

Influence of Rain on the Abundance of Bioaerosols in Fine and Coarse Particles

Chathurika M. Rathnayake¹, Nervana Metwali², Thilina Jayarathne¹, Josh Kettler¹, Yuefan Huang¹, Peter S. Thorne^{2,3}, Patrick T. O'Shaughnessy^{2,3}, and Elizabeth A. Stone¹

5 ¹ Department of Chemistry, University of Iowa, Iowa City, 52242, United States.

² Occupational and Environmental Health, University of Iowa City, 52242, United States.

³ Civil and Environmental Engineering, University of Iowa City, 52242, United States.

10 *Correspondence to:* Elizabeth A. Stone (betsy-stone@uiowa.edu)

Abstract. Assessing the environmental, health and climate impacts of bioaerosols requires knowledge of their size and abundance. These two properties were assessed through daily measurements of chemical tracers for pollens (sucrose, fructose, and glucose), fungal spores (mannitol and glucans) and Gram-negative bacterial endotoxins in fine particulate matter (PM_{2.5}), coarse PM (PM_{10-2.5}) and PM₁₀ (as the combination of PM_{2.5} and PM_{10-2.5}) during the spring tree pollen
15 season (mid-April to early-May) and late summer ragweed season (late-August to early-September) in the Midwestern US in 2013. Under dry conditions, pollen and fungal spore tracers were primarily in coarse PM (>75%), as expected for particles greater than 2.5 µm. Rainfall on May 2 corresponded to maximum atmospheric pollen tracer levels and a redistribution of pollen tracers to the fine PM fraction (>80%). Both changes were attributed to the osmotic rupture of pollen grains that led to the suspension of fine-sized pollen fragments. Fungal spore tracers peaked in concentration following spring rain events and
20 decreased in particle size, but to a lesser extent than pollens. A short, heavy thunderstorm in late summer corresponded to an increase in endotoxin and glucose levels, with a simultaneous shift to smaller particle sizes. Simultaneous increases in bioaerosol levels and decrease in their size has significant implications for population exposures to bioaerosols, particularly during rain events. Chemical mass balance (CMB) source apportionment modelling and regionally-specific pollen profiles were used to apportion PM mass to pollens and fungal spores. Springtime pollen contributions to PM₁₀ mass ranged from
25 0.04–0.8 µg m⁻³ (0.2–38%, averaging 4%), with maxima occurring on rainy days. Fungal spore contributions to PM₁₀ mass ranged from 0.1–1.5 µg m⁻³ (0.8–17%, averaging 5%), with maxima occurring after rain. Overall, this study defines changes to size distributions and concentrations of pollens, fungal spores, and endotoxins in response to rain in the Midwestern United States and advances the ability to apportion PM mass to pollens.

1 Introduction

Inhalable bioaerosols ($<100\mu\text{m}$) act as aeroallergens, triggering mild to severe allergic respiratory diseases (D'Amato et al., 2007a; Dales et al., 2003). Types of bioaerosols include viruses ($<0.3\ \mu\text{m}$), bacteria ($0.25\text{--}8\ \mu\text{m}$), fungal spores ($1\text{--}30\ \mu\text{m}$), and plant pollens ($\sim 5\text{--}100\ \mu\text{m}$) (Jones and Harrison, 2004; Matthias-Maser and Jaenicke, 1995). Once inhaled, bioaerosols reach different regions of the respiratory system based on their size (Oberdörster et al., 2005; Brown et al., 2013), which is dependent on the route of breathing, age, gender, and activity level (Brown et al., 2013). In general, particles of $3\ \mu\text{m}$ and $5\ \mu\text{m}$ for adults and children, respectively, travel beyond the larynx (Brown et al., 2013). Human immune system produces antibodies against inhaled aeroallergens that initiate airway symptoms (e.g., cough and runny nose), and exacerbate diseases like asthma and allergic rhinitis. Allergic respiratory diseases are estimated to affect 334 million people worldwide, particularly children (GAN, 2014). These respiratory illnesses are predicted to increase in response to global trends of increasing carbon dioxide concentrations (Singer et al., 2005; Ziska and Caulfield, 2000) and temperatures (Beggs, 2004) that enhance the allergenicity (Singer et al., 2005) and quantity (Ziska and Caulfield, 2000) of pollens, and duration of pollen seasons (Beggs, 2004; Beggs and Bambrick, 2006). The protection of sensitive populations from bioaerosols requires understanding environmental exposures to bioaerosols as a function of their type, size, and temporal variation.

Ambient levels of pollens vary seasonally with plant phenology (Galán et al., 1995; Targonski et al., 1995). Springtime in the Midwestern United States is generally characterized by high levels of tree pollens (Targonski et al., 1995), such as oak (Wallner et al., 2009), birch (Emberlin et al., 2002), alder, and hazel (Niederberger et al., 1998). Summertime has elevated concentrations of grass pollens (e.g., Timothy and Rye grass) and weed pollens, especially ragweed (Targonski et al., 1995). Daily pollen levels are affected by temperature, with warmer conditions favouring pollen development, maturation, and active release (van Vliet et al., 2002). Rainfall promotes the passive release of intact pollens by agitation (Taylor and Jonsson, 2004). In rainy conditions, pollen grains absorb water, osmotically rupture, and release cytoplasmic starch granules (D'Amato et al., 2007b). Microscopy studies have shown that intact birch pollens of $22\ \mu\text{m}$ in size can rupture and release around 400 starch granules (Staff et al., 1999) ranging from $0.03\text{--}4\ \mu\text{m}$ (D'Amato et al., 2007b). Consequently, human exposures to pollens in the atmosphere are highly dependent on pollen type, season, and local meteorology.

Fungal growth and spore release is also promoted by elevated temperatures (Corden and Millington, 2001) and wet conditions (Pasanen et al., 2000). Fungi discharge spores via splash-induced emission, as is the case for *Cladosporium*, a prominent fungal genus (Troutt and Levetin, 2001; Oliveira et al., 2009) that releases spores by mechanical shock and fast air currents produced by rain drops (Elbert et al., 2007; Allitt, 2000). Fungi that belong to the division Ascomycetes disperse spores in moist conditions (Jones and Harrison, 2004) leading to elevated spore levels several hours after rain (Allitt, 2000; Packe and Ayres, 1985). The release of bioaerosols during and after rain events can trigger significant changes to ambient bioaerosol numbers (Knox, 1993; Huffman et al., 2013) and mass concentrations (Marks et al., 2001).

Bacteria in the atmosphere are typically attached to soil or vegetative surfaces as agglomerations of cells (Jones and Harrison, 2004). Taxonomic analysis has revealed that soil and plant surfaces serve as sources of bacteria in the Midwestern US (Bowers et al., 2011). Ambient bacterial levels increase with temperature (Carty et al., 2003) due to conditions that favour vegetation and bacterial habitat (DeLucca and Palmgren, 1986; Romantschuk, 1992). In vegetation covered areas, atmospheric bacterial concentrations have been shown to increase during and after simulated rain events (Graham et al., 1977; Robertson and Alexander, 1994) as well as natural rain events (Constantinidou et al., 1990; Huffman et al., 2013). This response to precipitation has been attributed to rain moving plants and aerosolizing bacteria (Jones and Harrison, 2004). With strong dependences on local meteorology, bacteria are likely to exhibit high temporal variability.

Once released, bioaerosols in the atmosphere promote cloud and ice nucleation (Pope, 2010; Sun and Ariya, 2006; Murray et al., 2012). Intact birch, walnut and willow pollens have been demonstrated to be cloud condensations nuclei (CCN) (Pope, 2010), with cytoplasmic pollens granules ranging 0.05-0.3 μm being the most CCN active, due to their hygroscopicity and longer residence time (Steiner et al., 2015). Bacteria also are CCN, at relatively low supersaturations (Sun and Ariya, 2006; Franc and Demott, 1998). Because of their ordered structures, bioaerosols are effective ice nuclei (IN) forming ice crystals at sub-cooled temperatures, including intact pollens (Diehl et al., 2001; Diehl et al., 2002), pollen extracts (Augustin et al., 2013), fungal spores and bacteria (Murray et al., 2012). Their ability to act as CCN and IN affects the earth's climate through changes to cloud albedo and precipitation cycles (Diehl et al., 2001; Sun and Ariya, 2006).

Atmospheric levels of bioaerosols can be assessed through measurements of specific chemical and biological tracers. Glucose, fructose and sucrose are main energy storage material in plants, major contributors to pollen mass (Speranza et al., 1997; Fu et al., 2012) and have been used as pollen tracers in China and the United States (Fu et al., 2012; Jia et al., 2010a; Jia et al., 2010b). Although not unique to pollens, these three sugars also comprise a minor fraction of suspended soil (Rogge et al., 2007), road dust (Simoneit et al., 2004) and biomass burning (Medeiros and Simoneit, 2008). Mannitol and arabitol are sugar alcohols that serve as energy storage materials in fungi and are used to identify the presence of airborne fungal spores and to quantify their contributions to PM mass (Bauer et al., 2008; Zhang et al., 2010). 1,3- β -D-glucans are immune-active polysaccharides in fungal cell walls (Thorn et al., 2001; Bonlokke et al., 2006) that are also tracers of fungal spores that have been used to assess exposure levels in indoor and outdoor environments (Madsen, 2006; Crawford et al., 2009). Endotoxins are lipopolysaccharides in Gram-negative bacterial membranes that induce respiratory inflammations (Douwes et al., 2003; Thorne et al., 2015). Ambient levels of endotoxins have been measured in outdoor (Pavilonis et al., 2013) and occupational settings (Thorne et al., 2009). Measurement of these bioaerosol tracers allows for the evaluation of the atmospheric concentrations and size distributions of pollens, fungal spores, and Gram-negative bacteria.

Given the important role of bioaerosols in the health of sensitive populations and in atmospheric processes, a robust understanding of bioaerosol types and their response to changing meteorological conditions is needed. Our central objectives were *i*) to assess temporal variations in pollens, fungal spores and endotoxin concentrations and size distributions, *ii*) evaluate environmental conditions including rain and temperature that lead to high levels and decreases in bioaerosol sizes across fine ($\text{PM}_{2.5}$) and coarse ($\text{PM}_{10-2.5}$) modes, *iii*) determine intact pollen diameters and chemically profile regionally-

important pollen types (red oak, pin oak, cotton ragweed, giant ragweed and corn) for use in source apportionment, and iv) estimate pollen and fungal spore contributions to PM mass by way of chemical mass balance (CMB) modelling. The outcomes of this study include an improved understanding of changes in ambient concentrations and PM size distributions of bioaerosols in response to rain events and their contributions to PM mass.

5

2 Methods

2.1 Sample collection

Daily (24 h) PM samples were collected from 17 April–9 May (springtime) and 15 August–04 September (late-summer) in 2013, at the University of Iowa air monitoring site in Iowa City, Iowa, US (+41.6647, – 91.5845). The site was located at the University of Iowa Practice Fields in a suburban landscape in an open area surrounded by woods, agricultural fields, meadows and a parking lot. PM_{2.5} and PM_{10-2.5} were collected using an Andersen dichotomous sampler (Series 241) that included a PM₁₀ cut-off impactor (Anderson Instruments, Model 246b) and virtual impactor. The total air flow rate was 16.67 L min⁻¹ and the coarse flow rate was 1.667 L min⁻¹. PM samples were collected on 37-mm Teflon filters (Pall Corp.) and PM₁₀ was determined as the sum of PM_{2.5} and PM_{10-2.5}. The dichotomous sampler had a UMLBL (the University of Minnesota-Lawrence Berkeley Laboratory) type inlet which is equipped with a rain guard and a mesh-screen to exclude rain drops and insects. An additional set of PM_{2.5} samples were collected on to 90-mm quartz fibre filters (Pall Life Sciences) using a medium-volume sampler (URG Corp.) equipped with a sharp-cut cyclone to select PM_{2.5} at a flow rate of 90 L min⁻¹. Rain was excluded from the PM_{2.5} sampler primarily by positioning the inlet downward and secondarily by the cyclone. Both samplers were affixed to a platform 3 m above ground level and were unobstructed. Flowrates were measured using a rotameter at the beginning and the end of each sampling period; average flowrates were used to calculate air volumes. Filters were changed at 08:00 local time (CST) and one field blank was collected for every 5 samples. After sample collection, filters were stored at -20 °C in the dark.

To assess the representativeness of 2013 PM levels to typical conditions in Iowa, PM_{2.5} and PM₁₀ mass measurements were compared to measurements from 2010-2015 downloaded from the Technology Transfer Network (TTN) Air Quality System (AQS) Data Mart (USEPA, 2013). The federal reference method (FRM) site for Johnson County, Iowa is located at Hoover Elementary School, (+41.6572, – 91.5035), 6.3 km east of the University of Iowa air monitoring site. PM_{2.5} concentrations were compared to average levels over the sampling period calculated from hourly measurements while PM₁₀ data were compared to filter measurements collected from midnight to midnight every three days.

2.2 PM mass measurement

PM mass was determined by the difference of pre- and post-sampling Teflon filter weights. Filter measurements made in a temperature (21.9 °C) and humidity controlled (25±5%) room using an analytical microbalance (Mettler Toledo XP26) after conditioning 48 hours. Standard deviations of triplicate measurements were used as the error associated with the mass measurement.

2.3 Analysis of carbohydrates and inorganic ions

All glassware was prebaked at 500°C for 5 hours, while plastic vials used were pre-rinsed with ultrapure (UP) water (resistivity >18.2 MΩ cm⁻¹) (Barnstead EasyPure II, 7401). Teflon filters (containing PM_{10-2.5} samples) were cut in half using ceramic scissors on a clean, guided glass surface. Prior to extraction, Teflon filters were pre-wet with 100 µL of acetone (Sigma Aldrich). Subsamples of Teflon and quartz fibre filters (containing PM_{2.5}) were extracted into 4.00 mL of UP water by rotary shaking for 10 min at 125 rpm, ultra-sonication for 30 min at 60 Hz (Branson 5510, Danbury, CT, US), and then rotary shaking for 10 additional min. The extract was then filtered through a 0.45 µm polypropylene syringe filter (GE Healthcare, UK).

Carbohydrate concentrations were determined by high performance anion exchange chromatography (HPAEC) with pulsed amperometric detection (PAD, Dionex ICS 5000, Thermo Fisher, Sunnyvale, CA, USA). The HPAEC-PAD instrument consisted of an eluent organizer, dual pump, degasser, column compartment, electrochemical detector (ED50), AS-DV autosampler, CarboPac PA20 analytical column (3 X 150 mm, Dionex), guard column (3 X 30 mm), and a 10 µL injection loop. An isocratic separation of carbohydrates (erythritol, arabitol, fucose, trehalose [Alfa Aesar], glucose, fructose, arabinose, xylitol, xylose [Sigma Aldrich], rhamnose, mannose, ribose [Acros], sucrose and mannitol [Fisher Scientific]) was achieved with 10 mM sodium hydroxide (NaOH, Fisher Scientific) that was stored under N₂ (Praxair). The detector cell contained a gold disposable working electrode, to which quadruple waveform A was applied relative to a pH-Ag/AgCl reference electrode (Rocklin et al., 1998; Jensen and Johnson, 1997). Chromeleon 7 software was used for instrumental control, data acquisition and analysis. Carbohydrates were quantified against seven-point calibration curves ranging from 0.0100–2.50 ppm. Each analysis batch consisted of eight PM samples, two field blanks, one lab blank and one spike recovery sample. Summarized in Table S1 are carbohydrate extraction efficiencies (94-103%), instrument detection limits, and method detection limits.

Inorganic ion concentrations were determined using ion exchange chromatography with suppressed conductivity detection (ICS-5000, described above) following Jayarathne et al. (2014). Briefly, anions were separated on an Ionpac AS22 analytical column (4 X 250 mm, Dionex) preceded by a guard column and followed by a suppresser (Dionex AERS 500). Cations were separated on an Ionpac CS12A analytical column (3 X 150 mm, Dionex) preceded by a guard column, and followed by suppresser (Dionex CERS 500). Seven-point calibration curves were prepared from Seven Anion Standard and Six Cation-II Standard (Dionex) over the range of 0.010–10.0 ppm. Method performance metrics are summarized elsewhere (Jayarathne et al. 2014).

2.4 Analysis of biomarkers

Biomarkers were analyzed in extracts from the remaining halves of Teflon filters containing coarse PM and entire Teflon filters containing fine PM. Filters were extracted via shaking into 2 mL of sterile pyrogen-free (PF) water for 1 h at 22°C. Extracts were then centrifuged (5 min at 600g at 4 °C).

For analysis of fungal glucans, one aliquot of the supernatant was transferred into a PF borosilicate tube, mixed with 10x PF phosphate buffered Saline containing 0.05% Tween-20 (a surfactant), shaken for 1 h, autoclaved for 1 h, shaken for 20 min shaking, and then centrifuged for (600g at 4°C) 20min. Glucans were quantified by enzyme immunoassay as previously described by Blanc et al. (2005). A 12-point calibration curve prepared from (1-3, 1-6)- β -D-glucan (*scleroglucan*) ranged from 3-5000 ng mL⁻¹. The solution absorbance was measured at 450 nm (SpectraMax Plus 384; Molecular Devices, Sunnyvale, CA, USA).

For analysis of endotoxins, a second aliquot of the supernatant was subjected to the kinetic chromogenic *Limulus* amoebocyte lysate assay (LAL) (Lonza, Inc., Walkersville, MD) as described in Thorne (2000). The 12-point calibration curve was generated utilizing endotoxin standard (*Escherichia coli* 055:B5) at concentrations ranging from 0.024-50 Endotoxin Units (EU) mL⁻¹. The solution absorbance was measured at 405 nm (SpectraMax M5, Molecular Devices).

2.5 Collection and analysis of pollens

Oak pollens were harvested from pin and red oak trees in park areas surrounding Iowa City during the spring of 2013 into pre-cleaned aluminium foil lined bags. Cotton and giant ragweed pollens were collected in late-summer of 2015 from bushes near roadways in residential areas of Iowa City. Cotton ragweed and corn pollens were purchased (Polysciences Inc., Warrington, PA). Pollen images were taken to determine pollen grain diameters using a Zeiss LSM 710 fluorescence microscope (Carl Zeiss Microscopy GmbH, 07745 Jena, Germany) following Pöhlker et al. (2012), and IX-81 inverted microscope (Olympus Corporation, Tokyo, Japan). Prior to extraction and chemical analysis, pollens were desiccated overnight and weighed (Mettler Toledo XS204 and XP26 balances). Pollens (~0.005–0.015 g) were extracted and analysed following the methods described in section 2.3.

2.6 Chemical Mass Balance (CMB) modeling

PM mass was apportioned to fungal spores and pollens using EPA-CMB model (version 8.2). PM_{2.5} and PM₁₀ mass (from the sum of PM_{2.5} and PM_{10-2.5}) was apportioned to bioaerosols using sucrose, glucose, fructose, and mannitol as fitting species. Input source profiles included one pollen profile selected from red oak, pin oak (this study), white birch, Chinese willow, or Peking willow (Fu et al., 2012) and one fungal spore profile (Bauer et al., 2008). Sensitivity tests were conducted to assess the fit of different pollen profiles to ambient measurements, focusing on sampling days from 26 April–9 May when pollen tracer levels were highest.

2.7 Statistical analysis

Prior to statistical analysis, data points below detection limits were substituted with the limit of detection (LOD)/ $\sqrt{2}$ (Hewett and Ganser, 2007). Concentration measurements were tested for normality and log-normality using the Anderson-Darling test in Minitab (version 16). Species concentration measurements were not normally distributed, thus Spearman's rank order correlation was employed for non-parametric comparisons (r_s) in Minitab (version 16). PM measurements were

normally distributed thus t-tests comparing PM means from dry and rainy periods was conducted in Minitab (version 16). Significance was assessed at the 95% confidence interval ($p \leq 0.05$).

3 Results and discussion

Measurements of chemical tracers and biological markers are used to determine the relative concentrations and distribution of pollens, fungal spores, and bacteria in fine and coarse PM. Only few prior studies have combined chemical tracers and biological markers (Rathnayake et al., 2016; Chow et al., 2015), while many others have relied on either chemical tracers (Fu et al., 2012; Medeiros et al., 2006; Burshtein et al., 2011; Yttri et al., 2007; Zhang et al., 2010) or biological assays (Nilsson et al., 2011; Mueller-Anneling et al., 2004; Pavilonis et al., 2013; Madsen et al., 2011; Singh et al., 2011). Glucose, fructose, and sucrose are major components of pollens, mannitol and fungal glucans are in fungal spores, and endotoxins are in bacteria. In the ambient particulate matter, these species are used as bioaerosol tracers, since their concentrations reflect mass concentrations of the corresponding bioaerosol. These species provide general insight to classes of bioaerosols present, but cannot be used for species-level identification, which requires either microscopy imaging or DNA sequencing.

3.1 Characterization of pollens common to the Midwestern US

Red oak, pin oak, corn, cotton ragweed and giant ragweed pollen ranged in average diameter from 20 - 90 μm (Figure S1, Table 1). Together, glucose, fructose and sucrose accounted for an average of 5–14 % of pollen mass, while erythritol, arabinose, mannitol and rhamnose were detected in trace amounts (Table 1). Due to the relatively high mass fraction of glucose, fructose, and sucrose in pollens in the present and in prior studies (Fu et al., 2012; Speranza et al., 1997) these carbohydrates are the best candidates for assessing pollen contributions to ambient PM. Notably, the carbohydrate distributions in corn pollens differ from those previously reported (Speranza et al., 1997), with differences likely resulting from genetics (Speranza et al., 1997) and environmental factors (e.g. temperature, availability of water, and CO_2 levels) that are known to affect the synthesis and storage of carbohydrates (Aloni et al., 2001; Yoshida et al., 1998; Vesprini et al., 2002). Across different pollen types, the relative abundances of glucose, fructose and sucrose varied. For instance, the most abundant carbohydrate was sucrose for red oak, pin oak, and Polysciences cotton ragweed, fructose for corn pollen, and glucose for local cotton and giant ragweed. Sucrose to fructose ratios across different pollen types may serve to identify pollen types in ambient PM, in cases when a single pollen type is dominant (as discussed in section 3.6.1).

3.2 Fine and coarse PM concentrations

3.2.1 Spring

From 17 April to 9 May, 2013, daily PM_{10} levels in Iowa City ranged from 2–32 $\mu\text{g m}^{-3}$ (with an average of $15 \pm 8.9 \mu\text{g m}^{-3}$), and fine PM ranged from 2–13 $\mu\text{g m}^{-3}$ (with an average of $7.1 \pm 3.0 \mu\text{g m}^{-3}$). Comparison to PM levels at a nearby FRM site (located 6.3 km to the east) from 2010–2015 (Table S2), demonstrated that spring 2013 PM levels were typical for the surrounding years.

On 15 of the 23 spring sampling days, conditions were dry and no rain occurred (Figure 1a). On the remaining 8 days, daily rainfall totalled 0.3–85 mm. Rainfall corresponded to low PM concentrations with average fine PM levels decreasing from $8.3 \pm 2.6 \mu\text{g m}^{-3}$ on dry days to $4.7 \pm 2.2 \mu\text{g m}^{-3}$ on rainy days and coarse PM levels decreasing from $10 \pm 5.6 \mu\text{g m}^{-3}$ to $1.9 \pm 1.5 \mu\text{g m}^{-3}$ (Figure 1b). The PM reduction on rainy days was statistically significant ($p < 0.01$) and was driven by wet deposition of PM in both size modes. Rain also affected the distribution of particles between the fine and coarse modes. $\text{PM}_{2.5}$ contributed $48 \pm 11\%$ of PM_{10} on rainy days compared to $80 \pm 13\%$ on dry days. The shift in the PM size distribution reflects that rain was more effective at scavenging and/or suppressing the release of coarse particles compared to fine particles. This is consistent with previous ambient studies that have demonstrated coarse PM is more effectively scavenged than fine particles (Guo et al., 2016; Li et al., 2016). Particle removal via rainfall depends on many factors including a strong dependence on the particle size (Gregory, 1962; Baklanov and Sørensen, 2001); airborne particles with diameters greater than $3 \mu\text{m}$ have a higher tendency to collide with falling rain drops and are effectively scavenged via inertial impaction (Wang et al., 2010; Andronache, 2003; Mircea et al., 2000).

3.2.2 Late summer

Only one brief rain occurred during the three-week campaign, on August 22 when a thunderstorm brought 1.0 mm between 10–11 am (Figure 2a). From 15 August to 4 September, 2013, Iowa City daily PM_{10} levels as shown in Figure 2b, ranged from $21\text{--}50 \mu\text{g m}^{-3}$ (averaging $33 \pm 8 \mu\text{g m}^{-3}$) and fine PM levels ranged from $3\text{--}17 \mu\text{g m}^{-3}$ (averaging $12 \pm 4 \mu\text{g m}^{-3}$). On average, fine PM accounted for $39 \pm 12\%$ of PM_{10} . Compared to adjacent years (2010–2015), the late-summer of 2013 exhibited higher PM levels (Table S3). This is attributed to unusually dry conditions that reduce soil moisture leading to increase soil resuspension, and lack of wet deposition.

3.3 Pollen tracers

3.3.1 Spring

The temporal variations of pollens were assessed utilizing the combination of glucose, fructose and sucrose as chemical tracers. Ambient concentrations of these pollen tracers were relatively low from 17–25 April when lower temperatures (averaging 7°C) and rainy conditions prevailed. Pollen tracer levels were relatively higher from 26 April–9 May, coinciding with warmer temperatures (averaging 15°C) that marked the transition from winter to spring (Figure 1c–e, Table S4). Temperature and coarse mode glucose and sucrose were significantly correlated ($r_s \geq 0.8$, $p < 0.001$), reflecting that warmer temperatures promote the development, maturation, and release of pollens.

After the onset of spring, rain events increased pollen levels. For instance, maximum fructose and sucrose levels occurred on 2 May and maximum glucose on 9 May; rain occurred on both of these days, following a dry period with relatively high temperatures. Remarkably, rain events substantially altered the size distribution of pollen tracers. On a typical dry day, more than 80% of pollen tracers were present in coarse PM, which is expected for pollen particles that have

geometric diameters in the range of 5-100 μm (Huffman et al., 2010). However, when pollen markers peaked on 2 May, mass fractions of glucose, fructose and sucrose in the fine mode reached 83%, 91% and 93%, respectively (Figure 1c–e, right axis). With continued rainfall on 3–4 May, pollen markers remained elevated in the fine mode relative to coarse PM. After the rain stopped, coarse mode pollens increased in concentration and resumed the typical size distribution by 5 May. Light rainfall on 9 May coincided with increases in glucose in both size modes, with only 14% of these tracers in the fine mode. Together, these data suggest release of pollen fragments less than 2.5 μm during some rain events (2–4 May) and the passive release of some pollen particles in the coarse particle size range during others (9 May). Notably, this is the first observation of the release of fine particle pollen fragments to the atmosphere using chemical tracers. Most field measurements include analysis of either $\text{PM}_{2.5}$ or PM_{10} , while measurements in both size modes are required to capture this phenomenon.

The likely explanation for the increase in airborne pollens and simultaneous decrease in their size on May 2 is the rupturing of pollen walls as a result of the osmotic pressure that builds up inside the pollen due to absorbed moisture during rain (Taylor et al., 2004; Taylor et al., 2002). Osmotic shock has been previously demonstrated to cause rupturing of grass and birch pollens that releases cytoplasm (Taylor et al., 2004; Taylor et al., 2002; Suphioglu et al., 1992). Gusty winds can loft pollen fragments (Wallis et al., 1996) and strong winds on 2 May are likely to have contributed to the elevated fine pollen levels.

Differences in the size distributions of pollen tracers during the rain events on 2 May (mostly fine PM) and 9 May (mostly coarse PM) are expected to result from different pollen types predominating as evidenced by differing ratios of carbohydrates. On 2 May, the relative ratios of glucose and sucrose (normalized to fructose) in fine PM were 1.4 and 2.5, respectively, close to the ratios of red oak (1.2 and 2.1, respectively). Oak trees are abundant in Eastern Iowa and a prominent pollen type in the springtime, making oak a likely (but unconfirmed) source of pollens in fine PM. Meanwhile, the respective carbohydrate ratios on 9 May (18 and 0.7, respectively) did not match any of the local or literature available pollen profiles. These data suggest that certain pollen types undergo osmotic rupturing and release fine particles, while others do not. Further studies are needed to identify the types of pollens that rupture and conditions under which osmotic rupturing occurs.

3.3.2 Late summer

From mid-August to early-September, average temperature was moderately correlated with coarse mode glucose, fructose and sucrose ($r_s > 0.5$, $p < 0.02$). In the fine mode, glucose was frequently detected, while fructose and sucrose not (Figure 2c–e); this is likely due to the predominant pollen type having higher glucose concentrations relative to fructose and sucrose, as is the case for ragweed pollens (Table 1). The potential of glucose deriving from soil (Rogge et al., 2007; Simoneit et al., 2004) suspended in the air by splashing (Joung and Buie, 2015) was eliminated because there was no corresponding change in calcium, a well-established soil-tracer. Consequently, glucose is considered to be a tracer for pollens even in the absence of the other two pollen tracers, and the discussion of pollen size distribution relies solely on

glucose for this time period. On average, 83% of glucose mass concentration was found in coarse mode (Figure 2c), consistent with typical size range of intact pollens (Huffman et al., 2010). The single late-summer rain event on 22 August coincided with an increase in fine mode glucose concentration and an increase of the fine PM fraction of glucose to 34%, compared to 16% on dry days. The late summer single rain event indicated passive release of pollen fragments in response to rain that was similar to spring (section 3.3.1). However, with only one rain event occurring in the late summer study in 2013, additional studies are needed to validate these trends and identify the responsible pollen types.

3.4 Fungal spore tracers

3.4.1 Spring

Daily coarse mode fungal spore tracer concentrations significantly correlated with daily average temperature: fungal sugar mannitol and temperature ($r_s=0.7$, $p<0.001$) and the fungal cell wall component glucan and temperature— ($r_s=0.4$, $p=0.04$). From 17–21 and 23–25 April, cooler temperatures prevailed (averaging 6 and 7 °C, respectively) and PM₁₀ mannitol and glucan concentrations were relatively low (Figure 3a and b). An exceptionally high PM₁₀ glucan level occurred (Figure 3b) on April 22, when temperature increased to a local maximum of 14 °C. From 26 April, temperatures warmed to an average of 15 °C, concurrent with an increase fungal spore tracer levels. The correlation of temperature with fungal spore tracers is consistent with warmer temperatures favouring fungal growth (Corden and Millington, 2001; Rodriguez Rajo et al., 2005). The two tracers were moderately correlated with one another ($r_s=0.5$, $p<0.02$), signifying their origin from the same source.

Rain influenced ambient concentrations and the size distributions of fungal spore tracers, likely by triggering passive and/or active release mechanisms and/or promoting fungal growth. Maximum mannitol and glucan levels occurred on 5 May, which followed three days with rain (Figure 3a-b). Rainfall facilitates fungal growth promoting fungal germination and hyphal growth (Schulthess and Faeth, 1998; Morris et al., 2016) and wet conditions that follow rain are favourable for active release of fungal spores (Rodriguez Rajo et al., 2005; Van Osdol et al., 2004). For instance, actively discharged ascospores peak after rain in wet conditions (Troutt and Levetin, 2001; Elbert et al., 2007; MacHardy and Gadoury, 1986). Fungal spore tracer levels in coarse PM dropped on days when rain fell (e.g. 23 April, 2 May), due to particle removal by wet deposition. The size distributions of fungal spores, which typically have intact diameters in the range of 1–30 µm (Jones and Harrison, 2004), also were influenced by rain. During dry days, 13% of fungal spore tracers were in the fine PM fraction. On rainy days, the fraction of fungal spore tracers in the fine mode reached local maxima at 41% (23 April), 36% (24 April), and 54% (2 May) for mannitol and 38% for glucans (23 April; Figure 3a-b, right axis). The relative decrease in the size of fungal spores is attributed to a combination of the passive release of fungal spores less than 2.5 µm via rain splash and mechanical agitation of vegetative surfaces by rain drops (Allitt, 2000; Elbert et al., 2007; Huffman et al., 2013), and the removal of coarse fungal spore particles by droplet scavenging. Compared to pollens (section 3.3.1), rain events impacted the size distribution of fungal spores to a much lesser extent.

3.4.2 Late summer

From mid-August to early-September atmospheric concentrations of mannitol correlated with temperature ($r_s = 0.5$, $p = 0.01$), consistent with increased fungal growth with elevated temperatures (section 3.4.1). Fine mode mannitol reached a maximum on 22 August when rain fell during a one hour period (Figure 4a), likely due to fungal spore release via rain splash and mechanical agitation (section 3.4.1). Coarse mode mannitol also increased on 22 August, most likely due to release of fungal spores after rain subsided in response to wet conditions. Mannitol in fine PM accounted for an average of 9 ± 4 % of the total PM_{10} concentration and was not substantially different on 22 August (14%).

Coarse mode glucan concentrations in late summer were neither correlated with temperature ($r_s = 0.01$, $p = 1$), nor mannitol ($r_s = 0.2$, $p = 0.3$). Mannitol concentrations and fungal spore counts have spatial and seasonal differences from one another (Bauer et al., 2008), likely due to differences in mannitol emission per spore across fungal types (Elbert et al., 2007; Bauer et al., 2008) and/or mannitol concentrations in spores from within a species (e.g. ascomycetes releases ascospores during sexual reproduction and conidia during asexual reproduction (Nauta and Hoekstra, 1992)). The glucan content in fungal cell walls also vary with the fungal species (Foto et al., 2004). Collectively, these differences could give rise to weak or negligible correlations of ambient mannitol and glucan concentrations. Alternatively, non-fungal sources of either mannitol or glucans would confound their correlation. For instance, higher plants and some algae contain mannitol in their structure (Loescher et al., 1992; Shen et al., 1997). Ragweed pollens contain glucans (Foto et al., 2004), is a possible glucan source in late summer when ragweed pollens are prevalent and glucans significantly correlate with sucrose ($r_s = 0.5$, $p = 0.04$). Alternatively glucans may have derived from bacterial cells (McIntosh et al., 2005; Rylander and Lin, 2000), even though their correlation was not significant ($r_s = 0.4$, $p = 0.1$). Although glucans appear to have been influenced by bacterial and pollen levels in addition to fungi, the assessment of their ambient concentrations remains important, because they are immunostimulants that negatively impact human health (Thorn, 2001; Bonlokke et al., 2006).

3.5 Bacterial endotoxins

3.5.1 Spring

Coarse mode bacterial endotoxins, measured in endotoxin units (EU) against an *Escherichia coli* (055:B5) standard, were significantly correlated with daily average temperature ($r_s = 0.7$, $p < 0.001$). Lower temperatures averaging 7°C from 17-25 April, led to low endotoxin levels compared to a warmer period averaging 11 - 23°C from 26 April-1 May. The correlation of endotoxins with temperature agrees with prior ambient studies (Carty et al., 2003; Guan et al., 2014; Degobbi et al., 2011; Rathnayake et al., 2016) and is attributed to warmer temperatures increasing vegetative surfaces that serve as substrates for bacterial growth (Romantschuk, 1992; DeLucca and Palmgren, 1986; Carty et al., 2003). Heavy rain on 2 and 3 May led to a drop in PM_{10} endotoxin concentrations, due to wet deposition and suppression of soil dust particles upon which bacteria settle. On average, 92 ± 5 % of PM_{10} endotoxins were in the coarse mode (Figure 3c). The distribution of bacterial endotoxins as well as bacterial cells towards larger particles has been demonstrated previously (Nilsson et al., 2011; Monn et al., 1995; Shaffer and Lighthart, 1997). Such observations reflect the association of bacteria with particles prominent in coarse mode

such as plant parts, animal parts, soil, spores or pollen surfaces (Jones and Harrison, 2004; Shaffer and Lighthart, 1997). In addition, it has been suggested that bacteria settled on particles are more likely to survive in the atmosphere compared to a single bacterium (Lighthart et al., 1993). Coarse mode endotoxins demonstrated a moderate positive correlation with calcium, the crustal element ($r_s=0.7$, $p<0.001$), which suggests soil resuspension as a source of endotoxins in Iowa City, which has been demonstrated previously in the Midwestern US (Bowers et al., 2011; Rathnayake et al., 2016).

3.5.2 Late summer

In late summer, ambient endotoxin concentrations had a positive moderate correlation with coarse mode endotoxins ($r_s=0.5$, $p=0.02$) similar to springtime (section 3.5.1). On 22 August, the only late summer day with rain, fine mode endotoxin concentrations reached a maximum (Figure 4c). Meanwhile, the endotoxin fraction in the fine mode increased to 36% relative to an average of 5% on dry days. Rainfall promotes bacterial growth, such as *Pseudomonas syringae* that are common on plant surfaces and rapidly increase their populations during raining (Hirano and Upper, 1990; Hirano et al., 1996). The release of endotoxin to fine PM is expected to be caused by the aerosolization of Gram-negative bacteria living on plant surfaces (e.g., *Pseudomonas syringae*, *Pseudomonas fluorescens*, and *Pseudomonas viridiflava* etc. (Murray et al., 2012)) by agitation of plants or fungi by falling rain (Jones and Harrison, 2004; Constantinidou et al., 1990). Soil resuspension was suggested as an important source of bacterial endotoxins in spring (section 3.5.1), however coarse mode endotoxins were not significantly correlated with calcium in late summer ($r_s=0.2$, $p=0.33$), suggesting that this is not the case. Consequently, non-soil bacterial sources were likely responsible, such as plant surfaces (Romantschuk, 1992; Jeter and Matthyse, 2005; Murray et al., 2012) that are probably agricultural row crops (Lindemann et al., 1982; Hirano et al., 1996) in the agricultural state of Iowa. This link could be further explored by examining the co-occurrence of bacterial endotoxins with markers of plant waxes (i.e. odd-numbered *n*-alkanes), but is beyond the scope of the present study. The comparison of spring and late-summer endotoxin behaviour in response to rain suggests that soil bacteria are dominant in springtime, while bacteria residing on plant surfaces dominate in late-summer.

3.6 Contributions of pollens and fungal spores to PM mass

CMB source apportionment modelling was applied to estimate mass contributions of pollens and fungal spores to PM_{10} and $PM_{2.5}$. This work extends the application of fungal spores tracer-to-mass ratios to estimate their contributions to PM mass (Di Filippo et al., 2013; Zhang et al., 2010) to pollens for the first time. The CMB model requires representative source profiles for sources, which were drawn from the literature in the case of fungal spores (Bauer et al., 2008), birch, and willow pollens (Fu et al., 2012), and from this study (section 3.1).

3.6.1 Source apportionment in spring

The pollen profiles that explained the greatest fraction of the variance in the springtime measurements (assessed by the CMB R^2 value) were pin oak and red oak (Figure S2). The resultant R^2 value further increased when fungal spores were added to the model (Figure S2). Birch and willow profiles, which showed an excess of sucrose (Fu et al., 2012) explained a

substantially lower fraction of the variance in ambient data, where glucose and fructose concentrations outweighed sucrose. Hence, birch and willow pollen profiles were not considered further. Model results from using pin oak or red oak profiles in concert with the fungal spore profile produced consistent source contributions that were strongly correlated (Figure S3). Because red oak and pin oak fit ambient data to a comparable extent and both are sources of atmospheric pollens in Iowa, the best estimate of pollen contributions was calculated as the average contribution from red oak and pin oak.

Pollen and fungal spore contributions to PM_{10} and $PM_{2.5}$ estimated by the CMB model are shown in Figure 5 (and Table S6). Overall, contributions to fine PM after onset of spring, from 26 April–09 May ranged from $0.01\text{--}0.7\ \mu\text{g m}^{-3}$ for pollens and $0.03\text{--}0.1\ \mu\text{g m}^{-3}$ for fungal spores, while contributions to PM_{10} were consistently higher at $0.04\text{--}0.8\ \mu\text{g m}^{-3}$ for pollens and $0.13\text{--}1.5\ \mu\text{g m}^{-3}$ for fungal spores. On dry days, pollens contributed an average of 0.7% of $PM_{2.5}$ and 3.3% of PM_{10} . On rainy days, pollen contributions to fine PM averaged 11% and reached a maximum of 42% on May 2. Fungal spore contributions to fine PM averaged 0.5% on dry days and 1.7% on days with rain. Meanwhile, fungal spores had the greater contributions to PM_{10} mass on days following rain, reaching 8.7% on May 5. These source apportionment results demonstrate that bioaerosol contributions to PM_{10} mass in spring are typically low with averages of 4% and 5% for pollens and fungal spores, respectively), but can be significantly greater on days with rain, when bioaerosols are released and PM is removed by wet deposition. The distribution of bioaerosols in fine and coarse PM during spring is shown in Figure 6. For dry conditions, ~11% of pollens and fungal spores were observed in fine PM. However, during rainy days, 62% of pollen mass and 20% of fungal spore mass were observed in fine PM. These results indicate the importance of rain in shifting the size distribution of bioaerosols by affecting release mechanisms (i.e. passive release by splashing and mechanical agitation, or osmotic rupture of pollens).

Bioaerosol contributions to PM in this study were relatively in good agreement with prior studies. The average fungal spore contribution to PM_{10} in spring (5%) was 1.6 times higher than suburban site of Vienna, Austria, and 1.6 times lower than a tropical rainforest in China (Zhang et al., 2010), which were measured during springtime. Collectively, contributions from pollens (3.3%) and fungal spores (0.9%) to fine PM was ~2 times lower than contributions reported in US which determined in summertime (Coz et al., 2010). The slight variations of contributions could be attributed to the differences in ambient bioaerosol levels and geographical differences.

3.6.2 Source apportionment in late-summer

PM mass could not be apportioned to pollens in late summer, because of poor agreement between ambient data and source profiles. Fewer than 10% of the ambient PM samples had relative ratios of sucrose, fructose, and glucose in the range ragweed pollen profiles, which is a dominant pollen type in the Midwest. This lack of agreement could result from mixtures of pollen in the atmosphere that are not represented when utilizing a chemical profile for a single pollen type, and/or other dominant pollen types during late summer (e.g. Timothy grass and rye grass).

Fungal spore contributions to PM were estimated using the average mannitol conversion factor of $1.7\ \text{pg mannitol spore}^{-1}$ (range from $1.2\text{--}2.4\ \text{pg mannitol spore}^{-1}$) and a spore mass of 33 pg from Bauer et al. (2008). Resultant fungal spore

mass contributions to PM_{2.5} and PM_{10-2.5} ranged from 0.04-0.31 µg m⁻³ and 0.45-3.44 µg m⁻³, respectively, (Table S7). The contribution of fungal spores to PM_{2.5} averaged 1% on dry days, and 3% on 22 August when it rained. Meanwhile, fungal spore contributions to PM_{10-2.5} averaged 6% and reached to 16% on 22 August. The maximum fungal spore contributions to PM on 22 August is likely due to fungal spores released during rain by passive mechanisms and after rain by active mechanisms (section 3.4.1). This leads to an increase in fine sized fungal spores when raining, and coarse sized spores post-rain (Huffman et al., 2013; Hjelmroos, 1993).

3.7 Implications of the release of fine bioaerosols surrounding rain events

The release of fine sized bioaerosols can influence cloud formation, by acting as CCN and IN. Pollen fragments are effective CCN and IN (Pope, 2010; Diehl et al., 2001). During rain intact pollen particles can swell and rupture, producing hundreds of fine-sized pollen particles (D'Amato et al., 2007b), significantly increasing the number of CCN and IN active particles in the atmosphere. Bacteria and fungal spores also active IN and CCN (Murray et al., 2012; Sun and Ariya, 2006; Hassett et al., 2015). Bacterial strains with higher IN activity (mostly Gram-negative bacteria that inhabit plant surfaces (Murray et al., 2012), such as *Pseudomonas syringae*) increase in population during rain (Hirano et al., 1996), which can substantially increase airborne IN (Morris et al., 2016) that can persist in the atmosphere for weeks following rain (Bigg et al., 2015). Rainfall in general favours fungal growth (Schulthess and Faeth, 1998; Morris et al., 2016) as well as passive and active release of spores (Rodriguez Rajo et al., 2005; Van Osdol et al., 2004; Allitt, 2000; Elbert et al., 2007; Huffman et al., 2013) thereby increasing CCN and IN active particles in the atmosphere. When decreased in size (< 2.5 µm), these bioaerosols are more effective IN (Murray et al., 2015; Huffman et al., 2013). Because smaller particles have longer atmospheric lifetimes, fine bioaerosols will be transported longer distances before deposition, and thus may have effects in areas downwind of their release.

In general, the release of pollens, fungal spores, and Gram-negative bacteria in fine particles during rain events in Iowa, have the potential to influence human health. Elevating ambient fungal spore levels, particularly from species like *Penicillium*, *Aspergillus* and *Cladosporium*, trigger allergenic respiratory diseases like allergic rhinitis and asthma (Garrett et al., 1998; Tillie-Leblond et al., 2011; Knutsen et al., 2012) and high environmental exposures may lead to asthma exacerbations (Dales et al., 2003). Likewise, endotoxins induce inflammations in the respiratory tract (Dales et al., 2006; Liebers et al., 2008; Thorne et al., 2015). When pollen levels increase in concentration and decrease in size (as observed on May 2, May 9, and August 22), likely due to pollen rupturing, cytoplasmic pollen allergens (Suphioglu et al., 1992; Grote et al., 2001) will be released, leading to more direct exposure of humans to aeroallergens through inhalation. In the form of smaller particles, aeroallergens penetrate deeper into the respiratory tract where they may trigger more severe allergenic responses (Taylor et al., 2002; Wilson et al., 1973). Acute asthma epidemics have been associated with rain events have been documented in Australia, Europe, Mexico and the US (D'Amato et al., 2016; Dales et al., 2003; Grundstein et al., 2008) earning the name “thunderstorm asthma.” Such epidemics typically occur during pollen seasons (D'Amato et al., 2007a; D'Amato et al., 2007b; D'Amato et al., 2016) and have been associated with ambient pollen counts (Marks et al., 2001).

While lightning is associated with tropospheric ozone formation (Griffing, 1977; GAN, 2014) lightning alone (in the absence of rain) has not caused asthma epidemics (Grundstein et al., 2008), suggesting that rainfall plays an important role in thunderstorm asthma.

Pollen forecasting models currently do not include mechanisms for the release of pollen in response to rain and instead assume that rain serves only as a sink of pollens, by means of droplet scavenging and wet deposition (Zhang et al., 2013). This erroneous assumption leads to predictions of low atmospheric pollen levels on days with rain (e.g. May 2), when pollen tracer levels are highest and primarily in the form of fine particles. A more accurate representation of airborne pollen levels is needed to support an early-warning system to sensitive populations, but must go beyond simply the co-occurrence of elevated pollen levels and thunderstorms, which are suggested to cause too many false alarms (Newson et al., 1998). For accurate model parameterizations, a mechanistic and species-level understanding of pollen bursting is needed and should include definitions of the pollen types, seasonality, and meteorological conditions that promote the release of fine pollen particles to the atmosphere. In the meantime, persons suffering from pollen allergies should follow the recommendations of D'Amato et al. (2007b): "when asthmatic patients realize that a thunderstorm is approaching, the best thing for them to do is to stay indoors, with windows closed."

The results of this study provide new insight and tools to better understand the potential scope of thunderstorm asthma. While thunderstorm asthma has been documented in several locations, the data presented herein provide the first evidence of this phenomenon occurring in the Midwestern US. Thunderstorms and heavy rain are common in this region during spring, and thus it is anticipated that conditions characteristic of thunderstorm asthma likely occur several times annually. Pollen prediction indices do not currently account for the release of fine pollen fragments during rain, and consequently sensitive populations are not forewarned. To understand the potential for conditions that trigger thunderstorm asthma more broadly, chemical tracer approaches, as used here, are a useful tool. Chemical tracers provide a sensitive method of detecting fine pollen particles that may be useful in monitoring conditions that precede PM_{2.5} pollen release. Because carbohydrates are not expected to undergo chemical alternation by the pollen bursting, they also provide a means of tracking pollens across PM size fractions and associating pollens with their species of origin. Microscopy-based methods are challenged by changes to particle size and morphology upon bursting, which may require use of multiple microscopy techniques suitable for different particle sizes. Chemical tracer methods have potential to be broadly applied, as national monitoring programs routinely collect PM_{2.5} samples on filters for chemical analysis. In this way, regions and atmospheric conditions that lead to high levels of PM_{2.5} pollen particles may be better defined.

4. Conclusions

Daily concentrations of PM mass and bioaerosol tracers (including fructose, glucose, and sucrose for pollens, mannitol and glucans for fungal spores, and endotoxins from Gram-negative bacteria) demonstrated high day-to-day variability and influences from meteorology, particularly rain. Elevated bioaerosol tracer levels were observed when temperatures are warmer suggesting increased pollen, fungal and bacterial concentrations during both spring and late summer periods. Rain events of spring triggered the release of pollens, with maximum levels of pollen tracers occurring on May 2 and May 9, when rain occurred following a period of elevated temperatures in spring. Airborne fungal spore tracers in coarse PM fraction, however, were suppressed by spring rain and increased in concentration following rain events. Source apportionment by CMB modelling in concert with Midwestern pollen profiles indicated significant contributions from bioaerosols to PM mass on rainy days during springtime. Importantly, the size distribution of endotoxins and pollen and fungal spore tracers shifted towards fine particles ($<2.5\ \mu\text{m}$) during periods of rain. The fragmentation of pollens due to osmotic rupture, shown previously through microscopy methods. For the first time, we demonstrate a shift of coarse particle pollens ($2.5\text{-}10\ \mu\text{m}$) to fine particles ($2.5\ \mu\text{m}$) by way of chemical tracers during a major rain event and propose that this is due to osmotic rupture of pollens. The release of finer-sized bioaerosols during rain events has important implications for human exposures, because finer particles may penetrate more deeply into the lung and be transported over longer distances.

A detailed level of understanding of pollen release mechanisms, particularly as pollen fragments, is needed to improve the accuracy of allergen prediction models that erroneously forecast low airborne allergen levels during periods of rain. Future research should focus on a more precise determination of the duration of heightened pollen levels during rain events with higher time resolution measurements. Similarly, measurements with higher PM size resolution should be employed to determine the specific size range of pollen fragments during these events. Additional efforts are needed to characterize the fungal and floral species that release fine-sized bioaerosols to the atmosphere and the mechanisms that trigger such release, to allow for their accurate representation in atmospheric models to support accurate representations of environmental conditions and forewarn susceptible populations of conditions that may lead to high bioaerosol exposures.

Acknowledgements

We thank Ralph Altmaier and Lindy Carr for their assistance with PM sample collection and gravimetric analysis and Prof. Keri Hornbuckle for establishing the University of Iowa Air Monitoring Site. We also thank Jianqiang Shao and Katherine Walters for helping with fluorescence and inverted microscope images, and the University of Iowa Central Microscopy Research Facility, a core resource supported by the Vice President for Research & Economic Development, the Holden Comprehensive Cancer Center and the Carver College of Medicine. This research was supported by the Environmental Health Sciences Research Center (EHSRC) seed grant program (NIH P30 ES005605) and the University of Iowa.

Table 1: Pollen diameter and mass fractions of carbohydrates and ions with standard errors. The carbohydrates arabinol, xylitol, trehalose, fucose, mannose, xylose and ribose were below detection limits.

	Red Oak			Pin Oak			Corn			Cotton ragweed ^a			Cotton ragweed ^b			Giant ragweed ^b		
n	5			5			5			5			3			3		
Diameter (μm) ^c	30			30			80			20			35			35		
Carbohydrates (μg mg ⁻¹)																		
Glucose	41.1	±	4.1	40.2	±	3.5	15.2	±	0.9	15.9	±	1.6	43.3	±	2.0	39.2	±	2.8
Fructose	33.0	±	1.8	33.9	±	2.9	25.0	±	1.1	13.5	±	0.6	24.4	±	1.1	22.9	±	1.5
Sucrose	68.3	±	4.5	55.2	±	3.2	13.4	±	1.7	59.4	±	3.3	28.0	±	1.4	27.9	±	1.3
Erythritol	8.1	±	3.1	8.7	±	3.4	28.7	±	3.2	NQ ^d			NQ ^d			NQ ^d		
Mannitol	0.1	±	0.01	0.2	±	0.01	<0.001			<0.001			0.2	±	0.01	0.8	±	0.1
Rhamnose	0.1	±	0.01	0.1	±	0.01	<0.001			<0.001			<0.001			<0.001		
Arabinose	0.3	±	0.03	0.5	±	0.1	0.9	±	0.2	0.3	±	0.03	1.2	±	0.1	2.3	±	0.2
Inorganic ions (μg mg ⁻¹)																		
Sodium	0.25	±	0.20	0.23	±	0.01	0.30	±	0.10	0.03 ± 0.002			NA ^e					
Ammonium	1.36	±	0.11	1.11	±	0.90	0.89	±	0.16	1.33 ± 0.13								
Potassium	7.56	±	0.81	6.43	±	0.51	11.97	±	0.16	5.22 ± 0.48								
Magnesium	0.03	±	0.00	0.05	±	0.01	0.88	±	0.01	0.74 ± 0.06								
Calcium	0.07	±	0.02	0.12	±	0.01	0.37	±	0.03	1.85 ± 0.12								
Chloride	0.40	±	0.08	0.42	±	0.05	2.10	±	0.11	1.64 ± 0.18								
Nitrate	0.19	±	0.04	0.31	±	0.11	<0.019			<0.019								
Phosphate	3.94	±	0.39	1.65	±	0.41	10.5	±	0.88	8.99 ± 0.87								
Sulfate	0.79	±	0.29	0.46	±	0.02	0.94	±	0.12	0.25 ± 0.03								

^a Purchased from Ploysciences

^b Collected locally from Iowa City during late summer 2015

^c Approximate diameters

^d Not quantified (NQ) due to chromatographic interferences

^e Not analyzed (NA)

References

- Allitt, U.: Airborne fungal spores and the thunderstorm of 24 June 1994, *Aerobiologia*, 16, 397-406, doi: 10.1023/A:1026503500730, 2000.
- Aloni, B., Peet, M., Pharr, M., and Karni, L.: The effect of high temperature and high atmospheric CO₂ on carbohydrate changes in bell pepper (*Capsicum annuum*) pollen in relation to its germination, *Physiol. Plantarum*, 112, 505-512, doi: 10.1034/j.1399-3054.2001.1120407.x, 2001.
- Andronache, C.: Estimated variability of below-cloud aerosol removal by rainfall for observed aerosol size distributions, *Atmos. Chem. Phys.*, 3, 131-143, doi: 10.5194/acp-3-131-2003, 2003.
- Augustin, S., Wex, H., Niedermeier, D., Pummer, B., Grothe, H., Hartmann, S., Tomsche, L., Clauss, T., Voigtländer, J., and Ignatius, K.: Immersion freezing of birch pollen washing water, *Atmos. Chem. Phys.*, 13, 10989-11003, doi: 10.5194/acp-13-10989-2013, 2013.
- Baklanov, A., and Sørensen, J.: Parameterisation of radionuclide deposition in atmospheric long-range transport modelling, *Phys. and Chem. Earth, Part B: Hydrology, Oceans and Atmosphere*, 26, 787-799, doi: 10.1016/S1464-1909(01)00087-9, 2001.
- Bauer, H., Claeys, M., Vermeylen, R., Schueller, E., Weinke, G., Berger, A., and Puxbaum, H.: Arabitol and mannitol as tracers for the quantification of airborne fungal spores, *Atmos. Environ.*, 42, 588-593, doi: 10.1016/j.atmosenv.2007.10.013, 2008.
- Beggs, P. J.: Impacts of climate change on aeroallergens: past and future, *Clin. Exp. Allergy*, 34, 1507-1513, doi: 10.1111/j.1365-2222.2004.02061.x, 2004.
- Beggs, P. J., and Bambrick, H. J.: Is the global rise of asthma an early impact of anthropogenic climate change?, *Ciência & Saúde Coletiva*, 11, 745-752, doi: 10.1590/S1413-81232006000300022, 2006.
- Bigg, E. K., Soubeyrand, S., and Morris, C. E.: Persistent after-effects of heavy rain on concentrations of ice nuclei and rainfall suggest a biological cause, *Atmos. Chem. Phys.*, 15, 2313-2326, doi: 10.5194/acp-15-2313-2015, 2015.
- Blanc, P. D., Eisner, M. D., Katz, P. P., Yen, I. H., Archea, C., Earnest, G., Janson, S., Masharani, U. B., Quinlan, P. J., and Hammond, S. K.: Impact of the home indoor environment on adult asthma and rhinitis, *J. Occup. Environ. Med.*, 47, 362-372, doi: 10.1097/01.jom.0000158708.32491.9d, 2005.
- Bonlokke, J. H., Stridh, G., Sigsgaard, T., Kjærgaard, S. K., Löfstedt, H., Andersson, K., Bonefeld-Jørgensen, E. C., Jayatissa, M. N., Bodin, L., and Juto, J.-E.: Upper-airway inflammation in relation to dust spiked with aldehydes or glucan, *Scand. J. Work. Environ. Health*, 374-382, 2006.
- Bowers, R. M., Sullivan, A. P., Costello, E. K., Collett, J. L., Knight, R., and Fierer, N.: Sources of bacteria in outdoor air across cities in the midwestern United States, *Appl. Environ. Microbiol.*, 77, 6350-6356, doi: 10.1021/es402970s, 2011.
- Brown, J. S., Gordon, T., Price, O., and Asgharian, B.: Thoracic and respirable particle definitions for human health risk assessment, *Part. Fibre Toxicol.*, 10, 1-12, doi: 10.1186/1743-8977-10-12, 2013.
- Burshtein, N., Lang-Yona, N., and Rudich, Y.: Ergosterol, arabitol and mannitol as tracers for biogenic aerosols in the eastern Mediterranean, *Atmos. Chem. Phys.*, 11, 829-839, doi: 10.5194/acp-11-829-2011, 2011.
- Carty, C. L., Gehring, U., Cyrus, J., Bischof, W., and Heinrich, J.: Seasonal variability of endotoxin in ambient fine particulate matter, *J. Environ. Monit.*, 5, 953-958, doi: 10.1039/B308488D, 2003.
- Chow, J. C., Yang, X., Wang, X., Kohl, S. D., Hurbain, P. R., Chen, L. A., and Watson, J. G.: Characterization of Ambient PM₁₀ Bioaerosols in a California Agricultural Town, *Aerosol Air Qual. Res.*, 15, 1433-1447, doi: 10.4209/aaqr.2014.12.0313, 2015.
- Constantinidou, H., Hirano, S., Baker, L., and Upper, C.: Atmospheric dispersal of ice nucleation-active bacteria: The role of rain, *Phytopathology*, 80, 934-937, 1990.
- Corden, J. M., and Millington, W. M.: The long-term trends and seasonal variation of the aeroallergen *Alternaria* in Derby, UK, *Aerobiologia*, 17, 127-136, doi: 10.1023/A:1010876917512, 2001.
- Coz, E., Artíñano, B., Clark, L. M., Hernandez, M., Robinson, A. L., Casuccio, G. S., Lersch, T. L., and Pandis, S. N.: Characterization of fine primary biogenic organic aerosol in an urban area in the northeastern United States, *Atmos. Environ.*, 44, 3952-3962, doi: 10.1016/j.atmosenv.2010.07.007, 2010.
- Crawford, C., Reponen, T., Lee, T., Iossifova, Y., Levin, L., Adhikari, A., and Grinshpun, S. A.: Temporal and spatial variation of indoor and outdoor airborne fungal spores, pollen, and (1→3)-β-D-glucan, *Aerobiologia*, 25, 147-158, doi: 10.1007/s10453-009-9120-z, 2009.
- D'Amato, G., Cecchi, L., Bonini, S., Nunes, C., Annesi-Maesano, I., Behrendt, H., Liccardi, G., Popov, T., and Van Cauwenberge, P.: Allergenic pollen and pollen allergy in Europe, *Allergy*, 62, 976-990, doi: 10.1111/j.1398-9995.2007.01393.x, 2007a.
- D'Amato, G., Liccardi, G., and Fringuelli, G.: Thunderstorm-asthma and pollen allergy, *Allergy*, 62, 11-16, doi: 10.1111/j.1398-9995.2006.01271.x, 2007b.
- D'Amato, G., Vitale, C., D'Amato, M., Cecchi, L., Liccardi, G., Molino, A., Vatrella, A., Sanduzzi, A., Maesano, C., and Annesi-Maesano, I.: Thunderstorm related asthma: what happens and why, *Clin. Exp. Allergy*, doi: 10.1111/cea.12709, 2016.
- Dales, R., Miller, D., Ruest, K., Guay, M., and Judek, S.: Airborne endotoxin is associated with respiratory illness in the first 2 years of life, *Environ. Health Perspect.*, 610-614, 2006.

- Dales, R. E., Cakmak, S., Judek, S., Dann, T., Coates, F., Brook, J. R., and Burnett, R. T.: The role of fungal spores in thunderstorm asthma, *CHEST Journal*, 123, 745-750, doi: 10.1378/chest.123.3.745, 2003.
- Degobbi, C., Lopes, F. D., Carvalho-Oliveira, R., Muñoz, J. E., and Saldiva, P. H.: Correlation of fungi and endotoxin with PM_{2.5} and meteorological parameters in atmosphere of Sao Paulo, Brazil, *Atmos. Environ.*, 45, 2277-2283, doi: 10.1016/j.atmosenv.2010.12.005, 2011.
- DeLucca, A., and Palmgren, M.: Mesophilic microorganisms and endotoxin levels on developing cotton plants, *Am. Ind. Hyg. Assoc. J.*, 47, 437-442, doi: 10.1080/15298668691390016, 1986.
- Di Filippo, P., Pomata, D., Riccardi, C., Buiarelli, F., and Perrino, C.: Fungal contribution to size-segregated aerosol measured through biomarkers, *Atmos. Environ.*, 64, 132-140, doi: 10.1016/j.atmosenv.2012.10.010, 2013.
- Diehl, K., Quick, C., Matthias-Maser, S., Mitra, S., and Jaenicke, R.: The ice nucleating ability of pollen: Part I: Laboratory studies in deposition and condensation freezing modes, *Atmos. Res.*, 58, 75-87, doi: 10.1016/S0169-8095(01)00091-6, 2001.
- Diehl, K., Matthias-Maser, S., Jaenicke, R., and Mitra, S.: The ice nucleating ability of pollen: Part II. Laboratory studies in immersion and contact freezing modes, *Atmos. Res.*, 61, 125-133, doi: 10.1016/S0169-8095(01)00132-6, 2002.
- Douwes, J., Thorne, P., Pearce, N., and Heederik, D.: Bioaerosol health effects and exposure assessment: progress and prospects, *Ann. Occup. Hyg.*, 47, 187-200, doi: 10.1093/annhyg/meg032, 2003.
- Elbert, W., Taylor, P., Andreae, M., and Pöschl, U.: Contribution of fungi to primary biogenic aerosols in the atmosphere: wet and dry discharged spores, carbohydrates, and inorganic ions, *Atmos. Chem. Phys.*, 7, 4569-4588, doi: 10.5194/acp-7-4569-2007, 2007.
- Emberlin, J., Detandt, M., Gehrig, R., Jaeger, S., Noland, N., and Rantio-Lehtimäki, A.: Responses in the start of Betula (birch) pollen seasons to recent changes in spring temperatures across Europe, *Int. J. Biometeorol.*, 46, 159-170, doi: 10.1007/s00484-002-0139-x, 2002.
- Foto, M., Plett, J., Berghout, J., and Miller, J. D.: Modification of the Limulus amoebocyte lysate assay for the analysis of glucan in indoor environments, *Anal. Bioanal. Chem.*, 379, 156-162, doi: 10.1007/s00216-004-2583-4, 2004.
- Franc, G. D., and Demott, P. J.: Cloud activation characteristics of airborne Erwinia carotovora cells, *J. Appl. Meteorol.*, 37, 1293-1300, doi: 10.1175/1520-0450(1998)037<1293:CAC0AE>2.0.CO;2, 1998.
- Fu, P., Kawamura, K., Kobayashi, M., and Simoneit, B. R.: Seasonal variations of sugars in atmospheric particulate matter from Gosan, Jeju Island: Significant contributions of airborne pollen and Asian dust in spring, *Atmos. Environ.*, 55, 234-239, doi: 10.1016/j.atmosenv.2012.02.061, 2012.
- Galán, C., Emberlin, J., Domínguez, E., Bryant, R. H., and Villamandos, F.: A comparative analysis of daily variations in the Gramineae pollen counts at Córdoba, Spain and London, UK, *Grana*, 34, 189-198, doi: 10.1080/00173139509429042, 1995.
- GAN: Global Asthma Network, The Global Asthma Report, http://www.globalasthmareport.org/resources/Global_Asthma_Report_2014.pdf, accessed June, 2014.
- Garrett, M., Rayment, P., Hooper, M., Abramson, M., and Hooper, B.: Indoor airborne fungal spores, house dampness and associations with environmental factors and respiratory health in children, *Clin. Exp. Allergy*, 28, 459-467, doi: 10.1046/j.1365-2222.1998.00255.x, 1998.
- Graham, D., Quinn, C., and Bradley, L., F.: Quantitative Studies on the Generation of Aerosols of Erwinia carotovora var. atroseptica by Simulated Raindrop Impaction on Blackleg- infected Potato Stems, *J. Appl. Bacteriol.*, 43, 413-424, doi: 10.1111/j.1365-2672.1977.tb00768.x, 1977.
- Gregory, P. H.: The microbiology of the atmosphere, *Soil Sci.*, 94, 349, 1962.
- Griffing, G. W.: Ozone and oxides of nitrogen production during thunderstorms, *J. Geophys. Res.*, 82, 943-950, doi: 10.1029/JC082i006p00943, 1977.
- Grote, M., Vrtala, S., Niederberger, V., Wiermann, R., Valenta, R., and Reichelt, R.: Release of allergen-bearing cytoplasm from hydrated pollen: a mechanism common to a variety of grass (Poaceae) species revealed by electron microscopy, *J. Allergy Clin. Immunol.*, 108, 109-115, doi: 10.1067/mai.2001.116431, 2001.
- Grundstein, A., Sarnat, S. E., Klein, M., Shepherd, M., Naeher, L., Mote, T., and Tolbert, P.: Thunderstorm associated asthma in Atlanta, Georgia, *Thorax*, 63, 659-660, doi: 10.1136/thx.2007.092882, 2008.
- Guan, T., Yao, M., Wang, J., Fang, Y., Hu, S., Wang, Y., Dutta, A., Yang, J., Wu, Y., and Hu, M.: Airborne endotoxin in fine particulate matter in Beijing, *Atmos. Environ.*, 97, 35-42, doi: 10.1016/j.atmosenv.2014.08.005, 2014.
- Guo, L.-C., Zhang, Y., Lin, H., Zeng, W., Liu, T., Xiao, J., Rutherford, S., You, J., and Ma, W.: The washout effects of rainfall on atmospheric particulate pollution in two Chinese cities, *Environ. Pollut.*, 215, 195-202, doi: 10.1016/j.envpol.2016.05.003, 2016.
- Hassett, M. O., Fischer, M. W., and Money, N. P.: Mushrooms as Rainmakers: How Spores Act as Nuclei for Raindrops, *PLoS One*, 10, e0140407, doi: 10.1371/journal.pone.0140407, 2015.
- Hewett, P., and Ganser, G. H.: A comparison of several methods for analyzing censored data, in: *Ann. Occup. Hyg.*, 7, 611-632, 2007.
- Hirano, S. S., and Upper, C. D.: Population biology and epidemiology of Pseudomonas syringae, *Annu. Rev. Phytopathol.*, 28, 155-177, 1990.
- Hirano, S. S., Baker, L. S., and Upper, C. D.: Raindrop momentum triggers growth of leaf-associated populations of Pseudomonas syringae on field-grown snap bean plants, *Appl. Environ. Microbiol.*, 62, 2560-2566, doi, 1996.

- Hjelmroos, M.: Relationship between airborne fungal spore presence and weather variables: *Cladosporium* and *Alternaria*, *Grana*, 32, 40-47, doi: 10.1080/00173139309436418, 1993.
- Huffman, J., Treutlein, B., and Pöschl, U.: Fluorescent biological aerosol particle concentrations and size distributions measured with an Ultraviolet Aerodynamic Particle Sizer (UV-APS) in Central Europe, *Atmos. Chem. Phys.*, 10, 3215-3233, doi: 10.5194/acp-10-3215-2010, 2010.
- Huffman, J. A., Pöhlker, C., Prenni, A., DeMott, P., Mason, R., Robinson, N., Fröhlich-Nowoisky, J., Tobo, Y., Després, V., and Garcia, E.: High concentrations of biological aerosol particles and ice nuclei during and after rain, *Atmos. Chem. Phys.*, 13, 6151-6164, doi: 10.5194/acp-13-6151-2013, 2013.
- Jayarathne, T., Stockwell, C. E., Yokelson, R. J., Nakao, S., and Stone, E. A.: Emissions of fine particle fluoride from biomass burning, *Environ. Sci. Technol.*, 48, 12636-12644, doi: 10.1021/es502933j, 2014.
- Jensen, M. B., and Johnson, D. C.: Fast wave forms for pulsed electrochemical detection of glucose by incorporation of reductive desorption of oxidation products, *Anal. Chem.*, 69, 1776-1781, doi: 10.1021/ac960828x, 1997.
- Jeter, C., and Matthyssse, A. G.: Characterization of the binding of diarrheagenic strains of *E. coli* to plant surfaces and the role of curli in the interaction of the bacteria with alfalfa sprouts, *Mol. Plant. Microbe Interact.*, 18, 1235-1242, doi: 10.1094/MPMI-18-1235, 2005.
- Jia, Y., Bhat, S., and Fraser, M. P.: Characterization of saccharides and other organic compounds in fine particles and the use of saccharides to track primary biologically derived carbon sources, *Atmos. Environ.*, 44, 724-732, doi: 10.1016/j.atmosenv.2009.10.034, 2010a.
- Jia, Y., Clements, A. L., and Fraser, M. P.: Saccharide composition in atmospheric particulate matter in the southwest US and estimates of source contributions, *J. Aerosol Sci.*, 41, 62-73, doi: 10.1016/j.jaerosci.2009.08.005, 2010b.
- Jones, A. M., and Harrison, R. M.: The effects of meteorological factors on atmospheric bioaerosol concentrations—a review, *Sci. Total Environ.*, 326, 151-180, doi: 10.1016/j.scitotenv.2003.11.021, 2004.
- Joung, Y. S., and Buie, C. R.: Aerosol generation by raindrop impact on soil, *Nature communications*, 6, doi: 10.1038/ncomms7083, 2015.
- Knox, R.: Grass pollen, thunderstorms and asthma, *Clin. Exp. Allergy*, 23, 354-359, doi: 10.1111/j.1365-2222.1993.tb00339.x, 1993.
- Knutsen, A. P., Bush, R. K., Demain, J. G., Denning, D. W., Dixit, A., Fairs, A., Greenberger, P. A., Kariuki, B., Kita, H., and Kurup, V. P.: Fungi and allergic lower respiratory tract diseases, *J. Allergy Clin. Immunol.*, 129, 280-291, doi: 10.1016/j.jaci.2011.12.970, 2012.
- Li, X., Dong, Y., Dong, Z., Du, C., and Chen, C.: Observed changes in aerosol physical and optical properties before and after precipitation events, *Adv. Atmos. Sci.*, 33, 931-944, doi: 10.1007/s00376-016-5178-z, 2016.
- Liebers, V., Raulf-Heimsoth, M., and Brüning, T.: Health effects due to endotoxin inhalation (review), *Arch. Toxicol.*, 82, 203-210, doi: 10.1007/s00204-008-0290-1, 2008.
- Lighthart, B., Shaffer, B. T., Marthi, B., and Ganio, L. M.: Artificial wind-gust liberation of microbial bioaerosols previously deposited on plants, *Aerobiologia*, 9, 189-196, doi: 10.1007/BF02066261, 1993.
- Lindemann, J., Constantinidou, H. A., Barchet, W. R., and Upper, C. D.: Plants as sources of airborne bacteria, including ice nucleation-active bacteria, *Appl. Environ. Microbiol.*, 44, 1059-1063, doi: 10.1093/aem/44.6.1059, 1982.
- Loescher, W. H., Tyson, R. H., Everard, J. D., Redgwell, R. J., and Bielecki, R. L.: Mannitol Synthesis in Higher Plants Evidence for the Role and Characterization of a NADPH-Dependent Mannose 6-Phosphate Reductase, *Plant Physiol.*, 98, 1396-1402, doi: 10.1104/pp.98.4.1396, 1992.
- MacHardy, W. E., and Gadoury, D. M.: Patterns of ascospore discharge by *Venturia inaequalis*, *Phytopathology*, 76, 985-990, 1986.
- Madsen, A. M.: Airborne endotoxin in different background environments and seasons, *Ann. Agric. Environ. Med.*, 13, 81-86, 2006.
- Madsen, A. M., Frederiksen, M. W., Allermann, L., and Peitersen, J. H.: (1→3)- β -D-glucan in different background environments and seasons, *Aerobiologia*, 27, 173-179, doi: 10.1007/s10453-010-9178-7, 2011.
- Marks, G., Colquhoun, J., Girgis, S., Koski, M. H., Treloar, A., Hansen, P., Downs, S., and Car, N.: Thunderstorm outflows preceding epidemics of asthma during spring and summer, *Thorax*, 56, 468-471, doi: 10.1136/thorax.56.6.468, 2001.
- Matthias-Maser, S., and Jaenicke, R.: The size distribution of primary biological aerosol particles with radii > 0.2 μ m in an urban/rural influenced region, *Atmos. Res.*, 39, 279-286, doi: 10.1016/0169-8095(95)00017-8, 1995.
- McIntosh, M., Stone, B., and Stanisich, V.: Curdlan and other bacterial (1→3)- β -D-glucans, *Appl. Microbiol. Biotechnol.*, 68, 163-173, doi: 10.1007/s00253-005-1959-5, 2005.
- Medeiros, P. M., Conte, M. H., Weber, J. C., and Simoneit, B. R.: Sugars as source indicators of biogenic organic carbon in aerosols collected above the Howland Experimental Forest, Maine, *Atmos. Environ.*, 40, 1694-1705, doi: 10.1016/j.atmosenv.2005.11.001, 2006.
- Medeiros, P. M., and Simoneit, B. R.: Source profiles of organic compounds emitted upon combustion of green vegetation from temperate climate forests, *Environ. Sci. Technol.*, 42, 8310-8316, doi: 10.1021/es801533b, 2008.
- Mircea, M., Stefan, S., and Fuzzi, S.: Precipitation scavenging coefficient: influence of measured aerosol and raindrop size distributions, *Atmos. Environ.*, 34, 5169-5174, doi: 10.1016/S1352-2310(00)00199-0, 2000.

- Monn, C., Braendli, O., Schaeppi, G., Schindler, C., Ackermann-Liebrich, U., Leuenberger, P., and Team, S.: Particulate matter < 10 µm (PM₁₀) and total suspended particulates (TSP) in urban, rural and alpine air in Switzerland, *Atmos. Environ.*, 29, 2565-2573, doi: 10.1016/1352-2310(95)94999-U, 1995.
- Morris, C. E., Soubeyrand, S., Bigg, E. K., Creamean, J. M., and Sands, D. C.: Mapping rainfall feedback to reveal the potential sensitivity of precipitation to biological aerosols, *Bull. Am. Meteorol. Soc.*, doi: 10.1175/BAMS-D-15-00293.1, 2016.
- Mueller-Anneling, L., Avol, J. M. P., and Thorne, P. S.: Ambient endotoxin concentrations in PM₁₀ from Southern California, *Environ. Health Perspect.*, 112, 583, 2004.
- Murray, B., O'sullivan, D., Atkinson, J., and Webb, M.: Ice nucleation by particles immersed in supercooled cloud droplets, *Chem. Soc. Rev.*, 41, 6519-6554, doi: 10.1039/C2CS35200A, 2012.
- Murray, B., Ross, J., Whale, T., Price, H., Atkinson, J., Umo, N., and Webb, M.: The relevance of nanoscale biological fragments for ice nucleation in clouds, *Sci. Rep.*, 5, doi: 10.1038/srep08082, 2015.
- Nauta, M., and Hoekstra, R.: Evolution of reproductive systems in filamentous ascomycetes. I. Evolution of mating types, *Heredity* (Edinb.), 68, 405-410, doi: 10.1038/hdy.1992.60, 1992.
- Newson, R., Strachan, D., Archibald, E., Emberlin, J., Hardaker, P., and Collier, C.: Acute asthma epidemics, weather and pollen in England, 1987-1994, *European Respiratory Journal*, 11, 694-701, 1998.
- Niederberger, V., Pauli, G., Grönlund, H., Fröschla, R., Rumpold, H., Kraft, D., Valenta, R., and Spitzauer, S.: Recombinant birch pollen allergens (rBet v 1 and rBet v 2) contain most of the IgE epitopes present in birch, alder, hornbeam, hazel, and oak pollen: a quantitative IgE inhibition study with sera from different populations, *J. Allergy Clin. Immunol.*, 102, 579-591, doi: 10.1016/S0091-6749(98)70273-8, 1998.
- Nilsson, S., Merritt, A., and Bellander, T.: Endotoxins in urban air in Stockholm, Sweden, *Atmos. Environ.*, 45, 266-270, doi: 10.1016/j.atmosenv.2010.09.037, 2011.
- Oberdörster, G., Oberdörster, E., and Oberdörster, J.: Nanotoxicology: an emerging discipline evolving from studies of ultrafine particles, *Environ. Health Perspect.*, 823-839, 2005.
- Oliveira, M., Ribeiro, H., Delgado, J., and Abreu, I.: The effects of meteorological factors on airborne fungal spore concentration in two areas differing in urbanisation level, *Int. J. Biometeorol.*, 53, 61-73, doi: 10.1007/s00484-008-0191-2, 2009.
- Packe, G., and Ayres, J.: Asthma outbreak during a thunderstorm, *The Lancet*, 326, 199-204, doi: 10.1016/S0140-6736(85)91510-7, 1985.
- Pasanen, A.-L., Kasanen, J.-P., Rautiala, S., Ikäheimo, M., Rantamäki, J., Kääriäinen, H., and Kalliokoski, P.: Fungal growth and survival in building materials under fluctuating moisture and temperature conditions, *International Biodeterioration & Biodegradation*, 46, 117-127, doi: 10.1016/S0964-8305(00)00093-7, 2000.
- Pavilonis, B. T., Anthony, T. R., O'Shaughnessy, P. T., Humann, M. J., Merchant, J. A., Moore, G., Thorne, P. S., Weisel, C. P., and Sanderson, W. T.: Indoor and outdoor particulate matter and endotoxin concentrations in an intensely agricultural county, *J. Expo. Sci. Environ. Epidemiol.*, 23, 299-305, doi: 10.1038/jes.2012.123, 2013.
- Pöhlker, C., Huffman, J., and Pöschl, U.: Autofluorescence of atmospheric bioaerosols—fluorescent biomolecules and potential interferences, *Atmos. Meas. Tech.*, 5, 37-71, doi: 10.5194/amt-5-37-2012, 2012.
- Pope, F.: Pollen grains are efficient cloud condensation nuclei, *Environ. Res. Lett.*, 5, 044015, doi: 10.1088/1748-9326/5/4/044015, 2010.
- Pouleur, S., Richard, C., Martin, J.-G., and Antoun, H.: Ice nucleation activity in *Fusarium acuminatum* and *Fusarium avenaceum*, *Appl. Environ. Microbiol.*, 58, 2960-2964, 1992.
- Rathnayake, C. M., Metwali, N., Baker, Z., Jayarathne, T., Thorne, P. S., O'Shaughnessy, P. T., and Stone, E. A.: Urban enhancements of bioaerosol tracers in the Midwestern United States, *J. Geophys. Res. Atmos.*, 121, doi: 10.1002/2015JD024538, 2016.
- Robertson, B., and Alexander, M.: Mode of dispersal of the stem-nodulating bacterium, *Azorhizobium*, *Soil Biol. Biochem.*, 26, 1535-1540, doi: 10.1016/0038-0717(94)90095-7, 1994.
- Rocklin, R. D., Clarke, A. P., and Weitzhandler, M.: Improved long-term reproducibility for pulsed amperometric detection of carbohydrates via a new quadruple-potential waveform, *Anal. Chem.*, 70, 1496-1501, doi: 10.1021/ac970906w, 1998.
- Rodriguez Rajo, F. J., Iglesias, I., and Jato, V.: Variation assessment of airborne *Alternaria* and *Cladosporium* spores at different bioclimatical conditions, *Mycol. Res.*, 109, 497-507, doi: 10.1017/S0953756204001777, 2005.
- Rogge, W. F., Medeiros, P. M., and Simoneit, B. R.: Organic marker compounds in surface soils of crop fields from the San Joaquin Valley fugitive dust characterization study, *Atmos. Environ.*, 41, 8183-8204, doi: 10.1016/j.atmosenv.2007.06.030, 2007.
- Romantschuk, M.: Attachment of plant pathogenic bacteria to plant surfaces, *Annu. Rev. Phytopathol.*, 30, 225-243, 1992.
- Rylander, R., and Lin, R.-H.: (1 → 3)-β-d-glucan—relationship to indoor air-related symptoms, allergy and asthma, *Toxicology*, 152, 47-52, doi: 10.1016/S0304-3886(99)00052-2, 2000.
- Schulthess, F. M., and Faeth, S. H.: Distribution, abundances, and associations of the endophytic fungal community of Arizona fescue (*Festuca arizonica*), *Mycologia*, 569-578, doi: 10.2307/376121, 1998.
- Shaffer, B. T., and Lighthart, B.: Survey of culturable airborne bacteria at four diverse locations in Oregon: urban, rural, forest, and coastal, *Microb. Ecol.*, 34, 167-177, doi: 10.1007/s002489900046, 1997.
- Shelton, B. G., Kirkland, K. H., Flanders, W. D., and Morris, G. K.: Profiles of airborne fungi in buildings and outdoor environments in the United States, *Appl. Environ. Microbiol.*, 68, 1743-1753, doi: 10.1128/AEM.68.4.1743-1753.2002, 2002.

- Shen, B., Jensen, R. G., and Bohnert, H. J.: Increased resistance to oxidative stress in transgenic plants by targeting mannitol biosynthesis to chloroplasts, *Plant Physiol.*, 113, 1177-1183, doi: 10.1104/pp.113.4.1177 1997.
- Simoneit, B. R., Elias, V. O., Kobayashi, M., Kawamura, K., Rushdi, A. I., Medeiros, P. M., Rogge, W. F., and Didyk, B. M.: Sugars dominant water-soluble organic compounds in soils and characterization as tracers in atmospheric particulate matter, *Environ. Sci. Technol.*, 38, 5939-5949, doi: 10.1021/es0403099, 2004.
- 5 Singer, B. D., Ziska, L. H., Frenz, D. A., Gebhard, D. E., and Straka, J. G.: Research note: Increasing Amb a 1 content in common ragweed (*Ambrosia artemisiifolia*) pollen as a function of rising atmospheric CO₂ concentration, *Funct. Plant Biol.*, 32, 667-670, doi: 10.1071/FP05039, 2005.
- Singh, U., Reponen, T., Cho, K. J., Grinshpun, S. A., Adhikari, A., Levin, L., Indugula, R., and Green, B. J.: Airborne endotoxin and β -D-glucan in PM₁ in agricultural and home environments, *Aerosol Air Qual. Res.*, 11, 376-386, 2011.
- 10 Speranza, A., Calzoni, G., and Pacini, E.: Occurrence of mono-or disaccharides and polysaccharide reserves in mature pollen grains, *Sex. Plant Reprod.*, 10, 110-115, doi: 10.1007/s004970050076, 1997.
- Staff, I., Schappi, G., and Taylor, P.: Localisation of allergens in ryegrass pollen and in airborne micronic particles, *Protoplasma*, 208, 47-57, doi: 10.1007/BF01279074, 1999.
- 15 Steiner, A. L., Brooks, S. D., Deng, C., Thornton, D. C., Pendleton, M. W., and Bryant, V.: Pollen as atmospheric cloud condensation nuclei, *Geophys. Res. Lett.*, doi: 10.1002/2015GL064060, 2015.
- Sun, J., and Ariya, P. A.: Atmospheric organic and bio-aerosols as cloud condensation nuclei (CCN): A review, *Atmos. Environ.*, 40, 795-820, doi: 10.1016/j.atmosenv.2005.05.052, 2006.
- Suphioglu, C., Singh, M. B., Taylor, P., Knox, R., Bellomo, R., Holmes, P., and Puy, R.: Mechanism of grass-pollen-induced asthma, *The Lancet*, 339, 569-572, doi: 10.1016/0140-6736(92)90864-Y, 1992.
- 20 Targonski, P. V., Persky, V. W., and Ramekrishnan, V.: Effect of environmental molds on risk of death from asthma during the pollen season, *J. Allergy Clin. Immunol.*, 95, 955-961, doi: 10.1016/S0091-6749(95)70095-1, 1995.
- Taylor, P., Flagan, R., Miguel, A., Valenta, R., and Glovsky, M.: Birch pollen rupture and the release of aerosols of respirable allergens, *Clin. Exp. Allergy*, 34, 1591-1596, doi: 10.1111/j.1365-2222.2004.02078.x, 2004.
- 25 Taylor, P. E., Flagan, R. C., Valenta, R., and Glovsky, M. M.: Release of allergens as respirable aerosols: a link between grass pollen and asthma, *J. Allergy Clin. Immunol.*, 109, 51-56, doi: 10.1067/mai.2002.120759, 2002.
- Taylor, P. E., and Jonsson, H.: Thunderstorm asthma, *Curr. Allergy. Asthma Rep.*, 4, 409-413, doi: 10.1007/s11882-004-0092-3, 2004.
- Thorn, J.: Seasonal variations in exposure to microbial cell wall components among household waste collectors, *Ann. Occup. Hyg.*, 45, 153-156, doi: 10.1093/annhyg/45.2.153, 2001.
- 30 Thorn, J., Beijer, L., and Rylander, R.: Effects after inhalation of (1 \rightarrow 3)- β -D-glucan in healthy humans, *Mediators Inflamm.*, 10, 173-178, doi: 10.1080/09629350124119, 2001.
- Thorne, P. S.: Inhalation toxicology models of endotoxin-and bioaerosol-induced inflammation, *Toxicology*, 152, 13-23, doi: 10.1016/S0300-483X(00)00287-0, 2000.
- Thorne, P. S., Ansley, A. C., and Perry, S. S.: Concentrations of bioaerosols, odors, and hydrogen sulfide inside and downwind from two types of swine livestock operations, *J. Occup. Environ. Hyg.*, 6, 211-220, doi: 10.1080/15459620902729184, 2009.
- 35 Thorne, P. S., Mendy, A., Metwali, N., Salo, P., Co, C., Jaramillo, R., Rose, K. M., and Zeldin, D. C.: Endotoxin Exposure: Predictors and Prevalence of Associated Asthma Outcomes in the US, *Am. J. Respir. Crit. Care Med.*, 192(11), 1287-1297, doi: 10.1164/rccm.201502-0251OC 2015.
- Tillie-Leblond, I., Germaud, P., Leroyer, C., Tetu, L., Girard, F., Devouassoux, G., Grignat, J. P., Prudhomme, A., Dusser, D., and Wallaert, B.: Allergic bronchopulmonary aspergillosis and omalizumab, *Allergy*, 66, 1254-1256, doi: 10.1111/j.1398-9995.2011.02599.x, 2011.
- 40 Troutt, C., and Levetin, E.: Correlation of spring spore concentrations and meteorological conditions in Tulsa, Oklahoma, *Int. J. Biometeorol.*, 45, 64-74, doi: 10.1007/s004840100087, 2001.
- USEPA: Technology Transfer Network, http://aqsdr1.epa.gov/aqswb/aqstmp/airdata/download_files.html#Daily, accessed December, 2013.
- 45 Van Osdol, T., Hu, F., Barnes, C., and Portnoy, J.: The relationship between airborne ascospores, *Cladosporium* and rainfall events, *J. Allergy Clin. Immunol.*, 113, S62, doi: 10.1016/j.jaci.2003.12.192, 2004.
- van Vliet, A. J., Overeem, A., De Groot, R. S., Jacobs, A. F., and Spijksma, F. T.: The influence of temperature and climate change on the timing of pollen release in the Netherlands, *Int. J. Climatol.*, 22, 1757-1767, doi: 10.1002/joc.820, 2002.
- 50 Vesprini, J. L., Nepi, M., Cresti, L., Guarnieri, M., and Pacini, E.: Changes in cytoplasmic carbohydrate content during *Helleborus* pollen presentation, *Grana*, 41, 16-20, doi: 10.1080/00173130260045459, 2002.
- Wallis, D. N., Webb, J., Brooke, D., Brookes, B., Brown, R., Findlay, A., Harris, M., Hulbert, D., Little, G., and Nonoo, C.: A major outbreak of asthma associated with a thunderstorm: experience of accident and emergency departments and patients' characteristics, *BMJ*, 312, 601-604, doi: 10.1136/bmj.312.7031.601, 1996.

- Wallner, M., Erler, A., Hauser, M., Klinglmayr, E., Gadermaier, G., Vogel, L., Mari, A., Bohle, B., Briza, P., and Ferreira, F.: Immunologic characterization of isoforms of Car b 1 and Que a 1, the major hornbeam and oak pollen allergens, *Allergy*, 64, 452-460, doi: 10.1111/j.1398-9995.2008.01788.x, 2009.
- 5 Wang, X., Zhang, L., and Moran, M.: Uncertainty assessment of current size-resolved parameterizations for below-cloud particle scavenging by rain, *Atmos. Chem. Phys.*, 10, 5685-5705, doi: 10.5194/acp-10-5685-2010, 2010.
- Wilson, A. F., Novey, H. S., Berke, R. A., and Surprenant, E. L.: Deposition of inhaled pollen and pollen extract in human airways, *N. Engl. J. Med.*, 288, 1056-1058, doi: 10.1056/NEJM197305172882006, 1973.
- 10 Yoshida, M., Abe, J., Moriyama, M., and Kuwabara, T.: Carbohydrate levels among winter wheat cultivars varying in freezing tolerance and snow mold resistance during autumn and winter, *Physiol. Plantarum*, 103, 8-16, doi: 10.1034/j.1399-3054.1998.1030102.x, 1998.
- Yttri, K., Dye, C., and Kiss, G.: Ambient aerosol concentrations of sugars and sugar-alcohols at four different sites in Norway, *Atmos. Chem. Phys.*, 7, 4267-4279, doi: 10.5194/acp-7-4267-2007, 2007.
- Zhang, R., Duhl, T., Salam, M. T., House, J. M., Flagan, R. C., Avol, E. L., Gilliland, F. D., Guenther, A., Chung, S. H., and Lamb, B. K.: Development of a regional-scale pollen emission and transport modeling framework for investigating the impact of climate change on allergic airway disease, *Biogeosciences (Online)*, 10, 3977, doi: 10.5194/bgd-10-3977-2013, 2013.
- 15 Zhang, T., Engling, G., Chan, C.-Y., Zhang, Y.-N., Zhang, Z.-S., Lin, M., Sang, X.-F., Li, Y., and Li, Y.-S.: Contribution of fungal spores to particulate matter in a tropical rainforest, *Environ. Res. Lett.*, 5, 024010, doi: 10.1088/1748-9326/5/2/024010, 2010.
- Ziska, L. H., and Caulfield, F. A.: Rising CO₂ and pollen production of common ragweed (*Ambrosia artemisiifolia* L.), a known allergy-inducing species: implications for public health, *Funct. Plant Biol.*, 27, 893-898, doi: 10.1071/PP00032, 2000.

Figure captions

- 5 Figure 1: Temporal variation in precipitation and average temperature (a) in Iowa City, IA in the spring of 2013. Ambient concentrations of PM mass (b), glucose (c), fructose (d) and sucrose (e) in coarse and fine size fractions. The percent of PM and bioaerosol tracer mass in fine particles is shown on the right-axis for samples in which the analyte was detected in both size modes. During rain on 2 May, PM is suppressed, while pollen tracers in the fine mode substantially increased.
- 10 Figure 2: Temporal variation in precipitation and average temperature (a) in Iowa City, IA in the late summer of 2013. Ambient concentrations of PM mass (b), glucose (c), fructose (d) and sucrose (e) in coarse and fine size fractions. The percent of PM and bioaerosol tracer mass in fine particles is shown on the right-axis for samples in which the analyte was detected in both size modes. Fungal spore tracers increased significantly in the fine mode during the 2 May rain event.
- 15 Figure 3: Ambient concentrations of mannitol (a), glucans (b), and endotoxins (c) in coarse and fine size fractions in Iowa City, IA during spring of 2013. The percent of PM and bioaerosol tracer mass in fine particles is shown on the right-axis for samples in which the analyte was detected in both size modes. Fungal spore tracers increased significantly on 5 May, following a rainy period.
- 20 Figure 4: Ambient concentrations of mannitol (a), glucans (b), and endotoxins (c) in coarse and fine size fractions in Iowa City, IA during late summer of 2013. The percent of PM and bioaerosol tracer mass in fine particles is shown on the right-axis for samples in which the analyte was detected in both size modes Mannitol, the chemical tracer for fungal spores, and endotoxins from Gram-negative bacteria in fine mode increased on 22 August when it rained.
- 25 Figure 5: Apportionment of PM₁₀ mass (a) and PM_{2.5} mass (b) during the spring of 2013 to pollens and fungal spores using CMB modeling.
- Figure 6: Distribution of pollen and fungal spore mass (apportioned by the CMB model) across fine and coarse PM during dry and rainy conditions. The size distributions of pollens and fungal spores shifted towards fine particles during rain, with a more pronounced effect for pollens compared to fungal spores.

Figure 1

Spring

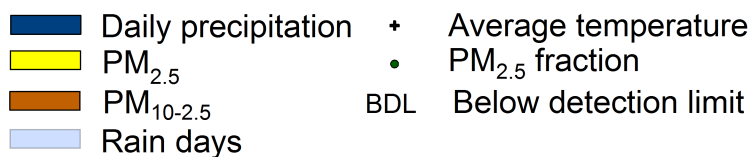
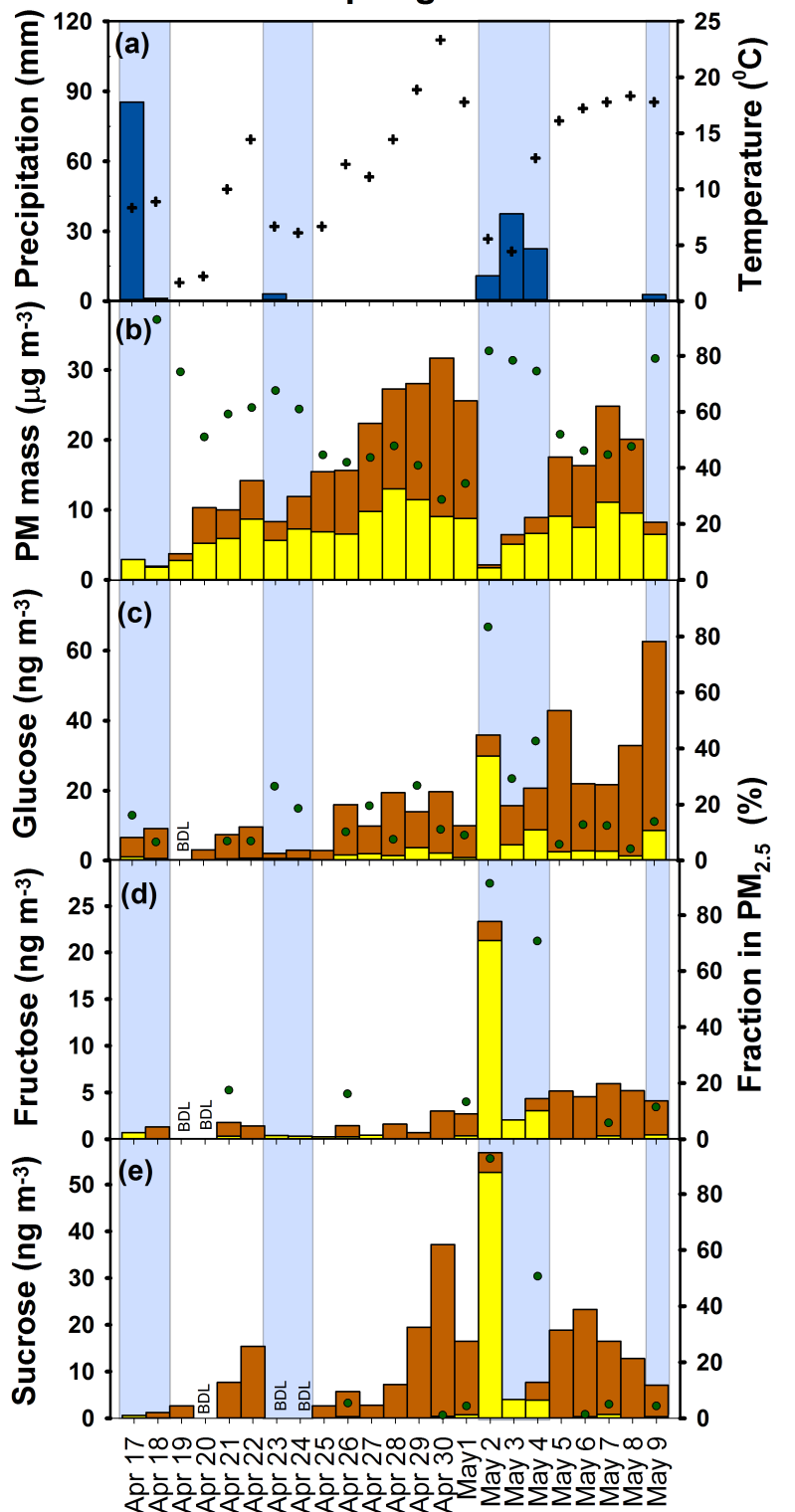


Figure 2

Late summer

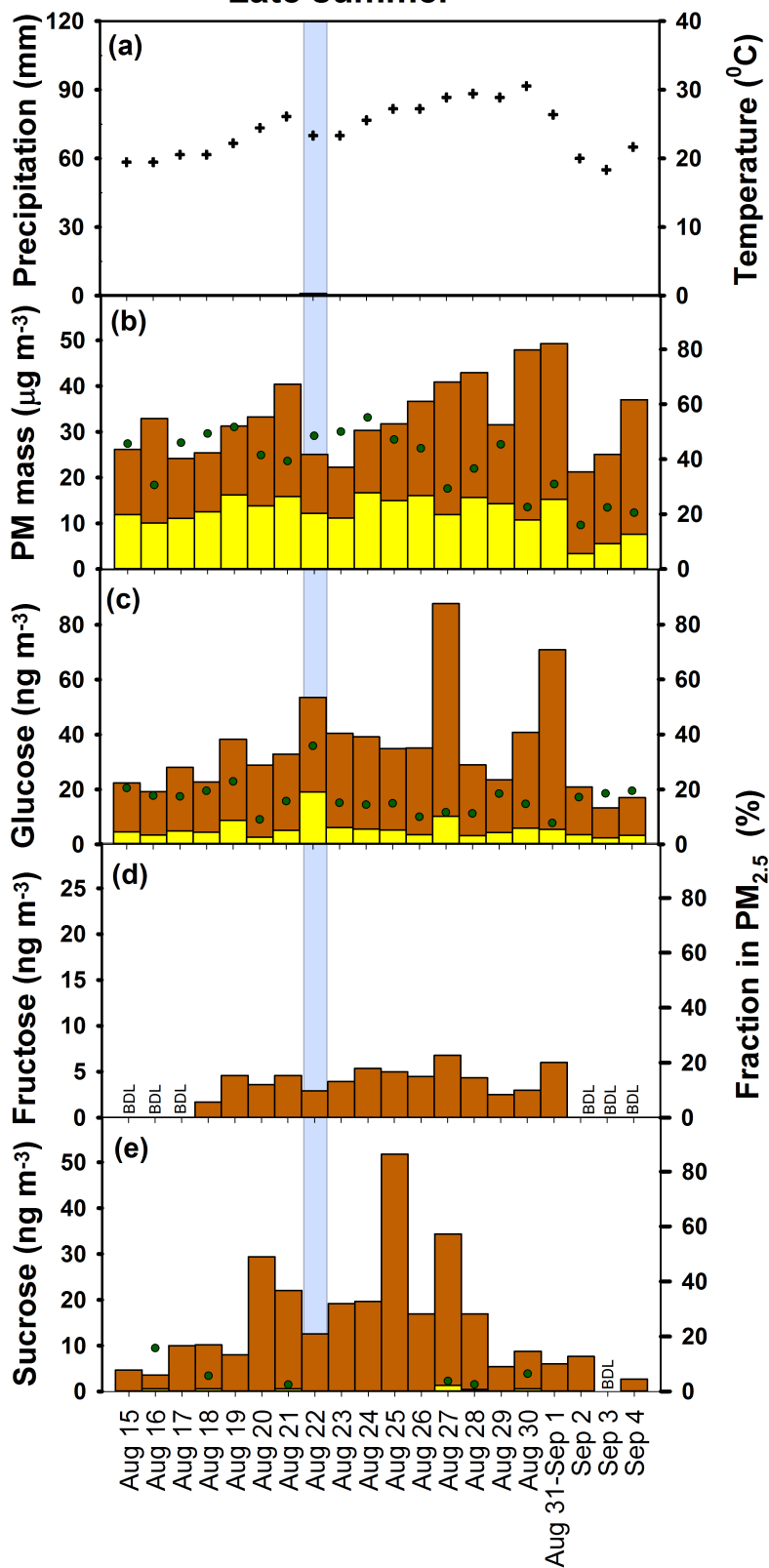


Figure 3
Spring

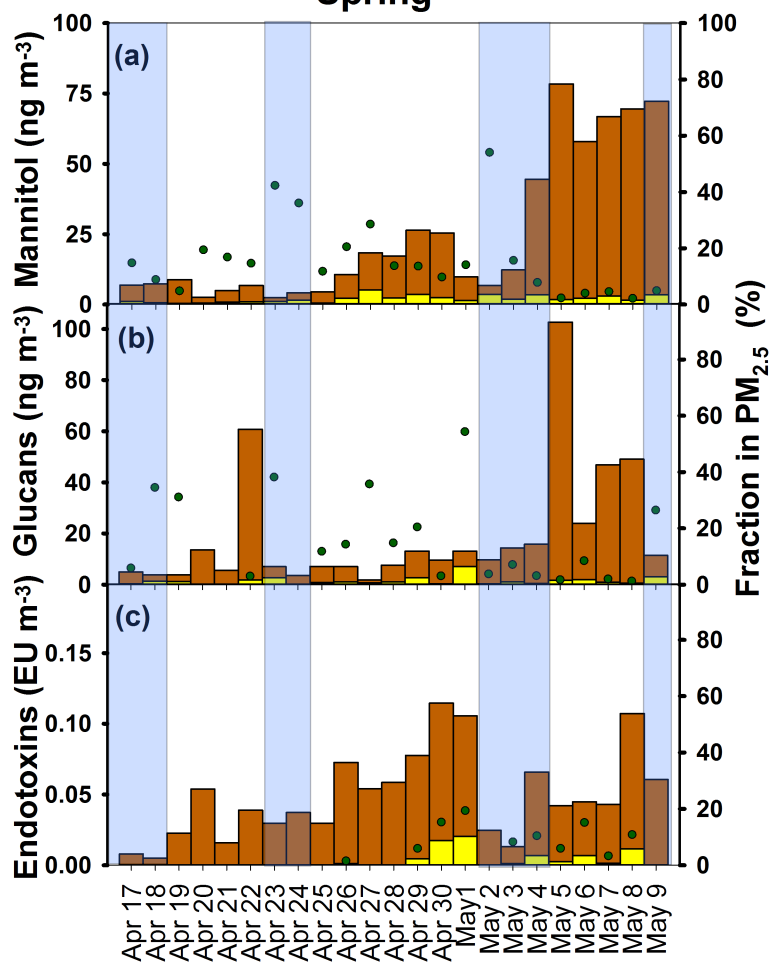


Figure 4

Late summer

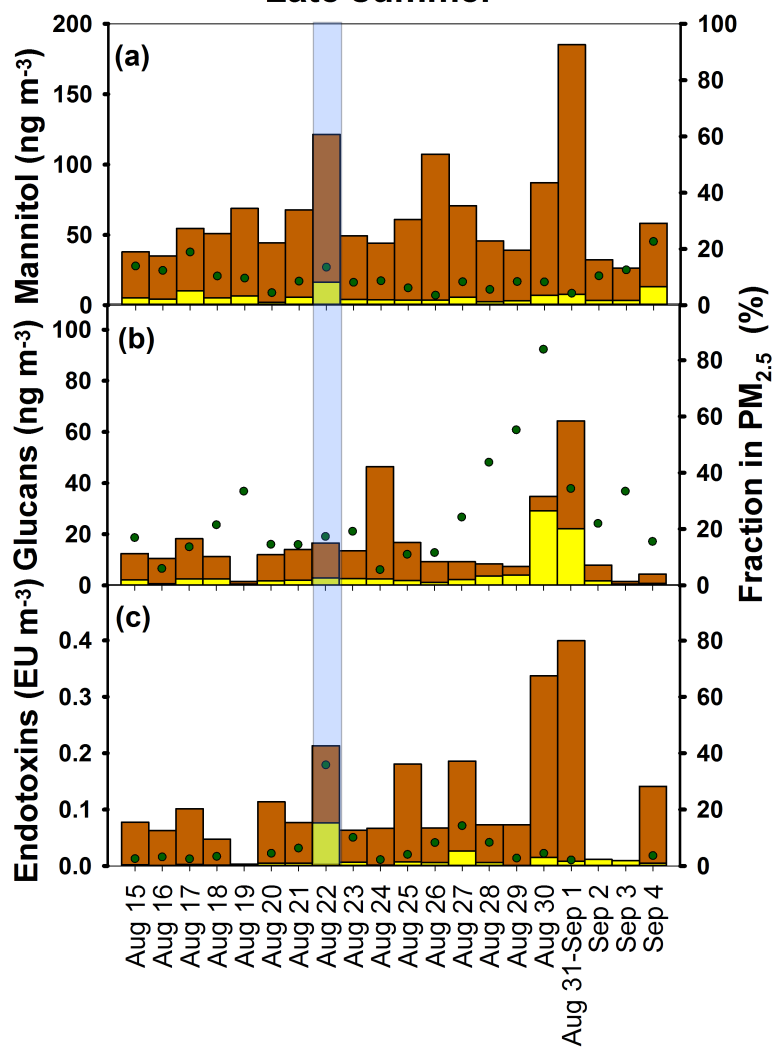


Figure 5

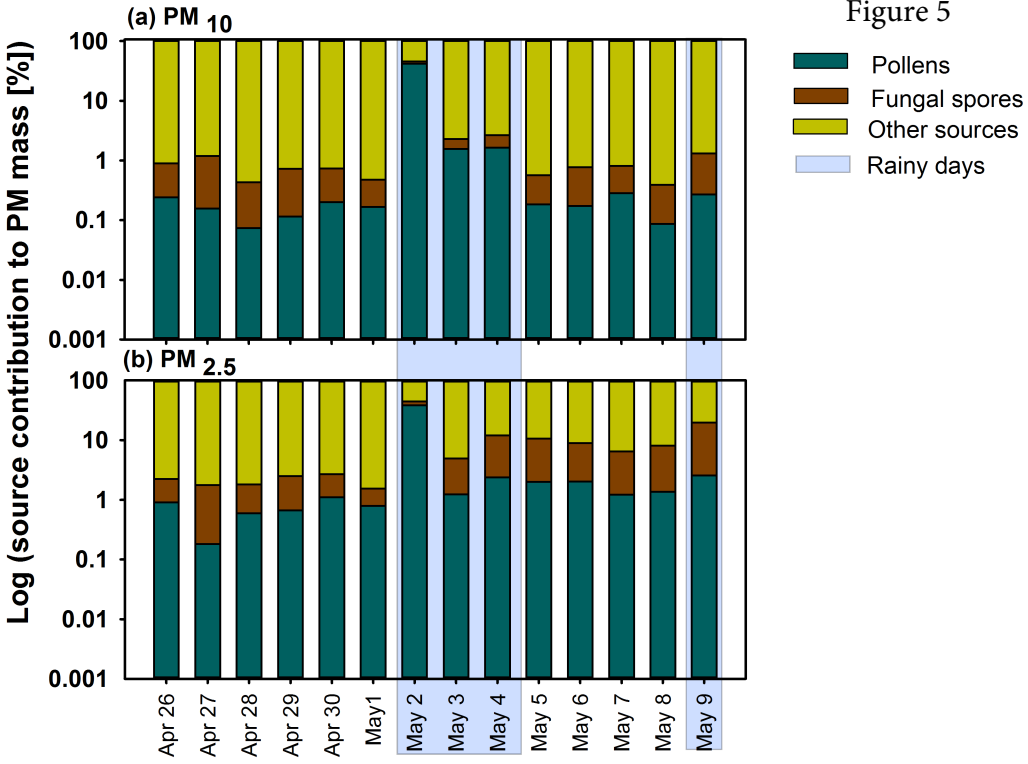
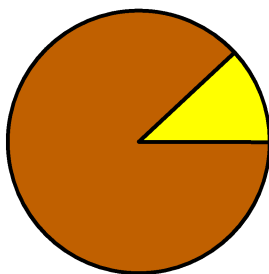
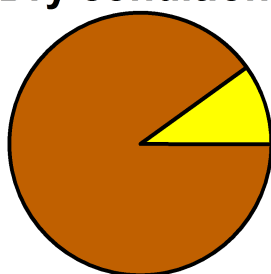


Figure 6

Pollens

Fungal spores

(a) Dry conditions



(b) Rainy days

