

We thank the three Reviewers for positive and constructive comments. Our responses are given in **bold** font and changes to the manuscript in **red**.

Anonymous Referee #1

This paper summarizes findings from the simulations by 7 models of the period 1990- 2015 using updated emissions. The paper succinctly describes the results and discusses the separate roles of aerosol-radiation interactions and aerosol-cloud interactions. The paper is well-written and presents a nice description of the results. I would however strongly suggest that the authors do the following

- 1) Because so much of the forcing comes from the change in emissions, it would be useful to have a discussion of how those differs from the ACCMIP/RCP projections. Maybe simply trends of major precursors over the region of analysis would be sufficient?

**Response: A figure comparing the Eclipse emission data with CMIP5/ACCMIP/RCP and the new CEDS data (for use in CMIP6) is included in the revised manuscript. Two figures on the regional emissions are added to the supplementary. A description of the figure including a reference to the ACPD paper by Klimont et al. have been added the manuscript as follows:**

‘The ECLIPSE emission data are shown in Figure 1 over the period 1990-2015 and compared to emission data used in Coupled Model Intercomparison Project (CMIP5) and to be used in CMIP6. Supplementary Figure S1 show emission data over Europe and south east Asia, respectively. BC emissions are higher in the ECLIPSE data compared to the CMIP5 data, but with similar trend. For SO<sub>2</sub> emission the former has a somewhat larger reduction towards the end of the 1990-2015 period than in the CMIP5 data. For the Community Emissions Data System (CEDS) data for CMIP6, the largest changes to the ECLIPSE data are the more pronounced increase in NO<sub>x</sub> and OC for the end of the 1990 to 2015 period. The CEDS data will be explored through a large set simulations within CMIP6 (Eyring et al., 2016).’

- 2) The ozone forcing discussion is rather cursory and needs to be extended. Is this simply driven by NO<sub>x</sub> changes or is methane playing a role, especially over the last 5 years of the analysis period? In addition, why is the IPCC ozone forcing of opposite sign (possibly related to changes in emissions?)

**Response: The ozone forcing discussion is extended including the role of methane. The IPCC forcing is weaker than found in our work, but of same sign. The end value in 2011 for the IPCC data is assumed to be the same as in 2010. The following text has been added to the manuscript:**

‘In addition to the shorter-lived ozone precursors of NO<sub>x</sub>, CO, and VOC changes in the concentration of CH<sub>4</sub> is taken into account, except for the EMEP model. The ozone forcing estimate in IPCC AR5 was based on simulations in Stevenson et al. (2013) and for the period after 2005 on the Representative Concentration Pathways 4.5 (RCP45) scenario which has a weaker increase in the forcing than the RCP85 scenario. Smaller ozone trend from the EMEP model is partly due to that a constant CH<sub>4</sub> value used in the trend calculations.’

- 3) It would be useful to put the findings in the overall context of recent forcings (volcanic, solar, stratospheric water vapor, stratospheric ozone).

**Response: A new paragraph has been included to put the aerosol and ozone forcing in context of other anthropogenic forcings and the two natural forcings of solar irradiance and volcanic eruption. The following paragraph is added to the manuscript:**

‘The dominant forcing mechanism over the 1990-2015 period is changes in the well-mixed greenhouse gases (WMGHG). The global mean forcing due to CO<sub>2</sub> increased over this period by 0.66 Wm<sup>-2</sup> and forcing due to other WMGHG rose by 0.16 Wm<sup>-2</sup> (see Supplementary material for further information of the calculations). Other anthropogenic forcing mechanisms have had negligible overall changes between 1990 and 2015, though; natural forcing of volcanic eruptions and solar irradiance changes have had large changes during the period, see Prather et al. (2013) and particularly their Table AII.1.2. Whereas previous studies indicated almost zero change in forcing of aerosol and ozone change this study shows by using an updated emission inventory and multi-model simulations a forcing 20% of the WMGHG forcing.’

While this might require an additional simulation, it would be useful to know how much variability in meteorological transport is responsible for the observed/simulated change. In particular, it would be useful to consider using one of the CTMs with a different set of meteorological analysis. Alternatively, the models driven by fixed SSTs could be used with constant emissions (similar to Barnes et al., JGR, 2016) to have a better understanding of the role of internal variability in driving trends over short periods.

**Response: We have investigated in an earlier study that interannual variation using consistent meteorological fields provide small differences (<http://www.atmos-chem-phys.net/11/11293/2011/acp-11-11293-2011-discussion.html>). However, differences between various meteorological data sets give larger differences. We have added the following sentences to the manuscript:**

‘Differences in atmospheric abundances can be large due to different meteorological data sets (Liu et al., 2007) and surface concentrations can be influenced by interannual variation (Barnes et al., 2016), but differences associated with nudging seem to be small (Sand et al., in preparations). ’

Anonymous Referee #2

This study provides an assessment of the evolution of ozone and submicron aerosol atmospheric composition over the 1990-2015 period based on 7 global models and a new emission inventory from the EU ECLIPSE project. This time period is important in global change science for several reasons, including the possible “hiatus” in the global SAT record, and the large changes in regional pollution emissions (decreases in NH mid latitudes and increases in lower latitudes). The study provides global annual average radiative forcing diagnostics and surface concentration changes over the period. The main conclusion is that combined ozone and aerosols changes contributed a net positive global radiative forcing of about +200 mW/m<sup>2</sup> between 1990 and 2015. The stronger net positive forcing than that reported in the IPCC AR5 is due to (unexplained) doubling of the ozone forcing, more stringent SO<sub>2</sub> reductions and higher BC increases in ECLIPSE, relative to the previous IPCC emission inventory. The paper is clear and well-written and merits publication in ACP once the following technical issues have been addressed.

1. This study assesses only the effects of anthropogenic emissions changes on the short-lived climate pollutants between 1990-2015. For example, the effects of other global change drivers including physical climate change and land use land cover change are not accounted for in the experimental protocol. The omission of these key drivers may be problematic given that the

computed global forcings are quite small. New work from other groups and multimodel assessments is already indicating that physical climate change may be an important driver of chemical changes over this period. At the very least, the title needs to reflect that only changes in anthropogenic pollution emissions are examined and some discussion of the importance of other global change drivers (and why they have or have not been included) needs to be provided to help the readers.

**Response: A new paragraph included in the summary and the title has been changed. The added paragraph reads as follows:**

‘The dominant forcing mechanism over the 1990-2015 period is changes in the well-mixed greenhouse gases (WMGHG). The global mean forcing due to CO<sub>2</sub> increased over this period by 0.66 Wm<sup>-2</sup> and forcing due to other WMGHG rose by 0.16 Wm<sup>-2</sup> (see Supplementary material for further information of the calculations). Other anthropogenic forcing mechanisms have had negligible overall changes between 1990 and 2015, though; natural forcing of volcanic eruptions and solar irradiance changes have had large changes during the period, see Prather et al. (2013) and particularly their Table AII.1.2. Whereas previous studies indicated almost zero change in forcing of aerosol and ozone change this study shows by using an updated emission inventory and multi-model simulations a forcing 20% of the WMGHG forcing.’

2. A corollary is that the 7 models are based on entirely different chemical and meteorological background states/years (e.g. 2000, 2010 etc.) across the period and this probably represents an important part of the uncertainty ranges, but is not discussed at all. Some discussion and analysis needs to be added to the paper.

**Response: See response to Reviewer 1. The following change to the manuscript has been done:**

‘Differences in atmospheric abundances can be large due to different meteorological data sets (Liu et al., 2007) and surface concentrations can be influenced by interannual variation (Barnes et al., 2016), but differences associated with nudging seem to be small (Sand et al., in preparations).’

3. The paper includes an evaluation of simulated surface concentration trends against observational networks for the period. No measurement data for the entirety of Asia is included in the paper, which is not really acceptable these days, especially because a main focus of the study is on emission changes in Asia.

**Response: Unfortunately there are, as far as the authors are aware of, no regional networks in Asia with long term measurement of PM<sub>2.5</sub> back to 2000 to be compared with the observed trends in Europe and North America as presented in table 2. Most of the sites with long term measurements are situated in cities and these are difficult to use to assess regional trends. However, the recent years there has been established regional networks and sites which can be used for studying temporal and spatial variability of aerosols in Asia. I.e. Wang et (2015) present PM<sub>10</sub>, PM<sub>2.5</sub> and PM<sub>1</sub> data from 24 CAWNET (China Atmosphere Watch Network) sites, whereof 11 are regional or remote sites with measurements from 2006 to 2014. The trends presented here does however not conclude on any large scale regional trends in China in this period. Trends in surface sulfate concentration and aerosol optical depth is available for a few site in Asia, but this work would need proper documentation before comparing to the model data in this study. See response to next comment on changes made to the manuscript.**

Wang Y. Q., Zhang X. Y., Sun J. Y., Zhang X. C., Che H. Z., Li Y. Spatial and temporal variations of the concentrations of PM<sub>10</sub>, PM<sub>2.5</sub> and PM<sub>1</sub> in China. *Atmos. Chem. Phys.* 2015; 15: 13585-13598.

4. Backing up: Why is this evaluation against surface pollution concentration trends a part of this paper? What is the relationship between surface ozone and aerosol concentrations and their radiative forcings? Please explain. For ozone, the surface concentration change and global forcing changes are rather decoupled. The model/measurement surface ozone trend comparison given is not particularly convincing, and the quantitative details appear to have been relegated to the supplementary information. Is this poor skill because the models in this study have simplified representation of land-atmosphere interactions? Would it be better for the specific goals of this paper to compare with global column and vertical profile measurements from the satellite records? E.g. MODIS, TES etc. Otherwise, I suggest including “surface concentration trends” in the paper title.

**Response: We have added an explanatory paragraph in beginning of the result section as the following:**

‘Evaluation of aerosol and chemistry models is a huge topic given the large spatial variability in aerosol and chemical species as well as difficulties associated with sampling issues (Schutgens et al., 2016) and the availability of long term measurements. In this study we restrict the comparison between the models and observations to surface fine mode particular matter which we further show have a similar trend as the total column aerosol optical depth (AOD). In the supplementary material we show comparison of surface ozone between the models used in this study and observations. In addition Supplementary Figure S2 presents trends in the tropospheric column and surface ozone from the models showing much larger difference between surface and column than for aerosols. Whereas the forcing efficiency of aerosols is strongly dependent on the surface reflectance and their position in relation to clouds (Haywood and Shine, 1997) the forcing efficiency for ozone is strongly dependent on altitude and most efficient around tropopause altitude (Forster and Shine, 1997; Lacis et al., 1990; MacIntosh et al., 2016).’

5. Table 1 needs sorting out because inconsistent terminology is used throughout. Please re-design the Table 1 with consistent terminology and acronyms e.g. N/A, ‘yes’, ‘included’. What is L for EMEP? The models that used climatological SSTs and sea ice, for which decade/period? Monthly varying?

**Response: We have included number of layers (L) for the EMEP model and used a consistent terminology.**

6. Table 1 indicates that the GISS model used ‘2000 met’. If I understand correctly, GISS is a coupled global CCM. There is an option to nudge to reanalysis winds but no full specified dynamics version is available? Please correct here, or provide a published reference for the specified dynamics version of GISS CCM?

**Response: The table has been updated with the following information for the GISS model: ‘2000 climatological monthly varying fixed-SSTs and sea-ice’**

7. Is it possible to provide an explanation for the doubled ozone forcing compared to IPCC AR5 value? Is it also due to the updated EU ECLIPSE emissions? The ozone radiative forcing section is very small compared to the aerosol sections! The paper can be improved and more interesting by presenting the major precursor drivers of the changes, and the reasons for discrepancies with other results.

**Response: We have indicated that the RCP85 simulations had higher ozone forcing than RCP45 which was used in IPCC AR5. The following is added to the manuscript in section 3.4:**

‘In addition to the shorter-lived ozone precursors of NO<sub>x</sub>, CO, and VOC changes in the concentration of CH<sub>4</sub> is taken into account, except for the EMEP model. The ozone forcing estimate in IPCC AR5 was based on simulations in Stevenson et al. (2013) and for the period after 2005 on the Representative Concentration Pathways 4.5 (RCP45) scenario which has a weaker increase in the forcing than the RCP85 scenario. Smaller ozone trend from the EMEP model is partly due to that a constant CH<sub>4</sub> value used in the trend calculations.’

8. I read several times over, and I find it difficult to understand exactly what is included in the multi-model mean “total aerosol forcing”? Can this definition be made clearer? I realize it is challenging in multimodel studies when models simulate different aerosol types and some represent aerosol-cloud interactions while others do not.

**Response: We have defined the how we use the term total aerosol effect. The following is added to the manuscript:**

‘(the combined aerosol-radiation and aerosol-cloud interaction)’

9. The uncertainty range needs to be added to the total forcing of +200mW/m<sup>2</sup> in the abstract.

**Response: Uncertainty range added in the abstract.**

10. Would it be useful to add a comparison to the total CO<sub>2</sub> forcing across this period? I believe the SLCP forcing is about 40% of the CO<sub>2</sub> forcing across the period.

**Response: A discussion is included in a paragraph in the summary and reads as follows:**

‘The dominant forcing mechanism over the 1990-2015 period is changes in the well-mixed greenhouse gases (WMGHG). The global mean forcing due to CO<sub>2</sub> increased over this period by 0.66 Wm<sup>-2</sup> and forcing due to other WMGHG rose by 0.16 Wm<sup>-2</sup> (see Supplementary material for further information of the calculations). Other anthropogenic forcing mechanisms have had negligible overall changes between 1990 and 2015, though; natural forcing of volcanic eruptions and solar irradiance changes have had large changes during the period, see Prather et al. (2013) and particularly their Table AII.1.2. Whereas previous studies indicated almost zero change in forcing of aerosol and ozone change this study shows by using an updated emission inventory and multi-model simulations a forcing 20% of the WMGHG forcing.’

11. Page 4, Line 20 states: “Five models simulated surface ozone changes based on the prescribed emissions of precursors including methane.” Does this mean that the models all have chemically dynamic (“flux-based”) full methane cycle simulations? Or do the models prescribe methane atmospheric concentrations based on observed amounts? Should methane radiative forcings be included in this analysis? If the models are using flux-based methane simulations then more information is needed about the natural emissions and some solid evaluation of the simulated methane concentrations.

**Response: We have added that changes in CH<sub>4</sub> concentrations have be included, except for the EMEP model.**

Anonymous Referee #3

In their manuscript “Multi-model simulations of aerosol and ozone radiative forcing for the period 1990-2015”, the authors present an updated multi-model estimate of aerosol and ozone radiative forcing for the period 1990 to 2015.

Using an updated emission dataset, aerosol forcing is found to be stronger positive in the new estimate as compared to IPCC AR5 assessment report, which is attributed to a stronger decline of SO<sub>2</sub> emissions and stronger BC emissions in the updated inventory. The manuscript is well written and the results are valid. Yet, given the differences in the used emissions and the selection of models, the results are not particularly surprising, which left me a bit confused about the overall scientific objectives of this work. Before recommending this work for publication, I would encourage the authors to emphasize the objectives of their work as well as to deepen the analysis of the process chain leading to the simulated forcing changes.

### General issues

- As a whole, I was missing a more in-depth analysis and discussion of how much of the differences to prior scenarios are simply a reflection of emission changes (in terms of magnitude and location) or due to an arbitrary selection of models (which also have changed from their state at AR5).

**Response: We have added a figure in the manuscript as well as two figures for the supplementary material. Text associated with the figures are added as follows:**

‘The ECLIPSE emission data are shown in Figure 1 over the period 1990-2015 and compared to emission data used in Coupled Model Intercomparison Project (CMIP5) and to be used in CMIP6. Supplementary Figure S1 show emission data over Europe and south east Asia, respectively. BC emissions are higher in the ECLIPSE data compared to the CMIP5 data, but with similar trend. For SO<sub>2</sub> emission the former has a somewhat larger reduction towards the end of the 1990-2015 period than in the CMIP5 data. For the Community Emissions Data System (CEDs) data for CMIP6, the largest changes to the ECLIPSE data are the more pronounced increase in NO<sub>x</sub> and OC for the end of the 1990 to 2015 period. The CEDs data will be explored through a large set simulations within CMIP6 (Eyring et al., 2016).’

- As emission changes seem to drive most of the simulated changes, the assumptions leading to these differences should be discussed in some detail. At present, the readers are simply referred to Stohl et al. (2015) but given the importance of these changes it should be possible to repeat the key points here.

**Response: We have added a figure in the manuscript as well as two figures for the supplementary material. Text associated with the figures are added and see response to the previous comment.**

- You fit a linear trend to emissions changes, how good (or bad) is this assumption? Are all local emissions changes at least monotonic?

**Response: We have compared trends in the concentration and not in the emissions.**

- The use of “forcing” is at times a bit ambiguous. Readers are used to forcing with respect to the pre-industrial period, however you seem to use it for the period of interest. Maybe this could be made more clear?

**Response: We have highlighted the point on time period. The following changes have been implemented:**

‘Radiative forcing is defined as a perturbation relative to a reference state, this can be a flexible year and most common to pre-industrial time (Boucher et al., 2013; Myhre et al., 2013b). All the aerosol and ozone forcings shown here are absolute changes ( $W m^{-2}$ ) relative to the 1990 value of each model. Thus all the plots show forcing starting at 0.0 in 1990.’

### Specific issues

• Page 5: “In all of multi-model analyses, differences are not simply proportional to burden because radiative forcing is calculated with different assumptions of optical properties and the radiative transfer calculations.” Forcing depends on more factors than just burden, optical properties and radiative transfer, as has been quantified in recent AeroCom experiments. Please expand on this.

**Response: The following is added:**

**‘to the host model for radiative transfer calculations and background fields of important factors such as clouds and surface albedo (Myhre et al., 2013a; Stier et al., 2013)’**

• Page 5: “BC is generally a more efficient absorber over regions of South and East Asia (increasing emissions) than over Europe and US” This is ambiguous. Pure BC is likely to be of similar absorption efficiency. Do you mean BC has different coatings (or coating thickness) or do you mean it has higher forcing efficiency (due to surface albedo differences or changes in cloud cover)?

**Response: We have corrected this to state that the forcing efficiency is higher.**

• Table 1: The caption needs to unambiguously describe the table.  
Acronyms like SOA vs. POM are not clear here.

**Response: We have modified the table and now used POA (primary OA) and SOA consistently**

• Table 2: It is entirely unclear how the comparison was done. Have models been sub-sampled at measurement sites / times to minimize sampling errors?

**Response: The following added to the table caption:**

**‘Models have been sampled at the grid points of the network sites and for the US periods 2000-2010 and 1990-2010 have been derived. ‘**

• Figure 1: The caption is not clear: this should be specific that this is a linear fit etc: : :

**Response: It is added ‘linear’**

# Multi-model simulations of aerosol and ozone radiative forcing due to anthropogenic emission changes during ~~for~~ the period 1990-2015

Gunnar Myhre<sup>1</sup>, Wenche Aas<sup>2</sup>, Ribu Cherian<sup>3</sup>, William Collins<sup>4</sup>, Greg Faluvegi<sup>5</sup>, Mark Flanner<sup>6</sup>,  
5 Piers Forster<sup>7</sup>, Øivind Hodnebrog<sup>1</sup>, Zbigniew Klimont<sup>8</sup>, Marianne T. Lund<sup>1</sup>, Johannes  
Mülmenstädt<sup>3</sup>, Cathrine Lund Myhre<sup>2</sup>, Dirk Olivié<sup>9</sup>, Michael Prather<sup>10</sup>, Johannes Quaas<sup>3</sup>, Bjørn  
H. Samset<sup>1</sup>, Jordan L. Schnell<sup>10</sup>, Michael Schulz<sup>9</sup>, Drew Shindell<sup>11</sup>, Ragnhild B. Skeie<sup>1</sup>,  
Toshihiko Takemura<sup>12</sup>, Svetlana Tsyro<sup>9</sup>

10 <sup>1</sup>Center for International Climate and Environmental Research – Oslo (CICERO), Oslo, Norway

<sup>2</sup>NILU – Norwegian Institute for Air Research, Kjeller, Norway

<sup>3</sup>Institute for Meteorology, Universität Leipzig, Germany

<sup>4</sup>Department of Meteorology, University of Reading, Reading, UK

15 <sup>5</sup>NASA Goddard Institute for Space Studies and Center for Climate Systems Research, Columbia University, New  
York, USA

<sup>6</sup>Department of Climate and Space Sciences and Engineering, University of Michigan, Ann Arbor MI, USA.

<sup>7</sup>University of Leeds, Leeds, United Kingdom

<sup>8</sup>International Institute for Applied Systems Analysis (IIASA), Laxenburg, Austria

<sup>9</sup>Norwegian Meteorological Institute, Oslo, Norway

20 <sup>10</sup>Department of Earth System Science, University of California, Irvine, CA 92697-3100, USA

<sup>11</sup>Nicholas School of the Environment, Duke University, Durham, NC 27708 USA

<sup>12</sup>Kyushu University, Fukuoka, Japan

*Correspondence to:* Gunnar Myhre (gunnar.myhre@cicero.oslo.no)

25

**Abstract.** Over the past decades, the geographical distribution of emissions of substances that alter the atmospheric energy balance has changed due to economic growth and pollution regulations. Here, we show the resulting changes to aerosol and ozone abundances and their radiative forcing, using recently updated emission data for the period 1990-2015, as simulated by seven global atmospheric composition models. The models broadly reproduce ~~the~~ large-scale changes in surface aerosol and ozone based on observations (e.g., -1 to -3%/yr in aerosols over the US and Europe). The global mean radiative forcing due to ozone and aerosols changes over the 1990-2015 period increased  
30 by ~~about~~ +0.172 ± 0.08 Wm<sup>-2</sup>, with approximately 1/3 due to ozone. This increase is more strongly ~~lyer~~ positive than



reported in IPCC AR5. The main reasons for the increased positive radiative forcing of aerosols over this period ~~is~~ are the substantial reduction of global mean SO<sub>2</sub> emissions, which is stronger in the new emission inventory compared to the IPCC, and higher black carbon emissions.

## 1. Introduction

5 Over the last decades, global temperature has been forced by a range of both natural and anthropogenic drivers (Schmidt et al., 2014b; Solomon et al., 2011). Relative to the period 1984-1998, which ended with a strong El Niño, the period 1998-2012 saw a reduced rate of global warming. A wide range of studies have discussed possible causes of this slowdown (Fyfe et al., 2016; Marotzke and Forster, 2015; Nieves et al., 2015) including discussions of the temperature trend itself (Karl et al., 2015). A record surface temperature over the instrumental period was however  
10 reached in 2014 (Karl et al., 2015) with another new record in 2015. Understanding the reasons behind periods with weaker or stronger temperature changes superimposed on the long-term trend in temperature that is continually forced by increased greenhouse gas concentrations is an integral part of the general study of the climate system.

The Intergovernmental Panel on Climate Change (IPCC) Fifth Assessment Report (AR5) had to rely on a limited number of studies for the 1998-2011 period with regard to radiative forcing of short-lived components (Flato et al.,  
15 2013; Myhre et al., 2013b). The short-lived components, notably ozone and atmospheric aerosols, are more difficult to quantify in terms of abundance and radiative forcing through atmospheric measurements than the greenhouse gases with lifetimes in the order of decades or longer. Abundances of short-lived components depend on location of emission, and are inhomogeneously distributed in the atmosphere with variability in time, geographical distribution and altitude.

20 The short-lived compounds of particular importance in terms of radiative forcing include ozone and atmospheric aerosols. Over the last decades, large changes in regional emissions of ozone and aerosol precursors have occurred, with reductions over the US and Europe in response to air quality controls, and a general increase over South and East Asia (Amann et al., 2013; Crippa et al., 2016; Granier et al., 2011; Klimont et al., 2013). The available emission data for various aerosol types differ in magnitude across regions (Wang et al., 2014b). The net effect of  
25 these emission changes in terms of changes in the Earth's radiative balance, is not obvious. In addition to a change in the geographical location of the emissions that emphasizes more chemically active, low-latitude regions; different types of aerosols have different impacts on the radiative balance. Some are purely scattering, while others enhance absorption of solar radiation. They may also affect cloud formation, albedo and lifetime through a range of mechanisms (Boucher et al., 2013; Kaufman et al., 2002). Since the net aerosol forcing is negative (cooling), a  
30 reduction in anthropogenic primary aerosol emissions and emissions of aerosol precursors implies a positive forcing over the time period of emission reductions.

The aerosols have a variety of types and composition and involve several different forcing mechanisms, specifically aerosol-radiation interactions (previously denoted direct aerosol effect and semi-direct effect when allowing for rapid adjustments) and aerosol-cloud interactions (Boucher et al., 2013). Their forcing over the industrial era has  
35 substantial uncertainties, quantified in terms of a total aerosol forcing of -0.9 (-1.9 to -0.1) W m<sup>-2</sup> (Boucher et al.,

2013). The IPCC AR5 mainly relied on Shindell et al. (2013a) for changes over the last 1-2 decades for the total aerosol forcing, in addition to one study for the direct aerosol effect based on satellite data (Murphy, 2013). The model studies available for the 2000-2010 period based on the results in Shindell et al. (2013a) were few, compared to what was available for earlier time periods. These studies revealed large regional changes in the aerosol forcing over the last decades, but in terms of global mean changes the values were small in magnitude. The clear sky direct aerosol effect over the period 2000-2012 showed small global mean forcing based on the changes in aerosol abundance from MISR satellite data (Murphy, 2013). The total aerosol forcing over the period 1990-2010 and 2000-2010 in IPCC AR5 was quantified as -0.03 and +0.02 W m<sup>-2</sup>, respectively (Myhre et al., 2013b). Tropospheric ozone forcing was estimated to be +0.03 W m<sup>-2</sup> over the 1990-2010 period. Kuhn et al. (2014) simulated a weak direct aerosol effect forcing of +0.06 W m<sup>-2</sup> over the 1996-2010 period, but with a much stronger forcing of +0.42 W m<sup>-2</sup> for the total aerosol effect.

At present aerosol forcing is diagnosed using a wide range of methods, with various degrees of sophistication of the aerosol-radiation and aerosol-cloud interactions included. To span this range and take different approaches into account, we encouraged the modelling groups participating in this study to perform aerosol and ozone forcing simulations over the 1990-2015 period with their standard configuration, but using updated emission inventories and more consistent diagnostics. Here, we present the resulting evolution of aerosol and ozone abundances at the regional level, and the resulting radiative forcing.

## 2. Methods

The seven global models participating in the present study are described in Table 1. The model setup to derive forcing varies between the models; from fixed meteorology, to one meteorological year, to fixed sea surface temperatures. All models use identical anthropogenic emission data from the EU project ECLIPSE<sup>1</sup> for the 1990 to 2015 period (Klimont et al., 2016; Stohl et al., 2015). Several updates and improvements compared to earlier emission data sets were included in this inventory (Klimont et al., 2016). The ECLIPSE emission data are shown in Figure 1 over the period 1990-2015 and compared to emission data used in Coupled Model Intercomparison Project (CMIP5) and to be used in CMIP6. Supplementary Figure S1 show emission data over Europe and south east Asia, respectively. BC emissions are higher in the ECLIPSE data compared to the CMIP5 data, but with similar trend. For SO<sub>2</sub> emission the former has a somewhat larger reduction towards the end of the 1990-2015 period than in the CMIP5 data. For the Community Emissions Data System (CEDS) data for CMIP6, the largest changes to the ECLIPSE data are the more pronounced increase in NO<sub>x</sub> and OC for the end of the 1990 to 2015 period. The CEDS data will be explored through a large set simulations within CMIP6 (Eyring et al., 2016).

All models simulated the main anthropogenic components sulphate, black carbon (BC) and primary organic aerosols (POA). Further, some models include secondary organic aerosols and nitrate. Five of the models simulated ozone changes over the period. The same offline radiative transfer code used for calculating the radiative forcing for OsloCTM2 was adopted for the atmospheric abundance changes from the EMEP model.

<sup>1</sup> Evaluating the Climate and Air Quality Impacts of Short-Lived Pollutants (ECLIPSE); European Union Seventh Framework Programme (FP7/2007-2013) under grant agreement no 282688.

Differences in atmospheric abundances can be large due to different meteorological data sets (Liu et al., 2007) and surface concentrations can be influenced by interannual variation (Barnes et al., 2016), but differences associated with nudging seem to be small (Sand et al., in preparations).

The forcing calculations are quantified at the top of the atmosphere for aerosols and at the tropopause for ozone and follow definitions made in IPCC AR5 (Boucher et al., 2013; Myhre et al., 2013b). The consideration of rapid adjustments associated with aerosols for the various models are described in Table 1.

Radiative forcing is defined as a perturbation relative to a reference state, this can be a flexible year and most common to pre-industrial time (Boucher et al., 2013; Myhre et al., 2013b). All the aerosol and ozone forcings shown here are absolute changes ( $\text{W m}^{-2}$ ) relative to the 1990 value of each model. Thus all the plots show forcing starting at 0.0 in 1990.

### 3. Results

#### 3.1 ~~Surface~~ Trends in aerosol and ozone

Evaluation of aerosol and chemistry models is a huge topic given the large spatial variability in aerosol and chemical species as well as difficulties associated with sampling issues (Schutgens et al., 2016) and the availability of long term measurements. In this study we restrict the comparison between the models and observations to surface fine mode particular matter which we further show have a similar trend as the total column aerosol optical depth (AOD). In the supplementary material we show comparison of surface ozone between the models used in this study and observations. In addition Supplementary Figure S2 presents trends in the tropospheric column and surface ozone from the models showing much larger difference between surface and column than for aerosols. Whereas the forcing efficiency of aerosols is strongly dependent on the surface reflectance and their position in relation to clouds (Haywood and Shine, 1997) the forcing efficiency for ozone is strongly dependent on altitude and most efficient around tropopause altitude (Forster and Shine, 1997; Lacis et al., 1990; MacIntosh et al., 2016).

Six models simulated changes in annually averaged  $\text{PM}_{2.5}$  (particulate matter with aerodynamic diameters less than  $2.5 \mu\text{m}$ ) over the 1990-2015 period. A model-mean linear trend is fitted and shown as a function of latitude and longitude, see Figure 2a. Regional changes in the model-mean range from 2 to 3%/yr reductions over much of the US and Europe to 1 to 2%/yr increases over much of South and East Asia. The intermodel variation is small, as the models simulate broadly similar geographical patterns. Observations of changes in  $\text{PM}_{2.5}$  based on the atmospheric networks EMEP (Europe) and IMPROVE (US) are available for selected time periods. The  $\text{PM}_{2.5}$  trends from observations and model mean results are compared in Table 2. The model results have been derived at the model grid of the observational sites. Over Europe the observed trend is limited to the decade 2000-2010 and is -0.5 %/yr larger (more negative) than the model mean (see Tørseth et al. (2012) for description, site selection, and trend methods). Over the US we have two decades of  $\text{PM}_{2.5}$  data, 1998-2008 (Hand et al. (2011), Hand et al. (2014)). We compare with the 2000s decade for consistency with the EMEP comparison, and with the 1989-2008 observations for a longer record. The US record shows that greater % reductions occurred in the second decade, and this is matched by the models simulation. Consistent with the EU record, the observations are -0.2 %/yr more negative

than models over either period. Thus our simulation appears to slightly underestimate the reductions in PM<sub>2.5</sub> over the US and EU. In Figure 24b the aerosol optical depth (AOD at 550 nm) is shown as model mean trend in absolute AOD similar to PM<sub>2.5</sub> in Figure 1a. Maximum reduction in AOD are of 0.30 (absolute AOD) over Europe and maximum increases are 0.25 over East Asia.

5 Five models simulated surface ozone changes based on the prescribed emissions of precursors including methane. The resulting annual mean surface ozone change (absolute, in ppb) from 1990 to 2015 is shown in Figure S24. The pattern of ozone change is similar among the models, but with some differences in magnitude. The regional changes in surface ozone have many similarities with the surface PM<sub>2.5</sub> changes (Fig. 24). Surface ozone increases are seen along maritime shipping routes due to increased NO<sub>x</sub> emissions. Figures S32 and S43 and Table S1 show the surface changes (ppb decade<sup>-1</sup>) from the models compared to observations over the US and EU. Extensive networks of surface ozone measurements, using the full 2,000 or so air quality sites in both the US and EU, are available from 1993 (US) and 1997 (EU) up to the cutoff date of 2013 (see Schnell et al. (2014); Schnell et al. (2015) for networks and methods). These gridded observations identify small-scale variations in the geographic pattern of ozone trends, which is only partially captured in these simulations. Some of the models capture some of the main seasonal shifts (e.g., decrease in summer peak ozone with increase in winter ozone over the eastern US and Europe).

### 3.2 Direct aerosol effect

The total global, annual mean radiative forcing of the change since 1990 in direct aerosol effect is shown in Figure 32, for seven models, together with the estimate given in IPCC AR5. The model mean is very close to the IPCC AR5 value, but the model spread is large. The model mean direct aerosol effect has a positive forcing in the periods 1995-2000 and 2005-2010, with the forcing over the other 5 year periods being negative or consistent with zero.

The model range for the direct aerosol effect due to changes in sulphate concentrations is smaller than that for the total direct aerosol effect, see Figure 43a. The range for sulphate forcing is a factor of two, slightly lower than the model range from other recent multi-model studies (Myhre et al., 2013a). The differences in sulphate burdens between a much larger group of models in IPCC AR5 was greater (Prather et al., 2013). In all of multi-model analyses, differences are not simply proportional to burden because radiative forcing is calculated with different assumptions of optical properties and to the host model the for radiative transfer calculations and background fields of important factors such as clouds and surface albedo (Myhre et al., 2013a; Stier et al., 2013). The IPCC AR5 estimate for direct aerosol effect of sulphate was close to zero for the whole 1990-2010 period, whereas the multi-model mean here is around +0.04 Wm<sup>-2</sup> in year 2010 with further increase to +0.05 Wm<sup>-2</sup> in 2015. A main reason for this difference is that in the new ECLIPSE emission inventory, global sulphate precursor emissions show stronger reductions for this period than previous estimates. The ECLIPSE SO<sub>2</sub> emission change over the 1990-2015 period is about -20%, including international shipping (Klimont et al., 2016; Stohl et al., 2015). Despite the overall positive direct aerosol forcing of sulphate over the 1990-2015 period from a global reduction of sulphate, it is negative in the intermediate five-year period 2000-2005.

The model-mean global mean radiative forcing of BC direct aerosol effect increases over the 1990-2010 period by  $+0.07 \text{ W m}^{-2}$  (see Fig. 43b), with values about 20% lower than in IPCC AR5. Between 2010 and 2015 the multi-model-mean drops by 25%. The model spread for BC is generally somewhat larger than for sulphate, where differences in the modeled BC vertical profile are the main contributor (Hodnebrog et al., 2014; Samset et al., 2013).

The BC emission increases from 1990 to 2015 are 10% in the global sum, but the increase in radiative forcing is relatively larger, and thus BC radiative forcing does not respond linearly to emissions. The forcing efficiency of BC is generally a more efficient absorber higher over regions of South and East Asia (increasing emissions) than over Europe and US (decreasing emissions), see Haywood and Ramaswamy (1998).

Figures 54a and 54b show the geographical distribution of the multi-model mean 1990-2015 radiative forcing of the direct aerosol effect for sulphate and BC, respectively. Sulphate forcing changes by  $+1$  to  $+2 \text{ W m}^{-2}$  over the southeastern US and central Europe due to reduced abundances; it changes by  $-0.5$  to  $-1.5 \text{ W m}^{-2}$  over most of South and East Asia. In other regions, the changes are minimal. The changes in the direct aerosol effect of BC are smaller in magnitude and opposite in sign: as much as  $-0.3 \text{ W m}^{-2}$  over the US and EU; as much as  $+0.3$  to  $+1.0 \text{ W m}^{-2}$  over a broad region of the northern tropics and sub-tropics from Africa to East Asia. The multi-model direct aerosol effect forcing of POA is very similar to IPCC AR5 over the 1990-2010 period, and generally small in magnitude (Figure 43c). To a small degree, the POA forcing acts to offset the positive forcing from BC and sulphate over the period 1990-2015. Secondary-SOA are included in a few models with forcing values over the 1990-2015 period generally of smaller magnitudes than primary-POA. Three of the models have nitrate aerosols included, with a large range in the forcing over the period (Figure 43d). The model range in nitrate forcing is presently larger than for other aerosol compounds (Myhre et al., 2013a; Shindell et al., 2013a). The strong nitrate forcing in the GISS model, which is likely too strong (Shindell et al., 2013a), explains the weak and negative total direct aerosol effect found here. On the other hand, NorESM, showing the highest total direct aerosol forcing, is without nitrate aerosols. That model also shows the strongest BC forcing among the models in this study.

### 3.3 Aerosol-cloud interaction and total aerosol effect

A subset of five models were able to diagnose the forcing from aerosol-cloud interaction, with four models having a weak or slightly positive forcing and one model having a large positive forcing, see Figure 65a. In three of the models rapid adjustments associated with aerosol-cloud interactions are simulated (i.e., in IPCC AR5 terms, they simulate an effective radiative forcing, or ERF), whereas in the two models OsloCTM2 and EMEP the RF (changes only to the cloud albedo) was simulated. The differences in direct aerosol effect found here can largely be explained by differences in the individual aerosol components, but a disentangling of aerosol-cloud interaction is more complex and average differences across the models are not readily attributed (Boucher et al., 2013).

The forcing of the total aerosol effect (the combined aerosol-radiation and aerosol-cloud interaction) based on five models, excluding CESM-CAM5 and ECHAM, are shown in Figure 65b. CESM-CAM5 and ECHAM have both direct aerosol effect very close to the model-mean. All five models have a positive total aerosol effect at the end of the 1990-2015 time period, but the magnitudes vary substantially from near zero to  $+0.2 \text{ W m}^{-2}$ . The direct aerosol

effect causes part of this spread, but the aerosol-cloud interaction is the major cause. Using the ECLIPSE emission data, we find a range similar to earlier studies, from weak to strongly positive total aerosol forcing (Kuhn et al., 2014), but that differs from the assessment of IPCC AR5, which had a negative total aerosol effect. Here, all models show a positive total aerosol forcing with a model-mean of around  $+0.1 \text{ W m}^{-2}$  ( $0.104 \pm 0.087 \text{ W m}^{-2}$  with the uncertainty given as one standard deviation) for the 1990-2015 period. The semi-direct effect of BC and, absorbing OA, is included in the total aerosol effect for all the models, except NorESM. For two of the models (EMEP and OsloCTM2) the semi-direct effect of BC is quantified to be  $-0.01$  and  $-0.03 \text{ W m}^{-2}$  in 2015 and slightly stronger in 2010. These estimates have been derived by the same method as in Hodnebrog et al. (2014); Samset and Myhre (2015). The spatial distribution of the mean multi-model total aerosol forcing from aerosol changes over the 1990-2015 period is shown in Figure 65c. The positive forcing dominates over most regions from a general reduction in the aerosol abundance reaching a maximum of  $4.0 \text{ W m}^{-2}$  over Europe. Over South and East Asia aerosol increases over the 1990-2015 period have led to a negative forcing of  $-3.0 \text{ W m}^{-2}$ .

### 3.4 Ozone forcing

The subset of five models that simulated ozone changes and their resulting radiative forcing all show positive RF over the entire time period. The multi-model mean forcing is twice the IPCC AR5 estimate, see Figure 76. Three models that used fixed meteorology simulate a relatively stable ozone forcing increase, while the other two models show that interannual variability contributed noise to the calculation of this forcing. For the period from 1990 to 2015 the model-mean forcing is  $+0.06 \text{ W m}^{-2}$ , with a model range of the order of 50% around this value.

In addition to the shorter-lived ozone precursors of NO<sub>x</sub>, CO, and VOC changes in the concentration of CH<sub>4</sub> is taken into account, except for the EMEP model. The ozone forcing estimate in IPCC AR5 was based on simulations in Stevenson et al. (2013) and for the period after 2005 on the Representative Concentration Pathways 4.5 (RCP45) scenario which has a weaker increase in the forcing than the RCP85 scenario. Smaller ozone trend from the EMEP model is partly due to that a constant CH<sub>4</sub> value used in the trend calculations.

### 4 Summary and conclusions

A suite of models have simulated ozone and aerosol forcing over the 1990-2015 period, using new emission data from the EU project ECLIPSE (Stohl et al., 2015). In areas where there are good and harmonized measurement network (US and EU), the models generally reproduce observed large scale surface trends in both compounds. Our key findings based on the updated model simulations are stronger positive radiative forcing of aerosols and ozone over the past 25 years than is reported in IPCC AR5. The global average total, multi-model ozone and aerosol forcing over the period 1990 to 2015 is almost  $+0.2 \text{ W m}^{-2}$ . However, uncertainties are large, and the model diversity of aerosol-cloud interaction is especially pronounced. The model range in the direct aerosol effect can be explained by the individual aerosol components and the diversity in modelling these processes. The model range in the forcing of the direct aerosol effect of nitrate aerosols is large and needs further investigations. The model range in the direct aerosol effect of BC is also large, but recent progress on BC lifetime (Samset et al., 2014) and improved

understanding of the importance of high resolution modelling for reproducing surface BC measurements (Wang et al., 2014a) are likely to provide more constrained BC forcing estimates in the future. In a similar way, the aerosol-cloud interaction needs observational constraints for reduced model spread. The regional forcing of aerosol changes over the 1990-2015 period is large with maximum values over Europe (+4.0 Wm<sup>-2</sup>) and South East Asia (-3.0 Wm<sup>-2</sup>).

5 | The dominant forcing mechanism over the 1990-2015 period is changes in the well-mixed greenhouse gases (WMGHG). The global mean forcing due to CO<sub>2</sub> increased over this period by 0.66 Wm<sup>-2</sup> and forcing due to other WMGHG rose by 0.16 Wm<sup>-2</sup> (see Supplementary material for further information of the calculations). Other anthropogenic forcing mechanisms have had negligible overall changes between 1990 and 2015, though; natural forcing of volcanic eruptions and solar irradiance changes have had large changes during the period, see Prather et al.  
10 | (2013) and particularly their Table AII.1.2. Whereas previous studies indicated almost zero change in forcing of aerosol and ozone change this study shows by using an updated emission inventory and multi-model simulations a forcing 20% of the WMGHG forcing.

### **Acknowledgement**

15 | This study benefitted from the Norwegian research council projects #229796 (AeroCom-P3) and the European Union Seventh Framework Programme (FP7/2007-2013) project # 282688. J. L. Schnell was supported by the National Science Foundation's Graduate Research Fellowship Program (DGE-1321846).

## References

- Amann, M., Klimont, Z. and Wagner, F.: Regional and Global Emissions of Air Pollutants: Recent Trends and Future Scenarios, *Annual Review of Environment and Resources*, 38(1), 31-55, 2013.
- Barnes, E. A., Fiore, A. M. and Horowitz, L. W.: Detection of trends in surface ozone in the presence of climate variability, *Journal of Geophysical Research: Atmospheres*, 121(10), 6112-6129, 2016.
- Bentsen, M., Bethke, I., Debernard, J. B., Iversen, T., Kirkevag, A., Seland, O., Drange, H., Roelandt, C., Seierstad, I. A., Hoose, C. and Kristjansson, J. E.: The Norwegian Earth System Model, NorESM1-M - Part 1: Description and basic evaluation of the physical climate, *Geoscientific Model Development*, 6(3), 687-720, 2013.
- Boucher, O., Randall, D., Artaxo, P., Bretherton, C., Feingold, G., Forster, P., Kerminen, V.-M., Kondo, Y., Liao, H., Lohmann, U., Rasch, P., Satheesh, S. K., Sherwood, S., Stevens, B. and Zhang, X.-Y., Clouds and Aerosols. In: *Climate Change 2013: The Physical Science Basis. Contribution of Working Group I to the Fifth Assessment Report of the Intergovernmental Panel on Climate Change*. T. F. Stocker, D. Qin, G.-K. Plattner, M. Tignor, S. K. Allen et al. (Editors), Cambridge University Press, Cambridge, United Kingdom and New York, NY, USA, pp. 571-657, 2013.
- Crippa, M., Janssens-Maenhout, G., Dentener, F., Guizzardi, D., Sindelarova, K., Muntean, M., Van Dingenen, R. and Granier, C.: Forty years of improvements in European air quality: regional policy-industry interactions with global impacts, *Atmos. Chem. Phys.*, 16(6), 3825-3841, 2016.
- Eyring, V., Bony, S., Meehl, G. A., Senior, C. A., Stevens, B., Stouffer, R. J. and Taylor, K. E.: Overview of the Coupled Model Intercomparison Project Phase 6 (CMIP6) experimental design and organization, *Geosci. Model Dev.*, 9(5), 1937-1958, 2016.
- Flato, G., Marotzke, J., Abiodun, B., Braconnot, P., Chou, S. C., Collins, W., Cox, P., Driouech, F., Emori, S., Eyring, V., Forest, C., Gleckler, P., Guilyardi, E., Jakob, C., Kattsov, V., Reason, C. and Rummukainen, M., Evaluation of Climate Models. In: *Climate Change 2013: The Physical Science Basis. Contribution of Working Group I to the Fifth Assessment Report of the Intergovernmental Panel on Climate Change*. T. F. Stocker, D. Qin, G.-K. Plattner, M. Tignor, S. K. Allen et al. (Editors), Cambridge University Press, Cambridge, United Kingdom and New York, NY, USA, pp. 741-866, 2013.
- Forster, P. M. D. and Shine, K. P.: Radiative forcing and temperature trends from stratospheric ozone changes, *Journal Of Geophysical Research-Atmospheres*, 102(D9), 10841-10855, 1997.
- Fyfe, J. C., Meehl, G. A., England, M. H., Mann, M. E., Santer, B. D., Flato, G. M., Hawkins, E., Gillett, N. P., Xie, S.-P., Kosaka, Y. and Swart, N. C.: Making sense of the early-2000s warming slowdown, *Nature Clim. Change*, 6(3), 224-228, 2016.
- Granier, C., Bessagnet, B., Bond, T., D'Angiola, A., van der Gon, H. D., Frost, G. J., Heil, A., Kaiser, J. W., Kinne, S., Klimont, Z., Kloster, S., Lamarque, J. F., Lioussé, C., Masui, T., Meleux, F., Mieville, A., Ohara, T., Raut, J. C., Riahi, K., Schultz, M. G., Smith, S. J., Thompson, A., van Aardenne, J., van der Werf, G. R. and van Vuuren, D. P.: Evolution



- of anthropogenic and biomass burning emissions of air pollutants at global and regional scales during the 1980-2010 period, *Climatic Change*, 109(1-2), 163-190, 2011.
- Hand, J. L., Copeland, S. A., Day, D. E., Dillner, A. M., Indresand, H., Malm, W. C., McDade, C. E., Moore, C. T., Pitchford, M. L., Schichtel, B. A. and Watson, J. G., 2011. IMPROVE, Spatial and Seasonal Patterns and Temporal Variability of Haze and its Constituents in the United States, Cooperative Institute for Research in the Atmosphere and Colorado University, ISSN 0737-5352-87.
- Hand, J. L., Schichtel, B. A., Malm, W. C., Copeland, S., Molenaar, J. V., Frank, N. and Pitchford, M.: Widespread reductions in haze across the United States from the early 1990s through 2011, *Atmospheric Environment*, 94, 671-679, 2014.
- Haywood, J. M. and Ramaswamy, V.: Global sensitivity studies of the direct radiative forcing due to anthropogenic sulfate and black carbon aerosols, *Journal of Geophysical Research-Atmospheres*, 103(D6), 6043-6058, 1998.
- Haywood, J. M. and Shine, K. P.: Multi-spectral calculations of the direct radiative forcing of tropospheric sulphate and soot aerosols using a column model, *Quarterly Journal of the Royal Meteorological Society*, 123(543), 1907-1930, 1997.
- Hodnebrog, Ø., Myhre, G. and Samset, B. H.: How shorter black carbon lifetime alters its climate effect, *Nat Commun*, 5, 5065, 2014.
- Iversen, T., Bentsen, M., Bethke, I., Debernard, J. B., Kirkevåg, A., Seland, O., Drange, H., Kristjansson, J. E., Medhaug, I., Sand, M. and Seierstad, I. A.: The Norwegian Earth System Model, NorESM1-M - Part 2: Climate response and scenario projections, *Geoscientific Model Development*, 6(2), 389-415, 2013.
- Karl, T. R., Arguez, A., Huang, B., Lawrimore, J. H., McMahon, J. R., Menne, M. J., Peterson, T. C., Vose, R. S. and Zhang, H.-M.: Possible artifacts of data biases in the recent global surface warming hiatus, *Science*, 348(6242), 1469-1472, 2015.
- Kaufman, Y. J., Tanre, D. and Boucher, O.: A satellite view of aerosols in the climate system, *Nature*, 419(6903), 215-223, 2002.
- Kirkevåg, A., Iversen, T., Seland, O., Hoose, C., Kristjansson, J. E., Struthers, H., Ekman, A. M. L., Ghan, S., Griesfeller, J., Nilsson, E. D. and Schulz, M.: Aerosol-climate interactions in the Norwegian Earth System Model-NorESM1-M, *Geoscientific Model Development*, 6(1), 207-244, 2013.
- Klimont, Z., Kupiainen, K., Heyes, C., Purohit, P., Cofala, J., Rafaj, P., Borcken-Kleefeld, J. and Schöpp, W.: Global anthropogenic emissions of particulate matter including black carbon, *Atmos. Chem. Phys. Discuss.*, 2016(doi: 10.5194/acp-2016-880), 1-72, 2016.
- Klimont, Z., Smith, S. J. and Cofala, J.: The last decade of global anthropogenic sulfur dioxide: 2000–2011 emissions, *Environmental Research Letters*, 8(1), 014003, 2013.
- Kuhn, T., Partanen, A. I., Laakso, A., Lu, Z., Bergman, T., Mikkonen, S., Kokkola, H., Korhonen, H., Raisanen, P., Streets, D. G., Romakkaniemi, S. and Laaksonen, A.: Climate impacts of changing aerosol emissions since 1996, *Geophysical Research Letters*, 41(13), 4711-4718, 2014.
- Lacis, A. A., Wuebbles, D. J. and Logan, J. A.: Radiative forcing of climate by changes in the vertical distribution of ozone, *Journal of Geophysical Research: Atmospheres*, 95(D7), 9971-9981, 1990.
- Lamarque, J., Bond, T., Eyring, V., Granier, C., Heil, A., Klimont, Z., Lee, D., Liousse, C., Mieville, A., Owen, B., Schultz, M., Shindell, D., Smith, S., Stehfest, E., Van Aardenne, J., Cooper, O., Kainuma, M., Mahowald, N., McConnell, J., Naik, V., Riahi, K. and van

- Vuuren, D.: Historical (1850-2000) gridded anthropogenic and biomass burning emissions of reactive gases and aerosols: methodology and application, *Atmospheric Chemistry and Physics*, 7017-7039, 2010.
- 5 Liu, X., Easter, R. C., Ghan, S. J., Zaveri, R., Rasch, P., Lamarque, J.-F., Gettelman, A., Morrison, H., Vitt, F., Conley, A., Park, S., Neale, R., Hannay, C., Ekman, A., Hess, P., Mahowald, N., Collins, W., Iacono, M., Bretherton, C., Flanner, M. and Mitchell, D.: Toward a minimal representation of aerosols in climate models: Description and evaluation in the Community Atmosphere Model CAM5., *Geosci. Model Dev.*, 5, 709–739, 2012.
- 10 Liu, X. H., Penner, J. E., Das, B. Y., Bergmann, D., Rodriguez, J. M., Strahan, S., Wang, M. H. and Feng, Y.: Uncertainties in global aerosol simulations: Assessment using three meteorological data sets, *Journal of Geophysical Research-Atmospheres*, 112(D11), 2007.
- MacIntosh, C. R., Allan, R. P., Baker, L. H., Bellouin, N., Collins, W., Mousavi, Z. and Shine, K. P.: Contrasting fast precipitation responses to tropospheric and stratospheric ozone forcing, *Geophysical Research Letters*, 43(3), 1263-1271, 2016.
- 15 Marotzke, J. and Forster, P. M.: Forcing, feedback and internal variability in global temperature trends, *Nature*, 517(7536), 565-570, 2015.
- Murphy, D. M.: Little net clear-sky radiative forcing from recent regional redistribution of aerosols, *Nature Geoscience*, 6(4), 258-262, 2013.
- 20 Myhre, G., Berglen, T. F., Johnsrud, M., Hoyle, C. R., Berntsen, T. K., Christopher, S. A., Fahey, D. W., Isaksen, I. S. A., Jones, T. A., Kahn, R. A., Loeb, N., Quinn, P., Remer, L., Schwarz, J. P. and Yttri, K. E.: Modelled radiative forcing of the direct aerosol effect with multi-observation evaluation, *Atmospheric Chemistry and Physics*, 9(4), 1365-1392, 2009.
- 25 Myhre, G., Samset, B. H., Schulz, M., Balkanski, Y., Bauer, S., Berntsen, T. K., Bian, H., Bellouin, N., Chin, M., Diehl, T., Easter, R. C., Feichter, J., Ghan, S. J., Hauglustaine, D., Iversen, T., Kinne, S., Kirkevåg, A., Lamarque, J. F., Lin, G., Liu, X., Lund, M. T., Luo, G., Ma, X., van Noije, T., Penner, J. E., Rasch, P. J., Ruiz, A., Seland, O., Skeie, R. B., Stier, P., Takemura, T., Tsigaridis, K., Wang, P., Wang, Z., Xu, L., Yu, H., Yu, F., Yoon, J. H., Zhang, K., Zhang, H. and Zhou, C.: Radiative forcing of the direct aerosol effect from AeroCom Phase II simulations, *Atmospheric Chemistry and Physics*, 13(4), 1853-1877, 2013a.
- 30 Myhre, G., Shindell, D., Bréon, F.-M., Collins, W., Fuglestedt, J., Huang, J., Koch, D., Lamarque, J.-F., Lee, D., Mendoza, B., Nakajima, T., Robock, A., Stephens, G., Takemura, T. and Zhang, H., Anthropogenic and Natural Radiative Forcing. In: *Climate Change 2013: The Physical Science Basis. Contribution of Working Group I to the Fifth Assessment Report of the Intergovernmental Panel on Climate Change*. T. F. Stocker, D. Qin, G.-K. Plattner, M. Tignor, S. K. Allen et al. (Editors), Cambridge University Press, Cambridge, United Kingdom and New York, NY, USA, pp. 659-740, 2013b.
- 35 Neale, R. B., Gettelman, A., Park, S., Chen, C., Lauritzen, P. H., Williamson, D. L., Conley, A. J., Kinnison, D., Marsh, D., Smith, A. K., Vitt, F., Garcia, R., Lamarque, J. F., Mills, M., Tilmes, S., Morrison, H., Cameron-Smith, P., Collins, W. D., Iacono, M., Easter, R. C., Liu, X., Ghan, S., Rasch, P. and Taylor, M. A., 2010. Description of the NCAR Community Atmosphere Model (CAM 5.0), NCAR Technical Report, NCAR/TN-486+STR, National Center for Atmospheric Research (NCAR), Boulder, Colorado.
- 45

- Nieves, V., Willis, J. K. and Patzert, W. C.: Recent hiatus caused by decadal shift in Indo-Pacific heating, *Science*, 349(6247), 532-535, 2015.
- Prather, M., Flato, G., Friedlingstein, P., Jones, C., Lamarque, J.-F., Liao, H. and Rasch, P., IPCC 2013: Annex II: Climate System Scenario Tables. In: *Climate Change 2013: The Physical Science Basis. Contribution of Working Group I to the Fifth Assessment Report of the Intergovernmental Panel on Climate Change*. T. F. Stocker, D. Qin, G.-K. Plattner, M. Tignor, S. K. Allen et al. (Editors), Cambridge University Press, Cambridge, United Kingdom and New York, NY, USA, pp. 1395-1445, 2013.
- 5 Samset, B. H. and Myhre, G.: Climate response to externally mixed black carbon as a function of altitude, *Journal of Geophysical Research: Atmospheres*, 120(7), 2913-2927, 2015.
- 10 Samset, B. H., Myhre, G., Herber, A., Kondo, Y., Li, S. M., Moteki, N., Koike, M., Oshima, N., Schwarz, J. P., Balkanski, Y., Bauer, S. E., Bellouin, N., Bernsten, T. K., Bian, H., Chin, M., Diehl, T., Easter, R. C., Ghan, S. J., Iversen, T., Kirkevåg, A., Lamarque, J. F., Lin, G., Liu, X., Penner, J. E., Schulz, M., Seland, Ø., Skeie, R. B., Stier, P., Takemura, T.,
- 15 Tsigaridis, K. and Zhang, K.: Modelled black carbon radiative forcing and atmospheric lifetime in AeroCom Phase II constrained by aircraft observations, *Atmos. Chem. Phys.*, 14(22), 12465-12477, 2014.
- Samset, B. H., Myhre, G., Schulz, M., Balkanski, Y., Bauer, S., Bernsten, T. K., Bian, H., Bellouin, N., Diehl, T., Easter, R. C., Ghan, S. J., Iversen, T., Kinne, S., Kirkevåg, A.,
- 20 Lamarque, J. F., Lin, G., Liu, X., Penner, J. E., Seland, O., Skeie, R. B., Stier, P., Takemura, T., Tsigaridis, K. and Zhang, K.: Black carbon vertical profiles strongly affect its radiative forcing uncertainty, *Atmospheric Chemistry and Physics*, 13(5), 2423-2434, 2013.
- Schmidt, G. A., Kelley, M., Nazarenko, L., Ruedy, R., Russell, G. L., Aleinov, I., Bauer, M.,
- 25 Bauer, S. E., Bhat, M. K., Bleck, R., Canuto, V., Chen, Y.-H., Cheng, Y., Clune, T. L., Del Genio, A., de Fainchtein, R., Faluvegi, G., Hansen, J. E., Healy, R. J., Kiang, N. Y., Koch, D., Lacis, A. A., LeGrande, A. N., Lerner, J., Lo, K. K., Matthews, E. E., Menon, S., Miller, R. L., Oinas, V., Oloso, A. O., Perlwitz, J. P., Puma, M. J., Putman, W. M.,
- 30 Rind, D., Romanou, A., Sato, M., Shindell, D. T., Sun, S., Syed, R. A., Tausnev, N., Tsigaridis, K., Unger, N., Voulgarakis, A., Yao, M.-S. and Zhang, J.: Configuration and assessment of the GISS ModelE2 contributions to the CMIP5 archive, *Journal of Advances in Modeling Earth Systems*, 6(1), 141-184, 2014a.
- Schmidt, G. A., Shindell, D. T. and Tsigaridis, K.: Reconciling warming trends, *Nature Geoscience*, 7(3), 158-160, 2014b.
- 35 Schnell, J. L., Holmes, C. D., Jangam, A. and Prather, M. J.: Skill in forecasting extreme ozone pollution episodes with a global atmospheric chemistry model, *Atmos. Chem. Phys.*, 14(15), 7721-7739, 2014.
- Schnell, J. L., Prather, M. J., Josse, B., Naik, V., Horowitz, L. W., Cameron-Smith, P.,
- 40 Bergmann, D., Zeng, G., Plummer, D. A., Sudo, K., Nagashima, T., Shindell, D. T., Faluvegi, G. and Strode, S. A.: Use of North American and European air quality networks to evaluate global chemistry-climate modeling of surface ozone, *Atmos. Chem. Phys.*, 15(18), 10581-10596, 2015.
- Schutgens, N. A. J., Gryspeerdt, E., Weigum, N., Tsyro, S., Goto, D., Schulz, M. and Stier, P.: Will a perfect model agree with perfect observations? The impact of spatial sampling,
- 45 *Atmos. Chem. Phys.*, 16(10), 6335-6353, 2016.

- Shindell, D. T., Lamarque, J. F., Schulz, M., Flanner, M., Jiao, C., Chin, M., Young, P. J., Lee, Y. H., Rotstayn, L., Mahowald, N., Milly, G., Faluvegi, G., Balkanski, Y., Collins, W. J., Conley, A. J., Dalsoren, S., Easter, R., Ghan, S., Horowitz, L., Liu, X., Myhre, G., Nagashima, T., Naik, V., Rumbold, S. T., Skeie, R., Sudo, K., Szopa, S., Takemura, T.,  
5 Voulgarakis, A., Yoon, J. H. and Lo, F.: Radiative forcing in the ACCMIP historical and future climate simulations, *Atmospheric Chemistry and Physics*, 13(6), 2939-2974, 2013a.
- Shindell, D. T., Pechony, O., Voulgarakis, A., Faluvegi, G., Nazarenko, L., Lamarque, J. F., Bowman, K., Milly, G., Kovari, B., Ruedy, R. and Schmidt, G. A.: Interactive ozone and methane chemistry in GISS-E2 historical and future climate simulations, *Atmos. Chem. Phys.*, 13(5), 2653-2689, 2013b.  
10
- Simpson, D., Benedictow, A., Berge, H., Bergstrom, R., Emberson, L. D., Fagerli, H., Flechard, C. R., Hayman, G. D., Gauss, M., Jonson, J. E., Jenkin, M. E., Nyiri, A., Richter, C., Semeena, V. S., Tsyro, S., Tuovinen, J. P., Valdebenito, A. and Wind, P.: The EMEP MSC-W chemical transport model - technical description, *Atmospheric Chemistry and Physics*, 12(16), 7825-7865, 2012.  
15
- Skeie, R. B., Berntsen, T. K., Myhre, G., Tanaka, K., Kvalevag, M. M. and Hoyle, C. R.: Anthropogenic radiative forcing time series from pre-industrial times until 2010, *Atmospheric Chemistry and Physics*, 11(22), 11827-11857, 2011.
- Solomon, S., Daniel, J. S., Neely, R. R., III, Vernier, J. P., Dutton, E. G. and Thomason, L. W.: The Persistently Variable "Background" Stratospheric Aerosol Layer and Global Climate Change, *Science*, 333(6044), 866-870, 2011.  
20
- Stevens, B., Giorgetta, M., Esch, M., Mauritsen, T., Crueger, T., Rast, S., Salzmann, M., Schmidt, H., Bader, J., Block, K., Brokopf, R., Fast, I., Kinne, S., Kornblueh, L., Lohmann, U., Pincus, R., Reichler, T. and Roeckner, E.: Atmospheric component of the MPI-M Earth System Model: ECHAM6, *Journal of Advances in Modeling Earth Systems*, 5(2), 146-172, 2013.  
25
- Stevenson, D. S., Young, P. J., Naik, V., Lamarque, J. F., Shindell, D. T., Voulgarakis, A., Skeie, R. B., Dalsoren, S. B., Myhre, G., Berntsen, T. K., Folberth, G. A., Rumbold, S. T., Collins, W. J., MacKenzie, I. A., Doherty, R. M., Zeng, G., van Noije, T. P. C., Strunk, A., Bergmann, D., Cameron-Smith, P., Plummer, D. A., Strode, S. A., Horowitz, L., Lee, Y. H., Szopa, S., Sudo, K., Nagashima, T., Josse, B., Cionni, I., Righi, M., Eyring, V., Conley, A., Bowman, K. W., Wild, O. and Archibald, A.: Tropospheric ozone changes, radiative forcing and attribution to emissions in the Atmospheric Chemistry and Climate Model Intercomparison Project (ACCMIP), *Atmospheric Chemistry and Physics*, 13(6),  
30 3063-3085, 2013.
- Stier, P., Schutgens, N. A. J., Bellouin, N., Bian, H., Boucher, O., Chin, M., Ghan, S., Huneus, N., Kinne, S., Lin, G., Ma, X., Myhre, G., Penner, J. E., Randles, C. A., Samset, B., Schulz, M., Takemura, T., Yu, F., Yu, H. and Zhou, C.: Host model uncertainties in aerosol radiative forcing estimates: results from the AeroCom Prescribed intercomparison study, *Atmospheric Chemistry and Physics*, 13(6), 3245-3270, 2013.  
40
- Stohl, A., Aamaas, B., Amann, M., Baker, L. H., Bellouin, N., Berntsen, T. K., Boucher, O., Cherian, R., Collins, W., Daskalakis, N., Dusinska, M., Eckhardt, S., Fuglestedt, J. S., Harju, M., Heyes, C., Hodnebrog, Ø., Hao, J., Im, U., Kanakidou, M., Klimont, Z., Kupiainen, K., Law, K. S., Lund, M. T., Maas, R., MacIntosh, C. R., Myhre, G., Myriokefalitakis, S., Olivie, D., Quaas, J., Quennehen, B., Raut, J. C., Rumbold, S. T.,  
45 Samset, B. H., Schulz, M., Seland, Ø., Shine, K. P., Skeie, R. B., Wang, S., Yttri, K. E.

- and Zhu, T.: Evaluating the climate and air quality impacts of short-lived pollutants, *Atmos. Chem. Phys.*, 15(18), 10529-10566, 2015.
- 5 Takemura, T., Egashira, M., Matsuzawa, K., Ichijo, H., O'Ishi, R. and Abe-Ouchi, A.: A simulation of the global distribution and radiative forcing of soil dust aerosols at the Last Glacial Maximum, *Atmospheric Chemistry and Physics*, 9(9), 3061-3073, 2009.
- Takemura, T., Nozawa, T., Emori, S., Nakajima, T. Y. and Nakajima, T.: Simulation of climate response to aerosol direct and indirect effects with aerosol transport-radiation model, *Journal of Geophysical Research-Atmospheres*, 110(D2), D02202, doi:10.1029/2004jd005029, 2005.
- 10 Tørseth, K., Aas, W., Breivik, K., Fjæraa, A. M., Fiebig, M., Hjellbrekke, A. G., Lund Myhre, C., Solberg, S. and Yttri, K. E.: Introduction to the European Monitoring and Evaluation Programme (EMEP) and observed atmospheric composition change during 1972-2009, *Atmos. Chem. Phys.*, 12(12), 5447-5481, 2012.
- 15 Wang, H., Easter, R. C., Rasch, P. J., Wang, M., Liu, X., Ghan, S. J., Qian, Y., Yoon, J. H., Ma, P. L. and Vinoj, V.: Sensitivity of remote aerosol distributions to representation of cloud-aerosol interactions in a global climate model, *Geoscientific Model Development*, 6(3), 765-782, 2013.
- 20 Wang, R., Tao, S., Balkanski, Y., Ciais, P., Boucher, O., Liu, J. F., Piao, S. L., Shen, H. Z., Vuolo, M. R., Valari, M., Chen, H., Chen, Y. C., Cozic, A., Huang, Y., Li, B. G., Li, W., Shen, G. F., Wang, B. and Zhang, Y. Y.: Exposure to ambient black carbon derived from a unique inventory and high-resolution model, *Proceedings of the National Academy of Sciences of the United States of America*, 111(7), 2459-2463, 2014a.
- 25 Wang, R., Tao, S., Shen, H. Z., Huang, Y., Chen, H., Balkanski, Y., Boucher, O., Ciais, P., Shen, G. F., Li, W., Zhang, Y. Y., Chen, Y. C., Lin, N., Su, S., Li, B. G., Liu, J. F. and Liu, W. X.: Trend in Global Black Carbon Emissions from 1960 to 2007, *Environmental Science & Technology*, 48(12), 6780-6787, 2014b.
- 30 Zhang, K., O'Donnell, D., Kazil, J., Stier, P., Kinne, S., Lohmann, U., Ferrachat, S., Croft, B., Quaas, J., Wan, H., Rast, S. and Feichter, J.: The global aerosol-climate model ECHAM-HAM, version 2: sensitivity to improvements in process representations, *Atmospheric Chemistry and Physics*, 12(19), 8911-8949, 2012.

**Table 1:** Model description.

| Models                           | Resolution                | Fixed-met or fixed-SST  | Rapid adjustment   | Anthropogenic aerosol components included   | References  |
|----------------------------------|---------------------------|---|--|---|---|
| <b>CESM (CAM5, MAM3, MOZART)</b> | 1.9° x 2.5°<br>L30        | <u>1982-2001 climatological monthly varying fixed-SSTs and sea-ice</u><br><del>Fixed-SST (climatological)</del>   | <del>No</del> A (direct effect only)   | Sulphate, BC, <u>POA</u> , SOA  | (Liu et al., 2012; Neale et al., 2010; Wang et al., 2013) |
| <b>ECHAM6-HAM2</b>               | T63 (1.8X1.8),<br>L31     | <u>Climatological monthly varying fixed-SST and sea ice extent averaged for the period 1979 to 2008.</u> <del>Fixed-SST and sea-ice extent (climatological)</del> | Included for semi-direct effect, cloud-aerosol interactions on liquid water clouds (no parameterised effects on ice clouds or convective clouds) | Sulphate, BC, <u>POA</u> <del>C</del>   | (Stevens et al., 2013; Zhang et al., 2012)                |
| <b>EMEP</b>                      | 0.5° x 0.5°<br><u>L20</u> | 2010 met  | <u>Included for semi-direct effect of BC</u><br><del>(CESM-CAM4) NA</del>  | Sulphate, nitrate, <u>primary PM</u><br><del>(BC, POM POAremaining), anthropogenic</del><br>SOA | (Simpson et al., 2012)                                    |
| <b>GISS</b>                      | 2.0° x 2.5°<br>L40        | <u>2000 climatological monthly varying fixed-SSTs and sea-ice</u><br><u>2000 met</u>  | <u>Yes</u>   | Sulphate, BC, <u>POA</u> , SOA, nitrate (dust also influenced by other anthropogenic)           | (Schmidt et al., 2014a; Shindell et al., 2013b)           |

|                  |                           |  |  |   |   |
|------------------|---------------------------|--|--|---|---|
|                  |                           |  |  | aerosols)   |   |
| <b>NorESM1</b>   | 1.9° x 2.5°<br>L26        | <u>Climatological</u><br><u>monthly varying</u><br><u>fixed SSTs and</u><br><u>sea ice extent</u><br><u>over the 1990-</u><br><u>2013 period</u><br><u>(climatological)</u>  | <u>yes</u> <u>No</u>                                     | Sulphate, BC,<br><u>POA</u> (SOA<br>included in<br><u>POA</u> ) | (Bentsen et al.,<br>2013; Iversen et<br>al., 2013;<br>Kirkevåg et al.,<br>2013) |
| <b>OsloCTM2</b>  | T42<br>2.8° x 2.8°<br>L60 | 2010 met   | Included for semi-<br>direct effect of BC<br>(CESM-CAM4) | Sulphate, BC,<br><u>POA</u> , SOA,<br>nitrate                   | (Myhre et al.,<br>2009; Skeie et<br>al., 2011)                                  |
| <b>SPRINTARS</b> | 1.125° x<br>1.125° L56    | <u>Climatological</u><br><u>monthly</u><br><u>varying fixed</u><br><u>SSTs and sea</u><br><u>ice extent over</u><br><u>the 1988-1992</u><br><u>period</u><br><u>1990 SST</u> | Included   | Sulphate, BC,<br><u>POA</u> , SOA                               | (Takemura et<br>al., 2009;<br>Takemura et al.,<br>2005)                         |

**Table 2:** Change in PM<sub>2.5</sub> given in %/yr over Europe and US for observations and multi-model mean. Values in parenthesis are standard deviations of the observed trends. Models have been sampled at the grid points of the network sites and for the US periods 2000-2010 and 1990-2010 have been derived.

|   | # sites | Observations (%/yr) | Mean-models (%/yr) |
|---|---------|---------------------|--------------------|
| Europe 2000-2010, based on EMEP network*  | 13      | -2.9 (1.5)          | -2.4               |
| US 2000-2009, based on IMPROVE network ** | 153     | -2.1 (2.07)         | -1.9               |
| US 1989-2009, based on IMPROVE network**  | 59      | -1.5 (1.25)         | -1.3               |

5 \*Modified from Tørseth et al. (2012) by extending one additional year. Same trend methods are used.

\*\*Adapted from Hand et al. (2011).



Total global emissions

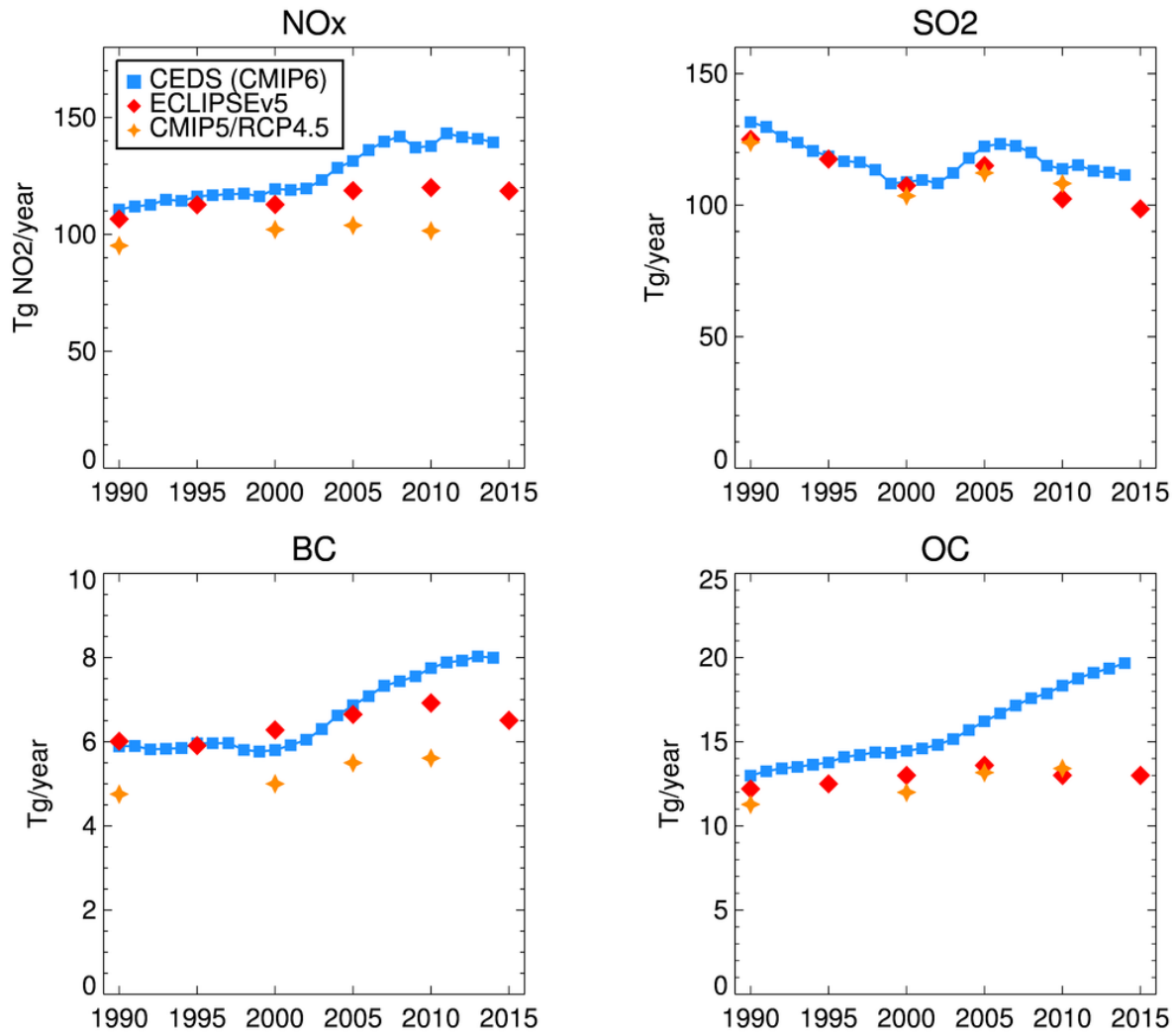
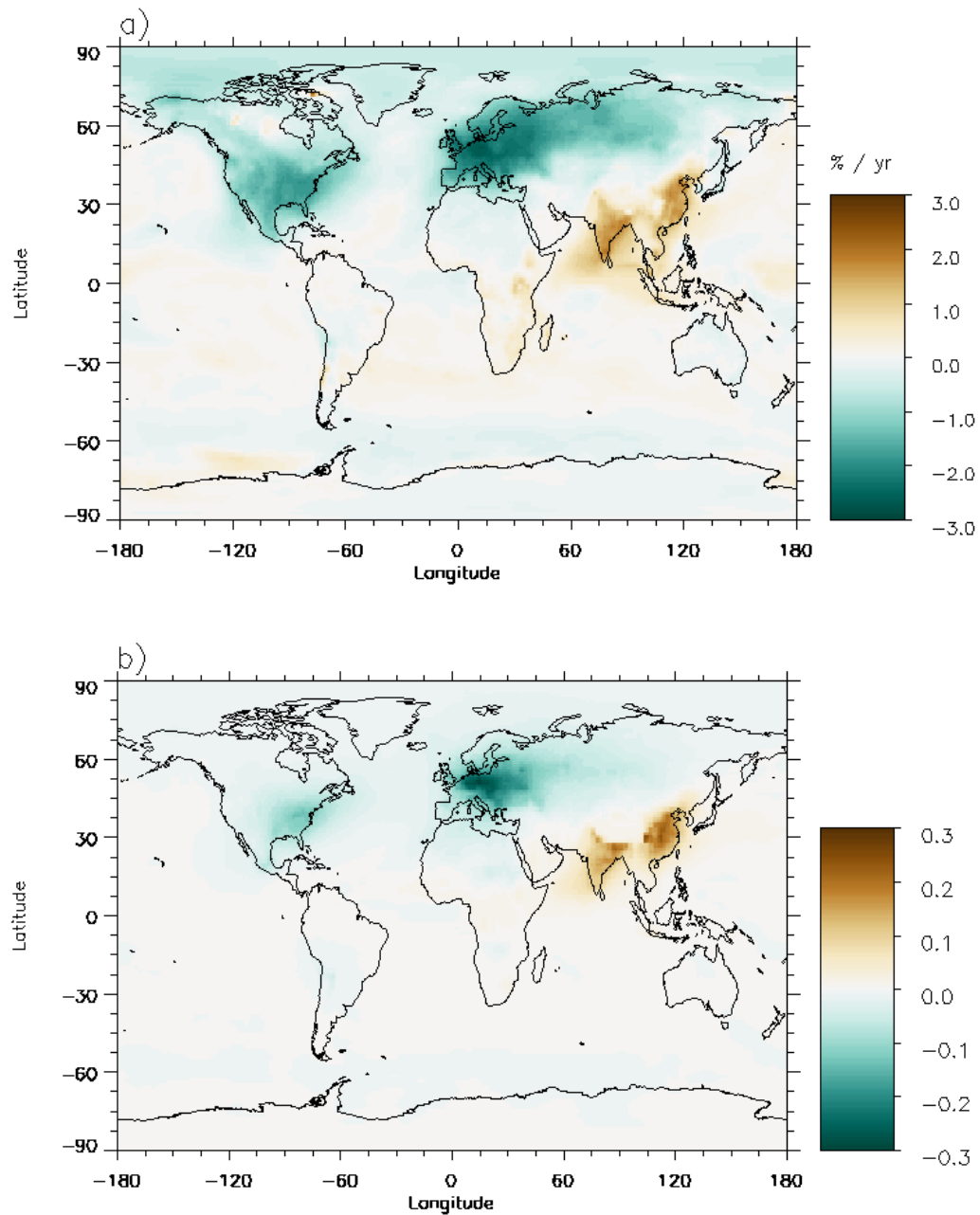


Figure 1: Global mean emissions for NO<sub>x</sub>, SO<sub>2</sub>, BC and OC for ECLIPSE (Klimont et al., 2016), data applied in Coupled Model Intercomparison Project (CMIP5) (Lamarque et al., 2010), and Community Emissions Data System (CEDS) to be used in CMIP6 (Hoesly et al. in preparation) over the period 1990-2015.

5



5 | **Figure 24:** Multi-model mean **linear** change in surface  $PM_{2.5}$  (a) and aerosol optical depth (AOD) at 550 nm (b), over the 1990-2015 period, simulated by the six models GISS, OsloCTM2, NorESM, CESM-CAM5, EMEP, and SPRINTARS.

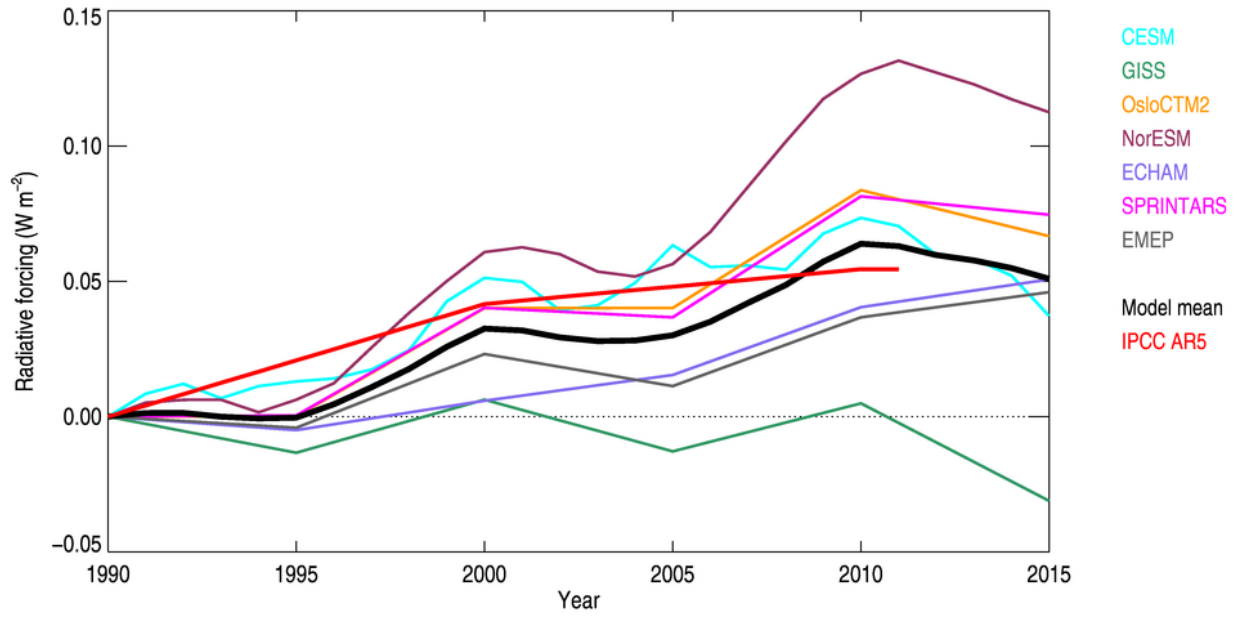
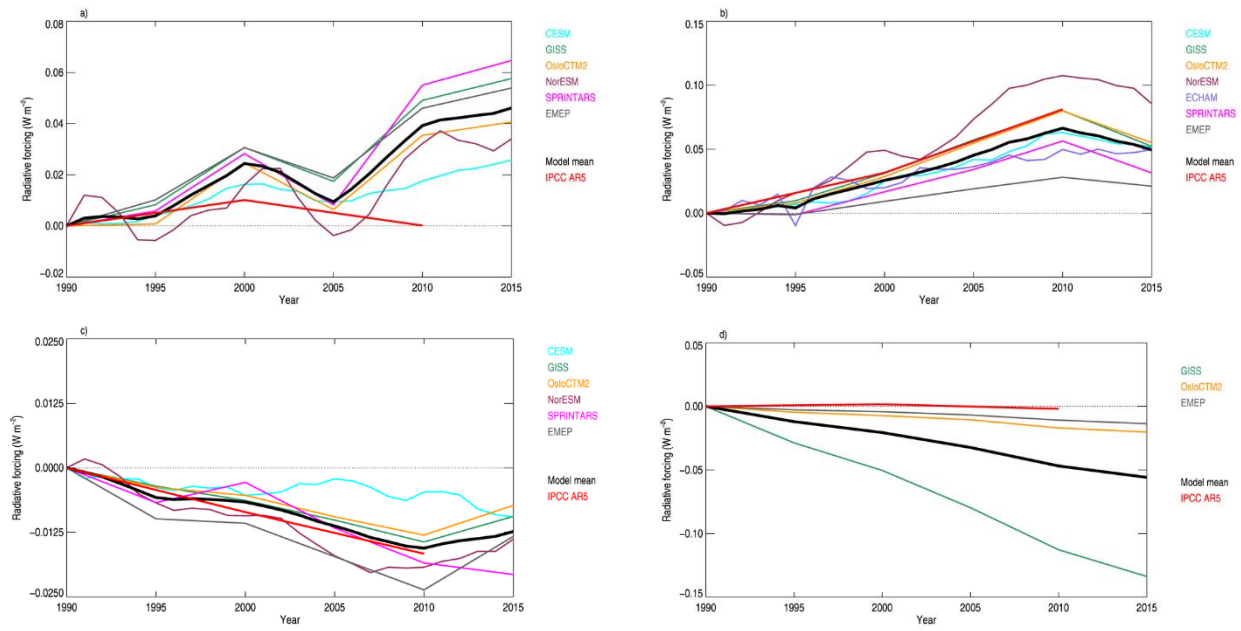
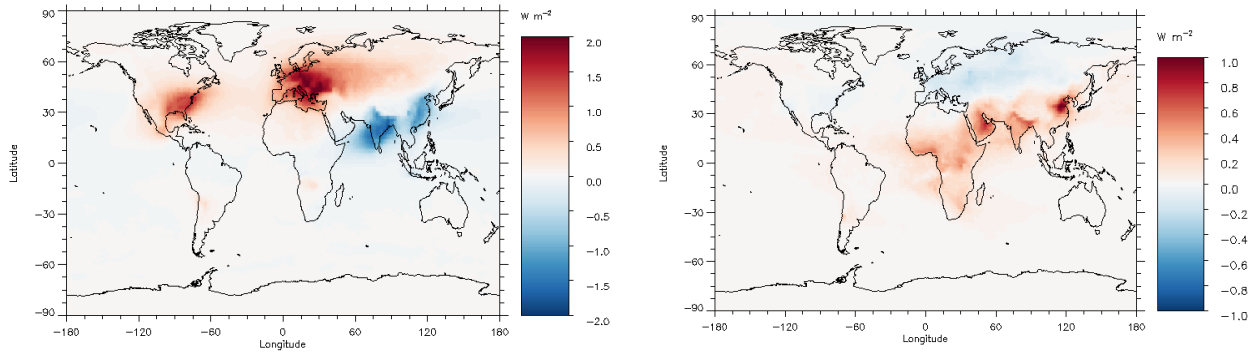


Figure 32: Radiative forcing ( $\text{W m}^{-2}$ ) of the direct aerosol effect over the period 1990–2015 given for seven models (legend lists the models), the multi-model mean is shown in black and the estimate provided in IPCC AR5 is included in red.



**Figure 43:** Radiative forcing ( $\text{W m}^{-2}$ ) of the direct aerosol effect by aerosol component (sulphate, a; BC, b; **POA**, c; nitrate, d) over the period 1990-2015.

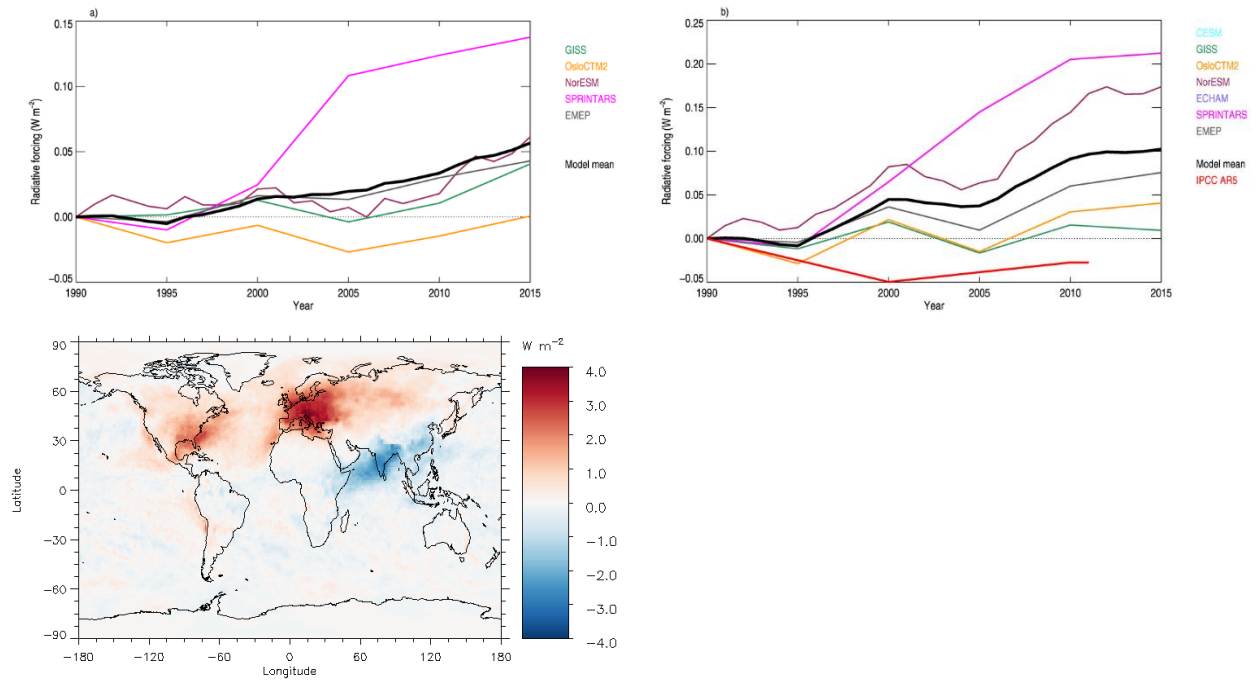
5



**Figure 54:** Geographical distribution of the 1990-2015 radiative forcing ( $W m^{-2}$ ) of the multi-model mean direct aerosol effect sulphate (left) and BC (right) as driven by emission changes.

5

10



**Figure 65:** Radiative forcing ( $\text{W m}^{-2}$ ) over the period 1990-2015 of the aerosol-cloud interaction for a subset of the models (a) and total aerosol effect (b). The lower panel shows the geographical distribution of radiative forcing ( $\text{W m}^{-2}$ ) of the multi-model mean total aerosol effect.

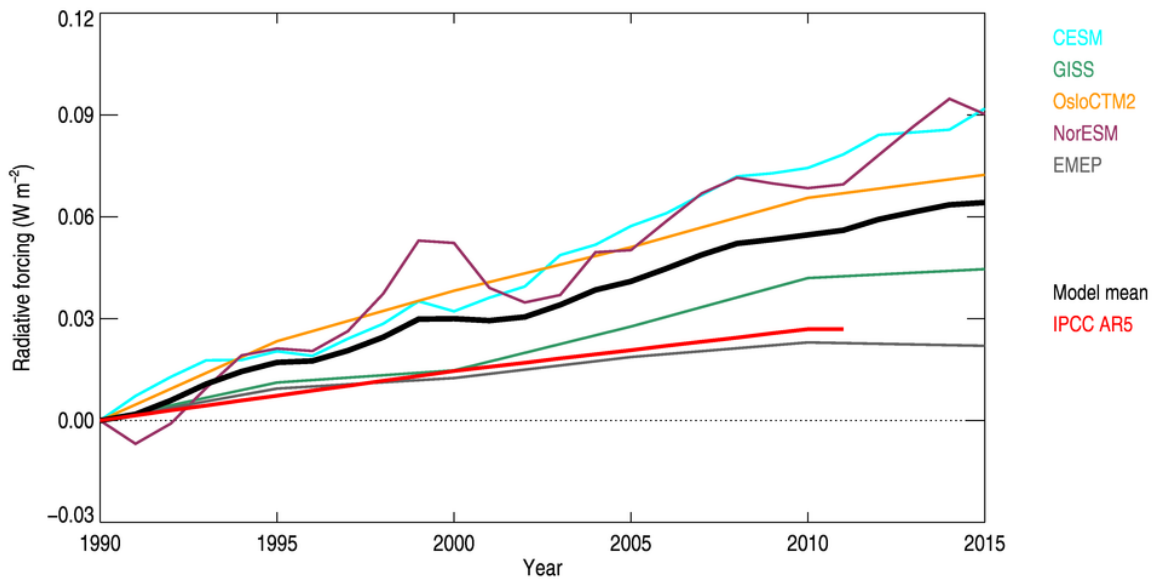


Figure 76: Radiative forcing ( $\text{W m}^{-2}$ ) due to the change in ozone over the period 1990-2015.