

Author response:

Dear Prof. Dameris,

Thank you and all of the referees very much for such a great review process that led to significant improvements of the manuscript.

We implemented all of the new comments from all referees, except the issue 4) raised by the Ref. #1 - that the Fig. 5 is too small. We have printed it in its current version (after enlargement of Fig. 5 after the interactive discussion) and we find it readable. We want to keep all of the subfigures in Fig.5 and so it is almost impossible to enlarge it further.

Also the issue 3) raised by the Ref. #1 has been adopted only partially, because we didn't delete the paragraph about supporting tracer data and the consequent figures in the Supplement. We softened even more our description of those figures - to be illustrative only, but still we would like to present them to attract researchers to analysis of the peculiar behaviour of the transport in the EA/NP region (and possibly the role of the Aleutian High, or Himalays, which is not stated explicitly in our paper).

On the other side, we adapted the comment to change the title, because we agree that the paper is no longer significantly related with tracer distributions. We think that the word dynamics describes the overall influence of GW distribution even better than the word circulation.

Ref # 1 and 2 also suggested that our discussion can be relevant for orographic GW parameterizations as well - this is a very valuable comment and we are now stating this in the text with two references (Ern et al. 2016 and Yamashita 2013) added.

Other comments were of technical nature and were adopted. You may find the revised version with marked up changes below.

Influence of the spatial distribution of gravity wave activity on the middle atmospheric ~~dynamics~~,

Petr Šácha¹, Friederike Lilienthal², Christoph Jacobi², Petr Pišoft¹

5 ¹Department of Atmospheric Physics, Faculty of Mathematics and Physics, Charles University in Prague, V Holesovickach 2, Prague 180 00, Czech Republic

²University of Leipzig, Institute of Meteorology, Stephanstr. 3, 04103 Leipzig, Germany

10 *Correspondence to:* Petr Šácha(petr.sacha@mff.cuni.cz)

Abstract. Analyzing GPS radio occultation density profiles, we have recently pointed out a localized area of enhanced gravity wave (GW) activity and breaking in the lower stratosphere of the Eastern Asia/North-western Pacific (EA/NP) region. With a mechanistic model of the middle and upper atmosphere experiments are performed to study a possible effect of such a localized GW breaking region on the large-scale circulation and transport and, more generally, a possible influence of the spatial distribution of gravity wave activity on the middle atmospheric ~~dynamics~~.

The results indicate an important role of the spatial distribution of GW activity for the polar vortex stability, formation of planetary waves (PW) and for the strength and structure of the zonal mean residual circulation. Also, a possible effect of a zonally asymmetric GW breaking in the longitudinal variability of the Brewer-Dobson circulation is analyzed. Finally, consequences of our results for a variety of research topics (sudden stratospheric warming, atmospheric blocking, teleconnection ~~patterns~~, and a compensation mechanism between resolved and unresolved drag) are discussed.

1 Introduction:

25 Consideration of gravity wave (GW) related processes is necessary for a proper description and modeling of the middle (as reviewed comprehensively by Fritts and Alexander, 2003) and upper atmospheric dynamics (see, e.g., the review by Smith, 2012). However, only recently satellite and other observational datasets with improved resolution and novel analysis methods together with high-resolution global models have been tightening the constraints for the parameterizations that can improve the treatment of these waves in climate models (Alexander et al., 2010; Geller et al., 2013).

30 Complex understanding and unbiased modeling of the middle atmospheric conditions is vital for climate research and there is strong evidence that coupling between chemistry and dynamics in the stratosphere is essential for surface climate variability and climate change in both hemispheres (Manzini et al., 2014; Calvo et al., 2015). There is also a wide recognition of dynamical links between the stratosphere and troposphere with a potential to significantly affect conditions at the surface (Haynes, 2005; Kidston et al., 2015). Hence, better representation of the stratosphere could improve the long-range and also short range forecast skills (Hardiman and Haynes, 2008; Gerber et al., 2012).

35 The Brewer–Dobson circulation (BDC) ~~was~~ discovered based on ~~a~~ distribution of trace gases by Brewer (1949) and Dobson (1956). Using the transformed Eulerian mean equations, Dunkerton (1978) derived a first dynamically consistent two-dimensional picture of the mean-transport streamlines for

Petr Šácha 29.11.16 9:32

Deleted: circulation

Petr Šácha 29.11.16 9:30

Deleted: and transport

Petr Šácha 29.11.16 9:33

Deleted: circulation and transport

Petr Šácha 29.11.16 9:33

Deleted: s

Petr Šácha 29.11.16 9:34

Deleted: s

Petr Šácha 29.11.16 9:34

Deleted: was first

Petr Šácha 29.11.16 10:32

Deleted: the

the middle atmosphere that is often used as a basic BDC concept. However, Demirhan Bari et al. (2013) found a 3D structure of the circulation in the middle atmosphere to be in good correspondence with tracer fields, especially in relation to the zonal wave-one pattern observed in the stratosphere and mesosphere, although their study did not give a comprehensive dynamical explanation of the discovered circulation structures (enhanced downward branch of BDC over north-eastern Asia, wave-one pattern).

PWs are usually thought to be created in the troposphere and then vertically propagating into the middle atmosphere. The theoretical possibility of PW creation by zonally asymmetric IGW breaking was first numerically analyzed by Holton (1984) and later on, e.g., by Smith (2003) and Oberheide et al. (2006), and experimentally verified by Lieberman et al. (2013). There is a building agreement in the literature on the role of wave activity in preconditioning sudden stratospheric warming (SSW; e.g. Ayrzaguena et al., 2011) events.

SSWs belong to the most pronounced atmospheric phenomena, as they cause abrupt changes of the middle atmospheric circulation and tracer distribution, and they also affect tropospheric weather patterns (e.g. Manney et al., 2009; Kuroda, 2008; Lehtonen and Karpechko, 2016). SSW dynamics and their impact differ whether a split or a displacement of the stratospheric polar vortex takes place (Seviour et al. 2016). It has been observed that displacements are connected with a dominating wave-one activity while vortex splits correlate with stronger wave-two activity (e.g., Kuttippurath and Nikulin, 2012). Generally, most attention is paid to the role of upward propagating PWs in preconditioning SSWs (Hoffmann et al., 2007; Nishii et al., 2009; Alexander and Shepherd, 2010).

The two open questions regarding the dynamics of SSWs are: what types of wave phenomena are responsible for the SSW triggering and what are the necessary basic state conditions? There are two main triggering theories discussed - anomalous tropospheric upward wave fluxes or nonlinear resonance in connection to the vortex geometry (Albers and Birner, 2014). Also, there is growing observational evidence that GW amplitudes are enhanced prior to SSWs (Ratnam et al., 2004a; Wang and Alexander, 2010; Yamashita et al., 2010), and GWs are acknowledged to play a role in a wide range of SSW related processes (e.g. mesospheric cooling, stratopause separation and recovery, Dunkerton and Butchart, 1984; Richter et al., 2010; Limpasuvan et al., 2012; France et al., 2013; Chandran et al., 2013; Siskind et al., 2010; Albers and Birner, 2014). Recently, Ern et al. (2016) showed that for both polar vortex event types the GW activity distribution displays a strong longitudinal structure and day-to-day variation. Ern et al. (2016) have also found an indication for a dynamical role of poleward propagating midlatitude GWs and they suggest the need for global models to reflect the non-vertical propagation and to include physical GW sources that are as realistic as possible.

However, the majority of studies are focused on the modulation of GWs by PWs (e.g. Cullens et al., 2015) and on the GW impact on the upper stratosphere/mesosphere region. Šácha et al. (2015) indicated a possible GW breaking in the lower stratosphere. Indeed, model experiments with gravity wave drag (GWD) parameterization showed that orographic GWD in the lower stratosphere can significantly affect the development of SSWs (Pawson, 1997; Lawrence 1997) and the large scale flow

Petr Šácha 29.11.16 10:34

Deleted: s

Petr Šácha 29.11.16 10:35

Deleted: .) and

Petr Šácha 29.11.16 10:35

Deleted: i

Petr Šácha 29.11.16 11:47

Deleted: when the GW-PW interaction is considered,

Petr Šácha 29.11.16 11:47

Deleted: are concerned by

Petr Šácha 29.11.16 11:48

Deleted: about

in the lower stratosphere and troposphere in general (McFarlane, 1987; Alexander et al., 2010; Sandu et al., 2016).

McLandress et al. (2012) found changes of PW drag resulting from artificial enhancements of the orographic GW sources in the parameterization. This was called a compensation process and was further statistically confirmed by Cohen et al. (2013), who interpreted it as a response of the resolved waves to maintain a “sensible” stable circulation. Such a response is expected, since all processes in the atmosphere are driven by the tendency to reach an energetically more favorable, stable state. In addition to the stability constraint, Cohen et al. (2014) proposed two additional mechanisms using a potential vorticity (PV) concept, PV mixing and refractive index interaction.

In this study, we focus on the physical mechanism and structure of the atmospheric response to the zonally asymmetric forcing represented by an artificially injected GWD in the stratosphere. We are following Šácha et al. (2015), who described a localized area of enhanced GW activity and breaking in the lower stratosphere over the Eastern Asia/North-western Pacific (EA/NP) region and discussed possible implications of this GW hotspot for large scale dynamics and transport. By artificially enhancing the GWD in a 3D mechanistic circulation model of the middle atmosphere we examine the hypothesis that such a robust breaking region plays a role in forcing the longitudinal variability of the BDC and can generate PWs. Further, we investigate possible implications of the GWD distribution and particular forcing components (direction of the force) for the polar vortex stability.

The structure of the paper is as follows: in section 2 we describe the model and sensitivity simulation set up together with the observational motivation and justification for an artificial GWD enhancement. The section closes with a brief description of tracer data used in this study. Section 3 starts with an illustration of the geopotential response to different GWD injections with particular focus on effects in the polar region. We also present the dynamical impact, structure and modes of the PWs generated by the artificial GWD. Finally, we show the differences of the BDC due to the geometry of the GWD modulation and analyze the 3D residual circulation spatial patterns in relation to the GWD distribution. In Section 4, we give a summary of our results, discuss potential implications of our findings and outline future directions of our work.

2 Data and methodology

2.1 Model description and configuration

We use the Middle and Upper Atmosphere Model (MUAM), which is a nonlinear 3D mechanistic global circulation model. It has a horizontal resolution of $5^\circ \times 5.625^\circ$ and 56 layers in the vertical extending to an altitude of about 160 km in log-pressure height (Pogoreltsev et al., 2007). At 1000 hPa, the lower boundary of the model, we prescribe stationary PWs of wave numbers 1, 2 and 3 obtained from decadal monthly mean ERA Interim (ERA-I) temperature and geopotential reanalysis data (ECMWF, 2016). Up to an altitude of 30 km the model zonal mean temperature is nudged to ERA-I zonal mean temperature. This is necessary because MUAM does not feature a detailed accounting of the troposphere, including orography and radiation processes (3D water vapor, surface albedo, etc.). However, the troposphere is necessary for stationary PW forcing and the generation and propagation of

Petr Šácha 29.11.16 11:55

Deleted: possible implications

Petr Šácha 29.11.16 11:55

Deleted: and the role of the GWD distribution and of the artificial forcing components (direction of the force).

Petr Šácha 29.11.16 11:56

Deleted: extends in 56 vertical layers up

Petr Šácha 29.11.16 12:00

Deleted: This is necessary because MUAM does not account for, e.g., orography or some radiat

Petr Šácha 29.11.16 9:35

Deleted: ive

Petr Šácha 29.11.16 12:01

Deleted: including

Petr Šácha 29.11.16 12:02

Deleted: or

traveling PWs and tides and therefore it cannot be neglected. The assimilation of stationary PWs and zonal mean temperatures is not only active during the spin-up of 330 model days but also during the 30-day analysis period.

The effect of nudging during the analysis period is dependent on the strength of the artificial forcing. In the reference simulation the nudging effect is lower than 1 K/day everywhere and in the simulation with the strongest forcing, its zonal mean locally reaches magnitudes of around 2 K/day (as shown in Fig. 1c). Because in MUAM simulations only the zonal mean temperatures are nudged to the zonal mean, nudging has no direct effect on the wave structure of the response to the forcing, but it is likely to reduce the magnitude of the zonal mean response.

The time step of the model is 225 s following a Matsuno (1966) integration scheme. For simulations, the model starts with a globally uniform temperature profile and no wind. During a spin-up period, the mean circulation is built, and PWs and tides are generated. After that, a time interval of 30 model days with a temporal resolution of 2h is analyzed. Since the lower boundary conditions are taken as a decadal mean January mean (mean value of all January data in one decade), this interval refers to an average January climatological state. Monthly zonal means of wind, temperature and GWD are given in Fig. 1. Owing to the constant forcing with time in the lower atmosphere, the standard deviation of temperature within these 30 days is smaller than 3K near the stratopause and mesopause and smaller than 1K elsewhere. The standard deviation of the zonal wind is largest within the jets reaching 4 m/s in the summer easterlies. These values do not have a meteorological meaning and are provided here to demonstrate that MUAM has a rather small variability within the analysis interval.

GWs are parameterized after a linear Lindzen (1981) type scheme updated as described in Fröhlich et al. (2003) and Jacobi et al. (2006). GWs are initialized at an altitude of 10 km with six different phase speeds ranging from 5 to 30 m/s, each propagating in eight different azimuth angles, and with GW vertical velocity amplitudes with an average value of 0.01 ms^{-1} . As input for the GW parameterization scheme, we modified the GW source function to reflect a distribution based on the mean January field of the potential energy of disturbances computed from FORMOSAT3/COSMIC radio occultation density profiles between the tropopause and 35 km altitude taken from Šácha et al. (2015). The GW weights are calculated from these data by dividing the potential energy at each grid point by its global mean. This setup has a positive impact on some climatological features in MUAM. Nevertheless, the effect on the horizontal distribution of GWD in the stratosphere is negligible. We will refer to this setup as the reference simulation. Zonal (*gcu*) and meridional (*gcv*) flow acceleration as well as the heating due to breaking or dissipation of GWs (*gt*) is calculated by the parameterization scheme.

To examine and to demonstrate the effect of spatial distribution of the GW activity we performed a set of sensitivity simulations (Table 1) with artificially changed GWD imposed on the model by modulating the GW parameterization output. Note that this change of GWD is only added after the spin-up so that only the 30 model days incorporate GWD changes. Thus, the simulation period also includes the temporally delayed response for the adaption from reference conditions to enhanced GWD (*gcu/gcv/gt*) values. The naming convention (Table 1) is given by "Gcu+distribution+gcv", where the basic value of *gcu* of 0.5 m/s/day is not stated.

Petr Šácha 29.11.16 12:03

Deleted: for the simulation with strongest forcing it reaches locally to magnitudes around

Petr Šácha 29.11.16 12:04

Deleted: in a zonal mean

Petr Šácha 29.11.16 12:10

Deleted: , and they

Petr Šácha 30.11.16 10:02

Deleted:

The enhancement is performed for a certain 3-dimensional box in the lower stratosphere (about 18-30 km) above the EA/NP region (37.5-62.5°N/112.5-168.8°E), according to the area of enhanced GW activity described by Šácha et al. (2015). This refers to the “box” distribution in Table 1 (an example is shown in Fig. 2, left panel). There are no exceptional GWD values in the reference simulation in this region. In a second version we additionally averaged the respective GWD parameter, in the same latitude range as the box but across all longitudes. This way, we obtain a zonally uniform distribution, i.e. a ring of enhanced GWD parameters instead of a box but with a smaller local magnitude. We refer to this configuration as ring or “Zon” simulations (see Table 1). For all simulations, the GWD parameters outside the box or the ring, respectively, remain unchanged and are not influenced by the enhancement. We are not smoothing the boundaries of the artificial enhancement area and the step between artificial and background GWD values is dependent on the horizontal location, the time step and, most importantly, the altitude level. To illustrate the sudden and localized effect of GW breaking, we have chosen to enhance the GWD in our simulations stepwise and rather abruptly. As suggested by Cohen et al. (2013), such a sharp change (as at the boundaries of our enhancement) leading to dynamic instabilities is likely to induce compensation processes.

Although it is impossible to directly compute the GW drag force from current satellite measurements alone (Alexander and Sato, 2015), Ern et al. (2011) gave a methodology to estimate absolute values of a “potential acceleration” caused by GWs (maximum zonal mean values of 3 m/s/day below 40km). Using ray tracing simulations, Kalisch et al. (2014) gave an estimate of around 20 m/s/day for a zonally averaged GWD in the lower stratosphere. In our model simulations we are injecting three values of artificial zonal GWD component, -0.5 m/s/day as a conservative enhancement and -10 m/s/day to demonstrate a big impact of the injection. In addition, an extreme case with -70 m/s/day is added to force substantial circulation changes (so-called SSW simulations).

Depending on the GW type and on the direction of background winds the GWD has also a meridional component, which is usually poorly constrained by observations. We performed simulations with three different values of meridional GW induced acceleration (-0.5 m/s/day, -0.1 m/s/day, 0.1 m/s/day). The directions of the zonal and meridional GW induced acceleration were chosen according to the prevailing directions of horizontal winds in the EA/NP region in January (see Šácha et al., 2015) assuming that the majority of GWs in the EA/NP region are of orographic origin (in January). On this basis we argue that the 5:1 ratio between the zonal and meridional GW induced acceleration is the most realistic and therefore we choose the Box0.1 (and Zon0.1) simulation as a representative conservative enhancement for most of the analyses in this paper. A comprehensive discussion of our sensitivity simulation set-ups is given in the Discussion section.

2.2 Residual circulation

To highlight the importance of the stratospheric research in the EA/NP region we present in the Supplement the 1978 to 2008 average total ozone January mean distribution from the ozone Multi Sensor Reanalysis version 1 (MSR1; van der A et al., 2010) data (TEMIS, 2016). Additionally, in the Supplement, we illustrate the similarity in the vertical structure and longitudinal variability of the model residual circulation and of zonal cross sections of the Michelson Interferometer for Passive

Petr Šácha 29.11.16 13:12

Deleted: s

Petr Šácha 29.11.16 13:12

Deleted: zonally within the same latitude range like the box.

Petr Šácha 29.11.16 13:13

Deleted:

Petr Šácha 29.11.16 13:13

Deleted: ,

Petr Šácha 29.11.16 13:15

Deleted: d

Petr Šácha 29.11.16 13:15

Deleted: to be around 20 m/s/day

Petr Šácha 29.11.16 13:17

Deleted: additional

Petr Šácha 29.11.16 13:16

Deleted: of GWD

Petr Šácha 29.11.16 13:18

Deleted: Directions

Petr Šácha 29.11.16 13:27

Deleted: based

Petr Šácha 29.11.16 13:28

Deleted: on the

Petr Šácha 29.11.16 13:28

Deleted: assumption

Petr Šácha 29.11.16 13:21

Deleted: the majority

Petr Šácha 29.11.16 13:24

Deleted:

Petr Šácha 29.11.16 13:21

Deleted: s

Petr Šácha 29.11.16 13:23

Deleted: in January

Petr Šácha 29.11.16 13:19

Deleted: will be

Petr Šácha 29.11.16 13:25

Deleted: and

Petr Šácha 29.11.16 13:29

Deleted: taking into account the prevailing directions of horizontal winds in the EA/NP region (see Šácha et al., 2015).

Petr Šácha 29.11.16 13:45

Deleted: and to show the robustness of our claim of an enhanced branch of the BDC in this region

Petr Šácha 29.11.16 13:46

Deleted: the comparison is shown

Petr Šácha 30.11.16 10:09

Deleted: between

Atmospheric Sounding (MIPAS) CH_4 volume mixing ratio profiles (KIT, 2016; see von Clarmann et al., 2009; Plieninger et al., 2015). However, the comparison of the distributions must be done with care, since the tracer distributions result from several different processes in the atmosphere, namely advective transport, mixing, and chemical reactions (Garny et al., 2014). Also, the residual velocities are closely related to Lagrangian-mean velocities up to $O(\alpha^2)$ only for small amplitude (α) steady waves (Bühler, 2014).

In the section 3.3, we study consequences of the GW hotspot for the longitudinal variability of the residual circulation (and BDC consequently) by means of the time mean 3D residual circulation according to Kinoshita and Sato (2013). The time averaging inserts additional uncertainty in the 3D residual circulation concept. Unlike Demirhan Bari et al. (2013), who based their analysis on monthly means and daily eddies, we are employing a 5-day running average on the 6 hourly MUAM output fields. This configuration gives the strongest zonally averaged Stokes drift from several choices of the running mean. But, it is still smaller (not shown) than the value of the Stokes drift resulting from transformed Eulerian mean equations, which is computed in this study according to Hardiman et al. (2010) for log-pressure height vertical coordinate models.

3. Results

To establish the timescales of the response, in Fig. 3 we show Hovmöller diagrams of the zonal mean zonal wind and its variance. The time evolution is presented at the 6.25 hPa level (around 35.5km log-pressure height, 13th model level). This level was chosen for our analysis because it is above the location of the artificially modified area and above the nudging extent, so it contains the atmospheric response only. In Fig. 3a, a Hovmöller diagram is given for the zonal mean zonal wind at 6.25 hPa level in the Ref simulation documenting that the model is essentially steady. Fig. 3b shows the time evolution of variance of the zonal mean wind anomaly (Box0.1-Ref) and Fig. 3c shows the time evolution of the zonal mean zonal wind for the 10box simulation. We can see the response building up in the first 7 days after the GWD injection and after that the structure of the response remains quasi-steady, with small variations of the magnitude only.

In contrast to this, the zonal mean zonal wind time evolution from the so-called SSW simulations (Fig. 4a and 4b) do not reach a steady state in the course of the 30 days simulation and therefore the results based on those simulations are presented at particular time steps or in animations in the Supplement. Results of other simulations (Table 1) are averaged across the quasi-steady state (7th-30th day of the simulation) and are supplemented with the estimate of statistical certainty or standard deviation of the mean.

Except for the SSW simulations, our study is focused mainly on the mean response to a monthly mean GWD distribution, because from observational analyses we usually have information on the IGW activity distribution on a monthly or seasonal basis (Šácha et al., 2015). The short-term response, which would be arguably more relevant to the real atmosphere taking into account the intermittency of large amplitude GWs (e.g. Hertzog et al., 2012; Wright et al., 2013), is not well captured by the mechanism of constant GWD injection, which is discussed in the final section. Still, there are some interesting results concerning the short-term response mentioned in the course of this study, e.g. note the

Petr Šácha 29.11.16 13:48

Deleted: interpretation of the differences

Petr Šácha 29.11.16 13:32

Deleted: e

Petr Šácha 29.11.16 14:19

Deleted: We can see the buildup of the response until approx. day 7

Petr Šácha 29.11.16 14:50

Deleted: as

Petr Šácha 29.11.16 14:23

Deleted: he

Petr Šácha 29.11.16 14:23

Deleted: will be

Petr Šácha 29.11.16 14:24

Deleted: e

agreement with the time scale of the transient response build up in Fig. 11d of Cohen et al. (2014), where ~~this time scale has been~~ related to the life cycle of the PW breaking.

3.1 Atmospheric response to variations in GWD and SSW

Fig. 5(1A) shows the mean (7th-30th day) horizontal wind and geopotential field at the 6.25 hPa level (13th model level) for the Ref simulation and the remaining plots in the first row show anomalies (i.e. differences from the results of this run) caused by different components of GWD with artificial values corresponding to the Box0.1 simulation. The second row (Fig. 5(2A) – Fig 5(2D)) shows horizontal wind and geopotential anomalies for the 10box (Fig. 5(2A)) and Box0.1 (Fig. 5(2B)) simulations and differences between simulations with conservative GWD enhancements (Figs. 5(2C) and 5(2D)). The third row (Figs. 5(3A) through 5(3D)) shows the same as the 2nd row, but for the artificial ring GWD configuration. Note the different scaling of the color bars, which is chosen according to the maximal and minimal value of geopotential (anomaly), so that the labels of the color bar give direct information on the magnitude of the differences in geopotential response.

The anomalies and differences are analyzed with special focus on the polar vortex response, since it will be shown below that the dynamical response ~~to~~ GWD changes is strongest in the polar region. This comparison demonstrates not only the importance of the role of the longitudinal distribution of the zonal mean drag force but it also highlights an important and different effect of each of the individual GWD components.

From comparison of Figs. 5(1B), 5(1C), and 5(1D) we see that among the GWD components modified in the Box0.1 simulation the response to the *gcu* component is the strongest. It induces a dipole structured anomaly with negative geopotential anomaly downwind from the region of GWD enhancement and positive anomaly north of this region (Fig. 5(1B)). The *gt* component alone induces a positive anomaly of smaller magnitude northward and upstream of the area (Fig. 5(1C)). In contrast to that, meridional drag induces a negative geopotential anomaly northward and downwind of the area, which has the smallest magnitude of all three components, but is still significant (Fig. 5(1D)).

The respective geopotential responses in the Box0.1gcv and the Box0.1gt simulations have almost exactly opposite features, as the positive *gt* enhances geopotential in the upwind and northward direction from the GWD region, while artificial northward deceleration has an opposite effect. Although we used a nonlinear model, the additivity of effects of different GWD components (Figs. 5(1B), 5(1C), and 5(1D)) seems to hold reasonably well as can be seen from the Box0.1 anomaly (Fig. 5(2B)), where the forcing constitutes ~~of identical~~ artificially enhanced GWD components (see Table 1). Also, the differences between simulations with different meridional drag (compare Figs. 5(2C) and 5(2D)) show the same pattern as induced by the meridional drag only (Fig. 5(1D)). The distribution of the response to the meridional component suggests that a box *gcv* enhancement in this geographical position can influence the geopotential response in the area of location of the Aleutian High.

Another two important results are visible from the comparison of the plots in the second and third row of Figure 5. Firstly, there are much bigger anomalies for the box enhancements (second row) than for the corresponding ring enhancements (third row). This is true locally as well as in the zonal mean

Petr Šácha 29.11.16 14:40

Deleted: it

Petr Šácha 29.11.16 14:26

Deleted: is

Petr Šácha 29.11.16 14:41

Deleted: on

Petr Šácha 30.11.16 10:15

Deleted: of

Petr Šácha 29.11.16 14:45

Deleted: exactly

Petr Šácha 30.11.16 10:16

Deleted: these

(compare the sum of geopotential response given in the legend for Figs. 5(2A), 5(2B), 5(3A) and 5(3B)). In the box simulations (Figs. 5(2A) and 5(2B)) the response is typically dominated by a rather meridionally oriented dipole pattern with a localized positive geopotential anomaly at the center of the polar vortex and negative geopotential anomaly at the location of Aleutian High. In the correspondent ring simulations (Figs. 5(3A) and 5(3B)) the geopotential response is more zonally uniform.

Secondly, there are large and significant differences (50% or 25% of the magnitude of the anomaly) between box simulations with slightly different setups of the meridional drag (Fig. 5(2B) vs. Figs. 5(2C) and 5(2D), respectively), while this is not true for ring GWD enhancements (few percent; see Fig. 5(3B) vs. Figs. 5(3C) and 5(3D)). Unlike the box enhancements, ring enhancements are almost insensitive to the different versions of GWD in the meridional direction. The difference between Zon0.1, Zon0.5 and Zon0.1pos simulations is very small and not significant.

As noted above, the magnitude of the geopotential response is larger for the box enhancements than for the ring enhancements. For the Box0.1 simulation, the geopotential anomaly at the 6.25 hPa level reaches about 20 gpm in a monthly mean. The horizontal wind anomaly for the Box0.1 simulation (Fig. 5(2B)) reaches maximal values slightly below 1m/s. Anomalies for the 10box simulation (Fig. 5(2A), 20 times bigger eastward deceleration than for Box0.1) are almost exactly 20 times stronger and show a very similar dipole pattern. Although locally the difference between these two simulations may seem to be linear, this comparison is misleading, since both simulations (10box and Box0.1) have different ratio between the strength of GWD components. This means, for example, that the drag force has different orientation between these two simulations.

Unexpectedly, the box simulations lead to anomalies that would contribute to weakening rather than amplification of the Aleutian High. Based on the results and discussion of Šácha et al. (2015), who argued that the EA/NP hotspot (high GW activity already in October/November) may play a role in the onset of the winter circulation in the stratosphere in this region, we expected a positive contribution of the GWD response to the background climatology (e.g. contribution to the unusually hot temperatures in the stratosphere in the EA/NP region by induced subsidence).

In Figs. 4a and 4b we presented a time evolution of the zonal mean zonal wind at 6.25 hPa for the SSWbox and SSWzon simulations with signs of a wind reversal at polar latitudes at particular time steps suggesting an occurrence of a minor SSW. We show additional results from the SSWbox and SSWzon simulation in two animations of the geopotential and horizontal wind field response at 6.25 hPa (Animation 1a and 1b in the Supplement). Also, in Fig. 6 we show two snapshots of the geopotential and horizontal wind field response at 280 hours after the GWD injection to illustrate the situation at a developed stage of the SSW. In response to a strong GWD enhancement in a box we observed a vortex displacement (Fig. 6a and Animation 1a in the Supplement) and in response to a strong GWD increase in a ring we obtain a vortex split like event (Fig. 6b and Animation 1b in the Supplement).

In the SSWbox simulation (Animation 1a), immediately after the spin-up period when the GWD starts to be artificially modified (injection of GWD), a geopotential ridge begins to form above the Northern Pacific (northward from the GWD area). This anomaly strengthens and shifts a little westward above

Petr Šácha 29.11.16 14:51

Deleted: Now

Petr Šácha 29.11.16 14:51

Deleted: w

Petr Šácha 30.11.16 10:17

Deleted: he

Petr Šácha 29.11.16 14:51

Deleted: form of

Petr Šácha 30.11.16 10:17

Deleted: and

Petr Šácha 29.11.16 14:53

Deleted: a

Petr Šácha 29.11.16 14:53

Deleted: show

Petr Šácha 30.11.16 10:18

Deleted: response

Petr Šácha 29.11.16 14:54

Deleted: increase

Siberia, where, from approximately 5 days of the GWD injection, we observe an evolution of a pressure high. All the time the vortex is shifting towards the northern boundary of Northern America where it stays till the end of the simulation.

In the SSWzon simulation we observe a slow (compared to the SSWbox simulation) creation of a pressure high above the Northern Pacific together with a high-pressure ridge above the Northern Atlantic. This pressure high is almost stationary (in contrast to the SSWbox) leading to the vortex split approximately ten days after the injection. This is a potentially very interesting result suggesting that a symmetric forcing favors vortex split and localized forcing favors displacement events, but the robustness of this claim needs to be tested in future work for various initial vortex states.

For illustration, in Figure 6 we show the geopotential field and horizontal wind speed 280 hours after the GWD injection, when the vortex split develops (Fig. 6b) and the vortex displacement is in its mature state (Fig. 6a). The vortex displacement event develops more quickly, as seen from comparison of Fig. 4a and 4b or in the Animation 1a and 1b in the Supplement. However, both events have limited vertical extent, and do not disturb the entire vortex (only up to 60 km of log-pressure height; not shown).

3.2 Creation of planetary waves and dynamical impact

In this section we compare PW activity and amplitude structure of the leading PW modes between reference, box and ring simulations. We show results of the E-P flux diagnostics and Fourier transform (FT) analysis of geopotential anomalies.

Fig. 7 shows the mean (7th-30th day) E-P flux and its divergence for the Ref simulation (Fig. 7a), Box0.1 simulation anomalies (Box0.1-Ref; Fig. 7b), Zon0.1 simulation anomalies (Fig. 7c), the difference between the Box0.1 and Zon0.1 simulations (Fig. 7d) and mean mean E-P flux and its divergence for the 10box simulation (Fig. 7e) and respective anomalies (Fig. 7f). Note that we show the E-P flux divergence as a force per unit area (units $[kgm^{-1}s^{-2}]$), not as an induced acceleration (units $[ms^{-2}]$), as in Hardiman et al. (2010), because otherwise upper stratospheric and mesospheric effects would dominate the plots due to the density decrease with height. The statistical significance of the mean E-P flux divergence differences has been computed by a t-test and regions with p values < 0.05 are stippled.

In Fig. 7b, for the Box0.1 and Ref simulation differences, we find an anomalously weak E-P flux convergence (positive difference to the Ref simulation) centered at the equatorward flank of the GWD enhancement area and an anomalous convergence in a broad area around 60°N. This pattern is similar for the Zon0.1 simulation anomalies (Fig. 7c), but much weaker and with the anomalous convergence starting more poleward. It is also similar in the 10box simulation anomalies (Fig. 7f), but much stronger in magnitude (approx. 20 times). In all of those simulations, this anomalous pattern is limited in altitude and only slightly exceeds the vertical boundaries of the GWD area (especially in the polar region).

Taking into account the reference E-P flux field (Fig. 7a), the anomalies can be caused by two different mechanisms. The first one is an indirect mechanism, when the artificial GWD drag modifies the winds

Petr Šácha 29.11.16 14:49

Deleted: from

Petr Šácha 29.11.16 14:49

Deleted: a

Petr Šácha 29.11.16 14:49

Deleted: s

causing changes (with respect to the Ref simulation) in propagation conditions for PWs propagating from below (for more details on the refractive index interaction see Cohen et al. (2014)). According to this mechanism, the E-P flux and its divergence anomalies and differences (Figs. 7b, c, d, f) would be associated with a stronger poleward and weaker/stronger upward propagation of PWs in the 10box/Box0.1 simulation along the northern edge the polar night jet in the northern part and northern boundary of the GWD area. The E-P flux divergence anomaly at the southern flank of the GWD would be associated with a suppression of upward and equatorward PW propagation elsewhere (between approximately 40°N and 60°N) in the latitudinal extent of the GWD region. But this mechanism fails to explain some features in Fig. 7, e.g. the E-P flux divergence emerging in the E-P flux field in the 10box simulation (Fig. 7e). Therefore, although the changes in the refractive index will definitely be present in the artificial GWD simulations, we have an indication that another mechanism is dominant.

This second mechanism is a stratospheric analogue of the evidence given by Holton (1984) that a zonally asymmetric GW breaking possibly generates PWs in the mesosphere. In connection with that the artificial GWD enhancement in a box would cause displacements of fluid particles (in the initially balanced predominantly zonal flow) and thus generate a broad spectrum of waves of different types depending on background conditions and on the geometry of the drag region. We can find support for this mechanism from the E-P flux difference between Box0.1 and Zon0.1 simulation (Fig. 7d).

In the previous section, we have shown that the box enhancement induces a stronger zonal mean geopotential response than the corresponding ring enhancement. So, we can assume that the first mechanism has bigger effect in the box simulations, which is true for the E-P flux divergence difference (Fig. 7d). However, considering E-P flux vectors, Fig. 7d reveals that there are not only differences in magnitude between Box0.1 and Zon0.1 E-P flux anomalies, but also that the Zon0.1 simulation lacks the horizontal component of the anomalous E-P flux, with biggest differences in the latitudinal band encompassing the artificial GWD area. This latitudinal band is not significant in Figs. 7b,c and d, because the plotted t-test results are based on the difference of the E-P flux divergence (not on the magnitude of the E-P flux vector difference). From Figs. 7 b, d, f, we see that the anomalous PWs are generated at the southern flank of the GWD area and propagate predominantly northward (with a small downward component), where they cause anomalous convergence between 60°-80°N.

For the conservative Box0.1 simulation, the anomalies in the E-P flux divergence are about 5% of the reference values. Zon0.1 E-P divergence anomalies (Fig. 7c) reach only 1-2% of the reference values, locally. Anomalies of the 10box simulation (Fig. 7f) exhibit the same pattern as Box0.1 anomalies, but the magnitude is much stronger - more than 50% of the reference E-P flux divergence values. Therefore, we observe an influence of the 10box GWD enhancement also in the mean field in Fig. 7e, where the artificial GWD box demonstrates itself as an E-P flux divergence area on the southern flank of the GWD enhancement region. This is another supporting argument that the box enhancement generates PWs, with further evidence given below.

In Fig. 8, E-P flux diagnostics is presented at particular moments (1 and 5 days) after the GWD injection for the SSWbox and SSWzon simulations. The anomalous E-P fluxes in those highly nonlinear simulations absolutely overcome the reference fields, so that we can directly observe the

Petr Šácha 29.11.16 15:01

Deleted: associated

Petr Šácha 29.11.16 15:01

Deleted: with

Petr Šácha 29.11.16 15:10

Deleted: regarding

Petr Šácha 29.11.16 15:10

Deleted: of

generation and propagation of PWs generated by the artificial GWD. However, for these simulations the structure of the E-P flux divergence area changes with time and also the propagation directions of PWs created in this region are time dependent. So, we have chosen to present snapshots from the 1st and 5th day to demonstrate particular features of the box GWD enhancement. For interested readers, the full time evolution is given in [in Animation 2 in the Supplement](#).

In Figs. 8a, b, one can clearly see the generation of PWs by the box enhancement. Five days after the GWD enhancement (Fig. 8b), the E-P flux divergence region extends almost over the whole GWD area. Anomalous PWs propagate equatorward, poleward and upward with two major E-P flux convergence regions around 30° N and between 60° and 80° N. One day after the GWD injection (Fig. 8a), the E-P flux divergence area is located at the southern flank of the GWD and generates horizontally, southward propagating PWs only. In Fig. 8a, in the majority of the GWD region, we can see also the first mechanism (refractive index interaction) being active, as the GWD region influences propagation of PWs propagating from below. This is the most dominant effect of the ring enhancement (Fig. 8c, d), where in the SSWzon simulation we can hardly observe any anomalous PW generation and the dominant effect of this ring enhancement is altering the propagation conditions for the upward propagating PWs from the troposphere. There is a weaker propagation through the GWD region, with deflection of PWs northward and southward at the southern GWD flank.

Further indication of the creation of PWs by the GWD region is provided by the FT analysis of geopotential anomalies at the 6.25 hPa level. FT provides information about the representation of different harmonics in the anomalous wave activity revealed by the E-P flux diagnostic, and about the spatiotemporal distribution of their amplitudes. The mean (7th-30th day) latitudinal structure of reference amplitudes of leading PW modes is given in Figs. 9a, b. Anomalous amplitudes (Box0.1-Ref simulation) are presented in Fig. 9c, d and differences from the Zon0.1 simulation are shown in Fig 9e, f. To quantify the dispersion of the monthly mean differences, the dotted lines show the standard deviations.

The wave-1 geopotential amplitude is anomalously enhanced for a box GWD (Box0.1-Ref; Fig. 9c). The amplitude anomaly is positive starting at the northern flank of the artificial GWD (37.5-62.5°N) and further poleward. The maximum is gained between 70-75°N. Another smaller, but still significant, region of positive wave-1 amplitude anomaly is located around 30°N south of the GWD. Smaller negative wave-1 amplitude anomaly lies inside the GWD area. In the Box0.1 simulation, wave-2 (Fig. 9c) has a pronounced negative amplitude anomaly inside the latitudinal belt encompassing the enhancement region. For wave-3 (Fig. 9d), we find positive anomalous amplitudes starting from central latitudes of the GWD region and ending around 80°N, although inside the GWD region the positive anomaly is locally not significant. There is a negative wave-3 amplitude anomaly starting at the southern flank of the GWD region with the end around 10°N. The effect on wave-4 amplitudes is almost negligible (Fig. 9d). The ring enhancement in the Zon0.1 simulation has a negligible effect on amplitudes of harmonics, as is visible from the similarity of the Box0.1 anomalies (Figs. 9c, d) and differences with Zon0.1 simulation (Figs. 9e, f). These results suggest that the box GWD enhancement generates preferentially wave-1 and -3 modes in comparison to the reference and also the ring GWD configuration.

Petr Šácha 29.11.16 14:50

Deleted: as

Another indication that the PWs are indeed generated by the GWD box enhancement is given in Fig. 10, where the time evolution of the anomalous wave-1 and wave-3 amplitudes is presented. Especially in the first approximately seven days from the GWD injection, we can observe a slow propagation of anomalous wave-1 (Fig. 10a) and wave-3 (Fig. 10b) amplitudes from the GWD region to the north. For wave-3 this propagation is visible later than for wave-1 (from approx. day 3). The oscillating patterns in Fig. 10 most likely originate from a non-linear interaction between anomalously generated inertia GWs and solar tides (see e.g. Walterscheid, 1981). Those inertia GWs are responsible for propagation of the anomalous wave activity through the Rossby wave critical layer in the tropics, across the equator, and into the Southern Hemisphere (Fig. 10).

3.3 Residual circulation response

The first row of Fig. 11 shows the mean (over the whole 30days) residual circulation mass fluxes for the reference simulation and the snapshot at 5days from the GWD injection for SSWbox simulation on the right. Mean (7th-30th day) anomalies and differences with the respective ring configuration are given in the second and third row for the Box0.1 simulation on the left and 10box simulation on the right. There are some remarkable results visible. Firstly, even for a conservative drag enhancement (Box0.1 simulation) there are significant (dashed) differences in the magnitude of the residual mass flux between box and ring GWD distribution of up to 3% in the lower stratosphere (Fig. 11e). For the 10box simulation the differences reach about 40% and create a similar pattern as for the conservative enhancement (Fig. 11f). The largest differences between the two artificial GWD configurations are found poleward from the GWD enhancement region in the altitude range between 20 and 30 km corresponding approximately to the vertical extent of the area and are associated with a stronger subsidence north of the enhancement region in the box simulations.

There is a smaller region of significant differences at the southern flank of the enhancement region associated with lesser downwelling in the box simulations. These two regions of significant differences constitute together a butterfly like pattern in the box-ring differences centered at approximately 45°N (the center of the enhancement region) and influencing a shallow BDC branch. Taking into account the reference field (see Fig. 11a) we can explain this pattern by a faster northward advection starting at approx. 45°N and stronger subsidence northward of 60°N. On the other hand there is less upwelling in the equatorial region (not significant for the Box0.1 simulation) and slower advection from the tropics.

The continuity is satisfied through smaller downwelling south of 60°N.

We observe a similar but stronger pattern in the anomalies (Figs. 11c, d), with the mean residual circulation mass flux anomaly reaching up to 5% for the Box0.1 simulation and more than 60% for the 10Box simulation. The position of the anomalous residual circulation patterns corresponds with the E-P flux divergence anomalies (Fig. 7b, f), where, for the box simulations, we observed anomalous E-P flux divergence at the southern flank and convergence north of the GWD region. In Figs. 11c and 11d the butterfly like pattern is centered more southward (35°N) than in box-ring differences and the anomalous pattern on the south of the GWD region is not as well pronounced and appears to be shifted above the GWD region for the 10box simulation (Fig. 11d).

Petr Šácha 29.11.16 15:12

Deleted: s

Petr Šácha 30.11.16 10:22

Deleted: are

In the upper stratosphere there are anomalies up to 2% only for the Box0.1 (Fig. 11c) and locally around 25% for the 10box simulation (Fig. 11d). The box simulations (not significant for Box0.1) show weaker subsidence towards the polar vortex center than the Ref simulation in the upper stratosphere and there is also anomalously low mass flux poleward and downward between 30 and 40 km of height above the GWD enhancement region. For both box enhancements, there is a large area of statistical significant anomalies giving a weak hint of lesser upwelling in the SH stratosphere (Figs. 11c, d). The differences between the two sets of box and ring GWD configuration are not significant in the SH (Figs. 11e, f).

The fact that the mean response of the upper BDC branch is rather weak and for the most part not significant can be explained by the effect of the artificial GWD region acting like an obstacle for northward flowing wind. The GWD enhancement region (Fig. 11b, snapshot for a SSWbox run) is constantly flown around inducing a significant mean anomaly (Fig. 11c, d) with anomalous upwelling in its southern part and downwelling on the northern flank. But, the GWD region (obstacle) creates also a lee wave like pattern with oscillating anomalies in the upper stratosphere and in the SH. Considering a time mean, these anomalies are small and not significant, but, at particular time steps, the magnitude of the anomalies is comparable regardless of the BDC branch. Supporting information is given in Animation 3 in the Supplement, which presents the time evolution of the zonal mean residual circulation associated mass flux for the 10box simulation (on the left) together with its anomaly (on the right). One can see here the global nature of the response and gain insight into how quickly the residual circulation gets affected by the NH anomalous forcing. After few time-steps, the response is constituted by a constant anomaly corresponding roughly to an accelerated shallow BDC branch sloping down from approx. 30km at the North Pole to the lowest analyzed levels at the equator. Except for this region, the entire domain is dominated by anomalies seemingly descending downward from the mesosphere associated with the obstacle analogy.

The zonal structure of the induced flow, and possible consequences of the GW hotspot for the longitudinal variability of the BDC were studied by means of 3D residual circulation analysis according to Kinoshita and Sato (2013). 5-day running averaging was performed. Šácha et al. (2015) pointed out unusually high temperatures in the EA/NP region at 30 hPa in winter and concluded that there could be an enhanced downwelling above the EA/NP region penetrating to lower levels than elsewhere. This is in agreement with Fig. 3 in Demirhan Bari et al. (2013). Supporting results highlighting the importance of future research in this region are given in the Supplement. In Fig. 1S in the Supplement we present a thirty-year average January MSR total ozone column field with a total ozone column maximum located in the EA/NP region. In Fig. 2S in the supplement, longitudinal cross-sections of MIPAS CH_4 volume mixing ratios indicates a peak of subsidence around 15 km in the EA/NP region (at 140°E) and the interesting massive upwelling branch east of it.

To evaluate the possible role of the GW activity in the longitudinal variability of the BDC, we present longitudinal cross-sections of the reference 3D vertical residual velocity and Box0.1 anomalies going from the northern to southern part of the artificial GWD (Fig. 12). From longitudinal cross-sections of the reference vertical residual velocity (left side of Fig. 12), we see that MUAM vertical residual

Petr Šácha 29.11.16 15:16

Deleted: s

Petr Šácha 29.11.16 15:16

Deleted: s

Petr Šácha 29.11.16 15:17

Deleted: show

velocity field is dominated by a wave-2 pattern, with the maximum subsidence branch penetrating to the lower stratosphere in the EA/NP region and with an abrupt switch to upwelling on the east. Ridges and troughs of the wave show a characteristic westward tilt with height.

Šácha et al. (2015) hypothesized that the collocation of the GW hotspot and the peak of the downward BDC branch, identified in the EA/NP region by Demirhan Bari et al. (2013), can be partly a consequence of the circulation induced by the GW breaking. But the results are rather contradictory. In agreement with the zonal mean residual circulation analysis, we can see that in the southern part of the area (Fig. 12f), the GWD induces predominantly anomalous upward flow. Anomalous subsidence strengthens when going further northward (Fig. 12b, d). In line with the obstacle analogy, we observe subsidence in the eastern part of the GWD region only, while anomalous upward flow dominates the western part of the GWD region, and then again eastward and slightly above the anomalous subsidence area. Similar structure of an Eulerian mean vertical velocity field has been found by Shaw and Boos (2012) as a response to an artificial torque placed in the troposphere around 30°N. These results show that GWs can contribute to longitudinal variations in the BDC and not only the downwelling, but also upwelling patterns may be related with GWs.

The magnitude of the vertical residual velocity anomalies maximizes around 2% of the reference value for the Box0.1 simulation (Fig. 12b, d, f). For the 10box simulation (Fig. 3S in the Supplement) the distribution of upwelling and subsidence is identical and the magnitude reaches 30% locally. Physically, such an anomalous pattern can be explained by considering the dominant background horizontal north-eastward wind together with the previously mentioned small obstacle analogy, with induced upward flow upwind and downward flow downwind from the GWD box. However, for the SSWbox simulation we can observe a completely different distribution variable with time, with subsidence dominating directly above the GWD area in the later stages of the simulation (Animation 4 in the Supplement). When the artificial GWD is strong enough to induce significant dynamical changes (SSW simulations) the anomalies cannot be directly explained as being GW induced because also the dynamical state of the atmosphere changes (e.g. the anticyclonic evolution in Animation 1a). Therefore, the explanation of residual vertical wind cross-section patterns for both SSW simulations is much more complicated and requires future research allowing at least the GWD enhancement to reflect the changing background conditions.

4. Discussion and conclusions

In this paper, we presented results of a set of sensitivity simulation to find out the possible role of a localized GW hotspot and also, generally, to demonstrate the influence of spatial distribution of GWD on the middle atmospheric dynamics. The focus was on a mean response to a steady GWD perturbation injected into climatological January condition. Except for the strongest GWD enhancement (SSW simulations; Fig.3), all simulations (Table 1) have reached a quasi steady state approximately 7 days after the GWD enhancement (Fig. 3). The average across this state was considered to be the mean response. Section 3.1 focused on the mean geopotential response at the 6.25 hPa level (Fig. 5). Mean anomalies (differences with reference) were found to be largest in the polar region and larger for the

Petr Šácha 29.11.16 14:00

Deleted: EA/NP

Petr Šácha 29.11.16 14:00

Deleted: enhanced BDC

Petr Šácha 29.11.16 14:02

Deleted: branch

Petr Šácha 29.11.16 15:20

Deleted: We will begin this section by giving a brief summary of results. Then, we will discuss limits of our results stemming from the construction of the sensitivity simulations and afterwards, we will give some conclusions for different research topics in the middle atmosphere.

Petr Šácha 29.11.16 15:21

Deleted: was considered as a mean response later in the text.

Petr Šácha 29.11.16 15:22

Deleted: was concerned with a

box GWD enhancements (both globally and locally) than for the corresponding ring enhancements. The important role of the often omitted meridional GWD component, especially for the polar vortex response, was highlighted. Most importantly, for simulations with the strongest GWD enhancement (SSWbox and SSWzon; Table 1), we observed different types of polar vortex events, namely a vortex split in response to the ring GWD enhancement and a vortex displacement for a localized forcing (Fig. 6).

In section 3.2 we studied the influence of the artificial GWD and of its distribution on the PW activity. We have found (Fig. 7) mean (7th-30th day) E-P flux convergence anomaly centered at the equatorward flank of the GWD enhancement area and an anomalous convergence in a broad area around 60°N in response to the artificial GWD. The anomalies are bigger for the box enhancements. In the box simulations we have identified anomalous, predominantly horizontal PW propagation indicative of in-situ PW generation. This is further supported by the results of FT analysis of the geopotential anomalies (Fig. 9), where, for the box simulations we have found especially the wave-1 and also wave-3 mean amplitude anomalously enhanced. Also, the short-term response (Fig. 10) showed the origin of the enhanced amplitudes to lie in the GWD area.

Section 3.3 focused on the residual circulation response. It was shown that there are significant differences in the zonal mean residual circulation between different distributions of the same zonal mean GWD (Fig. 11). A butterfly like pattern in the box-ring differences was identified centered at approximately 45°N (the center of the GWD region), with a stronger/weaker subsidence north/south of the enhancement region in the box simulations between 20 and 30 km log-pressure height. Evidence was given that the artificial GWD in our model acts like a small obstacle for the flow, which was further supported by the 3D residual circulation analysis (Fig. 12). We have found downwelling to the northeast (downwind) and upwelling to the southwest (upwind) of the GWD box showing that GWs can contribute to longitudinal variations in the BDC.

The biggest limit of our analysis is naturally the artificiality of our GWD enhancement. The GWD enhancement introduces an additional artificial constant momentum sink in the model. The concept of the artificial GWD enhancement leaves us also no chance to reflect any feedback between GWs and background conditions (changes in background winds, evolving PW field, etc.). Therefore, for example, our simulation of a vortex displacement differs from reality by not reflecting the background changes, as the GWs are known to be significantly filtered during SSWs (e.g. Holton, 1983; Limpasuvan et al., 2012). Considering the intermittent nature of GWs (e.g. Hertzog et al., 2012; Wright et al., 2013), another inaccuracy of our sensitivity simulation set-ups arises from the constancy of the artificial GWD. In particular in the EA/NP region, where we expect mountain wave forcing to be prominent in January, variations of more than an order of magnitude from day to day are to be expected (Schroeder et al., 2009). A multiple (during a month) pulse like injection of the artificial GWD would be arguably more realistic, but on the expense of absence of any steady response during the whole simulation. It is also a question, what is a more realistic illustration of the GW effect on the atmosphere, a sudden GWD injection or a smooth increase and decrease with e.g. a 10-day e-folding time to minimize the initial adjustment noise as proposed by Holton (1983)? Also the spatial

Petr Šácha 30.11.16 10:26

Formatted: English (UK)

Petr Šácha 29.11.16 15:24

Deleted: a purely constraint (from observations)

Petr Šácha 29.11.16 15:28

Deleted: and

Petr Šácha 29.11.16 15:28

Deleted: i

Petr Šácha 29.11.16 15:28

Deleted: also

Petr Šácha 29.11.16 15:29

Deleted: be

Petr Šácha 29.11.16 15:30

Deleted: has been concerned with a

Petr Šácha 29.11.16 15:30

Deleted: a

distribution of our artificial GWD is highly idealized (in both the horizontal and the vertical). We must note that we compare two "extreme" GWD longitudinal distributions only. It is also very likely that the sharp boundaries of the GWD enhancement in the 10box/zon and SSWbox/zon simulations are influencing some minor patterns of the response (e.g. the lee wave pattern in Fig. 10b).

In future work it is therefore necessary to take into account more realistic GWD distributions to address, for example, the efficiency of PW creation. For example, it is possible that a configuration of GWD taking into account the EA/NP and e.g. the Greenland GW activity hotspot would favour enhanced wave-2 instead of wave-1 activity, and for comparison a chessboard-like or random distribution of GWD might be more appropriate. Generally, the fact that the PW activity depends on the longitudinal GWD distribution (Fig. 7) suggests that the rate of compensation between resolved and unresolved drag (Cohen et al. 2013, 2014) can be variable in dependence on the GWD distribution influencing the efficiency of PW creation.

Another motivation for future research is to concentrate on the position of the GW hotspots relative to the climatological stationary wave location in the stratosphere and to analyze the interaction between the GWD effects and the climatological waves. For example, the EA/NP hotspot lies in the region of the phase transition between a trough and ridge of the climatological wave-1 and our results show (Fig. 8) an anomalous amplification of wave-1 amplitude for a box GWD enhancement in this region. The importance of standing waves for polar vortex strength is well recognized (Watt-Meyer and Kushner, 2015; Yamashita et al., 2015).

In the atmosphere, the most natural, immediate and fastest way for communication of information in the vertical are the GWs (apart from acoustic and acoustic-gravity waves with effects much higher in the atmosphere). We can argue that any change in the troposphere resulting in changes of sourcing, propagation or breaking conditions for GWs will almost immediately influence the distribution of GWD in the stratosphere, with possible effects demonstrated in our paper (in-situ generation of PWs in the lower stratosphere, anomalous vertical movements, etc.). For example, on the interannual scale, the occurrence and strength of the EA/NP GW hotspot can be dependent on the Pacific Decadal Oscillation (PDO) phase and can play a role in the relationship between PDO and SSW occurrence frequency (Kren et al., 2015; Woo et al., 2015; Kidston et al., 2015).

There are more conclusions relevant for the SSW research in our results. It is a common methodology (see Albers and Birner (2014) for a review of SSW preconditioning concepts) to estimate the relative impact of GWs and PWs on polar vortex preconditioning from zonal mean values of zonal forces only. But our results show that the dynamical effect of forcing depends also on its distribution. The impact connected with a localized area connected with a higher value of drag can be much stronger than one would expect from the zonal mean value only. Importantly, we have found that for a sufficiently strong artificial zonal mean zonal force there is a vortex split response to the ring artificial GWD configuration and vortex displacement for a localized forcing. We aim to investigate this in more detail and also for more realistic forcing distributions, but it seems to be clear at this stage that the SSW type may be determined also by the geometry of the forcing, not only by the vortex geometry. On the other

Petr Šácha 29.11.16 15:33

Deleted: to address e.g. the efficiency of PW creation.

Petr Šácha 29.11.16 15:35

Deleted: would possibly

Petr Šácha 29.11.16 15:35

Deleted: for comparison

Petr Šácha 29.11.16 15:35

Deleted: .

Petr Šácha 29.11.16 15:38

Deleted: e.g.

Petr Šácha 29.11.16 15:38

Deleted: e.g.

hand, vortex geometry can to a large extent influence the distribution of the forcing, e.g. spontaneous emission processes connected with the jet (Plougonven and Zhang, 2014).

Blocking connection with SSWs is a well-known correlation (e.g. Andrews et al., 1987; Martius et al., 2009; Nakamura et al., 2014; Albers and Birner, 2014) but the mechanisms standing behind are still rather elusive. The geographical location and evolution of the stationary positive geopotential anomaly with anomalous anticyclonic horizontal winds upstream of the GWD area is a remarkable feature of the atmospheric response to a localized GWD (Fig. 5) suggesting that GWs can be one of the missing mechanisms behind this relationship. This is connected with the important role of the meridional GWD component, especially for the polar vortex response. Interestingly, this feature becomes apparent for the localized enhancement only and has an almost negligible effect in simulations with ring enhancements. To our knowledge, the effect of the meridional component of GWD on the middle atmospheric circulation has not been studied yet. Also, horizontal GW propagation is neglected in most climate model parameterizations (Kalisch et al., 2014). Thus, it is not surprising that there are only few modelling constraints regarding the horizontal propagation directions, although some information is available from ray tracing simulations (Preusse et al., 2009). In most studies based on satellite data, GW propagation directions have not been analysed, because the information needed for such computation (e.g. hodograph analysis) is not available for most of the global observational instruments and their combinations (Wang and Alexander, 2010).

Finally, regarding polar vortex effects, the anomalous PW generation and breaking may be the physical justification for disturbing the vortex in its central levels which was a mechanism hypothesized by Scott and Dritschel (2005). Traditionally, PWs are thought to be generated in the troposphere and propagate up on the polar vortex edge. But, as Scott and Dritschel (2005) pointed out, when wave amplitudes become large and nonlinear effects become important, the notion of upward propagation ceases to be appropriate. Therefore, they considered an option of some in situ disturbance at a given level, with a possible explanation being what we propose - localized GW breaking inducing anomalous PW activity.

Regarding residual circulation, a general conclusion of this paper is that for the same magnitude of an artificial zonal mean zonal force (zonal mean meridional force as well) there are significant differences (depending on the magnitude of the GWD enhancement) in the zonal mean residual circulation between different distributions of this force (localized vs. zonally uniform). Also our results indicate that the distribution of GWD may play a role in zonal asymmetries of the BDC. This is a clear signal that in the research of future BDC changes from climate models we need to be concerned not merely by the magnitude or latitude-height profile of the zonal mean GWD but also by its zonal distribution. In particular, the models should be able to mimic the main GW activity hotspots and account for meridional propagation of GWs (Yamashita et al., 2013; Ern et al., 2016). This suggests the need for improvement especially of the nonorographic GW parameterization (though nonorographic GW are usually assumed to have significant effect at higher altitudes than in the vertical range analyzed in this

Petr Šácha 29.11.16 15:42

Deleted: e.g.

paper), since many global climate models use a globally uniform gravity wave source function (Geller et al., 2013).

Petr Šácha 29.11.16 15:43

Deleted: e.g.

Code availability

MUAM model code is available from the authors upon request.

5 Data availability

MIPAS CH_4 volume mixing ratio profiles have been provided by Karlsruhe Institute of Technology (KIT), Institute of Meteorology and Climate Research - Atmospheric Trace Gases and Remote Sensing through <https://www.imk-asf.kit.edu/english/308.php>. MSR total ozone is available through ESA, Tropospheric Emission Monitoring Internet Service (TEMIS) on

- 10 http://www.temis.nl/protocols/o3field/o3mean_msr2.php. ERA-Interim temperatures and geopotential heights data have been provided by ECMWF through <http://www.ecmwf.int/en/research/climate-reanalysis/era-interim>.

Acknowledgements

- 15 This study was supported by GA CR under grant 16-01562J and by Deutsche Forschungsgemeinschaft under grants JA 836/30-1 and 836/32-1. The authors would like to thank the referees and the Co-Editor Prof. Dr. Martin Dameris for their unbelievable effort and attitude towards improving the manuscript.

References

- Albers, J. R., and T. Birner, 2014: Vortex preconditioning due to planetary and gravity waves prior to sudden stratospheric warmings. *Journal of the Atmospheric Sciences*, 71 (11), 4028–4054, doi:10.1175/JAS-D-14-0026.1.
- 20 Alexander, S. P. and Shepherd, M. G.: Planetary wave activity in the polar lower stratosphere, *Atmos. Chem. Phys.*, 10, 707–718, doi:10.5194/acp-10-707-2010, 2010.
- 25 Alexander, M. J., & Sato, K. (2015). Gravity Wave Dynamics and Climate: An Update from the SPARC Gravity Wave Activity. Report on the 35th Session of the Joint Scientific Committee of the World Climate Research Programme 29 June–4 July 2014, Heidelberg, Germany, 9.
- 30 Alexander MJ, Geller M, McLandress C, Polavarapu S, Preusse P, Sassi F, Sato K, Eckermann S, Ern M, Hertzog A, Kawatani YA, Pulido M, Shaw T, Sigmond M, Vincent R, Watanabe S. 2010. Recent developments in gravity-wave effects in climate models and the global distribution of gravity-wave momentum flux from observations and models. *Q. J. R. Meteorol. Soc.* **136**: 1103 – 1124. DOI:10.1002/qj.637
- 35 Ayarzagüena, B., U. Langematz, and E. Serrano, 2011: Tropo- spheric forcing of the stratosphere: A comparative study of the two different major stratospheric warmings in 2009 and 2010. *J. Geophys. Res.*, 116, D18114, doi:10.1029/2010JD015023.

- Brewer, A.W., 1949: Evidence for a world circulation provided by the measurements of helium and water vapor distribution in the stratosphere. *Quart. J. Roy. Meteor. Soc.*, 75, 351–363.
- Butchart, N.: The Brewer–Dobson Circulation, *Rev. Geophys.*, 52, 157–184, doi:10.1002/2013RG000448, 2014.
- 5 Bühler, O.: *Waves and mean flows*, Cambridge University Press, 2014.
- Calvo, N., Polvani, L. M., & Solomon, S. (2015). On the surface impact of Arctic stratospheric ozone extremes. *Environmental Research Letters*, 10(9), 094003.
- Chandran, A., R. L. Collins, R. R. Garcia, D. R. Marsh, V. L. Harvey, J. Yue, and L. de la Torre
10 (2013), A climatology of elevated stratopause events in the whole atmosphere community climate model, *J. Geophys. Res. Atmos.*, 118, 1234–1246, doi:10.1002/jgrd.50123.
- Cohen, N. Y., E. P. Gerber, and O. Bühler, 2013: Compensation between resolved and unresolved wave driving in the strato- sphere: Implications for downward control. *J. Atmos. Sci.*, 70, 3780–3798,
15 doi:10.1175/JAS-D-12-0346.1.
- Cohen, N. Y., E. P. Gerber, and O. Bühler, 2014: What drives the Brewer- Dobson circulation? *Journal of the Atmospheric sciences*, 71, 3837–3855, doi: 10.1175/JAS-D-14-0021.1
- 20 Cullens, C. Y., S. L. England, and T. J. Immel (2015), Global responses of gravity waves to planetary waves during stratospheric sudden warming observed by SABER, *J. Geophys. Res. Atmos.*, 120, 12,018–12,026, doi:[10.1002/2015JD023966](https://doi.org/10.1002/2015JD023966).
- Demirhan Bari, D., Gabriel, A., Körmich, H., and Peters, D. W. H.: The effect of zonal asymmetries in
25 the Brewer-Dobson circulation on ozone and water vapor distributions in the northern middle atmosphere, *J. Geophys. Res.-Atmos.*, 118, 3447–3466, doi:10.1029/2012JD017709, 2013.
- Dobson, G. M. B. (1956). Origin and distribution of the polyatomic molecules in the atmosphere. *Proceedings of the Royal Society of London. Series A, Mathematical and Physical Sciences*,
30 236(1205), 187-193.
- Dunkerton, T. (1978), On the mean meridional mass motions of the stratosphere and mesosphere, *J. Atmos. Sci.*, 35, 2325–2333.
- 35 Dunkerton, T. J., and N. Butchart, 1984: Propagation and selective transmission of internal gravity waves in a sudden warming. *J. Atmos. Sci.*, 41, 1443–1460, doi:10.1175/1520-0469(1984)041<1443:PASTOI.2.0.CO;2.

ECMWF (2016), ERA-Interim,
<http://www.ecmwf.int/en/research/climate-reanalysis/era-interim>, downloaded at 15.3.2016.

Ern, M., Preusse, P., Gille, J., Hepplewhite, C., Mlynczak, M., Russell, J., and Riese, M.: Implications for atmospheric dynamics derived from global observations of gravity wave momentum flux in stratosphere and mesosphere, *J. Geophys. Res.-Atmos.*, 116, D19107, doi:10.1029/2011JD015821, 2011.

Ern, M., Trinh, Q. T., Kaufmann, M., Krisch, I., Preusse, P., Ungermann, J., Zhu, Y., Gille, J. C., Mlynczak, M. G., Russell III, J. M., Schwartz, M. J., and Riese, M.: Satellite observations of middle atmosphere gravity wave absolute momentum flux and of its vertical gradient during recent stratospheric warmings, *Atmos. Chem. Phys.*, 16, 9983-10019, doi:10.5194/acp-16-9983-2016, 2016.

France, J. A., and V. L. Harvey (2013), A climatology of the stratopause in WACCM and the zonally asymmetric elevated stratopause, *J. Geophys. Res. Atmos.*, 118, 2241–2254, doi:10.1002/jgrd.50218.

Fritts, D. C. and Alexander, M. J.: Gravity wave dynamics and effects in the middle atmosphere, *Rev. Geophys.*, 41, 1003, doi:10.1029/2001RG000106, 2003.

Fröhlich, K., A. Pogoreltsev, and Ch. Jacobi, 2003: Numerical simulation of tides, Rossby and Kelvin waves with the COMMA-LIM model. *Adv. Space Res.*, 32, 863-868, doi:10.1016/S0273-1177(03)00416-2.

Garny, H., T. Birner, H. Bönisch, and F. Bunzel (2014), The effects of mixing on age of air, *J. Geophys. Res. Atmos.*, 119, 7015–7034, doi:10.1002/2013JD021417.

Geller, M. A., Alexander, M. J., Love, P. T., Bacmeister, J., Ern, M., Hertzog, A., Manzini, E., Preusse, P., Sato, K., Scaife, A. A., and Zhou, T.: A comparison between gravity wave momentum fluxes in observations and climate models, *J. Climate*, 26, 6383–6405, doi:10.1175/JCLI-D-12-00545.1, 2013.

Gerber, E. P., A. Butler, N. Calvo, A. Charlton-Perez, M. Giorgetta, E. Manzini, J. Perlwitz, L. M. Polvani, F. Sassi, A. A. Scaife, T. A. Shaw, S.-W. Son, and S. Watanabe, 2012: Assessing and understanding the impact of stratospheric dynamics and variability on the Earth system, *B. Amer. Meteorol. Soc.*, 93, 845–859.

Hardiman, S. C. and P. H. Haynes, 2008: Dynamical sensitivity of the stratospheric circulation and downward influence of upper level perturbations, *J. Geophys. Res.*, 113, D23 103, doi:10.1029/2008JD010168.

Petr Šácha 29.11.16 11:22

Deleted: -

- Hardiman, S. C., Andrews, D. G., White, A. A., Butchart, N., and Edmond, I.: Using Different Formulations of the 1065 Transformed Eulerian Mean Equations and Eliassen-Palm Diagnostics in General Circulation Models, *J. Atmos. Sci.*, 67, 1983–1995, doi:10.1175/2010JAS3355.1, <http://dx.doi.org/10.1175/2010JAS3355.1>, 2010.
- 5 Haynes, P.: Stratospheric Dynamics, *Annu. Rev. Fluid Mech.*, 37, 263–293, doi:10.1146/annurev.fluid.37.061903.175710, 2005.
- 10 Haynes, P., McIntyre, M., Shepherd, T., Marks, C., and Shine, K. P.: On the “downward control” of extratropical diabatic circulations by eddy-induced mean zonal forces, *J. Atmos. Sci.*, 48, 651–678, 1991.
- He, C., Zhou, T., Lin, A., Wu, B., Gu, D., Li, C., & Zheng, B. (2015). Enhanced or Weakened Western North Pacific Subtropical High under Global Warming?. *Scientific reports*, 5.
- 15 Hertzog, A., Alexander, M. J., and Plougonven, R.: On the intermittency of gravity wave momentum flux in the stratosphere, *J. Atmos. Sci.*, 69, 3433–3448, 2012.
- Hoffmann, P., W. Singer, D. Keuer, W. K. Hocking, M. Kunze, and Y. Murayama (2007), Latitudinal and longitudinal variability of mesospheric winds and temperatures during stratospheric warming events, *J. Atmos. Sol. Terr. Phys.*, 69, 2355–2366.
- 20 Holton, J. R., The influence of gravity wave breaking on the general circulation of the middle atmosphere, *J. Atmos. Sci.*, 40, 2497–2507, 1983.
- 25 Holton, J. R., 1984: The generation of mesospheric planetary waves by zonally asymmetric gravity wave breaking. *J. Atmos. Sci.*, 41, 3427–3430, doi:10.1175/1520-0469(1984)041<3427:TGOMPW>2.0.CO;2.
- 30 Jacobi, Ch., K. Fröhlich, and A. Pogoreltsev, 2006: Quasi two-day-wave modulation of gravity wave flux and consequences for the planetary wave propagation in a simple circulation model, *J. Atmos. Sol.-Terr. Phys.*, 68, 283–292, doi:10.1016/j.jastp.2005.01.017.
- 35 Jacobi, Ch., F. Lilienthal, C. Geißler, and A. Krug, 2015: Long-term variability of mid-latitude mesosphere-lower thermosphere winds over Collm (51°N, 13°E), *J. Atmos. Sol.-Terr. Phys.*, 136, B, 174–186, doi:10.1016/j.jastp.2015.05.006.

- Kalisch, S., P. Preusse, M. Ern, S. D. Eckermann, and M. Riese, 2014: Differences in gravity wave drag between realistic oblique and assumed vertical propagation, *J. Geophys. Res. Atmos.*, 119, 10,081–10,099, doi:10.1002/2014JD021779.
- 5 Kidston, J., A. A. Scaife, S. C. Hardiman, D. M. Mitchell, N. Butchart, M. P. Baldwin, and L. J. Gray (2015), Stratospheric influence on tropospheric jet streams, storm tracks and surface weather, *Nat. Geosci.*, 8, 433–440, doi:10.1038/ngeo2424.
- 10 KIT (2016), Access to IMK/IAA generated MIPAS/Envisat data, <https://www.imk-asf.kit.edu/english/308.php>, downloaded at 01.02.2016.
- Kinoshita, T., & Sato, K. (2013). A formulation of three-dimensional residual mean flow applicable both to inertia–gravity waves and to Rossby waves. *Journal of the Atmospheric Sciences*, 70(6), 1577-1602.
- 15 Kren, A. C., Marsh, D. R., Smith, A. K., & Pilewskie, P. (2015). Wintertime Northern Hemisphere response in the Stratosphere to the Pacific Decadal Oscillation using the Whole Atmosphere Community Climate Model. *Journal of Climate*, (2015).
- 20 Kuroda, Y., 2008: Effect of stratospheric sudden warming and vortex intensification on the tropospheric climate. *J. Geophys. Res.*, 113, D15110, doi:10.1029/2007JD009550.
- Kuttippurath, J. and Nikulin, G.: A comparative study of the major sudden stratospheric warmings in the Arctic winters 2003/2004–2009/2010, *Atmos. Chem. Phys.*, 12, 8115–8129, doi:10.5194/acp-12-8115-2012, 2012.
- 25 [Lawrence, B.N.](#) (1997) The Effect of Parameterized Gravity Wave Drag on Simulations of the Middle Atmosphere During Northern Winter 1991/1992-General Evolution. NATO ASI SERIES I GLOBAL ENVIRONMENTAL CHANGE, 50. pp. 291-308.
- 30 Lehtonen, I., and A. Y. Karpechko (2016), Observed and modeled tropospheric cold anomalies associated with sudden stratospheric warmings, *J. Geophys. Res. Atmos.*, 121, 1591–1610, doi:10.1002/2015JD023860.
- Lieberman, R. S., D. M. Riggan, and D. E. Siskind, 2013: Stationary waves in the wintertime mesosphere: Evidence for gravity wave filtering by stratospheric planetary waves, *J. Geophys. Res.*, 118, 3139–3149, doi:10.1002/jgrd.50319.
- 35 Limpasuvan, V., Richter, J. H., Orsolini, Y. J., Stordal, F., and Kvissel, O.-K.: The roles of planetary and gravity waves during a major stratospheric sudden warming as characterized in WACCM, *J. Atmos. Sol.-Terr. Phys.*, 78–79, 84–98, 2012.

- Lindzen, R.S., 1981. Turbulence and stress owing to gravity wave and tidal breakdown. *Journal of Geophysical Research* 86, 9709–9714.
- Manney, G. L., M. J. Schwartz, K. Krüger, M. L. Santee, S. Pawson, J. N. Lee, W. H. Daffer, R. A. Fuller, and N. J. Livesey, 2009: Aura Microwave Limb Sounder observations of dynamics and transport during the record-breaking 2009 Arctic stratospheric major warming, *Geophys. Res. Lett.*, 36, L12815, doi:10.1029/2009GL038586.
- Manzini, E., et al. (2014), Northern winter climate change: Assessment of uncertainty in CMIP5 projections related to stratosphere-troposphere coupling, *J. Geophys. Res. Atmos.*, 119, 7979–7998, doi:[10.1002/2013JD021403](https://doi.org/10.1002/2013JD021403).
- Martius, O., L. Polvani, and H. Davies, 2009: Blocking precursors to stratospheric sudden warming events. *Geophys. Res. Lett.*, 36, L14806, doi:10.1029/2009GL038776.
- Matsuno, T., 1966. Numerical integration of the primitive equations by a simulated backward difference method. *Journal of Meteorological Society of Japan* 44, 76–84.
- McFarlane, N.A., The effect of orographically excited gravity wave drag on the general circulation of the lower stratosphere and troposphere, *J. Atmos. Sci.*, 44, 1775-1800, 1987.
- McLandress, C., S. Polavarapu, and S. R. Beagley, 2012: Is missing orographic gravity wave drag near 60S the cause of the stratospheric zonal wind biases in chemistry climate models? *J. Atmos. Sci.*, 69, 802–818.
- Nakamura, H., Nishii, K., Wang, L., Orsolini, Y. J., & Takaya, K., 2014: Cold-air outbreaks over East Asia associated with blocking highs: Mechanisms and their interaction with the polar stratosphere. *Dynamics and Predictability of Large-Scale High-Impact Weather and Climate Events*, 2.
- Nishii, K., H. Nakamura, and T. Miyasaka, 2009: Modulations in the planetary wave field induced by upward propagating Rossby wave packets prior to stratospheric sudden warming events: A case study, *Q. J. Roy. Meteor. Soc.*, 135, 39-52.
- Oberheide, J., H.-L. Liu, O. Gusev, and D. Offermann, 2006: Mesospheric surf zone and temperature inversion layers in early November 1994, *J. Atmos. Sol.-Terr. Phys.*, 68, 1752–1763.
- Pawson, S. (1997). Effects of gravity wave drag in the Berlin troposphere-stratosphere-mesosphere GCM. In *Gravity Wave Processes* (pp. 327-336). Springer Berlin Heidelberg.
- Plieninger, J., von Clarmann, T., Stiller, G. P., Grabowski, U., Glatthor, N., Kellmann, S., Linden, A., Haenel, F., Kiefer, M., Höpfner, M., Laeng, A., and Lossow, S.: Methane and nitrous oxide retrievals from MIPAS-ENVISAT, *Atmos. Meas. Tech.*, 8, 4657-4670, doi:10.5194/amt-8-4657-2015, 2015.

- Plougonven, R. and Zhang, F.: Internal gravity waves from atmospheric jets and fronts, *Rev. Geophys.*, 52, 33–76, doi:10.1002/2012RG000419, 2014.
- 5 Pogoreltsev, A.I., A.A. Vlasov, K. Fröhlich, and Ch. Jacobi, 2007: Planetary waves in coupling the lower and upper atmosphere, *J. Atmos. Sol.-Terr. Phys.*, 69, 2083-2101, doi:10.1016/j.jastp.2007.05.014.
- Preusse, P., S. D. Eckermann, M. Ern, J. Oberheide, R. H. Picard, R. G. Roble, M. Riese, J. M. Russell III, and M. G. Mlynczak, 2009: Global ray tracing simulations of the SABER gravity wave climatology, *J. Geophys. Res.*, 114, D08126, doi:10.1029/2008JD011214
- 10 Ratnam, M.V., T. Tsuda, Ch. Jacobi, and Y. Aoyama, 2004a: Enhancement of gravity wave activity observed during a major Southern Hemisphere stratospheric warming by CHAMP/GPS measurements. *Geophys. Res. Lett.*, 31, L16101, doi:10.1029/2004GL019789.
- 15 Richter, J. H., Sassi, F., & Garcia, R. R. (2010). Toward a physically based gravity wave source parameterization in a general circulation model. *Journal of the Atmospheric Sciences*, 67(1), 136-156.
- 20 Sandu, I., P. Bechtold, A. Beljaars, A. Bozzo, F. Pithan, T. G. Shepherd, and A. Zadra (2016), Impacts of parameterized orographic drag on the Northern Hemisphere winter circulation, *J. Adv. Model. Earth Syst.*, 7, doi:10.1002/2015MS000564.
- Schroeder, S., Preusse, P., Ern, M., and Riese, M.: Gravity waves resolved in ECMWF and measured by SABER, *Geophys. Res. Lett.*, 36, L10805, doi:10.1029/2008GL037054, 2009.
- 25 Scott, R. K., and D. G. Dritschel. 2005: Downward Wave Propagation on the Polar Vortex. *J. Atmos. Sci.*, 62, 3382-3395.
- 30 Seviour, W. J. M., L. J. Gray, and D. M. Mitchell (2016), Stratospheric polar vortex splits and displacements in the high-top CMIP5 climate models, *J. Geophys. Res. Atmos.*, 121, 1400–1413, doi:10.1002/2015JD024178.
- Shaw, T. A., and W. R. Boos, 2012: The tropospheric response to tropical and subtropical zonally-asymmetric torques: Analytical and idealized numerical model results. *J. Atmos. Sci.*, 69, 214-234.
- 35 Siskind, D. E., S. D. Eckermann, J. P. McCormack, L. Coy, K. W. Hoppel, and N. L. Baker (2010), Case studies of the mesospheric response to recent minor, major, and extended stratospheric warmings, *J. Geophys. Res.*, 115, D00N03, doi:10.1029/2010JD014114.
- 40

Smith, A. K.: The origin of stationary planetary waves in the upper mesosphere, *J. Atmos. Sci.*, 60, 3033–3041, 2003.

Smith, A. K.: Global dynamics of the MLT, *Surv. Geophys.*, 33, 1177–1230, doi:10.1007/s10712-012-9196-9, 2012.

Šácha, P., Foelsche, U., and Pišoft, P.: Analysis of internal gravity waves with GPS RO density profiles, *Atmos. Meas. Tech.*, 7, 4123–4132, doi:10.5194/amt-7-4123-2014, 2014.

Šácha, P., Kuchař, A., Jacobi, C., and Pišoft, P.: Enhanced internal gravity wave activity and breaking over the northeastern Pacific–eastern Asian region, *Atmos. Chem. Phys.*, 15, 13097–13112, doi:10.5194/acp-15-13097-2015, 2015.

TEMIS, Tropospheric Emission Monitoring Internet Service (2016), Monthly mean ozone from the multi-sensor reanalysis (MSR), http://www.temis.nl/protocols/o3field/o3mean_msr.php, downloaded at 10.03.2016.

van der A, R. J., Allaart, M. A. F., and Eskes, H. J.: Extended and refined multi sensor reanalysis of total ozone for the period 1970–2012, *Atmos. Meas. Tech.*, 8, 3021–3035, doi:10.5194/amt-8-3021-2015, 2015.

von Clarmann, T., Höpfner, M., Kellmann, S., Linden, A., Chauhan, S., Funke, B., Grabowski, U., Glatthor, N., Kiefer, M., Schieferdecker, T., Stiller, G. P., and Versick, S.: Retrieval of temperature, H₂O, O₃, HNO₃, CH₄, N₂O, ClONO₂ and ClO from MIPAS reduced resolution nominal mode limb emission measurements, *Atmos. Meas. Tech.*, 2, 159–175, doi:10.5194/amt-2-159-2009, 2009.

Walterscheid, R. L. "Inertio-gravity wave induced accelerations of mean flow having an imposed periodic component: Implications for tidal observations in the meteor region." *Journal of Geophysical Research: Oceans* 86.C10 (1981): 9698–9706.

Wang, L. and M. Alexander, 2010: Global estimates of gravity wave parameters from GPS radio occultation temperature data, *J. Geophys. Res.*, 115, D21122, doi:10.1029/2010JD013860.

Watt-Meyer, O., & Kushner, P. J. (2015). The Role of Standing Waves in Driving Persistent Anomalies of Upward Wave Activity Flux. *Journal of Climate*, 28(24), 9941–9954.

Woo, S.-H., M.-K. Sung, S.-W. Son, and J.-S. Kug, 2015: Connection between weak stratospheric vortex events and the Pacific Decadal Oscillation. *Climate Dynamics*, 1–12, doi:10.1007/s00382-015-2551-z.

Wright, C. J., Osprey, S. M., and Gille, J. C.: Global observations of gravity wave intermittency and its impact on the observed momentum flux morphology, *J. Geophys. Res.-Atmos.*, 118, 10980– 10993, doi:10.1002/jgrd.50869, 2013.

5 Yamashita, C., H.-L. Liu, and X. Chu (2010), Gravity wave variations during the 2009 stratospheric sudden warming as revealed by ECMWF-T799 and observations, *Geophys. Res. Lett.*, 37, L22806, doi:[10.1029/2010GL045437](https://doi.org/10.1029/2010GL045437).

10 [Yamashita, C., England, S. L., Immel, T. J., and Chang, L. C.: Gravity wave variations during elevated stratopause events using SABER observations, *J. Geophys. Res.-Atmos.*, 118, 5297– 5306, doi:10.1002/jgrd.50474, 2013.](#)

15 Yamashita, Y., Akiyoshi, H., Shepherd, T. G., & Takahashi, M., 2015: The Combined Influences of Westerly Phase of the Quasi-Biennial Oscillation and 11-year Solar Maximum Conditions on the Northern Hemisphere Extratropical Winter Circulation. *気象集誌*. 第 2 輯, 93(6), 629-644, doi:10.2151/jmsj.2015-054.

Petr Šácha 30.11.16 10:42

Deleted: -

20

Name	Distribution of the artificial GWD	Artificial gcu per gridpoint of the artificial area (m/s/d)	Zonal mean gcu in the altitude of artificial GWD (m/s/d)	Artificial gcv per gridpoint of the artificial area (m/s/d)	Zonal mean gcv (m/s/d)	Artificial gt per gridpoint of the artificial area (K/d)
<i>Ref</i>	~	~	<i>0.011</i>	~	<i>-0.001</i>	~
<i>Box0.5</i>	<i>box</i>	<i>-0.5</i>	<i>-0.073</i>	<i>-0.5</i>	<i>-0.085</i>	<i>0.05</i>
<i>Zon0.5</i>	<i>ring</i>	<i>-0.073</i>	<i>-0.073</i>	<i>-0.085</i>	<i>-0.085</i>	<i>0.05</i>
<i>Box0.1pos</i>	<i>box</i>	<i>-0.5</i>	<i>-0.073</i>	<i>0.1</i>	<i>0.018</i>	<i>0.05</i>
<i>Zon0.1pos</i>	<i>ring</i>	<i>-0.073</i>	<i>-0.073</i>	<i>0.018</i>	<i>0.018</i>	<i>0.05</i>
<i>Box0.1</i>	<i>box</i>	<i>-0.5</i>	<i>-0.073</i>	<i>-0.1</i>	<i>-0.016</i>	<i>0.05</i>

Zon0.1	ring	-0.073	-0.073	-0.016	-0.016	0.05
Box0.1gcu	box	-0.5	-0.073	~	-0.001	~
Box0.1gcv	box	~	0.011	-0.1	-0.016	~
Box0.1gt	box	~	0.011	~	-0.001	0.05
10box	box	-10	-1.706	-0.1	-0.016	0.05
10zon	ring	-1.706	-1.706	-0.016	-0.016	0.05
SSWbox	box	-70	-12.018	-0.1	-0.016	0.05
SSWzon	ring	-12.018	-12.018	-0.016	-0.016	0.05

Table 1: Sensitivity simulation names and GWD settings for zonal wind drag (gcu), meridional wind drag (gcv) and heating due to GW (gt) within the box. Note the gcu enhancements are negative because the drag is westward directed. The distribution describes whether the artificially enhanced GWD is implemented only for certain longitudes (Box) or zonally uniform (Zon). The tilde “~” indicates that values are unchanged w.r.t. the reference simulation. Note that for a “ring” simulation the gcu values are reduced in such a way that the zonally integrated acceleration is the same as for the corresponding “box” simulation.

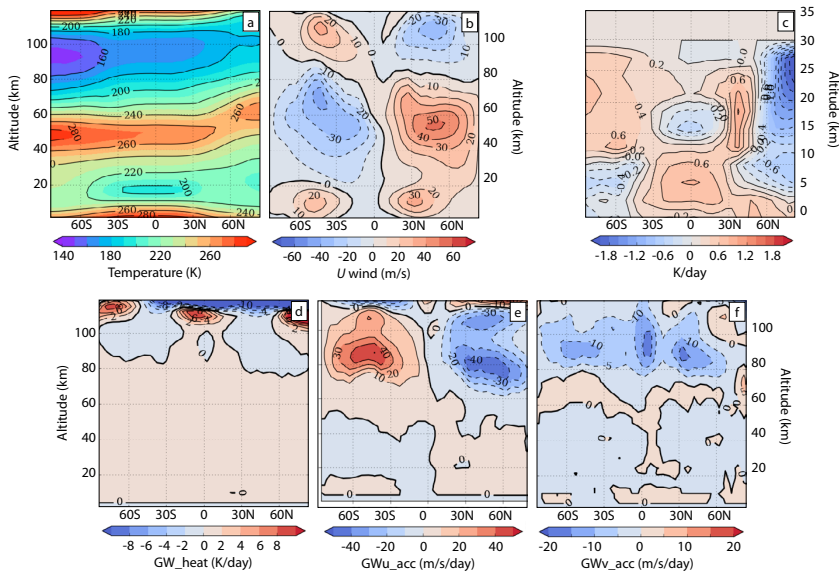


Fig. 1: Mean January zonal means of temperature (a), zonal wind (b), GW induced heating (d) GW induced zonal wind acceleration (e) and meridional wind acceleration (f) for the reference simulation. Additionally, January mean zonal mean nudging strength for the strongest GWD injection (SSWbox simulation in Table 1.) is shown (c).

Petr Šácha 29.11.16 14:37

Deleted: acceleration

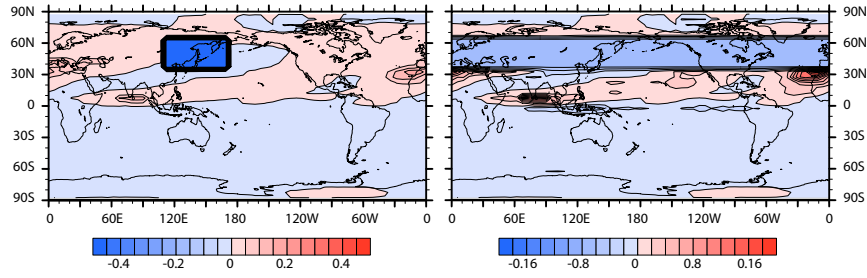


Fig. 2 Two examples of the GWD enhancement horizontal distribution imposed between approximately 20 and 30km of log pressure height. Left panel: box distribution (Box0.1 simulation). Right panel: ring distribution (Zon0.1 simulation). Colors indicate GW induced zonal acceleration [m/s/day].

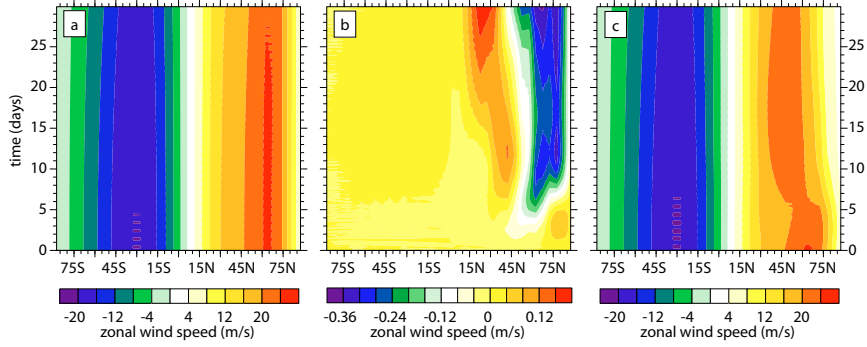


Fig. 3.A Hovmöller diagram of the zonal mean zonal wind for the Ref simulation (a), the zonal mean zonal wind difference with Box0.1 (b) and the zonal mean zonal wind for the 10box simulation at the 6.25 hPa level.

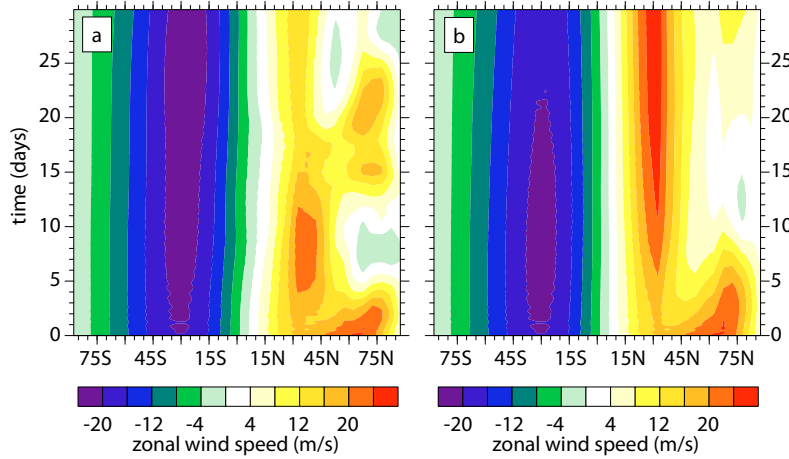


Fig. 4. Hovmöller diagram of the zonal mean zonal wind for the SSWbox simulation (a) and the SSWzon simulation (b) at 6.25hPa.

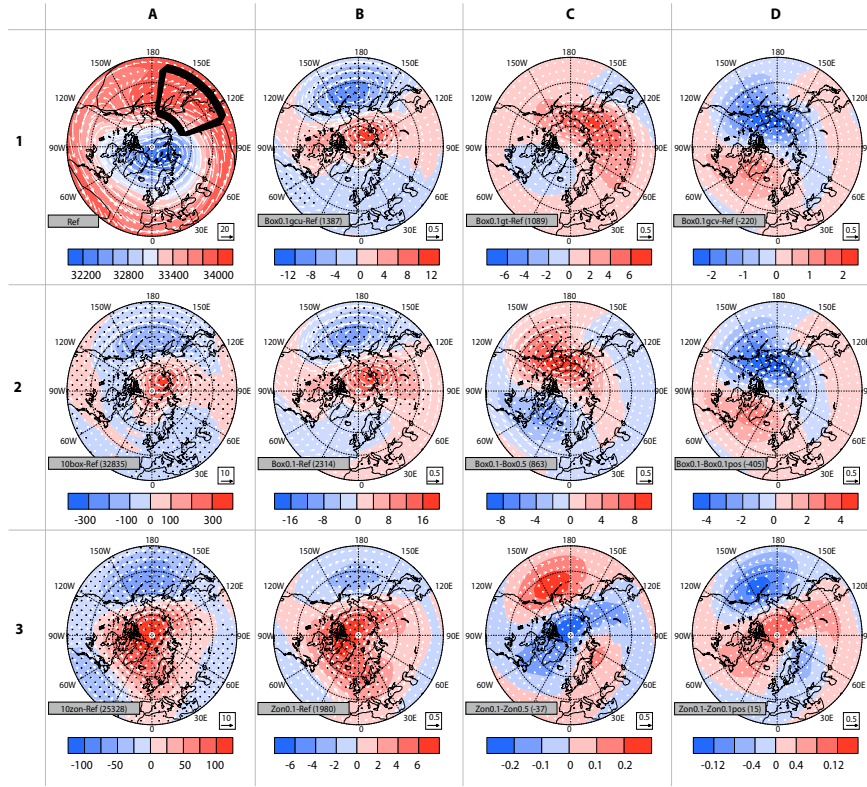


Figure 5: Mean geopotential and horizontal wind vectors at the 13th model level (6.25 hPa) for the reference simulation and differences for the sensitivity simulations with different GWD set-up. From top left (index 1A) to bottom right (index 3D): 1A) reference simulation overlaid with an illustration of the box area, 1B) reference-Box0.1gcu, 1C) reference-Box0.1gt, 1D) reference-Box0.1gcv, 2A) reference-10box, 2B) reference-Box0.1, 2C) Box0.1-Box0.5, 2D) Box0.1-Box0.1pos, 3A) reference-10zon, 3B) reference-Zon0.1, 3C) Zon0.1-Zon0.5 and 3D) Zon0.1-Zon0.1pos. Colors indicate geopotential height [gpm]. Note the different scaling of the respective plots. Arrows refer to horizontal wind [m/s] with unity arrows given below the individual plots. The statistical significance of the mean geopotential differences was computed by a t test and regions with p values < 0.05 are stippled. The sum of geopotential difference across the plotted area is given in the legend to each plot.

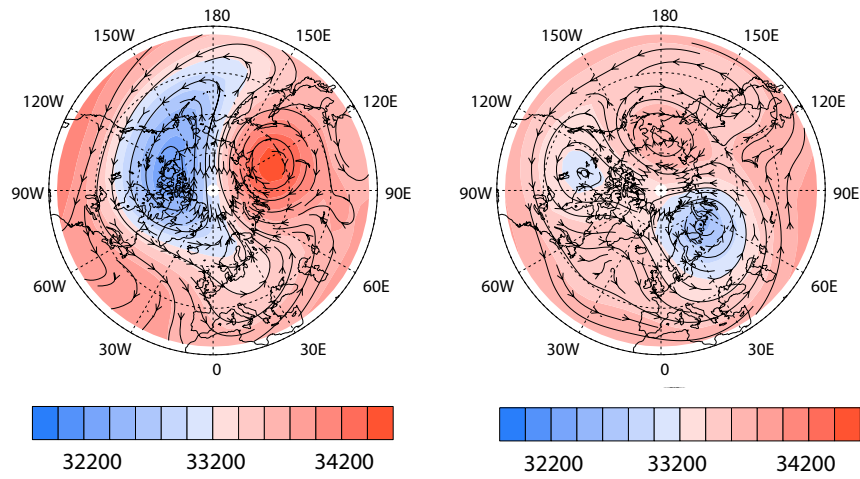


Fig. 6. Geopotential (colors, given in gpm) and horizontal winds (stream lines, given in m/s) for the SSWbox (left) and SSWzon (right) simulation at the 13th model level (6.25 hPa) at 280 hours after the injection.

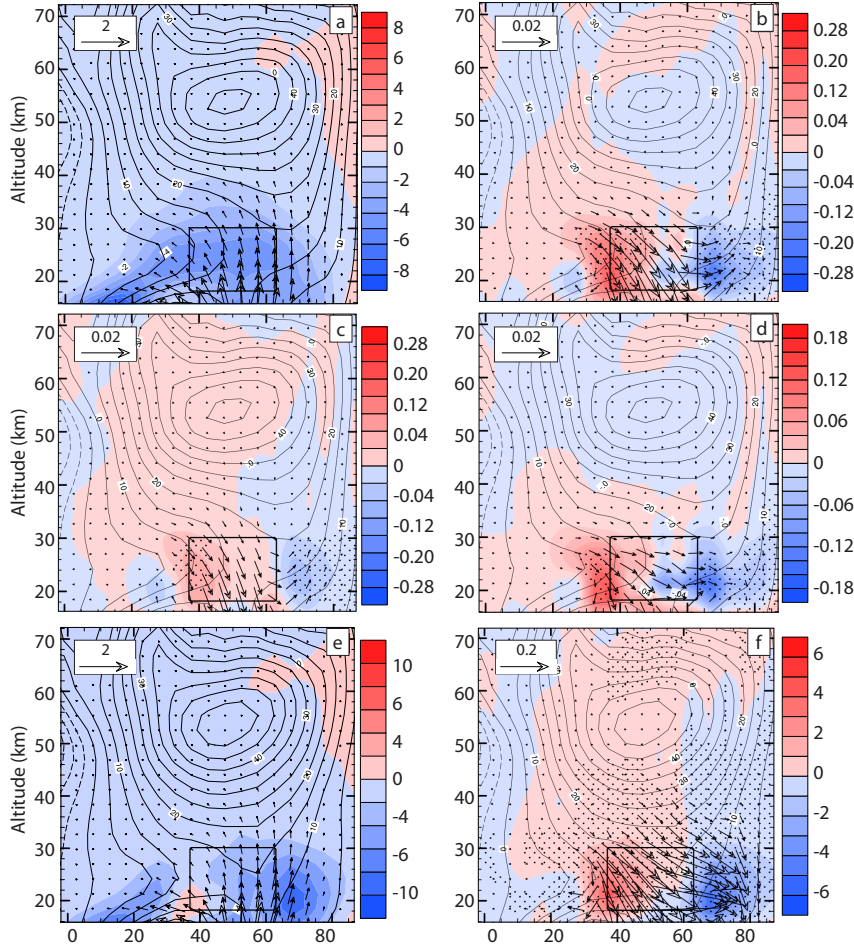


Fig. 7: Mean E-P flux vectors (kg s^{-2} , arrows are scaled according the relative distances of the plot) and its divergence (colors in $\text{kg m}^{-1} \text{s}^{-2}$) for Box0.1 (a), its anomalies (b), Zon0.1 anomalies (c), difference between the Box0.1 and Zon0.1 simulation (d), mean E-P flux and its divergence for 10box (e) and its anomaly (10box-Ref) (f). Note that scales are adjusted for each subfigure, except the plots of anomalies (b,c) sharing the same scaling. In panels (a-f) contours of zonal mean zonal wind from the respective simulations are overlaid with an increment of 10 m/s. All panels are overlaid with selected contour of gravity wave induced zonal acceleration to illustrate the location of artificial GWD. The statistical significance of the mean E-P flux divergence differences was computed by a t test and regions with p values < 0.05 are stippled.

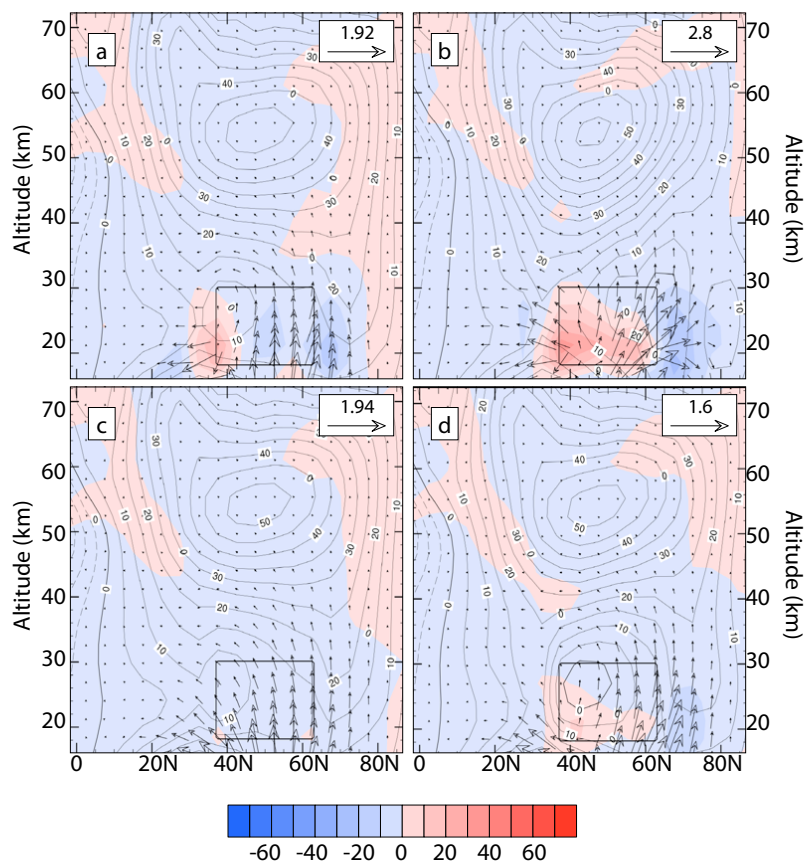
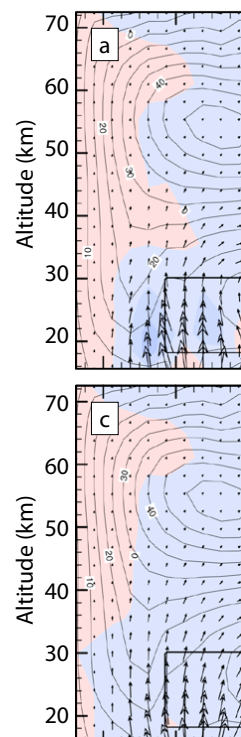


Fig. 8: E-P flux vectors (kg s^{-2} , arrows are scaled according to the relative distances of the plot) and its divergence (colors in $\text{kg m}^{-1} \text{s}^{-2}$) for the SSWbox simulation at 1 day (a) and 5 days (b) after the GWD injection, for SSWzon 1 day (c) and 5 days (d) after the GWD injection. In all panels contours of zonal mean zonal wind from the respective simulation and time step are overlaid with an increment of 10 m/s. All panels are overlaid with selected contour of gravity wave induced zonal



Unknown

Formatted: Font:(Default) Times New Roman, 8 pt, Bold

Petr Šácha 29.11.16 15:08

Deleted:

acceleration to illustrate the location of the artificial GWD.

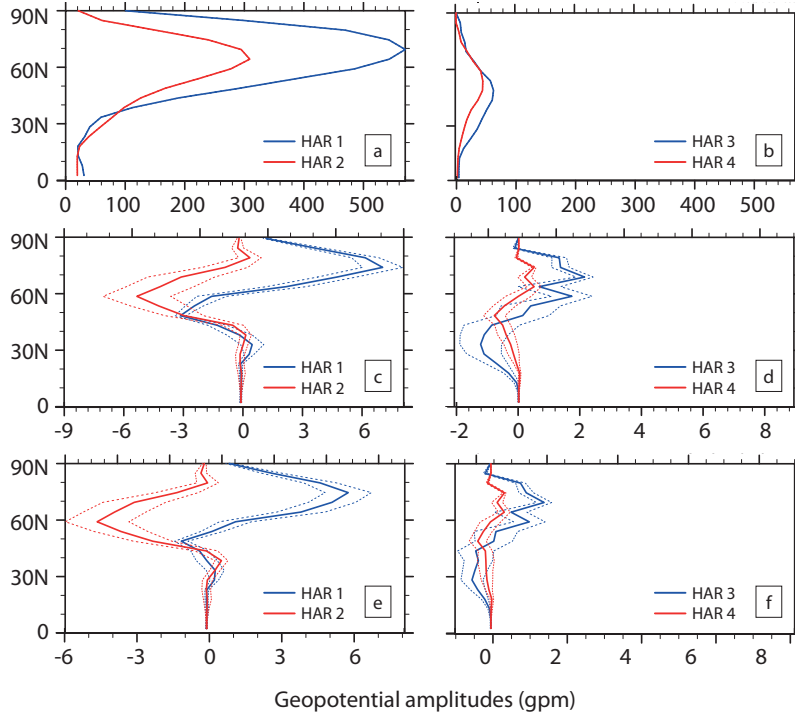


Fig. 9: Mean (7th to 30th day) latitudinal structure of the amplitude of selected harmonics for the Box0.1 simulation. From top left to bottom right: a) harmonics 1 and 2 for Box0.1, b) harmonics 3 and 4 for Box0.1, c) differences of a) from the reference simulation, d) differences of b) from reference simulation, e) differences of a) from Zon0.1, f) differences of b) from Zon0.1. At approx. 35 km log-pressure height. Units are given in [gpm]. Dotted lines show the standard deviation differences.

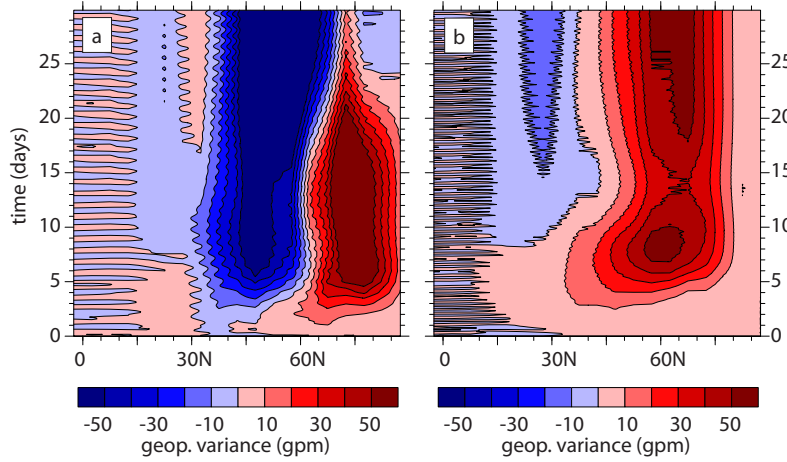


Fig. 10: Time evolution of a wave-1 (a) and wave-3 (b) amplitude difference with respect to the reference run, as given by the FT of geopotential height at approximately 35km log pressure height for Box0.1 simulation. Units are given in [gpm].

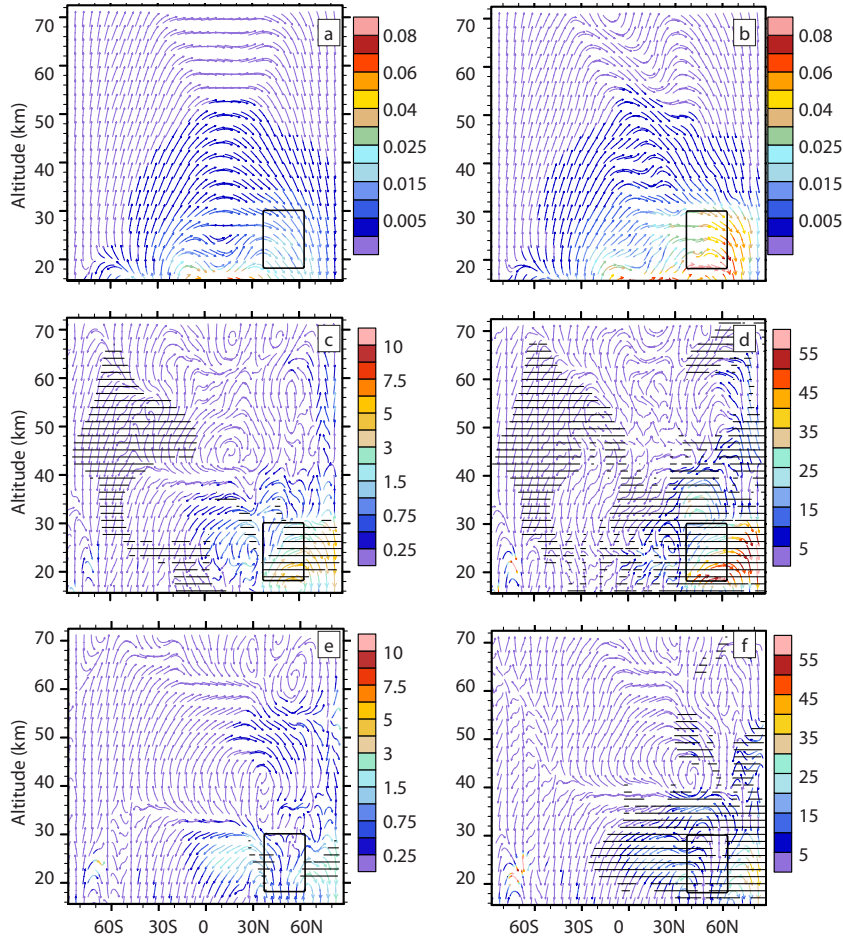


Fig. 11: Mean January zonal mean residual circulation (stream lines for illustration of direction only) and its mass flux (colors, in $\text{kg m}^{-2} \text{s}^{-2}$) on the left (from top to bottom: Ref simulation (a), relative Box0.1- Ref simulation anomaly (c), relative Box0.1 - Zon0.1 simulation difference (e)) and on the right (from top to bottom: snapshot of the SSWbox simulation at 5 days after the GWD injection (b), 10box - ref simulation relative anomaly (d), relative 10box - 10zon simulation difference (f)). Relative anomalies and differences are given in % of the reference or corresponding box simulation, respectively. The statistical significance of the mean residual circulation mass flux differences was computed by a t test and regions with p values < 0.05 are dashed.

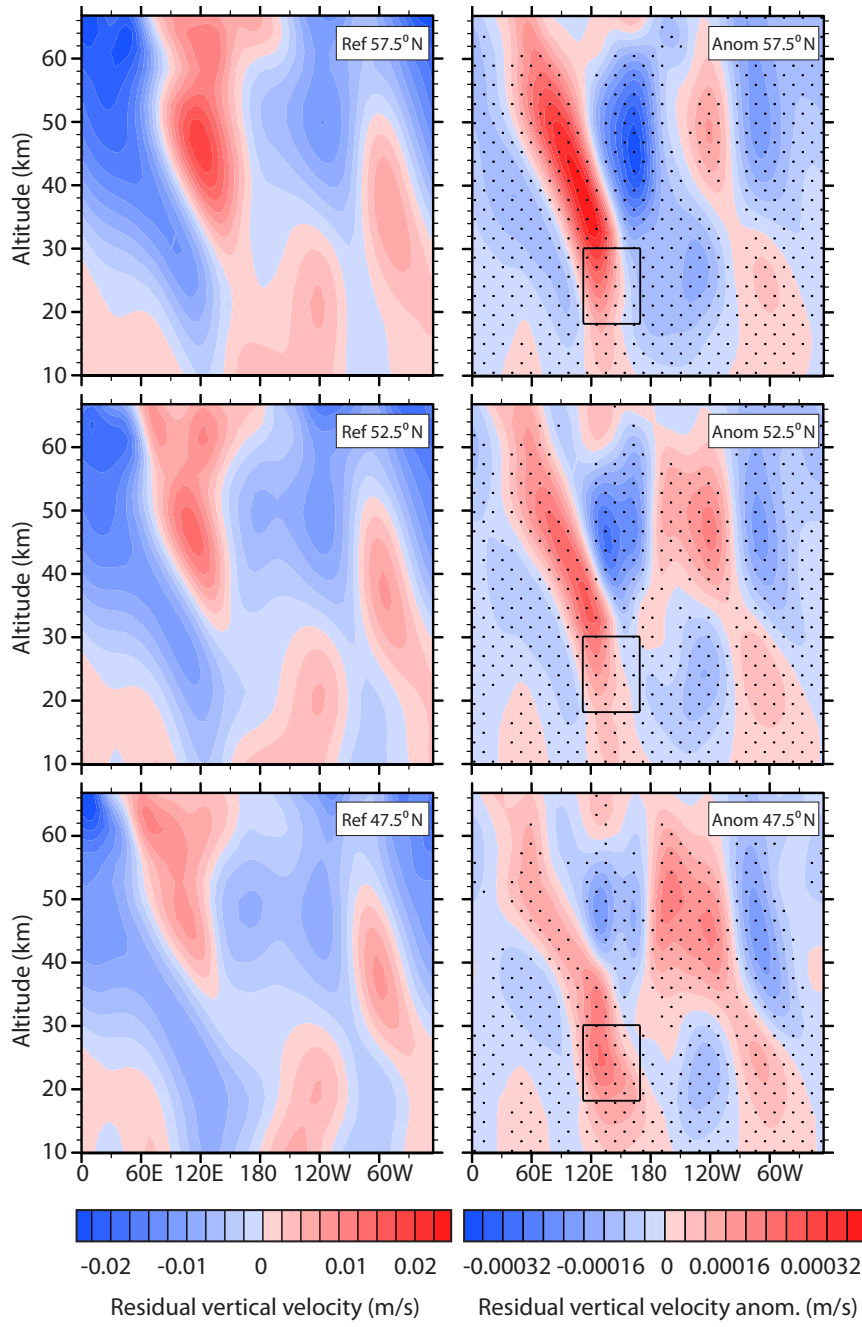


Fig. 12: Mean (7th to 30th day January longitudinal cross-sections of reference residual vertical velocity [ms^{-1}] (on the left) and Box0.1 simulation anomalies (on the right) at selected latitudes. The contours illustrate the position of the artificial

GWD. The statistical significance of the mean anomalies was computed by a t test and regions with p values < 0.05 are stippled.