

Figure S1. Comparison of median vertical profiles from PTR-MS (solid black) and Whole Air Sampler (WAS) measurements of isoprene and monoterpenes ($=\alpha$ -pinene $+\beta$ -pinene for the WAS) over the Southeast US during SEAC⁴RS (left). The observations are also compared to the GEOS-Chem simulation sampled in the same manner as each measurement in the center (PTR-MS) and right (WAS) panels.

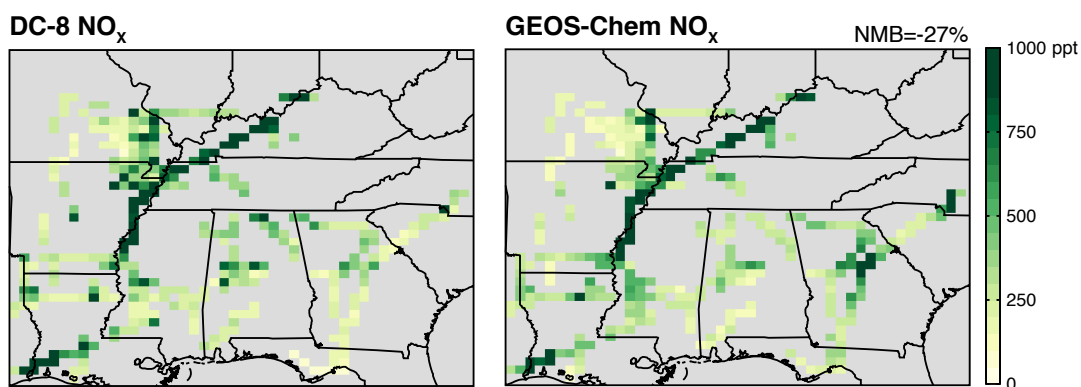


Figure S2. Same as Fig. 4, but for NO_x.

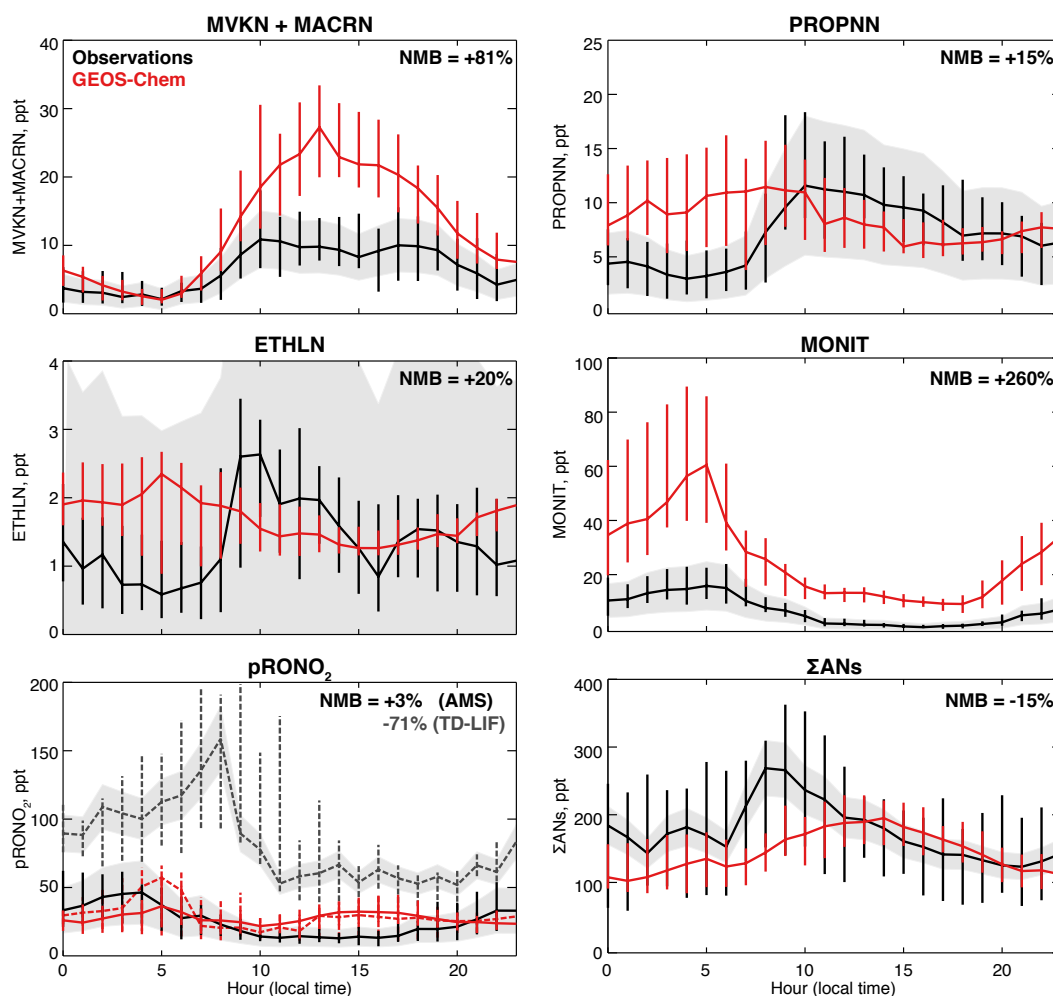


Figure S3. Same as Fig. 6, but for individual second generation isoprene nitrates (MVKN+MACRN, PROPNN, ETHLN) and summed first generation monoterpene nitrates (MONIT) from the CIT-ToF-MS (1 June – 4 July), particulate organic nitrates (pRONO₂) from the AMS (9 June – 15 July) and the TD-LIF (29 June – 15 July), and total organic nitrates (ΣANs) from the TD-LIF (1 June – 15 July).

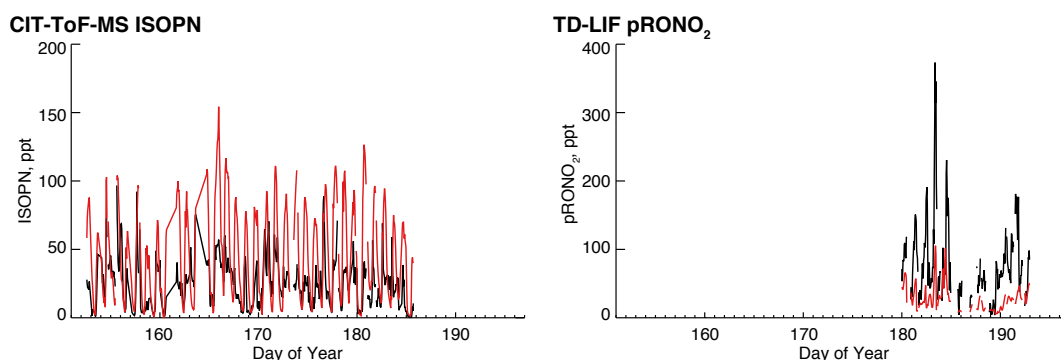


Figure S4. Same as Fig. 8, but for ISOPN measured by CIT-ToF-MS and for pRONO₂ measured by TD-LIF.