

Cover Letter

Dear editor,

Thanks a lot for your excellent editorial work and consideration of the constructive comments from the reviewer. We have revised the manuscript according to your suggestions and the version is as follows. We hope that our replies and the revised manuscript are acceptable, and look forward to hearing from you with a decision regarding our paper. Thank you very much!

Sincerely yours,

Weidong Guo

Response to Editor

- *There are some mistakes in reference list, Please check and correct them.*

Corrected. The references of previous work related to the topic of the manuscript have been included in the sections of introduction and references in this revised manuscript.

- *Some references miss the doi number. Please try to add them.*

Done. The missed doi numbers have been added in the part of reference.

Comparison of land-atmosphere interaction at different surface types in the mid- to lower reaches of Yangtze River Valley

W.D. Guo^{1,2}, X.Q. Wang^{1,2}, J.N. Sun^{1,2}, A.J. Ding^{1,2}, and J. Zou^{1,2}

¹Institute for Climate and Global Change Research, School of Atmospheric Sciences, Nanjing University, Nanjing, China

²Joint International Research Laboratory of Atmospheric and Earth System Sciences, Nanjing, China

Correspondence to: W.D. Guo (guowd@nju.edu.cn); J.N. Sun (jnsun@nju.edu.cn)

Abstract. The mid- to lower reaches of Yangtze River Valley is located within the typical East Asia monsoon zone. Rapid urbanization, industrialization, and development of agriculture have led to fast and complicated land use and land cover change in this region. To investigate land-atmosphere interaction in this region where human activities and monsoon climate are highly interactive with each other, micro-meteorological elements over four sites with different surface types around Nanjing, including urban surface at Dangxiao (hereafter DX-urban), suburban surface at Xianling (XL-suburb), and grassland and farmland at Lishui County (LS-grass and LS-crop), are analyzed and their differences are revealed. The impacts of surface parameters of different surface types on the radiation budget and land surface-atmosphere heat, water, and mass exchanges are investigated and compared. Results indicate that (1) the largest differences in daily average surface air temperature (T_a), surface skin temperature (T_s), and relative humidity (RH), which are found during the dry periods between DX-urban and LS-crop, can be up to 3.21°C, 7.26°C, and 22.79% respectively. The diurnal ranges of the above three elements are the smallest at DX-urban and the largest at LS-grass, XL-suburb and LS-crop; (2) differences in radiative fluxes are mainly reflected in upward shortwave radiation (USR) that is related to surface albedo and upward longwave radiation (ULR) that is related to T_s . When comparing four sites, it can be found that both the smallest USR and the largest ULR occur at DX-urban site. The diurnal variation of ULR is same as that of T_s at all the four sites; (3) the differences in daily average sensible heat (H) and latent heat (LE) between DX-urban and LS-crop are larger than 45 and 95 Wm⁻², respectively. The proportion of latent heat flux in the net radiation (LE/R_n) keeps increasing with the change of season from the spring to summer; (4) human activities have obvious effects on micro-climate. Urban heat island effect results in 2°C higher T_a at urban site than other sites in the nighttime. At crop site, LE is dominant due to irrigation and negative H is observed since evaporation cooling leads to low T_s . Although T_s is higher at XL-suburb than that at LS-grass, there is no large difference in T_a between the two sites due to the distinct effects of the planted forest.

1 Introduction

Land use/Land cover change (LULCC) is one of the most important anthropogenic forces to weather and climate change in local ,regional and global scale (IPCC, 2013). On earth, over 80% of the total land surface has been affected by human activities (Sanderson, 2002) in the form of construction and farmland and loss of forest, and are increasing greatly at multiple spatial and temporal scales in regions of different climate regimes.(Davin and De Noblet-Ducoudré, 2010; Kalnay and Cai, 2003; Lawrence et al., 2012). Logging and creation of new farmlands have changed land use in the tropics (DeFries et al., 2002); intensive human activities in temperate regions have changed forests and grasslands to farmlands, while urbanization and industrialization has been intensifying all the time and desert area has been expanding (Gao et al., 2003; [Huang et al., 2105](#); Suh and Lee, 2004). In boreal regions, forests have degraded to grasslands and farmlands due to fire and pests damages as well as logging (Brown et al., 2010; Lohila et al., 2010).

Under the same climate background, the radiation components and surface energy distribution are controlled by characteristic surface factors such as vegetation cover, albedo, roughness length, etc. (Amiro et al., 2006; Feddema et al., 2005; Jin and Roy, 2005), and subsequently affect micro-meteorological elements of temperature, humidity, and precipitation. The effect of LULCC on regional and global climate has been documented through the climate models. Large-scale vegetation degradation and the development of agriculture and animal husbandry in different scale will lead to decreases in precipitation (Mcalpine et al., 2009; Werth and Avissar, 2002), while LULCC will affect the temperature difference between the surface and air temperature and vegetation feedback,such as tropical warming and boreal cooling due to deforestation and urban heat island (Arnfield, 2003; Bounoua et al., 2002; Luyssaert et al, 2014; Pielke et al., 2002).

However, a severe uncertainty in models still exists due to the insufficient knowledge of the surface-atmosphere interaction in response to variations in surface fluxes and energy balance (Bonan, 2008; Wang and Eleuterio, 2001; Pitman et al., 2009).One way to solve this problem is verify the model and parameterization schemes by driving them with field measurement and observations, which is really important in present study. With the development of a new tool, Fluxnet (Baldocchi, 2001), a large number of land surface pair sites were built up from wild, rural to urban and produce many significant results. Both management on existing types of land cover and conversion to a different type can affect the local climate (Baldocchi, 2014). The areodynamically rougher and darker oak savanna has higher R_n , H and T_a than the grassland in the same climate condition (Baldocchi and Ma, 2013; Baldocchi et al, 2004); deforestation would have a cooling effect on T_a in mid- to high latitudes and a warming effect in low latitude (Lee et al., 2011); Wildfires on different land cover make different effects (Krishman et al., 2012; Montes-Helu et al., 2009); the management practices of rangeland and cropland or the change of crop types can influence the energy balance and water budget (Alberto et al., 2009; Alberto et al.,2011; Baldocchi and Rao, 1995; Coulter et al., 2006; Masseroni et al., 2014). Besides, in a city, LE at residential site is less dependent on short-term precipitation that at grass site and H is related with land cover and building intensity (Offerle et al.,

2006).

China, with the largest population in the world, is one of the fastest growing and urbanizing economies. So LULCC has an significant influence on the regional to global climate change by altering the land surface energy and water flux in China (Zhao and Pitman, 2005; Suh and Lee, 2004; Chen et al., 2014). Most field sites are built in the arid and semi-arid region. In the northeastern ecotone between agriculture and animal husbandry, farmland has a greater roughness and energy fluxes than grassland in Tongyu (Feng et al., 2012) but less than reed wetland in Panjin (Li et al., 2009). In the degraded grassland in West China, the oasis-desert transition zone is a cold source relative to the Gobi in Dunhuang (Wang et al., 2005), and energy fluxes are different over different land surface due to vegetation, precipitation and soil moisture in Loess Plateau (Huang et al., 2008; Guan et al., 2009; Wang et al., 2010). Besides, rapid urban expansion has changed heat fluxes in the Pearl River delta a lot (Lin et al., 2009) and has increased sensible heat flux in Beijing (Zhang et al., 2009). There are obvious differences between different surface types, including air temperature, soil moisture and surface radiation and energy budget (Zhao et al., 2013; Zhang et al., 2014). In monsoon region, it is worth noting that land cover change both in Tibet Plateau and Inner Mongolian from vegetated to bare land not only changed the local surface heat and water flux, but also weakened East Asia summer monsoon circulation and precipitation (Xue 1996; Li and Xue 2010). Even though the changes in surface heat fluxes can influence monsoon onset or weakening and precipitation (Hsu and Liu, 2003; Fu and Yuan, 2001; Qiu, 2013; Xue et al., 2004) ,the study based on field observations are very limited in the East Asian monsoon region (Bi et al., 2007) ,especially over the mid- to lower reaches of Yangtze River Valley.

The mid- to lower reaches of Yangtze River Valley is located in the typical East Asian monsoon region, where the land use and land cover has been experiencing rapid changes with more complicated land use types due to the rapid urbanization, industrialization, and development of agriculture and animal husbandry. Interaction between human activities and monsoon climate is most intensive in this region. Under the background of monsoon climate, studies about the differences in the diurnal and seasonal variations of the land-atmosphere interaction over various surface types are almost blank in this region. In order to better understand the characteristics and mechanisms for the exchanges of mass, energy, and water vapor between the land surface and atmosphere in the mid- to lower reaches of Yangtze River Valley, in the present study we analyze observations collected at several ground sites over different surface types around Nanjing. These sites include a school site in the urban area (hereafter DX-urban), the Xianling site in suburban Nanjing (XL-suburb), a grassland site (LS-grass) and a farmland site (LS-crop) in Lishui County, which is located in the countryside. Data used in this study were collected at these sites in the spring and summer of 2013. The goals of the study are (1) to compare the seasonal and diurnal variation of micro-meteorological elements over different land surface type, (2) to reveal the differences in surface radiation budget, energy distribution between various surface types; and (3) to calculate important surface parameters over different surface and investigate the feedback of different surface types to the atmosphere and its impact on local climate. The mechanisms for the surface-atmosphere feedback will be further investigated. This study will fill the gap of observation scarcity in land-

atmosphere interaction in the mid- to lower reaches of Yangtze River Valley, and provide scientific evidences for the regional climate simulation and climate change prediction.

2 Data and methodology

2.1 Introduction of field sites

5 The observations used in this study were collected at four field sites located in urban, suburban, and countryside areas of Nanjing. The four sites are referred to as DX-urban, XL-suburb, LS-grass and LS-crop hereafter.

The DX-urban site (Fig. 1a) is located at Baixia District of Nanjing ($32^{\circ}2'24''\text{N}$, $118^{\circ}47'24''\text{E}$), which is the central urban area of Nanjing. Residential and commercial buildings are dominant within the 500m radius centered around the DX-urban site, and thereby the land surface type is a typical urban surface at this site. Average height of buildings is 19.7m, and the building coverage is up to 70%.

The XL-suburb Site (Fig. 1b) is the key station in the experiment of Station for Observing Regional Processes of the Earth System, Nanjing University (SORPES-NJU). It is located at ($32^{\circ}7'14''\text{N}$, $118^{\circ}57'10''\text{E}$, 43m above sea level) in the eastern suburb of Nanjing, an upwind area along the prevailing wind direction in Nanjing (Ding et al., 2013). The distance between the XL-suburb Site and DX-urban Site is 18km. Within the 50m \times 50m area at the XL-suburb site, the grass height is 7cm.

15 Outside the site area are woodlands from afforestation with a height of around 3m. This site is located inside the Xianling campus of Nanjing University. Since its operation in 2011, continuous observations are measured through a suite of equipment instruments. The observations include conventional meteorological measurements at various levels, surface energy budget measurements, boundary layer meteorological elements measurements, surface radiation measurements, atmosphere components and aerosols measurements, etc. The data used in this study are standard measurements at half-hour intervals.

20 The site ($31^{\circ}43'08''\text{N}$, $118^{\circ}58'51''\text{E}$) at Lishui county is taken as a satellite site of the SORPES-NJU. The distance between Lishui site and DX-urban site is 38km. Lishui site consists of a pair of observational sites, one over the grassland (LS-grass, Fig. 1c) and the other (LS-crop, Fig. 1d) over the farmland nearby. The grass height is about 60cm at the LS-grass, and the observation period is from January 2012 to February 2014. Rice grows at LS-crop in the summer (mid June to early November) and winter wheat grows in the winter (from mid- to late November to early June of next year). A series of agricultural activities occurred in the cropland, including winter wheat harvest in late May, straw burning and rice irrigation in early June. The maximum height of wheat is 75cm. The observation period at LS-crop is from January 2013 to February 2014. The distance between the two sites at Lishui is 1.62km.

2.2 Micro-meteorological measurements

The instruments used at the XL-suburb site include automatic weather station, eddy covariance system (EC), energy balance system, and soil temperature / humidity observation system. Table 1 lists the major measured variables, ranges, observation heights, and instrument models. The same measurement method is applied at the XL-suburb, LS-grass and LS-crop sites. In the DX-urban site, there is no measurement of soil moisture and soil temperature. The instrument of eddy-covariance and energy balance system are installed at the top of 36.5m high tower on the roof of the building which is 22m high. The air temperature and humidity can be observed by the tower-mounted system 9m high above the roof.

The auto weather station (AG1000, Campbell) measures micro-meteorological elements of temperature, pressure, relative humidity, wind speed and direction, precipitation, and surface radiation components of upward/downward shortwave and longwave radiation fluxes. Ts is measured by infrared detection sensor (IRTS-P, Apogee).

Momentum, sensible and latent heat fluxes are measured by the eddy covariance system (EC3000, Campbell), which includes a three-dimensional sonic anemometer (CSAT-3) and a infrared analyzer (LI7500) at 3m height. The sampling frequency is 10Hz for measurements by the Data acquisition (CR5000). Strict correction and quality control (Foken et al., 2004) have been performed for all the turbulence measurements. Coordinate rotation correction (Wilczak et al., 2001), frequency response correction (Moore, 1986), and WPL correction etc. are applied in this study.

The soil heat flux plate (HFP01SC-L, Hukseflux) is at the depth of 8cm. At LS-grass and LS-crop sites, the soil heat flux is measured at 5cm and 10cm below the ground, respectively. Soil temperature and moisture at 5cm, 10cm, 20cm, 40cm, and 80cm are measured using Soil Temperature Profile Sensor (STP01-L, Hukseflux) and Water Content Analyzer (S616-L, Cambell). No soil temperature and moisture measurements are conducted at the DX-urban site.

The data collected at the spring and summer (from March to August) of 2013 are used in the present study. This is because the measurements are relatively complete during this period, which is also the time when land-atmosphere interaction is strong.

2.3 Methodology

2.3.1 Distribution of surface energy

In the surface with fractional vegetation cover, surface energy budget can be expressed as

$$R_n = H + L_E + G_0 + R_e \quad (1)$$

Where R_n is the net radiation which can be calculated by $R_n = DSR + DLR - USR - ULR$. Four radiation components in this equation are respectively downward shortwave radiation(DSR), downward longwave radiation(DLR), upward shortwave radiation(USR) and upward longwave radiation(ULR). , H and L_E are the sensible and latent heat fluxes respectively, G_0 is the soil heat flux at the surface, R_e is the remaining term, which is associated with the photosynthesis and respiration of plants as well as vegetation and soil thermal storage, etc. (Burba et al., 1999; Harazono et al., 1998). While in

the urban areas, the energy balance must take anthropogenic and net storage heat flux but not G_0 into consideration (Oke, 1987). In this paper, we only discuss the relationship between H, LE and R_n on the basis of the observation.

R_n can be calculated from the four radiation components. Sensible and latent heat fluxes are calculated by the following equations:

$$H = \overline{\rho C_p w' T'} \quad (2)$$

$$L_E = \overline{\rho L_v w' q'} \quad (3)$$

where ρ , C_p and L are the air density (kg m^{-3}), the specific heat capacity at constant pressure ($\text{J kg}^{-1} \text{K}^{-1}$), and latent heat of vaporization (J kg^{-1}). w' , T' and q' are perturbations of vertical velocity (m/s), temperature (K), and mixing ratio of water vapor (g/kg), respectively. Strict quality control has been conducted for all the flux measurements.

2.3.2 Parameters related to the land surface process

Surface albedo can be calculated based on the equation below (Zhang et al., 2004):

$$\alpha = \frac{\sum \text{USR}}{\sum \text{DSR}} \quad (4)$$

where both USR and DSR are half-hour interval. This method to a certain degree can avoid the adverse influence of low albedo on the calculation of daily average solar radiation when the solar zenith angle is too low. Daily average albedo is the ratio between the upward and downward solar radiation at half-hour interval during the period from 6:00 to 18:00 LST.

Following the same approach used in Li (2015), Bowen ratio is calculated based on the ratio of H and LE. It is expressed as:

$$\beta = \frac{\sum H}{\sum LE} \quad (5)$$

H and L_E are sensible and latent heat fluxes at half-hour interval, respectively. Daily Bowen ratio is the ratio between the sum of sensible and latent heat fluxes at half-hour interval over the entire day. The ratio between sensible and latent heat fluxes at the same time is taken as the Bowen ratio at that same time.

Following the independent method proposed by Chen (1993), which determines z_{0m} using only the mean wind speed and turbulence measured by ultrasonic anemometer, we fit the non-dimensional wind speed ku / u_* to the stability parameter z / L in a double logarithmic coordinate and obtain the value of ku/u_* under neutral condition. It is then applied to wind profile equation under neutral condition and yields:

$$z_{0m} = (z - d) e^{-\frac{ku}{u_*}} \quad (6)$$

where u is the horizontal wind speed (m/s); k is the Von Karman constant, which is set to be 0.4 in this study (Prueger et al., 2004); z is the height of the instrument probe (m); d is the zero displacement, which is 2m at XL-suburb site, 0.4m at LS-grass site and 0.5m at LS-crop site. u^* is the friction velocity (m s^{-1}); z_{0m} is the aerodynamic roughness length. Liu (2015) verified this independent method using measurements from the semi-arid region in China.

5 3 Results and discussion

3.1 Differences in micro-meteorological elements

The year of 2013 is an extremely drought period in southern China, the precipitation decreased by more than 78% of the average amount in summer, breaking the historical record over the past 50 years (Yuan et al., 2016), especially in the mid- to lower reaches of Yangtze River Valley (Han and He, 2014). Fig. 2 shows the daily variations of air temperature, surface temperature, and relative humidity at the four field sites. Surface temperature is calculated based on measured upward and downward longwave radiation and the Stefan-Boltzmann law. Realistic daily changing trends of temperature and humidity are displayed for the four sites, and maximum values of air temperature and surface temperature both occur in August. The changing trend of relative humidity is similar to that of precipitation, and the relative humidity tends to reach saturate at stations where there is more precipitation and higher temperature. Fig.2 shows clearly that large differences in temperature and humidity between the four sites mainly appear at April and August, when precipitation is relatively small. The largest air temperature difference of 3.21°C is found between DX-urban and LS-crop sites at the beginning of August, and the largest surface temperature difference is 7.26°C. The largest relative humidity difference is 22.79%. Apparently, even in the same climate background, there exist significant differences in micro-meteorological elements between various surface types. Such differences are more distinct when there is no precipitation or precipitation is relatively small. Generally, surface temperature increases when vegetation cover fraction decreases except in the farmland, which is affected by irrigation. This is consistent with findings from some experiments in mid-latitudes of North America (Lee X. et al., 2011; Li et al., 2015). Table 2 clearly indicates that, except that the minimum summer temperature is found at XL-suburb site, extremely high/low values of seasonal average air temperature, surface temperature, and relative humidity all occur at either LS-crop site or DX-urban site, which are the two sites that are most affected by human activities.

Fig. 3a and 3b suggest that the diurnal variations of both air temperature and surface temperature exhibit single-peak feature in the spring and summer. The minimum value occurs at 7:00 LST in the morning and the maximum value occurs in the afternoon. The variation of air temperature lags that of surface temperature. The peak time of both air and surface temperature in spring lags that in summer. Except for the LS-crop site, surface temperature is higher than air temperature in all the other three sites. Nighttime air temperature and surface temperature at the DX-urban site is higher than that in other sites by nearly 2°C due to the urban heat island effects. But UHI is not typical in daytime, the extreme drought weakens this

UHI and even makes the peak temperature at suburb site and grass site higher than urban site. Natural drought may not have a large effect at urban site or crop site because of human activities like watering or irrigation, but at grass site and suburb site, the evaporation cooling is decrease distinctly. Comparing the land surfaces that have vegetation cover, the grass height is low at the XL-suburb site and the peak surface temperature variation is large with the largest temperature up to 37.61°C. The peak surface temperature remains low at the LS-crop site due to irrigation, and even lower than the daily maximum air temperature in the summer. The peak surface temperature at the LS-crop site is only 32.4°C.

Due to the difference of radiation budget on land surface between daytime and nighttime, diurnal surface temperature range is larger than the diurnal range of air temperature. Comparing the diurnal temperature ranges at the four sites, it is found that the diurnal air temperature and surface temperature ranges are 4.79°C and 9.26°C in the spring, respectively, which are relatively small. In the summer, the LS-crop site is covered by water due to irrigation and the diurnal surface temperature range is only 7.77°C, which is the minimum among all the four sites. The diurnal air temperature range is 6.86°C at LS-grass site in the summer, and the range is relatively large among all the sites. Meanwhile, the diurnal surface temperature range at XL-suburb site is 12.46°C in the summer, the largest among the four sites. Despite the large diurnal surface temperature range at XL-suburb site, air temperature and diurnal air temperature range are not that large. This is because the afforest woodlands surrounding the XL-suburb site promotes the heat flux exchange between the surface and atmosphere.

Fig. 3c shows that the relative humidity is always larger in the summer than in the spring. Daily maximum relative humidity occurs at around 7:00 am in the morning, and the minimum value occurs at 16:00 in the afternoon. The occurrence of the maximum and minimum values in the spring lags that in the summer. The maximum value is found at LS-crop, with the summer average maximum value of 90.34%. The smallest relative humidity is found at the DX-urban site, where the maximum summer average humidity is only 58.72%. The diurnal relative humidity range at the four sites is larger in the spring than in the summer, and the largest value is found at LS-crop site in the spring and at LS-grass in the summer with the value of 39.03% and 27.36% respectively. The diurnal relative humidity range is the smallest at the DX-urban site, which is 23.29% in the spring and 20.40% in the summer. Fig. 3 clearly indicates that different surface types can lead to differences in surface temperature and impose significant impacts on micro-meteorological elements such as air temperature and relative humidity (Krishnan et al., 2012; Luyssaert et al., 2014).

3.2 Surface net radiation and energy distribution

3.2.1 Distribution of net radiation

Fig. 4 displays the daily variation of the four components of surface radiation flux. DSR is mainly affected by clouds and aerosols in the atmosphere. In the monsoon region of the mid- to lower reaches of Yangtze River Valley, the cloudy and

rainy weather is dominant during the period of May to July, leading to lower shortwave radiation despite the higher solar zenith angle. Under the same climate background, DSR and DLR are similar at the four sites. However, large differences are found in USR and ULR at the four sites. This is because USR is related to surface albedo while ULR is associated with surface temperature. Daily maximum values of USR and ULR both occur in early August. The maximum value of USR are 48.67、55.29、35.80 and 52.19Wm⁻² at the LS-grass, LS-crop, DX-urban, and XL-suburb sites respectively. The maximum value of ULR at the sour sites are 515.22、492.78、529.59 and 518.81W m⁻² respectively.

USR changes following the changes in DSR and surface albedo. Variability of monthly average USR (Fig.5b) is similar to that of DSR (Fig. 5a), and both are the smallest at the DX-urban site. However, compared to that in other sites, the USR at the LS-crop decreases rapidly since May and reaches its minimum of 14.87 Wm⁻² at the end of June. This is because of the albedo decrease at the LS-crop site, which is caused by straw burning at the end of May after the winter wheat harvest. Rice starts growing since late June, and the USR at LS-crop site becomes similar to that at other sites by August. The ULR remains largest at the DX-urban site and smallest at LS-crop site, which is attributed to the increases in vegetation cover fraction from May to August and irrigation at the LS-crop site. The difference in ULR between the DX-urban and LS-crop can be up to 26.9 W m⁻² in August.

With the same weather and climate background, there are no significant differences in DSR and DLR among the four sites, despite their distinct seasonal differences. The maximum daily DSR are around 550 W m⁻² and 600W m⁻² in the spring and summer respectively, and the maximum daily DLR are about 370 W m⁻² and 450 W m⁻² in the spring and summer respectively. Fig. 6c shows that the maximum daily average USR at XL-suburb, LS-grass and DX-urban grows to 90.35、84.79、59.49 W m⁻² in the summer. Unlike these three sites, USR at crop site decreases by 16.98 Wm⁻² form spring to summer due to the continuous lower albedo from June to early July. The diurnal variation of ULR (Fig. 6d) depends on diurnal variation of surface temperature (Fig.2b). The largest ULR occurs at XL-suburb site in the daytime and at DX-urban site in the nighttime. The maximum ULR and diurnal ULR range both are the smallest at the LS-crop site due to irrigation.

3.2.2 Surface energy distribution

The land-atmosphere energy exchange is the driving force for the local climate and is under great influence of climate change (Reale and Dirmeyer, 2000;Li et al., 2009). Fig. 7 shows daily variation of net radiation (R_n), sensible heat flux (H), and latent heat flux (LE). R_n and DSR have the similar changing trends and both are small during the monsoon precipitation period. The average R_n during the growing season is different over different surface types, and the values are 126.55, 118.40, 112.58, 105.08W m⁻² at the LS-crop, LS-grass, XL-suburb, and DX-urban sites respectively. The average value of H during the growing season are 4.62, 39.99, 26.13, 53.48 W m⁻² respectively at the four sites, while LE are 74.11, 53.59, 59.73, and 34.45 W m⁻² respectively. The above results suggest that under the same large scale forcing, there exist distinct differences in

radiation and turbulent fluxes over different surface types. Such kinds of differences are the largest between LS-crop and DX-urban sites, where human activities are the most intensive among the four sites. During the non-precipitation period, differences in R_n and H are large in July and August, with absolute value of differences up to 79.88 and 166.56 $W m^{-2}$ respectively. At the beginning of April, with little precipitation and insufficient soil moisture content, irrigation at the LS-crop site leads to the LE difference to be up to 107.87 $W m^{-2}$. The above differences are largely caused by the difference in vegetation cover at the surface and associated with the growth of vegetation and accompanied water cost.

Monthly average R_n reaches the largest in July and the value at LS-crop is 170.37 $W m^{-2}$. Since the rainy season starts, the proportion of LE in R_n gradually increases. Although the monthly variation of R_n are similar at the four sites (Fig. 8a), there exist large differences in sensible and latent heat flux (Fig. 8b, 8c). H is smallest at the LS-crop. Rice planting starts in mid June and the surface is covered by water. Negative sensible heat flux occurs in July and August at the LS-crop site. The difference in sensible heat flux between the LS-crop and DX-urban sites is 44.86 $W m^{-2}$. The change of LE is opposite to that of H . LE reaches the largest in July and August with the value greater than 95 $W m^{-2}$. LE is 55.68 $W m^{-2}$ larger at the LS-site than at the DX-urban site.

Fig. 9 depicts the seasonal average surface energy components. H accounts for a large proportion of R_n in the spring, with the value ascending from 25.60%, 47.65%, 60.92% to 75.45% at LS-crop, LS-grass, XL-suburb, and DX-urban sites. In the summer, accompanied with the rainy season, vegetation thrives and the ratio of LE/ R_n significantly increases. The values are 60.01%, 47.18%, 66.65% and 37.86% respectively at the four sites. Again effects of the woodlands surrounding the XL-suburb site are reflected in the measurements at XL-suburb. The negative sensible heat flux is attributed to the negative difference in air temperature and surface temperature (Table 1) at the LS-crop site.

Fig. 10 shows the diurnal variations of net radiation, sensible heat flux, and latent heat flux for the spring and summer at the four sites. R_n is negative at the nighttime and the maximum value occurs at around 14:00 in the daytime. The differences in peak value of R_n between the spring and summer are larger than 50 $W m^{-2}$ at all the four sites. Except for the DX-urban site, the difference in maximum H between the spring and summer is greater than 30 $W m^{-2}$ at the other three sites. The difference in the peak value of LE between the spring and summer is larger than 60 $W m^{-2}$. At the DX-urban site, H is always larger than LE in both the spring and summer. Fig. 10b shows clearly that the peak value of H is largest at the XL-suburb site in the spring, and at DX-urban site in the summer. The differences between these two sites and the LS-crop site are 92.53 and 162.21 $W m^{-2}$ respectively. The peak value of H is the smallest at the LS-crop site, and H can be negative during the entire day in the summer. This is because the LS-crop site is covered by water in the summer, and the large evaporation results in low surface temperature that is lower than air temperature (Lee et al., 2004). For both the spring and summer, the peak value of LE remains largest at the LS-crop site and smallest at the DX-urban site. The difference in LE between the two sites can be up to 138.46 $W m^{-2}$ in the spring and 156.46 $W m^{-2}$ in the summer. This result suggests that there exist distinct differences

in radiation and surface energy fluxes over different underlying surface types not only in the semiarid region (Wang et al, 2010; Li et al., 2015), but also in the monsoon region of mid- to lower reaches of Yangtze River valley.

3.3 Mechanism analysis

Changes in the surface characteristics are always accompanied by variations in the parameters involved in land surface process. Differences in characteristic parameters such as albedo, Bowen ratio, roughness length, etc affect radiation and energy distribution, which subsequently feedback to the atmosphere and affect micro-meteorology in the surface layer (Amiro et al., 2006; Lee et al., 2011).

3.3.1 Radiation and turbulent exchange coefficients

In land surface processes, albedo is a basic parameter that affects net radiation in the surface (Li et al., 2015; Krishnan et al., 2012; Zhang et al., 2014). Daily variations of albedo at three sites with vegetation (Fig.11a) show that albedo decreases with the growing of vegetation from March to mid May, and keeps stable in June, then slightly increases until August because of lacking precipitation. The rapid decrease is found in the LS-crop site with the largest daily decrease of 0.13. At the beginning of June, albedo decreases to less than 0.09 due to the straw burning and later remains less than 0.1 due to irrigation. Since mid July, the albedo at the LS-crop site gradually increases to 0.15 accompanied with the growing of rice, and becomes close to that at DX-urban and XL-suburb sites. At DX-urban site, there is no large daily variation of albedo, which remains at around 0.13. Besides, there exists a high correlation between albedo and precipitation for DX-urban and LS-crop sites but not LS-grass or XL-suburb. The roof is watertight in the city and the soil with sparse vegetation cover has high soil wetness in cropland. After precipitation, the waterlogging both occurs at these two sites, which cause the high albedo in a short time.

The difference in albedo determines the daily USR variation at the four sites (Fig. 4b). Fig. 12 shows that except for XL-suburb site, the albedo at the other three sites decrease from spring to summer. At the XL-suburb site, possibly because of insufficient precipitation after mid July, the summer albedo increases and becomes slightly larger than that in the spring. But at grassland, the albedo decreases largely in the green-up phrase, which results in the lower albedo in summer. And the dramatic decrease of surface albedo in early June is associated with the biomass burning due to the cultivation system in this region, i.e., a rotation of wheat in winter and rice in summer. Even with the influence of irrigation and albedo increase, however, the radiative forcing still leads to the increase of surface temperature. In the boreal region, however, model studies and field experiments both have revealed that (Defries et al., 2002; Lee et al., 2011) degradation of vegetation represented by deforestation could lead to lower surface temperature. This is quite different from the situation in temperate and tropical regions. Thereby, the warming and cooling trends might be different over regions with different surface types and

background climate, which makes it important to conduct mechanism study for the impact of different land cover types on local temperature.

Bowen ratio is the measure of surface energy distribution. It reflects the dry and wet condition of the surface to a certain degree (Li et al., 2015; Wang et al., 2010). The daily variation of the Bowen ratio (Fig. 11b) indicates that large variation occurs in the spring and there exist distinct differences between the four sites. The difference between the DX-urban and LS-crop sites is larger than 10 at the beginning of March. The differences between the four sites and the variation at each site both decrease during the rainy season. Except for the DX-urban site, Bowen ratio is smaller than 1.0 since early May at all the other three sites and LE becomes dominant. Considering the surface types at the four sites, it is found that daily variation of Bowen ratio is small (stable) at the surface with large vegetation cover fraction and high soil moisture content, which is more capable of adjusting the heat and water balance. This result is consistent to that for the semiarid region (Hu et al., 2009). Fig. 12b suggests that with more precipitation and large vegetation cover fraction in the summer, the Bowen ratio is much smaller in the summer than in the spring. Comparing the Bowen ratio at the four sites, the largest value is found at the DX-urban site while the smallest is at the LS-crop site for both the spring and summer. The negative sensible heat flux at the LS-crop site in the summer makes the Bowen ratio to be less than zero. At the XL-suburb site, H/LE further decreases due to the effects of woodlands nearby, while LE/R_n further increases and accounts for a larger proportion in the energy distribution (Fig. 9b).

Generally speaking, LE accounts for a large proportion of R_n at sites where Bowen ratio is small. The relative humidity is affected by temperature and water vapor content, which is basically shown in the mid- to lower reaches of Yangtze River Valley, but relative humidity would not be entirely analyzed without considering the influence of advection because of data limitation.

3.3.2 Surface roughness length at different surface types

Surface roughness length is an important ecological and land surface parameter. The spring-summer average roughness length at the DX-urban site calculated based on the shape of the surface roughness elements is 2.82m, which has no distinct seasonal variation. Monthly variations of surface roughness length at the other three sites are shown in Fig. 13, which shows that the roughness length basically increases with the month from May to August. The differences in roughness length between the four sites are largely caused by the differences in vegetation cover, which are rice, grass, and lawn at the LS-crop, LS-grass, and XL-suburb sites. The average roughness lengths of the growing season are 0.02m, 0.05m, and 0.17m respectively at these three sites. Apparently the roughness length at the XL-suburb site more reflects the characteristics of the woodlands nearby. The roughness length decreases slightly in July at XL-suburb and LS-grass sites due to insufficient precipitation. In early June after the harvest of winter wheat, the roughness length at the LS-crop is less than 0.01m, but it gradually increases later with the growth of rice.

Fig. 14 shows that from the spring to summer, the increase in roughness length at the XL-suburb site is much larger than that at the LS-grass site, and the differences between the spring and summer at the two sites are 0.045m and 0.007m respectively. This is attributed to the differences in vegetation type and height. This result indicates that different land use type and roughness element height are responsible for the different roughness length at various time scales.

Comparing results at LS-grass and XL-suburb sites, both are covered by natural vegetation, it can be found that the vegetation with larger roughness length can promote stronger turbulent flux transfer and has a higher capability of temperature adjustment. This explains why average temperature and diurnal temperature range both are relatively small at XL-suburb site, despite the high surface temperature at this site (Fig. 3a). Sensitivity experiments of a numerical model study also demonstrated that the surface roughness length is one of the most sensitive factors for land-atmosphere exchange (Liu et al., 2015).

4 Conclusions and discussion

2013 is a typical dry and hot year. During the growing season in the mid- to lower reaches of Yangtze River Valley monsoon region, the four different surface types, i.e. urban surface, woodland, grassland, and cropland, can directly affect the surface radiation balance and land-atmosphere exchanges of heat, water vapor, and mass fluxes, and subsequently affect local climate. In the present study, we have revealed the differences in several physical parameters between the four typical surface types mentioned above during the study period and explored the mechanisms for the differences.

Daily variations of the micro-meteorological elements at the four sites are different due to different surface characteristics. The differences in micro-meteorological elements are more distinct during the dry and hot period. The differences between the DX-urban and LS-crop sites are the most significant. The largest differences in air temperature, surface temperature, and relative humidity between the two sites are 3.21°C, 7.26°C, and 22.79% respectively. Compared with natural vegetation cover (LS-grass and XL-suburb sites), albedo at urban surface is smaller and thus the radiative forcing is stronger, leading to higher surface temperature. However, insufficient moisture content makes the Bowen ratio large. Hence the surface heat is transferred to the atmosphere mainly in the form of sensible heat flux, and air temperature is high while relative humidity is small. Meanwhile, the urban heat island effect results in higher surface T_a and T_s in the nighttime at the DX-urban site that is 2°C higher than at other sites, and the diurnal temperature range is small. At Lishui county, the crops were not stressed by lack of moisture or high temperatures during the growing period due to irrigation, so latent heat flux dominates the land-atmosphere heat flux exchange. Surface temperature and air temperature both are relatively low while the relative humidity is relatively large due to large evaporation at the surface. Surface albedo reaches its smallest value in June because of wheat harvest and straw burning at this time. Daily variation of USR increases under the influence of albedo. For both spring and

summer, the peak value of diurnal variation of surface temperature and diurnal temperature range are the smallest at the DS-crop site, mainly because the sufficient soil moisture content at this site acts to lower the surface temperature. Negative sensible heat flux is found at this site in the summer due to the large evaporation. Compared with the situation over surface types with natural vegetation cover, peak value in the diurnal variation of surface temperature and its diurnal range both are large at the XL-suburb site, where vegetation cover fraction is low. However, the woodland nearby the XL-suburb promotes turbulent exchange and heat flux transfer, leading to lower air temperature and its diurnal range. From the spring to summer, latent heat flux becomes dominant with the increase of albedo, and the Bowen ratio gradually decreases to less than 1. Diurnal ranges of air temperature, surface temperature, and relative humidity all gradually decrease.

Under the same climate background, changes in surface albedo result in changes in the radiative forcing. The Bowen ratio change caused by the surface energy distribution and the aerodynamic resistance change related to surface roughness length jointly determine the differences in surface temperature, air temperature, and relative humidity between different land surface types with various vegetation cover. The monsoon precipitation and land use changes by human activities makes the land-atmosphere interaction more complicated. Compared with the situation at sites with natural vegetation cover, air temperature at the XL-suburb site is smaller than that at the LS-grass site, whereas the surface temperature is higher than that at the LS-grass site. Such a inconsistency is caused by the complexity in the surface characteristics. The present study has investigated the features and mechanisms of land-atmosphere interaction over four different surface types. However, contributions of various land surface parameters to micro-meteorological elements are different, and further quantitative analysis of the contribution of each individual parameter is necessary.

Acknowledgements

This research is jointly sponsored by Natural Science Foundation of China (Grant No. 41475063, 91544231), the National Science and Technology Support Program (2014BAC22B04), and Program for New Century Excellent Talents in University. This work is also supported by the Jiangsu Collaborative Innovation Center for Climate Change.

References

- Amiro, B. D., Barr, A. G., Black, T.A., Iwashita, H., Kljun, N., McCaughey, J. H., Morgenstern, K., Murayama, S., Nesic, Z., Orchansky, A. L., Saigusa, N.: Carbon, energy and water fluxes at mature and disturbed forest sites, Saskatchewan, Canada, *Agr. Forest. Meteorol.*, 136, 237–251, [doi: 10.1016/j.agrformet.2004.11.012](https://doi.org/10.1016/j.agrformet.2004.11.012), 2006.
- 5 Alberto M.C.R., Wassmann R., Hirano T., Miyata A., Hatano R., Kumar A., Padre A., Amante M.: Comparisons of energy balance and evapotranspiration between flooded and aerobic rice fields in the Philippines, *Agric Water Manag.*, 98, 1417–1430, [doi: 10.1016/j.agwat.2011.04.011](https://doi.org/10.1016/j.agwat.2011.04.011), 2011.
- Alberto, M.C.R., Wassmann, R., Hirano, T., Miyata, A., Arvind, K., Padre, A., Amante, M.: CO₂/heat fluxes in rice fields: Comparative assessment of flooded and non-flooded fields in the Philippines, *Agric. Forest Meteorol.* 149, 1737–1750, [doi:10.1016/j.agrformet.2009.06.003](https://doi.org/10.1016/j.agrformet.2009.06.003), 2009.
- 10 Arnfield, A. J.: Two decades of urban climate research: A review of turbulence, exchanges of energy and water, and the urban heat island, *Int. J. Climatol.*, 23, 1–26, [doi:10.1002/joc.859](https://doi.org/10.1002/joc.859), 2003.
- Baldocchi D. D.: Biogeochemistry: Managing land and climate, *Nature Climate Change*, 4, 330–331, [doi:10.1038/nclimate2221](https://doi.org/10.1038/nclimate2221), 2014.
- 15 Baldocchi, D. D., and Ma, S.: How will land use affect air temperature in the surface boundary layer? Lessons learned from a comparative study on the energy balance of an oak savanna and annual grassland in California, USA, *Tellus B*, 65, 1999, [doi:10.3402/tellusb.v65i0.19994](https://doi.org/10.3402/tellusb.v65i0.19994), 2013.
- Baldocchi, D. D., Xu, L., Kiang N.: How plant functional-type, weather, seasonal drought, and soil physical properties alter water and energy fluxes of an oak–grass savanna and an annual grassland, *Agr. Forest. Meteorol.*, 123, 13–39, [doi: 10.1016/j.agrformet.2003.11.006](https://doi.org/10.1016/j.agrformet.2003.11.006), 2004.
- 20 Baldocchi, D. D., and Coauthors: FLUXNET: A new tool to study the temporal and spatial variability of ecosystem–scale carbon dioxide, water vapor, and energy flux densities, *Bull. Amer. Meteor. Soc.*, 82, 2415–2434, [doi: 10.1175/1520-0477\(2001\)082<2415:fantts>2.3.co;2](https://doi.org/10.1175/1520-0477(2001)082<2415:fantts>2.3.co;2), 2001.
- Baldocchi, D. D., and Rao, K. S.: Intra-field variability of scalar flux densities across a transition between a desert and an irrigated potato field, *Boundary-Layer Meteorology*, 76, 109–136, [doi: 10.1007/bf00710893](https://doi.org/10.1007/bf00710893), 1995.
- 25 Bi, X., Gao, Z., Deng, X., Wu, D., Liang, J., Zhang, H., Sparrow, M., Du, J., Li, F., and Tan, H.: Seasonal and diurnal variations in moisture, heat, and CO₂ fluxes over grassland in the tropical monsoon region of southern China, *J. Geophys. Res.*, 112, D10106, [doi: 10.1029/2006jd007889](https://doi.org/10.1029/2006jd007889), 2007.
- Bonan, G. B.: Forests and climate change: forcings, feedbacks, and the climate benefits from the forests, *Science* 320, 1444–1449, [doi: 10.1126/science.1155121](https://doi.org/10.1126/science.1155121), 2008.
- 30 Bounoua, L., DeFries, R., Collatz, G. J., Sellers, P., Khan, H.: Effects of land cover conversion on surface climate, *Clim. Change*, 52, 29, [doi: 10.1023/a:1013051420309](https://doi.org/10.1023/a:1013051420309), 2002.

- Brown, M., Black, T. A., Nesic, Z., et al.: Impact of mountain pine beetle on the net ecosystem production of lodgepole pine stands in British Columbia, *Agr. Forest. Meteorol.*, 150: 254–264, [doi: 10.1016/j.agrformet.2009.11.008](https://doi.org/10.1016/j.agrformet.2009.11.008), 2010.
- Burba, G. G., Verma, S. B., and Kim, J.: Surface energy fluxes of *Phragmites australis* in a prairie wetland, *Agr. Forest. Meteorol.*, 94,31–51, [doi: 10.1016/s0168-1923\(99\)00007-6](https://doi.org/10.1016/s0168-1923(99)00007-6), 1999.
- 5 Chen, J., Wang, J, and Mitsuta, Y.: An independent method to determine the surface roughness length (in Chinese), *Chinese J. Atmos. Sci.*, 17, 21–26, [doi: 10.1175/1520-0450\(2000\)039<0708:cosrla>2.0.CO;2](https://doi.org/10.1175/1520-0450(2000)039<0708:cosrla>2.0.CO;2), 1993.
- Chen, X., Su, Z., Ma, Y., Liu, S., Yu, Q. , Xu, Z.: Development of a 10-year (2001–2010) 0.1° data set of land-surface energy balance for mainland China, *Atmos. Chem. Phys.*, 14: 13097-13117, [doi: 10.5194/acp-14-13097-2014](https://doi.org/10.5194/acp-14-13097-2014), 2014.
- Coulter, R. L., Pekour, M. S., and Cook. D. R.: Surface energy and carbon dioxide fluxes above different vegetation types within ABLE, *Agr. Forest. Meteorol.*, 136, 147–158, [doi: 10.1016/j.agrformet.2004.11.011](https://doi.org/10.1016/j.agrformet.2004.11.011), 2006.
- 10 Davin, E. L., and De Noblet-Ducoudré, N.: Climatic impact of global-scale deforestation: radiative versus nonradiative processes, *J. Clim.* 23, 97–112, [doi: 10.1175/2009jcli3102.1](https://doi.org/10.1175/2009jcli3102.1), 2010.
- Defries, R. S., Bounoua, L., Collatz, G. J.: Human modification of the landscape and surface climate in the next fifty years, *Global Change Biology*, 8:438-458, [doi: 10.1046/j.1365-2486.2002.00483.x](https://doi.org/10.1046/j.1365-2486.2002.00483.x), 2002.
- 15 [Ding A J, Fu C B, Yang X Q, et al.: Intense atmospheric pollution modifies weather: a case of mixed biomass burning with fossil fuel combustion pollution in eastern China. *Atmospheric Chemistry & Physics*, 13\(20\):10545-10554, doi: 10.5194/acp-13-10545-2013, 2013.](https://doi.org/10.5194/acp-13-10545-2013)
- Feddema, J. J., Oleson, K. W., Bonan, G., Mearns, L. O., Buja, L. E., Meehl, G. A., Washington, W. M.: The importance of land-cover change in simulating future climates, *Science*, 310 , 1674–1678, [doi: 10.1126/science.1118160](https://doi.org/10.1126/science.1118160), 2005.
- 20 Feng, J. W., Liu, H. Z., Wang , L.: Seasonal and inter-annual variation of surface roughness length and bulk transfer coefficients in semiarid area, *Sci. China Earth Sci.*, 55, 254–261, [doi: 10.1007/s11430-011-4258-2](https://doi.org/10.1007/s11430-011-4258-2), 2012.
- Foken T, Gööckede M, Mauder M, et al. Post-Field Data Quality Control[M]// Handbook of micrometeorology: a guide for surface flux measurement and analysis. , 181-208, 2004:181-208.
- Fu, C. B., Yuan, H. L.: An virtual numerical experiment to understand the impacts of recovering natural vegetation on the summer climate and environmental conditions in East Asia, *Chinese Sci. Bull.* 46, 1199, [doi: 10.1007/bf02900602](https://doi.org/10.1007/bf02900602), 2001.
- 25 Gao, X. J., Luo, Y., Lin, W. T., Zhao, Z. C., Giorgi, F.: Simulation of effects of land use change on climate in China by a regional climate model, *Adv. Atmos. Sci.* 20,583, [doi: 10.1007/s11430-007-2060-y](https://doi.org/10.1007/s11430-007-2060-y), 2003.
- [Guan, X., Huang, J., Guo, N., Bi., J, and Wang, G.: Variability of soil moisture and its relationship with surface albedo and soil thermal parameters over the Loess Plateau, *Advances in Atmospheric Sciences*, 26 \(9\), 692-700, doi:10.1007/s00376-009-8198-0,2009.](https://doi.org/10.1007/s00376-009-8198-0)
- 30

- Harazono, Y., Kim, J., Miyata, A., Choi, T., Yun, J.I., and Kim, J.W.: Measurement of energy budget components during the International Rice Experiment (IREX) in Japan, *Hydrol. Processes*, 12, 2081–2092, [doi: 10.1002/\(sici\)1099-1085\(19981030\)12:13/14<2081::aid-hyp721>3.3.co;2-d](https://doi.org/10.1002/(sici)1099-1085(19981030)12:13/14<2081::aid-hyp721>3.3.co;2-d), 1998.
- 5 Hu, Z., Yu, G., Zhou, Y., et al.: Partitioning of evapotranspiration and its controls in four grassland ecosystems: application of a two-source model, *Agr. Forest. Meteorol.*, 149:1410–1420, [doi: 10.1016/j.agrformet.2009.03.014](https://doi.org/10.1016/j.agrformet.2009.03.014), 2009.
- [Huang J., Yu H., Guan X., Wang G. and Guo R.: Accelerated dryland expansion under climate change, *Nature Climate Change*, 1.6\(2\), 166-171, *Nature Clim. Change*, \[doi:10.1038/nclimate2837\]\(https://doi.org/10.1038/nclimate2837\), 2016.](https://doi.org/10.1038/nclimate2837)
- [Huang, J., Zhang, W., Zuo, J., Bi, J., Shi, J., Wang, X., Chang, Z., Huang, Z., Yang, S., Zhang, B., Wang, G., Feng, G., Yuan, J., Zhang, L., Zuo, H., Wang, S., Fu, C., and Chou, J.: An overview of the semi-arid climate and environment research observatory over the Loess Plateau, *Advances in Atmospheric Sciences*, 25 \(6\), 906-921, \[doi:10.1007/s00376-008-0906-7\]\(https://doi.org/10.1007/s00376-008-0906-7\), 2008.](https://doi.org/10.1007/s00376-008-0906-7)
- 10 Hsu, H.-H., and Liu, X.: Relationship between the Tibetan Plateau heating and East Asian summer monsoon rainfall, *Geophys. Res. Lett.*, 30, 2066, [doi:10.1029/2003gl017909](https://doi.org/10.1029/2003gl017909), 2003.
- Intergovernmental Panel on Climate Change: Climate Change 2013: The Physical Science Basis. Contribution of Working Group I to the Fifth Assessment Report of the Intergovernmental Panel on Climate Change [Stocker, T.F., D. Qin, G.-K. Plattner, M. Tignor, S.K. Allen, J. Boschung, A. Nauels, Y. Xia, V. Bex and P.M. Midgley (eds.)]. Cambridge University Press, Cambridge, United Kingdom and New York, NY, USA, 1535, 2013.
- 15 Jin, Y., Roy, P.D.: Fire-induced albedo change and its radiative forcing at the surface in northern Australia, *Geophys. Res. Lett.* 32, L13401, [doi: 10.1029/2005gl022822](https://doi.org/10.1029/2005gl022822), 2005.
- 20 Kalnay, E., Cai, M.: Impact of urbanization and land-use change on climate, *Nature*, 423, 528–531, [doi: 10.1038/nature01675](https://doi.org/10.1038/nature01675), 2003.
- Krishnan, P., Meyers, T. P., Scott, R. L., et al.: Energy exchange and evapotranspiration over two temperate semi-arid grasslands in North America, *Agr. Forest. Meteorol.*, 153, 31-44, [doi: 10.1016/j.agrformet.2011.09.017](https://doi.org/10.1016/j.agrformet.2011.09.017), 2012.
- Lawrence, P. J., Feddema, J. J., Bonan, G. B.: Simulating the biogeochemical and biogeophysical impacts of transient land cover change and wood harvest in the Community Climate System Model (CCSM4) from 1850 to 2100, *J. Clim.* 25, 3071–3095, [doi: 10.1175/jcli-d-11-00256.1](https://doi.org/10.1175/jcli-d-11-00256.1), 2012.
- 25 Lee, E., Barford, C., Kucharik, C., Felzer, B., and Foley, J.: Role of turbulent heat fluxes over land in the monsoon over East Asia, *Int. J. Geosci.*, 2, 420–431, [10.4236/ijg.2011.24046](https://doi.org/10.4236/ijg.2011.24046), [doi: 10.4236/ijg.2011.24046](https://doi.org/10.4236/ijg.2011.24046), 2011.
- Lee, X., Goulden, M. L., Hollinger, D. Y.: Observed increase in local cooling effect of deforestation at higher latitudes, *Nature*, 479, 384-387, [doi: 10.1038/nature10588](https://doi.org/10.1038/nature10588), 2011.
- 30 Lee, X., Qiang, Y., Sun, X., et al.: Micrometeorological fluxes under the influence of regional and local advection: a revisit, *Agr. Forest. Meteorol.*, 122, 111–124, [doi: 10.1016/j.agrformet.2003.02.001](https://doi.org/10.1016/j.agrformet.2003.02.001), 2004.

- Li, Y. J., Zhou, L., Xu, Z. Z., and Zhou, G. S.: Comparison of water vapor, heat and energy exchanges over agricultural and wetland ecosystems, *Hydrol. Processes*, 23, 2069–2080, [doi: 10.1002/hyp.7339](https://doi.org/10.1002/hyp.7339), 2009.
- Li, H. Y., Fu, C. B., Guo, W. D., Ma, F.: Study of energy partitioning and its feedback on the microclimate over different surfaces in an arid zone (in Chinese), *Acta Phys. Sin.*, 64, 059201, [doi: 10.7498/aps.64.059201](https://doi.org/10.7498/aps.64.059201), 2015.
- 5 Lin, W., Zhang, L., Du, D., Yang, L., Lin, H., Zhang, Y., and Li, J.: Quantification of land use/land cover changes in Pearl River Delta and its impact on regional climate in summer using numerical modeling, *Reg. Environ. Change*, 9, 75–82, [doi:10.1007/s10113-008-0057-5](https://doi.org/10.1007/s10113-008-0057-5), 2009.
- Liu, Y., Guo, W. D., Song, Y. M.: Estimation of key surface parameters in semi-arid region and their impacts on improvement of surface fluxes simulation, *Sci. China Earth Sci.* [doi: 10.1007/s11430-015-5140-4](https://doi.org/10.1007/s11430-015-5140-4), 2015.
- 10 Lohila, A., Minkinen, K., Laine, J.: Forestation of boreal peatlands: impacts of changing albedo and greenhouse gas fluxes on radiative forcing, *J. Geophys. Res.* 115, G04011, [doi: 10.1029/2010jg001327](https://doi.org/10.1029/2010jg001327), 2010.
- Luyssaert, S. et al.: Land management and land-cover change have impacts of similar magnitude on surface temperature, *Nature Clim. Change* 4, 389–393, [doi: 10.1038/nclimate2196](https://doi.org/10.1038/nclimate2196), 2014.
- Masseroni, D., Facchi, A., Romani, M., Chiaradia, E. A., Gharsallah, O., and Gandolfi, C.: Surface energy flux measurements in a flooded and an aerobic rice field using a single eddy-covariance system, *Paddy and Water Environment*, 13, 405–424, [doi: 10.1007/s10333-014-0460-0](https://doi.org/10.1007/s10333-014-0460-0), 2014
- 15 Montes-Helu, M. C., Kolb, T., Dore, S., Sullivan, B., Hart, S. C., Koch, G., Hungate, B. A.: Persistent effects of fire-induced vegetation change on energy partitioning and evapotranspiration in ponderosa pine forests, *Agr. Forest. Meteorol.*, 149, 491–500, [doi: 10.1016/j.agrformet.2008.09.011](https://doi.org/10.1016/j.agrformet.2008.09.011), 2009.
- 20 Moore, C. J.: Frequency response corrections for eddy correlation systems, *Boundary Layer Meteorol.*, 37, 17–35, [doi:10.1007/bf00122754](https://doi.org/10.1007/bf00122754), 1986.
- Mcalpine, C.A., Syktus, J., Ryan, J.G., Deo, R.C., Mckeen, G.M.: A continent under stress: interactions, feedbacks and risks associated with impact of modified land cover on Australia's climate, *Glob. Change Biol.*, 15, 2206, [doi: 10.1111/j.1365-2486.2009.01939.x](https://doi.org/10.1111/j.1365-2486.2009.01939.x), 2009.
- 25 Offerle, B., Grimmond, C., Fortuniak, K., and Pawlak, W.: Intraurban differences of surface energy fluxes in a central european city, *Journal of Applied Meteorology & Climatology*, 45, 125–136, [doi: 10.1175/jam2319.1](https://doi.org/10.1175/jam2319.1), 2006.
- Oke, T.R., Cleugh, H.A.: Urban heat storage derived as energy balance residuals, *Boundary layer Meteorology*, 39, 233–245, [doi: 10.1007/bf00116120](https://doi.org/10.1007/bf00116120), 1987.
- 30 Pielke, R. A., Marland, G., Betts, R. A., Chase, T. N., Eastman, J. L., Niles, J. O., Niyogi, D. D. S., Running, S. W.: The influence of land-use change and landscape dynamics on the climate system: relevance to climate-change policy beyond the radiative effect of greenhouse gases, *Philosophical Transactions A* 360, 1705, [doi: 10.1098/rsta.2002.1027](https://doi.org/10.1098/rsta.2002.1027), 2002.

- Pitman, A. J., Noblet-Ducoudre, N., Cruz, F. T. et al.: Uncertainties in climate responses to past land cover change: First results from the LUCID inter-comparison study, *Geophys. Res. Lett.*, 36, L14814, [doi:10.1029/2009gl039076](https://doi.org/10.1029/2009gl039076), 2009.
- Prueger, J. H., Kustas, W. P., Hipps, L. E., Hatfield, J. L.: Aerodynamic parameters and sensible heat flux estimates for a semi-arid ecosystem, *J Arid Environ.*, 57, 87-100, [doi: 10.1016/s0140-1963\(03\)00090-9](https://doi.org/10.1016/s0140-1963(03)00090-9), 2004.
- 5 Qiu, J.: Monsoon Melee, *Science*, 340, 1400–1401, doi:10.1126/science.340.6139.1400, 2013.
- Reale, O., Dirmeyer, P.: Modeling the effects of vegetation on Mediterranean climate during the Roman Classical Period. Part I: Climate history and model sensitivity, *Global & Planetary Change*, 25, 163-184, [doi: 10.1016/S0921-8181\(00\)00002-3](https://doi.org/10.1016/S0921-8181(00)00002-3), 2000.
- Sanderson, E. W., Jaiteh, M., Levy, M. A., Redford, K. H., Wannebo, A. V., Woolmer, G.: The human footprint and the last
10 of the wild, *Bioscience*, 52, 891–904, [doi: 10.1641/0006-3568\(2002\)052\[0891:thfatl\]2.0.co;2](https://doi.org/10.1641/0006-3568(2002)052[0891:thfatl]2.0.co;2), 2002.
- Suh, M.-S. and Lee, D.-K.: Impacts of land use/cover changes on surface climate over east Asia for extreme climate cases using RegCM2, *J. Geophys. Res.-Atmos.*, 109, D02108, doi:10.1029/2003jd003681, 2004.
- Wang, G.Y., Huang, J. P., Guo, W. D., Zuo, J. Q., Wang, J. M., Bi, J. R., Huang, Z. W., and Shi, J. S.: Observation analysis of land-atmosphere interactions over the Loess Plateau of northwest China, *J. Geophys. Res.*, 115, D00K17, [doi: 10.1029/2009jd013372](https://doi.org/10.1029/2009jd013372), 2010.
- 15 Wang, Q., and Eleuterio, D.P.: A comparison of bulk aerodynamic methods for calculating air-sea fluxes, paper presented at Ninth Conference on Mesoscale Processes, Am. Meteorol. Soc., Fort Lauderdale, Fla., 2001.
- Wang, S., Zhang, Q., Wei, G. A.: Analyses on Characters of Surface Radiation and Energy at Oasis-Desert Transition Zone in Dunhuang (in Chinese), *Plateau Meteorology*, 24, 556-562, [doi:1000-0534\(2005\)04-0556-07](https://doi.org/1000-0534(2005)04-0556-07), 2005.
- 20 Wang, Y., Sang, Y. Y., Zhang L. F.: Circulation anomaly of summer high temperature and drought in Zhejiang of 2013, *Journal of the Meteorological Sciences*, 35, 140-149, doi: 10.3969 /2014jms.0086, 2015.
- Werth, D., Avissar, R.: The local and global effects of Amazon deforestation, *J. Geophys. Res.*, 107, 8087, [doi: 10.1029/2001jd000717](https://doi.org/10.1029/2001jd000717), 2002.
- Wilczak, J. M., Oncley, S. P., and Stage, S.A., Sonic anemometer tilt correction algorithms, *Boundary Layer Meteorol.*, 99, 127–150, doi:10.1023/a:1018966204465, 2001.
- 25 Xue, Y., Juang, H.-M. H., Li, W., Prince, S., DeFries, R., Jiao, Y., and Vasic, R.: Role of land surface processes in monsoon development: East Asia and West Africa, *J. Geophys. Res.*, 109, [doi: 10.1029/2003jd003556](https://doi.org/10.1029/2003jd003556), 2004.
- [Yuan W, Cai W, Yang C, et al. Severe summer heatwave and drought strongly reduced carbon uptake in Southern China \[J\]. Scientific Reports, 6\(25\):87–90, doi: 10.1038/srep18813, 2016.](https://doi.org/10.1038/srep18813)
- 30 Han, X., He, L.: Analysis of Abnormal High Temperature Causes in the Summer of 2013, *Climate Change Research Letters*, 03:78-84, [doi: 10.12677/ccrl.2014.32012](https://doi.org/10.12677/ccrl.2014.32012), 2014.

- Zhang, C., Chen, F., Miao, S., Li, Q., Xia, X., and Xuan, C.: Impacts of urban expansion and future green planting on summer precipitation in the Beijing metropolitan area, *J. Geophys. Res.-Atmos.*,114, D02116, doi:10.1029/2008jd010328, 2009.
- 5 Zhang, M., Lee, X., Yu, G., et al.: Response of surface air temperature to small-scale land clearing across latitudes, *Environmental Research Letters*, 9:206-222, doi: [10.1088/1748-9326/9/3/034002](https://doi.org/10.1088/1748-9326/9/3/034002), 2014.
- Zhang, Q., Huang, R.: Water vapor exchange between soil and atmosphere over a Gobi surface near an oasis in the summer, *Journal of Applied Meteorology*, 43, 1917-1928, doi: [10.1175/jam2171.1](https://doi.org/10.1175/jam2171.1), 2004.
- Zhang, T. T., Wen, J., Wei, Z. G., Rogier, V., Li Z. C., Liu, R., Lv S. N., Chen H.: Land-atmospheric water and energy cycle of winter wheat, Loess Plateau, China, *Int. J.Clim.*,34, 3044-3053, doi: [10.1002/joc.3891](https://doi.org/10.1002/joc.3891), 2014.
- 10 Zhao, M., Pitman, A. J.: The relative impact of regional scale land cover change and increasing CO2 over China, *Adv. Atmos. Sci.* 22, 58–68, doi: [10.1007/bf02930870](https://doi.org/10.1007/bf02930870), 2005.
- Zhao, Q. F., Guo, W. D., Ling, X. L., Liu, Y., Wang, G. Y., Xie, J.: Analysis of evapotranspiration and water budget for various land use in semi-arid areas of Tongyu, China (in Chinese), *Climatic Environ. Res.* 18 415, doi: [10.3878/j.issn.1006-9585.2012.11203](https://doi.org/10.3878/j.issn.1006-9585.2012.11203), 2013.

15

Table 1. Instruments, measurement ranges, measurement heights, and instrument models.

Parameter/Variable Description	Name	Range	Measurement Height	Instrument
Wind speed sensor		0–45 m/s	2.0m	Met One, 014A-L
Humidity probe		0–100%	2.0m	Vaisala,HMP45C-L
Temperature probe		-45–60°C	2.0m	Vaisala, HMP45C-L
Barometric pressure sensor		600–1060 millibar	8.0m	Vaisala, CS105
Tipping bucket rain gage		0–15 mm	0.3m	TE525MM-L, R.M Young
Pyranometer (SW flux)		0–1200 W m ⁻²	1.5m	Kipp & Zonen, CM21
Pyrgeometer (LW flux)		0–700 W m ⁻²	1.5m	Kipp & Zonen, CG4
3-D Sonic anemometer			3.0m	Campbell, CSAT-3
Opened path infrared CO ₂ /H ₂ O analyzer			3.0m	Li-Cor, LI7500
Water content reflectometer		0–70 VV ⁻¹	5,10,20,40,80 cm	CAMPELL, CS616-L
Soil temperature profile		-50–70°C	2,5,10,20,50,80 cm	Hukseflux, STP01-L
Soil heat flux plate		-300–300 W m ⁻²	8 cm	Hukseflux, HFP01SC-L

Table 2. Seasonal averages of Air temperature, surface temperature, and relative humidity at the four sites.

Micro-meteorological element	Site name	LS-grass		LS-crop		DX-urban		XL-suburb	
		MAM	JJA	MAM	JJA	MAM	JJA	MAM	JJA
Average	Ta(°C)	17.29	29.85	16.44	29.02	17.50	29.92	16.53	28.64
	Ts(°C)	17.23	29.62	16.02	28.02	18.76	31.23	17.98	30.12
	RH(%)	69.51	76.60	71.41	78.53	60.88	68.61	63.44	73.54
Diurnal range	Ta(°C)	9.04	6.83	8.32	6.07	7.36	5.06	7.91	5.77
	Ts(°C)	14.51	11.67	12.22	7.77	10.64	9.26	16.19	12.46
	RH(%)	33.03	27.36	35.21	25.37	23.29	20.40	25.73	21.00

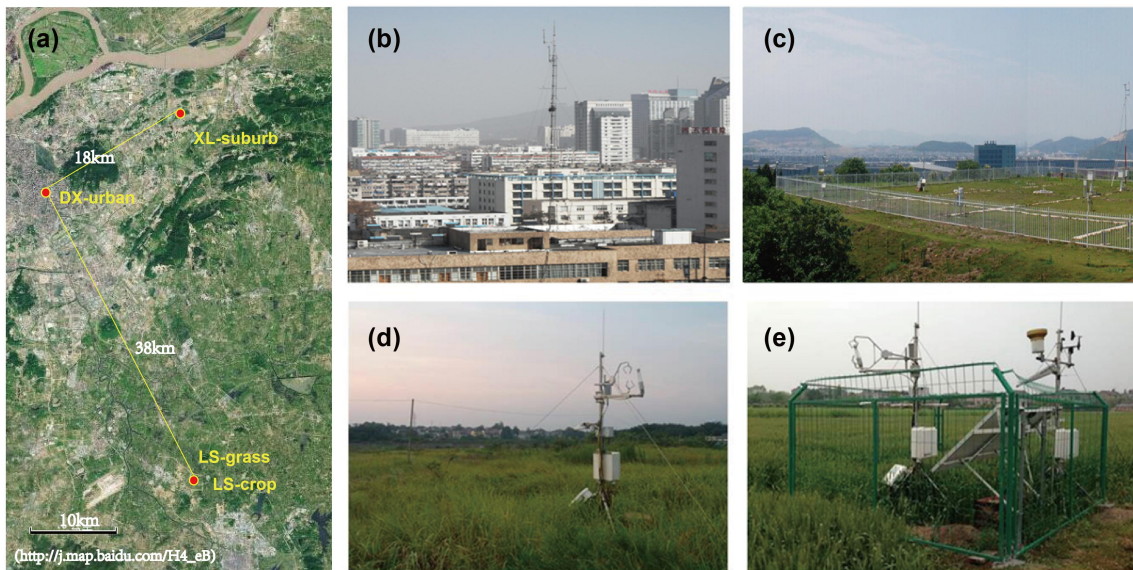


Figure 1. Location(a) and surface types of four field sites at (b) DX-urban, (c) XL-suburb, (d) LS-Grass and (e) LS-Crop in Nanjing.

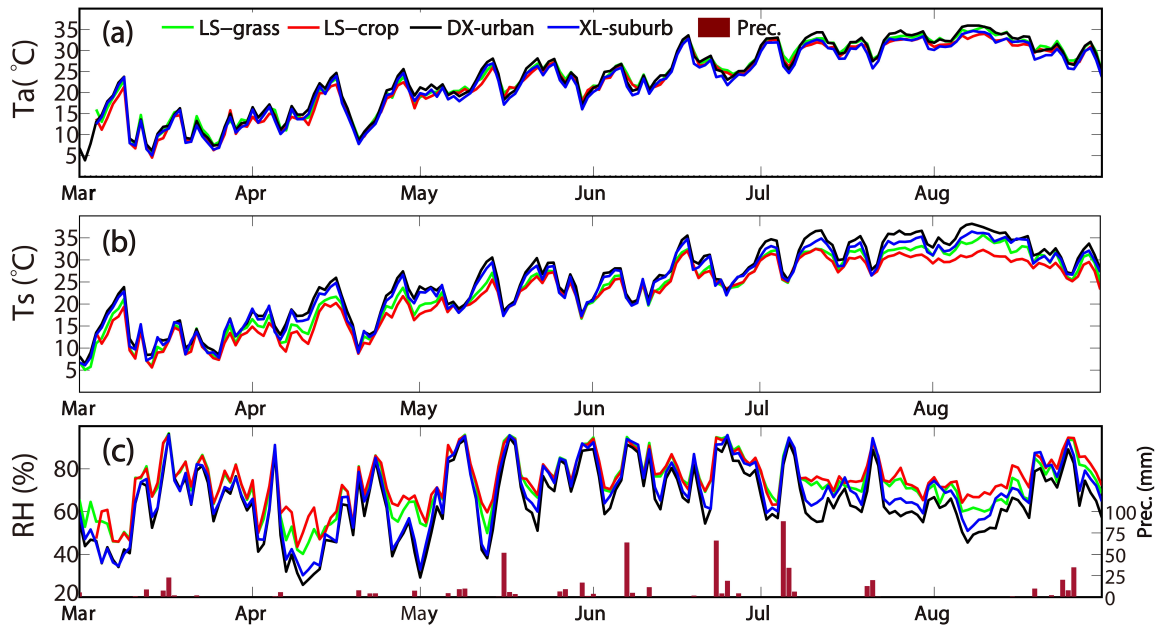


Figure 2. Daily variations of (a) air temperature, (b) surface temperature, and (c) relative humidity at the four sites in Nanjing from March to August, 2013.

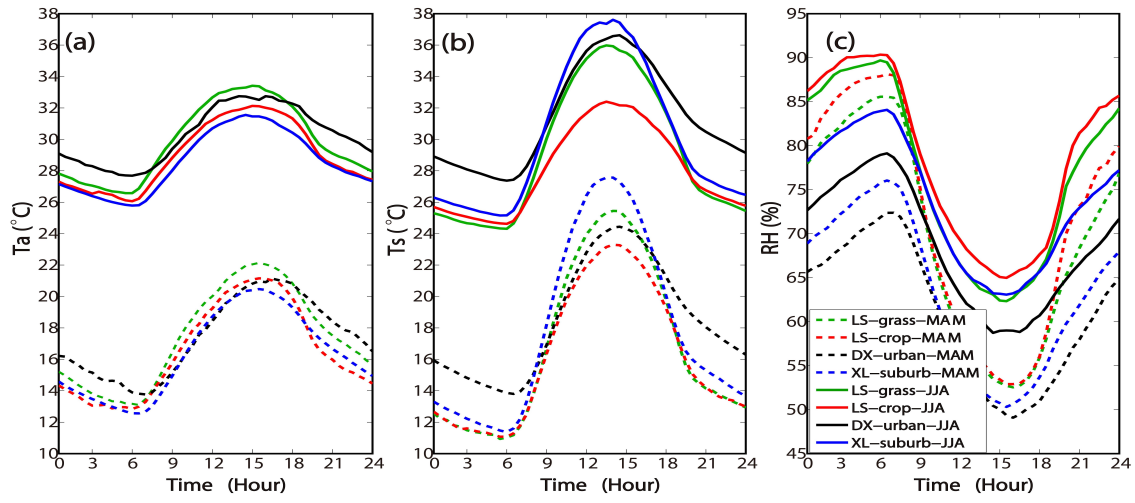


Figure 3. Diurnal variations of (a) air temperature, (b) surface temperature, and (c) relative humidity at the four sites in Nanjing in the spring and summer.

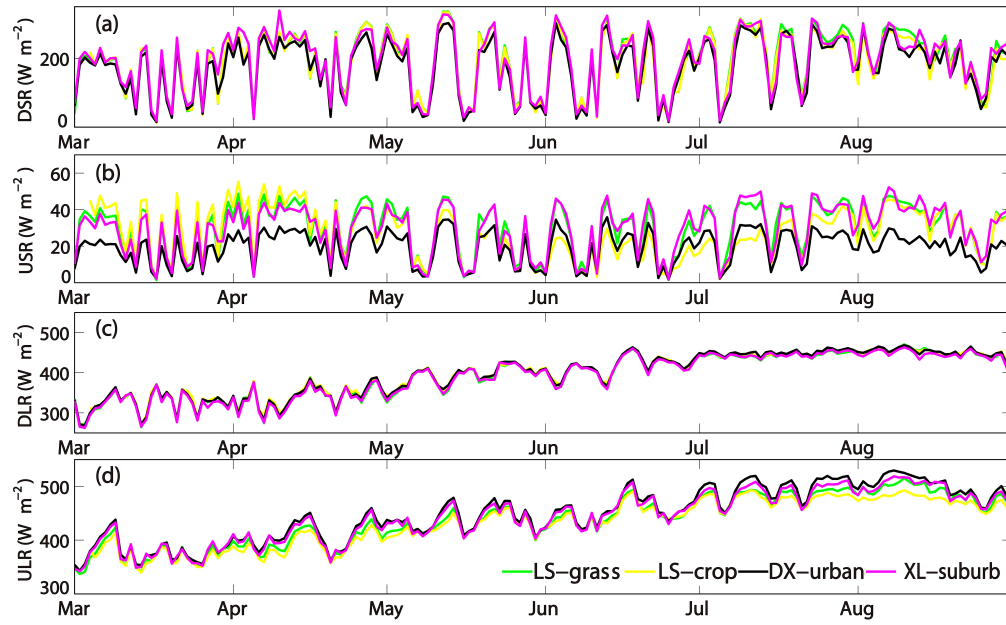


Figure 4. Daily variation of (a) downward shortwave radiation (DSR), (b) upward shortwave radiation (USR), (c) downward longwave radiation (DLR), and (d) upward longwave radiation (ULR) at the four sites in Nanjing.

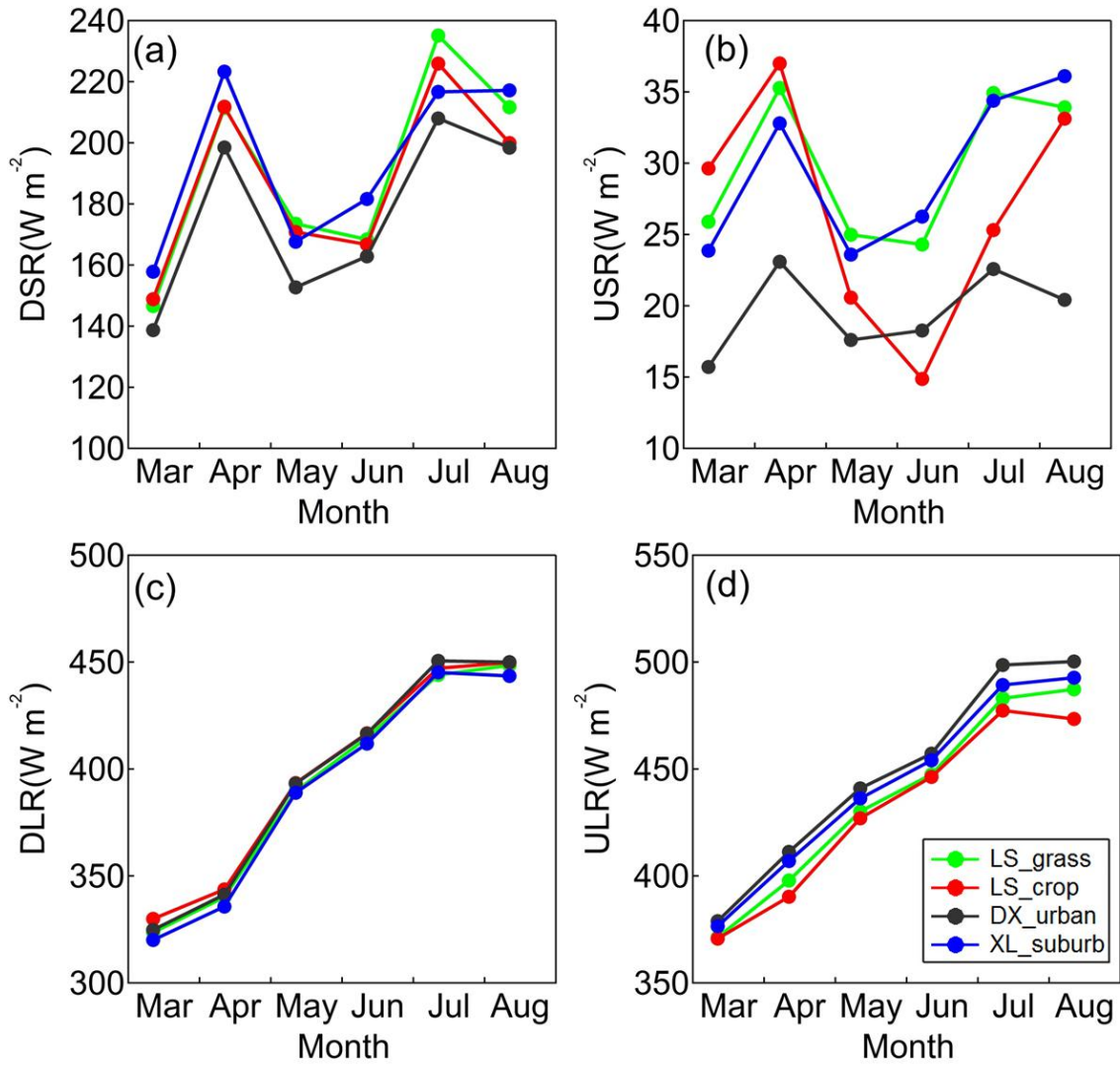


Figure 5. Monthly variation (a) downward shortwave radiation (DSR), (b) upward shortwave radiation (USR), (c) downward longwave radiation (DLR), and (d) upward longwave radiation (ULR) at the four sites in Nanjing.

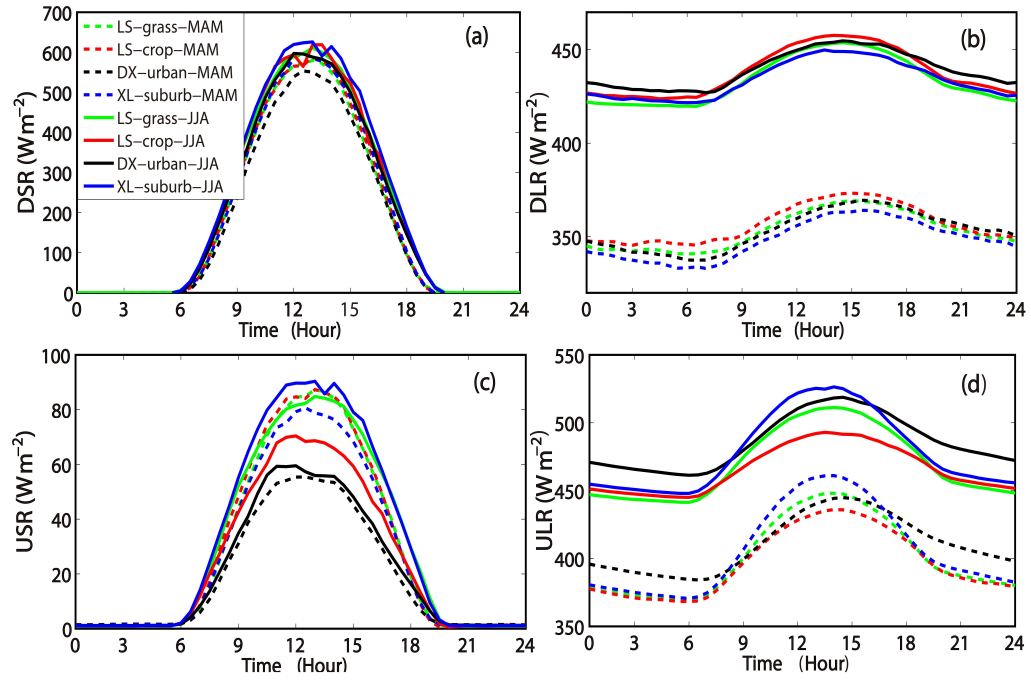


Figure 6. Diurnal variation of (a) downward shortwave radiation (DSR), (b) downward longwave radiation (DLR), (c) upward shortwave radiation (USR), and (d) upward longwave radiation (ULR) at the four sites in Nanjing.

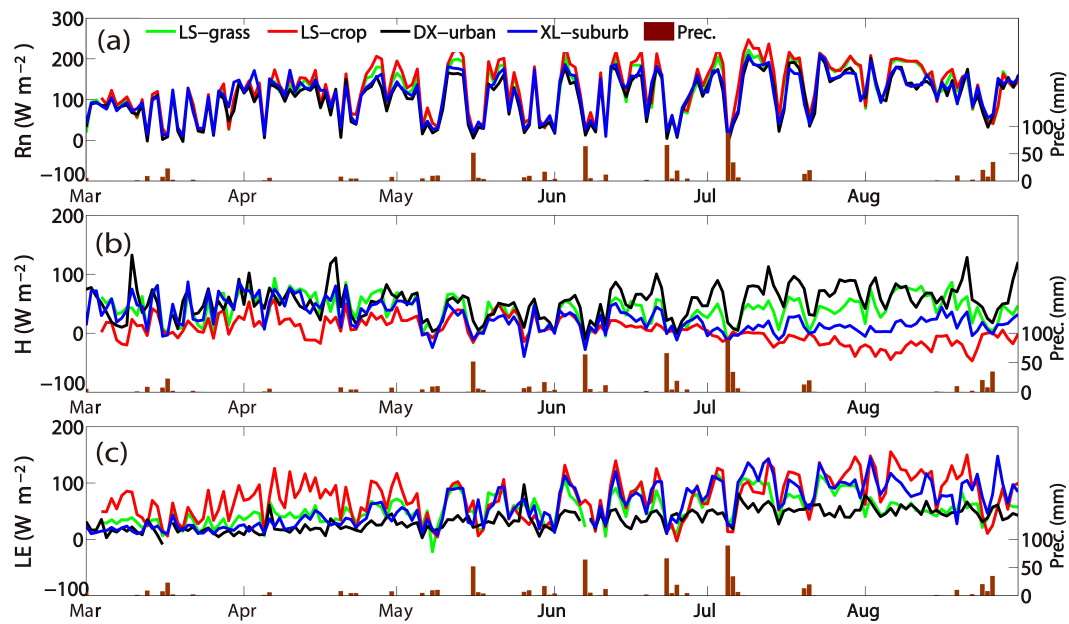


Figure 7. Daily variations of (a) net radiation, (b) sensible heat flux, (c) latent heat flux at the four sites in Nanjing from March to August, 2013.

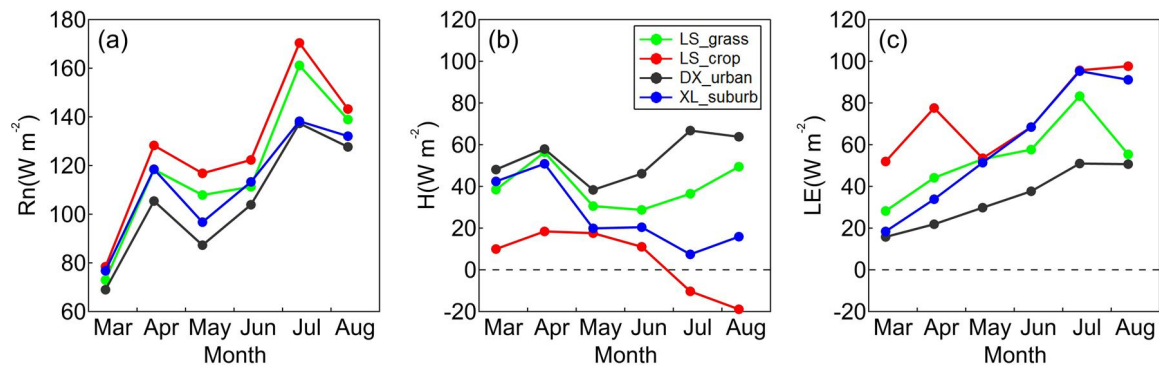


Figure 8. Monthly variation of (a) net radiation, (b) sensible heat flux, (c) latent heat flux at the four sites in Nanjing from March to August, 2013.

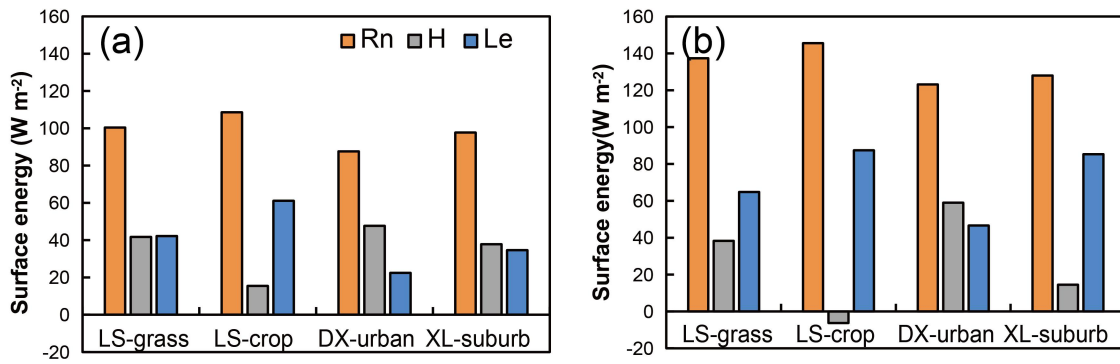


Figure 9. Seasonal average distribution of surface energy for the (a) spring and (b) summer at the four sites in Nanjing.

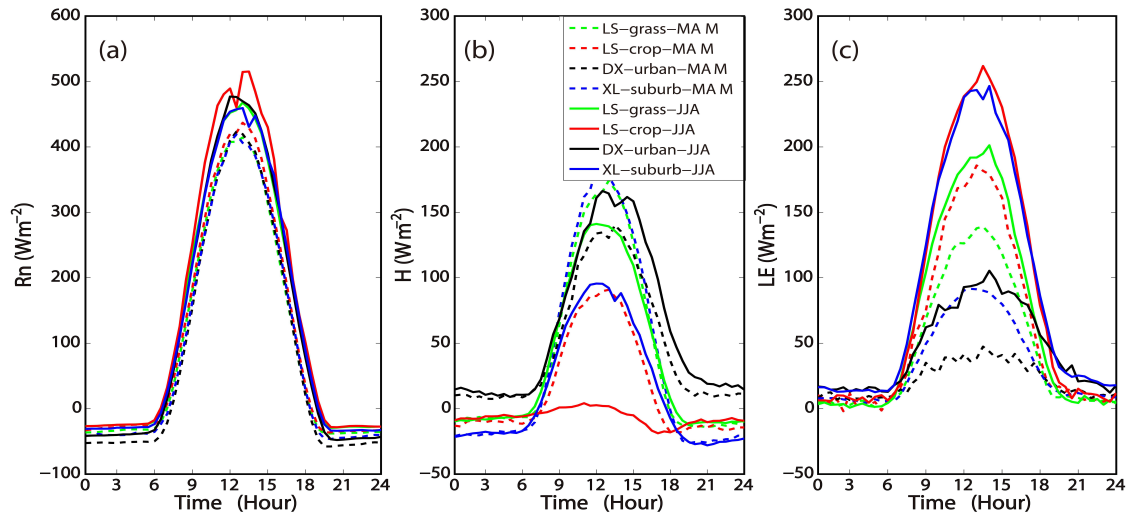


Figure 10. Diurnal variation of (a) net radiation, (b) sensible heat flux, (c) latent heat flux at the four sites in Nanjing from March to August, 2013.

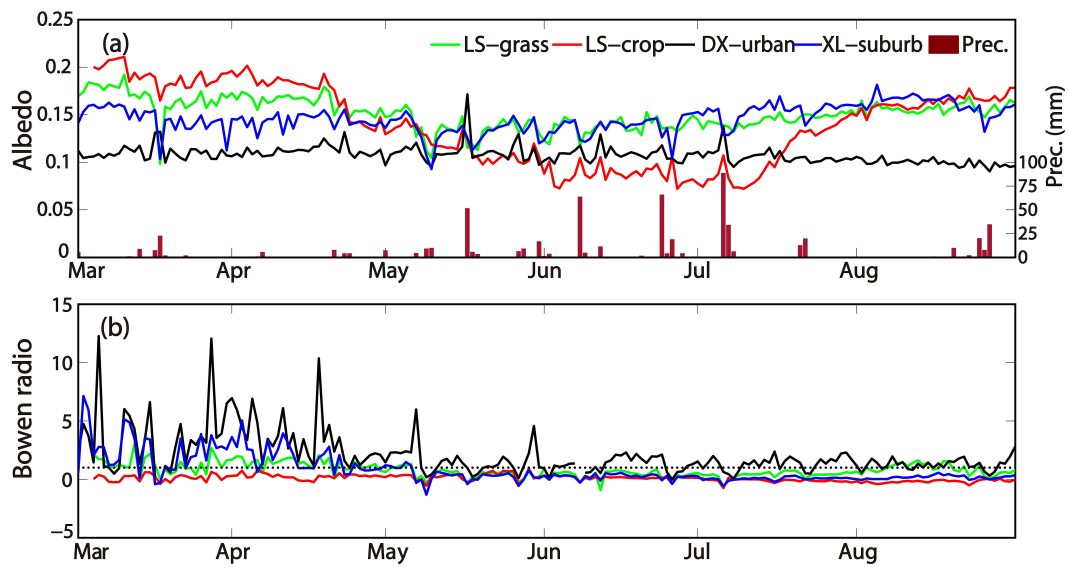


Figure 11. Daily variation of (a) albedo and (b) Bowen ratio at the four sites in Nanjing from March to August, 2013.

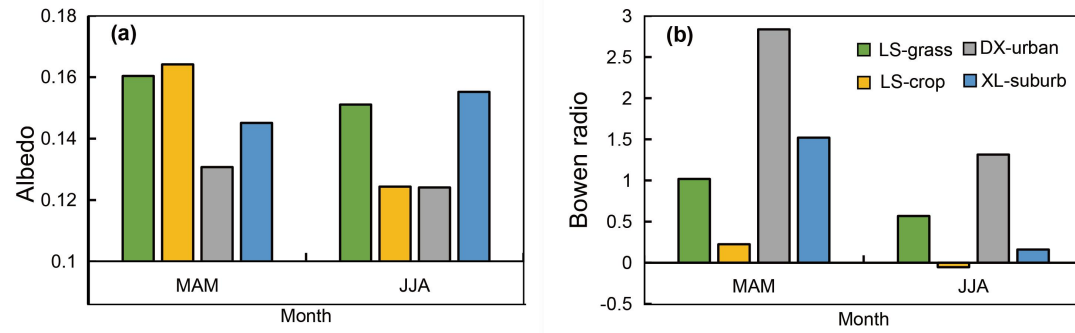


Figure 12. Seasonal averages of (a) albedo and (b) Bowen ratio for the spring and summer at the four sites in Nanjing.

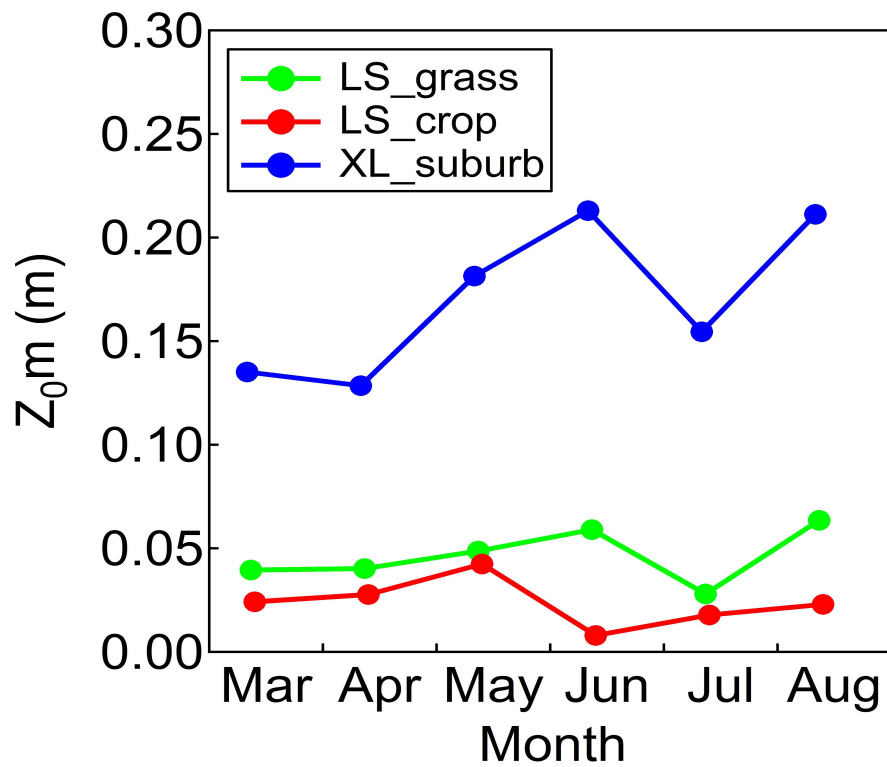


Figure 13. Monthly variations of surface roughness length at the three sites in Nanjing from March to August, 2013.

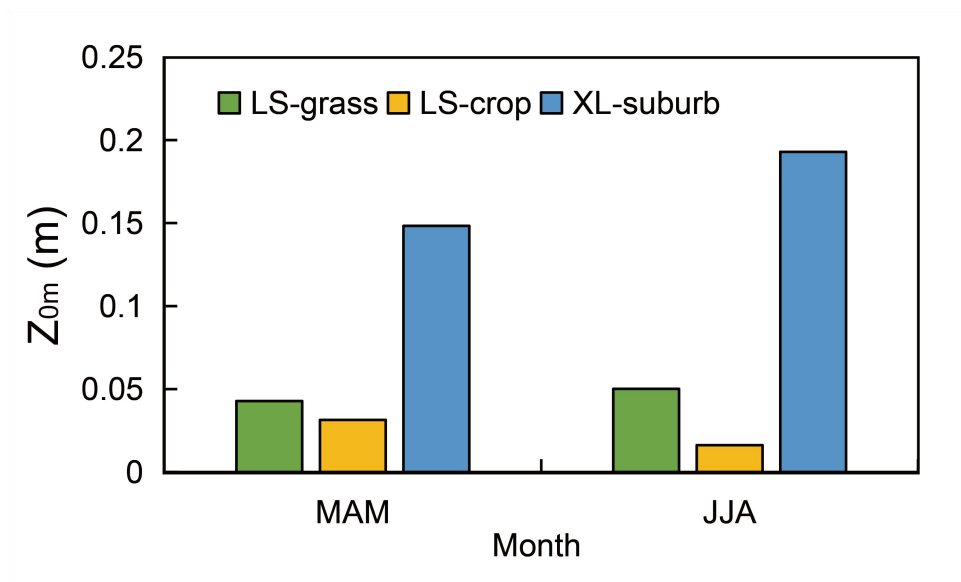


Figure 14. Seasonal averages of surface roughness length at the four sites in Nanjing for the spring and summer of 2013.