

We are herewith providing our replies with suitable answers to the comments raised by the reviewers. Our replies are highlighted in red colour font.

### **Anonymous Referee #1**

Received and published: 22 March 2016

This paper is very comprehensive and complete, even too lengthy at some points. It is also well written and I recommend it for publication as is. The only note is to check the name of O'Neill through the paper

We've checked that last name through the paper.

### **Anonymous Referee #2**

Received and published: 26 April 2016

The paper "Inventory of African desert dust events in the North-central Iberian peninsula in 2003-2014 based on sunphotometer-aeronet and particulate mass-emet data" by Cachorro et al., is an interesting paper dealing with a very timely and interesting topic: the dust presence over Southern Europe and its impact on PM measurements. There are some aspects however of the data analysis and discussion that should be improved for providing the readers with more robust results. My main comment is about the first criterion for selecting dust cases: a threshold on AOD. Firstly, the mean value of AOD is a mean for dust+ no dust cases, since cases including dust cases are within the dataset used for calculating the mean. Therefore the threshold mean + st dev selects by definition only extreme values, that at this stage could be dust or no dust cases. The same concept applies to the threshold on Angstrom exponent. There are many studies showing the occurrence of low dust AOD cases over Europe (example at network level Papayannis et al., 2008). Of course threshold criteria are always questionable but probably authors could improve the results considering seasonal threshold.

We have re-written the description of the methodology in order to avoid confusions or misleading. As the reviewer can see in the new description (see below), our method does not need a seasonal threshold since the visual inspection by human observers is daily performed. The established thresholds are assumed as "warning values" in order to more carefully analyze those days with possible presence of desert dust. Therefore, the final decision of considering a dusty day is carried out by a human observer taking into account all the information explained in the manuscript (AOD, PM<sub>10</sub>, air mass back-trajectories, satellite images, model forecast). This comprehensive method is difficult to apply in wider areas with many sites but this inventory can be considered as a reference for validation purposes.

So, our results are stable and they are not seasonal dependent. As we have mentioned in the new version of the manuscript, the thresholds are considered as "warning flags" and never are used alone in the DD identification. We have also identified desert dust intrusions showing a very low intensity with daily means of AOD and PM<sub>10</sub> notably smaller than the corresponding

thresholds (see Figures below). All the reported temporal trends are consistent and are attributed to a real decrease in the number of DD episodes as well as their contribution to aerosol load in the 2003-2014 period.

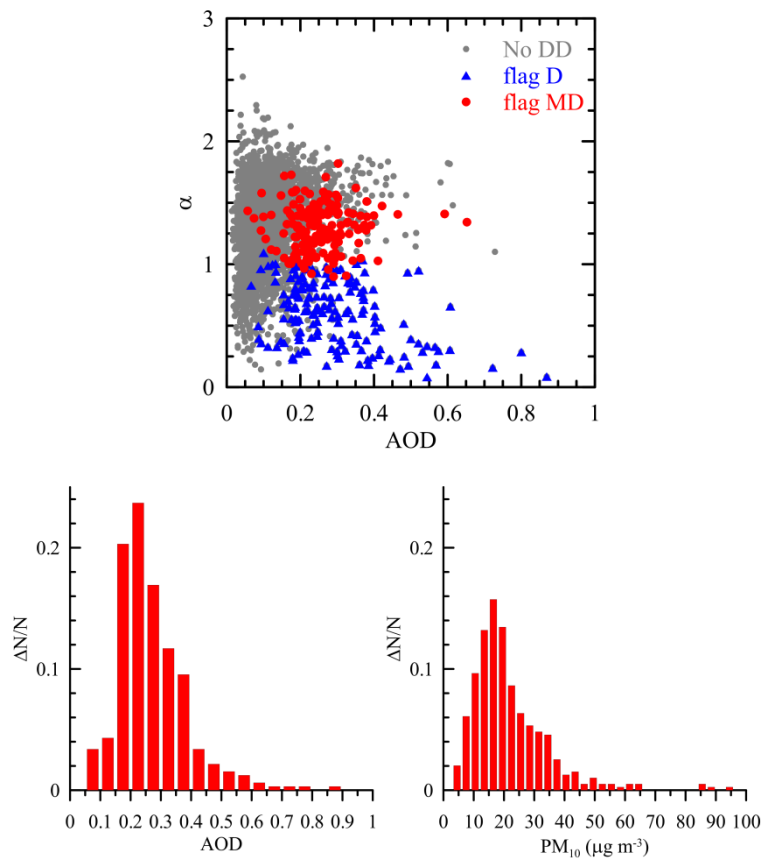
The text added is the following:

“Certain thresholds have been established in order to identify those conditions which are separated from the clean background over the study area. Hence, these choices are based on the aerosol climatology of the site from our investigations (Bennouna et al., 2014; Mateos et al., 2015) and previous results (see, e.g., Querol et al., 2009; 2014). The mean values for the long-term period 2003-2014 are  $0.13 \pm 0.09$  for  $AOD_{440nm}$  and  $10 \pm 9 \mu g m^{-3}$  for  $PM_{10}$ . In order to detect the DD intrusions over the study area, a visual inspection of the entire database is performed. When a day shows a group of the instantaneous  $AOD \geq 0.18$  and/or the daily  $PM_{10} \geq 13 \mu g m^{-3}$ , that day is carefully investigated. Hence, these thresholds must be taken as “warning flags” in the sense that these values alone do not define the classification as a dusty day. They also need the ancillary information given by the air mass backwards trajectories, satellite images, weather maps, and model forecasts in order to determine and corroborate the origin of aerosols and synoptic conditions. Therefore, with all this information the human observer decides if this day must be included or not in the DD inventory.

Simultaneously to the former analysis, the evolution of  $\alpha$  quantity is also checked, allowing the identification of two different types of DD intrusions. Those days displaying  $\alpha \leq 1.0$  in most of the instantaneous columnar data are identified as the “purer” desert dust intrusions and they are denoted by D flag. Those days with  $\alpha$  values in the interval  $1.0 \leq \alpha \leq 1.5$  (with the ensured presence of desert dust aerosols by the ancillary information) present a mixture with other types and they are denoted by MD (Mixed Desert) flag. The MD event days may either be a part of an intense event (generally of D type) or form by themselves a low-moderate intensity event. Previous studies have also stated that DD intrusions in the Mediterranean Basin can present moderate AOD associated with large  $\alpha$  values (e.g., Pace et al., 2006; Tafuro et al., 2006; Boselli et al., 2012). The limit of  $\alpha \leq 1$  for identifying coarse particles has been established by previous studies in different areas (e.g., Eck et al., 1999; 2010; Dubovik et al., 2002, Meloni et al., 2007; Boselli et al., 2012), making this threshold suitable for our study area. It is important to emphasize here that the  $\alpha$  parameter allows a more accurate identification of desert dust events, mainly those of low intensity with a less desert character (overall, the larger the AOD of a desert event, the lower the  $\alpha$ ) generally mixed with other aerosol types which are not accounted for in many DD studies (e.g., Gkikas et al., 2013). The DD events of low intensity are more difficult to detect and hence it is more difficult to evaluate their contribution or impact on AOD and  $PM_x$  daily values. In fact, the aerosol load threshold used in this study could seem very low, but we must note again here that all these quantities are manually supervised by the expert-observer who will take the final decision of the inclusion or not of a dusty day, having in mind all the available information given by these data and all the complementary material.”

About the threshold issue, the big question here is: the authors found a decreasing in the aod , i.e. this is a no stationary condition for this aerosol parameter and the threshold cannot be define in this way. The result here presented about the decreasing of dust cases is simply the consequence of the fixed threshold defined. The authors should consider the decreasing in AOD in the threshold application. Without taking into account the AOD trends results of the study would be compromised. My suggestion is defining a season by season threshold and reanalyzing data in view of this modification.

During the DD identification, the human observer bears in mind the seasonal evolution. A new paper dealing with the aerosol optical and microphysical characterization of DD events has been recently sent for publication as a part of this comprehensive DD aerosol study. In that paper we analyzed the intensity of the DD episodes in the inventory, the reviewer can see this quantity in the following  $\alpha$  vs AOD plot and the frequency histograms of AOD and PM10 values:



As it is mentioned in the text and it is shown in these figures, we have identified desert dust events with low intensity (daily values notably lower than the corresponding threshold). The use of both columnar and surface data provides a better indicator of the DD intrusions over our study area. Our method, of course, presents a certain uncertainty as all the DD inventories, but we present in the manuscript a reasonable evaluation of it.

As it is mentioned above, the trends in both dusty days and DD contribution are consistent and there are less DD event days which also show lower intensity at the ending of the analyzed period.

Minor comments are reported in the following.

Line 134: "PMx sampling is typically ... " there are many cases in which the PMx is provided with high temporal resolution

The reviewer is right, we've added: "The PMx sampling used here is based on daily records..."

Line 151: other papers combining columnar AOD and PMx measurements are available in literature, reviewing this paper I found very interesting the paper Boselli et al., Atm Env. which shows how cluster analysis in the aod/Angstrom space could be good for the dust identification with certain limit when this is compared to air mass analysis showing also that dust cases are very variable in AOD/Angstrom values.

We have added the mentioned reference since that study also reinforces the occurrence of mineral dust with low intensities and large Angstrom values.

Line 155: probably reliable is not the correct word here.

We have deleted 'reliable'

Line 222: Complete is here too much, sufficient, satisfying?

This sentence has been changed to: "The use of AOD440nm,  $\alpha$ , PM10, and PM2.5 observations provides a comprehensive database..."

Line 233: are 5 day backtrajectories sufficient? Iberian peninsula is not so far away from African, but however there could be longer paths carrying dust from the desert.

Following the study by Pace et al. (2006), the use of 3-day or 7-day trajectories does not significantly modify the average optical properties of each class with respect to the 5-day trajectories. Hence, we have assumed that 5-days can be an adequate time scale for the origin of air masses.

Line 279-281: include references for these values

Done. We have included references in the reviewed version.

Figure 4: this could be compared to AOD related just to dust layers as obtained by lidar observations available in literature

It is difficult to compare the AOD related to dust layers with the long-term DD contribution presented in Figure 4 since the quantities are not the same. The former gives an idea about the intensity, which is given in most of the case studies analyzed in literature. We have added previous studies using LIDAR database in the discussion of the annual cycles of dusty days in certain areas of the Iberian Peninsula and also in the Mediterranean Basin. Unfortunately, any LIDAR is available in the study area to perform a reliable comparison with the Sun photometer data. The closest LIDAR is placed in Madrid city, which could not be representative of the entire area because of the Central System landform. As we mentioned in the text (see Section 4.1.1), previous studies of DD inventories using surface aerosols in Madrid area have obtained a larger occurrence of DD outbreaks than the presented in our study.

# Inventory of African desert dust events in the North-central Iberian Peninsula in 2003-2014 based on Sun photometer-AERONET and particulate mass-EMEP data

Victoria E. Cachorro<sup>1\*</sup>, Maria A. Burgos<sup>1</sup>, David Mateos<sup>1</sup>, Carlos Toledano<sup>1</sup>, Yasmine Bennouna<sup>1</sup>,  
5 Benjamín Torres<sup>1</sup>, Ángel M. de Frutos<sup>1</sup>, and Álvaro Herguedas<sup>2</sup>

<sup>1</sup>Grupo de Óptica Atmosférica, Facultad de Ciencias, Universidad de Valladolid, Paseo Belén 7, CP 47011, Valladolid, Spain

<sup>2</sup>Departamento de Control de Calidad y Cambio Climático. Consejería de Fomento y Medio Ambiente de la Junta de Castilla y León, Valladolid, Spain.

10 *Correspondence to:* Victoria E. Cachorro (chiqui@goa.uva.es)

**Abstract.** A reliable identification of Desert Dust (DD) episodes over North-central Spain is carried out based on AErosol RObotic NETwork (AERONET) columnar aerosol sun-photometer (aerosol optical depth, AOD, and Ångström exponent,  $\alpha$ ) and European Monitoring and Evaluation Programme (EMEP) surface particulate mass concentration (PM<sub>x</sub>, x=10, 2.5, and 2.5-10  $\mu\text{m}$ ) as main core data. The impact of DD on background aerosol conditions is detectable by means of aerosol load  
15 thresholds and complementary information provided by HYSPLIT (Hybrid Single Particle Lagrangian Integrated Trajectory Model) air mass back-trajectories, MODIS (Moderate Resolution Imaging Spectroradiometer) images, forecasting aerosol models, and synoptic maps, which had been carefully reviewed by a human observer for each day included in the DD inventory. This identification method allows the detection of low and moderate DD intrusions and also mixtures of mineral dust with other aerosol types by means of the analysis of  $\alpha$ . During the period studied (2003-2014), a total of 152 DD  
20 episodes composed of 419 days are identified. Overall, this means  $\sim 13$  episodes and  $\sim 35$  days per year with DD intrusion, representing 9.6% days/year. During the identified DD outbreaks, 19 daily exceedances over  $50 \mu\text{g m}^{-3}$  are reported at the surface. The occurrence of DD event days along the year peaks in March and June with a marked minimum in April and lowest occurrence in winter. A large inter-annual variability is observed showing a statistically significant temporal decreasing trend of  $\sim 3$  days/year. As a key point, the DD impact on the aerosol climatology is addressed by evaluating the  
25 DD contribution to AOD, PM<sub>10</sub>, PM<sub>2.5</sub>, and PM<sub>2.5-10</sub> obtaining mean values of 0.015 (11.5%),  $1.3 \mu\text{g m}^{-3}$  (11.8%),  $0.55 \mu\text{g m}^{-3}$  (8.5%) and  $0.79 \mu\text{g m}^{-3}$  (16.1%), respectively. Almost similar annual cycles of DD contribution are obtained for AOD and PM<sub>10</sub> with two maxima, one in summer ( $0.03$  and  $2.4 \mu\text{g m}^{-3}$  for AOD in June and PM<sub>10</sub> in August, respectively) and another in March ( $0.02$  for AOD and  $2.2 \mu\text{g m}^{-3}$  for PM<sub>10</sub>), discrepancies occurring only in July and September. It is worth mentioning that the seasonal cycle of DD contribution to AOD does not follow the pattern of the total AOD (near bell  
30 shape), meanwhile both PM<sub>10</sub> cycles (total and DD contribution) present more similar shapes between them, although a main discrepancy is observed in September. The inter-annual evolution of the DD contribution to AOD and PM<sub>10</sub> has evidenced a progressive decrease. This decline in the levels of natural mineral dust aerosols can explain up to the 30% of the total aerosol

load decrease observed in the study area during the period 2003-2014. The relationship between columnar and surface DD contributions is evident with a correlation coefficient of 0.81 for the inter-annual averages. Finally, synoptic conditions during DD events are also analysed observing that the North African thermal low causes most of the events (~53%). The results presented in this study highlight the relevance of the area studied since it can be considered as representative of the clean background in Western Mediterranean Basin where DD events have a high impact on aerosol load levels.

## 1 Introduction

Atmospheric aerosol particles play a key role in the radiation scattering and absorption physical processes that contribute to the Earth's radiative budget (Trenberth et al., 2009; Wild et al., 2013). Their impact on Earth's climate is represented by their direct radiative forcing (Haywood and Boucher, 2000; Boucher et al., 2013), but aerosols also act as cloud condensation nuclei (CCN) modifying cloud properties and giving rise to a set of feedback processes that constitute the indirect radiative effect (Lohmann and Feichter, 2005; Lohmann et al., 2010; Boucher et al., 2013). All these aerosol climate effects have been enhanced due to anthropogenic aerosol particles (mainly sulphate and carbonaceous substances) which have increased the mean load of the world in the last century and have modified substantially the atmospheric composition (Boucher et al., 2013). Aerosol radiative properties, such as aerosol optical depth (AOD) or single scattering albedo (d'Almeida et al., 1991; Cachorro et al., 2000; Eck et al., 2010) are important issues to consider when studying the impact of atmospheric aerosol on climate.

Beside the climatological aspect of atmospheric aerosols, another element to be considered is their direct incidence on air quality (Kulmala et al., 2009; Ganor et al., 2009; Querol et al., 2013). The particulate matter in environmental studies is mostly represented by its level of mass concentration at the surface represented by various size fractions ( $PM_{10}$ ,  $PM_{2.5}$ ,  $PM_1$ , etc., where the subscript indicates the upper cut-off of the aerodynamic diameter of particles and  $PM_x$  is used here as a general term referring to these fractions) and by its chemical speciation to derived specific aerosol components: sulphates, nitrates, carbonaceous, mineral, etc.. The different properties of aerosols are linked to derived effects like the strong adverse impact on human health (Pope 2000; Pérez et al., 2012), and ecosystems (Mahowald et al., 2010).

Desert dust or mineral aerosol is one of the main natural types of atmospheric aerosol particles, with a strong impact on the Earth system due to its worldwide distribution and spatio-temporal variability (Goudie and Middleton, 2006; Knippertz and Stuut, 2014; Viana et al., 2014). The injections of Desert Dust (DD) into the atmosphere, from the two Sahara's major dust sources (Bodélé depression and Eastern Mauritania) by different re-suspension processes, can result in high layers being transported through very large distances (e.g., Prospero et al., 1999; 2002; Escudero et al., 2006; Engelstaedter and Washington, 2007; 2011; Knippertz and Todd, 2012; Guirado et al., 2014).

Our interest in this work focuses on atmospheric aerosol studies over the Iberian Peninsula (IP), which constitutes a peculiar area due to the large spatio-temporal variability in aerosol properties, types and mixing processes as a result of the contrasting influences of the Atlantic Ocean, Mediterranean Sea, European continent and the Saharan area. Based on sun-

photometer data studies, different sectors of the IP, basically defined by its topography/geography, can exhibit different aerosol climatologies (Alados-Arboledas et al., 2003; Vergaz et al., 2005; Estellés et al. 2007; Toledano et al., 2007a; Obregón et al., 2012; Bennouna et al., 2013; Mateos et al., 2014a). In particular, the Sahara and Sahel desert areas are the most important natural sources of mineral aerosols for the IP. The closeness of the IP to the African continent intensifies the impact of desert dust events on the aerosol load, measured on the whole atmospheric column (AOD) and at the surface (PM<sub>x</sub>). Different synoptic weather conditions and circulation patterns define the arrival of desert dust intrusions in the IP with a different seasonal behaviour (Escudero et al., 2005, 2006; Toledano et al., 2007b; Basart et al., 2009; Valenzuela et al., 2012; Pey et al., 2013a; Salvador et al., 2013, 2014). These intrusions are characterized by isolated or episodic events of short duration (around 2-3 days) but episodes in summer months are longer and more frequent in such a way that often successive episodes are linked due to the recirculation of air masses producing feedback processes, which give rise to a long residence time of desert dust particles in the atmosphere when there is low precipitation (Rodríguez et al., 2002; Escudero et al., 2005). Therefore, desert dust aerosols are one of the most important types over the IP, having an important influence on the air quality and radiative properties and hence its detection, quantification and characterization are important research tasks.

There are different ways to approach the detection or identification of desert dust events depending on the objectives of each study. The detection depends on the different techniques used: surface measurements, remote sensing (satellite or ground-based), back-trajectories evaluation, aerosol models, or a combination of them. Air mass trajectories have been one of the first and most used techniques to identify the origin of the transport of mineral dust aerosols to different regions worldwide (e.g., Hogand and Rosmond, 1991; Prospero et al., 2002; Kallos et al., 2003; Pace et al., 2006). Although there is abundant literature about mineral dust over Southern Europe or Mediterranean areas, most of the studies about detection, characterization and/or impact of desert dust aerosols are focused on case studies or particularly strong episodes: e.g., in Italy (e.g., Meloni et al., 2007; di Sarra et al., 2011; Bègue et al., 2012), Greece (e.g., Kaskaoutis et al., 2008) or the Iberian Peninsula (e.g., Lyamani et al., 2005; Pérez et al., 2006; Cachorro et al., 2006, 2008; Guerrero-Rascado et al., 2009; Córdoba-Jabonero et al., 2011). Few studies are based on long-term datasets of desert dust using different techniques, such as sun photometers (Toledano et al., 2007b; Valenzuela et al., 2012), satellite sensors (Kaufman et al., 2005, Kaskaoutis et al., 2012; Gkikas et al., 2013; 2015), LIDAR measurements (Mona et al., 2006; 2014; [Papayannis et al., 2008](#)) or PM<sub>x</sub> data (Escudero et al., 2005; Salvador et al., 2013; 2014; Pey et al., 2013a; Rodríguez et al., 2015). As can be seen only recent studies contain long-term data sets and only in some of them the net contribution of DD is evaluated.

PM<sub>x</sub> observations provided by different networks have constituted one of the most frequent tools for the establishment of DD inventories (e.g., Escudero et al., 2005; Pey et al., 2013a; Salvador et al., 2013; 2014) in order to evaluate their contribution to PM<sub>x</sub> levels demanded by the EU directives. The EU 2008/50/EC directive (EC, 2008) on air quality establishes threshold values for the concentration of particles with aerodynamic diameter below 10 (PM<sub>10</sub>) and 2.5 (PM<sub>2.5</sub>) µm: an annual mean and 24 hour mean of respectively 40 µg m<sup>-3</sup> and 50 µg m<sup>-3</sup> for PM<sub>10</sub> and an annual PM<sub>2.5</sub> average of 25 µg m<sup>-3</sup>. In this sense it is necessary to know the contribution of natural and anthropogenic components to the total aerosol



load. Therefore, the contribution of mineral dust in South-Europe is important because of the linkage of PM<sub>10</sub> exceedances and DD outbreaks.

Once the identification or discrimination of DD African aerosols is carried out, the next task is to quantify their contribution to the total aerosol load. The evaluation of impact or contribution of DD episodes to PM<sub>x</sub> data is viable by means of a chemical speciation analysis (Rodríguez et al., 2001, 2002, 2015) but this method requires a high man power and presents poor temporal sampling. Hence, in order to avoid this expensive technique other methods have been developed taking PM<sub>x</sub> (Escudero et al., 2007; Ganor et al., 2009) and AOD data (Toledano et al., 2007b) or need to be developed. As reported by Viana et al., (2010) and taking into account more recent publications (e.g., MAGRAMA, 2013, 2015) no more than three methods are nowadays used. However, other techniques such as receptor models widely applied for surface data (Pey et al., 2013b; Belis et al., 2013) may be updated or improved for DD contribution estimates. In a similar way columnar aerosol algorithms can facilitate the apportioning of the different aerosol types (Dubovik et al., 2002; O'Neill et al., 2003) to the total aerosol load.

The advantage of remote sensing techniques, such as sun-photometry, for DD detection is the spectral information recorded by their AOD measurements and given by the Ångström exponent,  $\alpha$ . This is a powerful tool in the identification and classification of the different aerosol types (Eck et al., 1999; Toledano et al., 2007a) but also allows “near-real-time” processing of data by means of reasonably sophisticated algorithms (Dubovik et al., 2002; O'Neill et al., 2003) to retrieve aerosol properties. Surface PM<sub>x</sub> and columnar AOD quantities present notable differences between them (see Bennouna et al., 2014; Mateos et al., 2015) and hence their DD impact can also present some discrepancies. The PM<sub>x</sub> sampling [used here](#) is based on daily records (see, Aas et al., 2013) while sun photometers provide instantaneous measurements of the columnar load but their sampling is limited to sun cloud-free conditions (Toledano et al., 2007a,b).

The usefulness of a DD inventory is that it opens the possibility of the evaluation of desert dust contribution to the total aerosol load. However, very few studies have accomplished this task over a long period and under a climatological perspective. To our knowledge, only the inventory of Toledano et al. (2007b) addressed the DD contribution to AOD between 2000 and 2005 in a Spanish South-western site. For PM<sub>x</sub> data we have found various studies, as those of more recent publication by Salvador et al. (2013; 2014) and Pey et al. (2013a). Salvador et al. (2013) reported a DD inventory and the corresponding contribution of DD is determined over the Madrid area from 2001-2011. This study is extended to several stations covering the whole IP by Salvador et al. (2014). Pey et al. (2013a), with the same methodology, analysed the period 2001-2011 for PM<sub>10</sub> at different sites over the whole Mediterranean Basin. In these three mentioned studies, the method followed for the evaluation of the DD contribution to PM<sub>x</sub> is different to that for AOD. Therefore, the development of methodologies for the evaluation of DD contribution is an open area of research.

Within this framework, the main purpose of this study is to establish [an-reliable](#) inventory of DD episodes together with the evaluation of their contribution to the total aerosol load, using both AOD and PM<sub>x</sub> data. As an innovative aspect, this is the first time, to our knowledge, that DD events are identified by the simultaneous use of both columnar (AOD/ $\alpha$ ) and surface (PM<sub>x</sub>) aerosol observations. The methodology is applied over one of the atmospheric cleanest areas in Southwestern Europe,

the North-central area ('Castilla y León' region) of the Iberian Peninsula, for a long time period spanning more than one decade (2003-2014). Regarding the columnar aerosol data, the reliable measurements performed within the Aerosol Robotic Network, AERONET (Holben et al., 1998), are considered. For the study area, the only available aerosol long-term data set is recorded in Palencia site (41.9° N, 4.5° W, and 750 m a.s.l.). Regarding surface aerosols, the high quality particulate matter data recorded by European Monitoring and Evaluation Programme (EMEP) network are considered in the nearby Peñausende station (41.28°N, 5.87°W, and 985 m a.s.l.), with similar background conditions to Palencia. In this way, the usage of these two worldwide extended networks ensures the feasibility of implementing the proposed method in other regions. The long-term inventory described hereafter has been employed to establish the main characteristics of the DD episodes in North-central Spain: their climatology, inter-annual behaviour, trends for the number of episodes and associated days, and occurrence under different synoptic scenarios. In addition, the evaluation of the DD contribution to the total mean values of AOD and PM<sub>x</sub> is also addressed over the period investigated under a climatological and inter-annual perspective, which emphasizes the correlations between both quantities.

Section 2 describes the region of study and the datasets used. The methodology followed in the DD identification and in the evaluation of its contribution is presented in section 3. In subsections 4.1-4.3, the seasonal cycles and inter-annual evolution of DD events, dusty days, and DD contribution to AOD and PM<sub>x</sub> are deeply investigated. Subsection 4.4 provides an estimation of the uncertainty of this method and subsection 4.5 describes the synoptic scenarios leading the arrival of DD episodes to North-central Iberian Peninsula. Finally, Section 5 sums up the main findings obtained in this study.

## 2 Sites of measurements and database

### 2.1 AERONET network and AOD/ Ångström exponent database

The main database for this study contains the instantaneous values of AOD obtained for 440 nm (henceforth AOD for sake of clarity) and Ångström exponent ( $\alpha$  for the 440-870 nm range) measured in Palencia site of the AERONET-Europe network (see Figure 1 and Table 1). The instrument used to obtain these data is a CIMEL CE318 radiometer which measures under clear sky conditions and each 15 minutes. The raw measurements in all sky conditions (level 1.0 of AERONET criteria), the cloud screened data (level 1.5), and the high quality processed data in the level 2.0 are used in this study. Lower quality levels are of great help to reliably determine the duration of each DD episode, in particular, when the event is mixed with cloudiness.

Aerosol measurements are available in the Palencia site since 2003, one of the longest series of aerosol optical measurements in the Iberian Peninsula (Mateos et al., 2014a). The number of available days for every year in this study can be seen in Table 1. The standardization protocols of AERONET demand pre- and post- calibration of the instruments after a field measuring period of 12 months, which helps to assure the quality of the obtained data and associates an uncertainty for AOD<sub>440nm</sub> of  $\pm 0.01$  and for the derived  $\alpha$  parameter of about  $\pm 0.03$  (see, e.g., Toledano et al., 2007a).

The Palencia site is placed in the autonomous region of “Castilla y León” in the North-central Iberian Peninsula, which is also known as the “Castilian plateau” with an average altitude of ~800 m. This region is the third less-populated community in Spain due to its big surface (94,193 km<sup>2</sup>) and its low population (2.543.413 inhabitants registered in the census in 2012), with a population density just a bit higher than 27 inhabitants per km<sup>2</sup>. Palencia is a small city (100.000 inhabitants) placed in the north of “Castilla y León” but the measuring site is located outskirts being surrounded by rural areas, removed from of big urban and industrial centres. Hence, this area exhibits an exceptionally clean atmosphere and aerosol observations are representative of the background conditions for the whole region. Therefore, desert dust intrusions are observed since they notably modify the background aerosol properties.

In order to fill the gaps in the Palencia AOD database, the site “Autilla” (42.00°N, 4.60°W, and 873 m a.s.l.) close to Palencia (7 km apart) has been used (see for details Bennouna et al., 2013). This site is being used by GOA (Grupo de Optica Atmosférica) as the calibration platform for Cimel sun photometers within the AERONET-EUROPE infrastructure and also works as a routine measurement site. Under these considerations, the columnar aerosol data series used in this study is consistent and allows one to perform the inventory of DD events in this region.

## 15 **2.2 EMEP network and PM database**

Daily PM<sub>10</sub> and PM<sub>2.5</sub> measurements provided by the EMEP network constitute the second core database used to carry out this study (see Figure 1 and Table 1). This network has the objective of regularly providing qualified scientific data to the interested organizations in order to analyse and assess the transboundary transport and emission of pollutants (e.g., Aas et al., 2013). This is the objective of the LRTAP (Long-Range Transboundary Air Pollution) convention that establishes a framework for cooperative action for reducing the impact of air pollution. Using the PM<sub>10</sub> and PM<sub>2.5</sub> data, the particulate matter associated with coarse particles (PM<sub>2.5-10</sub>) can be determined by subtracting these quantities.

PM<sub>10</sub> and PM<sub>2.5</sub> data belonging to the EMEP site of Peñausende have been used for the detection of days with DD load in correspondence with AOD- $\alpha$  data of the Palencia site and for the evaluation of their contribution to the total PM<sub>x</sub> levels. However, in order to better detect the DD episodes that arrive to our study area, two nearby stations (Campisábalos, 41.28°N, 3.14°W, and 1360 m a.s.l., and Barcarrota, 38.48°N, 6.92°W, and 393 m a.s.l., see Figure 1) are taken as complementary sites. All these three sites are placed in rural areas where background values are measured and the detection of Saharan desert dust intrusions is also possible. Among all Spanish EMEP sites, these two complementary sites have not been randomly selected, since their geographical locations help us to have more information about the path followed by the intrusion before arriving in our study area. The arrival direction can be established from the west (by the Peñausende site), South-west (by the Barcarrota site) and South-east (by the Campisábalos site).

The available time period for the PM<sub>x</sub> data starts in 2001, but the same period (2003-2014) used in the AOD<sub>440nm</sub> is considered. It is important to emphasize here that in spite of the distance between Peñausende and Palencia sites (~100 km), the absence of any large landforms between them together with their atmospheric and background conditions make possible

the joint discrimination and evaluation of these observations of AOD and PM<sub>x</sub> for the detection of DD intrusions. Furthermore, a deep analysis about the air masses at Peñausende and Palencia sites (not shown here) has been carried out, corroborating that the geographical distance between them is negligible in the analysis of regional quantities.

5 | The use of AOD<sub>440nm</sub>,  $\alpha$ , PM<sub>10</sub>, and PM<sub>2.5</sub> observations provides a ~~complete and detailed~~comprehensive database to carry out an analysis in terms of aerosol load and particle size, both at the surface and in the whole atmospheric column. Table 1 presents a detailed description of the annual sampling of each database. Overall, the PM<sub>x</sub> temporal sampling is larger than for AOD. Particularly, the year 2003 presents the lowest AOD sampling because of the gaps at the start of the sun photometer measurements.

### 2.3 Ancillary information

10 With the aim of performing a more accurate evaluation and discrimination of days that constitute a desert dust intrusion, ancillary information is taken into account. Air mass back-trajectories arriving at Palencia at 12.00 UTC have been calculated with the HYSPLIT model (Hybrid Single-Particle Lagrangian Integrated Trajectory), version 4 (Draxler et al., 2014; Stein et al., 2015). Due to the fact that desert dust aerosols can be transported to altitude levels higher than the boundary layer, back-trajectories have been calculated for three heights (500, 1500 and 3000 meters above ground level) and  
15 analysed 5 days back in time (120 h), assuming the model vertical velocity in the calculations. The meteorological database used as input for HYSPLIT is the Global Data Assimilation System (GDAS) dataset. These three levels are very usual in this type of studies to represent the air masses near the surface, in the boundary layer and in the free troposphere, in order to follow the vertical transport of aerosols.

Valuable information about cloudiness is obtained from MODIS (Moderate Resolution Imaging Radiometer) rapid response  
20 imagery products (<https://earthdata.nasa.gov/data/near-real-time-data/rapid-response>). In addition, GIOVANNI (Geospatial Interactive Online Visualization ANd aNalysis Infrastructure) MODIS AOD aerosol maps (<http://giovanni.gsfc.nasa.gov/giovanni/>) and those provided by the AERONET website ([http://aeronet.gsfc.nasa.gov/cgi-bin/bamgommas\\_interactive](http://aeronet.gsfc.nasa.gov/cgi-bin/bamgommas_interactive)) are used to determine the extension and path followed by the mineral dust air masses for a DD identified event. The NAAPS Global Aerosol model (Navy Aerosol Analysis and Prediction System; available at  
25 <http://www.nrlmry.navy.mil/aerosol/>) is also used.

As it has been analysed in previous studies (Escudero et al. 2005; Toledano et al. 2007b) desert dust intrusions over Spain take place under certain synoptic scenarios. For evaluating these scenarios, the geopotential height at 700 hPa and mean sea level pressure are required. Through the Earth System Research Laboratory of NOAA (National Oceanic and Atmospheric Administration), the plots of atmospheric quantities can be obtained for the selected days and one possible scenario among  
30 the four possibilities proposed by Escudero et al. (2005) is identified.

### 3 Methodology

#### 3.1 Detection of desert dust episodes

This study is based on instantaneous  $AOD_{440nm}$  and  $\alpha$  values, as well as daily  $PM_{10}$  and  $PM_{10}/PM_{2.5}$  ratio data. The method for the detection of Desert Dust (DD) intrusions is a manual inspection of the evolution of these four quantities together with the origin of the air masses at the three levels of altitude and the auxiliary material of AOD MODIS maps, aerosol models and synoptic scenarios. The methodology for detection is similar to that applied in Toledano et al., (2007b) with the added information of PMx data, and not so much different from that used in other studies also based on a set of different observations (Escudero et al., 2005; Pace et al., 2006; Kalivitis et al., 2007; MAGRAMA, 2013). The difference between these methods lies on the weight played by each quantity, or the way to analyse the information. For example in our case the AOD-PMx data is the first and primary information, but in other studies the key variable is the origin of the air masses (Pace et al., 2006; Valenzuela et al., 2012). Meteorological products and forecast aerosol models can also be used for this task (MAGRAMA, 2013). Although automatic methods can be applied in the DD identification, a visual inspection should be performed to corroborate each classification.

This study has been carried out as a year by year service to the “Consejería de Medio Ambiente” of the Autonomous Community of ‘Castilla y León’ by means of two Research Programmes from 2006-2013 about the “Discrimination, characterization and evaluation of desert dust outbreaks over ‘Castilla y León’ region”. These programmes have the purpose of accomplishment programmes aim to help accomplish the “Environmental Quality Improvement Policy” of the EU by the National and Regional Governments. The experience gained with this year by year identification gives rise to the final DD inventory presented in this study.

~~Certain thresholds have been established in order to identify those conditions which are separated from the background over the studied area. Hence, these choices are based on the aerosol climatology of the site. For Palencia, mean  $AOD_{440nm}$  is 0.13 with a standard deviation (std) of 0.09 and  $\alpha=1.27 \pm 0.36$ . Consequently, DD intrusions are firstly detected using the following thresholds:  $AOD_{440nm} \geq 0.2$  (AOD Criterion in Table 1), which is the mean plus the standard deviation approximately, and  $\alpha \leq 1.0$  for instantaneous values. If a day has about 50% of these data, the day is considered as a dusty day and these events are called “pure desert aerosols”, denoted by (D). However, days with instantaneous values of  $AOD_{440nm} \geq 0.2$  and  $1.0 \leq \alpha \leq 1.5$  may also present desert dust aerosols but mixed with other types (indicated by the high  $\alpha$  value), which is corroborated by the desert origin of air mass backwards trajectories, satellite images, and model forecasts. This type of days, named MD (Mixed Desert), may either be a part of an intense event (generally of D type) or form by themselves a low moderate intensity event. Previous studies have also stated that DD intrusions in the Mediterranean Basin can present moderate AOD associated with large  $\alpha$  values (e.g., Pace et al., 2006; Tafuro et al., 2006).~~

~~The limit of  $\alpha < 1$  for identifying coarse particles has been established by previous studies in different areas (e.g., Eck et al., 1999; 2010; Dubovik et al., 2002; Meloni et al., 2007), making this threshold suitable for our study area. It is important here to emphasize that the  $\alpha$  parameter allows a more fine identification of desert dust events, mainly those of low intensity with a~~

less desert character (the larger the AOD of a desert event, the lower  $\alpha$ ), generally those mixed with other type of aerosols which are not accounted for in many DD studies (e.g., Gkikas et al., 2013). DD events of low intensity are more difficult to detect and hence it is more difficult to evaluate their contribution or impact on the AOD and PM<sub>x</sub> daily values.

The criterion for the PM<sub>10</sub> values is selected from our investigations (Bennouna et al., 2014; Mateos et al., 2015) and previous results (see, e.g., Querol et al., 2009; 2014), giving a threshold of PM<sub>10</sub>  $\geq 13 \mu\text{g m}^{-3}$  for the daily values of the particulate mass concentration (PM Criterion in Table 1). The mean value of PM<sub>10</sub> over the period 2003–2014 is  $10 \pm 9 \mu\text{g m}^{-3}$ , thus 13 is the mean plus one third of the standard deviation. However, this value alone must be taken as a “warning value” and not as a true threshold, in the sense that this value alone does not define a dusty day. This PM<sub>10</sub> value could seem very low but we must note here that all these values are manually supervised by the expert observer who will take the final decision of the inclusion or not of a dusty day, having in mind all the available information given by these data and all the complementary material.

Certain thresholds have been established in order to identify those conditions which are separated from the clean background over the study area. Hence, these choices are based on the aerosol climatology of the site from our investigations (Bennouna et al., 2014; Mateos et al., 2015) and previous results (see, e.g., Querol et al., 2009; 2014). The mean values for the long-term period 2003–2014 are  $0.13 \pm 0.09$  for AOD<sub>440nm</sub> and  $10 \pm 9 \mu\text{g m}^{-3}$  for PM<sub>10</sub>. In order to detect the DD intrusions over the study area, a visual inspection of the entire database is performed. When a day shows a group of the instantaneous AOD  $\geq 0.18$  and/or the daily PM<sub>10</sub>  $\geq 13 \mu\text{g m}^{-3}$ , that day is carefully investigated. Hence, these thresholds must be taken as “warning flags” in the sense that these values alone do not define the classification as a dusty day. They also need the ancillary information given by the air mass backwards trajectories, satellite images, weather maps, and model forecasts in order to determine and corroborate the origin of aerosols and synoptic conditions. Therefore, with all this information the human observer decides if a day must be included or not in the DD inventory.

Simultaneously to the former analysis, the evolution of  $\alpha$  quantity is also checked, allowing the identification of two different types of DD intrusions. Those days displaying  $\alpha < 1.0$  in most of the instantaneous columnar data are identified as the “purer” desert dust intrusions and they are denoted by D flag. Those days with  $\alpha$  values in the interval  $1.0 < \alpha < 1.5$  (with the ensured presence of desert dust aerosols by the ancillary information) present a mixture with other types and they are denoted by MD (Mixed Desert) flag. The MD event days may either be a part of an intense event (generally of D type) or form by themselves a low-moderate intensity event. Previous studies have also stated that DD intrusions in the Mediterranean Basin can present moderate AOD associated with large  $\alpha$  values (e.g., Pace et al., 2006; Tafuro et al., 2006; Boselli et al., 2012). The limit of  $\alpha \leq 1$  for identifying coarse particles has been established by previous studies in different areas (e.g., Eck et al., 1999; 2010; Dubovik et al., 2002; Meloni et al., 2007; Boselli et al., 2012), making this threshold suitable for our study area. It is important to emphasize here that the  $\alpha$  parameter allows a more accurate identification of desert dust events, mainly those of low intensity with a less desert character (overall, the larger the AOD of a desert event, the lower the  $\alpha$ ) generally mixed with other aerosol types which are not accounted for in many DD studies (e.g., Gkikas et al., 2013). The DD events of low intensity are more difficult to detect and hence it is more difficult to evaluate their

contribution or impact on AOD and PM<sub>x</sub> daily values. In fact, the aerosol load threshold used in this study could seem very low, but we must note again here that all these quantities are manually supervised by the expert-observer who will take the final decision of the inclusion or not of a dusty day, bearing in mind all the available information given by these data and all the complementary material.

5

Another problem to be considered in the identification of a dusty day is when AOD and PM<sub>10</sub> measurements show different information, ~~e.g., AOD indicates desert dust presence but PM<sub>10</sub> does not~~. It must be taken into account that PM<sub>10</sub> quantity does not necessarily follow the same temporal behaviour as the AOD and possible delays due to deposition can occur. Desert dust events can reach the IP at high altitude layers (e.g., above 2000 meters, Gkikas et al., 2015), and dry deposition can last various hours/days. Assuming an average speed of deposition of around 0.6 cm s<sup>-1</sup> (Zender et al., 2003), DD particles can remain up to two days after an episode ends (Escudero et al., 2007). Hence, the delays between air masses and PM<sub>10</sub> are very variable (e.g., Kalivitis et al., 2007; Pey et al., 2013a). Therefore, as mentioned AOD and PM<sub>10</sub> observations must be considered as complementary information to detect mineral dust aerosols.

10

15

It is worth mentioning here that in the general detection of both intensity and duration of a particular event, DD causes an increase in the AOD<sub>440nm</sub> and PM<sub>10</sub> values, which then reach/surpass the corresponding threshold, together with a decrease in the  $\alpha$  and PM<sub>2.5</sub>/PM<sub>10</sub> values given rise to an increase of the mean size of the particle distribution. The duration of each intrusion can be established, since the ~~background~~normal characteristic values are recovered when the event finishes. The central or most intense days of each event are easy to detect due to the large increment of aerosol load with large particles ( $\alpha$  even close to zero) but low to moderate events are more difficult to detect. Although the events vary in their nature, the first and last days of a DD event show a low or moderate signature of mineral dust particles because of its mixture with other aerosol types (clean continental aerosol in our study area), with the exception of the strong DD events which generally have a notable impact on the aerosol load levels since the first day.

20

25

In the inspection of the instantaneous columnar dataset, non-reliable records are identified and removed due to their high dispersion likely attributed to cloud contaminated conditions. To corroborate some critical decisions, the ancillary information (see section 2.3) constitutes a key point of the methodology. For instance, the verification of cloudy conditions can be supported by means of a comparison between AOD instantaneous data from different levels, 1.0 (all-sky conditions) and 1.5 (cloud-screened data), and the visualization of cloud systems in MODIS true colour and cloud product images. If there are signs of cloud presence, instantaneous AOD data are carefully checked to discern between non-valid data and a DD intrusion.

30

Once aerosol load measurements for a certain day indicate the likely classification as a dusty day, the air mass back-trajectories (calculated as described in Section 2.3) are visualized in order to check if the origin of the path or the path followed crosses the North-African region and/or its surroundings. Therefore, the air mass back-trajectory analysis and the geopotential maps (establishing a particular synoptic scenario, see Sections 2.3 and 4.5) lead to the final decision with respect to a DD event day classification, even in those days showing cloudiness. Finally, to help in the understanding of the

general situation about the geographical distribution of the aerosol plumes, AOD MODIS maps and NAAPS forecasts are also inspected. The consistency of the information used provides a reliable identification of the DD event.

It is worth mentioning here that the final decision to include a day as D or MD is made by the human-observer with all the available information at hand. Perhaps this methodology is not the most adequate to apply for a big area with a high number of stations and long-term databases, but it is necessary for developing methodologies, because it will allow validation of other more automatic methods (e.g., those only based on threshold criteria), most of them using satellite observations (e.g., Gkikas et al., 2013, 2015).

### 3.2 Evaluation of desert dust contribution to total AOD and total PM<sub>10</sub> concentration

Once the DD inventory is established, the evaluation of DD contribution can be addressed at seasonal and annual scales. Following Toledano et al., (2007b), the contribution of the DD events to AOD can be obtained as the difference of the multi-annual monthly means considering all days and the corresponding value without including the desert dust cases. This procedure was also used for PM<sub>10</sub> data in a 3-year evaluation of net DD contribution in several sites at the Mediterranean Basin (Querol et al., 2009). In this study, the annual cycle of the DD contribution to AOD/PM<sub>x</sub> is evaluated with this same methodology over the entire period 2003-2014, using the DD event days classified in the inventory. Furthermore, the relative DD contribution to AOD/PM<sub>x</sub> can be obtained normalizing with respect to the total AOD/PM<sub>x</sub> value. Regarding the seasonal evaluations, the classification is used as follows: winter (DJF), spring (MAM), summer (JJA), and autumn (SON). Analogously, the yearly AOD/PM<sub>x</sub> means excluding dusty days are subtracted from the yearly AOD/PM<sub>x</sub> means for all days for obtaining the DD contribution at annual time scale.

This method assumes the entire daily aerosol load (both surface and columnar) due to DD aerosols, being included the contribution of regional background aerosols. Thus, suitable time scales for this kind of DD contribution calculation are the annual and climatological monthly means. Those evaluations for every single day or month can be addressed using other methods, for instance the determination of percentile 40 to evaluate the background conditions that are subtracted from PM<sub>x</sub> levels (Escudero et al., 2007). This method has been taken as the standard by the European Commission for the evaluation of DD contribution (Viana et al., 2014; MAGRAMA, 2013, 2015).

The methodology used in this study leads to lower uncertainty in the annual cycle evaluation since there is good data coverage for the multi-annual monthly sampling, but higher uncertainty for a yearly evaluation. The inclusion or not of an uncertain DD event (e.g., very contaminated with clouds where cloud optical depth is assigned to aerosol AOD) can substantially modify the corresponding yearly mean as it has been shown in Bennouna et al. (2014). This source of uncertainty must be considered in the temporal trend evaluation. It is not easy to establish an adequate methodology to evaluate the DD aerosol contribution (Viana et al., 2010) and much less with its corresponding associated error. A further investigation is necessary about this subject. A discussion about the uncertainty of our approaches in the DD identification and in the evaluation of DD contribution to aerosol load can be found at the end of the results section.



## 4 Results and discussion

### 4.1 Evaluation of the number of episodes and days: annual cycle and year-to-year variability

#### 4.1.1 Evaluation of the number of episodes and dusty days

The inventory of desert dust intrusions includes: information on each episode and its associated days; the daily mean AOD,  $\alpha$ ,  $PM_{10}$ , and  $PM_{2.5}$ ; cloudiness, synoptic scenarios, and air mass origin at the three altitude levels mentioned above. Tables 1 and 2 show the information used to classify DD events and the main statistics for this inventory, respectively.

The  $PM_{10}$  sampling presents the best coverage of the measuring time period with a 93.1% of the days, AOD is available 67.2% of the time, and the coincident sampling is available 63.2% of the time. As can be deduced from Table 1, the majority (51.3%) of the DD event days composing the inventory are noticeable in both AOD and  $PM_{10}$  datasets. However, 46.3% of the total detected days are over the required thresholds only in one quantity (AOD or  $PM_{10}$ ). This is the great advantage of the proposed inventory. The reasons behind this 46.3% (19.1% only with AOD and 27.2% only with  $PM_{10}$ ) are due to delays between columnar and surface levels related to deposition phenomena and the lack of AOD or  $PM_{10}$  measurements. Finally, a smaller number of cases (2.4%) are identified as dusty days using the ancillary information when AOD and  $PM_{10}$  data are not available.

The smaller coverage of AOD is not a major handicap in DD detection. There are several years (2004, 2007, 2008, 2010, 2011, and 2012) with more DD days detected only by AOD than only by  $PM_{10}$ , in spite of the smaller AOD sampling (between 53 and 103 days less per year). However, years 2003 and 2006, which present less than 200 daily AOD data, require the use of  $PM_{10}$  in order to better identify DD intrusions.

As reported in Table 2, during 2003-2014, a total number of 152 episodes have been identified, composed of 419 days. Among them, 243 have been classified as days with desert aerosols (D) and 176 with mixed aerosols (MD). Overall, this means 13 episodes and 35 days per year with desert dust intrusion, representing the 9.6% of the days each year. The duration of DD episodes is very variable, ranging from 1 to 13 days, but a value of 2.7 days is obtained as the mean episode duration. Due to the high variability of these intrusions it is difficult to distinguish when an event has ended or its intensity has simply fallen below our threshold. During summer, the recirculation of air masses in the IP is very frequent and the DD episodes are subject to large variations. We have considered separate DD episodes when there is, at least, one day that does not meet the DD requirements between two DD episodes.

Our percentage of dusty days of 9.6% is lower than that reported by Salvador et al. (2013), which is around 18% (18 episodes and 65 days per year), who analysed DD intrusions over the central Iberian Peninsula (Madrid area) between 2001 and 2008. This large difference between two nearby areas (separated by ~200 km) can be explained by the different time periods considered and the existence in between of a high mountain range (Sistema Central), up to 2400 m (a.s.l.). For the North-eastern area of the Iberian Peninsula, Escudero et al. (2005) reported 15% of DD intrusions (16 episodes and 54 days per year) in the period 1996-2002, and Pey et al. (2013a) obtained 17-18% between 2001 and 2011. In the comparison with our results, we must note that not all DD episodes have a net impact on  $PM_x$  levels because of the mentioned characteristics

of transport and deposition of DD intrusions. The contribution of these episodes to PM<sub>x</sub> and AOD will be analysed in the next subsections.

#### 4.1.2 Annual cycle of the number of episodes and days

The annual cycles of the number of episodes and number of days with DD conditions are presented in Figure 2. In general, the seasonal pattern along the year followed by the number of episodes (Figure 2a) and dusty days (Figure 2b) is similar with a significant increase of the DD occurrence in March (13 events and 34 dusty days), a weak fall of DD event days in April (14 events and 25 dusty days), a notable increment between May and September (around 17 events and 53 dusty days per month), and a progressive decline to the minima in November and December. The number of episodes and event days peaks in June (20 events and 65 dusty days). A noteworthy feature of this figure is the non-expected local minimum in the number of DD episodes in July (15 episodes in 2003-2014) which is shifted to August in the number of DD event days (46 dusty days in 2003-2014). Figure 2b is similar in shape to that reported by Salvador et al., (2013) with the exception of September and also similar to that of Escudero et al. (2005) with the exception of October. Concerning the two types of DD conditions distinguished in our inventory, D type controls the annual cycle in the March maximum and April minimum, while MD controls the evolution between August and October.

Some features mentioned above regarding the seasonal behaviour of DD events for the North-central Spanish region are also observed for other areas of the IP. For instance, the March maximum and April minimum are common features in South-western (Toledano et al., 2007b; Obregón et al., 2012), North-eastern (Escudero et al., 2005; [Papayannis et al., 2008](#)), and Central (Salvador et al., 2013) Spain. In spite of the different [measuring instruments \(sun-photometer, lidar, or particulate mass concentration\)](#), time periods, and methodologies employed in the DD event identification, its impact over (almost) all the Iberian Peninsula seems to follow the same pattern with the two maxima, one at late-winter/early-spring (March) and the other in summer, and the accentuated minimum of winter. Several minor discrepancies are found for the rest of the year; for example, the maximum number of DD event days during summer months with a local minimum (in July) between them seems to be a characteristic of the annual cycles of the South-western (Toledano et al., 2007b) and North-central areas. Conversely, the eastern region does not show this behaviour and presents a local maximum in October (Escudero et al., 2005; Pey et al., 2013a). These results confirm that different areas have different aerosol properties in the IP (Mateos et al., 2015). [The larger occurrence in summer and in certain spring and fall months is also observed in other Mediterranean areas using lidar networks to identify the occurrence of DD outbreaks \(e.g., Mona et al., 2006; Papayannis et al., 2008\).](#)

#### 4.1.3 Inter-annual variability and trends of the number of episodes and days with DD

The year-to-year variability for both number of episodes and days is reported in Table 2 and illustrated in Figure 3. A large inter-annual variability is observed, more accentuated for the evaluation of the number of DD event days (Figure 3b) with an apparent decreasing trend during the analysed period. A large number of dusty days is reported during the first five years (2003-2007), being the maximum in 2006 (68 days). Beyond 2007 there is a decline of DD event days up to 19 days in 2010,

and a small upturn is observed in 2011, 2012, and 2014 with a sharp reduction in 2013. The lowest occurrence of DD events occurred in 2013 with only 7 episodes lasting 15 days (4.11%). On the other side, the largest occurrence is registered in 2006 with 17 episodes composed of 68 days of dust intrusion (18.6%). Nevertheless, the number of episodes and the number of days are not directly linked. For instance, 12 episodes are observed in both 2007 and 2010 but the former registered 44 days of intrusion whereas the latter just 19 days. Furthermore, even though 2006 is the year with the highest occurrence of days, it is not linked with the most intense events. Both  $AOD_{440nm}$  and  $PM_{10}$  means (for DD days) are lower in 2006 than for previous years, in which a smaller occurrence of DD conditions is observed. The minimum load during DD days is registered in 2013 for the  $AOD_{440nm}$  (0.18) and in 2009 for the  $PM_{10}$  ( $16 \mu g m^{-3}$ ), while the maximum occurred in 2004 (0.33 for AOD and  $30 \mu g m^{-3}$  for  $PM_{10}$ ). Concerning the two classifications of DD event days, years 2003, 2006, 2009, 2012, and 2014 are governed by D type intrusions.

To quantify the decreasing trend rates in the number of episodes and associated days, the Theil-Sen estimator and Mann-Kendall test for significance have been used. The trends for the number of DD episodes and days are reported in Table 3 for the yearly values. A statistically significant trend at the 95% significance level presents a p-value below 0.05 (e.g., Sanchez-Lorenzo et al., 2013). The total number of dusty days has decreased by -2.7 days per year (p-value of 0.02) between 2003 and 2014. This strong change, however, does not cause a significant trend in the number of episodes which presents a rate of -0.67 episodes per year with a p-value around 0.03 (~97% of significance level). These figures corroborate a notable decrease in the DD events seen in the North-central area of the Iberian Peninsula over the past decade. This result is in line with the findings obtained by Gkikas et al. (2013) for the whole Mediterranean Basin using MODIS data between 2000 and 2007 and considering only very intense DD events.

20

## 4.2 Desert dust contribution to total AOD: seasonal cycle, inter-annual variability and trends

### 4.2.1 Annual seasonal cycle

Figure 4 and Table 4 show the annual cycle of the DD contribution (small red bars in the figure) together with the multi-annual monthly means considering all days and only days without DD aerosols (the difference between these two values gives the DD contribution). Overall, the mean DD contribution to AOD is 0.015 or 11.5% in 2003-2014.

The total AOD annual cycle representing the climatology follows the well-known pattern previously reported and explained for the Palencia site (see, e.g., Bennouna et al., 2013; Mateos et al., 2014a). To summarize: the increasing values from January to June (where the maximum is found) with a slight reduction in May and a decreasing trend to the end of the year, provide almost a well-defined bell shape. Concerning the climatology with the DD episodes excluded, it preserves the pattern found before for the general case, except for some minor discrepancies. For instance, the change between May and June is not noticeable for the curve with the DD excluded, in contrast with the larger increment observed for the general case.

30

However, the seasonal pattern followed by the DD contribution to AOD is considerably different to these two latter curves. Two maxima are observed during the annual cycle: the first one in March (late winter/early spring) with 0.018 or 13.4% and the strongest one occurring in summer period (June and August),  $\sim 0.027$  or  $\sim 17\%$ . Together with these maxima, there are two local minima: in April-May (around 0.014 or 9.5%) and in July (0.018 or 12%). After August, a progressive decline of the DD contribution is observed with the minimum in winter (December and January show similar values about 0.004 or 5.4%). It is worth mentioning here the different characters of the two local minima occurring in April-May and July, the former is more general of the IP (linked to the precipitation cycle) while the latter is more typical of the Central and South-western areas. For instance, the July minimum seems to be related with the arrival of drier air masses in the low troposphere as it is observed in the precipitable water vapour cycle (Ortiz de Galisteo et al., 2013).

10 The annual cycle of DD contribution for Palencia site (representing North-central Spain) presents a similar shape to that obtained in “El Arenosillo” site (South-western area) by Toledano et al., (2007b) for an inventory of 6 years, from 2000 to 2005. This is an important result in two aspects, one related with the shape of the annual cycle or seasonal behaviour and the other one related with the different contribution of North and South areas of the IP. In relation to the geographical gradient, a quantitative difference is observed between these two areas. The total AOD signal is clearly impacted by DD events in the Southern Iberian coast (with relative contributions being over the 30%), while in the North-central region the DD influence is weaker, thus a South-North decreasing gradient over the IP is observed regarding the DD contribution to AOD values. This behaviour is well known in the IP by earlier aerosol studies based on PM<sub>x</sub> data (Querol et al., 2009; Pey et al., 2013a; Salvador et al., 2013, 2014) but this is the first time this is confirmed by an inventory of AOD data.

20

#### 4.2.2 Inter-annual variability and trends

With respect to the inter-annual change of the DD contribution to AOD, Figure 5 and Table 5 show its annual values between 2003 and 2014 (using the methodology explained in Section 3.2). In a quick-look analysis, both total AOD and DD contributions have a significant year-to-year variability with a decreasing trend during the period studied but with different patterns (also observed in the relative DD contribution to AOD). The maximum DD contribution with a value of 0.033 or 21.2% took place in 2004, with also a maximum in the total AOD around 0.15 (the mean value of 2003 is clearly impacted by the low sampling: 42.7%, compared to the 72.4% in 2004). The year 2013 presents the absolute minimum of the DD contribution to AOD with 0.004 or  $\sim 4\%$ , with a low contribution in 2009 too (0.006 or  $\sim 5\%$ ). There is a weak evolution of DD contribution until 2008, although 2005 presents a marked local minimum (DD contribution to AOD around 0.016 or 11%). There are years with simultaneous decreases (2008, 2009, 2013) or increases (2011, 2014) of both total AOD and its DD contribution, but in other years they present the opposite behaviours (2005 and 2006). The line illustrating the evolution of the relative DD contribution to AOD highlights the minima of 2013, 2009, and 2005 and the maxima of 2004 and 2012.

The high inter-annual variability can be explained by the typical variability of the different African source-areas and associated emission processes together with the atmospheric conditions and transport patterns of DD aerosols that can reach the Iberian Peninsula (Prospero et al. 2002; Kaufman et al., 2005; Escudero et al., 2006; Knippertz and Todd, 2012; Salvador et al., 2014).

- 5 The temporal trends in total AOD and in the DD contribution to AOD are also evaluated and shown in Table 3. The decrease of the total AOD in the Palencia site in 2003-2014 is -0.006 AOD-units per year (with a p-value <0.01) or -4.6% per year, which is in line with previous findings for the same site by Bennouna et al., (2014) and Mateos et al., (2014b) for shorter periods. With respect to the DD contribution to AOD, a rate of -0.0019 AOD-unit per year (p-value = 0.02) or -11.2% per year is calculated. Therefore, this rate represents the 30% of the total AOD decreasing trend. Hence, the natural decrease of
- 10 DD aerosols has notably affected AOD levels over North-central Iberian Peninsula during the study period.

### 4.3 Desert dust contribution to PM<sub>x</sub> levels: annual cycle, inter-annual variability and trends

#### 4.3.1 Annual seasonal cycle

- 15 In the same way as for AOD, the contribution of desert dust events to mean values of PM<sub>10</sub>, PM<sub>2.5</sub>, and PM<sub>2.5-10</sub> have also been calculated. The annual cycle and the inter-annual evolution of these three quantities and the corresponding DD contributions are reported in Tables 4 and 5 and also illustrated by Figures 6 and 7, respectively.

The DD contribution to the total PM<sub>10</sub>, PM<sub>2.5</sub>, and PM<sub>2.5-10</sub> is not usually evaluated at the same time. To our knowledge, this is the first time that fine and coarse mode contributions are evaluated in a long-term desert dust inventory of this type.

- 20 Furthermore, the temporal trends for the inter-annual DD contributions are also discussed. It is worth mentioning here that as PM<sub>10</sub> and PM<sub>2.5</sub> are obtained from different filters (see Section 2.2) while PM<sub>2.5-10</sub> is only available with simultaneous PM<sub>x</sub> data, the data number used in the evaluation of DD contribution for each quantity slightly differs.

- According to Table 4, the mean DD contributions to PM<sub>x</sub> during the study period are 1.3 μg m<sup>-3</sup> (12%) for PM<sub>10</sub>, 0.6 μg m<sup>-3</sup> (9%) for PM<sub>2.5</sub>, and 0.8 μg m<sup>-3</sup> (16%) for PM<sub>2.5-10</sub>, respectively. Our findings during 2003-2014 are in line with those given
- 25 by Querol et al., (2009): 2 μg m<sup>-3</sup> for a 3-year period (2004-2006) at the Peñausende site. A decreasing south to north gradient of African dust contribution to PM<sub>10</sub> (e.g., Querol et al., 2009; Pey et al., 2013a) is found for the North-central area of the IP. In particular, PM<sub>10</sub> is similar to the averages in the North-eastern area (< 2 μg m<sup>-3</sup>) and smaller than the values obtained in southern sites (up to 5-6 μg m<sup>-3</sup>). Our relative contribution is in line with the lowest values of the ranges reported by Salvador et al. (2013) using a chemical speciation analysis in three different sites in sites near Madrid.

- 30 The total PM<sub>10</sub> annual cycle (see Figure 6) is well known in the North-central area of the Iberian Peninsula (see, e.g., Bennouna et al., 2014, Mateos et al., 2015): there are two maxima, a major one in summer and a secondary one in early spring (considering our seasonal classification with March as part of the spring), a winter minimum and another minimum in

April. This general behaviour for the entire dataset is also followed if the DD events are excluded. Furthermore, the evolution of DD contribution to  $PM_{10}$  is very similar to these two latter curves. The largest DD contribution is observed in March ( $2.2 \mu\text{g m}^{-3}$  or 20%) and summer months, June to August ( $\sim 2.3 \mu\text{g m}^{-3}$  or  $\sim 17\%$ ). The months of April and May ( $\sim 0.9 \mu\text{g m}^{-3}$  or  $\sim 9\%$ ) display a notable decrease with respect to March. After summer, there is a sharp fall in September ( $1.2 \mu\text{g m}^{-3}$  or 10%) producing a local minimum, and beyond October a progressive decline leading to the weakest effect ( $<8\%$ ) of the African intrusions during winter months (DJF). The maximum relative DD contribution to  $PM_{10}$  can reach 20%, which is within the range (10%-50%) observed by Pey et al. (2013a) for the eastern Spanish coast. Comparing the seasonal cycles of DD contribution to  $PM_{10}$  in the latter area with respect to North-central Iberian Peninsula, some common features appear (March maximum, April/May decrease, summer increase, and September drop) but a particular difference occurs in October since in the Mediterranean coast there is a notable rise of DD contribution at the surface.

Even though both AOD and  $PM_{10}$  express the aerosol load, these quantities present noticeable differences. To facilitate the comparison of the results shown above, Figure S1 (supplementary information) shows together the annual cycles of AOD and  $PM_{10}$  total means and their DD contributions. The annual cycle of the two quantities, total AOD and  $PM_{10}$ , for the complete dataset follows a similar behaviour between August and March, with the differences in April (local  $PM_{10}$ -minimum) and May (local AOD-minimum) being remarkable, and a different evolution in June-July. These discrepancies between these quantities lead to a moderate-high correlation coefficient of 0.82 between AOD and  $PM_{10}$ , but their physical meaning is uncertain taking into account the mentioned discrepancies in the two annual cycles. With respect to the correlation between the seasonal cycles of DD contributions, the absolute and relative ones for AOD and  $PM_{10}$  show the most significant discrepancies in July (with a local minimum of AOD) and September (sharp fall of  $PM_{10}$ ). Furthermore, the maximum of March is more intense for the DD contribution to  $PM_{10}$  than to AOD. The correlation factors between these quantities are moderate-high: 0.84 and 0.74 for the absolute and relative curves, respectively.

The fine mode, represented by the  $PM_{2.5}$  data, follows the same pattern as  $PM_{10}$  in the total and DD contribution curves (Table 4 and Figure 6b). The DD contribution to  $PM_{2.5}$  is below 10% for most of the year, with a mean value of  $\sim 9\%$ .

The total coarse mode ( $PM_{2.5-10}$ ) curve is also similar to that obtained for the total  $PM_{10}$ , although the mean contribution of the DD events is 16% of the total. The DD contribution to  $PM_{2.5-10}$  (Table 4 and Figure 6c) exhibits a strong maximum in March ( $1.7 \mu\text{g m}^{-3}$  or 33%), a reduction in April and May (around 14%), large values in June ( $1.4 \mu\text{g m}^{-3}$  or 25%) followed by a weak decrease in July and August ( $1.3 \mu\text{g m}^{-3}$  or 21%), and low values in autumn and winter.

### 4.3.2 Inter-annual variability and trends

The inter-annual variations of total  $PM_{10}$ ,  $PM_{2.5}$  and  $PM_{2.5-10}$  and the corresponding DD contributions to these  $PM_x$  concentrations are plotted in Figure 7 and reported in Table 5. In the shape of the DD contribution we can distinguish two periods associated with the strong minimum of 2009. The first period has a decreasing trend from 2003-2009 where the first four years have similar DD contributions among them. The second period starts with a strong ascent of DD contribution from 2009 to 2012, followed by a significant fall in 2013 and a final rise in 2014. The absolute maximum DD contribution

occurs in 2006 ( $2.4 \mu\text{g m}^{-3}$  or 21%) and the absolute minimum is observed in 2013 with  $0.4 \mu\text{g m}^{-3}$  or 5%, although very similar to the value in 2009. The solid line in Figure 7 illustrating the evolution of the relative contribution highlights the minima of 2005, 2009 and 2013 and the maxima of 2004, 2006, 2012, and 2014.

The inter-annual evolutions of the total  $\text{PM}_{10}$  and AOD are very similar (see Figure S2, supplementary information) with an excellent agreement between them represented by a correlation coefficient around 0.9 in 2003-2014. With respect to the yearly values of DD contributions to AOD and  $\text{PM}_{10}$ , they show a correlation coefficient of 0.81. The agreement is also quite good for the relative DD contributions to AOD and  $\text{PM}_{10}$  (correlation coefficient around 0.7). This high agreement, extremely good during 2009-2013, is not seen for some years. For instance, the reason behind the low DD contribution to AOD in 2006 can be explained by the poor sampling during that year (see Table 1). So far, no reasonable explanation has been found for the strong fall between 2004 and 2005 in the DD contribution to AOD despite the fact that total AOD and  $\text{PM}_{10}$  display the same behaviour. The DD contribution to  $\text{PM}_{10}$  is notably larger than that obtained for AOD in 2014. The high inter-annual variability of these quantities highlights the necessity of longer time periods to assess this kind of relationships, but bearing in mind that the net contribution of DD aerosols is represented by very low values with a high uncertainty, hence this variability is into the expected range of change. These results are of extraordinary interest for long-term studies of columnar and surface aerosol loads in relation to their evolution and trends for climate studies because tropospheric aerosols have a strong regional signature and the area studied presents exceptional background conditions representative of Western Mediterranean Basin.

The weak impact of the DD events on the  $\text{PM}_{2.5}$  levels (fine mode, see Figure 7b and Table 5) is reflected in the low relative contribution with only three years (2003, 2005, and 2006) presenting values higher than 12%. The last years of the period analysed (2009-2014) present a notable low DD contribution to  $\text{PM}_{2.5}$  below 7%. On the contrary,  $\text{PM}_{2.5-10}$  (Figure 7c and Table 5) presents a sharper behaviour than previous  $\text{PM}_x$  results although still following the  $\text{PM}_{10}$  pattern. The starting years are the ones with the largest contributions (around 27% until 2006) while 2013 shows the minimum values (around 5%) together with 2009 (~7%).

There is a decreasing trend of all the quantities shown in Figure 7. The general decrease of  $\text{PM}_x$  levels has been previously reported for the Peñausende site and shorter periods (e.g., Barmpadimos et al., 2012; Bennouna et al., 2014; Mateos et al., 2014b; Querol et al., 2014) and it has been corroborated with the temporal trends obtained in this study (see Table 3). Cusack et al., (2012) pointed out a percentage reduction ranging between 7% to 41% in the yearly  $\text{PM}_{2.5}$  from 2002 and 2010 in 11 Spanish sites. In order to quantify the observed decrease in the DD impact, Table 3 also presents the temporal trends of the DD contribution of  $\text{PM}_{10}$ ,  $\text{PM}_{2.5}$ , and  $\text{PM}_{2.5-10}$ . The general decrease of  $\text{PM}_{10}$  ( $-0.46 \mu\text{g m}^{-3}$  per year, with a p-value  $< 0.01$ ) in Peñausende site for the period 2003-2014 is in line with previous studies (e.g., Querol et al., 2014; Mateos et al., 2015). Regarding the DD contribution, the fall in the three quantities is quantified as around -10% per year. In particular, the DD contribution to  $\text{PM}_{10}$  has decreased by an absolute amount of  $0.14 \mu\text{g m}^{-3}$  per year (p-value of 0.06) and  $0.08 \mu\text{g m}^{-3}$  per year (p-value  $< 0.01$ ) for  $\text{PM}_{2.5}$ . The reduction observed in the DD event days (see subsection 4.1.3) has also led to a significant fall of the total particulate matter. Comparing the temporal trends of  $\text{PM}_{10}$  DD contribution and the rate for the total quantity,

the DD impact has caused 30% of the total  $PM_{10}$  decrease in North-central Spain. As expected, this percentage is smaller (about 21%) for the  $PM_{2.5}$  case. In the North-eastern region, Querol et al., (2014) showed that crustal matter accounted for 14% of the total  $PM_{2.5}$  decrease between 2001 and 2012.

#### 4.4 Estimation of associated uncertainty of the methodology

5 No quantification has been done about the associated uncertainties in the number of events and associated days in most of the reported bibliography. The same happens for the uncertainty linked to the DD contribution, which can be evaluated as a consequence of the earlier error of DD detection, but also can be evaluated based on other assumptions. A big step took place when the proposed methodology by Escudero et al., (2007) was taken as the official standard method. However, the 30 days moving percentile used to establish the regional background has been changed from 30% (reported by Escudero et al.,  
10 2007) to 40% (Pey et al., 2013a; Salvador et al., 2013, 2014). It seems apparent that this percentile may be site dependent thus demonstrating the difficulty of this evaluation. Otherwise, it must borne in mind that a big difference exists between the Escudero et al., (2007) methodology and that applied by us. This subsection describes a first estimated uncertainty of using the methodology proposed in this study.

Fingerprints of each DD event day are visible on at least one of the quantities related to aerosol load (columnar or surface)  
15 analysed in the inventory evaluation (see Section 3), plus the additional informational of air mass back-trajectories, satellite images, and synoptic scenarios. Usually, several of these variables simultaneously corroborate the DD presence, especially due to the low background values that characterize our region. Therefore, the thorough inspection of all the information provided by different sources at the same time causes the error in the DD identification to be minimal. From our experience during these 12 years of data, we consider that possible error sources can be, mainly, the following: gaps in the data series,  
20 classification or not of a day when the aerosol load is close to the threshold values, and uncertainty of the instrumental techniques and the ancillary tools. Therefore, we can estimate that about 3-5 days per year could be missed in the annual sum of dusty days, so the associated relative uncertainty, considering the average of 35 DD event days per year, is ~9-15%. This estimation gives a realistic range for the error associated with this methodology of visual inspection. The 5 days per year uncertainty (or 15%) can overestimate the real error, but even this percentage can be considered as acceptable as the  
25 maximum average error. Regarding the sum of dusty days in the seasonal cycle, the same range of error can be assumed in every monthly inter-annual value.

The possible of missing these few days with DD fingerprints (~3-5 per year and per inter-annual month) leads to an uncertainty in the evaluation of DD contribution to AOD values. Hence, to quantify the uncertainty in the seasonal cycle of the DD contribution to AOD each inter-annual monthly database is extended adding 9% of DD event days. For these “extra”  
30 days the AOD is assumed as the mean value during the DD events in that month. For instance, four days are added in June with a mean AOD of 0.27 and one day is added in January with  $AOD_{440nm} = 0.18$ . The DD contribution is calculated for this case, evaluating the differences with those values shown in Section 4.2 (from the original database). The results show a small change in the DD contribution to AOD, always below 0.002. For instance, for June the relative uncertainty caused by the



added days is 6.7% (the absolute DD contribution for the original evaluation is 0.027). However, those months with less absolute DD contribution to AOD cause a relative difference between 15% and 20% (such as January and December). Overall, the mean uncertainty is 0.0013 or 9.7%. The same procedure is applied for the inter-annual DD contribution to AOD. On average, the inclusion of 9% DD extra days causes an uncertainty of 0.0014 or 8.3%. If the assumption of missing 3 days per year is even enlarged to 5 days per year, the uncertainties caused on the DD contribution to AOD values only increase up to 14%. Hence, the reliability of the method followed here is demonstrated.

In the same way, the study of the uncertainties of the DD contribution to  $PM_{10}$  is also addressed with the same method (adding 9-15% extra DD event days). The results for  $PM_{10}$  indicate a mean uncertainty of 0.1-0.13  $\mu g m^{-3}$  or 8-14% in the evaluation of both annual cycle and inter-annual evolution. This relative uncertainty can be extrapolated to the  $PM_{2.5}$  and  $PM_{2.5-10}$  DD contributions.

#### 4.5 Analysis of the synoptic scenarios during desert dust episodes

Using the ancillary information used in the final choice of the DD identification, the synoptic scenarios that favour the arrival of air masses originated in the north of Africa are also studied. These scenarios are those defined and described by Escudero et al. (2005): via the Atlantic arch (NAH-S), directly from North-Africa by a deep low pressure (AD) or by a convective system (NAH-A), and from the Mediterranean area (NAD). Overall, the geographical positions and heights of the high and low pressure systems produce the mineral aerosols to reach the IP. Figure 8 presents the annual cycle and inter-annual variability of the number of episodes associated with each synoptic scenario. The synoptic scenario of each episode has been established considering all the daily meteorological maps during the episode.

The synoptic scenario analysis of the DD events (see Figure 8a) has shown a predominance of the NAH-A (81 out of 152 episodes), in particular, during the warm season (from May to October). This scenario corresponds to a North African High Located at Upper Levels, produced by intense solar heating of the Saharan desert. These air masses present large DD loads which can arrive at high altitudes (up to 5 km a.s.l.). In our study region, the NAH-S (North Africa High Located at Surface Level) scenario governs (38 out of 152 episodes) the DD intrusions between December and April (being also significant in October) and produces transport in the lower atmospheric levels (generally below 1 km a.s.l.). The AD scenario (Atlantic Depression) plays a minor role (24 out of 152 episodes) but with an influence confined between February and May, September, and November. The NAD (North African Depression) scenario only presents an important contribution in March and December (9 out of 152 episodes).

The fingerprints of the evolution of these synoptic scenarios are reflected in the climatology of the DD episodes shown in Figure 2. The rapid increase in DD events in March (see Figure 2) is caused by a larger influence of NAH-S (3 to 5 DD events with respect to February), the marked appearance of NAD (3 events), and a slight increase of AD (2 to 3 DD events with respect to February). The synoptic situation in April changes and the NAD scenario almost disappears while NAH-S and AD increase their influence. The local summer minimum in July is caused by the lower occurrence of the NAH-A conditions. Previous studies have found this minimum for other columnar quantities, such as the vertical precipitable water

vapour (Ortiz de Galisteo et al., 2013). The absolute DD event minimum of November is caused by the total disappearance of the NAH-A scenario.

Comparing these results with previous inventories performed in other geographical areas of the IP, the synoptic scenario climatology presents some discrepancies. Toledano et al. (2007b) have also found for “El Arenosillo” site (South-western IP) in the period 2000-2005 a predominance of the NAH-A conditions during summer. However, the role played by the NAH-S seems to be minor during winter compared to the North-central area. The DD inventory in the North-Mediterranean Spanish coast has been analysed by Escudero et al. (2005) between 1996 and 2002. They also obtained the major predominance of the NAH-A during summer, although the NAD scenario shows a notable impact on the DD events in May and November. These outbreaks arriving from the Mediterranean area are also reported in the months of February, March, and November in the “El Arenosillo” inventory.

Inter-annual distribution of DD events and the four synoptic scenarios (see Figure 8b) corroborates the predominance of the synoptic scenario NAH-A every year. Overall, there is a mean of 7 episodes per year due to this scenario in the North-central area of the IP, being the maximum influence in 2012 where 9 out of 12 events occurred under this situation. A special feature is the simultaneous appearance of the four scenarios only in years 2004, 2006, and 2014. The last two years of the analysed period (2013-2014) have shown a decrease of the number of episodes that can be attributed to the absence of synoptic conditions favouring mineral dust transport during summer (NAH-A scenario). The occurrence of the NAH-S and AD scenarios presents high inter-annual variability but the number of DD episodes they caused is always smaller than those caused by NAH-A. Finally, NAD conditions in our region are only relevant in 2004, 2011, and 2014 with 2, 3, and 2 events, respectively. However, this scenario plays a key role in the North-eastern area of the IP (e.g., Escudero et al., 2005), which shows that DD intrusions arriving through the Mediterranean area rarely reach the North-central region of Spain.

## 5 Conclusions

In this study, a methodology to obtain a reliable identification of DD intrusions is proposed and applied to the North-central area of the Iberian Peninsula. Long-term datasets of AOD and PM<sub>x</sub> for background sites of Palencia and Peñausende (representative of the study area) have been used as core information for the detection of desert dust intrusions in this area during an 12-year period (from January 2003 to December 2014). The analysis of ancillary information, such as air mass back-trajectories at three altitude levels (500, 1500 and 3000 m a.s.l.), MODIS-AOD and true colour images, and meteorological maps, has been used to precisely establish the duration of each desert dust episode, creating a reliable inventory with desert dust episodes. Main conclusions can be summarized as follows:

1. The simultaneous consideration of surface and columnar aerosols has been shown to be a reliable tool in the DD identification. More than a half of the inventory has been detected by AOD<sub>440nm</sub> and PM<sub>10</sub> data at the same time. However, each quantity is able to extend the DD detection by itself in a large number of cases (114 and 80 out of

419 days detected by only PM<sub>10</sub> and AOD data, respectively). The smaller coverage of AOD sampling is not a major handicap in this process.

2. A total of 152 episodes composed of 419 days presented desert dust aerosols during the entire period. The annual cycles of the number of DD episodes and days follow a similar pattern: an increase in March, a weak fall of event days in April, a notable increment between May and September and a progressive decline to the absolute minimum in winter, with the absolute maximum in June and local minimum in July/August. Inter-annual variability of the number of DD episodes and dusty days is high, ranging between 7 episodes (15 dusty days) in 2013 and 17 episodes (68 dusty days) in 2006. A temporal trend of -2.7 dusty days per year (95% significance level) between 2003 and 2014 is obtained. Therefore, a reduction of the DD outbreaks in the North-central area of the Iberian Peninsula is found during the period studied.
3. Overall, the mean DD contribution to AOD<sub>440nm</sub> is 0.015 or 11.5%, while for the surface concentration PM<sub>10</sub>, PM<sub>2.5</sub> and PM<sub>2.5-10</sub> is 1.3 µg m<sup>-3</sup> (11.8%), 0.55 µg m<sup>-3</sup> (8.5) and 0.79 µg m<sup>-3</sup> (16.1%), respectively.
4. The annual cycle of the DD contribution to aerosol load peaks in March, decreases in April-May, notably increases during summer months (the AOD curve has a local minimum in July), and experiences a progressive decline after summer (with a significant fall in September for the PM<sub>10</sub> curve) towards minimum values in winter. The maximum DD contribution to AOD occurs in June and August close to 0.03, while the PM<sub>10</sub> maximum DD contribution reaches ~2.4 µg m<sup>-3</sup> in August.
5. The inter-annual variability of the DD contribution to aerosol load is maximum in 2004 for AOD with 0.03 and 2006 for PM<sub>10</sub> with 2.4 µg m<sup>-3</sup>, and minimum in 2013 (0.004 for AOD<sub>440nm</sub> and 0.4 µg m<sup>-3</sup> for PM<sub>10</sub>). The correlation coefficient between the DD contribution to AOD<sub>440nm</sub> and PM<sub>10</sub> yearly means is 0.81.
6. The temporal trends of the DD contribution to AOD, PM<sub>10</sub>, and PM<sub>2.5</sub> have values of -0.0019 (p-value of 0.02), -0.14 µg m<sup>-3</sup> (p-value of 0.06) per year, and -0.08 µg m<sup>-3</sup> (p-value < 0.01) per year in the analysed period, respectively. This decrease of the levels of natural mineral dust aerosols represents around the 30% of the total aerosol load decrease shown by AOD (columnar) and PM<sub>10</sub> (surface) in 2003-2014. This decrease is around 20% for the PM<sub>2.5</sub> case.
7. DD outbreaks have mainly reached the North-central Iberian Peninsula directly from North-Africa by a convective system (NAH-A synoptic scenario), with clear predominance in the summer months. The NAH-S (via the Atlantic arch) and AD (directly from North-Africa by a deep low pressure) scenarios present a variable influence thorough the year, while the NAD (from the Mediterranean area) conditions are only important in March and December.

The proposed inventory is the first one based on long-term AOD-PM data series. The use of worldwide networks (EMEP and AERONET) ensures that this method can be implemented in other regions with background aerosol observations, as long as nearby PM<sub>x</sub> and AOD measurement sites in clear remote (background) locations are analysed.

With careful inspection of all the information, the inventory can be a useful tool to develop and validate automated methodologies [which use other instruments such as Raman lidar and ceilometer or using model forecasts](#). The comparison between different methodologies will allow a more reliable estimation of uncertainties in DD detection and its contribution to total aerosol load. Future studies based on this inventory will be focused on a global characterization of microphysical and radiative properties of desert dust including the evaluation of its radiative forcing over the study region. Therefore, these results are useful for assessing regional climate change studies linked to atmospheric aerosols because of the excellent clean background conditions of the area, which may be considered as one of the few sites/areas in Southwestern Europe with these conditions.

## 10 Acknowledgements

The authors are grateful to Spanish MINECO for the financial support of the FPI grant BES-2012-051868 and project CGL2012-33576. Thanks are due to EMEP (especially to MAGRAMA and AEMET) and AERONET-PHOTONS-RIMA staff for providing observations and for the maintenance of the networks. The research leading to these results has received funding from the European Union Seventh Framework Programme (FP7/2007-2013) under grant agreement Nr. 262254 [ACTRIS 2]. We also thank “Consejería de Fomento y Medio Ambiente” for their support to desert dust studies in “Castilla y León” region, as well as “Consejería de Educación of Junta de Castilla y León” for financing the project (VA100U14).

## References

- Aas, W., K. Espen Yttri, A. Stohl, C. Lund Myhre, M. Karl, S. Tsyro, K. Marecková, R. Wankmüller, Z. Klimont, C. Heyes, A. Alastuey, X. Querol, N. Pérez, T. Moreno, F. Lucarelli, H. Areskoug, V. Balan, F. Cavalli, J.P. Putaud, J.N. Cape, M. Catrambone, D. Ceburnis, S. Conil, L. Gevorgyan, J.L. Jaffrezo, C. Hueglin, N. Mihalopoulos, M. Mitosinkova, V. Riffault, K. Sellegri, G. Spindler, T. Schuck, U. Pfeffer, L. Breuer, D. Adolfs, L. Chuntanova, M. Arabidze, and E. Abdulazizov (2013), Transboundary particulate matter in Europe Status report 2013, EMEP Report, 4/2013 (Ref. O-7726), ISSN: 1504- 6109 (print), 1504–6192 (online).
- Alados-Arboledas, L., H. Lyamani, and F.J. Olmo (2003), Aerosol size properties at Armilla, Granada (Spain), *Quart. J. Roy. Meteor. Soc.*, 129(590), 1395-1413, doi: 10.1256/qj.01.207.
- Barnpadimos, I., J. Keller, D. Oderbolz, C. Hueglin, A.S.H. Prévôt (2012), One decade of parallel fine (PM 2.5) and coarse (PM 10-PM 2.5) particulate matter measurements in Europe: Trends and variability, *Atmos. Chem. Phys.*, 12(07), 3189-3203, doi: 10.5194/acp-12-3189-2012.

- Basart, S., C. Pérez, E. Cuevas, J. M. Baldasano, and G. P. Gobbi (2009), Aerosol characterization in Northern Africa, Northeastern Atlantic, Mediterranean Basin and Middle East from direct-sun AERONET observations. *Atmos. Chem. Phys.*, 9, 8265-8282.
- 5 Bègue, N., P. Tulet, J.P. Chaboureau, G. Roberts, L. Gomes, and M. Mallet (2012), Long-range transport of Saharan dust over northwestern Europe during EUCAARI 2008 campaign: Evolution of dust optical properties by scavenging, *J. Geophys. Res.*, 117(17), D17201, doi: 10.1029/2012JD017611.
- Belis, C.A., F. Karagulian, B.R. Larsen and P.K. Hopke (2013), Critical review and met-analysis of ambient particulate matter source apportionment using receptor models in Europe, *Atmos Environ.*, 69, 94-108, doi: 10.1016/j.atmosenv.2012.11.009.
- 10 Bennouna, Y. S., V. E. Cachorro, B. Torres, C. Toledano, A. Berjón, A. M. de Frutos, and I. Alonso Fernández Coppel (2013), Atmospheric turbidity determined by the annual cycle of the aerosol optical depth over north-center Spain from ground (AERONET) and satellite (MODIS), *Atmos. Environ.*, 67, 352-364, doi: 10.1016/j.atmosenv.2012.10.065
- Bennouna, Y. S., V. E. Cachorro, M. A. Burgos, C. Toledano, B. Torres, and A. M. de Frutos (2014), Relationships between columnar aerosol optical properties and surface particulate matter observations in North-central Spain from long-term records (2003–2011), *Atmos. Meas. Tech. Discuss.*, 7, 5829-5882, doi:10.5194/amtd-7-5829-2014.
- 15 [Boselli, A., R. Caggiano, C. Cornacchia, F. Madonna, L. Mona, M. Macchiato, G. Pappalardo, and S. Trippeta: Multi year sun-photometer measurements for aerosol characterization in a Central Mediterranean site. \*Atmos. Res.\*, 104-105, 98-110, doi:10.1016/j.atmosres.2011.08.002, 2012.](https://doi.org/10.1016/j.atmosres.2011.08.002)
- Boucher, O., D. Randall, P. Artaxo, C. Bretherton, G. Feingold, P. Forster, V. M. Kerminen, Y. Kondo, H. Liao, U. Lohmann, P. Rasch, S. K. Satheesh, S. Sherwood, B. Stevens, and X. Y. Zhang (2013), Clouds and aerosols, In: *Climate Change 2013: The Physical Science Basis, Contribution of Working Group I to the Fifth Assessment Report of the Intergovernmental Panel on Climate Change*, [Stocker, T.F., D. Qin, G.-K. Plattner, M. Tignor, S.K. Allen, J. Boschung, A. Nauels, Y. Xia, V. Bex and P.M. Midgley (eds.)], 571-657, Cambridge University Press, Cambridge, United Kingdom and New York, NY, USA.
- 20 Cachorro, V. E., P. Durán, R. Vergaz, and A. M. de Frutos (2000), Columnar physical and radiative properties of atmospheric aerosols in north central Spain, *J. Geophys. Res.*, 105(D6), 7161–7175, doi:10.1029/1999JD901165.
- Cachorro, V. E., R. Vergaz, A. M. de Frutos, J. M. Vilaplana, D. Henriques, N. Laulainen, and C. Toledano (2006), Study of desert dust events over the southwestern Iberian Peninsula in year 2000: Two case studies, *Ann. Geophys.*, 24(6), 1493-1510, doi: 10.5194/angeo-24-1493-2006 .
- 25 Cachorro, V. E., C. Toledano, N. Prats, M. Sorribas, S. Mogo, A. Berjón, B. Torres, R. Rodrigo, J. de la Rosa, and A. M. De Frutos (2008), The strongest desert dust intrusion mixed with smoke over the Iberian Peninsula registered with Sun photometry, *J. Geophys. Res.*, 113(14), D14S04, doi:10.1029/2007JD009582.

- Córdoba-Jabonero, C., M. Sorribas, J. L. Guerrero-Rascado, J. A. Adame, Y. Hernández, H. Lyamani, and B. de la Morena (2011), Synergetic monitoring of Saharan dust plumes and potential impact on surface: A case study of dust transport from Canary Islands to Iberian Peninsula, *Atmos. Chem. Phys.*, 11(7), 3067-3091, doi:10.5194/acp-11-3067-2011.
- Cusack, M., A. Alastuey, N. Pérez, J. Pey, and X. Querol (2012), Trends of particulate matter (PM<sub>2.5</sub>) and chemical composition at a regional background site in the Western Mediterranean over the last nine years (2002–2010), *Atmos. Chem. Phys.*, 12(18), 8341-8357, doi:10.5194/acp-12-8341-2012.
- d'Almeida, G., P. Koepke, and E. Shettle (1991), *Atmospheric Aerosols: Global Climatology and Radiative Characteristics*, Studies in Geophysical Optics and Remote Sensing, 561 pp., A. Deepak Pub., Hampton, Va.
- Draxler, R. A., B. Stunder, G. Rolph, A. Stein, A. Taylor (2014), *HYSPLIT4 User's Guide*, Air Resources Laboratory, National Oceanic and Atmospheric Administration (NOAA), Silver Spring, MD.
- di Sarra, A., C. Di Biagio, D. Meloni, F. Monteleone, G. Pace, S. Pugnaghi, and D. Sferlazzo (2011), Shortwave and longwave radiative effects of the intense Saharan dust event of 25–26 March 2010 at Lampedusa (Mediterranean Sea), *J. Geophys. Res.*, 116(23), D23209, doi:10.1029/2011JD016238.
- Dubovik, O., B.N. Holben, T. F. Eck, A. Smirnov, Y.J. Kaufman, M. D. King, D. Tanré and I. Slutsker, (2002), Variability of absorption and optical properties of key aerosol types observed in worldwide locations, *J. Atmos. Sci.*, 59, 590–608.
- EC: Directive 2008/50/EC of the European Parliament and of the Council (21 May 2008) on Ambient Air Quality and Cleaner Air for Europe, *Official Journal of the European Communities*, L 151, 1–44, 2008. <http://eur-lex.europa.eu/legal-content/EN/TXT/?uri=CELEX:32008L0050> (last visit in 7 December 2015).
- Eck, T. F., B. N. Holben, J. S. Reid, O. Dubovik, A. Smirnov, N. T. O'Neill, I. Slutsker, and S. Kinne (1999), The wavelength dependence of the optical depth of biomass burning, urban and desert dust aerosols, *J. Geophys. Res.*, 104, D24, 31333–31350.
- Eck, T. F., B. N. Holben, A. Sinyuk, R. T. Pinker, P. Goloub, H. Chen, B. Chatenet, Z. Li, R. P. Singh, S. N. Tripathi, J. S. Reid, D. M. Giles, O. Dubovik, N. T. O'Neill, A. Smirnov, P. wang and X. Xia (2010), Climatological aspects of the optical properties of fine/coarse mode aerosol mixtures, *J. Geophys. Res.*, 115(19), D19205, doi:10.1029/2010JD014002.
- Engelstaedter, S., and R. Washington (2007), Atmospheric controls on the annual cycle of North African dust, *J. Geophys. Res.*, 112(03), D03103, doi:10.1029/2006JD007195.
- Escudero, M., S. Castillo, X. Querol, A. Avila, M. Alarcón, M. M. Viana, A. Alastuey, E. Cuevas, and S. Rodríguez (2005), Wet and dry African dust episodes over eastern Spain, *J. Geophys. Res.*, 110(18), D18S08, doi:10.1029/2004JD004731.
- Escudero, M., A. Stein, R. R. Draxler, X. Querol, A. Alastuey, S. Castillo, and A. Avila (2006), Determination of the contribution of northern Africa dust source areas to PM<sub>10</sub> concentrations over the central Iberian Peninsula using the hybrid single-particle lagrangian integrated trajectory model (HYSPLIT) model, *J. Geophys. Res.*, 111(06), D06210, doi:10.1029/2005JD006395.

- Escudero, M., X. Querol, J. Pey, A. Alastuey, N. Pérez, F. Ferreira, S. Alonso, and E. Cuevas (2007), A methodology for the quantification of the net African dust load in air quality monitoring networks, *Atmos. Environ.*, 41(26), 5516-5524, doi: 10.1016/j.atmosenv.2007.04.047.
- Escudero, M., A. F. Stein, R. R. Draxler, X. Querol, A. Alastuey, S. Castillo, and A. Avila (2011), Source apportionment for African dust outbreaks over the western Mediterranean using the HYSPLIT model, *Atmos. Environ.*, 99(3-4), 518-527, doi: 10.1016/j.atmosres.2010.12.002.
- Estellés, V., J. A. Martínez-Lozano, M. P. Utrillas, and M. Campanelli (2007), Columnar aerosol properties in Valencia (Spain) by ground-based Sun photometry, *J. Geophys. Res.*, 112(11), D11201, doi:10.1029/2006JD008167.
- Ganor, E., A. Stupp and P. Alpert (2009), A method to determine the effect of mineral dust aerosol on air quality. *Atmos. Environ.*, 43, 5463-5468, doi:10106/j.atmosenv.2009.07.028.
- Gkikas, A., N. Hatzianastassiou, N. Mihalopoulos, V. Katsoulis, S. Kazadzis, J. Pey, X. Querol, and O. Torres (2013), The regime of intense desert dust episodes in the Mediterranean based on contemporary satellite observations and ground measurements, *Atmos. Chem. Phys.*, 13(23), 12135-12154, doi:10.5194/acp-13-12135-2013.
- Gkikas, A., Basart, S., Hatzianastassiou, N., Marinou, E., Amiridis, V., Kazadzis, S., Pey, J., Querol, X., Jorba, O., Gassó, S., and Baldasano, J. M. (2015), Mediterranean desert dust outbreaks and their vertical structure based on remote sensing data, *Atmos. Chem. Phys. Discuss.*, 15, 27675-27748, doi:10.5194/acpd-15-27675-2015.
- Goudie, A. S., and N. J. Middleton (2006), *Desert Dust in the Global System*, 288 pp., Ed. Springer-Verlag Berlin Heidelberg, Berlin, Germany.
- Guerrero-Rascado, J. L., F. J. Olmo, I. Avilés-Rodríguez, F. Navas-Guzmán, D. Pérez-Ramírez, H. Lyamani, and L. A. Arboledas (2009), Extreme Saharan dust event over the southern Iberian Peninsula in September 2007: Active and passive remote sensing from surface and satellite, *Atmos. Chem. Phys.*, 9(21), 8453-8469, doi:10.5194/acp-9-8453-2009.
- Guirado, C., E. Cuevas, V. E. Cachorro, C. Toledano, S. Alonso-Pérez, J. J. Bustos, S. Basart, P. M. Romero, C. Camino, M. Mimouni, L. Zeudmi, P. Goloub, J. M. Baldasano, and A. M. de Frutos (2014), Aerosol characterization at the Saharan AERONET site Tamanrasset, *Atmos. Chem. Phys.*, 14(21), 11753-11773, doi:10.5194/acp-14-11753-2014.
- Haywood, J. M., and O. Boucher (2000), Estimates of the direct and indirect radiative forcing due to tropospheric aerosols: A review, *Rev. Geophys.*, 38(4), 513-543, doi:10.1029/1999RG000078.
- Hogan, T., and T. Rosmond (1991), The description of the Navy Operational Global Atmospheric Predictions System's spectral forecast model, *Mon. Weather Rev.*, 119(8), 1786-1815, doi: 10.1175/1520-0493.
- Holben, B. N., T. F. Eck, I. Slutsker, D. Tanré, J. P. Buis, A. Setzer, E. Vermote, and A. Smirnov (1998), AERONET - A federated instrument network and data archive for aerosol characterization, *Remote Sens. Environ.*, 66(1), 1-16, doi: 10.1016/S0034-4257(98)00031-5.

- Kalivitis, N., E. Gerasopoulos, M. Vrekousis, G. Kouvarakis, N. Kubilay, N. Hatzianastassiou, I. Vardavas, N. Mihalopoulos (2007), Dust transport over the Eastern Mediterranean from TOMS, AERONET and surface measurements. *J. Geophys. Res.*, 112: D03202, doi:10.1029/2006JD007510.
- Kallos, G., A. Papadopoulos, and P. Katsafados (2003), Model-derived seasonal amounts of dust deposited on Mediterranean Sea and Europe. In *Building the European Capacity in Operational Oceanography. Proceedings of the Third International Conference on EuroGOOS*, Athens, Greece 3–6 December 2002. Edited by H. Dahlin, N.C. Flemming, K. Nittis and S.E. Petersson, Elsevier Oceanography Series, 69, 57-63.
- Kaufman, Y. J., I. Koren, L. A. Remer, D. Tanré, P. Ginoux, and S. Fan (2005), Dust transport and deposition observed from the terra-moderate resolution imaging spectroradiometer (MODIS) spacecraft over the Atlantic ocean, *J. Geophys. Res.*, 110(10), D10S12, doi:10.1029/2003JD004436.
- Kaskaoutis, D., H. Kambezidis, P. Nastos, and P. Kosmopoulos (2008), Study on an intense dust storm over Greece, *Atmos. Environ.*, 42, 6884–6896, 2008.
- Kaskaoutis, D.G., P.G. Kosmopoulos, P.T. Nastos, H.D. Kambezidis, M. Sharma, W. Mehdi (2012), Transport pathways of Sahara dust over Athens, Greece as detected by MODIS and TOMS. *Geomat Nat Hazards Risk*, 3, 35–54.
- Knippertz, P., and J-B.W. Stuut (2014), *Mineral Dust: A Key Player in the Earth System*, 509 pp. Springer Netherlands. Dordrecht, Netherlands.
- Knippertz, P. and M.C. Todd (2012), Mineral dust aerosols over the Sahara: Meteorological controls on emission and transport and implications for modeling. *Rev. Geophys.*, 50, RG1007, doi: 10.1029/2011RG000362.
- Kulmala, M., A. Asmi, H. K. Lappalainen, K. S. Carslaw, U. Pöschl, U. Baltensperger, Ø. Hov, J.-L. Brenquier, S. N. Pandis, M. C. Facchini, H.-C. Hansson, A. Wiedensohler, and C. D. O'Dowd (2009), Introduction: European Integrated Project on Aerosol Cloud Climate and Air Quality interactions (EUCAARI) – integrating aerosol research from nano to global scales, *Atmos. Chem. Phys.*, 9(8), 2825-2841, doi:10.5194/acp-9-2825-2009.
- Lohmann, U., and J. Feichter (2005), Global indirect aerosol effects: a review, *Atmos. Chem. Phys.*, 5(3), 715–737, doi: 10.5194/acp-5-715-2005.
- Lohmann, U., L. Rotstajn, T. Storelvmo, A. Jones, S. Menon, J. Quaas, A. M. L. Ekman, D. Koch, and R. Ruedy (2010), Total aerosol effect: radiative forcing or radiative flux perturbation?, *Atmos. Chem. Phys.*, 10(7), 3235-3246, doi:10.5194/acp-10-3235-2010.
- Lyamani, H., F. J. Olmo, and L. Alados-Arboledas (2005), Saharan dust outbreak over southeastern Spain as detected by sun photometer, *Atmos. Environ.*, 39(38), 7276–7284, doi: 10.1016/j.atmosenv.2005.09.011.
- MAGRAMA, (2013), Ministerio de Agricultura, Alimentación y Medio Ambiente. “Procedimiento para la identificación de episodios naturales de PM<sub>10</sub> y PM<sub>2.5</sub>, y la demostración de causa en lo referente a las superaciones del valor límite diario de PM<sub>10</sub>”. Madrid, Spain. Abril 2013. <http://www.magrama.gob.es/es/calidad-y-evaluacion->



ambiental/temas/atmosfera-y-calidad-del-aire/Metodología\_para\_episodios\_naturales\_2012\_tcm7-281402.pdf (last visit in 7 December 2015).

- MAGRAMA, (2015), Ministerio de Agricultura, Alimentación y Medio Ambiente. “Episodios naturales de partículas 2014”. Madrid, Spain. Abril 2015. [http://www.magrama.gob.es/es/calidad-y-evaluacion-ambiental/temas/atmosfera-y-calidad-del-aire/episodiosnaturales2014\\_tcm7-379247.pdf](http://www.magrama.gob.es/es/calidad-y-evaluacion-ambiental/temas/atmosfera-y-calidad-del-aire/episodiosnaturales2014_tcm7-379247.pdf) (last visit in 7 December 2015).
- Mahowald, N. M., S. Kloster, S. Engelstaedter, J. K. Moore, S. Mukhopadhyay, J. R. McConnell, S. Albani, S. C. Doney, A. Bhattacharya, M. A. J. Curran, M. G. Flanner, F. M. Hoffman, D. M. Lawrence, K. Lindsay, P.A. Mayewski, J. Neff, D. Rothenberg, E. Thomas, P. E. Thornton, and C. S. Zender (2010), Observed 20th century desert dust variability: impact on climate and biogeochemistry, *Atmos. Chem. Phys.*, 10(22), 10875-10893, doi:10.5194/acp-10-10875-2010.
- 10 Mateos, D., M. Antón, C. Toledano, V. E. Cachorro, L. Alados-Arboledas, M. Sorribas, and J. M. Baldasano (2014a), Aerosol radiative effects in the ultraviolet, visible, and near-infrared spectral ranges using long-term aerosol data series over the Iberian Peninsula, *Atmos. Chem. Phys.*, 14(24), 13497-13514, doi:10.5194/acp-14-13497-2014.
- Mateos, D., A. Sanchez-Lorenzo, M. Antón, V. E. Cachorro, J. Calbo, M. J. Costa, B. Torres and M. Wild (2014b), Quantifying the respective roles of aerosols and clouds in the strong brightening since the early 2000s over the Iberian Peninsula, *J. Geophys. Res. Atmos.*, 119(17), 10382-10393, doi: 10.1002/2013JD022076.
- 15 Mateos, D., V. E. Cachorro, C. Toledano, M. A. Burgos, Y. Bennouna, B. Torres, D. Fuertes, R. González, C. Guirado, A. Calle, A. M. de Frutos (2015), Columnar and surface aerosol load over the Iberian Peninsula establishing annual cycles, trends, and relationships in five geographical sectors, *Sci. Total Environ.*, 518-519, 378-392, doi:10.1016/j.scitotenv.2015.03.002.
- 20 Meloni, D., A. di Sarra, G. Biavati, J.J. DeLuigi, F. Monteleone, G. Pace, S. Piacentino, D.M. Sferlazzo (2007), Seasonal behavior of Saharan dust events at the Mediterranean island of Lampedusa in the period 1999–2005, *Atmos. Environ.*, 41, 3041-3056, doi:10.1016/j.atmosenv.2006.12.001.
- Mona, L., A. Amodeo, M. Pandolfi and G. Pappalardo (2006), Saharan dust intrusions in the mediterranean area: Three years of raman lidar measurements, *J. Geophys. Res.*, 111(16), D16203, doi:10.1029/2005JD006569.
- 25 Mona, L., N. Papagiannopoulos<sup>1</sup>, S. Basart, J. Baldasano, I. Biniotoglou, C. Cornacchia, and G. Pappalardo (2014), EARLINET dust observations vs. BSC-DREAM8b modeled profiles: 12-year-long systematic comparison at Potenza, Italy, *Atmos. Chem. Phys.*, 14, 8781–8793, doi:10.5194/acp-14-8781-2014.
- Obregón, M. A., S. Pereira, F. Wagner, A. Serrano, M. L. Cencillo, and A. M. Silva (2012), Regional differences of column aerosol parameters in western Iberian Peninsula, *Atmos. Environ.*, 62, 208-219, doi:10.1016/j.atmosenv.2012.08.016.
- 30 O’Neill, N.T., T.F. Eck, A. Smirnov, B.N. Holben and S. Thulasiraman (2003), Spectral discrimination of coarse and fine mode optical depth, *J. Geophys. Res.*, 108(D17), 4559, doi:10.1029/2002JD002975.
- Ortiz de Galisteo, J.P., Bennouna, Y., Toledano, C., Cachorro, V., Romero, P., Andrés, M.I., and Torres, B., 2013. Analysis of the annual cycle of the precipitable water vapour over Spain from 10-year homogenized series of GPS data. *Quarterly Journal of Royal Meteorological Society* 140, 397–406, doi: 10.1002/qj.2146.

- Pace, G., A. di Sarra, D. Meloni, S. Piacentino, and P. Chamard (2006), Aerosol optical properties at Lampedusa (Central Mediterranean): 1. Influence of transport and identification of different aerosol types, *Atmos. Chem. Phys.*, 6, 697–713, doi:10.5194/acp-6-697-2006.
- 5 [Papayannis, A., Amiridis, V., Mona, L., Tsaknakis, G., Balis, D., Bosenberg, J., Chaikovski, A., De Tomasi, F., Grigorov, I., Mattis, I., Mitev, V., Muller, D., Nickovic, S., Perez, C., Pietruczuk, A., Pisani, G., Ravetta, F., Rizi, V., Sicard, M., Trickl, T., Wiegner, M., Gerding, M., Mamouri, R. E., D'Amico, G., and Pappalardo, G.: Systematic lidar observations of Saharan dust over Europe in the frame of EARLINET \(2000–2002\), \*J. Geophys. Res.\*, 113, D10204, doi:10.1029/2007jd009028, 2008.](#)
- 10 Pérez, C., S. Nickovic, J. M. Baldasano, M. Sicard, F. Rocadenbosch, and V. E. Cachorro (2006), A long Saharan dust event over the western mediterranean: Lidar, sun photometer observations, and regional dust modeling, *J. Geophys. Res.*, 111(15), D15214, doi:10.1029/2005JD006579.
- Pérez, L., A. Tobías, X. Querol, J. Pey, A. Alastuey, J. Díaz, J. Sunyer (2012), Saharan dust, particulate matter and cause-specific mortality: A case-crossover study in Barcelona (Spain), *Environ. Int.*, 48, 150-155, doi: 10.1016/j.envint.2012.07.001.
- 15 Pey, J., X. Querol, A. Alastuey, F. Forastiere, and M. Stafoggia (2013a), African dust outbreaks over the Mediterranean Basin during 2001-2011: PM<sub>10</sub> concentrations, phenomenology and trends, and its relation with synoptic and mesoscale meteorology, *Atmos. Chem. Phys.*, 13(3), 1395-1410, doi:10.5194/acp-13-1395-2013.
- Pey, J., A. Alastuey and X. Querol (2013b), PM<sub>10</sub> and PM<sub>2.5</sub> source at the insular location in the western Mediterranean by using source apportionment techniques, *Sci. Total Environ.*, 456-457, 267-277, doi:10.1016/j.scitotenv.2013.03.084.
- 20 Pope, C. A., (2000), Review: Epidemiological basis for particulate air pollution health standards, *Aerosol Sci. Tech.*, 32(1), 4-14. doi:10.1080/027868200303885.
- Prospero, J. M., (1999), Long-term measurements of the transport of African mineral dust to the Southeastern United States: Implications for regional air quality, *J. Geophys. Res.*, 104(D13), 15.917–15.927, doi:10.1029/1999JD900072.
- Prospero, J. M., P. Ginoux, O. Torres, S. E. Nicholson, & T. E. Gill (2002), Environmental characterization of global sources of atmospheric soil dust identified with the nimbus 7 total ozone mapping spectrometer (TOMS) absorbing aerosol product, *Rev. Geophys.*, 40(1), 2-1--2-31, doi:10.1029/2000RG000095.
- 25 Querol, X., J. Pey, M. Pandolfi, A. Alastuey, M. Cusack, N. Pérez, T. Moreno, and S. Kleanthous (2009), African dust contributions to mean ambient PM<sub>10</sub> mass-levels across the Mediterranean Basin, *Atmos. Environ.*, 43(28), 4266-4277, doi: 10.1016/j.atmosenv.2009.06.013.
- 30 Querol, X., A. Alastuey, M. Viana, T. Moreno, C. Reche, M. C. Minguillón, A. Ripoll, M. Pandolfi, F. Amato, A. Karanasiou, N. Pérez, J. Pey, M. Cusack, R. Vázquez, F. Plana, M. Dall'Osto, J. de la Rosa, A. Sánchez de la Campa, R. Fernández-Camacho, S. Rodríguez, C. Pio, L. Alados-Arboledas, G. Titos, B. Artíñano, P. Salvador, S. García Dos Santos, and R. Fernández Patier (2013), Variability of carbonaceous aerosols in remote, rural, urban and industrial

- environments in Spain: implications for air quality policy, *Atmos. Chem. Phys.*, 13(13), 6185-6206, doi:10.5194/acp-13-6185-2013.
- 5 Querol, X., A. Alastuey, M. Pandolfi, C. Reche, N. Pérez, M. C. Minguillón, T. Moreno, M. Viana, M. Escudero, A. Orío, M. Pallarés, and F. Reina (2014), 2001–2012 trends on air quality in Spain, *Sci. Total Environ.*, 490, 957–969, doi:10.1016/j.scitotenv.2014.05.074.
- Rodríguez, S., X. Querol, A. Alastuey, G. Kallos, and O. Kakaliagou (2001), Saharan dust contributions to PM<sub>10</sub> and TSP levels in Southern and Eastern Spain, *Atmos. Environ.*, 35(14), 2433-2447. doi:10.1016/S1352-2310(00)00496-9.
- Rodríguez, S., X. Querol, A. Alastuey, and F. Plana (2002), Sources and processes affecting levels and composition of atmospheric aerosol in the western Mediterranean, *J. Geophys. Res.*, 107(D24), 4777, doi:10.1029/2001JD001488.
- 10 Rodríguez, S., E. Cuevas, J. M. Prospero, A. Alastuey, X. Querol, J. López-Solano, M. I. García, and S. Alonso-Pérez (2015), Modulation of Saharan dust export by the North African dipole *Atmos. Chem. Phys.*, 15, 7471-7486, doi:10.5194/acp-15-7471-2015.
- Salvador, P., B. Artiñano, F. Molero, M. Viana, J. Pey, A. Alastuey, X. Querol (2013), African Dust Contribution to Ambient Aerosol Levels Across Central Spain: Characterization of Long-Range Transport Episodes of Desert Dust, *Atmos. Res.*, 127, 117-129, doi:10.1016/j.atmosres.2011.12.011.
- 15 Salvador, P., S. Alonso-Pérez, J. Pey, B. Artiñano, J.J. de Bustos, A. Alastuey, X. Querol (2014), African dust outbreaks over the western Mediterranean Basin: 11-year characterization of atmospheric circulation patterns and dust source areas, *Atmos. Chem. Phys.*, 14, 6759-6775, doi:10.5194/acp-14-6759-2014.
- Sanchez-Lorenzo, A., J. Calbó, and M. Wild (2013), Global and diffuse solar radiation in Spain: Building a homogeneous dataset and assessing trends, *Global Planet. Change*, 100, 343-352, doi:10.1016/j.gloplacha.2012.11.010.
- 20 Stein, A., R. Draxler, G. Rolph, B. Stunder, M. Cohen, and F. Ngan (2015), NOAA's HYSPLIT atmospheric transport and dispersion modeling system. *Bull. Amer. Meteor. Soc.*, doi:10.1175/BAMS-D-14-00110.1 (in press).
- Tafuro, A.M., F. Barnaba, F. De Tomasi, M.R. Perrone, G.P. Gobbi (2006), Saharan dust particle properties over the central Mediterranean, *Atmos. Res.*, 81(1), 67-93.
- 25 Toledano, C., V. E. Cachorro, A. Berjon, A. M. de Frutos, M. Sorribas, B. de la Morena, and P. Goloub (2007a), Aerosol optical depth and Ångström exponent climatology at El Arenosillo AERONET site (Huelva, Spain), *Quart. J. Roy. Meteor. Soc.*, 133(624), 795–807. doi: 10.1002/qj.54.
- Toledano, C., V. E. Cachorro, A. M. de Frutos, M. Sorribas, N. Prats (2007b), Inventory of African Desert Dust Events Over the Southwestern Iberian Peninsula in 2000-2005 with an AERONET Cimel Sun Photometer, *J. Geophys. Res.*, 30 112(21), D21201, doi:10.1029/2006JD008307.
- Trenberth, K. E., J. T. Fasullo, and J. Kiehl (2009), Earth's Global Energy Budget. *Bull. Amer. Meteor. Soc.*, 90(3), 311–323. doi:10.1175/2008BAMS2634.1.

- Valenzuela, A., F. J. Olmo, H. Lyamani, M. Antón, A. Quirantes and L. Alados-Arboledas, (2012) Classification of aerosol radiative properties during African desert dust intrusions over southeastern Spain by sector origins and cluster analysis, *J. Geophys. Res.*, 117, D06214, doi:10.1029/2011JD016885.
- Valenzuela, A., F. J. Olmo, H. Lyamani, M. Antón, A. Quirantes, and L. Alados-Arboledas (2012), Aerosol radiative forcing during African desert dust events (2005–2010) over Southeastern Spain, *Atmos. Chem. Phys.*, 12(21), 10331–10351, doi:10.5194/acp-12-10331-2012.
- Vergaz, R., V. E. Cachorro, A. M. de Frutos, J. M. Vilaplana, and B. A. de la Morena (2005), Columnar characteristics of aerosols by spectroradiometer measurements in the maritime area of the Cadiz gulf (Spain), *Int. J. Climatol.*, 25(13), 1781-1804, doi: 10.1002/joc.1208.
- 10 Viana, M., P. Salvador, B. Artiñano, X. Querol, A. Alastuey, J. Pey, A.J. Latz, M. Cabañas, T. Moreno, S. García, M. Hecce, P. Diez, D. Romero, R. Fernández (2010), Assessing the performance of methods to detect and quantify African dust in airborne particulates, *Environ. Sci, Technol.*, 44, 8814-8820, doi: 10.1021/es1022625.
- Viana, M., J. Pey, X. Querol, A. Alastuey, F. de Leeuw, A. Lükewille (2014), Natural Sources of Atmospheric Aerosols Influencing Air Quality Across Europe, *Sci. Total Environ.*, 472, 825-833. doi:10.1016/j.scitotenv.2013.11.140.
- 15 Wild, M., D. Folini, C. Schar, N. Loeb, E. G. Dutton, and G. König-Langlo (2013), The global energy balance from a surface perspective, *Clim. Dyn.*, 40(11–12), 3107–3134, doi:10.1007/S00382-012-1569-8.
- Zender, C.S., H. Bian, and D. Newman (2003), Mineral Dust Entrainment and Deposition (DEAD) model: Description and 1990s dust climatology, *J. Geophys. Res.*, 108(D14), 4416, doi:10.1029/2002JD002775.

## Tables

Table 1: Yearly sampling of AERONET and EMEP databases (all days) used in this study. Yearly number of days in the DD inventory (desert dust event days) identified by criteria of AOD, PM<sub>10</sub>, AOD&PM<sub>10</sub> and other ancillary information. The relative coverage (percentage) is also given in parenthesis. See Section 3 for further details about the criteria used.

	2003	2004	2005	2006	2007	2008	2009	2010	2011	2012	2013	2014	Total
	All Days												
Sampling AOD (%)	156 (42.8)	265 (72.4)	295 (80.8)	190 (52.1)	271 (74.2)	280 (76.5)	256 (70.1)	244 (66.8)	269 (73.7)	252 (68.9)	220 (63.3)	249 (68.2)	2947 (67.2)
Sampling PM <sub>10</sub> (%)	343 (94.0)	349 (95.4)	340 (93.2)	347 (95.1)	349 (95.6)	333 (91.0)	341 (93.4)	347 (95.1)	347 (95.1)	319 (87.2)	332 (91.0)	335 (91.8)	4082 (93.1)
Coincident Sampling (%)	149 (40.8)	256 (69.9)	279 (76.4)	183 (50.1)	259 (71.0)	255 (69.7)	243 (66.6)	238 (65.2)	256 (70.1)	219 (59.8)	200 (57.5)	234 (64.1)	2771 (63.2)
	Desert Dust Event Days												
Number of dusty days	44	44	41	68	44	31	24	19	32	29	15	28	419
Only AOD Criterion (%)	5 (11.4)	8 (18.2)	9 (22.0)	6 (8.8)	14 (31.8)	4 (12.9)	4 (16.7)	5 (26.3)	9 (28.1)	12 (41.4)	2 (13.3)	2 (7.1)	80 (19.1)
Only PM <sub>10</sub> Criterion (%)	19 (43.2)	3 (6.8)	11 (26.8)	37 (54.4)	6 (13.6)	2 (6.5)	7 (29.2)	2 (10.5)	0 (0)	1 (3.4)	8 (53.3)	18 (64.3)	114 (27.2)
AOD&PM <sub>10</sub> Criteria (%)	20 (45.5)	33 (75.0)	21 (51.2)	24 (35.3)	22 (50.0)	25 (80.6)	11 (45.8)	9 (47.4)	23 (71.9)	15 (51.7)	4 (26.7)	8 (28.6)	215 (51.3)
Other Criteria (%)	0 (0)	0 (0)	0 (0)	1 (1.5)	2 (4.5)	0 (0)	2 (8.3)	3 (15.8)	0 (0)	1 (3.4)	1 (6.7)	0 (0)	10 (2.4)

Table 2: Main results of the DD inventory. Legend: N.E. (number of episodes), N.D. (number of days), P.D. (Percentage of days), and M.D. (mean duration). Yearly mean values of AOD,  $\alpha$  and PM<sub>x</sub> data of desert dust events are also reported.

	2003	2004	2005	2006	2007	2008	2009	2010	2011	2012	2013	2014	Total	Mean
N.E.	15	13	16	17	12	14	10	12	15	12	7	9	152	12.7
N.D.	44	44	41	68	44	31	24	19	32	29	15	28	419	34.9
P.D. (%)	12.05	12.02	11.23	18.63	12.05	8.47	6.58	5.21	8.77	7.92	4.11	7.67	9.6	9.6
M.D. (days)	2.93	3.14	2.56	4.00	3.67	2.21	2.40	1.58	2.13	2.42	2.14	3.11	2.7	2.7
Mean AOD <sub>440nm</sub>	0.32 ±0.11	0.33 ±0.16	0.28 ±0.13	0.24 ±0.08	0.29 ±0.11	0.27 ±0.10	0.20 ±0.05	0.31 ±0.11	0.27 ±0.09	0.27 ±0.10	0.18 ±0.11	0.19 ±0.09	--	0.26 ±0.05
Mean $\alpha$	0.98 ±0.33	0.92 ±0.40	0.95 ±0.44	0.88 ±0.32	1.17 ±0.40	1.02 ±0.44	0.92 ±0.27	0.91 ±0.50	0.90 ±0.36	0.83 ±0.48	1.22 ±0.29	0.63 ±0.41	--	0.94 ±0.15
Mean PM <sub>10</sub> ( $\mu\text{g m}^{-3}$ )	28.7 ±13.0	30.0 ±32.7	29.8 ±28.5	21.2 ±8.0	19.3 ±12.0	21.5 ±8.0	16.0 ±6.5	25.0 ±25.8	21.8 ±11.0	23.2 ±20.4	16.4 ±4.8	22.3 ±8.8	--	22.9 ±4.7
Mean PM <sub>2.5</sub> ( $\mu\text{g m}^{-3}$ )	14.9 ±6.3	14.4 ±8.9	14.7 ±10.0	12.0 ±3.7	10.0 ±4.1	13.8 ±4.4	8.5 ±5.0	10.6 ±9.4	8.7 ±3.1	7.9 ±3.3	8.5 ±3.7	8.1 ±2.6	--	11.0 ±2.8
Mean PM <sub>2.5-10</sub> ( $\mu\text{g m}^{-3}$ )	13.9 ±9.1	15.9 ±25.1	14.7 ±20.9	9.2 ±6.5	9.3 ±8.4	7.6 ±5.8	7.6 ±3.1	14.4 ±16.5	12.5 ±8.1	15.5 ±17.7	7.6 ±4.7	14.6 ±8.0	--	11.9 ±3.4

Table 3: Temporal trends (Theil-Sen estimator), p-value and confidence interval ([i1, i2]) given by the considered quantities for all days and for the contribution of DD. For the DD inventory the number of episodes and DD event days are also included.

	Quantity	Trend	p-value	i1	i2	Trend units	Trend (% per year)
ALL DAYS	AOD	-0.006	<0.01	-0.009	-0.003	AOD-units per year	-4.6
	PM <sub>10</sub>	-0.46	<0.01	-0.66	-0.30	µg m <sup>-3</sup> per year	-4.5
	PM <sub>2,5</sub>	-0.38	<0.01	-0.49	-0.30	µg m <sup>-3</sup> per year	-6.3
	PM <sub>2,5-10</sub>	-0.07	0.19	-0.19	0.07	µg m <sup>-3</sup> per year	-1.6
DD INVENTORY	Number of Episodes	-0.67	0.03	-1.00	0.00	N.E. per year	-5.2
	Number of DD event days	-2.7	0.02	-4.2	-1.30	N.D. per year	-8.0
	DD Contribution to AOD	-0.0019	0.016	-0.003	-0.000	AOD-units per year	-11.2
	DD Contribution to PM <sub>10</sub>	-0.14	0.06	-0.26	0.01	µg m <sup>-3</sup> per year	-10.1
	DD Contribution to PM <sub>2,5</sub>	-0.079	<0.01	-0.12	-0.04	µg m <sup>-3</sup> per year	-13.7
	DD Contribution to PM <sub>2,5-10</sub>	-0.085	0.06	-0.16	0.00	µg m <sup>-3</sup> per year	-10.0

5

Table 4. Monthly mean (and total) contribution of DD to total AOD and PM<sub>x</sub>, in absolute (AOD-units and  $\mu\text{g m}^{-3}$ , respectively) and relative (%) values during the 2003-2013 period.

		Jan	Feb	Mar	Apr	May	Jun	Jul	Aug	Sep	Oct	Nov	Dec	Total
AOD <sub>440nm</sub>	abs.	0.006	0.011	0.018	0.014	0.014	0.027	0.018	0.026	0.023	0.014	0.008	0.004	0.015
	rel.	6.05	9.94	13.38	9.37	9.86	17.07	12.07	17.42	15.66	12.37	9.55	5.40	11.51
PM <sub>10</sub>	abs.	0.51	0.58	2.23	0.81	0.96	2.28	2.35	2.38	1.16	1.37	0.83	0.23	1.31
	rel.	7.70	6.73	20.13	9.78	8.54	17.69	16.51	16.13	9.61	13.57	11.57	3.64	11.80
PM <sub>2.5</sub>	abs.	0.36	0.43	0.66	0.28	0.33	0.88	1.12	1.12	0.58	0.50	0.28	0.08	0.55
	rel.	7.85	7.16	10.50	5.60	5.00	11.99	13.64	13.40	8.33	9.71	7.26	1.88	8.53
PM <sub>2.5-10</sub>	abs.	0.20	0.17	1.67	0.47	0.69	1.40	1.25	1.33	0.58	0.93	0.56	0.17	0.79
	rel.	8.18	5.55	32.84	13.89	14.28	24.76	20.59	20.90	11.26	18.50	16.34	6.57	16.14



Table 5. Mean annual contribution of DD to total AOD and PMx in absolute (AOD-units and  $\mu\text{g m}^{-3}$ , respectively) and relative (%) values during the 2003-2013 period.

		2003	2004	2005	2006	2007	2008	2009	2010	2011	2012	2013	2014
AOD <sub>440nm</sub>	abs.	0.029	0.033	0.016	0.022	0.022	0.018	0.006	0.012	0.017	0.018	0.004	0.008
	rel.	15.87	21.22	10.76	15.59	16.06	14.78	4.68	11.75	12.03	14.67	3.76	7.25
PM <sub>10</sub>	abs.	2.29	2.35	2.07	2.39	1.18	1.08	0.50	0.94	1.11	1.14	0.39	1.25
	rel.	18.12	17.80	16.10	21.49	11.02	11.04	5.59	10.81	10.92	12.36	4.87	14.54
PM <sub>2.5</sub>	abs.	1.04	0.87	0.92	1.23	0.52	0.68	0.25	0.34	0.31	0.31	0.16	0.30
	rel.	13.07	10.27	11.95	17.79	8.10	10.36	4.76	6.92	5.99	6.88	3.52	6.55
PM <sub>2.5-10</sub>	abs.	1.38	1.61	1.21	1.21	0.73	0.42	0.27	0.65	0.71	0.91	0.18	1.01
	rel.	27.00	30.99	22.91	26.97	15.85	12.52	6.72	15.34	14.42	18.31	4.88	22.57

## Figure captions

Figure 1. Location of the main sites used in this study belonging to AERONET (blue diamonds) and EMEP (red stars) networks.

Figure 2. Annual cycle of a) total number of episodes per month for total DD intrusions; b) total (blue bars) number of days per month for total DD intrusions and for desert (D, green bars) and mixed desert (MD, red bars) categories. Mean values per month can be derived dividing by 12.

Figure 3. Inter-annual variability of a) total number of episodes; b) total (blue bars) number of days for the desert dust (DD) intrusions and for desert (D, green bars) and mixed desert (MD, red bars) categories.

Figure 4. Annual cycle for DD contribution to the total monthly AOD means in absolute (red bar) and relative values (black line). Blue bars represent the annual cycle of total AOD and green bars the corresponding values without including the days of desert dust.

Figure 5. Inter-annual variability of DD contribution to the total yearly AOD in absolute (red bar) and relative values (black line). Blue bars represent the mean year AOD value and green bars the corresponding values without including the days of desert dust.

Figure 6. Annual cycle for DD contribution to the total monthly  $PM_{10}$  (a),  $PM_{2.5}$  (b), and  $PM_{2.5-10}$  (c) means in absolute (red bar) and relative values (black line). Blue bars represent the annual cycle of total  $PM_{10}$  (a),  $PM_{2.5}$  (b), and  $PM_{2.5-10}$  (c) and green bars the corresponding values without including the days of desert dust.

Figure 7. Inter-annual variability of DD contribution to the total yearly  $PM_{10}$  (a),  $PM_{2.5}$  (b), and  $PM_{2.5-10}$  (c) in absolute (red bar) and relative values (black line). Blue bars represent the mean year  $PM_{10}$  (a),  $PM_{2.5}$  (b), and  $PM_{2.5-10}$  (c) value and green bars the corresponding values without including the days of desert dust.

Figure 8. Annual cycle (a) and inter-annual (b) variability of DD episodes classified in terms of their synoptic scenarios: NAH-S (white bars), AD (green bars), NAD (red bars), and NAH-A (blue bars).

## Figures

Figure 1

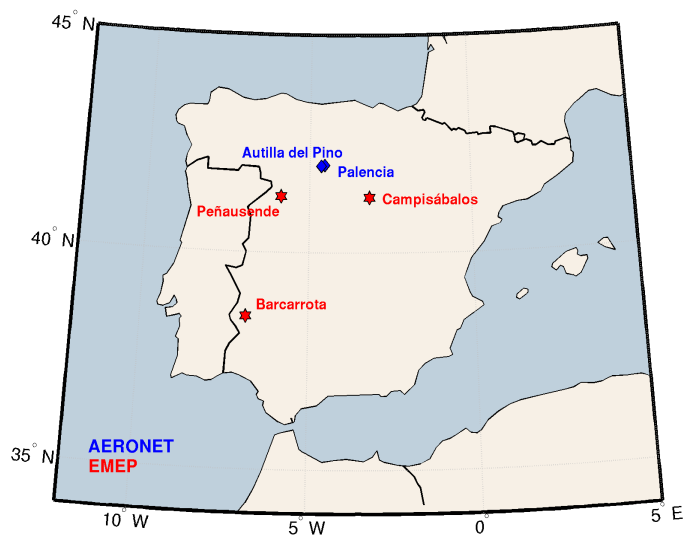
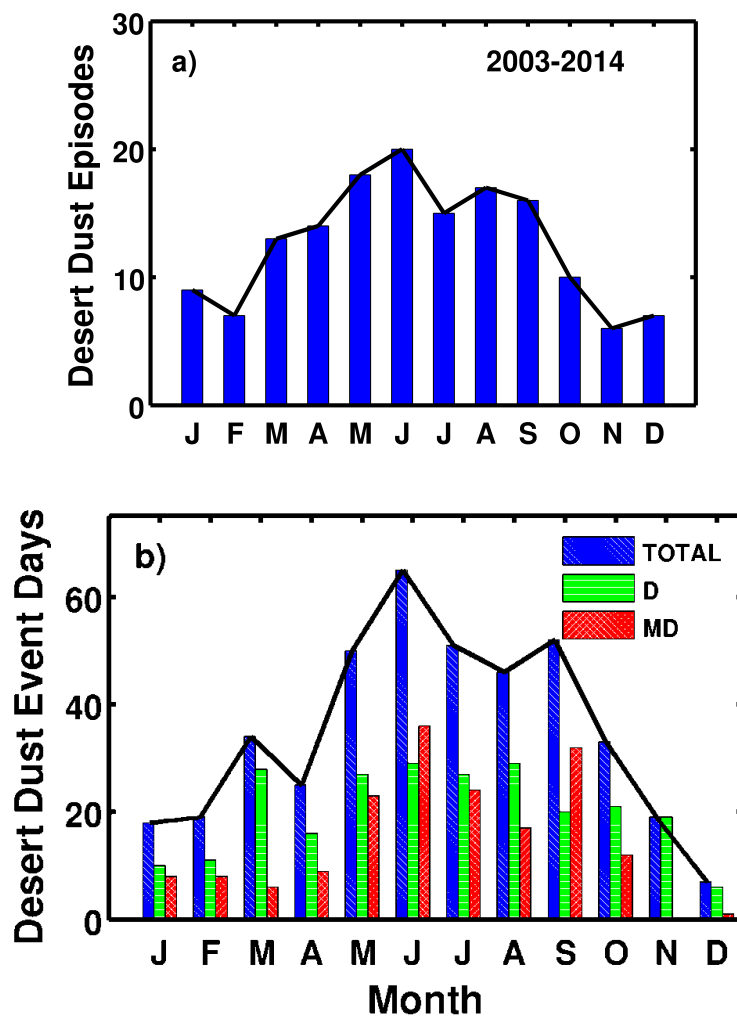


Figure 1: Location of the main sites used in this study belonging to AERONET (blue diamonds) and EMEP (red stars) networks.

Figure 2



5 Figure 2: Annual cycle of a) total number of episodes per month for total DD intrusions; b) total (blue bars) number of days per month for total DD intrusions and for desert (D, green bars) and mixed desert (MD, red bars) categories. Mean values per month can be derived dividing by 12.

Figure 3

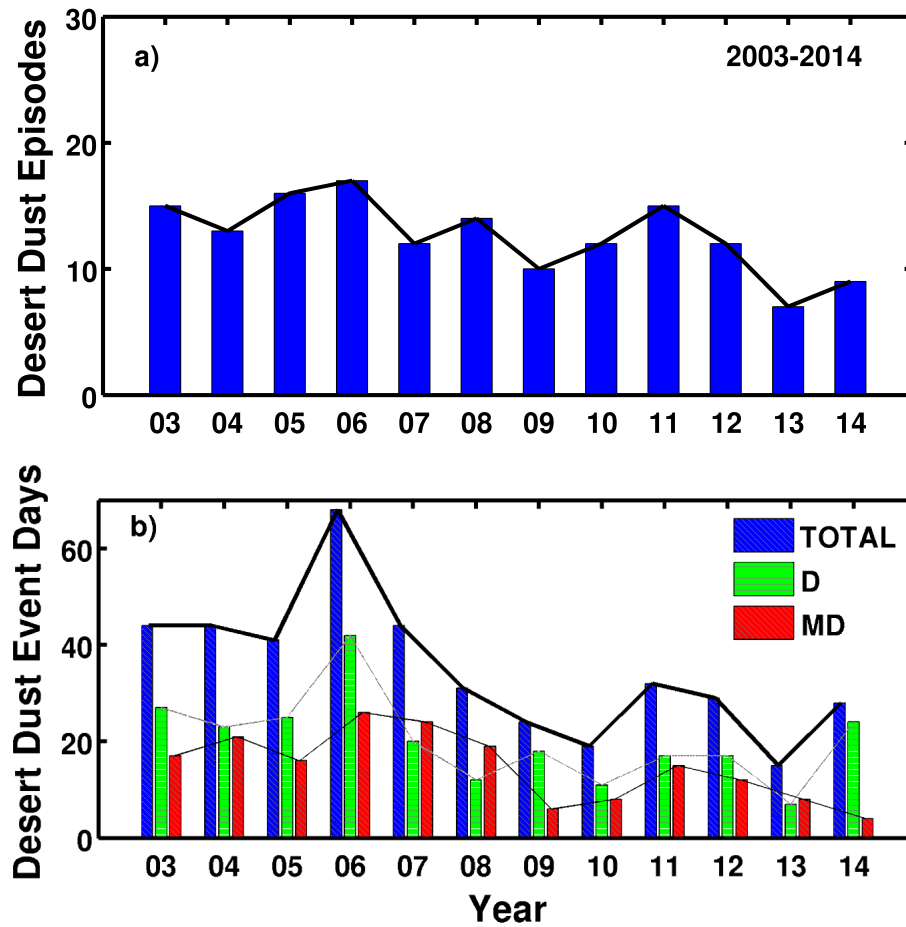


Figure 3: Inter-annual variability of a) total number of episodes; b) total (blue bars) number of days for the desert dust (DD) intrusions and for desert (D, green bars) and mixed desert (MD, red bars) categories.

Figure 4

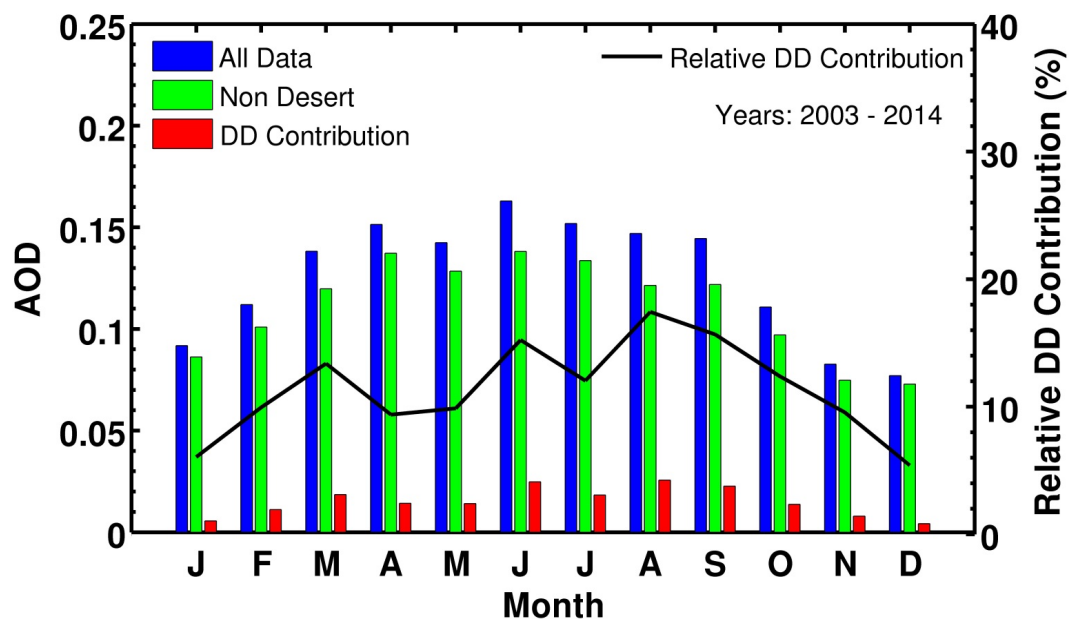
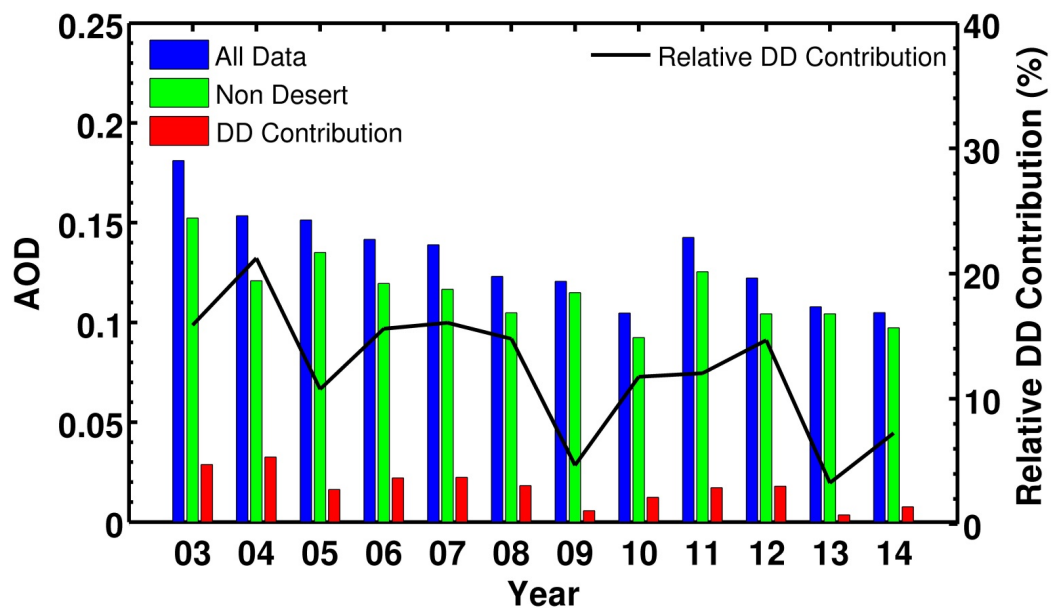


Figure 4: Annual cycle for DD contribution to the total monthly AOD means in absolute (red bar) and relative values (black line). Blue bars (also indicated as All Data) represent the annual cycle of total AOD and green bars the corresponding values without including the days of desert dust (indicated as Non desert).

10

15

Figure 5



5 Figure 5: Inter-annual variability of DD contribution to the total yearly AOD in absolute (red bar) and relative values (black line). Blue bars (also indicated as All Data) represent the mean year AOD value and green bars the corresponding values without including the days of desert dust (also indicated as Non Desert).

Figure 6

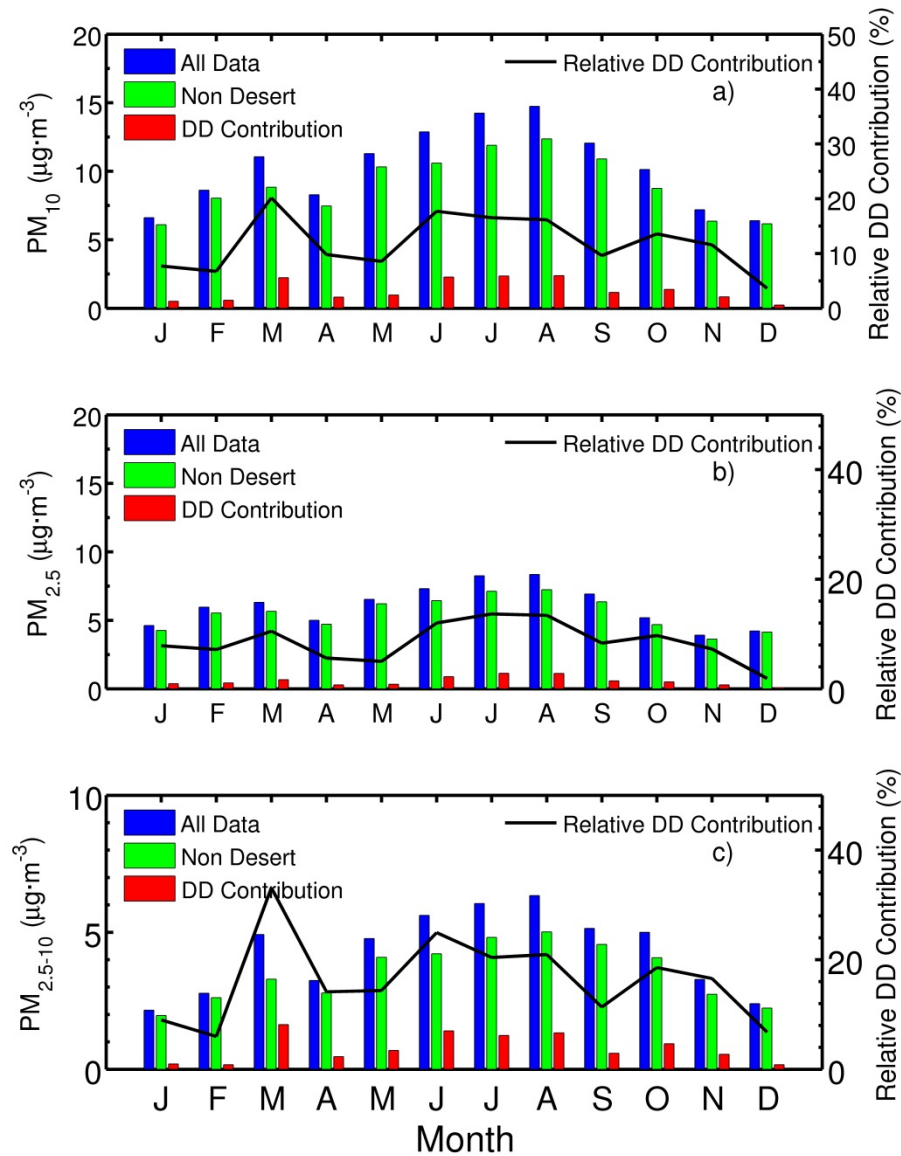
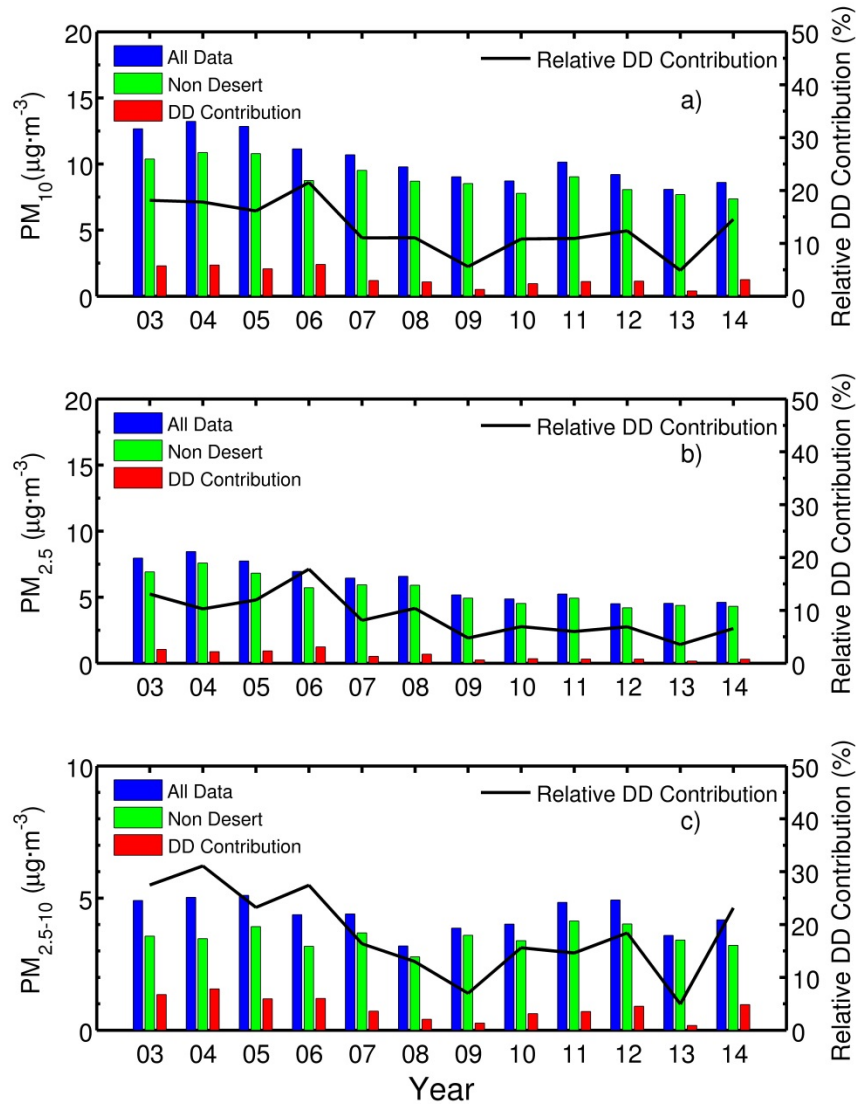


Figure 6: Annual cycle for DD contribution to the total monthly  $\text{PM}_{10}$  (a),  $\text{PM}_{2.5}$  (b), and  $\text{PM}_{2.5-10}$  (c) means in absolute (red bar) and relative values (black line). Blue bars represent the annual cycle of total  $\text{PM}_{10}$  (a),  $\text{PM}_{2.5}$  (b), and  $\text{PM}_{2.5-10}$  (c) and green bars the corresponding values without including the days of desert dust.

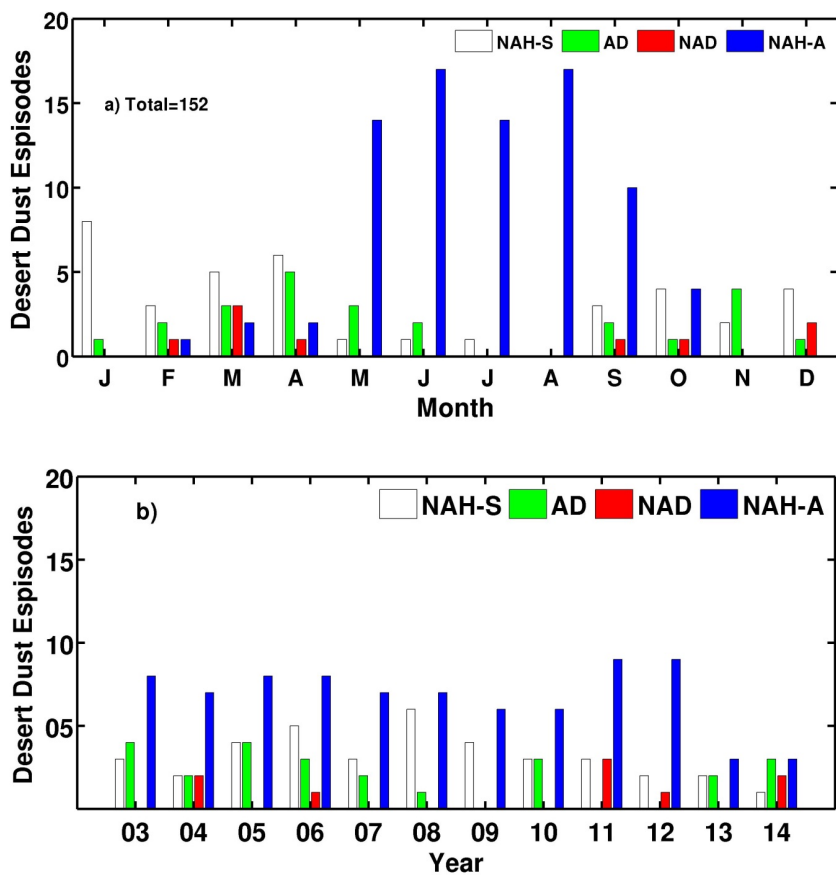


Figure 7



**Figure 7: Inter-annual variability of DD contribution to the total yearly  $\text{PM}_{10}$  (a),  $\text{PM}_{2.5}$  (b), and  $\text{PM}_{2.5-10}$  (c) in absolute (red bar) and relative values (black line). Blue bars represent the mean year  $\text{PM}_{10}$  (a),  $\text{PM}_{2.5}$  (b), and  $\text{PM}_{2.5-10}$  (c) value and green bars the corresponding values without including the days of desert dust.**

Figure 8



5

Figure 8: Annual cycle (a) and inter-annual (b) variability of DD episodes classified in terms of their synoptic scenarios: NAH-S (white bars), AD (green bars), NAD (red bars), and NAH-A (blue bars).