

We thank the Editor for his work in reviewing our manuscript.

Our replies can be found below each point.

1) P1, L9-10:

My understanding is that this paper addresses 2 independent points – (i) will there be a future change in the NAO and (ii) will there be a future change in the structure and hence the chemical implications of the NAO as defined as the leading mode of variability? I don't believe that any of your results directly address – “will there on average be a chemical change in future”, but what is addressed is “will positive NAO vs negative NAO have different chemical implications in future compared to the present.”

This needs to be made transparently clear to the reader and a sentence such as “We find that at end of the century during positive NAO phases south-west Mediterranean and north Africa will see higher pollutant concentrations with respect to the past, while a wider part of north Europe will benefit from lower pollution.” in the abstract is not very clear in my view – a casual reader may interpret it as saying “We find at the end of the century... a wider part of north Europe will benefit from lower pollution”. A possible clarification would be: “We find that at the end of the century south-west Mediterranean and north Africa will during positive NAO phases see higher pollutant concentrations with respect to the past, while a wide part of north Europe will, during NAO phases, see lower pollutant concentrations.” (The suggested sentence might seem unnecessarily repetitive, but at least it is transparently clear.)

Please consider carefully whether the distinction between (i) and (ii) above is made completely clear throughout the paper as a whole.

Indeed, the Editor correctly identifies the two independent points in this manuscript: (i) will there be a future change in the NAO and (ii) will there be a future change in the structure and hence the in the tracer transport? In both questions, the NAO was defined as the leading mode of variability. We also did not address any absolute chemical change in the future, but rather the implication on tracer transport of “positive NAO vs negative NAO [...] in future compared to the recent past”. As suggested by the Editor, we modified the abstract accordingly.

Additionally, we changed P8 L22-24: “Consequently, at the end of the century south-west Mediterranean and north Africa will suffer from higher pollutant concentrations during positive NAO phases compared to the past, while a wider part of north Europe will benefit from lower concentrations of long range pollutants (associated with improved surface air quality) during the positive NAO phases with respect to the past.”

Moreover, we clarified the conclusions (P10, L10-24): “As far as the NAO impact on tracer transport is concerned, our results show that, in the recent past, NAO affected surface tracer concentrations with increased tracer concentrations over the Arctic, south Mediterranean and north Africa during positive NAO (similarly to the findings of Creilson et al. (2003), Eckhardt et al. (2003), and Christoudias et al. (2012)). Considering CO-like tracers with constant lifetime and emissions, we find that, at the end of the century, the NAO effects on pollutants will be enhanced, i.e. tracer concentrations over those areas where they are depleted during positive NAO will reduce more, while they will increase over those areas where they are transported to. This means that tracers will be transported more efficiently towards those areas which already suffer from bad air quality conditions during positive NAO, i.e. over the Arctic, south Mediterranean and Africa.

Such conclusions are confirmed also by the computation of tracer mixing ratios and transport in the Atlantic sector during high positive and low negative NAO phases. Fu-

ture tracer concentrations during positive NAO will increase over Central Europe, south Mediterranean and north Africa, and reduce over north Europe and Greenland. Both the NAO amplitude changes and the NAO shift contribute to such concentration variations. For positive NAO, future tracer transport with respect to the past will get generally stronger over the North Atlantic Ocean and weaker over the Mediterranean region, enhancing the depletion of pollutants from centre-north Europe and the stagnation over south Mediterranean and north Africa. We remind that these results refer to constant emissions and idealised tracers (i.e. constant decay time)."

We hope that the repetition of the terms clarifies even further that we refer to "NAO effect on pollutants" (i.e. transport NAO-induced) of the future compared to the recent past, and not to the absolute changes in the concentrations.

2) P4, L31:

"Saravan" > "Saravanan".

Thank you for the note. We corrected the reference in the text and in the bibliography of our manuscript.

3) P6, L1:

"shown in the electronic supplement" – please make explicit reference to the Figures in the supplement – e.g. in this case "Fig 1S (where S indicates supplement)". Please do the same throughout the paper.

We named the figures in the supplement file as "Figure S1", "Figure S2", ... (we put the letter "S" in front of the number as per ACP rules) and we made explicit the references to such figures in the text. For instance, the old sentence (P6 L1): "The results (shown in the electronic supplement) exhibit differences between the two periods,..." now is: "The results (shown in Fig. S1 in the electronic supplement) exhibit differences between the two periods,..."

Projection of North Atlantic Oscillation and its effect on tracer transport

Sara Bacer¹, Theodoros Christoudias², and Andrea Pozzer¹

¹Atmospheric Chemistry Department, Max Planck Institute for Chemistry, Mainz, Germany

²Computation-based Science and Technology Research Center, The Cyprus Institute, Nicosia, Cyprus

Correspondence to: S. Bacer (sara.bacer@mpic.de)

Abstract. The North Atlantic Oscillation (NAO) plays an important role in the climate variability of the Northern Hemisphere with significant consequences on long-range pollutant transport. We investigate the evolution of pollutant transport in the 21st century influenced by the NAO under a global climate change scenario. We use a free-running simulation performed by the ECHAM/MESy Atmospheric Chemistry (EMAC) model coupled with the ocean general circulation model MPIOM, covering the period from 1950 until 2100. Similarly to other works, the model shows a future northeastward shift of the NAO centres of action and a weak positive trend of the NAO index (over 150 years). Moreover, we find that NAO trends (computed over periods shorter than 30 years) will continue to oscillate between positive and negative values in the future. To investigate the NAO effects on transport we consider carbon monoxide tracers with exponential decay and constant interannual emissions. We find that at the end of the century ~~during positive NAO phases~~ south-west Mediterranean and north Africa will during positive NAO phases see higher pollutant concentrations with respect to the past, while a wider part of north Europe will ~~benefit from lower pollution~~ during positive NAO phases, see lower pollutant concentrations. Such results are confirmed by the changes observed in the future for tracer concentration and vertically integrated tracer transport, differentiating the cases of “high NAO” and “low NAO” events.

1 Introduction

The North Atlantic Oscillation (NAO) is the most prominent recurrent pattern of atmospheric variability over middle and high latitudes in the Northern Hemisphere (NH). It is a swing between two pressure systems, the Azores High and Icelandic Low, which redistributes atmospheric masses between the Arctic and the subtropical Atlantic influencing weather conditions (Walker et al., 1932). When the Icelandic Low and Azores High are relatively stronger, the pressure difference is higher than average (positive NAO phase) and the north-south pressure gradient produces surface westerlies stronger than average across the middle latitudes of the Atlantic towards northern Europe. On the other hand, when the low and high surface pressure are relatively weaker (negative NAO phase) the flow has a reduced zonal component. These meridional oscillations produce large changes in the mean wind speed and direction, heat and moisture transport, surface temperature and intensity of precipitation, especially during boreal winter (Hurrell et al., 2003, and references therein). Several studies (Hurrell, 1995; Visbeck et al.,

2001; Hurrell et al., 2003) have associated the westerly flow during positive NAO with warm and moist maritime air and enhanced precipitation over northern-western Europe, and colder and drier conditions over the Mediterranean.

As the NAO exerts a strong influence on the boreal winter weather, it can also affect the transport of gas pollutants on hemispheric scale. Li et al. (2002) examined the transatlantic transport of anthropogenic ozone and the NAO impacts on the surface ozone in North America and Europe; they found that there are higher northern American ozone concentrations at Mace Head Ireland during positive NAO, when westerly winds across the North Atlantic are stronger. Creilson et al. (2003) also analysed the relationship between the NAO phases and the tropospheric ozone transport across the North Atlantic and discovered that rises of ozone over western Europe are strongly correlated with positive NAO. Eckhardt et al. (2003) studied the relationship between the NAO and transport towards the Arctic and found that concentrations of surface carbon monoxide, originating both from Europe and North America, increase in the Arctic during the NAO positive phases. Christoudias et al. (2012) studied the transport of regionally-tagged idealised tracers in relation to the NAO and found that, during high positive NAO phases, the trace gases emitted from North America are transported relatively far to northern-eastern Europe, while the trace gases emitted over Europe are transported mostly over Africa and the Arctic Circle. Pausata et al. (2012) showed both with station measurements and coupled atmosphere-chemistry model simulations that the NAO affects surface ozone concentrations during all seasons, except in autumn. The sensitivity studies by Thomas et al. (2014) regarding the free tropospheric carbon monoxide concentrations to different atmospheric weather conditions confirmed the NAO control of pollutant distribution and transport over the region of Nordic countries.

A number of studies have focused on the impacts of the NAO on aerosol concentrations. Moulin et al. (1997) analysed the role of the NAO in controlling the desert dust transport into the Atlantic and Mediterranean and suggested that the NAO likely influences the distribution of anthropogenic aerosols. Jerez et al. (2013) investigated the NAO influence on European aerosol concentrations through local atmospheric processes (e.g., precipitation, wind, cloudiness) and found that positive NAO promotes higher ground-level aerosol concentrations in southern regions of the Mediterranean during winter. Pausata et al. (2013) proved the influence of the NAO extreme events during the 1990s on the variability of particulate matter concentrations over Europe and suggested the usage of the NAO index as proxy for health impacts of pollution. The aforementioned studies suggest that future NAO phases will be important when projecting the northern American and European pollutant transport over Europe and the Arctic.

The NAO is an intrinsic mode of atmospheric variability but there is mounting evidence in the literature that it is unlikely that only stochastic atmospheric processes are the cause of NAO changes. There are a few candidate mechanisms to interpret low-frequency variations such as the North Atlantic (Rodwell et al., 1999) and tropical (Hoerling et al., 2001) sea surface temperature (SST), the sea-ice variations in the North Atlantic Ocean (Mehta et al., 2000) and the stratospheric circulation (Baldwin et al., 2001). Recently, Woollings et al. (2015) have ascribed the NAO variability on interannual-decadal timescales to the latitudinal variations of the North Atlantic jet and storm track, and the NAO variability on longer timescales to their speed and strength changes. In order to explain the upward trend observed from 1960s until 1990s some external forcings have been proposed as responsible. They include the increase of greenhouse gases (Kuzmina et al., 2005), warmer tropical SST (Hoerling et al., 2001) and the strengthened stratospheric vortex (Baldwin et al., 2001). However, there is still no consensus

and Osborn et al. (1997) asserted that recent variations can not be explained, even when combining the anthropogenic forcing and internal variability. Thus, a conclusive understanding of past NAO variability has still to be reached and the future NAO evolution continues to be an open research topic.

Earth system model simulations with increasing greenhouse-gas (GHG) concentrations can provide projections of the NAO and future trends. Most models have projected a weak positive NAO trend under a global warming climate change scenario. Gillett et al. (2013) found this when considering the mean of 37 CMIP5 models' merged historical and RCP 4.5 simulations for each season, and Stephenson et al. (2006) obtained similar results with 14 models out of 18 studied. However, some studies found the NAO index in a future scenario only weakly sensitive to the GHG increment, with no significant trends (Fyfe et al., 1999; Dorn et al., 2003; Rauthe et al., 2004; Fischer et al., 2009), or even decreasing trends (Osborn et al., 1997). More lately, Pausata et al. (2015) analysed the impacts due to the aerosol reduction (after air pollution mitigation strategies) and GHG increment on the winter North Atlantic atmospheric circulation and obtained a stronger positive NAO mean state by 2030. The dependency of the results on the model used is still unclear (Gillett et al., 2003; Stephenson et al., 2006). Other research questions are still open, regarding which climate processes govern the NAO variability, how the phenomenon varies in time, and what is the potential for the NAO predictability (Visbeck et al., 2001; Hurrell et al., 2001; Woollings et al., 2015).

The distribution and development of gases and aerosols are controlled by atmospheric chemistry and physics, including the transport of air masses integrated over continental scale. A large number of studies have addressed the NAO influence on tracer transport and the future trends of the NAO as disparate topics. However, there are no studies on the influence of the NAO on tracer and pollutant transport under a future scenario using an integrated modelling approach and with a full atmospheric chemistry to account for all potential feedbacks.

The aim of this paper is to study the influence on the pollutant transport due to the NAO in the span of the 21st century using a full Earth system model. We analyse a simulation performed by a coupled atmosphere-chemistry-ocean general circulation model in order to (i) investigate the NAO signal and trend in the future and (ii) study the NAO influence on the pollutant transport in the past and in the future over the North Atlantic sector. For the analysis, we focus on the carbon monoxide (CO) pollutant, which is directly emitted by combustion sources and has a lifetime of 1–3 months in the atmosphere; thus, it has a sufficiently long atmospheric residence lifetime relative to the timescales of transport.

The paper is structured as follows: Sect. 2 briefly describes the model used and the simulation set-up; Sect. 3 presents the NAO trends of the future projection; Sect. 4 analyses the NAO influence on and the changes of tracer transport. Conclusions and outlook are given in Sect. 5.

2 Methodology

Increasingly, the dynamics and chemistry of the atmosphere are being studied and modelled in unison in global models. Starting with the fifth round of the Coupled Model Intercomparison Project Phase 5 (CMIP5), some of the Earth system models (ESMs) that participated with interactive oceans included calculations of interactive chemistry. It was also a main recommendation of the SPARC CCMVal Report (2010), that Chemistry-Climate Models (CCMs) should continue to evolve

towards more comprehensive, self-consistent stratosphere-troposphere CCMs. These developments allow for including a better representation of stratosphere-troposphere, chemistry-climate and atmosphere-ocean couplings in CCMs and ESMs used for more robust predictions of climate changes and mutual influences and feedbacks on emitted pollutants (Eyring et al., 2012). The EMAC model was one of the first community models to introduce all these processes (Jöckel et al., 2006).

5 In this work we analyse a long chemistry climatic simulation performed by the ECHAM/MESSy Atmospheric Chemistry (EMAC) climate model under the “Earth System Chemistry Integrated Modelling” (ESCiMo) initiative (Jöckel et al., 2016). The EMAC model is a numerical chemistry and climate simulation system which uses the Modular Earth Submodel System (MESSy) to describe tropospheric and middle atmosphere processes and their interactions with oceans, land and human influences via dedicated sub-models (Jöckel et al., 2010).

10 The long chemistry climatic simulation RC2-oce-01 (Jöckel et al., 2016), hereafter referred to as “coupled simulation”, simulates the climate covering the period 1950–2100. The simulation is performed by the fully coupled atmosphere-chemistry-ocean model EMAC-MPIOM (Pozzer et al., 2011), using the 5th generation European Centre Hamburg general circulation model (ECHAM5, Roeckner et al. (2006)) as the dynamical core of the atmospheric model and the MESSy submodel MPIOM (Max Planck Institute Ocean Model, Marsland et al. (2003)) as the dynamical core of the ocean model, which computes SST
15 and SEA-ICE. The simulation resolution uses a spherical truncation of T42 (corresponding to a quadratic Gaussian grid of approx. 2.8×2.8 degrees in latitude and longitude) and 47 vertical hybrid pressure levels up to 0.01 hPa into the middle atmosphere (approximately 80 km with a resolution of ~ 20 hPa (~ 1 km) at the tropopause), referred to as T42L47MA. This vertical resolution is essential in order to take into account the influence of the stratosphere on the NAO variability (Baldwin et al., 2001). Proper representation of the stratospheric dynamics is important for simulating future climate changes and a realistic
20 reproduction of the NAO changes (Shindell et al., 1999). Scaife et al. (2007) further showed that the stratospheric variability has to be reproduced in order for models to fully simulate surface climate variations in the North Atlantic sector. The resolution for the ocean corresponds to an average horizontal grid spacing of 3×3 degrees with 40 unevenly spaced vertical levels (GR30L40). An important feature of the EMAC model is its capability to provide a careful treatment of chemical processes and dynamical feedbacks through radiation (Dietmüller et al., 2016). Thus, the coupled simulation includes gas phase species com-
25 puted online through the MECCA submodel (Sander et al., 2011), while it uses a monthly climatology of atmospheric aerosols (i.e. monthly aerosol variations are kept constant throughout the years) to take into account the interactions with radiation and heterogeneous chemistry. The model incorporates anthropogenic emissions as a combination of the ACCMIP (Lamarque et al., 2013) and RCP 6.0 scenario (Fujino et al., 2006). A detailed description can be found in Jöckel et al. (2016) and references therein. Let us stress that the same EMAC model forced with SST has been already used by Christoudias et al. (2012) to
30 successfully reproduce the NAO.

Coupled general circulation models (GCMs) perform better than atmospheric GCM forced with SST in reproducing the spatial patterns of atmospheric low-variability and the NAO phenomenon (↔) (Saravanan, 2011). Several works have shown that coupled models are able to simulate the main features of the NAO (e.g., Osborn et al. (1997), Stephenson et al. (2006)). Recently, Xin et al. (2015) have quantified the contribution of the coupling in the NAO variability, showing that 20% of the
35 NAO monthly variability is caused by the ocean-atmosphere coupling and 80% is due to the chaotic atmospheric variability.

Therefore, a coupled model is essential for a reasonable projection of future NAO. Our model is one of the first to include a full dynamical ocean-atmosphere coupling, stratospheric circulation in conjunction with online chemistry and anthropogenic emissions, thus providing state-of-the-art simulation capability of the phenomenon and potential impacts.

In order to investigate the transport of pollutants we use passive tracers with emissions modelled after CO emissions for the year 2000 (i.e. no interannual variability) and decay lifetime constant in time. These tracers are well-suited for investigating transport-related effects as no chemical influences or emission variability are included. CO is a good proxy for anthropogenic pollution, as it is mostly emitted by biomass burning and human activities (Pozer et al., 2007). In particular, we consider two passive CO tracers with a constant exponential decay (e-folding time) equal to 25 and 50 days, referred to as CO_25 and CO_50 respectively. For the whole analysis we focus on the winter (DJF: December-January-February) seasonal means, since the sea level pressure (SLP) amplitude anomalies are larger in winter and the NAO is typically stronger in this period. To study the intercontinental transport of CO (Subsect. 4.2) we compute the vertically integrated tracer transport vector, defined as (Hurrell, 1995) [Hurrell \(1995\)](#):

$$Q = \frac{1}{g} \int_0^{ps} r \mathbf{u} dp, \quad (1)$$

where r is the mixing ratio of the tracer (i.e. CO, CO_25 or CO_50) in mol/mol, \mathbf{u} the horizontal wind speed, p the atmospheric pressure, ps the surface pressure and g the gravitational acceleration.

3 NAO representation and changes

3.1 NAO representation

In order to define the spatial structure and temporal evolution of the NAO we use Empirical Orthogonal Function (EOF) analysis. We compute the eigenvectors of the cross-covariance matrix of the time variations of the SLP (Hurrell et al., 2003). By definition the eigenvectors are spatially and temporally mutually orthogonal and scale according to the amount of the total variance they explain; the leading EOF (EOF1) explains the largest percentage of the temporal variance in the dataset. The NAO is identified by the EOF1 of the cross-covariance matrix computed from the SLP anomalies in the North Atlantic sector. The EOF1 spatial pattern is associated with a north-south pressure dipole with its centres of action corresponding to the NAO poles with highest SLP variability. Therefore, we compute the EOF1 from winter seasonal SLP anomalies in the North Atlantic sector (20°N-80°N, 90°W-40°E) and we find that the long chemistry coupled simulation (1950-2100) reproduces the NAO signal with the typical north-south dipole structure (Fig. 1, top). The EOF1 explains 38.8% of the total variance, in accordance with the results found in literature (e.g., Fischer et al. (2009), Ulbrich et al. (1999)). In order to detect the NAO differences between the past and the end of the 21st century, we define two 30-years-long periods referred to as “recent past” (1980-2010) and “future” (2070-2100). Fig. 1 (centre and bottom) shows the EOF1 analysis for the two distinct periods. A climatological timescale (30 years) for the two periods has been chosen to reduce the interdecadal variability. Additionally, we have chosen various climatological timescales of 30 years during the past and future and we have computed the EOF1 in all periods, i.e.

1950-1979, 1960-1989, 1970-1999, 1980-2009 in the past and 2040-2069, 2050-2079, 2060-2089, 2070-2099 in the future. The results (shown in [Fig. S1 in the electronic supplement](#)) exhibit differences between the two periods, past and future, but they do not between any of the climatological timescale within each period. Thus, the changes observed for the past and future NAO patterns are not due to decadal variability but rather they are climate induced.

5 In Fig. 1 we can see that the centres of action of the NAO move northeastward towards the end of the century. Such NAO shift is in agreement with the results obtained by Ulbrich et al. (1999), Hu et al. (2003) and Pausata et al. (2015) for a climate change global warming scenario.

The shift of the NAO centres of action has to be taken into account when examining the temporal evolution of the NAO pattern. The NAO station-based index, defined as the difference of the normalized SLP between one northern station in Iceland and one southern station in the Azores, is fixed in space and is not able to capture the spatial variability of the NAO centres of action over seasonal (Hurrell et al., 2003) or (future) decadal (Ulbrich et al., 1999) scales. Since our model projects a spatial shift of the NAO centres, we will be considering the principal component time series of the leading EOF of SLP (PC1) (Hurrell et al., 2003) as NAO temporal index. The normalized PC1 computed for the entire simulation (1950-2100) after subtracting the SLP climatology of 1980-2010 is shown in Fig. 2.

15 3.2 NAO changes

To investigate the NAO temporal variability and trends we calculate, considering sliding windows, the linear regression coefficients with respect to time of the PC1 computed for the entire 150-years simulation (Fig. 2). In particular, we define windows of variable length between a minimum of 10 years and a maximum equal to 150 years sliding along the whole PC1 time series. We compute the linear slope (trend) for each window and assign the value to the window central year (e.g., the regression coefficient of the PC1 series in the selected period 1980-1990, a 11-year window, is assigned to the year 1985). Results in Fig. 3 show that no change in the projected future NAO variability is identified compared to the past when considering periods shorter than 30 years. For windows of length between 30 and 60 years, upward trends (centred in the 1980s and 2040s) interchange with downward trends (centred in the 2010s and 2060s). On longer window lengths we find that very weak non-statistically significant NAO trends are prevalent. The slope of the overall trend computed for the entire PC1 is $(2.99 \times 10^{-3} \pm 0.95 \times 10^{-3})$ [1/year], i.e. significant at 95%. In summary, our coupled EMAC-MPIOM model predicts a small significant positive trend for the NAO (for the 150 years horizon) in agreement with other studies that have used coupled models (e.g., Gillett et al. (2003), Hu et al. (2003), Stephenson et al. (2006)). In the same plot (Fig. 3), we have marked two triangles in correspondence to the recent past and future periods, with the aim of stressing the NAO trend changes. In the lower triangle we distinguish two sharp patterns: an upward trend (red shading) which dominates between 1980 and 1991 and a downward trend (blue shading) which dominates from 1992 onwards. Differently, in the upper triangle we note that, at the end of the century, there is a clear prevalence of positive NAO trends.

To enhance the analysis of NAO temporal evolution, we compute the number of (winter) NAO phases over 30 years, in the recent past and in the future (Fig. 4). In such a way, we study how the distribution of NAO phases evolves. In the recent past (Fig. 4, left) the distribution covers a large PC1 interval $([-3; 2.5])$ and the number of NAO phases is at most 3, except in the

interval $[0; 1]$ where it is clearly higher (equal to 9 and 10). Differently, in the future (Fig. 4, right) the distribution is skewed towards positive values of PC1 (the interval is $[-1.5; 2.5]$), with numbers of NAO phases between 4 and 7 in the interval $[-1.5; 1]$ and between 1 and 3 in the interval $[1; 2.5]$. Therefore, at the end of the century the number of negative NAO phases increases (15 in the future vs. 10 in the past), vice-versa, the number of positive NAO phases decreases (16 in the future vs. 21 in the past). However, the “high NAO extreme events” ($PC1 > 1.5$) are more frequent in the future (4 in the future vs. 1 in the past), while the number of “low NAO extreme events” ($PC1 < -1.5$) decreases (0 in the future vs. 3 in the past), and such results are consistent with the future positive trend commented before.

4 NAO effects on tracer transport in the future

4.1 Correlation and regression analysis

10 In order to investigate the NAO influence on tracer transport we compute the correlation (~~presented in the electronic supplement~~[Fig. S2](#)) and the regression (Fig. 5) between the PC1 and tracer mixing ratio at the surface level. We consider passive tracers whose emissions and decay lifetime are constant (CO_25 and CO_50) in order to remove influences by chemical production/decomposition variability. In this way the analysis gives information purely on the effect of tracer transport. We perform the correlation and regression considering the CO_25 tracer, which undergoes exponential decay with e-folding time equal to 25 days. A supplementary analysis is repeated for CO_50, with 50-days e-folding constant, to provide a constraint on the systematic uncertainty associated with the resident time of the tracer in the atmosphere and to show robustness of our results. To identify the future changes in transport pathways related to the NAO we perform the analysis separately in the two periods, recent past and future.

By means of the correlation (~~see the electronic supplement~~[Fig. S2](#)) we determine where European and Eastern USA CO-like tracers have a linear relationship with NAO. Higher the correlation (in absolute value), stronger the linear dependence between tracer mixing ratio and PC1. We observe that, in the recent past, the PC1 and CO_25 mixing ratio are significantly correlated over the northern part of the Northern America east coast, north-west Baffin Bay region, Arctic, north Africa and part of the Iberian Peninsula. Also present is a continuous area of significant anti-correlation encompassing the American central-east coast (near Florida and Cuba), through the central North Atlantic Ocean, towards northern and eastern Europe, and the Black Sea regions. The analysis with CO_50 leads to similar results ([Fig. S3](#)) and, thus, the outcomes can be considered robust under the uncertainties associated with pollutant tracer atmospheric residence lifetimes. Since the CO concentration over Europe is mostly influenced by emissions from Europe and only partially from North America (the Asian contribution can be considered negligible (Duncan et al., 2008)), we can compare our results with the findings of Christoudias et al. (2012) that used tracers tagged by origin. We find that the transport pattern in the recent past is similar with the one of Christoudias et al. (2012) for European emissions. However, our results supersede those in Christoudias et al. (2012) as that study was limited in the period 1960–2010 and was forced by prescribed SST and global atmospheric hydroxyl radical (OH) concentrations (as the removal mechanism for CO depletion). As far as the future period is concerned, all significantly correlated areas increase in size compared to the past, except for the area at north-west of the Baffin Bay which decreases. The area with positive correlation over the Arctic spreads southwards up to the Scandinavian Peninsula and the one over Africa spreads westwards

and northwards, covering further the Iberian Peninsula. Moreover, the correlation over north-west Africa and the near ocean becomes stronger with values between 0.6 and 1.0, greater than in the past. Similarly, also the area with significant anti-correlation is wider with respect to the past, and the magnitude of the negative correlation increases over north-east Europe, south Scandinavian, and the North Atlantic Ocean (between Great Britain and Iceland) with values in the range -0.6 and -0.8 .

5 Again, the analysis considering CO₅₀ has produced similar results.

In order to better define the relationship between NAO and tracer transport, we regress the CO₂₅ mixing ratio against the normalized PC1 (Fig. 5). Analogously to the correlation, areas with positive values mean that positive/negative NAO phases drive a higher/lower stagnation of trace pollutants, while areas with negative values mean that positive/negative NAO phases drive a depletion/increment of such pollutants. However, differently from the correlation, the regression map shows how intense the effect of NAO on CO₂₅ concentration could be. We observe that correlation and regression patterns are very similar. The regression analysis shows that the flow over Europe transports tracers over the Arctic, south Mediterranean, and Africa during positive NAO phases and splits the European continent in two distinct areas. Conversely, during negative NAO phases, the air is more stagnant over Central Europe allowing pollutants to accumulate. Such results extend what have been found by Creilson et al. (2003), Eckhardt et al. (2003) and Christoudias et al. (2012), who analysed the NAO effects on ozone, carbon monoxide and origin-tagged idealised tracers, respectively. The difference between the future regression and the recent past regression is computed for a clear comparison of the two periods (~~see the electronic supplement~~ Fig. S4). We find that the dichotomy over Europe is further stressed in the future, which is mostly characterized by positive NAO trends (Fig. 3) and more “high NAO extreme events” (Fig. 4) with respect to the past. Indeed, a stronger Azores High (during positive NAO) leads to enhanced transatlantic transport towards north-east Europe and then southwards, over Africa, and to a stronger separation of the flow over Europe. Therefore, northward transport to the Arctic and southward transport to Africa are further enhanced in the future. Such considerations are confirmed when studying the differences between future and recent past tracer concentration and transport (see next subsection).

Consequently, at the end of the century ~~during positive NAO phases~~ south-west Mediterranean and north Africa will suffer from higher pollutant concentrations during positive NAO phases compared to the past, while a wider part of north Europe will benefit from lower concentrations of long range pollutants ~~-(associated with improved surface air quality)~~ during the positive NAO phases with respect to the past. Similarly, the splitting over the American east coast will be enhanced as well, to a lesser degree. Nevertheless, we should note that this work is related only on the transport of CO-like tracers with constant lifetime and emissions, and thus it does not account for a possible (and probable) decrease of pollutant emissions both over Northern America and in Europe. Moreover, we do not deal with the reduction of aerosol and aerosol precursors emissions, predicted by most of the Representative Concentration Pathways (RCP, Lamarque et al. (2013)) over the Mediterranean, since we focus on trace gases rather than aerosols.

4.2 Tracer ~~concentration and~~ transport changes

Here, we further develop our analysis differentiating high and low NAO events, both in the recent past and in the future. We define “high NAO” and “low NAO” as (winter) periods with PC1 higher than 0.5 and lower than -0.5 , respectively. We obtain

12 high and 8 low NAO phases in the recent past and 9 high and 11 low NAO phases in the future. The averages of the PC1 amplitudes (all computed over at least 8 values) are equal to -1.38 in the recent past and -1.01 in the future considering the low NAO events and equal to 0.83 in the recent past and 1.24 in the future considering the high NAO events. Thus, we note that in the future the events categorized as high will have, on average, a higher PC1 amplitude than those in the recent past and, similarly, the future events categorized as low will be less negative than those in the recent past. Therefore, we find that the number of low/high NAO events will increase/decrease in the future, while the mean PC1 amplitudes will increase in the future in both cases (low and high NAO).

Firstly, we compute the temporal averages of CO₂₅ winter surface mixing ratio during high and low NAO events in order to investigate how tracer concentration changes in the future. In Fig. 6 we show the differences (percentages) between future and recent past during high and low NAO periods. We observe that in the future, during high NAO (Fig. 6, left), concentrations increase by 10% over north Africa and Mediterranean and even by 15% over some areas of the Iberian Peninsula, Greece and Aegean Sea; concentrations are lower than in the past over northern Europe and Greenland (in the range down to -10%). On the other hand, during low NAO (Fig. 6, right) CO₂₅ concentrations increase over north-east Africa and west-centre Europe (up to 15%) and decrease over north Scandinavian, the Arctic, and some areas of North America and Atlantic Ocean (down to -10%). Such variations are likely due to the more positive NAO events in the future. With this analysis we corroborate the results of the previous subsection and, moreover, we estimate which concentration changes are associated to the different NAO phases. Nevertheless, we would like to stress that, while the correlation and regression analyses were performed over 30 years, here the years considered are fewer (having to satisfy the conditions $PC1 < -0.5$ or $PC1 > 0.5$).

Secondly, following the same definitions of high and low NAO, we compute the temporal averages of Q (1). The main features of transport are in agreement with Hurrell (1995) and Christoudias et al. (2012): during positive NAO (Fig. 7, top) the axis of maximum transport has a southwest-to-northeast orientation across the Atlantic and extends farther to north-east Europe, while during negative NAO (Fig. 7, bottom) it is more longitudinally oriented. Comparing the recent past and future, we observe that during high NAO (Fig. 7, top) the east-northward transport of CO₂₅ is more pronounced in the future over the North Atlantic Ocean, from the Northern America coast towards Ireland, while it gets weaker over south Greenland, Mediterranean and west Europe. During low NAO (Fig. 7, bottom), the eastward CO₂₅ transport over the North Atlantic Ocean extends farther eastwards in the future, while it decreases over the Mediterranean Sea and north-east Africa; differently from the high NAO case, transport gets slightly stronger over south Greenland in the future. For a more immediate comparison we have also computed the differences between the two periods and the results are shown in [the supplement file Fig. S5](#). The main future changes of CO₂₅ transport, which gets generally stronger over the North Atlantic Ocean and weaker over the Mediterranean, confirm information retrieved from the correlation and regression analysis.

5 Conclusions

A free-running simulation performed by the coupled EMAC-MPIOM model has been analysed in order to study the influence of the NAO on future pollutant transport and concentration changes. The simulation takes into account the GHG increment

during the 21st century according to the ACCMIP (Lamarque et al., 2013) and RCP 6.0 scenario (Fujino et al., 2006) and uses a monthly aerosol climatology. The model is able to reproduce the SLP anomalies and the NAO signal (Christoudias et al., 2012), and the EOF analysis performed with the coupled simulation shows the typical dipole pattern which is identified as the NAO.

5 Similarly to other coupled GCMs, our model in a global warming scenario when considering the full modelled period projects (i) a northeastward shift of the NAO centres of action (Ulbrich et al. (1999), Hu et al. (2003), Pausata et al. (2015)) and (ii) a very weak but significant positive trend of the NAO (Hu et al. (2003), Gillett et al. (2003), Stephenson et al. (2006)). This suggests that the anthropogenic forcing has a non-null contribution in the NAO evolution. Moreover, in our model the NAO trends computed over periods shorter than 30 years will continue to oscillate between positive and negative values in the
10 future. The analysis of the NAO phase distribution reveals an increase of the negative NAO frequencies in the future although with much reduced amplitudes. On the contrary, positive NAO phases do decrease in frequency but increase in amplitude.

As far as the NAO impact on tracer transport is concerned, our results show that ~~NAO affects, in the recent past, NAO affected~~ surface tracer concentrations ~~and that tracers concentrate with increased tracer concentrations~~ over the Arctic, south Mediterranean and north Africa during positive NAO (similarly to ~~the findings of~~ Creilson et al. (2003), Eckhardt et al. (2003),
15 and Christoudias et al. (2012) ~~studies~~). Considering CO-like tracers with constant lifetime and emissions, ~~i.e. disregarding a possible decrease of pollutant emissions in Northern America and Europe,~~ we find that, at the end of the century, ~~tracers the~~ NAO effects on pollutants will be enhanced, i.e. tracer concentrations over those areas where they are depleted during positive NAO will reduce more, while they will increase over those areas where they are transported to. This means that tracers will be transported more efficiently towards those areas which already suffer ~~for from~~ bad air quality conditions during positive NAO,
20 i.e. over the Arctic, south Mediterranean and Africa.

Such conclusions are confirmed also by the computation of tracer mixing ~~ratio ratios~~ and transport in the Atlantic sector ~~. Future winter tracer concentrations during high positive and low negative NAO phases. Future tracer concentrations during positive NAO~~ will increase over Central Europe, south Mediterranean and north Africa, and reduce over north Europe and Greenland ~~due to more positive NAO events~~. Both the NAO amplitude changes and the NAO shift ~~can~~ contribute to such
25 concentration variations. ~~Future tracer transport gets~~ For positive NAO, future tracer transport with respect to the past will get generally stronger over the North Atlantic Ocean and weaker over the Mediterranean region, ~~depleting enhancing the depletion of~~ pollutants from centre-north Europe and ~~causing the~~ stagnation over south Mediterranean and north Africa, ~~as already noticed. We remember. We remind~~ that these results refer to constant emissions and idealised tracers (i.e. constant decay time).

30 *Acknowledgements.* The authors wish to extend their gratitude to the MESSy Consortium and the international IGAC/SPARC Chemistry-Climate Model Initiative (CCMI, 2013). The analysed simulations were carried out as part of the Earth System Chemistry integrated Modelling (ESCiMo) project at the German Climate Computing Centre (Deutsches Klimarechenzentrum, DKRZ). DKRZ and its scientific steering committee are gratefully acknowledged for providing the required computational resources.

References

- Baldwin, M. P., and Dunkerton, T. J.: Stratospheric Harbingers of Anomalous Weather Regimes, *Science*, 294, 581-584, 2001.
- Christoudias, T., Pozzer, A., and Lelieveld, J.: Influence of the North Atlantic Oscillation on air pollution transport, *Atmos. Chem. Phys.*, 12, 869–877, doi:10.5194/acp-12-869-2012, 2012.
- 5 Creilson, J. K., Fishman, J., and Wozniak, A. E.: Intercontinental transport of tropospheric ozone: a study of its seasonal variability across the North Atlantic utilizing tropospheric ozone residuals and its relationship to the North Atlantic Oscillation, *Atmos. Chem. Phys.*, 3, 2053–2066, www.atmos-chem-phys.org/acp/3/2053/, 2003.
- Dorn, W., Dethloff, K., Rinke, A., and Roeckner, E.: Competition of NAO regime changes and increasing greenhouse gases and aerosols with respect to Arctic climate projections, *Clim. Dyn.*, 21, 447-458 doi:10.1007/s00382-003-0344-2, 2003.
- 10 Duncan, B. N., and Logan, J. A.: Model analysis of the factors regulating the trends and variability of carbon monoxide between 1988 and 1997, *Atmos. Chem. Phys.*, 8, 7389–7403, www.atmos-chem-phys.net/8/7389/2008/, 2008.
- Eckhardt, S., Stohl, A., Beirle, S., Spichtinger, N., James, P., Forster, C., Junker, C., Wagner, T., Platt, U., and Jennings, S. G.: The North Atlantic Oscillation controls air pollution transport to the Arctic, *Atmos. Chem. Phys.*, 3, 1769–1778, www.atmos-chem-phys.org/acp/3/1769/, 2003.
- 15 Eyring, V., and Lamarque, J.-F.: Global chemistry-climate modeling and evaluation, *Eos, Transactions American Geophysical Union*, 93, 539-539, doi:10.1029/2012EO510012, 2012.
- Eyring, V., Lamarque, J. F., Hess, P., Arfeuille, F., Bowman, K., Chipperfield, M. P., Duncan, B., Fiore, A., Gettelman, A., Giorgetta, M. A., Granier, C., Hegglin, M., Kinnison, D., Kunze, M., Langematz, U., Luo, B., Martin, R., Matthes, K., Newman, P. A., Peter, T., Robock, A., Ryerson, T., Saiz-Lopez, A., Salawitch, R., Schultz, M., Shepherd, T. G., Shindell, D., Staehelin, J., Tegtmeier, S., Thomason, L., Tilmes, S., Vernier, J.-P., Waugh, D. W., and Young, P. J.: Overview of IGAC/SPARC Chemistry-Climate Model Initiative (CCMI) community simulations in support of upcoming ozone and climate assessments, *SPARC Newsletter*, 40, 48-66, 2013.
- 20 Dietmüller, S., Jöckel, P., Tost, H., Kunze, M., Gellhorn, C., Brinkop, S., Frömming, C., Ponater, M., Steil, B., Lauer, A., and Hendricks, J.: A new radiation infrastructure for the Modular Earth Submodel System (MESSy, based on version 2.51), *Geosci. Model Dev. Discuss.*, doi:10.5194/gmd-2015-277, in review, 2016.
- 25 Fischer-Bruns, I., Banse, D. F., and Feichter, J.: Future impact of anthropogenic sulfate aerosol on North Atlantic climate, *Clim. Dyn.*, 32, 511-524, doi:10.1007/s00382-008-0458-7, 2009.
- Fyfe, J. C., Boer, G. J., Flato, and G. M.: The Arctic and Antarctic Oscillations and their projected changes under global warming, *Geophys. Res. Lett.*, 26, 1601-1604, 1999.
- Fujino, J., Nair, R., Kainuma, M., Masui, T., and Matsuoka, Y.: Multi-gas mitigation analysis on stabilization scenarios using aim global model, *Energy J.*, 27, 343–354, 2006.
- 30 Gillett, N. P., Allen, M. R., McDonald, R. E., Senior, C. A., Shindell, D. T., and Schmidt, G. A.: How linear is the Arctic Oscillation response to greenhouse gases?, *J. Geophys. Res.*, 107, D3,4022, doi:10.1029/2001JD000589, 2002.
- Gillett, N. P., Graf, H. F., and Osborn, T. J.: Climate change and the North Atlantic Oscillation, in: *The North Atlantic Oscillation: Climatic Significance and Environmental Impact*, edited by: Hurrell, J. W., Kushnir, Y., Ottersen, G., and Visbeck, M., Eds. *Geophysical Monograph Series*, 134, American Geophysical Union, Washington DC, 193–209, 2003.
- 35 Gillett, N. P., and Fyfe, J. C.: Annular mode changes in the CMIP5 simulations, *Geophys. Res. Lett.*, 40, 1189-1193, doi:10.1002/grl.50249, 2013.

- Hoerling, M. P., Hurrell, J. W., and Xu, T.: Tropical Origins for the Recent North Atlantic Climate Change, *Science*, 292, 90-92, doi:10.1126/science.1058582, 2001.
- Hu, Z.-Z., and Wu, Z.: The intensification and shift of the annual North Atlantic Oscillation in a global warming scenario simulation, *Tellus*, 56A, 112-124, 2004.
- 5 Hurrell, J. W.: Decadal Trends in the North Atlantic Oscillation: Regional Temperatures and Precipitation, *Science*, 269, 676-679, 1995.
- Hurrell, J. W., Kushnir, Y., Visbeck, M.: The North Atlantic Oscillation, *Science*, 291, 603-602, 2001.
- Hurrell, J. W., Kushnir, Y., Ottersen, G., and Visbeck, M.: An overview of the North Atlantic Oscillation, in: *The North Atlantic Oscillation: Climatic Significance and Environmental Impact*, edited by: Hurrell, J. W., Kushnir, Y., Ottersen, G., and Visbeck, M., Eds. Geophysical Monograph Series, 134, American Geophysical Union, Washington DC, 1-35, 2003.
- 10 Jerez, S., Jimenez-Guerrero, P., Montávez, J. P., and Trigo, R. M.: Impact of the North Atlantic Oscillation on European aerosol ground levels through local processes: a seasonal model-based assessment using fixed anthropogenic emissions, *Atmos. Chem. Phys.*, 13, 11195–11207, doi:10.5194/acp-13-11195-2013, 2013.
- Jöckel, P., Tost, H., Pozzer, A., Brühl, C., Buchholz, J., Ganzeveld, L., Hoor, P., Kerkweg, A., Lawrence, M. G., Sander, R., Steil, B., Stiller, G., Tanarhte, M., Taraborrelli, D., van Aardenne, J., and Lelieveld, J.: The atmospheric chemistry general circulation
- 15 model ECHAM5/MESSy1: consistent simulation of ozone from the surface to the mesosphere, *Atmos. Chem. Phys.*, 6, 5067-5104, doi:10.5194/acp-6-5067-2006, 2006.
- Jöckel, P., Kerkweg, A., Pozzer, A., Sander, R., Tost, H., Riede, H., Baumgaertner, A., Gromov, S., and Kern, B.: Development cycle 2 of the Modular Earth Submodel System (MESSy2), *Geosci. Model Dev.*, 3, 717-752, doi:10.5194/gmd-3-717-2010, 2010.
- Jöckel, P., Tost, H., Pozzer, A., Kunze, M., Kirner, O., Brenninkmeijer, C. A. M., Brinkop, S., Cai, D. S., Dyroff, C., Eckstein, J.,
- 20 Frank, F., Garny, H., Gottschaldt, K.-D., Graf, P., Grewe, V., Kerkweg, A., Kern, B., Matthes, S., Mertens, M., Meul, S., Neumaier, M., Nützel, M., Oberländer-Hayn, S., Ruhnke, R., Runde, T., Sander, R., Scharffe, D., and Zahn, A.: Earth System Chemistry Integrated Modelling (ESCiMo) with the Modular Earth Submodel System (MESSy) version 2.51, *Geosci. Model Dev.*, 9, 1153-1200, doi:10.5194/gmd-9-1153-2016, 2016.
- Kuzmina, S. I., Bengtsson, L., Johannessen, O. M., Drange, H., Bobylev, L. P., and Miles, M. W.: The North Atlantic Oscillation and
- 25 greenhouse-gas forcing, *Geophys. Res. Lett.*, 32, L04703, doi:10.1029/2004GL021064, 2005.
- Lamarque, J.-F., Kyle, G. P., Meinshausen, M., Riahi, K., Smith, S. J., Vuuren, D. P., Conley, A. J., and Vitt, F.: Global and regional evolution of short-lived radiatively-active gases and aerosols in the Representative Concentration Pathways, *Climatic Change*, 109, 191-212, doi:10.1007/s10584-011-0155-0, 2011.
- Lamarque, J. -F., Dentener, F., McConnell, J., Ro, C.-U., Shaw, M., Vet, R., Bergmann, D., Cameron-Smith, P., Dalsoren, S., Doherty, R.,
- 30 Faluvegi, G., Ghan, S. J., Josse, B., Lee, Y. H., MacKenzie, I. A., Plummer, D., Shindell, D. T., Skeie, R. B., Stevenson, D. S., Strode, S., Zeng, G., Curran, M., Dahl-Jensen, D., Das, S., Fritzsche, D., and Nolan, M.: Multi-model mean nitrogen and sulfur deposition from the Atmospheric Chemistry and Climate Model Intercomparison Project (ACCMIP): evaluation of historical and projected future changes, *Atmos. Chem. Phys.*, 13, 7997-8018, doi:10.5194/acp-13-7997-2013, 2013.
- Li, Q., Jacob, D. J., Bey, I., Palmer, P. I., Duncan, B. N., Field, B. D., Martin, R. V., Fiore, A. M., Yantosca, R. M., Parrish, D. D., Simmonds,
- 35 P. G., and Oltmans, S. J.: Transatlantic transport of pollution and its effects on surface ozone in Europe and North America, *J. Geophys. Res.*, 107, doi:10.1029/2001JD001422, 2002.
- Marsland, S., Haak, H., Jungclaus, J. H., Latif, M., and Röske, F.: The Max-Planck-Institute global ocean/sea ice model with orthogonal curvilinear coordinates, *Ocean Modell.*, 5, 91-127, doi:10.1016/S1463-5003(02)00015-X, 2003.

- Mehta, V. M., Suarez, M. J., Manganello, J. V., and Delworth, T. L.: Oceanic influence on the North Atlantic Oscillation and associated Northern Hemisphere climate variations: 1959-1993, *Geophys. Res. Lett.*, 27, 121-124, 2000.
- Moulin, C., Lambert, C. E., Dulac, F., and Dayan, U.: Control of atmospheric export of dust from North Africa by the North Atlantic Oscillation, *Nature*, 387, 691-694, 1997.
- 5 NAO Index Data provided by the Climate Analysis Section, NCAR, Boulder, USA, Hurrell (2003), retrieved from <https://climatedataguide.ucar.edu/climate-data/hurrell-north-atlantic-oscillation-nao-index-pc-based> (last access:17/01/2016).
- Osborn, T. J., Briffa, K. R., Tett, S. F. B., Jones, P. D., and Trigo, R. M.: Evaluation of the North Atlantic Oscillation as simulated by a coupled climate model, *Clim. Dyn.*, 15, 685-702, 1999.
- Pausata, F. S. R., Pozzoli, L., Vignati, E., and Dentener, F. J.: North Atlantic Oscillation and tropospheric ozone variability in Europe: model analysis and measurements intercomparison, *Atmos. Chem. Phys.*, 12, 6357–6376, doi:10.5194/acp-12-6357-2012, 2012.
- 10 Pausata, F. S. R., Pozzoli, L., Dingenen, R. V., Vignati, E., Cavalli, F., and Dentener, F. J.: Impacts of changes in North Atlantic atmospheric circulation on particulate matter and human health in Europe, *J. Geophys. Res.*, 40, 4074-4080, doi:10.1002/grl.50720, 2013.
- Pausata, F. S. R., Gaetani, M., Messori, G., Kloster, S., and Dentener, F. J.: The role of aerosol in altering North Atlantic atmospheric circulation in winter and its impact on air quality, *Atmos. Chem. Phys.*, 15, 1725–1743, doi:10.5194/acp-15-1725-2015, 2015.
- 15 Pozzer, A., Jöckel, P., Tost, H., Sander, R., Ganzeveld, L., Kerkweg, A., and Lelieveld, J.: Simulating organic species with the global atmospheric chemistry general circulation model ECHAM5/MESSy1: a comparison of model results with observations, *Atmos. Chem. Phys.*, 7, 2527-2550, doi:10.5194/acp-7-2527-2007, 2007.
- Pozzer, A., Jöckel, P., Kern, B., and Haak, H.: The Atmosphere-Ocean General Circulation Model EMAC-MPIOM, *Geosci. Model Dev.*, 4, 771-784, doi:10.5194/gmd-4-771-2011, 2011.
- 20 Roeckner, E., Brokopf, R., Esch, M., Giorgetta, M., Hagemann, S., Kornblüeh, L., Manzini, E., Schlese, U., and Schulzweida, U.: Sensitivity of simulated climate to horizontal and vertical resolution in the ECHAM5 atmosphere model, *J. Climate*, 19, 3771-3791, 2006.
- Rauthe, M., Hense, A., and Paeth, H.: A model intercomparison study of climate change-signals in extratropical circulation, *Int. J. Climatol.*, 24, 643-662, doi:10.1002/joc.1025, 2004
- Rodwell, M. J., Rowell, D. P., and Folland, C. K.: Oceanic forcing of the wintertime North Atlantic Oscillation and European climate, *Nature*, 25 398, 320-321, 1999.
- Sander, R., Baumgaertner, A., Gromov, S., Harder, H., Jöckel, P., Kerkweg, A., Kubistin, D., Regelin, E., Riede, H., Sandu, A., Taraborrelli, D., Tost, H., and Xie, Z.-Q.: The atmospheric chemistry box model CAABA/MECCA-3.0, *Geosci. Model Dev.*, 4, 373-380, doi:10.5194/gmd-4-373-2011, 2011.
- ~~Saravan~~
- 30 [Saravanan](#), R.: Atmospheric Low-Frequency Variability and Its Relationship to Midlatitude SST Variability: Studies Using the NCAR Climate System Model, *J. Climate*, 11, 1386-1404, [http://dx.doi.org/10.1175/1520-0442\(1998\)011<1386:ALFVAI>2.0.CO;2](http://dx.doi.org/10.1175/1520-0442(1998)011<1386:ALFVAI>2.0.CO;2), 1998.
- Scaife, A. A., and Folland, C. K.: European Climate Extremes and the North Atlantic Oscillation, *J. Climate*, 21, 72-82, doi:10.1175/2007JCLI1631.1, 2007.
- Shindell, D. T., Miller, R. L., Schmidt, G. A., and Pandolfo, L.: Simulation of recent northern winter climate trends by greenhouse-gas forcing, *Nature*, 399, 452-455, 1999.
- 35 SPARC CCMVal: SPARC Report on the Evaluation of Chemistry-Climate Models, Eyring, V., Shepherd, T., and Waugh, D. (Eds.), SPARC Report No. 5, WCRP-30/2010, WMO/TD-No. 40, available at www.sparc-climate.org/publications/sparc-reports/, 2010.

- Stephenson, D. B., Pavan, V., Collins, M., Junge, M. M., and Quadrelli, R.: North Atlantic Oscillation response to transient greenhouse gas forcing and the impact on European winter climate: a CMIP2 multi-model assessment, *Clim. Dyn.*, 27, 401-420, doi:10.1007/s00382-006-0140-x, 2006.
- Thomas, M. A., and Devasthale, A.: Sensitivity of free tropospheric carbon monoxide to atmospheric weather states and their persistency: an observational assessment over the Nordic countries, *Atmos. Chem. Phys.*, 14, 11545–11555, doi:10.5194/acp-14-11545-2014, 2014.
- 5 Ulbrich, U., and Christoph, M.: A shift of the NAO and increasing storm track activity over Europe due to anthropogenic greenhouse gas forcing, *Clim. Dyn.*, 15, 551-559, 1999.
- Visbeck, M. H., Hurrell, J. W., Polvani, L., and Cullen, H. M.: The North Atlantic Oscillation: past, present, and future, *P. Natl. Acad. Sci. USA*, 98, 23, doi:10.1073/pnas.231391598, 2001.
- 10 Walker, G. T. and Bliss, E. W.: *World Weather*, V. *Mem. Roy. Meteorol. Soc.*, 4, 53-83, 1932.
- Woollings, T., Franzke, C., Hodson, D. L. R., Dong, B., Barnes, E. A., Raible, C. C., Pinto, J. G.: Contrasting interannual and multidecadal NAO variability, *Clim. Dyn.*, 45, 539-556, doi:10.1007/s00382-014-2237-y, 2015.
- Xin, x., Xue, W., Zhang, M., Li, H., Zhang, T., and Zhang, J.: How much of the NAO monthly variability is from ocean-atmospheric coupling: results from an interactive ensemble climate model, *Clim. Dyn.*, 44, 781-790, doi:10.1007/s00382-014-2246-x, 2015.

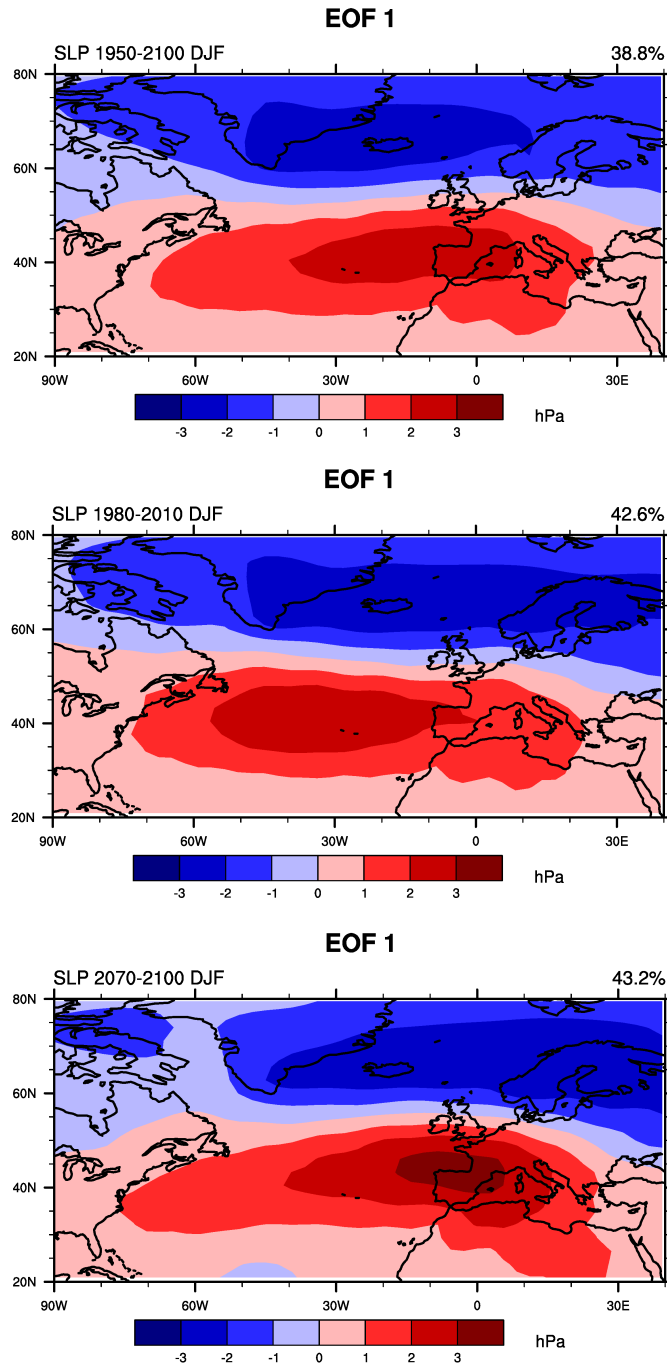


Figure 1. Leading empirical orthogonal function (EOF1) of the winter (DJF) mean sea level pressure (SLP) anomalies in the North Atlantic sector (20°N - 80°N , 90°W - 40°E) of the coupled simulation considering the full period 1950-2100 (*top*), recent past period: 1980-2010 (*centre*), and future period: 2070-2100 (*bottom*). The percentage at the top right of each figure quantifies the total variance explained. The patterns are displayed in terms of amplitude (hPa), obtained by regressing the SLP anomalies on the principal component time series.

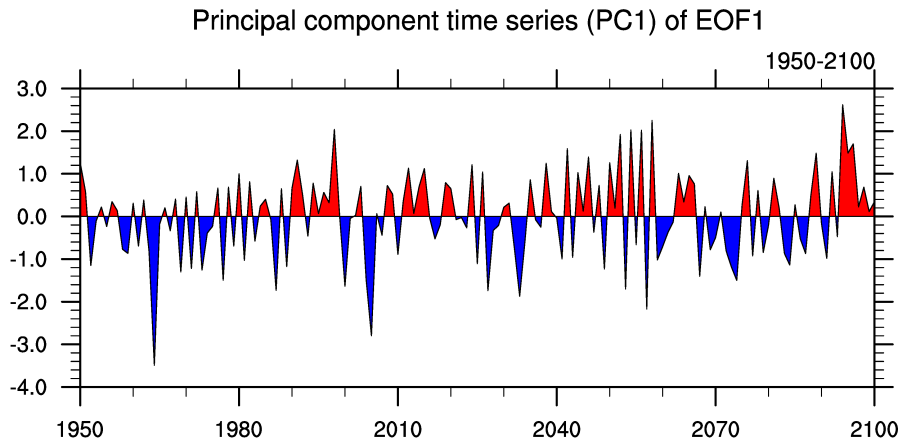


Figure 2. Normalized principal component time series (PC1) of the leading empirical orthogonal function (EOF1) of the winter mean sea level pressure (SLP) anomalies for the entire simulation period (1950-2100). The PC1 has been computed after removing the SLP climatology for the recent past (1980-2010).

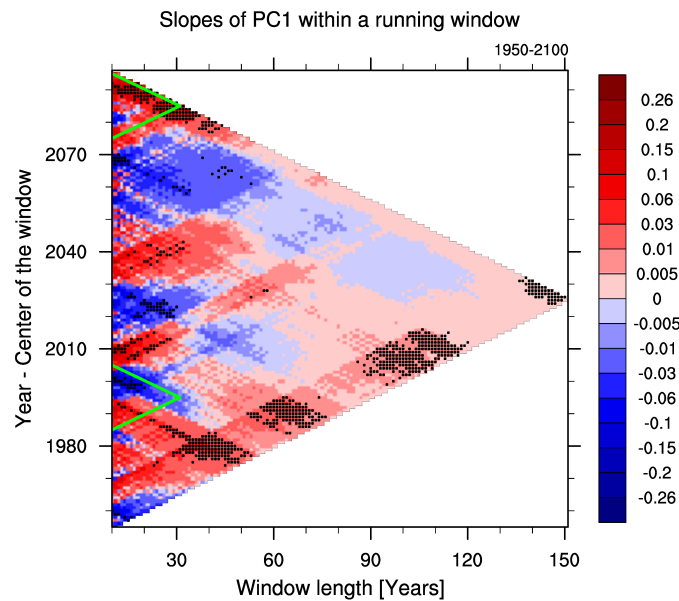


Figure 3. Linear regression coefficients of the PC1 based on coupled simulation data computed in sliding windows with variable length for the whole period 1950-2100. Plotted in the x-axis are the window lengths expressed in years, and in the y-axis the central year of the windows. The regression coefficient values are expressed in $1/\text{year}$ (see color legend). Points marked with black crosses indicate the 95% level of significance. The green triangles indicate the areas of the two periods recent past and future.

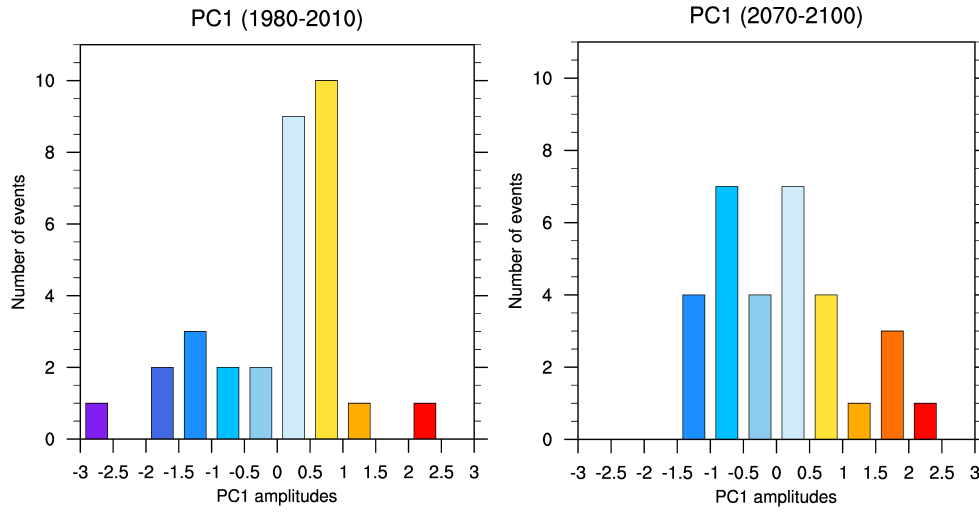


Figure 4. NAO phase number distributions, computed in the recent past (*left*) and future (*right*) periods.

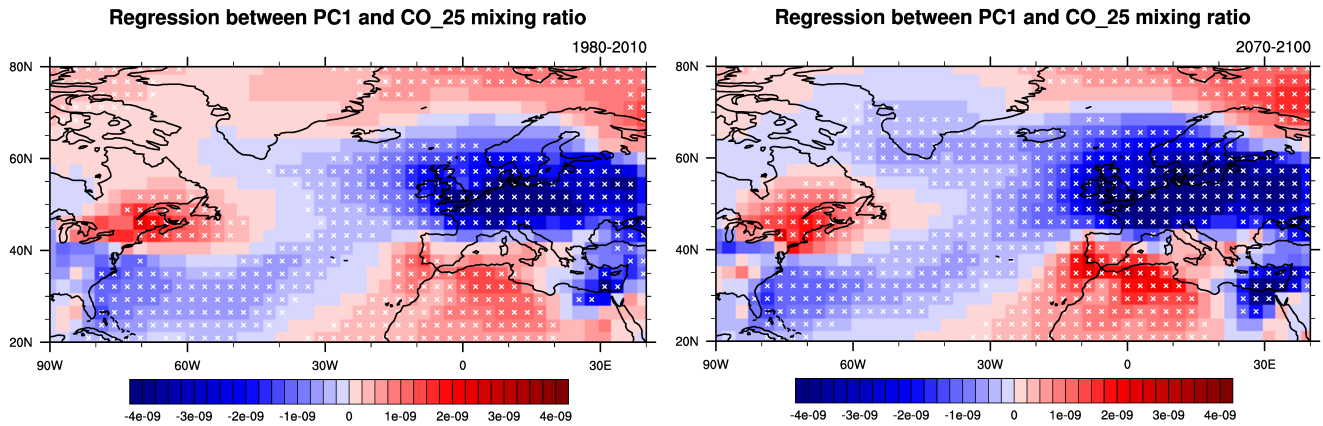


Figure 5. Regression of the winter seasonal CO₂₅ mixing ratio anomalies at surface level against the normalized PC1 computed for the recent past (*left*) and future (*right*) periods. The unit is mol/mol and the points marked with a white cross indicate local significance at the 95%.

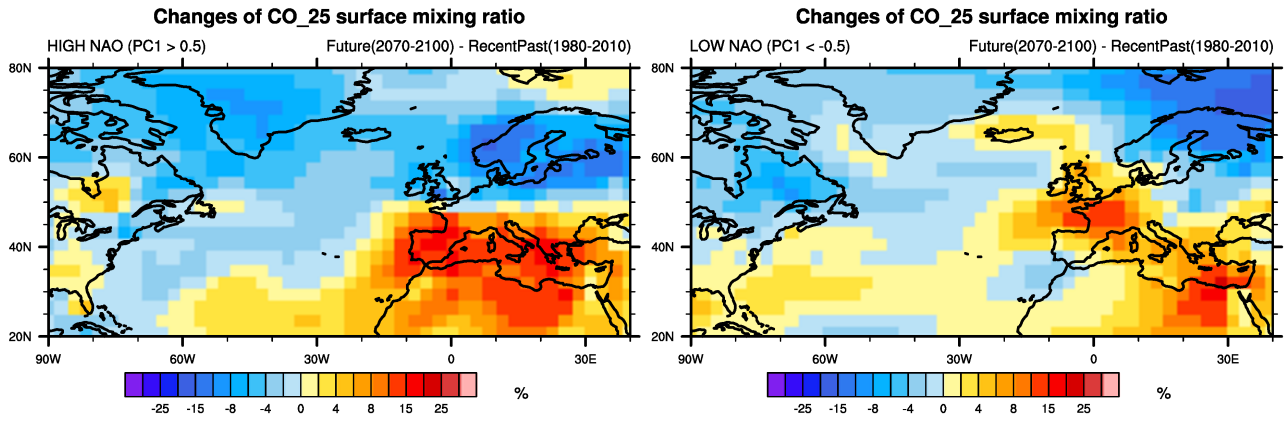


Figure 6. Differences between future (2070-2100) and recent past (1980-2010) temporal averages of CO₂₅ winter surface mixing ratio, both in the case of high NAO (PC1 > 0.5) (*left*) and low NAO (PC1 < -0.5) (*right*). More precisely, plots show the results of $[(CO_{25}^{ave, fut} - CO_{25}^{ave, past}) / CO_{25}^{ave, past}] \times 100$, so the colobars indicate the percentages.

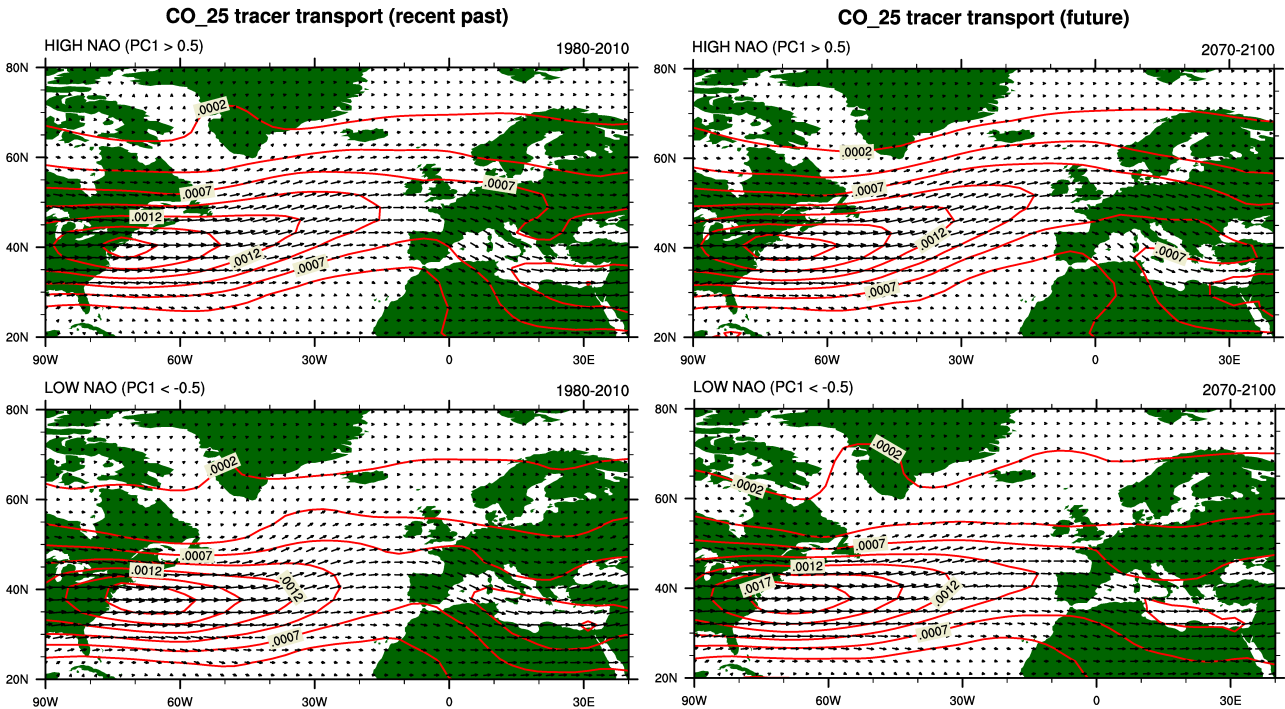


Figure 7. Temporal averages of vertically integrated CO₂₅ tracer transport vectors ($\frac{\text{mol}}{\text{mol}} \frac{\text{kg}}{\text{m} \cdot \text{s}}$) for winters with high NAO (PC1 > 0.5) (*top*) and low NAO (PC1 < -0.5) (*bottom*), both in the recent past (*left*) and in the future (*right*).