

Reply to review comments

We thank the reviewers for the time and efforts spent on the manuscript. Please find our point-by-point replies to the review comments below (colored in blue). A revised manuscript with tracked changes was uploaded.

Reviewer #1 (Andreas Dörnbrack)

This is a wonderful, I would say perfect paper documenting the stratospheric gravity wave activity (esp. orographic gravity waves) at selected hot spots of the southern hemisphere from 12 years AIRS data. Additionally, the authors also correlate the retrieved stratospheric mountain wave activity with the horizontal wind components taken at 2 km and near the AIRS observational level at 40 km, respectively. The methodology is sound, the presentation is very clear, precise, and comprehensive, the figures illustrate and exemplify the necessary information from the observations and meteorological analyses, and the tables add substantial material from a profound statistical analysis of the data. Therefore, the paper can be published in the present form.

Here, only a few thoughts I got while reading the manuscript:

- the enhanced correlation of the observed stratospheric gravity wave activity with the stratospheric winds was also found recently by the study of Kaifler et al. (2015)

Kaifler, B., N. Kaifler, B. Ehard, A. Dörnbrack, M. Rapp, and D. C. Fritts (2015), Influences of source conditions on mountain wave penetration into the stratosphere and mesosphere, *Geophys. Res. Lett.*, 42, 94889494, doi:10.1002/2015GL066465.

Additionally, I found it remarkable that the $u_0(2\text{ km})$ threshold for New Zealand (Table 2) lies almost exactly in the range of tropospheric winds for which Kaifler et al. found the largest gravity wave energies at mesospheric altitudes (Fig. 5a) supporting the findings of the present paper!

We added a brief discussion of the findings of the study of *Kaifler et al. (2015)* to the conclusions sections of our paper.

- I was wondering about the short vertical propagation times and short horizontal propagation distances. Most of the selected examples in Fig. 3 show a much longer horizontal spread of the waves. I always thought that these wave fronts are essentially due to hydrostatic mountain waves in the rotating regime, i.e. due to inertia-gravity waves (see Gill, 1980, p 260) which would imply longer horizontal wave lengths and longer vertical propagation times. But, you might have another explanation.

Following a comment of Reviewer #2, we removed the results of the ray-tracing calculations from the paper. These results are not needed for the discussion.

- the simple mountain wave prediction model used by the authors (very nice!) reminded me on my own first attempt to quantify stratospheric gravity wave above Scandinavia for one winter month based on quite similar criteria (Dörnbrack, A., M. Leutbecher, J. Reichardt, A. Behrendt, K.-P. Müller, and G. Baumgarten, 2001: Relevance of mountain wave cooling over Scandinavia: Mesoscale dynamics and observations for January 1997. *J. Geophys. Res.*, 106, 1569-1581. However, in the present model the wind turning with height is not considered which is clearly understandable for the southern hemispheric conditions without much planetary wave activity diverting the stratospheric winds from nearly pure westerlies!

Our model is indeed similar to the one proposed by *Dörnbrack et al. (2001)* and we added a brief discussion and the reference to the introduction of our paper.

Reviewer #2

This manuscript develops a novel method (“two-box” method) to detect orographic gravity waves (OGWs) that are associated with Southern Ocean hotspots from AIRS images. The orographic sources are delineated from all other GW cases using this method, and the relationship between the occurrence frequency of OGWs and the background wind at the generation level and the observational level, and the terrain orientation and altitude are studied. A simple deterministic model is proposed to predict the OGW occurrence using zonal wind threshold at the generation and observational levels (750 and 3 hPa, respectively). This model can roughly capture the interannual variability of the observed GW time series.

This paper is in general well written, the logic flow is clear, natural and fluent. The two box method is a novel way to disentangle OGWs from other types of GWs. The deterministic model is a simple yet effective way to capture potential OGW events that would therefore facilitate future analysis with huge amount of satellite images. This paper worth a final publication as it has good quality of scientific outcomes.

Having said above positive points, I do have a few major issues related to the content/presentation. They are: (1) The “prediction” model is actually not a forecast model, at least on traditional sense. It is more or less a deterministic model that given the lower and upper level wind condition, you can tell how possible an OGW event to occur, but you cannot forecast when and where it occurs. Or to state it in another way, this model does not have a term of (t) and $(t+dt)$ in it, where “ t ” is time. So please clarify this point clearly in the paper, and modify the wording accordingly.

We use the term “prediction” according to its definition in a statistical sense (e. g., *Cox, 2006*). Prediction provides a means of transferring knowledge about a sample of a population to the whole population, and to other related populations, which is not necessarily the same as prediction over time. When information is transferred across time, often to

specific points in time, the process is known as forecasting. We revised the manuscript to remove references to the term “forecast” to avoid misinterpretation.

(2) Another question I have with the “prediction” model is that why do you use this Gilbert skill score (GSS) to construct the 2-dimensional Probability Density Function, not the averaged variance (i.e., σ_{oro}^2) within the designated boxes? Also, there is no introduction or reference to this GSS, which I have no idea how it is calculated or what physical quantity it can represent.

We added a more detailed description of the GSS to clarify: “In particular, we analyze the Gilbert skill score (GSS), which is also known as ‘equitable threat score’ (*Schaefer*, 1990; *Wilks*, 2011). This is a standard verification method for dichotomous (yes/no) model predictions. It takes into account the probability of detection (POD) and the false alarm rate (FAR) of the model and is adjusted for hits associated with random chance.” Trying to predict gravity wave variances (σ_{oro}^2) with a model is an interesting topic. However, our model focuses on predicting occurrence frequencies of gravity wave events. The GSS is focusing on verification of yes/no predictions and is therefore well suited to validate our type of model.

(3) For the two box method, the authors do play around with the threshold to check its sensitivity, and it turns out it is indeed sensitive to the threshold. Have you also checked the lower threshold (e.g., $0.05 K^2$)? How do you trade-off the detection rate and false alarm rate? In other words, the standard to determine a good threshold is not stated clearly in this paper. I think this part (the last paragraph on Page 6) requires more details and more sensitivity study to determine the best threshold. Also, the box size is really largely dependent on topography size and nearby surroundings. Can you summarize a more generalized way if possible?

The last paragraph of Sect. 3 provides an extensive discussion on how we selected the variance threshold σ_{oro}^2 . We rephrased it a bit to try to make our approach more clear. A threshold of $0.05 K^2$ is outside the range we consider reasonable for this analysis. We had tested an intermediate value of $0.3 K^2$, which provides GSS values in between the results for 0.1 and $1 K^2$ (not reported in the paper). This led us to the conclusion that $0.1 K^2$ is the optimum choice within the considered range. The trade-off between POD and FAR is fixed in the definition of the GSS. Please note that the verification uses data of *Alexander and Grimsdell* (2013) as a reference. The reference data are determined by visual inspection, use a different set of AIRS channels, and are available only for a subset of hotspots and years. Therefore the reference data can provide guidance, but cannot be used to perform fine-tuning to determine the “best” choice of the variance threshold. The motivation for choosing the box sizes individually is provided in Sect. 3, 2nd paragraph.

(4) Since the number of rays are very limited for the ray-tracing experiment, the critical level in October is probably just case-by-case. Besides, this is a 2D ray-tracing that has many limitations. Other than illustrating the wind effect on shifting the vertical wavelength toward AIRS-favorable window, I dont see a particular reason of including the 1st

paragraph on Page 9 and Fig. 5. Its rather distracted of the main topic of this paper. The linear wave theory presented on Page 8 is pretty straightforward. I suggest deleting the 1st paragraph on Page 9 and Fig. 5.

We agree and removed the results of the ray-tracing calculations from the paper.

(5) Instead, since all the factors that play a role in the simple “prediction” model has been included in the GCM OGWD parameterization, I believe. What are the differences? Can your findings shed light on improving the model parameterization? Can your simple model be used to study inter-annual variability? Can you elaborate more on the value of your model?

In the introduction we pointed out “The main purpose of our model is to provide a means of separating upper level wind effects, like the observational filter, from low level effects, like those related to the gravity wave sources. This will allow the model to be used to discuss whether waves are likely present or affecting the atmosphere even though they are only weakly observed or invisible in the AIRS observations.” The model is not intended to be a replacement for more sophisticated orographic gravity wave dag parametrization schemes used in general circulation models.

Reviewer #3

This paper describes a concise and wise method to detect orographic gravity waves from hotspots distributed in the southern hemisphere middle and high latitudes by comparing gravity wave signature in two box areas windward and leeward of the hotspots observed by AIRS. The analyzed period covers about 12 years providing sufficient significance for the statistical results. In addition, based on careful correlation analyses, the authors made a simple model using thresholds for lower and upper level wind which predicts the occurrence of gravity waves detected by AIRS observations with a high score. This model is useful for future extended studies using AIRS observations such as wave flux estimate including geographic and interannual variability. Contents of this paper are quite interesting, well organized and hence has a significant value for publication. However, there are a few points which the authors may need to consider for improvement of the manuscript before publication. Thus, I recommend its publication in Atmospheric Chemistry and Physics after minor revision. Detailed comments are listed below.

Comments:

1. p.6, ll. 8-9: Please describe how orographic wave events are detected by visual inspection. Even visual inspection unwittingly uses some conditions to identify the orographic waves such as wavy phase structures and/or strong amplitudes. Are there any common characteristics in the cases when the two-box method failed and visual inspection succeeded in the detection?

To clarify we added: “In order to identify orographic waves in as objective and consistent a manner as possible, the visual inspections follows criteria defined by *Alexander and Grimsdell* (2013). In particular, there must be a clear difference in the wave pattern near the hotspot to distinguish orographic waves from waves from other sources, i. e., the location of the hotspot should be clearly indicated by the position of the wave pattern. Furthermore, if the observation includes both an orographic wave and a larger-scale background wave pattern, there must be a distinct change in the pattern directly adjacent to the hotspot.” We were not able to identify common characteristics of the cases when the two-box method failed and visual inspection was successful. The reasons are manifold.

2. p.10, ll. 29-30: Please describe the vertical wavelengths corresponding to the zonal wind thresholds obtained using (2). Are they close to the minimum vertical wavelength detectable by AIRS?

We added: “For zonal waves these thresholds correspond to vertical wavelengths of 14 and 23 km, which are close to or well above the AIRS detection limit, respectively.” Please note that the orientation of the wind may also play a role, in particular for the Antarctic Peninsula.

3. p.11, ll. 23-32: There may be one more factor influencing POD, that is horizontal wavelengths of gravity waves excited at each hotspot. AIRS detects horizontal wavelengths of about 100 km (p.9 l.5). However, small islands may generate gravity waves with small horizontal wavelengths which are hardly detectable by AIRS. In addition, such small-horizontal scale waves may not be able to propagate through strong westerly wind in the stratosphere. If we include a non-hydrostatic effect, the dispersion relation of gravity waves becomes

$$m^2 = \frac{N^2}{U^2} - k^2.$$

Orographic gravity waves generated by small horizontal-scale islands should have large k . The above dispersion relation formula indicates that m^2 can be negative in quite large U . In such condition, the waves hardly propagate upward and reflect downward at the level where $\frac{N^2}{U^2} = k^2$. Does not this mechanism happen for the hotspots with relatively low score?

We agree that the terrain horizontal extent may also play an important role for the characteristics of the wave emitted from the orographic sources. We added this factor to the list provided in the manuscript.

4. References in section 1 seem not sufficient. Suggested references are as follows.

a) p.2, ll.2-3: For orographic generation:

Aircraft observations:

- D. K. Lilly and P. J. Kennedy (1973), Observations of a Stationary Mountain Wave

and its Associated Momentum Flux and Energy Dissipation, *Journal of the Atmospheric Sciences*, 30, 1135-1152

MST/ST radar observations:

- Ecklund, W. L., K. S. Gage, G. D. Nastrom, and B. B. Balsley (1986), A Preliminary Climatology of the Spectrum of Vertical Velocity Observed by Clear-Air Doppler Radar. *Journal of Climate and Applied Meteorology*, 25, 885-892.

- Sato, K. (1990), Vertical Wind Disturbances in the Troposphere and Lower Stratosphere Observed by the MU Radar, *Journal of the Atmospheric Sciences*, 47, 2803-2817.

- Worthington, R. M., and L. Thomas (1996), Radar measurements of critical-layer absorption in mountain waves. *Quart. J. Roy. Meteor. Soc.*, 122, 1263-1282.

- Minamihara, Y., K. Sato, M. Kohma, and M. Tsutsumi (2016), Characteristics of Vertical Wind Fluctuations in the Lower Troposphere at Syowa Station in the Antarctic Revealed by the PANSY Radar, *SOLA*, 12, 116-120, doi:10.2151/sola.2016-026

p.2, ll.4-5: For adjustment of flow imbalance:

- Plougonven, R., and F. Zhang (2014), Internal gravity waves from atmospheric jets and fronts, *Rev. Geophys.*, 52, 3376, doi:10.1002/2012RG000419.

p.2, ll.9-10: For general discussion of gravity wave source in the summer and winter hemispheres:

- Sato, K., S. Watanabe, Y. Kawatani, Y. Tomikawa, K. Miyazaki, and M. Takahashi (2009), On the origins of mesospheric gravity waves. *Geophys. Res. Lett.*, 36, L19801, doi:10.1029/2009GL039908.

p.2, l.11: Orographic hotpots in the southern ocean:

- Wu, D. L., P. Preusse, S. D. Eckermann, J. H. Jiang, M. T. Juarez, L. Coy, D. Y. Wang (2006), Remote sounding of atmospheric gravity waves with satellite limb and nadir techniques, *Adv. Space Res.*, 37, 2269-2277, 2006

p.2, l.19: For gravity wave effects on PSCs:

- Alexander, S. P., A. R. Klekociuk, M. C. Pitts, A. J. McDonald, and A. Arevalo-Torres(2011), The effect of orographic gravity waves on Antarctic polar stratospheric cloud occurrence and composition, *J. Geophys. Res.*, 116, D06109, doi:10.1029/2010JD015184.

- Kohma, M., and K. Sato (2011), The effects of atmospheric waves on the amounts of polar stratospheric clouds. *Atmos. Chem. Phys.*, 11, 11535-11552. doi:10.5194/acp-11-11535-2011.

We added these references.

References

- Alexander, M. J., and A. W. Grimsdell (2013), Seasonal cycle of orographic gravity wave occurrence above small islands in the Southern Hemisphere: Implications for effects on the general circulation, *J. Geophys. Res.*, *118*(20), 11,589–11,599.
- Cox, D. R. (2006), *Principles of statistical inference*, Cambridge University Press.
- Dörnbrack, A., M. Leutbecher, J. Reichardt, A. Behrendt, K.-P. Müller, and G. Baumgarten (2001), Relevance of mountain wave cooling for the formation of polar stratospheric clouds over Scandinavia – mesoscale dynamics and observations for January 1997, *J. Geophys. Res.*, *106*(D2), 1569–1581.
- Kaifler, B., N. Kaifler, B. Ehard, A. Dörnbrack, M. Rapp, and D. C. Fritts (2015), Influences of source conditions on mountain wave penetration into the stratosphere and mesosphere, *Geophys. Res. Lett.*, *42*(21), 9488–9494.
- Schaefer, J. T. (1990), The critical success index as an indicator of warning skill, *Weath. Forecast.*, *5*(4), 570–575.
- Wilks, D. S. (2011), *Statistical methods in the atmospheric sciences*, vol. 100, Academic Press.

Stratospheric gravity waves at southern hemisphere orographic hotspots: 2003 – 2014 AIRS/Aqua observations

Lars Hoffmann¹, Alison W. Grimsdell², and M. Joan Alexander²

¹Jülich Supercomputing Centre, Forschungszentrum Jülich, Jülich, Germany

²NorthWest Research Associates, Inc., CoRA Office, Boulder, CO, USA

Correspondence to: L. Hoffmann (l.hoffmann@fz-juelich.de)

Abstract. Stratospheric gravity waves from small-scale orographic sources are currently not well-represented in general circulation models. This may be a reason why many simulations have difficulty reproducing the dynamical behaviour of the southern hemisphere polar vortex in a realistic manner. Here we discuss a 12-year record (2003 – 2014) of stratospheric gravity wave activity at southern hemisphere orographic hotspots as observed by the Atmospheric InfraRed Sounder (AIRS) aboard the National Aeronautics and Space Administration’s (NASA’s) Aqua satellite. We introduce a simple and effective approach, referred to as the ‘two-box method’, to detect gravity wave activity from infrared nadir sounder measurements and to discriminate between gravity waves from orographic and other sources. From austral mid fall to mid spring (April – October) the contributions of orographic sources to the observed gravity wave occurrence frequencies were found to be largest for the Andes (90%), followed by the Antarctic Peninsula (76%), Kerguelen Islands (73%), Tasmania (70%), New Zealand (67%), Heard Island (60%), and other hotspots (24 – 54%). Mountain wave activity was found to be closely correlated with peak terrain altitudes, and with zonal winds in the lower troposphere and mid stratosphere. We propose a simple model to predict the occurrence of mountain wave events in the AIRS observations using zonal wind thresholds at 3 hPa and 750 hPa. The model has significant predictive skill for hotspots where gravity wave activity is primarily due to orographic sources. It typically reproduces seasonal variations of the mountain wave occurrence frequencies at the Antarctic Peninsula and Kerguelen Islands from near zero to over 60% with mean absolute errors of 4 – 5 percentage points. The prediction model can be used to disentangle upper level wind effects on observed occurrence frequencies from low level source and other influences. The data and methods presented here can help to identify interesting case studies in the vast amount of AIRS data, which could then be further explored to study the specific characteristics of stratospheric gravity waves from orographic sources and to support model validation.

1 Introduction

Atmospheric gravity waves have substantial impact on weather and climate. They transport energy and momentum, contribute to turbulence and mixing, and influence the mean circulation and thermal structure of the middle atmosphere (Lindzen, 1981; Holton, 1982, 1983). Low frequency and long wavelength gravity waves can be explicitly resolved in mesoscale model simulations, whereas global circulation models typically require parametrization schemes to represent effects of gravity waves on subgrid-scales (Lindzen, 1981; Hines, 1997; Warner and McIntyre, 1999; Geller et al., 2013). The development of gravity wave

parametrization schemes is challenging, because gravity waves are excited by various sources, each having individual characteristics. Two prominent sources of gravity waves are orographic generation (~~Smith, 1979, 1985; Durran and Klemp, 1987~~) (~~Nastrom and Fritts, 1992~~) (Lilly and Kennedy, 1973; Smith, 1979, 1985; Ecklund et al., 1986; Durran and Klemp, 1987; Sato, 1990) (Nastrom and Fritts, 1992; Worthington and Thomas, 1996; Minamihara et al., 2016) and convection (Pfister et al., 1986; Tsuda et al., 1994; Alexander and Pfister, 1995; Vincent and Alexander, 2000). Other sources include adjustment of unbalanced flows in the jet streams and frontal systems (~~Fritts and Alexander, 2003; Wu and Zhang, 2004~~) (Fritts and Alexander, 2003; Wu and Zhang, 2004; Plougonven and Zhang, 2014). Another source, body forcing accompanying localized wave dissipation, is likely to occur commonly in the middle atmosphere (Vadas et al., 2003). The individual characteristics of the gravity wave sources and the alterations of the gravity wave spectrum with altitude-dependent wind and stability variations are important research topics.

In the stratosphere gravity waves from convective sources are generally most important in the summer hemisphere, where planetary wave activity is weak (~~Alexander and Rosenlof, 1996; Scaife et al., 2000~~) (Alexander and Rosenlof, 1996; Scaife et al., 2000; Sato et al., 2009). In the winter hemisphere orographic and jet sources play a more important role, and small-scale orographic hotspots may provide a significant contribution to the total gravity wave drag that is currently not well-represented in global climate models (~~McLandress et al., 2012; Alexander and Grimsdell, 2013; Vosper, 2015~~) (Wu et al., 2006; McLandress et al., 2012; Alexander and Grimsdell, 2013; Vosper, 2015). More comprehensive observations may help to develop and improve parameterizations to better incorporate the wave drag even for such small sources. In this study we analyze satellite observations of stratospheric gravity wave activity at 18 orographic hotspots located in the southern hemisphere. The study closely follows recent work of Alexander and Grimsdell (2013), which analyzed the seasonal cycle of orographic gravity wave occurrence above remote islands in the southern oceans. Further motivation to study stratospheric gravity wave activity at mid and high latitudes during winter arises from the fact that gravity waves play an important role in the formation of polar stratospheric clouds (PSCs). Localized temperature fluctuations associated with gravity waves can yield stratospheric temperatures below the threshold values for PSC formation, even if synoptic-scale temperatures are too high (Carslaw et al., 1998; Dörnbrack et al., 1999). Eckermann et al. (2009), Alexander et al. (2011), Kohma and Sato (2011), Lambert et al. (2012), and Orr et al. (2015) used comprehensive satellite observations to study the impact of mountain waves at high latitudes on PSC formation.

Satellite instruments offer excellent opportunities to study gravity waves on a global scale. In this study we focus on nadir scanning observations of AIRS (Aumann et al., 2003; Chahine et al., 2006) aboard NASA's Aqua spacecraft. The main advantage of nadir sounders such as AIRS is good horizontal resolution and coverage. The disadvantage is that the nadir measurement geometry limits the observations to gravity waves with rather long vertical wavelengths ($\lambda_z \gtrsim 15$ km for AIRS) due to the 'observational filter' effect (Alexander, 1998; Wu et al., 2006; Alexander and Barnet, 2007). However, observations of gravity waves with long vertical and short horizontal wavelengths are of particular interest, because these waves can potentially carry large momentum flux and excite significant wave drag (Fritts and Alexander, 2003; Ern et al., 2004; Preusse et al., 2008).

AIRS radiance measurements have successfully been exploited in a number of gravity wave studies. For instance, Alexander and Teitelbaum (2007), Eckermann et al. (2007), Limpasuvan et al. (2007), Alexander and Teitelbaum (2011), Niranjana Kumar et al. (2012), and Jiang et al. (2013) demonstrated the capabilities of AIRS to observe mountain waves at orographic hotspots such as the Antarctic Peninsula, the Andes, the Greenland topography, or the Himalayas. Gong et al. (2012) and Hoffmann et al. (2013) also analyzed global long-term records of stratospheric gravity wave activity from AIRS observations. By September 2015 AIRS had completed 13 years of measurements and gathered about 13.8×10^9 infrared radiance spectra, which can be used to explore the climatological variability of stratospheric gravity wave activity.

This study focuses on stratospheric gravity wave activity from orographic sources in the southern hemisphere, which is of particular interest in relation to the dynamical behaviour of the southern hemisphere polar vortex. The analysis is based on a 12-year record (January 2003–December 2014) of $4.3 \mu\text{m}$ radiance observations of AIRS/Aqua. Stratospheric gravity wave signals in terms of brightness temperature perturbations and variances are extracted by applying a number of standard techniques developed for nadir sounders (Wu, 2004; Eckermann et al., 2006; Alexander and Barnett, 2007; Hoffmann et al., 2014). We introduce a simple and effective new method to detect orographic gravity wave signals from infrared nadir sounder measurements. To infer the orographic wave signals this method analyzes brightness temperature variance differences between two boxes located up- and downstream of an orographic hotspot. The method is used to estimate the occurrence frequencies of mountain waves at 18 orographic hotspots in the southern hemisphere based on the long-term AIRS record. Furthermore, interactions between the mountain wave activity and tropospheric and stratospheric background winds are studied. To predict the occurrence of mountain wave events in the AIRS observations we propose a simple model based on zonal wind thresholds in the lower troposphere and in the mid stratosphere. Our approach uses similar criteria as a model presented by Dörnbrack et al. (2001) that was used to quantify stratospheric gravity wave activity above Scandinavia. However, the present model does not consider wind turning with height as we focus on southern hemispheric conditions with generally weaker planetary wave activity diverting the stratospheric winds from nearly pure westerlies. The main purpose of ~~the~~ our model is to provide a means of separating upper level wind effects, like the observational filter, from low level effects, like those related to the gravity wave sources. This will allow the model to be used to discuss whether waves are likely present or affecting the atmosphere even though they are only weakly observed or invisible in the AIRS observations.

In Sect. 2 we provide a brief description of the AIRS instrument and the methods used to extract brightness temperature perturbations related to stratospheric gravity waves from the radiance measurements. In Sect. 3 we introduce the method to detect and discriminate between gravity wave signals from orographic or other sources. Seasonal mean occurrence frequencies of orographic gravity waves at various hotspots based on the 12-year AIRS record are discussed in Sect. 4. Correlations between gravity wave activity and tropospheric and stratospheric background winds are discussed in Sect. 5. In Sect. 5 we also introduce the threshold model to predict the occurrence of mountain wave events in the AIRS observations. Section 6 focuses on inter- and intraseasonal variability of mountain wave activity at the hotspots and discusses the performance of the threshold model in explaining this variability. In Sect. 7 we provide conclusions and an outlook on how the results of this study might be used in future research.

2 AIRS observations of stratospheric gravity waves

AIRS (Aumann et al., 2003; Chahine et al., 2006) is one of six instruments aboard NASA’s Aqua satellite. Aqua was launched in a nearly polar, low earth orbit (705 km altitude, 100° inclination, 100 min period) in May 2002. Nearly global coverage is achieved during 14.4 orbits per day. The Aqua orbit is sun-synchronous, with Equator crossings at 01:30 LT (descending orbit nodes) and 13:30 LT (ascending orbit nodes). AIRS measures infrared radiance spectra from the Earth’s atmosphere in the nadir and sub-limb geometry. Each across-track scan covers 1780 km ground distance and consists of 90 footprints. The scans are separated by 18 km along-track distance. The footprint size varies between $14 \times 14 \text{ km}^2$ at nadir and $21 \times 42 \text{ km}^2$ at the scan extremes. AIRS measurements cover the $3.74\text{--}15.4 \mu\text{m}$ spectral range in three bands, with a resolving power of $\lambda/\Delta\lambda = 1200$. We analyze measurements from multiple channels in the $4.3 \mu\text{m}$ spectral region, with a noise equivalent delta temperature (NEDT) of $0.13\text{--}0.15 \text{ K}$ at 250 K scene temperature.

We infer information on stratospheric gravity wave activity directly from the AIRS radiance measurements following the approach of Hoffmann and Alexander (2010) and Hoffmann et al. (2013, 2014). We analyze spectral mean brightness temperatures in the $4.3 \mu\text{m}$ CO_2 fundamental band ($2322.5\text{--}2346.0$ and $2352.5\text{--}2367.0 \text{ cm}^{-1}$), which gets optically thick in the mid stratosphere. Temperature kernel functions for the $4.3 \mu\text{m}$ channels show a broad maximum in sensitivity of the radiances to stratospheric temperatures at $30\text{--}40 \text{ km}$ altitude and have a full-width at half-maximum of about 25 km (Hoffmann and Alexander, 2009; Hoffmann et al., 2014). The broad kernel functions limit the AIRS observations to gravity waves with long vertical wavelengths. We found that the 5%, 20%, and 50% response levels to wave amplitude are first exceeded at 16, 32, and 48 km vertical wavelength, respectively (Hoffmann and Alexander, 2010; Hoffmann et al., 2014). The observed brightness temperatures are mainly composed of three contributions: (i) gravity wave signals, (ii) slowly varying background signals, and (iii) measurement noise. Background signals associated with large-scale temperature gradients or planetary waves are removed with the detrending procedure of Wu (2004), Eckermann et al. (2006), and Alexander and Barnett (2007), i. e., brightness temperature perturbations are calculated as differences from a 4th-order polynomial fit for each across-track scan. This limits the amplitude response to 90%, 50%, and 20% at 800, 1200, and 1650 km across-track wavelength, respectively (Hoffmann and Alexander, 2010; Hoffmann et al., 2014). The short wavelength limit of the observations is at about 30 km , based on the Nyquist theorem and a sampling distance of 14 km at nadir. The noise of the spectral mean brightness temperatures is about 0.059 K at 250 K scene temperature (Hoffmann et al., 2014). The $4.3 \mu\text{m}$ brightness temperature variances shown in this paper have been corrected for noise, by subtracting noise variances scaled to scene temperature.

Climatological studies based on AIRS and other satellite observations revealed that stratospheric gravity wave activity at mid and high latitudes during the winter season is closely linked to orographic hotspots and jet sources (Gong et al., 2012; Hoffmann et al., 2013, 2014). Figure 1 shows the 2003–2014 multi-annual seasonal mean of detrended and noise-corrected AIRS $4.3 \mu\text{m}$ brightness temperature variances in the southern hemisphere. Here we focus on the time period from mid fall to mid spring (April–October), when stratospheric gravity wave activity in the southern hemisphere is largest. Figure 1 also shows terrain variability from a 2-minute gridded global relief data set (ETOPO2v2)¹. The standard deviation of terrain altitudes is one of

¹ Accessible at <http://www.ngdc.noaa.gov/mgg/global/etopo2.html> (last access: 24 November 2015).

the parameters considered in gravity wave parametrization schemes for subgrid-scale orographic sources (Miller et al., 1989; Lott and Miller, 1997). The AIRS and ETOPO2v2 maps show local maxima or ‘hotspots’ of stratospheric gravity wave activity being clearly associated with orographic features. The strongest hotspots are found at large mountain ranges, such as the Andes, the Antarctic Peninsula, and New Zealand. Many small-scale hotspots are also evident, e. g., at some of the remote islands in
5 the southern oceans. The small-scale hotspots are visible due to the high horizontal resolution of the AIRS observations. Based on these maps we selected 18 hotspots of stratospheric gravity wave activity that are more closely examined in this study (Table 1). Note that some prominent hotspots at the border of East Antarctica are not considered here. In these places gravity waves are triggered by katabatic winds from mainland Antarctica (Watanabe et al., 2006), which is a rather different source mechanism from those in the other places.

10 In addition to the orographic hotspots, the variance map in Fig. 1 shows a broad zonal band of stratospheric gravity wave activity around $50-70^{\circ}\text{S}$. A pronounced maximum of gravity wave activity within this latitude band is found leeward of the Andes and the Antarctic Peninsula, extending as far as 150°E . The origin of this broad maximum is not entirely clear as the region of enhanced activity extends well beyond the reach of the direct effect of orography. It may be caused by propagating mountain waves (Preusse et al., 2002; Sato et al., 2012; Hindley et al., 2015), but also by non-orographic sources in winter
15 storm tracks such as spontaneous adjustment, frontogenesis, and convection (Hendricks et al., 2014; Hindley et al., 2015; Alexander et al., 2016). Figure 2 shows 2003–2014 April–October seasonal mean winds from the ERA-Interim reanalysis (Dee et al., 2011) at the AIRS observational level (3 hPa, about 40 km) and at low level (750 hPa, about 2 km). The stratospheric gravity wave activity observed by AIRS is closely linked to the winds at both levels. The activity of the orographic sources is directly coupled to the strength of the surface winds, as strong surface winds are needed for waves to be launched. For AIRS
20 to be able to observe the waves, strong background winds in the stratosphere are needed to foster the propagation of gravity waves with long vertical wavelengths, to which AIRS is most sensitive due to its observational filter.

3 Two-box method for the detection of mountain waves

In this paper we introduce a simple and effective approach, referred to as the ‘two-box method’, to detect gravity wave activity at orographic hotspots from the AIRS measurements. In this method we examine the variance of detrended $4.3\ \mu\text{m}$ brightness
25 temperature perturbations in two boxes, located upstream and downstream of an orographic hotspot. We assume primarily westerly winds, so the western edge of the downstream box includes the hotspot and the box then extends to the east. The variance σ_e^2 of this box is considered to be primarily being influenced by signals from orographic gravity waves. The upstream box is located to the west of the hotspot and is not placed directly adjacent to the downstream box, but is slightly separated to reduce the likelihood of capturing orographic wave activity in this box. Orographic waves typically propagate downstream,
30 so the variance σ_w^2 in this box should not be affected by waves from the hotspot. The upstream box provides information on the background levels of gravity wave activity, being related to other sources. The presence of orographic wave activity is then determined from the difference in variance between these two boxes, calculated as $\sigma_{oro}^2 = \sigma_e^2 - \sigma_w^2$. The transfer of background variances from the upstream to the downstream box introduces some uncertainties in this analysis. However, large variance

differences σ_{oro}^2 most likely relate to the occurrence of orographic waves. We cope with the uncertainties of the method by introducing a variance threshold σ_0^2 and by considering only those events exceeding the threshold, $\sigma_{oro}^2 \geq \sigma_0^2$, as being related to the orographic source. Note that we applied the method to noise-corrected brightness temperature variances σ_e^2 and σ_w^2 , but due to the difference approach it also bears the potential to provide effective noise correction itself.

5 Figure 3 shows examples of orographic wave events at selected hotspots detected with the two-box method. The events shown here are among those with the largest σ_{oro}^2 values that we found in the 12-year record of AIRS data and in all cases the wave patterns clearly indicate orographic wave activity at the hotspots. As can be seen from the maps, we have chosen the box positions and sizes individually for each hotspot. Common box sizes for all hotspots may be desirable, in principle, regarding the wavelength sensitivities of the method. However, we found that individual optimization of the box sizes to the typical
10 size of the wave patterns at the hotspots improves the detection rates. Large boxes were used for strong hotspots producing extensive wave patterns such as the Andes and New Zealand (with box sizes of $10^\circ \times 8^\circ$ in longitude \times latitude) and the Antarctic Peninsula ($15^\circ \times 5^\circ$). Mid-size boxes were used for Kerguelen and Tasmania ($6^\circ \times 6^\circ$) as well as Crozet and South Georgia ($5^\circ \times 5^\circ$). Small boxes were used for Balleny and Peter I Island ($5^\circ \times 3^\circ$), located at high latitudes, and the remaining hotspots from Table 1 ($3^\circ \times 3^\circ$), located at mid latitudes. For most of the hotspots the mean latitude of the boxes was chosen
15 to match the latitude of the hotspot. However, for Heard we applied a latitudinal shift, to stay away from orographic waves created at Kerguelen (cf. Fig. 3). The longitudinal separation between the western and eastern boxes was 1° for all hotspots.

In order to validate the two-box method we performed two tests that compare the results of this automatic detection of orographic wave events with statistics from visual inspection of AIRS brightness temperature maps. In order to identify orographic waves in as objective and consistent a manner as possible, the visual inspections follows criteria defined by Alexander and Grimsdell (2013). In particular, there must be a clear difference in the wave pattern near the hotspot to distinguish orographic waves from waves from other sources, i. e., the location of the hotspot should be clearly indicated by the position of the wave pattern. Furthermore, if the observation includes both an orographic wave and a larger-scale background wave pattern, there must be a distinct change in the pattern directly adjacent to the hotspot. For the first test we used the automatic detection method to select the three events for each year and each hotspot which had the largest σ_{oro}^2 values. This gave us
20 $3 \times 12 \times 18 = 648$ individual events, for which we inspected the AIRS images to verify that orographic wave activity was visible at the hotspot. The performance of the two-box method varied between the hotspots. The largest success rates were found for the Andes (100%) and the Antarctic Peninsula (100%), followed by Kerguelen (93%), New Zealand (91%), Balleny (88%), Heard (78%), South Georgia (77%), and Tasmania (74%). For the remaining hotspots the success rates were below 54% and became as low as 6% for Macquarie. This test indicates that the two-box method performs best for strong hotspots
30 with frequent wave activity and large values of σ_{oro}^2 . The success rates clearly correlate with the peak altitude of the hotspots (see Table 1). Results for weak hotspots with low success rates should be considered more carefully, because those are more likely to be influenced by gravity waves from non-orographic sources.

As a second test we compared the detection results from the two-box method with the event statistic of Alexander and Grimsdell (2013). The study of Alexander and Grimsdell (2013) analyzed gravity wave activity at Auckland, Heard, Kerguelen,
35 Prince Edward, South Georgia, and Tasmania during the years 2003 and 2004. Orographic wave events were identified by visual

inspection of AIRS $15\ \mu\text{m}$ brightness temperature perturbation maps. The vertical coverage of the AIRS channel analyzed in that study ($667.8\ \text{cm}^{-1}$) is at slightly higher altitudes (around 35–45 km) than in this work. Noise levels of the $15\ \mu\text{m}$ data are about a factor of 7 larger than the $4.3\ \mu\text{m}$ data used here. This introduces some uncertainty when we compare the detection results. Considering the data of Alexander and Grimsdell (2013) as ‘observations’ and the results from the two-box method as ‘predictions’, we calculated a set of skill scores (~~Schaefer, 1990; Wilks, 2011~~) to assess the performance of the two-box method. In particular, we analyze the Gilbert skill score (GSS), which is also known as ‘equitable threat score’ (Schaefer, 1990; Wilks, 2011). This is a standard verification method for dichotomous (yes/no) model predictions. It takes into account the probability of detection (POD) and the false alarm rate (FAR) of the model and is adjusted for hits associated with random chance. The GSS analysis allows for method verification and can help to establish the variance threshold σ_0^2 . Here we analyzed the GSS for two choices of the variance threshold, $\sigma_0^2 = 0.1\ \text{K}^2$ and $\sigma_0^2 = 1\ \text{K}^2$, ~~to detect orographic wave activity.~~ These values define a reasonable range of thresholds. The total number of events decreases significantly for thresholds much larger than $1\ \text{K}^2$ and the method would not be applicable for some of the smaller hotspots with weaker wave activity at all. Choosing thresholds much lower than $0.1\ \text{K}^2$, this would include many events with rather low wave amplitudes that may not be too important overall or that are possibly affected by measurement noise. Using a variance threshold of $\sigma_0^2 = 1\ \text{K}^2$, we found a bias (ratio of predictions/observations) of 12%, a ~~probability of detection (POD)~~ POD of 11%, a ~~false alarm rate (FAR)~~ FAR of 5%, and a ~~Gilbert skill score (GSS)~~ GSS of 7%. With such a large variance threshold the two-box method missed many of the weaker events identified by Alexander and Grimsdell (2013). This leads to a low POD, but also to a good FAR. The fact that the GSS is larger than zero indicates that the method still does have skill compared to a random ~~forecast~~ prediction. Choosing a threshold of $\sigma_0^2 = 0.1\ \text{K}^2$ improves the skill scores of the method substantially. The bias is then 69%, the POD is 57%, the FAR is 18%, and the GSS is 33%. Future work may focus on fine-tuning of the variance threshold, including possible optimization for the individual hotspots. However, for this study we decided to focus on events characterized by a globally constant variance threshold to allow us to compare the results of the different hotspots to each other. We selected $\sigma_0^2 = 0.1\ \text{K}^2$ since with this value more events are included and the method has better skill than when using $\sigma_0^2 = 1\ \text{K}^2$.

4 Seasonal mean occurrence frequencies of mountain waves

In this section we discuss the seasonal mean occurrence frequencies of stratospheric gravity waves at the orographic hotspots. As a first step we calculated histograms of the variances in the eastern and western boxes at each hotspot (Fig. 4). In these histograms increased numbers of events in the eastern boxes point to more frequent orographic wave activity. To quantify the increase, we calculated the ratio n_e/n_w of the numbers of events below and above the identity line, respectively. A large ratio n_e/n_w indicates that the occurrence of orographic waves is more likely. Figure 4 and Table 1 show that n_e/n_w is largest for the Andes (20.8), followed by the Antarctic Peninsula (6.9), Kerguelen (6.0), Heard (3.4), Prince Edward (3.4), Tasmania (2.8), South Georgia (2.6), New Zealand (2.4), Auckland (2.3), Balleny (2.1), and Tristan (2.1). For most of the remaining hotspots n_e/n_w ranges from 1.3 to 1.9, indicating that orographic wave activity is less frequent. For South Orkney the ratio is 0.9, i. e., gravity wave activity in the upstream (western) box exceeds that in the downstream (eastern) box. This is due to the western

box often being influenced by orographic waves from the Antarctic Peninsula. In principle, the ratio n_e/n_w provides a simple way to select hotspots that are well suited to study orographic wave activity. However, this selection can be further optimized by considering uncertainties in measurement coverage and uncertainties in the confidence level at which orographic waves are detected, as will be discussed below.

5 The total number of events in the histograms in Fig. 4 depends on the number of satellite overpasses at each hotspot. Usually there are two satellite overpasses per day at each location, but this varies with latitude. At the equator there are regular data gaps between the AIRS swaths from neighbouring overpasses, these gaps become narrower with increasing latitude. The AIRS swaths start to overlap at $\pm 45^\circ$ latitude. At high latitudes there is significant overlap of the swaths so that there may be four, or even more, overpasses per day, which can be analyzed. The area observed during an overpass varies with each orbit and does
 10 not always cover the entire area of a box. In our analysis we considered only those overpasses that covered at least 50% of the area of the boxes, to ensure the variance calculations were robust. To cope with the variability in measurement coverage, we focus on occurrence frequencies, i. e., fractions of overpasses showing gravity wave activity with respect to the total number of overpasses, rather than event counts in the rest of the paper. Table 1 provides the 2003–2014 April–October seasonal mean occurrence frequencies f_{gw} of all observed gravity waves at each hotspot. These were calculated using only the information in
 15 the eastern box, and applying a variance threshold of $\sigma_e^2 \geq 0.1 \text{ K}^2$. The occurrence frequencies f_{gw} vary greatly between the hotspots, from 4.8% for Tristan to 59% for the Andes. Table 1 also presents the occurrence frequency f_{oro} of orographic waves determined with the two-box method with $\sigma_0^2 = 0.1 \text{ K}^2$ for each hotspot. The occurrence frequencies f_{oro} vary from 1.5% for Tristan to 53% for the Andes. Furthermore, Table 1 presents the ratio f_{oro}/f_{gw} as a measure of the contribution of orographic wave activity to total gravity wave activity as observed by AIRS at each hotspot. The ratio f_{oro}/f_{gw} varies from 24% for Gough
 20 to 90% for the Andes. It is important to note that the absolute values of f_{gw} and f_{oro} largely depend on the choice of σ_0^2 . For instance, raising σ_0^2 from 0.1 to 1 K^2 , f_{gw} and f_{oro} typically decrease by a factor of 5–15. However, while the frequencies changed, the ratio f_{oro}/f_{gw} remained nearly constant and we found that the rankings between different hotspots in terms of any of these measures – f_{oro} , f_{gw} , and the ratio f_{oro}/f_{gw} – are largely independent of the choice of σ_0^2 . The ratio f_{oro}/f_{gw} provides a good way to select hotspots that are best suited to study orographic wave activity.

25 Note that the occurrence frequency f_{oro} of orographic waves is expected to grow with the terrain peak altitude, because taller mountains cause larger vertical displacements in the flow and so will generate larger amplitude waves. A statistical association between terrain peak altitudes and gravity wave occurrence frequencies was also found from Table 1. The peak altitudes listed here are local maxima of the ETOPO2v2 data in the eastern boxes considered for the two-box method. The maxima are representative for 2-minute horizontal grid resolution and can be lower than actual mountain peak heights (cf.
 30 Table 1 of Alexander and Grimsdell, 2013). We calculated the Spearman rank-order correlation coefficient ρ_s between the terrain peak altitudes and the seasonal mean occurrence frequencies f_{gw} and f_{oro} of the hotspots. We found a medium degree of correlation ($\rho_s = 0.39$) using f_{gw} and a high degree of correlation ($\rho_s = 0.70$) using f_{oro} . This indicates that the two-box method effectively identifies orographic wave events, for which occurrence frequencies are closely linked to terrain altitude. Another important factor controlling the occurrence frequencies f_{gw} and f_{oro} are the background winds in the troposphere and
 35 stratosphere, which will be discussed in the next section.

5 Correlations of mountain wave activity and background winds

5.1 Mountain wave characteristics from linear wave theory

In this section we analyze correlations between the orographic wave occurrence frequencies and the background winds at the hotspots. However, we first repeat some of the typical characteristics of mountain waves and their relationships to the background winds as inferred from linear wave theory (e. g., Smith, 1979; Fritts and Alexander, 2003; Holton and Hakim, 2012). Starting from the dispersion relation for gravity waves with midrange intrinsic frequencies,

$$\hat{\omega} = \frac{Nk}{m}, \quad (1)$$

with intrinsic frequency $\hat{\omega} = ku$ for mountain waves, buoyancy frequency N , horizontal wavenumber k , and vertical wavenumber m , it can be shown that the vertical wavelength $\lambda_z = 2\pi/m$ is linearly proportional to the background wind u ,

$$\lambda_z = \frac{2\pi}{N}u. \quad (2)$$

For instance, in the troposphere ($N \approx 0.01 \text{ s}^{-1}$) a background wind $u = 10 \text{ m s}^{-1}$ triggers gravity waves with $\approx 6 \text{ km}$ vertical wavelength. In the stratosphere the restoring force is stronger, increasing the buoyancy frequency ($N \approx 0.02 \text{ s}^{-1}$) and potentially reducing the vertical wavelength. However, in the mid- and high-latitude austral winter the stratospheric background winds are much stronger than the low-level winds (up to a factor of 5–10), which typically shifts the vertical wavelengths into a range observable by AIRS ([~15 km or longer](#)), despite the opposing effect of the increased buoyancy.

~~As a representative example, we performed 2-D gravity wave raytracing calculations for ERA-Interim monthly mean temperature and zonal wind profiles at the Kerguelen Islands (Fig. ??). The raytracing model and some of its applications are described in more detail by Alexander (1998) and Yue et al. (2013, 2014). The model uses a more general form of the gravity wave dispersion relation and is not limited to mid-frequency waves. In our simulations the launch level of the mountain waves was set to 2 km. The horizontal wavelength was set to 100 km, which is a typical horizontal wavelength from AIRS observations. The raytracing calculations show that gravity waves are launched with a typical vertical wavelength of $\approx 9 \text{ km}$ in the troposphere, due to mean zonal winds of $\approx 18 \text{ m s}^{-1}$ and buoyancy frequencies of $\approx 0.012 \text{ s}^{-1}$ at the launch level. Mean westerly winds foster the propagation of gravity waves through the stratosphere from April to September. A critical layer related to easterly winds at 40 km was found in October. At the AIRS observational levels (about 40 km) vertical wavelengths become as large as 20–30 km from June to August, which is well within the range of wavelengths observable by AIRS. The mountain waves have large group velocities in the stratosphere (about 10–30 m/s), yielding short horizontal propagation distances (5–10 km) and propagation times (90–150 min) to reach the mid-stratosphere.~~

5.2 Time series and correlation analyses of gravity wave activity and background winds

In this section we discuss time series of the orographic gravity wave variances σ_{oro}^2 based on individual AIRS overpasses and ERA-Interim background winds (u, v) at different height levels above the hotspots. As an example, Fig. 5 shows time series of σ_{oro}^2 and u at the Kerguelen Islands. The years 2005, 2006, and 2007 shown here are characterized by a low, high, and

medium level of gravity wave activity, respectively. The values of u are area averages for the eastern box and refer to the AIRS observational level (3 hPa, about 40 km) and low level (750 hPa, about 2 km). We linearly interpolated in time from the 6-hourly ERA-Interim data to the measurement times of the AIRS/Aqua overpasses. Figure 5 also provides the Spearman rank-order correlation coefficient ρ_s between σ_{oro}^2 and u at the two height levels. Although vertical wavelengths scale linearly with the background wind to first order according to Eq. (2), the sensitivity of AIRS to different vertical wavelengths is non-linear. Therefore rank-order correlation coefficients instead of Pearson's linear correlation coefficients are analyzed here (Wilks, 2011). For the example of Kerguelen Islands and the years from 2005 to 2007 in Fig. 5 we found a high degree of correlation with the zonal wind at the observational level, with $\rho_s(40\text{ km})$ ranging from 0.78 to 0.84. These large correlation coefficients indicate that the observations are strongly influenced by the observational filter that is controlled by the background wind at the height level of the observations. We found a weak degree of correlation at low level, with $\rho_s(2\text{ km})$ ranging from 0.21 to 0.27. This indicates that although the influence of orographic sources on the observations is weaker than that of the upper level winds, information on the orographic sources is still present in the measurements.

We performed correlation analyses of the AIRS and ERA-Interim time series for the years 2003–2014 for the first nine hotspots listed in Table 1. At these hotspots the gravity wave activity is primarily due to the orographic sources, $f_{oro}/f_{gw} \gtrsim 50\%$. Figure 6 shows vertical profiles of ρ_s with respect to the zonal and meridional winds at different altitudes for the Antarctic Peninsula and Kerguelen. The results for the other hotspots are similar. Here we selected the Antarctic Peninsula and Kerguelen as representative examples of a mountain ridge and a peak, respectively. For a mountain ridge it may be expected that orientation of the background winds with respect to the ridge may also play a role, as waves are best formed parallel to the ridge and perpendicular to the wind (Hines, 1988). Figure 6 shows mean and standard deviation profiles of ρ_s based on individual years. Standard deviations are mostly in the range of 0.1–0.2, indicating that the interannual variations of ρ_s are small. Regarding correlations with the zonal winds (black curves in Fig. 6), we found a high degree of correlation for a broad maximum in the mid and upper stratosphere (ρ_s up to 0.6–0.8 at 30–50 km altitude), reflecting the influence of the AIRS observational filter. A second, weaker maximum of correlations was found in the lower troposphere (ρ_s up to 0.2–0.4 at 2 km altitude), reflecting the influence of the orographic sources. Correlations typically are at a minimum in the upper troposphere and lower stratosphere (near 10 km altitude). Regarding correlations with the meridional winds (gray curves in Fig. 6), strong correlations are generally not expected at peaks such as Kerguelen, because tropospheric and stratospheric winds are predominantly westerly (Fig. 2). Some degree of correlation could be expected for the Antarctic Peninsula, with the mountain ridge being aligned from southwest to northeast. However, we found that correlations with the low level meridional winds are low in both cases, with ρ_s being below ± 0.1 . At stratospheric levels the correlations with the meridional wind became larger, but ρ_s typically still did not exceed levels of ± 0.2 .

Note that the zonal and meridional winds in the troposphere or stratosphere are dynamically coupled and therefore strongly correlated. The correlations between the gravity wave activity and the zonal and meridional winds found here are therefore directly linked to the correlations of the winds themselves. To illustrate this, we calculated the correlations of the zonal winds at 2 km and 40 km altitude with the meridional and zonal winds at other height levels. From Fig. 6 it can be seen that the zonal winds have rather large correlation lengths in the vertical domain. The vertical correlations of the 40 km zonal wind steadily

decrease toward zero at the 10 km height level. The vertical correlations of the 2 km zonal wind fade away at 25 km altitude for Kerguelen and 40 km altitude for the Antarctic Peninsula. In Fig. 6 it can also be seen that anticorrelations (Antarctic Peninsula) or correlations (Kerguelen) of the gravity wave activity with respect to the meridional wind are directly related to anticorrelations or correlations between the meridional and zonal wind components. Based on this correlation analysis we
5 concluded that the zonal wind provides a good proxy for the total background wind activity on its own. It is largely sufficient to analyze the zonal winds at the two height levels (2 km and 40 km) selected here, which provide independent information.

We performed another correlation analysis to demonstrate that the background wind data can be used to effectively disentangle upper level wind effects on the AIRS gravity wave observations from low level source and other influences. Due to the observational filter the AIRS observations are limited to gravity waves with long vertical wavelengths, which in turn require
10 strong background winds at the observational level (Sect. 5.1). In order to reduce the influence of the observational filter, we performed the correlation analysis only for those events in the AIRS time series, for which the 40 km zonal winds exceed selected thresholds. Here we selected zonal wind thresholds of 44 m/s for the Antarctic Peninsula and 72 m/s for the Kerguelen Islands. These For zonal waves these thresholds correspond to vertical wavelengths of 14 and 23 km, which are close to or well above the AIRS detection limit, respectively. The thresholds are also applied in the prediction model for mountain wave events,
15 which will be introduced in more detail in Sect. 5.3. For the filtered AIRS time series including only cases with strong upper level winds (green curves in Fig. 6) we found that the correlations with the low level winds increased whereas correlations with upper level winds decreased. The correlation coefficient $\rho_s(2\text{ km})$ increased from 0.39 to 0.54 for the Antarctic Peninsula and from 0.23 to 0.42 for the Kerguelen Islands. In contrast, $\rho_s(40\text{ km})$ decreased from 0.59 to 0.35 for the Antarctic Peninsula and from 0.81 to 0.27 for the Kerguelen Islands. This shows that the focus on events with strong upper level winds provides
20 an efficient method to compile AIRS time series that more directly provide information on the gravity wave sources at lower levels. This approach is pursued further in a prediction model for mountain wave events based on wind thresholds that will be introduced next.

5.3 Prediction model for mountain wave events based on wind thresholds

In this section we introduce a simple model that can be used to predict the occurrence of mountain wave events at orographic
25 hotspots in the AIRS observations based on the zonal winds in the lower troposphere and mid stratosphere. Mountain waves are launched when there are strong winds near the surface. Strong background winds at higher altitudes are required to foster the propagation of gravity waves with long vertical wavelengths into the stratosphere (Sect. 5.1). We present a binary model that can be used to reliably predict the occurrence of a mountain wave event in the AIRS observations if the zonal winds $u(z)$ at $z = 2\text{ km}$ and $z = 40\text{ km}$ both exceed given thresholds, $u_0(z)$. A skill score analysis was performed to establish these zonal wind
30 thresholds. Binary observations of orographic waves are based on the variance threshold criterion, $\sigma_{oro}^2 \geq \sigma_0^2$ with $\sigma_0^2 = 0.1\text{ K}^2$, as introduced in Sect. 3. We calculated the GSS of this prediction model for zonal wind thresholds between -20 m/s and 120 m/s in steps of 1 m/s . The results for the Antarctic Peninsula and the Kerguelen Islands are presented in Fig. 7. In most cases the GSS distributions showed a clear maximum (e. g., for the Antarctic Peninsula in Fig. 7). We found that the GSS distributions are tightly constrained by the winds at the observational level (40 km) whereas the low level winds (2 km) seem to

play a smaller role. This is similar to results of Alexander and Grimsdell (2013), who found that the surface winds at southern hemisphere orographic hotspots are generally strong enough to generate gravity waves so the stratospheric winds were a better predictor of wave observations in AIRS. Exceptions occurred when surface winds blew westward, a situation that prevents any waves generated from penetrating to upper levels. For a few hotspots we found that the low level winds did not help to identify a clear maximum (e. g., for Kerguelen Islands in Fig. 7). To cope with this issue and to estimate uncertainty, we determined the wind thresholds from the upper 5% percentile of the GSS distributions. As an additional constraint, we considered only data points with a bias in the range of 90 – 110%, so that the model is not significantly under- or ~~overforecasting~~ overpredicting the total number of events.

The results of the skill score analysis are summarized in Table 2. Again, we focus on those nine hotspots where gravity wave activity is primarily related to orographic sources ($f_{oro}/f_{gw} \gtrsim 50\%$). GSS values in the range of 26 – 42% indicate that the prediction model has good skill. The model has no significant biases (98 – 103%), good PODs (59 – 80%), and mostly low FARs (18 – 43%). We found that the wind thresholds at the GSS maxima vary substantially between the hotspots, i. e., between 44 m/s (Andes) and 80 m/s (Prince Edward) at the 40 km level and 3 m/s (Antarctic Peninsula) and 18 m/s (Prince Edward) at the 2 km level. Among the most important factors influencing the thresholds are the different ~~peak-terrain altitudes and terrain~~ peak altitudes and horizontal extent as well as the background winds at the hotspots (cf. Fig. 2). Another factor influencing the thresholds in the case of mountain ridges could be the orientation of the winds with respect to the ridge. However, the correlation analysis presented in Sect. 5.2 suggests that this is a second-order effect. Nevertheless, the wind ranges found here are generally consistent with theory. A range of low level winds of about 5 – 15 m/s is best suited for wave generation, because weak or westward winds would give weak or no waves, whereas very strong eastward winds are associated with instability. Stratospheric background winds greater than 40 m/s clearly foster the propagation of waves with vertical wavelengths visible to AIRS (Sect. 5.1).

We also tested the sensitivity of the skill score analysis regarding the variance threshold σ_0^2 used to detect orographic wave activity. Increasing σ_0^2 to 1 K^2 , we found that the GSS decreased by 5 – 10 percentage points. This indicates that the prediction model has lower skill for predicting the occurrence of the strongest wave events. However, note that such strong events appear very infrequently, so the statistical sample size is substantially reduced, and individual observational effects are more influential. Decreasing σ_0^2 to 0.01 K^2 , we found that GSS increased by 5 – 10 percentage points. However, with this low threshold a large number of rather weak events is included, which may not contribute significantly to gravity wave drag or that are not even related to orographic sources at all. Note that the analysis for the remaining nine hotspots of Table 1 (Auckland to Gough) for our default threshold of 0.1 K^2 yields lower skills (GSS range of 10 – 24%), which was expected as orography is not the leading source mechanism in these places. The model is only applicable for orographic hotspots.

Figure 8 shows histograms of the 2003 – 2014 April – October ERA-Interim zonal winds at the 2 km and 40 km height levels for the Antarctic Peninsula and Kerguelen Islands. In the analysis of the wind distributions we considered two cases. In the first case we used wind data from all satellite overpasses over the hotspots, whereas in the second case we considered only data from overpasses with AIRS showing orographic wave events. The overall wind distributions (first case, light colors in Fig. 8) typically cover broad ranges of easterlies and westerlies, with 90% of the events being located in zonal wind ranges of about

–10 to 30 m/s at the 2 km level and about –20 to 110 m/s at the 40 km level. At the observational level the hotspots at mid latitudes (e. g., Kerguelen) have rather broad and flat distributions. The hotspots at high latitudes (e. g., Antarctic Peninsula) show a pronounced zonal wind maximum at 30 to 80 m/s due to the polar jet. The orographic wave events (second case, dark colors in Fig. 8) are associated with strong westerly winds, most notably at the observational level (with zonal wind ranges shifted to 40 to 120 m/s), but also at low level (with zonal wind ranges shifted to 0 to 30 m/s). Wind reversals from westerlies to easterlies prohibit the propagation of gravity waves into the stratosphere. Consequently, no wave events associated with easterlies at the 40 km level are found in the wind distributions. Regarding the 2 km level, we found that about 2.8% (Antarctic Peninsula) and about 0.3% (Kerguelen) of the events are associated with easterlies. These few outliers are likely due to false detections of orographic wave events with the two-box method as well as uncertainties of the ERA-Interim winds. Similar to the skill score analysis presented earlier, the analysis of wind distributions suggests that the wind distributions associated with mountain wave events are clearly affected by the overall wind distributions. Other factors such as the orientation of a mountain ridge with respect to the mean wind direction may contribute. This causes the wind thresholds of the prediction model to vary between the different hotspots. They need to be tuned for each location. Note that we also indicated the wind thresholds of the prediction model in Fig. 8. This shows that large fractions (60–80%) of the observed mountain wave events are in fact covered by the model.

6 Inter- and intraseasonal variations of mountain wave activity

In this section we discuss yearly and monthly variations of the orographic wave activity at the hotspots. We focus on results for the Antarctic Peninsula and Kerguelen Islands, being representative examples of a mountain ridge and a peak, respectively. Figure 9 shows 2003–2014 monthly mean occurrence frequencies of the orographic waves from AIRS observations and the prediction model. In addition, Fig. 9 shows monthly occurrence frequencies of the ERA-Interim zonal winds exceeding the thresholds at the 2 km and 40 km levels at the hotspots. The occurrence frequencies of the zonal winds were calculated using the wind thresholds defined in Sect. 5.3 and Table 2. A clear seasonal variation is found in the monthly occurrence frequencies, with minima of 1–12% in April and October and maxima as large as 62% in July. For the Antarctic Peninsula we found a rather long season, with occurrence frequencies exceeding the 50% level from May to September. At Kerguelen the 50% level is exceeded only in June and July. The intraseasonal variations of the orographic waves clearly follow the occurrence frequencies of the zonal winds at the observational level. Those cover ranges of 14–96% at the Antarctic Peninsula and 0–88% at the Kerguelen Islands. For both the Antarctic Peninsula and Kerguelen the occurrence frequencies of the low level winds are in the range of 60–80% from April to October on average, which indicates a high chances for orographic waves being excited at all times. The prediction model reproduces the monthly variations of the observed occurrence frequencies with a mean absolute error of 5 percentage points. A larger error of 15 percentage points was found only for Kerguelen Island in June, and seems to be related to an overestimation of the influence of the observational level wind on the wave activity.

Figure 9 also presents the seasonal mean occurrence frequencies at the Antarctic Peninsula and Kerguelen Islands for individual years from 2003 to 2014. The time series reveal substantial interannual variations of the occurrence frequencies,

covering ranges of 33–52% at the Antarctic Peninsula and 10–38% at Kerguelen Islands. The annual variations of the gravity wave occurrence frequencies are again found to be closely correlated with the occurrence frequencies of the zonal winds. The example for the Antarctic Peninsula indicates that even though winds at the observational level are often most influential, the low level winds are still important. This becomes most evident during the years 2005 to 2010. Given that the wind at the observational level remains high during this time, the occurrence of gravity waves then clearly follows the low level winds. This shows that both levels are required to predict AIRS observations of orographic waves. The prediction model reproduces the interannual variations of the seasonal occurrence frequencies with a mean absolute error of 4 percentage points. The absolute errors became as large as 12 percentage points (Antarctic Peninsula) and 9 percentage points (Kerguelen) in individual years. The large interannual variability indicates that to get statistically meaningful results the occurrence frequencies should be calculated based on long-term records such as those provided by AIRS.

7 Conclusions

In this paper we introduced the simple and effective two-box method that can be used to detect orographic gravity waves in infrared nadir sounder imagery. The method was applied to 12 years of AIRS/Aqua observations to analyze mountain wave activity during April to October at 18 orographic hotspots in the southern hemisphere. The seasonal mean mountain wave activity was most frequent over the Andes (with an occurrence frequency of 53%), followed by the Antarctic Peninsula (43%), Kerguelen (25%), South Georgia (24%), Heard (23%), Balleny (17%), and less than 13% in other places. At many hotspots mountain waves contribute significantly to the total gravity wave activity as observed by AIRS. Contributions are as large as 90% at the Andes, followed by the Antarctic Peninsula (76%), Kerguelen (73%) Tasmania (70%), New Zealand (67%), Heard (60%), and other hotspots (24–54%). Mountain wave occurrence frequencies are closely correlated with terrain peak altitudes ($\rho_s = 0.70$). Orographic gravity wave variances are also strongly correlated with the zonal background wind at 40 km altitude (with ρ_s varying between 0.6 and 0.8), which ~~is~~ we attributed to the AIRS observational filter. However, in a recent study of gravity wave measurements by a Raleigh/Raman lidar at Lauder, New Zealand, Kaifler et al. (2015) also found enhanced correlation of the the observed stratospheric gravity wave activity with the stratospheric winds. Weaker correlations are found with respect to low level winds at 2 km altitude (with ρ_s varying between 0.2 and 0.4), but this may be mostly due to the fact that the low level winds at the hotspots were rarely below the threshold required for launching waves. The range of low levels winds for New Zealand found here agrees well with the range of tropospheric winds for which Kaifler et al. (2015) found the largest gravity wave energies at mesospheric altitudes, supporting the findings of the present paper. We developed a simple model that predicts the occurrence frequencies of mountain waves in AIRS observations based on zonal wind thresholds at 2 km and 40 km altitude. This prediction model has significant skill (GSS of 10–42%). It reproduces yearly and monthly variations of the mountain wave occurrence frequencies at the Antarctic Peninsula and Kerguelen which vary from near zero to over 60% with mean absolute errors of 4–5 percentage points.

Our results on the seasonal cycle of gravity wave activity at southern hemisphere hotspots and correlations with the background winds agree well with those by Alexander and Grimsdell (2013). Use of the orographic wave detection algorithm

developed here, and the thresholds found for upper and lower level wind, could permit extension of their wave flux estimates to include geographic and interannual variability more comprehensively. This would allow us to better characterize the collective effect of these waves on the circulation of the southern hemisphere stratosphere. Although terrain peak altitudes and zonal background winds are most closely correlated with mountain wave occurrence frequencies, there are many other factors that influence the excitation, propagation, and observability of these waves. These include: (i) source variations such as terrain roughness, slope, and orientation with respect to the surface winds, (ii) wind variations between different height levels and between the zonal and meridional components, and (iii) observational effects related to the AIRS measurement geometry, e. g., the orientation of the wave fronts with respect to the line of sight. Future work should aim for improved understanding of these effects. The two-box method and the prediction model based on wind thresholds introduced here can be used to identify interesting case studies in the vast amount of AIRS data, improving the usefulness of the data for future research on mountain waves and their impact on atmospheric dynamics.

Acknowledgements. AIRS data products are distributed by the NASA Goddard Earth Sciences Data Information and Services Center. ERA-Interim data are provided by the European Centre for Medium-Range Weather Forecasts. The ETOPO2v2 data set was obtained from the U.S. Department of Commerce, National Oceanic and Atmospheric Administration, National Geophysical Data Center. Support for AG and MJA was provided by the Science of Terra and Aqua program, NASA contract #NNH11CD34C, and additional support for MJA by the NASA Shared Services Center, grant #NNX14A076G. We thank Catrin Meyer for comments on an earlier draft of this manuscript.

References

- Alexander, M. J.: Interpretations of observed climatological patterns in stratospheric gravity wave variance, *J. Geophys. Res.*, 103, 8627–8640, 1998.
- Alexander, M. J. and Barnet, C. D.: Using satellite observations to constrain gravity wave parameterizations for global models, *J. Atmos. Sci.*, 64, 1652–1665, 2007.
- Alexander, M. J. and Grimsdell, A. W.: Seasonal cycle of orographic gravity wave occurrence above small islands in the Southern Hemisphere: Implications for effects on the general circulation, *J. Geophys. Res.*, 118, 11 589–11 599, 2013.
- Alexander, M. J. and Pfister, L.: Gravity wave momentum flux in the lower stratosphere over convection, *Geophys. Res. Lett.*, 22, 2029–2032, 1995.
- 10 Alexander, M. J. and Rosenlof, K. H.: Nonstationary gravity wave forcing of the stratospheric zonal mean wind, *J. Geophys. Res.*, 101, 23 465–23 474, 1996.
- Alexander, M. J. and Teitelbaum, H.: Observation and Analysis of a Large Amplitude Mountain Wave Event over the Antarctic Peninsula, *J. Geophys. Res.*, 112, D21103, doi:10.1029/2006JD008368, 2007.
- Alexander, M. J. and Teitelbaum, H.: Three-dimensional properties of Andes mountain waves observed by satellite: A case study, *J. Geophys. Res.*, 116, D23110, doi:10.1029/2011JD016151, 2011.
- 15 Alexander, S. P., Klekociuk, A. R., Pitts, M. C., McDonald, A. J., and Arevalo-Torres, A.: The effect of orographic gravity waves on Antarctic polar stratospheric cloud occurrence and composition, *J. Geophys. Res.*, 116, D06109, doi:10.1029/2010JD015184, 2011.
- Alexander, S. P., Sato, K., Watanabe, S., Kawatani, Y., and Murphy, D. J.: Southern Hemisphere Extratropical Gravity Wave Sources and Intermittency Revealed by a Middle-Atmosphere General Circulation Model, *J. Atmos. Sci.*, 73, 1335–1349, 2016.
- 20 Aumann, H. H., Chahine, M. T., Gautier, C., Goldberg, M. D., Kalnay, E., McMillin, L. M., Revercomb, H., Rosenkranz, P. W., Smith, W. L., Staelin, D. H., Strow, L. L., and Susskind, J.: AIRS/AMSU/HSB on the Aqua Mission: Design, Science Objective, Data Products, and Processing Systems, in: *IEEE Trans. Geosci. Remote Sens.*, vol. 41, pp. 253–264, 2003.
- Carslaw, K. S., Wirth, M., Tsias, A., Luo, B. P., Dörnbrack, A., Leutbecher, M., Volkert, H., Renger, W., Bacmeister, J. T., Reimer, E., and Peter, T.: Increased stratospheric ozone depletion due to mountain-induced atmospheric waves, *Nature*, 391, 675–678, 1998.
- 25 Chahine, M. T., Pagano, T. S., Aumann, H. H., Atlas, R., Barnet, C., Blaisdell, J., Chen, L., Divakarla, M., Fetzer, E. J., Goldberg, M., Gautier, C., Granger, S., Hannon, S., Irion, F. W., Kakar, R., Kalnay, E., Lambrigtsen, B. H., Lee, S., Marshall, J. L., McMillan, W. W., McMillin, L., Olsen, E. T., Revercomb, H., Rosenkranz, P., Smith, W. L., Staelin, D., Strow, L. L., Susskind, J., Tobin, D., Wolf, W., and Zhou, L.: AIRS: improving weather forecasting and providing new data on greenhouse gases, *B. Am. Meteorol. Soc.*, 87, 911–926, 2006.
- Dee, D. P., Uppala, S. M., Simmons, A. J., Berrisford, P., Poli, P., Kobayashi, S., Andrae, U., Balmaseda, M. A., Balsamo, G., Bauer, P., 30 Bechtold, P., Beljaars, A. C. M., van de Berg, L., Bidlot, J., Bormann, N., Delsol, C., Dragani, R., Fuentes, M., Geer, A. J., Haimberger, L., Healy, S. B., Hersbach, H., Hólm, E. V., Isaksen, I., Kållberg, P., Köhler, M., Matricardi, M., McNally, A. P., Monge-Sanz, B. M., Morcrette, J.-J., Park, B.-K., Peubey, C., de Rosnay, P., Tavolato, C., Thépaut, J.-N., and Vitart, F.: The ERA-Interim reanalysis: configuration and performance of the data assimilation system, *Quart. J. Roy. Meteorol. Soc.*, 137, 553–597, 2011.
- Dörnbrack, A., Leutbecher, M., Kivi, R., and Kyrö, E.: Mountain-wave-induced record low stratospheric temperatures above northern Scandinavia, *Tellus*, 51, 951–963, 1999.
- 35

- Dörnbrack, A., Leutbecher, M., Reichardt, J., Behrendt, A., Müller, K.-P., and Baumgarten, G.: Relevance of mountain wave cooling for the formation of polar stratospheric clouds over Scandinavia – Mesoscale dynamics and observations for January 1997, *J. Geophys. Res.*, 106, 1569–1581, 2001.
- Durran, D. R. and Klemp, J. B.: Another look at downslope winds. Part II: nonlinear amplification beneath wave-overtuning layers, *J. Atmos. Sci.*, 44, 3402–3412, 1987.
- Eckermann, S. D., Wu, D. L., Doyle, J. D., Burris, J. F., McGee, T. J., Hostetler, C. A., Coy, L., Lawrence, B. N., Stephens, A., McCormack, J. P., and Hogan, T. F.: Imaging gravity waves in lower stratospheric AMSU-A radiances, Part 2: Validation case study, *Atmos. Chem. Phys.*, 6, 3343–3362, 2006.
- Eckermann, S. D., Ma, J., Wu, D. L., and Broutman, D.: A three-dimensional mountain wave imaged in satellite radiance throughout the stratosphere: Evidence of the effects of directional wind shear, *Quart. J. Roy. Meteorol. Soc.*, 133, 1959–1975, 2007.
- Eckermann, S. D., Hoffmann, L., Höpfner, M., Wu, D. L., and Alexander, M. J.: Antarctic NAT PSC belt of June 2003: Observational validation of the mountain wave seeding hypothesis, *Geophys. Res. Lett.*, 36, L02807, doi:10.1029/2008GL036629, 2009.
- Ecklund, W., Gage, K., Nastrom, G., and Balsley, B.: A preliminary climatology of the spectrum of vertical velocity observed by clear-air Doppler radar, *J. Clim. Appl. Meteorol.*, 25, 885–892, 1986.
- Ern, M., Preusse, P., Alexander, M. J., and Warner, C. D.: Absolute values of gravity wave momentum flux derived from satellite data, *J. Geophys. Res.*, 109, D20103, doi:10.1029/2004JD004752, 2004.
- Fritts, D. C. and Alexander, M. J.: Gravity wave dynamics and effects in the middle atmosphere, *Rev. Geophys.*, 41, 1003, doi:10.1029/2001RG000106, 2003.
- Geller, M. A., Alexander, M. J., Love, P. T., Bacmeister, J., Ern, M., Hertzog, A., Manzini, E., Preusse, P., Sato, K., Scaife, A. A., and Zhou, T.: A comparison between gravity wave momentum fluxes in observations and climate models, *J. Clim.*, 26, 6383–6405, 2013.
- Gong, J., Wu, D. L., and Eckermann, S. D.: Gravity wave variances and propagation derived from AIRS radiances, *Atmos. Chem. Phys.*, 12, 1701–1720, 2012.
- Hendricks, E. A., Doyle, J. D., Eckermann, S. D., Jiang, Q., and Reinecke, P. A.: What is the source of the stratospheric gravity wave belt in austral winter?, *J. Atmos. Sci.*, 71, 1583–1592, 2014.
- Hindley, N. P., Wright, C. J., Smith, N. D., and Mitchell, N. J.: The southern stratospheric gravity wave hot spot: individual waves and their momentum fluxes measured by COSMIC GPS-RO, *Atmos. Chem. Phys.*, 15, 7797–7818, 2015.
- Hines, C. O.: A modeling of atmospheric gravity waves and wave drag generated by isotropic and anisotropic terrain, *J. Atmos. Sci.*, 45, 309–322, 1988.
- Hines, C. O.: Doppler-spread parameterization of gravity-wave momentum deposition in the middle atmosphere. Part 1: Basic formulation, *J. Atm. Sol.-Terr. Phys.*, 59, 371–386, 1997.
- Hoffmann, L. and Alexander, M. J.: Retrieval of stratospheric temperatures from Atmospheric Infrared Sounder radiance measurements for gravity wave studies, *J. Geophys. Res.*, 114, D07105, doi:10.1029/2008JD011241, 2009.
- Hoffmann, L. and Alexander, M. J.: Occurrence frequency of convective gravity waves during the North American thunderstorm season, *J. Geophys. Res.*, 115, D20111, doi:10.1029/2010JD014401, 2010.
- Hoffmann, L., Xue, X., and Alexander, M. J.: A global view of stratospheric gravity wave hotspots located with Atmospheric Infrared Sounder observations, *J. Geophys. Res.*, 118, 416–434, 2013.
- Hoffmann, L., Alexander, M. J., Clerbaux, C., Grimsdell, A. W., Meyer, C. I., Röbler, T., and Tournier, B.: Intercomparison of stratospheric gravity wave observations with AIRS and IASI, *Atmos. Meas. Tech.*, 7, 4517–4537, 2014.

- Holton, J. R.: The role of gravity wave induced drag and diffusion on the momentum budget of the mesosphere, *J. Atmos. Sci.*, 39, 791–799, 1982.
- Holton, J. R.: The Influence of Gravity Wave Breaking on the General Circulation of the Middle Atmosphere, *J. Atmos. Sci.*, 40, 2497–2507, 1983.
- 5 Holton, J. R. and Hakim, G. J.: An introduction to dynamic meteorology, vol. 88 of *International Geophysics Series*, Academic Press, 5th edn., 2012.
- Jiang, Q., Doyle, J. D., Reinecke, A., Smith, R. B., and Eckermann, S. D.: A Modeling Study of Stratospheric Waves over the Southern Andes and Drake Passage, *J. Atmos. Sci.*, 70, 1668–1689, 2013.
- Kaifler, B., Kaifler, N., Ehard, B., Dörnbrack, A., Rapp, M., and Fritts, D. C.: Influences of source conditions on mountain wave penetration into the stratosphere and mesosphere, *Geophys. Res. Lett.*, 42, 9488–9494, 2015.
- 10 Kohma, M. and Sato, K.: The effects of atmospheric waves on the amounts of polar stratospheric clouds, *Atmos. Chem. Phys.*, 11, 11 535–11 552, 2011.
- Lambert, A., Santee, M. L., Wu, D. L., and Chae, J. H.: A-train CALIOP and MLS observations of early winter Antarctic polar stratospheric clouds and nitric acid in 2008, *Atmos. Chem. Phys.*, 12, 2899–2931, 2012.
- 15 Lilly, D. and Kennedy, P.: Observations of a stationary mountain wave and its associated momentum flux and energy dissipation, *J. Atmos. Sci.*, 30, 1135–1152, 1973.
- Limpasuvan, V., Wu, D. L., Alexander, M. J., Xue, M., Hu, M., Pawson, S., and Perkins, J. R.: Stratospheric gravity wave simulation over Greenland during 24 January 2005, *J. Geophys. Res.*, 112, D10115, doi:10.1029/2006JD007823, 2007.
- Lindzen, R. S.: Turbulence and stress due to gravity wave and tidal breakdown, *J. Geophys. Res.*, 86, 9707–9714, 1981.
- 20 Lott, F. and Miller, M. J.: A new subgrid-scale orographic drag parametrization: Its formulation and testing, *Quart. J. Roy. Meteorol. Soc.*, 123, 101–127, 1997.
- McLandress, C., Shepherd, T. G., Polavarapu, S., and Beagley, S. R.: Is Missing Orographic Gravity Wave Drag near 60°S the Cause of the Stratospheric Zonal Wind Biases in Chemistry-Climate Models?, *J. Atmos. Sci.*, 69, 802–818, 2012.
- Miller, M., Palmer, T., and Swinbank, R.: Parametrization and influence of subgridscale orography in general circulation and numerical weather prediction models, *Meteorol. Atmos. Phys.*, 40, 84–109, 1989.
- 25 Minamihara, Y., Sato, K., Kohma, M., and Tsutsumi, M.: Characteristics of Vertical Wind Fluctuations in the Lower Troposphere at Syowa Station in the Antarctic Revealed by the PANSY Radar, *SOLA*, 12, 116–120, 2016.
- Nastrom, G. D. and Fritts, D. C.: Sources of mesoscale variability of gravity waves. Part I: topographic excitation, *J. Atmos. Sci.*, 49, 101–110, 1992.
- 30 Niranjan Kumar, K., Ramkumar, T. K., and Krishnaiah, M.: Analysis of large-amplitude stratospheric mountain wave event observed from the AIRS and MLS sounders over the western Himalayan region, *J. Geophys. Res.*, 117, D22102, doi:10.1029/2011JD017410, 2012.
- Orr, A., S. Hosking, J., Hoffmann, L., Keeble, J., Dean, S. M., Roscoe, H. K., Abraham, N. L., Vosper, S., and Braesicke, P.: Inclusion of mountain-wave-induced cooling for the formation of PSCs over the Antarctic Peninsula in a chemistry–climate model, *Atmos. Chem. Phys.*, 15, 1071–1086, 2015.
- 35 Pfister, L., Starr, W., Craig, R., Loewenstein, M., and Legg, M.: Small-Scale Motions Observed by Aircraft in the Tropical Lower Stratosphere: Evidence for Mixing and its Relationship to Large-Scale Flows, *J. Atmos. Sci.*, 43, 3210–3225, 1986.
- Plougonven, R. and Zhang, F.: Internal gravity waves from atmospheric jets and fronts, *Rev. Geophys.*, 52, 33–76, 2014.

- Preusse, P., Dörnbrack, A., Eckermann, S. D., Riese, M., Schaefer, B., Bacmeister, J. T., Broutman, D., and Grossmann, K. U.: Space-based measurements of stratospheric mountain waves by CRISTA, 1. Sensitivity, analysis method, and a case study, *J. Geophys. Res.*, 107, 8178, doi:10.1029/2001JD000699, 2002.
- Preusse, P., Eckermann, S. D., and Ern, M.: Transparency of the atmosphere to short horizontal wavelength gravity waves, *J. Geophys. Res.*, 113, D24104, doi:10.1029/2007JD009682, 2008.
- 5 Sato, K.: Vertical wind disturbances in the troposphere and lower stratosphere observed by the MU radar, *J. Atmos. Sci.*, 47, 2803–2817, 1990.
- Sato, K., Watanabe, S., Kawatani, Y., Tomikawa, Y., Miyazaki, K., and Takahashi, M.: On the origins of mesospheric gravity waves, *Geophys. Res. Lett.*, 36, L19801, doi:10.1029/2009GL039908, 2009.
- 10 Sato, K., Tateno, S., Watanabe, S., and Kawatani, Y.: Gravity wave characteristics in the Southern Hemisphere revealed by a high-resolution middle-atmosphere general circulation model, *J. Atmos. Sci.*, 69, 1378–1396, 2012.
- Scaife, A. A., Butchart, N., Warner, C. D., Stainforth, D., and Norton, W.: Realistic quasi-biennial oscillations in a simulation of the global climate, *Geophys. Res. Lett.*, 27, 3481–3484, 2000.
- Schaefer, J. T.: The critical success index as an indicator of warning skill, *Weath. Forecast.*, 5, 570–575, 1990.
- 15 Smith, R. B.: The influence of mountains on the atmosphere, *Adv. Geophys.*, 21, 87–230, 1979.
- Smith, R. B.: On severe downslope winds., *J. Atmos. Sci.*, 42, 2597–2603, 1985.
- Tsuda, T., Murayama, Y., Wiryosumarto, H., Harijono, S. W. B., and Kato, S.: Radiosonde observations of equatorial atmosphere dynamics over Indonesia. 2. Characteristics of gravity waves, *J. Geophys. Res.*, 99, 10 507–10 516, 1994.
- Vadas, S. L., Fritts, D. C., and Alexander, M. J.: Mechanism for the Generation of Secondary Waves in Wave Breaking Regions, *J. Atmos. Sci.*, 60, 194–214, 2003.
- 20 Vincent, R. A. and Alexander, M. J.: Gravity waves in the tropical lower stratosphere: An observational study of seasonal and interannual variability, *J. Geophys. Res.*, 105, 17 971–17 982, 2000.
- Vosper, S.: Mountain waves and wakes generated by South Georgia: implications for drag parametrization, *Quart. J. Roy. Meteorol. Soc.*, 141, doi:10.1002/qj.2566, 2015.
- 25 Warner, C. D. and McIntyre, M. E.: Toward an ultra-simple spectral gravity wave parameterization for general circulation models, *Earth, Planets Space*, 51, 475–484, 1999.
- Watanabe, S., Sato, K., and Takahashi, M.: A general circulation model study of the orographic gravity waves over Antarctica excited by katabatic winds, *J. Geophys. Res.*, 111, D18104, doi:10.1029/2005JD006851, 2006.
- Wilks, D. S.: *Statistical methods in the atmospheric sciences*, vol. 100, Academic Press, 2011.
- 30 Worthington, R. and Thomas, L.: Radar measurements of critical-layer absorption in mountain waves, *Quart. J. Roy. Meteorol. Soc.*, 122, 1263–1282, 1996.
- Wu, D. L.: Mesoscale gravity wave variances from AMSU-A radiances, *Geophys. Res. Lett.*, 31, L12114, doi:10.1029/2004GL019562, 2004.
- Wu, D. L. and Zhang, F.: A study of mesoscale gravity waves over the North Atlantic with satellite observations and a mesoscale model, *J. Geophys. Res.*, 109, D22104, doi:10.1029/2004JD005090, 2004.
- 35 Wu, D. L., Preusse, P., Eckermann, S. D., Jiang, J. H., de la Torre Juarez, M., Coy, L., Lawrence, B., and Wang, D. Y.: Remote sounding of atmospheric gravity waves with satellite limb and nadir techniques, *Adv. Space Res.*, 37, 2269–2277, 2006.

Yue, J., Hoffmann, L., and Alexander, M. J.: Simultaneous observations of convective gravity waves from a ground-based airglow imager and the AIRS satellite experiment, *J. Geophys. Res.*, 118, 3178–3191, 2013.

Yue, J., Thuraijah, B., Hoffmann, L., Alexander, M. J., Chandran, A., Taylor, M. J., Russell III, J. M., Randall, C. E., and Bailey, S. M.: Concentric gravity waves in polar mesospheric clouds from the Cloud Imaging and Particle Size experiment, *J. Geophys. Res.*, 119,

5 5115–5127, 2014.

Table 1. Southern hemisphere orographic hotspots of stratospheric gravity wave activity. In this table n_e/n_w refers to the ratio of events with gravity waves variances in the eastern box being larger than in the western box, f_{gw} to the gravity wave occurrence frequency, and f_{oro} to the orographic wave occurrence frequency as observed by AIRS. The table is ordered by the ratio f_{oro}/f_{gw} .

Hotspot	Latitude	Longitude	Altitude [m]	n_e/n_w	f_{gw} [%]	f_{oro} [%]	f_{oro}/f_{gw} [%]
Andes	50.0°S	77.0°W	4405	20.8	59.1	52.8	89.4
Antarctic Peninsula	65.0°S	70.0°W	2236	6.9	56.0	42.7	76.3
Kerguelen	49.3°S	68.6°E	1792	6.0	34.4	25.4	73.9
Tasmania	41.9°S	144.5°E	1490	2.8	11.1	7.8	70.2
New Zealand	44.0°S	166.5°E	2983	2.4	13.5	9.1	67.3
Heard	54.1°S	73.2°E	2192	3.4	36.3	21.9	60.3
South Georgia	54.2°S	38.1°W	1831	2.6	44.1	23.8	54.0
Prince Edward	46.9°S	37.6°E	964	3.4	23.1	12.4	53.6
Balleny	67.0°S	162.1°E	1352	2.1	34.3	17.1	49.8
Auckland	50.7°S	166.1°E	403	2.3	14.6	6.4	43.7
Peter I	68.8°S	90.8°W	1328	1.5	21.1	7.3	34.6
Crozet	46.4°S	50.1°E	599	1.9	17.0	5.8	33.9
South Sandwich	58.4°S	26.5°W	903	1.3	35.8	12.0	33.6
Tristan	37.1°S	12.4°W	1344	2.1	4.8	1.5	32.1
Macquarie	54.6°S	158.8°E	206	1.4	16.3	5.2	32.0
Bouvet	54.4°S	3.3°E	298	1.4	25.3	7.4	29.2
South Orkney	60.6°S	45.5°W	755	0.9	41.2	11.0	26.7
Gough	40.3°S	10.1°W	758	1.7	7.9	1.9	23.7

Table 2. Zonal wind thresholds and skill scores of the mountain wave prediction model. The table provides the probability of detection (POD), the false alarm rate (FAR), and the Gilbert skill score (GSS).

Hotspot	$u_0(40 \text{ km})$ [m/s]	$u_0(2 \text{ km})$ [m/s]	bias [%]	POD [%]	FAR [%]	GSS [%]
Andes	50 ± 3	6 ± 2	98 ± 5	80 ± 3	18 ± 2	39.5 ± 0.5
Antarctic Peninsula	44 ± 3	3 ± 2	99 ± 5	73 ± 3	26 ± 1	31.3 ± 0.4
Kerguelen	72 ± 3	13 ± 3	101 ± 5	72 ± 2	29 ± 1	41.6 ± 0.7
Tasmania	69 ± 2	7 ± 2	102 ± 4	63 ± 2	38 ± 1	40.0 ± 0.4
New Zealand	64 ± 2	6 ± 2	100 ± 5	62 ± 2	38 ± 1	38.8 ± 0.6
Heard	72 ± 3	12 ± 2	101 ± 6	67 ± 3	34 ± 1	35.3 ± 0.4
South Georgia	73 ± 2	6 ± 3	102 ± 5	62 ± 2	39 ± 1	26.0 ± 0.3
Prince Edward	80 ± 2	18 ± 2	103 ± 5	59 ± 2	43 ± 1	32.3 ± 0.4
Balleny	50 ± 3	12 ± 2	98 ± 6	60 ± 2	39 ± 1	30.5 ± 0.4

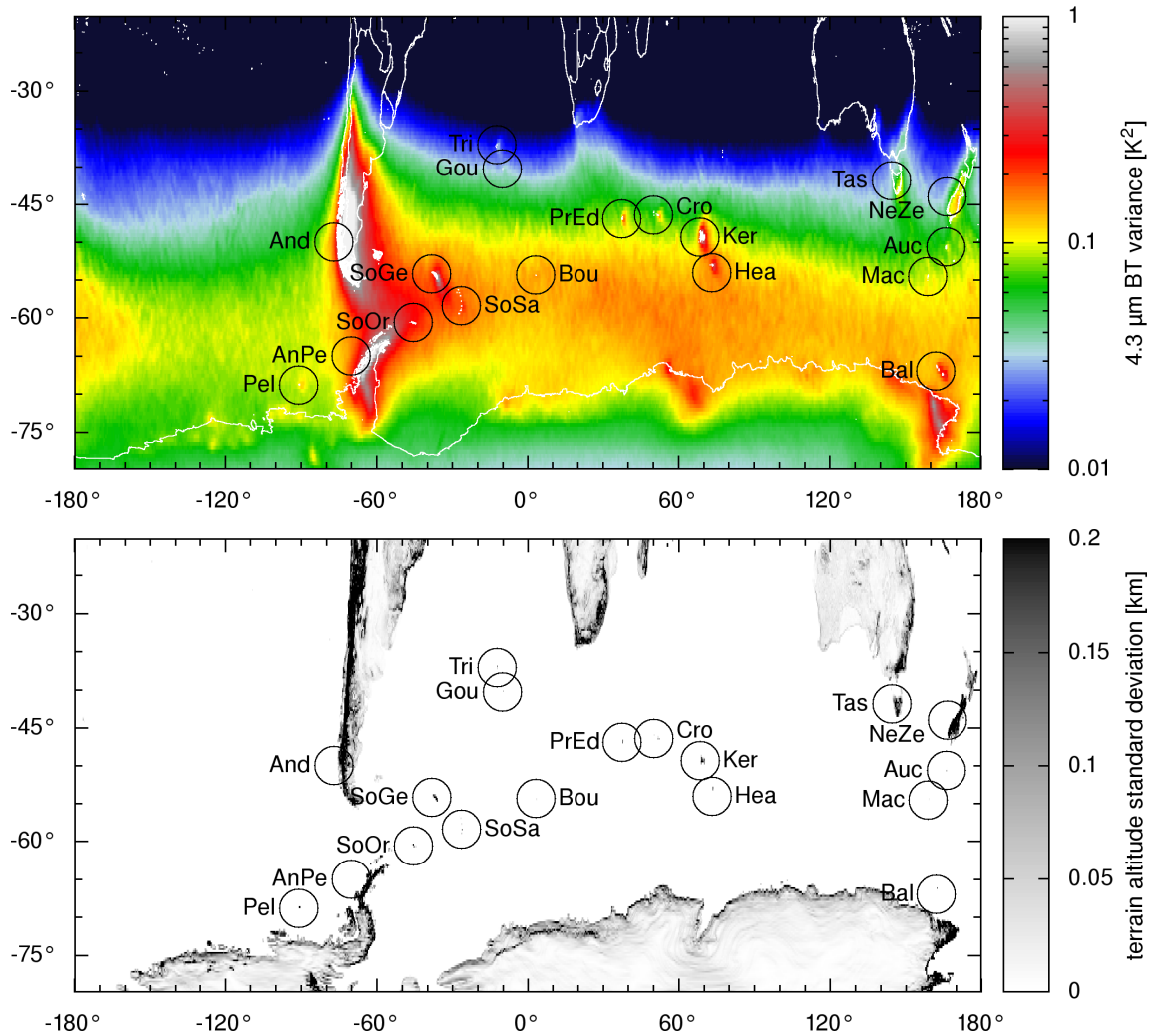


Figure 1. Top: Multi-annual seasonal mean (April–October in 2003–2014) of detrended and noise-corrected AIRS 4.3 μm brightness temperature variances due to stratospheric gravity wave activity. Bottom: Terrain altitude standard deviations from 2-minute gridded global relief data (ETOPO2v2) at $0.25^\circ \times 0.25^\circ$ horizontal resolution. Black circles indicate the locations of orographic hotspots that are investigated in this study (see Table 1 for details).

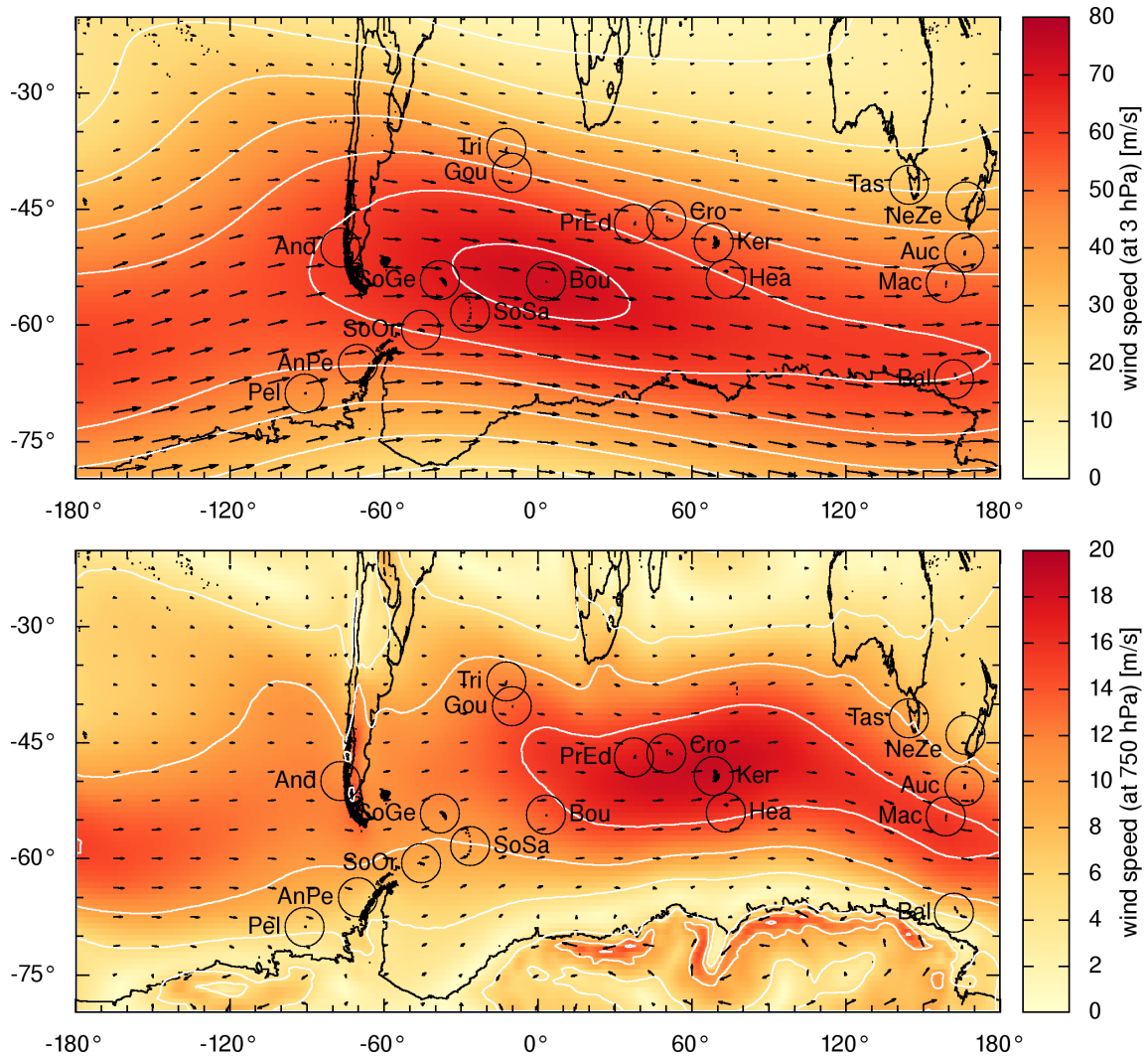


Figure 2. Multi-annual seasonal means (April–October in 2003–2014) of ERA-Interim horizontal winds at the AIRS observational level (3 hPa; top) and at low level (750 hPa; bottom). White contour lines appear at levels of 10 m/s for the 3 hPa layer and 5 m/s for the 750 hPa layer. Black circles indicate the locations of orographic hotspots that are investigated in this study (see Table 1 for details).

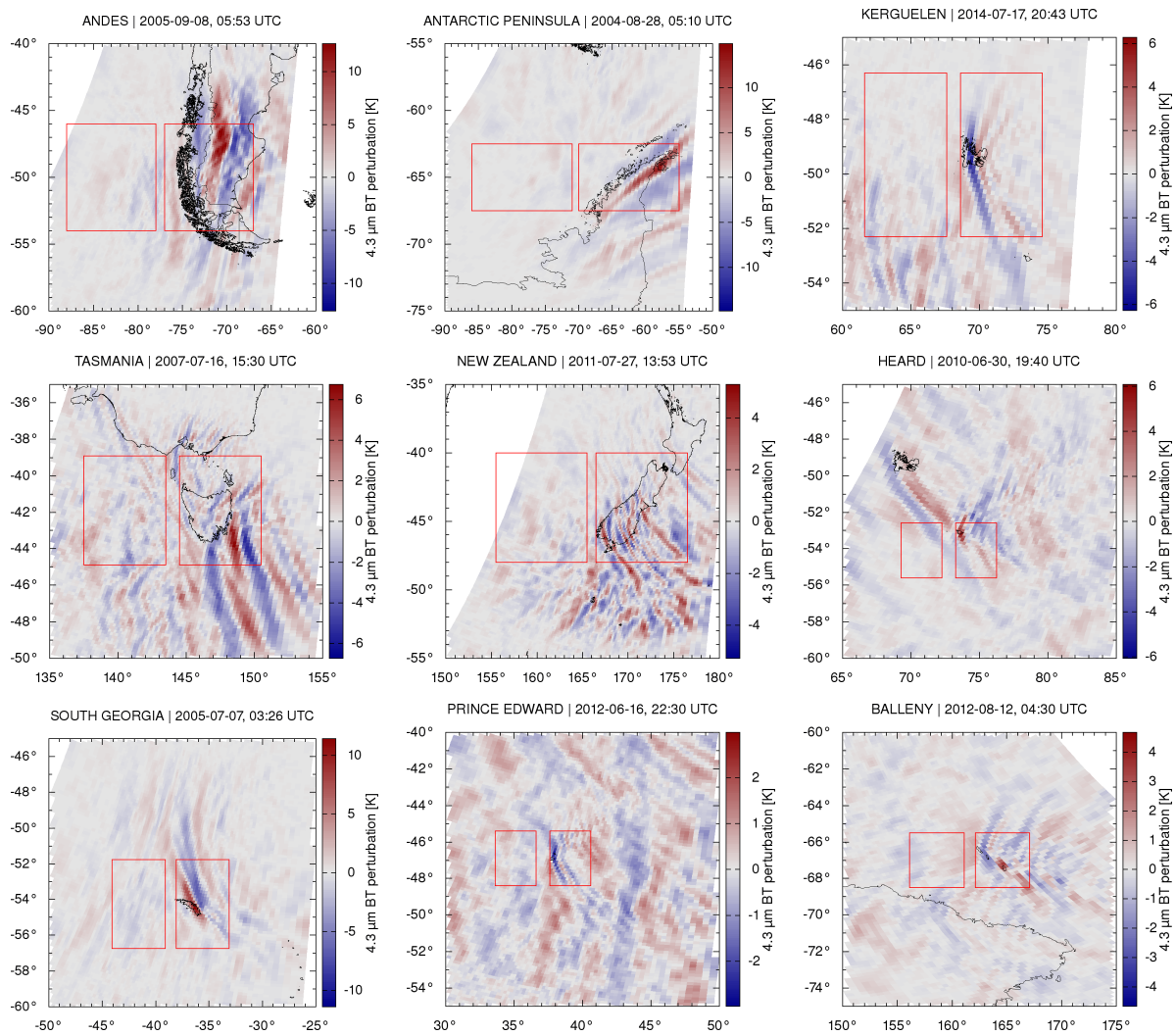


Figure 3. Maps of 4.3 μm brightness temperature perturbations from individual AIRS/Aqua satellite orbits illustrate stratospheric gravity wave activity at selected orographic hotspots. Red boxes indicate the eastern and western boxes used to detect gravity wave activity.

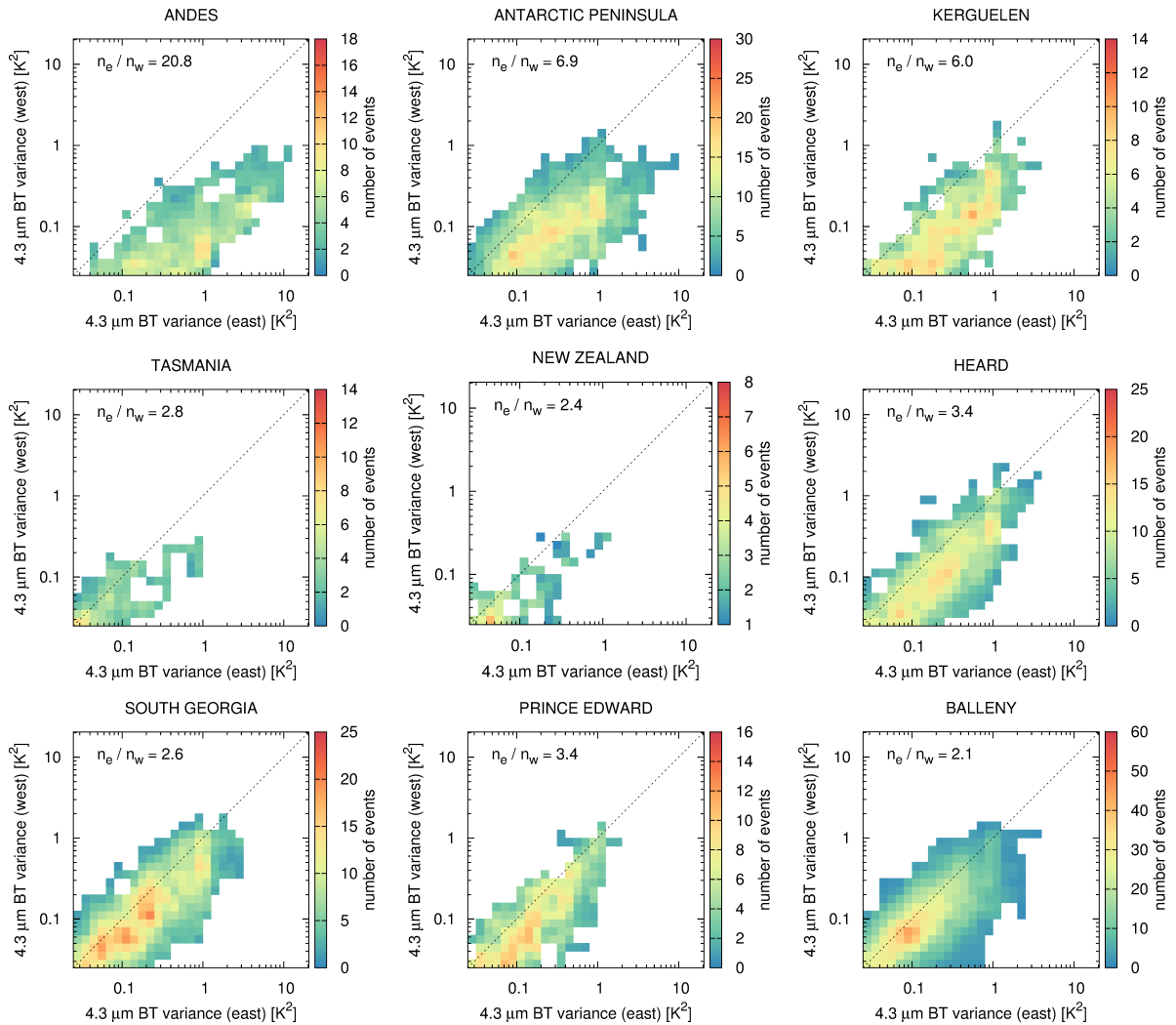


Figure 4. Histograms of 4.3 μm brightness temperature variances in eastern and western boxes at selected hotspots. Increased numbers of events in the eastern box indicate orographic wave activity. The ratio n_e/n_w refers to the numbers of events below and above the identity line, respectively. Note that the total number of events depends on the number of satellite overpasses, which increases for high latitudes.

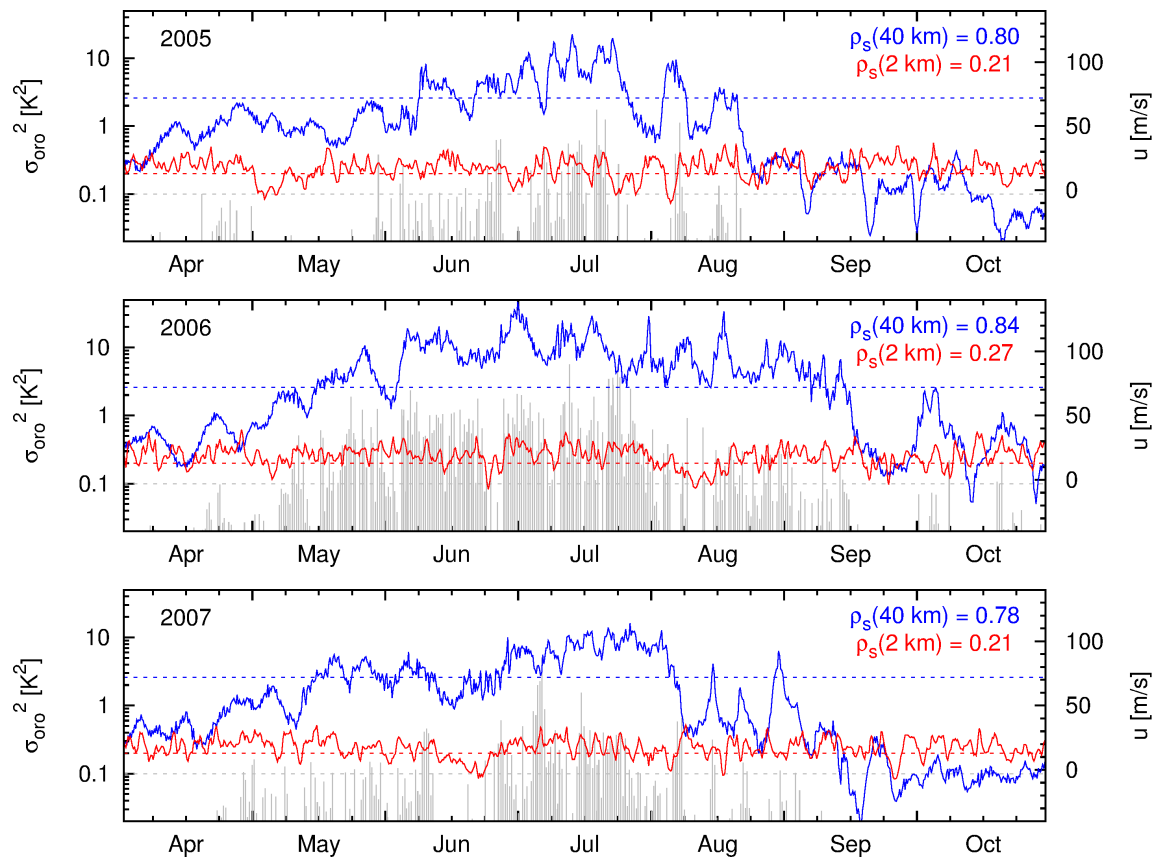


Figure 5. Time series of AIRS 4.3 μm brightness temperature variance differences (gray) and ERA-Interim zonal winds at 2 km (red) and 40 km (blue) log-pressure altitude from 1 April to 31 October in 2005 (top), 2006 (middle), and 2007 (bottom) at the Kerguelen Islands. Dotted lines indicate the 0.1 K² threshold used to detect orographic gravity waves and zonal wind levels of 13 and 72 m/s used to predict mountain wave events in the AIRS observations.

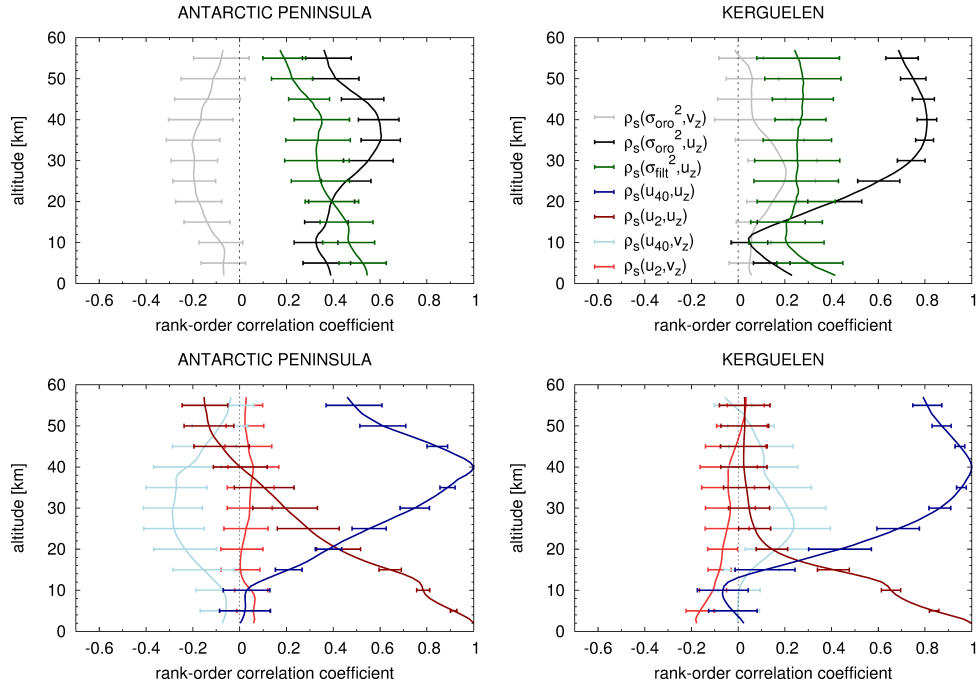


Figure 6. Top: Interannual mean and standard deviation of rank-order correlation coefficients of AIRS 4.3 μm brightness temperature variance differences and ERA-Interim zonal winds (black) and meridional winds (gray) at different altitudes. Green curves show correlation coefficients restricted to cases with 40 km zonal winds exceeding thresholds of 44 m s^{-1} at the Antarctic Peninsula and 72 m s^{-1} at Kerguelen Islands, respectively. Bottom: Rank-order correlations of 40 km (blue) and 2 km (red) zonal winds with zonal wind (dark colors) and meridional winds (light colors) at different altitudes.

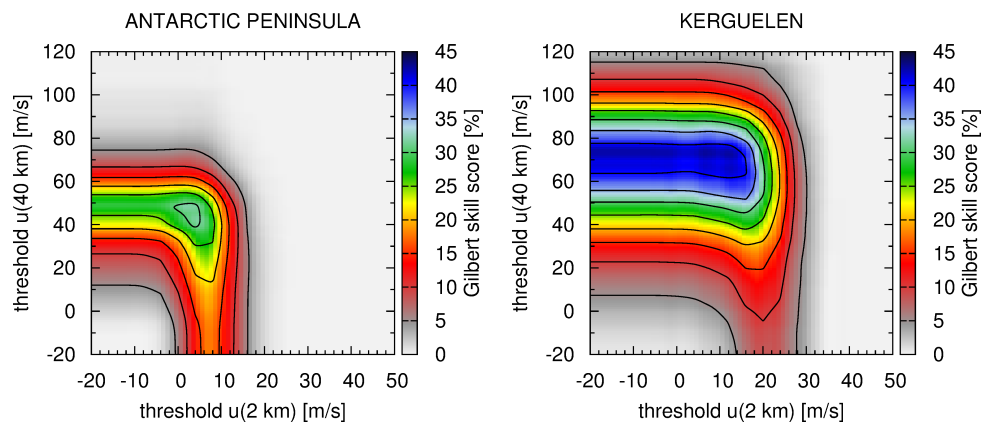


Figure 7. Gilbert skill scores of the prediction model for mountain wave events at the Antarctic Peninsula and Kerguelen for different zonal wind thresholds at 2 and 40 km altitude.

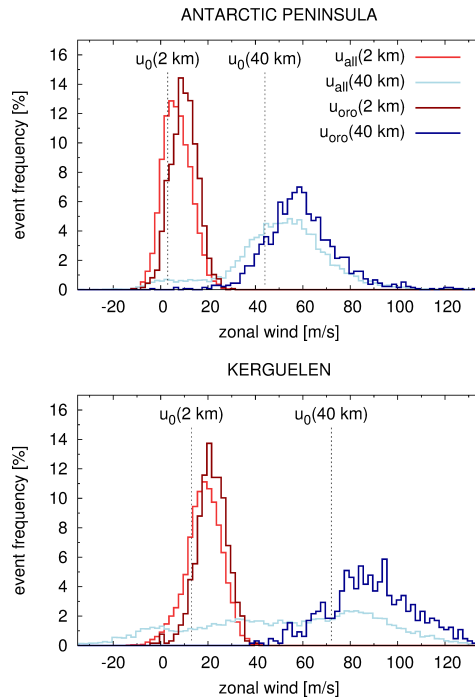


Figure 8. Histograms of ERA-Interim zonal winds at 2 km (red) and 40 km (blue) altitude during April – October 2003 – 2014 at the Antarctic Peninsula and Kerguelen. Light colored curves show data for all satellite overpasses. Dark colored curves show data only for overpasses with orographic wave events. Dotted lines indicate the zonal wind thresholds of the mountain wave prediction model.

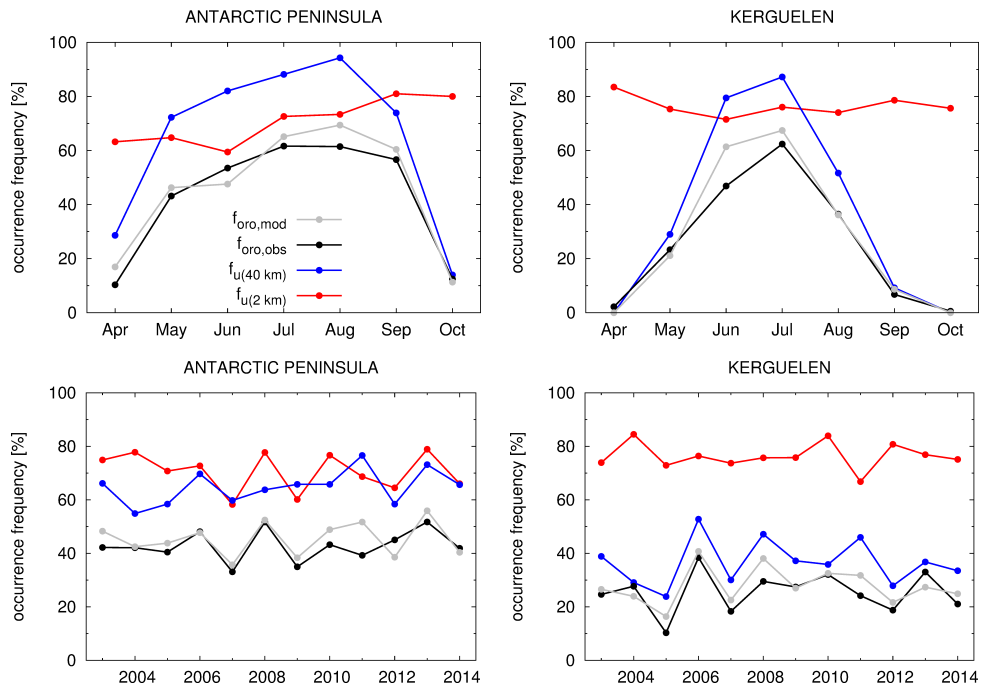


Figure 9. Monthly (top) and yearly (bottom) variability of orographic wave activity during April–October in 2003–2014 at the Antarctic Peninsula and Kerguelen Islands. Time series show occurrence frequencies of orographic waves from AIRS observations (black) and the mountain wave prediction model (gray). Also shown are occurrence frequencies of the zonal winds at the 2 km (red) and 40 km (blue) levels exceeding the prediction model thresholds.