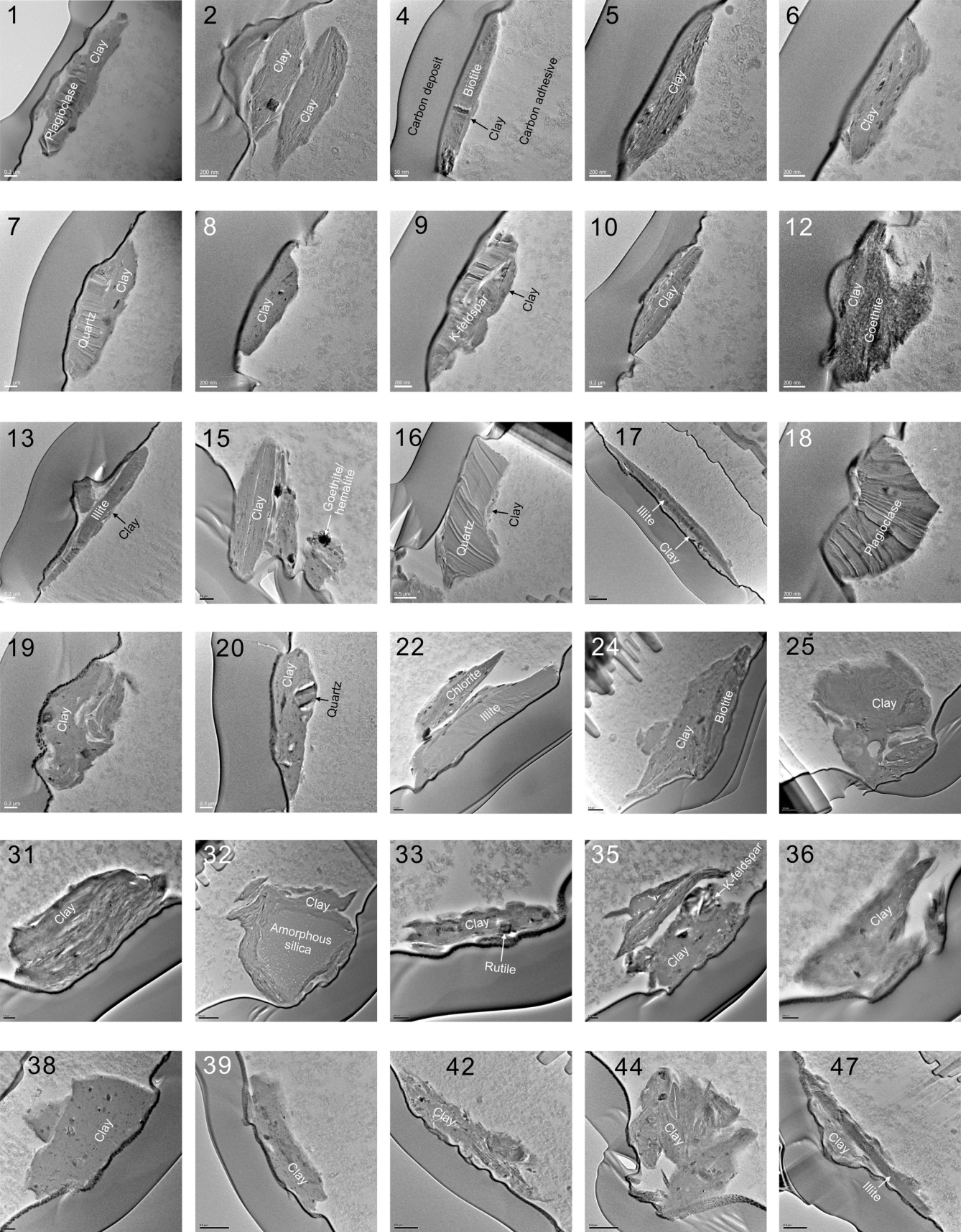


Supplementary Table 1. Ratio of three axes of ellipsoidal particles and their Fe (hydr)oxide contents.

Particle No.	Axis			Fe (hydr)oxides	
	c	b	a	volume %	
1	1.4	1.0	0.3	1.2	
2	1.3	1.0	0.8	0.6	
3	1.1	1.0	0.5	50.0	
4	1.3	1.0	0.1	0.0	
5	1.1	1.0	0.3	0.5	
6	1.3	1.0	0.1	3.5	
7	1.3	1.0	0.3	1.7	
8	2.0	1.0	0.3	5.5	
9	1.3	1.0	0.3	0.0	
10	1.1	1.0	0.3	2.9	
11	1.5	1.0	0.6	9.4	
12	1.6	1.0	0.5	55.7	
13	1.3	1.0	0.3	0.0	
14	1.2	1.0	0.6	91.2	
15	1.2	1.0	0.8	5.0	
16	1.7	1.0	0.4	0.5	
17	1.9	1.0	0.1	3.6	
18	2.0	1.0	0.7	0.0	
19	1.7	1.0	0.5	2.0	
20	1.1	1.0	0.3	8.6	
21	1.1	1.0	0.5	3.0	
22	1.2	1.0	0.4	1.5	
23	1.5	1.0	0.3	0.8	
24	1.2	1.0	0.3	6.7	
25	1.4	1.0	0.9	0.4	
26	1.2	1.0	0.5	0.8	
27	1.0	1.0	0.8	7.7	
28	1.5	1.0	0.7	0.7	
29	1.4	1.0	0.6	1.2	
30	1.2	1.0	0.6	0.6	
31	1.2	1.0	0.5	0.0	
32	2.0	1.0	1.0	0.0	
33	1.2	1.0	0.2	9.1	
34	1.4	1.0	0.2	1.0	
35	1.5	1.0	0.9	1.2	
36	1.8	1.0	0.5	2.3	
37	1.2	1.0	0.8	0.1	
38	1.1	1.0	0.6	10.4	
39	1.5	1.0	0.3	10.1	
40	1.1	1.0	0.9	2.6	
41	1.4	1.0	0.4	0.0	
42	1.4	1.0	0.2	3.2	
43	1.1	1.0	0.4	15.0	
44	1.3	1.0	1.0	1.9	
45	1.4	1.0	0.1	27.6	
46	1.6	1.0	0.6	4.2	
47	1.6	1.0	0.2	0.1	
48	1.7	1.0	1.0	0.0	
Average	1.4	1.0	0.6	Average	3.5*
Standard deviation	0.3		0.3	Standard deviation	5.1
Median	1.3		0.5	Median	1.8

\*Excluding exceptionally high Fe oxide contents (particle 3, 12, 14)



**Supplementary Figure 1.** TEM images of the cross sections of 30 dust particles not presented in the text.