

Author's Response

Anonymous Referee #1

•*The authors should improve the Introduction. I mentioned in my first review that there should also be a more detailed discussion of previous work. The second reviewer suggested that "The introduction should therefore be greatly expanded to motivate this particular study and original findings highlighted". I don't think this is done properly. The relevant literature should be cited here and not only in the sections with results. I also find some of the text in the Introduction confusing. In line 20 the authors cite Mitchell et al. for a study that separates the signal at the surface. But then only results from the stratosphere are mentioned.*

The Introduction was extended by a new section and more relevant literature was cited.

•*In the Conclusion and Discussion it is not clear which results are from the present paper and which from the previous literature. The authors should be more clear here.*

The Conclusion and Discussion was extended with a new section and additional literature citation was added to separate our results from previous clearer.

•*Figure 1 is a good idea. But it looks terrible! The black text is impossible to read and the orange outline around the continents do not follow the filled continents.*

The background map of Figure 1 was simplified and the text size was increased.

•*The authors remove the ENSO signal before the analysis of the eruptions. It should be discussed how large an effect this has.*

In section 3.3 a comment was made how large is the effect of the ENSO removal and an additional Figure was included in the Supplementary Information.

•*The two last lines in the abstract: "... agree well on the strength .." and "... no clear signal found .." seem like a contradiction and should be either corrected or explained.*

The last two lines of the abstract were modified to eliminate the contradiction.

Anonymous Referee #2

●*The authors now remove the effect of ENSO prior to the analysis. I think this is a useful step but the authors do not comment on what effects, if any, this has on their results. A short comment should be included and perhaps a figure added to the supplement particularly if the effects are large.*

In section 3.3 a comment was made how large is the effect of the ENSO removal and an additional Figure was included in the Supplementary Information.

●*The authors have removed the section on detection and attribution, since it was adding little new. I agree with this change but feel that since the paper addresses the temperature response a few sentences discussing what other detection and attribution studies have found in this area would be useful.*

A section about detection and attribution studies was added to the Introduction.

●*In their response to reviews the authors have mentioned that part of the motivation of the study is “to identify the differences in the reanalysis so that researchers who use them know which ones to use, and which to avoid.” This is an important aim and a short section should be added to the discussion/conclusions addressing this.*

A section on this was added to the Discussion and Conclusion.

●*Last line of the abstract – “high uncertainty of the model response” – Can you clarify why this is – is it due to internal variability or difference in response between models?*

A sentence on this was added at the end of section 3.2 .

●*P5 Line 6 -> change to “some studies show”
P 7 line 28 - > “could show” change to “show”
P 9 – line 5-7 – The significance of this should be mentioned.
P10 line 2 - “considering*

All changes done.

Summary

We thank the reviewers for the assessment of our paper. The manuscript has been revised accordingly, with the points being taken into account as per the reviewer suggestions.

- In particular, we extended the paper by a new section in the introduction, revisiting important literature.
- We added some more results into the abstract and the conclusion section to emphasize the important contribution to the S-RIP project.
- We simplified Figure 1 to make it better readable.
- We made a comment on how large the removal of the ENSO effect is and added a Figure in the Supplementary Information.

Revisiting the observed climate surface response to large volcanic eruptions

Fabian Wunderlich^{1,2} and Daniel M. Mitchell¹

¹Atmospheric, Oceanic and Planetary Physics, University of Oxford, UK

²Now at Institute of Meteorology, Freie Universität Berlin, Germany

Correspondence to: F. Wunderlich, Institute of Meteorology, Freie Universität Berlin, Carl-Heinrich-Becker-Weg 6-10, 12165 Berlin, Germany. (fabian.wunderlich@met.fu-berlin.de)

Abstract. In light of the range in presently available observational, reanalysis and model data, we revisit the surface climate response to large tropical volcanic eruptions from the end of the 19th century until present. We focus on the dynamical driven response of the North Atlantic Oscillation (NAO) and the radiative driven tropical temperature response. Using ten different reanalysis products and the Hadley Centre Sea Level Pressure observational dataset (HadSLP2) we confirm a positive tendency in the phase of the NAO during boreal winters following large volcanic eruptions, although conclude that it is not as clear cut as the current literature suggests. ~~Especially during poorly observed periods where higher uncertainties produce a less robust signal~~ While different reanalyses agree well on the sign of the surface volcanic NAO response for individual volcanoes, the spread in the response is often large ($\sim 1/2$ standard deviation). This inter-reanalysis spread is actually larger for the more recent volcanic eruptions, and in one case does not encompass observations (El Chichón). These are all in the satellite era, and therefore assimilate more atmospheric data that may lead to a more complex interaction for the surface response. The phase of the NAO leads to a dynamically driven warm anomaly over Northern Europe in winter, which is present in all datasets considered. The general cooling of the surface temperature due to reduced incoming shortwave radiation is therefore ~~disurbed~~ disturbed by dynamical impacts. In the tropics, where less dynamical driven influences are present, we confirm a predominant cooling after most but not ~~after~~ all eruptions. ~~The observation, reanalysis and model~~ All datasets agree well with the in-on the strength of the tropical response ~~–But with the observed and reanalysis response being statistically significant, but the modelled response not being significant~~ due to the high ~~uncertainty of the model response, no clear tropical cooling signal was found~~ variability across models.

1 Introduction

Understanding of the atmospheric naturally-forced variability is a key issue to estimate the human induced contribution to the recent climate change. Large volcanic eruptions can have an impact on the climate over several years (Robock, 2000). The injected aerosols into the lower stratosphere influence the radiation balance, resulting in a cooling of the tropical surface temperature (Humphreys, 1913, 1940) and a heating in the tropical lower stratosphere (Labitzke and McCormick, 1982; Parker and Brownscombe, 1983). For the eruption of Mt. Pinatubo in June 1991, which was the strongest tropical eruption in the satellite era, the lower tropical stratosphere was warmed up to 3 K (Mitchell et al., 2014; Fujiwara et al., 2015). The cooling signal on

the surface is less pronounced and therefore more difficult to separate from other internal and external climate variability. To perform this separation Mitchell et al. (2014) and Fujiwara et al. (2015) used multiple linear regression with nine reanalysis datasets (ERA-Interim, ERA-40, JRA-25, JRA-55, MERRA, NCEP-R1, NCEP-CFSR, NCEP-R2 and NOAA-20CR). A good agreement between most reanalysis datasets for the temperature response in the stratosphere was found. Uncertainties which arise from variability of the differences between the reanalysis models are currently being assessed in the Stratospheric and tropospheric Processes And their Role in Climate - Model inter comparison Project (SPARC-RIP) (Fujiwara and Jackson, 2013). The agreement between the reanalysis datasets in the troposphere is strong but no clear tropospheric cooling could be found, taking into account all large tropical eruptions after 1960 (Fujiwara et al., 2015). A factor which contributes to the uncertainty of the tropospheric cooling is a winter warming signal over Europe. The stratospheric polar vortex in boreal winter is strengthened due to weaker wave flux from the troposphere into the stratosphere and ozone losses in the high latitudes of the stratosphere (Stenchikov et al., 2002). This strengthening of the polar vortex can lead to descending wind anomalies into the troposphere and intensify the westerly winds near the surface (Baldwin and Dunkerton, 1999). With a strengthening of the polar vortex comes a shift of the North Atlantic Oscillation (NAO) towards a positive state, leading to anomalous advection of warm air from the Atlantic to Europe (Thompson and Wallace, 2001). Christiansen (2008) [found a significant shift of the NAO towards a positive state, using 13 major volcanic eruptions. The positive NAO causes a winter warming in Northern Europe up to 2 K](#) (Fischer et al., 2007). On a global scale the dynamically driven warming weakens the radiative driven cooling after large volcanic eruptions, hence the interplay between the two is important to consider.

[Unfortunately many CMIP5 models fail to reproduce the dynamic mechanism resulting in a positive NAO in winter](#) (Driscoll et al., 2012), [and it is currently debated as to why this may be, but possible explanations could be poorly represented spatial variability of volcanic aerosol in the models, in terms of vertical extend or latitudinal banding, a misrepresentation of the dynamics of volcanic aerosol in the stratosphere, or sampling issues \(only Mt Pinatubo has been well observed at those levels\). The tropical surface response to volcanic eruptions comes from reduced shortwave solar radiation reaching the surface, which is instead absorbed by volcanic aerosol in the lower stratosphere](#) (Robock, 2000). [A recent detection and attribution study showed that this lower stratospheric response to volcanic eruptions is magnified in models compared with observations](#) (Mitchell, 2016), [which agrees well with the larger surface cooling also seen in models](#) (e.g. Stenchikov et al., 2006). [Other detection and attribution studies show that the temperature response to natural forcings \(combined solar and volcanic forcing\) can be detected at the surface](#) (e.g. Jones et al., 2013; Bindoff et al., 2013) [in models, although the global cooling signal is overestimated](#) (Ribes and Terray, 2013). [A more recent study has shown that El Niño correlations have partially to blame for this signal](#) (Lehner et al., 2016), [but there are still uncertainties of the dynamical and radiative driven response to volcanic eruptions.](#)

While studies have looked at the volcanic response on the NAO and tropical surface before, here we investigate both in conjunction, assessing the variability of the NAO and the general temperature response following volcanic eruptions. We test the robustness of previous studies by including observations and all available reanalysis products to examine the uncertainty of the radiative and dynamical response to volcanic eruptions. Our results are also informed by the latest coupled climate models. The analysis of the uncertainty in the reanalysis products will contribute to the SPARC-RIP report, comparing the

representation of various atmospheric modes in reanalysis.

The remainder of this paper is as follows. Datasets and methods used in this study are described in section 2, followed by the results in section 3 and the discussion and summary in section 4.

2 Data and analysis method

5 In this study we use near surface monthly mean Temperature of Air at the Surface (TAS) and sea level pressure data from ten available reanalyses (Table 1). Furthermore we analyse the TAS fields of the CMIP5 historical model experiments provided by the World Climate Research Programme (Taylor et al., 2012).

For comparison of the temperature we use the Met Office Hadley Centre HadCRUT4 dataset, available with 100 ensemble members covering the period 1850 until present (Morice et al., 2012). This product has a global coverage with a resolution of
10 $5^{\circ}\times 5^{\circ}$ but it includes missing data depending on the observational data base. The provided data are anomalies referring to the mean climatology between 1961-1990 based on the relatively small number of missing data during this period.

To investigate the dynamical impact of the volcanic eruptions during boreal winter we make use of sea level pressure observations from the Hadley Centre Sea Level Pressure dataset (HadSLP2) (Allan and Ansell, 2006). This product does not contain missing data because of an applied interpolation procedure, which can cause uncertainties, specially in less covered
15 regions like the Arctic, Antarctic or deserts. The spatial resolution of $5^{\circ}\times 5^{\circ}$ is equal to the temperature product but the data includes the period 1850 until 2004. However, an updated version is available using NCEP/NCAR reanalysis fields from 2005 until present, named HadSLP2r (Kalnay et al., 1996). The mean values for both dataset are homogeneous but the variance is higher in HadSLP2r. Nevertheless we consider this adding of the dataset as justified since we use the updated period only for the calculation of the climatology, significance testing and for the Empirical Orthogonal Function (EOF) analysis in order to
20 calculate the NAO time series (Thompson and Wallace, 1998).

2.1 Reanalysis Data

All reanalysis datasets span at least the period from 1979 until 2012 except two ECMWF products: ERA-20C (20th century reanalysis product) (Poli et al., 2013), which ends in December 2010 and ERA-40 (Uppala et al., 2005), which ends in August
25 2002. To be able to compare all reanalysis over the same temporal region, we extend the ERA-20C and ERA-40 datasets until 2012 with data of the ERA-Interim reanalysis. ERA-Interim provides some advantages to the ERA-40 version including an improved data assimilation and a better representation of the stratospheric circulation (Dee et al., 2011). Since we use this added data just indirectly for calculations of climatology, anomaly fields and the EOF, the differences which would arise by using a full period consideration are negligible.

Both reanalysis products of the Japan Meteorological Agency (JMA) are used for the study. JRA-25 ends in 2004 but the
30 data until present is available from the JMA Climate Data Assimilation System (JCDAS) with the same system as JRA-25 (Onogi et al., 2007). The subsequent JMA product is called JRA-55 and covers a longer period beginning from 1958. Several improvements have made in comparison to the previous product such as a significant reduction of the large temperature bias in

the lower stratosphere by using a new radiation scheme (Ebita et al., 2011).

The MERRA reanalysis obtained from the National Aeronautics and Space Administration (NASA) is focused on the correct simulation of the hydrological cycle and is the only reanalysis used which does not represent the analysis field with spectral coefficients (Rienecker et al., 2011).

5 The first reanalysis project was operated by the National Centers for Environmental Prediction (NCEP), called NCEP-R1 (Kalnay et al., 1996) and has been updated with the NCEP-R2 product (Kanamitsu et al., 2002). A more sophisticated and recent reanalysis product of NCEP is the Climate Forecast System Reanalysis (NCEP-CFSR) (Saha et al., 2010).

Most products include a period beginning from the late 20th century, which means that just the last two large tropical eruptions of Mt. Pinatubo and El Chichón can be considered for the analysis. Due to the large number of individual ensemble members

10 and the long time series beginning in 1851, the NOAA-CIRES 20th Century Reanalysis Version 2c (NOAA-20CR) is the main product used in this study (Compo et al., 2011). The assimilation scheme of the NOAA-20CR reanalysis product uses an ensemble Kalman Filter in streams of 5 years. Each stream has 56 members.

The ERA-20C product starts in 1900 and includes most of the period which we investigated. The assimilation of these long datasets only include surface observation data, in contrast to the other products assimilating also satellite and radio-sonde

15 measurements. The reanalysis datasets are generally in good agreement with surface observation data, specially for sea level pressure and near surface temperature data, used in this study (Simmons et al., 2004; Makshtas et al., 2007; Lindsay et al., 2014). NCEP-R1 and JRA-25 show differences in the sea level pressure field over Greenland and MERRA generally over mountain areas likely because of distinguish surface pressure reduction methods (Lindsay et al., 2014). Since we use just anomaly fields for our calculations, this should not affect the results significantly.

20 **2.2 CMIP5 models**

The model data are obtained from the historic simulations of the CMIP5 models which include simulations with just volcanic forcing (Table 2). All models except the coupled-physical model of the Geophysical Fluid Dynamics Laboratory (GFDL-CM3) start from the beginning of 1850 and have at least three ensemble members. The advantages of the GFDL-CM3 model is a sophisticated interaction scheme between aerosols and clouds and a focus on coupling between the troposphere and stratosphere

25 (Donner et al., 2011). The Community Climate System Model 4 (CCSM4) and the Community Earth System Model version 1 with Community Atmospheric Model version 5 (CESM1-CAM5) models use the aerosol optical depths description of Ammann et al. (2007). All other models use the updated version of the Sato et al. (1993) description. CESM1-CAM5 includes the direct and indirect effects of aerosols (Meehl et al., 2013), while CCSM4 just provides the direct effects. These models show a good reproduction of the [ENSO-El Niño-Southern Oscillation \(ENSO\)](#) due to an improved deep convection scheme in the

30 atmosphere component (Gent et al., 2011). The ModelE2 version of the NASA Goddard Institute for Space Studies (GISS-E2) provides four different simulations with just volcanic forcing (Schmidt et al., 2014). They differ by using distinguished ocean models and whether the models include interactive chemistry and parametrization of indirect aerosol effects. GISS-E2-R uses the Russell ocean model (Hansen et al., 2007) and GISS-E2-H uses the Hybrid Coordinate Ocean Model (HYCOM) (Sun and Bleck, 2006). Both realizations are

available in a version with non-interactive chemistry (NINT), comparable to the prior CMIP3 simulation, but with a tuned aerosol indirect effect following Hansen et al. (2005) and a version with Tracers of Chemistry, Aerosols and their Direct and Indirect effects (TCADI) including interactive chemistry and a parametrization of the first indirect aerosol effects (Menon et al., 2010).

5 2.3 Choice of volcanoes

Not all studies which concentrate on the large-scale impact of volcanic eruptions use the same criteria for the choice of which eruption should be considered for a composite analysis. The volcanic explosivity index (VEI) introduced by Newhall and Self (1982) is a very frequently used measurement for the strength of the eruption (Robock, 2000). The calculation of the index is restricted to volcanic measurements but does account for the height of the eruption column. In Figure 1 all volcanic eruptions since the 19th century with a VEI-index of at least 5 are shown. Additionally volcanoes are included which in other studies are considered to have an impact on the climate but just reached a VEI-index of 4. The size of the triangle of each eruption indicate the respective VEI-index. The colour shows the phase of the ~~El Niño-Southern Oscillation (ENSO)~~ ENSO in the first winter after the eruption. The last three tropical eruptions of Mt. Agung in 1963, El Chichón in 1982 and Mt. Pinatubo in 1991 were followed by an El Niño event, suggesting a possible connection between large tropical volcanic eruptions and ENSO (Adams et al., 2003). Since most studies assume that the events are coincidental, we remove the effects of ENSO with a linear regression (see Methods).

Climate models represent volcanic eruption by an increase of the atmospheric aerosols due to the ejected material. Most models use the updated version of the so called Sato-Index (Sato et al., 1993). This index shows the aerosol optical depth (AOD) at wavelength 550 nm and is available as a zonal mean with global coverage and a meridional resolution of around 8°. In Figure 2 the tropical (30°S-30°N) AOD is plotted. As expected from the chosen region the values of low latitude eruptions are generally more pronounced than the extratropical eruptions. The tropical region is characterised by rising air in the stratosphere which lift the aerosols into higher levels. The residual stratospheric meridional circulation transports the aerosols to high latitudes (Trepte and Hitchman, 1992). A volcanic eruption in higher latitudes is expected to have less influence on the climate system because the downward flow in the stratospheric extratropics avoids rising aerosols in higher levels. Nevertheless some studies could show that also extratropical volcanic eruptions can have a significant large scale impact on climate but usually just on the hemisphere where the eruption took place (Graf and Timmreck, 2001; Oman et al., 2005). Since we focus on both the particular impact of the eruption on the NAO and the global temperature response, we consider the AOD in the tropical middle and upper stratosphere. In Figure 2 we draw a threshold at 0.05 nm in order to distinguish which volcanoes likely have a strong impact on the global climate. Therefore we choose the eruption of Krakatau in August 1883, Santa María in October 1902, Mt. Agung in March 1963, El Chichón in April 1982 and Mt. Pinatubo in June 1991 for our analysis.

2.4 Methods

For the calculation of the NAO we use the leading EOF between 0°-70°W and 35°N-80°N during the period 1979-2012 (Thompson and Wallace, 1998; Baldwin et al., 2008). We consider the SLP anomalies of the two winters following the erup-

tion as volcanic influenced, except in the case of Santa María which erupted so late during the year that the full influence on the winter circulation is unlikely. The anomalies are calculated with respect to the mean for the years 1979-2012, excluding the following two years after the eruptions of El Chichón and Mt. Pinatubo. The analysis of the temperature fields will be compared to the HadCRUT4 dataset, consisting of anomalies relative to the 1961-1990 reference period (Morice et al., 2012).

5 Since the HadCRUT4 dataset contains missing data, we just use the gridpoints and timesteps of the reanalysis products with non-missing values in the observational record. This ensures that all datasets can be compared directly. As some reanalysis products start in 1979 we just consider the five reanalysis datasets which include this reference period (ERA-20C, ERA-40, JRA-55, NCEP-R1, and NOAA-20CR).

After removing the mean seasonal cycle we subtract the data with a 10 year running mean to remove any further trend. To
10 make sure that the running mean is not influenced by the considered year, we average over the 60 months before the year and the 60 months after the considered year. Both, temperature and NAO response can be influenced significantly by the occurrence of ENSO phenomena (Lehner et al., 2016). To remove the effects of ENSO we calculate a monthly linear regression on the Niño 3.4 SST index. This seasonal dependent ENSO pattern is then subtracted from the data. The significance of the resulting anomaly field is calculated with a Monte Carlo test assuming independence between the volcanic eruption events.

15

3 Results

3.1 Pressure and NAO response

To analyse the NAO response to large volcanic eruptions we use surface pressure data of all available reanalysis products. Since MERRA, ERA-Interim, JRA25, NCEP-R2 and NCEP-CFSR start in 1979 with the beginning of continuous satellite ob-
20 servations we use the years 1979-2012 as our reference period. Two tropical eruptions had a significant impact on the climate system during this period, El Chichón in 1982 and Mt. Pinatubo in 1991. Figure 3 shows the mean SLP anomaly in the first two post volcanic winters after El Chichón and Mt. Pinatubo over the extratropical Northern Hemisphere in observation and for the multi-reanalysis mean.

The response pattern is captured well in all reanalysis products. Since the assimilation of surface pressure data is essential
25 for reanalysis products, the difference between the individual products and the observations is expected to be small (Kalnay et al., 1996). Over the Arctic region a higher level of observational uncertainty is apparent due to the decreased number of assimilated measurements than in the middle latitudes. Low pressure anomalies over the Arctic region are observed, bordered by a positive signal with the centre over Europe. Differences between the reanalysis products are weak but can be seen mainly above mountain areas, e.g. Rocky Mountains (Supplementary Information, Figures S1,S2), likely due to different pressure re-
30 duction techniques (Lindsay et al., 2014). Also the NOAA-20CR reanalysis product is in good agreement with other reanalysis datasets. NOAA-20CR is found to capture well the stratospheric temperature response to volcanic eruptions but with a slightly lower amplitude in comparison to other reanalysis products (Mitchell et al., 2014; Fujiwara et al., 2015). At the surface the NOAA-20CR does not show major differences of the pressure response after the eruption of Mt. Pinatubo and El Chichón

(Figures S1,S2).

In comparison to an expected positive NAO, in the first winter the high SLP anomaly is shifted towards Central Europe and therefore the negative centre is shifted northwards (Hurrell and Deser, 2009; Hurrell, 1995). Fujiwara et al. (2015) showed that the eruption of Mt. Pinatubo influences the stratospheric temperature and circulation stronger than the eruption of El Chichón.

5 Therefore it is expected that the surface pressure signal is dominated by the response to the eruption of Mt. Pinatubo. Probably due to the east phase of the quasi-biennial oscillation (QBO) in the first winter after the eruption of Mt. Pinatubo the volcanic signal on the SLP was weakened (Stenchikov et al., 2002). In contrast, the response of the second winter (Figure 3 b,d) shows a more NAO like pattern over the North Atlantic with significant positive anomalies in the region of the Azores. A sample of only two single events is not a robust data basis to make general conclusions. Hence, we use the NOAA-20CR product
10 which agrees well with the other reanalysis products, considering the SLP response after the eruption of Mt. Pinatubo and El Chichón (Figures S1,S2) and contains a longer period between 1851-2012. During this period five major tropical eruptions took place: Krakatau, Santa María, Mt. Agung, El Chichón and Mt. Pinatubo. The mean SLP response to these five eruptions is shown in Figure 4. The pattern in the North Atlantic region is similar to the mean over the last two eruptions but the pressure anomaly gradient is smaller, with a predominantly significant response pattern in the first winter. In general, the average pres-
15 sure anomaly field indicates a shift towards a positive NAO in the first winter after the eruption. A significant mean NAO signal could be found by Christiansen (2008) and Driscoll et al. (2012), taking into account tropical and extratropical eruptions. We calculated the monthly winter NAO index of just the tropical eruptions and show the index individually for every eruption in Figure 5. The observation data is shown by crosses and all reanalysis data is shown by blue ranges. The orange ranges indicate the NAO index of the 56 NOAA-20CR ensemble members (95% ensemble spread).

20 The spread of the reanalysis products is small showing high agreement between the individual reanalysis products. The observations agree well with the reanalysis data but in some cases the reanalysis NAO response can differ from the observational signal (e.g. in December and January after the eruption of El Chichón). Especially with higher uncertainty of the observation data in the post satellite era, the differences of the NAO index between the individual members of NOAA-20CR are increased, indicated by a wider spread of the error bar. Therefore some ensemble members can differ with the corresponding observations
25 by strength and even sign of the NAO phase (e.g. Santa María in December).

Consistent with Jones et al. (2003) there is no evidence for a positive NAO shift due to the volcanic eruptions in particular months and in the second winter after the eruption (Figures S3). The response in the mean winter NAO is not clear. In the first winter after the eruptions of El Chichón and Mt. Pinatubo a strong positive NAO phase could be found. Relative to the distribution shown with gray bars, a moderate positive NAO was present following the eruption of Krakatau. For the eruption
30 of Santa María we do not use the first winter after the eruption because the volcano erupted so late during the year that an influence of the injected aerosols to the stratospheric circulation is unlikely. In the winter 1903/04 a NAO-index around zero was found. This agrees with the results of Christiansen (2008) and Driscoll et al. (2012). In the winter directly after the eruption (1902/03) a strong positive NAO was found (Christiansen, 2008). In the winter after the eruption of Mt. Agung we found a negative NAO. Most of the aerosols after the eruption of Mt. Agung were concentrated in the Southern Hemisphere (Figure 2),
35 which reduces the impact on the boreal stratosphere in winter. Therefore we conclude that we do not find a significant positive

NAO response to volcanic eruptions with taking just the strongest five tropical eruptions from the end of the 19th century until present. We confirm that the NAO generally shifts towards a positive state in Figure 4 and in Figure 5d) but exceptions like Mt. Agung or Fernandina are found (Figure S4). Responsible for these exceptions can be disturbances of the polar vortex which descend downwards and influence the NAO over a short time scale of some weeks (Baldwin and Dunkerton, 1999). The positive NAO response to volcanic eruptions leads to a positive temperature anomaly over Northern Europe in winter (Robock and Mao, 1992, 1995; Fischer et al., 2007). This warming disagrees with the radiative driven cooling of the troposphere following the eruptions. Therefore just dynamically driven effects like circulation changes could explain this response. It is important to understand these dynamical driven effects in order to understand the total volcanic signal. The studies of Stenchikov et al. (2006) and Driscoll et al. (2012) ~~could~~ show that general circulation models are generally not able to reproduce this secondary effects and hence it is questionable if they reproduce the temperature response well. Only a subset of models show an associated warming over Northern Eurasia but much weaker than the observations (Driscoll et al., 2012; Gillett and Fyfe, 2013).

3.2 Temperature response

Figure 6 shows the TAS anomaly composites over the last three large volcanic eruptions of the reanalysis products in comparison to the observation data. The temperature anomalies are calculated over the whole first or second year after the eruption. We note here that, due to the observational anomalies respective to the period 1961-1990, we only consider the five reanalysis products which include this period. Influences due to ENSO and temperature trends are removed. Removing the ENSO effect is import due to the sampling of El Niño events after large volcanic eruptions. Without this step there is a warm bias in the tropics, especially over the East Pacific Ocean. Only little temperature effects can be attributed to ENSO in the extra tropics (Figure S5). We find a significant warming over Northern Europe which is consistent with the expected winter warming over this region. The warming over Siberia and the cooling in the Middle East suggests a positive NAO response following volcanic eruptions (Thompson and Wallace, 1998). The cooling over Alaska and North Canada and the warming over Southeastern United States and North Pacific suggest a negative Pacific/North American teleconnection pattern (PNA). This is consistent to a stronger polar vortex in boreal winter due to less wave propagation into the stratosphere (Garfinkel and Hartmann, 2008). The reanalysis mean shows a general cooling over sea areas, which is significant over the tropical Pacific and Southern Indian Ocean. The HadCRUT4 dataset shows a similar temperature anomaly pattern in high latitudes of the Northern Hemisphere. The cooling over the oceans is less pronounced in the observation dataset. The second year after the eruptions shows cooling over most continental and ocean areas with exceptions over Northern Siberia and the Eastern Pacific.

To assess a larger sample of eruption events we expand the considered period and include the early eruptions of Krakatau and Santa María. During the period after this eruptions much less observation data is available, especially over continental areas. In Figure 7a,b we averaged over at least four of five years after the volcanic eruptions. The results are similar to those of Figure 6. To be able to evaluate the effect of the volcanic eruptions over less observed areas we calculated the mean temperature response for all five eruptions with the NOAA-20CR product without missing data consideration (Figure 7c,d). Also the consideration of five independent eruptions confirms the significant warming over Northern Europe due to the shift of the NAO towards a positive state. The strongest cooling signals are found in areas with sparse observations. Therefore, these signals highly de-

depends on the reanalysis configuration. In the tropics a general cooling is found over land and sea areas with exception over the Eastern Pacific in the second year after the eruptions. This would confirm that the cooling after large volcanic eruptions is strongest in the tropics (Driscoll et al., 2012). For this reason we focus in the following on the TAS signal in the tropical region (30°N-30°S).

5 Figure 8 shows the mean anomalies of the tropical temperature in the first and second year after the eruptions, relative to the climatology of 1961-1990. The reanalysis and observation data are generally in good agreement, except in the first year after the eruption of Krakatau and Mt. Pinatubo, with a separation of the reanalysis anomaly spread and the mean temperature reponse in the observational record. This shows that the spread of the reanalysis products does not account for the whole range of uncertainty present in the observations. A general cooling of the tropical TAS response is not always visible in the
10 observation and reanalysis data. After the eruption of Mt. Agung negative and positive anomalies in the first winter after the eruption are found. The second year after the eruption of El Chichón was characterized by a warming of the tropics. The study of Fujiwara et al. (2015) did not show a clear temperature signal in the tropical troposphere after the eruption of El Chichón. The eruption of Mt. Pinatubo was the strongest in the 20th century and caused a cooling around 0.1 to 0.2 K, according to the observation and reanalysis data. In the first year after the eruption of Krakatau the cooling was just weak, regarding the TAS
15 anomaly distribution, shown with gray bars. We generally find a cooling of the tropical temperature following large volcanic eruptions. The global mean reponse is less robust due to the impact of dynamical warming especially over Europe and the high uncertainty range of the NOAA-20C dataset after the eruption of Krakatau and Santa ~~Ma~~María (Figure S6S7).

The historical simulations of the CMIP5 models involve far higher range of TAS responses than the observations. Most simulations with just volcanic forcing show a negative temperature signal. But due to the large spread of simulated TAS response
20 just the eruptions of Mt. Pinatubo shows a significant tropical cooling. For consistency we calculated the anomalies relative to the same period as the observation and reanalysis data. This period (1961-1990) was highly influenced by volcanic activity. By calculating anomalies relative to a non-volcanic influenced period (e.g. 1931-1960) we found that all simulations with just volcanic forcing show a negative TAS response after both years of all five eruptions (not shown). The mean TAS response to the eruptions of the historical simulations including also anthropogenic and other natural forcing agrees well with the simulations
25 with just volcanic forcing. Due to the high uncertainty range of the historical and volcanic simulations this result is not valid for all model runs. Most of this uncertainty is due to the difference in the response between the individual models rather than the internal climate variability.

4 Conclusion and Discussion

In this study we investigated the uncertainty in surface climate response to strong volcanic eruptions. The most up-to-date
30 available reanalysis products, GCMs and the newest observation datasets are used to best evaluate the radiative driven tropical temperature response and the dynamical driven NAO response following eruptions. Given the availability of these new datasets, it is timely to revisit the surface response to test the robustness of past studies of volcanic influences on climate. A summary of volcanic eruption intensity, and occurrence of El Niño events is present in Figure 1 from 1880-present.

The shift of the NAO towards a positive state in boreal winter due to an intensification of the polar vortex was noted in some observational studies (e.g., Shindell et al., 2004) but only some models with a good representation of the stratosphere are able to reproduce the associated winter warming over Eurasia (Kirchner et al., 1999). The CMIP5 models generally fail or underestimate the impact of the volcanic eruptions on the Northern Hemispheric circulation (Driscoll et al., 2012). This shows
5 that the dynamical mechanism is still not fully understood (Graf et al., 2007). Conditional on the injected material into the stratosphere, we selected the strongest five tropical volcanic eruptions from the end of the 19th century until present for our analysis. They are expected to have the biggest impact on the atmosphere.

We ~~showed-confirmed~~ that a positive NAO phase is likely to be present during the first post volcanic winter, ~~but-similar to the results of~~ Christiansen (2008) ~~and~~ Driscoll et al. (2012), ~~and that this signal is very persistent throughout the individual months (while not necessarily being particularly extreme in each month). Nevertheless~~ uncertainties still remain because not
10 all winters following large tropical volcanic eruptions show a positive NAO (e.g. Mt. Agung and Fernandina). Also none of the particular winter months show a significant shift of the NAO after the eruptions. By taking into account all available reanalysis datasets and the HadSLP2 observation data we have seen that there is a general agreement between the datasets. ~~The sea level pressure in the North Atlantic varies between the reanalysis datasets, resulting in some uncertainty of the calculated NAO response, and these differences are larger for the more recent volcanic eruptions. The differences in temperature between the reanalysis datasets depend on the considered region. Poorly observed regions such as the poles show higher uncertainty. The mean tropical response to volcanic eruptions is similar in all reanalysis datasets. While some reanalyses were in better agreement with observations, for the different diagnostics considered, the JRA-55 reanalysis performed consistently well.~~ It is known that the atmospheric condition after the volcanic eruption is a big source of uncertainty for the impact of eruptions on the
20 NAO. The QBO phase (Holton and Tan, 1982; Stenchikov et al., 2004), an El Niño or La Niña event (Moron and Plaut, 2003; Manzini et al., 2006; García-Herrera et al., 2006; Calvo et al., 2009) as well as the solar variability (Lean et al., 1995; Haigh, 2002; Gray et al., 2013) can influence the NAO phase directly or indirectly by modulating the stratospheric winter circulation in the Northern Hemisphere. A more robust indicator for the strengthening of the dynamical driven influence of the volcanic eruption is the characteristic winter warming over Northern Europe (Shindell et al., 2004; Fischer et al., 2007). By averaging
25 over the whole first year after the eruption we still could find a significant positive signal in Northern Europe due to the winter warming. This means that the general decrease of the surface temperature due to the injected aerosols is overwhelmed by this dynamical effect at mid-latitudes. This contributes to the fact that the strength of the radiative driven cooling is still not completely determined. The less dynamical influenced tropical response to volcanic eruptions show a general cooling mainly over ocean areas (Stenchikov et al., 2006). Nevertheless, ~~considerung-considering~~ the first two years after the eruption of Mt.
30 Agung and El Chichón no clear tropical cooling in both reanalysis and observation data is found. The model reponse to the eruptions shows a large uncertainty spread, suggesting a high dependence of the climate response on the atmospheric state during and after the eruption.

Acknowledgements. We thank Prof Lesley Gray and Qiuzi Han Wen for insightful comments. We also thank Karsten Hausteine, Gil Compo and two anonymous reviewers. JRA-55 monthly mean data were provided by the Japan Meteorological Agency via the JMA Data Dissem-

ination System (JDDS). The JRA-25 data were provided by the JMA and CRIEPI. JCDAS is a successor of JRA-25 using the same system provided by JMA. The NCEP-1 and NCEP-2 reanalysis data were provided by the NOAA/OAR/ESRL PSD. The ERA-40, ERA-Interim and ERA-20C data were provided by the ECMWF through their website. The MERRA data were provided by NASA/GSFC/GMAO. The NCEP-CFSR data were provided through NOAA/NCDC. Support for the Twentieth Century Reanalysis Project version 2c dataset is provided by the U.S. Department of Energy, Office of Science Biological and Environmental Research (BER), and by the National Oceanic and Atmospheric Administration Climate Program Office. We acknowledge the Program for Climate Model Diagnosis and Intercomparison and the World Climate Research Programme's Working Group on Coupled Modelling, which is responsible for CMIP, and we thank the climate modeling groups for producing and making available their model output.

References

- Adams, J. B., Mann, M. E., and Ammann, C. M.: Proxy evidence for an El Niño-like response to volcanic forcing, *Nature*, 426, 274–278, 2003.
- Allan, R. and Ansell, T.: A new globally-complete monthly historical gridded mean sea level pressure data set (HadSLP2): 1850-2004 ., *Journal of Climate*, 19, 5816–5842, doi:10.1175/JCLI3937.1, 2006.
- Ammann, C. M., Joos, F., Schimel, D. S., Otto-Bliesner, B. L., and Tomas, R. a.: Solar influence on climate during the past millennium: results from transient simulations with the NCAR Climate System Model., *Proceedings of the National Academy of Sciences of the United States of America*, 104, 3713–3718, doi:10.1073/pnas.0605064103, 2007.
- Baldwin, M., Stephenson, D., and Jolliffe, I.: Spatial weighting and iterative projection methods for EOFs, *Journal of Climate*, 22, 234–243, doi:10.1175/2008JCLI2147.1, 2008.
- Baldwin, M. P. and Dunkerton, T. J.: Propagation of the Arctic Oscillation from the stratosphere to the troposphere, *Journal of Geophysical Research*, 104, 30 937–30 946, doi:10.1029/1999JD900445, 1999.
- Bindoff, N. L., Stott, P. A., AchutaRao, M., Allen, M. R., Gillett, N., Gutzler, D., Hansingo, K., Hegerl, G., Hu, Y., Jain, S., et al.: Detection and attribution of climate change: from global to regional, 2013.
- Calvo, N., Giorgetta, M. a., Garcia-Herrera, R., and Manzini, E.: Nonlinearity of the combined warm ENSO and QBO effects on the Northern Hemisphere polar vortex in MAECHAM5 simulations, *Journal of Geophysical Research*, 114, D13 109, doi:10.1029/2008JD011445, 2009.
- Christiansen, B.: Volcanic eruptions, large-scale modes in the Northern Hemisphere, and the El Niño-Southern Oscillation, *Journal of Climate*, 21, 910–922, doi:10.1175/2007JCLI1657.1, 2008.
- Compo, G. P., Whitaker, J. S., Sardeshmukh, P. D., Matsui, N., Allan, R. J., Yin, X., Gleason, B. E., Vose, R. S., Rutledge, G., Bessemoulin, P., BroNnimann, S., Brunet, M., Crouthamel, R. I., Grant, a. N., Groisman, P. Y., Jones, P. D., Kruk, M. C., Kruger, a. C., Marshall, G. J., Maugeri, M., Mok, H. Y., Nordli, O., Ross, T. F., Trigo, R. M., Wang, X. L., Woodruff, S. D., and Worley, S. J.: The Twentieth Century Reanalysis Project, *Quarterly Journal of the Royal Meteorological Society*, 137, 1–28, doi:10.1002/qj.776, 2011.
- Cook, E. R., D'Arrigo, R. D., and Anchukaitis, K. J.: Tree ring 500 year ENSO index reconstructions, IGBP PAGES/World Data Center for Paleoclimatology Data Contribution, Series # 2, 2009.
- Dee, D. P., Uppala, S. M., Simmons, A. J., Berrisford, P., Poli, P., Kobayashi, S., Andrae, U., Balmaseda, M. A., Balsamo, G., Bauer, P., Bechtold, P., Beljaars, A. C. M., van de Berg, L., Bidlot, J., Bormann, N., Delsol, C., Dragani, R., Fuentes, M., Geer, A. J., Haimberger, L., Healy, S. B., Hersbach, H., Hólm, E. V., Isaksen, L., Kå llberg, P., Köhler, M., Matricardi, M., McNally, A. P., Monge-Sanz, B. M., Morcrette, J.-J., Park, B.-K., Peubey, C., de Rosnay, P., Tavolato, C., Thépaut, J.-N., and Vitart, F.: The ERA-Interim reanalysis: configuration and performance of the data assimilation system, *Quarterly Journal of the Royal Meteorological Society*, 137, 553–597, doi:10.1002/qj.828, <http://dx.doi.org/10.1002/qj.828>, 2011.
- Donner, L. J., Wyman, B. L., Hemler, R. S., Horowitz, L. W., Ming, Y., Zhao, M., Golaz, J. C., Ginoux, P., Lin, S. J., Schwarzkopf, M. D., Austin, J., Alaka, G., Cooke, W. F., Delworth, T. L., Freidenreich, S. M., Gordon, C. T., Griffies, S. M., Held, I. M., Hurlin, W. J., Klein, S. a., Knutson, T. R., Langenhorst, A. R., Lee, H. C., Lin, Y., Magi, B. I., Malyshev, S. L., Milly, P. C. D., Naik, V., Nath, M. J., Pincus, R., Ploshay, J. J., Ramaswamy, V., Seman, C. J., Shevliakova, E., Sirutis, J. J., Stern, W. F., Stouffer, R. J., Wilson, R. J., Winton, M., Wittenberg, A. T., and Zeng, F.: The dynamical core, physical parameterizations, and basic simulation characteristics of the atmospheric component AM3 of the GFDL global coupled model CM3, *Journal of Climate*, 24, 3484–3519, doi:10.1175/2011JCLI3955.1, 2011.

- Driscoll, S., Bozzo, A., Gray, L. J., Robock, A., and Stenchikov, G.: Coupled Model Intercomparison Project 5 (CMIP5) simulations of climate following volcanic eruptions, *Journal of Geophysical Research*, 117, D17 105, doi:10.1029/2012JD017607, 2012.
- Ebita, A., Kobayashi, S., Ota, Y., Moriya, M., Kumabe, R., Onogi, K., Harada, Y., Yasui, S., Miyaoka, K., Takahashi, K., Kamahori, H., Kobayashi, C., Endo, H., Soma, M., Oikawa, Y., and Ishimizu, T.: The Japanese 55-year Reanalysis "JRA-55": An Interim Report, SOLA, 7, 149–152, doi:10.2151/sola.2011-038, 2011.
- Fischer, E. M., Luterbacher, J., Zorita, E., Tett, S. F. B., Casty, C., and Wanner, H.: European climate response to tropical volcanic eruptions over the last half millennium, *Geophysical Research Letters*, 34, L05 707, doi:10.1029/2006GL027992, 2007.
- Fujiwara, M. and Jackson, D.: SPARC Reanalysis Intercomparison Project (S-RIP) Planning Meeting 29 April–1 May, 2013, Exeter, UK, SPARC, p. 52, 2013.
- 10 Fujiwara, M., Hibino, T., Mehta, S. M., Gray, L. J., Mitchell, D. M., and Anstey, J.: Global temperature response to the major volcanic eruptions in multiple reanalysis datasets, *Atmos. Chem. Phys.*, 2015.
- García-Herrera, R., Calvo, N., Garcia, R. R., and Giorgetta, M. a.: Propagation of ENSO temperature signals into the middle atmosphere: A comparison of two general circulation models and ERA-40 reanalysis data, *Journal of Geophysical Research*, 111, D06 101, doi:10.1029/2005JD006061, 2006.
- 15 Garfinkel, C. and Hartmann, D.: Different ENSO teleconnections and their effects on the stratospheric polar vortex, *Journal of Geophysical Research: Atmospheres*, 113, 2008.
- Gent, P. R., Danabasoglu, G., Donner, L. J., Holland, M. M., Hunke, E. C., Jayne, S. R., Lawrence, D. M., Neale, R. B., Rasch, P. J., Vertenstein, M., Worley, P. H., Yang, Z. L., and Zhang, M.: The community climate system model version 4, *Journal of Climate*, 24, 4973–4991, doi:10.1175/2011JCLI4083.1, 2011.
- 20 Gillett, N. P. and Fyfe, J. C.: Annular mode changes in the CMIP5 simulations, *Geophysical Research Letters*, 40, 1189–1193, doi:10.1002/grl.50249, 2013.
- Graf, H.-F. and Timmreck, C.: A general climate model simulation of the aerosol radiative effects of the Laacher See eruption (10,900 B.C.), *Journal of Geophysical Research*, 106, 14,747–14,756, doi:10.1029/2001JD900152, 2001.
- Graf, H.-F., Li, Q., and Giorgetta, M. a.: Volcanic effects on climate: revisiting the mechanisms, *Atmospheric Chemistry and Physics Discussions*, 7, 4503–4511, doi:10.5194/acpd-7-3941-2007, 2007.
- 25 Gray, L. J., Scaife, A. A., Mitchell, D. M., Osprey, S., Ineson, S., Hardiman, S., Butchart, N., Knight, J., Sutton, R., and Kodera, K.: A lagged response to the 11 year solar cycle in observed winter Atlantic/European weather patterns, *Journal of Geophysical Research: Atmospheres*, 118, 2013.
- Haigh, J. D.: The effects of solar variability on the Earth's climate, *The Royal Society*, 361, 95–111, doi:10.1098/rsta.2002.1111, 2002.
- 30 Hansen, J., Sato, M., Ruedy, R., Nazarenko, L., Lacis, A., Schmidt, G. A., Russell, G., Aleinov, I., Bauer, M., Bauer, S., Bell, N., Cairns, B., Canuto, V., Chandler, M., Cheng, Y., Del Genio, A., Faluvegi, G., Fleming, E., Friend, A., Hall, T., Jackman, C., Kelley, M., Kiang, N., Koch, D., Lean, J., Lerner, J., Lo, K., Menon, S., Miller, R., Minnis, P., Novakov, T., Oinas, V., Perlwitz, J., Perlwitz, J., Rind, D., Romanou, A., Shindell, D., Stone, P., Sun, S., Tausnev, N., Thresher, D., Wielicki, B., Wong, T., Yao, M., and Zhang, S.: Efficacy of climate forcings, *Journal of Geophysical Research*, 110, D18 104, doi:10.1029/2005JD005776, <http://dx.doi.org/10.1029/2005JD005776>, 35 2005.
- Hansen, J., Sato, M., Ruedy, R., Kharecha, P., Lacis, A., Miller, R., Nazarenko, L., Lo, K., Schmidt, G., Russell, G., Aleinov, I., Bauer, S., Baum, E., Cairns, B., Canuto, V., Chandler, M., Cheng, Y., Cohen, A., Del Genio, A., and Faluvegi, G.: Climate simulations for 1880-2003 with GISS modelE, *Climate Dynamics*, 29, 661–696, doi:10.1007/s00382-007-0255-8, 2007.

- Holton, J. R. and Tan, H. C.: The quasi-biennial oscillation in the Northern Hemisphere lower stratosphere, *Journal of the Meteorological Society of Japan*, 60, 140–148, 1982.
- Humphreys, W. J.: Volcanic dust and other factors in the production of climatic changes, and their possible relation to ice gases, *Journal of The Franklin Institute*, Aug., 131–172, 1913.
- 5 Humphreys, W. J.: *Physics of the Air*, Dover, Mineola, NY, Dover, Mineola, New York, 1940.
- Hurrell, J. W.: Decadal Trends in the North Atlantic Oscillation: Regional Temperatures and Precipitation, *Science*, 269, 676–679, 1995.
- Hurrell, J. W. and Deser, C.: North Atlantic climate variability: The role of the North Atlantic Oscillation, *Journal of Marine Systems*, 78, 28–41, doi:10.1016/j.jmarsys.2008.11.026, <http://dx.doi.org/10.1016/j.jmarsys.2008.11.026>, 2009.
- Jones, G. S., Stott, P. A., and Christidis, N.: Attribution of observed historical near-surface temperature variations to anthropogenic and natural causes using CMIP5 simulations, *Journal of Geophysical Research*, 118, 4001–4024, doi:10.1002/jgrd.50239, 2013.
- 10 Jones, P., Moberg, A., Osborn, T., and Briffa, K.: Surface Climate Responses to Explosive Volcanic Eruptions Seen in Long European Temperature Records and Mid-to-High Latitude Tree-Ring Density Around the Northern Hemisphere, *Geophysical Monograph Series*, 139, 239–254, 2003.
- Kalnay, E., Kanamitsu, M., Kistler, R., Collins, W., Deaven, D., Gandin, L., Iredell, M., Saha, S., White, G., Woollen, J., Zhu, Y., Leetmaa, A., Reynolds, R., Chelliah, M., Ebisuzaki, W., Higgins, W., Janowiak, J., Mo, K. C., Ropelewski, C., Wang, J., Jenne, R., and Joseph, D.: The NCEP/NCAR 40-Year Reanalysis Project, doi:[http://dx.doi.org/10.1175/1520-0477\(1996\)077<0437:TNYRP>2.0.CO;2](http://dx.doi.org/10.1175/1520-0477(1996)077<0437:TNYRP>2.0.CO;2), 1996.
- 15 Kanamitsu, M., Ebisuzaki, W., Woollen, J., Yang, S.-K., Hnilo, J. J., Fiorino, M., and Potter, G. L.: NCEP–DOE AMIP-II Reanalysis (R-2), *Bulletin of the American Meteorological Society*, 83, 1631–1643, doi:10.1175/BAMS-83-11-1631, <http://journals.ametsoc.org/doi/abs/10.1175/BAMS-83-11-1631>, 2002.
- 20 Kirchner, I., Stenchikov, G. L., Graf, H. F., Robock, A., and Antuña, J. C.: Climate model simulation of winter warming and summer cooling following the 1991 Mount Pinatubo volcanic eruption, *Journal of Geophysical Research*, 104, 19 039–19 055, 1999.
- Labitzke, K. and McCormick, M. P.: Stratospheric temperature increase due to Pinatubo aerosol, *Geophysical Research Letters*, 19, 1982.
- Lean, J., Beer, J., and Bradley, R.: Reconstruction of solar irradiance since 1610: Implications for climate change, *Geophysical Research Letters*, 22, 3195–3198, doi:10.1029/95GL03093, 1995.
- 25 Lehner, F., Schurer, A. P., Hegerl, G. C., Deser, C., and Frölicher, T. L.: The importance of ENSO phase during volcanic eruptions for detection and attribution, *Geophysical Research Letters*, 43, 2851–2858, 2016.
- Lindsay, R., Wensnahan, M., Schweiger, A., and Zhang, J.: Evaluation of Seven Different Atmospheric Reanalysis Products in the Arctic, *Journal of Climate*, 27, 2588–2606, doi:10.1175/JCLI-D-13-00014, 2014.
- Makstas, A., Atkinson, D., Kulakov, M., Shutilin, S., Krishfield, R., and Proshutinsky, A.: Atmospheric forcing validation for modeling the central Arctic, *Geophysical Research Letters*, 34, L20 706, doi:10.1029/2007GL031378, 2007.
- 30 Manzini, E., Giorgetta, M. A., Esch, M., Kornbluh, L., and Roeckner, E.: The Influence of Sea Surface Temperatures on the Northern Winter Stratosphere: Ensemble Simulations with the MAECHAM5 Model, *Journal of Climate*, 19, 3863–3881, doi:10.1175/JCLI3826.1, 2006.
- Meehl, G. A., Hu, A., Arblaster, J. M., Fasullo, J., and Trenberth, K. E.: Externally Forced and Internally Generated Decadal Climate Variability Associated with the Interdecadal Pacific Oscillation, *Journal of Climate*, 26, 7298–7310, doi:10.1175/JCLI-D-12-00548.1, 2013.
- 35 Menon, S., Koch, D., Beig, G., Sahu, S., Fasullo, J., and Orlikowski, D.: Black carbon aerosols and the third polar ice cap, *Atmospheric Chemistry and Physics*, 10, 4559–4571, doi:10.5194/acp-10-4559-2010, <http://www.atmos-chem-phys.net/10/4559/2010/>, 2010.

- Mitchell, D.: Attributing the forced components of observed stratospheric temperature variability to external drivers, *Quarterly Journal of the Royal Meteorological Society*, 2016.
- Mitchell, D., Gray, L., Fujiwara, M., Hibino, T., Anstey, J., Ebisuzaki, W., Harada, Y., Long, C., Misios, S., Stott, P., and Tan, D.: Signatures of naturally induced variability in the atmosphere using multiple reanalysis datasets, *Quarterly Journal of the Royal Meteorological Society*, doi:10.1002/qj.2492, 2014.
- 5 Morice, C. P., Kennedy, J. J., Rayner, N. A., and Jones, P. D.: Quantifying uncertainties in global and regional temperature change using an ensemble of observational estimates: The HadCRUT4 dataset, *Journal of Geophysical Research*, 117, D0810, doi:10.1029/2011JD017187, 2012.
- Moron, V. and Plaut, G.: The impact of El Niño-southern oscillation upon weather regimes over Europe and the North Atlantic during boreal winter, *International Journal of Climatology*, 23, 363–379, doi:10.1002/joc.890, 2003.
- Newhall, C. G. and Self, S.: The Volcanic Explosivity Index (VEI): An Estimate of Explosive Magnitude for Historical Volcanism, *History of Geophysics: Volume 2*, 87, 1231–1238, doi:10.1029/JC087iC02p01231, 1982.
- Oman, L., Robock, A., Stenchikov, G., Schmidt, G. A., and Ruedy, R.: Climatic response to high-latitude volcanic eruptions, *Journal of Geophysical Research*, 110, D13 103, doi:10.1029/2004JD005487, 2005.
- 15 Onogi, K., Tsutsui, J., Koide, H., Sakamoto, M., Kobayashi, S., Hatsushika, H., Matsumoto, T., Yamazaki, N., Kamahori, H., Takahashi, K., Kadokura, S., Wada, K., Kato, K., Oyama, R., Ose, T., Mannoji, N., and Taira, R.: The JRA-25 Reanalysis, *Journal of the Meteorological Society of Japan. Ser. II*, 85, 369–432, doi:10.2151/jmsj.85.369, 2007.
- Parker, D. E. and Brownscombe, J. K. L.: Stratospheric warming following the El Chichón volcanic eruption, *Nature*, 301, 406–408, 1983.
- Poli, P., Hersbach, H., Tan, D., Dee, D., Thépaut, J.-N., Simmons, A., Peubey, C., Laloyaux, P., Komori, T., Berrisford, P., Dragani, R., Trémolet, Y., Holm, E., Bonavita, M., Isaksen, L., and Fisher, M.: The data assimilation system and initial performance evaluation of the ECMWF pilot reanalysis of the 20th-century assimilating surface observations only (ERA-20C), *ERA Report Series*, 14, ECMWF, 2013.
- 20 Ribes, A. and Terray, L.: Application of regularised optimal fingerprinting to attribution. Part II: Application to global near-surface temperature, *Climate Dynamics*, 41, 2837–2853, doi:10.1007/s00382-013-1736-6, 2013.
- Rienecker, M. M., Suarez, M. J., Gelaro, R., Todling, R., Bacmeister, J., Liu, E., Bosilovich, M. G., Schubert, S. D., Takacs, L., Kim, G.-K., Bloom, S., Chen, J., Collins, D., Conaty, A., da Silva, A., Gu, W., Joiner, J., Koster, R. D., Lucchesi, R., Molod, A., Owens, T., Pawson, S., Pegion, P., Redder, C. R., Reichle, R., Robertson, F. R., Ruddick, A. G., Sienkiewicz, M., and Woollen, J.: MERRA: NASA's Modern-Era Retrospective Analysis for Research and Applications, *Journal of Climate*, 24, 3624–3648, doi:10.1175/JCLI-D-11-00015.1, <http://journals.ametsoc.org/doi/abs/10.1175/JCLI-D-11-00015.1>, 2011.
- Robock, A.: Volcanic eruptions and climate, *Reviews of Geophysics*, 38, 191–219, doi:10.1029/2007rg000232, <http://www.agu.org/pubs/crossref/2007/2007RG000232.shtml>, 2000.
- 30 <GotoISI>://000249520800001\$delimitter"026E30F\$nhhttp://www.agu.org/pubs/crossref/2007/2007RG000232.shtml, 2000.
- Robock, A. and Mao, J.: Winter warming from large volcanic eruptions, *Geophysical Research Letters*, 19, 2405–2408, doi:10.1029/92GL02627, 1992.
- Robock, A. and Mao, J.: The Volcanic Signal in Surface Temperature Observations, *Journal of Climate*, 8, 1086–1103, 1995.
- Rotstayn, L. D., Collier, M. A., Dix, M. R., Feng, Y., Gordon, H. B., O'Farrell, S. P., Smith, I. N., and Syktus, J.: Improved simulation of Australian climate and ENSO-related rainfall variability in a global climate model with an interactive aerosol treatment, *International Journal of Climatology*, 30, 1067–1088, doi:10.1002/joc.1952, <http://dx.doi.org/10.1002/joc.1952>, 2010.
- 35 Saha, S., Moorthi, S., Pan, H.-L., Wu, X., Wang, J., Nadiga, S., Tripp, P., Kistler, R., Woollen, J., Behringer, D., Liu, H., Stokes, D., Grumbine, R., Gayno, G., Wang, J., Hou, Y.-T., Chuang, H.-Y., Juang, H.-M. H., Sela, J., Iredell, M., Treadon, R., Kleist, D., Van Delst, P., Keyser,

- D., Derber, J., Ek, M., Meng, J., Wei, H., Yang, R., Lord, S., Van Den Dool, H., Kumar, A., Wang, W., Long, C., Chelliah, M., Xue, Y., Huang, B., Schemm, J.-K., Ebisuzaki, W., Lin, R., Xie, P., Chen, M., Zhou, S., Higgins, W., Zou, C.-Z., Liu, Q., Chen, Y., Han, Y., Cucurull, L., Reynolds, R. W., Rutledge, G., and Goldberg, M.: The NCEP Climate Forecast System Reanalysis, *Bulletin of the American Meteorological Society*, 91, 1015–1057, doi:10.1175/2010BAMS3001.1, <http://journals.ametsoc.org/doi/abs/10.1175/2010BAMS3001.1>,
5 2010.
- Sato, M., Hansen, J. E., McCormick, M. P., and Pollack, J. B.: Stratospheric Aerosol Optical Depths, 1850-1990, *Journal of Geophysical Research*, 98, 987–994, doi:10.1029/93JD02553, 1993.
- Schmidt, G. a., Kelley, M., Nazarenko, L., Ruedy, R., Russell, G. L., Aleinov, I., Bauer, M., Bauer, S. E., Bhat, M. K., Bleck, R., Canuto, V., Chen, Y.-h., Cheng, Y., Clune, T. L., Genio, A. D., Fainchtein, R. D., Faluvegi, G., Hansen, J. E., Healy, R. J., Kiang, N. Y., Koch, D., Laxis, A. a., Legrande, A. N., Lerner, J., Lo, K. K., Matthews, E. E., Menon, S., Miller, R. L., Oinas, V., and Oloso, A. O.: Journal of
10 Advances in Modeling Earth Systems contributions to the CMIP5 archive, *Journal of Advances in Modeling Earth Systems*, 6, 141–184, doi:10.1002/2013MS000265., 2014.
- Shindell, D. T., Schmidt, G. A., Mann, M. E., and Faluvegi, G.: Dynamic winter climate response to large tropical volcanic eruptions since 1600, *Journal of Geophysical Research*, 109, D05 104, doi:10.1029/2003JD004151, 2004.
- 15 Simkin, T. and Siebert, L.: *Volcanoes of the World: A Regional Directory, Gazetteer, and Chronology of Volcanism During the Last 10,000 Years*, Geoscience Press, Tucson, Arizona, 1994.
- Simmons, A. J., Jones, P. D., da Costa Bechtold, V., Beljaars, A. C. M., Kå llberg, P. W., Saarinen, S., Uppala, S. M., Viterbo, P., and Wedi, N.: Comparison of trends and low-frequency variability in CRU, ERA-40, and NCEP/NCAR analyses of surface air temperature, *Journal of Geophysical Research*, 109, doi:10.1029/2004JD005306, 2004.
- 20 Stenchikov, G., Robock, A., Ramaswamy, V., Schwarzkopf, M. D., Hamilton, K., and Ramachandran, S.: Arctic Oscillation response to the 1991 Mount Pinatubo eruption: Effects of volcanic aerosols and ozone depletion, *Journal of Geophysical Research*, 107, D24, 4803, doi:10.1029/2002JD002090, 2002.
- Stenchikov, G., Hamilton, K., Robock, A., Ramaswamy, V., and Schwarzkopf, M. D.: Arctic oscillation response to the 1991 Pinatubo eruption in the SKYHI general circulation model with a realistic quasi-biennial oscillation, *Journal of Geophysical Research*, 109,
25 doi:10.1029/2003JD003699, 2004.
- Stenchikov, G., Hamilton, K., Stouffer, R. J., Robock, A., Ramaswamy, V., Santer, B., and Graf, H. F.: Arctic Oscillation response to volcanic eruptions in the IPCC AR4 climate models, *Journal of Geophysical Research*, 111, D07 107, doi:10.1029/2005JD006286, 2006.
- Stenchikov, G. L., Kirchner, I., Robock, A., Graf, H.-F., Antuña, J. C., Grainger, R. G., Lambert, A., and Thomason, L.: Radiative forcing from the 1991 Mount Pinatubo volcanic eruption, *Journal of Geophysical Research*, 103, 13 837–13 857, 1998.
- 30 Sun, S. and Bleck, R.: Multi-century simulations with the coupled GISS-HYCOM climate model: control experiments, *Climate Dynamics*, 26, 407–428, doi:10.1007/s00382-005-0091-7, 2006.
- Taylor, K. E., Stouffer, R. J., and Meehl, G. A.: An overview of CMIP5 and the experiment design, *Bulletin of the American Meteorological Society*, 93(4), 485–498, doi:10.1175/BAMS-D-11-00094.1, 2012.
- Thompson, D. W. and Wallace, J. M.: Regional climate impacts of the Northern Hemisphere annular mode, *Science*, 293, 85–89, 2001.
- 35 Thompson, D. W. J. and Wallace, J. M.: The Arctic Oscillation signature in the wintertime geopotential height and temperature fields, *Geophysical Research Letters*, 25, 1297–1300, doi:10.1029/98GL00950, 1998.
- Trepte, C. R. and Hitchman, M. H.: Tropical stratospheric circulation deduced from satellite aerosol data, *Nature*, 355, 626–628, 1992.

- Uppala, S. M., Kållberg, P. W., Simmons, A. J., Andrae, U., Bechtold, V. D. C., Fiorino, M., Gibson, J. K., Haseler, J., Hernandez, A., Kelly, G. A., Li, X., Onogi, K., Saarinen, S., Sokka, N., Allan, R. P., Andersson, E., Arpe, K., Balmaseda, M. A., Beljaars, A. C. M., Berg, L. V. D., Bidlot, J., Bormann, N., Caires, S., Chevallier, F., Dethof, A., Dragosavac, M., Fisher, M., Fuentes, M., Hagemann, S., Hólm, E., Hoskins, B. J., Isaksen, L., Janssen, P. A. E. M., Jenne, R., McNally, A. P., Mahfouf, J.-F., Morcrette, J.-J., Rayner, N. A., Saunders, R. W.,
- 5 Simon, P., Sterl, A., Trenberth, K. E., Untch, A., Vasiljevic, D., Viterbo, P., and Woollen, J.: The ERA-40 re-analysis, *Quarterly Journal of the Royal Meteorological Society*, 131, 2961–3012, doi:10.1256/qj.04.176, <http://doi.wiley.com/10.1256/qj.04.176>, 2005.
- Wolter, K. and Timlin, M. S.: El Niño/Southern Oscillation behaviour since 1871 as diagnosed in an extended multivariate ENSO index (MEI.ext), *International Journal of Climatology*, 31, 1074–1087, doi:10.1002/joc.2336, <http://dx.doi.org/10.1002/joc.2336>, 2011.

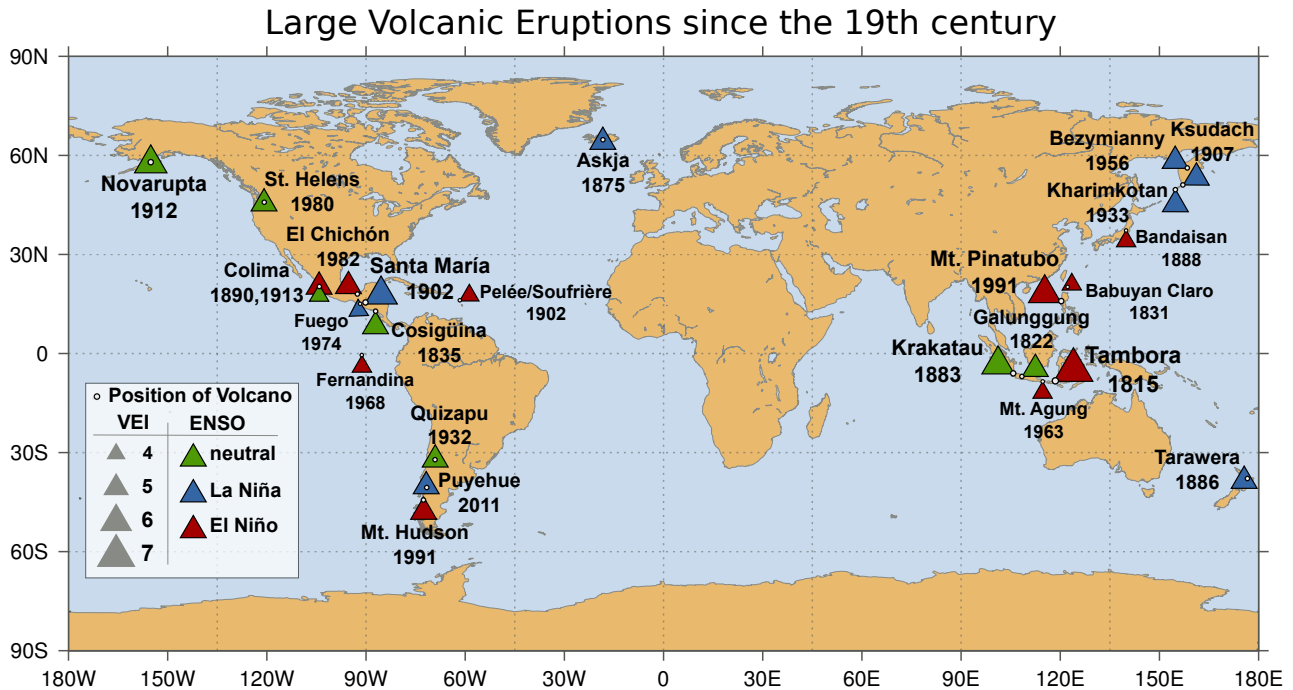


Figure 1. Large volcanic eruptions since the 19th century. The size of the triangle indicates the volcanic explosivity index (VEI) (Newhall and Self, 1982), from Simkin and Siebert (1994) and the Smithsonian Institution (www.volcano.si.edu). The filled colour shows the El Niño-Southern Oscillation (ENSO) event in the first winter after the eruption from Cook et al. (2009) until 1870 and from Wolter and Timlin (2011) from 1871 until present. In the case of Fuego, Santa María, Babuyan Claro and Galunggung the second winter after the eruption is considered for the definition of the ENSO phase.

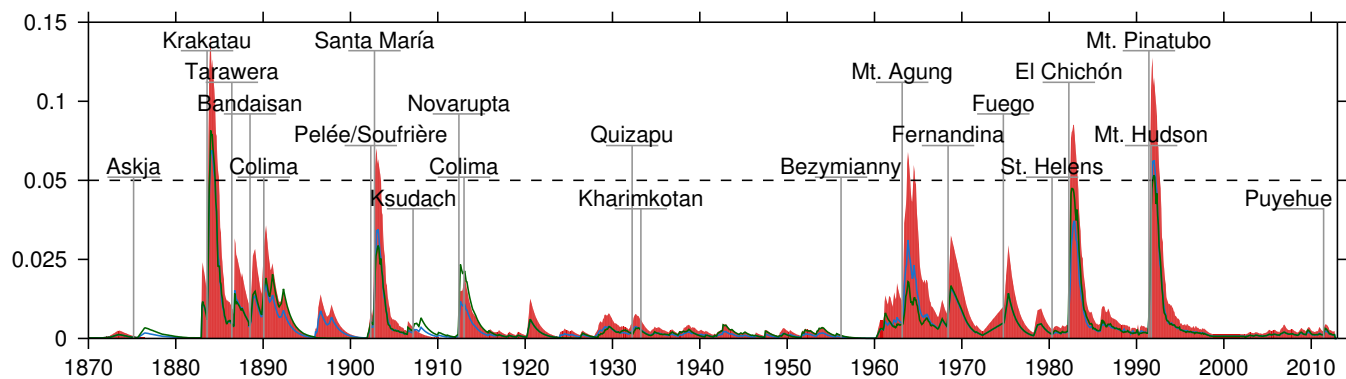


Figure 2. Tropical averaged Stratospheric Aerosol Optical Depth (AOD) at 550nm for the altitude region 20-25 km from Sato et al. (1993), updated dataset from data.giss.nasa.gov/modelforce/strataer/. All volcanic eruptions from Figure 1 for the period 1870 until present are included. They are indicated with a gray line corresponding to the eruption time and the name of the volcano. The green line is the mean AOD for the Northern Hemisphere and the blue line shows the mean AOD for the Southern Hemisphere.

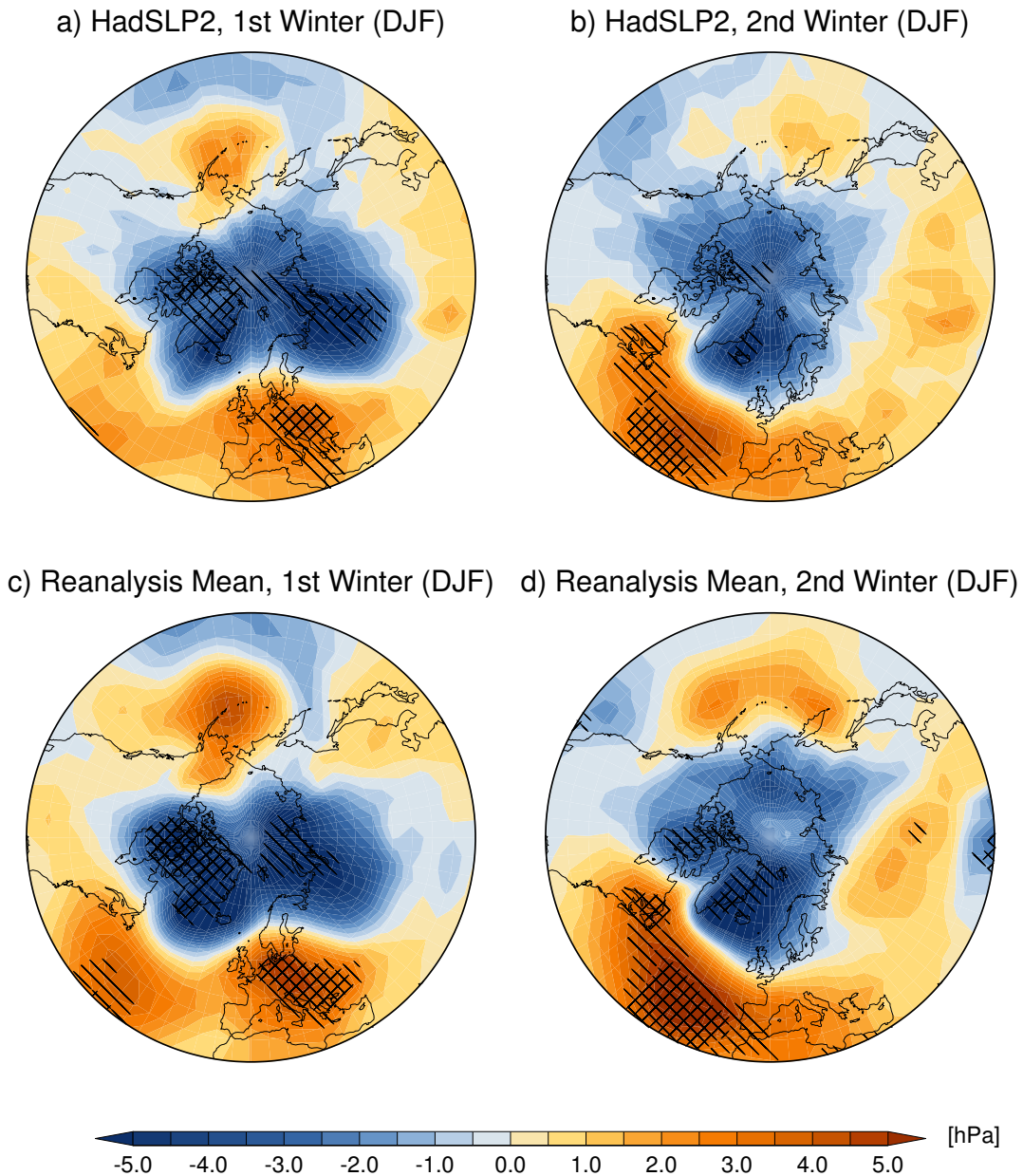
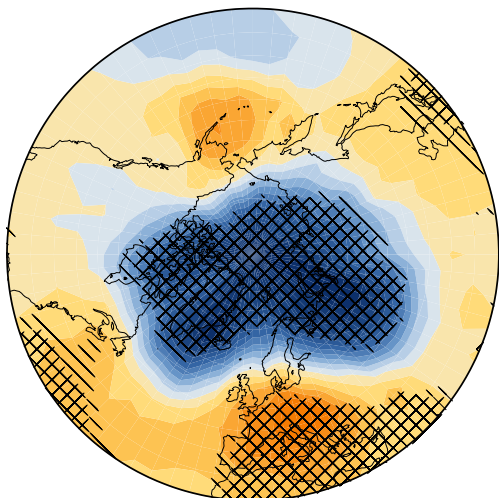
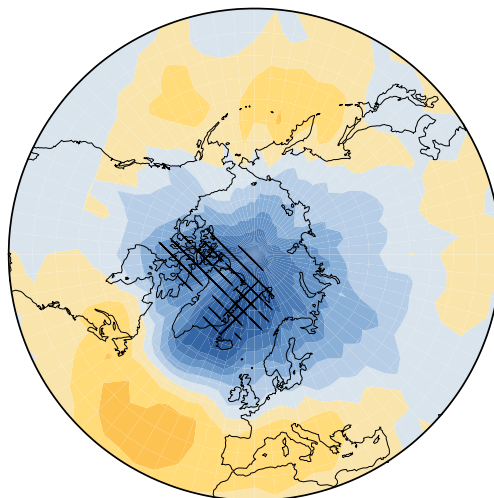


Figure 3. Observed and multi-reanalysis mean SLP anomalies (hPa) in the Northern Hemisphere in the first two post volcanic winters (DJF) averaged over the two volcanic eruptions of Mt. Pinatubo (1991) and El Chichón (1982). Anomalies are calculated with respect to the mean for the years 1979-2012, excluding the following two years after the eruptions. Single diagonal lines correspond to the 90% and double diagonal lines to the 95% confidence level obtained with a Monte Carlo test of two independent samples. a) Shows the mean anomaly for the HadSLP2 observation data for the first and b) for the second winter after the eruptions. c) and d) show respectively the mean anomaly of all 10 reanalysis datasets (Table 1).

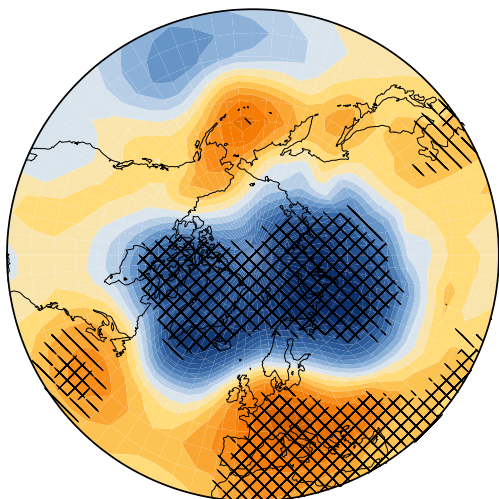
a) HadSLP2, 1st Winter (DJF)



b) HadSLP2, 2nd Winter (DJF)



c) NOAA 20CR, 1st Winter (DJF)



d) NOAA 20CR, 2nd Winter (DJF)

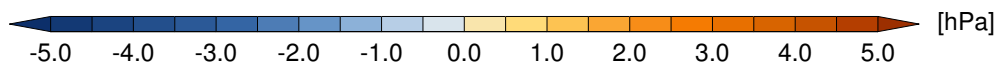
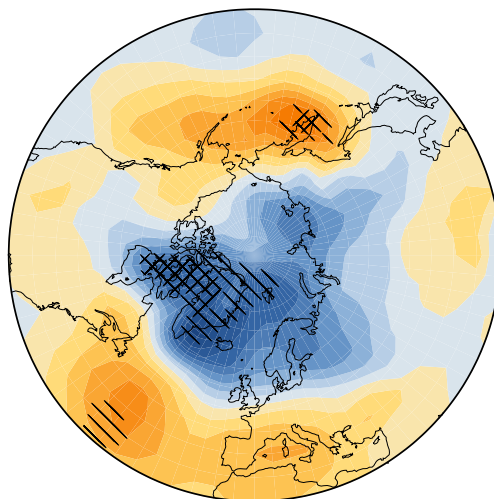


Figure 4. As Figure 3 but for just NOAA-20CR data and HadSLP2 data, averaged over all five post volcanic winters.

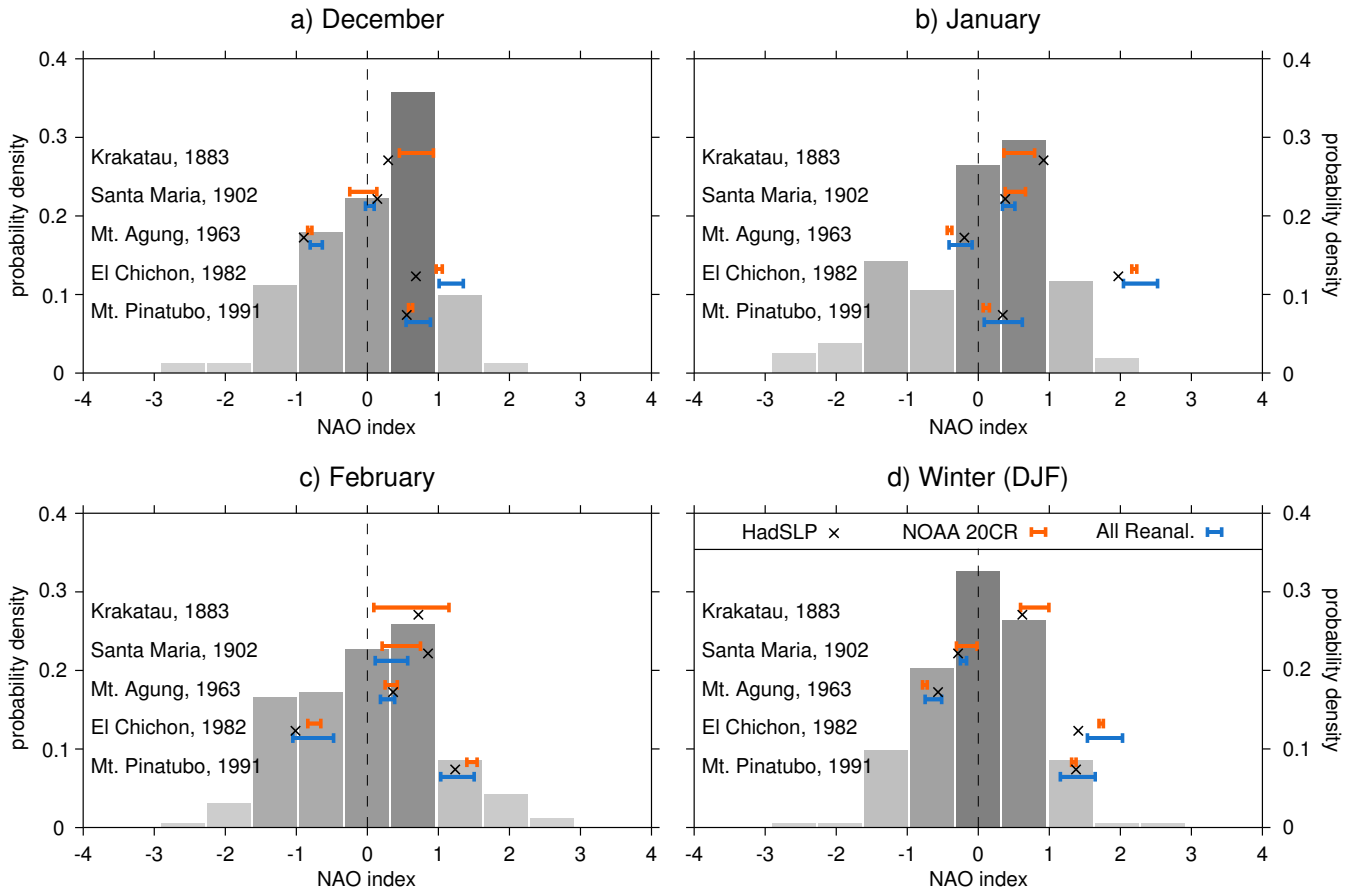


Figure 5. Monthly North Atlantic Oscillation (NAO) index of the first winter after five volcanic eruptions (a-c) and the winter mean (d), calculated with HadSLP2 observation data and reanalysis data. All data is calculated with respect to the mean for the years 1979-2012, excluding the following two years after the two eruption. The EOF is calculated over the period 1979-2012 for every product separately. The histogram shows the NAO index of the 163 years of observation data (1850-2012). Black crosses show the results of the HadSLP2 data. The blue lines show the reanalysis data spread of the NAO index for the winter after all eruptions except Krakatau. The orange lines show the 95% ensemble spread of the NAO after all five volcanic eruptions calculated with the NOAA-20CR dataset.

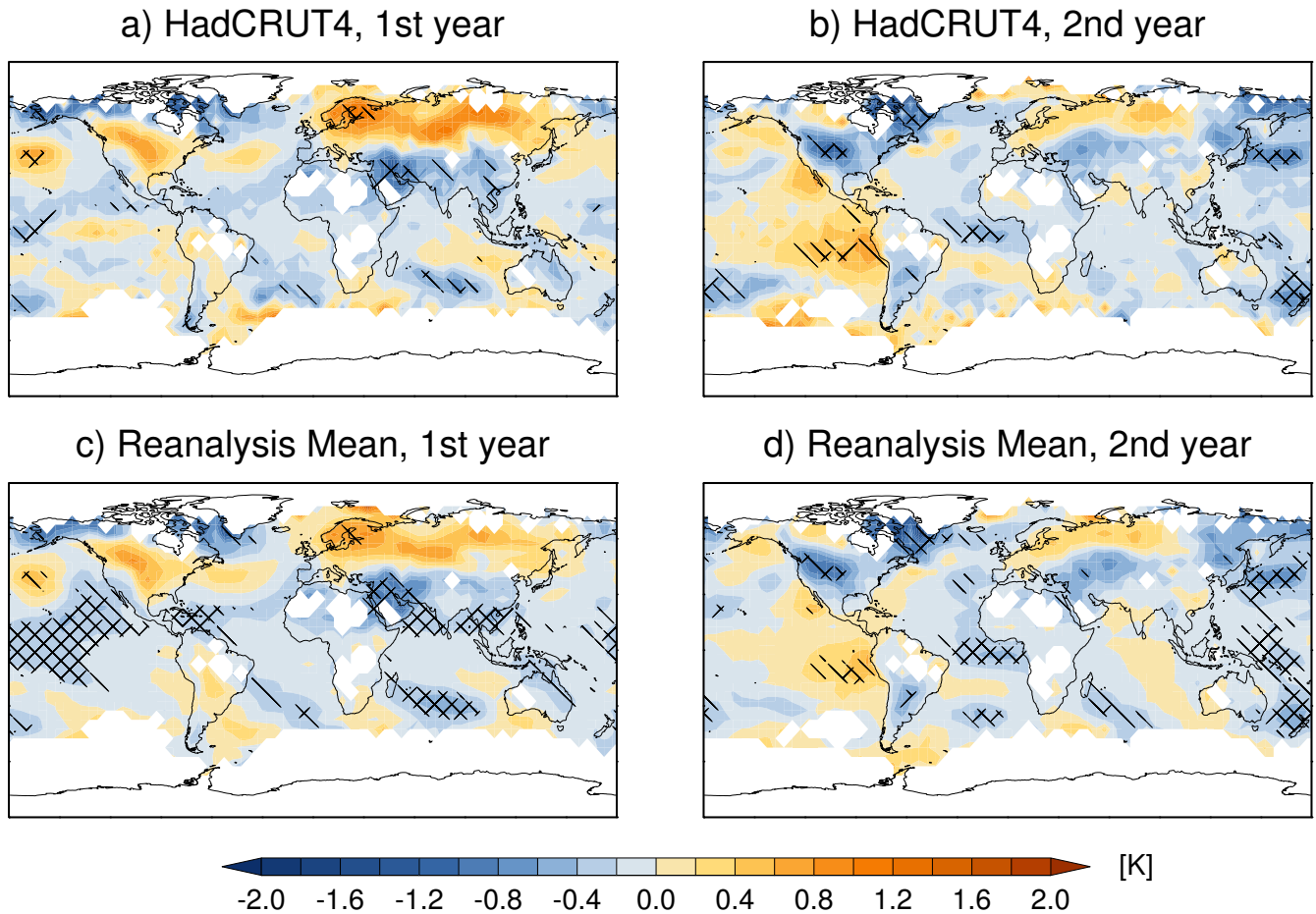


Figure 6. Observed and multi-reanalysis mean TAS anomalies (K) averaged over the first year (a and c) and second year (b and d) after the eruption and over the three volcanic eruptions Mt. Pinatubo (1991), El Chichón (1982) and Mt. Agung (1963). a) and b) show the mean anomaly for the HadCRUT4 observations and c) and d) show respectively the mean anomaly of the five reanalysis datasets, containing this period (Table 1). Anomalies are calculated with respect to the average over the years 1961-1990, consistent to the HadCRUT4 dataset. Single diagonal lines correspond to the 90% and double diagonal lines to the 95% confidence level obtained by a Monte Carlo test of three independent samples.

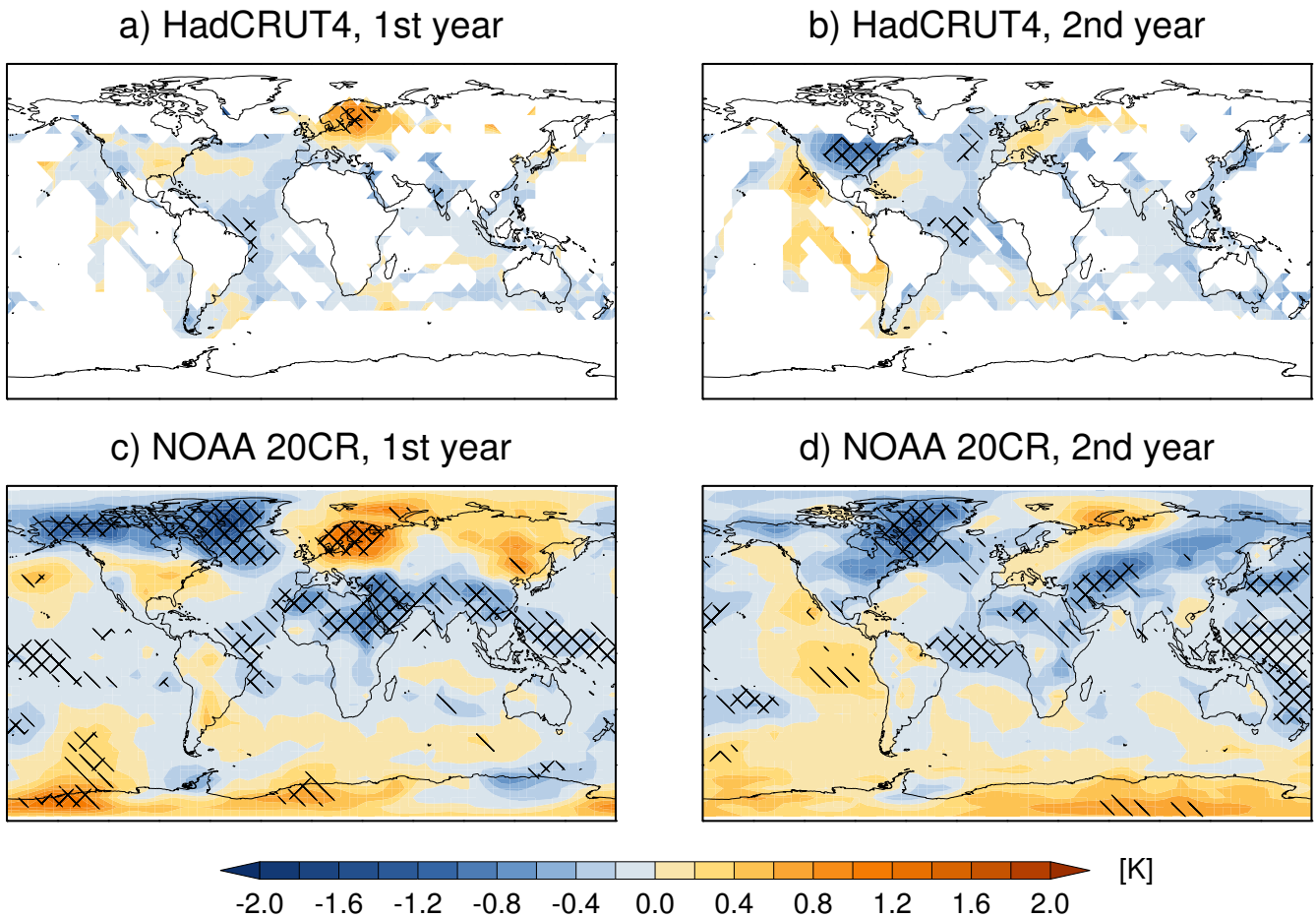


Figure 7. As Figure 6 but for just HadCRUT4 data in a-b averaged over at least four of five eruptions and NOAA-20CR data without missing data consideration, averaged over all five post volcanic years.

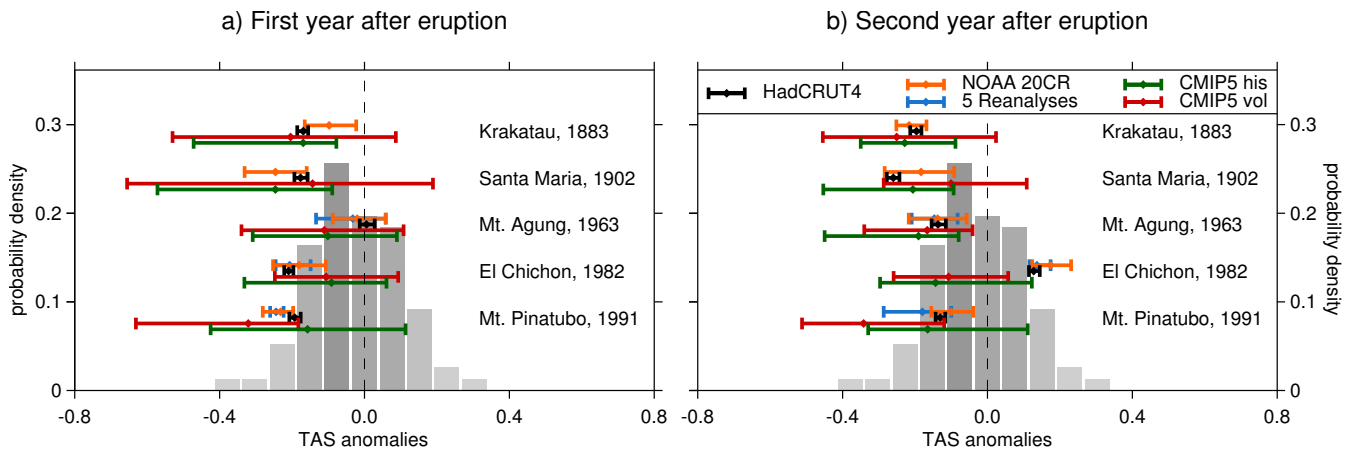


Figure 8. Tropical TAS anomalies (K) averaged over the region 30°S - 30°N and over the first year (a) and second year (b) after five volcanic eruptions, calculated with HadCRUT4 observation data and reanalysis data. Anomalies are calculated with respect to the average over the years 1961-1990, consistent to the HadCRUT4 dataset. The histogram shows the anomalies of 153 years of observation data (1855-2007). The first and last five years are leaved out because of the trend removal. The blue lines show the reanalysis data spread of the TAS anomalies for the years after all eruptions except Krakatau and Santa María. The orange lines show the 90% ensemble spread of TAS after all five volcanic eruptions calculated with the NOAA-20CR dataset. The mean response is indicated by the dot between the whiskers.

Table 1. Reanalysis products used in this study

Reanalysis Name	Reanalysis Resolution	Ensemble members	Time span	Volcanic aerosol changes	Reference
NASA MERRA	2/3° Lat x 1/2° Lon, L72	1	Jan 1979 - present	no	Rienecker et al. (2011)
ERA-40	T159, L60	1	Sept 1957 - Aug 2002	no	Uppala et al. (2005)
ERA-Interim	T255, L60	1	Jan 1979 - present	no	Dee et al. (2011)
ERA-20C	T159, L91	1	Jan 1900 - Dec 2010	no	Poli et al. (2013)
JRA25/JCDAS	T106, L40	1	Jan 1979 - Jan 2014	no	Onogi et al. (2007)
JRA55	T319, L60	1	Jan 1958 - present	no	Ebita et al. (2011)
NCEP-1 (R-1)	T62, L28	1	Jan 1948 - present	no	Kalnay et al. (1996)
NCEP-2 (R-2)	T62, L28	1	Jan 1979 - near present	no	Kanamitsu et al. (2002)
NCEP-CFSR / CFSv2	T382, L64	1	Jan 1979 - present	yes	Saha et al. (2010)
NOAA-CIRES 20th Century Reanalysis (v2c)	T62, L28	56	Jan 1851 - Dec 2014	yes	Compo et al. (2011)

Table 2. CMIP5 models used in this study

Model Name	Model Resolution	Ensemble members	Time span	Volcanic aerosol changes	Reference
CCSM4	0.9° Lat x 1.25° Lon, L26	3	Jan 1850 - Dec 2005	A07 ^a	Gent et al. (2011)
CESM1-CAM5	0.9° Lat x 1.25° Lon, L30	3	Jan 1850 - Dec 2005	A07	Meehl et al. (2013)
CSIRO-Mk3-6-0	T63, L18	5	Jan 1850 - Dec 2012	S93 ^b	Rotstayn et al. (2010)
GFDL-ESM2M	C48, L48	1	Jan 1860 - Dec 2005	S93 / S98 ^c	Donner et al. (2011)
GISS-E2-H NINT	2° Lat x 2.5° Lon, L40	5	Jan 1850 - Dec 2005	S93	Schmidt et al. (2014)
GISS-E2-H TCADI	2° Lat x 2.5° Lon, L40	5	Jan 1850 - Dec 2012	S93	Schmidt et al. (2014)
GISS-E2-R NINT	2° Lat x 2.5° Lon, L40	5	Jan 1850 - Dec 2005	S93	Schmidt et al. (2014)
GISS-E2-R TCADI	2° Lat x 2.5° Lon, L40	5	Jan 1850 - Dec 2012	S93	Schmidt et al. (2014)

^a Ammann et al. (2007), ^b Sato et al. (1993), ^c Stenchikov et al. (1998).