

Supplementary material for 'Error Apportionment for Atmospheric Chemistry-Transport Models. A new approach to model evaluation' by Solazzo and Galmarini

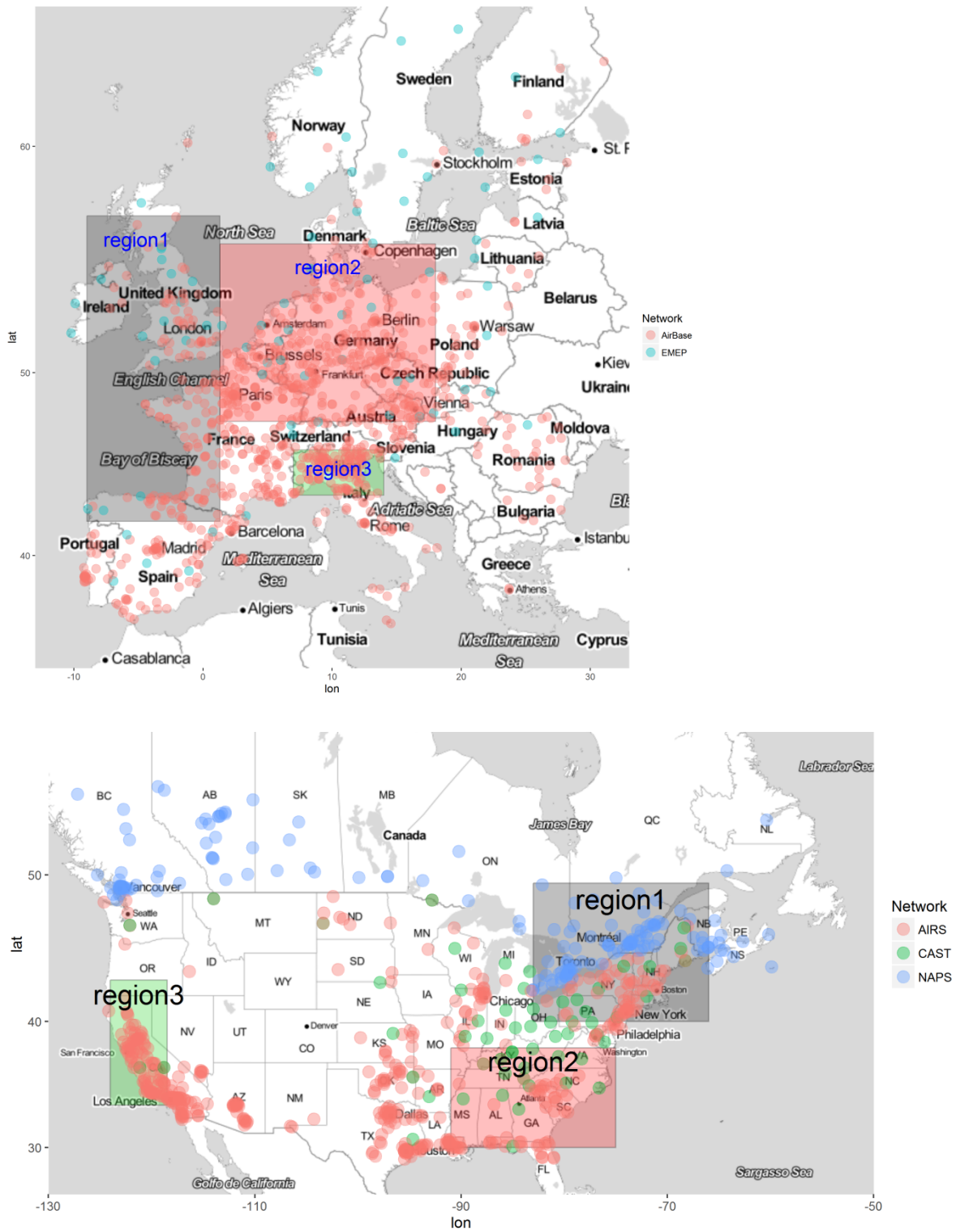
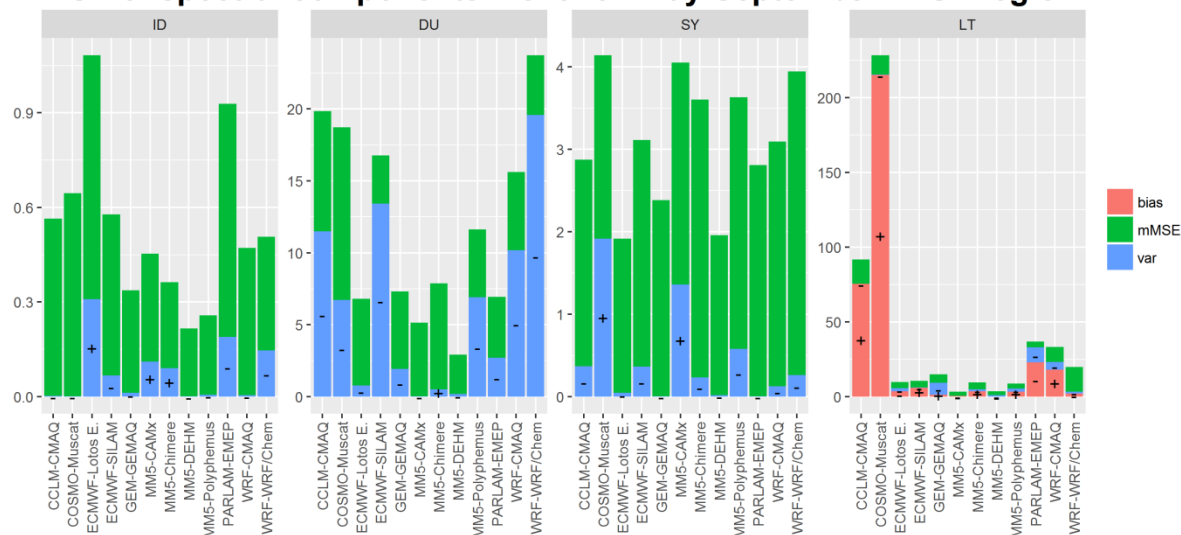


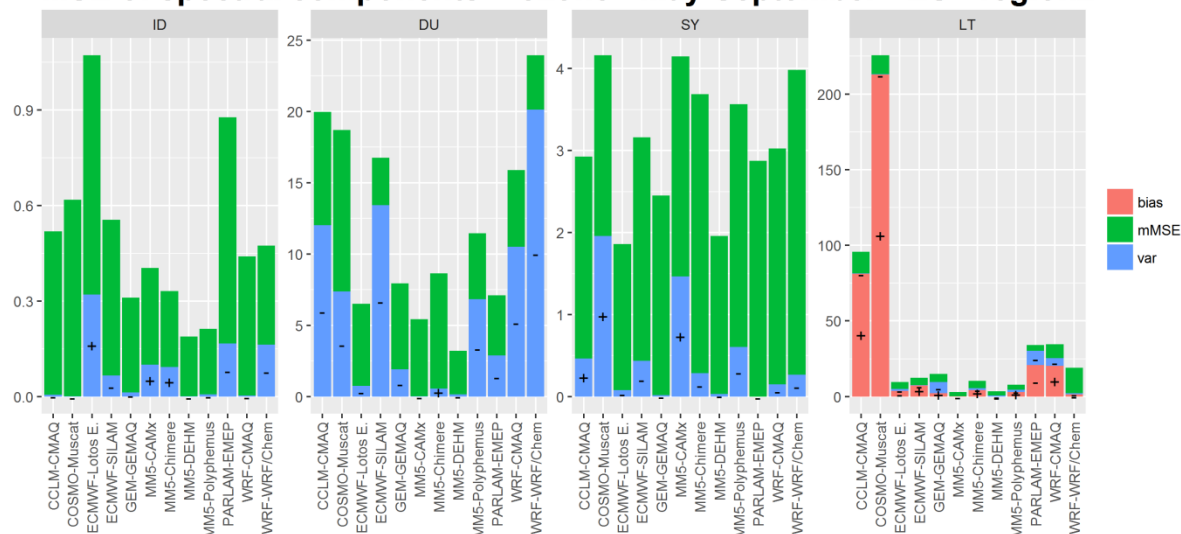
FIGURE S1. Sub-regions of the two continental domains a) EU, and b) NA. Overlaid are the ozone monitoring stations for the year 2010 classified based on the network.

AQMEI1 - EUROPE

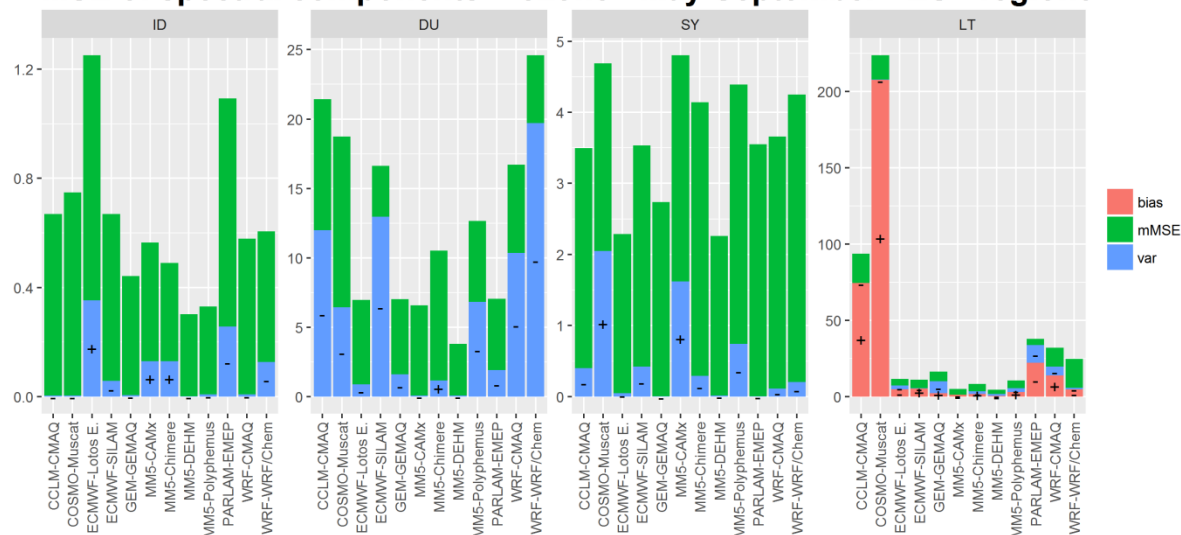
MSE of spectral components - ozone - May-September - EU - region1



MSE of spectral components - ozone - May-September - EU - region2



MSE of spectral components - ozone - May-September - EU - region3



AQMEI1 - North America

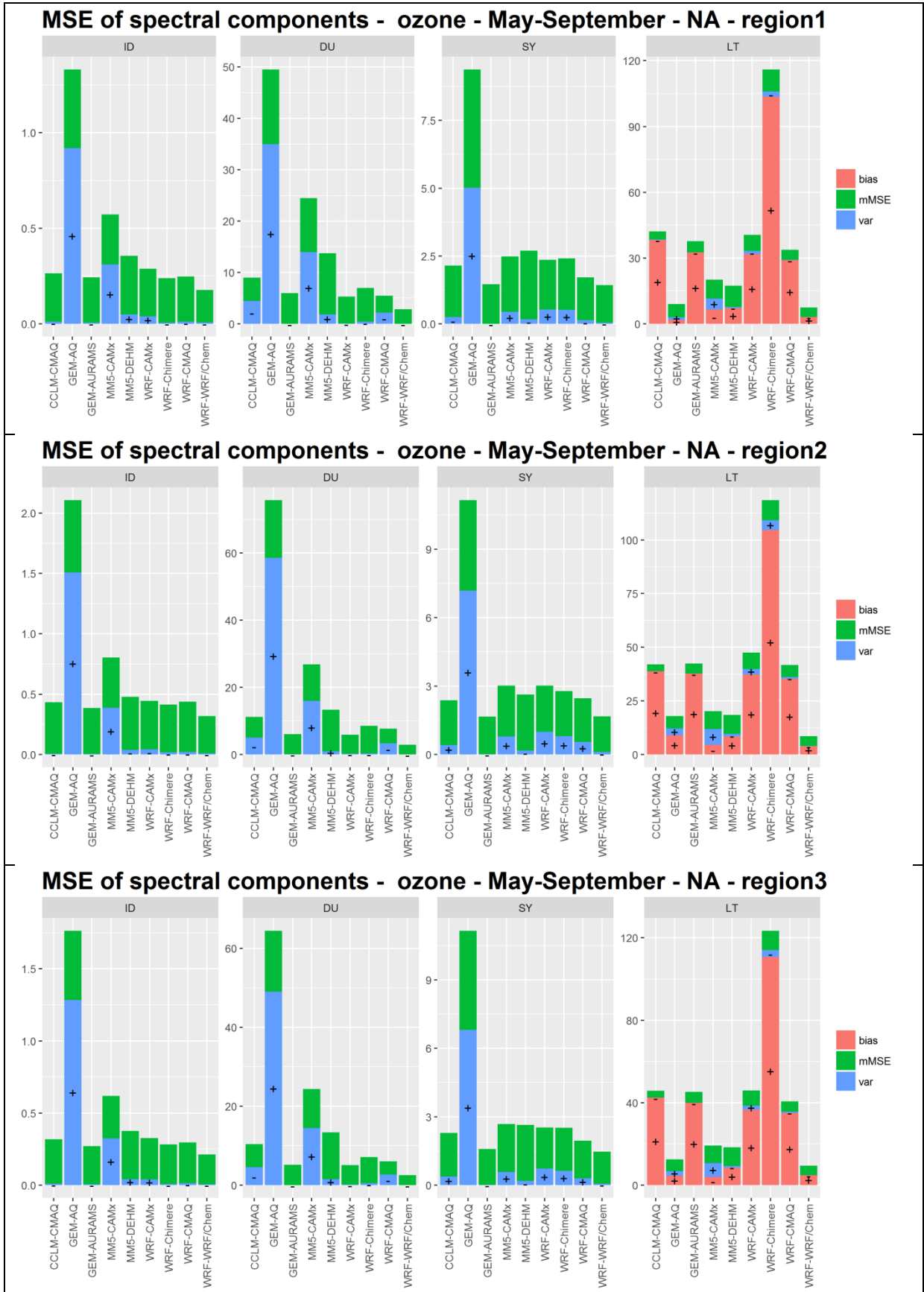
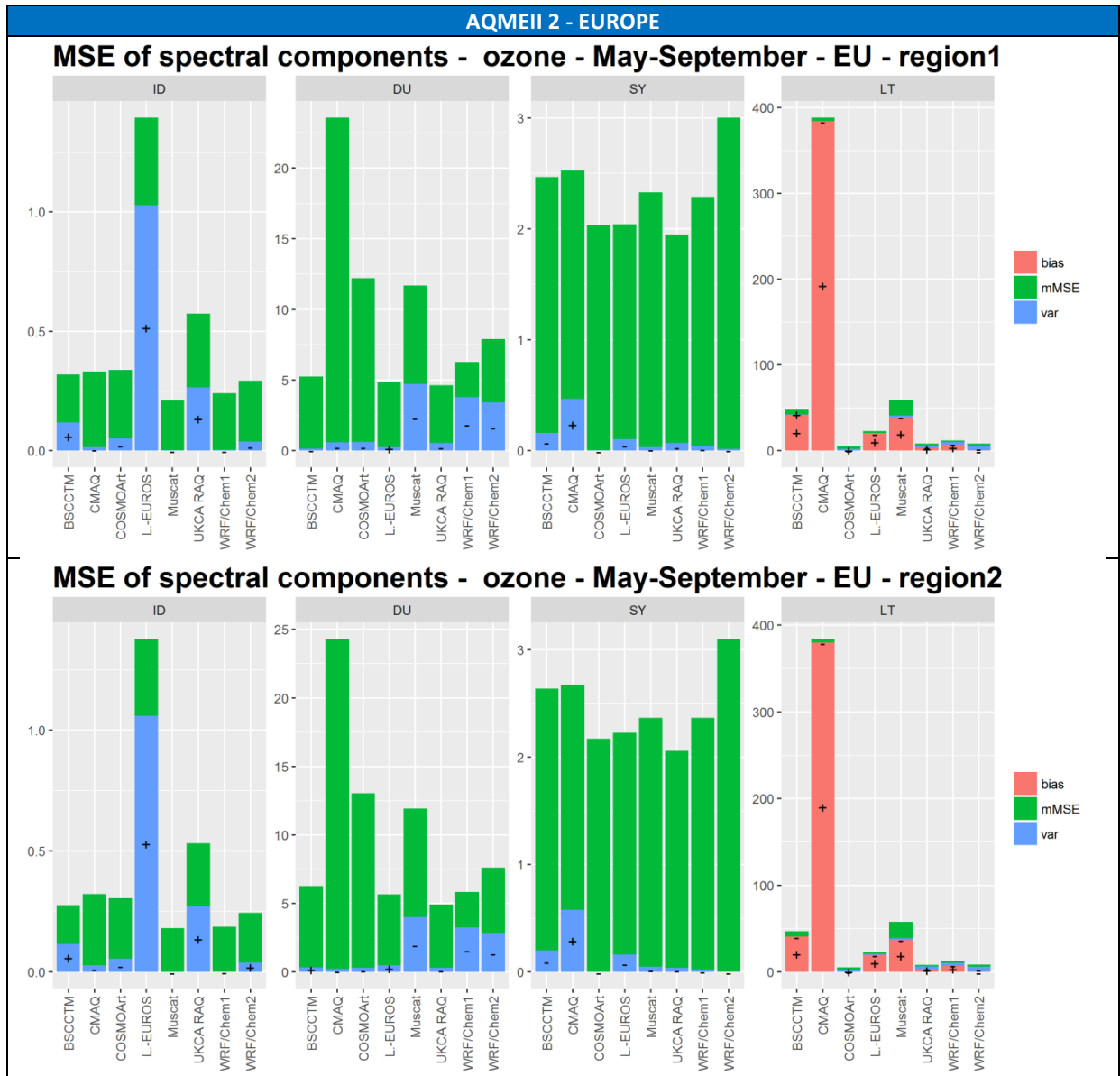
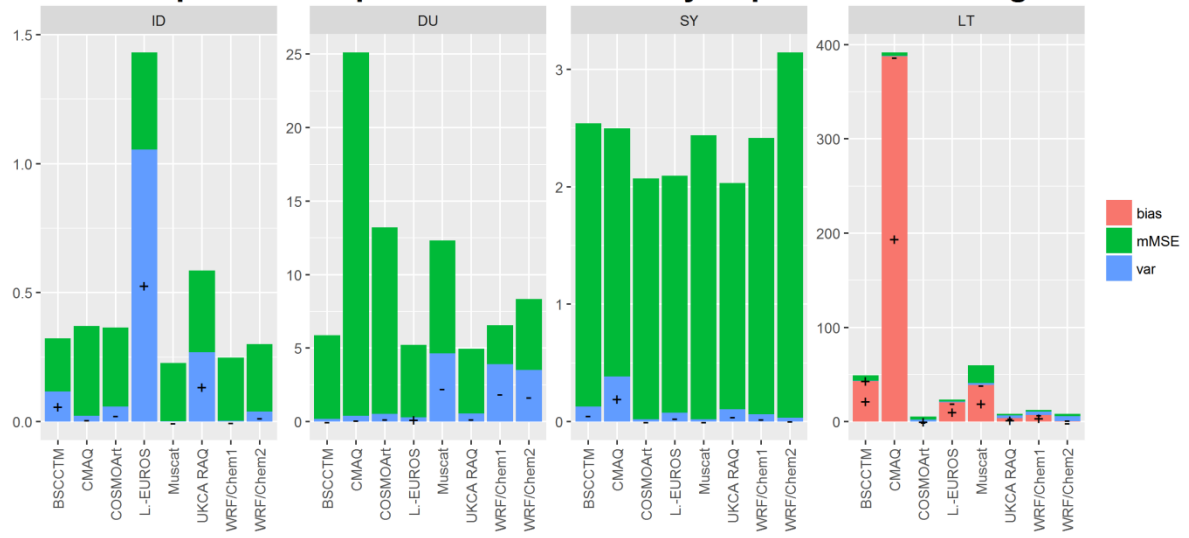


FIGURE S2. MSE (ppb²) breakdown in bias, variance and mMSE of the spectral components ID, DU, SY, LT (based on Eq 9) for the models of AQMEI11 and the three sub-regions of FIGURE S1. The sign within the share of bias and variance indicates

model overestimation (+) or underestimation (-) of mean concentration (bias) and variance. Top three panels: EU; lower three panels: NA.

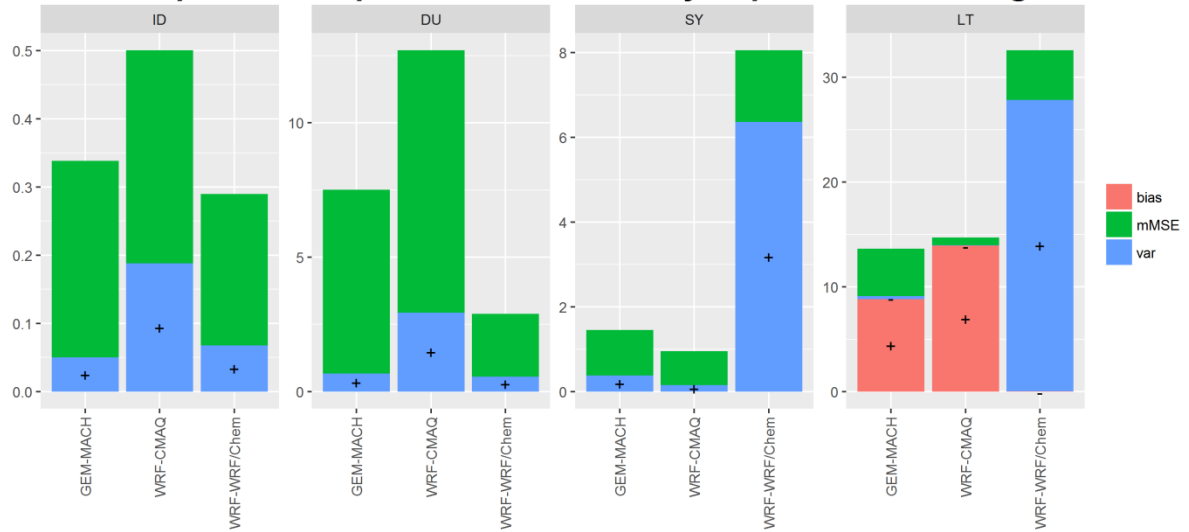


MSE of spectral components - ozone - May-September - EU - region3

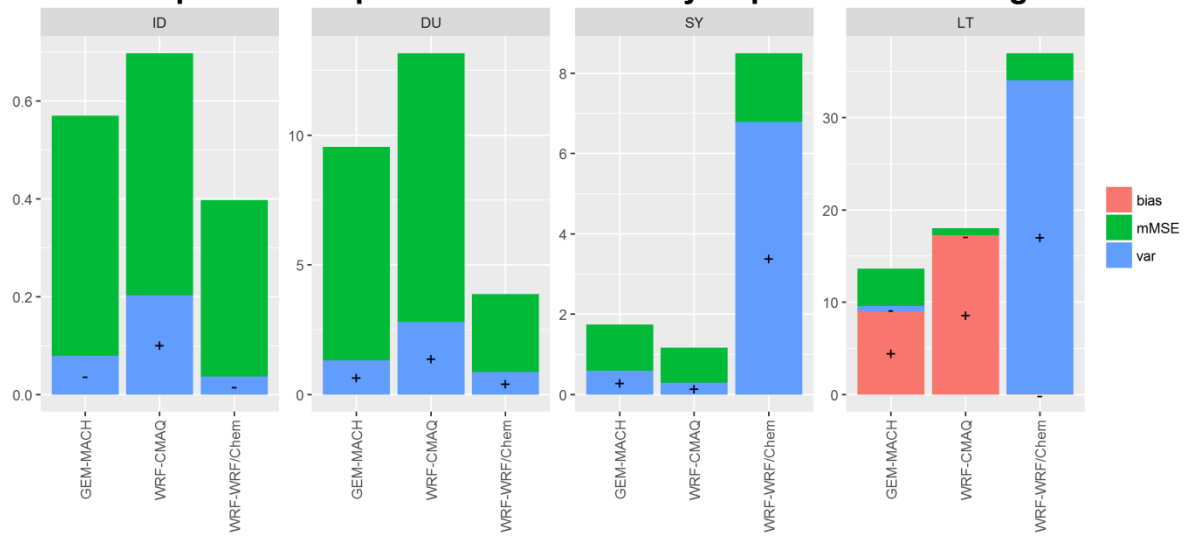


AQMEII 2 – North America

MSE of spectral components - ozone - May-September - NA - region1



MSE of spectral components - ozone - May-September - NA - region2



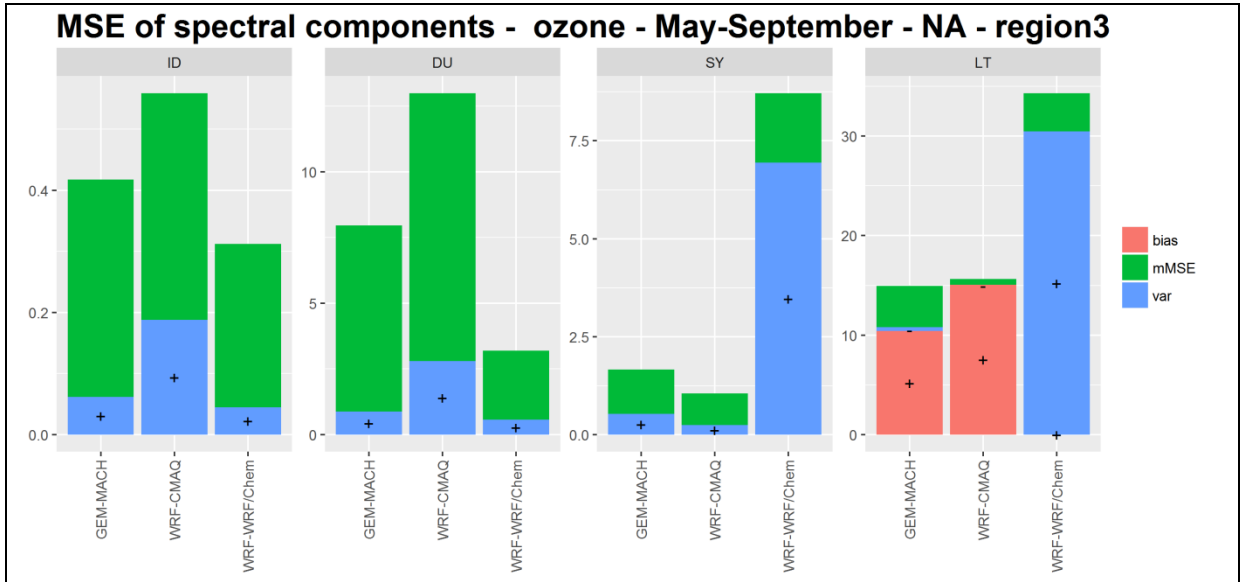
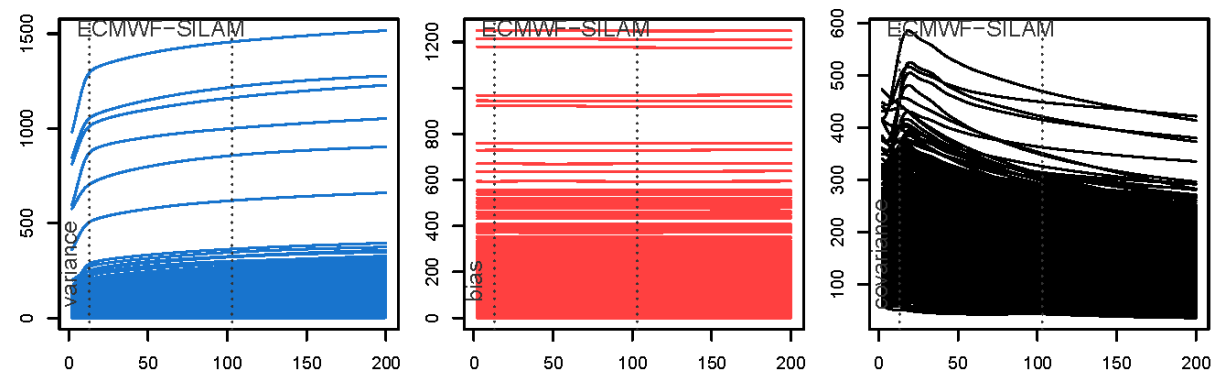
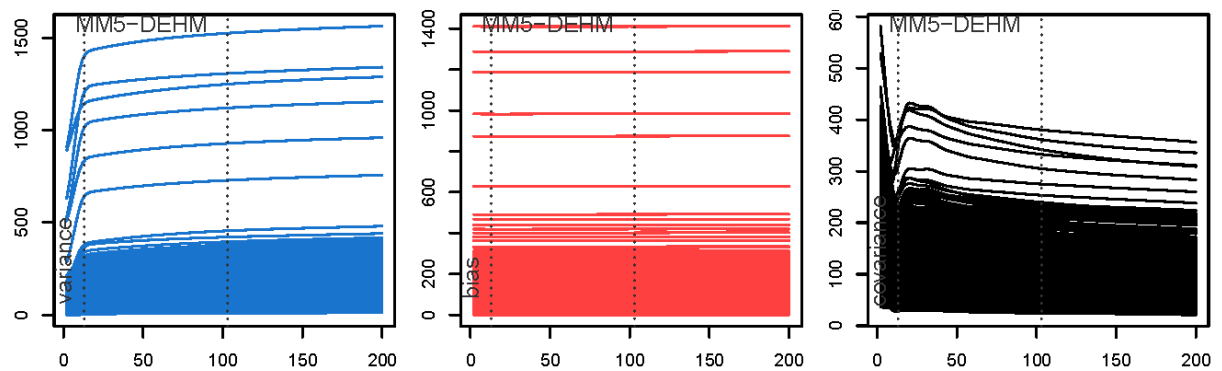
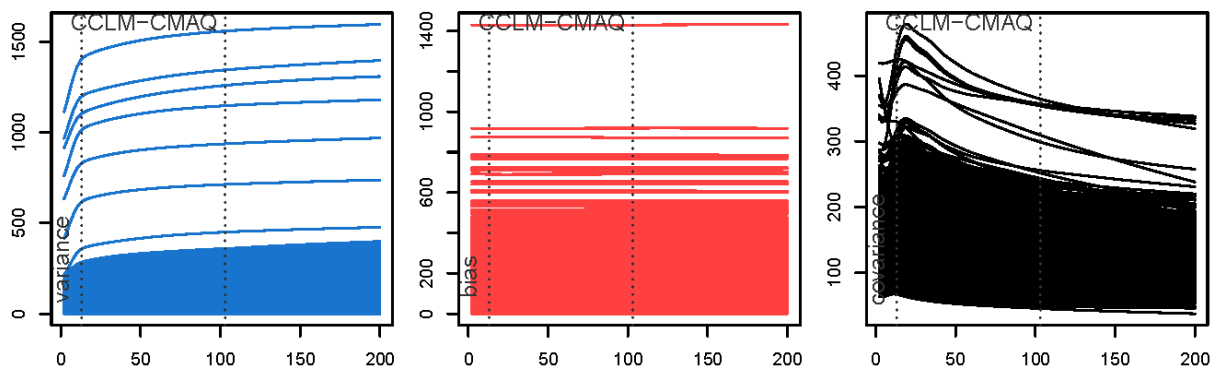
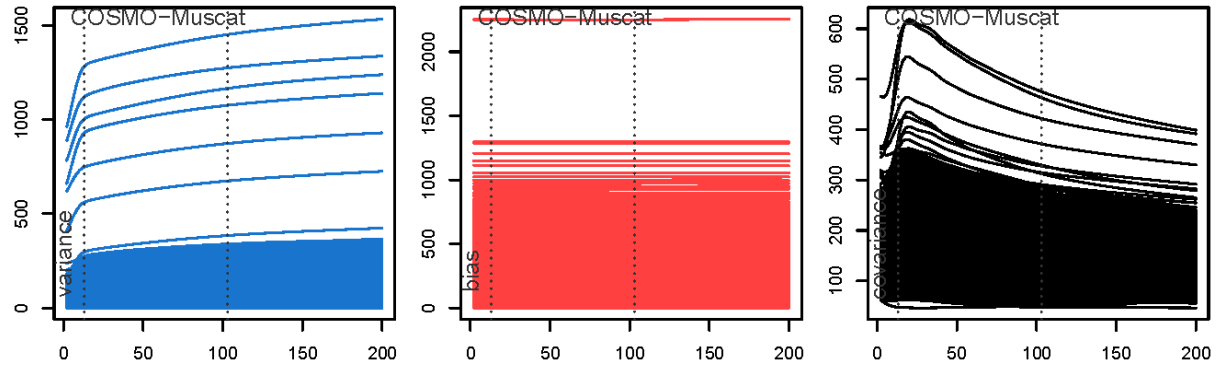
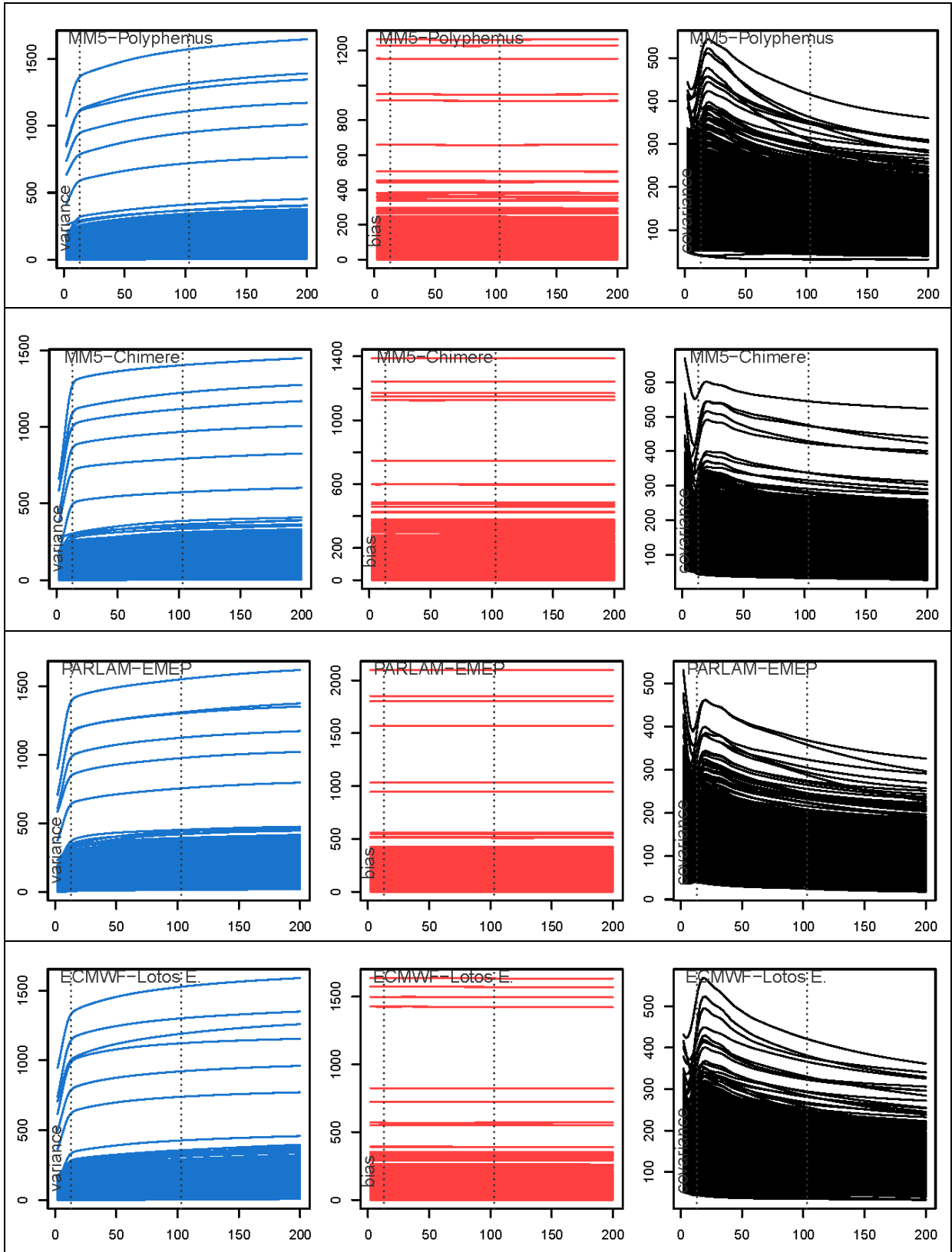
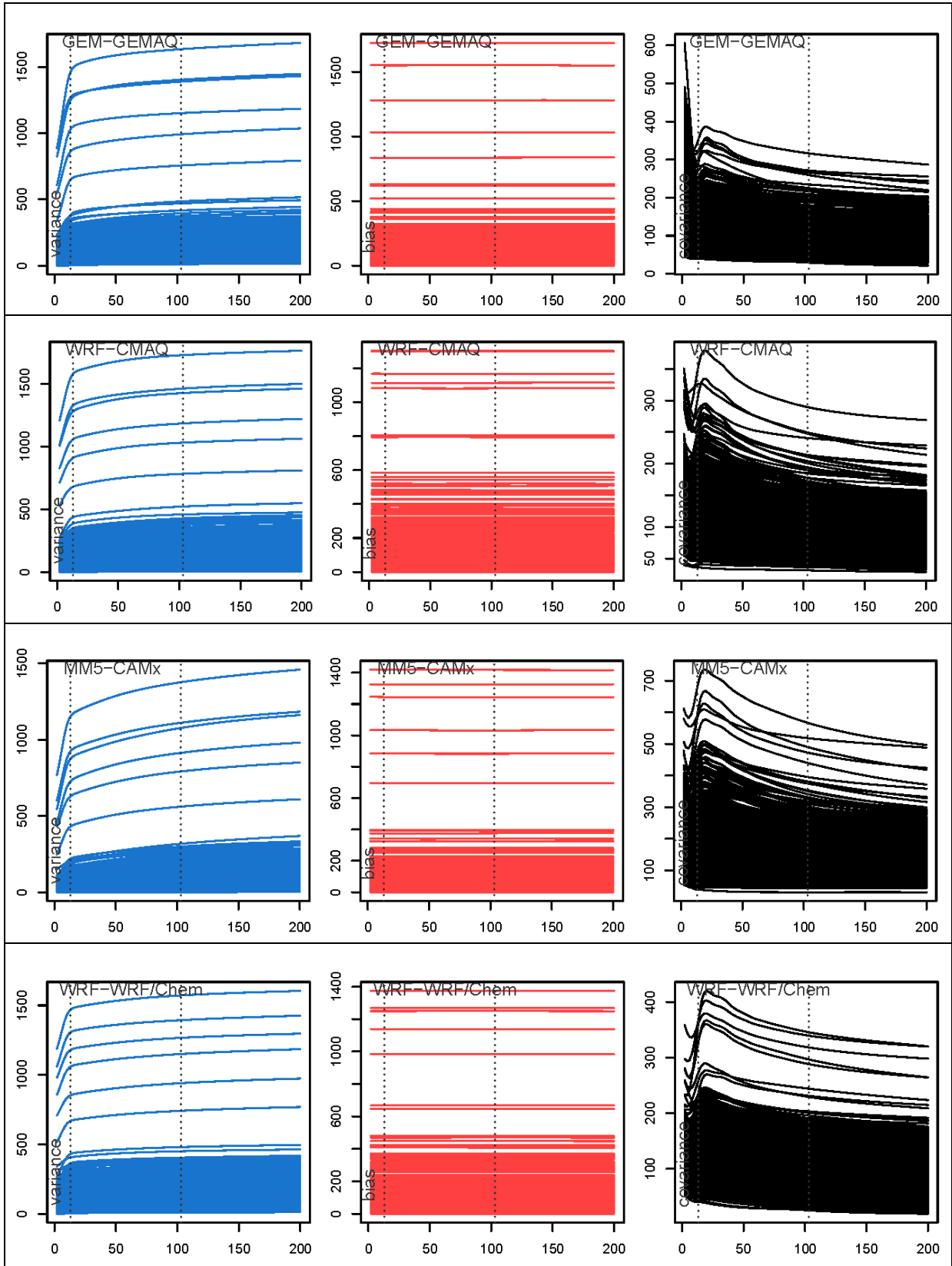


FIGURE S 3. As in Figure S2 for the models of AQMEI12.

AQMEII 1 – EUROPE - OZONE (MAY-SEPTEMBER 2006)







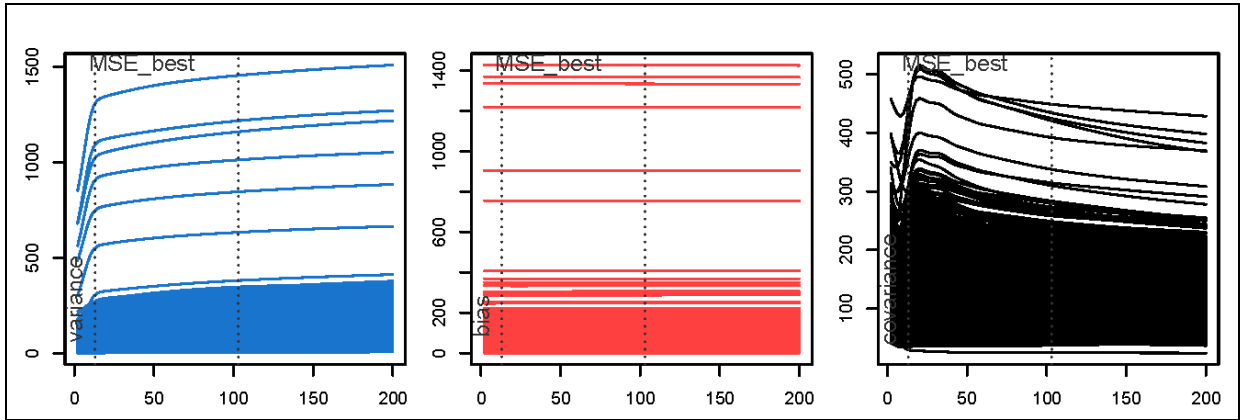
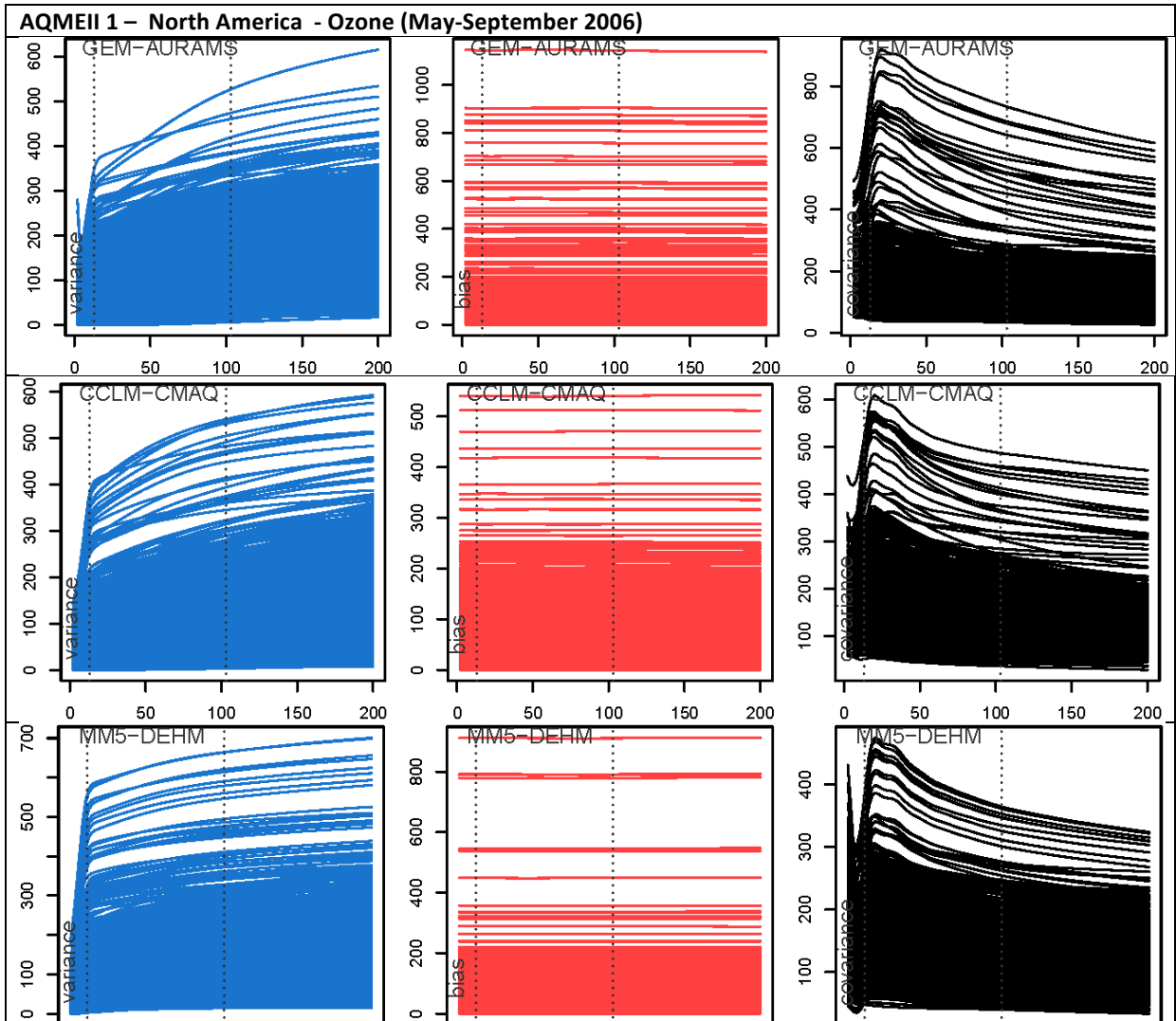
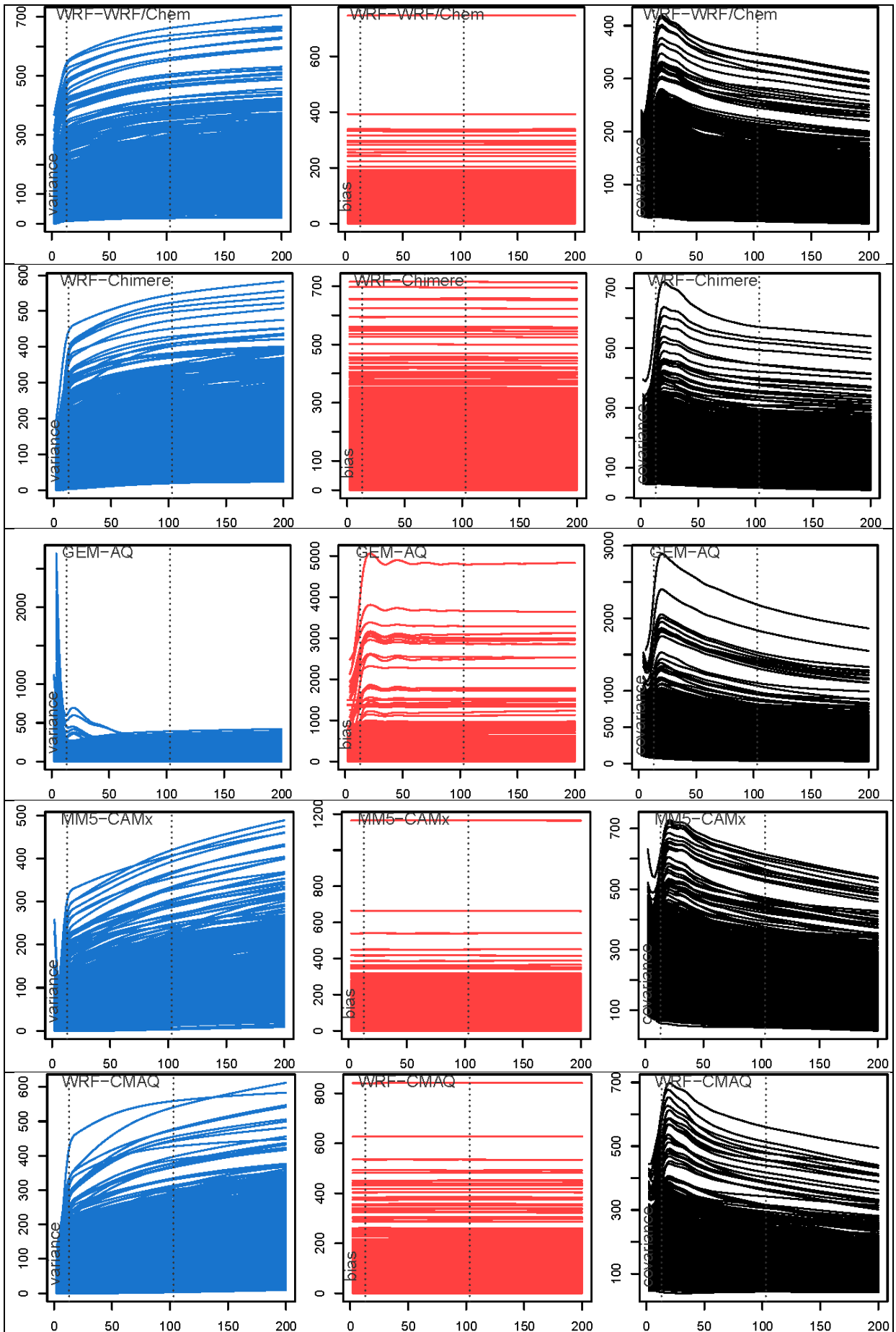


FIGURE 54. Variance (left column), Bias (central), and Covariance (right) for each modelling system and at all receptors as function of model complexity (decreasing from left to right on the horizontal axis). Vertical dotted lines represent the separation scale between SY and LT (103) and between ID and DU (13). Vertical axis is in ppb^2





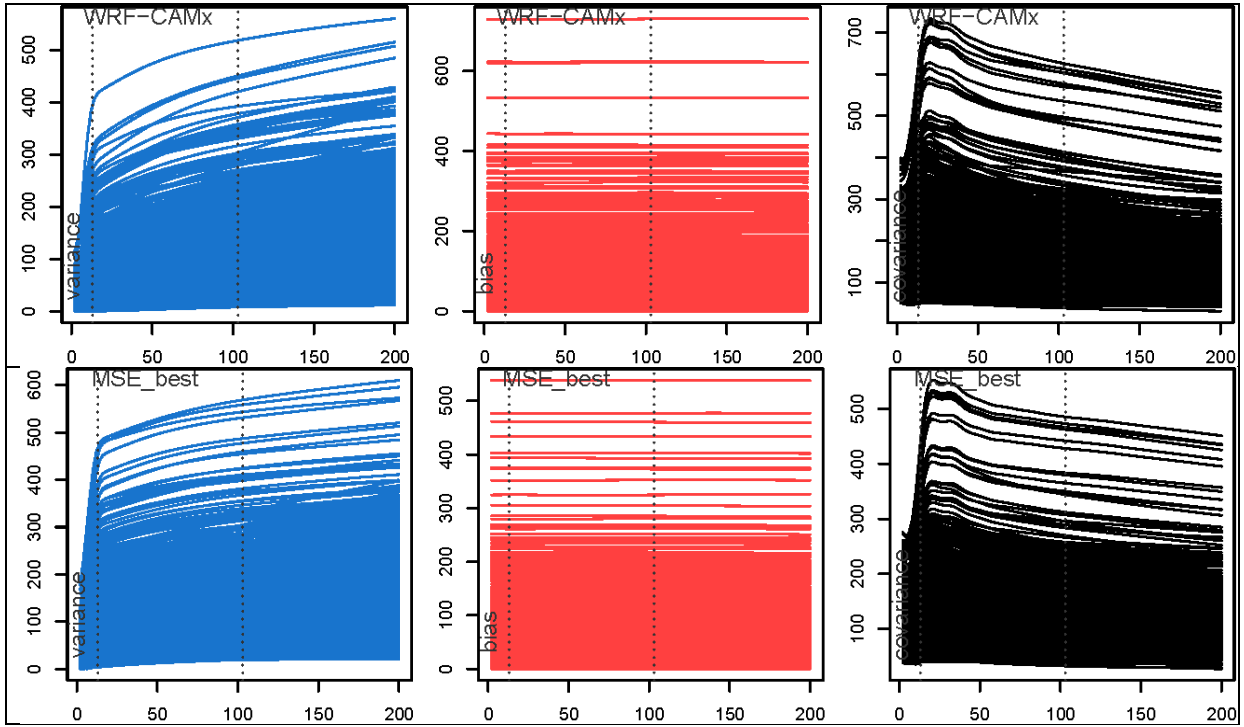
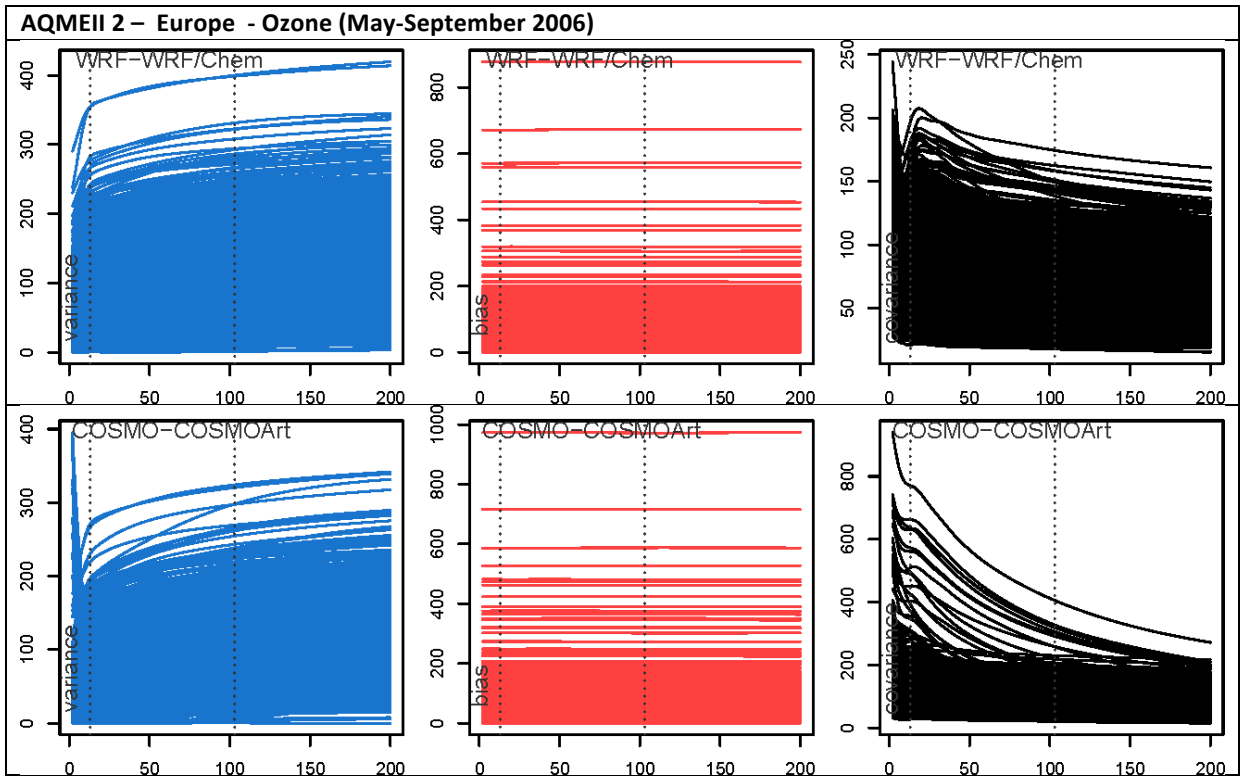
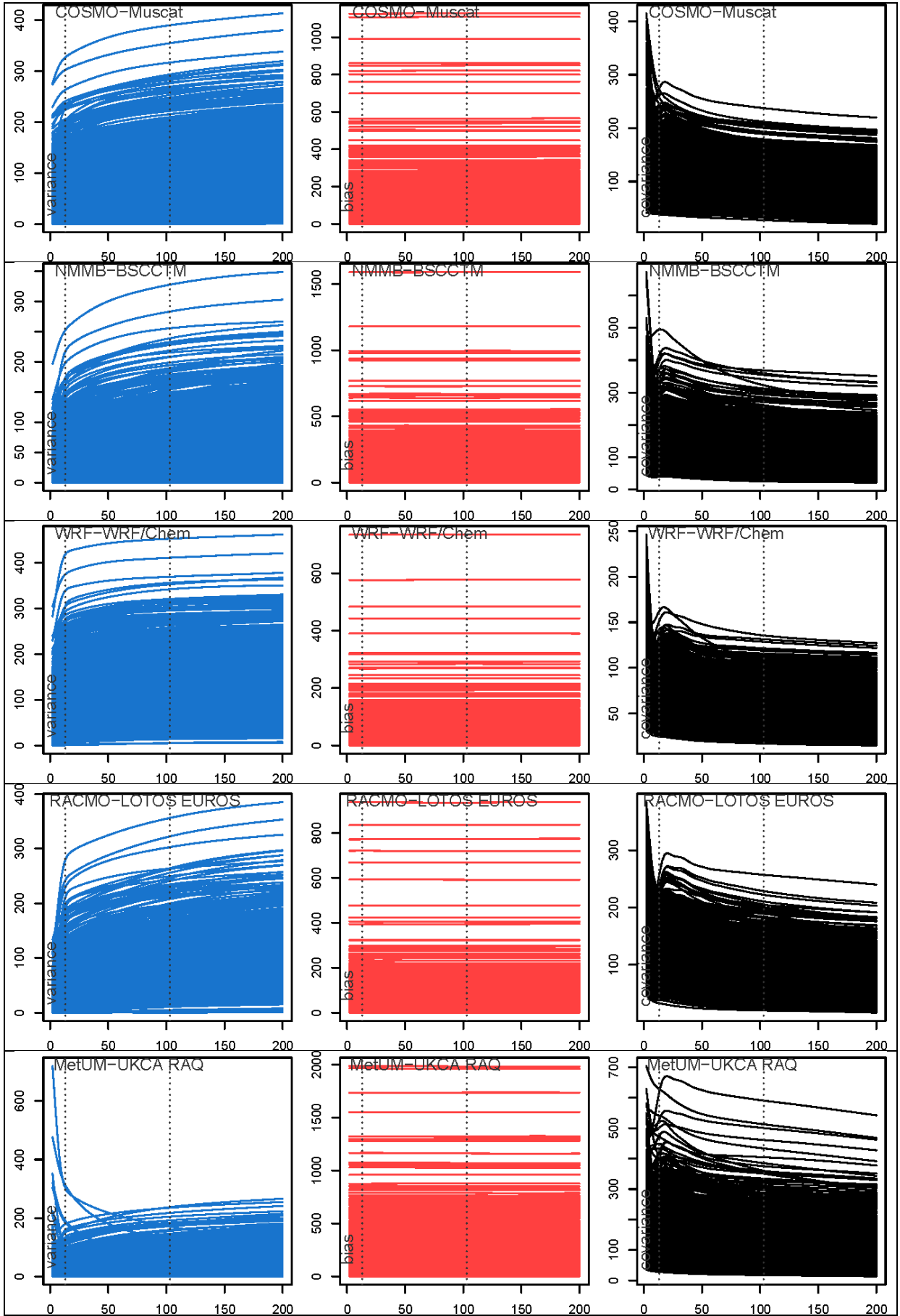


Figure S 5. As in Figure S4 for AQMEI1 - NA





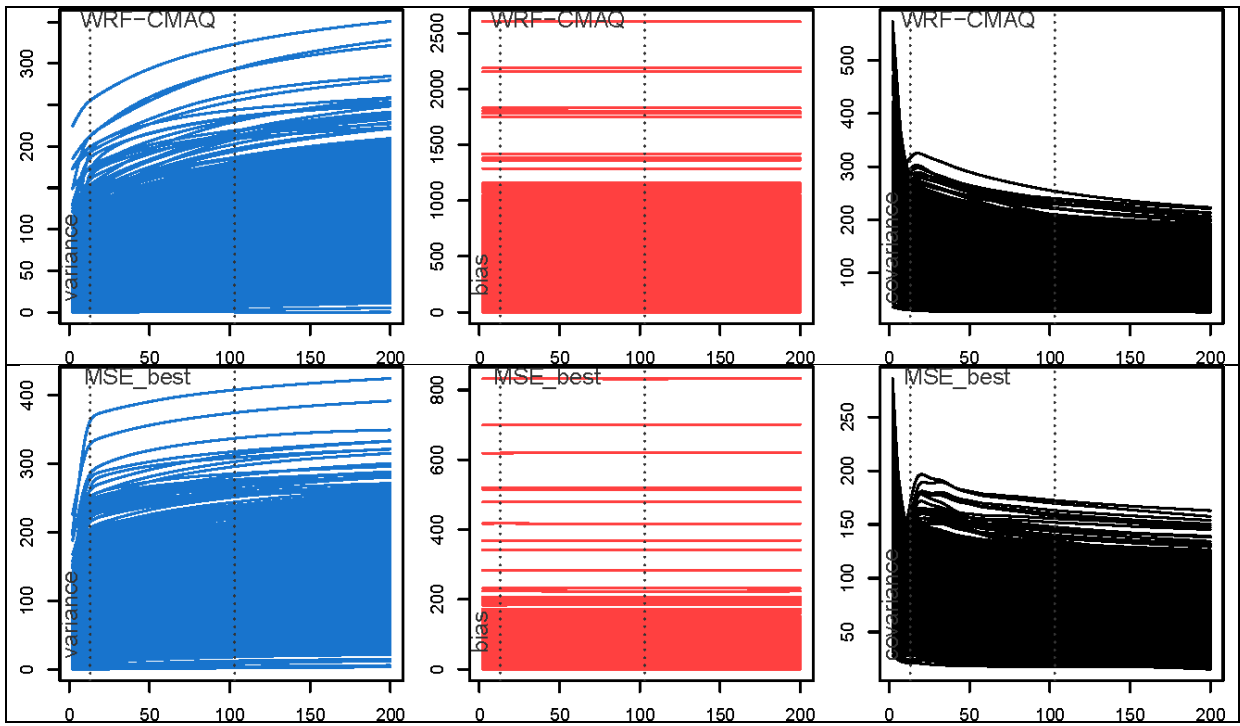
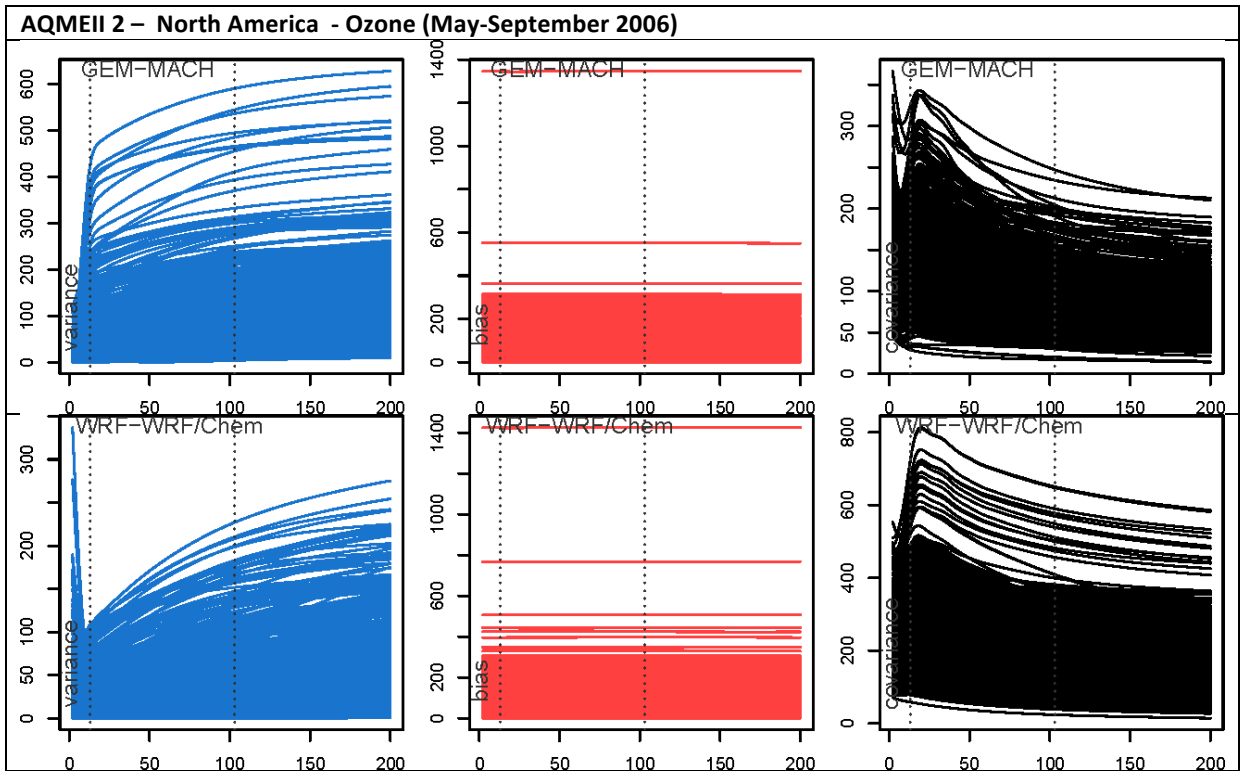


FIGURE S6. As in Figure S4 for AQMEII2 - EU



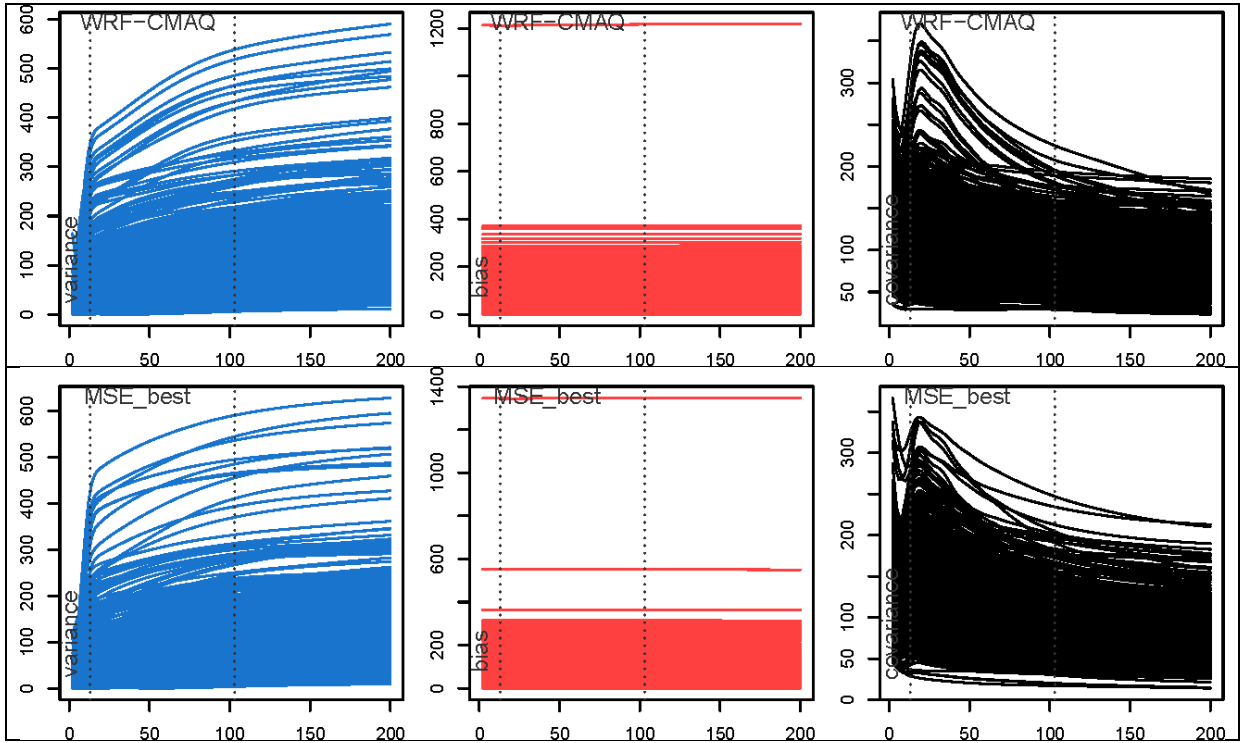


FIGURE S7. As in Figure S4 for AQMEI12 - NA