

Responses to reviewers

Anonymous Referee #1

We thank the reviewer for the positive review and the careful reading of the manuscript. The comments are addressed below in italic.

5

I have reviewed the article "Ice nucleation efficiency of AgI: review and new insights" by Marcolli et al. This article covers literature dating back to the 1960s on ice nucleation on AgI. The article focuses on the molecular level processes that may cause AgI to be an efficient ice nucleus. The article is timely, in that there is increasing interest in the processes that lead to efficient ice nucleation, and it would be of great interest to the readers of Atmos. Chem. Phys. I have a number of minor suggestions for authors to consider, which are listed below:

10

pg 2 line 7: It is interesting that condensation freezing is considered separately from immersion. To what extent does condensation freezing have a different efficiency than immersion? Can it also take place below water saturation, like deposition nucleation?

15

Condensation freezing occurs concurrent with the activation of a particle to a cloud droplet and its efficiency might be different from the one of immersion freezing. A definition of condensation freezing is also given in Vali et al. (2015). Although it is not clear whether immersion and condensation freezing have different efficiencies, these two modes are usually discriminated. We added a section in the revised manuscript that describes the different modes of heterogeneous ice nucleation.

20

pg 2 line 32: Is having a defect enough even if none of these "requirements" are met?

It is hard to imagine a defect that does not influence surface charge, polarizability, hydrogen bonding or van der Waals interactions. Therefore, when there is a defect, at least some of these properties change.

25

pg 2 line 31: It's odd to refer to these as requirements. Are they requirements, or simply properties that promote ice nucleation?

25

We agree that "requirements" might be a too strong expression in this context and replace it by "properties".

pg 3 line 28: You should specify if the symbols in Fig 1 are filled or open.

They are filled. This is now stated in the text of the revised manuscript.

30

pg 4 line 6: What is meant by "adsorb iodide ions on the surface"? Does it mean that iodide in the solution is surface active or something else?

This is explained in Appendix B3: "Because of the better solubility of Ag⁺ compared to I⁻, a neutral AgI crystal will be negatively charged in water or aqueous solutions." Surface activity is not meant. To make this clearer, we replace "adsorb" by "enrich".

35

Fig. 1: Indicate that the orange circles and triangles overlap.

This is done in the revised manuscript.

pg 11 line 25: If AgI particles stay on the surface of the droplets during immersion freezing, how is an "inside-out" contact freezing mechanism being separated from immersion freezing?

40

In continuous flow diffusion chambers, particles freely float in a droplet and can take a position on the droplet surface or immersed in the droplet depending on the balance of interfacial and surface forces. Therefore, an experiment that is intended to study immersion freezing can turn into a contact freezing experiment. This circumstance has not gained much attention yet. To determine whether immersion or contact freezing inside-out is at work, the position of the particle in or on the droplet must be derived based on the wetting behavior of the particle. This is discussed in more detail in the companion paper

by Nagare et al. (2016).

pg 11 line 1: A reference is needed here. Water molecules at the interface participate in fewer H-bonds and therefore may have greater mobility. In polymers for example, there is greater mobility at the air-polymer interface than in the bulk of the polymer.

5 *The reference is Taylor and Hale (1993).*

pg 12 line 13: Why should the amount of water adsorbed on a surface at a given RH matter for immersion freezing, where the nucleation presumably takes place at a location on the heterogeneous nucleus inside the water droplet?

10 *If ice nucleation happened on the surface that is totally immersed in water, RH should not matter. However, the studies compiled in Fig. 1 show that freezing temperatures are higher for setups where the particle can access the water surface compared with experimental arrangements where the droplet is immersed in or covered with oil. This indicates that freezing is not occurring on the surface that is totally immersed in water but either on the contact line to air or in water patches on the surface exposed to air. Water patches on the surface are indeed influenced by RH.*

15 pg 12 line 15: I do not understand this result for condensation freezing. Again, the surface is immersed in a solution in this mechanism, so it is hard to believe that surface adsorbed water due to RH has an effect. Activation may mean that the solution is most dilute, allowing freezing to occur.

The argumentation is based on the assumption that ice nucleation occurs on water patches on the surface exposed to air.

20 pg 12 line 31: Why is the observed dissolution greater for the contact freezing experiment (with the same particle diameter)? Also, is this mobility diameter?

25 *The particle diameter is the same but the droplet diameter is different. Droplets in IMCA/ZINC are 18 – 20 μm in diameter, the ones in CLINCH are 80 μm in diameter. Therefore, dissolution is greater for the contact freezing experiment in CLINCH than for the immersion freezing experiment in IMCA/ZINC. The particles are size selected according to mobility diameter.*

pg 13 line 17: As long as the surface is dissolved, the ice nucleation activity should be reduced according to the arguments in this section. Why should the amount of dissolution matter? Do you suspect that at 0.04% dissolution the surface is not fully dissolved? Are these arguments consistent with the comparison of the two particle sizes?

30 *The amount of dissolution should not matter but it should matter whether a particle is in the process of dissolving, because the surface should be different for a dissolving particle that is not in equilibrium with the surrounding solution compared with a particle that has reached or almost reached equilibrium with the solution. Equilibrium is reached or almost reached in the case of the immersion freezing experiments because activation to a water droplet occurs already in the IMCA section at warmer temperature. In the CLINCH experiment, a particle that collided with a droplet is continuously dissolving while it passes through the chamber. This is explained in Appendix B6.*

35 pg 14 line 8: Why does the addition of AgCl increase the ice nucleation activity? (This is stated in the conclusions, but it should be stated here as well.)

40 *In the presence of AgCl, AgI-AgCl solid solutions are formed, which have a better lattice match with ice than pure AgI. This is discussed in Sect. 3.3. We now mention this in the revised manuscript and refer to Sect. 3.3.*

Fig. A2: SAED diffractograms would be interesting to report to see the amount of different polymorphs in your sample. Were these taken?

No, we just measured XRD diffractograms of the bulk sample that revealed a mixture of the β - and the γ -

phase.

Wording/Grammar: pg 3 line 9: "Such an analysis should also allow us to identify factors" *Done*

pg 6 line 27: "They noted that a supersaturation of 20%...." *Done*

pg 8 line 29 & 30: For Miller indices, it is more typical to write 001 with a bar over the 1 rather than 00-1. *Done.*

pg 10 line 21: What is meant by "in sum"?

"in sum" is misplaced. We rearranged the text and put it in front of "to low configurational entropy"

pg 15 line 14: change "with different shares" to "in different proportions" *Done*

Reference:

Vali, G., DeMott, P. J., Möhler, O., and Whale, T. F.: Technical Note: A proposal for ice nucleation terminology, Atmos. Chem. Phys., 15, 10263–10270, doi:10.5194/acp-15-10263-2015, 2015.

Anonymous Referee #2

We thank the reviewer for the careful reading of the manuscript and the suggestions for improvement. The comments are addressed below in italic.

General comment:

The paper summarizes results about the ice nucleating efficiency of silver iodide in different modes obtained by various experimental techniques. Studies from several decades are summarized and explanations about the reasons of the efficient ice nucleating ability of silver iodide are described in molecular levels. Such a review gives important scientific insights and findings and is of high scientific relevance.

However, representing such a review is not a trivial task. The descriptions of the utilised techniques are not given in a way that the reader could easily follow (which is, of course, a challenge). I see some weaknesses in defining the different ice nucleating processes in their differences. The discussion about the stochastic nature of freezing processes and the neglecting of time dependence should be more detailed. Furthermore, I find

it critical that the paper mixes the review of previous findings with new experimental results which have not been published elsewhere. This should be treated separately in the paper, such as starting with an experimental part with new results, and then continue with the review part.

To my opinion, major revisions regarding the presentation quality are requested before publishing the manuscript in APC.

We improved the structure of the manuscript as suggested by the reviewer and added a paragraph at the end of the introduction to outline the structure to the reader.

Specific comments

1. The paper should be rearranged so that previous findings are clearly separated from new experimental results which have not been published elsewhere, such as starting with an experimental part with new results, and then continue with the review part.

We moved the Appendix A1 to the main text as an experimental part and rearranged the main text as

suggested.

2. Clear definitions of the treated freezing modes should be given in a section in the Review part.

We added Sect. 3.1 (Modes of heterogeneous ice nucleation) to the revised manuscript.

3. The descriptions of the utilised techniques should be completely reworked. Maybe it would be better not to describe too many details in the text which are listed in the tables.

We carefully went through the text and improved it.

4. In the text the use of the terms ice nuclei and IN, ice nucleating particles and INP is not consistent. Please correct this.

In the revised manuscript, we avoid using an abbreviation.

5. Temperatures are sometimes given in °C, sometimes in K. Please change this consistently.

We converted all temperatures to Kelvin.

6. Abstract: Including full references with all details in a paper is not usual; the same is the case for including references at all in the Abstract.

We delete the references from the abstract in the revised version.

7. Abstract, page 2, line 10: Deposition freezing: What about experimental results from deposition freezing with AgI particles?

Our main focus was to compare ice nucleation efficiency at water saturation from studies performed in contact, immersion, and condensation mode. We agree that a review on ice nucleation by AgI should also treat deposition nucleation. Therefore, we added a Table 4 that summarizes studies performed in deposition mode and discuss them in more detail in the text.

8. Abstract, and Introduction, page 3: The remark that “this paper is one of three papers that present and analyse contact freezing experiments with AgI” is somehow confusing. Unpublished results should be clearly presented in the paper as suggested, previous results should be treated equally all together.

We delete the references from the abstract in the revised version.

9. Introduction, page 2, line 8: There are recent studies showing that the freezing temperature in the contact mode is dependent on the particle size, e.g., Hoffmann et al., 2013, Faraday Discuss, 165. Therefore, only for large particle sizes contact freezing temperatures are higher than for immersion freezing.

Hoffmann et al. observed a surface area dependence for contact freezing. Such a dependence is also expected for immersion freezing. Hence, freezing efficiencies in immersion and contact mode should show the same size dependence.

10. Introduction, page 2, line 15: I would suggest to start a new paragraph here.

This is done.

11. Page 3, line 21, and many other places: In the text, there is often written something like “range from x – y” or “diameters of x – y”. Please avoid using “–” in the text and write, e.g. “range from x to y”.

We changed the text as suggested.

12. Page 8, line 10: The sense of the last sentence of this paragraph is not clear.

To make the meaning of the last sentence clearer, we insert the following sentence: “Thus, the difference in temperature between a frozen fraction of 0.1 and a fully frozen sample is 8 K.”

13. Page 8, line 14: What is meant by “even stronger dependence”?

We add to the sentence: “An even stronger dependence of freezing temperature...”

14. Page 10, line 27: Please reformulate the sentence “simulations ... were able to simulate ...”.

We reformulated this sentence: “In agreement with this, Fraux and Doye (2014) and Zielke et al. (2015) were able to simulate ice growth ...”

5 15. Page 11, Section 3.4, and other places: Please replace “totally” by “completely” or “entirely”.

We replaced “totally” by “completely”.

16. Figure 1: At least some short explanations of the symbols included directly in the figure would help the reader.

We inserted a legend to the right of the Figure in the revised manuscript.

10

Manuscript with changes marked:

Ice nucleation efficiency of AgI: review and new insights

Claudia Marcolli^{1,2}, Baban Nagare¹, André Welti^{1,3}, Ulrike Lohmann¹

¹Institute for Atmospheric and Climate Science, ETH Zurich, Zurich, Switzerland

15 ²Marcolli Chemistry and Physics Consulting GmbH, Zurich, Switzerland

³Leibniz Institute for Tropospheric Research (TROPOS), Leipzig, Germany

Correspondence to: C. Marcolli (claudia.marcolli@env.ethz.ch)

Abstract. AgI is one of the best investigated ice [nucleating substances](#). It has relevance for the atmosphere since it is used for glaciogenic cloud seeding. Theoretical and experimental studies over the last sixty years provide a complex picture of silver iodide as ice nucleating agent with conflicting and inconsistent results. This review compares experimental ice nucleation studies in order to analyse the factors that influence the ice nucleation ability of AgI. ~~We have performed experiments to compare contact and immersion freezing by AgI. This is one of three papers that describe and analyse contact and immersion freezing experiments with AgI. In Nagare et al. (Nagare, B., Marcolli, C., Stetzer, O., and Lohmann, U.: Comparison of measured and calculated collision efficiencies at low temperatures, Atmos. Chem. Phys., 15, 13759–13776, doi:10.5194/acp-15-13759-2015, 2015) collision efficiencies based on contact freezing experiments with AgI are determined and compared with theoretical formulations. In a companion paper, contact freezing experiments are compared with immersion freezing experiments conducted with AgI, kaolinite, and ATD as ice nuclei.~~ The following picture emerges from this analysis: The ice nucleation ability of AgI seems to be enhanced when the AgI particle is on the surface of a droplet, which is indeed the position that a particle takes when it can freely move in a droplet. Ice nucleation by particles with surfaces exposed to air, depends on water adsorption. AgI surfaces seem to be most efficient at nucleating ice when they are exposed to relative humidity at or

20

25

30

even above water saturation. For AgI particles that are ~~totally~~[completely](#) immersed in water, the freezing temperature increases

with increasing AgI surface area. Higher threshold freezing temperature seem to correlate with improved lattice matches as can be seen for AgI-AgCl solid solutions and $3\text{AgI}\cdot\text{NH}_4\cdot 6\text{H}_2\text{O}$, which have slightly better lattice matches with ice than AgI and also higher threshold freezing temperatures. However, the effect of a good lattice match is annihilated when the surfaces have charges. Also, the ice nucleation ability seems to decrease during dissolution of AgI particles. This introduces an additional history and time dependence for ice nucleation in cloud chambers with short residence times.

1 Introduction

Cloud glaciation is an important process that influences cloud optical properties, cloud lifetime, and precipitation. While cloud droplets freeze homogeneously below about 237 K, ice nucleating particles are needed to freeze droplets at higher temperatures. ~~Different modes of ice nucleation are discriminated. Probably the most important process is immersion freezing where an INP immersed in a water or solution droplet initiates freezing. Similar to this mode, condensation freezing denotes ice nucleation that occurs concurrent with the activation of an INP to a cloud droplet. Originally, contact freezing referred to freezing initiated by the collision of an aerosol particle with a supercooled droplet (Ladino Moreno et al., 2013). The importance of the collision in the process of contact freezing was challenged by Durant and Shaw (2005) who observed that freezing efficiency is also enhanced when the nucleating particle does not collide with the droplet but is partially immersed in it. To discriminate this nucleation process from traditional collisional contact freezing, it is termed contact freezing inside-out (Durant and Shaw, 2005; Shaw et al., 2005; Fornea et al., 2009; Murray et al., 2012; Gurganus et al., 2013; 2014). Immersion, condensation, and contact freezing are considered different mechanisms of ice nucleation because there is some evidence that they occur with different efficiencies. A number of laboratory studies suggests that droplets freeze at higher temperature in contact mode than in immersion mode (Ladino Moreno et al., 2013). However, many of these studies were not well constraint in terms of the number of collisions between particles and droplets (Ladino Moreno et al., 2013). Deposition nucleation is considered to be different from these three processes because it takes place below water saturation when ice nucleates on a substrate from vapor with no liquid water involved. This conception was recently challenged by Marcolli (2014) who hypothesized that at conditions below water saturation, liquid water condenses in pores because of the inverse Kelvin effect (Sjogren et al., 2007) and freezes eventually by immersion nucleation or homogeneously when the temperature is low enough.~~

When Vonnegut (1947) observed that a piece of silver iodide is able to freeze liquid water below -3.5°C 269.65 K , he attributed this high ice nucleation ability to the close fit between the crystal lattices of ice and AgI. However, the importance of lattice match was questioned thereupon because ice seems to nucleate preferentially at steps on the silver iodide surface and the hexagonal pattern only appears when the growing ice crystal has gained some size (Zettlemoyer et al., 1961). Crystals such as cadmium sulfide (CdS), quartz, indium antimonide (InSb), and barium fluoride (BaF₂) are ineffective as ice nuclei despite similar lattice spacing with ice (Edwards and Evans, 1962; Sadtchenko et al., 2002; Conrad et al., 2005). Moreover, examples of organic ice ~~nuclei-nucleating substances~~ like crystalline steroids nucleate ice almost as effectively as AgI but their crystal lattices exhibit no obvious relationship to the cell dimensions of ice (Head, 1961). The importance of lattice match was further

questioned when it was detected that the silver iodide surface is mainly hydrophobic with isolated hydrophilic patches. It was then conjectured that indeed these hydrophilic sites, which might be chemical defects, steps in the crystal lattice or hygroscopic contaminants (Corrin and Nelson, 1968; Zettlemoyer et al., 1963), are the locations where ice nucleation occurs rather than perfect faces of AgI crystals. On the other hand, the structures of some of the most efficient [IN-ice nucleating substances](#) closely match the ice lattice. Water freezes as high as -1°C [272 K](#) when covered by a monolayer of long-chain alcohols forming 2D crystals with close lattice matches to ice (Popovitz-Biro et al., 1994; Majewski et al., 1995; Zobrist et al., 2007). Ice active proteins expressed by the bacteria *Pseudomonas syringae* (*P. Syringae*) and *Erwinia herbicola*, which are ice active up to -2°C [271 K](#), possess sites with close fit to the ice lattice (Kajava and Lindow, 1993; Yankofsky et al., 1981; Govindarajan and Lindow, 1988; Budke and Koop, 2015). Therefore, a good [IN-ice lattice match with ice](#) seems to be one of the [requirements properties](#) that promotes ice nucleation, but it is certainly not the only one. Other [requirements properties](#) may be a low surface charge and large polarizability of the ice nucleating surface. Further factors are the orientation of hydrogen bonds and van der Waals interactions between the [IN-ice nucleating structure](#) and water molecules (Sadtschenko et al., 2002; Zielke et al., 2015). Fletcher (1959) pointed out that the molecular alignment of water molecules directed by hydrogen bonds must be favorable for the growth of further ice layers, otherwise, epitaxial ice growth is inhibited.

AgI has become one of the best investigated ice [nucleating agents](#). It is of relevance for the atmosphere because of its use for glaciogenic seeding of clouds to increase precipitation and to prevent hail (Silverman, 2001). Theoretical and experimental studies over the last sixty years provide a complex picture of silver iodide as ice nucleating agent with conflicting and inconsistent results. We have performed experiments to compare contact and immersion freezing yielding results contrasting with earlier studies. These new experiments are described here and in a companion paper (Nagare et al., 2016). The aim of this review is to compare experimental ice nucleation studies with AgI and to see whether seemingly conflicting results can be brought into agreement when the nucleation conditions are considered in more detail. Such an analysis should also allow [us](#) to identify factors that influence the ice nucleation efficiency of silver iodide. Moreover, this survey may show exemplarily what factors determine the efficiency of [IN ice nucleating particles](#) in general. This is one of three papers that present and analyze contact freezing experiments with AgI. In Nagare et al. (2015) collision efficiencies based on contact freezing experiments with AgI are determined and compared with theoretical formulations. In a companion paper (Nagare et al., 2016), contact freezing experiments are compared with immersion freezing experiments conducted with AgI, kaolinite, and ATD as [IN-ice nucleating particles](#).

[This review is structured as follows: in Sect. 2 new experimental results of immersion freezing with AgI are presented. Section 3 explains the different modes of ice nucleation and gives a literature review of ice nucleation studies performed with silver iodide ordered according to experimental techniques. The text is complemented by 4 tables, which summarize details of the experimental studies performed in immersion mode \(Table 1\), contact mode \(Table 2\), condensation mode \(Table 3\), and deposition mode \(Table 4\). Section 4 discusses the experimental findings with respect to factors that are supposed to influence the ice nucleation ability of AgI. The main text ends with conclusions summarizing the most important factors influencing the](#)

[ice nucleating ability of AgI and is supplemented by appendices, which summarize physical properties of AgI relevant for ice nucleation.](#)

2 A1 IMCA/ZINC experiments with AgI

5 Immersion freezing experiments were carried out with the IMCA/ZINC setup, which combines the cloud droplet activation chamber IMCA with the ice nucleation chamber ZINC (Lüönd et al., 2010). The IMCA chamber is kept at $T > 273$ K and RH up to 120 % for [cloud droplet](#) activation of all aerosol particles. The activated droplets grow to 18 – 20 μm diameter within about 10 s when they pass through the IMCA chamber. The droplets cool down on their way to the ZINC chamber, where they reach the target temperatures. The residence time in the ZINC chamber, which is kept at water saturation, can be varied between
10 1 to 21 s by changing the position of the IODE (Ice Optical Depolarization) detector (Nicolet et al., 2010) and the additional sheath air in the ZINC chamber (see Welti et al., 2012).

A suspension of AgI particles was prepared by mixing 0.1 M KI and AgNO_3 solutions in Milli-Q water (18.2 M Ω). Particles were generated by atomizing the produced suspension and subsequently dried (as described in Nagare et al., 2015). [Particle characterization is given in Appendix A.](#) X-ray diffractograms showed that a mixture of the β - and γ -forms precipitated, which
15 needed days to transform into the β -form. The size distribution of the AgI particles peaks at diameters of about 70 nm as shown in Fig. A1. The concentration of particles present in the Milli-Q water on the contrary peaks at 35 nm and vanishes at diameters > 100 nm. It dominates over the AgI particle concentration at diameters < 30 nm. Figure A2 shows STEM (scanning transmission electron microscopy) images of representative AgI particles. The precipitated particles are of irregular shapes and consist of conglomerates of AgI and KNO_3 .

20 In one set of experiments, particle size was varied between 20 and 400 nm for droplet residence time of 10 s. These experiments are shown in panel (a) of Fig. 1. For particles with diameters of 40 – 400 nm, median freezing was observed at ca. 264 K almost independent of particle size. For 30 nm particles, the median freezing temperature decreased to 259 K and the heterogeneously frozen fraction leveled off at ca. 0.9, indicating that 10 % of the particles did not induce ice nucleation. For particle diameters of 20 nm, most droplets froze homogeneously. Langer et al. (1978) showed that 20 nm particles produced by heating AgI induced contact freezing at 253 K. Therefore, the small size cannot be the reason why ice nucleation decreased drastically for particles < 40 nm. Indeed, comparing the size distribution obtained by atomizing the AgI suspension with the one obtained by atomizing pure Milli-Q water (Fig. A1) reveals that 30 nm diameter particles produced by atomization of the AgI suspension contained a minor fraction of particles originating from the Milli-Q water and the 20 nm size fraction is even dominated by these particles.

30 For 200 nm and 400 nm AgI particles, experiments with 3 s residence time were also carried out. This shorter residence time decreased the median freezing temperature by 1 – 2 K as shown in panel (b) of Fig. 1.

2-3 Literature review

3.1 Modes of heterogeneous ice nucleation

Heterogeneous ice nucleation may take place with the help of ice nucleating ~~particle~~substances between 237 K and 273 K in the mixed-phase clouds regime. In this regime, three pathways of ice nucleation are differentiated, namely, immersion freezing, condensation freezing and contact freezing. Probably the most important process is immersion freezing where an ice nucleating particle located within the body of a liquid particle (cloud droplet or solution particle) initiates freezing (Vali et al., 2015). Similar to this mode, condensation freezing denotes ice nucleation that is initiated concurrently with the initial formation of liquid water on a cloud condensation nucleus (CCN) at temperatures below the melting point of ice (Vali et al., 2015). These two modes of freezing are usually discriminated although it is not clear whether they indeed occur at different rates.

Originally, contact freezing referred to freezing initiated by the collision of an aerosol particle with a supercooled droplet (Ladino Moreno et al., 2013). This view of collisional contact freezing has been complemented by Durant and Shaw (2005) who found higher ice nucleation temperatures compared with the immersion mode, when an ice nucleus was in contact with the water-air interface of a droplet, from either the inside or the outside (Durant and Shaw, 2005; Gurganus et al., 2014; Fornea et al., 2009; Murray et al., 2012; Shaw et al., 2005). We refer to a contact nucleation process as adhesion freezing when the position of the particle on the water surface enhances the ice nucleation efficiency compared with immersion freezing and discriminate it from collisional contact freezing, which assumes an enhancement due to the collision of the particle with the droplet (Nagare et al., 2016, revised manuscript for ACP).

Deposition nucleation takes place when ice nucleates on a substrate directly from the gas phase with no liquid water involved. This conception was recently challenged by Marcolli (2014) who hypothesized that at conditions below water saturation, liquid water condenses in pores because of the inverse Kelvin effect (Sjogren et al., 2007) and that in most cases of ice nucleation below water saturation pore water is involved.

3.2 Ice nucleation experiments

Tables 1 - 4 compile setups and procedures of immersion, contact, condensation, and deposition nucleation experiments performed with silver iodide. The information given by the different studies is very diverse, which often limits direct comparisons. Some studies report the onset of freezing, which is usually significantly higher than a mean or median freezing temperature. The number or concentration of particles is often missing, preventing the evaluation of surface area present in a droplet. Figure 2 shows median freezing temperatures T_M for frozen fractions ranging from 0.2 to 0.8 as a function of surface area for the studies that provide enough information to determine or to estimate these quantities. The presented data is coded with respect to freezing mode (open symbols: contact freezing; filled symbols: immersion freezing) and studies (different colors and symbols). As a general trend, Fig. 2 shows an increase of T_M with increasing silver iodide surface area present per droplet. However, there are also many exceptions, showing that surface area is an important but not the only factor determining nucleation temperature. In the following subsections the experimental studies are presented sorted by experimental techniques.

3.2.1 Particles and droplets deposited on substrates

Edwards et al. (1962) investigated ice nucleation in immersion mode by monodisperse AgI particles in a cold stage (see Table 1). They prepared monodisperse AgI suspensions of single crystals with particle diameters of $0.17 \pm 0.02 \mu\text{m}$, $0.75 \pm 0.1 \mu\text{m}$, and $3.5 \pm 0.4 \mu\text{m}$ by slowly precipitating AgI with seed solutions containing AgI particles of different concentration, so that crystals grew on the seed particles and no nucleation took place. The larger particles crystallized as hexagonal pyramids, smaller ones were more rounded. The particles were deposited onto hydrophobic glass cover slips to which they adhered. Droplets of water or aqueous solutions were sprayed on the slips, which were then flooded with paraffin oil to prevent evaporation. The droplets contained 10^{-4} M AgNO_3 to offset the natural tendency of silver iodide prepared by this method to enrich iodide ions on the surface. The glass cover slips were cooled at a rate of 2 K/min in the cold stage and T_{50} , the temperature at which 50 % of the droplets with sizes between 30 and 60 μm had frozen, was reported. Generally, all droplets froze within about 4 K. The data from Edwards et al. (1962) given as red filled circles in Fig. 2 show a clear dependence of freezing temperature on surface area. The same experimental procedure was also used by Edwards and Evans (1968). Their AgI crystals had average diameters of 4 μm (2 – 5 μm) and a crystal habit of hexagonal plates. Droplets sprayed on cover slips contained between 1 and 1000 particles. The T_{50} values of this study given as red triangles in Fig. 2 are in fair agreement with the previous study by Edwards et al. (1962). Using the same method, Edwards and Evans (1962) investigated the dependence of freezing temperature on excess Ag^+ and I^- ions, which adsorb to the surface of AgI particles and influence their surface charge. To do this, they diluted a saturated AgI solution once with a 0.2 M KI solution containing the seed aerosol (sol A) and once with a 0.2 M AgNO_3 solution (sol B) leading to excess I^- (orange triangles) and excess Ag^+ (orange circles), respectively. It can be seen from Table 1 and Fig. 2 (symbols overlap), that in KI solutions with concentrations $>10^{-5} \text{ M}$ and AgNO_3 solutions with concentrations $>10^{-3} \text{ M}$ the freezing temperatures drop, manifesting a clear negative influence of the surface charge on the nucleation ability of silver iodide.

Gokhale and Goold (1968) used a cold stage to perform contact nucleation experiments (see Table 2). They sprinkled AgI particles on supercooled droplets on a hydrophobic plate at 268 K. They observed that the particles (5 – 400 μm in diameter) remained on the surface of the drops and initiated freezing at the initial stage temperature of 268 K. However, they did not quantify the number of particles present, which precludes an evaluation in terms of surface area. They performed similar experiments for an AgI smoke produced from an AgI string generator with particle diameters from 50 to 100 nm. These particles initiated freezing of 50 % of droplets at 263 K when the stage was cooled at a rate of 1.3 K/min. Gokhale and Goold (1968) concluded that these freezing temperatures are 5 – 10 K higher than the ones observed by Hoffer (1961) for droplets embedded in an oil with immersed AgI particles (see Sect. 3.2.2) and attributed it to an enhanced freezing probability for dry particles on a surface compared with particles immersed in the droplet. However, a strict comparison is not possible because in both studies, information is lacking to quantify the surface area present per droplet. In a follow-up study, Gokhale and Lewinter (1971) monitored the freezing process of 2 mm water droplets with a movie camera and observed that nucleation

was initiated at the point of particle contact and continued from there over the entire surface of the drop. The interior of the drop froze at a much slower rate.

[Bryant et al. \(1959\)](#) investigated the development of ice crystals on AgI films with a microscope (see Table 4). They exposed the samples to increasing relative humidity at different temperatures. For $T > 269$ K, only water droplets formed. For $T = 261 - 269$ K, supersaturation with respect to water was required for ice crystals to grow. For $T < 261$ K, supersaturation with respect to ice sufficed. Crystals were observed to form on specific sites which darkened with increasing exposure to white light from the microscope and seemed to be preferred centers for the decomposition of silver iodide to metallic silver and may mark the sites of emergent dislocations.

Similarly, [Anderson and Hallett \(1976\)](#) investigated large cleaved AgI crystals by microscopy when exposed to increasing humidity (see Table 4). In accordance with [Bryant et al. \(1959\)](#), they observed additional ice crystal nucleation when the AgI surface was illuminated by white light compared with red light. At one temperature, each nucleation site required a different ice supersaturation for activation, consistent with preferred nucleation at steps or some geometrical irregularity.

[Edwards and Evans \(1960\)](#) observed with a microscope the ice nucleation activity of a fine AgI aerosol on a gold substrate in deposition mode (see Table 4). The AgI particles had typically diameters < 15 nm and were produced by reacting an Ag aerosol with iodine vapor. At 98 % RH and temperatures of 262 K, 258 K, and 255 K only a small fraction of particles (< 0.5 %) was active in deposition mode.

[Zimmermann et al. \(2007\)](#) studied heterogeneous ice nucleation by AgI in an environmental scanning electron microscope in deposition and condensation mode (see Tables 3 and 4). They used p.a. grade AgI that they grinded to obtain particles in the size range from 1 – 10 μm . Experiments were performed by increasing the vapor pressure in the sample chamber at constant temperature. First ice formation in condensation mode was observed at a temperature of 268 K, and in deposition mode at 264 K.

23.2.2 Experiments with droplets embedded in oil

[Zobrist et al. \(2008\)](#) and [Aguerd et al. \(1982\)](#) investigated immersion freezing in water-in-oil emulsions. Their results are shown in Fig. 2 as purple triangles ([Zobrist et al., 2008](#)) and purple squares ([Aguerd et al. \(1982\)](#)). Details of the experiments are given in Table 1. AgI particles were prepared in situ by precipitating a silver nitrate solution and a potassium iodide solution in the presence of an oil containing a surfactant for emulsification. The freezing experiments were carried out in a differential scanning calorimeter (DSC) immediately after preparation. In the DSC thermograms of [Zobrist et al. \(2008\)](#) and [Aguerd et al. \(1982\)](#) a heterogeneous and a homogeneous freezing peak appeared. The presence of the homogeneous freezing peak could be either due to the absence of crystallized AgI in some of the droplets or inactive AgI crystallites. To quantify the surface area present per droplet, crystallization of one spherical particle per droplet was assumed, yielding particle diameters of 200 – 500 nm, depending on the assumed droplet size. For [Zobrist et al. \(2008\)](#) we assigned the onset of the heterogeneous freezing peak to freezing of 5 μm droplets and the maximum to freezing of 3 μm droplets. To quantify the surface area of AgI per droplet for [Aguerd et al. \(1982\)](#), an average droplet size of 2 μm was assumed. Considering the uncertainties in estimating surface

areas per droplet, the results from emulsion freezing experiments are in good agreements with each other and with the study performed with deposited AgI crystallites from Edwards et al. (1962).

5 Hoffer (1961) investigated freezing of 100 – 120 μm water droplets embedded in a silicone oil (see Table 1). AgI particles were produced from the reaction of silver nitrate with sodium iodide. He observed a median freezing temperature of 257 K when the droplets were cooled at a rate of 1 K/min and concluded that this value is lower by 9 K compared with results from cold chambers. However, with the given information, a strict comparison is not possible because the surface area of AgI present in a droplet cannot be quantified.

23.2.3 Cloud chamber experiments

10 Among the first to investigate ice nucleation on an AgI aerosol in a cloud chamber were Mason and van den Heuvel (1959) (see Tables 3 and 4). They introduced an AgI aerosol in an ice diffusion chamber and observed ice crystals nucleated in deposition and in condensation mode by their glittering in a beam of light from a mercury arc lamp. For $T = 261 - 268$ K supersaturation with respect to water was required to produce ice crystals. Above this temperature, only water droplets formed. For $T < 261$ K supersaturation of 12 % with respect to ice was sufficient to form ice crystals. The size of the AgI particles is not specified in this study. Therefore, it is not clear whether the relative humidity threshold for condensation freezing is limited by droplet activation.

15 Edwards and Evans (1960) investigated condensation freezing of an AgI aerosol in a cloud chamber produced by reacting an Ag aerosol with iodine vapor (see Table 3). They noted that indeed condensation freezing was limited by droplet activation for their aerosol. A supersaturation of 20 % with respect to water was needed to activate the AgI particles with typical diameters from 12 to 20 nm. Condensation freezing occurred up to 267 K. The activity of this aerosol was also tested when it was deposited on a substrate (see Table 4). At 98 % RH and temperatures of 262 K, 259 K, and 255 K a small fraction of particles (<0.005) was active in deposition mode.

20 Sax and Goldsmith (1972) performed immersion and contact freezing experiments in a cloud chamber (see Tables 1 and 2). Results are shown as filled and open blue diamonds in Fig. 2, respectively. Freely falling droplets with diameters from 40 to 160 μm (average: 100 μm) intercepted a horizontal aerosol stream of $5 \cdot 10^6 \text{ cm}^{-3}$ AgI particles with 30 nm diameter (size range from 10 to 40 nm) for 0.04 s (1 cm in vertical extent). The aerosol was produced by heating an AgI-coated resistance wire to $T = 700973 \text{ K}^{\circ}\text{C}$ in a nitrogen stream. For contact freezing experiments the droplets were brought in thermal equilibrium before intercepting the aerosol stream. After coagulation with the AgI particles, the droplets proceeded into an observation chamber where frozen droplets were distinguished visually from liquid ones. The collision of 100 μm droplets with 30 nm particles was dominated by Brownian motion. Assuming a collision efficiency of ca. 0.3, around 100 particles would be captured by the droplet (note that this number is higher than the collection of only 1 particle estimated by Sax and Goldsmith, 1972). For immersion freezing experiments, the droplets passed the aerosol stream at $T > 273$ K, before they were cooled to the target temperature. The residence time in the chamber was around 4 s. Immersion freezing occurred at 2 K lower temperature than contact freezing.

Langer et al. (1978) investigated contact freezing of monodisperse AgI aerosols in a cloud chamber ([open red circles in Fig. 2 and Table 2](#)). Silver iodide aerosol was generated thermally by passing dry air over molten AgI at temperatures up to 100°C above the AgI melting point of ~~558°C~~831 K. A NaCl aerosol was used to generate the liquid cloud in the chamber. During operation, there was a continuous stream of AgI aerosol and NaCl aerosol. The nucleating fraction and freezing temperatures were observed to increase with increasing particle size. Particles with diameters <20 nm and <10 nm were essentially inactive at temperatures of 259 K and 253 K, respectively.

Schaller and Fukuta (1979) investigated deposition, condensation, and contact freezing of AgI in their ice thermal diffusion chamber ([see Tables 2, 3, and 4](#)). The AgI aerosol was produced by heating an AgI powder on an iron plate. The smoke was introduced into the chamber and frozen fractions were evaluated after 1 min. They observed deposition nucleation up to 264 K and condensation freezing up to 268.5 K (frozen fraction of 1.3 % after 1 min). The onset temperature and the frozen fraction for condensation freezing increased with increasing supersaturation. Contact freezing was observed between 265 to 267 K. This temperature range nearly coincides with the one for condensation freezing. For comparison, Schaller and Fukuta (1979) performed an experiment [in immersion mode with](#) the AgI aerosol activated [to cloud droplets](#) above the ice nucleation threshold temperature. When the fog had formed, the chamber was cooled. No difference in ice nucleation behavior was observed for this procedure compared to condensation freezing experiments.

[DeMott \(1995\) investigated the efficiency of ice formation with silver iodide-type aerosols depending on ice nucleation mode with the aim to reproduce ice seeding conditions as closely as possible in cloud chambers \(see Tables 1 – 4\). He used a field-scale solution combustion device to produce AgI and AgI-AgCl aerosols. This generator produces AgI aerosols by burning AgI-acetone-ammonium iodide-water solutions in a propane flame. To produce AgI-AgCl aerosols 20 – 30 mole% ammonium perchlorate were added to the standard solution. Contact freezing experiments were performed in an isothermal cloud chamber, which isolates an artificially generated cloud at a supercooled temperature. The cloud is continuously replenished during an experiment to maintain a constant cloud droplet concentration. Total nominal droplet concentrations were either 2100 cm⁻³ or 4300 cm⁻³ in individual experiments. Results are shown in Fig. 2 for 30 nm and 70 nm particles as black open squares. For immersion freezing experiments, clouds were formed on AgI-AgCl aerosols at T > 268 K in a dynamic \(controlled expansion\) cloud chamber. Continuous expansion led to freezing at 257 K, as indicated by black filled squares in Fig. 2. DeMott \(1995\) concluded that immersion freezing is more than one order of magnitude less efficient than contact freezing for AgI-AgCl aerosols.](#)

[23.2.4 Bulk experiments](#)

[The highest freezing temperatures were obtained for bulk AgI suspensions \(see Table 1\). Aguerd et al. \(1982\) investigated a 1 cm³ bulk sample by mixing 0.01 M AgNO₃ and 0.01 M KI, for which they determined freezing at 269.5 K.](#)

Vonnegut and Baldwin (1984) investigated the kinetics of ice nucleation by measuring the time to freezing at constant temperature of a bulk sample with immersed AgI particles of 1 μm diameter. While freezing occurred with an average

nucleation time of 1 s at 264 K, it took more than 10 000 s to nucleate the sample at 270 K. This shows the stochastic nature of ice nucleation and that nucleation time has to be considered together with freezing temperature and surface area for comparisons between different studies.

Palanisamy et al. (1986a) investigated bulk samples in test tubes cooled at a rate of 0.1 K/min and observed freezing of pure AgI particles at 270.82 K and of AgI-AgCl cubic solutions even higher at 271.97 K.

Davis et al. (1975) reported freezing of water in contact with 3AgI·NH₄I·6H₂O films at 272 K compared with freezing at 269 K for AgI films.

23.2.5 Continuous flow diffusion chamber experiments

Nagare et al. (2015; 2016) presented contact freezing experiments performed with the ETH CoLLision Ice Nucleation CHamber (CLINCH) using 80 μm diameter droplets, which were exposed to 200 nm and 400 nm diameter AgI particles. These particles were prepared by mixing AgNO₃ and KI solutions. The suspension was atomized and the droplets were dried and size selected. Droplet residence times in the chamber, which was held at ice saturation, were 2 s or 4 s. These results are given as open green diamonds in Fig. 1. Details of the experiments are listed in Table 2. For aerosol concentrations from 500 to 2000 cm⁻³ low freezing efficiencies with median freezing temperatures of only $T_M = 247 - 248$ K were measured. At these concentrations, the droplets collected on average less than one particle. For a particle concentration of 5000 cm⁻³ and 4 s residence time, the droplets collected on average 2.35 particles and the median freezing temperature was 258 K.

Immersion freezing experiments in the IMCA/ZINC chamber with an AgI aerosol prepared by the same method as for the CLINCH experiments have also been carried out (see Sect. 2). The results of these measurements are given as filled green symbols in Fig. 1. It can be seen that freezing efficiencies for the immersion freezing experiments performed with IMCA/ZINC are distinctly higher than for the contact freezing experiments performed with CLINCH, although the same AgI aerosol was used for both experiments. With median freezing temperatures $T_M = 262$ K for 200 nm particles at 3 s residence time, the freezing temperatures from IMCA/ZINC are also higher than the ones from immersion freezing studies performed with droplets deposited on substrates and freezing experiments with emulsions. Reasons for this are discussed in the next section.

3.4 Discussion

Figure +2 shows a general trend of increasing freezing temperatures with increasing AgI surface area, however, there are also several exceptions. For a more consistent comparison, instead of freezing temperatures, nucleation rate coefficients expressed in units of e.g. cm⁻²s⁻¹ should be compared. However, most studies do not provide enough information to determine rates. Freezing temperatures as a function of surface area depend on measurement specific factors like the frozen fraction they refer to, the nucleation mode, and properties of the AgI particles dependent on the preparation method. In the following, relevant factors influencing heterogeneous ice nucleation by AgI will be discussed in more detail.

34.1 Freezing temperature and frozen fraction

The freezing temperature, which should characterize the efficiency of an [ice nucleating substance](#), is not independent of instrumental factors that have to be taken into account when results from different instruments are compared. Some detection methods provide onset temperatures of freezing. These depend on the detection limit of the measurement technique and are higher than median freezing temperatures, which are also often reported. With the IMCA/ZINC setup, freezing temperatures for frozen fractions of 0.1 – 1 are measurable. For 200 nm AgI particles and 3 s residence time, a median freezing temperature of 262 K was obtained. A frozen fraction of 0.1 was already reached at 265 K and a frozen fraction of 1 only at 254 K. [Thus, the difference in temperature between a frozen fraction of 0.1 and a fully frozen sample is 8 K.](#) This illustrates the differences that can be expected when freezing temperatures refer to different frozen fractions.

Classical nucleation theory predicts a dependence of nucleation rates (nucleation events per time) on the surface area present in a sample due to the stochastic nature of the nucleation process. Therefore, the freezing temperature is expected to increase with increasing surface area. [An even stronger dependence of freezing temperature on surface area is expected when active sites are responsible for ice nucleation because the probability to contain an efficient active site increases with increasing surface area.](#) This dependence is taken into account in [Fig. 2](#) by plotting freezing temperatures as a function of surface area. For immersion freezing, the stochastic nature of nucleation also leads to a dependence of freezing temperatures on time. Vonnegut and Baldwin (1984) showed that the freezing temperature increased from 264 K to 270 K when the observation time was extended from 1 s to 2 h. For contact freezing, the number of collisions during the experiment has to be taken into account to convert frozen fractions to freezing efficiencies (e.g. Nagare et al., 2016). For this, the collision efficiency has to be known, a quantity that depends on many factors such as size and charge of particles and droplets, temperature and water vapor concentration gradients between droplet surface and the surrounding (e.g. Nagare et al., 2015). For [adhesion](#) freezing there is a dependence of freezing temperature on nucleation time, as for immersion freezing [\(Nagare et al. 2016\)](#). Since collisional contact freezing is supposed to be immediate after a particle collides with a droplet, the outcome of a comparison of the nucleation efficiencies of collisional contact freezing and immersion freezing depends on the timescale.

34.2 Preparation method of AgI

The preparation method of AgI influences the size, polymorphic form, morphology, and number of surface defects of the produced particles. Most procedures lead to mixtures of the stable β - and the metastable γ -form (see Appendix B1). Commercial AgI is usually the β -form. The basal 001 and ~~00100~~ faces of the β -form show a close lattice match with ice and are often considered responsible for the ice nucleation ability of AgI. These faces correspond to the ~~111-111~~ and 111 faces of the γ -form, respectively. Typical crystal habits of the γ -form expose these faces partly to the surface (see Appendix B2). Therefore, the condition of lattice match is realized also for the γ -form, so that this form can induce ice nucleation as well as the β -form if lattice match is important. This was confirmed in a recent molecular dynamics study by Zielke et al. (2015)

who found that β -AgI and γ -AgI were able to nucleate ice but only on the silver exposed surface (see Appendix B4 for more details).

Edwards et al. (1962) prepared monodisperse silver iodide particles and noted that particles of the same size are not equally active ~~as INP~~, but behave as if the number of nucleation sites per particle is proportional to the surface area of the particle.

5 This led them to the conclusion that ice nucleation does not occur on the whole surface but on surface irregularities, which might be preferred nucleation sites. They suggested that the occurrence of nucleation sites depends only on the surface area irrespective whether there were few large or many small particles in their sample. However, depending on the preparation method, AgI crystals may contain different amounts of surface irregularities. Shevkunov (2005) conjectured that particles produced by solution combustion and used for cloud seeding have a superior ice nucleation ability compared to crystals with
10 perfect surfaces, because by this method particles contain many surface defects. Nevertheless, from the immersion freezing studies compared in ~~Fig. 1~~Fig. 2, such a relationship is not evident: freezing temperatures from experiments carried out with single crystals (Edwards et al. 1962) align well with freezing temperatures determined from emulsion experiments (Zobrist et al., 2008; Aguerd et al., 1982) conducted with irregularly shaped particles from precipitation (see Appendix A). Note that surface irregularities might be more important when the particles are exposed to air, if the ice nucleation efficiency depends
15 on the amount of water that adsorbs at surface defects or impurities (see discussion below).

When AgI is prepared by precipitation from AgNO_3 and KI solutions, the counterions K^+ and NO_3^- remain in solution and form conglomerates with AgI when the suspension is dried, e.g. during atomization (see Fig. A2 in Appendix A). KNO_3 dissolves again when the particle is in contact with water. The freezing ability might be altered during dissolution. However, it is rather unlikely that an effect persists once the soluble salts are completely dissolved. The dilution of dissolved salts in the
20 droplets is large enough so that the freezing point depression by the solute is negligible.

There is a strong influence of freezing temperatures on surface charge, which depends on the stoichiometric ratio of Ag^+ to I⁻ ions. This charge effect has a strong influence on the ice nucleation ability of AgI particles and will be discussed below in Sect. 3.3.

3.3 Lattice match and surface charge

25 The closeness of fit between the ice lattice and the lattice of the ice nucleating substance is often considered as a basic requirement for heterogeneous ice nucleation. Indeed, AgI surfaces show a close lattice match with ice. The fit is even improved for AgI-AgCl cubic solid solutions and the complex compound $3\text{AgI}\cdot\text{NH}_4\text{I}\cdot 6\text{H}_2\text{O}$ (see Appendix B1). Davis et al. (1975) reported a misfit for the basal plane of β -AgI with respect to the basal plane of ice of 1.5 % at 266 K and an even smaller misfit with respect to the complex compound $3\text{AgI}\cdot\text{NH}_4\text{I}\cdot 6\text{H}_2\text{O}$ of 1.3 %. This is consistent with the higher threshold
30 freezing temperatures that they observed for $3\text{AgI}\cdot\text{NH}_4\text{I}\cdot 6\text{H}_2\text{O}$ compared with AgI. Namely, heterogeneous ice nucleation on films of ~~these IN~~this compound occurred at 272 K for $3\text{AgI}\cdot\text{NH}_4\text{I}\cdot 6\text{H}_2\text{O}$ compared with 269 K for AgI. Palanisamy et al. (1986a) determined ice nucleation threshold temperatures of bulk samples of AgI-AgCl solid solutions with different AgI:AgCl mixing ratios and compared them with lattice constants from X-ray powder diffraction. The 65:35 mol% combination of AgI

and AgCl showed the best lattice match of 0.44 % and the highest nucleation temperature of 271.97 K in bulk experiments. Experiments with AgI₂ yielded a freezing temperature of 270.62 K and a lattice match of 1.77 %. AgCl has a large misfit of 12.86 %, nevertheless, nucleation was observed at a threshold temperature of 269.13 K (Palanisamy et al., 1986a). A superior ice nucleation ability of AgI-AgCl compared with AgI particles has also been observed by DeMott (1995) for experiments in the CSU isothermal cloud chamber.

While these studies support the importance of lattice match for the threshold freezing temperature, in other studies, the necessity and importance of lattice match is questioned. Conrad et al. (2005) explored homogeneous ice nucleation and found that the critical embryo that caused ice to form bears little structural similarities to hexagonal ice, Ih. Therefore, he suggested that the site for heterogeneous ice nucleation does not have to be ordered or more particularly, does not have to possess a hexagonal geometry to match the structure of Ih. In a molecular dynamics study, Fitzner et al. (2015) have found that lattice match is at most desirable but not a requirement for heterogeneous ice nucleation.

If there is an effect of a good lattice match, it can be annihilated by a high surface charge. A study by Edwards and Evans (1962) showed freezing temperatures that were highest for zero net charge and clearly lower in the presence of either excess Ag⁺ or I⁻ ions in the solution. Fletcher (1959) considered the importance of entropy for the growing ice embryo: a positive or a negative surface charge leads to a reduction of freezing efficiencies because the charge orders OH dipoles of water molecules parallel to one another and therefore reduces the entropy and raises the free energy of the growing ice embryo. The basal planes of AgI either end with Ag⁺ or with I⁻ ions. If ice grows on a basal face, the oxygens will be above ions which all have the same sign. Therefore, for lowest interfacial energy, the OH dipoles of the ice molecules at the interface must all be parallel leading [in sum](#) to low configurational entropy and ~~in sum~~ to a high free energy of nucleation. The prism face exposes equal numbers of Ag⁺ and I⁻ on the surface. Therefore, there is no entropy effect on the prism face and Fletcher (1959) concluded that this face of silver iodide should be superior at nucleating ice compared with the basal face, although its lattice match is inferior with a misfit of 1.6 % compared to the value of 1.4 % for the basal face (Fletcher, 1959). This conclusion was objected by Fukuta and Paik (1973), who calculated potentials of water molecules adsorbed on AgI surfaces which indicated that the entropy effect of ice nucleation can be ignored on AgI surfaces because the maximum configurational entropy can be easily realized by the forming ice germ. In agreement with this, [simulations by](#) Fraux and Doye (2014) and Zielke et al. (2015) were able to simulate ice growth at the silver terminated basal face of β-AgI but neither on the iodide terminated basal face nor on the prism face (see Appendix B5 for more details). The superiority of the Ag⁺-terminated compared with the I⁻-terminated basal face was ascribed to the chair conformation of water molecules on the Ag⁺-terminated face, which resembles the chair conformation present in hexagonal and cubic ice (Zielke et al., 2015). Both studies found that ice did not grow directly on the substrate but that a templating mechanism may be active so that particular AgI surfaces impose a structure in the adjacent water layer that closely resembles a layer that exists in bulk ice (hexagonal or cubic). Ice nucleates on this layer and not directly on the AgI surface. Similarly, Taylor and Hale (1993) suggested that ice nucleation occurs within a thicker film of adsorbed water on the basal AgI face after the two-dimensional nucleation of a solid-like monolayer adjacent to the substrate. The three dimensional nucleation would then occur on the ice-like underlayer with an extremely small lattice mismatch. However, such

a templating mechanism does not rule out that defects such as steps and ledges or impurities are also important (Zielke et al., 2015; Taylor and Hale, 1993).

34.4 Position of particles in or on the droplet

Durant and Shaw (2005) and Shaw et al. (2005) showed that freezing temperatures for ice nucleating particles that contact the water surface are higher than those of ~~totally~~ completely immersed particles. Depending on the experimental setup, particles can be forced in a position either in or on the droplet or they can be free to take the energetically most favorable position. In the studies performed by Edwards et al. (1962) and Edwards and Evans (1962; 1968) particles stick to the substrate and are ~~totally~~ completely immersed in the droplets. In the emulsion freezing studies by Zobrist et al. (2008) and Aguerd et al. (1982) droplets are within the oil phase so that the particles within the droplets have no access to the air-water interface.

If particles are floating in a droplet or bulk volume with free access to the air-water interface, the position of the particles depends on their wetting behavior with water. In the absence of other forces, they become ~~totally~~ completely immersed when they are completely wetted by water (contact angle of zero), otherwise they float on the surface (Nagare et al., 2016). For AgI the (intermediate advancing) contact angle is $45^\circ - 50^\circ$ (see Appendix B5) indicating that particles adhere to the water surface. This is in accordance with our own observations that AgI particles remain on the surface when gently sprinkled on water (Nagare et al., 2016) and with the observations by Gokhale and Goold (1968) and Gokhale and Lewinter (1971) when they sprinkled AgI particles on drops.

When an ice nucleating particle is activated to a cloud droplet, it is usually considered to be ~~totally~~ completely immersed in the droplet. However, when an AgI particle is free to take the energetically most favorable position, it will adhere to the surface of a droplet. Analysis of immersion freezing studies in ~~Fig. 1~~ Fig. 2 suggests that freezing temperatures are higher for those studies, where the particle is free to take a position on the surface of the droplet as is the case for experiments performed with IMCA/ZINC or with a cloud chamber as in the study by Sax and Goldsmith (1972).

During contact freezing experiments carried out in the CLINCH chamber, particles should remain on the surface of the droplets after collision. For immersion freezing experiments in IMCA/ZINC and contact freezing experiments in CLINCH, the same AgI preparation procedure was used, the same particle sizes were selected and residence times in the chambers were comparable. Therefore, similar freezing temperatures could be expected in both experiments. However, median freezing temperatures were around 16 K lower for contact freezing experiments in the CLINCH chamber than for immersion freezing experiments in the IMCA/ZINC chamber. Possible explanations for this will be discussed in the sections below.

34.5 Water adsorption and surface irregularities

The reason why freezing temperatures are increased when the ~~IN-ice nucleating particle~~ is positioned at the air-water interface compared with ~~totally~~ completely immersed is still debated. Gokhale and Lewinter (1971) conjectured that particles on the surface are better at nucleating ice than ~~totally~~ completely immersed particles because of two likely reasons: first, water molecules probably have less freedom of movement on the surface than molecules within the drop since they are more or less

bound into a polarized layer at the surface. An oriented layer of this nature should be more susceptible to nucleation than disoriented bulk water. Second, the dissipation of latent heat is much easier at the surface than within the bulk water. Another explanation, that has gained increasing attention recently, is that the energy barrier is reduced at the three-phase contact line of water, air, and nucleating surface (Djikaev and Ruckenstein, 2008; Gurganus et al., 2014).

- 5 How much water is adsorbed on the AgI surface depends on the relative humidity and the presence of surface irregularities. The water uptake of a defect-free AgI surface was calculated to be below one nominal monolayer at water saturation. Even above water saturation, water gathers in patches and does not form a monolayer also at nominal monolayer coverage (see Appendix B4). More water can adsorb on a surface with irregularities such as defects and impurities, compared with a perfect surface. In this case, water patches form in and around these irregularities and might be the starting point for ice nucleation.
- 10 If ice nucleation occurred indeed on such water patches on the AgI surface, ice nucleation efficiency should depend on RH. Contact freezing experiments in CLINCH were performed at ice saturation and immersion freezing experiments in IMCA/ZINC at water saturation. Therefore more water is adsorbed on the AgI surfaces in IMCA/ZINC experiments what indeed might increase the freezing temperature (for water adsorption on AgI surfaces see Appendix B4). Condensation freezing studies showed that the highest freezing temperatures are obtained for high supersaturation during activation (Schaller and
- 15 Fukuta, 1979; Zimmermann et al., 2007), which may increase the amount of water present at the surface of the particle. There is evidence that ice crystals form on specific sites (Bryant et al., 1959). These sites might be surface irregularities like dislocations and steps where water uptake is enhanced. Bryant et al. (1959) observed that at $T = 261 - 269$ K ice crystals formed at selected sites when the air was supersaturated with respect to water. At lower temperatures it was sufficient when the air was supersaturated with respect to ice. Bassett et al. (1970) conjectured that ice nucleation is preceded by water
- 20 adsorption at discrete locations which might be polar impurities on a hydrophobic surface leading to cluster formation and rapid migration of weakly adsorbed molecules to the growing clusters. Freezing of some of the clusters should occur before the surface of the substrate is ~~totally~~[completely](#) covered by a liquid-like layer of water. When the substrate also exhibits good fit with ice, as in the case of silver iodide, the interfacial energy is reduced and the nucleating ability should be maximized. Thus a disordered cluster of adsorbed water molecules may not offer as much resistance to freezing as bulk water. Once
- 25 formed, growth of the ice island is facilitated by rapid diffusion of molecules weakly adsorbed on the rest of the surface (Bassett et al., 1970).

34.6 Solubility and dissolution of AgI

- Silver iodide is a sparingly soluble salt with a solubility product of around 10^{-16} at 298 K (Hiemstra, 2012). The solubility decreases with decreasing temperature and reaches a value $< 10^{-17}$ at 273 K (Lyklema, 1966). Nevertheless, a small particle in
- 30 a large droplet will dissolve to some degree. In the CLINCH chamber (Nagare et al., 2015; 2016), a 200 nm particle will dissolve by around 2.4 % when it collides with an 80 μm droplet. In the IMCA/ZINC setup, particles with diameters between 20 – 200 nm were activated to droplets of 20 μm , leading to partial dissolution of 0.04 % for a 200 nm particle and 38 % for a

20 nm particle. Effective dissolution might even be larger, because the particles prepared by precipitation also contain shares of KNO_3 (see Appendix A).

Partial dissolution of a particle changes its shape and surface. Steps, corners, and kinks of atomic dimensions are eroded away and pits below a critical size form and disappear spontaneously. If they have reached the critical size, they continue to grow (Conrad et al., 2005). Pits are preferentially generated along or in dislocation boundaries. Calculations by Conrad et al. (2005) demonstrated that pitting improved the ice nucleation ability of a BaF_2 surface.

During the dissolution process, nucleation may be impeded because the eroding surface is changing too fast to let an ice embryo grow. Moreover, dissolution may lead to (additional) surface charge (Waychunas, 2014). A transient charge during dissolution may result when Ag^+ and I^- ions dissolve at different rates. Klimeš et al. (2013) have recently shown a preference for dissolution of Cl^- ions over Na^+ ions for dissolving NaCl crystals. The Cl^- ions are released first as this exposes more Na^+ ions at the surface creating favorable adsorption sites for water. A similar effect may also influence the charge on dissolving AgI surfaces because of the better solubility of Ag^+ compared to the one of I^- (Hiemstra, 2012). However, precise predictions are not possible because aqueous dissolution processes are not well understood on the molecular scale yet (Waychunas, 2014).

Time scale of dissolution can be calculated with the Noyes-Whitney equation (see Appendix B6). Using this equation, particles that collide with droplets in CLINCH will keep dissolving during the residence time of 2 s and 4 s in the chamber. On the other hand, droplets activated in the IMCA/ZINC instrument probably reach saturation while still in the IMCA section so that there is no ongoing dissolution in the ZINC chamber where ice nucleation should occur. If nucleation is indeed impeded on dissolving crystals, this difference might explain the superior ice nucleation ability of AgI particles in IMCA/ZINC compared with CLINCH. If in contact freezing experiments, more than one particle collides with a droplet, dissolution will be strongest for the first particle and less for subsequent ones. Indeed, for the highest particle concentration of 5000 cm^{-3} in CLINCH, more than two particles collided on average with a droplet. This may explain the higher freezing temperature for this concentration compared with lower ones.

If ice nucleation on dissolving AgI particles is reduced, the experiments performed by Sax and Goldsmith (1972) should also be affected by dissolution because in these experiments the residence time in the chamber was on the same timescale as dissolution (about 4 s).

34.7 Weather modification by cloud seeding

The era of weather modification started in the 1940s with first field experiments with the intention to stimulate rain from convective clouds by glaciogenic seeding (Silverman, 2001). Since then many operational programs and scientific studies have been conducted for rain enhancement and hail suppression (Chen and Xiao, 2010; Breed et al., 2014). In these programs silver iodide smokes are produced and injected into clouds mostly with ground based methods, but also with airplanes or rockets. Although in many countries weather modification programs are conducted, considerable skepticism exists as to whether these methods indeed provide a cost-effective means for increasing precipitation for water resources (Bruitjes, 1999). The ability to influence and modify cloud microstructure in certain simple cloud systems such as fog and simple orographic clouds has

been demonstrated in observational studies (Bruitjes, 1999). Nevertheless, the general impact of glaciogenic seeding is still uncertain since it is a challenge to detect a signal from seeding in the noisy pattern of precipitation (Pokharel et al., 2014). Cloud seeding strategies have been established for seeding of cold clouds. There is a need to adapt and optimize seeding strategies according to the different situations based on laboratory findings and numerical models (Garstang et al., 2005).

5 Focusing on microphysical aspects of cloud seeding, it is required to improve the understanding of how seeding agents form ice.

Most AgI aerosols used operationally for weather modification are produced by solution combustion or pyrotechnic generation methods (DeMott, 1995). Atomized AgI-acetone solutions are burned in a propane flame. During subsequent cooling in the atmosphere aerosol particles form. Usually, instead of pure AgI, a mixture of AgI and AgCl is used to produce AgI-AgCl solid solutions with improved ice nucleation ability compared with AgI ([probably due to a better lattice match, see also Sect. 3.3](#)). Large laboratory cloud chambers have been used to determine the ice nucleation effectiveness of aerosols for weather modifications (DeMott et al., 1983). The optimal sublimation temperature for silver iodide was found to be ~~750°C~~[1023 K](#). The optimal suspension concentration in acetone was determined to be 2 wt % (Shevkunov, 2005).

15 Combustion produces particles with diameters of around 30 nm with only few particles reaching sizes of 100 nm. It is unlikely that these small particles act as CCN, because the Kelvin effect opposes the activation to droplets. To enhance the water uptake of silver iodide particles, NaCl is often added to the acetone solution to increase the hygroscopicity of the particles and to improve their ability to act as CCN. When such particles freeze during CCN activation, this is considered as ice nucleation in condensation mode. [Cloud droplet formation followed by further cooling before ice nucleation would be attributed to immersion or adhesion freezing](#). If clouds are seeded from an airplane, the relative humidity is often too low for new CCN activation and the silver iodide particles need to collide with existing cloud droplets to act as ice nucleating particle. Collisions of such small particles with cloud droplets occur mainly by Brownian diffusion (Seinfeld and Pandis, 2006). If the droplets bear high charges, the attraction by electrostatic forces may increase the number of collision between silver iodide particles and cloud droplets. The analysis presented in this study suggests that the ice nucleation ability of dissolving AgI particles is reduced. Moreover, the freezing temperature increases with increasing surface area. Therefore, high enough concentrations to saturate cloud droplets with AgI are needed for glaciogenic seeding in the case of low supercooling.

5 Conclusions

Ice nucleation by silver iodide has been the subject of many experimental and theoretical studies. Although it is an artificial ice nucleus, it has relevance for the atmosphere since it is used for glaciogenic cloud seeding. In this review, physical properties of AgI have been analyzed with special attention to the ones that might be important for heterogeneous ice nucleation. Freezing temperatures as a function of surface area of AgI have been evaluated. The following factors seem to be relevant for heterogeneous ice nucleation on AgI particles:

- The ice nucleation ability of AgI seems to be enhanced when the AgI particle is on the surface of a droplet compared with ~~totally~~completely immersed. This is indeed the position that an AgI particle takes when it can freely move in a droplet.
- For AgI particles partly exposed to air, the ice nucleation ability seems to be influenced by surface water. Water adsorption increases with increasing relative humidity and is enhanced in the presence of surface defects. Indeed, some of the highest freezing temperatures have been observed for condensation freezing when cloud droplet activation occurred at high supersaturation with respect to water.
- For AgI particles that are ~~totally~~completely immersed in water, the freezing temperature increases with increasing AgI surface area. There is no evident influence of the number of surface defects. Surface defects might be more important when water adsorption on particles exposed to air is involved in ice nucleation.
- Higher threshold freezing temperatures seem to correlate with improved lattice match. AgI-AgCl solid solutions and $3\text{AgI}\cdot\text{NH}_4\text{I}\cdot 6\text{H}_2\text{O}$ have slightly better lattice matches with ice than AgI and their threshold freezing temperatures are also slightly higher.
- Edwards and Evans (1962) showed a clear dependence of ice nucleation ability on surface charge with highest freezing temperatures close to the point of zero charge and lower ones for positively and negatively charged surfaces.
- No influence of the polymorphic form on the ice nucleation ability of AgI could be detected. Most preparation methods yield mixtures of the stable β - and the metastable γ -form ~~with different shares~~in different proportions. No correlation becomes evident when the prevailing form expected for a given preparation procedure is compared with freezing temperature. This is in accordance with the results of recent modeling studies that surfaces of the β - and the γ -form are able to nucleate ice (Zielke et al., 2015).
- The ice nucleation ability might be decreased while AgI particles are dissolving. AgI is a sparingly soluble salt. If only one particle is present in a large cloud droplet, dissolution is nevertheless relevant. During dissolution, particles might acquire surface charge, which reduces the ice nucleation ability. Dissolution of nanoscale droplets should occur on the time scale of seconds to minutes. When saturation solubility is reached dissolution levels off and nanoscale pits acquired during dissolution might be preferred nucleation sites. This introduces an additional history and time dependence of ice nucleation in cloud chambers with short residence times.

Appendix A

A2 Characterization of AgI particles prepared by precipitation

In the CLINCH and IMCA/ZINC studies, aerosol particles were produced by atomizing a suspension of AgI particles prepared by precipitation from KI and AgNO_3 solutions. To decrease the concentration of dissolved KNO_3 , the supernatant solution was removed and replaced by water as described in Nagare et al. (2015). The suspensions were used for ice nucleation experiments

for the next few days. X-ray diffraction of the dried precipitate revealed that it consists of a mixture of the β -phase and γ -phase in similar proportions that transformed within less than a week completely into the β -phase when kept in suspension. A TSI 3081 scanning mobility particle sizer (SMPS) was used to measure the particle size distribution, which could be fitted with a lognormal distribution with median diameter of about 80 nm (Fig. A1). Transmission electron microscopy (TEM) and high angle annular dark field (HAADF) scanning transmission electron microscopy (STEM) showed a predominance of particles in the 100 –to 500 nm diameter size range, but additionally also the presence of particles with diameters down to 20 nm. The electron microscopy images together with energy dispersive X-ray spectroscopy (EDX) of selected particles shown in Fig. A2 reveal that the particles are conglomerates of AgI and KNO₃ crystallites. The primary particles exhibit sizes with diameters ranging from about 20 –to 300 nm. When conglomerated particles become immersed in a droplet, KNO₃ will dissolve and the primary particles may be released or a conglomerate of AgI may persist.

Appendix B

B1 Polymorphic forms

Silver iodide exists in three polymorphic forms. The α -modification represents a body-centered cubic (bcc) lattice. It is the stable form at temperatures above ~~147°C~~420 K and melts when heated to ~~555°C~~828 K (Burley, 1963). The hexagonal β -AgI is of wurtzite-type and shows a hexagonal closest packing of iodine atoms (Cava and Rietman, 1984). It is thermodynamically stable under ambient pressure and temperature and transforms to the high temperature stable α -modification at ~~147°C~~420 K. The γ -modification represents a face-centered cubic lattice (fcc) with zinc-blende type crystal structure. It is presumably metastable at all temperatures but can be preserved as powder at room temperature for days. It transforms to the hexagonal form within hours when the temperature is kept between ~~100°C~~373 K and ~~147°C~~420 K and to the high temperature stable α -form at T > ~~147°C~~420 K (Berry, 1967).

In stoichiometric ratio, silver iodide Ag⁺ and I⁻ ions have both four nearest neighbors. The bonding is partly covalent. The structure can be described as two interpenetrating hexagonally close-packed sublattices, to either give the characteristic [AB] stacking sequence of the hexagonal β -AgI or the cubic stacking sequence [ABC] of the zinc blende structured γ -AgI (Morgan and Madden, 2011). Both the hexagonal and low-cubic phases show a closest packing of iodine atoms with tetrahedral and octahedral holes. Half of the tetrahedral sites but no octahedral sites are occupied by silver. Whether β -AgI or γ -AgI is realized can be influenced by other cations present as impurities or small shares. Excess cations will enter available interstitial sites, either tetrahedral or octahedral, depending on the ionic radius (Burley, 1963). An excess of cations in the tetrahedral sites should stabilize the hexagonal phase, while an excess in the octahedral sites should stabilize the low-cubic phase. Cations with radii between 0.53 and 0.97 Å such as Fe²⁺, Li⁺, Cu²⁺, Na⁺ are able to occupy tetrahedral sites; cations with radii between 0.97 and 1.71 Å such as K⁺, Ba²⁺, NH₄⁺, Cs⁺ may occupy octahedral sites (Burley, 1963).

Co-precipitation of AgI with other silver halides yields solid solutions in which part of the iodide is substituted by the other halide ion. Co-precipitation with AgBr and AgCl leads to a contraction of the AgI lattice due to the smaller ionic radii of Br and Cl⁻ ions compared with I⁻ (Vonnegut and Chessin, 1971; Palanisamy et al., 1986a, 1986b). X-ray powder diffraction of AgI-AgCl solid solutions have shown that even small impurities of AgCl lead to cubic solid solutions (Palanisamy et al., 1986a). In the presence of ammonium, the complex compound 3AgI·NH₄I·6H₂O may form which has a better epitaxial fit with respect to ice than has silver iodide. The unit cell of this phase is monoclinic and its stability range includes the temperature range [from 253 –to 282 K](#) at water saturation (Davis et al., 1975).

The commercial powder (Sigma-Aldrich) is of the hexagonal β-form (Guo et al., 2006). By applying pressure by grinding, the powder transforms partly to the γ-modification (Burley, 1963). Precipitation of AgNO₃ and KI in stoichiometric ratio at room temperature usually leads to mixtures of the β- and γ- modification (Burley, 1963; Berry, 1967). Manson (1955) e.g. reports 36 ± 8 % β-phase in the precipitate. The only conditions of precipitation which produced entirely hexagonal crystals were when gelatin was present and the solutions were added slowly without an excess of either Ag⁺ or I⁻ (Berry, 1967). Faster precipitations give mixtures of the cubic and hexagonal phases, and crystals whose average diameter was as small as 15 nm (Berry, 1967). β-AgI is preferentially produced in the presence of an excess of iodide ions. In the presence of excess silver ions γ-AgI is the predominant form (Sidebottom et al., 1976; Burley, 1963). If the precipitate is kept in solution, the γ-modification transforms to the stable β-form. Quenching AgI that has been heated to [550°C823 K](#) in air or water produces primarily the metastable γ-form, while slow cooling results in stable β-AgI (Burley, 1963). When AgI is formed by condensation of silver and iodine vapors from the gas phase, 73 ± 2 % β-phase forms when the vapors are heated to [650°C923 K](#) and even 95 ± 2 % β-phase is obtained when the vapors are heated to [800°C1073 K](#) or higher (Manson, 1955). This can be explained by excess iodine present during crystallization: Since silver has a very low vapor pressure even at [1000°C1273 K](#), it will condense within the source tube to a large extent, whereas iodine, which boils at [183°C456 K](#), will be carried out in the effluent and be present in excess. Silver iodide with high shares of γ-AgI can also be obtained by lengthy grinding in a mortar and pestle or by the application of hydrostatic pressure. Complete conversion to the low-cubic form appears to be impossible (Burley, 1963). Tomaev et al. (2012) reports that the mechanical modification of β-AgI nanocrystals of 500–1000 nm in size stimulates the faceting of the crystals without a significant change in their size and the formation of smaller β-AgI crystals with a characteristic size of 40 nm on their surface. Precipitation of AgI from KI and AgNO₃ with the experimental procedure of Nagare et al. (2015) led to a mixture of β-AgI and γ-AgI that also contained KNO₃ (see Appendix A). The γ-modification transformed to the β-modification within days as was determined by XRD.

B2 Crystal faces and morphology

30 A cut along the basal plane of β-AgI creates the [00 \$\bar{1}\$ 00](#)-face with triply coordinated I⁻ ions and the corresponding 001 face with triply coordinated Ag⁺ ions. Following the definitions of Hiemstra (2012), the 111 face of γ-AgI terminates with I⁻ ions and has the same structure as the [00 \$\bar{1}\$ 00](#)-face of β-AgI. The [\$\bar{1}\bar{1}\bar{1}\$](#) -face terminates with Ag⁺ ions and has the same

structure as the 001 face of β -AgI. The fully loaded $111/\bar{1}\bar{1}\bar{1}-111$ face of γ -AgI can perfectly match the fully loaded $001/00\bar{1}00-1$ face of β -AgI. Both faces have the same site density and basic structure, enabling twinning of the two crystal types. Neutral surfaces can be created by the removal of triply coordinated ions from the lattice. With the sites and site densities of these faces, it is not possible to describe the asymmetric charging of AgI crystals, suggesting that they do not contribute significantly to the variable charge behavior of silver iodide. When β -AgI is fractured in parallel to the lateral faces of the periodicity cell exposing the 100 face, ions of both signs are present on the fracture surface. In contrast to the fracture along the bases, there will be no features of hexagonal symmetry on the fracture surface and the electric field of ions is less uniform (Shevkunov, 2005). The surface of the 100 face of β -AgI is neutral because Ag^+ and I^- are present in equal amounts but it can attain a positive charge by adsorbing Ag^+ ions, which will protrude from the surface (Hiemstra, 2012). The same is valid for the 110 face of γ -AgI because it is structurally the same. Applying surface complexation modeling to the 100 face, Hiemstra (2012) came to the conclusion that negative charge is created by desorption of Ag^+ from the surface leading to positive charge above the surface and negative charge on the surface, thus, a charge separation is introduced.

Single crystals of β -AgI form hexagonal plates or prisms with 100 faces at the edge (lateral face) and $001/00\bar{1}00-1$ faces on the planar side (basal face) (Hiemstra, 2012). Depending on growth conditions, they can also form triangular plates (Burley, 1963). In the presence of hexagonal steps hexagonal pyramids may form presumably by a screw mechanism (Burley, 1963). Crystals of γ -AgI may form tetrahedrons terminated by the 111 face or dodecahedrons with dominant 110 faces beside a contribution of 111 faces (Hiemstra, 2012). Octahedra indicate γ -AgI (Sidebottom et al., 1976). Moreover, the twinning of β -AgI and γ -AgI is possible because of the same surface structure of the planar $(00\bar{1}00-1/001)$ face of β -AgI and the $111/\bar{1}\bar{1}\bar{1}-111$ face of γ -AgI as can be observed for large crystals (Hiemstra, 2012). The dominant 110 face of γ -AgI has the same type of structure as the edge (100) face of β -AgI (Hiemstra, 2012). When γ -AgI particles approach spherical morphology, the 110 face and its equivalents are dominant and the 111-type faces are minor. In the case of equal distances for the opposing crystal faces, the calculated contribution of the 110-type faces is 74%. For hexagonal crystals of β -AgI, the contribution of the dominant edge faces is 67% at equal distances for all opposing surfaces (Hiemstra, 2012).

25 B3 Surface charge in water and aqueous solutions

Because of the better solubility of Ag^+ compared to I^- , a neutral AgI crystal will be negatively charged in water or aqueous solutions. The negative particle charge can be diminished by the addition of extra Ag^+ ions, which may re-adsorb depending on the solution concentration. Adsorption of Ag^+ ions leading to positive charge above the surface and negative charge on the surface, induces an electrical double layer consisting of an inner and an outer (second) Stern layer. At a certain Ag^+ concentration, equal numbers of Ag^+ and I^- are present at the particle surface. Under this solution condition, the particle is in its point of zero excess adsorption or point of zero charge (PZC) (Hiemstra, 2012). The PZC describes the charge of the inner layer (first Stern layer). The charge of the outer layer (second Stern layer) is in addition influenced by the presence of OH^- and

H_3O^+ ions and depends therefore on pH. The origin of the charge of interfacial water is usually attributed to the higher affinity of OH^- ions, with respect to H^+ ions, for the accumulation at the interface (Kallay et al., 2012). At high pH the diffuse double layer is negatively charged and at low pH it is positively charged. Zero charge is reached at the isoelectric point (IEP). The PZC depends only on the concentrations of Ag^+ or I^- ions (pAg or pI with $\text{pAg} + \text{pI}$ yielding the solubility product of AgI) because the Ag^+ and I^- ions are charge-determining, whereas the proton is indifferent. Lyklema and Golub (2007) determined the PZC by the titration of an AgI suspension which they had kept for two months in a solution with $\text{pI} = 4$. They obtained $\text{PZC} = 5.8$ (instead of 5.6 which is mostly cited in literature) and did not find a dependence on solution pH. Kallay et al. (2012) measured the IEP, which is also influenced by the charge present due to adsorbed OH^- and H_3O^+ ions in the second Stern layer. They precipitated AgI particles by gradually adding a KI solution to a silver nitrate solution until the equivalence point was reached and the particles settled. The precipitated particles were washed and dried. They determined the IEP by adding the AgI powder in portions to a dilute potassium iodide solution at pH 6 yielding 4.1 for KNO_3 concentrations of $10^{-2} - 10^{-3}$ mol/l and at pH 3 giving 4.6 (10^{-2} mol/l KNO_3) and 4.8 (10^{-3} mol/l KNO_3). These results support the hypothesis that in neutral environment around pH = 7, the negative charge of water layers at silver iodide surfaces significantly contributes to the electrokinetic charge of the particles, but does not significantly affect the (inner) surface potential. Hiemstra (2012) applied advanced surface complexation modeling (SCM) to the AgI surface and concluded that the inner Stern layer has a very low capacitance in accordance with strong orientation of primary hydration water in the local electrostatic field of the Ag^+ and I^- ions. Due to the high water ordering at the AgI surface, the secondary hydration water in the outer Stern layer is also rather strongly structured (Hiemstra, 2012). It is more difficult to charge the AgI surface positively by Ag^+ adsorption than to render it negative by uptake of I^- ions (Bijsterbosch and Lyklema, 1978). The Ag^+ activity at the PZC always exceeds the corresponding I^- concentration by many decades. Ag^+ ions show a stronger tendency to bind NO_3^- ions than adsorbed I^- ions to bind cations.

B4 Water adsorption and ice nucleation

In the sixties, adsorption isotherms of water on AgI were measured by several groups and compared with the adsorption of inert gases (N_2 , Kr and Ar) by applying the BET relation. Studies were performed for different preparation methods, degree of sample purity and at several temperatures. Tcheurekdjian et al. (1964) measured adsorption isotherms at $T = 259 - 293$ K of AgI samples obtained by sublimation, precipitation, for a sample treated with ammonia, and also a commercial sample. They observed that water coverage is only $\frac{1}{4}$ of the argon area at the nominal monolayer value. Based on this, they concluded that the surface of AgI is largely hydrophobic possessing isolated hydrophilic sites. The entropy of the adsorbed molecules is high, indicating considerable lateral movement. The measurements performed by Hall and Tompkins (1962) at $T = 228 - 248$ K confirmed the hydrophobic nature of the AgI surface. Corrin and Nelson (1968) investigated water adsorption for $T = 257 - 270$ K of AgI prepared by silver and iodine reacted in vacuo and purified in liquid ammonia solution. Applying the evaluation procedure suggested in Tcheurekdjian et al. (1964) to this samples resulted in a hydrophilic character of 6 – 9 %. The maximum in isosteric heats was reached for coverages below one monolayer, which was interpreted as a “pseudomonolayer” effect

corresponding to cooperative adsorption in patches. Corrin et al. (1964) investigated water adsorption at 303 K on an AgI sample prepared by the reaction between metallic silver and iodine and subsequent treatment with liquid ammonia and a material prepared by precipitation. They concluded that it is quite unlikely that a statistical monolayer of water exists on the surface of AgI at relative pressures less than unity. Higher values are probably due to small amounts of hygroscopic impurities on the AgI surface. Barchet and Corrin (1972) measured adsorption isotherms of a fine powder of AgI that should be free of hygroscopic ionic impurities but with particles containing numerous surface dislocations. The shape of the isosteric heat curves indicated that the adsorbed water was distributed in patches on the surface. Water vapor adsorption isotherms at -3.0°C showed a rapid increase in adsorption when the water vapor pressure raised above ice saturation but remained finite even at water saturation. The isotherms recorded at -6.5°C and -10.0°C were terminated by nucleation of the ice phase. Because the surface excess at nucleation clearly increased with temperature, Barchet and Corrin (1972) concluded that the number of embryos which formed on the water adsorbing sites as well as the number of sites did not increase with temperature but that the embryos themselves were larger at higher temperatures.

Barnes (1963) analyzed the NMR (nuclear magnetic resonance) signal of the protons of water molecules on an AgI powder saturated with water vapor to investigate water adsorption and ice nucleation. He found no hysteresis between increasing and decreasing temperature and therefore suggested that all the water present is adsorbed on the surface and not as capillary condensate in pores or pore-like spaces. Moreover, all the adsorbed water layers seemed to be able to freeze at the same temperatures. Barnes and Sanger (1961) investigated by proton spin resonance spectroscopy that the adsorbed water on silver iodide transforms in a temperature range of 20 K from liquid-like to solid-like with an onset of ordering close to the threshold temperature of heterogeneous ice nucleation on silver iodide.

Taylor and Hale (1993) simulated two water layers adsorbed on a model silver iodide (iodine exposed) basal face from 150 to 425 K using Monte Carlo methods. They observed a complex temperature dependence of the structure of the two-layer water condensate where quasi-crystalline, quasi-liquid, and liquid states coexisted at the same temperature. Both layers appeared to be solid at the lowest temperature studied. For $T > 265$ K the upper layer became increasingly liquid-like with increasing temperature, whereas the lower layer of water molecules remained generally solid-like up to $T = 325$ K. The lower layer consisted of five- and six-membered rings centered on the iodine ring with dipole moments preferentially oriented parallel to the substrate and nearly zero dipole moment projection perpendicular to the substrate. This indicates that at least in the second adsorbed layer ice formation above about 265 K is inhibited by the free surface entropy. For the AgI prism face, the first water monolayer is even less structured than on the basal AgI face. Possible remedies to this difficult situation for ice formation on AgI are not lacking. Some preliminary simulations for two water layers on a model basal face ledge indicate that the ledge is marginally better at promoting ice structure in the upper layer.

Shevkunov (2005) simulated the nucleation of water vapors on the 001 face of β -AgI (basal face) by the Monte Carlo method in a humid atmosphere at 273 K. They found that already below the liquid water saturation pressure, the crystal surface is covered with a water monolayer. The molecules in this layer are arranged above the iodine ions, between the silver ions, and are interconnected with hydrogen bonds forming the regular structure with hexagonal symmetry. Deposition of a second water

layer needed supersaturation, indicating that the condensation of water vapor into a macroscopic phase is prevented by a high free energy barrier. A point defect in the form of an extra ion on the surface did virtually not distort the hexagonal structure of the first water monolayer.

In a follow-up study, Shevkunov (2008) performed Monte Carlo simulations of water vapor nucleation on the basal plane (001) surface of a β -AgI crystal with and without defects. They concluded that the matching minimizes disorder in layer structure and therefore enhances stability of the layers, promoting layer-by-layer growth. The most stable orientations of molecules in monolayers adjacent to the substrate are parallel and perpendicular to it. The formation of each layer involved overcoming a nucleation barrier. The film thickness is an increasing function of pressure. As the saturation pressure is exceeded, the vapor explosively condensed into a dense macroscopic phase via layer-by-layer growth. The barriers that suppress the nucleation of successive monolayers can be eliminated by substrate surface defects. However, a point defect did not significantly change the macroscopic behavior of the condensed phase. Extended defects, such as cracks or fractures, should be much more effective in this respect.

Zielke et al. (2015) used molecular dynamics simulations at a supercooling of 20 K to investigate ice nucleation on surfaces representing faces of β -AgI and γ -AgI. These simulations showed that a good lattice match with ice is insufficient to predict the ice nucleation ability of an AgI surface. When the basal planes of hexagonal ice are compared, only the 001 face terminated by Ag^+ ions nucleates ice and not the iodide terminated $00\bar{1}00\bar{1}$ face, although both faces have identical lattice matches with ice. This was ascribed to the configuration that the surface imposes on the water molecules. On the silver exposed surface, the oxygen atoms of the water molecules take a chair conformation, which resembles the chair conformation present in hexagonal and cubic ice. In contrast, for the iodide exposed surface the hexagonal rings form a more coplanar structure that does not match any surface of ice, and no ice nucleation occurred on this face. Moreover, cubic and hexagonal ice was observed to nucleate on both, the β -form and the γ -form of AgI. On the silver and iodide terminated prism face, no ice could be observed. The authors speculate that a templating mechanism may be active in cases of close lattice match so that particular AgI surfaces impose a structure in the adjacent water layer that closely resembles a layer that exists in bulk ice (hexagonal or cubic). Ice nucleates at these surfaces and grows almost layer-by-layer into the bulk. They emphasize that this mechanism does not rule out defects being important for ice nucleation by silver iodide, but indicates that defects are not necessary in order to explain why silver iodide particles can be highly effective ice nuclei.

Performing simulations at supercooling of 10 K, Fraux and Doye (2014) also came to the conclusion that ice nucleates on the silver terminated basal surfaces of β -AgI but not on the iodide terminated ones. The ice formation occurred via a two-step mechanism. A hexagonal ice-like bilayer of strongly adsorbed water molecules immediately formed on the surface. After a certain lag time, a nucleation event occurred and ice started to grow on the top of this layer. Although a somewhat similar adsorbed layer formed on the I-terminated surface, this layer was unable to initiate ice growth. Similarly, although water molecules strongly adsorbed on the prism faces, these layers are less obviously ice-like and were unable to act as templates for ice growth on the time scales of the simulations.

B5 Contact angle of water on silver iodide

The contact angle of polycrystalline AgI depends on the silver concentration of the wetting liquid. Billett et al. (1976) measured the contact angle of an air bubble against thin films of silver iodide in an electrolyte solution using the captive bubble technique. The films consisted of a two-dimensional array of tightly packed, polydisperse micro- and nanocrystals of mainly trigonal and hexagonal shape. The size of the bubble was orders of magnitudes larger than the size of the crystals. Highest contact angle values were obtained for silver concentrations $pAg = 4 - 7$, namely $70^\circ - 73^\circ$ for the advancing liquid meniscus, $20^\circ - 24^\circ$ for the receding liquid meniscus and $45^\circ - 50^\circ$ for the intermediate advancing angle. Lowest values were obtained for $pAg = 1$ with 16° for the advancing, 9° for the receding, and 30° for the intermediate advancing angle and $pAg = 13$ with 16° for the advancing, 9° for the receding, and 9° for the intermediate advancing angle. The maximum value was realized close to the PZC with $pAg = 5.4 \pm 0.2$. This can be expected if one assumes that the spreading of water will be enhanced when the surface charge tends to orient the water molecules into a position that is energetically more favorable than the orientation of the bulk at the charged interface would be (Bijsterbosch and Lyklema, 1978).

B6 Dissolution of AgI particles in the CLINCH and IMCA/ZINC chambers

An approximate dissolution rate of particles can be calculated by the Noyes-Whitney equation (Dokoumetzidis and Macheras, 2006):

$$\frac{dM}{dt} = -\left(\frac{D}{h}\right)A(C_s - C_t) \quad (1)$$

where dM/dt describes the mass loss per time, D is the diffusion coefficient, A is the surface area of the particle(s), C_s and C_t are the saturation concentration and the concentration at time t , respectively, and h is a thin static liquid layer at the solid surface under steady state conditions.

Diffusion coefficients of ions in aqueous solutions increase with increasing temperature. For Ag^+ the diffusion coefficient is $D = 8.5 \cdot 10^{-6} \text{ cm}^2/\text{s}$ at 273 K and $16.6 \cdot 10^{-6} \text{ cm}^2/\text{s}$ at 298 K. The diffusion coefficient is slightly larger for I^- with $10.3 \cdot 10^{-6} \text{ cm}^2/\text{s}$ at 273 K and $20.0 \cdot 10^{-6} \text{ cm}^2/\text{s}$ at 298 K (Li and Gregory, 1974). For the liquid layer h , a value equal to the particle radius is often assumed (Sheng et al., 2008). Silver iodide is a sparingly soluble salt with a solubility product of around 10^{-16} at 298 K (Hiemstra, 2012; Lyklema, 1966). The solubility decreases with decreasing temperature and reaches a value $< 10^{-17}$ at 273 K (Lyklema, 1966). For an estimated saturation concentration of AgI in water of $C_s = 7.4 \cdot 10^{-10} \text{ g/cm}^3$ at $T < 273 \text{ K}$ and assuming $C_t = 0$, we obtain $dM/dt = 9 \cdot 10^{-19} \text{ g/s}$ for a 200 nm particle and $dM/dt = 9 \cdot 10^{-20} \text{ g/s}$ for a 20 nm particle. To reach saturation concentration in a 80 μm droplet at 273 K, $2 \cdot 10^{-16} \text{ g}$ AgI need to dissolve. With 2 s or 4 s residence time in the chamber, it can be assumed that the particle is constantly dissolving while in the chamber. The situation is different in the IMCA/ZINC chamber. Activation of the AgI particles to cloud droplets occurs at $T > 273 \text{ K}$ and the droplets grow only to 20 μm . Therefore, only $3 \cdot 10^{-18} \text{ g}$ AgI need to dissolve to reach saturation concentration in the droplet at 273 K. At 298 K, dissolution occurs at a higher rate of $dM/dt = 6 \cdot 10^{-18} \text{ g/s}$ for a 200 nm particle and at $dM/dt = 6 \cdot 10^{-19} \text{ g/s}$ for a 20 nm particle. Residence time in the IMCA part is approximately 15 s. Therefore, there seems to be enough time to reach saturation within the IMCA section. The

droplets might even become supersaturated with respect to AgI within the ZINC section, because dissolution occurred at $T > 273$ K and the saturation concentration is higher at this temperature than at the temperature in the ice nucleation section.

References

- Aguerd, M., Clause, D., and Babin, L.: Heterogeneous nucleation of ice by AgI in water droplets dispersed within emulsions, *Cryo-Lett.*, 3, 164 – 171, 1982.
- 5 [Anderson, B. J. and Hallett, J.: Supersaturation and time dependence of ice nucleation from the vapor on single crystal substrates, *J. Atmos. Sci.*, 33, 822 – 832, doi: 10.1175/1520-0469\(1976\)033<0822:SATDOI>2.0.CO;2, 1976.](#)
- Barchet W. R. and Corrin, M. L.: Water vapor adsorption by pure silver iodide above ice saturation, *J. Phys. Chem.*, 76, 2280 – 2285, doi:10.1021/j100660a018, 1972.
- 10 Barnes, G. T.: Phase transitions in water sorbed on ice forming nuclei, *Z. Angew. Math. Phys.*, 14, 510 – 518, 1963.
- Barnes, G. T. and Sanger, R.: An investigation into the mechanism of ice crystal nucleation by proton spin resonance spectroscopy, *Z. Angew. Math. Phys.*, 12, 159 – 164, doi:10.1007/BF01601015, 1961.
- Bassett, D. R.; Boucher, E. A., and Zettlemyer, A. C.: Adsorption studies on ice-nucleating substrates. Hydrophobed silicas and silver iodide, *J. Colloid Interf. Sci.*, 34, 436 – 446, doi:10.1016/0021-9797(70)90203-1, 1970.
- 15 Berry, C. R.: Structure and optical absorption of AgI microcrystals, *Phys. Rev.*, 161, 848 – 851, doi:10.1103/PhysRev.161.848, 1967.
- Bijsterbosch, B. H. and Lyklema, J.: Interfacial electrochemistry of silver iodide, *Adv. Colloid Interfac. Sci.*, 9, 147 – 251, doi:10.1016/0001-8686(87)80005-2, 1978.
- Billett, D. F., Hough, D. B., and Ottewill, R. H.: Studies on the contact angle of the charged silver iodide-solution-vapour interface, *J. Electroanal. Chem.*, 74, 107 – 120, doi:10.1016/S0022-0728(76)80217-3, 1976.
- 20 Breed, D., Rasmussen, R., Weeks, C., Boe, B., and Deshler, T.: Evaluating winter orographic cloud seeding: Design of the Wyoming Weather Modification Pilot Project (WWMPP), *J. Appl. Meteorol. Climatol.*, 53, 282 – 299, doi: 10.1175/JAMC-D-13-0128.1, 2014.
- Bruinjtes, R. T.: A review of cloud seeding experiments to enhance precipitation and some new prospects, *B. Am. Meteorol. Soc.*, 80, 805 – 820, doi:10.1175/1520-0477(1999)080<0805:AROCSE>2.0.CO;2, 1999.
- 25 Bryant, G. W., Hallett, J., and Mason B. J.: The epitaxial growth of ice on single-crystalline substrates, *J. Phys. Chem. Solids*, 189 – 195, 12, 1959.
- Budke, C. and Koop, T.: BINARY: an optical freezing array for assessing temperature and time dependence of heterogeneous ice nucleation, *Atmos. Meas. Tech.*, 8, 689 – 703, doi:10.5194/amt-8-689-2015, 2015.
- 30 Burley, G.: Polymorphism of silver iodide, *Am. Mineral.*, 48, 1266 – 1276, 1963.
- Cava, R. J. and Rietman, E. A.: Ionic conductivity of β -AgI, *Phys. Rev. B*, 30, 6896 – 6902, doi:10.1103/PhysRevB.30.6896, 1984.

- Chen, B. and Xiao H.: Silver iodide seeding impact on the microphysics and dynamics of convective clouds in the high plains, *Atmos. Res.*, 96, 186 – 207, doi:10.1016/j.atmosres.2009.04.001, 2010.
- Conrad, P., Ewing, G. E., Karlinsey, R. L., and Sadtchenko, V.: Ice nucleation on BaF₂(111), *J. Chem. Phys.*, 122, 064709, doi:10.1063/1.1844393, 2005.
- 5 Corrin, M. L. and Nelson, J. A.: Energetics of the adsorption of water vapor on “pure” silver iodide, *J. Phys. Chem.*, 72, 643 – 645, doi:10.1021/j100848a043, 1968.
- Corrin, M. L., Edwards, H. W., and Nelson, J. A.: The surface chemistry of condensation nuclei: II. The preparation of silver iodide free of hygroscopic impurities and its interaction with water vapor, *J. Atmos. Sci.*, 21, 565 – 567, doi:10.1175/1520-0469(1964)021<0565:TSCOCN>2.0.CO;2, 1964.
- 10 Davis, B. L., Johnson, L. R., and Moeng, F. J.: An explanation for the unusual nucleating ability of aerosols produced from the AgI-NH₄I-acetone system, *J. Appl. Meteorol.* 14, 891 – 896, doi:10.1175/1520-0450(1975)014<0891:AEFTUN>2.0.CO;2, 1975.
- DeMott, P. J.: Quantitative descriptions of ice formation mechanisms of silver iodide-type aerosols, *Atmos. Res.*, 38, 63 – 99, doi:10.1016/0169-8095(94)00088-U, 1995.
- 15 DeMott, P. J., Finnegan, W. G., and Grant, L. O.: An application of chemical kinetic theory and methodology to characterize the ice nucleating properties of aerosols used for weather modification, *J. Clim. Appl. Meteorol.*, 22, 1190 – 1203, doi:10.1175/1520-0450(1983)022<1190:AAOCKT>2.0.CO;2, 1983.
- Djikaev, Y. S. and Ruckenstein E.: Thermodynamics of heterogeneous crystal nucleation in contact and immersion modes, *J. Phys. Chem. A*, 112, 11677 – 11687, doi: 10.1021/jp803155f, 2008.
- 20 Dokoumetzidis, A. and Macheras, P.: A century of dissolution research: From Noyes and Whitney to the biopharmaceutics classification system, *Int. J. Pharm.*, 321, 1 – 11, doi:10.1016/j.ijpharm.2006.07.011, 2006.
- Durant, A. J. and Shaw, R. A.: Evaporation freezing by contact nucleation inside-out, *Geophys. Res. Lett.*, 32, L20814, doi:10.1029/2005GL024175, 2005.
- Edwards, G. R. and Evans, L. F.: Ice nucleation by silver iodide: I. Freezing vs sublimation. *J. Meteorol.*, 17, 627 – 634, doi:10.1175/1520-0469(1960)017<0627:INBSII>2.0.CO;2, 1960.
- 25 Edwards, G. R. and Evans, L. F.: Effect of surface charge on ice nucleation by silver iodide, *T. Faraday Soc.*, 58, 1649 – 1655, doi:10.1039/tf9625801649, 1962.
- Edwards, G. R. and Evans, L. F.: Ice nucleation by silver iodide: III. The nature of the nucleating site, *J. Atmos. Sci.*, 25, 249 – 256, doi:10.1175/1520-0469(1968)025<0249:INBSII>2.0.CO;2, 1968.
- 30 Edwards, G. R., Evans, L. F., and La Mer, V. K.: Ice nucleation by monodisperse silver iodide particles, *J. Colloid Sci.*, 17, 749 – 758, doi:10.1016/0095-8522(62)90049-1, 1962.
- Fitzner, M., Sosso, G. C., Cox, S. J., and Michaelides, A.: The many faces of heterogeneous ice nucleation: Interplay between surface morphology and hydrophobicity, *J. Am. Chem. Soc.*, 137, 13658 – 13669, doi: 10.1021/jacs.5b08748, 2015.
- Fletcher, N. H.: Entropy effect in ice crystal nucleation, *J. Chem. Phys.* 30, 1476 – 1482, doi:10.1063/1.1730221, 1959.

- Fornea, A. P., Brooks, S. D., Dooley, J. B., and Saha, A.: Heterogeneous freezing of ice on atmospheric aerosols containing ash, soot, and soil, *J. Geophys. Res.*, 114, D13201, doi:10.1029/2009JD011958, 2009.
- Fraux, G. and Doye, J. P. K.: Note: Heterogeneous ice nucleation on silver-iodide-like surfaces, *J. Chem. Phys.*, 141, 216101, doi:10.1063/1.4902382, 2014.
- 5 Fukuta N. and Paik Y.: Water adsorption and ice nucleation on silver iodide surfaces, *J. Appl. Phys.*, 44, 1092 – 1100, doi: 10.1063/1.1662311, 1973.
- Garstang, M., Bruintjes, R., Serafin, R., Orville, H., Boe, B., Cotton, W., and Warburton, J.: Weather modification – Finding common ground, *B. Am. Meteorol. Soc.*, 86, 647 – 655, doi:10.1175/BAMS-86-5-647, 2005.
- Gokhale, N. R. and Goold, J.: Droplet freezing by surface nucleation, *J. Appl. Meteorol.*, 7, 870 – 874, 1968.
- 10 Gokhale, N. R. and Lewinter, O.: Microcinematographic studies of contact nucleation, *J. Appl. Meteorol.* 10, 469 – 473, 1971.
- Govindarajan A. G. and Lindow S. E.: Size of bacterial ice-nucleation sites measured in situ by radiation inactivation analysis, *P. Natl. Acad. Sci. USA*, 85, 1334 – 1338, doi:10.1073/pnas.85.5.1334, 1988.
- Guo, Y.-G., Lee, J.-S., and Maier, J.: Preparation and characterization of AgI nanoparticles with controlled size, morphology and crystal structure, *Solid State Ionics*, 177, 2467 – 2471, doi:10.1016/j.ssi.2006.02.043, 2006.
- 15 Gurganus. C. W., Charnawskas, J. C., Kostinski, A. B., and Shaw, R. A.: Nucleation at the contact line observed on nanotextured surfaces, *Phys. Rev. Lett.*, 113, 235701, doi:10.1103/PhysRevLett.113.235701, 2014.
- Hall, P. G. and Tompkins, F. C.: Adsorption of water vapour on insoluble metal halides, *T. Faraday Soc.*, 58, 1734 – 1745, doi:10.1039/tf9625801734, 1962.
- Head, R. B.: Steroids as ice nucleators, *Nature*, 191, 1058 – 1059, doi:10.1038/1911058a0, 1961.
- 20 Hiemstra, T.: Variable charge and electrical double layer of mineral–water interfaces: silver halides versus metal (hydr)oxides, *Langmuir*, 28, 15614 – 15623, doi:10.1021/la303584a, 2012.
- Hoffer, T. E.: A laboratory investigation of droplet freezing, *J. Meteorol.*, 18, 766 – 778, doi:10.1175/1520-0469(1961)018<0766:ALIODF>2.0.CO;2, 1961.
- Kajava A. V. and Lindow S. E.: A model of the three-dimensional structure of ice nucleation proteins, *J. Mol. Biol.*, 232, 709 – 717, doi:10.1006/jmbi.1993.1424, 1993.
- Kallay, N., Preočanin, T., Šupljika, F., Lützenkirchen, J., and Lovković, M.: Influence of interfacial water layer on surface properties of silver halides: effect of pH on the isoelectric point, *J. Colloid Interf. Sci.*, 375, 167 – 171, doi:10.1016/j.jcis.2012.02.041, 2012.
- Klimeš, J., Bowler, D. R., and Michaelides, A.: Understanding the role of ions and water molecules in the NaCl
- 30 dissolution process, *J. Chem. Phys.*, 139, 234702, doi: 10.1063/1.4840675, 2013.
- Ladino Moreno, L. A., Stetzer, O., and Lohmann, U.: Contact freezing: a review of experimental studies, *Atmos. Chem. Phys.*, 13, 9745 – 9769, doi:10.5194/acp-13-9745-2013, 2013.

- Langer G., Cooper, G., Nagamoto, C. T., and Rosinski, J.: Ice nucleation mechanisms of submicron monodispersed silver iodide, 1,5-dihydroxynaphthalene and phloroglucinol aerosol particles, *J. Appl. Meteorol.*, 17, 1039 – 1048, doi:10.1175/1520-0450(1978)017<1039:INMOSM>2.0.CO;2, 1978.
- Li, Y. H. and Gregory, S.: Diffusion of ions in sea water and in deep-sea sediments, *Geochim. Cosmochim. Ac.*, 38, 708 – 714, 1974.
- Lüönd, F., Stetzer, O., Welti, A., and Lohmann, U.: Experimental study on the ice nucleation ability of size-selected kaolinite particles in the immersion mode, *J. Geophys. Res.*, 115, D14201, doi:10.1029/2009JD012959, 2010.
- Lyklema, J.: Electrical double layer on silver iodide – Influence of temperature and application to sol stability, *Discuss. Faraday Soc.*, 42, 81 – 90, 1966.
- 10 Lyklema, J. and Golub, T.: Electrical double layer on silver iodide and overcharging in the presence of hydrolyzable cations, *Croat. Chem. Acta*, 80, 303 – 311, 2007.
- Majewski, J., Margulis, L., Weissbuch, I., Popovitz-Biro, R., Arad, T., Talmon, Y., Lahav, M., and Leiserowitz, L.: Electron microscopy studies of amphiphilic self-assemblies on vitreous ice, *Adv. Mater.*, 7, 26 – 35, doi:10.1002/adma.19950070104, 1995.
- 15 Manson, J. E.: X-ray diffraction study of silver iodide aerosols, *J. Appl. Phys.* 26, 423 – 425, doi:10.1063/1.1722011, 1955.
- Marculli, C.: Deposition nucleation viewed as homogeneous or immersion freezing in pores and cavities, *Atmos. Chem. Phys.*, 14, 2071 – 2104, doi:10.5194/acp-14-2071-2014, 2014.
- [Mason, B. J. and van den Heuvel: The properties and behavior of some artificial ice nuclei, *Proc. Phys. Soc.*, 74, 744 – 755, doi:10.1088/0370-1328/74/6/312, 1959.](#)
- 20 Morgan, B. J. and Madden, P. A.: Effects of lattice polarity on interfacial space charges and defect disorder in ionically conducting AgI heterostructures, *Phys. Rev. Lett.*, 107, 206102, doi: 10.1103/PhysRevLett.107.206102, 2011.
- Murray, B. J., O’Sullivan, D., Atkinson, J. D., and Webb, M. E.: Ice nucleation by particles immersed in supercooled cloud droplets, *Chem. Soc. Rev.*, 41, 6519 – 6554, doi:10.1039/c2cs35200a, 2012.
- Nagare, B., Marcolli, C., Stetzer, O., and Lohmann, U.: Comparison of measured and calculated collision efficiencies at low
- 25 temperatures, *Atmos. Chem. Phys.*, 15, 13759 – 13776, doi:10.5194/acp-15-13759-2015, 2015.
- Nagare, B., Marcolli, C., Welti, A., Stetzer, O., and Lohmann, U.: Comparing contact and immersion freezing from continuous flow diffusion chambers, *Atmos. Chem. Phys. Discuss*, doi:10.5194/acp-2016-75, 2016.
- Nicolet, M., Stetzer, O., Lüönd, F., Möhler, O., and Lohmann, U.: Single ice crystal measurements during nucleation experiments with the depolarization detector IODE, *Atmos. Chem. Phys.*, 10, 313 – 325, doi:10.5194/acp-10-313-2010, 2010.
- 30 Palanisamy, M., Thangaraj, K., Gobinathan, R., and Ramasamy, P.: X-ray diffraction and ice nucleation studies of AgI-AgCl solid solutions, *J. Cryst. Growth*, 79, 1005 – 1009, doi:10.1016/0022-0248(86)90587-7, 1986a.
- Palanisamy, M., Thangaraj, K., Gobinathan, R., and Ramasamy, P.: Effect of particle size on the ice nucleating ability of AgI-AgBr-CuI system, *Cryst. Res. Technol.*, 21, 853 – 857, doi:10.1002/crat.2170210709, 1986b.

- Pokharel, B., Geerts, B., Jing, X., Friedrich, K., Aikins, J., Breed, D., Rasmussen, R., and Huggins, A.: The impact of ground-based glaciogenic seeding on clouds and precipitation over mountains: A multi-sensor case study of shallow precipitating orographic cumuli, *Atmos. Res.*, 147, 162 – 182, doi:10.1016/j.atmosres.2014.05.014, 2014.
- Popovitz-Biro, R., Wang, J. L., Majewski, J., Shavit, E., Leiserowitz, L., and Lahav, M.: Induced freezing of supercooled water into ice by self-assembled crystalline monolayers of amphiphilic alcohols at the air-water interface, *J. Am. Chem. Soc.*, 116, 1179 – 1191, doi:10.1021/ja00083a003, 1994.
- 5 Sadtchenko, V., Ewing, G. E., Nutt, D. R., and Stone, A. J.: Instability of ice films, *Langmuir*, 18, 4632 – 4636, doi:10.1021/la0255370, 2002.
- Sax, R. I. and Goldsmith, P.: Nucleation of water drops by Brownian contact with AgI and other aerosols, *Q. J. Roy. Meteor. Soc.*, 98, 60 – 72, doi:10.1002/qj.49709841506, 1972.
- 10 Schaller, R.C. and Fukuta, N.: Ice nucleation by aerosol particles: Experimental studies using a wedge-shaped ice thermal diffusion chamber, *J. Atmos. Sci.*, 36, 1788 – 1802, doi:10.1175/1520-0469(1979)036<1788:INBAPE>2.0.CO;2, 1979.
- Seinfeld, J. H. and Pandis, S. N.: *Atmospheric Chemistry and Physics: From Air Pollution to Climate Change*: John Wiley & Sons, Inc., 2006.
- 15 Shaw, R. A., Durant, A. J., and Mi, Y.: Heterogeneous surface crystallization observed in undercooled water, *J. Phys. Chem. B*, 109, 9865 – 9868, doi:10.1021/jp0506336, 2005.
- Sheng J. J., Sirois, P. J., Dressman, J. B., and Amidon, G. L.: Particle diffusional layer thickness in a USP dissolution apparatus II: A combined function of particle size and paddle speed, *J. Pharm. Sci.*, 97, 4815 – 4829, doi:10.1002/jps.21345, 2008.
- Shevkunov, S. V.: Computer simulation of the initial stage of water vapor nucleation on a silver iodide crystal surface: 1. 20 Microstructure, *Colloid J.*, 67, 548 – 560, doi:10.1007/s10595-005-0124-2, 2005.
- Shevkunov, S. V.: Stimulation of vapor nucleation on perfect and imperfect hexagonal lattice surfaces, *J. Exp. Theor. Phys.*, 107, 965 – 983, doi: 10.1134/S1063776108120078, 2008.
- Sidebottom, E. W., House, W. A., and Jaycock, M. J.: Investigation on the surface structure of precipitated silver iodide samples by Krypton adsorption, *J. Chem. Soc. Faraday T. I.*, 72, 2709 – 2721, doi:10.1039/f19767202709, 1976.
- 25 Silverman, B. A.: A critical assessment of glaciogenic seeding of convective clouds for rainfall enhancement, *B. Am. Meteorol. Soc.*, 82, 903 – 923, doi:10.1175/1520-0477(2001)082<0903:ACAOGS>2.3.CO;2, 2001.
- Sjogren, S., Gysel, M., Weingartner, E., Baltensperger, U., Cubison, M. J., Coe, H., Zardini, A. A., Marcolli, C., Krieger, U. K., and Peter, T.: Hygroscopic growth and water uptake kinetics of two-phase aerosol particles consisting of ammonium sulfate, adipic and humic acid mixtures, *J. Aerosol Sci.*, 38, 157 – 171, 2007.
- 30 Taylor, J. H. and Hale, B. N.: Monte Carlo simulations of water-ice layers on a model silver iodide substrate: A comparison with bulk ice systems, *Phys. Rev. B*, 47, 9732 – 9741, doi:10.1103/PhysRevB.47.9732, 1993.
- Tcheurekdjian, N., Zettlemoyer, A. C., and Chessick, J. J.: The adsorption of water vapor onto silver iodide, *J. Phys. Chem.*, 68, 773 – 777, doi:10.1021/j100786a010, 1964.

- Tomaev, V. V., Tver'yanovich, Yu. S., and Bal'makov, M. D.: Mechanical modification of β -AgI nanocrystals, *Crystallogr. Rep.*, 57, 948 – 954, doi:10.1134/S106377451207022X, 2012.
- [Vali, G., DeMott, P. J., Möhler, O., and Whale, T. F.: Technical Note: A proposal for ice nucleation terminology, *Atmos. Chem. Phys.*, 15, 10263 – 10270, doi:10.5194/acp-15-10263-2015, 2015.](#)
- 5 Vonnegut, B.: The nucleation of ice formation by silver iodide, *J. Appl. Phys.* 18, 593 – 595, doi:10.1063/1.1697813, 1947.
- Vonnegut, B. and Baldwin, M.: Repeated nucleation of a supercooled water sample that contains silver iodide particles, *J. Clim. Appl. Meteorol.*, 23, 486 – 490, doi:10.1175/1520-0450(1984)023<0486:RNOASW>2.0.CO;2, 1984.
- Vonnegut B. and Chessin H.: Ice nucleation by coprecipitated silver iodide and silver bromide, *Science*, 174, 945 – 946, doi:10.1126/science.174.4012.945, 1971.
- 10 Waychunas, G. A.: Disrupting dissolving ions at surfaces with fluid flow, *Science*, 344, 1094 – 1095, doi:10.1126/science.1254906, 2014.
- Welti, A., Lüönd, F., Kanji, Z. A., Stetzer, O., and Lohmann, U.: Time dependence of immersion freezing: an experimental study on size selected kaolinite particles, *Atmos. Chem. Phys.*, 12, 9893 – 9907, doi:10.5194/acp-12-9893-2012, 2012.
- Yankofsky, S. A., Levin Z., Bertold T., and Sandlerman, N.: Some basic characteristics of bacterial freezing nuclei, *J. Appl. Meteorol.*, 20, 1013 – 1019, doi:10.1175/1520-0450(1981)020<1013:SBCOBF>2.0.CO;2, 1981.
- 15 Zettlemoyer, A. C., Tcheurekdjian, N., and Chessick, J. J.: Surface properties of silver iodide, *Nature*, 192, 653, doi:10.1038/192653a0, 1961.
- Zettlemoyer, A. C., Tcheurekdjian, N., and Hosler, C. L.: Ice nucleation by hydrophobic substrates, *Z. Angew. Math. Phys.*, 14, 496 – 502, doi:10.1007/BF01601255, 1963.
- 20 Zielke, S. A., Bertram, A. K., and Patey, G. N.: A molecular mechanism of ice nucleation on model AgI surfaces, *J. Phys. Chem. B*, 119, 9049 – 9055, doi:10.1021/jp508601s, 2015.
- Zimmermann, F., Ebert, M., Worrigen, A., Schütz, L., and Weinbruch, S.: Environmental scanning electron microscopy (ESEM) as a new technique to determine the ice nucleation capability of individual atmospheric aerosol particles, *Atmos. Environ.*, 41, 8219 – 8227, doi:10.1016/j.atmosenv.2007.06.023, 2007.
- 25 Zobrist, B., Koop, T., Luo, B. P., Marcolli, C., and Peter, T.: Heterogeneous ice nucleation rate coefficient of water droplets coated by a nonadecanol monolayer, *J. Phys. Chem. C*, 111, 2149 – 2155, doi:10.1021/jp066080w, 2007.
- Zobrist, B., Marcolli, C., Peter, T., and Koop T.: Heterogeneous ice nucleation in aqueous solutions: the role of water activity, *J. Phys. Chem. A*, 112, 3965 – 3975, doi:10.1021/jp7112208, 2008.

Table 1. Immersion freezing studies with AgI or related salts: IN: ice nuclei; D_D: droplet diameter; C_p: particle concentration; D_p: particle diameter; T_f: freezing temperature; C_D: droplet concentration. References: Ed62: Edwards et al., 1962; EE68: Edwards and Evans, 1968; EE62: Edwards and Evans, 1962; Zo08: Zobrist et al., 2008; Ag82: Aguerd et al., 1982; Ho61: Hoffer, 1961; SG72: Sax and Goldsmith, 1972; DM95: DeMott, 1995; VB84: Vonnegut and Baldwin, 1984; Pa86: Palanisamy et al., 1986a; Da75: Davis et al., 1975.

IN	Preparation	Setup	D _D & prep	C _p	D _p	Activation	T _f	Refs
AgI	Precipitation from AgI saturated solution on seeds, deposited on cover slips	Cold stage; droplets on hydrophobic glass cover slips	30 – 60 μm,	10/drop	170 nm	50 %	255 K	Ed62
			av. 50 μm	100/drop	170 nm	50 %	260 K	
			sprayed from	2/drop	750 nm	50 %	258 K	
			atomizer on	10/drop	750 nm	50 %	260 K	
			cover slips	100/drop	750 nm	50 %	263 K	
				2/drop	3.5 μm	50 %	263 K	
	20/drop	3.5 μm	50 %	266 K				
AgI	Precipitation from AgI saturated solution on seeds, deposited on cover slips	Cold stage; droplets on hydrophobic glass cover slips	~ 100 μm	1000/drop	4 μm	50 %	268 K	EE68
			sprayed from	100/drop	4 μm	50 %	267.5 K	
			atomizer on	10/drop	4 μm	50 %	267K	
			cover slips	2/drop	4 μm	50 %	266 K	
AgI	Precipitation from AgI saturated solution on seeds, deposited on cover slips	Cold stage; droplets on hydrophobic glass cover slips, sol A: excess Ag ⁺	30 – 60 μm, av.	200/drop				EE62
			50 μm	10 ⁻² M AgNO ₃	750 nm	50 %	257 K	
			sprayed from	10 ⁻³ M AgNO ₃	750 nm	50 %	259 K	
			atomizer on	10 ⁻⁴ M AgNO ₃	750 nm	50 %	262 K	
			cover slips (~40)	10 ⁻⁵ M AgNO ₃	750 nm	50 %	263 K	
			covered with	10 ⁻⁶ M AgNO ₃	750 nm	50 %	259 K	
			paraffin oil	H ₂ O	750 nm	50 %	255 K	
				10 ⁻³ M KI	750 nm	50 %	255 K	
				10 ⁻⁴ M KI	750 nm	50 %	255 K	
				10 ⁻⁵ M KI	750 nm	50 %	255 K	
AgI	Precipitation from AgI saturated solution on seeds, deposited on cover slips	Cold stage; droplets on hydrophobic glass cover slips sol B: excess I ⁻	30 – 60 μm, av.	200/drop				EE62
			50 μm	10 ⁻² M AgNO ₃	750 nm	50 %	252 K	
			sprayed from	10 ⁻⁴ M AgNO ₃	750 nm	50 %	258 K	
			atomizer on	10 ⁻⁵ M AgNO ₃	750 nm	50 %	263 K	
			cover slips (~40)	H ₂ O	750 nm	50 %	264 K	
				10 ⁻⁶ M KI	750 nm	50 %	263 K	
				10 ⁻⁵ M KI	750 nm	50 %	257 K	
				10 ⁻⁴ M KI	750 nm	50 %	256 K	
AgI, KNO ₃	In situ precipitation	Emulsions cooled in DSC	3 μm ± 2 μm in oil	1/drop (assumed)	260 nm 440 nm	onset ~ 50 %	255 K 251.5 K	Zo08
AgI, KNO ₃	In situ precipitation	Emulsions cooled in DSC	<3 μm in oil	1/drop (assumed)	240 nm 240 nm	onset ~ 50 %	255 K 251 K	Ag82
AgI, KNO ₃	In situ Precipitation	bulk cooled in DSC	1 cm ³	10 ¹⁰ /sample (assumed)	200 nm	onset	269.5 K	Ag82
AgI, NaNO ₃	Precipitation in high viscosity silicone oil	Droplets embedded in oil, cooling at 1K/min	100 – 120 μm	Not known	Not known	50 %	257 K	Ho61

AgI	Heated wire with coated AgI	Chamber with falling droplets; 1 cm coagulation region; particles added at T > 273K	40 – 160 μm ; av. 100 μm stable stream	100/drop, captured in coagulation region	30 nm 30 nm	<1 % 50 %	263 K 256 K	SG72
AgI- AgCl	Burning acetone based solutions	Cloud chamber $C_D < 400 \text{ cm}^{-3}$	CCN activation of AgI particles (>50 %) at T > 268 K	1/drop	30 nm 30 nm 30 nm 30 nm 70 nm 70 nm 70 nm 70 nm 70 nm	0.05 % 0.5 % 0.8 % 2 % 5 % 0 % 0.01 % 0.1 % 0.2 % 1 %	267 K 265 K 263 K 261 K 257 K 267 K 265 K 263 K 261 K 257 K	DM95
AgI	Used as is	Suspension in U-shaped glass capillary tube with ca. 0.5 mm diameter	0.01 g H ₂ O	Many particles refreeze experiments at T _{const}	10 μm	1 s 30 s 15 min 2 h	264 K 266 K 268 K 270 K	VB84
AgI	99.95 % AR grade	Test tube filled with suspension, cooled with 0.1 K/min	0.25 ml suspension	0.25 mg per 0.25 ml suspension	~ 55 μm	Repeated bulk sample freezing	270.60 K	Pa86
AgI- AgCl	65:35 mol% AgI and AgCl molten together, then quenched to RT, powdered and sieved.	Test tube filled with suspension, cooled with 0.1 K/min	0.25 ml suspension	0.25 mg per 0.25 ml suspension	~ 55 μm	Repeated bulk sample freezing	271.97 K	Pa86
AgI	–	Layer mounted on thermoelectric device	–	–	–	threshold	269 K	Da75
3AgI· NH ₄ · H ₂ O	From aqueous solution of AgI and NH ₄ I	Layer mounted on thermoelectric device	–	–	–	threshold	272 K	Da75
AgI, KNO ₃	Precipitated suspension, atomized and size selected	IMCA/ZINC chamber, activation section followed by nucleation section	20 μm from AgI particles activated at T > 273K, S _w > 20%	1/drop, 3 s residence time 1/drop, 10 s residence time	200 nm 200 nm 200 nm 400 nm 20 nm 30 nm 40 nm 50 nm 200 nm 400 nm	10 % 50 % 100 % 50 % 50 % 50 % 50 % 50 % 50 % 50 %	265 K 262 K 255 K 263 K 236.5 K 259 K 264 K 264 K 264 K 264 K	This study

Table 2. Contact freezing studies with AgI and related salts. IN: ice nuclei; D_D : droplet diameter; C_p : particle concentration; D_p : particle diameter; T_f : freezing temperature; C_D : droplet concentration. References: GG68: Gokhale and Goold, 1968; GL71: Gokhale and Lewinter, 1971; SG72: Sax and Goldsmith, 1972; La78: Langer et al., 1978; SF79: Schaller and Fukuta, 1979; DM95: DeMott, 1995; Na16: Nagare et al., 2016.

IN	Preparation	Setup	D_D & prep	C_p	D_p	Activation	T_f	Refs
Ag mixed with NaI	Burner smoke from AgI string generator	Droplets on hydrophobic plate, cooling at 1.3 K/min	2.7 mm deposited	Smoke (introduced in chamber at 268 K)	50 – 100 nm	4 % 50 %	268 K 263 K	GG68
AgI	Crushed powder	Droplets on hydrophobic plate	2.7 mm deposited	many particles (sprinkled on drops at 268 K)	4 – 10 μm 5 – 20 μm 100 – 400 μm	100 % 100 % 100 %	268 K 268 K 268 K	GG68
AgI,	Purified grade used as is	Droplets on hydrophobic plate	2 mm deposited	many particles (sprinkled on drops at 268 K)	micron size	Freezing within 16 – 47 ms	268 K	GL71
AgI	Heated wire coated with AgI	Chamber with falling droplets; 1 cm coagulation region; particles added at T_f	40 – 160 μm ; av. 100 μm stable stream	100/drop, captured in coagulation region	30 nm 30 nm 30 nm	1 % 50 % 100 %	263 K 258 K 256 K	SG72
AgI	Heated wire with coated AgI	Chamber, particles added at target temperature	1 mm on tip of fiber in chamber	10 ⁵ /drop < 250/drop	30 nm 30 nm	50 – 100 % 50 – 100 %	268 K 263 K	SG72
AgI	Thermally (from molten AgI)	Cloud chamber, Residence time: 120 s (20 – 300 s)	av. 6 μm (1 – 10 μm) activated from NaCl aerosol, $C_D = 4 \cdot 10^4 \text{ cm}^{-3}$	100 – 1000 cm^{-3} air	20 nm 40 nm 60 nm 80 nm 100 nm 120 nm	1.2 % 15 % 28 % 41 % 46 % 47 %	257–258 K 257–258 K 257–258 K 257–258 K 257–258 K 257–258 K	La78
AgI,	Reagent grade heated on iron plate	Wedge-shaped ice thermal diffusion chamber	Small fog droplets activated from NH_4Cl particles	1/drop	Average: 300 nm	not known	267 K	SF79
AgI- AgCl	Burning acetone based solutions	Isothermal cloud chamber (960 L) $t_{\text{exp}} = 3 - 30 \text{ min}$ $C_D = 4300 \text{ cm}^{-3}$	8 μm (1 – 16 μm) Continuously produced by nebulizing water	1/drop (nominal)	30 nm 30 nm 30 nm 30 nm 30 nm 70 nm 70 nm 70 nm 70 nm 70 nm	0.04 % 6.6 % 12.2 % 24.3 % 34.4 % 0.2 % 39.8 % 54.6 % 45.8 % 65.0 %	267 K 265 K 263 K 261 K 257 K 267 K 265 K 263 K 261 K 257 K	DM95
AgI, KNO_3	Precipitated suspension atomized and size selected	CLINCH Continuous flow diffusion chamber	80 μm injected in chamber	1/drop 1/drop 2/drop 2/drop	200 nm 200 nm 200 nm 200 nm	50 % 100 % 50 % 100 %	248 K 246 K 258 K 250 K	Na16

Table 3. Condensation freezing studies. IN: ice nuclei; D_D: droplet diameter; C_p: particle concentration; D_p: particle diameter; T_f: freezing temperature. S_w: supersaturation with respect to water. References: MH59: Mason and van den Heuvel, 1959; SF79: Schaller and Fukuta, 1979; EE60: Edwards and Evans, 1960; DM95: DeMott, 1995; Zi07: Zimmermann et al., 2007.

IN	Preparation	Setup	D _D & prep	C _p	D _p	Activation	T _f	Refs
<u>AgI</u>	<u>AgI smoke produced by heating AgI</u>	<u>Aerosol introduced into an ice diffusion chamber</u>	<u>Activation at water saturation</u>	<u>1/drop</u>	<u>-</u>	<u>threshold</u>	<u>267 K</u>	<u>MH59</u>
<u>AgI</u>	<u>Reagent grade heated on iron plate</u>	<u>Wedge-shaped ice thermal diffusion chamber</u>	<u>Small fog droplets activated from AgI at S_w= 12.5%</u>	<u>1/drop</u>	<u>av: 300 nm</u>	<u>1.3 % 6.4 %</u>	<u>268.5 K 267 K</u>	<u>SF79</u>
<u>AgI</u>	<u>Ag aerosol reacting with iodine vapor</u>	<u>Cloud chamber</u>	<u>Activation at S_w= 20 %</u>	<u>1/drop</u>	<u>12 – 15 nm 18 – 20 nm</u>	<u>onset onset</u>	<u>264 – 265 K 266 – 267 K</u>	<u>EE60</u>
<u>AgI- AgCl</u>	<u>Burning acetone based solutions</u>	<u>Dynamic (controlled expansion) cloud chamber</u>	<u>Cloud point</u>	<u>1/drop</u>	<u>30 – 70 nm</u>	<u>2·10⁻⁴ 2·10⁻³</u>	<u>266 K 260 K</u>	<u>DM95</u>
<u>AgI, p.a.</u>	<u>grinded</u>	<u>ESEM, increasing RH in steps of 0.13 hPa (5 – 10 min)</u>	<u>Activation at S_w = 8 – 11%</u>	<u>1/drop</u>	<u>1 – 10 μm</u>	<u>threshold</u>	<u>268 K</u>	<u>Zi07</u>

5 **Table 4.** Deposition nucleation studies. IN: ice nuclei; RH_a: activation relative humidity; RH_i: relative humidity with respect to ice; RH_w: relative humidity with respect to water; T_a: activation temperature. References: Br59: Bryant et al., 1959; AH76: Anderson and Hallett, 1967; EE60: Edwards and Evans, 1960; Zi07: Zimmermann et al., 2007; MH59: Mason and van den Heuvel, 1959; SF79: Schaller and Fukuta, 1979; DM95: DeMott, 1995.

IN	Preparation	Setup	<u>AgI crystals</u>	<u>Nucleation of crystals</u>	<u>RH_a</u>	<u>T_a</u>	<u>Refs</u>
<u>AgI</u>	<u>AgI layer prepared by oxidizing silver by iodine vapor</u>	<u>Crystal in temperature and RH controlled chamber observed by microscopy</u>	<u>Single crystal</u>	<u>at special sites of crystal</u>	<u>> RH_w > 112 %RH_i</u>	<u>269 K < 261 K</u>	<u>Br59</u>
<u>AgI</u>	<u>Large cleaved crystals grown from solution</u>	<u>Crystal in temperature and RH controlled chamber observed by microscopy</u>	<u>single crystal</u>	<u>at special sites of crystals</u>	<u>> 102 % RH_i</u>	<u>< 268 K</u>	<u>AH76</u>
<u>AgI</u>	<u>Ag aerosol reacting with iodine vapor</u>	<u>Particles on gold disc on a RH controlled liquid cooled stage observed by microscopy</u>	<u>≤ 15 nm diameter</u>	<u>< 0.5 % < 0.5 % < 0.5 %</u>	<u>98 %RH_w 98 %RH_w 98 %RH_w</u>	<u>262 K 258 K 255 K</u>	<u>EE60</u>
<u>AgI, p.a.</u>	<u>grinded</u>	<u>ESEM, increasing RH in steps of 0.13 hPa (5 – 10 min)</u>	<u>1– 10 μm</u>	<u>Threshold activation</u>	<u>07 % RH_i</u>	<u>264 K</u>	<u>Zi07</u>
<u>AgI</u>	<u>AgI smoke produced by heating AgI</u>	<u>Aerosol introduced into an ice diffusion chamber</u>	<u>-</u>	<u>-</u>	<u>> 112 %RH_i</u>	<u>< 261 K</u>	<u>MH59</u>
<u>AgI</u>	<u>Reagent grade heated on iron plate</u>	<u>Wedge-shaped ice thermal diffusion chamber</u>	<u>av. 300 nm diameter</u>	<u>1.3 % 1.3 % 6.4 %</u>	<u>108 % RH_i 105 % RH_i 109 % RH_i</u>	<u>264 K 258 K 262 K</u>	<u>SF79</u>

AgI- AgCl	Burning acetone- based solutions	Dynamic (controlled expansion) cloud chamber	30 – 70 nm particles	$5 \cdot 10^{-5}$ 10^{-4} $2 \cdot 10^{-4}$ $7 \cdot 10^{-4}$ $1.5 \cdot 10^{-3}$ $2 \cdot 10^{-3}$	104 % RH _i 106 % RH _i 107 % RH _i 104 % RH _i 107 % RH _i 112 % RH _i	266 K 266 K 266 K 260 K 260 K 260 K	DM95
--------------	-------------------------------------	--	-------------------------	--	--	--	------

5

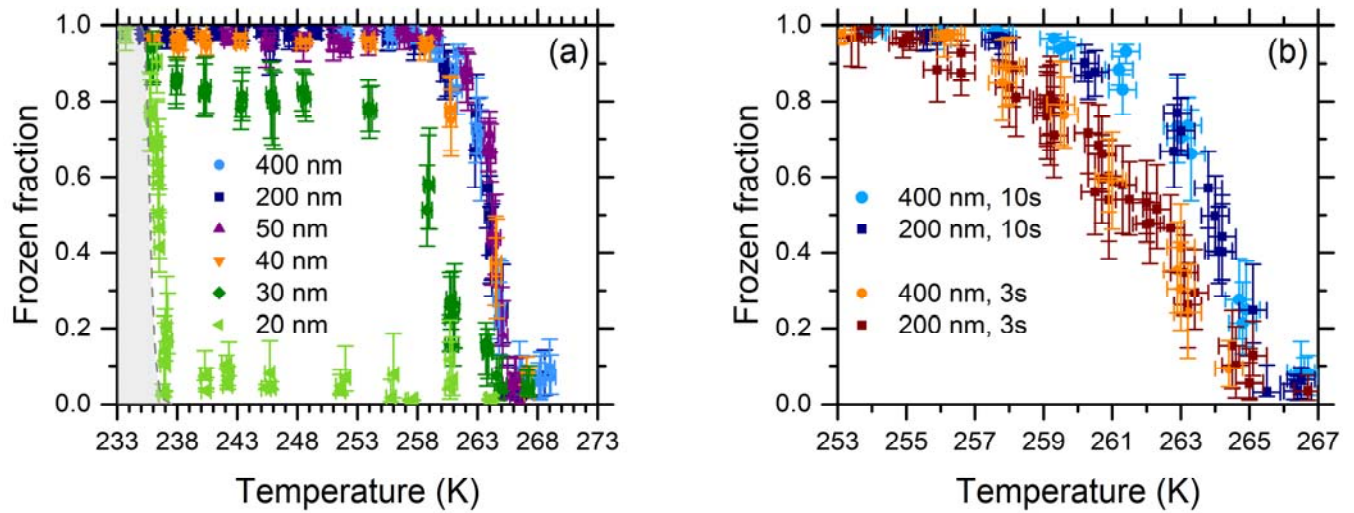


Figure A31. Immersion freezing experiments performed with the IMCA/ZINC setup. Panel (a): particle size dependence of frozen fraction. Panel (b): time dependence. Note, that the scales of the x-axes in panels (a) and (b) are different. Error bars represent the uncertainty in the frozen fraction due to the classification (liquid or ice) uncertainty of the IODE detector (Lüönd et al., 2010).

10

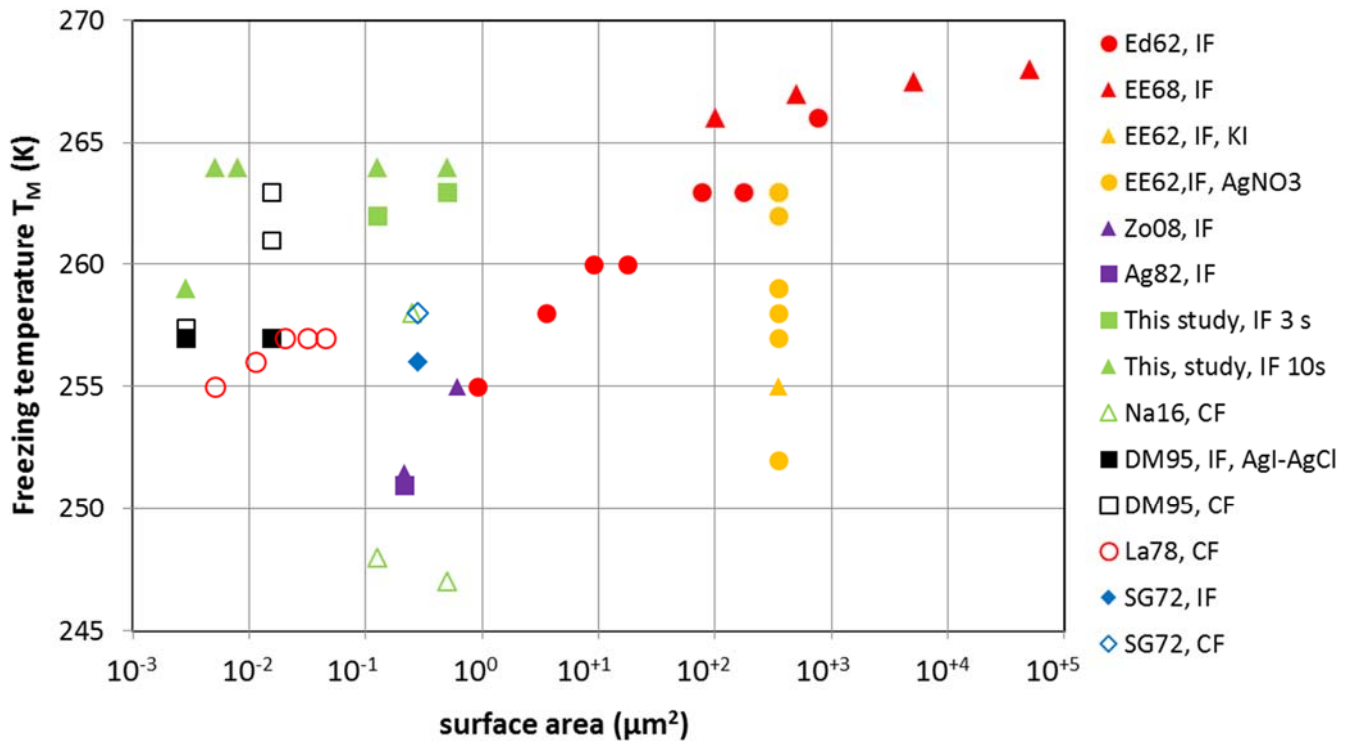


Figure 2. Median freezing temperatures T_M as a function of particle surface area per droplet for immersion freezing (IF, filled symbols) and contact freezing (CF, open symbols). Filled red symbols: droplets on hydrophobic glass slips with previously deposited AgI particles prepared by precipitation in stoichiometric ratio (circles: Edwards et al., 1962, [Ed62](#); triangles: Edwards and Evans, 1968, [EE68](#)). Filled orange symbols: droplets on hydrophobic glass slips with previously deposited AgI particles prepared by precipitation in non-stoichiometric ratio (Edwards and Evans, 1962, [EE62](#); circles: excess of AgNO₃, triangles: excess of KI, [note that circles and triangles overlap](#)). Filled purple symbols: emulsion of AgI containing water droplets prepared by in-situ precipitation in stoichiometric ratio (triangles: Zobrist et al., 2008, [Zo08](#); square: Aguerd et al., 1982, [Ag82](#)). Filled green symbols: Freely falling water droplets with immersed AgI particle (squares: this study, 3 s residence time; triangles: this study, 10 s residence time). Open green ~~symbol~~triangles: water droplets freely falling through chamber with AgI aerosol (Nagare et al., 2016, [Na16](#)). Filled black squares: cloud chamber filled with droplets from CCN activation of AgI-AgCl particles (DeMott, 1995, [DM95](#)). Open black squares: water droplets in cloud chamber with AgI-AgCl aerosol (DeMott, 1995). Open red circles: water droplets in cloud chamber filled with AgI aerosol (Langer, 1978, [La78](#)). Blue diamonds: freely falling droplets intercepting AgI aerosol, filled diamond: immersion mode, open diamond: contact mode (Sax and Goldsmith, 1972, [SG72](#)).

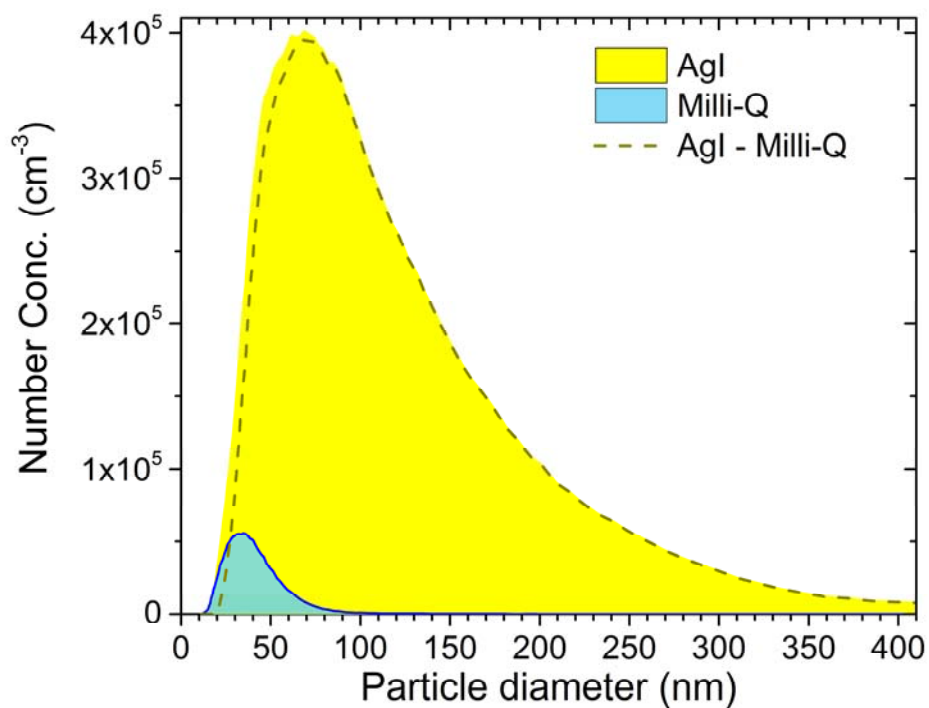


Figure A1. Size distribution of an AgI suspension in Milli-Q water (yellow area) measured with a TSI 3080 scanning mobility particle sizer (SMPS). Pure Milli-Q water measured with the same method and settings is shown as the blue area. The difference curve $\text{area}(\text{AgI}) - \text{area}(\text{Milli-Q})$ is given as dashed line.

5

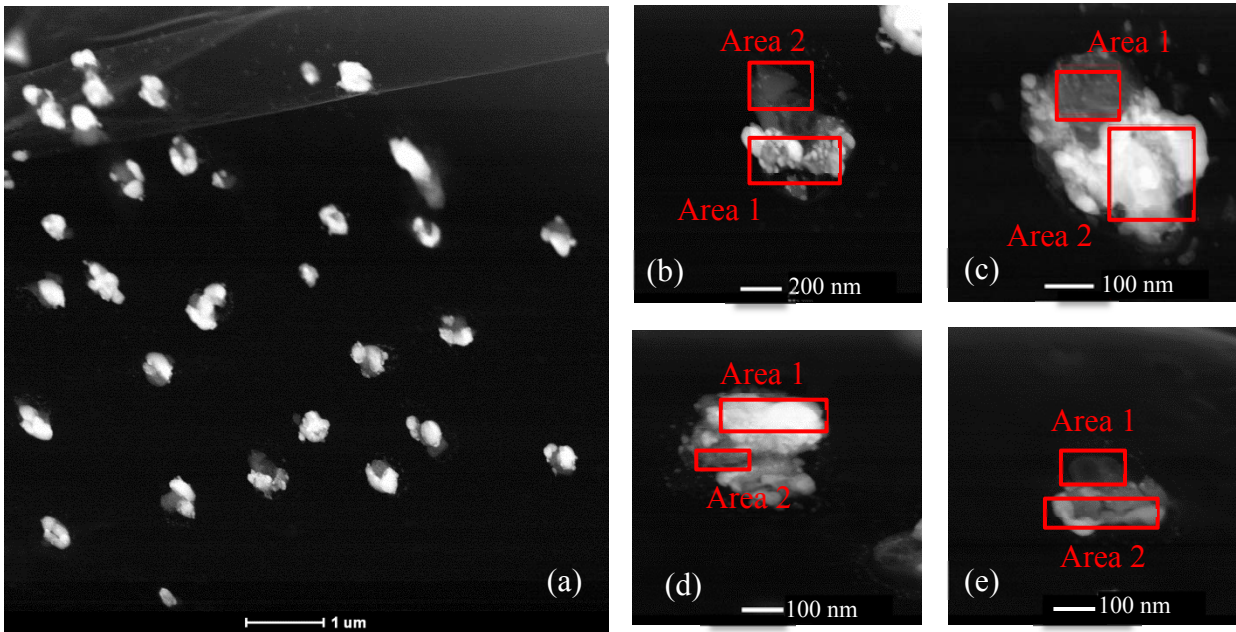


Figure A2. High angle annular dark field (*HAADF*) scanning transmission electron microscopy (*STEM*) of AgI particles formed by precipitation. Panel (a) shows an overview and panels (c – e) individual particles for which EDX (energy dispersive X-ray) spectroscopy has been performed. Panel (b): In area 1 silver and iodine was detected with small amounts of oxygen and potassium. In area 2 potassium and chloride were detected. Panel (c): In area 1 silver and iodine was detected, for area 2 the EDX spectrum showed a large peak for potassium and small peaks for chlorine and oxygen. Panel (d): Area 1 contained mainly silver and iodine, area 2 silver and iodine and possibly small amounts of potassium. Panel (e): The EDX spectrum of area 1 showed a small peak for potassium and small amounts of silver and iodine, area 2 silver and iodine.

10

5

10

15