

Representing the effects of stratosphere-troposphere exchange on 3D O₃ distributions in chemistry transport models using a potential vorticity based parameterization

5 Jia Xing^{1, 2}, Rohit Mathur¹, Jonathan Pleim¹, Christian Hogrefe¹, Jiandong Wang^{1, 2}, Chuen-Meei Gan¹,
Golam Sarwar¹, David C. Wong¹, Stuart McKeen³

¹The U.S. Environmental Protection Agency, Research Triangle Park, NC 27711, USA

²School of Environment, Tsinghua University, Beijing, 100084, China

³Cooperative Institute for Research in Environmental Sciences, University of Colorado, Boulder, CO 809309, USA

10 *Correspondence to: Rohit Mathur (mathur.rohit@epa.gov)*

Abstract. Downward transport of ozone (O₃) from the stratosphere can be a significant contributor to tropospheric O₃ background levels. However, this process often is not well represented in current regional models. In this study, we develop a seasonally and spatially varying potential vorticity (PV)-based function to parameterize upper tropospheric / lower stratospheric (UTLS) O₃ in a chemistry transport model. This dynamic O₃-PV function is developed based on 21-year ozonesonde records from World Ozone
15 and Ultraviolet Radiation Data Centre (WOUDC) with corresponding PV values from a 21-year Weather Research and Forecasting (WRF) simulation across the northern hemisphere from 1990 to 2010. The result suggests strong spatial and seasonal variations of O₃/PV ratios which exhibits large values in the upper layers and in high latitude regions, with highest values in spring and the lowest values in autumn over an annual cycle. The newly-developed O₃/PV function was then applied in the Community Multiscale Air Quality (CMAQ) model for an annual simulation of the year 2006. The simulated UTLS O₃ agrees much better with
20 observations in both magnitude and seasonality after the implementation of the new parameterization. Considerable impacts on surface O₃ model performance were found in the comparison with observations from three observational networks, i.e., EMEP, CASTNET and WDCGG. With the new parameterization, the negative bias in spring is reduced from -20 to -15% in the reference case to -9 to -1%, while the positive bias in autumn is increased from 1 to 15% in the reference case to 5 to 22%. Therefore, the downward transport of O₃ from upper layers has large impacts on surface concentration and needs to be properly represented in
25 regional models.

1. Introduction

Accurate characterization of distribution of tropospheric ozone (O₃) is of great interest because it is not only impacts human ecosystem health, but also affects the earth-atmosphere radiation balance and global climate. In addition to its well-known sources from the photochemistry involving NO_x and VOC, O₃ in the troposphere can also originate from stratosphere-to-troposphere
30 exchange in tropopause folds and in cut-off lows (e.g., Danielsen, 1968; Bamber et al., 1984; Holton et al., 1995) which become important during periods of significant downward transport or deep stratospheric intrusions (Roelofs and Lelieveld, 1997; Stohl et al., 2000; McCaffery et al., 2004; Zanis et al., 2014; Neu et al., 2014). The contribution of stratosphere-to-troposphere exchange to troposphere column O₃ is estimated to be 20-50% of all sources across the globe (Lelieveld and Dentener, 2000) and the fraction

is becoming larger due to reductions in O₃ precursor emissions and climate change (Collins et al., 2003). Quantification of O₃ contributions from the stratosphere-to-troposphere exchange is crucial for air quality management strategies.

Accurate O₃ vertical profiles are also essential for specifying lateral boundary conditions (LBCs) used in regional air quality simulations to capture the amount of O₃ imported to a region (Lam and Fu, 2010). A dynamical model representation of free-tropospheric O₃ variability becomes necessary for regional model applications conducted over large spatial domain and long simulation periods wherein sufficient opportunities exist for exchange between the boundary layer and free troposphere. LBCs traditionally derived from global model simulations, often can suffer from uncertainties associated with the simulation biases at global scale and inconsistent downscaling methodologies. In order to reduce such uncertainties and to adequately represent variability in the free troposphere, a dynamic representation of the upper tropospheric / lower stratospheric (UTLS) O₃ is desirable in regional models.

Potential vorticity (PV) has often been used as an indicator for air mass exchange between the stratosphere and the troposphere due to its strong positive correlation with O₃ and other tracers transported from the lower stratosphere to upper troposphere (Danielsen, 1968; Browell et al., 1987; Ancellet et al., 1994). Previous studies used a linear scaling with a constant O₃/PV ratio to parameterize the influence of stratosphere-to-troposphere exchange on O₃ near the tropopause (Ebel et al, 1991; Carmichael et al, 1998; McCaffery et al, 2004). However, the reported O₃/PV ratios vary depending on location, season, and altitude. For example, Browell et al (1987) suggested the average ratio between O₃ mixing ratios and PV is 50.2 ppb/PVu (1 PV unit = 10⁻⁶ m² K kg⁻¹ s⁻¹) from a study conducted over southern Nevada and California in April, 1984, while Ancellet et al (1994) suggested that the O₃ to PV ratios in the tropopause fold were 30-40 ppb/PVu at an European sounding station during November 1990. Carmichael et al (1998) suggested a O₃/PV ratio in the range 50-100 ppb/PVu at two sites in East Asia during spring, with smaller values at lower altitudes. Roelofs and Lelieveld (2000) reported a strong seasonal variation of O₃/PV ratio ranging from 36-76 ppb/PVu with the largest in spring and the lowest in autumn based on MOZAIC data across North America and Europe. Clearly, the O₃/PV ratio varies significantly as a function of location, altitude and time. However, to date, the spatial and temporal variations of O₃/PV ratio have not been well quantified.

This study aims to analyze the relationship between PV and UTLS O₃ over a large spatial and temporal scale and then to derive a spatially and temporally varying PV-based function to parameterize UTLS O₃ in a chemistry transport model. One thing should be noted that such PV based parameterization only modifies the O₃ mixing ratio, however, co-variances between O₃ and other species are not accounted for in such modifications which might introduce some inconsistencies in the chemistry in the model's UTLS. The method of development of the O₃-PV function is described in section 2. The evaluation of the new function through a model simulation is presented in section 3, and summarized in section 4.

2. Method

2.1 Ozone observations and PV data

A 21-year air quality simulation across the northern hemisphere from 1990 to 2010 has been conducted in our previous study (Xing et al., 2015) by using the Weather Research and Forecasting (WRF) coupled with the Community Multiscale Air Quality (CMAQ) model. Throughout the simulation, WRF was nudged towards NCEP/NCAR Reanalysis data and NCEP ADP operational global surface and upper air observational weather data as described in Xing et al. (2015). The model domain covers the northern hemisphere (see Figure 1) with a horizontal grid of 108 km×108 km resolution and 44 vertical layers of variable thickness between the surface and 50 hPa (approximately 3 vertical levels above 100hPa) (Mathur et al., 2012, 2014).

The model configuration and evaluation is detailed in Xing et al (2015). Anthropogenic emissions are derived from EDGAR (Emission Database for Global Atmospheric Research, version 4.2) and biogenic emissions are derived from GEIA (Global Emission Inventory Activity) (Guenther et al., 1995; Price et al., 1997). The model performance in the simulation of gaseous and particle concentrations was evaluated thorough comparison with several ground observation networks.

- 5 Ozonesonde observations were obtained from the World Ozone and Ultraviolet Radiation Data Centre (WOUDC). A total of 44 sites (noted as red dots in Figure 1) across the northern hemisphere were selected after applying screening criteria which required at least one complete year covering all 12 months. The O₃/PV ratio used in this study is calculated by using the O₃ mixing ratio from WOUDC divided by the PV estimated from WRF.

2.2 Parameterization of O₃-PV correlations

- 10 We parameterize the O₃/PV ratio as a combination of one spatial function and one temporal function, as shown below:

$$O_3/PV = F(\text{spatial}) \times G(\text{temporal}) \quad (1)$$

- The spatial function is parameterized through an analysis of O₃/PV correlations with latitude and air pressure on an annual average basis. The spatial distribution of the O₃/PV ratio at three vertical levels (58, 76 and 95 hPa) is presented in Figure S1. At the top layer (58hPa), most sites exhibit a consistent O₃/PV ratio around 80 ppb/PV_u, while larger values are noted in low latitude (<20°N) regions where PV is small. At lower altitudes (i.e., 76, 95hPa), the O₃/PV ratio decreases to around 50 ppb/PV_u. The O₃/PV ratio against latitude on each of the three levels is fitted by a 5th order polynomial function, as below:

$$F_{p_0}(lat) = a(0) + a(1) \times lat + a(2) \times lat^2 + a(3) \times lat^3 + a(4) \times lat^4 + a(5) \times lat^5; lat = abs(latitude) \quad (2)$$

The values of $a(0)$ - $a(5)$ are summarized in Table 1.

- 20 Decrease in the magnitude of the O₃/PV ratio with decreasing height is evident across the sites. In addition, significant decreases are exhibited in low latitude regions. Figure S2 displays the slope of the O₃/PV ratio vs. pressure at different latitudes. These slopes are estimated from the slope of the O₃/PV ratio at three vertical layers (i.e., 58, 76 and 95 hPa), i.e.

$$F(lat, p_x) = F_{p_0}(lat) + f(lat) \times (p_x - p_0); p_x \in (50hPa, 100hPa), p_0 = 58.56hPa \quad (3)$$

- A 2nd order polynomial function is then used to fit the latitude-dependent decreasing rate of O₃/PV vs. pressure (i.e., vertical heights), as follows:

$$f(lat) = \min[(b(0) + b(1) \times lat + b(2) \times lat^2), 0] \quad (4)$$

The values of $b(0)$ - $b(2)$ are summarized in Table 1.

- To examine the pressure- and latitude- dependent spatial function, we compared the measurement-based and function-fitted O₃/PV values in Figure 2. Generally, the new function is able to capture the variation of O₃/PV ratio at different horizontal and vertical locations. Large values are seen in upper layers and in low latitude regions. The correlation coefficients (R) between measurement-based and function-fitted values are 0.5-0.9 and normalized mean biases (NMB) are within ±15%. Poor correlation between O₃ and PV is found for latitudes south of 30N (Figure S2). This is in part because in the tropics, convective transport plays a significant role in shaping the vertical ozone profile. Consequently, PV alone may not be able to robustly represent UTLS O₃ in the tropics.

- The temporal function is parameterized through an analysis of O₃/PV ratios using seasonal cycles derived from monthly mean values. As seen in Figure 3, the O₃/PV ratio exhibits significant seasonal variations over an annual cycle. Consistent with Roelofs and Lelieveld (2000), the highest O₃/PV ratios occur in spring and the lowest ratios in autumn. A trigonometric function equation is used to represent the seasonality of the O₃/PV ratio, as below:

$$G(mfrc) = 1 + \sin\left(12^\circ \times (mfrc \times 30 + c(0))\right) \times c(1); mfrc = \frac{JulianDay}{365} \quad (5)$$

The values of $c(0)$ and $c(1)$ are summarized in Table 1. The fitted function generally captures the seasonal variation of O_3/PV , as seen in Figure 3. The seasonal variability in the O_3 - PV correlation also varies with latitude. The influence of convective transport on PV in the tropics, as discussed before, also results in weaker seasonal variations in the O_3 - PV correlation at low latitudes. This is seen in Figure 3, which compares the seasonal variations in this relationship inferred from (i) all sites, and (ii) sites at latitudes north of 40N. Thus to ensure that the parameterization more faithfully captures the seasonality at the higher latitudes, where it is strongest, we parameterize the temporal variations only on data at locations with latitudes north of 40N.

One should note that the parameterization is based on limited air pressure values, thus it is only applicable for conditions within the range from 50 to 100 hPa. Additionally, since only the O_3 - PV correlation is considered in the parameterization, the potential trend driven by factors other than PV (e.g., chemistry) cannot be captured by the current parameterization. However, the effects of processes which are already reflected in the observation (e.g., seasonal variations such as lower stratosphere ozone loss during Spring) are implicitly captured in the parameterization. By combining the spatial and temporal functions, the newly-developed O_3/PV function has been incorporated in the WRF-CMAQ model.

2.3 Application and evaluation

Simulations for the entire year of 2006 were conducted using the WRF-CMAQ model with the newly-developed O_3/PV function (denoted as “Sim-new”), with a three month spin-up period (October-December in 2005). O_3 mixing ratios in the upper layers only (for air pressure smaller than 100hPa) are scaled based on the time varying modeled PV values and the function detailed in section 2.2. The simulated O_3 in the lower layers are then impacted by the modeled dynamics such as downwards transport.

A reference case (noted as “Sim-ref”) is conducted by using a previously developed time- and space-invariant scaling ratio of 20 ppb/ PV_u derived from limited ozonesonde measurements from the IONS network and model PV estimates over the CONUS during summer 2006 (Mathur et al., 2008). The model simulations for which this 20 ppb/ PV_u scaling ratio was originally developed had a top level pressure of 100 hPa. Therefore, UTLS O_3 is expected to be underestimated in Sim-ref since the O_3/PV should be larger than 20 ppb/ PV_u when the top pressure of the model configuration is 50 hPa as in this study, particularly in high latitude regions and during spring time.

To investigate the influence of downward transport of O_3 through the stratosphere-to-troposphere exchange, we conducted a controlled case (noted as “Sim-off”) in which no UTLS O_3 were simulated (i.e., the O_3/PV function was turned off). The difference between Sim-new and Sim-off represents the impacts of downward transport of O_3 from the upper layers.

All other model options are identical in Sim-new, Sim-ref and Sim-off. The model configuration follows that described by Xing et al (2015). The anthropogenic emissions were derived from EDGAR. Biogenic VOC and lightning NO_x emissions were obtained from GEIA. Sarwar et al. (2015) reported that halogen chemistry and enhanced O_3 deposition over sea-water can affect tropospheric O_3 mixing ratios. Thus, we included the impact of halogen chemistry and enhanced O_3 deposition in the marine environment in all three cases.

The observed data used for the evaluation is summarized in Table 2. The WOUDC global ozonesonde measurements in 2006 are used for comparison with the predicted O_3 vertical profile. Surface O_3 measurement networks, including the European Monitoring and Evaluation Programme (EMEP, <http://www.emep.int>), the Clean Air Status and Trends Network (CASTNET, <http://epa.gov/castnet/>) and the World Data Centre for Greenhouse Gases (WDCGG, <http://ds.data.jma.go.jp/gmd/wdcgg/>) including a few sites in Asia and Europe, are used for comparison with the predicted surface O_3 concentrations. Only data at sites that covered more than 75% of entire year are selected for the comparison, except in the case of CASTNET because most sites have no O_3 records in winter (criteria set as at least 50% coverage).

3. Results and discussion

3.1 Comparison with O₃ sonde data from WOUDC

Figure 4 displays the observed and simulated annual mean O₃ for three groups of layers, i.e., upper layers at pressure <100hPa, middle layers at 300-500hPa and low layers at >800hPa, across the northern hemisphere. Seasonal comparisons for each group of layers are given in Figure S3-S5 (Spring = MAM, Summer = JJA, Autumn = SON, and Winter = DJF). Compared to the reference case (i.e., Sim-ref), the case with new-function (i.e., Sim-new) exhibits better agreement with observed UTLS O₃, especially in high latitude regions where O₃ levels are high. The statistics of model performance for simulated O₃ are summarized in Table 3. Both cases exhibit large R (>0.9) due to the strong correlation between UTLS O₃ and PV. However, the O₃ at high layers is significantly underestimated in Sim-ref, especially during spring (by -75%) when the UTLS O₃ is the highest across the year. The application of the dynamic O₃/PV function significantly improves the model performance for simulated O₃, as indicated by the significantly reduced NMB and the Normalized Mean Errors (NME) and slightly increased R-values in Sim-new. Such improvements are also evident in the simulated O₃ in the middle layers. The NMB-range is reduced from about -37 to -17% in Sim-ref to about -17 to -1% in Sim-new. Changes in lower-layer O₃ are also noticeable. Because of the greater O₃ burden in upper layers, higher O₃ is seen at low layers in Sim-new compared to Sim-ref. Such increase of low-layer O₃ improves the model performance by reducing the negative biases in spring and summer from -15 and -9% in Sim-ref to -5 and -1% in Sim-new, but deteriorates the model performance in Autumn as positive biases increase from 9% in Sim-ref to 15% in Sim-new. In winter, such increase of low-layer O₃ results in an overestimation of 13% in Sim-new from an underestimation of -7% in Sim-ref.

The observed and simulated O₃ vertical profiles at the 44 WOUDC ozonesonde monitor sites are compared in Figure 5. The simulated O₃ in Sim-new has better agreement with the WOUDC observations across most layers and latitudes. The most significant improvement is seen in the high latitude regions (latitude>45°) where the UTLS O₃ is significantly underestimated in Sim-ref by up to -75% (Figure 5d), as the NMB is reduced to a moderate level (within ±30%) in Sim-new. The overestimates in both low-level and UTLS ozone mixing ratios exhibited in the C-shaped signature in the NMB in Sim-ref is also indicative of the likely influence of convective transport on three-dimensional O₃ distributions in the tropics (e.g., Doherty et al., 2005), that is not adequately captured by the current parameterization. The NME in Sim-new is reduced by 10% - 70% (Figure 5f), though the overestimation of near-surface O₃ in low latitude regions (latitude<45°) becomes even more evident in the Sim-new due to more downward transport of O₃ from the upper layers. An increased NME in Sim-ref is found in the tropical UTLS, indicating the uncertainty in applying the new O₃/PV parameterization in the tropics. The comparison of vertical profiles in the free troposphere between Sim-ref, Sim-new and WOUDC is given in Figure S6. The free- tropospheric ozone is significantly underestimated in Sim-ref. The low bias is reduced in the simulation with the new O₃-PV parameterization, particularly in mid- and high- latitude regions.

Comparisons of O₃ seasonal variations are displayed in Figure 6. With the application of dynamic O₃/PV function, the Sim-new results in better performance (with larger R values) in seasonality as well as magnitude at all layers for both low and high latitude regions compared to the Sim-ref case. More importantly, the dynamic O₃/PV function derived from the seasonal variation of UTLS O₃, also improves the model performance in the simulation of the seasonality of low-layer O₃, suggesting the importance of accurate representation of downward transport of UTLS O₃ to the ground. In summer, the slight overestimation of high-layer O₃ but underestimation of middle-layer O₃ is noticeable in high latitude regions, which might be associated with the underestimation of downward transport of O₃ among those layers. A better vertically resolved model structure with higher resolutions may improve representation of dynamics near the tropopause and help reduce such discrepancy in the simulation of downward transport of UTLS

O₃.

3.2 Comparison with surface O₃ observation networks

Increased UTLS O₃ burden leads to more downward transport of O₃ to the surface. To investigate such impacts on the model performance in simulation of ground-level O₃ concentrations, we compared the simulated surface O₃ from two cases, i.e., Sim-ref and Sim-new, with observations from three surface networks. The observed surface daily maximum 8-h average O₃ (noted as “8h-max O₃”), the NMB in Sim-ref, and the difference between the NMEs from two simulations (i.e., NME in Sim-new minus Sim-ref) are presented in Figure 7 (for EMEP), Figure 8 (for CASTNET) and Figure S7 (for WDCGG). Statistics of the comparison are summarized in Table 3.

For EMEP sites in Europe, the 8h-max O₃ concentration in spring and summer is higher than in fall and winter. The Sim-ref underestimates O₃ by -15% in spring but overestimates O₃ by +15% in autumn. The application of dynamic O₃/PV function reduces the low biases (NMB is reduced from -15% to -1%) in spring but increases the high biases (NMB is increased from +15% to +22%) in autumn, because of more O₃ downward transport from upper layers. In summer and winter, the overall performance in O₃ simulations changes from slight underestimation (NMB = -7% to -0.3%) to slight overestimation (NMB = +3% to +15%). In most cases, better performance in Sim-new is noticeable at sites where the O₃ is underestimated in Sim-ref (See Figure 7).

Similar results are presented at CASTNET sites across the United States, as seen in Figure 8. The 8h-max O₃ in the simulation of Sim-ref is largely underestimated by -17% and -10% respectively during spring and summer when the O₃ is the highest across the year. The sim-new exhibits relatively better results, as the NMB is reduced to -9% and -8% respectively in spring and summer (see Table 3). In addition, lower NMEs and larger Rs are noted in Sim-new compared to Sim-ref. During autumn, O₃ is mostly overestimated at the eastern sites in the Sim-ref case and such overestimation becomes more pronounced in Sim-new, as the NMB is increased from +5% in Sim-ref to +8% in Sim-new. However, the performance for surface O₃ improved at the western U.S. sites in Sim-new. The O₃ in winter is underestimated by -10% in Sim-ref but overestimated by +6% in Sim-new.

At the WDCGG sites in Asia and Europe (see in Figure S6), the underestimation of O₃ during spring and winter is evident in Sim-ref. Better representation of UTLS O₃ and its subsequent downward transport in Sim-new improves the model performance, as the NMB is reduced from -20% (spring) and -17% (winter) to -8% (spring) and -0.03% (winter). The overestimation of O₃ in autumn becomes greater in Sim-new, as the NMB is increased from +0.8% to +5%.

3.3 Impacts on surface O₃ from the downward transport

The relative change from the Sim-off to Sim-new, as displayed in Figure 9, can be used to investigate the influence of exchange process between the free troposphere and boundary layer on surface O₃ concentrations. High impacts are evident in high latitude regions where UTLS O₃ is high. Also the exchange between the free troposphere and boundary layer is much stronger during spring and winter. The increasing percentages from Sim-off to Sim-new in east China, the U.S., Europe and the northern hemisphere are estimated to be about 7.4%, 13.3%, 16.4% and 11.5%, respectively, on an annual basis. The downward transport from upper layers has even larger impacts on surface O₃ during spring and winter, and the increasing percentages in four regions are, respectively, about 10.5%, 17.0%, 21.0% and 15.1% in spring, and 15.4%, 25.5%, 32.3% and 20.4% in winter.

4. Summary and conclusion

A seasonally and spatially varying PV-based function was developed from an investigation of the relationship between PV

simulated by WRF and UTLS O₃ derived from the WOUDC sonde observations over a 21-year period across the northern hemisphere. This new generalized dynamic O₃/PV function is successfully applied in the WRF-CMAQ model to parameterize O₃ in the upper troposphere. The implementation of the new function significantly improves the model's performance in the simulation of UTLS O₃ in both magnitude and seasonality compared to observations, which then enables a more accurate simulation of the vertical distribution of O₃ across the northern hemisphere. These can then be used to derive more realistic vertically and temporally varying LBCs for regional nested model calculations. It is important to note that we attempted to use all possible available data in developing the O₃-PV relationship in this study. Thus we leveraged the existence of a 21-year simulated record of PV in the UTLS with corresponding O₃ observations. The relationship developed can thus be considered to be "climatologically" representative rather than representing a specific time period or location. No particular year is used as a training data set. The stability of the function has been examined by leaving out the year of 2006 for parameterization, and results show that the resulting function barely changed due to this perturbation, suggesting the function parameterized in this study is not specific to a time or location, but rather designed to capture the average variability represented in the long-term record. Figure S8 presents a comparison of the O₃-PV functions developed using different lengths of data records. As illustrated by the results, the inferred functions are quite similar across these different data sets, thereby providing some confidence in its robustness in representing the seasonal and latitudinal variations in O₃-PV. Further improvements to the parameterization should be explored through more detailed analysis of mixing process in the UTLS, through more detailed investigation of the impact of stratospheric chemistry, and improvements in the performance of the parameterizations for conditions representative of the tropical UTLS. A limitation of this study is that the current model setting lacks sufficient vertical resolution in the lowermost stratosphere. To minimize effects of artificial numerical diffusion associated with the current limited vertical resolution employed in the model, we limit the application of the parameterization to between 100-50mb. Future studies with a much finer vertical resolution, especially to adequately capture the seasonal variation in the tropopause height are suggested to further help evolve the O₃-PV parameterization and its practical use. Impacts on ground-level O₃ concentrations from the implementation of this dynamic function were evaluated through the comparison with three observation networks: EMEP, CASTNET and WDCGG. Compared to Sim-ref, more O₃ is transported downward to the surface due to a larger UTLS O₃ burden in Sim-new in which the dynamic O₃/PV function was applied. The implementation of the new dynamic function results in better performance in O₃ simulations in spring when O₃ is underestimated in Sim-ref relative to all networks, but worse performance in autumn when O₃ is overestimated in Sim-ref at most sites; the overestimation in autumn in Sim-ref suggests that processes other than free-troposphere-to-boundary-layer exchange are dictating this model bias.

The O₃ downward transport has strong spatial and temporal variations, as its impact is more evident in high latitude regions and during spring. Impacts of the downward transport can contribute to the background surface O₃ concentrations by 7.4%, 13.3%, and 16.4% in east China, the U.S. and Europe, respectively, on an annual basis and with even larger contributions in spring. Thus, the improvement of UTLS O₃ simulation is important to provide a better assessment of background O₃ levels.

Acknowledgements

The authors gratefully acknowledge the free availability and use of datasets from the WOUDC, WDCGG, CASTNET, EMEP monitoring networks. During the conduct of this work, JX and CG held National Research Council post-doctoral fellowships JW was a visiting student at the U.S. Environmental Protection Agency.

5

Disclaimer: Although this work has been reviewed and approved for publication by the U.S. Environmental Protection Agency, it does not necessarily reflect the views and policies of the agency.

References

- 10 Ancellet, G., Beekmann, M., and Papayannis, A.: Impact of a cutoff low development on downward transport of ozone in the troposphere. *J. Geophys. Res.*, 99(D2), 3451-3468, 1994.
- Bamber, D. J., Healey, P. G. W., Jones, B. M. R., Penkett, S. A., Tuck, A. F., and Vaughan, G.: Vertical profiles of tropospheric gases: Chemical consequences of stratospheric intrusions. *Atmos. Environ.*, 18(9), 1759-1766, 1984.
- Browell, E. V., Danielsen, E. F., Ismail, S., Gregory, G. L., and Beck, S. M.: Tropopause fold structure determined from airborne lidar and in situ measurements. *J. Geophys. Res.*, 92(D2), 2112-2120, 1987.
- 15 Carmichael, G. R., Uno, I., Phadnis, M. J., Zhang, Y., and Sunwoo, Y.: Tropospheric ozone production and transport in the springtime in east Asia. *J. Geophys. Res.*, 103(D9), 10649-10671, 1998.
- Collins, W. J., R. G. Derwent, B. Garnier, C. E. Johnson, M. G. Sanderson, and D. S. Stevenson, Effect of stratosphere troposphere exchange on the future tropospheric ozone trend, *J. Geophys. Res.*, 108(D12), 8528, doi:10.1029/2002JD002617, 2003.
- Danielsen, E. F.: Stratospheric-Tropospheric Exchange Based on Radioactivity, Ozone and Potential Vorticity. *J. Atmos. Sci.*, 25, 20 502-518, 1968.
- Doherty, R. M., Stevenson, D. S., Collins, W. J., and Sanderson, M. G.: Influence of convective transport on tropospheric ozone and its precursors in a chemistry-climate model, *Atmos. Chem. Phys.*, 5, 3205-3218, doi:10.5194/acp-5-3205-2005, 2005.
- Ebel, A., H. Haus, H. J. Jakobs, M. Laube, M. Memmesheimer, and A. Oberreuter: Simulation of ozone intrusion caused by a tropopause fold and cut-off low, *Atmos. Environ.*, 25, 2131-2144, 1991.
- 25 Guenther, A., Hewitt, C. N., Erickson, D., Fall, R., Geron, C., Graedel, T., Harley, P., Klinger, L., Lerdau, M., McKay, W. A., Pierce, T., Scholes, B., Steinbrecher, R., Tallamraju, R., Taylor, J., and Zimmerman, P.: A Global Model of Natural Volatile Organic Compound Emissions, *J. Geophys. Res.*, 100, 8873-8892, 1995.
- Holton, J. R., Haynes, P. H., McIntyre, M. E., Douglass, A. R., Rood, R. B., and Pfister, L.: Stratosphere-troposphere exchange, *Rev. Geophys.*, 33, 403-439, doi:10.1029/95rg02097, 1995.
- 30 Lam, Y. F., and Fu, J. S.: Corrigendum to "A novel downscaling technique for the linkage of global and regional air quality modeling" published in *Atmos. Chem. Phys.*, 9, 9169-9185, 2009. *Atmospheric Chemistry and Physics*, 10(8), 4013-4031, 2010.
- Lelieveld, J. and Dentener, F. J.: What controls tropospheric ozone?, *J. Geophys. Res.*, 105, 3531-3551, 2000.
- Mathur, R., Gilliam, R., Bullock, O. R., Roselle, S., Pleim, J., Wong, D., Binkowski, F., and Streets, D.: Extending the applicability of the community multiscale air quality model to hemispheric scales: motivation, challenges, and progress, in: *Air pollution modeling and its applications*, edited by: Steyn, D. G. and Trini, S., XXI. Springer, Dordrecht, 175-179, 2012.
- 35

- Mathur, R., Lin, H. M., McKeen, S., Kang, D., and Wong, D.: Three-dimensional model studies of exchange processes in the troposphere: use of potential vorticity to specify aloft O₃ in regional models, The 7th Annual CMAS Conference, Chapel Hill, NC, USA, 2008.
- Mathur, R., Roselle, S., Young, J., and Kang, D.: Representing the Effects of Long-Range Transport and Lateral Boundary
5 Conditions in Regional Air Pollution Models, *Air Pollution Modeling and its Application XXII NATO Science for Peace and Security Series C: Environmental Security*, Springer, Heidelberg, Germany, Chapter 51, 303–308, 2014.
- McCaffery, S. J., S. A. McKeen, E.-Y. Hsie, D. D. Parrish, O. R. Cooper, J. S. Holloway, G. Hu 'bler, F. C. Fehsenfeld, and M. Trainer: A case study of stratosphere-troposphere exchange during the 1996 North Atlantic Regional Experiment, *J. Geophys. Res.*, 109, D14103, doi:10.1029/2003JD004007, 2004.
- 10 Neu, J. L., Flury, T., Manney, G. L., Santee, M. L., Livesey, N. J., and Worden, J.: Tropospheric ozone variations governed by changes in stratospheric circulation. *Nature Geoscience*, 7(5), 340-344, 2014.
- Price, C., Penner, J., and Prather, M.: NO_x from lightning 1: Global distribution based on lightning physics, *J. Geophys. Res.*, 102(D5), 5929–5941, 1997.
- Roelofs, G. J. and Lelieveld, J.: Model study of the influence of cross-tropopause O₃ transports on tropospheric O₃ levels, *Tellus*
15 *B*, 49, 38–55, 1997.
- Roelofs, G. J., and Lelieveld, J.: Model analysis of stratosphere-troposphere exchange of ozone and its role in the tropospheric ozone budget. In *Chemistry and radiation changes in the ozone layer*, pp. 25-43. Springer Netherlands, 2000.
- Sarwar, G., Gantt, B., Schwede, D., Foley, K., Mathur, R., and Saiz-Lopez, A.: Impact of Enhanced Ozone Deposition and Halogen Chemistry on Tropospheric Ozone over the Northern Hemisphere. *Environ. Science & Technol.*, 49(15), 9203-9211, 2015.
- 20 Stohl, A., N. Spichtinger-Rakowsky, P. Bonasoni, H. Feldmann, M. Memmesheimer, H. E. Schell, T. Trickl, S. Hu 'bener, W. Ringer, and M. Mandl: The influence of stratospheric intrusions on alpine ozone concentrations, *Atmos. Environ.*, 34, 1323– 1354, 2000.
- Xing, J., Mathur, R., Pleim, J., Hogrefe, C., Gan, C.-M., Wong, D. C., Wei, C., Gilliam, R., and Pouliot, G.: Observations and modeling of air quality trends over 1990–2010 across the Northern Hemisphere: China, the United States and Europe, *Atmos.*
25 *Chem. Phys.*, 15, 2723-2747, doi:10.5194/acp-15-2723-2015, 2015.
- Zanis, P., Hadjinicolaou, P., Pozzer, A., Tyrllis, E., Dafka, S., Mihalopoulos, N., and Lelieveld, J.: Summertime free-tropospheric ozone pool over the eastern Mediterranean/Middle East, *Atmos. Chem. Phys.*, 14, 115-132, doi:10.5194/acp-14-115-2014, 2014.

Table 1: Parameterization of the O₃/PV ratio correlation function

Nth of vector	0	1	2	3	4	5	
p (hPa)							
Horizontal (a)	58.56	203.53	-13.622	0.54157	-9.4264×10^{-3}	7.2990×10^{-5}	-2.0214×10^{-7}
	76.40	151.22	-15.762	0.86918	-1.8049×10^{-2}	1.8418×10^{-4}	-7.1408×10^{-7}
	95.62	62.217	-1.4435	3.0439×10^{-2}	5.8000×10^{-4}	-1.5410×10^{-5}	8.2912×10^{-8}
Vertical (b)	58 to 96	-2.1902	4.5507×10^{-2}	-2.4557×10^{-4}			
Temporal (c)	58 to 96	2	0.22				

Table 2: Summary of ozone observations used for comparison with WRF-CMAQ simulations

	Network	Region	Number of sites	Record frequency	Date Sources
Vertical profile	WOUDC	Global	44	Several hourly data per month	http://www.woudc.org/
Ground	WDCGG	Global	12	Hourly	http://ds.data.jma.go.jp/gmd/wdcgg/
	US-CASTNET	United States	51	Daily 8-hour maxima	http://epa.gov/castnet/
	EU-EMEP	Europe	117	Hourly	http://www.emep.int/

Table 3: Statistics of model performances in ozone simulations

Network	Season			Sim-ref				Sim-new				
		N pairs	Obs (ppb)	MB (ppb)	NMB (%)	NME (%)	R	MB (ppb)	NMB (%)	NME (%)	R	
WOUDC- High layers (pressure<100hPa)	Spring	249	1516.53	-1135.39	-74.87	67.43	0.90	26.07	1.72	21.05	0.94	
	Summer	243	1176.71	-776.68	-66.01	58.97	0.93	84.47	7.18	22.58	0.93	
	Autumn	246	1155.66	-763.60	-66.08	59.30	0.92	-30.03	-2.60	17.67	0.96	
	Winter	243	1458.05	-1073.49	-73.63	63.86	0.91	-77.13	-5.29	23.25	0.95	
WOUDC- Middle layers (300hPa<pressure<500hPa)	Spring	504	72.27	-26.52	-36.70	34.63	0.67	-9.71	-13.44	21.78	<i>0.61</i>	
	Summer	492	73.08	-19.79	-27.09	27.93	0.56	-12.06	-16.51	21.37	0.70	
	Autumn	498	59.45	-9.99	-16.80	18.91	0.66	-4.29	-7.21	16.97	0.68	
WOUDC- Low layers (pressure>800hPa)	Spring	1260	43.15	-6.65	-15.41	26.48	0.52	-0.43	-1.00	22.98	0.52	
	Summer	1222	39.65	-3.45	-8.71	27.43	0.72	-2.10	-5.28	25.84	0.74	
	Autumn	1241	34.66	3.22	9.28	25.91	0.61	<i>5.18</i>	<i>14.93</i>	<i>28.89</i>	0.62	
	Winter	1229	33.80	-2.23	-6.60	56.00	0.33	4.33	12.80	<i>63.92</i>	0.40	
Surface 8h-max O ₃		N pairs	Obs (µg m ⁻³)	MB (µg m ⁻³)	NMB (%)	NME (%)	R	MB (µg m ⁻³)	NMB (%)	NME (%)	R	
	EU-EMEP	Spring	10539	95.22	-14.31	-15.03	20.71	0.46	-0.67	-0.70	17.73	<i>0.41</i>
		Summer	10663	96.44	-0.24	-0.25	22.29	0.66	2.62	2.71	<i>22.36</i>	0.66
		Autumn	10469	69.26	10.07	14.54	34.33	0.55	<i>14.89</i>	<i>21.50</i>	<i>40.33</i>	<i>0.53</i>
Winter		10173	64.65	-4.82	-7.45	35.63	0.46	9.85	15.23	<i>45.33</i>	0.48	
US-CASTNET	Spring	3919	113.03	-19.54	-17.28	20.76	0.52	-9.61	-8.50	15.69	0.53	
	Summer	4456	115.58	-11.36	-9.83	19.48	0.62	-9.48	-8.20	18.81	0.63	
	Autumn	3279	89.21	4.60	5.16	22.21	0.59	<i>7.54</i>	<i>8.45</i>	<i>23.70</i>	<i>0.58</i>	
WDCGG	Winter	1094	89.23	-9.09	-10.18	16.46	0.47	5.09	5.71	15.31	0.47	
	Spring	1023	114.50	-22.46	-19.61	23.52	0.53	-9.34	-8.16	17.25	0.57	
	Summer	1021	100.30	-1.62	-1.62	33.93	0.55	0.80	0.79	32.57	0.60	
	Autumn	948	91.22	0.72	0.79	29.38	0.46	4.55	4.99	<i>30.42</i>	0.46	
	Winter	939	84.84	-14.16	-16.69	36.49	0.49	0.02	0.03	36.16	<i>0.48</i>	

Note: **bold**= better performance in Sim-new than Sim-ref; *italic*= worse performance in Sim-new than Sim-ref

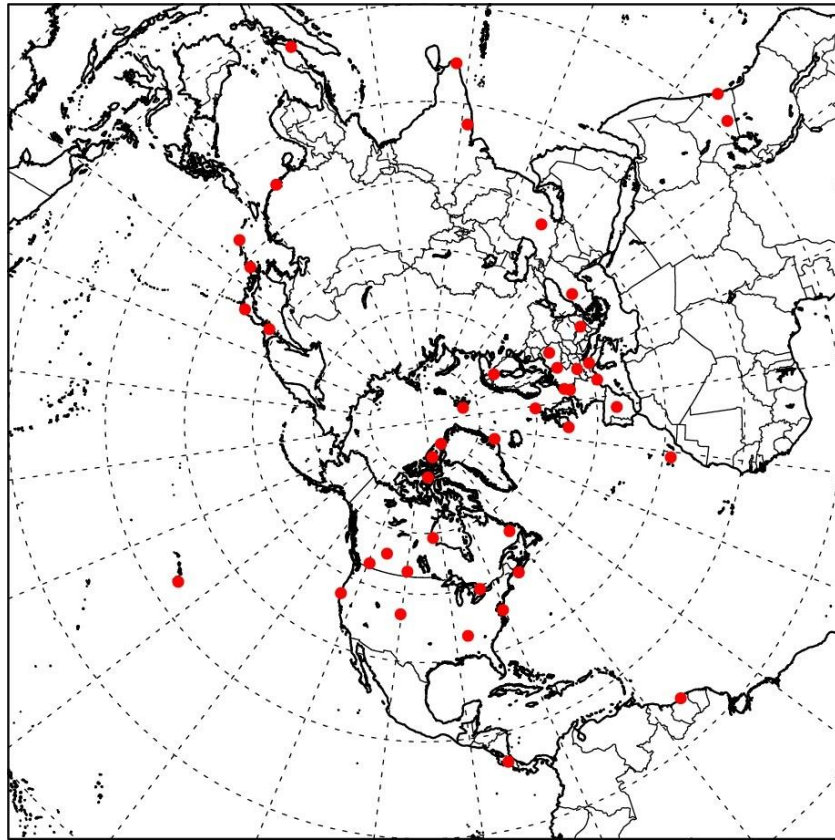


Figure 1: Simulation domain and spatial locations of the 44 WOUDC sites used in this study

5

1st (top) layer (mid-layer pressure=58hPa)

2nd layer (mid-layer pressure=76hPa)

3rd layer (mid-layer pressure=95hPa)

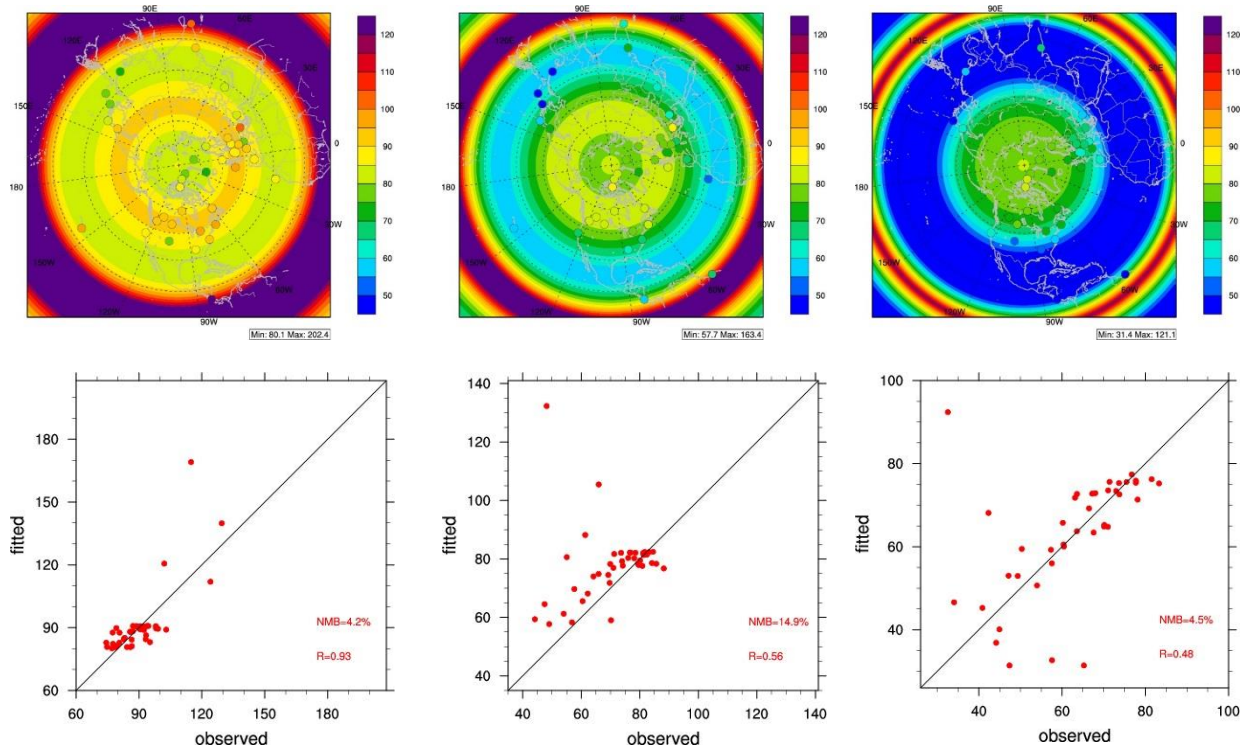
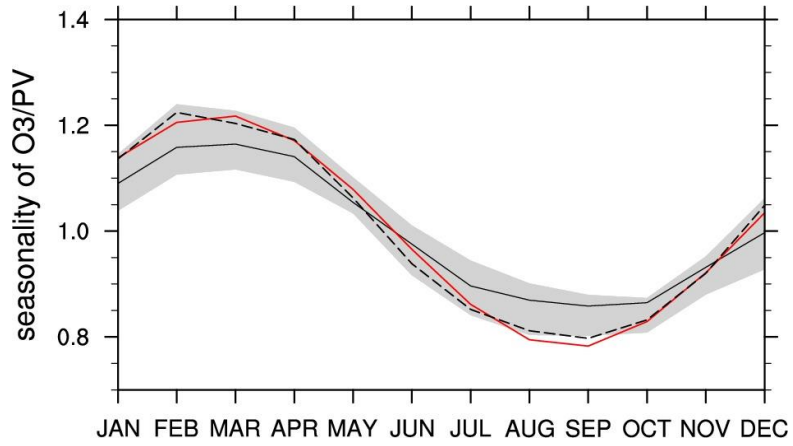


Figure 2: Sensitivity of O_3/PV to spatial location (ppb/PVU)



5

Figure 3: Seasonality of O₃/PV (Annual mean= 1, selected pressure < 60 hPa, black solid line=observed mean at all sites, grey shadows represent 25% to 75% of observed records, black dash line= observed mean at sites at latitudes >40N, red line = fitted by function)

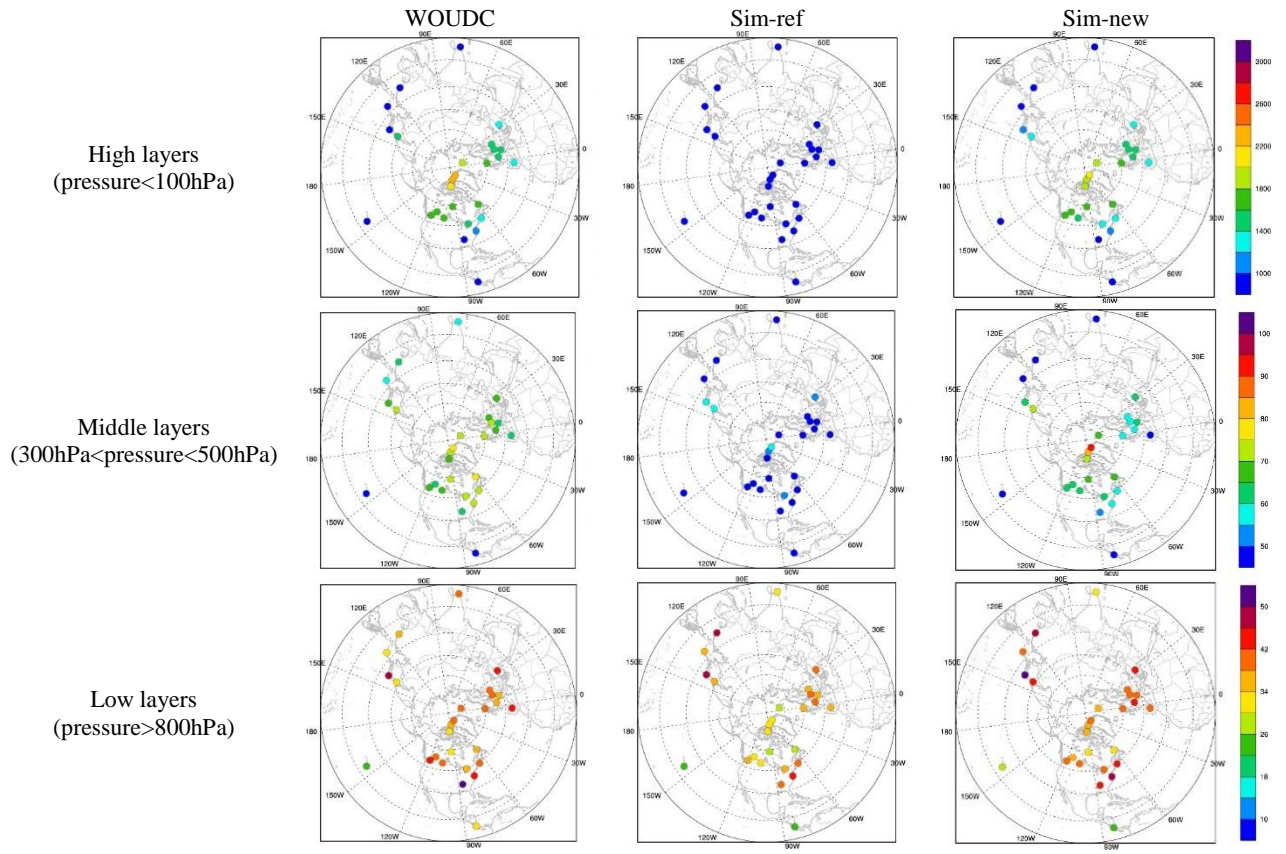
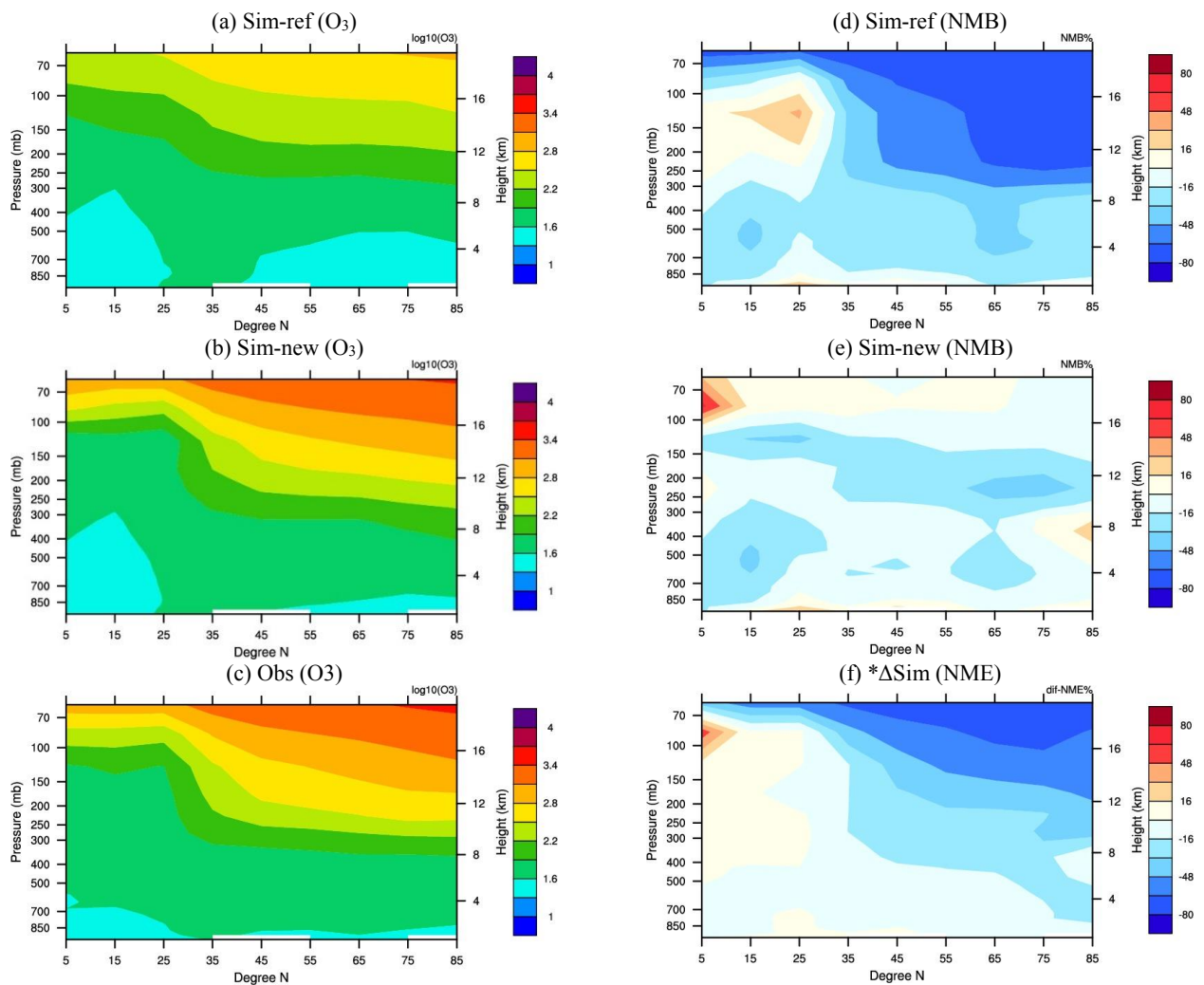


Figure 4: Ozone spatial distributions (annual mean of measurement time period for each WOUDC site, ppb, 2006 Jan-Dec)



5 **Figure 5: Zonal mean profiles of ozone and error metrics for the different cases. (a) Simulated ozone profile in reference case; (b) Simulated ozone profile in new case with updated O₃-PV parameterization ; (c) Observed ozone profile, the annual mean of measurement time period for each WOUDC site across the northern hemisphere; (d) Normalized Mean Bias in the reference simulation; (e) Normalized Mean Bias in the new simulation with updated O₃-PV parameterization; (d) Difference in Normalized Mean Errors between the new simulation and reference simulation (unit: ppb, 2006 Jan-Dec; NMB- Normalized Mean Bias; NME-Normalized Mean Error; *ΔSim= Sim-new minus Sim-ref in NME)**

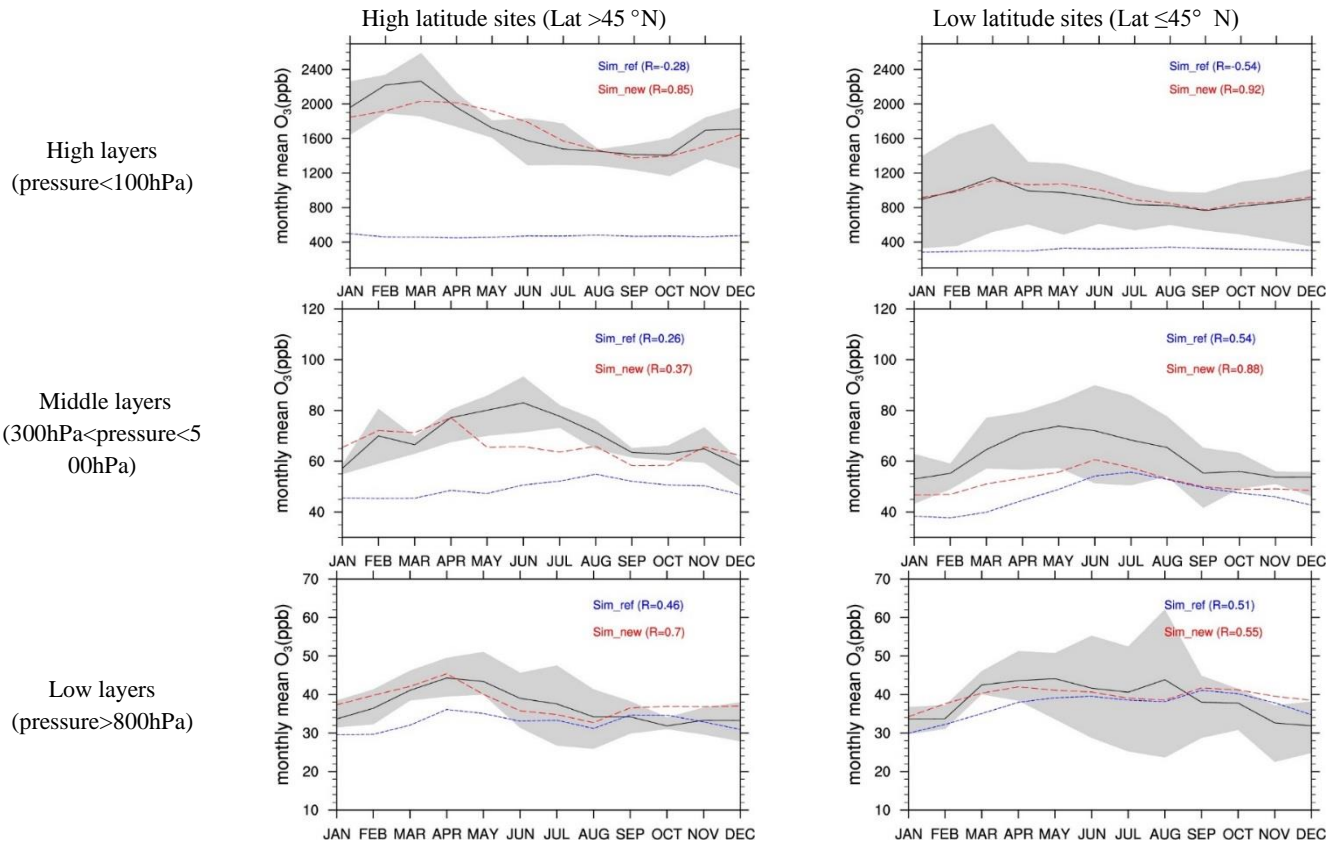


Figure 6: Ozone seasonal variations (44-site averages of monthly mean of measurement time period for each WOUDC site, ppb, 2006 Jan-Dec, black lines represent observations, blue lines represent Sim-ref, red lines represent Sim-new, grey shadows represent 25th and 75th percentiles of observations)

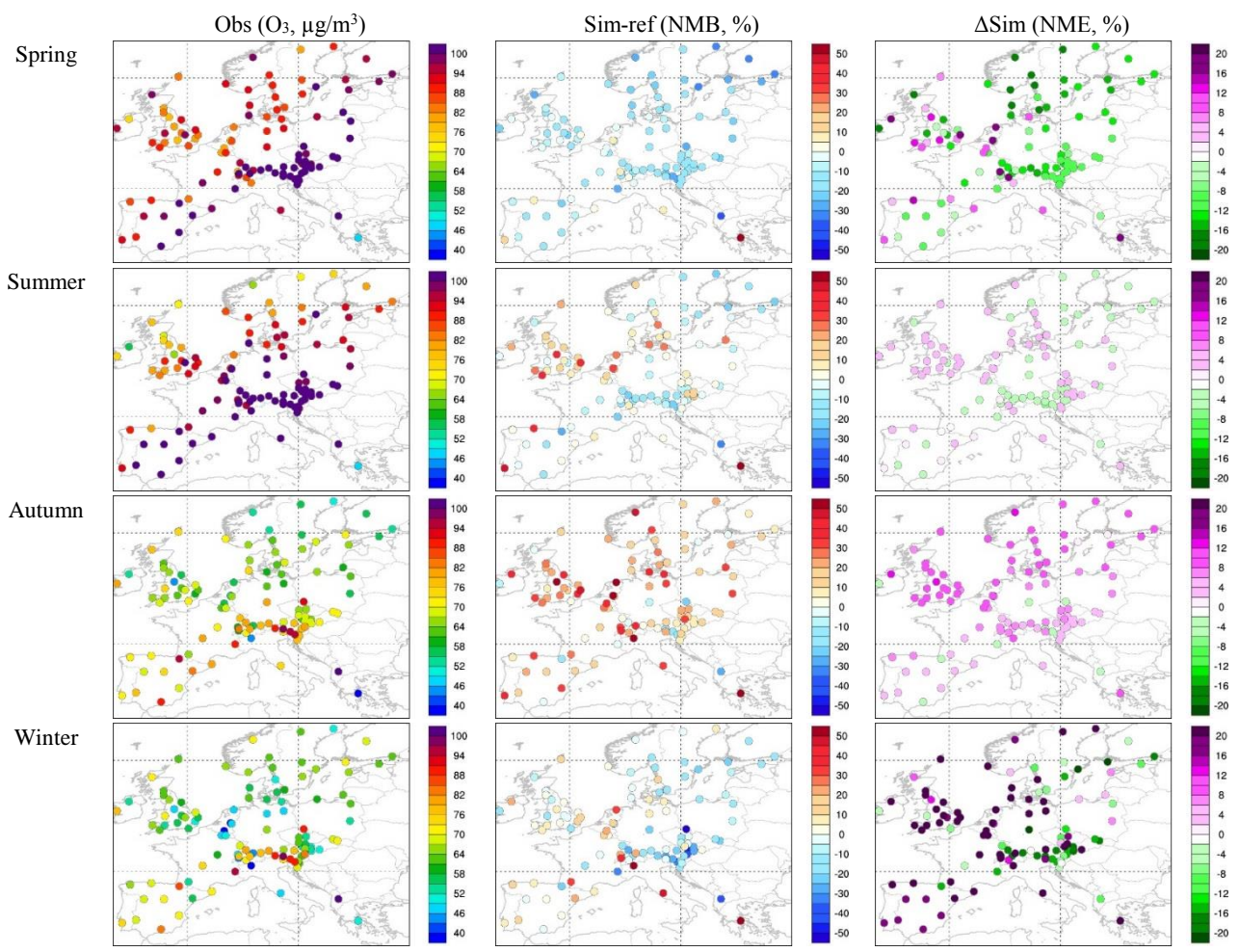


Figure 7: Comparison with EMEP surface daily maximum 8-h average O₃ concentrations ($\Delta\text{Sim} = \text{Sim-new} - \text{Sim-ref}$ in NME)

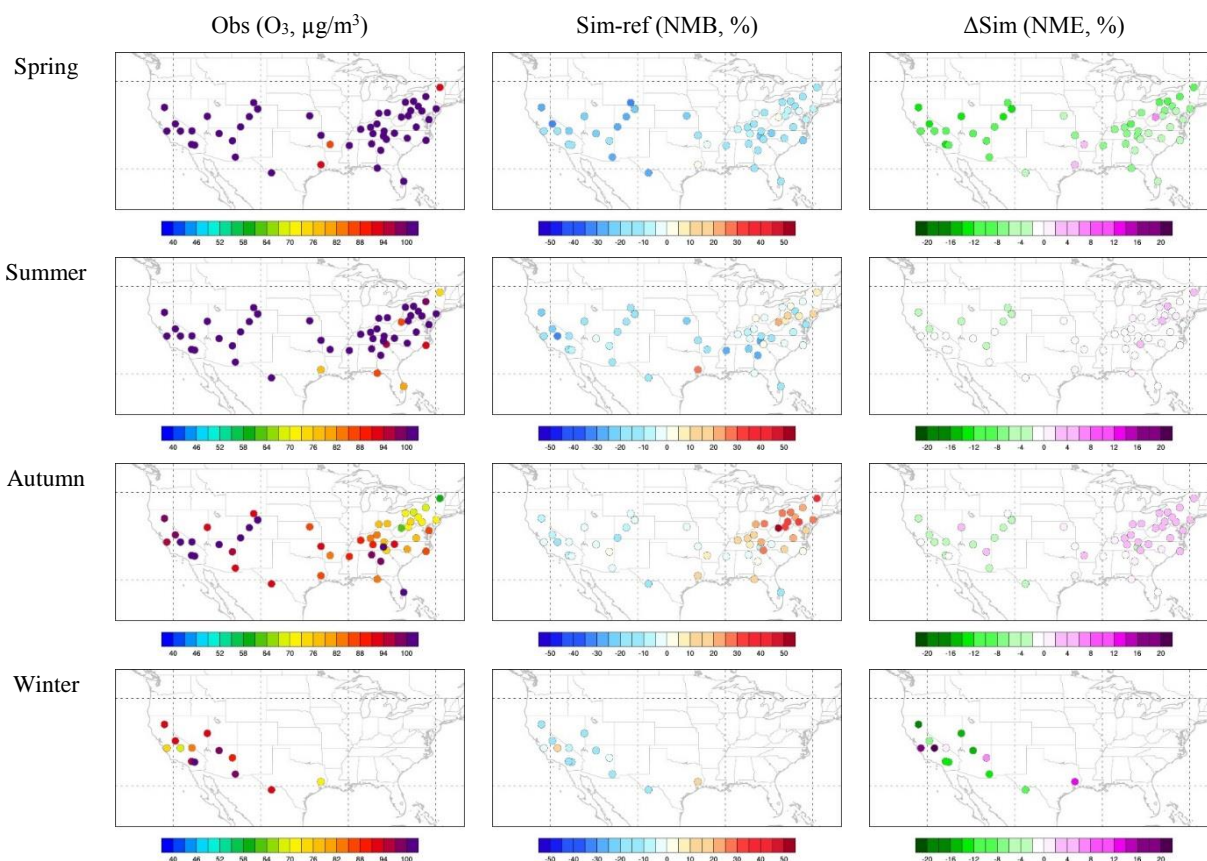
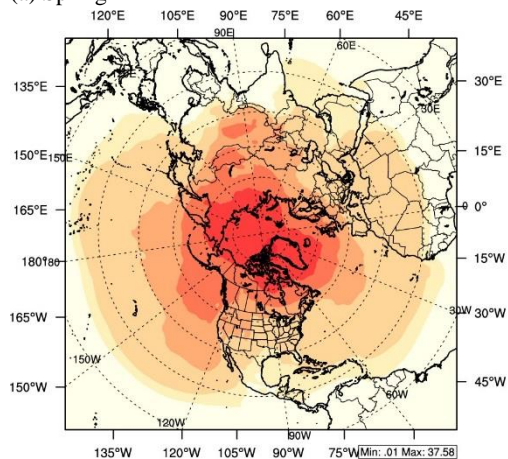
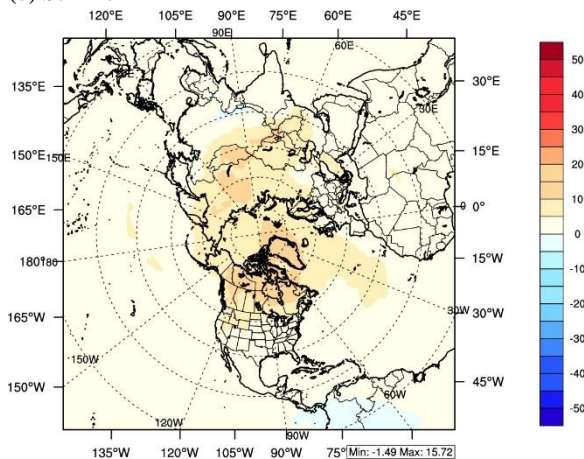


Figure 8: Comparison with CASTNET surface daily maximum 8-h average O₃ concentrations ($\Delta\text{Sim} = \text{Sim-new} - \text{Sim-ref}$ in NME)

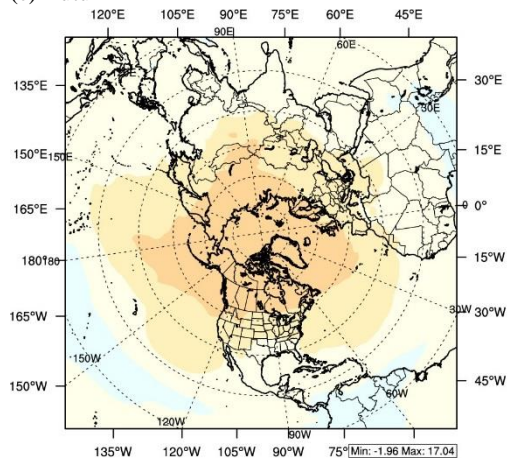
(a) Spring



(b) Summer



(c) Autumn



(d) Winter

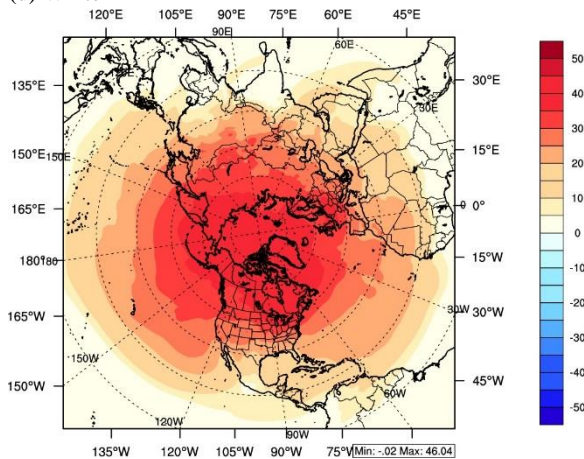


Figure 9: Relative changes in surface O₃ due to dynamic O₃/PV function (unit:%, *changes = (Sim-new minus Sim-off) / Sim-new)