

# ”Results from the validation campaign of the ozone radiometer GROMOS-C at the NDACC station of La Réunion Island”

Susana Fernandez, Rolf Rüfenacht, Niklaus Kämpfer,  
Thierry Portafaix, Françoise Posny and Guillaume Payen

May 9, 2016

We would like to thank the referee for the time dedicated to read the manuscript and for the insightful comments which will certainly improve the quality of the paper.

In the new version of the manuscript (attached below) all suggested corrections have been addressed. Response to the specific comments are exposed below.

1) This manuscript greatly relies on the information provided to AMT readers in a previous published work by Fernandez et al., AMT, 2015 (hereafter F15), where the O<sub>3</sub> measurements of GROMOS-C were first validated. I think the authors should underline in the manuscript the differences and the additional information that this manuscript shows/provides with respect to F15. Furthermore, whenever GROMOS-C technical details or retrieval aspects are mentioned without being explained (which I find appropriate, given F15), the authors should cite F15, possibly explicitly indicating the section or page of F15 where a specific information can be found.

F15 constitutes the ”instrument paper”, i.e., almost 80% of the manuscript deals with the technical description of GROMOS-C and the data processing. Only last section of F15 presents results of a very short campaign, a bit more than a month, that we consider a first test campaign rather than a validation. In the present manuscript, ”the validation paper”, we have collected 7 months of good quality data, and we have been able to compare it with in situ ozone measurements such as the radiosondes and lidar, besides the satellite and model which had also been considered in F15. In F15 spectra calibrated with different methods were compared, although we did not include the tipping curve but we did include the LN<sub>2</sub> calibration (not available here). Notice that for Fig. 14 of F15 the integration time was 4h. In Fig. 5 of this manuscript we are comparing daily means. Here we compare the influence of the different calibration methods on the retrievals. Additionally, wind has been measured by GROMOS-C for the first time during the validation campaign in La Réunion. Moreover, we believe that the high temporal resolution ozone timeseries shown in Fig. 6 are unique for this location and will be useful for future studies, such as the study of the ozone diurnal cycle, given the dearth of ozone data for south-tropical locations. All this results are new with respect to F15 and have all been mentioned in the conclusions.

All citations to F15 suggested in the supplement have been added, plus others in pages 3, 4, 6 and 7, explicitly indicating the pertinent section. A new paragraph has been added in Section 4.2 (page 7, lines 26-30).

2) The comparison of wind measurements is qualitative, not quantitative. The contour maps shown in Figure 9 are definitely helpful in showing the potentials of GROMOS-C in measuring stratospheric winds, but do not sufficiently characterize the data set and cannot really be considered a validation. For one thing, authors do not state what the uncertainty on the wind vertical profiles is.

We agree with the referee that the wind section was rather weak and the comparison was more qualitative. We have added a figure (Fig. 10) which quantifies the differences between GROMOS-C winds with respect to WIRA and ECMWF. We have added a paragraph in section 5 (page 10 lines 19-26) explaining the figure. Also the title of this section has been modified and we no longer include the word validation. We have added a sentence in the abstract and another in the conclusions quantifying the comparison of the wind profiles.

3) The case study discussed in section 6, although potentially interesting, is not covered in depth. What is the point of showing this stratospheric updraft? From a scientific standpoint, why do we care about it? What originated it? Where did the air originate from?

Section 6 briefly presents what we identify as a "special case", where the term special is used to indicate an anomaly in the rather stable ozone dataset measured during the campaign. The air updraft is evidenced from the bending of the isentropes, shown in top panel of Fig. 10. This is reinforced by the decrease of temperature observed at the corresponding pressure levels (the lifted air expands and cools down). The updrafted air mass contains higher ozone mixing ratios and results in an increase of ozone at the corresponding levels. We have calculated backward trajectories that show that during that period stratospheric air is advected to Réunion island from the southeastern region. However, the ozone distribution in the area is quite homogeneous and this horizontal transport would not have such an impact as the observed ozone increase. During this event very strong zonal winds are observed, followed by an intense East to West wind reversal. The physical explanation for this event is rather difficult to assess, and is out of the scope of this manuscript, whose goal is to validate GROMOS-C. We decided to include the special case as an example of potential uses of such an instrument. From a scientific standpoint this is maybe not the most striking event, but is the only anomaly we could highlight from the measurement period. The tropical ozone is very stable as the tropical middle-atmosphere is not exposed to strong atmospheric dynamical events. GROMOS-C is currently measuring in the Arctic, in Ny-Alesund (Svalbard), and throughout last winter we have measured strong and fast ozone increases followed by dramatic depletion, inside and outside the polar vortex, we have registered 2 sudden stratospheric warmings, etc. Atmospheric dynamics studied with GROMOS-C measurements will be the issue of future publications.

4) The comparison of ozone profiles relies partly on Figure 8, and some conclusions are drawn from it. Figure 8, however, appears to compare a daily mean on one specific day. If this is the case, I argue that the comparison on that specific day does not necessarily apply to the whole data set.

The referee is right to point out the weakness of that comparison, as it has, indeed, only been done for one day. The authors would have liked to perform the same comparison for several

days, but, as a matter of fact, during the 6 months of campaign we could only find one day where all ozone measurements (lidar, radiosonde, radiometer and satellite) coincide on time.

5) I feel the overall mixing ratio uncertainty on the GROMOS-C ozone vertical profiles is missing. Why did the authors leave that out?

Thanks for the suggestion. We have included the error bars in Fig. 3a, which account for both the smoothing and the observation error. A sentence explaining this has been added in page 6 line 31. We have also modified Fig. 5, adding the forward model to the spectra. Besides, we have included error bars for the 3 retrieved profiles, we have removed the averaging kernels and added the altitude resolution, as suggested.

6) The English could be improved a bit. There are very few grammatical errors, but mostly there are places where adjacent sentences are not well tied to one another and a few changes could make the reading flow better.

All English-related corrections and rewords suggested in the supplement have been addressed.

7) A few additional citations could be added in the introduction. The older they are, the better.

3 additional citations have been added in the introduction.

8) I recommend the authors to use only one altitude variable throughout the manuscript, either pressure or height, their choice, but I would stick to only one of them.

This suggestion is in contradiction with Referee 2, who suggests to include both altitude variables in all plot. We think it would be redundant to include both coordinates in each plot and prefer to use only pressure as vertical coordinate as it is more commonly used in the field. However, we have included both vertical coordinates only in Figure 3, as we believe it is more intuitive to give the altitude of the averaging kernels peak and the vertical resolution in km; besides, it can be illustrative for the reader to have a visual equivalence pressure-altitude.

Best regards,  
Susana Fernandez

# ”Results from the validation campaign of the ozone radiometer GROMOS-C at the NDACC station of La Réunion Island”

Susana Fernandez, Rolf Rüfenacht, Niklaus Kämpfer,  
Thierry Portafaix, Françoise Posny and Guillaume Payen

May 9, 2016

We would like to thank the referee for the time dedicated to read the manuscript and for the interesting suggestions. Response to the specific comments are exposed below.

- Section 2.1 The authors mention that O<sub>3</sub> at both 109.559 and 110.836 GHz can be observed. Why would one want to use the weaker 109.559 GHz line?

It could be used to retrieve ozone profiles independently, and compare with the retrievals from the main line. We intend to do that in the future.

- Please shortly describe the window with very low losses (material, thickness)

We have added a sentence in line 14 page 3: ”It is made of teflon 1 mm thick and has a shape of a section of a cone”.

- Figure 5 It would be illustrative to add the forward model spectra and the retrieved baselines in the upper three plots.

Thanks for the suggestion. We have added the forward model to Figure 5. Besides, we have included error bars for the retrieved profiles, we have removed the averaging kernels and added the altitude resolution.

- Figures 4, 6, 8, 9 and 10 The major altitude scale is pressure in all figures in the paper and I believe this is the correct thing to do. It would however be clarifying to add an approximate altitude scale in km to the right of figures 4, 6, 8, 9 and 10.

This suggestion is in contradiction with Referee 1, who suggests to use only one altitude variable in all plot. Only in Figure 3 we have included both vertical coordinates, pressure and altitude, since we believe it can be illustrative for the reader to have a visual equivalence pressure-altitude. However, we think it would be redundant to include both coordinates in each plot and prefer to use only pressure as vertical coordinate as it is more commonly used in the field.

# ”Results from the validation campaign of the ozone radiometer GROMOS-C at the NDACC station of La Réunion Island”

Susana Fernandez, Rolf Rüfenacht, Niklaus Kämpfer,  
Thierry Portafaix, Françoise Posny and Guillaume Payen

May 9, 2016

We would like to thank the referee for the time dedicated to read the manuscript and for all the comments which will certainly improve the quality of the paper.

In the new version of the manuscript (attached below) all English-related corrections and rewords have been addressed. Response to some specific comments are exposed below.

- It is nice to see Reunion Island used as a site for additional continuous ozone profile data (except during the wetter/warmer periods), given the lack of such low latitude operational sites. Some suggestions from the authors regarding other potential uses of this microwave radiometer would be useful as well (any campaigns elsewhere?) - or is the primary plan to try to keep this instrument operational at Reunion Island for many years?

Thanks for pointing this out. Indeed, the campaign in Réunion Island is over and we are currently performing a new campaign in Ny-Alesund, Svalbard. In the initial version of the manuscript we briefly explained the plans for the instrument and mentioned the Svalbard campaign in the conclusions. However, the editor suggested to remove it as he considered the information not relevant for the study.

- It would be good to state what the a priori is for the winds, assuming there is one here also.

We consider a constant zero wind a priori profile together with a relatively large variance. We have added a sentence in page 9 line 28.

- Section 6: There could also be some impact from horizontal transport (can one really rule this out - not clear at least)?

The referee is right to point that a horizontal transport can not be fully dismissed, however, Fig. 10 confirms that an air updraft took place since the bending of the isentropes evidence so. This is reinforced by the decrease of temperature observed at the corresponding pressure levels (the lifted air expands and cools down). The updrafted air mass contains higher ozone mixing ratios and results in an increase of ozone at the corresponding levels.

- Regarding Fig. 2 and the tipping curves, and opacity calculation (for example), it would be good if the authors include a more specific analysis discussion or at the very least a reference in the paragraph where this Figure is mentioned, so that readers can follow this (or track

this down) better, as long as the longer discussion has been published elsewhere; otherwise, it seems like this is a bit too succinct.

We agree with the reviewer that the description of Fig. 2 was a bit concise. We have extended the paragraph and added an explanation on how we calculated the specific humidity and a reference for the opacity calculation from the tipping curves (page 4 lines 11-16).

- Similarly for Fig. 3, why is panel (b) labeled with  $AVK * 4 / MR$ ? You need to define this better for someone to follow exactly what is plotted. Is this expanded scale mainly so that this is more easily read? Presumably the black curve is not on the same scale and is actually close to 1? Also, panel (c) or the text could be more specific regarding the width of the averaging kernels (which is typically defined as full width at half-maximum, but just to be clear on the definition).

The averaging kernels are multiplied by 4 so that we can plot them together with the measurements response, which is the area of the averaging kernels, as we explain in page 7 line 1. Indeed, the vertical resolution is given by the full width at half maximum of the averaging kernels. We have modified the caption of Fig. 3, clarifying what is plotted in panels b and c.

- In Fig. 4 and also Fig. 8, a better drawing of the vertical line (in black) at zero (at least) would help readability. A solid line could possibly work well or better for this. Also, change the caption for Fig. 4 to "relative differences with respect to the East profile." I also think that error bars or a mention of error bars would help the interpretation (otherwise measurements do not mean much). Is the green line systematically different enough from the others (or even for the differences between blue and red), given the number of profiles and the errors in the mean here? The authors mention a possible or likely explanation for the South-pointing data (a difference in elevation angle) although not much quantitative analysis is given in the manuscript regarding this explanation. The broader conclusions of the manuscript are not significantly affected by this detail, but in general, not enough discussion is really provided regarding estimates of systematic uncertainties for the ozone measurements and one has to rely more on comparisons to other sensors. This is acceptable to first-order for this paper, but it does leave some room for improvements overall for the GROMOS-C measurement itself; if more information has been provided elsewhere, the authors should certainly point to that, or plan for more analyses in the future (such as sensitivity tests and exploration of forward model errors).

A solid vertical black line has been added at zero in both Figs. 4 and 8. The caption of Fig. 4 has been corrected. The south profile (green line) is systematically different, we observe it for every day. Fig. 4 shows the 6-months mean of the daily mean profiles.

We have included the error bars in Fig. 3a, which account for both the smoothing and the observation error. A sentence explaining this has been added in page 6 line 31.

- Fig. 8; please indicate specifically in the Figure caption how the difference is calculated (instrument minus GROMOS-C), as the sentence may not be completely unambiguous.

Thanks for the suggestion. We have added the equation used for the calculation of the relative differences in the caption of Fig. 8.

# Results from the validation campaign of the ozone radiometer GROMOS-C at the NDACC station of La Réunion Island

Susana Fernandez<sup>1</sup>, Rolf Rüfenacht<sup>1,2</sup>, Niklaus Kämpfer<sup>1</sup>, Thierry Portafaix<sup>3</sup>, Françoise Posny<sup>3</sup>, and Guillaume Payen<sup>4</sup>

<sup>1</sup>Institute of Applied Physics, University of Bern, Switzerland

<sup>2</sup>now at Leibniz-Institute of Atmospheric Physics, Kühlungsborn, Germany

<sup>3</sup>LACy, Université de la Réunion, Saint Denis, France

<sup>4</sup>OSU-Réunion, Université de la Réunion, Saint Denis, France

*Correspondence to:* S. Fernandez  
(susana.fernandez@iap.unibe.ch)

**Abstract.** Ozone ~~is a species of primary interest as it~~ performs a key role in the middle atmosphere and its monitoring is thus necessary.

At the Institute of Applied Physics of the University of Bern, Switzerland, we built a new ground based microwave radiometer, GROMOS-C (GRound based Ozone MOnitoring System for Campaigns). It has a compact design and can be operated at remote places with very little maintenance requirements, being therefore suitable for remote deployments. It has been conceived to measure the vertical distribution of ozone in the middle atmosphere, by observing pressure broadened emission spectra at a frequency of 110.836 GHz. In addition, meridional and zonal wind profiles can be retrieved, based on the Doppler shift of the ozone line measured in the 4 directions of observation (North-East-South-West).

In June 2014 the radiometer was installed ~~in~~at the Maïdo observatory, on La Réunion Island (21.2°S, 55.5°E). High resolution ozone spectra were ~~continuously recorded~~recorded continuously during 7 months. Vertical profiles of ozone have been retrieved through an optimal estimation inversion process, using the Atmospheric Radiative Transfer Simulator ARTS2 as the forward model. The ~~best estimate of the vertical profile is done by means of the optimal estimation method.~~ The validation is performed against ozone profiles from the Microwave Limb Sounder (MLS) on the Aura satellite, the ozone lidar located ~~in~~at the observatory and with ozone profiles from weekly radiosondes. Zonal and meridional winds retrieved from GROMOS-C data are validated against another wind radiometer located in situ, WIRA. In addition, we compare both ozone and winds with ECMWF (European Centre for Medium-Range Weather Forecasts) model data. Results show that GROMOS-C provides reliable ozone profiles between 30 ~~to and~~ 0.02 hPa. The comparison with lidar profiles shows a very good agreement at all levels. The accordance with ~~MLS is within less than 10%~~ the MLS data set is within 5% for pressure levels between 25 and 0.2 hPa. GROMOS-C's wind profiles are in good agreement with the observations by WIRA and with the model data, differences are below 5 m/s for both.

## 1 Introduction

The stratospheric ozone layer absorbs ultraviolet radiation from the sun, protecting life at the surface of the Earth and, through heating by the absorbed radiation, determines the thermal state of the middle atmosphere. Variations in its concentration can significantly alter the radiative balance of the middle atmosphere and consequently influence climate through resulting circulation changes. Besides, it is well known that the ozone abundance is linked to climate change through the stratospheric cooling consequence of the greenhouse effect. The monitoring of ozone is necessary and interesting by itself, but additionally because it can be used as a tracer to study atmospheric dynamics processes (~~Scheiben et al., 2012~~) (Brasseur, G. P. and Solomon, S. (2005), Flury et al. (2009), Scheiben et al. (2012)). Ozone spectra can further be used to retrieve middle atmospheric horizontal wind from the Doppler shift between the spectra measured from opposite azimuthal directions (Rüfenacht et al., 2014). Wind information is crucial to study dynamical processes in the atmosphere. However the measurement of wind between 30 and 70 km remains a difficult challenge.

Nowadays there is a wide variety of ~~techniques~~ approaches to measure ozone profiles, from in situ aircraft and radiosondes, to remote sensing techniques, both satellite-borne and ground-based active and passive ~~techniques~~ instruments. Among all the methods, ground-based microwave radiometry is the only one that provides high temporal resolution ozone profiles up to the mesopause, continuously during ~~daily periods of light and dark~~ both daytime and nighttime and under most weather conditions. It is a passive technique based on the observation of the radiation emitted by rotational transitions of the ozone molecules. Ground based ozone radiometer sites in the world are scarce. Most are part of the NDACC (Network for the Detection of Atmospheric Composition Change) with permanent instruments located at meteorological observatories in Spitsbergen, Switzerland, Hawaii, New ~~Zeland~~ Zealand and Japan. However, many regions are not covered by this network. Continuous ozone time series measurements are needed in these regions, particularly in the southern hemisphere.

The Institute of Applied Physics (IAP) of the University of Bern has developed in ~~the last recent~~ years a new generation of transportable radiometers to be used in measurement campaigns. GROMOS-C is one of three mobile instruments built by ~~our~~ institute the IAP, along with the wind radiometer WIRA (~~Rüfenacht et al., 2012~~) (WInd RAdiometer, Rüfenacht et al. (2012)) and the water vapour radiometer MIAWARA-C (~~Straub et al., 2010~~) (Middle Atmospheric Water vapour RAdiometer for Campaigns, Straub et al. (2010)). These 3 instruments ~~have been measuring recorded measurements~~ together in a campaign at the Maïdo observatory (see Fig. 1). The Maïdo observatory is located on La Réunion island, in the Indian ocean, at an altitude of 2200 m.a.s.l. It ~~has been was~~ inaugurated in 2012, and hosts various instruments for atmospheric measurements, including wind and ozone lidars (Baray et al., 2013). Ozone sondes are deployed by Météo-France from a station nearby, Saint-Denis, at sea level. La Réunion is an important measurement site as it provides a multi-instrumented station in the southern hemisphere tropics.

The tropical region historically suffers from a lack of ground based ozone measurements with high vertical and temporal resolution. Recent ~~papers have work has~~ shown a significant negative ozone trend in the tropical stratosphere (Randel and Thompson, 2011), based on satellite observations combined with ozonesondes, which is likely related to modifications in the Brewer-Dobson circulation. ~~This study was based on satellite observations combined with ozonesondes.~~ (Butchart et al., 2006). Diur-



nal variations of stratospheric ozone in the tropics have recently been studied by ground based microwave radiometry at the Mauna Loa Observatory in Hawaii (Parrish et al., 2014).

With the data collected during this campaign we have been able to validate GROMOS-C performance as an ozone profiler by comparing to ozone lidar ~~and radiosondes, and~~, radiosondes, satellite and model data, and as a wind profiler by comparison to the wind radiometer WIRA ~~, as well as to satellite and~~ and to model data. The goal of this manuscript is to present this validation. The paper is organized as follows: Section 2 provides a brief description of the microwave radiometer and the retrieval technique used. Section 3 presents the measurement campaign ~~in~~ at the Maïdo observatory, including the different reference instruments. The main results of the campaign are presented in sections 4, 5 and 6, including the validation of ozone and wind profiles. Finally, section 7 concludes this paper.

## 10 2 GROMOS-C

GROMOS-C is a ground-based compact radiometer that measures the spectral intensity of the pressure broadened rotational emission line of ozone at 110.836 GHz. A detailed description of the instrument and of the ozone profiles retrieval method can be found in ~~(Fernandez et al., 2015)~~ Fernandez et al. (2015). The main characteristics of GROMOS-C are summarized in Table 1.

### 15 2.1 The instrument

The purpose of a microwave radiometer is to spectrally resolve the sky brightness temperature. The receiver of GROMOS-C has a noise temperature of 1080 K and offers the possibility to observe different emission lines: O<sub>3</sub> at 109.559 and 110.836 GHz, and CO at 115.271 GHz. The signal is spectrally analyzed by a fast Fourier transform spectrometer (FFTS), with a bandwidth of 1 GHz and a resolution of 30.5 kHz. One of GROMOS-C main features is the existence of multiple calibration methods, which allows to choose the most convenient to use under different conditions (Fernandez et al. (2015), section 2.3). The whole instrument is placed inside a sealed ~~aluminum housing thermally insulated~~ thermally insulated aluminum housing. A window with very low losses for microwave radiation has been built above the optics. It is made of teflon 1 mm thick and has a shape of a section of a cone. In order to operate GROMOS-C we just have to connect it to power and the internet. It is then remotely controlled with very little maintenance requirements.

### 25 2.1 Retrieval method

The vertical distribution of ozone is retrieved from the pressure dependence of the line width of the observed spectrum. The upper limit for the retrieval from the 110.836 GHz line is circa 70 km and our lower boundary is about 23 km ~~:(Fernandez et al. (2015), section 3.1)~~. For the retrievals of GROMOS-C we use the Atmospheric Radiative Transfer Simulator ARTS2 (Eriksson et al., 2011) together with Qpack2 (Eriksson et al., 2005). The estimate of the ozone profile is done by means of the optimal estimation method (OEM) (Rodgers, 1976).

### 3 The campaign

La Réunion island is an overseas department of France located in the Indian ocean (21.2°S, 55.5°E). The Maïdo observatory was built on top of one of the highest mountains of the island, the Maïdo mountain, at 2200 m.a.s.l. It houses a large variety of atmospheric instruments, including lidars, radiometers and in situ gas and aerosol sensors. This site is important and rare because it is a multi-instrumented meteorological station in the southern hemisphere tropics. Moreover, its high elevation above sea level constitutes an advantage for lidars and microwave radiometers as they benefit from the drier atmosphere ~~at higher altitude and therefore ensuring~~ which ensures lower tropospheric attenuation.

GROMOS-C was installed on the terrace of the Maïdo observatory in June 2014, and remained until the end of January 2015. High temporal resolution ozone spectra were ~~continuously recorded during those~~ recorded continuously for 7 months. The main goal of this measurement campaign was to validate the performance of GROMOS-C as an ozone and wind profiler by comparing to profiles from other reliable sources. Further, the high resolution ozone spectra constitute a valuable data set not previously available for this location. These data can be used to study the diurnal cycle of ozone in the tropics (Studer et al., 2014). An accurate knowledge of diurnal ozone variation is needed for reliable trend detection in the global ozone distribution. Merging ozone data from different satellites without properly accounting for the diurnal ozone cycle would result in a systematic bias in the calculated ozone trend.

Our campaign instruments WIRA and MIAWARA-C were also involved in the campaign with measurements starting in September 2013.

~~During the~~ Fig. 2 (top panel) shows the air temperature measured by the meteorological station of GROMOS-C. We can see that during the campaign, from June to January, the weather was quite stable with minimum temperatures of 6°C and maximum close to 20°C. The specific humidity is shown in the middle plot of Fig. 2. It has been calculated from the relative humidity and temperature measured by the meteorological station, and gives an idea of the increase on the amount of water in the troposphere during the summer. Atmospheric opacity was calculated periodically with the tipping curves ~~, and were~~ (Fernandez et al. (2015), section 2.3.3), and was found to be between 0.1 and 1 except for very humid days ~~(Fig.-2)~~, which occur mainly towards the summer (December-January). ~~The specific humidity increased considerably during the summer (Fig.-2-middle-plot).~~ An opacity value lower than 0.5 is considered to be very good. Spikes in the opacity plot correspond to clouds passing by.

The operation cycle of GROMOS-C includes 4 directions of sky view, North-East-South-West. All sky measurements are performed at an elevation angle of 22°. Afterwards the rotating mirror points to the Peltier and hot loads for calibration. The noise diode is turned on when the optics are pointing to the Peltier target. The integration time for each measurement is 1s. Tipping curves are performed every 15 minutes.

### 3.1 Reference instruments

#### Aura-MLS

The Earth Observing System Microwave Limb Sounder, EOS MLS, is a mm-wave radiometer onboard [the](#) Aura satellite, which was launched in July 2004. Aura-MLS covers latitudes between 82°S and 82°N. It is in a Sun-synchronous near-polar orbit at an altitude of 705 km, with two overpasses ~~at each geographic location at fixed local times per day~~ [per day near La Réunion Island](#). MLS observes emitted microwave radiation in limb geometry from the ground up to 96 km. ~~Atmsopheric~~ [Atmospheric](#) limb scans and radiometric calibration are performed routinely every 25 seconds. Vertical profiles are retrieved every 165 km along the suborbital track. A detailed description of Aura-MLS can be found in Waters et al. (2006).

Ozone is observed at 240 GHz. The retrieved profiles of version v3.3 are used for this comparison. The altitude range covered goes from the upper troposphere, 260 hPa, to the mesosphere, 0.02 hPa. The vertical resolution is 3 km at 260 hPa, increasing to 5.5 km at 0.02 hPa, and the horizontal resolution goes from 300 km to 500 km, depending on the pressure level (Froidevaux et al., 2008).

#### DIAL Lidar

A Differential Absorption ozone Lidar (DIAL) was installed ~~in~~ [at](#) the Maïdo observatory in 2013. It requires the use of 2 different emitted wavelengths. The laser sources are a tripled Nd:Yag laser, which provides the non-absorbed beam at 355 nm, and a XeCl excimer laser, which provides the absorbed beam at 308 nm. The receiving telescope is composed of 4 parabolic mirrors. The backscattered signal is collected by 4 optical fibers located at the focal point of each mirror. A Jobin Yvon holographic grating is used in the spectrometer.

The lidar provides ozone profiles over 15-45 km altitude. The lidar signals are recorded every 3 min but averaged over the whole night to increase the signal-to-noise ratio. It is necessary to apply a number of corrections to the signal. The background signal is estimated and removed using a linear regression in the high altitude range where the useful lidar signal is negligible (over 80 km). Ozone number density is retrieved from the slope of the signals after derivation (Godin-Beekmann et al., 2003). Lidar signals are corrected for the Rayleigh extinction using a pressure temperature profile from nearby radiosondes and a meteorological model.

#### Ozone Radiosondes

Ozone soundings are performed weekly since 1998, launched from Gillot, the Météo-France station near the airport of La Réunion Island, at 8 m.a.s.l. A profile is obtained up to the altitude where the balloon bursts at approximately 30 km. Ozone is measured with an electrochemical concentration cell (ECC) (Stübi et al., 2008). The ozonesonde currently used is a ECC Z Ensci type with a 0.5% KI buffered solution from Droplet Measurement Technology. It is coupled to a meteorological radiosonde M10 from MeteoModem.

The effective vertical resolution of the ozone data is between 50 and 100 m. The ozone measurement accuracy is approximately 4% in the stratosphere below [the](#) 10 hPa pressure level and the precision in total ozone column measured by the sonde is approximately 5%. These ozone measurements are part of the SHADOZ (Southern Hemisphere Additional Ozonesondes) (Thompson et al., 2003) and the NDACC networks.

## 5 WIRA

WIRA is the first ground-based microwave wind radiometer. It was built at IAP and measures the Doppler shift in the emission spectrum of middle atmospheric ozone at 142 GHz in order to derive middle atmospheric meridional and zonal wind profiles ([Rüfenacht et al., 2014](#)). In routine operation, a cycle contains the measurement of signals from two calibration targets as well as from four cardinal directions for the wind retrieval. The retrieval of wind profiles combines the calibrated spectra obtained at two opposite viewing directions (i.e. east and west for zonal and north and south for meridional wind). The prototype of the instrument as well as its operation mode and calibration scheme are described in detail in Rüfenacht et al. (2012). The retrieval method is presented in Rüfenacht et al. (2014). It covers an altitude range from 35 to 75 km, with a vertical resolution between 10 and 16 km.

## ECMWF

The European Centre for Medium-Range Weather Forecasts (ECMWF) provides global analyses of atmospheric ozone from the ground to the lower mesosphere. Ozone profiles can be obtained ~~from~~ [using](#) 2 different products from ECMWF: operational analysis or reanalysis. ERA-Interim (Dee et al., 2011) is their latest global atmospheric reanalysis dataset and provides profiles every 6 hours, for 60 pressure levels between the surface and 0.1 hPa. The altitude range of the operational analysis reaches pressure levels up to 0.01 hPa with a vertical resolution of 137 levels. [The time resolution is 6 hours as well. ECMWF models assimilate radiosondes, ground-based atmospheric observations together with modern hyperspectral instruments such as Infrared Atmospheric Sounding Interferometer, Advanced Infrared Sounder, Advanced Microwave Sounding Unit \(AMSU\) instruments along with GPS radio occultation observations.](#) For the validation of GROMOS-C we compare with the operational data, because our retrieval altitude range goes up to 0.03 hPa.

## 25 4 Results of ozone measurements

### 4.1 Ozone retrievals

Before the spectra ~~is~~ [are](#) fed to the inversion process a preprocessing is performed in order to correct the measurement for attenuation arising from the microwave window and tropospheric absorption ~~-(see Sect. 3 of Fernandez et al. (2015)).~~ Water vapour inhomogeneities in the troposphere are difficult to model and therefore it is important to correct the measured spectra for the tropospheric effect. Tropospheric opacity is calculated from the wings of the measured spectra (Navas-Guzmán et al.,

2015) and subtracted from it. Afterwards the lower limit for the retrieval is located at the tropopause level. The ~~spectra-spectral~~ baseline is removed by allowing the optimal estimation method to fit a polynomial of degree 2.

For the standard retrieval of GROMOS-C, we use the whole frequency resolution of the spectrometer, and a bandwidth of 300 MHz. Reduction of the noise level of the spectra is performed by integration in time, ~~being-the-with a~~ minimum time resolution ~~used-of~~ 1 hour. Ozone profiles are retrieved from the resulting averaged spectra, yielding a reliable profile from roughly 23 to 70 km, with a vertical resolution of 10-15 km depending on the pressure level.

The inversion process requires an a priori knowledge of the vertical ozone profile. This a priori information is taken from a zonal mean climatology using monthly mean Aura MLS data from 2004-2013. The a priori covariance matrix used has a fixed maximum value for the diagonal elements of 0.4 ppm and a Gaussian correlation decay at neighbouring levels. The covariance matrix of the measurement is built as a diagonal matrix, where the elements in the diagonal are the ~~square-squares~~ of the noise ~~level~~ of the spectra, which are assumed constant for all channels. Forward model calculations require a temperature-pressure-altitude profile. This data is taken from the ECMWF model for the corresponding time and location, interpolated to the pressure grid. Spectroscopic parameters for the ozone line are taken from the JPL and HITRAN catalogs. We used the oxygen and water continuum and peaks from the Rosenkranz model (Rosenkranz, 1998). We used water vapour profiles from the ECMWF model and oxygen and nitrogen mixing ratios are assumed to be constant.

An example of a daily mean retrieved ozone profile is shown in Fig. 3a, ~~together with~~ the a priori profile used for the retrieval ~~is plotted with a dashed line and the error bars (dashed lines), which represent the total retrieval error, that is, the sum of the observation and smoothing error~~. The corresponding averaging kernels and measurement response are shown in Fig. 3b. The averaging kernel matrix represents the sensitivity of the retrieved profile to the true atmospheric profile. The area of the kernels, called measurement response, is used as an indicator of the sensitive altitude range of the retrieval. We assume this altitude range delimited by the levels where the measurement response is larger than 0.8, which corresponds to pressure levels between 30 and 0.02 hPa (24 to 75 km). The full width at half maximum of the averaging kernels gives a measure of the vertical resolution. The averaging kernels ~~width-widths~~ (Fig. 3c) ~~go from are about~~ 7 km in the lower stratosphere, ~~increasing and increase~~ with altitude up to 17 km in the middle mesosphere. Fig. 3d shows the altitude peak of the corresponding kernels maximized at their nominal altitude for the altitude range under consideration.

The operative cycle of GROMOS-C contains the measurement of the sky signal from 4 directions of view. The spectra of 2 opposite view directions (East-West and North-South) are combined in order to retrieve zonal and meridional wind profiles. Ozone retrievals can also be performed individually for each direction, to study possible inhomogeneities of the ozone distribution, which are neglected for the wind retrievals. All sky measurements are performed at an elevation angle of 22°, which implies that two points located at the stratopause level in North and South directions are separated horizontally by a distance of circa 250 km. In stable conditions this constitutes a reasonable range over which to neglect ozone inhomogeneities.

Fig. 4 shows 4 ozone profiles corresponding to the 4 directions of view of GROMOS-C. Each of them has been calculated taking the mean of the daily mean profiles for the whole campaign period, from mid-June to mid-January. The right plot shows the mean relative difference profile, calculated in percent and with respect to the East. From 60 hPa to roughly 0.02 hPa the differences are within 2%, except for the South, and higher up they appear to increase with altitude. The increases in differ-

ences with altitude is consistent with an increase in horizontal distance between points in opposite directions. Therefore these discrepancies could be explained as differences in the ozone distribution. A positive bias of nearly 5% in ozone is notable at all altitudes in measurements toward the South. This bias is a result of an offset in elevation angle present only in the measurements toward the South.

## 5 4.2 Comparing the calibration methods

As mentioned above, multiple calibration techniques are used to generate GROMOS-C data; ~~these are hot load, Peltier load, noise diode and tipping curve.~~ ~~In~~. We have a blackbody target cooled with Peltier elements to 240 K used as the default cold load, and a similar load heated with resistors to 350 K used as default hot load; additionally we have a noise diode used as super-hot load adding circa 300 K, and tipping curves are performed regularly in order to use the zenith sky as an alternative cold load. ~~In~~ Fernandez et al. (2015) spectra calibrated with different methods were compared. ~~In~~ this section, we compare the influence of these calibration methods on the retrievals.

Fig. 5 displays the spectrum and retrieved profile for a day at the beginning of the campaign, the 23<sup>rd</sup> of June, for the 3 different calibration methods. A tropospheric correction has been applied to all spectra, so the retrieval starts at the tropopause level. Both the noise diode and hot-Peltier spectra have similar noise levels, which results in similar retrievals. ~~We added the equivalent MLS ozone profile (in red) to use as a reference. The averaging kernels and measurement response present the same characteristics as in Fig. 3.~~ However, the spectrum calibrated with the tipping curve exhibits a higher noise level, therefore the retrieval takes more information from the a priori. That could be the reason why this retrieved profile is closer to the reference MLS profile (in red), since we use a-MLS climatology as a priori profile. The upper limit of the measurement response is also lower, 0.035 hPa, compared to 0.02 hPa in the other cases. This corresponds to a larger uncertainty in the profile from that level.

Besides, the altitude resolution is degraded. The higher noise level in the tipping curve calibration is likely a result of zenith sky measurements, which are not long enough. A zenith measurement is taken only every 15 minutes. Therefore, the cold sky integration time is relatively short and the noise in this measurement is larger than the noise in the 22° measurement. This problem could likely be eliminated by raising the frequency of the tipplings or increasing the integration time for the retrievals. We started the campaign in winter (June) with good atmospheric conditions, i.e., low humidity, frequent clear skies and, therefore, low optical thickness (Fig. 2). However, towards the summer the temperature and humidity increased leading to higher opacity. Under these conditions, a baseline emerged on the calibrated ozone spectra. We found that its origin was at the Peltier load and we believe it could be due to the condensation of water on the window of the load if the dew point was reached. As water is not transparent to microwave radiation, part of the radiation would be backscattered and a standing wave would be created between the load and the antenna, which added a baseline to the spectra. Performing inversions of spectra with such a ripple would have considerable impact on the retrieval. Therefore, in such conditions we prefer other methods of calibration. It is important to point out that the baseline effect can be circumvented by the use of other calibration ~~technique~~ techniques and this ability to alternate calibration methods is an important advantage of the measurement approach.

### 4.3 Validation of the ozone timeseries

In this section we validate GROMOS-C retrieved profiles against other ozone profiles measured with different techniques. We have used tipping curve calibrated spectra for the daily mean comparison, but for shorter integration time we have considered the noise diode calibration because the altitude range where the measurement response is larger than 0.8 goes up to higher  
5 layers, allowing for a fair comparison also in the mesosphere.

The timeseries of ozone profiles measured by GROMOS-C during the Maïdo campaign are shown in Fig. 6 (abovetop panel). They correspond to retrieved profiles run with an integration time of 2 hours, calibrated with the noise diode, for the East direction. Ozone concentration is expressed as volume mixing ratio, in parts per million volume (ppm). The data gap in September corresponds to a week where we shifted the frequency range to measure carbon monoxide instead of ozone, and the  
10 gap in December corresponds to a very high opacity period where when the inversions did not work. The white lines represent the limits where the measurement response is larger than 0.8, identifying the altitude range where profiles can be reliable. In most cases these limits range from 30 to 0.03 hPa. Before a spectrum is fed to the retrieval, it has to pass a noise level test and be taken within certain limits of opacity and system temperature. If a spectrum fails any of these tests, it is discarded. In that case, the considered integration time will present a higher noise, affecting the averaging kernels of the inversion and decreasing  
15 the boundaries for the reliable profiles. We observed a decreased altitude range for the last month of data, which corresponds to the very humid period and-with high opacity.

A comparable plot of Aura MLS ozone profiles is shown in Fig. 6 (belowbottom). The similarity is striking. The annual cycle increase in ozone in the middle stratosphere from winter to summer due to increased solar radiation is obvious. The diurnal cycle is also perceptible. Special features of this dataset are discussed below, in section 6.

20 For a more quantitative comparison we have divided the profiles into 3 pressure levels, and plotted the mean volume mixing ratio for each layer (Fig. 7). Each point corresponds to a daily mean value; this time we have opted for the tipping curve calibration for the comparison. We chose altitude levels at 25-10 hPa, 10-2 hPa and 2-0.5 hPa, which correspond roughly to the lower, middle and upper stratosphere. We compared our measurements to those from MLS, lidar, radiosondes and with the model data from ECMWF. The radiosonde comparison is only available for the first layer because the balloons normally  
25 burst at circa 30 km. The lidar is not available for the highest layer under comparison. ECMWF and MLS are comparable at all levels. On the right plot we display the relative differences with respect to GROMOS-C. Until mid-December, all measurement measurements are within 10%. After mid-December, large fluctuations due to high opacity are problematic for GROMOS-C measurements. We cannot explain an apparent bias in ECMWF model results in the middle and higher upper stratosphere with respect to the measurements of MLS, GROMOS-C and lidar.

30 A more detailed comparison is shown in Fig. 8, where we plot a single GROMOS-C daily mean profile together with the equivalent profiles obtained from MLS, ECMWF, lidar and radiosonde. All of the profiles present a higher vertical resolution than GROMOS-C retrievals. We therefore have to convolve each of them with the averaging kernels of our inversions according to:

$$x_{conv} = A \cdot (x - x_a) + x_a \quad (1)$$



where  $A$  is the averaging kernels matrix,  $x$  stands for  ~~$O_3$  profile~~, ~~being the  $O_3$  profile~~ and  $x_a$  is the a priori profile of our retrievals. The convolution decreases the vertical resolution of the measured profiles and allows for an adequate comparison. Fig. 8 includes both the original unconvolved profiles plus the convolved ones. The relative differences between the convolved profiles relative to GROMOS-C is clear in the right plot in Fig 8. Results show ~~an~~ agreement with the satellite profile within ~~the~~ 5% up to 0.2 hPa and within 10% for the ECMWF profile. The agreement with lidar data is ~~good~~ within 5%, but the comparison to the radiosonde data shows more discrepancies, especially at lower altitude levels. However, keep in mind, GROMOS-C data reliability range starts at an altitude of 30 hPa. The bias decreases from 13% to 4% with increasing altitude. Above 0.1 hPa, the GROMOS-C retrieval appears to overestimate the volume mixing ratio of ozone. In the mesosphere the ozone concentration becomes so low a small discrepancy affects the relative difference in a significant way.

10

## 5 Result ~~and validation~~ of wind measurements

Although GROMOS-C was primarily designed for observations of ozone and carbon monoxide profiles its setup includes the capacity for middle-atmospheric wind measurements. Thanks to its relatively low noise temperature, to its sufficient spectral resolution, and to its ability to observe the atmosphere in the four cardinal directions, zonal and meridional wind profiles can be assessed. The wind profiles are determined from the Doppler shifts of different parts of the ~~Doppler-shifted spectrum~~ through an optimal estimation inversion, which was pressure broadened ozone emission spectrum, as first described by Rüfenacht et al. (2014), through an optimal estimation inversion. The retrieval is performed with the ARTS/QPACK software package (Eriksson et al., 2011, 2005). A constant zero wind a priori profile is considered, together with a relatively large variance. The atmospheric parameters of the forward and inverse model for the GROMOS-C wind retrieval were set analogously to the ones of the retrieval for the wind radiometer WIRA (see Sect. 4 of Rüfenacht et al. (2014)), taking into account that GROMOS-C measures the 110 GHz ozone emission line rather than 142 GHz.

The time series of GROMOS-C daily average wind profiles for a test phase of 6 months are shown in Fig. 9. For comparison, measurements by the co-located wind radiometer (WIRA) and ECMWF model data are also shown. The grey lines in the upper panels represent the upper and lower limit of the trustworthy altitude range. This range is defined to be the region where the measurement response is higher than 0.8, the altitude resolution higher better than 20 km, and the altitude accuracy (defined as the offset between the peak altitude and the nominal altitude of the averaging kernel) is better than 4 km. In the vast majority of cases, the trustable altitude range for GROMOS-C is delimited by the averaging kernel criterion. Data outside the trustable altitude range should not be considered.

The overall agreement between GROMOS-C, WIRA and ECMWF is clearly visible. The principal features such as the stratospheric wind reversal in July 2014 are captured by GROMOS-C. Due to the design and operation mode, which is not optimized for wind measurements, the uncertainties of the GROMOS-C observations are larger and the altitude range is smaller than ~~that~~ those of WIRA. Nevertheless, this comparison indicates the potential of GROMOS-C to perform zonal wind measurements over the altitude range of 40 to 60 km.



A more quantitative comparison between GROMOS-C, WIRA, and ECMWF is given in Fig. 10 which displays the average differences in zonal wind throughout the 6 month period of wind retrievals. The ECMWF profiles were convolved with the averaging kernels of GROMOS-C according to Eq. 1 so that the limited vertical resolution of the GROMOS-C wind retrieval does not influence the comparison. The profiles by WIRA have a similar altitude resolution and thus do not need to be convolved to obtain meaningful interpretations of the differences. GROMOS-C's wind profiles are in good agreement with the observations by the wind radiometer WIRA and with the model data from ECMWF, differences are below 5 m/s for both. The slight negative bias of GROMOS-C with respect to ECMWF and WIRA is mostly not significant and might be interpreted as a random feature.

## 6 Special case study

Fig. 6 shows an increase of ozone in early July between 4 and 1 hPa. This increase is evident in data from both GROMOS-C and MLS. This feature is presented in more detail in Fig. 11. The timeseries of ozone profiles measured by GROMOS-C have been plotted together with the isentropes (lines of equal potential temperature) taken from the ECMWF model. As air parcels travel on surfaces of equal potential temperature, the isentropes can be used to study the airflow and to identify vertical displacements. In Fig. 11, an updraft is identified by dashed lines and by deviations of the isentropes at 1200, 1400, and 1600 K. The updraft-updrafted air mass has higher ozone mixing ratios and results in higher ozone at the correspondent-corresponding pressure levels.

The timeseries of temperature profiles from the ECMWF model are shown in the middle plot. A substantial decrease of temperature is observed within the same time period mainly at pressure levels between 4 and 1 hPa, which is also explained by the updraft of air from colder layers. During this event strong zonal winds of up to 90 km/h are observed in the ECMWF model (Fig. 11, belowbottom) followed by an intense East to West wind reversal.

## 7 Conclusions

The first validation campaign of GROMOS-C took place at the Maïdo observatory in La Réunion island, from June 2014 till to January 2015. We validated its-the GROMOS-C capability to measure continuous ozone profiles with high temporal resolution for a broad altitude range.

We have confirmed that different calibration methods lead to equivalent retrieved profiles as long as the spectra is-are baseline free. We demonstrated the advantages of using multiple calibration methods. When the Peltier load method failed due to high humidity, we had the option to use a different approach. The tipping curve method works well at very low brightness temperatures. It is easy to implement. However, the calculation is time consuming and less accurate for cloud conditions. Further, the tipping curve method produces noisier spectra because the integration time for the cold sky measurements was short. This approach should be used when longer integration times are possible. The noise diode approach needs recalibration if the sys-

tem temperature fluctuates. This approach should be used when the system is thermally stable. The Peltier and hot loads are thermally stabilized and not weather dependent. They constitute the default calibration technique of GROMOS-C. During this campaign, when temperatures dropped below the dew point, water condensed on a window interfering with the measurement. This problem was fixed after the campaign by displacing moist air with dry nitrogen.

- 5 The measurement response of the retrievals of GROMOS-C is larger than 80% for pressure levels between 30 and 0.02 hPa (24 to 75 km). The vertical resolution goes from 7 km in the lower stratosphere, increasing with altitude up to 17 km in the middle mesosphere. The averaging kernels peak at its nominal altitude over this altitude range.

Validation has been performed using ozone profiles from Aura MLS satellite, the ozone lidar located in the observatory and with ozone profiles from weekly radiosondes, as well as with data from the ECMWF model. Results show an agreement with

- 10 MLS profiles within 5% up to 0.2 hPa and within 10% for the ECMWF profile. Agreement with the lidar is within 5% at all levels of comparison. Radiosonde data ~~shows show~~ more discrepancies especially at lower altitudes. ~~The bias in the ozone measurements decreases from 13 to 4% with increasing altitude in the trustworthy range.~~

Although GROMOS-C was mainly designed for ozone observations its setup allows for middle-atmospheric wind profile measurements. The 4 directions of view allow retrieval of zonal and meridional winds from the Doppler shift. Winds measured by

- 15 GROMOS-C have been ~~validated using compared with~~ data from another co-located wind radiometer (WIRA) and ~~using with~~ output from the ECMWF model. ~~The overall agreement between GROMOS-C, WIRA and ECMWF is clearly visible~~ retrieved wind profiles are in good agreement with the observations by WIRA and with the model data, with differences below 5 m/s for both. Important meteorological features such as the stratospheric wind reversal in July are clearly evident in GROMOS-C data. Thus GROMOS-C measurements can also be used to ~~measure retrieve~~ middle atmospheric wind profiles.

- 20 We also identified an updraft event from an increase of ozone measured by GROMOS-C.

The high temporal resolution ozone dataset presented here is unique for this location and will be useful given the dearth of such data from tropical locations. In a future study it would be ~~interested interesting~~ to investigate the ozone diurnal cycle which has not been studied for such a tropical location.

- 25 *Acknowledgements.* This work has been funded by the Swiss National Science Foundation under grant number 200020-160048. The authors want to thank the electronics workshop of the IAP for their support during the campaign. The authors acknowledge the European Communities, the Région Réunion, CNRS, and Université de la Réunion for their support and contribution in the construction phase of the research infrastructure OPAR (Observatoire de Physique de l'Atmosphère à La Réunion). OPAR is presently funded by CNRS (INSU) and Université de La Réunion, and managed by OSU-R (Observatoire des Sciences de l'Univers à La Réunion, UMS 3365).

## References

- Baray, J.-L., Courcoux, Y., Keckhut, P., Portafaix, T., Tulet, P., Cammas, J.-P., Hauchecorne, A., Godin Beekmann, S., De Maziere, M., Hermans, C., Desmet, F., Sellegri, K., Colomb, A., Ramonet, M., Sciare, J., Vuillemin, C., Hoareau, C., Dionisi, D., Dufлот, V., Veremes, H., Porteneuve, J., Gabarrot, F., Gaudo, T., Metzger, J.-M., Payen, G., Leclair de Bellevue, J., Barthe, C., Posny, F., Ricaud, P., Abchiche, A., and Delmas, R.: Maïdo observatory: a new high-altitude station facility at Reunion Island (21° S, 55° E) for long-term atmospheric remote sensing and in situ measurements, *Atmospheric Measurement Techniques*, 6, 2865–2877, 2013.
- Brasseur, G. P. and Solomon, S.: *Aeronomy of the Middle Atmosphere*, Springer, 2005.
- Butchart, N., Scaife, A., Bourqui, M., De Grandpré, J., Hare, S., Kettleborough, J., Langematz, U., Manzini, E., Sassi, F., Shibata, K., et al.: Simulations of anthropogenic change in the strength of the Brewer–Dobson circulation, *Climate Dynamics*, 27, 727–741, 2006.
- 10 Dee, D., Uppala, S., Simmons, A., Berrisford, P., Poli, P., Kobayashi, S., Andrae, U., Balmaseda, M., Balsamo, G., Bauer, P., et al.: The ERA-Interim reanalysis: Configuration and performance of the data assimilation system, *Quarterly Journal of the Royal Meteorological Society*, 137, 553–597, 2011.
- Eriksson, P., Jiménez, C., and Buehler, S. A.: Qpack, a general tool for instrument simulation and retrieval work, *Journal of Quantitative Spectroscopy and Radiative Transfer*, 91, 47–64, 2005.
- 15 Eriksson, P., Buehler, S., Davis, C., Emde, C., and Lemke, O.: ARTS, the atmospheric radiative transfer simulator, version 2, *Journal of Quantitative Spectroscopy and Radiative Transfer*, 112, 1551–1558, 2011.
- Fernandez, S., Murk, A., and Kämpfer, N.: GROMOS-C, a novel ground-based microwave radiometer for ozone measurement campaigns, *Atmospheric Measurement Techniques*, 8, 2649–2662, 2015.
- Flury, T., Hocke, K., Haefele, A., Kämpfer, N., and Lehmann, R.: Ozone depletion, water vapor increase, and PSC generation at midlatitudes by the 2008 major stratospheric warming, *Journal of Geophysical Research: Atmospheres* (1984–2012), 114, 2009.
- 20 Froidevaux, L., Jiang, Y. B., Lambert, A., Livesey, N. J., Read, W. G., Waters, J. W., Browell, E. V., Hair, J. W., Avery, M. A., McGee, T. J., Twigg, L. W., Sunnicht, G. K., Jucks, K. W., Margitan, J. J., Sen, B., Stachnik, R. A., Toon, G. C., Bernath, P. F., Boone, C. D., Walker, K. A., Filipiak, M. J., Harwood, R. S., Fuller, R. A., Manney, G. L., Schwartz, M. J., Daffer, W. H., Drouin, B. J., Cofield, R. E., Cuddy, D. T., Jarnot, R. F., Knosp, B. W., Perun, V. S., Snyder, W. V., Stek, P. C., Thurstans, R. P., and Wagner, P. A.: Validation of Aura Microwave Limb Sounder stratospheric ozone measurements, *Journal of Geophysical Research: Atmospheres*, 113, 2008.
- 25 Godin-Beekmann, S., Porteneuve, J., and Garnier, A.: Systematic DIAL lidar monitoring of the stratospheric ozone vertical distribution at Observatoire de Haute-Provence (43.92° N, 5.71° E), *Journal of environmental Monitoring*, 5, 57–67, 2003.
- Navas-Guzmán, F., Kämpfer, N., Murk, A., Larsson, R., Buehler, S., and Eriksson, P.: Zeeman effect in atmospheric O<sub>2</sub> measured by ground-based microwave radiometry, *Atmospheric Measurement Techniques*, 8, 1863–1874, 2015.
- 30 Parrish, A., Boyd, I., Nedoluha, G., Bhartia, P., Frith, S., Kramarova, N., Connor, B., Bodeker, G., Froidevaux, L., Shiotani, M., et al.: Diurnal variations of stratospheric ozone measured by ground-based microwave remote sensing at the Mauna Loa NDACC site: measurement validation and GEOSCCM model comparison, *Atmospheric Chemistry and Physics*, 14, 7255–7272, 2014.
- Randel, W. J. and Thompson, A. M.: Interannual variability and trends in tropical ozone derived from SAGE II satellite data and SHADOZ ozonesondes, *Journal of Geophysical Research: Atmospheres* (1984–2012), 116, 2011.
- 35 Rodgers, C. D.: Retrieval of atmospheric temperature and composition from remote measurements of thermal radiation, *Reviews of Geophysics*, 14, 609–624, 1976.

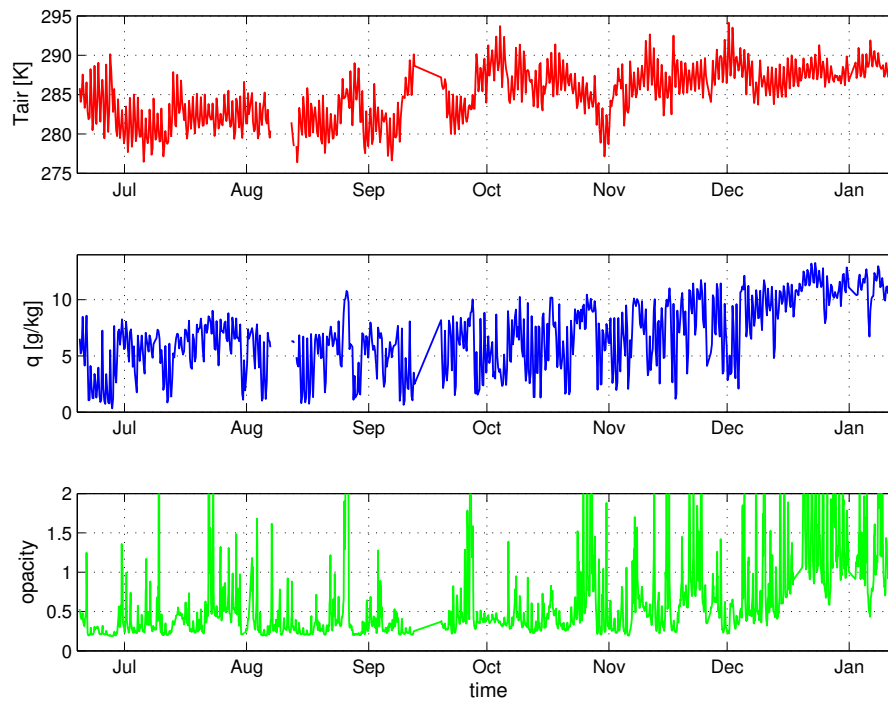
- Rosenkranz, P. W.: Water vapor microwave continuum absorption: A comparison of measurements and models, *Radio Science*, 33, 919–928, 1998.
- Rüfenacht, R., Kämpfer, N., and Murk, A.: First middle-atmospheric zonal wind profile measurements with a new ground-based microwave Doppler-spectro-radiometer, *Atmospheric Measurement Techniques*, 5, 2647–2659, 2012.
- 5 Rüfenacht, R., Murk, A., Kämpfer, N., Eriksson, P., and Buehler, S. A.: Middle-atmospheric zonal and meridional wind profiles from polar, tropical and midlatitudes with the ground-based microwave Doppler wind radiometer WIRA, *Atmospheric Measurement Techniques*, 7, 4491–4505, 2014.
- Scheiben, D., Straub, C., Hocke, K., Forkman, P., and Kämpfer, N.: Observations of middle atmospheric H<sub>2</sub>O and O<sub>3</sub> during the 2010 major sudden stratospheric warming by a network of microwave radiometers, *Atmospheric Chemistry and Physics*, 12, 7753–7765, 2012.
- 10 Straub, C., Murk, A., and Kämpfer, N.: MIAWARA-C, a new ground based water vapor radiometer for measurement campaigns, *Atmospheric Measurement Techniques*, 3, 1271–1285, 2010.
- Stübi, R., Levrat, G., Hoegger, B., Viatte, P., Staehelin, J., and Schmidlin, F.: In-flight comparison of Brewer-Mast and electrochemical concentration cell ozonesondes, *Journal of Geophysical Research: Atmospheres* (1984–2012), 113, 2008.
- Studer, S., Hocke, K., Schanz, A., Schmidt, H., and Kämpfer, N.: A climatology of the diurnal variations in stratospheric and mesospheric ozone over Bern, Switzerland, *Atmospheric Chemistry and Physics*, 14, 5905–5919, 2014.
- 15 Thompson, A. M., Witte, J. C., McPeters, R. D., Oltmans, S. J., Schmidlin, F. J., Logan, J. A., Fujiwara, M., Kirchhoff, V. W., Posny, F., Coetzee, G. J., et al.: Southern Hemisphere Additional Ozonesondes (SHADOZ) 1998–2000 tropical ozone climatology 1. Comparison with Total Ozone Mapping Spectrometer (TOMS) and ground-based measurements, *Journal of Geophysical Research: Atmospheres* (1984–2012), 108, 2003.
- 20 Waters, J. W., Froidevaux, L., Harwood, R. S., Jarnot, R. F., Pickett, H. M., Read, W. G., Siegel, P. H., Cofield, R. E., Filipiak, M. J., Flower, D., et al.: The earth observing system microwave limb sounder (EOS MLS) on the Aura satellite, *Geoscience and Remote Sensing, IEEE Transactions on*, 44, 1075–1092, 2006.

**Table 1.** GROMOS-C main features

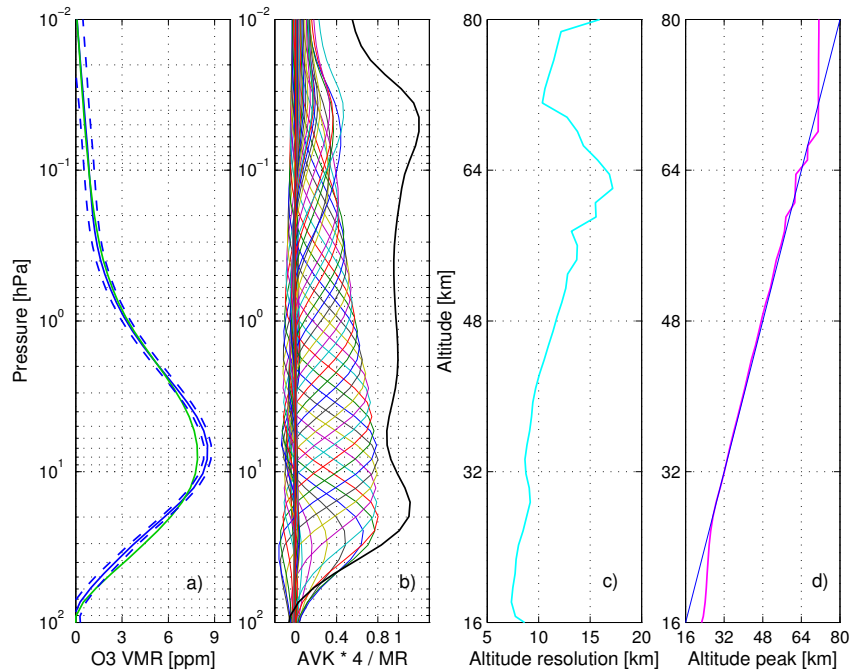
Receiver type	Preamplified heterodyne receiver
Operation mode	Single side band
Receiver noise temperature	1080 K
Frequency range	109 - 118 GHz (tunable)
Backend	FFTS, 1 GHz bandwidth
Spectral resolution	30.5 kHz
Calibration	hot/cold + noise diode + tipping curve
Altitude range	23 - 70 km



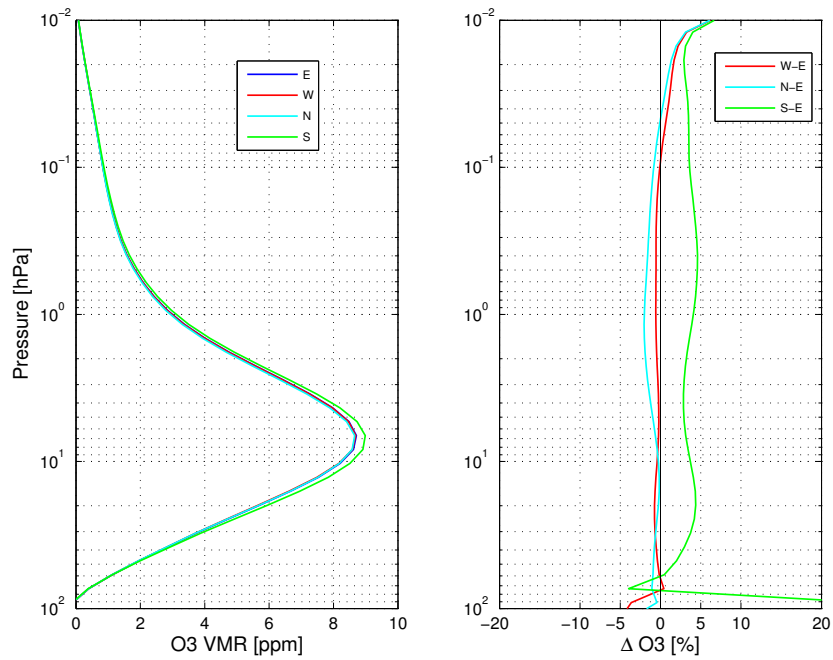
**Figure 1.** The ozone radiometer GROMOS-C at the Maïdo observatory, in La Réunion Island, together with the wind radiometer WIRA and the water vapour radiometer MIAWARA-C.



**Figure 2.** Air temperature (top), specific humidity (middle) and total optical thickness of the atmosphere at  $22^\circ$  elevation at 110 GHz (bottom), during the whole campaign at the Maïdo observatory.

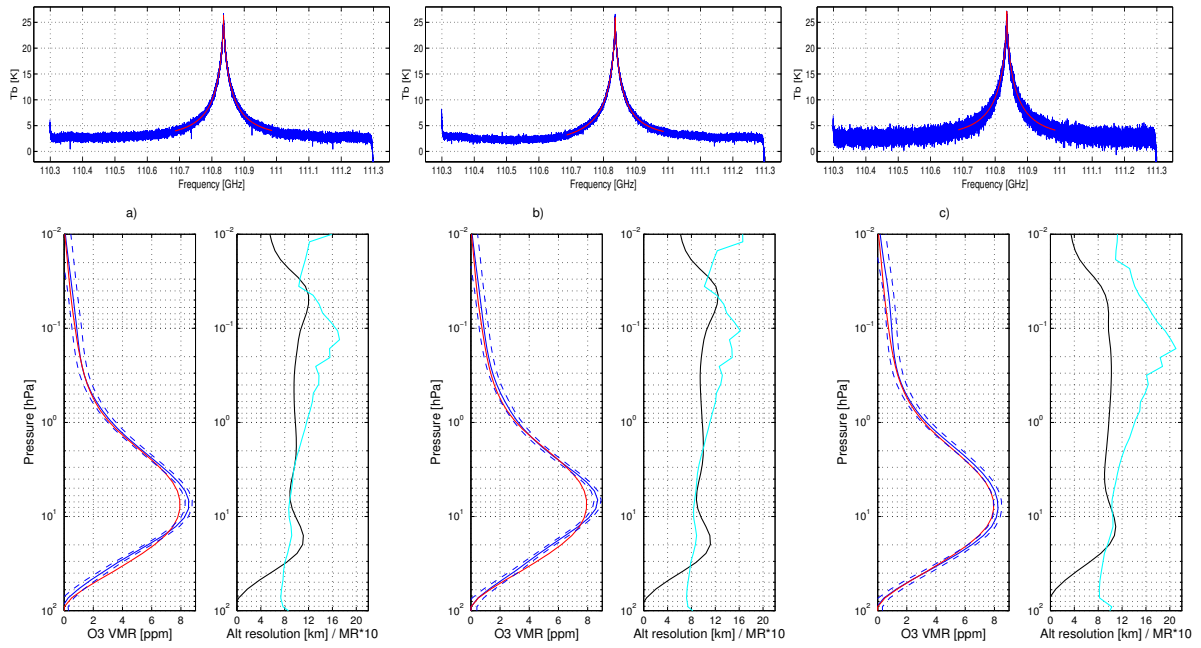


**Figure 3.** a) Example of a daily mean retrieved ozone profile (solid blue line) together with the a priori profile used for the inversion (dashed green line) and the total error limits (dashed blue lines). b) The corresponding averaging kernels multiplied by 4 (colour lines) and the measurement response (black line). c) Width-Full width at half maximum of the averaging kernels as a measure of vertical resolution. d) Altitude of the averaging kernels peak.

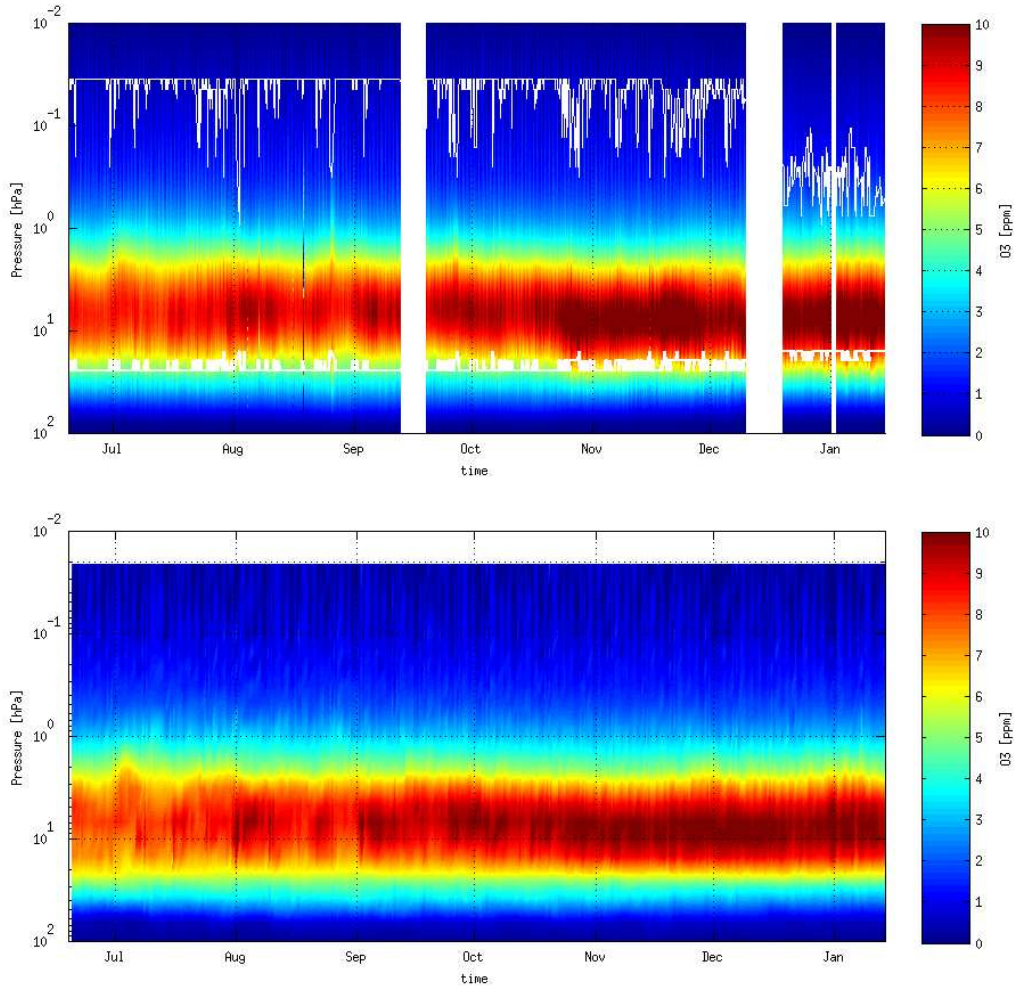


**Figure 4.** Comparison of ozone profiles in 4 directions of view. Each profile corresponds to the whole campaign mean of daily mean profiles. The right plot shows the relative differences with respect to the East profile.

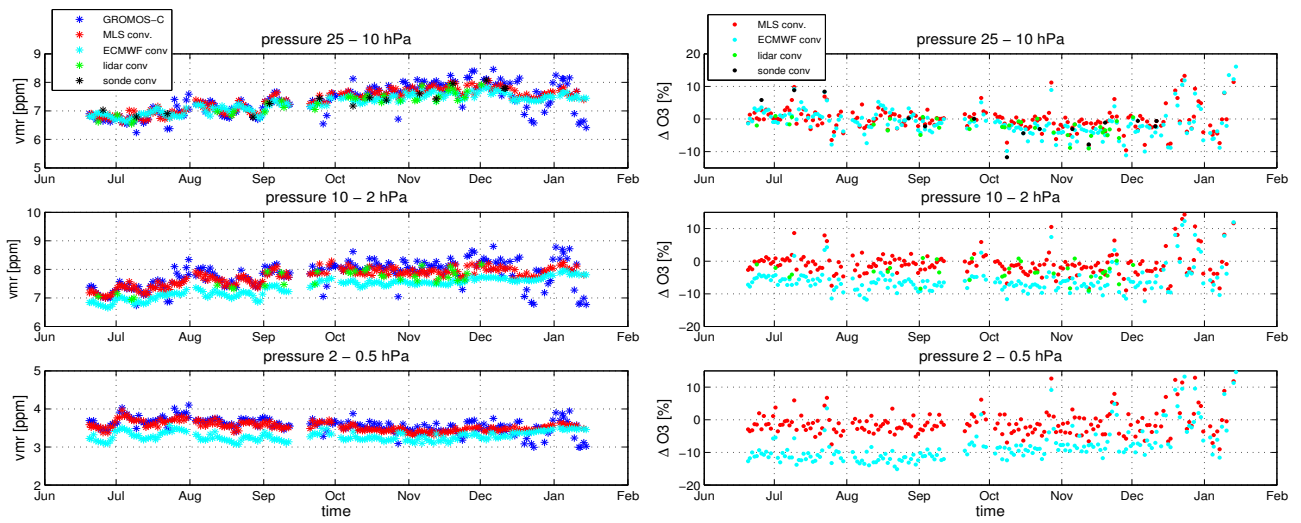




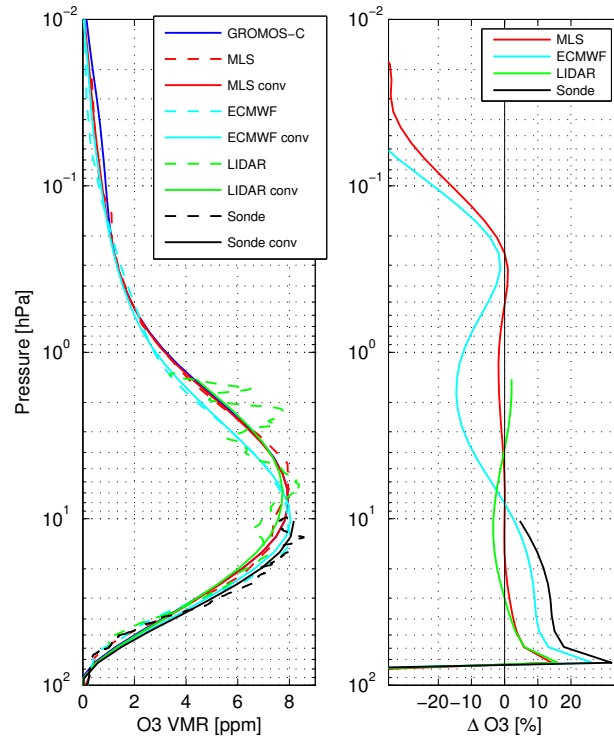
**Figure 5.** Top: Daily mean ozone spectrum measured (above) + retrieved profile (blue) , MLS profile and simulated (red) ozone spectrum, averaging kernels and measurement response (below) measured by GROMOS-C during the Maïdo campaign and calibrated with a) Hot and Peltier loads b) Noise diode c) Tipping curve. Bottom: Corresponding retrieved profiles (solid blue) together with the total error limits (dashed blue lines) and the MLS profile (red), measurement response multiplied by 10 (black) and altitude resolution (cyan).



**Figure 6.** Timeseries of ozone profiles measured by GROMOS-C during the Maïdo campaign ([abovetop](#)); the white lines represents the limits where the measurement response is larger than 0.8. Equivalent plot with Aura-MLS ozone profiles ([belowbottom](#)).

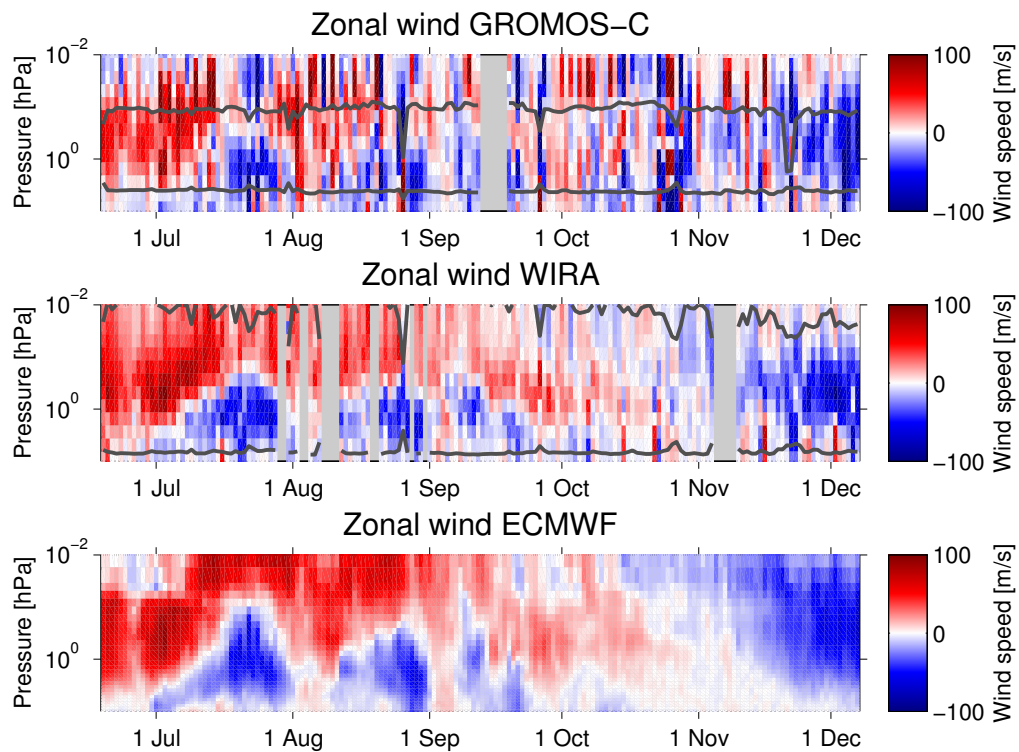


**Figure 7.** Daily mean timeseries of ozone volume mixing ratio measured by GROMOS-C and compared to MLS, ECMWF, lidar and radiosonde ozone measurements, for 3 pressure levels-intervals (left). The plotted vmr are averages over the indicated pressure intervals. Corresponding relative differences (right), calculated according to  $\Delta O_3 = (O_{3(\text{compared})} - O_{3(\text{gromos-c})}) / O_{3(\text{gromos-c})} \cdot 100$ .

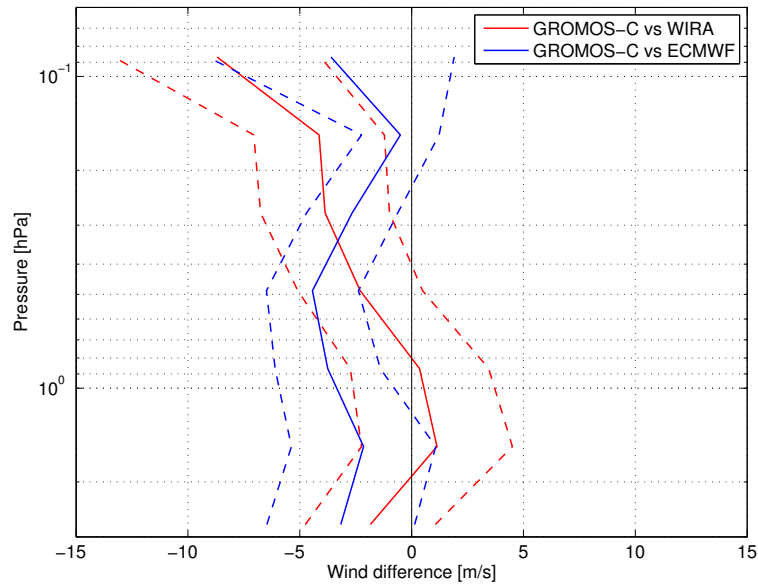


**Figure 8.** Comparison of a daily mean GROMOS-C ozone profile with MLS, ECMWF, lidar and radiosonde. We have included both the original and the convolved profiles. The right plot shows the relative differences of the convolved profiles with respect to GROMOS-C.

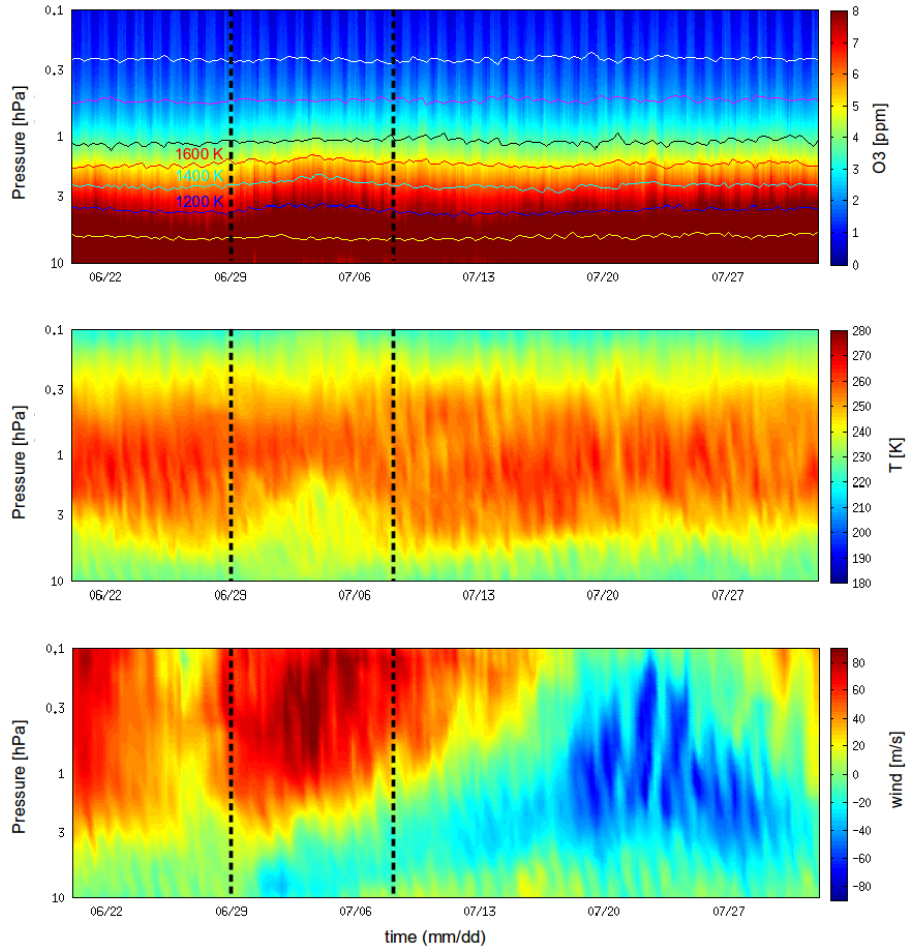
$$\Delta O_3 = \frac{O_3(\text{compared}) - O_3(\text{gromos-c})}{O_3(\text{gromos-c})} \cdot 100.$$



**Figure 9.** Middle-atmospheric zonal wind profiles measured by the radiometers GROMOS-C and WIRA as well as model data from ECMWF. The grey horizontal lines delimit the trustable altitude range which is basically equivalent to a measurement response larger than 0.8 [for GROMOS-C](#).



**Figure 10.** Differences of zonal wind profiles between GROMOS-C and WIRA ( $u_{\text{GROMOS-C}} - u_{\text{WIRA}}$ ) as well as between GROMOS-C and ECMWF ( $u_{\text{GROMOS-C}} - u_{\text{ECMWF}}$ ). The solid lines represent the average differences for the time period shown in Fig. 9 whereas the dashed lines mark the errors of the average profile, i.e. the standard deviation of the differences divided by the square root of the number of contributing measurements. Only altitudes with more than 15 days of trustworthy data have been considered in the analysis.



**Figure 11.** Zoom in the timeseries of ozone profiles measured by GROMOS-C plotted together with the isentropes from ECMWF (abovetop), temperature profiles from ECMWF (middle) and zonal wind profiles from ECMWF (belowbottom). The black dashed lines delimit the time period when the air updraft happened.