

Interactive comment on “Regional effects of atmospheric aerosols on temperature: an evaluation of an ensemble of on-line coupled models” by Rocío Baró et al.

Q: [R1] [...] The article has a very clear objective of evaluating the simulations of coupled models including aerosol interactions with radiation and clouds with respect to surface temperatures. This is clearly of general interest since it is an impact on weather forecasting that may motivate changes in operational models around the world. The improvement of temporal variability is an important result. [R2]: [...] The results points towards an improvement of spatial and temporal correlations when adding these interactions. The paper is well written and the topic is in the scope of the Journal. [R3] [...] The paper basically shows that including aerosol effects generally leads to a small improvement in the simulated surface temperature. [R4]: [...] According to the manuscript, the main conclusion obtained from the analyses is that the inclusion of aerosol effect feedbacks did not have a significant impact on the bias observed between modelled and observed temperature. However, the spatial and temporal variability are better represented when aerosol radiative effects are included in the simulations. The subject of the manuscript is within the scope of ACP and it is a relevant scientific issue. [R5]: [...] Overall, the manuscript is well written and can contribute to improve weather forecast models.

A: First of all, we would like to thank the reviewers for their positive opinion on the paper and its importance and their very valuable comments. All the reviewers raise very interesting points, which are addressed point-by-point below. (Reviewer's comments are displayed in black, replies in blue fonts).

Q: [R1] There is a lack of discussion on how well the aerosol concentrations for the two episodes compare with actual observations [...] In the cases used in this paper, how do these values compare to station data? [R2] It would be good to also provide a figure(s) showing observed AOD and clouds for the period of analysis and then how each model was able to represent them. If this is performed in other paper please include it anyways for context. [R3] [...] How can one see that without any plot showing emissions and/or aerosol loading in the manuscript? [R4] The aerosol horizontal and vertical distribution loading is absolutely absent from the manuscript. To address the influence of these effects on the surface temperature it is crucial to have, at least, a clear notion on the aerosol horizontal loading, observed and modelled. [R5] It would be interesting to evaluate the models skills in reproducing AOD and other aerosol optical properties.

A: We fully agree with the reviewers' comments. In fact, AOD representation is so important that the model representation and evaluation of aerosols and AOD are presented in a full accompanying paper, which will be soon re-submitted to this same issue of ACP after considering its own reviewer's

comments (Palacios-Peña et al., submitted. An assessment of aerosol optical properties from remote sensing observations and an ensemble of regional chemistry-climate coupled models over Europe).

However, a short description of the model behaviour for AOD representation is included in the manuscript at the beginning of the results section.

Q: [R1] The reader is left without means to judge whether this is a convincing case or not. In the conclusions, the authors reinforce this feeling by saying that this evaluation should be performed for cases with "episodes with stronger effects on the aerosol cloud interactions" and mentioning that in one of the cases larger concentration were found over the Mediterranean Sea where the evaluation is not performed.

A: The reviewer is right. Despite the substantiated election of the cases in different parts of the bibliography (especially, those related to EuMetChem), the sentence stated by the reviewers is an unfortunate claim. Our intention was to highlight that the ARI+ACI interactions are more pronounced in this episode over ocean areas (unluckily not covered by E-OBS). So we have rephrased the sentence in the conclusions for a better clarification:

"In order to further investigate the impact of including the aerosol interactions in online coupled models, more episodes with effects on the aerosol-radiation-cloud interactions should be considered. In this work, the fires episode represents a situation of clear skies, and therefore the ARI feedbacks are dominant. The dust episode election permits to study aerosol-cloud interaction, most of the ARI+ACI differences found in the models with respect to the base case were found over the Mediterranean sea. Since the observational data E-OBS only has values over land, the effect of ARI+ACI were not evaluation here. Unfortunately part of the interpretation of the results may be missed due to the unavailability of this database over the ocean."

Q: [R1] Page 6, line 8 you mention annual emissions, what is actually used in a daily/hourly basis? Are these cases significant from the point of view of high emissions and concentration of aerosol over land?

A: The methodology for emissions follows that explained by Im et al. (2015). As stated here, consistent temporal profiles (diurnal, day-of-week, seasonal) and vertical distributions were also made available to AQMEII and EuMetChem participating groups for time disaggregation. The temporal profiles for the EU anthropogenic emissions were provided from Schaap et al. (2005). This information has been clarified in the revised manuscript.

Im, U., Bianconi, R., Solazzo, E., Kioutsioukis, I., Badia, A., Balzarini, A., Baró, R., Bellasio, R., Brunner, D., Chemel, C., Curci, G., Flemming, J., Forkel, R., Giordano, L., Jiménez-Guerrero, P., Hirtl, M., Hodzic, A., Honzak, L., Jorba, O., Knote, C., Kuenen, J. J., Makar, P. A., Manders-Groot, A., Neal, L., Pérez, J. L., Pirovano, G., Pouliot, G., Jose, R. S., Savage, N., Schroder, W., Sokhi, R. S., Syrakov,

D., Torian, A., Tuccella, P., Werhahn, J., Wolke, R., Yahya, K., Zabkar, R., Zhang, Y., Zhang, J., Hogrefe, C., and Galmarini, S.: Evaluation of operational on-line-coupled regional air quality models over Europe and North America in the context of AQMEII phase 2. Part I: Ozone, *Atmospheric Environment*, 115, 404–420, 2015.

Schaap, M., Roemer, M., Sauter, F., Boersen, G., Timmermans, R., Bultjes, P.J.H., 2005. LOTOS-EUROS: Documentation. TNO report B&O-A, 2005-297, Apeldoorn.

Q: [R1] Pages 7, Equation 2, objectively define $\hat{\sigma}$; what is the operation defined in eq. 2? What is $V_{k_{ic}}$? [R2] Equation 2. There is either an error on the notation or a variable is not defined ($V_{k_{ic}}$)

A: We strongly appreciate the reviewer's suggestions. There was a typo in the definitions of the equations of variability that has been corrected in the revised version of the manuscript.

Q: [R1] Page 9, lines 3-5, for the whole period, 60 days in one case and 30 days in the other case? Only in figure 10 the exact period is mentioned. Please state that in the text.

A: The exact period is specified in pag 4, lines 23 to 25

Q: [R1] The numbers that summarize results should be organized in tables so they can be easily compared. [R3] The figures with maps are presented in such a way that one cannot gain a clear quantitative understanding of how the models differ beyond very large differences. [...] In most cases, the maps look identical without extremely close examination. A better way needs to be found to present this information. [R1] Page 9, lines 6-28 the average numbers of the bias for each case and run should be summarized in a Table.

A: Following the reviewer's advice, a Table summarizing all the results has been including in the revised version of the manuscript (Tables 2 and 3).

Q: [R1] [...] What is needed is a way to represent the effect on temperature in places where there is a high concentration of aerosol. You could choose a given simulation time with very high aerosol concentrations and show model performance for temperatures. [R2] [...] I suggest the authors to restrict their analysis only to regions where large aerosol impact is expected. For instance, bias could be computed only for regions where AOD is over a fixed threshold, or you could weigh the bias by AOD. [R4] I also wonder about the effectiveness of the discussion largely based on domain-averaged values given the domain considered.

A: The domains presented here are sub-domains of the ensemble of EuMetChem simulations, which covers a European-wide domain. The elections of these sub-domains was based precisely on those European sub-area where the aerosol could affect most the meteorological variables. It is for this reason that these sub-domains for the wildfires episode and the dust episode were selected. Therefore, in our opinion, results regarding bias or

correlation would not change importantly if different domains were selected.

Q: [R1]: [...] There is very little discussion on why given models may perform better than others.

A: We fully agree with the reviewer's comments. However, the point raised by the reviewers was already addressed in Brunner et al. (2015), where the authors present an operational analysis of model performance with respect to key meteorological variables relevant for atmospheric chemistry processes and air quality. So the reader is referred to that work for clarification.

Q: [R3] Gridded temperature data sets typically show a range of uncertainties due to different methodologies used to spatially distribute and average point observations. [...] Most likely, the differences identified between running the models with and without aerosol feedbacks is smaller than the differences between observation data sets.

A: The reviewer raises a very interesting point. One of the works coauthored the corresponding author of this manuscript (Gómez-Navarro et al., 2012) examines to what extent the evaluation and ranking of an ensemble of regional climate models, according to their ability to reproduce the observed climatologies, is sensitive to the choice of the reference observational data set. The authors found that for maximum and minimum temperatures, it turns out that uncertainties among observations are at least as relevant as uncertainties among the models within an ensemble.

However, the main objective of this work is not to rank the ensemble of simulations included in EuMetChem, but to provide a comprehensive comparison between simulations and to assess the differences when including the aerosol feedbacks. In this sense, the E-OBS dataset was selected because of its wide use in scientific literature when evaluating regional climate models.

Gómez-Navarro, J. J., J. P. Montávez, S. Jerez, P. Jiménez-Guerrero, and E. Zorita (2012), What is the role of the observational dataset in the evaluation and scoring of climate models?, *Geophys. Res. Lett.*, 39, L24701, doi:10.1029/2012GL054206.

Q [R3]: The “third” configuration needs to be defined in relation to the handling of aerosol and/or cloud droplet assumptions when aerosol-cloud interactions are disabled. [...] However, one cannot run a model without aerosol and still form clouds, since the aerosols are required for forming cloud droplets in almost all physically relevant conditions. So, even “without” aerosol-cloud interactions there are still significant assumptions built into the models to account for the ACI processes.

A: The reviewer is right. This point has been clarified in the manuscript (Second paragraph, Section 2) as follows: “*Although NRF case does not*

consider the aerosol effects and feedbacks, there is a standard aerosol assumption of some continental aerosol (250 cm⁻³ used by WRF-Chem in the absence of ACI for estimating cloud droplet number). On the other hand, ARI uses this constant value for accounting the interaction between aerosols and clouds, but allows the modification of the radiation budget by using the on-line estimated aerosols. Last, the ARI+ACI cases are based on simulated aerosol concentrations, which interact both with radiation and aerosols. The common setup for the participating models and a unified output strategy allow analyzing the model output with respect to similarities and differences in the model response to the aerosol direct effect and aerosol-cloud interactions."

Q: [R4] I would recommend the authors to describe the dominant meteorological context during the episodes, with special focus on those variables that govern the surface temperature field.

A: The weather conditions during the Russian forest fires were mainly dry and particularly hot, with light winds. During this situation, the sea-level pressure (SLP) showed a high-pressure system over the northeast part of the Russian area, finding a strong positive SLP anomaly for this period. This resulted in a strong positive surface temperature anomaly accompanied by weak winds from the southeast. On the other hand, a very deep trough characterizes the dust period situation with a vortex reaching 20 degrees of north latitude. This situation is maintained for several days, causing a continuous transport in middle levels. It is also worth mentioning the blocking situation over all central Europe. The dust event was dominated by strong south-easterly wind. This may explain windblown dust emissions increasing with wind speed and being transported to some parts of the European area.

This description has been included in the revised version of the manuscript, Section 2.

Q: [R4] Being the WRF-CHEM individual models dominant and presented basically the same configuration, although from distinct institution, the ensemble results seems to resemble WFR_CHEM features, which is clear when Bias are analysed. Moreover, I wonder about the inclusion of a WRF-CHEM model version with a spatial resolution substantially higher than the others and its influence on the ensemble results. [...] The simultaneous analyses of the inclusion(exclusion) of aerosol effects based on the ensemble field seems to be a challenge since the ensemble may reflect compensation between features from individual models.

A: The meteorological variables simulated by regional models suffer from uncertainties arising from a variety of sources such as internal variability, different model formulations, etc. Results found in the literature indicate that the ensemble mean is usually less biased than the individual members (Fernández et al. 2009, Knutti et al. 2010; Kjellström et al., 2011).

As stated by Annan and Hargreaves (2011), one hypothesis for the improvement of the ensemble mean when compared to the performance of the individual models is the paradigm of models being considered as independent samples from some distribution that is centered on the truth, as in this case the ensemble mean could be expected to converge to the truth as more models are added to the ensemble.

With respect to WRF-CHEM individual models being dominant, Jerez et al. (2013) indicate that the uncertainties associated to the physics of the driving meteorological model are of the same order of magnitude as the uncertainties associated with a multi-model ensemble. Therefore, even though WRF-CHEM models are dominant in the ensemble, the diversity of the parameterizations elected make the election feasible for an ensemble analysis.

Annan JD, Hargreaves JC (2010) Reliability of the CMIP3 ensemble. *Geophys Res Lett* 37:L02703, doi:10.1029/2009 GL041994

Fernández J, Primo C, Cofiño AS, Gutiérrez JM, Rodríguez MA (2009) MVL spatiotemporal analysis for model inter- comparison in EPS: application to the DEMETER multi- model ensemble. *Clim Dyn* 33:233–243

Knutti R, Furrer R, Tebaldi C, Cermak J, Meehl GA (2010) Challenges in combining projections from multiple cli- mate models. *J Clim* 23:2739–2758

Kjellström E, Nikulim F, Hanson U, Strandberg G, Ullerstig A (2011) 21st century changes in the European climate: uncertainties derived from an ensemble of regional cli- mate model simulations. *Tellus* 63A:24–40

Q: [R5] Even though Jiménez-Guerrero is one of the co-authors of the manuscript and reference to Jiménez-Guerrero et al. (2013) is given, at the validation methodology section (page 7, from line 7 and following), many parts of the text are identical to the reference, what must be avoided.

A: An effort has been made to rewrite this part of the manuscript, despite keeping the same nomenclature for the statistical figures.

MINOR COMMENTS:

Q: [R1] Page 4, lines 20-23 – please correct sentence structure

A: These lines have been corrected in the revised version

Q: [R1] Page 35 – Table 1 – define CS1, CS2, DE3, ES1, ES3, in the text you use things like, C11, C12...etc, this should be defined in the text.

A: This information has been clarified in the revised manuscript.

Q: [R1] Page 14, lines 23-26 – for T_{min} the case ENS-C13 is perhaps an exception?

A: The reviewer is right. This comment has been introduced in the revised version of the manuscript.

Q: [R2] Page 2, line 10. Somewhere in the text define “EuMetChem COST Action ES1004”

A: EuMetChem stands for “European framework for online integrated air quality and meteorology modelling”. This definition has been introduced in the second paragraph of the Introduction.

Q: [R2] Page 2, Line 19. I think that the statement “especially for those areas closest to emissions sources of atmospheric aerosols” is not explained or mentioned in the text.

A: This sentence has been removed from the revised version of the abstract.

Q: [R2] Section 3.2. What strikes me the most from these results are the differences between the smoke and the dust case. For the smoke case, most of the changes come from the radiation effects, while for the dust effects most changes come from aerosol-cloud effects. Can you explain why this happens? Does the dust case has more clouds over the domain? Is it related to better cirrus representation?

A: During the fire episode, a predominantly clear-sky situation was found; therefore, the aerosol effects governing the changes in temperature are related to the aerosol-radiation effect. Conversely, during the dust episode, formation of clouds is enhanced because of the meteorological situation explained above.

Q: [R2] Page 4, line 22. Erase “are run”

A: Line has been corrected

Q: [R2] Page 15, line 11. Fix the forkeletal2015 reference. [R3] p. 15, l. 9: Reference to Forkel et al. (2015) is mistyped. [R5] Page 15, line 11: please correct Forkel et al. 2015

A: Reference has been corrected in the revised version of the manuscript.

Q: [R3] p. 4, l. 27: “Three different cases” is better phrased as “Three different configurations.” “Cases” implies different dates and “configurations” is more specific to what is being described.

A: This comment has been introduced in the revised version of the manuscript as suggested.

Q: [R3] p. 5, l. 10: The WRF-Chem citations need to include those relevant to the aerosol direct and indirect effects, particularly because those processes are the focus of this paper. The standard citations for this purpose are Chapman et al. [2009]; Fast et al. [2006]; Gustafson et al. [2007].

A: These references have been added to the WRF-Chem citation.

Chapman, E. G., W. I. Gustafson, R. C. Easter, J. C. Barnard, S. J. Ghan, M. S. Pekour, and J. D. Fast (2009), Coupling aerosol-cloud-radiative processes in the WRF-Chem model: Investigating the radiative impact of elevated point sources, *Atmos. Chem. Phys.*, 9, 945–964, doi:10.5194/acp-9-945-2009.

Fast, J. D., W. I. Gustafson, R. C. Easter, R. A. Zaveri, J. C. Barnard, E. G. Chapman, G. A. Grell, and S. E. Peckham (2006), Evolution of ozone, particulates, and aerosol direct radiative forcing in the vicinity of Houston using a fully coupled meteorology-chemistry-aerosol model, *J. Geophys. Res.*, 111, D21305, doi:10.1029/2005jd006721.

Gustafson, W. I., E. G. Chapman, S. J. Ghan, R. C. Easter, and J. D. Fast (2007), Impact on modeled cloud characteristics due to simplified treatment of uniform cloud condensation nuclei during NEAQS 2004, *Geophys. Res. Lett.*, 34, L19809, doi:10.1029/2007gl0300321

Q: [R3] p. 5, l. 12: “Resolution” needs to be changed to “grid spacing.” The two are not interchangeable.

A: It has been changed as suggested.

Q: [R3] p. 5, l. 15: The authors presumably meant “grid spacing” and not “width.”

A: It has been changed as suggested.

Q: [R3] p. 8, l. 4: The “p” should be subscripted.

A: The reviewer is right. Letter “p” has been subscripted in the revised version of the manuscript.

Q: [R3] p. 11, l. 5: I do not understand what is trying to be conveyed by “...presenting the ensemble always maximum time...” This appears to be a garbled sentence.

A: The sentence has been corrected as “presenting the ensemble always maximum values for...”

Q: [R4] Page 2, Line 03: “...due to direct aerosol-radiation...” to “...due to the direct aerosol-radiation...”

A: This sentence has been changed in the revised version of the manuscript.

Q: [R4] Page 2, Line 04: "...from aerosol-cloud interactions..." to "...from aerosol-cloud-radiation interactions..."

A: This sentence has been changed in the revised version of the manuscript.

Q: [R4] Page 2, Line 09: "...and minimum temperature over Europe..." to "...and minimum temperature at 2 meters over Europe..."

A: This comment has been changed in the revised version of the manuscript.

Q: [R4] Page 2, Line 10: "The evaluated model outputs originate..." to "The evaluated models outputs originate..."

A: Changed as suggested.

Q: [R4]: Page 2, Line 11: "The case studies cover two important..." to "The cases studies cover two important..."

A: Changed as suggested.

Q: [R4] Page 2, Line 12-13: "...a heat wave and forest fires episode..." to "...a heat wave event and a forest fires episode..."

A: Changed as suggested.

Q: [R4] Page 2, Line 19: "...those areas closest to emissions sources..." to "...those areas closest to significant emissions sources..."

A: This sentence has been changed in the revised version of the manuscript.

Q: [R4] Page 2, Line 21 -22: "Atmospheric aerosol particles are known to have an impact on Earth's radiative budget due to their optical, microphysical and chemical properties,..." to "Atmospheric aerosol particles are known to have an impact on Earth's radiative Budget due to their interaction with radiation and clouds properties, which are dependent on their optical, microphysical and chemical properties..."

A: This sentence has been changed as suggested in the revised version of the manuscript.

Q: [R4] Page 2, Line 23-26: "They influence climate by modifying both the global energy balance through absorption and scattering of radiation (direct effect), and by acting as cloud condensation nuclei, thus affecting cloud droplet size distributions and lifetime (Twomey 1977; Lohmann and Feichter, 2005; Chung, 2012) and the reflectance and persistence..." to "They influence climate by modifying the global energy balance through both absorption and scattering of radiation (direct effect) and by acting as

cloud condensation nuclei, thus affecting clouds droplet size distribution, lifetime (Twomey 1977; Lohmann and Feichter, 2005; Chung, 2012) and reflectance (indirect effects)..."

A: This sentence has been changed as suggested in the revised version of the manuscript.

Q: [R4] Page 3, Line 15-17: "...the air quality model evaluation international initiative (AQMEII) in its phase 2 (Alapaty et al., 2012; Galmarini et al., 2015) focused on the assessment of ..." to "..., in its phase 2, the air quality model evaluation international initiative (AQMEII) (Alapaty et al., 2012; Galmarini et al., 2015) focused on the assessment of ..."

A: This sentence has been changed as suggested in the revised version of the manuscript.

Q: [R4] Page 3, Line 20: "...aerosols, radiation, clouds, and precipitation..." to "...aerosols, radiation, clouds and precipitation..."

A: Changed as suggested.

Q: [R4] Page 3, Line 20: "...a coordinated exercise of Working Groups 2 and 4 of the COST Action ES1004 (EuMetChem, <http://eumetchem.info>) emerged, in order to take into account the radiative feedbacks, due to atmospheric aerosol effects over meteorology..." to "..., a coordinated exercise of the working groups 2 and 4 of the COST Action ES1004 (EuMetChem, <http://eumetchem.info>) emerged in order to take into account the radiative feedbacks of atmospheric aerosol effects on meteorology."

A: Changed as suggested.

Q: [R4] Page 3, Line 26: "...of their strong potential of aerosol interactions..." to "... of their strong potential for aerosol-radiation and aerosol-cloud-radiation interactions ..."

A: This comment has been changed in the revised version of the manuscript.

Q: [R4] Page 3, Line 28: "...onto meteorology..." to "...on meteorology..."

A: Changed as suggested.

Q: [R4] Page 4, Line 1: Specify temperature at which level (surface, 2 meters?) the paragraph is referring.

A: Forkel et al. (2015) refer to 2-m temperature. This has been clarified in the revised version of the manuscript.

Q: [R4] Page 4, Line 5: "Forkel et al. (2012) studied an episode in June and July..." specify the nature of the episode that is discussed here.

A: The reason for selecting this two-month episode was clarified in the manuscript.

Q: [R4] Page 4, Line 7: "...this reduction was reflected in its spatial distribution of the planetary boundary layer height..." please, clarify.

A: This sentence has been rewritten in the revised version of the manuscript.

Q: [R4] Based on the first sentence of the last paragraph: Page 4 Line 11: "However, all these studies are based on individual model evaluations and do not take into account an ensemble of regional models, in order to build confidence on model simulations and to characterize the uncertainty associated to the use of different modelling systems". I'm tempted to suggest another perspective on the sentence that describe the manuscript main goal (just a suggestion) from:

Page 4 Line 14: " ...the objective of this work is to assess whether the inclusion of aerosol radiative feedbacks during two important atmospheric aerosol episodes of the year 2010 improves the outputs of an ensemble of regional on-line coupled models for maximum, mean and minimum temperature at 2 meters over Europe."

To " ...the objective of this work is to assess whether the outputs of an ensemble of regional on-line coupled models simulations including aerosol radiative feedbacks, during two important atmospheric aerosol episodes of the year 2010, improves the prognostic for maximum, mean and minimum temperature at 2 meters over Europe"

A: We strongly appreciate the reviewer's suggestion, which clarifies the objective of this contribution. The reviewer's comment has been introduced in the revised version of the manuscript.

Q: [R4] Page 4 Line 23: "...the Russian 2010 heatwave and wildfires episode in summer 2010 (25 July-15 August 2010)..." to "...the Russian heatwave and wildfires episode in the summer of 2010 (25 July-15 August 2010)..."

A: Changed as suggested.

Q: [R4] Page 5 Line 1: "...which does not consider any feedbacks to meteorology with simulated aerosol (NRF)," to "...which does not consider any aerosol effects feedbacks to meteorology (NRF),"

A: Changed as suggested.

Q: [R4] Page 5 Line 2: "...where aerosol-cloud interactions based on simulated aerosol concentrations and direct and indirect aerosol effects are considered (ARI+ACI)." I think this sentence needs to be improved.

A: This sentence has been rewritten for the sake of clarity in the revised version of the manuscript.

Q: [R4] Page 5 Line 11-12: "...with different chemistry and physics options and performed episodes..." The last part of the sentence "and performed episodes" did not make sense to me, please, clarify.

A: This sentence has been rewritten for the sake of clarity in the revised version of the manuscript.

Q: [R4] Page 5 Line 14: "...grid with of 0,125deg /approximately 14 km) there is an additional..." to "...grid with of 0.125 deg (approximately 14 km) and there is an additional..." [R5] Page 5, line 14: please replace "grid with of 0,125deg" by "grid with 0.125deg" (notice the use of comma as decimal separator).

A: Changed as suggested.

Q: [R4] Page 5 Line 21: "...uses the Model for Simulating Aerosol Interactions and Chemistry (MOSAIC)(4 bins) ..." Please, provide the meaning of "(4 bins)".

A: In order to clarify it, "4 bin" has been replaced by "4 aerosol size bins" since the term bins refers to the number of aerosol size bins considered for representing aerosol distribution with respect to their diameter.

Q: [R4] Page 6 Line 3: "2.2 Emissions and boundary conditions" The topic is mentioning "boundary conditions" but it only describe emissions sources. How about dust emission, since one of the case study focus is on an event of dust transport.

A: We appreciate the reviewer's suggestion. The description of boundary conditions has been added to the revised version of the manuscript.

Q: [R4] Page 6 Line 9: "...volatile organic compounds..." to "...volatile organic compounds..."

A: Changed as suggested.

Q: [R4] Page 6 Line 25: "...alter significantly any of our results..." to "... alter significantly our results..."

A: Changed as suggested.

Q: [R5] Page 12, line 20: please replace "intermediate representation the variability" by "intermediate representation of the variability";

A: Changed as suggested.

Regional effects of atmospheric aerosols on temperature: an evaluation of an ensemble of on-line coupled models

Rocío Baró^{1,2}, Laura Palacios-Peña¹, Alexander Baklanov³, Alessandra Balzarini⁴, Dominik Brunner⁵, Renate Forkel⁶, Marcus Hirtl², Luka Honzak⁷, Juan Luis Pérez⁸, Guido Pirovano³, Roberto San José⁸, Wolfram Schröder⁹, Johannes Werhahn⁵, Ralf Wolke⁹, Rahela Zabkar¹⁰, and Pedro Jiménez-Guerrero¹

¹Department of Physics, Regional Campus of International Excellence Campus Mare Nostrum, University of Murcia, Murcia, Spain

²Section Chemical Weather Forecasts, Division Data/Methods/Modelling, ZAMG - Zentralanstalt für Meteorologie und Geodynamik, Austria

³World Meteorological Organization, Geneva, Switzerland

⁴Ricerca sul Sistema Energetico (RSE), Italy

⁵Laboratory for Air Pollution/Environmental Technology, Empa, Swiss Federal Laboratories for Materials Science and Technology, Switzerland

⁶Karlsruher Institut für Technologie (KIT), Institut für Meteorologie und Klimaforschung, Atmosphärische Umweltforschung (IMK-IFU), Germany

⁷BO-MO d.o.o, Slovenia

⁸Environmental Software and Modelling Group, Computer Science School - Technical University of Madrid, Spain

⁹Leibniz Institute for Tropospheric Research, Permoserstr, Germany

¹⁰Slovenian Environment Agency, Slovenia

Correspondence to: Pedro Jiménez-Guerrero (pedro.jimenezguerrero@um.es)

Abstract

The climate effect of atmospheric aerosols is associated to their influence on the radiative budget of the Earth due to the direct aerosol-radiation interactions (ARI) and indirect effects, resulting from ~~aerosol-cloud~~ aerosol-cloud-radiation interactions (ACI). On-line coupled meteorology-chemistry models permit the description of these effects on the basis of simulated atmospheric aerosol concentrations, although there is still some uncertainty associated to the use of these models. In this sense, the objective of this work is to assess whether the inclusion of atmospheric aerosol radiative feedbacks of an ensemble of on-line coupled models improves the simulation results for maximum, mean and minimum temperature at 2 meters over Europe. The evaluated ~~model~~ models outputs originate from EuMetChem COST Action ES1004 simulations for Europe, differing in the inclusion (or omission) of ARI and ACI in the various models. The ~~case~~ cases studies cover two important atmospheric aerosol episodes over Europe in the year 2010, a heat wave ~~and event~~ and a forest fires episode (July-August 2010) and a more humid episode including a Saharan desert dust outbreak in October 2010. The simulation results are evaluated against observational data from E-OBS gridded database. The results indicate that, although there is only a slight improvement in the bias of the simulation results when including the radiative feedbacks, the spatio-temporal variability and correlation coefficients are improved for the cases under study when atmospheric aerosol radiative effects are included, ~~especially for~~ those areas closest to emissions sources of atmospheric aerosols.

1 Introduction

Atmospheric aerosol particles are known to have an impact on Earth's radiative ~~budget~~ Budget due to their interaction with radiation and clouds properties, which are dependent on their optical, microphysical and chemical properties, and are considered to be the most uncertain forcing agent. They influence climate by modifying ~~both~~ the global energy balance through both absorption and scattering of radiation (direct effect) ~~and~~ by acting as cloud

condensation nuclei, thus affecting ~~cloud droplet size distributions and clouds droplet size distribution~~, lifetime (Twomey, 1977; Lohmann and Feichter, 2005; Chung, 2012) and ~~the reflectance and persistence of clouds~~ reflectance (indirect effects) (Ghan and Schwartz, 2007; Yang et al., 2011). Depending on the atmospheric aerosol concentration, aerosol cloud interactions may result in an increase or decrease in liquid water content, cloud cover, and lifetime of low level clouds and a suppression or enhancement of precipitation (Bangert et al., 2011). Besides, aerosol absorption may decrease low-cloud cover by heating the air and reducing relative humidity. This leads to a positive radiative forcing, termed the semi-direct effect, which amplifies the warming influence of absorbing aerosols (Hansen et al., 1997). The Fifth Report of the Intergovernmental Panel on Climate Change (IPCC AR5) (Boucher et al., 2013; Myhre et al., 2013) distinguishes between aerosol-radiation interactions (ARI), which encompass the aerosol direct and semidirect effect, and the aerosol-cloud interactions (ACI), which encompass the indirect effects.

In order to account for these atmospheric aerosol effects, the use of fully-coupled models is needed for meteorological, chemical and physical processes. On-line coupled models include the interaction of atmospheric pollutants (gaseous-phase compounds and aerosols) with meteorological variables (Baklanov et al., 2014). In this context, in its phase 2, the air quality model evaluation international initiative (AQMEII) ~~in its phase 2~~ (Alapaty et al., 2012; Galmarini et al., 2015) focused on the assessment of how well the current generation of coupled regional scale air quality models can simulate the spatio-temporal variability in the optical and radiative characteristics of atmospheric aerosols and associated feedbacks among aerosols, radiation, clouds, and precipitation. On this basis, a coordinated exercise of ~~Working Groups~~ working groups 2 and 4 of the COST Action ES1004 European framework for online integrated air quality and meteorology modelling (EuMetChem, <http://eumetchem.info>) emerged, in order to take into account the radiative feedbacks, ~~due to of~~ atmospheric aerosol effects over on meteorology. In this initiative, two important episodes with high loads of atmospheric aerosols were analyzed which were identified during the previous AQMEII phase 2 modelling intercomparison exercise (Galmarini et al., 2015). They were selected on

behalf of their strong potential ~~of aerosol~~ for aerosol-radiation and aerosol-cloud-radiation interactions (Makar et al., 2015a, b; Forkel et al., 2015).

As a result of the AQMEII phase 2 initiative and EuMetChem COST Action, several studies covering the analysis of the ARI+ACI feedbacks ~~onto to~~ meteorology have been done (e.g. Baró et al. (2015); Forkel et al. (2015, 2016); Kong et al. (2015); San José et al. (2015)). Focusing on the effects of including ARI+ACI on temperature, Forkel et al. (2015) focused on the 2010 Russian wildfire episode, where the presence of the atmospheric aerosols decreased the 2-m mean temperature during summer 2010 by 0.25 K over the target area. For the same episode, Péré et al. (2014) showed daily mean surface temperature reductions between 0.2 to 2.6 K. ~~Forkel et al. (2012) studied an episode in June and~~ In Forkel et al. (2012) they studied a two-month episode (June to July 2006, where) ~~for allowing medium range effects of the direct and indirect aerosol effect on meteorological variables and air quality. They found~~ a slightly lower temperature ~~was found~~ over western Europe when including atmospheric aerosol feedbacks; ~~this reduction was reflected in its spatial distribution of the.~~ This reduction followed the same pattern as the planetary boundary layer height. Moreover, Meier et al. (2012) found during July 2006 a general decrease of 0.14 K on 2-m temperature when simulating absorbing aerosol in upper layers compared to an aerosol-free troposphere over land surface.

However, all these studies are based on individual model evaluations and do not take into account an ensemble of regional models, in order to build confidence on model simulations and to characterize the uncertainty associated to the use of different modelling systems. Therefore, the objective of this work is to assess whether the ~~inclusion of outputs of an ensemble of regional on-line coupled models simulations including~~ aerosol radiative feedbacks, during two important atmospheric aerosol episodes of the year 2010 ~~improves the outputs of an ensemble of regional on-line coupled models,~~ improves the prognostic for maximum, mean and minimum temperature at 2 meters over Europe.

2 Methodology

The analyzed model outputs are the results of a coordinated ~~modeling~~ modelling exercise which was performed within the COST Action ES1004 (EuMetChem). In order to analyze the ARI or ARI+ACI effect on temperature, it was suggested to run three case studies for two episodes ~~are run~~ with different on-line coupled models with identical meteorological boundary conditions and anthropogenic emissions. The two considered episodes are: the

5 Russian ~~2010~~ heatwave and wildfires episode in summer the summer of 2010 (25 July-15 August 2010) and an autumn Saharan dust episode, including the dust transport to Europe (2-15 October 2010).

The weather conditions during the Russian forest fires were mainly dry and particularly hot, with light winds (Péré et al., 2014; Kong et al., 2015). During this situation, the sea-level pressure (SLP) showed a high-pressure system over the northeast part of the Russian area, finding a strong positive SLP anomaly for this period. This resulted in a strong positive surface temperature anomaly accompanied by weak winds from the southeast (Baró et al., 2017). On the other hand, the dust period situation is characterized by a very deep trough with a vortex reaching 20°N latitude. This situation is maintained for several days, causing a continuous transport in middle levels. It is also worth mentioning the blocking situation over all central Europe. The dust event was dominated by strong south-easterly wind. This may explain windblown dust emissions increasing with wind speed and being transported to some parts of the European area (Kong et al., 2015).

10
15

For the chosen episodes, simulations with each model were performed with and without considering the atmospheric aerosol effects. Three different ~~eases~~ configurations were requested: the first one which does not consider any aerosol effects feedbacks to meteorology ~~with simulated aerosol (NRF(NRF; C11 fire and C21 dust episode))~~; second, where only ~~direct aerosol effect is~~ aerosol-radiation interactions are considered (ARI; C12 fire and C22 dust episode) and third, where ~~aerosol-cloud interactions based on simulated aerosol concentrations and direct and indirect aerosol effects~~ aerosol-radiation-cloud interactions are considered (ARI+ACI). ~~However, the third;~~ C13 fire and C23 dust episode (this case

20
25

could not be submitted by all of the participants-). Although NRF case does not consider the aerosol effects and feedbacks, there is a standard aerosol assumption of some continental aerosol (250 cm^{-3} used by WRF-Chem in the absence of ACI for estimating cloud droplet number). On the other hand, ARI uses this constant value for accounting the interaction between aerosols and clouds, but allows the modification of the radiation budget by using the on-line estimated aerosols. Last, the ARI+ACI cases are based on simulated aerosol concentrations which interact both with radiation and aerosols. The common setup for the participating models and a unified output strategy allow analyzing the model output with respect to similarities and differences in the model response to the aerosol direct effect and aerosol-cloud interactions.

2.1 Participating models

An overview of the different models and their configurations is shown in Table 1, where in first row the model acronym is shown. The participating models shown here are COSMO-MUSCAT (Wolke et al., 2012) and WRF-Chem (~~Grell et al., 2005; Grell and Baklanov, 2011~~) (~~Grell~~) different chemistry and physics options ~~and performed episodes.~~ The table also includes the episodes run for each model. The horizontal ~~resolution~~ grid spacing is around 25 km for most of the contributions. Only for the fire episode, the COSMO-MUSCAT simulations were made with a grid with of ~~0,1250.125~~ deg # (approximately 14 km) there is an additional WRF-Chem run with 9 km ~~width~~ grid spacing. The COSMO models use Kessler-type bulk microphysics (Doms et al., 2011) and WRF-Chem uses Morrison microphysics (Morrison et al., 2009), except for one contribution, that utilizes Lin (Lin et al., 1983). COSMO models use prognostic TKE (Doms et al., 2011) planetary boundary layer (PBL). The YSU PBL scheme (Hong et al., 2006) was chosen for the WRF-Chem simulations. In general, the Modal Aerosol Dynamics Model for Europe (MADE) is applied (Ackermann et al., 1998) except for one WRF-Chem simulation, which uses the Model for Simulating Aerosol Interactions and Chemistry (MOSAIC) (4 aerosol size bins) approach (Zaveri et al., 2008). For further information and details about the models, we refer to the work of Forkel et al. (2015); Im et al. (2015a, b); Baró et al. (2015). To enable the cross-comparison between models,

the participating groups interpolated their model output to a common grid with 0.1 degree resolution.

Moreover, the ensemble of the available simulations has also been included in this comparison, as recommended by several studies (Vautard et al., 2012; Jiménez-Guerrero et al., 2013; Landgren et al., 2014; Solazzo and Galmarini, 2015; Kioutsioukis et al., 2016), in order to check whether the design of an ensemble of simulations outperforms (or not) the skill of individual models.

2.2 Emissions and boundary conditions

For the EU domain, the anthropogenic emissions for the year 2009 (<http://www.gmes-atmosphere.eu/>) were applied by all modelling groups and are based on the TNO-MACC-II (Netherlands Organization for Applied Scientific Research, Monitoring Atmospheric Composition and Climate–Interim Implementation) framework (Kuenen et al., 2014; Pouliot et al., 2015). As described in Im et al. (2015a), annual emissions of methane (CH₄), carbon monoxide (CO), ammonia (NH₃), total non-methane volatile organic ~~com-pounds~~ compounds (NMVOC), nitrogen oxides (NO_x), particulate matter (PM₁₀ & PM_{2.5}) and sulfur dioxide (SO₂) from ten activity sectors are provided on a latitude/longitude grid of 1/8 × 1/16 resolution. Consistent temporal profiles (diurnal, day-of-week, seasonal) and vertical distributions were also made available to AQMEII and EuMetChem participating groups for time disaggregation. The temporal profiles for the EU anthropogenic emissions were provided from Schaap et al. (2005)

For further details, the reader is referred to Im et al. (2015a, b).

Hourly biomass burning emissions were provided by the Finnish Meteorological Institute (FMI) fire assimilation system (<http://is4fires.fmi.fi/>) (Sofiev et al., 2009). More details on the fire emissions and their uncertainties are discussed in Soares et al. (2015). The fire assimilation system provides only data for total PM emissions; the estimation of emissions for other species are described in Im et al. (2015b).

The chemical initial conditions (IC) were provided by the European Centre for Medium-Range Weather Forecasts (ECMWF) IFS-MOZART model, which are available in 3-hour time intervals and provided in daily files with 8 times per file. They were run under the MACC-II

project (Monitoring Atmospheric Composition and Climate – Interim Implementation) which uses an updated data set of anthropogenic emissions and compiles a satellite observations assimilations of O₃, CO and NO₂ in the IFS-MOZART system.

5 2.3 Observational database

E-OBS (Haylock et al., 2008) version 11.0 has been used as the gridded observational database for maximum, mean and minimum temperature. E-OBS is a high-resolution European land-only daily gridded data set covering the period 1950-2014. The E-OBS 0.25 degrees regular latitude-longitude grid has been used as the reference for validation. Thus, data from all model runs have been bilinearly interpolated onto the E-OBS grid. Since the resolution of the models is similar to that of E-OBS, the interpolation procedure is not expected to alter significantly **any of** our results.

2.4 Validation methodology

All the statistical measures are calculated at individual grid points. Only land grid points are considered in the analysis, since these are the only points where E-OBS contains information. Areas in grey indicate cells where E-OBS data are not available (southeastern part of the domain for the wildfires or southern part of the domain in the dust episode) or areas not covered by the modelling domain (southern part of the domain for the CS2 configuration).

We will use the notation V_{ipc}^k for a variable from model k at grid point i , on period p =fires,dust and case c =1, 2, 3 representing no radiative feedbacks, ARI and ARI+ACI. If we use bracket notation for an average over a given index (e.g. $\langle \cdot \rangle_{pc}$), we can express the bias at a given grid point as:

$$b_i^k = \left\langle V_{ipc}^k - O_{ip} \right\rangle_{pc} \quad (1)$$

where O_{ip} is the value observed. The model bias is the simplest measure of model performance.

The ensemble mean, $\langle V_{ipc}^k \rangle_k$, is usually considered as an additional simulation which compensates the errors of the different ensemble members. Even though this is a very simplistic view of the ensemble (which should be considered from a probabilistic point of view), it can be useful to reinforce the common signal of the different models in our analysis of the mean climate. Notice, however, that the ensemble mean is not a physical realization of any of the models, but just a statistical average (Knutti et al., 2010; Jiménez-Guerrero et al., 2013).

Then, the variability was assessed on the hourly series (\hat{V}_{ipc}^k):

$$\hat{V}_{ipc}^k = V_{ipc}^k - V_{ic}^k$$

\hat{V}_{ipc}^k). The ability to represent the variability can be decomposed into:

- the ability to represent its size, which can be represented by the standard deviation of the series:

$$\text{sd}[V]_i^k = \sqrt{\langle (\hat{V}_{ipc}^k)^2 \rangle_{pc}} \sqrt{\langle (V_{ipc}^k)^2 \rangle_{pc}} \quad (2)$$

and can be compared to that of the observations $\text{sd}[O]_{ip}$, and

- the ability to represent the hourly variations, which can be represented by the linear determination coefficient (ρ^2) with the observations.

$$\rho_i^{2,k} = \frac{\langle V_{ipc}^k O_{ip} \rangle_{pm}^2}{\langle (V_{ipc}^k)^2 \rangle_{pm} \langle (O_{ip})^2 \rangle_{pc}} \quad (3)$$

The latter ability can only be expected on simulations nested into “perfect” boundary conditions such as those considered in this study.

Finally, pattern agreement between simulated and observed data was quantified in a Taylor diagram by means of the spatial correlation (r) and the ratio between simulated and observed standard deviations, $V_i^k \equiv \langle V_{ipc}^k \rangle_{pc}$

$$r^k = \frac{\langle (V_i^k - \langle V_i^k \rangle_i) (O_i - \langle O_i \rangle_i) \rangle_i}{\sqrt{\langle (V_i^k - \langle V_i^k \rangle_i)^2 \rangle_i \langle (O_i - \langle O_i \rangle_i)^2 \rangle_i}} \quad (4)$$

$$s^k = \sqrt{\frac{\langle (V_i^k - \langle V_i^k \rangle_i)^2 \rangle_i}{\langle (O_i - \langle O_i \rangle_i)^2 \rangle_i}} \quad (5)$$

This information can be summarized in a Taylor (2001) diagram, which is a polar plot, with radial coordinate s^k and angular coordinate related to r^k .

3 Results

3.1 Aerosol representation

In order to address the influence of aerosols effects on the surface temperature it is crucial to have a notion on the aerosol loading, both observed and modelled. For that purpose, aerosol optical depth (AOD) from MODIS platform is used, precisely Level 2 of Atmospheric Aerosol Product (MxD04_L2), collection 6 (C6) with a resolution of 10 km. Despite the work of Palacios-Pena et al. (submitted to ACP, this issue) fully compiled the AOD evaluation against diverse satellite observations of the ensemble considered in this work, a brief description of the results are shown here. Figure 1 represents the Model-MODIS comparison of AOD at 550 nm both for the fires and the dust episode.

For the Russian wildfires episode, the highest values of AOD measurements by MODIS (around 2.7) are found over Russia and surroundings areas, due to the emissions produced by the wildfires. According to the estimation of the bias (MBE), all WRF-Chem simulations (CS1, CS2, ES1, ES3) and the ensemble underestimate AOD over the fire-affected areas (minimum MBE values for NRF: the ensemble -1.30; CS1 -1.46; CS2 -1.61; ES1 -1.46 and ES3 -1.62). Over the rest of the domain, a low overestimation (around 0.5) is produced by the WRF-Chem simulations (maximum MBE values for NRF: CS1 0.55; CS2 0.37; ES1 0.45 and ES3 0.64) and the ensemble (maximum MBE values for NRF 0.23). For DE3, the underestimation is lower (minimum MBE values for NRF -0.72) and does not cover a so large area as the rest of the experiments; however, over the rest of the domain a higher overestimation is found in DE3 (maximum MBE values for NRF 2.61). Generally, for ARI and ARI+ACI simulations, slightly lower MBE values than NRF are found in all the experiments (for example, in ES1 simulations: NRF -1.46; ARI -1.43; ARI+ACI -1.41). However, the MBE for the ensemble (NRF -1.3; ARI -1.23; ARI+ACI -1.40) does not show this improvement; but his analysis should be carefully taken into account because the ARI+ACI ensemble does not include DE3 simulations.

For the dust episode, AOD values measured by MODIS > 0.5 are observed over the southeast of the domain due to the dust transported. This value is not very high for a dust outbreak, but this is caused by the wet deposition (rain during the episode). The highest AOD values, around 1.3, are found over a small area near the Po Valley. All experiments (no CS2 simulations are available in this case) underestimated high AOD values (over the southeast of the domain). MBE values over this area are around -0.3 for DE3 but for the rest of the experiments (WRF-Chem simulations) these values are around -0.2. However small areas with a higher underestimation are found over this zone (minimum MBE values: the ensemble -0.73; CS1 -0.68; DE3 -0.84; ES1 -0.70; ES3 -0.67). Over the rest of the domain, small overestimations are modeled (MBE values around 0.1). Conversely, small punctual areas with a high overestimations are found (maximum MBE values for ENS 0.54; CS1 0.81; DE3 0.62; ES1 0.48; ES3 1.09).

3.2 Bias

The results for the daily bias of maximum, mean and minimum temperature have been obtained by calculating the bias of the daily mean series at each grid point of all the land grid points of the corresponding domain for the fires and dust episodes. [They are summarized in Table 2.](#)

5 During the fire episode (Fig. 2 left column) there is a general underestimation of the maximum temperature in the base case (average domain values from -2.1 K in ES3-C11 to -1.2 K in DE3-C11). This is especially noticeable over ~~several~~ [several](#) cells in Russia (up to -7 K). Conversely, a general overestimation is found in the west and northwest area of the domain (positive differences between +1.0 K in DE3-C11 to +6.5 K in ES1-C11). When
10 introducing the ARI or ARI+ACI, model biases do not improve (mean variation of the bias of +17.2% in C12 and +11.0% in C13). This positive variation was expected because the cold bias of models for reproducing maximum temperature and the overall cooling effects of aerosols. However, the improvement of introducing aerosol-cloud interactions is remarkable with respect to the case of including just aerosol-radiation effects ([the bias reduces 6.2% in ARI+ACI with respect to ARI simulations](#)). During the dust episode (Fig. 2 right column) the analysis of the results is similar as for the fires case (averaged-domain underestimations around -1.0 K in DE-C11 to -0.56 K in ES-C21). Here the inclusion of ARI (C22) leads to a mean increase of the bias of +10.2%, but ARI+ACI (C23) leads to a very limited improvement of the simulations with respect to the base case (C21), generally reductions of the
15 bias around -0.4%.
20

A similar discussion can be made for mean temperature. During the fires episode (left column of Fig. 3) all runs (but DE3) tend to underestimate the domain-averaged mean temperature (biases ranging from -0.4 K in ES1-C11 to +1.0 in DE3-C11). Here, the ensemble (ENS) simulation clearly outperforms the individual simulations (bias of -0.2 K in ENS-C11). Again, the model skill does not improve for mean temperature when including
25 ARI or ARI+ACI (bias increase by 46.0% and 56.2%, respectively for the fires episode) but in the case of DE3-C12 simulation (including ARI reduces the bias by -27.3%). During the

dust episode (right column of Fig. 3), there is a general averaged overestimation of mean temperature (+0.4 in ES1-C21 to 0.8 K in DE3-C21). Conversely to the fires episode, the inclusion of ARI and ARI+ACI improves the bias (reductions of this variable of -13.4% in C22 and -4.2% in C23). The reduction of the bias when including ARI+ACI is especially remarkable for the ensemble of simulations, where the bias decreases by -24.4% in ENS-C23.

5 Last, minimum temperature during the fire episodes is shown in the left column of Fig. 4. Here results are very different to analyze for improvements or worsening of the bias, since the domain-averaged errors are in the order of -0.01 K for WRF-based models in C11 and C12, so a very slight difference would lead to a percentage increase (or reduction) of the bias compared to the base case. However, for DE3-C11 the bias is larger (up to +1.6
10 K for minimum temperature averaged over all the domain) and the inclusion of ARI leads only to a small improvement (-1.5%). The dust case (right column of Fig. 4) shows a general overestimation of minimum temperature, with base-case biases ranging from +0.5 K in ES1-C21 to +1.8 K in DE3-C21. Here, the inclusion of ARI and ARI+ACI slightly improves the bias (reductions of -10.5% in C22 and -5.0% in C23). Here again, the improvement of the
15 ENS-C22 and ENS-C23 simulations is larger than for the rest of the models (reductions of the bias of -29.7% and -38.2% for ARI and ARI+ACI, respectively).

3.3 Temporal correlation

The temporal correlation (estimated through the coefficient of determination, ρ^2) between simulated and observed series is shown in Fig. 5, 6 and 7 for mean maximum and mean
20 minimum temperature, in that order. [They are also summarized in Table 3.](#) The first column in each panel represents the value of ρ^2 of the base case (C11 or C21) of each individual model (or the ensemble) with respect to the E-OBS database. The center (C12 or C22) and right (C13 and C23) columns indicate the increase (red values) or decrease (blue value) of the ρ^2 for each simulation with respect to the case not including feedbacks. Then, that
25 gives an idea in the improvement (or not) in the skill of the model for representing the time evolution of our series when compared to the observations.

For maximum, mean and minimum temperature during the fires episode (left side of Fig. 5, 6 and 7, respectively), domain-averaged ρ^2 is higher than 0.5 for all models (0.52 in CS1-C11 minimum temperature to 0.78 in DE3-C11 mean temperature). In general, coefficients of determination are highest for mean temperature (0.60 to 0.78) and lowest for minimum temperature (0.50 to 0.56), presenting the ensemble always maximum ~~time values for~~ ρ^2 (0.75, 0.79 and 0.61, respectively for maximum, mean and minimum temperature). The highest ρ^2 values are found over the north and west part of the domain (above 0.8 in mean temperature) and the lowest mainly over south and southeast area of the domain (under 0.2). According to the improvement with respect to C11 case, when analyzing the inclusion of the ARI and ARI+ACI a general improvement is observed for maximum and mean temperature, with positive values reaching up to 0.18 (domain-averaged values improve for individual models around 1% for maximum, 0.3% for mean temperature). Correlation with minima experiences a slight decrease (-0.4%) when including ARI or ARI+ACI for the ensemble mean.

During dust episode (right side of Fig. 5, 6 and 7), domain-averaged ρ^2 is higher than for the fires episode for all models and variables in the base case (0.76 in DE3-C21 minima to 0.90 in DE3-C21 mean temperature), with the ensemble again providing the highest correlation (values ranging from 0.88 for maximum, 0.91 for mean and 0.84 for minimum temperature). As well as before, the inclusion of the ARI and ARI+ACI shows an improvement over some areas in the order of 0.17 for mean and maximum temperature, with domain-averaged improvements of 0.3% in C22-C23 for maximum temperature, and 0.2% in C22-C23 for mean temperature and 0.1% in C23 for minimum temperature, with no improvement for C22 in this latter variable).

3.4 Temporal variability

The results for the daily variability of maximum, mean and minimum temperature have been obtained by calculating the standard deviation of the daily mean series at each grid point of all the land grid points of the corresponding domain for the fires and dust episodes.

5 Considering maximum temperature, in the fires episode (left column of Fig. 8), all runs tend to slightly overestimate the standard deviation of maximum temperature for the base case (no radiative feedbacks), with biases of maximum temperature standard deviation varying between +1.28 K for DE3-C11 to +0.25 K for ES1-C11. The biases of the standard deviation are reduced by -22.6% (on average) when including the ARI, with reductions in the biases of the standard deviation ranging from -34.2% in ES1-C12 and -8.6% for DE3-C12. For the ARI+ACI simulations the average reduction of the bias is -41.21% (-56.9% for ES1-C13 and -24.40% for CS2-C13). The rest of the models and cases show an intermediate behavior for representing the variability, with the best skills always for the cases including the ARI+ACI interactions. Analogous results can be found for maximum temperature during the dust episode (right column of Fig. 8): the inclusion of aerosol feedbacks generally improve the representation of the temporal variability of maximum temperature, with an average reduction of the bias of the standard deviation of -5.9% (-16.6%) for ARI (ARI+ACI) simulations.

10 For mean temperature during the fires episode, (left column of Fig. 9) all runs tend to overestimate the standard deviation for the base case (no radiative feedbacks), with biases of mean temperature standard deviation between +0.2 to +1.1 K. As for the maximum temperature, the biases of the standard deviation are reduced on -41.8% (on average) when including the ARI and -66.5% for the ARI+ACI simulations, with reductions in the biases of the standard deviation ranging from -8.5% in the DE3-C12 simulation to -78.2% in the ES1-C13 case. Similar to the maximum temperature, the rest of the models and cases show an intermediate representation the variability of the mean temperature, with the best skills always for the cases including the ARI+ACI interactions. Results for the dust episode are shown in the right column of Fig. 9. The standard deviation tends to be overestimated by all models in the north of Africa and central Europe, and underestimated in the eastern part of the target domain. Overall, the inclusion of ARI does not lead to better skills of the models when representing the temporal variability (+2.4%), and for ARI+ACI the skill improved only marginally (reductions of -0.6%).

With respect to the minimum temperature, for the fires episode (left column of Fig. 10) all runs tend to overestimate the standard deviation. Biases of the minimum temperature standard deviation range between +0.4 K for the WRF-Chem-based simulations and +1.0 K for DE3-C11. The high-resolution CS2-C11 simulation presents the lowest bias (+0.3 K).

In considering the biases of the standard deviation, there is a slight improvement when including ARI or ARI+ACI for the fires episode, while a slight worsening is depicted for the dust case. The variations in the biases of the standard deviation are on average -2.1% and -4.9% respectively for the ARI and ARI+ACI simulations (+3.4% and +5.4% for the dust episode).

3.5 Spatial variability

Taylor diagrams (Taylor, 2001) allow an easy comparison between the spatial and temporal patterns of two fields (Rauscher et al., 2010). In Fig. 11 shows the relative spatial standard deviation (radial distance from the origin) and the correlation (the cosine of the angular coordinate) with E-Obs. Model results with good performance in terms of spatial variability and correlation are located closer to the standard deviation ratio 1 and correlation 1, which corresponds to E-OBS (indicated by the small black asterisk). For maximum, mean and minimum temperature, the diverse models (and configurations) show a narrow spread in the representation of the spatial structure of the standard deviation.

With respect to the mean field of maximum temperature (left column in Fig. 11) all models perform well for the fires period (top row), with high spatial correlations (over 0.9) and a normalized standard deviation close to observations. However, the no radiative feedback configuration (C11 cases in Fig. 11) represent excessive spatial variability (standard deviation ratio over 1). The spatial variability of the daily standard deviation for the ARI simulations (asterisks in Fig. 11, C12 cases), as well as for ARI+ACI simulations (squares, C13 cases) is substantially improved, despite the spatial correlation remains practically constant for all models. Since there is a positive bias in the models when representing the spatial variability in the no radiative feedbacks simulations, the inclusion of radiative effects reduces the variability and therefore improves its spatial patterns. Analogous results can be found for the

dust episode (bottom row, Fig. 11), with a larger agreement between models, and lower differences between C21, C22 and C23 cases (no feedbacks, ARI and ARI+ACI simulations, in that order).

5 With respect to the mean temperature (center column in Fig. 11), the models perform very similarly with each other, showing a high spatial correlation with the observations (over 0.9 for all models and cases), with a small overestimation of the spatial variability for the C11 (fire episode, no radiative feedbacks) case (top row), which improves when including the ARI and ARI+ACI interactions. Similarly, the spatial variability is slightly overestimated for the C21 (dust, no radiative feedbacks) case, except for the DE3 model. Generally, the models better capture the spatial structure of the variability during the fires and dust cases
10 (Fig. 11, center column) when including the radiative feedbacks. The correlation is only slightly improved for the ARI and ARI+ACI cases (except for ENS simulations, which will be discussed below), and is always higher for the mean temperature than for maximum temperature.

15 The minimum temperature (Fig. 11, right column) is captured with quality as the maximum and mean temperature. While for the fire episode the models (in all cases) tend to provide a higher spatial variability than the observations, the spatial variability is underestimated for the dust episode, but with a high correlation (over 0.9) for both episodes. For this variable, the improvement of including the radiative feedbacks is not so evident, since the spatial variability does not generally improve for C12, C13, C22 or C23 cases with respect
20 to the configuration without radiative feedbacks. Moreover, the correlation coefficient is even slightly reduced with the inclusion of ARI or ARI+ACI.

25 Last, the added value of considering the ensemble mean of all available simulations in each episode and case is clear for the fires episode, but not that obvious for the dust period. For the fire episode, the ensemble mean outperforms individual models in terms of the standard deviation and the correlation coefficient, especially for mean temperature, where the correlation increases up to 0.99 for the ENS-C11 case.

Generally [The exception is found for the ENS-C13 for minimum temperature.](#) Generally, the skill of most models improves when aerosol-meteorology interactions are taken into account –

For the dust case, the ensemble mean outperforms the individual models for representing the standard deviation (that is, the spatial variability). However, the spatial correlation coefficient is somewhat reduced as compared to the individual models.

4 Summary and conclusions

This study shows a collective operational evaluation of the temperature at 2 meters (maximum, mean and minimum) simulated by the coupled chemistry and meteorology models under the umbrella of COST Action ES1004 for a wildfires and a dust episode in the year 2010. The meteorological parameters considered in this assessment are important to understand the effect of the aerosol interactions with clouds and radiation. In this sense, this study complements other several analysis (e.g. [Brunner et al. \(2015\)](#), [Makar et al. \(2015b\)](#), [forkeletal2015](#)[Brunner et al. \(2015\)](#); [Forkel et al. \(2015\)](#); [Makar et al. \(2015b\)](#)) by analyzing whether the inclusion of the radiative feedbacks improves or not the representation of the temperature field (maximum, mean and minimum) in an ensemble of simulations.

Focusing on the bias, in both episodes there is a general underestimation of the studied variables, being most noticeable in maximum temperature. In general, there is not a straightforward conclusion with respect to the improvement (or not) of the bias when introducing aerosol radiative feedbacks. Broadly, the biases are improved when including ARI or ARI+ACI in the dust case, but no evident improvements are found for the heatwave/wildfires episode. Although the ensemble does not outperform the individual models (in general), the improvements found when including ARI and ARI+ACI are by far more remarkable for the ensemble than for the individual models.

With respect to the temporal correlation, maximum and mean temperatures in the fires and dust episode show higher correlations over most of the domain when considering C11 case with respect to the E-OBS database than minimum temperature. During these

episodes, a twofold conclusion can be obtained: (1) the ensemble of simulations always outperforms the representation of the temporal variability of the series; and (2) an improvement of the ρ^2 coefficient is found when considering ARI or ARI+ACI feedbacks (in both episodes).

Regarding the temporal variability, during the fire episode there is a general pronounced overestimation of the standard deviation of the studied variables. Here, the inclusion of aerosol feedbacks largely improves the representation of the temporal variability of the three studied variables (reduction of the bias of the standard deviation) showing the best skills for the cases including the ARI+ACI interactions, with a reduction of bias of the standard deviation by as much as 75%. Very similar results can be found for the dust episode. Generally, it is for the temporal variability where the inclusion of the aerosol radiative feedbacks shows the largest improvements and results in an added value of the computational effort made to include direct aerosol radiation interactions and aerosol cloud interactions in the models. Last, with respect to the spatial variability for maximum and mean temperature, the inclusion of radiative effects reduces the variability and improves the spatial patterns for both episodes. For the minimum temperature, the improvement of including the radiative feedbacks is less evident.

In order to further investigate the impact of including the aerosol interactions in on-line coupled models, ~~episodes with stronger~~ more episodes with effects on the aerosol cloud aerosol-radiation-cloud interactions should be considered ~~since the selected episodes during EuMetChem Cost Action were mainly related to ARI. Moreover, during the dust episode. In this work, the fires episode represents a situation of clear skies, and therefore the ARI feedbacks are dominant. The dust episode election permits to study aerosol-cloud interaction,~~ most of the ARI+ACI differences found in the models with respect to the base case were found over the Mediterranean sea, ~~but~~, Since the observational data E-OBS only has values over land, the effect of ARI+ACI were not evaluation here. Unfortunately part of the interpretation of the results may be missed due to the unavailability of this database over the ocean. Furthermore, it ~~must be considered,~~ should be pointed out that all results

for the ARI+ACI cases were from WRF-Chem simulations, [which may bias the ARI+ACI results towards the behaviour of this model.](#)

30 There are still modelling issues regarding the representation of the field of temperature, where maximum temperatures are underestimated and minimum temperatures are over-estimated and the inclusion of the aerosol feedbacks does not improve this situation. Nevertheless, in this study, a general improvement of the temporal variability and correlation has been seen. These improvements may be important not only for certain episodes, as
5 analyzed here, by also for the representation of the climatology of temperatures. However, climatic-representative periods should be covered in further studies.

Acknowledgements. We acknowledge the E-OBS dataset from the EU-FP6 project ENSEMBLES (<http://ensembles-eu.metoffice.com>) and the data providers in the ECAD project (<http://www.ecad.eu>). This research have been carried out under the support of the Project REPAIR (CGL2014-59677-R),
10 funded by the Spanish Ministerio de Economía y Competitividad (MINECO) and the FEDER European program. Rocío Baró acknowledges the FPU scholarship (Ref. FPU12/05642) by the Spanish Ministerio de Educación, Cultura y Deporte. Pedro Jiménez-Guerrero acknowledges the fellowship 19677/EE/14 of the Programme Jiménez de la Espada de Movilidad, Cooperación e Internacionalización (Fundación Séneca-Agencia de Ciencia y Tecnología de la Región de Murcia, PCTIRM
15 2011-2014). Finally, we acknowledge the support of the European groups through COST Action ES1004 EuMetChem and the Air Quality Modelling Evaluation International Initiative (AQMEII) and the EuMetChem COST ACTION ES1004 have supported these works.

References

- 20 Ackermann, I. J., Hass, H., Memmesheimer, M., Ebel, A., Binkowski, F. S., and Shankar, U.: Modal aerosol dynamics model for Europe: Development and first applications, *Atmospheric environment*, 32, 2981–2999, 1998.
- Alapaty, K., Mathur, R., Pleim, J., Hogrefe, C., Rao, S. T., Ramaswamy, V., Galmarini, S., Schaap, M., Makar, P., Vautard, R., Makar, P., Baklanov, A., Kallos, G., Vogel, B., Hogrefe, C., and Sokhi, R.: New Directions: Understanding interactions of air quality and climate change at regional scales,
25 *Atmospheric Environment*, 49, 419–421, 2012.

- Baklanov, A., Schlünzen, K., Suppan, P., Baldasano, J., Brunner, D., Aksoyoglu, S., Carmichael, G., Douros, J., Flemming, J., Forkel, R., Galmarini, S., Gauss, M., Grell, G., Hirtl, M., Joffre, S., Jorba, O., Kaas, E., Kaasik, M., Kallos, G., Kong, X., Korsholm, U., Kurganskiy, A., Kushta, J., Lohmann, U., Mahura, A., Manders-Groot, A., Maurizi, A., Moussiopoulos, N., Rao, S. T., Savage, N., Seigneur, C., Sokhi, R. S., Solazzo, E., Solomos, S., Sørensen, B., Tsegas, G., Vignati, E., Vogel, B., and Zhang, Y.: Online coupled regional meteorology chemistry models in Europe: current status and prospects, *Atmospheric Chemistry and Physics*, 14, 317–398, 2014.
- Bangert, M., Kottmeier, C., Vogel, B., and Vogel, H.: Regional scale effects of the aerosol cloud interaction simulated with an online coupled comprehensive chemistry model, *Atmospheric Chemistry and Physics*, 11, 4411–4423, 2011.
- Baró, R., Jiménez-Guerrero, P., Balzarini, A., Curci, G., Forkel, R., Grell, G., Hirtl, M., Honzak, L., Langer, M., Pérez, J. L., Pirovano, G., José, R. S., Tuccella, P., Werhahn, J., and Zabkar, R.: Sensitivity analysis of the microphysics scheme in WRF-Chem contributions to AQMEII phase 2, *Atmospheric Environment*, 115, 620 – 629, 2015.
- [Baró, R., Lorente-Plaza, R., Montávez, J.P., and Jiménez-Guerrero, P.: Biomass burning aerosol impact on surface winds during the 2010 Russian heatwave, *Geophysical Research Letter*, 44, 1088–1094, doi:10.1002/2016GL071484.](#)
- Boucher, O., Randall, D., Artaxo, P., Bretherton, C., Feingold, G., Forster, P., Kerminen, V.-M., Kondo, Y., Liao, H., Lohmann, U., Rash, P., Satheesh, S., Sherwood, S., Stevens, B., and Zhang, X.-Y.: Clouds and Aerosols. In: *Climate Change 2013: The Physical Science Basis. Contribution of Working Group I to the Fifth Assessment Report of the Intergovernmental Panel on Climate Change*, Cambridge University Press, Cambridge, United Kingdom and New York, USA, 2013.
- Brunner, D., Savage, N., Jorba, O., Eder, B., Giordano, L., Badia, A., Balzarini, A., Baró, R., Bianconi, R., Chemel, C., Curci, G., Forkel, R., Jiménez-Guerrero, P., Hirtl, M., Hodzic, A., Honzak, L., Im, U., Knote, C., Makar, P., Manders-Groot, A., van Meijgaard, E., Neal, L., Pérez, J. L., Pirovano, G., José, R. S., Schroder, W., Sokhi, R. S., Syrakov, D., Torian, A., Tuccella, P., Werhahn, J., Wolke, R., Yahya, K., Zabkar, R., Zhang, Y., Hogrefe, C., and Galmarini, S.: Comparative analysis of meteorological performance of coupled chemistry-meteorology models in the context of AQMEII phase 2, *Atmospheric Environment*, 115, 470 – 498, 2015.
- [Chapman, E. G., Gustafson Jr, W., Easter, R. C., Barnard, J. C., Ghan, S. J., Pekour, M. S., and Fast, J. D.: Coupling aerosol-cloud-radiative processes in the WRF-Chem model: Investigating the radiative impact of elevated point sources, *Atmospheric Chemistry and Physics*, 9, 945–964, 2009.](#)

- Chung, C. E.: Aerosol direct radiative forcing: a review, INTECH Open Access Publisher, 2012.
- 30 Doms, G., Förstner, J., Heise, E., Herzog, H., Mironov, D., Raschendorfer, M., Reinhardt, T., Ritter, B., Schrodin, R., Schulz, J., and Vogel, G.: A description of the nonhydrostatic regional COSMO model, Part II: Physical Parameterization, <http://www.cosmo-model.org/>, 2011.
- [Fast, J. D., Gustafson Jr, W. J., Easter, R. C., Zaveri, R. A., Barnard, J. C., Chapman, E. G., Grell, G. A., and Peckham, S. E.: Evolution of ozone, particulates, and aerosol direct radiative forcing in the vicinity of Houston using a fully coupled meteorology-chemistry-aerosol model, *Journal of Geophysical Research*, 111, D21 305, 2006.](#)
- Forkel, R., Werhahn, J., Hansen, A. B., McKeen, S., Peckham, S., Grell, G., and Suppan, P.: Effect
5 of aerosol-radiation feedback on regional air quality. A case study with WRF-Chem, *Atmospheric Environment*, 53, 202–211, 2012.
- Forkel, R., Balzarini, A., Baró, R., Bianconi, R., Curci, G., Jiménez-Guerrero, P., Hirtl, M., Honzak, L., Lorenz, C., Im, U., Pérez, J. L., Pirovano, G., José, R. S., Tuccella, P., Werhahn, J., and Zabkar, R.: Analysis of the WRF-Chem contributions to AQMEII phase2 with respect to aerosol radiative
10 feedbacks on meteorology and pollutant distributions, *Atmospheric Environment*, 115, 630 – 645, 2015.
- Forkel, R., Brunner, D., Baklanov, A., Balzarini, A., Hirtl, M., Honzak, L., Jiménez-Guerrero, P., Jorba, O., Pérez, J., San José, R., Schröder, W., Tsegas, G., Werhahn, J., Wolke, R., and Zabkar, R.: A Multi-model Case Study on Aerosol Feedbacks in Online Coupled Chemistry-Meteorology Models Within the COST Action ES1004 EuMetChem, in: *Air Pollution Modeling and its Application XXIV*, pp. 23–28, Springer, 2016.
- Galmarini, S., Hogrefe, C., Brunner, D., Makar, P., and Baklanov, A.: Preface, *Atmospheric Environ-*
ment, pp. 340–344, 2015.
- Ghan, S. J. and Schwartz, S. E.: Aerosol properties and processes: A path from field and laboratory
20 measurements to global climate models, *Bulletin of the American Meteorological Society*, 88, 1059–1083, 2007.
- Grell, G. and Baklanov, A.: Integrated modeling for forecasting weather and air quality: A call for fully coupled approaches, *Atmospheric Environment*, 45, 6845–6851, 2011.
- Grell, G. A., Peckham, S. E., Schmitz, R., McKeen, S. A., Frost, G., Skamarock, W. C., and Eder, B.:
25 Fully coupled online chemistry within the WRF model, *Atmospheric Environment*, 39, 6957–6975, 2005.

- Guenther, A., Zimmermanharley, P., Monson, R., and Fall, R.: Isoprene and monoterpene rate variability: model evaluations and sensitive analyses, *Journal of Geophysical Research*, 98, 10 799–10 808, 1993.
- 30 Guenther, A., Karl, T., Harley, P., Wiedinmyer, C., Palmer, P., [and Geron, C.](#), ~~et al.~~: Estimates of global terrestrial isoprene emissions using MEGAN (Model of Emissions of Gases and Aerosols from Nature), *Atmospheric Chemistry and Physics*, 6, 3181–3210, 2006.
- [Gustafson Jr. W. I., Chapman, E. G., Ghan, S. J., Easter, R. C., and Fast, J. D.: Impact on modeled cloud characteristics due to simplified treatment of uniform cloud condensation nuclei during NEAQS 2004, *Geophysical Research Letters*, 34, L19 809, 2007.](#)
- Hansen, J., Sato, M., and Ruedy, R.: Radiative forcing and climate response, *Journal of Geophysical Research: Atmospheres*, 102, 6831–6864, 1997.
- 5 Haylock, M., Hofstra, N., Klein Tank, A., Klok, E., Jones, P., and New, M.: A European daily high-resolution gridded data set of surface temperature and precipitation for 1950–2006, *Journal of Geophysical Research: Atmospheres*, 113, D20, doi:10.1029/2008JD010201, 2008.
- Hong, S.-Y., Noh, Y., and Dudhia, J.: A new vertical diffusion package with an explicit treatment of entrainment processes, *Monthly Weather Review*, 134, 2318–2341, 2006.
- 10 Im, U., Bianconi, R., Solazzo, E., Kioutsioukis, I., Badia, A., Balzarini, A., Baró, R., Bellasio, R., Brunner, D., Chemel, C., Curci, G., Flemming, J., Forkel, R., Giordano, L., Jiménez-Guerrero, P., Hirtl, M., Hodzic, A., Honzak, L., Jorba, O., Knote, C., Kuenen, J. J., Makar, P. A., Manders-Groot, A., Neal, L., Pérez, J. L., Pirovano, G., Pouliot, G., Jose, R. S., Savage, N., Schroder, W., Sokhi, R. S., Syrakov, D., Torian, A., Tuccella, P., Werhahn, J., Wolke, R., Yahya, K., Zabkar, R., Zhang, Y., Zhang, J., Hogrefe, C., and Galmarini, S.: Evaluation of operational on-line-coupled regional air quality models over Europe and North America in the context of AQMEII phase 2. Part I: Ozone, *Atmospheric Environment*, 115, 404–420, 2015a.
- 15 Im, U., Bianconi, R., Solazzo, E., Kioutsioukis, I., Badia, A., Balzarini, A., Baró, R., Bellasio, R., Brunner, D., Chemel, C., Curci, G., van der Gon, H. D., Flemming, J., Forkel, R., Giordano, L., Jiménez-Guerrero, P., Hirtl, M., Hodzic, A., Honzak, L., Jorba, O., Knote, C., Makar, P. A., Manders-Groot, A., Neal, L., Pérez, J. L., Pirovano, G., Pouliot, G., Jose, R. S., Savage, N., Schroder, W., Sokhi, R. S., Syrakov, D., Torian, A., Tuccella, P., Wang, K., Werhahn, J., Wolke, R., Zabkar, R., Zhang, Y., Zhang, J., Hogrefe, C., and Galmarini, S.: Evaluation of operational online-coupled regional air quality models over Europe and North America in the context of AQMEII phase 2. Part II: Particulate matter, *Atmospheric Environment*, 115, 421–441, 2015b.
- 20
- 25

- Jiménez-Guerrero, P., Montávez, J., Domínguez, M., Romera, R., Fita, L., Fernández, J., Cabos, W., Liguori, G., and Gaertner, M.: Mean fields and interannual variability in RCM simulations over Spain: the ESCENA project, *Climate Research*, 57, 201–220, 2013.
- 30 Kioutsioukis, I., Im, U., Solazzo, E., Bianconi, R., Badia, A., Balzarini, A., Baró, R., Bellasio, R., Brunner, D., Chemel, C., Curci, G., van der Gon, H. D., Flemming, J., Forkel, R., Giordano, L., Jiménez-Guerrero, P., Hirtl, M., Jorba, O., Manders-Groot, A., Neal, L., Pérez, J. L., Pirovano, G., San Jose, R., Savage, N., Schroder, W., Sokhi, R. S., Syrakov, D., Tuccella, P., Werhahn, J., Wolke, R., Hogrefe, C., and Galmarini, S.: Insights into the deterministic skill of air quality ensembles from the analysis of AQMEII data, *Atmospheric Chemistry and Physics*, 16, 15629–15652, 2016.
- 5 Knutti, R., Furrer, R., Tebaldi, C., Cermak, J., and Meehl, G. A.: Challenges in combining projections from multiple climate models, *Journal of Climate*, 23, 2739–2758, 2010.
- Kong, X., Forkel, R., Sokhi, R. S., Suppan, P., Baklanov, A., Gauss, M., Brunner, D., Baró, R., Balzarini, A., Chemel, C., Curci, G., Jiménez-Guerrero, P., Hirtl, M., Honzak, L., Im, U., Pérez, J. L., Pirovano, G., Jose, R. S., Schlünzen, K. H., Tsegas, G., Tuccella, P., Werhahn, J., Zabkar, R., and Galmarini, S.: Analysis of meteorology–chemistry interactions during air pollution episodes using online coupled models within AQMEII phase-2, *Atmospheric Environment*, 115, 527–540, 10
2015.
- Kuenen, J., Visschedijk, A., Jozwicka, M., and Denier Van der Gon, H.: TNO-MACC_II emission inventory; a multi-year (2003–2009) consistent high-resolution European emission inventory for air quality modelling, *Atmospheric Chemistry and Physics*, 14, 10963–10976, 2014.
- 15 Landgren, O. A., Haugen, J. E., and Førland, E. J.: Evaluation of regional climate model temperature and precipitation outputs over Scandinavia, *Climate Research*, 60, 249–264, 2014.
- Lin, Y.-L., Farley, R. D., and Orville, H. D.: Bulk parameterization of the snow field in a cloud model, *Journal of Climate and Applied Meteorology*, 22, 1065–1092, 1983.
- Lohmann, U. and Feichter, J.: Global indirect aerosol effects: a review, *Atmospheric Chemistry and Physics*, 5, 715–737, 2005.
- 20 Makar, P., Gong, W., Milbrandt, J., Hogrefe, C., Zhang, Y., Curci, G., Zabkar, R., Im, U., Balzarini, A., Baró, R., Bianconi, R., Cheung, P., Forkel, R., Gravel, S., Hirtl, M., Honzak, L., Hou, A., Jiménez-Guerrero, P., Langer, M., Moran, M., Pabla, B., Pérez, J., Pirovano, G., José, R. S., Tuccella, P., Werhahn, J., Zhang, J., and Galmarini, S.: Feedbacks between air pollution and weather, Part 1: Effects on weather, *Atmospheric Environment*, 115, 442–469, 2015a.

Makar, P., Gong, W., Hogrefe, C., Zhang, Y., Curci, G., Zabkar, R., Milbrandt, J., Im, U., Balzarini, A., Baró, R., Bianconi, R., Cheung, P., Forkel, R., Gravel, S., Hirtl, M., Honzak, L., Hou, A., Jiménez-Guerrero, P., Langer, M., Moran, M., Pabla, B., Pérez, J., Pirovano, G., José, R. S., Tuccella, P., Werhahn, J., Zhang, J., and Galmarini, S.: Feedbacks between air pollution and weather, part 2: effects on chemistry, *Atmospheric Environment*, 115, 499–526, 2015b.

Meier, J., Tegen, I., Heinold, B., and Wolke, R.: Direct and semi-direct radiative effects of absorbing aerosols in Europe: Results from a regional model, *Geophysical Research Letters*, 39, L09802, doi:10.1029/2012GL050994, 2012.

Morrison, H., Thompson, G., and Tatarskii, V.: Impact of cloud microphysics on the development of trailing stratiform precipitation in a simulated squall line: Comparison of one-and two-moment schemes, *Monthly Weather Review*, 137, 991–1007, 2009.

Myhre, G., Samset, B. H., Schulz, M., Balkanski, Y., Bauer, S., Bernsten, T. K., Bian, H., Bellouin, N., Chin, M., Diehl, T., Easter, R. C., Feichter, J., Ghan, S. J., Hauglustaine, D., Iversen, T., Kinne, S., Kirkevåg, A., Lamarque, J.-F., Lin, G., Liu, X., Lund, M. T., Luo, G., Ma, X., van Noije, T., Penner, J. E., Rasch, P. J., Ruiz, A., Seland, Ø., Skeie, R. B., Stier, P., Takemura, T., Tsigaridis, K., Wang, P., Wang, Z., Xu, L., Yu, H., Yu, F., Yoon, J.-H., Zhang, K., Zhang, H., and Zhou, C.: Radiative forcing of the direct aerosol effect from AeroCom Phase II simulations, *Atmospheric Chemistry and Physics*, 13, 1853–1877, 2013.

Péré, J., Bessagnet, B., Mallet, M., Waquet, F., Chiapello, I., Minvielle, F., Pont, V., and Menut, L.: Direct radiative effect of the Russian wildfires and its impact on air temperature and atmospheric dynamics during August 2010, *Atmospheric Chemistry and Physics*, 14, 1999–2013, 2014.

Pouliot, G., van der Gon, H. A. D., Kuenen, J., Zhang, J., Moran, M. D., and Makar, P. A.: Analysis of the emission inventories and model-ready emission datasets of Europe and North America for phase 2 of the AQMEII project, *Atmospheric Environment*, 115, 345–360, 2015.

Rauscher, S. A., Coppola, E., Piani, C., and Giorgi, F.: Resolution effects on regional climate model simulations of seasonal precipitation over Europe, *Climate Dynamics*, 35, 685–711, 2010.

San José, R., Pérez, J., Balzarini, A., Baró, R., Curci, G., Forkel, R., Galmarini, S., Grell, G., Hirtl, M., Honzak, L., Im, U., Jiménez-Guerrero, P., Langer, M., Pirovano, G., Tuccella, P., Werhahn, J., Zabkar, R.: Sensitivity of feedback effects in CBMZ/MOSAIC chemical mechanism, *Atmospheric Environment*, 115, 646–656, 2015.

[Schaap, M., Roemer, M., Boersen, G., Timmermans, R., and Bultjes, P.: LOTOS-EUROS: Documentation. TNO report B&O-A, Tech. rep., 2005-296, Apeldoorn, 2005.](#)

- Simpson, D., Fagerli, H., Jonson, J., Tsyro, S., Wind, P., and Tuovinen, J.: The EMEP Unified Eulerian Model. Model Description. EMEP MSC-W Report 1/2003, The Norwegian Meteorological Institute, Oslo, Norway, 2003.
- 30 Soares, J., Sofiev, M., and Hakkarainen, J.: Uncertainties of wild-land fires emission in AQMEII phase 2 case study, *Atmospheric Environment*, 115, 361–370, 2015.
- Sofiev, M., Vankevich, R., Lotjonen, M., Prank, M., Petukhov, V., Ermakova, T., Koskinen, J., and Kukkonen, J.: An operational system for the assimilation of the satellite information on wild-land fires for the needs of air quality modelling and forecasting, *Atmospheric Chemistry and Physics*, 9, 6833–6847, 2009.
- 5 Solazzo, E. and Galmarini, S.: A science-based use of ensembles of opportunities for assessment and scenario studies, *Atmospheric Chemistry and Physics*, 15, 2535–2544, 2015.
- Taylor, K. E.: Summarizing multiple aspects of model performance in a single diagram, *Journal of Geophysical Research: Atmospheres*, 106, 7183–7192, 2001.
- Twomey, S.: The influence of pollution on the shortwave albedo of clouds, *Journal of the Atmospheric Sciences*, 34, 1149–1152, 1977.
- 10 Vautard, R., Moran, M. D., Solazzo, E., Gilliam, R. C., Matthias, V., Bianconi, R., Chemel, C., Ferreira, J., Geyer, B., Hansen, A. B., Jericevic, A., Prank, M., Segers, A., Silver, J. D., Werhahn, J., Wolke, R., Rao, S., and Galmarini, S.: Evaluation of the meteorological forcing used for the Air Quality Model Evaluation International Initiative (AQMEII) air quality simulations, *Atmospheric Environment*, 53, 15–37, 2012.
- 685 Wolke, R., Schröder, W., Schrödner, R., and Renner, E.: Influence of grid resolution and meteorological forcing on simulated European air quality: a sensitivity study with the modeling system COSMO–MUSCAT, *Atmospheric environment*, 53, 110–130, 2012.
- Yang, Q., Gustafson Jr, W., Fast, J. D., Wang, H., Easter, R. C., Morrison, H., Lee, Y.-N., Chapman, E. G., Spak, S., and Mena-Carrasco, M.: Assessing regional scale predictions of aerosols, marine stratocumulus, and their interactions during VOCALS-REx using WRF-Chem, *Atmospheric Chemistry and Physics*, 11, 11951–11975, 2011.
- 690 Zaveri, R. A., Easter, R. C., Fast, J. D., and Peters, L. K.: Model for simulating aerosol interactions and chemistry (MOSAIC), *Journal of Geophysical Research*, 113, D13204, doi:10.1029/2007JD008782, 2008.

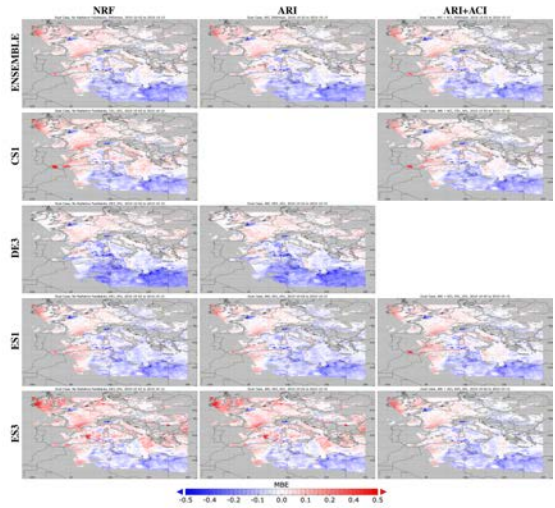
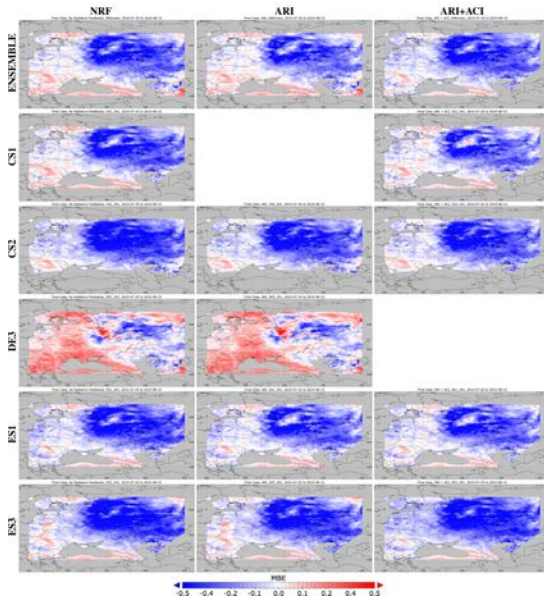
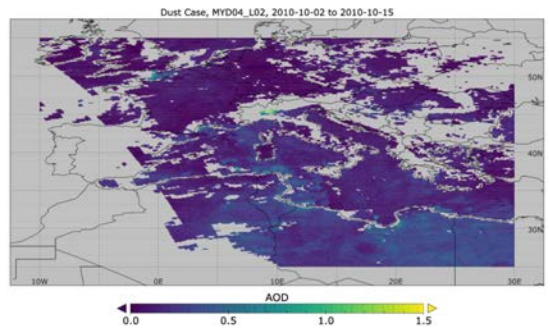
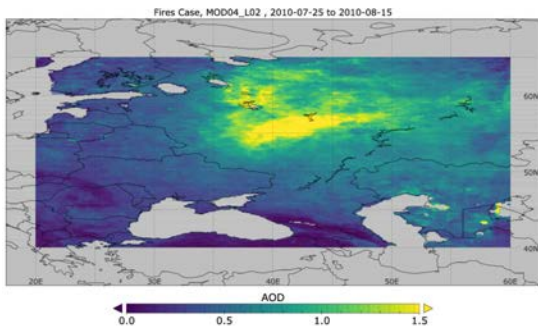


Figure 1. (Top row) Aerosol Optical Depth (AOD) at 550 nm for the fires (left) and dust (right) episodes, as derived from MODIS. The panel below represents the bias for the fires (left) and dust (right) episodes of each simulation with respect to the MODIS AOD. NRF: no radiative feedbacks; ARI: aerosol-radiation interactions; ARI+ACI: as ARI including aerosol-cloud interactions.

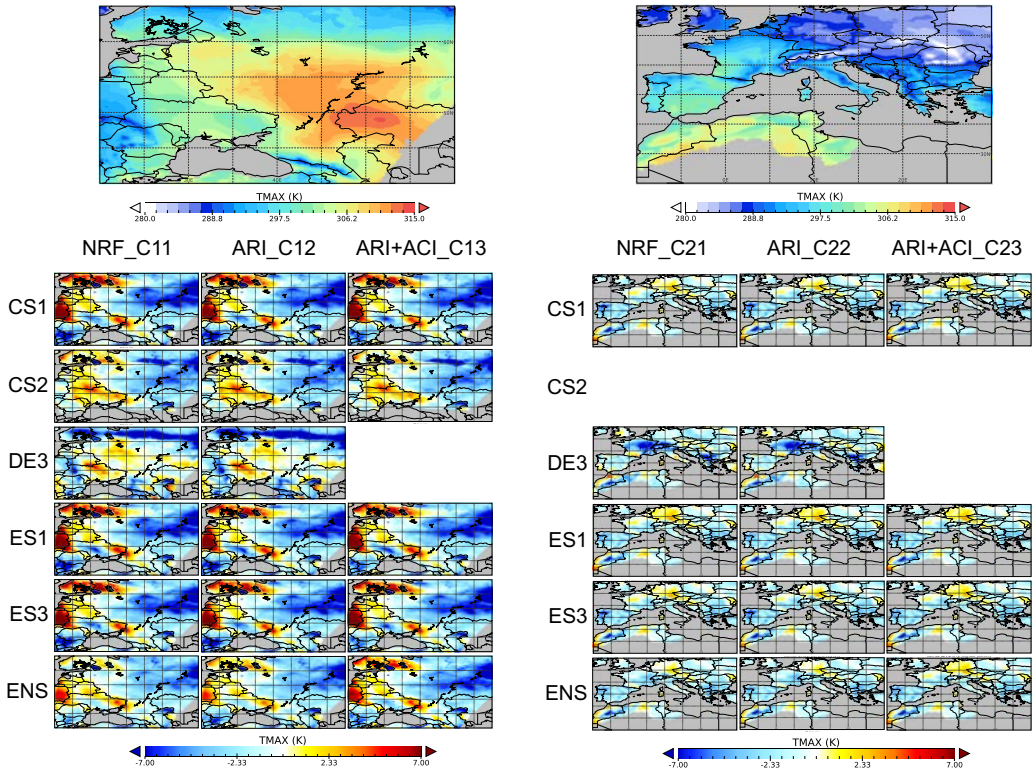


Figure 2. (Top row) Maximum temperature (TMAX) for the fires (left) and dust (right) episodes, as derived from E-OBS database (in K). The panel below represents the bias for the fires (left) and dust (right) episodes of each simulation with respect to the E-OBS database. NRF: no radiative feedbacks; ARI: aerosol-radiation interactions; ARI+ACI: as ARI including aerosol-cloud interactions.

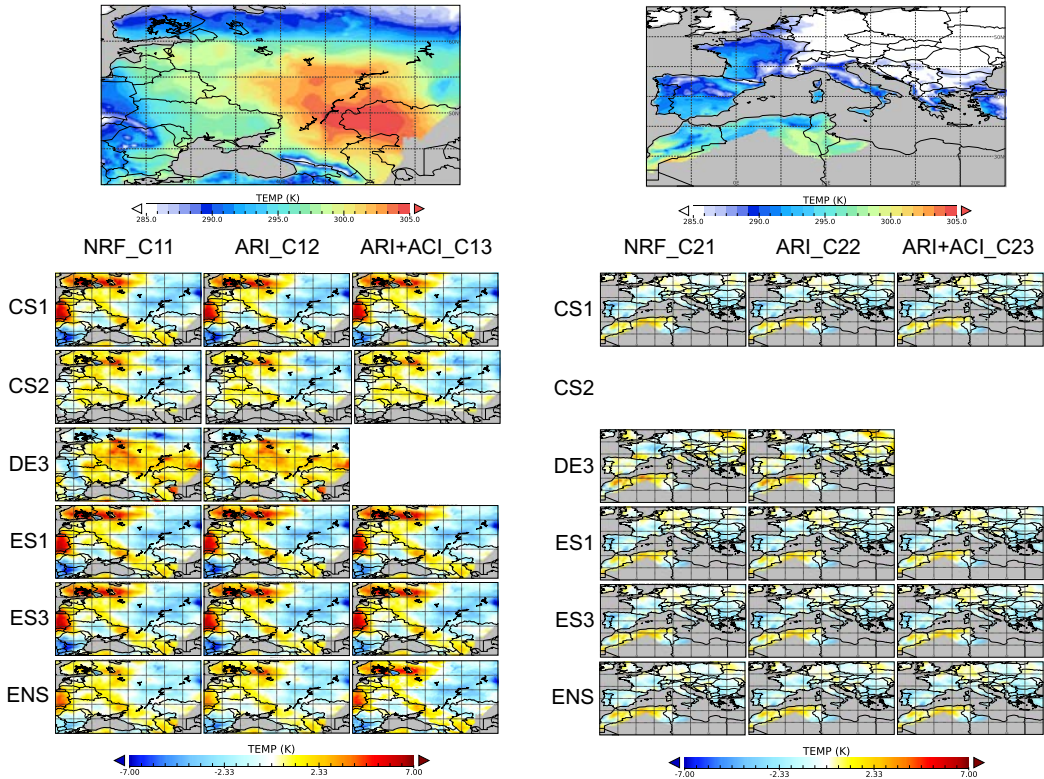


Figure 3. (Top row) Mean temperature (TEMP) for the fires (left) and dust (right) episodes, as derived from E-OBS database (in K). The panel below represents the bias for the fires (left) and dust (right) episodes of each simulation with respect to the E-OBS database. NRF: no radiative feedbacks; ARI: aerosol-radiation interactions; ARI+ACI: as ARI including aerosol-cloud interactions.

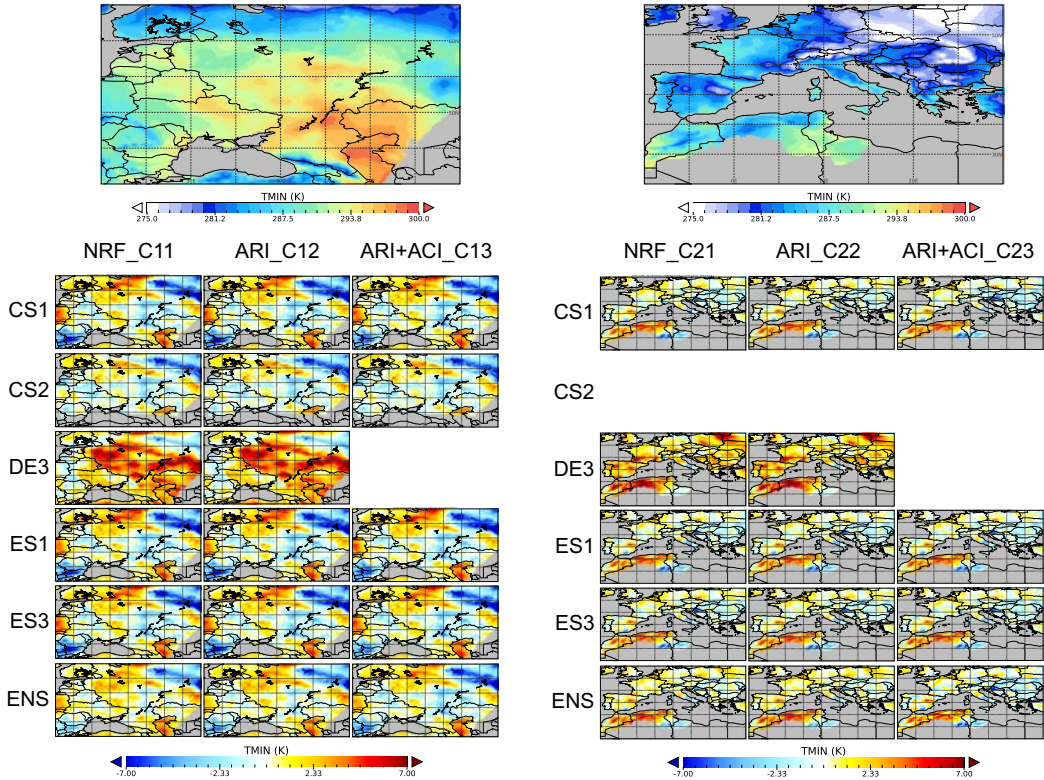


Figure 4. (Top row) Minimum temperature (TMIN) for the fires (left) and dust (right) episodes, as derived from E-OBS database (in K). The panel below represents the bias for the fires (left) and dust (right) episodes of each simulation with respect to the E-OBS database. NRF: no radiative feedbacks; ARI: aerosol-radiation interactions; ARI+ACI: as ARI including aerosol-cloud interactions.

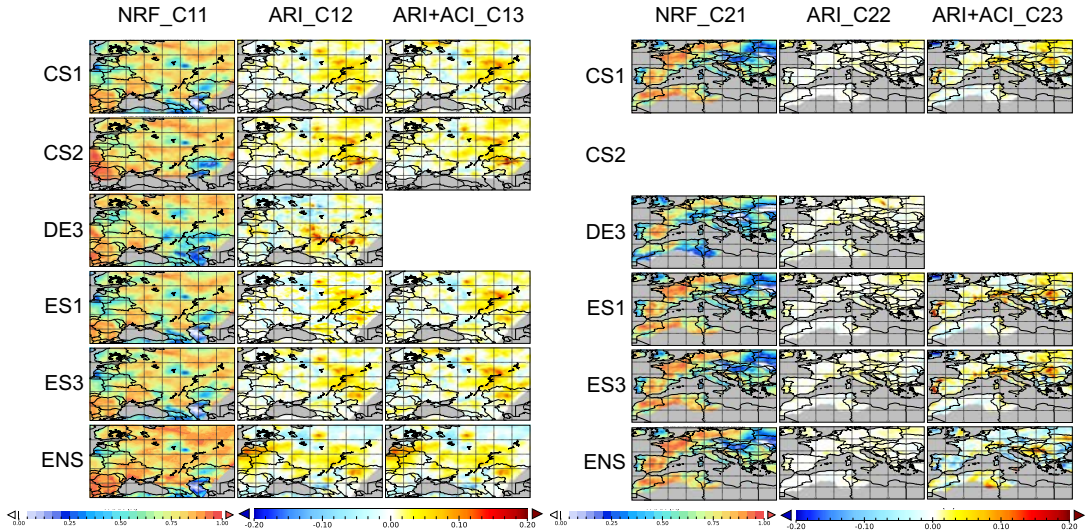


Figure 5. (Top row) Time determination coefficient (ρ^2) (model vs. E-OBS) of the maximum temperature (TMAX) for the fires (left panel) and dust (right panel) episodes. The first column in each panel below represents the value of ρ^2 of the no radiative feedback case with respect to the E-OBS database. The center and right columns indicate the increase (red values) or decrease (blue values) of each simulation with respect to the case not including feedbacks. NRF: no radiative feedbacks; ARI: aerosol-radiation interactions; ARI+ACI: as ARI including aerosol-cloud interactions.

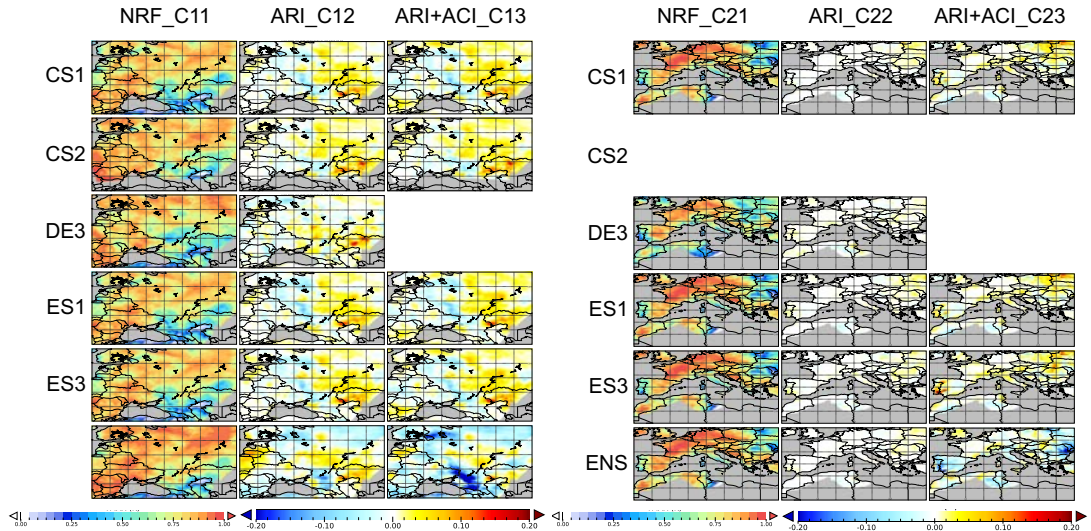


Figure 6. (Top row) Time determination coefficient (ρ^2) (model vs. E-OBS) of the mean temperature (TEMP) for the fires (left panel) and dust (right panel) episodes. The first column in each panel below represents the value of ρ^2 of the no radiative feedback case with respect to the E-OBS database. The center and right columns indicate the increase (red values) or decrease (blue value) of each simulation with respect to the case not including feedbacks. NRF: no radiative feedbacks; ARI: aerosol-radiation interactions; ARI+ACI: as ARI including aerosol-cloud interactions.

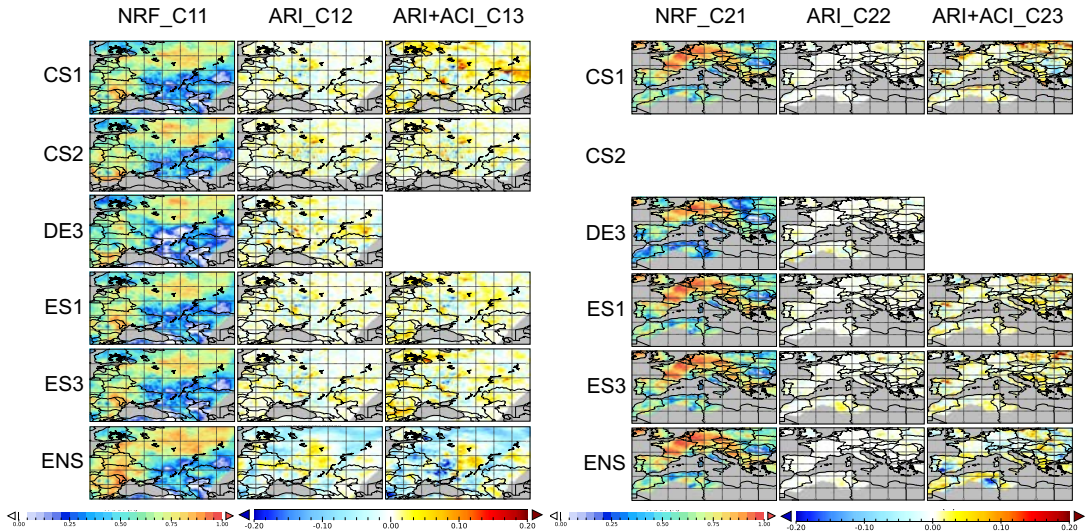


Figure 7. (Top row) Time determination coefficient (ρ^2) (model vs. E-OBS) of the minimum temperature (TMIN) for the fires (left panel) and dust (right panel) episodes. The first column in each panel below represents the value of ρ^2 of the no radiative feedback case with respect to the E-OBS database. The center and right columns indicate the increase (red values) or decrease (blue value) of each simulation with respect to the case not including feedbacks. NRF: no radiative feedbacks; ARI: aerosol-radiation interactions; ARI+ACI: as ARI including aerosol-cloud interactions.

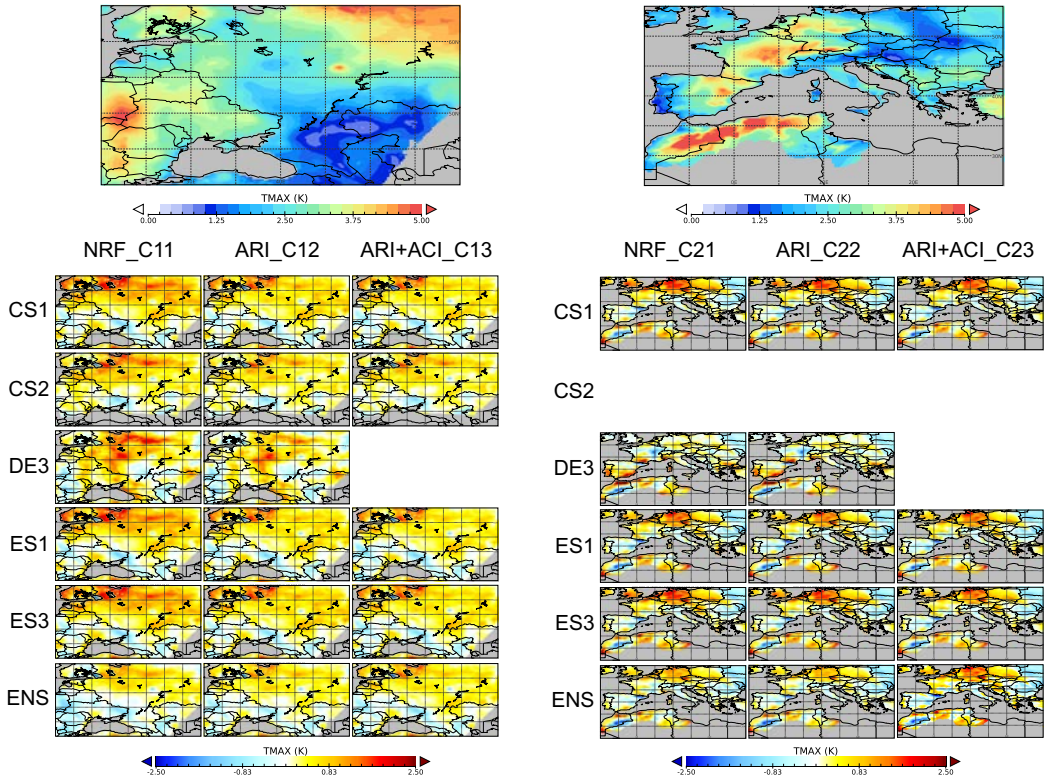


Figure 8. (Top row) Standard deviation (STD) of the maximum temperature (TMAX) for the fires (left) and dust (right) episodes, as derived from E-OBS database (in K). The panel below represents the bias for the standard deviation of the fires (left) and dust (right) episodes of each simulation with respect to the E-OBS database. NRF: no radiative feedbacks; ARI: aerosol-radiation interactions; ARI+ACI: as ARI including aerosol-cloud interactions.

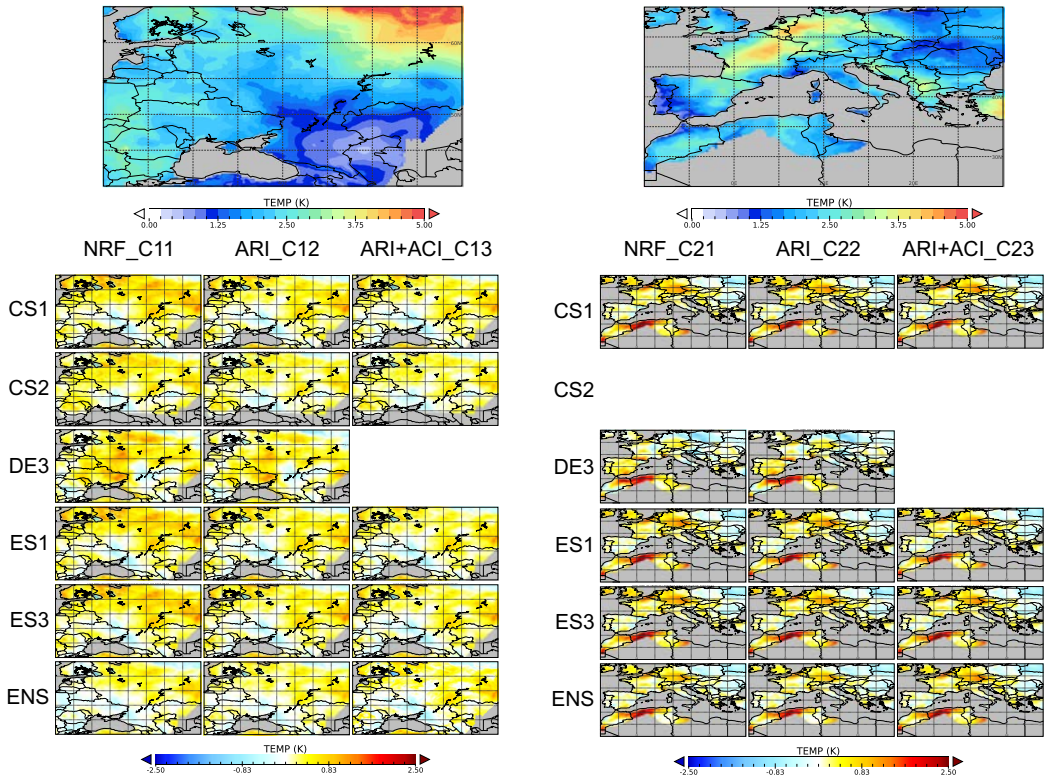


Figure 9. (Top row) Standard deviation (STD) of the mean temperature (TEMP) for the fires (left) and dust (right) episodes, as derived from E-OBS database (in K). The panel below represents the bias for the standard deviation of the fires (left) and dust (right) episodes of each simulation with respect to the E-OBS database. NRF: no radiative feedbacks; ARI: aerosol-radiation interactions; ARI+ACI: as ARI including aerosol-cloud interactions.

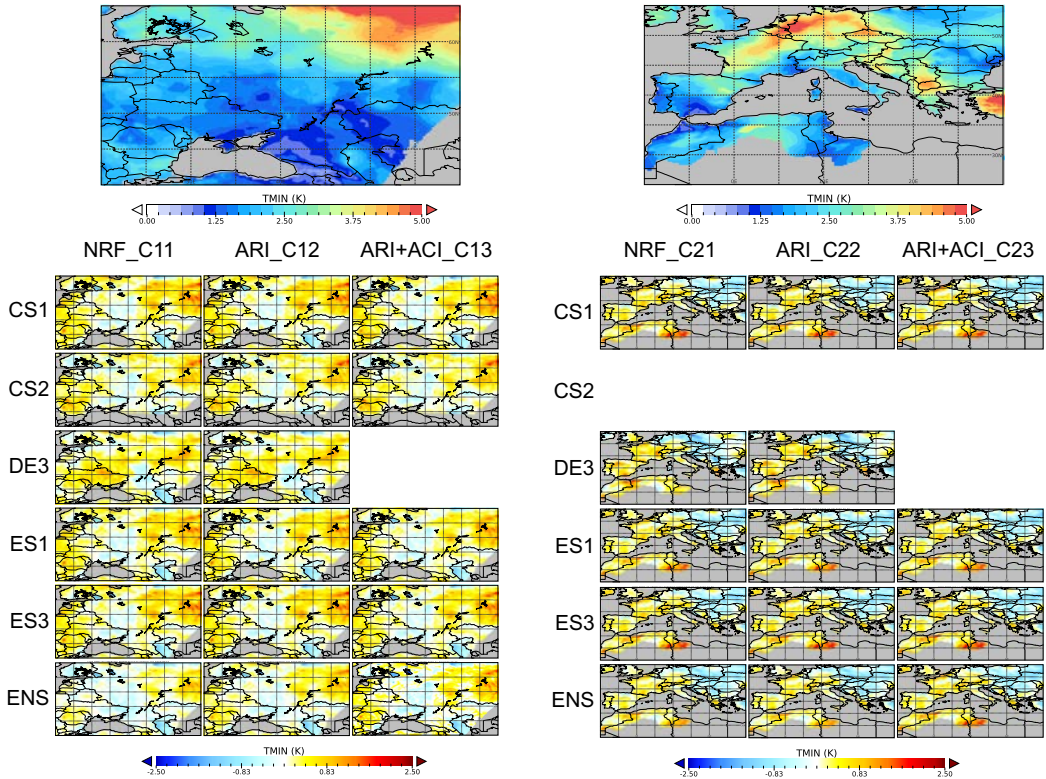


Figure 10. (Top row) Standard deviation (STD) of the minimum temperature (TMIN) for the fires (left) and dust (right) episodes, as derived from E-OBS database (in K). The panel below represents the bias for the standard deviation of the fires (left) and dust (right) episodes of each simulation with respect to the E-OBS database. NRF: no radiative feedbacks; ARI: aerosol-radiation interactions; ARI+ACI: as ARI including aerosol-cloud interactions.

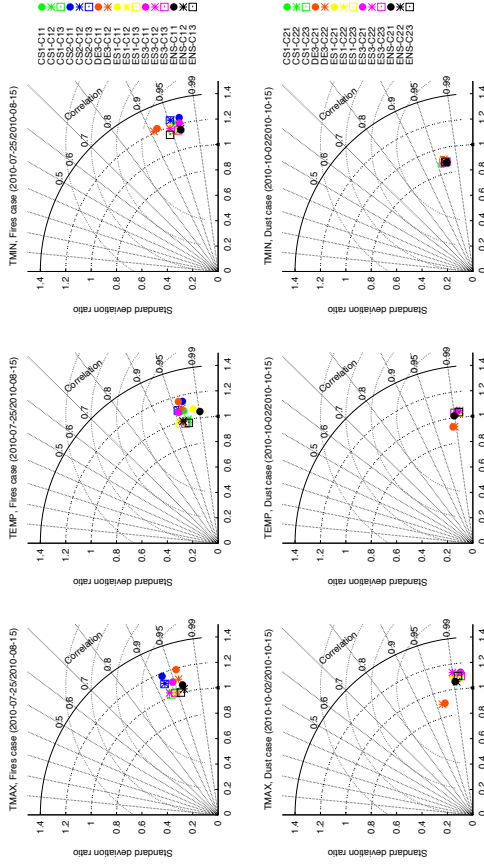


Figure 11. Taylor diagrams for (left) maximum temperature, (center) mean temperature, and (right) minimum temperature for the simulations included in the analysis. The top row represents the Taylor diagrams for the fires episode, while the bottom row stands for the dust episode. The cases included are: no radiative feedbacks (filled circle), ARI (asterisk) and ARI+ACI (empty squares). Each configuration is shown in a different color: CS1 (green), CS2 (dark blue), DE3 (red), ES1 (yellow), ES3 (pink) and ENS (black).

Table 1. Modelling systems participating and their contributions to the case studies

	CS1	CS2	DE3	ES1	ES3
Lead Institution	UL, KIT/IMK-IFU*	UL, KIT/IMK-IFU*	IFT Leipzig	U. Murcia	UPM-ESMG
Model	WRF-Chem	WRF-Chem	COSMO-MUSCAT	WRF-Chem	WRF-Chem
Episode	Fire, Dust	Fire	Fire, Dust	Fire, Dust	Fire, Dust
Runs	NRF, ARI, ARI+ACI	NRF, ARI, ARI+ACI	NRF, ARI	NRF, ARI, ARI+ACI	NRF, ARI, ARI+ACI
Resolution	23 km	9.9 km	0.125 deg.	23 km	23 km
Microphysics	Morrison	Morrison	Kessler-type bulk	Lin	Morrison
SW Radiation	Goddard-RRTMG	Goddard-RRTMG	δ -2-stream	Goddard-RRTMG	RRTMG
LW Radiation	RRTM-RRTMG	RRTM-RRTMG	δ -2-stream	RRTM-RRTMG	RRTMG
PBL/turbulence	YSU	YSU	Prognostic TKE	YSU	YSU
Biogenic model	MEGAN (Guenther et al., 2006)	MEGAN	Guenther et al. (1993)	MEGAN	MEGAN
Gas phase	RADM2 mod.-modified	RADM2 mod.-modified	RACM-MIM2	RADM2	CBMZ
Aerosol	MADE / SORGAM	MADE / SORGAM	Simpson et al. (2003)	MADE/SORGAM	MOSAIC 4 bins
Model reference	Grell et al. (2005); Forkel et al. (2011); Forkel et al. (2015)		Wolke et al. (2012)	Grell et al. (2005)	Grell et al. (2005)

*Joint effort, also including ZAMG, RSE, UPM-ESMG

Table 2. Domain-averaged bias (in K) for the fires (C1x) and dust (C2x) episodes of each simulation with respect to the E-OBS database. NRF: no radiative feedbacks; ARI: aerosol-radiation interactions; ARI+ACI: as ARI including aerosol-cloud interactions.

<u>Bias TMAX</u>	<u>CS1</u>	<u>CS2</u>	<u>DE3</u>	<u>ES1</u>	<u>ES3</u>	<u>ENS</u>
<u>C11(NRF)</u>	<u>-2.140</u>	<u>-2.120</u>	<u>-1.164</u>	<u>-2.047</u>	<u>-2.141</u>	<u>-1.945</u>
<u>C12(ARI)</u>	<u>-2.424</u>	<u>-2.376</u>	<u>-1.566</u>	<u>-2.325</u>	<u>-2.408</u>	<u>-2.242</u>
<u>C13(ARI+ACI)</u>	<u>-2.397</u>	<u>-2.376</u>		<u>-2.265</u>	<u>-2.336</u>	<u>-2.387</u>
<u>C21(NRF)</u>	<u>-0.854</u>		<u>-1.006</u>	<u>-0.564</u>	<u>-0.852</u>	<u>-0.820</u>
<u>C22(ARI)</u>	<u>-0.950</u>		<u>-1.039</u>	<u>-0.636</u>	<u>-0.967</u>	<u>-0.898</u>
<u>C23(ARI+ACI)</u>	<u>-0.816</u>			<u>-0.646</u>	<u>-0.755</u>	<u>-0.739</u>
<u>Bias TEMP</u>	<u>CS1</u>	<u>CS2</u>	<u>DE3</u>	<u>ES1</u>	<u>ES3</u>	<u>ENS</u>
<u>C11(NRF)</u>	<u>-0.460</u>	<u>-0.455</u>	<u>0.992</u>	<u>-0.409</u>	<u>-0.459</u>	<u>-0.187</u>
<u>C12(ARI)</u>	<u>-0.745</u>	<u>-0.720</u>	<u>0.721</u>	<u>-0.696</u>	<u>-0.767</u>	<u>-0.443</u>
<u>C13(ARI+ACI)</u>	<u>-0.724</u>	<u>-0.715</u>		<u>-0.642</u>	<u>-0.703</u>	<u>-0.376</u>
<u>C21(NRF)</u>	<u>0.359</u>		<u>0.790</u>	<u>0.446</u>	<u>0.358</u>	<u>0.487</u>
<u>C22(ARI)</u>	<u>0.289</u>		<u>0.771</u>	<u>0.390</u>	<u>0.289</u>	<u>0.443</u>
<u>C23(ARI+ACI)</u>	<u>0.339</u>			<u>0.384</u>	<u>0.383</u>	<u>0.368</u>

Table 3. Domain-averaged coefficient of determination (ρ^2) for the fires (C1x) and dust (C2x) episodes of each simulation with respect to the E-OBS database. NRF: no radiative feedbacks; ARI: aerosol-radiation interactions; ARI+ACI: as ARI including aerosol-cloud interactions.

ρ^2 TMAX	CS1	CS2	DE3	ES1	ES3	ENS
<u>C11(NRF)</u>	<u>0.658</u>	<u>0.697</u>	<u>0.713</u>	<u>0.648</u>	<u>0.658</u>	<u>0.753</u>
<u>C12(ARI)</u>	<u>0.670</u>	<u>0.710</u>	<u>0.714</u>	<u>0.660</u>	<u>0.671</u>	<u>0.748</u>
<u>C13(ARI+ACI)</u>	<u>0.670</u>	<u>0.710</u>		<u>0.658</u>	<u>0.669</u>	<u>0.719</u>
<u>C21(NRF)</u>	<u>0.857</u>		<u>0.757</u>	<u>0.861</u>	<u>0.857</u>	<u>0.870</u>
<u>C22(ARI)</u>	<u>0.859</u>		<u>0.759</u>	<u>0.863</u>	<u>0.859</u>	<u>0.871</u>
<u>C23(ARI+ACI)</u>	<u>0.860</u>			<u>0.862</u>	<u>0.861</u>	<u>0.864</u>
ρ^2 TEMP	CS1	CS2	DE3	ES1	ES3	ENS
<u>C11(NRF)</u>	<u>0.757</u>	<u>0.775</u>	<u>0.785</u>	<u>0.753</u>	<u>0.757</u>	<u>0.843</u>
<u>C12(ARI)</u>	<u>0.760</u>	<u>0.781</u>	<u>0.790</u>	<u>0.755</u>	<u>0.759</u>	<u>0.831</u>
<u>C13(ARI+ACI)</u>	<u>0.761</u>	<u>0.781</u>		<u>0.757</u>	<u>0.761</u>	<u>0.818</u>
<u>C21(NRF)</u>	<u>0.893</u>		<u>0.836</u>	<u>0.896</u>	<u>0.893</u>	<u>0.900</u>
<u>C22(ARI)</u>	<u>0.894</u>		<u>0.837</u>	<u>0.897</u>	<u>0.894</u>	<u>0.902</u>
<u>C23(ARI+ACI)</u>	<u>0.895</u>			<u>0.897</u>	<u>0.895</u>	<u>0.897</u>
ρ^2 TMIN	CS1	CS2	DE3	ES1	ES3	ENS
<u>C11(NRF)</u>	<u>0.519</u>	<u>0.525</u>	<u>0.554</u>	<u>0.516</u>	<u>0.519</u>	<u>0.614</u>
<u>C12(ARI)</u>	<u>0.514</u>	<u>0.500</u>	<u>0.555</u>	<u>0.510</u>	<u>0.511</u>	<u>0.580</u>