

We would like to thank the reviewer for the comments and feedbacks to help improve this manuscript!

Anonymous Referee #1

The paper describe a important topic related to the behaviour of aerosol modelling at Poles. A comparison between models and most important with observations is reported. This add value to the manuscript. However, prior the publication a deeper description related not only to the observed behaviour of the models, but also to the underlying mechanisms (i.e. reasons) is required throughout the whole paper. Here below some suggestion to improve the paper.

MAJOR POINTS

Page 5, lines 4-5. Even the “Model descriptions including model resolution, dynamics, and microphysics schemes used are given in Table 1 and 2 in Myhre et al. (2013)”, it should be useful for the reader to have at disposal the main model features in the present paper. I suggest to resume them in the supplemental material

We have made a new table describing the model resolution, meteorology, and aerosol microphysics (mixing state, size distribution and growth factors). The table is in the Supplementary (Table S1).

Page 5, lines 6-7. “Each model has provided climate and aerosol simulations using year 2006 meteorology. For present-day simulations emissions for year 2000 have been used, and for preindustrial runs year 1850 emissions have been used (Lamarque et al., 2010).” If the assumption on the used datasets for emissions appears reliable, it is not so intuitive for the reader to understand the choice of the year 2006 as a reference for meteorology. Please, demonstrate that 2006 year does not present any anomaly for what concern meteorology and general atmospheric circulation compared at least to the 2000-2015 period (the period of experimental data used for the comparison) using both modelling and experimental data i.e. GAW-WMO data. It seems that the 2006 assumption represents a big limitation when compared the simulated AOD with AERONET data (Figure 2). A big effort has to be done to overcome this limitation or to details its implication in term of uncertainty on the simulated aerosol properties when compared to other dataset based on multi-annual data. For example Figure 5 seems to overcome this limitation due to the fact that only 2006-2007 CALIPSO data were used.

The AeroCom model intercomparison setup is designed to have all the models run the same year. In that way, the transport will not be ‘smoothed out’ as in a climatology, and we can easier see if the models have the same features. Of course, you will then depend on the chosen year for transport. The AERONET stations does not provide enough data for 2006 to do a meaningful comparison, so therefore we included the climatology instead.

However, we have added data from 2006 from the stations where it was available, and we have plotted them together with the climatology in Figure 2.

Page 5, lines 17-18: “The models have estimated AOD as a combination of aerosol abundancies and optical properties, which is why AOD can be reported in the months where there is no actual sunlight”. Please details (at least in supplemental material) how each model calculates the aerosol optical properties and the underlying assumptions (i.e. mixing state, hygroscopic growth etc.).

We have added this information in the new table in Supplementary.

Page 7, line 28 – page 8, lines 1-3: “For GEOS-Chem and GOCART this maximum is dominated by natural aerosols (sea-salt and dust, respectively, as shown in Fig. 8). Note that modeled AOD is calculated from simulated aerosol distributions, and can therefore be reported even for months where there is no actual sunlight.” This sentence is limited just to observe that the behaviour of GEOS-Chem and GOCART is related to wrong simulation of sea-salt and dust. But it should be important to describe the inner reason for the overestimation of sea-salt and dust. Could you describe them?

We do not know if these models have ‘wrong simulation’ of sea-salt and dust. These models might as well be closer to the real atmosphere than the other models. Unfortunately, we have no observations of dust AOD we can compare with; we only have observations for total AOD.

Figure 1b: which is the reason for the overestimation of CAM4-Oslo in the Antarctic? Please add to the text an explanation.

We have added the following: ‘The higher values of AOD in CAM-Oslo are linked to efficient vertical transport in deep convective clouds which exaggerates the amount of aerosols in the upper troposphere (and poleward transported aerosols)’

Figure 5 is very promising. May I suggest also to add a comparison concerning the vertical behaviour of aerosol extinction coefficient? As the simulated radiative forcing strongly depends from the aerosol vertical profiles, this comparison could be very useful.

We agree that it would be interesting to investigate the vertical profiles. However, there is only a subset of models that have provided vertical profiles of the extinction coefficient and Koffi et al. (2016) have already studied these in detail, although not with a polar focus.

We have added the following: ‘Uncertainties in calculating the radiative impact of aerosols are linked to the vertical distribution of aerosols (Samset et al., 2013; Kipling et al., 2015). A comparison of the aerosol vertical extinction coefficient from 11 AeroCom models to CALIPSO has been performed in Koffi et al., (2016), showing large spread among the models.’

Figure 10 and related description at page 10 lines 5-7: the description is too short to capture the complexity of Figure 10. Please improve it. For example: why GISSMATRIX forecast a such big contribution of SOA compared to other models? Why GMI-MERRA-v3 did the same for Nitrate? What about the SPRINTARS behavior for sulphate which is opposed to the other models? A deeper description related not only to the observed behaviour but also the underlying mechanisms (i.e. reasons) is required here and throughout the whole paper.

A multi model comparison study like this cannot go deep into the reasons and underlying mechanisms behind the overestimation or underestimation of different species. For that (single) model studies which can perform dedicated sensitivity tests to isolate causes are needed. We have tried to include more information about why some of the models stand out, but the underlying mechanisms can be multiple:

‘GISS-modelE shows higher values for SOA. This model has the highest SOA lifetime (14 days) because of large amounts of SOA in the upper troposphere where there is less scavenging and more SOA available to be transported poleward.’

'SPRINTARS shows opposite behavior on the seasonal cycle of sulfate AOD compared to the other models. This is likely linked to an anomaly in the relative humidity over East Antarctica in the simulation and has been improved in a newer version of the model.'

'GMI-MERRA shows higher nitrate AOD values compared to the other models and is probably linked to the inclusion of oceanic NH₃ emissions (based on the GEIA emission inventory) in the model. The CMIP5 emission dataset do not include NH₃ oceanic emissions.'

Section 3.2: is the calculated radiative forcing in clear sky approximation or in all sky conditions?

We have used the all-sky radiative forcing calculations. We have now specified this in the text.

MINOR POINT

Page 10, line 13: "although the Arctic AOD of BC sis". Change "sis" with "is".

Done.

We would like to thank the reviewer for the comments and feedback to help improve this manuscript!

Anonymous Referee #2

This is a comprehensive study comparing a multi-model ensemble of AOD with ground based and satellite observation. Analysis are performed for both poles and for different aerosol components. The analysis is performed in good detail and shows that there is a wide model spread and the model median predicts the observation well. I recommend this paper for publication after some modifications:

A map showing where all the locations of the stations are would be useful. In the map also the area over which the satellite comparison has been performed could be added.

This is a good idea; we have added a new figure showing the station locations and the satellite area (new Figure 3).

In the introduction you write: Arctic AOD typically has a maximum during late winter and spring. In the data you show this is only true for some stations (e.g. Fig 2) and only clear for dust and sea-salt (Fig 8). Why can't this typical maximum not be seen in black carbon or sulfate? In Figure 2 only some stations show the spring peak – is this based on the location of the station, or is it a specific component which causes it and is not transported to the other stations. Would you expect, that the spring peak is stronger for surface or for the total column? I suggest to add some further description focusing on the seasonal cycle as well as the horizontal distribution of the aerosol.

This is a good point. We would expect the spring peak to be stronger at the surface than for the total column, since the age of air, and the amplitude of its seasonal cycle decrease strongly with altitude (Stohl 2006). We have added some text explaining this.

Why models struggle to simulate the Arctic haze is a subject of many studies, and the reasons are multiple and model-dependent. In this model-intercomparison study we are not able to investigate why the models do not simulate a spring peak in BC and sulfate.

In the new figure of the locations of the stations (Fig. 3), we have added a pie chart for each station of the distribution of the different aerosols' AOD (MAM average). This is to better show the difference between the locations -as simulated in the models. We have rewritten the text in the Results chapter describing the AERONET observations of AOD.

For the sensitivity study you change the emission and lifetime and look at the impact on AOD in the Arctic. To put this better into context: How long is the average lifetime in all the models compared to the case study model and how does the lifetime change over the seasons? Do you expect the BC emissions used are too low, or the lifetime is too short, can the sensitivity study help answering this?

The global annual mean BC lifetime in the AeroCom models ranges from 3.8 days (CAM5.1) to 17.1 days (HadGEM2) (Samset et al., 2014). GISS modelE has a BC global lifetime of 5.9 days

close to the AeroCom average global lifetime of 6.5 days. We have added this to the text. We have not the lifetime for the Arctic, and we do not know how this lifetime changes over the seasons. As there are many models parameters that influence the Arctic BC burden, it is difficult to make any firm conclusions regarding the magnitude of emissions and/or lifetime based on these sensitivity tests. Also, tuning BC burden in the Arctic only, might lead to larger bias elsewhere.

Comparing Fig 4 and 5 it seems that MODIS retrieved AOD are twice as high in April compared to August. In the CALIPSO AOD July values are double as high as April value. Is this big differences based to the screening in MODIS, you mention? If you could add a panel like Fig 4a) to Fig 5, it might be easier to see how well the model capture the different annual cycle.

Yes, the reasons for the high values for CALIPSO in summer compared to MODIS is due to the screening of the data. In the summer months, only the southernmost latitude bands dominated by biomass burning are screened. We are not quite sure what the reviewer means by adding Fig4a to Fig5. We have tried different plotting options for Fig5, and we decided that this was the best way to show the seasonal variation of the models and CALIPSO.

here are some further comments, given for the page and line number:

p1, li30 - there is a too abrupt change from transport to radiative forcing to AOD, you could add a sentence connecting those two topics.

Done.

p2, li 1 - in winter

Done.

p2, li 11 - add also the percentage of the changes due to doubling the lifetime

We have added: 'A doubling of the BC lifetime, result in a 39 % increase in Arctic AOD of BC.'

p2, li 23 - it should be "Faluvegi", you wrote "Feluvegi"

Done.

p3, li 28 - Can you give a reference for aerosols transported into the Antarctic?

Done (Fiebig et al. (2009), Stohl and Sodemann (2010), and Tomasi (2015)).

p5, li 7 - for "the" year 2000

Done.

p5, li 9 - what do you mean with "double calls"? please explain in more detail or rephrase.

We have added the following explanation; ' , i. e. for each time step the radiation code is called with and without the arguments needed to calculate the given species forcing,'

p5, li 10 - species is the singular form of species, the word specie appears also later in the text, please change.

Done.

p5, li 12 - biomass “burning” emissions (correct?) - this also appears later in the text

Yes, this has now been changed.

p7, li 25 - of “the” year 2000

Done.

p7, li 25 - It would be easier to understand if you also refer to the figure (Fig 1, black thick line)

Done.

p8, li 10 - r could be reported in the figure next to the rmse, so it is available for each stations

We have added the correlation factor to each plot.

p8, li 17 - either write “high reflectivity” or “highly reflective”

Done.

p8, li 19 - (see methods section)

Done.

p8, li 23 - you give the uncertainty range here, how is it calculated?

The uncertainty is calculated as the standard deviation. We have now specified this.

p8, li 25 - Some of the models “do” have a steeper slope

Done.

p9, li 7 - You explain how the rms was calculated, the rmse value should also appear the text when discussing them.

Done.

p 12, li 7 - it is written that you don’t include semi- or indirect cloud effects, or surface albedo modifications, how much approximately would the cloud effects and surface albedo modification impact the DAE?

We have added the following: ‘Jiao et al, 2015 estimates the Arctic surface radiative forcing from BC in snow to 0.18 Wm^{-2} , using deposited fields from the AeroCom Phase II models into an offline land and sea/ice model. There are few estimates of the semi-direct effects of aerosols, which is mostly due to BC. Bond et al. (2013) indicates a -0.1 Wm^{-2} global effect, equally split between direct and indirect effects, while a later study also indicates that the semi-direct effect

counteracts about 50% of the direct effect, independent of altitude (Samset and Myhre, 2015). None of these estimates are made specifically for the Arctic. Indirect cloud effects are likely different in the Arctic than at lower latitudes, in large because of the already bright surfaces in the Arctic. Also, cloud emissivity might be more important here, as thermal radiation dominates the dark winter months (Garrett et al, 2004).'

p 12, li 17 - you give a percentage of the effect by doubling emission, what would be the corresponding value for the changes in lifetime? (also in the abstract)

A doubling of the BC lifetime, result in a 39 % increase in Arctic AOD of BC. We have added this in the abstract.

Figures:

Fig 3, caption: the average "observation" over the 9 stations

This has been added.

Fig 14, caption: "total" in small case

Done.

Fig 8: also here the multi model median could be added.

Yes, originally we had the multi model median and the 25th/75th percentiles, but it was difficult to locate some of the other models, especially for the species with fewer models, so we decided to leave this out.

Fig 17: you could add the information that the left panel shows the experiment with doubling emission, while the right panel shows the effect of the changes in e-folding lifetime in the figure title.

Done.

Aerosols at the Poles: An AeroCom Phase II multi-model evaluation

Maria Sand¹, Bjørn H. Samset¹, Yves Balkanski², Susanne Bauer³, Nicolas Bellouin⁴, Terje K. Berntsen^{1,5}, Huisheng Bian⁶, Mian Chin⁷, Thomas Diehl⁸, Richard Easter⁹, Steven J. Ghan⁹, Trond Iversen¹⁰, Alf Kirkevåg¹⁰, Jean-François Lamarque¹¹, Guangxing Lin⁹, Xiaohong Liu¹², Gan Luo¹⁴, Gunnar Myhre¹, Twan van Noije¹⁴, Joyce E. Penner¹⁹, Michael Schulz¹⁰, Øyvind Seland¹⁰, Ragnhild B. Skeie¹, Philip Stier¹⁵, Toshihiko Takemura¹⁶, Kostas Tsigradis³, Fangqun Yu¹³, Kai Zhang^{17,9}, Hua Zhang¹⁸

¹Center for International Climate and Environmental Research – Oslo (CICERO), Oslo, Norway

10 ²Laboratoire des Sciences du Climat et de l'Environnement, CEA-CNRS-UVSQ, Gif-sur-Yvette, France

³NASA Goddard Institute for Space Studies and Columbia Earth Institute, New York, NY, USA

⁴Department of Meteorology, University of Reading, Reading, UK

⁵Department of Geosciences, University of Oslo, Oslo, Norway

⁶Earth System Science Interdisciplinary Center, University of Maryland, College Park, MD, USA

15 ⁷NASA Goddard Space Flight Center, Greenbelt, MD, USA

⁸Directorate for Sustainable Resources, Joint Research Centre, European Commission, Ispra, Italy

⁹Pacific Northwest National Laboratory, Richland, WA, USA

¹⁰Norwegian Meteorological Institute, Oslo, Norway

¹¹National Center for Atmospheric Research, Boulder, CO, USA

20 ¹²Department of Atmospheric Science, University of Wyoming, USA

¹³Atmospheric Sciences Research Center, State University of New York at Albany, New York, USA

¹⁴Royal Netherlands Meteorological Institute, De Bilt, The Netherlands

¹⁵Department of Physics, University of Oxford, Oxford, UK

¹⁶Research Institute for Applied Mechanics, Kyushu University, Fukuoka, Japan

25 ¹⁷Max Planck Institute for Meteorology, Hamburg, Germany

¹⁸Laboratory for Climate Studies, National Climate Center, China Meteorological Administration, Beijing, China

¹⁹Climate and Space Sciences and Engineering, University of Michigan, Ann Arbor, MI, USA

Correspondence to: Maria Sand (maria.sand@cicero.oslo.no)

30 **Abstract.** Atmospheric aerosols from anthropogenic and natural sources reach the Polar Regions through long-range transport and affect the local radiation balance. Such transport is however poorly constrained in present day global climate models, and few multi-model evaluations of Polar anthropogenic aerosol radiative forcing exist. Here we compare the aerosol optical depth (AOD) at 550nm from simulations with 16 global aerosol models from the AeroCom phase II model inter-comparison project with available observations at both Poles. We show that the annual mean multi-model median is representative of the observations in Arctic, but that the inter-model spread is large. We also document the geographical distribution and seasonal cycle of the AOD for the individual aerosol species; black carbon (BC) from fossil fuel and biomass burning, sulfate, organic

35

aerosols (OA), dust and sea-salt. For a subset of models that represent nitrate and secondary organic aerosols (SOA), we document the role of these aerosols at high latitudes.

The seasonal dependence of natural and anthropogenic aerosols differs with natural aerosols peaking in winter (sea-salt) and spring (dust), whereas AOD from anthropogenic aerosols peaks during late spring/summer. The models produce a median annual mean (AOD) of 0.07 in the Arctic (defined here as north of 60° N). The models also predict a noteworthy aerosol transport to the Antarctic (south of 70° S) with a resulting AOD varying between 0.01-0.02. The models have estimated the shortwave anthropogenic radiative forcing contributions to the direct aerosol effect (DAE) associated with BC and OA from fossil fuel and biofuel (FF), sulfate, SOA, nitrate, and biomass burning from BC and OA emissions combined. The Arctic modeled annual mean DAE is slightly negative (-0.12 W m⁻²), dominated by a positive BC FF DAE during spring and a negative sulfate DAE during summer. The Antarctic DAE is governed by BC FF. We perform sensitivity experiments with one of the AeroCom models (GISS modelE) to investigate how regional emissions of BC and sulfate and the lifetime of BC influence the Arctic and Antarctic AOD. A doubling of emissions in East Asia, result in a 33 % increase in Arctic AOD of BC. ~~A doubling of the BC lifetime, result in a 39 % increase in Arctic AOD of BC.~~ However, ~~these~~ radical changes, still fall within the AeroCom model range.

Deleted: the

Deleted: also

Deleted: such as reducing the e-folding lifetime by half or doubling it,

15 1 Introduction

The Polar Regions are relatively free from local sources of anthropogenic climate drivers, but are still experiencing rapid changes to increasing greenhouse gas concentrations that are distributed globally. These changes are amplified by feedbacks in the system, such as temperature feedbacks and the ice albedo feedback (Pithan and Mauritsen, 2014). The temperature in the Arctic is experiencing increases that are twice the global rate, resulting in reductions in summer sea-ice (Hartmann et al., 2013; Screen and Simmonds, 2010). In the Antarctic, summer sea-ice is increasing while several interior regions are rapidly losing ice mass (Rignot et al., 2008). The role of aerosols in the ongoing Polar climate changes is not well understood. Yang et al. (2014) emphasize the importance of including aerosols in models when simulating the recent changes in the Arctic climate. For instance, the measured decrease in anthropogenic sulfate concentrations in the Arctic during the last decades (Hirdman et al., 2010; Quinn et al., 2009) may have had a warming effect on the Arctic (Navarro et al., 2016). Shindell and Faluvegi (2009) showed that decreasing sulfate and increasing BC concentrations during the last three decades have substantially warmed the Arctic. In general, the climate impacts of aerosols and clouds constitute one of the largest sources of uncertainty in climate models (Boucher et al., 2013). This is true on a global scale and likely for the critical Polar regions where both sensitivities and dynamical processes may differ significantly from global mean values. Reducing these uncertainties is crucial to improve the reliability of future climate projections.

Deleted: e

Aerosols perturb the Earth's radiation balance through extinction of solar radiation (McCormick and Ludwig, 1967; Schulz et al., 2006). By scattering solar radiation, aerosols produce a negative shortwave radiative forcing (DAE) at the top-of-the-atmosphere (TOA). Some aerosols such as BC and dust also absorb solar radiation, and this absorption can lead to a positive DAE TOA (Bond et al., 2013). For a given aerosol abundance, the magnitude and sign of the DAE depend on the underlying surface albedo (Haywood and Shine, 1995). In the Polar Regions, the high albedo of snow and ice covered surfaces will increase the absorption associated with the DAE for absorbing aerosols (Hansen and Nazarenko, 2004; Bond et al., 2013). Concurrently, deposition of BC and dust can reduce the surface albedo and promote snowmelt (Flanner et al., 2009; Krinner et al., 2006; Clarke and Noone, 1985). Aerosols also influence the energy balance by changing the optical properties and lifetime of clouds (Twomey, 1977; Albrecht, 1989), and through changes to atmospheric stability (Hansen et al., 1997; Hodnebrog et al., 2014; Samset and Myhre, 2015).

The amount of aerosols emitted into the atmosphere has increased over the industrial era. Myhre et al. (2013) reported on the DAE due to anthropogenic aerosols in AeroCom Phase II. The global model-median DAE of the total aerosol effect, taking into account changes to BC, sulfate, OA, biomass burning aerosols, nitrate and secondary organic aerosols, was estimated to -0.27 W m⁻² with an inter-model range of -0.58 to -0.02 W m⁻² for the time period 1850-2000. Modifying the results from models with missing SOA and nitrate by use of results from the other models and scaling the period to 1750-2010, resulted in a median DAE of -0.35 W m⁻².

Most of the aerosols in the Polar Regions originate from lower and mid-latitudes (Koch and Hansen, 2005; Hirdman et al., 2010). Large-scale planetary circulations in the Northern Hemisphere govern the transport into the Arctic. The pronounced seasonal cycle of Arctic AOD typically has a maximum during late winter and spring due to a winter-time build-up in the shallow boundary layer with effective transport and reduced scavenging, often referred to as the Arctic Haze (Iversen and Joranger, 1985; Stohl, 2006). The seasonal cycle of Arctic AOD also varies spatially due to changing emissions, composition and transport patterns. In spring pollution haze and dust plumes from Asian deserts are most common, while later in the season biomass [burning](#) and wildfire smoke from North America and Siberia are observed more frequently (Tomasi et al., 2007). As the Arctic sea-ice is melting and more open water is exposed, emissions of sea-salt, dimethylsulfide (DMS), and organic aerosols within the Arctic are expected to increase (Nilsson et al., 2001; Browse et al., 2014).

In the Antarctic, sea-salt particles dominate the coastal sites, which are strongly influenced by the surrounding ocean (Tomasi et al., 2007). In summer, the sulfate from DMS produced by phytoplankton is at its peak, which can also influence the aerosol distribution in the Antarctic (Arimoto et al., 2004). The stations on the Antarctic Plateau on the other hand are mostly influenced by long-range transport [in the free troposphere](#) and the subsidence of fine sulfate and methane sulfonic acid (MSA) (Hara et al., 2004; Bigg, 1980; [Tomasi et al., 2015](#)). Sea-salt measured here originates mainly from marine air transported by

large storm events. The Antarctic is also influenced by smoke aerosols transported from South America, [Australia](#) and Southern Africa ([Fiebig et al., 2009](#); [Stohl and Sodemann, 2010](#)).

The ability of climate models to simulate aerosol burdens in remote regions depends on the transport and precipitation, as well internal aerosol physical and chemical parameterizations, such as wet deposition, oxidation and microphysics (Shindell et al., 2008; Textor et al., 2006; Zhou et al., 2012; von Hardenberg et al. 2012). Aerosol observations in the Polar Regions are sparse. Previous comparisons between models and single observations show significant model biases (Stohl et al., 2013; Shindell et al., 2008; Koch et al., 2009). Eckhardt et al. (2015) evaluate sulfate and BC concentrations from different models against a large set of ground based and aircraft measurements in the Arctic. They find that the aerosol seasonal cycle at the surface is weak in most models and that the concentrations of equivalent BC and sulfate are underestimated in winter/spring, but improved relative to earlier comparisons. Jiao et al. (2014) compare AeroCom phase II models with observations of BC in snow in the Arctic. They find that simulated BC distributions in snow are not well correlated with measurements, but that averaged values over the measurement domain are close to observed. The BC atmospheric residence time in the Arctic varies from 3.7 to 23.2 days in the models, and they suggest that aerosol removal processes are a leading source of variation in model performance in the Arctic. Kristiansen et al. (2016) calculate the aerosol lifetime by using observations of two radioactive isotopes released from the Fukushima nuclear power plant accident; one passive tracer and one that condenses on sulfate particles (^{137}Cs) that were used as a proxy for sulfate aerosols' fate in the atmosphere. Based on surface measurements taken in the weeks after the release, they derive an e-folding lifetime of 14.3 days for ^{137}Cs that serve as an estimate of the lifetime of sulfate. They compare this estimate with 19 AeroCom phase II models initialized with the same identical emissions of ^{137}Cs and the passive tracer. The AeroCom models show a large spread in their estimates lifetimes (4.8 to 26.7 days) and a mean of 9.4 days, which is low compared to the measurements (14.3 days). The underestimation is larger for the northernmost stations, suggesting that the models remove aerosols too quickly and underestimate the transport to the Arctic.

Deleted: and also

Here we present results from phase II of the AeroCom model experiment. The goal is to document the seasonal cycle of mean aerosol abundances and the resulting DAE at the poles, predicted by climate models presently in use, and the multi model spread. The DAE does not include indirect clouds effects or surface albedo modifications. As global aerosol emissions may change rapidly, both in magnitude and geographical distribution, and aerosol abundance observations in the Polar Regions are sparse, one aim of the present study is to deliver a baseline to which future model studies and observations may be compared.

2 Methods

2.1 Models

We have used results from 16 global aerosol models that participated in the AeroCom phase II project (e.g. Myhre et al., 2013) <http://aerocom.met.no>. The models are NCAR-CAM3.5 (Lamarque et al., 2010; Lamarque et al., 2012), CAM4-Oslo (Kirkevåg et al., 2013), CAM5.1 (Liu et al., 2012), GISS-MATRIX (Bauer et al., 2008), GISS modelE (Koch et al., 2011), GMI-MERRA-v3 (Bian et al., 2009), GOCART-v4 (Chin et al., 2009), HadGEM2 (Bellouin et al., 2011), IMPACT (Lin et al., 2012), INCA (Szopa et al., 2013), ECHAM5-HAM2 (Stier et al. 2005; Zhang et al., 2012b), OsloCTM2 (Skeie et al., 2011), SPRINTARS (Takemura et al., 2005), TM5 (Vignati et al., 2004), GEOS-Chem (Yu, 2011), and BCC (Zhang et al., 2012a). Model descriptions including model resolution, meteorology, and aerosol microphysics, are given in Table S1 in Supplementary.

Each model has provided climate and aerosol simulations using year 2006 meteorology. For present-day simulations emissions for the year 2000 have been used, and for preindustrial runs year 1850 emissions have been used (Lamarque et al., 2010). All AeroCom models include sulfate, BC, primary organic carbon, sea salt, and mineral dust in their total AOD, and some models also include nitrate and SOA. To report on the individual species, the models have either added double calls in the radiation code, i. e. for each time step the radiation code is called with and without the arguments needed to calculate the given species' forcing, or performed additional runs where each species has been run with preindustrial emissions. However, not all models were able to extract the AOD for the individual species. Table 1 lists the models and the species reported by each model. The individual species include BC (from fossil fuel, biofuel and biomass burning emissions), sulfate, total OA (from fossil fuel, biofuel and biomass burning emissions), nitrate, SOA, sea-salt, and dust. Here, organic aerosols refer to the total mass of organic compounds in the aerosol (both primary and secondary). For a comprehensive documentation on OA and SOA treatment in the AeroCom Phase II models, see Tsigaridis et al. (2014). The AOD is a measure of the total extinction (scattering + absorption) of sunlight as it passes through the atmosphere. In this study we use the AOD at 550nm wavelength. The models have estimated AOD as a combination of aerosol abundancies and optical properties, which is why AOD can be reported in the months where there is no actual sunlight. The DAE is calculated as the difference in TOA SW radiation between simulations with present-day and preindustrial emissions of aerosols and their precursors (under all-sky conditions). Results are available for total aerosol forcing, as well as for individual aerosol species (BC from fossil fuel and bio fuel emissions (FF), sulfate, total OA FF, nitrate, SOA, and OA and BC combined from biomass burning (BB) emissions. Hereafter we will use the term 'BC' for total BC (from fossil fuel, biofuel and biomass burning emissions) and BC FF for anthropogenic BC (from fossil fuel and biofuel emissions), and the same is used for total OA. For AOD we report BC (and OA) only, and for DAE we distinguish between BC FF, OA FF and biomass burning, which latter consists of emissions from both BC and OA. For information on the radiative transfer schemes of the individual models, see Stier et al. (2013), their Table 2, and the aerosol model references

Deleted: dynamics, and

Deleted: schemes

Deleted: used

Deleted: and 2

Deleted: Myhre et al. (2013)

in Myhre et al. (2013), their Table 2. Uncertainties in calculating the radiative impact of aerosols are linked to the vertical distribution of aerosols (Samset et al., 2013; Kipling et al., 2015). A comparison of the aerosol vertical extinction coefficient from 11 AeroCom models to CALIPSO has been performed in Koffi et al., (2016), showing large spread among the models.

Even if the models used meteorology for the year 2006, there is some inter-model variability in the simulated winds. Some models are nudged to different sets of reanalysis while others have used different prescribed meteorology data sets, see Table

5 S1. Three models (NCAR-CAM3.5, CAM4-Oslo, and CAM5.1) have calculated the meteorology online, i.e. with free-running meteorological fields. In CAM4-Oslo the meteorology is calculated based on the CAM4 aerosol extinction and cloud droplet fields, which does not differ between preindustrial and present-day simulations. The two other models have been run for several years to account for the year-to-year variability, and the reported simulations are based on a 5-year average. The fields (winds, temperature, humidity) are not identical between the preindustrial simulations and the present-day simulations in these two
10 models. The calculated aerosol-induced climate response in the polar regions will therefore be due to a combination of differences in emissions and in transport and lifetime. One model (GISS modelE) has duplicate 6-year runs with both nudged winds and free-running winds for preindustrial and present-day conditions, and we find that the difference in the Arctic fraction of the transported tracers between the nudged and the free wind simulations is small. The difference varies between 0.1-1.0 %
15 for most species (up to 2.0 % for a few species), for both preindustrial and present-day simulations. Another study with the CAM5.3 MAM4 model finds a significant difference in BC concentrations on a global scale between nudged and free-running winds (Liu et al. 2016), while the differences between the nudged and un-nudged runs in a study with ECHAM-HAM were small (von Hardenberg et al. 2012). Nevertheless, it did not make much difference for the ensemble results whether we included or excluded the three models that generated their own winds, and we have therefore decided to include these models in the
20 analysis.

Deleted: in Myhre et al. (2013)

There is no unique definition of the Arctic region and here we have defined the Arctic as the region north of 60° N, a definition found in other studies (Shindell and Faluvegi, 2009; AMAP, 2011). To avoid a large influence from the Southern Ocean we have defined the Antarctic as the region south of 70° S.

2.2 Comparison with observations

2.2.1 AERONET

25 We have compared the modelled seasonal cycle of AOD in the grid-box of each model in which the respective station is located with ground-based measurements from twelve stations in the Arctic and Antarctic from the AEROSOL ROBOTIC NETWORK (AERONET) <http://aeronet.gsfc.nasa.gov/> (Holben et al., 1998). The locations for each station are plotted in Figure 3, and the coordinates and measurement years for each station are given in Table 2. For Barrow, Alert, and Ny-Ålesund, we have used
30 monthly mean climatology derived from daily mean of spectral AOD reported in Stone et al. (2014). For the three stations in

Deleted: T

Antarctica, one coastal (Neumayer), one mid-altitude (Troll), and one Plateau (South Pole) monthly mean climatology is taken from Tomasi et al. (2015).

2.2.2 MODIS

Due to the high reflectance over bright surfaces, obtaining reliable satellite retrieval of AOD is difficult at the Poles. Glantz et al. (2014) compared AOD 555nm from the Moderate Resolution Imaging Spectroradiometer (MODIS) Aqua collection 5 Level 2 (Remer et al., 2005) over (dark) ocean areas around Svalbard with available AERONET ground-based measurements at Svalbard (Longyearbyen (78.2°N, 15.6°E) and Hornsund (77.0°N, 15.6°E)) for the period 2003-2011. They found comparable values in the summer season (JJA) (0.041 ± 0.025 for MODIS and 0.043 ± 0.024 for AERONET) and early autumn (September) (0.035 ± 0.021 for MODIS and 0.038 ± 0.021 for AERONET), but larger differences during spring (0.115 ± 0.069 for MODIS and 0.093 ± 0.050 for AERONET). The spring differences are partly explained by diverse air masses causing inhomogeneous aerosol geographical distributions. Glantz et al. (2014) conclude that satellite AOD retrievals in the Arctic marine atmosphere varies within the expected uncertainties of MODIS retrieval over ocean and can be of use to climate model validation. We have compared the MODIS AOD values with the AeroCom models averaged over the same area (75° N-82° N, 10° W- 40° E), illustrated in Figure 3 (in blue). For details on the retrieval, see Glantz et al. (2014).

2.2.3 CALIOP

We have compared modelled AOD with retrieved AOD from the Cloud-Aerosol Lidar with Orthogonal Polarization (CALIOP) onboard the Cloud-Aerosol Lidar and Infrared Pathfinder Satellite Observations (CALIPSO) satellite. CALIOP is an active nadir-looking backscattering lidar. It distinguishes clouds and aerosols by using the total backscatter radiation measured at 1063 nm combined with the linear depolarization at 532 nm (Liu et al. 2009). Because it is an active instrument CALIOP can retrieve aerosol and cloud vertical profiles during day and night, and can measure over the highly reflective surfaces in the Arctic. However, daytime retrievals are affected by the noise from scattering of solar radiation and are therefore less accurate than night-time retrievals (Winker et al., 2009). In the Arctic, there are no night-time observations in May, June and July which complicates the interpretation of spring and summer retrievals. CALIOP reports AOD by integrating the aerosol extinction coefficient from all detected layers over a given location. Thin aerosol layers in the Arctic often have backscattering values below the detection threshold of CALIOP and the column AOD can therefore be underestimated (Rogers et al. 2014). Omar et al. (2013) found that retrieved AOD from AERONET stations was 25 % higher compared to CALIOP AOD for AOD less than 1. CALIOP has an inclination angle of about 98.14° and has therefore no data points above 82 °N.

3 Results

Here we present AOD and DAE results from the Arctic (defined as 60° N - 90° N) and the Antarctic (70° S - 90° S) regions. We compare the simulated seasonal AOD to ground-based measurements from a selection of stations in the Arctic and Antarctic. We also compare the modelled AOD with retrieval from MODIS over the Svalbard ocean region and with CALIOP.

5 We then document the model simulated regional patterns for each aerosol species.

3.1 Aerosol Optical Depth

Figure 1 shows the seasonal cycle of the total AOD in the Arctic and the Antarctic, for all the AeroCom phase II models. Values are for present day conditions, i.e. emissions representative of the year 2000. The model-median AOD (Fig. 1, thick black line) has a summer maximum and a winter minimum at both Poles, but there is a large variation among the different
10 models. For the Arctic, the spread is larger during the winter/early spring and smaller during the summer months. A few models suggest an earlier Arctic AOD maximum in winter (IMPACT) and early spring (GEOS-Chem and GOCART). For GEOS-Chem and GOCART this maximum is dominated by natural aerosols (sea-salt and dust, respectively), as shown in Fig. 9). The higher values of AOD in CAM-Oslo are linked to efficient vertical transport in deep convective clouds which exaggerates the amount of aerosols in the upper troposphere (and poleward transported aerosols). Note that modelled AOD is calculated from
15 simulated aerosol distributions, and can therefore be reported even for months where there is no actual sunlight.

3.1.1 Comparisons with measurements at both Poles

We have compared the seasonal cycle of modelled AOD with measurements from nine Arctic stations (details in Table 2), shown in Fig. 2. The AERONET mean (a climatology for all available years) is shown as a red line, and the model median is shown as a thick black line. The yellow line represents the year 2006 where this was available. The AeroCom models are shown as thin grey lines (for individual models, see Fig S1). The root-mean-square-error and the correlation factor are shown for each site. We have calculated the root-mean-square-error (rmse) as the square root of the average of the difference between the model median and AERONET values for each month. The values ranges from 0.02 (Ny-Ålesund, Kangerlussuaq AND Andenes) to 0.07 (Bonanza Creek). Alert, Ny-Ålesund, Barrow, and Resolute Bay show the typical maximum in springtime AOD. Some models also show this peak, but the model median fails to capture the observed high spring AOD. The correlation factor for these stations are low (-0.08 to 0.27), except Ny-Ålesund (0.63). Figure 3 shows the type of aerosols in terms of AOD that the models simulate for each station during spring (MAM) (JJA average in Fig. S2). Ny-Ålesund is dominated by sea-salt during spring, and the total AOD is larger than the other stations. There is a better agreement between measurements and models during the summer season when the observed AOD and its variability is lower. Bonanza Creek experienced unusually high August values in 2004, 2005 and 2009, resulting in a large standard deviation. Here, the 2006 values for AERONET are closer to the model median during summer, except early spring. Tiksi station has the best correlation between
20
25
30

Deleted: all of

Deleted: shown in

Deleted: 8

Deleted: is

Deleted: For many stations, most models

Deleted: , especially at Barrow, Alert, Yakutsk and Resolute Bay

Deleted:

Deleted: , but the model median is lower than the observed mean at all stations except Andenes.

AERONET and the model median (0.86). This station has a maximum in AOD during summer, with large influences of organic aerosols from biomass burning (Fig. S2). Averaged over all 9 stations, the AERONET values are 120-160 % higher than the model median monthly averages (Feb - Nov). The correlation coefficient between the AeroCom and the AERONET monthly mean is 0.72 ($P < 0.05$). We would expect the spring peak in AOD to be stronger at the surface than for the total column. The age of Arctic air, and its amplitude of the seasonal cycle with highest values during spring decrease strongly with altitude (Stohl 2006), and the observed spring AOD is highest near the surface (Stone et al. 2010).

Figure 4 shows the spring (MAM) and summer (JJA) AOD for each model averaged over the nine Arctic stations, together with the measured AERONET AOD. As is apparent from the correlation coefficient (0.72) and the plots, the multi-model average is not a bad representation of the observed AOD, but the models altogether vary by a factor of 5-6 in magnitude.

GOCART and GEOS-Chem are the models closest to the observations during summer, and GMI-MERRA and IMPACT are the models closest during spring.

Retrieval of AOD from the MODIS satellite directly over snow and sea-ice are not available, due to the high reflectivity of these surfaces. Glantz et al. (2014) have provided spatial averages of MODIS AOD555nm over (darker) ocean areas around Svalbard over a 9-year period (see Methods section). In our comparison, we have included this 9-year average to take into

account the interannual spread in the data, even though the AeroCom models have simulated one year only. Figure 5a shows AOD over the Arctic Ocean (75° N - 82° N, 10° W - 40° E) from MODIS retrieval 2003-2011 from Glantz et al. (2014) compared with the AeroCom models from April through September. The retrieved AOD is approximately 0.1 in spring, but the uncertainty range is large: 0.115 ± 0.069 for MODIS and 0.093 ± 0.050 for AERONET (mean AOD \pm one standard deviation). The retrieved AOD decreases over summer through September. The AeroCom model mean also show a decrease

throughout the year, but the slope is not as steep compared to MODIS. Some of the models shown in Fig. 5b do have a steeper slope (GOCART, GISS-MATRIX, and GEOS-Chem). In the MODIS data the influence from large forest fires events and volcanic eruptions during summer has been removed to represent background conditions, and this might be part of the reason why the models show higher values during summer compared to MODIS.

We have compared total AOD with the vertical integral of the monthly mean elastic backscatter at 532 nm from CALIOP for the years 2006-2007. Figure 6 shows the seasonal cycle of AOD532nm retrieval from CALIOP for the years 2006-2011 averaged over 60° N - 82° N compared to the AeroCom models screened by CALIOP availability (which is why June has zero numbers north of 60° N). The summer months are therefore dominated by the biomass burning emissions at the southernmost latitudes. For all months except September, the model median lies within the range of the CALIOP retrievals. The correlation coefficient between the model median monthly mean and the CALIOP monthly mean is 0.75.

Figure 7 shows the measured seasonal cycle of AOD from three Antarctic stations (Neumayer, Troll and South Pole) compared to the AeroCom models. The Neumayer site is located closest to the ocean and has the highest variability among the models. The correlation factor at Neumayer is 0.37, higher than at Troll (-0.26) and the South Pole (-0.04). Most models seem to be in

Moved (insertion) [1]

Deleted: The root-mean-square-error is shown for each site. We have calculated the root-mean-square-error (rmse) as the square root of the average of the difference between the model median and AERONET values for each month.

Deleted: and the AERONET monthly mean (Feb - Nov) averaged over the 9 stations

Deleted: 3

Deleted: ly

Deleted: ,

Deleted: 4

Deleted: (

Deleted:)

Deleted: 4

Deleted: es

Deleted: 5

Deleted: 6

Moved up [1]: The root-mean-square-error is shown for each site. We have calculated the root-mean-square-error (rmse) as the square root of the average of the difference between the model median and AERONET values for each month.

Deleted: The two near-coastal sites (

the lower range of the observations. Tomasi et al. (2015) report multi-year sets of ground-based sun-photometer measurements conducted at nine Antarctic sites. For the high-altitude sites on the Antarctic Plateau (Dome Concordia 75° S and South Pole 90° S) AOD is very stable, mainly ranging from 0.02-0.04. These values are slightly higher than the median AeroCom Phase II AOD (0.01).

5 Figure 8 shows a boxplot of the annual mean AOD in the Arctic and Antarctic for total aerosols and for the individual components (sulfate, BC from all sources, OA from all sources, SOA, nitrate, sea-salt, and dust). Model-median total AOD is 0.07 in the Arctic (with a model range of 0.02-0.2), with the largest contribution to Arctic AOD from sulfate (45 %). In the Antarctic the total AOD is 0.01 (0.001-0.05) with sulfate being the largest model median component. However, sea salt shows a large range with the 75 percentile and the maximum value, much higher than the corresponding values for sulfate. Note that
10 all models have reported total AOD, but not all the individual components' AOD, see Table 1. The AOD median and 25th/75th percentiles values are listed in Table 3 and Table 4.

Figure 9 shows the seasonal cycle of the AOD for the same individual components as in Fig. 8; sulfate, BC, OA, SOA, nitrate, sea-salt, and dust averaged over the Arctic region (60° N - 90° N). There is a large spread between the models. Most models show a peak in the AOD during summer, with a few models showing a late spring maximum. The geographical distribution over the same region for the summer and winter season is shown in Fig. 10. For sulfate the largest AOD values during summer are found in the Russian and northern Europe regions, while for BC the highest AOD values are found over Russia and East Asia. Both OA and SOA show a maximum during summer in the fire season with the highest AOD over Russia and East Asia. Summer is also the season with maximum chemical production. During winter the AOD values are low for OA and SOA. There is one outlier for OA, CAM4-Oslo, which has very high marine primary OA emissions, and is the only model that
20 includes MSA in the primary organics emissions (Tsigaridis et al. 2014). The emissions of aerosols (per mass) are dominated by sea-salt and dust. Since these emissions are mostly interactive (a function of wind speed, and soil moisture for dust), a large model diversity in AOD is not surprising. Sea-salt AOD is highest during the winter season, with a maximum over the North Atlantic region. The areas around the Norwegian Sea and Barents Sea have the highest cyclonic activity during winter (Serreze and Barrett, 2008). For dust aerosols, the models show a maximum in spring/early summer and a secondary maximum in
25 September. The spring maximum originates most likely from dust storms in the Gobi and Taklimakan deserts, while the second smaller maximum in September might be due to local sources (Barrie and Barrie, 1990). GOCART shows higher AOD values for dust compared to the other models, probably linked to an overestimation of dust emissions (Kim et al., 2014). Only four models have reported AOD from nitrate. The nitrate maximum in winter is located over Eurasia, and over East Asia during summer.

30 Figure 11 shows the seasonal cycle of AOD in the Antarctic for all the aerosol species. The model-median AOD has a maximum during the SH summer season of 0.02 and is reduced to about half during the winter season (0.01). Modeled BC, sulfate and dust concentrations are highest during the winter months (SH summer). GISS-modelE shows higher values for

Deleted: 7

Deleted: of

Deleted: 8

Deleted: 7

Deleted: For sulfate and BC t

Deleted: 9

Deleted: also

Deleted: 0

SOA. This model has the highest SOA lifetime (14 days) because of large amount of SOA in the upper troposphere where there is less scavenging and more SOA available to be transported poleward. SPRINTARS shows opposite behavior on the seasonal cycle of sulfate AOD compared to the other models. This is likely linked to an anomaly in the relative humidity over East Antarctica in the simulation and has been improved in a newer version of the model. GMI-MERRA shows higher nitrate AOD values compared to the other models and is probably linked to the inclusion of oceanic NH₃ emissions (based on the GEIA emission inventory) in the model. The CMIP5 emission dataset do not include NH₃ oceanic emissions.

3.2 Aerosol direct radiative forcing

The DAE is calculated as the difference between the reflected solar radiation at TOA between simulations with present day (2000) and pre-industrial (1850) emissions of anthropogenic aerosols and precursors. Figure 12 shows the multi-model DAE for sulfate, BC FF (from fossil fuel and biofuel emissions), OA FF (from fossil fuel and biofuel emissions), BB, SOA, nitrate, and the total, averaged in the Arctic and the Antarctic regions. In the Arctic, the dominant aerosol forcing agents are BC FF and sulfate with model-median DAE estimated at +0.20 and -0.27 W m⁻², respectively, although the Arctic AOD of BC is low compared to the other aerosols (Fig. 8). The other treated species are relatively low both in burden and in modeled DAE. The Arctic annual mean multi-model-median DAE is -0.12 W m⁻² (with the 25th, 75th percentile; -0.22, 0.03). The Antarctic model-median DAE is 0.02 W m⁻² (0.01, 0.07). The two largest forcing components here are BC FF and OA FF. Note that only the direct radiative forcing is reported. The numbers are listed in Table 5 and Table 6.

Figure 13 shows the Arctic DAE seasonal cycle. The direct influence of aerosols on the radiation budget in the Arctic shifts from a BC-driven positive DAE during spring months, to a sulfate-driven negative forcing during late summer, caused by higher surface albedo from sea-ice and snow in the former season (Ødemark et al., 2012). Also shown in Fig. 13 is the geographical distribution of DAE during summer (JJA), and a balance between sulfate and BC FF is also apparent here linked to albedo. Negative DAE from sulfate dominates land areas outside the high-Arctic, while higher positive DAE from BC FF is evident in the high-Arctic and in the Pacific.

Even though the AOD of BC is low in the Arctic, the DAE from BC FF dominates the total DAE in spring. In Fig. 14 we have normalized the JJA DAE (for total, sulfate, and BC FF) to AOD (total, sulfate and BC) to illustrate this. The total normalized forcing is positive in the high-Arctic due to the high efficiency of the BC forcing. Outside the high-Arctic, there is a band of negative direct forcing due to sulfate.

Figure 15 shows the multi-model DAE in the Arctic, sorted by highest-to-lowest, for total aerosol and for sulfate and BC FF. Most models have an annual mean negative net DAE in the Arctic, ranging from -0.3 to 0.0 W m⁻², while 4 models show a positive net DAE (HadGEM2, OsloCTM2, GEOS-Chem, and CAM5.1). These latter models have a lower-than-average negative sulfate forcing (HadGEM2, CAM5.1, OsloCTM2), and/or higher-than-average positive BC FF forcing (GEOS-Chem, OsloCTM2, and HadGEM2). SPRINTARS is one of the models closest to the AOD observations during summer and spring

Deleted: 1

Deleted: s

Deleted: 7

Deleted: individual

Deleted: 2

Deleted: 2

Deleted: 3

Deleted: 4

(Fig. 4) and close to the annual mean model mean DAE. When normalizing the Arctic DAE with AOD for each model (Fig. 16), it is apparent that some models have a high forcing efficiency for sulfate (ECHAM5-HAM2) and/or BC FF (BCC, ECHAM5-HAM2).

Figure 17 shows the seasonal cycle of DAE for total aerosols and for sulfate, BC FF, OA FF, BB, SOA, and nitrate in Antarctica. There is a large spread in DAE during SH summer season, with values ranging from 0 to 0.3 W m^{-2} , dominated by BC DAE. Several of the models that have the highest (positive) BC FF DAE also have the highest (negative) sulfate DAE, as indicated by Myhre et al. (2013). As these models do not show particularly strong forcing per unit AOD (see e.g. Figure 16), but generally have high values for Antarctic AOD (Figure 11), we attribute this correlation to efficient transport of aerosols to the Southern Polar region.

3.3 Sensitivity simulations with GISS modelE

The model-spread for aerosols at the Poles is large and not entirely surprising, given the large sensitivity to remote transport for aerosol concentrations at high-latitudes. The reasons for this spread include transport and removal mechanisms and the interaction between them. To illustrate some of the variation we have performed sensitivity tests with one of the AeroCom models; GISS modelE. The anthropogenic BC emissions (from fossil fuel and biofuel) have been doubled in South Asia, East Asia and Russia, and Fig. 18a shows the resulting (total) BC AOD in the Arctic for the different regional emission perturbations. The annual mean BC AOD in the Arctic increases by 33 % from a doubling of the BC FF emissions in East Asia, while doubling in South Asia and Russia increase the BC AOD by 10 % and 8 %, respectively. The change in AOD from a doubling in emissions is still within the AeroCom model range, shown in grey lines. Here we only show plots for the Arctic, but the increase in BC AOD in Antarctica is not negligible; 28 % increase for a doubling in East Asia and 7 % for a doubling in South Asia (zero for Russia) (Supplement Fig S2). We have also tested the sensitivity to the e-folding time of BC from hydrophobic (fresh) to hydrophilic (aged) state. GISS modelE has a BC global lifetime of 5.9 days which is close to the AeroCom average global lifetime of 6.5 days (it ranges from 3.8 days in CAM5.1 to 17.1 days in HadGEM2) (Samset et al. 2014). Figure 18b shows the resulting change in BC AOD in Arctic by 1) doubling the e-folding time and 2) reducing it by 50 %. By reducing the e-folding time by half, BC decrease by 30 % at both Poles. On the other hand, by making the lifetime longer by doubling the e-folding time, the BC AOD increase with 36-39 % at both poles. The change in BC is still within the AeroCom model range.

4 Summary and discussion

We have reported on modelled AOD and DAE at both Poles, and compared individual and multi-model results to available measurements. Defining the Arctic as the $60^\circ \text{ N} - 90^\circ \text{ N}$ region, the dominant aerosol species, in terms of AOD, are sulfate,

Deleted: 3

Deleted: also

Deleted: 5

Deleted: 6

Deleted: BC FF

Deleted: .

Deleted: 5

Deleted: 0

Deleted: 7

Deleted: 1

Deleted: 7

Deleted: Recent aerosol-climate models transport anthropogenic aerosols to both Poles, with significant resulting impacts on the local radiative balance.

sea-salt and OA. The total model-median AOD is 0.07, which is close to observed AOD. However, the inter-model spread is very wide (0.02-0.2). Compared to measurements at nine Arctic stations, most models tend to underestimate the AOD, especially the build-up of aerosols during early winter/spring. Seasonally, the influence of aerosols on the Arctic energy balance shifts from a BC-driven positive DAE during spring months, to a sulfate-driven negative DAE during late summer.

5 Despite a relatively low Arctic BC AOD compared to the other aerosols, the BC FF DAE dominates during spring with an annual mean model-median of 0.20 W m^{-2} (0.11, 0.28 W m^{-2} 25th/75th percentiles). The total Arctic annual mean DAE model-median is slightly negative, -0.12 W m^{-2} (-0.22, 0.03). We note, however, that this estimate of Arctic aerosol radiative forcing does not include semi- or indirect cloud effects, or surface albedo modification. [The Arctic surface radiative forcing from BC in snow has been estimated to \$0.18 \text{ W m}^{-2}\$, using deposited fields from the AeroCom Phase II models into an offline land and](#)
10 [sea-ice model \(Jiao et al., 2015\). There are few estimates of the semi-direct effects of aerosols, which is mostly due to BC. Bond et al. \(2013\) indicates a \$-0.1 \text{ W m}^{-2}\$ global effect, equally split between direct and indirect effects, while a later study also indicates that the semi-direct effect counteracts about 50% of the direct effect, independent of altitude \(Samset and Myhre, 2015\). None of these estimates are made specifically for the Arctic. Indirect cloud effects are likely different in the Arctic than at lower latitudes, in large because of the already bright surfaces in the Arctic. Also, cloud emissivity might be more important](#)
15 [here, as thermal radiation dominates the dark winter months \(Garrett et al, 2004\).](#)

The models also predict a fair amount of aerosol transport to the Antarctic region (defined here as $70^\circ \text{ S} - 90^\circ \text{ S}$). In the Antarctica, modeled AOD is smaller in magnitude than in the Arctic, with an annual mean of 0.01 (0.001-0.05 model range). Compared to limited available measurements, these values might be on the lower end of the spectrum. As in the Arctic, the dominant aerosol species is sulfate. The dominant aerosol forcing agent in the Antarctic however is BC, resulting in a small,
20 but positive DAE in this region (0.03 W m^{-2}). Again, this does not include possible additional effects of surface albedo modification (Jiao et al. 2014).

Not surprisingly, the spread in modeled AOD at both Poles is large. Interestingly, the spread in modeled DAE is smaller. Sensitivity experiments of BC with one of the AeroCom models reveal that the Arctic BC AOD is sensitive to the emissions and lifetime of BC. A doubling of fossil fuel and biofuel emissions in East Asia, result in a 33 % increase in Arctic BC AOD.
25 However, radical changes such as reducing the e-folding lifetime by half or doubling it, still fall within the AeroCom model range.

The AeroCom data is only available as monthly averages, ~~and we have therefore compared with monthly averaged retrievals~~ from AERONET and CALIOP/MODIS. Schutgens et al. (2016a,b) suggests that models should be temporally collocated to the observations before comparing the data to prevent sampling errors. In their study three global models were compared to
30 AERONET/MODIS and sampling errors up to 100% in AOD were apparent for yearly and monthly averages. Since the AeroCom data is only provided monthly, this is a potential problem both for this and most other AeroCom studies.

Deleted: so

Various factors lie behind the large spread in modelled AOD in the Polar regions. Recommendations to improve our understanding of the role of aerosols in the Polar regions and to reduce the uncertainties include sensitivity tests on removal processes (Wang et al., 2013; Liu et al., 2011; Bourgeois and Bey, 2011) and resolution (Ma et al. 2014) during transport to the Arctic, up to date treatment of aerosol mixtures, missing emission sources (Stohl et al. 2013, Evangeliou et al. 2016), and a better characterization of measurement uncertainties in satellite data over Polar land and oceans. Of these, updated emission inventories (global and Polar), and model validation of AODs and column loadings against local observations seem most pressing to provide a solid baseline for evaluations of transport schemes and calculations of radiative forcing, taking into account a broader range of physical effects.

10 5 Data Availability

AeroCom data and CALIOP data are available through <http://aerocom.met.no>. Sensitivity studies and further analysis results are available upon request to M. Sand. AERONET data are available at <http://aeronet.gsfc.nasa.gov/>.

Acknowledgements

MS has received funding from The Research Council of Norway (RCN) through a FRIPRO Mobility Grant, BlackArc, contract no 240921. The FRIPRO Mobility grant scheme (FRICON) is co-funded by the European Union's Seventh Framework Programme for research, technological development and demonstration under Marie Curie grant agreement no 608695. MS and BHS were funded through the Polish-Norwegian Research Programme project iAREA, and RCN projects AEROCOM-P3 and AC/BC (240372). RCE and SJG were supported by the U. S. Department of Energy Office of Science Decadal and Regional Climate Prediction using Earth System Models (EaSM) program. The Pacific Northwest National Laboratory is operated for the DOE by Battelle Memorial Institute under contract DE-AC06-76RLO 1830. GL and JEP were supported by the National Science Foundation (projects AGS-0946739 and ARC-1023387) and the Department of Energy (DOE FG02 01 ER63248 and DOE DE-SC0008486. TT is supported by the NEC SX-ACE supercomputer system of the National Institute for Environmental Studies, Japan, the Environmental Research and Technology Development Fund (S-12-3) of the Ministry of Environment, Japan and JSPS KAKENHI Grant Numbers JP15H01728 and JP15K12190. TI, AK and ØS were supported by the Norwegian Research Council through the projects EVA (grant 229771), EarthClim (207711/E10), NOTUR (nn2345k), and NorStore (ns2345k), and through the EU projects PEGASOS and ACCESS and Nordforsk-CRAICC. P.S. acknowledges funding from the European Research Council (ERC) under the European Union's Seventh Framework Programme (FP7/2007–2013) ERC project ACCLAIM (Grant Agreement FP7-280025) and from the UK Natural Environment Research Council project GASSP (grant number NE/J022624/1). The CESM project is supported by the National Science Foundation and the

Office of Science (BER) of the U.S. Department of Energy. NCAR is sponsored by the National Science Foundation. CALIPSO is a joint satellite mission between NASA and the French Agency, CNES. We thank the PI investigators and their staff for establishing and maintaining the AERONET sites used in this study.

References

- 5 Albrecht, B. A.: Aerosols, cloud microphysics, and fractional cloudiness, *Science*, 245, 1227-1230, 1989.
- AMAP: The Impact of Black Carbon on Arctic Climate, Arctic Monitoring and Assessment Programme (AMAP), Oslo, Norway, 70, 2011.
- Arimoto, R., Hogan, A., Grube, P., Davis, D., Webb, J., Schloesslin, C., Sage, S., and Raccach, F.: Major ions and radionuclides in aerosol particles from the South Pole during ISCAT-2000, *Atmos. Environ.*, 38, 5473-5484,
10 doi:10.1016/j.atmosenv.2004.01.049, 2004.
- Barrie, L. A., and M. J. Barrie.: Chemical components of lower tropospheric aerosols in the high Arctic: Six years of observation, *J. Atmos. Chem.*, 11, 211–226, 1990.
- Bauer, S.E., D. Wright, D. Koch, E.R. Lewis, R. McGraw, L.-S. Chang, S.E. Schwartz, and R. Ruedy.: MATRIX (Multiconfiguration Aerosol TRacker of mIXing state): An aerosol microphysical module for global atmospheric models.
15 *Atmos. Chem. Phys.*, 8, 6603-6035, doi:10.5194/acp-8-6003-2008, 2008.
- Bellouin, N., Rae, J., Jones, A., Johnson, C., Haywood, J., and Boucher, O.: Aerosol forcing in the Climate Model Intercomparison Project (CMIP5) simulations by HadGEM2-ES and the role of ammonium nitrate, *J. Geophys. Res.*, 116, D20206, doi:10.1029/2011JD016074, 2011.
- Bian, H., Chin, M., Rodriguez, J. M., Yu, H., Penner, J. E., and Strahan, S.: Sensitivity of aerosol optical thickness and aerosol
20 direct radiative effect to relative humidity, *Atmos. Chem. Phys.*, 9, 2375-2386, doi:10.5194/acp-9-2375-2009, 2009.
- Bigg, E. K.: Comparison of Aerosol at Four Baseline Atmospheric Monitoring Stations, *Journal of Applied Meteorology*, 19, 521-533, 10.1175/1520-0450(1980)019<0521:COAafb>2.0.CO;2, 1980.
- Bond, T. C., Doherty, S. J., Fahey, D. W., Forster, P. M., Bernsten, T., DeAngelo, B. J., Flanner, M. G., Ghan, S., Kärcher, B., Koch, D., Kinne, S., Kondo, Y., Quinn, P. K., Sarofim, M. C., Schultz, M. G., Schulz, M., Venkataraman, C., Zhang, H.,
25 Zhang, S., Bellouin, N., Guttikunda, S. K., Hopke, P. K., Jacobson, M. Z., Kaiser, J. W., Klimont, Z., Lohmann, U., Schwarz, J. P., Shindell, D., Storelvmo, T., Warren, S. G., and Zender, C. S.: Bounding the role of black carbon in the climate system: A scientific assessment, *J. Geophys. Res.*, 5380-5552, doi:10.1002/jgrd.50171, 2013.
- Boucher, O., Randall, D., Artaxo, P., Bretherton, C., Feingold, G., Forster, P., Kerminen, V.-M., Kondo, Y., Liao, H., Lohmann, U., Rasch, P., Satheesh, S. K., Sherwood, S., Stevens, B., and Zhang, X. Y.: Clouds and aerosols, in: *Climate change*
30 2013: the physical science basis. Contribution of Working Group I to the Fifth Assessment Report of the Intergovernmental

- Panel on Climate Change, edited by: Stocker, T. F., Qin, D., Plattner, G.-K., Tignor, M., Allen, S. K., Boschung, J., Nauels, A., Xia, Y., Bex, V., and Midgley, P. M., Cambridge University Press, Cambridge, United Kingdom and New York, NY, USA, 571-657, 2013.
- Browse, J., Carslaw, K. S., Mann, G. W., Birch, C. E., Arnold, S. R., and Leck, C.: The complex response of Arctic aerosol to sea-ice retreat, *Atmos. Chem. Phys.*, 14, 7543-7557, 10.5194/acp-14-7543-2014, 2014.
- 5 Chin, M., Diehl, T., Dubovik, O., Eck, T. F., Holben, B. N., Sinyuk, A., and Streets, D. G.: Light absorption by pollution, dust, and biomass burning aerosols: a global model study and evaluation with AERONET measurements, *Ann. Geophys.*, 27, 3439-3464, doi:10.5194/angeo-27-3439-2009, 2009.
- Clarke, A. D., and Noone, K. J.: Soot in the Arctic snowpack: a cause for perturbations in radiative transfer, *Atmos. Environ.*, 19, 2045-2053, doi:10.1016/0004-6981(85)90113-1, 1985.
- 10 Eckhardt, S., Quennehen, B., Olivié, D. J. L., Berntsen, T. K., Cherian, R., Christensen, J. H., Collins, W., Crepinsek, S., Daskalakis, N., Flanner, M., Herber, A., Heyes, C., Hodnebrog, Ø., Huang, L., Kanakidou, M., Klimont, Z., Langner, J., Law, K. S., Lund, M. T., Mahmood, R., Massling, A., Myriokefalitakis, S., Nielsen, I. E., Nøjgaard, J. K., Quaas, J., Quinn, P. K., Raut, J. C., Rumbold, S. T., Schulz, M., Sharma, S., Skeie, R. B., Skov, H., Uttal, T., von Salzen, K., and Stohl, A.: Current model capabilities for simulating black carbon and sulfate concentrations in the Arctic atmosphere: a multi-model evaluation using a comprehensive measurement data set, *Atmos. Chem. Phys.*, 15, 9413-9433, doi:10.5194/acp-15-9413-2015, 2015.
- 15 Evangeliou, N., Balkanski, Y., Hao, W. M., Petkov, A., Silverstein, R. P., Corley, R., Nordgren, B. L., Urbanski, S. P., Eckhardt, S., Stohl, A., Tunved, P., Crepinsek, S., Jefferson, A., Sharma, S., Nøjgaard, J. K., and Skov, H.: Wildfires in northern Eurasia affect the budget of black carbon in the Arctic – a 12-year retrospective synopsis (2002–2013), *Atmos. Chem. Phys.*, 16, 7587-7604, doi:10.5194/acp-16-7587-2016, 2016.
- 20 [Fiebig, M., Lunder, C. R., and Stohl, A., Tracing biomass burning aerosol from South America to Troll Research Station, Antarctica, *Geophys. Res. Lett.*, 36, L14815, doi:10.1029/2009GL038531, 2009.](#)
- Flanner, M. G., Zender, C. S., Hess, P. G., Mahowald, N. M., Painter, T. H., Ramanathan, V., and Rasch, P. J.: Springtime warming and reduced snow cover from carbonaceous particles, *Atmos. Chem. Phys.*, 9, 2481-2497, doi:10.5194/acp-9-2481-2009, 2009.
- 25 [Garrett, T. J., Zhao, C., Dong, X., Mace G. G., and Hobbs P. V., Effects of varying aerosol regimes on low-level Arctic stratus, *Geophys. Res. Lett.*, 31, L17105, doi:10.1029/2004GL019928, 2004.](#)
- Glantz, P., Bourassa, A., Herber, A., Iversen, T., Karlsson, J., Kirkevåg, A., Maturilli, M., Seland, Ø., Stebel, K., Struthers, H., Tesche, M., and Thomason, L.: Remote sensing of aerosols in the Arctic for an evaluation of global climate model simulations, *J. Geophys. Res.*, 119, 8169-8188, doi:10.1002/2013JD021279, 2014.
- 30 Hansen, J., and Nazarenko, L.: Soot climate forcing via snow and ice albedos, *P. Natl. Acad. Sci. USA*, 101, 423-428, doi:10.1073/pnas.2237157100, 2004.

- Hansen, J., Sato, M., and Ruedy, R.: Radiative forcing and climate response, *J. Geophys. Res.*, 102, 6831–6864, doi:10.1029/96JD03436, 1997.
- Hara, K., Osada, K., Kido, M., Hayashi, M., Matsunaga, K., Iwasaka, Y., Yamanouchi, T., Hashida, G., and Fukatsu, T.: Chemistry of sea-salt particles and inorganic halogen species in Antarctic regions: Compositional differences between coastal and inland stations, *J. Geophys. Res.*, 109, D20208, doi:10.1029/2004JD004713, 2004.
- 5 von Hardenberg, J., Vozella, L., Tomasi, C., Vitale, V., Lupi, A., Mazzola, M., van Noije, T. P. C., Strunk, A., and Provenzale, A.: Aerosol optical depth over the Arctic: a comparison of ECHAM-HAM and TM5 with ground-based, satellite and reanalysis data, *Atmos. Chem. Phys.*, 12, 6953–6967, doi:10.5194/acp-12-6953-2012, 2012.
- Hartmann, D., Klein Tank, A., Rusticucci, M., Alexander, L., Broennimann, B., Charabi, Y., Dentener, F., Dlugokencky, E., Easterling, D., Kaplan, A., Soden, B., Thorne, P., Wild, M., and Zhai, P.: Observations: atmosphere and surface, In: *Climate Change 2013: The Physical Science Basis. Contribution of Working Group I to the Fifth Assessment Report of the Intergovernmental Panel on Climate Change*, [Stocker, T.F., D. Qin, G.-K. Plattner, M. Tignor, S.K. Allen, J. Boschung, A. Nauels, Y. Xia, V. Bex and P.M. Midgley (eds.)]. Cambridge University Press, Cambridge, United Kingdom and New York, NY, USA, 2013.
- 10 Haywood, J. M., and Shine, K. P.: The effect of anthropogenic sulfate and soot aerosol on the clear sky planetary radiation budget, *Geophys. Res. Lett.*, 22, 603–606, doi:10.1029/95GL00075, 1995.
- Hirdman, D., Sodemann, H., Eckhardt, S., Burkhardt, J. F., Jefferson, A., Mefford, T., Quinn, P. K., Sharma, S., Ström, J., and Stohl, A.: Source identification of short-lived air pollutants in the Arctic using statistical analysis of measurement data and particle dispersion model output, *Atmos. Chem. Phys.*, 10, 669–693, doi:10.5194/acp-10-669-2010, 2010.
- 20 Hodnebrog, Ø., Myhre, G., and Samset, B. H.: How shorter black carbon lifetime alters its climate effect, *Nat Commun*, 5, 10.1038/ncomms6065, 2014.
- Holben, B. N., Eck, T. F., Slutsker, I., Tanré, D., Buis, J. P., Setzer, A., Vermote, E., Reagan, J. A., Kaufman, Y. J., Nakajima, T., Lavenu, F., Jankowiak, I., and Smirnov, A.: AERONET—A Federated Instrument Network and Data Archive for Aerosol Characterization, *Remote Sens. Environ.*, 66, 1–16, doi:10.1016/S0034-4257(98)00031-5, 1998.
- 25 Iversen, T., and Joranger, E.: Arctic air pollution and large scale atmospheric flows, *Atmos. Environ.*, 19, 2099–2108, doi:10.1016/0004-6981(85)90117-9, 1985.
- Jiao, C., Flanner, M. G., Balkanski, Y., Bauer, S. E., Bellouin, N., Berntsen, T. K., Bian, H., Carslaw, K. S., Chin, M., De Luca, N., Diehl, T., Ghan, S. J., Iversen, T., Kirkevåg, A., Koch, D., Liu, X., Mann, G. W., Penner, J. E., Pitari, G., Schulz, M., Seland, Ø., Skeie, R. B., Steenrod, S. D., Stier, P., Takemura, T., Tsigaridis, K., van Noije, T., Yun, Y., and Zhang, K.: An AeroCom assessment of black carbon in Arctic snow and sea ice, *Atmos. Chem. Phys.*, 14, 2399–2417, doi:10.5194/acp-14-2399-2014, 2014.
- 30

- Kim, D., Chin, M., Yu, H., Diehl, T., Tan, Q., Kahn, R. A., Tsigaridis, K., Bauer, S. E., Takemura, T., Pozzoli, L., Bellouin, N., Schulz, M., Peyridieu, S., Chédin, A., and Koffi, B.: Sources, sinks, and transatlantic transport of North African dust aerosol: A multimodel analysis and comparison with remote sensing data, *J. Geophys. Res.*, 119, 6259-6277, 10.1002/2013JD021099, 2014.
- 5 [Kipling, Z., Stier, P., Johnson, C. E., Mann, G. W., Bellouin, N., Bauer, S. E., Bergman, T., Chin, M., Diehl, T., Ghan, S. J., Iversen, T., Kirkevåg, A., Kokkola, H., Liu, X., Luo, G., van Noije, T., Pringle, K. J., von Salzen, K., Schulz, M., Seland, Ø., Skeie, R. B., Takemura, T., Tsigaridis, K., and Zhang, K.: What controls the vertical distribution of aerosol? Relationships between process sensitivity in HadGEM3–UKCA and inter-model variation from AeroCom Phase II, *Atmos. Chem. Phys.*, 16, 2221–2241, 10.5194/acp-16-2221-2016, 2016.](#)
- 10 Kirkevåg, A., Iversen, T., Seland, Ø., Hoose, C., Kristjánsson, J. E., Struthers, H., Ekman, A. M. L., Ghan, S., Griesfeller, J., Nilsson, E. D., and Schulz, M.: Aerosol–climate interactions in the Norwegian Earth System Model – NorESM1-M, *Geosci. Model Dev.*, 6, 207–244, doi:10.5194/gmd-6-207-2013, 2013.
- Koch, D., and Hansen, J.: Distant origins of Arctic black carbon: A Goddard Institute for Space Studies ModelE experiment, *J. Geophys. Res.*, 110, D04204, doi:10.1029/2004JD005296, 2005.
- 15 Koch, D., Bauer, S. E., Del Genio, A., Faluvegi, G., McConnell, J. R., Menon, S., Miller, R. L., Rind, D., Ruedy, R., Schmidt, G. A., and Shindell, D.: Coupled Aerosol-Chemistry–Climate Twentieth-Century Transient Model Investigation: Trends in Short-Lived Species and Climate Responses, *J. Climate*, 24, 2693–2714, doi:10.1175/2011JCLI3582.1, 2011.
- Koch, D., Schulz, M., Kinne, S., McNaughton, C., Spackman, J. R., Balkanski, Y., Bauer, S., Berntsen, T., Bond, T. C., Boucher, O., Chin, M., Clarke, A., De Luca, N., Dentener, F., Diehl, T., Dubovik, O., Easter, R., Fahey, D. W., Feichter, J.,
- 20 Fillmore, D., Freitag, S., Ghan, S., Ginoux, P., Gong, S., Horowitz, L., Iversen, T., Kirkevåg, A., Klimont, Z., Kondo, Y., Krol, M., Liu, X., Miller, R., Montanaro, V., Moteki, N., Myhre, G., Penner, J. E., Perlwitz, J., Pitari, G., Reddy, S., Sahu, L., Sakamoto, H., Schuster, G., Schwarz, J. P., Seland, Ø., Stier, P., Takegawa, N., Takemura, T., Textor, C., van Aardenne, J. A., and Zhao, Y.: Evaluation of black carbon estimations in global aerosol models, *Atmos. Chem. Phys.*, 9, 9001–9026, doi:10.5194/acp-9-9001-2009, 2009.
- 25 [Koffi, B., Schulz, M., Bréon, F.-M., Dentener, F., Steensen, B. M., Griesfeller, J., Winker, D., Balkanski, Y., Bauer, S. E., Bellouin, N., Berntsen, T., Bian, H., Chin, M., Diehl, T., Easter, R., Ghan, S., Hauglustaine, D. A., Iversen, T., Kirkevåg, A., Liu, X., Lohmann, U., Myhre, G., Rasch, P., Seland, Ø., Skeie, R. B., Steenrod, S. D., Stier, P., Tackett, J., Takemura, T., Tsigaridis, K., Vuolo, M. R., Yoon, J., and Zhang, K.: Evaluation of the aerosol vertical distribution in global aerosol models through comparison against CALIOP measurements: AeroCom phase II results, *J. Geophys. Res.*, 121, 7254–7283, 10.1002/2015JD024639, 2016.](#)
- 30 Krinner, G., O. Boucher and Y. Balkanski.: Reduced glacial ice sheet extent in Northern Asia and Alaska owing to deposition of mineral dust on snow, *Geophys. Res. Lett.*, 10.1007/s00382-006-0159-z, 2006.

- Kristiansen, N. I., Stohl, A., Olivie, D. J. L., Croft, B., Søvde, O. A., Klein, H., Christoudias, T., Kunkel, D., Leadbetter, S. J., Lee, Y. H., Zhang, K., Tsigaridis, K., Bergman, T., Evangeliou, N., Wang, H., Ma, P. L., Easter, R. C., Rasch, P. J., Liu, X., Pitari, G., Di Genova, G., Zhao, S. Y., Balkanski, Y., Bauer, S. E., Faluvegi, G. S., Kokkola, H., Martin, R. V., Pierce, J. R., Schulz, M., Shindell, D., Tost, H., and Zhang, H.: Evaluation of observed and modelled aerosol lifetimes using radioactive tracers of opportunity and an ensemble of 19 global models, *Atmos. Chem. Phys.*, 16, 3525-3561, doi:10.5194/acp-16-3525-2016, 2016.
- Lamarque, J. F., Bond, T., Eyring, V., Granier, C., Heil, A., Klimont, Z., Lee, D., Liousse, C., Mieville, A., Owen, B., Schultz, M. G., Shindell, D., Smith, S. J., Stehfest, E., Van Aardenne, J., Cooper, O. R., Kainuma, M., Mahowald, N., McConnell, J. R., Naik, V., Riahi, K., and van Vuuren, D. P.: Historical (1850–2000) gridded anthropogenic and biomass burning emissions of reactive gases and aerosols: methodology and application, *Atmos. Chem. Phys.*, 10, 7017-7039, doi:10.5194/acp-10-7017-2010, 2010.
- Lamarque, J. F., Emmons, L. K., Hess, P. G., Kinnison, D. E., Tilmes, S., Vitt, F., Heald, C. L., Holland, E. A., Lauritzen, P. H., Neu, J., Orlando, J. J., Rasch, P. J., and Tyndall, G. K.: CAM-chem: description and evaluation of interactive atmospheric chemistry in the Community Earth System Model, *Geosci. Model Dev.*, 5, 369-411, 10.5194/gmd-5-369-2012, 2012.
- Lin, G., Penner, J. E., Sillman, S., Taraborrelli, D., and Lelieveld, J.: Global modeling of SOA formation from dicarbonyls, epoxides, organic nitrates and peroxides, *Atmos. Chem. Phys.*, 12, 4743-4774, doi:10.5194/acp-12-4743-2012, 2012.
- Liu, X., Easter, R. C., Ghan, S. J., Zaveri, R., Rasch, P., Shi, X., Lamarque, J. F., Gettelman, A., Morrison, H., Vitt, F., Conley, A., Park, S., Neale, R., Hannay, C., Ekman, A. M. L., Hess, P., Mahowald, N., Collins, W., Iacono, M. J., Bretherton, C. S., Flanner, M. G., and Mitchell, D.: Toward a minimal representation of aerosols in climate models: description and evaluation in the Community Atmosphere Model CAM5, *Geosci. Model Dev.*, 5, 709-739, doi:10.5194/gmd-5-709-2012, 2012.
- Liu, Z., Vaughan, M., Winker, D., Kittaka, C., Getzewich, B., Kuehn, R., Omar, A., Powell, K., Trepte, C., and Hostetler, C.: The CALIPSO Lidar Cloud and Aerosol Discrimination: Version 2 Algorithm and Initial Assessment of Performance, *Journal of Atmospheric and Oceanic Technology*, 26, 1198-1213, 10.1175/2009jtecha1229.1, 2009.
- Ma, P.-L.; P. J. Rasch, J. D. Fast, R. C. Easter, W. I. Gustafson, X. Liu, S. J. Ghan, B. Singh.: Assessing the CAM5 physics suite in the WRF-Chem model: Implementation, evaluation and resolution sensitivity. *Geosci. Model Develop.*, 7, 755–778, doi:10.5194/gmd-7-755-2014, 2014.
- McCormick, R. A., and Ludwig, J. H.: Climate Modification by Atmospheric Aerosols, *Science*, 156, 1358-1359, doi:10.1126/science.156.3780.1358, 1967.
- Myhre, G., Samset, B. H., Schulz, M., Balkanski, Y., Bauer, S., Bernsten, T. K., Bian, H., Bellouin, N., Chin, M., Diehl, T., Easter, R. C., Feichter, J., Ghan, S. J., Hauglustaine, D., Iversen, T., Kinne, S., Kirkevåg, A., Lamarque, J. F., Lin, G., Liu, X., Lund, M. T., Luo, G., Ma, X., van Noije, T., Penner, J. E., Rasch, P. J., Ruiz, A., Seland, Ø., Skeie, R. B., Stier, P., Takemura, T., Tsigaridis, K., Wang, P., Wang, Z., Xu, L., Yu, H., Yu, F., Yoon, J. H., Zhang, K., Zhang, H., and Zhou, C.: Radiative

- forcing of the direct aerosol effect from AeroCom Phase II simulations, *Atmos. Chem. Phys.*, 13, 1853-1877, doi:10.5194/acp-13-1853-2013, 2013.
- Navarro, J. C. A., Varma, V., Riipinen, I., Seland, Ø., Kirkevåg, A., Struthers, H., Iversen, T., Hansson, H. C., and Ekman, A. M. L.: Amplification of Arctic warming by past air pollution reductions in Europe, *Nature Geosci.*, 9, 277-281, doi:10.1038/ngeo2673, 2016.
- Nilsson, E. D., Rannik, Ü., Swietlicki, E., Leck, C., Aalto, P. P., Zhou, J., and Norman, M.: Turbulent aerosol fluxes over the Arctic Ocean: 2. Wind-driven sources from the sea, *J. Geophys. Res.*, 106, 32139-32154, doi:10.1029/2000JD900747, 2001.
- Pithan, F., and Mauritsen, T.: Arctic amplification dominated by temperature feedbacks in contemporary climate models, *Nature Geosci.*, 7, 181-184, doi:10.1038/ngeo2071, 2014.
- Quinn, P. K., Bates, T. S., Schulz, K., and Shaw, G. E.: Decadal trends in aerosol chemical composition at Barrow, Alaska: 1976–2008, *Atmos. Chem. Phys.*, 9, 8883-8888, doi:10.5194/acp-9-8883-2009, 2009.
- Remer, L. A., Kaufman, Y. J., Tanré, D., Mattoo, S., Chu, D. A., Martins, J. V., Li, R.-R., Ichoku, C., Levy, R. C., Kleidman, R. G., Eck, T. F., Vermote, E., and Holben, B. N.: The MODIS Aerosol Algorithm, Products, and Validation, *J. Atmos. Sci.*, 62, 947-973, doi:10.1175/JAS3385.1, 2005.
- Rignot, E., Bamber, J. L., van den Broeke, M. R., Davis, C., Li, Y., van de Berg, W. J., and van Meijgaard, E.: Recent Antarctic ice mass loss from radar interferometry and regional climate modelling, *Nature Geosci.*, 1, 106-110, doi:10.1038/ngeo102, 2008.
- Rogers, R. R., Vaughan, M. A., Hostetler, C. A., Burton, S. P., Ferrare, R. A., Young, S. A., Hair, J. W., Obland, M. D., Harper, D. B., Cook, A. L., and Winker, D. M.: Looking through the haze: evaluating the CALIPSO level 2 aerosol optical depth using airborne high spectral resolution lidar data, *Atmos. Meas. Tech.*, 7, 4317-4340, 10.5194/amt-7-4317-2014, 2014.
- Samset, B. H., and Myhre, G.: Climate response to externally mixed black carbon as a function of altitude, *J. Geophys. Res.*, 120, 2913-2927, doi:10.1002/2014JD022849, 2015.
- [Samset, B. H., Myhre, G., Schulz, M., Balkanski, Y., Bauer, S., Bernsten, T. K., Bian, H., Bellouin, N., Diehl, T., Easter, R. C., Ghan, S. J., Iversen, T., Kinne, S., Kirkevåg, A., Lamarque, J. F., Lin, G., Liu, X., Penner, J. E., Seland, Ø., Skeie, R. B., Stier, P., Takemura, T., Tsigaridis, K., and Zhang, K.: Black carbon vertical profiles strongly affect its radiative forcing uncertainty. *Atmos. Chem. Phys.*, 13, 2423-2434, 10.5194/acp-13-2423-2013, 2013.](#)
- Schulz, M., Textor, C., Kinne, S., Balkanski, Y., Bauer, S., Bernsten, T., Berglen, T., Boucher, O., Dentener, F., and Guibert, S.: Radiative forcing by aerosols as derived from the AeroCom present-day and pre-industrial simulations, *Atmos. Chem. Phys.*, 6, 5246, doi:10.5194/acp-6-5225-2006, 2006.
- Schutgens, N. A. J., Gryspeerdt, E., Weigum, N., Tsyro, S., Goto, D., Schulz, M., and Stier, P.: Will a perfect model agree with perfect observations? The impact of spatial sampling, *Atmos. Chem. Phys.*, 16, 6335-6353, 10.5194/acp-16-6335-2016, 2016a.

- Schutgens, N. A. J., Partridge, D. G., and Stier, P.: The importance of temporal collocation for the evaluation of aerosol models with observations, *Atmos. Chem. Phys.*, 16, 1065-1079, [10.5194/acp-16-1065-2016](https://doi.org/10.5194/acp-16-1065-2016), 2016b.
- Screen, J. A., and Simmonds, I.: The central role of diminishing sea ice in recent Arctic temperature amplification, *Nature*, 464, 1334-1337, [doi:10.1038/nature09051](https://doi.org/10.1038/nature09051), 2010.
- 5 Serreze, M. C., and P. Barrett.: The summer cyclone maximum over the Central Arctic Ocean, *J. Clim.*, 21, 1048-1065, [doi:10.1175/2007JCLI1810.1](https://doi.org/10.1175/2007JCLI1810.1), 2008.
- Shindell, D. T., Chin, M., Dentener, F., Doherty, R. M., Faluvegi, G., Fiore, A. M., Hess, P., Koch, D. M., MacKenzie, I. A., Sanderson, M. G., Schultz, M. G., Schulz, M., Stevenson, D. S., Teich, H., Textor, C., Wild, O., Bergmann, D. J., Bey, I., Bian, H., Cuvelier, C., Duncan, B. N., Folberth, G., Horowitz, L. W., Jonson, J., Kaminski, J. W., Marmer, E., Park, R., Pringle,
- 10 K. J., Schroeder, S., Szopa, S., Takemura, T., Zeng, G., Keating, T. J., and Zuber, A.: A multi-model assessment of pollution transport to the Arctic, *Atmos. Chem. Phys.*, 8, 5353-5372, [doi:10.5194/acp-8-5353-2008](https://doi.org/10.5194/acp-8-5353-2008), 2008.
- Shindell, D., and Faluvegi, G.: Climate response to regional radiative forcing during the twentieth century, *Nat. Geosci.*, 2, 294-300, [doi:10.1038/ngeo473](https://doi.org/10.1038/ngeo473), 2009.
- Skeie, R. B., Berntsen, T., Myhre, G., Pedersen, C. A., Ström, J., Gerland, S., and Ogren, J. A.: Black carbon in the atmosphere and snow, from pre-industrial times until present, *Atmos. Chem. Phys.*, 11, 6809-6836, [doi:10.5194/acp-11-6809-2011](https://doi.org/10.5194/acp-11-6809-2011), 2011.
- 25 Stier, P., Feichter, J., Kinne, S., Kloster, S., Vignati, E., Wilson, J., Ganzeveld, L., Tegen, I., Werner, M., Balkanski, Y., Schulz, M., Boucher, O., Minikin, A., and Petzold, A.: The aerosol-climate model ECHAM5-HAM, *Atmos. Chem. Phys.*, 5, 1125-1156, [doi:10.5194/acp-5-1125-2005](https://doi.org/10.5194/acp-5-1125-2005), 2005.
- Stier, P., Schutgens, N. A. J., Bellouin, N., Bian, H., Boucher, O., Chin, M., Ghan, S., Huneeus, N., Kinne, S., Lin, G., Ma,
- 20 X., Myhre, G., Penner, J. E., Randles, C. A., Samset, B., Schulz, M., Takemura, T., Yu, F., Yu, H., and Zhou, C.: Host model uncertainties in aerosol radiative forcing estimates: results from the AeroCom Prescribed intercomparison study, *Atmos. Chem. Phys.*, 13, 3245-3270, [doi:10.5194/acp-13-3245-2013](https://doi.org/10.5194/acp-13-3245-2013), 2013.
- Stohl, A.: Characteristics of atmospheric transport into the Arctic troposphere, *J. Geophys. Res.*, 111, D11306, [doi:10.1029/2005JD006888](https://doi.org/10.1029/2005JD006888), 2006.
- 25 Stohl, A., Klimont, Z., Eckhardt, S., Kupiainen, K., Shevchenko, V. P., Kopeikin, V. M., and Novigatsky, A. N.: Black carbon in the Arctic: the underestimated role of gas flaring and residential combustion emissions, *Atmos. Chem. Phys.*, 13, 8833-8855, [doi:10.5194/acp-13-8833-2013](https://doi.org/10.5194/acp-13-8833-2013), 2013.
- [Stohl, A., and Sodemann, H., Characteristics of atmospheric transport into the Antarctic troposphere, *J. Geophys. Res.*, 115, D02305, doi:10.1029/2009JD012536, 2010.](https://doi.org/10.1029/2009JD012536)
- 30 Stone, R., Sharma, S., Herber, A., Eleftheriadis, K., and Nelson, D.: A characterization of Arctic aerosols on the basis of aerosol optical depth and black carbon measurements, *Elem.: Sci. Anthropocene*, 2, [doi:10.12952/journal.elementa.000027](https://doi.org/10.12952/journal.elementa.000027), 2014.

- Szopa, S., Balkanski, Y., Schulz, M., Bekki, S., Cugnet, D., Fortems-Cheiney, A., Turquety, S., Cozic, A., Déandreis, C., Hauglustaine, D., Idelkadi, A., Lathièrre, J., Lefevre, F., Marchand, M., Vuolo, R., Yan, N., and Dufresne, J. L.: Aerosol and ozone changes as forcing for climate evolution between 1850 and 2100, *Clim. Dynam.*, 40, 2223-2250, doi:10.1007/s00382-012-1408-y, 2013.
- 5 Takemura, T., Nozawa, T., Emori, S., Nakajima, T. Y., and Nakajima, T.: Simulation of climate response to aerosol direct and indirect effects with aerosol transport-radiation model, *J. Geophys. Res.*, 110, D02202, 10.1029/2004JD005029, 2005.
- Textor, C., Schulz, M., Guibert, S., Kinne, S., Balkanski, Y., Bauer, S., Bernsten, T., Berglen, T., Boucher, O., Chin, M., Dentener, F., Diehl, T., Easter, R., Feichter, H., Fillmore, D., Ghan, S., Ginoux, P., Gong, S., Grini, A., Hendricks, J., Horowitz, L., Huang, P., Isaksen, I., Iversen, I., Kloster, S., Koch, D., Kirkevåg, A., Kristjansson, J. E., Krol, M., Lauer, A., Lamarque, J. F., Liu, X., Montanaro, V., Myhre, G., Penner, J., Pitari, G., Reddy, S., Seland, Ø., Stier, P., Takemura, T., and Tie, X.: Analysis and quantification of the diversities of aerosol life cycles within AeroCom, *Atmos. Chem. Phys.*, 6, 1777-1813, doi:10.5194/acp-6-1777-2006, 2006.
- 10 Tomasi, C., Vitale, V., Lupi, A., Di Carmine, C., Campanelli, M., Herber, A., Treffeisen, R., Stone, R. S., Andrews, E., Sharma, S., Radionov, V., von Hoyningen-Huene, W., Stebel, K., Hansen, G. H., Myhre, C. L., Wehrli, C., Aaltonen, V., Lihavainen, H., Virkkula, A., Hillamo, R., Ström, J., Toledano, C., Cachorro, V. E., Ortiz, P., de Frutos, A. M., Blindheim, S., Frioud, M., Gausa, M., Zielinski, T., Petelski, T., and Yamanouchi, T.: Aerosols in polar regions: A historical overview based on optical depth and in situ observations, *J. Geophys. Res.*, 112, D16205, 10.1029/2007JD008432, 2007.
- 15 Tomasi, C., Kokhanovsky, A. A., Lupi, A., Ritter, C., Smirnov, A., O'Neill, N. T., Stone, R. S., Holben, B. N., Nyeki, S., Wehrli, C., Stohl, A., Mazzola, M., Lanconelli, C., Vitale, V., Stebel, K., Aaltonen, V., de Leeuw, G., Rodriguez, E., Herber, A. B., Radionov, V. F., Zielinski, T., Petelski, T., Sakerin, S. M., Kabanov, D. M., Xue, Y., Mei, L., Istomina, L., Wagener, R., McArthur, B., Sobolewski, P. S., Kivi, R., Courcoux, Y., Larouche, P., Broccardo, S., and Piketh, S. J.: Aerosol remote sensing in polar regions, *Earth-Science Reviews*, 140, 108-157, doi:10.1016/j.earscirev.2014.11.001, 2015.
- 20 Tsigaridis, K., Daskalakis, N., Kanakidou, M., Adams, P. J., Artaxo, P., Bahadur, R., Balkanski, Y., Bauer, S. E., Bellouin, N., Benedetti, A., Bergman, T., Bernsten, T. K., Beukes, J. P., Bian, H., Carslaw, K. S., Chin, M., Curci, G., Diehl, T., Easter, R. C., Ghan, S. J., Gong, S. L., Hodzic, A., Hoyle, C. R., Iversen, T., Jathar, S., Jimenez, J. L., Kaiser, J. W., Kirkevåg, A., Koch, D., Kokkola, H., Lee, Y. H., Lin, G., Liu, X., Luo, G., Ma, X., Mann, G. W., Mihalopoulos, N., Morcrette, J. J., Müller, J. F., Myhre, G., Myriokefalitakis, S., Ng, N. L., O'Donnell, D., Penner, J. E., Pozzoli, L., Pringle, K. J., Russell, L. M., Schulz, M., Sciare, J., Seland, Ø., Shindell, D. T., Sillman, S., Skeie, R. B., Spracklen, D., Stavrou, T., Steenrod, S. D., Takemura, T., Tiitta, P., Tilmes, S., Tost, H., van Noije, T., van Zyl, P. G., von Salzen, K., Yu, F., Wang, Z., Wang, Z., Zaveri, R. A., Zhang, H., Zhang, K., Zhang, Q., and Zhang, X.: The AeroCom evaluation and intercomparison of organic aerosol in global models, *Atmos. Chem. Phys.*, 14, 10845-10895, doi:10.5194/acp-14-10845-2014, 2014.
- 30

- Twomey, S.: The influence of pollution on the shortwave albedo of clouds, *J. Atmos. Sci.*, 34, 1149-1152, 10.1175/1520-0469(1977)034<1149:TIOPOP>2.0.CO;2, 1977.
- Vignati, E., Wilson, J., and Stier, P.: M7: An efficient size-resolved aerosol microphysics module for large-scale aerosol transport models, *J. Geophys. Res.*, 109, D22202, doi:10.1029/2003JD004485, 2004.
- 5 Wang, H., R. C. Easter, P. J. Rasch, M. Wang, X. Liu, S. J. Ghan, Y. Qian, J.-H. Yoon, P.-L. Ma, and V. Velu.: Sensitivity of remote aerosol distributions to representation of cloud-aerosol interactions in a global climate model. *Geosci. Model Develop.*, 6, 765-782, doi:10.5194/gmd-6-765-2013, 2013.
- Winker, D. M., Vaughan, M. A., Omar, A., Hu, Y. X., Powell, K. A., Liu, Z. Y., Hunt, W. H., and Young, S. A.: Overview of the CALIPSO mission and CALIOP data processing algorithms, *J. Atmos. Ocean. Tech.*, 26, 2310–2323, 10 doi:10.1175/2009jtecha1281.1, 2009.
- Winker, D. M., Tackett, J. L., Getzewich, B. J., Liu, Z., Vaughan, M. A., and Rogers, R. R.: The global 3-D distribution of tropospheric aerosols as characterized by CALIOP, *Atmos. Chem. Phys.*, 13, 3345–3361, doi:10.5194/acp-13-3345-2013, 2013.
- Yang, Q., Bitz, C. M., and Doherty, S. J.: Offsetting effects of aerosols on Arctic and global climate in the late 20th century, 15 *Atmos. Chem. Phys.*, 14, 3969-3975, doi:10.5194/acp-14-3969-2014, 2014.
- Yu, F.: A secondary organic aerosol formation model considering successive oxidation aging and kinetic condensation of organic compounds: global scale implications, *Atmos. Chem. Phys.*, 11, 1083-1099, doi:10.5194/acp-11-1083-2011, 2011.
- Zhang, H., Wang, Z., Wang, Z., Liu, Q., Gong, S., Zhang, X., Shen, Z., Lu, P., Wei, X., Che, H., and Li, L.: Simulation of direct radiative forcing of aerosols and their effects on East Asian climate using an interactive AGCM-aerosol coupled system, 20 *Clim. Dynam.*, 38, 1675-1693, doi:10.1007/s00382-011-1131-0, 2012a.
- Zhang, K., O'Donnell, D., Kazil, J., Stier, P., Kinne, S., Lohmann, U., Ferrachat, S., Croft, B., Quaas, J., Wan, H., Rast, S., and Feichter, J.: The global aerosol-climate model ECHAM-HAM, version 2: sensitivity to improvements in process representations, *Atmos. Chem. Phys.*, 12, 8911-8949, doi:10.5194/acp-12-8911-2012, 2012b.
- Zhou, C., J. E. Penner, M. G. Flanner, M. M. Bisiaux, R. Edwards, J. R. McConnell.: Transport of black carbon to polar 25 regions: Sensitivity and forcing by black carbon, *Geophys. Res. Lett.*, 39, L22804, doi:10.1029/2012GL053388, 2012.
- Ødemark, K., Dalsøren, S. B., Samset, B. H., Berntsen, T. K., Fuglestad, J. S., and Myhre, G.: Short-lived climate forcers from current shipping and petroleum activities in the Arctic, *Atmos. Chem. Phys.*, 12, 1979-1993, doi:10.5194/acp-12-1979-2012, 2012.

Table 1: List of the models used in this study and which species they have reported.

	Aerosol Optical Depth								Direct Aerosol Effect						
	Total	Sulfate	BC	OA	SOA	Nitrate	Dust	Sea-salt	Total	Sulfate	BC FF	OA FF	BB	SOA	Nitrate
CAM4-Oslo	X	x	x	x			x	x	x						
HadGEM2	X	x	x	x	x	x	x	x	x	x	x	x	x		x
ECHAM5-HAM	X	x	x		x		x	x	x	x	x	x	x	x	
OsloCTM2	X	x	x	x	x	x	x	x	x	x	x	x	x	x	x
SPRINTARS	X	x	x	x	x		x	x	x	x	x	x	x		
GISS-MATRIX	X								x	x	x	x			
GISS-modeIE	X	x	x	x	x		x	x	x	x	x	x	x		
CAM5.1	X	x	x	x	x		x	x	x	x	x	x	x	x	
BCC	X	x	x	x					x	x	x	x	x		
GMI-MERRA-v3	X	x	x	x		x		x	x	x	x	x	x		x
GEOS-Chem	X						x	x	x	x	x	x	x	x	x
GOCART-v4	X	x	x	x			x	x	x	x	x	x	x		
NCAR-CAM3.5	X								x	x	x	x	x		x
IMPACT	X								x	x	x	x	x	x	
INCA	X	x	x	x			x	x	x	x	x	x	x		x
TMS-V3	X	x	x	x		x	x	x	x						

Table 2: List of the Arctic and Antarctic stations with ground-based measurements of AOD. Data for Tiksi, Andenes, Yakutsk, Bonanza Creek, Resolute Bay, and Kangerlussuaq are taken from the AERONET data base (<http://aeronet.gsfc.nasa.gov/>) and data from Ny Ålesund, Barrow and Alert are from Stone et al. (2014) and Tomasi et al. (2015).

Stations	Coordinates and altitude (amsl)	Measurement period
Tiksi	N 71°, E 128°, Alt 0 m	2010-2012, 2014
Andenes	N 69°, E 16°, Alt 379 m	2002, 2008-2011, 2013, 2014
Yakutsk	N 61°, E 129°, Alt 118 m	2004-2015
Bonanza Creek	N 64°, W 148°, Alt 150 m	1994- 1997, 1999-2015
Resolute_Bay	N 74°, W 94°, Alt 40 m	2004, 2006, 2008-2015
Kangerlussuaq	N 66°, W 50°, Alt 320 m	2008-2015
Ny Ålesund	N 78°, E 11°, Alt 5 m	2001-2011

Deleted: 4

Barrow	N 71°, W 156°, Alt 8 m	2001-2011
Alert	N 82°, W 62°, Alt 210 m	2004-2011
Neumeyer	S 70°, W 8°, Alt 40 m	2000-2007
Troll	S 72°, E 2°, Alt 1309 m	2007-2013
South Pole	S 90°, E 0°, Alt 2835 m	2001-2012

Table 3: Annual mean Arctic (60° N - 90° N) AOD AeroCom Phase II model-median, model range (minimum and maximum), and the 25th/75th percentile. The number of models for each species is given in the rightmost column. BC is total BC from all sources and OA is total OA from all sources.

	Median	Minimum	Maximum	25 th percentile	75 th percentile	Number of models
Total	0.071	0.025	0.183	0.031	0.121	16
Sulfate	0.032	0.003	0.068	0.009	0.044	12
BC	0.002	0.000	0.004	0.001	0.003	12
OA	0.014	0.001	0.072	0.006	0.017	11
SOA	0.004	0.001	0.012	0.002	0.007	6
Nitrate	0.001	0.000	0.011	0.000	0.003	4
Sea-salt	0.013	0.001	0.054	0.007	0.018	12
Dust	0.008	0.001	0.035	0.003	0.014	11

Table 4: As Table 3, but averaged over the Antarctic region (70° S - 90° S).

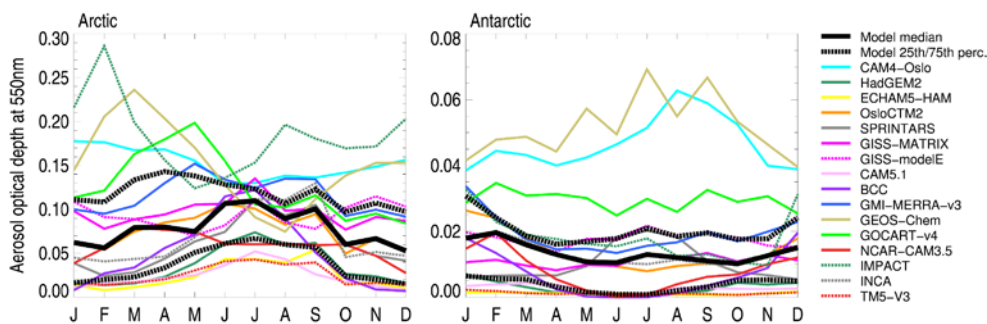
	Median	Minimum	Maximum	25 th percentile	75 th percentile	Number of models
Total	0.014	0.001	0.052	0.003	0.019	16
Sulfate	0.007	0.000	0.014	0.000	0.009	12
BC	0.000	0.000	0.001	0.000	0.000	12
OA	0.001	0.000	0.020	0.000	0.002	11
SOA	0.001	0.000	0.003	0.000	0.001	6
Nitrate	0.000	0.000	0.002	0.000	0.000	4
Sea-salt	0.002	0.000	0.032	0.001	0.011	12
Dust	0.001	0.000	0.002	0.000	0.002	11

Table 5: Annual mean Arctic (60° N - 90° N) DAE AeroCom Phase II model-median, model range (minimum and maximum), and the 25th/75th percentile. The number of models for each species is given in the rightmost column. BC FF is BC from fossil fuel and biofuel emissions and OA FF is OA from fossil fuel and biofuel emissions. BB is BC and AO combined from biomass burning emissions.

	Median	Minimum	Maximum	25 th percentile	75 th percentile	Number of models
Total	-0.12	-0.30	0.09	-0.22	0.01	16
Sulfate	-0.24	-0.43	0.01	-0.29	-0.11	14
BC FF	0.19	0.03	0.37	0.12	0.26	14
OA FF	0.00	-0.04	0.02	-0.02	0.00	14
BB	0.01	-0.06	0.04	-0.02	0.02	13
SOA	-0.01	-0.12	0.01	-0.02	0.00	5
Nitrate	-0.03	-0.09	0.00	-0.06	-0.01	6

Table 6: As Table 5, but averaged over the Antarctic region (70° S - 90° S).

	Median	Minimum	Maximum	25 th percentile	75 th percentile	Number of models
Total	0.03	0.00	0.10	0.01	0.07	16
Sulfate	0.00	-0.03	0.00	-0.01	0.00	14
BC FF	0.02	0.00	0.09	0.01	0.04	14
OA FF	0.00	0.00	0.01	0.00	0.00	14
BB	0.01	-0.01	0.08	0.00	0.02	13
SOA	0.00	0.00	0.01	0.00	0.00	5
Nitrate	0.00	0.00	0.03	0.00	0.00	6



5 Figure 1: Mean seasonal cycle of the Arctic (60° N - 90° N) (left) and Antarctic (70° S - 90° S) right) total AOD. The different colours represent the different AeroCom Phase II models. The black solid line is the model-median and the dashed line is the 25th/75th percentile.

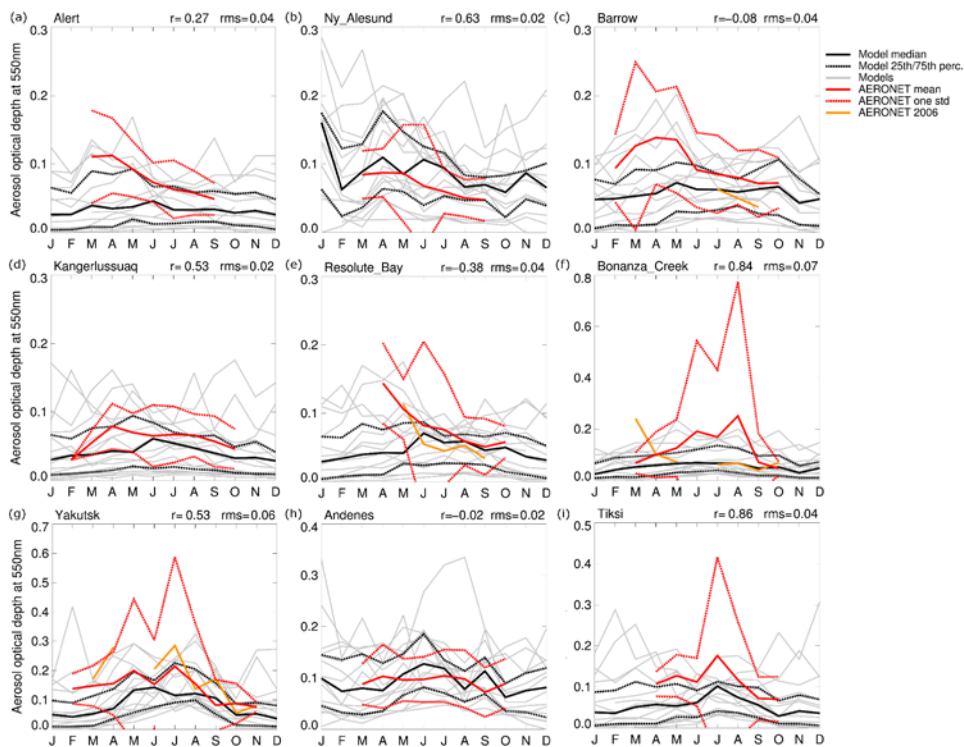


Figure 2: Seasonal cycle of model-median AOD compared to observations for nine Arctic stations; (a) Alert (82° N, 62° W), (b) Ny-Ålesund (78° N, 11° E), (c) Barrow (71° N, 156° W) (d) Kangerlussuaq (66° N, 50° W) (e) Resolute Bay (74° N, 94° W) (f) Bonanza Creek (64° N, 148° W), (g) Yakutsk (61° N, 129° E), (h) Andenes (69° N, 16° E), and (i) Tiksi (71° N, 128° E). The black solid line is the model-median and the black dashed line is the 25th/75th percentile. Models are shown in thin, grey lines. The red solid line is the observational mean and the dashed red line is one standard deviation from mean values. Measurements for (a) – (c) are taken Stone et al. (2014), (d)–(i) are from AERONET stations. Yellow lines are AOD measurements for year 2006 (only available at a few stations).

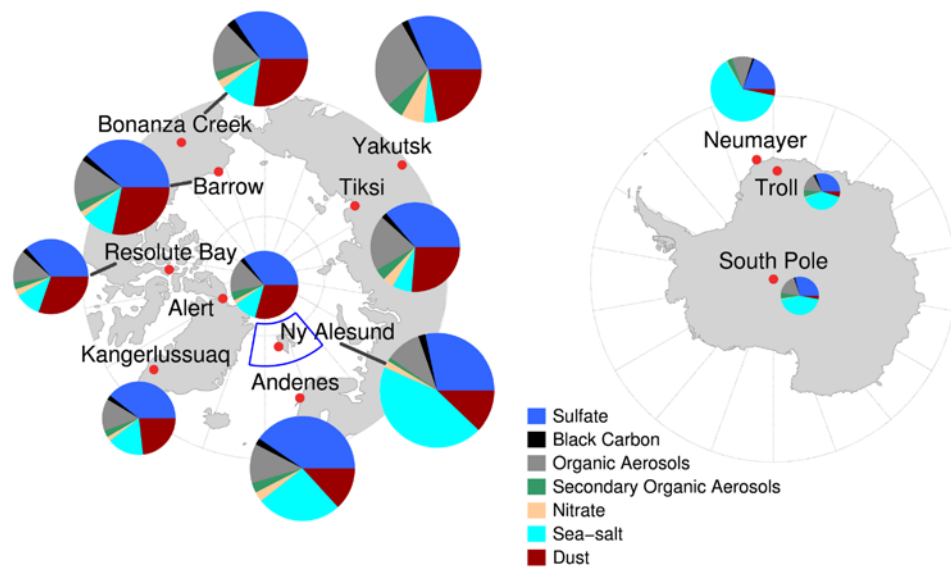


Figure 3: The locations of the stations (red dots) with AOD measurements used in this study and the MODIS area (blue square). The circles show the modelled AOD species MAM average for each station. The area of the circles is scaled to the model median total AOD.

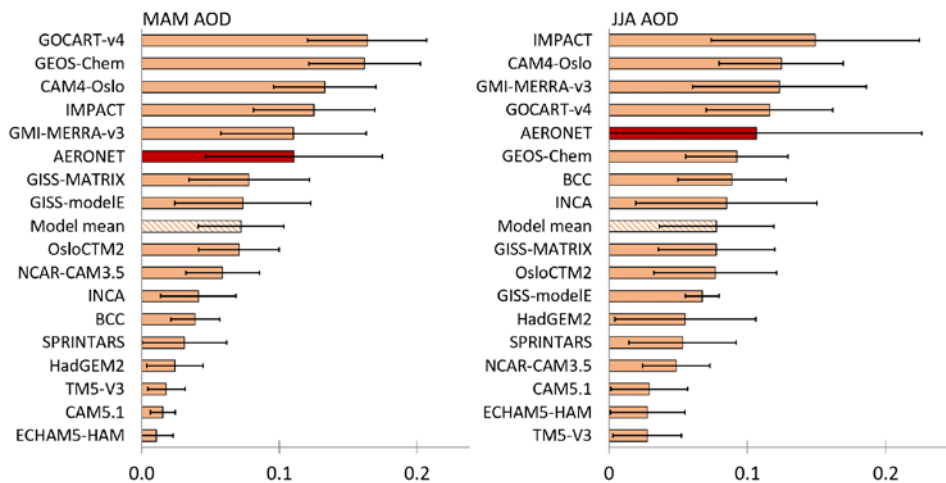


Figure 4: Multi-model AOD averaged for the spring (MAM) and summer (JJA) for the 9 Arctic AERONET stations in Fig. 2 (details Table 2). The red bar is the average observation over the 9 stations and the striped bar is the multi-model average. The error bars represent one standard deviation.

Deleted: 3

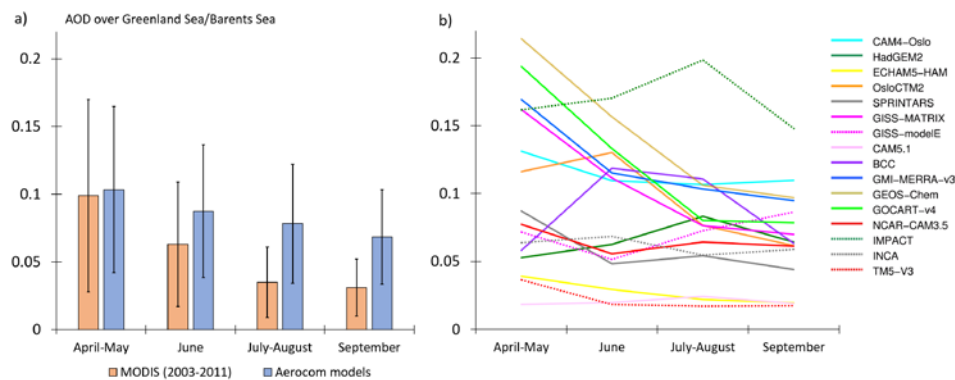


Figure 5: AOD over the Arctic Ocean (75° N - 82° N, 10° W - 40° E) from a) MODIS retrieval 2003-2011 median (orange) compared to the AeroCom phase II model mean (blue) and b) the individual models. The error bars in a) represent one standard deviation.

Deleted: 4

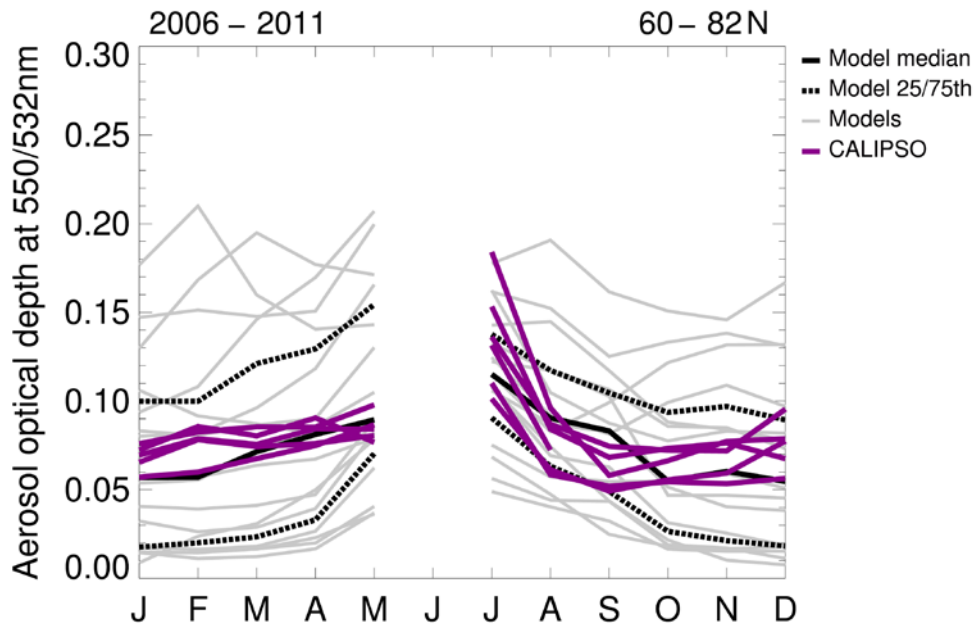


Figure 6: AOD in the Arctic ($60^{\circ}\text{ N} - 82^{\circ}\text{ N}$) from CALIPSO retrieval for the different years 2006-2011 (AOD_{532nm}) (purple lines) compared to the AeroCom phase II models (thin grey lines) screened by CALIOP availability.

Deleted: Note the different axes.

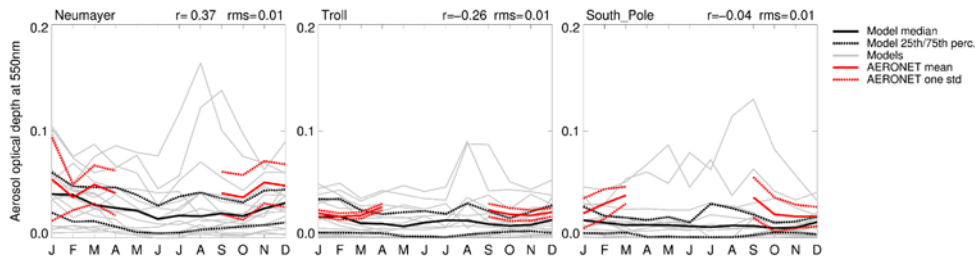


Figure 7: As Fig. 2, but for three Antarctic sites: Neumayer $70^{\circ}\text{ S}, 8^{\circ}\text{ W}$ (left), Troll $72^{\circ}\text{ S}, 2^{\circ}\text{ E}$ (middle), and South Pole $90^{\circ}\text{ S}, 0^{\circ}\text{ E}$ (right), with values from Tomasi et al. (2015).

Deleted: 5

Deleted: 6

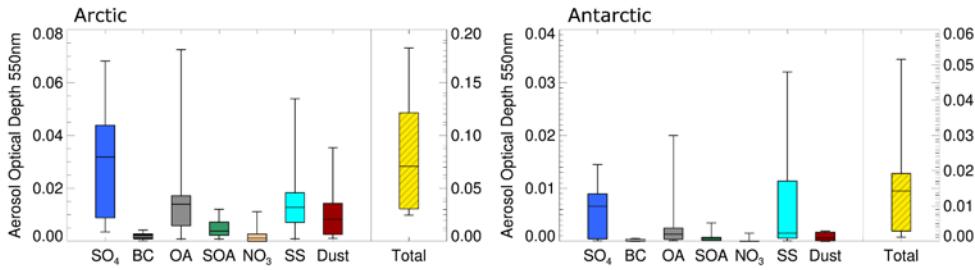


Figure 8: Annual mean multi-model median AOD for the individual components (sulfate, BC (from all sources), total OA (from all sources), SOA, nitrate, sea-salt, and dust) and the total aerosol, averaged over the Arctic (60° N - 90° N) (left) and the Antarctic (70° S - 90° S) (right). The bottom and top of each box are the first and third (25^{th} / 75^{th}) quartiles, and the band inside the box is the model-median. The whiskers represent the minimum and maximum of the model range. Note the different vertical axis; the right-side vertical axis is for total AOD.

Deleted: 7

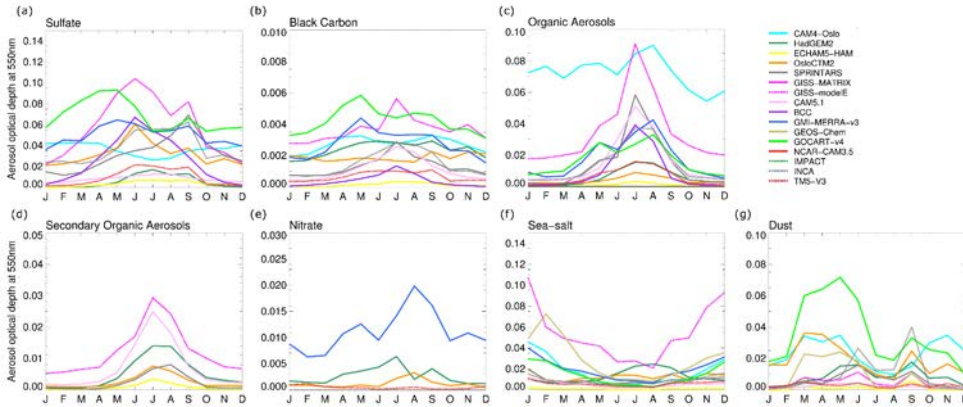


Figure 9: Seasonal cycle multi-model Arctic AOD for (a) sulfate, (b) BC (from all sources), (c) total OA (from all sources), (d) SOA, (e) nitrate, (f) sea-salt, and (g) dust. The Arctic region is defined as 60° N - 90° N. Note the different axes.

Deleted: 8

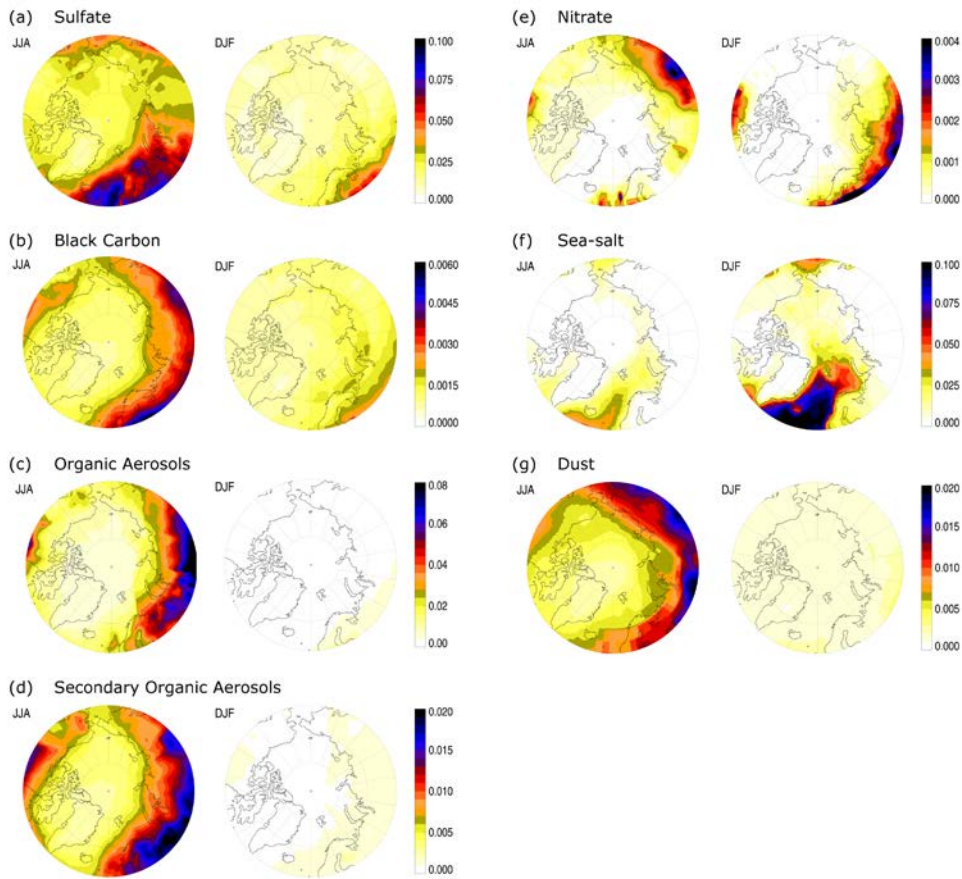


Figure 10: The geographical distributed model-median Arctic AOD (a) sulfate, (b) BC (from all sources), (c) total OA (from all sources), (d) SOA, (e) nitrate, (f) sea-salt, and (g) dust, for the summer (JJA) season (left) and the winter (DJF) season (right). Note the different axes.

Deleted: 9

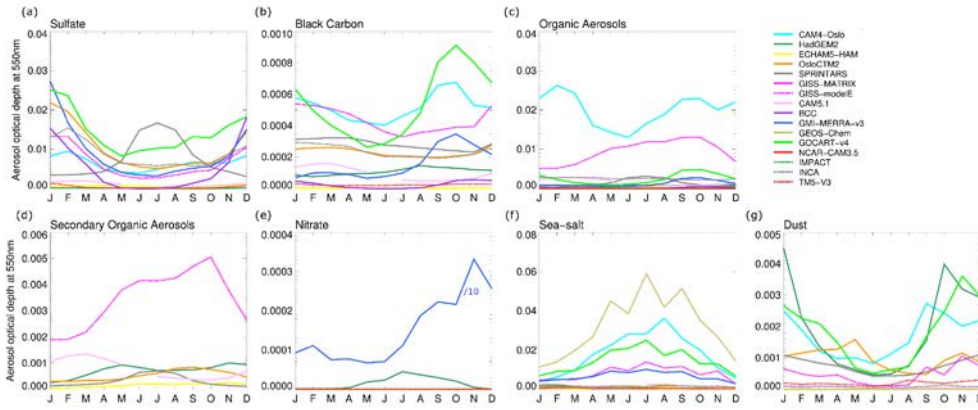


Figure 11: Multi-model seasonal cycle Antarctic mean (70° S - 90° S) AOD for the individual components (a) sulfate, (b) BC (from all sources), (c) total OA (from all sources), (d) SOA, (e) nitrate, (f) sea-salt and (g) dust. Note the different axes.

Deleted: 0

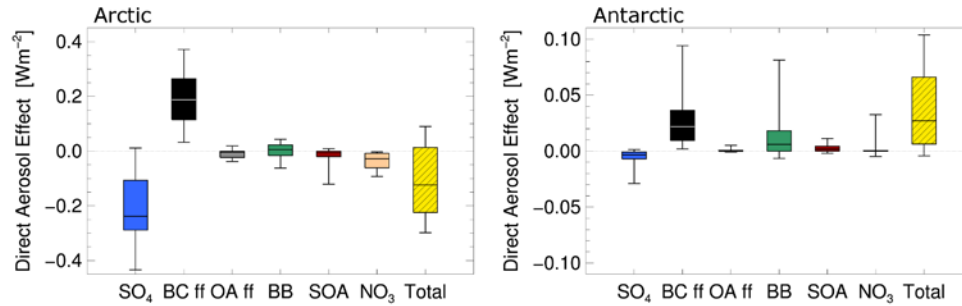


Figure 12: Annual mean multi-model DAE (in $W m^{-2}$) averaged over the Arctic (60° N - 90° N) (left) and the Antarctic (70° S - 90° S) (right), for the individual components (sulfate, BC FF, OA FF, BB, SOA, and nitrate) and the total aerosol. The bottom and top of each box are the first and third (25th/75th) quartiles, and the band inside the box is the model-median. The whiskers represent the minimum and maximum of the model range. Note the different vertical axis.

Deleted: 1

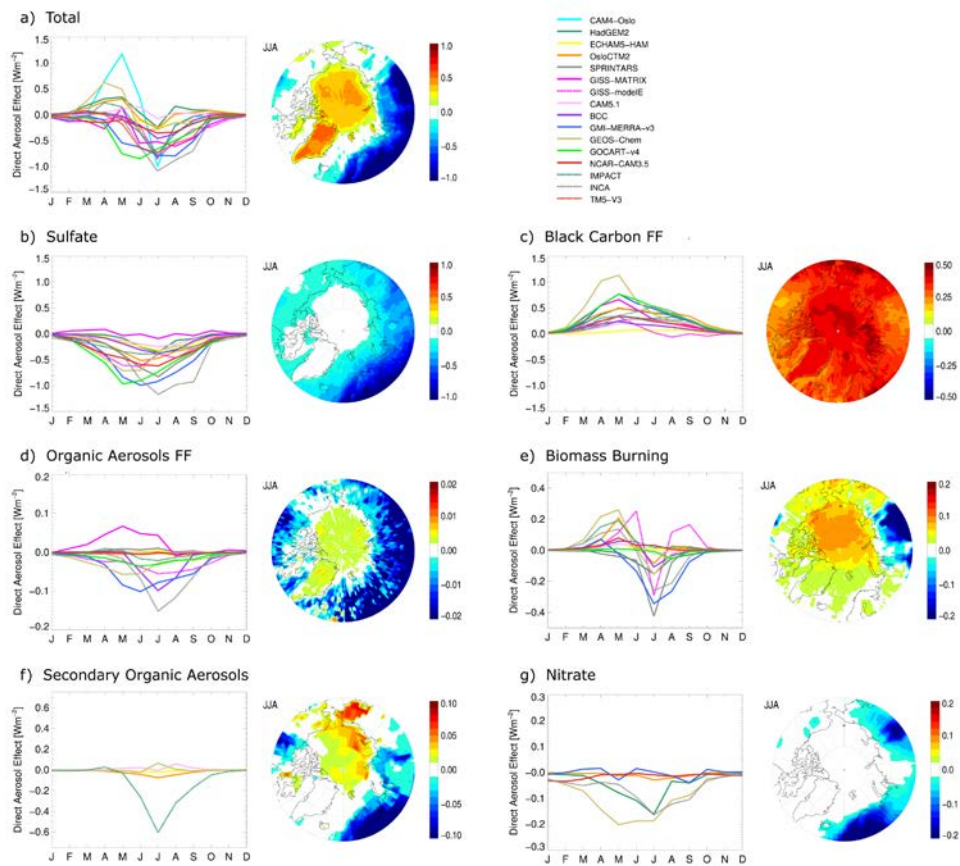


Figure 13: Arctic mean DAE seasonal cycle and the summer (JJA) mean model-median geographical distribution of (a) total aerosol, (b) sulfate, (c) BC FF, (d) OA FF, (e) BB, (f) SOA, and (g) nitrate. Note the different axes.

Deleted: 2

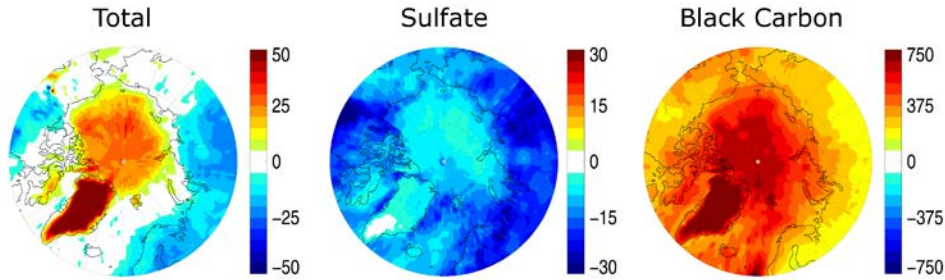


Figure 14: JJA mean model-median normalized DAE, i.e. total DAE (in W m^{-2}) per total AOD (left), sulfate DAE per sulfate AOD (middle) and BC FF DAE per BC AOD (right). Note the different axes.

Deleted: 3

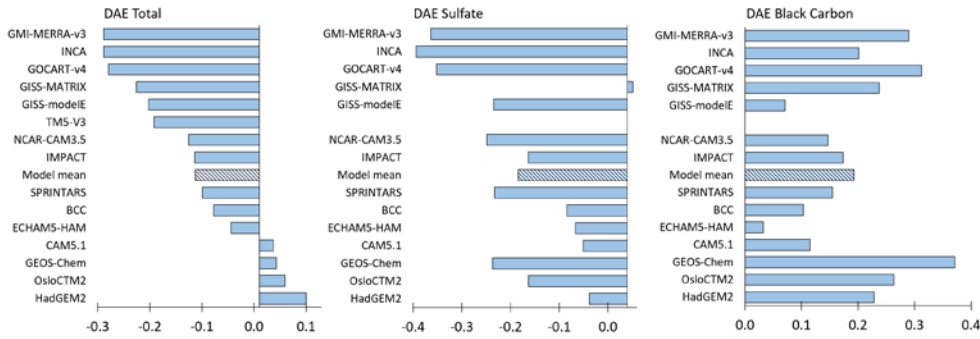


Figure 15: Arctic annual mean DAE (in W m^{-2}) for the AeroCom phase II models, total (left), sulfate (middle), BC FF (right). The striped bar is the model mean. TMS-V3 have reported total only.

Deleted: 4

Deleted: TOTAL

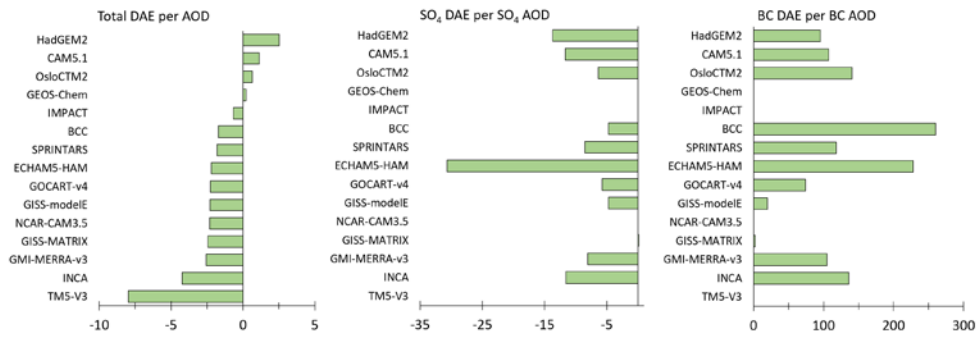
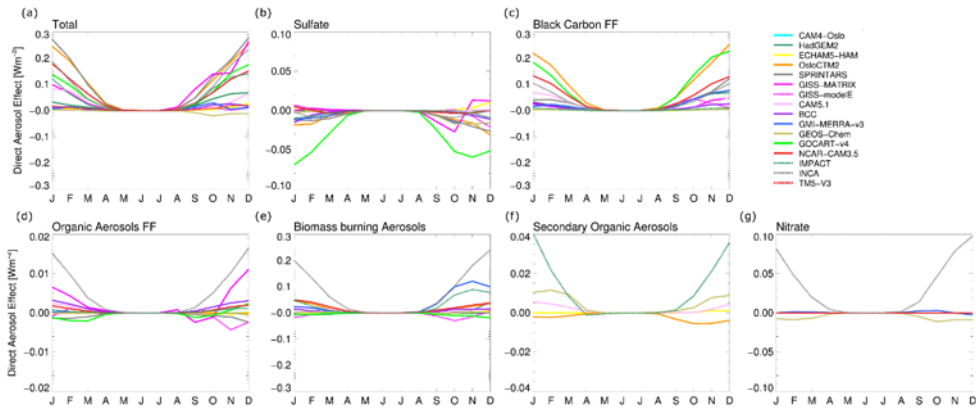


Figure 16: Arctic annual mean DAE per AOD for all AeroCom phase II models, total (left), sulfate (middle), and BC FF (right). Values for sulfate and BC is missing for GEOS-Chem, IMPACT, NCAR-CAM3.5, and TMS (see Table 1).

Deleted: 5

Deleted: TOTAL



5 Figure 17: Antarctic mean (70° S - 90° S) seasonal cycle of (a) the total DAE and the DAE for (b) sulfate, (c) BC FF, (d) OA FF, (e) BB, (f) SOA, and (g) nitrate. Note the different axes.

Deleted: 6

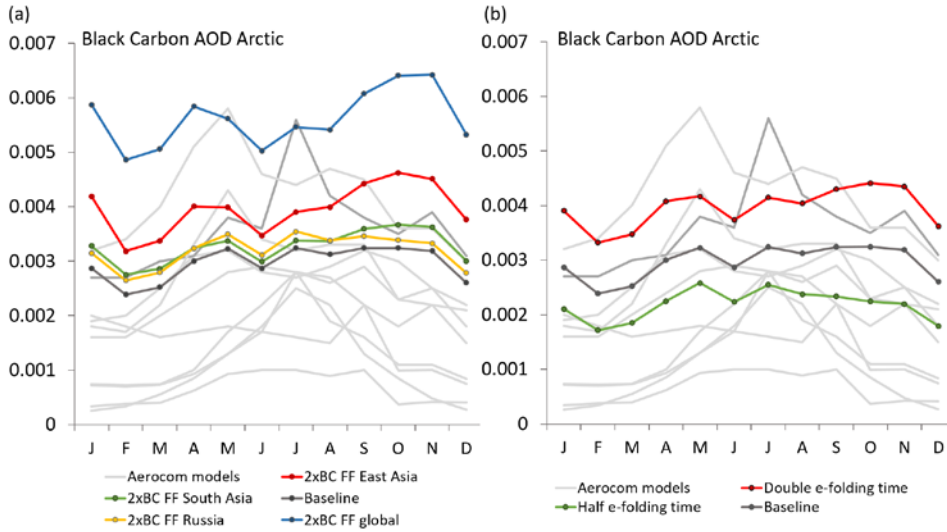


Figure 18: Arctic mean seasonal cycle of (total) BC AOD for simulations with GISS modelE (in colors) compared to the AeroCom models (in light grey). The left panel shows the experiment with doubling the emissions, while the right panel shows the effect of changing the e-folding lifetime. The darker grey AeroCom model is the GISS modelE AeroCom run. (a) shows emission perturbations for a doubling of BC emissions (fossil fuel and biofuel) in South Asia (green), East Asia (red), Russia (yellow), and global (blue). (b) shows double (red) and half (green) of the e-folding time from hydrophobic to hydrophilic BC.

Deleted: 7

Table S1: Model description

Model	Resolution	Meteorology	Mixing assumption, size distribution, and humidity growth factor
CAM4-Oslo	2.5°×1.8°, 26 levels	GCM-generated	Internal vs. external mixing is determined on growth mechanism: coagulation, condensation, and cloud processing gives internal mixing with pre-existing particle. Maxwell-Garnett mixing for absorbing and transparent constituents, otherwise volume mixing. For internally mixed aerosols growth factor calculated from Kohler theory, taking hygroscopicity of each mixed constituent into account
HadGEM2	1.8°×1.2°, 38 levels	Nudged to ERA Interim data	External mixing. Size distributions prescribed for each aerosol component. Aitken, accumulation, coarse, and dissolved modes. Size distributions assumed lognormal for interaction with radiation. Hygroscopic growth is parametrized as a function of RH following Fitzgerald (1975)
ECHAM5-HAM	1.8°×1.8°, 31 levels	Nudged to ECMWF analysis	4 of total 7 modes are internally mixed; volume weighted mixing of refractive indices. Internal mixing for aerosol compositions within each mode, while external mixing is assumed among different aerosol modes. The humidity growth is based on Kappa-Koehler theory
OsloCTM2	2.8°×2.8°, 60 levels	ECMWF reanalysis	8 bin sizes for SS and dust, log-normal size distributions in calculations of optical properties Hydrophilic BC is internal mixed; core shell type of mixing and an increase in absorption by 50%. The humidity growth is parameterized based on Fitzgerald (1975)
SPRINTARS	1.1°×1.1°, 56 levels	Nudged to NCEP/NCAR reanalysis	6 bins for dust, 4 bins for sea salt, 1 bin for sulfate, BC, and OA, with log-normal size distributions and particle growth as a function of relative humidity; 50% BC FF internally BC from other sources are internally mixed with POM. Other aerosols are externally mixed. The growth factors are according to Tang and Munkelwitz (1994) for sulfate, and Hobbs et al. (1997) for carbonaceous particles
GISS-MATRIX	2.5°×2.0°, 40 levels	Nudged to NCEP winds	Mixing state is taken into consideration. Particles including BC have core shell structure; other particles use volume mixing approach. The size is prognostic and the mixing state assumption follows the population definitions in Bauer et al. (2008). Uptake of water calculated following the thermodynamical model EQSAM and for SS using the Lewis parameterization (Lewis and Schwartz 2004)
GISS-modelE	2.5°×2.0°, 40 levels	Nudged to NCEP winds	Aerosol are externally mixed. Size distributions are prescribed. Sea salt, nitrate and sulfate get humidified following Lacis and Oinas 1991 and depends on ambient RH
CAM5.1	2.5°×1.8°, 30 levels	CAM5.1	Internal mixing within each of 3 log-normal modes. Size varies with mass/number. Volume mixing of refractive indices of components within mode. Kappa Kohler theory using volume mean kappa. Dry if $RH < RH_{crystalization}$. Wet if $RH > RH_{deliquescence}$. Linear in RH between
BCC	2.8°×2.8°, 26 levels	NCEP/NCAR reanalysis	Aerosols are externally mixed. The size spectrum of each aerosol is divided into 12 size bins. Kohler theory is used to calculate the humidity growth
GMI-MERRA-v3	2.5°×2.0°, 72 levels	Nudged to GEOS-5 MERRA reanalysis	External mixing. 5 bin sizes for dust, 4 bin sizes for seasalt, 3 bin size for nitrate and sulfate. All aerosols with log-normal size distributions. Based on Tang and Munkelwitz (1996) water activity formula for ammonium nitrate and ammonium sulfate. All others based on GADS OPAC
GEOS-Chem	5.0°×4.0°, 47 levels	Nudged to GEOS-5 reanalysis	Optical properties calculated over 6 externally mixed species; inorganic ions (sulfate + nitrate + ammonium), OC (primary and secondary), BC, SS, and soil dust (4 size bins). 40 bins for secondary particles, 20 bins for sea salt, 15 bins for

			dust, 4 log-normal modes for BC and primary OC. A log-normal size distribution (except dust, gamma-distributions in the 4 size bins). The size distribution varies by hygroscopic growth
GOCART-v4	2.5°×2.0°, 30 levels	NASA GEOS-4 DAS reanalysis	External mixing. Parameterized with prescribed dry particle sizes: 8 bins for dust, 4 bins for sea salt, 1 bin for sulfate, BC, and OA, with log-normal distributions, particle growth parameterized as a function of RH. Humidity growth based on GADS (OPAC)
NCAR-CAM3.5	2.5°×1.9°, 26 levels	GCM-generated	Bulk-aerosol model, except 4-bins for SS and mineral dust
IMPACT	5.0°×4.0°, 46 levels	DAO assimilation fields, reanalysis	4 bin sizes for SS and mineral dust, 2 modes for pure sulfate with explicitly resolved size and coagulation and condensation of SO ₄ with other aerosols
INCA	3.8°×1.9°, 19 levels	ECMWF IFS reanalysis	2 insoluble and 3 soluble modes with lognormal distribution. Size varies with number and mass affected by mixing, source and removal processes. Internal mixing is assumed with respect to removal by sedimentation and wet scavenging. Optical properties are calculated assuming external mixing. Optical properties assume mean size for each mode. 11 tabulated growth factors between 0 and 90% RH and 1 growth factor at 95% RH
TM5-V3	3.0°×2.0°, 34	ECMWF ERA-Interim reanalysis	Five out of seven modes are internally mixed. Volume weighted mixing of refractive indices within each mode, using non-linear mixing rules. The median radius for each mode is taken to infer optical properties. The soluble particles are assumed to be in equilibrium with water vapor. Only sulfate and SS are influencing the water uptake

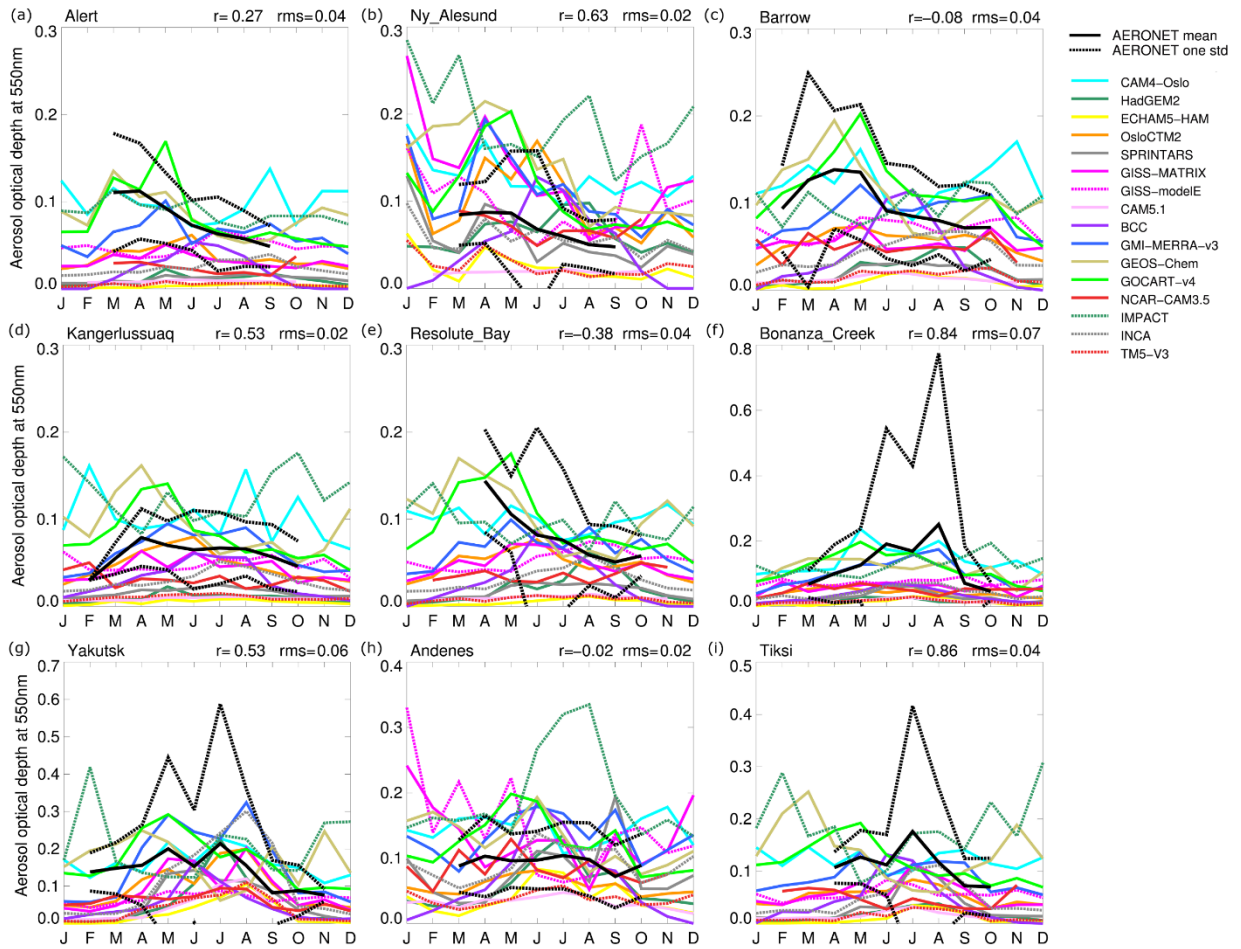


Figure S1: As in Fig 2, but with colors for the different models compared to AERONET. The black solid line is the AERONET mean, and the black dashed line is one standard deviation. R and rms is the correlation and root-mean-square between AERONET and the model median (model median is not shown in this plot).

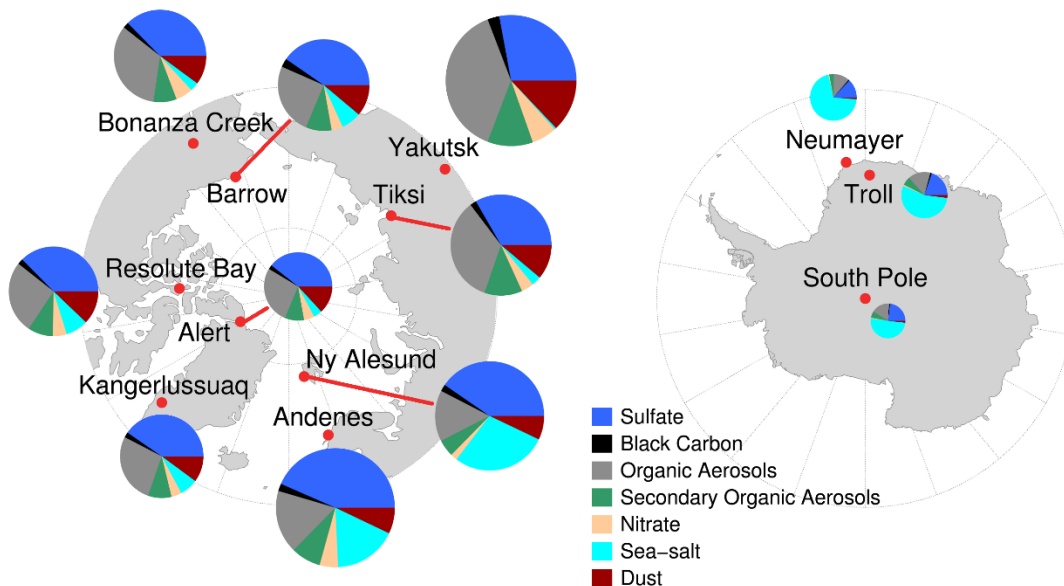


Figure S2: As in Figure 3, but for JJA. The circles show the modelled AOD species JJA average for each station. The area of the circles is scaled to the model median total AOD.

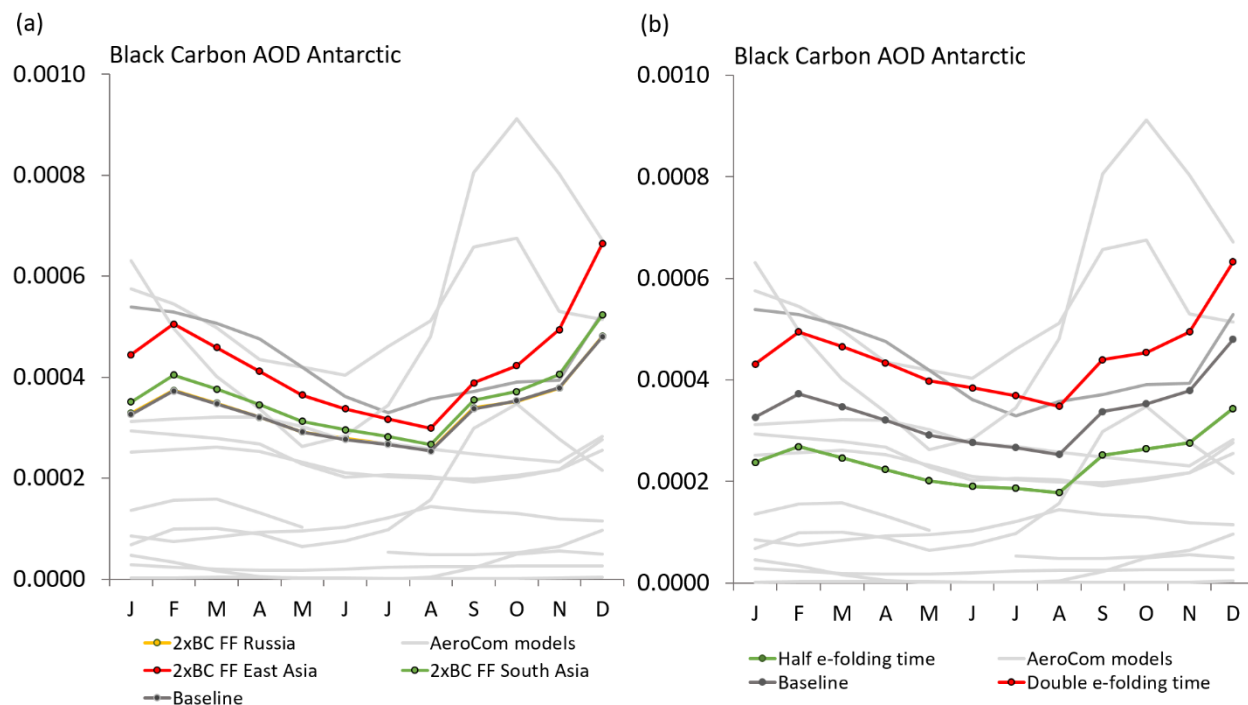


Figure S3: Antarctic mean seasonal cycle of (total) BC AOD for simulations with GISS modelE (in colors) compared to the AeroCom models (in light grey). The darker grey AeroCom model is the GISS modelE AeroCom run. (a) shows emission perturbations for a doubling of BC emissions (fossil fuel and biofuel) in South Asia (green), East Asia (red), and Russia (yellow). (b) shows double (red) and half (green) of the e-folding time from hydrophobic to hydrophilic BC.

References

Fitzgerald, J.W. Approximation formulas for the equilibrium size of an aerosol particle as a function of its dry size and composition and the ambient relative humidity, *J. Applied Meteorology*, 14, 1044–1049, 1975.

Lewis, Ernie R., and Stephen E. Schwartz. Sea salt aerosol production: mechanisms, methods, measurements, and models-A critical review. American geophysical union, 2004.

Tang, I. N., and H. R. Munkelwitz, Water activities, densities, and refractive indices of aqueous sulfates and sodium nitrate droplets of atmospheric importance, *J. Geophys. Res.*, 99, 18801–18808, 1994.

Hobbs, P. V., J. S. Reid, R. A. Kotchenruther, R. J. Ferek, and R. Weiss, Direct radiative forcing by smoke from biomass burning, *Science*, 275, 1776–1778, 1997.