

Supporting Information

Power Plant Fuel Switching and Air Quality in a Tropical Forested Environment

A. S. S. Medeiros (1,2), G. Calderaro (1,2), P. C. Guimarães (1,2), M. R. Magalhaes (1,2), M. V. B. Morais (3), S. A. A. Rafee (3), I. O. Ribeiro (1,2), R. V. Andreoli (1), J. A. Martins (3), L. D. Martins (3), S. T. Martin* (4), R. A. F. Souza* (1)

(1) Amazonas State University, Manaus, Amazonas, Brazil

(2) National Institute of Amazonian Research, Manaus, Amazonas, Brazil

(3) Federal University of Technology, Paraná, Av. Dos Pioneiros, 3131, Londrina, 86047-125, Brazil

(4) Harvard University, Cambridge, Massachusetts, USA

E-mail: scot_martin@harvard.edu, souzaraf@gmail.com

Submitted: December 2016

Atmospheric Chemistry and Physics

*To Whom Correspondence Should be addressed

Figure S1. Maps of near-surface ozone concentrations for historic emissions (Case A), present-day emissions (Case B), and planned future emissions (Case C). The left column shows afternoon means across the study period. The right column shows standard deviations. See caption of Figure 3 for further information.

Table S1. Power plant information in the study region in each month of 2014. Power plants listed here are the same as Table 2. Plant generated power (MW) are described by fuel types, abbreviated as fuel oil (F), diesel (D), and natural Gas (G) (ELETROBRAS, 2014).

Power Plant	Jan	Feb	Mar	Apr	May	Jun	Jul	Aug	Sep	Oct	Nov	Dez
Aparecida (G)	126.6	128.1	147.3	137.5	130.9	130.4	132.6	130.7	118.1	124.4	128.3	107.5
Aparecida (D)	0.4	7.1	1.1	5.1	8.3	1.7	4.3	14.3	10.3	7.7	11.8	8.6
Mauá / Electron (F)	36.6	35.2	9.9	24.9	32.8	12.9	13.0	12.0	9.6	15.1	19.6	19.0
Mauá / Electron (G)	107.3	105.4	79.0	74.2	40.2	105.3	110.5	107.1	103.2	110.6	96.7	61.3
Mauá / Electron (D)	138.0	158.3	134.5	173.2	188.2	154.9	153.3	109.0	150.0	130.2	110.7	136.8
Flores (D)	40.0	35.3	33.1	41.4	52.6	49.4	46.6	28.4	40.1	35.6	44.7	49.4
Cidade Nova (D)	6.5	7.1	5.7	8.4	11.0	8.4	9.0	4.6	10.3	8.7	9.9	13.7
São José (D)	23.9	16.7	14.9	19.0	23.0	19.8	21.0	12.5	13.1	13.1	15.1	13.8
Irاندوبا (D)	18.7	19.9	17.6	23.1	33.1	29.0	24.1	17.5	23.2	19.4	17.5	20.0
Breitener Tambaqui (G)	59.9	61.5	62.0	61.5	63.3	61.6	62.4	64.2	62.1	61.7	62.4	60.6
Breitener Jaraqui (G)	61.7	61.2	61.2	61.2	62.1	62.0	61.6	63.2	61.7	59.2	60.9	61.6
Ponta Negra (G)	65.5	65.9	65.8	66.0	65.8	66.0	65.7	64.9	65.5	65.1	64.2	61.1
Manauara (F)	15.7	10.9	5.8	6.6	6.4	5.4	4.6	6.5	4.9	5.2	5.4	6.5
Manauara (G)	48.8	53.6	59.9	58.7	58.2	58.0	60.3	55.2	59.1	58.7	59.3	57.6
Cristiano Rocha (F)	20.8	24.1	11.3	10.9	18.0	0.0	0.0	0.0	0.0	0.0	0.0	0.0
Cristiano Rocha (G)	45.4	41.9	55.2	55.3	44.3	69.2	69.8	69.1	70.1	69.6	70.9	69.5

References

ELETROBRAS: Relatory of energy generation., in, edited by: Santos, T. F. d., Environment Departament of Eletrobras Amazonas Energia, 2014.

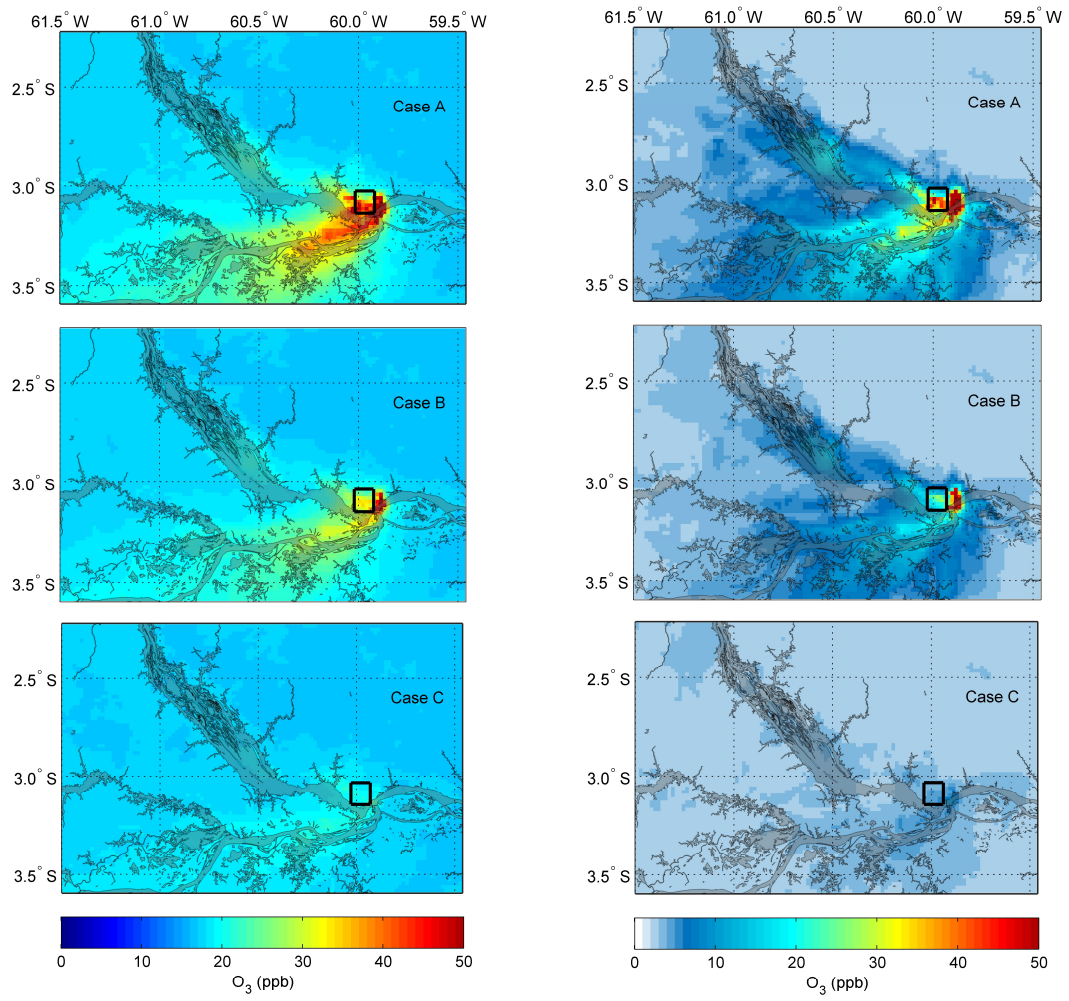


Figure S1