

Response to Reviewers' comments on "Sources of Springtime Surface Black Carbon in the Arctic: An Adjoint Analysis for April 2008" by Qi et al.

Prof. Xiaohong Liu,
Editor, *Atmospheric Chemistry and Physics*

Dear Prof. Liu,

We appreciate the time and efforts by you and the two reviewers in improving the manuscript for publication in *Atmospheric Chemistry and Physics*. We are very grateful for the constructive comments from the two reviewers. Our itemized responses and a track-change version of the revised manuscript are provided below. We have also submitted a clean version of the revised manuscript on the website. We hope you find this revised version acceptable for publication and look forward to your decision.

Sincerely,

Qi, Ling
qiling@atmos.ucla.edu
Dept. of Atmospheric & Oceanic Sciences
University of California, Los Angeles
Los Angeles, CA 90095, USA

Referee #1

Major Comments:

“This is an interesting study exploring sources of black carbon to the Arctic during April 2008, using an adjoint model configuration. The paper is well-written and well-referenced. Overall I find this to be a suitable study for publication in ACP and a worthwhile contribution to the literature in general, but I include below some critiques that should be addressed before the study is published.”

1 *“The authors raise the important point that previous studies applying 5- or 10-day back trajectories probably underestimate the contribution of BC from Asia to the Arctic. Yet the authors here cite surprisingly long atmospheric lifetimes for some sources of BC (Table 1), including 71 days for springtime Asia anthropogenic emissions, 98 days for annual-mean South Asia biomass emissions, and 141 days for springtime South Asia biomass emissions. Since the model runs were initiated only on March 1, less than two months before the analysis period, the long atmospheric lifetimes of springtime Asia emissions imply that Asia contributions may also have been underestimated in this study. The authors should include some assessment of the potential magnitude of bias introduced by their short spinup period compared with the modeled BC atmospheric lifetime.”*

Response: Points well taken. The long lifetime reported previously in the manuscript only accounted for deposition. I revised the lifetime now to account for both deposition and transport (Table 1). The method was explained in the note of Table 1. The lifetimes for BC accounting for both deposition and transport are less than 12 days. Thus, the two-month spin up time before the starting date March 1 is long enough for the system.

2 *“More generally, the reported lifetimes (Table 1) seem substantially longer than those cited in previous studies, and imply that the simulated global atmospheric burden (and probably direct radiative forcing) of BC must be quite large in this model. Please comment on this, in the context of previous studies of global BC burdens and radiative forcing.”*

Response: Points well taken. As explained in Response for question #1, the revised BC lifetime in the Arctic is close to other studies now. Global BC burden is within the range of current AeroCom models (See details in Table 6 in our papers Qi et al., 2017a, b).

3 *“While it is fine to focus the study on a narrow timeframe (April 2008), there is large inter-annual variability in spring BC emissions, especially those associated with biomass burning, and probably also in transport pathways to the Arctic. I suggest acknowledging this a bit more clearly, and if possible briefly discussing how representative the*

conditions of April 2008 were of Aprils in general (say, over the period 2000-2015). I also suggest changing the title from "Sources of Springtime..." to "Sources of Springtime 2008..." to communicate that this study only quantitatively examines one particular spring (unless the authors expand the analysis in a revised draft)."

Response: Points well taken. Revised accordingly in the title and in Sect. 3.1.

4 *"The modeled biases with respect to observations are as large as 80% at some locations. The implications of such large biases for source apportionment should be described more thoroughly. It is unlikely that all sources are biased in the same proportion, implying the potential for considerable bias in the apportionment itself."*

Response: Points well taken. Revised accordingly in Sect. 4.3.3.

Specific comments:

1. *"p1,16: Do these percentages represent the fraction of anthropogenic sources or the fraction of total BC? Wording suggests the former, but please clarify."*

Response: It is the former. Clarified.

2. *"p2,2: Please clarify the spatial domains over which these sensitivity numbers apply. Presumably the temperature change is Arctic, but over what domain is forcing averaged over?"*

Response: Clarified.

3. *"p3,3: "ends" -> "end""*

Response: Done.

4. *"p3, second paragraph: This section highlights great features of the adjoint technique and provides good justification for the methods applied here, but I would also acknowledge clearly that the quality of an adjoint analysis still depends on the accuracy of the physical representations built into the forward version of the model."*

Response: Points well taken. Acknowledged as such in Page 4 Lines 1–2.

5. *"p5,21: Was the gridded flaring emissions inventory used in this study provided completely by Stohl et al (2013), or were additional assumptions adopted to create the inventory? Please clarify."*

Response: The flaring emission inventory used in this study is completely from Stohl et al. (2013). Clarified in Sect. 3.1.

6. *"p5: Were any shipping emissions included in this study? If not, please comment on this omission and its potential importance for the study. "*

Response: Anthropogenic emissions used in this study (Bond et al., 2007) include shipping emissions already.

7. *“p5,26-31: It wasn’t clear to me which aging scheme was applied in the main analysis of this paper. For the main analysis, was constant aging assumed or slower winter/spring aging assumed? Please clarify.”*

Response: Clarified.

8. *“p5,31: “We estimates” -> “We estimate””*

Response: Done.

9. *“p6,31: “reaching the sites”: Presumably you mean reaching the surface (i.e., lowest model layer) at these locations, but please clarify.”*

Response: Clarified accordingly.

10. *“p7,2: “entirely linear”: linear with respect to what? Please clarify.”*

Response: Linear with respect to emission. Clarified accordingly.

11. *“p7,25: their -> there ”*

Response: Done.

12. *“p8,13-14: But would this feature necessarily produce a positive bias, as seen in the analysis?”*

Response: Clarified.

13. *“p8,28: This is one place where the representativeness of 2008 could be briefly described (see major comment).”*

Response: Revised. See response for question #3.

14. *“p9,30+: Please clarify whether these lifetimes are Arctic or global lifetimes, and describe how they were calculated. Also see comment below about Table 1.”*

Response: Revised accordingly in the note of Table 1.

15. *“p10,28: “in the Arctic front” is used here and elsewhere. The front itself is a boundary, so it might be more clear to instead use something like “within the polar dome” or “poleward of the Arctic front”.”*

Response: Points well taken. Revised in the manuscript.

16. *“p11,10: just for clarity I suggest changing “mean BC concentrations” to “mean forward simulated BC concentrations”.”*

Response: Done.

17. *“p12,22: meaning of "against deposition in the Arctic" is unclear to me.”*

Response: Explained in the notes of Table 1.

18. *“p13,5: "Denali, Barrow" -> "Denali and Barrow" (?)”*

Response: Done.

19. *“p14,27: "Overall, the 3-hourly inventory leads to weaker polar-ward transport of BC. For instance, the contribution is 50% lower at Denali,...” - Do these changes improve or worsen the agreement with measurements? Presumably, they should improve the comparison, no? ”*

Response: Clarified.

20. *“p14,29-30: "The lower contributions are likely because the temporal variation of the 3-hourly inventory is out of phase of the sensitivities at all sites" - But this should be a physically realistic phenomenon since the sensitivities were derived from high temporal resolution re-analysis data, shouldn't it? Perhaps the importance of this passage could be clarified by re-phrasing it in terms of physical processes rather than model sensitivities.*

Response: Revised accordingly.

21. *And finally, why were monthly emissions used for the main analysis? It seems that 3-hourly emissions should produce more realistic assessments.”*

Response: Explained in Sect. 3.1.

22. *“p15,6: "thereby" -> "and thereby””*

Response: Done.

23. *“p16,4: "sources of BC" -> "sources of BC to the Arctic””*

Response: Done.

24. *“p16,11: "contributions": contributions to what? Arctic atmospheric BC? Please specify.*

Response: Clarified.

25. *“Table 1: Again, please clarify exactly what these "lifetimes" represent. Are they residence times of BC within the Arctic? If so, how were they computed? If a parcel of BC enters, leaves, and re-enters the Arctic, how would this affect the "lifetime"? Or are these global lifetimes of BC that reaches the Arctic? ” ”*

Response: Clarified in notes of Table 1.

26. *“Figure 5: Maybe clarify that these are sensitivities with respect to hypothetical unit emissions occurring everywhere.”*

Response: Clarified.

27. *“Figure 8: Are the sensitivities for 3-hourly or monthly resolved emissions? What are the units of the right panel?”*

Response: They are the contributions (ng m^{-3}) from Siberia biomass burning emissions with 3-hourly and monthly resolutions, respectively. Figure 8 is revised.

28. *“Figure 9: What are the units? Please describe.”*

Response: It is unitless. The figure plots the ratio of sensitivities without and with the WBF effect.

References

Bond, T. C., Bhardwaj, E., Dong, R., Jogani, R., Jung, S. K., Roden, C., Streets, D. G., and Trautmann, N. M.: Historical emissions of black and organic carbon aerosol from energy-related combustion, 1850-2000, *Global Biogeochem Cy*, 21, doi 10.1029/2006gb002840, 2007.

Qi, L., Li, Q., Li, Y., and He, C.: Factors Controlling Black Carbon Distribution in the Arctic, *Atmos. Chem. Phys.*, 17, 1037-1059, doi:10.5194/acp-17-1037-2017, 2017a.

Qi, L., Li, Q., He, C., Wang, X., and Huang, J.: Effects of Wegener-Bergeron-Findeisen Process on Global Black Carbon Distribution, *Atmos. Chem. Phys.*, in press, 2017b.

Referee #3

Major Comments:

“Qi et al. quantify black carbon (BC) emission sources at 5 stations in the Arctic during April 2008 using a global CTM; GEOS-Chem and the adjoint technique. The authors use a tagged tracer technique to identify the sources, and compare the contributions with observations at the sites. A 5-day pollution episode is investigated further by computing source-receptor sensitivities at finer resolution with adjoint modeling approach. They find that the largest sources during April 2008 are anthropogenic emissions from Asia and biomass burning emissions from Siberia.

Arctic BC burden is mostly a result of long-range transport, and determining the emissions source regions is challenging. This study is therefore an important contribution to the field and within the scope of ACP. The Introduction chapter is well-written with a great overview of related work, and the authors clearly indicate their own contribution describing the GEOS-Chem adjoint approach. The overall presentation is well-structured and easy to follow. I will highly recommend this manuscript for publication and I have a few comments, questions, and suggestions for improvements below.”

1 *“The validity of your results depends on the emission data set. Can you please add more information about the emissions? What are the global numbers of the Bond et al. (2007) emissions combined with the Asian emissions from Zhang Q. et al. (2009)? Can you also give the total emissions from each region (those numbers can be added to Table 1)? On page 5 in Line 20 you state that Stohl et al suggests that gas flaring only accounts for 3 % of global emissions, but 42 % of the within-Arctic. Can't you report on your own emissions numbers here? Do you use ECLIPSE (v5?) emissions for the gas flaring?”*

Response: Points well taken. Revised accordingly in Sect. 3.1 and Table 1.

2 *“As you state in the introduction, many studies based on analysis of observation data, attribute Arctic BC to biomass burning and anthropogenic sources in high-latitude Eurasia (e.g., Eleftheriadis et al., 2009; Hirdman et al., 2010; Matsui et al., 2011). Compared to observation-based analysis in the Arctic, models, including yours, tend to give larger contributions to sources at lower latitudes, especially for the total column burden of Arctic BC. However, models often have too coarse resolution to correctly simulate the Arctic front and the shallow boundary layer. Could you please add some discussion of uncertainty in simulating the transport in GEOS-Chem?”*

Response: Excellent point. Added discussion in Sect. 4.3.3.

3 *“You compare your results nicely with other findings throughout the Results section. Could you also add a paragraph in your Conclusions with a summary of the comparison of your findings with previous studies to wrap things up? -If possible, why they differ (e.g.*

the 5-10 day trajectory used in other studies that you mention in the intro), and how your study contribute to greater knowledge of BC source attribution in the Arctic?”

Response: Points well taken. Revised in Sect. 5.

4 *“You report a long BC lifetime from Asian BB emissions. How realistic do you think this number is? As far as I am aware, this is considerably higher than other studies.”*

Response: Points well taken. The lifetime I reported in the manuscript was against deposition only. I revised the lifetime considering both transport and deposition in Table 1. This lifetime is close to the other studies.

5 *“5. I suggest that you add ‘April 2008’ in your title, as readers might assume you have analyzed several years/months (as I did). Related to this; can you add some discussion if April 2008 is representative of ‘springtime’? E.g. the biomass burning plume late April 2008 was unusually strong (Warneke et al. 2010).”*

Response: Points well taken. Revised accordingly in the title and in Sect. 3.1.

Specific comments:

1. *“P5 L5: What are the lowest model levels listed related to?”*

Response: We only discuss the surface sites in this study, so we deleted this description.

2. *“P10 L28: In → within?”*

Response: Done.

3. *“P15 L11: What about the 3 other stations? You have already showed that the model overestimates the BC concentrations at Zeppelin and Summit? Is there a better agreement without WBF?”*

Response: Clarified as suggested.

4. *“P15 L27: , after Zeppelin) .. add ‘ and,’”*

Response: Done.

5. *“P16 L8: altitudes → latitudes?”*

Response: Done.

Sources of Springtime Surface Black Carbon in the Arctic: An Adjoint Analysis for April 2008

Ling Qi^{1,2}, Qinbin Li^{1,2}, Daven K. Henze³, Hsien-Liang Tseng^{1,2}, Cenlin He^{1,2}

1. Department of Atmospheric and Oceanic Sciences, University of California, Los Angeles, CA, USA

2. Joint Institute for Regional Earth System Science and Engineering, University of California, Los Angeles, CA, USA

3. Department of Mechanical Engineering, University of Colorado, Boulder, CO, USA

Abstract: We quantify source contributions to springtime (April 2008) surface black carbon (BC) in the Arctic by interpreting surface observations of BC at five receptor sites (Denali, Barrow, Alert, Zeppelin, and Summit) using a global chemical transport model (GEOS-Chem) and its adjoint. Contributions to BC at Barrow, Alert, and Zeppelin are dominated by Asian anthropogenic sources (40–43%) before April 18 and by Siberian open biomass burning emissions (29–41%) afterward. In contrast, Summit, a mostly free tropospheric site, has predominantly an Asian anthropogenic source contribution (24–68%, with an average of 45%). We compute the adjoint sensitivity of BC concentrations at the five sites during a pollution episode (April 20–25) to global emissions from March 1 to April 25. The associated contributions are the combined results of these sensitivities and BC emissions. Local and regional anthropogenic sources in Alaska are the largest anthropogenic sources of BC at Denali (63% of total anthropogenic contributions), and natural gas flaring emissions in the Western Extreme North of Russia (WENR) are the largest anthropogenic sources of BC at Zeppelin (26%) and Alert (13%). We find that long-range transport of emissions from Beijing-Tianjin-Hebei (also known as Jing-Jin-Ji), the biggest urbanized region in Northern China, contribute significantly (~10%) to surface BC across the Arctic. On average it takes ~12 days for Asian anthropogenic emissions and Siberian biomass burning emissions to reach Arctic lower troposphere, supporting earlier studies. Natural gas flaring emissions from the WENR reach Zeppelin in about a week. We find that episodic, direct transport events dominate BC at Denali (87%), a site outside the Arctic front, a strong transport barrier. The relative contribution of direct transport to surface BC within the polar dome is much smaller (~50% at Barrow and Zeppelin and ~10% at Alert). The large contributions from Asian anthropogenic sources are predominately in the form of ‘chronic’ pollution (~40% at Barrow and 65% at Alert and 57% at Zeppelin) on about one month timescale. As such, it is likely that previous studies using 5- or 10-day trajectory analyses strongly underestimated the contribution from Asia to surface BC in the Arctic.

1. Introduction

The Arctic, one of the most sensitive regions to climate change, warms at a rate twice as rapid as the global average (AMAP, 2011). Climate modeling studies indicate that the Arctic surface warms from global BC, which absorbs solar radiation in the atmosphere (Bond et al., 2013 and references therein). Specifically, atmospheric BC at lower latitudes warms the Arctic

surface (60–90°N) due to pole-ward transport of heat absorbed by BC ($0.7\text{--}0.8 \text{ K (W m}^{-2}\text{)}^{-1}$, Shindell and Faluvegi, 2009; Sand et al. 2013, 2015). Although the total effect of BC in the Arctic troposphere is warming the surface, BC at different altitudes has different climate effects on the Arctic surface (Shindell and Faluvegi, 2009; Flanner et al., 2013). BC in the upper tropospheric Arctic slightly cools ($-0.2 \pm 0.1 \text{ K (W m}^{-2}\text{)}^{-1}$) the Arctic surface due to surface dimming, while surface atmospheric BC exerts a strong surface warming effect ($2.8 \pm 0.5 \text{ K (W m}^{-2}\text{)}^{-1}$, Flanner, 2013). In addition, this climate effect has a strong seasonal variation with the largest mass-normalized Arctic warming in spring, when the high insolation and surface albedo strongly facilitate a large radiative forcing of BC and the associated surface warming (Quinn et al., 2008; Flanner, 2013). It is thus imperative to improve our understanding of the distribution of BC in springtime in the Arctic and identify the sources both in the troposphere and at surface.

10

Numerous studies have analyzed BC vertical profiles and identified sources of springtime BC in the troposphere in the Arctic (e.g. Liu et al., 2015 and references therein), particularly during polar year 2008. They found that a dense haze layer with maximum BC concentration was usually observed in the middle troposphere (Warneke 2009, 2010; Wang et al., 2011; Brock et al., 2011; Marelle et al., 2015) and their sources were largely diverse. Stohl et al. (2007) found that agricultural fires in Eastern Europe strongly enhanced BC concentration in the European Arctic in spring 2006. Studies based on aircraft observations from Arctic Research of the Composition of the Troposphere from Aircraft and Satellites (ARCTAS, Jacob et al., 2010), and Aerosol, Radiation, and Cloud Processes affecting Arctic Climate (ARCPAC, Brock et al., 2011) found that agricultural as well as boreal forest fires in south Siberia dominated BC concentrations (up to 80%) in a large part of the Arctic troposphere (particularly in North American sector) in spring 2008 (Warneke et al., 2009, 2010; Brock et al., 2011; Wang et al., 2011). Given that an increasing trend of frequency of boreal forest fires has been predicted due to global warming, the contribution of these fires to Arctic BC is likely to increase in the future (Soja et al., 2007; Flannigan et al., 2009; Wotton et al., 2010; Liu et al., 2012). With the rapid increase of anthropogenic emissions in Eastern and Northern Asia, recent studies have shown that this region may become an important source (up to 90%) of Arctic BC in late winter and early spring, particularly in the free troposphere (Shaw et al., 2010; Frossard et al., 2011; Liu et al., 2015). Other studies suggest otherwise because strong scavenging during uplift processes in warm conveyor belts can significantly decrease the BC transport efficiency and the resulting contribution from this source (Stohl, 2006; Matsui et al., 2011).

25

The Arctic surface is isolated from the free troposphere by a strong transport barrier, the so-called ‘Arctic front’, which is a closed dome formed by surfaces of constant potential temperature (Stohl, 2006 and references therein). As such, the Arctic front strongly reduces the influence from episodic pollution entering the Arctic in the middle and upper troposphere and limits their impact on surface BC concentrations (Stohl, 2006; Brock et al., 2011). In addition, emissions within the polar dome are trapped in the lower troposphere and enhance surface concentration. The Arctic front extends further south (40°N)

30

over Europe and Russia in winter and early spring (Stohl, 2006). Thus, sources of Arctic surface BC have been repeatedly identified as emissions from the two regions. A large fraction of the 5- or 10-day back trajectories end in the industrial regions in Russia and Europe (Pollisar et al., 2001; Sharma et al., 2006; Huang et al., 2010; Dutkiewicz et al., 2014). In addition, long-term observations (decades) at surface sites Barrow (Pollisar et al., 2001; Sharma et al., 2006; Hirdman et al., 2010), Alert (Sharma et al., 2004, 2006; Huang et al., 2010; Hirdman et al., 2010), Zeppelin (Eleftheriadis et al., 2009; Hirdman et al., 2010), and Kevo (Dutkiewicz et al., 2014) showed that BC concentration has steadily declined since 1980. They relate these declining trends with declining emissions in the former Soviet Union. Asian contributions to surface BC were considered not to be significant due to two reasons. First, very few back trajectories ended in this region (Pollisar et al., 2001; Sharma et al., 2006; Huang et al., 2010; Dutkiewicz et al., 2014). Second, observed atmospheric surface BC concentrations at Alert, Barrow and Zeppelin did not increase with increasing BC emissions in East Asia since 2000 (Sharma et al., 2013). In addition, most of these studies were focused on the long-term average sources and contrasted sources in winter and in summer. Few studies have identified sources of BC in springtime surface Arctic, which efficiently warms the Arctic surface (Flanner, 2013).

Previous studies on BC source apportionment have used either statistical analysis of trajectories (Pollisar et al., 2001; Sharma et al., 2004; Eleftheriadis et al., 2009; Stohl, 2006; Hirdman et al., 2010; Harrigan et al., 2011; Dutkiewicz et al., 2014), the tagged tracer technique (Wang et al., 2011; Wang et al., 2014) or sensitivity simulations with perturbed emissions (Koch and Hansen, 2005; Shindell et al., 2008; Huang et al., 2010a; Bourgeois and Bey, 2011; Sharma et al., 2013; Ma et al., 2013). Trajectory analysis efficiently identifies transport pathways, but the model integration error increases when modeling time exceeds 5–6 days. This error introduces large uncertainties to the back trajectory paths, thereby sources can only be reliably assigned on continental scales (Liu et al., 2015). In addition, the assumption of the trajectory method is that the tracer is inert and not affected by chemical or other removal processes, which introduce large uncertainties to source apportionment (Liu et al., 2015). Tagged tracer and sensitivity simulations include chemical and physical processing of BC but are computationally limited in the spatial and temporal resolution of the source regions that can be considered (Wang et al., 2014). The Chemical Transport Model (CTM) adjoint not only explicitly simulates chemical and physical processes of aerosols but also offers a far more computationally efficient approach for receptor-oriented source attribution (Henze et al., 2007; Hakami et al., 2007). A single run of the adjoint model can compute the sensitivity of BC concentrations at a given location (or an average over a spatial domain) and time (or an average in a time interval) to global emissions over the spatial and temporal resolution of the model (Zhang, L. et al., 2009). The method has been applied to examine transpacific (Zhang, L. et al., 2009) and Arctic (Walker et al., 2012) transport of ozone, source apportionment of aerosol pollution episodes (Nester and Panitz, 2006; Zhang, L. et al., 2015a), and BC radiative forcing in the Himalayas and Tibetan Plateau (Kopacz et

al., 2011). [Yet, the quality of an adjoint analysis depends on the accuracy of the physical representations built into the forward version of the model.](#)

In a previous study (Qi et al., [2017a](#)), we assessed the sensitivity of BC concentration in surface air and in snow in the Arctic to flaring emissions, dry deposition velocity over snow and ice, and [Wegener-Bergeron-Findeisen \(WBF\)](#) in mixed-phase clouds. With all the improvements, simulated BC concentrations in snow in eight Arctic sub-regions agree with observations within a factor of two, meanwhile, simulated surface atmospheric BC fall within the range of observations. Based on this improved simulation of BC distribution in the Arctic, we use here the tagged tracer technique in a global 3D chemical transport model, GEOS-Chem, to identify sources of BC at Arctic surface sites (Denali, Barrow, Alert, Zeppelin and Summit) resolved at continental scales in April, 2008. We then use the GEOS-Chem adjoint to refine our estimated source contributions to BC at the five sites to sources resolved at the 2° latitude \times 2.5° longitude horizontal scale and hourly temporal resolution during a pollution event (April 20–25).

2. Surface BC Observations

In-situ measurements of BC are available at five sites within the Arctic Circle (Fig. 1): Denali, AL (63.7°N , 149.0°W , 0.66 km a.s.l.) in the low Arctic, three sites in the high Arctic, Barrow, AL (71.3°N , 156.6°W , 11 m a.s.l.), Alert, Canada (82.3°N , 62.3°W , 210 m a.s.l.), and Zeppelin, Norway (79°N , 12°E , 478 m a.s.l.), and a free tropospheric site at Summit, Greenland (72.6°N , 38.5°W , 3.22 km a.s.l.). Denali, outside the Arctic front ($\sim 66^\circ\text{N}$), receives pollution transported to the Arctic via ‘Aleutian Storm Track’ displaced to the central and north Alaska in April 2008 (Fuelberg et al., 2010). Barrow and Alert are within the [polar dome](#) and experience regular temperature inversion (Sharma et al., 2013). This inversion strongly suppresses the vertical transport from above and traps emissions [within the polar dome](#) in the lower troposphere (Stohl, 2006; Brock et al., 2011). Barrow is on the Northern land tip of Alaska, 8 km northeast of the town Barrow. It is influenced by both marine and continental air (Hirdman et al., 2010). Alert is located the furthest north of all five sites and is most isolated from continental sources (Hirdman et al., 2010). The Zeppelin observatory is on a mountain ridge on the Svalbard archipelago. Because of the relatively high elevation (478 m), Zeppelin is not always in a stable inversion layer (Sharma et al., 2013). Summit (3.2 km), on the top of the Greenland glacial ice sheet, is always in the Arctic free troposphere (Hirdman et al., 2010). BC is measured by Thermal Optical Reflectance combustion method at Denali, by a particle soot absorption photometer at Barrow, and by an aethalometer at Alert, Zeppelin, and Summit. Uncertainties of these measurements lie in overestimate of absorption based on light transmission, which is also affected by scattering. Additionally, empirical conversion from optical response to BC mass also involves uncertainties. Finally, there are uncertainties from non-BC absorbers. Details are summarized in Qi et al. ([2017a](#)).

3. GEOS-Chem and its adjoint

3.1 GEOS-Chem simulation of BC

GEOS-Chem is a global CTM driven with assimilated meteorology from the Goddard Earth Observing System (GEOS) of the NASA Global Modeling and Assimilation Office (GMAO). We use GEOS-5 meteorological data set to drive model simulation at 2° latitude \times 2.5° longitude horizontal resolution and 47 vertical layers from the surface to 0.01 hPa. Tracer advection, moist convection, deep convection and shallow convection schemes are summarized in Qi et al. (2017a).

Northern hemispheric BC emissions in April are shown in Fig. 2. Anthropogenic emissions of BC are from Bond et al. (2007) with Asian emissions from Zhang, Q. et al. (2009). The resulting global anthropogenic emissions are 5.8 Tg yr^{-1} . We applied seasonal variation for domestic heating emissions, which are concentrated in winter at high latitude, based on the heating degree day concept (Stohl et al., 2013). Open biomass burning emissions are available from the Global Fire Emissions Database version 3.1 (GFED3) with updates for small fire emissions (Randerson et al., 2012). We use the GFED3 inventory with two temporal resolutions, the standard monthly inventory and a 3-hourly inventory. We use the monthly inventory for the standard simulation and the 3-hourly inventory for the uncertainty simulation (Sect. 4.3.1), because we found that the monthly inventory produces a lower root mean square error against both the aircraft and surface BC observations in the Arctic. To derive the 3-hourly inventory, daily emissions are first re-sampled temporally from the monthly inventory according to Moderate Resolution Imaging Spectroradiometer (MODIS) daily active fire counts (Giglio et al., 2003). Then a diurnal cycle with a 3-hourly time step based on the active fire observations (Prins et al., 1998; Mu et al. 2010) is applied to the daily inventory. The resulting 3-hourly inventory has the same overall emissions as the monthly inventory but with a much finer temporal distribution. This finer resolution provides more information of the temporal variations of BC emissions, yet it also introduces uncertainties associated with the detailed temporal distribution. We also include emissions from gas flares in the oil and natural gas industry completely from Stohl et al. (2013). The total emissions of gas flaring only account for 3% of global total BC emissions but they account for 42% of total BC emissions in the Arctic. They are significant contributors to both BC deposition ($\sim 20\%$) and ambient BC concentrations during snow season (September to April) in the Arctic (Qi et al., 2017a). BC emissions in major source regions are shown in Table 1. BC emissions in the Arctic are shown in Fig. 1.

We assume 80% of the freshly emitted BC particles are hydrophobic and become hydrophilic with an e-folding time of 1.15 days, which reproduces the Asian outflow (Park et al., 2003; 2005). Liu et al. (2011) implemented an OH-dependent aging scheme, which has a strong diurnal and seasonal variation. Slower aging in winter allows more BC to remain hydrophobic and be transported to the Arctic, resulting in a better comparison with surface observations. The change in other seasons is

insignificant. We implement this aging scheme in GEOS-Chem and also find insignificant change of tropospheric and surface BC concentration in the Arctic in April (see supplement material Fig.1S). Thus, we use the 1.15 days e-folding aging time in this study. We estimate dry deposition velocity of BC over snow and ice using resistance-in-series method (Wesely 1989; Zhang et al., 2001), validated by recent measurements of aerosol deposition velocity over snow and ice (Qi et al., 2017a). Wet scavenging of BC follows Wang et al., (2011) with updates for BC scavenging efficiency in mixed-phase clouds (Qi et al., 2017b). We parameterize BC scavenging efficiency in mixed-phase clouds accounting for the effects of the WBF process (Qi et al., 2017b). WBF occurs when environmental vapor pressure is above the saturation vapor pressure of ice crystals and below that of cold water drops. Ice crystals grow and cold water drops evaporate, releasing BC particles in the cold water drops back into interstitial air. This process strongly reduces BC scavenging efficiency globally (from 8% in the tropics to 76% in the Arctic), slows down wet scavenging and increases atmospheric BC concentrations. Including WBF significantly improves the simulation of BC distribution in air (discrepancy reduced from -65% to 30%) and in snow (discrepancy is halved both in mid-latitudes – from 34% to 17% and in the Arctic – from -20% to -10%) globally (Qi et al., 2017b). We tested the uncertainties of source attribution associated with WBF in Sect 4.3.2.

We identify sources of BC in the Arctic in April 2008 using the tagged tracer technique, which is a physically consistent and computationally efficient approach to attribute sources resolved at continental scales (Wang et al., 2011; Wang et al., 2014). BC emitted from different source types (anthropogenic versus open biomass burning emissions) and source regions (Europe, Russia, Asia and North America) are tagged with no overlap among these geographical regions (Fig. 2). BC emitted in these tagged regions are explicitly tracked in the model and are treated the same way (transport, chemical and physical processes) as the original BC, allowing for direct estimate of the contributions from individual tagged source types and source regions. We spin up the model by two months before the starting date of March 1.

Arctic BC vertical profiles and sources at different altitudes in April 2008 (polar year) have been studied intensively (Brock et al., 2011; Wang et al., 2011). We identify sources of BC at the Arctic surface in this study during this period to complete the picture. In April 2008, the polar anticyclone was located near its climatological position. However, the “Aleutian Storm Track” was displaced north of its typical position, causing that North Pacific cyclones passed north or central Alaska, instead of the more typical route over the Gulf of Alaska (Fuelberg et al., 2010). This departure from climatology suggests that the pole-ward transport of emissions from Eurasia was facilitated. In contrast, the negative North Atlantic Oscillation in April 2008 was associated with a diminished transport of pollution from North America to the Arctic. Thus, the contribution to surface BC in the Arctic from Eurasia in April 2008 is probably biased high compared to the climatology, while the contribution from North America is biased low. In addition, the agricultural and forest fires in South Russia in April 2008

were much larger and earlier than normal, resulting in a much larger than normal contribution from this region to BC in surface Arctic.

3.2 GEOS-Chem adjoint simulation of BC

Compared with the tagged tracer technique, the adjoint modeling approach computes source-receptor sensitivities for individual receptor locations more efficiently and can be done at a much finer temporal and spatial resolution. We use GEOS-Chem adjoint (Henze et al., 2007) model v35 with updated emissions, dry deposition velocity and wet scavenging as described in Sect. 3.1. The adjoint model has previously been used to constrain emissions of CO (Kopacz et al., 2009, 2010), BC (Mao et al., 2014; Zhang et al., 2015) and other aerosols (Henze et al., 2009) and to identify sources of ozone (Zhang et al., 2009), BC (Kopacz et al., 2011) and other aerosols (Zhang et al., 2015). In addition, the adjoint has also been used to estimate the sensitivity of direct radiative forcing to aerosol emissions (Henze et al., 2012).

In this study, we use the adjoint [model](#) to compute the sensitivity of BC concentrations ($[BC]_s$) at the five receptor sites in the Arctic to global BC emissions (e) resolved at 2° latitude \times 2.5° longitude horizontal resolution over the history of air parcels reaching the [Arctic surface at these](#) sites (March 1–April 25). This sensitivity is denoted as k ,

$$[BC]_s = k \times e \quad (1)$$

As horizontal advection in GEOS-Chem is approximately linear, and the rest of the chemical and physical process are entirely linear [with respect to emissions](#), multiplication of the sensitivity (k) by emissions (e) yields an estimate of how much BC emissions from each grid cell contribute to BC concentrations at a receptor site ($[BC]_s$) (Henze et al., 2007; Kopacz et al., 2011). In this study, $[BC]_s$ is the mean BC concentration at each receptor site (Fig. 1) during April 20–25, 2008. The sensitivity is propagated backwards in time from April 25 to March 1. Then, hourly contributions from each grid cell can be calculated by multiplying these sensitivities with emissions at that time. Integrating these contributions from March 1 to April 25 gives the contributions of emissions in each grid cell to $[BC]_s$ at the receptor sites. Further integrating these contributions globally approximates the mean $[BC]_s$ during April 20–25 at each site.

We validate GEOS-Chem adjoint via comparison of adjoint gradients to forward model sensitivities, Λ , calculated using the finite difference approximation,

$$\Lambda = \frac{J(\sigma + \delta\sigma) - J(\sigma)}{\delta\sigma} \quad (2)$$

where J is the cost function, defined as the mean $[BC]_s$ at each of the five receptor sites, σ the scaling factor for BC emissions ($\sigma = 1$ for the sensitivity simulation). We use $\delta\sigma = 0.1$ for all tests in this study. We compare the sensitivities of mean $[BC]_s$ in April 20–25 at each receptor site to anthropogenic and biomass burning emissions in March 1–April 25 estimated by finite difference and adjoint method. This evaluation is quite time consuming to perform at each grid cell

throughout the globe owing to the expense of the finite difference calculations (144×91 runs). Hence, we selected 10 model grid cells with the largest anthropogenic and open biomass burning sources for the validation, because the absolute difference between the two methods is more substantial for larger values (Henze et al., 2007).

5 Fig. 3 shows the adjoint validation results. The simulation is for March 1–April 25 and the cost function J is evaluated at the end of each simulation. The agreements between finite difference sensitivities and the adjoint gradients are within $\sim 15\%$ (slopes vary from 0.84 to 1.15, except for biomass burning contribution at Summit), largely within the uncertainty that arises from deriving the adjoint of the advection using the continuous approach despite [there](#) being nonlinearities in the discrete treatment of advection in the forward model (Henze et al., 2007). To quantify the discrepancy, we compare the sensitivities
10 estimated by finite difference and the adjoint method at one grid cell in biomass burning regions in Siberia, with advection turned on and off. Without advection, finite difference sensitivities agree with adjoint gradients to within 1%. However, with advection turned on, the difference increases to $\sim 15\%$. Long-range transport from source regions to receptor sites in the Arctic does not exaggerate the disagreement. In addition, simulation lengths of 1, 5, 10, 20 and 50 days are not found to substantially alter the overall comparison, indicating that this error does not accumulate in time. In addition, the adjoint
15 gradients estimated by the continuous advection scheme are likely smoother and more physically meaningful than the finite difference sensitivities estimated by the discrete advection scheme (Henze et al., 2007; Liu et al., 2008; Gou et al., 2011). For example, a negative value of finite difference sensitivity is shown for anthropogenic sources for Denali and an abnormally low finite difference sensitivity value is also shown for anthropogenic sources for Barrow, because of the discrete advection scheme used in the forward model (Thuburn and Haine, 2001; Henze et al., 2007; Hakami et al., 2007).

20 4. Results and Discussion

4.1 Sources of Arctic BC in April 2008

4.1.1 Sources contributing to BC at selected surface sites

Fig. 4 (left panels) shows measured and GEOS-Chem simulated daily mean BC concentrations at the five sites for April 2008. At Denali, the model reproduces both the monthly mean (within 26%) and the day-to-day variation (correlation coefficient $r = 0.96$). At Barrow and Alert, simulated monthly mean BC concentrations agree with observations to within
25 10%. At Zeppelin, the monthly mean BC is overestimated by 80%. This positive bias is likely because of two reasons. First, [the gas flaring emissions, the major sources of BC at Zeppelin, are probably too high because the emission factor used is much larger than recent field and lab measurements](#) (Stohl et al., 2013; Qi et al., 2017a). Second, the model [underestimates BC scavenging efficiency at Zeppelin, where riming dominates the](#) in-cloud scavenging in mixed-phase clouds (Qi et al.,
30 [2017a](#)). At Summit, a free tropospheric site, monthly mean BC concentration is overestimated by 60%.

Using tagged tracers, we compute the contribution from major continental-scale source regions (Fig. 2) to surface BC in the Arctic (Fig. 4, right panels). Asian anthropogenic sources make the largest contribution to surface BC (e.g., 32–35% at Barrow, Alert and Zeppelin) and free tropospheric BC (45% at Summit) in the Arctic. Other large anthropogenic sources are from North America (at Denali and Barrow) and Siberia (at Zeppelin) because of their close proximity. Anthropogenic contributions from Europe, Siberia and North America to BC at Alert are comparable.

We also find that Asian anthropogenic contribution sharply increase (double or triple) from January–March (not shown) to April across the five sites, although BC emissions in Asia are much lower in April than in the previous three months (by 25%) due to less energy consumption from domestic heating. In contrast, contributions from European, North American, and Siberian anthropogenic sources are relatively flat from January–March to April. Such contrast indicates that the pole-ward transport of Asian emissions in April is enhanced so much so that it offsets the relatively lower emissions in that month. Previous studies suggest that Asian emissions are probably underestimated (Fu et al., 2012; Zhang et al., 2015) by about a factor of two. If the actual Asian emissions were higher, Asian contribution to the Arctic is likely larger than estimates in this study. Additionally, given that Asian BC emission is likely to continue to rise over the coming years (Qin and Xie, 2011; Wang et al., 2012), it is likely that their contribution to springtime BC in the Arctic will likewise increase.

Observations show a strong enhancement of BC concentration at Denali (up to $\sim 400 \text{ ng m}^{-3}$) during April 18–30 (Fig. 4, top left). GEOS-Chem reproduces this strong transport event (to within 20%). This enhancement is from a strong increase of contribution from North American anthropogenic sources (up to $\sim 200 \text{ ng m}^{-3}$) and Siberian biomass burning emissions (up to $\sim 200 \text{ ng m}^{-3}$) (Fig. 4, top right) due to favorable meteorological conditions over the North Pacific for pole-ward transport (Sect. 4.2.1). The Siberian biomass burning emissions are from forest fires in southern Siberia-Lake Baikal area and agricultural burning in Kazakhstan-southern Russia (Warneke 2009, 2010; Wang et al., 2011). These biomass burning emissions also enhance BC concentrations at the other [four](#) sites, although with much smaller magnitudes (up to $\sim 60 \text{ ng m}^{-3}$) and at different times. At Denali, the contribution of Siberian biomass burning reaches its maximum in April 18–25. At Barrow, two maxima appear at April 18 and 24. At Alert and Summit, the Siberian biomass burning contributions are the largest during April 25–30. At Zeppelin, the two peaks [appear](#) at April 22 and 30. The relative contributions from biomass burning emissions to BC at the five sites reach up to 46–64%, exceeding the contribution from anthropogenic sources during the pollution event. Yttri et al. (2014) derived BC concentration from biomass burning at Zeppelin based on the ratio of Levoglucosan and BC in 2008. They found that the lower and upper estimates of biomass burning contributed BC at Zeppelin were 4.3–13.3% and 31–45%. This estimate is broadly consistent with the range from this study (5.2–55.1% with a

mean of 17.6%). It indicates that ways to mitigate open biomass burning can be effective at reducing springtime surface BC in the Arctic and thus lessen the BC snow albedo effect (Flanner, 2013).

4.1.2 Atmospheric lifetimes of Arctic BC

Using tagged tracers (Sect. 3.1), we show GEOS-Chem simulated transport pathways of Arctic BC in April 2008 from major sources (Fig. 2) in Figs. S2 and S3. These transport pathways are in broad agreements with previously identified pathways of BC reaching the Arctic surface (Hirdman et al., 2010; Dutkiewicz et al., 2014) and the troposphere (e.g. Klonecki et al., 2003; Stohl, 2006; Wang et al., 2014). For instance, anthropogenic emissions from Siberia and Europe are transported to the Arctic through low-level transport (Klonecki et al., 2003; Stohl, 2006; Harrigan et al., 2011; Marelle et al., 2015), while anthropogenic emissions from Asia and biomass burning emissions from South Asia are uplifted in source regions and enter the Arctic through the middle and upper troposphere (Matsui et al., 2011; Wang et al., 2014; Liu et al., 2015). These transport pathways result in considerably different lifetimes of Arctic BC against deposition and transport (Table 1). For example, BC from Europe and Siberia enters the Arctic through the lower troposphere where it experiences relatively fast dry and wet deposition (Bourgeois and Bey, 2011; Wang et al., 2014). Consequently, the lifetimes against deposition are relatively short (7–9 days annually, 10–16 days for March–April). In contrast, BC from Asian anthropogenic and South Asian biomass burning emissions is transported into the Arctic middle and upper troposphere where deposition is relatively weak. As expected, the resulting lifetimes against deposition are much longer (~1.5–3 months annually and ~2–4 months for March–April). The lifetimes against deposition of BC from North American anthropogenic sources and Siberian biomass burning sources fall somewhere in between (2–3 weeks annually and ~1 month for March–April). In contrast, the lifetime of BC against transport is much shorter in the upper troposphere than that in the lower troposphere, because of the larger southward wind and the associated southward BC flux in the upper troposphere. For instance, the lifetime of BC against transport for South Asian biomass burning emissions (10 days) is much shorter than BC from European (21 days) and Siberian (28 days) anthropogenic sources, supporting previous studies (Stohl, 2006 and references thereafter). Thus, BC lifetime in the Arctic is determined by deposition and transport in the lower troposphere and is dominated by transport in the middle and upper troposphere. Combining the two removal processes, BC in the middle tropospheric Arctic have the longest lifetimes. As shown in Table 1, North American and Asian anthropogenic sources and Siberian biomass burning sources, which enter the Arctic in the middle troposphere, have the longest lifetimes (12 days in March and April). In addition, BC lifetimes in March and April are up to three days longer than the annual ones, driven by the slow deposition due to the dry and stable atmosphere in March and April. Longer lifetimes of BC from the three sources in March and April indicate that they have more persistent effects on BC concentration and distribution in springtime Arctic than the other sources and in other seasons.

4.2 Adjoint source attribution of Arctic BC during April 20–25, 2008

Tagged tracer [technique](#) can identify sources of BC efficiently at large geographical (e.g., continental) scales (see Sect. 4.1). However, for episodic transport, source attribution at much finer spatial and temporal resolutions is often needed. In this section, we focus our analysis on the strong pollution event during April 20–25 most notably at Denali (Fig. 4). We use the GEOS-Chem adjoint to estimate sources of BC at all five sites at 2° latitude \times 2.5° longitude horizontal and hourly temporal resolution.

4.2.1 Sensitivity of surface Arctic BC to the Northern Hemispheric emissions

Fig. 5 shows the sensitivity of mean BC in April 20–25 at the five surface sites to emissions in the Northern Hemisphere during the last 5, 10 and 25 days (dates back from April 25) of transport. The sensitivities are computed per model grid cell using results from the adjoint simulations (Sect. 3.2) and integrated in the given time periods (5, 10 or 25 days). BC at the four surface sites is most sensitive to nearby sources within 5 to 10 days prior to reaching these sites. When integrated over the 25 days prior to arrival, Denali, outside the Arctic front, is most exposed to emissions in the Bering Sea and Russia.

Barrow, Alert and Zeppelin in the high Arctic are most sensitive to emissions [within the polar dome](#). More specifically, BC at Barrow, Alert and Zeppelin is most sensitive to emissions in North America, the North Pole and Europe, respectively. Our estimates are consistent with sensitivity patterns of the transport climatologies (2000–07) in winter from Hirdman et al. (2010) for the three sites. The sensitivity of BC at Summit is clearly different from the other four low-level surface sites. BC at Summit in the free troposphere is more sensitive to emissions at lower than at higher latitudes, consistent with a previous study (Hirdman et al., 2010). Because of its higher altitude, Summit (3.2 km), more than the other four Arctic surface sites, is frequently exposed to air parcels from warmer low-latitudes that rise isentropically and transported northwards (Hirdman et al., 2010). In addition, Summit is more sensitive to emissions from the United States but relatively less sensitive to Eurasian emissions than the other four surface sites. Emissions [within the polar dome](#) do not influence BC concentration at Summit because the stable atmosphere [within the polar dome](#) during the simulation period in this study strongly suppresses the vertical transport of emissions from surface to the free troposphere. The difference of sensitivities for Summit between this study and Hirdman et al. (2010) is that this study does not show a strong sensitivity to emissions over Greenland, where is the highest sensitivity shown in Hirdman et al. (2010). This difference is probably resulted from different seasons and years simulated in the two studies (this study: April 20–25, 2008; Hirdman et al. (2010): climatology (2000–07) in winter and summer).

4.2.1 Source attribution of surface Arctic BC based on adjoint sensitivity

Fig. 6 shows contributions from global BC emissions during March 1–April 25 to BC concentrations during April 20–25 at Denali, Barrow, Alert, Zeppelin and Summit as computed from the GEOS-Chem adjoint simulations (Sect. 3.2). The left

panels show the contributions integrated from March 1 to April 25. The right panels are hourly contributions from major source regions (as defined in Fig. 2) during March 1–April 25. The left panels are BC concentrations originated from each model grid cell subsequently transported to the receptor sites. Summing these values up globally approximates (within 15%, see Sect. 3.2) the mean [forward simulated](#) BC concentrations in April 20–25 at the receptor sites. Summing up these values in a specific region (e.g. regions defined in Fig. 2), i.e., integrating the area underneath an individual curve (Fig. 6, right panels), gives the overall contribution from BC emitted in that source region during March 1–April 25. The results are summarized in Table 2. The difference between this adjoint attribution and the tagged tracer method is within 15% (Table 2). Such difference is largely explained by the choices of discrete (in the forward simulation) versus continuous (in the adjoint derivation) treatment of advection (Sect. 3.2). Transport timescales from different sources to the five sites can also be inferred from the spectra in the right panels.

Previous studies found that boreal forest fires in the southern Siberia-Lake Baikal area (40–60°N, 100–140°E) and grass/crops burning in Kazakhstan-southern Russia (40–60°N, 30–90°E) were the major sources of BC sampled along the ARCPAC and ARCTAS flights in April 2008 based on MODIS fire detection (Warneke et al., 2009, 2010). We aggregate separately the contributions from forest fires and grass/crops burning to BC at the five receptor sites. The resulting adjoint sensitivity-based estimates show that Siberian biomass burning contributions at the five sites are predominantly (> 90%) from forest fires in the southern Siberia-Lake Baikal area. Forest fires in that region during April 1–14 have large influences on BC at the two Alaskan sites Denali and Barrow, reaching these two sites after 11–25 days of transport (Fig. 6, right panels). The contribution from those forest fires, when integrated during April 1–14, is four times larger at Denali (137.8 ng m⁻³) than at Barrow (30.4 ng m⁻³). Note the different y-axis ranges (Fig. 6, right panels). The contributions at Alert and Zeppelin show similar temporal distributions, with relatively large influences from emissions during April 1–6 and 7–12, but different intensities. The contribution is a factor of three higher at Zeppelin (39.3 ng m⁻³) than at Alert (14.3 ng m⁻³).

In contrast, global anthropogenic contributions are considerably more scattered. At Denali, for instance, local and regional emissions – power plants (such as North Pole, US EIA, 2010) and petroleum refinery industries near Fairbanks (US EIA, 2016) account for 63% of total global anthropogenic contribution to BC at Denali. Additionally, we find that the two sites are influenced by long-range transport of emissions from Northeast China, particularly residential emissions from Heilongjiang province. BC emissions from natural gas flares in the WENR are significant sources of BC in the Arctic (Stohl et al., 2013; Qi et al., [2017a](#)). These flares are the largest sources to BC at Alert (13% of the global anthropogenic contributions) and Zeppelin (26% of global anthropogenic contributions). Global contributions to BC at Summit are distributed more evenly geographically compared to the other four sites. An interesting feature of the anthropogenic contributions is that industrial and residential BC emissions from the Jing-jin-ji cluster of megacities and Shandong province

in East China (together they encompass six model grid cells) are common important sources (7–10% of global contributions) of BC at all five sites.

At Denali, and to a much lesser degree at Barrow, significant contributions are seen from Asian anthropogenic emissions of BC emitted during April 8–15, with a maximum contribution from emissions on April 11. These emissions arrive at the sites after 12–17 days of transport. This episode results from ‘direct’ transport from Asia to the two sites (Brock et al., 2011, and references therein). The transport timescales are broadly consistent with previous estimates. For example, using a trajectory model coupled with tracer emissions, Stohl (2006) showed that, of the air parcels from Asia transported to the Arctic in winter, 25% arrived in less than 14 days and 50% in more than 20 days. Harrigan et al. (2011) attributed BC sampled along an April 12, 2008 DC-8 flight during the ARCTAS field campaign (Jacob et al., 2010) to Asian emissions 10–15 days prior to sampling times. At Denali, Barrow, Alert, and Zeppelin, all four low-level sites, model results show persistent influences from Asian anthropogenic emissions of BC, emitted as far back as March 6–16, after journeys of 35–50 days of transport, presumably after being transported to the Arctic circle and entrained by and becoming part of the circumpolar transport around and within the Arctic circle (Ma et al., 2013). These long timescales are born out by the long transport time from Asia to the Arctic (12–17 days) and the long lifetime in the Arctic afterward (12 days, Table 1). In addition, this lifetime of 12 days is estimated using the average deposition and southward flux in March and April. For specific air parcels (e.g. air parcels in March 6–16), they might experience slower deposition and lower southward flux and reside in the atmosphere for a longer time, resulting in a more persistent influence on surface BC in the Arctic. Direct, episodic transport of Asian emissions during April 8–15 account for 66% of the total Asian contribution (from emissions during March 1–April 25) to BC at Denali and 37% at Barrow. In contrast, Asian emissions during March 6–16 and the subsequent circumpolar transport (hence ‘chronic’ pollution, Brock et al., 2011) account for 39% of the total Asian contribution to BC at Barrow, 65% at Alert and 57% at Zeppelin. These results suggest that both direct, episodic events and chronic Asian anthropogenic pollution, on time scales of 1–2 months, play comparable roles in enhancing springtime Arctic surface BC. Previous studies identifying sources of Arctic surface BC used 5- or 10-day back trajectory analyses (Pollisar et al., 2001; Sharma et al., 2004; Eleftheriadis et al., 2009; Huang et al., 2010a; Matsui et al., 2011; Dutkiewicz et al., 2014). As such, the relatively short timescales used in those studies likely result in significant underestimates of long-range transport of BC from Asia to the Arctic.

At Denali, North American emissions have nearly an immediate impact, on a timescale of 0–9 days, because of the proximity to regional sources (power plants and petroleum refinery industries) in Alaska. These episodic transport events are the major parts of North American contributions at Denali (98%) and to a much lesser degree at Barrow (64%). There are secondary maxima in the North American anthropogenic contributions during March 16–31 (a time lag of 20–30 days) at

Denali and Barrow. These maxima reflect circumpolar transport of North American sources from Canada and the lower 48 states, hence the longer time lags. At Alert and Zeppelin, no direct transport events from North American anthropogenic sources are seen. Instead, circumpolar transport dominates the contribution from North American anthropogenic sources, which account for ~9% of total BC at Alert and ~5% at Zeppelin. At Denali, Barrow, Alert and Zeppelin, there is no direct transport from European anthropogenic emissions during this period. Rather, a long tail in March (more than 25 days of time lag) is seen at each of the four sites, most evident at Barrow, Alert and Zeppelin. These are European anthropogenic emissions that had been circulating the Arctic troposphere. Their relative contributions are 10% at Barrow, 18% at Alert and 13% at Zeppelin. Siberian anthropogenic contributions, mostly from natural gas flares (42% at Alert and 62% at Zeppelin) in the WENR (Stohl et al., 2013; Qi et al., 2016a), have large impacts on BC at Alert and Zeppelin after 6–15 days of transport. Gas flaring contributions are relatively small at Denali (~3%) and Barrow (~7%) and negligible at Summit (~1%) because of the weak sensitivities (Sect. 4.2.1).

Overall, episodic, direct transport dominates anthropogenic contributions at Denali (out of Arctic front, 87%), while chronic, circumpolar transport dominates anthropogenic contributions at Alert (furthest North in the Arctic of the five sites, 89%).

The two types of contributions are comparable at Barrow (direct: 42%) and Zeppelin (direct: 52%). BC concentration from direct transport events at Barrow (12.9 ng m^{-3}) is more than one order of magnitude lower than that at Denali (177.4 ng m^{-3}). This difference is largely explained by the strong transport barrier, i.e., the ‘Arctic front’ at ~66°N (Stohl, 2006 and references therein), which lies between and separates Denali (63.7°N) and Barrow (71.3°N). BC concentration at 750 hPa, above the Arctic front, over Barrow is more than a factor of three larger than that at the surface during April 20–25 (Fig. 7).

Contributions from both Asian anthropogenic sources and Siberian biomass burning emissions to BC at 750 hPa Barrow (Asian anthropogenic: 57.0 ng g^{-1} ; Siberian biomass burning: 119.8 ng g^{-1}) are four times larger than those at the surface Barrow (Asian anthropogenic: 13.6 ng g^{-1} ; Siberian biomass burning: 30.4 ng g^{-1}) and are comparable to their contributions to Denali (Asian anthropogenic: 38.3 ng g^{-1} ; Siberian biomass burning: 137.8 ng g^{-1}). The Arctic front also traps BC emitted within the front to the Arctic lower troposphere. This trapping is evident at Barrow – North American anthropogenic emissions are significant sources for BC at the surface (13%) but negligible at 750 hPa (1%). Zeppelin is strongly influenced by direct transport of natural gas flaring emissions in the WENR and European anthropogenic emissions. BC at Alert is also enhanced by direct transport from these flaring emissions, but to a much less extent (a factor of five lower) compared with Zeppelin. In contrast, almost all biomass burning contributions (> 97%) are from direct transport events in April at the four sites.

BC at Summit shows remarkably different signatures of source types and source regions than that at the other four sites. This free tropospheric site experiences a large and persistent contribution from anthropogenic sources of BC emitted during

March 1–April 15 in Asia, spanning time scales of 10–50 days. North American anthropogenic emissions take as short as four days (4–16 days) to impact BC at Summit because of the close proximity. Somewhat surprisingly, Summit is subject to comparable influences from European and North American anthropogenic emissions (~20%). Anthropogenic BC emitted during April 8–15 in Europe arrives at the site after 10–17 days of transport.

5 4.3 Uncertainty analysis

4.3.1 Uncertainty associated with the temporal resolution of biomass burning emissions

Open biomass burning emissions are known to have large day-to-day and diurnal variations (Giglio, 2007). It is conceivable that the temporal resolution of biomass burning emissions used in the model may introduce significant uncertainty in our source attribution. Here we examine the sensitivity of BC at the five sites to temporal variation of Siberian biomass burning emissions and explore the implications of these variations on atmospheric transport of BC to the Arctic. Specifically, we use both a monthly and a 3-hourly biomass burning emission inventories (Sect. 3.1) to assess the abovementioned uncertainty. The left panels of Fig. 8 show both monthly and 3-hourly BC biomass burning emissions in Siberia in March–April 2008. Also overlaid is the adjoint sensitivity of Arctic surface BC (at the five sites) to the emissions. Biomass burning contributions to Arctic surface BC are thus the combined results of the spatiotemporal distribution of the emissions and the sensitivities (Sect. 3.2). Fig. 8 (right panels) shows the resulting contributions from Siberian biomass burning to mean BC concentrations on April 20–25 at the five sites. The 3-hourly inventory results in more significant day-to-day and diurnal variations, as expected, and more acute episodic contributions (e.g., at Barrow from emissions on April 9–10 and 13–15). In contrast, the monthly inventory leads to more broad and persistent contributions from emissions on April 1–15, with more mesoscale variations. The temporal variation of contributions in April estimated from the monthly inventory generally follows the variation of sensitivities. Contribution maxima correspond to sensitivity maxima, such as the contribution peaks on April 7–10 at Barrow and on April 8–11 at Alert. Contributions estimated using 3-hourly inventory also peak on the same days. Contributions in March are negligible because of very low biomass burning emissions. Overall, the 3-hourly inventory leads to weaker pole-ward transport of BC. For instance, the contribution is 50% lower at Denali, 31–39% lower at Barrow, Alert and Zeppelin, and 6% lower at Summit. The lower contributions are because the much larger BC emissions after April 12 in the 3-hourly inventory has little effects on surface BC concentrations during April 20–25, because they can hardly be transported to the Arctic surface during such a short time, shown as the out of phase of the temporal variation of the 3-hourly inventory and the sensitivities at all sites (Fig. 8 left panels). The resulting BC concentration at Denali, Barrow and Alert compare worse with observations, while the comparison is improved at Zeppelin and Summit.

4.3.2 Uncertainty associated with wet scavenging

We examine here the role of wet scavenging, a determining factor of BC loading in the Arctic (Huang et al., 2010b; Vignati et al., 2010; Liu et al., 2011; Browse et al., 2012; Qi et al., 2017a), on pole-ward transport of BC. A critical process that affects the wet scavenging of BC particles is WBF (Cozic et al., 2007; Henning et al., 2004). In a previous study, we have shown that WBF releases BC particles incorporated in cloud water drops back into interstitial air in mixed-phase clouds, and thereby strongly reduces BC scavenging efficiency and slows down subsequent wet scavenging (Qi et al., 2017b). Conversely, the absence of WBF leads to lower mean BC concentrations in surface air. To examine the effect of WBF on Arctic surface BC, we conduct a simulation whereby WBF is turned off. A direct consequence of the absence of WBF is weaker sensitivities of Arctic BC to global emissions. Fig. 9 shows the reductions of these sensitivities relative to the standard simulation (which includes WBF). In the absence of WBF, the sensitivities are lower by 10–90% for most regions. The resulting BC concentrations in surface air at the five sites are lower by 18–52%. The discrepancies against observations with and without WBF at Denali are within 20%. The negative discrepancy against observations is further exaggerated at Barrow and Alert (from ~-10% with WBF to ~-55% without WBF), while the large positive discrepancies are reduced at Zeppelin (from 89% with WBF to -10% without WBF) and Summit (from 65% with WBF to -15% without WBF).

The absence of WBF results in inhomogeneous reduction of sensitivities. For Denali, Barrow, Alert and Zeppelin, the reductions of sensitivities are larger in far field source regions and smaller to near field emissions. The resulting relative contributions are higher from near field, but lower from far field. At Denali for example, the WBF effect results in significantly larger reductions of sensitivities to emissions from Europe (50–70%) than to those from the North American sector in the Arctic and the North Pacific (20–40%). Consequently, the resulting relative contribution from North America are larger in the absence of WBF (50%) than that with WBF included (43%). Similarly, for Barrow the relative contribution increases from 12% to 17% for North American emissions and from 49% to 51% for Siberian emissions in the absence of WBF, while the relative contributions decrease for other sources. For Alert and Zeppelin, the relative contributions from proximate source region Siberia increase from 46% to 53% at Alert and from 66% to 72% at Zeppelin. This indicates that WBF strongly increases the pole-ward transport of BC from far field regions. For Summit, the reduction of sensitivity without WBF is more evenly distributed than other surface sites and the resulting relative contributions from different sources change marginally.

4.3.3 Other uncertainties

A large portion of BC in the Arctic is transported from lower latitudes via low-pressure systems, particularly the polar front (Stohl, 2006), which is considerably finer than the spatial resolution of GEOS-Chem used in this study (2° latitude \times 2.5° longitude) and other global models. A recent study (Sato et al., 2016) found that a better representation of the vortex

structure of the low-pressure and frontal systems using a finer resolution (3.5 km) in a global model enhanced the pole-ward transport of BC from Europe-Siberia, Asia and North America, with relatively larger increase in Asia and smaller increase in Europe-Siberia region. Thus, the coarse resolution of GEOS-Chem in this study might have overestimated the relative contribution from Europe and Siberia, while underestimated the relative contribution from Asia.

GEOS-Chem generally captures the observed BC concentrations at Arctic surface, but the large positive bias at site Zeppelin (80%) and Summit (60%) has some implications for the uncertainties of source apportionment. At Zeppelin, one of the possible reasons for the large positive bias is that the flaring emissions used in this study is probably too high because the emission factor used is much larger than the current field and lab measurements (Qi et al., 2017a). The resulting contribution from Russian anthropogenic sources to the Arctic surface is probably also biased high in this study. The other reason for the large positive bias of BC concentration at the two sites is the miss representation of the WBF effects by the simply assumption. The uncertainties introduced by WBF are discussed in Sect. 4.3.2.

5. Summary and conclusions

This study identified sources of BC at surface sites in the low Arctic (Denali), the high Arctic (Barrow, Alert and Zeppelin), and in the Arctic free troposphere (Summit) using a 3D global chemical transport model GEOS-Chem with concentrations tagged by emission source regions at the continental scale in April 2008. We also identified sources and temporal variations of BC during a pollution episode at these five sites at 2° latitude × 2.5° longitude horizontal and hourly temporal resolution using the GEOS-Chem adjoint model.

The tagger tracer technique showed that the largest sources of BC in the Arctic in April 2008 were Asian anthropogenic sources (35–45%) and Siberian biomass burning emissions (46–64%). Adjoint sensitivity showed that during a transport episode in April 20–25, BC at Denali and Barrow in Alaska was most sensitive to emissions in the Pacific ocean while BC at Alert and Zeppelin was most sensitive to emissions in the Arctic Circle and Eurasia. At Summit in the free troposphere, BC was more sensitive to emissions at lower than higher latitudes.

The fine horizontal resolution of adjoint helped identify forest fires in southern Siberia-Lake Baikal area as the largest sources of biomass burning, accounting for more than 90% of total global biomass burning contributions to BC at the five receptor sites during April 20–25, 2008. The largest anthropogenic sources of BC at Denali and Barrow were local and regional emissions in Alaska. In addition, residential emissions from Heilongjiang province in Northeast China were a large anthropogenic source for Denali. For Alert and Zeppelin, the largest anthropogenic sources were gas flares in WENR.

Anthropogenic sources (industrial and residential) in Jing-jin-ji megacities and Shandong province in China were large sources (~10%) of BC at Barrow, Alert and Zeppelin in high Arctic.

Sources and source regions of BC in springtime Arctic identified in this study were in broad agreement with previous estimates except that we found a much larger contribution from Asian anthropogenic sources in the form of 'chronic' pollution on time scale of 1–2 months. We found that the contribution from biomass burning was in the range of 5.2–55.1%, in agreement with previous observations of the ratio of Levoglucosan and BC (Yttri et al., 2014). Transport pathways were consistent with previously identified pathways of BC reaching the Arctic surface (Hirdman et al., 2010; Dutkiewicz et al., 2014) and the troposphere (e.g. Klonecki et al., 2003; Stohl, 2006; Wang et al., 2014). For instance, anthropogenic emissions from Siberia and Europe were transported to the Arctic through low-level transport (Klonecki et al., 2003; Stohl, 2006; Harrigan et al., 2011; Marelle et al., 2015), while anthropogenic emissions from Asia and biomass burning emissions from South Asia were uplifted in source regions and entered the Arctic through the middle and upper troposphere (Matsui et al., 2011; Wang et al., 2014; Liu et al., 2015). The timescales for the transport estimated in this study were also consistent with previous estimates (Stohl, 2006; Harrigan et al., 2011). Asian emissions took 12–17 days to reach the Arctic surface. European, Russian and North American emissions took 0–9 days because of the closeness to the Arctic.

In contrast with the previous estimates, we found that a large portion of Asian contribution was in the form of 'chronic' pollution in the time scale of about 1–2 months, which is not captured by the 5- or 10-day back trajectories. The fine temporal resolution of contribution estimated using the adjoint method differentiated the contributions of episodic, direct transport from that of chronic, circumpolar transport. Our results suggested that even during a strong pollution episode, direct transport accounted for half of the contribution at most (42% at Barrow, 52% at Zeppelin and 11% at Alert). The chronic, circumpolar transport of BC was the largest contributor to BC at surface. A large fraction of the Asian contribution was from the chronic circumpolar transport (~60% at Barrow and ~100% at Alert and Zeppelin). The long direct transport timescale (>12 days) and the large contribution from chronic pollution suggested that contribution from Asia was probably strongly underestimated by previous studies that were based on 5- or 10-day trajectory analysis.

Source attribution of Arctic surface BC using the adjoint method was associated with uncertainties from all processes, including emissions, transport, aging, and deposition. We found that using a 3-hourly temporal resolution of biomass burning emissions reduced BC concentration strongly at Denali (~50%), moderately (~30%) at Barrow, Alert and Zeppelin and marginally (6%) at Summit. Finer resolution did not affect global sensitivity. The decrease of contribution resulted from the emissions and sensitivities being out of phase. BC concentrations at the five sites were lower by 35–52% without WBF, resulting from a reduction of sensitivities to global emissions. Without WBF, the sensitivity decreased more in the far field

sources faraway than near field sources for Denali, Barrow, Alert and Zeppelin. Thus, the relative contribution from proximate sources increased in the absence of WBF. This indicated that WBF strongly increased the pole-ward transport from far field regions. For Summit, the change of the relative contribution from different regions without WBF was negligible.

5 Acknowledgements

This study was funded by NASA grant NNX14AF11G from the Atmospheric Chemistry Modeling and Analysis Program (ACMAP) and by a grant from the U.S. Environmental Protection Agency's Science to Achieve Results (STAR) program. Although the research described in the article has been funded completely or in part by the U.S. Environmental Protection Agency's STAR program through grant R835037, it has not been subjected to any EPA review and therefore does not necessarily reflect the views of the Agency, and no official endorsement should be inferred. We would also like to thank the Global Monitoring Division at NOAA Earth System Research Laboratory, the Atmospheric Science and Technology Directorate at Environment Canada and SFT Norway for providing data. The Swedish Environmental Protection Agency and the Swedish Research Council have sponsored BC measurements at Zeppelin.

15

References

- AMAP: Snow, Water, Ice and Permafrost in the Arctic (SWIPA): Climate Change and the Cryosphere. Arctic Monitoring and Assessment Programme (AMAP), Oslo, xii + 538 pp., 2011.
- Bond, T. C., Bhardwaj, E., Dong, R., Jogani, R., Jung, S. K., Roden, C., Streets, D. G., and Trautmann, N. M.: Historical emissions of black and organic carbon aerosol from energy-related combustion, 1850-2000, *Global Biogeochem Cy*, 21, doi: 10.1029/2006gb002840, 2007.
- Bond, T. C., Doherty, S. J., Fahey, D. W., Forster, P. M., Berntsen, T., DeAngelo, B. J., Flanner, M. G., Ghan, S., Kärcher, B., Koch, D., Kinne, S., Kondo, Y., Quinn, P. K., Sarofim, M. C., Schultz, M. G., Schulz, M., Venkataraman, C., Zhang, H., Zhang, S., Bellouin, N., Guttikunda, S. K., Hopke, P. K., Jacobson, M. Z., Kaiser, J. W., Klimont, Z., Lohmann, U., Schwarz, J. P., Shindell, D., Storelvmo, T., Warren, S. G., and Zender, C. S.: Bounding the role of black carbon in the climate system: A scientific assessment, *Journal of Geophysical Research: Atmospheres*, 118, 5380-5552, doi: 10.1002/jgrd.50171, 2013.
- Bourgeois, Q., and Bey, I.: Pollution transport efficiency toward the Arctic: Sensitivity to aerosol scavenging and source regions, *Journal of Geophysical Research: Atmospheres*, 116, doi: 10.1029/2010jd015096, 2011.
- Brock, C. A., Cozic, J., Bahreini, R., Froyd, K. D., Middlebrook, A. M., McComiskey, A., Brioude, J., Cooper, O., Stohl, A., and Aikin, K.: Characteristics, sources, and transport of aerosols measured in spring 2008 during the aerosol, radiation, and cloud processes affecting Arctic Climate (ARCPAC) Project, *Atmos Chem Phys*, 11, 2423-2453, 2011.
- Browse, J., Carslaw, K. S., Arnold, S. R., Pringle, K., and Boucher, O.: The scavenging processes controlling the seasonal cycle in Arctic sulphate and black carbon aerosol, *Atmos Chem Phys*, 12, 6775-6798, doi: 10.5194/acp-12-6775-2012, 2012.
- Cozic, J., Verheggen, B., Mertes, S., Connolly, P., Bower, K., Petzold, A., Baltensperger, U., and Weingartner, E.: Scavenging of black carbon in mixed phase clouds at the high alpine site Jungfraujoch, *Atmospheric Chemistry and Physics*, 7, 1797-1807, 2007.

- Dutkiewicz, V. A., DeJulio, A. M., Ahmed, T., Laing, J., Hopke, P. K., Skeie, R. B., Viisanen, Y., Paatero, J., and Husain, L.: Forty - seven years of weekly atmospheric black carbon measurements in the Finnish Arctic: Decrease in black carbon with declining emissions, *Journal of Geophysical Research: Atmospheres*, 119, 7667-7683, 2014.
- Eleftheriadis, K., Vratolis, S., and Nyeki, S.: Aerosol black carbon in the European Arctic: Measurements at Zeppelin station, Ny-Ålesund, Svalbard from 1998–2007, *Geophysical Research Letters*, 36, n/a-n/a, 10.1029/2008gl035741, 2009.
- 5 Flanner, M. G.: Arctic climate sensitivity to local black carbon, *Journal of Geophysical Research: Atmospheres*, 118, 1840-1851, doi: 10.1002/jgrd.50176, 2013.
- Flannigan, M. D., Krawchuk, M. A., de Groot, W. J., Wotton, B. M., and Gowman, L. M.: Implications of changing climate for global wildland fire, *International journal of wildland fire*, 18, 483-507, 2009.
- 10 Frossard, A. A., Shaw, P. M., Russell, L. M., Kroll, J. H., Canagaratna, M. R., Worsnop, D. R., Quinn, P. K., and Bates, T. S.: Springtime Arctic haze contributions of submicron organic particles from European and Asian combustion sources, *Journal of Geophysical Research: Atmospheres*, 116, 2011.
- Fu, T.-M., Cao, J. J., Zhang, X. Y., Lee, S. C., Zhang, Q., Han, Y. M., Qu, W. J., Han, Z., Zhang, R., Wang, Y. X., Chen, D., and Henze, D. K.: Carbonaceous aerosols in China: top-down constraints on primary sources and estimation of secondary contribution, *Atmos. Chem. Phys.*, 12, 2725-2746, doi:10.5194/acp-12-2725-2012, 2012.
- 15 Fuelberg, H. E., Harrigan, D. L., and Sessions, W.: A meteorological overview of the ARCTAS 2008 mission, *Atmospheric Chemistry and Physics*, 10, 817-842, 2010.
- Giglio, L., Kendall, J., and Mack, R.: A multi-year active fire dataset for the tropics derived from the TRMM VIRS, *International Journal of Remote Sensing*, 24, 4505-4525, 2003.
- 20 Giglio, L.: Characterization of the tropical diurnal fire cycle using VIRS and MODIS observations, *Remote Sensing of Environment*, 108, 407-421, 2007.
- Gou, T., and Sandu, A.: Continuous versus discrete advection adjoints in chemical data assimilation with CMAQ, *Atmospheric environment*, 45, 4868-4881, 2011.
- Hakami, A., Henze, D. K., Seinfeld, J. H., Singh, K., Sandu, A., Kim, S., Byun, D., and Li, Q.: The adjoint of CMAQ, *Environmental science & technology*, 41, 7807-7817, 2007.
- 25 Harrigan, D., Fuelberg, H., Simpson, I., Blake, D., Carmichael, G., and Diskin, G.: Anthropogenic emissions during Arctas-A: mean transport characteristics and regional case studies, *Atmospheric Chemistry and Physics*, 11, 2011.
- Henning, S.: Aerosol partitioning in natural mixed-phase clouds, *Geophysical Research Letters*, 31, doi: 10.1029/2003gl019025, 2004.
- 30 Henze, D. K., and Seinfeld, J.: Development of the adjoint of GEOS-Chem, *Atmospheric Chemistry and Physics*, 7, 2413-2433, doi:10.5194/acp-7-2413-2007, 2007.
- Henze, D., Seinfeld, J., and Shindell, D.: Inverse modeling and mapping US air quality influences of inorganic PM 2.5 precursor emissions using the adjoint of GEOS-Chem, *Atmospheric Chemistry and Physics*, 9, 5877-5903, 2009.
- Henze, D. K., Shindell, D. T., Akhtar, F., Spurr, R. J., Pinder, R. W., Loughlin, D., Kopacz, M., Singh, K., and Shim, C.: Spatially refined aerosol direct radiative forcing efficiencies, *Environmental science & technology*, 46, 9511-9518, 2012.
- 35 Hirdman, D., Sodemann, H., Eckhardt, S., Burkhardt, J. F., Jefferson, A., Mefford, T., Quinn, P. K., Sharma, S., Ström, J., and Stohl, A.: Source identification of short-lived air pollutants in the Arctic using statistical analysis of measurement data and particle dispersion model output, *Atmos. Chem. Phys.*, 10, 669-693, 2010.
- Huang, L., Gong, S., Jia, C., and Lavoué, D.: Relative contributions of anthropogenic emissions to black carbon aerosol in the Arctic, *Journal of Geophysical Research: Atmospheres*, 115, 2010a.
- 40 Huang, L., Gong, S., Jia, C., and Lavoué, D.: Importance of deposition processes in simulating the seasonality of the Arctic black carbon aerosol, *Journal of Geophysical Research: Atmospheres*, 115, 2010b.
- Jacob, D. J., Crawford, J., Maring, H., Clarke, A., Dibb, J. E., Emmons, L., Ferrare, R., Hostetler, C., Russell, P., and Singh, H.: The Arctic Research of the Composition of the Troposphere from Aircraft and Satellites (ARCTAS) mission: design, execution, and first results, *Atmospheric Chemistry and Physics*, 10, 5191-5212, 2010.
- 45 Klonecki, A., Hess, P., Emmons, L., Smith, L., Orlando, J., and Blake, D.: Seasonal changes in the transport of pollutants into the Arctic troposphere - model study, *Journal of Geophysical Research: Atmospheres*, 108, 2003.

- Koch, D., and Hansen, J.: Distant origins of Arctic black carbon: a Goddard Institute for Space Studies ModelE experiment, *Journal of Geophysical Research: Atmospheres*, 110, 2005.
- Kopacz, M., Jacob, D. J., Henze, D. K., Heald, C. L., Streets, D. G., and Zhang, Q.: Comparison of adjoint and analytical Bayesian inversion methods for constraining Asian sources of carbon monoxide using satellite (MOPITT) measurements of CO columns, *Journal of Geophysical Research: Atmospheres*, 114, 2009.
- Kopacz, M., Jacob, D. J., Fisher, J., Logan, J. A., Zhang, L., Megretskaia, I. A., Yantosca, R. M., Singh, K., Henze, D., and Burrows, J.: Global estimates of CO sources with high resolution by adjoint inversion of multiple satellite datasets (MOPITT, AIRS, SCIAMACHY, TES), *Atmospheric Chemistry and Physics*, 10, 855-876, 2010.
- Kopacz, M., Mauzerall, D., Wang, J., Leibensperger, E., Henze, D., and Singh, K.: Origin and radiative forcing of black carbon transported to the Himalayas and Tibetan Plateau, *Atmospheric Chemistry and Physics*, 11, 2837-2852, 2011.
- Liu, D., Quennehen, B., Darbyshire, E., Allan, J. D., Williams, P. I., Taylor, J. W., Bauguitte, S.-B., Flynn, M. J., Lowe, D., and Gallagher, M.: The importance of Asia as a source of black carbon to the European Arctic during springtime 2013, *Atmospheric Chemistry and Physics*, 15, 11537-11555, 2015.
- Liu, J., Fan, S., Horowitz, L. W., and Levy, H.: Evaluation of factors controlling long-range transport of black carbon to the Arctic, *Journal of Geophysical Research*, 116, doi: 10.1029/2010jd015145, 2011.
- Liu, Z., and Sandu, A.: On the properties of discrete adjoints of numerical methods for the advection equation, *International Journal for Numerical Methods in Fluids*, 56, 769-803, 10.1002/flid.1547, 2008.
- Liu, Z., Yang, J., Chang, Y., Weisberg, P. J., and He, H. S.: Spatial patterns and drivers of fire occurrence and its future trend under climate change in a boreal forest of Northeast China, *Global Change Biology*, 18, 2041-2056, 2012.
- Ma, P.L., Gattiker, J.R., Liu, X. and Rasch, P.J.: A novel approach for determining source-receptor relationships in model simulations: A case study of black carbon transport in Northern Hemisphere winter. *Environmental Research Letters*, 8(2), Article No. 02042. doi:10.1088/1748-9326/8/2/024042, 2013.
- Mao, Y. H., Li, Q. B., Chen, D., Zhang, L., Hao, W. M., and Liou, K. N.: Top-down estimates of biomass burning emissions of black carbon in the Western United States, *Atmos. Chem. Phys.*, 14, 7195-7211, doi: 10.5194/acp-14-7195-2014, 2014.
- Marelle, L., Raut, J.-C., Thomas, J. L., Law, K. S., Quennehen, B., Ancellet, G., Pelon, J., Schwarzenboeck, A., and Fast, J. D.: Transport of anthropogenic and biomass burning aerosols from Europe to the Arctic during spring 2008, *Atmos Chem Phys*, 15, 3831-3850, 2015.
- Matsui, H., Kondo, Y., Moteki, N., Takegawa, N., Sahu, L., Zhao, Y., Fuelberg, H., Sessions, W., Diskin, G., and Blake, D.: Seasonal variation of the transport of black carbon aerosol from the Asian continent to the Arctic during the ARCTAS aircraft campaign, *Journal of Geophysical Research: Atmospheres*, 116, 2011.
- [Mu, M., Randerson, J. T., van der Werf, G. R., Giglio, L., Kasibhatla, P., Morton, D., Collatz, G. J., DeFries, R. S., Hyer, E. J., Prins, E. M., Griffith, D. W. T., Wunch, D., Toon, G. C., Sherlock, V., and Wennberg, P. O.: Daily and 3-hourly variability in global fire emissions and consequences for atmospheric model predictions of carbon monoxide, *Journal of Geophysical Research: Atmospheres*, 116, D24303, 10.1029/2011jd016245, 2011.](#)
- Nester, K., and Panitz, H.-J.: Sensitivity analysis by the adjoint chemistry transport model DRAISfor an episode in the Berlin Ozone (BERLIOZ) experiment, *Atmospheric Chemistry and Physics*, 6, 2091-2106, 2006.
- Park, R. J., Jacob, D. J., Chin, M., and Martin, R. V.: Sources of carbonaceous aerosols over the United States and implications for natural visibility, *J Geophys Res-Atmos*, 108, doi: 10.1029/2002jd003190, 2003.
- Park, R. J., Jacob, D. J., Palmer, P. I., Clarke, A. D., Weber, R. J., Zondlo, M. A., Eisele, F. L., Bandy, A. R., Thornton, D. C., Sachse, G. W., and Bond, T. C.: Export efficiency of black carbon aerosol in continental outflow: Global implications, *J Geophys Res-Atmos*, 110, doi: 10.1029/2004jd005432, 2005.
- Polissar, A. V., Hopke, P. K., and Harris, J. M.: Source regions for atmospheric aerosol measured at Barrow, Alaska, *Environmental science & technology*, 35, 4214-4226, 2001.
- Prins, E. M., Feltz, J. M., Menzel, W. P., and Ward, D. E.: An overview of GOES - 8 diurnal fire and smoke results for SCAR - B and 1995 fire season in South America, *Journal of Geophysical Research: Atmospheres*, 103, 31821-31835, 1998.
- Qi, L., Li, Q., Li, Y., and He, C.: Factors Controlling Black Carbon Distribution in the Arctic, *Atmos. Chem. Phys.*, [17, 1037-1059, doi:10.5194/acp-17-1037-2017, 2017a.](#)

- Qi, L., Li, Q., He, C., Wang, X., and Huang, J.: Effects of Wegener-Bergeron-Findeisen Process on Global Black Carbon Distribution, *Atmos. Chem. Phys.*, [in press, 2017b](#).
- Qin, Y., and Xie, S.: Spatial and temporal variation of anthropogenic black carbon emissions in China for the period 1980–2009, *Atmospheric Chemistry and Physics*, 12, 4825–4841, 2012.
- 5 Quinn, P., Bates, T., Baum, E., Doubleday, N., Fiore, A., Flanner, M., Fridlind, A., Garrett, T. J., Koch, D., and Menon, S.: Short-lived pollutants in the Arctic: their climate impact and possible mitigation strategies, *Atmospheric Chemistry and Physics*, 8, 1723–1735, 2008.
- Randerson, J. T., Chen, Y., van der Werf, G. R., Rogers, B. M., and Morton, D. C.: Global burned area and biomass burning emissions from small fires, *Journal of Geophysical Research: Biogeosciences*, 117, doi: 10.1029/2012jg002128, 2012.
- 10 Sand, M., Berntsen, T., Kay, J., Lamarque, J., Seland, Ø., and Kirkevåg, A.: The Arctic response to remote and local forcing of black carbon, *Atmos. Chem. Phys.*, 13, 211–224, 2013.
- Sand, M., Berntsen, T., von Salzen, K., Flanner, M., Langner, J., and Victor, D.: Response of Arctic temperature to changes in emissions of short-lived climate forcers, *Nature Climate Change*, 2015.
- Sharma, S., Lavoué, D., Cachier, H., Barrie, L. A., and Gong, S. L.: Long-term trends of the black carbon concentrations in the Canadian Arctic, *Journal of Geophysical Research: Atmospheres*, 109, doi: 10.1029/2003jd004331, 2004.
- 15 Sharma, S., Andrews, E., Barrie, L. A., Ogren, J. A., and Lavoué, D.: Variations and sources of the equivalent black carbon in the high Arctic revealed by long-term observations at Alert and Barrow: 1989–2003, *Journal of Geophysical Research: Atmospheres*, 111, doi: 10.1029/2005jd006581, 2006.
- Sharma, S., Ishizawa, M., Chan, D., Lavoué, D., Andrews, E., Eleftheriadis, K., and Maksyutov, S.: 16-year simulation of Arctic black carbon: Transport, source contribution, and sensitivity analysis on deposition, *Journal of Geophysical Research: Atmospheres*, 118, 943–964, doi:10.1029/2012jd017774, 2013.
- 20 Shaw, P., Russell, L., Jefferson, A., and Quinn, P.: Arctic organic aerosol measurements show particles from mixed combustion in spring haze and from frost flowers in winter, *Geophysical Research Letters*, 37, 2010.
- Shindell, D., Chin, M., Dentener, F., Doherty, R., Faluvegi, G., Fiore, A. M., Hess, P., Koch, D., MacKenzie, I., and Sanderson, M.: A multi-model assessment of pollution transport to the Arctic, *Atmospheric Chemistry and Physics*, 8, 5353–5372, 2008.
- Shindell, D., and Faluvegi, G.: Climate response to regional radiative forcing during the twentieth century, *Nature Geosci*, 2, 294–300, 2009.
- Soja, A. J., Tchepakova, N. M., French, N. H., Flannigan, M. D., Shugart, H. H., Stocks, B. J., Sukhinin, A. I., Parfenova, E., Chapin, F. S., and Stackhouse, P. W.: Climate-induced boreal forest change: predictions versus current observations, *Global and Planetary Change*, 56, 274–296, 2007.
- 30 Stohl, A.: Characteristics of atmospheric transport into the Arctic troposphere, *Journal of Geophysical Research: Atmospheres*, 111, doi: 10.1029/2005jd006888, 2006.
- Stohl, A., Berg, T., Burkhardt, J., Fjærraa, A., Forster, C., Herber, A., Hov, Ø., Lunder, C., McMillan, W., and Oltmans, S.: Arctic smoke—record high air pollution levels in the European Arctic due to agricultural fires in Eastern Europe in spring 2006, *Atmospheric Chemistry and Physics*, 7, 511–534, 2007.
- 35 Stohl, A., Klimont, Z., Eckhardt, S., Kupiainen, K., Shevchenko, V. P., Kopeikin, V. M., and Novigatsky, A. N.: Black carbon in the Arctic: the underestimated role of gas flaring and residential combustion emissions, *Atmos Chem Phys*, 13, 8833–8855, doi: 10.5194/acp-13-8833-2013, 2013.
- Thuburn, J., and Haine, T. W.: Adjoints of nonoscillatory advection schemes, *Journal of Computational Physics*, 171, 616–631, 2001.
- U.S. EIA, State Electricity Profiles 2008, Table2, p 7 ,2010
- U.S. EIA, Alaska State Energy Profile, <http://www.eia.gov/state/print.cfm?sid=AK#68>, 2016
- 45 Vignati, E., Karl, M., Krol, M., Wilson, J., Stier, P., and Cavalli, F.: Sources of uncertainties in modelling black carbon at the global scale, *Atmospheric Chemistry and Physics*, 10, 2595–2611, 2010.
- Walker, T., Jones, D., Parrington, M., Henze, D., Murray, L., Bottenheim, J., Anlauf, K., Worden, J., Bowman, K., and Shim, C.: Impacts of midlatitude precursor emissions and local photochemistry on ozone abundances in the Arctic, *Journal of Geophysical Research: Atmospheres*, 117, 2012.

- Wang, H., Rasch, P. J., Easter, R. C., Singh, B., Zhang, R., Ma, P. L., Qian, Y., Ghan, S. J., and Beagley, N.: Using an explicit emission tagging method in global modeling of source - receptor relationships for black carbon in the Arctic: Variations, sources, and transport pathways, *Journal of Geophysical Research: Atmospheres*, 119, 2014.
- 5 Wang, Q., Jacob, D. J., Fisher, J. A., Mao, J., Leibensperger, E. M., Carouge, C. C., Le Sager, P., Kondo, Y., Jimenez, J. L., Cubison, M. J., and Doherty, S. J.: Sources of carbonaceous aerosols and deposited black carbon in the Arctic in winter-spring: implications for radiative forcing, *Atmos Chem Phys*, 11, 12453-12473, doi: 10.5194/acp-11-12453-2011, 2011.
- Wang, R., Tao, S., Wang, W., Liu, J., Shen, H., Shen, G., Wang, B., Liu, X., Li, W., and Huang, Y.: Black carbon emissions in China from 1949 to 2050, *Environmental science & technology*, 46, 7595-7603, 2012.
- 10 Warneke, C., Bahreini, R., Brioude, J., Brock, C., De Gouw, J., Fahey, D., Froyd, K., Holloway, J., Middlebrook, A., and Miller, L.: Biomass burning in Siberia and Kazakhstan as an important source for haze over the Alaskan Arctic in April 2008, *Geophysical Research Letters*, 36, 2009.
- Warneke, C., Froyd, K., Brioude, J., Bahreini, R., Brock, C., Cozic, J., De Gouw, J., Fahey, D., Ferrare, R., and Holloway, J.: An important contribution to springtime Arctic aerosol from biomass burning in Russia, *Geophysical Research Letters*, 15 37, 2010.
- Wesely, M. L.: Parameterization of surface resistances to gaseous dry deposition in regional-scale numerical models, *Atmospheric Environment* (1967), 23, 1293-1304, [http://dx.doi.org/10.1016/0004-6981\(89\)90153-4](http://dx.doi.org/10.1016/0004-6981(89)90153-4), 1989.
- Wotton, B. M., Nock, C. A., and Flannigan, M. D.: Forest fire occurrence and climate change in Canada, *International journal of wildland fire*, 19, 253-271, 2010.
- 20 Yttri, K. E., Lund Myhre, C., Eckhardt, S., Fiebig, M., Dye, C., Hirdman, D., Ström, J., Klimont, Z., and Stohl, A.: Quantifying black carbon from biomass burning by means of levoglucosan—a one-year time series at the Arctic observatory Zeppelin, *Atmospheric Chemistry and Physics*, 14, 6427-6442, 2014.
- Zhang, L., Gong, S., Padro, J., and Barrie, L.: A size-segregated particle dry deposition scheme for an atmospheric aerosol module, *Atmos Environ*, 35, 549-560, [http://dx.doi.org/10.1016/S1352-2310\(00\)00326-5](http://dx.doi.org/10.1016/S1352-2310(00)00326-5), 2001.
- 25 Zhang, L., Jacob, D. J., Kopacz, M., Henze, D. K., Singh, K., and Jaffe, D. A.: Intercontinental source attribution of ozone pollution at western US sites using an adjoint method, *Geophysical Research Letters*, 36, 2009.
- Zhang, Q., Streets, D. G., Carmichael, G. R., He, K. B., Huo, H., Kannari, A., Klimont, Z., Park, I. S., Reddy, S., Fu, J. S., Chen, D., Duan, L., Lei, Y., Wang, L. T., and Yao, Z. L.: Asian emissions in 2006 for the NASA INTEX-B mission, *Atmospheric Chemistry and Physics*, 9, 5131-5153, 2009.
- 30 Zhang, L., Liu, L., Zhao, Y., Gong, S., Zhang, X., Henze, D. K., Capps, S. L., Fu, T.-M., Zhang, Q., and Wang, Y.: Source attribution of particulate matter pollution over North China with the adjoint method, *Environmental Research Letters*, 10, 084011, 2015a.
- Zhang, L., Henze, D. K., Grell, G. A., Bousserez, N., Zhang, Q., Torres, O., Ahn, C., Lu, Z., Cao, J., and Mao, Y.: Constraining black carbon aerosol over Asia using OMI aerosol absorption optical depth and the adjoint of GEOS-Chem, 35 2015b.

Table 1: Atmospheric lifetimes (τ) of Arctic BC (2008) from major sources and source regions and BC emissions in these regions.

		Emissions (Gg)		τ^* (days)					
		Annual	March-April	Annual			March-April		
				τ	$\tau_{dep.}$	$\tau_{tran.}$	τ	$\tau_{dep.}$	$\tau_{tran.}$
Anthropogenic	North America	420	69	9	22	14	12	36	18
	Europe	648	107	6	9	17	9	16	21
	Siberia	108	18	5	7	23	7	10	28
	Asia	3588	591	9	47	11	12	71	14
Biomass Burning	Siberia	289	125	9	16	19	12	30	21
	South Asia	203	113	9	98	9	9	141	10

* Assume changing of total mass of BC in the Arctic (Q) is negligible during the periods we concern. Sources of BC in the Arctic are balanced by its sinks. The sources include BC emissions in the Arctic and northward transport of BC at 60°N during the whole period, and the sinks are BC removal (dry and wet deposition) in the Arctic (R) and southward transport of BC at 60°N (F_{out}). Thus the lifetime of BC (τ) in the Arctic is estimated as

$$\tau = \frac{Q}{F_{out} + R} = \frac{Q}{F_{in} + E}$$

where Q is BC mass in the Arctic (kg), F_{out} and F_{in} southward and northward mass flux of BC at 60°N (kg day^{-1}), R the removal mass flux of BC and E the emission rate of BC in the Arctic ($> 60^\circ\text{N}$, kg day^{-1}). BC lifetime against deposition (τ_{dep}) is estimated as,

$$\tau_{dep} = \frac{Q}{R}$$

BC lifetime against transport (τ_{tran}) is estimated as,

$$\tau_{tran} = \frac{Q}{F_{out}}$$

Table 2: Model simulated relative contributions to surface BC concentration (ng m⁻³) at selected Arctic sites (Fig. 1) for April 20–25*, 2008.

		Anthropogenic				Biomass burning		Total	<u>Adjoint</u> <u>Forward</u>
		Asia	Siberia	Europe	N.A.	Siberia	S. Asia		
Denali	Forward	41.9	10.4	11.1	142.4	142.4	0.33	352.1	
	Adjoint	38.3	9.5	10.0	146.0	137.8	0.26	341.9	97%
Barrow	Forward	15.0	4.4	5.9	7.6	27.8	0.15	60.1	
	Adjoint	13.6	4.3	5.5	7.4	30.4	0.11	61.8	103%
Alert	Forward	16.6	10.1	10.8	4.7	14.3	0.25	58.5	
	Adjoint	13.8	9.5	9.3	4.5	14.3	0.15	51.8	89%
Zeppelin	Forward	21.0	32.8	14.6	5.7	39.3	0.35	116.5	
	Adjoint	17.8	32.4	13.4	5.3	39.3	0.23	108.8	93%
Summit	Forward	17.2	0.8	7.5	6.1	5.9	1.15	42.0	
	Adjoint	14.3	0.7	7.1	7.2	4.8	1.13	38.0	90%

*Values are averages for April 20–25. ‘Forward’ and ‘Adjoint’ are from ‘tagged tracer’ and from adjoint simulations. See text for details.

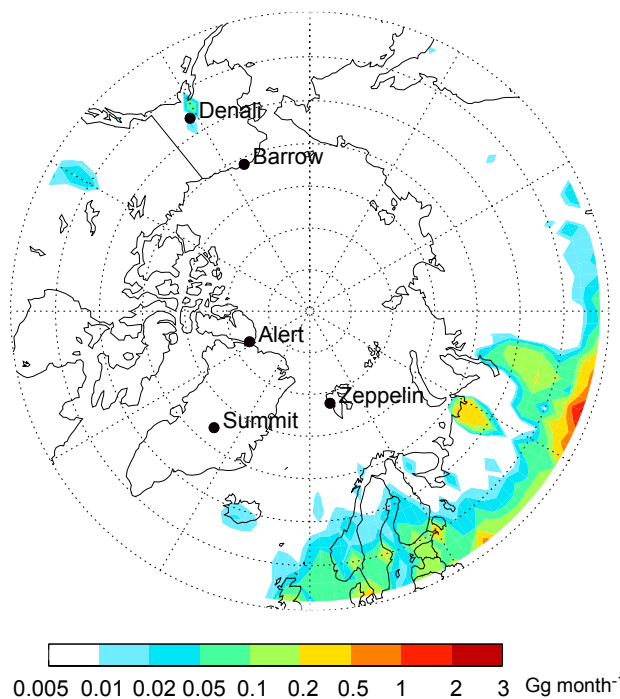


Figure 1: BC emissions (Gg month⁻¹) in the Arctic for April. Solid circles are surface sites: Denali, AL (63.7°N, 149.0°W, 0.66 km a.s.l.), Barrow, AL (71.3°N, 156.6°W, 0.01 km a.s.l.), Alert, Canada (82.3°N, 62.3°W, 0.21 km a.s.l.), Summit, Greenland (72.6°N, 38.5°W, 3.22 km a.s.l.), and Zeppelin, Norway (79°N, 12°E, 0.47 km a.s.l.). Data from Bond et al. (2007) and natural gas flaring emissions from Stohl et al. (2013).

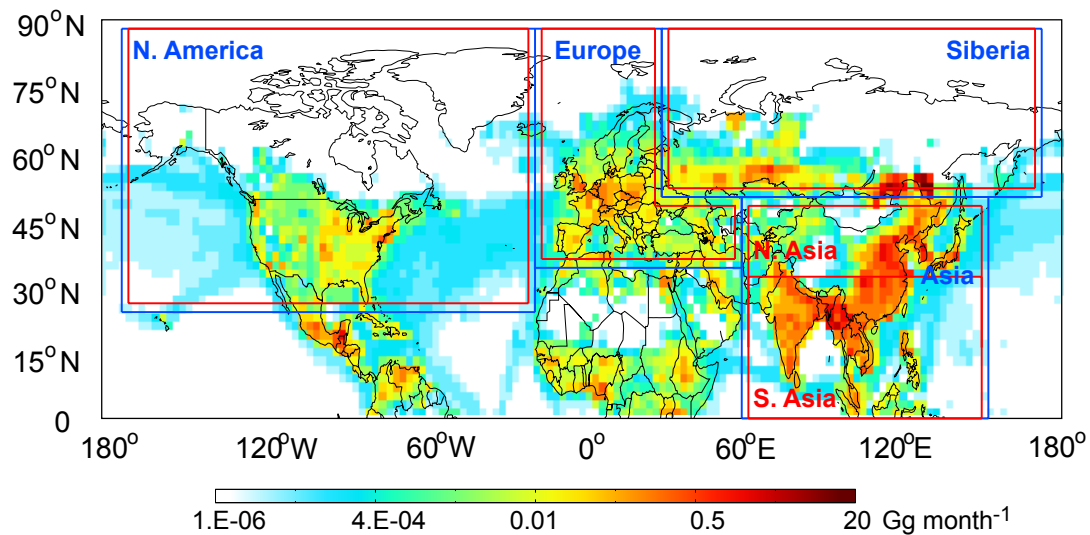


Figure 2: Northern Hemispheric BC emissions for April (Gg month^{-1}). BC tracers are ‘tagged’ by four anthropogenic (blue rectangles) and five biomass burning sources (red rectangles): North America ($172.5\text{--}17.5^\circ\text{W}$, $24\text{--}88^\circ\text{N}$) – both anthropogenic and biomass burning, Europe ($17.5^\circ\text{W}\text{--}30^\circ\text{E}$, $33\text{--}88^\circ\text{N}$ and $30\text{--}60^\circ\text{E}$, $33\text{--}50^\circ\text{N}$) – both, Siberia ($30\text{--}172.5^\circ\text{E}$, $50\text{--}88^\circ\text{N}$) – both, Asia – anthropogenic ($60\text{--}152.5^\circ\text{E}$, $0\text{--}50^\circ\text{N}$), Northern China ($60\text{--}152.5^\circ\text{E}$, $30\text{--}50^\circ\text{N}$) – biomass burning sources, South Asia and Southern China ($60\text{--}152.5^\circ\text{E}$, $0\text{--}30^\circ\text{N}$) – biomass burning.

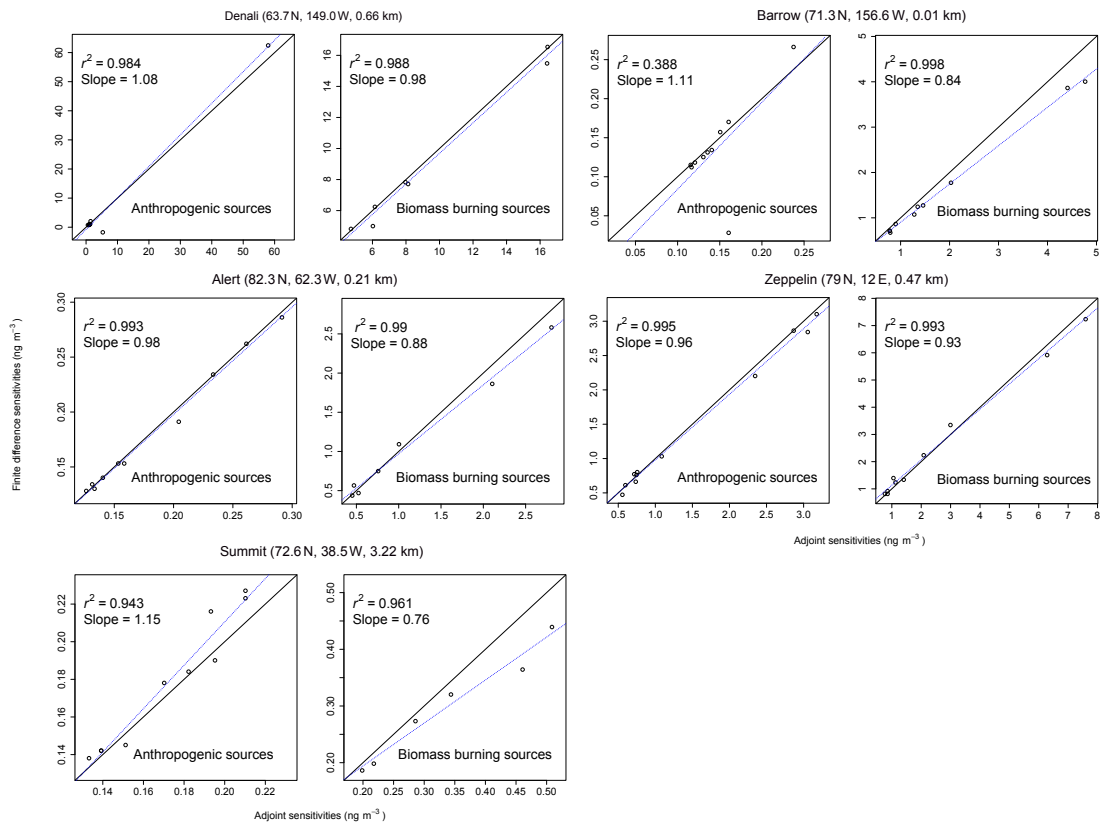


Figure 3: GEOS-Chem adjoint versus finite difference gradients of BC concentration for 10 model gridcells with largest anthropogenic BC contributions and 10 gridcells with largest biomass burning BC contributions at Denali, Barrow, Alert, Zeppelin, and Summit (see Fig. 1). Values are for March 1–April 25, 2008. Regression lines, slopes and r^2 values are shown.

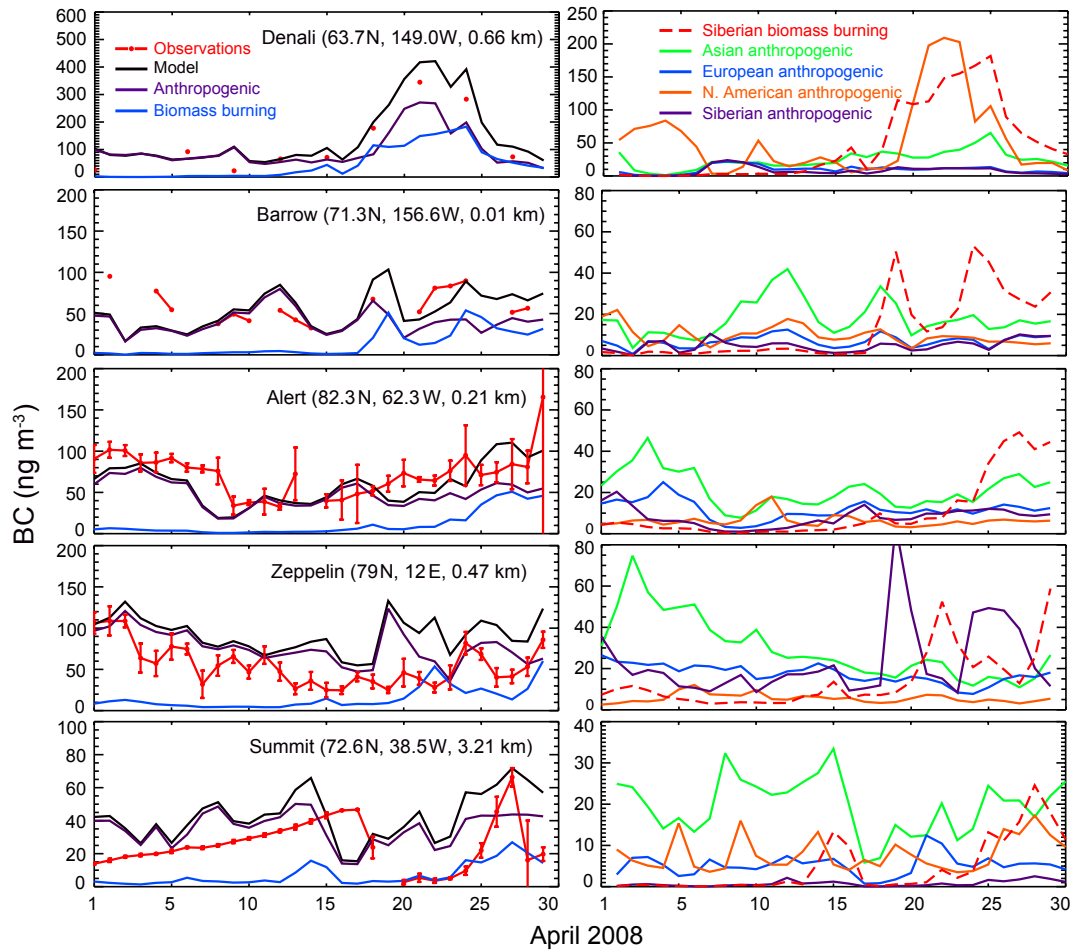


Figure 4: (left panels) Observed (red lines) and GEOS-Chem simulated (black lines) daily mean BC concentrations at Denali, Barrow, Alert, Zeppelin and Summit (see Fig. 1) for April 2008. Bars are standard deviations of observations. Modeled BC concentrations are decomposed into contributions from anthropogenic (purple lines) and biomass burning emissions (blue lines). (right panels) major contributions: Siberian biomass burning (red dashed line), Asian anthropogenic (green solid line), European anthropogenic (blue solid line), North American anthropogenic (orange solid line), and Siberian anthropogenic (purple solid line) sources.

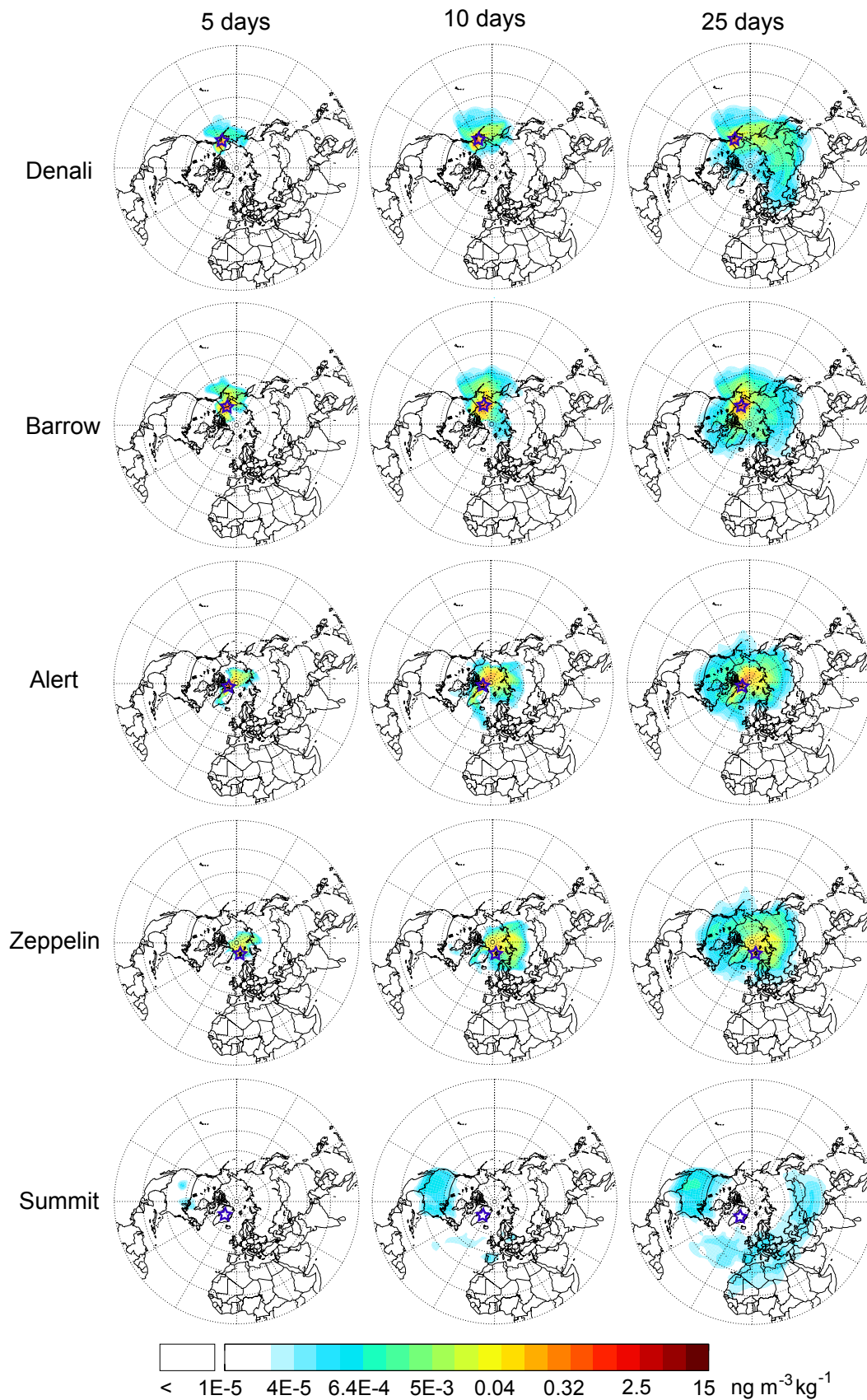


Figure 5: Sensitivity of mean BC concentration (averages for April 20–25, 2008) at Denali, Barrow, Alert, Zeppelin, and Summit (see Fig. 1) to Northern Hemispheric **hypothetical unit** BC emissions from during the 5, 10 and 25 days prior to April 25. See text for details.

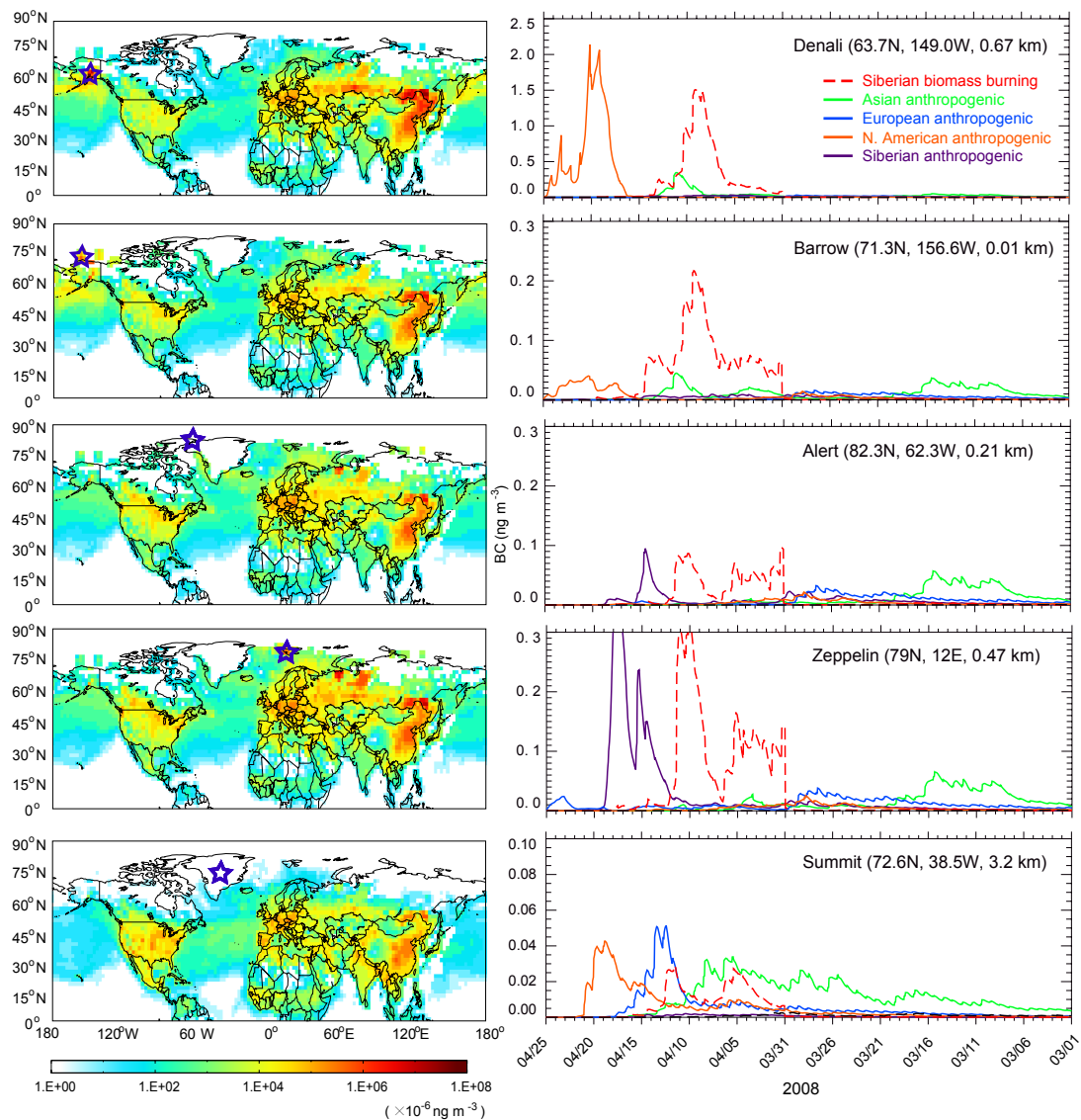


Figure 6: GEOS-Chem simulated contributions to BC concentrations, averaged over April 20–25, 2008, at (stars, left panels) Denali, AL (63.7°N, 149.0°W, 0.66 km a.s.l.), Barrow, AL (71.3°N, 156.6°W, 10 m a.s.l.), Alert, Canada (82.3°N, 62.3°W, 210 m a.s.l.), Zeppelin, Norway (79°N, 12°E, 470 m a.s.l.), and Summit, Greenland (72.6°N, 38.5°W, 3.22 km a.s.l.) from Northern hemispheric emissions as computed from adjoint simulations (see Sect. 3.2 for details): (left panels) Cumulative contributions from March 1–April 25 and (right panels) time-dependent contributions from Siberian biomass burning (red dashed line), Asian anthropogenic (solid green line), European anthropogenic (solid blue), North American anthropogenic (solid orange), and Siberian anthropogenic sources (solid purple). Source regions are as defined in Fig. 2.

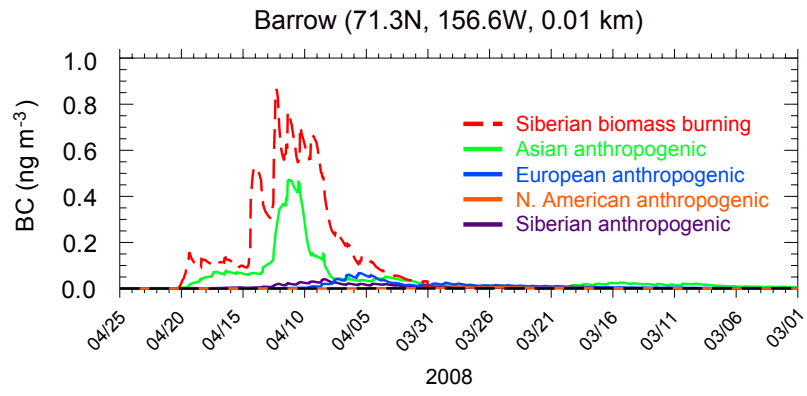


Figure 7: Same as Fig. 6 (right panels) but for BC at 750 hPa above Barrow.

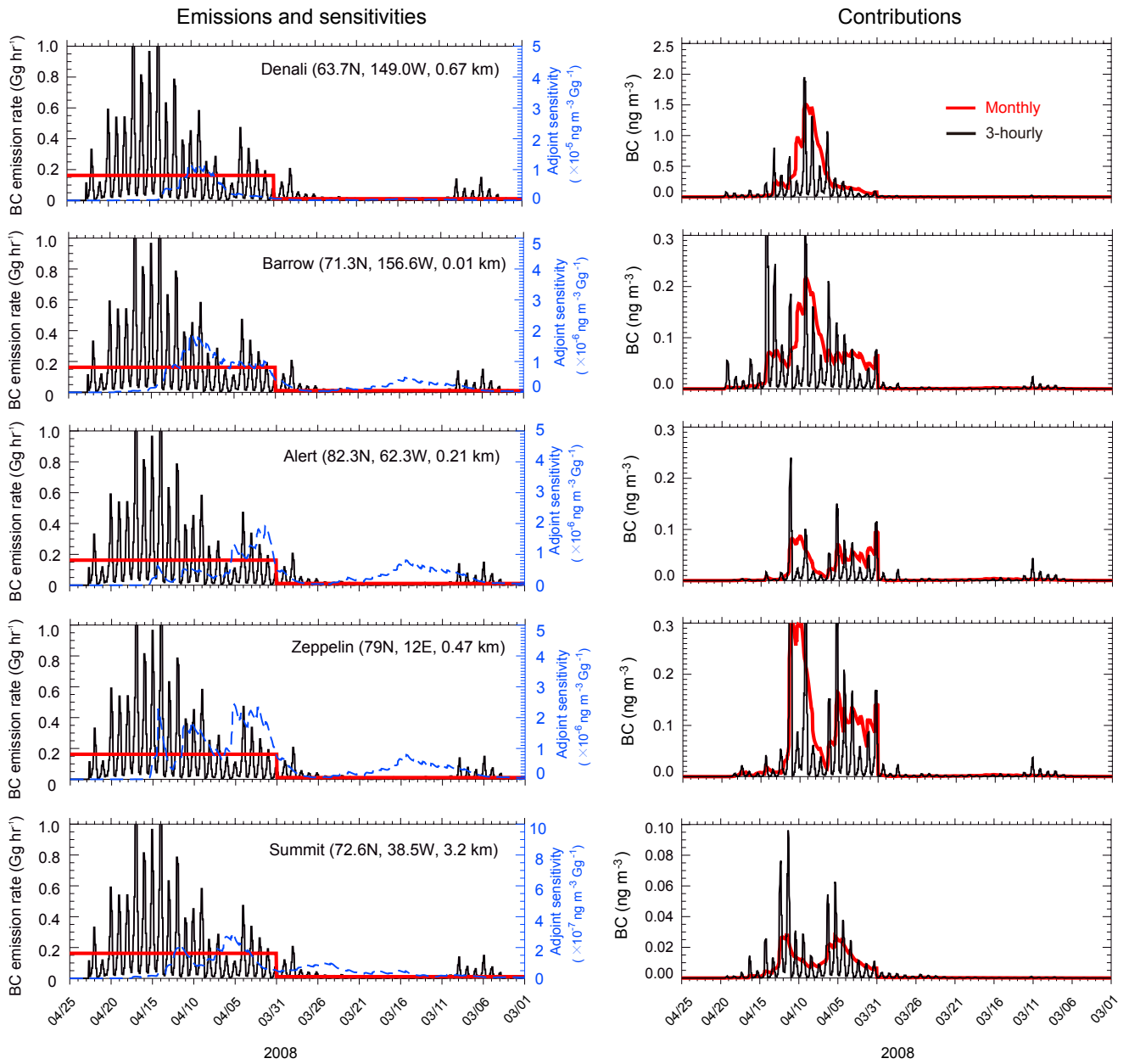


Figure 8: (left) Biomass burning BC emission rates (Gg hr^{-1} , red – monthly, black – 3-hourly) in Siberia (see Fig. 2) for April 2008 and (right) contributions (ng m^{-3}) to BC at the five sites from Siberian biomass burning emissions (red – monthly, black – 3-hourly) during March 1–April 25. Emission data is from the Global Fire Emissions Database version 3 (GFEDv3) inventory (Randerson et al., 2012). Adjoint sensitivities of mean BC during April 20–25, 2008 at the five sites (see Fig. 1) to Siberia biomass burning emissions are also shown (left panel, dashed blue).

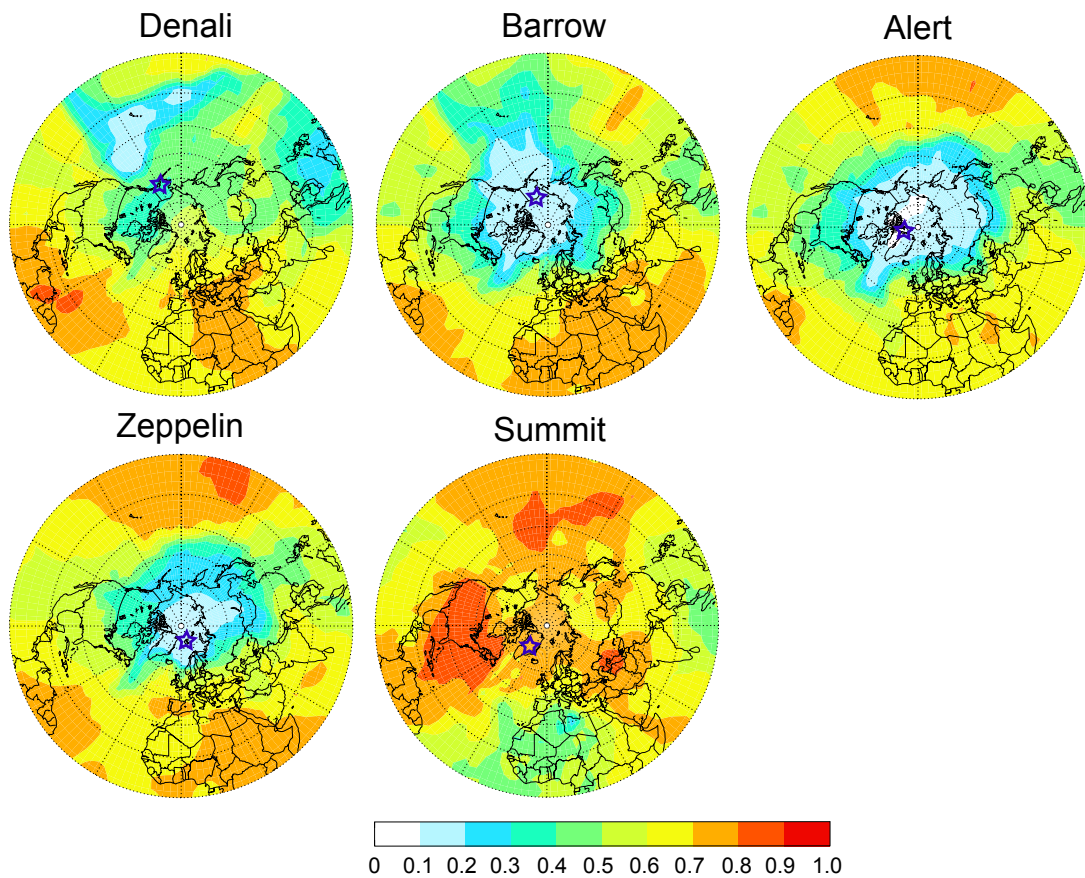


Figure 9: Reduction of adjoint sensitivities of BC concentration at selected Arctic sites (Fig. 1) to Northern Hemispheric emissions in the absence of WBF relative to standard simulation, averaged for the whole simulation period in March 1–April 25, 2008.