

## Answer to reviewer 1:

We thank the referee for the suggested correction and included them or rephrased the sentences:

- I suggest to change the title: "impacts" instead of "impact" because soil moisture does not have just one possible impact on the atmosphere - [included](#)
- P1, L15: "Increased" instead of "Enhanced" - [included](#)
- P1, L16: "predominantly" - [included](#)
- P2, L1: "stays" instead of "states" - [included](#)
- P2, L6: You cannot say that "soil moisture SITS at the beginning...", please rephrase. - [Rephrased](#)
- P2, L16-18: "Whereas, ..." Please check the grammar of that sentence, it does not make sense to me. - [rephrased](#)
- P2, L28: "synoptically" - [changed](#)
- P7, Table 1 caption: "gridpoints" should be "grid points" - [included](#)
- P9, L7: "eg" should be "e.g."; [included](#) "circulation" should be "circulations" - [included](#)
- P10, L3: "case study", not "case-study" - [included](#)
- P10, Figure 7: What is the red dot in the upper panel around 21 UTC? - [Deleted red dot.](#)

# Assessing the uncertainty of soil moisture ~~impact~~ impacts on convective precipitation using a new ensemble approach

Olga Henneberg<sup>1</sup>, Felix Ament<sup>2</sup>, and Verena Grützun<sup>2</sup>

<sup>1</sup>Institute for Atmospheric and Climate Science, ETH Zurich

<sup>2</sup>Meteorological Institute, University of Hamburg

Correspondence to: Olga Henneberg (olga.henneberg@alumni.ethz.ch)

**Abstract.** Soil moisture ~~influences~~ amount and distribution controls evapotranspiration and thus impacts the occurrence of convective precipitation. ~~Therefore, an accurate knowledge about soil moisture might be useful for an improved prediction of convective cells. However, simulations with slightly changed model setup cause a large spread in model results that result from the chaotic behaviour.~~ Many recent model studies have proved this interaction and demonstrated that changes in initial  
5 soil moisture condition result in modified convective precipitation. At the same time, the chaotic behavior of the atmospheric system ~~and stochastic variability~~ needs to be considered: any slight changes in the simulation setup, such as the chosen model domain, also result in modifications in the simulated precipitation field. This uncertainty caused by the stochastic variability is large compared to soil moisture effects as we will show. By shifting the model domain, an estimate on the uncertainty of the model results can be calculated. This uncertainty estimate, which includes ten simulations with shifted model boundaries, is  
10 compared to the effects ~~caused by soil moisture on precipitation~~ on precipitation, which are caused by variations in soil moisture amount. With this approach ~~the effect of soil moisture,~~ the influence of soil moisture amount and distribution on convective precipitation is quantified. Deviations in simulated precipitation can only be attributed to soil moisture impacts if the systematic effects of soil moisture modifications are larger than the inherent simulation uncertainty at the convection resolving scale.  
We performed seven experiments with ~~either~~ modified soil moisture amount or distribution to address the effect of soil moisture  
15 on precipitation. Each of the experiments consists of ten ensemble members using the deep convection resolving COSMO model with a grid spacing of 2.8 km. In three out of the seven experiments, precipitation changes exceed the model spread in either amplitude, location or structure. ~~This~~ These changes are caused by a 50% soil moisture ~~enhancement~~ increase in either the whole or part of the model domain or ~~dry-out~~ drying of the whole model domain. ~~Enhanced~~ Increased or reduced soil moisture ~~predominately result~~ predominantly results in reduced precipitation rates. Replacing the soil moisture by a realistic  
20 field from different days has an insignificant influence on ~~the~~ precipitation. We point out the need for uncertainty estimates in ~~real-case~~ soil moisture studies based on convection resolving models.

## 1 Introduction

Convective precipitation changes rapidly in time and is very variable in space (Pedersen et al., 2010). The heterogeneity of convective precipitation and the interaction of different scales challenge atmospheric models on the global and regional scale.

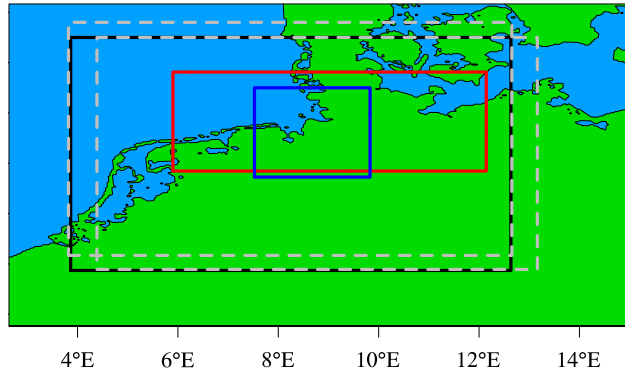
Nowadays, regional climate models operate with a horizontal resolution of 1 km and can represent convective processes explicitly to improve weather forecast (Mass et al., 2002). Nevertheless, precipitation formation results from a complex chain of atmospheric processes, which range from the microscale to the synoptic scale (Richard et al., 2007). Because many of these processes remain unresolved, precipitation ~~states features~~ a highly uncertain quantity. ~~Soil moisture sits at the beginning of~~  
5 ~~convective precipitation formation.~~ ~~Soil moisture affects~~ Soil moisture determines the partitioning of ~~turbulent heat fluxes into sensible and latent heat, what affects the surface and boundary layer temperature and the humidity in the lower boundary layer~~ energy and the land surface and controls how much energy is used to heat up the surface or to moisten the atmosphere. The surface temperature plays a crucial role in the initiation of convection, whereas the specific water content in the boundary layer modifies moist conditional  
10 instability. On the one hand, high surface temperatures initiate convection with a low soil moisture content. On the other hand, high soil moisture can ~~destabilise~~ destabilize the atmosphere by introducing water ~~vapour~~ vapor in the lower troposphere ~~what also favours convection. Conclusively moistening and drying of the lower boundary can intensify precipitation and vice versa. Whereas, resulting in an enhanced possibility for convection. Accordingly, there is no distinct effect from soil moistening or drying on precipitation intensification. In contrast, there exists~~ a strong systematic ~~effect on influence of~~ soil moisture changes  
15 ~~exists for the on~~ latent and sensible heat fluxes ~~as well as on~~ equivalent potential temperature, lifting condensation level, and convective energy ~~that follow the process chain~~ (Barthlott et al., 2011). Despite ~~to the systematic effect on partitioning of the heat fluxes~~ these systematic effects, precipitation reacts less systematically ~~on to~~ soil moisture variations (Barthlott and Kalthoff, 2011; Hohenegger et al., 2009). ~~Furthermore, the~~ The distribution and inhomogeneity of soil moisture patterns may  
20 ~~even~~ initiate secondary circulation (Clark et al., 2004; Adler et al., 2011; Kang and Bryan, 2011; Dixon et al., 2013; Maronga and Raasch, 2013; Froidevaux et al., 2014).

There is no clear agreement on soil moisture ~~precipitation~~ interaction in the literature: Barthlott et al. (2011) found a strong ~~dependency of influence on~~ precipitation, with changes larger than 500% ~~for a soil moisture variation of  $\pm 25\%$  in regions with low mountain ranges, and changes of up to  $-75\%$  for domains with higher mountain ranges. They could not identify significant differences between planetary boundary~~ ~~driven, and synoptically forced,~~ layer driven and synoptically forced con-  
25 ditions. Hauck et al. (2011) determined large systematic differences between ~~modelled~~ simulated and observed soil moisture. The influence on simulated precipitation in their study was complex and ~~depended strongly~~ strongly dependent on the chosen case and domain. A dependency of all convective indices on the equivalent potential temperature was found by Kalthoff et al. (2011) over different orographic terrains. However, convection was predominantly initiated over mountain crests, ~~independent~~ independently of the instability indices, but with smaller convective inhibition (CIN). The dependency of equivalent potential  
30 temperature on soil moisture was found to be influenced by surface inhomogeneity. Barthlott and Kalthoff (2011) provide a sensitivity study in which the soil moisture was ~~increased~~ changed by  $\pm 50\%$  in steps of 5%. While the study reveals a systematic effect on the 24 hours precipitation sum for reduced soil moisture ~~exists, precipitation does not react systematically in wetter simulations, precipitation is not systematically modified by wetter soil moisture conditions.~~

~~Diversity~~ Large variations in the results may partly be attributed to model uncertainty. Hohenegger and Schär (2007) investigated the error growth of random ~~perturbation methods~~ perturbation methods in cloud-resolving models using time shifted  
35

model simulations and perturbed temperature fields in the initial conditions. In their model study, using a model resolution of 2.2 km, a rapid error growth was found far away from the perturbed regions, but growth of uncertainties is limited by the large-scale atmospheric environment. A further aspect ~~of model uncertainties is provided by the model resolution especially in terms of causing model uncertainty is model resolution, especially regarding the influence on~~ convection. Different results ~~of~~ for soil moisture-precipitation feedback ~~occur for also appear in~~ simulations with explicit and differently parametrized convection (Hohenegger et al., 2009). Hohenegger et al. (2008) found different results in sign and strength of the influence of soil moisture that ~~depended~~ depend on the model resolution. Simulations with explicitly resolved convection indicate a negative soil moisture-precipitation feedback, that is in agreement with many other studies, summarised by Barthlott and Kalthoff (2011). ~~Soil~~ In numerical weather prediction models, soil moisture perturbations are ~~directly assessed to generate an ensemble spread in numerical weather forecasts used to generate the ensemble members.~~ Weather services include soil moisture perturbation in data assimilation for their ensemble forecast systems ~~as MeteoSwiss does by using.~~ For example, MeteoSwiss uses the method from Schraff et al. (2016) in the COSMO model to achieve a model spread, especially in summer (pers. com. Daniel Leuenberger, MeteoSwiss). The evaluation of the AROME-EPS (MeteoFrance) ensemble prediction system from Bouttier et al. (2016), which also includes soil moisture perturbations, ~~showed that a lack in precipitation spread remains. That rises~~ shows a lack of spread in forecasted precipitation rates. This raises the question if soil moisture perturbations can cause sufficient differences in simulated precipitation. This question will be addressed in the present study. As Richard et al. (2007) already stated, convective precipitation output strongly depends on the model setup, such as the prescribed initial conditions and boundary data. In the present study, we provide ~~an uncertainty estimate that allows random changes in precipitation and changes that results from differences in soil moisture. With a uncertainty estimate, which is based a description of changes in~~ simulated precipitation resulting from different amounts or changed pattern of soil moisture together with an assessment of the uncertainty in precipitation caused by random processes in the model. The uncertainty is estimated from an ensemble generated with different boundary conditions by slightly shifting the model domain. Based on a large number of simulations with slightly ~~different model setups, the effect~~ changed model setup, the systematic influence of different soil moisture modifications on precipitation can be ~~assessed~~ identified and quantified. ~~Furthermore, an effect caused by soil moisture can be separated from random changes. This determines if soil moisture perturbations can provide a sufficiently large ensemble spread for ensemble forecast.~~

Model simulations are conducted with the regional model COSMO (section 2.1). The soil moisture experiments and the ensemble approach are presented in sections 2.2 and 2.3, respectively, for a single case with convective precipitation. An overview of the synoptic conditions for this convective case is provided in section 3. An estimate on the model uncertainty based on the CTRL-ensemble is calculated in section 4.2. With the given uncertainty range, the significance of changes in precipitation caused by soil moisture changes compared to the model spread is assessed in section 4.3, and systematics in the soil moisture impact are investigated in section 4.4.



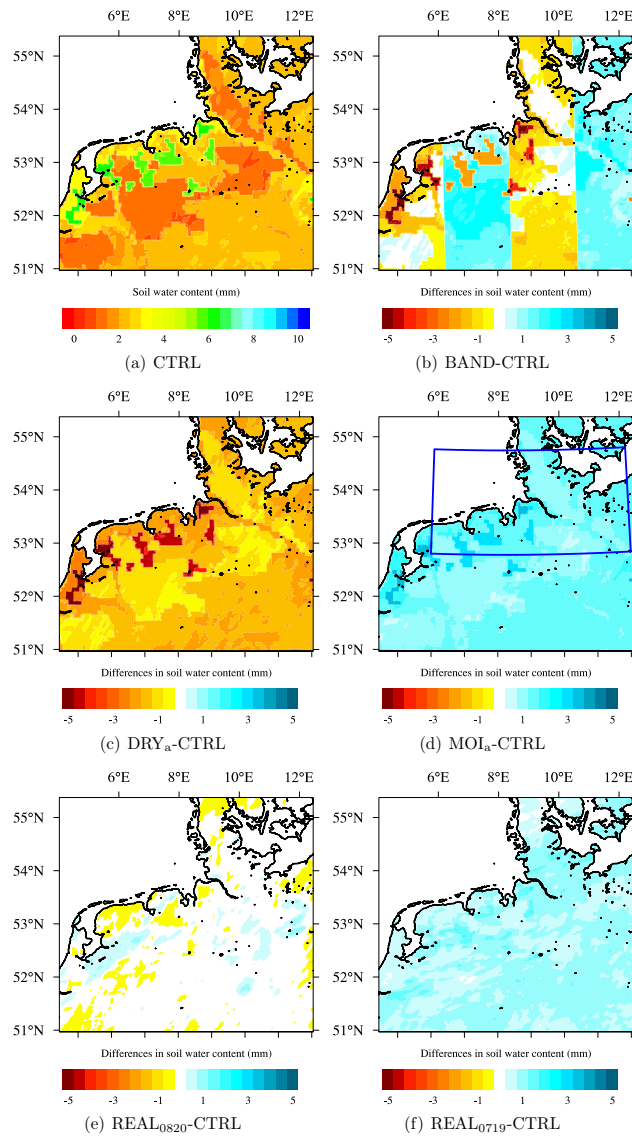
**Figure 1.** Model domain over Northern Germany given by the black rectangle for the CTRL run. Dashed gray rectangles describe the model domain, which is shifted by 30 gridpoints grid points to the north and to the east, respectively. The two analysis areas are marked with red and blue rectangles.

## 2 Modelling approach

### 2.1 Numerical setup

We performed 24-hour ~~simulations~~ integrations to simulate the convectively induced precipitation on 3 August 2012 over the area around Hamburg (Germany), using the non-hydrostatic model COSMO (Version 4.22, Schättler et al., 2009) with a horizontal resolution of  $0.1^\circ$  ( $\approx 1$  km). The chosen domain covers  $400 \times 450$  grid points over Northern Germany (Fig. 1). 50 vertical hybrid Gal-Chen levels range from the surface up to a height of 22 km. The lowest level has a vertical resolution of 20 m. ~~The boundary~~ Boundary and initial conditions are provided by the COSMO operational analysis with a resolution of 2.8 km.

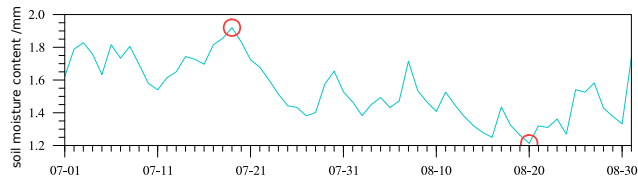
The horizontal resolution of ~~around~~ approximately 1 km allows for an explicit representation of deep convection, and thus provides much more accurate simulations of convective precipitation than resolutions, ~~which that~~ require convection parametrizations (Leutwyler et al., 2016, and references therein). Shallow convection is parametrized by using the Tiedke Scheme (Tiedtke, 1989). Land surface processes are calculated by the interactive soil and vegetation model TERRA-ML<sub>v</sub> and coupled to the atmospheric module (Doms et al., 2011). The coupled soil model includes seven soil levels from the surface down to a depth of 14.58 m with the uppermost layer having a vertical extension of 5 mm.



**Figure 2.** (a) Soil moisture for CTRL run and differences between CTRL run and (b) BAND run, (c) DRY<sub>a</sub> run, (d) MOI<sub>a</sub> run, (e) REAL<sub>0820</sub> run and (f) REAL<sub>0719</sub> run in the uppermost soil layer. Blue rectangle indicates the region where soil moisture was changed in DRY<sub>p</sub> run and MOI<sub>p</sub> run.

## 2.2 Soil moisture experiments

To address the potential effect of soil moisture [amount and local distribution](#) on precipitation, the soil moisture content provided in the initial conditions was modified (Table 1). Two [classes-ways](#) of changes in the soil moisture field were applied: extreme artificial changes, which [show a large range of soil moisture influence](#) [induce a large impact on precipitation](#) and modifications



**Figure 3.** Time series for soil moisture content in the uppermost soil level averaged over the analysis domain "red". Red circles indicate the soil moisture values, which were used to perform simulations with soil moisture from another day.

in a physically feasible, realistic range (Fig. 2). ~~Among the strong modifications is the~~ As an extreme modification, the total drying of ~~soil~~ the soil is implemented by setting the soil moisture content to zero (Fig. 2c). Soil moisture increase is achieved by an enhancement-increase of 50% (Fig. 2d) in all soil layers. Those changes are ~~applied first over the whole first applied~~ over all land points in the model domain (DRY<sub>a</sub> and MOI<sub>a</sub>, Table 1, Fig. 1) and ~~secondly over the red framed domain in~~ second over land points in the domain framed in red in Fig. 1, hereafter referred to as area "red" (DRY<sub>p</sub> and MOI<sub>p</sub>, Table 1). Another artificial modification is achieved by a redistribution of the soil moisture into four alternating bands (BAND) with 50% enhanced-increased and reduced soil moisture, respectively (Fig. 2b). A large range of possible soil moisture effects is covered with this-these modifications. More realistic, ~~but slightly less intense, and less intense~~ modifications are implemented by replacing the original soil moisture pattern by ~~one from a real pattern at~~ another day (Fig. 2e). ~~Therefore, the soil moisture~~ field from ~~For this purpose, soil moisture fields from 19 July 2012 and 20 August 2012 is are~~ used (Fig. 3). ~~On that day the the~~ August 20, the soil moisture content in the uppermost soil layer (5 mm) is around 1.2 mm [H<sub>2</sub>O] averaged over all land ~~points,~~ what grid points in the model domain which is 0.3 mm lower than on the simulated day (3 August 2012). On 19 July 2012 soil moisture content was slightly below the 50%-artificial enhancement-increase (Fig. 3). ~~Therefore, the soil moisture was higher than on 3 August and thus this day was used to simulate 3 August 2012 with realistic, but higher soil moisture.~~

15

### 2.3 Ensemble approach

To quantify the relevance of the results from the soil moisture modifications, the model uncertainty and variability is estimated with a novel and simple approach. Perturbations are ~~introduceed~~ implemented in the simulations by shifting the domain boundaries by ten to 30 grid points north- and eastwards (Table 2, Fig. 1). These perturbations ~~provide an estimate of allow for~~ estimating the uncertainty caused by the chaotic ~~behaviour-behavior~~ of the atmospheric system and are superimposed on all systematic and physical changes caused by the soil moisture perturbations. This method conserves the structure of all meteorological input fields and does not create errors on a scale that can interact with the analysed processes ~~eg by creating small scale secondary circulation~~ e.g. by creating small-scale secondary circulations. Furthermore, shifting start times of the simulations (Hohenegger and Schär, 2007) provide an additional degree of uncertainty with the same advantages as the domain shift. A time shift of one to six hours is also applied to the CTRL run to ~~fairly compare allow for a fair comparison of~~ uncertainty estimates. The ensemble, further called the CTRL-ensemble, ~~delivers comprises~~ 17 independent model simulations including

25

**Table 1.** Model simulations with modified soil moisture (SM). Simulations are named by the applied soil moisture modification and with  $a$  for whole model domain and  $p$  for modification in a subdomain (partly). Simulations with additional random changes caused by spatial shifting of the domain are denoted with  $ii$  and  $jj$ , which represents number of ~~gridpoints~~ grid points by which the model domain is shifted (For details see Table 2).

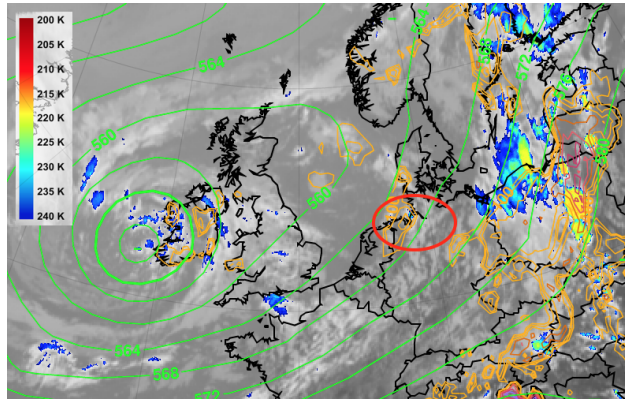
reference simulation for ensemble	Characteristics		ensemble generation	
	modification	area		
CTRL			CTRL-LOC $ii$ $jj$	TIME $tt$
DRY $_a$	dry out	whole model domain	DRY $_a$ -LOC $ii$ $jj$	
DRY $_p$	dry out	area “red”	DRY $_p$ -LOC $ii$ $jj$	
MOI $_a$	50% increased SM	whole model domain	MOI $_a$ -LOC $ii$ $jj$	
MOI $_p$	50% increased SM	area “red”	MOI $_p$ -LOC $ii$ $jj$	
BAND	four bands	whole model domain	BAND-LOC $ii$ $jj$	
REAL $_{0820}$	SM from 20.08.12	whole model domain	REAL $_{0820}$ -LOC $ii$ $jj$	
REAL $_{0719}$	SM from 19.07.12	whole model domain	REAL $_{0719}$ -LOC $ii$ $jj$	

the reference simulation (CTRL-run) to estimate the uncertainty. ~~The ensemble~~ This ensemble generating approach, including ~~all simulations with shifted model domains, was applied on~~ shifted model domain, is applied to every simulation with the modified soil moisture pattern (Table 2).

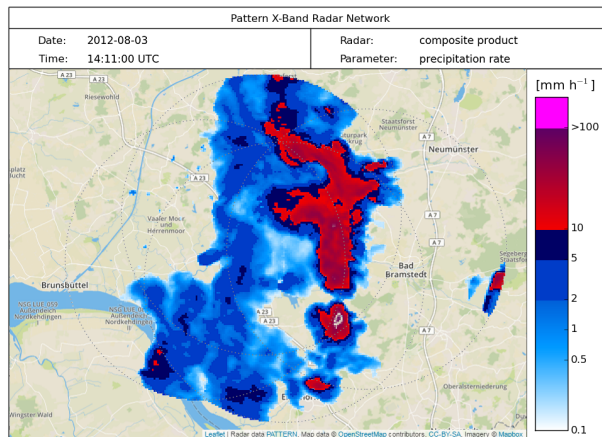
### 3 Convective ~~case-study~~ case study and the effect of soil moisture

- 5 The chosen convective case ~~on of~~ 3 August 2012 ~~was affected is characterized~~ by a low pressure system in the ~~north-northern~~ Atlantic, west of Great Britain (Fig. 4). The associated cold front ~~passed over~~ moved across Germany and resulted in heavy precipitation over Poland where air masses converged. Next to the major precipitation events in the east, another local precipitation cell developed close to Hamburg where a slight enhancement in convective available potential energy (CAPE) ~~-values~~ values and high clouds occurred (Fig. 4). This ~~locally strong precipitation~~ strong local precipitation cell was detected by the
- 10 rain radars over Hamburg at 14:11 UTC with rain rates between 10 to 100 mm h<sup>-1</sup> (Fig. 5). The ~~simulations showed maximal~~ COSMO simulations showed maximum values of 12 mm h<sup>-1</sup> between 13:00 ~~to and~~ 17:00 UTC. The simulated precipitation onset is ~~at~~ around 10:00 UTC (Fig. 7a). Before ~~the~~ precipitation onset, high CAPE-value confirms the convective nature of the precipitation (Fig. 7b). High CAPE-values enable the development of strong convective precipitation ~~formation~~, when CIN can be exceeded.





**Figure 4.** EUMetrain infra-red satellite image of Europe on 3 August 2012 at 12:00 UTC. **Colours** **Colors** are cloud top temperatures showing high clouds. Green contours are geopotential height at 500 hPa and orange contour lines are CAPE-values provided from ECMWF NWP ([www.eumetrain.org](http://www.eumetrain.org)). The area of interest is marked with a red circle. Note the CAPE values within the marked area and the high clouds, which correspond to the intense precipitation.



**Figure 5.** Radar composite from high resolution radars (Lengfeld et al., 2014) showing the precipitation rate over Itzehoe on 3 August 2012 at 14:11 UTC.

**Table 2.** ~~Uncertainty-ensemble~~ Uncertainty ensemble with randomly changed model simulations by model domain shifting ~~-, denoted with~~ (LOC) and the number of shifted grid points, and caused by shifting the model start time ~~denoted with~~ (TIME). The ~~shifted~~ time shift is given in hours. The lower left (LL) corner of the simulation domains is given in geographical (rotated) coordinates with the north pole being shifted to 40° N and -170° E.

run	LL corner in ° N	LL corner in ° E	starttime (UTC)
CTRL	50.87 (1.0)	15.55 (3.5)	0:00
LOC 00 10	50.97 (1.1)	15.56 (3.5)	0:00
LOC 00 20	51.07 (1.2)	15.57 (3.5)	0:00
LOC 00 30	51.17 (1.3)	15.59 (3.5)	0:00
LOC 10 00	50.88 (1.0)	15.39 (3.4)	0:00
LOC 10 10	50.98 (1.1)	15.40 (3.4)	0:00
LOC 10 20	51.08 (1.2)	15.42 (3.4)	0:00
LOC 20 00	50.89 (1.0)	15.23 (3.3)	0:00
LOC 20 10	50.98 (1.1)	15.25 (3.3)	0:00
LOC 20 20	51.08 (1.2)	15.26 (3.3)	0:00
LOC 30 00	50.89 (1.0)	15.08 (3.2)	0:00
TIME 01	50.87 (1.0)	15.55 (3.5)	1:00
TIME 02	50.87 (1.0)	15.55 (3.5)	2:00
TIME 03	50.87 (1.0)	15.55 (3.5)	3:00
TIME 04	50.87 (1.0)	15.55 (3.5)	4:00
TIME 05	50.87 (1.0)	15.55 (3.5)	5:00
TIME 06	50.87 (1.0)	15.55 (3.5)	6:00

## 4 Results

### 4.1 Soil moisture influence on ~~convective-related~~ convection-related variables

While the passing front ~~stated is~~ the main mechanism for the lifting of air masses in the performed simulations, soil moisture is important for the stability of the atmosphere and thus ~~affecting the precipitation-, which initially was~~ affects precipitation initially triggered by the synoptic system. In complete dry conditions (DRY<sub>a</sub> and DRY<sub>p</sub>), ~~no latent heat fluxes transport heat from the surface. Thus, sensible heat fluxes need to balance the heat differences between surface and atmosphere~~ the latent heat flux is zero and the sensible heat flux needs to balance along the net radiation flux and the soil heat flux (Fig. 6). Without latent cooling, the temperatures at 2 m altitude in the simulation with dry soil conditions (DRY<sub>a</sub> and DRY<sub>p</sub>) are the highest, whereas dew point ~~is~~ temperatures are the lowest (Fig. 6c and d). With more humidity in the atmosphere, less adiabatic cooling  
10 due to lifting is required for condensation. The resulting shift in the condensation level to lower altitudes can reduce CIN and

increase CAPE. CIN ~~only reduces is only reduced~~ in the first hours of the simulation before solar radiation heats the surface (Fig. 67). When the surface heats up ~~;~~ in simulations with low soil moisture content ~~;~~ ~~CIN values are (DRY<sub>a</sub> and DRY<sub>p</sub>).~~ CIN ~~is~~ continuously lower than in simulations with higher soil moisture content ~~(MOI<sub>a</sub> and MOI<sub>p</sub>).~~ The further development of CIN is strongly affected by the feedback from precipitation.

- 5 All mentioned quantities react systematically ~~on-to~~ changes in soil moisture ~~amount~~ (Fig. 6). Convective precipitation is more likely with reduced CIN and its strength depends on CAPE. However, ~~the changes in precipitation amount does not systematically react on the~~ ~~precipitation does not respond to changes in~~ soil moisture. The main reason ~~in literature~~ for this systematic ~~behaviour is due to the CIN dependency~~ ~~behavior mentioned in literature is the dependency of CIN~~ on the soil moisture (Kalthoff et al., 2011). Even though the changes in precipitation ~~with caused by~~ changing soil moisture are more
- 10 complex, precipitation is ~~certainly~~ influenced by the soil moisture. However, ~~that~~ the changes in precipitation caused by soil moisture ~~changes compared to the synoptic forcing are less significant will be shown~~ ~~modifications are often less significant than changes caused by synoptic forcing which will be demonstrated~~ in the following ~~sections~~.

## 4.2 Estimate of model uncertainties

- An estimate of the model uncertainty is determined from the CTRL-ensemble. The ~~statistical tool, which was applied for this purpose, is the SAL score~~ ~~assessment of this uncertainty is done statistically by using the SAL score~~ (Wernli et al., 2008), which assigns values for differences in structure,  $S$ , amplitude,  $A$  and location,  $L$ , ~~of between~~ precipitation patterns at every single output-timestep (~~15 min~~), ~~15min~~. ~~These three parameters of the SAL score are shortly introduced in the following.~~ Amplitude, ~~A yields,~~ ~~describes~~ the differences of precipitation amount over the whole ~~analysed domain:~~ ~~analyzed domain:~~

$$A = \frac{D(R_{\text{dif}}) - D(R_{\text{ctrl}})}{0.5[D(R_{\text{dif}}) + D(R_{\text{ctrl}})]} \frac{D(R_{\text{dif}}) - D(R_{\text{ref}})}{0.5[D(R_{\text{dif}}) + D(R_{\text{ref}})]} \quad (1)$$

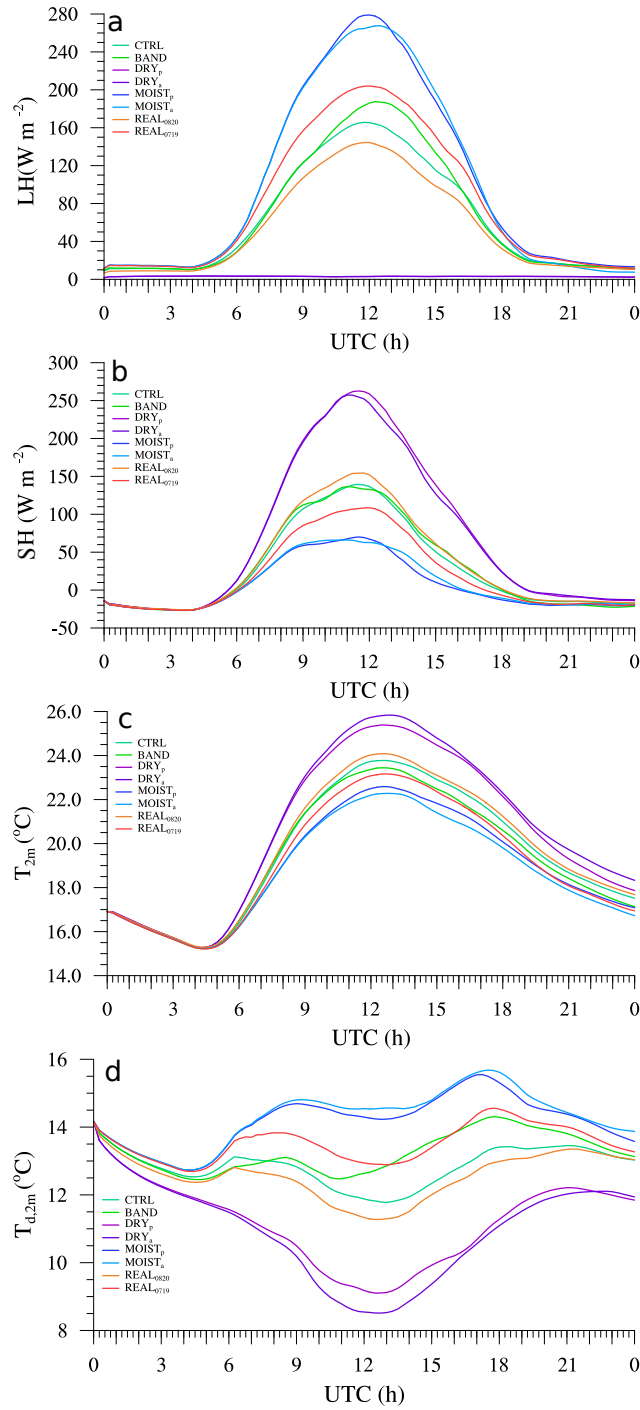
- 20 ~~with the averaged precipitation amount,~~  $D(R)$ , for shifted simulation from the CTRL-ensemble denoted with dif and the compared simulation that is the not shifted reference simulation from the CTRL-ensemble denoted with ctrl: ~~The precipitation amount averaged over the whole domain~~  $D(R)$  is:

$$D(R) = \frac{1}{N_{\text{GP}}} \sum_{(i,j) \in \epsilon} R_{ij}, \quad (2)$$

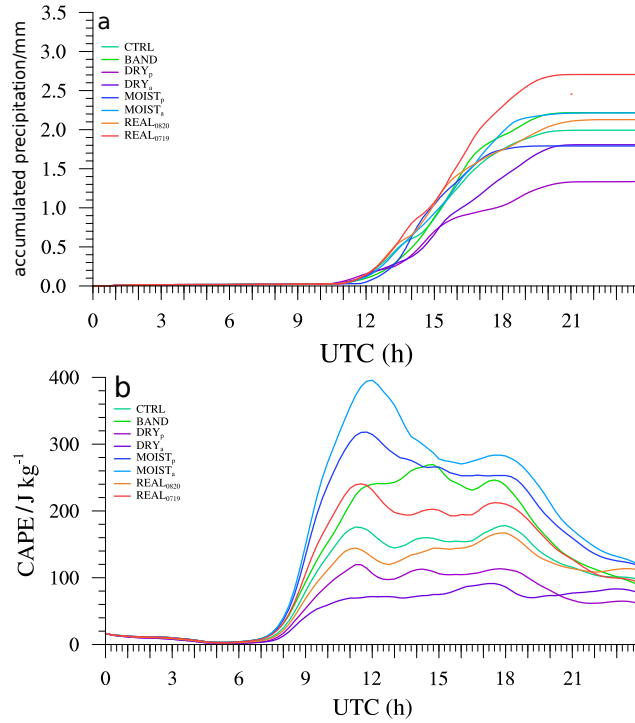
- ~~with where~~  $R_{ij}$  is the precipitation rate ~~;~~  $R_{ij}$ , within a grid point that is given by the indices ~~;~~  $i, j$ , and ~~at the grid point~~ with indices  $i, j$ , and  $N_{\text{GP}}$  the number of all grid points ~~;~~  $N_{\text{GP}}$ , in the ~~analysed domain.~~ in the analyzed domain.  $D(R_{\text{dif}})$  denotes the averaged precipitation amount for shifted simulations and  $D(R_{\text{ref}})$  the reference simulations (not shifted) in the CTRL-ensemble.

- ~~Component location~~ ~~The location parameter,~~  $L$ , compares the location of precipitation in ~~the~~ two model simulations in two steps. First, the ~~normalised~~ ~~normalized~~ distance of the ~~centres~~ ~~centers~~ of mass,  $\mathbf{x}(R)$ , of the precipitation patterns in each model
- 30 simulation is calculated ~~;~~:

$$L_1 = \frac{|\mathbf{x}(R_{\text{dif}}) - \mathbf{x}(R_{\text{ctrl}})|}{d} \frac{|\mathbf{x}(R_{\text{dif}}) - \mathbf{x}(R_{\text{ref}})|}{d}, \quad (3)$$



**Figure 6.** Timeseries of (a) latent heat fluxes,  $\overline{LH}$ , (b) sensible heat fluxes,  $\overline{SH}$ , (c) 2m-temperature and (d) dew point temperature,  $T_d$  in the reference simulations of the ensembles with different soil moisture modifications for 3 August 2013. Averaged over area “red”.



**Figure 7.** Timeseries of (a) accumulated precipitation and (b) CAPE for different model simulations for 3 August 2013. Averaged over “red” area.

where  $d$  denotes the maximal maximum possible distance within the analysed domain-analyzed domain. Secondly the distances from the centre-center of mass of all  $M$  individual cells,  $\mathbf{x}_n$ , to the centre-center of mass for the whole precipitation field,  $\mathbf{x}$ , is-calculated-are calculated as:

$$r(R) = \frac{\sum_{n=1}^M R_n |\mathbf{x} - \mathbf{x}_n|}{\sum_{n=1}^M R_n} \quad (4)$$

5 and-compared:-The distances resulting from the reference simulation and shifted simulations are then compared:

$$L_2 = 2 \left[ \frac{|r(R_{\text{dif}}) - r(R_{\text{ctrl}})|}{d} \frac{|r(R_{\text{dif}}) - r(R_{\text{ref}})|}{d} \right]. \quad (5)$$

Both components of  $L$  are added.

Structure component,  $S$ , gives a hint whether the precipitation patterns tend to more convective precipitation with small but more peaked rain objects or shallow precipitation with larger but-less-precipitating-objects. Therefore, a-objects, but weaker precipitation intensity. A volume,  $V(R)$ , is calculated by dividing the precipitation sum for a cell  $n$ ,  $\mathcal{R}_{ij}$ , calculated over the sum-of-precipitation- $\epsilon$  grid cells of  $n$ , by the maximum precipitation of this cell,  $\mathcal{R}_{ij}$ , over-all-grid-cells- $\epsilon$ , within-a-precipitation

cell,  $n$ , and the maximal precipitation,  $R_n^{max}$ , within this cell:  $R_n^{max}$ .

$$V_n = \sum_{(i,j) \in \epsilon} \frac{R_{ij}}{R_n^{max}} \frac{R_{ij}}{R_n^{max}}, \quad (6)$$

$$V(R) = \frac{\sum_{n=1}^M R_n V_n}{\sum_{n=1}^M R_n}. \quad (7)$$

5 With the volume,  $V(R)$ , over all precipitation cells,  $M$ , the structure component can be calculated ~~similar~~ similarly to Eq. (1):

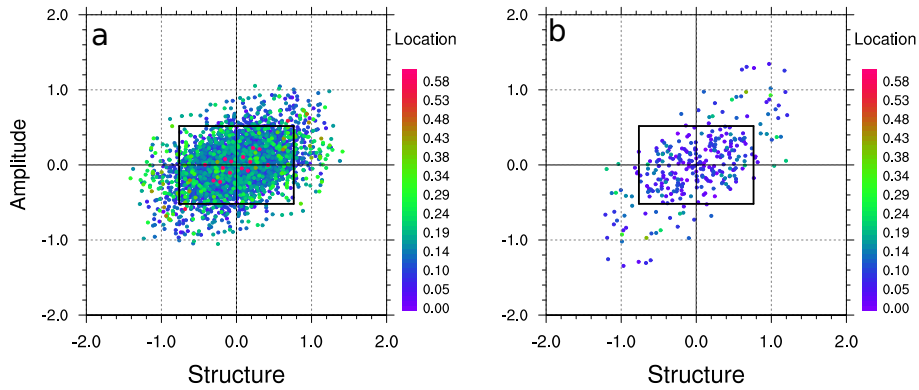
$$S = \frac{V(R_{dif}) - V(R_{ctrl})}{0.5[V(R_{dif}) + V(R_{ctrl})]} \frac{V(R_{dif}) - V(R_{ref})}{0.5[V(R_{dif}) + V(R_{ref})]}. \quad (8)$$

For more detailed information on SAL see Wernli et al. (2008).

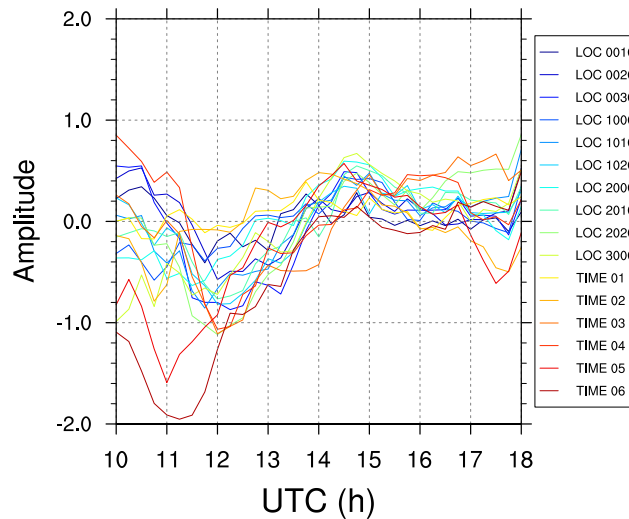
The ~~numerous simulations were compared in the time range~~ simulations are compared for the period from 10:00 UTC ~~and~~  
 10 to 18:00 UTC, covering the precipitation event. Those with a shifted model start or domain are compared to the CTRL run.  
~~Positive or negative amplitudes arise as an effect of which simulation~~ Amplitudes,  $A$ , are positive or negative dependent on  
which run is used as ~~the reference run, denoted with ctrl or comparison run, denoted with dif~~ reference (ref) or as a comparison  
simulation (dif). To avoid an uncertainty range ~~tending more to one direction~~ shifted toward one sign, all comparisons are ~~done~~  
~~in reverse additionally~~ additionally performed after swapping ref and dif run, providing a symmetric uncertainty distribution.  
 15 The uncertainty estimate (Fig. 8) encompasses a sample of 122 (permutation of simulation couples)  $\times$  32 (time steps) values,  
 although ~~they are not all~~ not all of them are independent of each other.

~~A and S~~ As parameters  $A$  and  $S$  are correlated (Fig. 8). Hence, a reduction in precipitation amplitude is related to too small  
 and/or peaked precipitation objects, whereas an increase in precipitation amount goes along with larger and/or shallower rain  
 objects. ~~The largest deviations~~ Largest amplitude deviations between the different runs arise in the first hours of the analysis  
 20 time from 10:00 to 11:30 UTC ~~of the analysis time~~ (Fig. 9). This ~~agrees with the beginning of the precipitation event~~ coincides  
with the time of the onset of the precipitation event which differs in the different simulations ~~because the onset of precipitation~~  
~~differs in all simulations~~ (Fig. 7) and therefore causes the largest uncertainties. The end of the precipitation event is not con-  
 sidered in the chosen time range.

A large shift in model start time leads to higher uncertainties (Fig. 9). Changes due to the spatially shifted model domain do not  
 25 depend on the distance of the boundary shift. The deviations from CTRL for simulations with shifted boundaries are not caused  
 by a direct change of physical parameters such as temperature ~~in a first instance,~~ but the differences emerge because synoptic  
~~systems, such as low pressure systems, are included in the model boundaries differently.~~ Differences the synoptic forcing at  
the lateral model boundary differs. Deviations are further caused by changes in the lower boundaries ~~such as including a larger~~  
~~area, such as changing areas~~ of sea- or landcover. For example, a model domain with north- or westward shifted boundaries  
 30 includes more grid points over sea surface. The simulation with the strongest westward shift (LOC3000) ~~causes~~ shows the  
 largest changes in precipitation amplitude (Fig. 9), ~~whereas the strongest northward shift by.~~ However, the strongest shift



**Figure 8.** SAL results for the CTRL-uncertainty-ensemble between 10:00 UTC and 18:00 UTC separated for ~~uncertainties~~ uncertainty generated by the spatially shifted model domain (a) and by the delayed model start (b). Structure is represented on the x-axis, amplitude on y-axis and location by marker colours. Every marker ~~presents~~ shows a comparison between two model simulations at a single time step. Simulations with shifted model domain are ~~presented~~ represented by filled dots and ~~those simulations~~ with shifted model start time by rectangles. The ~~borders of the~~ grey rectangle ~~are calculated by~~ delimits the region between the 5% and 95% ~~percentile of~~ percentiles in structure and location amplitude.



**Figure 9.** Amplitude values from Fig. 8 for comparisons to the CTRL run ~~only on the~~ for single time steps.

~~(30 km north in LOC3000)~~ , which also includes a larger fraction of sea surface, ~~affects~~ affects the precipitation amplitude less strongly than a ~~shifting by smaller shift~~ (20 km north in LOC2000), which includes a smaller fraction of sea surface (Fig. 9).

To address the dependency of ~~SAL score~~ SAL score on the chosen analysis area, two different analysis areas are chosen (Fig. 5 1). The ~~blue framed area in~~ area framed in blue in Fig. 1 includes mainly ~~the~~ small convective cells and the ~~red framed area~~ area

framed in red includes the whole precipitation field. For those two analysis areas, two simulations are compared ~~to each other~~ respectively. We define the model uncertainty for this study as the range ~~from between the 5% percentile to and~~ 95% percentile for structure and amplitude and ~~by up to the~~ 90% percentile for location. According to this definition, the uncertainty range is  $\pm 0.77$  ( $\pm 0.86$ ) in structure,  $\pm 0.54$  ( $\pm 0.69$ ) in amplitude, and up to 0.20 (0.29) in location for analysis area “red” (“blue”).

5 Changes are defined as significant when the response to the soil moisture modification is larger than the generated background noise ~~-from spatially shifted model domains or delayed model start time~~. A residual probability of 10% remains that the ~~latter~~ are not a result of changes do not result from soil moisture modification. ~~In comparison between~~ When comparing the CTRL run (Fig. 10a) and the simulation with shifted boundaries (Fig. 10b), differences in the single cells in the ~~Westwestern part~~ of the domain, partly over the North Sea, and in the structure of the large precipitation pattern in the ~~East-eastern part of~~ the domain become obvious. These differences are caused by shifting the boundary domain by ten grid points (10 km). The extreme modifications in soil moisture cause even more obvious differences in the precipitation patterns. The ~~enhancement~~ increase of soil moisture in either the whole domain or in a sub domain dramatically changes the location of the precipitation ~~for the chosen time dramatically cells in the analysed time steps~~ (Fig. 10e and f). In the moist simulations (MOI<sub>a</sub> and MOI<sub>p</sub>), the strongest precipitation occurs north-east of the ~~estuary~~ Elbe-estuary. This region is mainly free ~~of from~~ precipitation in

10 the dry simulations (DRY<sub>a</sub> and DRY<sub>p</sub>) ~~and in the CTRL simulations (CTRL and LOC1000) the~~, and the precipitation occurs even further north-east of this particular region in the CTRL simulations (CTRL and LOC1000). Moderate changes in soil moisture, ~~such as applied by using e.g. when applying~~ realistic moisture fields of a different day, result in smaller changes in precipitation. The general pattern observed in the CTRL run remains the same in REAL<sub>0820</sub> and REAL<sub>0719</sub> (Fig. 10f and g).

15

### 20 4.3 Significant effects of soil moisture modification on precipitation

The huge number of model simulations (a complete ensemble for each soil moisture modification) and the uncertainty estimate from ~~Seet-~~ section 4.2 accounts for a quantitative evaluation of the significance of soil moisture influence on precipitation. Each ensemble with modified soil moisture ~~will be is~~ compared to the ~~CTRL-uncertainty~~ CTRL uncertainty ensemble by comparing ensemble members with ~~the same shift of the model domain~~ same spatial model domain shift for every output-step.

25 Within every ensemble the values are divided into those that exceed the uncertainty range (given by blue rectangle in Fig. 11) ~~what is given by~~ derived from the uncertainty-ensemble, and those that ~~are lay~~ are within. The percentage of ~~the~~ values exceeding the uncertainty range is calculated to decide whether a soil moisture modification leads to significant changes in precipitation (Table 3). Changes caused by a soil moisture modification ~~will be treated are considered~~ as significant if more than 10% of the values exceed the uncertainty range. The threshold is set to 10% because the uncertainty range ~~was calculated by the is~~ determined by considering the range between the 5% and 95% what remains a percentiles, which leaves 10% probability that ~~an exceeding value can still be~~ the exceeding value is still caused by model ~~uncertainties~~ uncertainty.

30

The ~~structural change of precipitation on~~ change in structure of precipitation caused by the soil moisture modification ~~as~~ in the DRY<sub>p</sub>-ensemble exceeds the uncertainty range in only 5% of all cases (Fig. 11a and Table 3). For both scores, ~~S and A~~ S and A, the percentage of exceeding values lies beneath the 10% threshold. Therefore, precipitation does not respond significantly



to  $DRY_p$  modifications, but for L-the parameter L in area “red” (Table 3). In contrast, the soil moisture reduction in the whole domain ( $DRY_a$ -ensemble) affects the precipitation significantly (Fig. 11b). More than 50% of A-amplitude values exceed the uncertainty range, in some cases with values for A-A down to -1.8. For  $S_p$ , only 11% of the values exceed the uncertainty range. Nevertheless, this is enough to be treated-regarded as a significant impact. The soil moisture enhancement-increase in a sub domain only ( $MOI_p$ -ensemble) results in significant changes in precipitation (Fig. 11c). As already seen for-in the  $DRY_a$ -ensemble, the modification over the whole domain results in a stronger precipitation response.

The redistribution of soil moisture (BAND-ensemble) does not lead to any significant effect (Fig. 11e), except for L-L in area “blue”. ~~The redistribution of soil moisture~~ It changes the heterogeneity of the soil moisture by reducing small-scale structures, but induce-induces stronger variations on a large scale. Thus, secondary eirculation-circulations can develop on a different scale. This is in accordance with Adler et al. (2011); Kang and Bryan (2011) who Adler et al. (2011) and Kang and Bryan (2011) who both found an influence of the redistribution of soil moisture on the location of convective initiation. Therefore, area “blue”, mainly containing small convective cells, is more-influenced-influenced to a greater extent than area “red” with-the-, which has a large advected precipitation band.

Even slight modifications of soil moisture, as Klüpfel et al. (2011) performed by using different initialisations-initialization of soil moisture, lead to different precipitation patterns. Using-In the present study, using soil moisture from another day also changes precipitation. But those changes do not exceed the model uncertainty in more than 10% of all values in the present case. Accordingly, physically feasible-realistic changes in soil moisture lead to changes in precipitation not larger than changes that can also be caused by choosing a slightly different model setup.

#### 4.4 SystematicsSystematic behavior to soil moisture changes

After-determining-Having determined the significance of the strength of changes in precipitation, this section handles the systematics of changes. Significant changes do not necessarily imply systematic changes. While-Changes in L are not analyzed as this quantity provides no direction. While predominantly negative amplitude changes occur in  $DRY_a$  (Fig. 11b) predominantly negative-amplitude-changes-occur-, changes in  $MOI_p$  (Fig. 11c) are significant, but random changes-occur. Structure and amplitude change in both positive and negative directions. In none of the soil moisture experiments S-and-A-S and A are correlated (Fig. 11). To carve out any systematic effects-the-averaged-value-effect, the averaged values of amplitude and structure are compared to the average of the uncertainty-ensemble. Systematics in L are not analysed as this quantity provides no direction. The sample for the SAL results for the uncertainty-ensemble is symmetric and therefore the average over all values is zero. A significant difference of the averaged values from zero hints at the systematics. Whether the averaged values differ significantly from zero is tested statistically by:

$$\hat{z}_{\text{sys}} = \frac{\bar{x}_1 - \bar{x}_2 - E[\bar{x}_1 - \bar{x}_2]}{\sqrt{\hat{\sigma}^2[\bar{x}_1 - \bar{x}_2]}}. \quad (9)$$

$\bar{x}_1$  and  $\bar{x}_2$  denotes denote the averaged values of S-or-A-S or A for the two compared simulations,  $E[\bar{x}_1 - \bar{x}_2]$  is the expected value for the differences between the two simulations and is expected to be zero for the null hypothesis,  $\hat{\sigma}^2[\bar{x}_1 - \bar{x}_2]$  is the variance of the averages.

**Table 3.** Percentages ( $p_S, p_A, p_L$ ) of values  $\bar{S}, \bar{A}$  and  $\bar{L}$  that exceed the model uncertainty by 90%. ~~Uncertainties are~~ Uncertainty is in a range from  $[-0.767, 0.767]$  ( $[-0.857, 0.857]$ ) in structure,  $[-0.538, 0.538]$  ( $[-0.690, 0.690]$ ) in amplitude and 0.200(0.288) in location for analysis area “red” (“blue”). Bold values exceed model uncertainties in more than 10% of the cases. Averaged values and ~~its deviation~~ their deviations ( $\bar{S} \pm \hat{\sigma}^2, \bar{A} \pm \hat{\sigma}^2$ ). Bold values are those mean values that differ significantly from the mean of the uncertainty-ensemble after Eq. (9) for confidence interval of 90%.

Ensemble	Structure		Amplitude		Location
	$p_S$	$\bar{S} \pm \hat{\sigma}^2$	$p_A$	$\bar{A} \pm \hat{\sigma}^2$	$p_L$
analysis area “red”					
DRY <sub>p</sub>	5.79	0.02 ± 0.0034	3.58	<b>-0.13 ± 0.0011</b>	<b>25.34</b>
DRY <sub>a</sub>	<b>23.14</b>	<b>0.30 ± 0.0063</b>	<b>22.31</b>	<b>-0.26 ± 0.0023</b>	<b>53.72</b>
MOI <sub>p</sub>	<b>15.98</b>	-0.12 ± 0.0051	<b>18.73</b>	-0.05 ± 0.0042	8.26
MOI <sub>a</sub>	9.92	-0.10 ± 0.0043	<b>23.42</b>	<b>-0.18 ± 0.0043</b>	<b>26.72</b>
BAND	3.03	-0.04 ± 0.0025	0.55	0.00 ± 0.0001	6.61
REAL <sub>0820</sub>	3.31	-0.03 ± 0.0022	0.28	-0.02 ± 0.0006	0.55
REAL <sub>0719</sub>	2.48	0.05 ± 0.0024	1.65	0.09 ± 0.0008	1.65
analysis area “blue”					
DRY <sub>p</sub>	4.85	-0.10 ± 0.0033	9.39	<b>-0.29 ± 0.0091</b>	5.76
DRY <sub>a</sub>	<b>11.82</b>	0.08 ± 0.0058	<b>51.21</b>	<b>-0.60 ± 0.0068</b>	<b>30.61</b>
MOI <sub>p</sub>	<b>14.85</b>	-0.19 ± 0.0053	<b>12.12</b>	0.00 ± 0.0039	<b>12.42</b>
MOI <sub>a</sub>	<b>15.76</b>	<b>-0.27 ± 0.0058</b>	<b>19.70</b>	<b>-0.28 ± 0.0044</b>	<b>27.58</b>
BAND	7.27	-0.10 ± 0.0045	0.91	0.07 ± 0.0014	<b>21.52</b>
REAL <sub>0820</sub>	0.91	-0.04 ± 0.0026	0.30	-0.03 ± 0.0007	1.21
REAL <sub>0719</sub>	1.21	-0.01 ± 0.0026	0.30	0.07 ± 0.0010	1.21

The ~~averaged structure~~ average of the structure values differs significantly from zero only for the ~~ensemble~~ ensembles DRY<sub>a</sub> and MOI<sub>a</sub> ~~by analysing over area red and blue in the analysis domain “red” and “blue”~~, respectively (Table 3). The amplitude ~~reacts more often systematically in the analysis for both regions~~ values frequently feature a systematic response in both domains; Modifications of soil moisture ~~by increasing and decreasing result both in~~ increases as well as decreases, result in 5 in reduced precipitation rates. This implies a negative and positive ~~feedbacks~~ feedback, respectively. The positive feedback ~~by decreasing the soil moisture, activated by reduced soil moisture~~ is in consent with ~~Barthlott and Kalthoff (2011)~~. ~~The case study from Barthlott and Kalthoff (2011) shows a positive feedback for decreased soil moisture. But, enhanced soil moisture a~~ case study by Barthlott and Kalthoff (2011). However, increased soil moisture amount can lead to an increase or decrease in precipitation, dependent on the strength of ~~soil moisture enhancement~~ the increase. In contrast, Cheng and Cotton (2004); Ek and Holtslag (2004); Martin and Xue (2006); Hohenegger et al. (2009); Weverberg et al. (2010) found a negative feedback in convection resolving simulations.

The strength of the deviation depends on the strength of the modification. While a ~~partly-increased~~ partial increase in soil moisture does not lead to systematic changes ~~the~~, an overall enhancement has a systematic effect. The effect of dry soil exceeds the effect of soil moisture enhancement and shows systematic effects for both implementations (drying the entire domain or only parts). The effects are stronger for overall modifications. Comparing the results for both regions, the averaged differences calculated for region “blue” exceed those of region “red” because convective cells are more influenced by soil moisture changes.

## 5 Conclusions

In the present case study we conducted seven ensembles ~~of simulations with~~ for different perturbations in soil moisture. ~~The letter~~ amount and pattern. Each ensemble encompasses ten variations in the model domain. The soil moisture perturbations include strong artificial changes ~~and changes in a feasible range by replacing by drying and wetting the model domain and realistic changes implemented by replacing the initial soil moisture field~~ with real soil moisture patterns from another day. The ensembles ~~were conducted~~ are generated by conducting the simulation over slightly different model domains, ~~which were shifted~~ created by shifting the domain location by 10 to 30 ~~km to each other to deliver slightly changed~~ km to change the boundary conditions. ~~That caused~~ These changes cause a large spread in the convective case because the day (3 August 2012) was synoptically forced by a low pressure system over the Atlantic. Conclusively, only ~~in two ensembles soil moisture caused significant changes~~ two ensembles show significant changes caused by modified soil moisture amount in intensity, local distribution and amount of convective precipitation ~~what was~~ which are assessed with the SAL-score. The amplitude, determining ~~a difference in the difference in the~~ amount of precipitation, is most often systematically reduced within an ensemble. ~~Thus, no~~ No overall systematic was found because wetting and drying of soil can both result in reduced precipitation amount. The structure, which describes the ~~difference in intensity in precipitation~~ spatial variability of the precipitation field, can be either enhanced or decreased at different times and in different ensemble members ~~what can also be caused by a time delay~~. This might be explained by a delayed onset of precipitation caused by soil moisture ~~modification~~ modifications. A local displacement in the precipitation cells is found for three and four out of five artificially changed soil moisture patterns in the two ~~different analysis regions, respectively~~ analysis regions. The changes in precipitation for the simulations with realistic soil moisture patterns are not significant.

Limitations in the present study are: 1) the restriction to a single case study. Thus, no ~~general valid results could generally valid results can~~ be found. However, this study presents a proof of concept and ~~can be conducted with further cases, which should be further conducted with cases, that~~ are less affected by frontal systems. In those cases, a stronger influence of soil moisture on precipitation properties can be expected. 2) The dependency of the results on the chosen analysis area, which in turn shows the complexity of the results. 3) The dependency of the uncertainty estimate on synoptic forcing and size of the model domain. The ensemble spread might become smaller with weaker synoptic forcing and with a larger model domain. However, a ~~expected~~ smaller model spread would strengthen the importance of soil moisture influence as it is expected in ~~this~~ these cases.

In summary, we could ~~proof the concept of~~ prove the concept that by shifting the model domain ~~to achieve a sufficient~~

sufficiently large model spread can be achieved without being influenced by generated patterns. Such an estimate of the model spread is necessary in soil moisture studies to ~~assure the results from~~ separate the response to soil moisture changes from inherent forecast uncertainty at deep convection resolving grid spacing. We further showed that ~~under synoptically driven situation in synoptically driven situations~~ the effect of soil moisture remains uncertain and further ~~investigations are necessary.~~

- 5 ~~To proceed the present study further cases studies should be conducted.~~ investigation is necessary.

## References

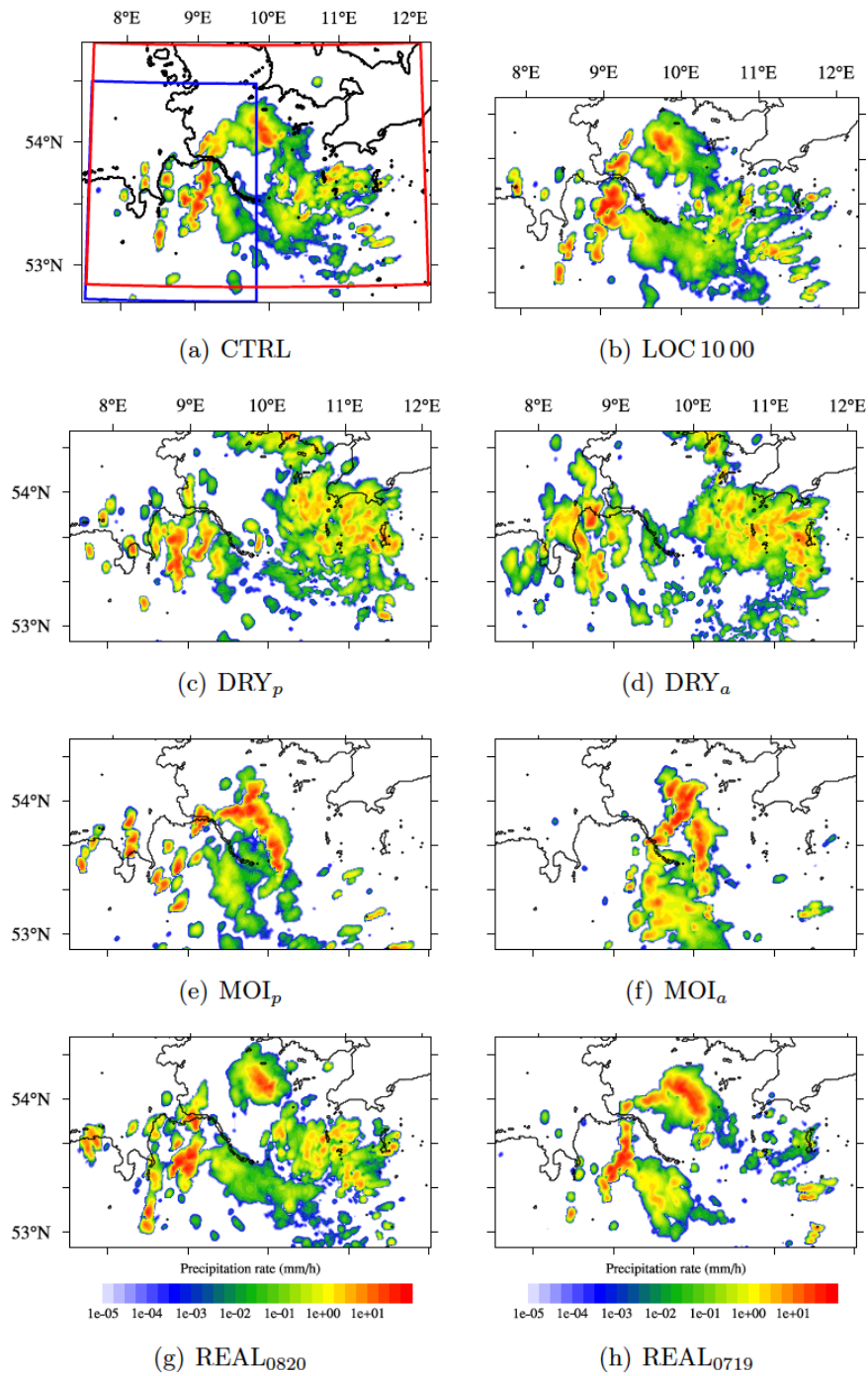
- Adler, B., Kalthoff, N., and Gantner, L.: The impact of soil moisture inhomogeneities on the modification of a mesoscale convective system: An idealised model study, *Atmos. Res.*, 101, 354–372, doi:10.1016/j.atmosres.2011.03.013, 2011.
- Barthlott, C. and Kalthoff, N.: A Numerical Sensitivity Study on the Impact of Soil Moisture on Convection-Related Parameters and Convective Precipitation over Complex Terrain, *J. Atmos. Sci.*, 68, 2971–2987, doi:10.1175/JAS-D-11-027.1, 2011.
- Barthlott, C., Hauck, C., Schädler, G., Kalthoff, N., and Kottmeier, C.: Soil moisture impacts on convective indices and precipitation over complex terrain, *Meteorol. Z.*, 20, 185–197, doi:10.1127/0941-2948/2011/0216, 2011.
- Bouttier, F., Raynaud, L., Nuissier, O., and Ménétrier, B.: Sensitivity of the AROME ensemble to initial and surface perturbations during HyMeX, *Q. J. R. Meteorol. Soc.*, 142, 390–403, doi:10.1002/qj.2622, <http://dx.doi.org/10.1002/qj.2622>, 2016.
- 10 Cheng, W. Y. Y. and Cotton, W. R.: Sensitivity of a Cloud-Resolving Simulation of the Genesis of a Mesoscale Convective System to Horizontal Heterogeneities in Soil Moisture Initialization, *J. Hydrometeorol.*, 5, 934–958, doi:10.1175/1525-7541(2004)005<0934:SOACSO>2.0.CO;2, 2004.
- Clark, D., Taylor, C., and Thorpe, A.: Feedback between the land surface and rainfall at convective length scales, *J. Hydrometeorol.*, 5, 625–639, doi:10.1175/1525-7541(2004)005<0625:FBTLISA>2.0.CO;2, 2004.
- 15 Dixon, N. S., Parker, D. J., Taylor, C. M., Garcia-Carreras, L., Harris, P. P., Marsham, J. H., Polcher, J., and Woolley, A.: The effect of background wind on mesoscale circulations above variable soil moisture in the Sahel, *Q. J. R. Meteorol. Soc.*, 139, 1009–1024, 2013.
- Doms, G., Förstner, J., Heise, E., Herzog, H.-J., Mironov, D., Raschendorfer, M., Reinhardt, T., Ritter, B., Schrodin, R., Schulz, J.-P., and Vogel, G.: A Description of the Nonhydrostatic Regional COSMO Model, Part 2: Physical Parameterization, Tech. rep., 2011.
- Ek, M. B. and Holtslag, A. A. M.: Influence of Soil Moisture on Boundary Layer Cloud Development, *J. Hydrometeorol.*, 5, 86–99, doi:10.1175/1525-7541(2004)005<0086:IOSMOB>2.0.CO;2, 2004.
- 20 Froidevaux, P., Schlemmer, L., Schmidli, J., Langhans, W., and Schaer, C.: Influence of the Background Wind on the Local Soil Moisture-Precipitation Feedback, *J. Atmos. Sci.*, 71, 782–799, doi:10.1175/JAS-D-13-0180.1, 2014.
- Hauck, C., Barthlott, C., Krauss, L., and Kalthoff, N.: Soil moisture variability and its influence on convective precipitation over complex terrain, *Q. J. R. Meteorol. Soc.*, 137, 42–56, doi:10.1002/qj.766, 2011.
- 25 Hohenegger, C. and Schär, C.: Predictability and error growth dynamics in cloud-resolving models, *J. Atmos. Sci.*, 64, 4467–4478, doi:10.1175/2007JAS2143.1, 2007.
- Hohenegger, C., Brockhaus, P., Bretherton, C. S., and Schär, C.: The soil moisture-precipitation feedback in simulations with explicit and parameterized convection, *J. Clim.*, 22, 5003–5020, doi:10.1175/2009JCLI2604.1, 2009.
- Hohenegger, C., Brockhaus, P., and Schaer, C.: Towards climate simulations at cloud-resolving scales, *Meteorol. Z.*, 17, 383–394, doi:10.1127/0941-2948/2008/0303, 2008.
- 30 Kalthoff, N., Kohler, M., Barthlott, C., Adler, B., Mobbs, S. D., Corsmeier, U., Traeumner, K., Foken, T., Eigenmann, R., Krauss, L., Khodayar, S., and Di Girolamo, P.: The dependence of convection-related parameters on surface and boundary-layer conditions over complex terrain, *Q. J. R. Meteorol. Soc.*, 137, 70–80, doi:10.1002/qj.686, 2011.
- Kang, S.-K. and Bryan, G. H.: A Large-Eddy Simulation Study of Moist Convection Initiation over Heterogeneous Surface Fluxes, *Mon. Weather Rev.*, 139, 2901–2917, doi:10.1175/MWR-D-10-05037.1, 2011.
- Klüpfel, V., Kalthoff, N., Gantner, L., and Kottmeier, C.: Evaluation of soil moisture ensemble runs to estimate precipitation variability in convection-permitting model simulations for West Africa, *Atmos. Res.*, 101, 178–193, doi:10.1016/j.atmosres.2011.02.008, 2011.

- Lengfeld, K., Clemens, M., Münster, H., and Ament, F.: Performance of high-resolution X-band weather radar networks - The PATTERN example, *Atmos. Meas. Tech.*, 7, 4151–4166, doi:10.5194/amt-7-4151-2014, 2014.
- Leutwyler, D., Fuhrer, O., Lapillonne, X., Lüthi, D., and Schär, C.: Towards European-scale convection-resolving climate simulations with GPUs: a study with COSMO4.19, *Geosci. Model Dev.*, 9, 3393–3412, doi:10.5194/gmd-9-3393-2016, 2016.
- 5 Maronga, B. and Raasch, S.: Large-Eddy Simulations of Surface Heterogeneity Effects on the Convective Boundary Layer During the LITFASS-2003 Experiment, *Boundary-Layer Meteorol.*, 146, 17–44, doi:10.1007/s10546-012-9748-z, 2013.
- Martin, W. J. and Xue, M.: Sensitivity analysis of convection of the 24 May 2002 IHOP case using very large ensembles, *Mon. Weather Rev.*, 134, 192–207, doi:10.1007/11768012\_21, 2006.
- Mass, C. F., Ovens, D., Westrick, K., and Colle, B. A.: Does increasing horizontal resolution produce more skillful forecasts? The results of two years of real-time numerical weather prediction over the Pacific Northwest, *Bull. Amer. Meteor. Soc.*, 83, 407–430+341, doi:10.1175/1520-0477(2002)083<0407:DIHRPM>2.3.CO;2, 2002.
- 10 Pedersen, L., Jensen, N. E., Christensen, L. E., and Madsen, H.: Quantification of the spatial variability of rainfall based on a dense network of rain gauges, *Atmos. Res.*, 95, 441–454, doi:10.1016/j.atmosres.2009.11.007, 2010.
- Richard, E., Buzzi, A., and Zängl, G.: Quantitative precipitation forecasting in the Alps: The advances achieved by the Mesoscale Alpine Programme, *Q. J. R. Meteorol. Soc.*, 133, 831–846, doi:10.1002/qj.65, 2007.
- 15 Schättler, U., G., D., and C., S.: A description of the nonhydrostatic regional COSMO model. Part VII: User’s Guide, 2009.
- Schraff, C., Reich, H., Rhodin, A., Schomburg, A., Stephan, K., Perriáñez, A., and Potthast, R.: Kilometre-scale ensemble data assimilation for the COSMO model (KENDA), *Q. J. R. Meteorol. Soc.*, 142, 1453–1472, doi:10.1002/qj.2748, <http://dx.doi.org/10.1002/qj.2748>, 2016.
- Tiedtke, M.: A Comprehensive Mass Flux Scheme for Cumulus Parameterization in Large-Scale Models, *Monthly Weather Review*, 117, 1779–1800, doi:10.1175/1520-0493(1989)117<1779:ACMFSF>2.0.CO;2, 1989.
- 20 Wernli, H., Paulat, M., Hagen, M., and Frei, C.: SAL-A Novel Quality Measure for the Verification of Quantitative Precipitation Forecasts, *Mon. Weather Rev.*, 136, 4470–4487, doi:10.1175/2008MWR2415.1, 2008.
- Weverberg, K. V., van Lipzig, N. P. M., Delobbe, L., and Lauwaet, D.: Sensitivity of quantitative precipitation forecast to soil moisture initialization and microphysics parametrization, *Q. J. R. Meteorol. Soc.*, 136, 978–996, doi:10.1002/qj.611, 2010.

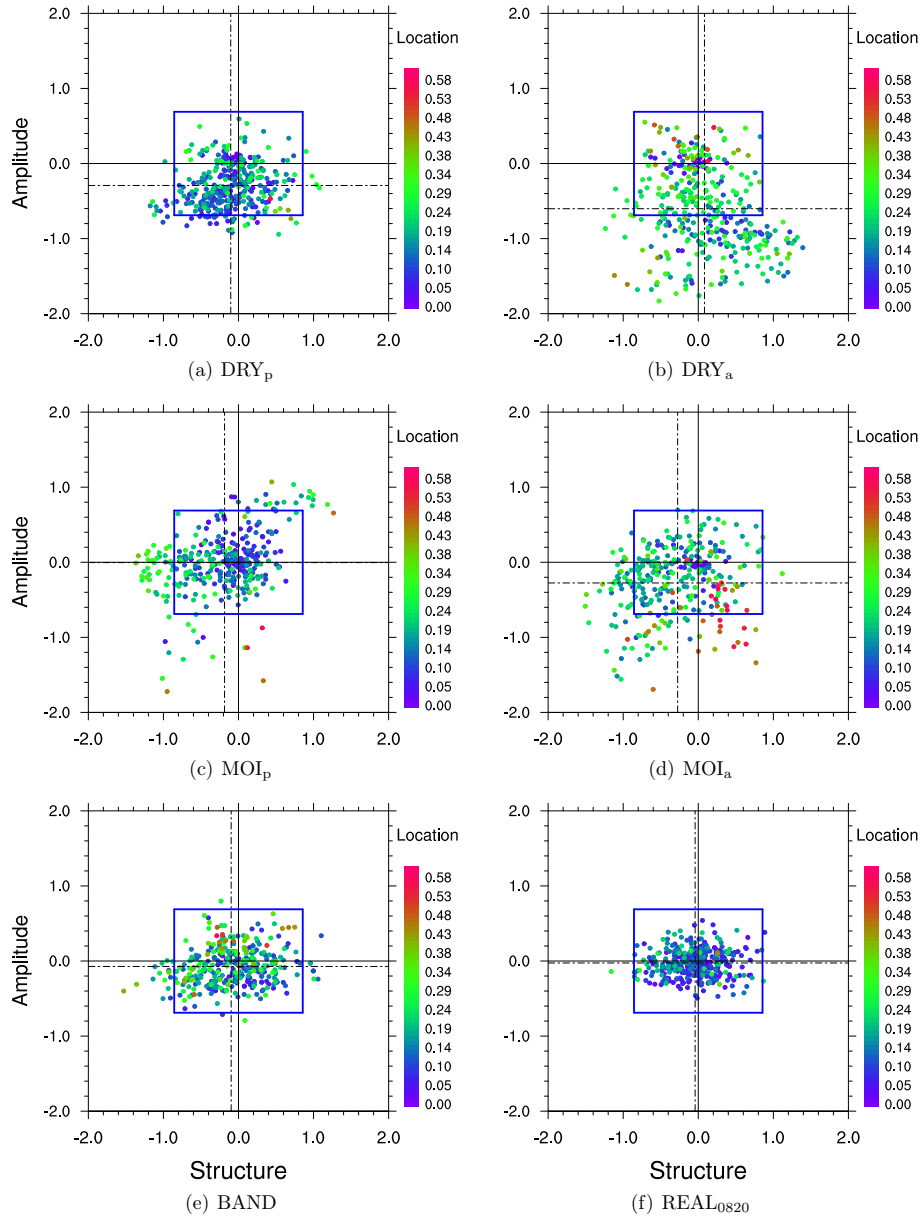
## 25 **Data availability**

Model output data are stored at DKRZ computers and can be provided on demand.

*Acknowledgements.* We would like to thank the COSMO consortium for access to the code, and the German weather service (DWD) for providing analysis data, Deutsches Klimarechenzentrum (DKRZ) for providing a simulation platform and Heini Wernli and Markus Zimmer for the SAL analysis code. Thanks to Will Ball [and Claire Merker](#) for proofreading. We thank the anonymous reviewers for their fruitful  
30 comments to improve this manuscript.



**Figure 10.** Precipitation rate at 14:45 UTC for (a) CTRL run , (b) LOC 1000 and (c-h) different soil moisture modified simulations.



**Figure 11.** SAL scatter plot: Comparison of ensembles (a) DRY<sub>p</sub>, (b) DRY<sub>a</sub>, (c) MOI<sub>p</sub>, (d) MOI<sub>a</sub>, (e) BAND and (f) MOI<sub>0820</sub> with the uncertainty-ensemble for area “blue”. Dashed lines represent the averages.