

Measurement of PM and its chemical composition in real-world emissions from non-road and on-road diesel vehicles

Min Cui^a, Yingjun Chen^{a*}, Yanli Feng^{b*}, Cheng Li^c, Junyu Zheng^{c*}, Chongguo Tian^d,

5 Caiqing Yan^e, Mei Zheng^e

^a Key Laboratory of Cities' Mitigation and Adaptation to Climate Change in Shanghai (China Meteorological Administration), College of Environmental Science and Engineering, Tongji University, Shanghai, China

^b Institute of Environmental Pollution and Health, School of Environmental and
10 Chemical Engineering, Shanghai University, Shanghai, China

^c Laboratory for Atmospheric Research and Environmental Simulation, School of Environment and Energy, South China University of Technology, Guangzhou, China

^d Key Laboratory of Coastal Zone Environmental Processes and Ecological Remediation, Yantai Institute of Coastal Zone Research, Chinese Academy of
15 Sciences, Yantai, China

^e SKL-ESPC and BIC-EAST, College of Environmental Science and Engineering, Peking University, Beijing 100871, China

Correspondence to: Yingjun Chen (yjchentj@tongji.edu.cn)

Yanli Feng (fengyanli@shu.edu.cn)

20 Junyu Zheng (Zhengjunyu_work@hotmail.com)

Abstract. With the rapid growth in the number of both non-road and on-road diesel vehicles, the adverse effects of particulate matter (PM) and its constituents on air quality and human health have attracted increasing attentions. However, studies on the characteristics of PM and its composition emitted from diesel vehicles are still scarce,
25 especially those performed in real-world conditions. In this study, six excavators and five trucks involving a range of emissions standards and operational modes were tested, and PM emissions as well as its constituents, including organic carbon (OC),

elemental carbon (EC), water soluble ions (WSIs), elements, and organic species such as PAHs, n-alkanes, hopane, and sterane were characterized. The average emission factors for PM (EF_{PM}) from excavator and truck emissions were 829 ± 806 and 498 ± 234 mg kg^{-1} fuel, respectively. EF_{PM} and PM constituents were significantly affected by fuel quality, operational mode, and emission standards. Significant correlation ($R^2=0.79$, $p<0.01$) was found between EF_{PM} for excavators and the sulfur contents in fuel. The highest average EF_{PM} for working excavators was 904 ± 979 mg kg^{-1} fuel, because of the high engine load required in this mode. From pre-stage 1 to stage 2, the average EF_{PM} for excavators decreased by 58%. For trucks, the average non-highway EF_{PM} (548 ± 311 mg kg^{-1} fuel) was higher than the highway EF_{PM} (497 ± 231 mg kg^{-1} fuel). Meanwhile, the reductions were 63.5% and 65.6% when switching from China II and III to China IV standards, respectively. Generally, the PM composition emitted from excavators was dominated by OC ($39.2 \pm 21.0\%$) and EC ($33.3 \pm 25.9\%$), while PM from trucks was dominated by EC ($26.9 \pm 20.8\%$), OC ($9.89 \pm 12\%$), and WSIs ($4.67 \pm 5.74\%$). The average OC/EC ratios for idling and working excavators were 3 to 4 times higher than those for moving excavators. Although the EF_{PM} for excavators and trucks were reduced with the constraint of regulations, the element fractions for excavators increased from 0.49 (pre-stage 1) to 3.03% (stage 2), and the fraction of WSIs for the China IV truck was 6-fold higher than the average value of all other-level trucks.. Furthermore, as compared with other diesel vehicles, wide ranges in the ratios of benzo[a]anthracene/(benzo[a]anthracene+chrysene) (0.26-0.86), indeno[1,2,3-cd]pyrene/(indeno[1,2,3-cd]pyrene +benzo[ghi]perylene) (0.20-1.0) and fluoranthene/(fluoranthene+pyrene) (0.24-0.87) were found for excavators, which might be a result of the complex characteristics of excavator operational modes. Through comparison of our results with literatures, on-board measurements data could reflect real condition better. Although fraction of the 16 priority PAHs in PM from the excavator and truck emissions were similar, the equivalent concentrations of total benzo[a]pyrene, were 31 times higher for excavators than that for trucks, implying that more attention should be paid to non-road vehicle emissions.

Keywords

Diesel vehicles; excavators; trucks; PM; chemical composition; influential factors

Copyright statement

We confirm that the material is original and has not been submitted elsewhere.

1. Introduction

5 Particulate matter (PM) emitted from diesel vehicles has significant adverse effects on air quality, human health, and global climate change, and therefore merit close examination (Aggarwal et al., 2015, 2016). Previous studies have found that diesel vehicle exhaust is a major source of ambient fine PM emissions ($D_{p \leq 2.5} \mu\text{m}$) (Oanh et al., 2010, Zhang et al., 2015a). For instance, vehicle exhaust was reported to
10 contribute almost 30% of ambient $\text{PM}_{2.5}$ in 9 cities of China in 2015 (MEP 2016). The International Agency for Research on Cancer (IARC) found that exposure to diesel exhaust could cause lung cancer (IARC 2012). Adar et al. (2015) reported that a disproportionate occurrence of respiratory disease had been caused when breathing polluted air from diesel school buses by a survey for more than 25 million children.
15 Nearly 34% of element carbon (EC) emissions, a major contributor to current global warming and poor human health, comes from off-road diesel vehicle emissions in the USA (USEPA 2015).

The numbers of on-road and non-road diesel vehicles have increased considerably in China, and have caused severe environmental problems. On-road diesel vehicles
20 can be classified into light-duty, medium-duty, and heavy-duty trucks. Non-road diesel vehicles mainly include construction machinery and agricultural equipment (MEP 2014). Airplanes, trains, and vessels are not included as non-road diesel vehicles in this study, because the primary fuels used for these vehicles were not diesel. The number of on-road diesel vehicles increased from 11.0 million in 2009 to
25 32.8 million in 2015, while the number of non-road diesel vehicles increased from 20.6 million in 2006 to 33.6 million in 2012 (CCCMYIY et al., 2013, MEP 2016). Based on the China vehicle environmental management annual report for 2015 (MEP 2016), 0.56 million tons of $\text{PM}_{2.5}$ were emitted from on-road mobile sources, of which

90% resulted from on-road diesel vehicle emissions (Figure S1). However, pollutants emitted from non-road diesel vehicles should not be neglected. In 1991, The U.S. Environmental Protection Agency (USEPA) published a report indicating that PM emitted from non-road diesel vehicles was significantly higher than that emitted from on-road diesel vehicles (USEPA 1991). Wang et al. (2016) compiled an emission inventory for non-road equipment (including agricultural equipment, river/ocean-going vessels, locomotives, and commercial airplanes) and found that there were 349 Gg of PM emitted from non-road vehicles in China during 2012. Construction equipment contributed as the largest non-road diesel vehicles emission source. Zhang et al. (2010) reported that PM₁₀ emitted from construction equipment in the Pearl River Delta (PRD) region accounted for 26.5% of the total emission from non-road vehicles in 2006. The number of construction equipment increased from 1.97 million to 5.85 million between 2006 and 2012 (CCCMY 2013). Furthermore, as one of the most abundant types of construction equipment (Figure S1), excavators contributed almost 65% of the PM emissions from construction equipment (Li et al., 2012).

In order to control PM emission pollution from diesel vehicles, China began to implement emission standards in early 2001 for light-duty diesel vehicles and heavy-duty diesel vehicles (SEPA et al., 2001). These standards were tightened in the subsequent 12 years, from the China I to China V standards. Although China V emission standard for on-road diesel vehicles has been formulated, insufficient diesel fuel quality slows their implementation (Yue et al., 2015). In addition, the China IV emission standards for on-road diesel vehicles are not fully implemented. Implementation timeline of emission standards for non-road diesel vehicles has lagged behind that of the on-road diesel vehicles. China implemented two emission standards for new non-road diesel engines, stage 1 and stage 2 in 2007 and 2009, respectively. However, the first implementation in China was 7 years later than that of USA (USEPA 2003, SEPA et al., 2007). The pollution emission limits for on-road and non-road diesel vehicles are given in Tables S1 and S2.

EF_{PM} is an important parameter in the compilation of emission inventories for

on-road and non-road diesel vehicles in China. However, the foundational work towards quantifying EF_{PM} is relatively weak and contains large uncertainties (Huang et al., 2011). Most of the EF_{PM} from trucks have been measured using tunnel and dynamometer tests, which could not evaluate influential factors for PM emissions from a single truck in real-world conditions (Alves et al., 2015b, Mancilla et al., 2012, Pio et al., 2013). Although several studies have measured PM emissions from trucks using on-board tests in real-world conditions (Wu et al., 2016, Wu et al., 2015, Zhang et al., 2015a), the data should be updated frequently (Huo et al., 2012) because EF_{PM} emitted from trucks could change along with improved emission standards. In addition, the data of EF_{PM} emitted from non-road diesel vehicles in real-world conditions is scarce in China. In 2014, the Ministry of Environmental Protection of the People's Republic of China had issued "Technical guide for the preparation of a single source emission inventory of atmospheric fine particulate matter." However, no measured data of EF_{PM} for non-road vehicles could be referred in this technical guide, especially for construction machinery (6 g km^{-1} were predicted for uncontrolled standards) (MEPPRC 2014). Until now, there was only one study in China by Fu et al. (2012) had provided EF_{PM} of 12 excavators using portable emission measurement system (PEMS) under different operational modes. On-board measurements need to be expanded to improve localization of EF_{PM} for non-road diesel vehicles in China as soon as possible, because of the complexity of real-world conditions, including lagging diesel quality and changing emission standards.

Analysis of the chemical composition of PM is essential for source apportionment, human health, and climate change studies. Primary PM emitted from diesel vehicles contains a variety of chemical components, including organic carbon (OC), elemental carbon (EC), water soluble ions (WSIs), elements, and organic species such as n-alkanes, polycyclic aromatic hydrocarbons (PAHs), hopane and sterane). Several previous field studies have focused on chemical composition of PM emitted from diesel vehicles, but specific characteristics of PM emitted from diesel vehicles and its composition still are great unknown, especially for organic compounds. Zhang et al. (2015a) characterized $PM_{2.5}$ compositions (OC, EC, WSIs and elements) emitted from

heavy-duty diesel trucks (HDDTs). Wu et al. (2016) reported the detailed chemical composition of PM_{2.5} emitted from China III and China IV diesel trucks, including the OC, EC, WSIs, and element contents. In 2012, Fu et al. (2012) firstly tested 12 excavators using on-board test in China, but only optically-based EF_{PM} was given.

5 In this study, PM emitted from on-road and non-road diesel vehicles was measured to (I) test emission factors of PM for excavators and trucks in real-world conditions; (II) identify influential factors on the emitted PM and its composition, and (III) characterize chemical components present in the emitted PM. Although the study results required substantial effort, it provided valuable information for developing of
10 effective control policies to reduce PM emissions from excavators and trucks.

Experimental

2.1 Diesel vehicle and operational mode selection

In this study, six excavators and five trucks were selected to cover a wide range of emission standards, manufacturers and engine loads. Detailed information for the
15 selected excavators and trucks is shown in Table 1. As shown in Figure S2, the annual production of excavators did not change substantially between 2007 and 2009 (an increase from 70,000 to 85,000), during stage 1 non-road vehicle emission standard was implemented. Therefore, excavators produced with pre-stage 1 and stage 2 emission standards were chosen for this study. Based on China national standard
20 (SEPA 2007), excavators are divided into five types according to their power rating. The excavators in this study were categorized as low (0-75 kw), medium (75-130 kw) or high (130-560 kw) power under different emission standards. Three operational modes were selected for the excavators reflect actual use condition, including idling, moving and working. Further descriptions of these three modes can be found in Fu et
25 al. (2012). In addition, consistent sampling times for the different modes were not strictly required in this study, as long as sufficient amounts of PM were collected to conduct the subsequent chemical analysis. The average sampling times during idling, moving, and working were 41.7, 24.0, and 28.5 min, respectively.

Three types of diesel trucks were selected in this study, including one China II
30 standards truck, three China III standards trucks, and one China IV standards truck.

The China III trucks included one of each light-duty, medium-duty, and heavy-duty diesel truck. Based on the traffic rules and driving conditions for on-road diesel trucks, routes were predesigned for the test trucks in Yantai, Shandong province of China (Figure 1). Because different trucks drove on different routes, the selected routes in this study were divided into non-highway and highway categories. The selected routes for China III and China IV light-duty trucks included non-highway 1, non-highway 2 and highway 1. The lengths of these three roads were 19, 35 and 17 km, respectively. The route chosen for the China II heavy-duty truck (yellow label) was non-highway 3 which was 25 km long. The routes chosen for China III medium-duty and heavy-duty trucks included non-highway 4 and highway 2. The lengths of these two roads were 47 and 23 km, respectively. The detailed velocity and road grade information for all of the tested routes are shown in Figures S3 and S4. Although repeated tests were conducted for some vehicles, it should be noted that only one set of integral data was selected for further discussion, which was due to the incompleteness of some monitoring data (e.g. the data of CO₂ and CO concentrations missing). As shown in Tables S3 and S4, the variability for the same operational mode was considered acceptable in test times. Some actions were required to reduce the uncertainty. For example, we combined sampling filters for the repeated experiments for T1 and T3 to carry out organic compound analysis.

2.2 On-board emission measurement system

The on-board emission measurement system was designed and constructed by our research group (Figure 2). A description of the on-board emissions test system was given in our previous report (Zhang et al., 2015b). Briefly, this system consists of two main components: a Photon II analyzer, which was used to analyze the flue gas (HC, CO, CO₂, SO₂, and NO_x), and a PM sampling system (TSP sampler). Although we used TSP sampler to collect PM ($D_p \leq 100 \mu\text{m}$) in this study, mainly PM collected in this experiment was considered as fine particles. Because almost all of the particles emitted from engine combustion are fine particles (An et al. 2011). The PM sampling system consisted of a dilution system followed by five exhaust channels. Two channels were connected to PM samplers, and the other three were blocked. Before

sampling, the emission measurement system was put on a truck and connected to the excavator exhaust tube by a stainless steel pipe. The system had clear improvements over other on-board instruments, such as PEMSs and FPS4000 (Zheng et al., 2015), with better portability and better ability to collect filter samples for further chemical analysis in the laboratory. The results in this study presented the first dataset from on-board measurement of non-road diesel vehicle exhaust in China.

2.3 Chemical analysis

2.3.1 Fuel quality analysis

Fuel quality has significant effect on PM emissions from vehicles (Cui et al., 2016, Liang et al., 2005, Zhang et al., 2014). Since the fuels used in excavators were various and always with poor qualities, all of the corresponding fuels from each of the tested excavators were collected to have quality analysis. The results of fuel quality analysis are given in Table 2. Comparing the diesel quality used in this study with the standards for non-road vehicles (GB 252-2015) (SEPA et al., 2015), it was found that the sulfur contents in most of the diesels used in this study (200-1100 ppm) were higher than which allowed by GB 252-2015 (<350 ppm). Additionally, the sulfur content in the diesel used by E4 was 1100 ppm, which was much higher than that used in the other excavators. Furthermore, the ash content of diesel used by E4 was 4.16%, about 420 times higher than the limit given by GB 252-2015.

2.3.2 PM and chemical composition analysis

Quartz-fiber filters were used to collect PM samples for PM weight measurement and chemical analysis. And the weight losses of these filters could be neglected through strict sampling processes. All filters were weighed before and after sampling to determine PM mass concentrations. Before each weighing, the filters were balanced at 25 °C and 40% relative humidity for 24 h. Each filter was weighed three times. WSIs were analyzed using ion chromatography (Dionex ICS3000, Dionex Ltd., America) following the method of Cui et al. (2016). Elements analysis was performed using inductively coupled plasma mass spectrometry (ICP-MS; ELAN DRC II type, Perkin Elmer Ltd., Hong Kong) (Cui et al. 2016).

Because the organic compounds on filters were insufficient for quantification, we

merged filters of different operational modes or driving routes based on the proportion of sampling time during each mode or route for analyzing the characteristic of PM for each diesel vehicle. Quartz filter samples were spiked with internal standards (including acenaphthene-*d*₁₀, benzo[a]anthracene-*d*₁₂, pyrene-*d*₁₀, coronene-*d*₁₂,
5 cholestane-*d*₄, *n*-C15-*d*₃₂, *n*-C20-*d*₄₂, *n*-C24-*d*₅₀, *n*-C30-*d*₅₈, *n*-C32-*d*₆₆, *n*-C36-*d*₇₄) and ultrasonically extracted two times in 30 mL of a 1:1 mixture of hexane and dichloromethane for 10 min. All extracts from each sample were combined, filtered and concentrated to approximately 0.5 mL.

Organic species including *n*-alkanes, PAHs, hopane and sterane were analyzed
10 using GC-MS (Agilent 7890A GC-5975C MS) with a DB-5MS column (length 30 m × i.d. 0.25 mm × thickness 0.25 μm). The GC operating program was as follows: 60 °C for 4 min, increase 5 °C min⁻¹ to 150 °C with 2 min static time, then increase 3 °C min⁻¹ to 306 °C with a 20 min static time. The GC had an injector temperature of 290 °C, injector volume of 2 μL, helium carrier gas, and gas flow rate of 1.2 mL min⁻¹.
15 The electron impact (EI) mode at 70 eV and selected-ion-monitoring (SIM) mode were selected to determine concentrations of PAHs, hopane, and sterane. For organic matter, blank samples and recovery rates (66.7-128% for five surrogates) were measured. The blank concentrations were subtracted from the sample concentrations. The final concentrations of organic matters were not corrected for the recoveries.

20 The PM chemical constituents analyzed in this study were OC; EC; WSIs: SO₄²⁻, NO₃⁻, Cl⁻, NH₄⁺; elements: Na, Mg, K, Ca, Ti, V, Cr, Mn, Fe, Co, Ni, Cu, Zn, Pb); *n*-alkanes: C12 to C40; the sixteen USEPA priority PAHs of naphthalene (Nap), acenaphthylene (Acy), acenaphthene (Ace), fluorene (Flu), phenanthrene (Phe), anthracene (Ant), fluoranthene (Fluo), pyrene (Pyr), benzo [a]anthracene (BaA),
25 chrysene (Chry), benzo[b]fluoranthene (BbF), benzo[k]fluoranthene (BkF), benzo[a]pyrene (BaP), indeno[1,2,3-cd]pyrene (IcdP), dibenz[a,h]anthracene (DahA) and benzo[ghi]perylene (BghiP); Hopane and sterane: ABB-20R-C27-Cholestane (ABB), AAA-20S-C27-Cholestane (AAA), 17A(H)-22,29,30-Trisnorhopane (Tm), 17A(H)-21B(H)-30-Norhopane (30AB), and 17A(H)-21B(H)-Hopane (29AB).

30 **2.4 Data processing**

2.4.1 Fuel-based emission factors

Fuel-based emission factors were calculated using the carbon mass balance formula:

$$EF_i = \frac{\Delta X_i}{\Delta CO_2} \cdot \frac{M_i}{M_{CO_2}} \cdot EF_{CO_2} \quad (1)$$

5 where EF_i and EF_{CO_2} (g kg^{-1} fuel) are the emission factors for species i and CO_2 , respectively, ΔX_i and ΔCO_2 (mol m^{-3}) are the background-corrected concentrations of species i and CO_2 , respectively, and M_i and M_{CO_2} (g mol^{-1}) represent the molecular weights of species i and CO_2 , respectively.

The CO_2 emission factors (EF_{CO_2}) were calculated as:

$$10 \quad EF_{CO_2} = R_{FG} \cdot c(CO_2) \cdot M_{CO_2} \quad (2)$$

where $c(CO_2)$ (mol m^{-3}) is the molar concentration of CO_2 , and R_{FG} ($\text{m}^3 \text{kg}^{-1}$ fuel) represents the flue gas emission rate.

The flue gas emission rate was calculated as:

$$R_{FG} = \frac{C_F}{c(C_{CO}) + c(C_{CO_2}) + c(C_{PM})} \quad (3)$$

15 where C_F (g C kg^{-1} fuel) represents the mass of carbon in 1 kg diesel fuel, and $c(C_{CO})$, $c(C_{CO_2})$, and $c(C_{PM})$ (g C m^{-3}) represent the flue gas mass concentrations of carbon as CO , CO_2 , and PM , respectively.

2.4.2 Average fuel-based emission factors for excavators and trucks

The average fuel-based emission factor for each excavator in each relevant
20 operational mode was calculated as:

$$EF_{i,j} = \sum EF_{i,j,g} \times P_{j,g} \quad (4)$$

where $EF_{i,j}$ (g kg^{-1} fuel) is the average emission factor of species i from excavator j , $EF_{i,j,g}$ (g kg^{-1} fuel) is the emission factor of species i from excavator j in mode g , and $P_{j,g}$ (%) is the proportion of activity time (Fu et al., 2012) for excavator j in mode g .

25 The average fuel-based emission factor for each truck in different driving conditions was calculated as:

$$EF_{i,j} = \sum EF_{i,j,s} \times P_{j,s} \quad (5)$$

where $EF_{i,j}$ (g kg^{-1} fuel) is the average emission factor for species i from truck j , $EF_{i,j,s}$ (g kg^{-1} fuel) is the emission factor of species i for truck j in driving condition s , and $P_{j,s}$ (%) is the proportion of activity time for truck j in driving condition s .

5 2.4.3 Benzo[a]pyrene equivalent concentration (BaP_{eq})

The various PAHs have a wide range of carcinogenic risks. Therefore, it is not accurate to evaluate the harmful effects of PAHs on human health using the total combined mass concentration. BaP_{eq} is typically used to evaluate the carcinogenic risks associated with individual PAH (Mirante et al., 2013), which was calculated as:

$$10 \quad \text{BaP}_{\text{eq}} = \sum \text{PAH}_i \times \text{PEF} \quad (6)$$

where PAH_i is the measured concentration of an individual PAH for excavator i , and PEF is the potency equivalence factor for that PAH obtained from Wang et al. (2008).

3. Results and discussion

3.1 Fuel-based PM emission factors for excavator exhaust

15 The EF_{PM} values for excavator exhaust are illustrated in Figure 3, with detailed information given in Table S5. The maximum fuel-based PM emission factor was 37 times higher than the minimum. In general, the average EF_{PM} for different excavators ranged from 96.5 to 2323 mg kg^{-1} fuel, with an average of 829 ± 806 mg kg^{-1} fuel. The EF_{PM} values of excavators reported by Fu et al. (2012) were within the range of
 20 EF_{PM} values in this study. The wide range of EF_{PM} values here could be due to the difference in emission standards for excavator. The excavators tested by Fu et al. (2012) included stage 1 and stage 2 emission standards, while the excavators in this studies were with the emissions standards of pre-stage 1 and stage 2.

The EF_{PM} measured for pre-stage 1 excavators during idling, moving and working
 25 were 914 ± 393 , 609 ± 38 and 1258 ± 1295 mg kg^{-1} fuel, respectively, whereas for stage 2 excavators, it was 243 ± 236 , 165 ± 144 and 551 ± 587 mg kg^{-1} fuel, respectively. That is, the EF_{PM} for the stage 2 excavators under idling, moving and working modes, were reduced by 73%, 73% and 56% compared to the pre-stage 1 excavator, respectively, while the average EF_{PM} for excavator decreased by 58% from

pre-stage 1 to stage 2. EF_{PM} could be influenced by many factors. In this study, the EF_{PM} range for excavators with different power ratings ranged from 96.5 (35 kw) to 2323 (110 kw) $mg\ kg^{-1}$ fuel, however, the correlations between EF_{PM} and engine power (See Figure S5) were weak. Additionally, fuel quality, emission standard and operational mode significantly influenced the EF_{PM} . Given that there is no government supervision of diesel used for non-road vehicles, the reduction of average EF_{PM} from pre-stage 1 to stage 2 could mainly attribute to both the different emission standards and diesel quality. As shown in Table S5, the average EF_{PM} from E5 to E6 with the same fuel quality but different emission standards reduced 87.1%. Similarly, EF_{PM} reduced 38.2% from E2 to E1. From which it indicated that emission standards have significant impacts on EF_{PM} . Likewise, the average EF_{PM} for E3, E1 and E6 that were under the same emission standard decreased with improvement of fuel quality, suggesting the influence of diesel quality. As shown in Figure 3, good correlation ($R^2 = 0.79$, $P < 0.01$) was found between the average EF_{PM} for excavators and sulfur contents in fuels, which was consistent with the results reported by Yu et al. (2007). Furthermore, the EF_{PM} for the various excavators varied significantly under different operational modes. Specifically, working excavators exhibited the highest EF_{PM} , which was more than double the values for idling and moving excavators. The average EF_{PM} for excavators were 578 ± 467 while idling, 343 ± 264 while moving, and 904 ± 979 $mg\ kg^{-1}$ fuel while working. Excavators under working mode produced the highest average EF_{PM} , which might be ascribed to that the higher engine load caused a lower air-fuel ratio and thus prompted PM production.

3.2 Fuel-based PM emission factor for trucks

The EF_{PM} for all measured trucks varied from 176 to 951 $mg\ kg^{-1}$ fuel. The maximum EF_{PM} for trucks was three times higher than the minimum. The average EF_{PM} for the tested diesel trucks was 498 ± 234 $mg\ kg^{-1}$ fuel, Consistent with that reported by Wu et al. (2016) (range: 95.6-1147 $mg\ kg^{-1}$ fuel; average: 427 $mg\ kg^{-1}$ fuel). The average EF_{PM} of diesel trucks under real-world conditions with different emission standards, vehicle sizes, and driving patterns were given in Figure 4. The measured EF_{PM} for China II, China III, and China IV diesel trucks varied from 200 to

548 mg kg⁻¹ fuel. The EF_{PM} for the China II truck measured in this study was lower than that reported by Liu et al. (2009) (910-2100 mg kg⁻¹ fuel). The average EF_{PM} for light-duty, medium-duty and heavy-duty diesel trucks were 524 ± 457, 459, and 492 mg kg⁻¹ fuel, respectively. The average EF_{PM} for trucks under non-highway and highway driving patterns were 548 ± 311 and 497 ± 231 mg kg⁻¹ fuel, respectively. As shown in Figure 4, reductions of EF_{PM} from the China II to China IV trucks, and from the China III to China IV trucks were 63.5% and 65.6%, respectively. The diesel used for trucks was assumed to have identical quality because of strict diesel quality regulations of on-road trucks. Therefore, the reductions of EF_{PM} for different trucks could be mainly attributed to the improvement in the emission standards. Of particular note was that the EF_{PM} for China III and light-duty diesel trucks were higher than the values for the other corresponding trucks. The reason might be the results of poor driving conditions, i.e., low average speed and highly varied speed (Figures S3 and S4). The same tendency is apparent in Figure 4, with diesel trucks driving on the non-highway (average speed of 28.5 km h⁻¹) emitted more PM than that driving on the highway (average speed of 60.7 km h⁻¹). The road grade further affected the EF_{PM} of the on-road diesel trucks. For example, the EF_{PM} for T5 driving on the highway was lower than those for T1 driving on the highway, because of lower road grade for T5 (Figure S4).

3.3 Particulate matter composition for individual diesel vehicles

Four types of constituents were considered for reconstituting PM mass in this study: (1) organic matter, which was calculated by multiplying the corrected OC by a factor of 1.6 (Almeida et al., 2006); (2) EC; (3) WSIs; and (4) elements. The reconstituted masses for the excavator samplers were 74.7-123% of the measured mass, while the reconstituted masses for the diesel truck samples were only 43.2-54.4% of the measured mass (Figure 5). In addition to uncalculated components, this discrepancy might be due to a distribution error between OC and EC by using TOR, droplet effects, or oxides when metal elements were only considered.

3.3.1 Particulate matter composition for individual excavator

The chemical composition of PM for each excavator is shown in Figure 5 and Table

S6. For each excavator, the carbonaceous component (OM+EC) was the dominant species, which is consistent with results of a previous study by Liu et al. (2005) who reported that the proportions of OC and EC in PM ranged from 70 to 91% (Liu et al., 2005). Because the OC/EC ratio is also used to identify the source of atmospheric particulate pollution, further assessment was performed on the OC/EC ratios in different operational modes for each excavator (Figure 6). The average OC/EC ratios during idling, moving, and working were 1.57, 0.57, and 2.38, respectively. The OC/EC ratio during idling was higher than 1 because soot hardly generated at low temperatures and fuel-rich zone. These results were consistent with those from Liu et al. (2005). Furthermore, Liu et al. (2005) reported that the OC/EC ratios decreased with load increasing for non-road engines. Although the trend of OC/EC ratios from idling (low load) to moving (medium load) was consistent with those reported by Liu et al. (2005), the OC/EC ratio under working (high load) was higher than those under idling and moving which was accorded with the results reported by Zhang et al. (2014). As shown in Figure 6, the differences between OC/EC ratios for different excavator operational modes were significant, and could be affected by a number of factors, including transient working conditions, diesel sulfur content, and extensive OC sources (Cocker et al., 2004, Liu et al., 2005, Ruiz et al., 2015).

As shown in Figure 5, WSIs and elements fractions ranged from 0.335 to 1.21% and from 0.163 to 7.50%, respectively, for all excavators. The total proportion of WSIs and elements to PM was the highest in excavator E6, followed by excavator E1. Generally, the total proportion of WSIs and elements to PM in exhaust from excavator E6 was 4 to 14 times higher than the corresponding proportions in exhaust from the other excavators. Sulfate and nitrate were the main WSIs (79.1-90.0% of WSIs) for almost all of the excavators, except for E1, in which the proportion of Cl^- (67.2%) was the highest (Table S6). Fe, Ca, Na, Mg, and K were the relatively dominant elements, except for E4 that Fe, Zn, and Cu were the most abundant elements. Wang et al. (2003) reported that the concentrations of the crustal elements of Fe, Ca, and Mg accounted for 50% of the total elements in diesel fuel, which were significantly higher than anthropogenic elements emitted from diesel vehicle engines. That is consistent with

the results from our study. Similarly, we supposed that diesel was the dominant source for these elements because the sampling tube was placed directly on the tailpipe. In addition, it was different from other excavators that Zn and Cu were also abundant elements for E4. Lin et al. (2015) found that Zn and Cu were originated from lubricating oil, except for brake linings. Therefore, we supposed that diesel and lubricating oil combustion were probably the main sources of element emitted from E4 (produced in 2004). Furthermore, the elements fractions for the two excavators manufactured in 2013 (1.42% for E1, 7.50% for E6 and 4.09 mg kg⁻¹ fuel for E1 and 7.24 mg kg⁻¹ fuel for E6) were higher than those for the other excavators (4.10, 1.71, 8.73, 1.56 mg kg⁻¹ fuel for E2, E3, E4, and E5). This indicates that elements emissions were deteriorating and more stringent control technology should be developed to avoid adverse health effects from the total elements composition of PM in the exhaust.

The n-alkanes, PAHs, hopane and steranes fractions in the exhaust from the excavators were 3.6 to 9.6%, 0.03 to 0.24%, and 0.001 to 0.09% respectively. Liang et al. (2005) characterized diesel particulate matter emitted from non-road engines using a dynamometer test and found that n-alkanes accounted for 0.83% of PM, which was lower than the proportion found in this study. It was possibly caused by the low sulfur diesel fuel they used and the different sampling methods. In contrast to the fractions of WSIs and elements, the fractions of n-alkanes, hopane and steranes were the highest in excavator E4, while the fraction of PAHs was the highest for the exhaust from E3. E4 had poorer diesel quality compared with E3, which might be the reason for high n-alkane, hopane and steranes concentrations. Similarly, Rogge et al. (1993) found that n-alkanes, hopane and steranes were mostly derived from the incomplete combustion of fuel and lubricant oil. However, we speculated that PAHs were affected by combustion conditions (i.e., combustion temperature) in this study, because E3, with the stage 2 standard, had better performance and superior fuel quality. PAH isomer ratios have been widely used to conduct source apportionment for environmental receptors (such as sediments) (Liu et al., 2012). Yunker et al. (2002) found that the ratios of the principal masses of PAH 178, 202, 228 and 276 had the

best potential to distinguish between natural and anthropogenic sources. For the excavators, the ranges of the ratios for BaA/(BaA+Chry), IcdP/(IcdP+BghiP), and Flua/(Flua+Pry) were 0.26-0.86, 0.20-1.0, and 0.24-0.87, respectively, with averages of 0.47 ± 0.27 , 0.44 ± 0.38 , and 0.48 ± 0.27 , respectively (Figure 7). The average ratios of PAHs in excavator exhaust obtained in this study were similar to those from Liu et al. (2015). The E4 excavator had obvious differences in the ratios of BaA/(BaA+Chry), IcdP/(IcdP+BghiP), and Flua/(Flua+Pry) to those from the other excavators. The isomer ratios of BaA/(BaA+Chry), IcdP/(IcdP+BghiP) and Flua/(Flua+Pry) for E4 were 0.86, 1.0 and 0.87, respectively. These were different from the ranges for fuel combustion defined by Yunker et al. (2002). The ratios of PAHs emitted from diesel vehicles reported by Yunker et al. (2002) mainly referred to those from on-road diesel vehicles. However, the operational mode and fuel quality for non-road diesel vehicles are more complicated than those for on-road diesel vehicles. Therefore, the results obtained in this study could provide references values for the isomer ratios of PAHs in non-road diesel vehicle exhaust.

3.3.2 Particulate matter composition for individual diesel trucks

For diesel trucks, the total carbonaceous composition (OM+EC) accounted for 44.0% (T1), 27.9% (T2), 43.9% (T3), 51.6% (T4) and 46.3% (T5) of PM, that are all lower than the values reported in previous studies (Chow et al., 2011, Wu et al., 2015). One of the main reasons was inferred as the different OC and EC detection methods used in our study. Through a comparison of two common thermal-optical methods (NIOSH and IMPROVE) of OC and EC analysis for 333 PM_{2.5} samples collected by Cheng et al. (2011), it was found that NIOSH-defined EC was lower (up to 80%) than that of defined by IMPROVE. The IMPROVE thermal-optical method was used in this study, which could cause under-valuation of OC. Except for T2 and T4 trucks, almost all of the OC/EC ratios for diesel trucks calculated in this study were lower than 1, which is consistent with conclusions from previous studies (Figure 6). The OC/EC ratios for T2 during highway and non-highway driving were 5.64 and 15.5, respectively, which might be a result of the effect by China IV emission standard. Other study also found that modern diesel passenger cars (Euro 4 and Euro 5) had high OC/EC ratios (Alves

et al. 2015b). The OC/EC ratio for T4 while driving on the non-highway was 4.10, which might be caused by the low driving speed. Because Cheng et al. (2015) have reported that the OC/EC ratios were substantially above 1 under idling or with low load. And the driving speed was zero for the first 500 seconds for T4 as shown in
5 Figure S3.

The sum of WSIs and elements fractions was lower than 5% of PM for all of the diesel trucks, except for T2, which is consistent with the results of Zhang et al. (2015a). SO_4^{2-} was the most abundant ion for trucks T2 and T5, while NO_3^- was the most abundant ion for trucks T1, T3 and T4. For T2, WSIs (13.8%) were the most
10 significant component of PM, followed by OC, which was 4 to 10 times higher than other trucks (Table S6). The main reason was inferred as that T2 was a China IV diesel vehicle with well-controlled combustion conditions leading to more water emissions, which accelerates the transformation from the gas phase to WSIs (e.g., the transformation of SO_2 to SO_4^{2-}). As can be seen in Table S6, Fe was the most abundant
15 element for trucks T1 and T5, while Ca was the most abundant element for trucks T2, T3, and T4. The total element fraction of T2 (China IV) was 16 times higher than that of T1 (China III). Although the EF_{PM} for diesel trucks decreased with stricter emission standards, the WSIs and element contents increased instead. It is well known that sulfate and nitrate are major precursors of acid rain, elements emitted by diesel engine
20 also have significant adverse health effects on human and attention needs to be paid to this phenomenon.

The n-alkanes, PAHs, hopane and steranes fractions were 0.85- 4.78%, 0.01-0.54% and 0.002- 0.024%, for the trucks. As shown in Table S6, C20 was the most abundant n-alkane in PM from T1, T2 and T4, while C19 was the most abundant n-alkane of T3
25 and T5. And the most abundant species of PAHs was pyrene. N-alkanes, PAHs, hopane and steranes accounted for the highest proportions of PM for the exhaust from T3, which might be affected by many factors, including differences in the engine power rating, complex reactions in the engine (combustion process and pyrolysis reactions related to temperature, humidity, etc.), and driving conditions. As shown in
30 Figure 7, the isomer ratios for diesel trucks were 0.28-0.35 for BaA/(BaA+Chry),

0.08-0.22 for IcdP/(IcdP+BghiP) and 0.08-0.39 for Flua/(Flua+Pry), with averages of 0.31 ± 0.03 , 0.15 ± 0.06 and 0.23 ± 0.12 , respectively. These are similar to results reported by Schauer et al. (1999).

3.4 Average chemical composition of PM emitted from diesel vehicles

5 3.4.1 Average chemical composition of PM in excavator exhaust

The average PM chemical compositions for excavator exhaust are listed in Table 3. Carbonaceous matter was the dominant component and accounted for 72.5% of the PM for excavators, whereas OC was the most abundant species (39.2%) for PM. The total element fraction was the second largest group and contributed 1.76% of PM. Of
10 the elements, emissions were dominated by Fe at 46.3%. In addition, the proportion of n-alkanes in PM from excavator exhaust (5.14%) was higher than the proportions of the other organic matter types (PAHs were 0.098% while hopane and sterane were 0.026%) and C20/C19 was the most abundant n-alkane. For parent PAH, emissions were dominated by pyrene and fluoranthene, followed by naphthalene and chrysene.

15 Table 3 summarizes the average source profiles of PM in excavator exhaust as derived in this study, as well as ones previously reported by others for comparison. As shown in Table 3, the average fraction of total carbonaceous components for the excavators tested in this study was consistent with that for a marine engine, while the element fraction was lower than that for a marine engine (Sippula et al., 2014). Iron
20 oxide is recognized as a catalyst and can promote soot burnout during combustion processes (Kasper et al., 1999). The EC fraction of PM in the excavator exhaust was higher than that reported by Sippula et al. (2014), which might be the result of a lower metal fraction in the excavators used for their study. The proportions of n-alkanes measured in this study were significantly higher than those emitted from a marine
25 engine (4-fold) and non-road generator (6-fold) in another study (Liang et al., 2005), which could be the result of different aliphatic compounds in the diesel fuels (Sippula et al., 2014). For the marine engine and non-road generators, C22 and C17 were the most abundant n-alkane species. PAHs were dominated by phenanthrene for a marine engine and fluoranthene for non-generators, which was different from the
30 result obtained for the excavators. This could indicate that the PM emitted from

different types of non-road diesel vehicles has varying source profiles based on the operational conditions.

3.4.2 Average source profile of PM for trucks

As shown in Table 3, PM from trucks was dominated by carbonaceous matter (36.8%), followed by WSIs (4.67%) and elements (0.941%). For individual species, sulfate and nitrate were the most abundant WSIs, and Fe was the most abundant element. Moreover, for organic matter, the average proportions of n-alkanes, PAHs, hopanes and steranes were 1.73%, 0.130%, and 0.011%, respectively. C20 was the most abundant n-alkane, and the PAHs were dominated by pyrene.

In comparison, total carbon emissions in this study were lower than those in previous studies, whereas the WSIs and elements fractions were higher (Alves et al., 2015a, Cui et al., 2016, Schauer et al., 1999, Wu et al., 2016). Several factors could have influenced these differing results, including fuel quality, driving condition, engine parameters (fuel injection timing, compression ratio, and fuel injector design) and experimental methods (Sarvi et al., 2008a, Sarvi et al., 2008b, Sarvi et al., 2009, Sarvi et al., 2010). As shown in Table 3, Fe was the dominant element in studies using on-road tests and tunnels, which is similar to our results, while Zn and Na were dominant in elements from results obtained by a dynamometer. Therefore, the results obtained from real world (on-road tests and tunnels) were different from those obtained in a laboratory. For organic matter, the proportion of PAHs, hopane and sterane to PM were consistent with the results from Schauer et al. (1999) and Cui et al. (2016). As in this study, the most abundant in n-alkane was C20 as measured by Schauer et al. (1999), and pyrene was the most abundant PAH reported by Cui et al. (2016). Thus, the average profile of PM for on-road diesel trucks is relatively stable and consistent across studies.

3.5 Comparison of source profile between excavators and trucks

Average EF_{PM} for excavators ($836 \pm 801 \text{ mg kg}^{-1} \text{ fuel}$) was higher than that for diesel trucks ($498 \pm 234 \text{ mg kg}^{-1} \text{ fuel}$). This result is reasonable because the operations for excavators are more transient than those for trucks. Sarvi et al. (2010) reported that particulate matter emitted from diesel engines was typically low during

steady state operation. Although the average EF_{PM} of excavators was higher than that of trucks, the average EF_{PM} of the stage 2 excavators was 477 mg kg^{-1} fuel, which was lower than those for the China II and China III trucks. Thus, appropriate regulations formulated for non-road diesel vehicles could improve their PM emissions.

When we compared the average percentages of chemical components in PM for excavators with those for trucks, several differences were found. In general, the carbonaceous (95.9%) and elements (1.76%) fractions for excavators were higher than those for diesel trucks (42.8% and 0.94%, respectively). As shown in Figure 8, the structures of different ring PAHs in the exhaust from excavators and trucks varied sharply, especially for 5 and 6-ring PAHs, although the average percentage of total PAHs in the PM were consistent between the excavators and trucks. Due to their lipophilicity, high molecular weight (5+6 ring) PAHs are considered to be more harmful to human health than the other PAHs. For further distinction, BaPeq was used in this study. The range of total BaPeq for trucks was 5.32 (T5) to 155 (T3) ng m^{-3} , while for excavators, the range of total BaPeq was 38.3 (E1) to 3637 (E4) ng m^{-3} . Moreover, the total average BaPeq for the excavators was 31 times larger than that for the diesel trucks. Almost all of the parent PAH BaPeq values calculated in this study for trucks and excavators were higher than the concentrations that cause 1/10000 of the carcinogenic risk, according to the World Health Organization (WHO). Due to the adverse environmental effects and health hazards caused by carbonaceous composition, elements, and PAHs, the PM emissions from excavators require urgent control.

Conclusions

This study reported the characteristics of PM source profiles for excavators and the EF_{PM} values for exhaust from excavators and trucks with different emission standards and used in different operational modes, or road conditions were obtained. The EF_{PM} for different excavators ranged from 96.5 to 2323 mg kg^{-1} fuel, with an average of 810 mg kg^{-1} fuel and showed a high correlation ($R^2=0.79$, $P<0.01$) with the fuel sulfur contents. The highest average EF_{PM} for excavators that are working (904 ± 979

mg kg⁻¹ fuel) might be the result of higher engine load causing lower air-fuel ratios. The average EF_{PM} for the tested diesel trucks with different emission standards and vehicle sizes under different driving conditions was 498 ± 234 mg kg⁻¹ fuel. The average EF_{PM} for excavators was decreased by 58% from pre-stage 1 to stage 2. Moreover, the reductions in EF_{PM} from the China II to the China IV truck and from the China III to the China IV truck were 63.5 and 65.6%, indicating that the improvements of the emission standards and fuel quality for diesel trucks and excavators have significantly effects one the reduction of PM emissions. It should be noticed that the EF_{PM} for China III and light-duty diesel trucks were higher than those for the other trucks, which could be a result of poor driving conditions that included a low average and highly variable speed. For each excavator, the carbon component (OM+EC) was dominant fraction and accounted for approximately 74.1-123% of the PM. The average ranges of WSIs, elements, n-alkanes, PAHs, hopane and sterane fractions for each excavator were 0.335-1.21%, 0.163-7.50%, 3.6-9.6%, 0.03-0.24% and 0.001-0.09%, respectively. In contrast to the other excavators, Zn and Cu were the second and third most abundant elements in exhaust from E4, which might to the result of poor fuel quality and the vehicle age. Additionally, the element fractions for the two excavators produced in 2013 (E1 (1.42%) and E6 (7.50%)) were higher than other excavators, which might indicate that elements emissions control deteriorated and more stringent control technology should be developed. For excavators, the ranges of the ratios BaA/(BaA+Chry), IcdP/(IcdP+BghiP) and Flua/(Flua+Pry) were 0.26-0.86, 0.20-1.0 and 0.24-0.87, respectively, with average of 0.47 ± 0.27, 0.44 ± 0.38 and 0.48 ± 0.27, respectively. For diesel trucks, the total carbonaceous composition (OM+EC) accounted for 44.0% (T1), 27.9% (T2), 43.9% (T3), 51.6% (T4) and 46.3% (T5) of PM. For T2, WSIs (13.8%) were the most significant fraction of PM after OC, and it was higher than those for the other trucks by a factor of 4 to 10. The n-alkanes, PAHs, hopane and steranes fractions ranged from 0.85 to 4.78%, 0.01 to 0.54% and 0.002 to 0.024% for trucks, respectively. In comparison with the results from other studies, the characteristics of the average source profiles for different types of non-road diesel vehicles varied sharply, while those for on-road diesel vehicles,

showed more stability. Although the PAHs fractions for the excavators and trucks were similar, the total BaP_{eq} that was used to evaluate the carcinogenic risk was 31 times greater for excavators than for trucks.

Acknowledgements. This study was supported by the CAS Strategic Research
5 Program (No.XDB05030303), the Natural Scientific Foundation of China
(Nos.41273135 and 41473091), the Fundamental Research Funds for the Central
Universities.

10 Reference

- Adar, S.D., D'Souza, J., Sheppard, L., Kaufman, J.D., Hallstrand, T.S., Davey, M.E.,
Sullivan, J.R., Jahnke, J., Koenig, J., Larson, T.V., Liu, L.J.S.: Adopting Clean Fuels
and Technologies on School Buses. *Pollution and Health Impacts in Children*,
American Journal of Respiratory and Critical Care Medicine. 191(12): 1413-1421
15 2015
- Aggarwal, P., Jain, S.: Impact of air pollutants from surface transport sources on
human health: A modeling and epidemiological approach, *Environment International*.
83: 146-157 2015
- Almeida, S.M., Pio, C.A., Freitas, M.C., Reis, M.A., Trancoso, M.A.: Approaching
20 PM_{2.5} and PM_{2.5-10} source apportionment by mass balance analysis, principal
component analysis and particle size distribution, *Science of the Total Environment*.
368(2-3): 663-674 2006
- Alves, C.A., Barbosa, C., Rocha, S., Calvo, A., Nunes, T., Cerqueira, M., Pio, C.,
Karanasiou, A., Querol, X.: Elements and polycyclic aromatic hydrocarbons in
25 exhaust particles emitted by light-duty vehicles, *Environmental Science and
Pollution Research*. 22(15): 11526-11542 2015a
- Alves, C.A., Lopes, D.J., Calvo, A.I., Evtyugina, M., Rocha, S., Nunes, T.: Emissions
from Light-Duty Diesel and Gasoline In-Use Vehicles Measured on Chassis
Dynamometer Test Cycles, *Aerosol and Air Quality Research*. 15(1): 99-116 2015b
- 30 An, P. Z., Sun, W. C., Li, G. L., Tan, M. Z., Lai, C. J. and Chen, S. B.: Characteristics
of Particle Size Distributions About Emissions in A Common-rail Diesel Engine with
Biodiesel Blends. 2nd International Conference on Challenges in Environmental
Science and Computer Engineering. Q. Zhou. Amsterdam, Elsevier Science Bv.
11:1371-1378 2011
- 35 CCCMIY (Compiling committee of China machinery industry yearbook), CCMA
(China Construction Machinery Association): China construction machinery industry
yearbook. China Machine Press Place, Published, 2013
- Chen, F., Hu, W., Zhong, Q.: Emissions of particle-phase polycyclic aromatic

- hydrocarbons (PAHs) in the Fu Gui-shan Tunnel of Nanjing, China, *Atmospheric Research*. 124: 53-60 2013
- Cheng, M.T., Chen, H.J., Young, L.H., Yang, H.H., Tsai, Y.I., Wang, L.C., Lu, J.H., Chen, C.B.: Carbonaceous composition changes of heavy-duty diesel engine particles in relation to biodiesels, aftertreatments and engine loads, *Journal of Hazardous Materials*. 297: 234-240 2015
- Cheng, Y., Zheng, M., He, K.b., Chen, Y., Yan, B., Russell, A.G., Shi, W., Jiao, Z., Sheng, G., Fu, J., Edgerton, E.S.: Comparison of two thermal-optical methods for the determination of organic carbon and elemental carbon: Results from the southeastern United States, *Atmospheric Environment*. 45(11): 1913-1918 2011
- Chow, J.C., Watson, J.G., Lowenthal, D.H., Antony Chen, L.W., Motallebi, N.: PM_{2.5} source profiles for black and organic carbon emission inventories, *Atmospheric Environment*. 45(31): 5407-5414 2011
- Cocker, D.R., Shah, S.D., Johnson, K.C., Zhu, X.N., Miller, J.W., Norbeck, J.M.: Development and application of a mobile laboratory for measuring emissions from diesel engines. 2. Sampling for toxics and particulate matter, *Environmental Science & Technology*. 38(24): 6809-6816 2004
- Cui, M., Chen, Y., Tian, C., Zhang, F., Yan, C., Zheng, M.: Chemical composition of PM_{2.5} from two tunnels with different vehicular fleet characteristics, *Science of The Total Environment*. 550: 123-132 2016
- Dai, S., Bi, X., Chan, L.Y., He, J., Wang, B., Wang, X., Peng, P., Sheng, G., Fu, J.: Chemical and stable carbon isotopic composition of PM_{2.5} from on-road vehicle emissions in the PRD region and implications for vehicle emission control policy, *Atmospheric Chemistry and Physics*. 15(6): 3097-3108 2015
- Fu, M.L., Ge, Y.S., Tan, J.W., Zeng, T., Liang, B.: Characteristics of typical non-road machinery emissions in China by using portable emission measurement system, *Science of the Total Environment*. 437: 255-261 2012
- Huang, C., Chen, C.H., Li, L., Cheng, Z., Wang, H.L., Huang, H.Y., Streets, D.G., Wang, Y.J., Zhang, G.F., Chen, Y.R.: Emission inventory of anthropogenic air pollutants and VOC species in the Yangtze River Delta region, China, *Atmospheric Chemistry and Physics*. 11(9): 4105-4120 2011
- Huo, H., Yao, Z.L., Zhang, Y.Z., Shen, X.B., Zhang, Q., He, K.B.: On-board measurements of emissions from diesel trucks in five cities in China, *Atmospheric Environment*. 54: 159-167 2012
- IARC (International Agency for Research on Cancer): Diesel Engine Exhaust Carcinogenic, 2012.
- Kasper, M., Sattler, K., Siegmann, K., Matter, U., Siegmann, H.C.: The influence of fuel additives on the formation of carbon during combustion, *Journal of Aerosol Science*. 30(2): 217-225 1999
- Li, D.I., Wu, Y., Zhou, Y., Du, X., Fu, L.x.: Fuel Consumption and Emission Inventory of Typical Construction Equipments in China, *Huanjing Kexue*. 33(2): 518-524 2012
- Liang, F.Y., Lu, M.M., Keener, T.C., Liu, Z.F., Khang, S.J.: The organic composition of diesel particulate matter, diesel fuel and engine oil of a non-road diesel generator, *Journal of Environmental Monitoring*. 7(10): 983-988 2005

- Lin, Y.C., Tsai, C.J., Wu, Y.C., Zhang, R., Chi, K.H., Huang, Y.T., Lin, S.H., Hsu, S.C.: Characteristics of trace metals in traffic-derived particles in Hsuehshan Tunnel, Taiwan: size distribution, potential source, and fingerprinting metal ratio, *Atmospheric Chemistry and Physics*. 15(8): 4117-4130 2015
- 5 Liu, H., He, K.B., Lents, J.M., Wang, Q.D., Tolvett, S.: Characteristics of Diesel Truck Emission in China Based on Portable Emissions Measurement Systems, *Environmental Science & Technology*. 43(24): 9507-9511 2009
- Liu, L.Y., Wang, J.Z., Wei, G.L., Guan, Y.F., Zeng, E.Y.: Polycyclic aromatic hydrocarbons (PAHs) in continental shelf sediment of China: Implications for anthropogenic influences on coastal marine environment, *Environmental Pollution*. 167: 155-162 2012
- 10 Liu, Z.F., Lu, M.M., Birch, M.E., Keener, T.C., Khang, S.J., Liang, F.Y.: Variations of the particulate carbon distribution from a nonroad diesel generator, *Environmental Science & Technology*. 39(20): 7840-7844 2005
- 15 Liu, Z.G., Wall, J.C., Ottinger, N.A., McGuffin, D.: Mitigation of PAH and Nitro-PAH Emissions from Nonroad Diesel Engines, *Environmental Science & Technology*. 49(6): 3662-3671 2015
- Longhin, E., Gualtieri, M., Capasso, L., Bengalli, R., Mollerup, S., Holme, J.A., Ovrevik, J., Casadei, S., Di Benedetto, C., Parenti, P., Camatini, M.: Physico-chemical properties and biological effects of diesel and biomass particles, *Environmental Pollution*. 215: 366-375 2016
- 20 Mancilla, Y., Mendoza, A.: A tunnel study to characterize PM_{2.5} emissions from gasoline-powered vehicles in Monterrey, Mexico, *Atmospheric Environment*. 59(0): 449-460 2012
- 25 MEP (Ministry of Environmental Protection of China): The technical guide for compiling primary source emission inventories of atmospheric fine particulate matter, 2014.
- MEP (Ministry of Environmental Protection of China): China vehicle environmental management annual report, 2016.
- 30 MEPPRC (Ministry of Environmental Protection of the People's Republic of China): Technical guide for the preparation of a single source emission inventory of atmospheric fine particulate matter: 12, 2014.
- Mirante, F., Alves, C., Pio, C., Pindado, O., Perez, R., Revuelta, M.A., Artinano, B.: Organic composition of size segregated atmospheric particulate matter, during summer and winter sampling campaigns at representative sites in Madrid, Spain, *Atmospheric Research*. 132: 345-361 2013
- 35 Oanh, N.T.K., Thiansathit, W., Bond, T.C., Subramanian, R., Winijkul, E., Paw-armart, I.: Compositional characterization of PM_{2.5} emitted from in-use diesel vehicles, *Atmospheric Environment*. 44(1): 15-22 2010
- 40 Pietikainen, M., Valiheikki, A., Oravisjarvi, K., Kolli, T., Huuhtanen, M., Niemi, S., Virtanen, S., Karhu, T., Keiski, R.L.: Particle and NO_x emissions of a non-road diesel engine with an SCR unit: The effect of fuel, *Renewable Energy*. 77: 377-385 2015
- Pio, C., Mirante, F., Oliveira, C., Matos, M., Caseiro, A., Oliveira, C., Querol, X.,

- Alves, C., Martins, N., Cerqueira, M., Camões, F., Silva, H., Plana, F.: Size-segregated chemical composition of aerosol emissions in an urban road tunnel in Portugal, *Atmospheric Environment*. 71(0): 15-25 2013
- 5 Rogge, W.F., Hildemann, L.M., Mazurek, M.A., Cass, G.R., Simoneit, B.R.T.: Sources of fine organic aerosol. 2. Noncatalyst and catalyst-equipped automobiles and heavy-duty diesel trucks, *Environmental Science & Technology*. 27(4): 636-651 1993
- 10 Ruiz, F.A., Cadrazco, M., López, A.F., Sanchez-Valdepeñas, J., Agudelo, J.R.: Impact of dual-fuel combustion with n-butanol or hydrous ethanol on the oxidation reactivity and nanostructure of diesel particulate matter, *Fuel*. 161: 18-25 2015
- Sarvi, A., Fogelholm, C.J., Zevenhoven, R.: Emissions from large-scale medium-speed diesel engines: 1. Influence of engine operation mode and turbocharger, *Fuel Processing Technology*. 89(5): 510-519 2008a
- 15 Sarvi, A., Fogelholm, C.J., Zevenhoven, R.: Emissions from large-scale medium-speed diesel engines: 2. Influence of fuel type and operating mode, *Fuel Processing Technology*. 89(5): 520-527 2008b
- Sarvi, A., Kilpinen, P., Zevenhoven, R.: Emissions from large-scale medium-speed diesel engines: 3. Influence of direct water injection and common rail, *Fuel Processing Technology*. 90(2): 222-231 2009
- 20 Sarvi, A., Zevenhoven, R.: Large-scale diesel engine emission control parameters, *Energy*. 35(2): 1139-1145 2010
- Schauer, J.J., Kleeman, M.J., Cass, G.R., Simoneit, B.R.T.: Measurement of emissions from air pollution sources. 2. C-1 through C-30 organic compounds from medium duty diesel trucks, *Environmental Science & Technology*. 33(10): 1578-1587 1999
- 25 SEPA (State Environmental Protection Administration), SAQSIQ (State Administration for Quality Supervision and Inspection and Quarantine): Limits and measurement methods for emissions from light-duty vehicles (I), 2001.
- SEPA (State Environmental Protection Administration), SAQSIQ (State Administration for Quality Supervision and Inspection and Quarantine): Limits and measurements methods for exhaust pollutants from diesel engines of non-road mobile machinery (I, II), 2007.
- 30 SEPA (State Environmental Protection Administration), SAQSIQ (State Administration for Quality Supervision and Inspection and Quarantine): General diesel fuels, 2015.
- 35 Shah, S.D., Ogunyoku, T.A., Miller, J.W., Cocker, D.R.: On-road emission rates of PAH and n-alkane compounds from heavy-duty diesel vehicles, *Environmental Science & Technology*. 39(14): 5276-5284 2005
- Sippula, O., Stengel, B., Sklorz, M., Streibel, T., Rabe, R., Orasche, J., Lintelmann, J., Michalke, B., Abbaszade, G., Radischat, C., Groger, T., Schnelle-Kreis, J., Harndorf, H., Zimmermann, R.: Particle Emissions from a Marine Engine: Chemical
- 40 Composition and Aromatic Emission Profiles under Various Operating Conditions, *Environmental Science & Technology*. 48(19): 11721-11729 2014
- USEPA (Environmental Protection Agency): Nonroad Engine and Vehicle Emission Study, 1991.

- USEPA (Environmental Protection Agency): Air Radiation. Reducing Air Pollution from Nonroad Engines, <http://www.epa.gov/otaq/cleaner-nonroad/f03011.pdf>.
- USEPA (Environmental Protection Agency) Evaluation of Black Carbon Emission Reductions from Mining Trucks in Russia: The Case of the Murmansk Region, 2015.
- 5 Wang, F., Li, Z., Zhang, K.S., Di, B.F., Hu, B.M.: An overview of non-road equipment emissions in China, *Atmospheric Environment*. 132: 283-289 2016
- Wang, X., Wang, W., Liu, X., Cheng, H., Xu, X.: Health risk assessment of PAHs in fine particulate matter in Beijing *Environmental chemistry*. 2008
- 10 Wang, X.W., Song, C.L., Lv, G., Song, J.N., Li, H., Li, B.: Evolution of in-cylinder polycyclic aromatic hydrocarbons in a diesel engine fueled with n-heptane and n-heptane/toluene, *Fuel*. 158: 322-329 2015
- Wang, Y.F., Huang, K.L., Li, C.T., Mi, H.H., Luo, J.H., Tsai, P.J.: Emissions of fuel metals content from a diesel vehicle engine, *Atmospheric Environment*. 37(33): 4637-4643 2003
- 15 Wu, B., Shen, X., Cao, X., Yao, Z., Wu, Y.: Characterization of the chemical composition of PM_{2.5} emitted from on-road China III and China IV diesel trucks in Beijing, China, *Science of The Total Environment*. 551–552: 579-589 2016
- Wu, B., Shen, X., Cao, X., Zhang, W., Wu, H., Yao, Z.: Carbonaceous composition of PM_{2.5} emitted from on-road China III diesel trucks in Beijing, China, *Atmospheric*
- 20 *Environment*. 116: 216-224 2015
- Yu, W., Yang, T.: Formation mechanism and technical measured for reducing emissions of diesel engine, *Transportation energy saving and environmental protection*. 2007
- Yue, X., Wu, Y., Hao, J.M., Pang, Y., Ma, Y., Li, Y., Li, B.S., Bao, X.F.: Fuel quality management versus vehicle emission control in China, status quo and future perspectives, *Energy Policy*. 79: 87-98 2015
- Yunker, M.B., Macdonald, R.W., Vingarzan, R., Mitchell, R.H., Goyette, D., Sylvestre, S.: PAHs in the Fraser River basin: a critical appraisal of PAH ratios as indicators of PAH source and composition, *Organic Geochemistry*. 33(4): 489-515 2002
- 30 Zhang, L.J., Zheng, J.Y., Yin, S.S., Peng K., Zhong, L.J.: Development of Non-road Mobile source Emission inventory for the Pearl River Delta Region, *Environmental Science* 31(4): 886-891 2010
- Zhang, Y., Yao, Z., Shen, X., Liu, H., He, K.: Chemical characterization of PM_{2.5} emitted from on-road heavy-duty diesel trucks in China, *Atmospheric Environment*.
- 35 122: 885-891 2015a
- Zhang, F., Chen, Y., Tian, C., Li, J., Zhang, G., Matthias, V.: Emissions factors for gaseous and particulate pollutants from offshore diesel engine vessels in China, *Atmos. Chem. Phys. Discuss.*, 15(17): 23507-23541 2015b
- Zhang, Z.H., Balasubramanian, R.: Influence of butanol–diesel blends on particulate emissions of a non-road diesel engine, *Fuel*. 118: 130-136 2014
- 40 Zheng, X., Wu, Y., Jiang, J.K., Zhang, S.J., Liu, H., Song, S.J., Li, Z.H., Fan, X.X., Fu, L.X., Hao, J.M.: Characteristics of On-road Diesel Vehicles: Black Carbon Emissions in Chinese Cities Based on Portable Emissions Measurement, *Environmental Science & Technology*. 49(22): 13492-13500 2015

Table captions

Table 1 Specifications for the tested excavators and trucks

Table 2 Diesel contents from excavators

Table 3 Comparison of average chemical constituents of PM for different diesel

5 vehicles

10

15

20

25

30

Table 1 Specifications of tested excavators and trucks

ID	Manufacturers	Model years	Emission standards	Powers (kw)	Total weights (kg)	Displacements (L)	Working hours (h)	Mileages (km)
E1	Volvo	2013	stage 2	169	30,500	7.1	2,751	/
E2	Hitachi	2007	pre-stage 1	162	30,200	9.8	16,166	/
E3	Sany	2012	stage 2	128	22,900	/	5,598	/
E4	Doosan	2004	pre-stage 1	110	22,000	8.1	12,000	/
E5	Doosan	2007	pre-stage 1	40	5,250	2.8	/	/
E6	Komatsu	2013	stage 2	35	5,300	2.4	780	/
T1	Futian	2010	China III	68	4,495	2.6	/	100,238
T2	JAC	2014	China IV	88	4,495	2.8	/	/
T3	Futian	2011	China III	70	11,190	3.9	/	99,000
T4	Chunlan	2002	China II	125	15,480	/	/	/
T5	JAC	2011	China III	105	15,590	4.3	/	130,000

5

10

15

Table 2 Diesel contents from excavators

ID	E1	E2	E3	E4	E5	E6	GB 252-2015
Gross thermal value (MJ/kg)	45.1	45.1	45.3	45.3	45.3	45.3	/
Net thermal value (MJ/kg)	42.4	42.4	42.7	42.8	42.6	42.5	/
Kinematic viscosity (20 °C)(mm ² /s)	4.23	4.23	3.89	4.16	4.60	4.39	3.00-8.00
Moisture (%)	n.d.	n.d.	n.d.	n.d.	n.d.	n.d.	/
Ash content (%)	0.04	0.04	0.05	4.16	0.03	0.05	0-0.01
C (%)	86.3	86.3	86.4	86.8	85.9	85.9	/
H (%)	11.6	11.6	11.5	11.2	12.0	12.1	/
O (%)	1.99	1.99	2.01	1.85	2.07	1.86	/
N (%)	0.05	0.05	0.05	0.04	0.06	0.05	/
S (ppm)	400	400	700	1100	200	200	<350

n.d. = not detected

6

7

Table 3 Comparison of average chemical constituents of PM for different diesel vehicles (%)

Vehicle types	Excavators	Trucks	Trucks	Medium-duty trucks	Diesel vehicles	Light-duty diesel engines	Marine engine	Non-road generator
Methods	On-road		On-road	Dynamometer	Tunnel	Dynamometer	Dynamometer	Dynamometer
Reference	This study		(Wu et al., 2016)	(Schauer et al., 1999)	(Cui et al., 2016)	(Alves et al., 2015b)	(Sippula et al., 2014)	(Liang et al., 2005)
EC	33.3	26.9	55.3	30.8	39.5	69.9	14.1	
OC	39.2	9.89	31.8	19.7	27.2	12.7	60.0	
Ions	0.614	4.67	1.49	1.96	11.7	0.638		
NH ₄ ⁺	0.044	0.215	0.188	0.730	2.06	0.005		
Cl ⁻	0.098	0.110	0.247		1.06	0.115		
NO ₃	0.278	1.08	0.529	0.230	3.81	0.459		
SO ₄ ²⁻	0.193	3.27	0.529	1.00	4.80	0.059		
Elements	1.76	0.941	0.493	0.200	12.8	0.069	3.17	
Na	0.245	0.047			0.287	0.041	0.564	
Mg	0.106	0.079			1.71	0.008	0.422	
K	0.197	0.028			0.872	0.002	0.671	
Ca	0.241	0.211		0.030	5.69	0.017	1.01	
Ti	0.008	0.011	0.145		0.206	0.0001	0.005	
V	0.001	0.000	0.001		0.008		0.044	
Cr	0.035	0.039	0.011	0.010	0.013		0.010	
Mn	0.013	0.009	0.002	0.010	0.064		0.006	

Continued Table 3

Fe	0.815	0.276	0.247	0.050	3.71	0.0003	0.138	
Co	0.001	0.005	0.0002	0.010	0.002		0.006	
Ni	0.015	0.006	0.002	nd			0.016	
Cu	0.042	0.107	0.004	0.010	0.013		0.130	
Zn	0.027	0.111	0.076	0.070	0.213	0.0001	0.130	
Pb	0.011	0.010	0.005	0.010	0.008		0.013	
Alkanes	5.14	1.73		0.222			1.37	0.831
C12	0.003	0.020						0.003
C13	0.003	nd						0.006
C14	0.019	0.0003						0.020
C15	0.057	0.013		0.001				0.056
C16	0.201	0.062		0.005				0.116
C17	0.107	0.144		0.003				0.265
C18	0.587	0.215		0.002			0.049	0.148
C19	0.777	0.308		0.002			0.120	0.126
C20	0.977	0.311		0.052			0.260	0.074
C21	0.516	0.290		0.022				0.014
C22	0.769	0.143		0.028			0.264	0.001
C23	0.349	0.099		0.025			0.177	0.001
C24	0.245	0.061		0.022			0.128	0.001
C25	0.197	0.032		0.014			0.083	0.0004

Continued Table 3

C26	0.119	0.016	0.019	0.075	
C27	0.031	0.009	0.014	0.056	
C28	0.023	0.004	0.011	0.058	
C29	0.013	0.002	0.003	0.046	
C30	0.007	0.001		0.025	
C31	0.010	0.002		0.017	
C32	0.010	0.001		0.007	
C33	0.010	0.00001		0.002	
C34	0.010	0.0004			
C35	0.013	0.00004			
C36	0.016	nd			
C37	0.018	nd			
C38	0.025	nd			
C39	0.031	nd			
C40	0.003	nd			
PAHs	0.098	0.130	0.251	0.021	0.021
Nap	0.008	0.001	0.014		0.0004
Acy	0.005	0.0003	0.006		0.0002
Ace	0.001	0.00004	0.001		0.0003
Flu	0.002	0.0001			0.001
Phe	0.005	0.021	0.007		0.008
Ant	0.001	0.001	0.002		0.0004

Fluo	0.026	0.010		0.027		0.009	0.002
Pyr	0.028	0.088		0.052		0.008	0.007
BaA	0.007	0.001		0.014		0.001	0.0005
Chry	0.008	0.002		0.025		0.003	0.0005
BbF	0.002	0.001		0.016			0.0003
BkF	0.001	0.0001		0.003			0.0002
BaP	0.0004	0.00001		0.009			0.0004
IcdP	0.001	0.00002		0.013		0.0004	0.001
DahA	0.000	0.001		0.001			0.0002
BghiP	0.003	0.004		0.062		0.0003	0.0003
Hopane, sterane	0.026	0.011	0.014	0.167		0.143	
ABB	0.001	0.0005	0.0004	0.007			
AAA	0.002	0.001	0.001	0.006			
Tm	0.001	0.001	0.001	0.014		0.012	
30AB	0.011	0.005	0.006	0.065		0.069	
29AB	0.011	0.004	0.006	0.075		0.061	

8 n.d. = not detected

9 **Figure captions**

10 Figure 1 The routes for diesel trucks

11 Figure 2 Particulate matter sampling system

12 Figure 3 EF_{PM} for excavators with different operational modes and emission standards
13 and the correlation with sulfur contents

14 Figure 4 Diesel trucks EF_{PM} for different emission standards, vehicle sizes and driving
15 conditions

16 Figure 5 Compositional constituents of PM for individual vehicles

17 Figure 6 OC/EC ratios in different operational modes and driving conditions for
18 excavators and trucks

19 Figure 7 Cross plots for the ratios of $BaA/(BaA+Chry)$ vs $IcdP/(IcdP+BghiP)$ and
20 $BaA/(BaA+Chry)$ vs $Flua/(Flua+Pry)$ and comparison with those from other diesel
21 vehicle sources.

22 Figure 8 Percentages of each ring PAHs to total PAHs; BaP_{eq} for parent PAHs in each
23 tested trucks and excavators

24

25

26

27

28

29

30

31

32

33

34

35

36

37

38

39

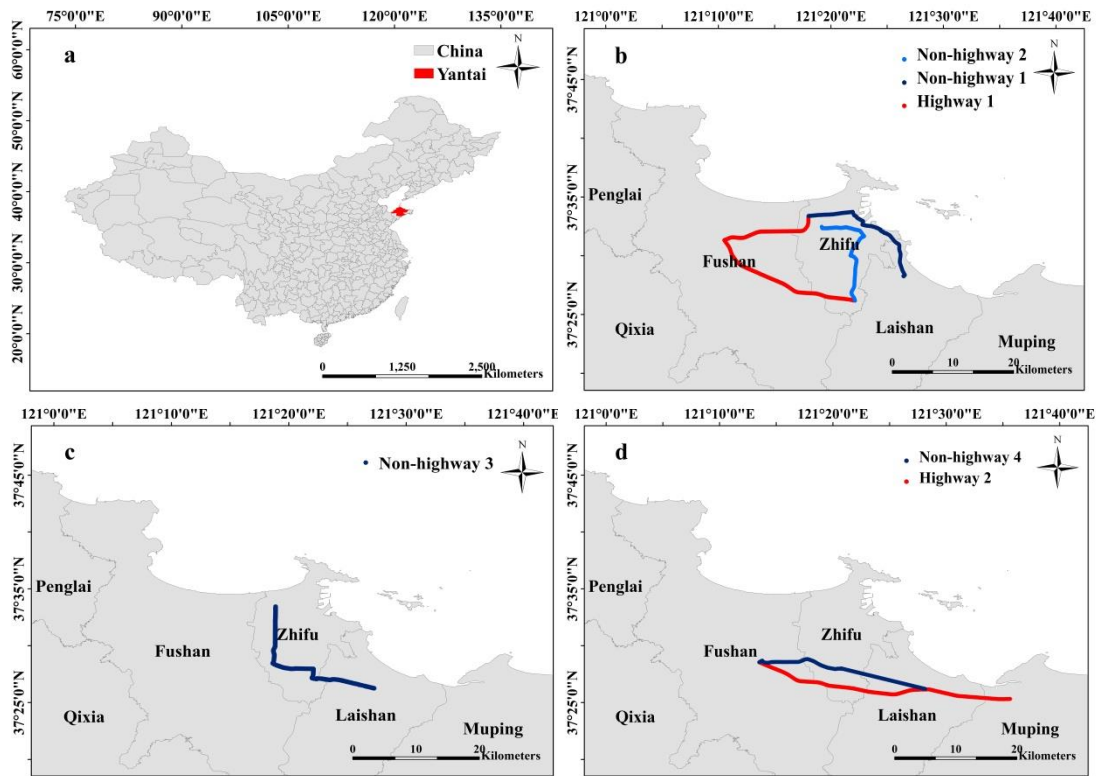
40

41

42

43

44



46

47 Figure 1 The routes for diesel trucks; a was the site of Yantai; b was the route for
 48 China III and China IV light-duty diesel trucks; c was the route for China II heavy-duty
 49 diesel truck; d was route for China III medium-duty and heavy-duty trucks

50

51

52

53

54

55

56

57

58

59

60

61

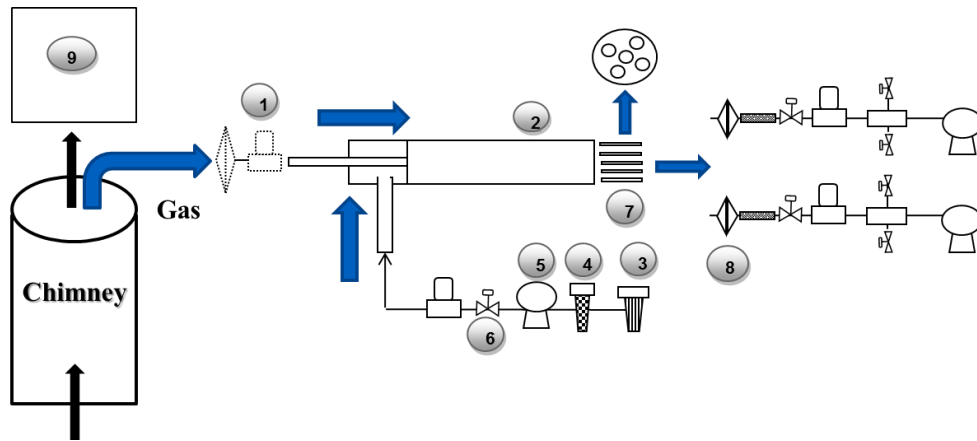
62

63

64

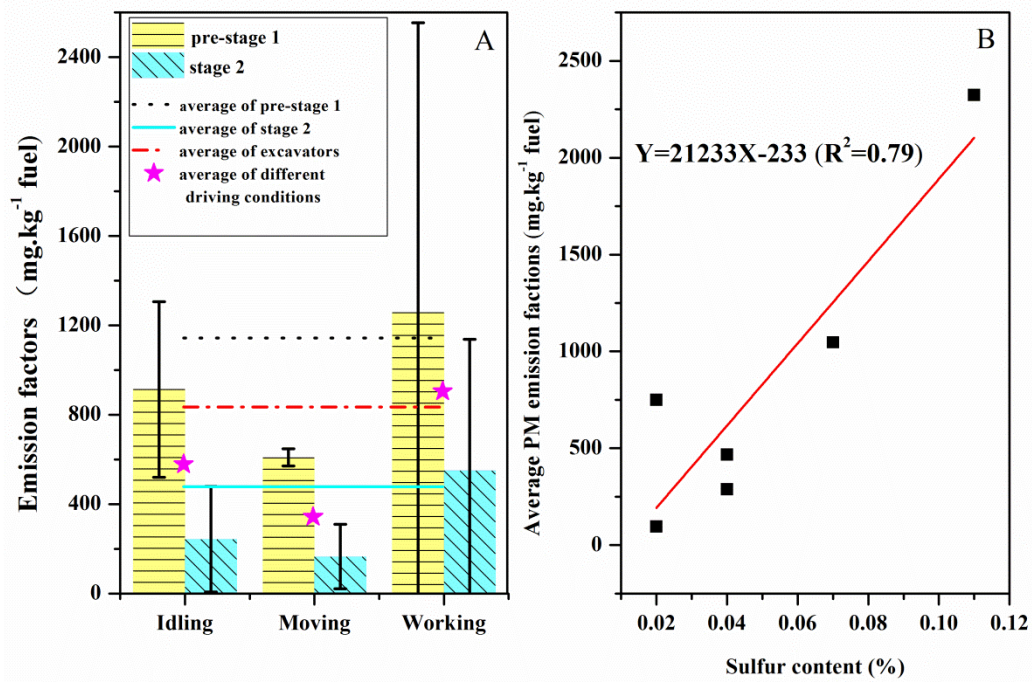
65

66



67
 68 Figure 2 Particulate matter sampling system; 1 is the flowmeter; 2 is the dilute tunnel;
 69 3 is the filterator; 4 is the activated carbon; 5 is the fan; 6 is the valve; 7 is the flow
 70 divider; 8 is the filter membrane sampler; and 9 is the exhaust analyzer

71
 72
 73
 74
 75
 76
 77
 78
 79
 80
 81
 82
 83
 84
 85
 86
 87
 88
 89
 90
 91
 92
 93
 94
 95



96

97 Figure 3 EF_{PM} for excavators with different operational modes and emission standards

98 (A) and the correlation with sulfur contents (B)

99

100

101

102

103

104

105

106

107

108

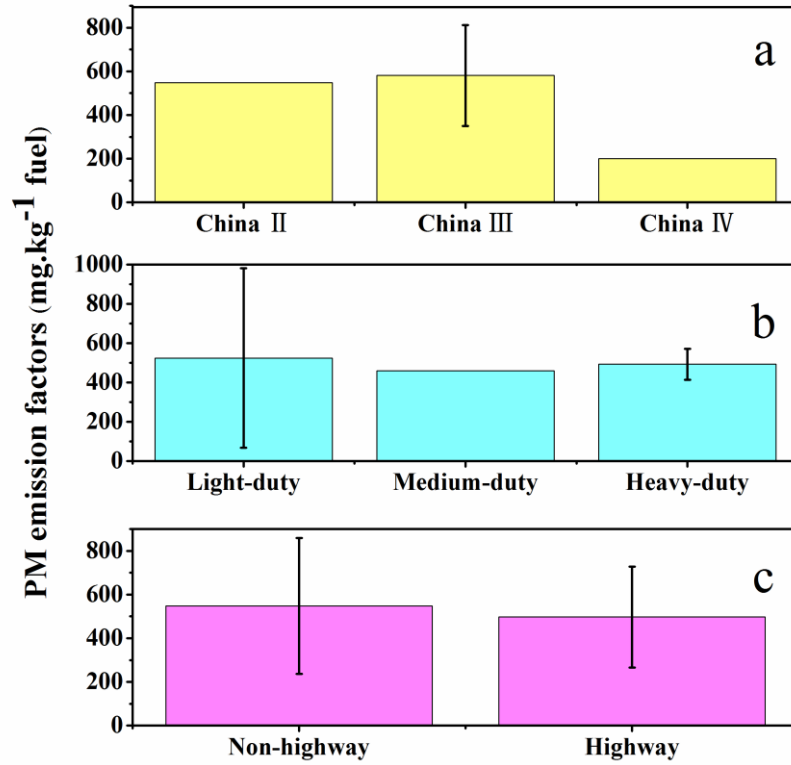
109

110

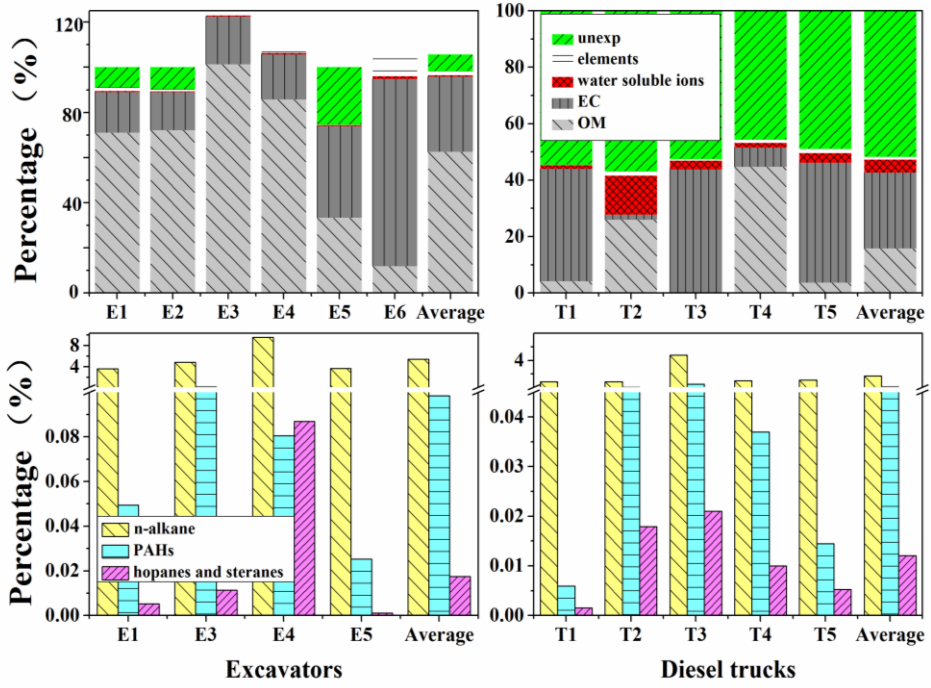
111

112

113



114
 115 Figure 4 Diesel trucks EF_{PM} for different emission standards (a), vehicle sizes (b) and
 116 driving conditions (c)
 117
 118
 119
 120
 121
 122
 123
 124
 125
 126
 127



128

129

Figure 5 Compositional constituents of PM for individual vehicles (%)

130

131

132

133

134

135

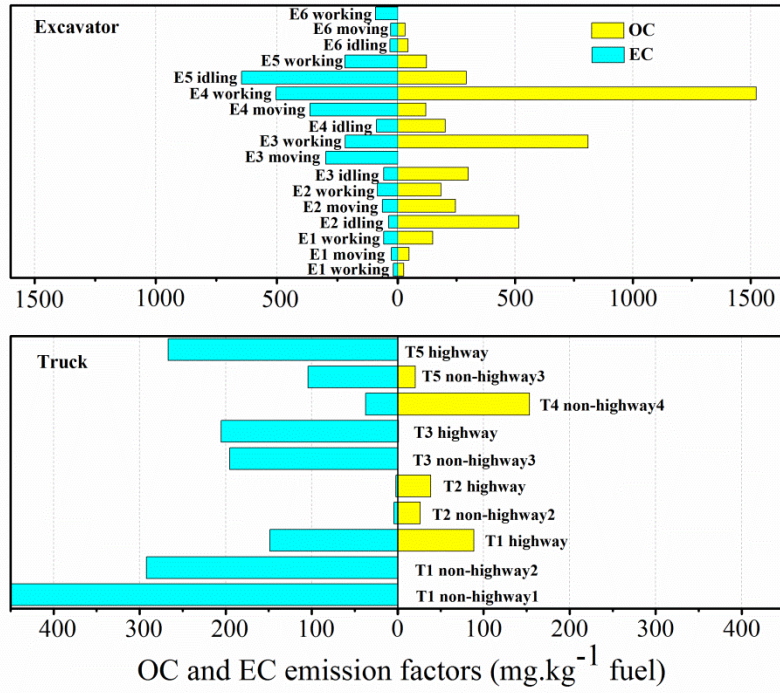
136

137

138

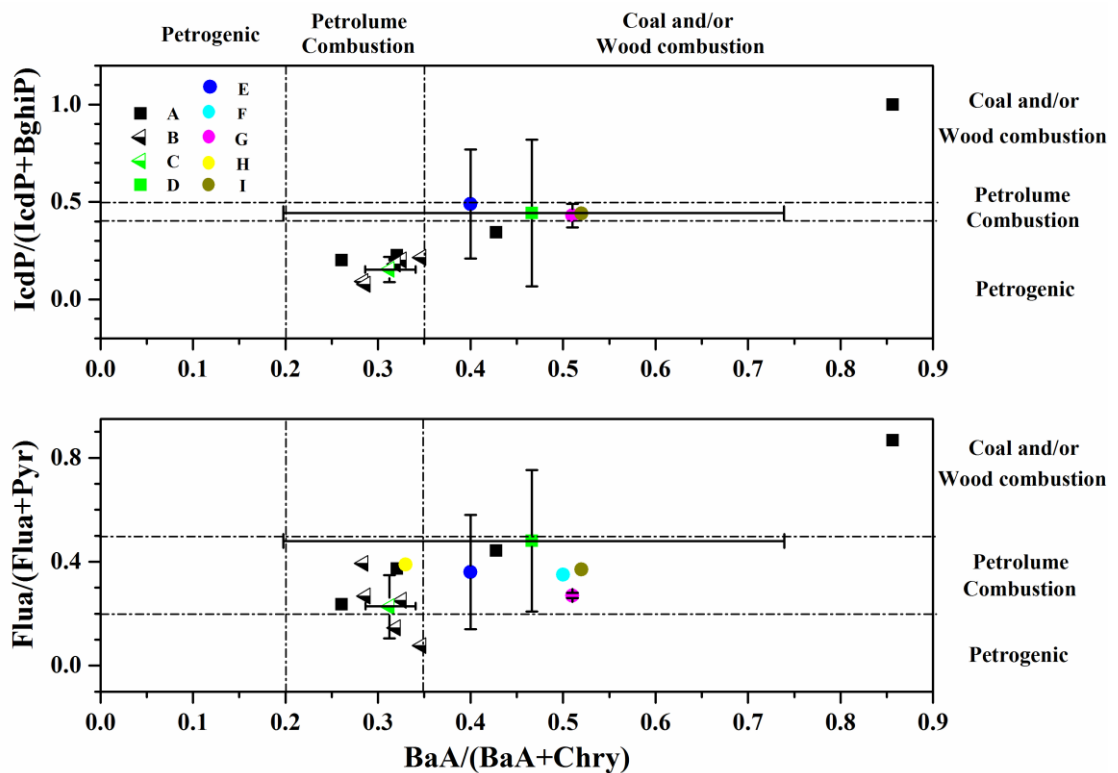
139

140



141
 142
 143
 144
 145
 146
 147
 148
 149
 150

Figure 6 OC/EC ratios in different operational modes and driving conditions for excavators and trucks



151

152 Figure 7 Cross plots for the ratios of $BaA/(BaA+Chry)$ vs $IcdP/(IcdP+BghiP)$ and
 153 $BaA/(BaA+Chry)$ vs $Flua/(Flua+Pyr)$ and comparison with those from other diesel
 154 vehicle sources. A and B are the isomer ratios of the PAHs from the excavators and
 155 trucks, respectively, tested in this study; C and D are the average isomer ratios of
 156 PAHs for trucks and excavators tested in this study; E, F, G, H, I are results obtained
 157 from Liu et al. (2015), Wang et al. (2015), Shah et al. (2005), Schauer et al. (1999),
 158 Chen et al. (2013)

159

160

161

162

163

164

165

166

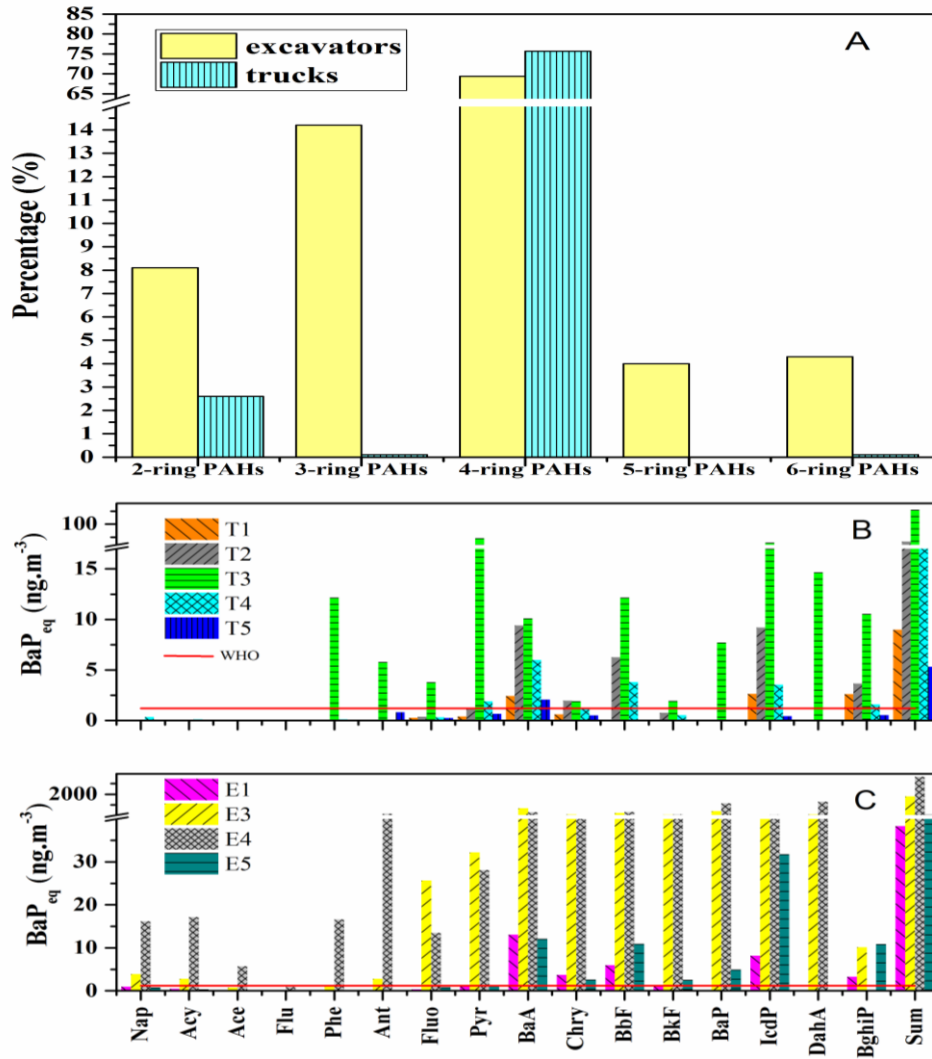
167

168

169

170

171



172
 173
 174
 175
 176
 177
 178
 179
 180
 181
 182

Figure 8 Percentages of each ring PAHs to total PAHs (A); BaPeq for parent PAHs in each tested trucks (b) and excavators (c)