

The Climatology of Australian Aerosol

By Ross Mitchell, Bruce Forgan and Susan Campbell

Manuscript acp-2016-1021, cover letter to the co-editor following recent reviews

Dear Co-editor,

We hereby resubmit the above manuscript following changes suggested by the two referees. In each case, our response to the referees is on the discussion web site, and is appended to this letter. With one exception, the changes made to the manuscript are given there.

The single exception concerns our response to referee #1, who raised the concern that “Characteristics of each class is clearly stated only in the abstract section”. Our response was that “We accept the point that more detail on the characteristics of each class is given in the abstract than elsewhere, and have modified the manuscript accordingly”.

In the final version of the manuscript as submitted, we have acted on this point by removing the detailed description of the class characteristics from the abstract, and providing a more descriptive account of the characteristics of the three classes in the Summary and Conclusions.

There are changes of a minor nature to the Acknowledgements section, and we have found and corrected several typographic errors.

We have uploaded the revised manuscript, together with a version highlighting the changes relative to the ACPD version, the latter called “diff.pdf”. Note that the latter has been uploaded as a “supplement”, file, as I do not know how to append a pdf file to a word document.

Let me know if further material is required.

Sincerely,

Ross M. Mitchell

17 March 2017

The following contains concatenated reviews from anonymous reviewers #1 and #3, together with the authors’ responses.

Reviews of “The climatology of Australian Aerosol” by R.M. Mitchell. B.W. Forgan and S.K. Campbell (Manuscript acp-2016-1021)

Response to anonymous referee #1

The authors thank the referee for this constructive review, which begins by acknowledging the rarity of long time series of aerosol over the southern hemisphere, and the contribution made in presenting an aerosol climatology providing “substantial results for the community”. From the outset, we emphasise that the primary goal of the paper is to present a continental-scale climatology of Australian aerosol. The classification work was intended to be exploratory in nature; unfortunately the referee has viewed this in a different light, and many detailed comments flow from this. As detailed below, we will amend the manuscript with this in mind.

In order to address the points raised clearly, we have included the issues raised (in italics) before responding.

General comment: It is not clear how the stations is classified. It is only by figure 7 or it is primarily by the general climatology of each region. In 4.6 it is stated that “the grouping is based on figure 7”. In that case, in the paragraph of 4.2 that investigates the unclassified station, could not have statements as “Tennant Creek is clearly tropical station”. Even in case that geographical factors are considered, they should be indicated. Also, the discussion on 4.2 about the nature of each “unclassified” station, could not match up with the correlation found (table 7, discussion 4.7). Characteristics of each class is clearly stated only in the abstract section.

Response

As indicated by the title and in earlier remarks, this is primarily a paper that deals with the climatology of Australian aerosol, as determined from sun photometer measurements from the Bureau of Meteorology and CSIRO. The analysis of the time series via spectral decomposition supports the subsequent classification, which we regard as preliminary and exploratory. Undoubtedly, future studies will apply more objective clustering methods. Nevertheless, our approach is a necessary first step. In particular, the use of the relative AOD-Angstrom exponent amplitudes of the periodic component as a proposed classifier (Figure 7) is novel, and warrants closer consideration in subsequent work. The subsequent figures summarise the additional information contained in the relative amplitudes of the second and third harmonics (Figure 8) and the relative episodic to periodic variation caused by highly irregular smoke episodes (Figure 9). Both offer potential in future classification studies, although this is beyond the scope of this work. In the present work, these figures illustrate the role of the higher harmonics on the detailed shape of the spring-summer aerosol peak, and a means of separating the south-eastern stations based on the episodic to periodic aerosol component.

Specific changes: The sentence quoted in part by the referee will be changed to read: *“Tennant Creek ~~is clearly~~ resembles a tropical station with somewhat reduced A_{τ} , consistent with its location between Darwin and Alice Springs.”* No geographical factors were considered in the classification scheme. The discussion at the end of section 4.2 explains why the three stations Tennant Creek, Learmonth and Rockhampton are identified as “unclassified”. The finding that several of the “unclassified” station pairs exhibit long-range correlation strengthens the case for continental-scale coherence in the time-variation of Australian aerosol. We accept the point that more detail on the characteristics of each class is given in the abstract than elsewhere, and have modified the manuscript accordingly.

Section 2.1, line 20 page 6. “no statistically significant difference was found”. Please explain in detail, which statistical significant approach was used and present some results on that.

Response: The sentence identified by the referee has been changed to read *“The differences in the Angstrom exponents from the two different wavelength pairs were more than a factor of 4 less than the estimated standard uncertainties from the combined Type A and Type B uncertainties (ISO 1995) in the monthly mean Angstrom exponent”*. [ISO: Guide to the expression of uncertainty in measurement, International Organization for Standardization, Switzerland, 101pp, 1995.]

Section 3. Before describing the tools used for the analysis, it is important to mention the quality control procedures applied on the timeseries. On section 2, the differences on cloud screening algorithms among the two types of instruments, are mentioned. Also selection on which months are used in the statistics is described in section 2. Were there any other filtering criteria applied on the values?

Response: The quality control methods are fully described in section 2. A more detailed comparison between the Bureau of Meteorology and CSIRO systems can be found in the cited reference Mitchell and Forgan (2003). No further filtering criteria were applied to the data sets, apart from those clearly stated in section 2.

Section 3.1, line 15, page 7. Interpolated intervals should be smaller than the frequencies that is examined, otherwise significant noise is added to the signal. It is not cleared which tests were performed by authors, but the confidence that no significant noise was added should be clarified.

Response: The interpolation algorithms used to fill in missing months in the time series were found not to introduce spurious frequencies into the FFT periodogram. This was determined by inspecting periodograms generated with three interpolation rules: linear, spline and Kalman. In no cases were spurious frequencies recorded. As stated in section 3.1, p.7, l.14, only spline and Kalman interpolation were used in the analysis presented in the paper. We stress that no interpolated data was used in deriving the fits to the time series using the model defined in equation (2).

Section 4.2- Figure 7. It is not clear how threshold values for the classification was selected. It is not clear why Rockhampton station is out of the Arid box (other than its coastal location). Could it have a similar to Adelaide behaviour due to dust transport? The same for Tennant creek, which is very close to the tropical box. I think a method to objectify threshold values is needed in order to strengthen the classification. Maybe to have a hybrid criterion using also cycles information from section 4.3, could be a more objective approach.

Response: As stated above, the main thrust of this paper is to define the climatology of Australian aerosol. As is clear from the above comment, there are many matters of detail left unresolved; these we are content to leave to future research. Nevertheless, the metrics defined here (detailed above in an earlier point) constitute an innovative approach to aerosol classification that will undoubtedly contribute to a more objective classification. We caution, however, that even “objective” clustering algorithms often require subjective decisions. For example, the “k-means” clustering method requires *a priori* input of the number of classes in the data, while in any method the “best” definition of the cost function requires subjective judgement.

Specific change: Line 12 of the abstract has been amended to read: “An exploratory classification of the aerosol types is undertaken based on (a) the relative periodic amplitudes of the Angstrom exponent and aerosol optical depth; (b) the relative amplitudes of the 6 and 4-month harmonic components of the aerosol optical depth, and (c) the ratio of episodic to periodic variation in aerosol optical depth.”

Section 4.5. A useful addition could be a brief discussion on the four stations with statistical significant trends, and the nature of aerosols and emissions in their areas. Are all of them connected to AA emissions decline?

Response: We accept the referee’s suggestion that some additional discussion is required regarding the stations showing trends, and propose to add the following.

Specific change (text inserted following line 11 on page 11): “The small negative trend at Alice Springs could well be due to the large aerosol peak in the austral summer 2002-2003, at the beginning of the Millennium drought, followed by fairly regular annual cycling thereafter (Figure 3). The more significant trend at Broome and Lake Argyle is considered given an expectation of increasing intensity of the monsoon in the north-west tropics (Rotstayn et al, 2009). Increasing monsoon rainfall can suppress subsequent smoke emission due to lingering moisture in the vegetation,

although associated increased vegetation growth leads to increased smoke emission in subsequent dry seasons. Evidence for this is seen from Figure 2, in the suppressed aerosol immediately following the 2010-2011 monsoon (the largest seasonal rainfall on record), but with very large smoke emission during the following burning season (2012). The balance between these competing effects will determine the ultimate direction of any trend. The present analysis suggests that the trend may be negative.”

Note that the discussion around the RCP 4.5 decline in northern hemisphere (NH) AA emissions was introduced to give some context to the observed trends at the 4 stations. It simply demonstrates that the observed trends – possible reasons for which are briefly discussed (above) – are large by comparison with projected declines in NH AA emissions as experienced following transport into the southern hemisphere.

Figures 2-4. In cases of stations where statistical significant trends were recorded, these trends should be noted on timeseries plots also. Appendix, Climatological Tables: Angstrom exponent was calculated for different pairs of wavelengths at some stations. It should be noted on tables titles which pair was used on each station.

Response: Attention has been drawn to the two time series plots where significant trends were found, through the additional material added (p.11, see above point).
Climatological tables: The wavelength pairs used are given in the table caption. Further annotation cannot easily be given, as many of the climatological values use data both before and after 2009, when the change in wavelength pairs took place.

This concludes our response to referee #1. Our response to referee #3 follows.

Interactive comment on “The Climatology of Australian Aerosol” by Ross M. Mitchell et al.

Anonymous Referee #3

Received and published: 3 February 2017

This is a valuable paper, and I am more than happy to recommend its publication in ACP. The data/climatology presented should be of interest to many scientists working in aerosols, and climate modelling. I have only a few small suggestions. Section 2 consists of a comparatively long “introduction”, followed by a much shorter subsection 2.1. I feel the paper would be slightly more readable if that introduction were to be subdivided into 1 or 2 subsections, with appropriate headings to guide the reader. I found the concept of fitting both an annual cycle, plus two higher harmonics, quite interesting. However, an alternative way to characterize double-peaked data is to use two (or more) annual cycles with different phase angles. The reference list is comprehensive, however an additional reference the authors might like to consider is Bouya et al., Journal of Atmospheric and Solar-Terrestrial Physics, vol. 72, 726-739. I have one final thought for potential further work. The authors identify three aerosol ‘groups’: tropical, arid and temperate. Might it be possible to generate spatio-temporal patterns for each, perhaps via a “grand fit” to the data? (This would be somewhat similar to EOFs.) This would then allow spatial interpolation of the climatology, although perhaps not extrapolation to Victoria and Tasmania.

Response

The authors wish to thank the reviewer for these suggestions.

We agree that section 1 (Introduction) is long; however the material it contains is all required to set the work in context. Section 2 (Observations) contains a description of the different sun photometer and processing systems used by the two agencies concerned (The Bureau of Meteorology and CSIRO). This is necessarily long because two observing systems are described. However, it is difficult to shorten or subdivide it without compromising its coherence or content.

The reviewer acknowledges our representation of the aerosol time series using an annual cycle and two higher harmonics. As stated in the paper, this choice was based on the on the spectral decomposition achieved through a fast fourier transform (FFT). The reviewer suggests that the higher harmonics could be replaced by appropriately phased "annual cycles". If these annual cycles are sinusoids with periods of 12 months, then the time series cannot be adequately modelled since the details of the spring-summer aerosol peaks clearly require higher frequency variation than is available from 12-month sinusoids, however phased. If the reviewer means pulsed or gated functions occurring every year, then the present analysis shows that this adds unnecessary complexity. On a monthly time scale, the time variation in aerosol can be well represented as a three-term harmonic oscillator. Since this finding has consequences for the construction of aerosol generation models, we will add a point to the Conclusions stating this.

We thank the reviewer for drawing out attention to the Bouya et al paper, and offering a suggestion for further work. We will consider the cited paper for inclusion. Coming up with a "grand-fit" to the data is a useful suggestion for further work, but well beyond the scope of the present paper.

Ross Mitchell, 10/2/2017

The Climatology of Australian Aerosol

Ross M. Mitchell¹, Bruce W. Forgan², and Susan K. Campbell¹

¹CSIRO Oceans and Atmosphere, Yarralumla, GPO Box 1700, Canberra, ACT, Australia

²Australian Bureau of Meteorology, PO Box 1289K, Melbourne, Australia

Correspondence to: R. M. Mitchell (Ross.Mitchell@csiro.au)

Abstract. Airborne particles or aerosols have long been recognized for their major contribution to uncertainty in climate change. In addition, aerosol amounts must be known for accurate atmospheric correction of remotely sensed images, and are required to accurately gauge the available solar resource. However, despite great advances in surface networks and satellite retrievals over recent years, long-term continental-scale aerosol data sets are lacking. Here we present an aerosol assessment over Australia based on combined sun photometer measurements from the Bureau of Meteorology Radiation Network and CSIRO/AeroSpan. The measurements are continental in coverage, comprising 22 stations, and generally decadal in time-scale, totalling 207 station-years. [Monthly climatologies are given at all stations.](#) Spectral decomposition shows that the time series can be represented as a weighted sum of sinusoids with periods of 12, 6 and 4 months, corresponding to the annual cycle and its second and third harmonics. Their relative amplitudes and phase relationships ~~leads~~[lead](#) to sawtooth-like waveforms sharply rising to an austral spring peak, with a slower decline often including a secondary peak during the summer. The amplitude and phase of these periodic components show significant regional change across the continent. Fits based on this harmonic analysis are used to separate the periodic and episodic components of the aerosol time series. ~~Classification~~[An exploratory classification](#) of the aerosol types is undertaken based on (a) the ~~spectral variation of the optical depth expressed in the~~[relative periodic amplitudes of the](#) Ångström exponent ~~,~~[and aerosol optical depth](#); (b) the ~~Fourier decomposition~~[relative amplitudes of the 6 and 4-month harmonic components of the aerosol optical depth](#), and (c) the ratio of episodic to periodic variation in aerosol optical depth. It is shown that Australian aerosol can be broadly grouped into three classes: ~~Temperate, Arid,~~ and ~~Tropical.~~ ~~The Temperate class is characterised by a small amplitude periodic component, with an increasing episodic component toward the fire-prone Eucalypt forests of the south-east. Arid zone aerosol has a larger periodic component, with pronounced twin spring-summer peaks, and an increasing episodic component towards active dust source regions. Tropical aerosol is characterised by a very large periodic component due to seasonal biomass burning in the savanna belt, with significant interannual variability due to variation in the strength of the monsoon and its effect on the fuel source.~~ [Tropical, Arid and Temperate.](#) Statistically significant decadal trends are found at 4 of the 22 stations. Despite the apparently small associated declining trends in mid-visible aerosol optical depth of between 0.001 to 0.002 per year, these trends are much larger than those projected to occur due to declining emissions of anthropogenic aerosols from the northern hemisphere. There is remarkable long-range coherence in the aerosol cycle across the continent, suggesting broadly similar source characteristics, including a possible role for inter-continental transport of biomass burning aerosol.

1 Introduction

Suspended atmospheric particles or aerosols are extensively studied because of their multiple environmental roles, and because - unlike well-mixed gases - their concentration and properties vary widely over space and time. Aerosols adversely affect human health (particularly in urban areas), and exert a further range of impacts due to their modulation of electromagnetic radiation within the atmosphere. Scattering and absorption by aerosol remains a major source of uncertainty in climate projections (Boucher et al., 2013), while satellite images of the Earth's surface require correction for aerosol effects. In addition, aerosol data are also required for the accurate assessment and forecasting of available solar energy (e.g., Perry and Troccoli, 2015).

Major enhancements in surface networks and satellite retrievals over the last 15 years have radically boosted knowledge of global aerosol. In particular, surface networks including AERONET (Holben et al., 1998), SKYNET (Nakajima et al., 2007; Hashimoto et al., 2012) and GAW/PFR (WMO, 2005) have provided regional aerosol climatologies and supported process studies (e.g., Eck et al., 2008), while several major satellite programs have championed the characterization of aerosols from orbit. Of note in this respect are NASA's flagship EOS A-train instruments MODIS (Levy et al., 2010), MISR (Martonchik et al., 2009) and CALIPSO (Young et al., 2013). In addition, the ATSR series of instruments operated by ESA has made a significant contribution to satellite aerosol measurement from space, particularly the AATSR instrument launched on the ENVISAT platform in March 2002 (Grey and North, 2009; Qin et al., 2015). However, retrieval of aerosol from satellites remains challenging (Mishchenko et al., 2009), and requires ongoing availability of validation data from surface networks. In addition to these more recent sensors, the 30-year record available from the NOAA/AVHRR series is proving valuable, as shown by the recent examination of the aerosol indirect effect of maritime aerosol on cloud properties (Zhao et al., 2016).

Since aerosol emission is highly correlated with human population and land mass, there has been a striking northern-hemisphere bias in aerosol characterisation efforts to date. However, there is a growing need for improved characterisation of southern hemisphere aerosol. In particular, with lower levels of anthropogenic aerosol (AA), the southern hemisphere is on average less subject to 'masking' of the greenhouse warming than the northern hemisphere (Rotstayn et al., 2013). Consequently, low AA regions including Australia experience the greenhouse gas component of warming with less moderation from aerosol radiative forcing, to a degree dependent on improved knowledge of Australian natural aerosol. Rotstayn et al. (2013) sought to quantify the unmasking implied by projected future decreases in AA, and their findings will be further considered below. Furthermore, recently Stephens et al. (2015) showed that the contribution of each hemisphere to the planetary albedo averaged over the last 13 years has been in near-perfect balance, with the increased reflection from northern hemisphere land exactly balanced by increased atmospheric scattering in the southern hemisphere. While the full ramifications of this finding are yet to be fully explored, there is a pressing need to better characterise southern hemisphere aerosol emissions.

Australia is the largest dust source in the southern hemisphere (Tanaka and Chiba, 2006) and is a significant source of smoke aerosol from savanna burning (Mitchell et al., 2013). Hence it is clear that Australia's aerosol emissions make up a significant fraction of the southern hemisphere total. Since aerosol contributes to the planetary albedo both directly, and indirectly through the modulation of cloud properties, the need for improved continental-scale characterisation of Australian aerosol is clear.

Studies of Australian aerosol to date have often been restricted in time and space. While coastal maritime aerosol has been extensively studied (Gras and Ayers, 1983; Gras, 1991), studies of the continental aerosol are more restricted. Thus Scott et al. (1992) characterised the aerosol cycle caused by seasonal biomass burning at Broome in the tropical north west of Australia in the late 1980s, with more extended analysis of regional tropical aerosol carried out by Mitchell et al. (2013); see also references
5 cited therein, [including Bouya et al. \(2010\)](#). Studies of the smoke from Eucalypt fires in southern temperate forests are few in number, but include Mitchell et al. (2006) and Radhi et al. (2006).

Australian dust emission has been well-studied from a geomorphological perspective (e.g., Leys et al., 2008; Bullard et al., 2008) but less so via sun photometry, where the measurand – column aerosol optical depth – is the required input for climate and remote sensing studies. However, Mitchell et al. (2010) analysed sun photometer and nephelometer measurements from
10 Tinga Tingana in the Australian arid zone during the Millennium drought (2002-2010) and found an approximate doubling in both column and near-surface aerosol during the austral summer over the duration of the drought. Feedbacks related to dust aerosol were modelled by Rotstayn et al. (2012), who found that inclusion of interactive dust in the model amplifies the impact of the ENSO cycle on Australian climate.

While satellite retrieval of aerosol over Australia is promising in terms of the extensive areal and temporal coverage available
15 over a sparsely-populated continent, the dense-dark vegetation (DDV) assumption inherent in the MODIS aerosol retrieval algorithm does not apply well over most of Australia (Levy et al., 2010; Gillingham et al., 2012). Problems in other sensors and retrieval methods are discussed by Qin et al. (2015), who show that the dual-view scan geometry of the AATSR instrument offers particular advantages under Australian conditions. However, the ongoing need for validation data from surface networks is universal.

20 Trends in aerosol loading over the period 1995–2009 were recently compiled by Yoon et al. (2016) at 15 AERONET stations. They showed that fine-mode anthropogenic aerosol is decreasing over those countries with strict environmental regulations, and vice-versa. Coarse-mode dominant aerosol depends strongly on meteorological conditions subject to climate change, with stations close to regions of increasing desertification showing a significant increase in coarse-mode dominant aerosol.

In this paper we present a continent-wide climatology of Australian aerosol obtained at 22 stations, spanning all mainland
25 states, and comprising a total of 207 station-years. The stations are operated by two agencies, the Australian Bureau of Meteorology, and the Commonwealth Scientific and Industrial Research Organization (CSIRO). The CSIRO stations are affiliated with NASA's worldwide AERONET sun photometer system, as further described below. Section 2 describes the two measurement systems and the data processing applied to each. The result of this step is a time series of multi-spectral monthly mean aerosol optical depth. Section 3 describes the common analysis applied to these time series. Section 4 presents a discussion
30 of the results, with conclusions given in Section 5. The Appendix presents the monthly aerosol climatology at each of the 22 stations in tabular form.

2 Observations

This study is based on aerosol measurements obtained at 22 stations across the Australian continent between July 1997 and June 2015. The details of the 22 stations are given in Table 1. The columns headed ‘First’ and ‘Last’ denote the extremities of the data record for a given station, but not its continuity. The right-hand column labelled ‘Months’ gives the number of months for which sufficient observations were made to generate a valid monthly mean. A given month is deemed to have a valid monthly mean based on (a) the number of days in the month on which there were sufficient (≥ 8) point measurements of aerosol optical depth to report a daily mean (NumDayOK), and the total number of point aerosol optical depth measurements in the month (NumObsMonth). The criterion applied in this study was *either* (NumDayOK ≥ 8 & NumObsOK > 300) *or* (NumDayOK ≥ 6 & NumObsOK > 600). The extent of spatial and temporal coverage is displayed in Figure 1, where the radius of the filled circles indicate the number of months reported by each station. The stations are listed in latitudinal order, starting in the tropics.

The measurements were obtained from sun photometers operated by the Bureau of Meteorology (abbreviated as ‘Bureau’ in Table 1 and later in the text) and CSIRO. The Bureau of Meteorology uses Middleton Solar SPO2 4-channel radiometers, with initially one and currently two radiometers at each site including nominal wavelengths of 368, 412, 500, 610, 778, 812 and 868 nm. The 500 nm channel is common to all radiometers and aids in cross calibration. The 610 nm channel is used with the 500 and 778 nm to provide an initial estimate of total column ozone, and the 812 nm channel is used to determine column water vapour. The FWHM for the filters is typically 10 nm, and an additional infrared blocking filter is used for the 368 nm channel to eliminate any infrared transmission given the low spectral irradiance at 368 nm.

The sun photometers operated by CSIRO are Cimel CE-318. The network is collectively known as AeroSpan (Aerosol characterisation via Sun Photometry: Australian Network) which forms the Australian component of AERONET, a worldwide sun photometer network operated by NASA (Holben et al., 1998), with contributing sub-networks from several countries outside the USA. The spectral channels used on the Cimel instrument have become standardized, and now include 340, 380, 440, 500, 670, 870, 1020 and 1640 nm, with a further channel at 936 nm yielding information on water vapour absorption. The channels between 340 and 1020 nm employ a silicon detector, while the 1640 nm channel uses an Indium gallium arsenide (InGaAs) detector. FWHM was likewise 10 nm for all channels.

Calibration of sun photometers refers to methods used to determine the exoatmospheric response of the instrument to the solar irradiance in a given spectral channel. This is a crucial procedure since once complete, the ratio between the actual instrument response and the exoatmospheric response gives the total atmospheric extinction, from which the aerosol extinction can be derived given knowledge of the gaseous absorption and scattering.

The use of different radiometers, wavelengths, and sampling strategies by the two networks introduces traceability issues when amalgamating the data series. In principle, the same calibration methodologies are used for in situ calibration as described in a detailed inter-calibration study of the two systems by Mitchell and Forgan (2003) at the Alice Springs station in 2000. The central result of the study was that the aerosol optical depths agreed to within 0.007 at the 95% confidence level for the two common wavelengths 500 nm and 868 nm. This well within the WMO (2005) requirement, and Bureau participation in the four WMO Filter Radiometer Comparisons held at the World Radiation Center in Davos, Switzerland, every 5 years begin-

ning in 2000, confirm the Bureau of Meteorology methodologies produce aerosol optical depth within the WMO uncertainty requirement.

Both networks utilise a combination of Langley methods to find a reference wavelength calibration and then apply the General Method developed by Forgan (1994) to calibrate the other wavelength channels (excluding the channels affected by water vapour). The General Method assumes the stability of the relative aerosol size distribution - but not the magnitude of the optical depth - throughout a morning or afternoon, and uses the reference wavelength aerosol optical thickness as the predictor for the least squares solution of the wavelength calibration value at the top of the atmosphere. As a Langley-type method involves an interpolation to the top of the atmosphere in real atmospheric conditions the selection of points not impacted by water or ice particles is key to the uncertainty of the top of atmosphere value. The two networks use different sampling strategies and methods to select points for the calibration process. The operational measurements are used to provide the in-situ calibrations.

The Bureau of Meteorology radiometers are co-located at solar and terrestrial irradiance stations that utilise the WMO Global Climate Observing System (or Baseline Surface Radiation Network) solar monitoring methodologies (Ohmura et al., 1998). The solar trackers employ active tracking sensors that mimic a 868 nm radiometer but with a wide field of view, and sample at 1 Hz. The standard deviation of the active tracking sensor is recorded every minute with the 0.12 s samples from the SPO2 radiometers. If the active sensor was not available the standard deviation of the direct irradiance from a pyrheliometer is used as an equivalent indicator of variability in the minute prior to the SPO2 measurement. The first pass of the selection process of data to use for SPO2 calibration is to eliminate the near zero SPO2 signals that are less than 5 times the measurement resolution (typically 0.005 V), and those periods when the standard deviation of the active sensor signal is more than 0.005 V. As the 868 nm active sensor signals in clear sun in typical Australian conditions is within 25% of the solar noon value for aerosol air masses less than 6, use of a fixed standard deviation is sufficient. The remaining data for each wavelength are then subject to the Harrison and Michalsky (1994) algorithm. If sufficient data remain, namely at least 30 points for aerosol air masses less than 6 and greater than 2, the calibration process is applied and the result recorded.

The AeroSpan measurements are based on a 'triplet' of the routine measurements obtained 30 s apart, spanning a minute. The standard deviation among the three measurements comprising the triplet is used for analogous filtering, as described in more detail by Mitchell and Forgan (2003).

For both networks, determinations of the natural logarithm of the top of atmosphere signal ($\ln V_0$) at 1 AU earth-sun distance are compiled during the deployment period, which may range from months to over a year. The time series of the $\ln V_0$ is then used to derive the time dependence of the $\ln V_0$ through linear interpolation using a single slope where possible, or a series of linear functions if the calibration is changing in a non-linear manner. For some wavelengths of some radiometers the non-linear changes were rapid and difficult to model; these periods have been eliminated from the data analysis. The calibration functions for each wavelength providing a top of atmosphere value for each day are used in the derivation of optical depth for the entire measurement data set, not just the points selected for the calibration process.

Determination of aerosol optical depth requires subtraction of all relevant molecular extinction. For the present 'aerosol' channels (i.e., not including the 812/936 nm water vapour channels), these are nitrogen dioxide and ozone. The correction for

NO₂ is small (typically <0.002 at 380-440 nm and <0.001 at 500 nm (Mitchell and Forgan, 2003) and was excluded from the present analysis; however ozone absorption is more significant. The total column ozone determined from the Total Ozone Monitoring Satellite (TOMS) measurements was used in this analysis. In particular, TOMS-EP (Earth Probe) was used from 1996 to September 2004, while TOMS-OMI (Ozone Monitoring Instrument) was used from October 2004 to present. Currently, 5 OMI Satellite Level 3e daily averaged ozone data gridded at 0.25° x 0.25° are obtained from the NASA Goddard Earth Sciences Data and Information Services Center Website. The ozone value used was based on the satellite data point nearest to the station coordinates.

For the elimination of cloud-affected aerosol optical depth measurements the two networks use different methods. In AeroSpan the filtering is similar to that described by Smirnov et al. (2000) used by AERONET. This first evaluates the short-term temporal variation based on triplets, then applies a further test based on the daily standard deviation of the aerosol optical depth. For the Bureau data the method of Alexandrov et al. (2004) is used after the elimination of signals less than 5 times the measurement resolution. This applies a moving temporal window of 15 minutes in span across a time series examining the variance in the initial estimate of the aerosol component of the optical depth.

2.1 Calculation of Ångström exponent

15 The Ångström exponent α captures the spectral slope of the aerosol optical depth, and is defined as

$$\alpha = -\frac{\ln(\tau_2/\tau_1)}{\ln(\lambda_2/\lambda_1)} \quad (1)$$

where τ is the spectral aerosol optical depth, and α is defined across the wavelength range (λ_1 - λ_2). For the AeroSpan stations, the Ångström exponent was defined using the wavelength pair (440-870 nm), in part because these channels have always been present on the CE-318 instruments. For the Bureau stations, the Ångström exponents were calculated using the 500 nm 20 wavelength and the 868 or 870 nm channel when available. For the Bureau data sets prior to 2009, 868 nm was only available from the active sensor, and led to an underestimate of the true optical depth due to the large opening angle. A comparison of the Bureau Ångström exponents using 500-778 and 500-868 was possible when the 868 nm channel was added in the last decade of measurements; ~~no statistically significant difference was found.~~ The differences in the Ångström exponents from the two different wavelength pairs were more than a factor of 4 less than the estimated standard uncertainties from the combined Type A and Type B uncertainties (ISO, 1995) in the monthly mean Ångström exponent. As a result, in the period before 2009, when ~~the~~ 868 nm ~~was data were~~ only available from the active sensor at Bureau sites, the 500-778 nm pair was used to calculate the Ångström exponent statistics reported below. A similar rationale supports the comparability of the AeroSpan and Bureau Ångström exponents, even though the basis wavelength pairs differ.

For the majority of the 22 stations, the annual mean aerosol optical depth at the 500 nm wavelength is less than 0.06, and at 30 868 nm less than 0.03. Hence even with the low uncertainties (~ 0.007) for the individual aerosol optical depth measurements, the uncertainties in the individual Ångström exponent measurements can be relatively large (>0.2). The monthly statistics of Ångström slopes based on individual values was compared to the monthly mean wavelength pair gradients derived from the General Method calibrations. The differences in monthly means were typically less than 0.1 except for those months where the

mean aerosol optical depth at 500 nm was less than 0.020. The comparison of the Ångström exponent methods of measurement and subsequent statistics is the subject of future work.

3 Analysis

In this section we introduce the data sets, then define the model fitting procedure used as a basis for the analysis. This allows
5 separation of the observed aerosol times series into a periodic component, with the residual interpreted as an episodic component. This is used as a basis for classification of the aerosol across the continent in terms of (a) the periodic amplitudes found for the Ångström exponent (a measure of aerosol size) and aerosol optical depth; (b) the harmonic content of the periodic component of the aerosol optical depth; and (c) the balance between the episodic and periodic components of the aerosol optical depth.

10 3.1 Monthly time series

Since the object of this work is to define the monthly climatology of Australian aerosol, aerosol time series were preprocessed into monthly means for subsequent analysis. The analysis involved (a) model fitting (as described below) and (b) spectral decomposition using a Fast Fourier Transform (FFT). Due to instrument malfunction and occasional removal for calibration, these time series contain infrequent gaps. The model fitting was carried out using all available data, simply ignoring periods
15 when no data were available. However, the FFT required a complete time series, so interpolation for missing data was required. This was carried out using a combination of spline fitting, and fits based on Kalman filtering, as provided in the **R** package. Testing showed that the interpolation had no significant effect on the Fourier analysis, which was employed only to assess the spectral content of the aerosol time series.

Examples of the time series are shown in [figures](#) [Figures](#) 2, 3 and 4. The left-hand panels show the monthly time series (black),
20 together with the (annually repeated) climatology (red), and the fit (green, see below). Interpolated periods are shown in blue. The right-hand panels show the power spectrum obtained from the FFT. From the latter, the dominance of the annual cycle is clear, with significant contributions at the 6 and 4-month periods, varying between sites. This general pattern was evident at all sites. The increasing complexity of the power spectrum at Wagga Wagga (Figure 4) arises due to the high incidence of episodic smoke plumes from forest fires in the south eastern Eucalypt forests. Other stations - not shown here - exhibit similar
25 characteristics, supporting the analysis outlined here.

3.2 Model fitting

The equation describing the model fit is as follows:

$$f(t) = a_0 + a_1 t + \sum_{j=1}^J b_j \cos[2\pi\omega_j(t - t_j^*)] \quad (2)$$

where a_0 is the time-invariant offset of the fit to the (dimensionless) aerosol optical depth time series, and a_1 is the linear
30 coefficient with units of inverse time. The following term represents the sum of J sinusoidal components, with amplitude b_j

and frequency ω_j . The phases of the sinusoidal components are encapsulated by t_j^* , which is the time in months corresponding to the first maximum in the cosine function following the zero-time reference for the j^{th} harmonic component, referred to below as the phase-time. The zero-time reference was chosen as the first December in the time series at each station. This aids the pictorial representation of the phase angles of the harmonic components, with the months of the phase-time corresponding to the hours of a clock face, with December at 12 O'clock (see Figure 6 in Section 4.1). Guided by the identification of the annual cycle and its second and third harmonics in the FFT analysis discussed above, three sinusoidal terms were employed ($J=3$), with periods of 12, 6 and 4 months corresponding to frequencies ω of 1/12, 1/6 and 1/4 cycles per month, respectively.

An example of the Fourier decomposition of one of the aerosol time series - in this case from Tinga Tingana - is shown in Figure 5. The sinusoidal components are shown in the lower panel, with their respective phase-times marked by arrows. Their sum (together with the offset and linear term further discussed below) results in the fit depicted by the orange line, representing the optimal fit to the data (shown here by the climatology in black) derived using a least-squares optimization provided within the **R** language. Clearly, the fitting using the three component sinusoid is capable of representing the dual peaks in aerosol optical depth observed at Tinga Tingana and in other in arid zone stations, the peaks occurring in the spring and summer. Although the three-term sinusoidal fit has insufficient high-frequency content to represent the narrow peaks observed at this site, the higher frequency components required are not found to be continent-wide, and the use of this three-component harmonic analysis is sufficient for classification of the various aerosol regimes as further discussed below.

A list of the fitted parameters for all sites is given in Table 2. As well as the parameters defined in Equation 2, the tables lists the square of Pearson's correlation coefficient (R^2). The linear trend parameter a_1 and its significance is further discussed below.

20 4 Results

4.1 Amplitude and phase of the aerosol optical depth of harmonic components

A geographic depiction of the fitted amplitudes and phases at all sites is shown in Figure 6. This clearly shows the increase in amplitude of the periodic components from south to north, and the general coherence of their phase relationship across the continent. However, at Darwin the phase-time of the annual cycle is noticeably earlier (10.3 months) than at all other tropical sites (11.0 months), suggesting an earlier onset of dry season at Darwin than at other sites. Comparison of the fitted functions with those at other tropical stations (Broome, Lake Argyle and Jabiru) indeed shows slightly earlier onset of the rise toward the October peak at Darwin than at the other tropical stations. In addition, the other stations show a broader peak declining later than at Darwin. This earlier decline from the October peak contributes to earlier phase-time at Darwin than at the other sites. Both effects can be understood as the high population density around Darwin relative to the other stations, leading to many fires early in the dry season. By contrast, the burning in the more remote regions is more driven by natural ignition, and hence peaks later when the fuel is drier. The reduced influence of human activity - with fewer late season fires being lit closer to Darwin - supports the persistence of the smoke aerosol later in the dry season at the more remote stations.

A regional phase change is also evident in south-eastern Australia, in the west-east transect Adelaide, Mildura, Wagga Wagga and Canberra. The corresponding phase-times are 10.4, 11.0, 0.1 and 0.6 months respectively, showing a trend toward a later spring-summer aerosol peak in moving from west to east. This is caused by the increasing strength of the summer component relative to the spring component in the compound peak, a consequence of the increasingly forested and (hence) bushfire-prone character of the more easterly sites. This is particularly true of Wagga Wagga and Canberra, where major incursions of smoke aerosol are found in the austral summer months. In contrast, the arid zone aerosol has a greater magnitude during the austral spring.

Aerosol sources contributing to the noted rise during spring are heterogeneous, with suggested contributions from fine aeolian dust (Mitchell et al., 2010), a combination of biomass burning smoke, fine dust, and maritime aerosol from long-range transport (Radhi et al., 2010), and exogenous biomass burning aerosol originating in southern Africa or even South America (Rosen et al., 2000).

Both Geraldton ($t_{12}^*=11.9$ months) and Learmonth (11.7 months) on the Western Australian coast show an aerosol peak near the end of the calendar year, and are thus distinct from both the tropical stations further north, and the temperate stations further south. These stations lie in the significant but poorly-studied north-west pathway for dust transport out of the central arid zone (Karlson et al., 2014), and their aerosol dynamics warrants closer study.

[Further results from the spectral analysis allow an exploratory classification into different aerosol regimes, as described below in sections 4.2, 4.3 and 4.4.](#)

4.2 Comparison of harmonic amplitudes of Ångström exponent and aerosol optical depth

The fitting procedure described above was applied to the time series of both aerosol optical depth and Ångström exponent. For the Ångström exponent, this leads to **an-analogous-a** set of fitted parameters [analogous](#) to those shown in Table 2, although for brevity, these are not shown. However, once the optimised fit for each station is obtained, its peak-to-peak amplitude can be determined for both the aerosol optical depth and Ångström exponent. A scatterplot of the amplitudes found for the Ångström exponent against that for the aerosol optical depth is shown in Figure 7, for all stations where the data record is 5 years or more.

Some separation of different aerosol regimes is possible from Figure 7. In particular, the tropical stations are easily identified by their large aerosol optical depth amplitude ($A_\tau > 0.2$) and clustering around Ångström exponent amplitude ($A_{AE} \sim 1.0$). A large number of stations lie within $0.03 < A_\tau < 0.1$ but with a large range of A_{AE} between 0.4 and 0.9. This rectangular region was divided into ‘Temperate’ and ‘Arid’, with the suggested division at $A_{AE} \sim 0.6$. Perhaps surprisingly given its coastal location, this classification places Adelaide in the Arid regime, possibly a result of the transport of dust over Adelaide during the summer months. By contrast, the more easterly stations at Wagga Wagga and Canberra have lower A_{AE} , as does Kalgoorlie, in temperate inland Western Australia.

The three stations Tennant Creek, Learmonth and Rockhampton fall outside the suggested classification rectangles. Tennant Creek is clearly a tropical station with somewhat reduced A_τ , consistent with its location between Darwin and Alice Springs. Learmonth combines the A_{AE} of a tropical station with the A_τ of an Arid zone station, while Rockhampton shows a puzzlingly

small A_τ given its location in coastal tropical Queensland. The aerosol regimes at Learmonth and Rockhampton warrant further study.

4.3 The 6 and 4 month components of the aerosol optical depth

For the tropical stations, the seasonal aerosol cycle is largely controlled by the 12-month component, with the second and third harmonics of lesser importance. However, for the arid zone and temperate stations, the higher frequency components are crucial in defining the dual-peaked nature of the compound spring-summer aerosol maximum, particularly the balance between the spring and summer components. For example, the seasonal cycle of aerosol at the arid zone station Tinga Tingana shown in Figure 5 has dual peaks in September and January, which can be understood by the interaction of the 6 and 4 month cycles with the annual cycle.

This is further explored in Figure 8, which plots the amplitude ratio of the 4-month to 12-month component ($A_{4:12}$), against that of the 6-month to 12-month component ($A_{6:12}$). This plot exhibits an reversed 'L'-shaped distribution, with a horizontal arm at $A_{4:12} \sim 0.2$, and vertical arm at $A_{6:12} \sim 0.4$. The horizontal arm contains all the tropical stations excepting Lake Argyle, confirming the weakness of the 4-month component at these stations. At the far left of this arm lie the two west coastal stations of Geraldton and Learmonth, suggesting that their seasonal cycle is largely determined by the 12-month component, with weak contributions at both 6 and 4 months.

The vertical arm contains a mixture of arid and temperate stations, increasing toward Wagga Wagga and Canberra, the only stations where $A_{4:12}$ exceeds $A_{6:12}$. This is a consequence of the large summer smoke aerosol signal associated with these stations, as already discussed. The 'outlier' of Mildura arises because of the relatively small amplitude of the annual component, rather than excessively high amplitudes at 6 and 4 months.

4.4 The balance between episodic and periodic aerosol

The residual or difference between the optimised model fit to the observed time series (equation 2) and the data itself is considered to be the 'episodic' component of the aerosol signal, in the sense that it is determined by unpredictable episodes such as fires or dust storms which depart from the 'periodic' component that govern the parameters of the fitted model. Figure 9 shows the standard deviation of the residual (expressed as a fraction of the peak-to-peak amplitude of its periodic variation) against the peak-to-peak amplitude of the periodic function fitted to the aerosol optical depth at 500 nm. The standard deviation was chosen as it includes extreme values, unlike other measures of variation such as the inter-quartile range.

Figure 9 allows separation of (a) the four tropical stations (b) a cluster of 5 stations with episodic variation at $\sim 20\%$, and (c) an extended series of stations with episodic variation between 24% up to 50%. The stations with episodic variation above 30% include the smoke-affected Wagga Wagga (46%) and Canberra (49%), and the dust-dominated Tinga Tingana (36%). Geraldton (39%) and Adelaide (32%) are also in this group, although the aerosol sources responsible are less clear. This result suggests that proximity to forested areas prone to irregular bushfires (unlike the savanna burning in the tropical north) engenders the greatest episodic variation found across the sites studied.

4.5 Trends in aerosol optical depth

Trends in aerosol optical depth are difficult to discern because of the inherent stochastic variability imposed on the periodic signal. Hence long time series are necessary to discern a small signal amidst much noise. For the present data set, we limit the trend analysis to those time series longer than 10 years. This avoids the pitfall that can appear when a multi-year (but
5 sub-decadal) regional change causes a change in aerosol loading. Such a change caused an increase in dust aerosol over the Lake Eyre Basin during the Millennium Drought (2003–2010), (Mitchell et al., 2010).

The model used in the present study does return a linear trend, as the coefficient a_1 listed in Table 2, together with the significance of the trend, expressed as the probability that the trend arose from a random distribution. It is standard practice to declare the trend significant if the probability of it arising randomly is 5% or less. In the present case, three of the stations fulfill
10 this criteria, but we relax it slightly to 6% to enable inclusion of a fourth station. The four stations satisfying both duration of record and significance criteria are listed in Table 3.

The table shows that the trends are negative but small. For Lake Argyle and Broome in Australia's north west (Kimberley) region, the trend expressed as a change in aerosol optical depth at 500 nm is -0.002 per year, with a standard uncertainty of ± 0.0008 . Assuming the uncertainty is normally distributed, there is a 67% probability that the trend lies between -0.0028 and
15 -0.0012 per year. For Rockhampton and Alice Springs, the best estimate of the trend is -0.0009 per year, with a corresponding range of -0.0012 to -0.0005. In summary, it can be stated that there is evidence for a small decrease in aerosol loading at these four sites, with a stronger (but still small) negative trend over the Kimberley stations.

The small negative trend at Alice Springs could well be due to the large aerosol peak in the austral summer 2002-2003, at the beginning of the Millennium drought, followed by fairly regular annual cycling thereafter (Figure 3). The more significant trend
20 at Broome and Lake Argyle is considered given an expectation of increasing intensity of the monsoon in the north-west tropics (Rotstayn et al., 2009). Increasing monsoon rainfall can suppress subsequent smoke emission due to lingering moisture in the vegetation, although associated increased vegetation growth leads to increased smoke emission in subsequent dry seasons. Evidence for this is seen from Figure 2 in the suppressed aerosol immediately following the 2010-2011 monsoon (the largest seasonal rainfall on record), but with very large smoke emission during the following burning season (2012). The balance
25 between these competing effects will determine the ultimate direction of any trend. The present analysis suggests that the trend may be negative.

Further context for these trends emerges from a consideration of the projected decrease in global aerosol following from scenarios under which future anthropogenic aerosol (AA) emissions decline. Rotstayn et al. (2013) modelled the impact of one such projected decline, following 'representative concentration pathway' 4.5 (RCP4.5, Taylor et al., 2012). Rotstayn et al.
30 (2013) found the expected 'unmasking' of greenhouse warming accompanying reduced aerosol emissions, with a less-expected increase in global rainfall caused by changed atmospheric dynamics. RCP4.5 is based on highly spatially inhomogeneous reduction in AA, with reductions over the centres of industrial activity in the northern hemisphere reflected as a large reduction in mid-visible aerosol optical depth over the northern hemisphere of 0.2 per century over the period 2006–2100. The projected decrease over the southern hemisphere is generally smaller, with a decline of <0.05 per century over Australia. Hence, the

observed trends of between 0.001–0.002 per year (0.1–0.2 per century) are larger than the modelled decrease (RCP4.5) by a factor between 2 and 4. This suggests that, over Australia, changes in natural aerosol are likely to dominate over inter-hemispheric transport of AA, hence adding weight to the climatological aerosol characterisation presented here.

4.6 Aerosol climatologies

- 5 Aerosol climatologies are presented in tabular and graphical formats. For each of the 22 stations included in this study, statistical summaries of aerosol optical depth at 500 nm and the Ångström exponent were prepared in tabular form, based on all individual determinations of the measurands. This allowed generation of quartiles and medians in addition to means. The resulting tables list the monthly mean, lower quartile, median, and upper quartile for both aerosol optical depth and Ångström exponent, for all 22 stations listed in order of decreasing latitude, and shown in Table A1.
- 10 For sites where the data record is over 5 years in length, the monthly climatology of aerosol optical depth at 500 nm is displayed in Figure 10. The time axis runs from July to June (rather than January to December) so as not to bisect the aerosol peak, which occurs in the austral spring-summer period (September to February). The grouping of stations into regions was based on the classification suggested by Figure 7, with the three sites lying outside the rectangles labelled ‘Unclassified’, and Adelaide included with the ‘Temperate’ sites, both in view of its transitional characteristics, and to reduce clutter in the ‘Arid
- 15 Zone’ panel. The scale length corresponding to unit optical depth is the same in all four panels to facilitate intercomparison.

4.7 Correlation among aerosol time series

- The groupings adopted in Figure 10 are used to examine correlation of the station time series within groups. The resulting values of Pearson’s correlation coefficient between each station pair in a group are shown in Tables 4–7. Unsurprisingly, given the tight clustering found in much of the foregoing analysis, the tropical group shows high correlation between stations,
- 20 with even the distant pair Broome–Jabiru yielding $R=0.8$ (Table 4). Although the correlation between arid zone station pairs is weaker across the board, the pair Alice Springs–Birdsville showed the highest coefficient in the present study, at $R=0.92$ (Table 5). The large episodic aerosol component in the bushfire-prone part of the Temperate group reduces expectations of high correlation coefficients, so it is surprising to note the coefficient of $R=0.795$ between Wagga Wagga and Canberra (Table 6), suggesting regional-scale linkage via correlated smoke episodes. The results seen in Table 7 for the ‘Unclassified’ stations are
- 25 yet more surprising, particularly the coefficient of $R=0.73$ between the pair Learmonth–Rockhampton, located on opposite sides of the continent at a distance of ~ 3730 km. The implication is that the mechanisms responsible for aerosol generation and transport have much in common at both regional and trans-continental scales.

- A further mechanism underlying this correlation is the inter-continental transport of aerosol plumes from southern Africa and possibly South America considered by Rosen et al. (2000). Although they measured the plumes from only one site, such
- 30 material is likely to be well-dispersed following long-range transport, and was shown to contribute ~ 0.02 to the mid-visible aerosol optical depth over Mildura. This is significant given the aerosol ‘offset’ of 0.05–0.06 typical of the arid zone stations (Table 2), so the widespread presence of this aerosol source could well boost the correlation among widely separated stations. Further analysis of the prevalence and uniformity of these layers is required.

5 Summary and conclusions

Analysis of the aerosol records at 22 stations across the Australian continent has been carried out with dual aims in mind: (a) generation of benchmark aerosol climatologies across the continent, and (b) classification of Australian continental aerosol types based on their measured time series. The latter goal was achieved by Fourier analysis which suggested that most of the seasonal variation could be explained by just three periodic terms, corresponding to the annual cycle and its second and third harmonics. Fitted coefficients arising from a model constructed on this basis support the following principal conclusions.

1. The proposed model explains 50% or more of the variance at 17 of the 22 sites (77%), and hence provides a basis on which to infer aerosol classification and to examine the time series for possible trends.
2. Analysis of the fitted parameters suggests that Australian aerosol can be classified into three groups: Tropical, Arid and Temperate, although there is overlap between the latter two groups on some measures.
3. ~~The tropical class~~ Tropical aerosol is distinguished by a large and dominant annual mode, resulting from savanna burning in Australia's tropical zone. Consideration of the phase of this annual mode allows the separation of different burning regimes, as seen in the earlier onset of burning near Darwin relative to the more remote tropical stations. Individual time series show significant interannual variability due to variation in the strength of the monsoon and its effect on the fuel source.
4. Arid zone aerosol is seasonally bimodal, with-often showing dual peaks in the austral spring and summer (typically September - January). This is evident in the associated with an increase in amplitude of the 4-monthly harmonic relative to the annual (12-month) signal. Arid zone sites are characterised by an increasing episodic component toward active dust-source regions.
5. ~~Temperate stations in this study were influenced by smoke aerosol in a manner that increased with proximity to the Eucalypt forests of the Great Dividing Range. This is evinced as an increase in the episodic aerosol component, derived from the residual between the fitted (periodic) model and the measured data~~ zone aerosol is characterised by a small-amplitude periodic component, with an increasing episodic component caused by smoke aerosol arising from fire-prone Eucalypt forests. This episodic component increases along a west-east transect with proximity to the forested areas of the south-east.
6. Significant decadal trends in aerosol optical depth at the 6% level or below were found at 4 of the 22 stations. The magnitude of the trends was small, with a decline in aerosol optical depth at 500 nm of ~ 0.002 per year in the Kimberley region of the tropical north west and ~ 0.001 per year at Alice Springs and Rockhampton. However, these trends are much larger than those projected to occur over Australia through future reductions in northern hemisphere anthropogenic aerosol emissions.
7. Strong correlation was found both among stations in the same group, and, remarkably, between stations separated by the full width of the continent. It follows that, on a monthly timescale, aerosol sources over Australia are driven by

mechanisms that do not vary greatly either on regional or continental scales. There is evidence that inter-continental transport of biomass burning aerosol may play a significant role in this.

5 Despite the strong coherence in Australian aerosol just noted, we caution that this applies to monthly-mean data. The extent to which such coherence applies on shorter timescales is unclear, although its persistence among tropical stations was explored by Mitchell et al. (2013). Although a monthly climatology is useful for low frequency applications, including solar resource prediction and arguably climate change, it is by no means suitable for applications requiring instantaneous aerosol fields such as the atmospheric correction of remote sensing imagery from satellites. Hence future work will consider the relation between the instantaneous and monthly mean aerosol, and the predictive capacity of the latter. Future work will also be directed to filling in the geographical gaps evident in the present study, particularly the lack of stations over Victoria and Tasmania.

10 *Acknowledgements.* The CSIRO network was established with the support of the CSIRO Earth Observation Centre, with valued contributions from Dean Graetz and Denis O'Brien. We also thank [Michael Milner, who restored and added SPO2 instruments to the Bureau of Meteorology network. In addition, thanks are due to Bureau](#) observing office staff, and the station managers at CSIRO sites, in particular Greg Smith at Lake Argyle, Neale McShane at Birdsville, Robert Thorn at Jabiru, and Keith Leggett and Garry Dowling at Fowlers Gap. The CSIRO component of this work is supported by [the AERONET staff at NASA Goddard Space Flight Center, and](#) the Earth Observation
15 Informatics Future Science Platform (EOI-FSP) led by Dr Arnold Dekker.

References

- WMO/GAW Experts Workshop on a Global Surface-based Network for Long Term Observations of the Column Aerosol Optical Properties, GAW 162, World Meteorological Organization, Davos, Switzerland, WMO TD No. 1287, 2005.
- Alexandrov, M. D., Marshak, A., Cairns, B., Lacis, A. A., and Carlson, B. E.: Automated cloud screening algorithm for MFRSR data, *Geophysical Research Letters*, 31, doi:10.1029/2003GL019105, 2004.
- Boucher, O., Randall, D., Artaxo, P., Bretherton, C., Feingold, G., Forster, P., Kerminen, V.-M., Kondo, Y., Liao, H., Lohmann, U., Rasch, P., Satheesh, S., Sherwood, S., Stevens, B., and Zhang, X.: Clouds and Aerosols. In: *Climate Change 2013: The Physical Science Basis. Contribution of Working Group I to the Fifth Assessment Report of the Intergovernmental Panel on Climate Change*, chap. 7, pp. 571–657, Cambridge University Press, Cambridge, United Kingdom and New York, NY, USA, 2013.
- 10 Bouya, Z., Box, G. P., and Box, M. A.: Seasonal variability of aerosol optical properties in Darwin, Australia, *Journal of Atmospheric and Solar-Terrestrial Physics*, 72, 726–739, 2010.
- Bullard, J., Baddock, M., McTainsh, G. H., and Leys, J. F.: Sub-basin scale dust source geomorphology detected using MODIS, *Geophys. Res. Lett.*, 35, doi:10.1029/2008GL033928, 2008.
- Eck, T. F., Holben, B. N., Reid, J. S., Sinyuk, A., Dubovik, O., Smirnov, A., Giles, D., O'Neill, N. T., Tsay, S. C., Ji, Q., Al Mandoos, A., Khan, M. R., Reid, E. A., Schafer, J. S., Sorokine, M., Newcomb, W., and Slutsker, I.: Spatial and temporal variability of column-integrated aerosol optical properties in the southern Arabian Gulf and United Arab Emirates in summer, *J. Geophys. Res.*, 113(D01204), doi:10.1029/2007JD008944, 2008.
- 15 Forgan, B. W.: General method for Calibrating Sun Photometers, *Applied Optics*, 33, 4841–4850, 1994.
- Gillingham, S. S., Flood, N., Gill, T. K., and Mitchell, R. M.: Limitations of the dense dark vegetation method for aerosol retrieval under Australian conditions, *Rem. Sens. Lett.*, 3, 67–76, 2012.
- Gras, J. L.: Southern hemisphere tropospheric aerosol microphysics, *J. Geophys. Res.*, 96, 5345–5356, 1991.
- Gras, J. L. and Ayers, G. P.: Marine Aerosol at Southern Mid-Latitudes, *J. Geophys. Res.*, 88, 10 661–10 666, 1983.
- Grey, W. M. F. and North, P. R. J.: *Aerosol optical depth from dual-view (A)ATSR satellite observations*, chapter 6, pp. 161–192, Springer, Praxis Publishing, Chichester, U.K., 2009.
- 25 Harrison, L. and Michalsky, J.: Objective Algorithms for the Retrieval of Optical Depths from Ground-Based Measurements, *Applied Optics*, 33, 5126–5132, 1994.
- Hashimoto, M., Nakajima, T., Dubovik, O., Campanelli, M., Che, H., Khatri, P., Takamura, T., and Pandithurai, G.: Development of a new data-processing method for SKYNET sky radiometer observations, *Atmos. Meas. Tech.*, 5, 2723–2737, 2012.
- Holben, B. N., Eck, T. F., Slutsker, I., Tanré, D., Buis, J. P., Setzer, A., Vermote, E., Reagan, J. A., Kaufman, Y. J., Nakajima, T., Lavenu, F., Jankowiak, I., and Smirnov, A.: AERONET - A federated instrument network and data archive for aerosol characterization, *Remote Sensing of Environment*, 66, 1–16, 1998.
- 30 ISO: Guide to the expression of uncertainty in measurement, International Organization for Standardization, Switzerland, 101pp, 1995.
- Karlson, L. R., Greene, R. S. B., Scott, K. M., Stelcer, E., and O’Loingsigh, T.: Characteristics of aeolian dust across northwest Australia, *Aeolian Research*, 12, 41–46, doi:10.1016/j.aeolia.2013.11.003, 2014.
- 35 Levy, R. C., Remer, L. A., Kleidman, R. G., Mattoo, S., Ichoku, C., Kahn, R., and Eck, T. F.: Global evaluation of the Collection 5 MODIS dark-target aerosol products over land, *Atmos. Chem. Phys.*, 10, 10 399–10 420, 2010.

- Leys, J., McTainsh, G., Strong, C., Heidenreich, S., and Biseaga, K.: DustWatch: Community networks to improve wind erosion monitoring in Australia, *Earth Surf. Proc. Landforms*, 33, 1912–1926, 2008.
- Martonchik, J. V., Kahn, R. A., and Diner, D. J.: Retrieval of aerosol properties over land using MISR observations, chapter 9, pp. 267–293, Springer, Praxis Publishing, Chichester, U.K., 2009.
- 5 Mishchenko, M. I., Geogdzhayev, I. V., Liu, L., Laci, A. A., Cairns, B., and Travis, L. D.: Toward unified satellite climatology of aerosol properties: What do fully compatible MODIS and MISR aerosol pixels tell us?, *J. Quant. Spectrosc. Rad. Transf.*, 110, 1962–1963, 2009.
- Mitchell, R. M. and Forgan, B. W.: Aerosol measurements in the Australian Outback: intercomparison of sun photometers, *Journal of Atmospheric and Oceanic Technology*, 20, 54–66, doi:10.1175/1520-0426(2003), 2003.
- Mitchell, R. M., O'Brien, D. M., and Campbell, S. K.: Characteristics and radiative impact of the aerosol generated by the Canberra firestorm of January 2003, *Journal of Geophysical Research-Atmospheres*, 111, doi:10.1029/2005JD006304, 2006.
- 10 Mitchell, R. M., Campbell, S. K., and Qin, Y.: Recent increase in aerosol loading over the Australian arid zone, *Atmos. Chem. Phys.*, 10, 1689–1699, doi:10.5194/acp-10-1689-2010, 2010.
- Mitchell, R. M., Forgan, B. W., Campbell, S. K., and Qin, Y.: The Climatology of Australian Tropical Aerosol: Evidence for regional correlation, *Geophys. Res. Lett.*, 40, 2384–2389, doi:10.1002/grl.50403, 2013.
- 15 Nakajima, T., Yoon, S. C., Ramanathan, V., Shi, G. Y., Takemura, T., Higurashi, A., Takamura, T., Aoki, K., Sohn, B. J., Kim, S. W., Tsuruta, H., Sugimoto, N., Shimizu, A., Tanimoto, H., Sawa, Y., Lin, N. H., Lee, C. T., Goto, D., and Schutgens, N.: Overview of the Atmospheric Brown Cloud East Asian Regional Experiment 2005 and a study of the aerosol direct radiative forcing in east Asia, *J. Geophys. Res.*, 112, doi:10.1029/2007JD009009, 2007.
- Ohmura, A., Gilgen, H., Hegner, H., Müller, G., Wild, M., Dutton, E. G., Forgan, B. W., Fröhlich, C., Philipona, R., Heimo, A., König-Langlo, G., McArthur, B., Pinker, R., Whitlock, C. H., , and Dehne, K.: Baseline Surface Radiation Network (BSRN/WRMC), a new precision radiometry for climate research, *Bull. Amer. Meteor. Soc.*, 79, 2115–2136, doi:10.1175/1520-0477(1998), 1998.
- 20 Perry, M. and Troccoli, A.: Impact of a fire burn on solar irradiance and PV power, *Solar Energy*, 114, 167–173, 2015.
- Qin, Y., Mitchell, R. M., and Forgan, B. W.: Characterizing the aerosol and surface reflectance over Australia using AATSR, *IEEE Trans. Geosci. Rem. Sens.*, doi:10.1109/TGRS.2015.2433911, 2015.
- 25 Radhi, M., Box, M. A., Box, G. P., and Forgan, B. W.: Seasonal Cycles of Aerosol Optical Properties at Wagga Wagga and Tennant Creek, Australia, *Clean Air and Environmental Quality*, 40, 40–44, 2006.
- Radhi, M., Box, M. A., Box, G. P., Mitchell, R. M., Cohen, D. D., Stelcer, E., and Keywood, M. D.: Optical, physical and chemical characteristics of Australian continental aerosols: Results from a field experiment, *Atmos. Chem. Phys.*, 10, 5925–5942, doi:10.5194/acp-10-5925-2010, 2010.
- 30 Rosen, J., Young, S., Laby, J., Kjome, N., and Gras, J.: Springtime aerosol layers in the free troposphere over Australia: Mildura Aerosol Tropospheric Experiment (MATE 98), *Journal of Geophysical Research-Atmospheres*, 105, 17 833–17 842, doi:10.1029/2002JC002343, 2000.
- Rotstayn, L. D., Forgan, B. W., Gabric, A. J., Galbally, I. E., Gras, J. L., Keywood, M. D., Luhar, A. K., Mitchell, R. M., and Young, S. A.: Possible impacts of anthropogenic and natural aerosols on Australian climate and weather: a review, *Int. J. Climatol.*, 29, 461–479, www.interscience.wiley.com;doi:10.1002/joc.1729, 2009.
- 35 Rotstayn, L. D., Collier, M. A., Mitchell, R. M., Qin, Y., Campbell, S. K., and Dravitzki, S. M.: Simulated enhancement of ENSO-related rainfall variability due to Australian dust, *Atmos. Chem. Phys.*, 11, 6575–6592, doi:10.5194/acp-11-6575-2011, 2012.

- Rotstajn, L. D., Collier, M. A., Chrastansky, A., Jeffrey, S. J., and Luo, J. J.: Projected effects of declining aerosols in RCP4.5: unmasking global warming?, *Atmos. Chem. Phys.*, 13, 10 883–10 905, doi:10.5194/acp-13-10883-2013, 2013.
- Scott, W. D., Forgan, B. W., and Prospero, J. M.: Atmospheric turbidity in measurements at Broome in Western Australia 1979-1984, *Journal of the Royal Society of Western Australia*, 75, 111–118, 1992.
- 5 Smirnov, A., Holben, B. N., Eck, T. F., Dubovik, O., and Slutsker, I.: Cloud-screening and quality control algorithms for the AERONET database, *Remote Sensing of Environment*, 73, 337–349, doi:10.1016/S0034-4257(00)00109-7, 2000.
- Stephens, G. L., O'Brien, D. M., Webster, P. J., Pilewski, P., Kato, S., and Li, J.: The albedo of Earth, *Rev. Geophys.*, doi:10.1002/2014RG000449, 2015.
- Tanaka, T. Y. and Chiba, M.: A numerical study of the contributions of dust source regions to the global dust budget, *Glob. Plan. Change*, 52,
10 88–104, 2006.
- Taylor, K. E., Stouffer, R. J., and Meehl, G. A.: An Overview of Cmp5 and the Experiment Design, *Bulletin of the American Meteorological Society*, 93, 485–498, doi:10.1175/Bams-D-11-00094.1, 2012.
- Yoon, J., Pozzer, A., Chang, D. Y., Lelieveld, J., Kim, J., Kim, M., Lee, Y. G., Koo, J. H., Lee, J., and Moon, K. J.: Trend estimates of AERONET-observed and model-simulated AOTs between 1993 and 2013, *Atmos. Environment*, 125, 33–47, 2016.
- 15 Young, S. A., Vaughan, M. A., Kuehn, R. E., and Winker, D. M.: The Retrieval of Profiles of Particulate Extinction from Cloud–Aerosol Lidar and Infrared Pathfinder Satellite Observations (CALIPSO) Data: Uncertainty and Error Sensitivity Analyses, *J. Atmos. Oceanic Technol.*, 30, 395–428, doi:10.1175/JTECH-D-12-00046.1, 2013.
- Zhao, X., Heidinger, A. K., and Walther, A.: Climatology Analysis of Aerosol Effect on Marine Water Cloud from Long-term Satellite Climate Data Records, *Remote Sens.*, doi:10.3390/rs70x000x, 2016.

Table 1. Details of the 22 stations considered in this study.

Station	State	Agency	Latitude	Longitude	First	Last	Months
Darwin	NT	Bureau	-12.42	130.89	Apr 1999	Dec 2015	194
Jabiru	NT	CSIRO	-12.66	132.89	Jun 2000	Jun 2016	151
Lake Argyle	WA	CSIRO	-16.11	128.75	May 1999	May 2016	177
Broome	WA	Bureau	-17.95	122.24	Dec 1998	Dec 2015	181
Townsville	QLD	Bureau	-19.25	146.77	Sep 2012	Sep 2015	37
Tennant Creek	NT	Bureau	-19.64	134.18	Jun 1999	Jun 2006	82
Learmonth	WA	Bureau	-22.24	114.10	Dec 1998	Dec 2015	87
Rockhampton	QLD	Bureau	-23.38	150.48	May 2000	Dec 2015	183
Longreach	QLD	Bureau	-23.44	144.28	Dec 2012	Jun 2015	31
Alice Springs	NT	Bureau	-23.80	133.89	Jan 2001	Dec 2015	180
Birdsville	QLD	CSIRO	-25.90	139.35	Aug 2005	Apr 2016	115
Geraldton	WA	Bureau	-28.80	114.70	Nov 1998	Dec 2015	115
Tinga Tingana	SA	CSIRO	-28.98	139.99	Jul 1997	Feb 2012	121
Kalgoorlie	WA	Bureau	-30.78	121.45	Jan 2003	Dec 2015	79
Fowlers Gap	NSW	CSIRO	-31.09	141.70	Apr 2013	Apr 2016	34
Woomera	SA	Bureau	-31.16	136.81	Jan 2012	Jun 2015	42
Lake Lefroy	WA	CSIRO	-31.25	121.70	Jun 2012	May 2016	46
Cobar	NSW	Bureau	-31.54	145.80	May 2012	Jun 2015	38
Mildura	Vic	Bureau	-34.24	142.09	Nov 1998	Jan 2015	102
Adelaide	SA	Bureau	-34.95	138.52	Mar 2003	Dec 2015	154
Wagga	NSW	Bureau	-35.16	147.46	Jan 2000	Dec 2015	190
Canberra	ACT	CSIRO	-35.27	149.11	Jan 2003	Jul 2016	148

Table 2. Parameters of the fits to the aerosol optical depth time series derived from the 22 stations. R^2 is the square of Pearson's correlation coefficient of the fit between the model given in Equation 2 and the aerosol optical depth time series at 500 nm. The parameters a_0 and a_1 give the AOD offset and linear coefficient respectively, the latter in units of AOD per year. The following column tabulates the significance of the trend, expressed as the probability that the trend arises from a random distribution. Trends were considered significant for $P(a_1)$ of $<6\%$, indicated in bold face. Remaining columns list the coefficients b and phase for the three sinusoidal components with periods of 12 months, 6 months and 4 months, respectively. The phase is expressed as the time in months at which the basis cosine function reaches its first maximum. The station labelled Canberra^b in the last row of the table demonstrates the improvement in the fit when the effects of the firestorm of January 2003 are excised. Exclusion of the months January, February, March and April 2003 leads to an increase in the value of R^2 from 0.181 to 0.413.

Station	Months	R^2	a_0	a_1	$P(a_1)$	12 month		6 month		4 month	
						b_{12}	t_{12}	b_6	t_6	b_4	t_4
Darwin	194	0.670	0.150	0.000	0.669	0.079	10.3	0.028	3.8	0.013	1.8
Jabiru	151	0.685	0.165	-0.001	0.198	0.089	11.0	0.026	4.2	0.016	1.8
Lake Argyle	177	0.601	0.147	-0.002	0.056	0.086	11.0	0.037	4.0	0.023	1.5
Broome	181	0.527	0.136	-0.002	0.005	0.067	11.0	0.029	4.0	0.013	1.7
Townsville	37	0.604	0.094	-0.006	0.168	0.031	11.3	0.005	3.1	0.011	1.3
Tennant Creek	82	0.688	0.090	-0.004	0.038	0.054	10.9	0.022	3.9	0.011	1.7
Learmonth	87	0.736	0.055	0.001	0.000	0.033	11.7	0.009	3.4	0.006	1.6
Rockhampton	183	0.692	0.087	-0.001	0.015	0.043	11.4	0.012	3.8	0.005	1.4
Longreach	31	0.697	0.072	-0.011	0.046	0.036	11.4	0.009	4.6	0.003	1.6
Alice Springs	180	0.586	0.064	-0.001	0.021	0.033	11.2	0.011	3.8	0.006	1.7
Birdsville	115	0.688	0.056	-0.001	0.100	0.024	10.9	0.010	3.6	0.007	1.6
Geraldton	115	0.397	0.064	-0.000	0.365	0.031	11.9	0.005	2.1	0.006	1.3
Tinga Tingana	121	0.382	0.048	0.001	0.157	0.023	11.4	0.011	2.9	0.011	1.1
Kalgoorlie	79	0.737	0.046	0.000	0.686	0.016	11.0	0.007	3.1	0.006	1.3
Fowlers Gap	34	0.731	0.042	0.004	0.010	0.011	10.9	0.006	3.0	0.006	1.6
Woomera	42	0.752	0.040	0.002	0.044	0.014	10.7	0.007	3.6	0.006	1.6
Lake Lefroy	46	0.756	0.049	0.002	0.026	0.016	11.1	0.005	2.8	0.007	1.3
Cobar	38	0.750	0.045	-0.001	0.315	0.013	11.4	0.005	2.9	0.009	1.5
Mildura	102	0.476	0.056	-0.000	0.053	0.011	11.0	0.009	2.9	0.008	1.3
Adelaide	154	0.510	0.058	0.000	0.880	0.014	10.4	0.006	3.3	0.006	1.2
Wagga Wagga	190	0.310	0.061	-0.000	0.944	0.017	0.1	0.007	2.9	0.008	1.2
Canberra	148	0.181	0.077	-0.002	0.131	0.025	0.6	0.009	2.3	0.012	1.1
Canberra ^b	144	0.413	0.061	0.000	0.308	0.018	0.4	0.009	3.1	0.005	1.2

Table 3. Analysis of linear trends a_1 expressed as the change in aerosol optical depth per year. Only stations with at least a 10-year data record and trend significance of $P(a_1) \leq 6\%$ are listed. $\sigma(a_1)$ is the standard uncertainty in a_1 .

Station	Months	$P(a_1)$	a_1 (yr ⁻¹)	$\sigma(a_1)$
Lake Argyle	177	0.056	-0.0017	0.00086
Broome	181	0.005	-0.0022	0.00077
Rockhampton	183	0.015	-0.0009	0.00035
Alice Springs	180	0.021	-0.0009	0.00037

Table 4. Pearson's correlation coefficient between all Tropical station pairs, for stations with time series of 60 months or greater.

Tropical				
Station	Darwin	Jabiru	L. Argyle	Broome
Darwin	1.000	0.888	0.827	0.750
Jabiru	0.888	1.000	0.869	0.804
L. Argyle	0.827	0.869	1.000	0.883
Broome	0.750	0.804	0.883	1.000

Table 5. Pearson's correlation coefficient between all Arid Zone station pairs, for stations with time series of 60 months or greater.

Arid Zone					
Station	Alice	Birdsville	Geraldton	T. Tingana	Mildura
Alice	1.000	0.920	0.569	0.732	0.577
Birdsville	0.920	1.000	0.550	0.748	0.574
Geraldton	0.569	0.550	1.000	0.361	0.469
T. Tingana	0.732	0.748	0.361	1.000	0.757
Mildura	0.577	0.574	0.469	0.757	1.000

Table 6. Pearson's correlation coefficient between all Temperate station pairs, for stations with time series of 60 months or greater.

Temperate				
Station	Kalg.	Adel.	Wagga	Canberra
Kalg.	1.000	0.680	0.492	0.263
Adel.	0.680	1.000	0.575	0.375
Wagga	0.492	0.575	1.000	0.795
Canberra	0.263	0.375	0.795	1.000

Table 7. Pearson's correlation coefficient between all unclassified station pairs, for stations with time series of 60 months or greater.

Unclassified			
Station	Tennant Ck	Learmonth	Rockhampton
Tennant Ck	1.000	0.761	0.829
Learmonth	0.761	1.000	0.726
Rockhampton	0.829	0.726	1.000

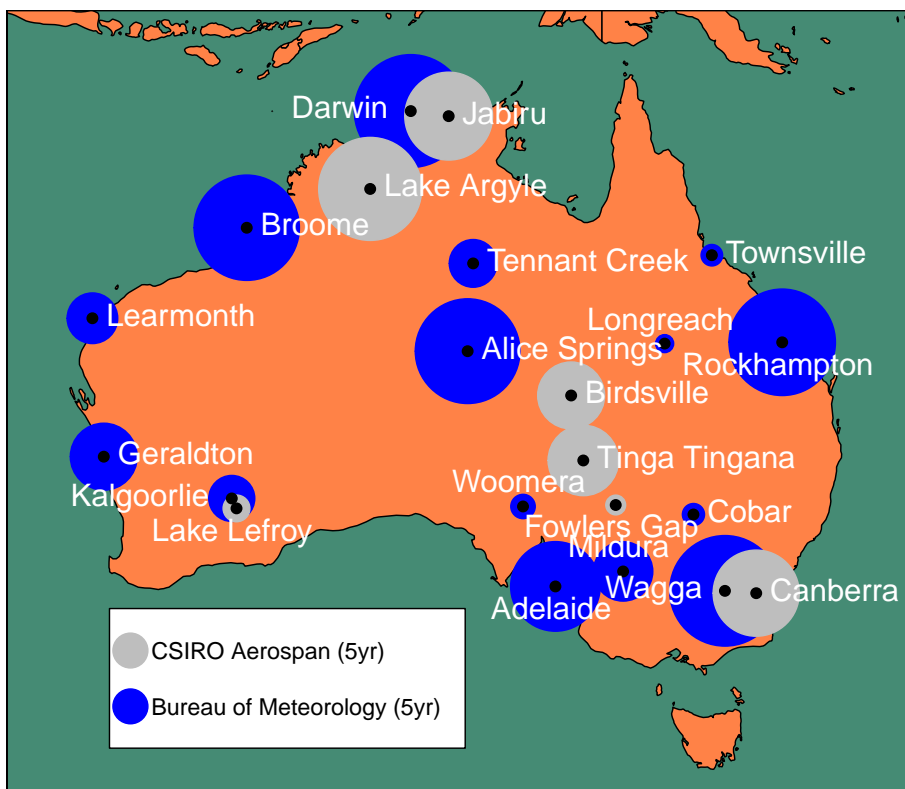


Figure 1. Location of sun photometer stations in Australia. Bureau of Meteorology stations are shown in blue, and CSIRO/AeroSpan stations in grey. The radius of the filled circles scales as the duration of the data record at a given station. The filled circles shown in the legend are for a duration of 5 yr.

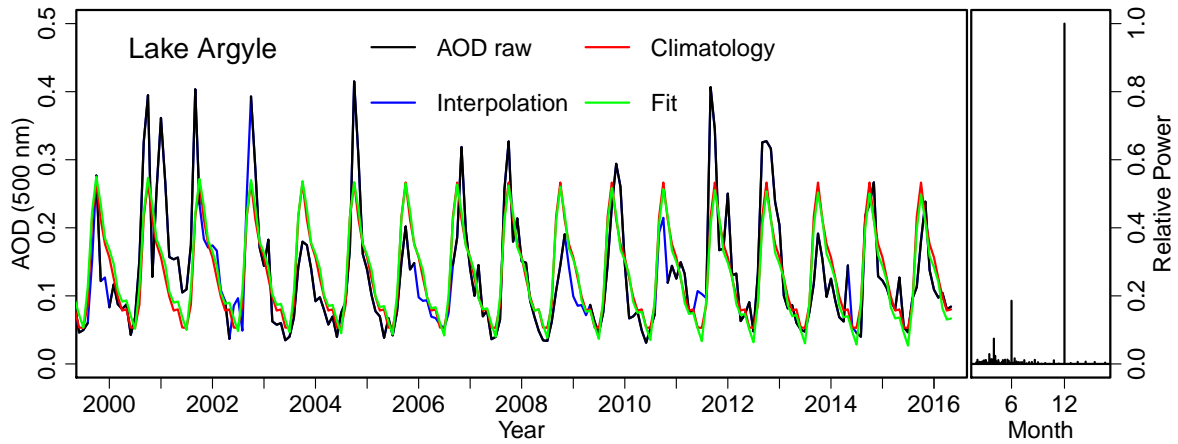


Figure 2. Left panel: Time series of monthly mean aerosol optical depth at 500 nm at Lake Argyle. The raw data is shown in black, the (repeated) climatology in red, the interpolated data in blue (see text), and the model fit is shown in green. Right panel: The power spectrum of the interpolated time series computed using a fast Fourier transform (FFT).

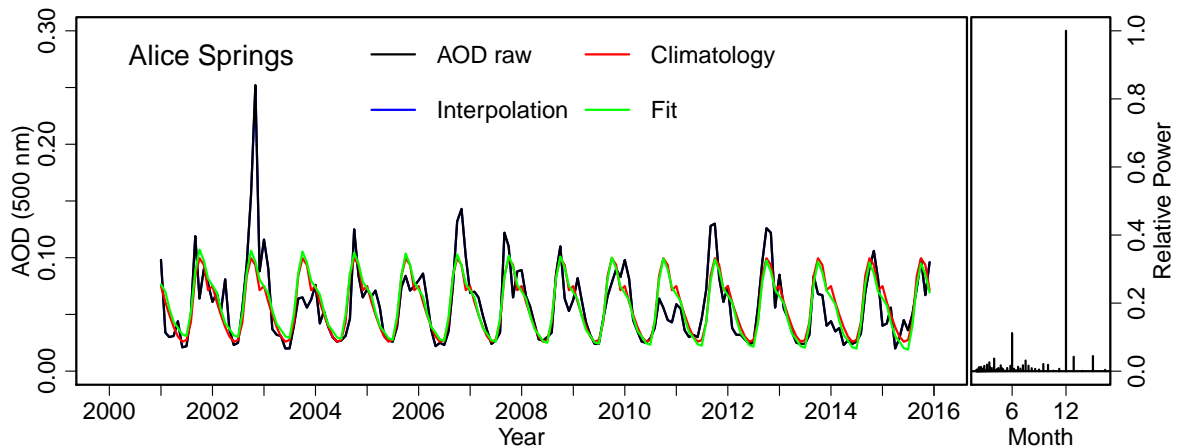


Figure 3. Left panel: Time series of monthly mean aerosol optical depth at 500 nm at Alice Springs. The raw data is shown in black, the (repeated) climatology in red, the interpolated data in blue (see text), and the model fit is shown in green. Right panel: The power spectrum of the interpolated time series computed using a fast Fourier transform (FFT).

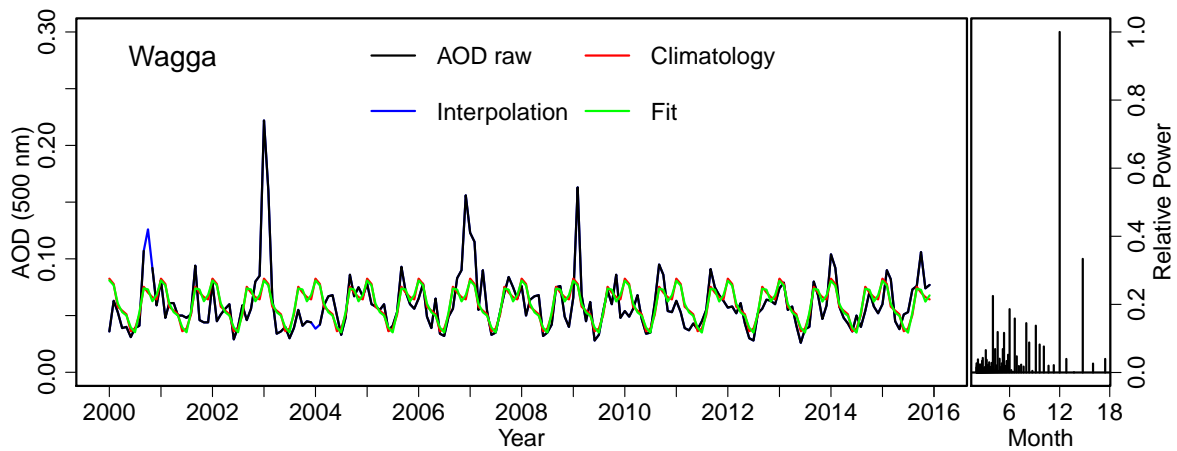


Figure 4. Left panel: Time series of monthly mean aerosol optical depth at 500 nm at Wagga Wagga. The raw data is shown in black, the (repeated) climatology in red, the interpolated data in blue (see text), and the model fit is shown in green. Right panel: The power spectrum of the interpolated time series computed using a fast Fourier transform (FFT).

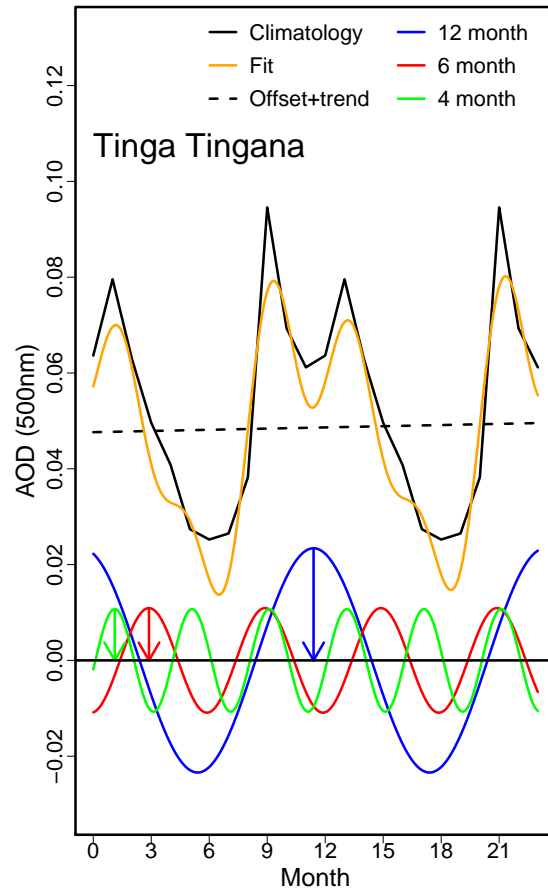


Figure 5. Illustration of the Fourier decomposition of the periodic component of the aerosol optical depth at Tinga Tingana. The fitted curve (orange) results from the addition of the offset plus linear trend (dashed line) to the three sinusoids corresponding to periods of 12 months (blue), 6 months (red) and 4 months (green). The arrowed phase-times of the three sinusoids were 11.4, 2.9 and 1.1 months respectively. The phase-times are referenced to the first December in each time series, denoted as month zero in this plot. The observed climatology is shown as the black solid line. The linear trend apparent in the dashed line is not significant at the 5% level (see Table 2).

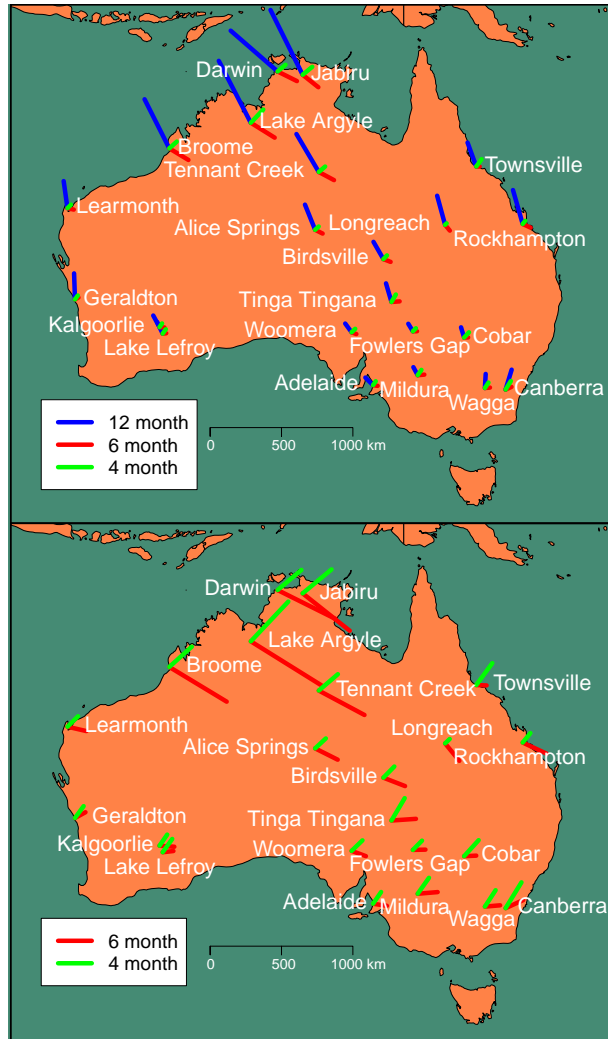


Figure 6. Amplitude and phase of the 12-month (blue), 6-month (red) and 4-month (green) components of the sinusoidal functions fitted to the time series of aerosol optical depth at 500 nm. The length of the bars is proportional to their amplitude, while the angles measured clockwise from due north indicate their phase. In the upper panel, all three components are shown. The lower panel presents an expanded version of the 6-month (red) and 4-month (green) components, where the lengths of these two components are scaled up by a factor of 3 relative to the upper panel.

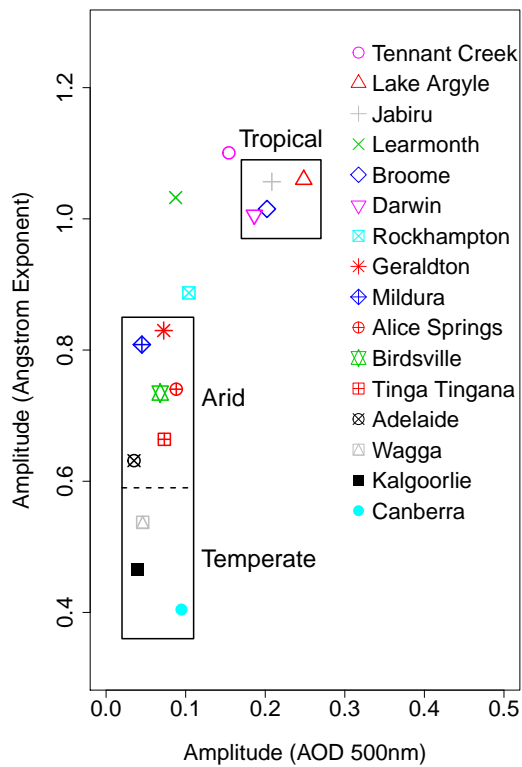


Figure 7. Plot of the periodic amplitudes of the Ångström exponent against aerosol optical depth at 500 nm. The amplitudes were obtained from the peak-to-peak excursion of the fitted functions representing the periodic component of the respective aerosol quantities.

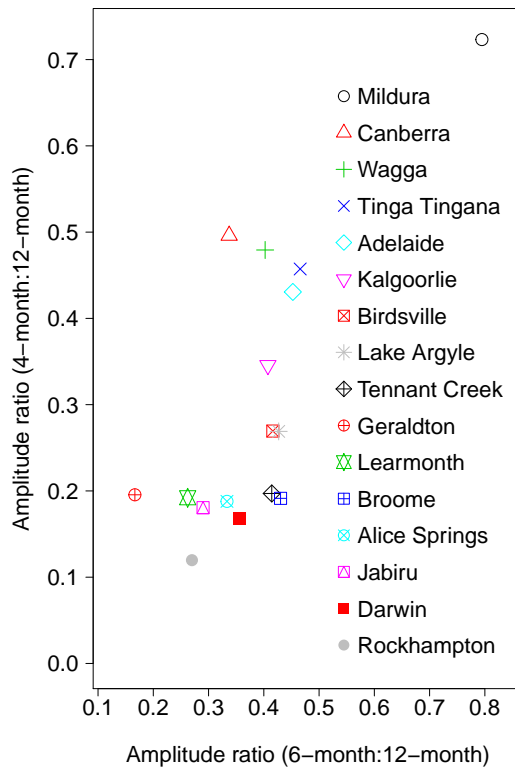


Figure 8. Plot of the amplitudes of the sinusoidal components with a period of 4 months (vertical axis) against the amplitude of the 6 monthly component (horizontal axis), both relative to the 12-month amplitude. The relative 4-monthly amplitude controls the extent of double-peaking in the spring-summer period.

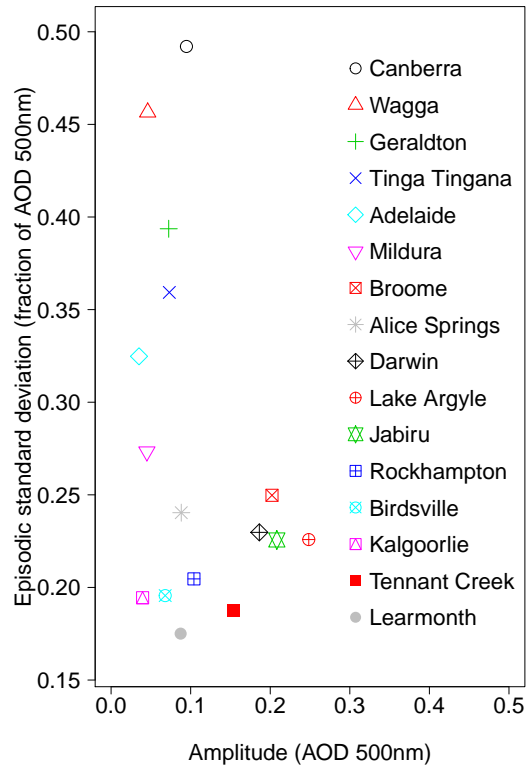


Figure 9. The standard deviation of the episodic component of the aerosol optical depth expressed as a fraction of the amplitude of the periodic aerosol optical depth at 500 nm, plotted against the amplitude of the periodic aerosol optical depth at 500 nm. This allows clear separation between (a) the tropical stations, and (b) stations effected by increasingly large episodic activity. Stations where the episodic standard deviation is more than 30% of the periodic component include the smoke-affected temperate stations of Wagga Wagga and Canberra, and the dust-dominated station at Tinga Tingana. The high episodic aerosol at Wagga Wagga and Canberra is consistent with the increasing incidence of smoke aerosol from forested areas from west to east.

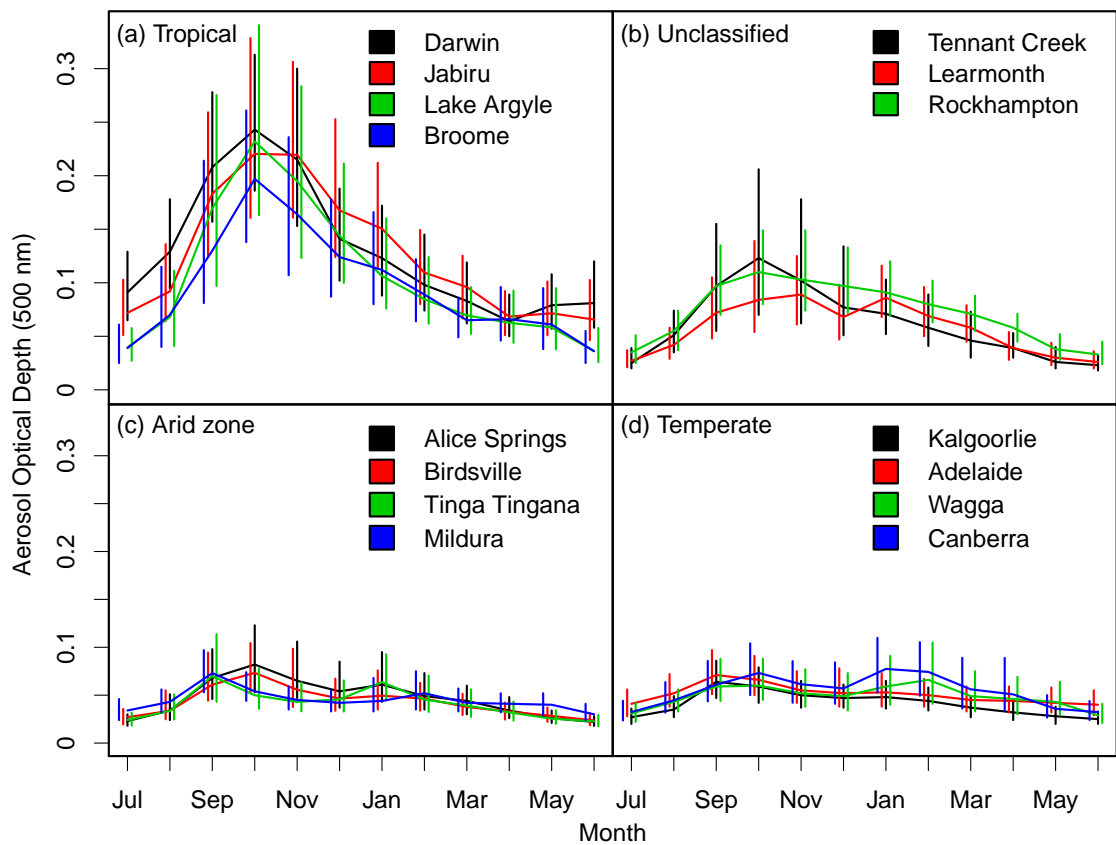


Figure 10. The monthly climatology of aerosol optical depth at 500 nm, for (a) Tropical, (b) Unclassified, (c) Arid zone, and (d) Temperate regions. The plots depict the monthly median, with the vertical bars showing the inter-quartile range, i.e., the range in aerosol optical depth between the 25th and 75th percentiles. The vertical bars are offset between sites for clarity.

Appendix A: Climatological tables

Table A1. Monthly climatology of 500 nm aerosol optical depth and Ångström exponent at all 22 stations, listed in order of decreasing latitude. The columns labelled 25Q and 75Q list the break points at the first quartile (25%) and third quartile (75%) respectively. For the Bureau stations (denoted ‘BoM’ in the header), the Ångström exponent before 2009 was calculated using the wavelength pair (500, 778 nm). For 2009 and beyond, the wavelength pair (500, 868 nm) was used (see text). For the CSIRO AeroSpan stations, denoted ‘CSIRO’, the wavelength pair (440, 870 nm) was used throughout.

Darwin (12.42 S, BoM)			Aerosol Optical Depth, 500 nm				Ångström exponent				
Mon	Yrs	Nobs	Mean	25Q	Median	75Q	Nobs	Mean	25Q	Median	75Q
1	13	17430	0.140	0.088	0.123	0.172	17430	0.57	0.27	0.54	0.84
2	12	21399	0.120	0.074	0.098	0.145	21399	0.58	0.26	0.68	1.05
3	13	31050	0.098	0.062	0.083	0.119	31050	0.86	0.53	0.89	1.16
4	12	73545	0.078	0.050	0.064	0.089	73545	0.93	0.58	0.92	1.24
5	13	105951	0.092	0.057	0.079	0.108	105951	1.13	0.81	1.15	1.46
6	14	134604	0.099	0.058	0.081	0.120	134604	1.22	0.89	1.22	1.59
7	14	139413	0.105	0.065	0.091	0.129	139413	1.18	0.88	1.20	1.49
8	15	126444	0.149	0.095	0.129	0.178	126444	1.29	1.05	1.30	1.54
9	15	108975	0.230	0.157	0.208	0.278	108975	1.34	1.19	1.36	1.54
10	15	86430	0.260	0.186	0.243	0.313	86430	1.26	1.12	1.30	1.45
11	15	54747	0.238	0.153	0.215	0.300	54747	1.22	1.01	1.29	1.50
12	15	36378	0.165	0.102	0.141	0.188	36378	0.90	0.65	0.96	1.24

Jabiru (12.66 S, CSIRO)			Aerosol Optical Depth, 500 nm				Ångström exponent				
Mon	Yrs	Nobs	Mean	25Q	Median	75Q	Nobs	Mean	25Q	Median	75Q
01	9	6417	0.187	0.113	0.150	0.212	6417	0.57	0.21	0.52	0.85
02	8	8371	0.128	0.080	0.110	0.149	8371	0.65	0.29	0.68	1.06
03	10	12124	0.114	0.067	0.096	0.125	12124	0.78	0.42	0.80	1.11
04	11	25762	0.084	0.051	0.068	0.092	25762	0.85	0.49	0.86	1.23
05	13	40694	0.088	0.051	0.071	0.101	40694	0.97	0.60	0.99	1.35
06	15	53134	0.088	0.046	0.066	0.103	53134	1.03	0.64	1.03	1.45
07	15	64731	0.085	0.051	0.072	0.103	64731	1.07	0.77	1.11	1.42
08	15	65423	0.117	0.064	0.092	0.136	65423	1.27	1.02	1.32	1.58
09	15	49354	0.212	0.125	0.183	0.259	49354	1.35	1.17	1.40	1.59
10	15	35388	0.259	0.161	0.220	0.329	35388	1.33	1.16	1.36	1.54
11	12	21807	0.250	0.161	0.220	0.306	21807	1.19	0.99	1.22	1.45
12	12	14469	0.214	0.124	0.168	0.253	14469	0.78	0.40	0.83	1.18

Lake Argyle (16.11 S, CSIRO)		Aerosol Optical Depth, 500 nm					Ångström exponent				
Mon	Yrs	Nobs	Mean	25Q	Median	75Q	Nobs	Mean	25Q	Median	75Q
01	14	25361	0.146	0.076	0.106	0.160	25361	0.48	0.16	0.37	0.73
02	14	24189	0.114	0.062	0.085	0.124	24189	0.63	0.22	0.60	0.99
03	14	30789	0.090	0.052	0.070	0.096	30789	0.71	0.38	0.72	1.02
04	15	45877	0.077	0.044	0.063	0.093	45877	1.04	0.73	1.09	1.38
05	17	51042	0.078	0.038	0.058	0.095	51042	1.12	0.81	1.15	1.46
06	13	43909	0.050	0.026	0.036	0.058	43909	1.04	0.77	1.07	1.35
07	14	50725	0.051	0.027	0.040	0.058	50725	1.11	0.81	1.11	1.43
08	15	60426	0.088	0.041	0.068	0.111	60426	1.23	1.02	1.27	1.49
09	14	58752	0.212	0.097	0.170	0.275	58752	1.34	1.15	1.40	1.61
10	16	50694	0.266	0.163	0.232	0.341	50694	1.39	1.21	1.43	1.60
11	16	45741	0.219	0.123	0.195	0.283	45741	1.30	1.14	1.38	1.57
12	14	27041	0.175	0.100	0.144	0.211	27041	0.84	0.48	0.88	1.20

Broome (17.95 S, BoM)		Aerosol Optical Depth, 500 nm					Ångström exponent				
Mon	Yrs	Nobs	Mean	25Q	Median	75Q	Nobs	Mean	25Q	Median	75Q
1	15	63441	0.137	0.080	0.112	0.166	63441	0.38	0.12	0.34	0.61
2	16	64785	0.106	0.064	0.089	0.122	64785	0.42	0.17	0.37	0.62
3	15	101973	0.077	0.049	0.065	0.086	101973	0.61	0.32	0.63	0.93
4	13	142407	0.079	0.046	0.066	0.096	142407	1.05	0.71	1.12	1.44
5	13	154413	0.076	0.038	0.061	0.095	154413	1.20	0.88	1.26	1.57
6	13	161550	0.047	0.025	0.036	0.055	161550	0.94	0.54	0.98	1.33
7	13	168627	0.048	0.025	0.039	0.061	168627	0.92	0.56	0.97	1.33
8	14	185094	0.090	0.040	0.070	0.115	185094	1.07	0.74	1.16	1.50
9	16	211056	0.162	0.081	0.130	0.214	211056	1.28	1.06	1.32	1.56
10	16	202263	0.210	0.138	0.197	0.261	202263	1.19	1.01	1.27	1.49
11	16	154101	0.185	0.107	0.164	0.236	154101	1.12	0.86	1.13	1.42
12	17	117633	0.141	0.087	0.124	0.178	117633	0.71	0.31	0.65	1.08

Townsville (19.25 S, BoM)			Aerosol Optical Depth, 500 nm				Ångström exponent				
Mon	Yrs	Nobs	Mean	25Q	Median	75Q	Nobs	Mean	25Q	Median	75Q
1	3	11097	0.103	0.071	0.088	0.122	11097	0.63	0.28	0.62	0.93
2	3	11856	0.090	0.048	0.069	0.100	11856	0.71	0.38	0.74	0.98
3	3	16746	0.073	0.054	0.068	0.084	16746	0.38	0.14	0.38	0.61
4	3	18690	0.056	0.039	0.051	0.067	18690	0.65	0.35	0.58	0.96
5	3	21204	0.057	0.040	0.056	0.070	21204	0.50	0.17	0.44	0.80
6	3	18183	0.058	0.040	0.051	0.071	18183	0.72	0.40	0.72	1.08
7	3	25752	0.054	0.039	0.049	0.066	25752	0.59	0.35	0.62	0.80
8	3	33111	0.068	0.046	0.061	0.082	33111	0.84	0.62	0.86	1.07
9	4	33579	0.108	0.070	0.096	0.135	33579	0.91	0.69	0.94	1.15
10	3	29700	0.114	0.084	0.105	0.127	29700	0.86	0.64	0.87	1.09
11	3	21135	0.105	0.071	0.094	0.129	21135	0.76	0.50	0.73	1.02
12	3	22038	0.111	0.070	0.092	0.117	22038	0.74	0.44	0.69	1.05

Tennant Creek (19.64 S, BoM)			Aerosol Optical Depth, 500 nm				Ångström exponent				
Mon	Yrs	Nobs	Mean	25Q	Median	75Q	Nobs	Mean	25Q	Median	75Q
1	7	53808	0.087	0.052	0.071	0.103	53808	1.02	0.63	1.04	1.41
2	7	46875	0.079	0.041	0.058	0.089	46875	0.79	0.43	0.73	1.10
3	7	62208	0.056	0.030	0.046	0.073	62208	1.22	0.70	1.10	1.53
4	7	74208	0.046	0.030	0.039	0.053	74208	1.28	0.80	1.12	1.72
5	7	78627	0.039	0.020	0.026	0.040	78627	1.17	0.91	1.19	1.42
6	7	73527	0.029	0.018	0.023	0.032	73527	1.00	0.73	1.02	1.28
7	7	98988	0.034	0.020	0.025	0.039	98988	1.16	0.75	1.09	1.47
8	7	104730	0.063	0.035	0.051	0.074	104730	1.30	1.01	1.30	1.61
9	7	80706	0.126	0.055	0.097	0.155	80706	1.24	1.06	1.29	1.46
10	7	81009	0.159	0.070	0.123	0.206	81009	1.44	1.25	1.45	1.62
11	7	59589	0.138	0.062	0.102	0.178	59589	1.22	0.97	1.30	1.50
12	7	54309	0.101	0.051	0.077	0.134	54309	1.22	0.91	1.23	1.60

Learmonth (22.24 S, BoM)			Aerosol Optical Depth, 500 nm				Ångström exponent				
Mon	Yrs	Nobs	Mean	25Q	Median	75Q	Nobs	Mean	25Q	Median	75Q
1	7	69039	0.099	0.068	0.086	0.116	69039	0.34	0.12	0.29	0.53
2	6	73647	0.078	0.050	0.069	0.096	73647	0.29	0.10	0.34	0.54
3	6	61080	0.064	0.045	0.058	0.079	61080	0.36	0.08	0.31	0.66
4	6	54321	0.045	0.028	0.039	0.054	54321	0.67	0.39	0.68	0.98
5	6	51885	0.036	0.023	0.030	0.044	51885	0.71	0.39	0.72	1.00
6	8	73611	0.030	0.020	0.026	0.036	73611	0.64	0.30	0.64	0.96
7	7	85224	0.031	0.021	0.027	0.037	85224	0.61	0.25	0.53	0.96
8	8	101604	0.047	0.029	0.042	0.058	101604	0.85	0.53	0.86	1.16
9	8	106053	0.083	0.048	0.072	0.105	106053	1.00	0.74	1.02	1.27
10	8	113100	0.100	0.054	0.084	0.139	113100	0.98	0.72	1.05	1.27
11	7	105447	0.097	0.061	0.089	0.125	105447	0.73	0.43	0.72	1.00
12	8	107043	0.076	0.047	0.068	0.098	107043	0.55	0.23	0.54	0.80

Rockhampton (23.38 S, BoM)			Aerosol Optical Depth, 500 nm				Ångström exponent				
Mon	Yrs	Nobs	Mean	25Q	Median	75Q	Nobs	Mean	25Q	Median	75Q
1	15	62601	0.107	0.069	0.091	0.120	60318	0.88	0.58	0.91	1.20
2	15	59529	0.090	0.063	0.080	0.102	57762	0.85	0.50	0.85	1.22
3	15	78348	0.074	0.055	0.071	0.088	77493	0.72	0.38	0.69	1.00
4	15	100890	0.061	0.045	0.058	0.071	99675	0.81	0.48	0.88	1.21
5	16	123183	0.043	0.028	0.038	0.052	115098	0.96	0.59	1.00	1.37
6	16	109758	0.037	0.024	0.033	0.045	94458	0.92	0.59	0.94	1.27
7	16	142692	0.041	0.025	0.035	0.051	117462	0.88	0.57	0.94	1.25
8	14	140895	0.059	0.037	0.055	0.074	130539	1.11	0.83	1.14	1.39
9	16	156834	0.110	0.070	0.097	0.135	138741	1.17	0.95	1.19	1.43
10	16	130170	0.127	0.080	0.110	0.149	121626	1.12	0.84	1.14	1.44
11	16	99297	0.121	0.074	0.103	0.149	95661	1.10	0.83	1.11	1.38
12	16	83106	0.116	0.072	0.097	0.133	77235	1.03	0.72	1.05	1.36

Longreach (23.44 S, BoM)			Aerosol Optical Depth, 500 nm				Ångström exponent				
Mon	Yrs	Nobs	Mean	25Q	Median	75Q	Nobs	Mean	25Q	Median	75Q
1	3	20343	0.080	0.039	0.058	0.097	20343	0.75	0.45	0.83	1.10
2	3	21129	0.051	0.031	0.043	0.060	21129	0.75	0.46	0.72	1.02
3	3	24864	0.051	0.042	0.050	0.058	24864	0.70	0.51	0.74	0.91
4	3	32142	0.033	0.024	0.033	0.039	32142	0.94	0.60	0.88	1.18
5	3	29613	0.028	0.017	0.026	0.036	29613	0.71	0.38	0.66	0.95
6	3	23079	0.026	0.017	0.025	0.032	23079	0.34	0.13	0.59	1.00
7	2	22395	0.030	0.021	0.027	0.038	22395	0.38	0.04	0.43	0.75
8	2	27858	0.034	0.023	0.029	0.042	27858	0.51	0.14	0.47	0.88
9	2	24885	0.075	0.054	0.065	0.084	24885	0.58	0.30	0.69	1.29
10	2	28503	0.092	0.076	0.094	0.113	28503	0.82	0.44	0.97	1.30
11	2	18720	0.086	0.069	0.085	0.104	18720	0.49	0.23	0.51	0.82
12	3	22056	0.092	0.047	0.068	0.097	22056	0.78	0.57	0.84	1.16

Alice Springs (23.80 S, BoM)			Aerosol Optical Depth, 500 nm				Ångström exponent				
Mon	Yrs	Nobs	Mean	25Q	Median	75Q	Nobs	Mean	25Q	Median	75Q
1	15	164997	0.076	0.043	0.061	0.095	164997	0.61	0.27	0.54	0.90
2	15	147060	0.061	0.035	0.049	0.073	147060	0.63	0.35	0.59	0.87
3	15	153681	0.051	0.030	0.044	0.060	153681	0.64	0.36	0.57	0.82
4	15	169059	0.041	0.026	0.034	0.048	169059	0.85	0.59	0.82	1.08
5	15	161859	0.030	0.021	0.026	0.034	161859	0.98	0.71	0.92	1.14
6	15	164082	0.025	0.018	0.022	0.028	164082	0.83	0.61	0.82	1.04
7	15	200130	0.027	0.018	0.023	0.030	200130	0.94	0.73	0.93	1.15
8	15	227472	0.043	0.024	0.034	0.051	227472	1.04	0.83	1.05	1.25
9	15	197091	0.082	0.046	0.068	0.098	197091	1.16	0.93	1.17	1.38
10	15	193989	0.098	0.053	0.082	0.123	193989	1.08	0.84	1.13	1.34
11	15	153372	0.090	0.047	0.065	0.106	153372	0.96	0.67	0.94	1.23
12	15	131631	0.070	0.037	0.054	0.085	131631	0.70	0.48	0.70	0.92

Birdsville (25.90 S, CSIRO)		Aerosol Optical Depth, 500 nm					Ångström exponent				
Mon	Yrs	Nobs	Mean	25Q	Median	75Q	Nobs	Mean	25Q	Median	75Q
01	9	27932	0.063	0.035	0.050	0.076	27932	0.59	0.22	0.56	0.92
02	9	22760	0.055	0.034	0.046	0.063	22760	0.61	0.27	0.61	0.93
03	10	34604	0.044	0.029	0.038	0.051	34604	0.50	0.25	0.50	0.74
04	9	30607	0.037	0.024	0.033	0.042	30607	0.78	0.51	0.78	1.04
05	9	26949	0.031	0.022	0.028	0.037	26949	0.98	0.69	0.97	1.21
06	9	23085	0.028	0.018	0.024	0.031	23085	1.01	0.69	0.98	1.27
07	10	26187	0.031	0.019	0.027	0.036	26187	1.06	0.78	1.07	1.33
08	10	33467	0.044	0.025	0.034	0.055	33467	1.21	0.93	1.20	1.45
09	11	40205	0.079	0.044	0.061	0.094	40205	1.23	0.95	1.25	1.53
10	10	38777	0.091	0.052	0.073	0.104	38777	1.13	0.80	1.20	1.50
11	9	24828	0.076	0.038	0.056	0.098	24828	0.97	0.61	1.03	1.36
12	9	26411	0.060	0.034	0.046	0.067	26411	0.63	0.26	0.62	0.96

Geraldton (28.80 S, BoM)		Aerosol Optical Depth, 500 nm					Ångström exponent				
Mon	Yrs	Nobs	Mean	25Q	Median	75Q	Nobs	Mean	25Q	Median	75Q
1	9	118401	0.085	0.048	0.067	0.095	96831	0.40	0.12	0.39	0.67
2	9	96519	0.076	0.045	0.062	0.088	77730	0.47	0.17	0.42	0.73
3	9	89955	0.052	0.032	0.046	0.063	71049	0.49	0.19	0.46	0.79
4	9	72270	0.040	0.026	0.035	0.047	48900	0.68	0.34	0.71	1.03
5	10	69081	0.032	0.021	0.028	0.038	50034	0.62	0.18	0.63	1.06
6	10	77562	0.028	0.017	0.024	0.035	61611	0.47	0.11	0.53	0.86
7	10	75828	0.032	0.022	0.028	0.039	65628	0.51	0.09	0.52	0.94
8	9	75966	0.044	0.025	0.036	0.055	65964	0.69	0.28	0.71	1.12
9	9	73878	0.076	0.046	0.066	0.093	65076	0.87	0.59	0.95	1.22
10	9	92436	0.071	0.047	0.060	0.084	78741	0.80	0.50	0.84	1.14
11	11	97635	0.080	0.050	0.070	0.096	86379	0.62	0.34	0.63	0.92
12	11	136530	0.087	0.047	0.068	0.101	110145	0.64	0.18	0.47	0.82

Tinga Tingana (28.98 S, CSIRO)		Aerosol Optical Depth, 500 nm					Ångström exponent				
Mon	Yrs	Nobs	Mean	25Q	Median	75Q	Nobs	Mean	25Q	Median	75Q
01	9	32799	0.086	0.044	0.064	0.093	32799	0.65	0.26	0.58	1.04
02	11	33001	0.059	0.032	0.045	0.070	33001	0.70	0.34	0.67	1.00
03	11	38212	0.049	0.027	0.039	0.056	38212	0.55	0.26	0.53	0.79
04	12	31238	0.038	0.024	0.032	0.043	31238	0.80	0.43	0.77	1.15
05	10	25510	0.038	0.020	0.025	0.034	25510	0.91	0.54	0.90	1.25
06	11	21402	0.026	0.018	0.023	0.029	21402	0.87	0.47	0.85	1.23
07	11	24220	0.027	0.018	0.024	0.032	24220	0.78	0.37	0.74	1.10
08	7	20779	0.043	0.025	0.034	0.051	20779	1.02	0.74	1.05	1.30
09	9	19911	0.093	0.043	0.070	0.114	19911	1.22	0.98	1.30	1.53
10	8	26343	0.073	0.036	0.050	0.078	26343	1.15	0.84	1.20	1.48
11	9	26199	0.063	0.033	0.043	0.063	26199	0.98	0.67	0.98	1.26
12	9	28923	0.064	0.033	0.046	0.065	28923	0.74	0.47	0.72	0.99

Kalgoorlie (30.78 S, BoM)		Aerosol Optical Depth, 500 nm					Ångström exponent				
Mon	Yrs	Nobs	Mean	25Q	Median	75Q	Nobs	Mean	25Q	Median	75Q
1	7	78819	0.054	0.036	0.048	0.065	78819	0.92	0.54	0.80	1.23
2	7	66669	0.049	0.034	0.044	0.058	66669	0.80	0.52	0.76	1.05
3	7	71631	0.039	0.027	0.037	0.048	71631	0.74	0.44	0.70	0.99
4	7	47499	0.035	0.024	0.032	0.043	47499	0.85	0.54	0.83	1.18
5	7	45126	0.031	0.020	0.028	0.038	45126	0.81	0.48	0.88	1.17
6	7	41082	0.030	0.020	0.025	0.033	41082	0.94	0.52	0.98	1.30
7	6	44394	0.031	0.020	0.027	0.036	44394	1.01	0.71	1.02	1.33
8	6	46155	0.043	0.027	0.035	0.049	46155	1.07	0.82	1.12	1.37
9	6	52254	0.071	0.047	0.064	0.086	52254	1.19	0.91	1.27	1.51
10	6	72519	0.065	0.042	0.059	0.079	72519	1.18	0.87	1.19	1.48
11	6	60234	0.053	0.037	0.050	0.065	60234	0.98	0.77	1.01	1.21
12	7	93039	0.053	0.037	0.047	0.061	93039	0.80	0.50	0.75	1.08

Fowlers Gap (31.09 S, CSIRO)		Aerosol Optical Depth, 500 nm					Ångström exponent				
Mon	Yrs	Nobs	Mean	25Q	Median	75Q	Nobs	Mean	25Q	Median	75Q
01	3	10779	0.053	0.036	0.045	0.059	10779	0.95	0.70	0.96	1.18
02	3	10697	0.049	0.035	0.046	0.060	10697	0.83	0.59	0.83	1.09
03	3	9624	0.048	0.032	0.045	0.060	9624	0.84	0.64	0.81	1.02
04	3	6354	0.032	0.024	0.030	0.038	6354	0.93	0.67	0.92	1.16
05	3	5471	0.034	0.023	0.031	0.039	5471	0.74	0.38	0.76	1.06
06	3	5217	0.035	0.024	0.030	0.040	5217	1.00	0.78	1.06	1.27
07	3	6777	0.032	0.021	0.027	0.039	6777	1.01	0.62	1.09	1.33
08	3	10558	0.039	0.027	0.034	0.048	10558	1.18	0.94	1.19	1.45
09	3	10329	0.064	0.044	0.057	0.078	10329	1.19	0.99	1.22	1.41
10	2	7100	0.058	0.034	0.048	0.065	7100	1.12	0.87	1.14	1.41
11	2	6487	0.044	0.029	0.036	0.051	6487	0.99	0.82	1.00	1.15
12	3	8032	0.046	0.030	0.039	0.054	8032	0.86	0.69	0.84	1.01

Woomera (31.16 S, BoM)		Aerosol Optical Depth, 500 nm					Ångström exponent				
Mon	Yrs	Nobs	Mean	25Q	Median	75Q	Nobs	Mean	25Q	Median	75Q
1	3	39396	0.050	0.031	0.040	0.061	39396	0.93	0.59	0.94	1.33
2	4	42141	0.047	0.034	0.044	0.059	42141	0.92	0.64	0.90	1.17
3	4	43056	0.034	0.024	0.032	0.041	43056	0.87	0.49	0.89	1.21
4	4	28503	0.035	0.024	0.032	0.043	28503	0.86	0.61	0.88	1.13
5	4	25938	0.031	0.021	0.029	0.037	25938	0.81	0.43	0.78	1.19
6	4	22785	0.035	0.022	0.028	0.041	22785	0.70	0.36	0.75	1.09
7	3	22647	0.029	0.018	0.023	0.032	22647	0.91	0.59	0.96	1.19
8	3	27981	0.037	0.026	0.033	0.045	27981	0.83	0.52	0.90	1.14
9	3	34107	0.065	0.038	0.055	0.084	34107	0.95	0.67	0.98	1.25
10	3	39054	0.063	0.035	0.048	0.075	39054	0.76	0.44	0.82	1.17
11	3	35679	0.057	0.034	0.044	0.068	35679	0.96	0.68	0.96	1.22
12	3	38532	0.042	0.029	0.037	0.050	38532	0.77	0.50	0.80	1.04

Lake Lefroy (31.25 S, CSIRO)			Aerosol Optical Depth, 500 nm				Ångström exponent				
Mon	Yrs	Nobs	Mean	25Q	Median	75Q	Nobs	Mean	25Q	Median	75Q
01	4	9729	0.063	0.042	0.055	0.076	9729	0.75	0.50	0.68	0.97
02	4	9704	0.059	0.040	0.056	0.072	9704	0.78	0.53	0.78	0.98
03	4	8129	0.045	0.034	0.042	0.054	8129	0.79	0.57	0.77	0.99
04	4	6204	0.039	0.026	0.034	0.048	6204	0.93	0.69	0.95	1.18
05	4	6493	0.040	0.027	0.035	0.046	6493	0.95	0.62	0.97	1.25
06	4	7512	0.035	0.024	0.030	0.043	7512	1.24	1.04	1.28	1.50
07	4	7297	0.039	0.025	0.033	0.047	7297	1.02	0.64	1.11	1.37
08	4	6965	0.047	0.029	0.039	0.056	6965	1.03	0.75	1.04	1.31
09	4	9844	0.076	0.046	0.068	0.098	9844	1.12	0.87	1.15	1.44
10	3	10470	0.063	0.040	0.052	0.072	10470	1.06	0.85	1.08	1.31
11	3	5875	0.060	0.041	0.053	0.070	5875	0.91	0.70	0.91	1.13
12	4	9326	0.057	0.040	0.050	0.068	9326	0.73	0.49	0.72	0.94

Cobar (31.54 S, BoM)			Aerosol Optical Depth, 500 nm				Ångström exponent				
Mon	Yrs	Nobs	Mean	25Q	Median	75Q	Nobs	Mean	25Q	Median	75Q
1	3	35127	0.062	0.034	0.049	0.079	35127	0.79	0.49	0.76	1.03
2	3	23010	0.054	0.039	0.055	0.067	23010	0.75	0.57	0.79	0.97
3	3	27621	0.040	0.027	0.038	0.051	27621	0.68	0.33	0.65	1.04
4	3	20724	0.034	0.022	0.029	0.040	20724	0.78	0.44	0.74	1.07
5	3	19260	0.033	0.022	0.029	0.040	19260	0.64	0.41	0.66	0.88
6	4	15828	0.033	0.021	0.028	0.034	15828	0.82	0.55	0.86	1.14
7	3	22806	0.029	0.018	0.023	0.031	22806	0.62	0.38	0.58	0.84
8	3	27069	0.035	0.022	0.031	0.044	27069	0.67	0.37	0.65	1.01
9	3	33414	0.063	0.035	0.054	0.074	33414	0.44	0.03	0.68	1.17
10	3	35907	0.061	0.036	0.052	0.073	35907	0.90	0.55	0.96	1.28
11	3	31761	0.047	0.027	0.034	0.056	31761	0.74	0.51	0.74	0.98
12	3	33609	0.044	0.029	0.037	0.053	33609	0.72	0.43	0.68	0.94

Mildura (34.24 S, BoM)			Aerosol Optical Depth, 500 nm				Ångström exponent				
Mon	Yrs	Nobs	Mean	25Q	Median	75Q	Nobs	Mean	25Q	Median	75Q
1	10	104439	0.059	0.033	0.044	0.068	104439	0.85	0.49	0.86	1.18
2	9	73968	0.061	0.035	0.052	0.075	73968	0.91	0.60	0.94	1.24
3	8	87930	0.047	0.033	0.042	0.057	87930	0.92	0.56	0.94	1.26
4	8	68325	0.044	0.032	0.041	0.052	68325	0.96	0.54	0.97	1.38
5	8	49818	0.044	0.029	0.040	0.052	49818	0.98	0.46	1.10	1.45
6	8	37413	0.038	0.024	0.030	0.041	37413	0.81	0.39	0.72	1.17
7	8	43722	0.040	0.024	0.034	0.046	43722	0.82	0.38	0.78	1.21
8	8	51516	0.049	0.032	0.043	0.056	51516	0.99	0.58	1.07	1.40
9	8	53826	0.081	0.053	0.073	0.097	53826	1.02	0.68	1.04	1.35
10	9	71685	0.064	0.044	0.054	0.074	71685	0.92	0.62	0.95	1.24
11	10	77835	0.052	0.035	0.045	0.059	77835	0.82	0.57	0.93	1.21
12	11	82419	0.052	0.033	0.042	0.055	82419	0.70	0.36	0.72	1.10

Adelaide (34.95 S, BoM)			Aerosol Optical Depth, 500 nm				Ångström exponent				
Mon	Yrs	Nobs	Mean	25Q	Median	75Q	Nobs	Mean	25Q	Median	75Q
1	12	154815	0.060	0.038	0.053	0.073	154815	0.65	0.28	0.64	1.00
2	12	118848	0.058	0.038	0.050	0.067	118848	0.70	0.40	0.70	0.98
3	13	117720	0.048	0.033	0.045	0.059	117720	0.51	0.15	0.53	0.95
4	13	80235	0.049	0.032	0.044	0.059	80235	0.68	0.27	0.72	1.11
5	13	54048	0.048	0.032	0.042	0.058	54048	0.80	0.35	0.82	1.30
6	13	44610	0.047	0.029	0.040	0.055	44610	0.73	0.30	0.76	1.20
7	13	47583	0.046	0.028	0.041	0.056	47583	0.60	0.23	0.58	1.09
8	13	58410	0.059	0.038	0.052	0.072	58410	0.65	0.19	0.72	1.21
9	13	78237	0.080	0.051	0.071	0.097	78237	0.80	0.40	0.90	1.27
10	13	95628	0.075	0.050	0.066	0.091	95628	0.75	0.40	0.84	1.26
11	13	109044	0.064	0.042	0.055	0.075	109044	0.86	0.45	0.88	1.23
12	13	129108	0.063	0.038	0.052	0.078	129108	0.66	0.21	0.62	1.07

Wagga (35.16 S, BoM)			Aerosol Optical Depth, 500 nm				Ångström exponent				
Mon	Yrs	Nobs	Mean	25Q	Median	75Q	Nobs	Mean	25Q	Median	75Q
1	15	148815	0.083	0.040	0.059	0.091	148815	1.03	0.64	1.06	1.45
2	16	114705	0.083	0.041	0.066	0.105	114705	1.14	0.83	1.18	1.51
3	16	144306	0.059	0.033	0.049	0.075	144306	1.07	0.73	1.10	1.45
4	16	114588	0.055	0.030	0.046	0.069	114588	1.26	0.95	1.32	1.61
5	16	90843	0.052	0.030	0.043	0.064	90843	1.22	0.88	1.32	1.61
6	17	58620	0.036	0.021	0.029	0.041	58620	1.15	0.76	1.19	1.56
7	16	60381	0.038	0.022	0.031	0.042	60381	1.11	0.74	1.15	1.54
8	17	86358	0.050	0.033	0.043	0.056	86358	1.08	0.73	1.16	1.46
9	17	109128	0.071	0.044	0.059	0.088	109128	1.06	0.76	1.13	1.43
10	16	126945	0.072	0.045	0.060	0.088	126945	1.04	0.72	1.07	1.39
11	17	115911	0.063	0.038	0.052	0.077	115911	1.11	0.79	1.12	1.40
12	17	154983	0.062	0.034	0.049	0.073	154983	0.95	0.60	1.01	1.34

Canberra (35.27 S, CSIRO)			Aerosol Optical Depth, 500 nm				Ångström exponent				
Mon	Yrs	Nobs	Mean	25Q	Median	75Q	Nobs	Mean	25Q	Median	75Q
01	13	32164	0.096	0.053	0.077	0.110	32164	0.96	0.64	0.95	1.28
02	14	28148	0.090	0.049	0.074	0.105	28148	1.04	0.73	1.02	1.35
03	14	30960	0.067	0.036	0.056	0.089	30960	1.14	0.84	1.17	1.45
04	14	22939	0.071	0.034	0.051	0.089	22939	1.14	0.81	1.17	1.50
05	12	19717	0.046	0.027	0.036	0.050	19717	1.26	1.02	1.27	1.52
06	11	12527	0.038	0.024	0.032	0.044	12527	1.21	0.92	1.27	1.52
07	11	15065	0.039	0.024	0.032	0.044	15065	1.24	0.92	1.30	1.58
08	13	26419	0.058	0.032	0.045	0.064	26419	1.22	0.92	1.32	1.59
09	11	30892	0.071	0.043	0.061	0.086	30892	1.34	1.12	1.42	1.61
10	12	25773	0.086	0.050	0.073	0.104	25773	1.22	0.98	1.25	1.50
11	11	22616	0.070	0.042	0.061	0.086	22616	1.07	0.84	1.10	1.32
12	12	31646	0.068	0.041	0.057	0.084	31646	1.01	0.73	1.05	1.31