

As noted in Sect. 2.2, our REFC2 ensemble consists of 2 full 1960-2099 integrations (ENS1-2) and 5 shorter runs from November 1980 to December 2080 (ENS3-7). For technical reasons, 5 six-year-long intervals in total were excluded from the analysis, in particular:

- July 2025 – June 2031 in member number 5 (ENS5)
- 5 - April 2074 – March 2080 in member number 5 (ENS5)
- April 1996 – March 2002 in member number 6 (ENS6)
- April 2043 – March 2049 in member number 6 (ENS6)
- August 1982 – July 1988 in member number 7 (ENS7)

An example of the resulting timeseries is shown in Fig. S1 for 65-90°N March total ozone column.

10

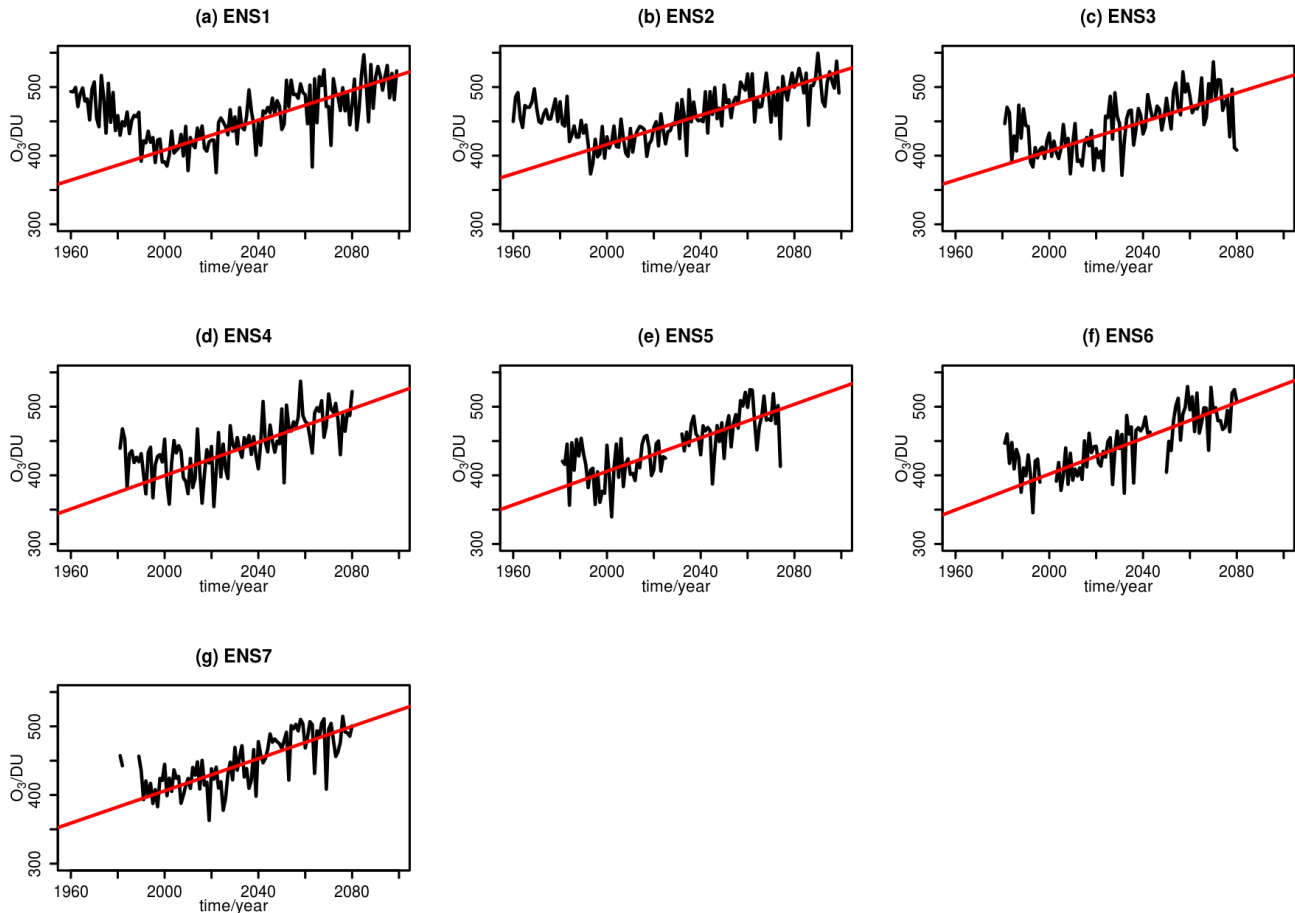


Figure S1: (a-g) Timeseries of 65-90°N March total ozone columns [DU] for individual ensemble members (black). Red lines show the corresponding long-term linear trends over the 2000-2080 period.