

1

# 2 SUPPORTING INFORMATION

3

4

## 5 On the simultaneous deployment of two single 6 particle mass spectrometers at an urban 7 background and a road side site during SAPUSS

8

9

10 Manuel Dall'Osto<sup>1,2\*</sup>, David C. S. Beddows<sup>3</sup>, Eoin J.  
11 McGillicuddy<sup>4</sup>, Johanna K. Gietl<sup>3</sup>, Xavier Querol<sup>2</sup>, Roy M.  
12 Harrison<sup>3,\$</sup> and John C. Wenger<sup>4</sup>

13

14

15 <sup>1\*</sup>Institut de Ciències del Mar, Consejo Superior de Investigaciones Científicas  
16 (CSIC), Pg Marítim de la Barceloneta 37-49, 08003 Barcelona, Spain; Tel: 0034 644  
17 053 801; Email: dallosto@icm.csis.es

18 <sup>2</sup>Institute of Environmental Assessment and Water Research (IDAEA) Consejo  
19 Superior de Investigaciones Científicas (CSIC) C/ Jordi Girona 18-26 08034  
20 Barcelona, Spain

21

22 <sup>3</sup>National Centre for Atmospheric Science Division of Environmental Health & Risk  
23 Management School of Geography, Earth & Environmental Sciences, University of  
24 Birmingham, Edgbaston, Birmingham, B15 2TT, United Kingdom

25

26 <sup>4</sup>Department of Chemistry and Environmental Research Institute,  
27 University College Cork, Ireland

28

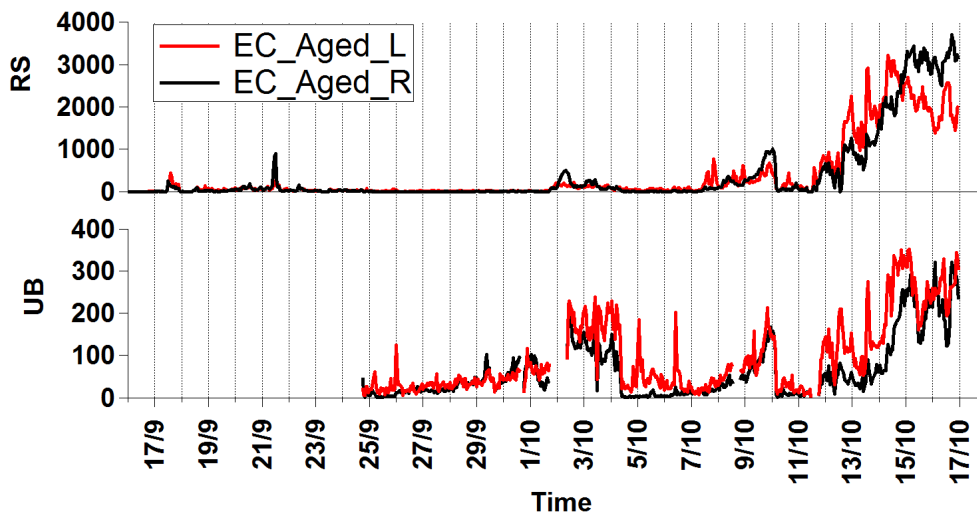
29 <sup>\$</sup>also at: Department of Environmental Sciences/Center of Excellence in  
30 Environmental Studies, King Abdulaziz University, Jeddah, 21589, Saudi Arabia

31

1

2

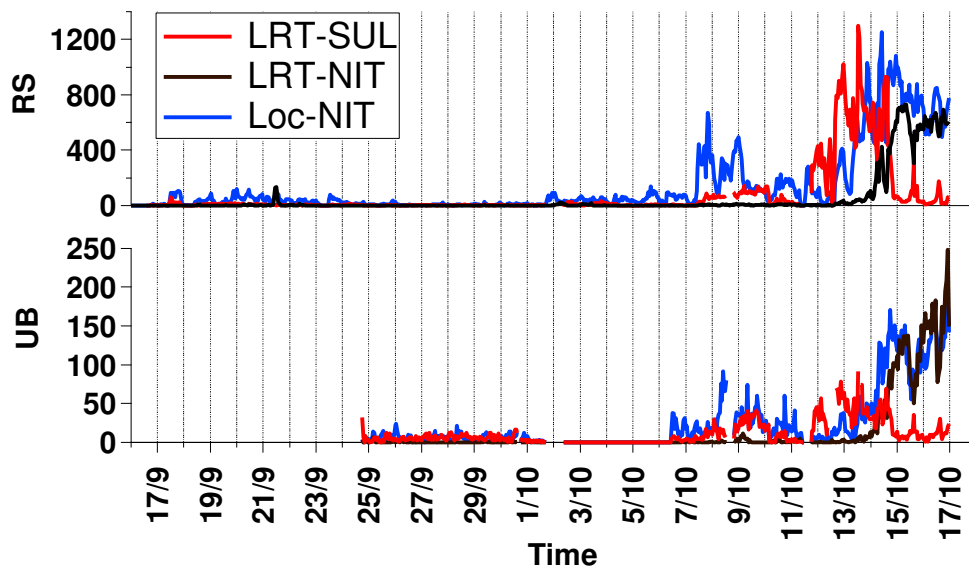
3



4

5

(a)



6

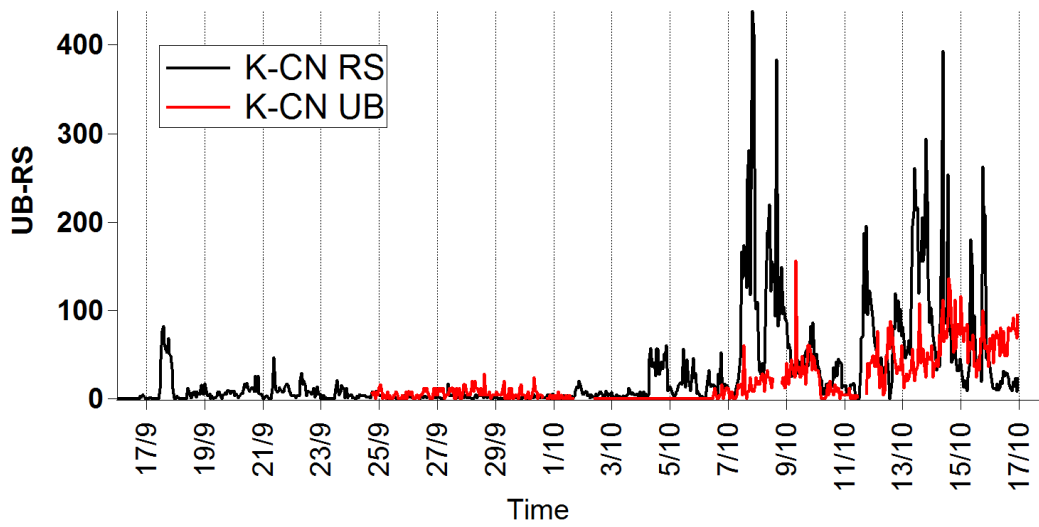
7

8

(b)

1

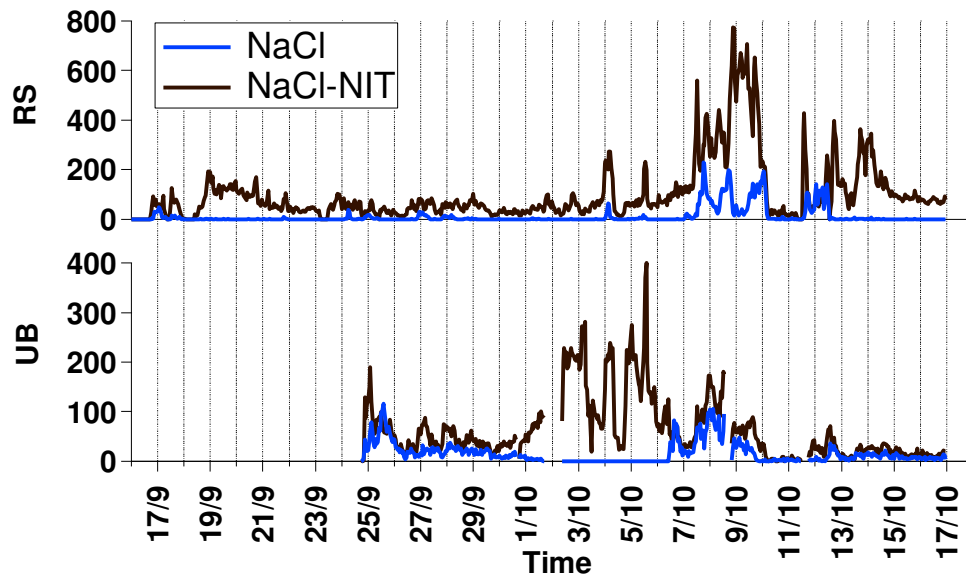
2



3

4

(c)



5

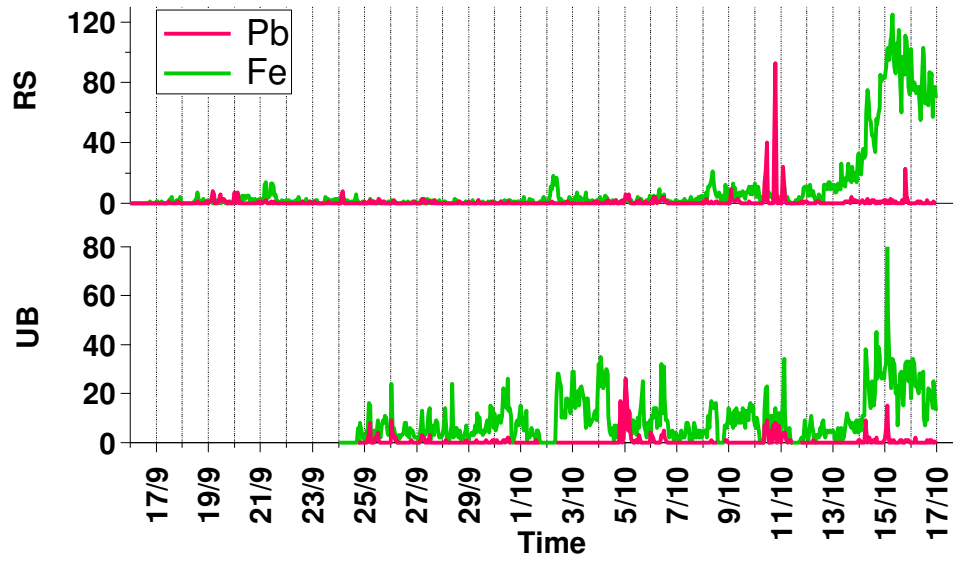
6

7

8

(d)

1

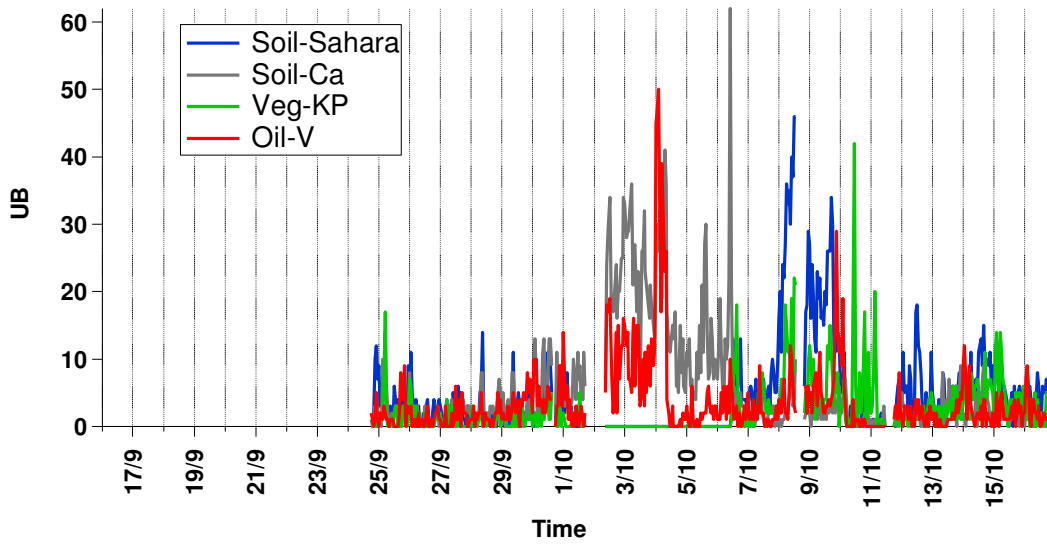


2

3

4

(e)

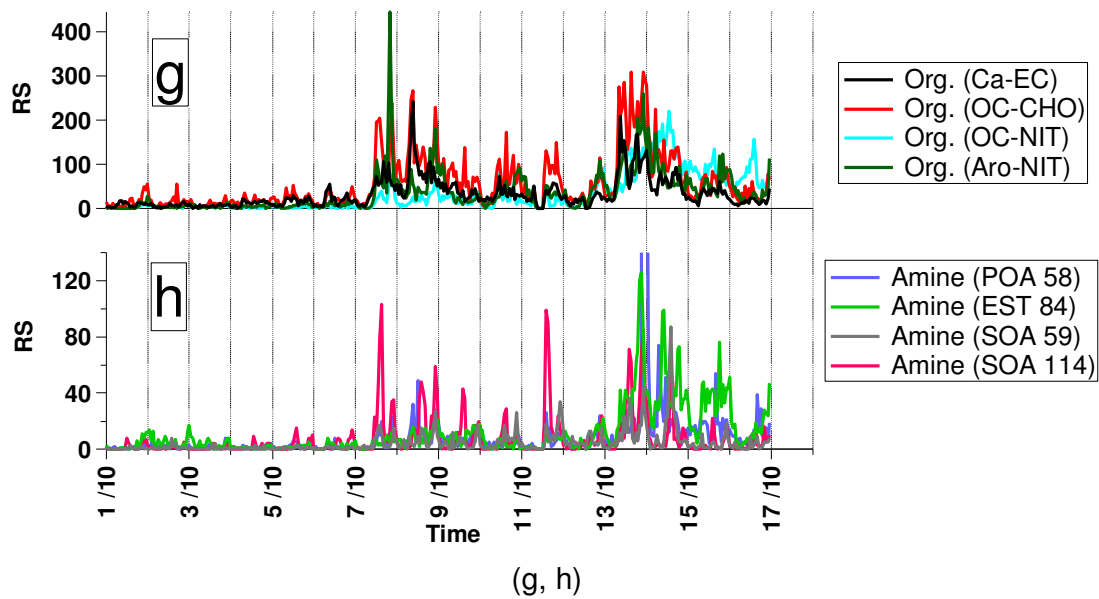


5

6

7

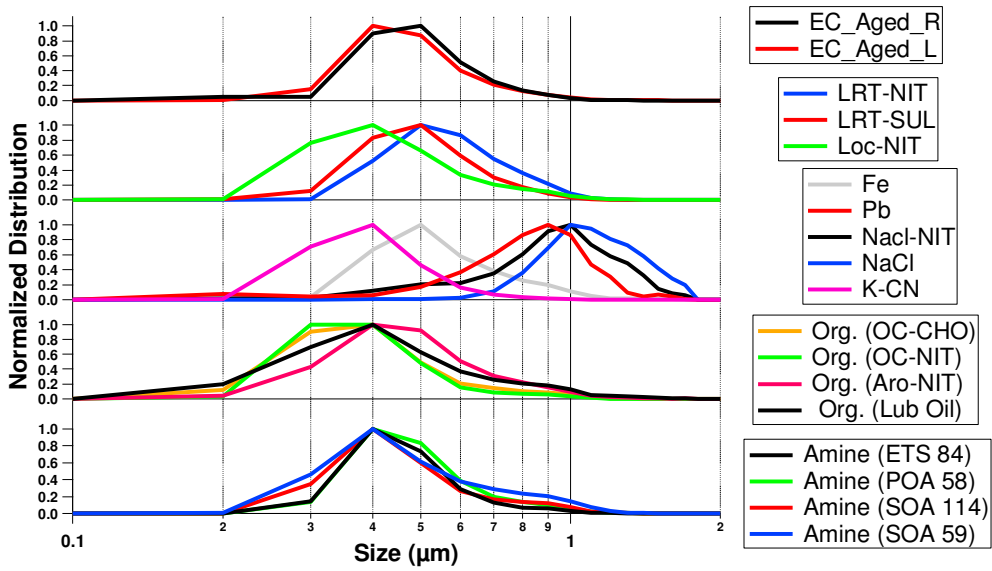
(f)



1  
2  
3  
4  
5  
6  
7  
8  
9  
10  
11  
12  
13  
14  
15

Figure SI 1. Temporal trends of ATOFMS particle types

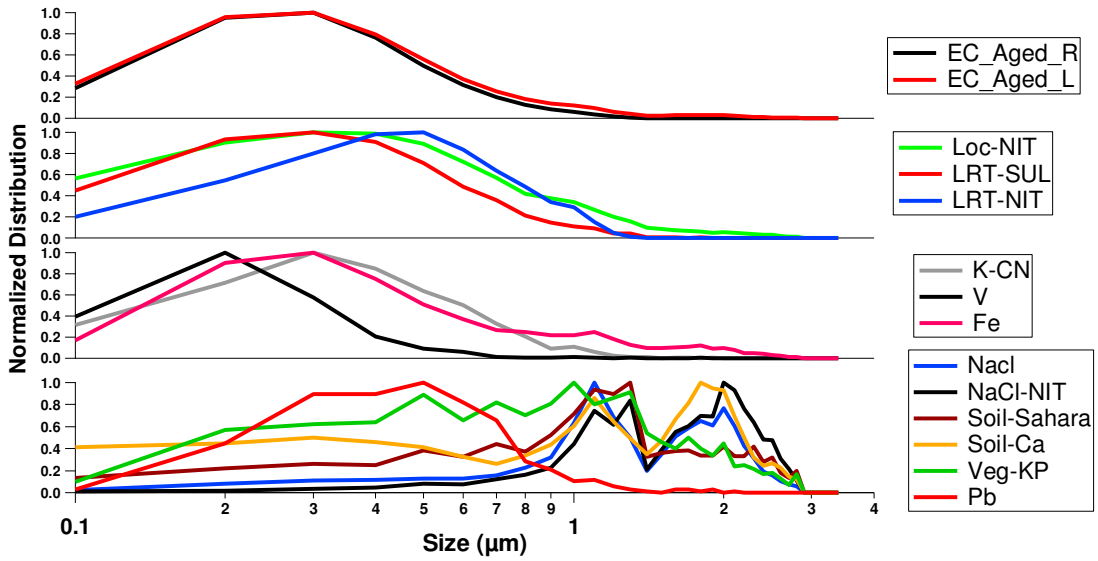
1



2

3

(a)



4

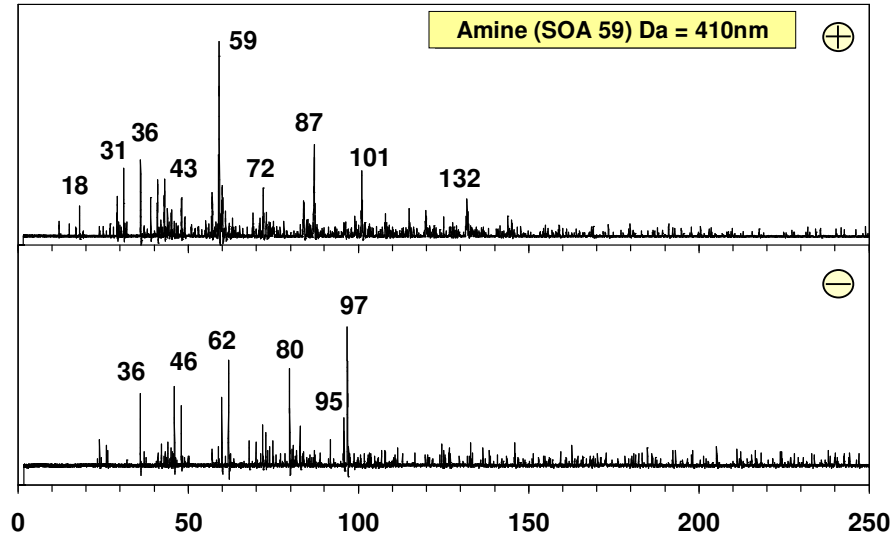
5

(b)

6

7 SI 2. Aerodynamic size ATOFMS modes for ATOFMS at RS (a) and UB (b)

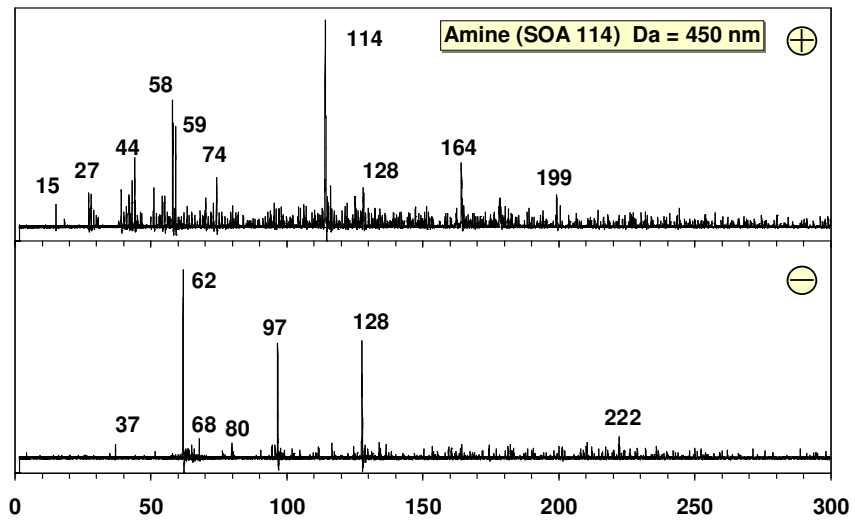
8



1

2 (a) Amine (SOA 59)

3



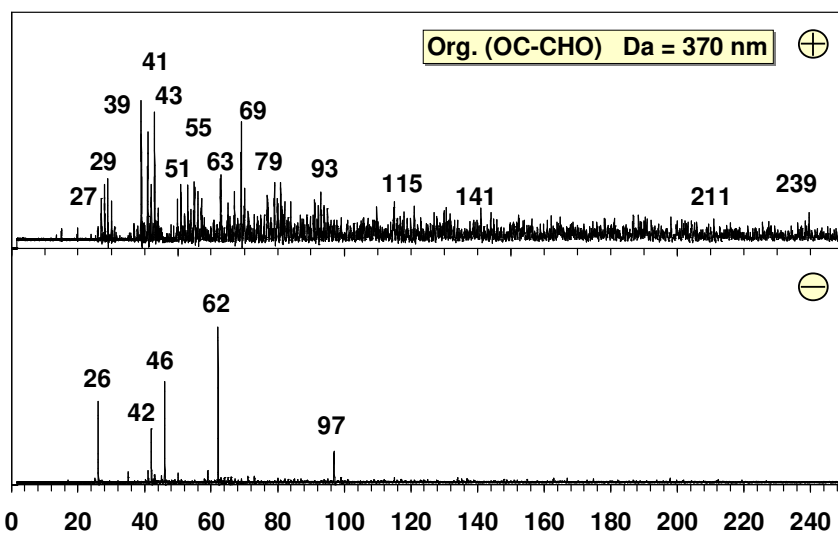
4

5 (b) Amine (SOA 114)

6

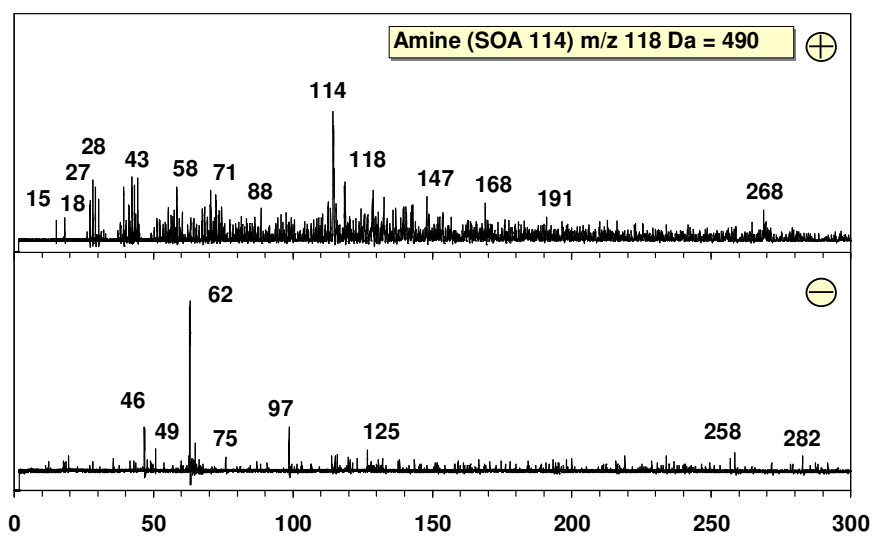
7

1



2

3 (c) Org. (OC-CHO)



4

5 (d) Amine (SOA 114) with  $m/z$  118

6

7 SI 3 a-d: Single particle mass spectra of selected ATOFMS particle types

8