

Responses to comments to revised version

We have taken into account the additional comments of the reviewer. Answers to his/her comments and a marked-up version of the manuscript are below.

• Reviewer's comment

I am satisfied with the authors' responses and revisions to most of my comments. There are, however, one major comment and a few specific requests for clarification left that need to be addressed before the final version of the manuscript is published. All line numbers in the following refer to the annotated version of the manuscript (the one that was included in the author response pdf file).

Major comment:

line 548: It is puzzling that there is no QBO in the MIPAS wavenumber-4. This is inconsistent with SABER-based diagnostics of the DE3. The cited Li et al. paper does not quantify the QBO effect but uses vague language such as "slightly stronger" etc. Looking into Figure 4 of the Li et al. paper, I believe there's quite a bit of QBO like amplitude variability going on. Overall, Li et al., 2015, Figure 4 looks consistent with Oberheide et al., 2009, Wan et al., 2010, Zhou et al., 2015, who consistently found a 15-20% amplitude modulation by the QBO. This needs to be discussed more closely in the manuscript. At the very least, it needs to be stated that the MIPAS k=4 result (no QBO) is inconsistent with the the SABER results (which are internally consistent with TIDI tides) and QBO signals in the ionosphere (Wan paper, also recent Chang et al., COSMIC TEC diagnostics).

Author's response

We state that we do not detect a QBO variability in MIPAS DE3. However, we cannot say that there is no QBO at all. We actually derived some quasi-2-year variation in MIPAS DE3 (particularly around 110km; 2K QBO amplitudes) but within MIPAS errors and, additionally, correspondence with the stratospheric QBO phase is not clear at all altitudes. We deleted that 'the impact (...) is expected to be small' and the reference to Li et al., and include now some further discussion in the text.

Specific comments:

• Reviewer's comment

In response to my original comment 2 to credit earlier work by Huang et al. re migrating tide-QBO studies, the authors now refer to Huang et al., 2006. I grant that some tidal discussion is included there, but the paper is more about the mean temperature. The more appropriate reference would be Huang et al., 2010 (10.1029/2009JD013698).

Author's response

Reference changed.

• Reviewer's comment

I am a little confused about the response to my original comment 3 (the solar flux dependence). The manuscript states (line 543) that for the inter-annual variability a solar flux component had to be included to get better results. Why is it then not "adequate" to perform an analysis for individual years from MIPAS?

Author's response

We wanted to leave room for such a variation but we think that a thorough study would not be robust using only 5 years of data. Nevertheless, we have repeated the calculations without the solar component and the results barely change.

• Reviewer's comment

Response to my original comment 5 (the part about the purpose of the GSWM/MSIS comparisons). line 269: GSWM-09 and CTMT do NOT include any in-situ tidal forcing in the thermosphere. Both models are designed to look into upward propagating tides and thus produce a (1,1) mode structure even at 110 km. However, at this altitude in-situ forcing kicks in. It needs to be clarified that both GSWM-09 and CTMT do not include the in-situ DW1. For GSWM-09, see for example the statement towards the end of section 1.3 in Zhang et al., 2010a. As such, the difference to MIPAS at 110 km is further support for the in situ forcing mentioned in the previous sentence in the manuscript.

Author's response

We write now that GSWM-09 and CTMT do not include any in-situ tidal forcing.

• Reviewer's comment

In the same context: line 283. I also believe that using tides from NRLMSISE below 110 km or so is not very meaningful, due to the data entering MSIS at these altitudes. Doug Drob and the NRL team work on a new MSIS version that will do a much better job. I urge the authors to omit the NRLMSIS data in the Figs between 80-100 km!!!! There is no use in comparing a model with real world data in a height region where the model is known to have deficiencies.

Author's response

The main use of comparing MIPAS with MSIS is to check if tide in MSIS are being transferred to MIPAS retrievals. We include now a clarifying sentence.

• Reviewer's comment

line 44: Oberheide et al. 2009 only discuss the DE3 QBO which most likely comes from the mesospheric QBO through the Ekanayake et al. mechanism.

Author's response

We think that Oberheide et al. [paragraph 32] also mention an alternative effect through stratospheric filtering during upward propagation, as suggested by Forbes and Vincent (1989).

• Reviewer's comment

line 473: This is a very (too) strong statement. There is indeed a decent understanding of what's the DE3 is doing to the ionosphere, see for example recent papers by Loren Chang using COSMIC TEC. There are some unknowns, e.g., the SE2 contribution and possibly some uncertainty about how important F-region meridional winds are. I suggest to add a qualifying sentence.

Author's response

We softened the statement.

• Reviewer's comment

line 485: An additional contribution to the higher peak altitude could be a the interference from D0 and TE1. I suggest to mention this as an additional possibility.

Author's response

We now write that interference with DW5 and/or TE1 is also possible.

After this comment, we noted that the contributing terdiurnal components were

misspelled for modes 1 and 4 (they were ok in Table 1). We corrected this.

• **Reviewer's comment**

Figure 1 & 3, right column: figure titles seem to be printed over each other

Author's response

The postscript figures look fine but, for some reason, they appear that way after compilation with latex. Let us please solve this problem during the manuscript production process if the problem persists.

• **Reviewer's comment**

line 500: "There oscillation"

Author's response

Changed.

MIPAS observations of longitudinal oscillations in the mesosphere and the lower thermosphere: Climatology of odd-parity daily frequency modes

Maya García-Comas¹, Francisco González-Galindo¹, Bernd Funke¹, Angela Gardini¹, Aythami Jurado-Navarro¹, Manuel López-Puertas¹, and William E. Ward²

¹Instituto de Astrofísica de Andalucía-CSIC, Granada, Spain

²Department of Physics, University of New Brunswick, Fredericton, New Brunswick, Canada

Correspondence to: Maya García-Comas
Instituto de Astrofísica de Andalucía-CSIC
Glorieta de la Astronomía s/n
18008 Granada, Spain (maya@iaa.es)

Abstract. MIPAS global sun-synchronous observations are almost fixed in local time. Subtraction of the descending and ascending node measurements at each longitude only includes the longitudinal oscillations with odd daily frequencies n_{odd} from the Sun's perspective at 10 A.M. Contributions from the background atmosphere, daily-invariant zonal oscillations and tidal modes with even-parity daily frequencies vanish. We have determined longitudinal oscillations in MIPAS temperature with n_{odd} and wavenumber $k=0-4$ from the stratosphere to 150 km from April 2007 to March 2012. To our knowledge, this is the first time zonal oscillations in temperature have been derived pole-to-pole in this altitude range from a single instrument. The major findings are the detection of: 1) migrating tides at Northern and Southern high latitudes; 2) significant $k = 1$ activity at extra-tropical and high-latitudes, particularly in the SH; 3) $k = 3$ and $k = 4$ eastward propagating waves that penetrate the lower thermosphere with a significantly larger vertical wavelength than in the mesosphere; 4) a migrating tide quasi-biennial oscillation in the stratosphere, mesosphere and lower thermosphere. MIPAS global measurements of longitudinal oscillations are useful for testing tide modeling in the MLT region and as a lower boundary for models extending higher up in the atmosphere.

1 Introduction

One of the most prominent and enduring dynamic features of the mesosphere and lower thermosphere (MLT) are the atmospheric solar tides (referred to as *tides* hereafter). They are oscillations with periods that are subharmonics of a solar day. A case in point is that of the migrating tides, which are westward propagating oscillations with a phase speed equal to the Earth's angular velocity, Ω . They give the appearance of travelling with the Sun, dependent on the local solar time (LST) but not on longitude. Migrating tides are excited by a longitude independent source, such as the absorption of solar IR radiation by water vapor in the troposphere, the solar UV radiation absorption by ozone in the stratosphere, and the local solar UV and EUV

20 radiation absorption by oxygen molecules and atoms, respectively, and possibly by chemical heating (Smith et al., 2003), in the thermosphere.

The non-migrating tides also have periods which are subharmonics of a solar day but may be either westward or eastward propagating, or stationary and their phase speed is not Ω . They are excited by longitudinally varying properties, like tropospheric latent heat release from evaporation, the sun's gravitational pull, heating rates, and by non-linear wave-wave
25 interactions. An interaction between zonal wavenumber s asymmetries in surface or atmospheric properties and the absorption of the n^{th} harmonic of the diurnally varying solar radiation generates a sum and a difference tide with frequency $n\Omega$ and zonal wavenumbers $n \pm s$. For example, the zonally asymmetric latent heat release in the tropical troposphere caused by the wavenumber-4 land-sea distribution modulates the migrating diurnal DW1 component to excite the DE3 and DW5 tidal
30 pair (Hagan and Forbes, 2002; Zhang et al., 2006). As an example of wave-wave interactions, involving tides and planetary waves, the interaction of the stationary planetary wave-1 sPW1 with DW1 leads to the formation of D0 and DW2 tidal modes (Hagan and Roble, 2001; Mayr et al., 2005a; Lieberman et al., 2015). Note that the widely used 3-character notation for tides is also used here. The first letter corresponds to the daily frequency (D corresponds to diurnal; S corresponds to semidiurnal; T corresponds to terdiurnal). The second letter indicates the direction of propagation (W for westward and E for eastward). The number is the absolute value of the tide zonal wavenumber.

35 Tides also interact with other waves. Tidal inter-annual variability is correlated with the El Nino-Southern Oscillation (ENSO) (Gurubaran et al., 2005; Lieberman et al., 2007) and the wind Quasi-Biennial Oscillation (QBO) (McLandress, 2002; Mayr and Mengel, 2005; Xu et al., 2009; Oberheide et al., 2009; Davis et al., 2013; Laskar et al., 2016); planetary and gravity wave (GW) activity may affect tidal activity (Fritts and Vincent, 1987; Teitelbaum and Vial, 1991; Mayr et al., 2005b; Pedatella and Liu, 2012; Ribstein et al., 2015); GW and tidal non-linear interaction significantly affects winds (Liu et al.,
40 2014). Nevertheless, there is no complete understanding of how these processes take place. For example, it is not clear if the mesospheric QBO signature originates at stratospheric levels, locally in the mesosphere or both (Oberheide et al., 2009).

Tides often propagate upwards. Regardless of the location of its source, the amplitude of upward propagating tides increases with altitude, due to energy conservation in an environment of decreasing-with-altitude density.

The tides that originate in the troposphere and propagate vertically connect the lower, middle and upper atmospheres. They
45 also produce a second order impact on atmospheric vertical coupling as they modulate the upward propagation of other waves, like gravity waves (Eckermann and Marks, 1996; Senf and Achatz, 2011). The connection also extends in the latitudinal direction because tides become a global feature under its standing wave latitudinal structure.

Over the last two decades, much progress has been made on determining the extent to which tides propagate from the lower atmosphere to the ionosphere; or changes in lower altitude regions are transmitted by tides to the upper atmosphere or to
50 other latitudes, but this knowledge is still incomplete. In this context, the lower thermosphere, in particular, the E-region, is of interest. Vertically-propagating tides maximize at those altitudes, where molecular dissipation dominates (Forbes and Garrett, 1979). They impact the spatial and temporal variability through electrodynamical effects, and are transmitted even higher (Immel et al., 2006; Kil et al., 2007; Hagan et al., 2007; Jin et al., 2008; Pedatella et al., 2008; Scherliess et al., 2008; Häusler and Lühr, 2009; Forbes et al., 2009).

55 Several authors have studied tides from satellite measurements in this altitude region in recent years. The analyses are based on observations of wind fields (Oberheide and Forbes, 2008a; Talaat and Lieberman, 2010; Lieberman et al., 2013; Cho and Shepherd, 2015, see e.g.,) or atmospheric species emission rates or abundances (Oberheide and Forbes, 2008b; Shepherd, 2011; Oberheide et al., 2013; Nee, 2014, see e.g.,) or the ionized atmosphere (England et al., 2006; Chu et al., 2009; Mukhtarov and Pancheva, 2011, see e.g.,). Few global observations of the neutral atmosphere are available in the
60 100-150 km altitude range. Temperatures have generally been analyzed at the lowest altitudes of this range (generally below 115 km) using TIMED, Aura or WINDII satellite measurements (see e.g., Wang et al., 2000; Forbes and Wu, 2006; Xu et al., 2009; Pancheva et al., 2010; Pancheva and Mukhtarov, 2011; Yue et al., 2013; Pancheva et al., 2013; Truskowski et al., 2014; Lieberman et al., 2015), or above the range, using WINDII measurements around 250 km (Shepherd et al., 2012) and CHAMP measurements of the exosphere (Forbes et al., 2008; Oberheide et al., 2009; Bruinsma and Forbes, 2010; Forbes et al., 2014,
65 see e.g.,). Studies of longitudinal oscillations measured by MIPAS on Envisat for this altitude range have been conducted by (Xu et al., 2013) but only for selected atmospheric conditions (aurorae). The global temperature tidal spectrum is therefore not very well known at 100-150 km. Besides understanding the local behavior, observations at these altitudes are needed to discern the origin of longitudinal oscillations higher up in the atmosphere. Characterizing the non-migrating temperature tides there is relevant as this range constitutes the lower boundary in numerical models.

70 The Michelson Interferometer for Passive Atmospheric Sounding (MIPAS) (Fischer et al., 2008) measured the Earth's temperature from pole to pole, covering altitudes from 20 to 170 km on board a sun-synchronous satellite, Envisat, offering the rare opportunity to observe longitudinal oscillations globally in this altitude range from a single instrument. MIPAS wide spatial and temporal coverages are ideal for constraining tidal vertical and latitudinal extent and global variations in seasonal and inter-annual time-scales. Additionally, they may reveal indicators for the tidal excitation mechanisms, the processes inducing
75 tidal variability and the lower and upper atmosphere coupling through tides. Additionally, the characterization of the tides in an atmospheric measurement dataset is a prerequisite for estimating trends (Beig et al., 2003).

The analysis of tides from atmospheric measurements is complex. Ideally, a complete longitudinal and local time coverage is needed in order to isolate the tidal components contributing to the observed signal. Sun-synchronous observations at 12 hour intervals at fixed local times, like MIPAS, do not provide good local time coverage but the combination of the measurements
80 made in each node reduces aliasing (Oberheide et al., 2002; Lieberman et al., 2015). Non-sun-synchronous observations allow for the separation of individual tidal components but the slow satellite precession period generally worsens the temporal resolution (e.g. Zhang et al., 2006; Gan et al., 2014; Truskowski et al., 2014).

This work describes the longitudinal oscillations in temperature measured by MIPAS from 40 to 150 km over a five year period (March 2007-March 2012). With the benefit of the sun-synchronous observational strategy, we extract the longitudinal
85 wavenumbers as viewed by an observer on the Sun, capable of isolating daily parities. This paper describes the observed temperature oscillations with odd-parity daily frequencies.

The paper is organized as follows. Section 2 describes the MIPAS temperature observations used in this work. Monthly climatologies of the observed longitudinal wavenumbers are presented in Section 3, where we discuss their latitude, altitude

and seasonal behavior in the context of other measurements. Section 4 includes a description of the inter-annual variability of
90 the main oscillations. We end with a summary of the main findings. Appendix A includes a description of the method used.

2 The instrument, data set and error sources

MIPAS measurements have full global coverage and were taken for the descending and ascending nodes at approximately two
fixed local times, 10 A.M. and 10 P.M., respectively (in general, local times differ from the average values by less than half an
hour at latitudes equatorward of 75° and by three quarters of an hour equatorward of 85°). The MIPAS Middle Atmosphere
95 (MA) and Upper Atmosphere (UA) modes of observation resulted in an altitude coverage of 18–102 km and 40–170 km,
respectively (Oelhaf, 2008). While operating with optimized resolution (0.0625 cm^{-1} ; unapodized), full day observations using
these modes were performed regularly (approximately one day in each mode every 10 days) from April 2007 to March 2012,
thus covering five years.

MIPAS spectra range from 4.3 to $15.6 \mu\text{m}$. Temperature and line of sight information (LOS) are derived in the MLT re-
100 gion from the $15 \mu\text{m}$ CO_2 emission using the IMK/IAA scientific MIPAS level 2 processor described in von Clarmann et al.
(2009), which accounts for non-LTE effects using the GRANADA model (Funke et al., 2012). In this study we use data
versions V5R_TLOS_521 and V5R_TLOS_621 of MA and UA, respectively, retrievals (García-Comas et al., 2014), which
provide temperature profiles with a vertical resolution of 3 to 10 km, from the stratosphere up to around 110 km (T_{MLT})
(García-Comas et al., 2012).

105 Thermospheric temperatures (T_{THER}) from 115 km up to 150 km are derived from MIPAS $5.3 \mu\text{m}$ NO emission mea-
surements in the UA mode with a vertical resolution of 10-15 km (Bermejo-Pantaleón et al., 2011). We use retrieval version
V5R_TT_621 of T_{THER} . This version differs from that described in Bermejo-Pantaleón et al. (2011) in the spectra calibration
version supplied by ESA and in the use of NOEM day and night concentrations (Marsh et al., 2004) as *a priori*, that correct
artifacts affecting night-time temperatures. Tests showed that this temperature version leads to similar night-time zonal mean
110 temperature structures but smaller in absolute value by 10-15K below 140 km and 15-25K above 140 km.

MIPAS temperature systematic errors are significant (1-3K below 85 km and 3-10K above 85 km for T_{MLT} , and 10-20K for
 T_{THER}), but as we analyze differences of longitudinal perturbations about an average value (see Sect. A), biases often partially
cancel out so that their effect on the derived oscillation characteristics are small. Additionally, we work with monthly averages,
which reduce the random error by at least a factor of $1/\sqrt{3}$. One of the most significant errors we expect is that produced by
115 the limited vertical resolution. At the peaks of a vertical wave, the wave amplitude error due to that smoothing depends on its
vertical wavelength. Smoothing errors are 2-5% in the mesosphere, 15% around 120 km and 30% around 140 km for 25 km
vertical wavelength waves. They increase for short vertical wavelengths, reaching 15-30% in the mesosphere and 60% around
120 km for 10 km vertical wavelength waves.

The temperature retrieval algorithm uses *a priori* information of the temperature at each MIPAS geolocation taken from
120 ECMWF at pressures larger than 0.1 hPa (≈ 70 km) and merged with NRLMSISE-00 model results at lower pressures.
NRLMSISE-00 includes only effects of low order tides (Picone et al., 2002). We examined *a priori* temperature oscillations

with longitude in the fixed local time frame of MIPAS. Besides the migrating component, we only detect wavenumber 1 and 2 non-migrating zonal oscillations with amplitudes generally smaller than 1K. Some exceptions occur in the winter high latitudes, probably corresponding to planetary wave activity (wavenumber-1 structures reaching 10K at 40 km, 5K at 50 km and 2K at 75 km). Given the differences between measurement and *a priori* tidal component fields (see Sect. 3.3.1), we conclude that the mapping of *a priori* longitudinal oscillations on the retrievals is not significant and does not influence MIPAS temperatures.

3 Five-year average zonal oscillations

Following the procedure described in Appendix A, we derived amplitudes and phases of the longitudinal oscillations of apparent wavenumber k from the stratosphere to the lower thermosphere as seen in MIPAS temperature differences of the descending and the ascending nodes.

We have constructed longitude-altitude maps of monthly T_{MLT} and T_{THER} temperatures averaged from April 2007 to March 2012 for the descending and the ascending legs. In order to achieve a good longitudinal coverage with a small loss of horizontal resolution, we used longitude and latitude running-means at each altitude in a $5^\circ \times 5^\circ$ grid. At each grid point, we averaged MIPAS monthly measurements taken within 25° in longitude and 10° in latitude bins. We then subtracted and divided by 2 the descending and the ascending node measurements at each grid point, $\Delta T/2$ hereafter.

Figure 1 left panels show typical $\Delta T/2$ fields. They are August and October monthly means averaged over the five years and constructed from T_{MLT} and T_{THER} measurements over the equator. A background with alternating positive and negative horizontal stripes is evident. A longitude-independent signature at each altitude must be responsible for that pattern. A longitude-independent feature in $\Delta T/2$ corresponds to a migrating component. The pattern is stronger during October (equinox) than August (solstice). Vertically alternating $\Delta T/2$ maxima and minima correspond to altitudes where the tidal phase is at 10 A.M. (45, 75, 95 and 110 km) and 10 P.M. (60, 85 105 and 120 km), respectively. A different regime takes place above 125 km, where a background positive $\Delta T/2$ remains nearly constant with altitude. That implies a nearly constant-with-altitude LST phase, that is, the oscillation does not propagate vertically. This is typical of an *in situ* generated oscillation.

The right panels in Fig. 1 are $\Delta T/2$ longitudinal anomalies (zonal mean subtracted at each altitude) averaged for August and October. They contain only $n - odd$ non-migrating tidal modes ($|n_{odd} - s|$ larger than 0). In August, a wavenumber-4 oscillation tilting eastward with height is noticeable from the mid-mesosphere to the thermosphere with increasing amplitude up to 130 km. A subtle underlying wave-1 perturbation propagates to the west in the upper mesosphere but suffers efficient dissipation in the lowermost part of the thermosphere.

The October $\Delta T/2$ anomaly field in Fig. 1 exhibits wavenumber-1 features tilting westward with height (18 km vertical wavelength). This signature is noticeable from 40 km, in the stratosphere, and extends to 110 km, in the lower thermosphere. Its vertical and longitudinal structure is similar to the one in August but the October feature is significantly stronger. Starting at 105 km, a zonal wavenumber-4 structure overlaps. This feature is perceived on the T_{THER} fields above 115 km but it is not as evident as at lower altitudes or in August, probably because it is weak and/or another component overlaps.

We performed the spectral analysis of MIPAS $\Delta T/2$ fields analogous to those shown in Fig. 1 globally and for the twelve months of the calendar year (see Appendix A). For each altitude z , latitude ϕ and month, we derived amplitudes C_k and phases θ_k , for which k are the *apparent* longitudinal wavenumbers in $\Delta T/2$ that embed the combination of the tidal modes with odd-parity daily frequency n and zonal wavenumber s such that $|n - s| = k$. We hereafter denote this combined oscillation as $|n_{odd} - s| = k$. Table 1 summarizes the major tidal components contributing to each apparent zonal wavenumber.

Positive and negative wavenumbers, indicating horizontal direction of propagation, cannot be separated in the spectra. Nevertheless, if the direction of vertical propagation is known, the dependence of the phases θ_k on altitude ultimately helps discern dominance of a particular tidal mode. For instance, assuming upward propagation, a θ_k moving to the east (west) with increasing altitude corresponds to an eastward (westward) propagating tidal oscillation if $s = n - k < 0$ ($s = n + k > 0$).

Figure 2 shows the derived average amplitude spectra during equinox months (April and October) and solstice months (January and July) at 88 and 110 km from wavenumber 0 to 4. The dominance of some modes is evident and depends on season and altitude.

For latitudes within 45°N and 45°S , the $|n_{odd} - s|=0$ mode is the strongest component in the upper mesosphere and below 100 km during April (and also February, March, May and August; not shown). Its amplitude ranges from 9 to 18K. The $|n_{odd} - s|=1$ and $|n_{odd} - s|=4$ oscillations follow in importance. During January and October (and also September, November and December; not shown), wavenumber $|n_{odd} - s|=1$ is the dominating component of the tidal field (8-15K) in the mesosphere. In July (and June; not shown), wavenumber $|n_{odd} - s|=4$ is the most important (8K), although $|n_{odd} - s|=0,1$ have similar amplitudes. MIPAS also detects $|n_{odd} - s|=0,1$ oscillations around $60\text{-}70^\circ$ during the summers with 2K amplitudes.

In the lower thermosphere, around 110 km, the strongest $n - odd$ longitudinal oscillation in MIPAS data is $|n_{odd} - s|=0$ at latitudes smaller than 70° and also $|n_{odd} - s|=4$ at latitudes smaller than 40° (see Fig. 2). This happens throughout the year, the former peaking around 25° N and S (15-20K) (except during June and July) and the latter over the equator (8-16K). In July and August, the $|n_{odd} - s|=4$ oscillation stands out particularly and wavenumber $|n_{odd} - s|=1$ (15K) is then also noticeable at 25° . At the highest latitudes, $|n_{odd} - s|=1$ is the only significant mode, although signatures from $|n_{odd} - s|=2$ oscillations are also present, for example, in January (12K).

Next, we give a detailed description of each of the extracted longitudinal oscillation modes and their seasonal variations. The MIPAS Sun-synchronous view provides a fixed local time shot of longitudinal variations. If otherwise not indicated, we use a phase defined in terms of longitude (positive towards the East of Greenwich) of maximum at 10 A.M. The caveat is that the phase is undefined for longitudinally-standing tidal components ($s = 0$).

3.1 The $|n_{odd} - s|=0$ mode

The $|n_{odd} - s|=0$ mode, which is just the $\Delta T/2$ zonal mean, contains contributions from the diurnal (DW1) and terdiurnal (TW3) migrating tides. Figures 3-5 include representative latitude-altitude and latitude-time cross sections. Because MIPAS observations occur at two fixed local times, contribution from migrating tides (that depend only on local time) are seen as invariant features over longitude. The values measured correspond to the temperature perturbations produced by these migrating tides at 10 A.M. These do not directly correspond to tidal amplitudes at altitudes where the vertical profiles do not peak.

10 A.M.-10 P.M. temperature difference maps for DW1 and TW3 from ECMWF at altitudes below around 0.1 mb and NRLMSISE-00 above ζ , used as *a priori* ζ (see Sect. 2), are also shown for comparison in Fig. 3. The ~~model results map MIPAS LT sampling and were convolved considering MIPAS temperature vertical resolution.~~ aim of this comparison is to verify that the retrieved vertical structures are not merely those transferred from the *a priori*.

MIPAS $|n_{odd} - s|=0$ latitude-altitude cross-section below 120 km exhibits maximum absolute values over the equator and at 35°N and 35°S in October (Fig. 3). Peaks of alternating sign are located at the equator at 42 km (1K), 56 km (-1K), 74 km (5K), 84 km (-11K), 94 km (7K), 104 km (-6K), 110 km (12K) and 120 km (-20K). Out-of-phase peaks (opposite sign) occur at 35° below 105 km. Their altitudes in the Northern Hemisphere (NH) are similar to those at the equator but they are 2 km higher in the Southern Hemisphere (SH). These extra-tropical perturbations are weaker (<1K below 80 km and 2K at 84 km, -6K at 94 km, 4K at 104 km and 15K at 110 km) than at the equator.

The *a priori* migrating component also presents the largest perturbations for the equinoxes and over the equator (Fig. 3). The alternating minima and maxima are located at similar altitudes below 70 km (corresponding to ECMWF) but the vertical wavelength above (NRLMSISE-00) increases and peaks are located only at 95 km and 110 km. Out of phase weaker oscillations appear only at 60°N and 60°S at 70-75 km. This shows poor agreement between NRLMSISE-00 and MIPAS but proves that MIPAS $|n_{odd} - s|=0$ does not come from the *a priori*. Global Scale Wave Model (GSWM-09; Hagan and Roble (2001); Zhang et al. (2010a, b)) and Climatological Tidal Model of the Thermosphere (CTMT; Oberheide and Forbes (2008a); Oberheide et al. (2011b)) DW1 sampled at MIPAS LT (not shown) present peaks located generally within 2-4 km and 1-2K of those of MIPAS below 100 km, except for the maxima at 70 km and 95 km over the equator (5-8K smaller in MIPAS).

MIPAS oscillation exhibits a vertical wavelength decreasing with altitude, varying from 30 km around the stratopause to 20 km around 110 km. This is comparable to 27 km, the classical tidal theory prediction for (1,1) (Chapman and Lindzen, 1970). The model DW1 has a slightly longer vertical wavelength on average than that given by MIPAS, particularly in the upper mesosphere. This could indicate caveats in the representation of gravity wave and tide interactions in this version of the model (Achatz et al., 2008). We note however that superposition of TW3 may affect the MIPAS-derived vertical wavelength.

The latitudinal structure of the phase changes above 105 km. The perturbations from the tropics to 50° around 110 km, peaking at 35° (15K), are not out of phase with those at the equator. This is consistent with overlapping of TW3, with the most pronounced amplitudes at mid-latitudes above 100 km (Moudden and Forbes, 2013; Yue et al., 2013), and/or the effect of the thermospheric *in situ* DW1 tide. This MIPAS feature is similar in ~~the NRLMSISE-00 model~~ but does not compare well with GSWM-09 or CTMT DW1 at 110 km, which exhibit typical (1,1) mode structure. We note that GSWM-09 and CTMT do not include *in situ* tidal forcing.

At 120 km, MIPAS zonal mean temperature differences switch to negative values for latitudes between 50°S and 30°N. There are several possibilities that might explain this feature. It could be due mainly to TW3. If related to a feature at 110 km explained by TW3 contribution, it would imply a TW3 vertical wavelength of 20 km. This is larger than expected from models (Du and Ward, 2010) but similar to TW3 wavelengths derived from previous measurements in the upper mesosphere (Thayaparan, 1997). Another possibility is a preferential dissipation of the low order DW1 modes from the Hough Mode Extension (HME) (Forbes and Hagan, 1982) at lower altitudes so that higher order modes dominate at these higher altitudes.

Finally, it could also be a consequence of the thermospheric *in situ* DW1. The latter would imply a downward propagation of the thermospheric component, allowed under the thermosphere viscid regime (Forbes and Garrett, 1976).

225 The feature at 120 km is not identifiable in GSWM-09 and CTMT DW1 results at MIPAS LT sampling. Neither in NRLMSISE-00 nor the thermosphere extension of the Whole Atmosphere Community Climate Model (WACCM-X) (Liu et al., 2010), which include *in situ* DW1. We cannot rule out that part of this disagreement is due to remaining artifacts in MIPAS T_{THER} due to unrealistic *a priori* NO day/night abundances used in the retrievals (see Bermejo-Pantaleón et al. (2011)).

At 130-150 km, MIPAS measures positive A.M.-P.M. zonal mean differences at 35°S-25°N in October (Fig. 3). The nearly
230 constant-with-altitude values above 130 km evidence no phase change with altitude. This is consistent with the effect of the thermospheric *in situ* generated diurnal migrating component. The phase of the *in situ* thermospheric tide is $\varphi_{DW1}=2-4$ P.M., dependent on the solar flux input (see e.g. Forbes and Garrett, 1976; Liu et al., 2010). Since MIPAS measurements correspond to LST=10, we note that MIPAS measurements of the thermosphere DW1 effect underestimate total *in situ* tide amplitudes by a factor of $\cos(n\Omega(10 - \varphi_{DW1}))$.

235 Comparison with ~~the~~ NRLMSISE-00 ~~model~~ shows little agreement at these altitudes. On the one hand, this strengthens the idea of the *a priori* having little impact on the derived temperature oscillations but, on the other hand, MIPAS significantly overestimates the model predictions. Again, artifacts in MIPAS T_{THER} retrieval cannot be ruled out.

Figure 3 also shows $|n_{odd} - s|=0$ longitudinal perturbations for January. Maximum and minimum values over the equator and in the NH are slightly higher (2 km) and 2-3K smaller than in October below 110 km at low to mid-latitudes. In the
240 thermosphere, negative perturbations at 120 km are 5K stronger than in October. Above 130 km, the signature of the *in situ* tide is clear (10-50K), producing maximum perturbations off the equator and tracking the sub-solar point.

At Southern high latitudes (55-75°S), MIPAS sees an oscillation peaking at 90 and 100 km in January (Fig. 3). It is in phase with the perturbations at 35°, probably indicating that it belongs to a different HME mode. Its dependence with season is shown in the time series at 75°S and 70°N depicted in Fig. 4. A vertical perturbation peaking at 10 A.M. with alternating maxima and
245 minima at 90, 100 and 110 km is clearly seen from late Spring through Summer at 75°S (2K). This structure is also present at Northern high latitudes (70°N) at similar altitudes but with slightly weaker amplitudes. This detection corroborates previous measurements of temperature tides at Southern high latitudes, where 3K amplitude diurnal components with 10 A.M. phases were measured from ground around 90 km (Lübken et al., 2011). Here we detect a Northern hemisphere counterpart.

Latitude-time slices at altitudes where $|n_{odd} - s|=0$ generally peak (84, 110, 120 and 140 km) are shown in Figure 5. The
250 seasonal and latitudinal variability is highly dependent on altitude. Starting with 84 km, the perturbation is stronger during the equinoxes than during solstices. This is due to the influence of the seasonal variation of the symmetry of the heating source (Forbes et al., 2001) and the zonal winds in the middle atmosphere (McLandress, 2002; Zhu et al., 2005), probably below 70 km (Achatz et al., 2008). Amplitudes are smaller than 1K for latitudes larger than 70° at this altitude.

At 110 km, the perturbation is positive all year round, except north of 70°N, and varies significantly (2-15K). Maxima are
255 generally reached at 35°, with a 5° shift towards higher latitudes in the local summer. Previously detected TW3 latitude shifts (Pancheva et al., 2013) and the *in situ* DW1 evidence the same behavior. Maximum values occur in the equinoxes, coinciding

with the expected maximum contribution from an overlapping DW1. Perturbations are significantly reduced over the equator during January, as a TW3 effect would be (Pancheva et al., 2013).

At 120 km, MIPAS $|n_{odd} - s|=0$ is negative between 50°S and 50°N. These negative perturbations generally peak at the same altitude throughout the year, which implies that the local time phase also remains constant. The latitudinal structure could correspond to a second-order symmetric mode of DW1 and/or the first TW3 mode. Maximum perturbations occur during solstices around 20° South and North (-20K), in contrast to the mesosphere, where maximum amplitudes are found at the equator during equinoxes.

At 140 km, the positive peaks, following the sub-solar point, move towards the local summer, when they present maximum amplitudes. The similarities of the $|n_{odd} - s|=0$ seasonal and latitudinal structure around 120 km with that at 140 km supports the possibility of downward propagation of the *in situ* thermospheric DW1. Additionally, MIPAS measurements show negative peaks at 140 km in Autumn around 50°N and 50°S (10K). These could be associated with the positive perturbation at lower altitudes (120 km) for similar latitudes.

3.2 The $|n_{odd} - s|=1$ mode

The strongest tidal modes included in the MIPAS $|n_{odd} - s|=1$ longitudinal oscillation are DW2 and D0. ~~FE2 and TW4~~ TW2 oscillations are also embedded if present. The diurnal modes are the strongest among them. They may originate from a combination of DW1 interaction with sPW1 and the longitudinally varying tropospheric latent heat release related with the wave-1 surface longitudinal asymmetry (Oberheide et al., 2005; Lieberman et al., 2015).

Figure 6 shows amplitudes and phases derived for November. Amplitudes maximize around the equator, 35°N and 35°S, and peak at 85-90 km (4-15K). SH amplitudes are larger than in the NH. The extra-tropical oscillations are out of phase with those at the equator. The decreasing phase with altitude (right upper plot of Fig. 6 and Fig. 7) indicates a westward propagation if vertical propagation is assumed. That indicates a contribution from DW2. The vertical wavelength is 25 km.

A hint of activity with smaller amplitudes (2K at 90 km and 6K 105 km) appears at 65°S. These features are in phase and anti-phase with the signals measured at 0° and 35°, respectively and also tilt westward with altitude. An analogous signature appears at 65°N but its propagation direction is not as coherent.

It is not evident from MIPAS data how efficiently this oscillation penetrates higher up in the thermosphere. At the very least, it does not increase with altitude in the 115-150 km range. This mode does not show a coherent structure and amplitudes usually oscillate around temperature error values at these altitudes.

Figure 6 also shows time series of the amplitudes and phases of MIPAS $|n_{odd} - s|=1$. Amplitudes at 68 km maximize in July, November and February (3-5K). These maxima shift in latitude following the tropical local winter. This off-equator displacement generally occurs at altitudes between 60 and 80 km. It is also present in SABER measurements (Gan et al., 2014). Secondary maxima (<2K) appear in July and November 20-30° to the North and to the South of the primary maximum.

The wave amplitude at 86 km (typical $|n_{odd} - s|=1$ peaking altitude) peaks at the equator during the equinoxes (10-15K) but also in July (8K) (Fig. 6). These values are larger than the combination of those reconstructed from ISAMS for DW2 (4K) and D0 (3K) (Forbes and Wu, 2006) or from SABER DW2 (2K) and D0 (4K) (Zhang et al., 2006). The phase remains constant

throughout the year except in July, when it shifts 180°. This reflects a change in the relative importance of the sources of the underlying tides, which is expected to be greater in July if tide-wave interaction dominates (see Fig. 3 in Oberheide et al., 2005).

295 The amplitude of $|n_{odd} - s|=1$ at 86 km reaches 4K from September to December around 35°. It is latitudinally symmetric and out of phase with respect to the equator. This value is in agreement with the combination of DW2 (2K) and D0 (2K) from SABER at a similar altitude in September 2004. The oscillation is also noticed at 35°N in July and 35°S in March (4K).

300 The time series at 105 km is more structured. Maximum $|n_{odd} - s|=1$ amplitudes occur mostly around 30° from November to March, particularly in the SH, and in July (larger in the SH; 10K). The phase does not change significantly over the year and is latitudinally asymmetric. This is in contrast with behavior at lower altitudes, suggesting other HME modes or even-parity frequency tidal components as principal contributions. The oscillation at 105 km is significant at the equator from October to December (6-8K) and is out-of-phase with that at 30°S.

305 These results are consistent with SABER measurements, showing D0 tide maxima at 110 km around 30-40°, particularly during the solstices and also strongest at SH local winter (7K), and DW2 maxima at 100-105 km over the equator, mainly from October to March (7K) (Gan et al., 2014; Truskowski et al., 2014). SABER also showed contribution from DW2 at 35°S but not in the NH, which could also be responsible for the hemispheric asymmetry here.

Maxima at 105 km, out-of-phase with the ones at 35°S, appear around 65°N and S (6-8K) only during November-December.

3.3 The $|n_{odd} - s|=2$ mode

310 MIPAS $|n_{odd} - s|=2$ longitudinal oscillation embeds the diurnal DE1 and DW3 and the terdiurnal TW1 components, of which DE1 is the strongest. These non-migrating tides most likely arise from non-linear interactions between their migrating counterparts (DW1 and TW3) and $s = 2$ stationary planetary waves (SPW2).

The detection of these tidal components has been reported seldom in the past. Indeed, this mode is weaker than those with $|n_{odd} - s|=0,1,4$ but it is a contribution with a coherent vertical propagation in MIPAS data above 90 km at certain latitudes (see below).

315 Figure 8 shows latitude-altitude maps of the derived amplitudes and phases for January and September. Both months show eastward propagating oscillations above 90 km at 35° South (2-5K) and North (3-8K in January and 3K in September).

320 September also exhibits a feature centered at 5-10°S above 75 km that mainly propagates westward and peaks at 90 km (6K). It is unclear whether the amplitudes measured around 110 km correspond uniquely to the same oscillation since there is no monotonical phase change with altitude. According to Truskowski et al. (2014), DW3 vertical wavelength prevents its penetration into the thermosphere if it originates in the troposphere. Therefore, the detection at these high altitudes with a lack of correspondence with an upward propagating signal could be consistent with a local source or with the propagation of a tidal component different to DW3.

The wave spectrum derived from SABER in September around 110 km by Zhang et al. (2006) shows a contribution from DW3 at 10-20°S (6K) and 40-50°S (4K) and a small contribution from DE1 around 20°N (<4K). The direction of propagation of the waves derived here only coincide at 35°S. However, CMAM DE1 simulations of Ward et al. (2005) showed a symmetric

325 three maxima latitudinal structure around 80-90 km dominating the mesopause (2K) and converting into an asymmetric two maxima structure in the lower thermosphere. Thus, MIPAS $|n_{odd} - s|=2$ structure probably responds to the overlapping of two significant contributions, in which DW3 dominates at extra-tropical latitudes and DE1 dominates at the equator.

The time series of $|n_{odd} - s|=2$ at 94 km shows a large seasonal variability. The maximum at 5-10°S appears mainly in May and September with a varying amplitude (bottom left panel in Fig. 8). The oscillation is also noticeable in March-April
330 and September around 30-40°N and S, when the mode is latitudinally asymmetric. July and November reveal a 4K amplitude oscillation closer to the equator (20°) and latitudinally symmetric (in phase).

The time series at 105 km (bottom right panel of Fig. 8) shows an incoherent latitudinal pattern not clearly correlated to the one at 94 km. This suggests the contribution of high order Hough modes at higher altitudes, varying throughout the year. Whereas strong signatures for an anti-symmetric Hough mode are found for January (4-6K), April (2-4K) and July (2K), a
335 symmetric mode is indicated for September.

3.4 The $|n_{odd} - s|=3$ mode

The combination of the DE2 and the DW4 tides produces a $|n_{odd} - s|=3$ longitudinal oscillation as seen by MIPAS. DE2 arises from the release of latent heat and its latitudinal/seasonal pattern is associated with a modulation by the mean wind (Pancheva et al., 2010). Fixed local time wavenumber-3 structures are present in the ionosphere but DE2 forcing from below has
340 not yet been clearly determined (Pedatella et al., 2008; England et al., 2009; Pancheva and Mukhtarov, 2010; Mukhtarov and Pancheva, 2011).

This is one of the dominating MIPAS zonal oscillations over the equator around 110 km in December (12K). Only the migrating component is stronger. It shows a latitudinally antisymmetric structure at 90 km during December (see Fig. 9). The amplitudes maximize at tropical latitudes and are larger in the SH. A symmetric mode dominates above 100 km and amplitudes
345 are significant at latitudes below 30-40°. Amplitudes increase up to 130-140 km (25K), where the oscillation starts dissipating. This pattern of enhanced activity during the NH winter agrees with previous studies for DE2 (Pedatella et al., 2008). MIPAS significant amplitudes in the E-region are not reproduced in the CTMT and the GSWM DE2, which model 5K maximum values above 110 km.

The phase increases with altitude (right upper plots of Fig. 9 and Fig. 10). If upward propagation is assumed, this indicates
350 contribution from an eastward propagating wave. This indicates that, opposite to what Pancheva et al. (2010) state, DE2 may penetrate above 115 km but with a significantly longer vertical wavelength (30 km at 140 km in contrast to 10-12 km in the upper mesosphere).

The change with altitude of the relative importance of the different Hough modes occurs throughout the year. This is deduced from the different latitudinal distribution of the amplitudes at 90 km and at 110 km (bottom panels in Fig. 9). Amplitudes at
355 90 km peak during the solstices at around 20° (4-6K) and are larger in the local summer. The oscillation also peaks in the solstices at 110 km (12K) and exhibits an off-equator displacement (5-10°) towards the local winter. These results agree with the DE2 seasonal behavior derived from SABER (Pancheva et al., 2010; Pancheva and Mukhtarov, 2011).

3.5 The $|n_{odd} - s|=4$ mode

The $|n_{odd} - s|=4$ MIPAS longitudinal variation includes the diurnal non-migrating components DE3 and DW5. These tidal
360 modes are thought to be excited by diurnally-varying latent heat release over the wave-4 land-sea variation. $|n_{odd} - s|=4$
also contains the ~~TW1 and TW2 components~~ [TE1 component](#). DE3 is the strongest non-migrating tidal effect in the lower
thermosphere and has been widely studied. It is thought to be primarily responsible for the wave-4 structure detected at higher
altitudes in the thermosphere (Hagan et al., 2007), while the direct absorption of the incoming radiation might play a secondary
role (Achatz et al., 2008). ~~It is not yet clear how much~~ [Quantification of the](#) troposphere-originated ~~DE3~~ [DE3 is relevant for](#)
365 [determining how much it](#) contributes to the fixed local time zonal wavenumber-4 in the ionosphere (Oberheide et al., 2011a;
Pedatella et al., 2012).

MIPAS $|n_{odd} - s|=4$ longitudinal oscillation has strong amplitudes in the lower thermosphere (at least below 135 km) over
the equator. Figure 11 shows amplitudes and phases altitude-latitude cross-section derived for August. The amplitudes are
significant from the equator to mid-latitudes above 70 km. They increase with altitude, reaching 8K around 95 km, 10K at
370 100 km, and peak at 120-125 km (35K). The mode starts dissipating at 125 km but maintains a consistent vertical propagation
(increasing phase with altitude). The DE3 temperature amplitude maximum is located around 110-115 km in results from
CTMT and the Whole Atmosphere Model (WAM) (Akmaev et al., 2008) and about 5 km below in GSWM-09. MIPAS peak is
around 10 km above the altitude predicted by models. This result may impact on the modeling of the mechanisms controlling
DE3 in the thermosphere. However, we note that the vertical resolution of MIPAS temperatures is approximately 10 km at these
375 altitudes, enough to shift the peak and partially explain the difference. [Interference with DW5 and/or TE1 is also possible.](#)

The $|n_{odd} - s|=4$ phase decreases with latitude, so that the oscillations over the equator and at 20-25° are out of phase.
The phase increases with altitude, pointing to DE3 as the main contributor if an upward propagation is assumed. The vertical
wavelength in the mesosphere is 8-12 km. The phase plot exhibits a crosswise structure, which decreases with height until the
lower thermosphere, where the phase is almost latitudinally symmetric. This indicates the presence of an asymmetric HME
380 mode below 95 km, that is more efficiently dissipated as it propagates upwards than the symmetric ones. This confirms the
results for the DE3 HMEs of the CTMT Oberheide and Forbes (2008a). In the lower thermosphere, the vertical wavelength
increases to 20 km.

Latitude-time slices at selected altitudes are plotted in Fig. 12. Maximum amplitudes occur around 10-20°N and 10-20°S at
84 km, stronger in the NH. ~~There~~ [The](#) oscillation tilts to the North during the equinoxes, to the South at the beginning of the
385 NH Winter, and is latitudinally extended and centered over the equator during the NH summer, agreeing with the DE3 pattern
from SABER (Gan et al., 2014; Zhang et al., 2006) and MLS (Forbes and Wu, 2006). The 4K larger MIPAS amplitudes might
be explained by contribution from DW5. Non-negligible amplitudes also appear in MIPAS data at high latitudes, at 60° in July
and at 80-85° in November.

Large amplitudes mainly occur around the equator at 94 km, maximizing (6-8K) from June to September (Fig. 12), 2K larger
390 than SABER DE3 (see e.g. Gan et al., 2014). This seasonal pattern agrees with a cycle responding to the combined seasonal
variation of the background atmosphere and of the diurnal heat source (Oberheide et al., 2006; Achatz et al., 2008). MIPAS

also measures 5K maxima close to the tropics in November-December and February and high latitude (50-60°) activity in July-August.

395 The oscillation is significantly amplified at 110 km (10-15K) and 125 km (30K) but has a similar seasonal variability to that at lower altitudes (Fig. 12). MIPAS values at 110 km generally agree with those derived from SABER for DE3 at similar altitudes (Zhang et al., 2006; Gan et al., 2014), although they are larger (2K) in March. DW5 contribution is also expected at these altitudes (a maximum of 4K, according to SABER).

This mode also presents hemispherically symmetric signatures at 50-60° in July-August at 110 km (2-4K) and 125 km (10K) and in November at 80° at 110 km (4K).

400 The phase at 110 km varies throughout the year over the equator (not shown). It shifts towards the West with latitude or, in terms of local time phase and assuming a dominant eastward propagating component (DE3), it occurs later in the day. The phase generally presents hemispherical symmetry.

The seasonal behavior reflects the seasonal change of the relative importance of the different Hough modes for most altitudes. There is a major contribution from a symmetric mode throughout the year at thermospheric altitudes, except from November 405 to January. It is then overcome (95-110 km) or competes (around 125 km) with an anti-symmetric mode, in agreement with HME from Oberheide and Forbes (2008a). July also presents a small contribution from the symmetric mode around 125 km. However, it is then when the asymmetric mode is strongest, whereas Oberheide and Forbes (2008a) report it to be strongest only in January.

4 Inter-annual variability

410 Five years of continuous observations are insufficient to unambiguously link atmospheric processes through correlations but are adequate to check for tidal quasi-biennial oscillations (QBO). Year to year variability of strengths of the measured longitudinal oscillations due to the effect of the zonal wind Quasi-Biennial-Oscillation is expected (McLandress, 2002; Mayr and Mengel, 2005; Huang Oberheide et al. (2009) and references therein discuss the possible mechanisms through which the zonal wind QBO might affect daily temperature oscillations.

415 At each altitude and latitude, we have decomposed the amplitudes of MIPAS $\Delta T/2$ derived $|n_{odd} - s|$ longitudinal oscillation modes from 2007 to 2012 into six intra-annual sinusoidal components (with 12, 6, 4, 3, 2.4 and 2 month periods), an inter-annual sinusoidal component (with its period as a free parameter) and a component proportional to the solar flux. We have allowed for solar cycle effects, for which we have accurate input energy variation, with the sole aim of deriving a more accurate inter-annual oscillation. Note that MIPAS time coverage spans from solar minimum to solar maximum and, thus, all 420 monotonical variations of temperature amplitudes, like trends, are embedded in this solar component. We have unambiguously found inter-annual variations consistent with a QBO in MIPAS data only for the strong $|n_{odd} - s|=0$ mode. A QBO effect in the DE3 component is not detected with confidence in MIPAS data. ~~This is not surprising as the impact of the QBO on~~ According to our Fig. 11, the 15-20% DE3 is expected to be small (Li et al., 2015) amplitude variations during boreal summer reported

425 by Oberheide et al. (2009) would imply QBO amplitudes of 0.5K at 90 km and 1.5K at 110 km. These are within the limits of the corresponding MIPAS temperature errors at these altitudes.

Figure 13 shows the time series from 2007 to 2012 of MIPAS $|n_{odd} - s|=0$ amplitudes over the equator and at 35°N. We recall that these correspond to migrating tide total amplitudes only at the altitudes where the tidal phase or anti-phase is 10Å.M., which are approximately located at the peaks in the vertical profiles. We already mentioned in Section 3.1 that there is a seasonal variation in the altitudes of these peaks, particularly at extra-tropical latitudes. These altitudes vary during a calendar
430 year 2 km up and down around 78 km and 85 km over the equator, but as much as 5 km around 75 km and 3 km at 88 km at 35°N, being higher in the winter (Fig. 13). This also happens in the SH but to a significantly lesser extent (not shown). These changes of peak altitudes are most likely due to a change of phase. The vertical wavelength barely changes because the peak altitude shift occurs at most altitudes simultaneously.

This behavior is repeated annually, pointing to a persistent seasonal effect. It could arise from a seasonal change of the
435 relative contribution from the different sources of this component, namely, the semi-annually varying background atmosphere and symmetry of the heating source. Due to its hemispherical asymmetry, we attribute it to the annual oscillation of the background atmosphere, significantly larger in the NH. Interaction with other dynamical features during the winter are not ruled out.

A QBO in MIPAS $|n_{odd} - s|=0$ mode amplitudes is noticeable in Fig. 13, particularly at the equator. Figure 14 shows these
440 time series at 44, 76 and 86 km over the equator (approximate peaking altitudes in the equinoxes) and the fitted annual, semi-annual and inter-annual components. Note that we kept the sign of the perturbations. The inter-annual component (red) competes with the combination of the semi-annual and the annual oscillations (grey) below 80 km. We also show two different representations of the zonal wind stratospheric QBO (SQBO) in Fig. 14: that obtained at the NOAA-ESRL Physical Sciences Division from the zonal average of the 30 mb zonal wind at the equator calculated from the NCEP/NCAR Reanalysis
445 (<http://www.esrl.noaa.gov/psd/>) and that measured at 30 mb from a radiosonde station in Singapore, compiled by the Freie Universitaet Berlin (<http://www.geo.fu-berlin.de/en/met/ag/strat/produkte/qbo/index.html>). The phase of the background zonal wind SQBO at 30 mb is opposite to that of the mesospheric QBO (MQBO) (Burrage et al., 1996), that is, when the SQBO is in its westerly phase, the MQBO is in its easterly phase.

The period of the derived inter-annual component (red) of MIPAS $|n_{odd} - s|=0$ agrees with that of the Singapore winds at
450 all altitudes (see Fig. 14). The (absolute value) of this inter-annual component is in phase with the zonal wind SQBO. In other words, MIPAS $|n_{odd} - s|=0$ strengthens at all altitudes simultaneously during the SQBO westerly phase, in agreement with previous observational studies (Xu et al., 2009; Wu et al., 2011), and, therefore, the MQBO easterly phase. Ekanayake et al. (1997) found that longitudinally propagating tides are stronger for mean zonal winds blowing in the opposite direction, which implies that a westward propagating tide, like DW1, should be stronger for westerlies. In combination, these facts suggest
455 that the QBO effect on mesospheric migrating tides is mainly not produced locally by the zonal wind MQBO. A more likely possibility is a zonal wind QBO interaction with tides in the stratosphere. This supports the argument by (Forbes and Vincent, 1989) of varying stratospheric tide filtering during upward propagation caused by the varying mean zonal winds instead of a

local effect in the mesosphere, where dissipation starts, as Oberheide et al. (2009) suggested as more plausible for DE3. Note that inter-annual variation at tropospheric altitudes, where the tide mainly originates, can not be ruled out.

460 A QBO is also present everywhere else where MIPAS $|n_{odd} - s| = 0$ mode is significant: there are stronger migrating tides during the SQBO eastward phase. Figure 15 shows a map of the QBO amplitude. Values are smaller than 0.5K below 75 km over the equator and below 105 km around 30°N and 30°S, 1K at 76 km, 2K at 86 km, 1K at 98 km and 1.5K at 110 km. These results agree with those derived from SABER below 90 km (Xu et al., 2009). Above, SABER values are about 1K larger.

5 Summary

465 The sun-synchronous Michelson Interferometer for Passive Atmospheric Sounding (MIPAS) globally sounded the atmospheric limb from the stratosphere to the lower thermosphere. MIPAS took measurements at two fixed local times during its ascending (10 A.M.) and descending (10 P.M.) nodes. Subtraction of the descending and ascending node measurement pairs, $\Delta T/2$, at each latitude, altitude and longitude eliminate the background atmosphere, the daily-invariant longitudinal oscillations (like planetary waves) and also the longitudinal oscillations with daily frequencies such that they are an even integer factor of the
470 24-hour day (like semi-diurnal tides). Thus, the zonal variation of the $\Delta T/2$ depicts a 'solar-view' mainly of the diurnal and terdiurnal tidal components.

Extraction of the underlying longitudinal oscillations by spectral analysis isolates the amplitudes and phases of the contributing MIPAS zonal wavenumbers k . Each wavenumber k comprises the combined contribution of the tidal modes such that their daily frequency n , an odd integer, and their zonal wavenumber s , are $|n_{odd} - s| = k$. The tidal modes embedded in MIPAS
475 k modes are listed in Table 1.

MIPAS spectra covered the CO₂ 15 μm and NO 5.3 μm emissions from which temperatures from 40 to 150 km are derived. We extracted the wavenumber $k = 0 - 4$ longitudinal waves from these temperatures globally from April 2007 to March 2012 and have made them available to the scientific community. To our knowledge, this is the first time zonal oscillations in temperature are derived in this altitude range globally from a single instrument.

480 We analyze and characterize the behavior of MIPAS $|n_{odd} - s|$ longitudinal oscillations from a climatological point of view from averages of monthly mean MIPAS $\Delta T/2$. The results generally agree well with measurements from other instruments, like SABER or MLS. They reveal that:

- Migrating tidal perturbations with odd n below 105 km are stronger during the equinoxes. They are latitudinally symmetric in strength. Their phases exhibit a seasonal variation, with a delay in the winter months that is larger in the Northern
485 hemisphere. The dominating tidal mode at latitudes below 50°, probably the first mode of the upward propagated DW1, rapidly dissipates above 105 km.
- At 110 km, the combination of the diurnal and terdiurnal migrating tide contributions produces maxima around 35°N and 35°S from September to May and from 35°N to 35°S from June to August. They shift 5° to higher latitudes in the local

- 490 summer. TW3 might also be responsible for the strong migrating perturbations measured at 120 km but contributions from an upward propagated DW1 high order mode or from the *in situ* generated thermospheric tide are also a possibility.
- The thermospheric DW1 above 130 km produces maximum perturbations off the equator, tracking the sub-solar point and peaking in the local summer.
 - MIPAS measured impact from migrating tides with $n - odd$ at Southern high latitude summer, with alternating maxima and minima at 90 and 100 km in phase with those at 35° . This agrees with previous ground-based detections (Lübken et al., 2011). MIPAS additionally detected a weaker counterpart in the NH summer.
 - Besides equatorial, $|n_{odd} - s| = 1$ also exhibits extra-tropical (35°) and high-latitude (65°) activity in the MLT, particularly in the SH from November to January.
 - $|n_{odd} - s| = 2$ presents significant seasonal variability with a latitudinal structure responding to the overlap of two contributions, a westward propagating oscillation that dominates at extra-tropical latitudes and an eastward propagating one that dominates at the equator.
 - $|n_{odd} - s| = 3$ is the strongest non-migrating mode in December and is also noticeable in November and January. A wave tilting eastward with altitude and already detected at 70 km, penetrates well in the lower thermosphere with a significantly larger vertical wavelength than in the mesosphere.
 - MIPAS shows a prominent wavenumber 4 structure starting at 70 km and peaking around 135 km (15 km above results from models). The latitudinal distribution reveals a contribution from a symmetric Hough mode in the lower thermosphere, which propagates upwards more easily than the antisymmetric one dominating in the mesosphere.
 - $|n_{odd} - s| = 4$ expands to higher latitudes in July-August, when hemispherically symmetric footprints are detected at $50-60^\circ$ above 85 km. Signatures of this mode are also detected in November at 80° .

510 We also studied the inter-annual variability of the amplitudes of the MIPAS $|n_{odd} - s|$ wavenumbers derived from monthly mean MIPAS $\Delta T/2$. We unambiguously detect a $|n_{odd} - s| = 0$ QBO, reaching 2K in the upper mesosphere at low latitudes. Comparison of tidal and zonal wind stratospheric and mesospheric QBO phases suggests that the QBO effect on tides does not mainly occur in the mesosphere.

515 The good MIPAS temporal resolution and global coverage observations extending from the stratosphere to the lower thermosphere presented here are useful for testing general circulation models considering tidal effects in the MLT region and may well represent a challenge for them to model their vertical, latitudinal and temporal dependence. A thorough analysis of particular cases found here is needed and will be the focus of future work.

Appendix A: Methodology for extraction of odd parity daily frequency tidal components

Considering the effect of tides as the only source of longitudinal variability, an atmospheric variable X (like temperature or species concentration) measured at longitude λ , altitude z , latitude ϕ and local solar time t can be described as the variable zonal mean \bar{X} at z and ϕ perturbed by the sum of the tidal oscillations $X'_{n,s}$, with zonal wavenumber s and daily wave frequency n , at position (λ, z, ϕ) and time t :

$$X(\lambda, t) = \bar{X} + \sum_{n,s} X'_{n,s}(\lambda, t), \quad (\text{A1})$$

where, for clarity, the dependence of X , \bar{X} and $X'_{n,s}$ on z and ϕ is not written. The tidal oscillations can be expressed as sinusoidal longitudinal oscillations of the form (e.g. Williams and Avery, 1996):

$$X'_{n,s}(\lambda, t) = A_{n,s} \cos(n\Omega t - (n-s)\lambda + \Phi_{n,s}). \quad (\text{A2})$$

where $\Omega = 2\pi/24$ is the Earth's angular velocity, and the oscillation amplitude $A_{n,s}$ and phase $\Phi_{n,s}$ are functions of z and ϕ . Note that this expression can be easily expressed in terms of Universal Time t' using $t = t' + \frac{24}{2\pi}\lambda$. The zonal wavenumber $s \in \mathbb{Z}$ is defined such that $s < 0$ refers to eastward propagating tides, $s > 0$ to westward propagating tides and $s = 0$ to stationary tides. The daily wave frequency $n \in \mathbb{N}$ is a positive integer such that $n = 1$ for a diurnal component, $n = 2$ for a semi-diurnal component, and so on.

For the particular case of sun-synchronous instrument observations, the local solar time of the ascending and descending segments, t_a and t_d , are fixed and fulfill $t_a = t_d + 12$. A tidal perturbation at local time t_a , $X'_{n,s}(\lambda, t_a)$, is then related to that at t_d , $X'_{n,s}(\lambda, t_d)$, through:

$$\begin{aligned} X'_{n,s}(\lambda, t_a) &= A_{n,s} \cos(n\Omega t_a - (n-s)\lambda + \Phi_{n,s}) = \\ &= A_{n,s} \cos(n\Omega t_d + n\pi - (n-s)\lambda + \Phi_{n,s}) = \\ &= (-1)^n X'_{n,s}(\lambda, t_d). \end{aligned} \quad (\text{A3})$$

Therefore, half the difference of the variable observed at longitude λ at the descending node local time $X(\lambda, t_d)$ and at the ascending node local time $X(\lambda, t_a)$ is:

$$\Delta X/2 = \frac{X(\lambda, t_d) - X(\lambda, t_a)}{2} = \frac{1}{2} \left[\sum_{n,s} X'_{n,s}(\lambda, t_d) - \sum_{n,s} (-1)^n X'_{n,s}(\lambda, t_d) \right] = \sum_{n-\text{odd}} \sum_s X'_{n,s}(\lambda, t_d), \quad (\text{A4})$$

where addends with even n and $n = 0$ (stationary longitudinal oscillations) cancel out.

Defining $k = |n - s|$, with $k \in \mathbb{N}$, $\Delta X/2$ in Eq. A4 can be written as:

$$\Delta X/2 = \sum_{n-\text{odd}} X'_{n,n}(t_d) + \sum_{n-\text{odd}, s < n} X'_{n,s}(\lambda, t_d) + \sum_{n-\text{odd}, s > n} X'_{n,s}(\lambda, t_d) = \sum_{n-\text{odd}} X'_{n,n}(t_d) + \sum_k \sum_{n-\text{odd}} X'_{n,n-k}(\lambda, t_d) + X'_{n,n+k}(\lambda, t_d). \quad (\text{A5})$$

540

Since t_d is fixed, $\Delta X/2$ is a function of longitude that can be Fourier-decomposed at each z and ϕ , $\Delta X/2 = C_0 + \sum_k C_k \cos(k(\lambda - \theta_k))$. Making a term-to-term correspondence of this harmonic decomposition with the right hand side of Eq. A5 and using Eq. A2, each k -order Fourier term equals to:

$$\begin{aligned} C_k \cos(k(\lambda - \theta_k)) &= \sum_{n-\text{odd}} X'_{n,n-k}(\lambda, t_d) + X'_{n,n+k}(\lambda, t_d) = \\ &= \sum_{n-\text{odd}} A_{n,n\pm k} \cos(n\Omega t_d \pm k\lambda + \Phi_{n,n\pm k}). \end{aligned} \quad (\text{A6})$$

545 k 's are *apparent* longitudinal wavenumbers of the $\Delta X/2$ decomposition. Modes fulfilling that n is odd and $s = n \pm k$ appear to have a k wavenumber on the sun-synchronous instrument $\Delta X/2$ and, thus, combine and are embedded in the the $k = |n - s|$ term. We hereafter denote this combined oscillation as $|n_{\text{odd}} - s| = k$. The major tidal components contributing to each apparent zonal wavenumber k are listed in Table 1.

Even if the tidal modes with the same n parity and the same $|n - s|$ are aliased, a close look at the derived phases θ_k and
550 their dependence with altitude ultimately helps discern the dominance of a certain direction of horizontal propagation.

The zero order Fourier term equals to:

$$C_0 = \sum_{n-\text{odd}} X'_{n,n}(t_d) = \sum_{n-\text{odd}} A_n \cos(n\Omega t_d + \Phi_{n,n}), \quad (\text{A7})$$

that is, the addition of the solar migrating components ($s = n$), which do not depend on λ but only on local time t_d . This equation shows that, even if only one mode dominates, the derived amplitude C_0 only corresponds to the amplitude of the tidal
555 component $A_{n,n}$ at the altitudes where the phase $\Phi_{n,n}$ is $n\Omega t_d$ or $n\Omega t_d$. These altitudes show up as maxima (or minima) in the derived C_0 vertical profile. Another piece of information comes from the vertical nodes of that profile, corresponding to altitudes for which the phase is $n\Omega(t_d \pm 6)$.

A method similar to the one described here was successfully applied to CRISTA data initially by Oberheide et al. (2002) and recently to SABER and MLS data by Lieberman et al. (2015). Li et al. (2015) also present an analogous analysis but applied
560 to any two fixed local times for the descending and the ascending nodes. In the later case, the isolation of individual tidal components is then possible if only two daily frequencies n contribute.

Analogously to the subtraction, the sum of the variable pairs measured at the descending and at the ascending node LSTs at longitude λ allows for the determination of the $n - \text{even}$ modes.

Acknowledgements. MGC was financially supported by the MINECO under its 'Ramon y Cajal' subprogram. The IAA team was supported
565 by the Spanish MINECO, under project ESP2014-54362-P, and EC FEDER funds. IMK/IAA generated MIPAS data can be accessed by request at <https://www.imk-asf.kit.edu/english/1500.php>.

References

- Achatz, U., Grieger, N., and Schmidt, H.: Mechanisms controlling the diurnal solar tide: Analysis using a GCM and a linear model, *J. Geophys. Res.*, 113, A08303, doi:10.1029/2007JA012967, 2008.
- 570 Akmaev, R. A., Fuller-Rowell, T. J., Wu, F., Forbes, J. M., Zhang, X., Anghel, A. F., Iredell, M. D., Moorthi, S., and Juang, H.-M.: Tidal variability in the lower thermosphere: Comparison of Whole Atmosphere Model (WAM) simulations with observations from TIMED, *Geophys. Res. Lett.*, 35, L03 810, doi:10.1029/2007GL032584, 2008.
- Beig, G., Keckhut, P., Lowe, R. P., Roble, R. G., Mlynczak, M. G., Scheer, J., Fomichev, V. I., Offermann, D., French, W. J. R., Shepherd, M. G., Semenov, A. I., Remsberg, E. E., She, C. Y., Lübken, F. J., Bremer, J., Clemesha, B. R., Stegman, J., Sigernes, F., and Fadnavis, S.:
- 575 Review of mesospheric temperature trends, *Rev. Geophys.*, 41, doi:10.1029/2002RG000121, 2003.
- Bermejo-Pantaleón, D., Funke, B., López-Puertas, M., García-Comas, M., Stiller, G. P., von Clarmann, T., Linden, A., Grabowski, U., Höpfner, M., Kiefer, M., Glatthor, N., Kellmann, S., and Lu, G.: Global Observations of Thermospheric Temperature and Nitric Oxide from MIPAS spectra at 5.3 μm , *J. Geophys. Res.*, 116, A10313, doi:10.1029/2011JA016752, <http://dx.doi.org/10.1029/2011JA016752>, 2011.
- 580 Bruinsma, S. L. and Forbes, J. M.: Anomalous behavior of the thermosphere during solar minimum observed by CHAMP and GRACE, *Journal of Geophysical Research (Space Physics)*, 115, A11323, doi:10.1029/2010JA015605, 2010.
- Burrage, M. D., Vincent, R. A., Mayr, H. G., Skinner, W. R., Arnold, N. F., and Hays, P. B.: Long-term variability in the equatorial middle atmosphere zonal wind, *J. Geophys. Res.*, 101, 12 847, doi:10.1029/96JD00575, 1996.
- Chapman, S. and Lindzen, R. S.: *Atmospheric Tides*, Reidel, Dordrecht, Netherlands, 1970.
- 585 Cho, Y.-M. and Shepherd, G.: Resolving daily wave 4 nonmigrating tidal winds at equatorial and midlatitudes with WINDII: DE3 and SE2, *Journal of Geophysical Research (Space Physics)*, 120, 10, doi:10.1002/2015JA021903, 2015.
- Chu, Y.-H., Wu, K.-H., and Su, C.-L.: A new aspect of ionospheric E region electron density morphology, *Journal of Geophysical Research (Space Physics)*, 114, A12 314, doi:10.1029/2008JA014022, 2009.
- Davis, R. N., Du, J., Smith, A. K., Ward, W. E., and Mitchell, N. J.: The diurnal and semidiurnal tides over Ascension Island ($^{\circ}$ S, 14°
- 590 W) and their interaction with the stratospheric quasi-biennial oscillation: studies with meteor radar, eCMAM and WACCM, *Atmospheric Chemistry & Physics*, 13, 9543–9564, doi:10.5194/acp-13-9543-2013, 2013.
- Du, J. and Ward, W. E.: Terdiurnal tide in the extended Canadian Middle Atmospheric Model (CMAM), *Journal of Geophysical Research (Atmospheres)*, 115, D24106, doi:10.1029/2010JD014479, 2010.
- Eckermann, S. D. and Marks, C. J.: An idealized ray model of gravity wave-tidal interactions, *J. Geophys. Res.*, 101, 21 195,
- 595 doi:10.1029/96JD01660, 1996.
- Ekanayake, E. M. P., Aso, T., and Miyahara, S.: Background wind effect on propagation of nonmigrating diurnal tides in the middle atmosphere, *J. Atmos. Sol.-Terr. Phys.*, 59, 401–429, doi:10.1016/S1364-6826(96)00012-0, 1997.
- England, S. L., Maus, S., Immel, T. J., and Mende, S. B.: Longitudinal variation of the E-region electric fields caused by atmospheric tides, *Geophys. Res. Lett.*, 33, L21 105, doi:10.1029/2006GL027465, 2006.
- 600 England, S. L., Zhang, X., Immel, T. J., Forbes, J. M., and DeMajistre, R.: The effect of non-migrating tides on the morphology of the equatorial ionospheric anomaly: seasonal variability, *Earth, Planets, and Space*, 61, 493–503, doi:10.1186/BF03353166, 2009.
- Fischer, H., Birk, M., Blom, C., Carli, B., Carlotti, M., von Clarmann, T., Delbouille, L., Dudhia, A., Ehhalt, D., Endemann, M., Flaud, J. M., Gessner, R., Kleinert, A., Koopmann, R., Langen, J., López-Puertas, M., Mosner, P., Nett, H., Oelhaf, H., Perron, G., Remedios, J.,

- Ridolfi, M., Stiller, G., and Zander, R.: MIPAS: an instrument for atmospheric and climate research, *Atmos. Chem. Phys.*, 8, 2151–2188, 2008.
- 605 Forbes, J. M. and Garrett, H. B.: Solar diurnal tide in the thermosphere, *J. Atmos. Sci.*, 33, 2226–2241, doi:10.1175/1520-0469(1976)033<2226:SDTITT>2.0.CO;2, 1976.
- Forbes, J. M. and Garrett, H. B.: Theoretical studies of atmospheric tides, *Reviews of Geophysics and Space Physics*, 17, 1951–1981, doi:10.1029/RG017i008p01951, 1979.
- 610 Forbes, J. M. and Hagan, M. E.: Thermospheric extensions of the classical expansion functions for semidiurnal tides, *J. Geophys. Res.*, 87, 5253–5259, doi:10.1029/JA087iA07p05253, 1982.
- Forbes, J. M. and Vincent, R. A.: Effects of mean winds and dissipation on the diurnal propagating tide - An analytic approach, *Planet. Spa. Sci.*, 37, 197–209, doi:10.1016/0032-0633(89)90007-X, 1989.
- Forbes, J. M. and Wu, D.: Solar tides as revealed by measurements of mesosphere temperature by the MLS experiment on UARS, *J. Atmos. Sci.*, 63, 1776–1797, 2006.
- 615 Forbes, J. M., Zhang, X., and Hagan, M. E.: Simulations of diurnal tides due to tropospheric heating from the NCEP/NCAR Reanalysis Project, *Geophys. Res. Lett.*, 28, 3851–3854, doi:10.1029/2001GL013500, 2001.
- Forbes, J. M., Zhang, X., Palo, S., Russell, J., Mertens, C. J., and Mlynczak, M.: Tidal variability in the ionospheric dynamo region, *Journal of Geophysical Research*, 113, A02 310, 2008.
- 620 Forbes, J. M., Bruinsma, S. L., Zhang, X., and Oberheide, J.: Surface-exosphere coupling due to thermal tides, *Geophys. Res. Lett.*, 36, L15 812, doi:10.1029/2009GL038748, 2009.
- Forbes, J. M., Zhang, X., and Bruinsma, S. L.: New perspectives on thermosphere tides: 2. Penetration to the upper thermosphere, *Earth, Planets, and Space*, 66, 122, 2014.
- Fritts, D. C. and Vincent, R. A.: Mesospheric momentum flux studies at Adelaide, Australia - Observations and a gravity wave-tidal interaction model, *Journal of Atmospheric Sciences*, 44, 605–619, doi:10.1175/1520-0469(1987)044<0605:MMFSAA>2.0.CO;2, 1987.
- 625 Funke, B., López-Puertas, M., García-Comas, M., Kaufmann, M., Höpfner, M., and Stiller, G. P.: GRANADA: a Generic RADIative traNsfer AnD non-LTE population Algorithm, *J. Quant. Spectrosc. Radiat. Transfer*, 113, 1771–1817, doi:10.1016/j.jqsrt.2012.05.001, <http://dx.doi.org/10.1016/j.jqsrt.2012.05.001>, 2012.
- Gan, Q., Du, J., Ward, W. E., Beagley, S. R., Fomichev, V. I., and Zhang, S.: Climatology of the diurnal tides from eCMAM30 (1979 to 2010) and its comparison with SABER, *Earth, Planets, and Space*, 66, 103, doi:10.1186/1880-5981-66-103, 2014.
- 630 García-Comas, M., Funke, B., López-Puertas, M., Bermejo-Pantaleón, D., Glatthor, N., Clarmann, T. v., Stiller, G. P., Grabowski, U., Boone, C. D., French, W. J., Leblanc, T., López-González, M. J., and Schwartz, M.: On the Quality of MIPAS Kinetic Temperature in the Middle Atmosphere, *Atmos. Chem. Phys.*, 12, 6009–6039, doi:10.5194/acp-12-6009-2012, <http://www.atmos-chem-phys.net/12/6009/2012/>, 2012.
- 635 García-Comas, M., Funke, B., Gardini, A., López-Puertas, M., Jurado-Navarro, A., von Clarmann, T., Stiller, G., Kiefer, M., Boone, C. D., Leblanc, T., Marshall, B. T., Schwartz, M. J., and Sheese, P. E.: MIPAS temperature from the stratosphere to the lower thermosphere: Comparison of vM21 with ACE-FTS, MLS, OSIRIS, SABER, SOFIE and lidar measurements, *Atmos. Meas. Tech.*, 7, 3633–3651, doi:10.5194/amt-7-3633-2014, <http://www.atmos-meas-tech.net/7/3633/2014/>, 2014.
- Gurubaran, S., Rajaram, R., Nakamura, T., and Tsuda, T.: Interannual variability of diurnal tide in the tropical mesopause region: A signature of the El Niño-Southern Oscillation (ENSO), *Geophysical Research Letters*, 32, 13 805, doi:10.1029/2005GL022928, 2005.
- 640

- Hagan, M. and Forbes, J.: Migrating and nonmigrating diurnal tides in the middle and upper atmosphere excited by tropospheric latent heat release, *J. Geophys. Res.*, 107, 4754, <http://dx.doi.org/10.1029/2001JD001236>, 2002.
- Hagan, M. E. and Roble, R. G.: Modeling diurnal tidal variability with the National Center for Atmospheric Research thermosphere-ionosphere-mesosphere-electrodynamics general circulation model, *J. Geophys. Res.*, 106, 24 869–24 882, doi:10.1029/2001JA000057, 645 2001.
- Hagan, M. E., Maute, A., Roble, R. G., Richmond, A. D., Immel, T. J., and England, S. L.: Connections between deep tropical clouds and the Earth's ionosphere, *Geophys. Res. Lett.*, 34, L20109, doi:10.1029/2007GL030142, 2007.
- Häusler, K. and Lühr, H.: Nonmigrating tidal signals in the upper thermospheric zonal wind at equatorial latitudes as observed by CHAMP, *Annales Geophysicae*, 27, 2643–2652, doi:10.5194/angeo-27-2643-2009, 2009.
- 650 Huang, F. T., Mayr, H. G., Reber, C. A., Russell, J. M., Mlynczak, M., and Mengel, J. G.: Stratospheric and mesospheric temperature variations for the quasi-biennial and semiannual (QBO and SAO) oscillations based on measurements from SABER (TIMED) and MLS (UARS), *Ann. Geophys.*, 24, 2131–2149, 2006.
- Huang, F. T., McPeters, R. D., Bhartia, P. K., Mayr, H. G., Frith, S. M., Russell, J. M., and Mlynczak, M. G.: Temperature diurnal variations (migrating tides) in the stratosphere and lower mesosphere based on measurements from SABER on TIMED, *Journal of Geophysical* 655 *Research (Atmospheres)*, 115, D16 121, doi:10.1029/2009JD013698, 2010.
- Immel, T. J., Sagawa, E., England, S. L., Henderson, S. B., Hagan, M. E., Mende, S. B., Frey, H. U., Swenson, C. M., and Paxton, L. J.: Control of equatorial ionospheric morphology by atmospheric tides, *Geophys. Res. Lett.*, 33, L15 108, doi:10.1029/2006GL026161, 2006.
- Jin, H., Miyoshi, Y., Fujiwara, H., and Shinagawa, H.: Electrodynamics of the formation of ionospheric wave number 4 longitudinal structure, *Journal of Geophysical Research (Space Physics)*, 113, A09 307, doi:10.1029/2008JA013301, 2008.
- 660 Kil, H., Oh, S.-J., Kelley, M. C., Paxton, L. J., England, S. L., Talaat, E., Min, K.-W., and Su, S.-Y.: Longitudinal structure of the vertical $E \times B$ drift and ion density seen from ROCSAT-1, *Geophys. Res. Lett.*, 34, L14 110, doi:10.1029/2007GL030018, 2007.
- Laskar, F. I., Chau, J. L., Stober, G., Hoffmann, P., Hall, C. M., and Tsutsumi, M.: Quasi-biennial oscillation modulation of the middle- and high-latitude mesospheric semidiurnal tides during August-September, *Journal of Geophysical Research (Space Physics)*, 121, 4869–4879, doi:10.1002/2015JA022065, 2016.
- 665 Li, X., Wan, W., Ren, Z., Liu, L., and Ning, B.: The variability of non-migrating tides detected from TIMED/SABER observations, *J. Geophys. Res.*, doi:10.1002/2015JA021577, 2015.
- Lieberman, R. S., Riggan, D. M., Ortland, D. A., Nesbitt, S. W., and Vincent, R. A.: Variability of mesospheric diurnal tides and tropospheric diurnal heating during 1997-1998, *J. Geophysical Research (Atmospheres)*, 112, D20 110, doi:10.1029/2007JD008578, 2007.
- Lieberman, R. S., Oberheide, J., and Talaat, E. R.: Nonmigrating diurnal tides observed in global thermospheric winds, *J. Geophys. Res.* 670 *(Space Physics)*, 118, 7384–7397, doi:10.1002/2013JA018975, 2013.
- Lieberman, R. S., Riggan, D. M., Ortland, D. A., Oberheide, J., and Siskind, D. E.: Global observations and modeling of nonmigrating diurnal tides generated by tide-planetary wave interactions, *J. Geophys. Res.*, doi:10.1002/2015JD023739, 2015.
- Liu, H.-L., Foster, B. T., Hagan, M. E., McInerney, J. M., Maute, A., Qian, L., Richmond, A. D., Roble, R. G., Solomon, S. C., Garcia, R. R., Kinnison, D., Marsh, D. R., Smith, A. K., Richter, J., Sassi, F., and Oberheide, J.: Thermosphere extension of the Whole Atmosphere 675 *Community Climate Model*, *Journal of Geophysical Research (Space Physics)*, 115, A12 302, doi:10.1029/2010JA015586, 2010.
- Liu, X., Xu, J., Yue, J., Liu, H. L., and Yuan, W.: Large winds and wind shears caused by the nonlinear interactions between gravity waves and tidal backgrounds in the mesosphere and lower thermosphere, *Journal of Geophysical Research*, 119, 7698–7708, doi:10.1002/2014JA020221, 2014.

- Lübken, F.-J., Höffner, J., Viehl, T. P., Kaifler, B., and Morris, R. J.: First measurements of thermal tides in the summer mesopause region at Antarctic latitudes, *Geophys. Res. Lett.*, 38, L24806, 2011.
- 680 Marsh, D. R., Solomon, S. C., and Reynolds, A. E.: Empirical model of nitric oxide in the lower thermosphere, *Journal of Geophysical Research (Space Physics)*, 109, A07301, doi:10.1029/2003JA010199, 2004.
- Mayr, H. G. and Mengel, J. G.: Interannual variations of the diurnal tide in the mesosphere generated by the quasi-biennial oscillation, *Journal of Geophysical Research*, 110, D10 111, doi:10.1029/2004JD005055, 2005.
- 685 Mayr, H. G., Mengel, J. G., Talaat, E. R., Porter, H. S., and Chan, K. L.: Mesospheric non-migrating tides generated with planetary waves: I. Characteristics, *Journal of Atmospheric and Solar-Terrestrial Physics*, 67, 959–980, doi:10.1016/j.jastp.2005.03.002, 2005a.
- Mayr, H. G., Mengel, J. G., Talaat, E. R., Porter, H. S., and Chan, K. L.: Mesospheric non-migrating tides generated with planetary waves: II. Influence of gravity waves, *Journal of Atmospheric and Solar-Terrestrial Physics*, 67, 981–991, doi:10.1016/j.jastp.2005.03.003, 2005b.
- McLandress, C.: Interannual variations of the diurnal tide in the mesosphere induced by a zonal-mean wind oscillation in the tropics, *Geophys. Res. Lett.*, 29, 1305, doi:10.1029/2001GL014551, 2002.
- 690 Moudén, Y. and Forbes, J. M.: A decade-long climatology of terdiurnal tides using TIMED/SABER observations, *Journal of Geophysical Research (Space Physics)*, 118, 4534–4550, doi:10.1002/jgra.50273, 2013.
- Mukhtarov, P. and Pancheva, D.: Global ionospheric response to nonmigrating DE3 and DE2 tides forced from below, *Journal of Geophysical Research (Space Physics)*, 116, A05 323, doi:10.1029/2010JA016099, 2011.
- 695 Nee, J. B.: Observations of non-migrating tides and ionospheric perturbations of O(¹D) airglow by ISUAL instrument, *Advances in Space Research*, 54, 409–416, doi:10.1016/j.asr.2013.09.011, 2014.
- Oberheide, J. and Forbes, J. M.: Tidal propagation of deep tropical cloud signatures into the thermosphere from TIMED observations, *Geophys. Res. Lett.*, 35, L04 816, doi:10.1029/2007GL032397, 2008a.
- Oberheide, J. and Forbes, J. M.: Thermospheric nitric oxide variability induced by nonmigrating tides, *Geophys. Res. Lett.*, 35, L16 814, doi:10.1029/2008GL034825, 2008b.
- 700 Oberheide, J., Hagan, M. E., Roble, R. G., and Offermann, D.: Sources of nonmigrating tides in the tropical middle atmosphere, *Journal of Geophysical Research (Atmospheres)*, 107, 4567, doi:10.1029/2002JD002220, 2002.
- Oberheide, J., Wu, Q., Ortland, D. A., Killeen, T. L., Hagan, M. E., Roble, R. G., Niciejewski, R. J., and Skinner, W. R.: Non-migrating diurnal tides as measured by the TIMED Doppler interferometer: Preliminary results, *Advances in Space Research*, 35, 1911–1917, doi:10.1016/j.asr.2005.01.063, 2005.
- 705 Oberheide, J., Wu, Q., Killeen, T. L., Hagan, M. E., and Roble, R. G.: Diurnal nonmigrating tides from TIMED Doppler Interferometer wind data: Monthly climatologies and seasonal variations, *Journal of Geophysical Research (Space Physics)*, 111, A10S03, doi:10.1029/2005JA011491, 2006.
- Oberheide, J., Forbes, J. M., Häusler, K., Wu, Q., and Bruinsma, S. L.: Tropospheric tides from 80 to 400 km: Propagation, interannual variability, and solar cycle effects, *J. Geophys. Res.*, 114, D00I05, doi:10.1029/2009JD012388, 2009.
- 710 Oberheide, J., Forbes, J. M., Zhang, X., and Bruinsma, S. L.: Wave-driven variability in the ionosphere-thermosphere-mesosphere system from TIMED observations: What contributes to the wave 4?, *Journal of Geophysical Research*, 116, A01306, doi:10.1029/2010JA015911, 2011a.
- Oberheide, J., Forbes, J. M., Zhang, X., and Bruinsma, S. L.: Climatology of upward propagating diurnal and semidiurnal tides in the thermosphere, *Journal of Geophysical Research (Space Physics)*, 116, A11 306, doi:10.1029/2011JA016784, 2011b.
- 715

- Oberheide, J., Mlynczak, M. G., Mosso, C. N., Schroeder, B. M., Funke, B., and Maute, A.: Impact of tropospheric tides on the nitric oxide 5.3 μm infrared cooling of the low-latitude thermosphere during solar minimum conditions, *J. Geophys. Res.*, 118, doi:10.1002/2013JA019278, <http://dx.doi.org/10.1002/2013JA019278>, 2013.
- Oelhaf, H.: MIPAS Mission Plan, ESA Technical Note ENVI-SPPA-EOPG-TN-07-0073, 2008.
- 720 Pancheva, D. and Mukhtarov, P.: Strong evidence for the tidal control on the longitudinal structure of the ionospheric F-region, *Geophys. Res. Lett.*, 37, L14 105, doi:10.1029/2010GL044039, 2010.
- Pancheva, D. and Mukhtarov, P.: *Aeronomy of the Earth's Atmosphere and Ionosphere*, chap. 2. Atmospheric Tides and Planetary Waves: Recent Progress Based on SABER/TIMED Temperature Measurements (2002–2007), pp. 19–56, IAGA Special Sopron Book Series 2, Springer, Ed. by M.A. Abdu, D. Pancheva, A. Bhattacharyya, doi:10.1007/978-94-007-0326-1_2, 2011.
- 725 Pancheva, D., Mukhtarov, P., and Andonov, B.: Global structure, seasonal and interannual variability of the eastward propagating tides seen in the SABER/TIMED temperatures (2002–2007), *Advances in Space Research*, 46, 257–274, doi:10.1016/j.asr.2010.03.026, 2010.
- Pancheva, D., Mukhtarov, P., and Smith, A. K.: Climatology of the migrating terdiurnal tide (TW3) in SABER/TIMED temperatures, *Journal of Geophysical Research (Space Physics)*, 118, 1755–1767, doi:10.1002/jgra.50207, 2013.
- Pedatella, N. M. and Liu, H.-L.: Tidal variability in the mesosphere and lower thermosphere due to the El Niño–Southern Oscillation, 730 *Geophys. Res. Lett.*, 39, L19802, doi:10.1029/2012GL053383, 2012.
- Pedatella, N. M., Forbes, J. M., and Oberheide, J.: Intra-annual variability of the low-latitude ionosphere due to nonmigrating tides, *Geophys. Res. Lett.*, 35, L18 104, doi:10.1029/2008GL035332, 2008.
- Pedatella, N. M., Hagan, M. E., and Maute, A.: The comparative importance of DE3, SE2, and SPW4 on the generation of wavenumber-4 longitude structures in the low-latitude ionosphere during September equinox, *Geophys. Res. Lett.*, 39, L19 108, doi:10.1029/2012GL053643, 735 2012.
- Picone, J., Hedin, A., Drob, D., and Aikin, A.: NRLMSISE-00 empirical model of the atmosphere: Statistical comparisons and scientific issues, *J. Geophys. Res.*, 107, 1468, doi:10.1029/2002JA009 430, 2002.
- Ribstein, B., Achatz, U., and Senf, F.: The interaction between gravity waves and solar tides: Results from 4-D ray tracing coupled to a linear tidal model, *Journal of Geophysical Research*, 120, 6795–6817, doi:10.1002/2015JA021349, 2015.
- 740 Scherliess, L., Thompson, D. C., and Schunk, R. W.: Longitudinal variability of low-latitude total electron content: Tidal influences, *Journal of Geophysical Research (Space Physics)*, 113, A01 311, doi:10.1029/2007JA012480, 2008.
- Senf, F. and Achatz, U.: On the impact of middle-atmosphere thermal tides on the propagation and dissipation of gravity waves, *Journal of Geophysical Research (Atmospheres)*, 116, D24110, doi:10.1029/2011JD015794, 2011.
- Shepherd, G. G.: Thermospheric observations of equatorial wavenumber 4 density perturbations from WINDII data, *Geophys. Res. Lett.*, 38, 745 L08 801, doi:10.1029/2011GL046986, 2011.
- Shepherd, M. G., Shepherd, G. G., and Cho, Y.-M.: Longitudinal variability of thermospheric temperatures from WINDII O(¹S) dayglow, *Journal of Geophysical Research (Space Physics)*, 117, A10 302, doi:10.1029/2012JA017777, 2012.
- Smith, A. K., Marsh, D. R., and Szymczak, A. C.: Interaction of chemical heating and the diurnal tide in the mesosphere, *Journal of Geophysical Research (Atmospheres)*, 108, 4164, doi:10.1029/2002JD002664, 2003.
- 750 Talaat, E. R. and Lieberman, R. S.: Direct observations of nonmigrating diurnal tides in the equatorial thermosphere, *Geophys. Res. Lett.*, 37, L04 803, doi:10.1029/2009GL041845, 2010.
- Teitelbaum, H. and Vial, F.: On tidal variability induced by nonlinear interaction with planetary waves, *J. Geophys. Res.*, 96, 14, doi:10.1029/91JA01019, 1991.

- Thayaparan, T.: The terdiurnal tide in the mesosphere and lower thermosphere over London, Canada (43°N, 81°W), *J. Geophys. Res.*, 102, 21, doi:10.1029/97JD01839, 1997.
- 755 Truskowski, A. O., Forbes, J. M., Zhang, X., and Palo, S. E.: New perspectives on thermosphere tides: 1. Lower thermosphere spectra and seasonal-latitude structures, *Earth, Planets, and Space*, 66, 136, doi:10.1186/s40623-014-0136-4, 2014.
- von Clarmann, T., Höpfner, M., Kellmann, S., Linden, A., Chauhan, S., Grabowski, U., Funke, B., Glatthor, N., Kiefer, M., Schieferdecker, T., and Stiller, G. P.: Retrieval of temperature H₂O, O₃, HNO₃, CH₄, N₂O and ClONO₂ from MIPAS reduced resolution nominal mode limb emission measurements, *Atmos. Meas. Tech.*, 2, 159–175, <http://www.atmos-meas-tech.net/2/159/2009/>, 2009.
- 760 Wang, D. Y., Ward, W. E., Shepherd, G. G., and Wu, D.-L.: Stationary Planetary Waves Inferred from WINDII Wind Data Taken within Altitudes 90–120 km during 1991–96, *J. Atmos. Sci.*, 57, 1906–1918, 2000.
- Ward, W. E., Fomichev, V. I., and Beagley, S.: Nonmigrating tides in equinox temperature fields from the Extended Canadian Middle Atmosphere Model (CMAM), *Geophys. Res. Lett.*, 32, L03803, doi:10.1029/2004GL021466, 2005.
- 765 Williams, C. R. and Avery, S. K.: Diurnal nonmigrating tidal oscillations forced by deep convective clouds, *J. Geophys. Res.*, 101, 4079–4091, doi:10.1029/95JD03007, 1996.
- Wu, Q., Ortland, D. A., Solomon, S. C., Skinner, W. R., and Niciejewski, R. J.: Global distribution, seasonal, and inter-annual variations of mesospheric semidiurnal tide observed by TIMED TIDI, *Journal of Atmospheric and Solar-Terrestrial Physics*, 73, 2482–2502, doi:10.1016/j.jastp.2011.08.007, 2011.
- 770 Xu, J., Smith, A. K., Liu, H.-L., Yuan, W., Wu, Q., Jiang, G., Mlynczak, M. G., Russell, J. M., and Franke, S. J.: Seasonal and quasi-biennial variations in the migrating diurnal tide observed by Thermosphere, Ionosphere, Mesosphere, Energetics and Dynamics (TIMED), *J. Geophys. Res.*, 114, 13 107, doi:10.1029/2008JD011298, 2009.
- Xu, J., Smith, A. K., Wang, W., Jiang, G., Yuan, W., Gao, H., Yue, J., Funke, B., López-Puertas, M., and Russell, J. M.: An observational and theoretical study of the longitudinal variation in neutral temperature induced by aurora heating in the lower thermosphere, *J. Geophys. Res.*, 118, 7410–7425, doi:10.1002/2013JA019144, <http://dx.doi.org/10.1002/2013JA019144>, 2013.
- 775 Yue, J., Xu, J., Chang, L. C., Wu, Q., Liu, H.-L., Lu, X., and Russell, J.: Global structure and seasonal variability of the migrating terdiurnal tide in the mesosphere and lower thermosphere, *J. Atmos. Sol.-Terr. Phys.*, 105, 191–198, doi:10.1016/j.jastp.2013.10.010, 2013.
- Zhang, L., Jakob, D. J., Bowman, K. W., Logan, J. A., Turquety, S., Hudman, R. C., Li, Q., Beer, R., Worden, H. M., Worden, J. R., Rinsland, C. P., Kulawik, S. S., Lampel, M. C., Shephard, M. W., Fisher, B. M., Eldering, A., and Avery, M. A.: Ozon–CO correlations determined by the TES satellite instrument in continental outflow regions, *Geophys. Res. Lett.*, 33, L18804, doi:10.1029/2006GL026399, 2006.
- 780 Zhang, X., Forbes, J. M., Hagan, M. E., Russell, J. M., Palo, S. E., Mertens, C. J., and Mlynczak, M. G.: Monthly tidal temperatures 20–120 km from TIMED/SABER, *J. Geophys. Res.*, 111, 10, doi:10.1029/2005JA011504, 2006.
- Zhang, X., Forbes, J. M., and Hagan, M. E.: Longitudinal variation of tides in the MLT region: 1. Tides driven by tropospheric net radiative heating, *Journal of Geophysical Research (Space Physics)*, 115, A06 316, doi:10.1029/2009JA014897, 2010a.
- 785 Zhang, X., Forbes, J. M., and Hagan, M. E.: Longitudinal variation of tides in the MLT region: 2. Relative effects of solar radiative and latent heating, *Journal of Geophysical Research (Space Physics)*, 115, A06 317, doi:10.1029/2009JA014898, 2010b.
- Zhu, X., Yee, J.-H., Talaat, E. R., Mlynczak, M., Gordley, L., Mertens, C., and Russell III, J. M.: An algorithm for extracting zonal mean and migrating tidal fields in the middle atmosphere from satellite measurements: Applications to TIMED/SABER–measured temperature and tidal modeling, *J. Geophys. Res.*, 110, D02105, doi:10.1029/2004JD004996, 2005.

Table 1. Main tidal component contributions resolved in our spectral analysis. The derived amplitudes and phases are a combination of all modes contributing.

n	wavenumber $ n - s $	components
odd	0	DW1+TW3
	1	D0+DW2+TW2
	2	DW3+DE1+TW1
	3	DE2+DW4+T0
	4	DE3+DW5+TE1

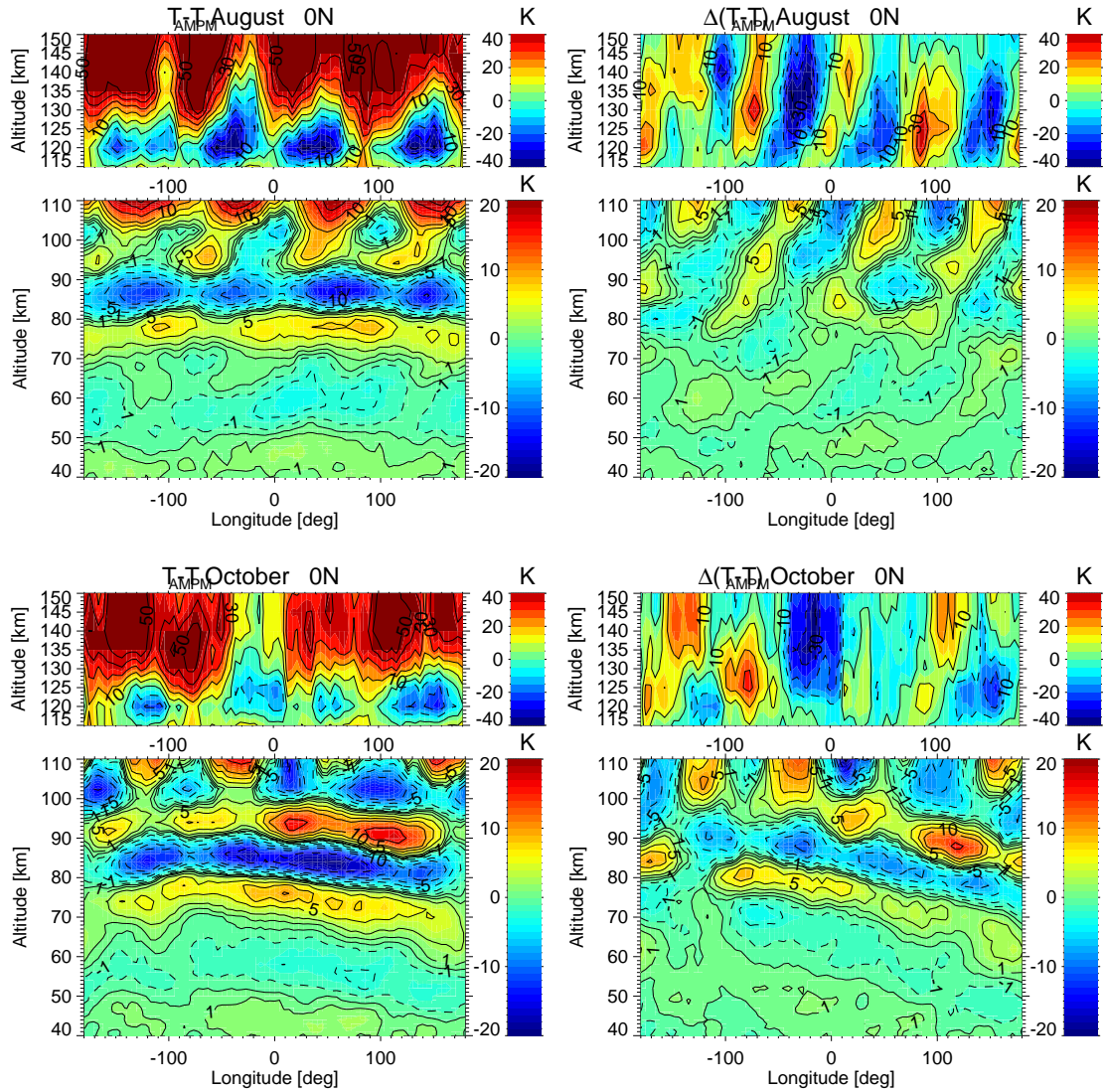


Figure 1. Equatorial MIPAS monthly mean temperature difference (left) and anomaly (with respect to the mean value at each altitude; right) of $\Delta T/2$ for August (1st and 2nd rows) and October (3rd and 4th rows) averaged for 2007-2012. Temperatures below 110 km are retrieved from measurements at 15 μm and above 115 km from 5.3 μm . Note the different color scales.

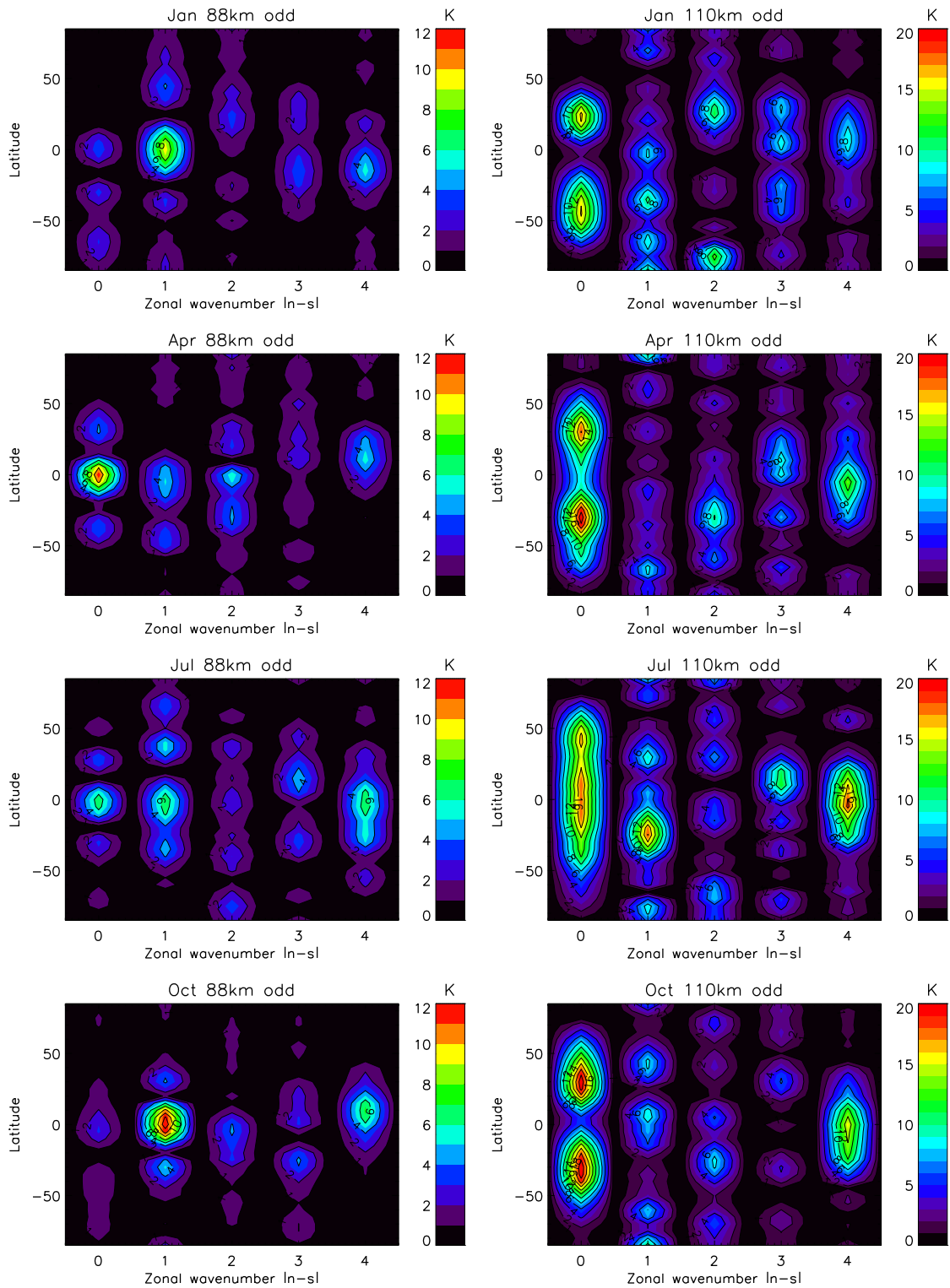


Figure 2. MIPAS $\Delta T/2$ average (2007-2012) monthly mean spectra at 88 km (left) and 110 km (right) for January (1st row), April (2nd

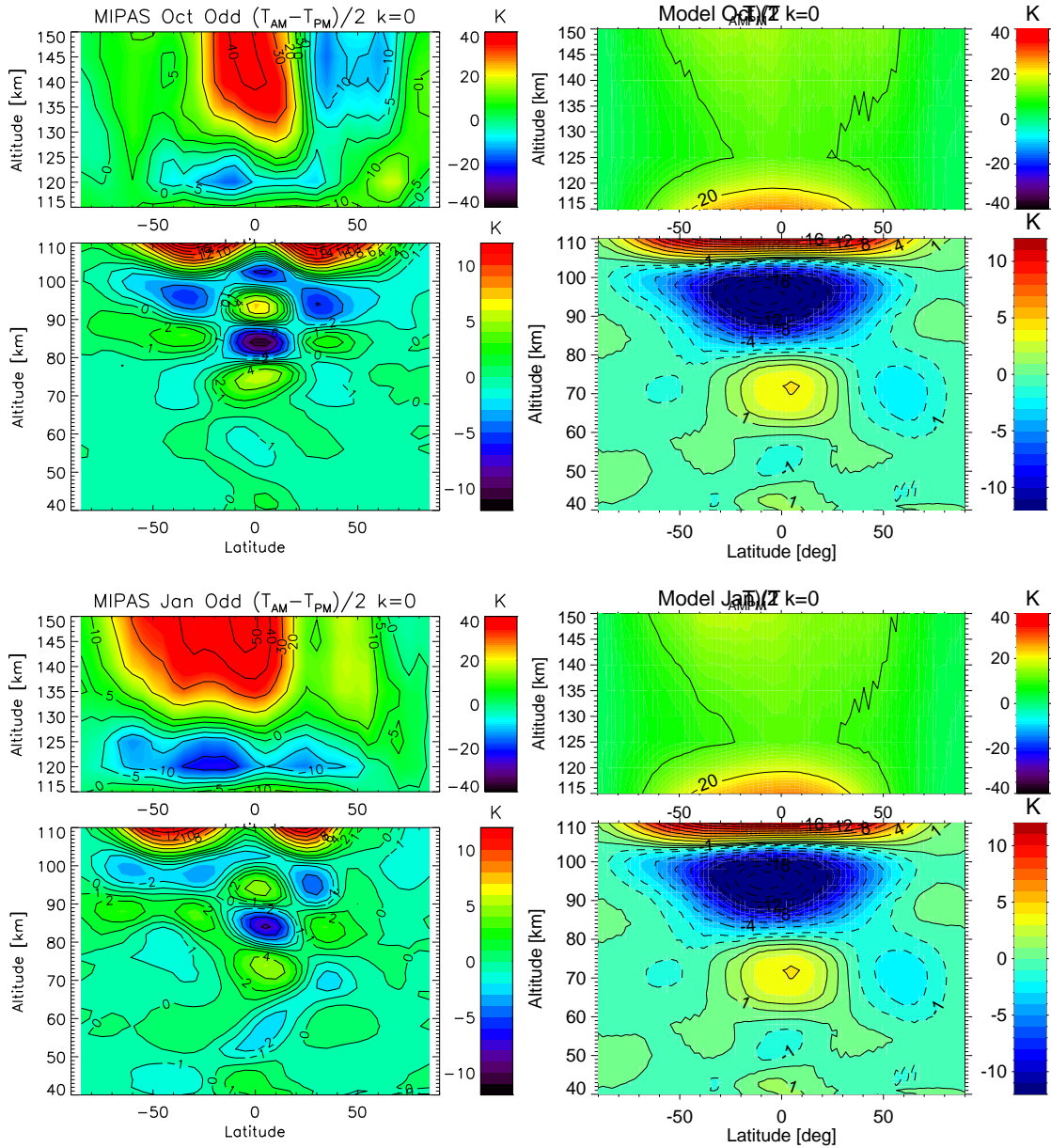


Figure 3. Zonal means of $\Delta T/2$ ($|n_{odd} - s|=0$ mode, embedding DW1 and TW3) extracted from average (2007-2012) monthly means of MIPAS T_{MLT} (20-110 km) and T_{THER} (115-150 km) temperatures (left) compared to [results for corresponding zonal means of the *a priori*](#) (ECMWF and NRLMSISE-00; see text) (right), for October (1st and 2nd rows) and January (3rd and 4th rows).

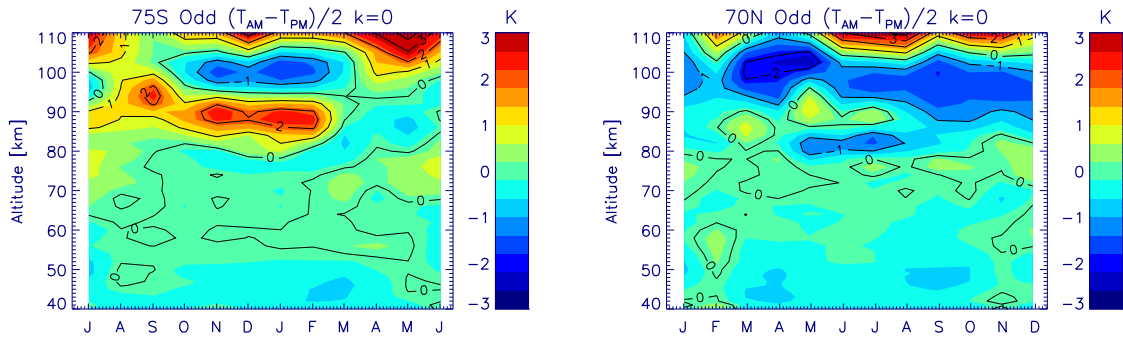


Figure 4. Time series of the vertical distribution of average (2007-2012) $\Delta T/2$ monthly zonal means ($|n_{odd} - s|=0$ mode) at high latitudes (75°S , left; 75°N , right).

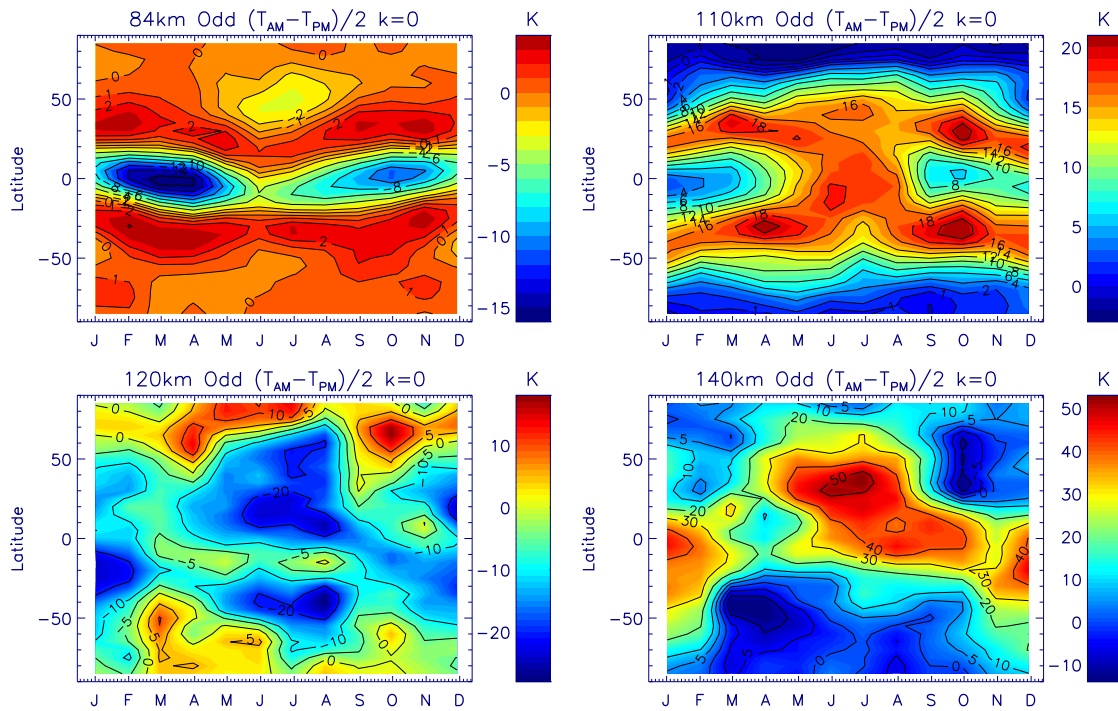


Figure 5. Time series of the latitudinal distribution of average (2007-2012) monthly zonal mean $\Delta T/2$ ($|n_{odd} - s|=0$ mode) at 84, 110, 120 and 140 km.

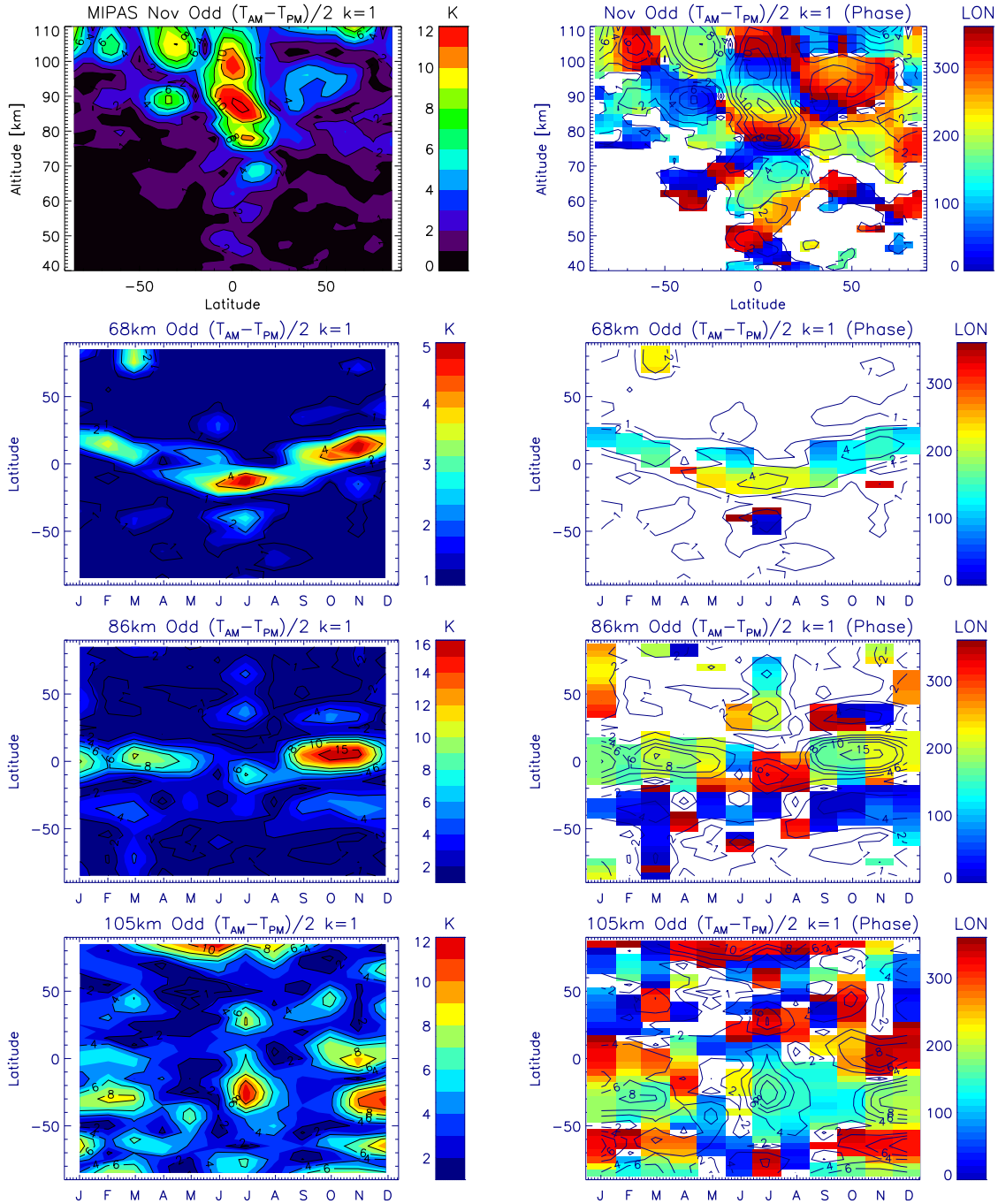


Figure 6. Latitude-altitude fields for November (1st row) and latitude-time fields at 68, 86 and 105 km (2nd-4th rows) of amplitudes and phases of MIPAS average (2007-2012) $|n_{odd} - s|=1$ mode. It embeds D0, DW2 and TW2 tidal oscillations.

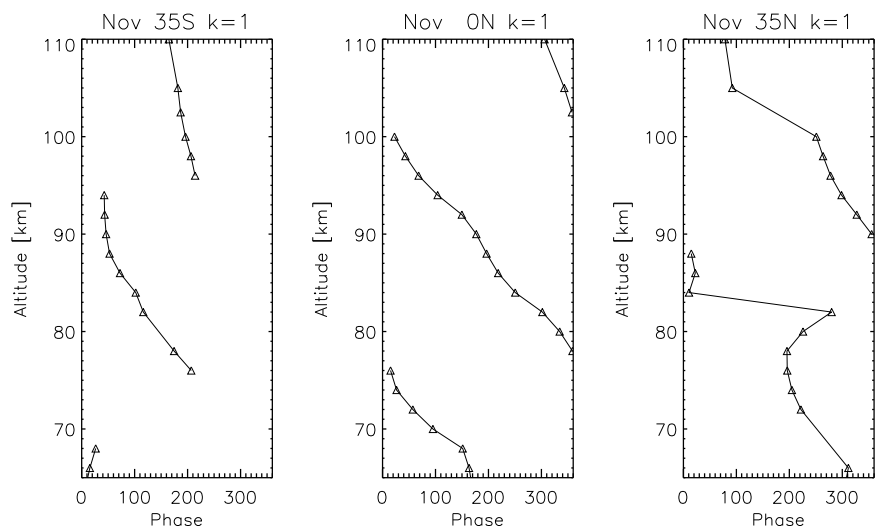


Figure 7. Phase of MIPAS average (2007-2012) $|n_{odd} - s|=1$ for November at 35°S (left), equator (center) and 35°N (right).

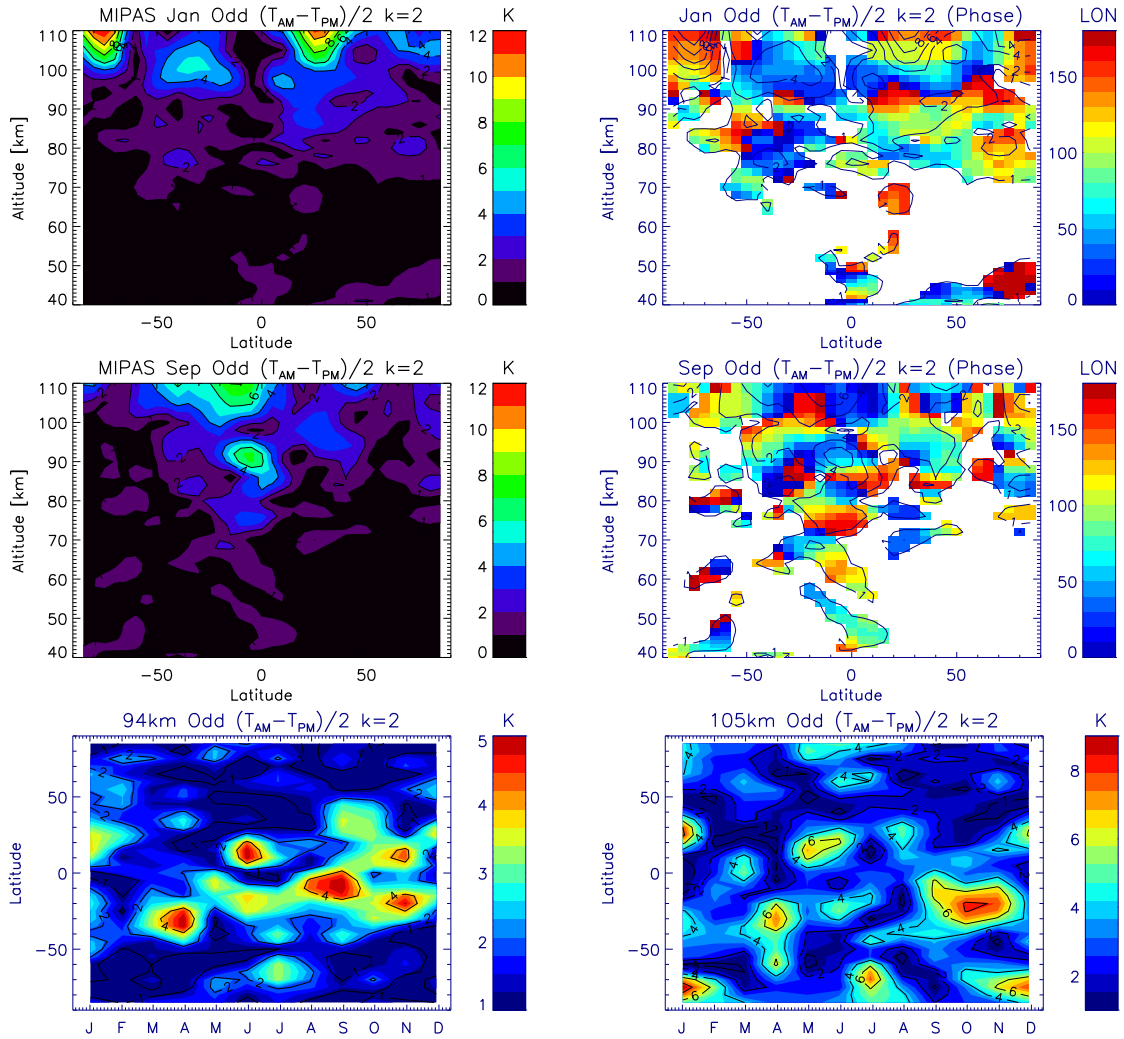


Figure 8. Latitude-altitude amplitude (left) and phase (right) fields for January (1st row) and September (2nd row) and latitude-time horizontal slices of amplitudes (3rd row) at 94 km (left) and 105 km (right) of MIPAS average (2007-2012) $|n_{odd} - s|=2$ mode. It comprises effects from the DW3, DE1 and TW1 tidal modes.

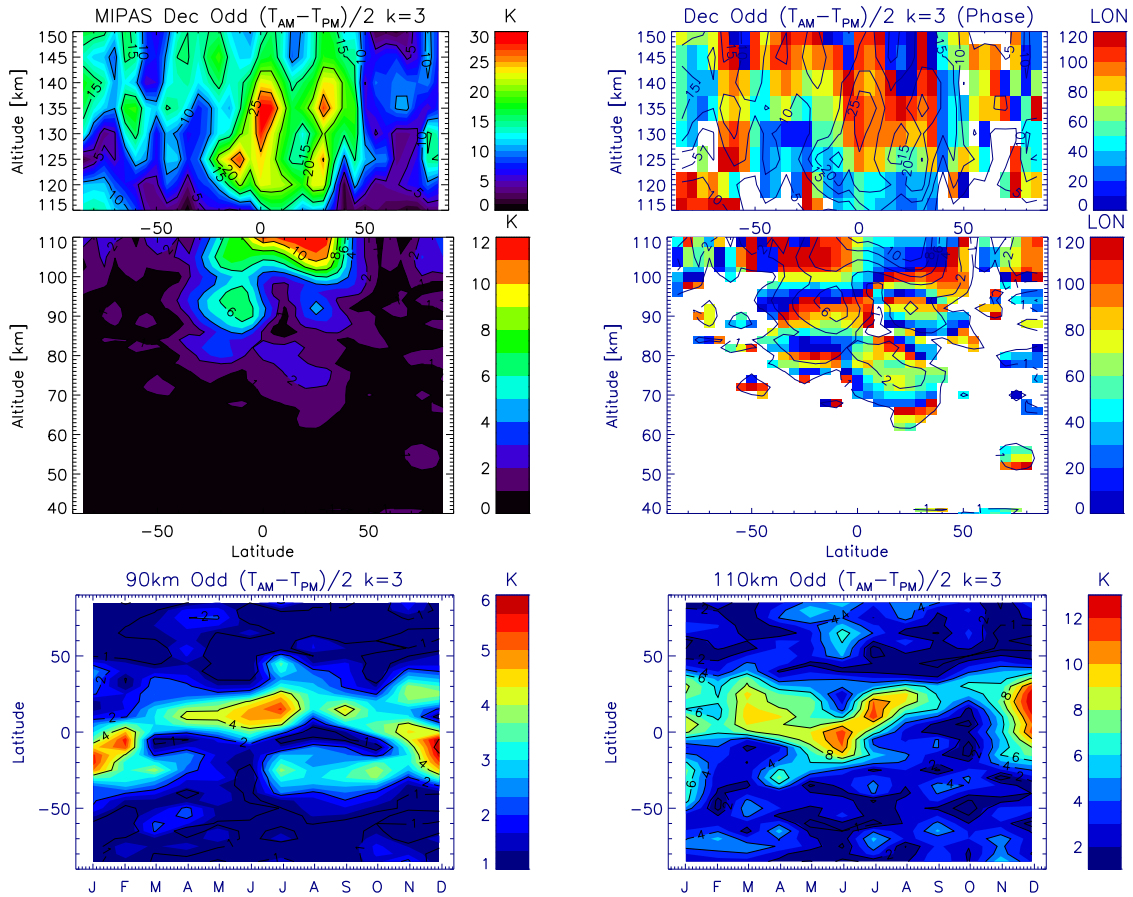


Figure 9. Latitude-altitude amplitude (left) and phase (right) fields for December MIPAS average (2007-2012) $|n_{odd} - s|=3$ longitudinal oscillations (1st and 2nd row) and average monthly mean time series of $|n_{odd} - s|=3$ amplitudes at 90 km (left) and 110 km (right). They embed contributions from DE2, DW4 and T0 tides.

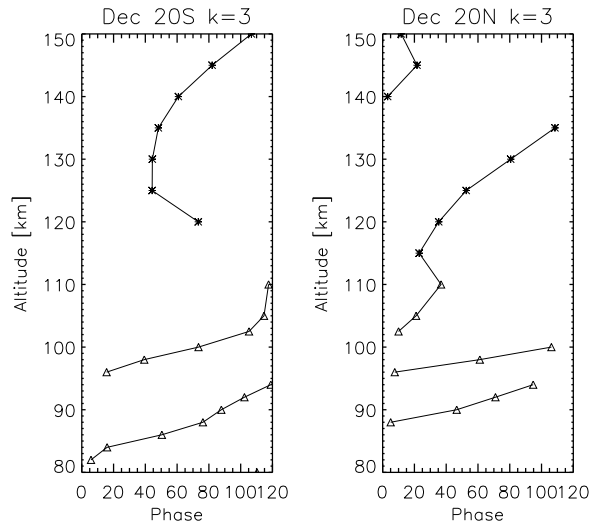


Figure 10. Phase of MIPAS average (2007-2012) $|n_{odd} - s|=3$ for December at 20°S (left) and 20°N (right).

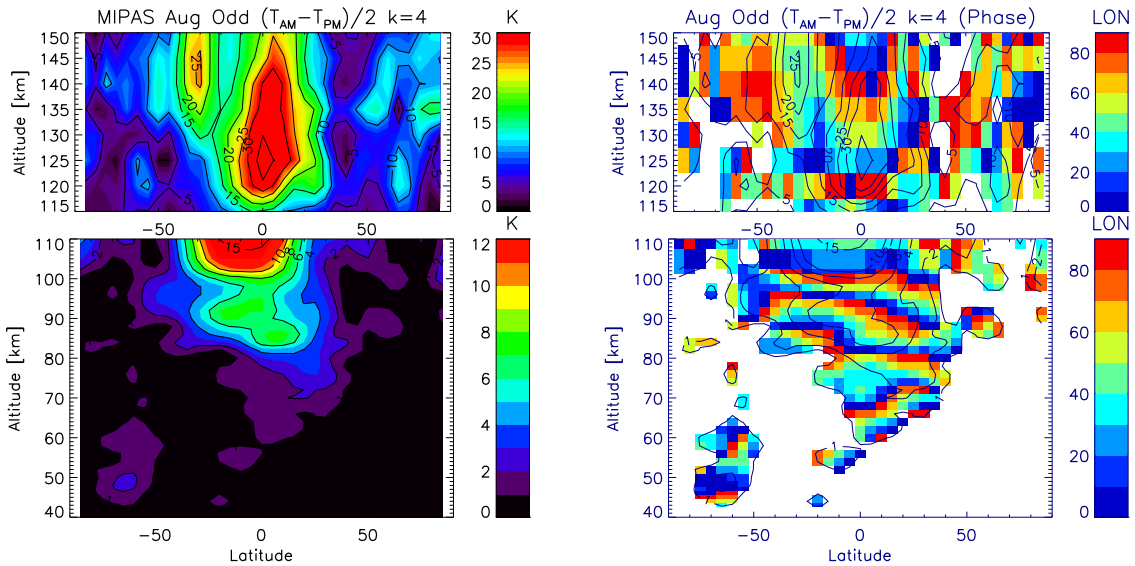


Figure 11. August average (2007-2012) monthly mean amplitudes (left) and phases (right) $|n_{odd} - s|=4$ oscillations from MIPAS T_{THER} (115-150 km; upper panels) and T_{MLT} (20-110 km; bottom panels) temperatures. Note the different color scale. They embed the [DE3](#), [DW5](#) and TE1 tides.

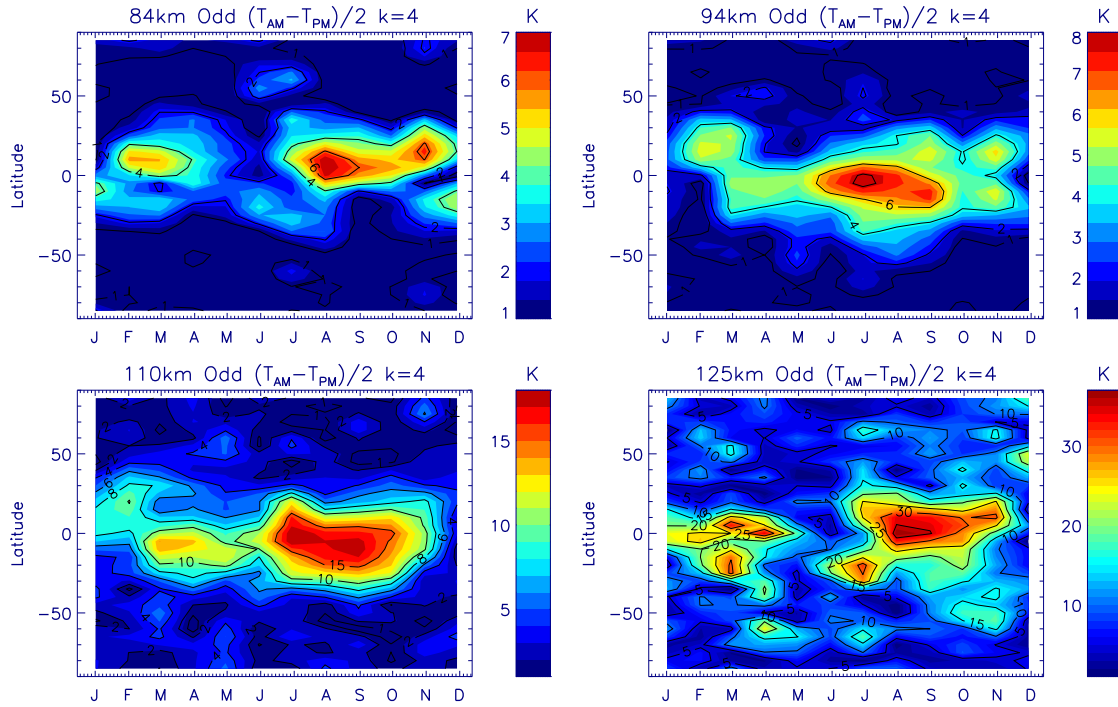


Figure 12. Time series of latitudinal distribution of average (2007-2012) monthly means amplitudes for the MIPAS $|n_{odd} - s| = 4$ mode at 84, 94, 110 and 125 km. It embeds DE3 and TE1 tidal oscillations.

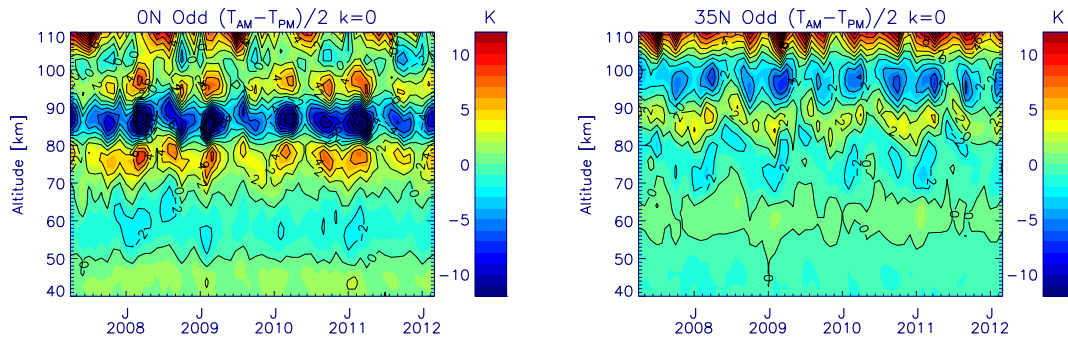


Figure 13. Time series of the MIPAS zonal mean of $\Delta T/2$ monthly means ($|n_{odd} - s| = 0$ mode) at the equator (left) and over 35°N (right).

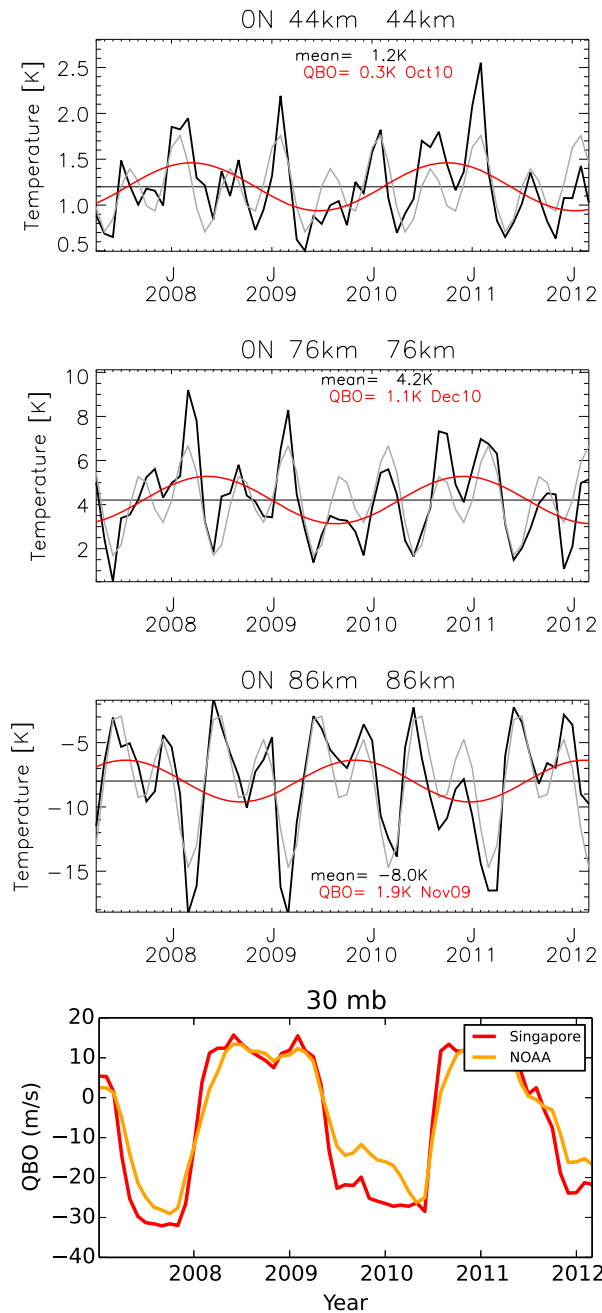


Figure 14. MIPAS monthly mean $|n_{odd} - s|=0$ mode perturbations (black lines) at 44, 76 and 86 km and their decomposition in annual plus semi-annual components (blue) and QBO (red). Singapore winds at 30 mb are also plotted in the bottom panel for reference.

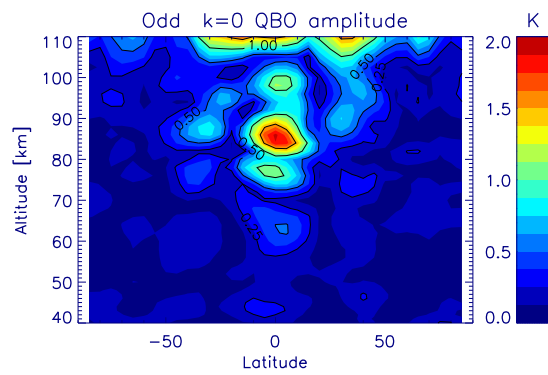


Figure 15. QBO amplitudes derived from the MIPAS $|n_{odd} - s|=0$ longitudinal mode extracted from monthly means from April 2007 to March 2012.