

LETTER TO EDITOR

Dear Editor,

thank you very much for your kind handling of our manuscript. We would also like to thank the referees for the constructive comments. We have carefully revised the manuscript according to your suggestions, and are herewith sending the revised version of the manuscript, including a point-by-point reply to the comments.

We hope that the revised manuscript will now be considered appropriate for publication.

Sincerely yours,

Francesca Costabile (on behalf of all of the co-authors)

POINT-BY-POINT REPLY TO THE COMMENTS

All referee comments (RC) are in bold, our answers (AA) in normal font, and changes in the manuscript are kept in *Italics*.

RC. "First, the finding that there is a significant dependence of BrC on the BC-to-OA ratio (e.g. line 360-362) does not necessarily follow from the data. The dependence of AAE on BC-to-OA ratio shown in Figure 3 can be due to the mere fact that at low BC-to-OA ratios OA has more weight in dictating AAE."

"I believe that ... the parameterization of AAE as a function of BC-to-OA ratio is useful, but it should be presented as an average property (for both BC and OA), and not an indication of the optical properties of BrC."

AA. We agree with the referee. We revised the manuscript (lines 363-373) as follows:

The increase of the AAE with the decrease of the BC-to-OA ratios is illustrated in Figure 3. The relation observed between AAE and BC-to-OA is an average aerosol property (i.e., for both BC and OA) as suggested by the parametrization of AAE as a function of the BC-to-OA ratio (inner panel of Fig.3) consistent with Lu et al. (2015). The grey line (referring to all the data points) shows the parametrization for the bulk aerosol. The black line (referring to the subset of all the data with PC3 scores > 0) shows the parametrization for BrC. We note a larger dependence of AAE on the BC-to-OA ratio for BrC ($r=-0.86$, $p<0.001$) - as opposed to the bulk aerosol ($r=-0.7$, $p<0.001$). However, this can be due to the fact that at low BC-to-OA ratios OA has more weight in dictating AAE.

RC. "Second, the concern that I raised in the last two reviews about AAE plateauing at 1.8 for large BC-to-OA ratios still holds."

AA. We thank the referee for his/her observations. In the revised manuscript, the authors acknowledge that (lines 375-389):

BC and AAE derived from PSAP measurements are affected by uncertainty related to the assumption employed to convert raw PSAP measurements to absorption coefficients, which is about $\pm 40\%$ based on literature studies (Lack et al, 2008; Nakayama et al., 2010; Lack and Langridge, 2013; Bond et al., 2013; Backman et al., 2014). This uncertainty could in principle reconcile our plateau AAE values higher than 1 with the common assumption that AAE tends to 1 when the aerosol is dominated by BC. Nevertheless, we modeled AAE as a function of aerosol chemical and microphysical properties (Fig. 1). Such simulation clearly shows that AAE close to 1 can be obtained for aerosol population dominated by fresh fossil fuel combustion emissions, with diameter centered below 20 nm. Conversely the size distribution of aerosol population investigated in this study is centered around 80-300 nm (Fig. 1). In addition source apportionment studies performed in the Po valley show that carbonaceous aerosol, both in urban and rural sites, is strongly affected by wood burning emissions (Gilardoni 2016, Gilardoni 2011, Larsen 2012). It follows that, even considering the possible bias due to the experimental uncertainty, the AAE plateauing at values higher than 1 for large BC-to-OA ratios is still in agreement with model results and source apportionment data.

RC. "please clearly explain in more detail how this manuscript relates to the closely related paper from your group by Gilardoni et al. that was published in PNAS recently. The two papers clearly relate strongly to each other. This overlap and similarity is not necessarily a negative, provided that the two papers add to each other and do not repeat an excessive amount of information and results, and provided that the relationship between the two papers is presented clearly."

AA. We thank the referee for his/her comment, which was addressed in the revised manuscript (lines 490-497) as follows:

In the paper by Gilardoni et al. (2016) we investigated organic aerosol source and identified SOA formation from processing of biomass burning emissions in the aqueous phase. We then discussed the climate implication of this aqSOA formation at the light of its optical properties, including AAE. In the present paper we investigated the particle size distribution and spectral optical properties of brown carbon in the ambient aerosol, and related these to major aerosol chemical components. By combining the analysis of microphysical and optical properties reported here with the source apportionment study by Gilardoni et al. (2016), we demonstrated that the aqSOA formation adds mass to the atmospheric aerosol in the droplet mode range.

RC. The main aspect that is missing is the authors do not show how AAE depends on ammonia, other than a high correlation in Table 1. Since ammonia has been identified as a key reactant in brown carbon formation (1-8), this relationship is of special interest to atmospheric chemists, and the papers impact would be greatly increased by including this data analysis, e.g. in Figure 2.

AA. We would like to thank the referee for this suggestion. We investigated the dependency of AAE on ammonium concentration in the updated Figure 2 (unfortunately gas phase ammonia concentration was not available during the experiment). At the light of this figure, in the revised manuscript we conclude that *BrC occurs in particles ... enriched in ammonium nitrate, and poor in BC* (lines 6-7, 353, 391-392, 487-489).

Relevant references [1-8] were added (lines 48-49).

Line 80: How/why is dust associated with high fOA? Or is this only an attribute of HULIS?

AA. We agree with the referee that this sentence is not clear enough. In the revised manuscript we keep the indication that *on the basis of the same data, Shinozuka et al. (2009) showed that AAE generally increases as f_{OA} or SSA increases.*

Line 453: Somewhere in the manuscript the authors should explain why these index of refraction values are peculiar

AA. The referee is right, and we apologize. We explained in the revised manuscript (lines 341-343) that *these are λ dependent values consistent with BrC in the ambient atmosphere (Moise et al., 2015) in an air mass having high OC to sulfate ratio and nitrate to sulfate ratio (Flowers et al., 2010).* Also, we believe that the term "peculiar" may be confusing and we used "specific".

RC. Figure 5: Two of these data sets (a and c) have been shown in previous figures on the same axes, but with different variables used for color coding. Given that the color coding looks about the same, this suggests that a graph of albedo vs droplet mode aerosol score might be useful. Just a suggestion.

AA. In the revised manuscript we added the graph of albedo vs droplet mode aerosol score in Figure 4 of the supplementary material (introduced at lines 355).

Technical comments

Line 29: This statement, while correct, should be accompanied by several literature references.

AA. We referred to the literature reviews by Laskin et al (2015) and Moise et al (2015).

Line 43: This statement is inaccurate unless qualified. Are the authors referring only to field measurement studies?

AA. Yes, and we corrected the text accordingly.

Line 94: The abbreviation PSAP is used here before it is defined 3 paragraphs later.

AA. The abbreviation PSAP is now defined here.

Line 166: Please include the 50% cut-off diameter for the impactor at the SMPS flow rates used.

AA. We indicated the 50% cutoff diameter = $0.457\ \mu\text{m}$ at the aerosol flowrate = 0.6 lpm.

Line 384: The reference to Figure 1 in the supplementary material is confusing. The figure caption makes no mention of showing case study data, and the figure does not identify the case study data in any way.

AA. We properly indicated the case study day in the caption of Figure 1 in the supplementary material.

Line 399: mycrophisical should be microphysical

AA. Done.

Figure 1: the PC2 symbol in the legend above the graph is not the same as the one on the graph

AA. Done

Figure 4: Is the local time at the Po Valley sampling site the same at UTC? There should be a statement to this effect.

AA. The revised caption of Fig.4 indicates that *Local Time at the Po Valley sampling site in this period is UTC + 1 hour*.

Also note that both Referees rated the presentation quality of this manuscript as only "Fair". This reflects the often clunky and unclear language used. Please carefully review your writing and rephrase to increase the clarity of the writing as needed.

AA. We agree with this comment, and we do apologize. We rephrased the revised manuscript to increase the clarity.

Characteristics of Brown Carbon in the urban Po Valley atmosphere

F. Costabile¹, S. Gilardoni², F. Barnaba¹, A. Di Ianni¹, L. Di Liberto¹, D. Dionisi¹, M. Manigrasso³, M. Paglione², V. Poluzzi⁴, M. Rinaldi², M.C. Facchini², and G. P. Gobbi¹

¹Institute for Atmospheric Sciences and Climate (ISAC), National Research Council (CNR), Rome, Italy

²Institute for Atmospheric Sciences and Climate (ISAC), National Research Council (CNR), Bologna, Italy

³INAIL, Rome, Italy

⁴ARPA ER, Bologna, Italy

Correspondence to: F. Costabile (f.costabile@isac.cnr.it)

Abstract. We investigate optical-microphysical-chemical properties of Brown Carbon (BrC) in the urban ambient atmosphere of the Po Valley. In situ ground measurements of aerosol spectral optical properties, PM₁ chemical composition (HR-ToF-AMS), and particle size distributions were carried out in Bologna. BrC was identified through its wavelength dependence of light absorption at visible wavelengths (λ), as indicated by the Absorption Ångström Exponent (AAE). We found that BrC occurs in particles with a narrow monomodal size distribution peaking in the droplet mode, enriched in ammonium nitrate and poor in BC, with a strong dependance on OA-to-BC ratios, and SSA₅₃₀ of 0.98 ± 0.01 . We demonstrate that peculiar-specific complex refractive index values ($k_{530} = 0.017 \pm 0.001$) are necessary in addition to larger particle size-a proper particle size range to match the large AAEs measured for this BrC ($AAE_{467-660} = 3.2 \pm 0.9$ with values up to 5.3). In terms of consistency of these findings with literature, this study: (i) provides experimental evidence of the size distribution of BrC associated with the formation of secondary aerosol; (ii) ~~contributes to sky radiometer retrieval techniques (e.g., AERONET) by adding~~ shows that in the lower troposphere AAE increases with increasing OA-to-BC ratios rather than with increasing OA ~~- contributing to sky radiometer retrieval techniques (e.g., AERONET)~~; (iii) extends the dependence of AAE on BC-to-OA ratios previously observed in chamber experiments to ambient aerosol dominated by wood burning emissions. These findings are expected to bear important implications for atmospheric modeling studies and remote sensing observations ~~, as regards as~~ regards the parametrization and identification of BrC in the atmosphere.

20 1 Introduction

Aerosol has an important role in the Earth's climate with both direct and indirect effects; in addition, it affects air quality and atmospheric chemistry. At present, our understanding of the light-absorbing aerosol types is incomplete (see reviews by Laskin et al., 2015; Moise et al., 2015). An important absorber of solar radiation in the ~~visible~~ UV-vis region is atmospheric carbonaceous aerosol (IPCC
25 2013). In the classification of its components proposed by Pöschl (2003), visible-light-absorbing properties ranged between two extremes. On one side, there is Black Carbon (BC), refractory material that strongly absorbs light over a broad spectral range. On the other side, there is colourless Organic Carbon (OC), non-refractory material, with no absorption or little absorption in the ~~UV~~ UV-vis spectral range. There is a gradual decrease of thermochemical refractiveness and specific optical absorption going from BC graphite-like structures to non-refractive and colorless OC
30 Laskin et al. (2015). A broad range of coloured organic compounds have recently emerged in the scientific literature for their possible role in the Earth's radiative transfer, therefore on its climate (Laskin et al., 2015; Moise et al., 2015).

The term Brown Carbon (BrC) has emerged to describe this aerosol having an absorption spectrum
35 smoothly increasing from the vis to the near-UV wavelengths, with a strong wavelength dependance of the light absorption coefficient ($\lambda^{-2} - \lambda^{-6}$) (Andreae and Gelencsér, 2006; Moosmüller et al., 2011; Bond et al., 2013; Laskin et al., 2015; Moise et al., 2015). BrC lacks a formal analytical definition (Bond et al., 2013). In this study, we will identify BrC through its high values (2-6) of the visible Absorption Ångström Exponent (AAE), a parameter describing the wavelength (λ) dependent
40 absorption coefficient (σ_a) of light by aerosol, written as:

$$AAE(\lambda) = -\frac{d\ln(\sigma_a)}{d\ln(\lambda)} \quad (1)$$

What is known about BrC aerosol is that it is organic matter having both primary and secondary sources (Laskin et al., 2015). Primary BrC can be emitted together with BC from low-temperature combustion processes, like wood combustion (Andreae and Gelencsér, 2006). Secondary organic
45 aerosol (SOA) formed in the atmosphere also contributes to light-absorbing-carbon (Moise et al., 2015, and references therein), but only a few ~~works~~ field measurement studies have analysed the BrC associated to SOA (Zhang et al., 2011; Saleh et al., 2013; Zhang et al., 2013; Gilardoni et al., 2016).

Numerous evidences indicate increased absorption towards UV for aerosol particles high in nitrate
50 (e.g., Jacobson, 1999; Zhang et al., 2013) ~~and sulfate (Lee et al., 2013; Song et al., 2013; Powelson et al., 2014; Lin et al., 2014),~~ sulfate (Lee et al., 2013; Song et al., 2013; Powelson et al., 2014; Lin et al., 2014), and ammonium (Shapiro et al., 2009; Noziere et al., 2009; Bones et al., 2010; Noziere et al., 2010; Sareen et al., 2010; Updyke et al., 2012; Flores et al., 2014). Lin et al. (2014) reported the formation of light-absorbing SOA constituents from reactive uptake of isoprene epoxydiols onto preexisting acidified sulfate seed aerosol as a potential source of secondary

55 BrC under tropospheric conditions. Powelson et al. (2014) discussed BrC formation by aqueous-phase carbonyl compound reactions with amines and ammonium sulfate. Lee et al. (2013) studied the likely but uncertain effect of sulfate on the formation of light-absorbing materials and organo-nitrogen via aqueous glyoxal chemistry in aerosol particles. Song et al. (2013) observed significant light absorption at 355 and 405 nm for SOA formed from an α -pinene + O₃ + NO₃ system only in the
 60 presence of highly acidic sulfate seed aerosols under dry conditions. Several studies demonstrated the importance of ammonium, both as a catalyst and as a reactant, in the formation of light-absorbing products (Powelson et al., 2014; Laskin et al., 2015). SOA formation can occur in both the gas and condensed phases. Recently, efficient SOA production has been recognised in cloud/fog drops and water containing aerosol: water soluble products of gas-phase photochemical reactions may dissolve
 65 into an aerosol aqueous phase and form SOA through further oxidation, this SOA being referred to as "aqSOA" (Ervens et al., 2011; Laskin et al., 2015). AqSOA formation impacts total SOA mass and aerosol size distributions by adding mass to the so-called "droplet mode" (Ervens et al., 2011). Meng and Seinfeld (1994) showed that the aerosol "droplet mode" in urban areas is the result of activation of smaller particles to form fog, followed by aqueous-phase chemistry and fog evaporation. It was
 70 demonstrated that aqSOA formation can affect aerosol optical properties by adding light-absorbing organic material at UV wavelengths (Shapiro et al., 2009; Ervens et al., 2011; Gilardoni et al., 2016). ~~Very recently~~ Recently, Gilardoni et al. (2016) demonstrated that in the ambient atmosphere the aq-SOA from biomass burning contributes to the BrC budget and exhibits light absorption wavelength dependence close to the upper bound of the values observed in laboratory experiments for fresh and
 75 processed biomass-burning emissions.

Despite the efforts made, relations between optical properties and chemical composition of organic compounds with spectrally variable light absorption (high AAE) are poorly understood (Laskin et al., 2015). A number of previous works (Shinozuka et al., 2009; Russell et al., 2010; Arola et al., 2011) studied how the organic aerosol (OA) mass fraction (f_{OA}) relates to AAE and to Single Scat-
 80 tering Albedo (SSA), the ratio of scattering to extinction, a key parameter in understanding aerosol warming or cooling effect. Results from in situ measurements on the C-130 aircraft (Central Mexico) during MILAGRO (Russell et al., 2010) showed that both organics and dust increase AAE values. Russell et al. (2010) showed a direct correlation between AAE and f_{OA} . On the basis of the same data, Shinozuka et al. (2009) showed that AAE generally increases as f_{OA} or SSA increases. ~~This was explained by the presence of humic-like substances (HULIS) and dust, which are coloured (high AAE) and weak absorbers (high SSA) associated with high f_{OA} .~~ Saleh et al. (2014) burnt a selec-
 85 tion of biomasses in a combustion chamber, varying the combustion parameters to obtain a range of BC-to-OA ratios. This ratio, the relative proportions of BC and OA mass, depends on fire characteristics and on-plume age, and determines ~~its aerosol~~ colour from black to brown to white as the ratio decreases. Saleh et al. (2014) findings link the extent of absorbance to the BC-to-OA ratio for aged
 90 and fresh biomass burning aerosols. If confirmed, this link has the potential to be a strong predictive

tool for light-absorbing properties of biomass burning aerosols (Bellouin, 2014; Moise et al., 2015). Following the approach of Saleh et al. (2014), Lu et al. (2015) reviewed available emission measurements of biomass burning and biofuel combustion, and found similar results indicating that AAE of the bulk OA decreases with the increasing BC-to-OA ratio. They conclude that the absorptive properties of OA from biomass/biofuel burning depend strongly on burning conditions and weakly on fuel types and atmospheric processing.

In this study, we investigate optical-microphysical-chemical properties of BrC in the ambient urban atmosphere. In situ ground ambient data of chemical (HR-ToF-AMS), optical (3- λ nephelometer and 3- λ Particle Soot Absorption Photometer, PSAP), and microphysical (SMPS and APS) aerosol properties were taken during two field measurements in Bologna, Po Valley. BrC is identified through the AAE of the non-dust bulk aerosol. First, ~~BrC properties are investigated (Sect.4.1) by relating AAE to~~, we investigate BrC properties by relating the AAE to the aerosol size, ~~key and in particular to the~~ aerosol types with known size distribution ~~modality (including e.g., the droplet mode)~~. We match AAE patterns measured for BrC to those theoretically expected for BrC in the ambient aerosol (based on the Mie theory). The AAE and aerosol size are then related to PM₁ major chemical components (nitrate, OA, BC, sulfate, and ammonium), and to the BC-to-OA ratios. ~~We match patterns measured for BrC to those theoretically expected (Mie theory) for BrC in ambient aerosol to infer the λ -dependent complex refractive index ratio.~~ Then, we show a case study to illustrate BrC major features ~~the major features of BrC~~ (Sect.4.3). Finally, findings are discussed in comparison with the literature to explore their general validity (Sect.4.4).

2 Experimental

Optical, chemical, and microphysical aerosol properties were measured, in the framework of the Supersite project funded by Emilia Romagna region, at the urban background site of Bologna (44 ° 31' 29" lat, 11° 20' 27" lon), in the Po Valley (Italy). Two measurement campaigns lasting one month were carried out: October 22 - November 13, 2012 (Fall campaign), and February 1-27, 2013 (Winter campaign). Measurements set-up ~~are is~~ described below.

2.1 Measurement cabins and sampling lines

Equipment was set up in two different cabins, located side by side. Optical properties and coarse fraction size distributions were measured in the same cabin, all the instruments set up on the same inlet system equipped with a PM₁₀ head. In the cabin, external air was pumped into a stainless steel tube (length = 4.0 m) by an external pump ensuring a laminar flow (Reynolds number <2000). The cabin was kept at a temperature of 20-25°C. The difference between air temperature and dew point was enough to dry the sampled air. Chemical properties and fine and ultrafine particle number size distribution were measured through a separate stainless steel inlet tube equipped with a PM₁ head.

2.2 Optical Measurements

Spectral optical properties in the visible range were measured online with a 5-minute time resolution. Dry aerosol absorption coefficients, $\sigma_a(\lambda)$, at three wavelengths ($\lambda = 467, 530, 660$ nm) were measured by a 3-wavelength ~~particle soot absorption photometer (PSAP)~~, PSAP (Radiance Research), together with dry aerosol scattering coefficients ($\sigma_s(\lambda)$) at 450, 525, and 635 nm, measured by an integrating nephelometer (Ecotech, mod. Aurora 3000). Like all filter-based methods, PSAP suffers from a number of measurement artifacts, including an overestimate of absorption ~~if light absorption is also affected by particulate light scattering~~ due to light scattering effects, and a dependence of measurements on filter transmittance (Tr) Lack et al. (2008); Virkkula (2010); Bond et al. (2013); Backman et al. (2014). We corrected raw PSAP data after the iterative procedure described by Virkkula (2010), where only data with $Tr > 0.7$ were retained. The wavelength-resolved $\sigma_s(\lambda)$ necessary to correct PSAP raw data were taken from nephelometer data corrected for truncation (Anderson and Ogren (1998), Bond (2001), and Müller et al., 2011). The scattering error after the truncation error correction is $\frac{\delta(\sigma_s)}{\sigma_s} = 0.02$ (Bond et al., 2013). The uncertainty of $\sigma_a(\lambda)$ derived from PSAP data after these corrections has been estimated to be $\frac{\delta(\sigma_a)}{\sigma_a} = 0.2$ (Virkkula, 2010; Lack et al., 2008; Bond et al., 1999; Virkkula, 2010; Cappa et al., 2008). ~~These~~ The PSAP-derived $\sigma_a(\lambda)$ can be considered an upper limit of the "true" value (Subramanian et al., 2007; Lack et al., 2008).

After all corrections, data were checked (by visual inspection) to find any outlier/low values that could significantly influence data statistics. These values could be due to variability in the measurements or to experimental errors. According to manufacturers: (i) PSAP sensitivity is $< 1 \text{ Mm}^{-1}$, and measurement range is $0\text{--}50 \text{ Mm}^{-1}$; (ii) the lower detectable limit of the nephelometer is 0.3 Mm^{-1} , with calibration tolerance of $\pm 4 \text{ Mm}^{-1}$, and measurement range $0\text{--}2000 \text{ Mm}^{-1}$. A few data (124 records having $\sigma_a < 1 \text{ Mm}^{-1}$, less than 20 records with $\sigma_s < 10 \text{ Mm}^{-1}$, and some points with $\sigma_s > 700 \text{ Mm}^{-1}$) were discarded, as they were considered dubious values (comparing to data variability during the field campaigns, illustrated in Figure 1 of the Supplementary material).

2.3 Chemical Measurements

Chemical composition of atmospheric aerosol particles were characterized online with a High Resolution Time of Flight Aerosol Mass Spectrometer (HR-ToF-AMS, Aerodyne Research Inc., Billerica) (DeCarlo et al., 2006). The HR-ToF-AMS measured the chemical composition of non-refractory PM_{10} (nr- PM_{10}), i.e sulfate, nitrate, ammonium, chloride, and organic aerosol. The instrument alternated acquisition in V mode (higher sensitivity and lower mass spectral resolution), and W mode (lower sensitivity and higher mass spectral resolution) every 2.5 minutes. Quantitative information discussed here corresponds to the data collected in V mode. While operating in V mode, the instrument measures particle size distribution based on time of flight (Jimenez et al., 2003). HR-ToF-AMS data were analyzed using SQUIRRELL v1.51 and PIKA v1.10 software (D. Sueper, University of

Colorado, Boulder, CO, USA) within Igor Pro 6.2.1 (WaveMetrics, Lake Oswego, OR). Collection efficiency was calculated according to Middlebrook et al. (2012) based on aerosol chemical composition and relative humidity. Data validation was performed by comparison with offline measurements of sulfate, ammonium, and nitrate concentrations in PM₁ aerosol samples. The HR-ToF-AMS aerosol sample line was dried below 40% RH with a Nafion drier. The uncertainty of the AMS-derived OA was assumed to be $\frac{\delta(OA)}{OA} = 0.2$ according to Quinn (2008).

2.4 Particle Number Size distributions

Particle number size distributions (PNSDs) were measured by combining a commercial Scanning Mobility Particle Sizer (SMPS, TSI mod. 3080 with Long-DMA, TSI mod. 3081, equipped with a water-based Condensation Particle Counter, CPC, TSI mod. 3787), and a commercial Aerodynamic Particle Sizer (APS, TSI). Particles from 14 nm to 750 nm of mobility diameter were sized and counted by the SMPS; particles from 0.5 to 20 μm of aerodynamic diameter were sized and counted by the APS (the procedure to fit the two PNSDs is described in Sect.3.2). SMPS data were corrected for penetration errors through the sampling line, penetration efficiency due to diffusion losses (calculated according to Hinds (1999)) being higher than 98% for particles bigger than 14 nm. An impactor (~~nozzle of 50% cutoff diameter = 0.457 μm at the aerosol flowrate = 0.6 lpm~~) was used to remove larger particles from the SMPS sampling line.

3 Data analysis

Data measured by all the instruments were merged in a single 5-minute time resolution dataset. This dataset includes the time series of the following variables: $\sigma_a(\lambda)$ and $\sigma_s(\lambda)$, OA, NO_3^- , SO_4^{2-} , NH_4^+ , and PNSD. Raw data were subjected to various "cleaning" processes as described in Sect.2, and then analysed as described in this section. The time series subjected to data analysis includes 11910 time points covering 40 days of measurements (5317 time points in the Fall and 5650 time points in the Winter). This time series includes missing values of some variables, related to instrument failures or data filtering as described above. The length of the ~~"complete"~~ complete time series (i.e., with no missing value) varies from variable to variable (10897 time points for OA, 10361 time points for NO_3^- , 8999 time points for SO_4^{2-} , 9677 time points for NH_4^+ , 2656 time points for the PNSD, 2367 time points for AAE, SSA, and BC, 1820 time points for f_{BC} , f_{OA} , f_{NO3} , f_{SO4} , f_{NH4} and OA-to-BC). ~~When all the time points with at least one missing values of the variables considered are excluded, the length of the timeseries drops to approx.~~ Overall, about 1500 data points. data points have the complete set of coincident measurements of all the variables addressed.

3.1 Inference of the optical Black Carbon mass concentration

The wavelength (λ) dependent BC absorption coefficient ($\sigma_{aBC}(\lambda)$), and equivalent BC mass concentration, were calculated using the AAE_{BC} attribution method. The measured absorption coefficient at 660 nm ($\sigma_a(660)$) was used to derive $\sigma_{aBC}(530)$, and then the BC mass concentration, assuming: (i) BC is the only light absorbing species at 600 nm, (ii) a known value of AAE_{BC} at 530-660 nm (see below), and (iii) a BC Mass Absorption Efficiency at 530 nm of $10 \text{ m}^2 \text{ g}^{-1}$ (as indicated by PSAP manufacturer). In literature, $AAE_{BC}=1$ is a commonly used value for both externally mixed BC ~~÷ and internally mixed BC~~ ~~is commonly assumed to have the same $AAE_{BC}=1$.~~
In fact, AAE_{BC} for externally mixed BC was predicted to be 1 for particles with diameter < 50 nm (e.g., Bergstrom et al., 2002; Moosmüller et al., 2011), but can range from 0.8 to 1.1 for particle diameters of 50-200 nm (Gyawali et al., 2009). For ambient particles, which can be internally or externally mixed, AAE_{BC} ~~for at~~ visible wavelengths has often been observed to be larger than 1 (Lack and Langridge, 2013; Shinozuka et al., 2009, and references therein). Theoretical calculations have shown that the AAE_{BC} for internally mixed BC can vary from 0.55 (e.g., Bahadur et al., 2012) to an upper limit of ~ 1.7 (e.g., Lack et al., 2008) depending on particle size, coating, core and wavelength. In Figure 3-2 of the Supplementary material we show numerically simulated (Mie Theory) values of $AAE(d_p, \lambda, m)$ resolved by particle diameter (d_p) and complex refractive index ($m(\lambda)$) at visible wavelengths (λ) for BC (Sect.3.4). It is shown that the AAE of BC tends to 1 for the smaller BC particles only, and can differ significantly from 1 for the larger BC particles. Based on these results and on previous works, we decided to use $AAE_{BC}=1.1$. The uncertainty $\delta(AAE_{BC})$ was set to 22% ($\frac{\delta(AAE_{BC})}{AAE_{BC}}=0.22$) according to Lack and Langridge (2013). BC uncertainty ($\delta(BC)$) was derived propagating this $\delta(AAE_{BC})$ together with the uncertainty of PSAP-derived σ_a (see Sect.2.2).

We discarded data possibly affected by desert dust (43 records over 5 days of measurements) to ensure that the equivalent BC mass concentration is not affected by desert dust contamination (assumption i above). Dust-free aerosol conditions were identified based on the analysis of aerosol spectral optical properties, increasingly applied to gather information on aerosol type (e.g., Bergstrom et al., 2002; Shinozuka et al., 2009; Russell et al., 2010; Arola et al., 2011; Costabile et al., 2013). In particular, we followed the methodology proposed by Costabile et al. (2013) which identifies the aerosol dominated by dust by a distinctive combination of scattering and absorption Ångström Exponents (SAE, AAE) and Single Scattering Albedo (SSA) spectral variation (dSSA). Data points of the time series fulfilling this distinctive combination (indicated in Table 3 of the Costabile et al. (2013)'s paper) were excluded from the analysis.

3.2 Fitting procedure for the particle number size distribution

Particle number size distributions (PNSDs) were measured by two different instruments (SMPS and APS, Sect.2). These data were merged to obtain one PNSD based on particle electrical mobility

diameters (d_m) ranging from 14 nm to 14 μ m. PNSDs measured by APS are based on aerodynamic diameters (d_a); these data were converted to PNSDs based on d_m according to Eq.2 (Khlystov et al., 2004; Seinfeld and Pandis, 2006):

$$d_m = \chi \frac{C_c(d_m)}{C_c(d_a)} \frac{d_a}{\left(\frac{\rho_p}{\rho_0 \chi}\right)^{1/2}} \quad (2)$$

where χ is the shape factor, $C_c(d_m)$ and $C_c(d_a)$ are the slip correction factors based on d_m and d_a respectively, ρ_p is the particle density, and ρ_0 is the unit density (1 $\text{g}\cdot\text{cm}^{-3}$). In applying Eq.2 to convert APS data, we assumed: d_m represents the true particle diameter; $C_c(d_m) = 1$ and $C_c(d_a) = 1$ (continuum regime); $\chi = 1$ (spherical particles); ρ_p continuously varying from 1.6 to 2 $\text{g}\cdot\text{cm}^{-3}$.

PNSDs (i.e., $n_N(\log_{10} d_m) = \frac{dN}{d\log_{10}(d_m)}$) measured by SMPS and APS ($\text{PNSD}_{\text{SMPS}}$, PNSD_{APS}) overlap for d_m ranging from 460 nm to 593 nm. In this size range, $\text{PNSD}_{\text{SMPS}}$ and PNSD_{APS} were replaced by $\text{PNSD}_{\text{fitted}}$. $\text{PNSD}_{\text{fitted}}$ was assumed to vary according to a power-law function (Junge size distribution) (Khlystov et al., 2004; Seinfeld and Pandis, 2006) (Eq.3):

$$n_N(\log_{10} d_m) = \frac{c}{d_m^\alpha}, \quad (3)$$

The coefficients c and α were calculated by an iterative procedure: (i) c was randomly initialized from 0 to 1000; (ii) α was calculated by Eq.3 constraining values from 2 to 5, as typically found for atmospheric aerosols (Seinfeld and Pandis, 2006). $\text{PNSD}_{\text{fitted}}$ replaced PNSD_{APS} and $\text{PNSD}_{\text{SMPS}}$ when their relative difference ($\delta(\text{PNSD})$, Eq.4):

$$\delta(\text{PNSD}) = \frac{|\text{PNSD}_{\text{SMPS}} - \text{PNSD}_{\text{APS}}|}{\max[\text{PNSD}_{\text{SMPS}}, \text{PNSD}_{\text{APS}}]} \quad (4)$$

was larger than 0.1 cm^{-3} . This procedure was considered acceptable if: (i) the minimum mean squared error between $\text{PNSD}_{\text{fitted}}$ and PNSD_{APS} was less than 1%; (ii) correlation coefficients between $\text{PNSD}_{\text{fitted}}$ and $\text{PNSD}_{\text{SMPS}}$, and between $\text{PNSD}_{\text{fitted}}$ and PNSD_{APS} were larger than 0.8 (98 of the records did not verify these conditions, and were checked by visual inspection: 94 of them were discarded, and 4 accepted). The final dataset contained PNSD data based on d_m from 14.1 to 429.4 nm measured by the SMPS, from 446.1 to 699 nm generated by the fitting procedure, and from 0.7 to 14 μ m measured by the APS. The Particle Surface Size Distribution (PSSD, i.e. $n_S(\log_{10} d_m) = \frac{dS}{d\log_{10}(d_m)}$) and Particle Volume Size Distribution (PVSD, i.e. $n_V(\log_{10} d_m) = \frac{dV}{d\log_{10}(d_m)}$) were calculated from this PNSD under the hypotheses of spherical particles (Hinds, 1999; Seinfeld and Pandis, 2006).

3.3 Principal component analysis of PNSD

PNSDs were statistically analysed through Principal Component Analysis (PCA) to identify key aerosol types with known modality. The relevant methodology was described in a previous study by

Costabile et al. (2009). In short, Principal Components (PCs) retained in the analysis were arranged in decreasing order of variance explained (λ_k , called eigenvalue of PC_k), PC1 being the component explaining the largest λ_k . The k^{th} eigenvector is composed of scalar coefficients describing the new PC_k as a linear combination of the original variables (the original variables are the time series of $dN/d\log(d_p)$). Factor loadings of PC_k represent the relative weight of the original variables in the PC_k re-scaled. Loadings thus show the "mode" of the PNSD associated to the PCs. Factor scores of PC_k represent the time series of PC_k values in the new coordinates of the space defined by the PCs. Scores thus represent the PC_k values in the time series of the original variables.

PCA retained three principal components (PC1-PC3) explaining approximately 80% of the variance. Factor loadings and diurnal cycles of scores for PC1-PC3 are illustrated in Figure 2-3 of the supplementary material, while Pearson's correlation coefficients r between these PCs and the other variables measured are shown in Table 1. Table 1 and Table 2 of the supplementary material show relevant r values in the Winter and in the Fall, and relevant Bonferroni adjusted probabilities (p values), respectively. These PCs were interpreted as follows:

PC1 is the largest component in terms of variance explained (51 %). Loadings peak in the 80-300 nm size range. Factor scores correlate to OA and BC. Weekly diurnal cycles of these scores are higher on working days and in the road-traffic rush hour. This PC represents the aerosol enriched in OA originating in the traffic rush hour in the urban area, due to local emissions (e.g., Costabile et al., 2009; Brines et al., 2015, and references therein).

PC2 explains 14 % of the variance. Loadings peak in the ultrafine size range (approx. 100 nm). Factor scores show diurnal cycles higher at night and in the Winter, with a slightly larger contribution during the week-ends. It correlates (inversely) to aerosol size and (directly) to f_{OA} ; in the Winter it correlates to both f_{OA} and f_{BC} (0.40, $p < 0.001$, Tab.1 of the Supplementary material). This PC should represent the nocturnal urban aerosol related to residential heating emissions.

PC3 explains 13% of the variance. Loadings peak in the larger accumulation mode size range (from 0.3 to 1 μ m). Diurnal cycles of scores are higher in daytime. It is inversely correlated to f_{BC} , and directly to nitrate, sulfate and ammonium. This PC represents the droplet mode aerosol poor in BC, previously found to originate in fog droplets, cloud droplets, and wet aerosol particles, due to aqueous phase processing (John, 1990; Meng and Seinfeld, 1994; Seinfeld and Pandis, 2006; Ervens et al., 2011).

3.4 Numerical simulations of AAE

Values of $AAE(d_p, \lambda, m)$ resolved by diameter d_p , radiation wavelength (λ), and complex refractive index ($m_{(\lambda)} = n_{(\lambda)} - ik_{(\lambda)}$), were numerically simulated according to Mie theory (e.g., Bohren and Huffman, 1983; Moosmüller et al., 2011). The aim was to reproduce patterns expected for BrC, BC and the urban background aerosol impacted by biomass burning emissions, as these were abundant

in the study area. Simulations are illustrated in [Figure 3-Fig. 2](#) of the supplementary material, the relevant methodology being described in a previous study by Costabile et al. (2013).

To simulate patterns expected for BrC in the urban ambient aerosol, we used λ dependent complex values of $m_{(\lambda)}$ inferred during CAPMEX for an air mass with $AAE_{405-532}=3.8$ (standard deviation=3.4), characterised by high Organic Carbon (OC) to sulfate (SO_4^{2-}) ratio and high nitrate (NO_3^-) to SO_4^{2-} ratio (Flowers et al., 2010; Moise et al., 2015). These are $m_{467}=1.492-0.026i$, $m_{530}=1.492-0.017i$, $m_{660}=1.492-0.014i$, the uncertainty for $n_{(\lambda)}$ and $k_{(\lambda)}$ being set to ± 0.01 and ± 0.001 , respectively.

To simulate patterns expected for BC we used λ independent complex values of m estimated by Alexander et al. (2008) for soot carbon particles at 550 nm: $n=1.95-0.79i$ at $\lambda=467, 530, 660$ nm. Note in Fig. 2 of the supplementary material the resulting variability with d_p of $AAE_{467-660}$ for BC: values of $AAE=1$ ~~correspond only to are only obtained for~~ $d_p < 100$ nm.

To simulate patterns expected for the urban background aerosol impacted by biomass burning emissions we used values of $m_{(\lambda)}$ inferred in a previous study for the smaller accumulation mode particles enriched in BC from biomass burning smoke (Costabile et al., 2013): $m_{467}=1.512-0.027i$, $m_{530}=1.510-0.021i$, $m_{660}=1.511-0.022i$, the uncertainty for $n_{(\lambda)}$ and $k_{(\lambda)}$ being set to ± 0.01 and ± 0.001 , respectively.

4 Results and discussion

In this section we first identify brown carbon (BrC) and characterize its optical-microphysical-chemical properties (Sect.4.1), then illustrate a case study (Sect.4.2), and finally discuss [the](#) findings in comparison ~~to with the~~ literature (Sect.4.3).

4.1 Brown carbon: identification and features

Several literature studies identify BrC based on ~~its the~~ high AAE values [in the bulk aerosol](#), i.e. from 2 to 6 (e.g., Andreae and Gelencsér, 2006; Bond et al., 2013). At a certain range of wavelengths (λ), these high AAE values ~~in the bulk aerosol~~ depend on several factors, including aerosol size, chemical composition, and aerosol mixing state. ~~To analyse the AAE dependence~~ [First, we analysed the dependence of AAE on aerosol size](#) ~~we~~. We used two different approaches. ~~First, we calculated $d_{med(S)}$, i.e. We calculated~~ the median mobility diameter of the particle surface size distribution (PSSD, Sect.3.2). ~~The $d_{med(S)}$ is intended to represent to obtain~~ the optically relevant aerosol size representative of the entire particle population. ~~Second, we analysed the aerosol population~~ [We then analysed the](#) particle number size distribution (PNSD) to find major aerosol types (i.e., Principal Components, PCs), ~~as described in detail in, Sect.3.3-Two~~. [We found two](#) components (PC1 and PC2) ~~were~~ related to smaller particles [and](#) originating from local emissions (road-traffic and residential heating, respectively), and one component (PC3) ~~was~~ related to larger particles (droplet mode)

originating from the aerosol processing. ~~Statistically significant Pearson's correlation coefficients (r) between Second, we analysed the relation between AAE, these PCs, AAE, and $d_{med(S)}$ and, and related these to PM₁ major constituents. Relevant statistically significant Pearson's correlation coefficients (r) are shown in Tab. 1. The Supplementary material show relevant, while r values observed in the Winter and in the Fall (Tab.1), and the matrix of Bonferroni Probabilities (p) associated to these r values (Tab. are shown in Tab.1 and Tab.2)of the Supplementary material.~~

The AAE correlates well with the $d_{med(S)}$ of the aerosol population ($r=0.60$, $p<0.001$). ~~Figure 1 shows that the measured~~ In Figure 1 we analyse this relation by comparing field measurements to numerical simulations results (these simulations are based on the Mie theory and are described in detail in Sect.3.4). Measurements show that the AAE increases with increasing $d_{med(S)}$ of the aerosol population the increase of the $d_{med(S)}$ (grey markers). In addition, markers in Fig. 1 We show the AAE and $d_{med(S)}$ representative of aerosol dominated by traffic emissions the three different aerosol types identified (PC1), wood burning emissions (, PC2), and droplet mode particles (, and PC3). To interpret these measurements , we show we add patterns theoretically expected ,based on the Mie theory, for (through numerical simulations) for three aerosol types: BrC in the ambient aerosol (brown line), a pure BC particle (black line), and an urban background aerosol impacted by wood burning emissions (grey line). These simulations, including relevant values of the complex refractive index $m(\lambda)=n(\lambda)-ik(\lambda)$, are described in detail in Sect.3.4. The lowest AAEs measured during this in the present study tend to values expected for pure BC ,and (black line), but are similar to values calculated for the urban background aerosol impacted by wood burning emissions .Both (grey line) - both aerosol types which were related to local emissions (PC1 and PC2) match these patterns. Larger AAEs (3.2 ± 0.9) correspond to the droplet mode aerosol (PC3), and are similar to the AAE expected for Brown Carbon aerosol. (brown line). Note that Fig.1 suggests that the threshold value of AAE₄₆₇₋₆₆₀ distinguishing BrC is AAE>2.3.

The dotted black line in Fig.1 represents the best fit to all the datapoints of the measurements. This line shows the increase of the AAE measured with increasing with the increase of the $d_{med(S)}$ ÷ in the measurements. To interpret this pattern, we note that the brown and grey lines show the (referring to the simulations of BrC and of the wood burning related aerosol, respectively) show the theoretical increase of the AAE theoretically expected with increasing aerosol size, with increasing only the aerosol size - i.e. when $m(\lambda)$ being is constant. Comparing these three lines, it is evident that peculiar specific values of $m(\lambda)$ are necessary in addition to the larger particle size a proper particle size range to match the large AAE measured for the droplet mode BrC aerosol. These values are $k_{(467)} = 0.026\pm0.001$, $k_{(530)} = 0.017\pm0.001$, $k_{(660)} = 0.014\pm0.001$, and $n_{467}=1.47\pm0.01$ (Sect.3.4). These are λ dependent values consistent with BrC in the ambient atmosphere (Moise et al., 2015) in an air mass having high OC to SO_4^{2-} ratio and NO_3^- to SO_4^{2-} ratio (Flowers et al., 2010) . This finding emphasizes that BrC properties depend on both aerosol size distribution and chemical composition (i.e., $m(\lambda)$).

Figure 2 investigates the link between chemical, microphysical, and optical properties. AAE is plotted against PM₁ major chemical components (OA, BC, nitrate, ~~and sulfates~~ sulfates, and ammonium PM₁ mass fractions, f_x). Grey markers show the longest available time series for AAE and f_x , while coloured markers show the datapoints for which the droplet mode aerosol scores (marker colour) and $d_{med(S)}$ (markers size) were available (see Sect.3). ~~BrC particles (i.e., particles with The BrC aerosol population (identified by AAE>2.3) shows higher f_{NO_3} and f_{NH_4} and lower f_{BC} values coupled to larger $d_{med(S)}$ and high droplet mode aerosol scores. Average values corresponding to BrC aerosol population~~ Relevant average values are as follows (mean±standard deviation): AAE=3.2±0.9, f_{NO_3} =0.38±0.05, f_{BC} =0.01±0.01, f_{OA} =0.35±0.04~~and~~, f_{SO_4} =0.1±0.02, f_{NH_4} =0.14±0.01, and SSA₅₃₀=0.98±0.01 (and $\sigma_{a467} = 7.6\pm3.33 \text{ Mm}^{-1}$, $\sigma_{s467} = 312\pm64 \text{ Mm}^{-1}$, and SAE=0.5±0.4). The relation between AAE and SSA will be further analysed in Figure 5 (in Figure 4 of the supplementary material we show the relation between the droplet mode aerosol and SSA).

Both Fig.2 and Tab.1 show ~~that there is~~ no direct correlation between AAE and f_{OA} . This may be explained by the fact that AAE correlates with larger particles (larger $d_{med(S)}$) ~~in~~ of the droplet mode (larger PC3 scores), while the f_{OA} correlates with smaller particles (lower $d_{med(S)}$) from residential heating emissions (larger PC2 scores). There is ~~,however, instead~~ a significant correlation between AAE and the ratio of OA to BC ($r=0.78$, $p<0.001$). ~~The OA-to-BC ratio indicates, a variable indicating~~ either combustion characteristics (higher for biofuels than for fossil fuel combustion) or aerosol ageing (lower for fresh aerosols) (Saleh et al., 2014; Bond et al., 2013). The ~~relation between AAE and~~ increase of the AAE with the decrease of the BC-to-OA ratios is illustrated in Figure 3(~~light-grey~~). Light-grey markers show the longest available time series for AAE and BC-to-OA, while coloured markers correspond to datapoints for which the droplet mode aerosol scores and f_{NO_3} were available). ~~When the bulk aerosol is dominated by the BrC droplet mode particles, the AAE is greater than 2.3 ± 1 (median±uncertainty), were available. The relation observed between AAE and BC-to-OA is an average aerosol property (i.e., for both BC and OA) as suggested by the parametrization of AAE as a function of the BC-to-OA ratios are lower than 0.05 ± 0.03 . In the ratio~~ (inner panel of Fig.3, ~~we parametrize the relation between AAE and BC-to-OA ratios for the bulk aerosol ($AAE=-0.5 \ln(BCtoOA)+1$), which is~~ consistent with Lu et al. (2015) (~~this consistency will be analysed in see Sect.4.3). When the BrC droplet mode particles dominate the bulk aerosol (black markers in the inner panel of Fig.3, corresponding to~~ The grey line (referring to all the data points) shows the parametrization for the bulk aerosol. The black line (referring to the subset of all the data with PC3 scores > 0) ~~,the relation between AAE and~~ shows the parametrization for BrC. We note a larger dependence of AAE on the BC-to-OA ~~is far stronger ratio for BrC ($r=-0.86$, $p<0.001$) :~~ This result highlights the significant dependence of BrC on ~~as opposed to the bulk aerosol ($r=-0.7$, $p<0.001$). However, this can be due to the fact that at low BC-to-OA ratios in the ambient aerosol, OA has more weight in dictating AAE.~~

In Fig. 3 AAE plateaus at values higher than 1 for large BC-to-OA ratios. We acknowledge that BC and AAE derived from PSAP measurements are affected by uncertainty related to the assumption employed to convert raw PSAP measurements to absorption coefficients, which is about $\pm 40\%$ based on literature studies (Lack et al., 2008; Nakayama et al., 2010; Lack and Langridge, 2013; Bond et al., 2013; Backman et al., 2015). This uncertainty could in principle reconcile our plateau AAE values higher than 1 with the common assumption that AAE tends to 1 when the aerosol is dominated by BC. Nevertheless, we modeled AAE as a function of aerosol chemical and microphysical properties (Fig.1). Such simulation clearly shows that AAE close to 1 can be obtained for aerosol population dominated by fresh fossil fuel combustion emissions, with diameter centered below 20 nm. Conversely the size distribution of aerosol population investigated in this study is centered around 80-300 nm (Fig.1). In addition source apportionment studies performed in the Po valley show that carbonaceous aerosol, both in urban and rural sites, is strongly affected by wood burning emissions (Gilardoni et al., 2011; Larsen et al., 2012; Gilardoni et al., 2016). It follows that, even considering the possible bias due to the experimental uncertainty, the AAE plateauing at values higher than 1 for large BC-to-OA ratios is still in agreement with model results and source apportionment data.

Taken together, these findings prove that BrC in the observed ambient aerosol shows $AAE_{467-660} = 3.2 \pm 0.9$ with $k_{(530)} = 0.017 \pm 0.001$, and occurs in particles in the droplet mode size range, enriched in ammonium nitrate and poor in BC, with a strong dependence on OA-to-BC ratios, SSA_{530} being 0.98 ± 0.01 . In particular, when the bulk aerosol is dominated by the BrC droplet mode particles, the AAE is greater than 2.3 ± 1 (median \pm uncertainty), and BC-to-OA ratios are lower than 0.05 ± 0.03 .

4.2 A case study

We present here a case study (Figure 4) to show the main microphysical and chemical features of the BrC aerosol observed.

On the case study day (i.e., February 1st, 2013) the relative humidity was high ($97.5 \pm 0.4\%$, against a mean value for the Winter campaign of $82 \pm 14\%$, and a maximum of 98 %), temperature averaged $2.8 \pm 0.0^\circ \text{C}$ (campaign mean value $= 3.5 \pm 2.8^\circ \text{C}$), and aerosol liquid water content was above $200 \mu\text{g} \cdot \text{m}^{-3}$ (Gilardoni et al., 2016). Absorption and scattering coefficients at 530 nm (Fig.1 of the supplementary material) ranged from 5 to 10 Mm^{-1} (with larger AAE), and from 300 to 400 Mm^{-1} (with lower Scattering Angstrom Exponents, SAE) respectively, with $SSA_{530} = 0.98 \pm 0.01$.

The number concentration of 2-10 μm particles (Fig.4e) had a peak at approx. 4:00 a.m. UTC (we interpret this as particle growth by water vapor), and then decreased until 9:00 a.m. UTC. After this, the number concentration of 0.3-1 μm particles increased. This increase occurred just after the part of the day (from 11:00 a.m. to 2:00 p.m) when the strong signal in the aerosol vertical profile at the ground (the darker red layer in Fig. 4d) is observed to dissipate (we interpret this as droplet evaporation). These processes are consistent with the formation of the droplet mode aerosol (John,

1990; Meng and Seinfeld, 1994; Seinfeld and Pandis, 2006) explaining the increase of the droplet mode aerosol scores (PC3) observed in the afternoon. The case study was selected during this period (1.5 hour from 5:30 to 7:00 p.m), and relevant data are shown in Fig.2, Fig.3, Fig.5, and Fig.1 of the supplementary material ([in this Figure, the case study is the first day of the Winter field campaign](#)).

During the case study (i.e., from 5:30 to 7:00 p.m on February 1st, 2013) we observed peculiar data. [The](#) AAE was significantly higher (3.4–5.3) than the median value (2.0 ± 0.5 during both field campaigns, and 2.1 ± 0.6 in the Winter). ~~Volume~~ [The volume](#) size distribution (Fig. 4a) was narrow and monomodal, centred on the droplet mode (d_m from 450 to 700 nm). Relevant mass size distributions of the main constituents of nr-PM₁ (NO_3^- , OA, and NH_4^+) were centered around 700 nm of the vacuum aerodynamic diameter (d_{va}) corresponding to about 500 nm in mobility diameter (for spherical particles in the continuum regime with $\rho_p = 1.4 \text{ g} \cdot \text{cm}^{-3}$ (Seinfeld and Pandis, 2006)). In addition, the OA mass below $d_{va} = 300$ nm was significantly lower than that of the droplet mode, especially when compared to the average field results (Fig. 4c). It is important to note that the collection efficiency of the HR-ToF-AMS is 50% for 600 nm particles and decreases for larger sizes (Liu et al., 2007). This explains the difference between the size distributions in Fig. 4a and Fig. 4b at larger sizes.

At the light of source apportionment study performed on organic aerosol (Gilardoni et al., 2016) we explain the increase of AAE during the case study period with the formation of secondary organic aerosol in the aqueous phase associated with aerosol particles. The analysis of ~~myerophysical~~ [microphysical](#) properties reported in this study confirms that the aqueous secondary organic aerosol formation adds mass to the atmospheric aerosol in the droplet mode range. This case study both illustrates and confirms general features observed for BrC during the whole field campaign.

4.3 Discussion in comparison with previous works

In this section we discuss our findings and explore their consistency with [the](#) literature.

The analysis of chemical and microphysical properties shows that BrC associated with the formation of secondary aerosol has a narrow monomodal size distribution centered around the droplet mode (400–700 nm) in the entire PM₁₀ size range. This result agrees with the observations reported by Lin et al. (2010), showing that 80% of the mass of atmospheric humic-like substances, a light absorbing organic aerosol component, was found in the droplet mode. The correspondence between BrC and the droplet mode aerosol points to the important role that aqueous reactions within aerosol particles can play in the formation of light absorbing organic aerosol (Ervens et al., 2011; Laskin et al., 2015).

The study of optical and chemical properties indicates that the larger AAE values associated with BrC depend on organic fraction in a different way from that in literature (Shinozuka et al., 2009; Russell et al., 2010; Arola et al., 2011). In Figure 5a we compare our measurements collected at the urban background site of Bologna with the trend expected based on airborne and sunphotometers

observations (Shinozuka et al., 2009; Russell et al., 2010). AAE is plotted versus the mass fraction of organic aerosol (f_{OA}), marker colour being SSA_{530} as in Shinozuka et al. (2009)'s Fig.7. We show the best fit lines (thin black lines) identified by Shinozuka et al. (2009) and corresponding to different SSA bins, and the best fit reported by Russell et al. (2010) (thick black line). Note that the larger AAE values in our study (associated to BrC in the droplet mode) correspond to Shinozuka et al. (2009)'s fit line at $SSA=0.98-1$, but were associated to lower scattering coefficients in those previous studies. There is consistency between our study and those reported previously. However, our data show that increasing AAE is accompanied by increasing the ~~organic-aerosol~~ OA normalized to BC (Fig.5b, $r=0.78$, $p<0.001$), rather than by increasing ~~organic-aerosol~~ OA (Fig.5a). This comparison adds to the literature that for the ambient aerosol in the lower troposphere AAE correlates with OA-to-BC ratios far more than with the organic fraction.

We found that BrC corresponds to BC-to-OA ratios below 0.05 ± 0.03 . ~~Finally~~, Fig.5c shows the dependence of AAE on the BC-to-OA ratio τ as parametrized by Saleh et al. (2014) and Lu et al. (2015) for biomass burning emissions and primary organic aerosol emissions. The best fit line to measurements performed in this study (grey line) is similar to the fitting lines reported previously (thicker and thinner black lines, showing respectively Saleh et al. (2014)'s and Lu et al. (2015)'s data). While we cannot compare absolute values because we compare the AAE of the bulk aerosol (this study) to the AAE of OA only (Saleh et al., 2014; Lu et al., 2015), it is evident that patterns are similar. This comparison extends the dependence of AAE on BC-to-OA observed in chamber experiments (solely for fresh biomass burning primary OA, and not for fossil fuel OA) by Saleh et al. (2014) and Lu et al. (2015) to ambient aerosol dominated by wood burning emissions (Gilardoni et al., 2016).

5 Summary and conclusions

We investigated optical-chemical-microphysical properties of brown carbon (BrC) in the urban ambient atmosphere. In situ ground measurements of chemical (HR-ToF-AMS), optical ($3-\lambda$ nephelometer and PSAP), and microphysical (SMPS and APS) aerosol properties were carried out in the Po Valley (Bologna), together with ancillary observations. BrC was identified and characterized by linking ~~its~~ the wavelength dependence of light absorption (as indicated by the Absorption Ångström Exponent, AAE) in the visible region to key aerosol types with known size distributions, and to major PM_{10} chemical components (BC, OA, nitrate, ammonium, and sulfate). BrC measurements were interpreted through numerical simulations (Mie theory) of $AAE(d_p, \lambda, m)$ resolved by particle size (d_p) and wavelength (λ) dependent complex refractive index ($m_{(\lambda)}=n_{(\lambda)}-ik_{(\lambda)}$) in the visible region.

We found that:

(1) AAE increases with increasing the (optically relevant) aerosol size. Larger AAEs (3.2 ± 0.9 , with values up to 5.5) occur when the bulk aerosol size distribution is dominated by the droplet

mode, i.e. the large accumulation mode originating from the processing in the aqueous phase. These values identify BrC.

(2) ~~Peculiar-Specific~~ $m_{(\lambda)}$ values are necessary in addition to ~~larger particle size~~ a proper particle size range to match the high AAE measured for BrC. These $m_{(\lambda)}$ values are theoretically expected to be: $k_{(467)} = 0.026 \pm 0.001$, $k_{(530)} = 0.017 \pm 0.001$, $k_{(660)} = 0.014 \pm 0.001$, and $n_{467} = 1.47 \pm 0.01$ ($SSA_{530} = 0.98 \pm 0.01$), consistent to literature $m_{(\lambda)}$ values for BrC in the ambient atmosphere.

(3) AAE increases with increasing the OA-to-BC ratio, rather than with increasing f_{OA} , the larger AAEs (and thus BrC) corresponding to larger ammonium nitrate ($f_{NO_3} = 0.38 \pm 0.05$, $f_{NH_4} = 0.14 \pm 0.01$) and lower BC ($f_{BC} = 0.01 \pm 0.01$).

In the paper by Gilardoni et al. (2016) we investigated organic aerosol source and identified SOA formation from processing of biomass burning emissions in the aqueous phase. We than discussed the climate implication of this aqSOA formation at the light of its optical properties, including AAE. In the present paper we investigated the particle size distribution and spectral optical properties of brown carbon in the ambient aerosol, and related these to major aerosol chemical components. By combining the analysis of microphysical and optical properties reported here with the source apportionment study by Gilardoni et al. (2016), we demonstrated that the aqSOA formation adds mass to the atmospheric aerosol in the droplet mode range.

When exploring consistency of these findings with the literature, our study:

(i) provides experimental evidence that the size distribution of BrC associated with the formation of secondary aerosol is dominated by the droplet mode, consistent with recent findings pointing to the role of aqueous reactions within aerosol particles in the formation of BrC;

(ii) adds to sunphotometric observations (e.g., AERONET) that in the lower troposphere AAE correlates with the organic aerosol normalized to BC (i.e., OA-to-BC) far more than with the organic fraction;

(iii) extends to the ambient aerosol dominated by wood burning emissions the dependence of AAE on BC-to-OA previously observed in combustion chamber experiments.

These findings are expected to bear important implications for atmospheric modeling studies and remote sensing observations. Both BrC number size distribution and the dependence of AAE on BC-to-OA can be relevant to parametrize and investigate BrC in the ambient atmosphere. Findings can be used to infer preliminary chemical information from optical information, as optical techniques are increasingly used to characterise aerosol properties.

Acknowledgements. This work was realized in the framework of the SUPERSITO Project, financed by the Emilia-Romagna Region (under the DR 1971/13). The work was partly accomplished in the framework of the DIAPASON (“Desert-dust Impact on Air quality through model-Predictions and Advanced Sensors Observations”) project, funded by the European Commission (LIFE+ 2010 ENV/IT/391).

References

- Alexander, D. T., Crozier, P. A., and Anderson, J. R.: Brown carbon spheres in East Asian outflow and their optical properties. *Science*, 321(5890), 833-836, 2008.
- 545 Andreae, M. O. and Gelencsér, A.: Black carbon or brown carbon? The nature of light-absorbing carbonaceous aerosols, *Atmos. Chem. Phys.*, 6, 3131-3148, doi:10.5194/acp-6-3131-2006, 2006.
- Arola, A., Schuster, G., Myhre, G., Kazadzis, S., Dey, S., and Tripathi, S. N.: Inferring absorbing organic carbon content from AERONET data, *Atmos. Chem. Phys.*, 11(1), 215-225, 2011.
- Backman, J., Virkkula, A., Vakkari, V., Beukes, J. P., Van Zyl, P. G., Josipovic, M., Piketh, S., Tiitta, P.,
550 Chiloane, K., Petäjä, T., Kulmala, M., and Laakso, L.: Differences in aerosol absorption Ångström exponents between correction algorithms for a particle soot absorption photometer measured on the South African Highveld, *Atmos. Meas. Tech.*, 7, 4285-4298, doi:10.5194/amt-7-4285-2014, 2014.
- Bahadur, E., Praveen, P. S., Xu, Y., and Ramanathan, V.: Solar absorption by elemental and brown carbon determined from spectral observations, *P. Natl. A. Sci.*, 109, 17366-17371, 2012.
- 555 Bellouin, N.: Aerosols: The colour of smoke, *Nat. Geosci.*, 7(9), 619-620, 2014.
- Bergstrom, R. W., Russell, P. B., and Hignett, P.: Wavelength Dependence of the Absorption of Black Carbon Particles: Predictions and Results from the TARFOX Ex *Atmos. Chem. Phys.*, 13, 10535-10543, 2002.
- Bohren, C. F., and D. R. Huffman, 1983: *Absorption and Scattering of Light by Small Particles*. John Wiley, 232 pp.
- 560 Bond, T. C., Anderson, T. L., and Campbell, D.: Calibration and intercomparison of filter-based measurements of visible light absorption by aerosols, *Aerosol Sci. Tech.*, 30, 582-600, 1999.
- Bond, T. C., Bergstrom, R. W.: Light absorption by carbonaceous particles: An investigative review. *Aerosol Sci. Tech.*, 40(1), 27-67, 2006.
- Bond, T.C., Doherty, S.J., Fahey, D.W., Forster, P. M., Berntsen, T., DeAngelo, B.J., Flanner, M.G., Ghan, S.,
565 Kärcher, B., Koch, D., Kinne, S., Kondo, Y., Quinn, P.K., Sarofim, M.C., Schultz, M.G., Schulz, M., Venkataraman, C., Zhang, H., Zhang, S., Bellouin, N., Guttikunda, S. K., Hopke, P. K., Jacobson, M. Z., Kaiser, J. W., Klimont, Z., Lohmann, U., Schwarz, J. P., Shindell, D., Storelvmo, T., Warren, S.G., Zender, C.S.: Bounding the role of black carbon in the climate system: A scientific assessment, *J. Geophys. Res. Atmos.*, 118, 5380-5552, doi:10.1002/jgrd.50171, 2013.
- 570 [Bones, D. L., Henricksen, D. K., Mang, S. A., Gonsior, M., Bateman, A. P., Nguyen, T. B., Cooper, W. J., and Nizkorodov, S. A.: Appearance of strong absorbers and fluorophores in limonene-O₃ secondary organic aerosol due to NH₄⁺-mediated chemical aging over long time scales, *J. Geophys. Res.*, 115, D05203, doi:10.1029/2009JD012864, 2010.](#)
- Brines, M. and Dall'Osto, M. and Beddows, D. C. S. and Harrison, R. M. and Gómez-Moreno, F. and Núñez,
575 L. and Artíñano, B. and Costabile, F. and Gobbi, G. P. and Salimi, F. and Morawska, L. and Sioutas, C. and Querol, X.: Traffic and nucleation events as main sources of ultrafine particles in high-insolation developed world cities, *Atmos. Chem. Phys.*, 15, 5929-5945, doi:10.5194/acp-15-5929-2015, 2015.
- Cappa, C. D., Lack, D. A., Burkholder, J. B., Ravishankara, A. R.: Bias in filter-based aerosol light absorption measurements due to organic aerosol loading: Evidence from laboratory measurements. *Aerosol Sci. Tech.*,
580 42(12), 1022-1032, 2008.

Costabile, F., Birmili, W., Klose, S., Tuch, T., Wehner, B., Wiedensohler, A., Franck, U., König, K., and Sonntag, A.: Spatio-temporal variability and principal components of the particle number size distribution in an urban atmosphere, *Atmos. Chem. Phys.*, 9, 3163-3195, doi:10.5194/acp-9-3163-2009, 2009.

Costabile, F., Barnaba, F., Angelini, F., and Gobbi, G. P.: Identification of key aerosol populations through their size and composition resolved spectral scattering and absorption, *Atmos. Chem. Phys.*, 13, 2455-2470, doi:10.5194/acp-13-2455-2013, 2013.

DeCarlo, P. F., Kimmel, J. R., Trimborn, A., Northway, M. J., Jayne, J. T., Aiken, A. C., Gonin, M., Fuhrer, K., Horvath, T., Docherty, K. S., Worsnop, D. R., and Jimenez, J. L.: Field-deployable, high-resolution, time-of-flight aerosol mass spectrometer, *Anal. Chem.*, 78, 8281-8289, 2006.

Ervens, B., Turpin, B. J., and Weber, R. J.: Secondary organic aerosol formation in cloud droplets and aqueous particles (aqSOA): a review of laboratory, field and model studies, *Atmos. Chem. Phys.*, 11, 11069-11102, doi:10.5194/acp-11-11069-2011, 2011.

Flores, J. M., Washenfelder, R. A., Adler, G., Lee, H. J., Segev, L., Laskin, J., Laskin, A., Nizkorodov, S. A., Brown, S. S., and Rudich, Y.: Complex refractive indices in the near-ultraviolet spectral region of biogenic secondary organic aerosol aged with ammonia, *Phys. Chem. Chem. Phys.*, 16, 10629-10642, doi:10.1039/C4CP01009D, 2014.

Flowers, B. A., Dubey, M. K., Mazzoleni, C., Stone, E. A., Schauer, J. J., Kim, S.-W., and Yoon, S. C.: Optical-chemical-microphysical relationships and closure studies for mixed carbonaceous aerosols observed at Jeju Island; 3-laser photoacoustic spectrometer, particle sizing, and filter analysis, *Atmos. Chem. Phys.*, 10, 10387-10398, doi:10.5194/acp-10-10387-2010, 2010.

Gilardoni, S., Vignati, E., Cavalli, F., Putaud, J. P., Larsen, B. R., Karl, M., Stenström, K., Genberg, J., Henne, S., and Dentener, F.: Better constraints on sources of carbonaceous aerosols using a combined ¹⁴C – macro tracer analysis in a European rural background site, *Atmos. Chem. Phys.*, 11, 5685-5700, doi:10.5194/acp-11-5685-2011, 2011.

Gilardoni, S., Massoli, P., Paglione, M., Giulianelli, L., Carbone, C., Rinaldi, M., Decesari, S., Sandrini, S., Costabile, F., Gobbi, G.P., Pietrogrande, M.C., Visentin, M., Scotto, F., Fuzzi, S., Facchini, M.C.: Direct observation of aqueous secondary organic aerosol from biomass burning emissions, *P. Natl. A. Sci.*, 113.36: 10013-10018, 2016.

Gyawali, M., Arnott, W. P., Lewis, K., and Moosmüller, H.: In situ aerosol optics in Reno, NV, USA during and after the summer 2008 California wildfires and the influence of absorbing and non-absorbing organic coatings on spectral light absorption, *Atmos. Chem. Phys.*, 9, 8007-8015, doi:10.5194/acp-9-8007-2009, 2009.

Hinds W.C., *Aerosol Technology*, 2nd, Edition., Wiley, New York, 1999.

Khlystov, A., Stanier, C., Pandis, S. N.: An Algorithm for Combining Electrical Mobility and Aerodynamic Size Distributions Data when Measuring Ambient Aerosol, Special Issue of Aerosol Science and Technology on Findings from the Fine Particulate Matter Supersites Program., *Aerosol Sci. Tech.*, 38, S1, 229-238, 2004.

Lack, D.A., Cappa, C.D., Covert, D.S., Baynard, T., Massoli, P., Sierau, B., Bates, T.S., Quinn, P.K., Lovejoy, E.R. and Ravishankara, A.R.: Bias in filter-based aerosol light absorption measurements due to organic aerosol loading: Evidence from ambient measurements. *Aerosol Sci. Tech.*, 42(12), 1033-1041, 2008.

- 620 Lack, D. A. and Langridge, J. M.: On the attribution of black and brown carbon light absorption using the Ångström exponent, *Atmos. Chem. Phys.*, 13, 10535-10543, doi:10.5194/acp-13-10535-2013, 2013.
- [Larsen, B. R., Gilardoni, S., Stenström, K., Niedzialek, J., Jimenez, J., and Belis, C. A.: Sources for PM air pollution in the Po Plain, Italy: II. Probabilistic uncertainty characterization and sensitivity analysis of secondary and primary sources, *Atmos. Environ.*, 50, 203–213, doi:10.1016/j.atmosenv.2011.12.038, 2012](#)
- 625 Laskin, A., Laskin, J., and Nizkorodov, S. A.: Chemistry of Atmospheric Brown Carbon, *Chem. Rev.*, doi: 10.1021/cr5006167, 2015.
- Lee, A.K.Y., Zhao, R., Li, R., Liggio, J., Li, S.-M., Abbatt, J.P.D.: Formation of light absorbing organo-nitrogen species from evaporation of droplets containing glyoxal and ammonium sulfate, *Environ. Sci. Technol.*, 47 (22), 12819-12826, doi:10.1021/es402687w, 2013.
- 630 Lin, P., Huang, X.-F., He, L.-Y., Yu, J. Z.: Abundance and size distributions of HULIS in ambient aerosols at a rural site in South China. *J. Aerosol Sci.*, 41 (1), 74–87, 2010.
- Lin, Y.-H., Budisulistiorini, S.H., Chu, K., Siejack, R.A., Zhang, H., Riva, M., Zhang, Z., Gold, A., Kautzman, K.E., Surratt, J.D.: Light-absorbing oligomer formation in secondary organic aerosol from reactive uptake of isoprene epoxydiols, *Environ. Sci. Technol.*, 48 (20), 12012-12021, doi: 10.1021/es503142b, 2014.
- 635 [Lin, P., Laskin, J., Nizkorodov, S. A., and Laskin, A.: Revealing brown carbon chromophores produced in reactions of methylglyoxal with ammonium sulfate, *Environ. Sci. Technol.*, 49, 14257– 14266, 2015.](#)
- Liu, P. S., Deng, R., Smith, K. A., Williams, L. R., Jayne, J. T., Canagaratna, M. R., Moore, K., Onasch, T.B., Worsnop, D.R., Deshler, T. : Transmission efficiency of an aerodynamic focusing lens system: Comparison of model calculations and laboratory measurements for the Aerodyne Aerosol Mass Spectrometer. *Aerosol Sci. Tech.*, 41(8), 721-733, doi: 10.1080/02786820701422278, 2007.
- 640 Lu, Z., Streets, D.G., Winijkul, E., Yan, F., Chen, Y., Bond, T.C., Feng, Y., Dubey, M.K., Liu, S., Pinto, J.P., Carmichael, G.R.: Light absorption properties and radiative effects of primary organic aerosol emissions, *Environ. Sci. Technol.*, 49 (8), 4868-4877, doi: 10.1021/acs.est.5b00211, 2015.
- Jacobson, M. Z.: Isolating nitrated and aromatic aerosols and nitrated aromatic gases as sources of ultraviolet light absorption, *J. Geophys. Res. - Atmos.*, 104(D3), 3527-3542, 1999.
- 645 Jimenez, J. L., Jayne, J.T., Shi, Q., Kolb, C.E., Worsnop, D.R., Yourshaw, I., Seinfeld, J.H., Flagan, R.C., Zhang, X., Smith, K.A. and Morris, J.W.: Ambient aerosol sampling using the Aerodyne Aerosol Mass Spectrometer, *J. Geophys. Res. - Atmos.*, 108 (D7), 1984-2012, doi:10.1029/2001jd001213, 2003.
- John, W., Wall, S. M., Ondo, J. L., and Winklmayr, W.: Modes in the size distributions of atmospheric inorganic aerosol, *Atmos. Environ.*, 24A, 2349-2359, 1990.
- 650 Meng, Z. and Seinfeld, J. H.: On the source of the submicrometer droplet mode of urban and regional aerosols, *Aerosol Sci. Tech.*, 20, 253-265, 1994.
- Middlebrook, A. M., Bahreini, R., Jimenez, J. L. and Canagaratna, M. R.: Evaluation of Composition-Dependent Collection Efficiencies for the Aerodyne Aerosol Mass Spectrometer using Field Data, *Aerosol Sci. Tech.*, 46, 258-271, doi:10.1080/02786826.2011.620041, 2012.
- Moise, T., Flores, J.M., Rudich, Y.: Optical Properties of Secondary Organic Aerosols and Their Changes by Chemical Processes, *Chem. Rev.*, 115.10, 4400-4439, doi: 10.1021/cr5005259, 2015.

Moosmüller, H., Chakrabarty, R. K., Ehlers, K. M., and Arnott, W. P.: Absorption Ångström coefficient, brown carbon, and aerosols: basic concepts, bulk matter, and spherical particles, *Atmos. Chem. Phys.*, 11, 1217-1225, doi:10.5194/acp-11-1217-2011, 2011.

[Nakayama, T., Kondo, Y., Moteki, N., Sahu, L. K., Kinase, T., Kita, K., and Matsumi, Y.: Size-Dependent Correction Factors for Absorption Measurements using Filter-based Photometers: PSAP and COSMOS, *J. Aerosol. Sci.*, 41, 333–343, 2010.](#)

[Nozière, B., Dziedzic, P., and Cordova, A.: Products and kinetics of the liquid-phase reaction of glyoxal catalyzed by ammonium ions \(NH₄⁺\), *J. Phys. Chem. A*, 113, 231–237, 2009.](#)

[Nozière, B., Dziedzic, P., and Cordova, A.: Inorganic ammonium salts and carbonate salts are efficient catalysts for aldol condensation in atmospheric aerosols, *Phys. Chem. Chem. Phys.*, 12, 3864–3872, 2010.](#)

Pohjola, M. A., Pirjola, L., Karppinen, A., et al.: Evaluation and modelling of the size fractionated aerosol particle number concentration measurements nearby a major road in Helsinki - Part I: Modelling results within the LIPIKA project, *Atmos. Chem. Phys.*, 7, 4065–4080, 2007.

Pöschl, U.: Aerosol particle analysis: challenges and progress. *Anal. Bioanal. chem.*, 375.1, 30-32, DOI 10.1007/s00216-002-1611-5, 2003.

Powelson, M.H., Espelien, B.M., Hawkins, L.N., Galloway, M.M., De Haan, D.O.: Brown carbon formation by aqueous-phase carbonyl compound reactions with amines and ammonium sulfate, *Environ. Sci. Technol.*, 48 (2), 985-993, doi: 10.1021/es4038325, 2014.

Quinn, P. K., Bates, T. S., Coffman, D. J., and Covert, D. S.: Influence of Particle Size and Chemistry on the Cloud Nucleating Properties of Aerosols, *Atmos. Chem. Phys.* 8(4), 1029-1042, 2008.

Russell, P. B., Bergstrom, R. W., Shinzuka, Y., Clarke, A. D., DeCarlo, P. F., Jimenez, J. L., Livingston, J. M., Redemann, J., Dubovik, O., and Strawa, A.: Absorption Ångström Exponent in AERONET and related data as an indicator of aerosol composition, *Atmos. Chem. Phys.*, 10, 1155-1169, doi:10.5194/acp-10-1155-2010, 2010.

Saleh, R., Hennigan, C. J., McMeeking, G. R., Chuang, W. K., Robinson, E. S., Coe, H., Donahue, N. M., and Robinson, A. L.: Absorptivity of brown carbon in fresh and photo-chemically aged biomass-burning emissions, *Atmos. Chem. Phys.*, 13, 7683-7693, doi:10.5194/acp-13-7683-2013, 2013.

Saleh, R., Robinson, E. S., Tkacik, D. S., Ahern, A. T., Liu, S., Aiken, A. C., Sullivan, R. C., Presto, A. A., Dubey, M. K., Yokelson, R. J., Donahue, N. M., and Robinson, A. L.: Brownness of organics in aerosols from biomass burning linked to their black carbon content, *Nat. Geosci.*, 7, 647-650, 2014.

[Sareen, N., Schwier, A. N., Shapiro, E. L., Mitroo, D., and McNeill, V. F.: Secondary organic material formed by methylglyoxal in aqueous aerosol mimics, *Atmos. Chem. Phys.*, 10, 997-1016, doi:10.5194/acp-10-997-2010, 2010.](#)

Seinfeld, J. H. and Pandis, S. P.: *Atmospheric Chemistry and Physics*, 2nd edn., John Wiley, New York, USA, 1232 pp., 2006.

Shapiro, E. L., Szprengiel, J., Sareen, N., Jen, C. N., Giordano, M. R., and McNeill, V. F.: Light-absorbing secondary organic material formed by glyoxal in aqueous aerosol mimics, *Atmos. Chem. Phys.*, 9, 2289-2300, doi:10.5194/acp-9-2289-2009, 2009.

Shinazuka, Y., Clarke, A. D., DeCarlo, P. F., Jimenez, J. L., Dunlea, E. J., Roberts, G. C., Tomlinson, J. M., Collins, D. R., Howell, S. G., Kapustin, V. N., McNaughton, C. S., and Zhou, J.: Aerosol optical properties

relevant to regional remote sensing of CCN activity and links to their organic mass fraction: airborne observations over Central Mexico and the US West Coast during MILAGRO/INTEX-B, *Atmos. Chem. Phys.*, 9, 6727-6742, doi:10.5194/acp-9-6727-2009, 2009.

700 Song, C., Gyawali, M., Zaveri, R.A., Shilling, J.E., Arnott, W.P.: Light absorption by secondary organic aerosol from α -pinene: Effects of oxidants, seed aerosol acidity, and relative humidity, *J. Geophys. Res.*, 118 (20), 11741-11749, doi: 10.1002/jgrd.50767, 2013.

705 [Updyke, K. M., Nguyen, T. B., and Nizkorodov, S. A.: Formation of brown carbon via reactions of ammonia with secondary organic aerosols from biogenic and anthropogenic precursors, *Atmos. Environ.*, 63, 22–31, doi:10.1016/j.atmosenv.2012.09.012,2012.](#)

Virkkula, A.: Correction of the calibration of the 3-wavelength Particle Soot Absorption Photometer (3 λ PSAP), *Aerosol Sci. Tech.*, 44, 706–712, 2010.

710 Zhang, X., Lin, Y. H., Surratt, J. D., Zotter, P., Prévôt, A. S., Weber, R. J.: Light-absorbing soluble organic aerosol in Los Angeles and Atlanta: A contrast in secondary organic aerosol. *Geophys. Res. Lett.*, 38(21), 2011.

Zhang, X., Y.-H. Lin, J. D. Surratt, and R. J. Weber: Sources, composition and absorption Ångström exponent of light-absorbing organic components in aerosol extracts from the Los Angeles Basin, *Environ. Sci. Technol.*, 47(8), 3685-3693, 2013.

Table 1. Statistically significant ($p < 0.001$) Pearson's correlation coefficients (r) between: Absorption Ångström Exponent (AAE) at 467-660 nm; scores of major aerosol types identified by PCA (PC1 is the road traffic related aerosol, PC2 is the residential heating related aerosol, and PC3 is the droplet mode aerosol); mass concentration and mass fractions (f_x) of Black Carbon (BC), organics (OA), nitrate (NO_3^-), sulfate (SO_4^{2-}), and ammonium (NH_4^+); optically relevant aerosol size representative of the entire aerosol population (calculated as median mobility diameter of the particle surface size distribution, $d_{med(S)}$); OA-to-BC ratios. See (see Tab.1 and Tab. 2 of the Supplementary material for ~~all the relevant values~~ additional relevant values).

r	AAE	$d_{med(S)}$	BC	f_{BC}	OA	f_{OA}	OA-to-BC	NO_3	f_{NO_3}	SO_4	f_{SO_4}	NH_4	f_{NH_4}
$d_{med(S)}$	0.60	1	-0.24	-0.38	–	-0.68	0.37	0.48	0.50	0.30	0.25	0.49	0.69
AAE	1	0.60	-0.26	-0.52	0.40	-0.34	0.78	0.60	0.40	0.67	0.18	0.65	0.44
PC1	–	–	0.56	–	0.83	–	–	0.52	–	–	–	0.52	–
PC2	–	-0.52	–	–	–	0.31	–	-0.19	–	–	–	-0.20	-0.27
PC3	0.66	0.60	-0.38	-0.53	0.12	-0.52	0.54	0.46	0.50	0.45	–	0.49	0.58

FIGURES

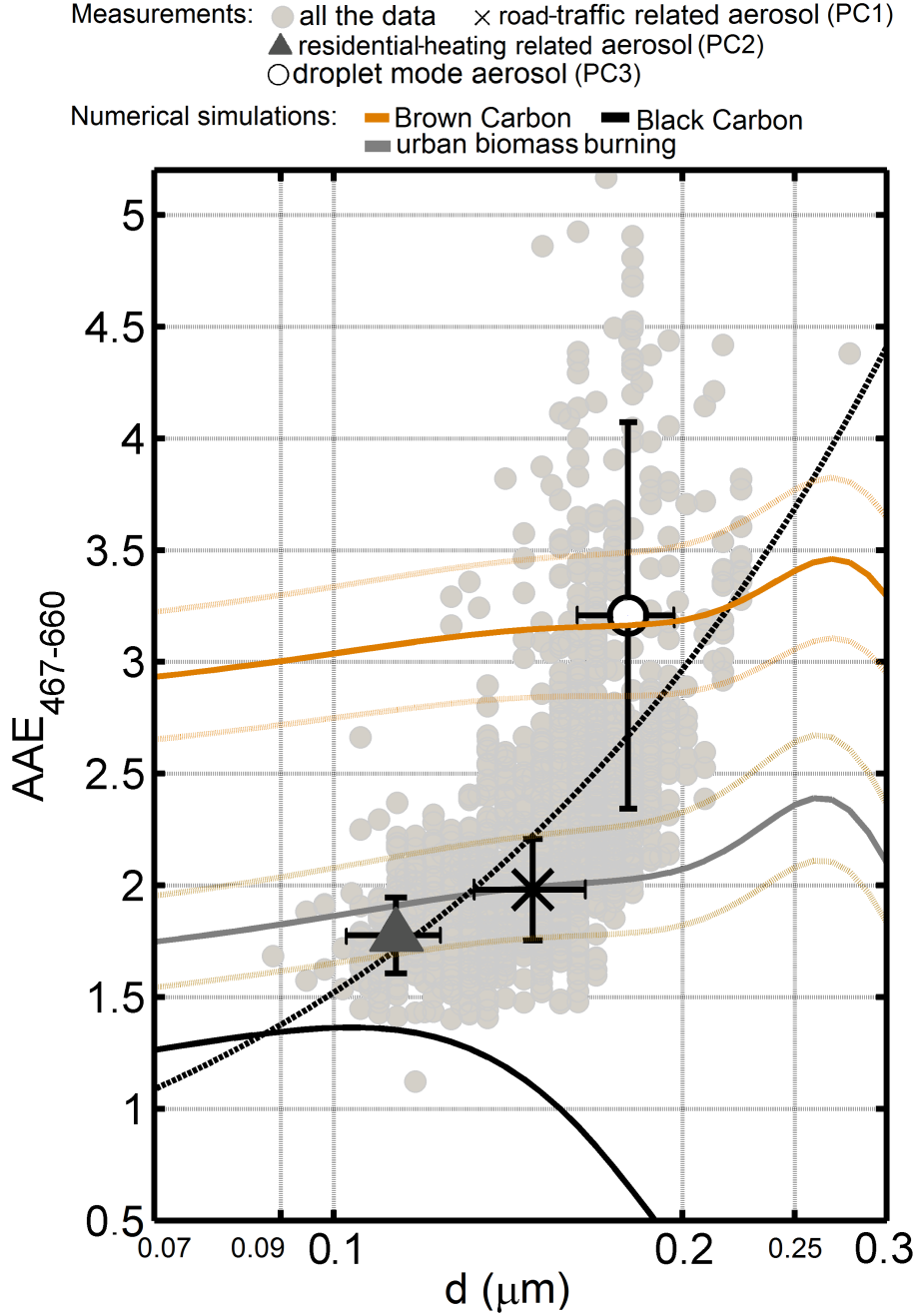


Figure 1. Experimentally measured and numerically simulated (Mie theory) relation between Absorption Ångström Exponent (AAE) at 467-660 nm and aerosol size (d). For measurements: (i) d is represented by the mobility median diameter of the PM_{10} particle surface size distribution ($d_{med(S)}$); (ii) all the data measured are indicated by light grey markers, the dotted black line representing the best linear fit to these data; (iii) major aerosol types identified (Sect.3.3) are indicated by darker markers (median \pm standard deviation). For numerical simulations (Sect.3.4): patterns theoretically expected for BrC, BC, and urban biomass burning are indicated by brown, black and grey thick lines respectively, the dotted thinner lines indicating the uncertainty of the refractive index ($m_{(\lambda)} = n_{(\lambda)} - ik_{(\lambda)}$) set to ± 0.01 for $n_{(\lambda)}$ and ± 0.001 for $k_{(\lambda)}$.

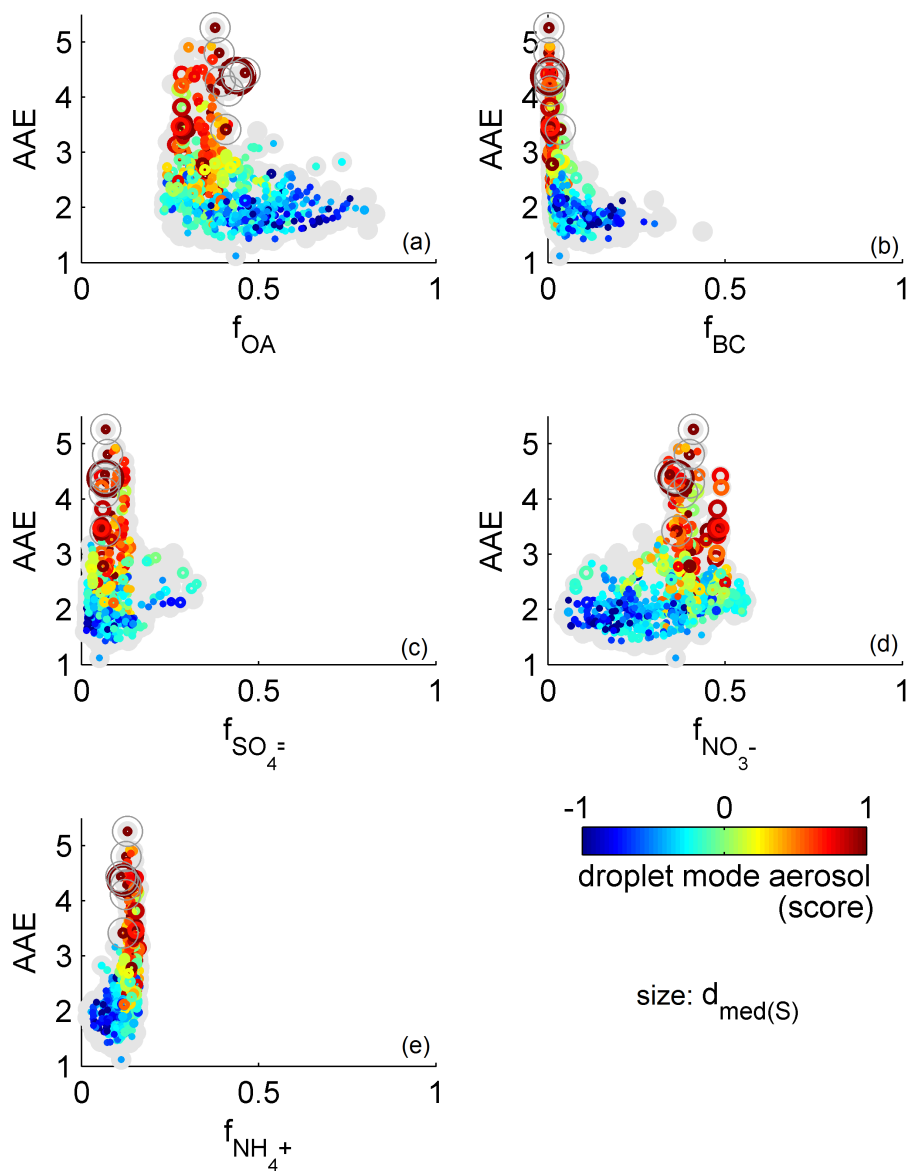


Figure 2. Physicochemical features of Brown Carbon. Absorption Ångström Exponent at 467-660 nm (AAE) plotted against mass fractions (f_x) of: (a) Organic Aerosol (OA), (b) Black Carbon (BC), (c) sulfate (SO_4^{2-}), and (d) nitrate (NO_3^-), and (e) ammonium (NH_4^+). Grey markers show the longest available time series for AAE and f_x , while marker color and size indicate datapoints for which the droplet mode aerosol scores and $d_{\text{med}(S)}$ were available (Sect.3). Data indicated by dark grey "o" show case study values illustrated in Fig. 4.

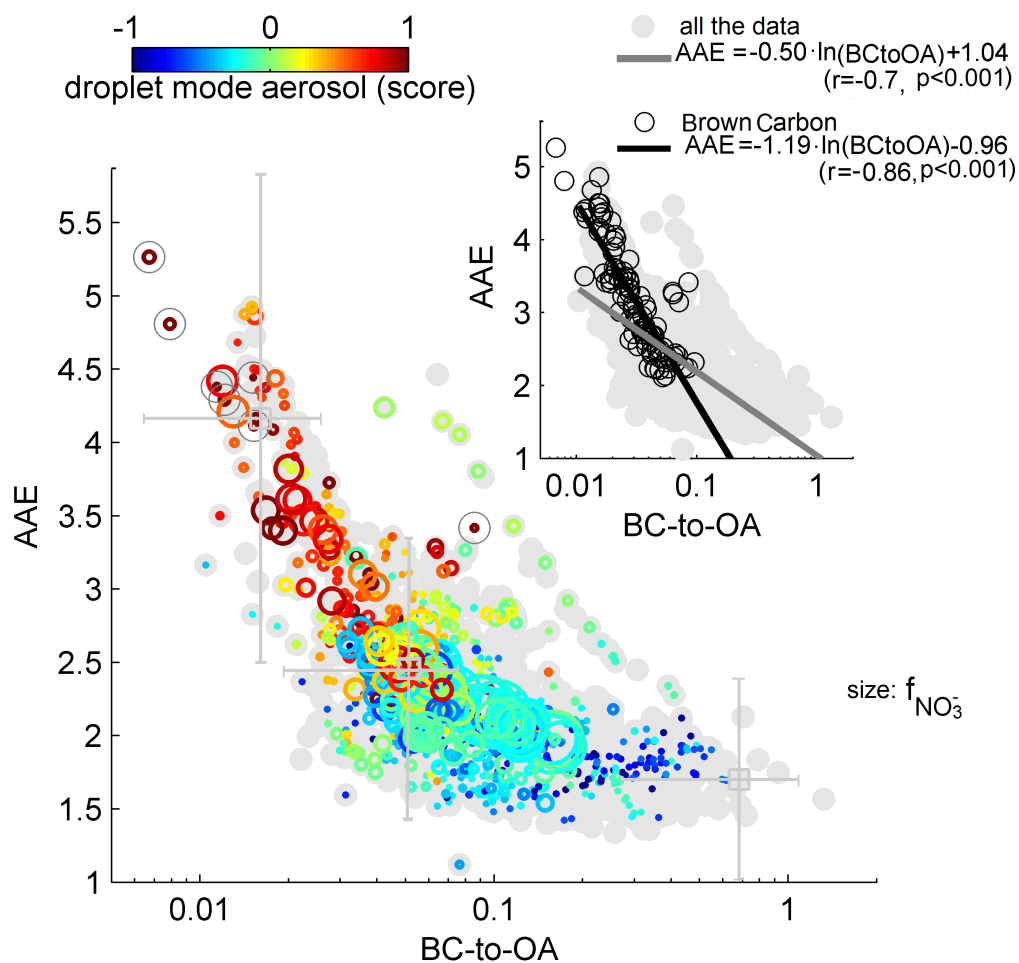


Figure 3. Dependence of AAE on OA -to- BC -to- OA ratios. Grey markers show the longest available time series for AAE at 467-660 nm and BC-to-OA, while marker color and size indicate datapoints for which the droplet mode aerosol scores and f_{NO_3} were available (Sect.3). Median values (grey squares) and relevant data uncertainty are indicated at the upper, mean, and lower AAE bins. Data indicated by dark grey "o" show case-study values illustrated in Fig. 4. Inner panel: best fit lines with relevant Eq. and Pearson's correlation coefficients (r , p) to all the data measured (grey line) and droplet mode BrC data (black line) (as indicated by droplet mode aerosol score > 0).

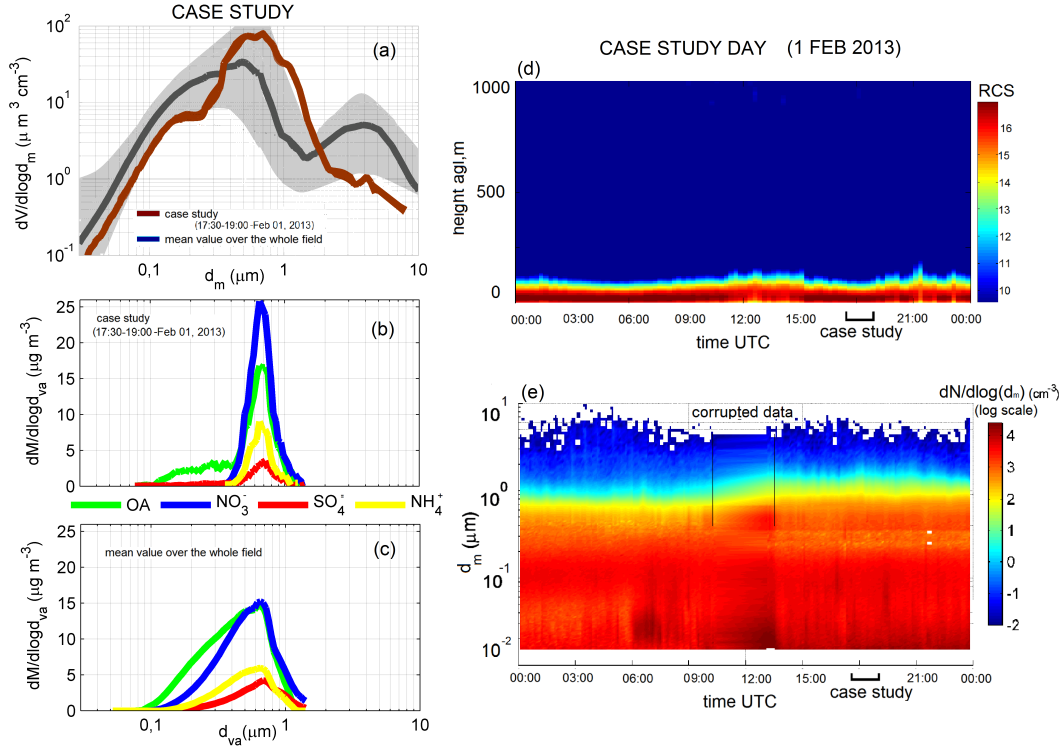


Figure 4. A case study illustrating BrC major features. Case study time period (1.5 hours) is from 17:30 to 19:00 UTC on February 1st, 2013–2013 (Local Time at the Po Valley sampling site in this period is UTC + 1 hour). Case study values are compared with mean values over the whole field experiment. Panels illustrate: (a) particle volume size distribution ($dV/d\log_{10} d_m$, based on electrical mobility particle diameter d_m) during the case study and relevant mean values; (b) particle mass size distribution ($dM/d\log_{10} d_{va}$, based on vacuum aerodynamic diameter, d_{va}) during the case study, and (c) relevant mean values; (d) aerosol vertical profiles in the atmosphere during the entire case study day (time-height cross section of the range corrected signal, $RCS=\ln(S \times R^2)$, from an LD40 ceilometer); (e) particle number size distributions during the entire case study day.

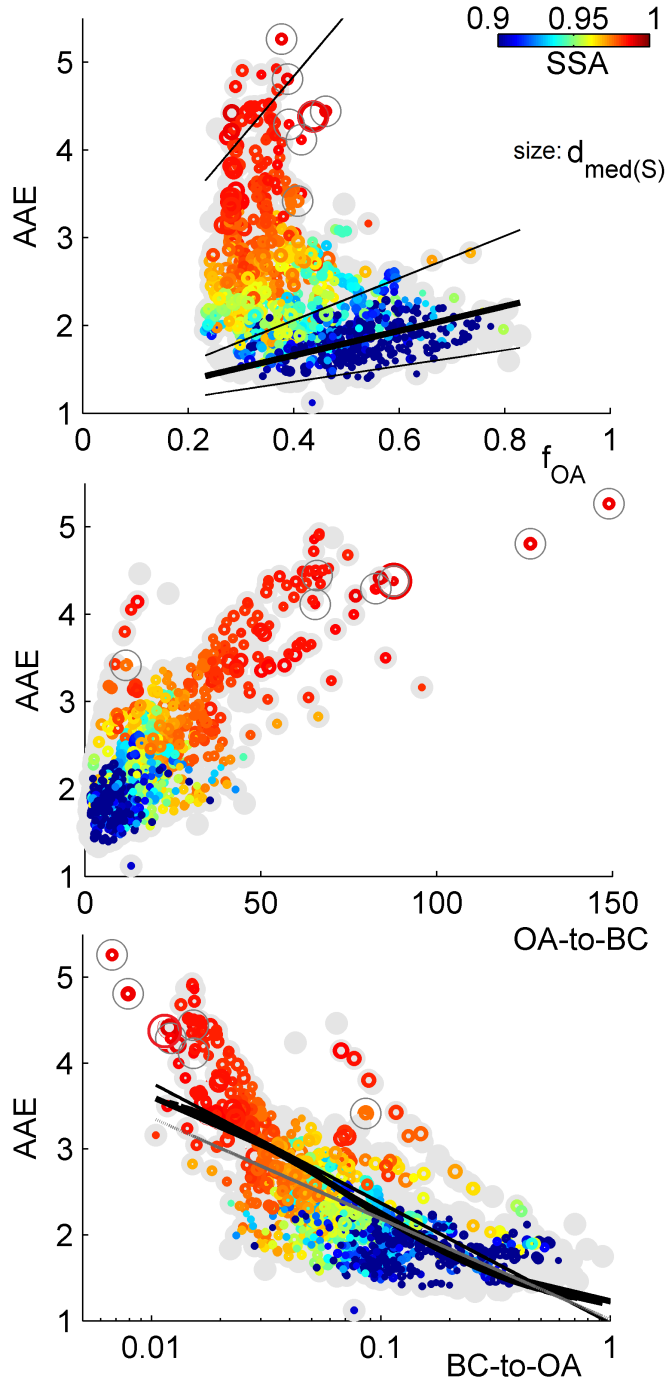


Figure 5. Absorption Ångström Exponent at 467-660 nm (AAE) against: (a) OA mass fraction, (b) OA-to-BC ratios, and (c) $\frac{BC}{OA}$ ratios. Grey markers show the longest available time series for AAE and f_{OA} , while coloured markers show datapoints for which the SSA at 530nm and $d_{med,S}$ were available (Sect.3). Best fit lines to data taken from: (i) Shinozuka et al. (2009) (at different SSA bins, i.e. 0.98-1.00, 0.96-0.98, 0.90-0.92, from top to bottom), and Russell et al. (2010) are indicated in panel a (thin and thick black lines respectively); (ii) Saleh et al. (2014), and Lu et al. (2015) are indicated in panel c (black thick and thin lines, respectively); (iii) this work are indicated in panel c (grey line, as in Fig.3). Data indicated by dark grey "o" show case-study values illustrated in Fig. 4.