

# Persistence of upper stratospheric winter time tracer variability into the Arctic spring and summer

David E. Siskind<sup>1</sup>, Gerald E. Nedoluha<sup>2</sup>, Fabrizio Sassi<sup>1</sup>, Pingping Rong<sup>3</sup>, Scott M. Bailey<sup>4</sup>, Mark E. Hervig<sup>5</sup>, and Cora E. Randall<sup>6</sup>

<sup>1</sup>Space Science Division, Naval Research Laboratory, Washington DC

<sup>2</sup>Remote Sensing Division, Naval Research Laboratory, Washington DC

<sup>3</sup>Center for Atmospheric Sciences, Hampton University, Hampton VA

<sup>4</sup>Bradley Department of Electrical and Computer Engineering, Virginia Tech, Blacksburg, VA

<sup>5</sup>GATS-Inc., Driggs, ID

<sup>6</sup>Laboratory of Atmospheric and Space Physics and Department of Atmospheric and Oceanic Sciences, University of Colorado, Boulder CO

*Correspondence to:* David Siskind (david.siskind@nrl.navy.mil)

**Abstract.** Using data from the Aeronomy of Ice in the Mesosphere (AIM) and Aura satellites, we have categorized the interannual variability of winter and spring time upper stratospheric methane (CH<sub>4</sub>). We further show the effects of this variability on the chemistry of the upper stratosphere throughout the following summer. Years with strong wintertime mesospheric descent followed by dynamically quiet springs, such as 2009, lead to the lowest summertime CH<sub>4</sub>. Years with relatively weak wintertime descent, but strong springtime planetary wave activity, such as 2011, have the highest summertime CH<sub>4</sub>. By sampling the Aura Microwave Limb Sounder (MLS) according to the occultation pattern of the AIM Solar Occultation for Ice Experiment (SOFIE), we show that summertime upper stratospheric chlorine monoxide (ClO) almost perfectly anticorrelates with the CH<sub>4</sub>. This is consistent with the reaction of atomic chlorine with CH<sub>4</sub> to form the reservoir species, hydrochloric acid (HCl). The summertime ClO for years with strong, uninterrupted mesospheric descent is about 50% greater than in years with strong horizontal transport and mixing of high CH<sub>4</sub> air from lower latitudes. Small, but persistent effects on ozone are also seen such that between 1-2 hPa, ozone is about 4-5% higher in summer for the years with the highest CH<sub>4</sub> relative to the lowest. This is consistent with the role of the chlorine catalytic cycle on ozone. These dependencies may offer a means to monitor dynamical effects on the high latitude upper stratosphere using summertime ClO measurements as a proxy. Also, these chlorine controlled ozone decreases, which are seen to maximize after years with strong uninterrupted wintertime descent, represent a new mechanism by which mesospheric descent can affect polar ozone. Finally, given that the effects on ozone appear to persist much of the rest of the year, the consideration of winter/spring dynamical variability may also be relevant in studies of ozone trends.

## 1 Introduction

There has recently been great interest in the variability of middle atmospheric trace constituents at high latitudes in the late winter and early spring. This interest has been fueled, in part, by the occurrence of prolonged sudden stratospheric warmings (SSWs) which can perturb the composition and structure of the stratosphere and mesosphere for many weeks (Manney et al., 2008a, b, 2009). These so-called extended SSWs are characterized by elevated stratopauses which reform near and above 80 km (Siskind et al., 2007; Manney et al., 2009). During the recovery phase of these extended events, the anomalous zonal wind flow alters the gravity wave propagation to the mesosphere, thus perturbing the mean meridional circulation and driving a dramatic descent of mesospheric air down to the stratosphere (Siskind et al., 2010; Chandran et al., 2013). For example, Bailey et al. (2014) have shown that mesospheric air enhanced in nitric oxide (NO) and depleted in water vapor (H<sub>2</sub>O) and methane (CH<sub>4</sub>) can descend from near 90 km in early February down to 40 km by early April. Bailey et al. (2014) focused on the 2013 SSW; other analogous events occurred in 2004, 2006 and 2009 (Manney et al., 2005, 2009; Randall et al., 2009). An additional motivation for much of the above studies is the interest in quantifying the extent to which the enhanced nitric oxide can cause reductions in polar upper stratospheric ozone (Funke et al., 2014).

There has been less attention paid to what happens to these dramatic perturbations as the spring progresses and the wintertime circulation transitions into a summer pattern. It has long been recognized that the winter to spring transition is characterized by a decay and breakdown of the winter time westerly jet and its eventual replacement by a zonal mean easterly flow around the polar region. This is known as the stratospheric final warming (SFW) (Hu et al., 2014). It has been observed that certain remnants of wintertime dynamical (Hess, 1991) or chemical tracer features (Orsolini, 2001; Lahoz et al., 2007) can persist well into the summer season. Most recently, work has focused upon specific events whereby the SFW can occur rather abruptly with a significant late season planetary wave event (Allen et al., 2011; Siskind et al., 2015a; Fiedler et al., 2014). These planetary waves can transport low latitude anticyclonic air poleward. This air can displace the winter polar vortex and then remain "frozen in" for a period of weeks or longer in late spring and early summer (Manney et al., 2006). Alternatively, this transition can occur gradually without significant wave activity. In the former case, the upper mesosphere often experiences cooler and wetter conditions which can lead to the early onset of the polar mesospheric cloud (PMC) season. In the latter case, the upper mesosphere remains warmer and drier. Siskind et al. (2015a) showed that 2011 and 2013 were years with an abrupt winter-to-spring transition and 2008 was a spring with negligible planetary wave activity. They used these years to define the extremes in spring time planetary wave activity and associated temperatures.

From the above, we can define four general scenarios for the transition from winter to summer based upon the combination of the two perturbations outlined above. We can have a year with extended descent of mesospheric air (typically the result of an extended SSW) or a winter with weak

descent. These winters can be followed by springs with either an abrupt planetary wave transition to  
60 a summer circulation or with a slower gradual transition. The purpose of this paper is to categorize  
the four possible combinations of these springtime scenarios and how they are manifested in the  
variability of trace constituents such as CH<sub>4</sub>, chlorine monoxide (ClO) and ozone (O<sub>3</sub>). Among our  
results, we will show that under certain circumstances, the zonal mean distribution of these trace  
constituents can be perturbed for many months even into the autumn. This is important because  
65 while the summer upper stratosphere is generally understood to be under radiative and photochem-  
ical control (Andrews et al., 1987), we will show how the zonal mean composition can be sensitive  
to dynamical changes that might have occurred over half a year prior.

## 2 Observations and Model

### 2.1 SOFIE and MLS data

70 Our primary data come from the Solar Occultation for Ice Experiment (SOFIE) (Gordley et al. ,  
2009) on the Aeronomy of Ice in the Mesosphere (AIM) satellite (Russell et al., 2009) and the  
Microwave Limb Sounder (MLS) (Santee et al., 2008; Froidevaux et al., 2008) on the Aura satellite  
(Waters et al. , 2006). SOFIE measures profiles of temperature, aerosols (ice and meteoric smoke)  
and O<sub>3</sub>, H<sub>2</sub>O, CO<sub>2</sub>, CH<sub>4</sub> and NO using the solar occultation technique. Since the AIM satellite is in a  
75 sun-synchronous polar orbit, the latitude of the occultations approximately tracks the terminator and  
is above 82° near equinox and near 65° at solstices. SOFIE acquires approximately 15 samples/day,  
uniformly spaced in longitude. The vertical resolution is about 2 km. Gordley et al. (2009) quote a  
precision for the CH<sub>4</sub> data of 10 ppbv at 70 km. This work uses version 1.3 SOFIE data. SOFIE CH<sub>4</sub>  
data has previously been presented by Bailey et al. (2014) and Siskind et al. (2015b) and shown to  
80 vary in a manner consistent with the other tracers of mesospheric descent measured by SOFIE;  
ongoing validation studies (P. Rong et al., submitted to the Journal of Geophysical Research, 2016)  
with the Atmospheric Chemistry Experiment suggest general agreement to within approximately  
12%. Here we emphasize the relative year to year variations.

Like AIM, the Aura satellite is also in a sun-synchronous orbit. However, unlike SOFIE, because  
85 MLS observes ClO and O<sub>3</sub> in emission, data is obtained over all latitudes up to about 82°N. We used  
Version 4.2 data. The MLS ozone was validated by Froidevaux et al. (2008) and used in a study of  
lower mesospheric photochemistry by Siskind et al. (2013). The ClO data has been validated by  
Santee et al. (2008) and compared with groundbased data by Nedoluha et al. (2011). Santee et al.  
(2008) show that the precision of the MLS ClO decreases for pressures less than 2 hPa; however,  
90 since we only show monthly averages, this is not a problem for the present study. It is also common  
practice to subtract the nighttime data from the daytime data (Santee et al., 2008; Nedoluha et al.,  
2008) in order to reduce systematic biases; however, for the high latitude spring/summer conditions  
shown here, there are often no night periods. Thus a given monthly average was constructed using

data from all local times without any background subtraction. The vertical resolution of the MLS  
95 CIO observation (3-4 km) is somewhat coarser than SOFIE. We thus interpolated the SOFIE profile  
to the MLS grid.

## 2.2 The Whole Atmosphere Community Climate Model (WACCM)

We also compare some of our results with WACCM (Garcia et al., 2007). WACCM is the high al-  
titude atmospheric component of the NCAR Community Earth System Model version 1 (CESM1).  
100 In its standard configuration, WACCM has 66 vertical levels from the ground to about  $5.9 \times 10^{-6}$   
hPa (approximately 140 km geometric height) and a horizontal resolution of  $1.9^\circ$  latitude x  $2.5^\circ$   
longitude. See Garcia et al. (2007) for a detailed discussion of the model climatology and param-  
eterizations. This version of WACCM uses specified dynamics (SD) provided by the Navy Oper-  
ational Global Atmospheric Prediction System- Advanced Level Physics High Altitude (NOGAPS-  
105 ALPHA) (Marsh, 2011; Sassi et al., 2013). NOGAPS-ALPHA is the high altitude extension of the  
then operational Navy’s weather forecast system up to about 90-92 km (Eckermann et al., 2009).  
Siskind et al. (2015b) have already shown that the combination of WACCM and NOGAPS-ALPHA  
(hereinafter called WACCM/NOGAPS) produced a successful representation of the descent of en-  
hanced upper mesospheric and lower thermospheric nitric oxide (NO) and depleted  $\text{CH}_4$  into the  
110 upper stratosphere/lower mesosphere. By contrast, WACCM nudged only up to 50-60 km by the  
Modern Era Retrospective Analysis for Research and Applications (MERRA) dataset did not (see  
also Randall et al., 2015). Since mesospheric descent is so important for understanding our present  
results, we only use WACCM/NOGAPS for this study. Unfortunately, of the seven years considered  
here (2008-2014), WACCM/NOGAPS is only available for the first two. We thus can not use it to  
115 reproduce all the variability seen in the SOFIE data. However, by comparing summer results from  
2009 with 2008, we can provide a broader context to the latitudinal extent of the  $\text{CH}_4$  changes and  
their effect on the chlorine and ozone chemistry of the upper stratosphere.

## 3 Results

### 3.1 Methane ( $\text{CH}_4$ )

120 Our specific interest is to highlight the consequences of the variations in upper stratospheric  $\text{CH}_4$   
as observed by SOFIE and shown in Figures 1 and 2. These figures illustrate the great variability  
that occurs in  $\text{CH}_4$  each winter and spring. Figure 1, which presents 6 years of SOFIE  $\text{CH}_4$  shows  
that each year is characterized by the descent of low values of  $\text{CH}_4$  from the mesosphere in the  
period from February to early April (roughly Day 30 to Day 110). This descent is characterized by  
125 large interannual variability and was strongest in 2009 and 2013. These were years with prolonged  
SSWs followed by elevated stratopauses and have been covered in the literature (Manney et al.,  
2009; Randall et al., 2009; Bailey et al., 2014). The difference between 2009 and 2013 is that in

2013, there was a large frozen in anticyclone event (FrIAC; Manney et al., 2006) that transported air with high values of CH<sub>4</sub> to high latitudes (Siskind et al., 2015a) whereas in 2009, no such spring time disturbance was evident. This is clearly seen in Figure 2 where the CH<sub>4</sub> jumps from below 0.1 ppmv on Day 100 to over 0.3 ppmv by Day 120. Years with a more moderate and shorter period of winter/early spring descent are 2010 and 2012. These two years did not have elevated stratopause events as in 2009 and 2013, but there were wintertime SSWs in both years and Straub et al. (2012) discussed the descent of dry air at high latitudes in the lower mesosphere during the late winter of 2010. The springtime vortex breakdown occurred relatively gradually over many weeks in March and April for both 2010 and 2012 and thus there was no transport of high CH<sub>4</sub> in either spring. These years ended up being close to 2009 in having low values of CH<sub>4</sub> persist into the summer. Even less mesospheric descent was seen in 2008 and the least descent was seen in 2011. 2011 was characterized by a strong undisturbed stratospheric polar vortex (Manney et al., 2011). Then in early April (Day 95) of that year, the largest FrIAC of the 36-year MERRA dataset was recorded (Allen et al., 2011; Thieblemont et al., 2013), causing a significant jump in upper stratospheric CH<sub>4</sub>.

After the spring, there is a 2nd period of decreasing CH<sub>4</sub> in the summer (most noticeable after Day 200). This summer time decrease is due to photochemistry (Funke et al., 2014) as the production of O(<sup>1</sup>D) and OH, both of which oxidize CH<sub>4</sub>, peak at high summer latitudes in the upper stratosphere (LeTexier et al., 1988). Since the upper stratosphere at this time of year is dynamically quiet, the year to year variability in summer CH<sub>4</sub> is driven by the winter and springtime dynamics. This can be seen in Figure 2a, which compares time series of upper stratospheric CH<sub>4</sub> for the 6 years shown in Figure 1 plus 2014. The figure shows that the lowest summer CH<sub>4</sub> was generally in 2009; this is the direct consequence of the late winter descent that persisted without interruption until early April. By contrast, the highest summer CH<sub>4</sub> was in 2011 which is the result of the dynamically quiet winter followed by the FrIAC in early April that caused the CH<sub>4</sub> to almost double. The other 5 years are intermediate, although as noted above, 2010 and 2012 are close to 2009. For all seven years, once the relative abundances of CH<sub>4</sub> were established by May 1st (Day 121), they remained mostly unchanged with respect to each other until October (around Day 280). Figure 2b shows WACCM zonal mean CH<sub>4</sub> results for 1.47 hPa at the single latitude of 75°N for 2009 and 2008. The reason for sampling WACCM at a single latitude is to test whether the slow seasonal drift of the SOFIE occultation pattern from 65 to 82° might be affecting our comparisons. While there are some differences in absolute abundance between WACCM and SOFIE for the first 30-40 days when late winter conditions still prevailed, after that, in spring and summer, the agreement between WACCM at one latitude and SOFIE over a small range of latitudes is excellent. Thus we can conclude that the latitude variation of the SOFIE occultations can be neglected. This is not surprising since wave activity and latitudinal gradients are relatively weak in summer.

Table 1 presents an idealized categorization of how the summer level of Arctic upper stratospheric CH<sub>4</sub> can be placed in the context of the four categories of wintertime descent and early spring

165 dynamical variability. The years 2008, 2009, 2011, 2013 are most representative of these idealized cases. The other years are more intermediate; as noted above, 2010 and 2012 were closer to 2009 in having relatively strong late winter descent of mesospheric air and a relative absence of spring time wave activity (with its associated horizontal transport of low latitude air to polar latitudes (cf. Siskind et al., 2015a)). 2014 is closer to 2011. As seen in Figure 2, there was a 50% increase in CH<sub>4</sub>  
170 in late March 2014 and we have previously, tentatively suggested that there was a FrIAC event in that spring (Siskind et al., 2014). Certainly this categorization is qualitative, not quantitative; however, we suggest that it provides a useful framework for analyzing the spring and summer CH<sub>4</sub> variability.

### 3.2 Chlorine Monoxide (ClO)

Here we explore the chemical consequences of the CH<sub>4</sub> variations illustrated above. CH<sub>4</sub> has long  
175 been known to play an important role in partitioning stratospheric chlorine (Solomon and Garcia, 1984). Specifically, the reaction  $\text{Cl} + \text{CH}_4 \rightarrow \text{HCl} + \text{CH}_3$  means that active chlorine ( $\text{ClO}_x = \text{Cl} + \text{ClO}$ ) should vary inversely with CH<sub>4</sub>. For example, Siskind et al. (1998) documented an increase in upper stratospheric ClO during the early years of the Upper Atmospheric Research Satellite (UARS) mission which was explained as a direct consequence of the decrease in CH<sub>4</sub> observed by Nedoluha  
180 et al. (1998). Froidevaux et al. (2000) observed a general anticorrelation between variations in ClO and CH<sub>4</sub> at 2 hPa in the tropics. They showed that there should be an inverse relationship between ClO and CH<sub>4</sub>.

Figure 3 shows that this anticorrelation also exists between high latitude CH<sub>4</sub> and ClO at 1.47 hPa during the spring and summer. It plots monthly averaged SOFIE CH<sub>4</sub> against MLS ClO (sampled at  
185 the SOFIE occultation latitudes) for the period May-August. Although there are only 7 datapoints for each month (6 in May due to missing data in 2014), the linear correlation coefficients of -.92 to -.97 are highly statistically significant. Note there is a general increase in ClO from late spring to late summer. This is consistent with the seasonal decrease in CH<sub>4</sub> and was discussed by Considine et al. (1998). Concerning the year-to-year variability, the highest summertime ClO for the seven year  
190 period is in 2009. This is a legacy of the strong uninterrupted descent which followed the January 2009 SSW. Other years with relatively high ClO include 2010 and 2012 which, as we have discussed, were also years similar to 2009 in their combination of winter descent and spring planetary waves. The lowest summertime ClO is in 2011. This is the result of the strong FrIAC event which occurred in April 2011. The general range of summer ClO which stems from the above winter/spring dynamical  
195 variability is about 50%.

Figure 3 also gives the slopes ( $m$ ) of the linear fit between ClO and CH<sub>4</sub>. It shows a tendency for progressively steeper (more negative) slopes as the summer progresses and methane decreases. In general, all the values of  $m$  are more negative than the value (-0.42 ppbv/ppmv) quoted by Nedoluha et al. (2011) for tropical conditions. However, Nedoluha et al. (2011) make the point that the CH<sub>4</sub> is  
200 relatively high in the tropics (about 0.6 ppmv according to their Figure 7). Thus the pattern of steeper



slopes for lower CH<sub>4</sub> is robust across both Nedoluha et al's and our analyses. This is precisely the pattern one would expect for the inverse power relationships discussed by Froidevaux et al. (2000). Thus the present SOFIE/MLS comparison is consistent with studies using both UARS and ground based data that showed ClO and CH<sub>4</sub> in the upper stratosphere varying with a high degree of anti-  
205 correlation.

To get a broader picture of the ClO and CH<sub>4</sub> changes at latitudes other than the narrow range sampled by SOFIE, Figure 4 shows the monthly average zonal mean WACCM/NOGAPS ClO and CH<sub>4</sub> difference fields for Aug 2009 minus Aug 2008. Also shown in the right hand plots are profiles that are compared with MLS (for ClO) and SOFIE (for CH<sub>4</sub>) for the SOFIE occultation latitude  
210 (given by the dashed white line in the color panel). The comparison between the model and the data is excellent. Since the difference between 2009 and 2008 represents about half the difference between the extreme years discussed above (2009 and 2011), one can multiply the ClO and CH<sub>4</sub> difference values in Figure 4 by a factor of two to get an estimate of the full range. The model shows that the low 2009 CH<sub>4</sub> and high 2009 ClO shown in Figure 4 are part of a broad region of perturbation  
215 extending from 40-50°N to the pole and covering the altitude region between about 1 and 8 hPa. There may be a small vertical offset, perhaps one grid point, whereby the model profile is shifted slightly downward relative to both the MLS and SOFIE data. A similar offset was recently noted by Siskind et al. (2015b) in their WACCM/NOGAPS simulation of the 2009 descent of mesospheric NO<sub>x</sub>. Since the summer CH<sub>4</sub> depletion is a consequence of the winter descent, this offset may reflect  
220 the small discrepancy seen by Siskind et al. (2015b).

Figure 4 shows that the effect of the CH<sub>4</sub> on ClO occurs over a relatively deep layer in the upper stratosphere; the detailed plots of the time behavior of CH<sub>4</sub> and ClO, specifically Figures 2 and 3, represent only the uppermost edge of this larger perturbation. The reason for focusing on this narrower region is that these altitudes, between 1-3 hPa, are where the chlorine cycle is affecting the  
225 ozone. This is discussed in the next section.

### 3.3 Ozone (O<sub>3</sub>)

Figure 5 presents a time series of upper stratospheric ozone from MLS in a format similar to Figure 2 for CH<sub>4</sub>. Only 4 years are shown because in summer, the curves almost overlap and it would be hard to distinguish all 7 years clearly. The 4 years shown correspond to the representative years  
230 given in Table 1. The figure shows very large variability in March and April, both intra- and inter-annually. This is largely driven by the large temperature variability, which itself is dynamically driven, as discussed by several authors (Siskind et al., 2015a; McCormack et al., 2006; Smith, 1995; Froidevaux et al., 1989). Of interest here is that after May 1st the interannual variability becomes very small, but is not zero. Also it shows that the relative abundance from year to year remains  
235 generally fixed throughout the summer into the autumn. This small remaining difference is due to chlorine chemistry as seen below.

Figure 6 shows the zonal and monthly averaged odd oxygen loss rates from the HO<sub>x</sub>, ClO<sub>x</sub> and NO<sub>x</sub> catalytic cycles for June 2008 and 2009 at 75°N calculated by WACCM/NOGAPS. The expressions for these terms are from equation A1 of McCormack et al., (2006). The figure shows that the contribution to total odd oxygen loss from chlorine chemistry maximizes in a narrow layer from 1-3 hPa and that it is greater in 2009 than in 2008. This is consistent with the greater ClO observed by MLS in 2009 as shown in Figure 3. The HO<sub>x</sub> cycle shows little change, but the NO<sub>x</sub> cycle actually shows the opposite effect, i.e. decreased loss in 2009. This is perhaps surprising and is worth documenting. Figure 7 shows the monthly averaged NO<sub>x</sub> (=NO + NO<sub>2</sub>) from WACCM for June for 75°N for 2009 and 2008. Above the stratosphere, from 1 - 0.1 hPa, NO<sub>x</sub> was higher in 2009. This is likely a legacy of enhanced descent from the upper mesosphere observed earlier that spring. However, as discussed by Siskind et al. (2015b) and also by Salmi et al. (2011) in their study of data from the Atmospheric Chemistry Experiment Fourier Transform Spectrometer, there is no evidence that these enhancements penetrated down to altitudes where the NO<sub>x</sub> catalytic cycle effects ozone. Although SOFIE does not measure NO<sub>2</sub>, the excellent agreement between WACCM NO and SOFIE NO documented by Siskind et al. (2015b) gives us confidence that the WACCM NO<sub>x</sub> results are an accurate reflection of reality. We suggest that the lower NO<sub>x</sub> from 1-8 hPa in 2009 is a legacy of greater winter/spring descent from the region of the NO minimum in the mesosphere near 60-75 km.

Thus while there is some offsetting of the changes in the chlorine cycle by the lower 2009 NO<sub>x</sub>, the net effect is that in the 1-2 hPa layer, the overall odd oxygen loss is greater in 2009. Between 3-7 hPa, it is less in 2009. These changes agree well with observed ozone changes as seen by MLS. This is shown in Figure 8 which presents an altitude profile of the ozone change from WACCM/NOGAPS compared with MLS for June at 75°N. The figure shows the relative 2009 ozone decrease near 1-2 hPa, corresponding to the increase in chlorine loss. From 4-6 hPa, there is a small ozone increase in 2009 which corresponds to the small reduction in NO<sub>x</sub> loss suggested by Figures 6 and 7.

Figure 9 shows that the ozone change over the entire seven year period is consistent with the above analysis for 2008 and 2009. Figure 9 presents monthly averaged correlation coefficients between MLS ozone and MLS ClO (Figure 8a) and between MLS ozone and SOFIE CH<sub>4</sub> (Figure 8b) for 1.47 hPa. Figure 9a shows that the approximate 5% spread in ozone values is almost perfectly anticorrelated with the 50% ClO changes shown in Figure 3. Further, since we have previously shown that the summer ClO in the upper stratosphere reflects the interannual variability in CH<sub>4</sub>, it is no surprise that MLS O<sub>3</sub>, sampled at SOFIE latitudes, should almost perfectly correlate with SOFIE CH<sub>4</sub>. This is shown in Figure 9b.

Finally, Figure 10 plots the linear correlation coefficient of CH<sub>4</sub> and O<sub>3</sub> as a function of altitude. Four curves are shown, corresponding to the 4 monthly averages presented in Figure 5. The figure shows that the correlation maximizes in the 1-2 hPa region with values near and above 0.9. This is to be expected from the chlorine cycle as shown in Figure 6 above. Below 2-3 hPa, the NO<sub>x</sub> cycle becomes more dominant and the link to CH<sub>4</sub> disappears. Thus the effects of uninterrupted



wintertime descent of mesospheric air on ozone may fall into two categories, separated by altitude.

275 From 1-2 hPa the ozone reductions result from chlorine enhancements; for higher pressures, the potential for  $\text{NO}_x$  enhancements dominates, provided such enhancements were to make it down to those pressures.

#### 4 Conclusions

We've shown how the chemical composition in the summertime upper stratosphere depends upon  
280 dynamical activity from the previous winter and spring. Our main result is to identify a new mechanism for summertime ClO and  $\text{O}_3$  variability, namely due to  $\text{CH}_4$  variations which, in turn, depend upon both the magnitude of winter time mesospheric descent and spring time planetary waves. In 2009, prolonged mesospheric descent and a relative absence of spring time wave activity lead to relatively low values of  $\text{CH}_4$  which persisted throughout the summer. At the other extreme, in 2011,  
285 the lack of strong winter descent combined with an intense frozen-in-anticyclone event in early April led to  $\text{CH}_4$  values which were more than twice that in 2009.

The excellent anticorrelation between MLS ClO and SOFIE  $\text{CH}_4$  both validates our understanding of reactive chlorine partitioning and also offers a framework for interpreting future observations. Due to orbital precession, the latitudes of the SOFIE occultations have drifted away from polar region and  
290 SOFIE is presently unable to monitor wintertime tracer descent. However, based upon the results in this paper, perhaps MLS ClO data can be used as a proxy for this. It would also be interesting to consider whether these variations in ClO have any impact on  $\text{O}_3$  trend assessments. Both the strong winter descent and the spring FrIAC phenomenon seem to be more common in recent years (Allen et al. , 2011; Manney et al., 2005). In principle, the enhanced variability we've shown here  
295 might have to be considered, at least for trend studies at high latitudes. Recent estimates of ClO trends (Jones et al. , 2011) have only considered the tropics.

Our work shows that these  $\text{CH}_4$  and ClO variations have caused up to a 5% variation in upper stratospheric ozone throughout the summer and early fall. This confirms the general role of chlorine chemistry in upper stratospheric ozone. This also represents a second mechanism, in addition to  
300 that associated with descent of enhanced mesospheric  $\text{NO}_x$ , by which descent of mesospheric air can cause ozone reductions. Studies of spring and summer time ozone loss following strong descent years should take care to distinguish between these two mechanisms. One way to distinguish them may be according to altitude. Thus ozone decreases for  $p < 3$  hPa ( $z > 40$  km) are more likely the result of low  $\text{CH}_4$  whereas for  $p > 3$  hPa ( $z < 40$  km),  $\text{NO}_x$  enhancements would dominate. A likely  
305 example of this second case is shown in Figure 1 of Randall et al. (2005).

Finally, the question of whether this variability would influence trend analyses may be worth considering. There was earlier work using Upper Atmospheric Research Satellite data to look at hemispheric differences in ozone trends (Conside et al. , 1998); in light of the more recent dynam-

ical variability seen in the NH, and its now-documented impact on ozone, perhaps this should be  
310 revisited.

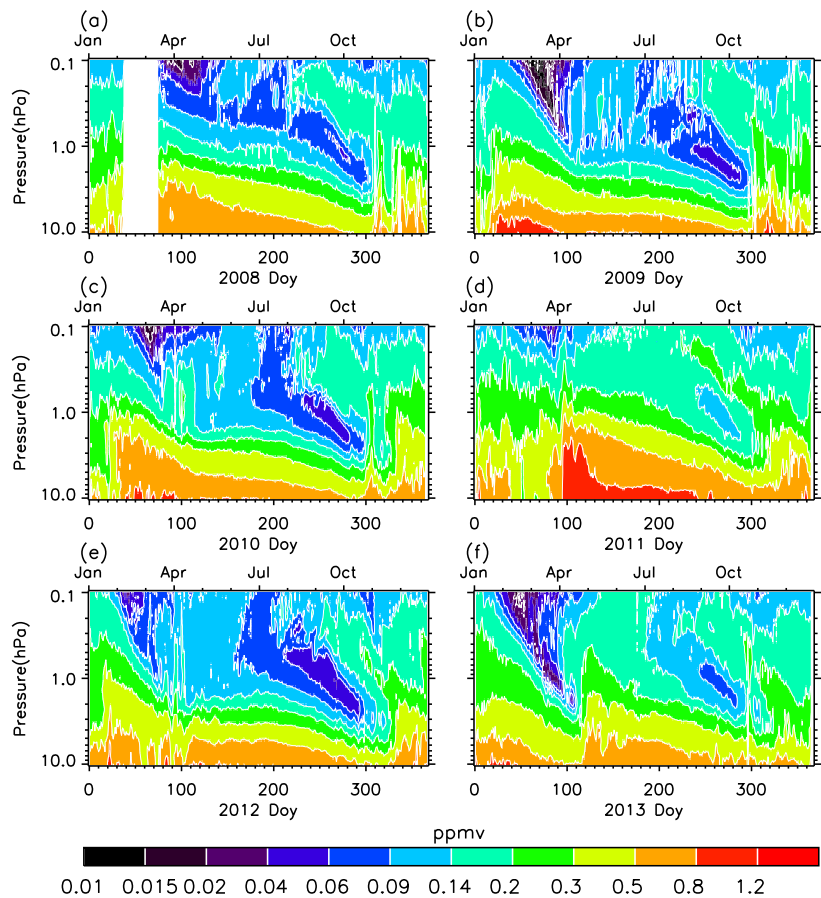
*Acknowledgements.* We acknowledge the Aeronomy of Ice in the Mesosphere explorer program from the NASA Small Explorer Program. Two of us (FS and GEN) additionally acknowledge funding from the Chief of Naval Research.

## References

- 315 Allen, D. R., et al., Modeling the frozen-in anticyclone in the 2005 arctic summer stratosphere, *Atmos. Chem. Phys.*, 11, 4557-4576, 2011.
- Andrews, D.G., J. R. Holton, and C. B. Leovy, *Middle Atmosphere Dynamics*, Academic Press, 489pp, 1987.
- Bailey, S. M., B. Thurairajah, C. E. Randall., L. Holt, D. E. Siskind, V. L. Harvey, K. Venkataramani, M. E. Hervig, P. Rong and J. M. Russell III, A multi tracer analysis of thermosphere to stratosphere descent triggered by the 2013 Stratospheric Sudden Warming, *Geophys. Res. Lett.*, 41, 5216-5222, doi:10.1002/20114GL059860, 2014.
- 320 Chandran, A., R. L. Collins, R. R. Garcia, D. R. Marsh, V. L. Harvey, J. Yue, and L. de la Torre, A climatology of elevated stratopause events in the whole atmosphere community climate model, *J. Geophys. Res.*, 118, 1-13, doi:10.1002/jgrd.50123, 2013.
- 325 Considine, D., A. E. Dessler, C. H. Jackman, J. E. Roesenfeld, P. E. Meade, M. R. Schoeberl, A. E. Roche, and J. W. Waters, Interhemispheric asymmetry in the 1 mbar O<sub>3</sub> trend: An analysis using an interactive zonal mean model and UARS data, *J. Geophys. Res.*, 103, 1607-1618, 1998
- Eckermann, S. D., et al., High altitude data assimilation experiments for the Northern Hemisphere summer mesosphere season of 2007, *J. Atm Solar-Terr Phys.*, 71, 531-551., 2009.
- 330 Fiedler, J., G. Baumgarten, U. Berger, A. Gabriel, R. Latteck, and F.-J. Lubken, On the early onset of the NLC season as observed at Alomar, *J. Atm. Solar-Terr. Phys.*, 127, <http://dx.doi.org/10.1016/j.jastp.2014.07.011>, 2014.
- Froidevaux, L., Allen, M. Berman, S., and Daughton, A.: The mean ozone profile and its temperature sensitivity in the upper stratosphere and mesosphere: an analysis of LIMS observations, *J. Geophys. Res.*, 94, 6389-6417, 1989.
- 335 Froidevaux, L., J. W. Waters, W. G. Read, P. S. Connell, D. E. Kinnison, and J. M. Russell III, Variations in the free chlorine content of the stratosphere (1991-1997): Anthropogenic, volcanic and methane influences, *J. Geophys. Res.*, 105, 4471-4481, 2000.
- Froidevaux, L., et al., Validation of Aura Microwave Limb Sounder stratospheric ozone measurements, *J. Geophys. Res.*, 113, D15S20, doi:10.1029/2007JD008771, 2008.
- 340 Funke, B., et al., Mesospheric and stratospheric NO<sub>y</sub> produced by energetic particle precipitation during 2002-2012, *J. Geophys. Res.*, 119, 4429-4446, 2014.
- Gordley, L. L., et al., The solar occultation for ice experiment, *J. Atm Solar Terr Phys.*, 71, 300-315, 2009.
- Garcia, R. R., D. R. Marsh, D. E. Kinnison, B. A. Boville, and F. Sassi, Simulation of secular trends in the middle atmosphere, *J. Geophys. Res.*, 112, D09301, doi:10.1029/2006JD007485, 2007.
- 345 Hu, J., R. Ren and H. Xu, Occurrence of winter stratospheric sudden warming events and the seasonal timing of spring stratospheric final warming, *J. Atm. Sci.*, 71, 2139-2334, doi:10.1175/JAS-D-13-0349, 2014.
- Jones et al., Analysis of HCl and ClO time series in the upper stratosphere using satellite data sets, *Atmos. Chem. Phys.*, 11, 5321-5333, 2011.
- 350 Lahoz, W. A., A. J. Geer, and Y. J. Orsolini, (2007) Northern Hemisphere stratosphere summer from MIPAS observations, *Q. J. Roy. Meteorol. Soc.*, 133, 197-211
- Letexier, H., S. Solomon, and R. R. Garcia, The role of molecular hydrogen and methane oxidation in the water vapour budget of the stratosphere, *Quart Jour. Royal Met Soc.*, 114, 281-295, 1988.

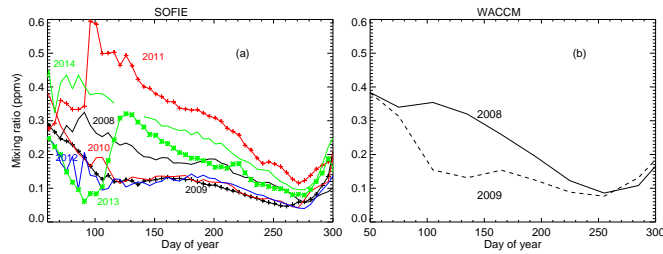
- 355 Manney, G. L., Kruger, K, J. L. Sabutis, S. A. Sena and S. Pawson, The remarkable 2003-04 winter and other recent warm winters in the Arctic stratosphere since the late 1990s, *J. Geophys. Res.*, 110, D04107, doi:10.1029/2004JD005367, 2005.
- Manney, G. L., et al., EOS Microwave Limb Sounder observations of frozen-in anticyclonic air in arctic summer, *Geophys. Res. Lett.*, 33, L08610. doi:10.1029/2005GL025418, 2005.
- 360 Manney, G. L., et al., The evolution of the stratopause during the 2006 major warming: Satellite data and assimilated meteorological analyses, *J. Geophys. Res.*, 113, D11115, doi:10.1029/2007JD009097, 2008a.
- Manney, G. L., et al., The Arctic in extreme winters: Vortex, temperature and MLS and ACE-FTS trace gas evolution, *Atmos. Chem. Phys.*, 9, 4775-4795, doi:10.5194/acp-9-4775-2009, 2008b.
- Manney, G. L., et al., Aura Microwave Limb Sounder observations of dynamics and transport during the record-breaking 2009 Arctic stratospheric major warming. *Geophys. Res. Lett.*, 36, L12815, doi:10.1029/2009GL038586, 2009.
- 365 Manney, G. L., et al., Unprecedented Arctic ozone loss in 2011, *Nature*, 478, 469, 2011.
- Marsh, D. R., Chemical dynamical coupling in the mesosphere and lower thermosphere, *Aeronomy of the Earth's Atmosphere and Ionosphere (IAGA, Special Sopron Book Series 2)*, 2011.
- McCormack, J. P., S. D. Eckermann, D. E. Siskind, and T. J. McGee, CHEM2D-OPP: A new linearized gas-phase ozone photochemistry parameterization for high-altitude NWP and climate models, *Atmos. Chem. Phys.*, 6, 4943-4972, 2006.
- 370 Nedoluha, G. E., et al., Changes in upper stratospheric CH<sub>4</sub> and NO<sub>2</sub> as measured by HALOE and implications for changes in transport, *Geophys. Res. Lett.*, 25, 987-990, 1998.
- Nedoluha, G. E., et al., Ground based measurements of ClO from Mauna Kea and intercomparisons with Aura and UARS MLS, *J. Geophys. Res.*, 116, D02307, doi:10.1029/2010JD014732, 2011.
- 375 Orsolini, Y. J., Long lived tracer patterns in the summer polar stratosphere, *Geophys. Res. Lett.*, 28, 3855-285, 2001.
- Randall, C. E., et al., Stratospheric effects of energetic particle precipitation in 2003-2004, *Geophys. Res. Lett.*, 32, L05802, doi:10.1029/2004GL022003, 2005
- 380 Randall, C. E., V. L. Harvey, D. E. Siskind, J. France, P. F. Bernath, C. D. Boone and K. A. Walker, NO<sub>x</sub> descent in the Arctic middle atmosphere in early 2009, *Geophys. Res. Lett.*, 36, L18811, doi:10.1029/2009GL039706, 2009.
- Randall, C. e., V. L. Harvey, L. A. Holt, D. R. Marsh, D. Kinnison, B. Funke and P. F. Bernath (2015) Simulation of energetic particle precipitation effects during the 2003-2004 Arctic winter, *J. Geophys. Res.*, 120, 5035-5048, doi:10.1002/2015JA021196.
- 385 Russell, J. M., III, et al., Aeronomy of ice in the Mesosphere (AIM): Overview and early science results, *J. Atmos. Sol. Terr. Phys.* 71, 289-299, doi:10.1016/j.jastp.2008.08.011, 2009.
- Salmi, S. M., P. T. Veronnen et al., Mesosphere-to-stratosphere descent of odd nitrogen in 2009, *Atmos. Chem. Phys.*, 4645-4655, 2011.
- 390 Santee, M. et al., Validation of the Aura Microwave Limb Sounder ClO measurements, *J. Geophys. Res.*, 113, D15S22, doi:10.1029/2007JD008762, 2008.

- Sassi, F., H.-L. Liu, J. Ma, and R. R. Garcia, The lower thermosphere during the northern winter of 2009: a modeling study using high-altitude data assimilation products in WACCM-X, *J. Geophys. Res.*, 118, 8954-8968, doi:10.1002/jgrd.50632, 2013.
- 395 Siskind, D. E., L. Froidevaux, J. M. Russell III, and J. Lean, Implications of upper stratospheric trace constituent changes observed by HALOE for O<sub>3</sub> and ClO from 1992 to 1995, *Geophys. Res. Lett.*, 25, 3513-3516, 1998.
- Siskind, D. E., S. D. Eckermann, L. Coy, J. P. McCormack, and C. E. Randall., On recent interannual variability of the Arctic winter mesosphere: Implications for tracer descent, *Geophys. Res. Lett.*, 34, L09806, doi:10.1029/2007GL029293., 2007.
- 400 Siskind, D. E., S. D. Eckermann, J. P. McCormack, L. Coy, K. W. Hoppel and N. L. Baker, Case studies of the mesospheric response to minor, major and extended stratospheric warmings, *J. Geophys. Res.*, 115, D00N03, doi:10.1029/2009JD014114, 2010.
- Siskind, D. E., M. H. Stevens, C. R. Englert, and M. G. Mlynczak, Comparison of a photochemical model with observations of mesospheric hydroxyl and ozone, *J. Geophys. Res.*, 118, 195-207, 405 doi:10.1029/2012JD017971, 2013.
- Siskind, D. E., D. R. Allen, C. E. Randall, V. L. Harvey, M. E. Hervig, J. Lumpe, B. Thurairajah, S. M. Bailey, J. M. Russell III, Extreme stratospheric springs and their consequences for the onset of polar mesospheric clouds, *J. Atm. Solar-Terr. Phys.*, 132, 74-81, <http://dx.doi.org/10.1016/j.jastp.2015.06.014>, 2015a.
- Siskind, D. E., F. Sassi, C. E. Randall, V. L. Harvey, M.E. Hervig and S. M. Bailey, Is a high altitude 410 meteorological analysis necessary to simulate thermosphere-stratosphere coupling?, *Geophys. Res. Lett.*, doi:10.1002/2015GL065838, 2015b
- Smith, A. K., Numerical simulations of global variations of temperature, ozone, and trace species of the stratosphere, *J. Geophys. Res.*, 100, 1253-1269, 1995.
- Solomon, S., and R. R. Garcia, On the distributions of long-lived tracers and chlorine species in the middle 415 atmosphere, *J. Geophys. Res.*, 89, 11,633-11,644, 1984.
- Straub, C., B. Tschanz, K. Hocke, N. Kampfer, and A. K. Smith, Transport of mesospheric H<sub>2</sub>O during and after the sudden warming of January 2010: observation and simulation, *Atmos. Chem. Phys.*, 12, 5413, 2012.
- Thieblemont, R. N., Y. J. Orsolini, A. Hauchecorne, M. A. Drouin, and N. Huret, A climatology of frozen-in anticyclones in the spring Arctic stratosphere over the period 1960-2011, *J. Geophys. Res.*, 118, D20110, 420 doi:10.1002/2014JD021763.
- Waters, J. W., The Earth Observing System Microwave Limb Sounder (EOS MLS) on the Aura satellite, *IEEE Trans. Geosci. Remote Sens.*, 44, 1075-1092, 2006.

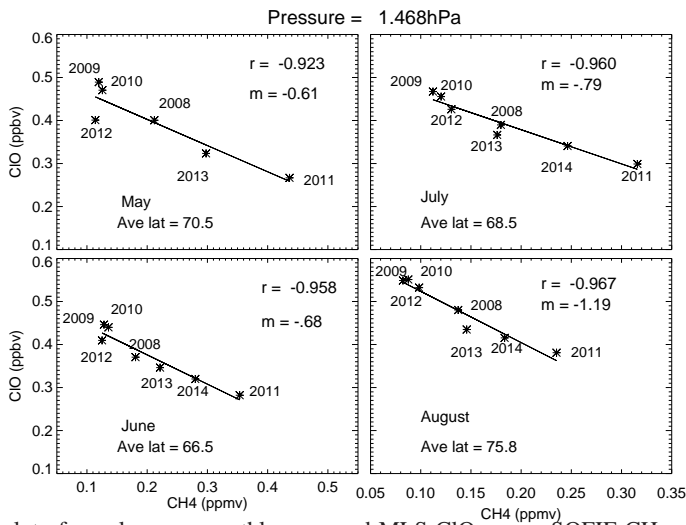


**Figure 1.** Overview of upper stratospheric and lower mesospheric zonal mean CH<sub>4</sub> observed by SOFIE for the indicated years. SOFIE observes at only 1 latitude per day in each hemisphere. This latitude has some variation from year to year, but is typically near 82° at the equinoxes and near 65-66° at the solstices.

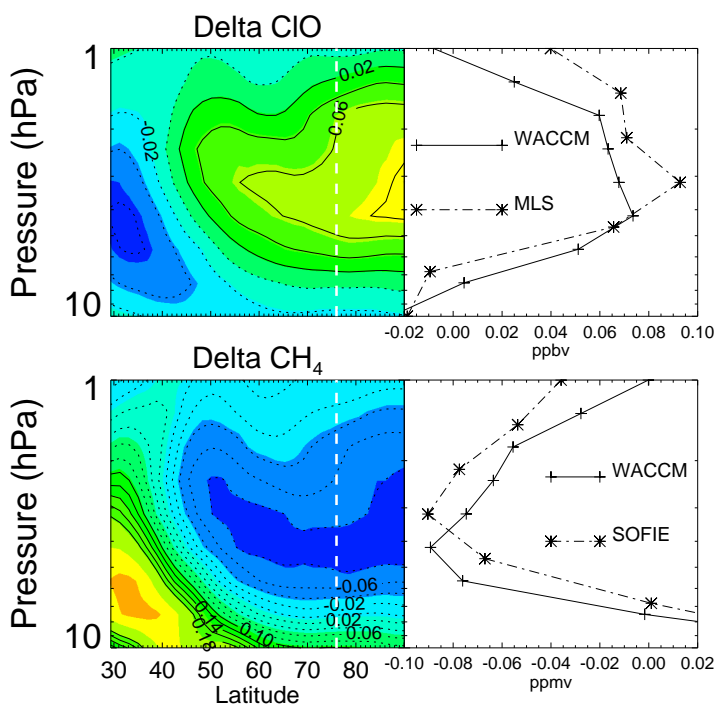




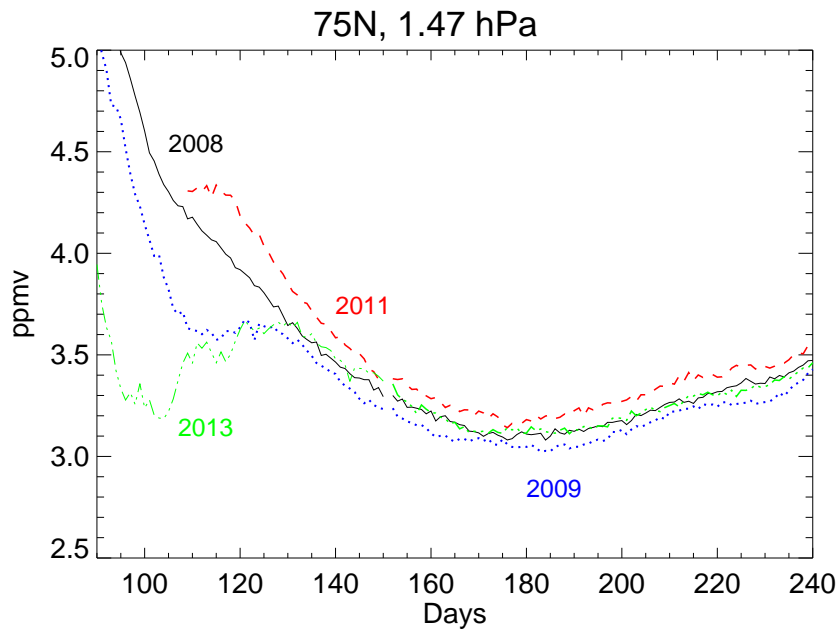
**Figure 2.** (a) Comparison of time series of zonal mean CH<sub>4</sub> mixing ratio at 1.47 hPa. (a) SOFIE data for the indicated years. The data have been grouped in 5-day bins. See Figure 1 for a discussion of the latitudes. (b) WACCM for 2008 (solid) and 2009 (dashed) at a single fixed latitude of 75°N.



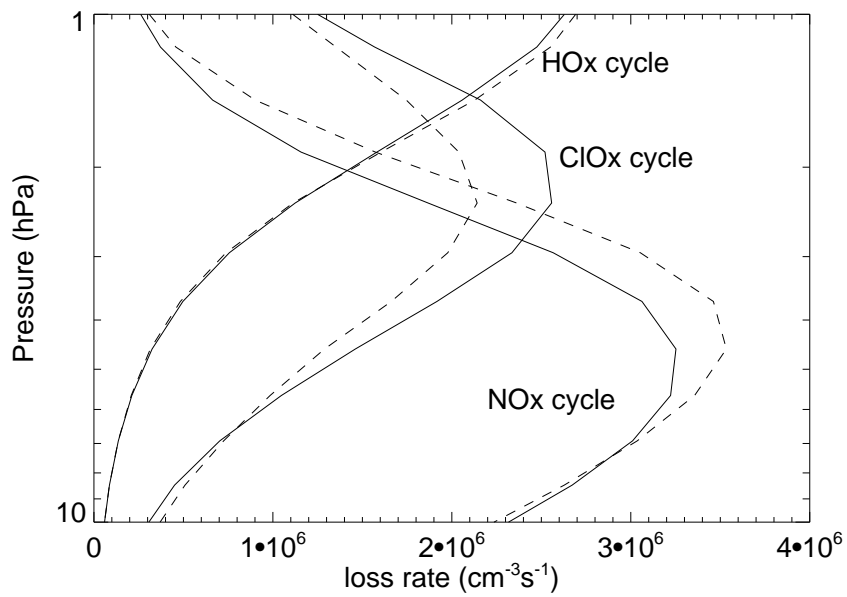
**Figure 3.** Scatterplot of zonal mean, monthly averaged MLS CIO versus SOFIE CH<sub>4</sub> at 1.47 hPa. The MLS data are sampled at the SOFIE occultation latitude, the monthly averages of which are indicated in each panel. In the upper right of each panel are given the linear correlation coefficients ( $r$ ) between each dataset for each month and the slope of the linear fit ( $m$ ) in units of ppbv of CIO per ppmv of CH<sub>4</sub>.



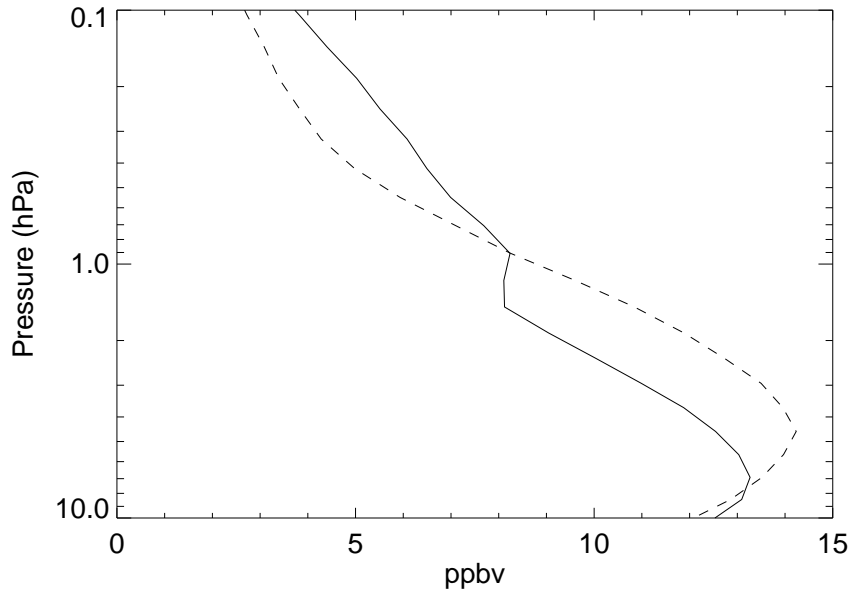
**Figure 4.** The color contours on the left are zonal mean WACCM/NOGAPS difference fields for August 2009 minus August 2008 for ClO (top) and CH<sub>4</sub> (bottom). The vertical dashed white line is the mean latitude of the SOFIE occultations for August. On the right, a vertical profile of the model difference at the SOFIE occultation latitude (solid line with plus symbols) is compared with MLS ClO and SOFIE CH<sub>4</sub> (data are dot-dashed curves with stars). Note that x-axis for the right panels are reversed from one another since the ClO change is positive while the CH<sub>4</sub> change is negative.



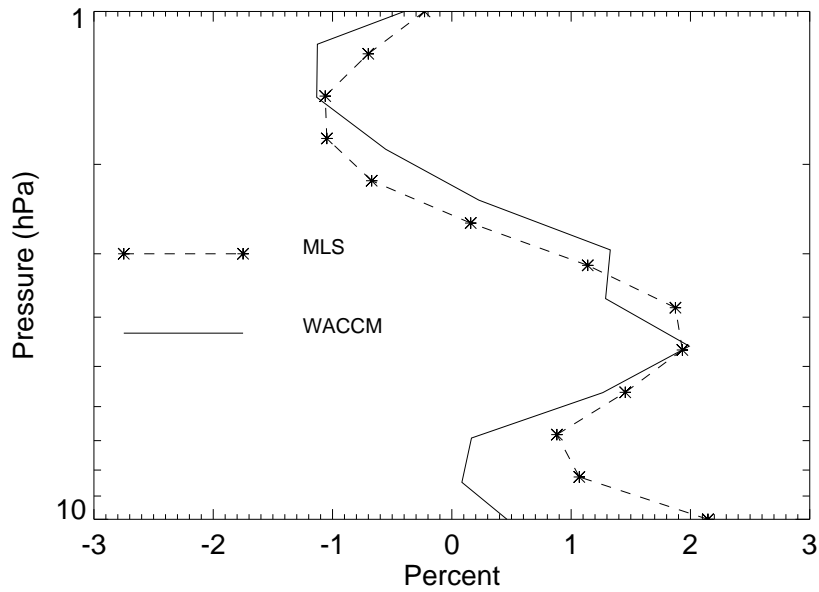
**Figure 5.** Time series of zonally averaged ozone from MLS at 75N.



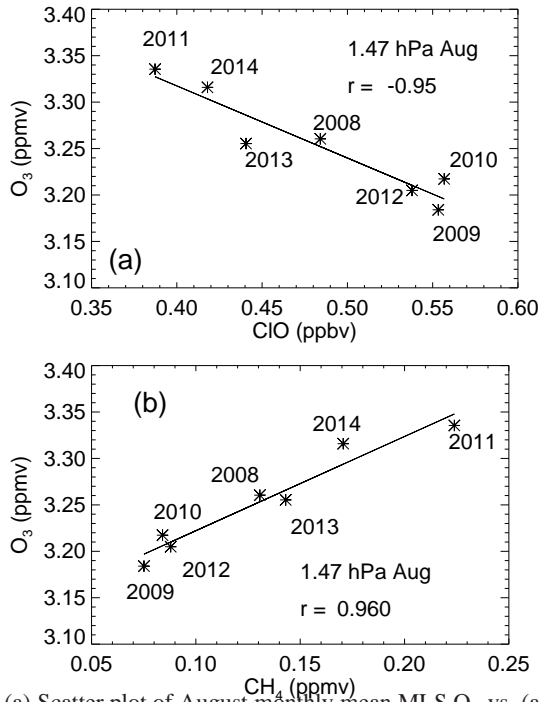
**Figure 6.** Altitude profiles of monthly and daily averaged ozone loss rates from WACCM/NOGAPS for June 2009 (solid) and June 2008 (dashed) at 75°N.



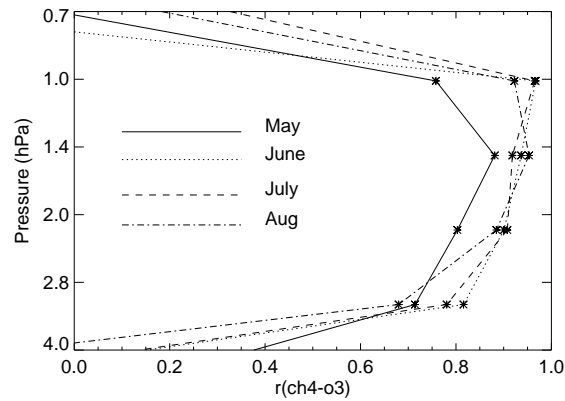
**Figure 7.** Monthly averaged WACCM/NOGAPS NO<sub>x</sub> (=NO + NO<sub>2</sub>) for June 2009 (solid) and 2008 (dashed) at 75°N.



**Figure 8.** Percent change in monthly averaged ozone for June 2009 minus June 2008 at 75°N. The solid line is from WACCM/NOGAPS and the dashed line with stars is from MLS data.



**Figure 9.** (a) Scatter plot of August monthly mean MLS O<sub>3</sub> vs. (a) MLS ClO and (b) SOFIE CH<sub>4</sub> at 1.47 hPa. The latitudes are near 78°N, corresponding to the latitude of the SOFIE occultations in August.



**Figure 10.** Altitude profiles of linear correlation coefficients for SOFIE CH<sub>4</sub> and MLS O<sub>3</sub> (sampled at the SOFIE occultation latitudes). The four curves are taken from zonal mean averages for May (solid), June (long dashes), July (dotted) and August (dot-dashed).

**Table 1.** Categorization of Summer Upper Stratospheric CH<sub>4</sub>

Category	Winter Descent	Spring PW	CH <sub>4</sub> value	Representative year
1.	high	low	lowest	2009
2.	high	high	intermediate	2013
3.	low	low	intermediate	2008
4.	low	high	highest	2011