

Supplement of

Chemical and physical characterization of traffic particles in four different highway environments in the Helsinki metropolitan area

J. Enroth^{1,2}, S. Saarikoski³, J. V. Niemi^{4,5}, A. Kousa⁴, I. Ježek⁶, G. Močnik^{6,7}, S. Carbone^{3,9}, H. Kuuluvainen⁸, T. Rönkkö⁸, R. Hillamo³, and L. Pirjola^{1,2}

¹Department of Technology, Metropolia University of Applied Sciences, P.O. Box 4021, FI-00180 Helsinki, Finland

²Department of Physics, University of Helsinki, P.O. Box 64, 00014 Helsinki, Finland

³Atmospheric Composition Research, Finnish Meteorological Institute, P.O. Box 503, 00101 Helsinki, Finland

⁴Helsinki Region Environmental Services Authority HSY, P.O. Box 100, FI-00066 HSY, Helsinki, Finland

⁵Department of Environmental Sciences, University of Helsinki, Helsinki, Finland

⁶Aerosol d.o.o., Ljubljana, Slovenia

⁷Condensed Matter Physics Department, Jožef Stefan Institute, Ljubljana, Slovenia

⁸Department of Physics, Tampere University of Technology, P.O. Box 692, 33101 Tampere, Finland

⁹now at: Department of Applied Physics, University of São Paulo, São Paulo, Brazil

Correspondence to: L. Pirjola (liisa.pirjola@metropolia.fi, liisa.pirjola@helsinki.fi)

Table S1. Aerosol instrumentation used in the mobile laboratory Sniffer.

Instrument	Measured parameter	Time resolution
CPC (Condensation Particle Counter, TSI)	particle number concentrations (diameter > 2.5 nm)	1 s
ELPI (Electrical Low Pressure Impactor, Dekati)	size distribution, aerodynamic diameter 7 nm - 10 µm	1 s
ELPI + Thermodenuder (TD)	particle volatility in the size range 7 nm – 10 µm, heated to 265 °C	1 s
EEPS (Engine Exhaust Particle Sizer, model 3090, TSI)	size distribution, mobility particle size 5.6 - 560 nm	1 s
Aethalometer (Magee Scientific Model AE 33)	black carbon in PM ₁ size fraction	10 s
DustTrak (TSI)	PM _{2.5}	1 s
SP-AMS (Soot Particle Aerosol Mass Spectrometer)	particle chemistry	5 s

Table S2. Distances at which the traffic-related pollutant concentrations (background concentrations were first subtracted) were halved from the concentrations at the highway.

	N _{tot} (m)	PM _{2.5} (m)	BC (m)	Org (m)	NO (m)	NO ₂ (m)
Herttoniemi	39	41	40	24	26	56
Malmi	83	38	50	34	38	374
Itä-Pakila	8	13	9	<6	13	12
Pitkäjärvi	40	33	31	38	25	90

Table S3. The ratio of NO to NO₂ as a function of distance from the highway.

Distance (m)	Herttoniemi	Malmi	Itä-Pakila	Pitkäjärvi
Road	1.80	2.77	1.54	2.54
Roadside	1.14	1.40	1.29	1.69
25	1.07	1.30	1.10	1.50
50	1.06	0.91	0.50	1.27
75	1.12	0.82	0.44	0.89
100	1.20	0.68	0.34	0.78
125	0.83	0.63	0.27	0.70
150		0.57	0.21	0.61
175		0.79	0.20	0.54
200		0.27	0.14	0.49
225			0.15	0.46
250			0.15	0.46
Background	0.04	0.15	0.19	0.22

Table S3. Average particle diameter (nm) of the size distribution as a function of distance from the roadside at different locations. Measurements were carried out by the EEPS.

D _{ave} (nm)	Highway	Roadside	50	100	Background
		0 m	m	m	
Herttoniemi	25.4	26.2	29.0	25.8	22.0
Malmi	26.9	23.4	24.2	27.5	29.8
Itä-Pakila	27.0	29.5	30.5	33.0	35.6
Pitkäjärvi	18.8	21.3	22.5	22.0	24.2

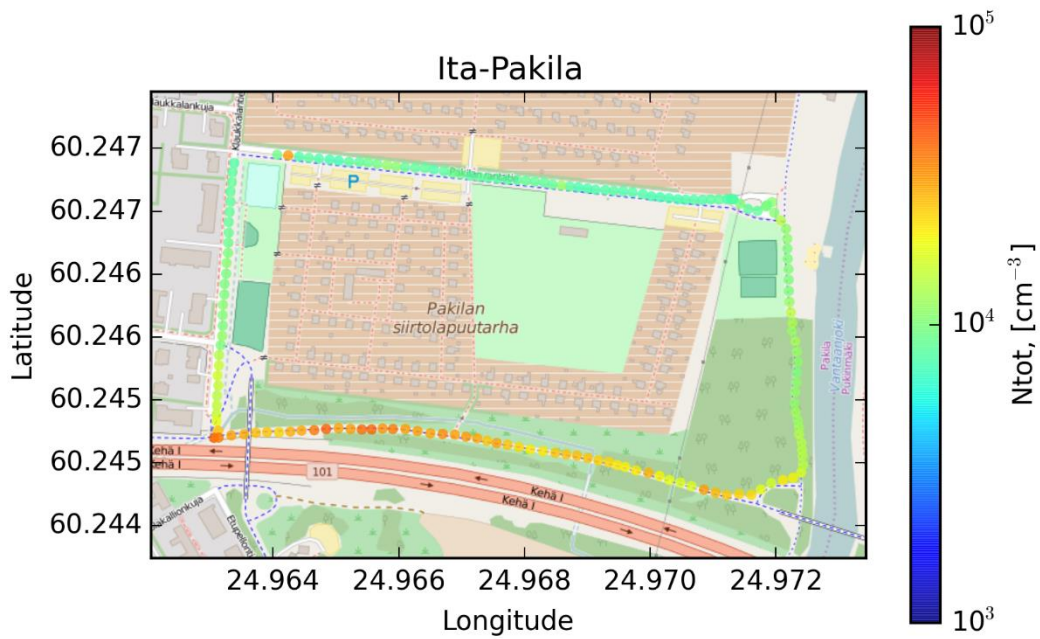


Figure S1. Total PN concentration averaged over all measurement loops at Itä-Pakila.

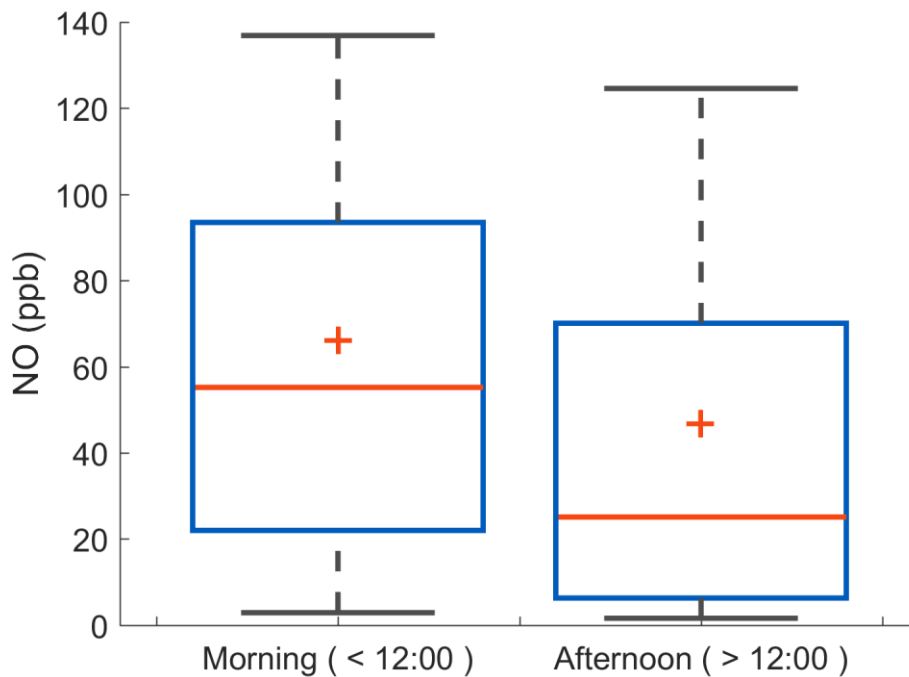


Figure S2. Average NO concentrations for the entire dataset separated based on the division of morning and evening rush hour occasions. Red line refers to median, plus sign to mean, blue box to 25 and 75 percentiles, and black whiskers to 10 and 90 percentiles.

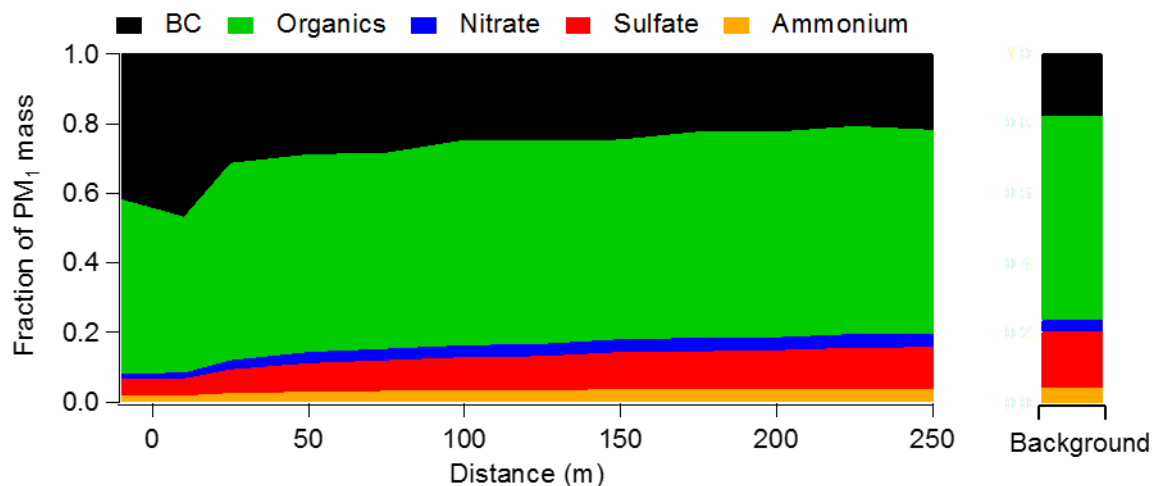


Figure S3. PM₁ mass fractions of BC, organics, nitrate, sulfate and ammonium measured at different distances from the road at Pitkäjärvi. Background concentrations are not subtracted.

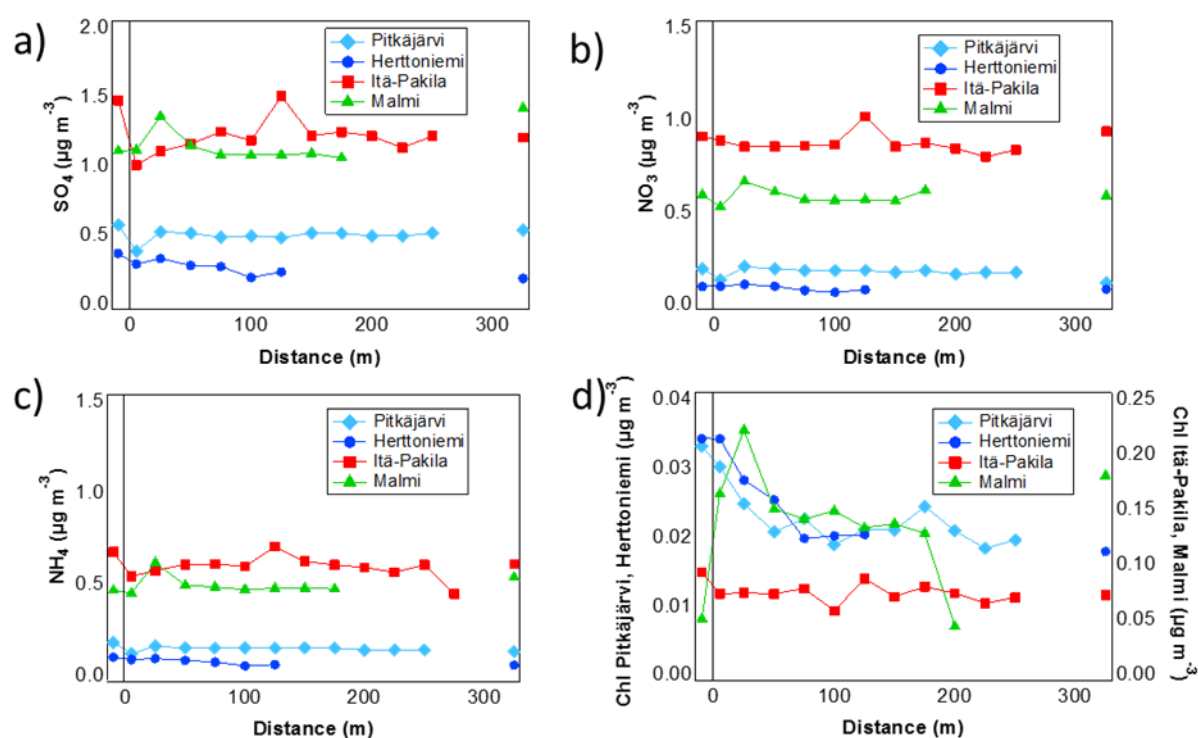


Figure S4. Concentration gradients for sulfate (a), nitrate (b), ammonium (c), and chloride (d) from each of the four locations. Zero distance refers to the roadside, negative value driving on the highway, and rightmost value to background site (≥ 500 m from the road). Background concentration were not subtracted from the measured concentrations.



Figure S5. The composition of organic fragments at Pitkäjärvi, Pakila, Malmi and Herttoniemi for highway, roadside and background locations. $C_xH_y^+$ refers to hydrocarbon fragments, $C_xH_yO^+$ to organic fragments with one oxygen atom and $C_xH_yO_z^+, z>1$ to organic fragments with more than one oxygen atom.

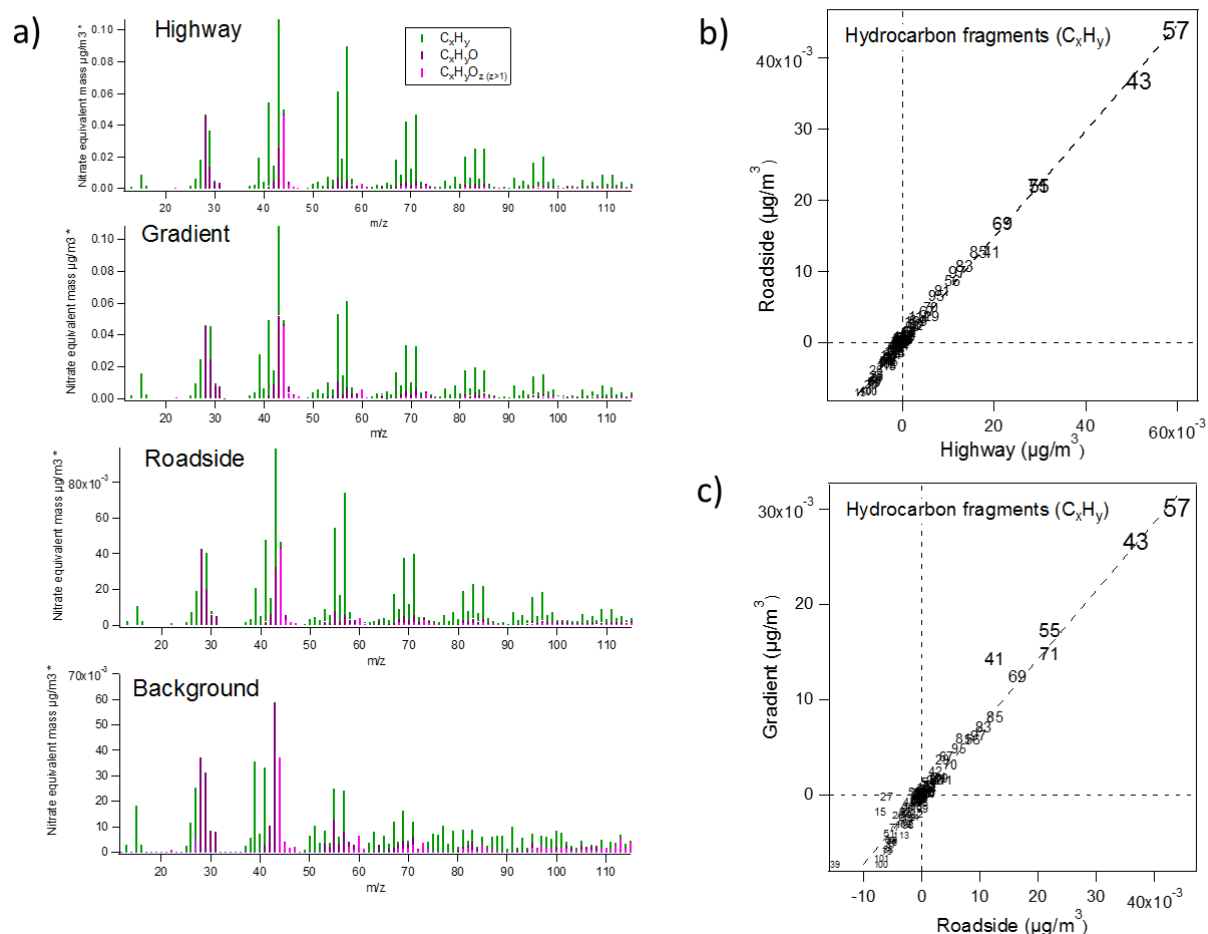


Figure S6 Mass spectra measured at highway, roadside, gradient and background at Pitkäjärvi (a) and the scatters plot for hydrocarbon fragments for roadside and highway (b) and gradient and roadside (c). $C_xH_y^+$ refers to hydrocarbon fragments, $C_xH_yO^+$ to organic fragments with one oxygen atom and $C_xH_yO_z^+$, $z>1$ to organic fragments with more than one oxygen atom. Hydrocarbon fragments measured at background are subtracted in (b) and (c). Marker size is scaled based on the concentration in (b) and (c).

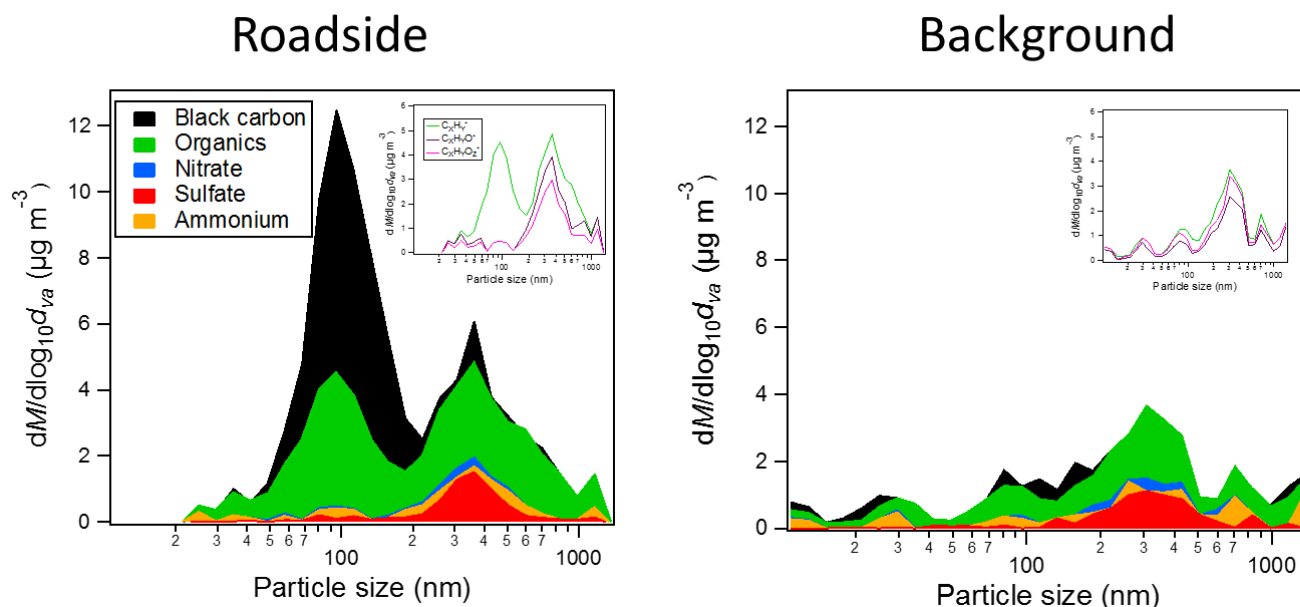


Figure S7- Mass size distribution measured at the roadside and background at Pitkäjärvi. The composition of organics is presented in insert picture. $C_xH_y^+$ refers to hydrocarbon fragments, $C_xH_yO^+$ to organic fragments with one oxygen atom and $C_xH_yO_z^+$, $z > 1$ to organic fragments with more than one oxygen atom. m/z 36 was used as a surrogate for rBC and organics was divided into hydrocarbons and oxidized fractions based on the contributions of m/z 57 and 44 at different size fractions.

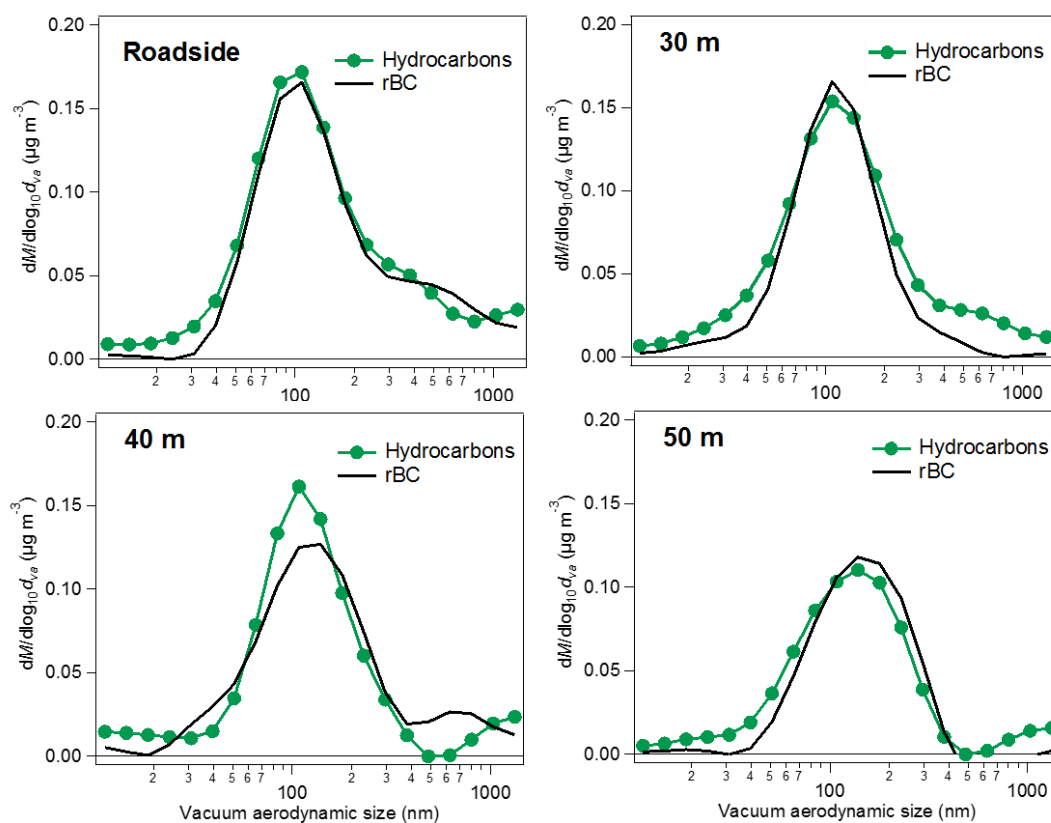


Figure S8. Particle size distributions for rBC and hydrocarbons at Herttoniemi on 26th of Oct 2012. Measurements at the roadside and 30, 40 and 50 meters from the road. m/z 57 is used as a surrogate for hydrocarbon fragments and m/z 36 for rBC.

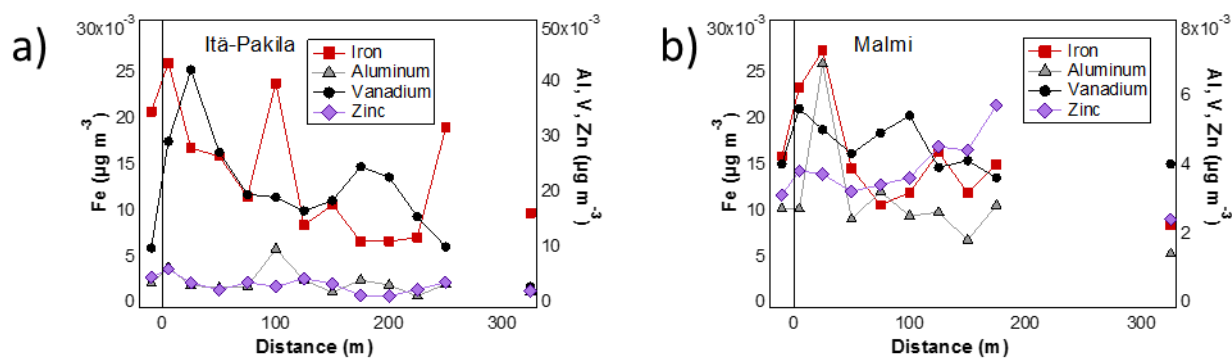


Figure S9. Concentration gradients for iron, aluminum, vanadium and zinc at Itä-Pakila and Malmi. Note difference in right side y-axes. Similar figures for Herttoniemi and Pitkäjärvi are presented in the paper.

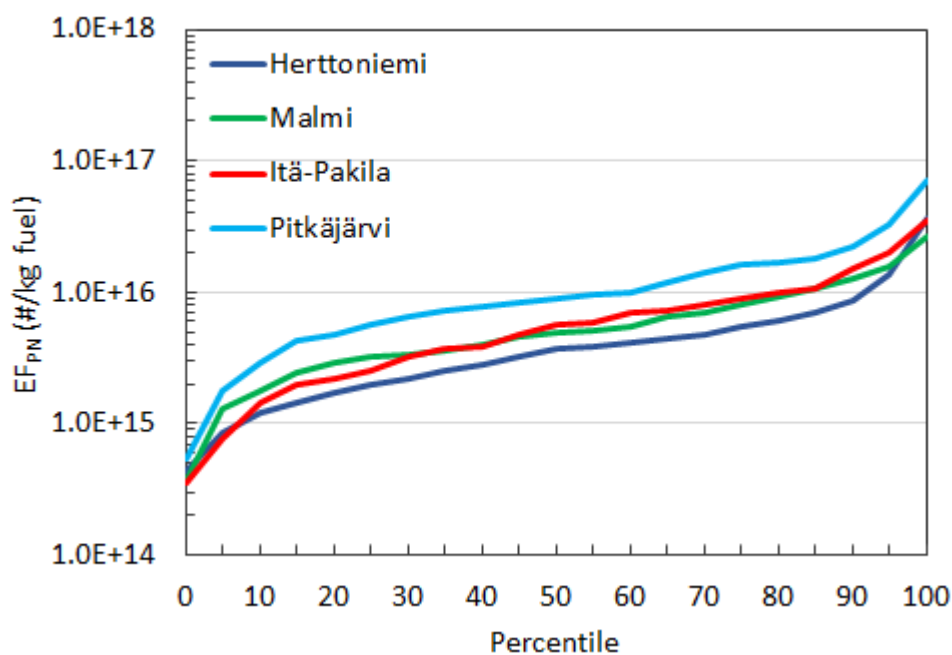


Figure S10. Distribution of emission factors EF_{PN} for the four locations. The average fraction of HD vehicles for Herttoniemi, Malmi, Itä-Pakila and Pitkäjärvi was 2.9, 4.8, 2.8 and 8.7%, respectively, and the total vehicle count 4010, 4630, 6060 and 3720 veh/hour, respectively.