

Biogenic, anthropogenic, and sea salt sulfate size-segregated aerosols in the Arctic summer

Roghayeh Ghahremaninezhad¹, Ann-Lise Norman¹, Jonathan P. D. Abbatt², Maurice Levasseur³, Jennie L. Thomas⁴

[1] Department of Physics and Astronomy, University of Calgary, Calgary, Canada

[2] Department of Chemistry, University of Toronto, Toronto, Canada

[3] Department of Biology, Laval University, Quebec, Canada

[4] Sorbonne Universités, UPMC Univ. Paris 06, Université Versailles St-Quentin, CNRS/INSU, UMR8190, LATMOS-IPSL, Paris, France

Correspondence to: Ann-Lise Norman (alnorman@ucalgary.ca)

Abstract

Size-segregated aerosol sulfate concentrations were measured on board the Canadian Coast Guard Ship (CCGS) Amundsen in the Arctic during July 2014. The objective of this study was to utilize the isotopic composition of sulfate to address the contribution of anthropogenic and biogenic sources of aerosols to the growth of the different aerosol size fractions in the Arctic atmosphere. Non-sea salt sulfate is divided into biogenic and anthropogenic sulfate using stable isotope apportionment techniques. A considerable amount of the average sulfate concentration in the fine aerosols with diameter $<0.49\ \mu\text{m}$ was from biogenic sources ($>63\%$) which is higher than previous Arctic studies measuring above the ocean during fall ($<15\%$) (Rempillo et al., 2011) and total aerosol sulfate at higher latitudes at Alert in summer ($>30\%$) (Norman et al., 1999). The anthropogenic sulfate concentration was less than biogenic sulfate, with potential sources being long range transport and, more locally, the Amundsen's emissions. Despite attempts to minimize the influence of ship stack emissions, evidence from larger-sized particles demonstrates a contribution from local pollution.

A comparison of $\delta^{34}\text{S}$ values for SO_2 and fine aerosols was used to show that gas-to-particle conversion likely occurred during most sampling periods. $\delta^{34}\text{S}$ values for SO_2 and fine aerosols were similar suggesting the same source for SO_2 and aerosol sulfate, except for two

1 samples with a relatively high anthropogenic fraction in particles $<0.49\ \mu\text{m}$ in diameter (July
2 15-17 and 17-19). The high biogenic fraction of sulfate fine aerosol and similar isotope ratio
3 values of these particles and SO_2 emphasize the role of marine organisms (e.g.
4 phytoplankton, alga, bacteria) in the formation of fine particles above the Arctic Ocean
5 during the productive summer months.

6 7 **1 Introduction**

8 Climate is changing in the Arctic faster than at lower latitudes (IPCC, 2013) and it has the
9 potential to influence the Arctic Ocean and aerosols that form above it. The Arctic ocean is
10 considered a source of primary aerosol, such as sea salt and organic, as well as secondary
11 particles from oxidation of SO_2 to sulfate (SO_4^{2-}) (Bates et al., 1987; Charlson et al., 1987;
12 Andreae, 1990; Yin et al., 1990; Leck and Bigg, 2005a; Leck and Bigg, 2005b; Barnes et al.,
13 2006; Ayers and Caine, 2007). Aerosols drive significant radiative forcing and influence
14 climate directly (by scattering of short/long wave radiation) and indirectly (by changing
15 number and size of cloud droplets and altering precipitation efficiency) (Shindell, 2007).
16 Recently, it has been shown that their net effect is cooling the Arctic which offsets around
17 60% of the warming effect of greenhouse gases (Najafi, et al., 2015). However, there are key
18 uncertainties in the estimation of aerosol effects and their sources which arise from limited
19 information on their spatial and temporal distribution.

20 Sulfate in the Arctic atmosphere originates from anthropogenic, sea salt and biogenic sources.
21 Anthropogenic aerosols, with a winter-to-springtime maximum known as Arctic Haze,
22 contain particulate organic matter, nitrate, sulfate, and black carbon which originate from
23 North America and Eurasia (Sirois and Barrie, 1999; Quinn et al., 2002; Stone et al., 2014).
24 Sea salt enters the atmosphere via mechanical processes such as sea spray and bubble bursting
25 (Leck and Bigg, 2005a). Formation of breaking waves on the ocean surface (at wind speeds
26 higher than 5 m/s) leads to the entrainment of air as bubbles into surface ocean water. These
27 bubbles rise to the surface due to their buoyancy and start to scavenge organic matter. They
28 burst at the air-sea interface and release sea spray aerosol (SSA) which includes organic
29 matter and inorganic sea salt (Quinn et al., 2015). Although, sea salt is generally found in
30 coarse mode particles, it is sometimes found in smaller sizes as well (Bates et al., 2006).
31 Several mechanisms are responsible to formation of SSA with different sizes. Small film
32 drops are generated by the shattering of the film caps. Larger jet drops (with size range of 1 to

25 μm) are formed by collapse of the bubble cavity. Spume drops are torn from the crests of wave and entered directly to the atmosphere at high wind speeds, above 10 m/s (Lewis and Schwartz, 2004; Quinn et al., 2015).

The most important source of biogenic sulfate aerosols in the Arctic summer is the oxidation of dimethyl sulfide (DMS) (Norman et al., 1999). DMS is mostly produced by the breakdown of its algal precursor dimethylsulfonopropionate (DMSP) by phytoplankton and bacteria DMSP-lyases and transported from the ocean to the atmosphere via turbulence and diffusion which depends on sea surface temperature, salinity and wind speed (Nightingale et al., 2000). Gaseous sulfur compounds from DMS oxidation are able to form new particles or condense on pre-existing aerosol in the atmosphere and thereby become large enough to act as Cloud Condensation Nuclei (CCN) (Charlson et al., 1987). However, there are crucial uncertainties in the details of the potential impact of DMS on climate at a global scale (Quinn and Bates, 2011).

The formation of new particles and CCN is particularly important during the summer when anthropogenic aerosols are scarce, scavenging is efficient, and sea-atmosphere gas exchange produces considerable DMS in the Arctic (Gabric et al., 2005; Elliot et al., 2012, Li et al. 1994; Leaitch et al., 2013). Some studies suggested an increase of biological activity, DMS production and emission with an increase of temperature and decrease of sea-ice cover during summer (Sharma et al. 2012; Levasseur, 2013). However, modelling results from Browse et al. (2014) suggest that increased DMS emissions during summertime will not cause a strong climate feedback due to the efficient removal processes for aerosol particles. Such results are highly dependent on aerosol size distributions which are relatively unconstrained particularly with respect to DMS oxidation (Bigg and Leck, 2001, Matrai et al., 2008; Quinn et al., 2009; Leaitch et al., 2013).

Tracers have been used in some studies to indicate different sources for sulfate, such as the use of DMS and MSA for biogenic activities (Savoie et al., 2002). Other studies assumed that non-sea salt sulfur originates from biogenic sources in clean areas with low anthropogenic sulfur emissions (Bates et al., 1992; Hewitt and Davison, 1997). These methods may overestimate the role of biogenic sources if anthropogenic sulfate is present. The isotopic differences of various sources present a way to determine the oceanic DMS contribution to aerosol growth (Norman et al., 1999, 2004; Seguin et al., 2010, 2011; Rempillo et al., 2011). Size-segregated aerosols were collected in July 2014 during an extended transect going from

the strait of Belle-Isle to Lancaster Sound in the Canadian Arctic, permitting comparison with measurements from other seasons. Sulfate aerosols have been apportioned into biogenic, anthropogenic and sea salt sulfate using sulfur isotopes, to find the contribution of each source in aerosol formation and growth.

2 Field description and methods

Particles were collected on board the Canadian Coast Guard Ship (CCGS) Amundsen in the Arctic during July 2014 as part of the NETCARE (Network on Climate and Aerosols: Addressing Key Uncertainties in Remote Canadian Environments) project. The route of this expedition and sampling intervals are shown in Figure 1 which took place from 8 to 24 July 2014.

Wind speed, and sea surface and air temperatures were documented each minute and averaged over 10 minutes using the Automatic Voluntary Observing Ships System (AVOS) system available onboard the Amundsen at ~23 m above the sea surface. In addition, a version of the Lagrangian particle model, FLEXPART-WRF (Brioude et al., 2013), was used to estimate potential emission sensitivities. More details/figures of FLEXPART-WRF are published in other studies from the same campaign (NETCARE 2014) (e.g. Mungall et al. 2015; Wentworth et al., 2016).

A high volume sampler was used to collect aerosol samples at a calibrated flow rate of $1.08 \pm 0.05 \text{ m}^3/\text{min}$. This high volume sampler was placed facing the bow above the bridge of the ship, around 30 m above the sea surface. It was fitted with a cascade impactor to collect size-fractionated particles on quartz filters as well as SO_2 . The SO_2 was trapped on a cellulose filter pre-treated with potassium carbonate (K_2CO_3) and glycerol solution (Saltzman et al., 1983; Norman et al., 2004; Seguin et al., 2010). The sampling interval was two days, starting from 10:00 h. The high volume sampler was turned off manually to avoid contamination when the ship emissions toward the sampler were observed or at times when the ship was stationary. Periods greater than 30 min are reported in table 1. Figure 1 shows sampling intervals: the high volume sampler was off because of stormy weather from 10:00 h on July 19th to 10:00 h on July 20th. Particle size cut off at flow rate of $1.13 \text{ m}^3/\text{min}$ and standard temperature and pressure (25°C and 1 atm) for spherical particles is at 50% collection efficiency, and the 6 ranges of particle aerodynamic diameter of the cascade impactor are: A

($>7.2 \mu\text{m}$), B ($3.0\text{--}7.2 \mu\text{m}$), C ($1.5\text{--}3.0 \mu\text{m}$), D ($0.95\text{--}1.5 \mu\text{m}$), E ($0.49\text{--}0.95 \mu\text{m}$), and F ($<0.49 \mu\text{m}$). Temperature and pressure effects are negligible, however the lower flow rate increases slightly the cut off diameter for each size range (Tisch Environmental, 2004). TOTAL sulfate refers to the sum of sulfate on each of the size fractions. Field blanks were collected on two separate occasions, and loaded and unloaded with the same method as samples processed except the high volume sampler was turned off, to assess whether and how much contamination occurred from procedural handling and analyses. Filters were stored in sealed ziplock bags at $< 4^\circ\text{C}$ before analysis in the lab.

A Li-Cor 7000 $\text{CO}_2/\text{H}_2\text{O}$ Analyzer, with an inlet near the location of the high volume sampler ($\sim 3 \text{ m}$) and at the same height was used to measure the atmospheric CO_2 mixing ratios. The objective of the CO_2 measurement was to determine the influence of smoke stack emissions from the ship for QA/QC of aerosol samples. The CO_2 concentrations are shown in Figure 2a. There were two periods when CO_2 measurements were not saved due to a computer malfunction: 10:30 h on July 10th to 9:00 h on July 11th, and 14:00 h on July 15th to 10:35 h on July 17th. The observation shows a relatively constant CO_2 mixing ratio with some peaks, indicating relatively little smoke stack contamination.

Once back in the laboratory, sulfate extracted from filters extracts was analysed for sulfate isotopes and concentration. Filter papers were shredded in distilled deionized water and sonicated for 30 minutes. Then, filter paper fibers were removed by $0.45 \mu\text{m}$ Millipore filtration, and a portion of the filtrate samples ($2 \times 10 \text{ mL}$) was used for ion concentration measurements. Remaining filtrate was treated with 5 mL of 10% BaCl_2 and 1 mL HCl to precipitate BaSO_4 . In addition of BaCl_2 and HCl , 2 mL of 30% hydrogen peroxide was added to SO_2 filter solutions to oxidize the SO_2 to sulfate. After extraction, BaSO_4 was dried and samples were packed into tin cups and analyzed with a PRISM II continuous flow isotope ratio mass spectrometer (CF-IRMS) to obtain $\delta^{34}\text{S}$ values in parts per thousand (‰) (relative to VCDT, Vienna Cañon Diablo Triolite) (Seguin et al., 2007). $\delta^{34}\text{S}$ for sulphur isotopes is shown by the abundance ratio of the two principal sulfur isotopes ($^{34}\text{S}/^{32}\text{S}$) (Krouse et al., 1991).

$$\delta^{34}\text{S} (\text{‰}) = \{(^{34}\text{S}/^{32}\text{S})_{\text{sample}} / (^{34}\text{S}/^{32}\text{S})_{\text{standard}} - 1\} \times 1000 \quad (1)$$

The uncertainty for $\delta^{34}\text{S}$ values ($\pm 0.3 \text{ ‰}$) was determined by the standard deviation of the $\delta^{34}\text{S}$ values of a suite of internal standards bracketing the $\delta^{34}\text{S}$ values of the samples.

Concentrations of cations (Ca^{2+} , K^+ , Na^+ , Mg^{2+}) and anions (Cl^- , SO_4^{2-} , PO_4^{3-} , NO_3^-) were obtained by ion chromatography with a detection limit of 0.1 mg/L. No peaks were detected for sulfate in the blank filters, and the average concentration of Na^+ in the blank filters was 1.2 mg/L after extraction (which is around 5% and 20% of the maximum and minimum of the Na^+ concentration in filter A with the most sea salt).

Three different sources - anthropogenic, biogenic, and sea salt - were considered for sulfur aerosols and the fraction of each source was obtained using:

$$[\text{SO}_4^{2-}]_{\text{total}} = [\text{SO}_4^{2-}]_{\text{bio}} + [\text{SO}_4^{2-}]_{\text{anthro}} + [\text{SO}_4^{2-}]_{\text{SS}}, \quad (2)$$

$$[\text{SO}_4^{2-}]_{\text{total}} \delta^{34}\text{S}_{\text{total}} = [\text{SO}_4^{2-}]_{\text{bio}} \delta^{34}\text{S}_{\text{bio}} + [\text{SO}_4^{2-}]_{\text{anthro}} \delta^{34}\text{S}_{\text{anthro}} + [\text{SO}_4^{2-}]_{\text{SS}} \delta^{34}\text{S}_{\text{SS}}. \quad (3)$$

Also $\delta^{34}\text{S}_{\text{NSS}}$ was determined using the expression for two source mixing:

$$[\text{NSS}] \delta^{34}\text{S}_{\text{NSS}} = [\text{measured}] \delta^{34}\text{S}_{\text{measured}} - [\text{SS}] \delta^{34}\text{S}_{\text{SS}}, \quad (4)$$

where SS and NSS refer to sea salt and non-sea salt sulfate respectively, and quantities in brackets, [X], indicate concentrations.

The amount of sea salt sulfate in sea water was calculated by SO_4^{2-} and Na^+ mass ratios:

$$[\text{SO}_4^{2-}]_{\text{SS}} = 0.252 [\text{Na}^+]. \quad (5)$$

Sulfur isotope apportionment in the Arctic assumes a $\delta^{34}\text{S}$ value of $+21\text{‰} \pm 0.1$ (Rees et al., 1978), $+18.6\text{‰} \pm 0.9$ (Sanusi et al. 2006; Patris et al. 2002), and $+3\text{‰} \pm 3$ (Li and Barrie, 1993; Nriagu and Coker, 1978; Norman et al., 1999) for sea salt, biogenic and anthropogenic $\delta^{34}\text{S}$ values respectively. These values were used to find sea salt, biogenic, and anthropogenic fractions in this study. The partial derivative rule for error propagation and standard deviation were considered for uncertainties.

3 Results

3.1 The meteorological measurements

Interaction of wind at the ocean's surface may lead to formation of primary coarse mode sea salt particles. DMS oxidation pathways, the formation of biogenic SO_2 , and production of new particles, are influenced by wind speed and temperature. Wind speed and sea/air temperatures from the Amundsen's AVOS system are shown in Figure 2b and 2c.

3.2 Sulfate aerosols

Total, sea salt, and non-sea salt sulfate concentrations and their standard deviations for the entire sampling program for different size fractions are summarized in Table 2.

Similar average sulfate concentrations were found for aerosols in $A_{>7.2 \mu\text{m}}$ (113 ng/m^3), $B_{3.0-7.2 \mu\text{m}}$ (100 ng/m^3), and $D_{0.95-1.5 \mu\text{m}}$ (110 ng/m^3) size fractions. An average sulfate concentration of 34 ng/m^3 was found for the $C_{1.5-3.0 \mu\text{m}}$ size aerosols. On the other hand, $F_{<0.49 \mu\text{m}}$ filter (fine aerosol) has the highest average sulfate concentration ($\sim 214 \text{ ng/m}^3$) and contains less than 3% sea salt sulfate (6 ng/m^3).

3.2.1 Sea salt sulfate

Table 2 includes average sea salt sulfate concentrations for aerosols for different size fractions for this study. As expected, coarse size filters $A_{>7.2 \mu\text{m}}$ and $B_{3.0-7.2 \mu\text{m}}$ in this study contain more sea salt sulfate than smaller diameter aerosols and the average sea salt sulfate is approximately six times higher than non-sea salt sulfate. In contrast, smaller aerosols on the $D_{0.95-1.5 \mu\text{m}}$ filter contain lower but significant amounts of sea salt sulfate ($\sim 55 \text{ ng/m}^3$). Although, on average, more than 75 percent of sulfate for the $C_{1.5-3.0 \mu\text{m}}$ filter is from sea salt, a considerable decrease in concentration is observed compared to $A_{>7.2 \mu\text{m}}$, $B_{3.0-7.2 \mu\text{m}}$ and $D_{0.95-1.5 \mu\text{m}}$ filters. Sea salt sulfate concentrations are low for aerosols collected on the $E_{0.49-0.95 \mu\text{m}}$ and $F_{<0.49 \mu\text{m}}$ filters (~ 5 to 6 ng/m^3). The spatial variability of TOTAL sulfate and sea salt concentrations is shown in Figure 3a.

3.2.2 Non-sea salt sulfate

The average non-sea salt sulfate concentrations for the entire study are reported in Table 2 (spatial variation in non-sea salt sulfate is shown in Figure 3b). Results show approximately uniform TOTAL non-sea salt sulfate concentrations (average $130 \pm 21 \text{ ng/m}^3$; range from 102 to 152 ng/m^3), except the first sample collected nearby the Gulf of St Lawrence (July 8th to 10th) which contains the highest non-sea salt sulfate concentration. The majority of sulfate for small aerosols in the $D_{0.95-1.5 \mu\text{m}}$ ($\sim 55 \text{ ng/m}^3$, 50%), $E_{0.49-0.95 \mu\text{m}}$ ($\sim 66 \text{ ng/m}^3$, 93%) and $F_{<0.49 \mu\text{m}}$ ($\sim 208 \text{ ng/m}^3$, 97%) fractions is from non-sea salt sources.

4 Discussion

4.1 Sea salt sulfate

Sea salt concentrations are variable with season and depend on atmospheric stability (Lewis and Schwartz 2004). Although wind is considered as an important factor to sea-air exchange of sea salt, correlations in this study between wind speed and sea salt sulfate concentrations for coarse and fine mode aerosols were not significant ($R^2 \cong 0.1$), which is consistent with previous studies (Lewis and Schwartz 2004; Rempillo et al., 2011; Seguin et al., 2011; Jaeglé et al. 2011).

4.2 Non-sea salt sulfate

The spatial variation of non-sea salt sulfate (anthropogenic plus biogenic aerosols) is shown in Figure 3b. Results show approximately uniform non-sea salt sulfate concentrations for samples in the Labrador Sea and north ($130 \pm 21 \text{ ng/m}^3$). Sulfate concentrations, especially non-sea salt sulfate, in this research were found to be higher than previous Arctic studies above the ocean during fall (2007-2008) (Rempillo et al., 2011), at higher latitudes at Alert in summer (1993-1994) (Norman et al., 1999) and about the same as at Barrow, Alaska during July (1997-2008) (Quinn et al., 2009). One reason could be higher biological activity and biogenic aerosols from phytoplankton during summer as addressed in the next section.

4.3 Sulfur isotope apportionment

Total $\delta^{34}\text{S}$ (Equation 2) versus the percentage of sea salt sulfate of size fractionated aerosols is shown in Figure 4. The mixing lines for sea salt/biogenic sulfate (solid line) and sea salt/anthropogenic sulfate (dashed line) are shown to demonstrate mixing for each pair of sources. Data from this study fall mainly within the mixing lines which suggests the assignment of the end-member $\delta^{34}\text{S}$ values is appropriate. However it can also be seen the data lie in two groups. One cluster has a high percent sea salt sulfate (>40% to >95%) and the second has a very low percent (<10%) sea salt sulfate. There is a high contribution of sea salt sulfate for aerosols on filters $A_{>7.2 \mu\text{m}}$ and $B_{3.0-7.2}$ and this decreases for smaller size aerosols. Sulfate aerosols on the $A_{>7.2 \mu\text{m}}$ filter lie along the sea salt/anthropogenic mixing line and are consistent with sea spray and a small contribution from the ship's stack emission. Aerosols on the $B_{3.0-7.2 \mu\text{m}}$, $C_{1.5-3.0 \mu\text{m}}$ and $D_{0.95-1.5 \mu\text{m}}$ filters and most of the $E_{0.49-0.95 \mu\text{m}}$ filters lie between

the upper and lower mixing line near to the right hand side of the Figure 4. This indicates that sulfate is dominated by sea salt for these samples and the remainder is a mixture of biogenic and anthropogenic sulfate. The $\delta^{34}\text{S}$ value for aerosols $<0.49\text{ }\mu\text{m}$ ($F_{<0.49\text{ }\mu\text{m}}$ filter) is more variable, it indicates very little sea salt sulfate is present and the majority of the sulfate is derived from a mixture of biogenic and anthropogenic sulfate. Norman et al. (1999) showed that most data from Alert during spring, fall, and winter lie between 0 and $+7\text{‰}$ which demonstrates a combination of anthropogenic and sea salt sulfate aerosols. Also, their data show an increase in $\delta^{34}\text{S}$ values during summer (between $+7\text{‰}$ and $+15\text{‰}$) and confirm the importance of biogenic sulfate. The $\delta^{34}\text{S}$ data for non-sea salt sulfate from Rempillo et al. (2011) illustrate the dominance of anthropogenic sources (more than 70%) during fall 2007 and 2008. In addition, Rempillo et al. (2011) introduced a new sulfate source, the Smoking Hills ($\delta^{34}\text{S} = -30\text{‰}$). This new source altered background $\delta^{34}\text{S}$ to -30‰ near the Smoking Hills on Cape Bathurst, Northwest Territories (Figure 1) and $\delta^{34}\text{S} = -5\text{‰}$ further away. There is no evidence from the isotope data for a significant contribution of sulfate from the Smoking Hills in this study, however, results from FLEXPART-WRF modeling show several potential emissions originated or passed near the Smoking Hills (Figure 5).

4.4 Anthropogenic and biogenic sulfate

The concentration of sulfate for aerosol samples derived from apportionment calculations for non-sea salt sulfate, anthropogenic and biogenic sources is shown in Figure 6. Results show an approximately uniform concentration ($130\pm 21\text{ ng/m}^3$) for sulfate aerosols in the Arctic region, aside from the Gulf of the St. Lawrence which has around four times higher concentrations (Figure 6a). In addition, the highest concentration for both anthropogenic and biogenic sulfate were found in the $F_{<0.49\text{ }\mu\text{m}}$ filter in the Arctic region.

Two possible sources for anthropogenic sulfate are ship emissions and long range transport (LRT). In the Arctic CO_2 above background is likely from ship emissions. The question is what is the appropriate background CO_2 mixing ratio? Analyses were performed assuming three different levels for background CO_2 (380, 385, 400 ppm). The result of these analyses indicates that CO_2 mixing ratios (Figure 2a) reached 380, 385 and 400 ppm for less than 1.5, 0.5 and 0.1% of sampling time respectively and were relatively uniform in comparison with similar measurements by Rempillo et al. (2011) which reached more than 2000 ppm when stack emissions impacted the samples, on average, 5% of the sampling time (O. Rempillo,

1 Personal communication June 2015). Therefore, the direct impact of ship stack emissions on
2 most aerosol samples in this study collected is expected to be small. This was confirmed by
3 nearly white filter samples after collection for all size fractions during this study compared to
4 filters which appeared grey or black when contaminated by ship stack sulfate in the SOLAS
5 study from 2007 to 2008 (O. Rempillo, Personal communication June 2015; Rempillo et al.,
6 2011). Furthermore, weak correlations were observed between anthropogenic sulfate and CO₂
7 for the A_{>7.2 μm}, B_{3.0–7.2 μm}, D_{0.95–1.5 μm}, E_{0.49–0.95 μm}, and F_{<0.49 μm} samples suggesting that some
8 portion of the anthropogenic sulfate was locally derived from the ship's emissions. However,
9 the correlations were poor so CO₂ is not considered as an adequate tracer to distinguish local
10 sulfate from LRT.

11 Long range transport of SO₂ and particles is a second potential mechanism affecting the
12 concentration of anthropogenic sulfate during this study. The lifetime for SO₂ in the Arctic is
13 more than one week (Thornton et al., 1989) and this potentially acts as a reservoir from which
14 new anthropogenic aerosols could form. Long range transport of anthropogenic sulfur
15 dominates in the Arctic winter and early spring because of the stable atmosphere and weak
16 removal of particles, and concentrations significantly decrease during summer because of a
17 lower number of sources within the polar front and stronger scavenging (Quinn et al., 2002;
18 Stone et al., 2014). The backward configuration modeling of FLEXPART-WRF shows that
19 potential emissions originated from the east for the first few days (12th, 13th), and expanded to
20 cover a broader region after that (Figure 5 shows some examples of backward configuration
21 results of FLEXPART-WRF). The Hudson Bay area is an important source of DMS (Richards
22 et al., 1994), and air parcels originating from Hudson Bay may contain more biogenic SO₂
23 and sulfate. On the other hand, air parcels originating from the south (North America) may
24 contain more pollution from LRT.

25 Figure 6b shows the time series of anthropogenic sulfate concentrations for size segregated
26 aerosols. The size fraction of aerosols is different for two distinct anthropogenic sources: long
27 range transport and ship emissions. The contribution of anthropogenic sulfate from long range
28 transport is highest for the first sample collected in the Gulf of St. Lawrence and is
29 pronounced in the E_{0.49–0.95 μm} and F_{<0.49 μm} filters. On the other hand, the anthropogenic
30 aerosol sulfate concentrations on filters A_{>7.2 μm}, B_{3.0–7.2 μm}, and C_{1.5–3.0 μm} were highest for
31 samples collected from July 17th to 19th, which suggests more sulfate from the ship's
32 emissions. Although the high volume sampler was turned off when the ship was stationary on

each of these days, some anthropogenic aerosols from ship emissions may have influenced the results for aerosol sulfate in that time period (July 17th to 19th).

A considerable amount of the sulfate concentration, ranging from 18 to 625 ng/m³ for F_{<0.49 μm} filters, is from biogenic sources. These values are higher than previously measured in the Arctic. For example, the average biogenic TOTAL sulfate concentration at Alert was around 30 ngS/m³ during July (Norman et al., 1999). Also, Rempillo et al. (2011) reported low biogenic sulfate concentrations with maximum and median equal to 115.2 and 0 ng/m³ respectively, above the Arctic Ocean in the Canadian Archipelago during fall 2007 and 2008. Figure 6b and 6c show that filter F_{<0.49 μm} contains the highest biogenic and anthropogenic sulfate concentrations for all samples (except anthropogenic sulfate for July 11-13). The biogenic fraction of non-sea salt sulfate for each size range is reported in table 3: high fractions of sulfate on filter F_{<0.49 μm} were from biogenic sources (73, 95, 92, 65%), except two samples collected on July 15-17 (25%) and 17-19 (41%) (see section 45).

4.5 Aerosol growth

The oxidation of SO₂ occurs in the gas phase, the aqueous phase, and also on the surface of particles. The rate of this oxidation depends on factors such as the presence of the aqueous phase in the form of clouds and fogs, the concentration of oxidants such as H₂O₂ and O₃, cloud pH, and sunlight intensity. The δ³⁴S value of aerosols reflects the proportion of δ³⁴S values for pre-existing aerosols and SO₂, by oxidation of local SO₂ on the surface of, or within, pre-existing aerosols (Seguin et al., 2011). Although the δ³⁴S value for pre-existing aerosols is not clear, it is reasonable to assume that particles with different sizes and the same δ³⁴S value originate from the same source (Seguin et al., 2011). However, sulfur isotope fractionation can confound apportionment. Harris et al., (2013) reported sulphur isotope fractionation due to SO₂ oxidation, which depends on temperature and oxidation pathways. By solving isotope fractionation equations (Harris et al., 2013) for the average temperature during sampling for this study (~5°C), δ³⁴S values of sulfate are (10.6 ± 0.7)‰, (16.1 ± 0.1)‰, and (-6.22 ± 0.02)‰ for homogeneous, heterogeneous, and TMI oxidation, respectively. However, a comparison of the δ³⁴S values for SO₂ and the F_{<0.49 μm} filter (or any other size fractions) does not support consistent isotope fractionation during SO₂ oxidation for samples collected during this campaign.

The isotope ratios ($\delta^{34}\text{S}$ value) for $F_{<0.49\ \mu\text{m}}$ and SO_2 filters are shown in Figure 7 along with the 1:1 line. Four of six samples lay close to the 1:1 line which suggests they have the same source or mixture of sources (and same isotope ratio value). However, there are two samples, collected on July 15-17 and 17-19, with different $\delta^{34}\text{S}$ values for SO_2 and $F_{<0.49\ \mu\text{m}}$ filter sulfate, which are shown with an asterisk on Figure 7. The anthropogenic fraction of sulfate for the $F_{<0.49\ \mu\text{m}}$ filter for these two sampling periods is relatively high. Although, the anthropogenic fraction of sulfate in $F_{<0.49\ \mu\text{m}}$ filters for these two sampling periods was higher than the remainder of samples (refer to section 4.4), SO_2 was predominantly biogenic (more than 80%).

Conditions for aerosol nucleation based on biogenic SO_2 concentrations were evaluated by Rempillo et al. (2011). They showed that the threshold value of biogenic SO_2 to form new particles was $11\ \text{nmol/m}^3$ for the clean Arctic atmosphere in fall. Sulfur dioxide concentrations in this study were higher than this threshold throughout the July 2014 campaign (average around $32\ \text{nmol/m}^3$) except for July 11-13. This is consistent with the measurements of Mungall et al. (2015) who reported high DMS concentrations in both the ocean and atmosphere during the same cruise. When $\delta^{34}\text{S}$ values for aerosol size fractions and SO_2 are similar, then it is likely that local SO_2 oxidation lead to substantial sulfate content. There are two periods that this is clearly the case and biogenic sulfate was dominant:

1. July 11-13 with $\delta^{34}\text{S}$ values for $E_{0.49-0.95\ \mu\text{m}}$ and $D_{0.95-1.5\ \mu\text{m}}$ filters of +14.2 and +13.1 ‰ respectively and,
2. July 13-15 with $\delta^{34}\text{S}$ values for SO_2 , $F_{<0.49\ \mu\text{m}}$ and $E_{0.49-0.95\ \mu\text{m}}$ filters of +16.7, +16.8 and +15.8 ‰ respectively.

In contrast, anthropogenic sulfate contributed to aerosol growth on July 9-11 with $\delta^{34}\text{S}$ values for $E_{0.49-0.95\ \mu\text{m}}$ and $D_{0.95-1.5\ \mu\text{m}}$ filters equal to +5.4 and +5.0 ‰ respectively.

It is interesting to note that $\delta^{34}\text{S}$ values for July 17-19 on the $E_{0.49-0.95\ \mu\text{m}}$ filters (0.49-0.95 μm) and SO_2 indicate almost pure biogenic sulfur ($\delta^{34}\text{S}_E = +17.8\ \text{‰}$, $\delta^{34}\text{S}_{\text{SO}_2} = +17.6\ \text{‰}$). However, the $\delta^{34}\text{S}$ value for sulfate on the $F_{<0.49\ \mu\text{m}}$ filters (<0.49 μm) was lower, +10.2 ‰. This suggests aerosols <0.49 μm (F) for this sampling period originated, in part, from anthropogenic sources, but aerosol growth from 0.49 to 0.95 μm (E) was dominated by oxidation of biogenic SO_2 at this time.

5 Conclusion

Size segregated aerosol sulfate concentrations were measured in the Arctic and sub-Arctic during July 2014. Sulfate was apportioned between sea salt, biogenic and anthropogenic sources using sulfur isotopes. Around 85% of coarse mode ($>0.95\ \mu\text{m}$) aerosol sulfate was from sea salt. However there was little to no sea salt sulfate in fine aerosols ($<0.49\ \mu\text{m}$), and more than 97% of the sulfate in these aerosols was non-sea salt. Approximately uniform non-sea salt sulfate concentrations were found for TOTAL sulfate ($130\pm 21\ \text{ng/m}^3$) in the Arctic atmosphere. The dominant source for fine aerosols and SO_2 was biogenic sulfur, arising from oxidation of DMS, which is likely due to high ocean-atmosphere gas exchange and the large ice-free surface in the Arctic during July (Levasseur, 2013).

A comparison of $\delta^{34}\text{S}$ values for fine (<0.49 microns) aerosols and SO_2 samples was used to show that the growth of pre-existing fine particles occurred primarily from the oxidation of SO_2 from DMS during all sampling events except two where a relatively high anthropogenic fraction in the smallest submicron size (<0.49 microns, F filter) was found (July 15-17 and 17-19). The dominance of ocean biogenic sources in fine aerosol sulfate and the similarity of the sulfur isotope composition for SO_2 and these fine particles highlight the contribution of marine life to the formation/growth of fine particles above the Arctic Ocean during the productive month of July.

Acknowledgements

This study was part of the NETCARE (Network on Climate and Aerosols: Addressing Key Uncertainties in Remote Canadian Environments) project and was supported by funding from NSERC. The authors also would like to thank the crew of the Amundsen and fellow scientists.

References

- Andreae, M.O.: Ocean-atmosphere interactions in the global biogeochemical sulfur cycle. *Marine Chemistry* 30, 1-29, 1990.
- Ayers, G.P., Cainey, J.M.: The CLAW hypothesis: a review of the major developments. *Environmental Chemistry* 4, 366-374, 2007.

- 1 Barnes, I., Hjorth, J., Mihalopoulos, N.: Dimethyl sulfide and dimethyl sulfoxide and their
2 oxidation in the atmosphere. *Chemical Reviews* 106, 940-975, 2006.
- 3 Bates, T.S., Anderson, T.L., Baynard, T., Bond, T., Boucher, O., Carmichael, G., Clarke, A.,
4 Erlick, C., Guo, H., Horowitz, L., Howell, S., Kulkarni, S., Maring, H., McComiskey, A.,
5 Middlebrook, A., Noone, K., O'Dowd, C.D., Ogren, J., Penner, J., Quinn, P.K., Ravishankara,
6 A.R., Savoie, D.L., Schwartz, S.E., Shinozuka, Y., Tang, Y., Weber, R.J., Yu, Y.: Aerosol
7 direct radiative effects over the northwest Atlantic, northwest Pacific, North Indian Oceans:
8 estimates based on in-situ chemical and optical measurements and chemical transport
9 modeling. *Atmospheric Chemistry and Physics* 6, 1657-1732, 2006.
- 10 Bates, T.S., Calhoun, J.A., Quinn, P.K.: Variations in the methanesulfonate to sulfate molar
11 ratio in submicrometer marine aerosol particles over the south Pacific ocean. *Journal of*
12 *Geophysical Research* 97, 9859-9865, 1992.
- 13 Bates, T.S., Charlson, R.J., Gammon, R.H.: Evidence for climate role of marine biogenic
14 sulphur. *Nature* 329, 319-321, 1987.
- 15 Bigg, E. K., Leck, C.: Properties of the aerosol over the central Arctic Ocean. *Journal of*
16 *Geophysical Research*, 106, 32101-32109, 2001.
- 17 Brioude, J., Arnold, D., Stohl, A., Cassiani, M., Morton, D., Seibert, P., Angevine, W., Evan,
18 S., Dingwell, A., Fast, J. D., Easter, R. C., Pissio, I., Burkhardt, J., and Wotawa, G.: The
19 Lagrangian 10 particle dispersion model FLEXPART-WRF version 3.1, Geoscientific Model
20 Development, 6, 1889–1904, doi:10.5194/gmd-6-1889-2013, 2013.
- 21 Browse, J., Carslaw, K. S., Mann, G. W., Birch, C. E., Arnold, S. R., and Leck, C.: The
22 complex response of Arctic aerosol to sea-ice retreat, *Atmospheric Chemistry and Physics*,
23 14, 7543-7557, 2014.
- 24 Charlson, R.J., Lovelock, J.E., Andreae, M.O., Warren, S.G.: Oceanic phytoplankton,
25 atmospheric sulphur, cloud albedo and climate. *Nature* 326, 655-661, 1987.
- 26 Christensen, J.H., Krishna Kumar, K., E. Aldrian, S.-I. An, I.F.A. Cavalcanti, M. de Castro,
27 W. Dong, P. Goswami, A. Hall, J.K. Kanyanga, A. Kitoh, J. Kossin, N.-C. Lau, J. Renwick,
28 D.B. Stephenson, S.-P. Xie and T. Zhou: Climate Phenomena and their Relevance for Future
29 Regional Climate Change. In: *Climate Change 2013: The Physical Science Basis.*
30 *Contribution of Working Group I to the Fifth Assessment Report of the Intergovernmental*
31 *Panel on Climate Change* [Stocker, T.F., D. Qin, G.-K. Plattner, M. Tignor, S.K. Allen, J.

Boschung, A. Nauels, Y. Xia, V. Bex and P.M. Midgley (eds.)]. Cambridge University Press, Cambridge, United Kingdom and New York, NY, USA, pp. 1217–1308, 2013.

Elliott S., Deal C., Humphries G., Hunke E., Jeffery N., Jin M., Levasseur M., and Stefels J.: Pan-Arctic simulation of coupled nutrient-sulfur cycling due to sea ice biology: preliminary results. *Journal of Geophysical Research*, 117, G01016, 2012.

Gabric, A. J., Bo Qu, Matrai, Patricia, Hirst, Anthony C.: The simulated response of DMS production in the Arctic ocean to global warming, *Tellus B* 57.5, 2005.

Harris, E., Sinha, B., Hoppe, P., and Ono, S.: High-Precision Measurements of ^{33}S and ^{34}S Fractionation during SO_2 Oxidation Reveal Causes of Seasonality in SO_2 and Sulfate Isotopic Composition, *Environmental Science & Technology* 47, 21, 12174-12183, 2013.

Hewitt, C. N., Davison, B.: Field measurements of dimethyl sulphide and its oxidation products in the atmosphere. *Philosophical Transactions of the Royal Society B* 352, 183-189, 1997.

Jaeglé, L., P. K. Quinn, T. S. Bates, B. Alexander, and J.-T. Lin: Global distribution of sea salt aerosols: New constraints from in situ and remote sensing observations, *Atmos. Chem. Phys.*, 11, 3137-3157, doi:doi:10.5194/acp-11-3137, 2011.

Krouse, H., Grinenko, L., Grinenko, V., Newman, L., Forrest, J., Nakai, N., Tsuji, Y., Yatsumimi, T., Takeuchi, V., Robinson, B., Stewart, M., Gunatilaka, A., Plumb, L., Smith, J., Buzek, F., Cerny, J., Sramek, J., Menon, A., Iyer, G., Venkatasubramanian, V., Egboka, B., Irogbenachi, M., and Eligwe, C.: *Stable Isotopes, Natural and Anthropogenic Sulphur in the Environment, Chapter, Case Studies and Potential Applications*, Wiley, Chichester, 1991.

Leaitch, W. R., Sharma, S., Huang, L., Macdonald, A. M., ToomSauntry, D., Chivulescu, A., von Salzen, K., Pierce, J. R., Shantz, N. C., Bertram, A., Schroder, J., Norman, A.-L., and Change, R. Y.-W.: Dimethyl Sulphide Control of the Clean Summertime Arctic Aerosol and Cloud, *Elementa: Science of the Anthropocene*, 1, doi.10.12952/journal.elementa.000017, 2013.

Leck, C., and E. K. Bigg: Biogenic particles in the surface microlayer and overlaying atmosphere in the central Arctic Ocean during summer, *Tellus, Ser. B*, 57,305–316, 2005a.

Leck, C., and E. K. Bigg: Source and evolution of the marine aerosol - A new perspective, *Geophysical Research Letters*, 32, 1–4, 2005b.

1 Levasseur, M.: Impact of Arctic meltdown on the microbial cycling of sulfur. *Nature*
2 *Geoscience*, 6 (9): 691-700, 2013.

3 Lewis, E.R., Schwartz, S. E.: *Sea salt Aerosol Production: Mechanisms, Methods,*
4 *Measurements, and Models*, pp. 413. American Geophysical Union, Washington, DC, 2004.

5 Li, S.-M., and L. A. Barrie: Biogenic sulfur aerosol in the Arctic troposphere: 1.
6 Contributions to total sulfate. *Journal of Geophysical Research*, 98(D11), 20, 613–20, 1993.

7 Mungall, E.L., Croft, B., Lizotte, M., Thomas, J.L., Murphy, J.G., Levasseur, M., Martin,
8 R.V., Wentzell, J.J.B., Liggio, J., and Abbatt, J.P.D.: Summertime Sources of Dimethyl
9 Sulfide in the Canadian Arctic Archipelago and Baffin Bay. *Atmospheric Chemistry and*
10 *Physics Discussion*, 15, 35547-35589, doi:10.5194/acpd-15-35547-2015, 2015.

11 Najafi, M.R, Francis W. Zwiers, Nathan P. Gillett: Attribution of Arctic temperature change
12 to greenhouse-gas and aerosol influences. *Nature Climate Change* 5, 246–249, 2015.

13 Nightingale, P. D., Liss P. S., and Schlosser. P.: Measurements of air-sea gas transfer during
14 an open ocean algal bloom. *Geophysical Research Letters*, 27, 2117-2120, 2000.

15 Norman, A.L., Barrie, L.A., Toom-Sauntry, D., Sirois, A., Krouse, H.R., Li, S.M., Sharma,
16 S.: Sources of aerosol sulphate at Alert: apportionment using stable isotopes. *Journal of*
17 *Geophysical Research* 104, 11619-11631, 1999.

18 Norman, A.L., Belzer, W., Barrie, L.: Insights into the biogenic contribution to total sulphate
19 in aerosol and precipitation in the Fraser Valley afforded by isotopes of sulphur and oxygen.
20 *Journal of Geophysical Research* 109, D05311, 2004.

21 Nriagu, L.O., Coker, R.D.: Isotopic composition of sulfur in precipitation within the Great
22 Lakes Basin. *Tellus* 30, 365-375, 1978.

23 Patris, N., Delmas, R.J., Legrand, M., De Angelis, M., Ferron, F.A., Stièvenard, M., Jouzel,
24 J.: First sulfur isotope measurements in central Greenland ice cores along the preindustrial
25 periods. *Journal of Geophysical Research* 107, D000672, 2002.

26 Quinn and T. S. Bates: The case against climate regulation via oceanic phytoplankton sulfur
27 emissions. *Nature* 480, 51–56, doi:10.1038/nature 10580, 2011.

28 Quinn, P. K., Bates, T. S., Schulz, K., and Shaw, G. E.: Decadal trends in aerosol chemical
29 composition at Barrow, Alaska: 1976–2008, *Atmospheric Chemistry and Physics*, 9, 8883-
30 8888, doi:10.5194/acp-9-8883-2009, 2009.

1 Quinn, P. K., Collins, D. B., Grassian, V. H., Prather, K. A., and Bates, T. S.: Chemistry and
2 Related Properties of Freshly Emitted Sea Spray Aerosol, *Chem Rev*, 115, 4383-4399,
3 10.1021/Cr5007139, 2015.

4 Quinn, P.K., Miller, T.L., Bates, T.S., Ogren, J.A., Andrews, E. and Shaw, G.E.: A 3-year
5 record of simultaneously measured aerosol chemical and optical properties at Barrow, Alaska.
6 *Journal of Geophysical Research* 107, doi: 10.1029/2001JD001248, 2002.

7 Rempillo, O., Seguin, A. M., Norman, A.-L., Scarratt, M., Michaud, S., Chang, R., Sjostedt,
8 S., Abbatt, J., Else, B., Papakyriakou, T., Sharma, S., Grasby, S., and Levasseur, M.:
9 Dimethyl sulfide air-sea fluxes and biogenic sulfur as a source of new aerosols in the Arctic
10 fall, *Journal of Geophysical Research Atmosphere*, 116, D00S04,
11 doi:10.1029/2011JD016336, 2011.

12 Rees, C.E., Jenkins, W.J., Monster, J.: Sulphur isotopic composition of Ocean water sulfate.
13 *Geochimica et Cosmochimica Acta* 42, 377-381, 1978.

14 Richards, S. R., J. W. M. Rudd, and C. A. Kelley: Organic volatile sulfur in lakes ranging in
15 sulfate and dissolved salt concentration over five orders of magnitude, *Limnol Oceanogr*,
16 39(3), 562-572, 1994.

17 Saltzman, E.S., Brass, G.W., Price, D.A.: The mechanism of sulfate aerosol formation:
18 chemical and sulfur isotopic evidence. *Geophysical Research Letters* 10, 513-516, 1983.

19 Sanusi, A.A., Norman, A.L., Burridge, C., Wadleigh, M., Tang, W.W.: Determination of the
20 S isotope composition of methanesulfonic acid. *Analytical Chemistry* 78, 4964-4968, 2006.

21 Savoie, D.L., Arimoto, R., Keene, W.C., Prospero, J.M., Duce, R.A., Galloway, J.N.: Marine
22 biogenic and anthropogenic contributions to non-sea salt sulfate in the marine boundary layer
23 over the North Atlantic Ocean. *Journal of Geophysical Research* 107, 4356-4376, 2002.

24 Seguin, A.M., Norman, A.L., Eaton, S., Wadleigh, M., Sharma, S.: Elevated biogenic sulphur
25 dioxide concentrations over the North Atlantic. *Atmospheric Environment* 44, 1139-1144,
26 2010.

27 Seguin, Alison Michelle, Norman, Ann-Lise, Eaton, Sarah, Wadleigh, Moire: Seasonality in
28 size segregated biogenic, anthropogenic and sea salt sulfate aerosols over the North Atlantic,
29 *Atmospheric Environment*, 45(38), p. 6947-6954, 2011.

Sharma, S., Chan, E., Ishizawa, M., Toom-Sauntry, D., Gong, S.L., Li, S.M., Tarasick, D.W.,
 Leaitch, W.R., Norman, A., Quinn, P.K., Bates, T.S., Levasseur, M., Barrie, L.A. and
 Maenhaut, W.: Influence of transport and ocean ice extent on biogenic aerosol sulfur in the
 Arctic atmosphere. *Journal of Geophysical Research* 117: 10.1029/2011JD017074, 2012.

Shindell, D.: Estimating the potential for twenty-first century sudden climate change.
Philosophical Transactions of the Royal Society A, 365, 2675-2694, 2007.

Sirois, A., and L. A. Barrie: Arctic lower tropospheric aerosol trends and composition at
 Alert, Canada: 1980–1995, *Journal of Geophysical Research*, 104(D9), 11599–11618, 1999.

Stone RS, Sharma S, Herber A, Eleftheriadis K, Nelson DW.: A characterization of Arctic
 aerosols on the basis of aerosol optical depth and black carbon measurements. *Elementa*
Science of Anthropocene 2: 000027 doi: 10.12952/journal.elementa.000027, 2014.

Thornton, D. C., A. R. Bandy, and A. R. Driedger III: Sulfur dioxide in the North American
 Arctic, *Journal of Atmospheric Chemistry* 9, 331–346, 1989.

Tisch Environmental, Inc, Series 230 High Volume Cascade Impactors; Multi-Stage
 Particulate Size Fractionator, Operations Manual, 2004.

Wentworth, G. R., Murphy, J. G., Croft, B., Martin, R. V., Pierce, J. R., Côté, J.-S.,
 Courchesne, I., Tremblay, J.-É., Gagnon, J., Thomas, J. L., Sharma, S., Toom-Sauntry, D.,
 Chivulescu, A., Levasseur, M., and Abbatt, J. P. D.: Ammonia in the summertime Arctic
 marine boundary layer: sources, sinks, and implications, *Atmos. Chem. Phys.*, 16, 1937-1953,
 doi:10.5194/acp-16-1937-2016, 2016.

Yang, Q., Bitz, C. M., and Doherty, S. J.: Offsetting effects of aerosols on Arctic and global
 climate in the late 20th century, *Atmospheric Chemistry and Physics* 14, 3969-3975, 2014.

Yin, F., Grosjean, D., Seinfeld, J.H.: Photooxidation of dimethyl sulfide and dimethyl
 disulfide. I: mechanism development. *Journal of Atmospheric Chemistry* 11, 309-364, 1990.

Table 1. Periods greater than 30 min when the high volume sampler was off to avoid contamination from ship emissions. The sampling interval was two days, starting from 10:00 h.

Sampling interval (July 2014)	Turn off-on time (UTC) of the high volume sampler	Reason to turn off the high volume sampler
9-11	July 10: 12:40 h-13:10 h	Ship emissions toward the sampler
11-13	July 11: 11:20 h-13:30 h	To change the sampler exhaust
13-15	July 15: 6:30 h-8:00 h	The ship was stationary
15-17	July 17: 8:00 h-10:00 h	The ship was stationary
17-19	July 18: 22:00 h-7:00 h *	The ship was stationary
20-22	July 21: 15:30 h-16:10 h	Ship emissions toward the sampler

* 7:00 h on the following day July 19

1 Table 2. Average TOTAL, sea salt and non-sea salt sulfate concentrations (ng/m³), sulfur
2 isotopic values (‰), and non-sea salt fraction (%) for size segregated aerosols filters.
3 Standard deviations are reported in parentheses.

4

Filter Size (μm)	Average Sulfate (ng/m ³)	Average δ ³⁴ S (‰)	SS Sulfate (ng/m ³)	NSS Sulfate (ng/m ³)	Fraction of NSS Sulfate (%)
A _{>7.20 μm}	113 (93)	+18.9 (1.1)	99 (85)	14 (13)	12
B _{3.00–7.20 μm}	100 (82)	+18.2 (1.2)	86 (75)	14 (8)	14
C _{1.50–3.00 μm}	34 (20)	+18.0 (0.6)	27 (20)	8 (1)	23
D _{0.95–1.50 μm}	110 (200)	+16.0 (2.3)	55 (93)	55 (110)	50
E _{0.49–0.95 μm}	71 (130)	+12.3 (5.8)	5 (5)	66 (120)	92
F _{<0.49 μm}	214 (320)	+14.0 (1.5)	6 (6)	208 (320)	97

5

6

Table 3. Biogenic fraction of non-sea salt sulfate (%) for each size range of filter. There was not enough sample for isotope analysis for some periods.

Filter Size (µm) /Sampling intervals	09-11	11-13	13-15	15-17	17-19	20-22
A _{>7.20 µm}	42	44	-	54	-	14
B _{3.00-7.20 µm}	28	22	-	31	-	44
C _{1.50-3.00 µm}	-	51	47	-	-	45
D _{0.95-1.50 µm}	13	67	47	-	-	66
E _{0.49-0.95 µm}	15	74	85	-	-	30
F _{<0.49 µm}	73	95	92	25	41	65



Figure 1. The route of CCGS *Amundsen* from 8 to 24 July 2014. Circles indicate sampling intervals for the high volume sampler from 9 to 22 July (9-11, 11-13, 13-15, 15-17, 17-19, 20-22). The high volume sampler was off because of stormy weather from 10:00 h on July 19th to 10:00 h on July 20th.

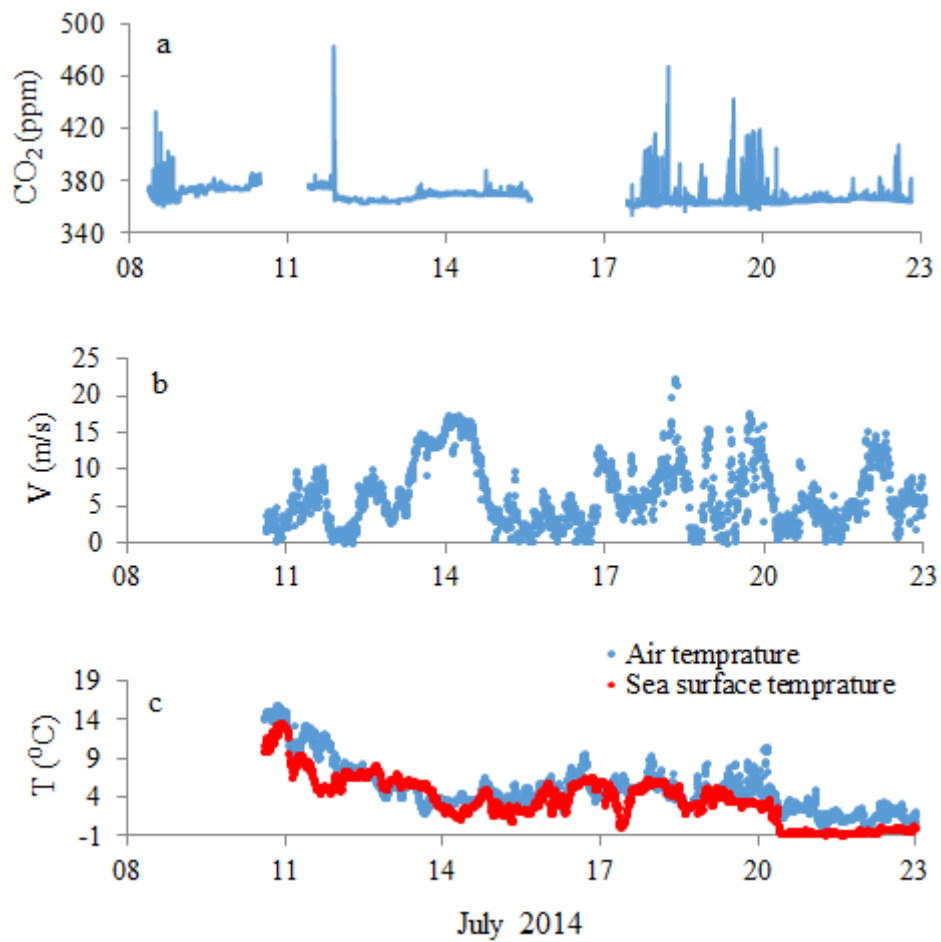


Figure 2. (a) CO₂ mixing ratio (ppm); (b) Wind speed (m/s) (c) Sea surface and Air temperatures (°C). CO₂ measurements were not reported from 10:30 h on July 10th to 9:00 h on July 11th, and 14:00 h on July 15th to 10:35 h on July 17th. Wind speed and temperatures were not recorded before July 11th.

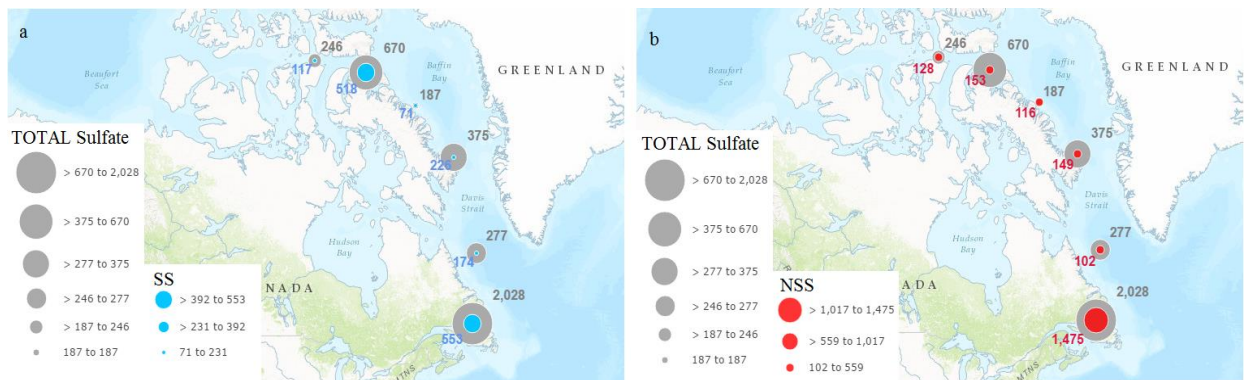


Figure 3. TOTAL sulfate, sea salt (a) and non-sea salt (b) sulfate concentrations (ng/m^3) of aerosols on $A_{>7.2\ \mu\text{m}}-F_{<0.49\ \mu\text{m}}$ filters. Numbers in the figure show TOTAL, sea salt and non-sea salt sulfate concentrations (ng/m^3) in gray, blue, and red colors respectively.

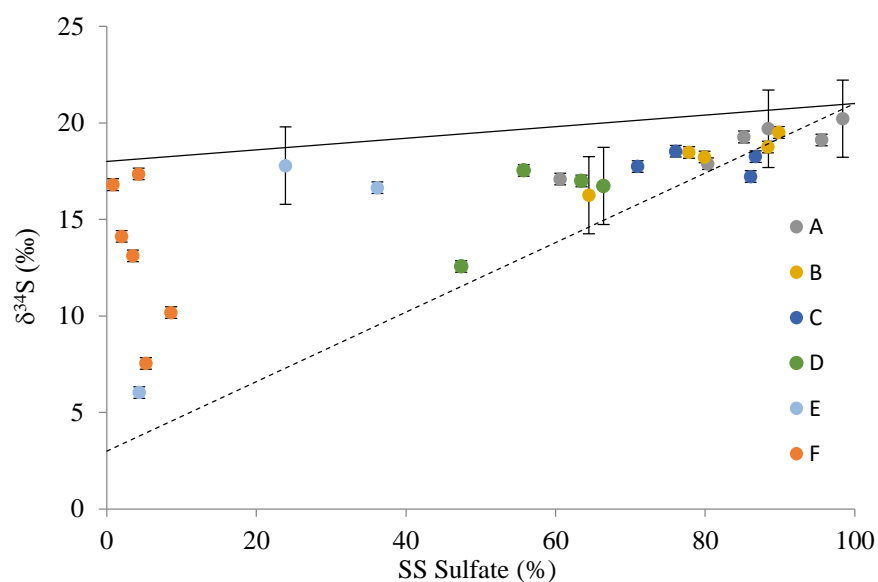


Figure 4. Total $\delta^{34}\text{S}$ versus the percentage of sea salt sulfate of size fractionated aerosols. The mixing lines show sea salt/biogenic sulfate (solid line) and sea salt/anthropogenic sulfate (dashed line) contributions. The standard deviations of each run were taken as the uncertainty for $\delta^{34}\text{S}$ values.

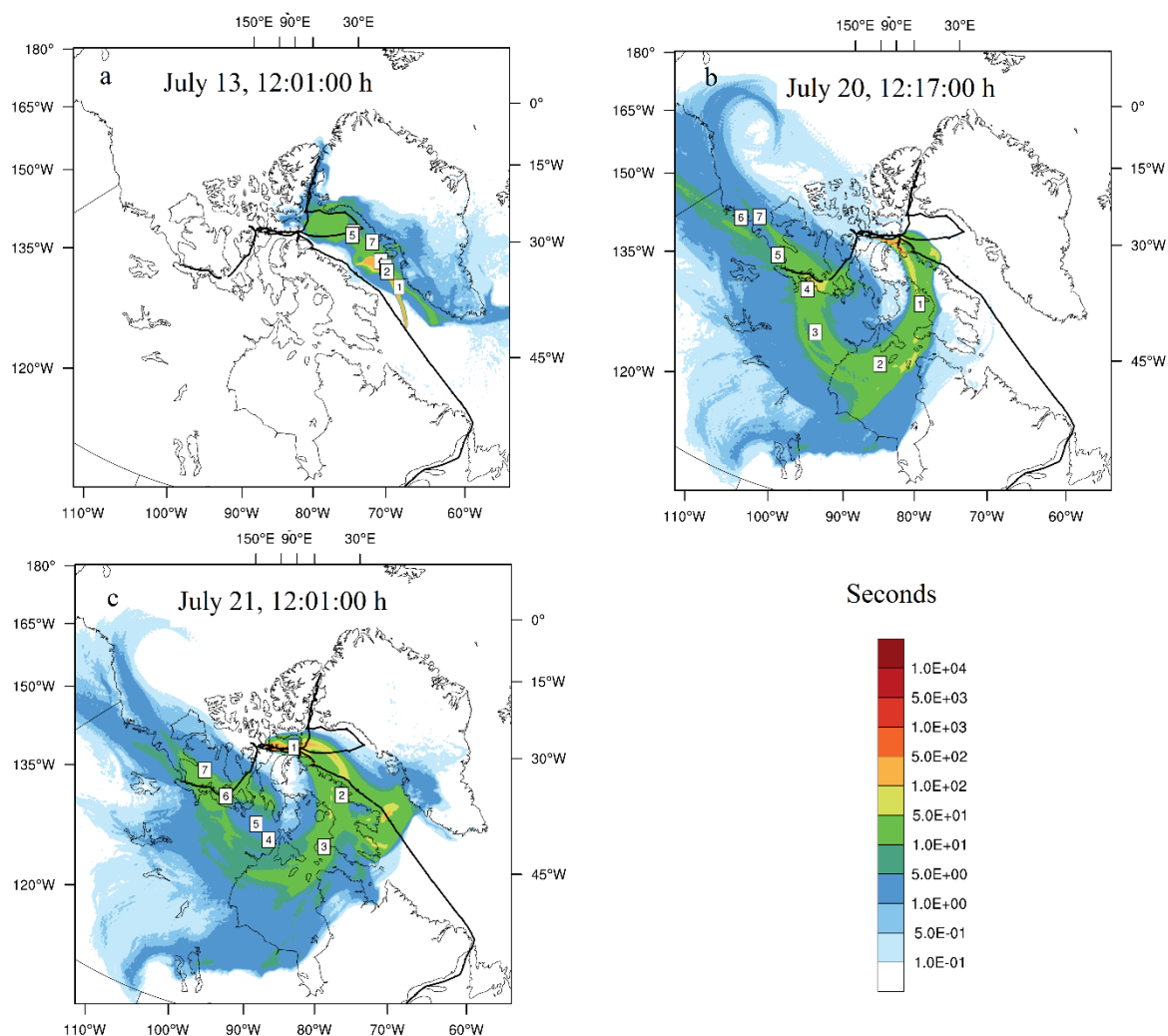
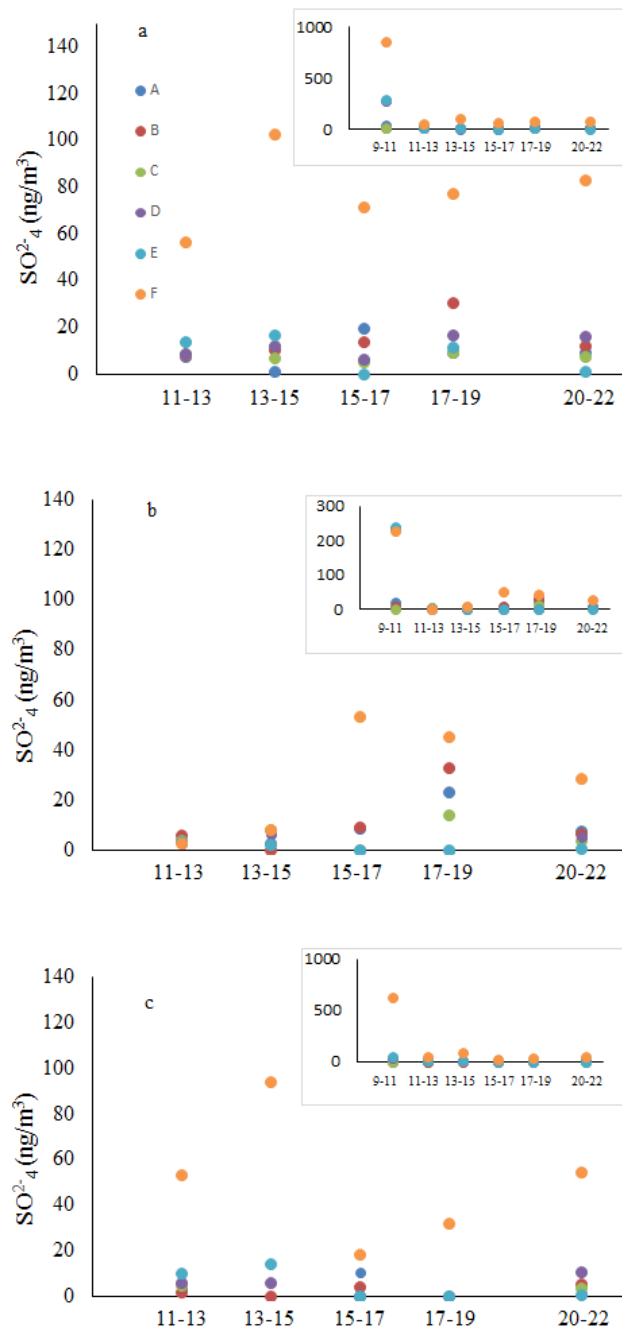


Figure 5. FLEXPART-WRF backward configuration of potential emission sensitivity plots for a) July 13 (12:01:00 h), July 20 (12:17:00 h), and July 21 (12:01:00 h). The black line shows the ship track (note that these panels include the ship track after July 23th 2014 when high volume sampling was not performed). The air mass residence time (seconds) before arriving at the ship location is shown with different colors. Numbers on the panels show the approximate lifetime and the center of the plume locations.



July 2014

Figure 6. Non-sea salt (a), anthropogenic (b) and biogenic (c) of non-sea salt sulfate concentrations, for size segregated aerosols in the Arctic and sub-Arctic. Strictly Arctic samples include those collected after July 13th. Inserts contain the first sampling period (9-11 July) in the Gulf of St. Lawrence.

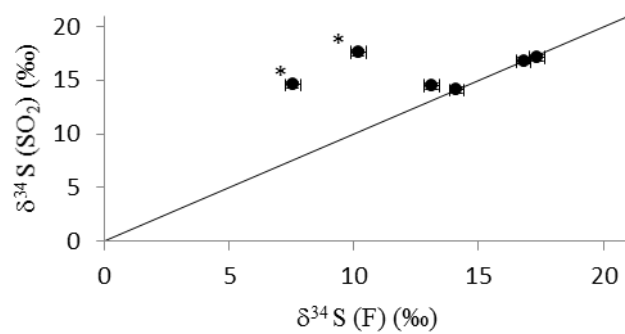


Figure 7. The isotope ratio ($\delta^{34}\text{S}$ value) for $\text{F}_{<0.49\text{ }\mu\text{m}}$ and SO_2 filters along with the 1:1 line. Two samples with different $\delta^{34}\text{S}$ values for SO_2 and $\text{F}_{<0.49\text{ }\mu\text{m}}$ filter sulfate are shown with asterisks.