

1 **Responses to Referee #1:**

2 In their contribution, the authors presented potential roles of climate variability
3 and change in recent increased haze pollution events in east China. This paper could
4 be a welcome reference in the literature.

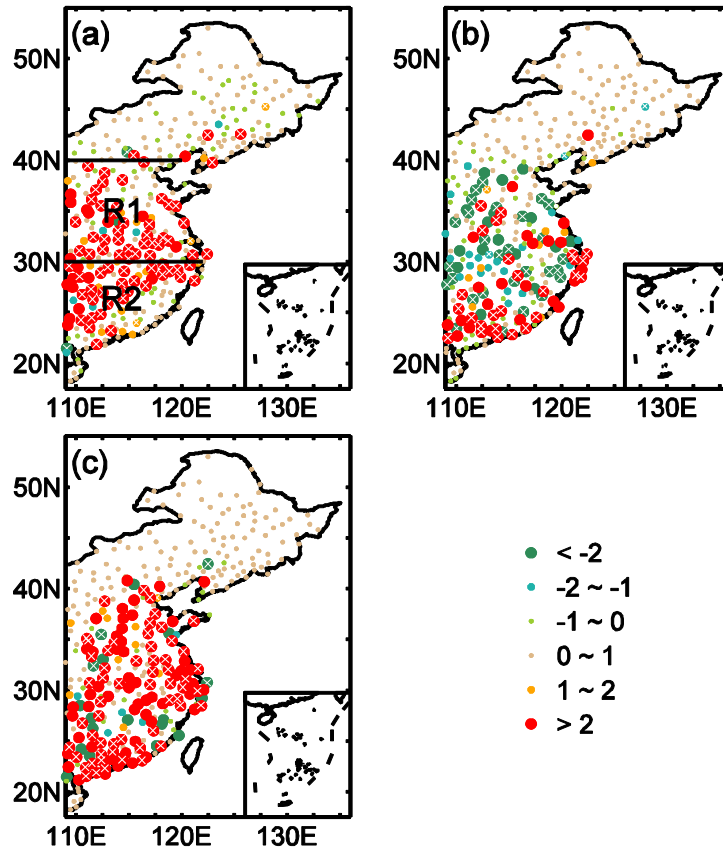
5 In recent years, haze pollution has been a particularly acute issue in east China.
6 The reasons behind recent increase of haze pollution events are complex. A number of
7 studies have discussed this problem from human activity perspective, i.e., increased
8 emissions into atmosphere due to urban and industrial pollution. However, little
9 attention has been paid to this issue from climate variability and change perspective.
10 The authors showed decadal trends in haze day in northeast and southeast China and
11 their relationships with Arctic sea ice extent, precipitation and surface winds. The
12 results can improve our understanding of physical processes that influence haze
13 variability in east China. Below I list some points, which the authors need to address.

14 **Reply:** Thanks for your suggestions, which have been addressed point by point in the
15 following and the corresponding corrections have been presented in the manuscript.

- 16
- 17 1. Page 4/ Line9: Better outline the two regions (R1 and R2) in Figure 1. How many
18 stations are used to calculate the averaged haze day in R1 and R2, respectively?
19 Are the haze day trends sensitive to the number of stations used?

20 **Reply:** (1) These two regions have been shown in Figure 1 [P14] as the following.
21 According to the statistics, there are 112 stations included in R1 and 104 in R2 [P4
22 L11-12].

23 (2) As the suggested, further analysis is implemented and results indicate that the
24 trends of haze days in these two regions show almost no sensitive to the number of
25 stations used. However, a relative larger trend can be observed in southern China than
26 that in northern China, which is also clear in Figure 1.



1
 2 **Figure 1.** Linear trend of station winter haze days in the three periods: (a) 1960-1979,
 3 (b) 1980-1999, and (c) 2000-2012. R1 and R2 are the two regions that discussed in
 4 the text. The circle with cross means the change is significant at the 95% confidence
 5 level. Units: day year⁻¹.

6

7 2. Page 4/Line 10: Explanation of the definition of haze day is needed.

8 **Reply: [P4 L3-5]** The numbers of the monthly haze days that used in this study are
 9 directly derived from the collections by the National Meteorological Information
 10 Center of China Meteorological Administration. The haze days are generally
 11 determined according to the immediately weather phenomenon by the sophisticated
 12 observers. Thus, the definition of haze day has not been shown in this study.
 13 Additionally, the measured haze occurrences are also defined based on the
 14 observations of visibility and relative humidity according to specified criteria, which
 15 vary between organizations (e.g., World Meteorological Organization and UK Met
 16 Office) and personal views (e.g., Vautard et al., 2009; Ding and Liu, 2014). In our
 17 early study, we adopted a comprehensive judgment method with visibility of less than

1 10 km, relative humidity at less than 90% and the wind speed lower than 7 m/s (Chen
2 and Wang, 2015).

3

4 Ding, Y. H., and Liu, Y. J.: Analysis of long-term variations of fog and haze in China
5 in recent 50 years and their relations with atmospheric humidity, *Sci. China Earth Sci.*,
6 57, 36–46, 2014.

7 Vautard, R., Yiou, P., and Oldenborgh, G.: Decline of fog, mist and haze in Europe
8 over the past 30 years, *Nat. Geosci.*, 2, 115–119, doi:10.1038/NGEO414, 2009.

9 Chen, H. P., and Wang, H. J.: Haze Days in North China and the associated
10 atmospheric circulations based on daily visibility data from 1960 to 2012, *J. Geophys.*
11 *Res. Atmos.*, 120, 5895–5909, doi:10.1002/2015JD023225, 2015.

12

13 3. Page 4/Line 13: “sea ice extent” should be “sea ice concentration”.

14 **Reply:** [P4 L15-16] Sorry for misleading and this sentence has been reworded as
15 “The autumn ASI index is calculated as the total sea ice extent in the region of
16 Arctic”.

17

18 4. Page 4/Line 14-16: Add “China Statistical Yearbook” in the reference list.

19 **Reply:** The ‘China Statistical Yearbook’ is published every year and there are at least
20 27 references from 1986 to 2012 which can be all found in the network. Thus, these
21 references have not been listed in the manuscript.

22

23 5. Page 5/Line 17: It seems that for R2, the variability of winter haze day becomes
24 larger in recent years as compared to the first and second periods.

25 **Reply:** It is actually true and it is apparent in Figure 2, which needs further studies in
26 the future.

27

28 6. Page 6/Line 4: A little bit more discussion regarding the influence of Arctic sea
29 ice loss on atmospheric circulation anomalies over east China is needed.

30 **Reply:** [P6 L6-11] Thanks for the suggestions. Actually, there are already some

1 discussions can be found in section 4 for this perspective. As the suggestion, more
2 discussion regarding this has been added in the current version of this study as “Early
3 studies (e.g., Wang et al., 2015) have indicated that the reduction of autumn ASI can
4 lead to positive sea level pressure anomalies in mid-latitude Eurasia, northward shift
5 of track of cyclone activity in China and weak Rossby wave activity in eastern China
6 during winter season. These atmospheric circulation changes favor less cyclone
7 activity and more stable atmosphere in eastern China, resulting in more haze days
8 there.”

9
10 Wang, H. J., Chen, H. P., and Liu, J.: Arctic sea ice decline intensified haze pollution
11 in eastern China. *Atmos. Oceanic Sci. Lett.*, 8, 1-9, 2015.

12
13 7. Page 6/Line 14-15: I suggest the authors add some discussion about the possible
14 factors contributing to increased precipitation during the first and second period
15 and decreased precipitation during the third period.

16 **Reply:** Thanks for the suggestions. However, this article is mainly focused on the
17 discussion about the influences of precipitation on the haze pollution, not the reasons
18 for the precipitation changes. This suggestion as you proposed is beyond the scope of
19 this article, thus the discussions about the precipitation changes have not been added
20 in the current version.

21
22 8. It is not clear how the authors define “>” and “<” signs in Figure 6? Relative to
23 what? Please clarify.

24 **Reply: [P19]** (1) “>” means “larger than” and “<” means “less than” in Figure 6,
25 which have been clarified in the figure caption.

26 (2) The comparisons are implemented among these three periods that discussed in the
27 paper, i.e. the second period is compared with the first period and the third period is
28 compared with the second period.

29
30 9. Page 8/Line 15-21: I would like to suggest the authors to add more discussion

1 about the projected changes in precipitation and surface winds over east China in
2 near term based on recent studies, CMIP5 model projections.

3 **Reply: [P8 L22-27]** Some discussions have been added as “Projections from CMIP5
4 models indicate that the low-level atmosphere tends to be more unstable and the
5 atmosphere humidity will decrease in eastern China (Wang et al., 2015).
6 Simultaneously, the winter precipitation in eastern China is projected to increase (Tian
7 et al., 2015), but the surface winds decrease (Jiang et al., 2013). Thus there will be
8 both favorable and unfavorable factors for haze occurrences in the near future based
9 on the model projections. However, there is no doubt that, with the projected sea ice
10 extent decrease (Kirtman et al., 2013), weakening of the winter East Asian monsoon
11 wind (Wang et al., 2013) and total energy consumption increase, the haze pollution in
12 eastern China may continue to be a serious problem in the near future. ”

13
14 Wang, H. J., Chen, H. P., and Liu, J.: Arctic sea ice decline intensified haze pollution
15 in eastern China. *Atmos. Oceanic Sci. Lett.*, 8, 1-9, 2015.

16 Tian, D., Guo, Y., and Dong, W. J.: Future changes and uncertainties in temperature
17 and precipitation over China based on CMIP5 models. *Adv. Atmos. Sci.*, 32(4),
18 487-496, doi:10.1007/s00376-014-4102-7, 2015.

19 Jiang, Y., Luo, Y., and Zhao, Z. C.: Maximum wind speed changes over China. *Acta*
20 *Meteor. Sinica*, 27(1), 63-74, doi:10.1007/s13351-013-0107-x, 2013.

21 Kirtman, B. et al.: Near-term Climate Change: Projections and Predictability. In:
22 *Climate Change 2013: The Physical Science Basis. Contribution of Working Group I*
23 *to the Fifth Assessment Report of the Intergovernmental Panel on Climate Change*
24 [Stocker, T. F., Qin, D., Plattner, G.-K., Tignor, M., Allen, S. K., Boschung, J.,
25 Nauels, A., Xia, Y., Bex, V., and Midgley, P. M. (eds.)]. Cambridge University Press,
26 Cambridge, United Kingdom and New York, NY, USA, pp. 953–1028,
27 doi:10.1017/CBO9781107415324.023, 2013.

28 Wang H. J., He, S. P., and Liu, J. P.: Present and Future Relationship between the East
29 Asian winter monsoon and ENSO: Results of CMIP5. *J. Geophys. Res. Ocean*, 118,
30 1-16, DOI:10.1002/jgrc.20332, 2013.

1 **Responses to Referee #2:**

2 The impact of climate change on air quality is an important cross-disciplinary topic.
3 Previous studies were mainly conducted by using numerical models and there is limited
4 number of studies based on analysis of observational data, especially in China. This study
5 presented a very interested analysis on the trend of number of haze days and investigated the
6 influences from Artic sea ice extent, precipitation and surface wind speed for different
7 decades based on measurements at 756 ground station during 1960-2012. This paper is
8 generally well-written and provides a different but unique angle of view from climatologist on
9 the trend of air pollution in eastern China. I would like to recommend its publication in
10 Atmospheric Chemistry and Physics after the following minor/technical points addressed
11 appropriately.

12 **Reply:** Thanks for your suggestions, which have been addressed point by point in the
13 following and the corresponding corrections have been presented in the manuscript.

14
15 Main comments:

16 1) If I understand it correctly, the “haze day data” (i.e. the term defined as “monthly haze
17 day data” at L1, Page 4.) used in the trend analysis is the “total number of haze day in a
18 month”. In the text, this term is not very clear defined. It will be better to give some
19 details of the data in Sect. 2 and clarified this term because it is not widely used in
20 countries other than China. Also, it will be better to include some previous works e.g.
21 Chen et al., 2015, which used the same dataset, as a reference in this section.

22 **Reply:** (1) Yes, the “monthly haze day” referred in this study actually is the “total
23 number of haze in a month”, which has been clarified in the paper.

24 (2) The previous works (e.g. Chen et al., 2015) as you referred is the paper by Chen and
25 Wang, 2015, JGR? If yes, we should clarify that the haze day in that work is defined
26 using visibility, relative humidity, and wind speed, which is different from the data that
27 used in this study. However, similar results can be found between these two datasets. The
28 haze days that used in this study are generally determined according to the immediately
29 weather phenomenon by the sophisticated observers, which have been used in another

1 work (Wang et al., 2015). These corrections have been clarified in the current version of
2 the manuscript.

- 3
- 4 2) The discussions in the last paragraph of Sect. 3 (L3-L19, Page 7): The authors tried to
5 discuss the reasons of the contradict trends between haze pollution and emission control.
6 One point worthwhile to be mentioned here is that the trend of haze pollution based on
7 “haze day data” actually is the trend of frequency (of haze day) but not the averaged
8 pollution concentrations. The former might link more with the change in occurrence
9 frequency of extremely stagnant weather, which was influenced by natural climate
10 variability (Zhang et al., 2016), but the latter will be more related to the emission and
11 control measures. Here a comparison with the two variables should consider the
12 differences, at least mention the possible influence. In additional, this part probably can
13 be moved into the Section 4 as the last discussion point highlighted for policy makers.
14 Reference: Zhang, Y. et al., Impact of synoptic weather patterns and inter-decadal climate
15 variability on air quality in the North China Plain during 1980-2013, Atmos. Environ.,124,
16 119-128, 2016.

17 **Reply:** As your suggestion, more discussions have been added and this part has been also
18 moved to Section 4.

19
20 Minor comments:

- 21 1) Line 21-22, page 2: “particulate matter 2.5”, Please change it to “fine particulate matter
22 (PM2.5)” or “particulate matter with mean aerodynamic diameter less than 2.5
23 micrometers”.

24 **Reply:** Corrected.

- 25 2) Line 20-21, Page 3: “a recent study further reveals that”, should you have a reference here?
26 For example, “a recent study by Wang (2015) further revealed that”.

27 **Reply:** Corrected.

- 28 3) Figure 6: What does “Jiangnan (JN)” in the figure notes mean? Maybe change it to
29 “South China”.

30 **Reply:** Corrected. “Jiangnan (JN)” has been changed to R2 and “Huang-Huai (HH)” to

1 R1, which have been labeled in Figure 1.

2

3

1 Understanding the Recent Trend of Haze Pollution in 2 Eastern China: Roles of Climate Change

3
4 H. J. Wang^{1,2,3} and H. P. Chen^{2,3,1}

5 [1] {Collaborative Innovation Center on Forecast and Evaluation of Meteorological
6 Disasters, Nanjing University for Information Science and Technology, Nanjing,
7 China}

8 [2] {Nansen-Zhu International Research Center, Institute of Atmospheric Physics,
9 Chinese Academy of Sciences, Beijing, China}

10 [3] {Climate Change Research Center, Chinese Academy of Sciences, Beijing, China}

11
12 Correspondence to: H. J. Wang (wanghj@mail.iap.ac.cn)

13 14 **Abstract**

15 In this paper, the variation and trend of haze pollution in eastern China for winter of
16 1960-2012 were analyzed. With the overall increasing number of winter haze days in
17 the period, the five decades were divided into three sub-periods based on the changes
18 of winter haze days (WHD) in central North China (30°N-40°N) and eastern South
19 China (south of 30°N) for east of 109°E mainland China. Results show that WHD
20 kept gradual increasing during 1960-1979, overall stable during 1980-1999, and fast
21 increasing during 2000-2012. The author identified the major climate forcing factors
22 besides total energy consumption. Among all the possible climate factors, variability
23 of the autumn Arctic sea ice extent, local precipitation and surface wind during winter
24 is most influential to the haze pollution change. The joint effect of fast increase of
25 total energy consumption, rapid decline of Arctic sea ice extent and reduced
26 precipitation and surface winds intensified the haze pollution in central North China
27 after 2000. There is similar conclusion for haze pollution in eastern South China after
28 2000, with the precipitation effect being smaller and spatially inconsistent.

1 1. Introduction

2 In recent years, China has suffered from increased severe haze events that have
3 caused strongly impacts on society, ecosystem, and human health. For example, the
4 eastern China was hit by a prolonged and heavy haze event in January 2013, which
5 made Beijing reaching its highest level of air pollution and led to the first haze orange
6 alert in Beijing's meteorological history (e.g. Ding and Liu, 2014; Zhang et al., 2014).
7 Furthermore, serious health problems have been induced from respiratory illness to
8 heart disease, premature death, and cancer with the intensification of air pollution
9 (Wang and Mauzerall, 2006; Xu et al., 2013; Xie et al., 2014). Thus, increased
10 attentions have been reported to the issue of haze both from the government bodies
11 and the general publics, and some air pollution prevention actions have been
12 implemented and have stipulated strict controls on coal consumption, industry
13 production, vehicles, etc.

14 Early studies have documented that the haze days are generally increase in
15 economically developed eastern China but decrease in the less economically
16 developed regions in China (e.g. Niu et al., 2010; Wu et al., 2010; Ding and Liu,
17 2014), and this increasing trend of haze is reported to be more pronounced since 2001
18 (Sun et al., 2013). Thus, the human activities, such as rapid urbanization and
19 economic development, are generally considered as the major contributors to this
20 long-term increasing trend of haze in eastern China (Wang et al., 2013). For example,
21 in Beijing, vehicles are reported to be the biggest source of fine particulate matter-~~2.5~~
22 (PM_{2.5}), accounting for 25% of the pollution, and the coal combustion and
23 cross-regional transport are the second greatest source, both accounting for 19%,
24 despite some debates still exist (He et al., 2013; Zhang et al., 2013). Similar
25 phenomenon can be observed in the other regions in China, such as in Chengdu city
26 over southwestern China in which the secondary inorganic aerosols and coal
27 combustion can account for $37 \pm 18\%$ and $20 \pm 12\%$ of the air pollutants, respectively
28 (Tao et al., 2014).

1 Evidently, there is no doubt that there is a great role can be found from the human
2 activities to the strongly increase of haze days in China. However, our deeply analysis
3 in this study indicates that the variations of haze days show different trends in the past
4 decades over eastern China, with increase in 1960-1979, no obvious change in
5 1980-1999 (even decrease over northern part of eastern China), and rapidly increase
6 since 2000, which presents a disagreement with the persistently and rapidly increase
7 of the total energy consumption over this region in the past. So, the impacts from the
8 climate change must be considered when talking about the changes of haze events
9 because the climate change can significantly influence the air pollution via variation
10 of local atmospheric circulation. Some early studies have revealed that the increased
11 haze days in eastern China may be associated with decreases of the surface wind
12 speed (Xu et al., 2006; Gao et al., 2008; Niu et al., 2010) and the relative humidity in
13 the atmosphere (Ding and Liu, 2014). Wu et al. (2008) indicate that the occurrences of
14 heavy haze events in the Pearl River Delta region of China are generally concurrently
15 with the stronger zonal circulations in the midtroposphere and weaker winds on the
16 surface. Chen and Wang (2015) reveal that the severe haze events in boreal winter
17 over northern China generally happen under a favorable atmospheric background,
18 with the weakened northerly winds and the development of inversion anomalies in the
19 lower troposphere, the weakened East Asian trough in the midtroposphere, and the
20 northward East Asian jet in the high troposphere. Additionally, a recent study ([Wang
21 et al., 2015](#)) further reveals that the Arctic sea ice decline can intensify the haze
22 pollution over eastern China and account for approximately 45-67% of the interannual
23 to interdecadal variability of haze occurrences. However, the possible reasons for the
24 different trends of haze days (varying from decades) over eastern China have not been
25 revealed so far, although the ambient conditions of the haze occurrences have been
26 well analyzed as well as the reason of its long-term increasing trend, which is thus to
27 be our interest and topic in this study.

28

29 **2. Data and Methods**

1 The monthly haze day data for 756 meteorological stations in China during
2 1960-2013 have been collected by the National Meteorological Information Center of
3 the China Meteorological Administration. The haze days from this dataset are
4 generally determined according to the immediately weather phenomenon by the
5 sophisticated observers. The monthly haze days here is the total numbers of haze day
6 in a month, which has been also used in the previous works (e.g., Wang et al., 2015).

7 For the site-observation, it was rejected if there are miss values in time series. Thus a
8 subset of total 542 stations is selected. We focus our analysis on haze pollution over
9 eastern China (east of 109°E, south of 40°N, mainland China) in this study. As have
10 been indicated, more than 40% haze pollution occurred in boreal winter (current year
11 December and following year January-February), hence we focus on the winter
12 season. We here after focus our analysis in two regions, R1 (east of 109°E in
13 30°N-40°N, including 112 stations) and R2 (east of 109°E; and south of 30°N,
14 including 104 stations) in mainland China. Regional Hhaze day is defined as the
15 average in the region R1 or R2. The Arctic sea ice extent (ASI) is calculated from the
16 Hadley Centre (HadISST1) with $1^{\circ} \times 1^{\circ}$ resolution for 1870-2013 (Rayner et al, 2003).
17 The autumn ASI index is calculated as the area-averagedtotal sea ice extent in the
18 region of north 45°NArctic. The annual statistics of total energy consumption that
19 providing for each province in China are obtained from the journal of ‘China
20 Statistical Yearbook’ that published every year.

22 3. Results

23 Heavy haze events can not only strongly affect the traffic but also induce serious
24 health problems from respiratory illnesses to heart disease, premature death and
25 cancer (Pope and Docheru, 2006; Wang and Mauzerall, 2006). The intensified air
26 pollution in China can be more or less attributed to the increased emissions of
27 pollutants into the atmosphere as the result of rapid economic development thus fast
28 increase of fossil fuel energy consumption and urbanization. Meanwhile, climate

1 change can also significantly influence the air pollution via variation of local
2 atmospheric circulation and precipitation.

3 As indicated by numerous studies, air pollution has generally been intensified in
4 eastern China in past half-century, with more haze days and increased $PM_{2.5}$
5 concentration during winter and spring (e.g. Wang et al, 2015). However, based on
6 our current studies, recent trend during 2000-2012 is different from that during
7 1980-1999 or 1960-1979 (Fig. 1). During 1960-1979, there is a general consistent
8 increasing trend of winter haze days (WHD) in Beijing-Tianjin-Hebei area and in the
9 lower reaches of Yangtze River Valley. There is no significant trend over
10 southeastern coastal region of China. In the second period (1980-1999), there are
11 generally increasing trends south of $30^{\circ}N$ but some decreasing trends in regions
12 between $30^{\circ}N$ and $40^{\circ}N$ in eastern China. During recent period (2000-2012) there are
13 generally large increasing trends in the region south of $40^{\circ}N$ in eastern China. During
14 all the three period, there is no significant trend in northeastern China and eastern
15 Inner-Mongolia.

16 Thus, our ~~first~~ question is why there are some decreasing trends of WHD during the
17 second period (1980-1999) when the rapid economy has been growing continuously
18 from late 1970s up to present. We then plotted the WHD together with total energy
19 consumption in R1 and R2 (Fig. 2). We found that WHD keeps gradual increasing
20 during the first period, remains stable or slightly decreases during the second period,
21 and then increases fast along with the rapid increase of total energy consumption
22 during the recent period. Therefore, the contradiction between the no-increasing
23 WHD and increasing energy consumption during the second period must be explained
24 by other factors, most reasonably, some climate factors.

25 One of the possible major climate factors is the Arctic sea ice extent (Deser et al.,
26 2010; Liu et al., 2012; Li and Wang, 2013; Li and Wang, 2014), whose relationship
27 with the haze pollution in eastern China was first indicated by Wang et al. (2015).
28 Here we show the apparent out-of-phase interannual relationship between the Autumn
29 Arctic sea ice extent and WHD for both R1 and R2 in Fig. 3, with high correlation

1 coefficients of -0.70 and -0.87 respectively during 1960-2012, -0.60 and -0.82
2 respectively during 1980-2012. Meanwhile the WHDs in R1 and R2 are temporally
3 correlated each other at 0.75 during 1960-2012 in the interannual variability. With the
4 significant impact of sea ice extent on the haze pollution, the fact that sea ice extent
5 remains generally stable can largely explain the no-increase of WHD during the
6 second period even along with economic development and total energy consumption
7 increase. In addition, the rapid decline of the sea ice extent in recent two decades can
8 also largely explain the fast increase of WHD in both northern and southern areas of
9 eastern China. Early studies (e.g., Wang et al., 2015) have indicated that the reduction
10 of autumn ASI can lead to positive sea level pressure anomalies in mid-latitude
11 Eurasia, northward shift of track of cyclone activity in China and weak Rossby wave
12 activity in eastern China during winter season. These atmospheric circulation changes
13 favor less cyclone activity and more stable atmosphere in eastern China, resulting in
14 more haze days there.

15 Precipitation change is another important factor that has significant impact on the
16 haze pollution, via the wet removal effect of atmospheric pollutants. Here we plot the
17 spatial distribution of the linear trend of station winter precipitation in eastern China
18 for each of the three periods (Fig. 4). It is clear that R2 has generally increasing trend
19 of precipitation during the first and second periods while R1 has apparent decreasing
20 trend during the third period. Therefore, the precipitation trends favor WHD
21 decreasing in R2 in the first and second periods and favor WHD increasing in R1
22 during the third period. In this regard, the impacts of both the sea ice extent and
23 precipitation trends in R1 help to intensify the haze pollution in the central North
24 China (R1) in recent period. While the precipitation trend in R2 (R1) is generally
25 small in recent period (first two periods), thus has smaller impacts on WHD as
26 compared to sea ice extent.

27 The simultaneous WHD-precipitation correlation coefficient is -0.11 and -0.16
28 respectively for R1 and R2 during 1961-2011. However, the WHD-precipitation
29 correlation coefficient is -0.60 and -0.41 respectively for R1 and R2 during 1980-2011.

1 Besides, we should not neglect the effect of changing surface winds. As shown in Fig.
2 5, there is generally weak reduction of surface winds in eastern China before year
3 2000, but spatially inconsistent trends of surface wind after 2000. Region R2 has the
4 upward trend of surface wind after 2000, while R1 has upward and downward trends
5 respectively in the north and south parts of the region.

6 Therefore, the precipitation trends in eastern China and the sea ice extent can explain
7 larger proportion of WHD variance since 1980s in eastern China besides emission of
8 pollutants by human beings. After the year 2000, from climate change perspective, the
9 intensified WHD in R1 is a joint effect of sea ice decline and precipitation and surface
10 wind decrease whereas the intensified WHD in R2 is mainly induced by the sea ice
11 decline (the surface wind weak increase is not favorable to WHD increase).

12 In Fig. 2, the year-to-year variation for summer haze days (SHD) is shown as well by
13 the blue curve, indicating slight trend and rapid increase before and after 2000 for the
14 two regions. Thus the intensification of the haze pollution in eastern China after 2000
15 is significant both in winter and summer. Changes of summer precipitation and
16 near-surface wind should be directly associated with the SHD trend. Even though we
17 did not find significant correlation between the SHD and the Arctic sea ice extent in
18 the year-to-year variability, the SHD increase after 2000 may also be related to the
19 Arctic sea ice. In addition, as shown in Zhu et al. (2011), the Pacific Decadal
20 Oscillation (PDO) phase change in late 1990s may have impacts on the summer
21 atmospheric circulation and precipitation changes in eastern China. Therefore
22 understanding of the climate mechanisms for the SHD change calls more
23 investigations from both local and remote perspectives.

24 ~~Another widely concerned question is, has the governmental control on pollutant~~
25 ~~emissions received positive effect? Based on our analysis, the answer is affirmative.~~
26 ~~This can be demonstrated by comparing the PM_{2.5} content in large city like Beijing,~~
27 ~~Tianjin, Hangzhou, Xi'an, Changchun, Shanghai, and Guangzhou between 2003 and~~
28 ~~2013, where all the cities have much reduced PM_{2.5} content in 2013 than 2003 during~~
29 ~~summer season (Cao et al., 2014). However, there has been no improvement of air~~

1 ~~quality for winter season. Then, how to understand such difference between air~~
2 ~~quality change between summer and winter? The key impact factor is the Arctic sea ice~~
3 ~~extent. On one hand, the winter atmospheric circulation in eastern China is~~
4 ~~significantly modulated by the preceding autumn Arctic sea ice extent thus the sea ice~~
5 ~~decline can intensify the haze pollution in eastern China even though the total~~
6 ~~emission of pollutant into the atmosphere has been reduced. On the other hand, sea ice~~
7 ~~extent has no significant influence on the summer atmospheric circulation, thus the~~
8 ~~effect of cutting off the pollutant emission can be evidently observed. In other words,~~
9 ~~the winter haze pollution would be more serious if the government has not controlled~~
10 ~~the pollutant emission after the year 2000. Definitely, controls on the pollutant~~
11 ~~emission always have positive effects and should be always encouraged.~~

13 **4. Conclusions and discussions**

14 Based on our above analysis, the Arctic sea ice extent has the most apparent impacts
15 on the haze pollution in eastern China among other climate factors including
16 precipitation and surface wind since 1980s. After the year 2000, the sea ice decline
17 and precipitation decrease in central North China jointly intensified the haze pollution,
18 whereas the net effects of sea ice decline ~~and surface wind increase~~ also intensified
19 the haze pollution in eastern South China. Our overall analysis and conclusions are
20 schematically summarized in Fig. 6.

21 However, two other points should be addressed here. The first point relates the
22 inter-correlation among sea ice extent, precipitation, and surface winds. Based on our
23 previous study (Wang et al., 2015), the Arctic sea ice decline may favor the Rossby
24 wave activity weakening in eastern China south of 40°N thus leads to the precipitation
25 decrease during winter season. Meanwhile, the change of sea ice extent may also have
26 moderate impacts on both the zonal and meridional surface winds in eastern China.
27 Secondly, recent trend after 2000 should be paid more attention. As we concluded
28 above, both the Arctic sea ice decline and the precipitation decreasing in central North

1 China, along with the total energy consumption increase, favors the haze pollution
2 intensifying. In eastern South China, there are two apparent factors (sea ice decline
3 and total energy consumption increasing) that help to intensifying the haze pollution
4 except the precipitation. In addition, the surface wind keeps overall decreasing in
5 central North China reflects the East Asian winter monsoon weakening after 1960
6 particularly after mid-1980s (Wang and He, 2012).

7 Projections from CMIP5 models indicate that the low-level atmosphere tends to be
8 more unstable and the atmosphere humidity will decrease in eastern China (Wang et
9 al., 2015). Simultaneously, the winter precipitation in eastern China is projected to
10 increase (Tian et al., 2015), but the surface winds decrease (Jiang et al., 2013). Thus
11 there will be both favorable and unfavorable factors for haze occurrences in the near
12 future based on the model projections. However, there is no doubt that, ~~With~~ ~~with~~ the
13 projected sea ice extent decrease (Kirtman et al., 2013), weakening of the winter East
14 Asian monsoon wind (Wang et al., 2013) and total energy consumption increase, the
15 haze pollution in eastern China may continue to be a serious problem in the near
16 future. There are already series of governmental plans to address the air pollution
17 issues in Beijing-Tianjin-Hebei area and Yangtze-River Delta as well as the Pearl
18 River Delta even though the future climate change is not favorable to the air pollution
19 reduction.

20 Another widely concerned question is, has the governmental control on pollutant
21 emissions received positive effect? Before addressing this question, one point should
22 be kept in your mind that the trend of haze pollution mentioned in this study is the
23 trend of frequency (haze day) but not the averaged pollution concentrations. The
24 former is generally linked more with the change in occurrence of extremely stagnant
25 weather, which was influenced by natural climate variability (Zhang et al., 2016),
26 while the latter is more related to the emission and control measures. Based on our
27 analysis, the answer is affirmative. This can be demonstrated by comparing the PM_{2.5}
28 content in large city like Beijing, Tianjin, Hangzhou, Xi'an, Changchun, Shanghai,
29 and Guangzhou between 2003 and 2013, where all the cities have much reduced

1 PM2.5 content in 2013 than 2003 during summer season (Cao et al., 2014). However,
2 there has been no improvement of air quality for winter season. Then, how to
3 understand such difference between air quality change between summer and winter?
4 The key impact factor is the Arctic sea ice extent. On one hand, the winter atmospheric
5 circulation in eastern China is significantly modulated by the preceding autumn Arctic
6 sea ice extent thus the sea ice decline can intensify the haze pollution in eastern China
7 even though the total emission of pollutant into the atmosphere has been reduced. On
8 the other hand, sea ice extent has no significant influence on the summer atmospheric
9 circulation, thus the effect of cutting off the pollutant emission can be evidently
10 observed. In other words, the winter haze pollution would be more serious if the
11 government has not controlled the pollutant emission after the year 2000. Definitely,
12 controls on the pollutant emission always have positive effects and should be always
13 encouraged.

14 ~~In Fig. 2, the year-to-year variation for summer haze days (SHD) is shown as well by~~
15 ~~the blue curve, indicating slight trend and rapid increase before and after 2000 for the~~
16 ~~two regions. Thus the intensification of the haze pollution in eastern China after 2000~~
17 ~~is significant both in winter and summer. Changes of summer rainfall and~~
18 ~~near-surface wind should be directly associated with the SHD trend. Even though we~~
19 ~~did not find significant correlation between the SHD and the Arctic sea ice extent in~~
20 ~~the year-to-year variability, the SHD increase after 2000 may also be related to the~~
21 ~~Arctic sea ice. In addition, as shown in Zhu et al. (2011), the Pacific Decadal~~
22 ~~Oscillation (PDO) phase change in late 1990s may have impacts on the summer~~
23 ~~atmospheric circulation and precipitation changes in eastern China. Therefore~~
24 ~~understanding of the climate mechanisms for the SHD change calls more~~
25 ~~investigations from both local and remote perspectives.~~

28 **Acknowledgements**

1 This research was supported by National Natural Science Foundation of China
2 (Grants 41421004, 41130103 and 41305061).

3

4 **References**

5 Cao, J. J., et al.: PM_{2.5} and the environment in China. Science Press, Beijing, 406pp,
6 2014.

7 Chen, H. P., and Wang, H. J.: Haze days in North China and the associated
8 atmospheric circulations based on daily visibility data from 1960 to 2012. J.
9 Geophys. Res. Atmos., 120, 5895-5909, doi:10.1002/2015JD023225, 2015.

10 Deser, C., Tomas, R., Alexander, M., and Lawrence, D.: The seasonal atmospheric
11 response to projected Arctic sea ice loss in the late 21st century. J. Climate, 23,
12 333-351, 2010.

13 Ding, Y. H., and Liu, Y. J.: Analysis of long-term variations of fog and haze in China
14 in recent 50 years and their relations with atmospheric humidity. Sci. China Earth
15 Sci., 57, 36-46, 2014.

16 Gao, G.: The climatic characteristics and change of haze days over China during
17 1961–2005 (in Chinese). Acta Geogr. Sin., 63, 762-768, 2008.

18 He, H., Wang, X. M., Wang, Y. S., Wang, Z. F., Liu, J. G., and Chen, Y. F.: Formation
19 mechanism and control strategies of haze in China (in Chinese). Bull. Chinese
20 Acad. Sci., 28(3), 344-352, 2013.

21 [Jiang, Y., Luo, Y., and Zhao, Z. C.: Maximum wind speed changes over China. Acta](#)
22 [Meteor. Sinica, 27\(1\), 63-74, doi:10.1007/s13351-013-0107-x, 2013.](#)

23 Li, F., and Wang, H. J.: Autumn sea ice cover, winter northern hemisphere annular
24 mode, and winter precipitation in Eurasia. J. Climate, 26, 3968–3981, 2013.

25 Li, F., and Wang, H. J.: Autumn Eurasian snow depth, autumn Arctic sea ice cover
26 and East Asian winter monsoon. Int. J. Climatol., [34, 3616-3625,](#)
27 DOI:10.1002/joc.3936, 2014.

28 Liu, J. P., Judith, A. C., Wang, H. J., Song, M. R., and Radley, M. H.: Impact of

1 declining Arctic sea ice on winter snowfall. Proc. Natl. Acad. Sci., DOI:
2 10.1073/pnas.1114910109, 2012.

3 Kirtman, B. et al.: Near-term Climate Change: Projections and Predictability. In:
4 Climate Change 2013: The Physical Science Basis. Contribution of Working
5 Group I to the Fifth Assessment Report of the Intergovernmental Panel on
6 Climate Change [Stocker, T. F., Qin, D., Plattner, G.-K., Tignor, M., Allen, S. K.,
7 Boschung, J., Nauels, A., Xia, Y., Bex, V., and Midgley, P. M. (eds.)].
8 Cambridge University Press, Cambridge, United Kingdom and New York, NY,
9 USA, pp. 953–1028, doi:10.1017/CBO9781107415324.023, 2013.

10 Niu, F., Li, Z. Q., Li, C., Lee, K.-H., and Wang, M. Y.: Increase of wintertime fog in
11 China: Potential impacts of weakening of the eastern Asian monsoon circulation
12 and increasing aerosol loading. J. Geophys. Res., 115, D00K20,
13 doi:10.1029/2009JD013484, 2010.

14 Pope, C. A. III, and Dockery, D. W.: Health effects of fine particulate air pollution:
15 lines that connect. J. Air Waste Manag. Assoc., 56(6), 709-742, 2006.

16 Rayner, N. A. et al.: Global analyses of sea surface temperature, sea ice, and night
17 marine air temperature since the late nineteenth century. J. Geophys. Res.,
18 108(D14), 4407, 2003.

19 Sun, Y., Ma, Z. F., Niu, T., Fu, R. Y., and Hu, J. F.: Characteristics of climate change
20 with respect to fog days and haze days in China in the past 40 years (in Chinese).
21 Clim. Environ. Res., 18, 397-406, 2013.

22 Tao, J., Gao, J., Zhang, L., Zhang, R., Che, H., Zhang, Z., Lin, Z., Jing, J., Cao, J., and
23 Hsu, S.-C.: PM_{2.5} pollution in a megacity of southwest China: Source
24 apportionment and implication. Atmos. Chem. Phys., 14, 8679-8699, 2014.

25 [Tian, D., Guo, Y., and Dong, W. J.: Future changes and uncertainties in temperature](#)
26 [and precipitation over China based on CMIP5 models. Adv. Atmos. Sci., 32\(4\),](#)
27 [487-496, doi:10.1007/s00376-014-4102-7, 2015.](#)

28 Wang H. J., and He, S. P.: Weakening relationship between East Asian winter
29 monsoon and ENSO after mid-1970s. Chinese Sci. Bull., 57(27), 3535-3540,

- 1 DOI: 10.1007/s11434-012-5285-x, 2012.
- 2 Wang H. J., He, S. P., and Liu, J. P.: Present and Future Relationship between the East
3 Asian winter monsoon and ENSO: Results of CMIP5. *J. Geophys. Res. Ocean*,
4 118, 1-16, DOI:10.1002/jgrc.20332, 2013
- 5 Wang, H. J., Chen, H. P., and Liu, J. P.: Arctic sea ice decline intensified haze
6 pollution in eastern China. *Atmos. Oceanic Sci. Lett.*, 8(1), 1-9, 2015.
- 7 Wang, X. P., and Mauzerall, D. L.: Evaluating impacts of air pollution in China on
8 public health: implications for future air pollution and energy policies. *Atmos.*
9 *Environ.*, 40(9), 1706-1721, 2006.
- 10 Wang, Y. S., Yao, L., Liu, Z. R., Ji, D. S., Wang, L. L., and Zhang, J. K.: Formation of
11 haze pollution in Beijing-Tianjin-Hebei region and their control strategies (in
12 Chinese). *Bull. Chinese Acad. Sci.*, 28(3), 353-363, 2013.
- 13 Wu, D., Liao, G. L., Deng, X. J., Bi, X. Y., Tan, H. B., Li, F., Jiang, C. L., Xia, D., and
14 Fan, S. J.: Transport condition of surface layer under haze weather over the Pearl
15 River Delta [in Chinese]. *J. Appl. Meteorol. Sci.*, 19, 1-9, 2008
- 16 Wu, D., Wu, X. J., Li, F., Tan, H. B., Chen, J., Cao, Z. Q., Sun, X., Sun, H., and Li, H.
17 Y.: Spatial and temporal variation of haze during 1951–2005 in Chinese
18 mainland [in Chinese]. *Acta Meteorol. Sin.*, 68, 680-688, 2010.
- 19 Xie, Y. B., Chen, J., and Li, W.: An assessment of PM_{2.5} related health risks and
20 impaired values of Beijing residents in a consecutive high-level exposure during
21 heavy haze days (in Chinese). *Environ. Sci.*, 35(1), 1-8, 2014.
- 22 Xu, M., Chang, C. P., Fu, C., Qi, Y., Robock, A., Robinson, D., and Zhang, H.: Steady
23 decline of East Asian monsoon winds, 1969–2000: Evidence from direct ground
24 measurements of wind speed. *J. Geophys. Res.*, 111(D24),
25 doi:10.1029/2006JD007337, 2006.
- 26 Xu, P., Chen, Y. F., and Ye, X. J.: Haze, air pollution, and health in China. *Lancet*, 382,
27 2067, doi:10.1016/S0140-6736(13)62693-8, 2013.
- 28 Zhang, R. H., Li, Q., and Zhang, R. N.: Meteorological conditions for the persistent
29 severe fog and haze event over eastern China in January 2013. *Sci. China Earth*

1 Sci., 57, 26-35, 2014.

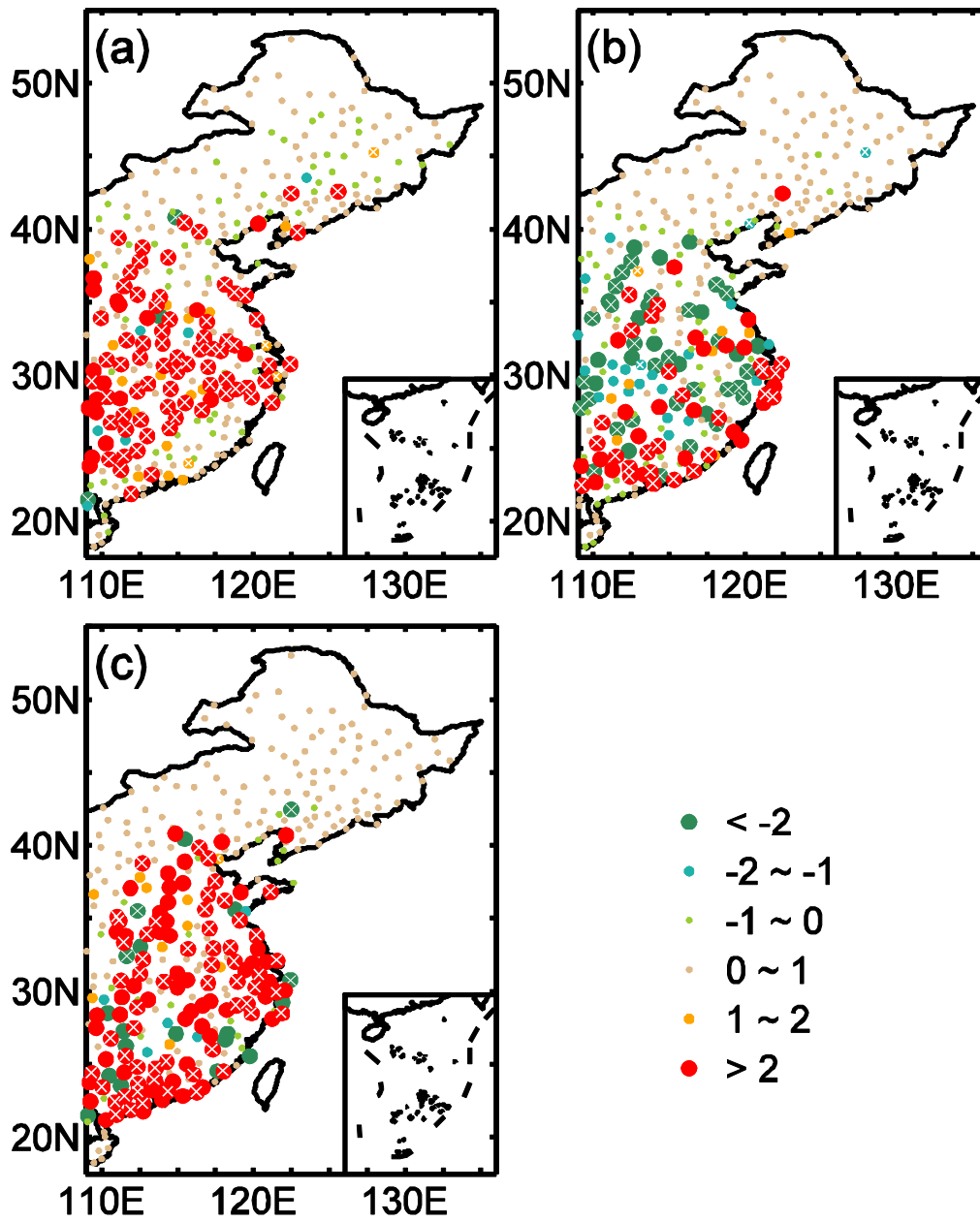
2 Zhang, R. J., Jing, J., Tao, J., Hsu, S.-C., Wang, G., Cao, J., Lee, C. S. L., Zhu, L.,
3 Chen, Z., Zhao, Y., and Shen, Z.: Chemical characterization and source
4 apportionment of PM_{2.5} in Beijing: Seasonal perspective. *Atmos. Chem. Phys.*,
5 13, 7053–7074, 2013.

6 Zhang, Y., Ding, A. J., Mao, H. T., Nie, W., Zhou, D. R., Liu, L. X., Huang, X., and
7 Fu, C. B.: Impact of synoptic weather patterns and inter-decadal climate
8 variability on air quality in the North China Plain during 1980-2013. *Atmos.*
9 *Environ.*, 124, 119-128, 2016.

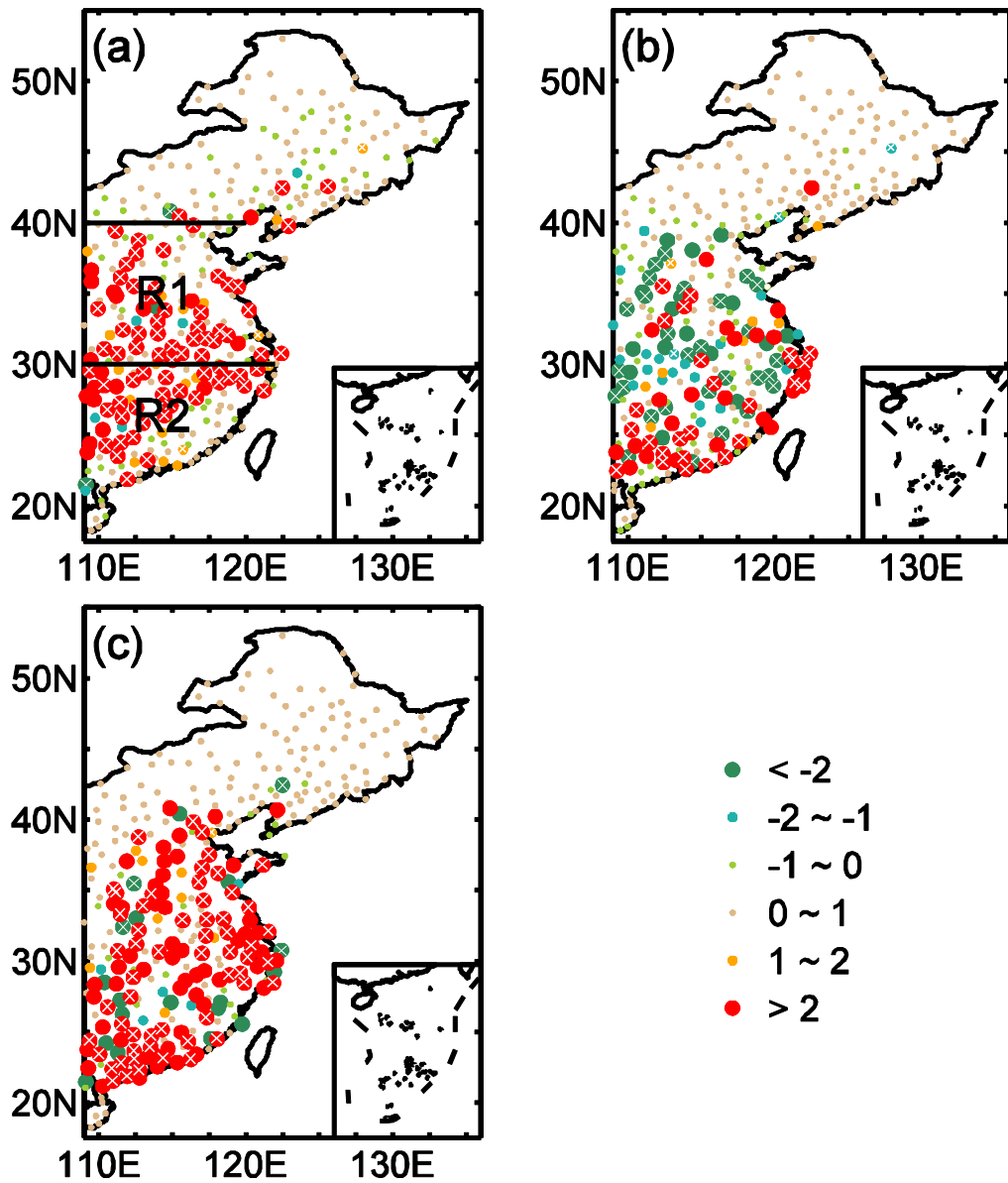
10 Zhu, Y. L., Wang, H. J., Zhou, W., Ma J. H.: Recent changes in the summer
11 precipitation pattern in East China and the background circulation. *Climate*
12 *Dynamics*, 36, 1463-1473, doi: 10.1007/s00382-010-0852-9, 2011.

13

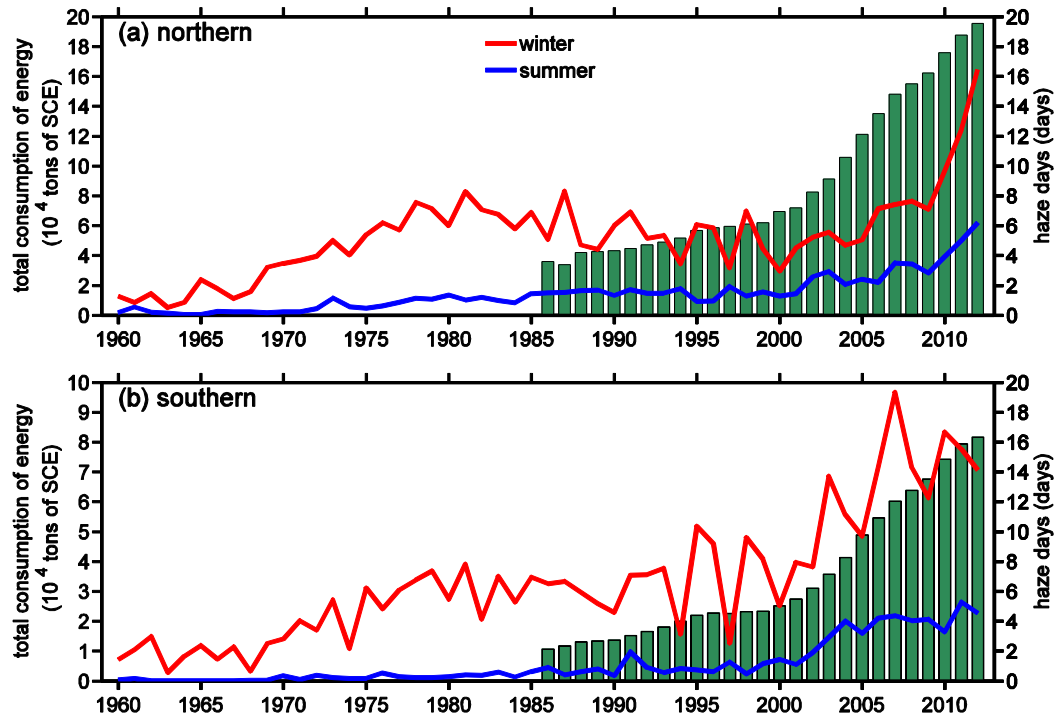
14 **Figures**



1



1
2 **Figure 1.** Linear trend of station winter haze days in the three periods: (a) 1960-1979,
3 (b) 1980-1999, and (c) 2000-2012. R1 and R2 are the two regions that discussed in
4 the text. The circle with cross means the change is significant at the 95% confidence
5 level. Units: day year⁻¹.



1

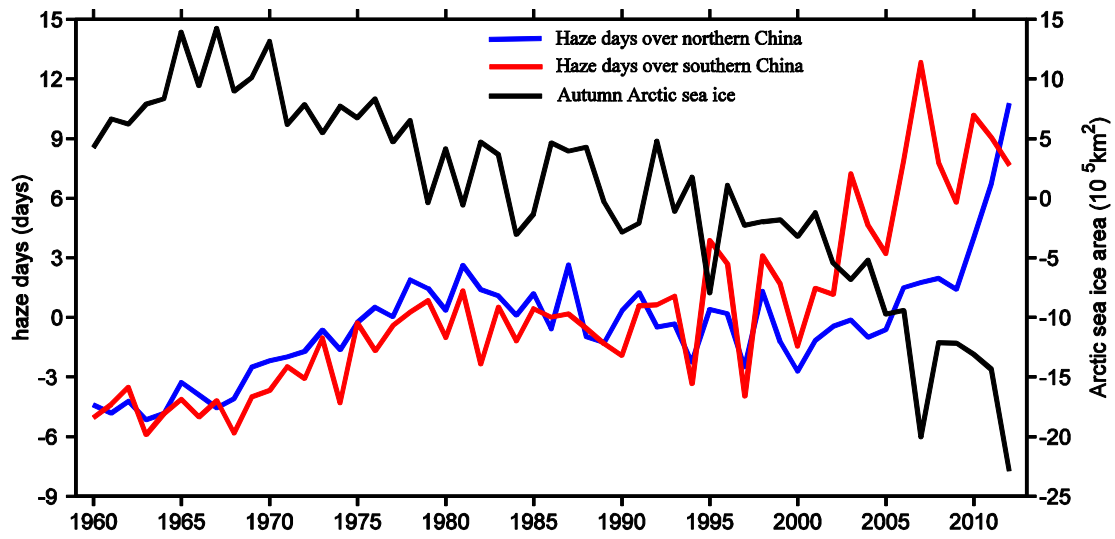
2 **Figure 2.** Time series for winter haze days (red curve), summer haze days (blue curve)

3 and total energy consumption (bar) for (a) region R1 (30°N-40°N) and (b) region R2

4 (south of 30°N) in east of 109°E of mainland China.

5

1

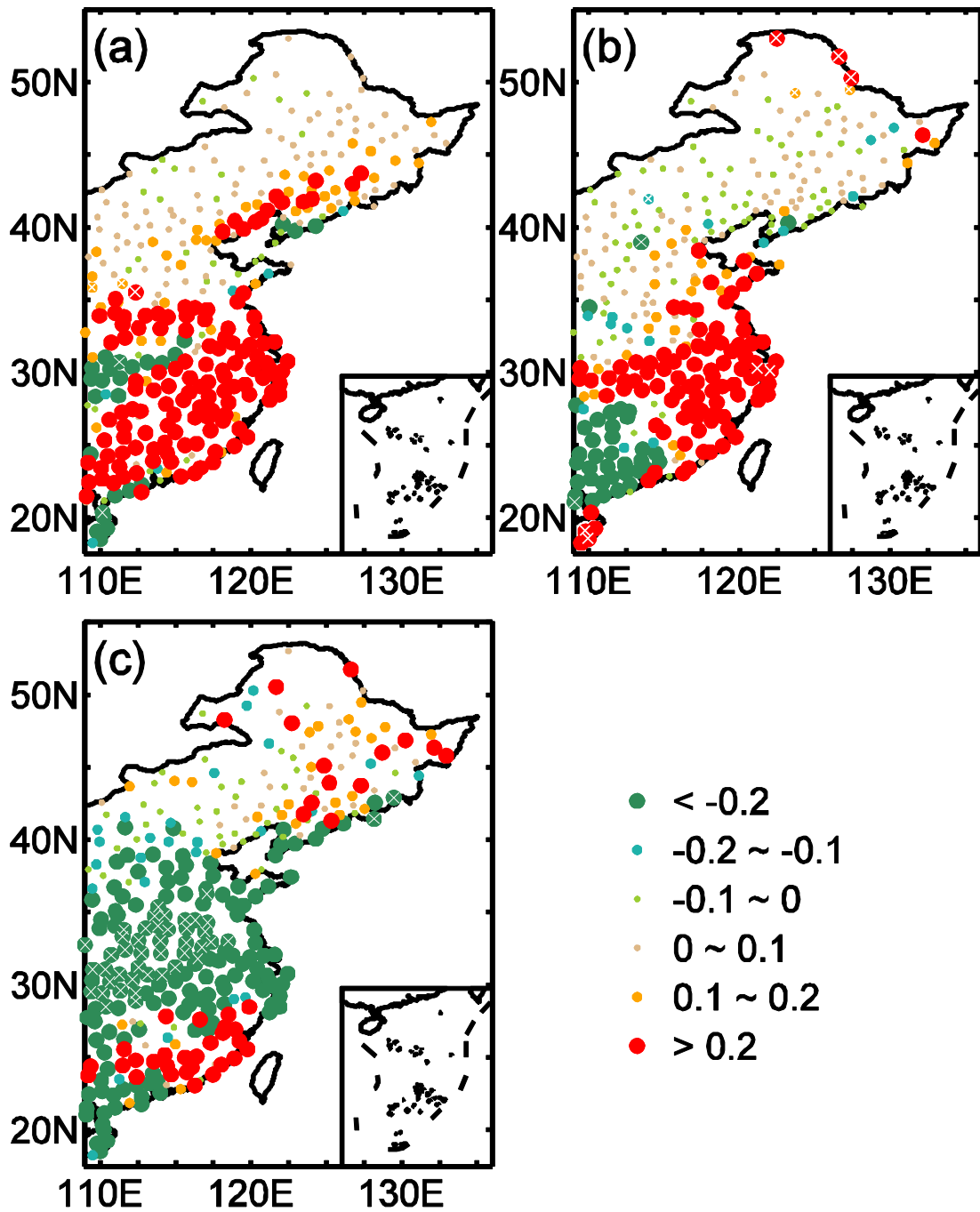


2

3 **Figure 3.** Temporal variations of winter haze days (WHD) for R1 (blue) and R2 (red),
4 and autumn Arctic sea ice extent (ASI) (black). The results of correlation coefficient
5 (CC) analysis are: $CC(\text{WHD-R1}, \text{WHD-R2})=0.75$ in 1960-2012 and 0.58 in
6 1980-2012; $CC(\text{WHD-R1}, \text{ASI})= -0.70$ in 1960-2012 and -0.60 in 1980-2012;
7 $CC(\text{WHD-R2}, \text{ASI})= -0.87$ in 1960-2012 and -0.82 in 1980-2012.

8

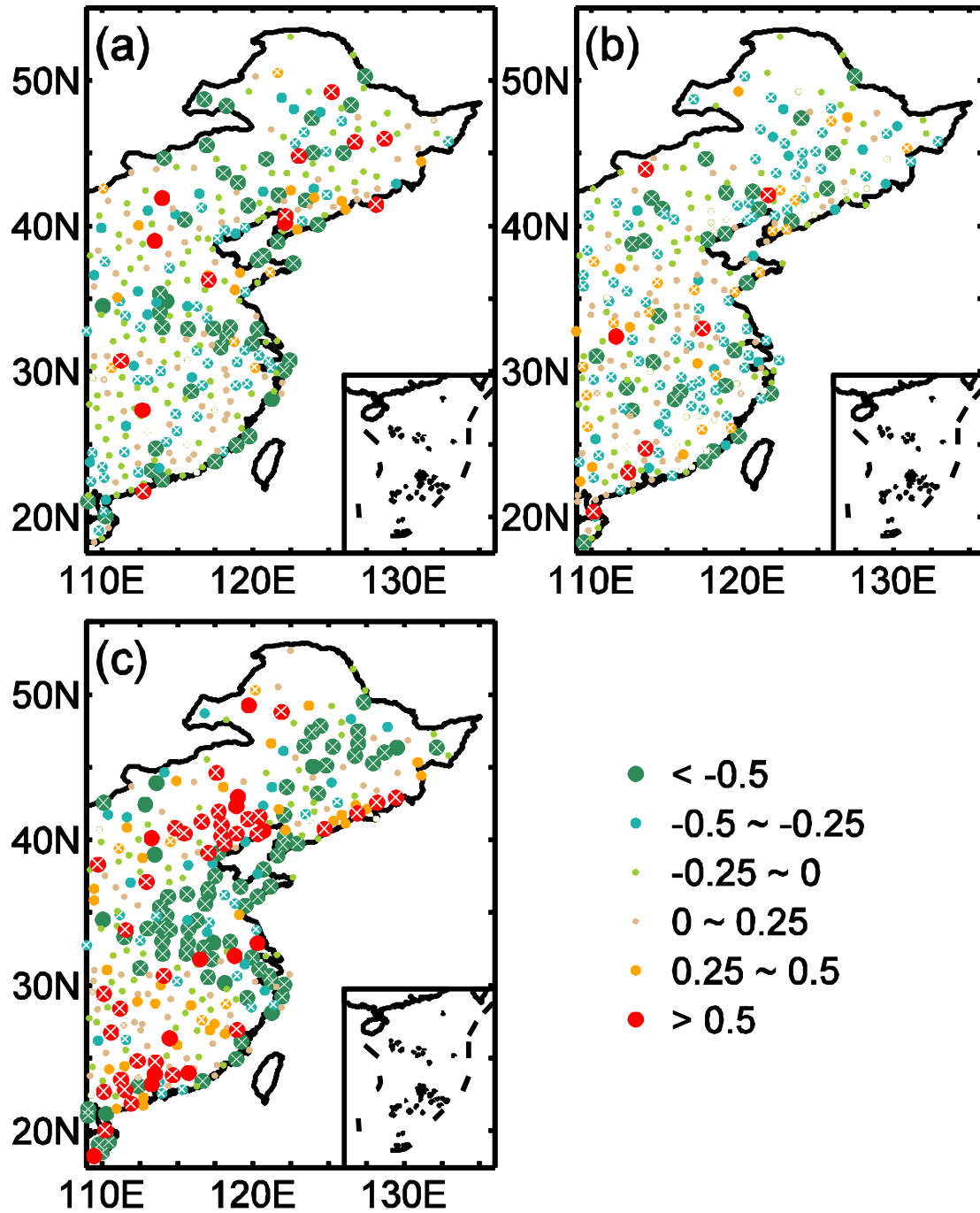
1



2

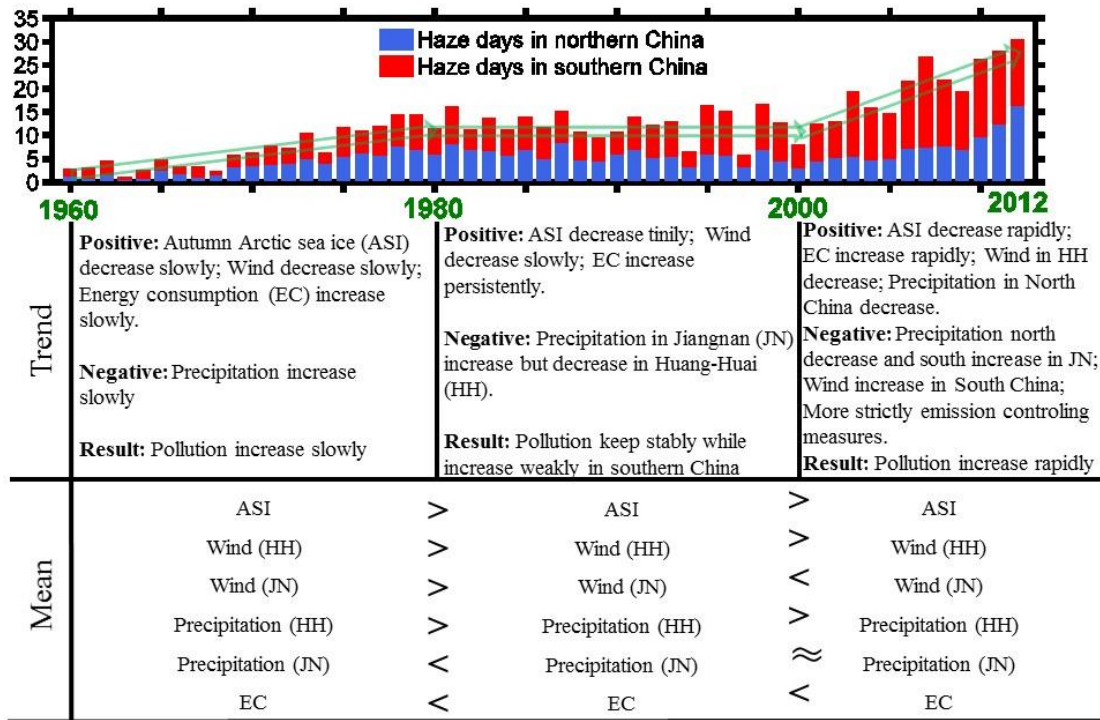
3 **Figure 4.** Linear trend of station winter precipitation (mm/day) in the three periods: (a)
4 1961-1979, (b) 1980-1999, and (c) 2000-2011. The circle with cross means the
5 change is significant at the 95% confidence level.

6

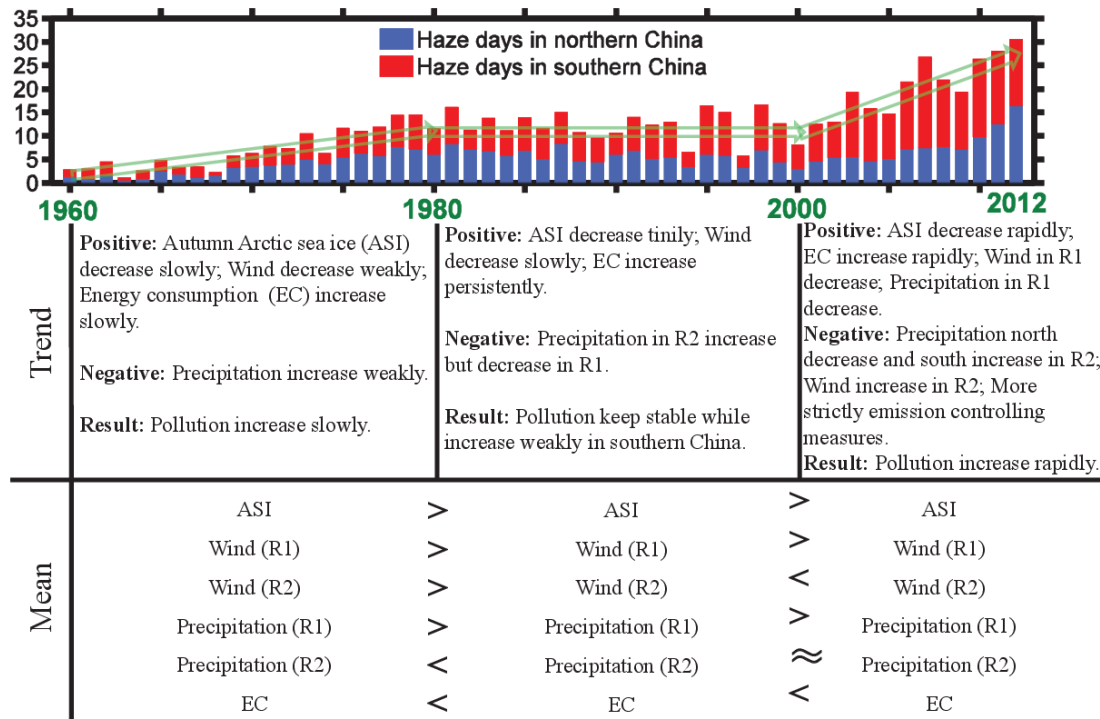


1
2
3
4

Figure 5. Same as in Figure 4 but for the winter surface wind speed (m/s).



1



2

3 **Figure 6.** Summary of the haze pollution change in eastern China and various
 4 influencing factors including climate change. The time series for winter haze days and

1 | their linear trends are plotted on the top. The signs of “>” mean “larger than”, “<”
2 | mean “less than”, and “≈” mean “equivalent”. The comparisons are implemented
3 | among these three periods, i.e. the second period is relative to the first period and the
4 | third period is relative to the second period.
5