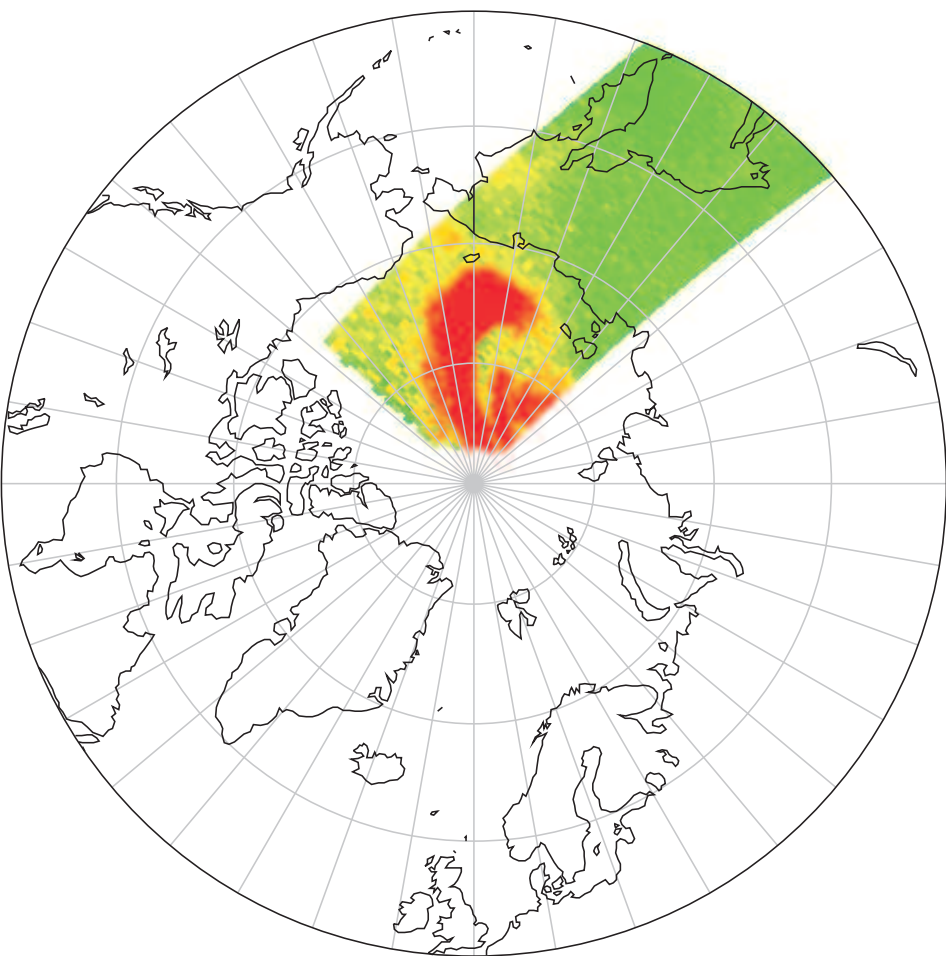


GOME2 BrO 26 March 2007 00:26 UTC



GOME2 BrO 26 March 2007 03:50/07:17 UTC

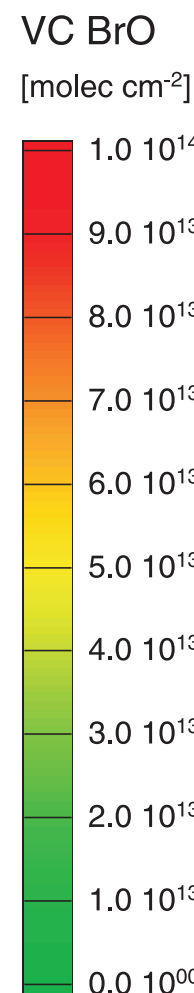
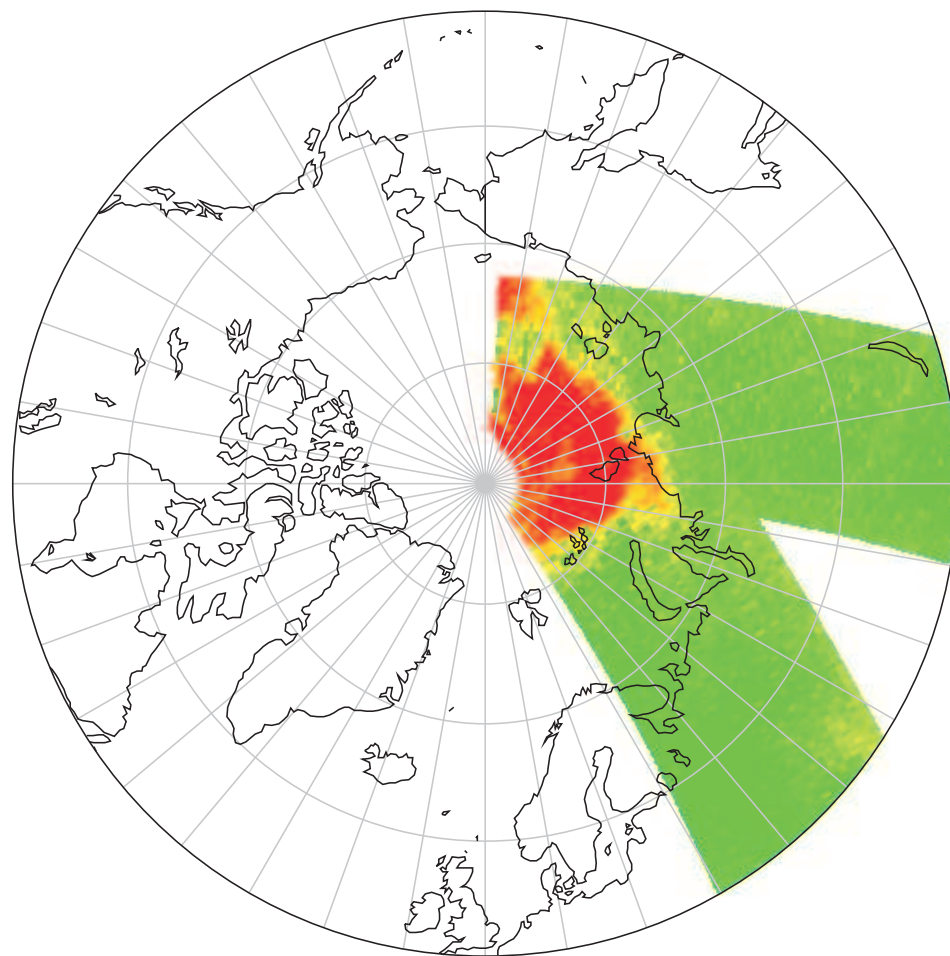


Fig. 1. The above figures show the three satellite orbits, which have been used as input to initialise the FLEXPART model calculations. For the second source region, two orbits have been combined to cover the complete BrO plume.

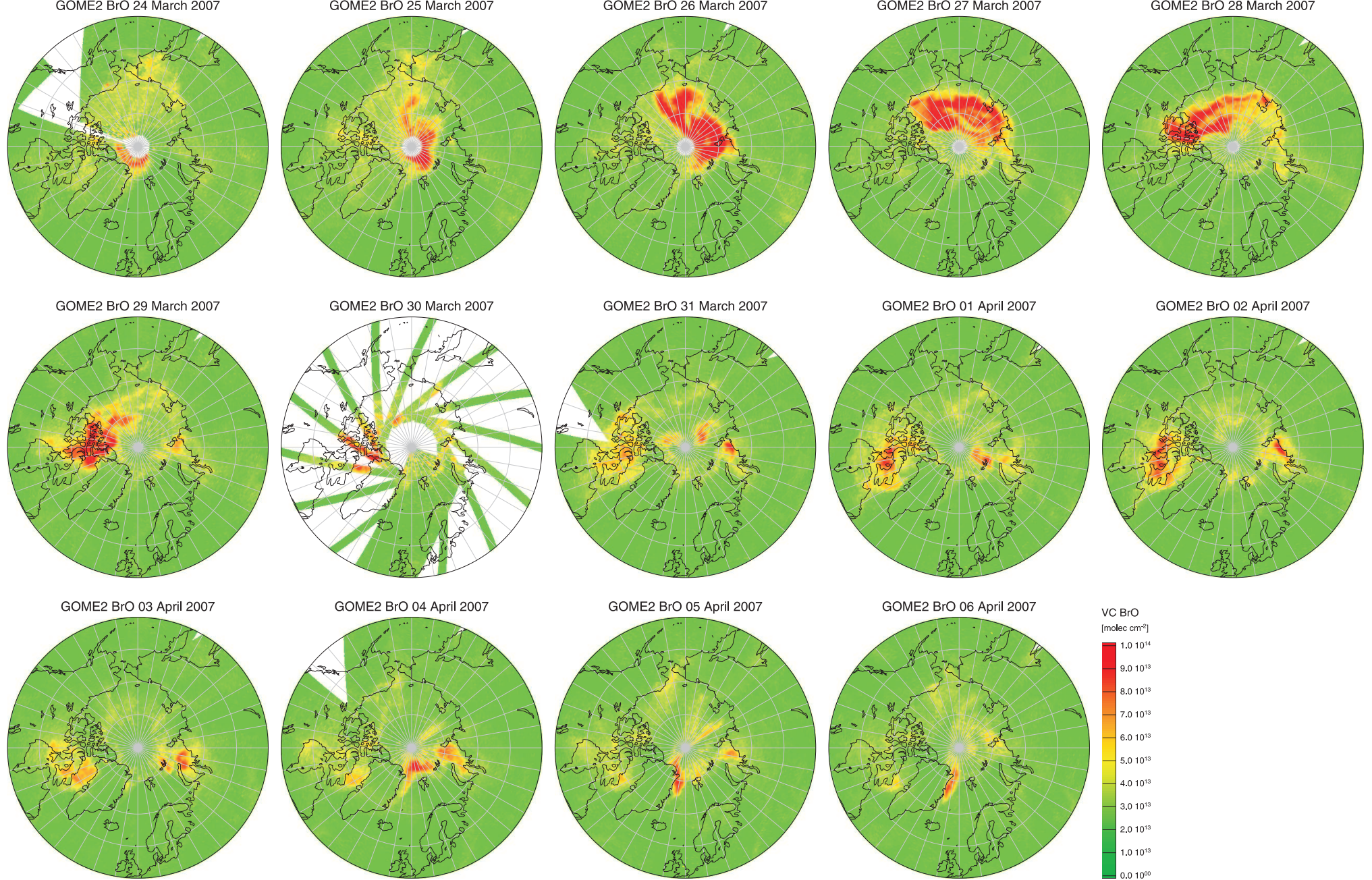


Fig. 2. Daily averaged vertical column of GOME-2 tropospheric BrO measurements. Enhanced values on 25 March in East Siberian Sea result from the last orbit at 22:44 UTC. The following orbit on 26 March at 00:26 UTC (Figure 1) was used as one input for the FLEXPART model run. On 30 March GOME-2 was operated in narrow swath mode.

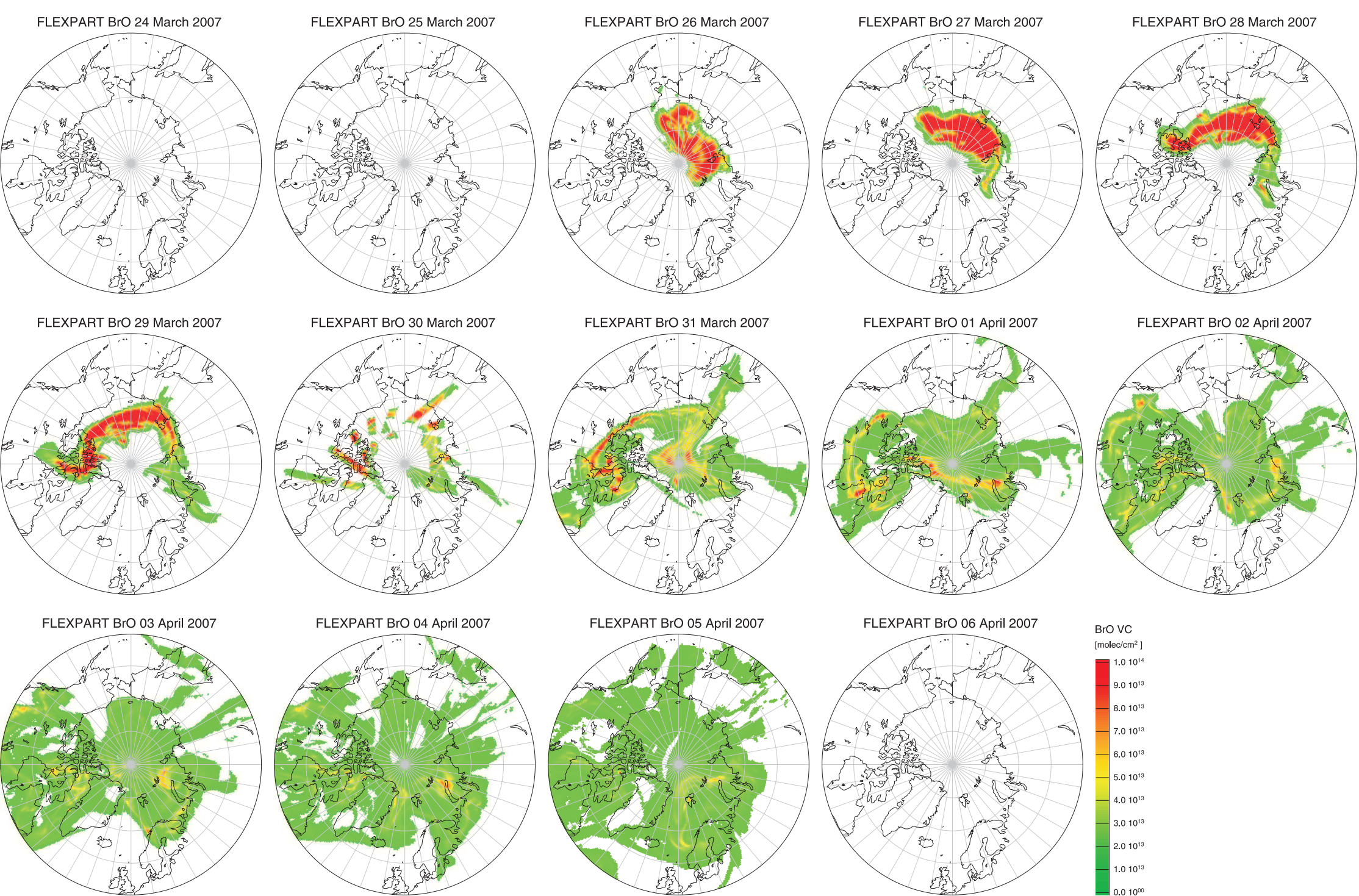


Fig. 3. Daily averaged FLEXPART model results adjusted to GOME-2 measurement data.

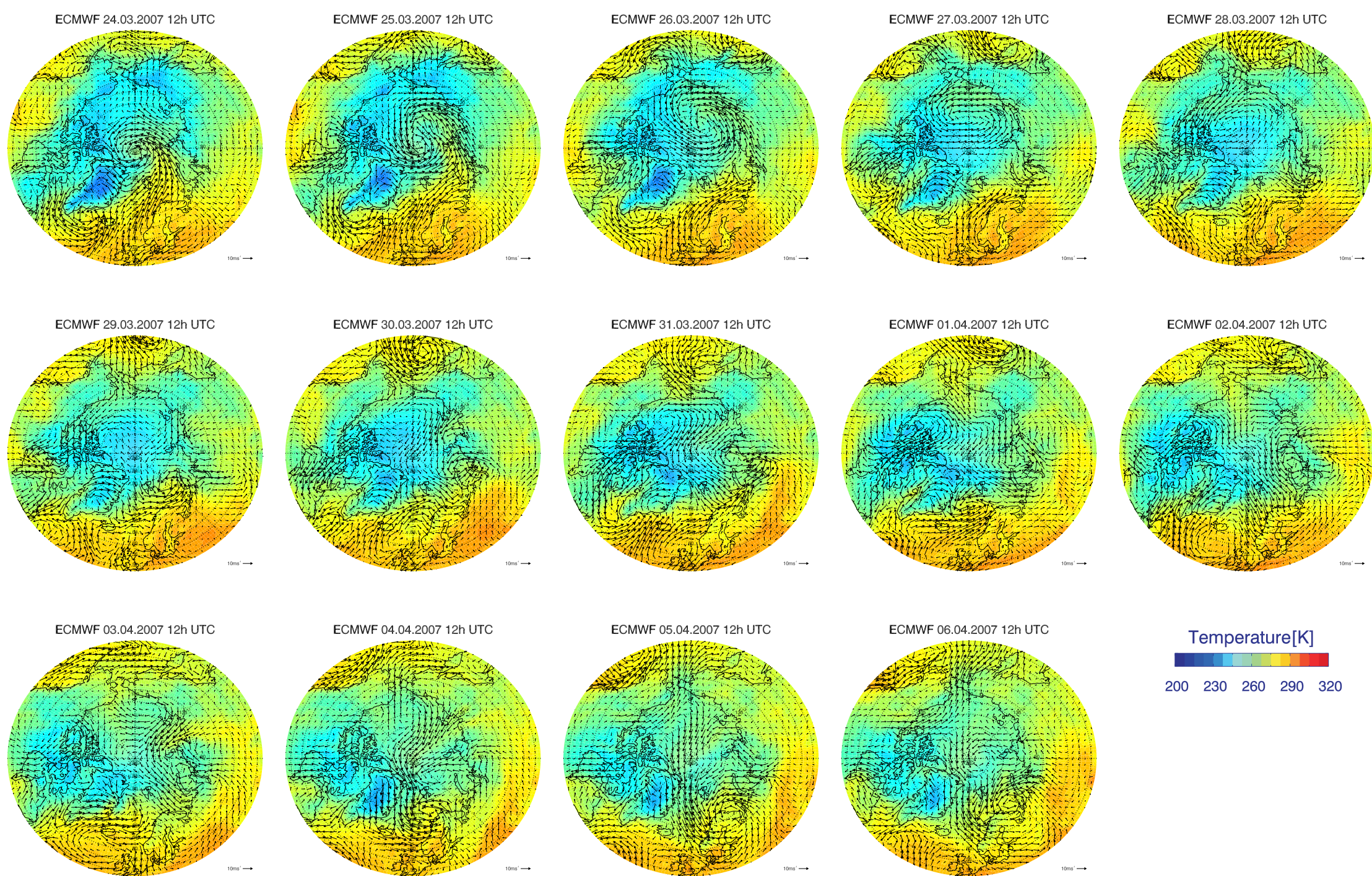
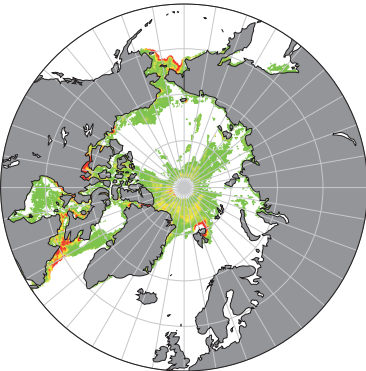
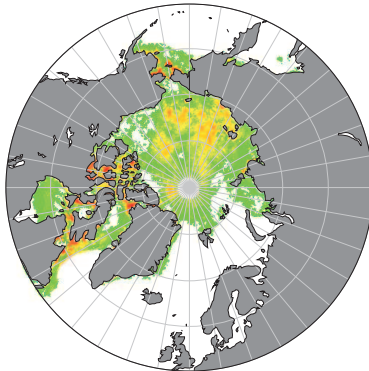


Fig. 4. ECMWF data, showing surface temperatures and wind fields during the BrO event (12h UTC)

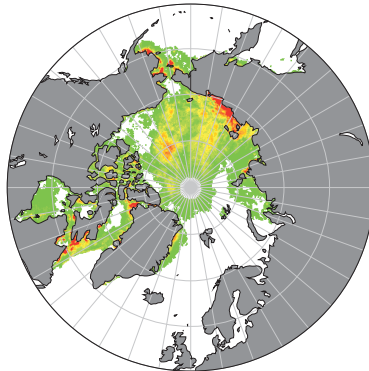
PFF 21 March 2007



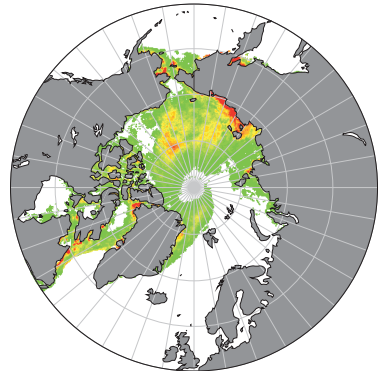
PFF 22 March 2007



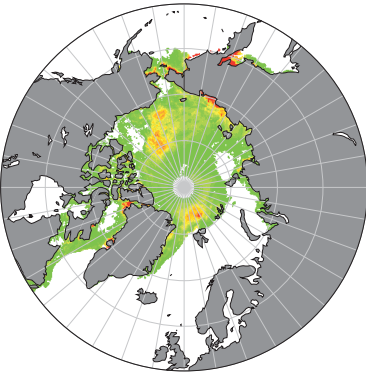
PFF 23 March 2007



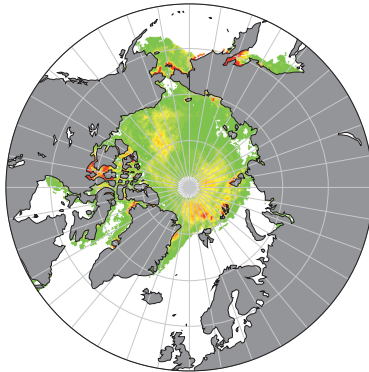
PFF 24 March 2007



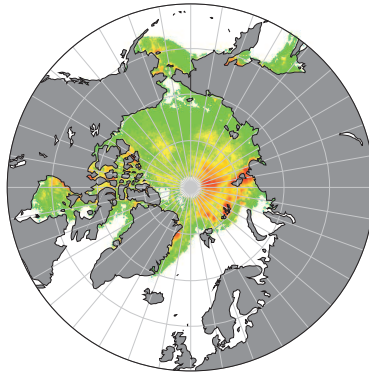
PFF 25 March 2007



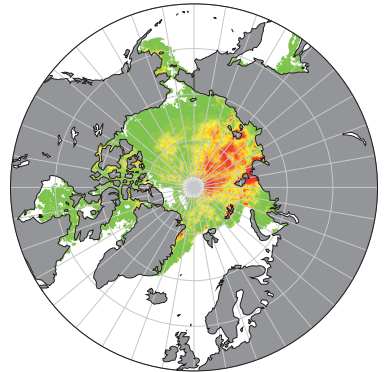
PFF 26 March 2007



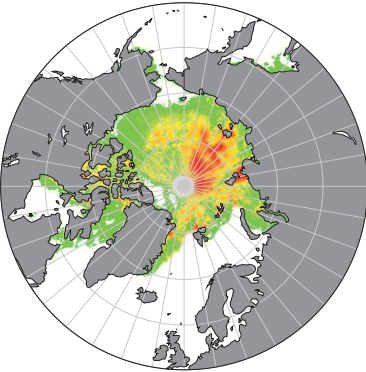
PFF 27 March 2007



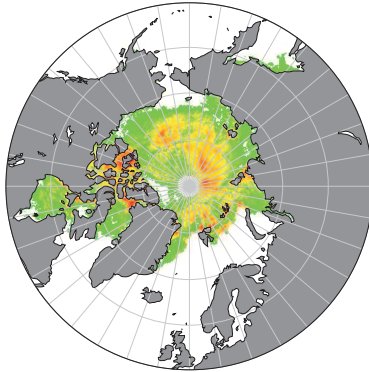
PFF 28 March 2007



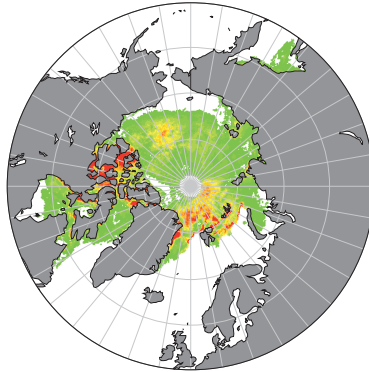
PFF 29 March 2007



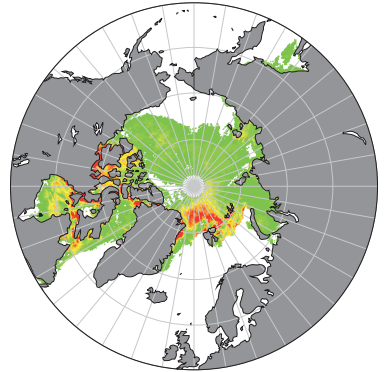
PFF 30 March 2007



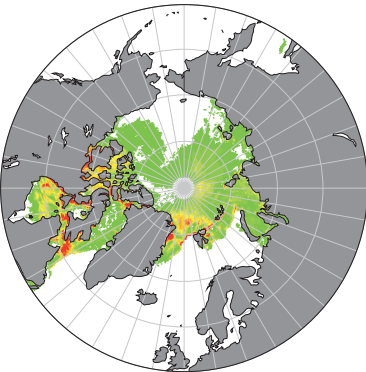
PFF 31 March 2007



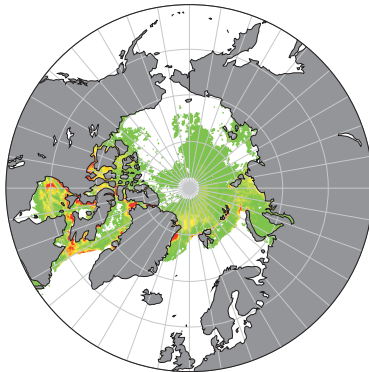
PFF 01 April 2007



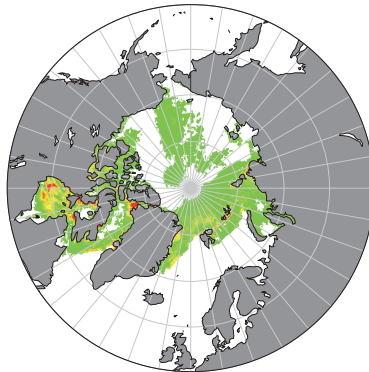
PFF 02 April 2007



PFF 03 April 2007



PFF 04 April 2007



PFF 05 April 2007

