

Interactive  
Comment

## ***Interactive comment on “Characterization of methane retrievals from the IASI space-borne sounder” by A. Razavi et al.***

**A. Razavi**

arazavi@ulb.ac.be

Received and published: 10 July 2009

This comment include the figures related to the reply to referees.

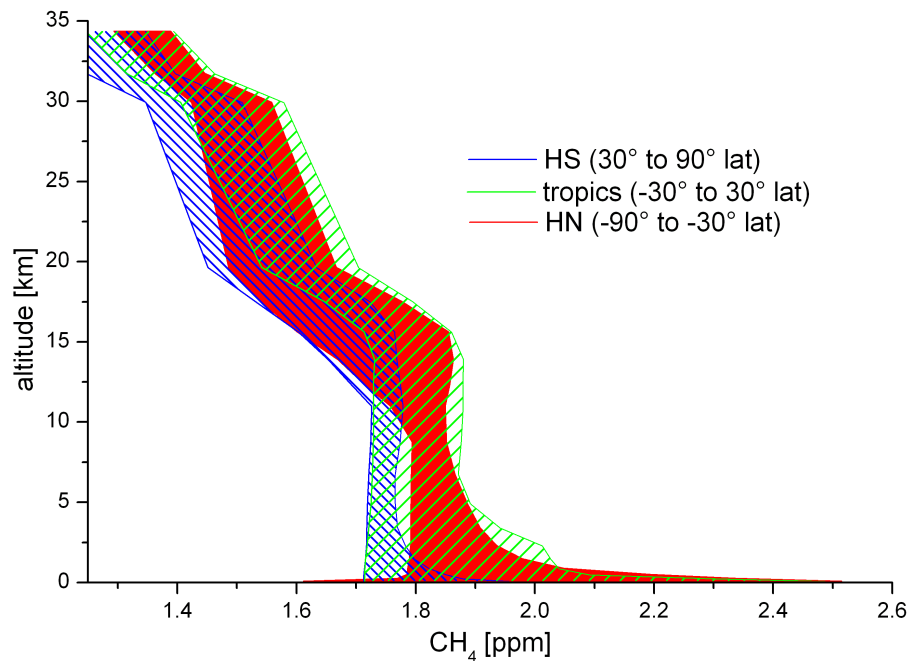
Interactive comment on Atmos. Chem. Phys. Discuss., 9, 7615, 2009.

Full Screen / Esc

Printer-friendly Version

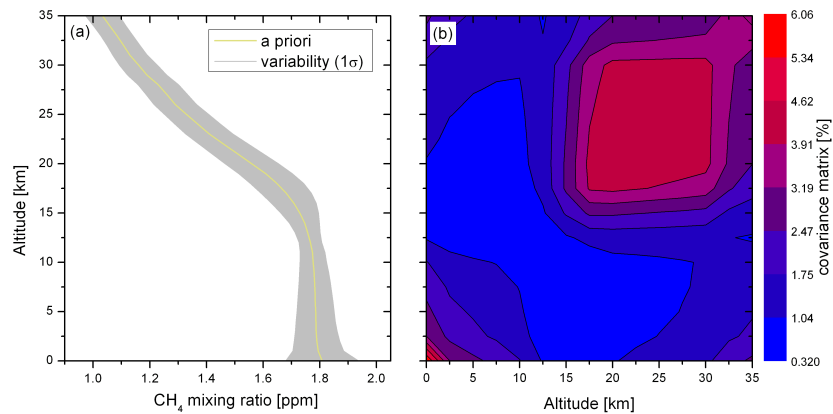
Interactive Discussion

Discussion Paper

[Interactive  
Comment](#)

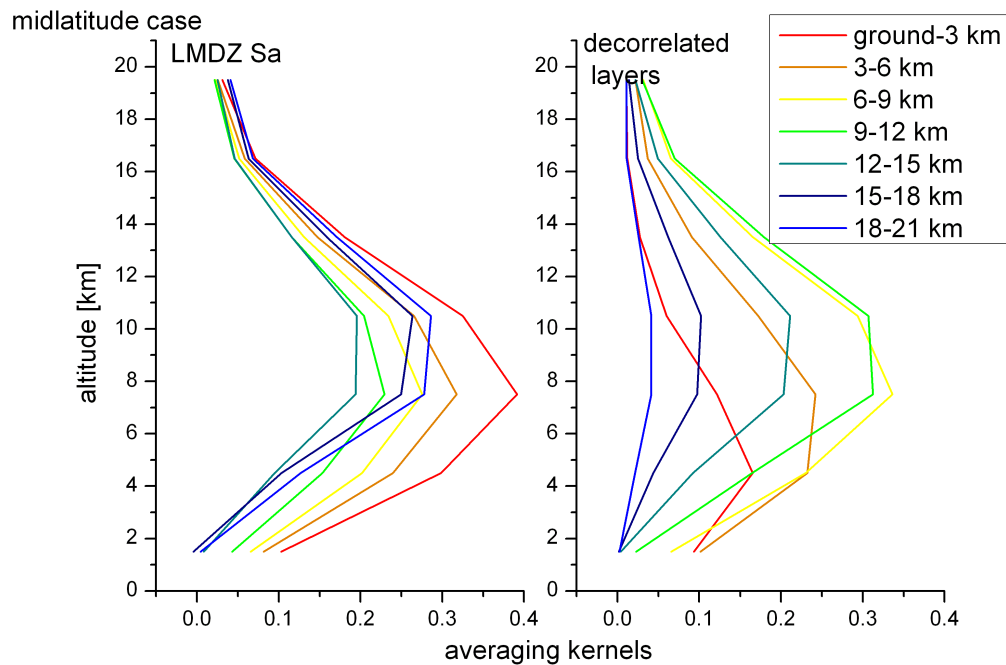
**Fig. 1.** Fig A. The 3 areas represent 4 days of LMDZ profiles used to derive the a priori. 3 latitudinal bands are differentiated: Southern Hemisphere in blue, tropics in green and Northern Hemisphere in red.

[Full Screen / Esc](#)[Printer-friendly Version](#)[Interactive Discussion](#)[Discussion Paper](#)

Interactive  
Comment

**Fig. 2.** Fig B. The matrix form of the covariance has been added to the revised manuscript.

[Full Screen / Esc](#)[Printer-friendly Version](#)[Interactive Discussion](#)[Discussion Paper](#)



**Fig. 3.** Fig C. Comparison of averaging kernels when using the LMDZ Sa matrix and when using a Sa with decorrelated layers.

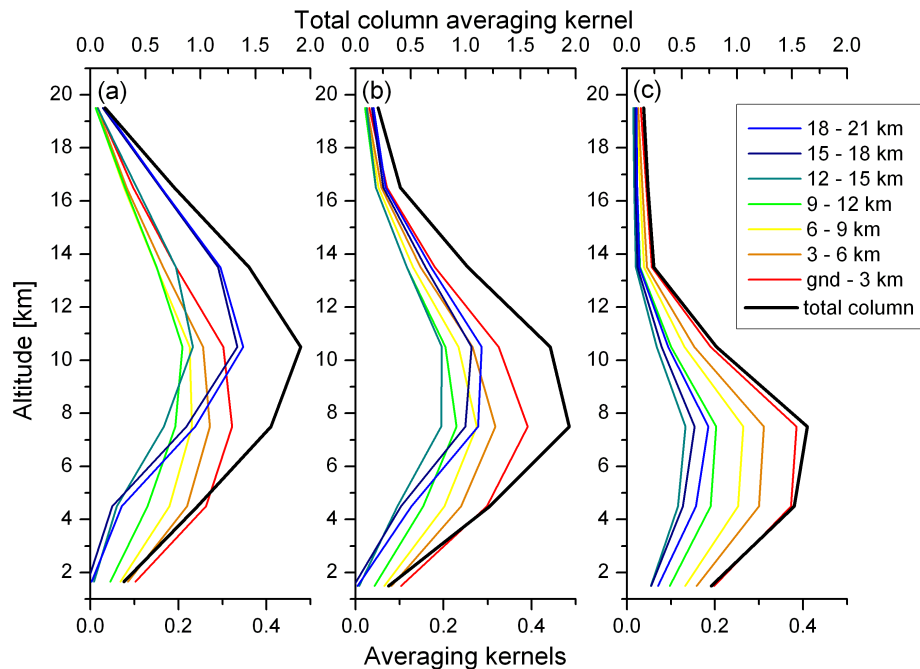
Interactive  
Comment

Full Screen / Esc

Printer-friendly Version

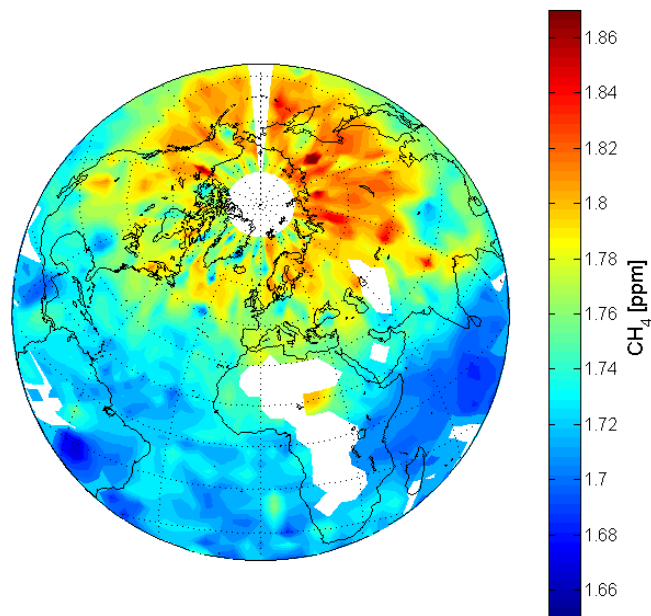
Interactive Discussion

Discussion Paper



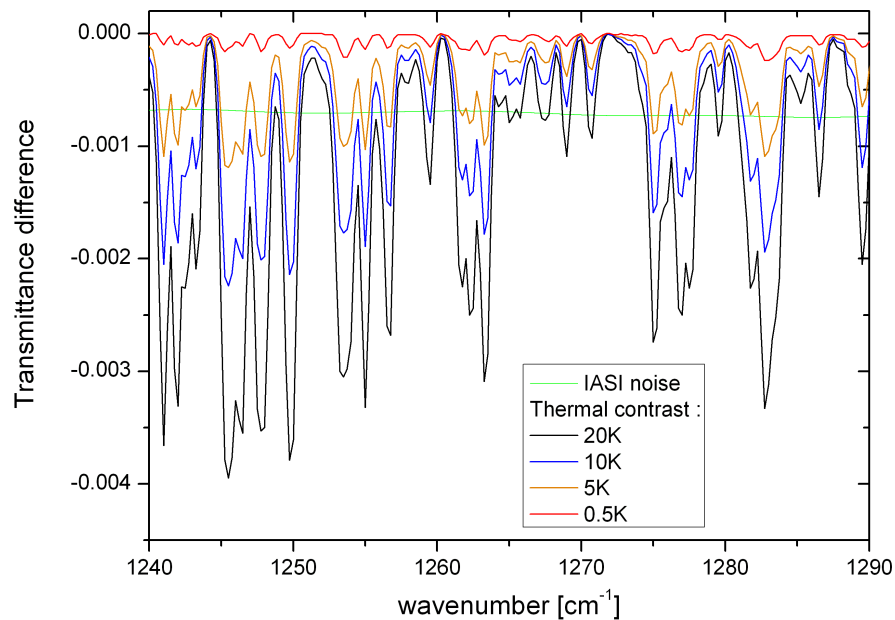
**Fig. 4.** Fig D. The total column averaging kernels are now plotted on “paper figure 5” in the revised manuscript.

[Full Screen / Esc](#)[Printer-friendly Version](#)[Interactive Discussion](#)[Discussion Paper](#)

[Interactive  
Comment](#)

**Fig. 5.** Fig E. Revised global distribution of methane illustrated on a 4x4° grid.

[Full Screen / Esc](#)[Printer-friendly Version](#)[Interactive Discussion](#)[Discussion Paper](#)



**Fig. 6.** Fig F. Simulation of the signal difference (in transmittance) with a 200 ppb methane enhancement near the Earth's surface.

Interactive  
Comment

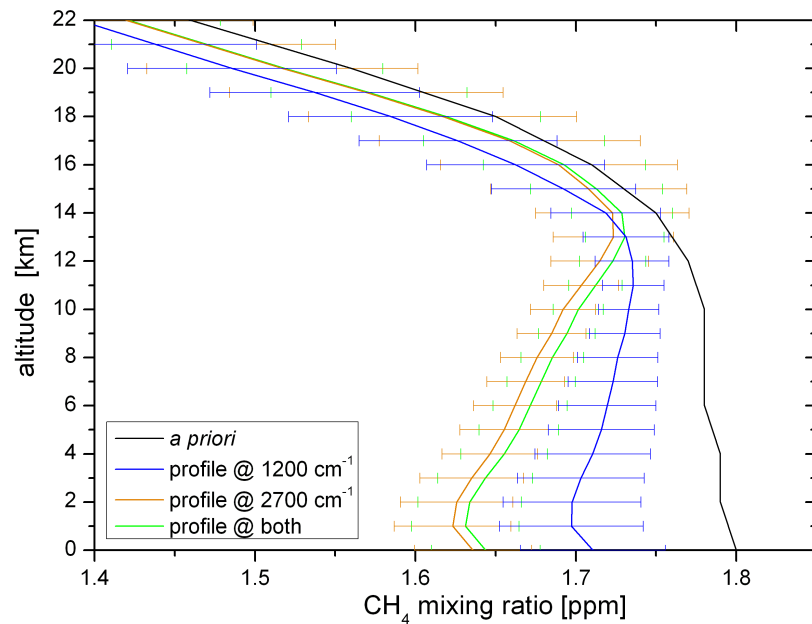
Full Screen / Esc

Printer-friendly Version

Interactive Discussion

Discussion Paper



[Interactive  
Comment](#)

**Fig. 7.** Fig G. Revised figure with methane profiles retrieved from different spectral regions.

[Full Screen / Esc](#)[Printer-friendly Version](#)[Interactive Discussion](#)[Discussion Paper](#)