

***Interactive comment on “Distribution and sources of bioaccumulative air pollutants at Mezquital Valley, Mexico, as reflected by the atmospheric plant *Tillandsia recurvata* L.” by A. Zambrano García et al.***

**G. Sosa-Iglesias**

gsosa@imp.mx

Received and published: 17 June 2009

Please find attached the revised manuscript which reinforces all the arguments accordingly to the referee's observations. The conclusion section was rewritten to express in a better way our findings without changing the spirit of the original conclusions. Old tables 7 and 8 were condensed in a new table 7 in order to clarify the results.

Please also note the Supplement to this comment.

---

C1933

Interactive comment on Atmos. Chem. Phys. Discuss., 9, 5809, 2009.

C1934

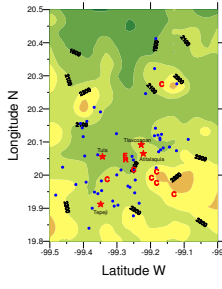


Fig. 1.

C1935

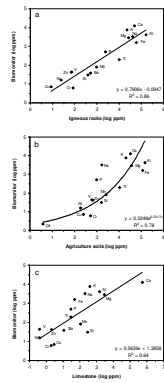


Fig. 2.

C1936

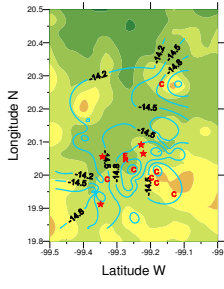


Fig. 3.

C1937

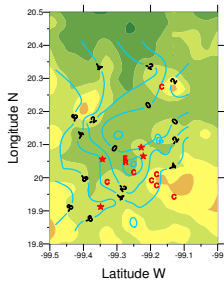


Fig. 4.

C1938

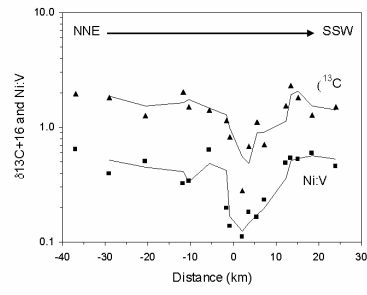


Fig. 5.

C1939

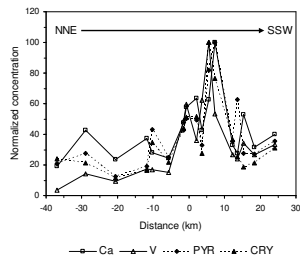


Fig. 6.

C1940

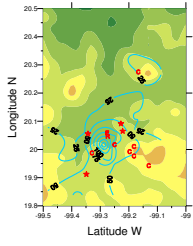


Fig. 7.

C1941

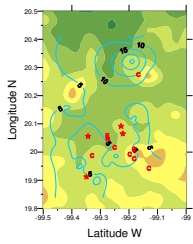


Fig. 8.

C1942

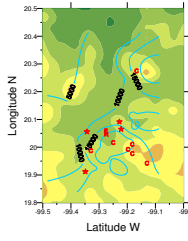


Fig. 9.

C1943

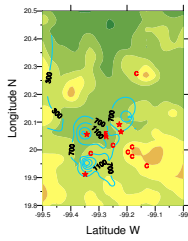


Fig. 10.

C1944

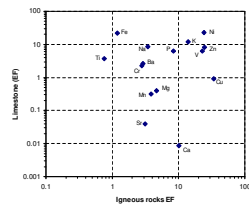


Fig. 11.

C1945

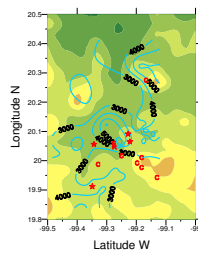
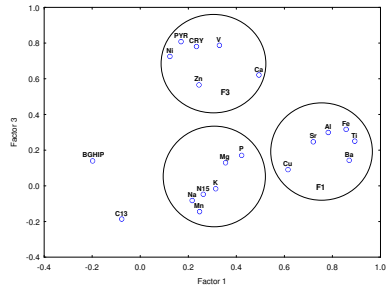


Fig. 12.

C1946



**Fig. 13.**

C1947