

This discussion paper is/has been under review for the journal Atmospheric Chemistry and Physics (ACP). Please refer to the corresponding final paper in ACP if available.

Factors influencing the contribution of ion-induced nucleation in a boreal forest, Finland

S. Gagné¹, T. Nieminen¹, T. Kurtén^{1,2}, H. E. Manninen¹, T. Petäjä¹, L. Laakso^{1,3}, V.-M. Kerminen^{1,4}, M. Boy¹, and M. Kulmala^{1,5}

¹Department of Physics, P.O. Box 64, 00014 University of Helsinki, Finland

²Dept. of Chemistry, University of Copenhagen, 2100, Denmark

³School of Physical and Chemical Sciences, North-West University, Private Bag x6001, Potchefstroom 2520, South Africa

⁴Finnish Meteorological Institute, P.O. Box 503, 00101 Helsinki, Finland

⁵Department of Applied Environmental Science, Stockholm University, 10691 Stockholm, Sweden

Received: 11 November 2009 – Accepted: 18 November 2009 – Published: 1 December 2009

Correspondence to: S. Gagné (stephanie.gagne@helsinki.fi)

Published by Copernicus Publications on behalf of the European Geosciences Union.

Factors influencing the contribution of ion-induced nucleation

S. Gagné et al.

Title Page

Abstract

Introduction

Conclusions

References

Tables

Figures

⏪

⏩

◀

▶

Back

Close

Full Screen / Esc

Printer-friendly Version

Interactive Discussion

Abstract

We present the longest series of measurements so far (2 years and 7 months) made with an Ion-DMPS at the SMEAR II measurement station in Hyytiälä, Southern Finland. We show that the classification of overcharged (implying some participation of ion-induced nucleation) and undercharged (implying no or very little participation of ion-induced nucleation) days based on Ion-DMPS measurements agrees with the fraction of ion-induced nucleation based on NAIS measurements. We analyzed the influence of different parameters on the contribution of ion-induced nucleation to the total particle formation rate. We found that the fraction of ion-induced nucleation is typically higher on warmer, drier and sunnier days compared to colder days with less solar radiation and a higher relative humidity. Also, we observed that bigger concentrations of new particles were produced on days with a smaller fraction of ion-induced nucleation. Moreover, sulfuric acid concentrations were smaller for days with a bigger fraction of ion-induced nucleation. Finally, we propose tentative explanations on how these different parameters influence the different nucleation mechanisms, and show that the different mechanisms seem to take place at the same time during an event. The relative contribution of the different mechanisms seems to vary depending on the surrounding conditions.

1 Introduction

Atmospheric aerosol particles influence the Earth's radiation balance and hydrological cycle through both direct and indirect effects. The direct effect is due to scattering and absorption of solar radiation by atmospheric aerosol particles (e.g., Myhre et al., 2009) whereas the indirect effects refer to aerosol-related changes in cloud albedo, lifetime and precipitation patterns (e.g., Twomey, 1991; Lohmann and Feichter, 2005; Stevens and Feingold, 2009). The population of aerosol particles capable of affecting cloud properties is called cloud condensation nuclei (CCN). In the atmosphere, CCN

Factors influencing the contribution of ion-induced nucleation

S. Gagné et al.

Title Page

Abstract

Introduction

Conclusions

References

Tables

Figures

⏪

⏩

◀

▶

Back

Close

Full Screen / Esc

Printer-friendly Version

Interactive Discussion

originate from both primary particle emissions and secondary atmospheric production, i.e. the formation of new aerosol particles by nucleation and their subsequent growth to CCN sizes (Andreae and Rosenfeld, 2008). Globally, the contribution of nucleated particles to CCN populations is estimated to be around 41% of which 11% comes from the boundary layer (Carslaw et al., 2009; Spracklen et al., 2008).

Atmospheric new particle formation (NPF) and growth has been observed frequently and in many environments (see Kulmala et al., 2004; Kulmala and Kerminen, 2008; and references therein). The exact mechanisms for nucleation and their relative contribution to new particle formation are not well known. Many mechanisms have been proposed (Kulmala, 2003; Yu and Turco, 2001) amongst others: homogeneous (binary and ternary) and heterogeneous (neutral and ion-induced) nucleation. The contribution of ion-induced nucleation – nucleation around a charged kernel – to particle formation is not clearly known: Iida et al. (2008) reported a contribution of less than 1% in a heavily polluted environment in Mexico city whereas Gagné et al. (2008) reported a median contribution of around 6% in a relatively clean background environment in Hyytiälä, Finland. Studies including the ion–ion recombination contribution to neutral clusters include that by Yu and Turco, 2008 who report almost 100% of ion-mediated nucleation in Hyytiälä whereas Kulmala et al. (2007) and Manninen et al. (2009a) both reported values around 10% for the same location. The results of Iida et al. (2006) and Gagné et al. (2008), based on similar measurement and analysis methods, indicate that the contribution of ion-induced nucleation on new particle formation varies from place to place and day to day.

Due to clearly documented varying contribution of ion-induced nucleation on NPF (Laakso et al., 2007a, 2008; Gagné et al., 2008) and an extensive set of measurement, Hyytiälä is a good place to investigate reasons behind these variations. The Ion-DMPS (Ion Differential Mobility Particle Sizer, Laakso et al., 2007) gives information about the charging state and therefore the contribution of ion-induced and neutral nucleation. It has been operating at the SMEAR II measurement station (Vesala et al., 1998; Hari and Kulmala, 2005), in Hyytiälä, since April 2005 with 246 nucleation

Factors influencing the contribution of ion-induced nucleation

S. Gagné et al.

Title Page

Abstract

Introduction

Conclusions

References

Tables

Figures

⏪

⏩

◀

▶

Back

Close

Full Screen / Esc

Printer-friendly Version

Interactive Discussion

events observed until the end of 2007. The Ion-DMPS measures the charging state of a particle population. Comparing the neutralized and the ambient size distributions reveals whether a nucleation event is overcharged (higher concentrations in the ambient sample than in the neutralized sample) or undercharged (higher concentrations in the neutralized sample than in the ambient sample). The charging state (over- or undercharging) gives us information about the participation of ion-induced nucleation in new particle formation and growth (Kerminen et al., 2007). Overcharged new particle formation events suggest (at least) some contribution of ion-induced nucleation and undercharged events suggest no or very little participation of ion-induced nucleation in the new particle formation process.

In this study, we aim to shed new light on factors affecting the contribution of ion-induced nucleation to the total nucleation rate. We start our analysis by demonstrating that the charging state, as measured by the Ion-DMPS, really can distinguish between particle formation events with a low and a higher contribution by ion-induced nucleation (calculations according to Kulmala et al., 2007a). After this we present the longest time series of particle charging state measurements conducted so far and aim to address the following two questions: 1) how is the contribution of ion-induced nucleation dependent on the season, various meteorological parameters, concentration of electrically charged nanoparticles (i.e. air ions), and the concentration and temporal evolution of the gaseous sulfuric acid concentration? 2) are the different nucleation events characterized by either ion-induced or neutral nucleation, or do these two nucleation pathways occur simultaneously? Finally, we suggest a hypothesis to explain the reasons behind the variation in the proportion of ion-induced nucleation from one day to another.

Factors influencing the contribution of ion-induced nucleation

S. Gagné et al.

Title Page

Abstract

Introduction

Conclusions

References

Tables

Figures

⏪

⏩

◀

▶

Back

Close

Full Screen / Esc

Printer-friendly Version

Interactive Discussion

2 Materials and methods

2.1 Measurements

This work is based on Ion-DMPS measurements from the SMEAR II station, between April 2005 and December 2007. The station is situated in Hyytiälä, southern Finland (61°51' N, 24°17' E, 181 m a.s.l.), in a Scots pine boreal forest (Hari and Kulmala, 2005). In this study, we use data from other parameters measured at the same station at various heights in a measurement tower, or at ground level.

2.1.1 Ion-DMPS

The Ion-DMPS (Mäkelä et al., 2003; Laakso et al., 2007a) is based on a Differential Mobility Particle Sizer (DMPS, Hoppel, 1987; Aalto et al., 2004) whose bi-polar charger (Ni-63, 370 MBq) can be switched on and off and whose Differential Mobility Analyzer (DMA, Winklmayer et al., 1991) can classify particles of positive and negative polarity according to their electrical mobility. The Ion-DMPS can thus work in four modes: it can measure either ambient air ions (neutralizer off) or neutralized air ions (neutralizer on, at electrical charge steady-state), and they both can be measured in either positive or negative mode by changing the polarity of the potential difference applied in the DMA. Comparing the ambient and neutralized mode for each polarity gives us the charging state (similar measurements were done by Iida et al., 2006, 2008; Vana et al., 2006). The charging state is defined as the ratio of ambient charged particle concentration to its corresponding neutralized (charge steady-state) concentration. When the charging state is larger than one, i.e. when there are more charged particles in the ambient air than there are at the steady-state, the particle population is said to be overcharged. Oppositely, when the charging state is smaller than one, i.e. when there are fewer charged particles in the ambient air than there are at the steady-state, the particle population is said to be undercharged. Alternatively, if the charging state stays around one, the particle population is at the steady-state charging. The particle formation

Factors influencing the contribution of ion-induced nucleation

S. Gagné et al.

Title Page

Abstract

Introduction

Conclusions

References

Tables

Figures

⏪

⏩

◀

▶

Back

Close

Full Screen / Esc

Printer-friendly Version

Interactive Discussion

and growth events are classified as overcharged, steady-state and undercharged days independently for each polarity. In this study, we used overcharged and undercharged categories to investigate the reasons behind this difference.

2.1.2 BSMA

5 The Balanced Scanning Mobility Analyzer (BSMA, Tammet, 2006) measures size distribution of naturally charged particles between mobilities of 0.032 to $3.2 \text{ cm}^2 \text{ V}^{-1} \text{ s}^{-1}$ which correspond to a diameter range of about 0.42 to 7.5 nm using the algorithm described by Tammet (1995, 1998). The BSMA consists of two aspiration-type plate DMAs, one for each polarity, with a common collector electrode. Size segregation is
10 obtained by discharging a capacitor through the repelling electrode and concentration by monitoring the electrometer current in the balanced bridge circuit. The sheath air and the sample air are aspirated through parallel plates connected to a high voltage or grounded. The sample and the offset mode alternate by applying a potential difference on the sampling plates. The BSMA has been measuring in Hyytiälä since March 2003
15 and samples air at about 2 m above the ground level at a flow rate of about 22 l s^{-1} . In this paper, the BSMA is used to retrieve concentration of small and intermediate air ions (0.4 – 1.8 and 1.8 – 7.5 nm , respectively, in Tammet diameters).

2.1.3 DMPS

20 The Twin-Differential Mobility Particle Sizer (Twin-DMPS, Aalto et al., 2004) is a well established instrument in aerosol research. It measures the size distribution of aerosol particles in time. It is composed of two DMPSs, one for smaller sizes and another for larger sizes. The inlet and the neutralizer are common to both systems. The smaller system measures particles of smaller diameters with a Hauke type DMA (10.9 cm , Winkelmayr et al., 1991) and a TSI 3025 CPC (Stolzenburg and McMurry, 1991). The other
25 one measures particles of larger diameters with a 28 cm Hauke-type DMA and a TSI 3010 CPC (Mertes et al., 1995). The overall size range is between 3 and 1000 nm and

Factors influencing the contribution of ion-induced nucleation

S. Gagné et al.

Title Page

Abstract

Introduction

Conclusions

References

Tables

Figures

⏪

⏩

◀

▶

Back

Close

Full Screen / Esc

Printer-friendly Version

Interactive Discussion



the measurements are taken at about 8 m above the ground level. The total (charged and neutral) particle concentration is then calculated assuming charge steady-state after the air sample has been neutralized. In this paper, the DMPS data is used for its total particle concentration.

2.1.4 NAIS

The NAIS (Neutral cluster and Air Ion Spectrometer, Kulmala et al., 2007; Manninen et al., 2009b) is an instrument based on the AIS (Air Ion Spectrometer, Mirme et al., 2007) and the airborne version of the NAIS is described by Mirme et al. (2009). It measures the mobility distribution of both negatively and positively charged particles between 3.16 and 0.0013 cm² V⁻¹ s⁻¹ (0.8 and 42 nm, in Millikan diameter), and neutral particles between ~2.0 and 42 nm in particle size. It consists of two cylindrical DMAs with 21 insulated electrometers each. This allows to the simultaneous measurement of 21 channels of mobility and two polarities, saving time by not having to scan the mobility. It alternates between the charged and neutral modes. In Hyytiälä, this instrument samples at about 2 m above the ground level.

2.1.5 Meteorological data

The meteorological data such as temperature, relative humidity and water vapor concentration are measured in a measurement tower, located at approximately 50 m away from the particle instruments (Vesala et al., 1998). The data is taken primarily from sensors at 4.2 m above the ground and from higher levels (8.4, 16.8, 33.6, 50.4 and 67.2 m, in priority order) when the main level's data is unavailable.

2.1.6 Radon ionization and external radiation

The ion pair production rate is examined based on the direct method described in an earlier study by Laakso et al., 2004. The same instruments were used and the same calculation technique was applied. The ion pair production rate caused by ²²²Rn is

Factors influencing the contribution of ion-induced nucleation

S. Gagné et al.

Title Page

Abstract

Introduction

Conclusions

References

Tables

Figures

⏪

⏩

◀

▶

Back

Close

Full Screen / Esc

Printer-friendly Version

Interactive Discussion



Factors influencing the contribution of ion-induced nucleation

S. Gagné et al.

Title Page

Abstract

Introduction

Conclusions

References

Tables

Figures

⏪

⏩

◀

▶

Back

Close

Full Screen / Esc

Printer-friendly Version

Interactive Discussion

calculated by considering the total energy of three alpha and two beta particles, and assuming that the average ion pair production energy is 34 eV. The air is monitored continuously by counting emission of particle-bound radon daughter nuclides collected on fiber-glass filters. The proportion of ^{222}Rn and ^{220}Rn can be distinguished using their half-life differences (Paatero et al., 1998). The uncertainty of the ion pair production rate varies from 3 to 20% depending on the radon activity concentration.

External radiations, consisting mainly of cosmic radiation and gamma radiation were measured with a scintillation gamma spectrometer. The spectrometer was located at 1.5 m above the ground. The dose rate is calculated using a calibration factor for an integrated energy spectrum between 100 and 3000 keV. The ion pair production rate is obtained by assuming that the average ion pair production energy is 34 eV. The uncertainty on the ionization rate is about $\pm 10\%$. The external radiation is strongly affected by snow cover, indicating that the radiation coming from the ground is playing an important role. It was found that the snow cover and the water content are both influencing the ion pair production rate due to the external radiation, especially if the water is located in the upper layer (Hatakka et al., 1998).

2.2 Data analysis

2.2.1 Data classification

All the days between the 1 April 2005 and the 31 December 2007 when the Ion-DMPS was measuring were classified and used in this study. Each day was classified as a NPF event day, undefined day, not an event day or bad/no data, loosely based on the classification of Dal Maso et al. (2005). Of these days, only the NPF event days were kept for analysis. The NPF days were subsequently classified into three sub-categories: overcharged, undercharged and steady-state as described in Gagné et al. (2008). From a total of 246 NPF event days, 164 were found to be overcharged and 42 undercharged. In comparison, the DMPS-based classification by the method described by Dal Maso et al. (2005) gave the following numbers: for overcharged

Factors influencing the contribution of ion-induced nucleation

S. Gagné et al.

Title Page

Abstract

Introduction

Conclusions

References

Tables

Figures

⏪

⏩

◀

▶

Back

Close

Full Screen / Esc

Printer-friendly Version

Interactive Discussion

days, 64 class I events, 42 class II events, 45 were undefined according to the DMPS, and 2 were not seen as events; for undercharged days, 24 were class I events, 6 were in class II events, 10 undefined, and 1 was not classified as an event. On two days, one in each category, the DMPS was not working. Since the classification is given for both the positive and negative polarity the classification for one given day was defined as follow: if both the negative and positive polarities were in agreement the day was classified as overcharged or undercharged. If they were different, the event day was discarded. Thus, 40 event days were discarded because the class wasn't clear (11 days) or because the polarities were not classified in the same category (29 days of which most had a weak overcharge on one polarity and steady-state in the other). Aerosol populations that were classified as steady-state were considered undercharged in this study since the participation of ion-induced nucleation was at steady-state and thus had a low ion-induced fraction. In the undercharged class, 25 had both polarities at steady-state, and 7 had one of the polarities at steady-state.

2.2.2 Condensation sink, growth rate, and ion-induced fraction from the NAIS

The condensation sink (CS) describes the removal rate of vapor molecules onto the pre-existing aerosol particles. It was calculated according to Kulmala et al. (2001) based on the aerosol size distribution in the 3–1000 nm size range measured with the DMPS.

The ion-induced fraction of the particle formation was calculated based on measurement data from the NAIS and the BSMA. The BSMA measures the naturally charged fraction of the aerosol, while the NAIS measures, in addition, the total particle concentration. The formation rate of 2 nm particles was calculated based on the method described in Kulmala et al. (2007a). The total formation rate J_2 is:

$$J_2 = \frac{dN_{2-3}}{dt} + \text{CoagS} \cdot N_{2-3} + \frac{\text{GR}}{1 \text{ nm}} \cdot N_{2-3} \quad (1)$$

where N_{2-3} is the concentration of particles between 2 and 3 nm, CoagS is the coagulation sink for 2 nm particles and GR is the growth rate of the particles in the initial steps of the particle formation. In calculating the formation rate of charged particles, J_2^\pm , we also took into account the ion-ion recombination and charging of neutral particles in the 2–3 nm size range:

$$J_2^\pm = \frac{dN_{2-3}^\pm}{dt} + \text{CoagS} \cdot N_{2-3}^\pm + \frac{\text{GR}}{1\text{nm}} N_{2-3}^\pm + \alpha \cdot N_{2-3}^\pm \cdot N_{<3}^\mp - \beta \cdot N_{2-3} \cdot N_{<3}^\pm \quad (2)$$

It is important to note that the ion-induced fraction was averaged between 4.8 and 8.4 h after sunrise, because this is when the events are going on, on average, and thus the fraction is more stable. The fraction is not interesting (and since the formation rates are close to zero, the fraction varies a lot) outside these boundaries because there is no nucleation at that moment. Also, the days for which the data were available are limited to the clearest new particle formation days, which all took place during springtime. This dataset may not be representative of the whole yearly behavior and the results should be interpreted only as a test on a small specific sample.

2.2.3 Sulfuric acid

The atmospheric sulfuric acid concentrations were predicted by the new model SOSA (model to simulate concentrations of organic vapors and sulfuric acid in the lower troposphere). SOSA was developed in the first half of 2009 at the University of Helsinki based on sulfuric acid closure (Boy et al., 2005). The meteorology is based on a 1-D version of the model SCADIS (Sogachev et al., 2002; Sogachev and Panferov, 2006) and the Model for Emissions of Gases and Aerosols in Nature (MEGAN, Guenther et al., 2006) is used to simulate the emission of organic vapors from the biosphere. The gas phase chemistry is solved with the Kinetic PreProcessor (Sandu and Sanders, 2006; <http://people.cs.vt.edu/~asandu/Software/Kpp/>) in combination with the Master Chemical Mechanism (MCM, <http://mcm.leeds.ac.uk/MCM/>) from the University of Leeds. It is a parallelized model operating on the high-performance supercluster

25808

Factors influencing the contribution of ion-induced nucleation

S. Gagné et al.

Title Page

Abstract

Introduction

Conclusions

References

Tables

Figures

⏪

⏩

◀

▶

Back

Close

Full Screen / Esc

Printer-friendly Version

Interactive Discussion



Murska at the CSC-IT Center for Science in Finland, which gives the possibility to run detailed processes in chemistry, aerosol dynamic and meteorology within reasonable time. The model uses meteorological, and various other input data (inorganic gas concentrations, aerosol properties and radiation data) measured in Hyytiälä as input to minimize the uncertainty in the simulated parameters. The vertical resolution of the model is up to 3 km in 75 levels increasing exponentially from the ground to the model top which provides very detailed information about the fluxes inside and above the canopy. A manuscript presenting an overview of the model is under preparation.

2.2.4 Hydration state calculations

To assess and illustrate possible differences in the role of water between the overcharged and undercharged events, the hydration state of sulfuric acid molecules (H_2SO_4), i.e. the number of water molecules attached to sulfuric acid, were modeled using the measured water vapor concentration and temperature together with the hydration free energies. They were computed using quantum chemistry simulations by Kurtén et al. (2007), and specifically the parametrisations given therein. First, the Gibbs free energy of hydrate formation (i.e. the free energy change for the addition of 0–4 water molecules to H_2SO_4) was computed from the given parametrisations at each temperature. Next, the relative concentration (percentage) of H_2SO_4 molecules bound to 0, 1, 2, 3 or 4 water molecules was computed from the law of mass balance (also known as the law of chemical equilibrium) using this free energy change and the measured absolute water concentration. Finally, the average number of water molecules bound to H_2SO_4 was computed as a weighted average of the relative concentrations.

Factors influencing the contribution of ion-induced nucleation

S. Gagné et al.

Title Page

Abstract

Introduction

Conclusions

References

Tables

Figures

⏪

⏩

◀

▶

Back

Close

Full Screen / Esc

Printer-friendly Version

Interactive Discussion

3 Results

3.1 General presentation of the data

3.1.1 Annual variation of over- and undercharged days

As the measurement days were categorized into over- and undercharged days, the data showed a clear seasonal pattern in their relative distribution (Fig. 1). While the total number of new particle formation event days was the largest in spring (April and May), overcharged events dominated during the summer months whereas undercharged ones were more important in winter. It can be seen from Fig. 1 that while overcharged NPF event days are more frequent during most the year, undercharged days took over in November, December and January, around the winter solstice. In spring and autumn, overcharged events were more common but undercharged events also took place regularly. In winter, however, overcharged events became very rare, and so did undercharged events in summer. It should be noted that the number of events as such decreases in winter. This annual distribution of over- and undercharged events has to be taken into account when performing the analysis of other parameters that also vary on a seasonal basis. For example, temperature varies between summer and winter and the large number of overcharged events during the summer will affect the average values. In these kinds of cases, the summer months were removed altogether so that the high number of summer overcharged events would not dominate the statistics.

3.1.2 Comparison of the ion-induced contribution derived from Ion-DMPS and NAIS

In order to assess how accurately the Ion-DMPS classification reflects the fraction of ion-induced nucleation taking part in a new particle event, it was compared to the fraction derived from the NAIS measurements. The classification based on the Ion-DMPS

Factors influencing the contribution of ion-induced nucleation

S. Gagné et al.

Title Page

Abstract

Introduction

Conclusions

References

Tables

Figures

⏪

⏩

◀

▶

Back

Close

Full Screen / Esc

Printer-friendly Version

Interactive Discussion

aerosol size distributions was compared to the ion-induced nucleation fraction calculated from the formation rates of charged and neutral particles, with a NAIS, at 2 nm as described in Kulmala et al. (2007) and in Manninen et al. (2009a). The data was available for 44 days over the period covered in this paper, of which 28 were overcharged and 11 were undercharged. Five days were in neither of the categories and it was impossible to obtain reasonable numbers for 3 undercharged days because of too small charged particle concentrations. All of the days occurred during the spring, but this does not invalidate the comparison because those events covered a wide range of ion-induced nucleation fraction. The median value of the ion-induced fraction during the overcharged events was twice as high than for undercharged events (Fig. 2a). This indicates that the classification based on the Ion-DMPS data is in agreement with the one derived from the NAIS measurements. One should note that these two methods are completely independent from each other. Figure 2a shows that the fraction of ion-induced nucleation becomes less important in the middle of the event (after 7 h after sunrise). It therefore seems that ion-induced nucleation is more important at the beginning of the event in agreement with the thermodynamical principles described in Kulmala et al. (2007b).

Figure 2b shows the comparison between the ion-induced nucleation fractions calculated from the NAIS (Manninen et al., 2009) and extrapolated from the Ion-DMPS data (Kerminen et al., 2007). In general, the agreement is good, despite a few points with especially large ion-induced fractions. The extrapolation method used with the Ion-DMPS is sensitive to measurement uncertainties and, the higher values are even more sensitive because of the shape of the extrapolating equation. Otherwise, the NAIS with its formation rate ratio compares fairly well with the charging state extrapolation method applied to the Ion-DMPS measurements.

**Factors influencing
the contribution of
ion-induced
nucleation**

S. Gagné et al.

Title Page

Abstract

Introduction

Conclusions

References

Tables

Figures

⏪

⏩

◀

▶

Back

Close

Full Screen / Esc

Printer-friendly Version

Interactive Discussion

3.2 Relation between over- and undercharged events and other measured quantities

3.2.1 Meteorological parameters and solar radiation

The median temperature of overcharged days was higher than that of undercharged days. The difference between the median temperatures was about 8.5°C when the whole year was taken into account. However, as mentioned above, this could be due to the seasonal distribution of overcharged and undercharged days. When the summer months (June-July-August) were removed from the analysis, the temperature still remained significantly higher during overcharged days compared to undercharged days. The difference between the median temperatures was still around 5°C (Fig. 3a). However, the temperature does not seem to be a clear indicator of the fraction of ion-induced contribution to new particle formation with respect to the total particle formation. Indeed, the correlation between temperature and the ion-induced fraction calculated from NAIS measurements was very weak. In order to show that the temperature difference is not only caused by a seasonal tendency, the temperature on each day was compared with a seasonal average. Figure 3b shows the temperature difference between the mean temperature on the event day and the average temperature on that day since 1996, with a 10 days smoothing. Overcharged days happened on a median temperature of 0.23 above normal, and undercharged days with a median temperature of 2.13 below normal.

The connection between the intensity of solar radiation and the ion-induced fraction was also examined because it is often related to the ambient temperature. The net and global solar radiation levels were indeed higher for overcharged days than they were for undercharged days, even when the summer months were discarded. However, the solar radiation was generally higher on event days compared to non-event days. The global radiation had a better correlation with the fraction of ion-induced nucleation than what temperature did, although not significant in both cases (around 0.09 and 0.01 for global radiation and temperature, respectively). The correlation coefficients for

Factors influencing the contribution of ion-induced nucleation

S. Gagné et al.

Title Page

Abstract

Introduction

Conclusions

References

Tables

Figures

⏪

⏩

◀

▶

Back

Close

Full Screen / Esc

Printer-friendly Version

Interactive Discussion



both temperature and global radiation were calculated based only on approximately 40 springtime new particle formation events, so the sample was limited and not necessarily representative of the whole analyzed period.

The relative humidity was slightly higher for undercharged days compared to overcharged days. However, the absolute humidity (water content) was higher for overcharged days than for undercharged days (likely because of the temperature difference). Overcharged days thus seem to take place, on average, during dryer (lower relative humidity) and warmer days, when the amount of solar radiation is high.

3.2.2 Particle concentrations

As observed by Vana et al. (2006), a higher contribution from ion-induced nucleation seems to be connected with smaller concentrations and undercharged nucleation with higher concentrations of nucleated particles. On Fig. 4, one can see that the median concentration of nucleation mode particles was higher on undercharged days (blue line) than on overcharged days (red line). On overcharged days the median peak concentration reached 1200 particles cm^{-3} whereas on undercharged days it reached around 1900 particles cm^{-3} . The concentrations in Aitken (25–100 nm) and accumulation (100–500 nm) modes did not show any significant difference between over- and undercharged days.

3.2.3 Charged nanoparticles

In order to investigate whether the ions participating in ion-induced nucleation originate from the pool of charged nanoparticles smaller than 2 nm, the median concentration of negatively and positively charged particles between 0.4 and 1.8 nm and between 0.75 and 1.0 nm from BSMA measurement (Tammets diameter) as a function of the time after the sunrise is presented in Fig. 5a and b, respectively. In both diameter ranges and both polarities, the concentration of charged nanoparticles was higher for overcharged days

Factors influencing the contribution of ion-induced nucleation

S. Gagné et al.

Title Page

Abstract

Introduction

Conclusions

References

Tables

Figures

⏪

⏩

◀

▶

Back

Close

Full Screen / Esc

Printer-friendly Version

Interactive Discussion

than for undercharged days. No significant difference between over- and undercharged days for the ion pair production rate due to radon daughter decay was found. It should also be noted that in the 0.75 to 1.0 nm range, there were generally much higher concentrations in summer than in winter. However, this tendency was not observed in the 0.4–1.8 nm range, hence concentration difference was not only due to the seasonal distribution of over- and undercharged event days and removing the summer months did not change the tendency.

A drop in the concentration of charged nanoparticles smaller than 1.8 nm was observed when the nucleation events started. The condensational sink (CS) was not responsible for this as its value also dropped just before the new particle formation event; an increase in CS could cause the removal of small charged particles from the pool. No significant difference between overcharged and undercharged days was seen for the condensational sink (not shown). The radon daughters cannot explain this either, because the drop in their concentration, due to boundary layer height change during the day, is more important for undercharged days. We would then expect the drop to be this way also for nanoparticle concentrations. When the BSMA channels were analyzed one by one, the drop during the event time was noticed most clearly in the 0.75 to 1.0 nm range (Fig. 5b). In the 0.75 to 1.0 nm range, the median concentration of charged nanoparticles was significantly lower for non-event days. Note that the drop in the ions smaller than 1.8 nm (Tammeter diameter, corresponding to around 2.2 nm in Millikan diameter) took place at the same time as the rise in nucleation mode particle concentration, about 4 h after the sun rise (Fig. 4). The dip was more pronounced for overcharged days in absolute number concentration for both polarities and both size ranges. The percentage of charged nanoparticles disappearing from their pool was also larger for overcharged days than for undercharged days for all the size ranges and polarities of Fig. 5 except for positively charged nanoparticles between 0.75–1.0 nm (see Table 1). The difference in the fraction of “activated” ions was more important for negatively charged nanoparticles. The sign preference of ion-induced nucleation towards the negatively charged kernels have been observed in field measurements,

**Factors influencing
the contribution of
ion-induced
nucleation**S. Gagné et al.

Title Page

Abstract

Introduction

Conclusions

References

Tables

Figures

⏪

⏩

◀

▶

Back

Close

Full Screen / Esc

Printer-friendly Version

Interactive Discussion

laboratory experiments, and quantum chemical simulations (e.g., Vana et al., 2006; Winkler et al., 2008; Kurtén et al., 2009).

3.2.4 External radiation

The external radiation consists of ionizing gamma rays travelling in the atmosphere. Due to its ionizing properties, external radiation can be a good candidate for triggering ion-induced nucleation. The median ion pair production rate due to external radiation was around $9 \text{ ion pairs s}^{-1} \text{ cm}^{-3}$ for undercharged days and a bit below $10 \text{ ion pairs s}^{-1} \text{ cm}^{-3}$ for overcharged days. This is not a big difference when considering that the uncertainty on this value was estimated to be around 10%. However, even though the ion pair production rate does not seem to influence the concentration of charged nanoparticles, it seems to have a relation with the formation rates of 2 nm charged particles calculated from NAIS measurements. Since the NAIS data only came from spring days, this may not be true for the whole year. The formation rates of 2 nm charged particles increased for an increasing ion pair production rate due to external radiation. This relation was stronger for positively charged particles than for negatively charged particles. No difference between overcharged and undercharged days was noticed, the formation rates increased in the same way for both classes. During the days when the soil was covered with snow (and $<8.5 \text{ ion pairs s}^{-1} \text{ cm}^{-3}$), the formation rates of charged particles did not lie on the same line, the points were scattered. This could be due to smaller particle formation rates and hence more uncertainty on the formation rate on these days.

An interesting relation between ion pair production rate by external radiation and the water content in the soil and snow cover was observed, as described by Hatakka et al. (1998). In winter, the external radiation is blocked by the snow cover on top of the soil. During that period, less water penetrates into the soil and the soil humidity decreases along with the ion production rate. In spring, when the snow melts, the water penetrates into the soil and the soil humidity along with the ion production rate due to external radiation increases. During the summer, the ion production rate is

Factors influencing the contribution of ion-induced nucleation

S. Gagné et al.

Title Page

Abstract

Introduction

Conclusions

References

Tables

Figures

⏪

⏩

◀

▶

Back

Close

Full Screen / Esc

Printer-friendly Version

Interactive Discussion



anti-correlated to the water content in the soil, as water in the upper parts of the soil is absorbing part of radiation energies. The effect of water is more important when the water is in the part of the soil closer to the surface, so that it is above the radiation source. This may explain why many overcharged events were observed in the summer of 2006 when the boreal forest in Hyytiälä was undergoing a drought.

3.2.5 Growth rates

The growth rates of charged particles were similar for both overcharged and undercharged days. However, for neutral particles (calculated based on DMPS data; Hirsikko et al., 2005) in the 3 to 7 nm range, the average growth rate was higher for undercharged days. The mean growth rate during the April 2005 to June 2007 period (due to unavailability of the data for the second half of 2007) was 3.7 nm h^{-1} for overcharged days and 5.2 nm h^{-1} for undercharged days. The corresponding median values are 2.6 and 5.2 nm h^{-1} .

3.2.6 Sulfuric acid and hydration

Since sulfuric acid is a strong candidate for participating in atmospheric nucleation (e.g., Weber et al., 1996; Birmili et al., 2003; Stanier et al., 2004; Riipinen et al., 2007; Kulmala and Kerminen, 2008), its modeled concentration as well as its saturation ratio were analyzed. Furthermore, since the sulfuric acid concentration may vary seasonally, and more importantly its saturation ratio is influenced by the ambient temperature, median values were calculated excluding the summer months (Fig. 6). The median sulfuric acid concentration (Fig. 6a) was higher for undercharged days than for overcharged ones. The difference was even higher for the saturation ratio (Fig. 6b). Of course, the temperature difference has an amplifying effect on the saturation ratio difference. The difference was bigger when including the summer months.

Simple quantum chemistry calculations were made to illustrate possible differences in the participation of water in nucleation (assumed here to involve mainly sulfuric acid

Factors influencing the contribution of ion-induced nucleation

S. Gagné et al.

Title Page

Abstract

Introduction

Conclusions

References

Tables

Figures

⏪

⏩

◀

▶

Back

Close

Full Screen / Esc

Printer-friendly Version

Interactive Discussion



**Factors influencing
the contribution of
ion-induced
nucleation**

S. Gagné et al.

Title Page

Abstract

Introduction

Conclusions

References

Tables

Figures

⏪

⏩

◀

▶

Back

Close

Full Screen / Esc

Printer-friendly Version

Interactive Discussion

and water) for over- and undercharged days. The average number of water molecules bound to H_2SO_4 molecules were calculated using the average temperatures and relative humidity for each classified new particle formation event day, as described in Sect. 2.2.4 (Fig. 7). One can see that, on average, undercharged days (blue dots) had a greater number of water molecules bound to H_2SO_4 molecules than overcharged days (red dots). This can also be seen when looking at the percentile statistics. Qualitatively, this is reasonable. For example, while the HSO_4^- ion (probably one of the main anions acting as seeds in ion-induced nucleation) binds water only slightly more strongly than neutral H_2SO_4 does, its binding to additional neutral H_2SO_4 molecules is immensely stronger. (The differences between HSO_4^- and neutral H_2SO_4 in binding to water and additional H_2SO_4 molecules are 3–4 kcal/mol and around 30 kcal/mol, respectively, based on data from Kurtén et al., 2007, 2008.) Thus, the number of water molecules in a charged HSO_4^- – H_2SO_4 – H_2O critical cluster is likely to be significantly smaller than in a neutral H_2SO_4 – H_2O critical cluster, and the dependence of nucleation rates on water concentrations is likely significantly lower for ion-induced than for neutral nucleation. As the preference for H_2SO_4 toward anions is mainly due to its high acidity (see e.g., Kurtén et al., 2009, for a discussion), a similar pattern very likely applies also for other core anions than HSO_4^- . Even though it is thought that other compounds also form the critical cluster, sulfuric acid and water almost certainly are part of it, hence the relevance of the proportion of water in ion-induced and neutral clusters.

4 Discussion

Substantial differences between overcharged (involving ion-induced nucleation) and undercharged (involving no or very little ion-induced nucleation) new particle formation events were found. The most striking and unexpected of these was the difference in the temperature (Fig. 3). Solar radiation, while it was also higher on overcharged days, does not seem a likely candidate for influencing the mechanism. It is known that higher solar radiation levels seem to be required to trigger new particle events regardless of

the mechanism involved (Boy and Kulmala, 2002). It is important to keep in mind that global solar radiation does not ionize the lower atmosphere. Nevertheless, solar radiations may have an influence on chemical reactions that contribute to one mechanism more than another since it is thought to induce vertical mixing and photochemistry (Nilsson et al., 2001).

In neutral nucleation there usually is an activation energy barrier that depends on temperature in many ways (directly and through other variables). In ion-induced nucleation, this energy barrier is reduced, sometimes even removed, because of the induced dipole caused by the presence of the charge in the seed particle and the corresponding binding between the core ion and the molecules of the nucleating vapor. Correspondingly, the critical cluster (the smallest cluster for which growth is more likely than evaporation) is smaller for ion-induced than for neutral nucleation, at least if the nucleating substances are the same. Since temperature increases the collision rate but increases evaporation to a much greater degree, a rise in temperature will, in general, decrease nucleation rates. As the number of temperature-sensitive steps (i.e. the number of molecules in the critical cluster) is smaller in ion-induced nucleation than in neutral nucleation, ion-induced nucleation is likely to be less temperature sensitive than neutral nucleation, and the ion-induced nucleation rate will decrease less as the temperature increases. The magnitude of this effect is unfortunately hard to assess quantitatively as the molecular-level mechanisms for both neutral and ion-induced nucleation are, as yet, unknown. Other parameters, such as seasonally dependent volatile organic compound emission, might also influence the nucleation mechanism.

Overcharged events also required less sulfuric acid than undercharged ones (Fig. 6). It has been shown that the formation rate of particles is proportional to the concentration of sulfuric acid to the power 1–2 (see e.g., Kulmala et al., 2006; Riipinen et al., 2007; Kuang et al., 2008; Nieminen et al., 2009). The observation that overcharged days had lower concentrations of sulfuric acid than undercharged days, on average, may imply that particles growing on charged seeds may need fewer sulfuric acid molecules to bind before it overcomes the energy barrier and activates than those

Factors influencing the contribution of ion-induced nucleation

S. Gagné et al.

Title Page

Abstract

Introduction

Conclusions

References

Tables

Figures

⏪

⏩

◀

▶

Back

Close

Full Screen / Esc

Printer-friendly Version

Interactive Discussion

growing neutrally. It has been observed experimentally that charged particles (negative first, then positive) activate with lower vapor concentrations than neutral particles (Winkler et al., 2008). Undercharged days were characterized by a higher average number of water molecules bound to H_2SO_4 , possibly indicating a larger number of water molecules needed to stabilize the critical clusters in neutral nucleation pathways. This supports the idea that ion-induced nucleation is achieved more easily when it comes to condensable vapors availability.

The higher nuclei growth rates on undercharged days support the idea that there are generally more nucleating vapors available on those days and that they contribute both to nucleation and growth. Although sulfuric acid (and water) availability cannot explain all of the growth it probably contributes to some fraction (Boy et al., 2003, 2005). Also, based on the difference between over- and undercharged days on vapor availability, it could be interesting to verify that the relation of ion-induced nucleation and neutral nucleation formation rates with sulfuric acid concentrations have different dependences (slopes).

The fact that growth rates were bigger on undercharged days has another implication when considering the work by Kerminen et al. (2007). They developed a method to extrapolate the charging state (that is how charged the particle population is compared to the equivalent steady-state population) to smaller sizes from Ion-DMPS data. This extrapolation method is valid only if the information about the charging state is preserved until the detection size (3 nm). This is the case when the nuclei grow fast enough. If the nuclei growth rate is low, information about the original charging state will be lost before the particles reach detectable sizes. This means that if undercharged days generally had higher growth rates than overcharged days, it is unlikely that undercharged days had in reality been overcharged days for which the “memory” had been lost.

External radiation consists of high energy photons that can ionize the lower troposphere and could affect the contribution of ion-induced nucleation to the total nucleation rate. The ion pair production rate due to external radiation correlated with the formation rate of >2 nm ions on days when the soil was not covered with snow. The contribution

Factors influencing the contribution of ion-induced nucleation

S. Gagné et al.

Title Page

Abstract

Introduction

Conclusions

References

Tables

Figures

⏪

⏩

◀

▶

Back

Close

Full Screen / Esc

Printer-friendly Version

Interactive Discussion

**Factors influencing
the contribution of
ion-induced
nucleation**S. Gagné et al.

[Title Page](#)[Abstract](#)[Introduction](#)[Conclusions](#)[References](#)[Tables](#)[Figures](#)[⏪](#)[⏩](#)[◀](#)[▶](#)[Back](#)[Close](#)[Full Screen / Esc](#)[Printer-friendly Version](#)[Interactive Discussion](#)

from galactic cosmic rays is about constant throughout the year while the contribution coming from the soil (about 2/3 of the total radiation) varies depending on e.g. snow cover and water content in the soil (Hatakka et al., 1998). The dependence of the formation rate of charged particles on external radiation seems to be the same for both overcharged and undercharged days. The total formation rate, consisting of both charged and electrically neutral particles, however, did not increase as the external radiation level increased. This suggests that the number of particles nucleated through ion-induced nucleation depends on the level of external radiation.

Another interesting observation was the behavior of charged nanoparticles from BSMA measurements (Fig. 5). The concentration of charged nanoparticles (<2 nm) was higher, on average, on overcharged days than on undercharged days. This could be due to, for example, the higher solar radiation level and its influence on atmospheric chemistry and/or the higher level of external radiation. As one can see on Fig. 5, a larger dip in the concentration of charged nanoparticles was observed on days having a higher fraction of ion-induced nucleation (overcharged) than on days with less ion-induced nucleation (undercharged), suggesting that a bigger number of charged nanoparticles were activated on overcharged event days. As the condensational sink was about the same during over- and undercharged days, scavenging by larger pre-existing particles does not explain the difference in charged nanoparticles concentrations before the start of the event or the drop in their concentration. However, it is also important to note that the drop in percentage (Table 1) is bigger for overcharged days, especially for negative particles. The activation of a bigger fraction and concentration of charged nanoparticles on overcharged days implies that the ion-induced contribution to concentration varies and is more important on overcharged days.

Undercharged events produced more nucleated particles than overcharged events (Fig. 4). While the production of particles through ion-induced may be modulated by external radiation, the production by neutral mechanisms seems to be modulated by temperature. This means that when the temperature gets higher, the number concentration of freshly nucleated particles coming from neutral nucleation decreases while

the number concentration from ion-induced nucleation stays about the same. Consequently, the *fraction* of ion-induced nucleation (IIN/total) would be larger on days with higher temperatures.

Also, the ion-induced fraction calculated based on NAIS measurement during the event gives an interesting insight (Fig. 2a). The ion-induced fraction dropped approximately 7–8 h after sunrise when the concentration of newly formed particles was still relatively low compared to its peak (Fig. 4). Later on, when the concentration reached its peak value, neutral nucleation seemed to play a bigger role than it was at the beginning of the event. This phenomenon has also been observed by Laakso et al. (2007b), and supported by thermodynamical principles of atmospheric nucleation (Kulmala et al., 2007b). The concentration of charged nanoparticles (Fig. 5) did not recover immediately when the ion-induced fraction decreased, suggesting that the ion-induced new particle production is probably still the same, but neutral nucleation's contribution is increasing, making the ion-induced *fraction* smaller. Neutral mechanisms taking over during an event shows that neutral nucleation can start after ion-induced nucleation has begun; ion-induced nucleation does not seem to monopolize the condensing vapors.

5 Conclusions

In this work, we have established that the Ion-DMPS classification of event days into overcharged and undercharged days is in general agreement with the ion-induced fraction calculated based on NAIS measurements. We showed that, in Hyytiälä, days with a bigger fraction of ion-induced nucleation tended to occur on warmer, dryer (lower relative humidity), and sunnier days. We also propose an explanation on how these meteorological parameters affect the nucleating mechanisms, especially in the case of temperature. The modeled sulfuric acid concentrations were smaller on overcharged days, supporting the idea that charged seeds activate at lower vapor concentrations. The relative humidity was also lower on overcharged days and, according to quantum chemistry calculations, a lower number of water molecules were bound to sulfuric

Factors influencing the contribution of ion-induced nucleation

S. Gagné et al.

Title Page

Abstract

Introduction

Conclusions

References

Tables

Figures

⏪

⏩

◀

▶

Back

Close

Full Screen / Esc

Printer-friendly Version

Interactive Discussion

acid. The concentration of charged nanoparticles, as measured with a BSMA, was bigger on overcharged days. The removal of these nanoparticles from their pool during the new particle formation was more pronounced on overcharged days. The higher concentration of nanoparticles is perhaps due to atmospheric chemistry (amount of solar radiation) or external radiation levels, while the removal from their pool may show that charged seeds activate. The growth rates of undercharged days were larger than those of overcharged day for neutral particles, perhaps the difference in sulfuric acid availability play a part in this phenomenon.

Finally, it seems that both ion-induced and neutral nucleation are taking place in a same nucleation event, yet in different proportions during an event and also between different days. It seems that neutral nucleation can take place after ion-induced nucleation has started, meaning that ion-induced nucleation does not seem to “steal away” all the condensing vapors, probably because the charged particles are not numerous enough. The production of new particles due to ion-induced nucleation (generally smaller) seem to be related to the levels of external radiations. It remains to be seen if the same conclusions apply in other environments.

Acknowledgements. This research was supported by the Academy of Finland Center of Excellence program (project no. 1118615) and by the European Commission 6th Framework program project EUCAARI, contract no. 036833-2 (EUCAARI). Veijo Hiltunen and Heikki Laakso are acknowledged for maintenance of the instruments at the SMEAR II station. Petri Keronen is acknowledged for providing the meteorological data. Jussi Paatero, Alessandro Franchin, Sigfried Schobesberger, Jukka Pumpanen, Liisa Kulmala and Taina Yli-Juuti are acknowledged for useful discussion and providing data.

**Factors influencing
the contribution of
ion-induced
nucleation**

S. Gagné et al.

Title Page

Abstract

Introduction

Conclusions

References

Tables

Figures

⏪

⏩

◀

▶

Back

Close

Full Screen / Esc

Printer-friendly Version

Interactive Discussion

References

- Aalto, P., Hämeri, K., Becker, E., Weber, R., Salm, J., Mäkelä, J. M., Hoell, C., O'Dowd, C. D., Karlsson, H., Hansson, H.-C., Väkevä, M., Koponen, I. K., Buzorius, G., and Kulmala, M.: Physical characterization of aerosol particles during nucleation events, *Tellus*, 53B, 344–358, 2001.
- Andreae, M. O. and Rosenfeld, D.: Aerosol-cloud-precipitation interactions. Part 1. The nature and sources of cloud-active aerosols, *Earth-Sci. Rev.*, 89, 13–41, 2008.
- Birmili, W., Berresheim, H., Plass-Dülmer, C., Elste, T., Gilge, S., Wiedensohler, A., and Uhrner, U.: The Hohenpeissenberg aerosol formation experiment (HAFEX): a long-term study including size-resolved aerosol, H₂SO₄, OH, and monoterpenes measurements, *Atmos. Chem. Phys.*, 3, 361–376, 2003, <http://www.atmos-chem-phys.net/3/361/2003/>.
- Boy, M. and Kulmala, M.: Nucleation events in the continental boundary layer: Influence of physical and meteorological parameters, *Atmos. Chem. Phys.*, 2, 1–16, 2002, <http://www.atmos-chem-phys.net/2/1/2002/>.
- Boy, M., Rannik, Ü., Lehtinen, K. E. J., Tarvainen, V., Hakola, H., and Kulmala, M.: Nucleation events in the continental PBL – long term statistical analyses of aerosol relevant characteristics, *J. Geophys. Res.*, 108(D21), 4667, doi:10.1029/2003JD003838, 2003.
- Boy, M., Kulmala, M., Ruuskanen, T. M., Pihlatie, M., Reisell, A., Aalto, P. P., Keronen, P., Dal Maso, M., Hellen, H., Hakola, H., Jansson, R., Hanke, M., and Arnold, F.: Sulphuric acid closure and contribution to nucleation mode particle growth, *Atmos. Chem. Phys.*, 5, 863–878, 2005, <http://www.atmos-chem-phys.net/5/863/2005/>.
- Boy, M., Hellmuth, O., Korhonen, H., Nillson, E. D., ReVelle, D., Turnipseed, A., Arnold, F., and Kulmala, M.: MALTE – model to predict new aerosol formation in the lower troposphere, *Atmos. Chem. Phys.*, 6, 4499–4517, 2006, <http://www.atmos-chem-phys.net/6/4499/2006/>.
- Carlsaw, K. S., Merikanto, J., and Spracklen, D. V.: The impact of Nucleation on Global CCN. In proceedings of the International Conference on Nucleation and Atmospheric Aerosols 2009, Prague, Czech Republic, p. 488, 2009.
- Dal Maso, M., Kulmala, M., Riipinen, I., Wagner, R., Hussein, T., Aalto, P. P., and Lehtinen, K. E. J.: Formation and growth of fresh atmospheric aerosols: Eight years of aerosol

ACPD

9, 25799–25838, 2009

Factors influencing the contribution of ion-induced nucleation

S. Gagné et al.

Title Page

Abstract

Introduction

Conclusions

References

Tables

Figures

◀

▶

◀

▶

Back

Close

Full Screen / Esc

Printer-friendly Version

Interactive Discussion

size distribution data from SMEAR II, Hyytiälä, Finland, *Boreal Environ. Res.*, 10(5), 323–336, 2005.

Gagné, S., Laakso, L., Petäjä, T., Kerminen, V.-M., and Kulmala, M.: Analysis of one year of Ion-DMPS data from the SMEAR II station. Finland, Tellus, 60B, 318–329, 2008.

5 Hari, P. and Kulmala, M.: Station for measuring ecosystem-atmosphere relations (SMEAR II), *Boreal Environ. Res.*, 10(5), 315–322, 2005.

Hatakka, J., Paatero, J., Viisanen, Y., and Mattsson, R.: Variations of external radiation due to meteorological and hydrological factors in central Finland, *Radiochemistry*, 40(6), 534–538, 1998.

10 Hirsikko, A., Laakso, L., Hörrak, U., Aalto, P. P., Kerminen, V.-M., and Kulmala, M.: Annual and size dependent variation of growth rates and ion concentrations in boreal forest, *Boreal Environ. Res.*, 10, 357–369, 2005.

Hoppel, W. A.: Determination of the aerosol size distribution from the mobility distribution of the charged fraction of aerosols, *J. Aerosol Sci.*, 9, 41–54, 1978.

15 Iida, K., Stolzenburg, M., McMurry, P., Dunn, M., Smith, J., Eisele, F., and Keady, P.: Contribution of ion-induced nucleation to new particle formation: Methodology and its application to atmospheric observations in Boulder, Colorado. *J. Geophys. Res.*, 111, D23201, doi:10.1029/2006JD007167, 2006.

20 Iida, K., Stolzenburg, M. R., McMurry, P. H., and Smith, J. N.: Estimating nanoparticle growth rates from size-dependent charged fractions: Analysis of new particle formation events in Mexico City, *J. Geophys. Res.*, 113, D05207, doi:10.1029/2007JD009260, 2008.

Kerminen, V.-M., Anttila, T., Petäjä, T., Laakso, L., Gagné, S., Lehtinen, K. E. J., and Kulmala, M.: Charging state of the atmospheric nucleation mode: Implications for separating neutral and ion-induced nucleation, *J. Geophys. Res.*, 112, D21205, doi:10.1029/2007JD008649, 2007.

25 Kuang, C., McMurry, P. H., McCormick, A. V., and Eisele, F. L.: Dependence of nucleation rates on sulfuric acid vapor concentration in diverse atmospheric locations, *J. Geophys. Res.* 113, D10209, doi:10.1029/2007JD009253, 2008.

30 Kulmala, M., Dal Maso, M., Mäkelä, J., Pirjola, L., Väkevä, M., Aalto, P., Mikkilainen, P., Hämeri, K., and O'Dowd, C. D.: On the formation, growth and composition of nucleation mode particles, *Tellus* 53B, 479–490, 2001.

Kulmala, M.: How particles nucleate and grow, *Science* 302, 1000–1001, 2003.

Kulmala, M., Vehkamäki, H., Petäjä, T., Dal Maso, M., Lauri, A., Kerminen, V.-M., Birmili, W.,

Factors influencing the contribution of ion-induced nucleation

S. Gagné et al.

Title Page

Abstract

Introduction

Conclusions

References

Tables

Figures

◀

▶

◀

▶

Back

Close

Full Screen / Esc

Printer-friendly Version

Interactive Discussion



**Factors influencing
the contribution of
ion-induced
nucleation**

S. Gagné et al.

Title Page

Abstract

Introduction

Conclusions

References

Tables

Figures

◀

▶

◀

▶

Back

Close

Full Screen / Esc

Printer-friendly Version

Interactive Discussion

and McMurry, P.: Formation and growth rates of ultrafine atmospheric particles: a review of observations, *J. Aerosol Sci.*, 35, 143–176, 2004.

Kulmala, M., Lehtinen, K. E. J., and Laaksonen, A.: Cluster activation theory as an explanation of the linear dependence between formation rate of 3 nm particles and sulphuric acid concentration, *Atmos. Chem. Phys.*, 6, 787–793, 2006,
5 <http://www.atmos-chem-phys.net/6/787/2006/>.

Kulmala, M., Riipinen, I., Sipilä, M., Manninen, H. E., Petäjä, T., Junninen, H., Dal Maso, M., Mordas, G., Mirme, A., Vana, M., Hirsikko, A., Laakso, L., Harrison, R. M., Hanson, I., Leung, C., Lehtinen, K. E. J., and Kerminen, V.-M.: Toward direct measurement of atmospheric nucleation, *Science*, 318, 89–92, 2007a.

Kulmala, M., Mordas, G., Petäjä, T., Grönholm, T., Aalto, P. P., Vehkamäki, H., Hienola, A. I., Herrmann, E., Sipilä, M., Riipinen, I., Manninen, H. E., Hämeri, K., Stratmann, F., Bilde, M., Winkler, P. M., Birmili, W., and Wagner, P. E.: The condensation particle counter bettery (CPCB): A new tool to investigate the activation properties of nanoparticles, *J. Aerosol Sci.*, 38, 289–304, 2007b.

Kulmala, M. and Kerminen, V.-M.: On the formation and growth of atmospheric nanoparticles, *Atmos. Res.*, 90, 132–150, 2008.

Kurtén, T., Noppel, M., Vehkamäki, H., Salonen, M., and Kulmala, M.: Quantum chemical studies of hydrate formation of H_2SO_4 and HSO_4^- , *Boreal Environ. Res.*, 12, 421–430, 2007.

Kurtén, T., Loukonen, V., Vehkamäki, H., and Kulmala, M.: Amines are likely to enhance neutral and ion-induced sulfuric acid-water nucleation in the atmosphere more effectively than ammonia, *Atmos. Chem. Phys.*, 8, 4095–4103, 2008,
20 <http://www.atmos-chem-phys.net/8/4095/2008/>.

Kurtén, T., Ortega, I. K., and Vehkamäki, H.: The sign preference in sulfuric acid nucleation, *J. Mol. Struct.-Theochem*, 901, 169–173, 2009.

Laakso, L., Petäjä, T., Lehtinen, K. E. J., Kulmala, M., Paatero, J., Hörrak, U., Tammet, H., and Joutsensaari, J.: Ion production rate in a boreal forest based on ion, particle and radiation measurements, *Atmos. Chem. Phys.*, 4, 1933–1943, 2004,
15 <http://www.atmos-chem-phys.net/4/1933/2004/>.

Laakso, L., Gagné, S., Petäjä, T., Hirsikko, A., Aalto, P. P., Kulmala, M., and Kerminen, V.: Detecting charging state of ultra-fine particles: instrumental development and ambient measurements, *Atmos. Chem. Phys.*, 7, 1333–1345, 2007a,
30 <http://www.atmos-chem-phys.net/7/1333/2007/>.

**Factors influencing
the contribution of
ion-induced
nucleation**

S. Gagné et al.

Title Page

Abstract

Introduction

Conclusions

References

Tables

Figures

◀

▶

◀

▶

Back

Close

Full Screen / Esc

Printer-friendly Version

Interactive Discussion

- Laakso, L., Gronholm, T., Kulmala, L., Haapanala, S., Hirsikko, A., Lovejoy, E. R., Kazil, J., Kurten, T., Boy, M., Nilsson, E. D., Sogachev, A., Riipinen, I., Stratmann, F., and Kulmala, M.: Hot-air balloon as a platform for boundary layer profile measurements during particle formation, *Boreal Environ. Res.*, 12(3), 279–294, 2007b.
- 5 Lohmann, U. and Feichter, J.: Global indirect aerosol effects: a review, *Atmos. Chem. Phys.*, 5, 715–737, 2005,
<http://www.atmos-chem-phys.net/5/715/2005/>.
- Mäkelä, J. M., Riihelä, M., Ukkonen, A., Jokinen, V., and Keskinen, J.: Comparison of mobility equivalent diameter with Kelvin-Thomson diameter using ion mobility data, *J. Chem. Phys.*, 105, 1562–1571, 1996.
- 10 Mäkelä, J. M., Salm, J., Smirnov, V. V., Koponen, I., Paatero, J., and Pronin, A. A.: Electrical charging state of fine and ultrafine particles in boreal forest air, *J. Aerosol Sci.*, 32, 149–150, 2003.
- Manninen, H. E., Nieminen, T., Riipinen, I., Yli-Juuti, T., Gagné, S., Asmi, E., Aalto, P. P., Petäjä, T., Kerminen, V.-M., and Kulmala, M.: Charged and total particle formation and growth rates during EUCAARI 2007 campaign in Hyytiälä, *Atmos. Chem. Phys.*, 9, 4077–4089, 2009a,
<http://www.atmos-chem-phys.net/9/4077/2009/>.
- 15 Manninen, H. E., Petäjä, T., Asmi, E., Riipinen, I., Nieminen, T., Mikkilä, J., Hörrak, U., Mirme, A., Mirme, S., Laakso, L., Kerminen, V.-M., and Kulmala, M.: Long-term field measurements of charged and neutral clusters using Neutral cluster and Air Ion Spectrometer (NAIS), *Boreal Environ. Res.* 14, 591–605, 2009b.
- 20 Mertes, S., Schröder, F., and Wiedensohler, A.: The particle detection efficiency curve of the {TSI-3010 CPC} as a function of temperature difference between saturator and condenser, *Aerosol Sci. Tech.*, 23, 257–261, 1995.
- 25 Mirme, A., Tamm, E., Mordas, G., Vana, M., Uin, J., Mirme, S., Bernotas, T., Laakso, L., Hirsikko, A., and Kulmala, M.: A widerange multi-channel Air Ion Spectrometer, *Boreal Environ. Res.*, 12, 247–264, 2007.
- Mirme, S., Mirme, A., Minikin, A., Petzold, A., Hörrak, U., Kerminen, V.-M., and Kulmala, M.: Atmospheric sub-3 nm particles at high altitudes, *Atmos. Chem. Phys. Discuss.*, 9, 19435–19470, 2009,
<http://www.atmos-chem-phys-discuss.net/9/19435/2009/>.
- 30 Myhre, G., Berglen, T. F., Johnsrud, M., Hoyle, C. R., Berntsen, T. K., Christopher, S. A.,

Fahey, D. W., Isaksen, I. S. A., Jones, T. A., Kahn, R. A., Loeb, N., Quinn, P., Remer, L., Schwartz, J. P., and Yttri, K. E.: Modelled radiative forcing of the direct aerosol effect with multi-observation evaluation, *Atmos. Chem. Phys.*, 9, 1365–1392, 2009, <http://www.atmos-chem-phys.net/9/1365/2009/>.

5 Nieminen, T., Manninen, H. E., Sihto, S.-L., Yli-Juuti, T., Mauldin III., R. L., Petäjä, T., Riipinen, I., Kerminen, V.-M., and Kulmala, M.: Connection of sulfuric acid to atmospheric nucleation in boreal forest, *Environ. Sci. Technol.*, 43, 4715–4721, 2009.

Nilsson, E. D., Rannik, U., Kulmala, M., Buzorius, G., and O'Dowd, C. D.: Effect of the continental boundary layer evolution, convection, turbulence and entrainment on aerosol formation, *Tellus*, 53B, 441–461, 2001.

10 Paatero, J., Hatakka, J., and Viisanen, Y.: Concurrent Measurements of Airborne Radon-222, Lead-210 and Beryllium-7 at the Pallas-Sodankylä GAW Station, Northern Finland, Tech. Rep., Finnish Meteorological Institute, 1998.

Riipinen, I., Sihto, S.-L., Kulmala, M., Arnold, F., Dal Maso, M., Birmili, W., Saarnio, K., Teinilä, K., Kerminen, V.-M., Laaksonen, A., and Lehtinen, K. E. J.: Connections between atmospheric sulphuric acid and new particle formation during QUEST III–IV campaigns in Heidelberg and Hyytiälä, *Atmos. Chem. Phys.*, 7, 1899–1914, 2007, <http://www.atmos-chem-phys.net/7/1899/2007/>.

20 Sogachev, A. and Panferov, O.: Modification of two-equation models to account for plant drag, *Bound. Lay. Meteorol.*, 121, 229–266, doi:10.1007/s10546-006-9073-5, 2006.

Stanier, C. O., Khlystov, A. Y., and Pandis, S. N.: Nucleation events during the Pittsburgh Air Quality Study: Description and relation to key meteorological, gas phase, and aerosol parameters, *Aerosol Sci. Tech.*, 38, 253–264, 2004.

25 Stolzenburg, M. R. and McMurry, P. H.: An ultrafine aerosol condensation nucleus counter, *Aerosol Sci. Tech.*, 14, 48–65, 1991.

Tammet, H.: Size and mobility of nanometer particles, clusters and ions, *J. Aerosol Sci.*, 26, 459–475., 1995.

Tammet, H.: Reduction of air ion mobility to standard conditions, *J. Geophys. Res.-Atmos.*, 103, 13933–13937, 1998.

30 Tammet, H.: Continuous scanning of the mobility and size distribution of charged clusters and particles in atmospheric air and the balanced scanning mobility analyzer BSMA, *Atmos. Res.*, 82, 523–535, 2006.

Spracklen, D. V., Carslaw, K. S., Kulmala, M., Kerminen, V.-M., Sihto, S.-L., Riipinen, I.,

**Factors influencing
the contribution of
ion-induced
nucleation**

S. Gagné et al.

[Title Page](#)[Abstract](#)[Introduction](#)[Conclusions](#)[References](#)[Tables](#)[Figures](#)[⏪](#)[⏩](#)[◀](#)[▶](#)[Back](#)[Close](#)[Full Screen / Esc](#)[Printer-friendly Version](#)[Interactive Discussion](#)

**Factors influencing
the contribution of
ion-induced
nucleation**

S. Gagné et al.

- Merikanto, J., Mann, G. W., Chipperfield, M. P., Wiedensohler, A., Birmili, W., and Lihavainen, H.: Contribution of particle formation to global cloud condensation nuclei concentrations, *Geophys. Res. Lett.*, 35, L06808, doi:10.1029/2007GL033038, 2008.
- 5 Stevens, B. and Feingold, G.: Untangling aerosol effects on clouds and precipitation in a buffered system, *Nature*, 461, 607–613, doi:10.1038/nature08281, 2009.
- Twomey, S.: Aerosols, clouds and radiation, *Atmos. Environ.*, 25A, 2435–2442, 1991.
- Vana, M., Tamm, E., Hörrak, U., Mirme, A., Tammet, H., Laakso, L., Aalto, P., and Kulmala, M.: Charging state of atmospheric nanoparticles during the nucleation burst events, *Atmos. Res.*, 82, 536–546, 2006.
- 10 Vesala, T., Haataja, J., Aalto, P., Altimir, N., Buzorius, G., Garam, E., Hämeri, K., Ilvesniemi, H., Jokinen, V., Keronen, P., Lahti, T., Markkanen, T., Mäkelä, J., Nikinmaa, E., Palmroth, S., Palva, L., Pohja, T., Pumpanen, J., Rannik, Ü., Siivola, E., Ylitalo, H., Hari, P., and Kulmala, M.: Long-term field measurements of atmosphere-surface interactions in boreal forest combining forest ecology, micrometeorology, aerosol physics and atmospheric chemistry, *Trends Heat Mass Momentum Transf.*, 4, 17–35, 1998.
- 15 Weber, R. J., Marti, J. J., McMurry, P. H., Eisele, F. L., Tanner, D. J., and Jefferson, A.: Measured atmospheric new particle formation rates: implications for nucleation mechanisms, *Chem. Eng. Commun.*, 151, 53–64, 1996.
- Winkler, P. M., Steiner, G., Virtala, A., Vehkamäki, H., Noppel, M., Lehtinen, K. E. J., Reischl, G. P., Wagner, P. E., and Kulmala, M.: Heterogeneous nucleation experiments bridging the scale from molecular ion clusters to nanoparticles, *Science*, 319, 1374, doi:10.1126/science.1149034, 2008.
- 20 Winklmayr, W., Reischl, G., Lindner, A., and Berner, A.: A new electromobility spectrometer for the measurement of aerosol size distributions in the size range from 1 to 1000 nm, *J. Aerosol Sci.*, 22, 289–296, 1991.
- 25 Yu, F. and Turco, R.: From molecular clusters to nanoparticles: role of ambient ionization in tropospheric aerosol formation, *J. Geophys. Res.*, 106, 4797–4817, 2001.
- Yu, F. and Turco, R.: Case studies of particle formation events observed in boreal forests: implications for nucleation mechanisms, *Atmos. Chem. Phys.*, 8, 6085–6102, 2008, <http://www.atmos-chem-phys.net/8/6085/2008/>.
- 30

Title Page

Abstract

Introduction

Conclusions

References

Tables

Figures

◀

▶

◀

▶

Back

Close

Full Screen / Esc

Printer-friendly Version

Interactive Discussion

Factors influencing the contribution of ion-induced nucleation

S. Gagné et al.

Table 1. The fraction of small particles removed from the pool of charged nanoparticles during new particles formation events. The calculations are based on the medians of all days as they appear in Fig. 5. The dip is always bigger in concentrations for all 4 categories (size range and polarity), and in percentage for 3 out of 4. The difference is more important for negatively charged particles.

Fraction of charged nanoparticles removed from their pool during new particle formation events		
	Overcharged (median)	Undercharged (median)
0.4–1.8 nm (5 channels)		
Negatively charged	16%	12%
Positively charged	13%	10%
0.75–1.0 nm (1 channel)		
Negatively charged	17%	9%
Positively charged	12%	13%

Title Page

Abstract

Introduction

Conclusions

References

Tables

Figures

⏪

⏩

◀

▶

Back

Close

Full Screen / Esc

Printer-friendly Version

Interactive Discussion

Factors influencing the contribution of ion-induced nucleation

S. Gagné et al.

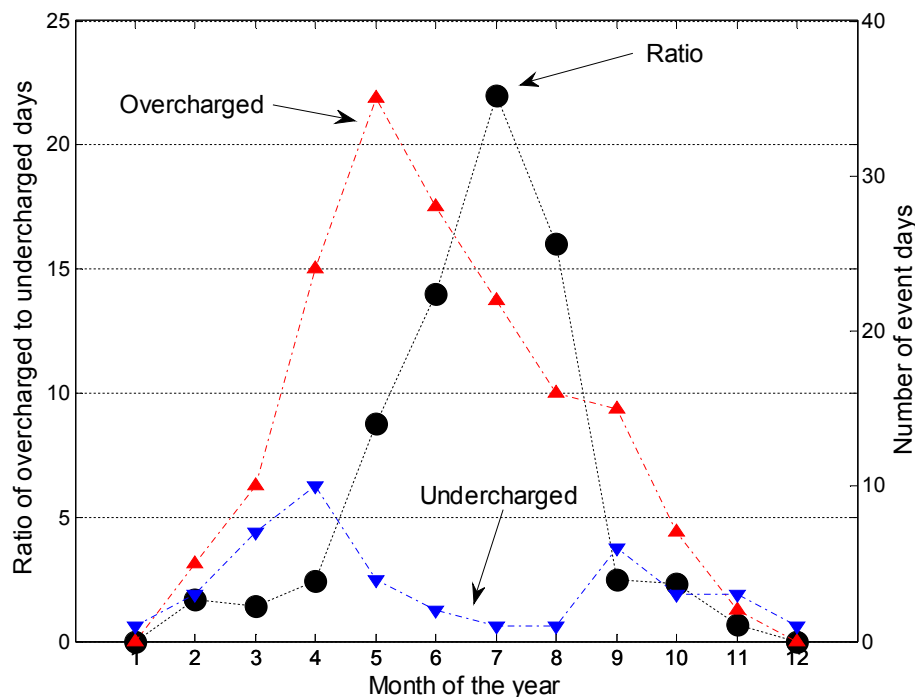


Fig. 1. Ratio of overcharged events to undercharged events for each month over the 2005–2007 period (black circles, left vertical axis). The number of event days is also presented for overcharged days (in red) and undercharged days (in blue), and report to the right vertical axis.

[Title Page](#)[Abstract](#)[Introduction](#)[Conclusions](#)[References](#)[Tables](#)[Figures](#)[⏪](#)[⏩](#)[◀](#)[▶](#)[Back](#)[Close](#)[Full Screen / Esc](#)[Printer-friendly Version](#)[Interactive Discussion](#)

**Factors influencing
the contribution of
ion-induced
nucleation**

S. Gagné et al.

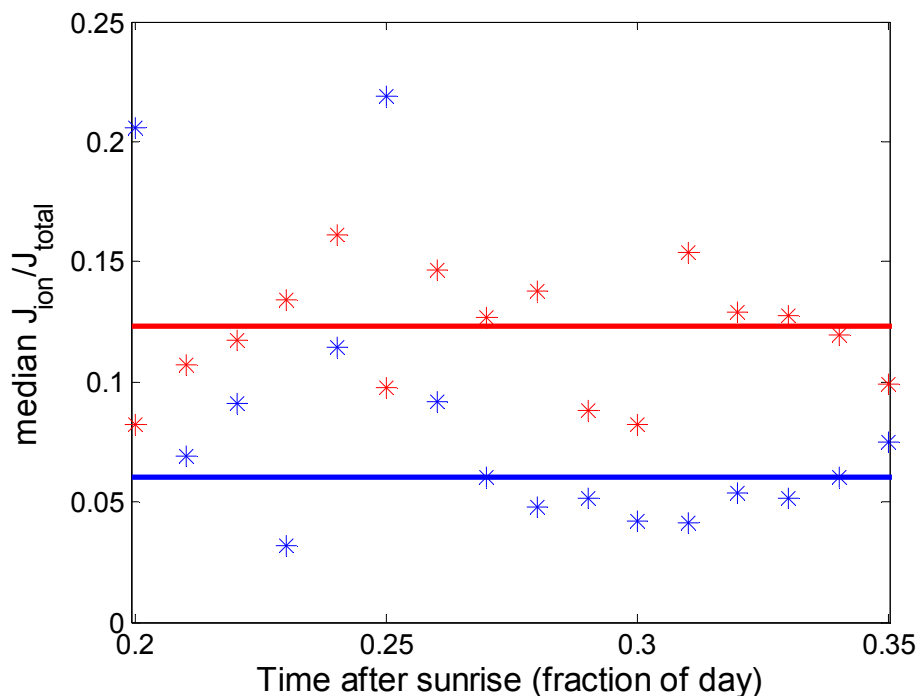


Fig. 2a. Ion-induced fraction as a function of the time after sunrise. The median ion-induced nucleation fraction is calculated using the formation rate of 2 nm charged particles divided by the total formation rate of 2 nm particles from NAIS measurements. The median fraction for 28 overcharged days is shown in red, for 8 undercharged in blue. The horizontal lines represent the median value between 0.2 and 0.35 h after the sunrise (when the event is taking place, on average).

[Title Page](#)[Abstract](#)[Introduction](#)[Conclusions](#)[References](#)[Tables](#)[Figures](#)[⏪](#)[⏩](#)[◀](#)[▶](#)[Back](#)[Close](#)[Full Screen / Esc](#)[Printer-friendly Version](#)[Interactive Discussion](#)

**Factors influencing
the contribution of
ion-induced
nucleation**

S. Gagné et al.

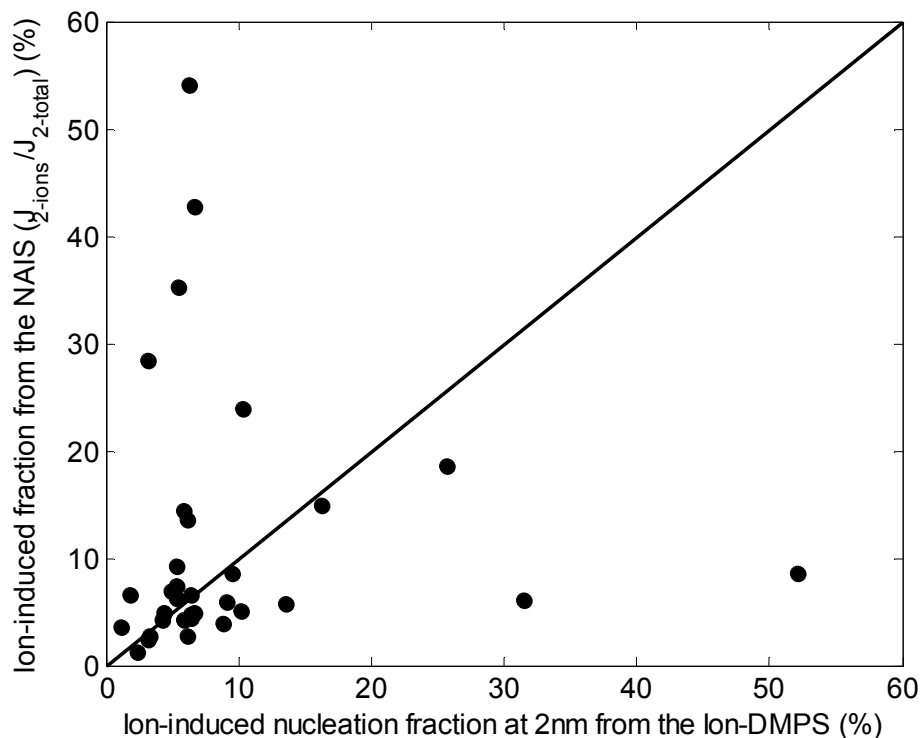


Fig. 2b. The Ion-induced fraction calculated for events of 2006 and 2007 are compared for the NAIS measurements and method and the Ion-DMPS measurements and method. The Ion-DMPS extrapolation method is very sensitive which explains the high ion-induced fraction in some cases.

[Title Page](#)[Abstract](#)[Introduction](#)[Conclusions](#)[References](#)[Tables](#)[Figures](#)[⏪](#)[⏩](#)[◀](#)[▶](#)[Back](#)[Close](#)[Full Screen / Esc](#)[Printer-friendly Version](#)[Interactive Discussion](#)

**Factors influencing
the contribution of
ion-induced
nucleation**

S. Gagné et al.

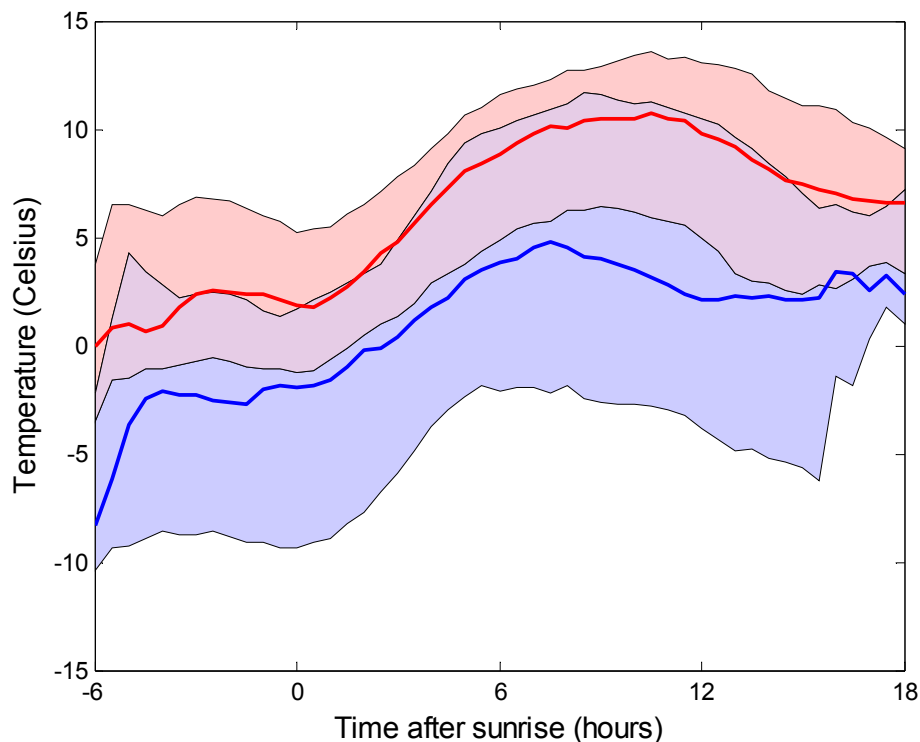


Fig. 3a. The median temperature for all overcharged days (in red) and undercharged days (in blue) excluding summer months. The filled areas represent the 25 to 75 percentiles. The temperature difference excluding summer months is still around 5°C, with warmer temperatures for overcharged days. When all the data points are included, the temperature difference increases to about 8.5°C.

[Title Page](#)[Abstract](#)[Introduction](#)[Conclusions](#)[References](#)[Tables](#)[Figures](#)[◀](#)[▶](#)[◀](#)[▶](#)[Back](#)[Close](#)[Full Screen / Esc](#)[Printer-friendly Version](#)[Interactive Discussion](#)

**Factors influencing
the contribution of
ion-induced
nucleation**

S. Gagné et al.

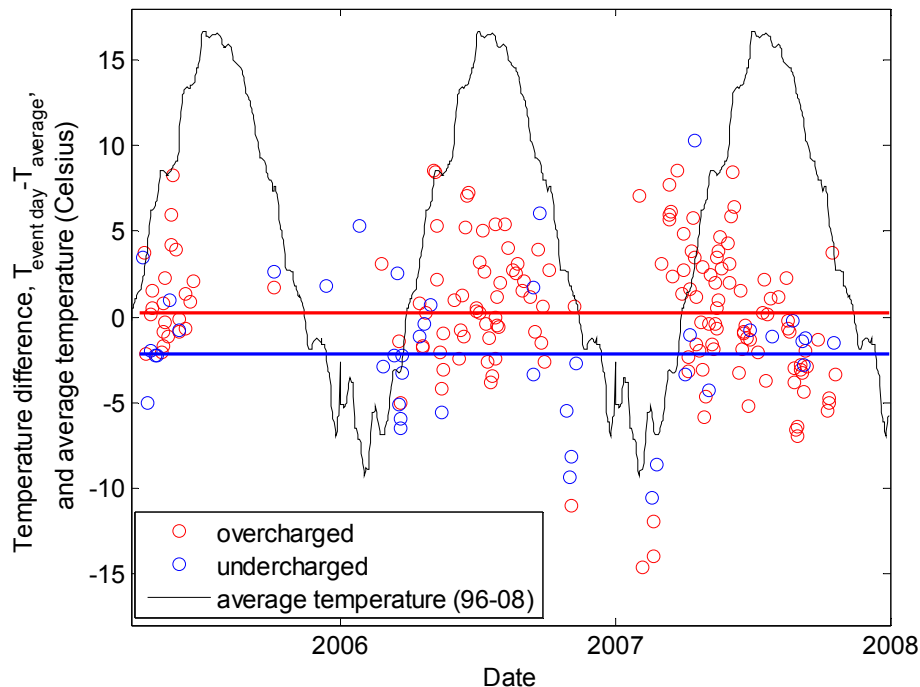


Fig. 3b. The temperature difference between each event day and a 1996–2008 average is presented for overcharged (in red) and undercharged (in blue) events. The medians for over- and undercharged days were 0.23°C and -2.13°C (horizontal red and blue lines, resp.) and the means were 0.32°C and -1.87°C , respectively. The black line shows the 12 year average temperature smoothed over 10 days.

[Title Page](#)[Abstract](#)[Introduction](#)[Conclusions](#)[References](#)[Tables](#)[Figures](#)[◀](#)[▶](#)[◀](#)[▶](#)[Back](#)[Close](#)[Full Screen / Esc](#)[Printer-friendly Version](#)[Interactive Discussion](#)

**Factors influencing
the contribution of
ion-induced
nucleation**

S. Gagné et al.

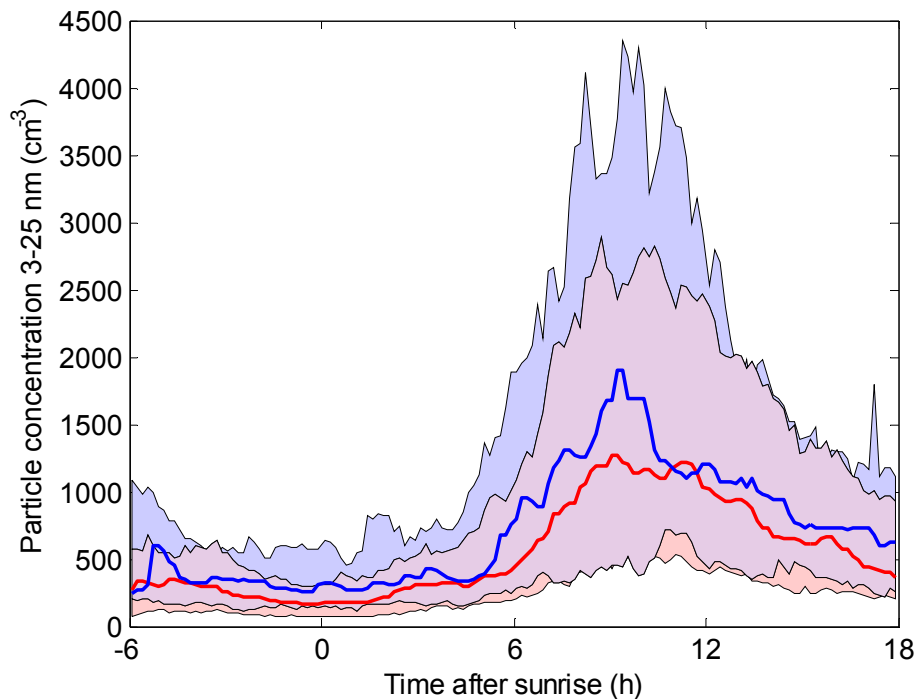


Fig. 4. Nucleation mode particles (3 to 25 nm) measured with a DMPS. Higher concentrations of nucleation mode particles are nucleated on undercharged days (median, blue line) than on overcharged days (median, red line). The 25 and 75 percentiles range is given by blue and pink filled areas (purple is where both ranges are superposed).

[Title Page](#)[Abstract](#)[Introduction](#)[Conclusions](#)[References](#)[Tables](#)[Figures](#)[◀](#)[▶](#)[◀](#)[▶](#)[Back](#)[Close](#)[Full Screen / Esc](#)[Printer-friendly Version](#)[Interactive Discussion](#)

**Factors influencing
the contribution of
ion-induced
nucleation**

S. Gagné et al.

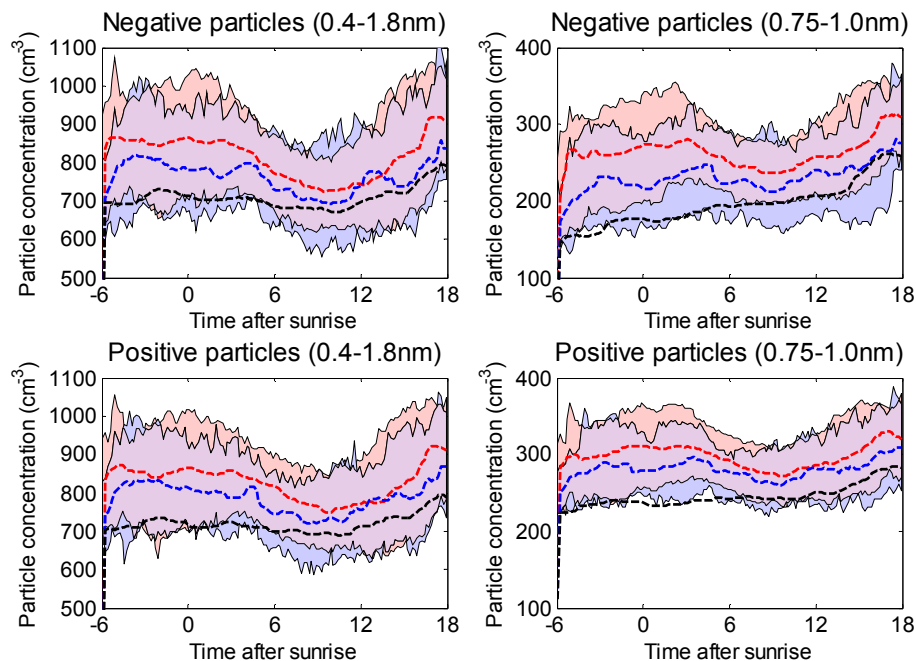


Fig. 5. Electrically charged particle concentration below the activation size as a function of the time spent after sunrise for **(a)** 0.4 to 1.8 nm particles on the left and **(b)** 0.75 to 1.0 nm particles on the right (Tammeter diameter). The median concentrations for overcharged days are in red and for undercharged days, in blue. The median on non-event days are also added for comparison in black. The colored areas represent the 25 and 75 percentiles (for over- and undercharged days only). Negatively charged particles are in the upper part of the plot and the positively charged ones in the lower part of the plot.

[Title Page](#)[Abstract](#)[Introduction](#)[Conclusions](#)[References](#)[Tables](#)[Figures](#)[⏪](#)[⏩](#)[◀](#)[▶](#)[Back](#)[Close](#)[Full Screen / Esc](#)[Printer-friendly Version](#)[Interactive Discussion](#)

**Factors influencing
the contribution of
ion-induced
nucleation**

S. Gagné et al.

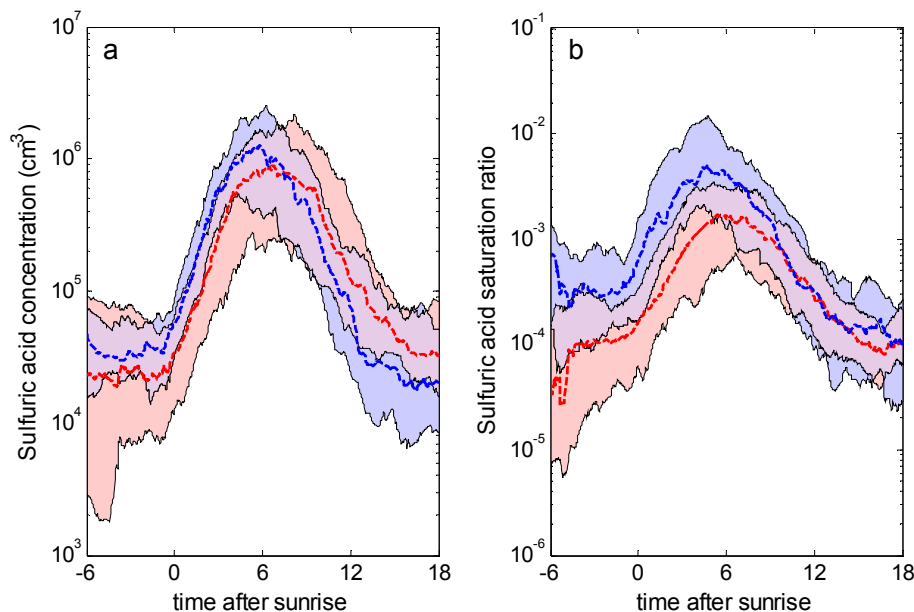


Fig. 6. (a) Median sulfuric acid concentration (modeled, SOSA) on overcharged days (red) and undercharged days (blue). (b) Median sulfuric acid saturation ratio (modeled, SOSA) on overcharged days (red) and undercharged days (blue). The 25 to 75 are represented by the filled areas. In this picture, the summer months have been removed.

[Title Page](#)[Abstract](#)[Introduction](#)[Conclusions](#)[References](#)[Tables](#)[Figures](#)[⏪](#)[⏩](#)[◀](#)[▶](#)[Back](#)[Close](#)[Full Screen / Esc](#)[Printer-friendly Version](#)[Interactive Discussion](#)

**Factors influencing
the contribution of
ion-induced
nucleation**

S. Gagné et al.

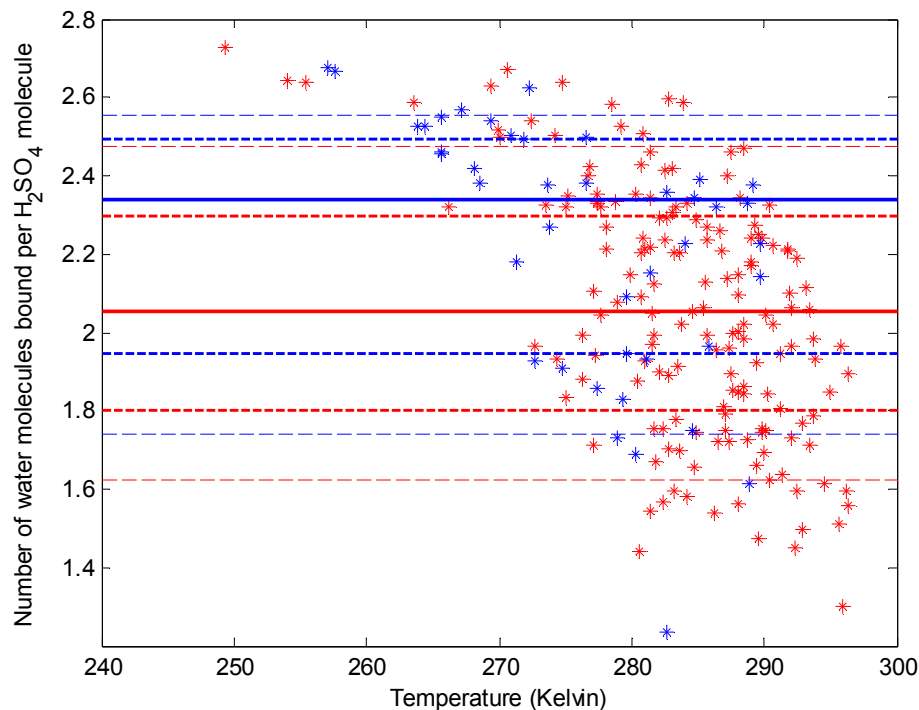


Fig. 7. The number of water molecules attached to sulfuric acid as a function of the temperature for overcharged (red dots) and undercharged (blue dots) days. The full lines represent the median of all over- (red) and undercharged (blue) days, the short and thick dashed lines are the 25 and 75 percentiles, and the long thin dashed lines are the 10 and 90 percentiles with the same color coding.

[Title Page](#)[Abstract](#)[Introduction](#)[Conclusions](#)[References](#)[Tables](#)[Figures](#)[◀](#)[▶](#)[◀](#)[▶](#)[Back](#)[Close](#)[Full Screen / Esc](#)[Printer-friendly Version](#)[Interactive Discussion](#)