

This discussion paper is/has been under review for the journal Atmospheric Chemistry and Physics (ACP). Please refer to the corresponding final paper in ACP if available.

An investigation of the origins of reactive gaseous mercury in the Mediterranean marine boundary layer

F. Sprovieri, I. M. Hedgecock, and N. Pirrone

Institute of Atmospheric Pollution Research, Rende Section, Rende, CS, Italy

Received: 29 October 2009 – Accepted: 30 October 2009 – Published: 19 November 2009

Correspondence to: F. Sprovieri
(f.sprovieri@iia.cnr.it)

Published by Copernicus Publications on behalf of the European Geosciences Union.

ACPD

9, 24815–24846, 2009

Gaseous mercury in the Mediterranean marine boundary layer

F. Sprovieri et al.

Title Page

Abstract

Introduction

Conclusions

References

Tables

Figures

⏪

⏩

◀

▶

Back

Close

Full Screen / Esc

Printer-friendly Version

Interactive Discussion

Abstract

Atmospheric mercury concentrations were measured during two oceanographic cruise campaigns covering the Adriatic Sea, the first during the autumn in 2004 and the second in the summer of 2005. The inclement weather during the autumn campaign meant that no clear in-situ production of oxidised gas phase mercury was seen, and that events where high values of $\text{Hg}_{(g)}^{\text{II}}$ and/or Hg associated with particulates (Hg^{P}) were observed, were the result of plumes from anthropogenic emission sources. During the summer campaign however, the by now rather familiar diurnal variation of $\text{Hg}_{(g)}^{\text{II}}$ concentration, with maxima around midday, was observed. Again there were events when high $\text{Hg}_{(g)}^{\text{II}}$ and particulates (Hg^{P}) concentrations were seen which did not fit with the pattern of daily in-situ $\text{Hg}_{(g)}^{\text{II}}$ production, which were traceable, with the help of back trajectory calculations, to anthropogenic emission sources. All the emission plumes encountered could be traced back to ports, not all of which are associated with major industrial installations. It therefore seems likely in these cases that the emissions are either due to shipping or to port activities. Box modelling studies of the summer 2005 campaign show that although the in-situ production of $\text{Hg}_{(g)}^{\text{II}}$ occurs in the MBL, the exact chemical mechanism responsible is difficult to determine. However given the high O_3 concentrations encountered during this campaign it seems clear that if Hg^0 does react with O_3 , it does not produce gas phase $\text{Hg}_{(g)}^{\text{II}}$, and the reaction between Hg^0 and OH if it occurs, does not contribute appreciably to $\text{Hg}_{(g)}^{\text{II}}$ production.

1 Introduction

The world's oceans and seas are the largest emitters of mercury to the atmosphere, industrial emissions are around 2350 Mg y^{-1} , terrestrial emissions 1550 Mg y^{-1} (excluding biomass burning), and ocean emissions roughly 2780 Mg y^{-1} . Terrestrial emissions, ocean and surface water emissions are sometimes referred to as natural

ACPD

9, 24815–24846, 2009

Gaseous mercury in the Mediterranean marine boundary layer

F. Sprovieri et al.

Title Page

Abstract

Introduction

Conclusions

References

Tables

Figures

⏪

⏩

◀

▶

Back

Close

Full Screen / Esc

Printer-friendly Version

Interactive Discussion

emissions, however this is slightly misleading. Although a part of the mercury emitted comes from geological and geothermal sources, much of it is recycled Hg previously emitted from primary or anthropogenic sources, and subsequently redeposited to terrestrial and ocean surfaces (Pirrone et al., 2009; Mason, 2009). The atmosphere is the most important medium by which Hg is transported around the globe, mostly in the form of elemental Hg. Mercury emitted both from ocean and terrestrial surfaces is elemental mercury (Hg^0), whereas the majority of Hg which is deposited (by dry or wet deposition), is oxidised Hg (Hg^{II}). Most marine waters are saturated in dissolved Hg^0 , but the precise mechanisms which result in Hg^0 emission from marine waters is still unclear. There is evidence that solar radiation enhances emission, either directly, or by its interaction with marine biota, as both abiotic and biotic processes have been suggested as pathways for the reduction of oxidised Hg to Hg^0 , (Mason, 2009; Andersson et al., 2007; Fantozzi et al., 2007). The Mediterranean Sea region is particular in numerous ways, it is a unique sea, with a distinct combination of climatological, meteorological, geographical and geological characteristics. It is also rather particular from the point of view of mercury. The area contains 65% of the world's cinnabar deposits, much of it in a belt that runs from southern Spain to Tuscany in Italy and up into Slovenia. The fact that the Mediterranean is a semi-closed sea bordered by numerous industrialised nations, with a large population living close to the coast, has led to concerns that pollutants and contaminants could build up within the Basin and affect wildlife. A number of studies have investigated the concentrations of heavy metals and also persistent organic pollutants (particularly organochlorine and polychlorinated biphenyl compounds, Storelli et al. (2009)) in the tissues of marine animals. Mercury has been found in crustaceans, molluscs and fish, but for the most part not at levels which could cause toxic effects in humans (Storelli, 2008). The exception to this generalisation are tuna (albacore and blue fin), and some rays and swordfish, which have been found to contain mercury concentrations above EU and WHO recommendations, especially in larger (older) specimens. A further problem is that the mercury contained in the muscle tissue of fish is almost all methylmercury, which is a potent neurotoxin (Storelli et al.,

Gaseous mercury in the Mediterranean marine boundary layer

F. Sprovieri et al.

Title Page

Abstract

Introduction

Conclusions

References

Tables

Figures



Back

Close

Full Screen / Esc

Printer-friendly Version

Interactive Discussion

2005, 2002). The toxicity of methylmercury and its presence in predatory fish is one of the main reasons for Hg being added to the environmental political agenda in recent years, (European Community, 2001; UNEP, 2008). In many ways the Adriatic Sea is a microcosm of the Mediterranean Sea, with a range of geographical complexities and anthropogenic pressures. For example, to the north of the Adriatic, the Soča/Isonzo river runs past the now disused Idrija mine (Slovenia) and into the Gulf of Trieste (Covelli et al., 2001; Faganeli et al., 2003); there is a major industrial area based around the port of Marghera (Italy); the Bay of Kaštela (Split, Croatia) has been contaminated in the past by a chlor-alkali plant, the repercussions of which continue up to this day (Kljakovic-Gaspic et al., 2006). The coastal zone is densely populated, much of the area is a national and international tourist destination, and there are important fishing and shellfish industries.

Two research cruises to study Hg in the atmosphere and in sea water were performed in the Adriatic as part of the ongoing Med-Oceanor series of projects. The first in the autumn of 2004 and the second in the summer of 2005. Elemental Hg, Reactive Gaseous Mercury (RGM, the term commonly used to refer to $\text{Hg}_{(g)}^{\text{II}}$) and Hg associated with particulate matter below $2.5 \mu\text{m}$, (Hg^{P}) were measured continuously during the cruises. The provenance of RGM in the Marine Boundary Layer (MBL) is of much interest as it is readily deposited and therefore plays an important role in the Hg biogeochemical cycle. The concentration of RGM in the Mediterranean MBL has been observed to vary diurnally (particularly in clear weather) peaking around mid-day or soon after (Sprovieri et al., 2003; Hedgecock et al., 2003, 2005). While it is possible to attribute observed RGM concentrations to in-situ production in the remote MBL (Laurier et al., 2003), the situation in the Mediterranean (and particularly the Adriatic) is not so clear cut. There is the possibility that RGM originates from anthropogenic sources, or that the observed variation in RGM concentration is the result of the change in boundary layer height from night to day, as has been suggested in the case of measurements at coastal sites in the Mediterranean (Wängberg et al., 2008). Instances of high RGM concentrations during the cruises have been investigated using back

Gaseous mercury in the Mediterranean marine boundary layer

F. Sprovieri et al.

Title Page

Abstract

Introduction

Conclusions

References

Tables

Figures

⏪

⏩

◀

▶

Back

Close

Full Screen / Esc

Printer-friendly Version

Interactive Discussion

trajectory analysis using HYSPLIT (Draxler and Rolph, 2003) and the AMCOTS box model (Hedgecock and Pirrone, 2004; Hedgecock et al., 2005). The AMCOTS model has been used previously to simulate the daily variation seen in RGM concentration over the Mediterranean during the summer (Hedgecock et al., 2005). The stability of the atmospheric conditions and general lack of cloud are conducive to the use of a box model, which when constrained by measured O₃, humidity, temperature and Hg⁰ concentration, allow the investigation of the formation of RGM resulting from in-situ oxidation. AMCOTS has also been used in conjunction with measurement data from the Arctic during Hg depletion events (Hedgecock et al., 2008). In this case the focus was slightly different, as the study sought to examine if, in the absence of O₃ and OH (O₃ is depleted contemporaneously with Hg⁰), the current understanding of Hg⁰ + halogen oxidation chemistry could account for the rapidity of the diminution of the Hg⁰ concentration. This study combines both these approaches, the model is used to simulate the in-situ production of RGM and the results compared with measurements, aided by the previous identification of plumes, where it is to be expected that the model does not accurately reproduce the RGM concentration. The research campaign during the summer of 2005 also allows the investigation of the role of O₃ and OH oxidation of Hg⁰ in RGM production, because of the continually high O₃ mixing ratio encountered throughout the measurement period; the average (day and night) O₃ mixing ratio for the period 14–29 June was 60 ppb, with a maximum of just over 100 ppb. The high temperatures (the average over the cruise period was just above 30°C) also means that thermal decomposition of Hg addition products which have been proposed (Goodsite et al., 2004) is rapid, further putting the model mechanism to the test. The summer oceanographic campaign therefore serves as a laboratory to test hypotheses about the rate and possible products of reactions between Hg⁰ and O₃, and also OH.

Gaseous mercury in the Mediterranean marine boundary layer

F. Sprovieri et al.

Title Page

Abstract

Introduction

Conclusions

References

Tables

Figures

⏪

⏩

◀

▶

Back

Close

Full Screen / Esc

Printer-friendly Version

Interactive Discussion

2 Measurements aboard the R. V. Urania

Measurements of atmospheric mercury species were conducted across the Adriatic sea aboard the R. V. Urania of the Italian CNR, during two oceanographic campaigns performed along the same route during two seasons, autumn (26 October to 15 November) 2004 and summer (15 June to 5 July) 2005 in order to assess how mercury species concentrations and distribution in the Adriatic MBL change with season and meteorological patterns. The cruise paths of the Med-Oceanor campaigns to date are shown in Fig. 1. The 2004 and 2005 cruise paths (solid and dotted white lines) were identical in the Adriatic but the 2005 cruise started from Rome and finished at Messina. Collection and analysis of Hg^0 , $\text{Hg}_{(\text{g})}^{\text{II}}$ and Hg^{P} was performed using an automated Tekran (Toronto, Canada) Model 2537A CVAFS, Tekran Model 1130 speciation unit, and Tekran Model 1135 Hg^{P} system (Landis et al., 2002). The integrated mercury system was mounted on the top deck of the R. V. Urania with the inlet at about 10 m above the sea surface. Hg^0 samples (5 min) were continuously quantified by the 2537A analyser. The technique is based on amalgamation on two Au-traps within the analyser working alternately, and mercury detection by CVAFS. The integrated Tekran speciation system was configured to collect 2 h $\text{Hg}_{(\text{g})}^{\text{II}}$ and Hg^{P} samples on a quartz KCl-coated annular denuder and quartz filter assembly, respectively. Particles larger than $2.5 \mu\text{m}$ are removed from the air stream by a cyclone before entering the denuder, and smaller particles pass through without deposition on the reactive inner surface under the proper flow rate conditions (10 l min^{-1}). After the 2 h sampling period, a one hour analysis procedure begins by flushing the 1130 and 1135 systems with mercury free air. The Hg^{P} and $\text{Hg}_{(\text{g})}^{\text{II}}$ collected on the quartz filter and annular denuder, respectively, were thermally decomposed (at 800 and 500°C respectively) into the mercury free air stream and detected as Hg^0 . During the campaign denuders were re-coated and replaced weekly. The Tekran 2537A analysers were calibrated on a daily basis using the internal permeation tubes. The permeation tube in each of the Tekran 2537A instruments was calibrated just prior to the study as described in Landis et al. (2002)

Gaseous mercury in the Mediterranean marine boundary layer

F. Sprovieri et al.

Title Page

Abstract

Introduction

Conclusions

References

Tables

Figures

⏪

⏩

◀

▶

Back

Close

Full Screen / Esc

Printer-friendly Version

Interactive Discussion

using a Tekran model 2505 primary calibration unit. The detection limit for $\text{Hg}_{(g)}^{\text{II}}$ and Hg^{P} under the operating conditions used was less than 2 pg m^{-3} .

3 Modelling

3.1 The AMCOTS photochemical box model

5 The AMCOTS (Atmospheric Chemistry Model Over The Sea) model was developed to investigate the atmospheric chemistry of Hg in the gas and deliquesced aerosol phases in the MBL (Hedgecock et al., 2005). It contains a detailed mechanism to describe gas phase chemistry, photolysis, aqueous phase chemistry in deliquesced sea salt and non-sea salt sulphate aerosol, and the transfer of chemical species between the phases. Originally based on the MOCCA model (Sander and Crutzen, 1996) it has
10 been updated according to the MECCA reaction mechanism (Sander et al., 2005). The Hg chemistry included in the model is similar to that described in (Hedgecock et al., 2005), but in this study a number of possible mechanisms have been investigated, due to the different reaction rate determinations for some Hg reactions available in
15 the literature. Rate constants determined in the laboratory and also using theoretical techniques have been considered, see Sect. 4.3. The model is used to simulate the concentration of RGM, a catch-all term used to describe the gas phase oxidised Hg component collected on the KCl-coated denuders described above in Sect. 2 (Landis et al., 2002). The model is constrained by measurement data, specifically Hg^0 and
20 O_3 concentration, relative humidity, temperature, as well as latitude and longitude, (for the calculation of photolysis rate constants using Fast-J; Wild et al., 2000). The model reaction mechanism is prepared using KPP (the Kinetic Pre-Processor; Damian et al., 2002; Sandu et al., 2003; Daescu et al., 2003) which allows the chemical mechanism to be defined by the user, the inclusion of customised reaction rate constant expressions, and a choice of integration methods. The aerosol loading in the model is considered to
25 be constant and the two classes of aerosol are assumed to have a uniform composition.

Gaseous mercury in the Mediterranean marine boundary layer

F. Sprovieri et al.

Title Page

Abstract

Introduction

Conclusions

References

Tables

Figures

⏪

⏩

◀

▶

Back

Close

Full Screen / Esc

Printer-friendly Version

Interactive Discussion



The aerosol composition is “refreshed” to reflect the deposition of previously emitted particles and the emission of fresh ones, at a rate depending on the typical particle size. The non-sea salt sulphate is completely replaced over a period of 7 days, while the sea salt aerosol, which in our previous studies (Hedgecock and Pirrone, 2004; Hedgecock et al., 2005) was assumed to be replaced over 3 days, is now refreshed more rapidly in light of the recent studies by Lowe et al. (2009) and is assumed to be replaced in 1 day. The model is initiated with typical MBL concentrations in the gas and aqueous phase as described in Sander and Crutzen (1996).

3.2 Back trajectory modelling

The NOAA Hybrid single-particle Lagrangian integrated trajectory model (HYSPPLIT) (Draxler and Rolph, 2003) was used to calculate 72 h backward trajectories for the R. V. Urania’s position at midday and midnight during both oceanographic campaigns. Where there was the suspicion that the ship was in the path of a plume, further trajectories at one hour intervals were calculated. The calculations were performed using the READY website (Rolph, 2003) making use of the archived FNL meteorological datasets.

4 Results and discussion

4.1 Overview of the campaigns

The average Hg^0 concentrations measured during the campaigns were 1.6 and 2.0 ng m^{-3} for the autumn (2004) and summer (2005) cruises respectively. These values are close to the northern hemispheric background of 1.72 ng m^{-3} (as measured at Mace Head, Ireland (Kock et al., 2005)). They also confirm previous measurements in the Mediterranean Basin which show, that unlike the seasonal variation in

Gaseous mercury in the Mediterranean marine boundary layer

F. Sprovieri et al.

Title Page

Abstract

Introduction

Conclusions

References

Tables

Figures

◀

▶

◀

▶

Back

Close

Full Screen / Esc

Printer-friendly Version

Interactive Discussion

Gaseous mercury in the Mediterranean marine boundary layer

F. Sprovieri et al.

Title Page

Abstract

Introduction

Conclusions

References

Tables

Figures

⏪

⏩

◀

▶

Back

Close

Full Screen / Esc

Printer-friendly Version

Interactive Discussion

Hg^0 concentrations observed at Mace Head – higher values in the winter compared to the summer – in the Mediterranean this seasonal variation is the reverse with higher values seen during the summer, (Wängberg et al., 2008). Previous cruises during the summer also show Hg^0 concentrations higher than the hemispheric background, Hg^0 average of 1.9 ng m^{-3} in 2000 (Sprovieri et al., 2003), and 1.96 ng m^{-3} in 2003 (Sprovieri and Pirrone, 2008). During a spring campaign in 2004 average Hg^0 concentrations closer to the hemispheric background were observed, 1.75 ng m^{-3} , (Sprovieri and Pirrone, 2008). The reasons for this difference are most likely to be due to the prevailing meteorological conditions during the Mediterranean summer when a stable high pressure system over the Basin results in a low MBL (around 400 m) and air from northern and central Europe flows southward into the region. This southerly motion of air in the boundary layer is responsible for the high O_3 concentrations observed across the Mediterranean during summertime (Lelieveld et al., 2002), and also carries anthropogenic Hg into the MBL. The stability of the summer anticyclone may also result in marine emissions of Hg^0 remaining trapped in the MBL and contributing to the higher observed Hg^0 concentrations with respect to Mace Head, as has been suggested by (Wängberg et al., 2008). There are three occasions during the autumn cruise when distinct peaks in the Hg^0 concentration in combination with either Hg^{II} and Hg^{P} , or both, are seen, as shown in figure 2. The relatively rough sea conditions, combined with the windy and cloudy meteorological conditions during this cruise, make the in-situ oxidation of Hg^0 producing observable peaks in the RGM concentration unlikely. The most obvious difference between the measurements made during the autumn and those during the summer cruise is the much greater variation in RGM concentrations, with numerous peaks observed, whereas the Hg^{P} concentration showed little variation. There were two major Hg^0 peaks and several smaller spikes, which unlike those seen during the autumn campaign, were not always accompanied by peaks in RGM or Hg^{P} , see figure 3. The origin of these differences between the two cruises has been investigated using back trajectory simulations and also, in the case of the summer cruise, the AMCOTS box model (Hedgecock and Pirrone, 2004; Hedgecock et al., 2005) to

simulate local gas and aerosol phase chemistry which could lead to in-situ production of RGM.

4.2 High Hg species concentration events

There were four clear plumes observed during the autumn 2004 measurement campaign, Fig. 2, and three events during the summer which stand out. As mentioned above the observed variation in RGM is very different during the summer compared to the autumn. Apart from a few exceptions, the RGM concentration peaks each day between noon and early afternoon. Similar diurnal variation in RGM has been observed previously in the MBL, both in the Mediterranean (Sprovieri et al., 2003; Hedgecock et al., 2005) and in the Pacific (Laurier et al., 2003). In both cases there was an absence of potential anthropogenic sources suggesting that RGM was being formed by the oxidation of Hg^0 within the MBL itself. The generally calm sea conditions and stable atmospheric conditions, with no rain, permit the constrained version of the AMCOTS model to be used in an attempt to simulate the daily production of RGM in the MBL. However some anthropogenic plumes clearly were encountered during this campaign, high RGM during night time is an obvious indicator, and back trajectory calculations have again been used to try to identify possible sources.

4.2.1 28/29 October 2004

During 27 October and the early hours of 28 October the the 72 h back trajectories show that the air sampled on board the R. V. Urania originated over the Iberian Peninsula and crosses the sea to the ship, and concentrations of Hg species are close to the campaign averages. From midday on 28 October the wind still originates from the Iberian Peninsula but passes south of Sicily before changing direction and crossing the island before reaching the ship. As the day progresses, the point at which the air masses cross Sicily moves from the western to the eastern end, until at 20:00 h on 28 October the air reaching the R. V. Urania has passed directly over the large

Gaseous mercury in the Mediterranean marine boundary layer

F. Sprovieri et al.

Title Page

Abstract

Introduction

Conclusions

References

Tables

Figures

◀

▶

◀

▶

Back

Close

Full Screen / Esc

Printer-friendly Version

Interactive Discussion

industrial and port area around Priolo, Mellili and Augusta between Catania and Syracuse on the eastern Sicilian coast. The concentrations of Hg^0 , RGM and Hg^{P} all start to increase. The air arriving at the ship continues to come from the same direction for a number of hours and the maximum RGM concentrations are seen in the early hours of the morning of 29 October. The back trajectory calculations suggest that the air-mass has travelled for roughly six hours before being sampled and thus the emission of $\text{Hg}^0/\text{RGM}/\text{Hg}^{\text{P}}$ occurred during the hours of darkness and the RGM peak is therefore clearly not the result of Hg oxidation resulting from MBL photochemistry. By midday on 29 October the wind is coming more from the south-east than the south and so crosses just a small part of the north-east corner of Sicily before arriving at the Urania, and this is reflected in the observed decrease in RGM. Interestingly the next day the ship passes very close to the Priolo-Augusta area, but with winds from the south-east, no noticeable increase in any of the Hg species was observed.

4.2.2 3 November 2004

A peak in both Hg^0 and Hg^{P} were observed as well as a small but distinct increase in RGM on the night between 2 and 3 November. The Urania was in the Adriatic off the coast from Bari, and the air mass arriving at the ship had passed over the open Mediterranean and then into the Ionian Sea, between Puglia and Calabria, after which it passed overland between Taranto and Bari. The largest iron and steel foundry in Europe is located in the industrial zone to the north-west of the town of Taranto and has been the subject of a written question in the European Parliament as recently as 2008 regarding its emissions. After passing Taranto the airmass passed overland without change in altitude until reaching the Adriatic. The relative lack of RGM may be due to the nature of the emissions from the industrial area or the result of the more rapid deposition of RGM compared to Hg^{P} .

Gaseous mercury in the Mediterranean marine boundary layer

F. Sprovieri et al.

Title Page

Abstract

Introduction

Conclusions

References

Tables

Figures

⏪

⏩

◀

▶

Back

Close

Full Screen / Esc

Printer-friendly Version

Interactive Discussion

4.2.3 5 November 2004

Marked peaks in Hg^0 and Hg^{P} were observed, but not in RGM. The back trajectories suggest that the air sampled on the Urania had crossed the Balkans at low altitude encountering hilly and forested terrain. In the previous 72 h the airmass sampled has crossed part of Bulgaria, Serbia, Bosnia and Herzegovina, and finally Croatia. The source or sources of the observed peaks in Hg^0 and Hg^{P} is not so obvious in this instance. However, 12 h prior to sampling, the airmass passed close to Rijeka, the largest seaport in Croatia, and given the rapidity with which RGM deposits, it is possible that, in part at least, the elevated Hg^{P} may well have originated from the port area.

4.2.4 18 June 2005

There is an increase in Hg^{P} between 06:00 and 12:00 accompanied by an increase in Hg^0 . RGM increases slowly until midday and then increases more rapidly peaking at 15:00, and then has decreased again by the next analysis time at 18:00. The air mass being sampled had crossed the southern Adriatic before crossing Puglia, the Ionian Sea and then Calabria before skirting Gioia Tauro and crossing the extreme southern tip of Calabria before reaching the ship off the east coast of Sicily. Gioia Tauro is the largest container port in the Mediterranean. It is possible that this event is caused by emissions from the port area, followed by RGM deposition as the air crosses the hilly southern tip of Calabria, and that the later peak in RGM is due in part to the oxidation of Hg^0 in the 6 h spent in the MBL (low wind) before the air reaches the Urania. This possibility is discussed again in Sect. 4.4 below.

4.2.5 21/22 June 2005

During the afternoon of 21 June the RGM concentration begins to decrease and then picks up again from about 18:00 onwards and reaches a maximum at midnight, after which it decreases again. The Hg^{P} concentration also increases rising above 5 pg m^{-3} .

Gaseous mercury in the Mediterranean marine boundary layer

F. Sprovieri et al.

Title Page

Abstract

Introduction

Conclusions

References

Tables

Figures

⏪

⏩

◀

▶

Back

Close

Full Screen / Esc

Printer-friendly Version

Interactive Discussion

During the late afternoon the air arriving at the R. V. Urania has come south-west across the Adriatic from the Split/Kaštela area of Croatia. As the evening goes on, the airmass, particularly the lower trajectories calculated (100 and 500 m) continues to come from the Croatian coast but crosses it progressively further to the north as the night goes on. By 03:00 in the morning of 22 June the air is crossing over the sea to the north of Šibenik. The area of Kaštela has an aluminium smelter and had a mercury-cell chlor-alkali plant, as mentioned before in the Introduction, and Split is a major port.

4.2.6 25 June 2005

At 02:40 in the morning the Hg^0 and RGM increase, this is clearly an emission plume, as RGM production during the hours of darkness is much slower than during the day. Interestingly the R. V. Urania was in the Gulf of Trieste at this point, and the air mass had recently passed close to the port of Rijeka in Croatia, and also the shipping lanes leading out of the bay, where the port is situated, into the open Adriatic.

4.2.7 26 June 2005

The Hg^0 concentration begins to increase from about 08:00. An examination of the hourly back trajectories shows that they do not change significantly between 06:00 and 17:00. The increase in Hg^0 is accompanied by an increase in RGM but not Hg^{P} . The back trajectories show that the air being sampled aboard the R. V. Urania has crossed the Italian peninsula from the northern Tyrrhenian Sea and that it has passed by Ancona, a major Adriatic port. The air arriving at the position of the R. V. Urania has been over the sea for more than 12 h, so in this instance it seems plausible that the observed RGM is the result of both a plume and in-situ oxidation of Hg^0 , this possibility is discussed further in Sect. 4.4 below.

Gaseous mercury in the Mediterranean marine boundary layer

F. Sprovieri et al.

Title Page

Abstract

Introduction

Conclusions

References

Tables

Figures

⏪

⏩

◀

▶

Back

Close

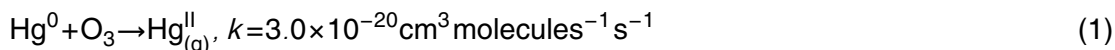
Full Screen / Esc

Printer-friendly Version

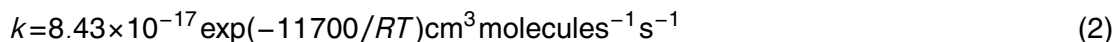
Interactive Discussion

4.3 Box modelling studies

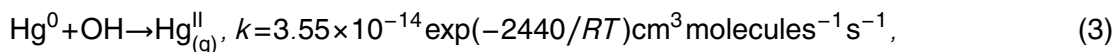
The box model has been used with the concentrations of Hg and O₃ constrained by measurements. OH is also effectively constrained by the measured O₃ concentration and relative humidity. Using typical values to describe the sea salt and non-sea salt sulphate aerosol, the calculated concentration of Hg_g^{II} has been compared to the values measured during the summer 2005 campaign. A number of different combinations of reactions and reaction rate constants for the oxidation of elemental Hg were tried, as there is some uncertainty as to the atmospheric Hg oxidation mechanism, (Hynes et al., 2009; Ariya et al., 2009). There have been both laboratory measurements and theoretical calculations of the reaction rate constants for Hg with halogen atoms and molecules, and for the reaction with O₃ and OH. The uncertainty mentioned above mostly centres around the stability of possible excited intermediates such as HgBr* and HgOH*, and whether the Hg⁰+O₃ (and Hg⁰+OH) reactions occur at appreciable rates. The physical state of possible reaction products is another difficulty, especially given that the experimental technique used to sample and quantify Hg_g^{II} in the field, relies on thermally decomposing the compounds collected and detecting Hg as Hg⁰. The box model has therefore been used with a large number of slightly different reaction rate mechanisms, in which combinations of the following possibilities were used;



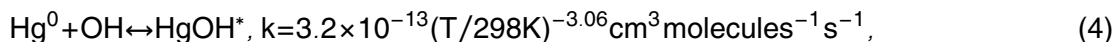
(Hall, 1995) or



(Pal and Ariya, 2004)



(Pal and Ariya, 2004) or



24828

Gaseous mercury in the Mediterranean marine boundary layer

F. Sprovieri et al.

Title Page

Abstract

Introduction

Conclusions

References

Tables

Figures

⏪

⏩

◀

▶

Back

Close

Full Screen / Esc

Printer-friendly Version

Interactive Discussion



forwards

$$k=2.7 \times 10^9 \exp(-4061/T) \text{s}^{-1} \quad (5)$$

backwards, (Goodsite et al., 2004).

$$\text{Hg}^0 + \text{Br} \rightarrow \text{HgBr}, k=1.46 \times 10^{-32} (T/298)^{-1.86} \text{cm}^3 \text{molecules}^{-1} \text{s}^{-1}, \quad (6)$$

5 (Donohoue et al., 2006) or

$$k=3.2 \times 10^{12} \text{cm}^3 \text{molecules}^{-1} \text{s}^{-1}, \quad (7)$$

(Ariya et al., 2002) in this instance assuming that this is the rate limiting step and that HgBr further reacts rapidly to form an Hg^{II} compound in the gas phase.

$$\text{Hg}^0 + \text{Br} \leftrightarrow \text{HgBr}^*, k=1.1 \times 10^{-12} (T/298K)^{-2.37} \text{cm}^3 \text{molecules}^{-1} \text{s}^{-1} \quad (8)$$

10 forwards and

$$k=1.2 \times 10^{10} \exp(-8357/T) \text{s}^{-1} \quad (9)$$

for the reverse reaction (Goodsite et al., 2004), and

$$\text{HgBr} + \text{Br} \rightarrow \text{HgBr}_2, k=22.5 \times 10^{-10} (T/298K)^{-0.57} \text{cm}^3 \text{molecules}^{-1} \text{s}^{-1} \quad (10)$$

(Goodsite et al., 2004).

15 The reaction between Hg⁰ and BrO (Raofie and Ariya, 2003) was also included in the reaction mechanism but proved to be of little importance when compared to the reactions above. For many of the combinations tried the results were clearly way off the mark, either failing to reproduce the midday maxima (both over and underestimates were obtained), the nocturnal minima (commonly overestimated) or, and this applied to almost all the simulations, failing to reproduce the extent of the diurnal variation. With the O₃+Hg⁰ rate constant from Hall (1995) and the HgBr* allowed to decay back to reactants, the RGM minima are in the right ball park but the maxima are far too low. Including the HgOH* decay gave an almost flat line for the RGM concentration, as shown

Gaseous mercury in the Mediterranean marine boundary layer

F. Sprovieri et al.

Title Page

Abstract

Introduction

Conclusions

References

Tables

Figures

◀

▶

◀

▶

Back

Close

Full Screen / Esc

Printer-friendly Version

Interactive Discussion



in Fig. 4. Using the Pal and Ariya (2004) value for $k(\text{Hg}^0 + \text{O}_3)$ and both the HgOH^* and HgBr^* formation and decomposition values from Goodsite et al. (2004), continual build up of RGM occurs and very little day to night variation is seen (Fig. 5). The removal of one or both of the excited state decays from the reaction mechanism gives a more realistic profile but the modelled minimum concentration remains significantly too high. Following these tests the products of the $\text{Hg}^0 + \text{O}_3$ and $\text{Hg}^0 + \text{OH}$ reaction were assumed to be solid and therefore not to contribute to the modelled RGM concentration. At this point it made no difference which rate constant was used for the reactions, as the Hg^0 concentration is constrained within the model and updated every time step from the measured data, therefore the rate at which Hg^0 is consumed does not influence RGM production from the other gas phase reactions. A previous study (Hedgecock et al., 2005) found that a combination of the Ariya et al. (2002) rate constant and the assumption of solid products (from $\text{Hg}^0 + \text{O}_3$ and $\text{Hg}^0 + \text{OH}$) gave results comparable to those using the $\text{Hg}^0 + \text{O}_3$ rate constant from Hall (1995) but assuming that the reaction products contributed to RGM. For the summer 2005 results modelled concentrations of RGM similar to the observations were obtained only by assuming that the formation of the HgBr^* intermediate is the rate limiting step in the formation of RGM, and using the Ariya et al. (2002) rate coefficient for $\text{Hg}^0 + \text{Br}$ rather than the rate expression from Donohoue et al. (2006). Figure 6 shows the model results assuming that the $\text{Hg}^0 + \text{O}_3$ and $\text{Hg}^0 + \text{OH}$ reactions do not give products that contribute to RGM, and that the HgBr^* recombination product is converted to RGM before it can decay back to the initial reactants. Recently high concentrations of BrO have been observed in a semi-polluted MBL (Mahajan et al., 2009). To assess whether the initial conditions and NO emission rate employed in the model affected the release of brominated compounds to the MBL a number of test studies were performed. It proved possible to increase both the rate and overall amount of Br compound release from the aerosol by increasing the aerosol loading (higher liquid water content of the sea salt aerosol) and also by assuming the MBL was more polluted (higher NO_2 initial concentration and higher NO emission rate). Doubling the sea salt aerosol loading increased Br and BrO concentrations by a factor

Gaseous mercury in the Mediterranean marine boundary layer

F. Sprovieri et al.

[Title Page](#)[Abstract](#)[Introduction](#)[Conclusions](#)[References](#)[Tables](#)[Figures](#)[⏪](#)[⏩](#)[◀](#)[▶](#)[Back](#)[Close](#)[Full Screen / Esc](#)[Printer-friendly Version](#)[Interactive Discussion](#)

of roughly 1.5, but this was not sufficient to reproduce the observations if the HgBr^* produced in the $\text{Hg}^0 + \text{Br}$ reaction was permitted to thermally dissociate back to $\text{Hg}^0 + \text{Br}$. Increasing the NO_x concentration in the model so that the average NO_2 concentration increased threefold from 40 to 120 ppt, increased peak daytime BrO by 50%. However the greatest change was seen in the nocturnal concentrations of Cl_2 (a tenfold increase) and NO_3 (also a tenfold increase), which contrived to increase the nocturnal Hg^0 oxidation rate, to such an extent, that a small but discernible peak in RGM was seen soon after midnight, contrary to all observations made thus far in the MBL. It has to be concluded therefore that these simulations are unrealistic. The chemical mechanism employed for the summer 2005 results was used to re-run the simulations for the summer 2000 oceanographic campaign described in Sprovieri et al. (2003) and modelled in Hedgecock et al. (2003, 2005). The comparison between the simulated and observed RGM concentrations proved to be similar to those previously published with the Index of Agreement metric (see Hedgecock et al., 2005) differing by just 0.06, having a value in this case of 0.63 rather than 0.69. The simulation shown in Fig. 6 has an IOA of 0.67, with an average modelled RGM concentration of 9.0 pg m^{-3} compared to the 8.2 pg m^{-3} observed.

4.4 The mercury plumes encountered during the summer campaign

The four plumes identified in the measurements during the summer 2005 campaign are easily identifiable in figure 6. At midday on 18 June the model underestimates the RGM concentration by 15 pg m^{-3} , approximately 35%. As the arrival of this plume at the position of the Urania is close to the time of the peak concentration of RGM produced in-situ, it would be easy to assume that the model had failed to reproduce the observed concentration. This is also true in the case of the plume of 26 June where the observed RGM is underestimated by over 60%, again as the plume's influence on the measurements occurs close to midday, it would be easy to interpret the discrepancy as a failing in the model. The plumes which were detected around midnight of 22 and 25 June are much more simply attributable to an external and not local (in situ)

Gaseous mercury in the Mediterranean marine boundary layer

F. Sprovieri et al.

Title Page

Abstract

Introduction

Conclusions

References

Tables

Figures

⏪

⏩

◀

▶

Back

Close

Full Screen / Esc

Printer-friendly Version

Interactive Discussion



influence. All of these instances clearly reduce the apparent ability of the model to predict RGM concentration from the given Hg^0 concentration. The Index of Agreement mentioned in Sect. 4.3 improves by more than 10% to 0.74 if these outliers are not included. The model can therefore give an insight as to the proportion of the atmospheric RGM loading resulting from in situ oxidation (including that from the Hg^0 in the plume itself) and that which is transported from the emission source.

4.5 Atmospheric mercury cycling over the Adriatic

The debate over which reactions are important in the atmospheric oxidation of Hg appears set to continue for some time. Box modelling studies seem to indicate that RGM production in the atmosphere is dominated by reactions involving Br compounds (Hedgecock et al., 2008; Holmes et al., 2009), while many regional models still rely on O_3 and OH as atmospheric oxidants and HO_2 as a reductant in cloud water (Ryaboshapko et al., 2007a,b). Global modelling studies use a range of chemical mechanisms of varying complexity, and various treatments of deposition and re-emission or aqueous phase reduction of Hg^{II} which allow the hemispheric uniformity of Hg^0 concentrations to be reproduced (for example, Jung et al., 2009; Selin et al., 2008; Seigneur et al., 2006; Travnikov, 2005; Dastoor and Larocque, 2004). Holmes et al. (2006) investigated the free tropospheric lifetime of Hg with respect to oxidation by Br using the reaction rate coefficients from Goodsite et al. (2004), and more recently used a box model to assess the sources and deposition of RGM in the MBL (Holmes et al., 2009). The authors concluded that it was possible to fit RGM observations without including the oxidation to RGM of Hg^0 by O_3 , if the entrainment flux from the free troposphere was increased in their model. As mentioned in the Introduction the Adriatic in the summer provides a hot, ozone rich environment to study the production of RGM in the MBL. In fact it proved difficult to reconcile published measured and theoretical rate constants for atmospheric Hg^0 oxidation reactions with the observations, and the only way proved to be the assumption that the $\text{Hg}^0 + \text{O}_3$ and $\text{Hg}^0 + \text{OH}$ reactions do not give products that contribute to RGM, however this does not bring us any closer to knowing

Gaseous mercury in the Mediterranean marine boundary layer

F. Sprovieri et al.

Title Page

Abstract

Introduction

Conclusions

References

Tables

Figures

⏪

⏩

◀

▶

Back

Close

Full Screen / Esc

Printer-friendly Version

Interactive Discussion



whether they do actually occur, and if so what the products are. The other assumption that proved necessary was that the $\text{Hg}^0 + \text{Br}$ reaction controls the rate at which RGM is produced and that therefore HgBr^* is rapidly converted to RGM. The temperatures encountered during the cruise were such that the thermal dissociation (Goodsite et al., 2004), occurred so rapidly in the model that almost no RGM was produced at all, when it was included in the model reaction mechanism. The observation of high, atmospheric Hg species concentrations associated with air masses which had recently passed over, or very close to port areas, is of some concern. Further work is needed to distinguish between emissions from ships themselves and those associated with port activity or other local sources. There is currently much interest in ships as sources of pollutants which affect air quality, in part because global shipping is predicted to increase, whilst emissions from other sources are being always more stringently controlled, thus making ship emissions an ever more important source of contaminants. This is particularly true where busy shipping routes run close to population centres, the Mediterranean is a prime example of such a case (Marmar et al., 2009). As far as the authors are aware no mercury emission inventories include shipping among their emission categories.

5 Conclusions

The two cruise campaigns in the Adriatic demonstrate the complexity of Hg cycling in the MBL in general, and the importance of anthropogenic influences particularly in areas not far from the coast. The Adriatic is perhaps more susceptible to these influences than many parts of the Mediterranean or ocean environments, because it is extremely narrow. The back trajectory analyses demonstrate that in the Adriatic it does not really matter in which direction the wind is coming from, a part will be influenced by an anthropogenic plume due to either regional industries or shipping/port activities or both. There are two important sources of Hg in the Mediterranean (and other regions) which are generally not included in emission inventories, biomass burning and shipping. While some progress has been made with the biomass burning contribution

Gaseous mercury in the Mediterranean marine boundary layer

F. Sprovieri et al.

Title Page

Abstract

Introduction

Conclusions

References

Tables

Figures



Back

Close

Full Screen / Esc

Printer-friendly Version

Interactive Discussion

to the atmospheric Hg loading, (Cinnirella et al., 2008; Friedli et al., 2009; Wiedinmyer and Friedli, 2007) shipping emissions remain unquantified and as yet unestimated. The consensus of opinion seems to be moving away from considering O₃ and OH the most important atmospheric oxidants of Hg⁰ to the view that Br radicals and possibly other Br-containing compounds are the more important (see Holmes et al., 2009; Hynes et al., 2009; Ariya et al., 2009). This causes no little concern from a modelling point of view, because although it is possible to include Br chemistry explicitly and comprehensively in box models (Hedgecock et al., 2005, 2008; Holmes et al., 2009) its inclusion in regional and global models presents far greater problems and as yet has only been done in a parametrised or climatological fashion (Seigneur et al., 2006; Holmes et al., 2006; Dastoor et al., 2008). The difficulty is doubled in this case, as there is uncertainty in the Hg chemistry, and also a less than complete understanding of the sources and chemistry of Br-containing compounds in the atmosphere, as shown recently by Mahajan et al. (2009). Finally it should be reiterated that the use of the term “RGM” is less than satisfactory, in order to understand the atmospheric cycling on any scale between very local and global it is of the utmost importance to identify the compounds which are collected on KCl-coated denuders and which make up the oxidised component of atmospheric Hg.

Acknowledgements. The authors gratefully acknowledge the NOAA Air Resources Laboratory (ARL) for the provision of the HYSPLIT transport and dispersion model and/or READY website (<http://www.arl.noaa.gov/ready.php>) used in this publication.

References

- Andersson, M., Gårdfeldt, K., Wängberg, I., Sprovieri, F., Pirrone, N., and Lindqvist, O.: Seasonal and daily variation of mercury evasion at coastal and off shore sites from the Mediterranean Sea, *Mar. Chem.*, 104, 214–226, 2007. 24817
- Ariya, P. A., Khalizov, A., and Gidas, A.: Reactions of Gaseous Mercury with Atomic and

Gaseous mercury in the Mediterranean marine boundary layer

F. Sprovieri et al.

Title Page

Abstract

Introduction

Conclusions

References

Tables

Figures



Back

Close

Full Screen / Esc

Printer-friendly Version

Interactive Discussion

Gaseous mercury in the Mediterranean marine boundary layer

F. Sprovieri et al.

Title Page

Abstract

Introduction

Conclusions

References

Tables

Figures

⏪

⏩

◀

▶

Back

Close

Full Screen / Esc

Printer-friendly Version

Interactive Discussion

Molecular Halogens: Kinetics, Product Studies, and Atmospheric Implications, *J. Phys. Chem. A*, 106, 7310–7320, doi:10.1021/jp020719o, 2002. 24829, 24830

Ariya, P. A., Peterson, K., Snider, G., and Amyot, M.: Mercury chemical transformations in the gas, aqueous and heterogeneous phases: state-of-the-art science and uncertainties, in: *Mercury Fate and Transport in the Global Atmosphere: Emissions, Measurements and Models*, edited by: Pirrone, N. and Mason, R. P., http://dx.doi.org/10.1007/978-0-387-93958-2_15, Springer, ISBN: 978-0-387-93957-5, 459–501 pp., 2009. 24828, 24834

Cinnirella, S., Pirrone, N., Allegrini, A., and Guglietta, D.: Modeling mercury emissions from forest fires in the Mediterranean region, *Environ. Fluid Mech.*, 8, 129–145, doi:10.1007/s10652-007-9048-1, 2008. 24834

Covelli, S., Faganeli, J., Horvat, M., and Brambati, A.: Mercury contamination of coastal sediments as the result of long-term cinnabar mining activity (Gulf of Trieste, northern Adriatic sea), *Appl. Geochem.*, 16, 541–558, doi:10.1016/S0883-2927(00)00042-1, 2001. 24818

Daescu, D. N., Sandu, A., and Carmichael, G. R.: Direct and adjoint sensitivity analysis of chemical kinetic systems with KPP: II – numerical validation and applications, *Atmospheric Environment*, 37, 5097–5114, doi:10.1016/j.atmosenv.2003.08.020, 2003. 24821

Damian, V., Sandu, A., Damian, M., Potra, F., and Carmichael, G. R.: The kinetic preprocessor KPP—a software environment for solving chemical kinetics, *Comput. Chem. Eng.*, 26, 1567–1579, doi:10.1016/S0098-1354(02)00128-X, 2002. 24821

Dastoor, A. P. and Larocque, Y.: Global circulation of atmospheric mercury: a modelling study, *Atmospheric Environment*, 38, 147–161, doi:10.1016/j.atmosenv.2003.08.037, 2004. 24832

Dastoor, A. P., Davignon, D., Theys, N., Van Roozendaal, M., Steffen, A., and Ariya, P. A.: Modeling Dynamic Exchange of Gaseous Elemental Mercury at Polar Sunrise, *Environ. Sci. Technol.*, 42, 5183–5188, 2008. 24834

Donohoue, D. L., Bauer, D., Cossairt, B., and Hynes, A. J.: Temperature and Pressure Dependent Rate Coefficients for the Reaction of Hg with Br and the Reaction of Br with Br: A Pulsed Laser Photolysis-Pulsed Laser Induced Fluorescence Study, *J. Phys. Chem. A*, 110, 6623–6632, doi:10.1021/jp054688j, 2006. 24829, 24830

Draxler, R. R. and Rolph, G. D.: HYSPLIT (HYbrid Single-Particle Lagrangian Integrated Trajectory) Model, Model access via NOAA ARL READY Website <http://www.arl.noaa.gov/HYSPLIT.php>, 2003. 24819, 24822

European Community: Ambient Air Pollution by Mercury – Position Paper on Mercury,

Tech. rep., European Commission (Publisher), Office for Official Publications of the European Communities, Brussels, http://ec.europa.eu/environment/air/pdf/pp_mercury.pdf, ISBN 92-894-2053-7, 2001. 24818

Faganeli, J., Horvat, M., Covelli, S., Fajon, V., Logar, M., Lipej, L., and Cermelj, B.: Mercury and methylmercury in the Gulf of Trieste (northern Adriatic Sea), *Sci. Total Environ.*, 304, 315–326, doi:10.1016/S0048-9697(02)00578-8, 2003. 24818

Fantozzi, L., Ferrara, R., Frontini, F., and Dini, F.: Factors influencing the daily behaviour of dissolved gaseous mercury concentration in the Mediterranean Sea, *Mar. Chem.*, 107, 4–12, doi:10.1016/j.marchem.2007.02.008, 2007. 24817

Friedli, H., Arellano, A., Cinnirella, S., and Pirrone, N.: Initial Estimates of Mercury Emissions to the Atmosphere from Global Biomass Burning, *Environ. Sci. Technol.*, 43, 3507–3513, doi:10.1021/es802703g, 2009. 24834

Goodsite, M. E., Plane, J. M. C., and Skov, H.: A Theoretical Study of the Oxidation of Hg₀ to HgBr₂ in the Troposphere, *Environ. Sci. Technol.*, 38, 1772–1776, doi:10.1021/es034680s, 2004. 24819, 24829, 24830, 24832, 24833

Hall, B.: The gas phase oxidation of elemental mercury by ozone, *Water Air Soil Poll.*, 80, 301–315, 1995. 24828, 24829, 24830, 24844

Hedgecock, I. and Pirrone, N.: Chasing quicksilver: Modeling the atmospheric lifetime of Hg(0) in the marine boundary layer at various latitudes, *Environ. Sci. Technol.*, 38, 69–76, doi:10.1021/es034623z, 2004. 24819, 24822, 24823

Hedgecock, I., Pirrone, N., Sprovieri, F., and Pesenti, E.: Reactive gaseous mercury in the marine boundary layer: modelling and experimental evidence of its formation in the Mediterranean region, *Atmos. Environ.*, 37, 41–49, 2003. 24818, 24831

Hedgecock, I., Trunfio, G., Pirrone, N., and Sprovieri, F.: Mercury chemistry in the MBL: Mediterranean case and sensitivity studies using the AMCOTS (Atmospheric Mercury Chemistry over the Sea) model, *Atmos. Environ.*, 39, 7217–7230, doi:10.1016/j.atmosenv.2005.09.002, 2005. 24818, 24819, 24821, 24822, 24823, 24824, 24830, 24831, 24834

Hedgecock, I. M., Pirrone, N., and Sprovieri, F.: Chasing quicksilver northward: mercury chemistry in the Arctic troposphere, *Environ. Chem.*, 5, 131–134, doi:10.1071/EN08001, 2008. 24819, 24832, 24834

Holmes, C. D., Jacob, D. J., and Yang, X.: Global lifetime of elemental mercury against oxidation by atomic bromine in the free troposphere, *Geophys. Res. Lett.*, 33, L20808,

ACPD

9, 24815–24846, 2009

Gaseous mercury in the Mediterranean marine boundary layer

F. Sprovieri et al.

Title Page

Abstract

Introduction

Conclusions

References

Tables

Figures

⏪

⏩

◀

▶

Back

Close

Full Screen / Esc

Printer-friendly Version

Interactive Discussion

doi:10.1029/2006GL027176, 2006. 24832, 24834

Holmes, C. D., Jacob, D. J., Mason, R. P., and Jaffe, D. A.: Sources and deposition of reactive gaseous mercury in the marine atmosphere, *Atmos. Environ.*, 43, 2278–2285, doi:10.1016/j.atmosenv.2009.01.051, 2009. 24832, 24834

5 Hynes, A. J., Donohoue, D. L., Goodsite, M. E., and Hedgecock, I. M.: Our current understanding of major chemical and physical processes affecting mercury dynamics in the atmosphere and at the air-water/terrestrial interfaces, in: *Mercury Fate and Transport in the Global Atmosphere: Emissions, Measurements and Models*, edited by: Pirrone, N. and Mason, R. P., http://dx.doi.org/10.1007/978-0-387-93958-2_14, ISBN: 978-0-387-93957-5, chap. 14, 427–457 pp., Springer, 2009. 24828, 24834

10 Jung, G., Hedgecock, I. M., and Pirrone, N.: ECHMERIT V1.0 – a new global fully coupled mercury-chemistry and transport model, *Geoscientific Model Development Discussions*, 2, 385–453, 2009. 24832

15 Kljakovic-Gaspic, Z., Odzak, N., Ujevic, I., Zvonaric, T., Horvat, M., and Baric, A.: Biomonitoring of mercury in polluted coastal area using transplanted mussels, *Sci. Total Environ.*, 368, 199–209, doi:10.1016/j.scitotenv.2005.09.080, 2006. 24818

Kock, H., Bieber, E., Ebinghaus, R., Spain, T., and Thees, B.: Comparison of long-term trends and seasonal variations of atmospheric mercury concentrations at the two European coastal monitoring stations Mace Head, Ireland, and Zingst, Germany, *Atmos. Environ.*, 39, 7549–7556, 2005. 24822

20 Landis, M. S., Stevens, R. K., Schaedlich, F., and Prestbo, E. M.: Development and Characterization of an Annular Denuder Methodology for the Measurement of Divalent Inorganic Reactive Gaseous Mercury in Ambient Air, *Environ. Sci. Technol.*, 36, 3000–3009, doi:10.1021/es015887t, 2002. 24820, 24821

25 Laurier, F., Mason, R., Whalin, L., and Kato, S.: Reactive gaseous mercury formation in the North Pacific Ocean's marine boundary layer: A potential role of halogen chemistry, *J. Geophys. Res.-Atmos.*, 108, 4529, 2003. 24818, 24824

30 Lelieveld, J., Berresheim, H., Borrmann, S., Crutzen, P. J., Dentener, F. J., Fischer, H., Feichter, J., Flatau, P. J., Heland, J., Holzinger, R., Korrman, R., Lawrence, M. G., Levin, Z., Markowicz, K. M., Mihalopoulos, N., Minikin, A., Ramanathan, V., de Reus, M., Roelofs, G. J., Scheeren, H. A., Sciare, J., Schlager, H., Schultz, M., Siegmund, P., Steil, B., Stephanou, E. G., Stier, P., Traub, M., Warneke, C., Williams, J., and Ziereis, H.: Global Air Pollution Crossroads over the Mediterranean, *Science*, 298, 794–799, doi:10.1126/science.1075457,

ACPD

9, 24815–24846, 2009

Gaseous mercury in the Mediterranean marine boundary layer

F. Sprovieri et al.

Title Page

Abstract

Introduction

Conclusions

References

Tables

Figures

⏪

⏩

◀

▶

Back

Close

Full Screen / Esc

Printer-friendly Version

Interactive Discussion



2002. 24823

Lowe, D., Topping, D., and McFiggans, G.: Modelling multi-phase halogen chemistry in the remote marine boundary layer: investigation of the influence of aerosol size resolution on predicted gas- and condensed-phase chemistry, *Atmos. Chem. Phys.*, 9, 4559–4573, 2009, <http://www.atmos-chem-phys.net/9/4559/2009/>. 24822

Mahajan, A. S., Oetjen, H., Lee, J. D., Saiz-Lopez, A., McFiggans, G. B., and Plane, J. M.: High bromine oxide concentrations in the semi-polluted boundary layer, *Atmospheric Environment*, 43, 3811–3818, doi:10.1016/j.atmosenv.2009.05.033, 2009. 24830, 24834

Marmner, E., Dentener, F., Aardenne, J. V., Cavalli, F., Vignati, E., Velchev, K., Hjorth, J., Boersma, F., Vinken, G., Mihalopoulos, N., and Raes, F.: What can we learn about ship emission inventories from measurements of air pollutants over the Mediterranean Sea?, *Atmos. Chem. Phys.*, 9, 6815–6831, 2009, <http://www.atmos-chem-phys.net/9/6815/2009/>. 24833

Mason, R. P.: Mercury emissions from natural processes and their importance in the global mercury cycle, in: *Mercury Fate and Transport in the Global Atmosphere: Emissions, Measurements and Models*, edited by: Pirrone, N. and Mason, R. P., http://dx.doi.org/10.1007/978-0-387-93958-2_7, Springer, ISBN: 978-0-387-93957-5, chap. 7, 173–191 pp., 2009. 24817

Pal, B. and Ariya, P. A.: Gas-Phase HO-Initiated Reactions of Elemental Mercury: Kinetics, Product Studies, and Atmospheric Implications, *Environ. Sci. Technol.*, 38, 5555–5566, doi:10.1021/es0494353, 2004. 24828, 24830, 24845

Pirrone, N., Cinnirella, S., Feng, X., Finkelman, R. B., Friedli, H. R., Leaner, J., Mason, R., Mukherjee, A. B., Stracher, G., Streets, D. G., and Telmer, K.: Global Mercury Emissions to the Atmosphere from Natural and Anthropogenic Sources, in: *Mercury Fate and Transport in the Global Atmosphere: Emissions, Measurements and Models*, edited by: Pirrone, N. and Mason, R. P., http://dx.doi.org/10.1007/978-0-387-93958-2_7, Springer, ISBN: 978-0-387-93957-5, chap. 1, 1–47 pp., 2009. 24817

Raofie, F. and Ariya, P. A.: Kinetics and products study of the reaction of BrO radicals with gaseous mercury, *J. Phys. IV*, 107, 1119–1121, 2003. 24829

Rolph, G. D.: Real-time Environmental Applications and Display sYstem (READY), <http://www.arl.noaa.gov/ready.php>, NOAA Air Resources Laboratory, Silver Spring, MD, 2003. 24822

Ryaboshapko, A., Bullock Jr., O. R., Christensen, J., Cohen, M., Dastoor, A., Ilyin, I., Petersen, G., Syrakov, D., Artz, R. S., Davignon, D., Draxler, R. R., and Munthe, J.: Intercomparison

ACPD

9, 24815–24846, 2009

Gaseous mercury in the Mediterranean marine boundary layer

F. Sprovieri et al.

Title Page

Abstract

Introduction

Conclusions

References

Tables

Figures

◀

▶

◀

▶

Back

Close

Full Screen / Esc

Printer-friendly Version

Interactive Discussion

Gaseous mercury in the Mediterranean marine boundary layer

F. Sprovieri et al.

[Title Page](#)[Abstract](#)[Introduction](#)[Conclusions](#)[References](#)[Tables](#)[Figures](#)[⏪](#)[⏩](#)[◀](#)[▶](#)[Back](#)[Close](#)[Full Screen / Esc](#)[Printer-friendly Version](#)[Interactive Discussion](#)

- study of atmospheric mercury models: 1. Comparison of models with short-term measurements, *Sci. Total Environ.*, 376, 228–240, doi:10.1016/j.scitotenv.2007.01.072, 2007a. 24832
- Ryaboshapko, A., Bullock Jr., O. R., Christensen, J., Cohen, M., Dastoor, A., Ilyin, I., Petersen, G., Syrakov, D., Travnikov, O., Artz, R. S., Davignon, D., Draxler, R. R., Munthe, J., and Pacyna, J.: Intercomparison study of atmospheric mercury models: 2. Modelling results vs. long-term observations and comparison of country deposition budgets, *Sci. Total Environ.*, 377, 319–333, doi:10.1016/j.scitotenv.2007.01.071, 2007b. 24832
- Sander, R. and Crutzen, P. J.: Model study indicating halogen activation and ozone destruction in polluted air masses transported to the sea, *J. Geophys. Res.*, 101, 9121–9138, 1996. 24821, 24822
- Sander, R., Kerkweg, A., Jöckel, P., and Lelieveld, J.: Technical note: The new comprehensive atmospheric chemistry module MECCA, *Atmos. Chem. Phys.*, 5, 445–450, 2005, <http://www.atmos-chem-phys.net/5/445/2005/>. 24821
- Sandu, A., Daescu, D. N., and Carmichael, G. R.: Direct and adjoint sensitivity analysis of chemical kinetic systems with KPP: Part I – theory and software tools, *Atmos. Environ.*, 37, 5083–5096, doi:10.1016/j.atmosenv.2003.08.019, 2003. 24821
- Seigneur, C., Vijayaraghavan, K., and Lohman, K.: Atmospheric mercury chemistry: Sensitivity of global model simulations to chemical reactions, *J. Geophys. Res.*, 111, D22306, doi:10.1029/2005JD006780, 2006. 24832, 24834
- Selin, N. E., Jacob, D. J., Yantosca, R. M., Strode, S., Jaegl, L., and Sunderland, E. M.: Global 3-D land-ocean-atmosphere model for mercury: Present-day versus preindustrial cycles and anthropogenic enrichment factors for deposition, *Global Biogeochem. Cy.*, 22, GB2011, doi:10.1029/2007GB003040, 2008. 24832
- Sprovieri, F. and Pirrone, N.: Spatial and temporal distribution of atmospheric mercury species over the Adriatic Sea, *Environ. Fluid Mech.*, 8, 117–128, doi:10.1007/s10652-007-9045-4, 2008. 24823
- Sprovieri, F., Pirrone, N., Gårdfeldt, K., and Sommar, J.: Mercury speciation in the Marine Boundary Layer along a 6000 km cruise path around the Mediterranean Sea, *Atmos. Environ.*, 37, 63–71, 2003. 24818, 24823, 24824, 24831
- Storelli, M.: Potential human health risks from metals (Hg, Cd, and Pb) and polychlorinated biphenyls (PCBs) via seafood consumption: Estimation of target hazard quotients (THQs) and toxic equivalents (TEQs), *Food Chem. Toxicol.*, 46, 2782–2788, doi:10.1016/j.fct.2008.05.011, 2008. 24817

Gaseous mercury in the Mediterranean marine boundary layer

F. Sprovieri et al.

Title Page

Abstract

Introduction

Conclusions

References

Tables

Figures

⏪

⏩

◀

▶

Back

Close

Full Screen / Esc

Printer-friendly Version

Interactive Discussion

- Storelli, M., Stuffer, R., and Marcotrigiano, G.: Total and methylmercury residues in tuna-fish from the Mediterranean sea, *Food Addit. Contam.*, 19, 715–720, 2002. 24818
- Storelli, M., Giacomini-Stuffer, R., Storelli, A., and Marcotrigiano, G.: Accumulation of mercury, cadmium, lead and arsenic in swordfish and bluefin tuna from the Mediterranean Sea: A comparative study, *Mar. Pollut. Bull.*, 50, 1004–1007, 2005. 24817
- Storelli, M., Losada, S., Marcotrigiano, G., Roosens, L., Barone, G., Neels, H., and Covaci, A.: Polychlorinated biphenyl and organochlorine pesticide contamination signatures in deep-sea fish from the Mediterranean Sea, *Environ. Res.*, 109, 851–856, doi:10.1016/j.envres.2009.07.008, 2009. 24817
- Travnikov, O.: Contribution of the intercontinental atmospheric transport to mercury pollution in the Northern Hemisphere, *Atmos. Environ.*, 39, 7541–7548, doi:10.1016/j.atmosenv.2005.07.066, 2005. 24832
- UNEP: Mercury fate and transport in the global atmosphere: Measurements, models and policy implications, UNEP, [http://www.chem.unep.ch/mercury/Sector-Specific-Information/Fate_and_Transport\(1\).htm](http://www.chem.unep.ch/mercury/Sector-Specific-Information/Fate_and_Transport(1).htm), 2008. 24818
- Wängberg, I., Munthe, J., Amouroux, D., Andersson, M., Fajon, V., Ferrara, R., Gårdfeldt, K., Horvat, M., Mamane, Y., Melamed, E., Monperrus, M., Ogrinc, N., Yossef, O., Pirrone, N., Sommar, J., and Sprovieri, F.: Atmospheric mercury at mediterranean coastal stations, *Environ. Fluid Mech.*, 8, 101–116, doi:10.1007/s10652-007-9047-2, 2008. 24818, 24823
- Wiedinmyer, C. and Friedli, H.: Mercury Emission Estimates from Fires: An Initial Inventory for the United States, *Environ. Sci. Technol.*, 41, 8092–8098, doi:10.1021/es071289o, 2007. 24834
- Wild, O., Zhu, X., and Prather, M.: Fast-J: Accurate simulation of in-and below-cloud photolysis in tropospheric chemical models, *J. Atmos. Chem.*, 37, 245–282, 2000. 24821

Gaseous mercury in the Mediterranean marine boundary layer

F. Sprovieri et al.

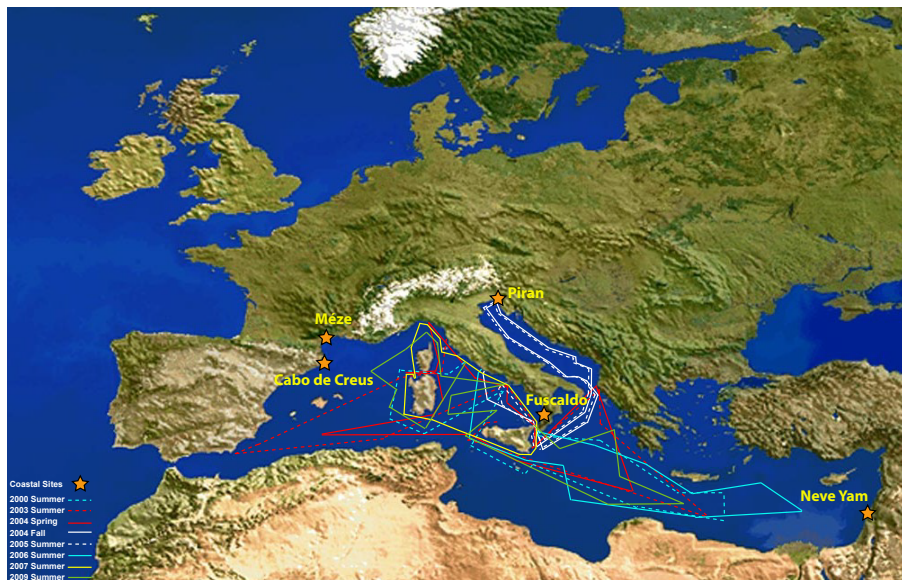


Fig. 1. The routes taken by the R. V. Urania during the Med-Oceanor oceanographic campaigns. The Adriatic campaign of autumn 2004 and summer 2005 are in white.

[Title Page](#)

[Abstract](#)

[Introduction](#)

[Conclusions](#)

[References](#)

[Tables](#)

[Figures](#)

[⏪](#)

[⏩](#)

[◀](#)

[▶](#)

[Back](#)

[Close](#)

[Full Screen / Esc](#)

[Printer-friendly Version](#)

[Interactive Discussion](#)

Gaseous mercury in the Mediterranean marine boundary layer

F. Sprovieri et al.

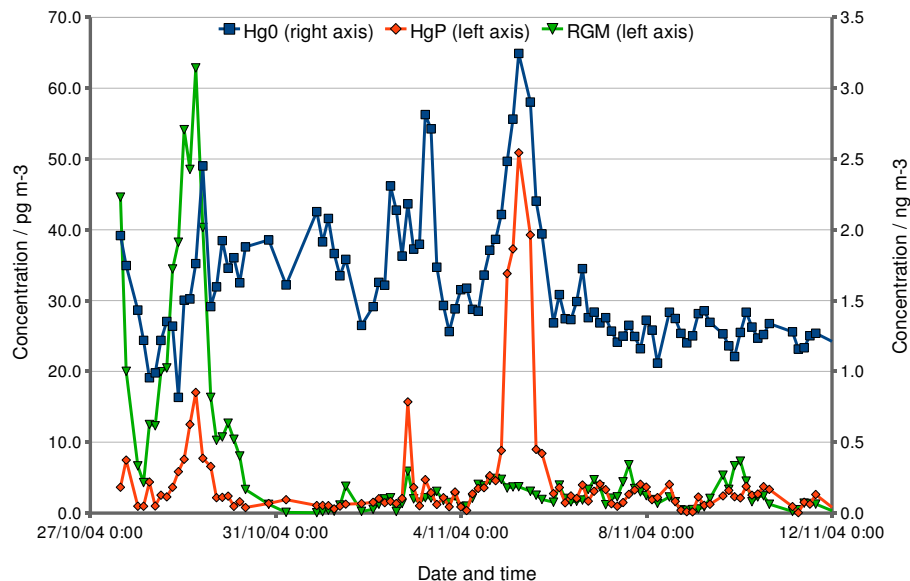


Fig. 2. The measured atmospheric Hg species concentrations during the autumn 2004 oceanographic campaign.

Title Page

Abstract

Introduction

Conclusions

References

Tables

Figures

◀

▶

◀

▶

Back

Close

Full Screen / Esc

Printer-friendly Version

Interactive Discussion

Gaseous mercury in the Mediterranean marine boundary layer

F. Sprovieri et al.

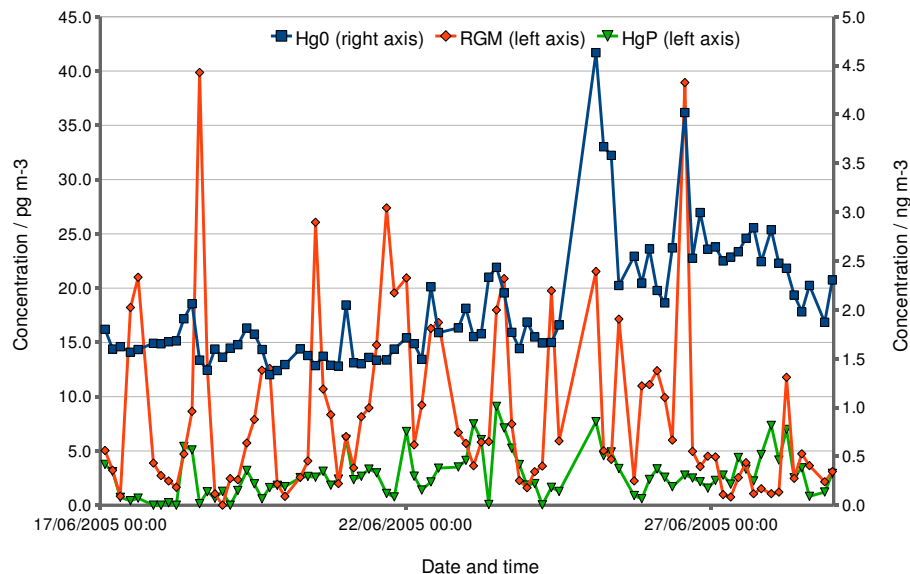


Fig. 3. The measured atmospheric Hg species concentrations during the autumn 2005 oceanographic campaign.

Title Page

Abstract

Introduction

Conclusions

References

Tables

Figures

◀

▶

◀

▶

Back

Close

Full Screen / Esc

Printer-friendly Version

Interactive Discussion

Gaseous mercury in the Mediterranean marine boundary layer

F. Sprovieri et al.

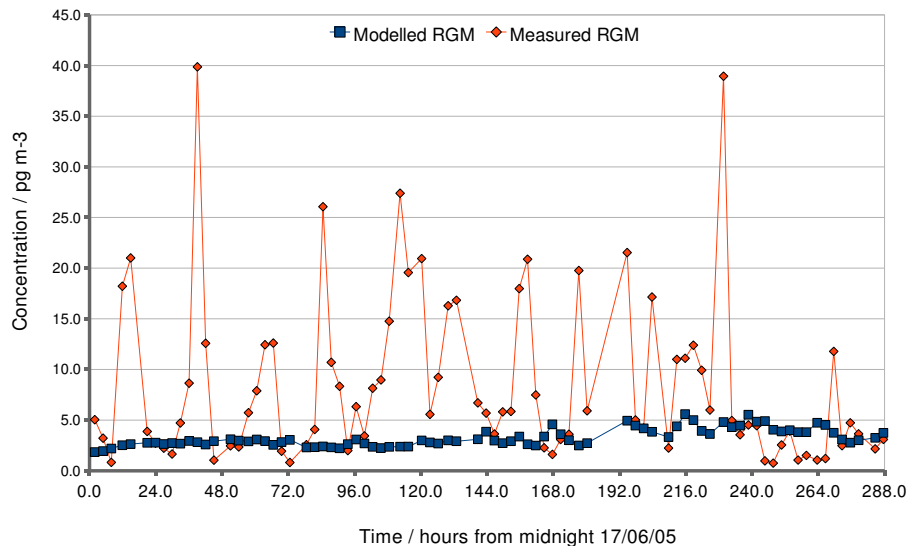


Fig. 4. The measured and modelled RGM concentration, assuming all reaction products contribute to RGM and using the $\text{Hg}^0 + \text{O}_3$ reaction rate constant from Hall (1995).

[Title Page](#)[Abstract](#)[Introduction](#)[Conclusions](#)[References](#)[Tables](#)[Figures](#)[⏪](#)[⏩](#)[◀](#)[▶](#)[Back](#)[Close](#)[Full Screen / Esc](#)[Printer-friendly Version](#)[Interactive Discussion](#)

Gaseous mercury in the Mediterranean marine boundary layer

F. Sprovieri et al.

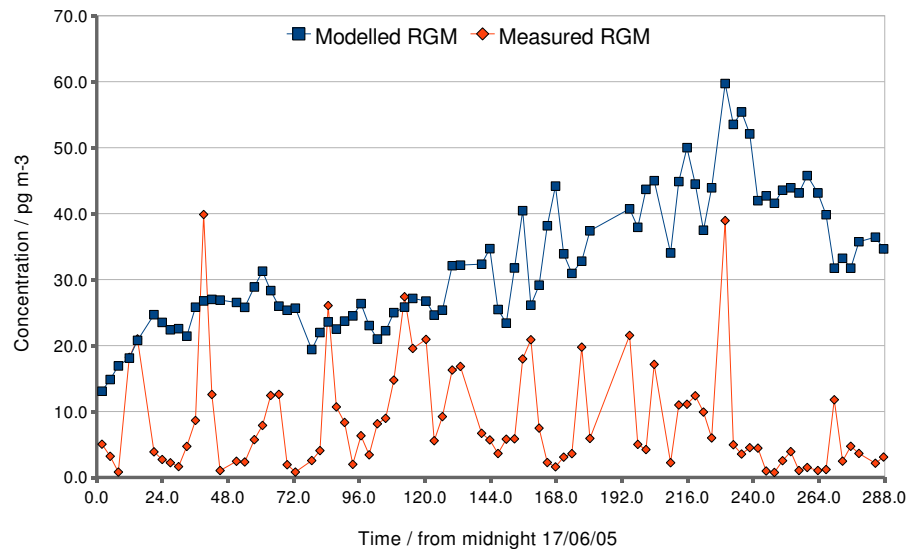


Fig. 5. The measured and modelled RGM concentration, assuming all reaction products contribute to RGM and using the $\text{Hg}^0 + \text{O}_3$ reaction rate constant from Pal and Ariya (2004).

[Title Page](#)[Abstract](#)[Introduction](#)[Conclusions](#)[References](#)[Tables](#)[Figures](#)[⏪](#)[⏩](#)[◀](#)[▶](#)[Back](#)[Close](#)[Full Screen / Esc](#)[Printer-friendly Version](#)[Interactive Discussion](#)

Gaseous mercury in the Mediterranean marine boundary layer

F. Sprovieri et al.

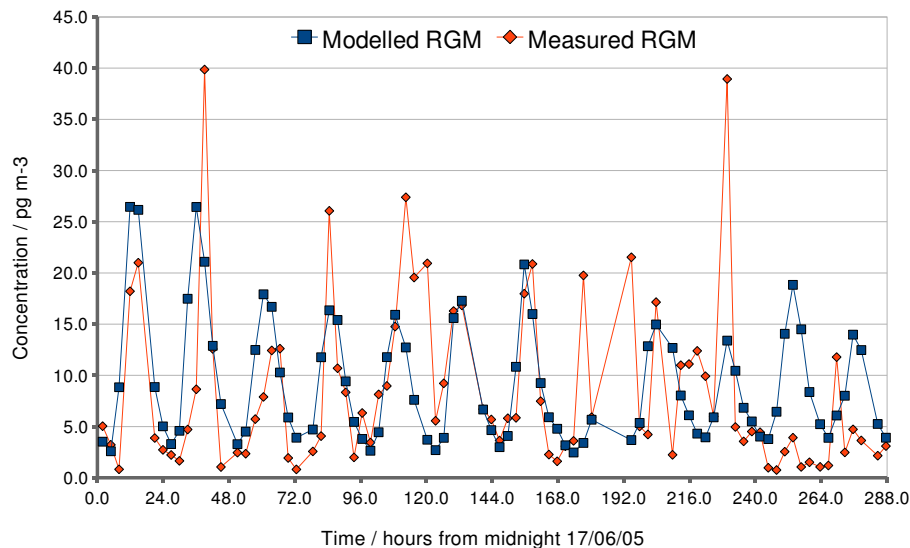


Fig. 6. The measured and modelled RGM concentration, assuming that $\text{Hg}^0 + \text{O}_3$ and $\text{Hg}^0 + \text{OH}$ reaction products do not contribute to RGM and assuming that $\text{Hg}^0 + \text{Br}$ is the rate limiting step in RGM formation.

[Title Page](#)[Abstract](#)[Introduction](#)[Conclusions](#)[References](#)[Tables](#)[Figures](#)[⏪](#)[⏩](#)[◀](#)[▶](#)[Back](#)[Close](#)[Full Screen / Esc](#)[Printer-friendly Version](#)[Interactive Discussion](#)