

This discussion paper is/has been under review for the journal *Atmospheric Chemistry and Physics (ACP)*. Please refer to the corresponding final paper in *ACP* if available.

Statistical properties of aerosol-cloud-precipitation interactions in South America

T. A. Jones¹ and S. A. Christopher^{1,2}

¹Earth System Science Center, UA Huntsville, Huntsville, AL, USA

²Department of Atmospheric Science, UA Huntsville, Huntsville, AL, USA

Received: 13 May 2009 – Accepted: 21 September 2009 – Published: 12 October 2009

Correspondence to: T. A. Jones (tjones@nsstc.uah.edu)

Published by Copernicus Publications on behalf of the European Geosciences Union.

ACPD

9, 21463–21507, 2009

Statistical properties of aerosol-cloud-precipitation

T. A. Jones and
S. A. Christopher

Title Page

Abstract

Introduction

Conclusions

References

Tables

Figures

◀

▶

◀

▶

Back

Close

Full Screen / Esc

Printer-friendly Version

Interactive Discussion

Abstract

Given the complex interaction between aerosol, cloud, atmospheric properties, it is difficult to extract their individual effects to observed rainfall amount. This research uses principle component analysis (PCA) that combines Moderate Resolution Imaging Spectroradiometer (MODIS) aerosol and cloud products, NCEP Reanalysis atmospheric products, and rainrate estimates from the Tropical Rainfall Measuring Mission (TRMM) precipitation radar (PR) to assess the specific combinations of these inputs that most affect warm rain processes. Data collected during September 2006 over the South America, which includes the Amazon basin, are used as aerosols, clouds, and precipitation are all present in this region at this time. The goal of this research is to combine these observations into a smaller number of variables through PCA with each having a unique physical interpretation. In particular, we are concerned with PC variables whose weightings include aerosol optical thickness (AOT), as these may be an indicator of aerosol indirect effects. If they are indeed occurring, then PC values that include AOT should change as a function of rainrate.

To emphasize the advantage of PCA, changes in aerosol, cloud, and atmospheric observations are compared to rainrate. Comparing no-rain, rain, and heavy rain ($>5 \text{ mm h}^{-1}$) samples, cloud thicknesses, humidity, and upward motion are all larger for the rain and heavy rain samples. However, no statistically significant difference in AOT exists, indicating that atmospheric conditions are more important to rainfall than aerosol concentrations as expected. If aerosols are affecting warm process clouds, it would be expected that stratiform precipitation would decrease as a function increasing aerosol concentration through either Twomey and/or semi-direct effects. PCA extracts the latter signal in a variable labeled PC2, which explains 15% of the total variance and is second in importance the variable (PC1) containing the broad atmospheric conditions. PC2 contains weightings showing that AOT is inversely proportional to low-level humidity and cloud optical thickness. Increasing AOT is also positively correlated with increasing low-level instability due to aerosol absorption. The nature of these weight-

ACPD

9, 21463–21507, 2009

Statistical properties of aerosol-cloud- precipitation

T. A. Jones and
S. A. Christopher

Title Page

Abstract

Introduction

Conclusions

References

Tables

Figures

◀

▶

◀

▶

Back

Close

Full Screen / Esc

Printer-friendly Version

Interactive Discussion

ings is strongly suggestive that PC2 is an indicator of the semi-direct effect with larger values associated with lower rainfall rates. PC weightings consistent with the Twomey effect (an anti-correlation between AOT and cloud droplet effective radius) are only present in PC13, which explains less than 1% of the total variance. Also, it does not vary significantly with rainrate. Thus, if the Twomey effect is occurring, it is highly non-linear and/or being overshadowed by other processes. Using the raw variables alone, these determinations could not be made; thus, we are able to show the advantage of using advanced statistical techniques such as PCA for analysis of aerosols impacts on precipitation in South America.

1 Introduction

It has been well established through modeling and observational studies that the properties of clouds located in the vicinity of high aerosol concentrations can be significantly altered (e.g. Ackerman et al., 2000; Ramanathan et al., 2001; Penner et al. 2004; and Koren et al., 2005; Rosenfeld et al., 2006). Certain types of aerosols (e.g. sulfates) are water soluble and act as excellent CCN for cloud liquid water droplets resulting in an increase in available CCN for cloud formation. If atmospheric conditions are held constant, increasing CCN will result in smaller water droplets compared to a less polluted region increasing cloud albedo, reflecting more solar radiation back into space. This is known as the first indirect, or the Twomey effect (Twomey, 1977; Kaufman and Fraser, 1997; Feingold, 2003). For example, Kaufman et al. (2005) observed that liquid water drop effective radius (R_c) dropped 32% when AOT increased from 0.03 to 0.43 over oceanic regions between 5° N and -20° S. These changes were attributed to an increase in smoke aerosols in the Amazon (and central Africa) owing to an increase in biomass burning. The increase in albedo due to smaller drop sizes results in a cooling at the top of the atmosphere of -1.5 W m^{-2} . However, this relationship does not always occur as Peng et al. (2002) observed a positive correlation between AOT and R_c for highly polluted regions in the Arabian Sea.

Statistical properties of aerosol-cloud- precipitation

T. A. Jones and
S. A. Christopher

Title Page

Abstract

Introduction

Conclusions

References

Tables

Figures



Back

Close

Full Screen / Esc

Printer-friendly Version

Interactive Discussion

A decrease in droplet size has the additional effect of delaying the onset of collision and coalescence in warm clouds, reducing precipitation efficiency and increasing the lifespan and the areal coverage of the cloud, which has been labeled as the second indirect effect (Albrecht, 1989; Quaas et al., 2004). Reducing precipitation efficiency also acts to increase water loading, leading to an increase in cloud liquid water path (LWP) and a corresponding increase in cloud thickness, complicating the identification of the Twomey effect in observations (Han et al., 1998; Reid et al., 1998; Schwartz et al., 2002). Both the first and second indirect effects act to cool the atmosphere, partially offsetting warming due to greenhouse gases (Lohmann and Feichter, 2005). However, absorbing aerosols such as soot from biomass burning can suppress cloud formation through warming of certain atmospheric layers increasing evaporation of water droplets and also increasing atmospheric stability, which is known as the semi-direct effect (Hanson et al., 1997; Ackerman et al., 2000; Johnson et al., 2004). This phenomena has been observed to occur in the North Atlantic Ocean where increased dust aerosol concentrations can lead to a decrease in the occurrence of tropical cyclones (Dunion and Veldon, 2004).

Given the complex interaction between atmospheric conditions, aerosol concentrations, and cloud properties, extracting aerosol effects from an observational perspective is challenging under the best of circumstances (e.g. Brenguier et al., 2003; Quaas et al., 2004, 2008). Both the first and second aerosol indirect effects and the semi-direct effect described above should lead to a reduction in precipitation compared to less polluted regions (Ramanathan et al., 2001). While the relationship between aerosols and cloud properties has been well established, the effect on precipitation has only been examined from an observational perspective on a limited basis (e.g. Rosenfeld et al., 2006; Martins et al., 2008). Martins et al. (2008) using numerical modeling output, observed that increases in aerosol concentration generally reduced low rainrate values ($<5 \text{ mm h}^{-1}$) associated with warm rain processes, through generally accepted aerosol indirect effects. Numerical modeling studies by Teller and Levin (2006) and Khain et al. (2005) have also noted that less precipitation occurred during high levels of pollution

**Statistical properties
of aerosol-cloud-
precipitation**

T. A. Jones and
S. A. Christopher

[Title Page](#)[Abstract](#)[Introduction](#)[Conclusions](#)[References](#)[Tables](#)[Figures](#)[◀](#)[▶](#)[◀](#)[▶](#)[Back](#)[Close](#)[Full Screen / Esc](#)[Printer-friendly Version](#)[Interactive Discussion](#)

during warm cloud processes.

However, Andreae et al. (2004), Lin et al. (2006), and Martins et al. (2008) have observed an increase in precipitation associated with an increase in pollution, at least for high rainrate examples ($>5 \text{ mm h}^{-1}$). Since biomass burning aerosols delay the onset of precipitation through slower droplet growth, the drag on updrafts produced by raindrops is reduced, allowing a greater number of smaller droplets to reach higher altitudes, causing additional latent heat release when they freeze (Martins et al., 2008). The resulting increase in buoyancy in turn creates an environment for favorable for convective precipitation, which at least for localized regions, can more than offset the decrease warm process precipitation due to pollution. Since this effect impacts the likelihood of convective rainfall, it is labeled the “convective effect” for the remainder of this work. While strong modeling and observational evidence for this occurring exists (Khain et al., 2005; Lin et al., 2006), which effect is dominant over large regions remains unclear.

This research focuses on the warm cloud component of these processes where we hypothesize that if aerosol indirect (or semi-direct) effects are indeed occurring, the resulting decrease in collision and coalescence and/or the increase in atmospheric stability should result in a decrease in stratiform precipitation amount compared to the same environment in more pristine conditions. The combination of these various processes is hereafter referred to as “aerosol effects”. TRMM-PR separates precipitation into stratiform vs. convective elements using the observed radar reflectivity characteristics allowing for an assessment on the importance of precipitation type relative to aerosol indirect effects. Extracting the physical signals from these data is a difficult task given the uncertainties in precipitation measurements and the influence of many other atmospheric conditions to rainfall requiring the implementation of additional analysis techniques.

To accomplish this task, this research combines aerosol and cloud data from the MODIS instrument with atmospheric conditions provided by NCEP Reanalysis and rainrate data derived from the precipitation radar onboard the TRMM satellite. Avail-

Statistical properties of aerosol-cloud- precipitation

T. A. Jones and
S. A. Christopher

Title Page

Abstract

Introduction

Conclusions

References

Tables

Figures

◀

▶

◀

▶

Back

Close

Full Screen / Esc

Printer-friendly Version

Interactive Discussion

able parameters include aerosol optical thickness, cloud optical thickness, liquid water droplet effective radius (from MODIS), wind speed and direction, humidity, temperature, vertical motion (from NCEP), and finally rainrate and rain-type from TRMM-PR. Combining these parameters is a crucial step for unraveling these effects, but also introduces significant challenges. Given the high correlation between many of these parameters, deriving a statistically significant relationship between parameters such as AOT and rainrate alone is a tall order. Multiple linear regression techniques using aerosol, cloud, and atmospheric properties have been used to examine the presence of aerosol indirect effects (e.g. Kaufman et al., 2005). For example, Kaufman et al. (2005) estimated that the effect of aerosols and independent meteorological observations relative to cloud cover to be roughly equal, but that changes in aerosol and cloud cover due to the same atmospheric conditions occurred only 30% of the time. Thus, 70% of the change in cloud cover in the Atlantic was attributed to dust aerosols. However, the high correlation between various parameters makes physical interpretation of individual variables in the regression equation difficult, limiting their usefulness. While it is possible to combine various atmospheric parameters into more complex variables such as the Cloud Work Function (Lin et al., 2006), related cloud and aerosol parameters remain left out. To remedy this situation, we apply PCA to the combined data set to reduce the overall number of parameters to something more manageable by grouping linearly correlated observations into a fewer number of variables in PC space (Wilks, 2006). In essence, PCA combines information from highly correlated observations such as vertical velocity and cloud top pressure into a single variable. These new variables each have a unique meaning and are generally uncorrelated with one another. Some represent important physical properties relating to the atmosphere and clouds, while others may represent non-physically significant observations.

This research focuses on the South American continent where large aerosol concentrations produced from biomass burning, especially during the month of September as indicated by the large number of fire detections from MODIS (Fig. 1a). In particular, biomass burning in central South America produces $AOT > 1.0$ over a rather large

Statistical properties of aerosol-cloud-precipitation

T. A. Jones and
S. A. Christopher

[Title Page](#)[Abstract](#)[Introduction](#)[Conclusions](#)[References](#)[Tables](#)[Figures](#)[◀](#)[▶](#)[◀](#)[▶](#)[Back](#)[Close](#)[Full Screen / Esc](#)[Printer-friendly Version](#)[Interactive Discussion](#)

region (Fig. 1b). This period corresponds to the “dry season” in the Amazon, but significant precipitation is still occurring over this region (Williams et al., 2002). The period of highest AOT corresponds with the lowest overall precipitation amounts that at first glance would seem to be an indicator of (warm process) aerosol effects. However, the changing atmospheric conditions from season to season make extracting this effect, which is secondary to the larger synoptic effects, difficult without determining the interrelationships between atmospheric conditions, clouds, and aerosols. Koren et al. (2008) compared MODIS AOT and cloud property retrievals over the Amazon during the dry season and observed that for $AOT > 0.4$, that increasing aerosol concentrations acted to decrease cloud cover due to an increase in atmospheric stability in the aerosol layer. Using aircraft measurements, Reid et al. (1999) did not observe a significant relationship between AOT and R_c while Kaufman and Fraser (1997) did find a significant anti-correlation between AOT and R_c for this region using AVHRR data. The aerosol indirect effect observed by Kaufman and Fraser (1997) was much smaller than that expected from model predictions. The presence of semi-direct effects from soot and other absorbing aerosols could explain this shortfall. If aerosol indirect effects and/or semi-direct effects are occurring, they should manifest themselves in some combination of the aerosol, cloud, and atmospheric observations present at any one time. This combination may represent both linear and non-linear interactions between variables. The analysis method used by this research will extract the quasi-linear combinations, but not-necessarily the non-linear combinations that certainly do exist. To examine whether or not linear aerosol are present over this region, data from the month of September 2006 was selected since significant aerosol, cloud, and precipitation concentrations are collocated and present over a large area of South America.

The goal of this research is to explore the hypothesis that aerosol indirect and/or semi-direct effects, as they relate to the occurrence and intensity of precipitation, can be extracted from the combined aerosol, cloud, and atmospheric conditions database to a statistically significant level. Two methods will be employed in order to test this hypothesis. First, the basic descriptive statistics (mean and standard deviation) of the rain

Statistical properties of aerosol-cloud- precipitation

T. A. Jones and
S. A. Christopher

Title Page

Abstract

Introduction

Conclusions

References

Tables

Figures

◀

▶

◀

▶

Back

Close

Full Screen / Esc

Printer-friendly Version

Interactive Discussion

vs. no rain samples are compared to determine whether or not statistically significant differences exist between the sample means. A similar test will be conducted using the new variables produced using PCA. Second, the new PC variables that prove statistically significant at discriminating between rain and no-rain samples are compared with rainrate to determine if a statistically significant relationship exists here too. If aerosol indirect or semi-direct effects are affecting rainfall, then variables whose weightings are indicative of indirect effects (e.g. AOT and cloud droplet effective radius inversely weighed), should also show a significant relationship to rainrate. While regression functions between rainrate and PC variables are created as part of this process, we stress that these functions should not be thought of as any sort of prognostic models. The goal of this research is to show whether or not a statistically significant relationship exists, not how to accurately model it.

2 Data

2.1 Cloud properties

The Clouds and Earth's Radiant Energy System (CERES) Single Scanner Footprint (SSF) FM1, Edition 2F data between for September from the Terra and Aqua satellite (in a sun-synchronous orbit with an equator-crossing local time of about 10:30 a.m. and 1:30 p.m., respectively) are collected for the South American region (Fig. 1). The CERES-SSF product combines the radiative fluxes retrieved from the CERES instrument with aerosol properties from the MOD04 (Collection 5) product (Remer et al., 2006) and cloud (Minnis et al., 2003) properties retrieved from MODIS. At nadir, CERES-SSF footprint resolution is ~ 20 km with a near daily global coverage. Derived cloud properties include cloud liquid water path (LWP), water cloud effective droplet radii (R_c), cloud optical thickness (COT), and cloud top pressure (CTP) retrieved from the 3.7 μm (near-infrared) channel (Minnis et al., 2003). MODIS is capable of providing cloud characteristics at 2 different levels, one nearer to the surface, the other (if it ex-

Statistical properties of aerosol-cloud-precipitation

T. A. Jones and
S. A. Christopher

Title Page

Abstract

Introduction

Conclusions

References

Tables

Figures

◀

▶

◀

▶

Back

Close

Full Screen / Esc

Printer-friendly Version

Interactive Discussion

ists) higher in the atmosphere. The second cloud layer is retrieved for less than 5% of all cloud observations. Since the second cloud layer is comparatively rare, and since we choose to only investigate aerosol effects on low-level liquid water clouds, and data associated with the upper cloud layer are removed. The MODIS algorithm uses visible wavelengths to retrieve cloud optical depth and near IR to mid-IR measurements to retrieve cloud droplet sizes that are then converted to LWP. The only constraints placed on the data (outside normal quality control flags) is that MODIS cloud data are only used for pixels over land surfaces and when the MODIS cloud phase parameter indicates that the cloud in question is at least 99% or comprised of liquid water droplets. A quantitative assessment of the effects of aerosols on ice clouds are beyond the scope of this study (e.g. Demott et al., 2004). Compared to the cloud retrieval in the MOD06 product (Platnick et al., 2003), CERES-SSF generally produces smaller R_c and COT values, though the overall patterns are generally similar with cloud amounts differing less than 10% (Minnis et al., 2003).

Han et al. (1994) and more recently Platnick et al. (2003) provide a review of the various error sources in the retrieval process including calibration, assumptions in atmospheric and surface properties, ambiguous solutions for optically thin clouds calibration, vertical heterogeneity of clouds and cirrus contamination. One significant uncertainty related to this research is that associated with optically thin clouds (e.g. Nakajima and King, 1990). Under these circumstances, the relationship between retrieved COT and cloud droplet effective radius may be ambiguous. However, we cannot ignore optically thin clouds as part of this research as they contribute a large portion of the total cloud cover (Turner et al., 2007; Jones and Christopher, 2008). As a result, data from both thin and thick clouds are retained for the following analysis.

2.2 Aerosol properties

MODIS products are derived from cloud-free 500 m resolution data (20x20 pixels) and aggregated to 10 km footprint used by the Collection 5 MODIS level 2 aerosol product (MOD04). At least 10 pixels must remain (2.5%) after cloud masking and other quality

Statistical properties of aerosol-cloud-precipitation

T. A. Jones and
S. A. Christopher

Title Page

Abstract

Introduction

Conclusions

References

Tables

Figures

◀

▶

◀

▶

Back

Close

Full Screen / Esc

Printer-friendly Version

Interactive Discussion



control procedures for an AOT retrieval to be made. The nature of the cloud masking algorithm used by MODIS is such that it tends to classify very thick aerosol layers (i.e. dust over the North Atlantic) as clouds and not aerosols (Remer et al., 2006). As a result, total AOT may be somewhat underestimated. If a retrieval is made, the 10 km parameters are then converted to match the CERES 20 km field of view (FOV) using a point spread weighting function (Loeb et al., 2005). Both “average” and “best” AOT retrievals are included in the CERES-SSF AOT. The reported uncertainty of the MODIS AOT product over land is $\pm 0.05 \pm 0.15 \tau$ (Remer et al., 2006). The Deep Blue aerosol product is currently not included in the CERES-SSF files used in this research. However, the region of study contains few areas of large deserts so sample size is not adversely affected. Collocated CERES SSF data are used rather than the original level 2 MODIS aerosol and cloud products since future studies will examine the radiative impact of clouds modified by aerosols.

While the MODIS algorithm uses strict cloud-clearing thresholds when calculating AOT, some cloud contamination does remain (Remer et al., 2006; Zhang and Reid, 2006; Yuan et al., 2008). Some aerosols species, such as sea salt and sulfate, are hygroscopic and will grow in size in high humidity environments, which are present in the vicinity of clouds (Feingold et al., 2003; Jeong et al., 2007). Thus, the same aerosol concentrations will produce a higher visible and near infrared reflectances near clouds since the aerosols have swelled in size due to the moisture. When this occurs, AOT is overestimated in the vicinity of clouds when partly cloudy conditions exist within a MODIS pixel (Koren et al., 2007). The magnitude of this increase has been estimated to be 13 and 11% for visible wavelengths when comparing against AERONET and MODIS data (Koren et al., 2007). If this increase in AOT is a result of an increase in aerosol size, then parameters such Angstrom exponent and FMF should also be sensitive to cloud coverage (Koren et al., 2007; Redemann et al., 2009). Koren et al. (2007) observed lower Angstrom exponent values near clouds, and attributed these values to larger, humidified aerosols and/or small cloud droplets being improperly identified as aerosols. Another important consideration is that scattering from nearby clouds may

Statistical properties of aerosol-cloud- precipitation

T. A. Jones and
S. A. Christopher

[Title Page](#)[Abstract](#)[Introduction](#)[Conclusions](#)[References](#)[Tables](#)[Figures](#)[◀](#)[▶](#)[◀](#)[▶](#)[Back](#)[Close](#)[Full Screen / Esc](#)[Printer-friendly Version](#)[Interactive Discussion](#)

also lead to spuriously high AOT retrievals (Wen et al., 2006; Mauger and Norris, 2007; Marshak et al., 2008). However, Wen et al., (2006) observed that this phenomena is only occurs on a spatial scale of a few kilometers. Since MODIS derived AOT at 10 km (and we use AOT data that has been remapped to a 20 km resolution), this effect will not be resolvable in the MODIS data used here and should not significantly impact the interpretation of the results.

2.3 NCEP data

Daily wind speed and direction, relative humidity, temperature, and vertical velocity between 1000 and 700 hPa levels are obtained from National Center for Environmental Prediction (NCEP) Reanalysis data. Since we are primarily interested in warm process clouds, we focus on atmospheric conditions below the freezing level. The NCEP Reanalysis contains global meteorological conditions with a 2.5° horizontal resolution and a 17 level vertical resolution at 6 h time intervals (Kalnay et al., 1996). This research uses the raw values from the 925, 850, and 700 hPa levels as well as the temperature difference between the surface (1000 hPa) and 700 hPa to provide an estimate of atmospheric lapse rate and low-level stability. Negative values indicate temperature decreasing with height (more unstable) with positive values indicating temperature increasing with height (stable). Vertical velocity is reported in pressure coordinates (Pa s^{-1}); thus, positive values indicate sinking air while negative values indicate rising air. As in previous aerosol indirect effect studies such as Jones and Christopher (2008), the focus is on changes in NCEP variables not necessarily their absolute magnitudes owing to various uncertainties present in the NCEP product.

2.4 TRMM-PR rainrate data

The TRMM satellite was launched in 1997 into a unique orbit that maximizes observations of the tropical regions in a $\pm 40^\circ$ latitude band. (Kummerow et al., 2000). Both a passive microwave sensor (TMI) and an active microwave radar (PR) are located

Statistical properties of aerosol-cloud- precipitation

T. A. Jones and
S. A. Christopher

Title Page

Abstract

Introduction

Conclusions

References

Tables

Figures

◀

▶

◀

▶

Back

Close

Full Screen / Esc

Printer-friendly Version

Interactive Discussion

on board the satellite. For this research, data from the PR are used (Iguchi et al., 2000). The PR derives radar reflectivity at 13.8 GHz with a 250 m vertical and 4 km horizontal resolution over a 215 km swath. Rainrate is derived from the radar data in much the same way as surface based radars using a radar reflectivity – rainrate ($Z-R$) relationship, details of which can be found in (Doviak and Zrnic, 1993). When compared to ground based rain-gauge measurements, the uncertainty in PR rainrate was estimated (over western Africa) to be 1.6 mm/day (0.07 mm h^{-1}) for data aggregated over a 2.5° domain (Nicholson et al., 2003). The TRMM-PR 2A25 precipitation product from September 2006 was acquired for this research. Each 2A25 file contains both vertical profiles and total column estimates of radar reflectivity and rainfall rate. This research uses the total column rainrate product to compare with the independent atmospheric, cloud, and aerosol observations. Instantaneous rainrates are converted into daily averages as described below. TRMM-PR also separates stratiform from convective precipitation using the observed reflectivity characteristics and computes stratiform and convective rainrate for both rain types. We also examine the difference between stratiform and convective precipitation coverage and characteristics to determine certain conditions are more favorable for one or the other.

2.5 Other data sets

For illustration purposes, the MOD14 MODIS fire product was obtained for the same time period. MODIS fire product uses a contextual algorithm for fire detection (Morissette et al., 2005) based on strong emission of mid-IR radiation from fires and is available at a 1 km resolution. In addition, aerosol layer heights for this month are obtained from CALIPSO data. The CALIOP sensor on board the CALIPSO satellite is an active lidar on the CALIPSO satellite provides vertical profiles of backscatter at 532 and 1064 nm that sample the vertical distribution of clouds and aerosols in the atmosphere (Vaughan et al., 2004). We use both the level 1 backscatter (LID-L1) and the level 2 aerosol-layer height retrievals (ALAY5-V2), which are still in their preliminary stages of validation. Given the largely un-validated nature of this product, we chose to

Statistical properties of aerosol-cloud-precipitation

T. A. Jones and
S. A. Christopher

Title Page

Abstract

Introduction

Conclusions

References

Tables

Figures

◀

▶

◀

▶

Back

Close

Full Screen / Esc

Printer-friendly Version

Interactive Discussion



only use it as an illustration tool and not as an input to PCA.

2.6 Data fusion

Combining data from NCEP, MODIS, and TRMM is a non-trivial task requiring several steps and important assumptions. The NCEP data represents the lowest common denominator resolution-wise with a grid spacing of 2.5°. Thus, the higher resolution MODIS and TRMM data are placed onto the NCEP grid for further analysis. For each day, MODIS aerosol and cloud data within a 2.5° box are assigned the atmospheric conditions within ±3 h of the nearest available NCEP time. In the area of study, this usually works out to be 12:00 UTC for Terra data and 18:00 UTC for Aqua data. Similarly, available TRMM rainrate information for that day and location are averaged over that box. In doing this, the assumption is made that aerosol, cloud, and atmospheric conditions are relatively uniform within a 2.5° region. Temporal sampling is another concern. In order to trust the results, valid collocated data should exist for as many days as possible during the one month period. Fortunately, valid data from all sensors exist for at least one third of the total possible number of days (31) with several areas having coincident data available for more than 20 days for each 2.5° grid cell.

Rainrate information collected over the entire one-day period is averaged into the NCEP box, not just rainrate near the time of the Terra or Aqua overpasses. Since the TRMM not in a polar orbit like Terra or Aqua, limiting the data to only rainrate information available within an hour or two of their overpasses would unacceptably reduce sample size. As a result, the rainrate used here represents a daily averaged value. The assumption is made that aerosol concentrations do not change substantially within a 24 h period and that the changes to cloud and precipitation properties is also relatively constant for this period of time. The resulting daily, 2.5° resolution data set contains 25 parameters, 24 of which is used as inputs to principal component analysis and one (TRMM rainrate), which are used to determine whether or not aerosols are influencing precipitation (Table 1).

Statistical properties
of aerosol-cloud-
precipitation

T. A. Jones and
S. A. Christopher

Title Page

Abstract

Introduction

Conclusions

References

Tables

Figures



Back

Close

Full Screen / Esc

Printer-friendly Version

Interactive Discussion



3 Principle component analysis (PCA)

The statistical technique of PCA enables the reduction of multiple and highly correlated variables from multiple data sources into a fewer number of independent variables, each with a unique physical interpretation (Wilks, 2006). The initial step in PCA is the calculation of a linear correlation matrix between each of the input variables. For this research, 24 input variables exist representing a combination of atmospheric, cloud, and aerosol conditions (Table 1). Location is also included so that the spatial dependence between these conditions is taken into account. Rainrate can be held out as the comparison variable used later to test the aerosol effect hypothesis. The correlation matrix is computed from the combined aerosol, cloud, meteorology dataset where each data point represents data at a specific 2.5° grid cell for an individual day for all data during a one month period. Only points where valid data exists within a 2.5° grid cell are used during this process. As a result, some regions will be sampled more than others. Valid data exists for at least one-third of all days for all grid cells, with some having sampling up to 70%. The differences in sampling are not well correlated with the other data combinations; thus, we are confident sampling differences are not having an adverse impact on the following statistics and their physical interpretation.

Once the correlation matrix is computed, eigenvalues and vectors are calculated from the linear correlation matrix to determine the weighting coefficients, which are then applied to the raw variables to produce the new independent pseudo-variables (or PC variables). The magnitude of an eigenvalue relative to the total variance of the dataset can be thought of as the degree of variance explained by a new variable. The larger the eigenvalue, the more “important” its information is relative to the entire dataset. Each eigenvalue and eigenvector is associated with a would-be PC variable and defines the physical content of that variable via the linear weightings derived from the eigenvectors. It is important to note that this form of PCA only takes into account linear combinations of data; thus, primarily non-linear interactions will not be evident from this analysis. PC variables are ordered in such away that the first variable (PC1) accounts for the greatest

ACPD

9, 21463–21507, 2009

Statistical properties of aerosol-cloud- precipitation

T. A. Jones and
S. A. Christopher

Title Page

Abstract

Introduction

Conclusions

References

Tables

Figures

◀

▶

◀

▶

Back

Close

Full Screen / Esc

Printer-friendly Version

Interactive Discussion

variance in the raw data with the next (PC2) accounting for the next highest amount of variance and so on (Fig. 2). Eigenvalues are also used to determine the proper number of new variables (dimensions) to create from the original dataset. For this work, the total number of pseudo-variables is truncated to 16 instead of the possible maximum of 24 since the 17th and larger dimensions account for less than 1% of the total variance are likely dominated by random noise (Jones et al., 2004). To further reduce noise in the new dataset, weightings less than ± 0.2 are set to zero before the creation of the final PC variables. Richman and Gong (1999) showed that including lower weights increased noise and decreased the viability of the new variables. The step is important for this research as the data used here contains a high degree of random variability that needs to be filtered out as much as possible prior to further analysis. The end result of this process is a data set containing 16 PC variables, some of which contain physical signals that related to rainrate while others contain non-physical signals not associated with rain. Principle component statistics for both Terra and Aqua were computed and very little difference between the two was observed. Thus, the following analysis will primarily concentrate on the Terra data alone.

4 Result

4.1 Raw data

Prior to the analysis of variables created using PCA, the raw observations are examined relative to precipitation occurrence and intensity to determine what, if any significant linear relationships exist. Without considering precipitation, aerosol effects should still manifest themselves as significant correlations between AOT and certain cloud properties such as R_c , COT, and CTP. Scatterplots of AOT vs. each of these parameters, where each point represents a 2.5° box for each day, do not readily indicate the presence of these effects (Fig. 3). Recall that if the first (or Twomey) effect is occurring, then AOT and R_c for liquid water clouds should be inversely correlated, which is not

Statistical properties of aerosol-cloud- precipitation

T. A. Jones and
S. A. Christopher

Title Page

Abstract

Introduction

Conclusions

References

Tables

Figures

◀

▶

◀

▶

Back

Close

Full Screen / Esc

Printer-friendly Version

Interactive Discussion

evident in Fig. 3a. If the second indirect effect is occurring, then a positive relationship between AOT and cloud thicknesses should be evident. Again, this was not observed as AOT and COT are negatively correlated. AOT and CTP also have a weak negative correlation, indicating higher topped clouds in higher AOT environments, which is a possible indicator of the second aerosol indirect effect; however, none of these relationships are statistically significant. To determine if aerosol effects are localized to certain regions in South America, the correlation between AOT, R_c , COT, and CTP is calculated for daily data within each 2.5° box and plotted in Fig. 1d–f. No evidence for the first indirect effect exists since AOT and R_c are not negatively correlated where AOT is highest (Fig. 1d). If anything, AOT and R_c have a greater positive correlation. The correlation between AOT and COT (and CTP) shows more of a spatial dependence relative to the location of maximum AOT in central South America (Fig. 1e). For this area, AOT and COT are negatively correlated while AOT and CTP are positively correlated (Fig. 1f). This would indicate that higher aerosol concentrations are associated with thinner clouds with lower heights compared to other regions. This is not consistent with the second aerosol indirect effect, but is consistent with the semi-direct effect whereby absorbing aerosols (such as the soot and black carbon produced by the biomass burning) warm portions of the atmosphere, increasing atmospheric stability, which decreasing the favorability of the environment for the formation of clouds and precipitation.

To determine if aerosol effects are evident relative to precipitation measurements, data are first separated into no-rain, rain, and “heavy” rain only ($>0.5 \text{ mm h}^{-1}$) samples to examine if any significant differences in variables exist for rain vs. no rain. Table 2 lists mean and standard deviation values for selected variables for each of the three samples. CTP, COT, and R_c all slightly larger in the rain and heavy-rain samples compared to the no-rain samples, as would be expected. Conversely MODIS cloud fraction does not show much difference, and remains quite low ($<15\%$) for all three samples. Since only data with valid AOT retrievals are used, at least some cloud-free sky must exist within each pixel, so 100% cloudy regions are not included, reducing cloud frac-

Statistical properties of aerosol-cloud-precipitation

T. A. Jones and
S. A. Christopher

Title Page

Abstract

Introduction

Conclusions

References

Tables

Figures

◀

▶

◀

▶

Back

Close

Full Screen / Esc

Printer-friendly Version

Interactive Discussion

tion compared to if AOT retrievals were not a concern. Atmospheric wind speed and relative humidity are also greater in the rain sample, while average vertical velocity is tiny for all three samples. The latter is primarily a result of the poor resolution of the NCEP data that prevents sampling of the vertical motion associated with mesoscale features (Lin et al., 2006).

Overall, these are differences of only a few percent and standard deviations between all samples overlap by a large margin. Still, statistical significance testing using both Student's T and the nonparametric Wilcoxon–Mann–Whitney methods (Wilks, 2006) show that the differences between no-rain and heavy rain samples are significant to at least a 99% confidence level for all parameters related to atmospheric conditions and cloud properties with the exception of V700 and MODIS cloud fraction. These differences remain significant when compared against the sample mean variables calculated from the entire dataset. Breaking down precipitation into stratiform and convective components, we find that monthly mean convective rainrate is much greater the stratiform rainrate (0.7 vs. 3.3 mm h⁻¹). Furthermore, convective rain is more likely to occur further north and is associated with stronger easterly winds and more moisture as shown in Fig. 4. As the statistics suggest, the stratiform proportion is minimized in the north (50%) and maximized (90%) further south.

AOT is slightly higher for the no-rain compared to the heavy rain sample (0.32 vs. 0.30), but this difference is also not statistically significant. Similarly, AOT is also lower for the convective rain sample compared to the stratiform rain sample (0.28 vs. 0.31). Figure 4 clearly illustrates that convective rain is more likely in northern South America, further away from the maximum aerosols concentrations further south. While neither difference is statistically significant, both are opposite that found by Lin et al. (2006) who expected convective precipitation to be enhanced by aerosols. It remains unclear from these comparisons if aerosols are having any significant impact on precipitation characteristics. For example, the lower AOT associated with the heavy rain and convective rain samples may be due to the cleansing effect of the precipitation, which is not considered an indirect or semi-direct effect. This indicates that to prove (or disprove)

Statistical properties of aerosol-cloud- precipitation

T. A. Jones and
S. A. Christopher

[Title Page](#)[Abstract](#)[Introduction](#)[Conclusions](#)[References](#)[Tables](#)[Figures](#)[◀](#)[▶](#)[◀](#)[▶](#)[Back](#)[Close](#)[Full Screen / Esc](#)[Printer-friendly Version](#)[Interactive Discussion](#)

the existence of aerosol effects in these data, more complex relationships between AOT and the other parameters must be taken into account.

For the heavy rain rate sample only, Fig. 5 shows the relationship between selected atmospheric, cloud, and aerosol parameters relative to rain rate. A statically significant linear relationship (using confidence level greater than 99%) is only observed between rainrate and vertical velocity where rainrate decreases as downward vertical motion (positive values in pressure coordinates) increases. Neither COT nor R_c show any significant relationship, while AOT has a weak positive correlation to rainrate. If any of the aerosol indirect or semi-direct effects are occurring relative to warm process precipitation, the relationship between AOT and rainrate should be negative. These single parameter plots are not conclusive evidence that a single atmospheric, cloud, or aerosol parameter is related to rainrate or not, since all these parameters are highly correlated with each another. No significant differences exist in this relationship when comparing to stratiform vs. convective rainrate. Better relationships might be found when comparing the PC variables to rainrate, since each variable is representative of a unique set of atmospheric, cloud, and aerosol properties, some combination of which may be sensitive to rainrate.

4.2 PC data

The application of PCA produces 16 new variables with unique physical interpretations that can be inferred from the weighting coefficients use to create each variable (Table 2). The first PC variable (PC1) accounts for 25% of the total variance and is primarily derived from the prevailing atmospheric conditions and their location. Positive values of PC1 indicate higher latitudes, stronger easterly (from east) winds, relative humidity, and upward vertical motion between 1000 and 700 hPa. PC1 also receives a negative weighting from the lapse rate parameter indicating that increasingly negative values of lapse rate (i.e. greater instability) are correlated with more positive values of PC1. Latitude is also important, with a weighting coefficient of 0.85 in PC1. What this means is that atmospheric conditions favorable for clouds and precipitation are

Statistical properties of aerosol-cloud- precipitation

T. A. Jones and
S. A. Christopher

Title Page

Abstract

Introduction

Conclusions

References

Tables

Figures

◀

▶

◀

▶

Back

Close

Full Screen / Esc

Printer-friendly Version

Interactive Discussion

more likely to be found in the northern portion of the continent (e.g. Amazon), which is evident from Fig. 1b. MODIS cloud properties are also present with positive weightings associated with COT, LWP, and R_c . Thus, PC1 is clearly indicative of atmospheric conditions in which clouds and precipitation are more likely to occur.

5 Continuing on to PC2, which accounts for 15% of the total variance, we find a more interesting interaction between atmospheric, cloud, and aerosol weightings. Positive values of PC2 are associated with northerly winds and upward vertical motion at 850 and 700 hPa, with the larger weighting at 700 hPa. The humidity weighting coefficients are interesting in that they are negative at 925 and 850 hPa, but positive at 700 hPa.
 10 PC2 is sensitive to dryer stable layers near the surface relative to more moist conditions aloft. The sign of the lapse rate coefficient is consistent with this, as positive values would indicate the presence of an inversion layer in the lower atmosphere. COT and LWP are negatively weighted indicating that atmospheric conditions associated with PC2 are not conducive for liquid water cloud formation, though cloud fraction and
 15 cloud top pressure have weighting coefficients such that positive values of PC2 indicate more cloud cover at higher levels corresponding to 700 hPa layer where the humidity weighting is also positive. MODIS AOT also has a significant positive weighting (0.45), which indicates that the same atmospheric conditions not favorable for thick clouds near the surface also correspond to the highest AOT.

20 Recall that the relationship between only AOT itself and rainrate is weakly positive, opposite that expected for aerosol effect to warm-process precipitation, but consistent with an increase in convective precipitation (Lin et al., 2006). In PC2, increasing AOT corresponds to conditions that are increasingly unfavorable for precipitation. The weighting coefficients for AOT and cloud fraction are also of the same sign, consistent
 25 with the second indirect effect. The positive relationship between stability and AOT may be an indicator that radiative effects are dominating microphysical effects, which is quite similar to the results of Rosenfeld et al. (2008) who observed a decrease in CAPE when $AOT > 0.25$. These results are also consistent with the spatial correlation plots of AOT vs. COT and CTP shown in Fig. 1e and f, where regions associated with

Statistical properties of aerosol-cloud-precipitation

T. A. Jones and
S. A. Christopher

Title Page

Abstract

Introduction

Conclusions

References

Tables

Figures

◀

▶

◀

▶

Back

Close

Full Screen / Esc

Printer-friendly Version

Interactive Discussion

the highest AOT had the thinnest and lowest clouds. Note that the spatial plot of PC2 in Fig. 6b is quite similar to the AOT – cloud parameter correlation plots. Given these relationships, at least a portion of the inhibition of precipitation due to aerosols (if it is indeed occurring) is accounted for by PC2. Conversely, if the convective effect was dominant, then PC2 should be larger for higher rainrates, especially for the convective portion of the precipitation.

The next PC variable, PC3, accounts for 13% of the total variance with positive values associated with west winds, higher humidity, and higher COT, LWP, cloud fraction, R_c , and lower CTP all of which indicate a strong sensitivity to cloud depth and coverage. Longitude is also highly weighted (-0.55) indicating that the deeper clouds and greater atmospheric humidity are more likely further west associated with convergence near the Andes mountains in western South America, which is apparent when comparing Figs. 1c and 6d. Continuing to PC4, we find that it primarily consists of vertical motion parameters weakly associated with northerly winds and further eastward longitude. No significant weightings from clouds and aerosol variables are present. PC5 contains significant weightings from longitude, humidity at all levels, lapse rate, and cloud parameters including LWP, cloud fraction, and R_c . Interestingly, the cloud weighting are inversely proportional to the humidity weightings indicating the presence of thicker clouds in lower moisture environments.

Positive values of PC6 are primarily sensitive to northerly winds at 925 and 850 hPa, with negative weighting associated with AOT. Less significant positive weightings also exist for COT, CTP, and LWP. In other words, increasing values of PC6 represent greater northerly winds associated thicker, but lower level clouds and a decreasing aerosol content. The importance of AOT in PC6 (Fig. 6f) is clearly evident in its similarity to the AOT plot in Fig. 1a. By PC7, only 5% of the total variance is being explained and the physical interpretations become less clear. Of particular interest with respect to this research, is which of these higher order PC variables contain evidence for more traditional aerosol indirect effects. Clearly, PC2 accounts for a portion of these effects, but its signal is not independent of that from other atmospheric conditions. Recall that the first aerosol

Statistical properties of aerosol-cloud-precipitation

T. A. Jones and
S. A. Christopher

[Title Page](#)
[Abstract](#)
[Introduction](#)
[Conclusions](#)
[References](#)
[Tables](#)
[Figures](#)
[◀](#)
[▶](#)
[◀](#)
[▶](#)
[Back](#)
[Close](#)
[Full Screen / Esc](#)
[Printer-friendly Version](#)
[Interactive Discussion](#)

indirect effect postulates that AOT is inversely proportional to cloud droplet effective radius that in turn would reduce precipitation. Thus, any PC variable associated with indirect effects not included in PC2 should include weighting coefficients for AOT, cloud fraction, and R_c that reflect the expected relationship. Significant weighting coefficients exist for AOT in PC9, 10, and 13. In PC9, the weighting coefficients for AOT, COT, LWP, and R_c are all the same sign, which would not be expected if this variable corresponds to indirect effects. Temperatures at 925 and 850 hPa are positively weighted while longitude is negatively weighted and tied with AOT for the maximum weighting coefficient values (-0.39). Analysis of the spatial distribution of PC9 in Fig. 7d indicates that PC9 is lowest in Central America (corresponding to regions of high AOT and low COT) and highest in the northern and southern portions of South America where precipitation amount is greater. Positive values of PC9 correspond to smaller aerosol concentrations and thinner clouds with more low level stability, but in a more humid environment.

The largest weighting coefficient in PC10 is also from AOT, with smaller contributions from the u-component of wind speed. As expected, the spatial distribution of PC10 is very similar to that of AOT alone, though it is inversely correlated. Given the lack of cloud property weightings in this variable, it is also unlikely to be representative of indirect effects. PC13, while only explaining 2% of the total variance, is comprised of AOT, cloud fraction, and R_c among others. The weighting coefficients for AOT and cloud fraction are of the same sign, with the coefficient for R_c being the opposite. This is exactly the relationship expected for the Twomey effect. However, the weighting coefficients are low (<0.3) calling into question their true significance. Other months of data were analyzed to determine if similar weighting patterns existed, and they indeed were found. As such, we are confident that what is being observed in PC13 is not noise, but a result of an actual signal present within the data. Positive values of PC13 are associated with higher AOT and smaller R_c ; thus, if this effect is reducing the amount of precipitation through decreasing cloud droplet size, then the relationship between PC13 and precipitation should be negatively correlated. (The larger PC13, the higher

Statistical properties of aerosol-cloud-precipitation

T. A. Jones and
S. A. Christopher

[Title Page](#)
[Abstract](#)
[Introduction](#)
[Conclusions](#)
[References](#)
[Tables](#)
[Figures](#)
[◀](#)
[▶](#)
[◀](#)
[▶](#)
[Back](#)
[Close](#)
[Full Screen / Esc](#)
[Printer-friendly Version](#)
[Interactive Discussion](#)

the corresponding AOT, which according to theory indicates that precipitation should decrease).

4.3 Comparison of PC variables with rainrate

As with the raw variables, and mean and standard deviation of each PC variable is compared across no-rain, rain, and heavy rain samples (Table 3). Differences in several PC variables are clearly evident between no-rain and heavy rain samples. For example, PC1 increases by 0.6, PC2 decreases 0.23, and PC3 increases by 0.15. Recall that PC1 includes significant weighting coefficients from many atmospheric variables, which interact in a manner such that positive values of PC1 should indicate an environment (and location) more favorable for precipitation. PC2 includes a linear combination of atmospheric and cloud variables along with AOT, where positive values indicate less low-level moisture, greater low-level stability, thinner clouds, and higher AOT. Thus, highly positive values should be associated with less rainfall while negative values more. This is indeed the case as PC2 values are most negative for the heavy rain sample (Table 3) providing further evidence that AOT and the occurrence of precipitation are negatively correlated. However, recall that R_c is not significantly weighted in PC2, so it is unlikely that PC2 is an indicator of the first aerosol indirect effect, but more likely a reflection of the semi-direct effect. Despite the presence of AOT – cloud parameter relationships similar to that expected by Lin et al. (2006), values for PC2 are lower for convective precipitation compared to stratiform precipitation. Thus, it would appear that if the convective effect is occurring over this domain, it is more than being offset by the decrease in precipitation due to other aerosol effects. Values for PC3 increase from no-rain to heavy rain samples as expected since this variable is positively correlated with increased humidity and cloud thickness in the mountainous convergence zone in western South America. The differences between no-rain and heavy rain sample means for PC1–3 are statistically significant to at least a 99% confidence level using the same tests as before.

Moving on to higher order PC variables, differences become less clear. PC4 is not

Statistical properties of aerosol-cloud-precipitation

T. A. Jones and
S. A. Christopher

Title Page

AbstractIntroduction

ConclusionsReferences

TablesFigures

◀▶

◀▶

BackClose

Full Screen / Esc

Printer-friendly Version

Interactive Discussion



statistically significant. PC5 increases from no-rain to rain samples, even though it is negatively correlated with humidity and positively correlated with stability. However, R_c is positively weighted indicating that positive PC5 values are correlated with larger water droplets, which would increase the likelihood of collision and coalescence and thus precipitation. PC6 is lower for the heavy rain sample, neither this difference nor the difference between the no-rain sample and the total sample means are statistically significant. Differences in PC7 and PC8 are also not significant, but those between PC9 and PC10 are (Table 3). Both PC9 and 10 increase from no-rain to rain to heavy-rain samples. In the case of PC9, this indicates that greater amounts of rainfall are associated with greater stability, thinner clouds, lower AOT, but somewhat higher low level humidity. The physical significance of this, if any, remains unclear. Similarly, larger values of PC10 are also associated with decreasing aerosol concentrations, but little other information is present in this variable. Finally, PC13, whose weighting coefficients seem most directly associated with the Twomey effect, increases slightly from no-rain to rain samples, but not to a statistically significant level, which is opposite of what would be expected anyway. Thus, if this effect is occurring, it is being offset by other processes accounted for in previous PC variables or is non-linear and not identifiable using this form of PCA.

Overall, AOT is heavily weighted in 3 statistically significant PC variables (PC2, 9, and 10). PC9 and PC10 do not appear to correspond to any significant semi-direct, indirect, or convective aerosol effects. PC2 is the second most important variables behind favorable atmospheric conditions and includes a significant AOT weighting coefficient that correspond to conditions unfavorable for precipitation at low levels of the atmosphere. A monthly mean plot of aerosol layer height derived from CALIPSO level 2 data shows that the smoke aerosols exist at least 4 km above ground level in the west central portion of the continent (Fig. 9). A vertical profile of 532 nm backscatter over South America on 22 September 2006 at 18:00 UTC clearly shows the significant aerosol concentration between -20° S and 0° N, with aerosols ranging from near the surface all the way up to 4 km in altitude. Recall that for the semi-direct effect to oc-

Statistical properties of aerosol-cloud-precipitation

T. A. Jones and
S. A. Christopher

[Title Page](#)
[Abstract](#)
[Introduction](#)
[Conclusions](#)
[References](#)
[Tables](#)
[Figures](#)
[◀](#)
[▶](#)
[◀](#)
[▶](#)
[Back](#)
[Close](#)
[Full Screen / Esc](#)
[Printer-friendly Version](#)
[Interactive Discussion](#)

cur, large concentrations of elevated, absorbing aerosols must exist, and the CALIPSO data demonstrates that to be the case at least for the month of data analyzed. The positive weighting coefficient for stability in PC2 is consistent with this effect occurring, though the stability parameter is defined at from a slightly lower level (1000–700 hPa).

5 Also note that AOT and R_c are positively correlated overall, and no PC variable that includes inverse relationship between the two provided a statistically significant difference when compared to no-rain vs. heavy rain samples. If aerosols are affecting the likelihood of precipitation for the time period and spatial domains examined here, it is likely more through semi-direct effects and not traditional aerosol indirect effects.

10 To determine if indirect and/or semi-direct effects are affecting *rainrate*, linear regression models between each statistically significant PC variable from above are created between them and TRMM rainrate. Unfortunately, as with the raw atmospheric and cloud parameters, statistically significant linear regression relationships between rainrate and PC variables are not found (Fig. 8). If we were to include rainrate between 0 to
15 0.5 mm h^{-1} in the analysis, then the expected relationships for PC1–3 to become apparent. However, given the high degree of noise present when rainrate is low, including these data in the regression relationships displayed in Figs. 5 or 8 is not appropriate. Further stratifying the data into convective vs. stratiform precipitation did not improve the significance of the PC variables compared to rainrate itself. Given the spatial and
20 temporal resolution differences between the data sets and their various uncertainties, this result was not completely unexpected. Still, we are able to show the usefulness of PC variables in examine how aerosol concentrations are related to the probability of rain occurring, which is an important step forward. It is important to note that we are not attempting to create a predictive model, this research is keyed to showing that
25 a statistically significant relationship exists.

Statistical properties of aerosol-cloud- precipitation

T. A. Jones and
S. A. Christopher

[Title Page](#)[Abstract](#)[Introduction](#)[Conclusions](#)[References](#)[Tables](#)[Figures](#)[◀](#)[▶](#)[◀](#)[▶](#)[Back](#)[Close](#)[Full Screen / Esc](#)[Printer-friendly Version](#)[Interactive Discussion](#)

5 Conclusions

Overall, we find that atmospheric conditions favorable for precipitation are correlated to a statistically significant level with the occurrence of precipitation observed using TRMM-PR, and this correlation outweighs any aerosol-cloud interactions. We also find that MODIS cloud parameters such as COT, CTP, and R_c show a significant correlation where the occurrence of precipitation where thicker, deeper clouds with larger water droplets are more likely to be associated with precipitation. A comparison using solely AOT and TRMM-PR rain data does not provide an unambiguous solution as to what, if any, effects aerosols are having on precipitation. Since aerosol, cloud, and the surrounding atmospheric conditions are highly related to one another, this research uses PCA to extract unique physical signals from the combined dataset.

The most important PC variable in terms of total variance explained, PC1, is representative of a linear combination of atmospheric and location parameters associated with favorable conditions for precipitation and is greater for data where rainrate $> 0.5 \text{ mm h}^{-1}$. PC2 is the more interesting combination as it includes significant weighting coefficients for AOT in combination with other atmospheric variables. The weighting coefficients for PC2 suggest that larger values of PC2 are associated with greater low-level stability and drier air, which is unfavorable for precipitation, especially stratiform precipitation. In the case of PC2, higher values correspond to the no-rain sample compared to the rain and heavy rain samples. Also significant in PC2 are the cloud and aerosol components. The weighting coefficient for AOT is positive indicating the larger AOT corresponds to a decreased likelihood for precipitation, which is consistent with the result expected from traditional aerosol indirect and semi-direct effects tied to warm process clouds. However, the positive AOT weighting coefficient also corresponds to an increase in cloud fraction and lower cloud top temperatures. This relationship was observed by Lin et al. (2006) under the hypothesis that while aerosols are decreasing the efficiency of warm process precipitation, they increase the likelihood of convective precipitation. Even though we are analyzing only liquid water cloud properties, the sta-

Statistical properties of aerosol-cloud- precipitation

T. A. Jones and
S. A. Christopher

Title Page

Abstract

Introduction

Conclusions

References

Tables

Figures

◀

▶

◀

▶

Back

Close

Full Screen / Esc

Printer-friendly Version

Interactive Discussion

tistical relationships observed in PC2 are similar to that expected through the convective effect hypothesis with one major exception. If the convective effect was dominant, then heavy precipitation should correspond to higher values of PC2 when in fact the opposite was observed. For the domain studied here, it appears that if the convective effect is occurring, the decrease in precipitation due to more traditional aerosol effects, especially the semi-direct effect where absorbing aerosols warm the atmosphere and increase stability, is still greater.

The difference in PC3 values between no-rain and heavy rain samples also proved significant, with this variable being largely sensitive to greater precipitation amounts, thicker and higher clouds associated with convergence along the western coast of South America near the Andes mountains. Several higher order PC variables show significant differences between no-rain and heavy rain samples, though none appear to be associated with any known aerosol indirect effects. Only in PC13 are the AOT and R_c coefficients significant and inversely correlated, which should occur according to the Twomey effect. However, no statistically significant difference in PC13 exists between rain and no-rain samples strongly indicating that if the first aerosol indirect effect is occurring, it is being offset by the other processes described by several other PC variables.

The differences between no-rain and heavy rain values for PC1–3 are much greater in an absolute sense compared to several to the individual atmospheric and cloud properties. Also recall that, combined, these three variables alone account for over 50% of the total variance. This research clearly emphasizes the usefulness of PCA at extracting different physical signals from a large array of highly correlated data. Using only PC1 and PC2, it is possible to discriminate between conditions favorable for precipitation and those favorable for some form of aerosol effects on clouds and precipitation. Given these results, we are able to conclude that atmospheric conditions are more important to rainrate than aerosol–cloud interactions; however, these interactions are an important secondary factor. We find that the radiative effects of absorbing aerosols outweigh the microphysical effects when reducing the probability for stratiform precipi-

**Statistical properties
of aerosol-cloud-
precipitation**

T. A. Jones and
S. A. Christopher

Title Page

Abstract

Introduction

Conclusions

References

Tables

Figures



Back

Close

Full Screen / Esc

Printer-friendly Version

Interactive Discussion



tation. In addition, while PC2 would also be sensitive to the convective effect, its values relative to rainrate indicate that any increase in precipitation due to this effect is being more than offset by the reduction in precipitation due to the semi-direct effect. Unfortunately, PC variables did not have statistically significant relationships with rainrate itself, although neither did the raw variables with the exception of vertical velocity. Given the noise and uncertainties present in all the data sets used in the research and the likely possibility of non-linear interactions occurring, this null result is not unexpected. To better quantify the relationship between aerosol concentrations and rainrate in the future, additional coincident observations of these parameters with an important focus being the relative vertical distributions of aerosols and clouds are needed. Fortunately, the recent advent of CALIPSO and CloudSat data open up this possibility for future research.

Acknowledgements. This research is supported by NASA's Radiation sciences, Interdisciplinary sciences, an EOS grant, and ACPMAP programs. The CERES SSF data that contains the merged MODIS and CERES were obtained through the NASA Langley Distributed Active Archive Systems. We would like to also recognize A. Naegar for calculating CALIPSO aerosol layer heights shown in Fig. 9.

References

- Ackerman, A. S., Toon, O. B., Stevens, D. E., Heymsfield, A. J., Ramanathan, V., and Welton, E. J.: Reduction of tropical cloudiness by soot, *Science*, 288, 1042–1047, 2000.
- Ackerman, A. S., Toon, O. B., Stevens, D. E., and Coakley Jr., J. A.: Enhancement of cloud cover and suppression of nocturnal drizzle in stratocumulus polluted by haze, *Geophys. Res. Lett.*, 30, L1381, doi:10.1029/2002GL016634, 2003.
- Albrecht, B.: Aerosols, cloud microphysics, and fractional cloudiness, *Science*, 245, 1227–1230, 1989.
- Andreae, A., Rosenfeld, D., Artaxo, P., et al.: Smoking rain clouds over the Amazon, *Science*, 303, 1337–1342, 2004.
- Brenguier, J.-L., Pawlowska, H., and Schuller, L.: Cloud microphysical and radiative properties

Statistical properties of aerosol-cloud-precipitation

T. A. Jones and
S. A. Christopher

Title Page

Abstract

Introduction

Conclusions

References

Tables

Figures

◀

▶

◀

▶

Back

Close

Full Screen / Esc

Printer-friendly Version

Interactive Discussion



- for parameterization and satellite monitoring of the indirect effect of aerosol on climate, *J. Geophys. Res.*, 108(D15), 8632, doi:10.1029/2002JD002682, 2003.
- DeMott, P. J., Sassen, K., Poellot, M. R., Baumgardner, D., Rodgers, D. C., Brooks, S. D., Prenni, A. J., and Kreidenweis, S. M.: African dust aerosols as atmospheric ice nuclei, *Geophys. Res. Lett.*, 30, 1732, doi:10.1029/2003GL017410, 2003.
- Doviak, R. J. and Zrnic, D. S.: *Doppler Radar and Weather Observations*, 2nd edn., Academic Press, San Diego, p. 562, 1993.
- Dunion, J. P. and Velden, C. S.: The impact of the Saharan air layer on Atlantic tropical cyclone activity, *Bull. Am. Meteorol. Soc.*, 85, 353–365, 2004.
- Feingold, G.: Modeling of the first indirect effect: Analysis of measurement requirements, *Geophys. Res. Lett.*, 30(6), 1997, doi:10.1029/2003GL017967, 2003.
- Feingold, G., Eberhard, W. L., Veron, D. E., and Previdi, M.: First measurements of the Twomey indirect effect using ground-based remote sensors, *Geophys. Res. Lett.*, 30(6), 1287, doi:10.1029/2003GL016633, 2003.
- Han, Q. Y., Rossow, W. B., and Lacis, A. A.: Near-global survey of effective droplet radii in liquid water clouds using ISCCP data, *J. Climate*, 7, 465–497, 1994.
- Han, Q., Rossow, W. B., Chou, J., and Welch, R. M.: Global survey of the relationships of cloud albedo and liquid water path with droplet size using ISCCP, *J. Climate*, 11, 1516–1528, 1998.
- Hanson, J., Sato, M., and Ruedy, R.: Radiative forcing and climate response, *J. Geophys. Res.*, 102, 6831–6864, 1997.
- Iguchi, T., Kozu, T., Meneghini, R., Awaka, J., and Okamoto, K.: Rain-profiling algorithm for the TRMM precipitation radar, *J. Appl. Meteorol.*, 39, 2038–2052, 2000.
- Jeong, M.-J., Li, Z., Andrews, E., and Tsay, S.-C.: Effect of aerosol humidification on the column aerosol optical thickness over the atmospheric radiation measurement southern great plains site, *J. Geophys. Res.*, 112, D10202, doi:10.1029/2006JD007176, 2007.
- Johnson, B. T., Shine, K. P., and Forster, P. M.: The semi-direct aerosol effect: Impact of absorbing aerosols on marine stratocumulus, *Q. J. Roy. Meteorol. Soc.*, 130, 1407–1422, 2004.
- Jones, T. A., McGrath, K. M., and Snow, J. T.: Association between NSSL mesocyclone detection algorithm detected vortices and tornadoes, *Weather Forecast.*, 19, 872–890, 2004.
- Jones, T. A. and Christopher, S. A.: Seasonal variation in satellite derived effects of aerosols on clouds in the Arabian Sea, *J. Geophys. Res.* 113, D09207, doi:10.1029/2007JD009118,

Statistical properties of aerosol-cloud- precipitation

T. A. Jones and
S. A. Christopher

Title Page

Abstract

Introduction

Conclusions

References

Tables

Figures

◀

▶

◀

▶

Back

Close

Full Screen / Esc

Printer-friendly Version

Interactive Discussion

2008.

Kalnay, E., Kanamitus M., Kitsler, R., et al.: The NCEP/NCAR 40-year reanalysis project, Bull. Amer. Meteorol. Soc., 77, 437–471, 1996.

Kaufman, Y. J. and Fraser, R. S.: The effect of smoke particles on clouds and climate forcing, Science, 277, 1636–1639, 1997.

Kaufman, Y. J., Koren, I., Remer, L. A., Rosenfeld, D., and Rudich, Y.: The effect of smoke, dust, and pollution, aerosol on shallow cloud development over the Atlantic Ocean, Proc. Natl. Acad. Sci., 102(32), 11207–11212, 2005a.

Khain, A. P., Rosenfeld, D., and Pokrovsky, A.: Aerosol impact on the dynamics and micro-physics of convective clouds, Q. J. R. Meteorol. Soc., 131, 2639–2663, 2005.

Koren I., Kaufman, Y. J., Remer, L. A., Rosenfeld, D., and Rudich, Y.: Aerosol invigoration and restructuring of Atlantic convective clouds, Geophys. Res. Lett., 32(14), L14828, doi:10.1029/2005GL023187, 2005.

Koren, I., Remer, L. A., Kaufman, Y. J., Rudich, Y., and Martins, J. V.: On the twilight zone between clouds and aerosols, Geophys. Res. Lett., 34, L08805, doi:10.1029/2007GL029253, 2007.

Koren, I., Martins, J. V., Remer, L. A., and Afargan, H.: Smoke invigoration versus inhibition of clouds over the Amazon, Science, 321, 946–949, 2008.

Kummerow C., Simpson, J., Thiele, O., et al.: The status of the tropical rainfall measuring mission (TRMM) after two years in orbit, J. Appl. Meteorol., 39, 1965–1982, 2000.

Lin J. C., Matsui, T., Pielke Sr., R. A., and Kummerow, C.: Effects of biomass burning derived aerosols on precipitation and clouds in the Amazon Basin: a satellite-based empirical study, J. Geophys. Res., 111, D19204, doi:10.1029/2005JD006884, 2006.

Loeb, N. G. and Manalo-Smith, N.: Top-of-atmosphere direct radiative effect of aerosols over global oceans from merged CERES and MODIS observations, J. Climate, 18, 3506–3526, 2005.

Lohmann, U. and Feichter, J.: Global indirect aerosol effects: a review, Atmos. Chem. Phys., 5, 715–737, 2005, <http://www.atmos-chem-phys.net/5/715/2005/>.

Lohmann, U. and Lesins, G.: Comparing continental and oceanic cloud susceptibilities to aerosols, Geophys. Res. Lett., 30, 1791, doi:10.1029/2003GL017828, 2003.

Mauger, G. S. and Norris, J. R.: Meteorological bias in satellite estimates of aerosol-cloud relationships, Geophys. Res. Lett., 34, L16824, doi:10.1029/2007GL029952, 2007.

ACPD

9, 21463–21507, 2009

Statistical properties of aerosol-cloud- precipitation

T. A. Jones and
S. A. Christopher

Title Page

Abstract

Introduction

Conclusions

References

Tables

Figures

◀

▶

◀

▶

Back

Close

Full Screen / Esc

Printer-friendly Version

Interactive Discussion

- Marshak, A., Wen, G., Coakley, J. A., Remer, L. A., Loeb, N. G., and Cahalan, R. F.: A simple model for the cloud adjacency effect and the apparent bluing of aerosols near clouds. *J. Geophys. Res.*, 113, D14S17, doi:10.1029/2007JD009196, 2008.
- Martins J. A., Silva Dias, M. A. F., and Gonçalves, F. L. T.: Impact of biomass burning aerosols on precipitation in the Amazon: A modeling case study, *J. Geophys. Res.*, 114, D02207, doi:10.1029/2007JD009587, 2009.
- Matsui, T., Masunaga, H., Kreidenweis, S. M., Pielke Sr., R. A., Tao, W.-K., Chin, M., and Kaufman, Y. J.: Satellite based assessment of marine low cloud variability associated with aerosol, atmospheric stability, and the diurnal cycle. *J. Geophys. Res.*, 111, D17204, doi:10.1029/2005JD006097, 2006.
- Minnis, P., Young, D. F., Sun-Mack, S., Heck, P. W., Doelling, D. R., and Treppe, Q.: CERES Cloud Property Retrievals from Imagers on TRMM, Terra, and Aqua, *Proc. SPIE 10th International Symposium on Remote Sensing: Conference on Remote Sensing of Clouds and the Atmosphere VII*, Barcelona, Spain, 8–12 September, 37–48, 2003.
- Morissette, J. T., Giglio, L., Csisszar, I., Setzer, A., Schroeder, W., Morton, D., and Justice, C. O.: Validation of MODIS active fire detection products derived from two algorithms, *Earth Interact.*, 9, 1–23, 2005.
- Nakajima, T., King, M. D., and Spinhirne, J. D.: Determination of the optical thickness and effective particle radius of clouds from reflected solar radiation measurements. Part II: Marine strato-cumulus observations, *J. Atmos. Sci.*, 48, 728–750, 1991.
- Nicholson, S. E., Some, B., McCollum, J., et al.: Validation of TRMM and other rainfall estimates with a high-density gauge dataset for West Africa. Part II: Validation of TRMM rainfall products, *J. Appl. Meteorol.*, 42, 1355–1368, 2003.
- Peng, Y., Lohmann, U., Leaith, R., Banic, C., and Couture, M.: The cloud albedo-cloud droplet effective radius relationship for clean and polluted clouds from RACE and FIRE.ACE, *J. Geophys. Res.*, 107, 4106, doi:10.1029/2000JD000281, 2002.
- Penner, J. E., Dong, X., and Chen, Y.: Observational evidence of a change in radiative forcing due to the indirect aerosol effect, *Nature*, 427, 231–234, 2004.
- Platnick, S., King, M. D., Ackerman, S. A., Menzel, W. P., Baum, B. A., Riédi, J. C., and Frey, R. A.: The MODIS Cloud Products: Algorithms and Examples from Terra, *IEEE Trans. Geosci. Remote Sens.*, 41, 459–473, 2003.
- Quaas, J., Boucher, O., and Breon, F.-M.: Aerosol indirect effects in POLDER satellite data and the Laboratoire de Meteorologie Dynamique-Zoom (LMDZ) general circulation model, *J.*

Statistical properties of aerosol-cloud-precipitation

T. A. Jones and
S. A. Christopher

Title Page

Abstract

Introduction

Conclusions

References

Tables

Figures

◀

▶

◀

▶

Back

Close

Full Screen / Esc

Printer-friendly Version

Interactive Discussion

- Geophys. Res., 109, D08205, doi:10.1029/2003JD004317, 2004.
- Quaas, J., Boucher, O., Bellouin, N., and Kinne, S.: Satellite-based estimate of the direct and indirect aerosol climate forcing, *J. Geophys. Res.*, 113, D05204, doi:10.1029/2007JD008962, 2008.
- 5 Ramana M. V., Ramanathan, V.: Abrupt transition from natural to anthropogenic aerosol radiative forcing: Observations at the ABC-Maldives Climate Observatory, *J. Geophys. Res.*, 111, D20207, doi:10.1029/2006JD007063, 2006.
- Ramanathan, V., Crutzen, P. J., Kiehl, J. T., and Rosenfeld, D.: Aerosols, climate, and the hydrological cycle, *Science*, 294, 2119–2124, 2001.
- 10 Reid J. S., Hobbs, P. V., Ferek, R. J., Blake, D. R., Martins, J. V., Dunlap, M. R., and Liousse, C.: Physical, chemical, and optical properties of regional hazes dominated by smoke in Brazil, *J. Geophys. Res.*, 103, 32059–32080, 1998.
- Reid J. S., Hobbs, P. V., Rangno, A. L., and Hegg, D. A.: Relationships between cloud droplet effective radius, liquid water content, and droplet concentration for warm clouds in Brazil embedded in biomass smoke, *J. Geophys. Res.*, 104(D6), 6145–6153, 1999.
- 15 Redemann, J., Zhang, Q., Livingston, J., Russell, P., Shinozuka, Y., Clarke, A., Johnson, R., and Levy, R.: Testing aerosol properties in MODIS (MOD35/MYD35) Collection 4 and 5 using airborne sunphotometer observations in INTEX-B/MILAGRO, *Atmos. Chem. Phys. Discuss.*, 9, 11753–11781, 2009,
- 20 <http://www.atmos-chem-phys-discuss.net/9/11753/2009/>.
- Remer, L. A. and Kaufman, Y. J.: Aerosol direct radiative effect at the top of the atmosphere over cloud free ocean derived from four years of MODIS data, *Atmos. Chem. Phys.*, 6, 237–253, 2006,
- <http://www.atmos-chem-phys.net/6/237/2006/>.
- 25 Richman, M. B. and Gong, X.: Relationships between the definition of the hyperplane width to the fidelity of principal component loading patterns, *J. Climate*, 12, 1557–1576, 1999.
- Rosenfeld, D., Kaufman, Y. J., and Koren, I.: Switching cloud cover and dynamical regimes from open to closed Benard cells in response to the suppression of precipitation by aerosols, *Atmos. Chem. Phys.*, 6, 2503–2511, 2006,
- 30 <http://www.atmos-chem-phys.net/6/2503/2006/>.
- Rosenfeld, D., Lohmann, U., Raga, G. B., O'Dowd, C. D., Kulmala, M., Fuzzi, S., Reissell, A., and Andreae, M. O.: Flood or drought: How do aerosols affect precipitation, *Science*, 321, 1309–1313, 2008.

Statistical properties of aerosol-cloud- precipitation

T. A. Jones and
S. A. Christopher

Title Page

Abstract

Introduction

Conclusions

References

Tables

Figures

◀

▶

◀

▶

Back

Close

Full Screen / Esc

Printer-friendly Version

Interactive Discussion



Schwartz S. E., Harshvardhan, and Benkovitz, C. M.: Influence of anthropogenic aerosol on cloud optical depth and albedo shown by satellite measurements and chemical transport modeling, Proc. Nat. Acad. Sci. US, 99, 1784–1789, 2002.

5 Teller, A. and Levin, Z.: The effects of aerosols on precipitation and dimensions of subtropical clouds: a sensitivity study using a numerical cloud model, Atmos. Chem. Phys., 6, 67–80, 2006,
<http://www.atmos-chem-phys.net/6/67/2006/>.

Turner, D. D., Vogelmann, A. M., Austin, R. T., et al.: Thin liquid water clouds: their importance and our challenge, B. Am. Meteorol. Soc., 88(2), 177–190, doi:10.1175/BAMS-88-2-177, 2007.

10 Twomey, S. A.: The influence of pollution on the shortwave albedo of clouds, J. Atmos. Sci., 34, 1149–1152, 1977.

Vaughan, M., Young, S., Winker, D., Powell, K., Omar, A., Liu, Z., Hu, Y., and Hostetler, C.: Fully automated analysis of space-based lidar data: an overview of the CALIPSO retrieval algorithms and data products, Proc. SPIE, 5575, 16–30, 2004.

15 Wen, G., Marshak, A., and Cahalan, R. F.: Impact of 3-D Clouds on Clear Sky Reflectance and Aerosol Retrieval in a Biomass Burning Region of Brazil, IEEE Geo. Rem. Sens. Lett., 3, 169–172, 2006.

Williams, E., Rosenfeld, D., Madden, N., et al.: Contrasting convective regimes over the Amazon: Implications for cloud electrification, J. Geophys. Res., 107, 8082, doi:10.1029/2001JD000380, 2002.

20 Yuan, T., Li, Z., Chang, F. L., Vant-Hull, B., and Rosenfeld, D.: Increase of cloud droplet size with aerosol optical depth: An observation and modeling study. J. Geophys. Res., 113, D04201, doi:10.1029/2007JD008632, 2008.

25 Zhang, J. and Reid, J. S.: MODIS aerosol product analysis for data assimilation: Assessment of over-ocean level 2 aerosol optical thickness retrievals. J. Geophys. Res., 111, D22207, doi:10.1029/2005JD006898, 2006.

**Statistical properties
of aerosol-cloud-
precipitation**

T. A. Jones and
S. A. Christopher

Title Page

Abstract

Introduction

Conclusions

References

Tables

Figures

◀

▶

◀

▶

Back

Close

Full Screen / Esc

Printer-friendly Version

Interactive Discussion

Table 1. Mean and standard deviation values for NCEP derived atmospheric conditions and MODIS cloud and aerosol properties for South America during September 2006 for no-rain, rain, and heavy rain ($>0.5 \text{ mm h}^{-1}$) samples. Variables in italics are not statistically significant to a 99% confidence level.

Variable	Abbr.	No-Rain	Rain	H-Rain
Number	N	3203	4707	2642
Latitude	LAT	-15.3 ± 15.8	-10.8 ± 14.6	-4.2 ± 12.6
Longitude	LON	-60.6 ± 11.8	-61.7 ± 11.9	-63.1 ± 12.2
925 hPa Vertical Vel.	W925	0.04 ± 0.14	0.03 ± 0.17	0.0 ± 0.08
850 hPa Vertical Vel.	W850	0.03 ± 0.13	0.02 ± 0.16	0.0 ± 0.09
700 hPa Vertical Vel.	W700	0.02 ± 0.11	0.01 ± 0.13	0.0 ± 0.09
925 hPa Zonal Vel.	U925	-1.5 ± 5.5	-2.4 ± 4.9	-3.0 ± 4.5
850 hPa Zonal Vel.	U850	-1.2 ± 6.2	-2.4 ± 5.4	-3.5 ± 5.0
700 hPa Zonal Vel.	U700	-0.2 ± 7.8	-1.5 ± 7.1	-3.7 ± 7.0
925 hPa Merid Vel.	V925	-0.4 ± 5.0	-0.2 ± 5.5	0.4 ± 3.9
850 hPa Merid Vel.	V850	-0.4 ± 5.0	-0.2 ± 5.1	0.3 ± 3.9
700 hPa Merid Vel.	V700	-0.1 ± 5.0	-0.2 ± 5.0	0.2 ± 3.7
925 hPa Relative Humid.	R925	63.1 ± 19.9	66.0 ± 21.9	70.0 ± 16.2
850 hPa Relative Humid.	R850	58.8 ± 19.9	60.6 ± 22.2	65.1 ± 16.4
700 hPa Relative Humid.	R700	48.2 ± 23.7	47.8 ± 26.0	53.3 ± 20.5
925 hPa Temperature	T925	291 ± 7.3	292 ± 6.4	294 ± 4.1
850 hPa Temperature	T850	287 ± 6.7	288 ± 5.9	290 ± 3.6
700 hPa Temperature	T700	278 ± 6.0	280 ± 4.7	281 ± 2.7
700–1000 hPa Temp	LAPSE	-6.7 ± 3.6	-6.7 ± 2.9	-7.1 ± 2.0
Aerosol Optical Thick.	AOT	0.32 ± 0.5	0.30 ± 0.4	0.31 ± 0.4
Cloud Optical Thick	COT	3.9 ± 2.5	4.2 ± 2.8	4.4 ± 2.2
Cloud Top Pressure	CTP	779 ± 100	764 ± 102	761 ± 97
Liquid Water Path	LWP	25.0 ± 18.4	27.5 ± 19.6	30.2 ± 17.3
Cloud Fraction	CF	11.6 ± 12.0	12.4 ± 12.8	11.5 ± 11.5
Droplet Effective Radius	RAD	9.9 ± 2.2	10.1 ± 2.4	10.5 ± 2.1

Statistical properties of aerosol-cloud-precipitation

T. A. Jones and
S. A. Christopher

[Title Page](#)
[Abstract](#)
[Introduction](#)
[Conclusions](#)
[References](#)
[Tables](#)
[Figures](#)
[I◀](#)
[▶I](#)
[◀](#)
[▶](#)
[Back](#)
[Close](#)
[Full Screen / Esc](#)
[Printer-friendly Version](#)
[Interactive Discussion](#)

Table 2. Weighting coefficients produced using PCA that are used to generate the new PC variables. Values less than 0.2 are set to 0.0.

	PC1	PC2	PC3	PC4	PC5	PC6	PC7	PC8	PC9	PC10	PC11	PC12	PC13	PC14	PC15	PC16
LAT	0.85	-0.28	0.00	0.00	0.00	0.00	0.00	0.00	0.00	0.00	0.00	0.00	0.00	0.00	0.00	0.00
LON	0.00	0.00	-0.55	0.26	-0.39	0.00	-0.40	0.00	-0.39	0.00	0.00	0.00	0.00	0.00	0.00	-0.20
U925	-0.55	0.32	0.44	0.00	0.00	0.00	0.31	0.00	0.00	0.36	0.00	0.00	0.00	0.00	0.00	-0.20
V925	0.00	-0.66	0.00	0.26	0.00	-0.49	0.00	0.29	0.00	0.00	-0.23	0.00	0.00	0.00	0.00	0.00
W925	-0.47	0.00	0.00	-0.79	0.00	0.00	0.00	0.00	0.00	0.00	0.00	0.24	0.00	0.00	0.00	0.00
R925	0.30	-0.47	0.53	0.00	-0.24	0.22	0.00	-0.26	0.26	0.00	-0.32	0.00	0.00	0.00	0.00	0.00
T925	0.88	0.22	0.00	0.00	0.00	-0.20	0.00	0.00	0.00	0.20	0.00	0.00	0.00	0.00	0.00	0.00
U850	-0.67	0.43	0.36	0.00	0.00	0.00	0.22	0.00	0.00	0.32	0.00	0.00	0.00	0.00	0.00	0.00
V850	-0.25	-0.76	0.00	0.29	0.00	-0.42	0.00	0.00	0.00	0.00	0.00	0.00	0.00	0.00	0.00	0.00
W850	-0.49	-0.24	0.00	-0.78	0.00	0.00	0.00	0.00	0.00	0.00	0.00	0.00	0.00	0.00	0.00	0.00
R850	0.44	-0.27	0.58	0.00	-0.42	0.00	0.00	0.00	0.25	0.00	0.00	0.00	0.00	0.00	0.00	0.00
T850	0.87	0.25	0.00	0.00	0.00	0.00	0.00	0.00	0.00	0.00	0.00	0.00	0.00	0.00	0.00	0.00
U700	-0.74	0.32	0.20	0.00	0.00	0.00	0.00	0.00	0.00	0.00	0.00	0.00	-0.22	0.00	0.00	0.32
V700	-0.26	-0.70	0.00	0.27	0.00	0.00	0.00	0.00	0.00	0.24	0.00	0.00	0.00	0.30	0.00	0.00
W700	-0.34	-0.45	0.00	-0.49	0.00	0.00	0.00	-0.21	0.00	0.00	0.00	-0.50	0.00	0.00	0.00	0.00
R700	0.41	0.21	0.46	0.00	-0.37	-0.34	0.00	0.00	0.00	0.00	0.37	0.00	-0.27	0.00	0.22	0.00
T700	0.84	0.00	0.00	-0.27	0.00	0.00	0.00	0.00	0.00	0.22	-0.28	0.00	0.00	0.00	0.00	0.00
LAPSE	-0.35	0.40	0.00	0.00	0.53	0.00	0.30	0.00	0.27	0.00	-0.22	-0.26	0.00	0.00	0.00	0.00
AOT	0.20	0.45	0.00	0.00	0.00	-0.47	0.00	0.00	-0.39	-0.42	0.00	0.00	0.27	0.00	0.00	0.00
COT	0.25	-0.28	0.70	0.00	0.00	0.30	0.00	0.31	-0.32	0.00	0.00	0.00	0.00	0.00	0.00	0.00
CTP	0.00	-0.34	-0.53	0.00	0.00	0.20	0.53	0.00	0.00	0.00	0.00	0.00	0.00	-0.28	0.27	0.00
LWP	0.29	-0.30	0.70	0.00	0.28	0.26	0.00	0.00	-0.38	0.00	0.00	0.00	0.00	0.00	0.00	0.00
CF	0.00	0.37	0.42	0.00	0.27	0.00	-0.62	0.00	0.00	0.00	0.00	0.00	0.22	-0.29	0.21	0.00
RAD	0.24	0.00	0.21	0.00	0.51	0.00	0.00	-0.63	-0.27	0.00	0.00	0.00	-0.26	0.00	0.00	0.00

Statistical properties of aerosol-cloud- precipitation

T. A. Jones and
S. A. Christopher

Title Page

Abstract

Introduction

Conclusions

References

Tables

Figures

◀

▶

◀

▶

Back

Close

Full Screen / Esc

Printer-friendly Version

Interactive Discussion

Table 3. Mean and standard deviations for PC1-16 for no-rain, rain, and heavy rain samples. Variables in *italics* are not statistically significant to a 99% confidence level.

Variable	No-Rain	Rain	H-Rain
Number	3203	4707	2642
PC1	-0.15 ± 1.1	0.1 ± 0.9	0.46 ± 0.7
PC2	0.05 ± 1.1	-0.04 ± 1.0	0.18 ± 0.8
PC3	-0.03 ± 1.1	0.02 ± 1.0	0.12 ± 1.0
PC4	0.04 ± 1.1	-0.02 ± 1.0	0.08 ± 0.7
PC5	-0.12 ± 1.3	0.08 ± 1.3	0.12 ± 1.2
PC6	0.00 ± 1.2	0.00 ± 1.1	-0.15 ± 1.0
PC7	0.09 ± 1.2	-0.06 ± 1.1	0.03 ± 1.1
PC8	-0.04 ± 1.4	0.03 ± 1.3	-0.08 ± 1.2
PC9	-0.05 ± 1.2	0.04 ± 1.2	0.14 ± 1.2
PC10	-0.04 ± 1.6	0.03 ± 1.4	0.10 ± 1.3
PC11	0.08 ± 1.5	-0.05 ± 1.4	0.12 ± 1.4
PC12	-0.06 ± 1.3	0.04 ± 1.3	0.00 ± 1.1
PC13	0.02 ± 1.4	-0.02 ± 1.7	0.00 ± 1.6
PC14	-0.09 ± 2.4	0.06 ± 2.1	0.05 ± 1.9
PC15	0.05 ± 2.7	-0.04 ± 2.5	0.19 ± 2.4
PC16	-0.03 ± 1.8	0.02 ± 1.7	-0.01 ± 1.7

Statistical properties of aerosol-cloud- precipitation

T. A. Jones and
S. A. Christopher

Title Page

Abstract

Introduction

Conclusions

References

Tables

Figures

◀

▶

◀

▶

Back

Close

Full Screen / Esc

Printer-friendly Version

Interactive Discussion

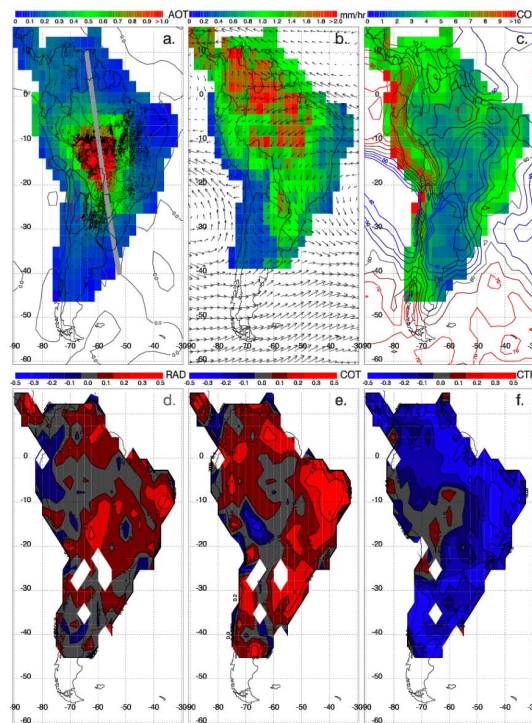
Statistical properties
of aerosol-cloud-
precipitationT. A. Jones and
S. A. Christopher

Fig. 1. Monthly averaged AOT **(a)**, TRMM rainrate in mm h^{-1} **(b)**, and COT **(c)** over South America for September, 2006. Overlaid on AOT are MODIS derived fire locations from the MOD14 product during the same month. NCEP Reanalysis wind vectors at 850 hPa are overlaid on rainrate, and relative humidity contours are overlaid on COT. Gray line in panel **(a)** represents the location of a CALIPSO overpass on 22 September 2006 at approximately 18:00 UTC. Panels **(d–f)** represent the correlation coefficients between AOT and R_c **(d)**, COT **(e)** and CTP **(f)** for each 2.5° grid cell. Red values indicate a positive correlation while blue values indicate a negative correlation.

Title Page

Abstract

Introduction

Conclusions

References

Tables

Figures

◀

▶

◀

▶

Back

Close

Full Screen / Esc

Printer-friendly Version

Interactive Discussion

**Statistical properties
of aerosol-cloud-
precipitation**

T. A. Jones and
S. A. Christopher

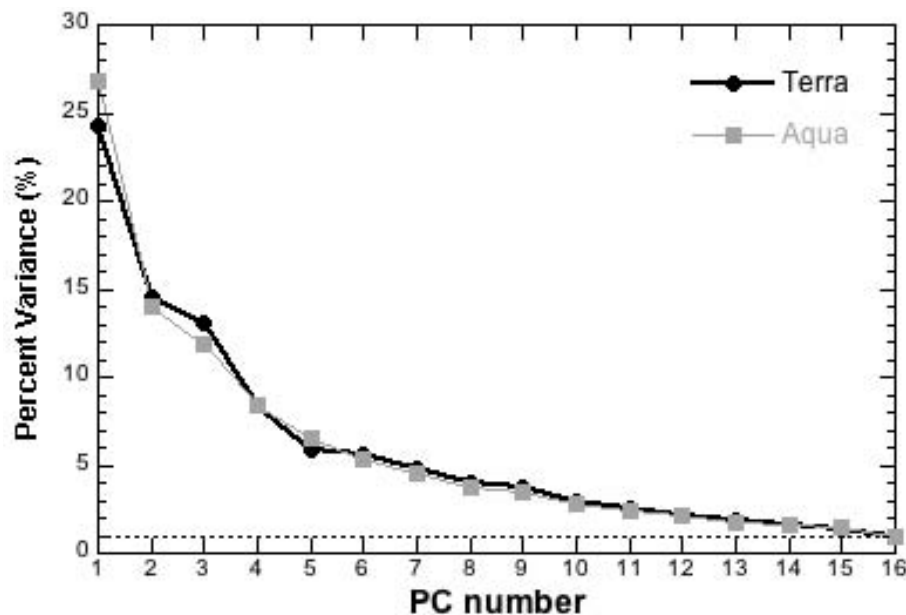


Fig. 2. First 16 eigenvalues derived from the 24 parameter dataset from both Terra and Aqua satellites. Note the values are in close agreement for both sets of data. Dotted line indicates the amount of variance that would be explained by random noise, which occurs at approximately PC16. Thus, higher order PC variables are not retained.

[Title Page](#)[Abstract](#)[Introduction](#)[Conclusions](#)[References](#)[Tables](#)[Figures](#)[◀](#)[▶](#)[◀](#)[▶](#)[Back](#)[Close](#)[Full Screen / Esc](#)[Printer-friendly Version](#)[Interactive Discussion](#)

**Statistical properties
of aerosol-cloud-
precipitation**

T. A. Jones and
S. A. Christopher

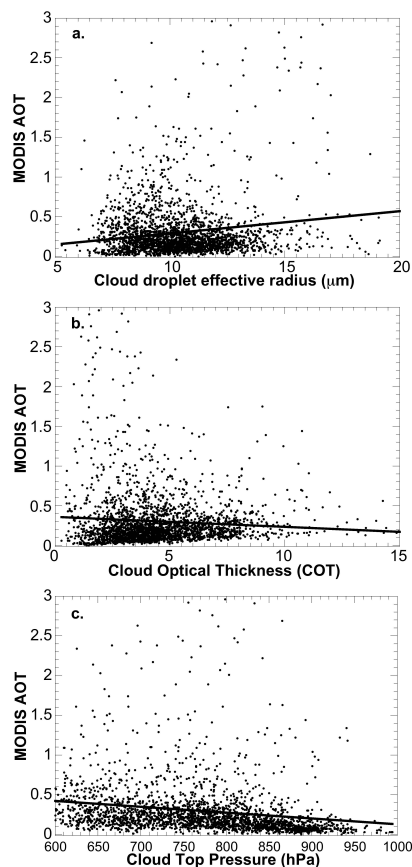


Fig. 3. Scatterplot of R_c (a), COT (b), and CTP (c) as a function of MODIS AOT for daily 2.5° data during September 2006. Black lines represent linear regression best-fit lines for each parameter.

[Title Page](#)[Abstract](#)[Introduction](#)[Conclusions](#)[References](#)[Tables](#)[Figures](#)[I◀](#)[▶I](#)[◀](#)[▶](#)[Back](#)[Close](#)[Full Screen / Esc](#)[Printer-friendly Version](#)[Interactive Discussion](#)

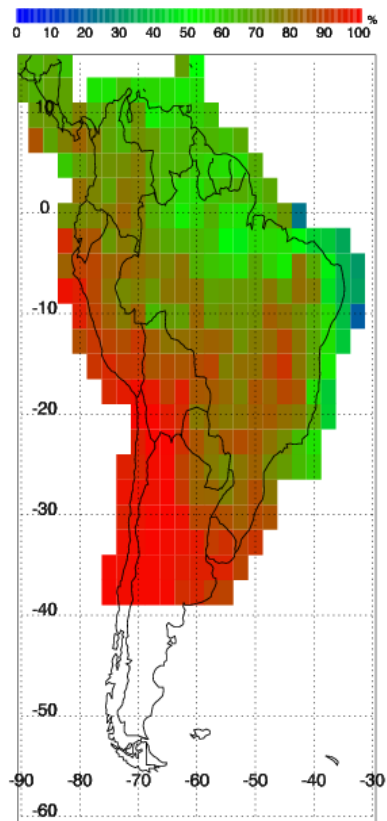


Fig. 4. Percentage of precipitation in each 2.5° grid box from TRMM-PR defined as stratiform precipitation. Red coloring indicates that precipitation is mostly stratiform, while green coloring indicates it approximately a 50–50% mix.

Statistical properties of aerosol-cloud- precipitation

T. A. Jones and
S. A. Christopher

Title Page

Abstract

Introduction

Conclusions

References

Tables

Figures

◀

▶

◀

▶

Back

Close

Full Screen / Esc

Printer-friendly Version

Interactive Discussion

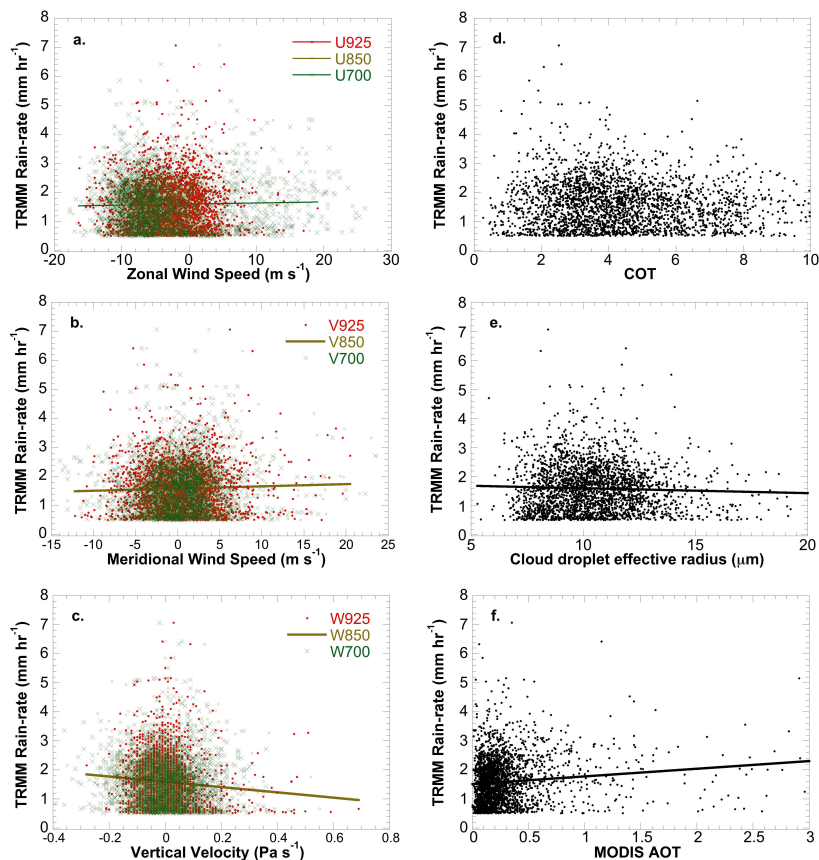
**Statistical properties
of aerosol-cloud-
precipitation**T. A. Jones and
S. A. Christopher

Fig. 5. Scatterplots of TRMM rainrate vs. selected atmospheric, cloud, and aerosol variables for September 2006 including linear least squares. Parameters compared to rainrate include zonal, meridional, and vertical velocities as well as COT, R_c , and AOT.

Title Page

Abstract

Introduction

Conclusions

References

Tables

Figures

◀

▶

◀

▶

Back

Close

Full Screen / Esc

Printer-friendly Version

Interactive Discussion

**Statistical properties
of aerosol-cloud-
precipitation**

T. A. Jones and
S. A. Christopher

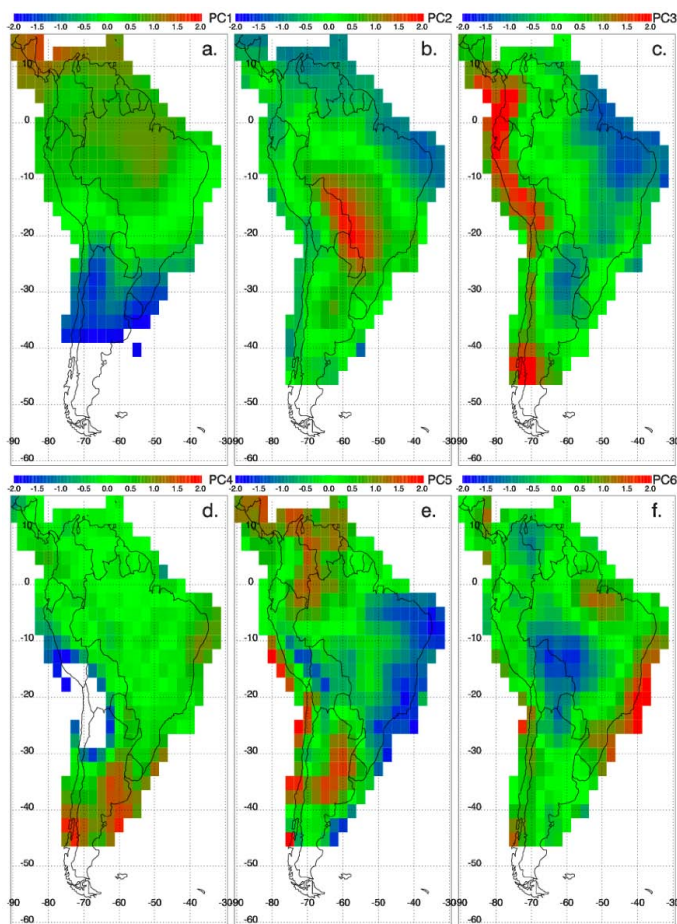


Fig. 6. Spatial plots of PC1–6 created using the combined atmospheric, cloud, and aerosol property data set. Reds indicate positive PC values while blues indicate negative PC values.

[Title Page](#)[Abstract](#)[Introduction](#)[Conclusions](#)[References](#)[Tables](#)[Figures](#)[◀](#)[▶](#)[◀](#)[▶](#)[Back](#)[Close](#)[Full Screen / Esc](#)[Printer-friendly Version](#)[Interactive Discussion](#)

**Statistical properties
of aerosol-cloud-
precipitation**

T. A. Jones and
S. A. Christopher

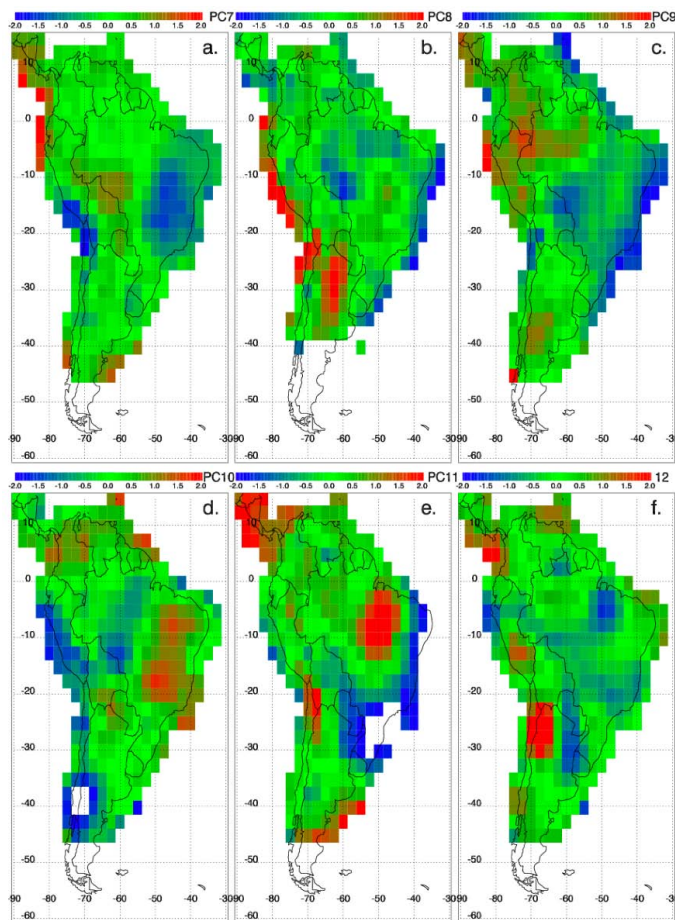


Fig. 7. Spatial plots of PC7–12. Combined, PC7–12 account for less than 10% of the total variance.

[Title Page](#)[Abstract](#)[Introduction](#)[Conclusions](#)[References](#)[Tables](#)[Figures](#)[◀](#)[▶](#)[◀](#)[▶](#)[Back](#)[Close](#)[Full Screen / Esc](#)[Printer-friendly Version](#)[Interactive Discussion](#)

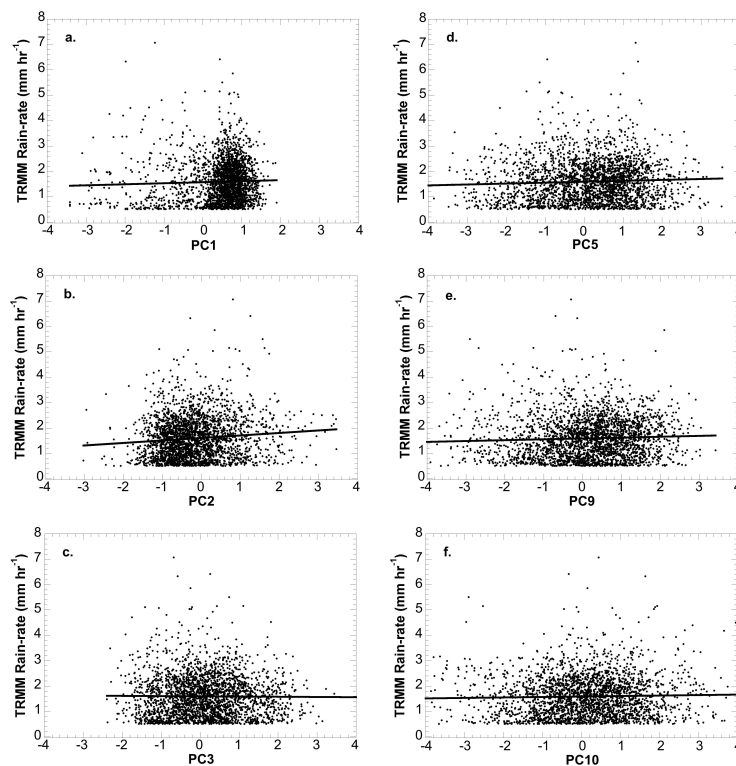
**Statistical properties
of aerosol-cloud-
precipitation**T. A. Jones and
S. A. Christopher

Fig. 8. Scatter plots of rainrate vs. selected PC variables, which are statistically significant and separating rain from no-rain samples. Unfortunately, significant relationships with rainrate itself could not be found.

[Title Page](#)[Abstract](#)[Introduction](#)[Conclusions](#)[References](#)[Tables](#)[Figures](#)[◀](#)[▶](#)[◀](#)[▶](#)[Back](#)[Close](#)[Full Screen / Esc](#)[Printer-friendly Version](#)[Interactive Discussion](#)

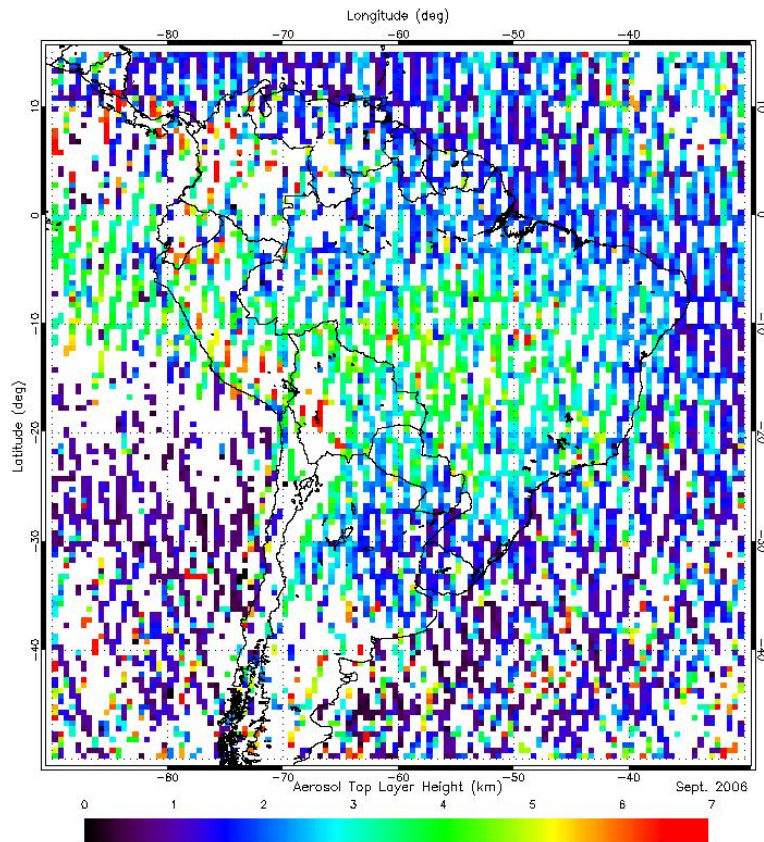


Fig. 9. CALIPSO level 2 aerosol heights (km) over South America during September 2006. In the central portion of the continent where biomass burning and AOT is highest, aerosols are present up to 4 km above the surface.

Statistical properties of aerosol-cloud- precipitation

T. A. Jones and
S. A. Christopher

Title Page

Abstract

Introduction

Conclusions

References

Tables

Figures

◀

▶

◀

▶

Back

Close

Full Screen / Esc

Printer-friendly Version

Interactive Discussion

**Statistical properties
of aerosol-cloud-
precipitation**

T. A. Jones and
S. A. Christopher

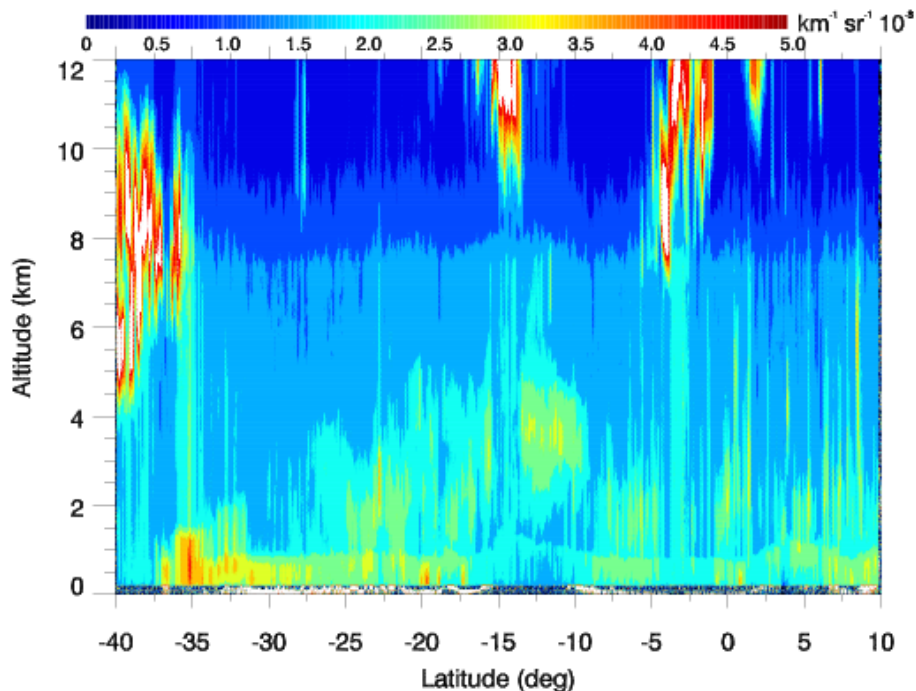


Fig. 10. CALIPSO 532 nm backscattered radiation from an overpass on 22 September 2006 at 18:00 UTC. A thick aerosol layer exists between -20° S and 0° N that corresponds to the region of maximum AOT shown in Fig. 1a. Note that in this example, significant aerosol concentrations are present from near the surface up to 4 km.

[Title Page](#)[Abstract](#)[Introduction](#)[Conclusions](#)[References](#)[Tables](#)[Figures](#)[◀](#)[▶](#)[◀](#)[▶](#)[Back](#)[Close](#)[Full Screen / Esc](#)[Printer-friendly Version](#)[Interactive Discussion](#)