

This discussion paper is/has been under review for the journal *Atmospheric Chemistry and Physics (ACP)*. Please refer to the corresponding final paper in *ACP* if available.

**On the quality of the
Nimbus 7 LIMS
Version 6 water vapor
profiles**

E. E. Remsberg et al.

On the quality of the Nimbus 7 LIMS Version 6 water vapor profiles and distributions

**E. E. Remsberg¹, M. Natarajan¹, G. S. Lingenfelter², R. E. Thompson³,
B. T. Marshall³, and L. L. Gordley³**

¹NASA Langley Res. Center, 21 Langley Blvd., Mail Stop 401B, Hampton, VA 23681, USA

²SSAI, 1 Enterprise Parkway, Hampton, VA 23661, USA

³GATS, Inc., 11864 Canon Blvd., Suite 101, Newport News, VA 23606, USA

Received: 22 June 2009 – Accepted: 7 August 2009 – Published: 1 September 2009

Correspondence to: E. E. Remsberg (ellis.e.remsberg@nasa.gov)

Published by Copernicus Publications on behalf of the European Geosciences Union.

Title Page

Abstract

Introduction

Conclusions

References

Tables

Figures

⏪

⏩

◀

▶

Back

Close

Full Screen / Esc

Printer-friendly Version

Interactive Discussion

Abstract

This report describes the quality of the Nimbus 7 Limb Infrared Monitor of the Stratosphere (LIMS) water vapor (H_2O) profiles of 1978/1979 that were processed with a Version 6 (V6) algorithm and archived in 2002. The V6 profiles incorporate a better knowledge of the instrument attitude for the LIMS measurements along its orbits, leading to improvements for its temperature profiles and for the registration of its water vapor radiances with pressure. As a result, the LIMS V6 zonal-mean distributions of H_2O exhibit better hemispheric symmetry than was the case from the original Version 5 (V5) dataset that was archived in 1982. Estimates of the precision and accuracy of the V6 H_2O profiles are developed and provided. Individual profiles have a precision of order 5% and an estimated accuracy of about 19% at 3 hPa, 14% at 10 hPa, and 26% at 50 hPa. Profile segments within about 2 km of the tropopause are often affected by emissions from clouds that appear in the finite field-of-view of the detector for the LIMS H_2O channel. Zonally-averaged distributions of the LIMS V6 H_2O are compared with those from the more recent Microwave Limb Sounder (MLS) satellite experiment for November, February, and May of 2004/2005. The patterns and values of their respective distributions are similar in many respects. Effects of a strengthened Brewer-Dobson circulation are indicated in the MLS distributions of the recent decade versus those of LIMS from 1978/1979. A tropical tape recorder signal is present in the 7-month time series of LIMS V6 H_2O with lowest values in February 1979, and the estimated, annually-averaged “entry-level” H_2O is 3.5 to 3.8 ppmv. It is judged that this historic LIMS water vapor dataset is of good quality for studies of the near global-scale chemistry and transport for pressure levels from 3 hPa to about 70 to 100 hPa.

ACPD

9, 17903–17935, 2009

On the quality of the Nimbus 7 LIMS Version 6 water vapor profiles

E. E. Remsberg et al.

Title Page

Abstract

Introduction

Conclusions

References

Tables

Figures

⏪

⏩

◀

▶

Back

Close

Full Screen / Esc

Printer-friendly Version

Interactive Discussion

1 Background

The Nimbus 7 Limb Infrared Monitor of the Stratosphere (LIMS) experiment operated successfully from 25 October 1978 through 28 May 1979, the planned lifetime of the onboard cryogen gases used to cool its detectors (Gille and Russell, 1984). LIMS provided daily, near-global distributions of stratospheric H₂O. The LIMS Version 5 (V5) Level 2 profiles and Level 3 zonal Fourier coefficients were archived in 1982 and 1983, respectively, and they have been used for numerous scientific studies. The present report describes the quality of the updated, Version 6 (V6) H₂O dataset, archived in 2002.

As a review, it is noted that the original, LIMS V5 H₂O distributions were used to examine issues related to stratospheric chemistry (e.g. LeTexier et al., 1988; Garcia and Solomon, 1994) and transport (e.g. Gray and Pyle, 1986; Butchart and Remsberg, 1986; and Gille et al., 1987). Its H₂O distributions were also used in studies of the stratospheric budget of water vapor, and, in particular, to estimate the H₂O mixing ratio as it enters the tropical stratosphere from below (Jones et al., 1986; Hansen and Robinson, 1989). Their estimated, annually-averaged, “entry-level” values ranged from 2.7 ppmv to 3.3 ppmv. Russell (1987) and Remsberg et al. (1990) provided the monthly distributions of stratospheric H₂O from the LIMS V5 Level 3 (mapped) dataset. Later, Chiou et al. (1993, 1996) compared the LIMS V5 distributions with those from the Stratospheric Aerosol and Gas Experiment (SAGE II) of the Earth Radiation Budget Satellite (ERBS) and from the Stratospheric and Mesospheric Sounder (SAMS) instrument of Nimbus 7. They found general agreement among those three data sets, at least within their combined error bars. However, the H₂O values from all three experiments were subject to rather large errors, particularly in the lower stratosphere. Their respective meridional gradients of H₂O also differed somewhat with each other and with those obtained from subsequent ER-2 aircraft measurement campaigns.

The precisions and accuracies for the LIMS V5 H₂O profiles were reported in Russell et al. (1984), Remsberg et al. (1984a), and Remsberg and Russell (1987). Their

ACPD

9, 17903–17935, 2009

On the quality of the Nimbus 7 LIMS Version 6 water vapor profiles

E. E. Remsberg et al.

Title Page

Abstract

Introduction

Conclusions

References

Tables

Figures

⏪

⏩

◀

▶

Back

Close

Full Screen / Esc

Printer-friendly Version

Interactive Discussion

**On the quality of the
Nimbus 7 LIMS
Version 6 water vapor
profiles**

E. E. Remsberg et al.

[Title Page](#)[Abstract](#)[Introduction](#)[Conclusions](#)[References](#)[Tables](#)[Figures](#)[⏪](#)[⏩](#)[◀](#)[▶](#)[Back](#)[Close](#)[Full Screen / Esc](#)[Printer-friendly Version](#)[Interactive Discussion](#)

combined errors are no greater than 17% in the middle stratosphere (3 to 30 hPa), due primarily to the effects of profile registration and temperature biases for their retrievals. Their quality is not as good near the stratopause because that is where the radiances approach the detector noise for the H₂O channel. In the upper stratosphere the radiances originate from strong water vapor lines in the LIMS broadband H₂O channel from 6.4 to 7.3 μm. Those lines are nearly saturated and lead to a highly non-linear relation between radiance and retrieved H₂O concentration. Kerridge and Remsberg (1989) reported on the effects of an additional complication for the retrieval of upper stratospheric LIMS H₂O, particularly during daylight. They showed that the retrieved H₂O values at those altitudes were larger for day than for night – a consequence of not accounting for non-local thermodynamic equilibrium (non-LTE) emissions in the daytime H₂O radiances. That additional, non-LTE emission is most significant in the mesosphere, but its residual effects also extend to the retrieved stratospheric profiles of LIMS (Mertens et al., 2002).

The LIMS V5 H₂O is also not very accurate in the upper troposphere/lower stratosphere (UT/LS) (Kley et al., 2000). In particular, there are systematic H₂O errors just above the tropical tropopause due to the LIMS V5 temperatures being a bit too warm, to the uncertainties for the interfering effects of the pressure-induced O₂ continuum emission, and to the contaminating emissions from aerosols and clouds that were not accounted for. Furthermore, in the tropics there is a sharp increase of H₂O and temperature just below the tropopause. The instantaneous, finite vertical field-of-view (FOV) width of the LIMS H₂O channel is 3.6 km at its 50% response points, so it averages across the region of the tropopause. Although the deconvolution procedure accounts for the effects of any FOV side lobes in the radiances prior to their retrieval, the spatial smoothing effect of the main FOV lobe is still present.

Section 2 of this report describes the important changes in the LIMS V6 water vapor algorithm and the improvements for its profiles and distributions. Its zonally-averaged, nighttime distribution for mid November is compared qualitatively with the Earth Observing System (EOS Aura) Microwave Limb Sounder (MLS) Version 2.2 (v2.2) H₂O

of 2004. Both cross sections exhibit many of the same features. Section 3 gives estimates of the precision and systematic errors for single LIMS V6 H₂O profiles. Section 4 contains qualitative comparisons between LIMS and MLS for February and May. Although their overall distributions are similar, they show significant differences near the tropical hygropause and in the upper stratosphere at high latitudes. Section 5 contains a brief discussion of some initial scientific findings from the LIMS distributions, and Sect. 6 summarizes the quality of the V6 H₂O dataset.

2 LIMS V6 water vapor

2.1 LIMS V6 algorithm for H₂O

A major reason for the update of the overall LIMS algorithm to V6 is the incorporation of more recent spectroscopic line parameters for the retrievals of the LIMS profiles of temperature and each of its species (ozone, water vapor, nitric acid, and nitrogen dioxide), so that they are more compatible with the corresponding profile quantities obtained with the follow-on sensor systems of the Upper Atmosphere Research Satellite (UARS), of EOS Aura, and of the Environmental Satellite (ENVISAT) of the European Space Agency. The V6 forward model for the H₂O and CH₄ radiances in the LIMS channel makes use of HITRAN 1996 line parameters (Rothman et al., 1998), although the parameters for the ν_2 lines of H₂O from 6.4 to 7.3 μm are nearly unchanged from the ones used for the retrieval of the earlier V5 profiles. Effects of overlap for the lines of H₂O and CH₄ are accounted for with an additional, band model emissivity table. The effects of the underlying, interfering radiance from the O₂ continuum are updated based on the empirical model of Thibault et al. (1997). The temperature dependence of that model is significantly different from what was used for O₂ in V5, particularly for the colder temperatures of the lower stratosphere. This change is one reason that the retrieved V6 H₂O profiles of the tropical lower stratosphere are not quite as dry as those of V5.

**On the quality of the
Nimbus 7 LIMS
Version 6 water vapor
profiles**

E. E. Remsberg et al.

Title Page

Abstract

Introduction

Conclusions

References

Tables

Figures

⏪

⏩

◀

▶

Back

Close

Full Screen / Esc

Printer-friendly Version

Interactive Discussion



**On the quality of the
Nimbus 7 LIMS
Version 6 water vapor
profiles**E. E. Remsberg et al.

[Title Page](#)[Abstract](#)[Introduction](#)[Conclusions](#)[References](#)[Tables](#)[Figures](#)[⏪](#)[⏩](#)[◀](#)[▶](#)[Back](#)[Close](#)[Full Screen / Esc](#)[Printer-friendly Version](#)[Interactive Discussion](#)

The Nimbus 7 spacecraft was in a Sun-synchronous orbit, and the LIMS radiometer viewed the atmospheric limb and in a direction 146.5 degrees clockwise from the spacecraft velocity vector (Gille and Russell, 1984). Figure 1 is a schematic of the effective view of the LIMS measurement array (or the instantaneous FOVs for the LIMS channels) at the horizon for a down/up scan pair, traveling from right to left along the orbit. A scan begins with the center of the array at 153 km, moving downward to 38 km below the solid Earth limb, and then returning upward again. The complete down/up sequence occurs in 24 s, while its limb position travels 144 km along the orbit. The angular resolution for the H₂O detector is 1 milliradian, and it subtends a vertical width of 3.6 km for the tangent layer at the horizon. Effectively, it is the geometry of the limb measurement that determines the vertical resolution of its retrieved profiles.

Accuracies for the LIMS H₂O profiles are dominated by the effects of instrument jitter on the radiances and the uncertainties in the atmospheric temperature-pressure profiles (or $T(p)$) and the associated registration of the H₂O radiances with pressure-altitude (Russell et al., 1984). The point spacing for the measured Level 2 profile data is 0.375 km and all those radiance samples were used. In addition, the adjacent down/up scan pairs were retrieved using an interleave procedure and the results averaged. These steps reduced much of the effects of jitter in the radiances and yielded an effective vertical resolution of 3.7 km for H₂O. The better determination of spacecraft/instrument orbital attitude for LIMS V6 has also led to more accurate temperature profiles (Remsberg et al., 2004). Although $T(p)$ was retrieved at about ~2 km vertical resolution, the effects of any vertical temperature structure were minimized in the retrieved H₂O profiles, at least to first order. A Gaussian smoother with a nearly 1.5 km vertical halfwidth at half maximum was employed for the final retrieval of the H₂O profiles. The altitude range of good profile data was set by a noise variance criterion. The V6 profiles were also output at the more frequent spacing of about 1.6 degrees of latitude along an orbit, rather than the nearly 4 degree separation for the V5 dataset. As a result, the V6 H₂O profiles and distributions have a quality and stability that is improved over that from the original V5 algorithm.

**On the quality of the
Nimbus 7 LIMS
Version 6 water vapor
profiles**

E. E. Remsberg et al.

[Title Page](#)[Abstract](#)[Introduction](#)[Conclusions](#)[References](#)[Tables](#)[Figures](#)[⏪](#)[⏩](#)[◀](#)[▶](#)[Back](#)[Close](#)[Full Screen / Esc](#)[Printer-friendly Version](#)[Interactive Discussion](#)

5 First-order corrections for the interfering effects of CH₄ were achieved using the seasonal, zonal mean cross sections of 1994 from the UARS Halogen Occultation Experiment (HALOE) dataset, but extrapolated back to 1979 based on the annually-increasing CH₄ at ground level. Note that we did not elect to use the concurrent CH₄ distributions from the Nimbus 7 Stratosphere and Mesosphere Sounder (SAMS) experiment because they only extended down to about the 20-hPa level (Jones and Pyle, 1984). A similar first-order correction for the interfering emissions from stratospheric aerosols was developed based on the 5.26 μm aerosol extinctions of March/May 1996 from HALOE, but then extrapolated back to 1979 based on the ratio of the SAGE I extinctions at 1 μm for 1979 to the corresponding SAGE II extinctions of 1996. A minor extrapolation was also performed to convert the HALOE extinctions from 5.26 to 6.9 μm. However, the near-background aerosols of the LIMS time period have only a minor effect for the forward radiance model of its H₂O channel. On the other hand, the accounting for CH₄ leads to a reduction of tropical H₂O mixing ratios by 15% between about 40 to 7 hPa. Effects of horizontal temperature gradients along the view path for the tangent-layer have also been accounted for to first order within the V6 algorithm (Remsberg et al., 2004).

20 The V6 H₂O retrievals are based on a downward, onion-peeling approach, rather than an optimal estimation procedure. Retrievals began where signal-to-noise (S/N) values for the radiances exceed a value of 1.5 – in the lower mesosphere. V6 temperatures are warmer than those of V5 by 1 to 2 K at and above the stratopause, so the useful V6 values of H₂O begin several layers lower than for V5. A constant H₂O value of 6.5 ppmv was used in the LIMS forward radiance model to estimate the effects of water vapor radiance above the altitude of the first retrieved layer. That assumed value is based on observations of H₂O for the lower mesosphere from HALOE and MLS and from ground-based microwave measurements of the 1990s, with a slight downward adjustment for the lower values of CH₄ and their oxidation to H₂O for the 1978/1979 period (Remsberg et al., 1984).

2.2 LIMS V6 zonal mean distributions of H₂O

Figure 2a is the zonally-averaged distribution of V6 H₂O for 15 November 1978 from its descending (north-to-south or local nighttime) orbital segments. General features that are apparent are: (1) the increase of water vapor from the lower to the upper stratosphere due to the chemical conversion of CH₄ to water vapor with altitude, (2) the increase of water vapor in the lower stratosphere from near the Equator to higher latitudes or from the entry region of dry air to the stratosphere to a region of more well-mixed air, and (3) a region of rapid increase from the “tropical hygropause” to just below the tropopause near 100 hPa, where the water vapor begins to increase rapidly. In addition, many of the low altitude portions of the profiles were cutoff due to their low signal levels in the tangent layer. A first-order screening was also conducted for the presence of the interfering emissions from clouds, as evaluated based on the character of the corresponding LIMS ozone profiles that are affected very little by the increasing water vapor of the upper troposphere (Remsberg et al., 2007). Radiance contamination due to clouds is very prevalent near the tropical tropopause. Those scan segments were screened out during the generation of the Level 2 dataset, leading to values in the tropics that may not be representative of the zonal mean even several kilometers higher. More tropical scans extended to lower altitudes on 15 November than was the case for most days.

Only a very few (less than 10) middle latitude, correlative water vapor profiles were obtained during 1978/1979 for the purpose of validating the LIMS H₂O profiles. Those few comparisons indicate that the LIMS V6 values are higher by 10 to 15% from about 10 to 70 hPa, but within the estimated accuracies of about $\pm 20\%$ for both the comparison measurements (Russell et al., 1984) and the LIMS V6 data themselves (see also Sect. 3). Consequently, in this report we are opting to show qualitative comparisons of the zonal mean distributions of LIMS V6 versus those from Aura MLS that have been validated more extensively. The MLS Version 2.2 H₂O distributions are based on profiles having a vertical resolution in the stratosphere ($\sim 3\text{--}4$ km) that is comparable to

On the quality of the Nimbus 7 LIMS Version 6 water vapor profiles

E. E. Remsberg et al.

Title Page

Abstract

Introduction

Conclusions

References

Tables

Figures



Back

Close

Full Screen / Esc

Printer-friendly Version

Interactive Discussion

that of LIMS V6. Precision of individual MLS stratospheric H₂O profiles is about 5%, and accuracy is of the order of 10% (Lambert et al., 2007).

Figure 2b is a plot of MLS V2.2 stratospheric H₂O for 15 November 2004 based on data that were accessed from (<http://mls.jpl.nasa.gov/>). The period of 2004/2005 of the MLS data was selected for comparison because the distribution of H₂O is affected somewhat by the QBO-induced circulations of the lower stratosphere and the tropical winds were changing from a westerly to an easterly QBO phase, as was the case for the LIMS period (Fueglistaler and Haynes, 2005). Although MLS H₂O extends to near the mesopause, Fig. 2b is restricted to the same pressure-altitude domain as that of LIMS in Fig. 2a. MLS data extend from 83 S to 83 N latitude, whereas the LIMS plot covers only from 64 S to 84 N. It is noted that there is a vertical oscillation in the MLS V2.2 H₂O distribution near 30 hPa that stretches across most latitudes; that feature is an artifact due to departures from a linear signal response at that level. The MLS data were smoothed to first order according to the prescription in Lambert et al. (2007), prior to the generation of Fig. 2b.

The patterns of zonally-averaged water vapor agree well in most respects between LIMS and MLS, and their absolute values agree within about 10% in the middle stratosphere. MLS has values at 3 hPa that are slightly larger than those of LIMS, a finding that is consistent with the fact that CH₄ has been increasing in the stratosphere since the LIMS time period. The respective meridional gradients of H₂O are largest in the subtropics of the middle stratosphere, which is characteristic of the net transport of the Brewer/Dobson circulation plus the slow chemical conversion of CH₄ to H₂O with altitude. The altitudes of the tropical hygropause and the magnitudes of the minimum water vapor are also similar for the LIMS and MLS distributions of Fig. 2, indicating that the effects of the finite FOV and, in particular, the vertical weightings for the temperature and species are being handled properly in the forward radiance model of LIMS V6. That agreement is also an important indicator of the good accuracy of the LIMS V6 $T(p)$ and of the associated pressure registration of its water vapor radiances. On the other hand, one can clearly see the effects of dehydration in the MLS data at 60 S, but not in

On the quality of the Nimbus 7 LIMS Version 6 water vapor profiles

E. E. Remsberg et al.

[Title Page](#)[Abstract](#)[Introduction](#)[Conclusions](#)[References](#)[Tables](#)[Figures](#)[⏪](#)[⏩](#)[◀](#)[▶](#)[Back](#)[Close](#)[Full Screen / Esc](#)[Printer-friendly Version](#)[Interactive Discussion](#)

the LIMS cross section at the same latitude. This difference is most likely an indication of the expanded area and persistence of the cold, wintertime southern polar vortex and its associated polar stratospheric clouds (PSC) during the intervening 26 years (WMO, 2007). We will show LIMS and MLS comparisons for February and May in Sect. 4, so that one can also judge the level of agreement for the seasonal variations of their water vapor distributions.

As with LIMS V5, no corrections are made for the vibrationally-excited (non-LTE) H₂O emissions, the effects of which are most significant in the mesosphere during daytime but which extend down to the uppermost stratosphere, too (Mertens et al., 2002). Figure 3 shows that the retrieved, zonally-averaged daytime V6 H₂O is larger than that for nighttime by about 0.4 to 0.8 ppmv in the upper stratosphere for 15 November. Although there are rather large variations in those differences with latitude, note that there is almost no difference poleward of about 60 N (twilight or darkness for both the LIMS ascending and descending orbital segments). The nighttime LIMS H₂O distributions ought to be more accurate because the effect of any non-LTE bias is much smaller in the absence of sunlight. But, the effects of non-LTE emissions on the LIMS V6 H₂O of the upper stratosphere are also complicated by the fixed H₂O value of 6.5 ppmv that was used for both day and night in the LIMS forward model above the first retrieved layer. Thus, the day/night differences of the upper stratosphere are not due solely to the non-LTE effects. Day/night H₂O differences at 10 hPa and through the lower stratosphere are less than about 0.4 ppmv, but still of order 5 to 10%. On the other hand, if one wants to obtain better detail about the daily variations and the transport of H₂O with longitude for the lower stratosphere, it is reasonable to combine the ascending (daytime) and descending (nighttime) LIMS data.

3 Estimates of error for single profiles

Figure 4 is an estimate of the precision for a V6 H₂O profile, as obtained from sets of about 6 scans along each of the orbital segments between 25 S and 35 S latitude on

**On the quality of the
Nimbus 7 LIMS
Version 6 water vapor
profiles**

E. E. Remsberg et al.

Title Page

Abstract

Introduction

Conclusions

References

Tables

Figures



Back

Close

Full Screen / Esc

Printer-friendly Version

Interactive Discussion



1 February 1979, i.e. for a season when the large-scale, zonal wave activity was small for the stratosphere. The profile points in Fig. 4 are actually based on the minimum standard deviation (SD) values from among all the sets of the separate descending (open diamonds) and then the ascending (solid diamonds) orbital segments. Even though there must be effects of atmospheric variability contained in them, those SD values are no worse than about 4% through much of the stratosphere. The much larger SD values near 100 hPa may be due to not having screened effectively for the emissions from thin cirrus. Single profiles of H₂O also have higher SD values near 1.3 hPa because digitization and detector noise is significant for the measured radiances at and above that level.

Table 1 summarizes our calculations of precision (or random error) based on S/N, as well as the effects of systematic errors for a single H₂O profile. The precision is no worse than about 5% through most of the stratosphere, and it is a slight improvement from that for V5 – a consequence of the better vertical sampling for the radiances plus the use of a 5-interleave retrieval procedure for obtaining the final V6 profiles (Remsberg et al., 2004). Our calculated precisions are somewhat larger than the SD values of Fig. 4.

Estimates of the systematic errors in Table 1 due to radiometric bias, H₂O line parameter uncertainties (8%), the main IFOV lobe, and the approximations for the forward model were adopted from the simulation studies in Russell et al. (1984). The H₂O profiles have a bias of order 10 to 15% due to estimates of the V6 temperature biases from Remsberg et al. (2004, their Table 2, row g), which are less than ± 1.6 K as shown in parentheses in Table 1. Furthermore, there is no evidence that the estimated V6 $T(p)$ biases of Table 1 are all of the same sign. That finding is based on the V5 versus rocketsonde/radiosonde $T(p)$ comparisons in Remsberg et al. (1984b), followed by the zonal mean, V6 minus V5 differences for $T(p)$ in Remsberg et al. (2007, their Fig. 3). Uncertainties for the O₂ continuum model are of order 10%, although the effect of that model is only important for the retrieved H₂O from about 50 to 100 hPa. The root-sum-squares (RSS) of the bias errors that were evaluated are given in the

**On the quality of the
Nimbus 7 LIMS
Version 6 water vapor
profiles**

E. E. Remsberg et al.

Title Page

Abstract

Introduction

Conclusions

References

Tables

Figures

⏪

⏩

◀

▶

Back

Close

Full Screen / Esc

Printer-friendly Version

Interactive Discussion

bottom row of Table 1 and are of the order of 19% in the upper stratosphere, 15% in the middle stratosphere, and 26% in the lower stratosphere. Primary components of that total error are from the uncertainties of the main IFOV lobe and from the estimated temperature biases.

5 There are other sources of bias error that have not been fully characterized. For example, errors in the spatial side lobes of the IFOV function have not been verified, but their effects appear to be small based on the quality of the V6 H₂O distributions. Small uncertainties are present from the interfering aerosol emission of the lower stratosphere. The distribution of that emission varies with altitude and latitude, and it is representative of the near background aerosol layer of 1978/1979. It is also noted that the same monthly and zonally-averaged distribution of aerosol emission was used for making a correction in the forward model for all months of the LIMS dataset. Biases for the interfering CH₄ have their largest effect in the middle to lower stratosphere at tropical latitudes, but they lead to errors in H₂O that are no greater than a few percent. There are also small biases in the retrieved H₂O values at 1.3 to about 2.0 hPa as a result of assuming the constant mixing ratio of 6.5 ppmv for the forward model above the top retrieved layer. Some sources of bias error (such as that from temperature) also vary slightly according to the atmospheric state. In general, the RSS values of Table 1 are considered as worst case scenario estimates of the true total bias error for a single profile. Finally, the major stratospheric components of the aggregate (~10%) bias error profile for the comparison MLS H₂O data are from pointing uncertainties, forward model assumptions, and the optimal estimation formulation for its retrieval (Lambert et al., 2007).

4 LIMS/MLS water vapor comparisons for February and May

25 Figure 5a and b is a comparison of the zonally-averaged H₂O distributions for 15 February from LIMS in 1979 versus that from MLS in 2005. The agreement between the two is similar to that of November (Fig. 2), except for the region of the hygropause which is

**On the quality of the
Nimbus 7 LIMS
Version 6 water vapor
profiles**

E. E. Remsberg et al.

Title Page

Abstract

Introduction

Conclusions

References

Tables

Figures



Back

Close

Full Screen / Esc

Printer-friendly Version

Interactive Discussion



nearer to the tropopause in February than in November. Specifically, the tropical minimum for 15 February is near 50 hPa to 70 hPa (~20 to 18 km) from LIMS but is near 80 hPa to 100 hPa (~17.5 to 16 km) from MLS. Very few of the tropical LIMS profiles actually extend to 100 hPa, and it is very likely that even those few contain effects of residual emissions from thin cirrus. Limb infrared measurements are very sensitive to emissions from clouds, while the microwave measurements are much less so. Further, when the finite FOV measurements of LIMS are nearing the tropopause, the associated retrieved H₂O will have a high bias even for clear skies because of the sharp increase in the water vapor of the upper troposphere. Therefore, one should be cautious about interpreting the LIMS H₂O within about 2 km of the tropopause, or when lower than about 18 km in the tropics to about 13 km at high latitudes.

In the uppermost stratosphere and at high latitudes of the winter hemisphere the MLS H₂O is greater than that of LIMS V6 by 0.5 to 1.0 ppmv, partly a result of the slow increase of atmospheric CH₄ from 1978/1979 to 2004/2005 and its conversion to H₂O in the upper stratosphere. The maximum values from the MLS data also support our choice of a constant value of 6.5 ppmv for the LIMS H₂O above the first retrieved layer in the lower mesosphere for the LIMS forward model.

There are indications in the February MLS data of effects of descending air from near the stratopause to the middle stratosphere by its elevated values of H₂O in the NH polar vortex. Conversely, the largest polar H₂O from LIMS is centered near 30 hPa, and the temperatures are too warm in mid February for the occurrence of emissions from PSC. It is noted that the profile segments that were obviously contaminated by PSC earlier in the winter were screened out of the individual LIMS profiles, although residual effects may still be present for those periods. A listing of those occurrences is available in a separate file that is part of the archived LIMS dataset. An important difference for the LIMS versus the MLS retrieval of water vapor is the high sensitivity of the LIMS radiances to the temperature along its line-of-sight emissivity mass path. If there are slight errors in the horizontal (or vertical) temperature gradients, there will also be biases in the retrieved LIMS water vapor (see Table 1). Such biases are a

**On the quality of the
Nimbus 7 LIMS
Version 6 water vapor
profiles**

E. E. Remsberg et al.

Title Page

Abstract

Introduction

Conclusions

References

Tables

Figures

⏪

⏩

◀

▶

Back

Close

Full Screen / Esc

Printer-friendly Version

Interactive Discussion

distinct possibility at the edges of the polar vortex and during the sudden stratospheric warming (SSW) periods of January and February 1979. It is presumed that errors in those gradients are the main cause of the apparent excess of polar H₂O from LIMS, spanning from 8 to 80 hPa in mid February.

5 Figure 6a and b shows the LIMS/MLS comparisons for 16 May, and again the distributions are similar in most respects. However, Fig. 6a shows that there is an upward and poleward extension of relatively low values of LIMS water vapor (<5.0 ppmv) at about 50 S, 3 hPa for May, when there ought to be a slow descent of air from the lower mesosphere with higher H₂O values. The MLS plot of Fig. 6b does not show a similar
10 relative minimum. The region of 50 S, 3 hPa is very near to the edge of the polar vortex, according to the enhanced meridional gradients of scaled potential vorticity (sPV) and as indicated in the equivalent latitude versus potential temperature (or EqL/ θ) plots of the daily MLS water vapor for May (not shown, but viewable at the MLS Website).

Note that in the Northern Hemisphere there is only a hint of a relative minimum at
15 50 N, 3 hPa in the LIMS plot of Fig. 2a for November, when the polar vortex has a similar seasonal configuration. The corresponding MLS plot of Fig. 2b shows an H₂O distribution that is very much like that of LIMS. The good agreement between LIMS and MLS in November, but not in May, is explained as follows. The descending orbital segments of LIMS near 50 S for May were obtained when the Nimbus 7 satellite was viewing from
20 above the South Pole and the LIMS tangent view path was parallel to the meridional temperature gradient (Remsberg et al., 1986). But because the true temperature field poleward of 64 S was not known, the $T(p)$ values at 64 S were merely extrapolated poleward for the LIMS emissivity mass path algorithm. Those extrapolated temperatures are too warm and not representative of the southern polar vortex region in May.
25 Such a warm bias means that less of the total radiance in the water vapor channel is attributed to water vapor in the forward model, leading to the relative minimum in LIMS H₂O that was retrieved. The corresponding zonal mean of the ascending LIMS H₂O does not have a similar relative minimum at 50 S, 3 hPa, because the LIMS viewing direction for those orbital segments was more nearly along a line of latitude, and thus

**On the quality of the
Nimbus 7 LIMS
Version 6 water vapor
profiles**

E. E. Remsberg et al.

Title Page

Abstract

Introduction

Conclusions

References

Tables

Figures



Back

Close

Full Screen / Esc

Printer-friendly Version

Interactive Discussion

the temperature along its view path was known. For the Northern Hemisphere the LIMS temperatures were retrieved to 84 N, and its orbital viewing geometry was also more nearly perpendicular to the temperature gradient. As a result, the LIMS temperatures are likely more accurate in the polar vortex region for the corresponding northern season (c.f. Fig. 2a for November).

5 Initial scientific findings from LIMS V6 water vapor

The Stratospheric Processes and their Role in Climate (SPARC) Project Office has initiated a Re-assessment of the Water Vapor in the Upper Troposphere and Lower Stratosphere (UT/LS) study that is intended to be an update of Kley et al. (2000). The LIMS V6 dataset can be used to extend the historical record of the changes in UT/LS water vapor from the 1978/1979 period (see also Rosenlof et al., 2001). As an example, the LIMS/MLS comparison plots of Figs. 2, 5, and 6 show the effects of the classic Brewer/Dobson (BD) circulation in their respective zonal-mean water vapor cross sections, at least for the middle and upper stratosphere.

The isolines of low water vapor mixing ratio above the tropopause are sloping toward higher pressures from low to high latitudes, in accord with a net meridional transport of air along isentropic surfaces. It also appears that the relatively dry air of the tropical lower stratosphere is being transported poleward more effectively in the MLS versus the LIMS H₂O cross sections. Note that it is presumed that the patterns of the respective, zonal-mean LIMS and MLS H₂O distributions are correct. Such differences may be an important tracer diagnostic for a climatological change in the meridional transport of the lower stratosphere (Li et al., 2008; Thompson and Solomon, 2009; Tuck et al., 1997). For instance, an increase in the eddy heat flux due to wave activity will accelerate the BD circulation and lead to lower zonal mean cold-point temperatures at the tropical tropopause. More specifically, Dhomse et al. (2008) reported on a distinct anti-correlation between tropical water vapor values from 16 to 20 km and the September to February eddy heat flux at 50 hPa of both hemispheres. They showed that the

On the quality of the Nimbus 7 LIMS Version 6 water vapor profiles

E. E. Remsberg et al.

Title Page

Abstract

Introduction

Conclusions

References

Tables

Figures

⏪

⏩

◀

▶

Back

Close

Full Screen / Esc

Printer-friendly Version

Interactive Discussion



tropical temperature anomalies were cold and the eddy heat flux was enhanced during the period of the MLS measurements. On the other hand, their overall tropical temperature anomalies were warm during the time of the LIMS observations, indicating a corresponding reduction in the eddy heat flux and the associated BD circulation.

5 Differences near 60 S in the MLS and LIMS H₂O of Fig. 2 for the lower stratosphere indicate the effects of enhanced dehydration toward the outer regions of the southern polar vortex in the decades since the Nimbus 7 LIMS experiment. A more complete examination of the state of the Southern Hemisphere polar winter stratosphere of 1978 should be undertaken to estimate the effects of dehydration at that time and for comparison with the measured values from LIMS in November and late October 1978.

10 The sequence of MLS water vapor of February, May, and then November (Figs. 5b, 6b, and 2b) indicates an annual cycle in H₂O in the lower tropical stratosphere, the so-called “tape recorder” response first described by Mote et al. (1996). In other words, the location and movement of the MLS hygropause is in good accord with an annual cycle for H₂O, which has its minimum at the cold tropopause in February and is then carried upward through the rest of the year. Figure 7a shows the 7-month time series of the daily-average, LIMS V6 descending H₂O scans between 10 S to 10 N but plotted from 10 to only 50 hPa or to near the lower limit of its signal-to-noise for the tangent layers of the tropics. No more than one or perhaps a very few LIMS scans were obtained at 10 S to 10 N on those days where the low altitude profile segments are white. The average value for the previous day was plotted for the 14 days when LIMS made no scans. Note that we show time series of the mixing ratios rather than the mixing ratio anomalies because we do not have one complete year of data for defining their annual average.

25 A “tape recorder” signal is evident above the 30-hPa level by the rightward, positive slope of the color bands with time in Fig. 7a. Such is not the case in the tropical lower stratosphere. Minimum values of the LIMS H₂O occur in January/February, and the upward excursion of low water vapor mixing ratios to above 30 hPa at this time may be a consequence of an enhanced extratropical, wintertime wave forcing for the ascent of

**On the quality of the
Nimbus 7 LIMS
Version 6 water vapor
profiles**

E. E. Remsberg et al.

Title Page

Abstract

Introduction

Conclusions

References

Tables

Figures



Back

Close

Full Screen / Esc

Printer-friendly Version

Interactive Discussion

the BD circulation (Solomon et al., 1986). The associated LIMS time series of the zonal average $T(p)$ is in Fig. 7b, and it also indicates an upward extension of colder values at the same time. We have no clear evidence that the low values of H_2O are a result of a warm bias in the LIMS temperatures used for the H_2O retrievals; on the contrary, the January/February LIMS values are colder by several degrees at 30 and 50 hPa compared with observed Equatorial temperatures (Randel et al., 2002). However, it is difficult to rule out a low bias in H_2O due to the finite FOV effects of the LIMS H_2O channel. Finally, from March through May the weakening of the vertical H_2O gradient in Fig. 7a from 30 to 10 hPa is likely a consequence of the meridional mixing of air during the transition from QBO westerlies to easterlies. Schoeberl et al. (2008, their Fig. 6a) found a similar blurring of the MLS H_2O tape recorder signal for 2007.

Visual inspections of the LIMS water vapor values in the middle stratosphere for November, February, and May (Figs. 2, 5, and 6) indicate slightly larger values at middle latitudes in the Northern than in the Southern Hemisphere, in accord with findings from aircraft data for non-vortex air (Kelly et al., 1990). In other words, there is a slight hemispheric asymmetry in the H_2O values, most likely due to larger descent rates for polar air from the upper to the middle stratosphere in the Northern Hemisphere followed by meridional mixing from polar to middle latitudes. There may also be a northern subtropical contribution from the relatively large “entry-level H_2O ” (or H_2O_e) associated with the summer monsoon circulation (Jackson et al., 1998). It is less likely that there is a mid-stratosphere influence in the Southern Hemisphere due to the wintertime polar dehydration over Antarctica (Mote, 1995).

Earlier estimates of H_2O_e from LIMS by Jones et al. (1986) and Hansen and Robinson (1989) must be revised upward now because of the greater values of the V6 H_2O . For example, using the descending LIMS V6 H_2O and the SAMS CH_4 for the months of January through May 1979, we obtain a value of 6.8 ± 0.3 ppmv for the quantity $2CH_4 + H_2O$ at 40 N and between 3 and 10 hPa. Because CH_4 at the tropical tropopause at that time was about 1.5 ppmv, we infer H_2O_e of 3.8 ± 0.3 ppmv. Mid to upper stratosphere values of $2CH_4 + H_2O$ at 40 S are only about 6.5 ppmv, so H_2O_e

**On the quality of the
Nimbus 7 LIMS
Version 6 water vapor
profiles**E. E. Remsberg et al.

[Title Page](#)[Abstract](#)[Introduction](#)[Conclusions](#)[References](#)[Tables](#)[Figures](#)[⏪](#)[⏩](#)[◀](#)[▶](#)[Back](#)[Close](#)[Full Screen / Esc](#)[Printer-friendly Version](#)[Interactive Discussion](#)

is about 0.3 ppmv less or 3.5 ppmv. This range of H_2O_e values agrees well with that inferred from the in situ and satellite measurements of the late 1980s and the 1990s (see Table 2.4 of Kley et al., 2000). It is also qualitatively consistent with the warm anomalies of the cold-point tropopause temperatures of the late 1970s.

Both the vertical and along-orbit sampling of the LIMS H_2O dataset represent significant improvements from the V6 profiles. For this reason daily water vapor fields on pressure surfaces exhibit good continuity, making it possible to resolve some of the details of the variations and the large-scale transport of water vapor with altitude, latitude, and longitude. As an example, Fig. 8a shows the distribution of LIMS H_2O of 7 February 1979 on the 31.6-hPa surface for the Northern Hemisphere, as generated from zonal Fourier analyses of the V6 profiles plus minor interpolations for their coefficients in time and onto grid spaces. One can see a region of low H_2O (4.5 ppmv) at about the Greenwich meridian and 55 N latitude; it is co-located with temperatures near 195 K or just above the threshold for deposition to water ice. The associated plot of the LIMS geopotential height is in Fig. 8b. It shows the effects of underlying domes of high pressure over Siberia and the Aleutians, flanking an intense polar vortex region that is being drawn out toward lower latitudes. Qualitatively, there is a large-scale, counterclockwise circulation about the outer edge of the vortex that may have transported lower values of water vapor toward the vortex from middle latitudes, while peeling higher values of H_2O from the vortex edge toward the middle latitudes. A more complete analysis of the transport of H_2O is possible during this period using sequences of daily plots of the water vapor along with calculated wind fields from the concurrent surface maps of the LIMS geopotential heights.

The LIMS instrument and measurement concept is also the prototype for the Sounding of the Atmosphere using Broadband Emission Radiometry (SABER) satellite experiment (Russell et al., 1999), which began measurements in January 2002 and is still operating in 2009. SABER measures water vapor radiance profiles from the tropopause (or cloud tops) to the upper mesosphere and with nearly a 2 km vertical resolution. Its algorithm for obtaining useful water vapor profiles is fashioned after that

**On the quality of the
Nimbus 7 LIMS
Version 6 water vapor
profiles**

E. E. Remsberg et al.

Title Page

Abstract

Introduction

Conclusions

References

Tables

Figures

⏪

⏩

◀

▶

Back

Close

Full Screen / Esc

Printer-friendly Version

Interactive Discussion

of LIMS V6, but with the important addition of a forward model for the non-LTE radiances of the mesosphere and the improvements for the retrieval of H₂O profiles down into the stratosphere.

The SABER v1.07 algorithm gives water vapor values in the mesosphere that are too large because of small but significant cold biases in the SABER $T(\rho)$ (Remsberg et al., 2008). The estimates of LIMS V6 accuracy in Table 1 clearly show that small biases in the temperature profile affect the LTE retrieval of water vapor from limb radiances in the 6.4 to 7.3 μm spectral region. However, based on the good agreement between the LIMS V6 and the MLS water vapor distributions, there is every reason to expect that the SABER H₂O profiles will also be of very good quality once the bias in the SABER $T(\rho)$ is accounted for (e.g. Feofilov et al., 2009). Multi-year, near global-scale studies of the transport of water vapor are anticipated from the LIMS, MLS, and SABER datasets.

6 Conclusions

The radiances of the Nimbus 7 LIMS experiment were reconditioned and new retrievals of them were conducted with a V6 algorithm to make its products more compatible with those of follow-on satellite experiments. Single profiles of the LIMS V6 H₂O have improved precision (5%) and accuracies (19% at 3 hPa, 14% at 10 hPa, and 26% at 50 hPa), as compared with the original V5 product. Qualitative comparisons with the Aura MLS V2.2 H₂O reveal similar patterns and absolute values between about 70 hPa and 3 hPa. However, one should be cautious about interpreting features in the LIMS V6 profiles of the lowermost stratosphere, in particular within about 2 km of the tropopause where the effects of residual emissions from cloud tops may still be present. The profile segments from about 3.0 hPa to 1.3 hPa contain day/night differences of order 0.6 ppmv (or $\sim 10\%$), due to not having corrected for the effects of non-LTE emissions near to and above the stratopause.

The V6 Level 2 (profile) data can be obtained by ftp download from the Goddard Earth Sciences and Data Information Services Center (<http://daac.gsfc.nasa.gov/>)

On the quality of the Nimbus 7 LIMS Version 6 water vapor profiles

E. E. Remsberg et al.

Title Page

Abstract

Introduction

Conclusions

References

Tables

Figures



Back

Close

Full Screen / Esc

Printer-friendly Version

Interactive Discussion



under the menu entitled “Remote Sensing Data”. Individual LIMS V6 profiles have a point spacing of 0.375 km. Their effective vertical resolution is 3.7 km, primarily because of the finite FOV of the LIMS H₂O channel. Retrievals were conducted for adjacent pairs of profiles along orbits, yielding an effective spacing of one profile per 1.6 degrees of latitude.

The good precision of the V6 profiles provides for daily surface maps of stratospheric water vapor for studies of its large-scale transport. Although accuracies for single profiles of the LIMS V6 H₂O may be no better than about 15%, the relative accuracies for its zonal mean distributions are much better than that. Analyses of H₂O time series reveal a tropical tape recorder signal plus the effects of a dynamically-induced Brewer-Dobson circulation. Average “entry-level” values for the LIMS V6 H₂O vary from 3.5 ppmv as inferred from the data for the Southern Hemisphere versus 3.8 ppmv for the Northern Hemisphere.

Acknowledgements. We recognize J. Gille and J. Russell III (Co-PIs of the LIMS experiment) and the members of the original LIMS Project and Science Teams. The research leading to the improvement and generation of the LIMS V6 Level 2 water vapor dataset was conducted with funds from several NASA NRA proposals and with the consistent support of J. Kaye of NASA Headquarters. The analyses in this manuscript were conducted with funds from the NASA NRA NNH08ZDA001N for the MAP Program administered by D. Considine.

References

- Andrews, D. G., Holton, J. R., and Leovy, C. B.: Middle Atmosphere Dynamics, Academic Press, New York, 489 pp., 1987.
- Butchart, N. and Remsberg, E. E.: The area of the stratospheric polar vortex as a diagnostic for tracer transport on an isentropic surface, *J. Atmos. Sci.*, 43, 1319–1339, 1986.
- Chiou, E., Remsberg, E. E., Rodgers, C. D., Munro, R., Bevilacqua, R. M., McCormick, M. P., and Russell III, J. M.: Proposed reference model for middle atmosphere water vapor, *Adv. Space Res.*, 18, no. 9/10, 59–89, 1996.

**On the quality of the
Nimbus 7 LIMS
Version 6 water vapor
profiles**

E. E. Remsberg et al.

Title Page

Abstract

Introduction

Conclusions

References

Tables

Figures

⏪

⏩

◀

▶

Back

Close

Full Screen / Esc

Printer-friendly Version

Interactive Discussion

**On the quality of the
Nimbus 7 LIMS
Version 6 water vapor
profiles**E. E. Remsberg et al.

[Title Page](#)[Abstract](#)[Introduction](#)[Conclusions](#)[References](#)[Tables](#)[Figures](#)[⏪](#)[⏩](#)[◀](#)[▶](#)[Back](#)[Close](#)[Full Screen / Esc](#)[Printer-friendly Version](#)[Interactive Discussion](#)

- Chiou, E. W., McCormick, M. P., McMaster, L. R., Chu, W. P., Larsen, J. C., Rind, D., and Oltmans, S.: Intercomparison of stratospheric water vapor observed by satellite experiments: stratospheric aerosol and gas experiment II versus limb infrared monitor of the stratosphere and atmospheric trace molecule spectroscopy, *J. Geophys. Res.*, 98, 4875–4887, 1993.
- 5 Dhomse, S., Weber, M., and Burrows, J.: The relationship between tropospheric wave forcing and tropical lower stratospheric water vapor, *Atmos. Chem. Phys.*, 8, 471–480, 2008, <http://www.atmos-chem-phys.net/8/471/2008/>.
- Feofilov, A. G., Kutepov, A. A., Pesnell, W. D., Goldberg, R. A., Marshall, B. T., Gordley, L. L., García-Comas, M., López-Puertas, M., Manuilova, R. O., Yankovsky, V. A., Petelina, S. V., and Russell III, J. M.: Daytime SABER/TIMED observations of water vapor in the mesosphere: retrieval approach and first results, *Atmos. Chem. Phys. Discuss.*, 9, 13943–13997, 2009, <http://www.atmos-chem-phys-discuss.net/9/13943/2009/>.
- 10 Fueglistaler, S. and Haynes, P. H.: Control of interannual and longer-term variability of stratospheric water vapor, *J. Geophys. Res.*, 110, D24108, doi:10.1029/2005JD006019, 2005.
- Garcia, R. and Solomon, S.: A new numerical model of the middle atmosphere, 2, Ozone and related species, *J. Geophys. Res.*, 99, 12937–12951, 1994.
- Gille, J. C. and Russell III, J. M.: The limb infrared monitor of the stratosphere: experiment description, performance, and results, *J. Geophys. Res.*, 89, 5125–5140, 1984.
- 20 Gille, J. C., Lyjak, L. V., and Smith, A. K.: The global residual mean circulation in the middle atmosphere for the northern winter period, *J. Atmos. Sci.*, 44, 1437–1452, 1987.
- Gray, L. J. and Pyle, J. A.: The semiannual oscillation and equatorial tracer distributions, *Q. J. Roy. Meteorol. Soc.*, 112, 387–407, 1986.
- Hansen, A. R. and Robinson, G. D.: Water vapor and methane in the upper stratosphere: an examination of some of the Nimbus 7 measurements, *J. Geophys. Res.*, 94, 8474–8484, 1989.
- 25 Jackson, D. R., Driscoll, S. J., Highwood, E. J., Harries, J. E., and Russell III, J. M.: Troposphere to stratosphere transport at low latitudes as studies using HALOE observations of water vapour 1992–1997, *Q. J. Roy. Meteorol. Soc.*, 124, 169–192, 1998.
- 30 Jones, R. L. and Pyle, J. A.: Observations of CH₄ and N₂O by the NIMBUS 7 SAMS: a comparison with in situ data and two-dimensional numerical model calculations, *J. Geophys. Res.*, 89, 5263–5279, 1984.
- Jones, R. L., Pyle, J. A., Harries, J. E., Zavody, A. M., Russell III, J. M., and Gille, J. C.: The

**On the quality of the
Nimbus 7 LIMS
Version 6 water vapor
profiles**E. E. Remsberg et al.

[Title Page](#)[Abstract](#)[Introduction](#)[Conclusions](#)[References](#)[Tables](#)[Figures](#)[⏪](#)[⏩](#)[◀](#)[▶](#)[Back](#)[Close](#)[Full Screen / Esc](#)[Printer-friendly Version](#)[Interactive Discussion](#)

water vapor budget of the stratosphere studied using LIMS and SAMS satellite data, Q. J. Roy. Meteorol. Soc., 112, 1127–1143, 1986.

Kelly, K. K., Tuck, A. F., Heidt, L. E., Loewenstein, M., Podolske, J. R., Strahan, S. E., and Vedder, J. F.: A comparison of ER-2 measurements of stratospheric water vapor between the 1987 Antarctic and 1989 Arctic airborne missions, Geophys. Res. Lett., 17, 465–468, 1990.

Kerridge, B. J. and Remsberg, E. E.: Evidence from the limb infrared monitor of the stratosphere for nonlocal thermodynamic equilibrium in the nu2 mode of mesospheric water vapour and the nu3 mode of stratospheric nitrogen dioxide, J. Geophys. Res., 94, 16323–16342, 1989.

Kley, D., Russell III, J. M., and Phillips, C.: SPARC Assessment of Upper Tropospheric and Stratospheric Water Vapour, World Climate Research Program (WCRP) Report No. 113, World Meteorological Organization (WMO) Technical Document 1043, 312 pp., 2000.

Lambert, A., Read, W. G., Livesey, N. J., Santee, M. L., Manney, G. L., Froidevaux, L., Wu, D. L., Schwartz, M. J., Pumphrey, H. C., Jimenez, C., Nedoluha, G. E., Cofield, R. E., Cuddy, D. T., Daffer, W. H., Drouin, B. J., Fuller, R. A., Jarnot, R. F., Knosp, B. W., Pickett, H. M., Perun, V. S., Snyder, W. V., Stek, P. C., Thurstans, R. P., Wagner, P. A., Waters, J. W., Jucks, K. W., Toon, G. C., Stachnik, R. A., Bernath, P. F., Boone, C. D., Walker, K. A., Urban, J., Murtagh, D., Elkins, J. W., and Atlas, E.: Validation of the Aura Microwave Limb Sounder middle atmosphere water vapor and nitrous oxide measurements, J. Geophys. Res., 112, D24S36, doi:10.1029/2007JD008724, 2007.

LeTexier, L., Solomon, S., and Garcia, R. R.: The role of molecular hydrogen and methane oxidation in the water vapour budget of the stratosphere, Q. J. Roy. Meteorol. Soc., 114, 281–296, 1998.

Li, F., Austin, J., and Wilson, J.: The strength of the Brewer-Dobson circulation in a changing climate: coupled chemistry-climate model simulations, J. Climate, 21, 40–57, 2008.

Mertens, C. J., Mlynczak, M. J., Lopez-Puertas, M., and Remsberg, E. E.: Impact of non-LTE processes on middle atmospheric water vapor retrievals from simulated measurements of 6.8 micrometer Earth limb emission, Geophys. Res. Lett., 29(9), pp. 2-1 to 2-4, 2002.

Mote, P. W.: Reconsideration of the cause of dry air in the southern middle latitude stratosphere, Geophys. Res. Lett., 22, 2025–2028, 1995.

Mote, P. W., Rosenlof, K. H., Holton, J. R., Harwood, R. S., and Waters, J. W.: An atmospheric tape recorder: the imprint of tropical tropopause temperatures on stratospheric water vapor, J. Geophys. Res., 102, 3989–4006, 1996.

**On the quality of the
Nimbus 7 LIMS
Version 6 water vapor
profiles**E. E. Remsberg et al.

[Title Page](#)[Abstract](#)[Introduction](#)[Conclusions](#)[References](#)[Tables](#)[Figures](#)[⏪](#)[⏩](#)[◀](#)[▶](#)[Back](#)[Close](#)[Full Screen / Esc](#)[Printer-friendly Version](#)[Interactive Discussion](#)

Randel, W., Chanin, M.-L., and Michaut, C.: SPARC Intercomparison of Middle Atmosphere Climatologies, World Climate Research Program (WCRP) Report No. 116, World Meteorological Organization (WMO), Technical Document 1142, 96 pp., 2002.

5 Remsberg, E. E. and Russell III, J. M.: The near global distributions of middle atmospheric H₂O and NO₂ measured by the Nimbus 7 LIMS experiment, in: Transport Processes in the Middle Atmosphere, edited by: Visconti, G. and Garcia, R., Reidel, 87–102, 1987.

Remsberg, E. E., Russell III, J. M., and Wu, C.-Y.: An interim reference model for the variability of the middle atmosphere water vapor distribution, *Adv. Space Res.*, 10(6), 51–64, 1990.

10 Remsberg, E. E., Russell III, J. M., Gordley, L. L., Gille, J. C., and Bailey, P. L.: Implications of the stratospheric water vapor distribution as determined from the NIMBUS 7 LIMS experiment, *J. Atmos. Sci.*, 41, 2934–2945, 1984a.

Remsberg, E. E., Russell III, J. M., Gille, J. C., Gordley, L. L., Bailey, P. L., Planet, W. G., and Harries, J. E.: The validation of NIMBUS 7 measurements of ozone, *J. Geophys. Res.*, 89, 5161–5178, 1984b.

15 Remsberg, E. E., Kurzeja, R. J., Haggard, K. V., Russell III, J. M., and Gordley, L. L.: Description of data on the Nimbus 7 LIMS Map Archive Tape – Ozone and Nitric Acid, NASA Tech. Paper No. 2625, available from NTIS, Springfield, VA, 71 pp., 1986.

Remsberg, E. E., Gordley, L. L., Marshall, B. T., Thompson, R. E., Burton, J., Bhatt, P., Harvey, V. L., Lingenfelter, G. S., and Natarajan, M.: The Nimbus 7 LIMS Version 6 radiance conditioning and temperature retrieval methods and results, *J. Quant. Spectrosc. Ra.*, 86, 395–424, doi:10.1016/j.jqsrt.2003.12.007, 2004.

Remsberg, E., Lingenfelter, G., Natarajan, M., Gordley, L., Marshall, B. T., and Thompson, E.: On the quality of the Nimbus 7 LIMS version 6 ozone for studies of the middle atmosphere, *J. Quant. Spectrosc. Ra.*, 105, 492–518, doi:10.1016/j.jqsrt.2006.12.005, 2007.

25 Remsberg, E. E., Marshall, B. T., Garcia-Comas, M., Krueger, D., Lingenfelter, G. S., Martin-Torres, J., Mlynczak, M. G., Russell III, J. M., Smith, A. K., Zhao, Y., Brown, C., Gordley, L. L., Lopez-Gonzalez, M. J., Lopez-Puertas, M., She, C.-Y., Taylor, M. J., and Thompson, R. E.: Assessment of the quality of the Version 1.07 temperature-versus-pressure profiles of the middle atmosphere from TIMED/SABER, *J. Geophys. Res.*, 113, D17101, doi:10.1029/2008JD010013, 2008.

30 Rosenlof, K. H., Oltmans, S. J., Kley, D., Russell III, J. M., Chiou, E.-W., Chu, W. P., Johnson, D. J., Kelly, K. K., Michelsen, H. A., Nedoluha, G. E., Remsberg, E. E., Toon, G. C., and McCormick, M. P.: Stratospheric water vapor increases over the past half century, *Geophys.*

**On the quality of the
Nimbus 7 LIMS
Version 6 water vapor
profiles**E. E. Remsberg et al.

[Title Page](#)[Abstract](#)[Introduction](#)[Conclusions](#)[References](#)[Tables](#)[Figures](#)[⏪](#)[⏩](#)[◀](#)[▶](#)[Back](#)[Close](#)[Full Screen / Esc](#)[Printer-friendly Version](#)[Interactive Discussion](#)

Res. Lett., 28, 1195–1198, 2001.

Rothman, L. S., Rinsland, C. P., Goldman, A., Massie, S. T., Edwards, D. P., Flaud, J.-M., Perrin, A., Camy-Peyret, C., Dana, V., Mandin, J.-Y., Schroeder, J., McCann, A., Gamache, R. R., Wattson, R. B., Yoshino, K., Chance, K. V., Jucks, K. W., Brown, L. R., Nemtchinov, V., and Varanasi, P.: The HITRAN molecular spectroscopic database and HAWKS (HITRAN Atmospheric WorkStation): 1996 edition, *J. Quant. Spectrosc. Ra.*, 60, 665–710, 1998.

Russell III, J. M.: An interim reference model for the middle atmosphere water vapor distribution, *Adv. Space Res.*, 7(9), 5–15, 1987.

Russell III, J. M., Gille, J. C., Remsberg, E. E., Gordley, L. L., Bailey, P. L., Fischer, H., Girard, A., Drayson, S. R., Evans, W. F. J., and Harries, J. E.: Validation of water vapor results measured by the limb infrared monitor of the stratosphere experiment on NIMBUS 7, *J. Geophys. Res.*, 89, 5115–5124, 1984.

Russell III, J. M., Mlynczak, M. G., Gordley, L. L., Tansock, J., and Esplin, R.: An overview of the SABER experiment and preliminary calibration results, in *Proceedings of the SPIE*, 3756, 44th Annual Meeting, Denver, CO, 18–23 July, 277–288, 1999.

Schoeberl, M. R., Douglass, A. R., Stolarski, R. S., Pawson, S., Strahan, S. E., and Read, W.: Comparison of lower stratospheric tropical mean vertical velocities, *J. Geophys. Res.*, 113, D24109, doi:10.1029/2008JD010221, 2008.

Solomon, S., Kiehl, J. T., Garcia, R. R., and Grose, W.: Tracer transport by the diabatic circulation deduced from satellite observations, *J. Atmos. Sci.*, 43, 1603–1617, 1986.

Thibault, F., Menoux, V., LeDoucen, R., Rosenmann, L., Hartmann, J.-M., and Boulet, C.: Infrared collision-induced absorption by O₂ near 6.4 μm for atmospheric applications: measurements and empirical modeling, *Appl. Optics*, 36, 563–567, 1997.

Thompson, D. W. J. and Solomon, S.: Understanding recent stratospheric climate change, *J. Climate*, 22, 1934–1943, 2009.

Tuck, A. F., Baumgardner, D., Chan, K. R., Dye, J. E., Elkins, J. W., Hovde, S. J., Kelly, K. K., Loewenstein, M., Margitan, J. J., May, R. D., Podolske, J. R., Proffitt, M. H., Rosenlof, K. H., Smith, W. L., Webster, C. R., and Wilson, J. C.: The Brewer-Dobson circulation in the light of high altitude in situ aircraft observations, *Q. J. Roy. Meteorol. Soc.*, 123, 1–69, 1997.

WMO (World Meteorological Organization): Scientific Assessment of Ozone Depletion: 2006, Global Ozone Research and Monitoring Project – Report No. 50, 572 pp., Geneva, Switzerland, 2007.

**On the quality of the
Nimbus 7 LIMS
Version 6 water vapor
profiles**

E. E. Remsberg et al.

Title Page

Abstract

Introduction

Conclusions

References

Tables

Figures

⏪

⏩

◀

▶

Back

Close

Full Screen / Esc

Printer-friendly Version

Interactive Discussion

Table 1. Estimates of precision and accuracy (in %) for profiles of LIMS V6 H₂O.

Pressure (hPa)	100	50	30	10	5	3
Random (or PRECISION)	5	5	5	5	6	9
Radiometric Bias	5	5	5	5	5	5
Temperature Bias (Amt. of T Bias)	16 (1.1 K)	18 (1.3 K)	11 (1.1 K)	8 (1.0 K)	14 (1.5 K)	15 (1.6 K)
H ₂ O Line Parameters (8%)	8	8	8	8	8	8
O ₂ Cross Section (10%)	11	6	2	1	0	0
Forward Model Main IFOV Lobe	5 15	5 15	5 5	5 5	5 5	5 5
RSS of Bias Errors (or ACCURACY)	27	26	16	14	18	19

**On the quality of the
Nimbus 7 LIMS
Version 6 water vapor
profiles**

E. E. Remsberg et al.

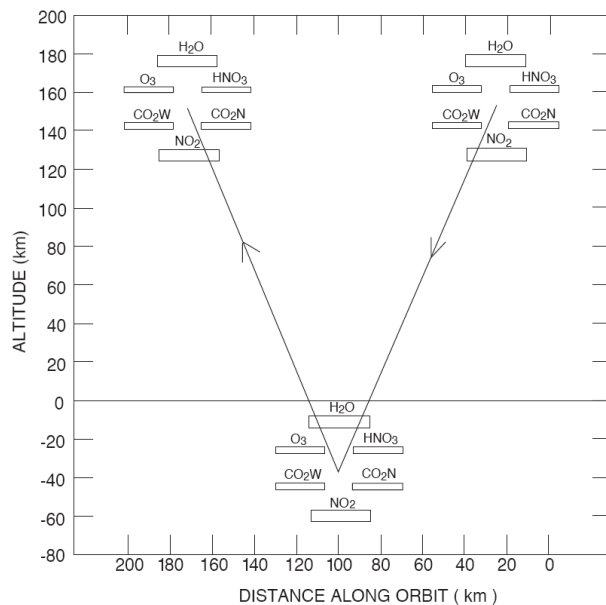


Fig. 1. Locations and relative sizes of the LIMS channel fields-of-view (FOV) projected to the limb at the tops and bottom of a down/up scan pair.

[Title Page](#)[Abstract](#)[Introduction](#)[Conclusions](#)[References](#)[Tables](#)[Figures](#)[◀](#)[▶](#)[◀](#)[▶](#)[Back](#)[Close](#)[Full Screen / Esc](#)[Printer-friendly Version](#)[Interactive Discussion](#)

On the quality of the
Nimbus 7 LIMS
Version 6 water vapor
profiles

E. E. Remsberg et al.

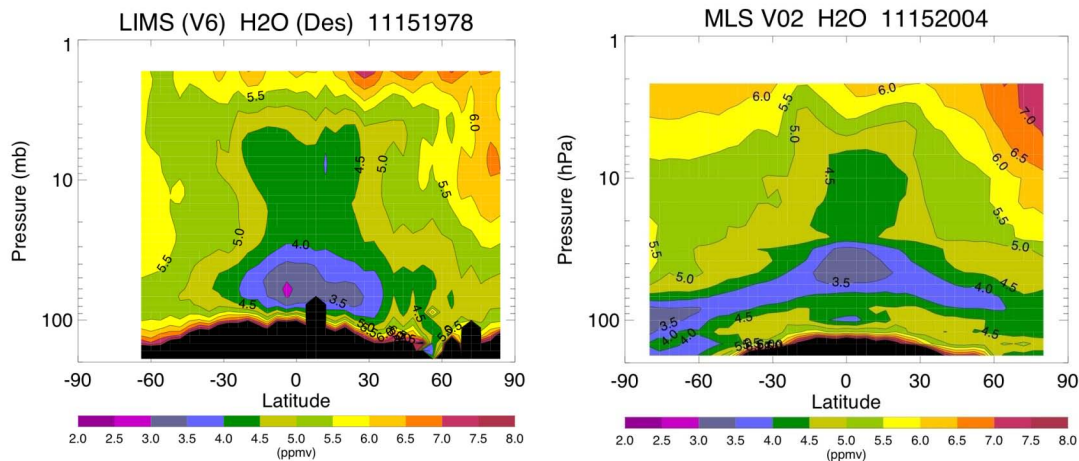


Fig. 2. (a) Zonal mean of LIMS V6 descending orbital (nighttime) H₂O for 15 November 1978. Contour interval is 1.0 ppmv; (b) Zonal mean of MLS V2.2 H₂O for 15 November 2004.

Title Page

Abstract

Introduction

Conclusions

References

Tables

Figures

⏪

⏩

◀

▶

Back

Close

Full Screen / Esc

Printer-friendly Version

Interactive Discussion

On the quality of the
Nimbus 7 LIMS
Version 6 water vapor
profiles

E. E. Remsberg et al.

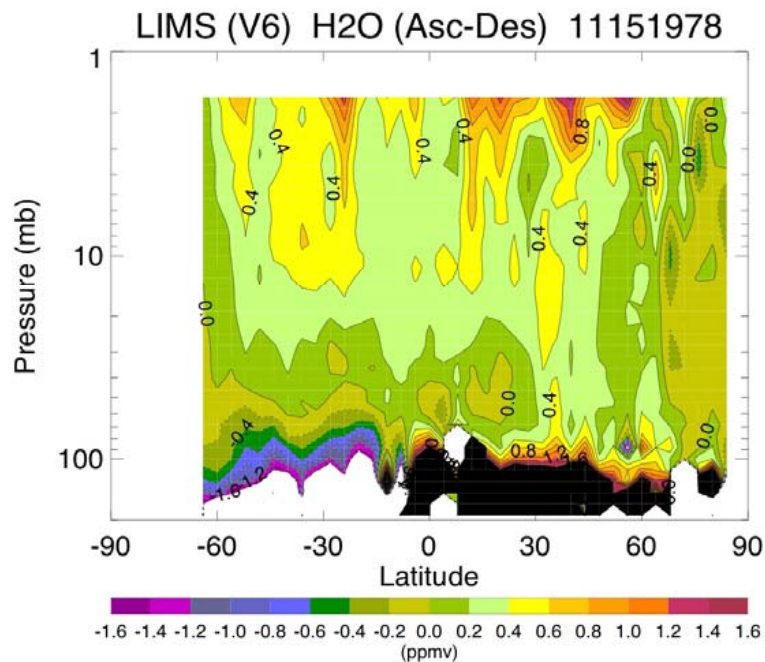


Fig. 3. Zonal-mean cross section of the ascending (day) minus descending (night) differences in LIMS V6 H₂O for 15 November 1978. Contour interval is 0.2 ppmv.

Title Page

Abstract

Introduction

Conclusions

References

Tables

Figures

◀

▶

◀

▶

Back

Close

Full Screen / Esc

Printer-friendly Version

Interactive Discussion

**On the quality of the
Nimbus 7 LIMS
Version 6 water vapor
profiles**E. E. Remsberg et al.

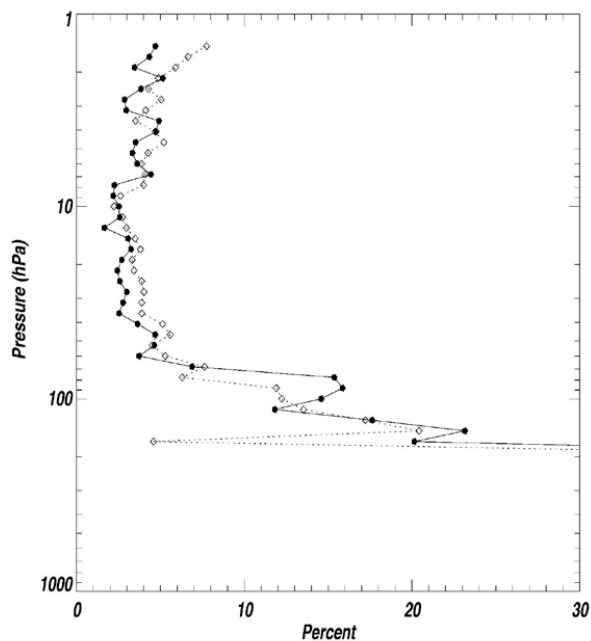


Fig. 4. Profiles of the minimum standard deviation (SD) values of LIMS V6 H₂O (in %) from its sets of descending (open diamonds) and ascending (solid diamonds) orbital crossings between 25 S and 35 S latitude on 1 February 1979.

[Title Page](#)[Abstract](#)[Introduction](#)[Conclusions](#)[References](#)[Tables](#)[Figures](#)[◀](#)[▶](#)[◀](#)[▶](#)[Back](#)[Close](#)[Full Screen / Esc](#)[Printer-friendly Version](#)[Interactive Discussion](#)

On the quality of the
Nimbus 7 LIMS
Version 6 water vapor
profiles

E. E. Remsberg et al.

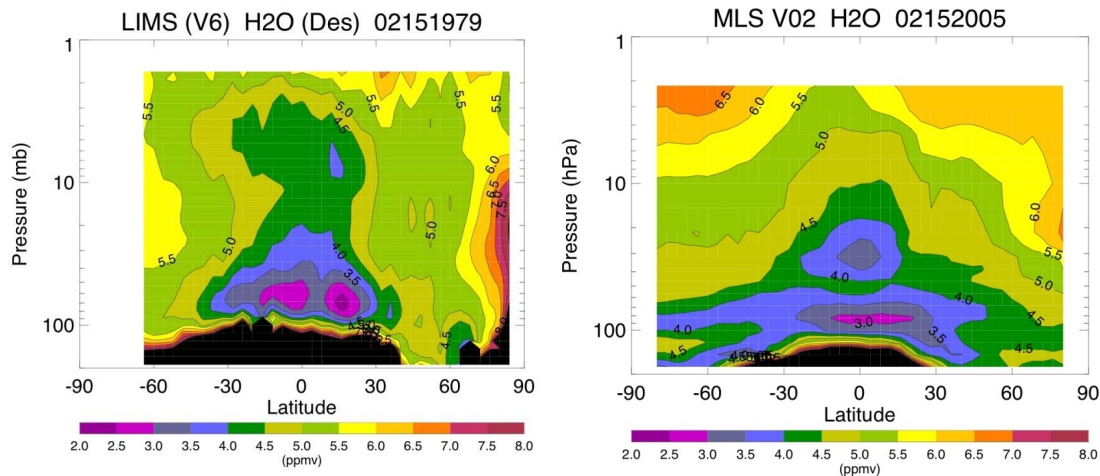


Fig. 5. As in Fig. 2, but **(a)** for LIMS V6 descending H₂O of 15 February 1979 and **(b)** for MLS for 15 February 2005.

Title Page

Abstract

Introduction

Conclusions

References

Tables

Figures

◀

▶

◀

▶

Back

Close

Full Screen / Esc

Printer-friendly Version

Interactive Discussion

On the quality of the
Nimbus 7 LIMS
Version 6 water vapor
profiles

E. E. Remsberg et al.

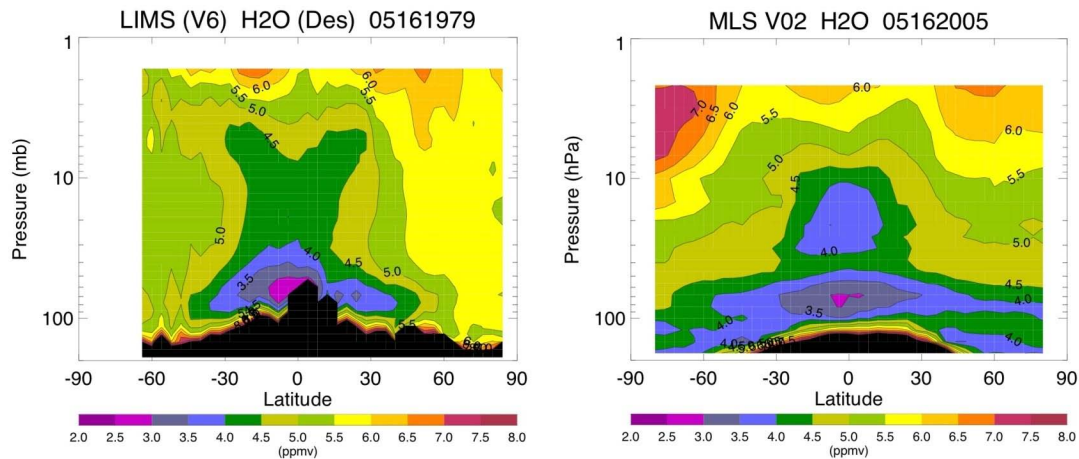


Fig. 6. As in Fig. 2, but **(a)** for LIMS V6 descending H₂O of 16 May 1979 and **(b)** for MLS for 16 May 2005.

Title Page

Abstract

Introduction

Conclusions

References

Tables

Figures

⏪

⏩

◀

▶

Back

Close

Full Screen / Esc

Printer-friendly Version

Interactive Discussion

**On the quality of the
Nimbus 7 LIMS
Version 6 water vapor
profiles**E. E. Remsberg et al.

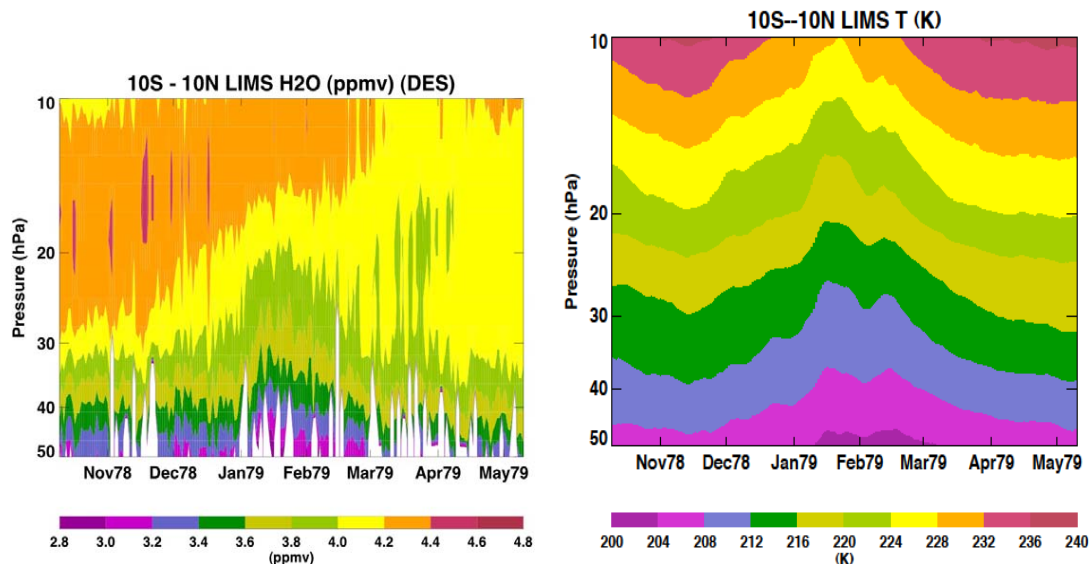


Fig. 7. (a) Time series of zonally-averaged LIMS V6 H₂O mixing ratio (in ppmv) for 10S to 10N and from 50 to 10 hPa; color contour increment is 0.2 ppmv and plot extends only to 25 May 1979. (b) As in (a), but for LIMS V6 temperatures with a color change every 4 K. Tic marks on the abscissa denote Day 15 of each month.

[Title Page](#)[Abstract](#)[Introduction](#)[Conclusions](#)[References](#)[Tables](#)[Figures](#)[⏪](#)[⏩](#)[◀](#)[▶](#)[Back](#)[Close](#)[Full Screen / Esc](#)[Printer-friendly Version](#)[Interactive Discussion](#)

**On the quality of the
Nimbus 7 LIMS
Version 6 water vapor
profiles**

E. E. Remsberg et al.

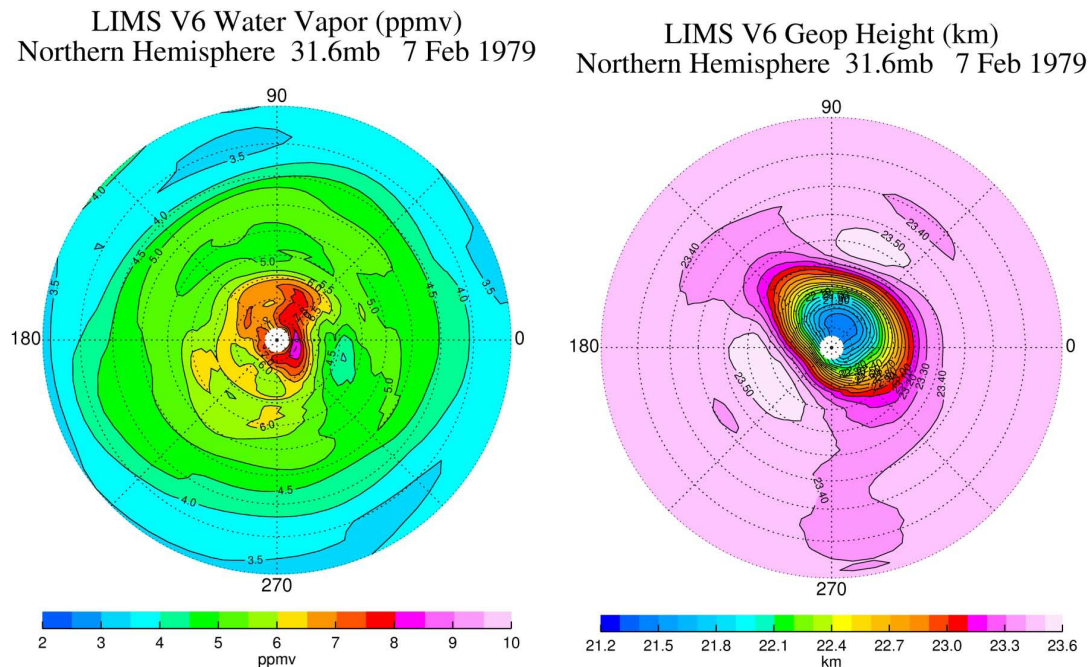


Fig. 8. Polar plot of LIMS V6 Northern Hemisphere data at 31.6 hPa (mb) for 7 February 1979 – (a) H₂O with a contour interval of 0.5 ppmv; (b) geopotential height from 21.2 to 23.6 with a contour interval of 0.1 gpm.

[Title Page](#)[Abstract](#)[Introduction](#)[Conclusions](#)[References](#)[Tables](#)[Figures](#)[◀](#)[▶](#)[◀](#)[▶](#)[Back](#)[Close](#)[Full Screen / Esc](#)[Printer-friendly Version](#)[Interactive Discussion](#)