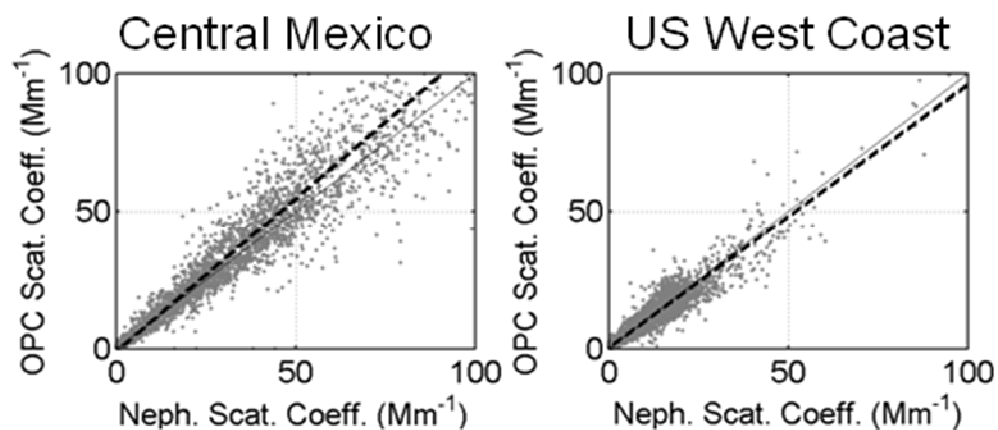


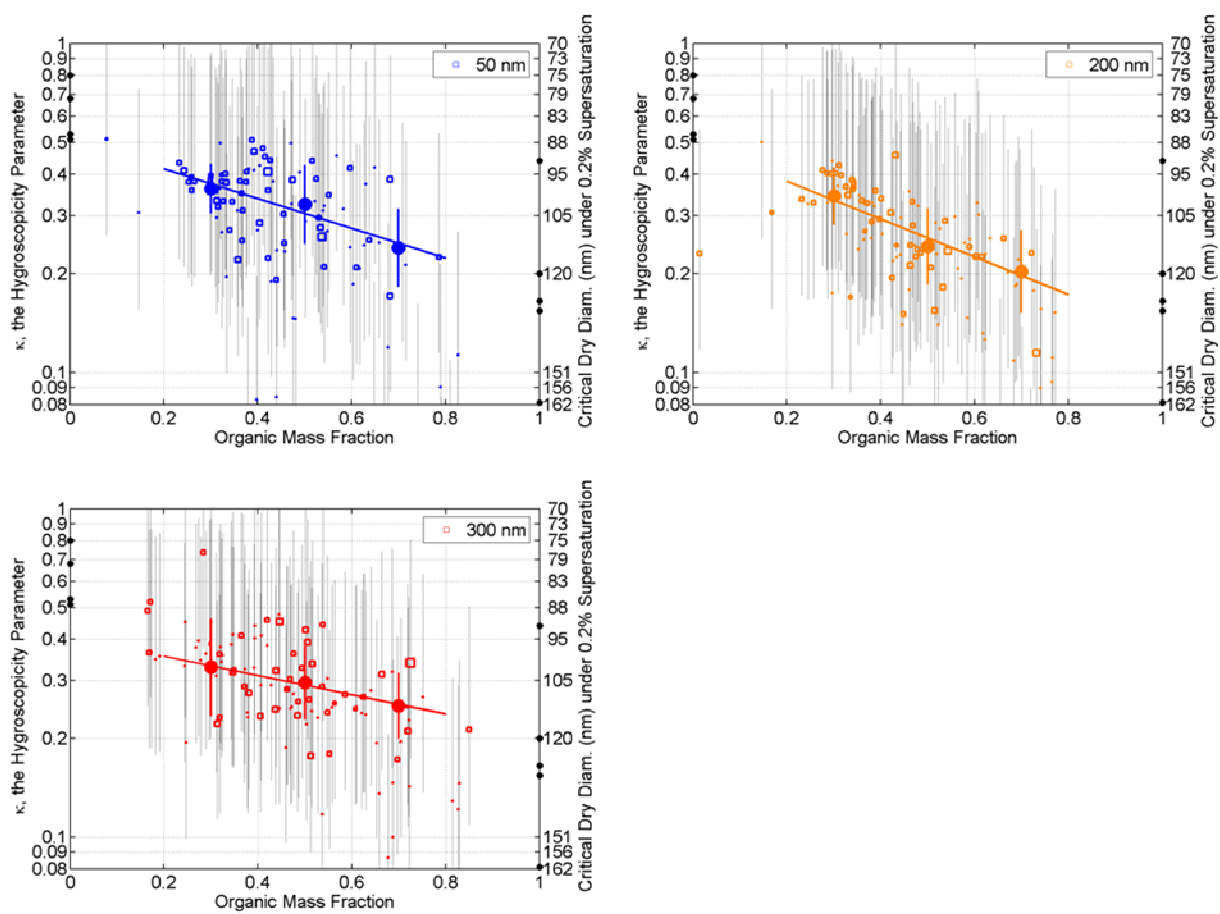
Supplement Table 1. Slope, intercept and R2 of the regression line for the scattering comparison between the OPC and nephelometer at 450, 550 and 700 nm.

λ (nm)	Slope	Intercept	R2
Central Mexico			
450	1.08	-1.61	0.86
550	1.11	-1.14	0.85
700	1.15	-1.29	0.84
the US West Coast			
450	0.94	0.37	0.89
550	0.96	0.16	0.86
700	0.97	0.03	0.83

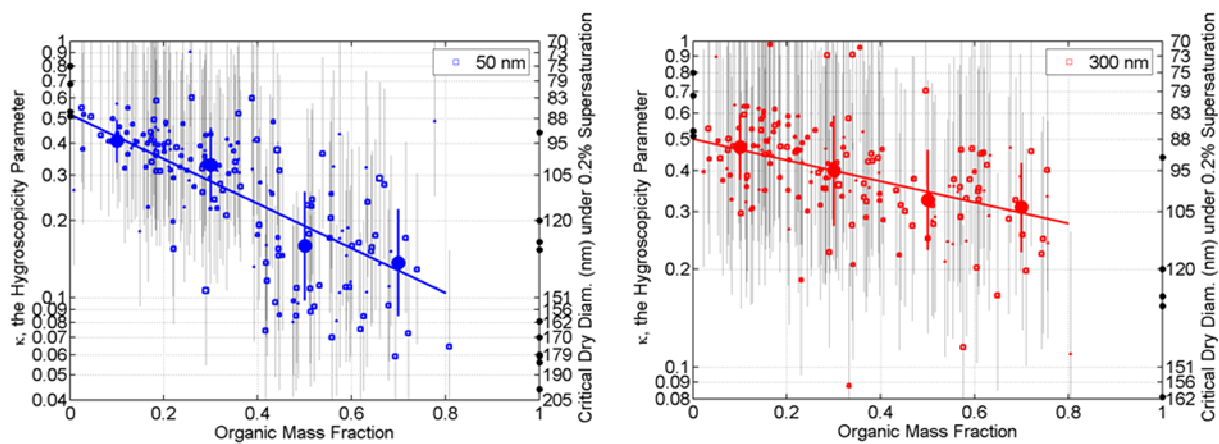
The intercept is in Mm^{-1} .



Supplement Figure 1. Comparison of the scattering coefficient at 550 nm between the OPC and the nephelometer over 7 - 170°, averaged over 30 seconds, for Central Mexico (left panel) and the US West Coast (right). The dashed lines represent the linear regression: $y = 1.11x - 1.14$ ($R^2 = 0.85$) and $y = 0.96x + 0.16$ ($R^2 = 0.86$) for the two regions respectively.



Supplement Figure 2. Same as Figure 3c but for the other TDMA dry diameters.



Supplement Figure 3. Same as Figure 3d but for the other TDMA dry diameters. Note the different vertical scales. The 200-nm scans, scarcely made over the US West Coast, are not shown.