

This discussion paper is/has been under review for the journal *Atmospheric Chemistry and Physics (ACP)*. Please refer to the corresponding final paper in *ACP* if available.

**Variability in regional
background aerosols
within the
Mediterranean**

X. Querol et al.

Variability in regional background aerosols within the Mediterranean

X. Querol¹, A. Alastuey¹, J. Pey¹, M. Cusack¹, N. Pérez¹, N. Mihalopoulos²,
C. Theodosi², E. Gerasopoulos³, N. Kubilay⁴, and M. Koçak⁴

¹Institute of Environmental Assessment and Water Research (IDÆA), Department of Geosciences, CSIC, LLuis Solé i Sabarís S/N, 08028 Barcelona, Spain

²Environmental Chemical Processes Laboratory, Depart. of Chemistry, University of Crete, P.O. Box 1470, 71409 Heraklion, Greece

³Institute for Environmental Research and Sustainable Development, National Observatory of Athens, Metaxa & V. Pavlou, 15236, Athens, Greece

⁴Institute of Marine Sciences, Middle East Technical University, P.O. Box 38, 33731, Erdemli-Mersin, Turkey

Received: 5 March 2009 – Accepted: 7 April 2009 – Published: 23 April 2009

Correspondence to: X. Querol (xavier.querol@ija.csic.es)

Published by Copernicus Publications on behalf of the European Geosciences Union.

Title Page

Abstract

Introduction

Conclusions

References

Tables

Figures

⏪

⏩

◀

▶

Back

Close

Full Screen / Esc

Printer-friendly Version

Interactive Discussion

Abstract

The main objective of this study is the identification of major factors controlling levels and chemical composition of aerosols in the regional background (RB) along the Mediterranean Basin (MB). To this end, data on PM levels and speciation from Montseny (MSY, Northeastern Spain), Finokalia (FKL, Southern Greece) and Erdemli (ERL, Southern Turkey) for the period 2001 to 2008 are evaluated. Important differences on PM levels and composition are evident when comparing the Western and Eastern MBs. The results manifest W-E and N-S PM₁₀ and PM_{2.5} gradients along the MB, attributed to the higher frequency and intensity of African dust outbreaks in the EMB, while for PM₁ very similar levels are encountered.

PM in the EMB is characterized by higher levels of crustal material and sulphate as compared to WMB (and central European sites), however, RB nitrate and OC+EC levels are relatively constant across the Mediterranean and lower than other European sites. Marked seasonal trends are evidenced for PM levels, nitrate (WMB), ammonium and sulphate. Also relatively higher levels of V and Ni (WMB) are measured in the Mediterranean basin, probably as a consequence of high emissions from fuel-oil combustion (power generation, industrial and shipping emissions).

Enhanced sulphate levels in EMB compared to WMB were measured. The high levels of sulphate in the EMB may deplete the available gas-phase NH₃ so that little ammonium nitrate can form due to the low NH₃ levels.

This study illustrates the existence of three very important features within the Mediterranean that need to be accounted for when modeling climate effects of aerosols in the area, namely: (a) the increasing gradient of dust from WMB to EMB; (b) the change of hygroscopic behavior of mineral aerosols (dust) via nitration and sulphation; and (c) the abundance of highly hygroscopic aerosols during high insolation (low cloud formation) periods.

Variability in regional background aerosols within the Mediterranean

X. Querol et al.

Title Page

Abstract

Introduction

Conclusions

References

Tables

Figures

⏪

⏩

◀

▶

Back

Close

Full Screen / Esc

Printer-friendly Version

Interactive Discussion

1 Introduction

Tropospheric aerosols have been the object of intensive research mainly because of their impact on health (Pope and Dockery, 2006), the Earth's climate (IPCC, 2007), visibility, ecosystems and building materials. Air quality degradation by particulate matter (PM) over polluted areas is often characterized by high levels of regional background (RB) aerosols on which intense episodes of either natural or anthropogenic origins are superimposed. Such episodes are associated with synoptic and mesoscale meteorological conditions that favour formation and accumulation of aerosol pollutants at regional or even continental scales. The exclusive measurement of aerosols in highly polluted areas and at a local scale may prevent adequate interpretation of the origin of pollution episodes. On the contrary, measurements performed at RB sites seem to optimize accurate documentation on both aerosol long-term trends and relevant synoptic features. The importance of this type of measurement site is highlighted by the creation of the EU-wide EUSAAR network (European Supersites for Atmospheric Aerosol Research, EU 6th framework, EUSAAR RII3-CT-2006-026140), which seeks to integrate the measurements of atmospheric aerosol properties at 21 high quality European ground-based stations.

Reports from countries around the Mediterranean Basin and Eastern Europe show especially high levels of atmospheric PM compared to Northern and some Central European regions. Both anthropogenic (transport sector, industrial processes, power generation, biomass burning, among others) and natural (African dust, resuspension, sea spray, forest fires, primary biological particles, biogenic secondary organic compounds) emissions, as well as orographic and climatic factors contribute to those enhanced PM levels.

A number of individual studies are available on the variability of RB-PM levels for Western (e.g. Querol et al., 1998a, Rodríguez et al., 2002 and 2004, Pérez et al., 2008) and Eastern Mediterranean (e.g. Koçak et al., 2007a; Gerasopoulos et al., 2007), and to a lesser extent on PM speciation (e.g. Querol et al., 1998b, 2001, 2004; Rodríguez

Variability in regional background aerosols within the Mediterranean

X. Querol et al.

Title Page

Abstract

Introduction

Conclusions

References

Tables

Figures



Back

Close

Full Screen / Esc

Printer-friendly Version

Interactive Discussion

et al., 2003, Marenco et al., 2006; Viana et al., 2008; Dongarrà et al., 2007; Saliba et al., 2007; Koçak et al., 2007b; Koulouri et al., 2008; Glavas et al., 2008). However, there is a lack of comparative studies on the variability of PM levels and composition along the Mediterranean Basin, necessary for understanding the special features that differentiate aerosol processes and aerosol-climate interactions between WMB and EMB, for instance.

This study aims to summarise the results on levels and chemical composition of RB-PM along the Mediterranean Basin, with special attention giving by applied to the comparison between WMB and EMB, in order to identify and discriminate the major controlling factors. Special focus is given to the identification and interpretation of daily and seasonal patterns and the influence of certain atmospheric transport on PM composition and levels, with emphasis on African dust outbreaks and regional pollution episodes. Additionally, the Mediterranean situation will be put into context with the corresponding situation over Central and Northern Europe, by comparison with similar studies performed in other regions in Europe. For this purpose, PM speciation data from the Montseny (MSY, NE Spain) and Finokalia (FKL, Crete Island, Southern Greece) sites, both EUSAAR sites and Erdemli (ERL, Southern Turkey), obtained during the period 2001–2008, are evaluated in this paper.

2 Atmospheric dynamics and sources of PM along the Mediterranean

The WMB presents peculiar and complex atmospheric dynamics affected by mesoscale and local meteorological processes but also regional factors, such as: (1) the considerable influence of the Azores high-pressure system in the meteorology of the Iberian Peninsula (IP); (2) the coastal ranges surrounding the Mediterranean coast (Fig. 1); (3) the influence of the Iberian and Saharan thermal lows causing weak pressure gradients over the Mediterranean; (4) the intense breeze action along the Mediterranean coast favoured by the prevailing low advective conditions; (5) the scarce summer precipitation; and (6) the intense seasonal contrast concerning temperature,

Variability in regional background aerosols within the Mediterranean

X. Querol et al.

Title Page

Abstract

Introduction

Conclusions

References

Tables

Figures

⏪

⏩

◀

▶

Back

Close

Full Screen / Esc

Printer-friendly Version

Interactive Discussion

humidity and rainfall (Millán et al., 1997; Soriano et al., 2001; Gangoiti et al., 2001; Rodríguez et al., 2002; 2003; Jorba et al., 2004; Pérez et al., 2004).

Similarly, the EMB meteorology is controlled by the following main factors: (1) during spring and early summer the development of Saharan depressions to the South of the Atlas Mountains take place (Moulin et al., 1998). These cyclones move eastwards, across the Mediterranean between Libya and Egypt and are responsible for the transport of large amounts of desert dust over the EMB; (2) during summer the EMB is influenced by the Azores anticyclone extended to the east and the cyclonic branch of the large South Asian thermal low. Additionally, a strong influence of the Indian Monsoon on the dry Mediterranean climate (Rodwell and Hoskins, 2001), combined with the complex orographic terrain of regions such as Greece, result in persistent northerly winds, called “Etesians”. As a result, the EMB is influenced by advection from Europe in the lower troposphere, favouring the transport of particles from urban areas of central and Eastern Europe as well as from areas with intense biomass burning (Balis et al., 2003; Sciare et al., 2008).

The overall area is characterized by abrupt topography, influencing the synoptic winds (Fig. 1). Although the Mediterranean Basin contains extensive regions of semi-arid soils, most of the ranges are mainly covered by typical Mediterranean and coniferous forests. The main densely populated areas and urban conglomerations (e.g. Barcelona, Valencia, Marseille, Rome, Athens, Istanbul and Cairo), industrial settlements, dense road and ships traffic paths, all constituting large anthropogenic emission sources, are located along the coastal areas.

All the above factors give rise to a scenario of a particularly complex aerosol phenomenology, with large anthropogenic and natural emissions, significant secondary aerosol formation and transformation, and intensive interaction between aerosols and gaseous pollutants. It is also noticeable that the intensive meteorological contrast throughout instead of along the year (temperature, humidity and rainfall) causes marked seasonal patterns for specific PM components.

Variability in regional background aerosols within the Mediterranean

X. Querol et al.

Title Page

Abstract

Introduction

Conclusions

References

Tables

Figures



Back

Close

Full Screen / Esc

Printer-friendly Version

Interactive Discussion

3 Methodology

3.1 Monitoring sites

The MSY (41°46' N; 02°21' E, 720 m a.s.l.), FKL (35°20' N; 25°40' E, 230 m a.s.l.), and ERL (36°36' N; 34°18' E, 22 m a.s.l.) monitoring stations are selected due to their representative locations as typical for Western and Eastern Mediterranean RB sites and also because they have a long-term data series of PM concentrations and chemical composition.

MSY is situated at the Montseny Natural Park located 40 km to the NNE of Barcelona metropolitan area (ca. 3.5 million inhabitants), 25 km from the Mediterranean coast. The station is located at La Castanya, a perpendicular valley to the coast inside the Catalan Pre-Coastal Ranges (Fig. 1). Even though the station is relatively far from urban and industrial agglomerations, it should be noted that the adjacent regions are highly populated and industrialized, and anthropogenic emissions may affect this site under specific meteorological scenarios. Atmospheric dynamics and aerosol variability at MSY are described in detail by Pérez et al. (2008).

FKL is situated in the northern coast of Crete Island, 70 km east of Heraklion, which is the nearest largest city of the island with 0.15 million inhabitants. The station is located at the top of a hill and faces the sea to the north within a sector of 270° to 90° (Mihalopoulos et al., 1997). According to the criteria proposed by the European Environment Agency (Larssen et al., 1999), FKL is characterized as a “natural background” station, with characteristics of a remote coastal site, and only under specific meteorological circumstances can be affected by anthropogenic pollution from short (Heraklion) and medium (Athens) range transport. A recent description of the prevailing winds has been reported by Gerasopoulos et al. (2005).

ERL is located on the coastline of South Turkey in the EM. The sampling site is rural and not under direct influence from industrial activities. The nearest city (Mersin) is located 45 km to the east of the sampling site and has a population of 0.74 million inhabitants (Kubilay et al., 2000; Koçak et al., 2004, 2007b).

Title Page

Abstract

Introduction

Conclusions

References

Tables

Figures

⏪

⏩

◀

▶

Back

Close

Full Screen / Esc

Printer-friendly Version

Interactive Discussion

3.2 Sampling methods and measurements

3.2.1 MSY station

At MSY, PM₁₀, PM_{2.5} and PM₁ are continuously measured since March 2002 using real time optical counters (GRIMM 1107) which are corrected with gravimetric measurements. 24-h PM₁₀ and PM_{2.5} samples are collected on 150 mm quartz micro-fibre filters (Schleicher and Schuell, QF20) using high volume samplers (30 m³/h) and DIGITEL cut-off inlets. Originally, TSP and PM_{2.5} were sampled weekly (a mean of 2 samples of TSP and 1 sample of PM_{2.5} per week), but in 2004 TSP sampling was replaced by PM₁₀.

Overall, 188 (March 2002 – January 2004), 442 (January 2004 – December 2007) and 255 (March 2002 – December 2007) samples of TSP, PM₁₀ and PM_{2.5}, respectively, were analyzed. PM mass concentrations were determined by standard gravimetric procedures. Thereafter, 1/2 of each filter was acid digested (HF:HNO₃:HClO₄) for the determination of major and trace elements by ICP-AES and ICP-MS. Another 1/4 of each filter was water leached to determine soluble ion concentrations by ion chromatography (sulphate, nitrate and chloride) and ion selective electrode (ammonium). The remaining 1/4 of each filter was used for the elemental analysis of total carbon (TC) by elemental analyzers. Details of the analytical procedure are given by Querol et al. (2001). Furthermore, OC and EC (organic and elemental carbon) were analyzed by a thermal-optical transmission technique (Birch and Cary, 1996) using a Sunset Laboratory OCEC Analyzer. Moreover, SiO₂ and CO₃²⁻ were indirectly determined on the basis of empirical factors (Al*1.89= Al₂O₃, 3*Al₂O₃=SiO₂ and 1.5*Ca=CO₃²⁻, mass ratios, see Querol et al., 2001; however CO₃²⁻ was divided by 2 due to possible occurrence of coarse Ca nitrate and sulphate). The addition of the above determinations accounted for 75–85% of the TSP, PM₁₀ and PM_{2.5} mass. The chemical components of the PM are grouped as (a) crustal or mineral (sum of Al₂O₃, SiO₂, CO₃²⁻, Ca, Fe, K, Mg, Mn, Ti and P); (b) marine component (sum of Cl⁻ and Na⁺); (c) organic matter and

Variability in regional background aerosols within the Mediterranean

X. Querol et al.

Title Page

Abstract

Introduction

Conclusions

References

Tables

Figures

◀

▶

◀

▶

Back

Close

Full Screen / Esc

Printer-friendly Version

Interactive Discussion

elemental carbon, OM+EC (OM obtained applying a 2.1 factor to the OC concentrations following the suggestions from Turpin et al., 2000); and (d) secondary inorganic aerosols, SIA (sum of SO_4^{2-} , NO_3^- and NH_4^+).

3.2.2 FKL station

PM₁₀ is routinely monitored at FKL since September 2004, with an Eberline FH 62 I-R (Eberline Instruments GmbH) particulate monitor, designed to continuously measure the mass concentration of the suspended particles in ambient air based on b-attenuation (Gerasopoulos et al., 2006). Additional aerosol samples were collected using a Small-Deposit-area low-volume-Impactor “SDI” and a Virtual Impactor “VI” (Gerasopoulos et al., 2007; Koulouri et al., 2008) since July 2004. In total, 360 samples (180 PTFE and 180 Quartz filters) have been collected and analyzed for the main anions, cations, elements, OC and EC at different aerosol fractions. The OM/OC ratio was 2.1 as before. PTFE filters were analyzed for water-soluble ions and elements. 1/4 of each PTFE-filter was extracted using 20 ml of pure water (18 MΩ). The solutions obtained were analyzed by ion chromatography for anions (Cl^- , Br^- , NO_3^- , SO_4^{2-} , $\text{C}_2\text{O}_4^{2-}$, among others) and cations (Na^+ , NH_4^+ , K^+ , Mg^{2+} and Ca^{2+}). More details on the IC method are given by Bardouki et al. (2003). Elements (Al, Ti, V, Cr, Mn, Fe, Ni, Cu, Zn, Cd, Pb) were determined using ICP-MS after acid digestion. Quartz filters were analyzed for organic and elemental carbon (OC and EC), with the same thermal-optical transmission method used at MSY under conditions described in Koulouri et al. (2008).

3.2.3 ERL station

At ERL, PM_{10-2.5} and PM_{2.5} concentrations were determined gravimetrically from April 2001 to April 2002. Water-soluble ions were measured by ion chromatography (IC) at Environmental Chemical Processes Laboratory (ECPL), University of Crete, following the same method as for FKL filters described in detail by Bardouki et al. (2003). Con-

Variability in regional background aerosols within the Mediterranean

X. Querol et al.

Title Page

Abstract

Introduction

Conclusions

References

Tables

Figures

◀

▶

◀

▶

Back

Close

Full Screen / Esc

Printer-friendly Version

Interactive Discussion

centration of the elements (Fe, Ti, Ca, Mn, K, Cr, V, Zn, Cl, S) were obtained using 2 cm² of the filter sample applying proton-induced X-ray emission (PIXE) at ATOMKI (Institute of Nuclear Research of the Hungarian Academy of Sciences, Debrecen, Hungary). During the experiments, the aerosol samples were irradiated by a 2MeV proton beam, which was supplied by the 5MV Van de Graaff Accelerator of ATOMKI (for more details see Borbely-Kiss et al., 1999). For the evaluation of PIXE spectra, the PIXEKLM software was applied (Szabo and Borbely-Kiss, 1993). BC content in 46 fine aerosol filter samples collected during winter and summer was determined using a smoke stain reflectometer (SSR, Borbely-Kiss et al., 1999). For this purpose, obtained reflectance was converted into $\mu\text{g m}^{-3}$ by calibrating the instrument using EC (for more details see Kocak et al., 2007a, b). OC data was not available in this station.

3.3 Complementary analyses

To interpret the different source regions of air masses, NCEP meteorological maps (Kalnay et al., 1996) and daily back-trajectories calculated by HYSPLIT4 model (Draxler and Rolph, 2003) were used. Daily, 5-day back-trajectories were calculated at 12:00 h GMT at receptor points of 700, 1500 and 2500 m a.s.l. modelling also the vertical velocity. According to these tools, sampling days were classified as African dust outbreaks and transport of marine air masses, from the Atlantic for the WMB and the Mediterranean for both basins. Additionally, in the WMB the recirculation of air masses, the winter anticyclonic episodes, and the transport of European air masses were also identified; whereas for the EMB the air masses from the Central and Northern European continent, were recognized.

African dust outbreaks were additionally identified by aerosol maps from the Marine Meteorology Division of the Naval research Laboratory, USA (NRL) (<http://www.nrlmry.navy.mil/aerosol>); the SKIRON aerosol concentration maps and simulations (<http://forecast.uoa.gr>, Kallos et al., 1997); the BSC-/DREAM dust maps (<http://www.bsc.es/projects/earthscience/DREAM/>, Pérez et al., 2006); and satellite imagery provided by NASA SeaWIFS project (McClain et al., 1998,

Variability in regional background aerosols within the Mediterranean

X. Querol et al.

Title Page

Abstract

Introduction

Conclusions

References

Tables

Figures

⏪

⏩

◀

▶

Back

Close

Full Screen / Esc

Printer-friendly Version

Interactive Discussion



4 Results

4.1 PM levels

Mean annual TSP, PM₁₀, PM_{2.5} and PM₁ levels recorded at MSY (2002–2008) are 26, 17, 13 and 11 $\mu\text{g}/\text{m}^3$ (calculated from daily means), whereas at FLK (2004–2008) the mean annual PM₁₀, PM_{2.5} and PM₁ levels reach 31, 18 and 10 $\mu\text{g}/\text{m}^3$ (mean values from SDI 2-day in average samplings) and at ERL (2001–2002) PM₁₀ and PM_{2.5} attain mean levels of 36 and 10 $\mu\text{g}/\text{m}^3$. The data shown here, corroborated by the intermediate levels (24 $\mu\text{g}/\text{m}^3$) measured at a sub-urban site in Palermo by Dongarrà et al. (2007) and the 30 $\mu\text{g}/\text{m}^3$ measured at the EMEP site in Cyprus (Ayia Marina, as reported in Airbase), indicate a prominent increase in the annual PM₁₀ levels from WMB to EMB. A north-south gradient of increasing PM₁₀ levels is also observed. In the EMB, the mean annual values reported for Lazaropole (Macedonia) and Rojen peak (Bulgaria, airbase dataset) are close to 15 $\mu\text{g}/\text{m}^3$. The same gradient holds in the WMB when comparing PM₁₀ levels measured at MSY with those recorded at Spanish EMEP stations (Pérez et al., 2008). In both cases, this N-S trend can be explained by the gradual deposition of dust transported from North Africa northwards, as well as the lower rainfall from North to South.

Concerning PM_{2.5}, 13, 18 and 10 $\mu\text{g}/\text{m}^3$, were measured at MSY, FKL and ERL, respectively. This PM_{2.5} range is slightly higher than the one obtained at RB sites located at Atlantic and Central Spain (8–11 $\mu\text{g}/\text{m}^3$). As pointed out by Gerasopoulos et al. (2007) the higher values recorded at Finokalia for PM_{2.5} are due to Saharan dust intrusions. Very close mean annual PM₁ levels are measured at MSY and FKL (11 and 10 $\mu\text{g}/\text{m}^3$, respectively), which is higher than the summer levels measured at Monte Cimone in Italy (7 $\mu\text{g}/\text{m}^3$, Marengo et al., 2006), free troposphere site (2165 m a.s.l.).

Variability in regional background aerosols within the Mediterranean

X. Querol et al.

Title Page

Abstract

Introduction

Conclusions

References

Tables

Figures

⏪

⏩

◀

▶

Back

Close

Full Screen / Esc

Printer-friendly Version

Interactive Discussion

Variability in regional background aerosols within the Mediterranean

X. Querol et al.

[Title Page](#)[Abstract](#)[Introduction](#)[Conclusions](#)[References](#)[Tables](#)[Figures](#)[⏪](#)[⏩](#)[◀](#)[▶](#)[Back](#)[Close](#)[Full Screen / Esc](#)[Printer-friendly Version](#)[Interactive Discussion](#)

As PM_{10} and $PM_{2.5}$ are influenced by dust sources, prominent W-E and N-S gradients are also revealed for the different PM fraction ratios. Thus, $PM_{2.5}/PM_{10}$ reaches the lowest values in the EMB (0.3–0.6 at FKL and ERL), similar to the Canary Islands and Southern Iberian Peninsula (0.4 and 0.5, respectively, Querol et al., 2004, 2008).

In the Central and Northern Iberian Peninsula, the average $PM_{2.5}/PM_{10}$ ratio ranges between 0.60 and 0.75. The same tendency is also seen in the mean $PM_1/PM_{2.5}$ ratios ranging from 0.65 at FKL to 0.8 at MSY.

4.1.1 Diurnal variability of PM levels

The daily evolution of PM levels (Fig. 2) at semi-elevated sites of the WMB, such as MSY, strongly depends on the dominant breeze circulation (mountain and sea breezes) (Pérez et al., 2008). More precisely, early in the day atmospheric pollutants are accumulated in the pre-coastal depression (highly populated and industrialized, crossed by important main roads); subsequently the diurnal breeze development (activated by insolation) increases PM levels at MSY by transporting the aged air masses upwards from the valley. The cleaner nocturnal drainage flows and the decrease in the mixing layer height decreases the PM levels, representing the continental background.

Thus during the night (20:00–06:00 h GMT), relatively low PM levels are recorded, and the mean continental background levels for the study period are estimated at 12, 9 and $6 \mu\text{g}/\text{m}^3$ for PM_{10} , $PM_{2.5}$ and PM_1 , in winter and 15, 12 and $9 \mu\text{g}/\text{m}^3$ in summer.

From early morning (06:00–08:00 h GMT in summer, 09:00–10:00 h GMT in winter) to afternoon, PM levels increase progressively coinciding with the Southern flow, reaching maximum values between 13:00–14:00 h GMT in summer and 15:00–16:00 h GMT in winter (Fig. 2). Mean maximum hourly values of 20, 16 and $13 \mu\text{g}/\text{m}^3$ in winter and 23, 16 and $13 \mu\text{g}/\text{m}^3$ in summer are registered for PM_{10} , $PM_{2.5}$ and PM_1 , respectively.

In the EMB, and in particular at the remote coastal FKL station, PM levels are highly impacted by the year-round presence of dust from North Africa. This is evidenced by the significant deviation between average and median hourly values when calculating the typical PM diurnal cycle (not shown here). To diminish the random contribution

Variability in regional background aerosols within the Mediterranean

X. Querol et al.

of dust on the mean PM diurnal we have used medians of hourly values, additionally excluding hourly concentrations $>50 \mu\text{g}/\text{m}^3$ for PM_{10} (Fig. 2). In any case a lower diurnal/nocturnal PM contrast in the EMB is noticeable when compared with the MSY. This may be due in our study to the influence of large regional emissions of atmospheric pollutants transported to MSY by mountain and seas breezes during daytime. In the absence of high resolution data for $\text{PM}_{2.5}$ and PM_1 , we have used the ratios of $\text{PM}_1/\text{PM}_{10}$ and $\text{PM}_{2.5}/\text{PM}_{10}$ derived from the impactors for each season, to reproduce their mean diurnal cycle, keeping in mind that in this way we force their pattern to follow the respective one of PM_{10} .

As in the case of WMB, relatively lower PM levels are encountered during night (20:00–04:00 h GMT). The mean continental background levels for the study period are estimated at 14, 8 and $4 \mu\text{g}/\text{m}^3$ for PM_{10} , $\text{PM}_{2.5}$ and PM_1 , in winter, and 19, 13 and $9 \mu\text{g}/\text{m}^3$ in summer. A progressive PM level enhancement is observed during daytime, however with different characteristics for each season. In summer two morning peaks are found (Fig. 2) at 04:00–06:00 h GMT and 08:00–10:00 h GMT, that coincide with the increase of NO_x and ozone, respectively. This possibly demonstrates the effect of regional sources of pollution under intense photochemical activity (Gerasopoulos et al., 2005). During the transitional seasons (spring and autumn), daytime enhanced PM levels are still evident, however the role of photochemical processes appears less significant. Finally, in winter, the peak narrows and is delimited between 05:00 and 11:00 h GMT, possibly reflecting the conjunction of diurnal patterns of otherwise lower levels of pollution and solar radiation. Mean maximum hourly values of 17, 10 and $5 \mu\text{g}/\text{m}^3$ in winter and of 24, 16 and $11 \mu\text{g}/\text{m}^3$ in summer are registered for PM_{10} , $\text{PM}_{2.5}$ and PM_1 , respectively. The similarity of the mean maximum summer values between FKL and MSY and the large differences found in winter are attributed to the high summer atmospheric mixing, and the effect of the winter anticyclonic episodes frequently developed in the WMB.

[Title Page](#)[Abstract](#)[Introduction](#)[Conclusions](#)[References](#)[Tables](#)[Figures](#)[⏪](#)[⏩](#)[◀](#)[▶](#)[Back](#)[Close](#)[Full Screen / Esc](#)[Printer-friendly Version](#)[Interactive Discussion](#)

4.1.2 Seasonal variability of PM levels

The seasonal and multi-year evolution of PM₁₀ levels at MSY, FKL and ERL is presented in Fig. 3. A clear summer maximum in the WMB and a broader or bimodal pattern in the EMB sites, depending on the relative contribution of anthropogenic and natural aerosols, are observed.

Indeed, in the WMB the highest levels are registered during summer months (June and July), associated with the higher frequency of African dust outbreaks, lower precipitation, higher resuspension due to soil dryness, increased formation of secondary aerosols (Fig. 4) and recirculation of air masses (poor air renovation) (Querol et al., 2001; Viana et al., 2002; Escudero et al., 2005). The summer increase is more pronounced in the coarse fraction (PM_{2.5-10}) than in the finer fractions (PM_{1-2.5} and PM₁) because of the coarser size of the mineral dust and summer-nitrate particles (Fig. 4, Pérez et al., 2008). During the rest of the year, PM levels are relatively low owing to the high frequency of Atlantic advections and precipitation. A secondary maximum is found during winter (November to March) when PM levels rise because of intense pollution episodes of either anthropogenic (winter anticyclonic scenarios) or natural (African dust) origins. The seasonal variation of PM levels at MSY is also influenced by the evolution of the boundary layer. When the monitoring site is outside the boundary layer (especially in winter), it is less affected by regional anthropogenic emissions, in contrast to summer.

In the EMB the higher frequency of dust episodes in spring (Moulin et al., 1998) has a significant contribution to local RB-PM levels. Indeed, the seasonal maximum is usually recorded in spring (April–May) as a consequence of the frequent African dust episodes, which actually exceeds the summer maximum. This is clearly evident in the coarser fractions (PM₁₀ or even PM_{2.5}), while for PM₁ a secondary summer maximum is observed, in accordance to the seasonality of anthropogenic types of aerosols like non-sea salt sulphate (Gerasopoulos et al., 2007; Koulouri et al., 2008).

Variability in regional background aerosols within the Mediterranean

X. Querol et al.

Title Page

Abstract

Introduction

Conclusions

References

Tables

Figures

⏪

⏩

◀

▶

Back

Close

Full Screen / Esc

Printer-friendly Version

Interactive Discussion

4.2 PM speciation

In relative proportions (Fig. 5), mineral matter is the major component of PM_{10} at both W and EMBs (22 to 38%, with the higher proportions being obtained at the EMB), followed by sulphate, OM, nitrate and ammonium. Sea spray shows a marked variation with a clear increasing trend towards the EMB, especially in the coastal sites, where it may reach significant levels to become a major component of PM_{10} . As expected, in $PM_{2.5}$, the relative proportions of crustal and sea spray components decreased when compared with PM_{10} . However the proportions of crustal material were relatively high in $PM_{2.5}$ (8 to 14%). Conversely, the proportion of all the other components increased. Around 10 to 14% of the PM_{10} mass (and 2 to 16% of the $PM_{2.5}$) consists of unaccounted mass, which is mainly attributed to moisture not eliminated during filter conditioning. A number of inorganic hetero-atoms (F, O, H), not analyzed here, may also be responsible for a small fraction of this unaccounted proportion.

The comparison of WMB and EMB with North and Central Europe, in terms of composition, show major gradients of crustal, nitrate, sulphate, OC and EC. Table 1 and Fig. 1 show the mean levels of PM_{10} and $PM_{2.5}$ components measured at MSY, FKL and ERL and a selection of rural-RB sites.

The main distinctive feature of PM at the three sites of this study is the relatively high levels of the crustal component (4 and $1 \mu\text{g}/\text{m}^3$ for PM_{10} and $PM_{2.5}$ at MSY; 14 and 2 (0.8 if the major 6 dust events are removed) $\mu\text{g}/\text{m}^3$ for PM_{10} and PM_1 at FKL; and 9, and $1 \mu\text{g}/\text{m}^3$ for PM_{10} and $PM_{2.5}$ at ERL, respectively) when compared with the selected Central and Northern European sites (2 and $<0.5 \mu\text{g}/\text{m}^3$ for PM_{10} and $PM_{2.5}$ in most cases). The mean annual contribution of dust at FKL is estimated to be $8 \pm 5 \mu\text{g}PM_{10}/\text{m}^3$, in agreement with the range given by Mitsakou et al. (2008) ($5\text{--}9 \mu\text{g}/\text{m}^3$) for Heraklion, the nearest large city to FKL station. Of course, at the remote site of FKL the percentage contribution of dust is much higher than at Heraklion reaching 40–50% in spring (frequent dust outbreaks) and winter (some of which are among the most intense events). In the WMB this African dust annual contribution ranges from

Variability in regional background aerosols within the Mediterranean

X. Querol et al.

Title Page

Abstract

Introduction

Conclusions

References

Tables

Figures

⏪

⏩

◀

▶

Back

Close

Full Screen / Esc

Printer-friendly Version

Interactive Discussion

1–2 $\mu\text{gPM}_{10}/\text{m}^3$ in the NWMB to 7 $\mu\text{gPM}_{10}/\text{m}^3$ in the SWMB.

Sulphate levels measured at WMB-MSY (3 $\mu\text{g}/\text{m}^3$) fall in the usual range reported for rural-RB sites in Central and Southern Europe and the UK (2–4 $\mu\text{g}/\text{m}^3$), and are higher than those measured at RB sites of Switzerland and the Scandinavian region (1–2 $\mu\text{g}/\text{m}^3$). However, at the EMB-FKL-ERL, measured levels are among the highest in Europe (5–6 $\mu\text{g}/\text{m}^3$). EMB is highly influenced by air masses coming from Eastern Europe (e.g. Ukraine, Russia) which in association with high insolation in the area favours H_2SO_4 production via homogeneous reactions (Mihalopoulos et al., 2007). Furthermore, SO_2 emissions from coal power generation in Greece, Turkey and the countries surrounding the Black Sea, the latter contributing to more than one third of the total SO_2 emissions reported over Europe in 2004 (Vestreng et al., 2007), may also contribute to enhanced sulphate levels in EMB. Furthermore, the high levels of sulphate in the EMB may deplete the available gas-phase NH_3 so that little ammonium nitrate can form due to the low NH_3 levels. Note that this is consistent with the aerosols in the EMB being acidic and those in the WMB being neutralized by NH_4^+ , as later discussed.

Nitrate and ammonium levels at both WMB and EMB follow a very similar spatial distribution pattern. For instance nitrate levels range from 1.7 to 1.9 $\mu\text{g}/\text{m}^3$ at both basins. These values are lower than in Central Europe and the UK (2–4 $\mu\text{g}/\text{m}^3$), slightly higher than at RB sites of Switzerland and the Scandinavian region (0.5–1 $\mu\text{g}/\text{m}^3$) and similar to the levels measured in RB sites of Italy.

Concerning SIA, the nitrate/sulphate ratio in PM_{10} in the WMB is in the range of 0.4–0.6 for most years, whereas in the EMB, this ratio falls in the lowest fraction of the above range (0.3–0.4), close to the range of values reported for RB sites of Switzerland and Scandinavia (Birkenes) and almost half the values recorded in RB sites of Germany and UK (Table 1).

Finally, a very interesting difference between the size distributions of nitrate was observed. In Central and Northern Europe and in the WMB the ratio of nitrate levels in $\text{PM}_{2.5}/\text{PM}_{10}$ is constantly 0.7 to 0.8, whereas in the EMB this decreases down to 0.1–0.2 (see also $\text{PM}_{2.5}$ data measured at Patras; Table 1). This is probably due to several

Variability in regional background aerosols within the Mediterranean

X. Querol et al.

Title Page

Abstract

Introduction

Conclusions

References

Tables

Figures

⏪

⏩

◀

▶

Back

Close

Full Screen / Esc

Printer-friendly Version

Interactive Discussion

Variability in regional background aerosols within the Mediterranean

X. Querol et al.

Title Page

Abstract

Introduction

Conclusions

References

Tables

Figures

⏪

⏩

◀

▶

Back

Close

Full Screen / Esc

Printer-friendly Version

Interactive Discussion

factors, such as: (1) the major occurrence of coarse sodium and calcium nitrate in the EMB (also in an important proportion in the WMB) with respect to other areas, and 2) with a minor relevance, the high levels of sulphate in EMB, sufficient to neutralize ammonium and consequently reduce ammonium nitrate formation under favourable meteorological conditions i.e. during winter.

EC and OM levels are also homogeneous across the RB of the Mediterranean (0.2–0.4 and 4–6 $\mu\text{g}/\text{m}^3$ respectively) and lower compared to most RB sites of central Europe (Putaud et al., 2004; Pio et al., 2007). The OC/EC ratio mean values are close to 11 at MSY and 4 at FLK. The highest ratio in the WMB may be attributed to the lack of ventilation in spring-summer which causes significant SOA formation which, in our opinion is of a major anthropogenic origin, including fuel combustion, biomass firing and forest fires, coupled with high biogenic emissions of precursors reported in summer (Peñuelas et al., 1999). Formation from SOA from anthropogenic precursors it has been shown to be a major cause of increased PM levels in many regions of the world, but it appears to be underestimated by current models (Volkamer et al., 2006). The high OC/EC ratios measured at MSY can be explained by the high SOA formation from a combination of anthropogenic precursors or biomass burning, or a combination of both (Reid et al., 2005).

Levels of sea spray (0.5 and 0.2 $\mu\text{g}/\text{m}^3$ for PM_{10} and $\text{PM}_{2.5}$ at MSY; 2.9 and 0.1 $\mu\text{g}/\text{m}^3$ for PM_{10} and PM_1 at FKL; and 8.9 and 0.4 $\mu\text{g}/\text{m}^3$ for PM_{10} and $\text{PM}_{2.5}$ at ERL, the later being located a few meters from the shore–line.) vary strongly across WMB and EMB, being usually much lower in the WMB. In the WMB sea spray is low ($<1 \mu\text{g}/\text{m}^3$ in PM_{10}) in the mountainous areas surrounding the Mediterranean, such as MSY. At the coastal areas the levels are higher (annual average around 4 $\mu\text{g}/\text{m}^3$ in PM_{10} at the Balearic Islands), but lower when compared with the Atlantic sites of Europe (4 to 12 $\mu\text{g}/\text{m}^3$, Vieser et al., 2001; Querol et al., 2004).

Table 2 shows the mean levels of trace elements analyzed in PM_{10} and $\text{PM}_{2.5}$ at MSY, ERL, FKL and a selection of rural-RB sites. Levels of V and Ni measured at both basins are higher (by a factor of 3 to 9) than most sites in central Europe possibly

as a consequence of the relatively high emissions from fuel-oil combustion (power generation, industrial and shipping emissions). The other elements analyzed fall in similar concentration ranges.

Overall, based on the above characteristics it may be concluded that EMB compared to WMB is characterized by higher levels of crustal material and sulphate. Furthermore, Na and Ca nitrate are the main species of nitrate in the EMB in contrast to the prevalence of NH_4^+ -nitrate in the WMB. Compared to European sites of similar characteristics, all Mediterranean sites are characterized by relatively high levels of crustal material and lower levels of OM+EC and nitrate (Table 1).

4.2.1 Seasonal variability of PM chemical composition

The major PM chemical components show marked seasonal trends in the W and EMBs (Fig. 4).

Mineral matter in PM_{10} and $\text{PM}_{2.5}$ exhibits strong seasonal variability and high levels almost throughout the year at both W and EMBs (Fig. 4). This fact can be attributed to both the elevated dust resuspension of local and regional origin due to high convective dynamics and low rainfall, and the higher frequency of African dust episodes occurring during spring and autumn in the EMB and spring and summer in the WMB (Pérez et al., 2008). The levels of mineral matter in $\text{PM}_{2.5}$ usually account for less than 50% of those measured for PM_{10} , although this ratio varies throughout the year. In the WMB the lowest ratio of the $\text{PM}_{2.5}/\text{PM}_{10}$ mineral matter is measured from late spring to mid summer (20–30%), and the highest in winter (35–45%). However, this does not occur in the EMB where the ratio remains constantly low (around 15%) throughout the year, indicating the presence of coarser particles.

Nitrate levels at MSY present a strong seasonal variability with higher values during colder months and much reduced levels in the warmer period (Fig. 4), owing to the thermal instability of the ammonium nitrate (Harrison and Pio, 1983; Querol et al., 2004), the most frequent compound of nitrate at this site. Nevertheless, the occurrence of a relatively high proportion of coarse nitrate species (Ca and Na nitrate compounds)

Variability in regional background aerosols within the Mediterranean

X. Querol et al.

Title Page

Abstract

Introduction

Conclusions

References

Tables

Figures

⏪

⏩

◀

▶

Back

Close

Full Screen / Esc

Printer-friendly Version

Interactive Discussion



Variability in regional background aerosols within the Mediterranean

X. Querol et al.

can be also deduced from the MSY data as the ratio of $\text{PM}_{2.5}/\text{PM}_{10}$ nitrate is very close to 90% during the colder months and around 20% in summer. It is important to highlight that extremely intense nitrate episodes are recorded every year from November to March (up to $15 \mu\text{g}/\text{m}^3$ of daily mean nitrate levels, Fig. 5) being associated with the transport (by mountain breezes) of aged air masses from the surrounding industrial/urban areas during anticyclonic scenarios (Pérez et al., 2008). At the EMB the situation regarding nitrate is completely different as nitrate presents higher values during summer and lower during winter. Size-segregated measurements show that the majority of nitrate (>85%) is confined in the coarse mode, strongly indicating that it is chemically combined mostly with alkaline ion species (Mamane and Gottlieb, 1992; Pakkanen et al., 1999). The most likely formation pathway for particulate nitrate (NO_3^-) is the reaction of gaseous nitric acid or some other nitrogen compounds with sea salt particles and mineral dust particles (Metzger et al., 2006).

Sulphate levels at both basins increase progressively from April–May to reach maximum levels in mid summer (Fig. 4). This seasonal pattern could be related to enhanced photochemistry, low air mass renovation at regional scale, the increment of the summer mixing layer depth favouring the regional mixing of polluted air masses, and possible higher summer contribution of marine secondary sulphate from DMS oxidation (Millán et al., 1997; Rodríguez et al., 2002; Mihalopoulos et al., 2007). In the WMB secondary maxima of sulphate concentration are commonly recorded from November to March, coinciding with the anticyclonic nitrate pollution episodes. At both basins, sulphate species have a prevalent fine grain size (ratio $\text{PM}_{2.5}/\text{PM}_{10}$ close to 1) without significant variations in grain size throughout the year. Only a small proportion of coarse SO_4^{2-} is observed during African dust outbreaks, probably due to the formation of CaSO_4 .

Ammonium concentration shows different behaviour in each basin. In the WMB only slight variations throughout the year are observed with mainly three peaks appearing. Two of them in the colder months are related with the presence of ammonium nitrate (and in lower proportion ammonium sulphate) and another one in summer is

[Title Page](#)[Abstract](#)[Introduction](#)[Conclusions](#)[References](#)[Tables](#)[Figures](#)[⏪](#)[⏩](#)[◀](#)[▶](#)[Back](#)[Close](#)[Full Screen / Esc](#)[Printer-friendly Version](#)[Interactive Discussion](#)

Variability in regional background aerosols within the Mediterranean

X. Querol et al.

[Title Page](#)[Abstract](#)[Introduction](#)[Conclusions](#)[References](#)[Tables](#)[Figures](#)[⏪](#)[⏩](#)[◀](#)[▶](#)[Back](#)[Close](#)[Full Screen / Esc](#)[Printer-friendly Version](#)[Interactive Discussion](#)

associated with the highest concentration of ammonium sulphate. During April–May and September–October minimum levels are generally recorded. Due to the artefact reaction between the ammonium nitrate and sodium chloride on PM_{10} filters, and the consequent loss of gaseous ammonium chloride (Querol et al., 2001), higher levels of ammonium were on average recorded in $PM_{2.5}$ with respect to those obtained in PM_{10} . Sodium chloride is mainly retained in the $PM_{2.5}$ cyclone and the interaction of these species with ammonium nitrate in the filter is prevented. However, in PM_{10} , the two species may interact on the filter.

At the EMB, as only formation of ammonium sulphate occurs, ammonium follows the seasonal variation of sulphate. The significant correlation between NH_4^+ and $nss-SO_4^{2-}$ observed both at ERL and FKL, with the equivalent $NH_4^+/nss-SO_4^{2-}$ slope being smaller than 1 (0.85 in FKL and 0.64–0.95 at ERL), indicates that partial neutralization of $nss-SO_4^{2-}$ occurs by NH_4^+ .

Sea spray presents no uniform behaviour in the MB. In particular, at MSY it shows a distinct seasonal trend (Fig. 4), with highest concentration during summer, probably related to the increasing sea breeze circulation over the coast (located at 30 km), which intensifies in the mid summer. On the contrary, no clear trend is observed at FKL, while at ERL a maximum is found during winter. However, at both locations sea spray clearly follows the wind speed variation. At both basins chlorine/sodium ratios show a seasonal trend, with higher winter values (close to the typical marine ratio) and considerably lower values in summer. The lower summer ratios may be attributed to interaction of nitric acid with abundant sodium chloride which causes loss of volatile hydrochloric acid. As expected, sea spray had a prevalent coarse grain size, with constant $PM_{2.5}/PM_{10}$ ratios in the range 0.4–0.6.

Carbonaceous aerosol concentrations are maximum in summer in the WMB (Fig. 5), coinciding with the lowest renovation of the atmosphere at a regional scale (Rodríguez et al., 2002; Pérez et al., 2008) and probably with high biogenic emissions of volatile organic precursors. Secondary peaks are usually observed in February–March and late autumn (Fig. 4), associated with the aforementioned winter anticyclonic pollution

episodes. Carbonaceous compounds have a prevalent fine grain size, with $PM_{2.5}/PM_{10}$ ratios very close to 1.

As previously reported, the OC/EC ratio reaches mean values close to 11, however during most of the years this rate decreases in winter and increases in summer, probably due to high secondary summer biogenic OC contributions, but also to the very low EC levels. At the EMB the OC/EC ratio is much lower ranging from 4 in PM_1 to 5.4 in PM_{10} . In addition, a statistically significant correlation occurs between fine OC and EC (slope equal to 4, $r=0.73$), which does not change on a seasonal basis ($r=0.65$ for winter and 0.86 for summer). Regarding the seasonal variation of both OC and EC, maxima and minima occur during summer (July–August and June, respectively) and the max/min ratio of 1.6 (for OC) is lower than for nitrate and sulphate.

Long-term (5-year) measurements of Black Carbon (BC) and OC in bulk aerosols performed in the EMB (Crete Island, Sciare et al., 2008) have shown that long-range transport of agricultural waste, and burning emissions from European countries surrounding the Black Sea, are important during two periods of the year, March–April and July–September. The contribution of biomass burning to the concentrations of BC and OC is shown to be rather small (20 and 14%, respectively, on a yearly basis), although this contribution could be much higher on a monthly basis and is expected to have a high intra- and inter-annual variability. Removing the biomass burning influence, a prominent OC seasonal variation is revealed, with an increase by almost a factor of two during May and June, whereas BC is found to be quite stable throughout the year.

4.3 Influence of different meteorological scenarios and air mass origins on PM levels and chemical composition

In both WMB and EMB the highest levels of PM_{10} (24 and 51–54 $\mu g/m^3$, respectively, Tables 3 and 4) are recorded under the transport of dust from Sahara and the Middle East/Arabian Peninsula. As expected, at both WMB and EMB, African dust outbreaks increase the proportion of mineral matter markedly in all size fractions (40–62% in PM_{10} , and 17–28% in $PM_{2.5}$). During these episodes, the contribution of carbonaceous

Variability in regional background aerosols within the Mediterranean

X. Querol et al.

Title Page

Abstract

Introduction

Conclusions

References

Tables

Figures

⏪

⏩

◀

▶

Back

Close

Full Screen / Esc

Printer-friendly Version

Interactive Discussion



aerosols are at the lowest for all sites.

On the other hand, the lowest levels of PM_{10} for WMB and EMB (13 and 21–30 $\mu\text{g}/\text{m}^3$ respectively, Table 3) are associated to the transport of marine air masses, from the Atlantic for the WMB and the Mediterranean for both basins. In the WMB the recirculation of air masses and the winter anticyclonic episodes increase PM_{10} levels markedly (20 and 19 $\mu\text{g}PM_{10}/\text{m}^3$, respectively). In the case of the EMB, air masses from the Central and Northern European continent increase PM_{10} levels considerably (20–40 $\mu\text{g}PM_{10}/\text{m}^3$), owing to the transport of anthropogenic pollutants emitted in Central Europe.

Therefore, at RB sites daily variability of PM levels is driven by the concatenation of different meteorological scenarios that may alter both levels and size of particulate matter.

As shown in Table 4, the transport of air masses from the Mediterranean and Western Europe causes similar proportions of OM in the WMB and EMB (21–23% in PM_{10} and 29–31% in $PM_{2.5}$ or PM_1). The proportion of OM in the EMB decreases considerably when the transport of air masses is from Eastern Europe (15% in PM_{10} and 23% in PM_1 at FKL). The EC proportion does not present noticeable variations with the air mass origins.

Regional recirculations (REG) cause the highest proportion of sulphate in the WMB (MSY) and EMB (ERL). These proportions increase in the $PM_{2.5}$ fraction with respect to the PM_{10} fraction (15–20% in PM_{10} , and 27–39% in $PM_{2.5}$), due to prevailing low dispersive conditions and high photochemical oxidation. Sulphate also increases markedly at FKL under European transport (21–23% PM_{10} and 37–39% in PM_1).

The nitrate proportion in the EMB is considerably lower than in the WMB. The nitrate and ammonium proportion at MSY is higher under WAE (21–22% for nitrate and 8–11% for ammonium in both PM_{10} and $PM_{2.5}$). The higher proportions of nitrate in the EMB occur under European transport and regional recirculations, representing only 4–6% of PM_{10} .

Variability in regional background aerosols within the Mediterranean

X. Querol et al.

Title Page

Abstract

Introduction

Conclusions

References

Tables

Figures

⏪

⏩

◀

▶

Back

Close

Full Screen / Esc

Printer-friendly Version

Interactive Discussion

5 Conclusions

PM levels and speciation for the period 2001 to 2008 at three typical regional background (RB) sites at the WMB and the EMB (Montseny/MSY – NE Spain, Finokalia/FKL – Southern Greece and Erdemli/ERL – Southern Turkey), are utilized, in conjunction with selected European sites, for the identification of major factors controlling levels and chemical composition that differentiate aerosols along the Mediterranean Basin.

The major findings of this study can be summarized as follows:

- A prominent W-E and N-S PM_{10} and $PM_{2.5}$ increasing gradient along the Mediterranean Basin is found, while for PM_1 similar levels are observed in both basins. These gradients are attributed to the proximity to dust sources and the higher frequency and intensity of African dust outbreaks in the EMB when compared with the WMB.
- In the WMB, PM levels follow a clear seasonal pattern with summer maximum due to lower precipitation, higher resuspension, photochemical transformations and frequent African episodes. A broader pattern is observed at the EMB with maxima in spring due to the higher frequency of dust episodes.
- Speciation data shows that PM in EMB is characterized by higher levels of crustal material and sulphate compared to WMB. RB nitrate and OC+EC levels are relatively constant across the Mediterranean.
- The main form of RB nitrate formed in the EMB is Na and Ca nitrate, with a dominant coarse grain size. Thus, the ratio of $PM_{2.5}/PM_{10}$ nitrate levels in the EMB is considerably lower (0.1–0.2) than in central and northern EU and the WMB (0.7 to 0.8). Nitrate levels at WMB present a strong seasonal variability with maxima during colder months and reduced levels in the warmer period. This can be related to the thermal instability of the ammonium nitrate in summer ambient conditions and to extremely intense nitrate episodes recorded every year from

Variability in regional background aerosols within the Mediterranean

X. Querol et al.

Title Page

Abstract

Introduction

Conclusions

References

Tables

Figures



Back

Close

Full Screen / Esc

Printer-friendly Version

Interactive Discussion

Variability in regional background aerosols within the Mediterranean

X. Querol et al.

Title Page

Abstract

Introduction

Conclusions

References

Tables

Figures



Back

Close

Full Screen / Esc

Printer-friendly Version

Interactive Discussion



November to March. Contrarily, at the EMB nitrate presents higher values during summer and lower during winter, due to the combination of nitrate mostly with alkaline ion species.

- Sulphate levels at both parts of the basin increase progressively from April–May to reach maximum levels in mid summer, due to enhanced photochemistry, low air mass renovation on a regional scale, the increment of the summer mixing layer depth favouring the regional mixing of polluted air masses, and the possible higher summer contribution of marine secondary sulphate from DMS oxidation. A small proportion of primary sulphate can not be discarded, but prior studies showed that the S/PM rate is very small in the free troposphere, when compared with the boundary layer during African dust episodes (Alastuey et al., 2005). In any case enhanced sulphate levels in EMB compared to WMB were measured. The high levels of sulphate in the EMB may deplete the available gas-phase NH_3 so that little ammonium nitrate can form due to the low NH_3 levels. Note that this is consistent with the aerosols in the EMB being acidic and those in the WMB being neutralized by NH_4^+ . This may be the reason for the coarse prevalence of nitrate in the EMB, where the interaction of HNO_3 with sea salt and mineral matter may be favoured by the low NH_3 available.
- The OC/EC ratio is close to 11 at MSY, and 4 at FLK, due to the lack of ventilation in WMB during spring-summer and the enhanced formation of SOA from anthropogenic and forest fire precursors, with a minor contribution of biogenic precursors. This has been shown to be a major cause of increased PM levels in many regions of the World, but it appears to be underestimated by current models (Volkamer et al., 2006). Thus the high OC/EC ratios measured at MSY can be explained by the high SOA formation from a combination of anthropogenic VOC precursors or biomass burning, or a combination of both. These two sources are enhanced in summer.
- Trace element levels (V and Ni) measured at both basins are relatively higher

Variability in regional background aerosols within the Mediterranean

X. Querol et al.

Title Page

Abstract

Introduction

Conclusions

References

Tables

Figures



Back

Close

Full Screen / Esc

Printer-friendly Version

Interactive Discussion



(by a factor of 3 to 9) than most sites in central Europe as a consequence of the relatively high emissions from fuel-oil combustion in the study area (power generation, industrial and shipping emissions).

- Compared to central European sites, PM at Mediterranean RB is characterized by relatively high levels of crustal material and sulphate (EMB), and lower levels of OM+EC and nitrate. Special Mediterranean features may account for these differences: (a) Crustal material: The lower atmospheric rain scavenging potential, the high frequency of African dust outbreaks and the higher emissions (anthropogenic and natural). (b) Sulphate: The higher SO₂ emissions, lower ventilation of the atmospheric basin and higher photochemistry. (c) OM+EC: Lower use of biomass combustion in winter. (d) Nitrate: Higher ambient temperature favouring the gas phase prevalence of nitrate.

Overall, it is shown that the peculiar atmospheric dynamics and emission sources of the Mediterranean Basin decisively influence the levels and chemical composition of RB aerosols. Particularly contrasting meteorological patterns in the Western and Eastern parts of the basin occur, as mentioned previously, give rise to significantly different characteristics of PM. Thus, the Mediterranean is a very distinctive region when compared with other regions in Europe, and should be considered when modelling climate effects of aerosols and when evaluating air quality at European scales.

Finally, this study clearly demonstrates why the Mediterranean is included among the most vulnerable regions globally by means of climate destabilization, as well as the significant and complicated role that aerosols play as a forcing driver. The provided comparisons also highlight air quality degradation in the area and identify the major sources and important processes responsible. This is very useful for implementing strategies that will have an impact on health concerns but also policy issues such as identification and discrimination between anthropogenic and natural contributions.

Acknowledgements. This study was supported by the Ministry of Science and Innovation (CGL2005-03428-C04-03/CLI, CGL2007-62505/CLI, GRACCIE-CSD2007-00067), the Euro-

pean Union (6th framework CIRCE IP, 036961, EUSAAR RII3-CT-2006-026140). The authors would also like to acknowledge NASA/Goddard Space Flight Center, SeaWIFS-NASA Project, University of Athens, Navy Research Laboratory-USA and the Barcelona Super-Computing Centre for their contribution with TOMS maps, satellite images, SKIRON dust maps, NAAPs aerosol maps, and DREAM dust maps, respectively. The authors gratefully acknowledge the NOAA Air Resources Laboratory (ARL) for the provision of the HYSPLIT transport and dispersion model and/or READY website (<http://www.arl.noaa.gov/ready.html>) used in this publication. We would like to express our gratitude to Jesús Parga for his technical support. Finally, we would like to express our gratitude to Airbase-EEA for allowing free access to ambient PM levels recorded at a large number of sites in Europe, some of these data have been used in this study.

References

- Alastuey, A., Querol, X., Castillo, S., Escudero, M., Avila, A., Cuevas, E., Torres, C., Romero, P.M., Exposito, F., Garcia, O., Diaz, J. P., Dingenen, R. V., and Putaud, J. P.: Characterisation of TSP and PM_{2.5} at Izaña and Sta. Cruz de Tenerife (Canary Islands, Spain) during a Saharan dust episode (July 2002), *Atmos. Environ.*, 39(26), 4715–4728, 2005.
- Balis, D. S., Amiridis, V., Zerefos, C., Gerasopoulos, E., Andreae, M. O., Zanis, P., Kazantzidis, A., Kazadzis, S., and Papayannis, A.: Raman lidar and sunphotometric measurements of aerosol optical properties during a biomass burning episode over Thessaloniki, Greece, *Atmos. Environ.*, 37, 4529–4538, 2003.
- Bardouki, H., Liakakou, H., Economou, C., Sciare, J., Smolik, J., Zdimal, V., Eleftheriadis, K., Lazaridis, M., Dye, C., and Mihalopoulos, N.: Chemical composition of size-resolved atmospheric aerosols in the eastern Mediterranean during summer and winter, *Atmos. Environ.*, 37, 195–208, 2003.
- Birch, M. and Cary, R.: Elemental carbon-based method for monitoring occupational exposures to diesel particulate diesel exhaust, *Aerosol Sci. Tech.*, 25, 221–241, 1996.
- Borbély-Kiss, I., Koltay, E., Szabó, Gy., Bozó, L., and Tar, K.: Composition and sources of urban and rural atmospheric aerosol in Eastern Hungary, *J. Aerosol Sci.*, 30, 369–391, 1999.
- Dongarrà, G., Manno, E., Varrica, D., and Vultaggio, M.: Mass levels, crustal component and

Variability in regional background aerosols within the Mediterranean

X. Querol et al.

Title Page

Abstract

Introduction

Conclusions

References

Tables

Figures



Back

Close

Full Screen / Esc

Printer-friendly Version

Interactive Discussion

trace elements in PM₁₀ in Palermo, Italy. Short communication, *Atmos. Environ.*, 41, 7977–7986, 2007.

Draxler, R. R. and Rolph G. D.: HYSPLIT (HYbrid Single-Particle Lagrangian Integrated Trajectory) Model access via NOAA ARL READY Website (<http://www.arl.noaa.gov/ready/hysplit4.html>). NOAA Air Resources Laboratory, Silver Spring, MD, 2003.

Escudero, M., Castillo, S., Querol, X., Avila, A., Alarcón, M., Viana, M. M., Alastuey, A., Cuevas, E., and Rodríguez, S.: Wet and dry African dust episodes over Eastern Spain, *J. Geophys. Res.*, 110, D18S08, doi:10.1029/2004JD004731, 2005.

Escudero, M., Querol, X., Ávila, A., and Cuevas, E.: Origin of the exceedances of the European daily PM limit value in regional background areas of Spain, *Atmos. Environ.*, 41, 730–744, 2007.

Gangoiti, G., Millán, M. M., Salvador, R., and Mantilla, E.: Long range transport and recirculation of pollutants in the Western Mediterranean during the RECAPMA Project, *Atmos. Environ.*, 35, 6267–6276, 2001.

Gerasopoulos, E., Kouvarakis, G., Vrekoussis, M., Kanakidou, M., and Mihalopoulos, N.: Ozone variability in the marine boundary layer of the Eastern Mediterranean based on 7-year observations, *J. Geophys. Res.*, 110, D15309, doi:10.1029/2005JD005991, 2005.

Gerasopoulos, E., Kouvarakis, G., Babasakalis, P., Vrekoussis, M., Putaud, J.-P., and Mihalopoulos, N.: Origin and variability of particulate matter (PM₁₀) mass concentrations over the Eastern Mediterranean, *Atmos. Environ.*, 40, 25, 4679–4690, 2006.

Gerasopoulos, E., Koulouri, E., Kalivitis, N., Kouvarakis, G., Saarikoski, S., Mäkelä, T., Hillamo, R., and Mihalopoulos, N.: Size-segregated mass distributions of aerosols over Eastern Mediterranean: seasonal variability and comparison with AERONET columnar size-distributions, *Atmos. Chem. Phys.*, 7, 2551–2561, 2007, <http://www.atmos-chem-phys.net/7/2551/2007/>.

Glavas, S. D., Nikolakis, P., Ambatzoglou, D., and Mihalopoulos, N.: Factors affecting the seasonal variation of mass and ionic composition of PM_{2.5} at a central Mediterranean coastal site, *Atmos. Environ.*, 42, 5365–5373, 2008.

Harrison, R. M. and Pio, C.: Size differentiated composition of inorganic aerosol of both marine and continental polluted origin, *Atmos. Environ.*, 17, 1733–1738, 1983.

Hueglin, C., Gehrig, R., Baltensperger, U., Gysel, M., Monn, C., and Vonmont, H.: Chemical characterisation of PM_{2.5}, PM₁₀ and coarse particles at urban, near-city and rural sites in Switzerland, *Atmos. Environ.*, 39, 637–651, 2005.

Variability in regional background aerosols within the Mediterranean

X. Querol et al.

[Title Page](#)[Abstract](#)[Introduction](#)[Conclusions](#)[References](#)[Tables](#)[Figures](#)[⏪](#)[⏩](#)[◀](#)[▶](#)[Back](#)[Close](#)[Full Screen / Esc](#)[Printer-friendly Version](#)[Interactive Discussion](#)

IPCC: Climate Change 2007: The Physical Science Basis. Contribution of Working Group I to the Fourth Assessment Report of the IPCC (ISBN 978 0521 88009-1 Hardback; 978 0521 70596-7 Paperback), 2007.

Jorba, O., Pérez, C., Roca-denbosch, F., and Baldasano, J. M.: Cluster Analysis of 4-Day Back Trajectories Arriving in the Barcelona Area (Spain) from 1997 to 2002, *J. Appl. Meteorol.*, 43, 6, 887–901, 2004.

Kallos, G., Kotroni, V., and Lagouvardos, K.: Proceedings of the Symposium on Regional Weather Prediction on Parallel computer Environments, University of Athens, Greece, 109–122, 1997.

Kallos, G., Astitha, M., Katsafados, P., and Spyrou, C.: Long-range transport of anthropogenically and naturally produced particulate matter in the Mediterranean and North Atlantic: Current state of knowledge, *J. Appl. Meteorol. Clim.*, 46, 1230–1251, 2007.

Kalnay, E., Kanamitsu, M., Kistler, R., Collins, W., Deaven, D., Gandin, L., Iredell, M., Saha, S., White, G., Woollen, J., Zhu, Y., Chelliah, M., Ebisuzaki, W., Higgins, W., Janowiak, J., Mo, K. C., Ropelewski, C., Wang, J., Leetmaa, A., Reynolds, R., Jenne, R., and Joseph, D.: The NCEP/NCAR 40-Year Reanalysis Project, *B. Am. Meteorol. Soc.*, 77, 437–471, 1996.

Koçak, M., Kubilay, N., and Mihalopoulos, N.: Ionic composition of lower tropospheric aerosols at a Northeastern Mediterranean site: implications regarding sources and long-range transport, *Atmos. Environ.*, 38, 2067–2077, 2004.

Koçak, M., Mihalopoulos, N., and Kubilay, N.: Contributions of natural sources to high PM₁₀ and PM_{2.5} events in the eastern Mediterranean, *Atmos. Environ.*, 41(18), 3806–3818, 2007a.

Koçak, M., Mihalopoulos, N., and Kubilay, N.: Chemical composition of the fine and coarse fraction of aerosols in the northeastern Mediterranean, *Atmos. Environ.*, 41(34), 7351–7368, 2007b.

Koulouri, E., Saarikoski, S., Theodosi, C., Markaki, Z., Gerasopoulos, E., Kouvarakis, G., Mäkelä, T., Hillamo, R., and Mihalopoulos, N.: Chemical composition and sources of fine and coarse aerosol particles in the Eastern Mediterranean, *Atmos. Environ.*, 42, 26, 6542–6550, 2008.

Kubilay, N., Nickovic, S., Moulin, C., and Dulac, F.: An illustration of the transport and deposition of mineral dust onto the eastern Mediterranean, *Atmos. Environ.*, 34, 1293–1303, 2000.

Lall, R. and Thrurston, G. D.: Identifying and quantifying transported vs. local sources of New York City PM_{2.5} fine particulate matter air pollution, *Atmos. Environ.*, 40, S333–S346, 2006.

Larssen, S., Sluyter, R., and Helmis, C.: Criteria for EUROAIRNET, the EEA air quality moni-

Variability in regional background aerosols within the Mediterranean

X. Querol et al.

Title Page

Abstract

Introduction

Conclusions

References

Tables

Figures

◀

▶

◀

▶

Back

Close

Full Screen / Esc

Printer-friendly Version

Interactive Discussion

- toring and information network, <http://reports.eea.eu.int/TEC12/en>, 1999.
- Lelieveld, J., Berresheim H., Borrmann S., et al.: Global air pollution crossroads over the Mediterranean, *Science*, 298, 794–799, 2002.
- Mamane, Y. and Gottlieb, J.: Nitrate formation on sea salt and mineral particles – a single particle approach, *Atmos. Environ.*, 26A, 1763–1769, 1992.
- Marengo, P., Bonasoni, F., Calzolari, M., Ceriani, M., Chiari, J., and Cristofanelli, P.: Characterization of atmospheric aerosols at Monte Cimone, Italy, during summer 2004: source apportionment and transport mechanisms, *J. Geophys. Res.*, 111, D24202, doi:10.1029/2006JD007145, 2006.
- McClain, C. R., Cleave M. L., Feldman, G. C., Gregg, W. W., Hooker, S. B., and Kuring, N.: Science Quality SeaWiFS Data for Global Biosphere Research, *Sea Technol.*, 39, 10–15, 1998.
- Metzger, S., Mihalopoulos, N., and Lelieveld, J.: Importance of mineral cations and organics in gas-aerosol partitioning of reactive nitrogen compounds: case study based on MINOS results, *Atmos. Chem. Phys.*, 6, 2549–2567, 2006, <http://www.atmos-chem-phys.net/6/2549/2006/>.
- Mihalopoulos, N., Stephanou, E., Kanakidou, M., Pilitsidis, S., and Bousquet, P.: Tropospheric aerosol ionic composition above the Eastern Mediterranean area, *Tellus* 49B, 314–326, 1997.
- Mihalopoulos, N., Kerminen, V. M., Kanakidou, M., Berresheim, H., and Sciare, J.: Formation of particulate sulfur species (sulphate and methanesulfonate) during summer over the Eastern Mediterranean: A modelling approach, *Atmos. Environ.*, 41, 32, 6860–6871, 2007.
- Millán, M., Salvador, R., Mantilla, E., and Kallos, G.: Photo-oxidant dynamics in the Mediterranean basin in summer: results from European research projects, *J. Geophys. Res.*, 102, 8811–8823, 1997.
- Moulin, C., Lambert, E., Dayan, U., Masson, V., Ramonet, M., Bousquet, P., Legrand, M., Balkanski, Y. J., Guelle, W., Marticorena, B., Bergametti, G., and Dulac, F.: Satellite climatology of African dust transport in the Mediterranean atmosphere, *J. Geophys. Res.*, 103, 13137–13144, 1998.
- Pakkanen, T. A., Hillamo, R. E., Aurela, M., Andersen, H. V., Grundahl, L., Ferm, M., Persson, K., Karlsson, V., Reissell, A., Royset, O., Floisand, I., Oyola, P., and Ganko, T.: Nordic intercomparison for measurement of major atmospheric nitrogen species, *J. Aerosol Sci.*, 30, 247–263, 1999.

Variability in regional background aerosols within the Mediterranean

X. Querol et al.

[Title Page](#)[Abstract](#)[Introduction](#)[Conclusions](#)[References](#)[Tables](#)[Figures](#)[⏪](#)[⏩](#)[◀](#)[▶](#)[Back](#)[Close](#)[Full Screen / Esc](#)[Printer-friendly Version](#)[Interactive Discussion](#)

- Peñuelas, J., Llusà, J., and Gimeno, B. S.: Effects of ozone concentrations on biogenic volatile organic compounds emission in the Mediterranean region, *Environ. Pollut.*, 105, 17–23, 1999.
- Pérez, C., Nickovic, S., Pejanovic, G., Baldasano, J. M., and Özsoy, E.: Interactive dust-radiation modelling: a step to improve weather forecasts, *J. Geophys. Res.*, 111, D16206, doi:10.1029/2005JD006717, 2006.
- Pérez, C., Sicard, M., Jorba, O., Comeron, A., and Baldasano, J. M.: Summertime re-circulations of air pollutants over the north-eastern Iberian coast observed from systematic EARLINET lidar measurements in Barcelona, *Atmos. Environ.*, 38, 3983–4000, 2004.
- Pérez, N., Castillo, S., Pey, J., Alastuey, A., Viana, M., and Querol, X.: Interpretation of the variability of regional background aerosols in the Western Mediterranean, *Sci. Total Environ.*, 407, 527–540, 2008.
- Pio, C. A., Legrand, M., Oliveira, T., Afonso, J., Santos, C., Caseiro, A., Fialho, P., Barata, F., Puxbaum, H., Sanchez-Ochoa, A., Kasper-Giebl, A., Gelencsér, A., Preunkert, S., and Schock, M.: Climatology of aerosol composition (organic versus inorganic) at non-urban areas on a West-East transect across Europe, *J. Geophys. Res.*, 112, D23S02, doi:10.1029/2006JD008038, 2007.
- Pope, C. A. and Dockery, D. W.: Health effects of fine particulate air pollution: lines that connect, *J. Air Waste Manage.*, 56(6), 709–742, 2006.
- Putaud, J.-P., Van Dingenen, R., Dell'Acqua, A., Raes, F., Matta, E., Decesari, S., Facchini, M. C., and Fuzzi, S.: Size-segregated aerosol mass closure and chemical composition in Monte Cimone (I) during MINATROC, *Atmos. Chem. Phys.*, 4, 889–902, 2004, <http://www.atmos-chem-phys.net/4/889/2004/>.
- Puxbaum, H., Gomiscek, B., Kalina, M., Bauer, H., Salam, A., Stopper, S., Preining, O., and Hauck, H.: A dual site study of PM_{2.5} and PM₁₀ aerosol chemistry in the larger region of Vienna, Austria, *Atmos. Environ.*, 38, 3949–3958, 2004.
- Querol, X., Alastuey, A., Puigercus, J. A., Mantilla, E., Miro, J. V., Lopez-Soler, A., Plana, F., and Artíñano, B.: Seasonal evolution of suspended particles around a large coal-fired power station: particulate levels and sources, *Atmos. Environ.*, 32, 1963–1978, 1998.
- Querol, X., Alastuey, A., Rodriguez, S., Plana, F., Ruiz, C. R., Cots, N., Massagué, G., and Puig, O.: PM₁₀ and PM_{2.5} source apportionment in the Barcelona Metropolitan Area, Catalonia, Spain, *Atmos. Environ.*, 35, 6407–6419, 2001.
- Querol, X., Alastuey, A., Viana, M. M., Rodríguez, S., Artíñano, B., Salvador, P., Santos, S. G.

Variability in regional background aerosols within the MediterraneanX. Querol et al.

[Title Page](#)[Abstract](#)[Introduction](#)[Conclusions](#)[References](#)[Tables](#)[Figures](#)[⏪](#)[⏩](#)[◀](#)[▶](#)[Back](#)[Close](#)[Full Screen / Esc](#)[Printer-friendly Version](#)[Interactive Discussion](#)

Variability in regional background aerosols within the Mediterranean

X. Querol et al.

[Title Page](#)[Abstract](#)[Introduction](#)[Conclusions](#)[References](#)[Tables](#)[Figures](#)[⏪](#)[⏩](#)[◀](#)[▶](#)[Back](#)[Close](#)[Full Screen / Esc](#)[Printer-friendly Version](#)[Interactive Discussion](#)

- D., Patier, R. F., Ruiz, C. R., Rosa, J. D. L., Campa, A. S. D. L., Menedez, M., and Gil, J. I.: Speciation and origin of PM₁₀ and PM_{2.5} in Spain, *J. Aerosol Sci.*, 35, 1151–1172, 2004.
- Querol, X., Alastuey, A., Moreno, T., Viana, M. M., Castillo, S., Pey, J., Rodríguez, S., Artíñano, B., Salvador, P., Sánchez, M., Garcia Dos Santos, S., Herce Garraleta, M. D., Fernandez-Patier, R., Moreno-Grau, S., Minguillón, M. C., Monfort, E., Sanz, M. J., Palomo-Marín, R., Pinilla-Gil, E., Cuevas, E., De La Rosa, J., and Sanchez De La Campa, A.: Spatial and temporal variations in airborne particulate matter (PM₁₀ and PM_{2.5}) across Spain 1999–2005, *Atmos. Environ.*, 42, 3964–3979, 2008.
- Reid, J. S., Koppmann, R., Eck, T. F., and Eleuterio, D. P.: A review of biomass burning emissions part II: intensive physical properties of biomass burning particles, *Atmos. Chem. Phys.*, 5, 799–825, 2005, <http://www.atmos-chem-phys.net/5/799/2005/>.
- Rodríguez, S., Querol, X., Alastuey, A., Viana, M. M., and Mantilla, E.: Events affecting levels and seasonal evolution of airborne particulate matter concentrations in the Western Mediterranean, *Environ. Sci. Technol.*, 37, 216–222, 2003.
- Rodríguez, S., Querol, X., Alastuey, A., and Mantilla, E.: Origin of high PM₁₀ and TSP concentrations in summer in Eastern Spain, *Atmos. Environ.*, 36, 3101–3112, 2002.
- Rodríguez, S., Querol, X., Alastuey, A., Viana, M. M., Alarcón, M., Mantilla E., and Ruiz, C. R.: Comparative PM₁₀–PM_{2.5} source contribution study at rural, urban and industrial sites during PM episodes in Eastern Spain, *Sci. Total Environ.*, 328, 95–113, 2004.
- Rodwell, M. J. and Hoskins, B. J.: Subtropical anticyclones and summer monsoons, *J. Climate*, 14, 3192–3211, 2001.
- Saliba, N. A., Kouyoumdjian, H., and Roumie, M.: Effect of local and long range transport emissions on the elemental composition of PM_{10–2.5} and PM_{2.5} in Beirut, *Atmos. Environ.*, 41(31), 6497–6509, 2007.
- Sciare, J., Oikonomou, K., Favez, O., Liakakou, E., Markaki, Z., Cachier, H., and Mihalopoulos, N.: Long-term measurements of carbonaceous aerosols in the Eastern Mediterranean: evidence of long-range transport of biomass burning, *Atmos. Chem. Phys.*, 8, 5551–5563, 2008, <http://www.atmos-chem-phys.net/8/5551/2008/>.
- Soriano, C., Baldasano, J. M., Buttler, W. T., and Moore, K.: Circulatory Patterns of Air Pollutants within the Barcelona Air Basin in a Summertime situation: Lidar and Numerical Approaches, *Bound.-Lay. Meteorol.*, 98, 1, 33–55, 2001.
- Spindler, G., Brüggemann, E., Gnauk, T., Grüner, A., Müller, K., Tuch, Th. M., Wallasch, M. B., Wehner, A., and Herrmann, H.: Size-segregated physical and chemical long-time characteri-

zation of particles depending from air mass origin at German lowlands (Saxony, Melpitz site). EMEP Particulate Matter Assessment Report, Part B, Annex A, NILU, report EMEP/CCC-Report 8/2007, ref. O-7726, August 2007, 178–221, 2007.

Szabo, G. Y. and Borbely-Kiss, I.: PIXKLM computer package for PIXE analyses, Nucl. Instrum. Meth B, 75, 123–126., 1993.

Turpin, B. J., Saxena, P., and Andrews, A.: Measuring and simulating particulate organics in the atmosphere: problems and prospects, Atmos. Environ., 34, 2983–3013, 2000.

Vestreng, V., Myhre, G., Fagerli, H., Reis, S., and Tarrasón, L.: Twenty-five years of continuous sulphur dioxide emission reduction in Europe, Atmos. Chem. Phys., 7, 3663–3681, 2007, <http://www.atmos-chem-phys.net/7/3663/2007/>.

Viana, M., Querol, X., Alastuey, A., Cuevas, E., and Rodríguez, S.: Influence of African dust on the levels of atmospheric particulates in the Canary Islands air quality network, Atmos. Environ., 36, 5861–5875, 2002.

Viana, M., Querol, X., Ballester, F., Llop, S., Esplugues, A., Fernández Patier, R., García Dos Santos, S., and Herce, M. D.: Characterising exposure to PM aerosols for an epidemiological study, Atmos. Environ., 42, 1552–1568, 2008a.

Volkamer, R., Jimenez, J. L., San Martini, F., et al.: Secondary organic aerosol formation from anthropogenic air pollution: Rapid and higher than expected, Geophys. Res. Lett., 33, L17811, doi:10.1029/2006GL026899, 2006.

Yin, J. and Harrison, R. M.: Pragmatic mass closure study for PM_{1.0}, PM_{2.5} and PM₁₀ at road-side, urban background and rural sites, Atmos. Environ., 42, 980–988, 2008.

Yttri, K. E.: Concentrations of particulate matter (PM₁₀, PM_{2.5}) in Norway. Annual and seasonal trends and spatial variability. EMEP Particulate Matter Assessment Report, Part B, Annex A, NILU, report EMEP/CCC-Report 8/2007, ref. O-7726, August 2007, 292–307, 2007.

Variability in regional background aerosols within the Mediterranean

X. Querol et al.

Title Page

Abstract

Introduction

Conclusions

References

Tables

Figures

⏪

⏩

◀

▶

Back

Close

Full Screen / Esc

Printer-friendly Version

Interactive Discussion

Variability in regional background aerosols within the Mediterranean

X. Querol et al.

Table 1. Mean annual levels of PM₁₀ and PM_{2.5} components measured at MSY, FKL and ERL and a selection of rural-regional background sites.

Country	Germany			Austria		Switzerland		Finland	Great Britain			Spain				Greece		Turkey				
Site	Melpitz ¹			Streithofen ²		Chaumont ³		Birkenes ⁴	Churchill-P.S. ⁵	Bernantes ⁶	Villar Arzobispo ⁷		Monagrega ⁸	Montseny (this study)		Finokalia (this study)		Erdemli (this study)				
Period	2004–2006			1999–2000		2004		2004	2005–2006		2001		2004–2005		1999–2000	2004–2007	2002–2007		2004–2006		2001–2002	
n	153	153	153			104	78			87	45	72	72	112	351	239	86	86	281	281		
fraction	PM ₁₀	PM _{2.5}	PM ₁	PM ₁₀	PM _{2.5}	PM ₁₀	PM _{2.5}	PM ₁₀	PM ₁₀	PM ₁₀	PM _{2.5}	PM ₁₀	PM _{2.5}	PM ₁₀	PM ₁₀	PM _{2.5}	PM ₁₀	PM ₁	PM ₁₀	PM _{2.5}		
PM	20.5	16.1	12.2	23.7	18.1	10.8	7.7	5.4	19.0	18.9	13.5	21.0	18.0	22.0	16.3	13.6	36.0	12.0	36.4	9.7		
Mineral	1.1	0.7	0.5			1.6	0.7	0.1	1.0	2.5	1.5	7.3	5.2	5.8	3.6	1.1	14.1	1.7	9.2	1.4		
Sea spray	0.5	0.2	0.1	0.3	0.2	0.2	0.1	0.8	2.0	2.4	0.9	0.6	0.4	0.6	0.5	0.2	2.9	0.1	8.9	0.4		
SO ₄ ²⁻	3.1	2.8	2.3	3.9	3.3	2.0	2.3	1.1	2.8	3.0	2.9	2.3	2.5	3.8	2.6	2.9	5.5	4.4	5.0	3.4		
NO ₃ ⁻	3.4	2.8	2.0	4.1	2.9	0.8	0.6	0.4	3.2	0.9	0.4	1.4	1.3	2.2	1.7	1.3	1.7	0.1	1.9	0.3		
NH ₄ ⁺	2.0	1.8	1.4	2.6	2.1	0.8	0.8	0.8	1.3	1.3	1.2	1.1	1.2	1.3	0.9	1.2	1.6	1.4	0.9	0.9		
SIA	8.6	7.4	5.7	10.6	8.3	3.6	3.7	2.2	7.3	5.2	4.5	4.8	5	7.3	5.2	5.3	8.8	5.9	7.7	4.6		
OC				4.3	3.0	1.7*	1.6*	0.9	3.6					1.7	2.1	2.1	2.9	1.8				
EC				2.0**	1.8	0.6	0.4	0.1	1					0.6	0.2	0.2	0.4	0.3				
OM+EC [#]	6.4	4.5	3.6	11.0	8.1	2.3	2.0	2.0	8.6	4.5	4.0	2.4	2.8	4.2	4.6	4.6	6.5	4.1				
Unacc.	4	3	2	2	2	3	1	<1	<1	4	3	6	5	4	2	2	4	<1				

¹ Spindler et al. (2007); ² Puxbaum et al. (2004); ³ Hueglin et al. (2005); ⁴ Yttri (2007); ⁵ Yin and Harrison (2008); ⁶ Salvador et al. (2007); ⁷ Viana et al. (2008); ⁸ Rodríguez et al. (2004). SIA: secondary inorganic aerosols; OM+EC: organic matter+elemental carbon; Unacc.: unaccounted PM mass [#] OM=OC*2.1 (Turpin et al., 2000); * OM values instead of OC; ** BC values instead of EC.

Table 2. Mean levels of trace elements analyzed in PM₁₀ and PM_{2.5} at MSY, FKL and ERL and a selection of rural-regional background sites.

	USA		Austria			Switzerland		Italy		Spain				Greece		Turkey														
	Sterling Forest ¹	PM _{2.5}	Streithofen ²	PM ₁₀	PM _{2.5}	Payerne ³	PM ₁₀	PM _{2.5}	Chaumont ³	PM ₁₀	PM _{2.5}	Mt Cimone ⁴	PM ₁₀	PM _{2.5}	Bernantes ⁵	PM ₁₀	PM _{2.5}	Villar Arzobispo ⁵	PM ₁₀	PM _{2.5}	Monagrega ⁷	PM ₁₀	PM _{2.5}	Montseny	PM ₁₀	PM _{2.5}	FKL	PM ₁₀	PM _{2.5}	ERL ⁸
Li															0.1	0.1	0.3	0.2							0.2	0.1				
V	3		1	1		1	1	1	3			5	4	3	3			2	4	3	8	5	9	5						
Cr			0.5	0.3								1	1	2.1	2			1	1	0.9	9	3	5.7	1.8						
Mn	1		4	2		3	2	1	6			5	3	4	3			5	5	3	12	2	8	2						
Co			0.004	0.003											0.1	0.2	0.1	0.1							0.1	0.1				
Ni	4		1	0		1	1	1	1			3	4	3	4										2	2	4	2	4	2
Cu	1		4	2		6	7	6	3			8	9	2	1			3	5						3	2				
Ga						0.03	0.04	0.02							0.2	0.1	0.07	0.07							0.1	0.1				
As			0.7	0.5		0.5	0.2	0.2							0.4	0.3	0.2	0.3							0.3	0.3				
Zn	9		27	17					10	6		16	17	11	12			30	12						29	12	10	5		
Se	1.0					0.2	0.2	0.2				0.5	0.4	0.3	0.4										0.3	0.2				
Sr	1								3			1	1	1	1			5	2	1										
Ba	0											6	5	4	5										6	4				
Pb	2		17	12		10	5	5	4	2		8	7	5	6			10	4	5	9	6								
Rb						0.3	0.3	0.2				1	0.5	0.5	0.5										0.5	0.2				
Y						0.04	0.04	0.01				0.1	0.1	0.07	0.05										0.1	0.1				
Cd			0.3	0.2		0.3	0.1	0.1				0.2	0.2	0.1	0.1										0.1	0.1				
Sb						0.3	0.2	0.2				0.6	0.4	0.4	0.3										0.5	0.4				
La						0.1	0.1	0.2				0.1	0.1	0.1	0.1										0.2	0.1				
Ce												0.2	0.2	0.2	0.2										0.4	0.2				
Tl						0.03	0.01	0.01				0.1	0.1	0.1	0.2										0.1	0.1				
Sn												0.5	0.4	0.4	1										1	1				

¹ Lall and Thurston (2006); ² Puxbaum et al. (2004); ³ Hueglin et al. (2005); ⁴ Marengo et al. (2006); ⁵ Salvador et al. (2007); ⁶ Viana et al. (2008);

⁷ Rodriguez et al. (2004)

Variability in regional background aerosols within the Mediterranean

X. Querol et al.

Title Page

Abstract

Introduction

Conclusions

References

Tables

Figures

⏪

⏩

◀

▶

Back

Close

Full Screen / Esc

Printer-friendly Version

Interactive Discussion

Variability in regional background aerosols within the Mediterranean

X. Querol et al.

Table 3. PM₁₀, PM_{2.5} and PM₁ levels for the main scenarios occurring at MSY, FKL and ERL. NAF, African dust outbreaks; EU, EUW, EUE, European air mass transport (total, Western and Eastern Europe); MED, Mediterranean air mass transport; WAE, winter anticyclonic episodes; ATL, Atlantic advective conditions; SE, Middle East and Arabian air mass transport; REG, regional re-circulations.

	$\mu\text{g}/\text{m}^3$	NAF	EU	EUW	EUE	MED	WAE	ATL	SE	REG
MSY	PM ₁₀	24	16			13	19	13		20
	PM _{2.5}	16	13			11	16	11		15
	PM ₁	12	11			9	14	9		12
FKL	PM ₁₀	54		19	21	21				19
ERL	PM ₁₀	51		34	40	30			56	33
	PM _{2.5}	10		10	9	8			8	11

Title Page

Abstract

Introduction

Conclusions

References

Tables

Figures

◀

▶

◀

▶

Back

Close

Full Screen / Esc

Printer-friendly Version

Interactive Discussion

Table 4. Annual frequency, PM₁₀, PM_{2.5} and PM₁ levels and PM₁₀, PM_{2.5} or PM₁ composition (in %) for the main scenarios occurring at MSY. FKL and ERL. NAF African dust outbreaks; WAE, winter anticyclonic episodes; REG, regional re-circulations, EU, European air mass transport (EUW, from Western Europe; EUE, from Eastern Europe) MED, Mediterranean air mass transport; ATL, Atlantic advective conditions; SE, South Eastern air mass transport.

MSY	NAF	WAE	REG	EU	MED	ATL	FKL	NAF	EUW	EUE	MED	ERL	NAF	EUW	EUE	MED	SE	REG
=Annual frequency =(% days/year)	12–24	7–15	14–20	8–17	2–7	39–53		16	36	28	14		8	5	8	7	10	62
$\mu\text{g PM}_{10}/\text{m}^3$	26	20	18	13	13	13	$\mu\text{g PM}_{10}/\text{m}^3$ (from VI)	98	25	28	26	$\mu\text{g PM}_{10}/\text{m}^3$	51	34	40	30	56	33
OM (%)	16	23	22	22	23	24	OM (%)	8	21	15	20	OM (%)						
EC (%)	1	2	1	1	2	2	EC (%)	0.4	2	1	2	EC (%)						
SO_4^{2-} (%)	14	14	20	14	17	15	SO_4^{2-} (%)	5	23	21	17	SO_4^{2-} (%)	8	10	8	10	5	15
NO_3^- (%)	6	22	5	10	9	12	NO_3^- (%)	2	6	7	7	NO_3^- (%)	3	4	4	3	2	6
NH_4^+ (%)	4	8	6	6	5	6	NH_4^+ (%)	1	7	6	5	NH_4^+ (%)	2	2	1	2	1	3
Mineral (%)	40	16	22	14	23	22	Mineral (%)	62	22	15	26	Mineral (%)	50	24	28	30	21	31
Sea S. (%)	2	2	3	3	3	4	Sea S. (%)	4	9	13	10	Sea S. (%)	28	26	30	30	47	28
SIC (%)	24	44	30	30	31	34	SIC (%)	8	36	34	29	SIC (%)	13	16	13	15	8	24
Unacc. (%)	17	14	21	31	18	17	Unacc. (%)	17.6	10	22	13	Unacc. (%)	8	34	28	21	24	16
$\mu\text{g PM}_{2.5}/\text{m}^3$	17	16	15	12	10	11	$\mu\text{g PM}_{2.5}/\text{m}^3$ (from VI)	13	12	13	9	$\mu\text{g PM}_{2.5}/\text{m}^3$	10	10	9	8	8	11
OM (%)	25	23	26	29	29	29	OM (%)	17	31	23	35	OM (%)						
EC (%)	1	1	1	2	1	2	EC (%)	2	2	2	3	EC (%)						
SO_4^{2-} (%)	21	18	27	19	21	20	SO_4^{2-} (%)	22	39	37	38	SO_4^{2-} (%)	29	27	28	35	25	39
NO_3^- (%)	4	21	2	12	6	9	NO_3^- (%)	1	1	1	1	NO_3^- (%)	2	3	2	4	2	3
NH_4^+ (%)	7	11	9	10	6	8	NH_4^+ (%)	7	13	12	13	NH_4^+ (%)	8	8	7	9	5	10
Mineral (%)	17	5	8	5	15	9	Mineral (%)	28	4	4	11	Mineral (%)	28	10	21	26	20	15
Sea S. (%)	1	2	2	2	2	2	Sea S. (%)	1	1	1	1	Sea S. (%)	10	8	7	13	17	12
SIC (%)	32	44	37	41	33	37	SIC (%)	30	53	50	51	SIC (%)	39	38	37	48	32	52
Unacc. (%)	24	20	25	22	19	22	Unacc. (%)	21	9	20	0	Unacc. (%)	23	45	35	14	31	21
$\mu\text{g PM}_1/\text{m}^3$	12	14	12	11	9	9												

Variability in regional background aerosols within the Mediterranean

X. Querol et al.

Title Page

Abstract

Introduction

Conclusions

References

Tables

Figures

⏪

⏩

◀

▶

Back

Close

Full Screen / Esc

Printer-friendly Version

Interactive Discussion

Variability in regional background aerosols within the Mediterranean

X. Querol et al.

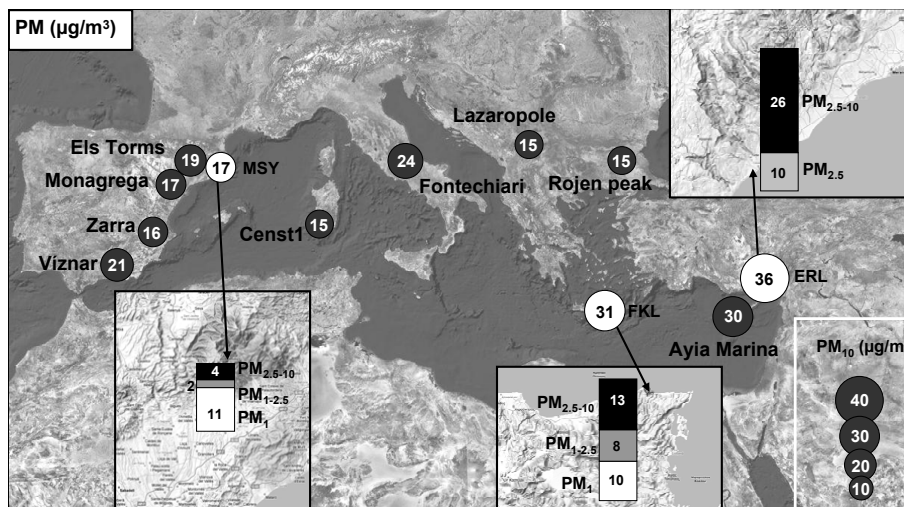


Fig. 1. Location of the monitoring sites over the Mediterranean Basin. Mean annual PM_{10} , $\text{PM}_{1-2.5}$ and $\text{PM}_{2.5-10}$ levels ($\mu\text{g}/\text{m}^3$) at MSY, FKL and ERL. Mean annual PM_{10} levels at other regional background monitoring sites across the Mediterranean Basin. White circles show data from this study, shadowed circles show data from Airbase.

Title Page

Abstract

Introduction

Conclusions

References

Tables

Figures

⏪

⏩

◀

▶

Back

Close

Full Screen / Esc

Printer-friendly Version

Interactive Discussion

Variability in regional background aerosols within the Mediterranean

X. Querol et al.

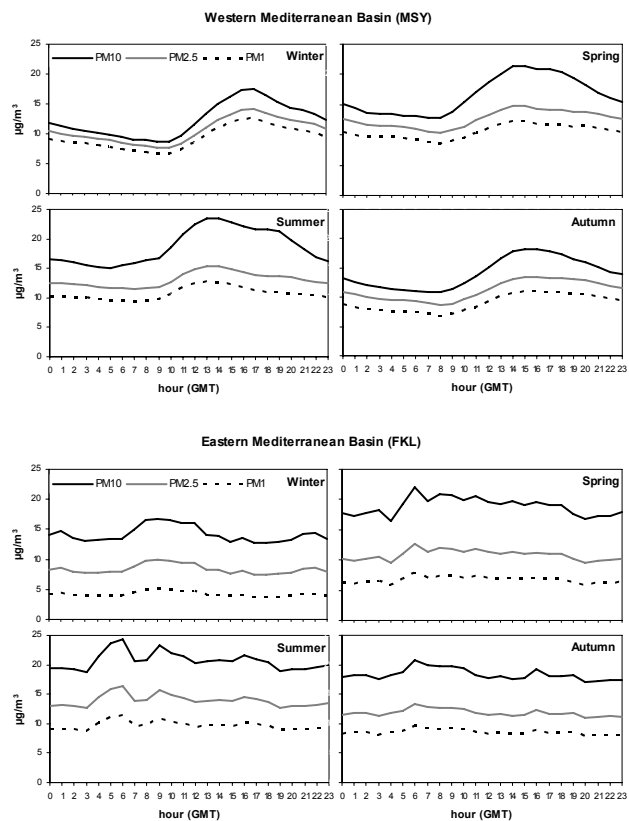


Fig. 2. Mean seasonal daily evolution of PM_{10} , $\text{PM}_{2.5}$ and PM_1 levels in the WMB (MSY) and EMB (FKL).

[Title Page](#)[Abstract](#)[Introduction](#)[Conclusions](#)[References](#)[Tables](#)[Figures](#)[◀](#)[▶](#)[◀](#)[▶](#)[Back](#)[Close](#)[Full Screen / Esc](#)[Printer-friendly Version](#)[Interactive Discussion](#)

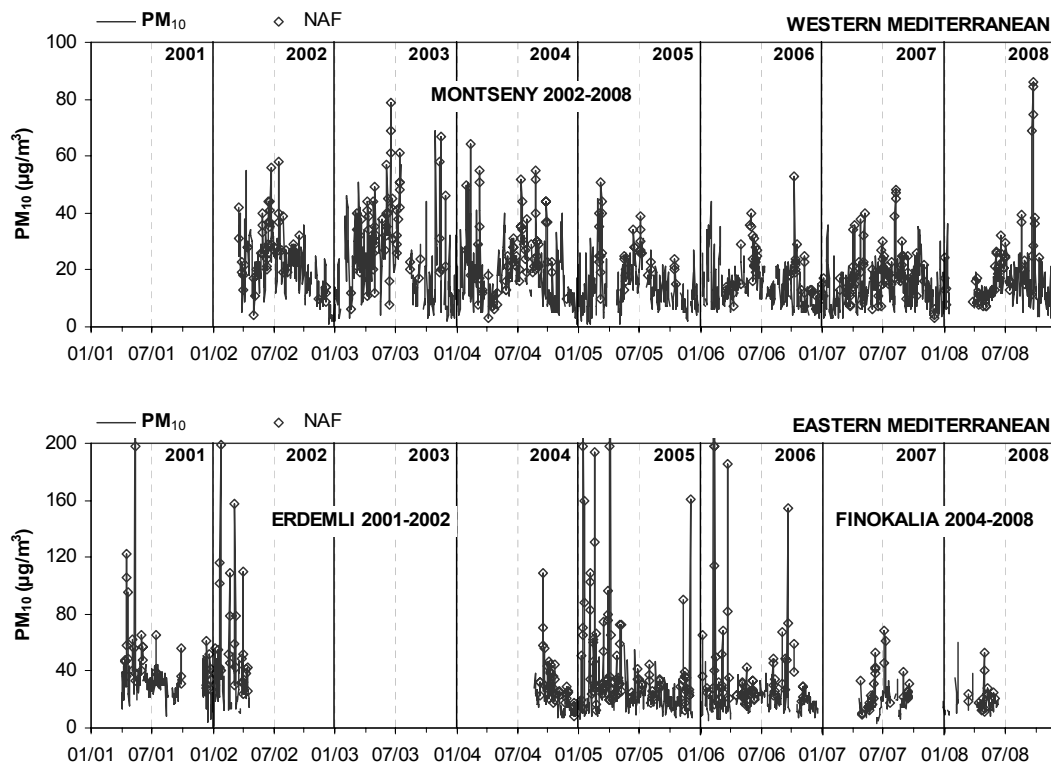


Fig. 3. Mean daily PM₁₀ levels from 2001 to 2008 at Montseny (WMB), and Erdemli and Finokalia (EMB). African dust episodes are indicated with unfilled rhombus.

Variability in regional background aerosols within the Mediterranean

X. Querol et al.

Title Page

Abstract

Introduction

Conclusions

References

Tables

Figures

◀

▶

◀

▶

Back

Close

Full Screen / Esc

Printer-friendly Version

Interactive Discussion

Variability in regional background aerosols within the Mediterranean

X. Querol et al.

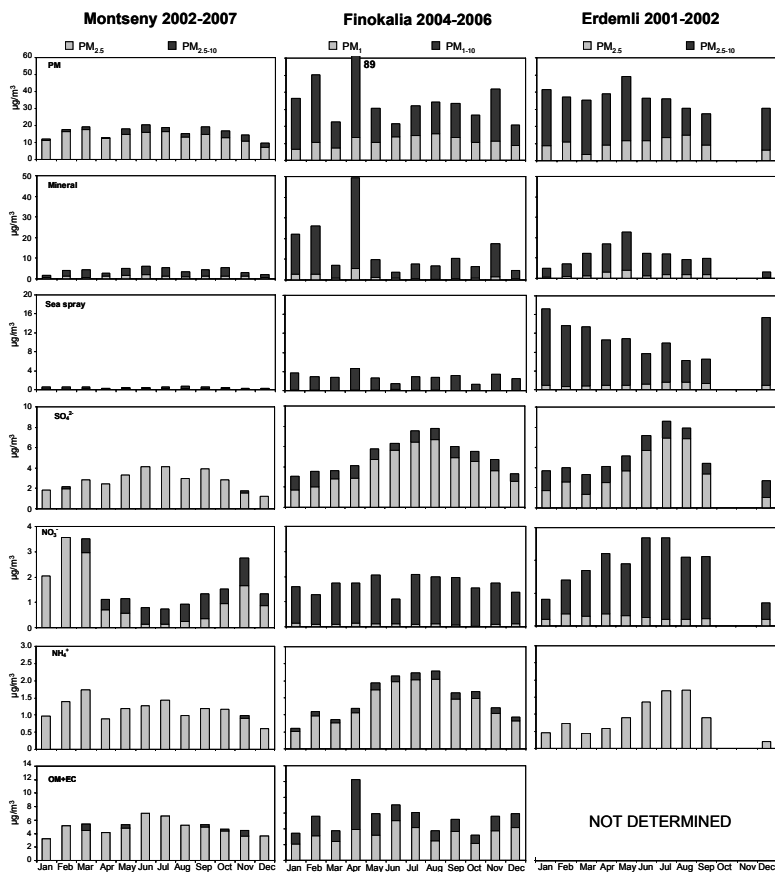


Fig. 4. Seasonal evolution of PM mass concentration and its major species (mineral dust, sea spray, sulphate, nitrate, ammonium and organic matter+elemental carbon) in PM_1 or $\text{PM}_{2.5}$ and PM_{1-10} or $\text{PM}_{2.5-10}$ at Montseny, Finokalia and Erdemli.

Title Page

Abstract

Introduction

Conclusions

References

Tables

Figures

◀

▶

◀

▶

Back

Close

Full Screen / Esc

Printer-friendly Version

Interactive Discussion

Variability in regional background aerosols within the Mediterranean

X. Querol et al.

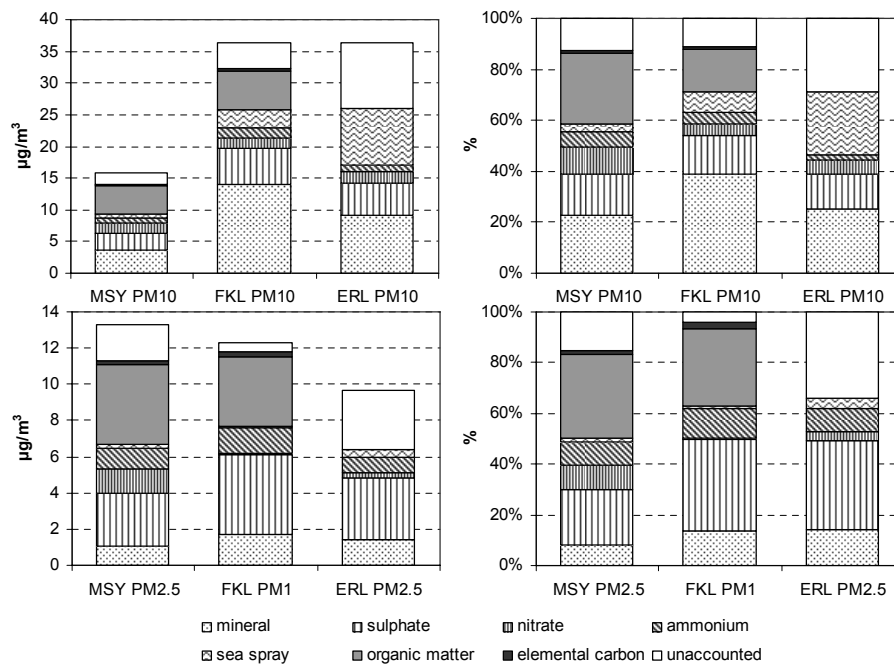


Fig. 5. PM major composition ($\mu\text{g}/\text{m}^3$ and %) at Montseny (MSY), Finokalia (FKL) and Erdemli (ERL) in PM₁₀, PM_{2.5} and PM₁.

Title Page

Abstract

Introduction

Conclusions

References

Tables

Figures

◀

▶

◀

▶

Back

Close

Full Screen / Esc

Printer-friendly Version

Interactive Discussion