

Modelling of cirrus clouds – Part 2: Competition of different nucleation mechanisms

P. Spichtinger¹ and K. M. Gierens²

¹Institute for Atmospheric and Climate Science, ETH Zurich, 8092 Zurich, Switzerland

²Deutsches Zentrum für Luft- und Raumfahrt, Institut für Physik der Atmosphäre,
Oberpfaffenhofen, Germany

Received: 4 March 2008 – Accepted: 9 April 2008 – Published: 20 May 2008

Correspondence to: P. Spichtinger (peter.spichtinger@env.ethz.ch)

Published by Copernicus Publications on behalf of the European Geosciences Union.

Modelling Cirrus Clouds – Part 2

P. Spichtinger and
K. M. Gierens

Title Page

Abstract

Introduction

Conclusions

References

Tables

Figures

◀

▶

◀

▶

Back

Close

Full Screen / Esc

Printer-friendly Version

Interactive Discussion



Abstract

We study the competition of two different freezing mechanisms (homogeneous and heterogeneous freezing) in the same environment for cold cirrus clouds. To this goal we use the recently developed and validated ice microphysics scheme (Spichtinger and Gierens, 2008, henceforth “Part 1”) which distinguishes between ice classes according to their formation process. We investigate cases with purely homogeneous ice formation and compare them with cases where background ice nuclei in varying concentration heterogeneously form ice prior to homogeneous nucleation. We perform additionally a couple of sensitivity studies regarding threshold humidity for heterogeneous freezing, uplift speed, and ambient temperature, and we study the influence of random motions induced by temperature fluctuations in the clouds. We find three types of cloud evolution, homogeneously dominated, heterogeneously dominated, and a mixed type where neither nucleation process dominates. The latter case is prone to long-lasting in-cloud ice supersaturation of the order 30% and more.

1 Introduction

Cirrus clouds are like other clouds important modulators of the radiation budget of the Earth-atmosphere system. However, the mean impact of cirrus on Earth’s climate is still unclear, although a net warming seems probable (Chen et al., 2000). A recent study (Fusina et al., 2007) on the radiative impact of thin midlatitude cirrus clouds shows that the transition from a net warming to a net cooling depends crucially on the number density of ice crystals, which in turn depends sensitively on cooling rates (Haag and Kärcher, 2004) and the ice crystal formation mechanism.

There are two classes of ice formation mechanisms in the low temperature range ($T < -38^\circ\text{C}$), namely heterogeneous nucleation and homogeneous freezing of solution droplets (for a definition of these notions see Vali, 1985). While homogeneous freezing requires ice-supersaturation in excess of 45% (Koop et al., 2000), many kinds of

Modelling Cirrus Clouds – Part 2

P. Spichtinger and
K. M. Gierens

Title Page

Abstract

Introduction

Conclusions

References

Tables

Figures



Back

Close

Full Screen / Esc

Printer-friendly Version

Interactive Discussion



heterogenous ice nuclei allow ice generation at lower supersaturation thresholds (see e.g. [DeMott et al., 2003](#); [Möhler et al., 2006](#)). However, suitable ice nuclei are rare in the upper troposphere, so that it is generally believed that homogeneous nucleation is the dominant pathway for formation of cold cirrus clouds ([Sassen and Dodd, 1989](#); [Heymsfield and Sabin, 1989](#); [Kärcher and Ström, 2003](#)). While this may be so, simulations indicate that heterogeneous nucleation can influence the formation of cirrus clouds significantly ([Sassen and Benson, 2000](#); [Khvorostyanov and Curry, 2005](#); [DeMott et al., 1997](#)). Boxmodel studies ([Gierens, 2003](#); [Ren and Mackenzie, 2005](#); [Liu and Penner, 2005](#)) even suggest that heterogeneous nucleation can suppress homogeneous nucleation if enough heterogeneous ice nuclei are available and the vertical velocity is below some threshold depending on environmental conditions. Of course, the boxmodel results might be extreme in a sense, because sedimentation is not represented and both nucleation mechanisms are assumed to occur in the same air parcel. This might be different in an extended cirrus cloud, which is the reason that we intend to study the competition of the two ice formation mechanisms in a cloud resolving model.

For that purpose we use the recently developed ice microphysics scheme ([Spichtinger and Gierens, 2008](#), henceforth Part 1) within the framework of the anelastic non-hydrostatic model EULAG to investigate the competition of two different nucleation processes within the same environment. The present paper is intended to be a process study, hence we perform simulations of idealistic cases, which yet are representative for mid latitude cirrus cloud formation. A similar study by [Khvorostyanov et al. \(2006\)](#) was focussed on thin tropical cirrus clouds.

The article is structured as follows: In Sect. 2 we briefly describe our model, for more details we refer to Part 1. In Sect. 3 we present the general setup for our simulations. Results of reference cases and sensitivity studies are presented and discussed in Sect. 4. Finally, conclusions are drawn in Sect. 5.

Modelling Cirrus Clouds – Part 2P. Spichtinger and
K. M. Gierens[Title Page](#)[Abstract](#)[Introduction](#)[Conclusions](#)[References](#)[Tables](#)[Figures](#)[◀](#)[▶](#)[◀](#)[▶](#)[Back](#)[Close](#)[Full Screen / Esc](#)[Printer-friendly Version](#)[Interactive Discussion](#)

2 Model description

We now briefly describe the model used in this study, for details we refer to Part 1 and the quoted references. We use the anelastic non-hydrostatic model EULAG (see e.g. [Smolarkiewicz and Margolin, 1997](#)); the dry anelastic equations solved in the model are presented in ([Smolarkiewicz et al., 2001](#); [Grabowski and Smolarkiewicz, 2002](#), and Part 1). For coupling the dry equations with the ice microphysics, i.e. the moist thermodynamics, we use the concept of the density potential temperature (see e.g. [Emanuel, 1994](#); [Grabowski and Smolarkiewicz, 2002](#), and Part 1). This leads to new equations (Eqs. 5 and 6 in Part 1) which are solved by the model.

We use a double moment bulk microphysics scheme, i.e. number and mass concentrations are prognostic variables. Crystal masses (and sizes) are assumed to obey log-normal distributions with temporally varying mean mass and width. Crystal shapes are droxtals (aspect ratio 1) up to a diameter of $7.42 \mu\text{m}$ and columns with size dependent aspect ratio for larger sizes. An arbitrary number of ice classes can be treated by the scheme. Each ice class is dual to an aerosol type that nucleates the ice class, hence ice classes are distinguished by their formation mechanism (e.g. heterogeneously vs. homogeneously formed ice). The aerosol types are described by their number and mass concentration as well.

The following processes for cold cirrus clouds are parameterized in our ice microphysics: nucleation (homogeneous/heterogeneous), diffusional growth/evaporation, and sedimentation. We have not included aggregation of ice crystals yet, which is a process of minor importance in cold cirrus clouds ($T < -38^\circ\text{C}$) where small ice crystals with low terminal velocities predominate ([Kajikawa and Heymsfield, 1989](#)). For the parameterisation of homogeneous freezing of aqueous solution droplets we assume sulphuric acid solution droplets as the background aerosol with lognormally distributed mass of the acid (the water content is computed with the Koehler equation). Freezing rates are calculated using the water activity based, temperature dependent parametrization of [Koop et al. \(2000\)](#). Heterogeneous nucleation needs the presence

Modelling Cirrus Clouds – Part 2

P. Spichtinger and
K. M. Gierens

Title Page

Abstract

Introduction

Conclusions

References

Tables

Figures

◀

▶

◀

▶

Back

Close

Full Screen / Esc

Printer-friendly Version

Interactive Discussion



**Modelling Cirrus
Clouds – Part 2**P. Spichtinger and
K. M. Gierens

Title Page

Abstract

Introduction

Conclusions

References

Tables

Figures

◀

▶

◀

▶

Back

Close

Full Screen / Esc

Printer-friendly Version

Interactive Discussion



of solid particle surfaces on which the ice germs can form. There are a number of different mechanisms, but for our purpose these details are unimportant, since our question is: what happens to homogeneous nucleation and the cloud evolution when a number of ice crystals is already formed by *any* mechanism at a lower relative humidity threshold. For this purpose we can apply a very simple parameterisation: We assume that there is a special aerosol type that nucleates into ice at a certain relative humidity $\text{RH}_{i,\text{het}}$, that is, at $\text{RH}_{i,\text{het}}$ all particles of that aerosol type become ice crystals of the corresponding class. Eventually, upon evaporation of these crystals the aerosol particles are released back to the atmosphere.

For parameterising the diffusional growth or evaporation of single ice crystals we use a modified Koenig ansatz (Koenig, 1971) with corrections for small crystals and ventilation. This new approximation depending on ice crystal mass, temperature, pressure and supersaturation only, allows us to determine the growth rate very accurately without solving the growth equation. This approach is applied to the bulk variable, i.e. the ice water content. For the evaporation of ice crystals, both the ice mass concentration and number concentration decrease in relative proportion as described in Part 1. To simulate sedimentation we use mass and number weighted terminal velocities, respectively, with parameterisations for single crystals from Heymsfield and Iaquinta (2000).

3 Setup

We use the following setup for our simulations: The whole 2-D model domain ($0 \leq x \leq 6.3$ km, $4 \leq z \leq 13$ km) is lifted up adiabatically with a constant updraught velocity w which is equivalent to a constant cooling rate dT/dt for the background temperature profile T_θ . For the reference case we use $w=0.06$ m s⁻¹, for sensitivity studies we set this variable to $w=0.04, 0.08$ m s⁻¹. We use a horizontal resolution of $\Delta x=100$ m with a horizontal extension of 6.3 km, cyclic boundary conditions in x-direction, a vertical resolution of $\Delta z=10$ m and a dynamical timestep of $\Delta t=1$ s. According to our findings in Part 1 this time step is sufficient because of the small vertical velocities.

**Modelling Cirrus
Clouds – Part 2**P. Spichtinger and
K. M. Gierens

Title Page

Abstract

Introduction

Conclusions

References

Tables

Figures

◀

▶

◀

▶

Back

Close

Full Screen / Esc

Printer-friendly Version

Interactive Discussion



The total simulation time is $t_s=300$ min for all simulations which is at the lower end of the synoptic range. The maximum vertical uplift of a layer in our simulation would be $\Delta z=5 \cdot 3600 \text{ s} \cdot 0.08 \text{ m s}^{-1}=1440 \text{ m}$ which is a reasonable value comparable to the typical uplift, e.g. in a warm conveyor belt (see e.g. [Spichtinger et al., 2005](#)).

5 We investigate the competition of different nucleation mechanisms by assuming two classes of ice, one formed by homogeneous nucleation (class 1) and one formed by heterogeneous nucleation (class 2). The background aerosol of class 1, sulphuric acid solution, is assumed to have a lognormal size distribution (size of the pure acid when it would form a sphere) with a geometrical standard deviation of $\sigma_r=1.4$, a geometric mean radius of $r_a=25$ nm and a number concentration of $n_{a,1}=N_{a,1}\rho=300 \text{ cm}^{-3}$. For all simulations in this study we use this setup for the aerosol of class 1.

The background aerosol of class 2 varies by number concentration and by its threshold supersaturation for ice initiation since these are the ingredients of our sensitivity studies. Since all aerosol particles form ice at one and the same RHi, their size distribution is irrelevant for these simulations. New ice crystals are assumed to have initial mass of $m=10^{-15}$ kg, which is equivalent to an initial diameter of $L=D=1.2 \mu\text{m}$. We vary the IN number concentrations in the range $n_{a,2}=0/2/5/8/10/20/50 \text{ L}^{-1}$. The relative humidity threshold is set to $\text{RHi}_{\text{het}}=130\%$ in the reference case; sensitivity studies will be performed with thresholds $110 \leq \text{RHi}_{\text{het}} \leq 140\%$.

20 In Fig. 1 the initial vertical profiles of the meteorological variables for the reference simulation are shown.

The vertical profiles of potential temperature have been determined by [Clark and Farley \(1984\)](#) such that a constant Brunt–Vaisala frequency of $N=0.0094 \text{ s}^{-1}$ results for the whole model domain; this results into an almost linear temperature profile. The initial vertical profiles of pressure, temperature and potential temperature are the same for all simulations. In the upper part of the model domain we prescribe an ice supersaturated layer with $\text{RHi}=105\%$ and a vertical depth of $\Delta z=1$ km. This depth is on the lower end of typical vertical extensions for cirrus clouds (see e.g. [Mace et al., 2006](#)) but is still in the typical range for an extratropical cirrus cloud and an ice–

supersaturated layer (Spichtinger et al., 2003). For the reference cases the layer is located between 9.5 km and 10.5 km, while for sensitivity studies we also consider a higher ($10.5 \leq z_{\text{ISSR}} \leq 11.5$ km), hence colder, and a lower, hence warmer, layer ($8.5 \leq z_{\text{ISSR}} \leq 9.5$ km).

4 Discussion of results

We first describe the results of the reference cases, which have constant vertical updraught of $w=0.06 \text{ m s}^{-1}$ without fluctuations (making the simulation quasi 1-D). The ISSR initially covers the vertical range $9500 \leq z \leq 10500$ m. The background aerosol concentration (heterogeneous IN) is varied in the range $n_{a,2}=0/2/5/8/10/20/50 \text{ L}^{-1}$. Then we study several sensitivities, e.g. using ISSRs at different altitudes or temperatures (Sect. 4.4), using different updraught velocities (Sect. 4.3), using different thresholds for heterogeneous nucleation (Sect. 4.2) and finally using full 2-D simulations with temperature (and velocity) fluctuations superimposed (Sect. 4.5).

4.1 Reference experiments

Figure 2 shows the evolution of a cirrus cloud when it is unaffected by heterogeneous ice nuclei, that is, when only homogeneous nucleation occurs.

The cloud appears almost simultaneously throughout the depth of the ISSR at $t_s \sim 100$ min. Due to the growth of the ice crystals excess vapour within the cloud is consumed quickly, and the supersaturation gets reduced close to saturation at about $t_s = 130$ min. Sedimentation together with the ongoing cooling leads to persistent supersaturation at the upper edge of the cirrus which periodically becomes high enough to trigger another nucleation pulse (cf. Part 1). The falling ice crystals formed in the permanent nucleation zone at cloud top act as an efficient sink for water vapour in the lower cloud regions, where in spite of the ongoing cooling the relative humidity is maintained at saturation due to the growth of the falling ice crystals.

Modelling Cirrus Clouds – Part 2

P. Spichtinger and
K. M. Gierens

Title Page

Abstract

Introduction

Conclusions

References

Tables

Figures

◀

▶

◀

▶

Back

Close

Full Screen / Esc

Printer-friendly Version

Interactive Discussion



When heterogeneous ice nuclei are present in the ISSR, cloud evolution changes significantly. Now, the first crystals form by heterogeneous nucleation at $t_s \sim 60$ min. These ice crystals find a highly supersaturated environment with much less competition for the excess vapour than ice crystals formed homogeneously, because of the low number concentration of IN. Thus they rapidly grow and start to fall which causes a vertical concentration gradient of ice in the ISSR, i.e. more ice at ISSR base than at its top. Thus the rate at which excess vapour is consumed due to ice growth decreases with altitude in the ISSR and the originally rectangular humidity profile gets more and more tilted with values increasing with altitude before homogeneous nucleation sets in. The tilting is additionally supported by the temperature dependent growth of ice crystals. The change of the RH_i profile is the stronger the more IN are present (see Fig. 3) and it affects the homogeneous nucleation event and the later cloud evolution. While homogeneous nucleation takes place over the whole depth of the ISSR when no IN are present, the inclusion of more and more IN confines the region where homogeneous nucleation can occur more and more to the cloud top.

Figure 4 shows the evolution of the cloud with varying numbers of IN; it can be compared to Fig. 2 which shows the case without IN. An IN number concentration of $n_a = 5 \text{ L}^{-1}$ does not yet affect much the structure of the cirrus; the heterogeneously formed ice crystals are not sufficient to halt the increase of supersaturation within the cloud. Hence homogeneous nucleation still occurs throughout the supersaturated layer, but with a delay of about 30 min between cloud top and base, as explained above. Enough ice crystals form homogeneously to reduce the relative humidity almost to saturation. The steady state relative humidity wrt ice inside the cloud at $t_s = 180$ min is slightly higher ($\sim 110\%$) in this case than in the case without heterogeneous ice nuclei ($\sim 105\%$), because slightly less ice crystals are produced (homogeneously) in this case than in the case without IN. The slight reduction of the number of homogeneously formed crystals is a consequence of the reduced rate at which supersaturation increases at the nucleation threshold. This implies a smaller overshooting of RH_i over the threshold, hence less ice crystals.

**Modelling Cirrus
Clouds – Part 2**P. Spichtinger and
K. M. Gierens[Title Page](#)[Abstract](#)[Introduction](#)[Conclusions](#)[References](#)[Tables](#)[Figures](#)[◀](#)[▶](#)[◀](#)[▶](#)[Back](#)[Close](#)[Full Screen / Esc](#)[Printer-friendly Version](#)[Interactive Discussion](#)

**Modelling Cirrus
Clouds – Part 2**P. Spichtinger and
K. M. Gierens[Title Page](#)[Abstract](#)[Introduction](#)[Conclusions](#)[References](#)[Tables](#)[Figures](#)[◀](#)[▶](#)[◀](#)[▶](#)[Back](#)[Close](#)[Full Screen / Esc](#)[Printer-friendly Version](#)[Interactive Discussion](#)

By further increasing the IN concentration to 10 L^{-1} , more ice crystals are formed heterogeneously which consume more vapour than in the preceding case. Accordingly, the rate at which supersaturation increases further in the cloud is lower than before, such that the overshooting over the homogeneous threshold is flattened, and homogeneous nucleation produces less crystals. Because the concentration of heterogeneously formed crystals increases with depth in the cloud due to sedimentation, the increase of supersaturation in the lower half of the cloud is inhibited so much that the threshold for homogeneous freezing is not reached anymore. Hence homogeneous nucleation is confined to the upper half of the cloud. Although the concentration of heterogeneous ice crystals is high enough to inhibit homogeneous nucleation in the lower part of the cloud, it is not sufficient to deplete the excess vapour down to saturation at the cloud bottom, also because these crystals quickly fall out of the supersaturated layer. In contrast, homogeneous nucleation in the upper cloud part still produces a sufficient number of crystals that effectively use up the excess vapour. Hence the cloud obtains a two-layer structure with high ice number density and RH_i close to saturation in the upper layer and low ice number density but persistent supersaturation in the lower layer. The persistent supersaturation is only depleted later (after, say, 4 h) when enough homogeneously formed ice crystals have fallen into the lower layer where they take up the excess vapour.

Progressing to 20 IN L^{-1} , we see that the heterogeneously formed ice crystals start to deplete the supersaturation in the lower cloud layer while persistent supersaturation is maintained over almost the remaining cloud depth. Only at the uppermost cloud top homogeneous nucleation is possible but too few crystals are produced to effectively reduce the supersaturation. On further increasing the IN concentration the bottom layer of the cloud where the heterogeneous ice crystals deplete the excess vapour down to saturation becomes thicker, but there is still a layer of persistent supersaturation at the top of the cloud which gets deeper over time as the heterogeneously formed ice crystals sediment down while the ongoing updraught leads to further cooling. In summary, there are three different regimes:

**Modelling Cirrus
Clouds – Part 2**P. Spichtinger and
K. M. Gierens[Title Page](#)[Abstract](#)[Introduction](#)[Conclusions](#)[References](#)[Tables](#)[Figures](#)[◀](#)[▶](#)[◀](#)[▶](#)[Back](#)[Close](#)[Full Screen / Esc](#)[Printer-friendly Version](#)[Interactive Discussion](#)

1. Only few heterogeneous IN (up to about 10 L^{-1}): Homogeneous nucleation occurs over the whole depth of the cloud, i.e. nucleation and depositional growth determines the structure of the cirrus cloud.
2. Medium number of IN (about 10 L^{-1}): Heterogeneously formed ice crystals begin to significantly affect the cirrus cloud. Homogeneous nucleation is confined to a more and more shallow layer at cloud top, yet still a sufficient number of ice crystals are formed there that effectively reduce supersaturation in the upper cloud part. In the lower cloud part, heterogeneously formed crystals inhibit homogeneous nucleation while they are not yet sufficient in number to reduce the supersaturation. A zone with long lasting or persistent supersaturation is thus present in the lower cloud part.
3. Large number of IN (20 L^{-1} and more): The cloud is completely dominated by heterogeneously formed ice, which is sufficient in number to relax the supersaturation in the lower part of the cloud down to saturation. When cooling goes on for hours, supersaturation can build up again in the upper part of the cloud after enough ice crystals have fallen down due to gravity. This may still later lead to relatively undisturbed homogeneous nucleation.

The transition between homogeneously dominated and heterogeneously dominated cloud occurs at about 10 IN L^{-1} ; the same value is predicted by the analytical formula Eq. (21) of Gierens (2003), when 216 K and 260 hPa are used as mean temperature and pressure in the cloud after 1 h of uplift. It can be seen that high supersaturations inside cirrus clouds (not considering the one at cloud top) can be maintained over a long period when IN are present and when steady cooling goes on over several hours. The supersaturation zone is in the lower part of the cloud when low to medium number concentration of IN is present, while it shifts to the upper part of the cloud when the IN concentration is high.

4.2 Variation of heterogeneous nucleation threshold

Now we test how the threshold humidity for heterogeneous nucleation affects the simulated cloud evolution. We use $\text{RH}_{i_{\text{het}}}=110\%$ and $\text{RH}_{i_{\text{het}}}=140\%$, respectively, instead of $\text{RH}_{i_{\text{het}}}=130\%$ of the reference case. Equation (21) of Gierens (2003) gives only minor variation for the critical IN concentrations in this range, so we still find 10 L^{-1} from that formula for both thresholds (again with 216 K and 260 hPa). From this we might expect that variation of the nucleation threshold has not a great effect on cloud evolution for IN concentrations both sufficiently below and above the critical concentration. Indeed, we find that by and large the cloud evolution is similar for the considered nucleation thresholds in cases with 5 and 20 (and more) IN L^{-1} . Large differences appear in the case with 10 IN L^{-1} , which is the critical concentration that the formula predicts.

When heterogeneous nucleation occurs at a low threshold humidity there is a long time for the ice crystals to grow and fall before homogeneous nucleation commences first in upper levels of the ISSR and eventually in the lower levels as well if the conditions allow it, as we will see. The increase rate of the supersaturation becomes larger as soon as the heterogeneously formed crystals fall out of the layer. Hence the overshooting over the homogeneous nucleation threshold gets higher and more crystals are formed homogeneously when the heterogeneous nucleation event is long time ago. The homogeneously formed ice crystal concentrations at cloud top are similar for all simulations ($\text{RH}_{i_{\text{het}}}=110/130/140\%$) with maxima in the range $200\text{--}250 \text{ L}^{-1}$, although a slight increase with decreasing nucleation threshold is observed. However, the maximum concentrations in the middle of the cloud differ. In the case with $\text{RH}_{i_{\text{het}}}=110\%$ we find maximum homogeneous ice concentrations of at least 180 L^{-1} , while this is about 150 L^{-1} in the reference case. With an even higher heterogeneous threshold of $\text{RH}_{i_{\text{het}}}=140\%$ we find only maxima of 100 L^{-1} of homogeneously formed ice crystals. The depth of the incloud nucleation zone decreases strongly with increasing values of $\text{RH}_{i_{\text{het}}}$, which can be seen in Fig. 5.

Figure 6 shows for the 10 L^{-1} case the effect of IN with various nucleation thresholds

Modelling Cirrus Clouds – Part 2

P. Spichtinger and
K. M. Gierens

Title Page

Abstract

Introduction

Conclusions

References

Tables

Figures

◀

▶

◀

▶

Back

Close

Full Screen / Esc

Printer-friendly Version

Interactive Discussion



on the RH_i-profile at simulation times from $t_s=100$ min, i.e. just before homogeneous nucleation starts at the ISSR top, to $t_s=170$ min. The profiles of number concentration of the heterogeneously and homogeneously formed crystals are shown as well (note the different scale of the x-axes for homogeneously and heterogeneously formed ice crystals). Instead of altitude we use temperature as the height-variable which allows to add the threshold line for homogeneous nucleation of $0.25\ \mu\text{m}$ droplets in the figure. Homogeneous nucleation happens when a humidity profile touches the homogeneous nucleation threshold line. Comparing the curves we see that the red profile (110% threshold) touches the homogeneous threshold at all times shown, indicating that homogeneous nucleation occurs in this case throughout the depth of the ISSR. The corresponding curves in the rhs panels always show peaks, indicating the newly formed crystals. With the higher thresholds for heterogeneous nucleation (green and blue profiles) the heterogeneous nucleation event occurs a shorter time period before the homogeneous nucleation threshold is reached. More crystals are still in the layer (not yet sedimented) and first reduce the overshooting over the homogeneous threshold, which results in smaller numbers of homogeneously formed crystals. Further down in the ISSR, the heterogeneously formed crystals even inhibit the humidity profile to reach the nucleation threshold. Then no more crystals are formed homogeneously in the lower levels of the ISSR and persistent supersaturation (below the homogeneous threshold) can be maintained there. Since homogeneous nucleation occurs over the full ISSR depth in the case with $\text{RH}_{i,\text{het}}=110\%$, supersaturation becomes reduced throughout the ISSR (except the top level) in that case, but not the others.

4.3 Variation of the uplift speed

The uplift speed, w , or cooling rate, has two important influences on a cirrus cloud. First, the number of ice crystals that form homogeneously when no IN are present, scales approximately as $w^{3/2}$ (Kärcher and Lohmann, 2002). Second, the critical IN

Modelling Cirrus Clouds – Part 2

P. Spichtinger and
K. M. Gierens

Title Page

Abstract

Introduction

Conclusions

References

Tables

Figures

◀

▶

◀

▶

Back

Close

Full Screen / Esc

Printer-friendly Version

Interactive Discussion



**Modelling Cirrus
Clouds – Part 2**P. Spichtinger and
K. M. Gierens[Title Page](#)[Abstract](#)[Introduction](#)[Conclusions](#)[References](#)[Tables](#)[Figures](#)[◀](#)[▶](#)[◀](#)[▶](#)[Back](#)[Close](#)[Full Screen / Esc](#)[Printer-friendly Version](#)[Interactive Discussion](#)

concentration of Gierens (2003) scales as $w^{3/2}$, as well. In our sensitivity study we use values of $w=0.04 \text{ m s}^{-1}$ and $w=0.08 \text{ m s}^{-1}$, respectively, both typical synoptic values. As we have seen in Part 1, even variation in this restricted range affect the structure of the simulated cirrus clouds considerably. Over this range, $w^{3/2}$ changes by a factor of 2.8. The critical IN concentrations are 4.5 and 13 L^{-1} , respectively.

Theoretical considerations (e.g. Gierens, 2003) show that the influence of heterogeneously formed ice crystals on the further evolution of a cirrus cloud decreases with increasing uplift strength. This is indeed what we find here.

Comparing the time evolution for low and high vertical windspeed (Fig. 7 left and right, respectively) with the time evolution in the reference case (Figs. 2 and 4) shows that the case with highest w and lowest IN concentration experiences a similar homogeneous nucleation event like the pure homogeneous case. For instance, homogeneous nucleation takes place almost simultaneously over the whole depth of the ISSR, in spite of the presence of the heterogeneously formed ice crystals. The cooling rate is sufficiently high to overcome the depletion of the excess vapour by the growth of the heterogeneous ice. For the case with $w=0.04 \text{ m s}^{-1}$ and the low IN concentration of 5 L^{-1} the formula of Gierens (2003) predicts inhibition of homogeneous nucleation which, however, happens over the complete depth of the cloud. The reason is that the slow uplift allows the heterogeneous crystals to fall out of the cloud before the humidity reaches the homogeneous nucleation threshold. Sedimentation is, however, not included in the derivation of the formula of Gierens (2003).

At $w=0.08 \text{ m s}^{-1}$, 10 IN L^{-1} are still not sufficient to hinder homogeneous nucleation to occur over the whole depth of the cloud. The cloud quickly reaches ice saturation after the homogeneous nucleation event. However, at $w=0.04 \text{ m s}^{-1}$ the same concentration of IN shuts down homogeneous nucleation almost completely (apart from the uppermost layer). As before, the concentration of heterogeneously formed crystals is insufficient to reduce the supersaturation, hence we get here a situation where almost the whole cloud depth remains highly supersaturated for the 5 h simulation time. After about 4 h the region is essentially free of crystals because they are already fallen out.

With higher IN concentrations and slow uplift, the heterogeneously formed ice crystals start to consume the supersaturation and the two-layer structure re-appears with low supersaturation in the lower cloud part and high supersaturation in the upper part, as in the corresponding reference cases.

20 20 IN L^{-1} are required in the stronger uplift case with $w=0.08 \text{ m s}^{-1}$, to shut down homogeneous nucleation over most of the cloud depth. However, supersaturation is not effectively removed by the heterogeneously formed crystals, because of the higher cooling rate. Only in the case with 50 IN L^{-1} we get an approximately ice-saturated layer at cloud bottom. The upper half is still in a highly supersaturated state after 5 h simulation time.

15 The resume of this section is that we still have three regimes of IN concentrations, one where homogeneous nucleation is hardly affected, one where it is almost completely inhibited, and an intermediate one where slight parameter changes can dramatically change the evolution of the cloud structure. As expected, the critical IN concentration increases with uplift speed.

4.4 Impact of temperature

20 So far we described simulations with an initial temperature in the ice supersaturated layer of $215 \leq T \leq 222 \text{ K}$. As homogeneous nucleation rates, depositional growth rates, and the effect of IN on the later cloud evolution depend sensitively on temperature, we now perform simulations with colder and warmer ice supersaturated layers, namely $206 \leq T \leq 215 \text{ K}$ and $222 \leq T \leq 230 \text{ K}$, respectively. These temperature variations are realised simply by shifting the ISSR up and down 1 km. For the critical IN concentrations we find 6.5 L^{-1} for the warm case (assuming 224 K and 300 hPa) and 16 L^{-1} for the cold case (209 K, 200 hPa). The changes are mostly due to the temperature dependence of homogeneous nucleation rates and deposition growth rates (see Part 1).

25 The temperature effect on homogeneous nucleation can be seen in Fig. 8 which shows cases without IN, i.e. the result of purely homogeneous nucleation, just after cloud formation at $t_s \sim 100 \text{ min}$. Without IN, homogeneous nucleation occurs in all T –

Modelling Cirrus Clouds – Part 2

P. Spichtinger and
K. M. Gierens

Title Page

Abstract

Introduction

Conclusions

References

Tables

Figures

◀

▶

◀

▶

Back

Close

Full Screen / Esc

Printer-friendly Version

Interactive Discussion



ranges almost simultaneously throughout the ISSR.

In the warm case, 5 IN L^{-1} are not sufficient to inhibit homogeneous nucleation anywhere in the ISSR, hence the latter happens over the whole depth of the cloud layer. However, the increase rate of supersaturation is retarded by the few heterogenous ice crystals such that less ice crystals are produced homogeneously. Later (after about 3 h) this has the effect of leaving a persistent supersaturated layer in the upper part of the cloud when due to sedimentation too little ice crystals remain there to effectively take up the excess vapour. In the simulations we have discussed so far, the crystals leaving this layer were always replaced by fresh crystals falling from cloud top, where the ongoing cooling periodically led to new nucleation bursts. In the warm case this effect is much weaker due to the relatively low nucleation rate at this temperature.

As 10 IN L^{-1} is already significantly above the critical IN concentration in the warm case, we find homogeneous nucleation confined to the uppermost layer of the ISSR, producing only few crystals, such that in-cloud supersaturation is not reduced for hours, until the end of the simulation after 6 h. The supersaturated region at that time is almost void of ice. Even higher IN concentrations shut down homogeneous nucleation nearly completely, and lead to more and more consumption of the excess vapour in the lower parts of the cloud, leaving the 2-layer type cloud as in the simulations before with high IN concentrations. The heterogeneous ice grows faster than in the reference cases, thus its sedimentation fluxes are larger and the lower saturated layer is thinner than in the reference case, while for the upper supersaturated layer it is vice versa.

In the cold case the transition between the homogeneously and heterogeneously dominated clouds takes place between the 10 and 20 IN L^{-1} cases, as expected. Sedimentation fluxes of the heterogeneous ice are small compared to the warm and reference cases, such that in the most polluted situation the lower saturated layer is thicker than in those other cases.

Modelling Cirrus Clouds – Part 2

P. Spichtinger and
K. M. Gierens

Title Page

Abstract

Introduction

Conclusions

References

Tables

Figures

◀

▶

◀

▶

Back

Close

Full Screen / Esc

Printer-friendly Version

Interactive Discussion



4.5 Effect of temperature fluctuations

We have seen in Part 1 that initial temperature fluctuations forming wind field fluctuations (i.e. small eddies) have the effect to reduce mean values of cloud ice and crystal number concentrations and to leave more water in the vapour phase. These results were obtained from simulations with purely homogeneous nucleation. When there are fluctuations a few of the model grid boxes obtain a higher than average cooling rate and these are the first grid boxes where homogeneous nucleation occurs, producing higher than average crystal numbers due to the higher cooling rate. Some of the new crystals are soon transported into the neighbouring, still cloud free, grid boxes by the small eddies that result from the fluctuations. These crystals now retard the increase rate of supersaturation in their new grid boxes where thus less than average ice crystals are produced eventually. Now the question arises whether and how the presence of IN and their impact on cloud evolution prior to homogeneous nucleation changes the fluctuation effects.

We do not expect an impact of fluctuations on heterogeneous nucleation because the formulation of this process in our model is not sensitive to them. Once the heterogeneous threshold is surpassed, every IN freezes independent of the rate at which the relative humidity increases beyond the threshold. This kind of insensitivity should not change much with a more sophisticated parameterisation of heterogeneous nucleation unless the number concentrations of heterogeneously formed crystals is large enough that mixing into neighbouring grid boxes has a major effect on the increase rate of relative humidity there. However, even at our highest IN concentrations we have not seen such an effect.

Considering the temporal evolution of clouds dominated by homogeneous nucleation we find that RH_i profiles display extreme variability exceeding 30% during the relaxation phase that follows the homogeneous nucleation event. The RH_i fluctuations are smaller ($\approx 10\%$) before nucleation starts, and after the relaxation phase they decrease to the roughly 10% range. The extreme RH_i variability during the relaxation

Modelling Cirrus Clouds – Part 2

P. Spichtinger and
K. M. Gierens

Title Page

Abstract

Introduction

Conclusions

References

Tables

Figures

◀

▶

◀

▶

Back

Close

Full Screen / Esc

Printer-friendly Version

Interactive Discussion



**Modelling Cirrus
Clouds – Part 2**P. Spichtinger and
K. M. Gierens

phase is a consequence of (a) the high nucleation threshold which marks the upper limit of the fluctuations, (b) the differing starting times for the relaxation process in different grid boxes at the same altitude, and (c) the differing relaxation rates due to the variation in crystal surface concentration in different grid boxes which in turn result from the different cooling rates. Because of the periodically occurring nucleation bursts at the upper cloud boundary, there are always strong RH_i fluctuations in this region. Figure 9 shows this time evolution of the relative humidity fluctuations around the starting point of homogeneous nucleation (around $t \sim 100$ min).

Clouds that are dominated by heterogeneously formed ice crystals do not display large RH_i variability over a large fraction of their development. Typically, RH_i variability does not exceed 5% in any level. Only in the later evolution when the heterogeneously formed ice has fallen out of much of the cloud and when thus homogeneous nucleation starts to produce larger numbers of ice crystals in the upper part of the cloud, RH_i fluctuations get larger. Apart from the mechanisms related to relaxation, the different sedimentation fluxes of homogeneously formed crystals into lower levels with still substantial average supersaturation leads there to stronger RH_i variability than before when only the heterogeneously formed crystals were present. The increase of RH_i variability must be a consequence of the increasing and spatially highly varying crystal number concentration when the homogeneously formed crystals arrive from above. In Fig. 10 the time evolution of the relative humidity fluctuations for the case of $n_a = 20 \text{ L}^{-1}$ is shown; starting from very small fluctuations at $t_s = 120$ min an increase of the strength of the fluctuations can be observed when homogeneous nucleation begins to dominate the cloud.

Clouds with approximately the critical concentration of IN initially behave like clouds dominated by homogeneous nucleation. In the upper part of the cloud where homogeneous nucleation occurs first we find the typical strong RH_i variability during the relaxation phase. The fluctuations first are relatively weak in the lower part of the cloud. However, the supersaturation there is large (albeit below the homogeneous threshold) and lots of homogeneously formed crystals fall into this layer from above where they

[Title Page](#)[Abstract](#)[Introduction](#)[Conclusions](#)[References](#)[Tables](#)[Figures](#)[◀](#)[▶](#)[◀](#)[▶](#)[Back](#)[Close](#)[Full Screen / Esc](#)[Printer-friendly Version](#)[Interactive Discussion](#)

start to consume the excess vapour. Since the sedimentation flux density fluctuates itself, the vapour take up varies from grid cell to grid cell, leading eventually to large variability in the RH_i profiles. Overall, the fluctuation effect on the RH_i profiles is largest in the case with critical IN number concentration. In Fig. 11 the time evolution of the relative humidity fluctuations for the case of $n_a=10 \text{ L}^{-1}$ is shown. The strong variability of the humidity profiles in this mixed case can be observed clearly.

Finally we show statistics of in-cloud supersaturation, a topic that attracted quite some interest during recent years (e.g. Ovarlez et al., 2002; Korolev and Mazin, 2003; Spichtinger et al., 2004; Peter et al., 2006). We evaluate the humidity fields in an altitude range $10400 \leq z \leq 10600 \text{ m}$ (mimicking aircraft probing) for a couple of simulation times (i.e. cloud ages) and for IN concentrations from zero to 50 L^{-1} . The frequency distributions are shown in Fig. 12. As we can see, a cloud that is dominated by either type of nucleation, homogenous or heterogeneous, sooner or later approaches saturation, that is the humidity distribution centres around a quasi-steady supersaturation value (Korolev and Mazin, 2003) at about 110% RH_i. In contrast, clouds where neither nucleation process dominates display long-lasting significant in-cloud supersaturation exceeding 130% RH_i, in particular when the critical IN concentration is present. Of course, the persistent supersaturation is the consequence of the ongoing uplift and the relatively low ice crystal concentration in some regions of the cloud, which in turn is due to the attenuation of homogeneous nucleation caused by the pre-existing heterogeneously formed ice. These results show that long-lasting in-cloud supersaturation can be explained by dynamics and standard microphysics alone; there is no need to resort to exotic phenomena for an explanation, although they are not excluded and could contribute to the phenomenon, perhaps in a more pronounced way at temperatures $T < 200 \text{ K}$.

4.6 Cloud effects on background aerosol distribution

All our simulations were initialised with a uniform homogeneous background distribution of IN, clearly an idealisation. These IN form ice crystals that in turn grow, fall to

Modelling Cirrus Clouds – Part 2

P. Spichtinger and
K. M. Gierens

Title Page

Abstract

Introduction

Conclusions

References

Tables

Figures

◀

▶

◀

▶

Back

Close

Full Screen / Esc

Printer-friendly Version

Interactive Discussion



cloud base and below into the subsaturated sub-cloud layer and eventually evaporate, thereby giving back the IN to the background atmosphere. Since the IN do not fall, they become enriched in a layer below the cloud. The enrichment factor can be quite large. For instance, when the initial background concentrations was $n_a=20\text{ L}^{-1}$, the sub-cloud enrichment leads to values of $n_a=70\text{--}80\text{ L}^{-1}$ in the simulations. In real situations the enrichment would of course also depend on the humidity profile below the cloud which controls the evaporation rate of the ice crystals. The high enrichment factor here stems from the sharp humidity gradient below the ISSR which leads to quick evaporation over a short falling distance.

The assumed ongoing cooling sooner or later leads to high humidity values also in the sub-cloud layer. The previously evaporated ice adds further to the humidity increase, such that eventually the threshold for heterogeneous nucleation is reached and surpassed again. Hence a new cloud of heterogeneous ice may form just below the original cloud, and even partly within the old cloud, since the falling homogeneous ice crystals may already have reached this layer as well. In Fig. 13 the heterogeneous formation of ice crystals in this sub cloud layer with enriched IN concentrations is shown for two example simulations (top: $w=0.06\text{ m s}^{-1}$, ISSR in low temperature regime; bottom: $w=0.08\text{ m s}^{-1}$, ISSR in reference temperature regime). In both cases, the layer structure of the heterogeneously formed cirrus clouds resembles the enrichment of the scavenged aerosols in a thin sub cloud layer.

This shows how cirrus clouds can modify the background aerosol distribution by nucleation, sedimentation and evaporation (in this order) and create relatively large aerosol concentrations in subcloud layers. We see, large aerosol concentrations are not necessarily a product of correspondingly large source strengths, but may also be the result of cloud processes. In our simulations a layered structure of the background aerosol distribution resulted. Another effect of cloud processing is the alteration of microphysical and chemical IN properties; yet this has not been considered here.

**Modelling Cirrus
Clouds – Part 2**P. Spichtinger and
K. M. Gierens[Title Page](#)[Abstract](#)[Introduction](#)[Conclusions](#)[References](#)[Tables](#)[Figures](#)[◀](#)[▶](#)[◀](#)[▶](#)[Back](#)[Close](#)[Full Screen / Esc](#)[Printer-friendly Version](#)[Interactive Discussion](#)

5 Conclusions

We have used the recently developed ice microphysics scheme (Part 1) for investigating the impact of heterogeneous nucleation on the life cycle of cirrus clouds driven by constant synoptic updraught ($w \leq 0.08 \text{ m s}^{-1}$) over at least 5 h. Heterogeneous and homogeneous nucleation take place within the same environment and can influence each other. Related studies have been performed earlier with boxmodels, but crystal sedimentation, temperature and wind fluctuations, usually not implemented in boxmodels, introduce new effects. From our simulations we draw the following conclusions:

1. The rate $dRHi/dt$ at the homogeneous nucleation threshold RHi_{hom} determines the number of ice crystals that are produced in the nucleation event. In a situation without pre-existent ice crystals, it is the cooling rate dT/dt or, indirectly, the uplift rate w that determines (is proportional to) $dRHi/dt$.
2. Heterogeneous ice formation at relative humidities $RHi_{\text{het}} < RHi_{\text{hom}}$ leads to pre-existent ice that reduces $dRHi/dt$ due to its water uptake, hence reduces the number of ice crystals formed homogeneously later. This impeding effect of heterogeneous ice formation increases with increasing number of IN, and it is strong when RHi_{het} is little below RHi_{hom} . It is weak when RHi_{het} is low (i.e. when the background aerosol represents good ice nuclei), because this allows the heterogeneously formed ice to fall out from the ISSR before the homogeneous threshold is reached. The impeding effect is not simply linear in $RHi_{\text{hom}} - RHi_{\text{het}}$.
3. Sedimentation of the heterogeneously formed ice crystals leads to a downward ice concentration gradient in the cloud, which in turn causes an upward gradient of $dRHi/dt$. Hence the number of ice crystals forming homogeneously experiences an upward gradient as well. Homogeneous nucleation can be switched off in the lower cloud layers when a sufficiently large concentration of heterogeneously formed ice crystals is present. Fluctuations of temperature and random motions in the cloud weaken the latter effect.

Modelling Cirrus Clouds – Part 2

P. Spichtinger and
K. M. Gierens

Title Page

Abstract

Introduction

Conclusions

References

Tables

Figures

◀

▶

◀

▶

Back

Close

Full Screen / Esc

Printer-friendly Version

Interactive Discussion



**Modelling Cirrus
Clouds – Part 2**P. Spichtinger and
K. M. Gierens

4. There are generally three types of cloud structures: homogeneously dominated, heterogeneously dominated, and a mixed case. The latter is given when the IN concentration is roughly the critical number density from Eq. (21) in Gierens (2003) (typically 10 L^{-1} for the cases considered here). Mixed cases are prone to long-lasting in-cloud supersaturation, while in either homogeneously and heterogeneously dominated cirrus RH_i relaxes to a quasi-stationary supersaturation of the order 10%. The persistent supersaturation in each case is a consequence of the assumed constant uplift, resulting in constant cooling. We conjecture that mixed type clouds are characterised by similar timescales of cooling, crystal growth, and sedimentation.

5. The constant uplift together with crystal sedimentation leads to a thin zone of persistent ice supersaturation at the upper boundary of the ISSR and the cloud which periodically gives rise to a new homogeneous nucleation event.

6. Fluctuations of temperature and random motions in the cloud have the effect of leaving more water in the vapour phase, i.e. they enhance the in-cloud supersaturation phenomenon. The fluctuations have the biggest influence in the mixed cases where neither homogeneous nor heterogeneous ice formation dominates.

7. The cloud processes affect the background spatial distribution of the IN. In the cases studied here an initially uniform distribution is transformed into a layer nearly void of IN (most of the cloud layer) and a layer just beneath the cloud where IN are enriched. The ongoing cooling can eventually lead to new heterogeneous ice formation below the original cloud layer.

Cirrus clouds can form rather complex structures even in simple situations with constant cooling, quasi rectangular initial RH_i profiles and a very simple heterogeneous nucleation parameterisation. To this complexity contribute (1) the highly nonlinear nucleation behaviour (on/off), (2) the supersaturation hysteresis involved in ice formation vs. evaporation (ice forms at substantial supersaturation but evaporates at subsaturation), and (3) the competition between various ice formation processes that act at

[Title Page](#)[Abstract](#)[Introduction](#)[Conclusions](#)[References](#)[Tables](#)[Figures](#)[◀](#)[▶](#)[◀](#)[▶](#)[Back](#)[Close](#)[Full Screen / Esc](#)[Printer-friendly Version](#)[Interactive Discussion](#)

different supersaturation thresholds. Whenever this game ends in a draw (i.e. neither nucleation process dominates) there appear zones of long-lasting substantial supersaturation in a cirrus cloud.

Acknowledgements. We thank Piotr K. Smolarkiewicz for sharing his model and Andreas Dörnbrack for help in its application. We thank these two and Marcia Baker, Bernd Kärcher, Ulrike Lohmann, Thomas Peter, Olaf Stetzer and Marian de Reus for fruitful discussions. This study contributes to the DFG (German research foundation) project “Dünnere Zirrus” (Gl 333/1-1), to the DLR/HGF-project “Particles and Cirrus Clouds” (PAZI-2) and to Activity 5 of the European Integrated Project QUANTIFY. The numerical simulations were performed at the European Centre for Medium-Range Weather Forecasts (special project “Ice supersaturation and cirrus clouds”).

References

- Chen, T., Rossow, W. B., and Zhang, Y.: Radiative Effects of Cloud-Type Variations, *J. Climate*, 13, 264–286, 2000. [9062](#)
- Clark, T. and Farley, R.: Severe downslope windstorm calculations in two and three spatial dimensions using anelastic interactive grid nesting: A possible mechanism for gustiness, *J. Atmos. Sci.*, 41, 329–350, 1984. [9066](#)
- DeMott, P. J., Rogers, D. C., and Kreidenweis, S. M.: The susceptibility of ice formation in upper tropospheric clouds to insoluble aerosol components, *J. Geophys. Res.*, 102, 19 575–19 584, 1997. [9063](#)
- DeMott, P. D., Cziczo, A., Prenni, D., Murphy, S., Kreidenweis, D., Thomson, R., Borys, D., and Rogers, D. C.: Measurements of the concentration and composition of nuclei for cirrus formation, *Proc. Nat. Acad. Sciences*, 100, 14 655–14 660, 2003. [9063](#)
- Emanuel, K.: *Atmospheric convection*, Oxford University Press, 580 pp., 1994. [9064](#)
- Fukuta, N. and Walter, L.: Kinetics of hydrometeor growth from a vapor-spherical model, *J. Atmos. Sci.*, 27, 1160–1172, 1970.
- Fusina, F., Spichtinger, P., and Lohmann, U.: The impact of ice supersaturated regions and thin cirrus on radiation in the mid latitudes, *J. Geophys. Res.*, 112, D24S14, doi:10.1029/2007JD008449, 2007. [9062](#)

Modelling Cirrus Clouds – Part 2

P. Spichtinger and
K. M. Gierens

Title Page

Abstract

Introduction

Conclusions

References

Tables

Figures

◀

▶

◀

▶

Back

Close

Full Screen / Esc

Printer-friendly Version

Interactive Discussion



- Gierens, K.: On the transition between heterogeneous and homogeneous freezing, *Atmos. Chem. Phys.*, 3, 437–446, 2003, <http://www.atmos-chem-phys.net/3/437/2003/>. 9063, 9070, 9071, 9073, 9081
- Grabowski, W. and Smolarkiewicz, P.: A multiscale anelastic model for meteorological research, *Mon. Weather Rev.*, 130, 939–956, 2002. 9064
- Haag, W. and Kärcher, B.: The impact of aerosols and gravity waves on cirrus clouds at midlatitudes, *J. Geophys. Res.*, 109, D12202, doi:10.1029/2004JD00457, 2004. 9062
- Heymsfield, A. and Iaquinta, J.: Cirrus crystal terminal velocities, *J. Atmos. Sci.*, 57, 916–938, 2000. 9065
- Heymsfield, A. J. and Sabin, R. M.: Cirrus crystal nucleation by homogeneous freezing of solution droplets, *J. Atmos. Sci.*, 46, 2252–2264, 1989. 9063
- Kajikawa, M. and Heymsfield, A.: Aggregation of ice crystals, *J. Atmos. Sci.*, 46, 3108–3121, 1989. 9064
- Kärcher, B. and Lohmann, U.: A Parameterization of cirrus cloud formation: Homogeneous freezing of supercooled aerosols, *J. Geophys. Res.*, 107, D2, 4010, doi:10.1029/2001JD000470, 2002. 9072
- Kärcher, B. and Ström, J.: The roles of dynamical variability and aerosols in cirrus cloud formation, *Atmos. Chem. Phys.*, 3, 823–838, 2003, <http://www.atmos-chem-phys.net/3/823/2003/>. 9063
- Koenig, L.: Numerical modeling of ice deposition, *J. Atmos. Sci.*, 28, 226–237, 1971. 9065
- Korolev, A. and Mazin, I.: Supersaturation of Water Vapor in Clouds, *J. Atmos. Sci.*, 60, 2957–2974, 2003. 9078
- Koop, T., Luo, B., Tsias, A., and Peter, T.: Water activity as the determinant for homogeneous ice nucleation in aqueous solutions, *Nature* 406, 611–614, 2000. 9062, 9064
- Khvorostyanov, V. and Curry, J.: The Theory of Ice Nucleation by Heterogeneous Freezing of Deliquescent Mixed CCN. Part II: Parcel Model Simulation, *J. Atmos. Sci.*, 62, 261–285, 2005. 9063
- Khvorostyanov, V., Morrison, H., Curry, J. A., Baumgardner, D., and Lawson, P.: High supersaturation and modes of ice nucleation in thin tropopause cirrus: Simulation of the 13 July 2002 Cirrus Regional Study of Tropical Anvils and Cirrus Layers case, *J. Geophys. Res.*, 111, D02201, doi:10.1029/2004JD005235, 2006. 9063
- Liu, X. and Penner, J. E.: Ice nucleation parameterization for global models, *Meteor. Z.*, 14, 499–514, 2005. 9063

**Modelling Cirrus
Clouds – Part 2**P. Spichtinger and
K. M. Gierens

Title Page

Abstract

Introduction

Conclusions

References

Tables

Figures

◀

▶

◀

▶

Back

Close

Full Screen / Esc

Printer-friendly Version

Interactive Discussion



- Mace, G. G., Benson, S., and Vernon, E.: Cirrus Clouds and the Large-Scale Atmospheric State: Relationships Revealed by Six Years of Ground-Based Data, *J. Climate*, 19, 3257–3278, 2006. [9066](#)
- Möhler, O., Field, P. R., Connolly, P., Benz, S., Saathoff, H., Schnaiter, M., Wagner, R., Cotton, R., Krämer, M., Mangold, A., and Heymsfield, A. J.: Efficiency of the deposition mode ice nucleation on mineral dust particles, *Atmos. Chem. Phys.*, 6, 3007–3021, 2006, <http://www.atmos-chem-phys.net/6/3007/2006/>. [9063](#)
- Ovarlez, J., Gayet, J.-F., Gierens, K., Ström, J., Ovarlez, H., Auriol, F., Busen, R., and Schumann, U.: Water vapor measurements inside cirrus clouds in northern and southern hemispheres during INCA, *Geophys. Res. Lett.*, 10.1029/2001GL014440, 2002. [9078](#)
- Peter T., Marcolli C., Spichtinger P., Corti, T., Baker M. B., and Koop, T.: When dry air is too humid, *Science*, 314, 5804, 1399–1400, 2006. [9078](#)
- Ren, C. and Mackenzie, A. R.: Cirrus parametrization and the role of ice nuclei, *Q. J. R. Meteorol. Soc.*, 131, 1585–1605, 2005. [9063](#)
- Sassen, K. and Benson, S.: Ice nucleation in cirrus clouds: A model study of the homogeneous and heterogeneous modes, *Geophys. Res. Lett.*, 27, 521–524, 2000. [9063](#)
- Sassen K. and Dodd, G. C.: Haze aprticle nucleation simulations in cirrus clouds, and applications for numerical and lidar studies, *J. Atmos. Sci.*, 46, 3005–3014, 1989. [9063](#)
- Smolarkiewicz, P. and Margolin, L.: On forward-in-time differencing for fluids: an Eulerian/Semi-Lagrangian non-hydrostatic model for stratified flows, *Atmosphere-Oceans*, 35, 127–152, 1997. [9064](#)
- Smolarkiewicz, P., Margolin, L., and Wyszogrodzki, A.: A class of nonhydrostatic global models. *J. Atmos. Sci.*, 58, 349–364, 2001. [9064](#)
- Spichtinger, P., Gierens, K., Leiterer, U., and Dier, H.: Ice supersaturation in the tropopause region over Lindenberg, Germany, *Meteorol. Z.*, 12, 143–156, 2003. [9067](#)
- Spichtinger, P., Gierens, K., Smit, H. G. J., Ovarlez, J., and Gayet, J.-F.: On the distribution of relative humidity in cirrus clouds, *Atmos. Chem. Phys.*, 4, 639–647, 2004, <http://www.atmos-chem-phys.net/4/639/2004/>. [9078](#)
- Spichtinger P., Gierens K., and Wernli H.: A case study on the formation and evolution of ice supersaturation in the vicinity of a warm conveyor belt's outflow region, *Atmos. Chem. Phys.*, 5, 973–987, 2005, <http://www.atmos-chem-phys.net/5/973/2005/>. [9066](#)
- Spichtinger, P. and Gierens, K.: Modelling of cirrus clouds. Part 1: Model description and validation, *Atmos. Chem. Phys. Discuss.*, 8, 601–686, 2008,

Modelling Cirrus Clouds – Part 2P. Spichtinger and
K. M. Gierens

Title Page

Abstract

Introduction

Conclusions

References

Tables

Figures

◀

▶

◀

▶

Back

Close

Full Screen / Esc

Printer-friendly Version

Interactive Discussion



<http://www.atmos-chem-phys-discuss.net/8/601/2008/>. 9062, 9063

Vali, G.: Nucleation terminology, Bull. Amer. Meterol. Soc., 66, 1426–1427, 1985. 9062

ACPD

8, 9061–9098, 2008

Modelling Cirrus Clouds – Part 2

P. Spichtinger and
K. M. Gierens

Title Page

Abstract

Introduction

Conclusions

References

Tables

Figures

◀

▶

◀

▶

Back

Close

Full Screen / Esc

Printer-friendly Version

Interactive Discussion

9085



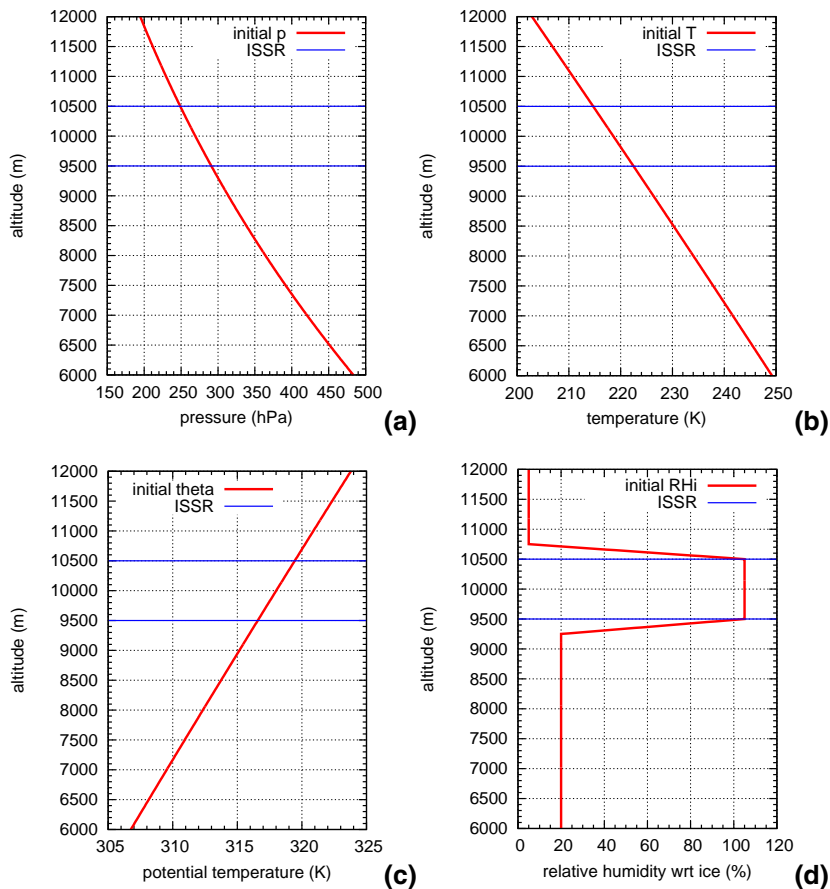
**Modelling Cirrus
Clouds – Part 2**P. Spichtinger and
K. M. Gierens

Fig. 1. Initial vertical profiles for the reference case of pressure (a), temperature (b), potential temperature (c) and relative humidity with respect to ice (d).

[Title Page](#)[Abstract](#)[Introduction](#)[Conclusions](#)[References](#)[Tables](#)[Figures](#)[◀](#)[▶](#)[◀](#)[▶](#)[Back](#)[Close](#)[Full Screen / Esc](#)[Printer-friendly Version](#)[Interactive Discussion](#)

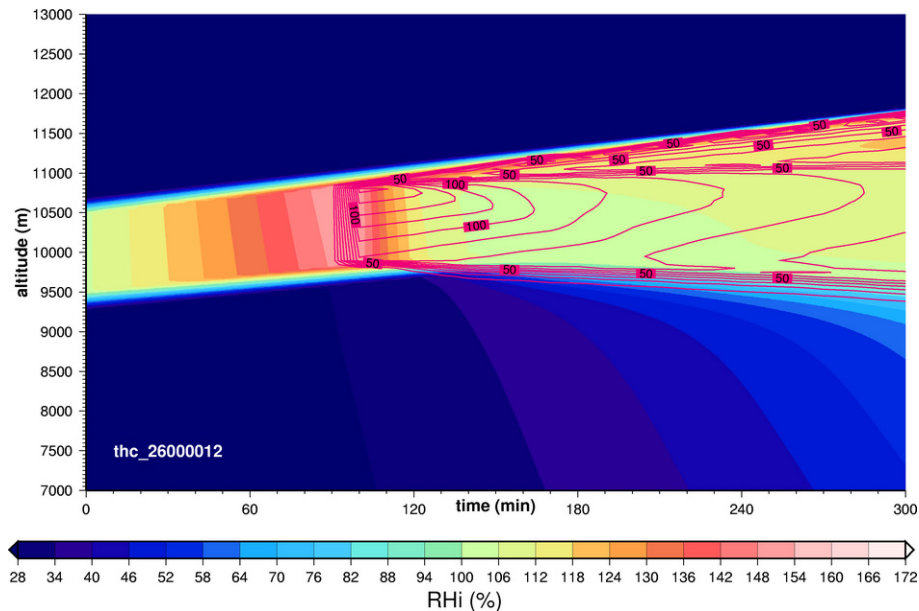
**Modelling Cirrus
Clouds – Part 2**P. Spichtinger and
K. M. Gierens

Fig. 2. Time evolution of the relative humidity wrt ice and ice crystal number densities (purple isolines, in 10L^{-1} steps) in the reference cirrus with $w=0.06\text{m s}^{-1}$ and only homogeneous nucleation.

[Title Page](#)[Abstract](#)[Introduction](#)[Conclusions](#)[References](#)[Tables](#)[Figures](#)[◀](#)[▶](#)[◀](#)[▶](#)[Back](#)[Close](#)[Full Screen / Esc](#)[Printer-friendly Version](#)[Interactive Discussion](#)

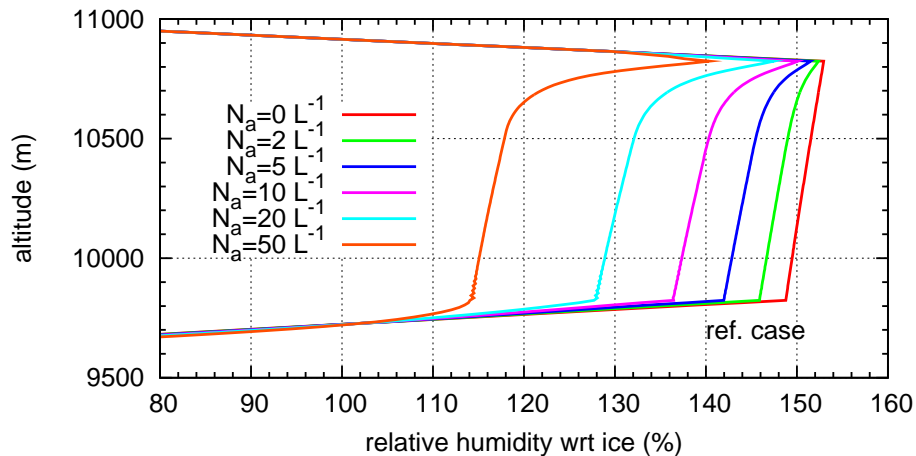
**Modelling Cirrus
Clouds – Part 2**P. Spichtinger and
K. M. Gierens

Fig. 3. Modification of the RH profile due to different ice nuclei concentrations at simulation time $t=90$ min (just before homogeneous nucleation starts).

[Title Page](#)[Abstract](#)[Introduction](#)[Conclusions](#)[References](#)[Tables](#)[Figures](#)[◀](#)[▶](#)[◀](#)[▶](#)[Back](#)[Close](#)[Full Screen / Esc](#)[Printer-friendly Version](#)[Interactive Discussion](#)

Modelling Cirrus Clouds – Part 2

P. Spichtinger and
K. M. Gierens

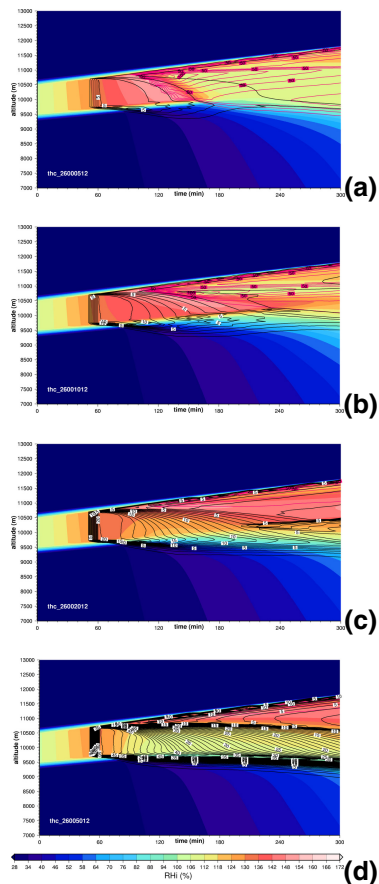


Fig. 4. Time evolution of the relative humidity wrt ice and ice crystal number densities (heterogeneously nucleated crystals: black isolines, in 1 L^{-1} steps, homogeneously nucleated crystals: purple isolines in 10 L^{-1} steps) in the reference cirrus with $w=0.06 \text{ m s}^{-1}$ and varying heterogeneous IN concentrations ($n_{a,2}=5/10/20/50 \text{ L}^{-1}$), panels (a–d).

[Title Page](#)
[Abstract](#)
[Introduction](#)
[Conclusions](#)
[References](#)
[Tables](#)
[Figures](#)
[◀](#)
[▶](#)
[◀](#)
[▶](#)
[Back](#)
[Close](#)
[Full Screen / Esc](#)
[Printer-friendly Version](#)
[Interactive Discussion](#)

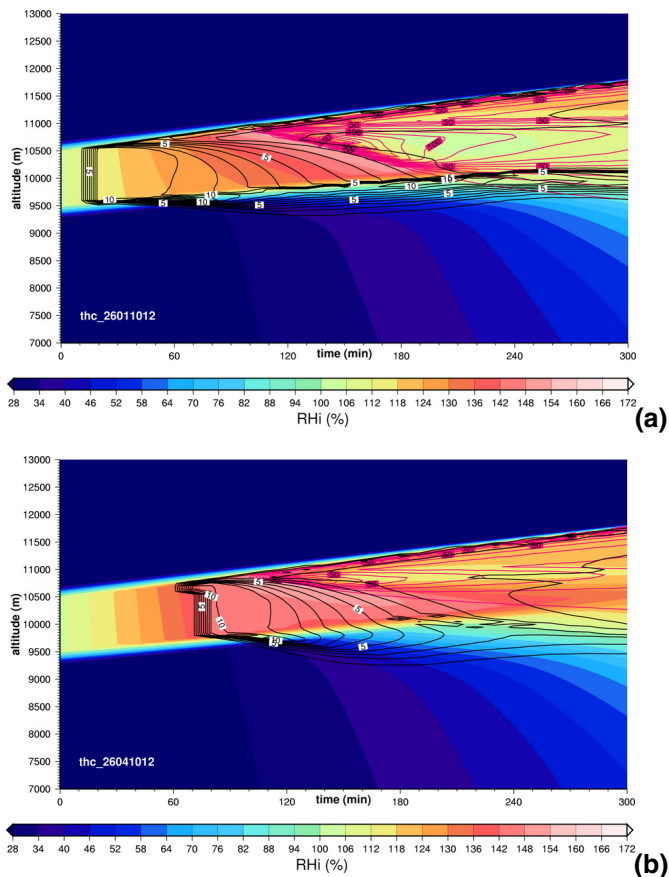

Modelling Cirrus
Clouds – Part 2P. Spichtinger and
K. M. Gierens

Fig. 5. Time evolution of the relative humidity wrt ice and ice crystal number densities (heterogeneously nucleated crystals: black isolines, in 1 L^{-1} steps, homogeneously nucleated crystals: purple isolines in 10 L^{-1} steps) in the reference cirrus with $w=0.06 \text{ m s}^{-1}$, heterogeneous nucleation threshold $\text{RH}_{\text{het}}=110\%$ **(a)**, $\text{RH}_{\text{het}}=140\%$. **(b)**, for $n_{a,2}=10 \text{ L}^{-1}$

Title Page

Abstract

Introduction

Conclusions

References

Tables

Figures

◀

▶

◀

▶

Back

Close

Full Screen / Esc

Printer-friendly Version

Interactive Discussion



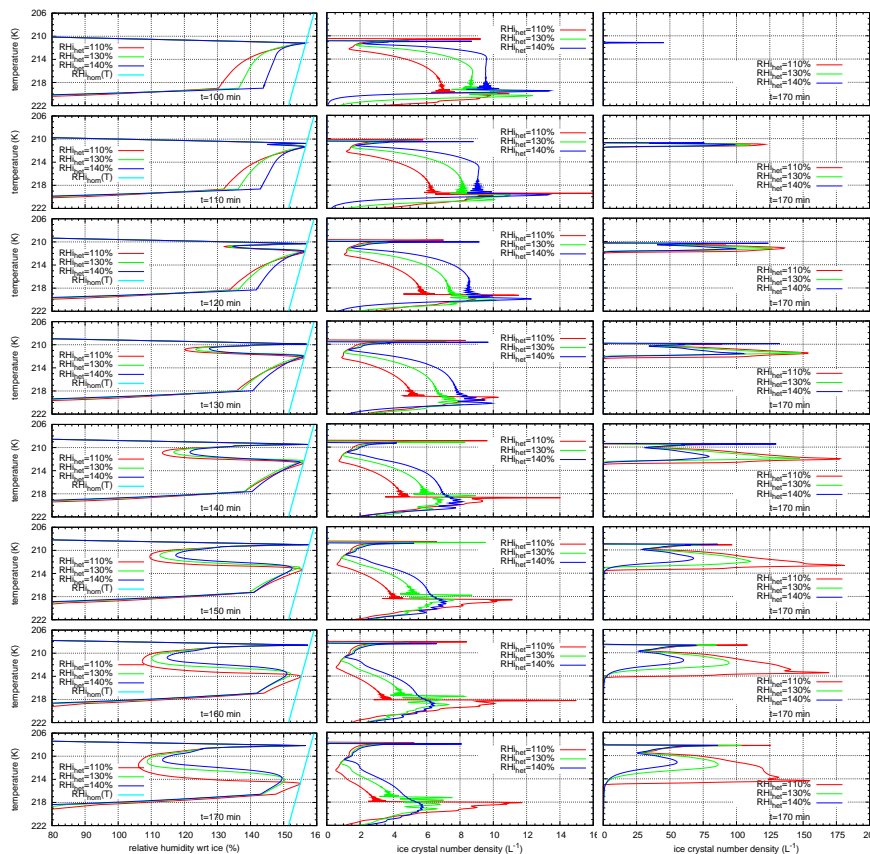
Modelling Cirrus
Clouds – Part 2P. Spichtinger and
K. M. Gierens

Fig. 6. Vertical profiles of relative humidity wrt ice (in %, left), heterogeneously formed ice crystal number density (in L^{-1} , middle) and homogeneously nucleated ice crystal number density (in L^{-1} , right), respectively, versus temperature for simulation times $t_s = 100, 110, 120, 130, 140, 150, 160, 170$ min (from top to bottom).

Title Page

Abstract

Introduction

Conclusions

References

Tables

Figures

◀

▶

◀

▶

Back

Close

Full Screen / Esc

Printer-friendly Version

Interactive Discussion



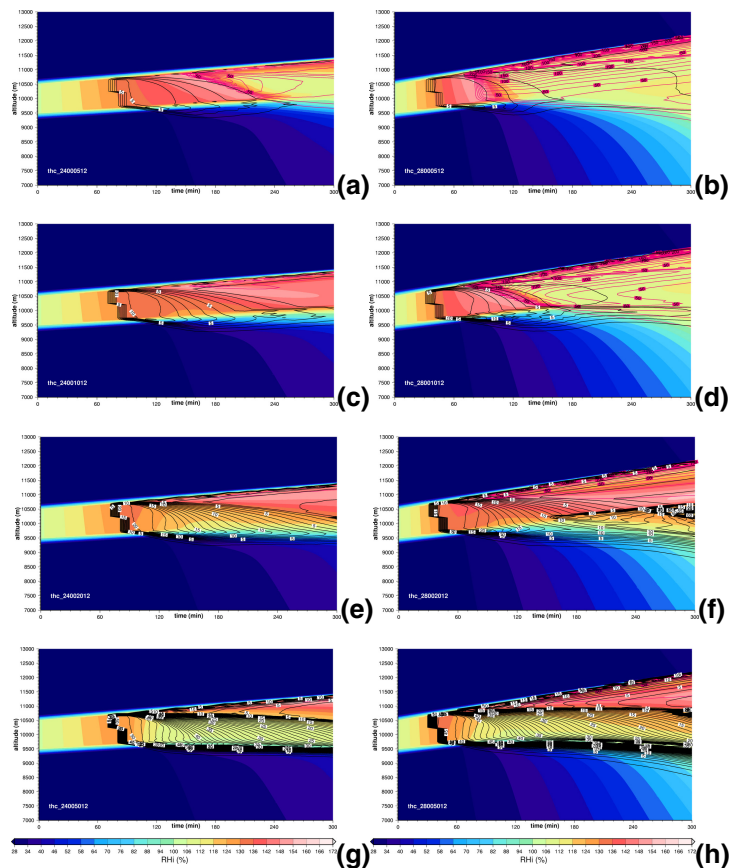
Modelling Cirrus
Clouds – Part 2P. Spichtinger and
K. M. Gierens

Fig. 7. Time evolution of the relative humidity wrt ice and ice crystal number densities (heterogeneously nucleated crystals: black isolines, in 1 L^{-1} steps, homogeneously nucleated crystals: purple isolines in 10 L^{-1} steps) in the reference cirrus with $w=0.04\text{ m s}^{-1}$ (left) and $w=0.08\text{ m s}^{-1}$ (right), respectively, and varying heterogeneous IN concentrations ($5/10/20/50\text{ L}^{-1}$) from top to bottom.

Title Page

Abstract

Introduction

Conclusions

References

Tables

Figures

◀

▶

◀

▶

Back

Close

Full Screen / Esc

Printer-friendly Version

Interactive Discussion



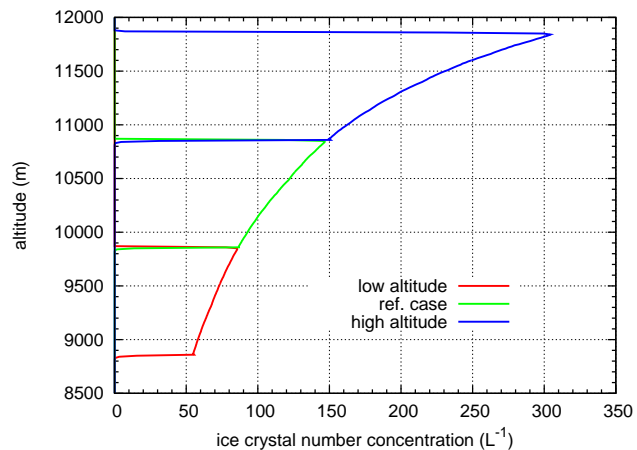
**Modelling Cirrus
Clouds – Part 2**P. Spichtinger and
K. M. Gierens

Fig. 8. Ice crystal number densities for cirrus clouds formed at different temperature ranges at simulation time $t_s = 100$ min.

[Title Page](#)[Abstract](#)[Introduction](#)[Conclusions](#)[References](#)[Tables](#)[Figures](#)[◀](#)[▶](#)[◀](#)[▶](#)[Back](#)[Close](#)[Full Screen / Esc](#)[Printer-friendly Version](#)[Interactive Discussion](#)

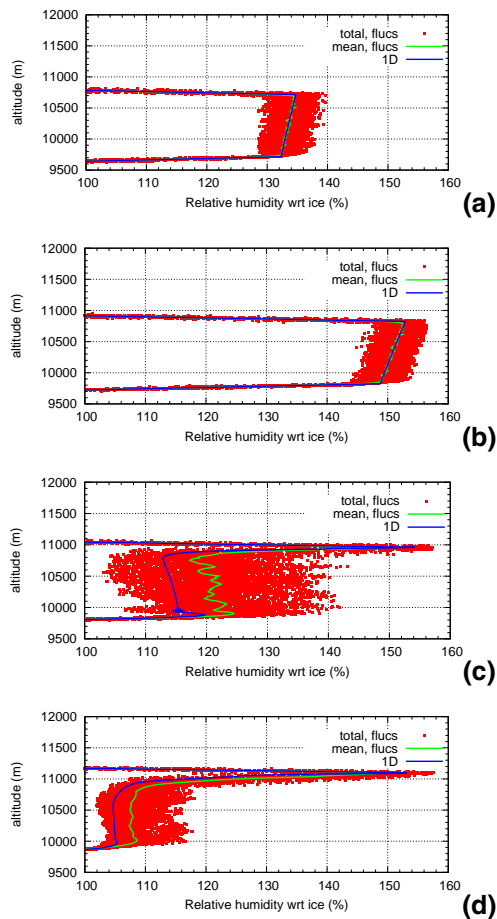
Modelling Cirrus
Clouds – Part 2P. Spichtinger and
K. M. Gierens

Fig. 9. Time evolution for the relative humidity in the simulation with only homogeneous nucleation. From top to bottom: simulation time $t_s=60/90/120/150$ min, (a–d) i.e. around the starting point of homogeneous nucleation.

Title Page

Abstract

Introduction

Conclusions

References

Tables

Figures

◀

▶

◀

▶

Back

Close

Full Screen / Esc

Printer-friendly Version

Interactive Discussion



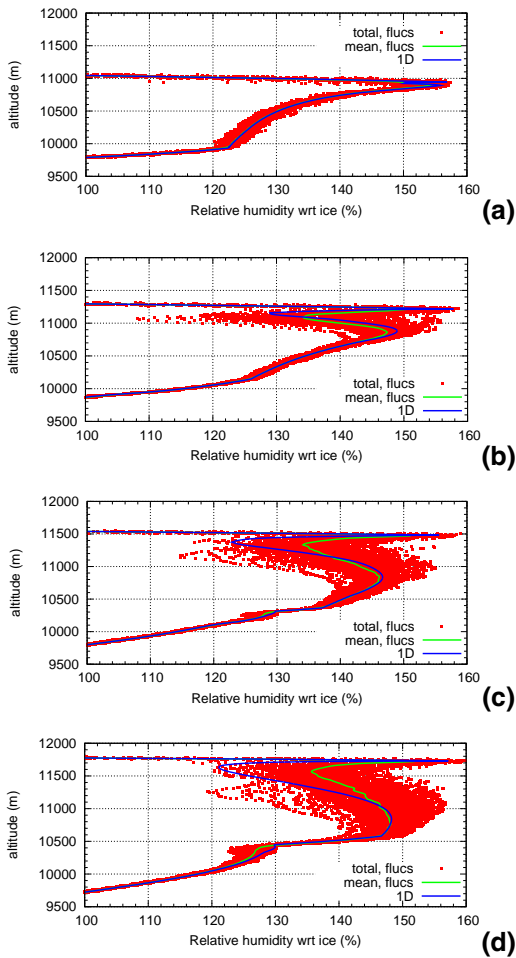
Modelling Cirrus
Clouds – Part 2P. Spichtinger and
K. M. Gierens

Fig. 10. Time evolution for the relative humidity in the simulation with $n_a=20\text{ L}^{-1}$. From top to bottom: simulation time $t_s=120/180/240/300$ min, **(a–d)**.

Title Page

Abstract

Introduction

Conclusions

References

Tables

Figures

◀

▶

◀

▶

Back

Close

Full Screen / Esc

Printer-friendly Version

Interactive Discussion



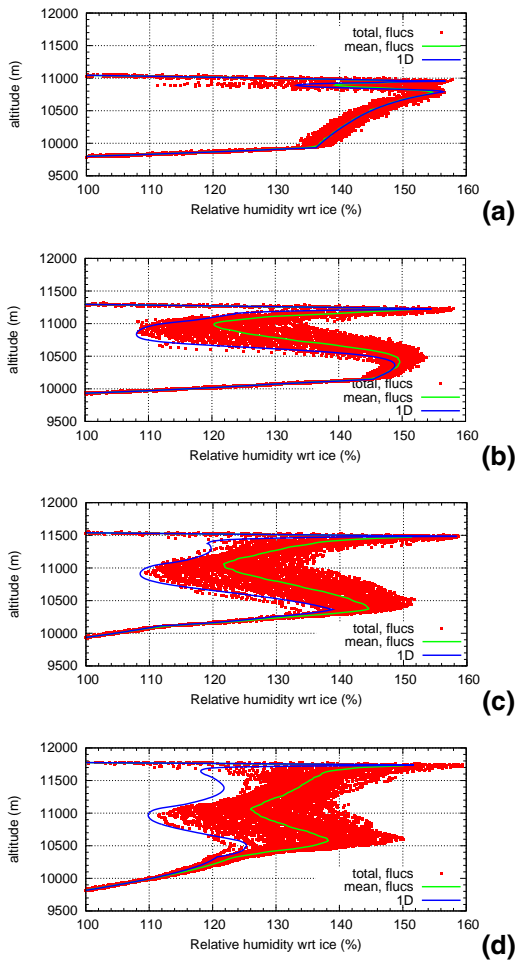
Modelling Cirrus
Clouds – Part 2P. Spichtinger and
K. M. Gierens

Fig. 11. Time evolution for the relative humidity in the simulation with $n_a=10\text{ L}^{-1}$. From top to bottom: simulation time $t_s=120/180/240/300$ min (**a–d**).

[Title Page](#)[Abstract](#)[Introduction](#)[Conclusions](#)[References](#)[Tables](#)[Figures](#)[◀](#)[▶](#)[◀](#)[▶](#)[Back](#)[Close](#)[Full Screen / Esc](#)[Printer-friendly Version](#)[Interactive Discussion](#)

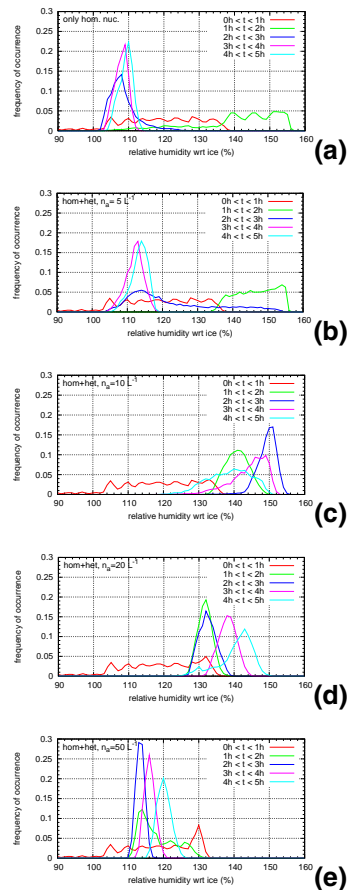
Modelling Cirrus
Clouds – Part 2P. Spichtinger and
K. M. Gierens

Fig. 12. Frequency distribution of the relative humidity in the altitude range $10\,400 \leq z \leq 10\,600$ m collecting data from different time intervals (**a**: [0 h:1 h], **b**: [1 h:2 h], **c**: [2 h:3 h], **d**: [3 h:4 h], **e**: [4 h:5 h], from top to bottom) for the different simulations ($n_a=0/5/10/20/50 \text{ L}^{-1}$) during a synoptic updraught of $w=0.06 \text{ m s}^{-1}$ including small scale temperature fluctuations.

Title Page

Abstract

Introduction

Conclusions

References

Tables

Figures

◀

▶

◀

▶

Back

Close

Full Screen / Esc

Printer-friendly Version

Interactive Discussion



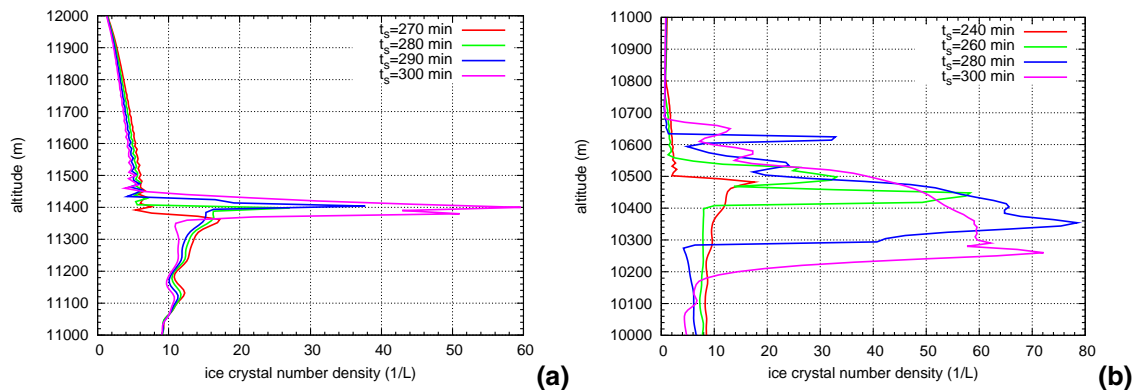
Modelling Cirrus
Clouds – Part 2P. Spichtinger and
K. M. Gierens

Fig. 13. Heterogeneous nucleation events below the cloud layer due to modification of the aerosol concentration by nucleation, sedimentation and evaporation of ice crystals are shown in representing heterogeneously formed ice crystals vs. height. Top panel **(a)**: Simulation with constant updraught of $w=0.06$ for a initial ISSR in the range $10.5 \leq z \leq 11.5$ km. Bottom panel **(b)**: Simulation with constant updraught of $w=0.08$ for a initial ISSR in the range $9.5 \leq z \leq 10.5$ km. In both cases, the initial IN concentration was $n_a=20 \text{ L}^{-1}$.

Title Page

Abstract

Introduction

Conclusions

References

Tables

Figures

◀

▶

◀

▶

Back

Close

Full Screen / Esc

Printer-friendly Version

Interactive Discussion