

**The Hadley  
circulation**

Y. Hu and Q. Fu

# Observed poleward expansion of the Hadley circulation since 1979

Y. Hu<sup>1</sup> and Q. Fu<sup>2</sup>

<sup>1</sup>Dept. of Atmospheric Sciences, Peking University, Beijing, China

<sup>2</sup>Dept. of Atmospheric Sciences, University of Washington, Seattle, USA

Received: 12 June 2007 – Accepted: 25 June 2007 – Published: 2 July 2007

Correspondence to: Y. Hu (yyhu@pku.edu.cn)

Title Page

Abstract

Introduction

Conclusions

References

Tables

Figures

◀

▶

◀

▶

Back

Close

Full Screen / Esc

Printer-friendly Version

Interactive Discussion

EGU

## Abstract

Using three meteorological reanalyses and three outgoing long-wave radiation (OLR) datasets, we show that the Hadley circulation has a significant poleward expansion of about 2 to 4.5 degrees of latitude since 1979. The three reanalyses along with the MSU data all indicate that the poleward expansion of the Hadley circulation in each hemisphere occurs during its spring and fall seasons. Results from the OLR datasets do not have such seasonality. The expansion of the Hadley circulation implies a poleward expansion of the band of subtropical subsidence, leading to enhanced mid-latitude tropospheric warming and poleward shifts of the subtropical dry zone. This would contribute to an increased frequency of midlatitude droughts in both hemispheres.

## 1 Introduction

The Hadley circulation is a thermally driven meridional circulation. Warmer tropical air rises by releasing latent heat and flows pole-ward to both hemispheres. Air then cools in the subtropics, sinks and flows back to the tropics, generating an enclosed circulation in each hemisphere. The Hadley circulation is fundamentally important to the climate system and its changes have important impacts on global climate (Diaz and Bradley, 2004). Recent studies are concerned with multi-decadal changes of the Hadley circulation with respect to its intensity. Using outgoing longwave radiation (OLR) datasets from the Earth Radiation Budget Experiment (ERBE), Chen et al. (2002) and Wielicki, et al. (2002) suggested that the Hadley circulation was intensified in the 1990s. Using reanalysis datasets, Quan et al. (2002), Hu et al. (2005) and Mitas and Clement (2005) showed that the winter cell of the Hadley circulation has large intensification in the past few decades. However, whether the intensification of the Hadley cell as suggested by some of these studies is real remains controversial (Trenberth, 2002; Held and Soden, 2007).

On the other hand, results from several recent studies suggested that the Hadley

## The Hadley circulation

Y. Hu and Q. Fu

Title Page

Abstract

Introduction

Conclusions

References

Tables

Figures

◀

▶

◀

▶

Back

Close

Full Screen / Esc

Printer-friendly Version

Interactive Discussion

**The Hadley  
circulation**

Y. Hu and Q. Fu

[Title Page](#)[Abstract](#)[Introduction](#)[Conclusions](#)[References](#)[Tables](#)[Figures](#)[◀](#)[▶](#)[◀](#)[▶](#)[Back](#)[Close](#)[Full Screen / Esc](#)[Printer-friendly Version](#)[Interactive Discussion](#)

circulation has poleward expansion since 1979. Based on satellite-borne microwave sounding unit (MSU) data, Fu et al. (2006) showed an enhanced warming in the mid-latitude troposphere. Such a change in tropospheric temperature fields indicates a poleward shift in the maximum horizontal temperature gradient and thus implies a poleward shift of subtropical jet streams. Since the location of the subtropical jet stream marks the poleward edge of the Hadley circulation, Fu et al. (2006) suggests a broadening of the Hadley circulation. In studying Northern-Hemisphere midlatitude total ozone trends, Hudson et al. (2006) found that the subtropical upper tropospheric front shifted poleward by about 2.75 degree latitudes over 1979–2003, which also implies a poleward shift of the tropospheric subtropical jet stream. Through an analysis of tropopause heights in the subtropics using radiosonde measurements and reanalysis data, Seidel and Randel (2007)<sup>1</sup> found an expansion of the tropical belt for about 4.25 degree latitudes during 1979–2005.

In this study, we use three meteorological reanalysis datasets to show the direct evidence that the Hadley circulation indeed has a poleward expansion in both hemispheres in the recent few decades. We also examine the Hadley cell expansion by analyzing three OLR datasets. We compare the results from reanalyses with those from OLR and MSU datasets to examine the consistency among results based on different observational quantities. Data and methods used in this study are described in Sect. 2. Results from reanalysis datasets are in Sect. 3. Results based on OLR and MSU datasets are presented in Sect. 4. Discussion and conclusions are in Sect. 5.

## 2 Data and methods

The three reanalysis datasets used in this study are from the European Centre for Medium-Range Weather Forecasts (Uppala, et al., 2005), the National Center for Envi-

<sup>1</sup>Seidel, D. J. and Randel, W. J.: Recent widening of the tropical belt: Evidence from tropopause observations, *J. Geophys. Res.*, submitted, 2007.

ronmental Prediction/National Center for Atmospheric Research (Kalnay, et al., 1996) and the National Center for Environmental Prediction/Department of Energy (Kanamitsu et al., 2002). For simplicity, they are denoted by ERA40, NCEP/NCAR, and NCEP/DOE, respectively. The ERA40 reanalysis used here is from January 1979 to August 2002 (24 years), and NCEP/NCAR and NCEP/DOE reanalyses are from January 1979 to December 2005 (27 years). In the analyses of these three datasets, we use the mean meridional mass stream-function (MMS) to characterize the Hadley circulation. MMS is obtained by vertically integrating monthly meridional winds in the conventional way (Holton, 1994). Clockwise circulation (the northern cell) is defined as positive, and anti-clockwise circulation (the southern cell) is defined as negative. The locations of pole-ward edges of the Hadley circulation are identified as the latitudes where MMS equals  $0 \text{ kg s}^{-1}$ , which are obtained using linear interpolation. Pole-ward expansion since 1979 is estimated by calculating linear trends of the edge latitudes. The total expansion of the Hadley circulation is then obtained from the summation of the trends in these edge latitudes in Northern Hemisphere (NH) and Southern Hemisphere (SH).

The three OLR records used here are the High-Resolution Infrared Radiation Sounder (HIRS) Pathfinder dataset (Mehta and Susskind, 1999), the International Satellite Cloud Climatology Project (ISCCP) version FD dataset (Zhang et al., 2004), and the Global Energy and Water Cycle Experiment (GEWEX) Radiative Flux Assessment (RFA) dataset (Stackhouse, 2004). The periods are from December 1979 to August 2003 for HIRS (24 years) and from December 1983 to November 2004 for the ISCCP and GEWEX datasets (21 years). Although the most reliable long-term OLR record is from the active cavity broadband non-scanner wide field of view instruments on the Earth Radiation Budget Satellite (ERBS) (Wong et al., 2006), we did not use this dataset because of its low horizontal resolution. However, it is shown that the observed decadal changes in the HIRS Pathfinder OLR and the ISCCP FD record are similar to the OLR changes from ERBS (Wong et al., 2006). The subsidence regions associated with the Hadley circulation, due to their dry troposphere and lack of high clouds, can

**The Hadley  
circulation**

Y. Hu and Q. Fu

Title Page

Abstract

Introduction

Conclusions

References

Tables

Figures

◀

▶

◀

▶

Back

Close

Full Screen / Esc

Printer-friendly Version

Interactive Discussion

be identified as the region with high OLR. For the OLR records the locations of the pole-ward edges of the Hadley circulation are defined as the latitudes where the OLR equals  $250 \text{ W m}^{-2}$ . In this study all variables are analyzed in terms of zonally averaged values.

### 3 Poleward expansion in reanalyses

Figure 1 shows the MMS latitude-time plots on the 500 hPa pressure surface for September–November (SON) season from the three reanalyses. The tan band indicates the time evolution of the northern branch of the Hadley circulation and the blue band over the tropics is part of the southern branch. In all three plots, the northern edge of the tan band exhibits a systematic poleward trend from 1979 onward. For ERA40, the linear trend in the location of the northern edge is about  $2.1^\circ$  latitude from 1979 to 2002, with a statistical significance above the 95% confidence level (student t-test value is 2.32). For NCEP/NCAR and NCEP/DOE, the poleward extensions are  $1.9^\circ$  and  $2.5^\circ$  of latitude from 1979 to 2005, respectively, with a statistical significance above the 98% confidence level (student t-test values are about 2.52). From Fig. 1, we can find that the poleward extension of the northern Hadley circulation branch appears to be a robust feature of the analyses (the Southern Oscillation/El Niño events may modulate the evolution of the patterns but do not drive the overall trends). In addition, the significant poleward expansion is not limited over the period since 1979. It is also found in ERA40 and NCEP/NCAR reanalyses since the 1950s. Here, to compare with the results derived from OLR datasets, we focus on the period since 1979–2005.

A poleward extension is also found for the southern Hadley-circulation branch. Figure 2 shows the latitude-time plot of the Southern Hemisphere (SH) MMS at 500 hPa for March–May (MAM) from the same three reanalyses. The blue band indicates the time evolution of the southern branch of the Hadley circulation. Similar to that of the northern branch, the poleward edges of the southern branch in all the three datasets demonstrate systematic southward expansions. The largest southward expansion is

Title Page

Abstract

Introduction

Conclusions

References

Tables

Figures

◀

▶

◀

▶

Back

Close

Full Screen / Esc

Printer-friendly Version

Interactive Discussion

found in NCEP/DOE, with magnitude close to 3.0 degree latitudes over the 27 years. All the trends are statistically significant.

Trends in edge latitudes, averaged from 400 to 600 hPa, for four seasons and for both branches are summarized in Fig. 3. For the northern branch (Fig. 3a), the poleward extension in all three reanalyses mainly occurs in the boreal summer and autumn. In contrast, trends in the boreal winter and spring are either very small or slightly negative (equatorward shrinking of the northern branch). The extension in the summer and autumn seasons is about 2.5° in these reanalyses except in the ERA40 where it goes up to 5° in JJA. Similarly, the poleward extension of the southern branch mainly occurs in the austral summer and autumn (Fig. 3b). The poleward shifts of the poleward edges in these seasons since 1979 are about 1.0°, 2.0°, and 3.0°, respectively, in the ERA40, NCEP/NCAR, and NCEP/DOE reanalyses, which are generally smaller than those for the northern branch. Note that in both hemispheres student t-test values for the summer and autumn trends in Figs. 3a and b are all larger than 2.0 (above the 95% confidence level), whereas the relatively weak trends in winter and spring in both hemispheres are less significant.

Figure 3c shows the total expansion of the Hadley circulation in three reanalyses for four seasons. The total expansion is the summation of trends in Figure 3a and b. The seasonal expansions from NCEP/NCAR and NCEP/DOE in last 27 years are about 2.7° and 3.1°, respectively, with little seasonal dependence. However, the expansion in ERA40 ranges from about 1° in March-May (MAM) to about 5° in June–August (JJA). Such a large seasonal variation in the total expansion, which is inconsistent with the other two reanalyses and the OLR results (as will be discussed below), could be largely due to the problems in ERA40 (Trenberth and Smith, 2006). But the annual-mean expansion of the Hadley circulation from ERA40 is 2.6° (that can be roughly converted to 2.9° by linearly extrapolating to last 27 years), which agrees well with those from NCEP/NCAR and NCEP/DOE. The agreement among three reanalysis results is very encouraging, particularly in view of the significant differences in the climatological states of the Hadley circulation in these reanalyses (Mitas and Clement, 2005): the in-

**The Hadley  
circulation**

Y. Hu and Q. Fu

Title Page

Abstract

Introduction

Conclusions

References

Tables

Figures

◀

▶

◀

▶

Back

Close

Full Screen / Esc

Printer-friendly Version

Interactive Discussion

tensity of the Hadley circulation from ERA40 is much stronger than that in NCEP/NCAR and NCEP/DOE, while the maximum MMS in NCEP/DOE (at about 800 hPa) is centered much lower than those in ERA40 and NCEP/NCAR (at about 450 hPa). It is obvious that in all three reanalyses the Hadley circulation has become wider in almost all seasons during the past 24–27 years.

#### 4 Poleward expansion in OLR

The subsidence regions of the Hadley circulation, because of the dryness of the troposphere and lack of high clouds, can be identified as the region with high OLR. For the OLR records the locations of the poleward edges of the Hadley circulation are roughly defined as the latitudes where the OLR equals  $250 \text{ W m}^{-2}$ . Figure 4 shows the zonally averaged temporal evolution of the OLR from the HIRS Pathfinder for four seasons in NH. The poleward extension of the northern Hadley-circulation branch based on the  $250 \text{ W m}^{-2}$  OLR is about  $2.14^\circ$ ,  $2.75^\circ$ ,  $2.56^\circ$  and  $2.67^\circ$  in latitude for the four seasons, respectively, as shown in Fig. 4a. One can alternatively use other OLR contours to measure the poleward expansion. But results do not change very much. For example, the poleward expansion of contour  $240 \text{ W m}^{-2}$  is about  $2.05^\circ$ ,  $3.11^\circ$ ,  $3.07^\circ$  and  $3.04^\circ$  in latitude for the four seasons, respectively. The consistent poleward expansion of different OLR contours can be clearly seen in Fig. 4.

Significant poleward extension in the Southern Hemisphere can also be found in HIRS OLR datasets. Time evolution of zonal-mean HIRS OLR in the Southern Hemisphere is illustrated in Fig. 5. Similar to the Northern Hemisphere, the  $250 \text{ W m}^{-2}$  OLR contour shows poleward (southward) expansion in all the four seasons, with magnitude of about  $2.0^\circ$  latitudes. In contrast to the reanalysis results, these trends in OLR-contour latitudes in both hemispheres exhibit similar magnitudes for all seasons. At the current stage, it is not clear to us why there is a difference in the seasonal dependence between the reanalyses and OLR datasets. Our research is currently under way to investigate such difference.

### The Hadley circulation

Y. Hu and Q. Fu

Title Page

Abstract

Introduction

Conclusions

References

Tables

Figures

◀

▶

◀

▶

Back

Close

Full Screen / Esc

Printer-friendly Version

Interactive Discussion

The OLR temporal evolutions in ISCCP FD and GEWEX RFA are similar to those in Fig. 5 (not shown). Figure 6a and b summarize the trends in latitudes of the 250 W m<sup>-2</sup> OLR contour from the three OLR datasets for both hemispheres. Trends from HIRS OLR are largest, while trends from GEWEX OLR are smallest (generally less than 1.0° latitude). Again, the trends have no significant seasonality.

Figure 6c shows that the total expansion of the Hadley circulation, indicated by the HIRS Pathfinder OLR, is about 4.5° latitude for 1980–2003. The total expansions in ISSCP and GEWEX OLR datasets are about 3.5° and 2.0° for 1984–2004, which can be roughly linearly extrapolated to 4.0° and 2.3° for 1980–2003, respectively. The trends from ISSCP and GEWEX also exhibit little seasonal variations in magnitudes. For ISSCP, the range of the total expansion is from about 2.0° in December–February (DJF) to about 4.0° in MAM, which is still much less than the seasonal dependence in ERA40. Regardless of the details, our analyses based on different observational datasets (three reanalyses and three OLR datasets) in terms of different physical quantities (MMS versus OLR) all indicate an expansion of the Hadley circulation during the last 24–27 years, ranging from about 2.0 to 4.5 degrees of latitude.

The poleward expansion of the Hadley circulation can be also measured by the poleward shift of the jet streams because the subtropical jet streams mark the poleward limit of the tropical Hadley circulation. We derived the poleward shifts of subtropical jet streams for different seasons using the MSU-inferred tropospheric temperature trends for 1979–2005 using the geostrophic relation (Mears et al., 2003; Fu et al., 2004; Johanson and Fu, 2006). It is found that the northern subtropical jet stream exhibited a northward shift in most seasons with the largest shift occurring during the boreal summer. The southern subtropical jet stream has exhibited the largest shift in the austral summer. That the largest poleward shifts of subtropical jet streams occur in summer in both hemispheres is consistent with the reanalysis results. The total expansions of the Hadley circulation based on MSU observations are 2.4° and 2.2° in DJF and JJA, respectively, which are within the ranges of those derived from the reanalyses and OLR datasets.

**The Hadley  
circulation**

Y. Hu and Q. Fu

Title Page

Abstract

Introduction

Conclusions

References

Tables

Figures

◀

▶

◀

▶

Back

Close

Full Screen / Esc

Printer-friendly Version

Interactive Discussion



## 5 Discussion and conclusions

Using three reanalysis, three OLR and one MSU datasets, we have shown evidence that the Hadley circulation has poleward expansion since 1979. The magnitudes of total poleward expansion ranges from 2 to 4.5 degree latitudes. The magnitudes estimated here are consistent with those derived from other observational quantities including total ozone (Hudson et al., 2006) and tropopause heights (Seidel and Randel, 2007)<sup>1</sup>. The analyses of multi-datasets enhance our confidence on our conclusion about the observed expansion of the Hadley cell since 1979.

One important question remains related to above results: what causes the expansion of the Hadley circulation? At the current stage of our knowledge, there are no clear answers to this question. The poleward expansion of the Hadley circulation could be a response to increasing greenhouse gas concentrations. A recent study (Lu et al., 2007) found a robust widening of the Hadley circulation in the climate change simulations with 21st century increasing greenhouse gas scenarios in the Fourth Assessment Report (AR4) of the Intergovernmental Panel on Climate Change (IPCC). But the simulated magnitudes of poleward expansion is about an order of magnitude smaller than those based on observations. Another important player may be the ozone depletion since 1979. If so, the observed expansion since 1979 would provide a unique test-bed for examining our understanding of the expansion of the Hadley circulation and of the GCMs' ability to simulate it. Such a test could be fundamentally important because of the critical role of the Hadley circulation in transporting energy poleward. The reconciliation between model simulations and observations on the Hadley circulation expansion may help improve our understanding of the small equator-to-pole surface temperature gradients during the Eocene (Crowley and Zachos, 2000), if the increased atmospheric heat transport is the dominant process for maintaining such low gradients.

The poleward expansion of the Hadley circulation may also be affected by regional factors (Menon et al., 2002, Ramanathan et al., 2005). For example, Fu et al. (2006) showed that the enhanced midlatitude summer tropospheric warming was much larger

### The Hadley circulation

Y. Hu and Q. Fu

Title Page

Abstract

Introduction

Conclusions

References

Tables

Figures

◀

▶

◀

▶

Back

Close

Full Screen / Esc

Printer-friendly Version

Interactive Discussion

**The Hadley  
circulation**

Y. Hu and Q. Fu

[Title Page](#)[Abstract](#)[Introduction](#)[Conclusions](#)[References](#)[Tables](#)[Figures](#)[◀](#)[▶](#)[◀](#)[▶](#)[Back](#)[Close](#)[Full Screen / Esc](#)[Printer-friendly Version](#)[Interactive Discussion](#)

over northern China than the warming at other longitudes (see their Fig. S4). Results of GCM simulations suggest that the increase in black-carbon concentration in southern China might cause changes in the local meridional circulations, with enhanced rising motions in the south and subsidence in the north of China (Menon et al., 2002). It was suggested that such changes in the local circulation due to anthropogenic aerosols caused floods in the south and droughts in the north of China. These changes in regional atmospheric circulations may also contribute to the poleward extension of the zonally averaged Hadley circulation.

The belt of subtropical subsidence motions extends toward higher latitudes as the Hadley circulation expands poleward regardless of the cause. Because subsidence causes adiabatic heating and suppresses convection, this poleward extension would lead to midlatitude tropospheric warming and a poleward extension of subtropical dry zones. This would contribute to an increased frequency of droughts in both hemispheres (Hoerling et al., 2001; Lau et al., 2005).

*Acknowledgements.* We thank J. M. Wallace, K. E. Trenberth, I. Held, G. Lau, and J. Edwards for valuable comments and suggestions on the manuscript. We thank P. Stackhouse for his information on the GEWEX RFA dataset. Part of research was done during Q. Fu's sabbatical visit at the Geophysical Fluid Dynamics Laboratory (GFDL)/NOAA, Princeton University. Y. Hu is supported by the NSF of China under grants 40575031 and 40533016, and by the Ministry of Education of China under grants 106002. Q. Fu is supported by the NASA grants NNG04GM23G and NNG05GA19G and NOAA grant NA17RJ1232.

## References

- Chen, J. Y., Carlson, B. E., and Del Genio, A. D.: Evidence for strengthening of the tropical general circulation in the 1990s, *Science*, 295, 838–841, 2002.
- Crowley, T. J. and Zacher, J. C.: Warm Climate in Earth History, edited by: Huber, B. T., Macleod, K. G., and Wing, S. L., Cambridge Univ. Press, Cambridge, 2000.
- Diaz, H. F. and Bradley, B.: The Hadley Circulation: Present, Past and Future. Kluwer Academic Publishers, The Netherlands, 2004.

**The Hadley  
circulation**

Y. Hu and Q. Fu

Title Page

Abstract

Introduction

Conclusions

References

Tables

Figures

◀

▶

◀

▶

Back

Close

Full Screen / Esc

Printer-friendly Version

Interactive Discussion

- Fu, Q., Johanson, C. M., Wallace, J. M., and Reichler, T.: Enhanced mid-latitude tropospheric warming in satellite measurements, *Science*, 312, 1179, 2006.
- Fu, Q., Johanson, C. M., Warren, S. G., and Seidel, D. J.: Contribution of stratospheric cooling to satellite-inferred tropospheric temperature trends, *Nature*, 429, 55–58, 2004.
- 5 Held, I. M. and Soden, B. J.: Robust response of the hydrological cycle to global warming, *J. Clim.*, 19, 5686–5699, 2006.
- Hoerling, M. P., Whitaker, J. S., Kumar, A., and Wang, W.: The midlatitude warming during 1998–2000, *Geophys. Res. Lett.*, 28, 755–758, 2001.
- Holton, J. R.: *An Introduction to Dynamic Meteorology*. Academic Press, New York, 1994.
- 10 Hu, Y., Tung, K.-K., and Liu, J.: A closer comparison of early and late winter atmospheric trends in the Northern-Hemisphere, *J. Clim.*, 18, 2924–2936, 2005.
- Hudson, R. D., Andrade, M. F., Follette, M. B., and Frolov, A. D.: The total ozone field separated into meteorological regimes, Part II: Northern Hemisphere mid-latitude total ozone trends, *Atmos. Chem. Phys.*, 6, 5183–5191, 2006,  
15 <http://www.atmos-chem-phys.net/6/5183/2006/>.
- Johanson, C. M. and Fu, Q.: Robustness of Tropospheric Temperature Trends from MSU Channels 2 and 4, *J. Clim.*, 19, 4234–4242, 2006.
- Kalnay, E., Kanamitsu, M., Kistler, R., et al.: The NCEP/NCAR 40-year reanalysis project, *Bull. Am. Meteorol. Soc.*, 77, 437–471, 1996.
- 20 Kanamitsu, M., Ebisuzaki, W., Woollen, J., et al.: NCEP-DOE AMIP-II reanalysis (R-2). *Bull. Am. Meteorol. Soc.*, 83, 1631–1643, 2002.
- Lau, N. C., Leetmaa, A., Nath, M. J., and Wang, H. L.: Influences of ENSO-Induced Indo–Western Pacific SST Anomalies on Extratropical Atmospheric Variability during the Boreal Summer, *J. Clim.*, 18, 2922–2942, 2005.
- 25 Lu, J., Vecchi, G. A., and Reichler, T.: Expansion of the Hadley cell under global warming, *Geophys. Res. Lett.*, 34, L06805, doi:10.1029/2006GL028443, 2007.
- Mears, C. A., Schabel, M. C., and Wentz, F. J.: A reanalysis of the MSU channel 2 tropospheric temperature record, *J. Clim.*, 16, 3650–3664, 2003.
- Mehta, A. and Susskind, J.: Outgoing longwave radiation from the TOVS Pathfinder Path A data set, *J. Geophys. Res.*, 104(D10), 12 193–12 212, 1999.
- 30 Menon, S., Hansen, J., Nazarenko, L., and Luo, Y.: Climate effects of black carbon aerosols in China and India, *Science*, 297, 2250–2253, 2002.
- Mitas, C. M. and Clement, A.: Has the Hadley cell been strengthening in recent decades?,

**The Hadley  
circulation**

Y. Hu and Q. Fu

[Title Page](#)[Abstract](#)[Introduction](#)[Conclusions](#)[References](#)[Tables](#)[Figures](#)[◀](#)[▶](#)[◀](#)[▶](#)[Back](#)[Close](#)[Full Screen / Esc](#)[Printer-friendly Version](#)[Interactive Discussion](#)

EGU

Geophys. Res. Lett., 32, L03809, doi:10.1029/2004GL021765, 2005.

Quan, X., Diaz, H. F., and Hoerling, M. P.: Changes of The Hadley Circulation Since 1950. The conference on the Hadley circulation: Present, Past and Future, November 12-15, 2002, Honolulu, Hawaii, 2002.

5 Ramanathan, V., Chung, C., Kim, D., et al.: Atmospheric brown clouds: Impacts on S. Asian climate and hydrological cycle. PNAS, 102, 5326, 2005.

Stackhouse, Jr., P. W.: GEWEX News, November, 2004.

Trenberth, K. E. and Smith, L.: The vertical structure of temperature in the tropics: Different flavors of El Nino, J. Clim., 19, 4956–4973, 2006.

10 Trenberth, K. E.: Changes in tropical clouds and radiation: Are they real? Science, 296, 2095a, 2002.

Uppala, S. M., Kallberg, P. W., Simmons, A. J., et al.: The ERA-40 reanalysis, Quart. J. Roy. Meteor. Soc., 131, 2961–3012, 2005.

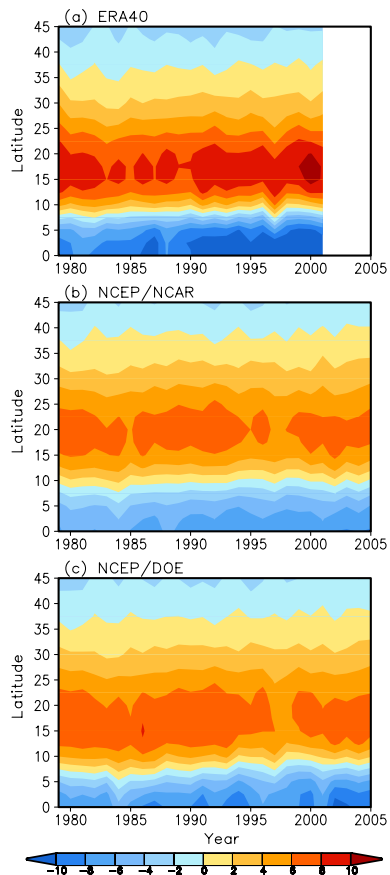
15 Wielicki, B. A., Wong, T., Allan, R. P., et al.: Evidence for large decadal variability in the tropical mean radiative energy budget, Science, 295, 841–843, 2002.

Wong, T., Wielicki, B. A., Lee III, R. B., et al.: Reexamination of the observed decadal variability of the earth radiation budget using altitude-corrected ERBE/ERBS nonscanner WFOV data, J. Clim. 19, 4028-4040, 2006.

20 Zhang, Y., Wielicki, B. A., Lee III, R. B., et al.: Calculation of radiative fluxes from the surface to top of atmosphere based on ISCCP and other global datasets: Refinements of the radiative transfer model and the input data, J. Geophys. Res. 109, D19105, doi:10.1029/2003JD004457, 2004.

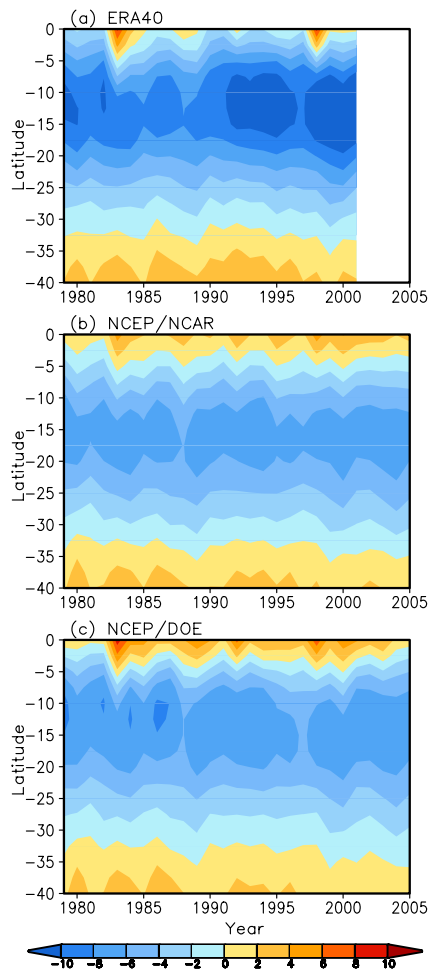
**The Hadley  
circulation**

Y. Hu and Q. Fu



**Fig. 1.** Time evolution of zonal mean meridional mass streamfunction (MMS) at 500 hPa in NH for September–November (SON) from three reanalyses. The unit of MMS is  $1.0 \times 10^{10} \text{ kg s}^{-1}$  and the color interval is  $2.0 \times 10^{10} \text{ kg s}^{-1}$ .

[Title Page](#)[Abstract](#)[Introduction](#)[Conclusions](#)[References](#)[Tables](#)[Figures](#)[◀](#)[▶](#)[◀](#)[▶](#)[Back](#)[Close](#)[Full Screen / Esc](#)[Printer-friendly Version](#)[Interactive Discussion](#)



**Fig. 2.** Same as Fig. 1, except for SH autumn (MAM).

9380

**The Hadley  
circulation**

Y. Hu and Q. Fu

Title Page

Abstract

Introduction

Conclusions

References

Tables

Figures

◀

▶

◀

▶

Back

Close

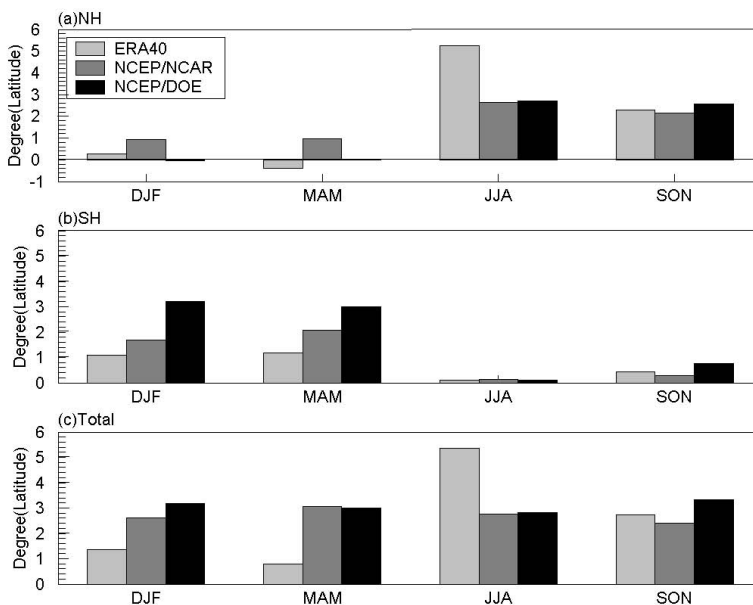
Full Screen / Esc

Printer-friendly Version

Interactive Discussion

The Hadley  
circulation

Y. Hu and Q. Fu



**Fig. 3.** Poleward shifts of poleward edges of the Hadley circulation from three reanalyses, averaged from 400 to 600 hPa. **(a)** The northern branch, **(b)** the southern branch, and **(c)** total poleward expansion. Positive trends indicate poleward shifts of the Hadley circulation and negative values indicate equator-ward shifts. The ERA40 is for 1979–2002 while the NCEP/NCAR and NCEP/DOE are for 1979–2005. For each branch, statistical significance of the trends in the hemisphere summer and autumn is above the 95% confidence level, whereas the relatively weak trends in the hemisphere winter and spring have significant levels below the 90% confidence level.

Title Page

Abstract

Introduction

Conclusions

References

Tables

Figures

◀

▶

◀

▶

Back

Close

Full Screen / Esc

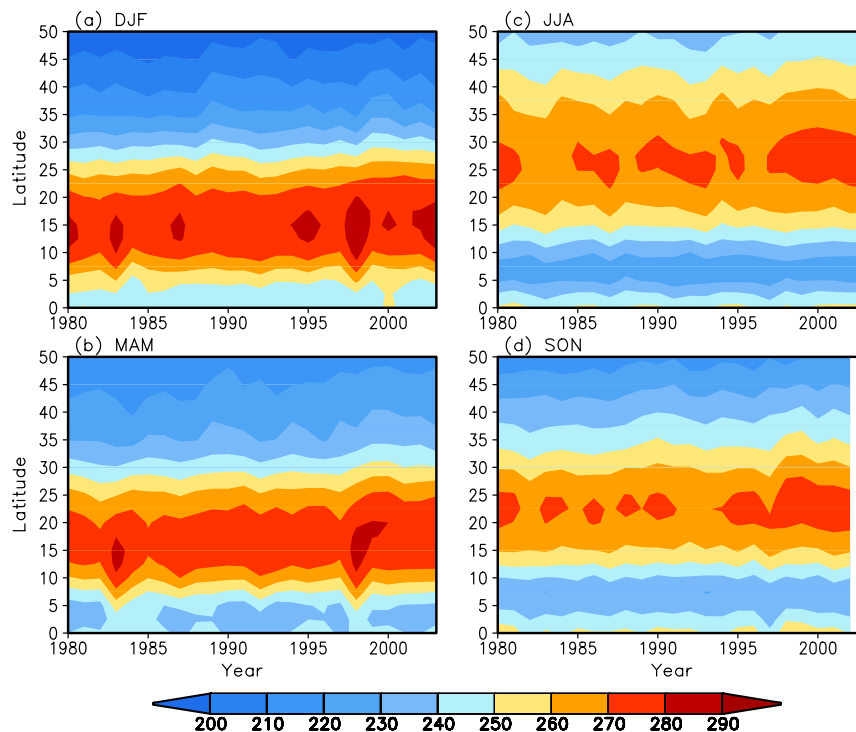
Printer-friendly Version

Interactive Discussion

EGU

The Hadley  
circulation

Y. Hu and Q. Fu



**Fig. 4.** Time evolution of zonal-mean seasonal HIRS OLR in the Northern Hemisphere. The OLR unit is  $W m^{-2}$ , and color interval is  $10 W m^{-2}$ . The  $250 W m^{-2}$  OLR contour is the line between pale blue and yellow colors. **(a)** DJF, **(b)** MAM, **(c)** JJA, and **(d)** SON.

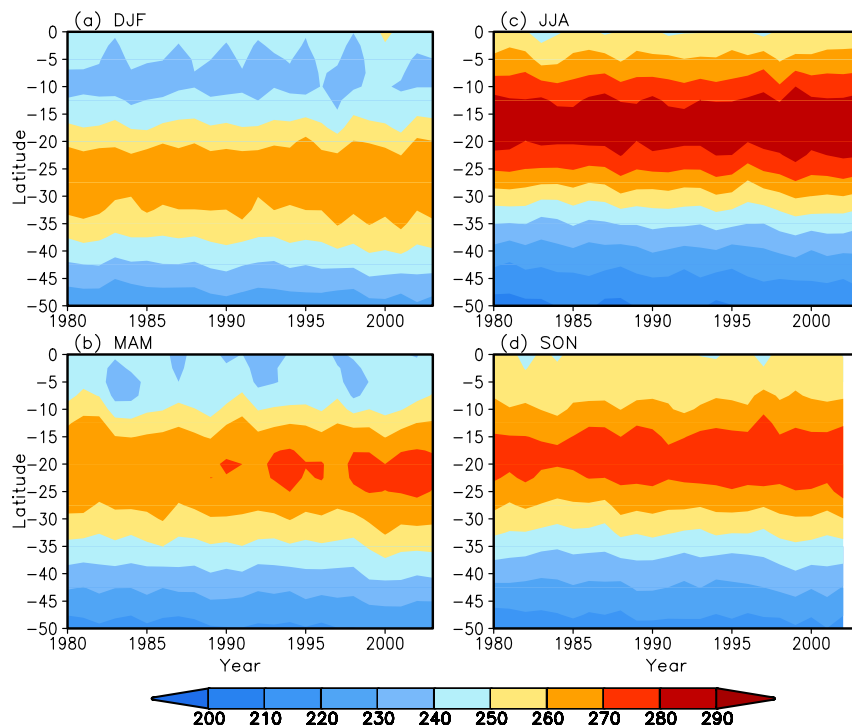
[Title Page](#)[Abstract](#)[Introduction](#)[Conclusions](#)[References](#)[Tables](#)[Figures](#)[I◀](#)[▶I](#)[◀](#)[▶](#)[Back](#)[Close](#)[Full Screen / Esc](#)[Printer-friendly Version](#)[Interactive Discussion](#)

EGU



**The Hadley  
circulation**

Y. Hu and Q. Fu



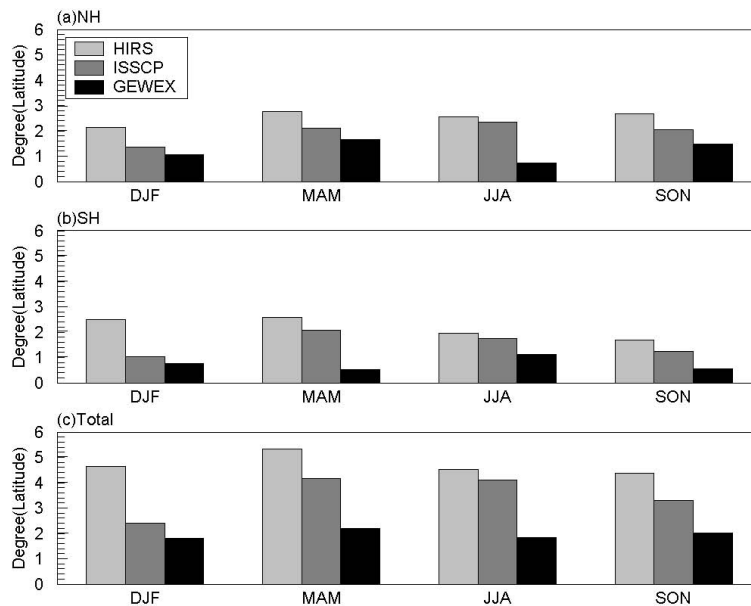
**Fig. 5.** Same as Fig. 4, except for the Southern Hemisphere.

[Title Page](#)[Abstract](#)[Introduction](#)[Conclusions](#)[References](#)[Tables](#)[Figures](#)[◀](#)[▶](#)[◀](#)[▶](#)[Back](#)[Close](#)[Full Screen / Esc](#)[Printer-friendly Version](#)[Interactive Discussion](#)

EGU

The Hadley  
circulation

Y. Hu and Q. Fu



**Fig. 6.** Poleward expansion of the  $250 \text{ W m}^{-2}$  contour from three OLR datasets. **(a)** NH, **(b)** SH, and **(c)** total poleward expansion. Results from three OLR datasets are for 1980–2003 in HIRS and for 1984–2004 in the ISSCP and GEWEX datasets. Student t-test values for the trends in HIRS and ISSCP OLR are larger than 2.9 and 1.8, respectively. For GEWEX OLR, t-test values for the NH trends are larger than 2.5, except the trend in JJA which has a t-test value less than 1.0. The SH trends in DJF and JJA have t-test values larger than 1.75, while t-test values for the trends in MAM and SON are less than 1.0.

Title Page

Abstract

Introduction

Conclusions

References

Tables

Figures

◀

▶

◀

▶

Back

Close

Full Screen / Esc

Printer-friendly Version

Interactive Discussion