

Seasonality of PAN in  
coastal antarctica

G. P. Mills et al.

# Seasonal variation of peroxyacetylnitrate (PAN) in coastal Antarctica measured with a new instrument for the detection of sub-part per trillion mixing ratios of PAN

G. P. Mills<sup>1</sup>, W. T. Sturges<sup>1</sup>, R. A. Salmon<sup>2</sup>, S. J.-B. Bauguitte<sup>2</sup>, K. A. Read<sup>3</sup>, and B. J. Bandy<sup>1</sup>

<sup>1</sup>School of Environmental Sciences, University of East Anglia, Norwich NR4 7TJ, UK

<sup>2</sup>British Antarctic Survey, Maddingley Road, Cambridge, UK

<sup>3</sup>Department of Chemistry, University of York, Heslington, York YO19 4RR, UK

Received: 5 April 2007 – Accepted: 16 April 2007 – Published: 26 April 2007

Correspondence to: G. P. Mills (g.mills@uea.ac.uk)

Title Page

Abstract

Introduction

Conclusions

References

Tables

Figures

◀

▶

◀

▶

Back

Close

Full Screen / Esc

Printer-friendly Version

Interactive Discussion

EGU

## Abstract

An automated gas chromatograph with sample pre-concentration for the measurement of peroxyacetylnitrate (PAN) was constructed with a minimum detection limit below 1 pptv. This instrument was deployed at the British Antarctic Survey's Halley Research Station, Antarctica (75.6° S, 26.6° W) as part of the CHABLIS (Chemistry of the Antarctic Boundary Layer and the Interface with Snow) campaign. Hourly measurements were carried out between July 2004 and February 2005 with observed maximum and minimum mixing ratios of 52.3 and <0.6 pptv, respectively with a mean PAN mixing ratio for the measurement period of 9.2 pptv (standard deviation: 6.2 pptv). The changes in PAN mixing ratios typically occurred over periods of several days to a week and showed a strong similarity to the variation in alkenes. The mixing ratio of PAN at Halley has a possible seasonal cycle with a winter maximum and summer minimum, though the cycle is incomplete and the data is very variable. Calculations indicate that gross local PAN production is approximately 1pptv d<sup>-1</sup> in spring and 0.6 pptv d<sup>-1</sup> in summer. Net loss of PAN transported to Halley in the summer is a small gas-phase source of NO<sub>x</sub> and net production of PAN in the spring is a very small NO<sub>x</sub> sink .

## 1 Introduction

One of the products of the oxidation of most hydrocarbons by OH radicals in the presence of NO<sub>2</sub> is peroxyacetylnitrate (CH<sub>3</sub>C(O)OONO<sub>2</sub>) , hereafter referred to as PAN, which is the most abundant of a number of peroxy nitrates which have been observed in the troposphere (Roberts et al., 2003; Flocke et al., 2005).

Since its discovery as a component of photochemical smog, PAN has been measured throughout the troposphere, even in remote locations. The mixing ratios of PAN seen in highly polluted urban environments can reach tens of parts per billion (ppbv) (Gaffney et al., 1999; Rappengluck et al., 2000) whilst the levels seen in remote marine environments are often only a few pptv (Gallagher et al., 1990; Muller and Rudolph,

ACPD

7, 5617–5645, 2007

## Seasonality of PAN in coastal antarctica

G. P. Mills et al.

Title Page

Abstract

Introduction

Conclusions

References

Tables

Figures

◀

▶

◀

▶

Back

Close

Full Screen / Esc

Printer-friendly Version

Interactive Discussion

EGU

1992; Staudt et al., 2003)

While the production of the peroxyacetyl (PA) radical (which reacts with  $\text{NO}_2$  to make PAN) is a photolytic process, the main loss process for PAN is initiated by dissociation into the peroxyacetyl radical and  $\text{NO}_2$ . This dissociation process is highly sensitive to temperature, so much so that a change in temperature of 30 K changes the rate of dissociation by over two orders of magnitude. Thus PAN produced in polluted environments and lifted to high altitudes, where the temperatures are low, could be transported great distances before the air descends and warms, releasing the  $\text{NO}_2$  tied up in PAN. This transport of PAN away from source regions and its subsequent thermal decomposition has long been a subject of interest as a source of nitrogen oxides ( $\text{NO}_x$ ), and thus a potential impact on ozone production, in remote regions (Crutzen, 1979; Ridley et al., 1990, Hudman et al., 2004).

While there have been many studies of PAN in remote northern hemisphere locations, with several of the arctic (Bottenheim and Gallant, 1989; Beine and Krognes, 2000; Dassau et al., 2004), there are fewer published studies of the southern hemisphere and only currently two of high southern latitudes.

Measurements made during the PEAN'99 campaign show PAN mixing ratios at Neumayer ( $70.6^\circ \text{S}$ ,  $8.3^\circ \text{W}$ ) ranging between 48 pptv and  $<5$  pptv (the limit of detection) during February (Jacobi et al., 2000). This campaign was followed by a cruise north from Neumayer to Cape Town, South Africa in March and there was only 1 pptv variation in the observed daily mean PAN mixing ratios of 17.6 pptv at latitudes between  $60^\circ \text{S}$ - and  $70^\circ \text{S}$  (Jacobi and Shrems, 1999). However, since both studies were limited to the late austral summer we have no seasonal information.

This study aims to add to the exceptionally sparse measurements of PAN so far reported in the Antarctic region and to investigate any seasonality of PAN mixing ratios in Antarctica. In this paper we present measurements taken over the austral winter, spring and summer of 2004–2005, made with a purpose built automated gas chromatograph which we describe.

## Seasonality of PAN in coastal antarctica

G. P. Mills et al.

Title Page

Abstract

Introduction

Conclusions

References

Tables

Figures

◀

▶

◀

▶

Back

Close

Full Screen / Esc

Printer-friendly Version

Interactive Discussion

## 2 Experimental

### 2.1 Measurement site

All the measurements used in this study were taken at the Clean Air Sector Laboratory (CASlab) at Halley located on the Brunt ice shelf, Antarctica. The predominant wind direction at Halley is easterly, with westerly and more southerly winds also contributing a significant proportion of surface wind directions seen at Halley (King, 1989; Renfrew and Anderson, 2002). Northerly winds are rare. The CASlab itself was situated approx. 1 km SSE from the main base.

The CASlab sample manifold consisted of a heated inlet approximately 8 m above the surface, connected to a 10 cm diameter stainless steel pipe from which the instrument sampled via a 2 m long 1/8" PFA line. The residence time of air in the inlet was <1 s.

### 2.2 Instrument description

The GC used in this study was a 19" rack mounted computer controlled instrument and a schematic is shown in Fig. 1a. This schematic does not show details of the trap itself or the temperature controls.

#### 2.2.1 Sample trap

The sample trap consists of a 1 m coil of 0.53 mm MxT-1 (100% dimethylpolysiloxane) metal column (Restek) with a film thickness of 7  $\mu\text{m}$ . The coil was contained inside a circular groove cut into a 3×3×0.5 cm aluminium block and held in the groove by an aluminium plate. The block was cooled to between 223 K and 208 K using a triple stage cascade peltier with a water cooled heatsink maintained at 263 K by a re-circulating water chiller. The temperatures of the aluminium block and the sample loop were recorded with T-type thermocouples. The cold block was insulated and sealed to prevent water condensing on the trap.

Title Page

Abstract

Introduction

Conclusions

References

Tables

Figures

◀

▶

◀

▶

Back

Close

Full Screen / Esc

Printer-friendly Version

Interactive Discussion

For injections, the sample loop was heated by passing a current directly through the sample loop using a 12 V DC supply. The heating of the sample loop was controlled by computer and heating rates of approximately  $14^{\circ}\text{C s}^{-1}$  were used. An injection temperature of 308–318 K was used to minimise the thermal decomposition of PAN in the sample loop

### 2.2.2 Column and column oven

The column was a 15 m long 0.25 mm id MXT-200 (trifluoropropylmethyl polysiloxane) with a 1  $\mu\text{m}$  film (Restek) which was housed in a temperature programmable oven. The column was held at 263 K for 3 min and then heated up to 318 K, initially at  $1.3\text{ K min}^{-1}$  and then after PAN had eluted, at  $5\text{ K min}^{-1}$ . Under typical operating conditions, PAN eluted after 12 min. The oven consisted of an insulated 1.3 cm thick aluminium block with a 10 cm diameter circular groove cut into it, into which the column sat and was held tightly in place by a covering plate. The block was cooled with a 58 W single-stage Peltier device and heated on the opposite side by a 50 W mat heater attached to the covering plate. The temperature of the column was measured in 3 places by k-type thermocouples to ensure an even temperature along the column. Maximum and minimum possible temperatures of the column were limited by temperature controllers and temperatures within this range were regulated by turning the heater/peltier combination on and off as necessary.

### 2.2.3 Sample manifold and zeros

The sample manifold consisted of six 3-way PTFE solenoid valves connected by silcosteel tubing (Restek). The sample manifold was flushed with sample air for 3 min before trapping started by actuating two bypass valves (D in Fig. 1) and the purge valve (C). Trapping was initiated by deactivating valves (D) and terminated by deactivation of valve (C). Because of the small diameter of the trap, the amount of water in 200 ml of Antarctic air could block the trap so the air samples were dried with a 72" Nafion

## Seasonality of PAN in coastal antarctica

G. P. Mills et al.

Title Page

Abstract

Introduction

Conclusions

References

Tables

Figures

◀

▶

◀

▶

Back

Close

Full Screen / Esc

Printer-friendly Version

Interactive Discussion

dryer (H) situated upstream of valve (A). All samples were trapped for 10 minutes at 20 sccm and purged with helium for 20 s prior to injection to reduce the disruption to the baseline caused by the oxygen in the sample.

Calibrations were performed by actuating valve (A) which selects the output from the calibration unit and zeros were performed by diverting the sample flow through a 3 m length of 1/8" silcosteel tubing wound onto an aluminium block (G) maintained at 423 K, a method commonly used in PAN instruments. At this temperature 99.9% of PAN should have dissociated in 0.14 s and at sample flow rate of 20 sccm the residence time in the tube is approx. 14 s. Bare stainless steel tubing was not used to avoid possible decomposition of propyl nitrate, which co-elutes with PAN on this column, on dry metal. Propyl nitrate should not thermally decompose at this temperature because it has a lifetime of over 2 h at 420 K based on the thermal dissociation rate constant of Baker et al. (1977).

All gases were drawn through the trap with a diaphragm pump and the flow rates were controlled by a downstream mass flow controller between the trap and the pump.

#### 2.2.4 Others

The carrier and purge gases (both Helium) were regulated by pressure regulators and the detector make up gas (Ar-CH<sub>4</sub>(5%)) was controlled by a stainless steel double stage needle valve. Typical operating conditions were a column flow rate of 1–2 ml min<sup>-1</sup> and a makeup gas flow of 25 ml min<sup>-1</sup>.

The detector was a CE80 Electron capture detector (Thermo Scientific) controlled with an ECD850 control unit (Thermo Scientific). The detector was held at 329 K to minimise PAN decomposition in the detector, which was significant at a detector temperature of 350 K.

Data was acquired using custom written software and Measurement Computing hardware and data was sampled at 81 Hz and averaged and recorded at 9 Hz.

## Seasonality of PAN in coastal antarctica

G. P. Mills et al.

Title Page

Abstract

Introduction

Conclusions

References

Tables

Figures

◀

▶

◀

▶

Back

Close

Full Screen / Esc

Printer-friendly Version

Interactive Discussion

## 2.2.5 Calibration unit

The calibration unit produces PAN using the widely used method of photolysis of acetone/air/NO mixtures (Warneck and Zerbach, 1992; Flocke et al., 2005). A schematic of the calibration unit is shown in Fig. 1b.

5 Acetone-containing air ( $50\text{--}100\text{ ml min}^{-1}$ ) is mixed with NO (flow  $0.5\text{--}2\text{ ml min}^{-1}$ ) and the mixture is photolysed in a flow-through pyrex cell. A Penray mercury lamp was employed and the pyrex cell cuts out wavelengths below 290 nm, preventing photolysis of PAN in the cell. This minimises PAN photolysis within the cell, but requires a higher acetone concentration for maximum conversion of NO to PAN than the method of Flocke et al. (2005). The acetone containing air was generated by passing air through silicone  
10 tubing held above an acetone reservoir and the length of the silicone tube was optimised to minimise the amount of acetone required for maximum PAN production. The PAN produced in the photolysis cell is then further diluted by zero air, the flow of which is controlled by a flow control valve. The total air flow (acetone permeation + diluent)  
15 was measured upstream with a mass flow meter.

The lamp and the upstream solenoid on/off valves were controlled by PC allowing automatic selection of a variety of calibration unit outputs (zero air, non-photolysed mixture etc).

20 Prior to the field deployment, the output of the calibrator was analysed on a 4 channel chemiluminescence NO<sub>x</sub> instrument (Brough et al., 2003) and a GC-ECD optimised for organic nitrate analysis (Jones et al., 1999). Within the calibration unit greater than 99.5% NO loss was observed, with approx. 1% of the NO<sub>x</sub> output being methyl nitrate. Because of the presence of acetone, the NO<sub>2</sub> could not be determined very accurately with this instrument, but was estimated at only 3–4% of the total NO<sub>x</sub>. We  
25 thus estimate that the calibration source converts NO to PAN with about a 95 +/-2% efficiency. The accuracy in the calibration output, as calculated from the sum of the squares of the individual errors in gas flows, conversion efficiency and the NO mixing ratio, is estimated to be 14.2%

### Seasonality of PAN in coastal antarctica

G. P. Mills et al.

Title Page

Abstract

Introduction

Conclusions

References

Tables

Figures

◀

▶

◀

▶

Back

Close

Full Screen / Esc

Printer-friendly Version

Interactive Discussion

### 3 Results and discussion

#### 3.1 Instrument performance

To test if the instrument response was linear with concentration, 200 ml samples of calibration gas with PAN mixing ratios between 8 and 107 pptv were trapped at 223 K. A sample of photolysed air/acetone (NO not added) was also measured. It is clear from Fig. 2a that the instrument is linear over the range studied.

Figure 2b shows the detector response to a calibration of 20 pptv as a function of sample volume at two trapping temperature (210 and 223 K). As can be seen, the instrument response is linear for small sample volumes, but flattens out at higher volumes indicating that sample breakthrough has occurred and that at 200 ml the trap has reached equilibrium with the sample air. At 223 K the curve starts to become non-linear at a lower sample volume and the instrument response is lower at high sample volumes indicating a smaller effective volume of air is concentrated at 223 K than at 210 K. This suggests that variations in trap temperature could thus result in inaccurate PAN measurements. During the measurement period, the fluctuations in trap temperature were observed mainly in the winter when the laboratory temperature fluctuated most. These occurred over periods of several days and since calibrations were performed during these periods the change in temperature and thus effective sample volume should not have given spurious results. There was however a drift in the minimum attainable temperature during the campaign and at the start of the campaign a trapping temperature of 208 K was achieved, whilst at the end of the campaign the trapping temperature was 220 K.

This change in the effective volume trapped did not affect the observed linearity with concentration but did reduce the sensitivity and thus the ultimate limit of detection. This could be improved with a longer trap and/or a trap with a larger surface area. At 220 K, the precision of the instrument measuring calibrations (200 ml volume at 72 pptv) over a period of 48 h was 4.7% (3 sigma of 48 samples), and 5.2% for 18 consecutive calibrations at 14.1 pptv.

## Seasonality of PAN in coastal antarctica

G. P. Mills et al.

Title Page

Abstract

Introduction

Conclusions

References

Tables

Figures

◀

▶

◀

▶

Back

Close

Full Screen / Esc

Printer-friendly Version

Interactive Discussion



Figure 2c shows two chromatograms obtained in Antarctica on 11 December 2004, an air sample containing 31 pptv of PAN and an air sample with the PAN decomposed by passing the sample through the zero heater.

It is evident from Fig. 2c that the PAN is removed by passing the sample through the heated section and there is no evidence of propyl nitrate which co-elutes with PAN on this column, but is not decomposed by the heater. The small peak after PAN in the air sample in Fig. 4 is an unknown component that is often not present at all, but when it is present is always very small it was not present in any air samples after the zero for many hours. No other peaks in the chromatogram showed a change upon passing through the heater. propyl nitrate was never observed in any of the zeros during this study. This is consistent with propyl nitrate measurements from bottle samples made regularly throughout the year at Halley being consistently below 0.2 pptv (and often below 0.05 pptv) with only a few exceptions in winter and mid summer where levels reached 1 pptv (data not shown)

The limit of detection (LoD) of the instrument was estimated from the standard deviation of the noise of the chromatogram in the PAN region during zeros and the instrument sensitivity calculated from the calibrations, and is defined here as  $3\sigma$  of the noise.

The detection limit of the instrument varied throughout the measurement period between a minimum of 0.6 pptv and a maximum of 4.2 pptv with a median of 1.65 (LQ=0.89,UQ=2.85) pptv. The causes of the drifts in instrument sensitivity are probably the result of trapping temperature changes-particularly in the winter months-and variations in the cleanliness of the trap, and the variation in baseline noise may be due to changes in the cleanliness of the detector and the efficacy of the sample drying throughout the campaign.

The mean precision, determined from 20 sets, taken throughout the whole measurement period, of 8 consecutive air injections was  $16\pm 8\%$ . This was considerably worse than the precision observed for lab calibrations before and after the campaign and also worse than that observed during night-time ambient air measurements made in Norwich post-campaign (9%). The cause of the poor precision in Antarctica is un-

---

## Seasonality of PAN in coastal antarctica

G. P. Mills et al.

---

[Title Page](#)[Abstract](#)[Introduction](#)[Conclusions](#)[References](#)[Tables](#)[Figures](#)[I◀](#)[▶I](#)[◀](#)[▶](#)[Back](#)[Close](#)[Full Screen / Esc](#)[Printer-friendly Version](#)[Interactive Discussion](#)

known.

### 3.2 Field measurements

PAN measurements were obtained from 7 July 2004 to the end of January 2005. Problems with the logging computer prior to July meant only sporadic data were obtained between March and June 2004 and these data are not included here. Samples were taken at 1 h intervals, calibrations were performed every 2 days and heated zeros performed every 4–5 days. Occasional blanks were also performed throughout the campaign, by sampling helium with no evidence of contamination observed at any time.

A time series of the hourly PAN measurements and the daily mean PAN mixing ratio is shown in Fig. 3 along with hourly data for CO, ozone, temperature, TUV calculated solar flux (as a guide to potential photochemically active radiation) and  $\Sigma C_2-C_5$  alkenes.

Table 1 shows a statistical overview of the PAN data and includes the February 1999 measurements of Jacobi et al. (2000), for comparison. Where samples were below the LoD of the instrument a value of half the LoD at that time was used in the calculation of the daily and monthly averages shown in both Table 1 and Figs. 3 and 4.

The daily mean PAN mixing ratio varied from 0.82 pptv to 33.2 pptv, whilst the individual hourly measurements ranged from below 0.6 pptv (lowest LoD) to 52.3 pptv (observed on 27 July.). Throughout the measurement period 17% of the individual hourly measurements were below the detection limit of the instrument and 23% were lost through instrument problems-mostly in groups of 2–3 days.

There was no example of a diurnal variation in PAN observed at any time during the measurement period and the variation in the mixing ratios typically took place over periods of several days to a week.

The PAN mixing ratios observed in this study are consistent with those obtained at Neumayer, which is also a coastal site, by Jacobi et al. (2000) in February 1999, when a mean mixing ratio of 13 pptv was reported, with a maximum value of 48 pptv. The levels seen at Halley are somewhat lower than PAN levels typically observed in the MBL in the Southern Ocean and South Atlantic in early March (Jacobi and Schrems,

## Seasonality of PAN in coastal antarctica

G. P. Mills et al.

Title Page

Abstract

Introduction

Conclusions

References

Tables

Figures

◀

▶

◀

▶

Back

Close

Full Screen / Esc

Printer-friendly Version

Interactive Discussion

1999) though it is recognised that our data was obtained earlier in the season than those obtained in the South Atlantic.

They are also much lower than the mixing ratios observed at Ny-Ålesund, Svalbard (78.9° N, 11.9° E) in the comparable arctic seasons (Beine and Krognes, 2000) and those seen at Alert, Nunavut (82.5° N, 62.5° W) and Summit, Greenland (72.5° N, 38.4° W)(Dassau et al., 2004). This is not surprising given the much greater distances from sources of pollution in Antarctica compared to the Arctic and the lower levels of PAN precursors in the southern hemisphere in general.

A linear regression of the daily means of PAN and ozone shows no correlation and the short-term variation of PAN in this study does not correlate with ozone or CO, though there is one occasion (24 to 31 January) where PAN correlates well with CO. This is in sharp contrast with a long term study of PAN in the Arctic at Ny-Ålesund where ozone and PAN were highly correlated throughout the year (Beine and Krognes, 2000). The PAN, ozone and alkene data all show short term variability and whilst there is no relationship between PAN and ozone variability, there are several periods where PAN and the alkenes vary in a very similar way for long periods (e.g. 21 January 2005–31 January 2005). There are also periods where large changes in one species are not matched by changes in the other (31 December 2004–14 January 2005 is a good example).

Several studies have shown a clear seasonal cycle in the arctic with a spring maximum in PAN and a summer minimum. The monthly medians of PAN, ozone and CO are plotted in Fig. 4 and whilst CO and ozone show clear seasonal variability, with a September maximum for CO and ozone (although we do not have data for earlier in the year) the pattern in PAN is less clear. Whilst the observed median PAN concentrations are highest in winter and lowest in summer, and although the median PAN and ozone values follow a very similar pattern, the much greater day to day variation in PAN mixing ratios means that any seasonal cycle inferred from these data alone are tentative. The alkene data presented here for the July to January period show no clear seasonal pattern, but the full cycle peaks in April–May with a sharp decline into July (Read et al.,

---

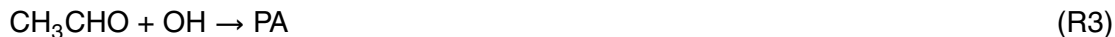
**Seasonality of PAN in coastal antarctica**G. P. Mills et al.

---

[Title Page](#)[Abstract](#)[Introduction](#)[Conclusions](#)[References](#)[Tables](#)[Figures](#)[◀](#)[▶](#)[◀](#)[▶](#)[Back](#)[Close](#)[Full Screen / Esc](#)[Printer-friendly Version](#)[Interactive Discussion](#)

2006)

For the measurement period the daily local gross production rate of PAN was estimated, in the same manner as Dassau et al. (2004), using the following simplified reaction scheme and assuming acetaldehyde was in steady state and was the only source of the PA radical.



Clear-sky photolysis rates were estimated using TUV derived actinic flux (Madronich and Flocke, 1988) and the OH and HO<sub>2</sub> concentrations were estimated by scaling the measured January mean concentrations with the actinic flux.

NO<sub>x</sub> was assumed to be a constant 25 pptv and the NO/NO<sub>2</sub> ratio was estimated from the Leighton relationship (Leighton, 1961) using observed ozone.

Table 3 shows the source of the data and the rate constants used in the calculation of both steady state acetaldehyde and PAN production.

These calculations suggest that gross PAN production is roughly constant at approx 0.9–1 pptv pptv d<sup>-1</sup> throughout the spring and early summer and that in January it is only 0.6 pptv d<sup>-1</sup> at Halley, though there may well be additional sources of both acetaldehyde and peroxyacetyl radicals, such as acetone which would alter this production rate. Unfortunately no measurements of these oxygenates were made.

PAN loss rates were similarly estimated for the entire measurement period using the thermal and photolysis rate constants. Figure 5a shows the calculated thermal

Seasonality of PAN in coastal antarctica

G. P. Mills et al.

Title Page

Abstract

Introduction

Conclusions

References

Tables

Figures

◀

▶

◀

▶

Back

Close

Full Screen / Esc

Printer-friendly Version

Interactive Discussion

dissociation and photolysis rate constants throughout the measurement period, as well as the combined total rate constant.

Except in spring, when the total rate is still small, photolysis was only a minor contributor to the total PAN decomposition rate. The loss due to OH was an order of magnitude lower than that of photolysis and has not been considered further.

The maximum PAN loss rate was estimated using Eq. (1) and assuming that all radicals formed are lost.

$$\frac{-d[\text{PAN}]}{dt} = (k_D + J_{\text{PAN}})[\text{PAN}] \quad (1)$$

Estimates of the minimum loss rates were made by considering only the proportion of radicals formed by thermal dissociation reacting with NO to be lost:

$$\frac{-d[\text{PAN}]}{dt} = k_D[\text{PAN}](1 - \alpha) \quad (2)$$

where

$$\alpha = \frac{k_4}{k_5[\text{NO}]/[\text{NO}_2] + k_4} \quad (3)$$

The resulting maximum and minimum daily PAN loss rates are shown in Fig. 5b.

During the spring, the calculated production rates are higher than the maximum loss rates indicating that PAN production is a small net NO<sub>x</sub> sink during this period. As the season progresses, the loss rates become larger and by January, at PAN mixing ratios above about 6 pptv the calculated minimum loss rates are greater than the estimated production rates and PAN is a net source of NO<sub>x</sub>. Measured daily mean NO<sub>x</sub> during January ranged from 6–31 pptv (shown in Fig. 5c with PAN loss rates for January only) while PAN loss rates between 4 and 14 pptv (minimum and maximum respectively) are calculated during the elevated PAN episodes. Thus PAN can be an important gas-phase source of NO<sub>x</sub> in Antarctica during the summer.

The low calculated production rates at Halley suggest that the episodes of high PAN are unlikely to have been formed locally and that the PAN has been formed elsewhere

Seasonality of PAN in coastal antarctica

G. P. Mills et al.

Title Page

Abstract

Introduction

Conclusions

References

Tables

Figures

◀

▶

◀

▶

Back

Close

Full Screen / Esc

Printer-friendly Version

Interactive Discussion

and transported to Halley (or formed in transit over a period of many days). It is, however, impossible to rule out local, sporadic sources of PAN or its precursors as a cause of these episodes.

The source regions of PAN are however impossible to determine. The PAN mixing ratio does not show any relationship to the type of back trajectory (geographical source or height) in any period of the year nor do the short-term variations correspond to changes in either ozone or CO, which is different to the pattern seen in the Arctic (Beine and Krognnes, 2000) where PAN and ozone are co-transported from mid latitudes.

The absence of any clear relationship between recent air-mass location and PAN is evident from Fig. 6, where Fig. 6a shows 8-day back trajectories for days when the daily mean PAN mixing ratio was greater than 140% of the monthly mean level, and Fig. 6b shows trajectories for days when PAN was less than 60% of the monthly mean. The data are taken from the entire measurement period, but there is still no obvious relationship between trajectory type and PAN even when viewed on a monthly or seasonal basis.

This lack of a relationship between the apparent air-mass source and PAN mixing ratio is not entirely surprising since the lifetime of PAN can be much longer than the calculable length of a trajectory, even in summer, and the PAN lifetime itself is extremely sensitive to differences in temperature during transport.

While the PAN shows no relationship with back-trajectories, there is, for a notable proportion of the data, a clear qualitative relationship with the alkenes (mostly ethene and some propene). Figure 7 shows timeseries for PAN and the alkenes for such a period.

Ethene has an OH dependent lifetime of about 15 days under typical high latitude winter conditions and the ratio of ethene to propene is consistent with an oceanic origin of these species, though emissions from snowpack cannot be excluded as a possibility (Read et al., 2006). The clear relationship between PAN and alkenes suggests that the alkenes and PAN precursors share a common source and that much of the variation in PAN is caused by differing influence of oceanic emissions on the air arriving at Halley.

## Seasonality of PAN in coastal antarctica

G. P. Mills et al.

Title Page

Abstract

Introduction

Conclusions

References

Tables

Figures

◀

▶

◀

▶

Back

Close

Full Screen / Esc

Printer-friendly Version

Interactive Discussion

Because of the different principal loss processes for PAN and alkenes, differences in temperature, time since emission and NO/NO<sub>2</sub> ratios will all affect the PAN/alkene ratio observed at Halley. As for the alkenes, a variable and sporadic snowpack source of either PAN or its precursors cannot be ruled out.

5 On only one occasion is it possible to identify the potential source region. Between 25 and 30 January 2005, PAN increased and then decreased along with CO with both maxima occurring on 27 and 28 January. During this period, 8-day back trajectories suggest that the air mass arrived at Halley from the South Atlantic marine boundary layer (MBL) somewhere near the Falkland Islands, whilst on the 26th and 30th, the air was descending from high altitudes above the Antarctic continent. Even in this period  
10 an ozone increase was not observed.

The PAN mixing ratios we observe are not incompatible with those of the surrounding region, with the July mean value at Halley being very similar to the few observations made in Punta Arenas, Chile, during June (Rudolph et al., 1987) and the South Atlantic measurements in late summer (Jacobi and Schrems, 2000) fit well with our higher  
15 observations. Mid-tropospheric air is also expected to have higher levels of PAN than the MBL and air transported from there to Antarctica could be expected to contain higher PAN mixing ratios than those of the surrounding MBL.

## 4 Conclusions

20 The instrument as used at Halley worked well with detection limits as low as 0.6 pptv achieved in the field. The system was also reliable for the 7 months of its active deployment thus allowing good data coverage within this period. The main limitations of the instrument are the frequency of sampling and the variations in the precision and sensitivity of the instrument in the Antarctic. An increase in trap size, using a packed trap  
25 with a much larger surface area, and an improvement in temperature control should help with the latter issues.

The measurements made in this study show that there is a possible seasonal cycle in

---

## Seasonality of PAN in coastal Antarctica

G. P. Mills et al.

---

Title Page

Abstract

Introduction

Conclusions

References

Tables

Figures

◀

▶

◀

▶

Back

Close

Full Screen / Esc

Printer-friendly Version

Interactive Discussion

**Seasonality of PAN in coastal antarctica**

G. P. Mills et al.

[Title Page](#)[Abstract](#)[Introduction](#)[Conclusions](#)[References](#)[Tables](#)[Figures](#)[◀](#)[▶](#)[◀](#)[▶](#)[Back](#)[Close](#)[Full Screen / Esc](#)[Printer-friendly Version](#)[Interactive Discussion](#)

PAN which is different to those typically observed in the Arctic and the absolute levels of PAN are much lower than observed in the Arctic during the equivalent season. Although the data presented here are not a complete annual cycle, the cycle appears to peak in winter, but the obvious relationship with alkenes (which are highest in autumn/early winter) means that an autumn maximum can not be ruled out.

In summer, the decomposition of PAN can be an important source of NO<sub>x</sub> in the Antarctic, whilst at other times of the year PAN decomposition is negligible.

*Acknowledgements.* We would like to thank B. Bandy, for the use of the UFAM PAN instrument (supported by the Universities' Facility for Atmospheric Measurement of the National Centre for Atmospheric Science (UK)) and A. Jones for the use of the ozone data. Finally we would like to thank the technical and logistical staff at BAS and in particular those at Halley without whose help this work would not have been possible.

This work was funded by The Natural Environment Research Council under the Antarctic Funding Initiative, grant number NER/G/S/2001/00550.

## References

Atkinson, R., Baulch, D. L., Cox, R. A., Crowley, J. N., Hampson, R. F., Hynes, R. G., Jenkin, M. E., Rossi, M. J., and Troe, J.: Evaluated kinetic and photochemical data for atmospheric chemistry: Part 1 – gas phase reactions of Ox, HOx, NO<sub>x</sub> and SO<sub>x</sub> species, *Atmos. Chem. Phys.*, 4, 1461–1738, 2004

Atkinson, R., Baulch, D. L., Cox, R. A., Crowley, J. N., Hampson, R. F., Hynes, R. G., Jenkin, M. E., Rossi, M. J., and Troe, J. Evaluated kinetic and photochemical data for atmospheric chemistry: Volume II – gas phase reactions of organic species, *Atmos. Chem. Phys.*, 6, 3625–4055, 2006

Barker, J. R., Benson, S. W., Mendenhall, G. D., and Goldern, D. M.: Measurement of rate constants of importance in smog, Rep. PB-274530, Natl. Tech. Inf. Serv., Springfield, Va., 1977.

Beine, H. J. and Krognes, T.: The seasonal cycle of peroxyacetyl nitrate (PAN) in the European Arctic, *Atmos. Environ.*, 34, 933–940, 2000.



**Seasonality of PAN in coastal antarctica**

G. P. Mills et al.

Title Page

Abstract

Introduction

Conclusions

References

Tables

Figures

◀

▶

◀

▶

Back

Close

Full Screen / Esc

Printer-friendly Version

Interactive Discussion

Bloss, W. J., Lee, J. D., Heard, D. E., Salmon, R. A., Bauguitte, S. J.-B., Roscoe, H. K., and Jones, A. E.: Observations of OH and HO<sub>2</sub> radicals in coastal Antarctica, *Atmos. Chem. Phys. Discuss.*, 7, 2893–2935, 2007

Bottenheim, J. W. and Gallant, A. J.: PAN over the Arctic; Observations during AGASP-2 in april 1986, *J. Atmos. Chem.*, 9, 301–316, 1989

Bridier, I., Caralp, F., Loirat, H., Lesclaux, R., Veyret, B., Becker, K. H., Reimer, A., and Zabel, F.: Kinetic and theoretical studies of the reactions CH<sub>3</sub>C(O)O<sub>2</sub> + NO<sub>2</sub> + M = CH<sub>3</sub>C(O)O<sub>2</sub>NO<sub>2</sub> + M between 248 and 393 K and between 30 and 760 Torr, *J. Phys. Chem.*, 95, 3594, 1991.

Brough, N., Reeves, C. E., Penkett, S. A., Dewey, K., Kent, J., Barjat, H., Monks, P. S., Ziereis, H., Stock, P., Huntrieser, H., and Schlager, H.: Intercomparison of aircraft instruments on board the C-130 and Falcon 20 over southern Germany during EXPORT 2000, *Atmos. Chem. Phys.*, 3, 2127–2138, 2003,

<http://www.atmos-chem-phys.net/3/2127/2003/>.

Crutzen, P. J.: The role of NO and NO<sub>2</sub> in the chemistry of the troposphere and the stratosphere, *Ann. Rev. Earth Planet. Sci.*, 7, 443–472, 1979.

Dassau, T. M., Shepson, P. B., Bottenheim, J. W., and Ford, K. M.: Peroxyacetyl nitrate photochemistry and interactions with the arctic surface, *J. Geophys. Res.*, 109, D18302, doi:10.1029/2004JD004562, 2004

Flocke, F. M., Weinheimer, A. J., Swanson, A. L., Roberts, J. M., Schmitt, R., and Shertz, S.: On the measurement of PANs by Gas Chromatography and Electron Capture Detection, *J. Atmos. Chem.*, 52, 19–43, 2005

Gaffney, J. S., Marley, N. A., Cunningham, M. M., and Doskey, P. V.: Measurements of peroxyacetyl nitrates (PANs) in Mexico City: Implications for megacity air quality impacts on regional scales, *Atmos. Environ.*, 33(30), 5003–5012, 1992.

Gallagher, M. S., Carsey, T. P., and Farmer, M. L.: Peroxyacetyl nitrate in the North Atlantic marine boundary layer, *Global Biogeochem. Cycles*, 4(3), 297–308, 1990.

Hudman, R. C., Jacob, D. J., Cooper, O. R., Evans, M. J., Heald, C. L., Park, R. J., Fehsenfeld, F., Flocke, F., Holloway, J., Hubler, G., Kita, K., Koike, M., Kondo, Y., Neuman, A., Nowak, J., Oltmans, S., Parrish, D., Roberts, J. M., and Ryerson, T.: Ozone production in transpacific Asian pollution plumes and implications for ozone air quality in California, *J. Geophys. Res.*, 109(23), 1–14, 2004.

Jacobi, H.-W. and Schrems, O.: Peroxyacetyl nitrate (PAN) distribution over the South Atlantic ocean, *Phys. Chem. Chem. Phys.*, 1, 5517–5521, 1999.

**Seasonality of PAN in coastal antarctica**

G. P. Mills et al.

Title Page

Abstract

Introduction

Conclusions

References

Tables

Figures

◀

▶

◀

▶

Back

Close

Full Screen / Esc

Printer-friendly Version

Interactive Discussion

- Jacobi, H.-W., Weller, R., Jones, A. E., Anderson, P. S., and Schrems, O.: Peroxyacetyl nitrate (PAN) concentrations in the Antarctic troposphere measured during the photochemical experiment at Neumayer (PEAN'99), *Atmos. Environ.*, 34, 5235–5247, 2000.
- Jones, A. E., Weller, R., Minikin, A., Wolff, E. W., Sturges, W. T., McIntyre, H. P., Leonard, S. R., Schrems, O., and Bauguitte, S.: Oxidized nitrogen chemistry and speciation in the Antarctic troposphere, *J. Geophys. Res. D. Atmos.*, 104(D17), 21 355–21 366, 1999.
- King, J. C.: Low-level wind profiles at an Antarctic coastal station, *Antarctic Sci.*, 1(2), 169–178, 1985.
- Leighton, P. A.: *Photochemistry of Air Pollution*, Elsevier, New York, 1961.
- Madronich, S. and Flocke, S.: The role of solar radiation in atmospheric chemistry, in *Handbook of Environmental Chemistry* (P. Boule, ed.), Springer-Verlag, Heidelberg, 1–26, 1988.
- Moortgat, G. K., Veyret, B., and Lesclaux, R.: Kinetics of the reaction of HO<sub>2</sub> with CH<sub>3</sub>C(O)O<sub>2</sub> in the temperature range 253–368 K, *Chem. Phys. Lett.*, 160, 443, 1989.
- Muller, K. P. and Rudolph, J.: Measurements of peroxyacetyl nitrate in the marine boundary layer over the Atlantic, *J. Atmos. Chem.*, 15, 361–367, 1992.
- Rappengluck, B., Oyola, P., Olaeta, I., and Fabian, P.: The evolution of photochemical smog in the Metropolitan Area of Santiago de Chile, *J. Appl. Meteorol.*, 39(3), 275–290, 2000.
- Read, K. A., Lewis, A. C., Salmon, R. A., Jones, A. E., and Bauguitte, S.: OH and halogen atom influence on the variability of non-methane hydrocarbons in the Antarctic Boundary Layer, *Tellus*, 59B, 22–38, 2007.
- Renfrew, I. A. and Anderson, P. S.: The surface climatology of an ordinary katabatic wind regime in Coats Land, Antarctica, *Tellus, Series A: Dynamic Meteorol. Oceanogr.*, 54(5), 463–484, 2002.
- Ridley, B. A., Shetter, J. D., Walega, J. G., Madronich, S., Elsworth, C. M., Grahek, F. E., Fehsenfeld, F. C., Norton, R. B., Parrish, D. D., Huebler, G., Buhr, M., Williams, E. J., Allwine, E. J., and Westberg, H. H.: The behavior of some organic nitrates at Boulder and Niwot Ridge, Colorado, *J. Geophys. Res.*, 95, 13 949–13 961, 1990.
- Roberts, J. M. and Bertman, S. B.: The thermal decomposition of peroxyacetic nitric anhydride (PAN) and peroxyacrylic nitric anhydride (MPAN), *Int. J. Chem. Kinet.*, 24, 297–307, 1992.
- Roberts, J. M., Jobson, B. T., Kuster, W., Goldan, P., Murphy, P., Williams, E., Frost, G., Riemer, D., Apel, E., Stroud, C., Wiedinmyer, C., and Fehsenfeld, F.: An examination of the chemistry of peroxy-carboxylic nitric anhydrides and related volatile organic compounds during Texas

Air Quality Study 2000 using ground-based measurements, J. Geophys. Res., 108(16), ACH 4-1–ACH 4-12, 2003.

Rudolph, J., Vierkorn-Rudolph, B., and Meixner, F. X.: Large-scale distribution of peroxyacetyl-nitrate results from the STRAT0Z III flights, J. Geophys. Res., 92, 6653–6661, 1987.

5 Staudt, A. C., Jacob, D. J., Ravetta, F., Logan, J. A., Bachiochi, D., Sandholm, S., Ridley, B., Singh, H. B., and Talbot, B.: Sources and chemistry of nitrogen oxides over the tropical Pacific, J. Geophys. Res., 108(2), PEM 11-1–PEM 11-17, 2003.

Singh, H. B. and Hanst, P. L.: Peroxyacetyl nitrate (PAN) in the unpolluted atmosphere : an important reservoir for nitrogen oxides, Geophys. Res. Lett., 8, 941–944, 1981.

10 Sivakumaran, V. and Crowley, J. N.: Reaction between OH and CH<sub>3</sub>CHO Part 2. Temperature dependent rate coefficients (201–348 K), Phys. Chem. Chem. Phys., 5, 106–111, 2003

Talukdar, R. K., Burkholder, J. B., Schmoltnner, A.-M., Roberts, J. M., Wilson, R. R., and Ravishankara, A. R.: Investigation of the loss processes for peroxyacetyl nitrate in the atmosphere: UV photolysis and reaction with OH, J. Geophys. Res., 100(D7), 14 163–14 173, 1995.

15 Warneck, P. and Zerbach, T.: Synthesis of peroxyacetyl nitrate in air by acetone photolysis, Environ. Sci. Technol., 26, 74–79, 1992.

Villalta, P. W. and Howard, C. J.: Direct kinetic study of the CH<sub>3</sub>C(O)O<sub>2</sub> + NO reaction using chemical ionisation mass spectrometry, J. Phys. Chem., 100, 13 624–13 628, 1996.

ACPD

7, 5617–5645, 2007

---

## Seasonality of PAN in coastal antarctica

G. P. Mills et al.

---

Title Page

Abstract

Introduction

Conclusions

References

Tables

Figures

◀

▶

◀

▶

Back

Close

Full Screen / Esc

Printer-friendly Version

Interactive Discussion

EGU

## Seasonality of PAN in coastal antarctica

G. P. Mills et al.

**Table 1.** Additional chemical measurements made during CHABLIS, which are used in this paper.

Species	Technique	Data frequency	Detection limit
Ozone	UV absorption (2B Technologies)	1 min	1.5 ppbv
CO	Fluorescence (Aerolaser)	30 s	1.5 ppbv
NMHC	GC/ FID	hourly	2–5 pptv (C <sub>2</sub> -C <sub>5</sub> )
NO <sub>x</sub>	Chemiluminescence Photolytic NO <sub>2</sub> conversion	1 min	NO: 1.5 pptv NO <sub>2</sub> : 3 pptv

Title Page

Abstract

Introduction

Conclusions

References

Tables

Figures

◀

▶

◀

▶

Back

Close

Full Screen / Esc

Printer-friendly Version

Interactive Discussion

## Seasonality of PAN in coastal antarctica

G. P. Mills et al.

**Table 2.** Statistical overview of PAN mixing ratios (in pptv) during CHABLIS. The Data for February 99 measured at Neumayer (Jacobi et al., 2000) is included for comparison. Means and medians are calculated from the hourly data using 0.5\* est LoD for periods where PAN was below the LoD.

Period	mean	std. dev.	Median	n
All	9.3	7.9	7.3	3014
July	13.2	9.5	10.3	364
August	10.2	7.1	8.7	461
Sept	10.4	8.6	8.9	413
Oct	8.0	4.7	7.4	413
Nov	7.1	4.9	6.8	465
Dec	5.5	3.9	4.6	441
Jan	11.1	8.7	8.0	457
Feb (1999)	13	7		

[Title Page](#)
[Abstract](#)
[Introduction](#)
[Conclusions](#)
[References](#)
[Tables](#)
[Figures](#)
[I◀](#)
[▶I](#)
[◀](#)
[▶](#)
[Back](#)
[Close](#)
[Full Screen / Esc](#)
[Printer-friendly Version](#)
[Interactive Discussion](#)

## Seasonality of PAN in coastal antarctica

G. P. Mills et al.

**Table 3.** Rate constants and concentrations used in calculations. First order rate constants are in  $\text{s}^{-1}$  and 2nd order are in  $\text{molec}^{-1}\text{cm}^3 \text{s}^{-1}$ . Photolysis rates are calculated from TUV and  $\text{NO}/\text{NO}_2$  is calculated from the Leighton relationship.

Species	Mixing ratio used	Source
[Ethane]	observed	Read et al. (2006)
[OH]	scaled to Jan mean of $4 \times 10^5 \text{ molec cm}^{-3}$	Bloss et al. (2007)
[HO <sub>2</sub> ]	scaled to Jan mean of 0.76 pptv	Bloss et al. (2007)
Temperature	observed	P. Anderson, BAS
O <sub>3</sub>	observed	A. Jones, BAS
NOx	25 pptv	S. Bauguitte, BAS
NO/NO <sub>2</sub>	calculated	–
Reaction	Rate Constant	
Ethane + OH → CH <sub>3</sub> CHO (k <sub>1</sub> )	$6.9 \times 10^{-12} \exp(-1000/T)$	Atkinson et al., 2006
CH <sub>3</sub> CHO + OH → PA (k <sub>3</sub> )	$4.4 \times 10^{-12} \exp(365/T)$	Sivakumaran and Crowley, 2003
PAN → PA + NO <sub>2</sub> (k <sub>D</sub> )	$5.4 \times 10^{16} \exp(-13830/T)$	Roberts and Bertman., 1992
PA + NO <sub>2</sub> → PAN (k <sub>4</sub> )	$1.2 \times 10^{-11} (T/300)^{-0.9}$	Bridier et al. (1991)
PA + HO <sub>2</sub> → products (k <sub>6</sub> )	$5.2 \times 10^{-13} \exp(980/T)$	Moortgat et al. (1989)
PA + NO → products (k <sub>5</sub> )	$7.5 \times 10^{-12} \exp(290/T)$	Villalta and Howard (1996)
O <sub>3</sub> + NO → NO <sub>2</sub> + O <sub>2</sub>	$1.4 \times 10^{-12} \exp(-1310/T)$	Atkinson et al. (2004).
J <sub>CH<sub>3</sub>CHO</sub> → products	$2.8 \times 10^{-6}$	calculated

Title Page

Abstract

Introduction

Conclusions

References

Tables

Figures

◀

▶

◀

▶

Back

Close

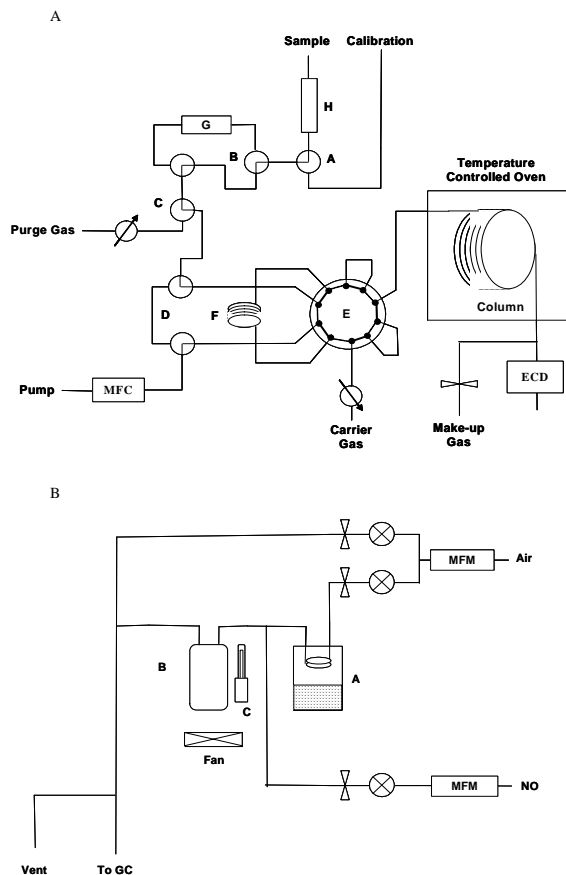
Full Screen / Esc

Printer-friendly Version

Interactive Discussion

## Seasonality of PAN in coastal antarctica

G. P. Mills et al.



**Fig. 1.** (a) schematic of the gas chromatograph showing calibration selection valve (A), zero valve (B), start/stop/purge valve (C), bypass valves (D) and VICI valve (E). (b) Schematic of the calibration unit. (A) acetone reservoir, (B +C) photolysis cell and penray lamp. MFM is a mass flow meter.

Title Page

Abstract

Introduction

Conclusions

References

Tables

Figures

◀

▶

◀

▶

Back

Close

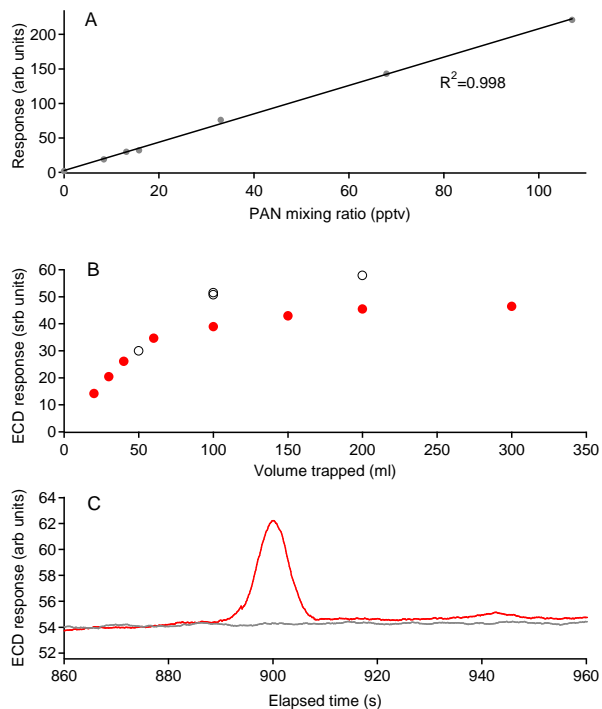
Full Screen / Esc

Printer-friendly Version

Interactive Discussion

## Seasonality of PAN in coastal antarctica

G. P. Mills et al.



**Fig. 2.** (A) response of the instrument to 200 ml samples of different PAN mixing ratios trapped at 223 K (B) The response of the instrument to different sample volumes at two temperatures, 210 K (black-open) and 223 K (red-solid) (C) Two chromatograms of Antarctic air taken on 11 December 2004 containing 31 pptv of PAN (red line), and after passing through zero heater (grey line)

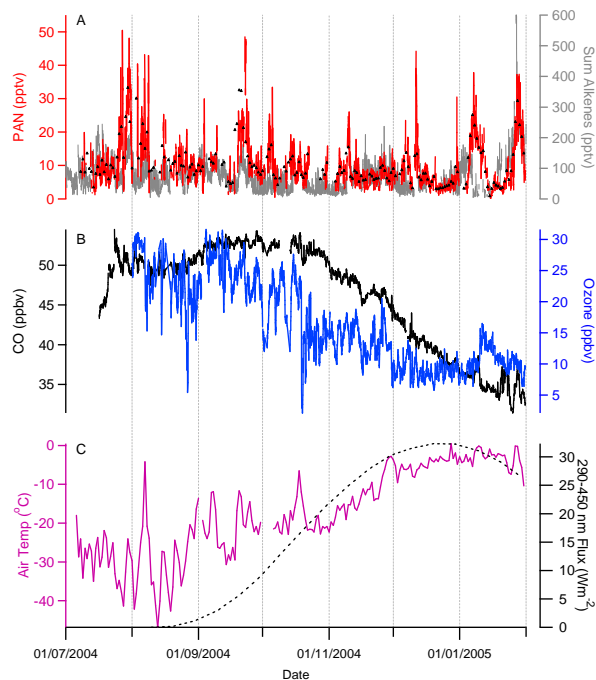
[Title Page](#)[Abstract](#)[Introduction](#)[Conclusions](#)[References](#)[Tables](#)[Figures](#)[◀](#)[▶](#)[◀](#)[▶](#)[Back](#)[Close](#)[Full Screen / Esc](#)[Printer-friendly Version](#)[Interactive Discussion](#)

EGU



## Seasonality of PAN in coastal antarctica

G. P. Mills et al.



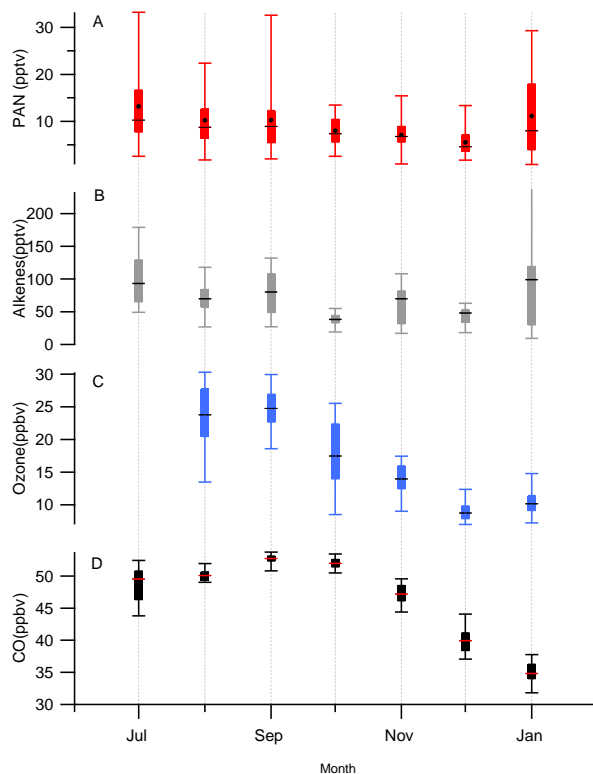
**Fig. 3.** Timeseries of data from Halley from July 2004 to Feb 2005 showing **(A)** hourly PAN measurements (red line), daily mean PAN mixing ratios (black triangles) and the  $\Sigma_{C_2-C_5}$  alkenes. **(B)** ozone (blue) and CO (black) hourly measurements **(C)** hourly air temperature (red) and TUV calculated irradiation (290–450 nm) as a guide to photochemically active radiation.

[Title Page](#)[Abstract](#)[Introduction](#)[Conclusions](#)[References](#)[Tables](#)[Figures](#)[◀](#)[▶](#)[◀](#)[▶](#)[Back](#)[Close](#)[Full Screen / Esc](#)[Printer-friendly Version](#)[Interactive Discussion](#)

EGU

## Seasonality of PAN in coastal antarctica

G. P. Mills et al.

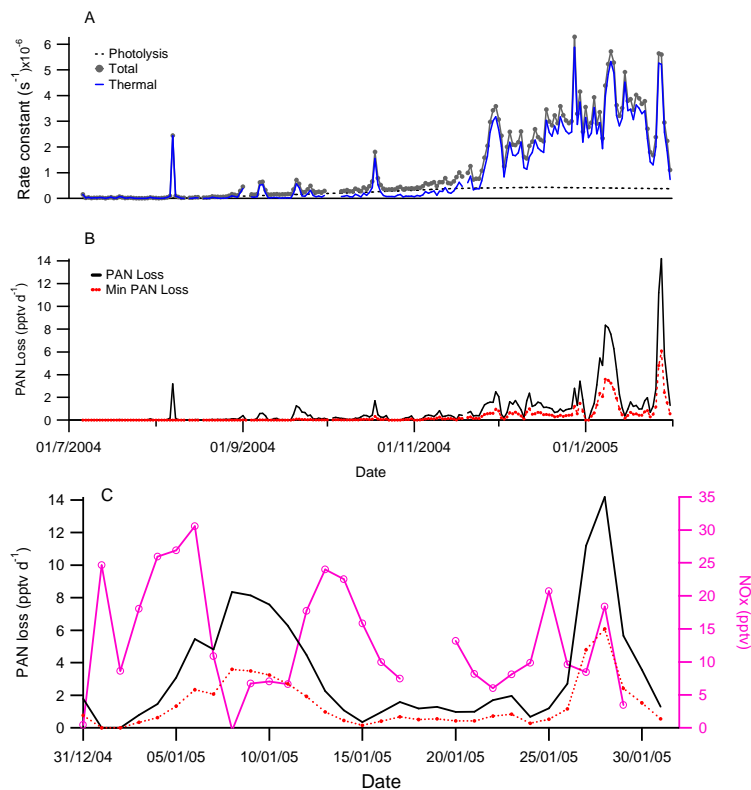


**Fig. 4.** Box and whisker plot showing seasonal variability of **(A)** PAN , **(B)**  $\Sigma C_2-C_5$  alkenes, **(C)** ozone and **(D)** CO for each calendar month. There was no ozone data for July. The horizontal line is the median, the box represents the upper and lower quartiles and the whiskers show the maximum and minimum daily means for that month. The alkene maximum in January was >500 pptv and is off scale. For PAN, the monthly mean is also plotted as black circles.

[Title Page](#)[Abstract](#)[Introduction](#)[Conclusions](#)[References](#)[Tables](#)[Figures](#)[I◀](#)[▶I](#)[◀](#)[▶](#)[Back](#)[Close](#)[Full Screen / Esc](#)[Printer-friendly Version](#)[Interactive Discussion](#)

## Seasonality of PAN in coastal antarctica

G. P. Mills et al.

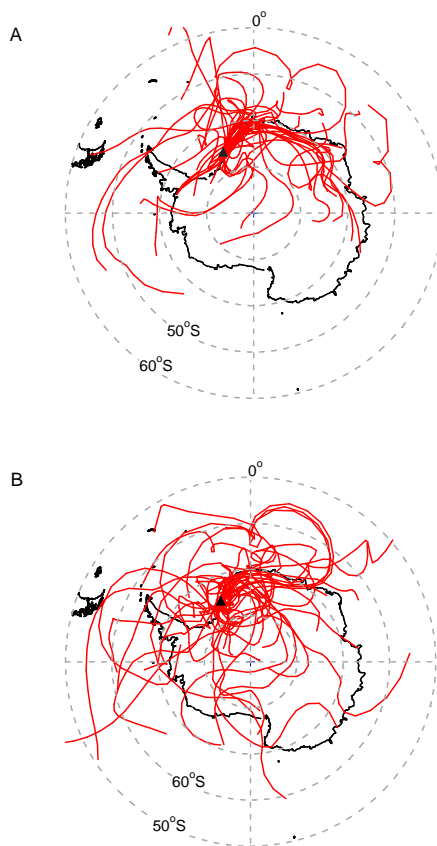


**Fig. 5.** (A) calculated rate constants for PAN showing thermal dissociation (solid blue line), photolysis (dashed line) and the total (line and circle). (B) maximum (black solid) and the minimum (red dashed) PAN loss rates calculated from Eqs. (1) and (2), for the whole measurement period. (C) the same two PAN decomposition rates for January 2005 with the measured  $NO_x$  (pink circles) also shown.

[Title Page](#)[Abstract](#)[Introduction](#)[Conclusions](#)[References](#)[Tables](#)[Figures](#)[◀](#)[▶](#)[◀](#)[▶](#)[Back](#)[Close](#)[Full Screen / Esc](#)[Printer-friendly Version](#)[Interactive Discussion](#)

## Seasonality of PAN in coastal antarctica

G. P. Mills et al.

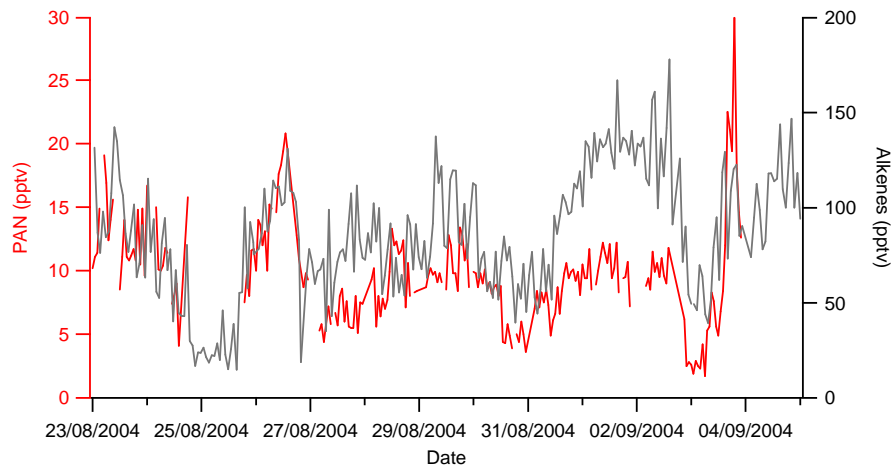


**Fig. 6.** 8-day back trajectories (calculated using the BADC trajectory server with ECMWF analyses) for the whole measurement period where PAN mixing ratio was **(A)** above 140% of the monthly mean, and **(B)** below 60% of the monthly mean. Halley is marked by a black triangle.

[Title Page](#)[Abstract](#)[Introduction](#)[Conclusions](#)[References](#)[Tables](#)[Figures](#)[I◀](#)[▶I](#)[◀](#)[▶](#)[Back](#)[Close](#)[Full Screen / Esc](#)[Printer-friendly Version](#)[Interactive Discussion](#)

**Seasonality of PAN in coastal antarctica**

G. P. Mills et al.



**Fig. 7.** Timeseries of PAN and  $\Sigma C_2-C_5$  alkenes showing very similar patterns of variation for both species. This is one example of several such periods throughout the measurement period.

[Title Page](#)[Abstract](#)[Introduction](#)[Conclusions](#)[References](#)[Tables](#)[Figures](#)[◀](#)[▶](#)[◀](#)[▶](#)[Back](#)[Close](#)[Full Screen / Esc](#)[Printer-friendly Version](#)[Interactive Discussion](#)

EGU