

New formulation of  
EESC

Newman et al.

# A new formulation of equivalent effective stratospheric chlorine (EESC)

P. A. Newman<sup>1</sup>, J. S. Daniel<sup>2</sup>, D. W. Waugh<sup>3</sup>, and E. R. Nash<sup>4</sup>

<sup>1</sup>Atmospheric Chemistry and Dynamics Branch, NASA Goddard Space Flight Center, Greenbelt, Maryland, USA

<sup>2</sup>NOAA Earth System Research Laboratory/Chemical Sciences Division, Boulder, Colorado, USA

<sup>3</sup>Johns Hopkins University, Baltimore, Maryland, USA

<sup>4</sup>Science Systems and Applications, Inc., Lanham, Maryland, USA

Received: 27 February 2007 – Accepted: 19 March 2007 – Published: 22 March 2007

Correspondence to: P. A. Newman (paul.a.newman@nasa.gov)

Title Page

Abstract

Introduction

Conclusions

References

Tables

Figures

◀

▶

◀

▶

Back

Close

Full Screen / Esc

Printer-friendly Version

Interactive Discussion

EGU

## Abstract

Equivalent effective stratospheric chlorine (EESC) is a convenient parameter to quantify the effects of halogens (chlorine and bromine) on ozone depletion in the stratosphere. We show and discuss a new formulation of EESC that now includes the effects of age-of-air dependent fractional release values and an age-of-air spectrum. This new formulation provides quantitative estimates of EESC that can be directly related to inorganic chlorine and bromine throughout the stratosphere. Using this EESC formulation, we estimate that human-produced ozone depleting substances will recover to 1980 levels in 2041 in the midlatitudes, and 2067 over Antarctica. These recovery dates are based upon the assumption that the international agreements for regulating ozone-depleting substances are adhered to. In addition to recovery dates, we also estimate the uncertainties in the estimated time of recovery. The midlatitude recovery of 2041 has a 95% confidence uncertainty from 2028 to 2049, while the 2067 Antarctic recovery has a 95% confidence uncertainty from 2056 to 2078. The principal uncertainties are from the estimated mean age-of-air, and the assumption that the mean age-of-air and fractional release values are time independent. Using other model estimates of age decrease due to climate change, we estimate that midlatitude recovery may be accelerated from 2041 to 2031.

## 1 Introduction

Ozone-depleting substances (ODSs) are primarily comprised of chlorine- and bromine-containing chemicals that have very long lifetimes in the atmosphere. These human produced ODSs have now been regulated under the landmark 1987 Montreal Protocol agreement and the amendments and adjustment to the Protocol (Sarma and Bankobeza, 2000). Based upon ground measurements and emission estimates, the future ground levels of ODSs has been developed as scenario A1 in WMO (2007). This scenario assumes that the Protocol will be adhered to. This scenario A1 projects

## New formulation of EESC

Newman et al.

Title Page

Abstract

Introduction

Conclusions

References

Tables

Figures

◀

▶

◀

▶

Back

Close

Full Screen / Esc

Printer-friendly Version

Interactive Discussion

a steady decline of most ODSs over the coming decades.

Due to the established relationship between stratospheric ozone depletion and inorganic chlorine and bromine abundances, the temporal evolution of chlorine- and bromine-containing halogenated species is an important indicator of the potential damage of anthropogenic activity on the health of stratospheric ozone. Equivalent effective stratospheric chlorine (EESC) was developed to relate this halogen evolution to tropospheric source gases in a simple manner (Daniel et al., 1995). This quantity sums ODSs, accounting for a transit time to the stratosphere, for the greater potency of stratospheric bromine (Br) compared to chlorine (Cl) in its ozone destructiveness with a constant factor ( $\alpha$ ), and also includes the varying rates with which Cl and Br will be released in the stratosphere from different source gases (i.e., fractional release,  $f$ ). The fractional release accounts for ODS disassociation in the stratosphere relative to the amount that entered at the tropopause. EESC has been used to relate predictions of human-produced ODS abundances to future ozone depletion (WMO, 1995, 1999, 2003, 2007).

In the past, EESC estimates have been used to evaluate various ODS emission scenarios primarily using two metrics. These include 1) a comparison of the times when EESC returns to 1980 levels and 2) the relative integrated changes in EESC between 1980 or some other time and when EESC returns to 1980 levels. These comparison metrics did not require that EESC quantitatively describe stratospheric chlorine and bromine levels, but only that it be proportional to these levels. Furthermore, these EESC calculations had not included a distribution of transport times from the troposphere into the stratosphere (the so called age-of-air spectrum) or any dependence of the fractional chlorine release values on the age-of-air. As air moves into the stratosphere at the tropical tropopause ODSs have not been disassociated, and have fractional release values near zero. In contrast, after transiting through the upper stratosphere, the ODSs in an air parcel are nearly fully disassociated and have fractional release values close to 1.0. Recently, Newman et al. (2006) reformulated EESC to account for both an age-of-air spectrum and age dependent fractional release values.

**New formulation of  
EESC**

Newman et al.

Title Page

Abstract

Introduction

Conclusions

References

Tables

Figures

◀

▶

◀

▶

Back

Close

Full Screen / Esc

Printer-friendly Version

Interactive Discussion

This new formulation provides quantitative estimates of inorganic chlorine, bromine, fluorine, and EESC, for different regions of the stratosphere. The purpose of this paper is to further articulate this new formulation and to expose some of the uncertainties in the calculation of EESC. These uncertainties can have considerable impact on ODS recovery dates.

In addition to recovery estimates, EESC has been used as a proxy for halogen levels in ozone trend analysis studies (Yang et al., 2005; Dhomse et al., 2006; Guillas et al., 2006; Newman et al., 2006; Stolarski et al., 2006b). Past trend analysis studies used a linear trend to represent the effects of ODS changes, however with the regulation of ODSs, a linear trend is no longer appropriate. Most trend studies now use EESC as an ODS proxy because stratospheric ozone depletion trends are changing, and these changes most probably began when halogen levels stopped increasing in the late 1990s (Montzka et al., 1996). A few of these studies have suggested that ozone recovery has now passed its first stage: i.e., the linear decrease has stopped and ozone levels are no longer dropping (e.g., Newchurch et al., 2003; WMO, 2007). It is critical that assumptions that are hidden, but implicit in EESC estimates, be understood in order to properly apply EESC in an ozone trend analysis and to ascribe ozone trend changes to the regulation of ODSs.

This paper is divided into six sections. Section 2 provides the theoretical description of EESC in both its new formulation and in the formulation used in past assessments. In the remainder of this paper, we will separately refer to the “classic EESC” used in the WMO assessments and to the reformulated EESC used by Newman et al. (2006). Section 3 shows a step-by-step construction of reformulated EESC, and Sect. 4 compares this reformulation to the classic EESC. Section 5 has detailed descriptions of reformulated EESC uncertainties. The final section summarizes and discusses the implications of reformulated EESC and its uncertainties.

---

**New formulation of  
EESC**Newman et al.

---

Title Page

Abstract

Introduction

Conclusions

References

Tables

Figures

◀

▶

◀

▶

Back

Close

Full Screen / Esc

Printer-friendly Version

Interactive Discussion

## 2 Equivalent effective stratospheric chlorine (EESC)

EESC, as a function of time  $t$ , is defined as

$$\text{EESC}(t) = a \left( \sum_{Cl} n_i f_i \rho_i + \alpha \sum_{Br} n_i f_i \rho_i \right), \quad (1)$$

where  $n$  is the number of chlorine or bromine atoms of a particular source gas  $i$ ,  $f$  represents the efficiency of stratospheric halogen release of the source gas relative to that of chlorofluorocarbon-11 (CFC-11), and  $\rho$  is the source gas mixing ratio when the gas entered the stratosphere (Daniel et al., 1995). Summations are over the Cl- and Br-containing halocarbons. The leading factor,  $a$ , can be an arbitrary value as indicated by WMO (1995, 1999, 2003, 2007) or it can be the fractional release value of CFC-11 so that the EESC quantity accurately represents the amount of inorganic chlorine ( $\text{Cl}_y$ ) and bromine ( $\text{Br}_y$ ) in some region of the stratosphere. In the rest of this manuscript, we fold the  $a$  factor directly into the  $f$  values. Equivalent effective chlorine (ECI) (Montzka et al., 1996) represents the same quantity but with no consideration of the transport time to the stratosphere and all fractional releases set to a value of 1.0.

In the classic EESC,  $\rho_i$  is calculated assuming a simple time lag,  $\Gamma$ , from the surface observations

$$\rho_i = \rho_{i,\text{entry}}(t - \Gamma), \quad (2)$$

where  $\rho_{i,\text{entry}}(t)$  is the surface observation at time  $t$ . WMO (1995, 1999, 2003, 2007) estimated this classic EESC assuming  $\Gamma = 3$  y to obtain a value appropriate for relating to globally averaged ozone loss.

The relative effectiveness of bromine compared to chlorine for ozone depletion ( $\alpha$  in Eq. 1), arises from the residence of inorganic bromine in more active compounds for ozone destruction. This relative effectiveness is usually presented for global ozone depletion although it is a function of altitude, latitude, and background chlorine and bromine amount. We adopt a value of 60 for  $\alpha$  in both EESC formulations following

Title Page

Abstract

Introduction

Conclusions

References

Tables

Figures

◀

▶

◀

▶

Back

Close

Full Screen / Esc

Printer-friendly Version

Interactive Discussion

WMO (2007) and refer to the detailed discussion in that assessment regarding the update of this value from the value of 45 assumed by WMO (2003).

EESC estimates were reformulated by Newman et al. (2006). They revised the method of calculating EESC to account for the fact that 1) different stratospheric locations are characterized by different mean transit times, 2) each location is composed of air characterized by not a single transit time, but a range, and 3) the fractional release values depend on the mean age of air. In the Newman et al. (2006) calculations  $\rho_i$  is calculated using age-of-air spectra weighted mixing ratios as

$$\rho_i(t) = \int_{-\infty}^t \rho_{i,\text{entry}}(t')G(t-t')dt', \quad (3)$$

where  $G(t)$  is the age-spectrum, and the fractional releases are age-of-air dependent,  $f_i = f_i(\Gamma)$ . This reformulation reduces to the classic EESC calculation if  $G(t) = \delta(t - \Gamma)$ , a delta function, and  $\Gamma = 3y$ . This just represents a forward shift of the entire time series of  $\rho_{i,\text{entry}}(t)$  by 3 years.

Estimates of total inorganic and organic chlorine and bromine can be provided from Eq. (1). The first term in Eq. (1) provides an estimate of  $\text{Cl}_y$ , while the second term (without  $\alpha$ ) is an estimate of  $\text{Br}_y$ . In addition, the reformulated equation can be used to estimate total inorganic fluorine by using the number of fluorine atoms in each species, and the same tropospheric mixing ratios and fractional release values.

In Eq. (1),  $f$  represents the fraction of the species that has been disassociated during its movement through the stratosphere. Fractional release was originally defined by Solomon and Albritton (1992) as:

$$f_i = \frac{\rho_{i,\text{entry}} - \rho_{i,\phi,\theta}}{\rho_{i,\text{entry}}}, \quad (4)$$

where  $\phi$  is latitude and  $\theta$  represents altitude (or potential temperature). In Eq. (1), it is assumed that  $f$  is mainly dependent on mean age-of-air and is independent of time. Schauffler et al. (2003) derived the fractional release of CFC-11 as a function of

---

**New formulation of  
EESC**Newman et al.

---

Title Page

Abstract

Introduction

Conclusions

References

Tables

Figures

◀

▶

◀

▶

Back

Close

Full Screen / Esc

Printer-friendly Version

Interactive Discussion

mean age-of-air from lower stratospheric aircraft observations. Observational based fractional release values for other species in the lower stratosphere were derived by Newman et al. (2006).

To apply Eq. (1) to Eq. (3) it is necessary to know the mean age-of-air and, in the case of Eq. (3), the age spectrum. Calculations of mean ages from observations of carbon dioxide (CO<sub>2</sub>) or sulfur hexafluoride (SF<sub>6</sub>) indicate that in the lower stratosphere the mean age is around 3 years in midlatitudes and around 5.5 years in polar regions (e.g., Waugh and Hall, 2002; Newman et al., 2006, and references therein), and we use these values in our standard calculations. There is some uncertainty in the characteristics of the full age spectrum, although analysis of multiple tracers indicates that the spectra are broad (e.g., Andrews et al., 2001; Schoeberl et al., 2005). In our calculations we assume that the age spectrum is an inverse Gaussian function with mean,  $\Gamma$ , and width,  $\Delta$  (see Eq. (9) of Waugh and Hall, 2002), related by  $\Delta = \Gamma/2$ . The sensitivity to this value of  $\Delta/\Gamma$  is examined below.

### 3 Estimating EESC

In this section, we will show the details of estimating the reformulated EESC. We start with a time history of CFC-11 mixing ratio measurements and expected future concentrations. Figure 1 displays this CFC-11 time history of chlorine using scenario A1 of WMO (2007). The surface observations (black) of the chlorine contained in CFC-11 are multiplied by 3 to account for the three chlorine atoms ( $n_i\rho_i$  in Eq. 1). The peak CFC-11 surface value of 809.1 ppt of chlorine occurs in 1994 shortly after the 1992 production phaseout during the 1993–1994 period (WMO, 2007). The figure also shows the chlorine from CFC-11 after the application of a 3-year age spectrum ( $\Gamma = 3\text{ y}$ ,  $\Delta = 1.5\text{ y}$ , red dashed) and a 5.5-year age spectrum ( $\Gamma = 5.5\text{ y}$ ,  $\Delta = 2.75\text{ y}$ , blue dashed) to the surface time series using Eq. (3). The age spectrum shifts the time series to later times as would be expected. While the surface CFC-11 peaked in 1994, the CFC-11 in the stratosphere for 3-year old air peaked in 1998. For 5.5-year old air, the peak is shifted

New formulation of  
EESC

Newman et al.

Title Page

Abstract

Introduction

Conclusions

References

Tables

Figures

◀

▶

◀

▶

Back

Close

Full Screen / Esc

Printer-friendly Version

Interactive Discussion

to 2001 and the maximum is reduced to about 788 ppt. This shift is slightly later than that obtained from a simple 5.5-year shift and the peak is smaller than the surface peak because of the consideration of the age spectrum. The peak value in 2001 results from the 5.5-year age spectrum weighted average of surface values prior to 2001. Since, most of those surface values are considerably less than the 809.1 ppt peak, the peak in 2001 must be smaller than the size of the surface peak.

The fractional release,  $f$ , provides the fractional amount of CFC-11 that has been dissociated in the stratosphere relative to the amount that entered at the tropopause. [Schauffler et al. \(2003\)](#) used ER-2 observations to calculate the fractional release of CFC-11 as a function of mean age-of-air. The release of chlorine via the degradation of CFC-11 in the stratosphere occurs by solar photolysis at wavelengths less than approximately 240 nm. At the tropical tropopause (air that has recently entered the stratosphere), virtually none of the CFC-11 has been degraded. Hence, its fractional release is zero. For a 3-year mean age of air, approximately 47% of the CFC-11 has been converted into inorganic chlorine, with 53% remaining as CFC-11. For a 5.5-year mean age-of-air, essentially all of the CFC-11 has been converted. The solid red curve of Fig. 1 displays the  $\text{Cl}_y$  contribution from CFC-11 ( $n_i f_i \rho_i$  in Eq. 1).

Table 1 lists 16 different species used to estimate EESC in this study along with their chemical formulas, year 2000 surface mixing ratios from [WMO \(2007\)](#) scenario A1, estimated lifetimes, and observationally derived fractional release values for 3- and 5.5-year mean ages (valid in the lower stratosphere).

$\text{Cl}_y$  is estimated by summing the contributions of all the long-lived chlorine species. Short-lived chlorine containing gases may contribute approximately 100 ppt to  $\text{Cl}_y$  ([WMO, 2007](#)), but their contribution is not included herein. Figure 2 displays the contributions from CFC-11, CFC-12, and methyl chloroform to total chlorine. Figure 2a is identical to Fig. 1, shown again for ease of comparison with CFC-12 and methyl chloroform. Figures 2a–c, show surface concentrations (black), the inorganic contribution to  $\text{Cl}_y$  for a 3-year mean age-of-air (filled), and the inorganic contribution to  $\text{Cl}_y$  for a 5.5-year mean age-of-air (dashed). The fractional release values are qualitatively

---

**New formulation of  
EESC**Newman et al.

---

Title Page

Abstract

Introduction

Conclusions

References

Tables

Figures

◀

▶

◀

▶

Back

Close

Full Screen / Esc

Printer-friendly Version

Interactive Discussion



related to the inverse of stratospheric lifetimes of the species. Stratospheric lifetimes for CFC-11, CFC-12, and methyl chloroform are 45 y, 100 y, and 49 y, respectively. For a 3-year mean age, the associated fractional releases are 0.47, 0.23, and 0.67, respectively (Table 1). The cumulative sum is shown in Fig. 2d. On a time average, the species that contribute the majority of the chlorine to the stratospheric inorganic burden are: methyl chloride, CFC-11, CFC-12, carbon tetrachloride, methyl chloroform, CFC-113, and HCFC-22. Methyl chloride is the dominant natural species that contributes to stratospheric chlorine. An additional five Cl-containing species are included in Fig. 2d, but their contributions are too small to be clearly displayed. For air in the stratosphere with a 3-year mean age-of-air,  $Cl_y$  had a peak value in mid-1995 at approximately 1420 ppt.

As indicated in Eq. (1), EESC is estimated by combining the inorganic chlorine with inorganic bromine. Bromine is a more efficient depleter of ozone, and is scaled by  $\alpha=60$ . Figure 3 displays  $Cl_y$ ,  $Br_y$ , and EESC. Figure 3a is the same as Fig. 2d (with color rearrangement) for a 3-year mean age-of-air.  $Br_y$  peaks in 2001, about six years later than  $Cl_y$ , with a maximum value of 9.1 ppt. The reformulated EESC in Fig. 3c is combined from Fig. 3a and Fig. 3b. Figure 3d is similar to Fig. 3c, but is calculated for a 5.5 year mean age-of-air.

The EESC is characterized by both a strong variation of magnitude and peak year between the 3-year curve (Fig. 3c) and the 5.5-year curve (Fig. 3d). The reference year of 1980 is often chosen as a metric for substantial recovery (gray vertical line). The year of recovery (black vertical line) of EESC is then considered to be when the EESC value drops to the same as in the reference year (black horizontal line). This recovery of EESC would occur in 2041.3 for a 3-year (Fig. 3c) and in 2067.2 for a 5.5-year (Fig. 3d) mean age-of-air. The peak values of EESC are substantially different between a 3- and a 5.5-year mean age. The 3-year mean age EESC value peaks at 1931 ppt in mid-1996, while the 5.5-year mean age EESC peaks at a value of 4045 ppt in early 2001.

**New formulation of  
EESC**

Newman et al.

Title Page

Abstract

Introduction

Conclusions

References

Tables

Figures

◀

▶

◀

▶

Back

Close

Full Screen / Esc

Printer-friendly Version

Interactive Discussion

## 4 Comparison with classic EESC

The classic EESC used by WMO (1995, 1999, 2003, 2007) is formulated as shown in Eq. (1), but it uses the simple time series shift noted above and uses different values for the fractional release values than are used by Schauffler et al. (2003) and Newman et al. (2006). Figure 4 displays the EESC estimated in the reformulation (solid) and the classic technique (dashed) using  $\Gamma=3$  y (blue) and  $\Gamma = 5.5$  y (red). Figure 4a shows the actual values of EESC as calculated by the two techniques, where the reformulated EESC curves yield a quantitative estimate (i.e.,  $Cl_y$  and  $Br_y$ ) while the classic EESC does not.

Figure 4b shows the EESC curves normalized to the respective peak values. For  $\Gamma = 3$  y, the classic EESC behavior is similar to the reformulated EESC. However, for  $\Gamma=5.5$  y, there is a significant difference between reformulated and classic EESC in the period after approximately 2001. This difference results from the higher “relative to 1980” peak value of the classic EESC in 2000 that can be seen in Fig. 4c.

As noted in Table 1, differing fractional release values will impact the estimated recovery date. Because of these release differences, recovery estimates here are different from those reported by WMO (2007). For a 3-year shift in the classic EESC, WMO (2007) estimated a 2048.8 recovery in comparison to our reformulated EESC estimate of 2041.3 (a difference of 7.5 y). Only a small part of this difference is due to the application of an age spectrum: if we use the simple 3-year shift, rather than an age spectrum, with our age dependent release rates the difference from WMO (2007) is 7.0 y. For a 6-year shift, WMO (2007) calculated a 2064.7 recovery. If we use their 6-year mean age with our reformulated EESC, we estimate recovery in 2073.3. Hence, recovery differences between our estimates and WMO (2007) are primarily related to fractional release value differences.

The reasons for the differences between our reformulated EESC fractional release values (Schauffler et al., 2003; Newman et al., 2006) and the WMO (2003, 2007) release values are currently uncertain. There are particularly striking differences in the

### New formulation of EESC

Newman et al.

Title Page

Abstract

Introduction

Conclusions

References

Tables

Figures

◀

▶

◀

▶

Back

Close

Full Screen / Esc

Printer-friendly Version

Interactive Discussion

values for HCFC-141b and HCFC-142b. The derivation of these values from data (Schauffler et al., 2003) is quite sensitive to an accurate assessment of the age-of-air for gases such as these with a large trend. However, the uncertainty in the age inferred by Schauffler et al. (2003) is unlikely to explain the large differences. On the other hand, the values adopted by WMO (2003, 2007) are taken from Solomon and Albritton (1992) and were calculated with a 2-D model. It also seems unlikely that the kinetics of these gases, combined with transport uncertainties of the model would lead to such fractional release errors. The resolution of the differences in these values will require both new observations and a dedicated study. Because we are primarily interested in exploring the sensitivities of EESC, for the purpose of this work we will rely on the fractional release values presented by Newman et al. (2006), while at the same time acknowledging the important degree of uncertainty in both sets of fractional release values.

## 5 EESC sensitivities and uncertainties

The calculations of EESC shown in Fig. 1 through Fig. 4 involved the choice of several parameter values, some of which are uncertain. We now examine the sensitivity of the EESC calculations and recovery dates to the mean age-of-air, the age spectrum width, the choice of  $\alpha$ , the scenario, the fractional release value uncertainties, the choice of 1980 as the start date, and the assumption that the mean age-of-air is a constant in time.

### 5.1 Sensitivity to mean age-of-air

EESC is strongly dependent on the mean age-of-air. Mean age-of-air impacts both the temporal behavior of EESC and the peak concentration of EESC. Figure 5 displays the EESC for a variety of mean age-of-air values ranging from 2 to 6 years. As noted above in Fig. 1, the peak shifts to the right for older mean age. ECI (gray curve) indicates the

## New formulation of EESC

Newman et al.

Title Page

Abstract

Introduction

Conclusions

References

Tables

Figures

◀

▶

◀

▶

Back

Close

Full Screen / Esc

Printer-friendly Version

Interactive Discussion

peak values at the surface and is computed from the observations using  $\alpha=60$ . ECI peaks at about 4529 ppt around the beginning of 1995.

EESC is also characterized by a strong variation of magnitude and peak year as a function of mean age-of-air. For ages greater than 6 years, there are small changes in the magnitude of EESC, since almost all of the ODS species have been converted to  $\text{Cl}_y$  and  $\text{Br}_y$ , however, the peaks continue to shift towards later dates for these older ages.

In stratospheric ozone recovery discussions, it is first necessary to understand when stratospheric chlorine and bromine levels will return to a pre-ozone depletion level. A larger value of mean age-of-air leads to a later recovery date because a larger age implies that the stratospheric EESC level was lower in 1980. Therefore, the return to that lower level will take longer. The 3-year mean age implies an EESC recovery near 2041, while the older 5.5-year mean age implies a recovery near 2067. Figure 6a displays the peak EESC value versus age-of-air (black). The EESC peak is very sensitive to mean age-of-air, and increases from zero for a zero mean age to 4045 ppt for a 5.5-year mean age. This increase results from the competition between the fractional release, which results in more liberated chlorine and bromine as the age increases, and the greater flattening of the peak arising from the larger age spectrum width as the age increases. For mean ages above about 5.8 years, nearly all of the organic species have been degraded, so little additional chlorine or bromine is available for release. For a 5.8-year age, Fig. 6b shows the peak year versus mean age-of-air (black). The peak year varies almost linearly with age. Each additional year of age results in approximately a 1.0- to 1.5-year increase in the peak year. The asymmetries in the EESC time series and the consideration of the age spectrum are the reasons the increase is not exactly 1.0 year.

Recovery is very sensitive to mean age-of-air (Newman et al., 2006). Figure 6c shows the recovery year versus mean age-of-air (black). Each additional year of age results in approximately a 10-year delay of the recovery. This large recovery sensitivity to mean age-of-air can be understood by examining Fig. 4c. Because of the large age,

---

**New formulation of  
EESC**Newman et al.

---

Title Page

Abstract

Introduction

Conclusions

References

Tables

Figures

I◀

▶I

◀

▶

Back

Close

Full Screen / Esc

Printer-friendly Version

Interactive Discussion

relative EESC for a 5.5-year mean age (appropriate to the Antarctic polar vortex) continues to grow during the 1995–2001 period, reaching a value that is nearly double its 1980 value. The relative EESC for a 3-year mean age (appropriate for the midlatitudes) only increases an additional 66% from 1980 to 1996. Because the decay rates (post 2001) for these relative EESC curves are similar, the EESC for 3-year air recovers much earlier than for 5.5-year air.

## 5.2 Sensitivity to width

In our calculations of the age spectra, we have assumed that the age spectrum width is half of the mean age-of-air ( $\Delta = \Gamma/2$ ). This is used in all of Fig. 1 through Fig. 5. We test the sensitivity to the spectral width by applying simple increases and decreases to the width. This has no effect on the fractional release values used because they are determined from the mean age alone. In Fig. 6, the spectral width has been both increased (red) and decreased (blue) by 30%. For example, the 5.5-year age spectrum width has been varied from 1.9 y to 3.6 y. The largest differences for the peak EESC value and recovery year occur for the largest ages. However, even then the values are not very sensitive to variations in  $\Delta$  for any of the three metrics. For a 5.5-year mean age, the peak value decreases by only 46 ppt (1.1% of the 4045 ppt value) with a 30% increase of the spectrum width of 0.8 y. The peak year and the recovery year also demonstrate small variations for large width variations. For a 5.5-year mean age of air, increasing the width by 30% advances (or hastens) the date of recovery by 1.1 y (2067.2 to 2066.1), while decreasing the width by 30% delays the recovery by 1.0 y to 2068.2. In summary, in contrast to variations in mean age the EESC is only moderately sensitive to variations in the spectrum width.

## 5.3 Sensitivity to $\alpha$

Because the bromine catalytic cycle is more efficient for ozone loss than the chlorine catalytic cycle, the Bry contribution to EESC is scaled ( $\alpha=60$ ) to account for this ef-

### New formulation of EESC

Newman et al.

Title Page

Abstract

Introduction

Conclusions

References

Tables

Figures

◀

▶

◀

▶

Back

Close

Full Screen / Esc

Printer-friendly Version

Interactive Discussion

5 efficiency. Model estimates of  $\alpha$  show variations with time, altitude, and latitude (e.g., Daniel et al., 1995). Inspection of Fig. 5 of Daniel et al. (1995) shows a variation of  $\alpha$  from a minimum of about 25 at the equator to a maximum of 65 at 90° S. Hence, while we have adopted the WMO (2007) value, it is important to note that different values should probably be used for the midlatitudes and polar regions.

10 Figure 7 repeats the EESC from Fig. 5 for both a 3-year mean age (lower black) and a 5.5-year mean age-of-air (upper black). We also show the EESC for  $\alpha=40$  (blue) and  $\alpha=80$  (red). From Fig. 3b, we see that  $Br_y$  peaks at approximately 9 ppt for a 3-year mean age. For the 3-year mean age-of-air, an increase or decrease of  $\alpha$  by 20 will increase or decrease EESC by 172 ppt. For a 5.5-year mean age-of-air EESC is changed by 304 ppt for a change in  $\alpha$  by 20. Because  $Br_y$  peaks later than  $Cl_y$  (see Fig. 3) an increase of  $\alpha$ , which increases the relative importance of  $Br_y$ , thereby delays the peak year of the maximum EESC. However, this shift is small. Increasing  $\alpha$  from 60 to 80 increases the peak year from 2001.2 to 2001.5. The EESC recovery year is also impacted in a minor way by an increase or decrease of  $\alpha$ . Increasing  $\alpha$  from 60 to 80 delays the 5.5-year mean age recovery year from 2067.2 to 2068.0, and increases the 3-year mean age recovery year from 2041.3 to 2042.5. In summary,  $\alpha$  is relatively important to the peak value of EESC, but is relatively unimportant for the EESC peak year or the EESC recovery year.

20 It is important to realize that a change of  $\alpha$  does not imply the extent to which the  $Cl_y$  or  $Br_y$  destruction of stratospheric ozone is changing. Rather, it only provides information concerning how the relative efficiency of  $Cl_y$  is changing with respect to  $Br_y$  for ozone destruction. Hence, while the chlorine and bromine contributions to EESC can be directly related to  $Cl_y$  and  $Br_y$ , the summed EESC quantity loses this direct relationship because of the introduction of the multiplicative  $\alpha$  factor. Danilin et al. (1996) modeled ozone loss in the Antarctic vortex and computed  $\alpha$  for a range of  $Cl_y$  and  $Br_y$  values. In their calculation, they showed that for a fixed amount of  $Br_y$ ,  $\alpha$  increases as  $Cl_y$  increases, and for fixed  $Cl_y$ ,  $\alpha$  decreases as  $Br_y$  increases. We have taken their estimates of  $\alpha$  and calculated  $\alpha$  as a function of time for the  $Cl_y$  and

---

**New formulation of  
EESC**Newman et al.

---

Title Page

Abstract

Introduction

Conclusions

References

Tables

Figures

◀

▶

◀

▶

Back

Close

Full Screen / Esc

Printer-friendly Version

Interactive Discussion

Br<sub>y</sub> values estimated using our age spectra and release rates. Figure 7 shows EESC calculated using these time-varying  $\alpha$  values (magenta) for a mean age of 5.5 y. Their estimated  $\alpha$  has a value of 43.1 in 1980 and 41.5 in 2067. As is apparent in Fig. 7, this curve is slightly higher than the  $\alpha=40$  (blue) curve. The recovery year using the  $\alpha$  values from Danilin et al. (1996) is 2065.9. Using a fixed value of  $\alpha=42.1$ , the recovery year is 2066.4. Hence, a temporal varying  $\alpha$  value leads to only modest changes in the recovery year.

#### 5.4 Sensitivity to halogen scenarios

The full EESC time series depends on both the mixing ratio observations (pre-2006) and the future scenario that is estimated from projected chlorine and bromine emissions (post 2006). We have estimated the sensitivities of recovery times to variations in scenarios presented by WMO (2007). Figure 8 displays EESC versus time for three different scenarios. Scenario A1 from WMO (2007) is shown (black), again repeating our 3-year (lower) and 5.5-year (upper) mean age-of-air results. Also shown are the mean age-of-air results that are derived from scenario Ab (blue) in the previous assessment (WMO, 2003). There are two main differences between these results. First, between 2005 and 2020, the EESC from scenario A1 falls off faster than the older scenario Ab. This results from the downward revision of methyl bromide concentrations. Second, from approximately 2020 to 2080, the EESC for scenario A1 is higher than the older scenario Ab. While methyl bromide has been revised downward, CFC-11, CCl<sub>4</sub>, Halon 1211, and HCFC-22 have all been revised upward (WMO, 2007). The main contribution to this increase is the higher levels of HCFC-22 in the 2020 to 2080 period. The change from scenario Ab to A1 leads to a slight delay of recovery from 2039 to 2041.3 for the 3-year mean age and from 2064.3 to 2067.2 for the 5.5-year mean age. While the scenario revision between WMO (2003) and WMO (2007) is substantial, the change in recovery between the scenarios is modest.

Figure 8 also displays EESC versus time for scenario E0 (red), which includes zero future emissions (WMO, 2007). While the attainment of zero emissions is highly un-

**New formulation of  
EESC**

Newman et al.

Title Page

Abstract

Introduction

Conclusions

References

Tables

Figures

◀

▶

◀

▶

Back

Close

Full Screen / Esc

Printer-friendly Version

Interactive Discussion

likely, it provides a useful theoretical lower limit on future ODS concentrations and a corresponding limit on recovery. For a 3-year age, the E0 recovery is 2029 as opposed to the baseline case of 2041. For a 5.5-year age, the E0 recovery is 2053 as opposed to the baseline case of 2067.

## 5.5 Sensitivity to fractional release values

The peak EESC value, the year of this peak value, and the recovery year are all dependent on the fractional release values of the various species. These sensitivities depend largely on the magnitude of the contribution of the particular halogen species to the total EESC. For example, CFC-115 had a surface mixing ratio of about 9 ppt in 2000, hence it has a small contribution to an overall 1980 EESC level of 2200 ppt (5.5-year mean age). The peak EESC, the peak year, and the recovery year are not strongly impacted by uncertainty in the CFC-115 fractional release values. Table 1 shows the sensitivity of peak EESC and the recovery year for a 0.10 fractional release variation centered on the assumed value of fractional release. For a 3-year mean age-of-air, CFC-11 has a fractional release of 0.47. For a variation of 0.42 to 0.52 in fractional release, the maximum EESC changes by 79.9 ppt and the recovery date increases by 0.47 y.

Increasing the fractional release values always increases the peak EESC value. The sensitivities of the maximum EESC value in Table 1 are proportional to the concentration of the particular species, while the sensitivities of the year of recovery are proportional to the mixing ratio difference between the value at the time of EESC recovery to the value in 1980. Because the atmospheric concentrations of species such as CFC-11, CFC-12, methyl chloride, and methyl bromide are large, the sensitivity of the peak EESC to release variations is also large.

In contrast to the EESC magnitude, increasing fractional release can cause the recovery date to be earlier (negative sensitivity) or later (positive sensitivity). A negative sensitivity example comes by increasing the fractional release of methyl chloroform. Increasing  $f$  by 0.1 moves the recovery date for 3-year air 1.37 years earlier from 2041.3

## New formulation of EESC

Newman et al.

Title Page

Abstract

Introduction

Conclusions

References

Tables

Figures

◀

▶

◀

▶

Back

Close

Full Screen / Esc

Printer-friendly Version

Interactive Discussion



to 2039.9 (0.58 years earlier for 5.5-year air). This negative sensitivity results from the methyl chloroform time history. In Fig. 2c, methyl chloroform was relatively large in 1980, peaked in early 1994, and had fallen to zero by 2041. Increasing the fractional release for methyl chloroform by 0.1 increases 1980 EESC but does not change 2041 EESC. The total  $Cl_y$  in Fig. 2d shows a recovery line drawn from the 1980 vertical line. Increasing methyl chloroform (via a fractional release increase) increases 1980 EESC without changing 2041 EESC, shifting the recovery to an earlier date. Carbon tetrachloride and methyl bromide have similar negative sensitivities for 3-year-old air.

Most species exhibit a positive increase in recovery date for an increase in fractional release. Again, this increase is sensitive to the mixing ratio difference of the particular species at the time of recovery compared to 1980. Inspection of Fig. 2b and Fig. 2d shows that CFC-12 makes a large contribution in 1980, 2041, and 2067 to the overall  $Cl_y$ . Increasing the CFC-12 contribution to  $Cl_y$  by increasing the fractional release will push recovery further into the future because the CFC-12 contribution is larger at the time of expected recovery than it was in 1980. For a 3-year age, if the release is increased from 0.18 to 0.28, the recovery year is increased from 2041.3 to 2043.9 (2.58 y).

We estimate the uncertainty in recovery dates using a Monte Carlo approach on the fractional release values by randomly varying all of the fractional release values for those species shown in Table 1. The release values are altered from their standard values by adding variability with a standard deviation  $\sigma=0.05$ . This 0.05 standard deviation is chosen as a nominal uncertainty by inspection of the CFC-11 versus age curve in Schauffler et al. (2003). Fractional release values are constrained to range between 0.0 and 1.0. The uncertainty in fractional release values leads to a moderate uncertainty in the year of recovery. For a 3-year mean age, the 95% confidence limits on the 2041.3 recovery date vary from 2036.1 to 2045.1 ( $\sigma=2.2$  y). For a 5.5-year mean age, the 95% confidence limits on the 2067.2 recovery date are from 2066.0 to 2069.4 ( $\sigma=0.86$  y).

The variation in the recovery date  $\delta y_i = y' - y$  for a particular species due to a

---

**New formulation of  
EESC**Newman et al.

---

Title Page

Abstract

Introduction

Conclusions

References

Tables

Figures

◀

▶

◀

▶

Back

Close

Full Screen / Esc

Printer-friendly Version

Interactive Discussion

prescribed variation in fractional release  $\delta f_i = f' - f$  can be theoretically derived from Eq. (1).  $EESC'_i(y) - EESC_i(y) = n_i \delta f_i \rho_i(y)$  is the difference in EESC for a given year  $y$ . Using  $EESC'_i(1980) = EESC'_i(y + \delta y_i) = EESC'_i(y) + \partial EESC'_i / \partial t \delta y_i$  (from a Taylor expansion), and noting that  $EESC_i(y) = EESC_i(1980)$  and that  $\partial EESC / \partial t \approx \partial EESC'_i / \partial t$  gives

$$\begin{aligned} \partial EESC / \partial t \delta y &= EESC'_i(1980) - EESC'_i(y) \\ &= [EESC'_i(1980) - EESC_i(1980)] \\ &\quad - [EESC'_i(y) - EESC_i(y)] \\ &= n_i \delta f_i \rho_i(1980) - n_i \delta f_i \rho_i(y) \end{aligned} \quad (5)$$

Solving for  $\delta y_i$  gives

$$\delta y_i = - \frac{\delta f_i n_i [\rho_i(y) - \rho_i(1980)]}{\partial EESC / \partial t}, \quad (6)$$

A comparison of recovery year sensitivity to individual fractional release values can be seen in Table 1. In general, the magnitude of the sensitivity is smaller for a 5.5-year mean age than for a 3-year mean age.

The smaller uncertainty in the recovery for the 5.5-year mean age-of-air results from the larger rate of EESC decreases at the time of recovery ( $\partial EESC / \partial t$ ). Inspection of Fig. 5 reveals that EESC is changing at a rate of about  $-20 \text{ ppt y}^{-1}$  for 5.5-year air in about 2067, while the decline rate is a about  $-13 \text{ ppt y}^{-1}$  for 3-year air in about 2041. The sensitivity is inversely proportional to this decline rate, and so the sensitivity decreases as mean age-of-air increases.

## 5.6 Sensitivity to recovery start date

In all figures herein, the recovery dates indicated are determined from the EESC level in 1980. This 1980 value is chosen as a useful mark because the amount of ozone

## New formulation of EESC

Newman et al.

Title Page

Abstract

Introduction

Conclusions

References

Tables

Figures

◀

▶

◀

▶

Back

Close

Full Screen / Esc

Printer-friendly Version

Interactive Discussion

depletion at midlatitudes and in the Antarctic vortex was relatively small. While the choice of a specific year is somewhat arbitrary, 1980 is the year often considered in previous work (WMO, 1999, 2003, 2007) and has been adopted herein for our standard calculations.

5 The recovery date is very sensitive to this starting date. In spite of the previous justification for the choice of 1980, the ODS level in 1980 should not be considered as the pre-ozone depletion level; for example, for a 3-year mean age, EESC had more than doubled between 1950 and 1980 (Fig. 3). EESC increased rapidly over the 1970s (Fig. 5), and it is clear from Farman et al. (1985) that some ozone loss had occurred  
10 as early as 1975 over Antarctica. If the start date for ozone loss is set to 1975 rather than 1980 then the recovery is pushed from 2041.3 to 2063.0 for a 3-year mean age and from 2067.2 to 2097.0 for a 5.5-year mean age. Figure 9 displays the sensitivity to recovery date. A shift of one year changes the recovery by approximately ten years. However, this result does not change the fact that the date corresponding to 1980  
15 EESC levels still represents a time when ozone loss due to ODSs, in the absence of other atmospheric changes, should be relatively small compared to the losses of the past decade or so.

### 5.7 Sensitivity to temporal changes of age-of-air and fractional release rates

In the above calculations we have assumed that the mean age-of-air is constant in time. However, model simulations suggest that the mean age may decrease with time  
20 as a result of an accelerated mean circulation from climate change. Austin and Li (2006) show an age decrease at 60–90° N and 35 hPa of about 0.15 years per decade. In addition to decreasing mean age, an accelerated circulation changes the fractional release values. A faster circulation will both decrease the age and shift the fractional  
25 release values to higher numbers, while a slower circulation has the opposite effect. Hence, we cannot assume that either mean age-of-air or fractional release values are constant in time.

We test the sensitivity of EESC to temporal changes in the mean age by linearly

---

**New formulation of  
EESC**

Newman et al.

---

Title Page

Abstract

Introduction

Conclusions

References

Tables

Figures

◀

▶

◀

▶

Back

Close

Full Screen / Esc

Printer-friendly Version

Interactive Discussion

decreasing and increasing the mean age by 0.3 years over the 1980 to 2010 period. This change, while significant, is still smaller than the decrease calculated by Austin and Li (2006) for the polar lower stratosphere. To calculate the coherent variation of release rates, we have drawn upon a time series of CFC-11, CFC-12 and mean age-of-air from the Goddard Earth Observing System (GEOS-4) chemistry/climate model (CCM) (Stolarski et al., 2006a). Based upon the GEOS-4 model, we coherently vary all of the fractional release values with mean age by increasing release values by 1% for each 0.1-year change of mean age.

Figure 10 shows EESC for an increase of age from 3.0 y to 3.3 y (lower red) and 5.5 y to 5.8 y (upper red), and a decrease of age from 3.0 y to 2.7 y (lower blue) and from 5.5 y to 5.2 y (upper blue). For the 3-year mean age, the 0.3-year age change substantially alters the EESC behavior and recovery date. Reducing the age from 3.0 y to 2.7 y accelerates recovery from 2041.3 to 2031.1. Shifting the 5.5-year age by 0.3 years has a somewhat smaller effect; reducing the age from 5.5 y to 5.2 y accelerates recovery from 2067.2 to 2061.5.

The above large changes in recovery date, at first glance, appear to be inconsistent with the earlier analysis of sensitivity to mean age, where a change of 0.3 y resulted in a 3-year shift in the recovery date (compare with the above 11- to 12-year shift for age decreasing by 0.3 y). As noted earlier from Fig. 4c, the EESC decreases at a relatively regular rate in the period after about 2001 for a constant mean age-of-air. An acceleration of the circulation decreases the age but increases the fractional release values. Overall, the change in the circulation will act to decrease the EESC.

To calculate the overall impact of a temporal shift, we again use the time series of mean age-of-air from the GEOS-4 CCM (Stolarski et al., 2006a). In this CCM run, the mean age-of-air shows decadal variations on the order of 0.1–0.2 y. To simulate this effect, we generate artificial age-of-air time series using the statistical characteristics of the model's age-of-air time series. In particular, we take detrended polar and mid-latitude time series of age-of-air from model runs extending to 2100, compute a power spectrum from those time series, and fit a power law to those analyzed time series. We

---

**New formulation of  
EESC**Newman et al.

---

Title Page

Abstract

Introduction

Conclusions

References

Tables

Figures

I◀

▶I

◀

▶

Back

Close

Full Screen / Esc

Printer-friendly Version

Interactive Discussion

then add noise to these power law fits using a gamma distribution, and randomly vary the temporal phase of each frequency over the period from 1950 to 2100. These random time series of age-of-air lead to EESC variation in both 1980 and at the recovery period. For the 3-year mean age of air EESC the standard uncertainty,  $\sigma$ , in the year of recovery is 4.4 y, while for the 5.5-year mean age of air  $\sigma=2.4$  y.

## 5.8 Combined uncertainties

The previous sections discussed EESC sensitivities. In this section we perform Monte Carlo simulations to calculate the recovery date uncertainties assuming future halo-carbon abundances in the A1 scenario of [WMO \(2007\)](#) are accurate (summarized in [Table 2](#)). The first row summarizes the uncertainty in the mean age-of-air,  $\Gamma$ . Inspection of [Fig. 6](#) from [Andrews et al. \(2001\)](#) suggests  $\sigma \approx 0.3$  y. We vary the age with  $\sigma=0.3$  y using a Monte Carlo technique in our EESC calculations while holding all other variables fixed, with the exception that fractional releases vary with the mean age. This Monte Carlo technique yields a probability distribution function (PDF) with  $\sigma=2.64$  y for 3-year old air and  $\sigma=4.09$  y for 5.5-year old air. The 3-year 95% confidence limits for the 2041.3 recovery are from 2036.1 to 2046.5, while the 5.5-year limits are 2059.2 to 2074.4.

We similarly use the Monte Carlo technique to calculate PDFs for  $\Delta$ ,  $\alpha$ ,  $f$ , and the start date. The uncertainty on  $\Delta$  is estimated from [Andrews et al. \(2001\)](#) and [Schoeberl et al. \(2005\)](#), on  $\alpha$  and the start date is from [WMO \(2007\)](#), on  $f$  is from [Schauffler et al. \(2003\)](#), and on the temporal variations in  $\Gamma$  is from the analysis of the GEOS-4 CCM model output ([Stolarski et al., 2006a](#)). In the case of the age temporal variations ( $\Gamma(t)$ +red noise), we have not coherently adjusted the fractional release values with mean age, such that this variance is an upper limit.

The total uncertainty is calculated by varying all of the factors listed in [Table 2](#). For EESC with a 3-year mean age-of-air (recovery in 2041.3), the distribution of recovery dates is somewhat skewed, with 95% confidence limits of 2027.7 and 2048.7. This uncertainty is dominated by our assumption that mean age is a fixed constant. For

## New formulation of EESC

Newman et al.

Title Page

Abstract

Introduction

Conclusions

References

Tables

Figures

◀

▶

◀

▶

Back

Close

Full Screen / Esc

Printer-friendly Version

Interactive Discussion

the Antarctic EESC with a 5.5-year mean age-of-air (recovery in 2067.2), the 95% confidence limits are 2056.3 and 2077.6. This 5.5-year uncertainty is dominated by the uncertainty in value of the mean age.

## 6 Summary and discussion

EESC is an important quantity for estimating the effect of surface ODS emissions and concentrations on stratospheric chlorine and bromine levels, and can provide insight into peak  $Cl_y$  and  $Br_y$  levels in the stratosphere and into future ozone recovery. In this paper we have described a reformulation of the technique for estimating EESC. This reformulation uses both fractional release rates that are dependent upon mean age-of-air, and an age spectrum to represent the transport time lag between the tropospheric levels of ODSs. In addition to EESC, this reformulation also provides quantitative estimates of  $Cl_y$ ,  $Br_y$ , and total inorganic fluorine that are dependent on the mean age-of-air.

Using this new formulation we have estimated new ODS recovery dates for the stratosphere. We estimate, given the future halocarbon abundances projected in A1 of WMO (2007), that midlatitude recovery will occur in 2041 while the Antarctic region will recover in 2067. Midlatitude air is characterized by an age-of-air of approximately 3 years, while Antarctic lower stratospheric air has a mean age of approximately 5.5 years. We have followed WMO (2007) by using a bromine scaling factor of 60 and their scenario A1. This contrasts with the WMO (2007) estimates of 2048.6 and 2064.7. The differences in these estimates are primarily due to differences in the fractional release values of a few ODSs. The 95% confidence limits for the midlatitude 2041 recovery are 2027.7 and 2048.7, while the Antarctic limits are 2056.3 and 2077.6.

Newman et al. (2006) estimated that the ozone hole's area would fully recover (decrease to a zero size) by 2068. This estimate was based upon a 5.5-year mean age-of-air, scenario Ab of WMO (2003), and an empirical estimate that the ozone hole had an initial zero size in mid-1979, not 1980. In that study, they confined the observations

### New formulation of EESC

Newman et al.

Title Page

Abstract

Introduction

Conclusions

References

Tables

Figures

◀

▶

◀

▶

Back

Close

Full Screen / Esc

Printer-friendly Version

Interactive Discussion

to the vortex where age-of-air ought to be relatively uniform and a constant value as a function of time. Using the new Scenario A1 from WMO (2007) we estimate that the ozone hole's recovery date shifts by 2 years to 2070.

We have also explored the sensitivity of EESC to a number of parameters. These parameters include mean age-of-air, age spectrum width, bromine efficiency for ozone destruction versus chlorine, fractional release, starting date for ODS losses, and temporal changes of mean age-of-air and fractional release values. The recovery dates for EESC are primarily dependent upon the mean age-of-air and trends in the mean age-of-air. For example, the Antarctic EESC recovers at a later date than the midlatitude EESC because the air in the Antarctic stratosphere is older. A temporal trend in mean age with a coherent variation of release rates also can impact recovery strongly. Austin and Li (2006) estimated that Arctic stratospheric air (60–90° N, 35 hPa) would become younger by approximately 0.5 y between 1980 and 2040, while upper stratospheric tropical air (20° S–20° N, 1.3 hPa) would become younger by 0.8 y. If air in midlatitude stratosphere becomes younger by 0.3 y, we estimate that recovery will be advanced from 2041.3 to 2031.1.

The strong dependence of EESC on mean age-of-air exposes a crucial assumption that underlies many trend studies and future EESC projections: viz., mean age-of-air and fractional release values are constant over the ozone data record. A shift in mean age can significantly impact interpretation of ozone trends and EESC values. For a 3-year mean age, a  $\pm 0.3$  year shift in mean age results in a  $\pm 9$  year shift in recovery to 1980 values and nearly a 230 ppt (12%) change in the peak EESC value. In ozone trend studies, it has been assumed that EESC has a fixed shift with respect to the tropospheric values (typically 3 years). Changes in the circulation will cause both changes in the advection of ozone and age-of-air, and therefore the EESC of the lower stratosphere. EESC variations resulting from age-of-air variation have the potential to lead to large variations of ozone.

The analysis of ozone trends also requires a careful consideration of sampling issues to insure that the fractional chlorine and bromine release values can be accurately

New formulation of EESC

Newman et al.

Title Page

Abstract

Introduction

Conclusions

References

Tables

Figures

◀

▶

◀

▶

Back

Close

Full Screen / Esc

Printer-friendly Version

Interactive Discussion

---

**New formulation of  
EESC**Newman et al.

---

[Title Page](#)[Abstract](#)[Introduction](#)[Conclusions](#)[References](#)[Tables](#)[Figures](#)[◀](#)[▶](#)[◀](#)[▶](#)[Back](#)[Close](#)[Full Screen / Esc](#)[Printer-friendly Version](#)[Interactive Discussion](#)

EGU

parameterized. This can be accomplished by ensuring that the mean age-of-air is either large (greater than 5.8 years) or is relatively constant over the ozone observation record. Sampling of ozone near the edge of the polar vortex is particularly susceptible to such a problem because of the large gradient of age-of-air at the polar vortex edge.

5 Great caution must be exercised in interpreting ozone trends because of the variation of age-of-air spatially and over the observation time period.

The EESC estimates have proven extremely useful for estimating recovery and for exploring various emission scenarios. However, the use of EESC is limited by the assumptions that underlie the calculations. First, estimates of fractional release rates and mean age-of-air are largely calculated from midlatitude and Arctic observations  
10 in the lower stratosphere during the last 15 years. Models show that release rates are also a function of altitude and that the mean ages in the stratosphere may be changing. Second, we have assumed that the fractional release observationally derived functions are also fixed in time. This assumption cannot be strictly justified because of both  
15 circulation and chemistry changes in the future. Finally, while EESC is a convenient parameter for recovery estimates, it is not equivalent to ozone, and it does not include the fully interactive elements of a coupled climate/chemistry model.

*Acknowledgements.* This research was funded under the NASA Atmospheric Chemistry, Modeling, and Analysis Program. The comments and discussions with A. Douglass, S. Montza,  
20 and R. Stolarski were also extremely helpful.

## References

Andrews, A. E., Boering, K. A., Daube, B. C., Wofsy, S. C., Loewenstein, M., Jost, H., Podolske, J. R., Webster, C. R., Herman, R. L., Scott, D. C., Flesch, G. J., Moyer, E. J., Elkins, J. W., Dutton, G. S., Hurst, D. F., Moore, F. L., Ray, E. A., Romashkin, P. A., and Strahan, S. E.:  
25 Mean ages of stratospheric air derived from in situ observations of CO<sub>2</sub>, CH<sub>4</sub>, and N<sub>2</sub>O, J. Geophys. Res., 106(D23), 32 295–32 314, doi:10.1029/2001JD000465, 2001. [3969](#), [3983](#)  
Austin, J. and Li, F.: On the relationship between the strength of the Brewer-



New formulation of  
EESC

Newman et al.

Title Page

Abstract

Introduction

Conclusions

References

Tables

Figures

◀

▶

◀

▶

Back

Close

Full Screen / Esc

Printer-friendly Version

Interactive Discussion

Dobson circulation and the age of stratospheric air, *Geophys. Res. Lett.*, 33, L17807, doi:10.1029/2006GL026867, 2006. [3981](#), [3982](#), [3985](#)

Daniel, J. S., Solomon, S., and Albritton, D. L.: On the evaluation of halocarbon radiative forcing and global warming potentials, *J. Geophys. Res.*, 100(D1), 1271–1285, doi:10.1029/94JD02516, 1995. [3965](#), [3967](#), [3976](#)

Danilin, M. Y., Sze, N.-D., Ko, M. K., Rodriguez, J. M., and Prather, M. J.: Bromine-chlorine coupling in the Antarctic ozone hole, *Geophys. Res. Lett.*, 23(2), 153–156, doi:10.1029/95GL03783, 1996. [3976](#), [3977](#), [3997](#)

Dhomse, S., Weber, M., Wohltmann, I., Rex, M., and Burrows, J. P.: On the possible causes of recent increases in northern hemispheric total ozone from a statistical analysis of satellite data from 1979 to 2003, *Atmos. Chem. Phys.*, 6, 1165–1180, 2006, <http://www.atmos-chem-phys.net/6/1165/2006/>. [3966](#)

Farman, J. C., Gardiner, B. G., and Shanklin, J. D.: Large losses of total ozone in Antarctica reveal seasonal ClO<sub>x</sub>/NO<sub>x</sub> interaction, *Nature*, 315, 207–210, doi:10.1038/315207a0, 1985. [3981](#)

Guillas, S., Tiao, G. C., Wuebbles, D. J., and Zubrow, A.: Statistical diagnostic and correction of a chemistry-transport model for the prediction of total column ozone, *Atmos. Chem. Phys.*, 6, 525–537, 2006, <http://www.atmos-chem-phys.net/6/525/2006/>. [3966](#)

Montzka, S. A., Butler, J. H., Myers, R. C., Thompson, T. M., Swanson, T. H., Clarke, A. D., Lock, L. T., and Elkins, J. W.: Decline in the tropospheric abundance of halogen from halocarbons: Implications for stratospheric ozone depletion, *Science*, 272, 1318–1322, doi:10.1126/science.272.5266.1318, 1996. [3966](#), [3967](#)

Newchurch, M. J., Yang, E.-S., Cunnold, D. M., Reinsel, G. C., Zawodny, J. M., and Russel, III, J. M.: Evidence for slowdown in stratospheric ozone loss: First stage of ozone recovery, *J. Geophys. Res.*, 108(D16), 4507, doi:10.1029/2003JD003471, 2003. [3966](#)

Newman, P. A., Nash, E. R., Kawa, S. R., Montzka, S. A., and Schauffler, S. M.: When will the Antarctic ozone hole recover?, *Geophys. Res. Lett.*, 33, L12814, doi:10.1029/2005GL025232, 2006. [3965](#), [3966](#), [3968](#), [3969](#), [3972](#), [3973](#), [3974](#), [3984](#)

Schauffler, S. M., Atlas, E. L., Donnelly, S. G., Andrews, A., Montzka, S. A., Elkins, J. W., Hurst, D. F., Romashkin, P. A., Dutton, G. S., and Stroud, V.: Chlorine budget and partitioning during the Stratospheric Aerosol and Gas Experiment (SAGE) III Ozone Loss and Validation Experiment (SOLVE), *J. Geophys. Res.*, 108(D5), 4173, doi:10.1029/2001JD002040, 2003.

[3968](#), [3970](#), [3972](#), [3973](#), [3979](#), [3983](#)

Schoeberl, M. R., Douglass, A. R., Polansky, B., Boone, C., Walker, K. A., and Bernath, P.: Estimation of stratospheric age spectrum from chemical tracers, *J. Geophys. Res.*, 110, D21303, doi:10.1029/2005JD006125, 2005. [3969](#), [3983](#)

5 Sarma, K. M., and Bankobeza, G. M.: The Montreal protocol on substances that deplete the ozone layer, United Nations Environment Programme, Nairobi, Kenya, 2000. [3964](#)

Solomon, S. and Albritton, D.: Time-dependent ozone depletion potentials for short- and long-term forecasts, *Nature*, 357, 33–37, doi:10.1038/357033a0, 1992. [3968](#), [3973](#)

10 Stolarski, R. S., Douglass, A. R., Gupta, M., Newman, P. A., Pawson, S., Schoeberl, M. R., and Nielsen, J. E.: An ozone increase in the Antarctic summer stratosphere: A dynamical response to the ozone hole, *Geophys. Res. Lett.*, 33, L21805, doi:10.1029/2006GL026820, 2006a. [3982](#), [3983](#)

15 Stolarski, R. S., Douglass, A. R., Steenrod, S., and Pawson, S.: Trends in stratospheric ozone: Lessons learned from a 3D chemical transport model, *J. Atmos. Sci.*, 63, 1028–1041, doi:10.1175/JAS3650.1, 2006b. [3966](#)

Waugh, D. W. and Hall, T. M.: Age of stratospheric air: Theory, observations, and models, *Rev. Geophys.*, 40(4), 1010, doi:10.1029/2000RG000101, 2002. [3969](#)

World Meteorological Organization: Scientific assessment of ozone depletion: 1994, Global Ozone Research and Monitoring Project–Report No. 37, Geneva, 1995. [3965](#), [3967](#), [3972](#)

20 World Meteorological Organization: Scientific assessment of ozone depletion: 1998, Global Ozone Research and Monitoring Project–Report No. 44, Geneva, 1999. [3965](#), [3967](#), [3972](#), [3981](#)

World Meteorological Organization: Scientific assessment of ozone depletion: 2002, Global Ozone Research and Monitoring Project–Report No. 47, Geneva, 2003. [3965](#), [3967](#), [3968](#), [3972](#), [3973](#), [3977](#), [3981](#), [3984](#), [3998](#)

25 World Meteorological Organization: Scientific assessment of ozone depletion: 2006, Global Ozone Research and Monitoring Project–Report No. 50, Geneva, 2007. [3964](#), [3965](#), [3966](#), [3967](#), [3968](#), [3969](#), [3970](#), [3972](#), [3973](#), [3976](#), [3977](#), [3981](#), [3983](#), [3984](#), [3985](#), [3989](#), [3991](#), [3994](#), [3998](#)

690

Yang, E.-S., Cunnold, D. M., Newchurch, M. J., and Salawitch, R. J.: Change in ozone trends at southern high latitudes, *Geophys. Res. Lett.*, 32, L12812, doi:10.1029/2004GL022296, 2005.

[3966](#)

**New formulation of  
EESC**

Newman et al.

Title Page

Abstract

Introduction

Conclusions

References

Tables

Figures

◀

▶

◀

▶

Back

Close

Full Screen / Esc

Printer-friendly Version

Interactive Discussion

New formulation of  
EESC

Newman et al.

**Table 1.** Fractional release values for all 16 species used in this study for 3-year and 5.5-year mean age-of-air.  $\rho_{i,\text{entry}}$  is the mean surface mixing in 2000 (WMO, 2007). Stratospheric lifetimes that are significantly different than atmospheric lifetimes are listed. Atmospheric lifetimes are from WMO (2007) and stratospheric lifetimes are from C. Jackman (private communication). The sensitivity of the peak EESC value and the recovery year, relative to 1980 EESC values, are for a change in  $f$  of 0.10 about the indicated value.

Species	Formula	$\rho_{i,\text{entry}}$ ppt	Lifetime		$\Gamma = 3\text{ y}$			$\Gamma = 5.5\text{ y}$		
			atm. y	strat. y	$f$	Peak EESC ppt	Recovery year y	$f$	Peak EESC ppt	Recovery year y
CFC-11	$\text{CCl}_3\text{F}$	262.6	45		0.47	79.9	0.47	0.99	78.8	-0.07
CFC-12	$\text{CCl}_2\text{F}_2$	538.0	100		0.23	102.0	2.59	0.86	103.2	1.21
CFC-113	$\text{CCl}_2\text{FCClF}_2$	82.3	85		0.29	24.1	0.91	0.90	23.9	0.42
CFC-114	$\text{CClF}_2\text{CClF}_2$	17.0	300		0.12	3.3	0.09	0.40	3.3	0.05
CFC-115	$\text{CClF}_2\text{CF}_3$	8.73	1700		0.04	0.7	0.06	0.15	0.8	0.04
Carbon tetrachloride	$\text{CCl}_4$	98.8	26		0.56	41.5	-1.77	1.00	40.7	-1.37
Methyl chloroform	$\text{CH}_3\text{CCl}_3$	49.9	5	49	0.67	35.3	-1.29	0.99	26.8	-0.58
HCFC-22	$\text{CHClF}_2$	139.8	12	288	0.13	10.6	2.36	0.41	11.7	0.33
HCFC-141b	$\text{CH}_3\text{CCl}_2\text{F}$	11.9	9.3		0.08	0.3	0.40	0.90	1.1	0.12
HCFC-142b	$\text{CH}_3\text{CClF}_2$	11.6	17.9		0.01	0.5	0.06	0.29	0.7	0.01
Halon-1211	$\text{CBrClF}_2$	4.0	16		0.62	18.7	0.61	1.00	20.5	0.10
Halon-1202	$\text{CBr}_2\text{F}_2$	0.05	2.9		0.62	0.4	-0.01	1.00	0.5	0.00
Halon-1301	$\text{CBrF}_3$	2.7	65		0.28	12.8	1.19	0.80	14.0	0.57
Halon-2402	$\text{CBrF}_2\text{CBrF}_2$	0.41	20		0.65	4.7	0.02	1.00	4.8	-0.01
Methyl bromide	$\text{CH}_3\text{Br}$	8.9	0.7	49	0.60	55.8	-0.51	0.99	55.0	-0.27
Methyl chloride	$\text{CH}_3\text{Cl}$	550.0	1	85	0.44	55.0	0.02	0.91	55.0	0.03

Title Page

Abstract

Introduction

Conclusions

References

Tables

Figures

◀

▶

◀

▶

Back

Close

Full Screen / Esc

Printer-friendly Version

Interactive Discussion

## New formulation of EESC

Newman et al.

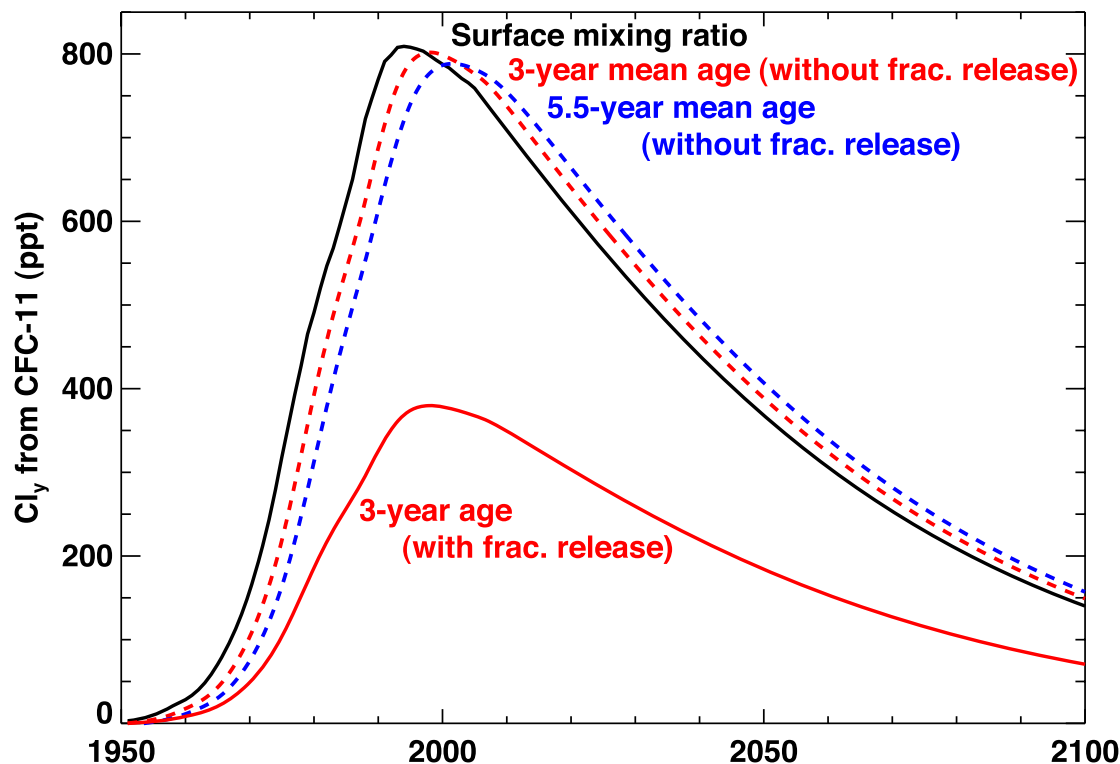
**Table 2.** Estimated uncertainties for recovery dates with 3-year and 5.5-year mean age-of-air. The lower and upper values are of the recovery year for each side of the two-sided 95% confidence limits, based on the prescribed uncertainties. The years in the header are the standard recovery years corresponding to the mean age-of-air.

Parameter	Prescribed uncertainty	$\Gamma = 3 \text{ y}$ (2041.3)			$\Gamma = 5.5 \text{ y}$ (2067.2)		
		$\sigma$ y	Lower y	Upper y	$\sigma$ y	Lower y	Upper y
Mean age ( $\Gamma$ )	$\pm 0.3 \text{ y}$	2.64	2036.1	2046.5	4.09	2059.2	2074.4
Width ( $\Delta$ )	$\Gamma/2 \pm 30\%$	0.29	2040.6	2041.7	1.01	2064.9	2068.8
$\alpha$	$60 \pm 15$	1.06	2038.9	2043.1	0.65	2065.8	2068.4
Fractional release ( $f$ )	$\pm 5\%$	2.23	2036.8	2045.4	0.88	2065.9	2069.4
Start date	$1980 \pm 0.5 \text{ y}$	2.10	2037.2	2045.4	2.48	2062.5	2072.2
$\Gamma(t)$ +red noise	$\approx 0.3 \text{ y}$	4.36	2032.3	2048.7	1.99	2063.4	2071.0
Total		6.28	2027.7	2052.2	5.50	2056.3	2077.6

[Title Page](#)[Abstract](#)[Introduction](#)[Conclusions](#)[References](#)[Tables](#)[Figures](#)[◀](#)[▶](#)[◀](#)[▶](#)[Back](#)[Close](#)[Full Screen / Esc](#)[Printer-friendly Version](#)[Interactive Discussion](#)

New formulation of  
EESC

Newman et al.



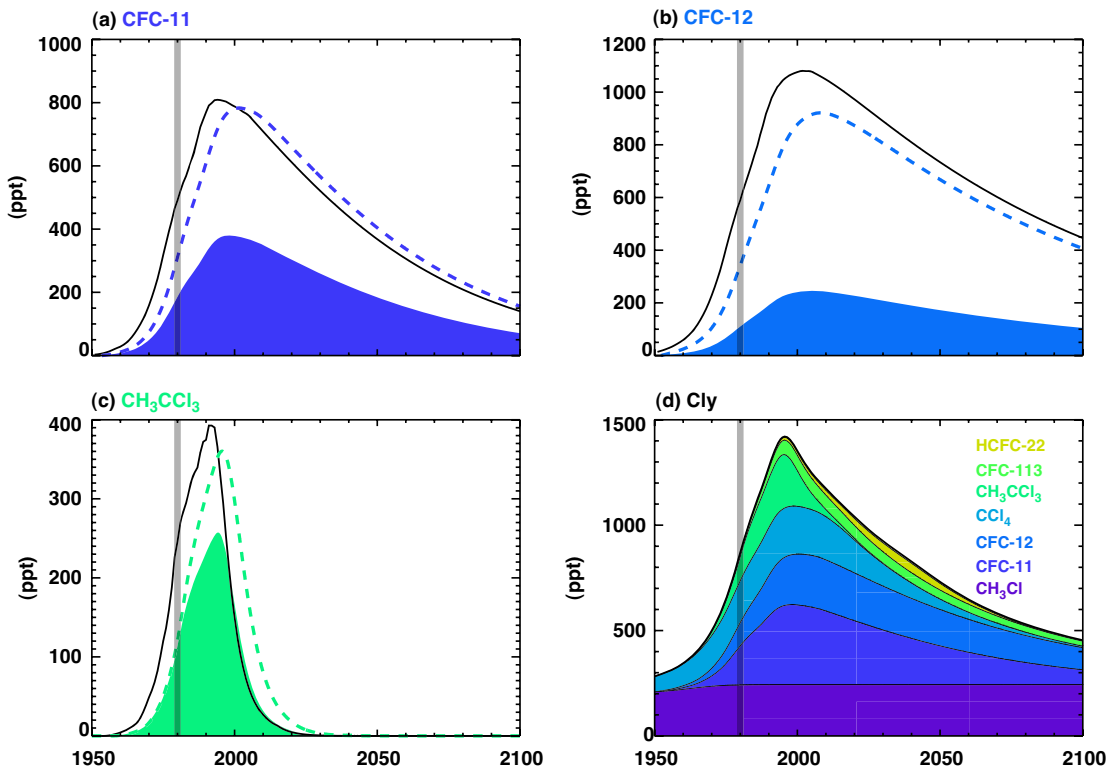
**Fig. 1.** CFC-11 as a function of year from scenario A1 of WMO (2007). The CFC-11 values have been multiplied by 3 to account for its 3 chlorine atoms. The black curve displays the surface concentration. The dashed red and blue curves show these CFC-11 values after an application of a 3-year age spectrum and a 5.5-year age spectrum, respectively. The solid red curve shows the CFC-11 contribution to  $Cl_y$  after applying a 47% fractional release value to the dashed red curve.

[Title Page](#)[Abstract](#)[Introduction](#)[Conclusions](#)[References](#)[Tables](#)[Figures](#)[◀](#)[▶](#)[◀](#)[▶](#)[Back](#)[Close](#)[Full Screen / Esc](#)[Printer-friendly Version](#)[Interactive Discussion](#)

EGU

New formulation of  
EESC

Newman et al.



**Fig. 2.** Chlorine species as a function of year for (a) CFC-11 (as in Figure 1), (b) CFC-12, and (c) methyl chloroform ( $\text{CH}_3\text{CCl}_3$ ). The black curve represents the surface chlorine for each species (i.e., surface measurement scaled by the number of chlorine atoms), filled color curves (dashed lines) represent the chlorine concentrations with fractional release for a 3-year (5.5 year) mean age-of-air. (d)  $\text{Cl}_y$  as a function of year for a 3-year mean age-of-air. The filled color curves represent the summed contributions of each species to  $\text{Cl}_y$ . The gray vertical line indicates the reference year of 1980.

Title Page

Abstract

Introduction

Conclusions

References

Tables

Figures

◀

▶

◀

▶

Back

Close

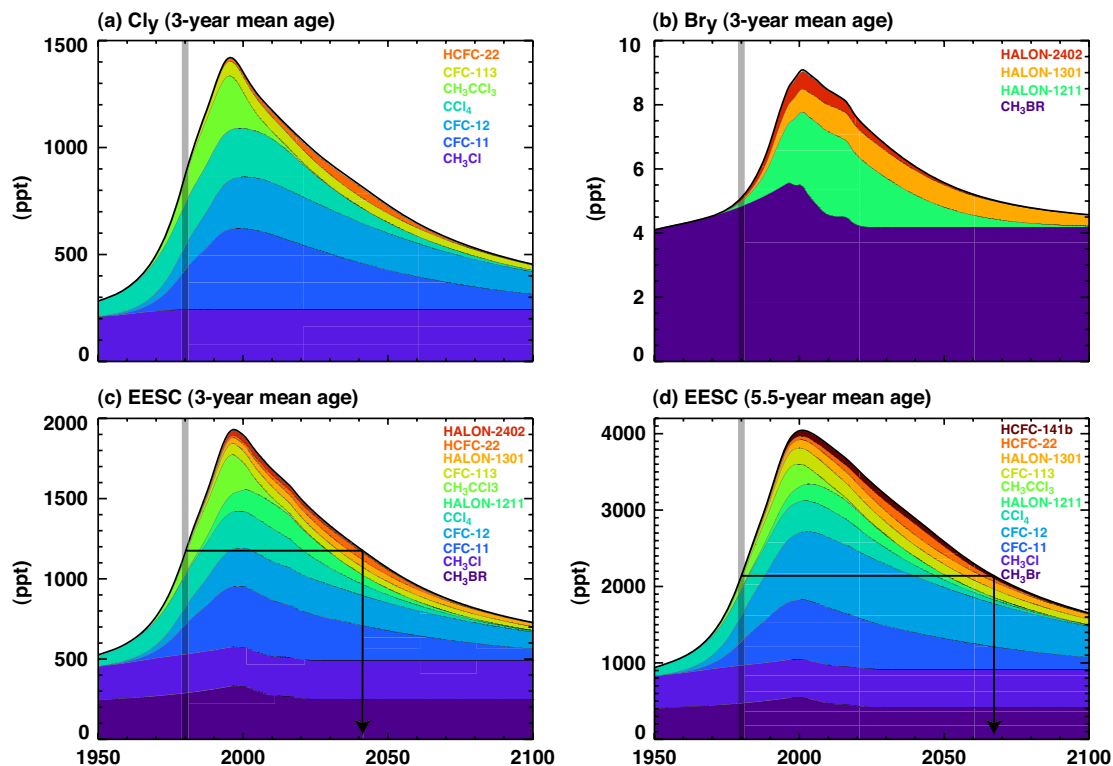
Full Screen / Esc

Printer-friendly Version

Interactive Discussion

New formulation of  
EESC

Newman et al.



**Fig. 3.** (a) Inorganic chlorine, (b) inorganic bromine, and (c) EESC versus time for a 3-year mean age-of-air. (d) EESC versus time for a 5.5-year mean age-of-air. The filled color curves represent the summed contributions of each species to the total. Although all species are included in the total, the species indicated are the only ones large enough to be visible. The gray vertical line indicates the reference year of 1980. The black horizontal and vertical lines indicate the recovery date of EESC to 1980 values.

Title Page

Abstract

Introduction

Conclusions

References

Tables

Figures

◀

▶

◀

▶

Back

Close

Full Screen / Esc

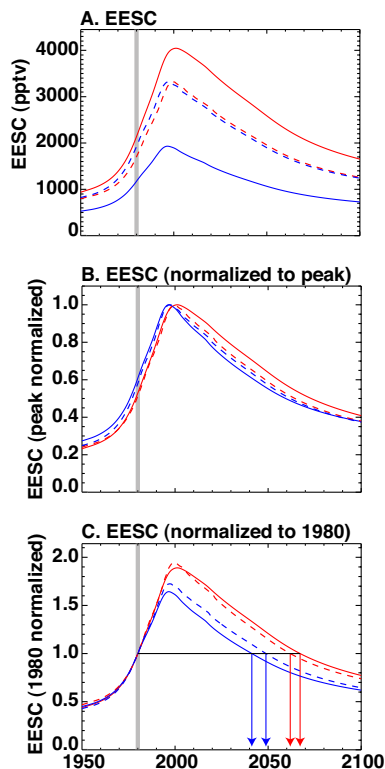
Printer-friendly Version

Interactive Discussion

EGU

New formulation of  
EESC

Newman et al.



**Fig. 4.** (a) Actual EESC calculations, (b) EESC normalized to the peak value, and (c) EESC normalized to the 1980 value versus time. The blue and red curves indicate a 3-year and 5.5-year mean age-of-air, respectively. The solid curves are the reformulated EESC. The dashed curves show the classic EESC as used by WMO (2007) with the exception that a 5.5-year shift is used instead of a 6-year shift. The gray vertical line indicates the reference year of 1980. The black horizontal line along with the blue and red vertical lines indicate the recovery date of EESC to 1980 values.

Title Page

Abstract

Introduction

Conclusions

References

Tables

Figures

◀

▶

◀

▶

Back

Close

Full Screen / Esc

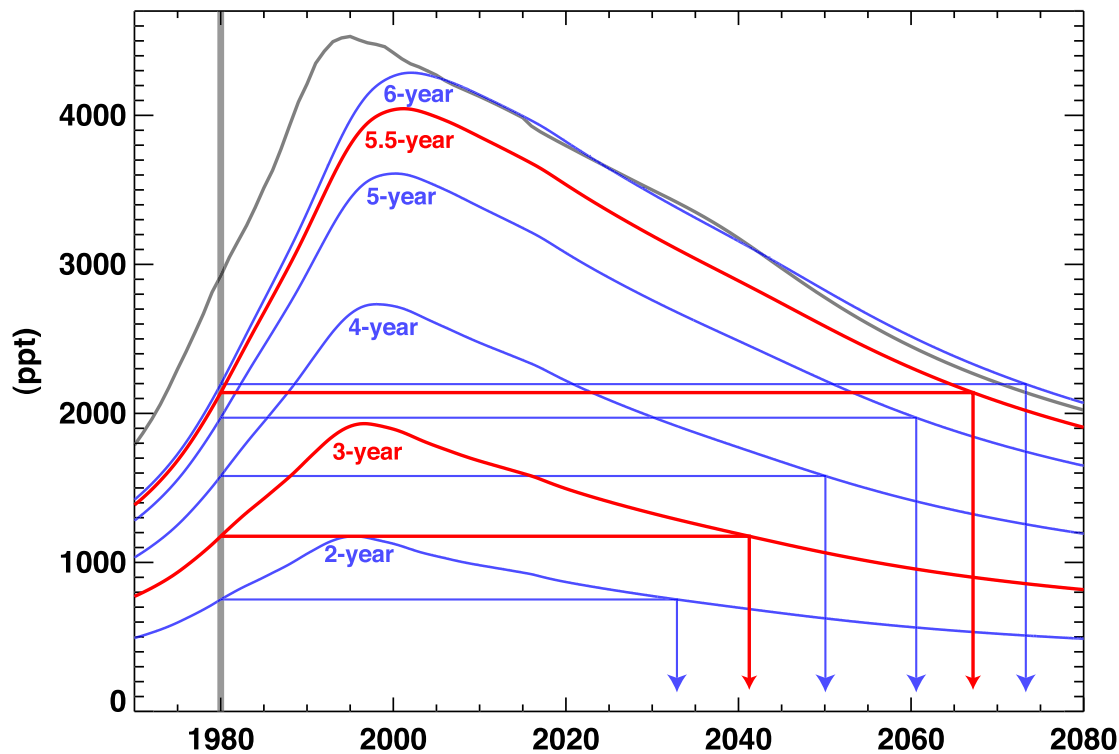
Printer-friendly Version

Interactive Discussion



New formulation of  
EESC

Newman et al.

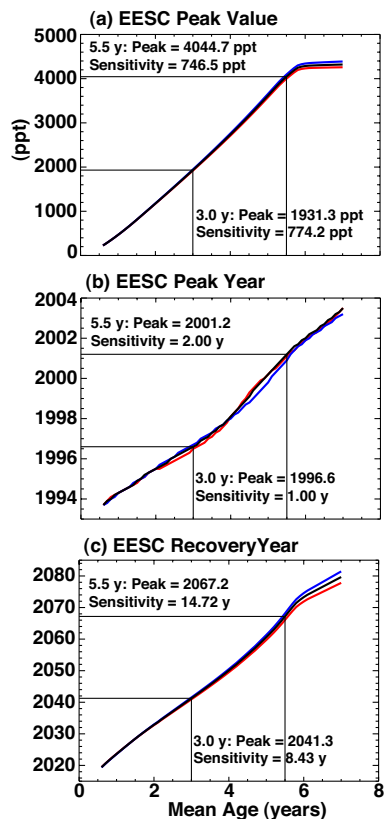


**Fig. 5.** EESC and ECI versus time. The blue curves are for EESC with mean age-of-air values of 2, 4, 5, and 6 years. The red curves indicate the 3-year and 5.5-year EESC calculations. The gray curve shows ECI. The gray vertical line indicates the reference year of 1980. The blue and red horizontal and vertical lines indicate the recovery date of EESC to 1980 values.

[Title Page](#)[Abstract](#)[Introduction](#)[Conclusions](#)[References](#)[Tables](#)[Figures](#)[◀](#)[▶](#)[◀](#)[▶](#)[Back](#)[Close](#)[Full Screen / Esc](#)[Printer-friendly Version](#)[Interactive Discussion](#)

New formulation of  
EESC

Newman et al.



**Fig. 6.** (a) EESC peak value, (b) EESC peak year, and (c) EESC recovery year versus mean age-of air. The black curve represents the standard calculation. The red and blue curves indicate a spectral width that has been increased and decreased by 30%, respectively, as compared to that of the standard calculation. The black horizontal and vertical lines indicate the associated values for a mean of 3 and 5.5 years.

Title Page

Abstract

Introduction

Conclusions

References

Tables

Figures

◀

▶

◀

▶

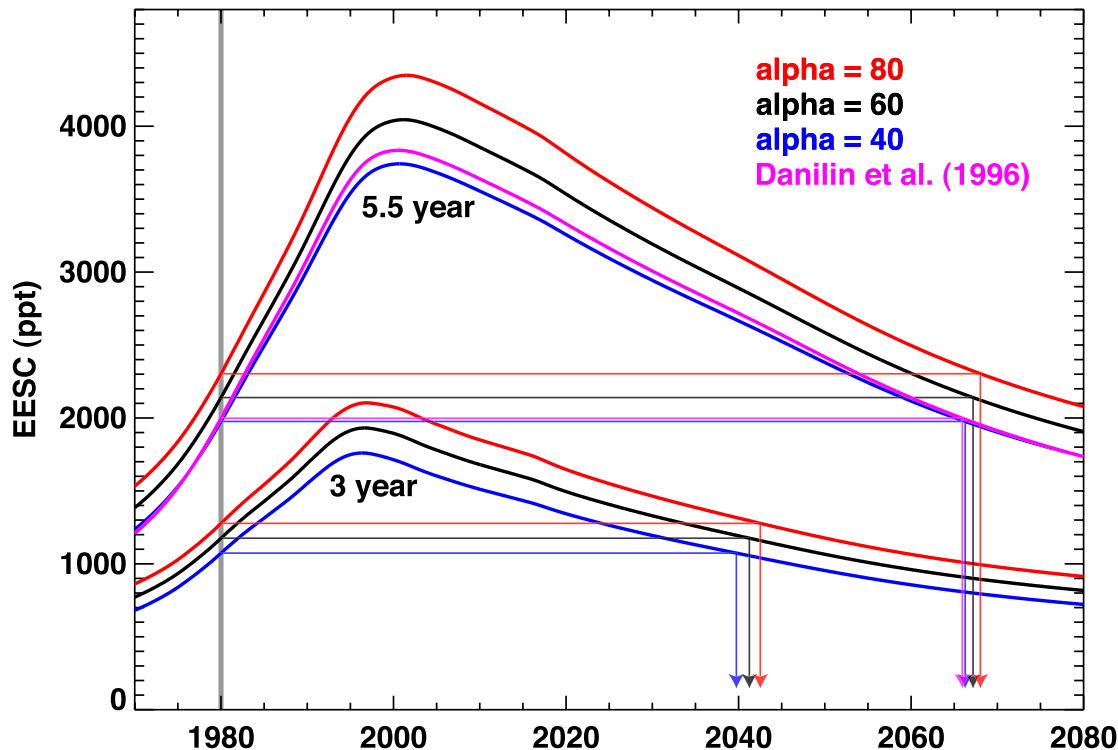
Back

Close

Full Screen / Esc

Printer-friendly Version

Interactive Discussion



**Fig. 7.** EESC versus time. The upper and lower groups of curves are for a 5.5- and 3-year mean age, respectively. The red, black, and blue curves are for  $\alpha=40$ ,  $\alpha=60$ , and  $\alpha=80$ , respectively. The magenta curve is estimated using a 5.5-year mean age and a varying  $\alpha$  based upon Antarctic estimates from (Danilin et al., 1996). The gray vertical line indicates the reference year of 1980. The black and color horizontal and vertical lines indicate the recovery date of EESC to 1980 values.

New formulation of EESC

Newman et al.

Title Page

Abstract

Introduction

Conclusions

References

Tables

Figures

◀

▶

◀

▶

Back

Close

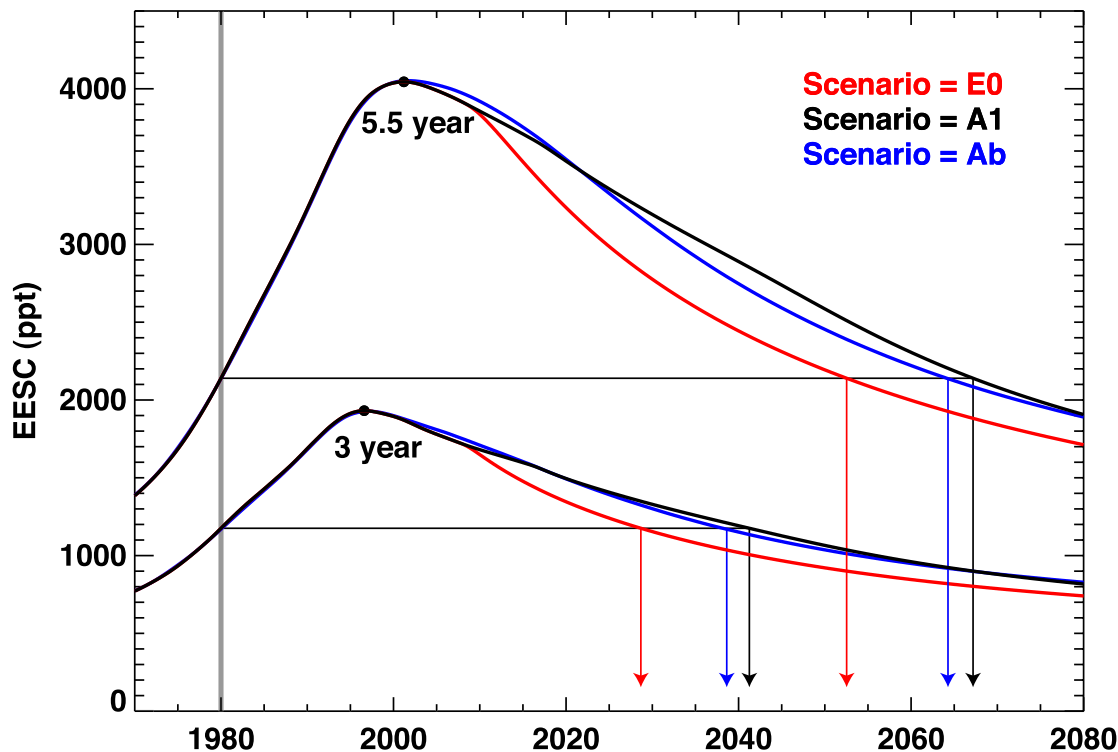
Full Screen / Esc

Printer-friendly Version

Interactive Discussion

New formulation of  
EESC

Newman et al.

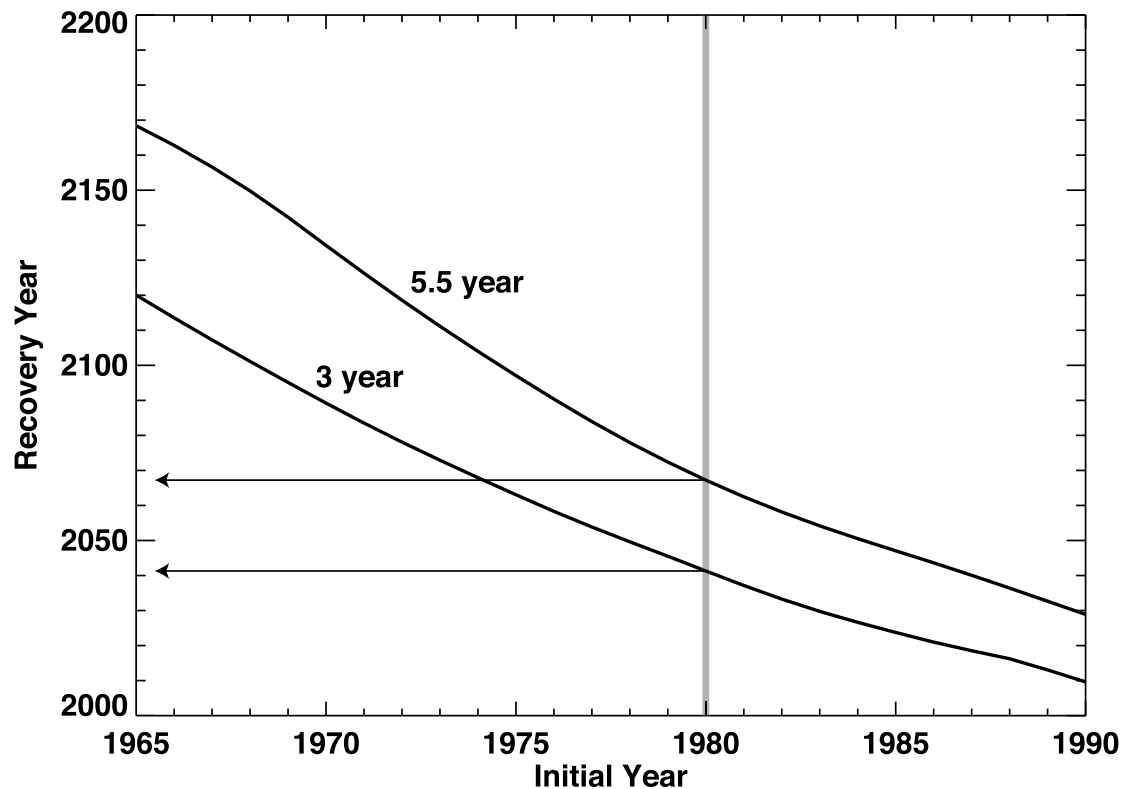


**Fig. 8.** EESC versus time using widths that are half of the mean age-of-air and with  $\alpha=60$ . The upper and lower groups of curves are for a 5.5- and 3-year mean age, respectively. The black curves indicate scenario A1 from WMO (2007), the baseline case used in Fig. 5. The red curves indicate the zero emission halogen scenario E0 from WMO (2007). The blue curves indicate scenario Ab from WMO (2003). The gray vertical line indicates the reference year of 1980. The black horizontal and color vertical lines indicate the recovery date of EESC to 1980 values.

[Title Page](#)[Abstract](#)[Introduction](#)[Conclusions](#)[References](#)[Tables](#)[Figures](#)[◀](#)[▶](#)[◀](#)[▶](#)[Back](#)[Close](#)[Full Screen / Esc](#)[Printer-friendly Version](#)[Interactive Discussion](#)

**New formulation of  
EESC**

Newman et al.

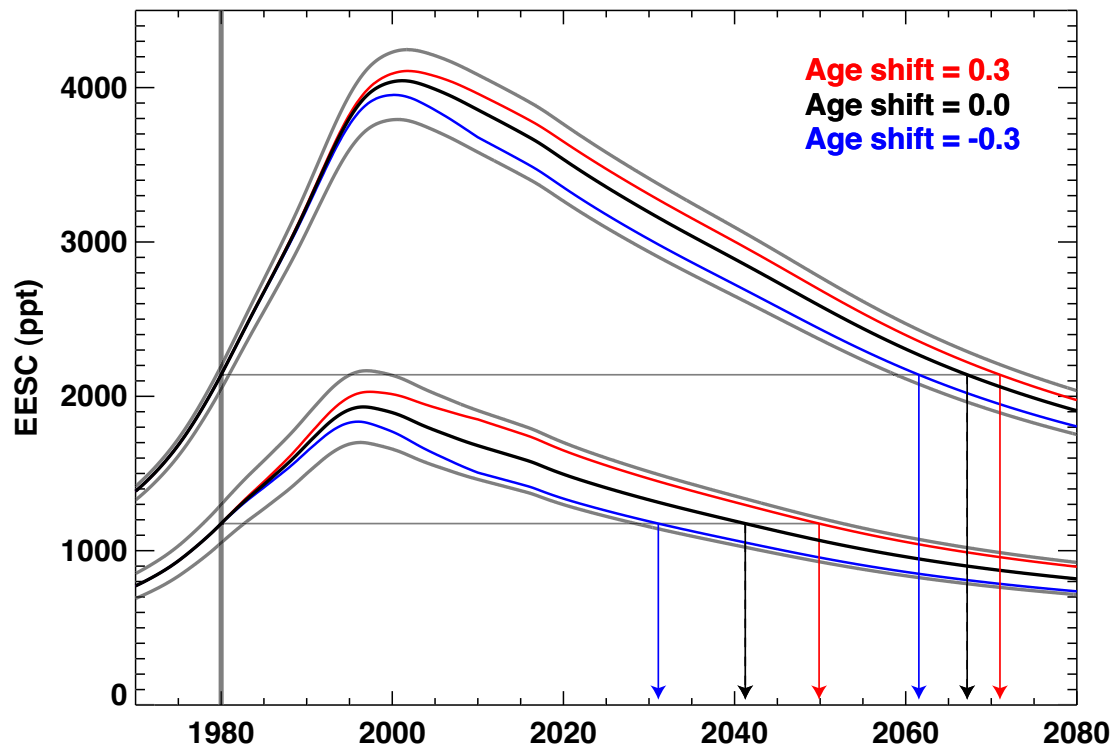


**Fig. 9.** Recovery year as a function of initial year. The upper and lower curves are for a 5.5-year and a 3-year mean age-of air, respectively. The gray vertical line indicates the reference year of 1980. The black horizontal lines indicate the recovery date of EESC to 1980 values.

[Title Page](#)[Abstract](#)[Introduction](#)[Conclusions](#)[References](#)[Tables](#)[Figures](#)[I◀](#)[▶I](#)[◀](#)[▶](#)[Back](#)[Close](#)[Full Screen / Esc](#)[Printer-friendly Version](#)[Interactive Discussion](#)

New formulation of  
EESC

Newman et al.



**Fig. 10.** EESC versus time. The black curves indicate no age shift. The gray curves indicate age shifts of  $\pm 0.3$  y about the upper and lower curves that are centered on 5.5 y and 3 y, respectively. The red curves are derived by linearly changing the age from 3.0 y to 3.3 y and from 5.5 y to 5.8 y between 1980 and 2010, with coherent fractional release changes. The blue lines are similarly derived, but the mean age is decreased from 3.0 y to 2.7 y and from 5.5 y to 5.2 y with coherent fractional release changes. The gray vertical line indicates the reference year of 1980. The black horizontal and color vertical lines indicate the recovery date of EESC to 1980 values.

[Title Page](#)[Abstract](#)[Introduction](#)[Conclusions](#)[References](#)[Tables](#)[Figures](#)[I◀](#)[▶I](#)[◀](#)[▶](#)[Back](#)[Close](#)[Full Screen / Esc](#)[Printer-friendly Version](#)[Interactive Discussion](#)