

**Sensitivities in
modelling global
tropospheric ozone**

O. Wild

Modelling the global tropospheric ozone budget: exploring the variability in current models

O. Wild^{1,*}

¹Frontier Research Center for Global Change, JAMSTEC, Yokohama, Japan

*now at: Centre for Atmospheric Science, University of Cambridge, UK

Received: 11 January 2007 – Accepted: 6 February 2007 – Published: 8 February 2007

Correspondence to: O. Wild (oliver.wild@atm.ch.cam.ac.uk)

Title Page

Abstract

Introduction

Conclusions

References

Tables

Figures

◀

▶

◀

▶

Back

Close

Full Screen / Esc

Printer-friendly Version

Interactive Discussion

Abstract

What are the largest uncertainties in modelling ozone in the troposphere, and how do they affect the calculated ozone budget? Published chemistry-transport model studies of tropospheric ozone differ significantly in their conclusions regarding the importance of the key processes controlling the ozone budget: influx from the stratosphere, chemical processing and surface deposition. This study surveys ozone budgets from previous studies and demonstrates that about two thirds of the increase in ozone production seen between early assessments and more recent model intercomparisons can be accounted for by increased precursor emissions. Model studies using recent estimates of emissions compare better with ozonesonde measurements than studies using older data, and the tropospheric burden of ozone is closer to that derived here from measurement climatologies, 335 ± 10 Tg. However, differences between individual model studies remain large and cannot be explained by surface precursor emissions alone; cross-tropopause transport, wet and dry deposition, humidity, and lightning make large contributions to the differences seen between models. The importance of these processes is examined here using a chemistry-transport model to investigate the sensitivity of the calculated ozone budget to different assumptions about emissions, physical processes, meteorology and model resolution. The budget is particularly sensitive to the magnitude and location of lightning NO_x emissions, which remain poorly constrained; the 3–8 TgN/yr range in recent model studies may account for a 10% difference in tropospheric ozone burden and a 1.4 year difference in CH_4 lifetime. Differences in humidity and dry deposition account for some of the variability in ozone abundance and loss seen in previous studies, with smaller contributions from wet deposition and stratospheric influx. At coarse model resolutions stratospheric influx is systematically overestimated and dry deposition is underestimated; these differences are 5–8% at the 300–600 km grid-scales investigated here, similar in magnitude to the changes induced by interannual variability in meteorology. However, a large proportion of the variability between models remains unexplained, suggesting that differences in

ACPD

7, 1995–2035, 2007

Sensitivities in modelling global tropospheric ozone

O. Wild

Title Page

Abstract

Introduction

Conclusions

References

Tables

Figures

◀

▶

◀

▶

Back

Close

Full Screen / Esc

Printer-friendly Version

Interactive Discussion

EGU

model chemistry and dynamics have a large impact on the calculated ozone budget, and these should be the target of future model intercomparisons.

1 Introduction

Ozone is an important greenhouse gas, a major component of photochemical smog, and the primary source of hydroxyl radicals which control the oxidizing capacity of the troposphere (e.g., Prather and Ehhalt, 2001). The abundance of O_3 in the troposphere is controlled by transport from the O_3 -rich stratosphere, by chemical production following the oxidation of hydrocarbons and CO in the presence of nitrogen oxides (NO_x) and by removal via chemical destruction or dry deposition. The magnitudes of these sources and sinks have not been reliably quantified, and observational constraints on them remain poor. The chemical lifetime of O_3 in the troposphere, typically days to weeks, is similar in magnitude to the dynamical timescales for transport and mixing, and thus the factors controlling O_3 are not easily separable. The net effects of chemical processing are dependent on the balance between large production and destruction terms which dominate in different regions of the troposphere, and the importance of stratosphere-troposphere exchange (STE) is similarly dependent on the balance between downward transport of O_3 from the stratosphere, mostly at mid-latitudes, and a smaller upward flux in tropical regions. The equilibrium between these chemical and dynamical fluxes constitutes a buffering of tropospheric O_3 , and poor estimates of one or more of these governing processes may be masked by readjustment of the others so that the abundance of O_3 in the troposphere is not greatly affected. However, a quantitative understanding of the processes controlling the production, redistribution and fate of O_3 in the troposphere is required before a reliable assessment can be made of how O_3 may respond to changes in anthropogenic emissions of trace gases or global climate.

Global chemistry-transport models (CTMs) that simulate the chemical and dynamical processes controlling O_3 provide a self-consistent estimate of the key budget terms.

Sensitivities in modelling global tropospheric ozone

O. Wild

Title Page

Abstract

Introduction

Conclusions

References

Tables

Figures

◀

▶

◀

▶

Back

Close

Full Screen / Esc

Printer-friendly Version

Interactive Discussion

Most CTMs can reproduce the seasonality and distribution of tropospheric O₃ measured by ozonesondes in a climatological sense, but assessments of the relative importance of the controlling processes vary widely (Prather and Ehhalt, 2001). Recent model intercomparison studies estimate a net O₃ influx of 550 Tg/yr from the stratosphere and a surface removal of 1000 Tg/yr by dry deposition, with net chemical production making up the balance of 450 Tg/yr (Stevenson et al., 2006). However, there are large differences between individual model studies in the importance of these terms reflecting differences in their treatments of chemical and dynamical processes. These differences highlight significant imperfections in our current understanding of the key factors involved (e.g., in the magnitude and distribution of emissions, chemical processing, and convection) and in their numerical representation at computationally-tractable temporal and spatial scales. CTMs are typically focussed on global-scale issues such as attribution of climate impacts due to changing patterns of fossil fuel combustion (Gauss et al., 2003; Dentener et al., 2006a), or assessment of the policy impacts of intercontinental transport of oxidants on air quality (e.g., Holloway et al., 2003). Many of the chemical and dynamical processes controlling O₃ in the troposphere occur at much smaller temporal and spatial scales than can be resolved in these models, and thus important processes are parameterized, introducing additional uncertainty. Nevertheless, improved understanding of the interactions between tropospheric composition and climate, and in particular of how changes in climate may affect the sources and fate of tropospheric O₃, requires that the principal terms in the O₃ budget can be quantified in a reliable and consistent way so that the sensitivity of the budget to changes in transport, convection, chemistry and deposition can be evaluated reliably. Recent model intercomparison exercises have suggested that this may not currently be the case (Prather and Ehhalt, 2001; Stevenson et al., 2006).

The aims of this paper are to explore the differences seen in previous model estimates of the source and fate of tropospheric O₃, and to investigate to what extent these arise from the use of different input conditions or from differences in model formulation. Differences in precursor emissions or meteorological data may mask the more sub-

Sensitivities in modelling global tropospheric ozone

O. Wild

Title Page

Abstract

Introduction

Conclusions

References

Tables

Figures

◀

▶

◀

▶

Back

Close

Full Screen / Esc

Printer-friendly Version

Interactive Discussion

tle differences that reflect improved scientific understanding or deficiencies in process representation. Identifying the source of these differences is important for reducing the uncertainty in the modelled response of tropospheric O₃ to applied changes and for interpreting the results of multi-model “ensemble” studies. The sensitivity of the budget terms to key model processes is explored here in a consistent way with a single model. Section 2 reviews tropospheric O₃ budgets from published studies and highlights the origins of some of the differences between them. Section 3 describes the limited observational constraints on the O₃ budget. Section 4 then examines the sensitivity of the budget terms to emissions, meteorology, and key physical processes and interprets the variability seen in previous studies in light of these results. The implications of the results for future model intercomparison studies are outlined in Sect. 5.

2 Tropospheric ozone budgets in global models

A comparison of O₃ budgets from published global model studies is presented in Table 1. The studies are ordered chronologically by publication date, and statistics from earlier studies summarised in the Intergovernmental Panel on Climate Change (IPCC) Third Assessment Report (TAR) Prather and Ehhalt (2001) are compared with those published since 2000 to show how the calculated O₃ budget has evolved. There are large differences in the key terms between individual model studies: STE fluxes vary by a factor of four (340–1440 Tg/yr), deposition fluxes vary by almost a factor of three (530–1470 Tg/yr), and gross chemical production varies by a factor of two (2330–5260 Tg/yr). The tropospheric burden of O₃ varies between 240 and 380 Tg. However, these studies vary widely in their precursor emissions and in model formulation and resolution. Many of the pioneering early studies used simplified chemistry schemes omitting oxidation of non-methane hydrocarbons (NMHC), and a number of them had unreasonably high estimates of stratospheric influx; compensation between the key terms in the budget leads several studies to conclude that the troposphere is a net chemical sink of O₃. Recent studies have benefited from more detailed chemi-

Sensitivities in modelling global tropospheric ozone

O. Wild

Title Page

Abstract

Introduction

Conclusions

References

Tables

Figures

◀

▶

◀

▶

Back

Close

Full Screen / Esc

Printer-friendly Version

Interactive Discussion

cal schemes, improved understanding of the emissions of key precursor species, and better quality meteorological data at higher spatial resolution. This has reduced the variability in independent studies published since 2000 compared with those surveyed in the IPCC-TAR, but the 1σ variability remains large: STE 530 ± 100 Tg/yr, chemistry 400 ± 250 Tg/yr, and deposition 950 ± 220 Tg/yr. It is not clear how much of this variability is due to the use of different input data (e.g., emissions or meteorological data) and how much is down to different model treatments of the key processes involved. These studies have typically used their own definitions of the tropopause and of the chemical fluxes constituting O_3 production, making direct comparison of O_3 burdens, lifetimes and tendencies particularly difficult.

A recent model intercomparison coordinated by the European Union project Atmospheric Composition Change: the European Network of Excellence (ACCENT) involved many of the models shown in Table 1 and aimed to reduce these uncertainties by constraining precursor emissions and applying consistent tropopause diagnostics across all participating models (Dentener et al., 2006a; Stevenson et al., 2006). The budget terms calculated in this study were higher than those from previous studies, and the variability in the terms was also larger, despite the more tightly constrained conditions. In particular, there is an increase in gross production between the IPCC-TAR (3450 Tg/yr), studies published since 2000 (4470 Tg/yr) and the ACCENT intercomparison (5110 Tg/yr), which is accompanied by a 10% increase in O_3 burden, a 20% increase in deposition, and a drop in the tropospheric lifetime of O_3 from 24 to 22 days. Higher estimates of precursor emissions make a substantial contribution to the increased production, as noted in regression analyses by Wu et al. (2006). The sensitivity of gross O_3 production to surface emissions of NO_x and isoprene (C_5H_8) is shown in Fig. 1 for published studies and for individual models contributing to the ACCENT intercomparison. While the strong dependence on surface emissions is clear, there is a large scatter in these plots, even for the relatively well-constrained ACCENT studies, indicating that other factors have an important influence on the budget. A major goal of the present study is to investigate the effects of these processes more closely

Sensitivities in modelling global tropospheric ozone

O. Wild

Title Page

Abstract

Introduction

Conclusions

References

Tables

Figures

◀

▶

◀

▶

Back

Close

Full Screen / Esc

Printer-friendly Version

Interactive Discussion

using the tighter constraints imposed by application of a single model framework, and ensuring that comparison of budget terms is fully self-consistent.

3 Constraints from observations

Of the budget terms considered here only influx of O_3 from the stratosphere has been adequately estimated from observational data. Murphy and Fahey (1994) used observed mid-latitude N_2O-O_3 correlations and an upward flux of N_2O derived from a budget analysis to derive a net downward flux of O_3 of 450 Tg/yr, with a range of 200–870 Tg/yr. Gettelman et al. (1997) used lower stratospheric O_3 measurements and calculations of the residual circulation to derive a net downward flux of 510 Tg/yr at 100 hPa (with a range of 450–590 Tg/yr). McLinden et al. (2000) reduced the uncertainty in the analysis of Murphy and Fahey (1994) by considering the tighter N_2O-NO_y and NO_y-O_3 relationships separately, estimating a flux of 475 ± 120 Tg/yr, and further refinements by Olsen et al. (2001) led to the best estimate currently available, 550 ± 140 Tg/yr. Most model studies published since 2000 fall within this range, and the mean influx from the ACCENT model intercomparison was 552 Tg/yr. However, This agreement masks significant differences in the magnitude of gross cross-tropopause fluxes and in treatment of stratospheric O_3 , and does not constitute an independent comparison as some models apply a flux constraint through use of tuned upper boundary conditions or an artificial stratospheric O_3 tracer such as Synoz (McLinden et al., 2000).

In the absence of reliable observation-based estimates of global deposition fluxes or chemical production, the best remaining constraint is on the abundance of O_3 itself. Without details of the seasonal, geographical and altitudinal variations in O_3 from previous studies only a simple comparison of the mean annual global tropospheric burden is possible here. However, the tropospheric O_3 burden and its dependence on the definition of the tropopause has not been evaluated previously. The tropospheric burden is estimated here from three different climatologies built from available ozonesonde, satel-

Sensitivities in modelling global tropospheric ozone

O. Wild

Title Page

Abstract

Introduction

Conclusions

References

Tables

Figures

◀

▶

◀

▶

Back

Close

Full Screen / Esc

Printer-friendly Version

Interactive Discussion

**Sensitivities in
modelling global
tropospheric ozone**

O. Wild

Title Page

Abstract

Introduction

Conclusions

References

Tables

Figures

◀

▶

◀

▶

Back

Close

Full Screen / Esc

Printer-friendly Version

Interactive Discussion

lite and surface measurements, and using a number of different dynamical and thermal definitions of the tropopause, see Table 2. The climatologies were interpolated onto a common $4^\circ \times 5^\circ$ grid and integrated from the surface to a tracer tropopause defined by a given abundance of O_3 (100, 120 or 150 ppb), a thermal tropopause based on a lapse rate of 2 K km^{-1} following the WMO definition, or a dynamical tropopause based on potential vorticity (PV) using the lower of the PV=2.0 surface and the tropical 380 K isentrope. For comparison, a cold-point tropopause based on the tropical temperature minimum is shown (a WMO thermal tropopause was applied in the extra-tropics), and a stepped-isobaric tropopause typical of crude model diagnostics is also used (100 hPa in the tropics and 250 hPa poleward of 30°). Thermal and dynamical tropopauses were calculated using monthly-mean data for year 2000 from the European Centre for Medium-Range Weather Forecasts (ECMWF); burdens calculated with 1997 data differ by less than 2 Tg ($<1\%$). These comparisons provide only crude estimates of the true tropospheric burden, neglecting temporal or spatial variations in tropopause height which may bias it high or low, but they provide a convenient benchmark against which model simulations can be compared.

Use of a tracer tropopause provides the greatest consistency in O_3 burden for the different climatologies, as differences in O_3 distribution are suppressed. This definition is the simplest to employ when comparing model studies, and based on the 150 ppb level recommended by Prather and Ehhalt (2001) suggests a tropospheric burden of $335 \pm 10 \text{ Tg}$ for the three climatologies used here. Thermal definitions generally give higher burdens, as noted by Bethan et al. (1996), and are more sensitive to O_3 differences in the tropopause region and thus more variable; the WMO lapse-rate definition gives a burden of about $352 \pm 30 \text{ Tg}$. Interestingly, the crude pressure tropopause gives very similar burdens to the WMO lapse-rate tropopause for all three climatologies used here, but note that they are quite different for typical model fields (discussed below), highlighting systematic differences in O_3 distribution between modelled and climatological fields. The PV=2.0 dynamical tropopause gives similar burdens to the 150 ppb tracer tropopause for both model and climatological fields, and burdens are consistently

lower than with the WMO lapse-rate definition.

There is considerable uncertainty in these estimates due to the sparse coverage of ozonesonde sites, but the O₃ burdens derived here are generally lower than the 370 Tg burden recommended by [Prather and Ehalt \(2001\)](#). The dynamical tropopause is represented well by the 150 ppb O₃ tracer tropopause, and the mean burden of 344 Tg from the ACCENT model intercomparison (reduced to 336 Tg after removing model outliers) ([Stevenson et al., 2006](#)) is in good agreement with the 335±10 Tg range estimated here from measurement climatology. The variability in burden for a single O₃ distribution based on different definitions of the tropopause is as much as ±15%, suggesting that differences in definition make an important contribution to the differences between model burdens shown in Table 1.

4 CTM sensitivity studies

The dependence of the calculated O₃ budget on precursor emissions and on physical and meteorological variables is investigated here with a global CTM. Altering variables independently allows an assessment of their contributions to the model differences seen in Table 1, and use of a single model framework ensures that the comparison of their relative importance is self-consistent. A similar approach has been adopted in a recent study of uncertainties in a regional model ([Mallet and Sportisse, 2006](#)). Previous global studies have focussed on the effects of individual variables, e.g., hydrocarbon oxidation ([Houweling et al., 1998](#); [Roelofs and Lelieveld, 2000](#); [von Kuhlmann et al., 2004](#)), STE ([Wauben et al., 1998](#)), model resolution ([von Kuhlmann et al., 2003](#); [Wild and Prather, 2006](#)), lightning NO_x emissions ([Labrador et al., 2005](#)), convection ([Lawrence et al., 2003](#); [Doherty et al., 2005](#)), and interannual variability in meteorology ([Zeng and Pyle, 2005](#)), but have not compared their effects in a comprehensive or systematic way.

The model used here is the Frontier Research System for Global Change (FRSGC) version of the University of California, Irvine (UCI) CTM described in [Wild and Prather](#)

Title Page

Abstract

Introduction

Conclusions

References

Tables

Figures

◀

▶

◀

▶

Back

Close

Full Screen / Esc

Printer-friendly Version

Interactive Discussion

(2000) with the configuration used in Wild et al. (2004). Pieced-forecast meteorological data generated by the European Centre for Medium-Range Weather Forecasts Integrated Forecast System (ECMWF-IFS) are used to drive the model. The 70–80 runs performed here use the same initial conditions and spin-up period, but a different variable is altered in each case to quantify its effect on the O₃ budget. The tropopause is diagnosed on-line using the 120 ppb abundance of Linoz, an O₃-like tracer with a linearised O₃ chemistry in the stratosphere, no loss in the free troposphere and a 2-day relaxation to 20 ppb at the surface (McLinden et al., 2000). For consistency with other published studies, O₃ budget terms are diagnosed from monthly-mean model output based on a 150 ppb O₃ tracer tropopause (Prather and Ehhalt, 2001; Stevenson et al., 2006). The difference in O₃ burden between this diagnostic O₃ tropopause and the on-line Linoz tropopause is generally less than 10 Tg, about 3%.

Two sets of emissions scenarios are used in these experiments. The base scenario (“BASE”) for NO_x, CO and NMHC loosely represents 1990’s understanding, and is taken from version 2 of the EDGAR database for 1990 (Olivier et al., 1996) with isoprene emissions from Guenther et al. (1995) reduced to 220 TgC/yr following Hauglustaine et al. (1998). A second, updated scenario (“IIASA”) uses emission distributions from EDGAR v3.2 for 1995 (Olivier and Berdowski, 2001) scaled to the year 2000 using emission data from the International Institute for Applied Systems Analysis (IIASA) (Dentener et al., 2005), as recommended for the recent ACCENT model intercomparison. The sensitivity studies described here use the BASE emissions unless otherwise indicated, and are run with 1996 meteorology at T21L19 resolution (5.6° resolution with 19 levels).

Model runs are evaluated by comparing with ozonesonde observations from the period 1980–1993 (Logan, 1999), supplemented by additional data from the tropics between 1997 and 2002 (Thompson et al., 2003). Monthly interannual mean O₃ mixing ratios at selected altitudes at each location are averaged over four latitude bands and compared with monthly means from model simulations sampled at the same locations, following the method of Stevenson et al. (2006), see Fig. 2. Three model scenar-

Sensitivities in modelling global tropospheric ozone

O. Wild

Title Page

Abstract

Introduction

Conclusions

References

Tables

Figures

◀

▶

◀

▶

Back

Close

Full Screen / Esc

Printer-friendly Version

Interactive Discussion

ios are shown to illustrate the range of O₃ responses: the control run (BASE), a run with updated emissions (IIASA), and a run contributed to the ACCENT intercomparison (ACCENT) which used IIASA emissions in different model conditions (year 2000 meteorology with higher horizontal and vertical resolution, T42L37, and minor improvements to model physics described in [Wild and Prather, 2006](#)). While the magnitude and seasonality of O₃ are captured reasonably well in these runs, a number of discrepancies clearly remain, most notably in the wintertime at Northern mid-latitudes and in the tropical upper troposphere. The difference between BASE and IIASA runs shows how changes in precursor emissions alone contribute to changes in O₃; comparison with observations suggests that emissions in the BASE scenario are too low, particularly in the tropics. Differences between the IIASA and ACCENT runs reflect changes in meteorology and resolution, although differences in the tropical upper troposphere are dominated by changes in the magnitude and vertical distribution of lightning NO_x emissions in the ACCENT run.

To provide a more quantitative measure of model performance, the mean bias and root mean square (RMS) error are calculated over the ten locations shown in [Figure 2](#) weighted by pressure so that they are representative of the O₃ burden. The annual mean bias over these locations for the BASE, IIASA and ACCENT runs is -5.3, -1.0 and 1.6 ppb, respectively, and the RMS errors are 7.8, 4.6 and 4.3 ppb. Comparison of the annual mean tropospheric O₃ burden with climatologies provides an additional measure of model performance, see [Table 2](#). Using the BASE emissions the O₃ burden is consistently low for all tropopause definitions; the comparison is best for the ACCENT run where there is close agreement with the [Fortuin and Kelder \(1998\)](#) climatology. The largest differences are seen for the simple diagnostic tropopause based on pressure, reflecting differences in the geographical distribution of O₃ in the tropopause region and the lack of longitudinal variation in the climatologies.

Sensitivities in modelling global tropospheric ozone

O. Wild

Title Page

Abstract

Introduction

Conclusions

References

Tables

Figures

◀

▶

◀

▶

Back

Close

Full Screen / Esc

Printer-friendly Version

Interactive Discussion

4.1 Sensitivity to precursor emissions

The dependence of O₃ production on precursor emissions shown in Fig. 1 suggests that increases in NO_x and isoprene emissions between the IPCC-TAR survey and the ACCENT studies make a large contribution to the differences seen in the calculated O₃ budget. To examine this, surface emissions of isoprene and NO_x are increased independently by replacing the BASE emissions with the higher values recommended for the ACCENT runs, see Table 3. The increase from 42 to 51 TgN/yr for NO_x and from 220 to 500 TgC/yr for isoprene each contribute an additional 450 Tg of O₃ production per year. Scaled to the mean emission increases between the IPCC-TAR survey and the ACCENT studies, these changes account for about 1100 Tg/yr of additional production, 66% of the 1660 Tg/yr increase in mean production between the studies. Production is enhanced more with increased isoprene than with increased NO_x, but a greater proportion of this occurs in the boundary layer where surface deposition is greater, and thus the increase in the tropospheric burden is less. Higher NO_x and isoprene emissions both lead to a decrease in the lifetime of tropospheric O₃ to loss by chemistry and deposition, but they have opposing effects on the lifetime of CH₄, as NO_x is a net source of OH while isoprene is a net sink. The greatly reduced mean bias and RMS error compared with ozonesonde data suggest that the higher NO_x and isoprene emissions recommended for the ACCENT runs are more appropriate for present-day studies than those in the BASE scenario.

These emission scenarios are compared with those used in the OxComp model intercomparison conducted for the IPCC-TAR (Prather and Ehhalt, 2001), and with the IIASA emissions. The OxComp emissions give very similar budget changes to the increased-NO_x run, BASE+N, and the IIASA emissions give budgets similar to the increased-NO_x and isoprene run, BASE+NI. Although the differences in the O₃ lifetime between these runs and the equivalent BASE runs are small, the CH₄ lifetime changes significantly as emissions of CO and NMHC differ in the OxComp and IIASA scenarios.

To explore the full sensitivity of the O₃ budget to emissions of NO_x and isoprene, a

Sensitivities in modelling global tropospheric ozone

O. Wild

Title Page

Abstract

Introduction

Conclusions

References

Tables

Figures

◀

▶

◀

▶

Back

Close

Full Screen / Esc

Printer-friendly Version

Interactive Discussion

series of 20 runs have been performed using isoprene emissions of 0, 220, 350, 500 and 650 TgC/yr and NO_x emissions of 30, 42, 51 and 60 TgN/yr. Isoprene emissions were scaled linearly on the distribution of [Guenther et al. \(1995\)](#), while NO_x emissions were varied non-linearly, with the 30 TgN/yr scenario representing 1970 conditions and the 60 TgN/yr scenario scaled to IIASA current-legislation emissions for 2030 ([Dentener et al., 2005](#)). The variation in key budget terms is shown in Fig. 3. The gross production and burden of O₃ both increase steadily with increasing precursor emissions, consistent with the changes seen in the published budgets (see Fig. 1 and Table 1) and the O₃ lifetime is reduced as chemical destruction and deposition increase. The contrasting effects of NO_x and isoprene on OH lead to a balance such that the CH₄ lifetime remains little affected, but the gradient of the slope is steep, and small changes in either NO_x or isoprene can affect the lifetime substantially.

Note that the effects seen here are dependent on the complexity of the chemical scheme used in the model. The simplified scheme used here does not include isoprene nitrates, and more detailed studies treating their formation and deposition have found this to be a significant channel for removal of both isoprene intermediates and NO_x ([Pöschl et al., 2000](#); [von Kuhlmann et al., 2004](#)). It is not clear how many previous studies have included this pathway, but it has been shown to lead to stabilization of O₃ production with increasing isoprene emissions ([Wu et al., 2006](#)). The differing complexity of chemical schemes may be an important source of differences between model studies and merits a more detailed investigation.

Table 3 also shows the sensitivity of the budget terms to the treatment of other hydrocarbons. Use of a globally-uniform field of CH₄ instead of CH₄ emissions and chemical integration avoids the long spin-up times associated with CH₄, but has very little effect on the O₃ budget or lifetime. The CH₄ lifetime is extended by about 5%, reflecting a higher atmospheric burden in the stratosphere when using a uniform field. Removal of all NMHC emissions leads to a reduction in O₃ production of about 900 Tg/yr, half of which is due to isoprene, and a reduction in O₃ burden of about 35 Tg (12%) compared with the BASE scenario. These results are consistent with those of [Houweling et al.](#)

Sensitivities in modelling global tropospheric ozone

O. Wild

Title Page

Abstract

Introduction

Conclusions

References

Tables

Figures

◀

▶

◀

▶

Back

Close

Full Screen / Esc

Printer-friendly Version

Interactive Discussion

(1998) shown in Table 1.

4.2 Sensitivity to physical processes

Meteorological and dynamical processes influence the production, mixing and removal of O₃ both directly and indirectly. Humidity, temperature and UV flux govern chemical reaction rates, boundary layer turbulence and convection redistribute O₃ and its precursors, influencing O₃ production and removal, and deposition processes remove O₃ and soluble precursors. Ozone chemistry in the upper troposphere is influenced by the magnitude and distribution of lightning-produced NO_x emissions and by direct influx of O₃ from the stratosphere. Perturbation experiments are performed with the FRSGC/UCI CTM to explore the effect of these processes on O₃, and the impacts on the key budget terms are shown in Table 4. For compatibility with the emissions studies in Sect. 4.1, the same BASE control run was used.

The stratospheric influx of O₃ was increased by applying a consistent scaling of stratospheric Linoz chemistry. This leads to increased chemical removal and deposition in the troposphere, but also to decreased O₃ production, as noted by Wauben et al. (1998), due to faster removal of NO_x. Of the additional O₃ transported from the stratosphere, about 60% is destroyed chemically, 10% is deposited at the surface, and 30% is accounted for by decreased production. Quantifying the impact of STE on the tropospheric burden and lifetime of O₃ is complicated by the choice of tropopause, however. Applying a thermal or dynamical tropopause or using the same location as in the control run leads to a large increase in the burden and an increase in lifetime associated with additional O₃ at high altitude. However, applying an O₃ tracer tropopause leads to a much smaller increment in the burden as the tropospheric domain shrinks, and the O₃ lifetime shows a marginal decrease, see Table 4. Use of a tracer tropopause clearly damps the calculated budget response to changes in STE. As removal of O₃ by dry deposition changes only slowly along with the burden, the net impact of chemistry, P-L, is very sensitive to the STE flux used.

Dry deposition affects the O₃ budget directly by surface removal of O₃ and indirectly

Sensitivities in modelling global tropospheric ozone

O. Wild

Title Page

Abstract

Introduction

Conclusions

References

Tables

Figures

◀

▶

◀

▶

Back

Close

Full Screen / Esc

Printer-friendly Version

Interactive Discussion

by removal of precursors such as NO_x and PAN. Increased deposition is balanced largely by decreased chemical loss due to lower O_3 , with a small increase in production caused by lower OH and hence an increased lifetime for NO_x . The decreased chemical loss is responsible for lower OH formation and hence for the increased CH_4 lifetime.

5 The net impact of chemistry is very sensitive to dry deposition as the net STE flux changes only marginally in response to changes in the tropospheric burden. Note the non-linear response of the dry deposition rate to the applied increases in deposition velocity as the surface O_3 abundance falls. In contrast, wet deposition does not affect O_3 directly but leads to the removal of soluble species such as HNO_3 and H_2O_2 which
10 influence the availability of NO_x and OH. Increasing removal of these species by 50% causes both production and loss of O_3 to fall by about 2.5%, and the tropospheric burden drops proportionately. The small drop in net chemical production is balanced by reduced dry deposition, and the lifetime of O_3 is little affected. However, the decrease in OH leads to a significant increase in the lifetime of CH_4 , and the OH response is
15 60–90% larger than for equivalent changes in the dry deposition rate. A non-linear response is also evident here, as a 50% reduction in wet deposition rates has twice the effect on the O_3 burden and removal as a 50% increase.

The effects on oxidant chemistry of small, globally uniform changes in temperature and humidity representing the uncertainty in meteorological fields are also examined.
20 Increases in temperature affect chemical reaction kinetics and lead to significantly increased O_3 production and loss rates, but net production and other key budget terms are largely unaffected, and the tropospheric burden drops by less than 1% for a temperature rise of 5°C . However, the faster chemistry leads to a higher abundance of OH, and the CH_4 lifetime is reduced by almost 10% for a 5°C rise. This sensitivity of
25 CH_4 oxidation to temperature provides a small negative feedback on climate warming, as noted by [Fiore et al. \(2006\)](#), and highlights temperature as a significant source of uncertainty in model-derived CH_4 lifetimes, as noted by [Stevenson et al. \(2000\)](#). Increased humidity leads to more efficient O_3 loss and greater OH production. Additional OH boosts O_3 production, but this only makes up about 45% of the additional O_3 loss,

Sensitivities in modelling global tropospheric ozone

O. Wild

Title Page

Abstract

Introduction

Conclusions

References

Tables

Figures

◀

▶

◀

▶

Back

Close

Full Screen / Esc

Printer-friendly Version

Interactive Discussion

**Sensitivities in
modelling global
tropospheric ozone**

O. Wild

Title Page

Abstract

Introduction

Conclusions

References

Tables

Figures

◀

▶

◀

▶

Back

Close

Full Screen / Esc

Printer-friendly Version

Interactive Discussion

and net production falls. Surface deposition falls by about 6% with a 20% increase in humidity, balancing the increased chemical loss, and the O₃ burden is reduced by 5%. The global O₃ burden is much more sensitive to changes in humidity than in temperature, and the CH₄ lifetime is also strongly affected. Note that the uncertainty in the tropospheric water vapour burden in current climate models is about 10% (Stevenson et al., 2006), and this would introduce a 3% (9 Tg) variability in the O₃ burden, a 3% (0.8 day) variability in O₃ lifetime and a 3% (0.3 year) variability in CH₄ lifetime based on these sensitivity studies..

Deep convection mixes O₃-rich air from the upper troposphere down towards the surface where the O₃ lifetime is shorter and lifts freshly-emitted O₃ precursors into the upper troposphere where O₃ production may be greater. Previous studies with and without convection have disagreed on the relative importance of these pathways, with Lawrence et al. (2003) finding a 12% increase in O₃ burden when including convection due to the dominant effect of increased production, and Doherty et al. (2005) finding a 14% decrease in burden as greater descent and destruction outweighed increased production. In the present study smaller changes in convection have been applied, and these were allowed to affect convective washout as well as lifting processes. Stronger convection leads to increased O₃ production in the upper troposphere but to decreased production in the lower troposphere, where the washout of soluble precursors is greater. There is an increase in the inferred influx from the stratosphere, indicating that convection penetrates above the tracer tropopause used here. Greater tropospheric overturning leads to higher surface O₃ and greater deposition, and the tropospheric burden decreases. Comparison with the wet deposition sensitivity runs presented above suggests that this is partly due to increased washout, and that the effect of lifting alone is small. These results lie midway between those presented by Lawrence et al. (2003) and Doherty et al. (2005), and highlight the large uncertainty in modelled O₃ responses to convection. It is not clear if this uncertainty reflects differences in convection schemes, lightning emissions or chemical complexity, as discussed in Doherty et al. (2005), but the uncertainty is sufficiently large that this topic

would be a valuable target for future model intercomparison studies.

The magnitude and distribution of lightning-produced NO_x emissions are highly uncertain (e.g., [Price et al., 1997](#)) but are important for O_3 due to the longer lifetime of NO_x in the upper troposphere and its greater efficiency for O_3 production. Increased emissions cause a large increase in production and in tropospheric burden, as seen in previous studies ([Labrador et al., 2005](#)); about 10% of the additional O_3 produced is removed by deposition, and the rest is destroyed by chemistry, contributing to a higher abundance of OH and to a reduced CH_4 lifetime. The sensitivity of the O_3 burden and the CH_4 lifetime are notably larger than for the other processes considered here. The range of lightning emissions used in the ACCENT model studies, 3–8 TgN/yr, would account for a 10% difference in O_3 burden, a 0.7 day difference in O_3 lifetime and a 1.4 year difference in CH_4 lifetime between models. Note also that the study here uses uniform vertical emission profiles for inter-cloud and cloud-to-ground lightning strokes based on [Price and Rind \(1992\)](#). Inclusion of more realistic profiles based on observations ([Pickering et al., 1998](#)) (run Alt5) leads to a 25% greater increase in O_3 production and a 50% greater increase in burden for the same 5 TgN/yr emissions, as a greater proportion of the NO_x emissions occur at high altitudes where the lifetimes of O_3 and NO_x are longer.

Finally, a number of additional sensitivities related to model methodology have been examined, see Table 4. The dry deposition scheme of [Isaksen et al. \(1985\)](#) used in some studies (e.g., [Berntsen et al., 1996](#); [Wild and Prather, 2000](#); [Zeng and Pyle, 2005](#)) is a simpler alternative to the resistances-in-series scheme of [Wesely \(1989\)](#) used here. Application of this scheme with 1-m deposition velocities from [Hough \(1991\)](#) leads to 30% greater O_3 deposition, an additional 260 Tg/yr. Faster removal of NO_x suppresses production, but chemical destruction falls by a greater margin to compensate for the increased deposition. The tropospheric O_3 burden is almost 10% less than in the BASE run, and underestimation of the ozonesonde measurements suggest that the deposition rate with this scheme is too high. However, the lack of good observational constraints on deposition prevents this from being determined uniquely.

Sensitivities in modelling global tropospheric ozone

O. Wild

Title Page

Abstract

Introduction

Conclusions

References

Tables

Figures

◀

▶

◀

▶

Back

Close

Full Screen / Esc

Printer-friendly Version

Interactive Discussion

The deposition rate is also reduced by application of a non-local boundary layer mixing scheme (Holtslag and Boville, 1993) in place of the simple hourly bulk-mixing used in the BASE run. Less efficient vertical mixing leads to stronger near-surface gradients and reduced deposition of O₃, but a smaller proportion of NO_x escapes into the free troposphere, so chemical production is suppressed. The net effect of these changes on the global burden is small, less than 1%.

A major source of uncertainty not considered here is in the calculation of photolysis rates. A number of different methods are currently used, ranging in complexity from tabulated rates based on climatological conditions to fully-interactive schemes accounting for absorption and scattering of aerosol and cloud particles calculated online. A simple test removing all cloud cover in the interactive Fast-J scheme used here (Wild et al., 2000) indicates that the global budget of O₃ is relatively insensitive to cloud cover. However, global O₃ production at the surface is 15% higher without cloud cover, balanced by lower production in the upper troposphere, and regional and seasonal differences can be much larger. Tie et al. (2003) found larger global effects (as much as 8%) suggesting that the impacts may depend on details of the cloud scheme used. Inclusion of monthly-mean aerosol fields for the scattering code similarly lead to regional differences in O₃ production, but the global impacts appear to be small.

4.3 Sensitivity to meteorology and resolution

Differences in meteorological data may affect the O₃ budget through self-consistent variations in the physical processes considered in Sect. 4.2. Meteorological data from the ECMWF-IFS model for 1997 and 2000 are compared with the fields for 1996 used in this study, and the impact on the O₃ budget is shown in Table 5 and in Fig. 4. The CTM is run at T21L19 with each meteorology, and is additionally run at T21L37 and T42L37 to test the effects of doubled vertical and horizontal resolution. Precursor emissions are taken from IIASA for closer comparison with the ACCENT studies, and the same emissions are used for each year. Total lightning NO_x emissions are constrained to 5 Tg/yr, although the location of the emissions differs from year to year following the

Sensitivities in modelling global tropospheric ozone

O. Wild

Title Page

Abstract

Introduction

Conclusions

References

Tables

Figures

◀

▶

◀

▶

Back

Close

Full Screen / Esc

Printer-friendly Version

Interactive Discussion

occurrence of deep convection events. Differences in O₃ burden and lifetime between the different years are small, but differences in STE, deposition and chemistry reach 7–8%. The lifetime of CH₄ is 5% longer in 1997 than in 2000, suggesting that OH levels are significantly lower and reflecting shifts in humidity and convection during the 1997–1998 El Niño period (Chandra et al., 1998; Sudo et al., 2001). The chemical production of O₃ is lower in 1997, and influx from the stratosphere is greater. These results are in good qualitative agreement with those of Zeng and Pyle (2005) who examined the evolution of the O₃ budget between 1990 and 2001 with a global climate model. The magnitude of this interannual variability indicates that model intercomparisons focussed on differences due to chemical or dynamical schemes should recommend use of the same meteorological fields.

Model O₃ budgets are sensitive to the horizontal and vertical resolution used, both through their effects on transport and mixing processes and through their impacts on O₃ chemistry from the spatial averaging of emissions (e.g., Chatfield and Delany, 1990). At the highest resolution used here, T42L37, there is a significant reduction in STE (8%, 40 Tg/yr) compared with T21L19 due to better resolution of the tropopause and there is an increase in surface deposition (5%, 40 Tg/yr). Increased net chemical production (25%, 80 Tg/yr) balances the budget, but there is a 2–4% drop in the O₃ burden. The magnitude of these effects is highly consistent for 1997 and 2000 meteorology, and confirms the results of previous studies (von Kuhlmann et al., 2003; Wild and Prather, 2006). The changes due to resolution seen here are similar in magnitude to those with different meteorological fields, but are systematic in nature. Increased vertical resolution has relatively little effect on gross chemical production or surface deposition, but accounts for at least half of the decrease in STE and for about one third of the increase in net production. Increased horizontal resolution dominates the changes in deposition and gross chemical production due to better localisation of boundary layer O₃, its production and convection, and better resolution of the tropopause region leads to an additional reduction in STE. Although the mean tropospheric lifetime of O₃ is only marginally affected by increased resolution, the chemical lifetime of CH₄ is substantially

**Sensitivities in
modelling global
tropospheric ozone**

O. Wild

Title Page

Abstract

Introduction

Conclusions

References

Tables

Figures

◀

▶

◀

▶

Back

Close

Full Screen / Esc

Printer-friendly Version

Interactive Discussion

increased, by as much as 5% for the 2000 case, reflecting lower OH and O₃ production at higher resolution.

4.4 Examining inter-model variability

To what extent do the sensitivities examined here account for the variability in published model budgets seen in Table 1? The results of these sensitivity studies and of earlier published studies are shown in Fig. 5. The variability is examined in two different parameter spaces which summarize the fate of O₃ and the abundance of OH, following Stevenson et al. (2006). Results from published model studies and from individual models from the ACCENT model intercomparison are shown in Figs. 5a and b, and results from the sensitivity studies over part of these parameter spaces are shown in Figs. 5c and d. The sensitivities examined here do not reflect the same level of uncertainty in the different variables, but are intended to be loosely comparable so that the relative importance of different processes is evident.

Differences in the abundance and fate of O₃ are revealed by the relationship between the tropospheric burden and the lifetime of O₃ to chemical removal and deposition and are shown in Fig. 5a. Inclusion of hydrocarbon chemistry and increased surface emissions lead to higher burdens and shorter lifetimes, but cannot account for the large spread in lifetime and burden seen in the ACCENT studies where emissions varied little. Figure 5c suggests that differences in humidity and in surface deposition may make important contributions to this variation, as they affect the O₃ burden and lifetime without changing gross tropospheric removal significantly. A 10% variation in humidity and a 200 Tg/yr variation in dry deposition, as seen in the ACCENT studies (Stevenson et al., 2006), could each account for 9 Tg in O₃ burden and 1 day in O₃ lifetime. Variations in temperature and convection have a similar but smaller effect. Wet deposition and STE lead to changes in the gross removal of O₃, but the scatter in this dimension is strongly influenced by emissions. Lightning NO_x emissions varied between 3 and 8 Tg/yr for the ACCENT models and may account for 30 Tg in O₃ burden and 500 Tg/yr in O₃ removal. Isoprene emissions varied between 220 and 630 TgC/yr,

Sensitivities in modelling global tropospheric ozone

O. Wild

Title Page

Abstract

Introduction

Conclusions

References

Tables

Figures

◀

▶

◀

▶

Back

Close

Full Screen / Esc

Printer-friendly Version

Interactive Discussion

and may thus account for 20 Tg in O₃ burden and 650 Tg/yr in O₃ removal. However, the sensitivity studies performed here only account for a proportion of the variability seen in the ACCENT runs, and it is likely that differences in chemical mechanisms and model dynamics also make large contributions to this variability.

5 The relationship between the chemical loss of O₃, governing the source of OH, and the lifetime of CH₄, controlled by OH, is shown in Fig. 5b. The variability in this relationship is more restricted, and most points lie close to a single line, as processes that increase O₃ production and loss are associated with a higher level of OH and hence with a shorter CH₄ lifetime. Surface emissions of isoprene have a significantly different
10 effect, however, as greater OH formation from higher O₃ production and loss is outweighed by the direct removal of OH that initiates hydrocarbon oxidation, and thus CH₄ lifetime increases with higher isoprene emissions as other studies have noted (von Kuhlmann et al., 2004). Model studies omitting higher hydrocarbons underestimate both O₃ loss and CH₄ lifetime. The mean chemical lifetime of CH₄ from the ACCENT
15 studies is 9.8 years, close to the 9.6 years recommended by Prather and Ehhalt (2001), but the variability is large, 6.9–15.2 years. The variation in lightning emissions may account for almost 1.5 years in the CH₄ lifetime, but differences in temperature, humidity, wet and dry deposition, and STE also contribute significantly to this variability. The abundance of OH is very sensitive to the chemistry and photolysis schemes used,
20 factors which are not quantified in this study. However, determination of the climate impacts of CH₄ and other tracer gases depends on a reliable quantification of chemical removal by OH, and the large variability seen in the ACCENT studies suggests that further work is needed to reduce the uncertainty in current models.

25 To estimate the contribution of the processes examined here to the variability in the budget terms from the ACCENT intercomparison, the terms are standardized by applying correction factors based on the sensitivities derived with the FRSGC/UCI CTM, see Table 6. A sensitivity factor for the change in each of these budget terms with respect to STE, dry deposition, lightning and surface emissions is derived from Table 4, and a correction factor is then applied for each model by scaling the fractional devia-

Sensitivities in modelling global tropospheric ozone

O. Wild

Title Page

Abstract

Introduction

Conclusions

References

Tables

Figures

◀

▶

◀

▶

Back

Close

Full Screen / Esc

Printer-friendly Version

Interactive Discussion

tion from the ensemble mean by the respective sensitivity factor. The mean production and loss terms decrease marginally, but the variability is significantly reduced, by more than 100 Tg/yr for production and 200 Tg/yr for loss, and the difference between the outlying models is reduced by almost 40%. The largest contributions to this reduced variability in production come from standardizing the isoprene emissions and lightning NO_x, while for loss the greatest impact is from standardizing deposition. The 1σ variability in the CH₄ lifetime is reduced by about 25%, from 1.7 to 1.3 years, and lightning NO_x emissions make the largest contribution to this. Although this standardization is approximate, it demonstrates that the biases imposed by the treatment of these processes are systematic, and that the differences between models would be reduced in more tightly constrained studies.

5 Conclusions

This study has examined how the tropospheric O₃ budget calculated in global CTMs has evolved over the past decade and has explored the sensitivity of the key budget terms to variability in precursor emissions, physical processes and meteorology. Large differences apparent in early CTM studies reflect overestimation of stratosphere-troposphere exchange and omission of hydrocarbon chemistry. The increases in O₃ production and tropospheric burden in more recent studies are principally due to use of higher surface emissions of NO_x and isoprene. Increases in these emissions alone lead to an increase in O₃ production of 1100 Tg/yr in the FRSGC/UCI CTM, accounting for about 66% of the increase in production seen between the IPCC-TAR and ACCENT studies. Recent analysis by Wu et al. (2006) has shown similar results. Comparison with ozonesonde measurements suggests that precursor emissions used in earlier studies were too low, and that O₃ distributions are reproduced better with recent IASA emissions data.

The burden of O₃ in the troposphere in CTMs has increased from around 300 Tg to around 340 Tg following the increase in precursor emissions, but is strongly influ-

Sensitivities in modelling global tropospheric ozone

O. Wild

Title Page

Abstract

Introduction

Conclusions

References

Tables

Figures

◀

▶

◀

▶

Back

Close

Full Screen / Esc

Printer-friendly Version

Interactive Discussion

enced by the tropopause definition used. Comparison of three O₃ climatologies with seven different tropopause definitions suggests that as much as ±15% of the variability in the burden may be due to the choice of tropopause. Recent model assessments have recommended use of an O₃ tracer tropopause of 150 ppb (Prather and Ehhalt, 2001), and this gives a tropospheric burden of 335±10 Tg based on the measurement climatologies used here. The mean burden from the ACCENT model intercomparison is 344 Tg, close to this value, but the 1σ variability remains large, 39 Tg, even with consistent use of the 150 ppb O₃ tracer tropopause, highlighting substantial differences in O₃ distribution between the models.

Sensitivity studies have been performed to examine how differences in key model processes might account for the difference in O₃ budget terms seen in the relatively well-constrained ACCENT model intercomparison. The magnitude and vertical distribution of lightning NO_x emissions is shown to be a major source of uncertainty, and the 3–8 TgN/yr range in ACCENT study may account for a 10% difference in tropospheric ozone burden and a 1.4 year difference in CH₄ lifetime. Processes affecting the O₃ distribution, such as dry deposition, STE, and convection, and those affecting chemical production and loss, such as temperature, humidity, photolysis and wet removal of precursors, also have an important role and may account for much of the year-to-year variability in the budgets of O₃ and CH₄. The uncertainty in these processes is not well characterised, but dry deposition, STE and surface and lightning emissions account for about 25% of the model variability in the ACCENT intercomparison. The large spread in CH₄ lifetime suggests that the climate response of changes in O₃ precursors in current models may differ substantially. Tighter constraints on lightning NO_x emissions and meteorological fields would allow future model intercomparisons to focus more closely on the impacts of different chemistry schemes and different parameterizations of convection and mixing which are difficult to discern from recent studies.

Further development of CTMs with greater chemical detail, better treatment of scavenging and aerosol processes and finer resolution of small-scale processes is expected to lead to refinement of the O₃ budget terms explored here. As improved parameteri-

Sensitivities in modelling global tropospheric ozone

O. Wild

Title Page

Abstract

Introduction

Conclusions

References

Tables

Figures

◀

▶

◀

▶

Back

Close

Full Screen / Esc

Printer-friendly Version

Interactive Discussion

zations of the key processes become available, widely-differing models should start to converge on the same budget terms, with differences driven only by interannual variability in meteorology and emissions. Tightly-constrained model intercomparisons will continue to be valuable in identifying those areas where significant differences exist between models, and should ultimately allow a more rigorous quantification of uncertainty in the key budget terms. Important targets for future intercomparisons should be the distribution and speciation of NO_y and the treatment of oxygenated VOCs, both of which have been implicated in the ACCENT studies as major sources of uncertainty (Dentener et al., 2006b; Shindell et al., 2006). Observational constraints on the key terms in the O_3 budget remain very poor, and improved estimates based on satellite or in-situ measurements would be valuable.

Acknowledgements. The author is grateful for discussions with D. Jacob (Harvard) and D. Stevenson (University of Edinburgh) which initiated this work, and would like to thank all those who contributed to the ACCENT model intercomparison. The study was supported by the Frontier Research Center for Global Change of the Japan Agency for Marine-Earth Science and Technology (JAMSTEC), Japan, and by the NERC QUEST project in the UK.

References

- Berntsen, T., Isaksen, I. S. A., Wang, W.-C., and Liang, X.-Z.: Impacts of increased anthropogenic emissions in Asia on tropospheric ozone and climate. A global 3-D model study, *Tellus*, 48B, 13–32, 1996. [2011](#), [2025](#)
- Bethan, S., Vaughan, G., and Reid, S. J.: A comparison of ozone and thermal tropopause heights and the impact of tropopause definition on quantifying the ozone content of the troposphere, *Q. J. R. Meteorol. Soc.*, 122, 929–944, 1996. [2002](#)
- Bey, I., Jacob, D. J., Yantosca, R. M., et al.: Global modelling of tropospheric chemistry with assimilated meteorology: Model description and evaluation, *J. Geophys. Res.*, 106(D19), 23 073–23 095, 2001. [2025](#)
- Chandra, S., Ziemke, J. R., Min, W., and Read, W. G.: Effects of 1997–1998 El Niño on tropospheric ozone and water vapor, *Geophys. Res. Lett.*, 25, 3867–3870, 1998. [2013](#)

Sensitivities in modelling global tropospheric ozone

O. Wild

Title Page

Abstract

Introduction

Conclusions

References

Tables

Figures

◀

▶

◀

▶

Back

Close

Full Screen / Esc

Printer-friendly Version

Interactive Discussion

**Sensitivities in
modelling global
tropospheric ozone**

O. Wild

Title Page

Abstract

Introduction

Conclusions

References

Tables

Figures

◀

▶

◀

▶

Back

Close

Full Screen / Esc

Printer-friendly Version

Interactive Discussion

- Chatfield, R. B. and Delany, A. C.: Convection links biomass burning to increased tropical ozone: However, models will tend to overpredict O_3 , *J. Geophys. Res.*, 95, 18473–18488, 1990. [2013](#)
- Crutzen, P. J., Lawrence, M. G., and Pöschl, U.: On the background photochemistry of tropospheric ozone, *Tellus*, 51A-B, 123–146, 1999. [2025](#)
- Dentener, F., Stevenson, D., Cofala, J., Mechler, R., Amann, M., Bergamaschi, P., Raes, F., and Derwent, R.: The impact of air pollutant and methane emission controls on tropospheric ozone and radiative forcing: CTM calculations for the period 1990–2030, *Atmos. Chem. Phys.*, 5, 1731–1755, 2005, <http://www.atmos-chem-phys.net/5/1731/2005/>. [2004](#), [2007](#)
- Dentener, F., Stevenson, D., Ellingsen, K., et al.: The global atmospheric environment for the next generation, *Environ. Sci. Technol.*, 40, 3586–3594, doi:10.1021/es0523845, 2006a. [1998](#), [2000](#)
- Dentener, F., Drevet, J., Lamarque, J. F., et al.: Nitrogen and sulfur deposition on regional and global scales: A multi-model evaluation, *Global Biogeochem. Cycles*, 20, GB2020, doi:10.1029/2005GB002672, 2006b. [2018](#)
- Doherty, R. M., Stevenson, D. S., Collins, W. J., and Sanderson, M. G.: Influence of convective transport on tropospheric ozone and its precursors in a chemistry-climate model, *Atmos. Chem. Phys.*, 5, 3205–3218, 2005, <http://www.atmos-chem-phys.net/5/3205/2005/>. [2003](#), [2010](#)
- Fiore, A. M., Horowitz, L. W., Dlugokencky, E. J., and West, J. J.: Impact of meteorology and emissions on methane trends, 1990–2004, *Geophys. Res. Lett.*, 33, L12809, doi:10.1029/2006GL026199, 2006. [2009](#)
- Fortuin, J. P. F. and Kelder, H.: An ozone climatology based on ozonesonde and satellite measurements, *J. Geophys. Res.*, 103, 31709–31734, 1998. [2005](#), [2026](#)
- Gauss, M., Myhre, G., Pitari, G., et al.: Radiative forcing in the 21st century due to ozone changes in the troposphere and lower stratosphere, *J. Geophys. Res.*, 108, 4292, doi:10.1029/2002JD002624, 2003. [1998](#)
- Gettelman, A., Holton, J. R., and Rosenlof, K. H.: Mass fluxes of O_3 , CH_4 , N_2O and CF_2Cl_2 in the lower stratosphere calculated from observational data, *J. Geophys. Res.*, 102, 19149–19159, 1997. [2001](#)
- Guenther, A., Hewitt, C. N., Erickson, D., et al.: A global model of natural volatile organic compound emissions, *J. Geophys. Res.*, 100, 8873–8892, 1995. [2004](#), [2007](#)

**Sensitivities in
modelling global
tropospheric ozone**

O. Wild

Title Page

Abstract

Introduction

Conclusions

References

Tables

Figures

◀

▶

◀

▶

Back

Close

Full Screen / Esc

Printer-friendly Version

Interactive Discussion

Hauglustaine, D. A., Brasseur, G. P., Walters, S., Rasch, P. J., Müller, J.-F., Emmons, L. K., and Carroll, M. A.: MOZART, a global chemical transport model for ozone and related chemical tracers: 2. Model results and evaluation, *J. Geophys. Res.*, 103, 28 291–28 335, 1998. [2004](#), [2025](#)

5 Hauglustaine, D. A., Hourdin, F., Jourdain, L., Filiberti, M.-A., Walters, S., Lamarque, J.-F., and Holland, E. A.: Interactive chemistry in the Laboratoire de Météorologie Dynamique general circulation model: Description and background tropospheric chemistry evaluation, *J. Geophys. Res.*, 109, D04314, doi:10.1029/2003JD003957, 2004. [2025](#)

10 Holloway, T., Fiore, A. M., and Galanter-Hastings, M.: Intercontinental transport of air pollution: Will emerging science lead to a new hemispheric treaty?, *Environ. Sci. Technol.*, 37, 4535–4542, 2003. [1998](#)

Holtstlag, A. A. M. and Boville, B. A.: Local versus nonlocal boundary layer diffusion in a global climate model, *J. Clim.*, 6, 1825–1842, 1993. [2012](#)

15 Horowitz, L. W., Walters, S., Mauzerall, D. L., et al.: A global simulation of tropospheric ozone and related tracers: Description and evaluation of MOZART, version 2, *J. Geophys. Res.*, 108(D24), 4784, doi:10.1029/2002JD002853, 2003. [2025](#)

Hough, A. M.: Development of a two-dimensional global tropospheric model: Model chemistry, *J. Geophys. Res.*, 96, 7325–7362, 1991. [2011](#)

20 Houweling, S., Dentener, F., and Lelieveld, J.: The impact of non-methane hydrocarbon compounds on tropospheric photochemistry, *J. Geophys. Res.*, 103, 10 673–10 696, 1998. [2003](#), [2007](#), [2025](#)

Isaksen, I. S. A., Hov, Ø., Penkett, S. A., and Semb, A.: Model analysis of the measured concentration of organic gases in the Norwegian Arctic, *J. Atmos. Chem.*, 3, 3–27, 1985. [2011](#)

25 Labrador, L. J., von Kuhlmann, R., and Lawrence, M. G.: The effects of lightning-produced NO_x and its vertical distribution on atmospheric chemistry: sensitivity simulations with MATCH-MPIC, *Atmos. Chem. Phys.*, 5, 1815–1834, 2005, <http://www.atmos-chem-phys.net/5/1815/2005/>. [2003](#), [2011](#)

30 Lawrence, M. G., Crutzen, P. J., Rasch, P. J., Eaton, B. E., and Mahowald, N. M.: A model for studies of tropospheric photochemistry: description, global distributions and evaluation, *J. Geophys. Res.*, 104, 26 245–26 277, 1999. [2025](#)

Lawrence, M. G., von Kuhlmann, R., and Salzmann, M.: The balance of effects of deep convective mixing on tropospheric ozone, *Geophys. Res. Lett.*, 30, 18, doi:10.1029/2003GL017644,

2003. [2003](#), [2010](#)

Lelieveld, J. and Dentener, F. J.: What controls tropospheric ozone? *J. Geophys. Res.*, 105, 3531–3551, 2000. [2025](#)

Lelieveld, J. and van Dorland, R.: Ozone chemistry changes in the troposphere and consequent radiative forcing of climate, in *Atmospheric Ozone as a Climate Gas*, W.C. Wang and I.S.A. Isaksen (eds.), NATO ASI Series I, Vol 32, Springer-Verlag, Berlin, 1995. [2025](#)

Levy II, H., Kasibhatla, P. S., Moxim, W. J., Klonecki, A. A., Hirsch, A. I., Oltmans, S. J., and Chameides, W. L.: The global impact of human activity on tropospheric ozone, *Geophys. Res. Lett.*, 24, 791–794, 1997. [2025](#)

Li, D. and Shine, K. P.: A 4-Dimensional Ozone Climatology for UGAMP Models, UGAMP Internal Report No. 35, April 1995. [2026](#)

Logan, J. A.: An analysis of ozonesonde data for the troposphere: Recommendations for testing 3-D models, and development of a gridded climatology for tropospheric ozone, *J. Geophys. Res.*, 104, 16 115–16 149, 1999. [2004](#), [2026](#), [2032](#)

Mallet, V. and Sportisse, B.: Uncertainty in a chemistry-transport model due to physical parameterizations and numerical approximations: An ensemble approach applied to ozone modeling, *J. Geophys. Res.*, 111, D01302, doi:10.1029/2005JD006149, 2006. [2003](#)

McLinden, C. A., Olsen, S., Hannegan, B., Wild, O., Prather, M. J., and Sundet, J.: Stratospheric ozone in 3-D models: A simple chemistry and the cross-tropopause flux, *J. Geophys. Res.*, 105, 14 653–14 665, 2000. [2001](#), [2004](#)

Mickley, L. J., Murti, P. P., Jacob, D. J., Logan, J. A., Rind, D., and Koch, D.: Radiative forcing from tropospheric ozone calculated with a unified chemistry-climate model, *J. Geophys. Res.*, 104, 30 153–30 172, 1999. [2025](#)

Müller, J.-F. and Brasseur, G.: IMAGES: A three-dimensional chemical transport model of the global troposphere, *J. Geophys. Res.*, 100(D8), 16 445–16 490, 1995. [2025](#)

Murphy, D. M. and Fahey, D. W.: An estimate of the flux of stratospheric reactive nitrogen and ozone into the troposphere, *J. Geophys. Res.*, 99, 5325–5332, 1994. [2001](#)

Olivier, J. G. J. and Berdowski, J. J. M.: Global emissions sources and sinks, in *The Climate System*, edited by J. J. M. Berdowski, R. Guicherit and B. J. Heij, pp 33–78, A. A. Balkema Publishers, Lisse, The Netherlands. [2004](#)

Olivier, J. G. J., Bouwman, A. F., van der Maas, C. W. M., et al.: Description of EDGAR Version 2.0, RIVM/TNO report 771060 002, RIVM, Bilthoven, December 1996. [2004](#)

Olsen, S. C., McLinden, C. A., and Prather, M. J.: The stratospheric N₂O–NO_y system: Testing

ACPD

7, 1995–2035, 2007

Sensitivities in modelling global tropospheric ozone

O. Wild

Title Page

Abstract

Introduction

Conclusions

References

Tables

Figures

◀

▶

◀

▶

Back

Close

Full Screen / Esc

Printer-friendly Version

Interactive Discussion

EGU

**Sensitivities in
modelling global
tropospheric ozone**

O. Wild

Title Page

Abstract

Introduction

Conclusions

References

Tables

Figures

◀

▶

◀

▶

Back

Close

Full Screen / Esc

Printer-friendly Version

Interactive Discussion

uncertainties in a 3-D framework, *J. Geophys. Res.*, 106, 28 771–28 784, 2001. [2001](#)

Park, R. J., Pickering, K. E., Allen, D. J., Stenchikov, G. L., and Fox-Rabinovitz, M. S.: Global simulation of tropospheric ozone using the University of Maryland Chemical Transport Model (UMD-CTM): 1. Model description and evaluation, *J. Geophys. Res.*, 109, D09301, doi:10.1029/2003JD004266, 2004. [2025](#)

Pickering, K. E., Wang, Y., Tao, W.-K., Price, C., and Müller, J.-F.: Vertical distributions of lightning NO_x for use in regional and global chemical transport models, *J. Geophys. Res.*, 103(D23), 31 203–31 216, doi:10.1029/98JD02651, 1998. [2011](#)

Pöschl, U., von Kuhlmann, R., Poisson, N., and Crutzen, P. J.: Development and intercomparison of condensed isoprene oxidation mechanisms for global atmospheric modeling, *J. Atmos. Chem.*, 37, 29–52, 2000. [2007](#)

Prather, M. J. and Ehhalt, D.: Atmospheric Chemistry and Greenhouse Gases, in *Climate Change 2001: The Scientific Basis*, Cambridge University Press, Cambridge, UK, 2001. [1997](#), [1998](#), [1999](#), [2002](#), [2003](#), [2004](#), [2006](#), [2015](#), [2017](#), [2025](#)

Price, C. and Rind, D.: A simple lightning parameterization for calculating global lightning distributions, *J. Geophys. Res.*, 97, 9919–9933, 1992. [2011](#)

Price, C., Penner, J., and Prather, M. J.: NO_x from lightning: 1. Global distribution based on lightning physics, *J. Geophys. Res.*, 102, 5929–5941, 1997. [2011](#)

Roelofs, G.-J. and Lelieveld, J.: Distribution and budget of O_3 in the troposphere calculated with a chemistry general circulation model, *J. Geophys. Res.*, 100(D10), 20 983–20 998, 1995. [2025](#)

Roelofs, G.-J. and Lelieveld, J.: Model study of cross-tropopause O_3 transports on tropospheric O_3 levels, *Tellus*, 49B, 38–55, 1997. [2025](#)

Roelofs, G.-J. and Lelieveld, J.: Tropospheric ozone simulation with a chemistry-general circulation model: Influence of higher hydrocarbon chemistry, *J. Geophys. Res.*, 105(D18), 22 697–22 712, 2000. [2003](#), [2025](#)

Rotman, D. A., Atherton, C. S., Bergmann, D. J., et al.: IMPACT, the LLNL 3-D global atmospheric chemical transport model for the combined troposphere and stratosphere: Model description and analysis of ozone and other trace gases, *J. Geophys. Res.*, 109, D04303, doi:10.1029/2002JD003155, 2004. [2025](#)

Shindell, D. T., Grenfell, J. L., Rind, D., and Grewe, V.: Chemistry-climate interactions in the Goddard Institute for Space Studies general circulation model. 1. Tropospheric chemistry model description and evaluation, *J. Geophys. Res.*, 106(D8), 8047–8075, 2001. [2025](#)

Shindell, D. T., Faluvegi, G., and Bell, N.: Preindustrial to present day radiative forcing by tropospheric ozone from improved simulations with the GISS chemistry-climate GCM, *Atmos. Chem. Phys.*, 3, 1675–1702, 2003,

<http://www.atmos-chem-phys.net/3/1675/2003/>. 2025

5 Shindell, D. T., Faluvegi, G., Stevenson, D. S., et al.: Multi-model simulations of carbon monoxide: Comparison with observations and projected near-future changes, *J. Geophys. Res.*, 111, D19306, doi:10.1029/2006JD007100, 2006. 2018

Stevenson, D. S., Johnson, C. E., Collins, W. J., Derwent, R. G., and Edwards, J. M.: Future tropospheric ozone radiative forcing and methane turnover – the impact of climate change, *Geophys. Res. Lett.*, 27, 2073–2076, 2000. 2009, 2025

10 Stevenson, D. S., Doherty, R. M., Sanderson, M. G., Collins, W. J., Johnson, C. E., and Derwent, R. G.: Radiative forcing from aircraft NO_x emissions: Mechanisms and seasonal dependence, *J. Geophys. Res.*, 109, D17307, doi:10.1029/2004JD004759, 2004. 2025

Stevenson, D., Dentener, F. J., Schultz, M. G., et al.: Multi-model ensemble simulations of present-day and near-future tropospheric ozone, *J. Geophys. Res.*, 111, D08301, doi:10.1029/2005JD006338, 2006. 1998, 2000, 2003, 2004, 2010, 2014, 2025, 2031

Sudo, K. and Takahashi, M.: Simulation of tropospheric ozone changes during 1997–1998 El Niño: Meteorological impact on tropospheric photochemistry, *Geophys. Res. Lett.*, 28, 4091–4094, 2001. 2013

20 Sudo, K., Takahashi, M., and Akimoto, H.: CHASER: A global chemical model of the troposphere 2. Model results and evaluation, *J. Geophys. Res.*, 107, doi:10.1029/2001JD001114, 2002. 2025

Tie, X., Madronich, S., Walters, S., Zhang, R., Rasch, P., and Collins, W.: Effect of clouds on photolysis and oxidants in the troposphere, *J. Geophys. Res.*, 108(D20), 4642, doi:10.1029/2003JD003659, 2003. 2012

25 Thompson, A. M., Witte, J. C., McPeters, R. D., et al.: Southern Hemisphere Additional Ozonesondes (SHADOZ) 1998–2000 tropical ozone climatology 1. Comparison with Total Ozone Mapping Spectrometer (TOMS) and ground-based measurements, *J. Geophys. Res.*, 108(D2), 8238, doi:10.1029/2001JD000967, 2003. 2004, 2032

30 von Kuhlmann, R., Lawrence, M. G., Crutzen, P. J., and Rasch, P. J.: A model for studies of tropospheric ozone and nonmethane hydrocarbons: Model description and ozone results, *J. Geophys. Res.*, 108(D9), 4294, doi:10.1029/2002JD002893, 2003. 2003, 2013, 2025

von Kuhlmann, R., Lawrence, M. G., Pöschl, U., and Crutzen, P. J.: Sensitivities in global scale

**Sensitivities in
modelling global
tropospheric ozone**

O. Wild

Title Page

Abstract

Introduction

Conclusions

References

Tables

Figures

◀

▶

◀

▶

Back

Close

Full Screen / Esc

Printer-friendly Version

Interactive Discussion

- modeling of isoprene, *Atmos. Chem. Phys.*, 4, 1–17, 2004, <http://www.atmos-chem-phys.net/4/1/2004/>. 2003, 2007, 2015
- Wang, Y., Logan, J. A., and Jacob, D. J.: Global simulation of tropospheric O₃–NO_x–hydrocarbon chemistry. 2. Model evaluation and global ozone budget, *J. Geophys. Res.*, 103, 10 727–10 755, 1998. 2025
- Wauben, W. M. F., Fortuin, J. P. F., van Velthoven, P. F. J., and Kelder, H.: Comparison of modelled ozone distributions with sonde and satellite observations, *J. Geophys. Res.*, 103, 3511–3530, 1998. 2003, 2008, 2025
- Wesely, M. L.: Parameterization of surface resistances to gaseous dry deposition in regional-scale numerical models, *Atmos. Environ.*, 23, 1293–1304. 1989. 2011
- Wild, O. and Prather, M. J.: Excitation of the primary tropospheric chemical mode in a global 3-D model, *J. Geophys. Res.*, 105, 24 647–24 660, 2000. 2003, 2011, 2025
- Wild, O. and Prather, M. J.: Global tropospheric ozone modelling: Quantifying errors due to grid resolution, *J. Geophys. Res.*, 111, D11305, doi:10.1029/2005JD006605, 2006. 2003, 2005, 2013
- Wild, O., Zhu, X., and Prather, M. J.: Fast-J: Accurate simulation of in- and below-cloud photolysis in tropospheric chemical models, *J. Atmos. Chem.*, 37, 245–282, 2000. 2012
- Wild, O., Pochanart, P., and Akimoto, H.: Trans-Eurasian transport of ozone and its precursors, *J. Geophys. Res.*, 109, D11302, doi:10.1029/2003JD004501, 2004. 2004, 2025
- Wong, S., Wang, W.-C., Isaksen, I. S. A., Berntsen, T. K., and Sundet, J. K.: A global climate-chemistry model study of present-day tropospheric chemistry and radiative forcing from changes in tropospheric O₃ since the preindustrial period, *J. Geophys. Res.*, 109, D11309, doi:10.1029/2003JD003998, 2004. 2025
- Wu, S., Mickley, L. J., Jacob, D. J., Logan, J. A., Yantosca, R. M., and Rind, D.: Why are there large differences between models in global budgets of tropospheric ozone?, *J. Geophys. Res.*, in press, 2007. 2000, 2007, 2016
- Zeng, G. and Pyle, J. A.: Influence of El Niño Southern Oscillation on stratosphere/troposphere exchange and the global tropospheric ozone budget, *Geophys. Res. Lett.*, 32, L01814, doi:10.1029/2004GL021353, 2005. 2003, 2011, 2013

Sensitivities in modelling global tropospheric ozone

O. Wild

Title Page

Abstract

Introduction

Conclusions

References

Tables

Figures

◀

▶

◀

▶

Back

Close

Full Screen / Esc

Printer-friendly Version

Interactive Discussion

Table 1. Global ozone budgets from published CTM studies^a.

Model	Resolution ^b	Emissions					O ₃ Budget					Reference
		NO _x	CO	HC ^c	Isop	P	L	P-L	STE	Dep	Burd	
MOGUNTIA	10x10 L10	45	1550	0	0	3609	3183	427	528	953	253	Lelieveld and van Dorland (1995)
ECHAM3.2	T21 L19	40	1400	0	0	3206	3037	170	575	740	236	Roelofs and Lelieveld (1995)
IMAGES	5x5 L25	33	1428	322 ^t	220	4550	4000	550	550	1100	—	Müller and Brasseur (1995)
UIO	8x10 L9	35	1575	150	180	—	—	295	846	1178	370	Berntsen et al. (1996)
GCTM	265 km L11	40	—	0	0	—	—	128	696	825	298	Levy et al. (1997)
ECHAM4	T30 L19	38	1900	0	0	3415	3340	75	459	534	271	Roelofs and Lelieveld (1997)
ECHAM/TM3	3.8x5 L9	38	1089	0	0	2894	3149	-255	740	533	266	Houweling et al. (1998)
ECHAM/TM3	3.8x5 L9	38	1089	108	400	3979	4065	-86	768	681	311	Houweling et al. (1998)
HGISS	4x5 L9	42	1040	99	597	4100	3680	420	400	820	310	Wang et al. (1998)
MOZART	T42 L25	43	1219	251 ^t	220	3018	2511	507	391	898	—	Hauglustaine et al. (1998)
CTMK	4x5 L15	38	—	0	0	3694	3719	-27	1429	1432	—	Wauben et al. (1998)
CTMK	4x5 L15	38	—	0	0	3789	3536	252	1092	1363	—	Wauben et al. (1998)
MATCH	T21 L28	37	1350	0	0	2490	3300	-810	1440	620	—	Crutzen et al. (1999)
MATCH-MPIC	T63 L28	39	1500	0	0	2334	2812	-478	1103	621	—	Lawrence et al. (1999)
HGISS-GCM	4x5 L9	40	1030	100	550	4330	3960	370	390	760	360	Mickley et al. (1999)
STOCHEM	5x5 L9	41	1033	197	446	4323	3888	435	432	862	316	Stevenson et al. (2000)
UCI	8x10 L9	44	1050	92	502	4229	3884	345	473	812	288	Wild and Prather (2000)
TM3	3.8x5 L9	46	1365	160	356	3314	3174	140	565	705	347	Lelieveld and Dentener (2000)
ECHAM4	T30 L19	38	1750	0	0	3663	3699	-36	607	570	271	Roelofs and Lelieveld (2000)
ECHAM4	T30 L19	38	1148	118	400	4375	4302	73	590	668	294	Roelofs and Lelieveld (2000)
GEOS-CHEM	4x5 L20	46	1043	103	397	4900	4300	600	470	1070	315	Bey et al. (2001)
GISS-GCM	4x5 L9	38	1175	0	0	—	—	389	750	1140	262	Shindell et al. (2001)
CHASER	T21 L32	44	1227	145 ^t	400	4895	4498	397	593	990	322	Sudo et al. (2002)
MOZART2	T42 L34	44	1195	218 ^t	410	5258	4749	509	343	857	362	Horowitz et al. (2003)
MATCH-MPIC	T21 L28	43	1261	175	350	4170	4090	80	630	700	306	von Kuhlmann et al. (2003)
MATCH-MPIC	T63 L28	43	1261	175	350	4560	4290	280	540	820	294	von Kuhlmann et al. (2003)
GISS-GCM	4x5 L23	40	988	100	176	—	—	1049	417	1466	349	Shindell et al. (2003)
LMdz-INCA	2.5x3.8 L19	47	1364	0	0	4486	3918	567	523	1090	296	Hauglustaine et al. (2004)
UMD-CTM	4x5 L20	41	1132	54	503	—	—	—	479	1290	340	Park et al. (2004)
IMPACT	4x5 L52	38	1398	52 ^t	502	—	—	161	663	826	—	Rotman et al. (2004)
STOCHEM	5x5 L9	50	1114	179 ^t	507	4975	4421	554	395	949	273	Stevenson et al. (2004)
FRSGC/UCI	T21 L19	42	1248	143	220	4091	3854	237	519	757	283	Wild et al. (2004)
SUNYA-GCCM	T42 L18	43	1167	170	220	—	—	513	606	1127	376	Wong et al. (2004)
All Models (mean±std.dev)	33 studies	41	1270	94	240	3948	3745	245	636	902	307	
		±4	±222	±89	±210	±761	±554	±346	±273	±255	±38	
IPCC-TAR ^d	12 studies	39	1285	75	195	3448	3435	46	765	818	304	Prather and Ehhalt (2001)
		±3	±293	±89	±232	±730	±505	±403	±380	±265	±32	
post-2000	17 studies	43	1186	122	338	4465	4114	396	529	949	314	
		±3	±122	±66	±162	±514	±409	±247	±105	±222	±33	
ACCENT	21 models	51	1078	125 ^t	470	5110	4668	442	552	1003	344	Stevenson et al. (2006)
		±2	±57	—	±66	±606	±727	±309	±168	±200	±39	

^a Emissions and budgets are in Tgyr⁻¹ (TgNyr⁻¹ for NO_x and TgCyr⁻¹ for hydrocarbons); dashes indicate budget data unavailable.

^b Resolution in degrees (latitude by longitude) and number of model levels; spectral truncations of T21, T30, T42 and T63 are used to label Gaussian grids with approximate resolutions of 5.6°, 3.8°, 2.8° and 1.9° respectively.

^c Non-methane hydrocarbons excluding isoprene and terpenes; *t* label indicates terpenes also emitted (an additional 100–170 TgCyr⁻¹).

^d Selected studies published before 2000 shown in Table 4.12 of the IPCC Third Assessment Report, with [Wauben et al. \(1998\)](#) corrected.

Sensitivities in modelling global tropospheric ozone

O. Wild

Title Page

Abstract

Introduction

Conclusions

References

Tables

Figures

◀

▶

◀

▶

Back

Close

Full Screen / Esc

Printer-friendly Version

Interactive Discussion

Sensitivities in modelling global tropospheric ozone

O. Wild

Table 2. Estimated annual mean tropospheric O₃ burdens (in Tg) based on O₃ climatologies and FRSGC/UCI CTM fields with different definitions of the tropopause.

O ₃ Fields	O ₃ Tracer Tropopause			Pressure 100/250 hPa	Thermal Tropopause		Pot. Vorticity 2.0 PVU
	100 ppb	120 ppb	150 ppb		WMO	Cold Point	
<i>O₃ Climatology</i>							
Li and Shine (1995)	295	318	344	382	383	408	362
Fortuin and Kelder (1998)	295	312	333	345	347	370	332
Logan (1999)	292	307	327	322	325	343	308
<i>CTM O₃ fields</i>							
BASE emissions	260	273	290	266	296	321	285
IIASA emissions	285	300	318	295	327	353	316
ACCENT run	303	316	331	313	338	363	323

Title Page

Abstract

Introduction

Conclusions

References

Tables

Figures

I◀

▶I

◀

▶

Back

Close

Full Screen / Esc

Printer-friendly Version

Interactive Discussion

Sensitivities in modelling global tropospheric ozone

O. Wild

Table 3. Annual ozone budgets in the FRSGC/UCI CTM: sensitivity to precursor emissions^a.

Run	Emissions Scenario	Emissions			O ₃ Budget						Lifetimes		O ₃ Bias	
		NO _x	Isop	CO	P	L	P-L	STE	Dep	Burd	O ₃	CH ₄	Mean	RMS
<i>Sensitivity to Isoprene and NO_x Emissions</i>														
Base	EDGAR v.2	42	220	1248	4078	3842	236	519	756	290	23.0	9.07	-5.3	7.8
Base+I	Increased isoprene	42	500	1248	4529	4224	305	513	817	303	21.9	9.59	-3.2	6.3
Base+N	Increased NO _x	51	220	1248	4512	4227	286	516	803	306	22.2	8.17	-2.8	6.1
Base+NI	NO _x and isoprene	51	500	1248	5022	4654	368	510	876	322	21.2	8.56	-0.4	5.1
OxComp	OxComp emis	50	220	1550	4454	4166	288	515	802	304	22.3	8.90	-3.1	7.0
IIASA	IIASA 2000 emis	51	500	1078	4926	4578	348	510	857	318	21.4	8.37	-1.0	4.6
<i>Sensitivity to Hydrocarbon Emissions</i>														
Base	EDGAR v.2	42	220	1248	4078	3842	236	519	756	290	23.0	9.07	-5.3	7.8
FixCH4	CH ₄ at 1760 ppb	42	220	1248	4117	3877	241	518	760	292	23.0	9.49	-5.0	7.5
Nolsop	NMHC: no Isoprene	42	0	1248	3616	3469	146	525	675	274	24.1	8.75	-7.6	10.0
NoHVOC	NMHC: C ₂ H ₆ only	42	0	1248	3233	3183	50	528	584	258	25.0	8.57	-10.0	11.7
NoVOC	NMHC: none	42	0	1248	3171	3138	33	529	568	255	25.1	8.52	-10.5	12.1

^a Emissions/budgets in Tg yr⁻¹ (TgN yr⁻¹ for NO_x, TgC yr⁻¹ for isoprene); lifetimes in days for O₃ and years for CH₄; biases in ppb.

[Title Page](#)
[Abstract](#)
[Introduction](#)
[Conclusions](#)
[References](#)
[Tables](#)
[Figures](#)
[Back](#)
[Close](#)
[Full Screen / Esc](#)
[Printer-friendly Version](#)
[Interactive Discussion](#)

Table 4. Annual ozone budgets in the FRSGC/UCI CTM: sensitivity to physical processes^a.

Run	Brief Description	O ₃ Budget						Lifetimes		O ₃ Bias	
		P	L	P-L	STE	Dep	Burd	O ₃	CH ₄	Mean	RMS
<i>Effects of Stratosphere-Troposphere Exchange</i>											
STE1	50% decreased O ₃ STE	4183	3700	484	253	737	281	23.1	9.20	-7.2	8.9
STE2	20% decreased O ₃ STE	4126	3776	351	395	746	286	23.1	9.13	-6.2	8.2
Base	Control Run	4078	3842	236	519	756	290	23.0	9.07	-5.3	7.8
STE3	20% increased O ₃ STE	4047	3893	154	606	761	293	22.9	9.02	-4.6	7.4
STE4	50% increased O ₃ STE	3975	4013	-38	812	776	299	22.8	8.90	-3.0	7.1
<i>Effects of Dry Deposition</i>											
Dry1	50% decreased dry dep	4051	4108	-57	517	460	302	24.1	8.78	-3.2	7.1
Dry2	20% decreased dry dep	4066	3936	130	518	649	295	23.5	8.97	-4.5	7.5
Base	Control Run	4078	3842	236	519	756	290	23.0	9.07	-5.3	7.8
Dry3	20% increased dry dep	4091	3761	329	520	850	285	22.6	9.16	-5.9	8.2
Dry4	50% increased dry dep	4109	3656	453	521	975	280	22.0	9.28	-6.7	8.8
<i>Effects of Wet Deposition</i>											
Wet1	50% decreased wet dep	4302	4046	255	517	772	300	22.7	8.59	-3.7	6.8
Wet2	20% decreased wet dep	4146	3905	242	518	760	293	22.9	8.82	-4.8	7.5
Base	Control Run	4078	3842	236	519	756	290	23.0	9.07	-5.3	7.8
Wet3	20% increased wet dep	4028	3797	231	520	752	287	23.1	9.22	-5.6	8.1
Wet4	50% increased wet dep	3972	3745	227	521	749	285	23.1	9.40	-6.0	8.4
<i>Effects of Temperature on Chemistry</i>											
Tem1	5°C lower temperature	3940	3706	233	519	753	292	23.9	9.86	-4.8	7.4
Tem2	2°C lower temperature	4019	3785	235	519	754	291	23.4	9.38	-5.1	7.7
Base	Control Run	4078	3842	236	519	756	290	23.0	9.07	-5.3	7.8
Tem3	2°C higher temperature	4141	3905	237	519	757	289	22.6	8.76	-5.4	7.9
Tem4	5°C higher temperature	4245	4005	239	519	760	288	22.1	8.32	-5.5	8.1
<i>Effects of Humidity on Chemistry</i>											
Hum1	20% decreased humidity	4030	3730	300	516	815	309	24.8	9.69	-2.3	6.0
Hum2	10% decreased humidity	4055	3789	266	518	783	299	23.8	9.35	-3.9	6.8
Base	Control Run	4078	3842	236	519	756	290	23.0	9.07	-5.3	7.8
Hum3	10% increased humidity	4100	3891	209	520	731	282	22.3	8.82	-6.5	8.8
Hum4	20% increased humidity	4121	3936	185	521	709	275	21.6	8.61	-7.6	9.8
<i>Effects of Convection</i>											
Cnv1	50% reduced convection	4118	3861	257	488	746	295	23.3	9.03	-4.9	7.5
Cnv2	20% reduced convection	4092	3850	242	508	751	291	23.1	9.05	-5.2	7.7
Base	Control Run	4078	3842	236	519	756	290	23.0	9.07	-5.3	7.8
Cnv3	20% greater convection	4067	3837	230	529	760	289	22.9	9.08	-5.3	8.0
Cnv4	50% greater convection	4055	3830	224	542	767	287	22.8	9.09	-5.4	8.2
<i>Effects of Lightning NO_x</i>											
Lit1	No lightning NO _x	3460	3284	176	524	701	260	23.8	11.03	-9.7	11.9
Lit2	50% decreased lightning	3802	3593	209	521	731	277	23.4	9.84	-7.2	9.5
Base	Control Run (5 Tg NO _x)	4078	3842	236	519	756	290	23.0	9.07	-5.3	7.8
Lit3	50% increased lightning	4316	4058	258	517	776	301	22.7	8.50	-3.6	6.6
<i>Effects of Alternate Treatments</i>											
Alt1	Simple dry deposition	3914	3419	495	522	1019	268	22.0	9.67	-8.6	10.3
Alt2	non-local PBL mixing	3971	3799	172	519	691	288	23.4	9.20	-5.6	8.1
Alt3	Clear-sky photolysis	4060	3813	248	521	770	283	22.6	9.07	-6.1	8.7
Alt4	Aerosol in photolysis	4064	3830	233	519	753	290	23.1	9.13	-5.1	7.7
Alt5	C-profile lightning NO _x	4236	4003	232	517	750	304	23.3	8.72	-3.5	6.6

^a Budgets in Tg yr⁻¹; lifetimes in days for O₃ and years for CH₄; biases in ppb.

Sensitivities in modelling global tropospheric ozone

O. Wild

Title Page

Abstract

Introduction

Conclusions

References

Tables

Figures

◀

▶

◀

▶

Back

Close

Full Screen / Esc

Printer-friendly Version

Interactive Discussion

Sensitivities in modelling global tropospheric ozone

O. Wild

Table 5. Annual ozone budgets in the FRSGC/UCI CTM: sensitivity to meteorology and resolution^a.

Run	Description	Meteorological Data		O ₃ Budget						Lifetimes		O ₃ Bias	
		Resolution	Year	P	L	P-L	STE	Dep	Burd	O ₃	CH ₄	Mean	RMS
Met96	IFS 1996 data	T21 L19	1996	5247	4932	315	505	814	342	21.7	8.38	2.1	5.0
Met97	IFS 1997 data	T21 L19	1997	4975	4663	312	535	849	336	22.2	8.79	0.9	5.9
Met97L	– 37 levels	T21 L37	1997	5103	4766	338	516	854	340	22.1	8.54	2.3	6.0
Met97R	– T42 resolution	T42 L37	1997	4982	4588	394	496	889	331	22.0	8.89	1.5	5.3
Met00	IFS 2000 data	T21 L19	2000	5314	4972	342	524	869	345	21.5	8.02	2.4	5.6
Met00L	– 37 levels	T21 L37	2000	5310	4935	374	494	865	341	21.5	8.10	2.1	5.3
Met00R	– T42 resolution	T42 L37	2000	5160	4734	427	481	905	331	21.4	8.45	1.7	4.3

^a Budgets in Tg yr⁻¹; lifetimes in days for O₃ and years for CH₄; biases in ppb.

[Title Page](#)
[Abstract](#)
[Introduction](#)
[Conclusions](#)
[References](#)
[Tables](#)
[Figures](#)
[Back](#)
[Close](#)
[Full Screen / Esc](#)
[Printer-friendly Version](#)
[Interactive Discussion](#)

Sensitivities in modelling global tropospheric ozone

O. Wild

Table 6. Budget terms from the ACCENT model intercomparison corrected for differing emissions, deposition and STE fluxes.

	O ₃ Prod (Tg/yr)	O ₃ Loss (Tg/yr)	CH ₄ Lifetime (years)
ACCENT study	5110±606	4668±727	9.79±1.74
Standardized values	5079±494	4639±513	9.71±1.33

[Title Page](#)
[Abstract](#)
[Introduction](#)
[Conclusions](#)
[References](#)
[Tables](#)
[Figures](#)
[Back](#)
[Close](#)
[Full Screen / Esc](#)
[Printer-friendly Version](#)
[Interactive Discussion](#)

Sensitivities in
modelling global
tropospheric ozone

O. Wild

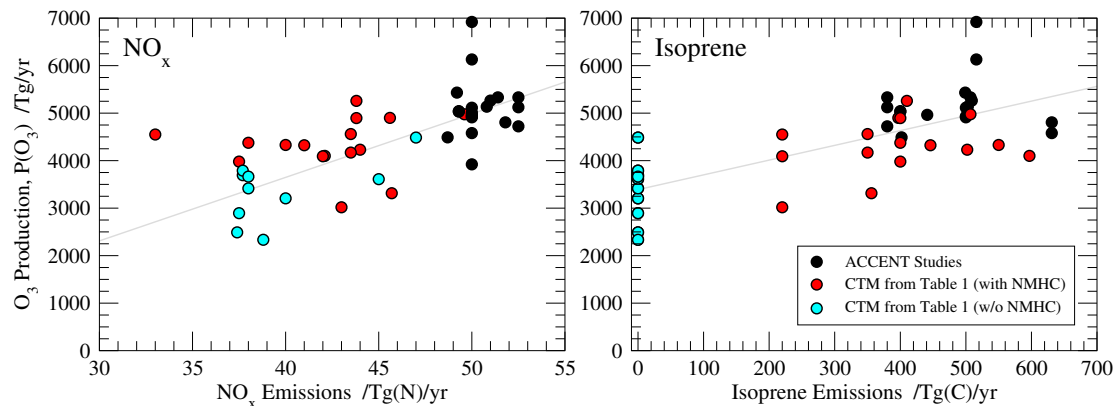


Fig. 1. Relationship between gross O₃ production, P(O₃), and precursor emissions for the model studies described in Table 1 with and without hydrocarbon oxidation and for the ACCENT model intercomparison studies described in [Stevenson et al. \(2006\)](#).

Title Page

Abstract

Introduction

Conclusions

References

Tables

Figures

◀

▶

◀

▶

Back

Close

Full Screen / Esc

Printer-friendly Version

Interactive Discussion

Sensitivities in
modelling global
tropospheric ozone

O. Wild

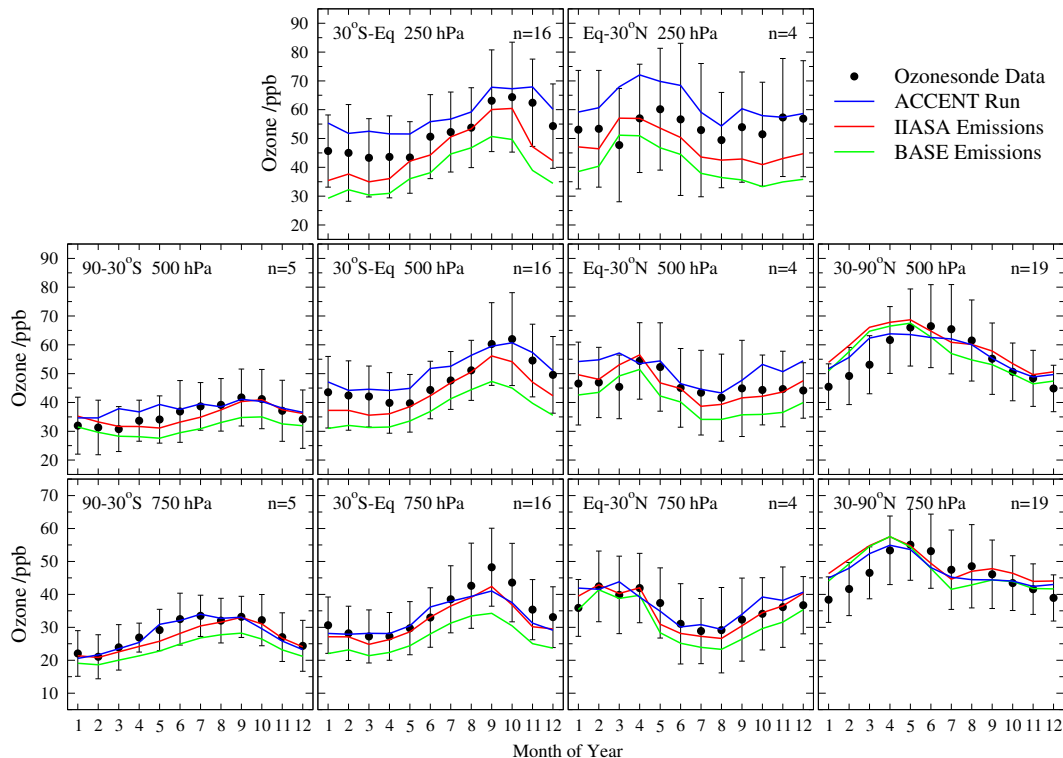


Fig. 2. Comparison of the annual cycle of O_3 in the FRSGC/UCI CTM with ozonesonde measurements at 750, 500 and 250 hPa averaged over four latitude bands. Results for 3 model simulations are shown: the BASE run (green), a run with IIASA emissions (red) and a T42L37 run for year 2000 with IIASA emissions (blue). Monthly mean mixing ratios at each site are averaged over each band and are compared with model fields sampled in the same way; error bars show the average interannual standard deviation at each station. Ozonesonde data are from Logan (1999) and Thompson et al. (2003); the number of stations in each band is given by “n”.

Title Page

Abstract

Introduction

Conclusions

References

Tables

Figures

◀

▶

◀

▶

Back

Close

Full Screen / Esc

Printer-friendly Version

Interactive Discussion

Sensitivities in
modelling global
tropospheric ozone

O. Wild

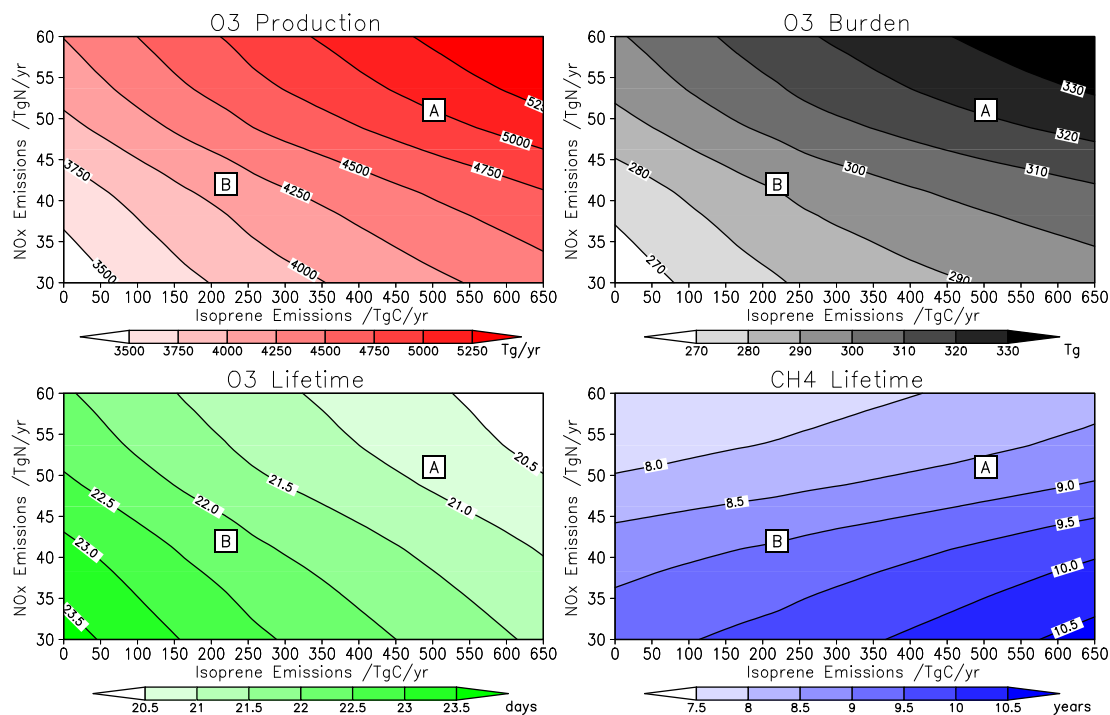


Fig. 3. Isopleth plots showing the variations in O₃ production, O₃ burden and the tropospheric lifetimes of O₃ and CH₄ for different combinations of NO_x and Isoprene emissions using the FRSGC/UCI CTM with 1996 meteorology at T21 resolution. The BASE run (“B”) and IIASA run for the ACCENT studies (“A”) are indicated.

Title Page

Abstract

Introduction

Conclusions

References

Tables

Figures

◀

▶

◀

▶

Back

Close

Full Screen / Esc

Printer-friendly Version

Interactive Discussion

**Sensitivities in
modelling global
tropospheric ozone**

O. Wild

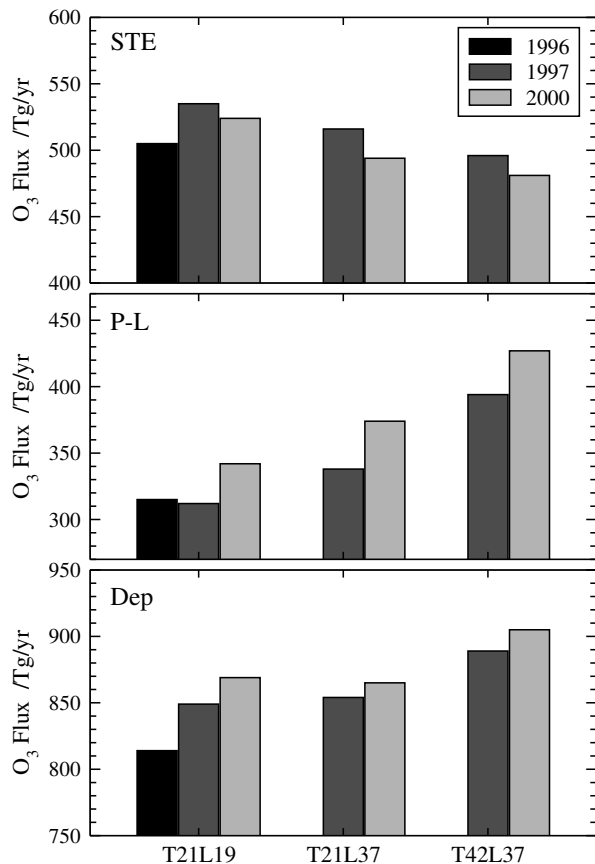


Fig. 4. Effects of meteorology and model resolution on the annual flux of O₃ through stratosphere-troposphere exchange (STE), net chemistry (P-L) and surface deposition (Dep).

Title Page

Abstract

Introduction

Conclusions

References

Tables

Figures

◀

▶

◀

▶

Back

Close

Full Screen / Esc

Printer-friendly Version

Interactive Discussion

Sensitivities in
modelling global
tropospheric ozone

O. Wild

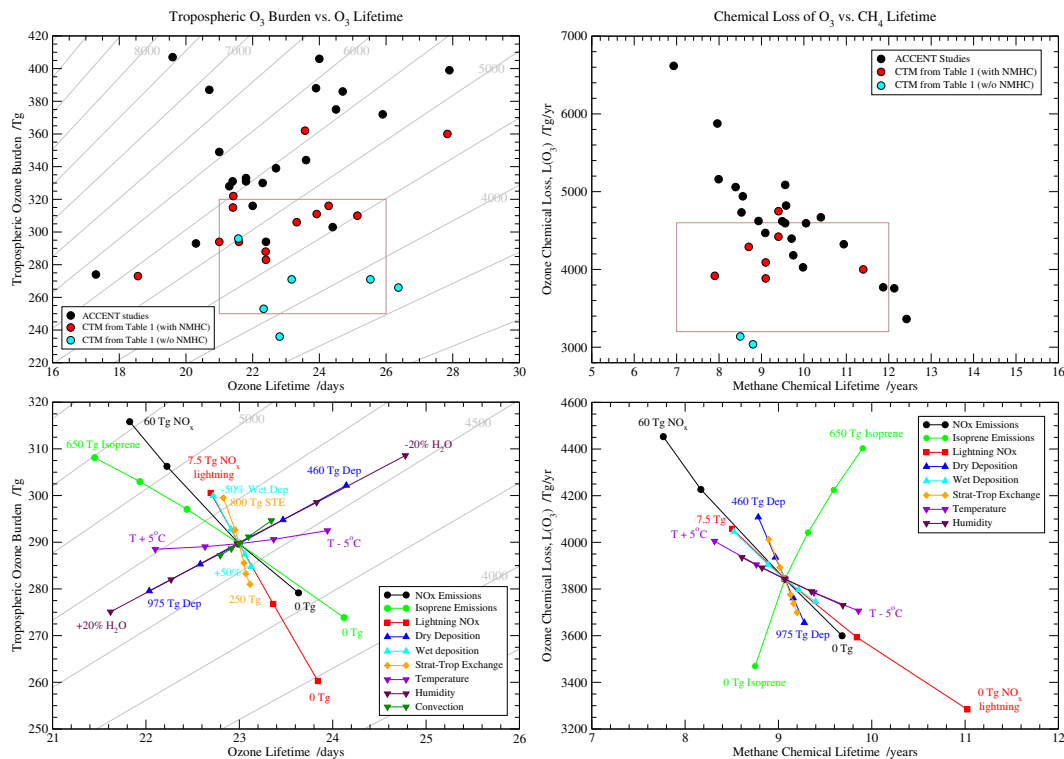


Fig. 5. The relationship between the tropospheric burden of O₃ and its lifetime to chemical removal and deposition (left panels, **a** and **c**) and between the chemical removal of O₃ and the chemical lifetime of CH₄ (right panels, **b** and **d**). The upper panels (a and b) show results from published studies summarized in Table 1 and the lower panels (c and d) show the results of sensitivity studies listed in Table 3. Tropospheric O₃ removal rates are shown as diagonal lines in the left panels (labelled in Tg/yr). For ease of comparison the domain of the sensitivity studies shown in the lower panels c and d is highlighted in the upper panels with a box.

Title Page

Abstract

Introduction

Conclusions

References

Tables

Figures

◀

▶

◀

▶

Back

Close

Full Screen / Esc

Printer-friendly Version

Interactive Discussion