

Implementation of a Markov Chain Monte Carlo Method to inorganic aerosol modeling of observations from the MCMA-2003 Campaign. Part II: Model application to the CENICA, Pedregal and Santa Ana sites

F. M. San Martini^{1,*}, E. J. Dunlea², R. Volkamer^{1,***}, T. B. Onasch³, J. T. Jayne³, M. R. Canagaratna³, D. R. Worsnop³, C. E. Kolb³, J. H. Shorter³, S. C. Herndon³, M. S. Zahniser³, D. Salcedo⁴, K. Dzepina^{2,6}, J. L. Jimenez^{2,6}, J. M. Ortega^{1,**}, K. S. Johnson¹, G. J. McRae⁵, L. T. Molina^{1,7}, and M. J. Molina^{1,***}

¹Department of Earth, Atmospheric, and Planetary Sciences, Massachusetts Institute of Technology, Cambridge, MA, USA

²Cooperative Institute for Research in the Environmental Sciences (CIRES), University of Colorado at Boulder, Boulder, CO, USA

³Aerodyne Research Inc., Billerica, MA, USA

⁴Centro de Investigaciones Químicas, Universidad Autónoma del Estado de Morelos, Cuernavaca, Morelos, México

Title Page

Abstract

Introduction

Conclusions

References

Tables

Figures

◀

▶

◀

▶

Back

Close

Full Screen / Esc

Printer-friendly Version

Interactive Discussion

⁵Department of Chemical Engineering, Massachusetts Institute of Technology, Cambridge, MA, USA

⁶Department of Chemistry and Biochemistry, University of Colorado-Boulder, Boulder, CO, USA

⁷Molina Center on Energy and the Environment, La Jolla, CA, USA

*now at: the Board on Chemical Sciences and Technology, National Academies, Washington D.C., USA

**now at: Sandia National Laboratory, Livermore, CA, USA

***now at: University of California San Diego, La Jolla, CA, USA

Received: 29 May 2006 – Accepted: 31 May 2006 – Published: 10 July 2006

Correspondence to: F. M. San Martini (ico@alum.mit.edu)

ACPD

6, 5999–6040, 2006

**Part II: CENICA,
Pedregal and Santa
Ana**

F. M. San Martini et al.

Title Page

Abstract

Introduction

Conclusions

References

Tables

Figures

◀

▶

◀

▶

Back

Close

Full Screen / Esc

Printer-friendly Version

Interactive Discussion

EGU

Abstract

A Markov Chain Monte Carlo model for integrating the observations of inorganic species with a thermodynamic equilibrium model was presented in Part I of this series. Using observations taken at three ground sites, i.e. a residential, industrial and rural site, during the MCMA-2003 campaign in Mexico City, the model is used to analyze the inorganic aerosol and ammonia data and predict gas phase concentrations of nitric and hydrochloric acid. In general the model is able to accurately predict the observed inorganic aerosol concentrations at all three sites. The agreement between the predicted and observed gas phase ammonia concentration is excellent. The NO_z concentration calculated from the NO_y , NO and NO_2 observations is of limited use in constraining the gas phase nitric acid concentration given the large uncertainties in this measure of nitric acid and additional reactive nitrogen species. Focusing on the acidic period of 9–11 April identified by Salcedo et al. (2006), the model accurately predicts the aerosol phase observations during this period with the exception of the nitrate predictions after 10:00 a.m. (CDT) on 9 April, where the model underpredicts the observations by, on average, 20%. For periods when the aerosol chloride observations are consistently above the detection limit, the model is able to both accurately predict the aerosol chloride predictions and provide well-constrained $\text{HCl}(\text{g})$ concentrations. When the aerosols are aqueous, the most likely concentrations of $\text{HCl}(\text{g})$ are in the sub-ppbv range. The most likely predicted concentration of $\text{HCl}(\text{g})$ was found to reach concentrations of order 10 ppbv if the aerosols are dry. Finally, the atmospheric relevance of $\text{HCl}(\text{g})$ is discussed in terms of its indicator properties for the possible influence of chlorine-mediated photochemistry in Mexico City.

1 Introduction

The deterioration of air quality in urban centers throughout the world is fueled by population growth, especially in urban centers, and increased emissions with further mod-

Part II: CENICA, Pedregal and Santa Ana

F. M. San Martini et al.

Title Page

Abstract

Introduction

Conclusions

References

Tables

Figures

◀

▶

◀

▶

Back

Close

Full Screen / Esc

Printer-friendly Version

Interactive Discussion

ernization and industrialization. About 70% of the population of North America, Europe, and Latin America now live in cities (Molina and Molina, 2002). The 2003 Mexico City Metropolitan Area (MCMA) field campaign was designed to provide a scientific base for devising emissions control strategies for the MCMA, as well as insights to air pollution problems in other megacities.

In Part I of this series, San Martini et al. (2006) have described an equilibrium inorganic aerosol model embedded in a Markov Chain Monte Carlo algorithm to produce a powerful tool to analyze aerosol data and predict gas phase concentrations where these are unavailable. The method directly incorporates measurement uncertainty, prior knowledge, and provides for a formal framework to combine measurements of different quality. Applying the model to gas and aerosol phase data taken at the La Merced site during the MCMA-2003 campaign, San Martini et al. (2006) showed that the model reproduced observations of particle-phase ammonium, nitrate, and sulfate well. During periods where the aerosol chloride observations were consistently above the detection limit, the model reproduced the aerosol chloride observations well and predicted well-constrained gas-phase hydrochloric acid concentrations. In addition, the model was able to probabilistically discriminate between diverging observations of ammonia from two different instruments, a long-path and a point sample. The observations from the point sampler, which was co-located to the aerosol measurements, were shown to be more likely consistent with all the available observations and our knowledge of aerosol thermodynamics.

Previous work has shown that modeling aerosol behavior in Mexico City and, thus, design control strategies, is constrained primarily by a lack of observations of gas phase species (San Martini et al., 2005). In particular, the finding that reductions in ammonia concentrations are likely to be less effective at reducing aerosol concentrations in Mexico City than expected is constrained by observations at a single site, La Merced (San Martini et al., 2005). Therefore an improved understanding of the temporal and spatial distribution of gas phase ammonia, nitric and hydrochloric acid concentrations is need (San Martini et al., 2006, 2005). In this paper we therefore use

**Part II: CENICA,
Pedregal and Santa
Ana**F. M. San Martini et al.

Title Page

Abstract

Introduction

Conclusions

References

Tables

Figures

◀

▶

◀

▶

Back

Close

Full Screen / Esc

Printer-friendly Version

Interactive Discussion

data from the MCMA-2003 campaign to expand the application of the model introduced in Part I to three very different measurement sites. We focus in particular on the acid period of 9–11 April 2003 identified by (Salcedo et al., 2006), and on the distribution of the inorganic aerosol and gas phase chloride.

2 Measurement sites

The Aerodyne Mobile Laboratory (AML) can be deployed in stationary sampling, mobile sampling and mapping, and vehicle chase mode (Kolb et al., 2004). Here we analyze data collected with the AML when it was deployed in stationary mode at three sites in different areas of Mexico City during MCMA-2003: the National Center for Environmental Research and Training (Centro Nacional de Investigación y Capacitación Ambiental, abbreviated as CENICA), Pedregal, and Santa Ana sites. Figure 1 shows the locations of the CENICA, Pedregal, and Santa Ana sites in the Mexico City basin

CENICA (19.36° N, 99.07° W), the campaign supersite, is on the Iztapalapa campus of the Universidad Autónoma Metropolitana. CENICA is approximately 10 km southeast of downtown Mexico City and near the conservation area Cerro de la Estrella, and is in a mixed commercial-residential area; to the west and south are mainly residential areas, and to the north and east are several factories and industries (Shirley et al., 2005). We also use data from an AMS deployed at the CENICA ground site, whose results have been summarized by Salcedo et al. (2006).

Pedregal (19.33° N, 99.20° W) is in the southwestern part of the MCMA in an affluent residential area with low vehicular traffic density. Prevailing daytime winds transport pollutants from the city center and industrial areas north of the city to this site.

The Santa Ana site (19.177° N, 98.99° W) is located just outside the MCMA to the south. It is considered a “boundary” site, as it is influenced by both clean background conditions and polluted outflow from the city at different times. It lies near the southeastern border of the Mexico City Federal District and on the western rim of a mountain pass that channels the southern outflow of air from the city. Santa Ana is a small, rural

Part II: CENICA, Pedregal and Santa Ana

F. M. San Martini et al.

Title Page

Abstract

Introduction

Conclusions

References

Tables

Figures

◀

▶

◀

▶

Back

Close

Full Screen / Esc

Printer-friendly Version

Interactive Discussion

town, with agriculture as the predominant activity.

3 Experimental

Part I of this series (San Martini et al., 2006) and references therein describe the instruments onboard the AML, which include an aerosol mass spectrometer (AMS) and a quantum cascade tunable infrared laser differential absorption spectroscopy (TILDAS) instrument to measure gas phase ammonia.

The AML did not include an instrument to directly measure gas-phase HNO_3 . However, an estimate of the HNO_3 concentration can be derived based on observations of NO , NO_2 , and total NO_y . As described in Part I, the AML included a commercial total NO_y instrument, which measures both NO_y and NO , and a fast-response TILDAS NO_2 instrument. From the total NO_y and NO measurements, along with the TILDAS NO_2 measurement, we calculate the non- NO_x fraction of NO_y , referred to as NO_z :

$$\text{NO}_z = \text{NO}_y - \text{NO} - \text{NO}_2 \quad (1)$$

NO_z provides an (approximate) upper bound to the HNO_3 concentration since NO_z may comprise HNO_3 , RNO_3 , PAN, HONO, NO_3 , N_2O_5 and particulate NO_3^- .

Temperature and relative humidity observations were obtained from the routine monitoring network in Mexico City (Red Automática de Monitoreo Atmosférico, RAMA), which operates sites at Pedregal and Santa Ana. The National Center for Environmental Research and Training provided temperature and relative humidity observations at CENICA.

Part I demonstrated that co-located observations of aerosol species and gas-phase precursors are more likely to be consistent with all the available observations and our knowledge of aerosol thermodynamics. A combination of long-path rooftop observations and point observations showed a likelihood of additional influences on the long-path measurements from sources not collocated with the point measurements. Therefore this analysis did not use long-path gas-phase ammonia observations collected by

Part II: CENICA, Pedregal and Santa Ana

F. M. San Martini et al.

Title Page

Abstract

Introduction

Conclusions

References

Tables

Figures

◀

▶

◀

▶

Back

Close

Full Screen / Esc

Printer-friendly Version

Interactive Discussion

researchers from Argonne National Laboratory from the CENICA roof in the latter half of MCMA-2003. Similarly, but with one exception, we did not use observations from the second Aerodyne AMS deployed on the CENICA roof. In order to investigate the acidic period identified by (Salcedo et al., 2006), observations from the rooftop AMS were combined with the AML observations on 9 April when the AML AMS observations were not available. The speciation, and mass concentrations reported by the two AMSs compared well, with some differences that are likely due to the different inlets used in both AMS instruments (Salcedo et al., 2006).

4 Model description

The model described in Part I (San Martini et al., 2006) was used here. In brief, a modified version of the inorganic aerosol model ISORROPIA (Nenes et al., 1998) was embedded in a Markov Chain Monte Carlo (MCMC) algorithm. ISORROPIA predicts the equilibrium partitioning of inorganic species between the gas and aerosol phase given inputs of temperature, relative humidity, and total pollutant concentrations. Based on the work of (Mozurkewich, 1993), the value of the equilibrium constant for the dissociation of solid ammonium nitrate in ISORROPIA was modified, as discussed in detail in Part I. Note that ISORROPIA includes inorganic species only; the effect of organic species on aerosol behavior is not included in the model. The possible impacts of this assumption are discussed in Sect. 6.

The MCMC algorithm is a Bayesian method that allows for the inclusion of measurement uncertainty and inference of missing observations. Bayes' Theorem describes conditional probability:

$$p(\theta|\text{Data}) = \frac{p(\text{Data}|\theta) p(\theta)}{p(\text{Data})} \quad (2)$$

where Data and θ are the observations and unknown variables, and $p(\theta|\text{Data})$, $p(\text{Data}|\theta)$ and $p(\theta)$ are termed the posterior, likelihood and prior function, respectively.

Title Page

Abstract

Introduction

Conclusions

References

Tables

Figures

◀

▶

◀

▶

Back

Close

Full Screen / Esc

Printer-friendly Version

Interactive Discussion

tively. The term $p(\text{Data})$ is a normalizing constant (equal to the probability of the observations).

The likelihood functions relating the observations and model predictions described in Part I are used here, with the exception that the only gas phase observations used here are from the TILDAS instrument on board the AML. Thus the measurement uncertainties for ammonia and NO_2 are $\pm 29\%$ and $\pm 49\%$ at the 95% confidence level, i.e., the likelihood function of the observations are described by normal distributions whose mean is the observation and whose standard deviation is proportional to the observation:

$$p\left(\text{NH}_3^{\text{obs}}|\text{NH}_3\right) \sim N\left(\text{NH}_3^{\text{obs}}, 0.15 \times \text{NH}_3^{\text{obs}}\right) \quad (3)$$

$$p\left(\text{NO}_2^{\text{obs}}|\text{HNO}_3\right) \sim N\left(\text{NO}_2^{\text{obs}}, 0.25 \times \text{NO}_2^{\text{obs}}\right) \quad (4)$$

where a normal probability density function with mean μ and standard deviation σ is denoted as $N(\mu, \sigma)$ and the superscript obs refers to observation. With the exception of 9 April, the model is only run when both the aerosol and ammonia observations are available; modeling of 9 April is discussed in Sect. 5.1.

The AMS mass concentrations have a range of uncertainty of approximately -30% and $+10\%$ (Salcedo et al., 2006). Therefore, for the AMS observations above the detection limit, the likelihood function is a mixed Gaussian model (San Martini et al., 2006)

$$p\left(X^{\text{obs}}|X\right) = 0.7 \times N\left(X^{\text{obs}}, 0.061X^{\text{obs}}\right) + (0.3) \times N\left(0.85X^{\text{obs}}, 0.1275X^{\text{obs}}\right) \quad (5)$$

where the superscript obs refers to observation and X refers to the concentration of ammonium, nitrate, sulfate, or chloride. This asymmetric likelihood function is due to the uncertainty in particle collection efficiency.

The detection limits for ammonium, nitrate, and sulfate were 0.37 , 0.05 , $0.11 \mu\text{g}/\text{m}^3$, respectively. As described in San Martini et al. (2006), the detection limit used for

**Part II: CENICA,
Pedregal and Santa
Ana**F. M. San Martini et al.

Title Page

Abstract

Introduction

Conclusions

References

Tables

Figures

◀

▶

◀

▶

Back

Close

Full Screen / Esc

Printer-friendly Version

Interactive Discussion

**Part II: CENICA,
Pedregal and Santa
Ana**

 F. M. San Martini et al.

chloride observations was $0.15 \mu\text{g}/\text{m}^3$; this is higher than the $0.05 \mu\text{g}/\text{m}^3$ detection limit reported by Salcedo et al. (2006) for the CENICA rooftop instrument. The higher detection limit for chloride was used because on average the chloride observations are between one and two orders of magnitude smaller (on a molar basis) than the other inorganic aerosol species, and due to the negative observations reported. Moreover, given the uncertainty of the small chloride mass concentrations evidenced by the negative observations, the standard deviation for the chloride likelihood was doubled for observations between one and two times the detection limit, i.e., for chloride observations between 0.15 and $0.30 \mu\text{g}/\text{m}^3$ the likelihood function is:

$$\rho\left(\text{Cl}^{\text{obs}}|\text{Cl}\right) = 0.7 \times \text{N}\left(\text{Cl}^{\text{obs}}, 0.122\text{Cl}^{\text{obs}}\right) + (0.3) \times \text{N}\left(0.85\text{Cl}^{\text{obs}}, 0.255\text{Cl}^{\text{obs}}\right) \quad (6)$$

The chloride observations and predictions are discussed further in the Results and Discussion section.

For all species, if an observation was below the detection limit, the likelihood function given by Eq. (5) was not used. Rather, for ammonium, nitrate, and sulfate, the uncertainty in the observation is assumed to be constant and equal to $\pm 49\%$ of the detection limit (i.e., ± 0.18 , 0.025 , and $0.054 \mu\text{g}/\text{m}^3$ for ammonium, nitrate and sulfate, respectively, at the 95% confidence level). Chloride observations below the detection level were assumed to be negligible.

The prior $\rho(\theta)$ represents the uncertainty of θ before the data arrives: the prior thus contains all the information available about the unknown variables before the experiment begins. The same lognormal prior distributions described in Part I (San Martini et al., 2006) are used in this work:

$$\text{Na}_{\text{equiv}} \sim \log \text{N}(6 \times 10^{-3}, 0.65) \quad (7)$$

$$\text{NH}_3 \sim \log \text{N}(0.5, 0.9) \quad (8)$$

$$\text{HNO}_3 \sim \log \text{N}(1.5 \times 10^{-2}, 1.5) \quad (9)$$

[Title Page](#)
[Abstract](#)
[Introduction](#)
[Conclusions](#)
[References](#)
[Tables](#)
[Figures](#)
[◀](#)
[▶](#)
[◀](#)
[▶](#)
[Back](#)
[Close](#)
[Full Screen / Esc](#)
[Printer-friendly Version](#)
[Interactive Discussion](#)

$$\text{HCl} \sim \log N(0.02, 1.4) \quad (10)$$

where a lognormally distributed random variable X with mode \tilde{X} and standard deviation σ is denoted as $X \sim \log N(\tilde{X}, \sigma)$.

5 Results

5.1 CENICA

The agreement between the predicted and observed ammonia concentrations, shown in Fig. 2a, is excellent: of the 1140 points analyzed, the mode of 1109 of the posterior ammonia distributions was within the measurement uncertainty (i.e., of the 1140 points analyzed, the predicted mode of 97% of these points was within the 29% measurement uncertainty, while the mode of the remaining 31 points was beyond 29% of the measurement). Of the 31 points where the mode of the distribution fell outside of the measurement uncertainty, the 95% confidence interval overlapped the measurement uncertainty in all but a single case. Figure 2b compares the predicted nitric acid concentration with the calculated NO_z . In theory, the calculated NO_z represents an upper limit for the nitric acid concentration. The limitation of NO_z as a measure of nitric acid concentration can be seen both in the over-predictions and the significant negative NO_z values. Although considerable time and effort went into making the measurements used to calculate NO_z , it is clear that the uncertainties in this measure are large. Given the uncertainties, the utility of NO_z as either a direct measure or upper limit for nitric acid for this dataset is limited.

Figure 3 compares the predicted and observed aerosol concentrations when the AML was parked at the CENICA site. In general, the predictions of ammonium, nitrate and sulfate are in good agreement with the observations, with only few predictions outside the measurement uncertainties. The agreement between the predicted and observed chloride concentrations is reasonable, though more variable, with both over-

Title Page

Abstract

Introduction

Conclusions

References

Tables

Figures

⏪

⏩

◀

▶

Back

Close

Full Screen / Esc

Printer-friendly Version

Interactive Discussion

and under-predictions prevalent. The aerosol chloride observations and their predictions will be discussed more fully later. The predictions shown in Fig. 3 are assuming the aerosols are in thermodynamic equilibrium, i.e., in the stable (deliquescence) branch as opposed to the metastable (efflorescence) branch.

5 We now turn to the period 9–11 April highlighted by (Salcedo et al., 2006). As defined by de Foy et al. (2005), 9–11 April corresponded to “Cold Surge” days, which were influenced by a cold air mass that reduced vertical mixing and boundary layer height. Very high aerosol concentrations were observed 9–11 April, with the highest aerosol concentrations of MCMA-2003 observed on 9 April. Despite partial cloudiness, intense photochemical activity combined with reduced dilution lead to very high concentration of both gas and aerosol phase pollutants on 9 April. The rooftop AMS observed peak concentrations a factor of ~ 2 higher than the average daily maximum nitrate concentration, and the peak nitrate concentration observed by the AML AMS was $\sim 10 \mu\text{g}/\text{m}^3$ higher than all other observed daily maximum nitrate concentrations. On 10 April, a large SO_2 plume covered the northern half of the city, with a maximum concentration of 277 ppb (de Foy et al., 2005).

10 Co-located gas and aerosol phase observations are available only intermittently on 9 April. The AML AMS observations are only available between 11:35 and 21:42 CDT; rooftop AMS observations are available from 00:00 and 19:00 CDT. Ammonia observations are available between 00:00 and 06:03 CDT, 11:07 and 13:40 CDT, and 18:52 and 19:36 CDT. Given the interesting features observed by both AMS instruments, for 9 April only we have therefore combined the rooftop and AML AMS observations for the analysis. We use the rooftop observations between 00:00 and 11:35 CDT, and the AML observations between 11:35 and 19:36 CDT (see Figs. 4 and 5). Note that no ammonia observations are available between 06:03 and 11:07 CDT and 13:40 and 18:52 CDT. During these periods only the model was run with no ammonia observations: the only direct constraint on the ammonia concentration is provided by the prior probability distribution described in Part I. All other model runs described in this paper were constrained by ammonia observations.

**Part II: CENICA,
Pedregal and Santa
Ana**F. M. San Martini et al.

[Title Page](#)[Abstract](#)[Introduction](#)[Conclusions](#)[References](#)[Tables](#)[Figures](#)[◀](#)[▶](#)[◀](#)[▶](#)[Back](#)[Close](#)[Full Screen / Esc](#)[Printer-friendly Version](#)[Interactive Discussion](#)

**Part II: CENICA,
Pedregal and Santa
Ana**F. M. San Martini et al.

[Title Page](#)[Abstract](#)[Introduction](#)[Conclusions](#)[References](#)[Tables](#)[Figures](#)[◀](#)[▶](#)[◀](#)[▶](#)[Back](#)[Close](#)[Full Screen / Esc](#)[Printer-friendly Version](#)[Interactive Discussion](#)

An additional interesting feature of 9–11 April is the high relative humidity. In the late evening of 8 April, the relative humidity reached a peak of 96%, at which point the aerosols will certainly be aqueous. The relative humidity remained high throughout the day except for several hours in the afternoon. Under stable equilibrium, and not considering the relative humidity history, the particles are predicted to be dry between noon and 05:00 p.m. (CDT) on 9 April, and then become aqueous again after 05:00 p.m. as the relative humidity increases past the mutual deliquescence relative humidity. We investigated the sensitivity of assuming stable versus metastable equilibrium for this period only and found that differences between the predicted aerosol concentrations were negligible. Consistent with the results presented in Part I, the gas phase predictions between the stable and metastable case diverged. Since no gas phase observations are available during this period, and field observations indicate the prevalence of metastable aerosol (Rood et al., 1989), Fig. 5 therefore shows the predicted aerosol concentrations for 9 April for the case where the aerosols are assumed to be metastable.

Due to a low planetary boundary layer during 9 April (de Foy et al., 2005; Volkamer et al., 2006¹) the aerosol concentrations observed on 9 April reveal two interesting features: (1) very high nitrate concentrations, and (2) that the chloride concentrations remain above the detection limit for most of the day. These will be discussed in turn. Figure 3b shows generally good agreement between observed and predicted nitrate concentrations at CENICA, consistent with the findings at La Merced reported in Part I. Good agreement between nitrate predictions and observations is confirmed in Figs. 4 and 6, which show the observations and predictions of aerosol phase species for the early morning of 9 April and 10–11 April. Figure 5, however, shows that on 9 April after approximately 10:00 a.m. the model underpredicts the observed nitrate. Specifically,

¹Volkamer, R., Jimenez, J. L., San Martini, F. M., Dzepina, K., Zhang, Q., Salcedo, D., Molina, L. T., Worsnop, D. R., and Molina, M. J.: Secondary Organic Aerosol Formation from Anthropogenic Air Pollution: Rapid and Higher than Expected, *Geophys. Res. Lett.*, doi:10.1029/2006GL026899, submitted, 2006.

the mode of the predicted nitrate distribution is below the observation after 10:00 a.m., where the average underprediction is 20%; the uncertainty bands of the observations and predictions, however, consistently overlap. In all cases, the 95% confidence interval overlaps either the observation itself or the measurement uncertainty. With few exceptions, the mode of the predicted nitrate distribution falls within the observation uncertainty (i.e., the mode of the predicted nitrate distribution is within –30% of the observation). Possible explanations for the model nitrate underprediction are presented in the Discussion section.

The highest mass concentrations of chloride observed at CENICA during MCMA-2003 occur in the early morning (Salcedo et al., 2006). In general, chloride observations are below the detection limit during the rest of the day. In contrast, the chloride observations on 9 April consistently remain above the detection limit from 03:56 a.m. until the last available chloride observation of 9 April at 21:24 p.m. Figure 7 shows the observed and predicted aerosol chloride and the predicted HCl(g) concentration for the case where the aerosols are assumed to be metastable. The periods with narrow HCl(g) uncertainty bands correspond to the times where NH₃(g) observations are available, allowing the system to be well constrained. Conversely, periods with relatively large uncertainty bands (approximately a factor of 20) correspond to times when no direct NH₃(g) observations are available and the only direct constraint on the gas phase concentrations are provided by the prior distributions described in Part I. Note that the mode of the HCl(g) concentration is continuous and does not “jump” between the periods with and without NH₃(g) data, so that the main impact of the NH₃(g) data is to greatly reduce the uncertainty in the predicted HCl(g). In Part I we showed that the predicted HCl(g) concentrations are well constrained when the observed chloride concentrations are consistently above the detection limit; this is confirmed in Fig. 7. This is also confirmed in Fig. 8, which shows the observed and predicted aerosol chloride and the predicted HCl(g) concentration for 10–11 April.

On 9 April, for the case where the aerosols are assumed to be metastable between noon and 05:00 p.m., the average and maximum most likely HCl(g) concentrations are

**Part II: CENICA,
Pedregal and Santa
Ana**F. M. San Martini et al.

Title Page

Abstract

Introduction

Conclusions

References

Tables

Figures

◀

▶

◀

▶

Back

Close

Full Screen / Esc

Printer-friendly Version

Interactive Discussion

0.14 and 0.63 ppbv (see Fig. 7). Moreover, at the 95% confidence level, the concentration of HCl(g) remains above 0.01 ppbv and below 2.4 ppbv throughout the day except for two brief periods in the early afternoon (see Fig. 7). Note that the average predicted ionic strength for 9 April when the aerosols are assumed to remain aqueous throughout the day is 13.6 mol/kg. The average ionic strength between noon and 05:00 p.m. is 33 mol/kg. The predicted concentration of HCl(g) is higher between noon and 05:00 p.m. if the aerosols are assumed to be dry. Between noon and 05:00 p.m. the predicted average and maximum most likely HCl(g) concentrations for the case where the aerosol are assumed to be dry (i.e., in the deliquescence branch) are 0.96 and 2.5 ppbv.

For 10–11 April, the HCl(g) concentrations are generally well constrained and predicted to be sub-ppbv (see Fig. 8). After 09:30 a.m. on 11 April the aerosols are predicted to deliquesce and the predicted HCl concentration increases to 2 ppbv, eventually reaching 8 ppbv at 11:35 a.m.

A comparison of the HCl(g) concentrations predicted at CENICA with those predicted at La Merced (San Martini et al., 2006) is instructive. At La Merced, during periods where the aerosol chloride observations are consistently above the detection limit, the HCl(g) concentrations are well constrained, with concentrations ranging from sub-ppbv up to ~ 10 ppbv. These predictions are very similar to those on 10–11 April at CENICA (see Fig. 8). In contrast, on 9 April the most likely concentration of HCl(g) at CENICA is predicted to remain below 1 ppbv throughout the day. This is in marked difference to the HCl(g) predictions at La Merced. For those brief periods at La Merced where the afternoon chloride concentration was above the $0.15 \mu\text{g}/\text{m}^3$ detection limit, the model was in general unable to reproduce these observations despite searching in very high HCl(g) concentration probability space (up to ~ 100 ppbv) (San Martini et al., 2006). This difference is likely due to the higher than average ammonia concentrations on 9 April at CENICA, as well as cooler temperatures and higher relative humidity.

The importance of the low boundary layer on pollutant concentrations of 9 April highlighted by Volkamer et al. (2006)¹ can be seen in Fig. 9. Figure 9a shows all the

**Part II: CENICA,
Pedregal and Santa
Ana**F. M. San Martini et al.

Title Page

Abstract

Introduction

Conclusions

References

Tables

Figures

◀

▶

◀

▶

Back

Close

Full Screen / Esc

Printer-friendly Version

Interactive Discussion

CENICA ammonia measurements from the TILDAS instrument onboard the AML by the time of day for all days (green) and for 9 April 2003 (black). Similarly, Fig. 9b shows the concentration of NO₂ measured by open-path Differential Optical Absorption Spectroscopy (DOAS) (Volkamer et al., 2005) by the time of day for all days (light green) and for 9 April 2003 (black). The concentration of both ammonia and NO₂ remain significantly higher in the afternoon of 9 April than on other days. The latter points to a significantly higher production rate of nitric acid on 9 April, while the former indicates that this excess nitrate will partition to the aerosol phase since the production of ammonium nitrate aerosol is determined in part by whether the partial pressure product of ammonia and nitric acid is above the equilibrium constant. Similarly, the production of ammonium chloride aerosol is determined in part by whether the partial pressure product of ammonia and hydrochloric acid is above the equilibrium constant.

Finally, it is interesting to note that the predicted pH for the acidic period is comparable to the predicted pH at La Merced when the aerosols are assumed to be metastable (see Part I). The average estimated pH was 3.7 on 9 April and 3.9 for the period where the aerosols are aqueous on 10–11 April.

5.2 Pedregal

Figures 10 and 11 compare the predicted and observed aerosol and gas phase species at the Pedregal site. Figure 10 confirms that, with the exception of 9 April at CENICA, the agreement between the observations and predictions of the aerosol phase species is generally within the measurement uncertainties. Specifically, in contrast to the predictions at CENICA on 9 April, 10:00 a.m. to 07:00 p.m. (CDT), the model does not systematically underpredict the nitrate observations. Both slight over- and underpredictions occur, with only very few predictions beyond the measurement uncertainties. Significant “negative chloride observations” underscore the uncertainties associated with the chloride observations and the rationale for the 0.15 μg/cm³ detection limit (San Martini et al., 2006). Negative chloride concentrations were also reported at CENICA (minimum observation = -0.43 μg/m³) and Santa Ana (minimum observation

**Part II: CENICA,
Pedregal and Santa
Ana**

F. M. San Martini et al.

Title Page

Abstract

Introduction

Conclusions

References

Tables

Figures

◀

▶

◀

▶

Back

Close

Full Screen / Esc

Printer-friendly Version

Interactive Discussion

= $-0.13 \mu\text{g}/\text{m}^3$). The predictions of gas phase ammonia and nitric acid at Pedregal are consistent with those at CENICA and Santa Ana: excellent agreement between the ammonia predictions and observations, while the calculated NO_2 is both over- and underpredicted by the model.

Figure 12 shows the observed and predicted aerosol chloride and the predicted $\text{HCl}(\text{g})$ concentration at Pedregal. Figure 12 confirms the results at La Merced described in Part I (San Martini et al., 2006) and at CENICA on 10–11 April. Note that $\text{HCl}(\text{g})$ was only predicted if both the aerosol chloride was above the detection limit and the gas phase ammonia observation was available. Thus, in general, chloride observations remained above the detection limit in the morning; during this period the predicted $\text{HCl}(\text{g})$ concentration was ~ 1 ppbv and increased to ~ 10 ppbv until around noon. After approximately noon, even if the observed aerosol chloride was above the detection limit, the chloride was predicted to remain in the gas phase even if $\text{HCl}(\text{g})$ concentrations in excess of 10 ppbv were sampled by the Markov Chain. There are two exceptions to this finding: on 22 April 2003 at 15:56 and 18:12 the aerosol chloride are above the detection limit and the predicted $\text{HCl}(\text{g})$ concentration is ~ 1 –2 ppbv.

5.3 Santa Ana

Figures 13 and 14 compare the predicted and observed aerosol and gas phase species at the Santa Ana site. Only a limited dataset is available since the model was only run when both aerosol and gas phase ammonia observations are available. The comparison of the predicted and observed aerosol concentrations at Santa Ana shown in Fig. 13 shows generally good agreement, with most predictions falling within the measurement uncertainties. The chloride predictions are particularly limited with only eight points above the detection limit when gas phase ammonia observations were available. Figure 14 shows excellent agreement between the ammonia predictions and observations, while the calculated NO_2 is mostly overpredicted by the model.

Figure 15 shows the observed and predicted aerosol chloride and the predicted

**Part II: CENICA,
Pedregal and Santa
Ana**

F. M. San Martini et al.

Title Page

Abstract

Introduction

Conclusions

References

Tables

Figures

◀

▶

◀

▶

Back

Close

Full Screen / Esc

Printer-friendly Version

Interactive Discussion

HCl(g) concentration at Santa Ana. We emphasize that the predictions are limited to periods where both the ammonia observation is available and the observed aerosol chloride is above the detection limit. With this limitation in mind, for those points approximately before noon the HCl(g) concentration is predicted to be between ~ 0.1 and ~ 1 ppbv. In general, in other periods the chloride is predicted to partition to the gas phase despite the Markov Chain sampling high HCl(g) concentrations (up to ~ 50 ppbv). An exception to this was found at approximately 15:20 on 16 April 2003, where appreciable chloride is predicted to partition to the aerosol phase. The predicted HCl(g) concentrations in this period are predicted to be ~ 20 – 40 ppbv (see Fig. 15).

6 Discussion

ISORROPIA reproduces the aerosol observations well, with the exception of aerosol nitrate 10:00 a.m. to 07:00 p.m. on 9 April (see Fig. 5). As implemented here, the Markov Chain Monte Carlo method includes measurement but not model uncertainty.

A key model uncertainty is the effect of organic species on aerosol behavior. Mixed organic-inorganic aerosols have been observed in a variety of ambient sampling studies (see for example Duce et al., 1983; Hughes et al., 1999; Middlebrook et al., 1998; Noble and Prather, 1996; Rogge et al., 1993). The water absorption of atmospheric aerosols has conventionally been associated with their inorganic fraction; the aerosol model used in this work, ISORROPIA, only treats the inorganic aerosol species.

Studies of the effect of organics on the hygroscopicity of inorganic aerosols and the partitioning of inorganic species are, in general, limited and somewhat contradicting in the literature. Some researchers have suggested that organics have a negative effect on the growth factor or evaporation rate of inorganics (e.g., Lightstone et al., 2000; Marcolli and Krieger, 2005; Marcolli et al., 2004; Xiong et al., 1998), others a positive effect (e.g., Andrews and Larson, 1993; Ansari and Pandis, 2000; Varutbangkul et al., 2006), and others both a positive and negative effect (e.g., Choi and Chan, 2002; Cruz and Pandis, 2000; Saxena et al., 1995) or no effect (Hameri et al., 1997, 1998). Var-

Title Page

Abstract

Introduction

Conclusions

References

Tables

Figures

◀

▶

◀

▶

Back

Close

Full Screen / Esc

Printer-friendly Version

Interactive Discussion

**Part II: CENICA,
Pedregal and Santa
Ana**F. M. San Martini et al.

ious researchers have implemented mixed organic-inorganic thermodynamic aerosol models (see for example Clegg et al., 2003; Griffin et al., 2003; Koo et al., 2003; Ming and Russel, 2002; Pun et al., 2002; Saxena and Hildemann, 1997). While recent advances have greatly contributed to the field, only a small portion of the organic species found in the atmosphere have been investigated under relatively idealized conditions. Thus modeling secondary organic aerosol (SOA) formation and (primary + secondary) organic aerosol thermodynamics is very difficult due to major uncertainties in the gas-phase chemistry of organic aerosol formation, phase-partitioning of the condensable organic gases, and the molecular identity and thermodynamics of organic PM (McMurry, 2000; Zhang et al., 2000). Although some models exist, recent results from Mexico City and other locations show that current models may underpredict SOA formation by close to an order of magnitude (Volkamer et al., 2006)¹.

Given the uncertainties in the literature, it is interesting to note that the aerosol nitrate deviations found in this work are consistent with the predictions of Ansari and Pandis (2000). These authors predicted that on average SOA accounts for approximately 7% of the total predicted aerosol water, and increases the predicted nitrate partitioning by approximately 10% (Ansari and Pandis, 2000). The effect of SOA on aerosol water content decreased with increasing relative humidity. However, the mass fraction of SOA appeared to be more important in determining the magnitude of the effect, with increasing SOA mass fractions leading to increasing aerosol water content. Thus, despite being less hygroscopic than inorganic components, the SOA contribution can be as high as 15–20% for areas where the aerosol mass is dominated by SOA, as is the case in the MCMA. Specifically, based on the work of Ansari and Pandis (2000), the conditions on 9 April (high relative humidity and nitric acid production rates, combined with less efficient dilution and high SOA concentrations) indicate that SOA will likely have an appreciable effect on aerosol water content. This increased aerosol water content may help explain the nitrate underprediction observed in the afternoon of 9 April as the increased water content may increase nitrate partitioning to the aerosol phase (Ansari and Pandis, 2000). A limitation of the work of Ansari and Pandis is that

[Title Page](#)[Abstract](#)[Introduction](#)[Conclusions](#)[References](#)[Tables](#)[Figures](#)[◀](#)[▶](#)[◀](#)[▶](#)[Back](#)[Close](#)[Full Screen / Esc](#)[Printer-friendly Version](#)[Interactive Discussion](#)

organic compounds were assumed to not change the thermodynamics (i.e., activity coefficients) of the inorganic components.

Our results indicate that under certain conditions inorganic nitrate concentrations may be affected by SOA to a significant extent. Such feedbacks are not obvious from our data for other inorganic aerosol components. Further experimental data on water uptake of SOA and models that account for this additional water and nitric acid uptake, as well as the effect of SOA species on the activity coefficients, will be valuable in furthering our understanding of aerosol behavior.

In Part I we showed that the model is able to accurately reproduce the aerosol chloride observations when the observations are consistently above the detection limit, and that during these periods the predicted HCl(g) concentrations are well constrained. This is confirmed in this work (see Figs. 7 and 8). Part I (San Martini et al., 2006) discusses the model uncertainties and limitations, in particular with respect to the treatment of chloride species, and showed the predicted HCl concentration was dependent on whether the aerosols are stable or metastable. On 9 April at CENICA the most likely HCl concentration is predicted to remain in the sub-ppbv range throughout the day when the aerosols are assumed to remain aqueous; the average and maximum mode of the HCl posterior distribution is 1 ppbv and 2.5 ppbv when the aerosols are assumed to be dry between noon and 05:00 p.m. on 9 April. On 10–11 April the most likely HCl concentration is predicted to remain in the sub-ppbv range when the aerosols are aqueous. In the late morning of 11 April, the aerosols are predicted to be dry at equilibrium; in this case the most likely HCl concentration is predicted to be as high as ~8 ppbv.

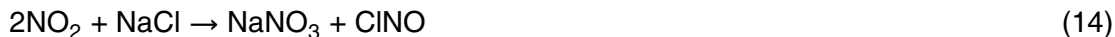
The importance of chlorine on the photochemistry in the MCMA is unclear. Tanaka et al. (2000, 2003) found that chlorine may have a significant effect on the photochemistry of some urban environments, and the effect of salt chemistry on photochemistry in the vicinity of saline dry lakebeds has been previously noted (Hebestreit et al., 1999).

We note in particular that salt particles may be important to the photochemistry in the MCMA. Recall that the dry salt-lake in the northeast of the city is a source of salt

**Part II: CENICA,
Pedregal and Santa
Ana**F. M. San Martini et al.

[Title Page](#)[Abstract](#)[Introduction](#)[Conclusions](#)[References](#)[Tables](#)[Figures](#)[⏪](#)[⏩](#)[◀](#)[▶](#)[Back](#)[Close](#)[Full Screen / Esc](#)[Printer-friendly Version](#)[Interactive Discussion](#)

particles. In addition to the reaction of salt particles with nitric acid to produce HCl(g), reactions that may be important include (Finlayson-Pitts and Hemminger, 2000):



10 ClONO_2 , Cl_2 , and ClNO dissociate to highly reactive Cl, which can then react with ozone (Finlayson-Pitts and Hemminger, 2000). Reactions (11–14) in Mexico City can lead to ozone formation, i.e. via Cl-radical initiated VOC oxidation (Reaction 16), or destruction, i.e. via Reaction (15) and the subsequent scavenging of NO_x from the atmosphere:



However Cl may also react with organics, e.g.,



15 where RH is e.g. an alkane. The rate constants for Reactions (15) and (16) are $k_{15}=10^{-11} \text{ cm}^3/\text{molecule}\cdot\text{s}$ and $k_{16}=10^{-10} \text{ cm}^3/\text{molecule}\cdot\text{s}$. Reaction (16) may be particularly important to the photochemistry in the MCMA given the high concentrations of alkanes previously observed in the MCMA (Blake and Rowland, 1995). In fact most Cl-radicals will react with alkanes even in the presence of high ozone concentrations during afternoons.

20 The importance of HCl as a source of chlorine radicals, and hence on the photochemistry in the MCMA, can be approximated by considering Reactions (15), (16) and the daytime formation of Cl (HCl does not photolyze in the troposphere):



**Part II: CENICA,
Pedregal and Santa
Ana**

F. M. San Martini et al.

Title Page

Abstract

Introduction

Conclusions

References

Tables

Figures

◀

▶

◀

▶

Back

Close

Full Screen / Esc

Printer-friendly Version

Interactive Discussion

Assuming the residence time of Cl is determined by Reactions (15) and (16) only:

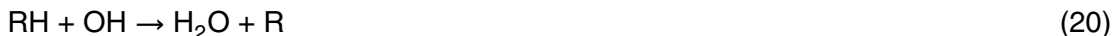
$$\frac{1}{\tau_{\text{Cl}}} \sim k_{15} [\text{O}_3] + k_{16} [\text{RH}] \quad (18)$$

The ratio of Cl/OH-radical concentrations is given by:

$$\frac{[\text{Cl}\cdot]}{[\text{OH}\cdot]} \sim \frac{k_{17} [\text{HCl}]}{k_{15} [\text{O}_3] + k_{16} [\text{RH}]} \quad (19)$$

- 5 Representative concentrations in the MCMA of ozone and RH are ~ 100 ppbv (3×10^{12} cm³/molecule-s) (Velasco et al., 2006)². With $k_{17} = 10^{-12}$ cm³/molecule-s, and assuming a concentration of HCl(g) ~ 1 ppbv (2×10^{10} cm³/molecule-s) yields a ratio of Cl/OH of $\sim 6 \times 10^{-5}$.

10 The importance of HCl(g) as a source of chlorine radicals to the alkane photochemistry in the MCMA is determined by the relative importance of Reaction (16) to the reaction of OH with RH:



15 The ratio of the reaction rate constant for Reaction (20) to Reaction (16) for propane, n-butane, and n-heptane is $\frac{1}{90}$, $\frac{1}{40}$, and $\frac{1}{14}$, respectively. Using n-butane as a representative example to estimate an upper limit effect on photochemistry (the single most abundant alkane in Mexico City actually is propane; Blake and Rowland, 1995), an HCl(g) concentration of ~ 1 ppbv yields a ratio of ~ 400 , i.e., the percent contribution of Cl radicals to RH oxidation is $\sim 0.2\%$. Even concentrations of HCl (g) of ~ 10 ppbv

²Velasco, E., Lamb, B., Westberg, H., Allwine, E., Sosa, G., Arriaga, J. L., Jonson, T., Alexander, M., Prazeller, P., Knighton, W. B., Rogers, T. M., Grutter, M., Herndon, S. C., Kolb, C. E., Zavala, M. A., de Foy, B., Molina, L. T., and Molina, M. J.: Distribution, magnitudes, reactivities, ratios and diurnal patterns of volatile organic compounds in the Valley of Mexico during the MCMA 2002 & 2003 field campaigns, Atmos. Chem. Phys. Discuss., in preparation, 2006.

Title Page

Abstract

Introduction

Conclusions

References

Tables

Figures

◀

▶

◀

▶

Back

Close

Full Screen / Esc

Printer-friendly Version

Interactive Discussion

**Part II: CENICA,
Pedregal and Santa
Ana**F. M. San Martini et al.

[Title Page](#)[Abstract](#)[Introduction](#)[Conclusions](#)[References](#)[Tables](#)[Figures](#)[I◀](#)[▶I](#)[◀](#)[▶](#)[Back](#)[Close](#)[Full Screen / Esc](#)[Printer-friendly Version](#)[Interactive Discussion](#)

yield only a 2% contribution of Cl radicals to RH oxidation. The effect of Cl radicals from HCl to alkane photochemistry is thus expected to be very minor. The net effect of HCl (g) on ozone production may in fact be negative if scavenging of NO_x into nitrated chlorine reservoirs, organic nitrates, and scavenging of HO_x into ClOH, as well as the subsequent possible removal from the gas-phase was considered.

It should be pointed out that the only source for Cl radicals considered here is our predicted most likely concentration of HCl(g). We have neglected other Cl radical sources (e.g., photolysis of Cl_2 , ClNO_2 , ClNO , etc.) in our analysis. Particularly Cl_2 can jump-start photochemical ozone production in Houston (Tanaka et al., 2003). To our knowledge neither Cl_2 nor HCl measurements have been reported in Mexico City to date. It is noteworthy that chlorinated hydrocarbons account for 1–2.5 %_C of total VOCs in Mexico City (Velasco et al., 2006)². Our results indicate that HCl(g) is likely present in substantial concentrations. The upper limit values for HCl(g) predictions indicate that Cl radical release is at the verge of being relevant for photochemistry. The source of HCl(g) and other sources for Cl radicals are presently not clear, and further investigation of the importance of chlorine on the photochemistry in the MCMA is warranted.

7 Conclusions

Using observations taken at three sites during the MCMA-2003 campaign we showed that the model described in Part I (San Martini et al., 2006) is, in general, able to accurately predict the observed inorganic aerosol concentrations. The agreement between the predicted and observed ammonia concentrations is excellent. The NO_z calculated from the NO_y , NO and NO_2 observations during this campaign is of limited use in constraining the nitric acid concentration given the large uncertainties in this measure of nitric acid.

Focusing on the acidic period of 9–11 April identified by Salcedo et al. (2006), the model accurately predicts the aerosol phase observations during this period with the

exception of the nitrate predictions after approximately 10:00 a.m. (CDT) on 9 April, where the model underpredicts the observations. While the 9–11 April period was identified as acidic by Salcedo et al. (2006), ISORROPIA predicts comparable pH values during this and other periods where the aerosol are predicted to be aqueous. The predicted pH of the aqueous aerosol in the MCMA was ~3–4 pH units despite the high concentrations of gas phase ammonia observed.

For periods when the aerosol chloride observations are consistently above the detection limit, the model is able to accurately predict the aerosol chloride predictions and the predicted HCl(g) concentrations are well constrained. When the aerosols are aqueous, the most likely concentrations of HCl(g) are in the sub-ppbv range. The most likely predicted concentration of HCl(g) was found to reach concentrations of order 10 ppbv when the aerosols are dry. While the Markov Chain Monte Carlo method used here provides a powerful tool to predict HCl, direct observations of gas phase HCl in future campaigns will be invaluable. These observations will lead to a better understanding aerosol behavior in the MCMA as well as the importance of chlorine chemistry to MCMA's photochemistry. Finally, future work will utilize the aerosol phase observations and predicted gas-phase probability distributions calculated here and in Part I to determine the effect of changes in precursor concentration on inorganic aerosol in the MCMA.

Acknowledgements. The financial support of the Comisión Ambiental Metropolitana of Mexico and of the U.S. National Science Foundation (Award ATM 308748 and ATM-308748) and the Department of Energy (Award DE-FG02-05ER63980) for this work is gratefully acknowledged. Aerodyne would like to thank CAM, the National Science Foundation's Atmospheric Chemistry Program, and the Department of Energy's Atmospheric Sciences Program for financial support. D. Salcedo, K. Dzepina, and J. L. Jimenez would like to thank NSF (grant ATM-0528634) and DOE (grant DE-FG02-05ER63981) for funding. K. Dzepina is recipient of an Advanced Study Program fellowship from the National Center for Atmospheric Research. R. Volkamer acknowledges consecutive fellowships by Henry and Camille Dreyfus Foundation and Alexander von Humboldt Foundation. F. M. San Martini would like to thank B. de Foy for helpful discussions.

**Part II: CENICA,
Pedregal and Santa
Ana**F. M. San Martini et al.

[Title Page](#)[Abstract](#)[Introduction](#)[Conclusions](#)[References](#)[Tables](#)[Figures](#)[⏪](#)[⏩](#)[◀](#)[▶](#)[Back](#)[Close](#)[Full Screen / Esc](#)[Printer-friendly Version](#)[Interactive Discussion](#)

References

- Andrews, E. and Larson, S. M.: Effect of Surfactant Layers on the Size Changes of Aerosol-Particles as a Function of Relative-Humidity, *Environ. Sci. Technol.*, 27(5), 857–865, 1993.
- Ansari, A. S. and Pandis, S. N.: Water Absorption by Secondary Organic Aerosol and Its Effect on Inorganic Aerosol Behavior, *Environ. Sci. Technol.*, 34(1), 71–77, 2000.
- Blake, D. R. and Rowland, F. S.: Urban Leakage of Liquefied Petroleum Gas and Its Impact on Mexico City Air Quality, *Science*, 269(5226), 953–956, 1995.
- Choi, M. Y. and Chan, C. K.: The effects of organic species on the hygroscopic behaviors of inorganic aerosols, *Environ. Sci. Technol.*, 36(11), 2422–2428, 2002.
- Clegg, S. L., Seinfeld, J. H., and Brimblecombe, P.: Thermodynamic Modelling of Aqueous Aerosols Containing Electrolytes and Dissolved Organic Compounds, *Aerosol Sci.*, 32, 713–778, 2003.
- Cruz, C. N. and Pandis, S. N.: Deliquescence and Hygroscopic Growth of Mixed Inorganic-Organic Atmospheric Aerosol, *Environ. Sci. Technol.*, 34(20), 4313–4319, 2000.
- de Foy, B., Caetano, E., Magaña, V., Zitácuaro, A., Cárdenas, B., Retama, A., Ramos, R., Molina, L. T., and Molina, M. J.: Mexico City basin wind circulation during the MCMA-2003 field campaign, *Atmos. Chem. Phys.*, 5, 2267–2288, 2005.
- Duce, R. A., Pohnen, V. A., Zimmerman, P. R., Grosjean, D., Cautreels, W., Chatfield, R., Jaenicke, R., Ogren, J. A., Pellizzari, D., and Wallace, G. T.: Organic Material in the Global Troposphere, *Rev. Geophys.*, 21, 921, 1983.
- Finlayson-Pitts, B. J. and Hemminger, J. C.: Physical Chemistry of Airborne Sea Salt Particles and Their Components, *J. Phys. Chem. A*, 104, 11 463–11 477, 2000.
- Griffin, R. J., Nguyen, K., Dabdub, D., and Seinfeld, J. H.: A Coupled Hydrophobic-Hydrophilic Model for Predicting Secondary Organic Aerosol Formation, *J. Atmos. Chem.*, 44, 171–190, 2003.
- Hameri, K., Charlson, R. J., Hansson, H.-C., and Jacobson, M.: Hygroscopic properties of ammonium sulfate aerosols mixed with slightly soluble organic compound, *J. Aerosol Sci.*, 28(Supplement 1), S153–S154, 1997.
- Hameri, K., Charlson, R. J., Hansson, H.-C., and Jacobson, M.: Hygroscopic properties of ammonium sulfate aerosol particles mixed with slightly soluble organic compound, *J. Aerosol Sci.*, 29(Supplement 1), 587–588, 1998.
- Hebestreit, K., Stutz, J., Rosen, D., Matveiv, V., Peleg, M., Luria, C., and Platt, U.: DOAS

ACPD

6, 5999–6040, 2006

Part II: CENICA, Pedregal and Santa Ana

F. M. San Martini et al.

Title Page

Abstract

Introduction

Conclusions

References

Tables

Figures

◀

▶

◀

▶

Back

Close

Full Screen / Esc

Printer-friendly Version

Interactive Discussion

EGU

**Part II: CENICA,
Pedregal and Santa
Ana**F. M. San Martini et al.

[Title Page](#)[Abstract](#)[Introduction](#)[Conclusions](#)[References](#)[Tables](#)[Figures](#)[◀](#)[▶](#)[◀](#)[▶](#)[Back](#)[Close](#)[Full Screen / Esc](#)[Printer-friendly Version](#)[Interactive Discussion](#)

- Measurements of Tropospheric Bromine Oxide in Mid-Latitudes, *Science*, 283, 55–57, 1999.
- Hughes, L. S., Allen, J. O., Kleeman, M. J., Johnson, R. J., Cass, G. R., Gross, D. S., Gard, E. E., Gaelli, M. E., Morrical, B. D., Fergenson, D. P., Dienes, T., Noble, C. A., Liu, D.-Y., Silva, P. J., and Prather, K. A.: Size and Composition Distribution of Atmospheric Particles in Southern California, *Environ. Sci. Technol.*, 33(20), 3506–3515, 1999.
- 5 Kolb, C. E., Herndon, S. C., McManus, B., Shorter, J. H., Zahniser, M. S., Nelson, D. D., Jayne, J. T., Canagaratna, M. R., and Worsnop, D. R.: Mobile laboratory with rapid response instruments for real-time measurements of urban and regional trace gas and particulate distributions and emission source characteristics, *Environ. Sci. Technol.*, 38(21), 5694–5703, 2004.
- 10 Koo, B., Ansari, A. S., and Pandis, S. N.: Integrated Approaches to Modeling the Organic and Inorganic Atmospheric Aerosol Components, *Atmos. Environ.*, 37, 4757–4768, 2003.
- Lightstone, J. M., Onasch, T. B., Imre, D., and Oatis, S.: Deliquescence, efflorescence, and water activity in ammonium nitrate and mixed ammonium nitrate/succinic acid microparticles, *J. Phys. Chem. A*, 104(41), 9337–9346, 2000.
- 15 Marcolli, C. and Krieger, U. K.: The Deliquescence/Efflorescence Cycle of Organic/Ammonium Sulfate Particles: Phases, Phase Transitions, and Salt Effects, *Geophys. Res. Abstr.*, 7, 03337, 2005.
- Marcolli, C., Luo, B. P., and Peter, T.: Mixing of the organic aerosol fractions: Liquids as the thermodynamically stable phases, *J. Phys. Chem. A*, 108(12), 2216–2224, 2004.
- McMurry, P. H.: A Review of Atmospheric Aerosol Measurements, *Atmos. Environ.*, 34, 1959–1999, 2000.
- 20 Middlebrook, A. M., Murphy, D. M., and Thomson, D. S.: Observations of Organic Material in Individual Marine Particles at Cape Grim during the First Aerosol Characterization Experiment (ACE 1), *J. Geophys. Res.*, 103(D13), 16 472–16 483., 1998
- Ming, Y. and Russel, L. M.: Thermodynamic Equilibrium of Organic-Electrolyte Mixtures in Aerosol Particles, *AIChE J.*, 48(6), 1331–1348, 2002.
- Mozurkewich, M.: The Dissociation Constant of Ammonium Nitrate and its Dependence on Temperature, Relative Humidity and Particle Size, *Atmos. Environ.*, 27A(2), 261–270, 1993.
- 25 Nenes, A., Pandis, S., and Pilinis, C.: ISORROPIA: A new thermodynamic equilibrium model for multiphase multicomponent inorganic aerosols, *Aquatic Geochem.*, 4, 123–152, 1998.
- Noble, C. A. and Prather, K. A.: Real-Time Measurement of Correlated Size and Composition Profiles of Individual Atmospheric Aerosol Particles, *Environ. Sci. Technol.*, 30(9), 2667–

2680, 1996.

- Pun, B. K., Griffin, R. J., Seigneur, C., and Seinfeld, J. H.: Secondary Organic Aerosol 2: Thermodynamic Model for Gas/Particle Partitioning of Molecular Constituents, *J. Geophys. Res.*, 107(D17), doi:2001D000542, 2002.
- 5 Rogge, W. F., Mazurek, M. A., Hildemann, L. M., Cass, G. R., and Simoneit, B. R. T.: Quantification of Urban Organic Aerosols at a Molecular-Level-Identification, Abundance, and Seasonal-Variation, *Atmos. Environ.*, 27A, 1309, 1993.
- Rood, M. J., Shaw, M. A., Larson, T. V., and Covert, D. S.: Ubiquitous Nature of Ambient Metastable Aerosol, *Nature*, 337(9), 537–539, 1989.
- 10 Salcedo, D., Onasch, T. B., Dzepina, K., Canagaratna, M. R., Zhang, Q., Huffman, J. A., De Carlo, P. F., Jayne, J. T., Mortimer, P., Worsnop, D. R., Kolb, C. E., Johnson, K. J., Zuberi, B., Marr, L. C., Volkamer, R., Molina, L. T., Molina, M. J., Cardenas, B., Bernabé, R. M., Marquez, C., Gaffney, J. S., Marley, N. A., Laskin, A., Shutthanadan, V., Xie, Y., Brune, W. H., Leshner, R., Shirley, T. R., and Jiminez, J. L.: Characterization of Ambient Aerosols in Mexico City during the MCMA-2003 Campaign with Aerosol Mass Spectrometry: results from the CENICA Supersite, *Atmos. Chem. Phys.*, 6, 925–946, 2006.
- 15 San Martini, F. M., Dunlea, E. J., Grutter, M., Onasch, T. B., Jayne, J. T., Canagaratna, M. R., Worsnop, D. R., Kolb, C. E., Shorter, J. H., Herndon, S. C., Zahniser, M. S., Ortega, J. M., McRae, G. J., Molina, L. T., and Molina, M. J.: Implementation of a Markov Chain Monte Carlo Method to Inorganic Aerosol Modeling of Observations from the MCMA-2003 Campaign. Part I: Model Description and Application to the La Merced Site, *Atmos. Chem. Phys. Discuss.*, 6, 5933–5998, 2006.
- 20 San Martini, F. M., West, J. J., Sosa, G., Molina, L. T., Molina, M. J., and McRae, G. J.: Modeling Inorganic Aerosols and their Response to Changes in Precursor Concentration in Mexico City, *J. Air Waste Manage. Assoc.*, 55(6), 803–815, 2005.
- 25 Saxena, P. and Hildemann, L. M.: Water Absorption by Organics: Survey of Laboratory Evidence and Evaluation of UNIFAC for Estimating Water Activity, *Environ. Sci. Technol.*, 31(11), 3318–3324, 1997.
- Saxena, P., Hildemann, L. M., McMurry, P. H., and Seinfeld, J. H.: Organics Alter Hygroscopic Behavior of Atmospheric Particles, *J. Geophys. Res.-Atmos.*, 100(D9), 18755–18770, 1995.
- 30 Shirley, T. R., Brune, W. H., Ren, X., Mao, J., Leshner, R., Cardenas, B., Volkamer, R., Molina, L. T., Molina, M. J., Lamb, B., Velasco, E., Jobson, T., and Alexander, M.: Atmospheric oxidation in the Mexico City Metropolitan Area (MCMA) during April 2003, *Atmos. Chem.*

**Part II: CENICA,
Pedregal and Santa
Ana**

F. M. San Martini et al.

Title Page

Abstract

Introduction

Conclusions

References

Tables

Figures

◀

▶

◀

▶

Back

Close

Full Screen / Esc

Printer-friendly Version

Interactive Discussion

- Phys. Discuss., 5, 6041–6076, 2005.
- Tanaka, P. L., Oldfield, S., Mullins, C. B., and Allen, D. T.: Anthropogenic Sources of Chlorine in Urban Atmospheres, *Environ. Sci. Technol.*, 34, 4470–4473, 2000.
- 5 Tanaka, P. L., Riemer, D. D., Chang, S., Yarwood, G., McDonald-Buller, E. C., Apel, E. C., Orlando, J. J., Silva, P. J., Jimenez, J. L., Anagatatna, M. R., Neece, J. D., Mullins, C. B., and Allen, D. T.: Direct Evidence of Chlorine-Enhanced Urban Ozone Formation in Houston, TX, *Atmos. Environ.*, 37, 1393–1400, 2003.
- 10 Varutbangkul, V., Brechtel, F. J., Bahreini, R., Ng, N. L., Keywood, M. D., Kroll, J. H., Flagan, R. C., Seinfeld, J. H., Lee, A., and Goldstein, A. H.: Hygroscopicity of secondary organic aerosol formed by oxidation of cycloalkenes, monoterpenes, sesquiterpenes, and related compounds, *Atmos. Chem. Phys. Discuss.*, 6, 1121–1177, 2006.
- Volkamer, R., Molina, L. T., Molina, M. J., Shirley, T. R., and Brune, W. H.: DOAS measurement of glyoxal as an indicator of fast VOC chemistry in urban air, *Geophys. Res. Lett.*, 32, L08806. doi:10.1029/2005GL022616, 2005.
- 15 Xiong, J. Q., Zhong, M. H., Fang, C. P., Chen, L. C., and Lippmann, M.: Influence of organic films on the hygroscopicity of ultrafine sulfuric acid aerosol, *Environ. Sci. Technol.*, 32(22), 3536–3541, 1998.
- 20 Zhang, Y., Seigneur, C., Seinfeld, J. H., Jacobson, M., Clegg, S. L., and Binkowski, F. S.: A comparative review of inorganic aerosol thermodynamic equilibrium modules: similarities, differences, and their likely causes, *Atmos. Environ.*, 34, 117–137, 2000.

**Part II: CENICA,
Pedregal and Santa
Ana**F. M. San Martini et al.

[Title Page](#)[Abstract](#)[Introduction](#)[Conclusions](#)[References](#)[Tables](#)[Figures](#)[◀](#)[▶](#)[◀](#)[▶](#)[Back](#)[Close](#)[Full Screen / Esc](#)[Printer-friendly Version](#)[Interactive Discussion](#)

**Part II: CENICA,
Pedregal and Santa
Ana**

F. M. San Martini et al.

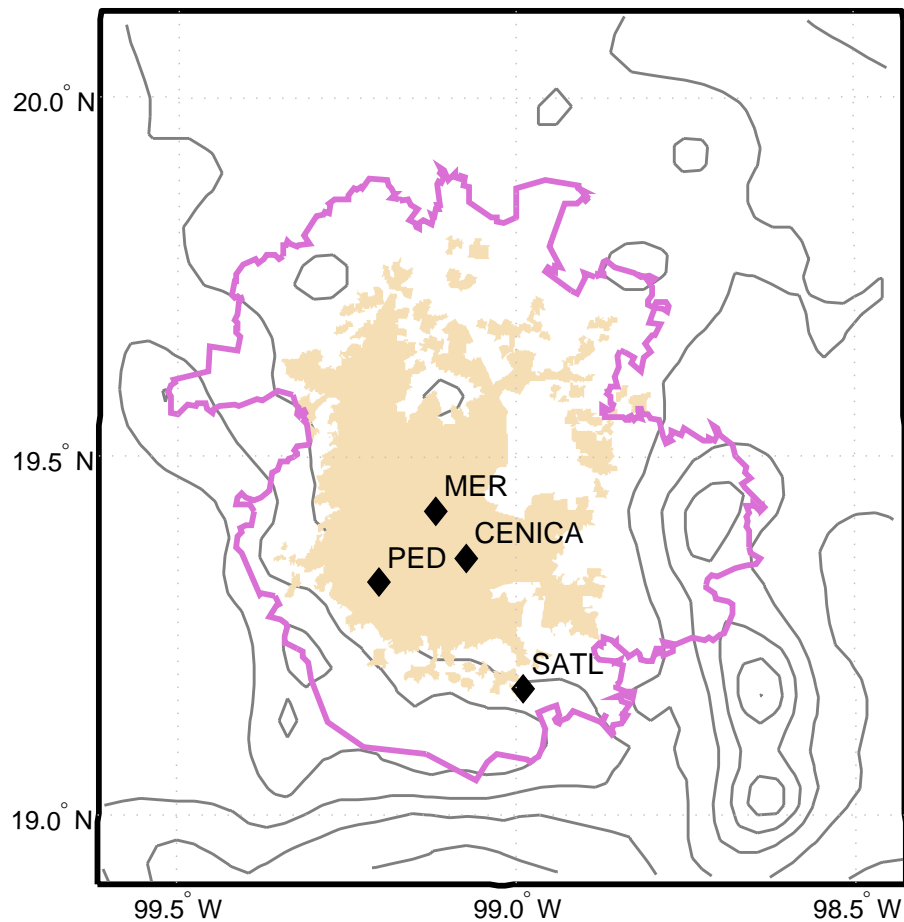


Fig. 1. Map of Mexico City basin showing the monitoring stations CENICA, Pedregal (PED) and Santa Ana (SATL). Also shown is the La Merced site (see San Martini et al., 2006).

[Title Page](#)[Abstract](#)[Introduction](#)[Conclusions](#)[References](#)[Tables](#)[Figures](#)[◀](#)[▶](#)[◀](#)[▶](#)[Back](#)[Close](#)[Full Screen / Esc](#)[Printer-friendly Version](#)[Interactive Discussion](#)

**Part II: CENICA,
Pedregal and Santa
Ana**

F. M. San Martini et al.

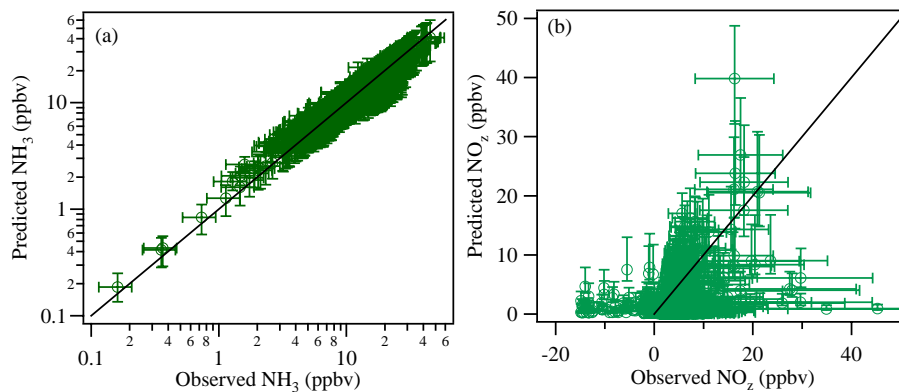


Fig. 2. Correlation plots for **(a)** ammonia and **(b)** NO₂ and nitric acid for CENICA. The error bars for the predictions represent the 95% confidence interval; the measurement uncertainty for ammonia and NO₂ is $\pm 29\%$ and $\pm 49\%$.

[Title Page](#)[Abstract](#)[Introduction](#)[Conclusions](#)[References](#)[Tables](#)[Figures](#)[◀](#)[▶](#)[◀](#)[▶](#)[Back](#)[Close](#)[Full Screen / Esc](#)[Printer-friendly Version](#)[Interactive Discussion](#)

**Part II: CENICA,
Pedregal and Santa
Ana**

F. M. San Martini et al.

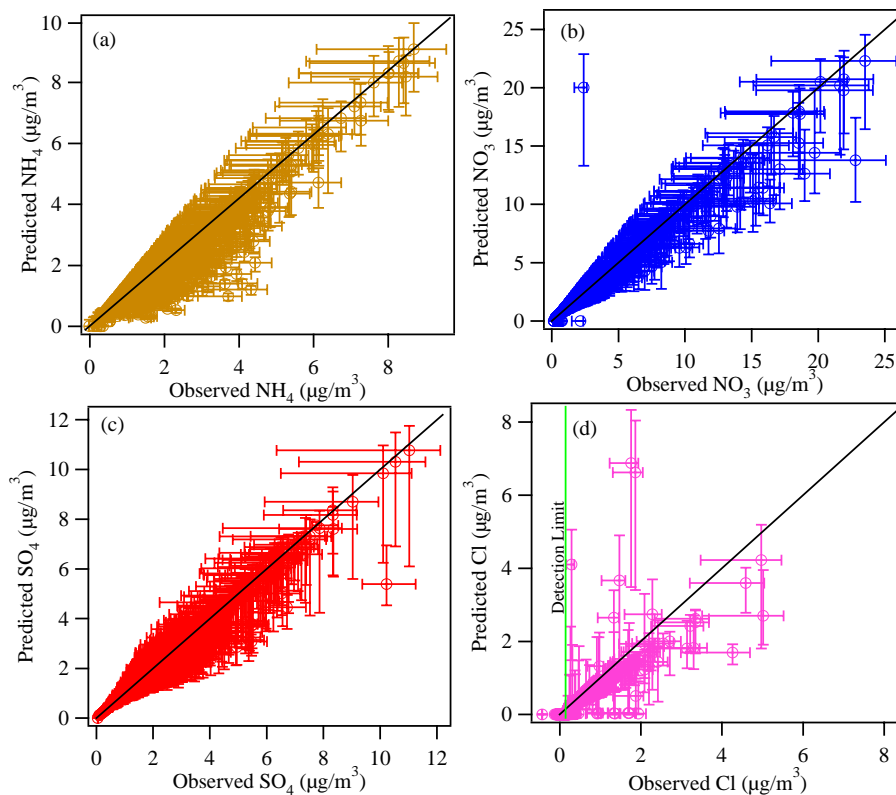


Fig. 3. Correlation plots for (a) ammonium, (b) nitrate, (c) sulphate, and (d) chloride for CENICA. The error bars for the predictions represent the 95% confidence interval; the measurement uncertainty is +10%, –30%. The detection limit for chloride is $0.15 \mu\text{g}/\text{m}^3$.

[Title Page](#)[Abstract](#)[Introduction](#)[Conclusions](#)[References](#)[Tables](#)[Figures](#)[◀](#)[▶](#)[◀](#)[▶](#)[Back](#)[Close](#)[Full Screen / Esc](#)[Printer-friendly Version](#)[Interactive Discussion](#)

Part II: CENICA, Pedregal and Santa Ana

F. M. San Martini et al.

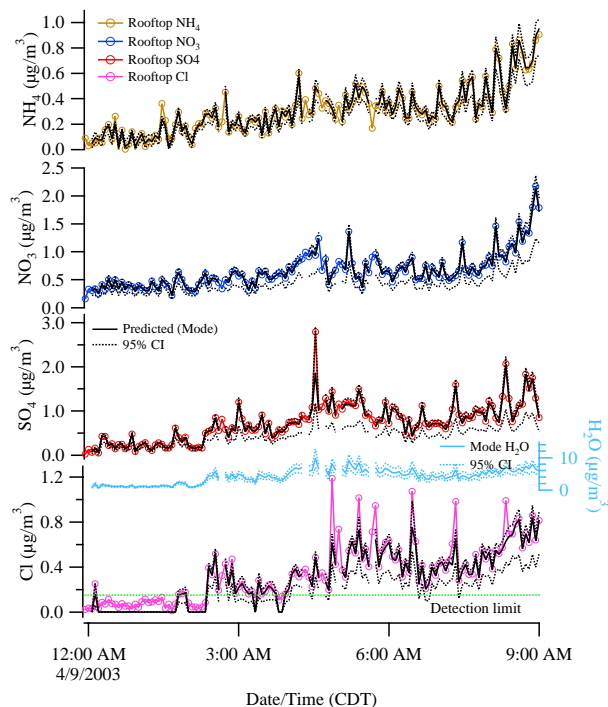


Fig. 4. Predicted (black) and observed (colored) concentrations of ammonium, nitrate, sulfate and chloride at CENICA from midnight to 09:00 a.m. (CDT) on 9 April. Note that the chloride observations are consistently above the $0.15 \mu\text{g}/\text{m}^3$ detection limit after 03:56 a.m. (CDT). The black dashed lines are the predicted 95% confidence intervals; the measurement uncertainty is +10%, –30%. The aerosols are predicted to be aqueous at equilibrium; also shown is the predicted aerosol water content (blue). For 9 April only the AMS observations include both rooftop and AML observations; the observations shown here are from the rooftop only (see text).

Title Page

Abstract

Introduction

Conclusions

References

Tables

Figures

◀

▶

◀

▶

Back

Close

Full Screen / Esc

Printer-friendly Version

Interactive Discussion

Part II: CENICA, Pedregal and Santa Ana

F. M. San Martini et al.

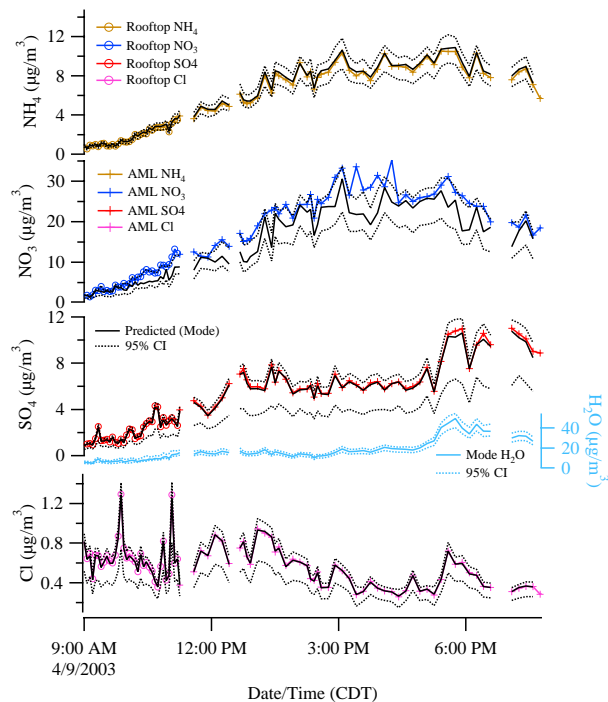


Fig. 5. Predicted (black) and observed (colored) concentrations of ammonium, nitrate, sulfate and chloride at CENICA from 09:00 to 19:36 (CDT) on 9 April. The chloride observations between 09:00 and 19:36 (CDT) are consistently above the $0.15 \mu\text{g}/\text{m}^3$ detection limit (see text). Also shown is the predicted aerosol water content, where the aerosols are assumed to be in the metastable branch between noon and 05:00 p.m. (CDT) (see text); the average ionic strength during this period is $33 \text{ mol}/\text{kg}$. For 9 April only the AMS observations include both rooftop and AML observations; from 09:00 to 11:36 the observations are from the rooftop and from 11:35 to 19:36 from the AML (see text). The black dashed lines are the predicted 95% confidence intervals; the measurement uncertainty is +10%, –30%.

Title Page

Abstract

Introduction

Conclusions

References

Tables

Figures

◀

▶

◀

▶

Back

Close

Full Screen / Esc

Printer-friendly Version

Interactive Discussion

Part II: CENICA, Pedregal and Santa Ana

F. M. San Martini et al.

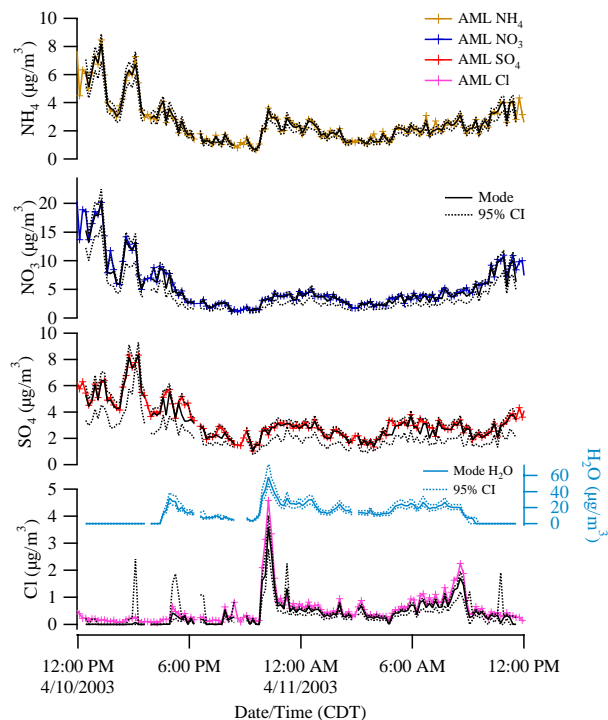


Fig. 6. Predicted (black) and observed (colored) concentrations of ammonium, nitrate, sulfate and chloride at CENICA from noon on 10 April to noon on 11 April. The aerosols are assumed to be stable; note that the aerosols are assumed to effloresce at 16:30 on 10 April and deliquesce at 09:30 on 11 April. The observations shown are from the AMS onboard the AML. The black dashed lines are the predicted 95% confidence intervals; the measurement uncertainty is +10%, –30%.

Title Page

Abstract

Introduction

Conclusions

References

Tables

Figures

◀

▶

◀

▶

Back

Close

Full Screen / Esc

Printer-friendly Version

Interactive Discussion

Part II: CENICA, Pedregal and Santa Ana

F. M. San Martini et al.

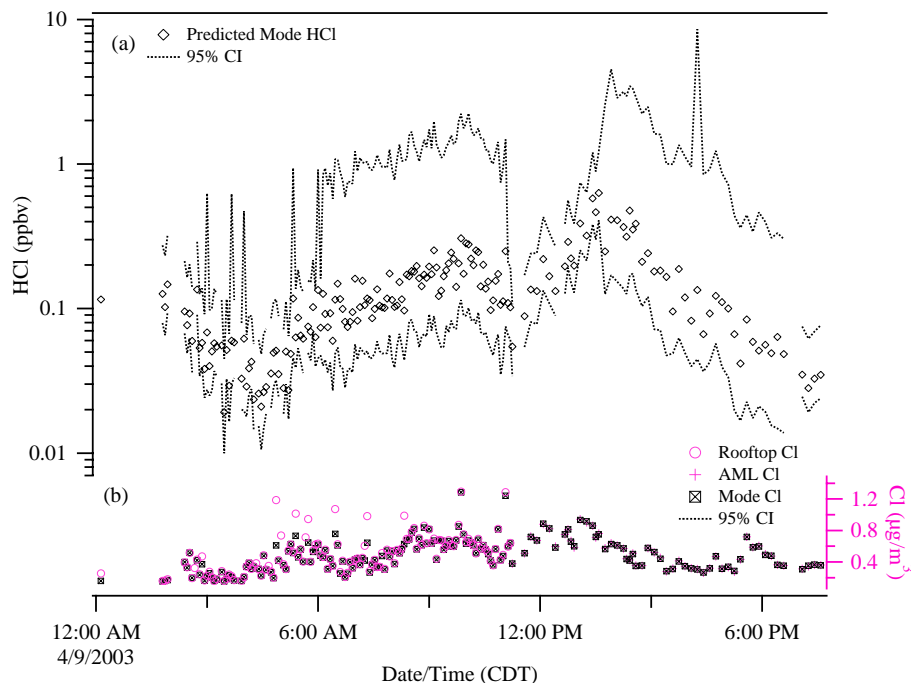


Fig. 7. (a) Posterior distribution of HCl(g) concentrations on 9 April at CENICA for the case where the aerosols are assumed to be metastable between noon and 05:00 p.m. (see text). The points represent the mode of the probability density function and the dashed lines are the 95% confidence intervals. The periods with a broad confidence interval are when no ammonia observations are available and the ammonia concentration is constrained by the prior (see text). (b) Predicted (mode) and observed aerosol chloride concentrations, where only the observations above the detection limit are shown. Between 09:00 and 11:36 the aerosol chloride observations are from the rooftop AMS and from 11:35 to 19:36 from the AMS onboard the AML (see text).

Title Page

Abstract

Introduction

Conclusions

References

Tables

Figures

◀

▶

◀

▶

Back

Close

Full Screen / Esc

Printer-friendly Version

Interactive Discussion

**Part II: CENICA,
Pedregal and Santa
Ana**

F. M. San Martini et al.

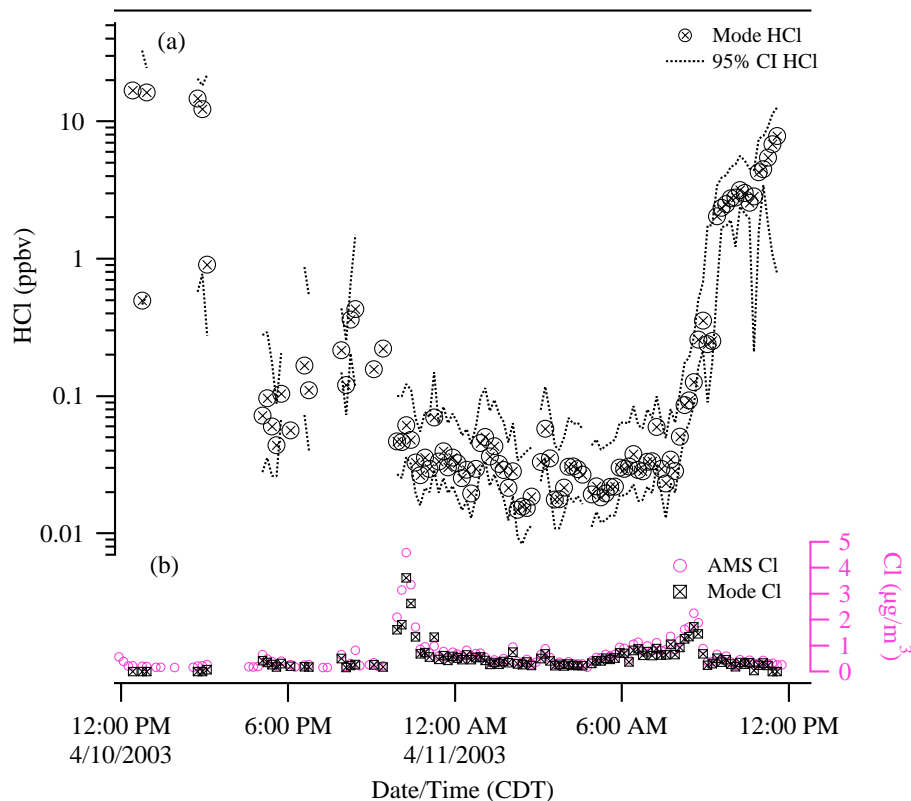


Fig. 8. (a) Posterior distribution of HCl(g) concentrations on 10–11 April at CENICA. The points represent the mode of the probability density function and the dashed lines are the 95% confidence intervals. Only points whose Markov Chain passed the convergence tests described in Part I are shown. (b) Predicted (mode) and observed aerosol chloride concentrations, where only the observations above the detection limit are shown. The aerosols are assumed to be stable; note that the aerosols are assumed to effloresce at 16:30 on 10 April and deliquesce at 09:30 on 11 April.

Title Page

Abstract

Introduction

Conclusions

References

Tables

Figures

◀

▶

◀

▶

Back

Close

Full Screen / Esc

Printer-friendly Version

Interactive Discussion

**Part II: CENICA,
Pedregal and Santa
Ana**

F. M. San Martini et al.

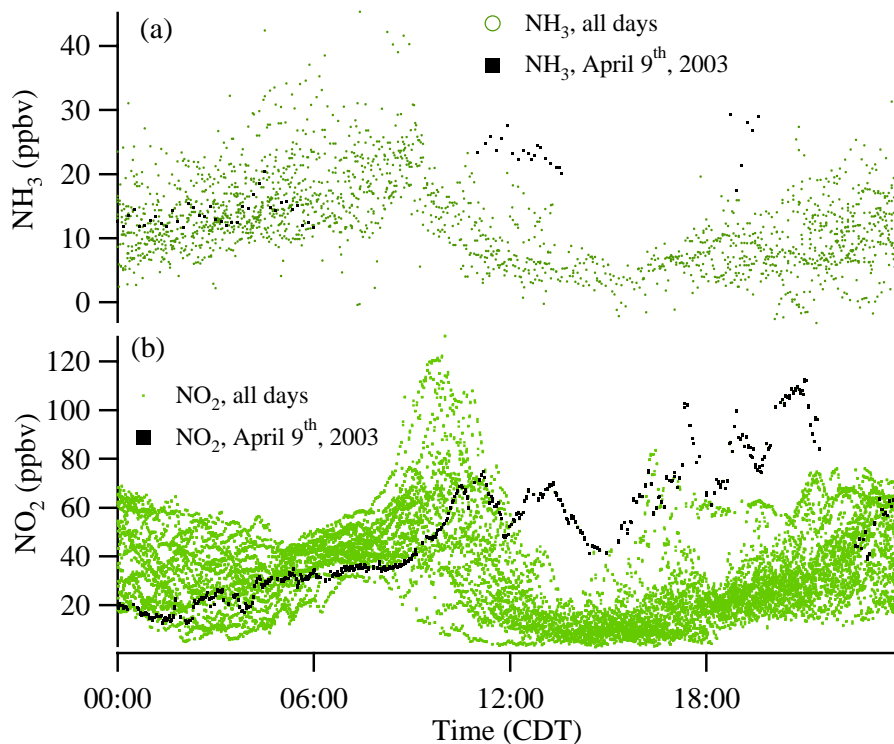


Fig. 9. (a) Observations of ammonia at CENICA from the TILDAS instrument onboard the AML by the time of day for all days (green) and for 9 April 2003 (black). (b) Concentration of NO_2 measured by open-path DOAS by the time of day for all days (light green) and for 9 April 2003 (black).

[Title Page](#)[Abstract](#)[Introduction](#)[Conclusions](#)[References](#)[Tables](#)[Figures](#)[◀](#)[▶](#)[◀](#)[▶](#)[Back](#)[Close](#)[Full Screen / Esc](#)[Printer-friendly Version](#)[Interactive Discussion](#)

**Part II: CENICA,
Pedregal and Santa
Ana**

F. M. San Martini et al.

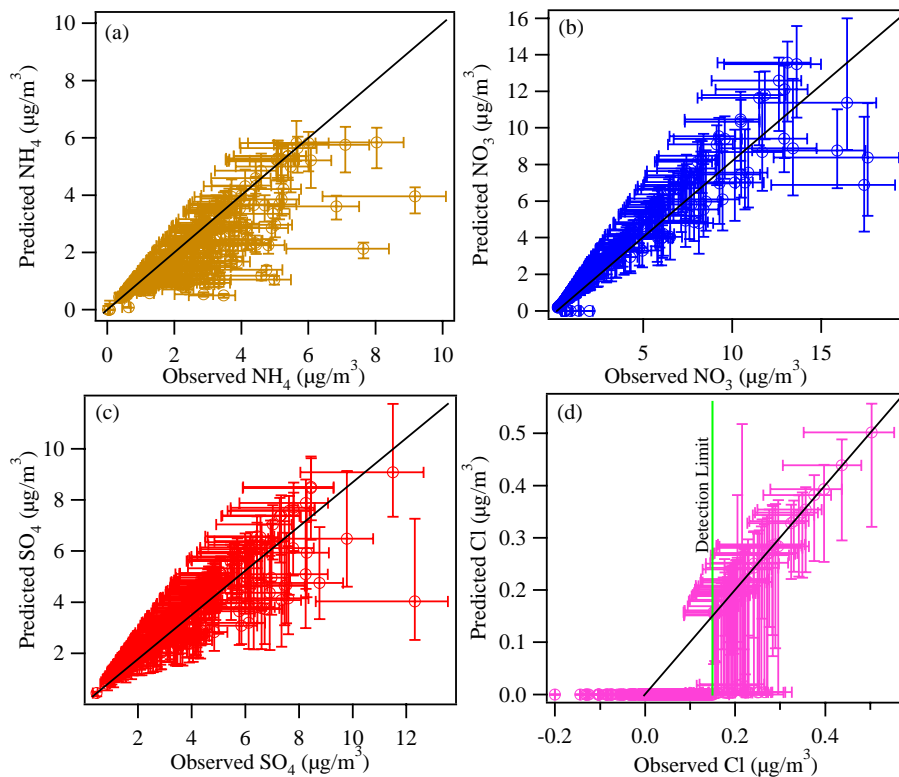


Fig. 10. Correlation plots for (a) ammonium, (b) nitrate, (c) sulphate, and (d) chloride for Pedregal. The error bars for the predictions represent the 95% confidence interval; the measurement uncertainty is +10%, –30%. The detection limit for chloride is $0.15 \mu\text{g}/\text{m}^3$.

[Title Page](#)[Abstract](#)[Introduction](#)[Conclusions](#)[References](#)[Tables](#)[Figures](#)[◀](#)[▶](#)[◀](#)[▶](#)[Back](#)[Close](#)[Full Screen / Esc](#)[Printer-friendly Version](#)[Interactive Discussion](#)

**Part II: CENICA,
Pedregal and Santa
Ana**

F. M. San Martini et al.

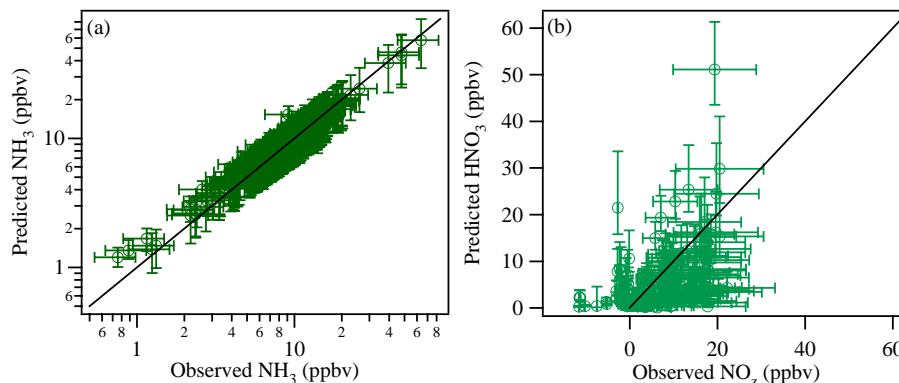


Fig. 11. Correlation plots for **(a)** ammonia and **(b)** NO_2 and nitric acid for Pedregal. The error bars for the predictions represent the 95% confidence interval; the measurement uncertainty for ammonia and NO_2 is $\pm 29\%$ and $\pm 49\%$.

Title Page

Abstract

Introduction

Conclusions

References

Tables

Figures

◀

▶

◀

▶

Back

Close

Full Screen / Esc

Printer-friendly Version

Interactive Discussion

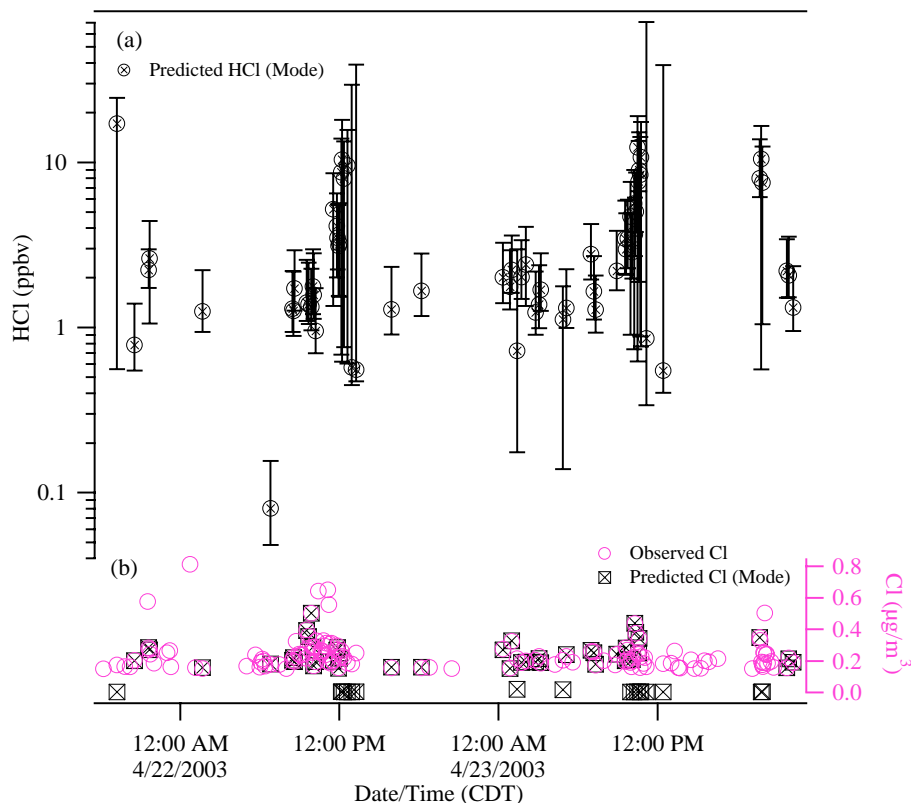


Fig. 12. (a) Posterior distribution of HCl(g) concentrations on 22–23 April at Pedregal. The points represent the mode of the probability density function and the error bars are the 95% confidence intervals. Only points whose Markov Chain passed the convergence tests described in Part I are included. (b) Predicted (mode) and observed aerosol chloride concentrations, where only the observations above the detection limit are shown. The model was not run if the ammonia observations were lacking, even when the observed aerosol chloride concentration was above the detection limit.

[Title Page](#)[Abstract](#)[Introduction](#)[Conclusions](#)[References](#)[Tables](#)[Figures](#)[◀](#)[▶](#)[◀](#)[▶](#)[Back](#)[Close](#)[Full Screen / Esc](#)[Printer-friendly Version](#)[Interactive Discussion](#)

**Part II: CENICA,
Pedregal and Santa
Ana**

F. M. San Martini et al.

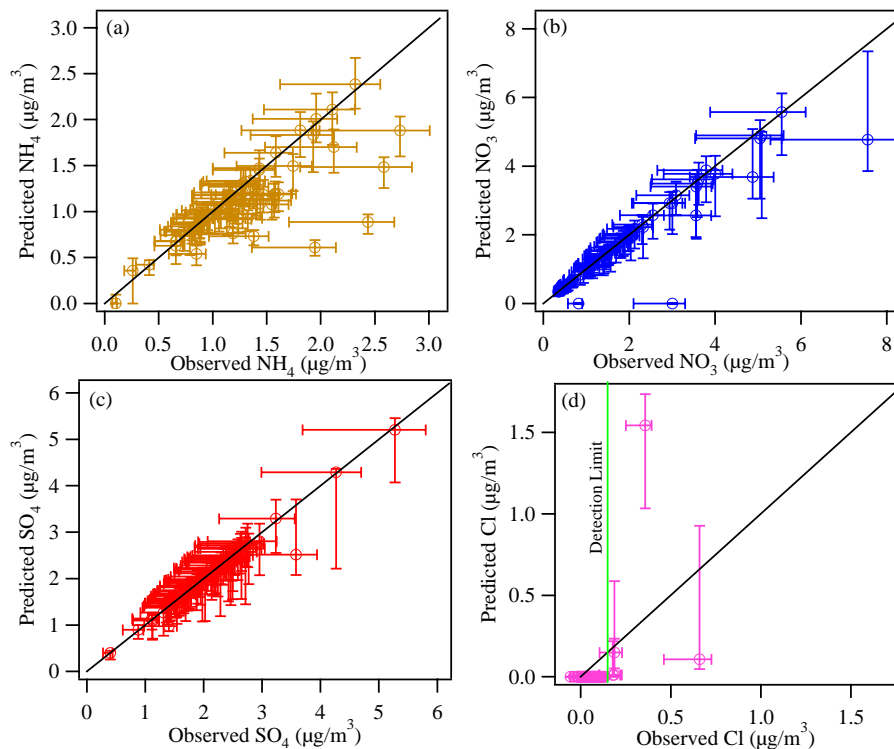


Fig. 13. Correlation plots for **(a)** ammonium, **(b)** nitrate, **(c)** sulphate, and **(d)** chloride for Santa Ana. The error bars for the predictions represent the 95% confidence interval; the measurement uncertainty is +10%, –30%. The detection limit for chloride is $0.15 \mu\text{g}/\text{m}^3$.

[Title Page](#)[Abstract](#)[Introduction](#)[Conclusions](#)[References](#)[Tables](#)[Figures](#)[◀](#)[▶](#)[◀](#)[▶](#)[Back](#)[Close](#)[Full Screen / Esc](#)[Printer-friendly Version](#)[Interactive Discussion](#)

**Part II: CENICA,
Pedregal and Santa
Ana**

F. M. San Martini et al.

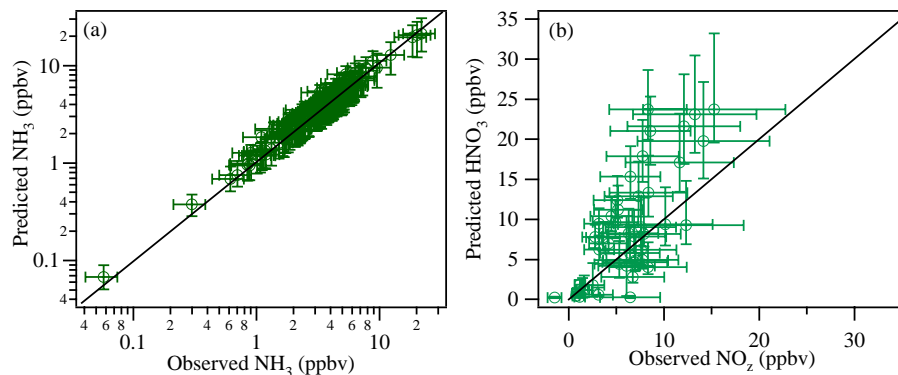


Fig. 14. Correlation plots for **(a)** ammonia and **(b)** NO_2 and nitric acid for Santa Ana. The error bars for the predictions represent the 95% confidence interval; the measurement uncertainty for ammonia and NO_2 is $\pm 29\%$ and $\pm 49\%$.

[Title Page](#)[Abstract](#)[Introduction](#)[Conclusions](#)[References](#)[Tables](#)[Figures](#)[◀](#)[▶](#)[◀](#)[▶](#)[Back](#)[Close](#)[Full Screen / Esc](#)[Printer-friendly Version](#)[Interactive Discussion](#)

Part II: CENICA, Pedregal and Santa Ana

F. M. San Martini et al.

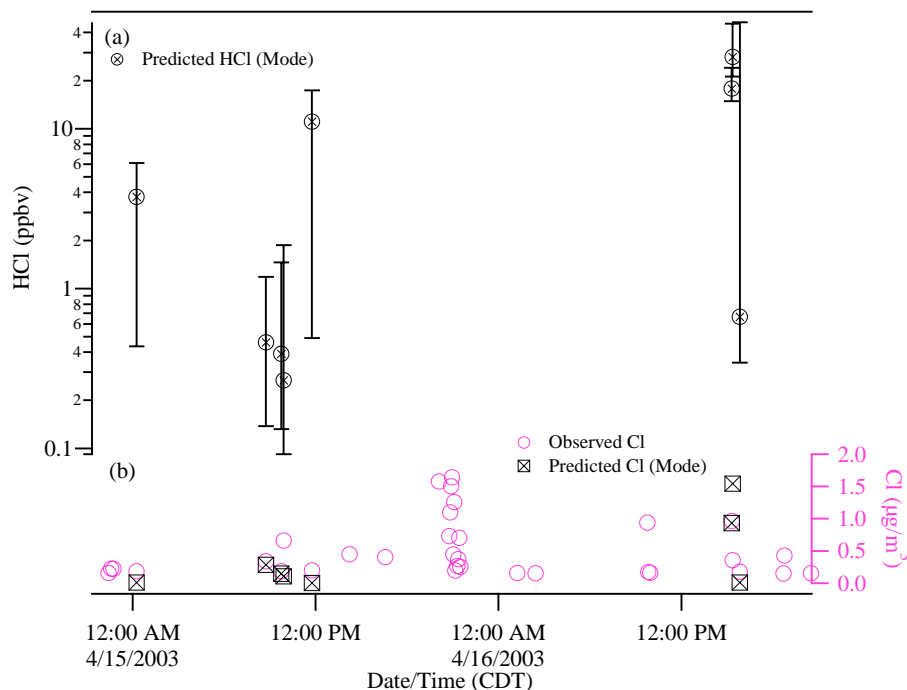


Fig. 15. (a) Posterior distribution of HCl(g) concentrations on 16–16 April at Santa Ana. The points represent the mode of the probability density function and the error bars are the 95% confidence intervals. (b) Predicted (mode) and observed aerosol chloride concentrations, where only the observations above the detection limit are shown. Also excluded are chloride observations between $\sim 20:00$ and $21:00$ on 15 April 2003. During this time very high concentrations of chloride were observed (up to $22 \mu\text{g}/\text{m}^3$). This plume, which was associated with very high organic aerosol concentrations, was traced to trash burning. No ammonia observations are available during this period. The model was not run if the ammonia observations were lacking, even when the observed aerosol chloride concentration was above the detection limit.

Title Page

Abstract

Introduction

Conclusions

References

Tables

Figures

◀

▶

◀

▶

Back

Close

Full Screen / Esc

Printer-friendly Version

Interactive Discussion