

**Non-volatile
residuals of newly
formed particles**

M. Ehn et al.

Non-volatile residuals of newly formed atmospheric particles in the boreal forest

M. Ehn¹, T. Petäjä¹, W. Birmili^{1,2}, H. Junninen¹, P. Aalto¹, and M. Kulmala¹

¹Division of Atmospheric Sciences, Department of Physical Sciences, P.O. Box 64, 00014 University of Helsinki, Finland

²Leibniz-Institute for Tropospheric Research, Permoserstrasse 15, 04318, Leipzig, Germany

Received: 11 September 2006 – Accepted: 13 October 2006 – Published: 17 October 2006

Correspondence to: M. Ehn (mikael.ehn@helsinki.fi)

Title Page

Abstract

Introduction

Conclusions

References

Tables

Figures

◀

▶

◀

▶

Back

Close

Full Screen / Esc

Printer-friendly Version

Interactive Discussion

Abstract

The volatility of sub-micrometer atmospheric aerosol particles was studied in a rural background environment in Finland using a combination of a heating tube and a scanning mobility particle sizer. The analysis focused on nano-particles formed from nucleation bursts which were subsequently observed during their growth in the diameter range between 5 and 60 nm. During the 6 days of new particle formation shown in detail, the concentrations of newly formed particles increased up to $10\,000\text{ cm}^{-3}$. The number of nucleation mode particles measured after volatilization in the heating tube at 280°C was up to 90% of the total number under ambient conditions. Taking into account the absolute accuracy of the size distribution measurements, all ambient particles found in the rural atmosphere could have a non-volatile core after volatilization at 280°C . As the regional new particle formation events developed over time as a result of further vapor condensation, the newly formed particles grew at an average growth rate of $2.4\pm 0.3\text{ nm h}^{-1}$. Importantly, the non-volatile cores of nucleation mode particles were also observed to grow over time, however, at a lower average growth rate of $0.6\pm 0.3\text{ nm h}^{-1}$. One implication of the volatility analysis is that the newly formed particles, which have reached ambient diameters of 15 nm, are unlikely to consist of sulfuric acid, ammonium sulfate, and water alone. A relatively constant ratio between the growth rate of the ambient particles as well as their non-volatile cores indicates that non-volatile matter is formed only gradually in the growing particles. The non-volatile fraction of the particles showed some correlation with the ambient temperature. The composition and formation mechanism of this non-volatile material in nucleation mode particles are, to date, not known.

1 Introduction

Atmospheric aerosols play a key role in the balance of global climate, notably through their direct and indirect effects on incoming solar radiation (Houghton et al., 2001;

Non-volatile residuals of newly formed particles

M. Ehn et al.

Title Page

Abstract

Introduction

Conclusions

References

Tables

Figures

◀

▶

◀

▶

Back

Close

Full Screen / Esc

Printer-friendly Version

Interactive Discussion

Haywood and Boucher, 2000). Aerosol particles are directly injected into the atmosphere through a variety of mechanisms including combustion, sea-salt, and dust emission, which are commonly termed as primary aerosol generation mechanisms. Secondary particle formation, in contrast, includes the formation of new atmospheric nuclei through the nucleation of supersaturated vapors. This process generates high number concentrations of new particles <10 nm, part of which will eventually grow further by condensation and reach particle sizes of about 100 nm where they become effective light scatterers and cloud condensation nuclei.

New particle formation has been experimentally observed in many parts of the world, such as the free troposphere (Clarke, 1992), the marine boundary layers (Covert et al., 1992), the coastal environment (O'Dowd et al., 2002), and the continental boundary layer (Woo et al., 2001; Birmili et al., 2003; Dal Maso et al., 2005). Kulmala et al. (2004) reviewed over 100 ground-based and aircraft observations of new particle formation, and provide the most comprehensive summary of experimental efforts to date.

Despite the intensive experimental efforts reported, the exact nucleation mechanism and contributing compounds have still not been determined. However, activation theory recently developed by Kulmala et al. (2006) can, to a large extent, explain the observed formation rates based on measured sulphuric acid concentrations. Due to the minuscule amounts of mass contained in nanoparticles, it has been extremely difficult to develop methods for their chemical speciation. The most recently developed direct speciation method is aerosol mass spectrometry, which has been used to derive information on the chemical composition of nanoparticles as small as 6 nm in Atlanta (Smith et al., 2005). Instead of direct speciation methods, indirect approaches have alternatively been pursued, notably hygroscopicity and volatility analysis (e.g., Saku-
rai et al., 2005). The basic experimental approach of volatility analysis involves the heating of a continuous stream of sample aerosol, thereby evaporating volatile particle. These devices used are known as “thermodenuders” (Burtcher et al., 2001), and have mainly been used to remove the volatile fractions in particles from engine exhaust. The heated sample is often cooled in a tube consisting of activated charcoal

**Non-volatile
residuals of newly
formed particles**M. Ehn et al.

Title Page

Abstract

Introduction

Conclusions

References

Tables

Figures

◀

▶

◀

▶

Back

Close

Full Screen / Esc

Printer-friendly Version

Interactive Discussion

to remove the desorbed material and prevent it from re-adsorbing on the particles.

[Wehner et al. \(2005\)](#) applied volatility analysis to the number size distribution of sub-micrometer particles at a rural observation site in Melpitz, Eastern Germany. The study demonstrated that atmospheric particles originating from tropospheric nucleation bursts contain non-volatile residuals which are not volatile at 300°C, which is a temperature where usually the overwhelming mass fraction of organic and ionic compounds relevant in tropospheric aerosols has evaporated ([Turpin et al., 2000](#)).

As the new particles grew in total diameter, the size fraction of the non-volatile core increased as well, but at a slower rate. [Wehner et al. \(2005\)](#) concluded that the formation of a non-volatile core, together with the condensation of sulfuric acid, could explain the growth of the new particles up to 10–20 nm. On the composition of the nano-sized non-volatile cores, however, only hypothetical conclusions could be made. One hypothesis included the gradual formation of organic polymers inside the newly formed particles, a mechanism which has been observed in chamber experiments using photo-oxidation products of aromatic compounds ([Kalberer et al., 2004](#)).

In this work we conducted a volatility analysis of newly formed atmospheric particles in the rural background atmosphere of Finland, with the objective of quantifying the volatile and non-volatile size fractions during particle formation and subsequent growth. We discuss the relationship of our observations to former observations, and derive their implications on particle formation and growth in the boreal forest.

2 Measurements

The measurements were performed at SMEAR II ([Vesala et al., 1998](#); [Kulmala et al., 2001](#)) in Hyytiälä, Southern Finland as a part of the BACCI/QUEST-campaign between March and May 2005. The SMEAR station is located in a boreal coniferous forest and the largest city near the station is Tampere, about 60 km from the site. Continuous measurements of the dry aerosol number size distributions have been performed at the station since 1996 ([Mäkelä et al., 1997](#)) with a twin-DMPS system ([Aalto et al.,](#)

Non-volatile residuals of newly formed particles

M. Ehn et al.

Title Page

Abstract

Introduction

Conclusions

References

Tables

Figures

⏪

⏩

◀

▶

Back

Close

Full Screen / Esc

Printer-friendly Version

Interactive Discussion

2001). The system contains two Differential Mobility Particle Sizers (DMPS) measuring in parallel, one optimized for small particles (3–50 nm) and the other for larger sizes (10–1000 nm).

For the volatility analysis a Volatility-Scanning Mobility Particle Sizer (V-SMPS) was built. A SMPS (Wang and Flagan, 1990) is similar to a DMPS except that it does not separately measure the number concentration of a certain amount of size ranges. Instead it does a slow continuous scan of the entire size range we wish to measure. The V-SMPS used in our study contained a 10.9 cm long Hauke-type DMA (Winklmayr et al., 1991) and a TSI model 3025 butanol condensation particle counter (Stolzenburg and McMurry, 1991). The particles were neutralized with a 370 MBq Nickel-63 beta source. To minimize losses of small particles, the DMA was operated with high flowrates (sample flow of 4 liters per minute (LPM), sheath flow of 20 LPM). The system measured the size distribution from 3 to 40 nm every 5 min alternating between ambient air and air that had passed through a heating tube. This was a stainless steel tube of outer diameter 10 mm and length approximately 0.5 m heated to 280°C. All species that evaporate below this temperature should be removed from the aerosol phase in the heating tube. Species that do not evaporate at this temperature are referred to as non-volatile. The alternating SMPS measurements will henceforth be referred to as “ambient” and “heated”.

To ensure that volatile compounds are removed satisfactorily in our system, the performance of the heating tube was compared to a previously characterized thermodenuder design, the “Leipzig” thermodenuder (Wehner et al., 2002). The comparison of aerosols downstream the volatilization devices was conducted for urban background aerosols in Helsinki for the nominal operation conditions of the heating tube ($T=280^{\circ}\text{C}$) and the Leipzig thermodenuder ($T=300^{\circ}\text{C}$). During a 12-h comparison experiment, the size distributions downstream the heating tube and the Leipzig thermodenuder agreed within 10% for all particle sizes between 5 and 900 nm. The absence of an explicit vapor desorption section after the heating tube used in this work did not seem to limit the removal rate of volatilized particulate material. Thus, the performance of both devices

**Non-volatile
residuals of newly
formed particles**M. Ehn et al.

Title Page

Abstract

Introduction

Conclusions

References

Tables

Figures

◀

▶

◀

▶

Back

Close

Full Screen / Esc

Printer-friendly Version

Interactive Discussion

can be considered equivalent for particle concentrations as low as those found in rural and urban background air in Finland. Particle losses inside the heating tube due to Brownian diffusion and thermophoresis was determined in the laboratory by measuring the penetration through the oven, for a tube temperature of 280°C.

5 The V-SMPS was placed inside the same temperature controlled cottage as the twin-DMPS. The aerosol sample was taken from a height of 9 m above the ground through a large tube with a flow rate of 100 LPM, from which smaller sample flows were distributed to the twin-DMPS and V-SMPS. All the times mentioned in this study are in Finnish winter time (UTC+2).

10 3 Determination of nucleation mode diameters

To simplify the analysis of the measured size distributions, we fitted modes to each scan. The parameterization of the size distributions was accomplished by assuming that the total aerosol size distribution consisted of a sum of smaller aerosol distributions. With the problem expressed as a sum of underlying variables, factor analysis
15 tools were used to solve it.

Thus, constrained matrix factorization (Paatero, 1997) was utilized. The underlying factors were thought to be log-normal probability distributions in small size ranges of approximately 1 nm. The distributions had fixed area, width and position, and the task was to solve the matrix equation

$$20 \mathbf{X} = \mathbf{GF} + \mathbf{E} \quad (1)$$

in a least squares sense. \mathbf{X} is a matrix that contains the total aerosol size distributions, with time in rows and aerosol size bins in columns. \mathbf{G} is a matrix containing the number concentrations of particles in small size ranges, with time in rows and the weights of the small distributions in columns. \mathbf{F} is a matrix with log-normal probability distributions
25 in rows and aerosol size bins in columns. Finally, \mathbf{E} is the residual of the fit, so the only unknown in the equation is \mathbf{G} .

Non-volatile residuals of newly formed particles

M. Ehn et al.

Title Page

Abstract

Introduction

Conclusions

References

Tables

Figures

◀

▶

◀

▶

Back

Close

Full Screen / Esc

Printer-friendly Version

Interactive Discussion

The total aerosol size distribution at a certain time t is

$$\mathbf{X}(t, :) = \sum_{i=1}^f \mathbf{G}(t, i) \mathbf{F}(i, :). \quad (2)$$

where $:$ denotes a whole row of \mathbf{X} and \mathbf{F} , respectively. f is the number of probability distributions.

5 The modes in the total aerosol size distribution were found by increasing f from two until the resulting mode was no longer unimodal. At this point a new mode was started. The final positions of the modes were defined as the size where the modes had their maximum values.

10 The main advantages of the described method are its speed and robustness. Robustness means that there is a very small number of parameters that need to be defined before the analysis. The most important ones, the number and the position of the aerosol modes are not predefined or limited. The algorithm runs in MatLab (The Math Works Inc. MA, USA).

4 Results

15 4.1 Losses of sampled particles in the heating tube

20 The results are shown in Fig. 1. The solid line corresponds to the penetration of particles through the tube as a function of particle size. For particles above 15 nm the losses are roughly 20%, for 5 nm particles already about 50% and for 3 nm:s almost 70%. Considering losses in the rest of the tubing and the DMA, this means that only very few particles of sizes below 5 nm will be detected, leading to poor counting statistics. We observe particles at $D_p < 5$ nm, but the large fluctuations between two consecutive measurements suggest 5 nm as a lower detection limit of the V-SMPS. The inverted size distributions for the heated measurements were corrected according to the mea-

Non-volatile residuals of newly formed particles

M. Ehn et al.

Title Page

Abstract

Introduction

Conclusions

References

Tables

Figures

◀

▶

◀

▶

Back

Close

Full Screen / Esc

Printer-friendly Version

Interactive Discussion

sured penetration. This is appropriate because size-dependent particle losses occur in the region where the overwhelming fraction of aerosol particles is singly charged.

4.2 Ambient aerosol formation

New particle formation occurs frequently in Hyytiälä, and continuous measurements have been conducted there since 1996 (Dal Maso et al., 2005). Both the probability of particle formation, and the average growth rates are highest during spring and autumn. We measured V-SMPS and DMPS size distributions concurrently between 18 March and 18 May 2005. As newly formed particles in Hyytiälä often contained non-volatile fractions, we studied six cases (21 March, 26 March, 31 March, 3 April, 16 April and 12 May) more closely. These days were selected for the following reasons:

- 1) New particle formation occurred, with a substantial fraction of total particle number <20 nm.
- 2) The new particles formed a clear mode that could be followed over a long period of time (>10 h).
- 3) Consecutive V-SMPS distributions were mostly coherent during the mentioned time period, i.e. the data did not fluctuate strongly from one measurement to the next.

The second criteria is also an indicator of particle formation and subsequent growth happening fairly homogeneously in larger air masses, implying that particle formation can be considered a regional event.

Figure 2 illustrates the particle size distributions measured with the twin-DMPS and V-SMPS during 26 and 27 March. New particles are detected before noon during the first day with both the twin-DMPS and the ambient SMPS. At this point only a background mode can be seen in the heated spectrum. In the evening around 21:00 the concentration of the mode increases and it starts growing more quickly. A short while later a mode also becomes visible in the heated SMPS spectra. At this point the

Non-volatile residuals of newly formed particles

M. Ehn et al.

Title Page

Abstract

Introduction

Conclusions

References

Tables

Figures

◀

▶

◀

▶

Back

Close

Full Screen / Esc

Printer-friendly Version

Interactive Discussion

particles have grown outside the measuring range of the ambient SMPS, but we can still follow the mode with the DMPS.

4.3 Aerosol number concentration

A comparison of the total particle concentrations measured by the DMPS and the V-SMPS during the previously studied days (26–27 March) is plotted in Fig. 3. During the first night and morning almost all the particles contained non-volatile cores of sizes between 5 and 40 nm. When the particle formation started around noon, only about 10% of the particles had non-volatile cores. We assume that the non-volatile residues, if any exist, would be smaller than 5 nm, i.e. non-detectable with the SMPS. In the evening when the particle concentration and size increased, the concentration of non-volatile fractions also increased, less than an hour later. During the night the concentrations became almost equal. A similar trend can be seen during the other studied days as well, with the fraction of particles containing non-volatile cores increasing throughout the growth of the new particles. The fraction of particles containing non-volatile cores did not usually reach 100%, but stopped at 90%. The ambient SMPS, when compared to the DMPS, seems to slightly underestimate the particle concentration when the mode is below 10 nm, and slightly overestimate it at larger sizes.

4.4 Ambient aerosol growth rates

As described in Sect. 3, modes were fitted to the measured distributions. In this study the placement of a fitted mode was defined as the point where it had its maximum value. The mode of new particles could not be followed reliably with the SMPS once part of it had grown larger than the upper detection limit of 40 nm. Therefore the ambient SMPS modes are only fitted up to 30 nm.

The evolution of the modes of new particles and their non-volatile cores during the six studied days is plotted in Fig. 4. The DMPS and ambient SMPS agree fairly well, within 2 nm, which defines the accuracy of nucleation mode diameters determined by these

Non-volatile residuals of newly formed particles

M. Ehn et al.

Title Page

Abstract

Introduction

Conclusions

References

Tables

Figures

◀

▶

◀

▶

Back

Close

Full Screen / Esc

Printer-friendly Version

Interactive Discussion

two systems. By the time the new particles reached ambient sizes of around 20 nm, the non-volatile fractions had formed a stably developing mode as well. This mode continued to grow as the new particles grew, but at a lower growth rate. Table 1 gives the average growth rates for each day, calculated by fitting a straight line to the size distributions in Fig. 4. As can be seen from the figure, the deviation from the straight line is usually small, especially for the non-volatile fractions. The relative fluctuations in particle GR are smaller than the fluctuations for the non-volatile cores. The particle GR is on average about 4 times the core GR. The table also gives the time difference between the detection of the particles and the non-volatile cores. However, “detection” in this case refers to the time when a mode could be reliably fitted to the corresponding data.

Although the GR are fairly stable, some differences can be detected. This can be illustrated by closer examining the diameter ratio of the non-volatile cores to the particles. In Fig. 5 the diameter ratios, both compared to the DMPS and the ambient SMPS, are plotted together with the ambient temperature. During most of the days when the modes could be followed long enough, there is a steady decrease in the ratio during the night and an increase in the morning around 05:00 a.m. Interestingly, the same behavior is observed for the ambient temperature. Especially during 22 March, 17 April and 13 May the similarities are clearly noticeable. During the other studied days the modes of new particles could not be followed until the time when the temperature started increasing.

5 Discussion

Wehner et al. (2005) have previously performed volatility analysis similar to ours in Melpitz where they made four case studies of days with new particle formation. Their results agree very well with ours. They were able to follow the modes of new particles and the non-volatile cores starting from about 4 nm each day, whereas our experimental methods only allow detection of nucleation mode growth from above 6 nm. In

Non-volatile residuals of newly formed particles

M. Ehn et al.

Title Page

Abstract

Introduction

Conclusions

References

Tables

Figures

◀

▶

◀

▶

Back

Close

Full Screen / Esc

Printer-friendly Version

Interactive Discussion

**Non-volatile
residuals of newly
formed particles**M. Ehn et al.

[Title Page](#)[Abstract](#)[Introduction](#)[Conclusions](#)[References](#)[Tables](#)[Figures](#)[⏪](#)[⏩](#)[◀](#)[▶](#)[Back](#)[Close](#)[Full Screen / Esc](#)[Printer-friendly Version](#)[Interactive Discussion](#)

Melpitz the particles formed around 08:00 a.m. and the non-volatile mode was detected at around 10:00 a.m. In Hyytiälä, we could start following the non-volatile mode in the late afternoon or evening. [Wehner et al. \(2005\)](#) focused only on the day of nucleation, but our analysis extends through the night and morning as long as we can follow the modes. They stated that all new particles in Melpitz contained non-volatile cores, and based on our measurements, this is also the case in Hyytiälä. The average diameter ratio of the non-volatile residuals to the particles in Melpitz was 0.3, with a corresponding value of 0.31 in Hyytiälä. This value, however, showed some variation during the growth, with a slight decrease during the evening and night, and an increase in the early morning. Similar behavior was observed in a concurrent study of the hygroscopicity of new particles in Hyytiälä, implying changes in the condensing vapors during different stages of the growth ([Ehn et al., 2006](#)).

The method used in this study does not give any information on what the non-volatile cores consist of. But since the cores grow during particle growth, the non-volatile residual must form from the condensing vapors. Earlier studies (e.g. [Kulmala et al., 2001](#)) credit a large part of the growth to organic substances. [Kalberer et al. \(2004\)](#) showed that these can, with time, form polymers which have very high volatilization temperatures. This would explain the observed growing non-volatile cores and [Wehner et al. \(2005\)](#) also concluded this to be the most probable explanation in Melpitz. Volatility analysis has previously been performed in Hyytiälä for accumulation mode particles ([O'Dowd et al., 2000](#)). All of these particles contained non-volatile material, which was thought to be soot carbon.

Explaining the observed similarities between diameter ratio and temperature is a difficult task. It is not known if the connection is due to the temperature, or if both the temperature and diameter ratio are functions of a third parameter, such as global radiation. Assuming the temperature to be the influencing parameter, it may either be increasing the non-volatile substance in the particles, decreasing the volatile substance, or both. Semi-volatile vapors that have condensed on the particles during the night would evaporate once the temperature again starts rising. On the other hand,

**Non-volatile
residuals of newly
formed particles**M. Ehn et al.

[Title Page](#)[Abstract](#)[Introduction](#)[Conclusions](#)[References](#)[Tables](#)[Figures](#)[⏪](#)[⏩](#)[◀](#)[▶](#)[Back](#)[Close](#)[Full Screen / Esc](#)[Printer-friendly Version](#)[Interactive Discussion](#)

the process or processes forming the non-volatile substance may be temperature dependent. Looking solely at the small changes in GR for the particles and non-volatile residuals separately, no clear verifications can be found from these limited datasets. Interestingly, the temperature change, and not the absolute temperature, is the correlating parameter, as the absolute temperature is about 15 degrees lower during the particle formation events in March than during the one in May. This supports the theory of a third influencing parameter.

There were small differences between the ambient SMPS and DMPS data, but this was to be expected since the systems have different setups and use different inversion algorithms. The particles that contain non-volatile cores larger than 40 nm will not be detected by the heated SMPS. Also, the ambient SMPS showed lower concentrations than the DMPS for the smaller sizes, therefore the heated SMPS may be underestimating the concentration. This may be an additional reason for the concentration of non-volatile cores always being 10% or more below the total particle concentration.

6 Conclusions

The particle number size distribution from 3–40 nm was measured after heating to 280°C in a boreal forest in Southern Finland. The measurements were conducted between 18 March and 18 May 2005, with a Volatility-SMPS as part of the BACCI/QUEST campaign. The size distribution at room temperature was measured by a twin-DMPS.

The analysis focused on 6 days with new particle formation. During these days, a mode of new particles was detected around noon, and a mode of non-volatile material some hours later. The non-volatile cores grew at a average rate of $0.6 \pm 0.3 \text{ nm h}^{-1}$, i.e. at about a fourth of the growth rate of the particles themselves ($2.4 \pm 0.3 \text{ nm h}^{-1}$). By dividing the diameter of the non-volatile cores with the particle diameter, we obtain a value for the fraction of non-volatile material in the particles. This diameter ratio typically decreased slowly during the evening and night, and reached its minimum at the same time as the ambient temperature, whereafter it started to increase.

A similar volatility study was previously conducted at a rural site in Eastern Germany (Wehner et al., 2005). They reported on 4 days with new particle formation where new particles were detected in the morning around 08:00 a.m. and a growing non-volatile mode observed about 1–2 h later. They calculated an average diameter ratio of 0.3, which can be compared to the corresponding value of 0.31 in Hyytiälä. Both studies concluded that all new particles gradually formed non-volatile cores and that the most probable explanation for this was the formation of polymers from organic vapors condensing on the particles.

Due to the many similarities during new particle formation at the two sites in Germany and Finland, it can be concluded that the compounds and processes involved may also be very similar. Longer lasting measurements of the volatility of nanoparticles, and possibly new measurement methods, will hopefully shed more light on the topics discussed in this paper.

References

- Aalto, P., Hämeri, K., Becker, E., Weber, R., Salm, J., Mäkelä, J. M., Hoell, C., O'Dowd, C. D., Karlsson, H., Hansson, H.-C., Väkevä, M., Koponen, I. K., Buzorius, G., and Kulmala, M.: Physical characterization of aerosol particles during nucleation events, *Tellus*, 53B, 344–358, 2001. [10406](#)
- Birmili, W., Berresheim, H., Plass-Dülmer, C., Elste, T., Gilge, S., Wiedensohler, A., and Uhrner, U.: The Hohenpeissenberg aerosol formation experiment (HAFEX): A long-term study including size-resolved aerosol, H₂SO₄, OH, and monoterpenes measurements, *Atmos. Chem. Phys.*, 3, 361–376, 2003. [10405](#)
- Burtscher, H., Baltensperger, U., Bukowiecki, N., Cohn, P., Hüglin, C., Mohr, M., Matter, U., Nyeki, S., Schmatloch, V., Streit, N., and Weingartner, E.: Separation of volatile and non-volatile aerosol fractions by thermodesorption: instrumental development and applications, *J. Aerosol Sci.*, 32, 427–442, 2001. [10405](#)
- Clarke, A.: Atmospheric nuclei in the remote free troposphere, *J. Atmos. Chem.*, 14, 479–488, 1992. [10405](#)

Non-volatile residuals of newly formed particles

M. Ehn et al.

Title Page

Abstract

Introduction

Conclusions

References

Tables

Figures

◀

▶

◀

▶

Back

Close

Full Screen / Esc

Printer-friendly Version

Interactive Discussion

**Non-volatile
residuals of newly
formed particles**

M. Ehn et al.

Title Page

Abstract

Introduction

Conclusions

References

Tables

Figures

◀

▶

◀

▶

Back

Close

Full Screen / Esc

Printer-friendly Version

Interactive Discussion

- Covert, D. S., Kapustin, V. N., Quinn, P. K., and Bates, T. S.: New particle formation in the marine boundary layer, *J. Geophys. Res.*, 97, 20 581–20 589, 1992. [10405](#)
- Dal Maso, M., Kulmala, M., Riipinen, I., Wagner, R., Hussein, T., Aalto, P. P., and Lehtinen, K. E. J.: Formation and Growth of Fresh Atmospheric Aerosols: Eight Years of Aerosol Size Distribution Data from SMEAR II, Hyytiälä, Finland, *Boreal Environ. Res.*, 10, 323–336, 2005. [10405](#), [10410](#)
- Ehn, M., Petäjä, T., Aufmhoff, H., Aalto, P., Hämeri, K., Arnold, F., Laaksonen, A., and Kulmala, M.: Hygroscopic properties of ultrafine aerosol particles in the boreal forest: diurnal variation, solubility and the influence of sulfuric acid, *Atmos. Chem. Phys. Discuss.*, 6, 9937–9965, 2006. [10413](#)
- Haywood, J. and Boucher, O.: Estimates of the direct and indirect radiative forcing due to tropospheric aerosols: A review, *Rev. Geophys.*, 38, 513–543, 2000. [10405](#)
- Houghton, J. T., Ding, Y., Griggs, D. J., Noguer, M., van der Linden, P. J., Dai, X., Maskell, K., and Johnson, C. A. (Eds.): *Climate Change 2001: The Scientific Basis*, Cambridge University Press, Cambridge, United Kingdom and New York, NY, USA, 881 pp, 2001. [10404](#)
- Kalberer, M., Paulsen, D., Sax, M., Steinbacher, M., Dommen, J., Prevot, A., Fisseha, R., Weingartner, E., Frankevich, V., Zenobi, R., and Baltensperger, U.: Identification of polymers as major components of atmospheric organic aerosols, *Science*, 303, 1659–1662, 2004. [10406](#), [10413](#)
- Kulmala, M., Hämeri, K., Aalto, P. P., Mäkelä, J. M., Pirjola, L., Nilsson, E. D., Buzorius, G., Rannik, Ü., Dal Maso, M., Seidl, W., Hoffmann, T., Janson, R., Hansson, H.-C., Viisanen, Y., Laaksonen, A., and O'Dowd, C. D.: Overview of the international project on biogenic aerosol formation in the boreal forest (BIOFOR), *Tellus B*, 53, 324–343, 2001. [10406](#), [10413](#)
- Kulmala, M., Vehkamäki, H., Petäjä, T., Dal Maso, M., Lauri, A., Kerminen, V.-M., Birmili, W., and McMurry, P.: Formation and growth rates of ultrafine atmospheric particles: a review of observations, *J. Aerosol Sci.*, 35, 143–176, 2004. [10405](#)
- Kulmala, M., Lehtinen, K. E. J., and Laaksonen, A.: Cluster activation theory as an explanation of the linear dependence between formation rate of 3 nm particles and sulphuric acid concentration, *Atmos. Chem. Phys.*, 6, 787–793, 2006. [10405](#)
- Mäkelä, J. M., Aalto, P., Jokinen, V., Pohja, T., Nissinen, A., Palmroth, S., Markkanen, T., Seitsonen, K., Lihavainen, H., and Kulmala, M.: Observations of ultrafine aerosol particle formation and growth in boreal forest, *Geophys. Res. Lett.*, 24, 1219–1222, 1997. [10406](#)
- O'Dowd, C., Hämeri, K., Mäkelä, J., Väkevä, M., Aalto, P., de Leeuw, G., Kunz, G., Becker,

**Non-volatile
residuals of newly
formed particles**

M. Ehn et al.

- E., Hansson, H.-C., Allen, A., Harrison, R., Berresheim, H., Kleefeld, C., Geever, M., Jennings, S., and Kulmala, M.: Coastal new particle formation: Environmental conditions and aerosol physicochemical characteristics during nucleation bursts, *J. Geophys. Res.*, 107, 8107, doi:10.1029/2001JD000206, 2002. [10405](#)
- 5 O'Dowd, C. D., Becker, E., Mäkelä, J. M., and Kulmala, M.: Aerosol physico-chemical characteristics over a boreal forest determined by volatility analysis, *Boreal Environ. Res.*, 5, 337–348, 2000. [10413](#)
- Paatero, P.: Least squares formulation of robust non-negative factor analysis, *Chemometr. Intell. Lab.*, 37, 23–35, 1997. [10408](#)
- 10 Sakurai, H., Fink, M., McMurry, P., Mauldin, L., Moore, K., Smith, J., and Eisele, F.: Hygroscopicity and volatility of 4–10 nm particles during summertime, *J. Geophys. Res.*, 110, D22S04, doi:10.1029/2005JD005918, 2005. [10405](#)
- Smith, J. N., Moore, K. F., Eisele, F. L., Voisin, D., Ghimire, A. K., Sakurai, H., and McMurry, P. H.: Chemical composition of atmospheric nanoparticles during nucleation events in Atlanta, *J. Geophys. Res.*, 110, D22S03, doi:10.1029/2005JD005912, 2005. [10405](#)
- 15 Stolzenburg, M. and McMurry, P.: An ultrafine aerosol condensation nucleus counter, *Aerosol Sci. Technol.*, 14, 48–65, 1991. [10407](#)
- Turpin, B., Saxena, P., and Andrews, E.: Measuring and simulating particulate organics, *Atmos. Environ.*, 34, 2983–3013, 2000. [10406](#)
- 20 Vesala, T., Haataja, J., Aalto, P., Altimir, N., Buzorius, G., Garam, E., Hämeri, K., Ilvesniemi, H., Jokinen, V., Keronen, P., Lahti, T., Markkanen, T., Mäkelä, J., Nikinmaa, E., Palmroth, S., Palva, L., Pohja, T., Pumpanen, J., Rannik, Ü., Siivola, E., Ylitalo, H., Hari, P., and Kulmala, M.: Long-term field measurements of atmosphere-surface interactions in boreal forest combining forest ecology, micrometeorology, aerosol physics and atmospheric chemistry, *Trends in Heat, Mass & Momentum Transfer*, 4, 17–35, 1998. [10406](#)
- 25 Wang, S. and Flagan, R.: Scanning electrical mobility spectrometer, *Aerosol Sci. Technol.*, 13, 230–240, 1990. [10407](#)
- Wehner, B., Philippin, S., and Wiedensohler, A.: Design and calibration of a thermodenuder with and improved heating unit to measure the size-dependent volatile fraction of aerosol particles, *J. Aerosol Sci.*, 33, 1087–1093, 2002. [10407](#)
- 30 Wehner, B., Petäjä, T., Boy, M., Engler, C., Birmili, W., Tuch, T., Wiedensohler, A., and Kulmala, M.: The contribution of sulfuric acid and non-volatile compounds on the growth of freshly formed atmospheric aerosols, *Geophys. Res. Lett.*, 32, L17810,

[Title Page](#)[Abstract](#)[Introduction](#)[Conclusions](#)[References](#)[Tables](#)[Figures](#)[◀](#)[▶](#)[◀](#)[▶](#)[Back](#)[Close](#)[Full Screen / Esc](#)[Printer-friendly Version](#)[Interactive Discussion](#)

doi:10.1029/2005GL023827, 2005. [10406](#), [10412](#), [10413](#), [10415](#)

Winklmayr, W., Reischl, G., Lindner, A., and Berner, A.: A new electromobility spectrometer for the measurement of aerosol size distributions in the size range from 1 to 1000 nm, *J. Aerosol Sci.*, 22, 289–296, 1991. [10407](#)

- 5 Woo, K. S., Chen, D. R., Pui, D. Y. H., and McMurry, P. H.: Measurements of Atlanta Aerosol Size Distributions: Observations of Ultrafine Particles, *Aerosol Sci. Technol.*, 34, 75–87, 2001. [10405](#)

ACPD

6, 10403–10424, 2006

**Non-volatile
residuals of newly
formed particles**

M. Ehn et al.

Title Page

Abstract

Introduction

Conclusions

References

Tables

Figures

⏪

⏩

◀

▶

Back

Close

Full Screen / Esc

Printer-friendly Version

Interactive Discussion

EGU

**Non-volatile
residuals of newly
formed particles**

M. Ehn et al.

Table 1. Time differences between the detection of new particles and their cores, and the corresponding growth rates.

	21 March	26 March	31 March	3 April	16 April	12 May	Mean
Time between detection [h]	4.19	4.26	4.40	1.93	5.29	6.72	4.47±1.57
GR of particles [nm/h]	2.48	2.64	2.59	2.69	2.05	2.11	2.43±0.28
GR of nov-volatile cores [nm/h]	0.86	0.50	0.51	0.60	0.74	0.23	0.57±0.22

[Title Page](#)[Abstract](#)[Introduction](#)[Conclusions](#)[References](#)[Tables](#)[Figures](#)[I◀](#)[▶I](#)[◀](#)[▶](#)[Back](#)[Close](#)[Full Screen / Esc](#)[Printer-friendly Version](#)[Interactive Discussion](#)

**Non-volatile
residuals of newly
formed particles**

M. Ehn et al.

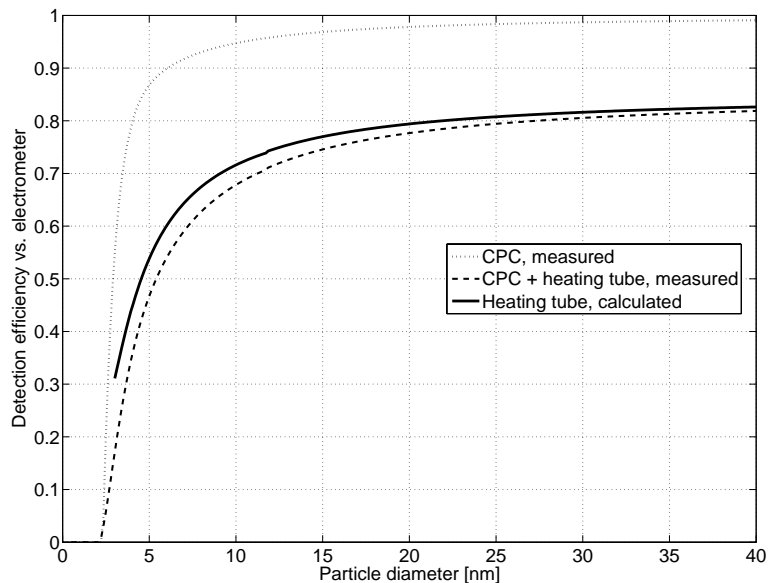


Fig. 1. Transport efficiency of a TSI3025 CPC and the heating tube (at 280°C) used in the V-SMPS setup as a function of particle size. The detection efficiency of the CPC (dotted line) is taken into account in the inversion of the data; the penetration efficiency of the heating tube (solid line) is considered in the final size distribution correction.

[Title Page](#)[Abstract](#)[Introduction](#)[Conclusions](#)[References](#)[Tables](#)[Figures](#)[◀](#)[▶](#)[◀](#)[▶](#)[Back](#)[Close](#)[Full Screen / Esc](#)[Printer-friendly Version](#)[Interactive Discussion](#)

**Non-volatile
residuals of newly
formed particles**

M. Ehn et al.

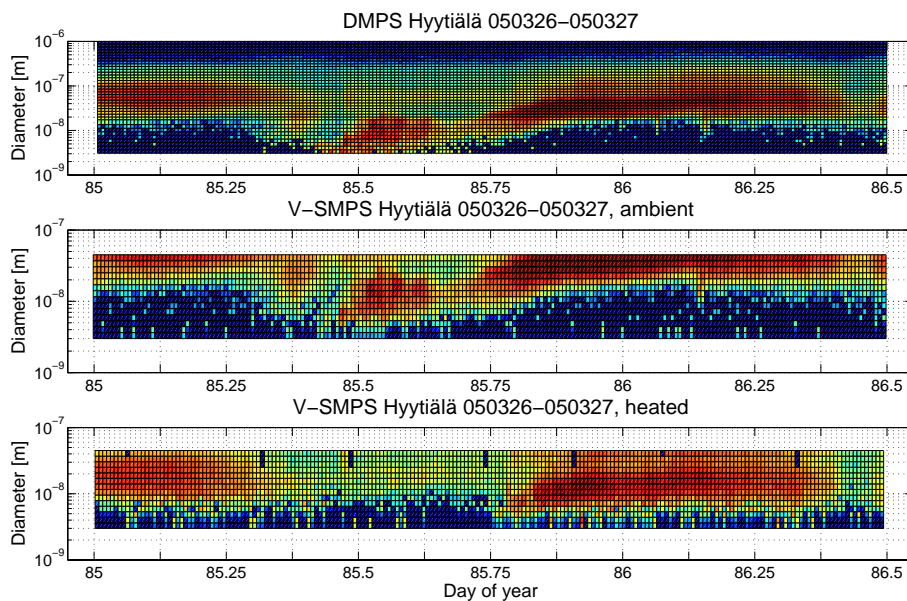


Fig. 2. The particle number size distribution during 26–27 March 2006. The top figure shows the DMPS data, the middle figure the ambient SMPS data, and the bottom figure the heated SMPS data.

[Title Page](#)[Abstract](#)[Introduction](#)[Conclusions](#)[References](#)[Tables](#)[Figures](#)[◀](#)[▶](#)[◀](#)[▶](#)[Back](#)[Close](#)[Full Screen / Esc](#)[Printer-friendly Version](#)[Interactive Discussion](#)

**Non-volatile
residuals of newly
formed particles**

M. Ehn et al.

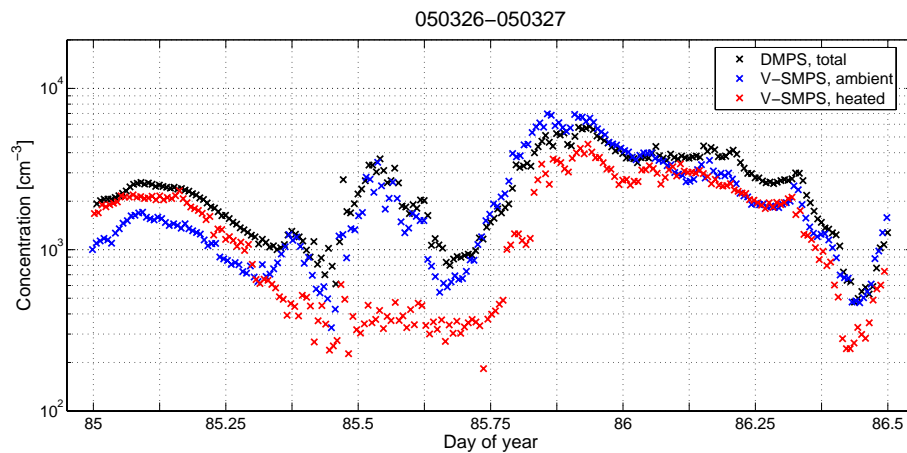


Fig. 3. The particle concentrations measured with the DMPS, and the heated and non-heated SMPS.

[Title Page](#)[Abstract](#)[Introduction](#)[Conclusions](#)[References](#)[Tables](#)[Figures](#)[◀](#)[▶](#)[◀](#)[▶](#)[Back](#)[Close](#)[Full Screen / Esc](#)[Printer-friendly Version](#)[Interactive Discussion](#)

Non-volatile
residuals of newly
formed particles

M. Ehn et al.

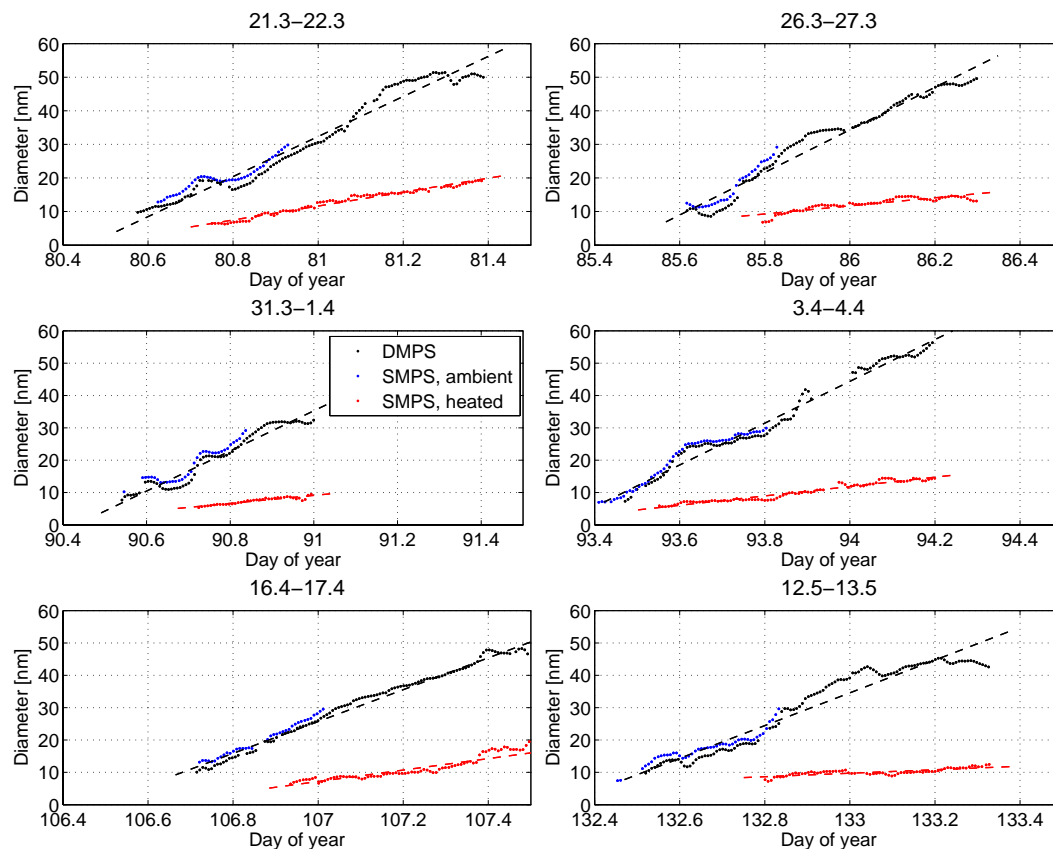


Fig. 4. Positions of the fitted modes as a function of time. During the selected days, new particles appeared typically around mid-day and a non-volatile mode was detected some hours later. The straight line indicates a linear fit to the modes and is used for calculating an average growth rate for each day.

[Title Page](#)[Abstract](#)[Introduction](#)[Conclusions](#)[References](#)[Tables](#)[Figures](#)[◀](#)[▶](#)[◀](#)[▶](#)[Back](#)[Close](#)[Full Screen / Esc](#)[Printer-friendly Version](#)[Interactive Discussion](#)

Non-volatile
residuals of newly
formed particles

M. Ehn et al.

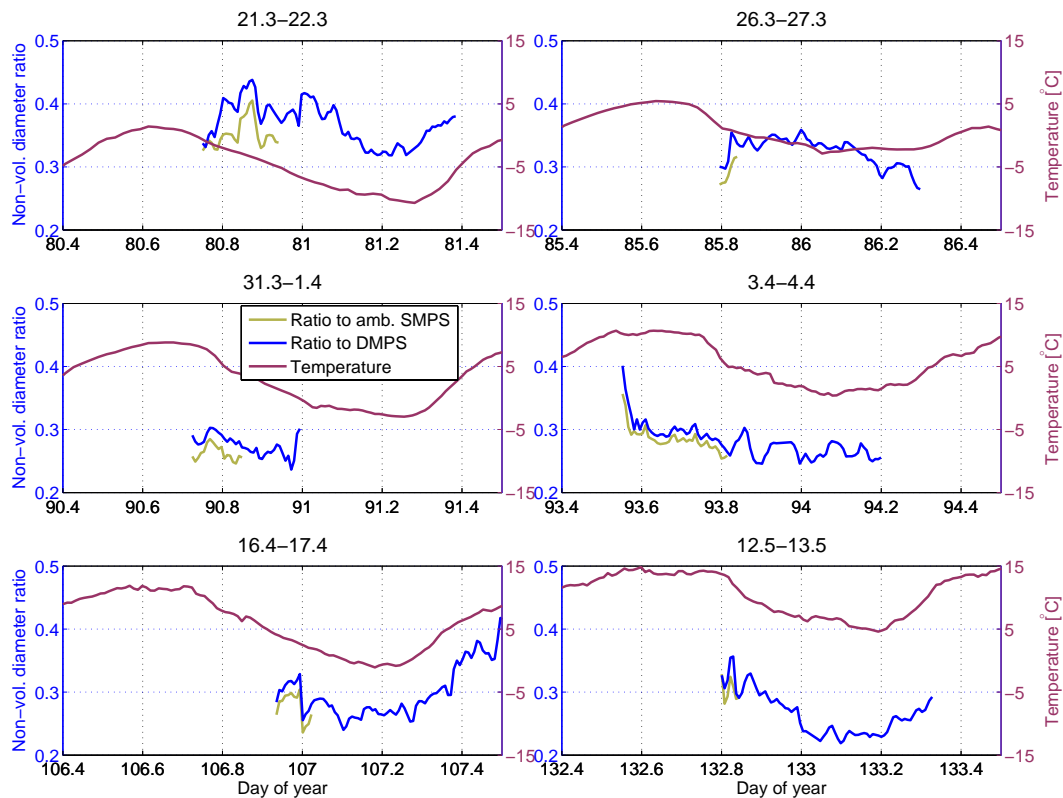


Fig. 5. The diameter ratio of non-volatile substance to the particles as a function of time. As the temperature increases in the morning, the ratio also increases.

[Title Page](#)[Abstract](#)[Introduction](#)[Conclusions](#)[References](#)[Tables](#)[Figures](#)[◀](#)[▶](#)[◀](#)[▶](#)[Back](#)[Close](#)[Full Screen / Esc](#)[Printer-friendly Version](#)[Interactive Discussion](#)