

Fall vortex ozone

S. R. Kawa et al.

Fall vortex ozone as a predictor of springtime total ozone at high northern latitudes

S. R. Kawa¹, P. A. Newman¹, R. S. Stolarski¹, and R. M. Bevilacqua²

¹Atmospheric Chemistry and Dynamics Branch, NASA Goddard Space Flight Center, Greenbelt, Maryland, USA

²Naval Research Laboratory, Washington, DC, USA

Received: 17 November 2004 – Accepted: 1 January 2005 – Published: 12 January 2005

Correspondence to: S. R. Kawa (kawa@maia.gsfc.nasa.gov)

© 2005 Author(s). This work is licensed under a Creative Commons License.

Title Page

Abstract

Introduction

Conclusions

References

Tables

Figures

◀

▶

◀

▶

Back

Close

Full Screen / Esc

Print Version

Interactive Discussion

EGU

Abstract

Understanding the impact of atmospheric dynamical variability on observed changes in stratospheric O_3 is a key to understanding how O_3 will change with future climate dynamics and trace gas abundances. In this paper we examine the linkage between interannual variability in total column O_3 at northern high latitudes in March and lower-to-mid stratospheric vortex O_3 in the prior November. We find that these two quantities are significantly correlated in the years available from TOMS, SBUV, and POAM data (1978–2004). Additionally, we find that the apparent decadal shift in March O_3 variability from the 1980s to years post-1990 is also seen in the November vortex O_3 , so that interannual variability in both quantities is largely driven by the later years. The cause of this correlation is not clear, however. Interannual variations in March total O_3 are known to correspond closely with variations in winter stratospheric wave driving consistent with the effects of varying residual circulation, temperature, and chemical loss. Variation in November vortex O_3 may also depend on dynamical wave activity, however, the dynamics in fall are less variable than in winter and spring. We do not find significant correlations of dynamic indicators for November such as temperature, heat flux, or polar average total O_3 with the November vortex O_3 , nor with dynamical indicators later in winter and spring that might lead to a connection to March. We discuss several potential hypotheses for the observed correlation but do not find strong evidence for any considered mechanism. We present the observations as a phenomenon whose understanding may improve our ability to predict the dependence of O_3 on changing dynamics and chemistry.

1. Introduction

The polar regions are a bellwether for processes that affect stratospheric O_3 globally. Decadal decreases in total O_3 at high southern latitudes in spring (Fig. 1) are clearly attributable to increasing abundances of chlorine- and bromine-containing trace gases of

Title Page

Abstract

Introduction

Conclusions

References

Tables

Figures

◀

▶

◀

▶

Back

Close

Full Screen / Esc

Print Version

Interactive Discussion

Fall vortex ozone

S. R. Kawa et al.

anthropogenic origin, which are now regulated by international agreements (Solomon, 1999 and references within). Owing to more active meteorology in the northern hemisphere (NH), springtime O_3 decreases there are not as monotonic as those in the South (Fig. 1) and are attributed to a combination of chemical and dynamical forcings (Newman et al., 1997; Manney et al., 1997; Coy et al., 1997; Chipperfield and Jones, 1999; Anderson and Knudsen, 2002). The relative contribution, causal mechanisms, and time scales for dynamical O_3 change at high northern latitudes, as well as in the middle latitudes of both hemispheres, is currently the subject of active scientific debate (WMO, 2003).

During winter, O_3 is transported from the low-latitude photochemical production region by the poleward and downward Brewer-Dobson circulation. This circulation is primarily driven by planetary scale waves propagating into the stratosphere from the Northern extratropical troposphere (Rosenlof and Holton, 1993). These planetary waves affect polar O_3 in three ways: 1) directly, as noted above, by the Brewer-Dobson circulation which advects higher concentrations of O_3 into the lower stratosphere, 2) by occasionally mixing material into the polar vortex or by breaking up the polar vortex, and 3) indirectly by warming the polar region and reducing the occurrence of polar stratospheric clouds, which thereby decreases catalytic chemical loss of O_3 . Inter-annual variation of planetary wave activity has a major effect on O_3 levels in spring via both transport and photochemical loss.

Quantifying the contribution of dynamical versus photochemical processes is essential to predicting the future of stratospheric O_3 in the face of changing trace gas abundances (e.g., Cl , Bry , H_2O) and climate. Better understanding of the chemical and dynamical components of contemporary O_3 variability and trends is required. Although current trends in Cl and Br are known to within several percent and future Cl and Br can be forecast with relative confidence (WMO, 2003), no one can predict NH high latitude O_3 in the next few years or decades to better than about 50 DU (Fig. 1). In spite of extensive study we still don't know to what extent the observed changes represent trends related to chemistry, dynamics, or just natural variability.

[Title Page](#)[Abstract](#)[Introduction](#)[Conclusions](#)[References](#)[Tables](#)[Figures](#)[◀](#)[▶](#)[◀](#)[▶](#)[Back](#)[Close](#)[Full Screen / Esc](#)[Print Version](#)[Interactive Discussion](#)

EGU

Fall vortex ozone

S. R. Kawa et al.

The objective of this work is to present data for the interannual variability in O_3 and to show that a correlation exists between NH March total O_3 and NH vortex O_3 in the preceding November. Previous work (Kawa et al., 2002), hereafter referred to as K02, showed typical O_3 values and structure in the fall 1999 polar vortex from Polar Ozone and Aerosol Measurement (POAM) observations. The key features from K02 are that

1. O_3 in the vortex (lower-middle stratosphere) in late November (~ 3 ppmv) is significantly lower in mixing ratio than outside the vortex at similar latitude
2. O_3 in the vortex has a relatively small vertical gradient from 550 to 800 K
3. Polar vortex O_3 is controlled by photochemical loss operating through late summer and fall on a relatively isolated high-latitude air mass.

Here we show that other years are similar to these 1999 results. Some interannual variability does exist however, albeit small with respect to spring variability. We find that this variability in the northern fall vortex is correlated with variability in total O_3 at high latitudes in spring (Fig. 1).

We explore several potential hypotheses for how the fall and spring diagnostics are connected; however we do not find a convincing mechanistic link. Variability in both quantities is presumably related to stratospheric dynamical variability, but we do not find a significant correlation of indicators of dynamical activity between the two periods. This may be because the time series is not sufficiently long, the data are not precise or complete enough, the correlation is in fact random, or we simply have not found the best way to look at the problem. In any case, establishing the existence of and determining the physical relationship for such a correlation should aid us in understanding the impact of observed and future dynamical changes on stratospheric O_3 .

[Title Page](#)[Abstract](#)[Introduction](#)[Conclusions](#)[References](#)[Tables](#)[Figures](#)[I◀](#)[▶I](#)[◀](#)[▶](#)[Back](#)[Close](#)[Full Screen / Esc](#)[Print Version](#)[Interactive Discussion](#)

EGU

2. Fall O₃ data

2.1. POAM

We use the 10 years of available data from POAM II and III for November (Table 1). The POAM II and III instruments are visible/near infrared photometers for making measurements of O₃, aerosol extinction, water vapor, and nitrogen dioxide in the polar stratosphere using the solar occultation technique (Lucke et al., 1999). For science applications, the two instruments are essentially the same. POAM makes 14–15 measurements per day in each hemisphere around a circle of latitude, with a longitudinal spacing of about 25°. The measurement latitude varies slowly over the year. In the northern hemisphere in November the measurement range is 65° N to 69° N. The seasonal latitude coverage of POAM III is nearly identical to that of POAM II. We use version 3 POAM III O₃ retrievals, which have a vertical resolution of about 1.1 km, and random error levels of <10% above 10 km (<5% above 15 km) (Lumpe et al., 2002).

For POAM II, we use version 6 data (the latest version). However, there is a systematic bias between the POAM II version 6 and the POAM III version 3 O₃ retrievals, with POAM II O₃ mixing ratios generally lower than POAM III. The reason for the discrepancy is not completely clear, but POAM II and POAM III validation studies (Rusch et al., 1997 and Randall et al., 2003, respectively) strongly suggest that this is a POAM II problem, perhaps related to altitude registration errors. Derivation of an optimum empirical correction to the POAM II data is currently in progress by the POAM team. For this study we have applied a time invariant, altitude-dependent correction profile to enforce consistency with POAM III based on the POAM II/III time series and the validation studies of the two instruments. The correction scale factor is 1.1 (10% POAM II mixing ratio increase) at and below 500 K, with a linear decrease to unity at and above 1000 K. We estimate that this correction factor is accurate to 3–5%, which is sufficient for our purposes.

Each of the 10 years of available POAM data (Table 1) for November is averaged in potential temperature-equivalent latitude intervals (see Fig. 3 of K02 for an example

Title Page

Abstract

Introduction

Conclusions

References

Tables

Figures

◀

▶

◀

▶

Back

Close

Full Screen / Esc

Print Version

Interactive Discussion

Fall vortex ozone

S. R. Kawa et al.

cross section). The equivalent latitudes are calculated (Nash et al., 1996) for a set of potential temperature levels using daily UKMO potential vorticity analyses and interpolated to the POAM measurement locations for that day. POAM O₃ mixing ratios interpolated to each potential temperature level are summed and averaged in 5°-equivalent latitude bins. In all years there are at least 4 individual POAM samples in each bin from 55° to 85° at 550 to 700 K and the average is about 20 (e.g., Hoppel et al., 2002).

The average O₃ profiles for each November in the equivalent latitude range 75° to 80° (Fig. 2) show the same general features as were found for 1999 in K02: O₃ mixing ratios in the vortex are 3 to 3.5 ppmv with very little vertical gradient from 550 to 800 K or above. The vortex edge (Nash et al., 1996) for each year is between 60° and 70° from 550 to 800 K so the profiles shown in Fig. 2 are inside the vortex. The average O₃ varies about ±10% from the interannual mean. Horizontal O₃ gradients in the vortex, above about 70° equivalent latitude, are also small as seen in K02.

2.2. SBUV

To extend the time series analysis to more years, we analyzed November vortex O₃ data (version 8) from the Solar Backscatter Ultraviolet (SBUV) and SBUV/2 instruments for 1978–2003 (McPeters et al., 1994; Miller et al., 2002). SBUV data are available for 24 years. Horizontal coverage is more extensive than POAM. The maximum latitude coverage (SZA=88°) is determined by the position of the seasonal terminator so the SBUV maximum latitude is about the same as the POAM sample latitude, but because SBUV is a nadir sounder, it samples the full range of sunlit latitudes in each orbit. An example of SBUV coverage is shown in Fig. 3 (compare to Fig. 2 of K02 for POAM).

The vertical resolution of SBUV is coarse (about 5–8 km) relative to POAM (1.1 km), although the O₃ profiles of interest do not have much vertical variability. Also precision and accuracy are not quite as good as POAM. The single profile error for version 6 SBUV between 30 and 1 mbar is estimated at ≤10% (Bhartia et al., 1996), and comparison of NOAA-11 SBUV/2 with correlative data shows comparable differences (Planet et al., 1996). Four different SBUV satellite instruments are used over the 24

[Title Page](#)[Abstract](#)[Introduction](#)[Conclusions](#)[References](#)[Tables](#)[Figures](#)[◀](#)[▶](#)[◀](#)[▶](#)[Back](#)[Close](#)[Full Screen / Esc](#)[Print Version](#)[Interactive Discussion](#)

EGU

Fall vortex ozone

S. R. Kawa et al.

[Title Page](#)[Abstract](#)[Introduction](#)[Conclusions](#)[References](#)[Tables](#)[Figures](#)[◀](#)[▶](#)[◀](#)[▶](#)[Back](#)[Close](#)[Full Screen / Esc](#)[Print Version](#)[Interactive Discussion](#)

EGU

years. The different instruments are inter-calibrated to better than $\pm 2\%$ for total O_3 (Miller et al., 2002); version 8 is a significant improvement over previous (Bhartia et al., 2004). Comparison of SBUV and POAM O_3 data (cf., Fig. 3 and K02 Fig. 2) shows the distribution from SBUV has the same general features as POAM discussed above.

Equivalent latitude/potential temperature averages of SBUV data for the 10 POAM years shows a close correlation to POAM averages, $r=0.89$ at 600 K. Overall, the standard deviation of the November equivalent latitude averages in the vortex is about the same (0.2–0.5 ppmv, e.g., K02 Fig. 3) in years common to POAM and SBUV. We have also done an extensive point-by-point comparison between SBUV and POAM data in the NH in November of each year. Same-day, collocated within 1000 km, layer averages for pressures of 6–10, 10–16, and 16–25 mbar, POAM and SBUV/2 O_3 mixing ratios are correlated at the $r=0.83$ to 0.96 level. We conclude that the SBUV is calibrated well enough with POAM that we proceed to use the longer SBUV time series to better understand the significance of O_3 variability observed during the POAM years.

3. Correlation with March TOMS

Comparing the time series of average November vortex O_3 (Fig. 4) with the high-latitude total O_3 in March (from Fig. 1) we find that the interannual variability appears to be correlated. The fall data are shifted one year forward in Fig. 4 so, for example, the November O_3 plotted at 2003 is actually from November 2002. The November average is taken over equivalent latitudes 70 to 85°, which are inside the vortex and are sampled in every year. The March average is taken over the region poleward of 63°, which generally includes the polar vortex (Newman et al., 1997). Shifting the March averaging boundary within 58 to 73° does not change the correlations, only the amplitude of the fluctuations. The March averages taken at different latitude cutoffs are highly correlated with each other because most of the variability is at the high latitudes.

As discussed above, the data from SBUV and POAM in Fig. 4 are nearly the same for the years of overlap. SBUV data are shown at only one potential temperature

Fall vortex ozone

S. R. Kawa et al.

(600 K) because of their lower vertical resolution and because the NCEP meteorological analysis used for the potential temperature/equivalent latitude averaging extends only to 10 mbar. The 1979 to 2003 SBUV analysis uses the NCEP reanalysis (Kalnay et al., 1996) because UKMO data is not available before 1991. The POAM analysis uses meteorological data from the UKMO assimilation system (Swinbank and O'Neill, 1994), as do our comparisons between POAM and SBUV/2, to examine the full depth of the stratosphere.

Assuming a linear fit to the data in Fig. 4, the correlation coefficient between November vortex and March total O_3 is fairly large (Fig. 5) although there is no apparent reason to assume a linear model for the relationship. For 24 data points (years), a correlation of 0.6 is significant above the 99% confidence level using a Student's t-test.

The correlation coefficients using only the 10 POAM years are also significant at the 98% level ($r > 0.7$). As expected from the lack of vertical gradient in the November vortex O_3 (Fig. 2), Fig. 4 shows the correlations are high from 550 to 700 K. Below 500 and above 800 K the correlation coefficient falls to less than 0.6 as shown in Fig. 6.

The data for 1993 (March 1993, November 1992) form an apparent outlier with low March total O_3 but relatively high November vortex O_3 . This year may exhibit anomalous O_3 behavior at high latitudes as a result of the chemical impact of aerosol from the Mt. Pinatubo eruption in June 1991. Rosenfield (2003) using a 2-D stratospheric chemistry-transport model shows that the maximum effect from Pinatubo on O_3 at high northern latitudes in March does not occur until 1993. She finds that the net chemical effect from the aerosol, which occurs mostly below 50 mbar, produces about a 25 DU decrease in the column relative to previous and following years. The aerosol chemical impact on O_3 diminishes with altitude above the lowermost stratosphere and becomes a net increase near 25 km where the NO_x catalytic cycle dominates. This altitude is close to that where our November O_3 diagnostic is evaluated. An analysis of observational data following Pinatubo (Angell, 1998) shows similar timing of profile and total O_3 changes at polar latitudes in the North. Thus the data for 1992/1993 exhibit a different correlation than other years and one that is consistent with the demonstrated chemical

[Title Page](#)[Abstract](#)[Introduction](#)[Conclusions](#)[References](#)[Tables](#)[Figures](#)[I◀](#)[▶I](#)[◀](#)[▶](#)[Back](#)[Close](#)[Full Screen / Esc](#)[Print Version](#)[Interactive Discussion](#)

EGU

influence of Mt. Pinatubo aerosol. If we omit 1993 from the correlation of Fig. 5, the r value increases to 0.78.

Finally, with reference to the March total column O_3 time series (Figs. 1, 4), we see significantly greater variability in 1990–2004 compared to prior years. All the low O_3 years (<420 DU) occur after 1989 and the variance is much larger. This is consistent with analysis of meteorological variability. Stratospheric warmings have been less frequent and intense through the 1990s (Pawson and Naujokat, 1999; Waugh et al., 1999) leading to a more stable NH vortex, less descent, and lower March O_3 . Whether this change in the O_3 time series is significant in a climatological context and how it may be related to possible decadal changes in tropospheric climate forcing and chemistry is currently under debate (WMO, 2003). In a separate model test we found that the residual influence of halogens, after removing the 21-year trend, was to reduce March O_3 in the lowest years after 1990 by about 10 DU compared to a parallel calculation using constant 1979 Bry and Cly. Understanding the correlation with November vortex O_3 in the 1990s may be a clue to better understanding the changes in O_3 and dynamics depicted in Fig. 1.

4. Discussion

In order to understand the apparent correlation seen in Figs. 4–6, we seek a hypothesis for the mechanistic link between these two diagnostic quantities—November vortex O_3 in the lower to middle stratosphere and March total O_3 at high latitudes. Both are related to the strength and stability of the polar vortex, wave activity, and descent, modulated by chemistry.

March total O_3 is primarily a measure of accumulated winter descent of O_3 -rich air to the lower stratosphere. Most of the O_3 increase occurs as a result of descent near the vortex edge (Schoeberl et al., 1992). This descent, and its associated adiabatic temperature increase, is controlled by planetary wave driving in mid winter (Newman et al., 2001). Large-amplitude wave events are manifested as stratospheric warmings.

Title Page

Abstract

Introduction

Conclusions

References

Tables

Figures

◀

▶

◀

▶

Back

Close

Full Screen / Esc

Print Version

Interactive Discussion

Fall vortex ozone

S. R. Kawa et al.

[Title Page](#)[Abstract](#)[Introduction](#)[Conclusions](#)[References](#)[Tables](#)[Figures](#)[◀](#)[▶](#)[◀](#)[▶](#)[Back](#)[Close](#)[Full Screen / Esc](#)[Print Version](#)[Interactive Discussion](#)

EGU

March total O_3 is well correlated to January/February/March high latitude temperature and tropopause heat flux, which is a fairly direct indicator of wave dynamical activity (Randel et al., 2002). Low March O_3 , cold years are characterized by a stable vortex with relatively smaller accumulated descent at high latitudes. In other years the vortex is no longer evident in late March, having been entirely eroded away by wave events.

Accelerated chemical loss in the lower stratospheric vortex also contributes to a low March average as the area-weighted diagnostic includes changes in the vortex as well as the so-called “croissant” region, the total O_3 maximum surrounding the vortex. We have dissected the March polar total O_3 into equivalent latitude regions based on potential vorticity gradients at 500 K. Interannual variability of O_3 for equivalent latitudes greater than 65° is highly correlated ($r > 0.9$) with the March area average, and the correlation is greater than 0.8 down to equivalent latitudes of 45° N. The average edge of the polar vortex at 500 K in March is generally near equivalent latitude 72° , which is where the correlation coefficient is at its maximum. The high correlation across a wide range of equivalent latitudes, including both vortex and extra-vortex air, demonstrates that interannual variation in the March area diagnostic represents variability in both transport and chemical loss, as the latter is highly confined to vortex equivalent latitudes. Observationally, it is not possible to isolate the lower stratospheric photochemical loss contribution to variation in March average total O_3 from that due to descent and mixing. Model simulations indicate that dynamical variations dominate over chemistry through the 1990s (Chipperfield and Jones, 1999). Alternatively, Andersen and Knudsen (2002) argue that inferred chemical O_3 loss in the vortex accounts for more than half of the observed O_3 change in March 1992–2000 from the 1979–1982 average. The time series residual of Andersen and Knudsen, attributable to dynamic variations, also does show a clear correlation with the March O_3 , i.e., the chemical and dynamical effects are strongly correlated (as expected). In terms of the analysis presented here the key parameter is dynamical variation that controls both the O_3 transport and temperature, which in turn drives chemical loss.

The November vortex O_3 diagnostic samples only the core of the vortex over a lim-

Fall vortex ozone

S. R. Kawa et al.

ited altitude range in the middle to lower stratosphere. Interannual variability here is relatively small, consistent with the invariant seasonal radiative and photochemical processes that govern O_3 in this region (K02 and references within). Relative to mid latitudes, the vortex contains low O_3 mixing ratios that are produced by chemical loss through the fall season (K02). The variability here likely results from varying descent in the vortex and possibly mixing of higher- O_3 air into the vortex, both of which depend on the early-season wave activity. Descent in the vortex is primarily driven by diabatic cooling, but wave driving also plays a role. Most of the analyzed years show evidence at 650 K of waves distorting the vortex and pushing it off the pole in November (e.g., Fig. 3). These common wave events are referred to as Canadian warmings (Labitzke 1977, 1982). The key to uncovering the mechanism that produces the observed fall-spring correlations seems to lie in determining what drives the variability in the fall vortex since the spring total O_3 variability can largely be understood in terms of tropospheric wave forcing driving the stratospheric dynamics.

Other possible indicators of dynamic activity in November do not show as close a correlation as seen in Figs. 4–6. November temperature, either high latitude average or vortex averaged (done like POAM here, not shown) is not well correlated with March O_3 ($r=0.39$). November temperature has little variability (<8 K range versus 22 K in March, 1979–2002 at 650 K and below) and is apparently a less sensitive indicator. November total O_3 high latitude average is also not correlated with March total ozone O_3 ($r=0.29$). Similar to the temperature comparison above, November total O_3 has low variability, 35 DU range versus 120 DU in March. Thus interannual variability in the March minus November O_3 difference is driven almost entirely by variability in March O_3 . This indicates that the observed correlation is not simply a persistence of anomalous high-latitude O_3 from one season to the next. Note that an anomaly of ± 0.25 ppmv over a vertical extent of 550 to 800 K (30 to 8 mbar, Fig. 2) amounts to an anomaly of ± 4.3 DU, far less than the observed changes in total O_3 . We also ran a radiative transfer model test (Rosenfield et al., 1994) that showed the observed O_3 profile perturbation in fall would have a negligible impact on vortex descent calculated

[Title Page](#)[Abstract](#)[Introduction](#)[Conclusions](#)[References](#)[Tables](#)[Figures](#)[◀](#)[▶](#)[◀](#)[▶](#)[Back](#)[Close](#)[Full Screen / Esc](#)[Print Version](#)[Interactive Discussion](#)

EGU

through winter.

November TOMS total O₃ averaged only in the vortex (as defined at 650 K, similar to the method above) is fairly well correlated with March O₃ but not as well as November POAM O₃, consistent with the profile correlation in Fig. 6. These findings based on total O₃ and temperature analyses are consistent whether all available years 1979–2003 are used or just the POAM years.

In summary, this adds up to the fact that no other fall diagnostic based on temperature or total O₃ is as good an indicator of dynamic activity through the winter as lower to middle stratosphere vortex O₃ in November. We examined the hypothesis that this correlation exists because there is a seasonally persistent level of stratospheric wave activity from late fall through the winter into March in the NH, but have not been able to demonstrate this hypothesis. A persistent level of wave activity may reflect the dependence of the efficiency of wave driving on the mean flow of the stratosphere, which varies on annual and quasi-biennial time scales, but we have been unable to substantiate this hypothesis using common dynamical diagnostic quantities and/or model simulation. The 100-mbar heat flux averaged over 40–75° N (Newman et al., 2001) for January, February, or March is not significantly correlated with that quantity in November for either 1979– or 1990–2003. The heat flux in November does not, however, explain a majority of the temperature or ozone variance at this time, consistent with the understanding that radiative and chemical processes primarily control the temperature and O₃ distributions in the fall season. We also examined diagnostics related to radiative cooling in fall ($T_{\text{Nov}}, \Delta T_{\text{Sept–Nov}}$) with November heat flux and O₃, but did not find any significant correlations.

Two available multi-annual model simulations do not shed much light on the observed correlation either. Neither a 35-year, off-line O₃ run using parameterized, gas-phase chemistry and meteorology from a general circulation model (Ma et al., 2004), nor a similar 50-year run with full stratospheric chemistry showed a significant correlation between November vortex O₃ and March column average as observed. This also argues against the persistent wave activity hypothesis and suggests that either interactive

Title Page

Abstract

Introduction

Conclusions

References

Tables

Figures

◀

▶

◀

▶

Back

Close

Full Screen / Esc

Print Version

Interactive Discussion

O₃/dynamics is required or the models lack representation of key processes, e.g., the quasi-biennial oscillation (QBO).

Several previous works also bear on this hypothesis. Fioletov and Shepherd (2003) show that mid latitude (35–60°) total O₃ has seasonally persistent interannual anomalies from November through the NH winter and up to the following October. They attribute this to persistence of variability in the wintertime O₃ buildup (with constant photochemical decay). As discussed above, however, we did not find a significant correlation between November and March total O₃ for latitudes greater than 63°. Salby and Callaghan (2002) relate total O₃ from 10 to 90° to winter polar temperatures and anomalies in the residual circulation. They conclude that anomalous residual circulation, driven primarily by E-P flux from the troposphere and to a lesser degree by the QBO, plus a chemical term mainly related to aerosol abundance, accounts for virtually all of the March O₃ variation. Nonlinear feedbacks of O₃ variation on the residual circulation are found to be a minor secondary contribution. They also find that the November to March O₃ tendency anomaly is determined almost entirely by the March anomaly, i.e., November O₃ variance is small. Gray et al. (2001) suggest that the efficiency of the tropospheric wave driving is influenced by the mean flow state of the stratosphere. They find NH mid winter polar temperatures correlated with upper stratosphere equatorial winds in September and October. This suggests that waves may have a larger impact at higher latitudes during tropical easterlies. That is, the efficiency of the wave event may be improved when we have easterlies in the tropical upper stratosphere. This mechanism may play a role in producing our observed O₃ correlations.

5. Conclusions

We have examined the interannual variability of O₃ in fall and spring at high northern latitudes. The interannual variations of NH O₃ abundances in the lower to mid stratospheric vortex in November from POAM and SBUV data (1993–2003 and 1978–2003, respectively) are apparently correlated with high latitude average total column O₃ in

Title Page

Abstract

Introduction

Conclusions

References

Tables

Figures

◀

▶

◀

▶

Back

Close

Full Screen / Esc

Print Version

Interactive Discussion

Fall vortex ozone

S. R. Kawa et al.

[Title Page](#)[Abstract](#)[Introduction](#)[Conclusions](#)[References](#)[Tables](#)[Figures](#)[I◀](#)[▶I](#)[◀](#)[▶](#)[Back](#)[Close](#)[Full Screen / Esc](#)[Print Version](#)[Interactive Discussion](#)

EGU

the following March ($r=0.7$ or greater). March O_3 is known to be a clear indicator of the level of wintertime stratospheric wave activity. The cause of the correlation with mid-to-lower stratosphere vortex O_3 in November is not clear. The connection does not appear to be the result of a seasonally persistent O_3 anomaly or wave activity through the NH late fall and winter. We do not find a correlation of the November O_3 data with dynamical indicators from standard meteorological analysis data in fall. Whether this is because the data are not precise enough, we have not found the appropriate diagnostic quantity, or the correlation is a result of some unrelated phenomenon is not known. The 24-year time series of March total O_3 data shows a shift in the level of variability between the 1980s and 1990–2004. The later years have more variability and include significantly lower values consistent with the observed interannual variability in the stratospheric meteorology. Total March O_3 in the 1980s has higher amounts, less variability, and the fall-spring correlation is not as strong as in the later years. Understanding these variations, their correlations, and the physical processes behind them is important to our ability to predict O_3 in the future with changing climate and source gases.

Acknowledgements. We would like to acknowledge helpful discussion with D. Waugh and S. Pawson. We thank S. Frith and P. K. Bhartia for help and advice in using SBUV and SBUV/2 data, and J. E. Rosenfield for radiative transfer test calculations. This work has been supported by the NASA Atmospheric Chemistry Modeling and Analysis Program.

References

- Angell, J. K.: Impact of El Chichon and Pinatubo on ozonesonde profiles in north extratropics, *Geophys. Res. Lett.*, 25, 4485–4488, 1998.
- Bhartia, P. K., McPeters, R. D., Mateer, C. L., Flynn, L. E., and Wellemeyer, C.: Algorithm for the estimation of vertical ozone profiles from the backscattered ultraviolet technique, *J. Geophys. Res.*, 101, 18 793–18 806, 1996.
- Bhartia, P. K., Wellemeyer, C. G., Taylor, S. L., Nath, N., and Gopalan, A.: Solar Backscatter

Fall vortex ozone

S. R. Kawa et al.

- Ultraviolet (SBUV) version 8 profile algorithm, Proc. Quad. Ozone Symp., 295–296, Kos, Greece, 1–8 June, 2004.
- Chipperfield, M. P. and Jones, R. L.: Relative influences of atmospheric chemistry and transport on Arctic ozone trends, *Nature*, 400, 551–554, 1999.
- 5 Coy, L., Nash, E. R., and Newman, P. A.: Meteorology of the polar vortex: Spring 1997, *Geophys. Res. Lett.*, 24, 2693–2696, 1997.
- Fioletov, V. E. and Shepherd, T. G.: Seasonal persistence of midlatitude total ozone anomalies, *Geophys. Res. Lett.*, 30(7), doi:10.1029/2002GL016739, 2003.
- Fusco, A. C. and Salby, M. L.: Interannual variations of total ozone and their relationship to variations of planetary wave activity, *J. Climate*, 12, 1619–1629, 1999.
- 10 Gray, L. J., Phipps, S. J., Dunkerton, T. J., Baldwin, M. P., Drysdale, E. F., and Allen, M. R.: A data study of the influence of the equatorial upper stratosphere on northern-hemisphere stratospheric sudden warmings, *Q. J. R. Meteorol. Soc.*, 127, 1985–2003, 2001.
- Hood, L. L., McCormack, J. P., and Labitzke, K.: An investigation of dynamical contributions to midlatitude ozone trends in winter, *J. Geophys. Res.*, 102, 13 079–13 093, 1997.
- 15 Hoppel, K., Bevilacqua, R., Nedoluha, G., et al.: POAM III observations of arctic ozone loss for the 1999/2000 winter, *J. Geophys. Res.*, 107, doi:10.1029/2001JD001112, 2002.
- Kalnay, M. E., Kanamitsu, M., Kistler, R., et al.: The NCEP/NCAR reanalysis project, *Bull. Am. Meteorol. Soc.*, 77, 437–471, 1996.
- 20 Kawa, S. R., Bevilacqua, R. M., Margitan, J. J., Douglass, A. R., Schoeberl, M. R., Hoppel, K. W., and Sen, B.: Interaction between dynamics and chemistry of ozone in the setup phase of the Northern Hemisphere polar vortex, *J. Geophys. Res.*, 107, 8310, doi:10.1029/2001JD001527, 2002.
- Labitzke, K.: Interannual variability of the winter stratosphere in the northern hemisphere, *Mon. Wea. Rev.*, 105, 762–770, 1977.
- 25 Labitzke, K.: On the interannual variability of the middle stratosphere during the northern winter, *J. Meteorol. Soc. Japan*, 60, 124–138, 1982.
- Lucke, R. L., Korwan, D. R., Bevilacqua, R. M., et al.: The Polar Ozone and Aerosol Measurement (POAM) III instrument and early validation results, *J. Geophys. Res.*, 104, 18 785–18 799, 1999.
- 30 Lumpe, J. D., Bevilacqua, R. M., Hoppel, K. W., and Randall, C. E.: POAM III retrieval algorithm and error analysis, *J. Geophys. Res.*, 107(D21), doi:10.1029/2002JD002137, 2002.
- Ma, J., Waugh, D. W., Douglass, A. R., Kawa, S. R., Newman, P. A., Pawson, S., Stolarski, R.

[Title Page](#)[Abstract](#)[Introduction](#)[Conclusions](#)[References](#)[Tables](#)[Figures](#)[◀](#)[▶](#)[◀](#)[▶](#)[Back](#)[Close](#)[Full Screen / Esc](#)[Print Version](#)[Interactive Discussion](#)

EGU

Fall vortex ozone

S. R. Kawa et al.

[Title Page](#)[Abstract](#)[Introduction](#)[Conclusions](#)[References](#)[Tables](#)[Figures](#)[◀](#)[▶](#)[◀](#)[▶](#)[Back](#)[Close](#)[Full Screen / Esc](#)[Print Version](#)[Interactive Discussion](#)

EGU

S., and Lin, S. J.: Interannual variability of stratospheric trace gases: Role of extratropical wave driving, *Q. J. R. Meteorol. Soc.*, 130, 2459–2474, 2004.

Manney, G. L., Froideveaux, L., Santee, M. L., Zurek, R. W., and Waters, J. W.: MLS observations of Arctic ozone loss in 1996–1997, *Geophys. Res. Lett.*, 24, 2697–2700, 1997.

5 Manney, G. L., Sabutis, J. L., and Swinbank, R. L.: A unique stratospheric warming event in November 2000, *Geophys. Res. Lett.*, 28, 2629–2632, 2001.

McPeters, R. D., Miles, T., Flynn, L. E., Wellemeyer, C. G., and Zawodny, J. M.: Comparison of SBUV and SAGE-II ozone profiles – implications for ozone trends, *J. Geophys. Res.*, 99, 20 513–20 524, 1994.

10 Miller, A. J., Nagatani, R. M., Flynn, L. E., et al.: A cohesive total ozone data set from the SBUV (/2) satellite system, *J. Geophys. Res.*, 107(D1), 4701, doi:10.1029/2001JD000853, 2002.

Nash, E. R., Newman, P. A., Rosenfield, J. E., and Schoeberl, M. R.: An objective determination of the polar vortex using Ertel’s potential vorticity, *J. Geophys. Res.*, 10, 9471–9478, 1996.

Newman, P. A., Gleason, J. F., McPeters, R. D., and Stolarski, R. S.: Anomalous low ozone over the Arctic, *Geophys. Res. Lett.*, 24, 2689–2692, 1997.

Newman, P. A., Nash, E. R., and Rosenfield, J. E.: What controls the temperature of the Arctic stratosphere during spring?, *J. Geophys. Res.*, 106, 19 999–20 010, 2001.

Newman, P. A., Harris, N. R. P., Adriani, A., et al.: An overview of the SOLVE-THESEO 2000 campaign, *J. Geophys. Res.*, 107 (D20), art. no. 8259, 2002.

20 Pawson, S. and Naujokat, B.: The cold winters of the middle 1990s in the northern lower stratosphere, *J. Geophys. Res.*, 104, 14 209–14 222, 1999.

Planet, W. G., Miller, A. J., DeLuisi, J. J., Hofmann, D. J., Oltmans, S. J., Wild, J. D., McDermid, I. S., McPeters, R. D., and Connor, B. J.: Comparison of NOAA-11 SBUV/2 ozone vertical profiles with correlative measurements, *Geophys. Res. Lett.*, 23, 293–296, 1996.

25 Randel, W. J., Wu, F., and Stolarski, R. S.: Changes in column ozone correlated with the stratospheric EP flux, *J. Met. Soc. Japan*, 80, 849–862, 2002.

Randall, C. E., Rusch, D. W., Bevilacqua, R. M., et al.: Validation of POAM III ozone: Comparisons with ozonesonde and satellite data, *J. Geophys. Res.*, 108 (D12), 4367, doi:10.1029/2002JD002944, 2003.

30 Rosenfield, J. E., Newman, P. A., and Schoeberl, M. R.: Computations of diabatic descent in the stratospheric polar vortex, *J. Geophys. Res.*, 99, 16 677–16 689, 1994.

Rosenfield, J. E.: Effects of volcanic eruptions on stratospheric ozone recovery, in: *Volcanism and the Earth’s Atmosphere*, AGU Monographs, edited by: Robock, A. and Oppenheimer,

Fall vortex ozoneS. R. Kawa et al.

[Title Page](#)[Abstract](#)[Introduction](#)[Conclusions](#)[References](#)[Tables](#)[Figures](#)[I◀](#)[▶I](#)[◀](#)[▶](#)[Back](#)[Close](#)[Full Screen / Esc](#)[Print Version](#)[Interactive Discussion](#)

EGU

C., AGU, Washington, D.C., 139, 227–236, 2003.

Rosenlof, K. H. and Holton, J. R.: Estimates of the stratospheric residual circulation using the downward control principle, *J. Geophys. Res.*, 98, 10 465–10 479, 1993.

Rusch, D. W., Bevilacqua, R. M., Randall, C. E., et al.: Validation of POAM II ozone measurements with coincident MLS, HALOE, and SAGE II observations, *J. Geophys. Res.*, 102, 23,615–23,627, 1997.

Salby, M. L. and Callaghan, P. F.: Interannual changes of the stratospheric circulation: Relationship to ozone and tropospheric structure, *J. Clim.*, 15, 3673–3685, 2002.

Schoeberl M. R., Lait, L. R., Newman, P. A., and Rosenfield, J. E.: The structure of the polar vortex, *J. Geophys. Res.*, 97, 7859–7882, 1992.

Solomon, S.: Stratospheric ozone depletion: A review of concepts and history, *Rev. Geophys.*, 37, 275–316, 1999.

Swinbank, R. and O'Neill, A.: A stratosphere-troposphere data assimilation system, *Mon. Weather Rev.*, 122, 686–702, 1994.

Waugh, D. W., Randel, W. J., Pawson, S., Newman, P. A., and Nash, E. R.: Persistence of the lower stratospheric polar vortices, *J. Geophys. Res.*, 104, 27 191–27 201, 1999.

World Meteorological Organization (WMO): Scientific Assessment of Ozone Depletion: 2002, *Global Ozone Res. And Monit. Proj.*, Geneva, 2003.

Fall vortex ozone

S. R. Kawa et al.

Table 1. POAM data used in annual averages.

Year	POAM II				POAM III					
	1993	1994	1995	1996	1998	1999	2000	2001	2002	2003
Nov. Dates	3–30	1–30	1–30	1–13	1–30	2–30	2–30	1–30	3–30	1–30
# of data days	15	30	30	12	29	24	25	30	20	30
# of NH Profiles	82	328	341	122	392	175	174	214	144	205

[Title Page](#)[Abstract](#)[Introduction](#)[Conclusions](#)[References](#)[Tables](#)[Figures](#)[I◀](#)[▶I](#)[◀](#)[▶](#)[Back](#)[Close](#)[Full Screen / Esc](#)[Print Version](#)[Interactive Discussion](#)

EGU

Fall vortex ozone

S. R. Kawa et al.

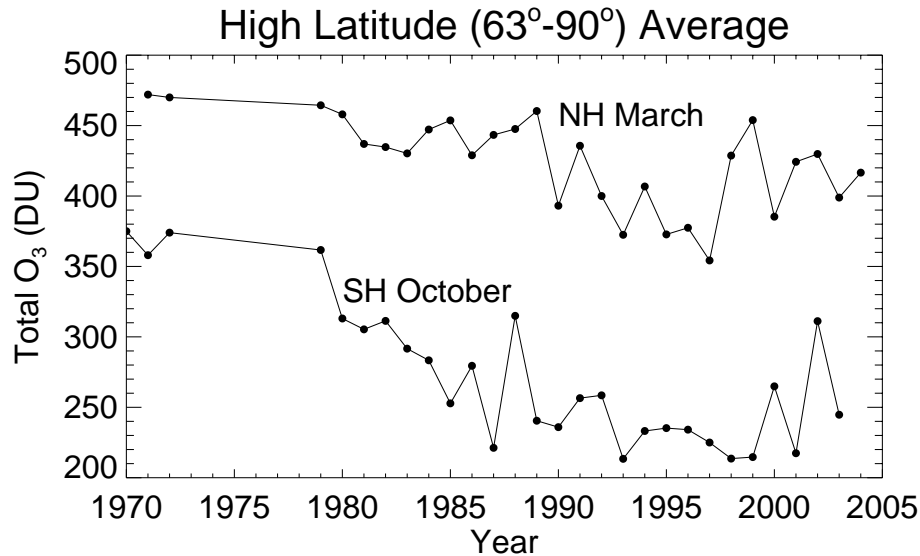


Fig. 1. Time series of average total O₃ from TOMS measurements at high latitudes in March and October. See Newman et al. (1997) for instrument data sources. Data after 1997 are from EP-TOMS.

[Title Page](#)[Abstract](#)[Introduction](#)[Conclusions](#)[References](#)[Tables](#)[Figures](#)[I◀](#)[▶I](#)[◀](#)[▶](#)[Back](#)[Close](#)[Full Screen / Esc](#)[Print Version](#)[Interactive Discussion](#)

EGU

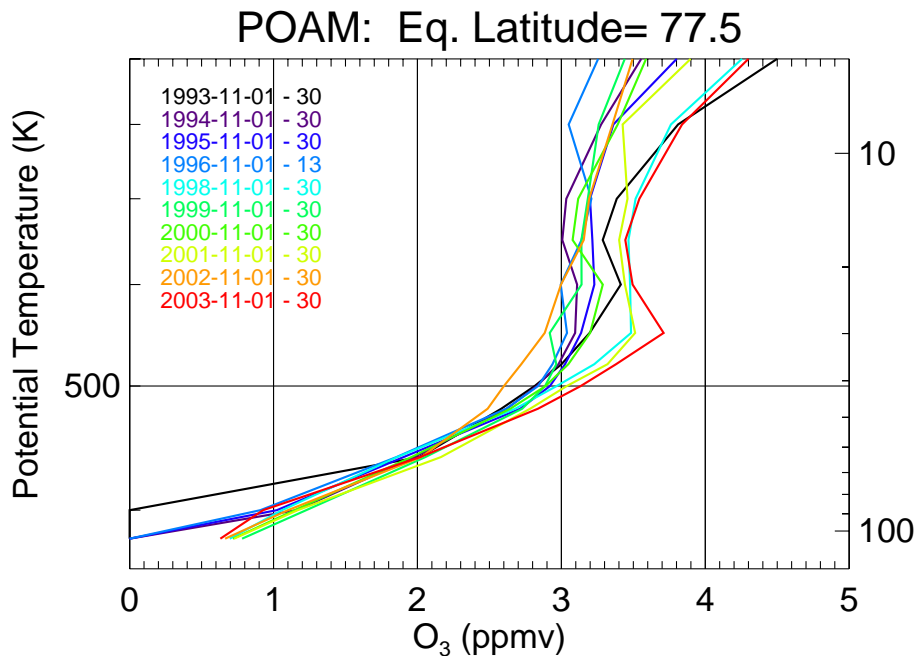


Fig. 2. Interannual variation of average November O₃ profiles from POAM at equivalent latitudes 75–80°, which is inside the northern polar vortex in each year. Right axis corresponds to approximate average pressure for the potential temperature levels.

[Title Page](#)[Abstract](#)[Introduction](#)[Conclusions](#)[References](#)[Tables](#)[Figures](#)[◀](#)[▶](#)[◀](#)[▶](#)[Back](#)[Close](#)[Full Screen / Esc](#)[Print Version](#)[Interactive Discussion](#)

EGU

Fall vortex ozone

S. R. Kawa et al.

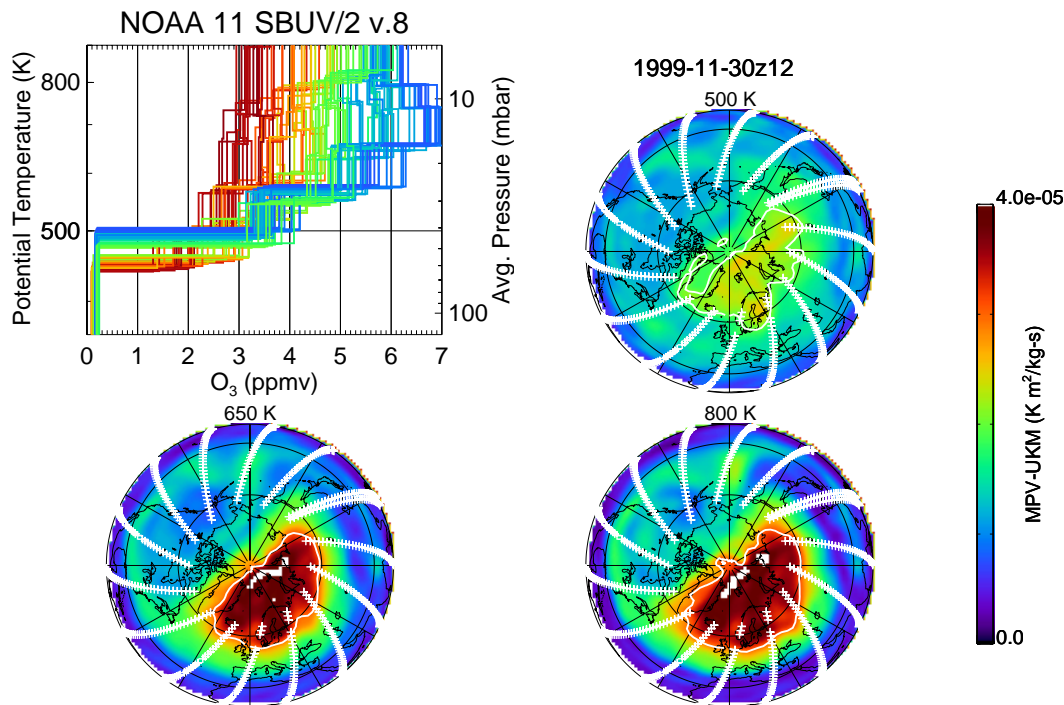


Fig. 3. SBUV NH O_3 profile measurements for one day. O_3 profiles at latitudes greater than 50° are plotted and color coded according to their potential vorticity at 650 K. Vertical resolution of O_3 profiles reflects data reported in SBUV layers mapped to potential temperature using UKMO meteorological analysis.

[Title Page](#)
[Abstract](#)
[Introduction](#)
[Conclusions](#)
[References](#)
[Tables](#)
[Figures](#)
[◀](#)
[▶](#)
[◀](#)
[▶](#)
[Back](#)
[Close](#)
[Full Screen / Esc](#)
[Print Version](#)
[Interactive Discussion](#)

EGU

Fall vortex ozone

S. R. Kawa et al.

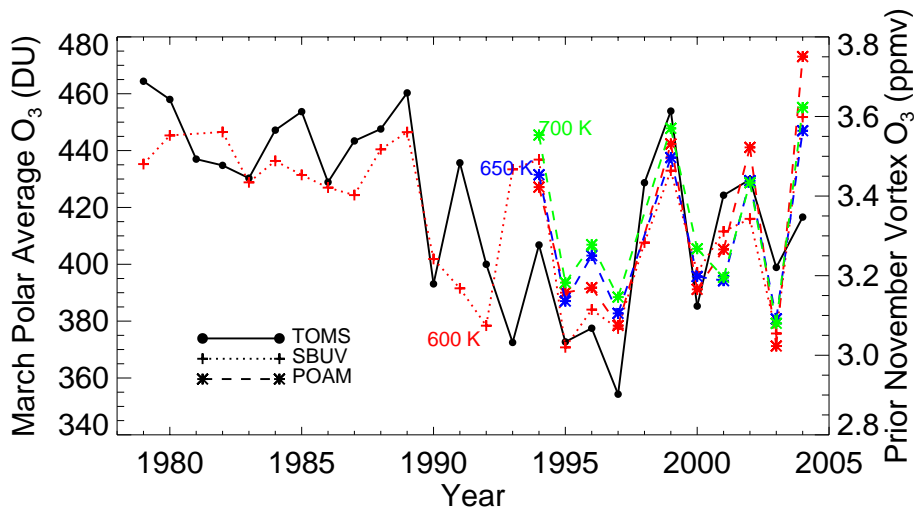


Fig. 4. Time series comparison of TOMS March average total O_3 from Fig. 1 (solid black line, left axis) and vortex-averaged O_3 data in November (colored lines, right axis) for the entire TOMS, SBUV, and POAM data records. POAM data (asterisk symbols, dashed lines) are shown for 3 potential temperatures. Only one potential temperature level is shown for SBUV (plus symbols, dotted line) with its lower resolution in the vertical (cf., Fig. 3).

[Title Page](#)
[Abstract](#)
[Introduction](#)
[Conclusions](#)
[References](#)
[Tables](#)
[Figures](#)
[◀](#)
[▶](#)
[◀](#)
[▶](#)
[Back](#)
[Close](#)
[Full Screen / Esc](#)
[Print Version](#)
[Interactive Discussion](#)

EGU

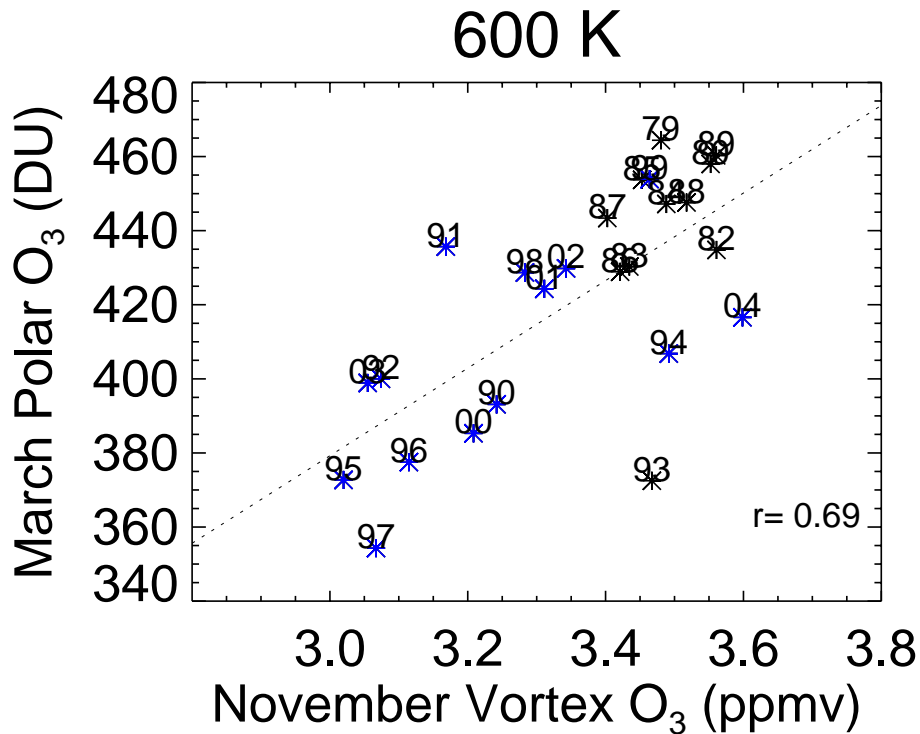


Fig. 5. Correlation plot for March total O₃ and November vortex averaged O₃ at 600 K from SBUV data. Symbols for years after 1990, other than 1993, are colored blue.

[Title Page](#)[Abstract](#)[Introduction](#)[Conclusions](#)[References](#)[Tables](#)[Figures](#)[◀](#)[▶](#)[◀](#)[▶](#)[Back](#)[Close](#)[Full Screen / Esc](#)[Print Version](#)[Interactive Discussion](#)

EGU

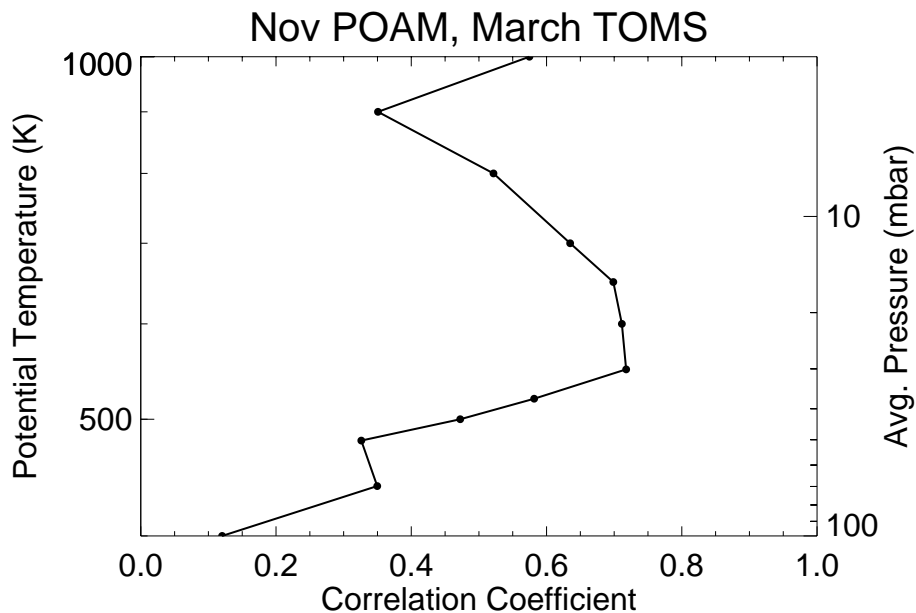


Fig. 6. Profile of the correlation coefficient between POAM November vortex average O_3 and TOMS high latitude average total O_3 in March.

[Title Page](#)[Abstract](#)[Introduction](#)[Conclusions](#)[References](#)[Tables](#)[Figures](#)[◀](#)[▶](#)[◀](#)[▶](#)[Back](#)[Close](#)[Full Screen / Esc](#)[Print Version](#)[Interactive Discussion](#)

EGU