

STARTWAVE
atmospheric water
database

J. Morland et al.

The STARTWAVE atmospheric water database

J. Morland¹, B. Deuber^{1,*}, D. G. Feist¹, L. Martin¹, S. Nyeki^{1,2}, N. Kämpfer¹,
C. Mätzler¹, P. Jeannet², and L. Vuilleumier²

¹Institute of Applied Physics, University of Bern, Sidlerstrasse 5, Bern 3012, Switzerland

²MeteoSwiss, Atmospheric Data Department, Les Invuades, Payerne 1530, Switzerland

* now at: BKW FMB Energie AG, Switzerland

Received: 13 July 2005 – Accepted: 24 August 2005 – Published: 28 October 2005

Correspondence to: J. Morland (june.morland@mw.iap.unibe.ch)

© 2005 Author(s). This work is licensed under a Creative Commons License.

Title Page

Abstract

Introduction

Conclusions

References

Tables

Figures

⏪

⏩

◀

▶

Back

Close

Full Screen / Esc

Print Version

Interactive Discussion

EGU

Abstract

The STARTWAVE (STudies in Atmospheric Radiative Transfer and Water Vapour Effects) project aims to investigate the role which water vapour plays in the climate system, and in particular its interaction with radiation. Within this framework, an ongoing water vapour database project was set up which comprises integrated water vapour (IWV) measurements made over the last ten years by ground-based microwave radiometers, Global Positioning System (GPS) receivers and sun photometers located throughout Switzerland at altitudes between 330 and 3584 m. At Bern (46.95° N, 7.44° E) tropospheric and stratospheric water vapour profiles are obtained on a regular basis and integrated liquid water, which is important for cloud characterisation, is also measured. Additional stratospheric water vapour profiles are obtained by an airborne microwave radiometer which observes large parts of the northern hemisphere during yearly flight campaigns. The database allows us to validate the various water vapour measurement techniques. Comparisons between IWV measured by the Payerne radiosonde with that measured at Bern by two microwave radiometers, GPS and sun photometer showed instrument biases within ± 0.5 mm. The bias in GPS relative to sun photometer over the 2001 to 2004 period was -0.8 mm at Payerne (46.81° N, 6.94° E, 490 m), which lies in the Swiss plains north of the Alps, and $+0.6$ mm at Davos (46.81° N, 9.84° E, 1598 m), which is located within the Alps in the eastern part of Switzerland. At Locarno (46.18° N, 8.78° E, 366 m), which is located on the south side of the Alps, the bias is $+1.9$ mm. The sun photometer at Locarno was found to have a bias of -2.2 mm (13% of the mean annual IWV) relative to the data from the closest radiosonde station at Milano. This result led to a yearly rotation of the sun photometer instruments between low and high altitude stations to improve the calibrations. In order to demonstrate the capabilities of the database for studying water vapour variations, we investigated a front which crossed Switzerland between 18 November 2004 and 19 November 2004. During the frontal passage, the GPS and microwave radiometers at Bern and Payerne showed an increase in IWV of between 7 and 9 mm. The GPS IWV

STARTWAVE atmospheric water database

J. Morland et al.

Title Page

Abstract

Introduction

Conclusions

References

Tables

Figures

◀

▶

◀

▶

Back

Close

Full Screen / Esc

Print Version

Interactive Discussion

STARTWAVE
atmospheric water
databaseJ. Morland et al.

[Title Page](#)[Abstract](#)[Introduction](#)[Conclusions](#)[References](#)[Tables](#)[Figures](#)[◀](#)[▶](#)[◀](#)[▶](#)[Back](#)[Close](#)[Full Screen / Esc](#)[Print Version](#)[Interactive Discussion](#)

EGU

measurements were corrected to a standard height of 500 m, using an empirically derived exponential relationship between IWV and altitude. A qualitative comparison was made between plots of the IWV distribution measured by the GPS and the 6.2 μm water vapour channel on the Meteosat Second Generation (MSG) satellite. Both showed that the moist air moved in from a northerly direction, although the MSG showed an increase in water vapour several hours before increases in IWV were detected by GPS or microwave radiometer. This is probably due to the fact that the satellite instrument is sensitive to an atmospheric layer at around 320 hPa, which makes a contribution of one percent or less to the IWV.

1. Introduction

Water vapour plays a crucial role in the earth's radiation balance, both directly through the absorption of solar radiation and emission of longwave radiation and indirectly through the formation of clouds. No projection of climate change is complete without considering the effects of future changes in water vapour. Because the maximum amount of water vapour which can be present in the atmosphere increases with increasing temperature (the Clausius-Clapeyron relationship), atmospheric water vapour is expected to increase in a warmer climate. This water vapour feedback could approximately double the warming expected due to greenhouse gases alone (IPCC, 2001). It is therefore essential to set up networks to monitor atmospheric water vapour.

Stratospheric water vapour contributes to radiation cooling by infrared emission. It is also the main source of the OH radical which is involved in many reactions, including stratospheric ozone depletion. Observations have shown that stratospheric water vapour has increased in recent years (see for example Oltmans et al., 2000). However, the processes leading to this increase are poorly understood and long-term monitoring is necessary.

Clouds constitute a major radiation feedback but at the same time there are many uncertainties about their role in climate and climate change. They have been identified

STARTWAVE
atmospheric water
databaseJ. Morland et al.

[Title Page](#)[Abstract](#)[Introduction](#)[Conclusions](#)[References](#)[Tables](#)[Figures](#)[⏪](#)[⏩](#)[◀](#)[▶](#)[Back](#)[Close](#)[Full Screen / Esc](#)[Print Version](#)[Interactive Discussion](#)

EGU

by the Intergovernmental Panel on Climate Change (IPCC) as the single largest uncertainty in the estimates of climate sensitivity (IPCC, 2001). A comparison of model predicted integrated liquid water (ILW) with measurements obtained by a network of ground-based microwave radiometers during CLIWA-NET (the Baltic sea experiment cloud liquid water network) showed that atmospheric models generally over-predict the amount of clouds containing liquid water as well as the frequency and duration of precipitation events (van Meijgaard and Crewell, 2005). In an observational study, Senegupta et al. (2003) demonstrated that surface radiation is highly sensitive to variations in liquid water path (equivalent to ILW). In this context, there is a clear need for regular liquid water measurements.

Until the recent development of remote sensing techniques, in-situ measurements by radiosondes were the only means of determining atmospheric water vapour. However, the radiosonde network was designed for meteorological applications rather than climate monitoring and changes in reporting practices or sensor types can cause abrupt changes in the observational record (Ross and Elliott, 2001). Satellites can provide remotely sensed estimates of water vapour for a large part of the globe but as monitoring tools, they suffer from the fact that individual instruments have a relatively short lifetime and that instrument changeovers can cause steps in the data series (e.g. Piccon et al., 2003). Satellite-borne microwave radiometers can generally only measure water vapour over the sea surface as the land background emission is too high and too variable.

In recent years, ground-based remote sensing networks have been developed which are capable of making water vapour observations. AERONET is a worldwide network of 100 sun photometer stations which was set up for aerosol monitoring (Holben et al., 1998) but which can also be used to measure integrated water vapour (IWW) (Halthore et al., 1997; Bokoye et al., 2003). The Global Positioning System (GPS) has recently emerged as a robust, all-weather method for measuring water vapour. Water vapour has been monitored by the Swedish GPS network since 1993 (Gradinarsky et al., 2002), making it one of the longest running GPS networks.

STARTWAVE
atmospheric water
databaseJ. Morland et al.

[Title Page](#)[Abstract](#)[Introduction](#)[Conclusions](#)[References](#)[Tables](#)[Figures](#)[◀](#)[▶](#)[◀](#)[▶](#)[Back](#)[Close](#)[Full Screen / Esc](#)[Print Version](#)[Interactive Discussion](#)

EGU

In order to detect instrument problems or improve measurement methods, it is very useful to be able to compare various water vapour measurement techniques. Many case studies compare IWV observations using different techniques (e.g. Basili et al., 2001; Bokoye et al., 2003) but there are few locations where IWV is routinely monitored using several types of instrument. One such site is the Southern Great Plains site in Oklahoma, run by the U.S. Department of Energy's Atmospheric Radiation Monitoring (ARM) program, where routine measurements are made by microwave radiometer, GPS, radiosonde and lidar (Revercomb et al., 2003).

Remote sensing of water vapour and liquid water has been a research topic at the Institute of Applied Physics (IAP) in Bern for many years. Instruments have been developed for operation from the ground, from aircraft and from space. The earliest water vapour measurements in the middle atmosphere were made from aircraft in the mid 1980s (Peter et al., 1988) and have since then been continued with the AMSOS (Airborne Microwave Stratospheric Observing System) instrument (Peter, 1998; Feist et al., 2003; Vasic, 2005). Global coverage of the middle atmospheric water vapour distribution was obtained in the mid 1990s with the space shuttle instrument MAS (Millimeter wave Atmospheric Sounder) (Croskey et al., 1992; Aellig et al., 1996). Early measurements of integrated water vapour at the IAP were made between 1989 and 1995 by the PAMIR (Passive Microwave and Infrared Radiometer) instrument (Mätzler, 1992). A sun photometer was acquired in 1992 (Ingold et al., 2000) and regular measurements by the passive microwave radiometer TROWARA (TROpospheric WAter vapour Radiometer) began in 1994 (Peter and Kämpfer, 1992). The interest in water vapour continued with the acquisition of a Global Positioning System (GPS) receiver in 1998 (Rohrbach, 1999). In recent years two state of the art microwave radiometers were designed and built at the IAP for atmospheric research. These are the ASMUWARA (All Sky MULti Wavelength RAdiometer) instrument (Martin, 2003; Martin et al., 2003), which scans over the entire hemisphere to make measurements of Integrated Water Vapour (IWV) and Integrated Liquid Water (ILW), and the MIAWARA (Middle Atmosphere WAter vapour RAdiometer) instrument which produces water vapour profiles in

the middle atmosphere between 25 and 80 km (Deuber et al., 2004).

In this paper a database is described which brings together water vapour measurements from a GPS and sun photometer network in Switzerland as well as observations made by the Payerne radiosonde, the water vapour radiometers at Bern and the AMSOS airborne radiometer. The database was developed as part of the STARTWAVE (studies in Atmospheric Radiative Transfer and Water Vapour Effects) contribution to the Swiss National Centre for Competence in Research (NCCR) Climate project and is available online through a user-friendly interface at <http://www.iapmw.unibe.ch/research/projects/STARTWAVE/>. The observational area (excluding the yearly flight campaigns) is illustrated in Fig. 1 and extends from 45.8° to 47.8° north and 6.1° to 10.3° east. A particularly interesting feature of the observations is that they are made over a large altitude range of 330 to 3584 m.

There were a number of motivations behind the creation of the database. These include: (1) the establishment of an archive for the long-term monitoring of water vapour, (2) the provision of a reference for the validation of model and satellite data and (3) the improvement of the quality of water vapour observations through the inter-comparison of different techniques. Sections 2 to 8 give a brief description of each observation technique. A validation of the IWV measurements at five different sites is presented in Sect. 10 and Sect. 11 uses an example of a frontal system to demonstrate how the ground-based measurements can provide information on horizontal as well as vertical water vapour variations.

2. GPS measurements

The Automated GPS Network of Switzerland (AGNES) is a network of thirty fixed GPS receivers which was set up by the Swiss Federal Office of Topography for geodetical applications. There is an additional receiver at the Institute of Applied Physics in Bern, making a total of thirty-one receivers. Their geographic positions are shown in Fig. 1. They are distributed throughout Switzerland at altitudes between 330 m (MuttENZ in

Title Page

Abstract

Introduction

Conclusions

References

Tables

Figures

◀

▶

◀

▶

Back

Close

Full Screen / Esc

Print Version

Interactive Discussion

the Swiss plains, north of the Alps) and 3584 m (Jungfrauoch, a mountain pass in the Alps).

The fixed GPS receivers measure timed microwave signals sent by a constellation of orbiting satellites. These signals are delayed as they pass through the troposphere.

- 5 The Zenith Total Delay (ZTD) due to the atmosphere is calculated on an hourly basis and is given as the apparent extra path through the atmosphere. It is on the order of 2 m at sea level and is composed of the Zenith Hydrostatic Delay (ZHD), due to dry gases, mainly N₂ and O₂, and the Zenith Wet Delay (ZWD), due to water vapour.

$$\text{ZWD} = \text{ZTD} - \text{ZHD}(\rho) \quad (1)$$

- 10 The ZWD can be determined as shown in Eq. (1) by calculating ZHD from surface pressure measurements and subtracting it from the ZTD. The integrated water vapour (IWV) can then be calculated from the ZWD using a relationship which is dependent on surface temperature (Bevis et al., 1992; Emaradson et al., 1998). For the STARTWAVE database calculations, pressure and temperature are obtained from the closest stations in the Swiss meteorological network (ANETZ). Where there is a height difference between the meteorological station and the GPS station, the ANETZ station pressure is interpolated to the GPS station height using the hydrostatic relationship. Further details on the calculation of IWV from the AGNES ZTD data are given in Guerova et al. (2003). It should be noted that the data at Jungfrauoch require a correction of approximately +1.3 mm due to the radome which protects the antenna from ice and snow. The correction was calculated from the relationship between coincident GPS and sun photometer data (Morland et al., 2005¹).
- 15
- 20

¹Morland, J., Liniger, M., Kunz, H., Balin, I., Nyeki, S., Mätzler, C., and Kämpfer, N.: Comparison of GPS and ERA40 IWV in the Alpine region, including validation of GPS observations at Jungfrauoch (3584 m), J. Geophys. Res., in review, 2005.

Title Page

Abstract

Introduction

Conclusions

References

Tables

Figures

◀

▶

◀

▶

Back

Close

Full Screen / Esc

Print Version

Interactive Discussion

3. Sun photometer/precision filter radiometer measurements

Sun photometers have been operated at five locations in Switzerland over the last decade (see Fig. 1). These instruments track the sun in order to measure direct solar irradiance and are equipped with sixteen or eighteen narrow-band channels in the 300 to 1024 nm range, including channels centred on the water vapour absorption bands at 719, 817 and 946 nm. Water vapour transmittance can be calculated from the observations in the water vapour bands after first establishing the aerosol amount from measurements in the other bands. The water vapour transmittance is converted to integrated water vapour (IWV) using a method based on radiative transfer modelling (see Ingold et al., 2000). For the STARTWAVE project, only IWV calculated from the 946 nm line is saved in the database as this line is considerably stronger than the others and has been shown to yield more accurate measurements (Ingold, 2000; Mätzler et al., 2002).

An 18-channel sun photometer has been operated by the Institute of Applied Physics at Bern (575 m) since 1992, while a further four instruments, each equipped with 16 channels, are operated by the Swiss Atmospheric Radiation Monitoring program (CHARM) of MeteoSwiss. Initiated in 1992, the CHARM network includes two stations at low altitudes, Payerne (491 m, north of the Alps) and Locarno-Monti (366 m, south of the Alps), as well as two stations in the Alps, Davos (1590 m) and Jungfrau-joch (3584 m), which monitor UV, visible and infrared radiation (Heimo et al., 2001). These stations are equipped with a more recent version of the Bern sun photometer (SPM2000) called the Precision Filter Radiometer (PFR), which is specifically designed to improve instrument stability. Measurements are made in sunny conditions at time intervals of between 30 s and 2 min (depending on the station), and are averaged over hourly periods before being stored in the database. Continuous sun photometer measurements began at Davos in 1995 (Nyeki et al., 2005²), at Jungfrau-joch in 1999, at

²Nyeki, S., Vuilleumier, L., Morland, J., Bokoye, A., Viatte, P., Mätzler, C., and Kämpfer, N.: A 10-year integrated atmospheric water vapor (IWV) record using precision filter radiometers

Title Page

Abstract

Introduction

Conclusions

References

Tables

Figures

◀

▶

◀

▶

Back

Close

Full Screen / Esc

Print Version

Interactive Discussion

Locarno in 2001 and at Payerne in 2002. Since the CHARM network also measures global solar irradiance and infrared (long-wave) irradiance from the atmosphere, it provides the opportunity for linking IWV observations to changes in atmospheric radiation.

4. PAMIR measurements

5 The Passive and Active Microwave and Infrared Radiometer (PAMIR) was originally designed for measuring the spectral signatures of snow and ice (Mätzler, 1987). It consisted of five microwave radiometers with frequencies at 4.9, 10.4, 21, 35 and 94 GHz as well as a scatterometer (10.4 GHz) and an infrared radiometer. In 1987 it was transferred to the Tannacker agricultural research station at Moosedorf near Bern (570 m
10 above sea level, 7.48° E and 47.00° N) where it was used to characterise land surface emissivity (Mätzler, 2005). From 1979 onwards, atmospheric measurements were made at a number of locations and these observations were used to characterise zenith opacity at PAMIR frequencies (Mätzler, 1992). The PAMIR channels used to calculate integrated water vapour (IWV) and integrated liquid water (ILW), together with those
15 of other microwave radiometers contributing to the database, are shown in Fig. 2 in relation to the water vapour and liquid water absorption coefficients.

The observations made at the Moosedorf research site between 1989 and 1995 are included in the STARTWAVE database. PAMIR was not automated and measurements were made when personnel were available. During this period 127 separate sky observations were made in conditions which ranged from clear sky to completely overcast.
20 They represent the earliest archived integrated water vapour (IWV) measurements at Bern.

(PFR) at two high-alpine sites, Geophys. Res. Lett., submitted, 2005.

**STARTWAVE
atmospheric water
database**

J. Morland et al.

Title Page

Abstract

Introduction

Conclusions

References

Tables

Figures

◀

▶

◀

▶

Back

Close

Full Screen / Esc

Print Version

Interactive Discussion

5. TROWARA measurements

The TROpospheric WAter vapour Radiometer (TROWARA) was designed to measure Integrated Water Vapour (IWV) and Integrated Liquid Water (ILW). It began operating at Bern in 1994 and it observes the atmosphere at a fixed elevation angle of 40° in a south-easterly direction. It has one channel at 21.3 GHz which is sensitive to the water vapour absorption line and another at 31.5 GHz which is more strongly influenced by liquid water (see Fig. 2). Brightness temperature measurements made by both channels yield estimates of IWV and ILW as described in Peter and Kämpfer (1992). This reference also contains a description of the radiometer in its original setup (1994 to April 2002).

In 2002, the radiometer was reviewed in order to improve its stability and reliability for climate observations. A more accurate radiometer model was developed in order to improve the instrument calibration (Morland, 2002) and the radiometer was moved into an indoor laboratory from where it observes the atmosphere through a microwave transparent window. This had the double advantage of increasing temperature stability and also sheltering the instrument from rain so that measurements can be made during or soon after rain events. Another consequence was that the observation frequency increased from three to thirty measurements per minute. Between January 1994 and April 2002, the instrument operated during 49% of the possible observation days. While some of the downtime was due to rain, much of it was due to essential repairs being carried out on the vacuum device which cooled the calibration load. This was replaced by low temperature noise diodes in spring 2004 and since then the instrument has been operational during 96% of the possible observation days.

Over the 1995 to 1998 period, a bias of 2.1 mm in TROWARA relative to radiosonde data was reported (Ingold and Mätzler, 2000). After instrument improvements carried out between 2001 and 2002, a much smaller positive bias of 0.4 mm was observed for the years 2003 and 2004. It is common for instruments used in climate monitoring to display a bias which is due to instrumental rather than climatic factors. Statistical

Title Page

Abstract

Introduction

Conclusions

References

Tables

Figures

◀

▶

◀

▶

Back

Close

Full Screen / Esc

Print Version

Interactive Discussion

STARTWAVE
atmospheric water
databaseJ. Morland et al.

[Title Page](#)[Abstract](#)[Introduction](#)[Conclusions](#)[References](#)[Tables](#)[Figures](#)[◀](#)[▶](#)[◀](#)[▶](#)[Back](#)[Close](#)[Full Screen / Esc](#)[Print Version](#)[Interactive Discussion](#)

EGU

techniques have been developed to detect and correct these biases by comparing an instrument time series to one or more reference time series. Using as reference series IWV from the Payerne radiosonde as well as IWV differences between nearby meteorological stations, TROWARA IWV data were homogenised using the Multiple Linear Regression (MLR) technique described by Vincent (1998). The homogenised TROWARA IWV data are now available in the STARTWAVE database (Morland and Mätzler, 2005³). Figure 3 shows the resultant IWV time series. The annual cycle and trend were modelled according to Vinnikov et al. (2002). The trend estimated from the monthly anomalies is +0.06 mm per year with a standard error (including the effects of autocorrelation) of 0.15 mm. Clearly there are not yet enough observations to distinguish any long terms trends from the natural variability in the data. For this reason, we plan to continue making automatic IWV measurements with the TROWARA instrument for the foreseeable future.

6. ASMUWARA measurements

The All Sky MUlti Wavelength Radiometer (ASMUWARA) (Martin et al., 2005⁴) is designed to give information on the distribution of integrated water vapour (IWV) and integrated liquid water (ILW) across the sky as well as to produce profiles of temperature and IWV. ASMUWARA is based at Bern and has ten channels: nine microwave channels with frequencies between 18 and 150 GHz (see Fig. 2) and one channel in the thermal infrared.

The three channels around the 21 GHz water vapour absorption line and the 31 GHz channel, which is more sensitive to liquid water, are used to determine IWV and ILW using the method described in Westwater (1993). These channels are also used to

³Morland, J. and Mätzler, C.: Ten years of experience with a water vapour radiometer in the context of climate monitoring, IEEE Trans. Geosci. Rem. Sens., to be submitted, 2005.

⁴Martin, L., Schneebeli, M., and Mätzler, C.: ASMUWARA, a new microwave and infrared radiometer system for meteorological monitoring, Meteorologische Zeitschrift, submitted, 2005.

obtain water vapour profiles from the ground up to five km altitude (Martin and Mätzler, 2005⁵).

Temperature profiles in the first 5 km above the instrument (Martin and Mätzler, 2005⁵) are obtained from observations made by the four channels lying on the lower frequency side of the pressure broadened oxygen absorption complex near 60 GHz. The vertical resolution of the profiles decreases with height and is approximately equal to the height above the ground (Lüdi et al., 2003). An infrared radiometer (9.6–11.5 μm) operates alongside the microwave radiometer and is used, along with the temperature profiles, to deduce cloud base height.

In order to build up an image of the sky, ASMUWARA completes a rosetta-like sky scan every twenty minutes. Observations are made at azimuth angles between 0 and 360° in 30° steps. At every azimuth angle, the instrument scans through zenith angles between 0 and 85°. Figure 4 shows examples of the hemispherical IWV and ILW amounts measured on the 2 December 2004 at 08:18 UT. The IWV scan in Fig. 4a shows that values in the north and west are about 2.5 mm higher than those in the south-east. At the same time the ILW values in the north are also high while ILW values close to zero in the south indicate clear sky.

For a short period in September 2003, two radiometers were operated at Bern in addition to ASMUWARA and TROWARA as part of the MATRAG (Measurement of Alpine Tropospheric delay by Radiometers and GPS) project (Haefele et al., 2004). Over a three day period, IWV calculated by all four radiometers agreed to within 1 mm. ASMUWARA tropospheric opacities have also been favourably compared to MIAWARA tropospheric opacities (Deuber et al., 2005).

⁵Martin, L. and Mätzler, C.: Tropospheric water and temperature retrieval for ASMUWARA, Meteorologische Zeitschrift, submitted, 2005.

STARTWAVE
atmospheric water
database

J. Morland et al.

Title Page

Abstract

Introduction

Conclusions

References

Tables

Figures

◀

▶

◀

▶

Back

Close

Full Screen / Esc

Print Version

Interactive Discussion

7. MIAWARA measurements

The Middle Atmosphere WATER vapour RAdiometer (MIAWARA) is a ground-based radiometer which retrieves stratospheric water vapour profiles using spectral observations at 22 GHz. Radiation is measured over a 1 GHz band centred on the 22.235 GHz water vapour line shown in Fig. 2. Because this line is pressure broadened, high resolution spectral measurements yield water vapour profiles. At Bern (47° N), profiles can be retrieved between 25 and 65 km. This approximately corresponds to pressures between 50 and 3 hPa. A detailed description of the instrument and its calibration technique is given in Deuber et al. (2004).

A one year series of MIAWARA measurements made between May 2004 and March 2005 is shown in Fig. 5. The water vapour profiles peak between 30 and 50 km where the oxidation of methane is most efficient. Because photo dissociation by Lyman-alpha radiation is more efficient at higher altitudes, the water vapour content decreases with altitude in the upper stratosphere and mesosphere. A recent study (Deuber, 2004) demonstrated the application of MIAWARA data to the study of the dynamics of stratospheric water vapour.

From January to April 2004, MIAWARA was located at Sodankylä, Finland (67° N) where it took part in the LAUTLOS/WAVAP campaign. Deuber et al. (2005) presented an extensive validation of MIAWARA measurements made both at Bern and Sodankylä. MIAWARA profiles obtained at Bern and Sodankylä agreed with satellite profiles to within 10 and 8%, respectively. Due to the dry polar atmosphere at Sodankylä, MIAWARA was able to make measurements starting from an altitude as low as 20 km. This allowed the comparison of MIAWARA measurements in the 20 to 30 km altitude range with two balloon-borne instruments – the NOAA frost point hygrometer and the FLASH advanced stratospheric hygrometer. The differences between the radiometer and the in situ sensors were less than 2%.

Title Page

Abstract

Introduction

Conclusions

References

Tables

Figures

◀

▶

◀

▶

Back

Close

Full Screen / Esc

Print Version

Interactive Discussion

8. AMSOS measurements

The Airborne Microwave Stratospheric Observing System (AMSOS) is designed to measure stratospheric water vapour profiles from an aircraft platform. Unlike the ground-based microwave instruments, AMSOS observes the centre of a strong water vapour spectral line near 183 GHz (see Fig. 2). This line can only be observed from high altitudes because the largest part of the troposphere is opaque at this frequency range. However, from a flight altitude of 10 km or above, this strong line can be observed with an excellent signal-to-noise ratio, which means that a spectrum can be obtained every few minutes. From the measured spectra, profiles of stratospheric water vapour can be retrieved along the flight track for the 15–65 km altitude range. Details of the instrument are reported by Vasic et al. (2005).

AMSOS has been flown on yearly flight campaigns since 1994. A typical campaign extends from Switzerland over northern Europe into the Arctic as well as southwards along the west coast of Africa into the tropics and includes most latitudes from the Equator to the North Pole. Figure 6 shows an example of the water vapour distribution measured during the campaign in September 2002. The water vapour distributions measured during summer campaigns were dominated by large-scale transport and showed the effects of the Brewer-Dobson circulation. In wintertime, additional small-scale structures appeared which resulted mostly from vertical transport in the polar vortex.

9. Radiosoundings

The radiosoundings at Payerne consist of temperature and humidity vertical profiles measured by MeteoSwiss with the Swiss RadioSonde (SRS400) twice a day since 1990. Although the radiosonde cannot be regarded as a reference system, it constitutes a valuable long-term dataset for the evaluation of other water vapour measurement techniques.

Title Page

Abstract

Introduction

Conclusions

References

Tables

Figures

◀

▶

◀

▶

Back

Close

Full Screen / Esc

Print Version

Interactive Discussion

STARTWAVE
atmospheric water
database

 J. Morland et al.

[Title Page](#)
[Abstract](#)
[Introduction](#)
[Conclusions](#)
[References](#)
[Tables](#)
[Figures](#)
[◀](#)
[▶](#)
[◀](#)
[▶](#)
[Back](#)
[Close](#)
[Full Screen / Esc](#)
[Print Version](#)
[Interactive Discussion](#)

EGU

During the calculation of water vapour density, temperature measurements are used to obtain the saturation water vapour pressure. The measurement accuracy of the temperature sensor (Cu-Co thermocouple) in the troposphere is approximately ± 0.2 K. Radiation effects on the sensor are corrected according to Ruffieux and Joss (2003).

5 The humidity sensor is a resistive carbon hygistor manufactured first by VIZ, then by Sippican since 1999. It is still widely used in the US National Weather Service upper-air network. References in Larsen et al. (1993) report that this sensor has an accuracy ranging from $\pm 5\%$ (for relative humidities in the 20% to 90% range) to 7% (for relative humidities in the ranges 0% to 20% and 90% to 100%), while the precision is stated to be $\pm 3\%$ (root mean square).

10 The quality, accuracy and reproducibility of the VIZ/Sippican carbon hygristors are limited by their decreasing response at low temperatures in the middle to upper troposphere (see Elliott et al., 2002; Wang et al., 2003, and articles cited therein). Furthermore, the radiosonde carbon hygistor tends to slightly under-estimate water vapour in the lower troposphere near humidity saturation. As the main contribution to the IWV comes from the lower troposphere, the average effect on the IWV should be a small negative bias. Nevertheless, for winter cases with a very dry free troposphere above low stratus (low IWV values), the bias is positive. Comparisons with a chilled mirror hygrometer allowed a statistical correction of the hygistor humidity profiles. Resultant
 20 IWV are on average a few percent higher than the original values that submitted to the STARTWAVE data base (Jeannet, 2004).

The STARTWAVE database contains integrated water vapour (IWV) calculated from the radiosonde data for the period from 1994 onwards. In order to obtain IWV, water vapour density, ρ , is calculated from temperature and relative humidity and this is integrated over height, h :

$$\text{IWV} = \int_0^{h_{\text{limit}}} \rho dh \quad (2)$$

The integration is performed up to a height equivalent to 200 mbar (nearly 12 km),
 10853

where humidity measurements are stopped. In order to ease comparison between radiosonde and GPS, the integration is also carried out from the heights equivalent to five different GPS stations: 575 m (Bern), 907 m (Zimmerwald), 1598 m (Davos), 2318 m (Andermatt) and 3580 m (Jungfrauoch). ZTD is also calculated from the IWV for these heights as well as from ground level at Payerne (498 m a.s.l.). The distance of these stations to Payerne ranges from 40 km (Bern and Zimmerwald) to 220 km (Davos, within the Alps) as can be seen in Fig. 1.

10. Validation of Integrated Water Vapour measurements

As an example of the capability of the database, Figs. 7 and 8 show all the measurements made at Bern and Davos in both January and July 2003. The radiosonde IWV was calculated by integrating Payerne radiosonde measurements from a starting altitude of 575 m for Bern and 1598 m for Davos.

The data at Bern generally show very good correspondence between the AS-MUWARA, TROWARA and GPS data. The sun photometer measures less frequently than the other instruments due to the requirements of sunny conditions. In July 2003, the Payerne radiosonde occasionally, mostly at 12:00 UTC, has a large negative bias relative to the instruments at Bern. The mean bias in the radiosonde relative to TROWARA in July was just -0.5 mm during the 00:00 UT sounding, but -2.2 mm during the 12:00 UT sounding. The mean IWV measured by TROWARA in July was 22.7 mm and these represent biases of -2.2 and -9.7% , respectively.

The GPS and the PFR measurements at Davos shown in Figs. 7 and 8 agree very well. The Payerne radiosonde, integrated from the altitude of Davos, gives similar IWV values to GPS in January but has a considerable negative bias during most of the days in the very hot month of July 2003, probably due to differing local atmospheric conditions over the Swiss plains and the Alps on convective days. The Davos comparisons for January allow us to see the time lag between events in Payerne 6.95° E and Davos 9.85° E. For instance, there is a large increase in the IWV measured by the Payerne

[Title Page](#)[Abstract](#)[Introduction](#)[Conclusions](#)[References](#)[Tables](#)[Figures](#)[◀](#)[▶](#)[◀](#)[▶](#)[Back](#)[Close](#)[Full Screen / Esc](#)[Print Version](#)[Interactive Discussion](#)

EGU

radiosonde which peaks at 23:00 UT on the 26 January 2003 (marked with an arrow on Fig. 7), whereas the corresponding increase in the IWV measured by the GPS at Davos occurs twelve hours later at 11:00 UT on 27 January 2003.

Figure 9 summarises the statistics for the comparison of all other instruments at Bern and the Payerne radiosonde with TROWARA over the years 2003 and 2004. TROWARA was chosen as a reference because it has the highest measurement frequency (approximately 1900 observations are averaged to give an hourly mean value). The radiosonde measurements were compared with the average of the TROWARA data obtained during the two hours after the radiosonde launch time. The bias in other instruments relative to TROWARA is within ± 0.5 mm. The standard deviation is between 1 and 2 mm. Not surprisingly, the standard deviation is highest for the radiosonde which is launched 40 km west southwest of Bern. The intercept of the best linear fit between TROWARA and other datasets lies between +0.6 mm (GPS) and +1.4 mm (radiosonde) and the slope between 0.88 (sun photometer and radiosonde) and 1.0 (GPS).

The statistics of the comparisons between GPS and PFR, PFR and radiosonde and GPS and radiosonde are shown in the first, second and third set of bars in Fig. 10. The Payerne radiosonde was used in the comparisons with the data from Payerne, Davos and Jungfraujoch. The measurements were integrated from the heights of Davos and Jungfraujoch, respectively, for comparison with the ground based measurements at these stations. Data from the Milano radiosonde (45.43° N, 9.28° E, 103 m altitude) were integrated from the height of Locarno (366 m) for comparison with the GPS and PFR measurements at this site.

The slopes of the comparisons shown in Fig. 10 lie between 0.75 (PFR:radiosonde at Locarno) and 1.12 (GPS:radiosonde at Jungfraujoch). The intercepts lie between -1.0 mm (GPS:PFR at Payerne) and +1.7 mm (GPS:radiosonde at Davos).

The GPS and PFR are positively biased relative to the radiosonde measurements, apart from the case of the PFR at Locarno. This implies an overall negative bias in the radiosonde IWV. However, the negative bias could also be caused by climatological

[Title Page](#)[Abstract](#)[Introduction](#)[Conclusions](#)[References](#)[Tables](#)[Figures](#)[◀](#)[▶](#)[◀](#)[▶](#)[Back](#)[Close](#)[Full Screen / Esc](#)[Print Version](#)[Interactive Discussion](#)

STARTWAVE
atmospheric water
databaseJ. Morland et al.

[Title Page](#)[Abstract](#)[Introduction](#)[Conclusions](#)[References](#)[Tables](#)[Figures](#)[⏪](#)[⏩](#)[◀](#)[▶](#)[Back](#)[Close](#)[Full Screen / Esc](#)[Print Version](#)[Interactive Discussion](#)

EGU

differences between the Alpine sites and Payerne, in the Swiss plains. The PFR at Payerne has a large positive bias of 3.1 mm in comparison to the radiosonde, whereas the bias in the GPS is only +0.8 mm. The large bias in the PFR may be partly due to the fact that it only observes during the daytime and could only be compared with 12:00 UT soundings. Over the same period, biases of -0.1 mm and $+1.2$ mm were observed between the GPS and the radiosonde measurements at 00:00 and 12:00 UT, respectively.

The bias in the GPS relative to the PFR is -0.8 mm at Payerne and $+0.6$ mm at Davos. It should be noted that the GPS and PFR measurements at Jungfraujoch are not independent as the PFR was used to correct a constant bias in the GPS caused by the radome at this site (Morland et al., 2005¹). At Locarno the GPS has a considerably larger bias of $+1.8$ mm relative to the PFR. The PFR at Locarno has a negative bias of -2.2 mm relative to the Milano radiosonde, whereas the GPS has a positive bias of 1.0 mm. This suggests that the calibration of the Locarno PFR dataset is not yet optimal, due to the difficulties in obtaining the required periods of atmospheric stability at this site. Biases of up to 2 mm between PFR and either GPS or radiosonde are not unusual (Bokoye et al., 2003). However, the biases between PFR and GPS at the other STARTWAVE stations are less than 1 mm which indicates that the Locarno results could be improved. The PFR instruments are now being rotated between high altitude and low altitude stations so that improved calibrations at Locarno can be expected in the future.

11. Case study

The STARTWAVE water vapour measurements can yield detailed information on water vapour variability. We demonstrate this with the example of a frontal system which crossed Switzerland between 18 November 2004 and 19 November 2004. Figure 11 shows a time series of IWV measured by GPS and microwave radiometer. Hourly averages are shown for the TROWARA data and 20 min averages are plotted for AS-

STARTWAVE
atmospheric water
database

J. Morland et al.

Title Page

Abstract

Introduction

Conclusions

References

Tables

Figures

◀

▶

◀

▶

Back

Close

Full Screen / Esc

Print Version

Interactive Discussion

EGU

MUWARA. During this period, the ASMUWARA microwave radiometer was located at Payerne for a field campaign, although it is normally based in Bern. Between 18 November 2004 19:00:00 and 19 November 2004 02:00:00, the GPS at Bern (575 m), ASMUWARA (Payerne) and TROWARA (Bern) measured an IWV increase of 7 to 9 mm. An increase of 8 mm is observed by the GPS at Saanen (1369 m) over the same time period. The IWV values at this higher altitude station are about 4 mm lower than those at Bern before the passage of the front and about 1.3 mm lower afterwards. At Andermatt and Jungfrauoch, smaller IWV increases of 5.5 and 3.5 mm, respectively, are recorded. It should be noted that because of the noise in the GPS signal, it cannot reliably resolve IWV values less than 0.5 mm, which is a problem at the Jungfrauoch station where low IWV values are frequently recorded.

The STARTWAVE data can provide information on temporal changes in water vapour with a resolution of one hour or less, as well as providing information on the changes in water vapour with height. Since there is a network of GPS receivers distributed throughout Switzerland, we might ask whether we can also obtain information on the horizontal distribution of water vapour. If we were to plot the IWV values measured by the GPS stations, we would see little more than the fact that there is less IWV over the Alps. In order to study the spatial distribution of water vapour, we must first remove the effects of altitude. We do this by using an empirical relationship to correct the IWV measured at a given height z , $IWV(z)$, to that which would be expected at 0.5 km, $IWV(0.5)$:

$$IWV(0.5) = a * IWV(z) * \exp \frac{(z - 0.5)}{H} \quad (3)$$

All heights are in kilometres. H is the scale height of the relationship and a is a parameter which is related to the scatter in the observed relationship between IWV and altitude. We averaged the GPS data acquired during 2004 over 6 hourly intervals (to reduce the effect of spatial variations) and fitted Eq. (2) to the IWV observed at different heights. An estimate of H and a was obtained for each 6 h period. The mean values for 2004 were 2.04 km (standard deviation, 0.56 km) and 1.03 (standard deviation, 0.09)

STARTWAVE
atmospheric water
databaseJ. Morland et al.

[Title Page](#)[Abstract](#)[Introduction](#)[Conclusions](#)[References](#)[Tables](#)[Figures](#)[◀](#)[▶](#)[◀](#)[▶](#)[Back](#)[Close](#)[Full Screen / Esc](#)[Print Version](#)[Interactive Discussion](#)

EGU

for H and a , respectively. We then found best fit relationships between the calculated values of a and H and the observed IWV. The scale height, H , was found to be related to the IWV at Jungfraujoch (3584 m), and to the difference between the IWV at Payerne (491 m) and that at Jungfraujoch. The coefficient a on the other hand, was related to both the north-south IWV gradient between Payerne (46.81° N, 6.94° E) and Stabio (45.86° N, 8.94° E, 366 m) as well as the east-west IWV gradient between Payerne and St. Gallen (47.44° N, 9.34° E, 707 m).

Using values of a and H calculated from the observed IWV differences, we corrected the hourly IWV at all stations to a height of 500 m. This is plotted in Fig. 12 at hourly intervals from 18 November 2004 18:00:00 to 19 November 2004 13:00:00. The altitude corrected IWV increased throughout the evening of the 18 November 2004 from a mean value of 10.0 mm at 18:00:00 to a mean value of 12.3 mm at 19 November 2004 00:00:00. The mean IWV is 14.6 mm at 19 November 2004 03:00:00 and 06:00:00, with minimum values of 8 and 12 mm, respectively. At 19 November 2004 09:00:00, several stations in the north recorded IWV values of less than 11 mm and at 12:00:00, only the area south of the Alps showed IWV values of 13.6 mm or more. At 15:00:00, after the passage of the front, the average IWV was 6.1 mm, with a maximum value of 9.8 mm.

As a comparison, we show the Meteosat Second Generation (MSG) channel 5 (6.2 μm) images obtained at hourly intervals between 18 November 2004 18:00:00 to 19 November 2004 13:00:00. Whiter areas indicate higher water vapour values. When making comparisons between MSG images and IWV data, it should be borne in mind that the satellite water vapour channel has a peak sensitivity at 320 hPa. We estimate, from radiosoundings made during this period, that the water vapour at 320 hPa and above makes a contribution of 0.3 to 1.1% to the total integrated water vapour. This is probably the reason why the MSG images show increased water vapour at 18 November 2004 20:00:00 when the GPS and MW measurements had not yet recorded a water vapour increase. However, the MSG images confirm the general pattern shown by the GPS, i.e. that moister air was brought in from the north west on the evening of

18 November 2004 and that it moved away towards the south west on the morning of 19 November 2004.

This example serves to show the potential of the GPS measurements to study the spatial variability of water vapour. However, it also demonstrates that the frontal system is much larger than the study area. For this reason, we would like to extend the database to include GPS stations outside Switzerland.

12. Summary and conclusions

Table 1 summarises the products available in the STARTWAVE database, the frequency of the measurements and the period of operation. The GPS, TROWARA and radiosonde data are automatically updated. Data processing for the other instruments is not yet fully automated and processed data are delivered to the database with a time lag of several months.

The STARTWAVE database was created with the following aims:

1. The intercomparison and validation of different water vapour measurement techniques
2. The validation of model data
3. The validation of satellite observations
4. The study of water vapour characteristics in the Alpine region
5. The study of atmospheric processes
6. The detection of long term trends in water vapour

In this paper, we have presented the results of an instrument inter-comparison. Most measurements at the same location agreed to within ± 0.5 mm. Poorer results were obtained for the GPS-PFR comparison at Locarno but it should be possible to obtain

Title Page

Abstract

Introduction

Conclusions

References

Tables

Figures

◀

▶

◀

▶

Back

Close

Full Screen / Esc

Print Version

Interactive Discussion

better results once the expected improvements in the instrument calibration have been obtained.

Several studies have already been carried out in which model data are compared with ground-based observations. GPS are independent of numerical weather prediction (NWP) models since they are not assimilated into the meteorological observing system. Guerova et al. (2003) used GPS observations to validate two MeteoSwiss NWP models: the Local Model and the Swiss Model. In another study, GPS observations were compared with the 40 year reanalysis dataset (ERA40) produced by the European Centre for Medium Range Weather Forecasting (ECMWF) (Morland et al., 2005¹). It was found that the reanalysis data capture water vapour variations on timescales of several days very well. A similar study between AMSOS stratospheric water vapour measurements and ERA40 and ECMWF operational data is currently in progress. The Swiss GPS data were also used to evaluate the ECHAM5 climate model. A three year GPS water vapour climatology was compared with that produced by the ECHAM5 climate model run with the current climate conditions. There was good agreement between the altitude dependence of both annually and seasonally averaged GPS IWV and that calculated by the model (M. Wild, personal communication).

The MIAWARA profiles have already been favourably compared with satellite measurements (Deuber et al., 2005). Comparisons between STARTWAVE IWV observations and satellite data will form part of the next phase of the project.

We demonstrated, using a case study of a frontal system, that the Alpine GPS data contain information on integrated water vapour at different heights. In order to obtain information on horizontal variability, it is necessary to make an altitude correction. In the future, we hope to expand the number of GPS receivers contributing to the project so that we can improve the altitude-based correction and investigate water vapour on a regional basis.

There is not yet a sufficiently long time series of measurements to detect water vapour trends. The time series analysis carried out on the first ten years of observations made by TROWARA at Bern suggests that IWV is increasing. Using the method

STARTWAVE
atmospheric water
database

J. Morland et al.

Title Page

Abstract

Introduction

Conclusions

References

Tables

Figures

◀

▶

◀

▶

Back

Close

Full Screen / Esc

Print Version

Interactive Discussion

described in Weatherhead et al. (1998), we estimate that 25 years of TROWARA observations are required before a trend can be detected at the 90% confidence level. The database project is therefore very important for long term water vapour monitoring, as it provides a framework for archiving data on an ongoing basis.

5 *Acknowledgements.* This work was funded by the Swiss National Centre for Competence in Research Climate project (NCCR-Climat). MeteoSwiss provided surface meteorological measurements and radiosonde data and GPS ZTD data were supplied by the Swiss Federal Office of Topography. We thank E. Brockmann for his help with the GPS dataset. The MSG images were provided by EUMETSAT and we are grateful for the help of E. Koffi from the University of
10 Fribourg in preparing the images.

References

- 15 Aellig, C., Bacmeister, J., Bevilacqua, R., Daehler, M., Kriebel, D., Pauls, T., Siskind, D., Kämpfer, N., Langen, J., Hartmann, G., Berg, A., Park, J., and Russell III, J.: Space borne H₂O measurements in the Arctic stratosphere and mesosphere in the spring 1992, *Geophys. Res. Lett.*, 23(17), 2325–2328, 1996.
- Basili, P., Bonafoni, S., Ferrara, R., and Ciotti, P.: Atmospheric Water Vapor Retrieval by Means of Both a GPS Network and a Microwave Radiometer During an Experimental Campaign in Cagliari, Italy, in 1999, *IEEE Trans. Geosci. Remote Sens.*, 39, 11, 2436–2443, 2001.
- 20 Bevis, M., Businger, S., Herring, T. A., Rocken C., Anthes, R. A., and Ware, R. H.: GPS Meteorology: Remote sensing of atmospheric water vapor using the Global Positioning System, *J. Geophys. Res.*, 97, 15787–15801, 1992.
- Bokoye, A. I., Royer, A., O’Neill, N. T., Cliche, P., McArthur, L. J. B., Teillet, P. M., Fedosejevs, G., and Theriault, J.-M.: Multisensor analysis of integrated atmospheric water vapour over Canada and Alaska, *J. Geophys. Res.*, 108(D15), 4480, doi:10.1029/2002JD002721, 2003.
- 25 Croskey C., Kämpfer, N., Bevilacqua, R., Hartmann G., Kunzi, K., Schwartz, Ph., Olivero, J., Puliafito, E., Aellig, Ch., Umlauf, G., Waltman, W., and Degenhardt, W.: The Millimeter wave Atmospheric Sounder (MAS): A Shuttle Based Remote Sensing Experiment, *IEEE Trans. Microwave Theory Tech.*, 40, 6, 1090–1100, 1992.
- Deuber, B.: October 2003 Enhanced Stratospheric Water Vapour over Bern: A Dynamical

Title Page

Abstract

Introduction

Conclusions

References

Tables

Figures

◀

▶

◀

▶

Back

Close

Full Screen / Esc

Print Version

Interactive Discussion

Case Study, IAP Research Report No. 2004-09_MW, Institute of Applied Physics, University of Bern, 2004.

Deuber, B., Kämpfer, N., and Feist, D. G.: A new 22-GHz radiometer for middle atmospheric water vapor profile measurements, *IEEE Trans. Geosci. Remote Sens.*, 42, 5, 974–984, 2004.

Deuber, B., Haefele, A., Feist, D. G., Martin, L., Kämpfer, N., Nedoluha, G. E., Yushkov, V., Khaykin, S., Kivi, R., and Vömel, H.: Middle Atmospheric Water Vapour Radiometer – MI-AWARA: Validation and first results of the LAUTLOS/WAVVAP campaign, *J. Geophys. Res.*, 110(D13), D13306, doi:10.1029/2004JD005543, 2005.

Elliott, W. P., Ross, R. J., and Blackmore, W. H.: Recent Changes in NWS Upper-Air Observations with Emphasis on Changes from VIZ to Vaisala Radiosondes, *Bull. Am. Meteorol. Soc.*, 83, 7, 1003–1017, doi:10.1175/1520-0477(2002)083, 2002.

Emardson, T. R., Elgered, G., and Johanson, J.: Three months of continuous monitoring of atmospheric water vapor with a network of Global Positioning System receivers, *J. Geophys. Res.*, 103(D2), 1807–1820, doi:10.1029/97JD03015, 1998.

Feist, D. G., Vasic, V., and Kämpfer, N.: Changes in the distribution of stratospheric water vapor observed by an airborne microwave radiometer, in: *Proceedings of the 16th ESA Symposium on European Rocket and Balloon Programmes and Related Research*, edited by: Warmbein, B., SP-530, 401–404, 2003.

Gradinarsky, L. P., Johansson, J. M., Bouma, H. R., Scherneck, H. G., and Elgered, G.: Climate monitoring using GPS, *Phys. Chem. Earth*, 27, 335–340, 2002.

Guerova, G., Brockmann, E., Quiby, J., Schubiger, F., and Mätzler, C.: Validation of NWP mesoscale models with Swiss GPS Network AGNES, *J. Appl. Meteorol.*, 42, 1, 141–150, 2003.

Haefele, P., Martin, L., Becker, M., Brockmann, E., Morland, J., Nyeki, N., Mätzler, C., and Kirchner, M.: Impact of Radiometric Water Vapor Measurements on Troposphere and Height Estimates by GPS, in: *Proceedings of ION GNSS 2004*, 21st to 24th September 2004, Long Beach, Session F5: GPS Meteorology, 2004.

Hagemann, S. and Bengtsson, L.: On the determination of atmospheric water vapor from GPS measurements, *J. Geophys. Res.*, 108(D21), 4678, doi:10.1029/2002JD003235, 2003.

Halthore, N. R., Thomas, F. E., Holben, B. N., and Markham, B. L.: Sun photometric measurements of atmospheric water vapor column abundance in the 940-nm band, *J. Geophys. Res.*, 102(D4), 4343–4352, doi:10.1029/96JD03247, 1997.

STARTWAVE
atmospheric water
database

J. Morland et al.

Title Page

Abstract

Introduction

Conclusions

References

Tables

Figures

◀

▶

◀

▶

Back

Close

Full Screen / Esc

Print Version

Interactive Discussion

STARTWAVE
atmospheric water
database

J. Morland et al.

[Title Page](#)[Abstract](#)[Introduction](#)[Conclusions](#)[References](#)[Tables](#)[Figures](#)[◀](#)[▶](#)[◀](#)[▶](#)[Back](#)[Close](#)[Full Screen / Esc](#)[Print Version](#)[Interactive Discussion](#)

Heimo, A., Vernez, A., Lehmann, A., Goeldi, B., Philipona, R., Marty, Ch., Wehrli, Ch., and Ingold, T.: The Swiss Atmospheric Radiation Monitoring CHARM: Implementation and first results, in: IRS-2000: Current Problems in Atmospheric Radiation, 528-531, edited by: Smith, W. L. and Timofeyev, Y. M., A. Deepak Publishing, Hampton, Va., USA, 2001.

5 Holben, B. N., Eck, T. F., Slutsker, I., Tanré, D., Buis, J. P., Setzer, A., Vermote, E., Reagan, J. A., Kaufman, Y. J., Nakajima, T., Lavenu, F., Jankowiak, I., and Smirnov, A.: AERONET: A federated instrument network and data archive for aerosol characterization, *Rem. Sens. Environ.*, 66, 1–16, 1998.

10 Ingold, T., Schmid, B., Mätzler, C., Demoulin, P., and Kämpfer, N.: Modeled and empirical approaches for retrieving columnar water vapor from solar transmittance measurements in the 0.72, 0.82 and 0.94 μm absorption bands, *J. Geophys. Res.*, 105(D19), 24 327–24 344, doi:10.1029/2000JD900392, 2000.

15 Ingold, T. and Mätzler, C.: Four Years of Columnar Water Vapor Measurements above the Swiss Central Plain using Radiosondes and a Microwave Radiometer, IAP Research Report No. 2000-02, Institute of Applied Physics, University of Bern, 2000.

Intergovernmental Panel on Climate Change (IPCC): Climate Change 2001: The Scientific Basis, edited by: Houghton, J. T., Ding, Y., Griggs, D. J., Noguer, M., van der Linden, P. J., Dai, X., Maskell, K., and Johnson, C. A., Cambridge University Press, Cambridge, 2001.

20 Jeannet, P.: TUC Experiment: Soundings data set V1.0, Internal MeteoSwiss report, 19 November 2004, 18 p., 2004.

Larsen, J. C., Chiou, E. W., Chu, W. P., McCormick, M. P., McMaster, L. R., Oltmans, S., and Rind, D.: A comparison of the stratospheric aerosol and gas experiment II tropospheric water vapor to radiosonde measurements, *J. Geophys. Res.*, 98(D3), 4897–4918, doi:10.1029/92JD01630, 1993.

25 Lüdi, A., Martin, L., and Mätzler, C.: The retrieval of temperature profiles with the ground based radiometer system ASMUWARA, IAP Research Report, No. 2003-13, Institute of Applied Physics, University of Bern, 2003.

Martin, L.: Microwave Transmission and Emission Measurements for Tropospheric Monitoring, Thesis of the Philosophisch-Naturwissenschaftliche Fakultät, Universität Bern, Bern, Switzerland, 2003.

30 Martin, L., Lüdi, A., and Mätzler, C.: Tropospheric monitoring with ASMUWARA, in: Sixth International Symposium on Tropospheric Profiling, edited by: Wandinger, U., Engelmann, R., and Schmieder, K., 38–40, 2003.

STARTWAVE
atmospheric water
databaseJ. Morland et al.

[Title Page](#)[Abstract](#)[Introduction](#)[Conclusions](#)[References](#)[Tables](#)[Figures](#)[◀](#)[▶](#)[◀](#)[▶](#)[Back](#)[Close](#)[Full Screen / Esc](#)[Print Version](#)[Interactive Discussion](#)

Mätzler, C.: Microwave sensors for measuring avalanche-critical snow parameters, in: Internat. Symp. on Avalanche Formation, Movement and Effects, Davos, Switzerland, 14–19 September 1986, edited by: Salm, B. and Gubler, H., IAHS Publ. No. 162, 149–160, 1987.

Mätzler, C.: Ground-based observations of atmospheric radiation at 5, 10, 21, 35 and 94 Ghz, Radio Sci., 27, 403–415, 1992.

Mätzler, C.: Passive Microwave Signature Catalog (Volumes 1–3), Reports of the Institute of Applied Physics, Bern, 1993, 1994.

Mätzler, C., Martin, L., Guerova, G., and Ingold, T.: Assessment of integrated water vapour data at Bern from GPS, sun photometry, microwave radiometry and radiosonde, in: 2nd Workshop of COST Action 716, Exploitation of ground-based GPS for Meteorology, GFZ Potsdam, Germany, 28th–29th January, 2002.

Morland, J.: TROWARA – Tropospheric Water Vapour Radiometer. Radiometer review and new calibration model, Institute of Applied Physics, University of Bern, Research Report No. 2002-15, 2002.

Oltmans, S. J., Vömel, H., Hofmann, D. J., Rosenlof, K. H., and Kley, D.: The increase in stratospheric water vapor from balloonborne frostpoint hygrometer measurements at Washington D.C. and Boulder, Colorado, Geophys. Res. Lett., 27(21), 3453–3456, 2000.

Peter, R. and Kämpfer, N.: Radiometric determination of water vapour and liquid water and its validation with other techniques, J. Geophys. Res., 97(D16), 18 173–18 183, doi:10.1029/92JD01717, 1992.

Peter, R., Künzi, K., and Hartmann, G.: Latitudinal survey of water vapor in the middle atmosphere using an airborne millimeter wave sensor, Geophys. Res. Lett., 15, 1173–1176, 1988.

Peter, R.: Stratospheric and mesospheric latitudinal water vapor distributions obtained by an airborne millimeter-wave spectrometer, J. Geophys., Res., 103(D13), 16 275–16 290, doi:10.1029/98JD00968, 1998.

Picon, L., Roca, R., Serrar, S., Monge, J. L., and Desbois, M.: A new METEOSAT “water vapor” archive for climate studies, J. Geophys. Res., 108(D10), 4301, doi:10.1029/2002JD002640, 2003.

Rohrbach, A.: Wasserdampfmessungen mit GPS, Master’s thesis, Philosophisch-Naturwissenschaftliche Fakultät, Universität Bern, Bern, Switzerland, 1999.

Revercomb, H. E., Turner, D. D., Tobin, D. C., et al.: The ARM program’s water vapor intensive observation periods: Overview, Initial Accomplishments, and Future Challenges, Bull. Am.

STARTWAVE
atmospheric water
databaseJ. Morland et al.

[Title Page](#)[Abstract](#)[Introduction](#)[Conclusions](#)[References](#)[Tables](#)[Figures](#)[◀](#)[▶](#)[◀](#)[▶](#)[Back](#)[Close](#)[Full Screen / Esc](#)[Print Version](#)[Interactive Discussion](#)

Meteorol. Soc., 84, 2, 217–236, 2003.

Ross, R. J. and Elliott, W. P.: Radiosonde-Based Northern Hemisphere Tropospheric Water Vapor Trends, *J. Clim.*, 14, 1602–1612, 2001.

Ruffieux, D. and Joss, J.: Influence of radiation on the temperature sensor mounted on the Swiss radiosonde, *J Atmos. Ocean. Tech.*, 20, 11, 1576–1582, 2003.

Senegupta, M., Clothiaux, E. E., Ackerman, T. P., Kato, S., and Min, Q.: Importance of Accurate Liquid Water Path for Estimation of Solar Radiation in Warm Boundary Layer Clouds: An Observational Study, *J. Clim.*, 16, 2997–3009, 2003.

van Meijgaard, E. and Crewell, S.: Comparison of model predicted liquid water path with ground-based measurements during CLIWA-NET, *Atmos. Res.*, 75, 3, 201–226, 2005.

Vasic, V., Feist, D. G., Müller, S., and Kämpfer, N.: An airborne radiometer for stratospheric water vapor measurements at 183 GHz, *IEEE Trans. Geosci. Remote Sens.*, 43, 7, 1563–1570, doi:10.1109/TGRS.2005.846860, 2005.

Vincent, L. A.: A Technique for the Identification of Inhomogeneities in Canadian Temperature Series, *J. Clim.*, 11, 1094–1104, 1998.

Vinnikov, K. Y., Robock, A., Cavalieri, D. J., and Parkinson, C. L.: Analysis of seasonal cycles in climatic trends with application to satellite observations of sea ice extent, *Geophys. Res. Lett.*, 29(9), 1310–1314, 2002.

Wang, J. H., Carlson, D. J., Parsons, D. B., Hock, T. F., Lauritsen, D., Cole, H. L., Beierle, K., and Chamberlain, E.: Performance of operational radiosonde humidity sensors in direct comparison with a chilled mirror dew-point hygrometer and its climate implication, *Geophys. Res. Lett.*, 30(16), 1860, doi:10.1029/2003GL016985, 2003.

Weatherhead, E. C., Reinsel, G. C., Tiao, G. C., Meng, X.-L., Choi, D., Cheang, W.-K., Keller, T., DeLuisi, J., Wuebbles, D. J., Kerr, J. B., Miller, A. J., Oltmans, S. J., and Frederick, J. E.: Factors affecting the detection of trends: Statistical considerations and applications to environmental data, *J. Geophys. Res.*, 103(D14), 17 149–17 162, doi:10.1029/98JD00995, 1998.

Westwater, E. R.: Ground-based microwave remote sensing of meteorological variables, in: *Atmospheric Remote Sensing by Microwave Radiometry*, edited by: Janssen, M. A., John Wiley & Sons, Inc., 1993.

**STARTWAVE
atmospheric water
database**

J. Morland et al.

Table 1. Summary of the products available in the STARTWAVE database.

Instrument	Location	Products	Frequency of measurements saved in database	Period of operation
AGNES GPS	30 sites throughout Switzerland	IWV	Hourly to present	November 2000
Sun photometer/PFR	5 sites	IWV	Hourly average	Bern, 1993 to present Jungfrauoch, 1999 to present Davos, 2000 to present Locarno, 2001 to present Payerne, 2002 to present 1989 to 1995
PAMIR	Mooseedorf, near Bern	IWV, ILW	Not automated. 127 measurements over 5 year period	
TROWARA	Bern	IWV, ILW	Original data – 30 measurements per minute Hourly averages	1994 to present (with some gaps for radiometer improvements)
ASMUWARA	Bern	Hemispherical scans of IWV and ILW Water vapour and temperature profiles up to 5 km	One hemispherical scan every 20 min	2002 to present
MIAWARA	Bern	Water vapour profiles between 25 and 65 km Hourly IWV	Profile every 1 to 3 days	2002 to present
AMSOS	flight campaigns over northern hemisphere (8–90° N)	Water vapour profiles between 15–65 km	One profile every 2–3 min during flight operation	One campaign lasting about one week per year since 1998
radiosonde	Payerne	along flight track IWV	Twice daily (00:00 h and 12:00 h)	1994 to present

Title Page

Abstract

Introduction

Conclusions

References

Tables

Figures

◀

▶

◀

▶

Back

Close

Full Screen / Esc

Print Version

Interactive Discussion

STARTWAVE
atmospheric water
database

J. Morland et al.

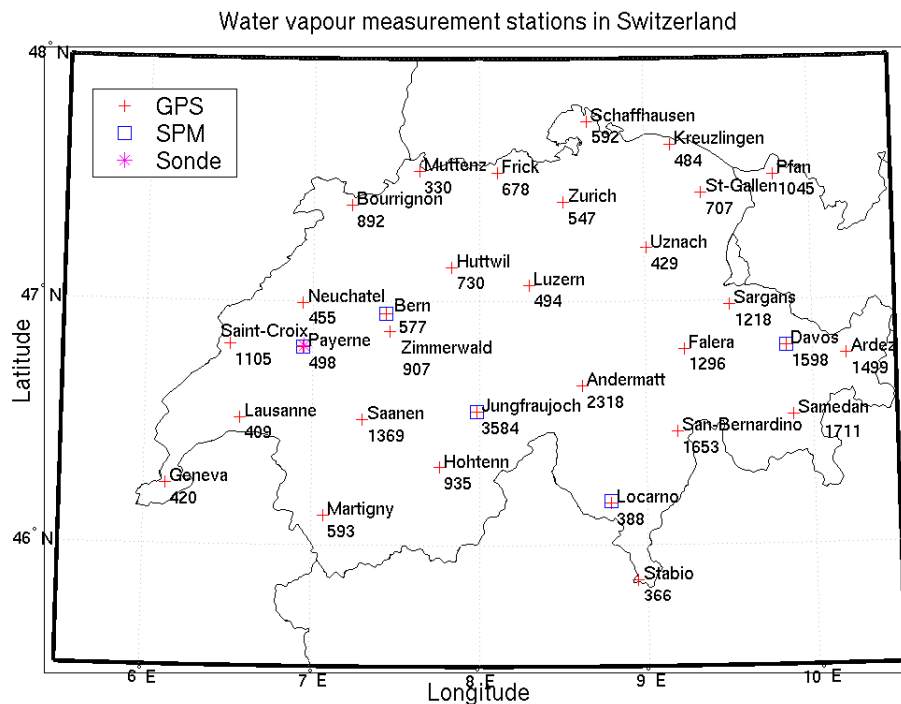


Fig. 1. A map of Switzerland showing the locations of the AGNES GPS stations, the sun photometer (SPM) stations and the Payerne radiosonde. The altitude in metres is given beneath the station name.

[Title Page](#)[Abstract](#)[Introduction](#)[Conclusions](#)[References](#)[Tables](#)[Figures](#)[◀](#)[▶](#)[◀](#)[▶](#)[Back](#)[Close](#)[Full Screen / Esc](#)[Print Version](#)[Interactive Discussion](#)

EGU

STARTWAVE
atmospheric water
database

J. Morland et al.

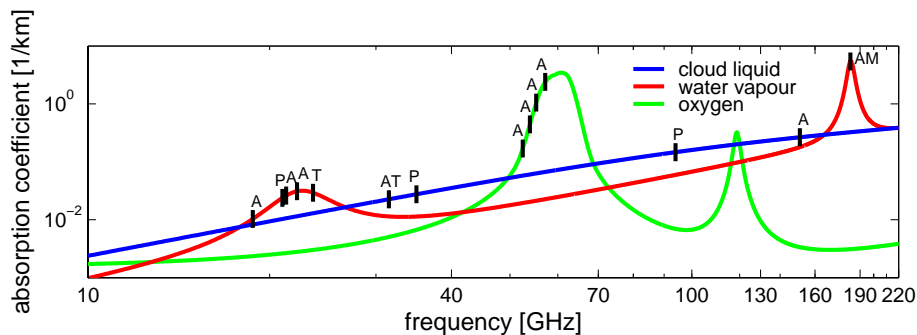


Fig. 2. The frequencies of the microwave radiometer channels in relation to water vapour, cloud liquid water and oxygen absorption. The symbols A, AM, P, and T refer to ASMUWARA, AMSOS, PAMIR and TROWARA channels, respectively.

[Title Page](#)[Abstract](#)[Introduction](#)[Conclusions](#)[References](#)[Tables](#)[Figures](#)[◀](#)[▶](#)[◀](#)[▶](#)[Back](#)[Close](#)[Full Screen / Esc](#)[Print Version](#)[Interactive Discussion](#)

EGU

STARTWAVE
atmospheric water
database

J. Morland et al.

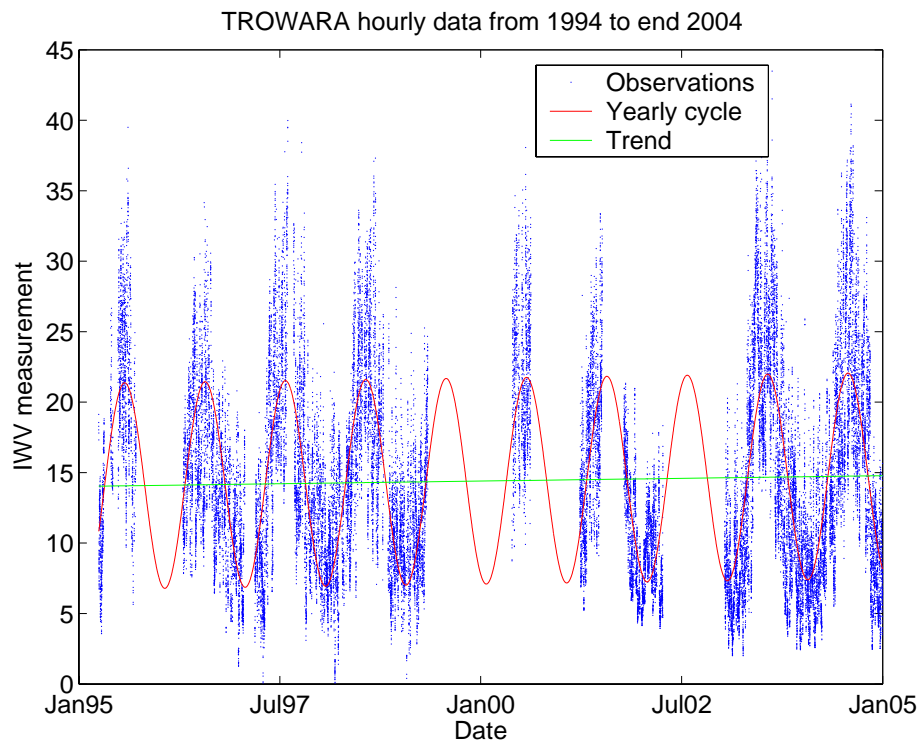


Fig. 3. Time series of TROWARA hourly integrated water vapour (IWV) measurements (blue points) with a model of the annual cycle (red) and trend (green).

[Title Page](#)[Abstract](#)[Introduction](#)[Conclusions](#)[References](#)[Tables](#)[Figures](#)[◀](#)[▶](#)[◀](#)[▶](#)[Back](#)[Close](#)[Full Screen / Esc](#)[Print Version](#)[Interactive Discussion](#)

EGU

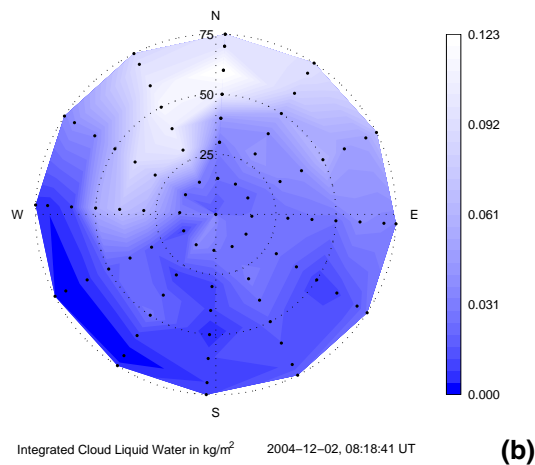
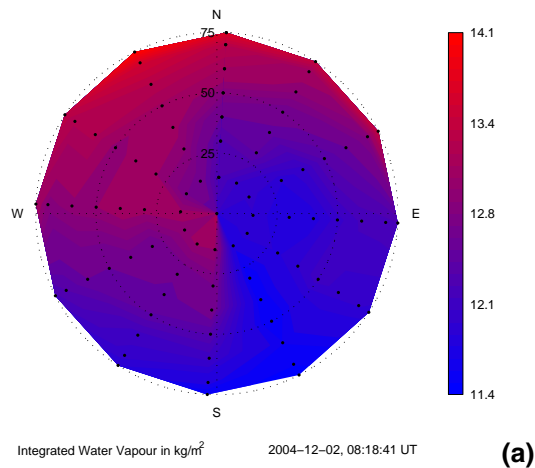


Fig. 4. ASMUWARA sky scans on 2 December 2004 at 08:18: (a) integrated water vapour (IWV) scan and (b) integrated liquid water (ILW) scan.

[Title Page](#)[Abstract](#)[Introduction](#)[Conclusions](#)[References](#)[Tables](#)[Figures](#)[◀](#)[▶](#)[◀](#)[▶](#)[Back](#)[Close](#)[Full Screen / Esc](#)[Print Version](#)[Interactive Discussion](#)

**STARTWAVE
atmospheric water
database**

J. Morland et al.

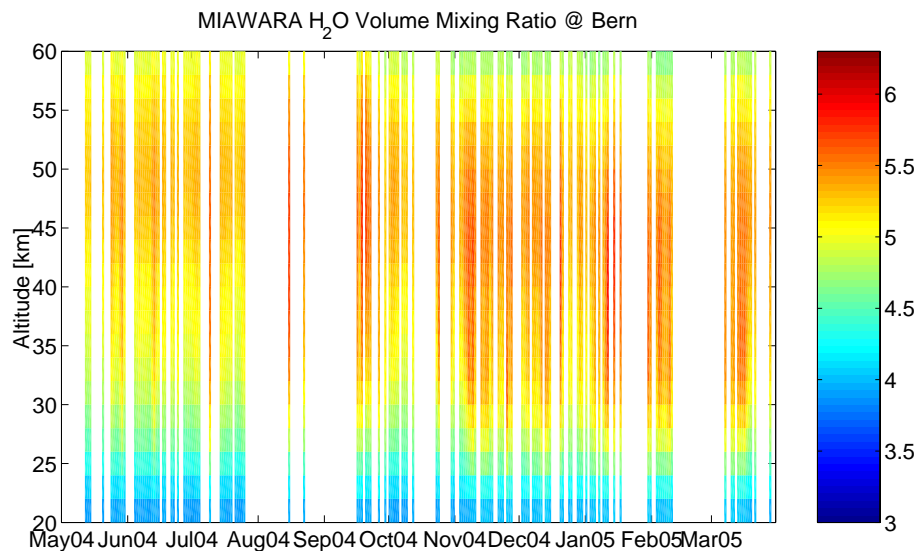


Fig. 5. A one year series of MIAWARA profiles from May 2004 to March 2005. The water vapour mixing ratio is measured in parts per million volume.

[Title Page](#)[Abstract](#)[Introduction](#)[Conclusions](#)[References](#)[Tables](#)[Figures](#)[◀](#)[▶](#)[◀](#)[▶](#)[Back](#)[Close](#)[Full Screen / Esc](#)[Print Version](#)[Interactive Discussion](#)

EGU

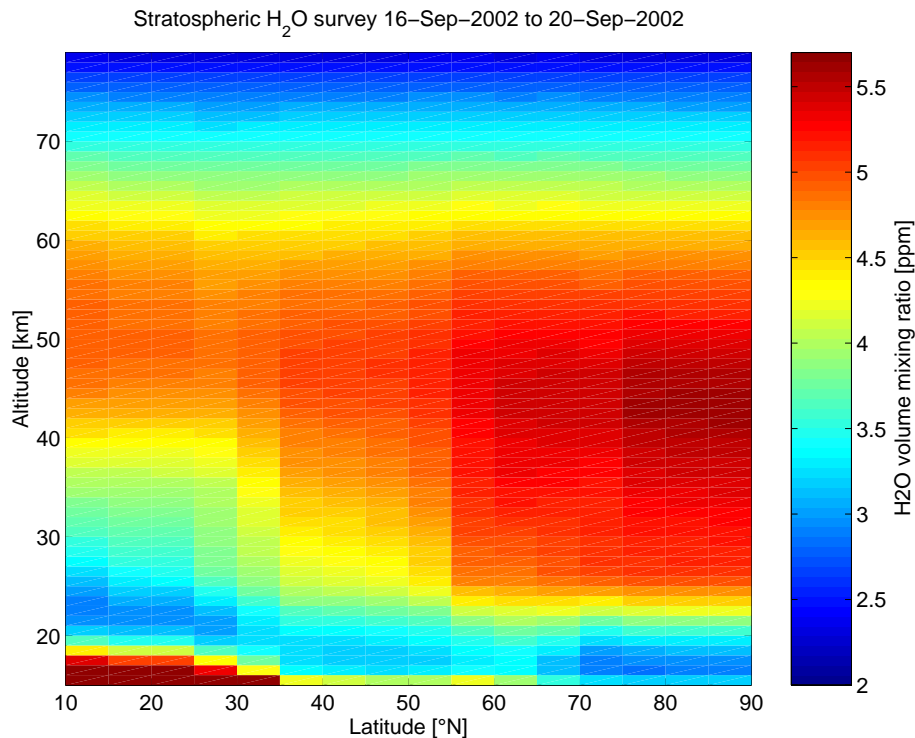


Fig. 6. Example of AMSOS measurements from the flight campaign in September 2002. Measurements were made between 22° W and 20° E. The individual water vapour profiles were binned into 5-degree latitude bands and then averaged.

STARTWAVE
atmospheric water
database

J. Morland et al.

Title Page

Abstract

Introduction

Conclusions

References

Tables

Figures

◀

▶

◀

▶

Back

Close

Full Screen / Esc

Print Version

Interactive Discussion

EGU

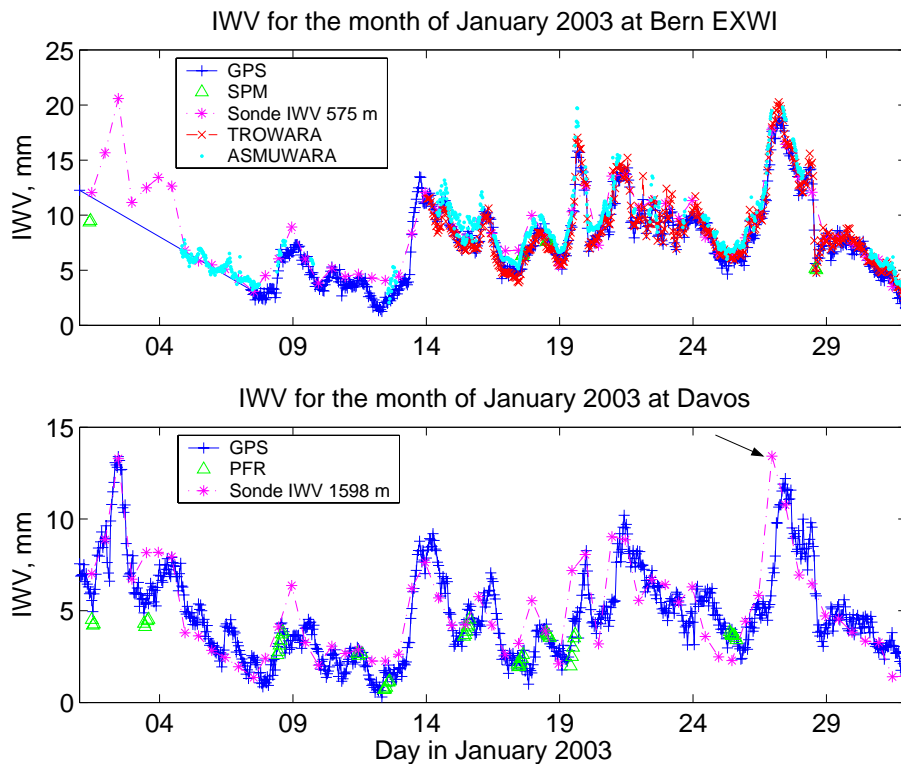


Fig. 7. A comparison between all available IWV observations for Bern (575 m) and Davos (1598 m) during January 2003. PFR refers to the Precision Filter Radiometer at Davos and SPM to the sun photometer at Bern.

[Title Page](#)[Abstract](#)[Introduction](#)[Conclusions](#)[References](#)[Tables](#)[Figures](#)[◀](#)[▶](#)[◀](#)[▶](#)[Back](#)[Close](#)[Full Screen / Esc](#)[Print Version](#)[Interactive Discussion](#)

EGU

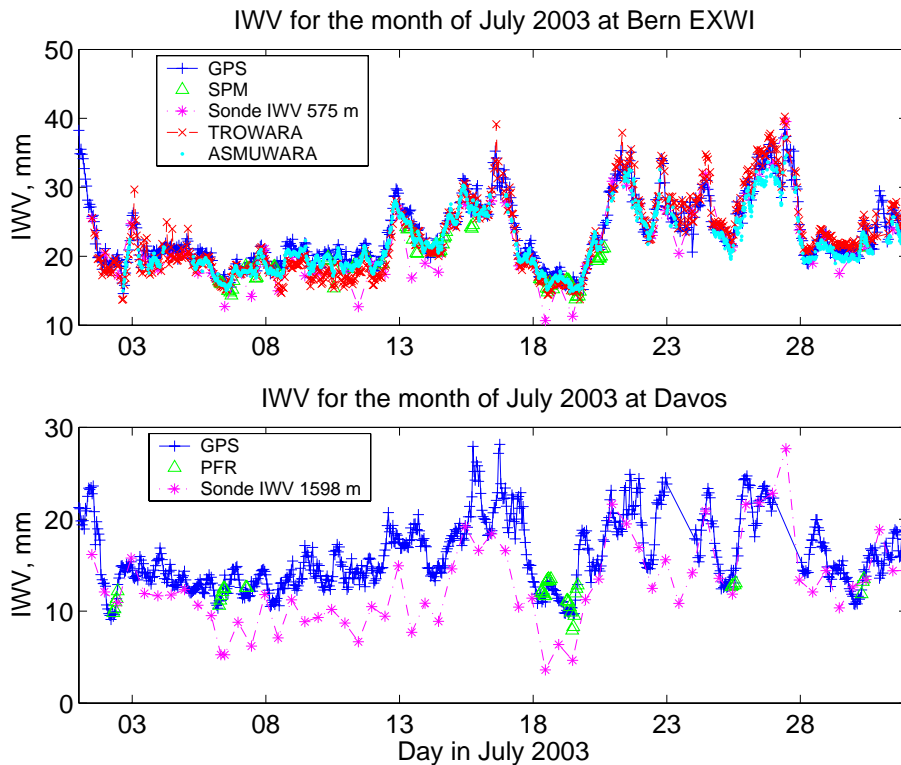


Fig. 8. A comparison between all available IWV observations for Bern (575 m) and Davos (1598 m) during July 2003. PFR refers to the Precision Filter Radiometer at Davos and SPM to the sun photometer at Bern.

[Title Page](#)[Abstract](#)[Introduction](#)[Conclusions](#)[References](#)[Tables](#)[Figures](#)[◀](#)[▶](#)[◀](#)[▶](#)[Back](#)[Close](#)[Full Screen / Esc](#)[Print Version](#)[Interactive Discussion](#)

EGU

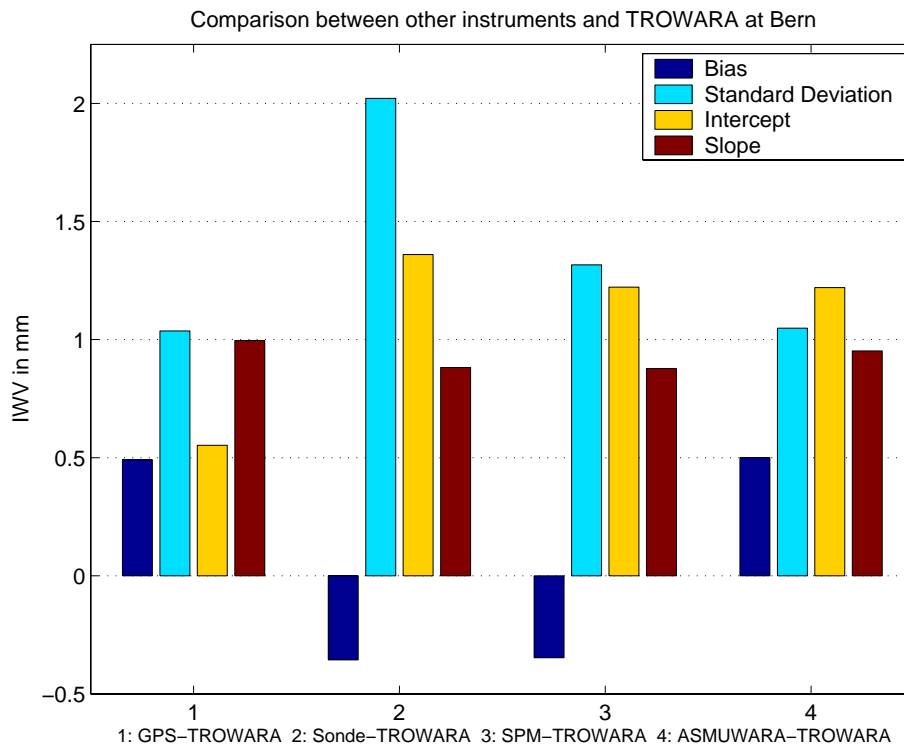


Fig. 9. The bias (light blue) and standard deviation (dark blue) of the comparison between GPS (Bern), radiosonde (Payerne), SPM (Sun Photometer, Bern), ASMUWARA (Bern) with TROWARA (Bern). Also shown are the intercept (yellow) and slope (brown) of the best fit linear relationship between each instrument and TROWARA.

[Title Page](#)[Abstract](#)[Introduction](#)[Conclusions](#)[References](#)[Tables](#)[Figures](#)[◀](#)[▶](#)[◀](#)[▶](#)[Back](#)[Close](#)[Full Screen / Esc](#)[Print Version](#)[Interactive Discussion](#)

EGU

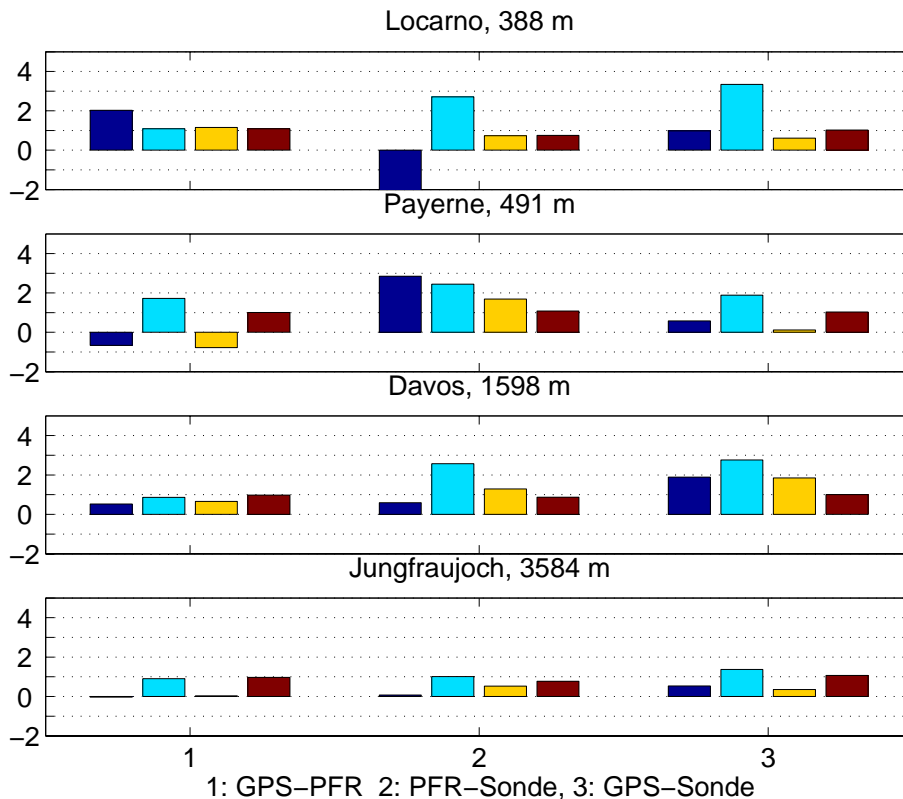


Fig. 10. The bias (light blue), standard deviation (dark blue), intercept (yellow) and slope (brown) of the relationships between IWV measurements made at Locarno, Payerne, Davos and Jungfrauoch. The comparisons between GPS (dependent) and PFR (independent), PFR (dependent) and radiosonde (independent) and GPS (dependent) and radiosonde (independent) are shown in the first, second and third sets of bars, respectively. The radiosonde measurements are integrated from the height of the station used in the comparison.

[Title Page](#)
[Abstract](#)
[Introduction](#)
[Conclusions](#)
[References](#)
[Tables](#)
[Figures](#)
[◀](#)
[▶](#)
[◀](#)
[▶](#)
[Back](#)
[Close](#)
[Full Screen / Esc](#)
[Print Version](#)
[Interactive Discussion](#)

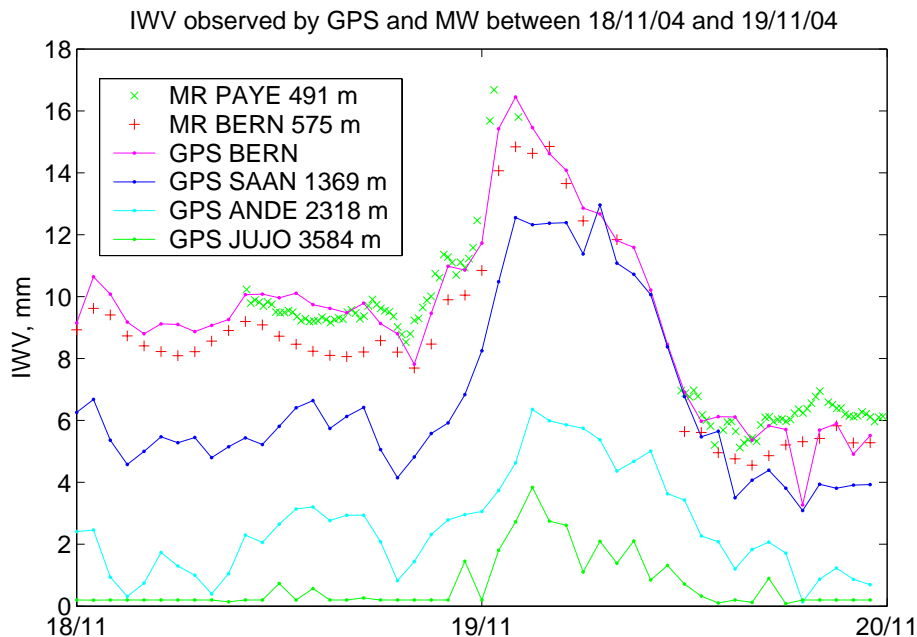


Fig. 11. A time series of GPS, ASMUWARA (Payerne) and TROWARA (Bern) IWV measurements during the passage of a frontal system from the 18 November 2004 to 19 November 2004. GPS measurements are shown for Bern, Payerne, Saanen, Andermatt and Jungfrau-joch.

[Title Page](#)[Abstract](#)[Introduction](#)[Conclusions](#)[References](#)[Tables](#)[Figures](#)[◀](#)[▶](#)[◀](#)[▶](#)[Back](#)[Close](#)[Full Screen / Esc](#)[Print Version](#)[Interactive Discussion](#)

EGU

STARTWAVE
atmospheric water
database

J. Morland et al.

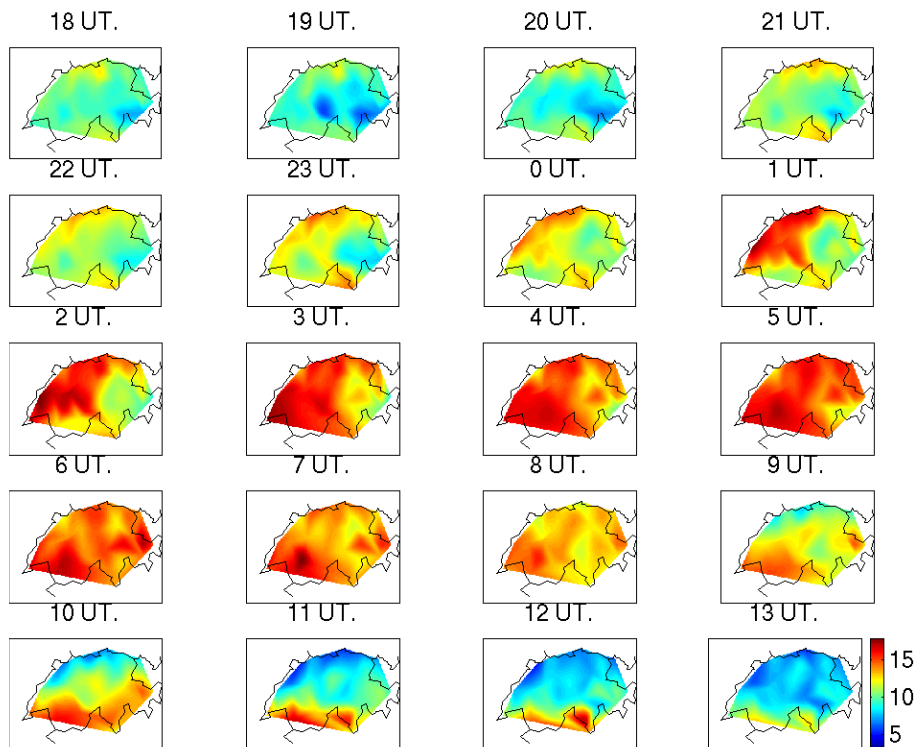


Fig. 12. The IWV measured by the GPS network during the passage of a frontal system from 18:00 UT on 18 November 2004 to 13:00 UT on the 19 November 2004. The IWV for all stations is corrected to a height of 500 m. The plots represent GPS measurements from the previous hour and are shown at hourly intervals.

[Title Page](#)[Abstract](#)[Introduction](#)[Conclusions](#)[References](#)[Tables](#)[Figures](#)[◀](#)[▶](#)[◀](#)[▶](#)[Back](#)[Close](#)[Full Screen / Esc](#)[Print Version](#)[Interactive Discussion](#)

EGU

STARTWAVE
atmospheric water
databaseJ. Morland et al.

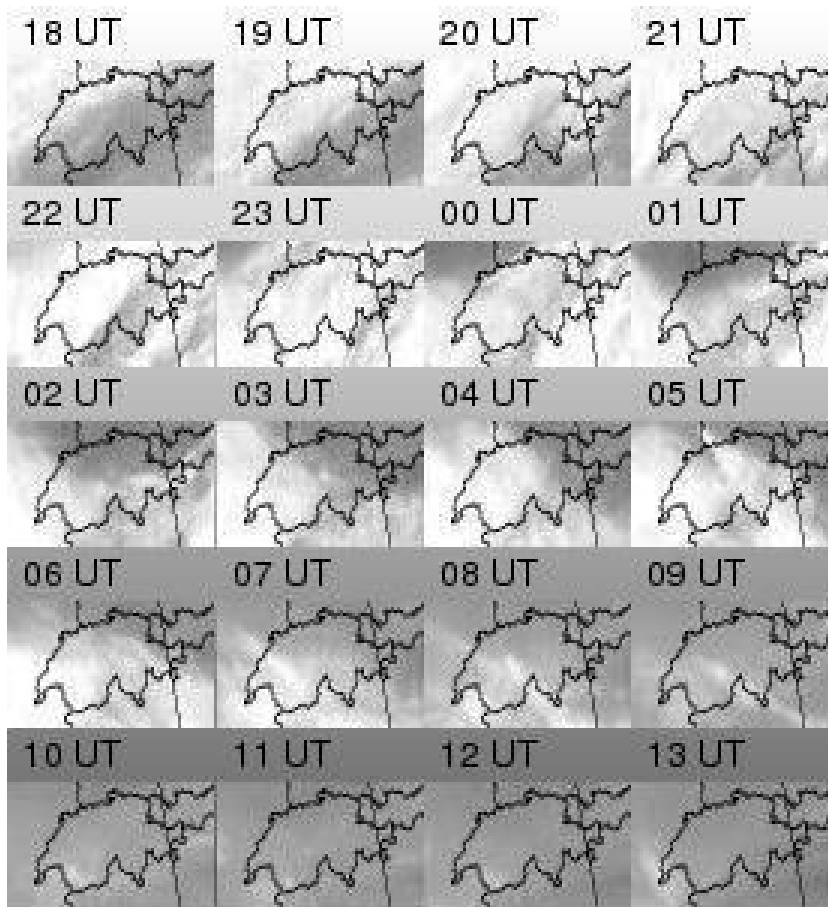


Fig. 13. A series of hourly water vapour (channel 5, $6.2\ \mu\text{m}$) images obtained by the Meteosat Second Generation (MSG) satellite system from 18 November 2004 to 19 November 2004.

[Title Page](#)[Abstract](#)[Introduction](#)[Conclusions](#)[References](#)[Tables](#)[Figures](#)[◀](#)[▶](#)[◀](#)[▶](#)[Back](#)[Close](#)[Full Screen / Esc](#)[Print Version](#)[Interactive Discussion](#)

EGU