

Interactive
Comment

Interactive comment on “How large-scale subsidence affects stratocumulus transitions” by van der Dussen et al.

van der Dussen et al.

johanvanderdussen@outlook.com

Received and published: 19 November 2015

A complete response to the reviewers suggestions has been attached as a supplementary document. Figures can be found below.

Please also note the supplement to this comment:

<http://www.atmos-chem-phys-discuss.net/15/C9536/2015/acpd-15-C9536-2015-supplement.pdf>

Interactive comment on Atmos. Chem. Phys. Discuss., 15, 17229, 2015.

Full Screen / Esc

Printer-friendly Version

Interactive Discussion

Discussion Paper



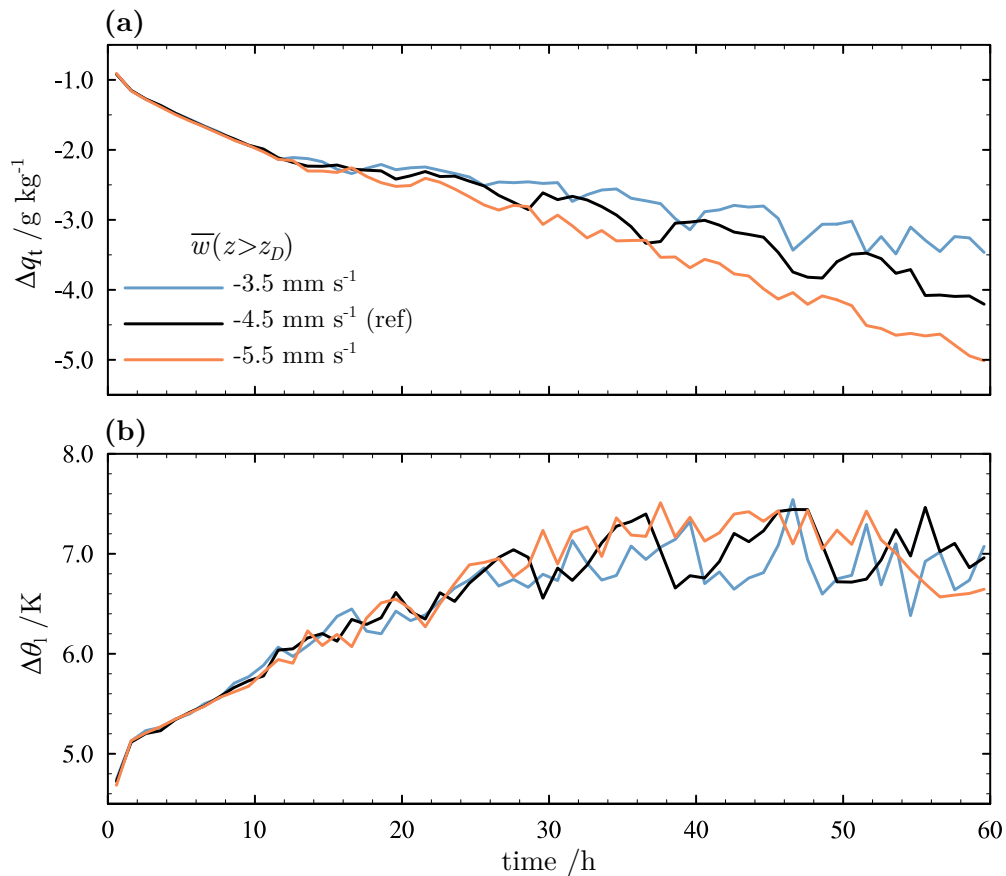


Fig. 1. The inversion jumps (a) of total humidity and (b) of liquid water potential temperature as a function of time for each of the sensitivity experiments.

[Full Screen / Esc](#)[Printer-friendly Version](#)[Interactive Discussion](#)[Discussion Paper](#)

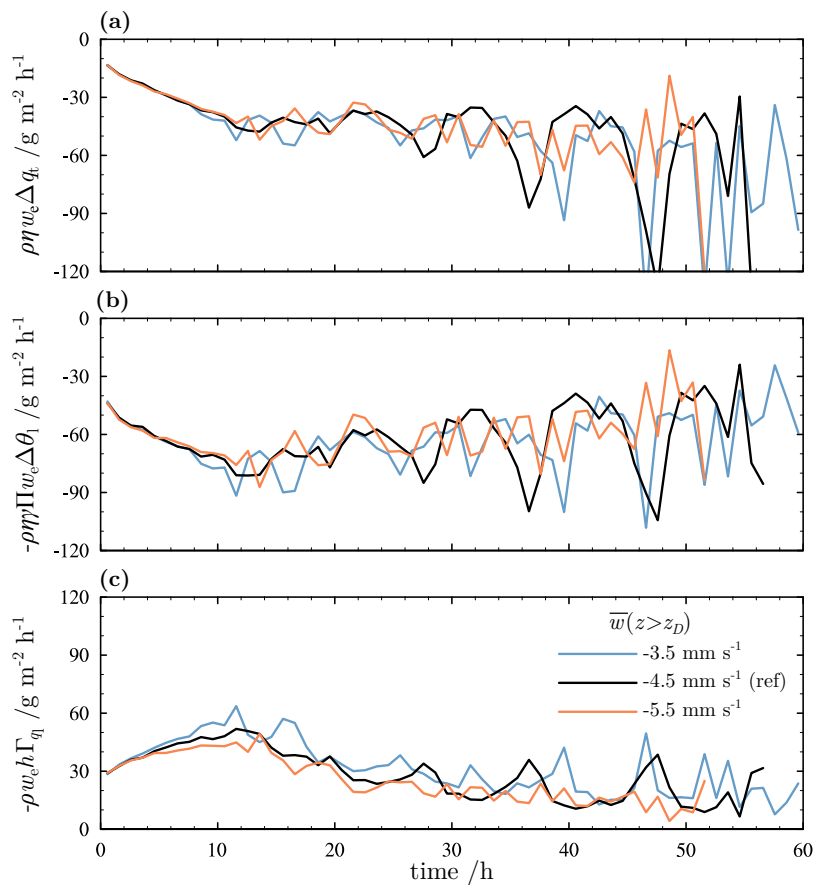


Fig. 2. The LWP tendency due to entrainment split up into the three terms of Eq. (5): (a) entrainment drying, (b) entrainment warming and (c) cloud deepening due to entrainment.