

Interactive  
Comment

## ***Interactive comment on “How large-scale subsidence affects stratocumulus transitions” by van der Dussen et al.***

**van der Dussen et al.**

johanvanderdussen@outlook.com

Received and published: 16 November 2015

A complete response to the reviewers suggestions has been attached as a supplementary document. Figures can be found below.

Please also note the supplement to this comment:

<http://www.atmos-chem-phys-discuss.net/15/C9373/2015/acpd-15-C9373-2015-supplement.pdf>

---

Interactive comment on Atmos. Chem. Phys. Discuss., 15, 17229, 2015.

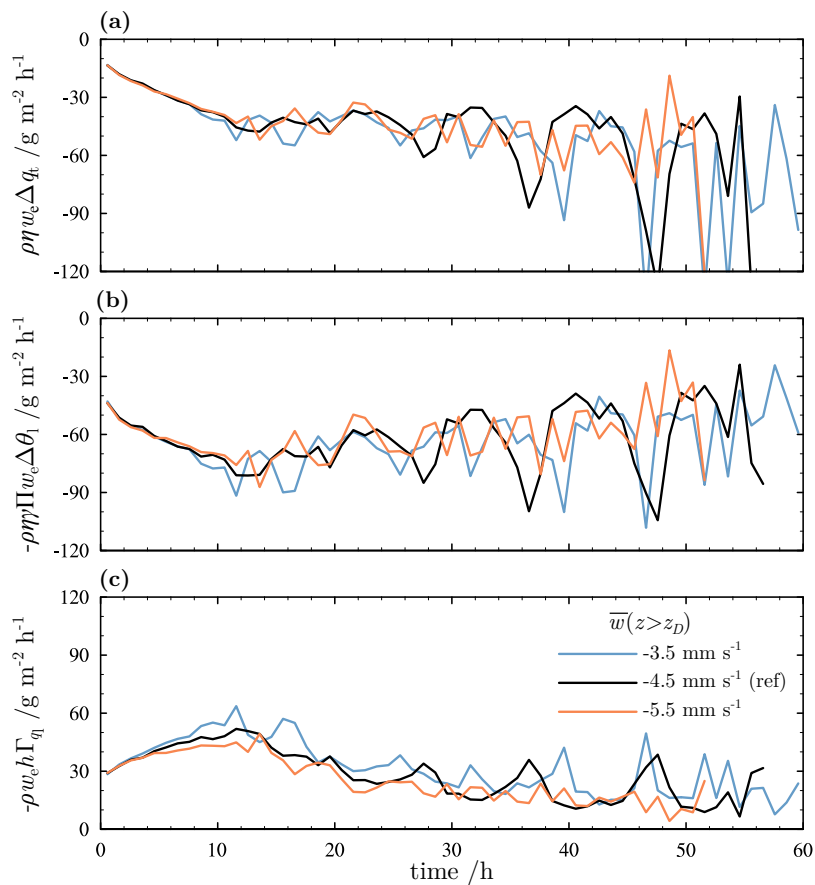
Full Screen / Esc

Printer-friendly Version

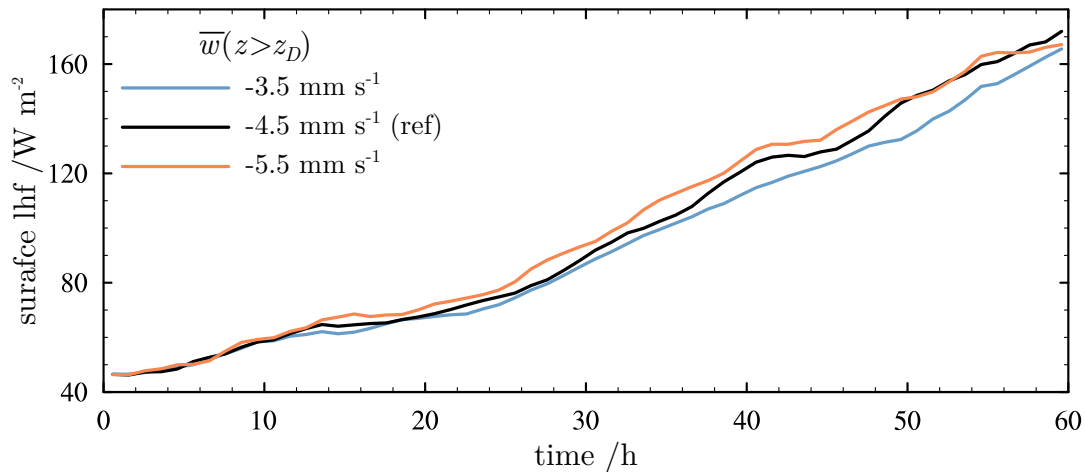
Interactive Discussion

Discussion Paper





**Fig. 1.** The LWP tendency due to entrainment split up into the three terms of Eq. (5): (a) entrainment drying, (b) entrainment warming and (c) cloud deepening due to entrainment.

[Interactive  
Comment](#)

**Fig. 2.** The surface latent heat flux as a function of time for the three sensitivity simulations.

[Full Screen / Esc](#)[Printer-friendly Version](#)[Interactive Discussion](#)[Discussion Paper](#)