

*We would like to thank the 2 anonymous referees and Dr. Jacobi for their thoughtful comments on the manuscript and suggestions for improvements, which we found to be very helpful! Our responses (in blue) are included below, following the referee comments (in black). Suggestions for changes in the manuscript are indicated in the file in the attachment.*

### **Anonymous Referee #1**

This paper concerns a new parameterization of BC in snow that was implemented in the climate model CanAM4.2. First, the authors verify their model by comparing simulations of BC snow mixing ratios and forcing with a broad set of measurements and with other models. Then, the authors focus on two periods 1950-1959 and 2000-2010 and looks at trends in BC concentrations and the impact of BC emissions on surface albedo, snow cover and surface temperature between these periods. They find that changes in BC concentrations in snow since 1950 have had a much smaller impact on the cryosphere compared to the rise in surface temperatures.

How much BC have affected snow melt during the last decade is an important research question and I think this study makes a significant contribution to the field. The manuscript is clearly written and the authors have done a careful job in comparing their work with others. The authors describe their model and parametrization in detail. The figures are clear and concise and the authors present and discuss their results thoroughly.

I recommend this paper for publication, and I have only a couple of questions/editorial changes.

P18845: The CanAM model is compared with the SNICAR model with the same configuration. Here it is shown that CanAM produces 25 % less albedo response to BC in snow, and the authors attribute this to the choice of BC optical properties that produces a MAC 550 nm of 4.9 m<sup>2</sup>g<sup>-1</sup>, compared to 7.5 in SNICAR. Line 15: ‘.. result in similar albedo responses ..’ compared to SNICAR? Or to CanAM? Would this change your conclusions do you think?

*We modified the manuscript to clarify that a similar albedo response is simulated in CanAM and SNICAR with this modification. This is consistent with the conclusion in the paper that the weaker albedo response in CanAM can be attributed to differences in mass absorption coefficients.*

P18853,L11: missing ‘()’

*This mistake is corrected in the revised version of the manuscript.*

P18853, L22: You have run the model with 8 ensembles, but show only one ensemble, since the others 'are similar'. Why don't you show the ensemble mean instead of picking one ensemble?

*We agree that ensemble mean results could be shown in the figure although ensemble averaging would reduce contributions of natural variability in snow and BC to simulated concentrations. This would not be beneficial for comparisons with observations. In any event, we are confident that biases in individual ensemble members are very similar so that we would consider the current figure to be meaningful.*

P18853,L28: 'A relatively small number of sites in Siberia causes localized model underestimates for Russia.' Why?

*The reviewer raises an interesting question. An additional analysis revealed that concentrations of BC in snow of more than 100 ng/g were observed at several sites in the vicinity of Tiksi on the Arctic Ocean coast in Russia, with generally much cleaner conditions for other sites in Siberia (Doherty et al., 2010). It appears that local sources of BC in the Tiksi area are not accounted for in the ECLIPSE data set in CanAM4.2 (i.e. zero emission flux), which likely explains the large differences between simulated and observed concentrations for these particular sites. We revised the manuscript to provide more specific information about Siberian model biases.*

*Reference: Doherty, S. J., Warren, S. G., Grenfell, T. C., Clarke, A. D., and Brandt, R. E.: Light-absorbing impurities in Arctic snow, Atmos. Chem. Phys., 10, 11647–11680, doi:10.5194/acp-10-11647-2010, 2010.*

## Anonymous Referee #2

This work focuses on atmospheric black carbon (BC) aerosol deposited in snow and the resulted changes in snow properties by employing a physically developed parameterization in CanAM4.2 climate model. Parameterization and model results are validated with multiple field measurements and compared with other model simulations. Global radiative effect and climate response to BC in snow are investigated from 1950s to 2000s. Results of this study are substantially different from some previous studies in terms of the impact of BC in snow on climate, which is attributed to different model configurations and possibly missing BC-snow feedbacks in model. The manuscript is addressing an interesting scientific problem, rich in content and well-constructed. I would recommend it for a publication after minor revisions.

Specific comments:

1) Page 18853, line 20-22: If data in Fig 3 is averaged over a certain time period, please show a standard deviation to indicate how data varies over the averaging time period.

*Typically, observations of BC concentrations in snow are available for individual days at each site, sometimes with several measurements per day. If available, we averaged all measurements in a month and used these to directly compare with monthly mean model results from corresponding grid cells that include a particular measurement site. No attempt has been made to determine temporal or spatial variability because we felt that there are not enough measurements of BC in snow available to do this in a statistically meaningful way. This approach is very similar to what has been done in other model validation studies (e.g. Duo et al., 2012; Jiao et al., 2014). We think that this relatively simple approach is sufficient to identify large-scale model biases based on the limited amount of measurements that are available.*

References:

*Dou, T., Xiao, C., Shindell, D. T., Liu, J., Eleftheriadis, K., Ming, J., and Qin, D, The distribution of snow black carbon observed in the Arctic and compared to the GISS-PUCCINI model, Atmos. Chem. Phys., 12, 7995–8007, 2012"*

*Jiao, C., Flanner, M. G., Balkanski, Y., Bauer, S. E., Bellouin, N., Berntsen, T. K., Bian, H., Carslaw, K. S., Chin, M., De Luca, N., Diehl, T., Ghan, S. J., Iversen, T., Kirkevåg, A., Koch, D., Liu, X., Mann, G. W., Penner, J. E., Pitari, G., Schulz, M., Seland, Ø., Skeie, R. B., Steenrod, S. D., Stier, P., Takemura, T., Tsigaridis, K., van Noije, T., Yun, Y., and Zhang, K., An AeroCom assessment of black carbon in Arctic snow and sea ice, Atmos. Chem. Phys., 14, 2399-2417, 2014.*

2) Page 18858, line 1-4: Where is the factor of 3 coming from and how is the equilibrium temperature change of 0.03 degree obtained? Does 0.03 degree here have anything to do with the negative temperature response analyzed in paragraph 2 at page 18861?

*We revised the text to clarify the use of a factor 3 for the efficacy of BC in snow. Furthermore, the estimated increase in global mean temperature of 0.03 K (page 18858) cannot be directly compared to the temperature response of -0.001 K in the simulations with CanAM4.2 (page 18861). As was mentioned in the previous paragraph on page 18861 and other sections of the paper, we do not account for changes in SSTs and sea ice fraction in simulations with CanAM4.2. This is in contrast to the former estimate which accounts for these climate feedbacks. We revised the text to try to clarify this. However, both of these numbers indicate that changes in BC in snow between the 1950s and 2000s have only very small impacts on global climate, well below any meaningful detection limits.*

3) Page 18861, line 26: In Page 18845, paragraph 2 indicates an underestimated snow albedo response to BC in snow in Can AM4.2 model. If the parameterization is improved, will it help to enhance the model simulated climate response to BC in snow? A sensitivity study may help to further understand the question.

*There are considerable uncertainties associated with optical properties of BC in snow so it is not obvious to us that an increased mass absorption coefficient would indeed improve results. We estimate the impact of an increased mass absorption coefficient on radiative forcing to be roughly of the same order as the snow albedo differences shown in Fig. 1. Even if impacts were somewhat higher, key conclusions of the paper would not be affected as is evident from the weak response of surface albedo to radiative forcings for large portions of the Northern Hemisphere (compare Figures 5, 6 and 7).*

Editorial comments:

1) Page 18845, line 3: "BC are taken to to be that", remove a "to".

*Corrected in revised version of the paper.*

2) Fig. 5: It might be good to change the unit to mg/m<sup>3</sup>, to make the numbers under color bar more readable.

*Corrected in revised version of the paper.*

## H.-W. Jacobi

I would like to draw the attention of the authors to our recent study on BC in snow in the Himalayas (Jacobi, H.-W., et al., Black carbon in snow in the upper Himalayan Khumbu Valley, Nepal: Observations and modeling of the impact on snow albedo, melting, and radiative forcing, *The Cryosphere* 9, 1685-1699, 2015). The observations presented in this paper may also be useful for the evaluation of the performance of the used global model.

*Thank you for bringing these measurements to our attention. As we indicated in the paper, our results provide evidence for considerable radiative effects of BC in snow in the Himalayan region, consistent with conclusions of other studies. Unfortunately, we do not have much confidence in radiative forcings in mountainous regions in CanAM4.2 owing to the relatively coarse resolution of the model (T63, corresponding to about 2.8 degrees latitude/longitude). The model cannot realistically simulate large spatial differences in BC concentrations that likely occur in this mountainous region owing to interactions of pollutant transport, precipitation, and topography. We agree that these measurements are potentially useful for validation of global climate models. However, in our opinion this would require a detailed analysis of the measurements and model which we feel is beyond the scope of the current study.*

Moreover, the authors mention four different positive BC-snow albedo feedback mechanisms in the introduction. I was wondering if the authors were able to analyze, which of these specific feedback mechanisms were most important. I imagine that the importance of the different mechanisms may vary among different regions. For example, in our local simulation for the Khumbu valley we found with a detailed snowpack model an important increase in the snow grain size in the presence of BC compared to the clean snow.

*We did not determine contributions from individual feedback mechanisms to results in the paper. However, we performed additional (yet unpublished) simulations with specified climatological snow grain sizes which we thought would help us to address the first 2 feedback processes mentioned in the introduction. Unfortunately, we did not have the resources to complete the analysis of these simulations before the end of our research project.*

*The climate research community already addresses snow feedback processes in separate projects, including plans in phase 6 of the WCRP Coupled Model Intercomparison Project (CMIP6), to which we planning to contribute. As we indicate in our paper, we believe that there is a substantial amount of work that still needs to be done in that regard in order to reduce uncertainties in simulated impacts of BC on snow and climate. While a fair amount of work has been done to constrain radiative forcings*

*of BC in snow, an increased focus of the research community on snow feedback mechanisms would likely be very beneficial.*

# Simulation of black carbon in snow and its climate impact in the Canadian Global Climate Model

Maryam Namazi<sup>1,2</sup>, Knut von Salzen<sup>1</sup>, and Jason N. S. Cole<sup>1</sup>

<sup>1</sup>Canadian Centre for Climate Modelling and Analysis, Environment Canada, Victoria, British Columbia, Canada

<sup>2</sup>now at Department of Mathematics, University of Isfahan, Isfahan, Iran

*Correspondence to:* Knut von Salzen  
(knut.vonsalzen@ec.gc.ca)

**Abstract.** A new physically-based parameterization of black carbon (BC) in snow was developed and implemented in the Canadian Atmospheric Global Climate Model (CanAM4.2). Simulated BC snow mixing ratios and BC snow radiative forcings are in good agreement with measurements and results from other models. Simulations with the improved model yield considerable trends in regional BC concentrations in snow and BC snow radiative forcings during the time period from 1950 – 1959 to 2000 – 2009. Increases in radiative forcings for Asia and decreases for Europe and North America are found to be associated with changes in BC emissions. Additional sensitivity simulations were performed in order to study the impact of BC emission changes between 1950 – 1959 and 2000 – 2009 on surface albedo, snow cover fraction, and surface air temperature. Results from these simulations indicate that impacts of BC emission changes on snow albedos between these two decades are small and not significant. Overall, changes in BC concentrations in snow have much smaller impacts on the cryosphere than the net warming surface air temperatures during the second half of the 20th century.

## 1 Introduction

Snow plays an important role in the land surface radiation budget and therefore climate. Snow albedo can be strongly reduced by absorbing aerosols such as black carbon (BC), brown organic carbon, or dust which have been deposited on the snow through dry and wet deposition and cause warming of the snowpack (Warren and Wiscombe, 1980, 1985; Hansen and Nazarenko, 2004; Hadley and Kirchstetter, 2012).

BC is produced by incomplete combustion of fossil and biomass fuels and is emitted into the atmosphere from a wide range of natural and anthropogenic sources. Total emissions of BC from fossil fuel and biofuel combustion have increased strongly from 1850 to 2000 (Bond et al., 2007; Skeie et al., 2011). In addition to effects on snow albedo, BC can affect Earth's climate through direct  
25 radiative, semi-direct and indirect (cloud) effects.

An initial albedo reduction by BC in snow can be amplified by positive feedbacks involving snow processes, for example:

- 30 i) a warmer snowpack causes increases in snow grain effective radius (Flanner and Zender, 2006) which thereby causes further reductions in snow albedo,
- ii) larger snow grain sizes in a warm snowpack leads to a stronger BC snow radiative forcing (Warren and Wiscombe, 1980; Hadley and Kirchstetter, 2012),
- iii) BC tends to become more highly concentrated near the surface of the snowpack when snow melts (Clarke and Noone, 1985; Doherty et al., 2010), and
- 35 iv) an earlier snow melt onset may cause an earlier exposure of a darker underlying surface.

Different models have been used to simulate impacts of BC on snow and climate. Hansen and Nazarenko (2004) used the few available measurements of BC in snow at that time to determine snow albedo changes in the Arctic, Antarctica, Greenland, and other regions in the Northern Hemisphere. These albedo change estimates were used to calculate the radiative forcing (RF) and climate  
40 response. Jacobson (2004a) estimated BC concentrations in snow prognostically and used them to calculate the change in albedo and RF. More recently, Flanner et al. (2007, 2009); Koch et al. (2009b); Rypdal et al. (2009b); Skeie et al. (2011); Jiao et al. (2014) used prognostic modelling methods to simulate BC in snow and interactions with climate.

45 Flanner et al. (2007) investigated impacts of BC in snow on snow radiative and microphysical processes. They performed simulations for strong and weak boreal fire years and suggested that both BC emissions and the treatment of snow aging represent large sources of uncertainty in the simulations of BC in snow. In a recent study of Jiao et al. (2014), BC deposition fields from 25 global aerosol models were used to investigate effects of BC transport and deposition processes on BC  
50 concentration in snow. The analysis reveals that these processes are more important for differences in simulated BC concentrations in snow than differences in snow melt water scavenging rates or emissions in models.

Widespread surface melting of the Greenland ice sheet in 1889 and 2012 was recently attributed to  
55 warm temperatures combined with reductions in surface albedo resulting from deposition of black



carbon from Northern Hemisphere forest fires (Keegan et al., 2014). On the other hand, the extent to which absorption of visible radiation by BC in snow might have contributed to rapid warming of the mid to high latitude land surface and decline in Eurasian springtime snow cover (Déry and Brown, 2007) is presently unknown. Studies of BC in snow are complicated by the fact that anthropogenic emissions of BC are non-uniform in space and time, compounded by large variations in atmospheric transport of BC at high latitudes (Stohl et al., 2006). In addition, there is large inter-annual variability in vegetation fire emissions of BC. Variations in total BC emissions are also compounded by changes in snow cover extent (SCE) and depth owing to variations in temperatures and snowfall. Consequently, concentrations of BC in snow are highly variable and climate effects are difficult to quantify robustly.

Some of the recent studies focused on RFs during individual years (Flanner et al., 2007, 2009) while Hansen et al. (2007a); Koch et al. (2009a, 2011b); Skeie et al. (2011) analyzed differences between pre-industrial and present-day processes and climate. Some of the studies produced evidence for potentially large impacts of BC in snow on radiative forcings and climate. For instance, Flanner et al. (2009) concluded that fossil fuel and biofuel emissions of BC induce a large springtime snow cover loss over Eurasia as a consequence of strong snow-albedo feedbacks and large BC emissions from Asia, with a magnitude similar to impacts of anthropogenic carbon dioxide concentrations on SCE. According to Koch et al. (2009a), black carbon in snow has caused an increase in surface air temperature between 1890 and 1995 that more than balances a decrease in surface air temperature caused by direct radiative effects of aerosols during this time period. However, in a later study, Koch et al. (2011b) found only small impacts of BC on snow and ice during the twentieth century. In a related study, Holland et al. (2012) concluded that the deposition and cycling of aerosols in sea ice cause the sea ice to melt and may therefore play a role in late-twentieth-century Arctic sea ice trends. On the other hand, Goldenson et al. (2012) found that deposition of aerosols have small impacts on Arctic sea ice and climate.

The purpose of this work is to study impacts of BC emissions on cryospheric and climate processes in a recent version of the Canadian Atmospheric Global Climate Model (CanAM4.2). We apply a physically based parameterization of the snow albedo in combination with new parameterizations for BC concentrations in snow and effective radius of snow grains, which are described in Section 2. Simulations of BC in snow, RFs of BC in snow, and changes in snow cover fraction (SCF) and surface air temperatures from 1950s to 2009s are discussed in Section 3.

## 2 Modelling Approach

90 An interactive model treatment of BC emissions, transport, and deposition is required in order to simulate the RF of BC in snow and feedbacks between aerosol, snow physical processes, and climate. The Canadian Atmospheric Global Climate Model (CanAM4.2) is similar to the earlier version CanAM4 (von Salzen et al., 2013) but uses version 3.6 of the Canadian Land Surface Scheme (CLASS) to model the energy and water balances of the soil, snow, and vegetation canopy components (Verseghy, 2012). Relative to CanAM4, there are many improvements to the simulation of  
95 snow. These include new formulations for vegetation interception of snow (Bartlett et al., 2006), for unloading of snow from vegetation (Hedstrom and Pomeroy, 1998), for the albedo of snow-covered canopies (Bartlett and Verseghy, 2015), for the limiting snow density as a function of depth (Tabler et al., 1997; Brown et al., 2006), and finally for the thermal conductivity of snow (Sturm et al., 1997).  
100 Water retention in snowpacks has also been incorporated.

Other differences between CanAM4 and CanAM4.2 that are relevant to this study are the introduction of an aerosol microphysics scheme (von Salzen, 2006; Ma et al., 2008; Peng et al., 2012), a higher vertical resolution in the upper troposphere, a reduced solar constant ( $1361 \text{ W m}^{-2}$ ) and an  
105 improved treatment of the solar continuum used in the radiative transfer. However, the model retains the same T63 spectral resolution, with 49 vertical levels.

Different types of natural and anthropogenic aerosols are considered, including sulfate, black and organic carbon, sea salt, and mineral dust. Parameterizations for emissions, transport, gas-phase  
110 and aqueous-phase chemistry, and dry and wet deposition account for interactions with simulated meteorological variables for each individual grid point and time step. Hydrophobic and hydrophilic black and organic carbon aerosol are considered, with a specified lifetime, representing aerosol aging processes of hydrophobic carbonaceous aerosols (Croft et al., 2005). Fluxes and properties of the air (downwelling longwave and shortwave radiation, precipitation, air pressure and temperature,  
115 specific humidity and wind speed) are passed to CLASS which in turn computes the density, liquid water content, mass and temperature of a single layer of snow at each time step. The snow albedo calculation in CLASS does not explicitly account for snow metamorphism nor albedo reductions by BC which requires addition of new parameterizations (Section 2.1).

### 120 2.1 Radiative and Snow Microphysical Processes

A parameterization for snow albedo which accounts for contributions of BC-snow mixing ratio and the effective snow grain size was developed (Cole et al., 2015). For the sake of completeness the approach is described in brief. Lookup tables for snow albedo and transmission are used, which

are functions of snow water equivalent, underlying surface albedo, solar zenith angle, snow grain  
125 size and BC concentration. These tables are created for incident radiation that is purely direct beam  
or diffuse and for each radiation band in the CanAM4.2 radiative transfer model. Table contents  
are computed using the DISORT radiative transfer model (Stamnes et al., 1988). For each possible  
combination in the tables DISORT calculations are performed for 280 different wavelengths between  
0.25 and 4.0 microns which are then averaged over each band, weighted by either incident direct or  
130 diffuse radiation. For each of the calculations the optical properties of snow and BC are computed  
using Mie calculations. The size distribution and refractive indices for BC are taken to be that in  
Bäumer et al. (2007) to maintain consistency between the atmosphere and snow radiative effects.

The response of snow albedo to the presence of BC, relative to pristine snow, is shown in Fig. 1 for  
135 a semi-infinite snow layer in which BC is externally mixed and illuminated by direct beam radi-  
ation at a 60 degree zenith angle. For comparison, we show results from the Snow, Ice, and Aerosol  
Radiation (SNICAR) model (Flanner et al., 2007, 2009) using the same configuration. It is clear  
that the Cole et al. (2015) snow albedo model produces an albedo response to BC in snow that is  
roughly 25% less than SNICAR for all BC concentrations and snow grain sizes. This can be largely  
140 attributed to the choice of BC optical properties. In SNICAR the mass absorption coefficient at 550  
nm is  $7.5 \text{ m}^2/\text{g}$ , following recommendations by Bond and Bergstrom (2006), while the parame-  
terization of Bäumer et al. (2007) produces a mass absorption coefficient of  $4.9 \text{ m}^2/\text{g}$  at 550 nm.  
Recreating the lookup tables in Cole et al. (2015) with BC refractive indices that are consistent with  
SNICAR (Flanner et al., 2012) result in similar albedo responses due to BC in snow [in CanAM4.2](#)  
145 [and SNICAR](#) (not shown).

We consider snow over bare ground as well as on continental ice sheets and sea-ice for the devel-  
opment of new parameterizations for snow grain sizes and BC concentrations in snow. The existing  
parameterizations for snow in CLASS (3.6) are used to simulate properties of a single layer of snow  
150 with variable depth. Since vertical profiles of snow physical properties are not resolved in CLASS  
and extinction of solar radiation mainly occurs near the surface of snow layers, parameterizations  
of snow microphysical processes need to account for unresolved processes in the snowpack. The  
Snow Model Intercomparison Project (SnowMIP) experiments have shown that the performance of  
CLASS for simulations of the seasonal evolution of snow on land is comparable to that of a multi-  
155 layer snowpack model (Brown et al., 2006), despite the use of a single layer of snow.

### 2.1.1 Snow Metamorphism

Snow grain size influences the snow albedo and thermal conductivity as well as chemical interaction  
between snow and atmosphere (Domine et al., 2008). It generally increases over time as the snow-  
pack ages and therefore causes reductions in snow albedo, especially in the near infrared (Wiscombe

160 and Warren, 1980). The visible albedo, however, depends more strongly on concentrations of snow  
 impurities such as black carbon (BC) and mineral dust (Warren and Wiscombe, 1980). Larger snow  
 grains amplify the rate of snow albedo reduction by BC in snow (Hadley and Kirchstetter, 2012;  
 Aoki et al., 2011). This is because of deeper radiation penetration in coarser snow grains (Warren  
 and Wiscombe, 1980). In addition, the growth of snow grains contributes to snow albedo feedbacks  
 165 as the snowpack warms (Flanner and Zender, 2006). Therefore, an accurate model representation of  
 snow grain sizes is potentially important for simulations of the effects of BC on climate.

Snow with non-spherical complex particles can be represented as a collection of spheres, which  
 conserves the volume to surface area ratio well (error less than 5%) (Grenfell and Warren, 1999;  
 170 Grenfell et al., 2005). The effective radius,  $R_e$ , the surface area-weighted mean radius of a collection  
 of spherical particles, is given by

$$R_e = \frac{3}{\rho_i S}, \quad (1)$$

where  $\rho_i = 917 \text{ kg m}^{-3}$  is the bulk ice density. The snow specific surface area (S) is defined as the  
 ratio of the surface area per unit mass of snow in  $\text{m}^2 \text{ kg}^{-1}$ , which defines atmosphere-snow chem-  
 175 istry interactions and surface energy balance through snow albedo and turbulent fluxes.

The size of the snow grains depends on the macrophysical state of the snowpack which is determined  
 by its temperature, type, density, and amount of liquid water. We consider three mechanisms for the  
 temporal evolution of snow grain size in a layer at the top of the snowpack: dry aging, wet aging  
 180 and snow deposition. Other processes such as wind and sintering that can also affect snow grain size  
 are not considered owing to a lack of available parameterizations and simplicity of the CLASS snow  
 model.

For dry aging of snow grains, we use a physically-based approach by Flanner and Zender (2006)  
 185 which predicts the temporal evolution of  $R_e$  (m), of dry snow due to water vapour transport in the  
 snowpack, which is driven by differences in snow grain curvature and temperature gradient. The  
 calculation depends on snowpack temperature, vertical temperature gradient, and snow density. It is  
 formulated as

$$\frac{dR_e}{dt} = \frac{dR_e}{dt} \Big|_0 \left( \frac{\tau}{R_e - R_{e0} + \tau} \right)^{\frac{1}{\kappa}}, \quad (2)$$

190 where  $\frac{dR_e}{dt} \Big|_0$  ( $\text{m s}^{-1}$ ) is the initial rate of change of the effective radius, and  $\tau$  and  $\kappa$  are empirical  
 parameters which account for the spatial distribution of grain sizes and irregularity in grain spacing  
 and are specified according to the original version of the parameterization.  $R_{e0}$  is the effective radius  
 of fresh snow and is set to  $54.53 \text{ } \mu\text{m}$  corresponding to  $\text{SSA}_0 = 60 \text{ m}^2 \text{ kg}^{-1}$  (Flanner et al., 2007)  
 based on observational data of Legagneux et al. (2004).

195

The parameterization of wet aging accounts for the increase in snow grain size by rounding due to presence of liquid water within the snowpack. This process is modeled using an empirical equation expressed in terms of  $R_e$  ( $\mu\text{m}$ ),

$$\frac{dR_e}{dt} = \frac{10^{18} C_1 f_{\text{liq}}^3}{4\pi R_e^2}, \quad (3)$$

200 based on experimental data, (Brun, 1989; Oleson et al., 2010). Here  $C_1 = 4.22 \times 10^{-13}$  and  $f_{\text{liq}}$  is the mass liquid water fraction given by  $\frac{W_{\text{liq}}}{W_{\text{liq}} + W_{\text{ice}}}$  where  $W_{\text{liq}}$  and  $W_{\text{ice}}$  are the masses of water and ice in ( $\text{kg m}^{-2}$ ), respectively. Flanner et al. (2007) also use this parameterization for wet aging.

We parametrize the effects of snowfall on mean snow effective radius (m) in a shallow layer at the  
205 surface of the snowpack according to

$$\frac{dR_e}{dt} = -\frac{1}{\tau_d}(R_e - R_{e0}), \quad (4)$$

where  $\tau_d$  is an adjustment time scale which is given by

$$\tau_d = \frac{\rho_s z_s}{F_s} \quad (5)$$

for  $F_s > 0$ . Here,  $z_s$  (m),  $\rho_s$  ( $\text{kg m}^{-3}$ ) and  $F_s$  ( $\text{kg m}^{-2} \text{s}^{-1}$ ) are instantaneous snow depth, density  
210 of snow layer, and snowfall flux, respectively. If there is no snowfall,  $F_s = 0$ , then the effective radius remains constant. We use  $z_s = 25$  cm as the maximum depth of the surface snow layer in parameterizations of snow grain size, corresponding to a typical depth of solar penetration in snow (France et al., 2011). If the depth of snowpack is shallower than 5 cm, the effective radius is kept constant. We found a weak sensitivity of results to the assumed depth of the snow layer between 15  
215 and 25 cm, which does not affect the conclusions presented in the following.

There are few field measurements for effective radius of snow with vertical profiles available which can be used to validate parameterizations for snow grain sizes. The measurements which we use are from six locations and are summarized in Table 1. The averaged simulated effective radius corresponding to the location and month of the measurements is  $0.29 \pm 0.18$  mm. This is comparable to  
220 an averaged observed effective radius of  $0.22 \pm 0.11$  mm.

### 2.1.2 BC concentration in snow

The parameterization of BC concentrations in snow is based on a BC mass budget for a shallow  
225 homogeneous layer of snow at the top of the snowpack, with the additional simplifying assumption that there is no transfer of BC between the layer and underlying snow except for removal of BC by meltwater scavenging. The BC concentration is determined by accumulation rates of BC and snow through deposition processes. In addition, partial scavenging of BC by melting snow water

will act to increase the BC concentration in the top layer. Processes such as the advection of BC and  
 230 snow by wind or sea ice and effects of sublimation of snow on BC concentrations are not considered.

The parameterization has the following components:

- BC deposition: The BC concentration ( $\text{kg m}^{-3}$ ) in the snow layer increases by BC deposition and decreases by snowfall. If changes in snow density are omitted and the layer depth ( $z_s$ ) is  
 235 constant,

$$\frac{dC}{dt} = \frac{F_b}{z_s} - \frac{C F_s}{\rho_s z_s}, \quad (6)$$

where  $F_b$  is the total black carbon deposition flux ( $\text{kg m}^{-2} \text{s}^{-1}$ ), resulting from dry deposition, convective and large-scale wet deposition.

240 The BC snow mass budget can also be expressed as an adjustment of the concentration towards an effective surface BC concentration,

$$\frac{dC}{dt} = -\frac{1}{\tau_d}(C - C_0), \quad (7)$$

where the adjustment time scale ( $\tau_d$ ) is given by equation (5). The effective surface concentration ( $C_0$ ) is given by  $C_0 = \rho_s \frac{F_b}{F_s}$ . If there is no snowfall, then the change in BC concentration  
 245 is given by  $\lim_{F_s \rightarrow 0} \frac{dC}{dt} = \frac{F_b}{z_s}$ .

- Scavenging: Snow meltwater can scavenge hydrophilic BC out of the snow layer. However, BC may accumulate near the surface during the melt as observed in Conway et al. (1996); Xu et al. (2006); Doherty et al. (2010) and enhance the RF due to incomplete scavenging (Flanner et al., 2007). We parametrized this process by assuming the BC concentration change in time  
 250 to be proportional to the meltwater flux and concentration of BC in the snow surface layer,

$$\frac{dC}{dt} = (1 - s) \frac{F_w}{\rho_s z_s} C. \quad (8)$$

Here,  $F_w$  ( $\text{kg m}^{-2} \text{s}^{-1}$ ) is the meltwater flux out of the snow layer and  $0 \leq s \leq 1$  is the scavenging factor. For  $s = 1$ , in case of a perfectly efficient scavenging efficiency, the concentration of BC on top of the snow layer is not changed by melting of snow. In the other  
 255 limiting case of  $s = 0$ , BC is not removed by snow meltwater and therefore tends to accumulate in the snow surface layer over time. We choose  $s = 0.1$  for which the simulated BC are in good agreement with measured BC (Doherty et al., 2010). Rypdal et al. (2009b) and Skeie et al. (2011) assume that all BC remains at the snow surface as snow melts while Flanner et al. (2007, 2009) and Jiao et al. (2014) apply a scavenging efficiency of 0.2 for hydrophilic  
 260 BC and 0.03 for hydrophobic BC, based on Conway et al. (1996). In contrast, Hansen et al. (2005) and Koch et al. (2009b) did not include any contribution of snow melt to BC snow concentrations.

## 2.2 Simulation Setup

In order to investigate BC in snow and effects on cryospheric and climate processes, two simulations were performed from 1950 – 2009 with one year of model spin-up for 1949. In the control simulation (CTRL) snow aging and BC concentration in the snow are calculated prognostically using the parameterizations described in the previous sections. A sensitivity experiment (EXP) based on the control simulation is performed by applying specified monthly climatological BC concentrations in snow rather than time varying prognostic values. The climatological BC concentrations in this simulation were obtained by temporal averaging of BC concentration in snow over the first decade of the control simulation, 1950 – 1959, for times when snow is present. Consequently, differences between the two simulations can be attributed to differences in simulated BC radiative forcing in snow evolving over time relative to the 1950s.

Simulations were performed following specifications outlined by Taylor et al. (2011). Monthly mean sea surface temperature (SST) and sea-ice boundary conditions were used for the model lower boundary (Hurrell et al., 2008). These are the same boundary condition data that were required for the fifth Coupled Model Intercomparison Project CMIP5. Time-varying monthly averaged concentrations for CO<sub>2</sub>, CH<sub>4</sub>, O<sub>3</sub>, N<sub>2</sub>O, effective CFC11 and CFC12 were those of the historical period used in the CMIP5 project and extended to 2010 using the Representative Concentration Pathway (RCP4.5) scenario (Moss et al., 2010).

Emissions of BC and other aerosol compounds were provided using a combination of linearly interpolated monthly emission fluxes from different data sets in an attempt to include the most recent improvements in newly available emission data sets. Anthropogenic emissions in 2005 and subsequent years were specified according to the Evaluating the Climate and Air Quality Impacts of Short-Lived Pollutants (ECLIPSE) inventory, version 4a (Klimont et al., 2015, in preparation). Monthly varying emissions for forest and grass fires from GFED, version 3.1, were used for 1997 and subsequent years (van der Werf et al., 2010). Aircraft and shipping emissions and emissions before the first year of these data sets were taken from the CMIP5/RCP data base (Lamarque, 2010; Moss et al., 2010), with linear interpolation of the data sets in time between available start and end years.

With this approach, total global mean emissions of BC in CanAM4.2 are 4.87 Tg year<sup>-1</sup> during 1950 – 1959 and 8.82 Tg year<sup>-1</sup> during 2000-2009. The latter agrees well with the CMIP5/RCP data emissions during this time period (available at <http://tntcat.iiasa.ac.at:8787/RcpDb/dsd?Action=htmlpage&page=compare>). However, differences in regional emission patterns exist owing to improved temporal resolution, addition of new emission sectors and other revisions in the updated data set.

300 By using the observation-based SSTs and sea ice extent according to the CMIP5 approach, simulated climate conditions and BC concentrations are directly comparable to observations. However, this implies that feedbacks between BC in snow, oceanic heat transport, and sea ice are not accounted for in the simulations. Implications of this approach will be discussed in detail in the following.

305 Ensemble mean results are used to account for natural atmospheric variability in the simulations. We performed simulations with 8 ensemble members for each of the control and experiment simulations. Note that ocean and sea ice conditions are identical for each ensemble member. This implies that differences in ensemble mean results will represent only the portion of variability of the natural climate system which is associated with variations in atmospheric and land surface processes, disregarding ocean and sea ice processes.

## 2.3 Simulated and observed BC in snow and ice

### 2.3.1 Deposition of BC

To simulate the BC concentration in snow accurately, we require accurate BC deposition fluxes. Simulated BC deposition fluxes were compared to ice core measurements at four locations in Greenland (McConnell et al., 2007, 2010; McConnell and Edwards, 2008) during the time period of the simulations. The ice cores were collected in 2003 in Greenland at Act2 (66.00 °N, 45.2 °W), D4 (71.4°N, 43.9 °W), Humboldt (78.5 °N, 56.8 °W) and Summit (72.6 °N, 38.3 °W). BC contents in the ice cores were measured with a laser soot photometer (SP2) and were used to derive the deposition flux of BC from 1772 to 2003. Annually averaged BC deposition fluxes from these measurements and CanAM4.2 are shown in Fig. 2. CanAM4.2 reproduces the declining trend in the observed BC deposition flux for Greenland, which may be explained by a decrease in emissions and transport of BC from North America. The model results are in particularly good agreement with measurements at Summit and D4. However, the model underestimates deposition rates at the south-westerly locations and the trends are also weaker compared to the measurements. Note that the observed inter-annual variability is particularly large for these two sites which is likely associated with local processes either in the atmosphere or in the snow and ice. Moreover, model results are much less variable at these locations.

### 2.3.2 BC-snow mixing ratio

330 Extensive data sets of observed BC mass mixing ratios in snow have very recently become available for model validation. Doherty et al. (2010) provides the first large survey of BC snow mass mixing ratios in eight different regions in the Arctic: (1) Arctic Ocean, (2) Canadian Arctic, (3) Alaska, (4) Canadian Sub-Arctic, (5) Greenland, (6) Ny-Ålesund, (7) Tromsø, and (8) Russia in 1998 and 2005



– 2009. In Wang et al. (2013), 400 snow samples were gathered at 46 sites across northern China  
335 in January and February 2010. Finally, a recent field campaign was conducted that included 67 North  
American sites in 13 American states and 3 Canadian Provinces ; ~~Doherty et al. (2014)~~ [\(Doherty et al., 2014\)](#).  
For all of these studies, vertical profiles of light-absorbing particles in snow in different vertical inter-  
vals throughout the snowpack are available. The spectrally-resolved total light absorption of samples  
340 was analysed and used to estimate snow BC mass mixing ratios and their contribution to the total  
absorption by BC and non-BC particles.

In Fig. 3, we compare simulated annual mean BC mass mixing ratios in snow with annual mean  
measurements from the new observational data sets for corresponding grid cells and months. Since  
simulated results are representative of the top 25 cm of the snowpack, we vertically averaged the  
345 available measured profiles for each location using given interval depths as weights. If multiple  
measurements were taken on different days in a specific month of a year, we average the measure-  
ments over that month. Results from only one model ensemble member are shown. Results from  
other ensemble members are similar.

350 As shown in Fig. 3, CanAM4.2 broadly reproduces observed large-scale patterns of high concentra-  
tions in China and low concentrations for Greenland. Observations and model results are generally in  
good agreement, especially for sites in the Canadian Arctic, Canadian sub-Arctic, and Alaska. How-  
ever, CanAM4.2 systematically underestimates concentrations for Chinese sites. ~~A relatively small  
number of sites in Siberia causes localized model underestimates for Russia~~ [For Russia, observed  
355 high concentrations of BC in snow of more than 100 ng g<sup>-1</sup> at sites near Tiksi on the Arctic Ocean  
coast are not reproduced by the model, which can likely be attributed to local BC emissions in this  
region that are not accounted for in the emission data set.](#) Concentrations of BC in North America are  
well reproduced at latitudes above about 50 °N and systematically underestimated at lower latitudes.  
The mean simulated and measured BC snow concentrations averaged over all samples temporally  
360 and spatially are 35 and 108 ng g<sup>-1</sup>, respectively and the correlation between model results and  
observations is 0.84. Note that biases for Chinese sites contribute significantly to the differences  
in sample mean concentrations, which incompletely reflect conditions in the Northern Hemisphere.  
Despite the unprecedented size of the observational data set employed here, a rigorous validation of  
BC concentrations in snow in global models will require measurements over longer time periods and  
365 from additional regions. Note that the large variability in simulated BC concentrations in snow over  
Arctic Ocean sea ice compared to observation in Fig. 3 can likely be attributed to differences in BC  
mass budgets in snow over sea ice. This may be related to the omission of advection of sea ice and  
other processes for snow on sea ice in the model.

370 Biases in simulated BC snow concentrations are partly related to emissions. Models generally tend

to substantially underestimate absorption aerosol optical depth for North American and Asian sites, which has been attributed to a lack of BC emissions in these regions (Koch et al., 2009b; Bond et al., 2013). This is broadly consistent with underestimates of absorption aerosol optical depth and near-surface atmospheric concentrations of BC in CanAM4.2 in these regions (not shown).

375 Similarly, Kopacz et al. (2011) found that BC concentrations in snow were underestimated in their simulations at Chinese sites. On the other hand, there are no obvious systematic regional biases in BC concentration in snow in the Arctic in models (Bond et al., 2013). Koch et al. (2009a) and Skeie et al. (2011) extended their comparison to include measurements from Forsström et al. (2009) as well.

### 380 **3 Change in BC in snow and snow-climate processes between 1950 – 1959 and 2000 – 2009**

The following analysis of BC in snow and impacts on the cryosphere and climate will focus on the period 2000 – 2009. Changes since 1950 – 1959 will also be analyzed. Global anthropogenic BC emissions from fossil and biofuel sources have steadily increased by 73% from 1950 to 2000 (Lamarque, 2010). This corresponds to about half of the total increase in global anthropogenic BC  
385 emissions since 1850.

The mean simulated deposition of BC for 2000 – 2009 is shown in the top panel of Fig. 4. CanAM4.2 produces local maxima in the deposition flux near the equator due to the proximity of vegetation fire sources and efficient atmospheric BC removal by wet deposition in precipitating cloud systems.

390 Other notable deposition maxima in the Northern Hemisphere are related to emissions from Asia and Europe. A minimum in BC deposition occurs for Greenland, which can be largely attributed to the relatively high elevation of the topography. Simulated BC concentrations in air tend to decrease strongly with altitude in CanAM4.2 in the Arctic which leads to a decreasing efficiency of dry and wet deposition processes with elevation.

395

Corresponding to increases in global BC emissions, the mean BC deposition flux has increased from 1950 – 1959 to 2000 – 2009 with particularly large increases for East and Southeast Asia Fig. 4. Decreases for North America and Europe reflect reductions in emissions from air quality regulatory activities and technology improvements in these regions. For instance, decreases in amounts of  
400 carbonaceous aerosol have been documented based on ice-core measurements in Europe since the 1970s (Legrand et al., 2007) and air sampling across the United States during 1990 – 2004 (Murphy et al., 2011). On the other hand, BC emission from China and the rest of Asia has increased substantially over the four last decades, which largely explains increases in BC deposition for Asia and the North Pacific. It is estimated that BC emissions from China have increased 30% from 2000 to 2005  
405 and 21% and 41% from China and India, respectively, between 1996 and 2010 (Lei et al., 2011;

Lu et al., 2011). BC deposition over Greenland is mostly affected by North American emissions, except during winter. Consequently, simulated trends in BC deposition for Greenland are consistent with trends in emissions from North America. Emissions from Europe and East Asia play a more important role for BC deposition elsewhere in the Arctic (Shindell et al., 2008).

410

The annual mean BC concentration in snow during 2000 – 2009 in Fig. 5 is spatially well correlated with the BC deposition flux in Fig. 4, with high BC concentrations in snow in Europe, Russia, China and South and East Asia. In the Arctic, Greenland has the cleanest snow, consistent with low deposition rates. Similar patterns are simulated during the spring season (March-April-May, MAM),  
415 which is a particularly important time period for RFs of climate by BC in snow given the high SCE and solar insolation in the Northern Hemisphere during this time of the year. Similarly, changes in the concentration of BC in snow and BC deposition fluxes from the 1950s to the 2000s agree well with each other. Large increases in BC deposition fluxes for the Tibetan Plateau and the Himalayas lead to equivalent increases in BC concentrations in snow in these regions, with only relatively small  
420 differences between annual mean and MAM. The simulated reduction in BC concentrations in snow in Europe, North America and Greenland agrees with the declining trends in deposition rates for these regions in Fig. 4.

### 3.1 Radiative forcing

The instantaneous RF of BC in snow (BC present - no BC present) for 2000 – 2009 and the change  
425 in RF due to changes in BC concentrations in snow between 1950 – 1959 and 2000 – 2009 are shown in Fig. 6. Changes that are significant at 95% confidence level according to a student-t test are hatched, based on a model ensemble of 8 members (bottom panels). The changes in RF agree broadly with changes in BC in snow shown in Fig. 5 with stronger (weaker) RF change for higher (lower) concentrations. However, the relationship between BC concentrations and RF depends on  
430 solar insolation, snow grain size, snow depth, and other factors, which cause the RF to vary spatially and temporally. The global mean simulated RF for 2000 – 2009 is  $0.045 \text{ W m}^{-2}$  (annual) and  $0.080 \text{ W m}^{-2}$  (MAM). The mean RF in the Arctic north of  $60^\circ \text{N}$  is  $0.140 \text{ W m}^{-2}$  (annual) and  $0.317 \text{ W m}^{-2}$  (MAM).

435 Increases in global mean BC concentrations in snow between 1950 – 1959 and 2000 – 2009 lead to increases in global RF of  $0.011 \text{ W m}^{-2}$  (annual) and  $0.008 \text{ W m}^{-2}$  (MAM). The mean change in RF in the Arctic is 0.003 for (annual) and  $-0.004 \text{ W m}^{-2}$  (MAM). Statistically significant RF reductions for Europe, North America and Greenland are consistent with reductions in BC concentrations in snow in these regions and are in contrast to an increase in RF for large portions of Asia, especially  
440 in MAM. Increases in RF are most pronounced for the Himalayas and Tibetan Plateau because of high BC deposition fluxes and long persistence of SCE into the year in these regions. Given the

large magnitude of the RF, an intensification of glacial snow melt in these regions by BC in snow as observed in Lau et al. (2010) and modelled in Flanner et al. (2009) seems plausible. However, the horizontal resolution of CanAM4.2 is insufficient for a more detailed analysis of forcing changes and processes in these regions.

In comparison, other studies estimate present-day global mean RF of BC in snow from all BC sources to be between +0.01 to +0.08 W m<sup>-2</sup> (Flanner et al., 2007, 2009; Hansen et al., 2007a; Koch et al., 2009a; Rypdal et al., 2009b; Skeie et al., 2011; Wang et al., 2011; Lee et al., 2013b), with a best estimate of 0.04 W m<sup>-2</sup> in Bond et al. (2013), which agrees well with our results (0.045 W m<sup>-2</sup>). In a study of the Aerosol Comparisons between Observations and Models (AeroCom) project (Jiao et al., 2014) a range of Arctic RF from 0.06 to 0.28 W m<sup>-2</sup> was reported. Note that different BC emission inventories are used in different studies and results also often refer to different years. In addition to the BC in snow, some models also account for BC in sea-ice. Moreover, differences in diagnostic calculations of RF also exist. All these factors contribute to differences in RF estimates.

The efficacy of BC in snow, the change in global mean equilibrium temperature per unit of RF, ~~was previously estimated to be several times greater than~~ relative to the temperature response to CO<sub>2</sub> RF ~~(Hansen et al., 2007b; Flanner et al., 2007). The~~ is on the order of 3, with individual estimates ranging from 2.7 (Hansen et al., 2007b) to 3.17 (Flanner et al., 2007). This relatively large impact of BC in snow on global temperatures results from efficient snow albedo feedbacks ~~Section 4~~ (Section 1). Based on an efficacy of BC in snow of 3 and an equilibrium climate sensitivity of 3.37°C (Andrews et al., 2012), our estimate of global mean RF of BC in snow implies a global mean equilibrium temperature change response of 0.03°C ~~which is associated with~~ from changes in BC in snow between 1950 – 1959 and 2000 – 2009. Note that this estimate accounts for responses of SSTs and sea ice feedbacks to RF of BC in snow.

### 3.2 Impacts of BC in snow on cryosphere and climate

In an analysis strategy similar to the previous sections, the impacts of changes of BC concentrations in snow between 1950 – 1959 and 2000 – 2009 on the cryosphere will be investigated. Recall that climatological mean BC in snow from the 1950s replaces the actual BC in snow in the EXP run.

The middle panel of Fig. 7 shows the effect of the change in BC snow concentrations between 1950 – 1959 and 2000 – 2009 on shortwave broadband surface albedos. Note that surface albedo is calculated from reflected and absorbed radiative fluxes at the surface. Although physically coherent and statistically significant changes in RF of BC in snow were found (Fig. 6), changes in surface albedo are weak and not statistically significant. There is a strong reduction near the Himalayas and Tibetan Plateau, which is associated with increasing BC deposition over time in these areas. Local

patterns in albedo changes generally do not agree well with changes in RF of BC in snow. The weak response of surface albedos to BC radiative forcings in snow in Fig. 7 can be attributed to variations  
480 in snow processes in the simulations which arise from natural variations in amount and properties of snow in the Northern Hemisphere that are associated with precipitation and temperature (Brown and Robinson, 2011). Owing to large simulated variations in snow properties, impacts of BC in snow on surface albedo are very small and negligible for almost all regions. This is also apparent from results of individual ensemble members (not shown). Therefore, the results generally give no indication  
485 of large positive feedbacks of snow albedo to BC in snow, with the notable exception of the region comprising the Himalayas and Tibetan Plateau.

In comparison, total net changes in surface albedos between 1950 – 1959 and 2000 – 2009 in the control simulation with changes in greenhouse gas RF included are substantial (Fig. 7, bottom panel).  
490 Significant reductions in sea ice fraction and snow cover fraction (SCF) over Europe and Northern Asia lead to significant reductions in surface albedos, as will be further discussed in the following. There is no obvious relationship between changes in surface albedo and BC in snow for most of the regions. However, for the Himalayas and Tibetan Plateau, the changes in surface albedos are similar to changes in surface albedos induced by BC in snow. This indicates that cryospheric changes  
495 in these regions during the time period of the simulation may have been substantially affected by changes in BC in snow. However, confidence in these results is low given the low resolution of the model.

Although impacts of changes in BC in snow on surface albedos are not statistically significant and  
500 therefore unlikely to affect local climate processes systematically, we analyzed changes in SCF and surface air temperature for consistency and completeness.

As expected, there are no statistically robust changes in annual SCF that are associated with changes of BC in snow (Fig. 8, middle panel). Reductions of SCF in Eurasia and increases of SCF in North  
505 America (NA) appear to be broadly consistent with BC emissions increase in Eurasia and reduction in NA but they are not statistically significant. However, the simulated increase in SCF in northern Russia is counter-intuitive because BC concentration has increased from 1950s to 2000s. The reductions in SCF in the Himalayas and Tibetan Plateau are consistent with an accumulation of BC in snow in these regions. In comparison, significant reductions in SCF in the control run between  
510 1950s and 2000s in the Northern Hemisphere, especially near the boundaries of the Arctic ocean, Eurasia and Northern Asia, can be largely attributed to the specified reductions in sea ice fraction and increasing SSTs between these decades (Fig. 8, bottom panel). These results are broadly consistent with observation in Déry and Brown (2007) which show that SCF in Eurasia and North America during spring 1979 – 2008 has decreased by 13.5% and 6%, respectively, since 1968 – 1978.

Our results appear to contradict conclusions by Flanner et al. (2009) according to which emissions of BC induce a large springtime snow cover loss over Eurasia. This is despite a similar global RF of  $0.054 \text{ W m}^{-2}$  (1998) and  $0.049 \text{ W m}^{-2}$  (2001), and emissions of  $8.80 \text{ Tg year}^{-1}$  (1998) and  $6.70 \text{ Tg year}^{-1}$  (2001), Flanner et al. (2007). The differences between this and our study can at least  
 520 be partly attributed to the fact that the earlier study addressed total impacts of all present-day BC emissions whereas we focus on impacts of emission changes from the 1950s to 2000s here. For instance, present-day emissions from vegetation fires are large and have only slightly increased since pre-industrial times (Lamarque, 2010) and therefore produce only minor contributions to changes in BC in snow since the end of the 19<sup>th</sup> century. In another study, Koch et al. (2009a) attributed a  
 525 reduction in snow and ice cover extent of 1.2% in the Arctic from 1890 to 1995 to radiative forcing by black carbon in snow based on equilibrium simulations with an atmospheric model coupled to a slab ocean model. However, in a more recent study of transient climate change with a fully coupled climate model, Koch et al. (2011b) concluded that the darkening of snow albedos by BC has not caused recent snow cover and sea ice extent Arctic losses, with simulated changes in global (Arctic)  
 530 snow cover and sea ice extent of -0.06% (-0.26%) and 0.02% (0.33%) for 1890s to 1990s and 1970s to 1990s, respectively. They argued that fully coupled transient simulation produces smaller aerosol impacts on climate by accounting for moderating effects of ocean heat uptake on simulated temperature changes.

535 Changes in BC in snow are not generally associated with any statistically robust changes in surface air temperature in CanAM4.2 (Fig. 9). Locally, the warming is considerable for the Himalayas and Tibetan Plateau, consistent with BC snow concentration and albedo changes in these regions.

In contrast, significant warming is simulated in the control run with all greenhouse gas and aerosol  
 540 radiative forcings in large portions of the Northern Hemisphere between 1950 – 1959 and 2000 – 2009. The increase in simulated Arctic (global) mean surface air temperature is  $1.41$  ( $0.63$ ) $^{\circ}\text{C}$  for annual and  $1.46$  ( $0.60$ ) $^{\circ}\text{C}$  for MAM. However, recall that all-forcing changes in Fig. 9 also account for changes in SSTs and sea ice whereas effects of BC in snow were evaluated using specified SSTs and sea ice during 2000 – 2009 (Section 2.2). Consequently, increases in SSTs owing to positive radiative forcing of BC in snow are omitted for the latter, although they are likely to be very  
 545 small (Section 3.1).

Similar to results for SCF discussed earlier, our simulated changes in near-surface air temperature do not agree with warming trends due to BC in snow according to Flanner et al. (2007, 2009) and  
 550 Koch et al. (2009a). The simulated Arctic (global) ensemble mean temperature response to BC in snow in our simulations is  $-0.007$  ( $-0.001$ ) $^{\circ}\text{C}$  in the annual mean and  $-0.027$  ( $-0.019$ ) $^{\circ}\text{C}$  for MAM.

This yields a temperature change per unit of emission flux close to  $0^{\circ}\text{C year Tg}^{-1}$ . In comparison, the Arctic (global) annual mean equilibrium temperature response from total BC in snow was estimated as 1.61 (0.15) and  $0.50$  ( $0.10$ ) $^{\circ}\text{C}$  for 1998 and 2001, respectively (Flanner et al., 2007, 2009),  
555 corresponding to a global mean temperature change per unit of emission flux of  $0.015 - 0.017^{\circ}\text{C year Tg}^{-1}$ . According to Koch et al. (2009a), BC in snow has caused an increase in temperature of  $0.5$  ( $0.2$ ) $^{\circ}\text{C}$  in the Arctic (global) over the twentieth century based on equilibrium climate simulations. However, Koch et al. (2011b) simulated transient Arctic (global) temperature changes of BC in snow of  $+0.20$  ( $-0.03$ ) $^{\circ}\text{C}$  and  $-0.17$  ( $-0.02$ ) $^{\circ}\text{C}$  for 1890s – 1990s and 1970s – 1990s, respectively.  
560 Clearly, the magnitude of the simulated temperatures response depends on the choice of time period and associated changes in emissions in these studies. Temperature responses to changes in BC in snow are affected by substantial variability in climate and are poorly constrained in models.

The net impact of changes in concentrations of BC in snow on snow albedos depends on the magnitude of snow albedo feedbacks, which determine how strongly surface warming is amplified through  
565 a reduction in surface albedo resulting from warming or melting snow (Qu and Hall, 2007). Fletcher et al., (2015) showed that climate models generally reproduce observation-based estimates of snow albedo feedbacks well but tend to underestimate the temperature sensitive component of the total snow albedo feedback. This implies that where snow persists, its albedo does not reduce fast enough  
570 when the temperature warms, including warming from absorption of solar radiation by BC in snow. A very recent and preliminary analysis shows that the version of the model configuration used here produces a net snow albedo feedback that is about 20% weaker than observed, which can likely be attributed to a weak response of the temperature sensitive component of the total snow albedo feedback (Fletcher, personal communication). This could potentially lead to a relatively weak  
575 response of surface albedos to changes in BC in snow in the simulations presented here. Impacts of BC in snow on snow albedo in CanAM4.2 have not yet been compared to results from other models and observations. It is therefore unclear how realistic impacts of BC in snow on snow albedos in CanAM4.2 are.

#### 4 Conclusions

580 The effect of black carbon (BC) in the current version of Canadian Global Climate Model (CanAM4.2) was investigated. The modelling approach accounts for snow metamorphism and BC concentration in snow, which affect snow albedo. We validated our models by comparing the estimated BC deposition and BC mixing ratio against extensive field measurements, which produced good agreement. We estimated annual global and Arctic mean radiative forcings of BC in snow during 2000 – 2009  
585 of  $0.04$  and  $0.14 \text{ W m}^{-2}$ , respectively, within the range reported by previous studies. Although the radiative forcing due to BC in snow is locally large and comparable to other studies, changes in BC

concentrations in snow between 1950s to 2000s generally do not lead to any statistically significant changes in surface albedo, snow cover fraction, and surface air temperature based on simulations using eight ensemble members. Furthermore, we demonstrate that the simulated changes are much weaker than changes caused by greenhouse gas and other aerosol radiative forcings during these decades.

Results from our study do not agree with results from some of the earlier studies which indicated large impacts of total BC in snow on snow cover extent and surface air temperature. This may be partly related to differences in magnitudes of transient and equilibrium climate responses to BC in snow, which cannot be assessed without additional simulations with coupled atmosphere/ocean models. In addition, differences in snow albedo feedbacks in models potentially contributes to differences in responses in climate to changes in BC concentrations in snow. Consequently, more rigorous model comparisons with focus on snow albedos and snow albedo feedback processes would be useful in the future.

*Acknowledgements.* This research was supported by Environment Canada, Natural Sciences and Engineering Research Council of Canada (NSERC), and joint EC/NSERC-funded ‘Network on Climate and Aerosols: Addressing Key Uncertainties in Remote Canadian Environments (NETCARE)’. Funding for the development of the ECLIPSE emission data set was provided by the European Union Seventh Framework Programme (FP7/2007-2013) under grant agreement no 282688 - ECLIPSE. Emission data sets are available from <http://www.geiacenter.org/access> (ECLIPSE), <http://www.globalfiredata.org/data.html> (GFED), and <http://tntcat.iiasa.ac.at:8787/RcpDb/dsd?Action=htmlpage&page=about> (RCP). We would like to thank [2 anonymous referees and H.-W. Jacobi for their thoughtful comments on the manuscript and suggestions for improvements.](#) [In addition, we would like to thank](#) Mark Flanner, Chris Fletcher, Chad Thackeray, Greg Flato, and Diana Verseghy for providing ~~very useful comments on~~ [helpful comments on earlier versions of](#) the manuscript. Furthermore, we would like to thank Sarah Doherty who provided BC mixing ratio measurements, Florent Domine and Chris Derksen who provided the measurements of effective radius of snow, ~~and~~ Mark Flanner who provided lookup tables for parameterizations of dry snow aging, [and Rashed Mahmood for helping to generate figures.](#)



## References

- 615 Andrews, T., Gregory, J. M., Webb, M. J., and Taylor, K. E.: Forcing, feedbacks and climate sensitivity in CMIP5 coupled atmosphere-ocean climate models, *Geophys. Res. Lett.*, 39, L09712, doi:10.1029/2012GL051607, 2012.
- Aoki, T., Kuchiki, K., Niwano, M., Kodama, Y., Hosaka, M., and Tanaka, T.: Physically based snow albedo model for calculating broadband albedos and the solar heating profile in snowpack for general circulation  
620 models, *J. Geophys. Res.*, 116, D11114, doi:10.1029/2010JD015507, 2011.
- Bartlett, P.A., Mackay, M.D. and Verseghy, D.L.: Modified snow algorithms in the Canadian Land Surface Scheme: model runs and sensitivity analysis at three boreal forest stands, *Atmosphere-Ocean* 44, 207–222, 2006.
- Bartlett, P., and Verseghy, D.: Modified treatment of intercepted snow improves the simulated forest albedo in  
625 the Canadian Land Surface Scheme, accepted for publication in *Hydrological Processes*, 2015.
- Bäumer, D., Lohmann, U., Lesins, G., Li, J., and Croft, B.: Parameterizing the optical properties of carbonaceous aerosols in the Canadian Centre for Climate Modeling and Analysis Atmospheric General Circulation Model with impacts on global radiation and energy fluxes *Journal of Geophysical Research: Atmospheres*, 112, D10207, 2007.
- 630 Bond, T. C., and Bergstrom, R. W.: Light Absorption by Carbonaceous Particles: An Investigative Review, *Aerosol Sci. and Technol.*, 40, 27-67, 2006.
- Bond, T. C., Bhardwaj, E., Dong, R., Jogani, R., Jung, S. K., Roden, C., Streets, D. G., and Trautmann, N. M.: Historical emissions of black and organic carbon aerosol from energy-related combustion, 1850–2000, *Global Biogeochem. Cy.*, 21, Gb2018, doi:10.1029/2006gb002840, 2007.
- 635 Bond, T. C., Doherty, S. J., Fahey, D. W., Forster, P. M., Berntsen, T., DeAngelo, B. J., Flanner, M. G., Ghan, S., Kärcher, B., Koch, D., Kinne, S., Kondo, Y., Quinn, P. K., Sarofim, M. C., Schultz, M. G., Schulz, M., Venkataraman, C., Zhang, H., Zhang, S., Bellouin, N., Guttikunda, S. K., Hopke, P. K., Jacobson, M. Z., Kaiser, J. W., Klimont, Z., Lohmann, U., Schwarz, J. P., Shindell, D., Storelvmo, T., Warren, S. G., and Zender, C. S.: Bounding the role of black carbon in the climate system: A scientific assessment, *J. Geophys.*  
640 *Res.-Atmos.*, 118, 5380–5552, doi:10.1002/jgrd.50171, 2013.
- Brown, R., Bartlett, P., Mackay, M. and Verseghy, D.: Estimation of snow cover in CLASS for SnowMIP, *Atmosphere-Ocean* 44, 223–238, 2006.
- Brown, R. D., and Robinson, D. A.: Northern Hemisphere spring snow cover variability and change over 1922–2010 including an assessment of uncertainty. *Cryosphere*. 5, 1, 219–229, 2011.
- 645 Brun, E.: Investigation on wet-snow metamorphism in respect of liquid-water content, *Ann. Glaciol.*, 13, 22–26, 1989.
- Clarke, A., and Noone K.: Soot in the Arctic: A cause for perturbation in radiative transfer, *J. Geophys. Res.*, 19(12), 2045–2053, 1985.
- Cole, J., Namazi, M., von Salzen, K., and Barker H.: A new snow albedo parameterization for Canadian Land  
650 Surface Scheme (CLASS), (to be submitted to JAMES)
- Conway, H., Gades, A., and Raymond, C. F.: Albedo of dirty snow during conditions of melt, *Water Resour. Res.*, 32, 1713–1718, doi:10.1029/96WR00712, 1996.
- Croft, B., Lohmann, U. and von Salzen, K.: Black carbon ageing in the Canadian Centre for Climate modelling

- and analysis atmospheric general circulation model, *Atmos. Chem. Phys.*, 5, 1931–1949, 2005.
- 655 Derksen, C., Toose, P., Lemmetyinen, J., Pulliainen, J., Langlois, A., Rutter, N. and Fuller, M.: Evaluation of passive microwave brightness temperature simulations and snow water equivalent retrievals through a winter season. *Remote Sensing of Environment*, 117, 236–248, 2012.
- Déry, S. J. and Brown, R. D.: Recent Northern Hemisphere snow cover extent trends and implications for the snow-albedo-feedback, *Geophys. Res. Lett.*, 34, L22504, doi:10.1029/2007GL031474, 2007.
- 660 Doherty, S. J., Warren, S. G., Grenfell, T. C., Clarke, A. D., and Brandt, R. E.: Light-absorbing impurities in Arctic snow, *Atmos. Chem. Phys.*, 10(23), 11647–11680, doi:10.5194/acp-10-11647-2010, 2010.
- Doherty, S. J., Dang, C., Hegg, D. A., Zhang, R., and Warren S. G.: Black carbon and other light-absorbing particles in snow of central North America, *J. Geophys. Res. Atmos.*, 119, doi:10.1002/2014JD022350, 2014.
- 665 Domine, F., Albert, M., Huthwelker, T., Jacobi, H.-W., Kokhanovsky, A. A., Lehning, M., Picard, G., and Simpson, W. R.: Snow physics as relevant to snow photochemistry, *Atmos. Chem. Phys.*, 8, 171–208, doi:10.5194/acp-8-171-2008, 2008.
- Domine, F., Gallet J. C., Bock, J., and Morin, S.: Structure, specific surface area and thermal conductivity of the snowpack around Barrow, Alaska, *J. Geophys. Res.*, 117, D00R14, doi:10.1029/2011JD016647, 2012.
- 670 Flanner, M. G., Liu, X., Zhou, C., Penner, J. E., and C. Jiao, C.: Enhanced solar energy absorption by internally-mixed black carbon in snow grains, *Atmos. Chem. Phys.*, 12, 4699–4721, doi:10.5194/acp-12-4699-2012, 2012.
- Flanner, M., and Zender, C.: Linking snowpack microphysics and albedo evolution, *J. Geophys. Res.*, 111, D12208, doi:10.1029/2005JD006834, 2006.
- 675 Flanner, M. G., Zender, C. S., Randerson, J. T., and Rasch, P. J.: Present-day climate forcing and response from black carbon in snow, *J. Geophys. Res.*, 112(D11), 202, doi:10.1029/2006JD008003, 2007.
- Flanner, M. G., Zender, C. S., Hess, P. G., Mahowald, N. M., Painter, T. H., Ramanathan, V., and Rasch, P. J.: Springtime warming and reduced snow cover from carbonaceous particles, *Atmos. Chem. Phys.*, 9(7), 2481–2497, doi:10.5194/acp-9-2481-2009, 2009.
- 680 Fletcher, C. G., Kushner, P. J., Hall, A., and Qu, X.: Circulation responses to snow albedo feedback in climate change, 36, L09702, doi:10.1029/2009GL038011, 2009.
- Fletcher, C. G., Thackeray, C. W., and Burgers. T. M.: Evaluating biases in simulated snow albedo feedback in two generations of climate models, *J. Geophys. Res. Atmos.*, 120, 12–26, doi:10.1002/2014JD022546, 2015.
- 685 Forsström, S., Ström, J., Pedersen, C. A., Isaksson, E., and Gerland, S.: Elemental carbon distribution in Svalbard snow, *J. Geophys. Res.*, 114, D19112, doi:10.1029/2008jd011480, 2009.
- France, J. L., King, M. D., Lee-Taylor, J., Beine, H. J., Ianniello, A., Domine, F., and MacArthur A.: Calculations of in-snow NO<sub>2</sub> and OH radical photochemical production and photolysis rates: A field and radiative-transfer study of the optical properties of Arctic (Ny-Ålesund, Svalbard) snow, *J. Geophys. Res.*, 116, F04013, doi:10.1029/2011JF002019, 2011.
- 690 Gallet, J.-C., Domine, F., Arnaud, L., Picard, G., and Savarino, J.: Vertical profile of the specific surface area and density of the snow at Dome C and on a transect to Dumont D’Urville, Antarctica albedo calculations and comparison to remote sensing products, *The Cryosphere*, 5, 631–649, doi:10.5194/tc-5-631-2011, 2011.

- Goldenson, N., Doherty, S. J., Bitz, C. M., Holland, M. M., Light, B., and Conley, A. J.: Arctic climate response to forcing from light-absorbing particles in snow and sea ice in CESM, *Atmos. Chem. Phys.*, 12, 7903–7920, doi:10.5194/acp-12-7903-2012, 2012.
- Grenfell, T. C., and Warren, S. G.: Representation of a nonspherical ice particle by a collection of independent spheres for scattering and absorption of radiation, *J. Geophys. Res.*, 104(D24), 31,709–37,697, 1999.
- Grenfell, T. C., Neshyba, S. P., and Warren, S. G.: Representation of a nonspherical ice particle by a collection of independent spheres for scattering and absorption of radiation: 3. Hollow columns and plates, *J. Geophys. Res.*, 110, D17203, doi:10.1029/2005JD005811, 2005.
- Hadley, O. L., and Kirchstetter, T. W.: Black carbon reduction of snow albedo. *Nature Climate Change* 2, 437–440, 2012.
- Hansen, J., and Nazarenko, L., Soot climate forcing via snow and ice albedos, *Proc. Natl. Acad. Sci.*, 101(2), 423–428, 2004.
- Hansen, J., Sato, M., Ruedy, R., Nazarenko, L., Lacis, A., Schmidt, G. A., Russell, G., Aleinov, I., Bauer, M., Bauer, S., Bell, N., Cairns, B., Canuto, V., Chandler, Cheng, Y., Genio, A. D., Faluvegi, G., Fleming, E., Friend, A., Hall, T., Jackman, C., Kelley, M., Kiang, N., Koch, D., Lean, J., Lerner, J., Lo, K., Menon, S., Miller, R., Minnis, P., Novakov, T., Oinas, V., Perlwitz, J., Perlwitz, J., Rind, D., Romanou, A., Shindell, D., Stone, P., Sun, S., Tausnev, N., Thresher, D., Wielicki, B., Wong, T., Yao, M., and Zhang, S.: Efficacy of climate forcings, *J. Geophys. Res.*, 110(D18), D18104, doi:10.1029/2005JD005776, 2005.
- Hansen, J., Sato, M., Kharecha, P., Russell, G., Lea, D. W., and Siddall, M.: Climate change and trace gases, *Philos. Trans. R. Soc. A (365)*, 1925–1954, doi:10.1098/rsta.2007.2052, 2007a.
- Hansen, J., Sato M., Ruedy R., Kharecha, P., Lacis A., Miller, R., Nazarenko, L., Lo, K. Schmidt, G. A., Russell, G., Aleinov, I., Bauer, S., Baum, E., Cairns, B., Canuto, V. Chandler, M., Cheng, Y., Cohen, A., Del Genio, A., Faluvegi, G., Fleming, E., Friend, A., Hall, T., Jackman, C., Jonas, J., Kelley, M., Kiang, N. Y., Koch, D., Labow, G., Lerner, J., Menon, S., Novakov, T., Oinas, V., Perlwitz, Ja., Perlwitz, Ju., Rind, D., Romanou, A., Schmunk, R., Shindell, D., Stone, P., Sun, S., Streets, D., Tausnev, N., Thresher, D., Unger, N., Yao, M., and Zhang, S., Climate simulations for 1880–2003 with GISS modelE, *Clim. Dyn.*, 29, 661–696, doi:10.1007/s00382-007-0255-8, 2007b.
- Hedstrom, N.R., and Pomeroy, J. W.: Measurements and modelling of snow interception in the boreal forest, *Hydrol. Proc.* 12, 1611–1625, 1998.
- Holland, M. M., Bailey, D. A., and Briegleb, B. P.: Improved sea ice shortwave radiation physics in CCSM4: the impact of melt ponds and aerosols on Arctic sea ice. *Journal of Climate*, 25, 1413–1430, 2012.
- Hurrell, J. W., Hack, J. J., Shea, D., Caron, J. M. and Rosinski, J.: A new sea surface temperature and sea ice boundary dataset for the community atmosphere model. *Journal of Climate*, 21: 5145–5153, 2008.
- Jacobi, H.-W., Domine, F., Simpson, W. R., Douglas, T. A. and Sturm, M.: Simulation of the specific surface area of snow using a one-dimensional physical snowpack model: Implementation and evaluation for subarctic snow in Alaska, *Cryosphere*, 4, 35–51, doi:10.5194/tc-4-35-2010,n 2010.
- Jacobson, M. Z.: Climate response of fossil fuel and biofuel soot, accounting for soot’s feedback to snow and sea ice albedo and emissivity, *J. Geophys. Res.*, 109(D21), D21201, doi:10.1029/2004JD004945, 2004a.
- Jiao, C., Flanner, M. G., Balkanski, Y., Bauer, S. E., Bellouin, N., Berntsen, T. K., Bian, H., Carslaw, K. S., Chin, M., De Luca, N., Diehl, T., Ghan, S. J., Iversen, T., Kirkevåg, A., Koch, D., Liu, X., Mann, G.

- W., Penner, J. E., Pitari, G., Schulz, M., Seland,  $\phi$ ., Skeie, R. B., Steenrod, S. D., Stier, P., Takemura, T.,  
735 Tsigaridis, K., van Noije, T., Yun, Y., and Zhang, K.: An AeroCom assessment of black carbon in Arctic  
snow and sea ice, *Atmos. Chem. Phys.*, 14, 2399–2417, doi:10.5194/acp-14-2399-2014, 2014.
- Keegan, K. M., Albert, M. R., McConnell, J. R., and Baker, I.: Climate change and forest fires synergistically  
drive widespread melt events of the Greenland ice sheet, *Proc. Natl. Acad. Sci.*, 111(2), 7964–7967, doi:  
10.1073/pnas.1405397111, 2014.
- 740 Koch, D., Menon, S., Del Genio, A., Ruedy, R., Alienov, I., and Schmidt, G. A.: Distinguishing aerosol impacts  
on climate over the past century, *J Climate*, 22(10), 2659–2677, doi:10.1175/2008jcli2573.1, 2009a.
- Koch, D., Schulz, M., Kinne, S., McNaughton, C., Spackman, J. R., Balkanski, Y., Bauer, S., Berntsen, T.,  
Bond, T. C., Boucher, O., Chin, M., Clarke, A., De Luca, N., Dentener, F., Diehl, T., Dubovik, O., Easter, R.,  
Fahey, D. W., Feichter, J., Fillmore, D., Freitag, S., Ghan, S., Ginoux, P., Gong, S., Horowitz, L., Iversen, T.,  
745 Kirkevåg, A., Klimont, Z., Kondo, Y., Krol, M., Liu, X., Miller, R., Montanaro, V., Moteki, N., Myhre, G.,  
Penner, J. E., Perlwitz, J., Pitari, G., Reddy, S., Sahu, L., Sakamoto, H., Schuster, G., Schwarz, J. P., Seland,  
 $\phi$ ., Stier, P., Takegawa, N., Takemura, T., Textor, C., van Aardenne, J. A., and Zhao, Y.: Evaluation of black  
carbon estimations in global aerosol models, *Atmos. Chem. Phys.*, 9(22), 9001–9026, doi:10.5194/acp-9-  
9001-2009. 2009b.
- 750 Koch, D., Bauer, S., Del Genio, A., Faluvegi, G., McConnell, J. R., Menon, S., Miller, R. L., Rind, D.,  
Ruedy, R., Schmidt, G. A., and Shindell, D.: Coupled aerosol-chemistry-climate twentieth century tran-  
sient model investigation: Trends in short-lived species and climate responses, *J. Climate*, 24, 2693–2714,  
doi:10.1175/2011JCL13582.1, 2011b.
- Kopacz, M., Mauzerall, D. L., Wang, J., Leibensperger, E. M., Henze, D. K., and Singh, K.: Origin and  
755 radiative forcing of black carbon transported to the Himalayas and Tibetan Plateau, *Atmos. Chem. Phys.*, 11,  
2837–2852, doi:10.5194/acp-11-2837-2011, 2011.
- Lamarque, J.-F., Bond, T. C., Eyring, V., Granier, C., Heil, A., Klimont, Z., Lee, D., Liousse, C., Mieville, A.,  
Owen, B., Schultz, M. G., Shindell, D., Smith, S. J., Stehfest, E., Van Aardenne, J., Cooper, O. R., Kainuma,  
M., Mahowald, N., McConnell, J. R., Naik, V., Riahi, K., and van Vuuren, D. P.: Historical (1850–2000)  
760 gridded anthropogenic and biomass burning emissions of reactive gases and aerosols: methodology and  
application, *Atmos. Chem. Phys.*, 10, 7017–7039, doi:10.5194/acp-10-7017-2010, 2010.
- Lau, W. K. M., Kim, M. K., Kim, K. M., and Lee, W. S.: Enhanced surface warming and accelerated  
snow melt in the Himalayas and Tibetan Plateau induced by absorbing aerosols, *Environ. Res. Lett.*, 5(2),  
doi:10.1088/1748-9326/5/2/025204, 2010.
- 765 Lee, Y. H., Lamarque, J.-F., Flanner, M. G., Jiao, C., Shindell, D. T., Berntsen, T., Bisiaux, M. M., Cao, J.,  
Collins, W. J., Curran, M., Edwards, R., Faluvegi, G., Ghan, S., Horowitz, L. W., McConnell, J. R., Ming,  
J., Myhre, G., Nagashima, T., Naik, V., Rumbold, S. T., Skeie, R. B., Sudo, K., Takemura, T., Thevenon, F.,  
Xu, B., and Yoon, J.-H.: Evaluation of preindustrial to present-day black carbon and its albedo forcing from  
Atmospheric Chemistry and Climate Model Intercomparison Project (AC-CMIP), *Atmos. Chem. Phys.*, 13,  
770 2607–2634, doi:10.5194/acp-13-2607-2013, 2013b.
- Legagneux, L., Taillandier, A. S., and Domine F.: Grain growth theories and the isothermal evolution of the  
specific surface area of snow, *J. Appl. Phys.*, 95(11), 6175–6184, 2004.
- Legrand, M., Preunkert, S., Schock, M., Cerqueira, M., Kasper-Giebl, A., Afonso, J., Pio, C., Gelencsér, A., and

- Dombrowski-Etchevers I.: Major 20th century changes of carbonaceous aerosol components (EC, WinOC, DOC, HULIS, carboxylic acids, and cellulose) derived from Alpine ice cores, *J. Geophys. Res.*, 112(D23), D23S11, doi:10.1029/2006JD008080, 2007.
- 775 Lei, Y., Zhang, Q., He, K. B., and Streets, D. G.: Primary anthropogenic aerosol emission trends for China, 1990–2005, *Atmos. Chem. Phys.*, 11, 931–954, doi:10.5194/acp-11-931-2011, 2011.
- Lu, Z., Zhang, Q., and Streets, D. G.: Sulfur dioxide and primary carbonaceous aerosol emissions in China and  
780 India, 1996–2010, *Atmos. Chem. Phys.*, 11, 9839–9864, doi:10.5194/acp-11-9839-2011, 2011.
- Ma, X., von Salzen, K., and Li, J.: Modelling sea salt aerosol and its direct and indirect effects on climate, *Atmos. Chem. Phys.*, 8, 1311–1327, 2008.
- McConnell, J. R., et al: 20th century industrial black carbon emissions altered Arctic climate forcing. *Science*. doi:10.1126/science.1144856, 2007.
- 785 McConnell, J. R., and Edwards, R.: Coal burning leaves toxic heavy metal legacy in the Arctic. *Proceedings of the National Academy of Sciences*. doi:10.1073/pnas.0803564105, 2008.
- McConnell, J. R.: New Directions: Historical black carbon and other ice core aerosol records in the Arctic for GCM evaluation *Atmospheric Environment* 44, 21–22, 2665–2666, 2010.
- Morin, S., Domine, F., Dufour, A., Lejeune, Y., Lesaffre, B., Willemet, J.-M., Carmagnola, C. M. and Jacobi,  
790 H. W.: Measurements and modeling of the vertical profile of specific surface area of an alpine snowpack. *Adv. Water. Resour.*, 55, 111–120, doi:10.1016/j.advwatres.2012.01.010, 2013.
- Moss, R. H., Edmonds, J. A., Hibbard, K. A., Manning, M. R., Ross, S. K., van Vuuren, D. P., Carter, T. R., Emori, S., Kainuma, M., Kram, T., et al: The next generation of scenarios for climate change research and assessment. *Nature* 463, 747–756, 2010.
- 795 Murphy, D. M., Chow, J. C., Leibensperger, E. M., Malm, W. C., Pitchford, M., Schichtel, B. A., Watson, J. G., and White, W. H.: Decreases in elemental carbon and fine particle mass in the United States, *Atmos. Chem. Phys.*, 11, 4679–4686, doi:10.5194/acp-11-4679-2011, 2011.
- Oleson, K. W., Lawrence, D. M., Bonan, G. B., Flanner, M. G., Kluzek, E., Lawrence, P. J., Levis, S., Swenson, S. C., and Thornton, P. E.: Technical description of version 4.0 of the Community Land Model (CLM), Tech.  
800 Rep. NCAR/TN–478+STR, National Center for Atmospheric Research, 2010.
- Peng, Y., von Salzen, K., and Li, J.: Simulation of mineral dust aerosol with Piecewise Log-normal Approximation (PLA) in CanAM4-PAM, *Atmos. Chem. Phys.*, 12, 6891–6914, doi:10.5194/acp-12-6891-2012, 2012.
- Qu, X. and Hall, A.: What controls the strength of snow-albedo feedback?, *J. Clim.*, 20(15), 3971–3981,  
805 doi:10.1175/JCLI4186.1, 2007.
- Rypdal, K., Rive, N., Berntsen, T. K., Klimont, Z., Mideksa, T. K., Myhre, G., and Skeie R. B.: Costs and global impacts of black carbon abatement strategies, *Tellus B*, 61(4), 625–641, doi:10.1111/j.1600-0889.2009.00430.X, 2009b.
- Shindell, D. T., Chin, M., Dentener, F., Doherty, R. M., Faluvegi, G., Fiore, A. M., Hess, P., Koch, D. M.,  
810 MacKenzie, I. A., Sanderson, M. G., Schultz, M. G., Schulz, M., Stevenson, D. S., Teich, H., Textor, C., Wild, O., Bergmann, D. J., Bey, I., Bian, H., Cuvelier, C., Duncan, B. N., Folberth, G., Horowitz, L. W., Jonson, J., Kaminski, J. W., Marmer, E., Park, R., Pringle, K. J., Schroeder, S., Szopa, S., Takemura, T., Zeng, G., Keating, T. J., and Zuber, A.: A multi-model assessment of pollution transport to the Arctic,

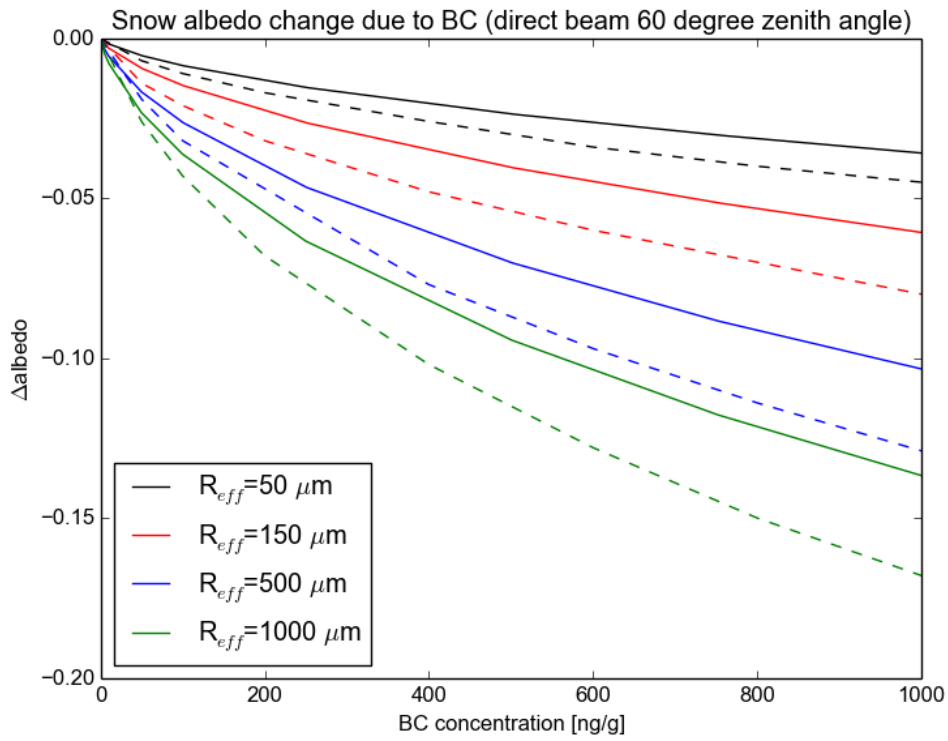
- Atmos. Chem. Phys., 8, 5353–5372, 2008.
- 815 Skeie, R. B., Berntsen, T., Myhre, G., Pedersen, C. A., Ström, J., Gerland, S., and Ogren, J. A.: Black carbon in the atmosphere and snow, from pre-industrial times until present, *Atmos. Chem. Phys.*, 11, 6809–6836, doi:10.5194/acp-11-6809-2011, 2011.
- Stamnes, K.; Tsay, S.-C.; Wiscombe, W. and Jayaweera, K.: Numerically stable algorithm for discrete-ordinate-method radiative transfer in multiple scattering and emitting layered media *Applied Optics*, 27, 2502–2509,  
820 1988.
- Stohl, A., Andrews, E., Burkhardt, J. F., Forster, C., Herber, A., Hoch, S. W., Kowal, D., Lunder, C., Mefford, T., Ogren, J. A., Sharma, S., Spichtinger, N., Stebel, K., Stone, R., Ström, J., Tørseth, Wehrli, C., and Yttri, K. E.: Pan-Arctic enhancements of light absorbing aerosol concentrations due to North American boreal forest fires during summer 2004, *J. Geophys. Res.*, 111, D22214, doi:10.1029/2006JD007216, 2006.
- 825 Stohl, A., Klimont, Z., Eckhardt, S., Kupiainen, K., Shevchenko, V. P., Kopeikin, V. M., and Novigatsky, A. N.: Black carbon in the Arctic: the underestimated role of gas flaring and residential combustion emissions, *Atmos. Chem. Phys.*, 13, 8833–8855, doi:10.5194/acp-13-8833-2013, 2013.
- Sturm, M., Holmgren, J., König, M., and Morris, K.: The thermal conductivity of seasonal snow, *J. Glaciol.* 43, 26–41, 1997.
- 830 Tabler, R.D., Benson, C.S., Santana, B.W. and Ganguly, P.: Estimating snow transport from wind speed records: estimates versus measurements at Prudhoe Bay, Alaska. In *Proc. 58th Western Snow Conf.*, Sacramento, CA., pp. 61–78, 1990.
- Taillandier, A.-S., Domine, F., Simpson, W. R., Sturm, M., Douglas, T. A., and Severin, K.: Evolution of the snow area index of the subarctic snowpack in Central Alaska over a whole season. Consequences for the air  
835 to snow transfer of pollutants, *Environ. Sci. Technol.*, 40, 7521–7527, 2006.
- Taylor, K. E., Stouffer, R. J., and Meehl, G. A.: A summary of the CMIP5 experiment design. CMIP5 internal document, 2011.
- Versegny, D.: The Canadian Land Surface Scheme CLASS (3.6), Technical Documentation, Tech. rep., Science and Technology Branch, Environment Canada, 2012.
- 840 van der Werf, G. R., Randerson, J. T., Giglio, L., Collatz, G. J., Mu, M., Kasibhatla, P. S., Morton, D. C., DeFries, R. S., Jin, Y., and van Leeuwen, T. T.: Global fire emissions and the contribution of deforestation, savanna, forest, agricultural, and peat fires (1997–2009), *Atmos. Chem. Phys.*, 10, 11707–11735, doi:10.5194/acp-10-11707-2010, 2010.
- von Salzen, K.: Piecewise log-normal approximation of size distributions for aerosol modelling, *Atmos. Chem.*  
845 *Phys.*, 6, 1351–1372, 2006.
- von Salzen, K., Scinocca, J. F., McFarlane, N. A., Li, J., Cole, J. N. S., Plummer, D., Versegny, D., Reader, M. C., Ma, X., Lazare, M., Solheim, L.: The Canadian Fourth Generation Atmospheric Global Climate Model (CanAM4). Part I: Representation of Physical Processes, *Atmosphere-Ocean*, 51, 104–125, doi:10.1080/07055900.2012.755610, 2013.
- 850 Wang, Z. L., Zhang, H., and Shen, X. S.: Radiative forcing and climate response due to black carbon in snow and ice, *Adv. Atmos. Sci.*, 28(6), 1336–1344, doi:10.1007/s00376-011-0117-5, 2011.
- Wang, X., Doherty, S. J., and Huang J.: Black carbon and other light-absorbing impurities in snow across Northern China, *J. Geophys. Res. Atmos.*, 118, 1471–1492, doi:10.1029/2012JD018291, 2013.

- Warren, S., and Wiscombe, W.: A model for the spectral albedo of snow. II: Snow containing atmospheric  
855 aerosols, *J. Atmos. Sci.*, 37, 2734–2745, 1980.
- Warren, S. G., and Wiscombe, W. J.: Dirty snow after nuclear-war, *Nature*, 313(6002), 467–470, 1985.
- Wiscombe, W. J., and Warren, S. G.: A model for the spectral albedo of snow. I: Pure snow, *J. Atmos. Sci.*, 37,  
2712–2733, 1980.
- Xu, B., Yao, T., Liu, X., and Wang, N.: Elemental and organic carbon measurements with a two-step heat-  
860 ing gas chromatography system in snow samples from the Tibetan Plateau, *Ann. Glaciol.*, 43, 257–262,  
doi:10.3189/172756406781812122, 2006.

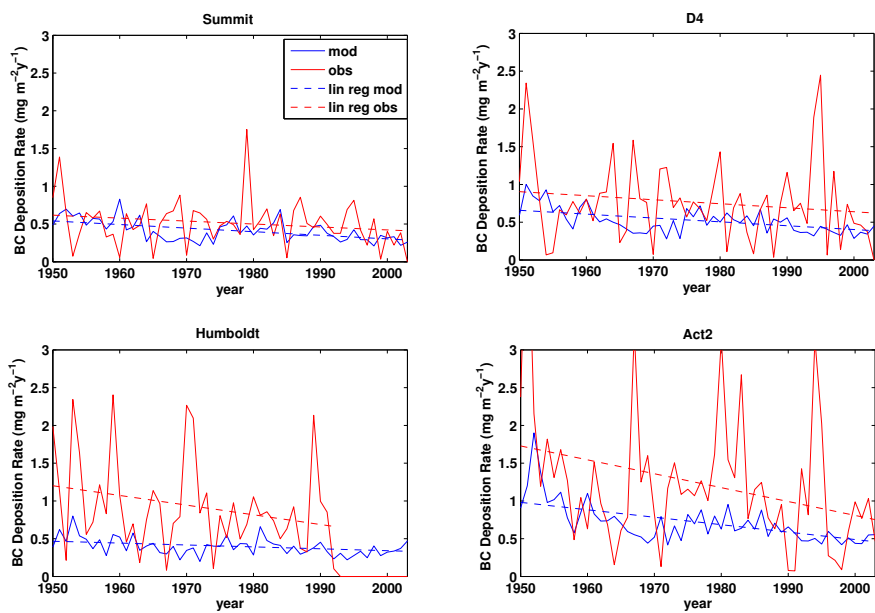
**Table 1.** Observed and simulated effective radius of snow in surface snow

Region	Sampling period	Mean obs. (mm)	Mean model (mm)	Reference
Fairbanks, Alaska (64.87 °N, 147.73 °W)	Nov 2003 to Apr 2004	0.36	0.42	Taillandier et al. (2006)
Dome C, Antarctic plateau (75.1 °S, 123.33 °E)	Nov 2008 to Jan 2009	0.15	0.23	Gallet et al. (2012)
Barrow, Alaska (71.33 °N, 203.34 °E)	Mar 2009 to Apr 2009	0.13	0.58	Domine et al. (2012)
Col de Porte, France (45.30 °N, 5.77 °E)	Sep 2009 to May 20	0.32	0.11	Morin et al. (2013)
Churchill, Canada (58.74 °N, 66.18 °E)	Jan 2010 to Apr 2010	0.23	0.18	Derksen et al. (2012)
Montmorency, Canada (47.33 °N, 288.87 °E)	Jan 2012 to Mar 2012	0.10	0.19	Unpublished data by F. Domine

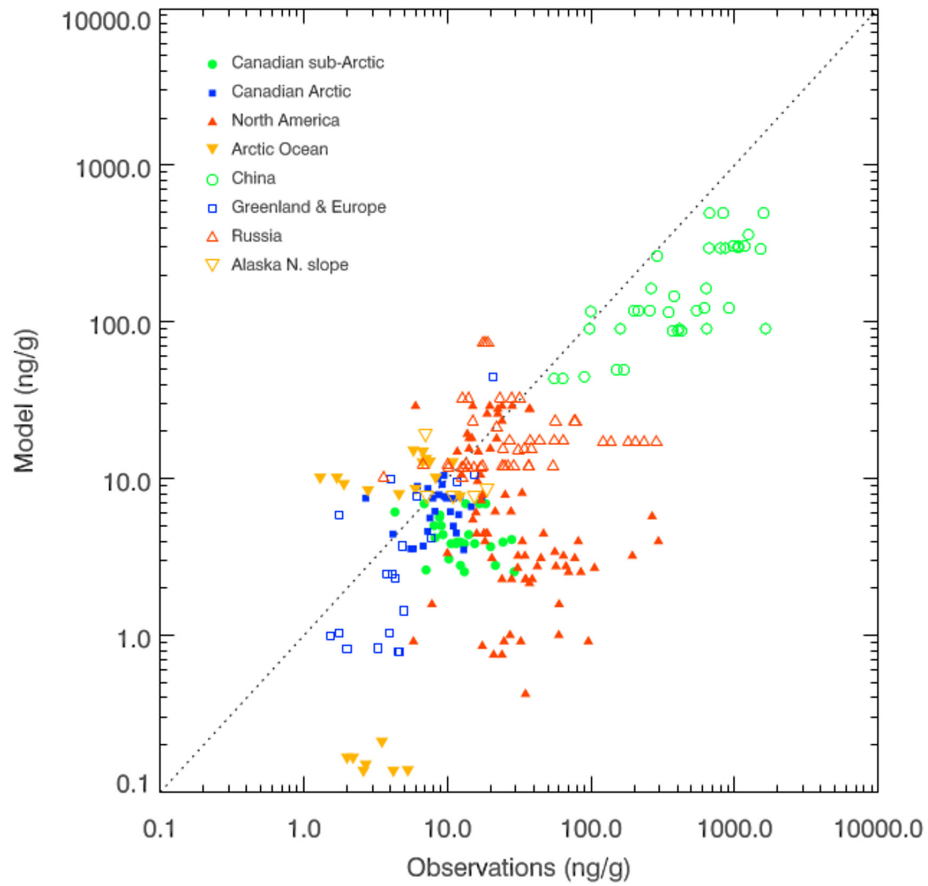




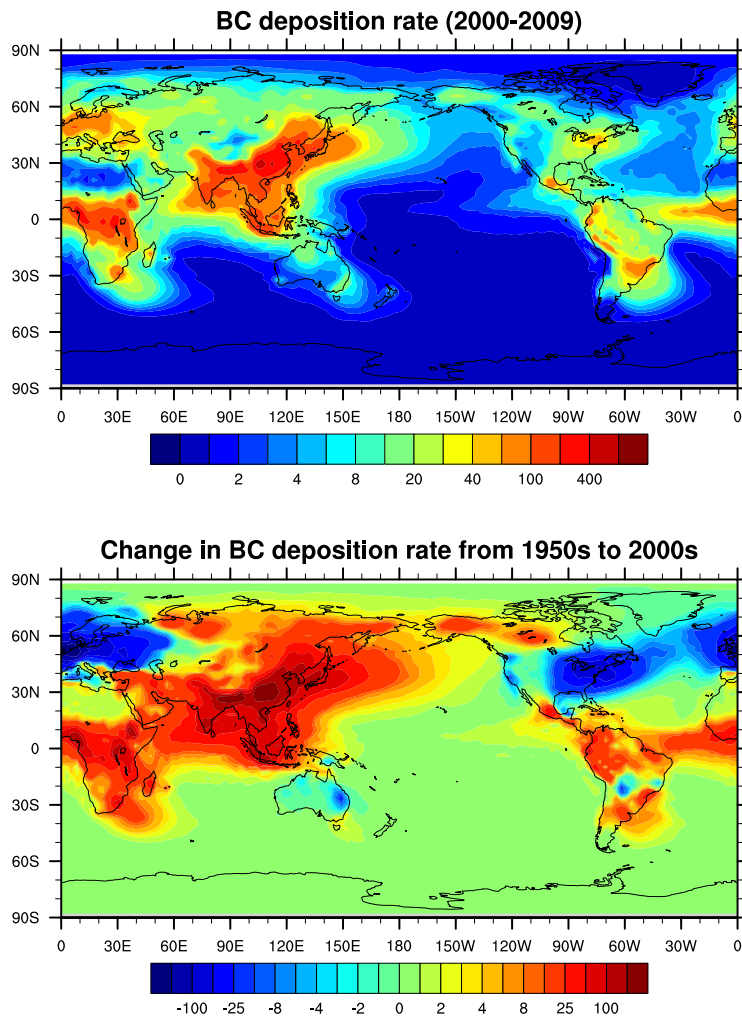
**Fig. 1.** Response of snow albedo to the presence of BC, relative to pristine snow, for different snow grain effective radius. Full lines refer to simulations based on the approach by Cole et al. (2015) in CanAM4.2; dashed lines refer to results from simulations with SNICAR (Flanner et al., 2007, 2009).



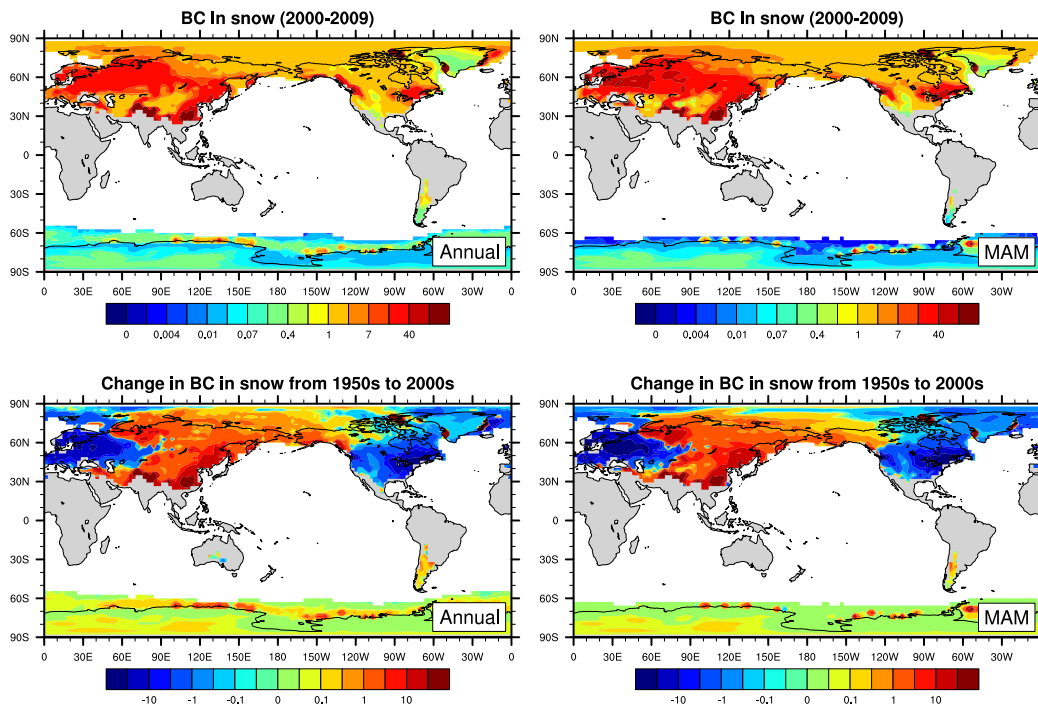
**Fig. 2.** Measured and modelled black carbon (BC) deposition flux in ice cores in Greenland at Summit (72.6 °N, 38.3 °W) (top left), D4 (71.4 °N, 43.9 °W) (top right), Humboldt (78.5 °N, 56.8 °W) (bottom left) and Act2 (66.0 °N, 45.2 °W) (bottom right) from 1950 – 2009. The measurements, solid line, and their linear regression, dashed line, are in red and the model results, solid line, and their linear regression, dashed line, are in blue.



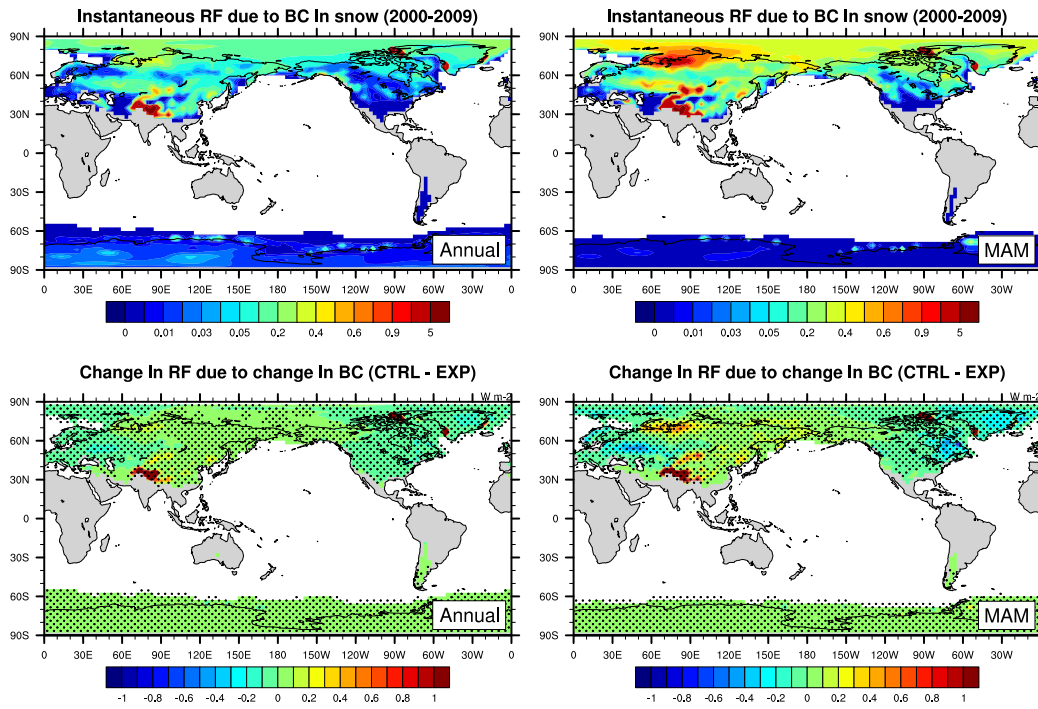
**Fig. 3.** Comparison of measured and modelled BC in snow in log-scale scatter plot. The measurements are vertically averaged over depth for the top 25 cm and compared to simulated results over the same grid-box and month.



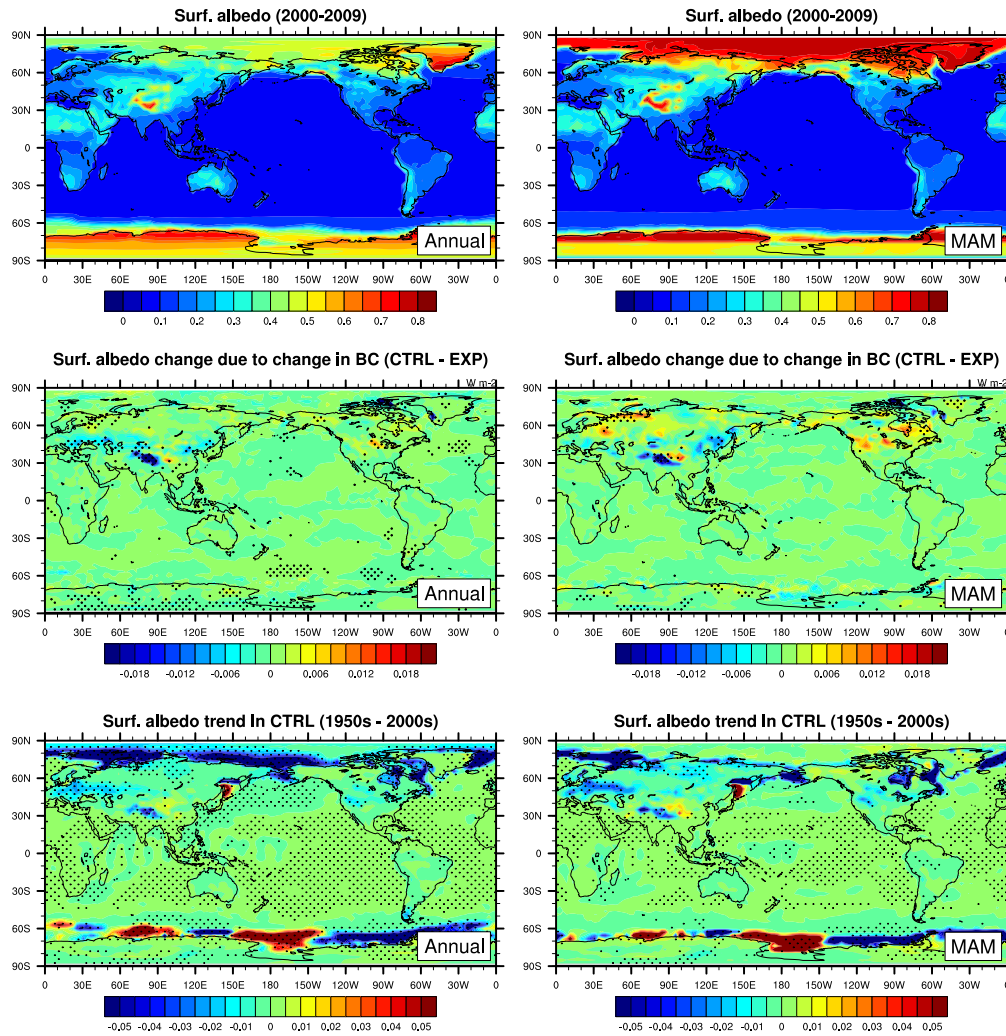
**Fig. 4.** Annual mean BC deposition flux ( $\text{mg m}^{-2} \text{yr}^{-1}$ ) during 2000-2009 (top) and annual mean BC deposition flux change 1950s to 2000s (bottom).



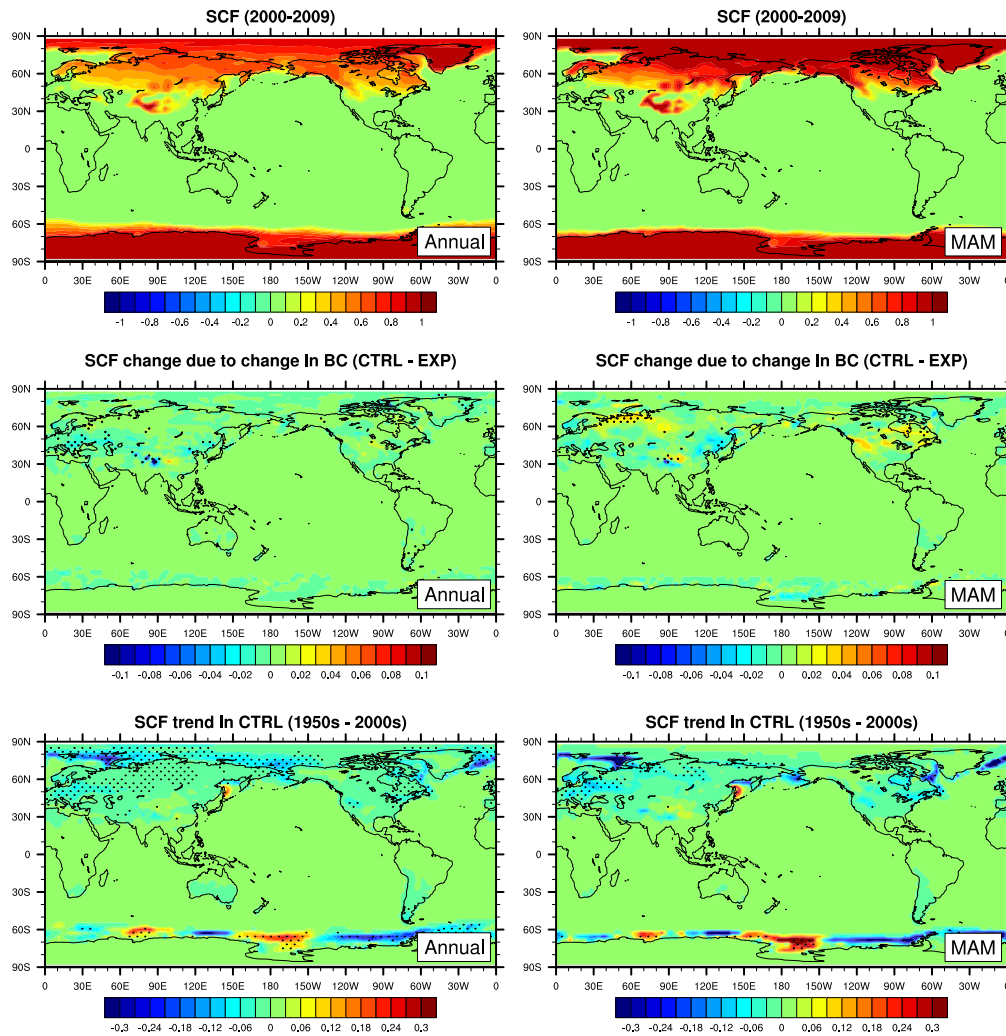
**Fig. 5.** Annual mean (top left) and spring mean (top right) BC concentration in snow ( $\text{kg mg m}^{-3}$ ) during 2000 – 2009, annual mean (bottom left) and spring mean (bottom right) change in BC concentration in snow ( $\text{kg mg m}^{-3}$ ) from 1950s to 2000s.



**Fig. 6.** Annual mean (top left) and spring mean (top right) all-sky instantaneous radiative forcing of BC in snow ( $W m^{-2}$ ) during 2000 – 2009, annual mean (bottom left) and spring mean (bottom right) radiative forcing changes ( $W m^{-2}$ ) due to BC in snow from 1950s to 2000s. Hatching indicates regions where the results are statistically significant ( $p = 0.05$ ).

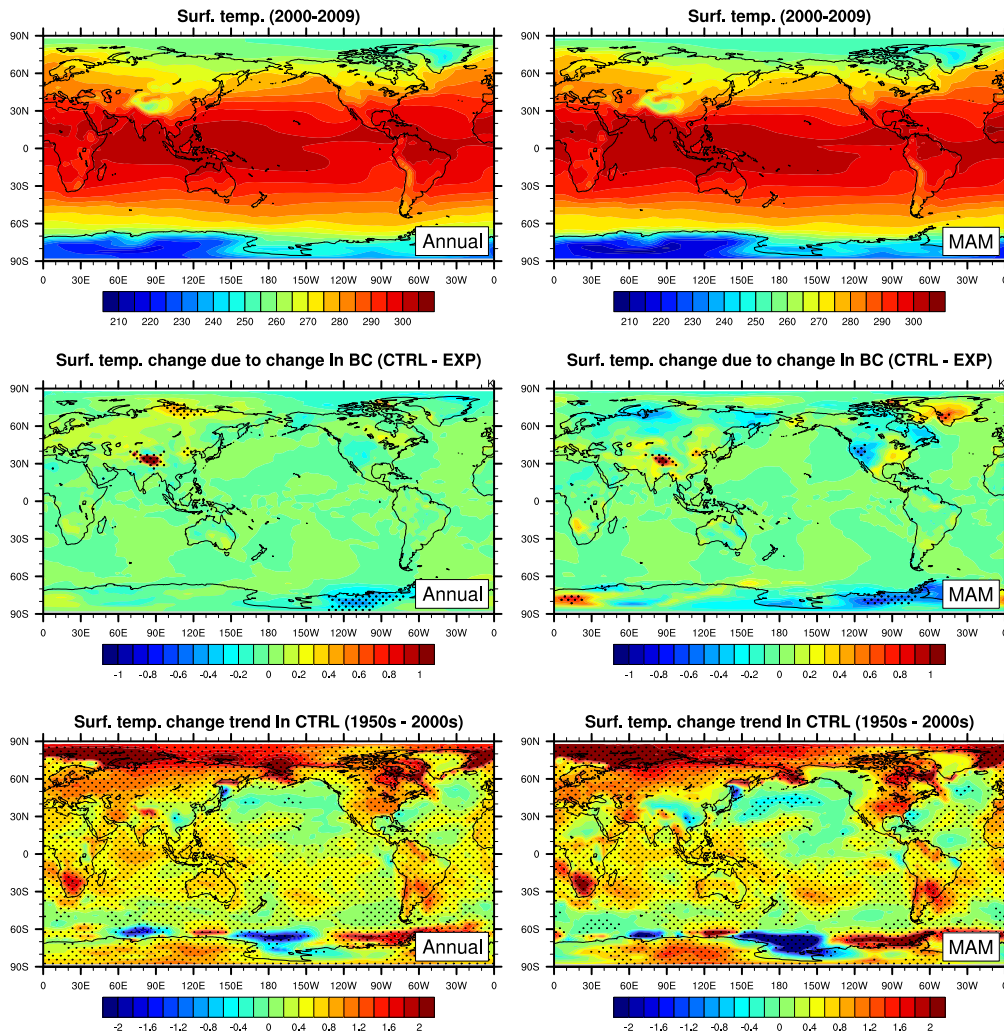


**Fig. 7.** Annual mean (top left) and spring mean (top right) surface albedo during 2000 – 2009, annual mean (middle left) and spring mean (middle right) surface albedo changes due to BC in snow from 1950s to 2000s and annual mean (bottom left) and spring mean (bottom right) surface albedo changes due to all forcing from 1950s to 2000s. Hatching indicates regions where the results are statistically significant ( $p = 0.05$ ).



**Fig. 8.** Annual mean (top left) and spring mean (top right) snow cover fraction during 2000 – 2009, annual mean (middle left) and spring mean (middle right) snow cover fraction changes due to BC in snow from 1950s to 2000s and annual mean (bottom left) and spring mean (bottom right) snow cover fraction changes due to all forcing from 1950s to 2000s. Hatching indicates regions where the results are statistically significant ( $p = 0.05$ ).





**Fig. 9.** Annual mean (top left) and spring mean (top right) near-surface air temperature ( $K$ ) during 2000 – 2009, annual mean (middle left) and spring mean (middle right) near-surface air temperature changes ( $K$ ) due to BC in snow from 1950s to 2000s and annual mean (bottom left) and spring mean (bottom right) near-surface air temperature changes ( $K$ ) due to all forcing from 1950s to 2000s. Hatching indicates regions where the results are statistically significant ( $p = 0.05$ ).